

**The twenty-third annual report of the committee of visitors of the County Lunatic Asylum at Colney Hatch : January quarter session, 1874 / [Middlesex County Lunatic Asylum].**

**Contributors**

London (England). County Lunatic Asylum, Colney Hatch.  
Wyatt, William Henry.  
Palmer Phillips, Charles.  
Wilkes, James, 1932-  
Marshall, William Gurslave.  
Sheppard, Edgar.  
Skaife, John S.  
Burrows, Robert A.  
Walker, John.  
Hawkins, Henry.  
Henderson, George H.

**Publication/Creation**

[London] : [Printed by Harrison & Sons], [1874]

**Persistent URL**

<https://wellcomecollection.org/works/cvwshrvk>

**License and attribution**

This work has been identified as being free of known restrictions under copyright law, including all related and neighbouring rights and is being made available under the Creative Commons, Public Domain Mark.

You can copy, modify, distribute and perform the work, even for commercial purposes, without asking permission.



Wellcome Collection  
183 Euston Road  
London NW1 2BE UK  
T +44 (0)20 7611 8722  
E [library@wellcomecollection.org](mailto:library@wellcomecollection.org)  
<https://wellcomecollection.org>

Middlesex.

---

THE  
TWENTY-THIRD ANNUAL REPORT  
OF THE  
COMMITTEE OF VISITORS

OF THE  
County Lunatic Asylum

AT

COLNEY HATCH,

JANUARY QUARTER SESSION, 1874.

---

LONDON:  
HARRISON AND SONS, ST. MARTIN'S LANE,  
*Printers in Ordinary to Her Majesty.*

1874.

WELLCOME INSTITUTE LIBRARY	
Coll.	welMOmee
Call	Ann-Rep
No.	WLM 28
	.BE 5
	M 62
	1874



22501245596

187 a

Middlesex.

---

THE  
 TWENTY-THIRD ANNUAL REPORT  
 OF THE  
 COMMITTEE OF VISITORS

OF THE

County Lunatic Asylum

AT

COLNEY HATCH,

JANUARY QUARTER SESSION, 1874.



LONDON:

HARRISON AND SONS, ST. MARTIN'S LANE,

*Printers in Ordinary to Her Majesty.*

1874.

Middlesex County Lunatic Asylum,

COLNEY HATCH.

COMMITTEE OF VISITORS APPOINTED BY THE COURT,

JANUARY QUARTER SESSION, 1873.

---

WILLIAM HENRY WYATT, Esq., Chairman, 88, Regent's Park Road.

E. W. WADESON, Esq., 40, Tavistock Square.

WILLIAM DOLLIN ALEXANDER, Esq., Summit House, Upper Clapton.

WILLIAM STUTFIELD, Esq., 135, Harley Street.

SIR WILLIAM HENRY BODKIN (Assistant Judge), West Hill, Highgate.

HENRY ROBARTS, Esq., Stamford Hill.

EDWARD SHEPHERD, Esq., 8, Aberdeen Park, Highbury.

J. B. PRICE, Esq., 24, Milner Square.

GEORGE PLUCKNETT, Esq., Manor House, Finchley.

W. P. BODKIN, Esq., Merton Lane, Highgate.

JOHN CHARRINGTON, Esq., Upper Clapton.

H. H. SEYMOUR, Esq., 30, Upper Brook Street.

J. J. TANNER, Esq., Foulden Lodge, Upper Clapton.

LT.-COL. J. W. JEAKES, Winchester Hall, Highgate.

CORNELIUS NICHOLSON, Esq., Wellfield, Muswell Hill.

R. E. ARDEN, Esq., East Burnham House, Bucks.

THOMAS DRY, Esq., 23, Gloucester Road, Regent's Park.

A. W. GADESSEN, Esq., 56, Leman Street.

## TABLE OF CONTENTS.

	Page
Report of Committee of Visitors . . . . .	5

## APPENDICES TO REPORT.

Entry of Commissioners in Lunacy at their Visit of Inspection . . . . .	13
Contract prices of Provisions, &c. . . . .	to face 20
Statement of Lunatics and Idiots chargeable to the County, and Parishes and Unions in the County, in each Year from 1851 . . . . .	to face 21
Abstract and Summary of the Returns of the number of Pauper Lunatics chargeable to the County, and Parishes in the County . . . . .	21
The Accounts of the Asylum for the Year—	
1.—Account Current . . . . .	22
2.—Income and Expenditure . . . . .	to face 22
3.—Balance Sheet . . . . .	23
4.—Victoria Fund Account . . . . .	24
Return of Admissions, Discharges, and Deaths in 1873 . . . . .	25
Ditto ditto from the opening of the Asylum . . . . .	to face 26
List of Officers and Servants, with their Salaries and Wages . . . . .	27

## REPORTS FROM THE OFFICERS.

1.—Report from the Male Department . . . . .	31
2.—Report from the Female Department . . . . .	35
Medical Tables . . . . .	41 to 50
3.—Chaplain's Report . . . . .	51
4.—Steward's Report . . . . .	57
Employment of Male Patients in Tailor's Shop . . . . .	61
"          "          in Shoemaker's Shop . . . . .	62
"          "          in Upholsterer's Shop. . . . .	63
Return of Provisions consumed during the year . . . . .	64
Daily Dietary. . . . .	65
Farm and Garden Accounts . . . . .	66
Valuation of Stock on Farm . . . . .	67
Additions, Alterations and Improvements . . . . .	68



Digitized by the Internet Archive  
in 2018 with funding from  
Wellcome Library

## Middlesex.

---

TO HER MAJESTY'S JUSTICES OF THE PEACE FOR  
THE COUNTY OF MIDDLESEX, IN GENERAL QUARTER  
SESSION ASSEMBLED.

*The TWENTY-THIRD ANNUAL REPORT  
of the Committee of Visitors of the County  
Lunatic Asylum at Colney Hatch.*

---

THE Committee commenced their Twenty-Second Report last year by saying that the history of the Asylum during the year then passed, like that of the one preceding, had been very uneventful, and would need but a short Report. Similar words are applicable to the present Report, and much which was then said might be repeated in nearly identical words. This Report will, therefore, in the first instance, summarize very shortly the matters requiring report according to the provisions of the Lunatic Asylums' Acts, and will conclude with the details of such special matters which the Committee think it right to bring under the notice of the Court.

The Asylum is throughout in good repair, numerous improvements in warming, ventilation, &c., have been made in addition to what had already been done. The health of the Patients has continued good, with complete freedom from epidemics. The conduct of the officers, attendants, and servants has, with very little exception, been good;



and the treatment of the Patients has been satisfactory. The Asylum continues full, and latterly many cases have necessarily been refused admission. Vacancies for recent cases have been created to a considerable extent by the discharge of quiet and imbecile Patients to the Workhouse, with a view to their removal to the Metropolitan District Imbecile Asylums ; and this course will, when practicable, be continued. The Committee have enlarged the supply of books, and means for the amusement of the Patients, and have endeavoured to the utmost of their ability to promote industrial occupations in both the Male and Female Departments. A new associated Bath House for the Male Patients, the plans for which were approved by the Court last year, is now completed and ready for use, and the alterations in the kitchens, also approved by the Court in 1872, and completed about the latter end of that year, have been very satisfactory in their results. The whole of the cooking has been done in one kitchen since the beginning of the year without any inconvenience, and at a considerable saving in cost. The female kitchen is being fitted up as an additional dining hall.

In consequence of the improvements introduced in the laundry machinery, the Committee have been enabled to dispense with the services of ten paid laundry women. In addition to this, the Committee have every reason to believe that the linen will be much more effectually washed ; while the expenditure in the Laundry Department, from the adoption of new machinery and the decrease of staff, must in future years be largely reduced.

As many of the Male Attendants and Servants in the Establishment are married, having their families resident in the neighbourhood, the Committee found that by giving them

a fair money allowance by way of commutation for their washing and lodging in the Asylum, a great boon would be conferred on the men, while several beds might be added to the accommodation for male Patients; they therefore offered the sum of 16s. a month to all the married men in addition to their wages, upon their giving up the lodging and washing hitherto provided for them in the Asylum; and out of 32 persons, 29 have gratefully accepted the offer. By this arrangement, additional accommodation will be afforded for 24 male Patients on the 1st of February next. While the comfort of the Male Attendants has thus been cared for, the interests of the Female Attendants have not been overlooked; for in the month of June last the Committee resolved to pay to such of the Nurses, who had extra responsibility or more arduous duty, an additional monthly wage by way of gratuity, dependent on the Matron's report as to the manner in which their duties had been carried out. This system appears to have afforded general satisfaction to the Nurses, and to have worked well for the interests of the Asylum: and it will become a matter of consideration with the Committee whether this mode of rewarding good service may not be advantageously extended.

The Committee have made several alterations in the system of night watching in the Female Department; and they feel satisfied that, with the regulations now in operation in both departments, the night watching in the Asylum is very effective. Under the present arrangement, no Patient ought to be left unseen for a longer period than two hours in the Male department, and one hour in the Female: while in the Infirmarys the intervals are still less.

Very few serious casualties have occurred in either department; but unhappily there have been two suicides during

the year—one of a male, the other of a female. Inquests were held in each case, and in the verdicts returned by the Coroner's juries, no blame was attached to any person for the occurrences. The verdicts were as follow, viz:—

1. “ Edward Wise, strangulation by hanging  
“ whilst in a state of unsound mind.”

2. “ Mary Milton, suicide by strangulation with a  
“ ligature composed of two pieces of string tied round  
“ the neck.”

The changes in the staff of Subordinate Officers have been somewhat less than in former years, and the Committee have on the whole been pleased with their general behaviour.

Dr. Balfour, one of the Assistant Medical Officers in the Female Department, resigned upon his receiving the appointment of Medical Superintendent of the Imbecile Asylum at Hampstead; and Dr. Gentle, the other Assistant Medical Officer in the Female Department, on account of impaired health. Drs. Dyer and Skelton have been appointed successors to the above-named gentlemen, and they have proved themselves well qualified for their appointments.

The Committee announce with sincere regret the approaching retirement of Miss Builder, their highly esteemed Matron, who has for some time past been suffering from the effects of a severe illness, which in 1870 rendered her for some months totally incapable of doing duty of any kind. Miss Builder has now stated that she feels herself unfit longer to perform the duty, and has tendered her resignation; but for the convenience of the Institution she

will continue to perform her duties until the 31st of March next, when she will have completed 20 years' service. In consideration of her great efficiency and zealous conduct, and the long period of 20 years in the service, the Committee have granted her a pension of £200 a-year, to commence from the 31st of March next, being two-thirds of her salary of £300, exclusive of her emoluments valued at £150 a-year; and in conformity with the Lunacy Acts Amendment Act 1862, the order granting this pension will be submitted to the Court on the presentation of this Report.

The high price of coals has led the Committee to adopt several improvements in the consumption of fuel, by alterations in the construction of fire grates, &c.: and they are now testing a new mode of heating the furnaces, in which the present consumption of expensive coal is very great. By availing themselves of favourable opportunities for purchasing large quantities of coal, the Committee have succeeded in making economical contracts.

The continued high price of both meat and coal necessitated an advance in the weekly maintenance rate on the 1st of April last, when it was advanced from 9s. 4d. to 9s. 7½d.: and as even at this advance the expenditure for the year has slightly exceeded the income, viz., to the extent of £288 5s., the Committee considered it expedient, from the 1st of January instant, further to raise it to 9s. 11d. per Patient per week.

The annual visit of inspection by two of the Commissioners in Lunacy was made on the 30th of April last and three following days. The Entry which was made by them on that occasion is inserted in the Appendix. The Committee, with their usual desire to pay attention to the suggestions

made by the Commissioners, carefully considered this Entry, and continued the consideration of portions of the Entry made by the two Visiting Commissioners in the preceding year: and they have adopted some of the recommendations made by those gentlemen. For instance, they have directed that the use of mechanical restraint shall be resorted to only in cases where the Medical Superintendents shall be convinced that it is urgently required, and that during such restraint the progress and condition of the Patient shall be observed personally by the Medical Superintendent, and fully reported in his diary. The Committee have also ordered the old system of Case Books to be resumed, instead of the Entry of each case on a separate sheet. The Committee most cordially coincide with the Commissioners in Lunacy in wishing that more could be done for promoting out-door occupation among the Male Patients. They constantly impress this desire on the Medical Superintendent of the Male Department, and since the change of one of the Inspectors the Committee hope that there has been an improvement in this respect.

The Committee have this year lost another old and valued friend in their deceased colleague, Mr. Tanner, who for many years was a most regular attendant at their Meetings, at which he was always zealous in promoting any good work; he was kind and courteous to every one with whom he came in contact, and was universally esteemed by all connected with the Asylum.

The retiring Members are—

Sir W. H. Bodkin.

Lieut.-Col. Jeakes.

J. J. Tanner, Esq., deceased.

J. Charrington, Esq., resigned.

E. Shepherd, Esq.

A. W. Gadesden, Esq.

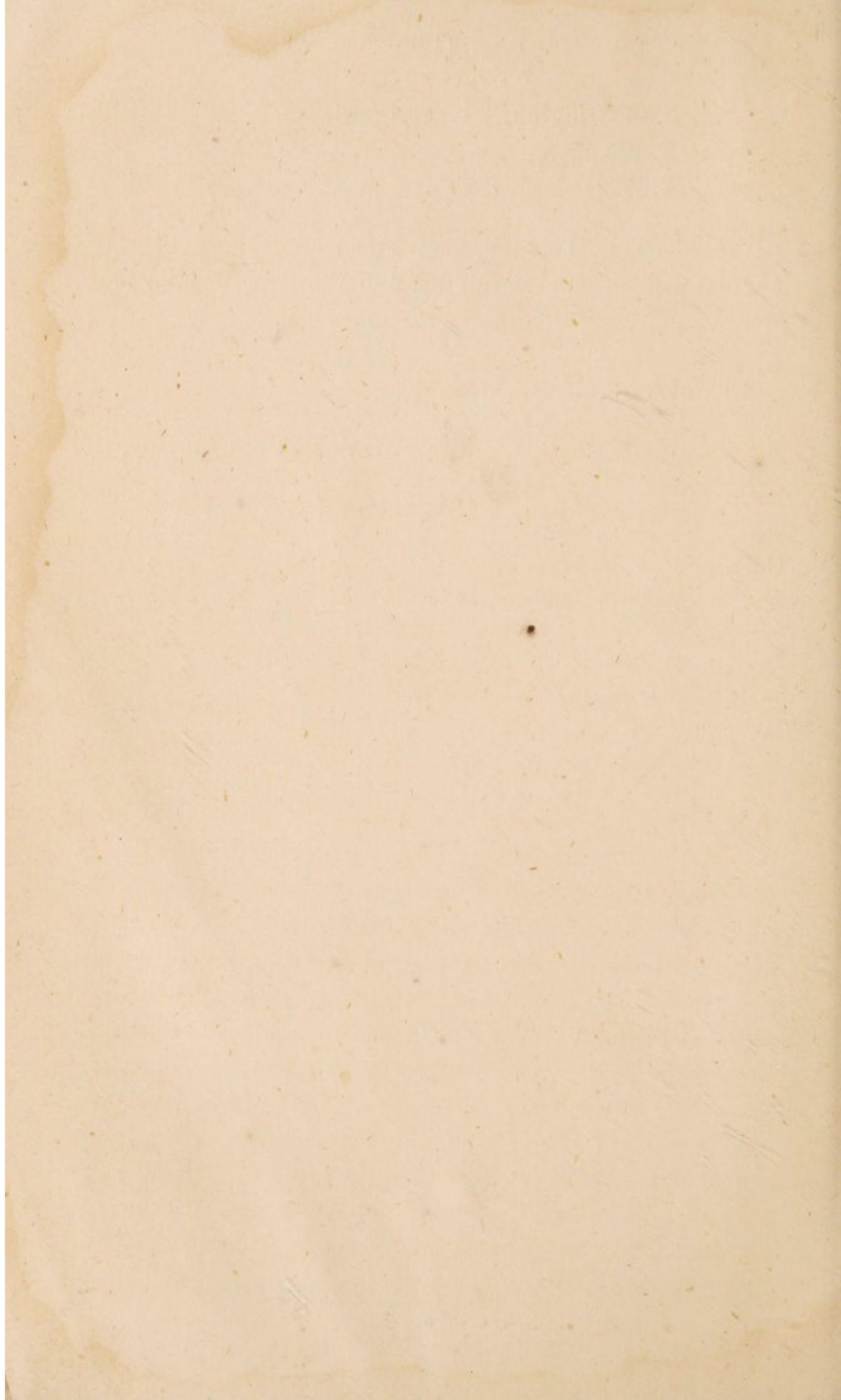
The Medical, Domestic, and Financial History of the Asylum will be found in full detail in the Reports from the Medical and other Officers hereto appended.

All which is submitted, &c.

W. H. WYATT, *Chairman.*

COLNEY HATCH ASYLUM,

*20th January, 1874.*



## APPENDIX.

---

ENTRY MADE BY THE COMMISSIONERS IN  
LUNACY AT THEIR ANNUAL VISIT.

---

MIDDLESEX COUNTY ASYLUM, COLNEY HATCH.

*6th May, 1873.*

WE have been engaged from the 30th ultimo to the 3rd instant inclusive in visiting this Asylum, and with the exception of 1 Male and 9 Females out on trial, we have seen the Patients, 2,076, now on the books, viz., 828 Males, and 1,248 Females. Since the last visit, an interval of little more than 10 months, the changes among the Patients have been as follows:—Admitted, 232 Males, 258 Females; discharged, 146 Males, 204 Females; died, 99 Males, 64 Females. The admissions include 36 re-admissions, and of the discharged, 164 are stated to have recovered, 86 others were transferred direct to Leavesden, and 23 to Hampstead District Asylums, 15 patients have escaped, all but 2 were retaken. The assigned causes of death in the Male Division have been 42 general paralysis; 13 epilepsy, apoplexy and



other cerebral diseases; 16 diseases of the lungs and heart; 17 exhaustion; 3 diarrhœa and dysentery; and 8 senile decay and other general causes. In the Female Division 7 women died from general paralysis; 18 from ordinary paralysis and apoplexy; 4 from epilepsy; 24 from diseases of the lungs and heart; 8 from exhaustion; 2 from erysipelas; and 1 from jaundice. Inquests were held in the cases of 2 men and 1 woman; 1 man died suddenly from the rupture of a blood vessel on the brain, and another was found dead in bed from epilepsy; the female died from apoplexy. No casualties of a serious nature have occurred since the last visit beyond those above enumerated.

During the above period, applications for the admission of 398 Patients have been refused for want of room, and there are now vacancies only for 4 in the Male Division. To some extent the pressure will shortly be relieved by removal to the Hampstead Asylum of a number of Patients, who, in the opinion of the Medical Officers, are of the harmless chronic class, for whom alone the District Asylums are designed. The effect, however, of such removal has been, and will be, to replace Patients of a quiet character by others requiring a much larger amount of supervision and care.

Considering the importance of making due provision for the absence of Attendants from the several wards when away on holiday or from sickness, we greatly doubt the sufficiency of the present staff in either Division, and we beg to direct the attention of the Visitors to the subject. On the Male side we think that an additional Attendant is required in B 3 Ward, and also in Nos. 5 and 13; and in the Female Division in Nos. 22, E 2, and 24. An eighth Night Attendant is, we are glad to find, about to be appointed

for the females, and considering the class of Male Patients now here, and the number who are wet and dirty (151 of them) the appointment of a fifth in the Men's Division is very desirable.

At present there are no special arrangements for the special night watching of the suicidal and epileptic Patients, the latter amounting to 288; but we understand that this important subject is under the consideration of the Committee, and we trust that an efficient scheme for this purpose will, ere long, be adopted in both Divisions.

The Male Patients were, during our visit, with scarcely an exception, quiet and orderly; but many of the women were noisy and much excited, and amongst them there was an unusual amount of discontent.

The complaints as to the diet were indeed numerous in both Divisions, especially in reference to the Australian meat, which is now extensively used, and to the fish dinner, which for some short time has been given once in the week. Although the fish is simply boiled, and without any kind of sauce, it does not appear in itself to be disliked by the Patients; but the complaints bore upon the insufficiency of its cleaning, and to the inadequate quantity. Upon the first day of inspection we saw the dinner served in one of the Male Wards (B 2), which contains 34 Patients, and we do not think that the quantity sent up for that dinner, after deduction of skin and bone, was more than enough for half that number. After distributing it in the most careful way, it was found necessary to send for eight portions of Australian meat. We think that this matter requires immediate attention, and that a much larger quantity of fish, properly cleaned, should be allowed. The

question of serving the Australian meat to Patients, who are so prejudiced against it as persistently to refuse to eat it, should also be considered by the Committee. The amended dietary, we are glad to see, provides butter for breakfast, and the quantity of meat in the pies has been increased.

We also saw at dinner about 250 women in the Hall; this dinner was properly served, and the Patients were orderly and generally satisfied with the stew, bread and beer. We understand that it is proposed to convert the old kitchen into a second dining hall for Females, and for that purpose it appears to be well adapted.

A more frequent change of table cloths throughout the Asylum is necessary; and unless in very exceptional cases, we think that all the male Patients should be provided with knives and forks, as are the females. The men in Wards B 3, D, and Nos. 10, 11, and 14, are only supplied with spoons.

The condition of the Patients as to cleanliness was satisfactory, and on the whole the men were fairly clothed, but many of the women were untidy, and their dresses worn, and not very clean. More authority should, we think, be vested in the Matron in the selection of the material for the dresses of the females, and also as to the way in which they should be made up; a greater variety of colour and more attention to the fit of the dresses would be an improvement. Ten Patients on the Male Side are wearing strong dresses, and a large number of the women have ordinary gowns, but of specially strong material.

The Wards throughout were clean, and with the exception of B 3, and 14, on the Male Side, the ventilation was fairly

good. An offensive smell, however, pervaded both these Wards, and in them some Patients we hear have lately had dysentery. The smell appeared to be caused by the floors being so constantly soiled, and the boards being saturated. The daily scouring which is required has no doubt been the chief cause of the dysentery. Covering the floors in these Wards with some material impermeable to moisture would appear to be the only way of remedying this state of things.

While the Wards for the quieter and better class of Patients in both Divisions are properly furnished and supplied with books, papers, and means of amusement, in those for the worse class—more especially in the Male Division—there has been no improvement; there is still a want of more furniture in them, particularly of padded settees or benches with backs, of books, papers, games, and objects likely to interest and amuse the Patients, who should also have occupation of a useful kind. For this purpose we think that rooms connected with the Wards should be provided, and that the Patients should be encouraged by extra diet or other indulgences to employ themselves, and the Attendants (by gratuities) to persevere in promoting their employment.

The beds and bedding we found quite clean, but as many as 124 Patients (44 males and 80 females) still sleep upon sackings without mattresses, and 47 males and 6 females upon mattresses placed upon the floor. A few low bedsteads have been provided since the last visit, and we hope that they will be supplied generally and the sides padded for epileptics; also that mattresses will be gradually given to the Patients now sleeping on sackings.

There are still no proper rooms for buckets, mops, brooms

and other articles in use in the Wards ; and we again would draw the attention of the Visitors to the insufficient number of water-closets in many of the Wards, there being in many instances two only in Wards containing from 40 to 70 Patients.

Plans for an associated bath-room for the men have received the sanction of the Secretary of State, and the foundations are being got out.

In the women's general bath-room the water is stated to be changed for every person ; but in the Wards of both Divisions, three not unfrequently use the same water. The hot water, both in reference to quantity and its early supply, seems to be deficient, as in some of the Wards we were informed that it could not be obtained before half-past 7 o'clock in the morning.

In Male Wards 2 and 5 we noticed that coils of steam pipes have recently been placed in the middle of the corridors, and projecting about 2 feet above the floor ; some protection to these should at once be devised.

Considering the large number of aged, paralyzed, and feeble cases now in this Asylum, the general health is not unsatisfactory, and there were only 11 men and 33 women in bed on the second day of our visit ; 30 men and 85 women were taking medicine.

One male was in the padded room at our visit, but the door was not locked, and several women were also in their rooms under similar circumstances. Seclusion amongst the men, during the past 10 months, has been used only in 23 cases on 35 occasions altogether, but on the female side, 134 Patients, chiefly epileptics, have been

secluded 351 times, varying in duration from a few minutes to 13 hours. In this Division all Patients are entered as being in seclusion if locked into their rooms between 6 a.m. and 7.45 p.m. No Patient was in restraint during our visit in either Division, and since the last visit 1 female only has had her hands fastened on four occasions, and for surgical reasons.

We have great satisfaction in stating that the use of restraint amongst the men has latterly been greatly diminished, and that during the above period it has been employed in 8 cases only, in 3 of them for self-protection on 13 occasions, and in the remaining 5 for surgical reasons on 7 occasions. The use of restraint in the case of the Patient specially noticed by our colleagues has been for some months discontinued.

There is nothing new to report as to the number of Patients employed, or as to their occupation. Only 50 men work on the farm or grounds, and 72 in various trades. No system of instruction in trades is carried out here, and much might be done, we think, in this direction to the benefit of the Patients themselves and economy of the Institution, by the appointment of artizans and out-door Attendants capable of teaching the male Patients. By this means the number of paid tailors, shoemakers, and others, might be reduced—199 women are employed in needle-work, 202 in house duties, and 124 in the laundry.

The Patients who attend Divine Service are very few, less than a third of the whole number on Sundays.

The arrangements for out-door exercise are very much the same as have been set forth in previous Reports. The

planting of the Airing Courts, which was recommended at the last visit, has been commenced, but the close high paling with which the trees and shrubs have been surrounded is very unsightly. In the yard for the male Patients belonging to Wards 14 and B 3, clumps have been very injudiciously placed on a bank of turf, instead of round the yard or in its centre, where they would afford shade and also be ornamental. We still recommend that in this and the adjoining yard, flower beds and trees should be laid out and planted under the direction of Dr. Sheppard.

Case Books have, since the 1st January, been provided in each Division.

The weekly rate of maintenance has been raised from 1st April last from 9s. 4d. to 9s. 7½d.

The difficulties incident to the successful working of this now overgrown Asylum have recently been much increased by the removal of all the Patients of a quiet and well conducted class to the Leavesden Asylum, and the admission of others from the various licensed houses and other places, the majority of whom are violent, noisy, or of dirty habits.

While according every praise to the zeal and industry of the superintendence exercised under difficulties of an exceptional character, our visit on this occasion confirms us in a conviction we have long entertained, that an Asylum of this magnitude, and occupied by the description of Patients now here, is quite beyond satisfactory management.

(Signed) CHARLES PALMER PHILLIPS,  
JAMES WILKES,

*Commissioners in Lunacy.*

### Middlesex Lunatic Asylum, Colney Hatch.

*Contract Prices of the Principal Articles of Consumption in each Half-year, and Maintenance Rates, in 1873, and Corresponding Prices and Rates in Six previous Years.*

ARTICLES.	To 30th June, 1867.	To 31st December, 1867.	To 30th June, 1868.	To 31st December, 1868.	To 30th June, 1869.	To 31st December, 1869.	To 30th June, 1870.	To 31st December, 1870.	To 30th June, 1871.	To 31st December, 1871.	To 30th June, 1872.	To 31st December, 1872.	To 31st March, 1873.	To 30th June, 1873.	To 30th September, 1873.	To 31st December, 1873.
Ox Beef ... } at per stone	0 9 3	0 7 6	0 7 6	0 7 3	0 7 11	0 7 0	0 7 9	0 8 8	0 8 8	0 9 2	0 9 1	0 9 2	0 9 2	0 9 9	0 9 9	0 9 0
Mutton ... }																
Flour.....at per sack	2 6 9	2 5 0	2 10 6	1 18 3	1 14 0	1 14 0	1 10 6	1 15 0	1 19 0	1 17 0	1 17 0	2 4 0	2 4 0	2 3 0	2 3 0	2 7 9
Malt.....at per qr.	3 7 9	3 7 9	3 6 6	3 6 6	3 7 6	3 7 6	2 18 9	2 18 9	2 18 9	2 18 9	2 18 9	2 18 9	2 18 9	2 6 3	2 6 3	2 6 3
Cheese.....at per cwt.	3 13 0	3 3 0	3 1 0	2 19 6	3 8 0	3 10 0	3 10 0	3 6 0	3 6 0	3 3 0	3 1 0	3 1 0	3 3 0	3 3 0	3 1 0	3 1 0
Butter .....	5 12 0	5 4 0	4 16 0	5 4 0	5 12 0	5 4 0	5 4 0	5 10 0	5 10 0	5 3 0	4 18 0	4 18 0	5 2 0	5 2 0	5 2 0	5 2 0
Sugar, raw ...	1 15 0	1 15 0	1 15 6	1 15 6	1 15 0	1 15 0	1 17 6	1 17 6	1 12 0	1 12 0	1 14 0	1 14 0	1 13 0	1 13 0	1 13 0	1 13 0
Sugar, refined ..	2 6 0	2 6 0	2 5 0	2 5 0	2 5 0	2 5 0	2 7 0	2 7 0	2 4 0	2 4 0	2 4 0	2 4 0	2 3 0	2 3 0	2 3 0	2 3 0
Silkstone } at per ton	0 15 5	0 17 10	0 17 10	0 16 3	0 16 3	0 16 3	0 16 3	0 16 0	0 16 0	0 14 5	0 14 5	1 0 6	—	—	1 5 3	1 5 3
Coals }																
Weekly Maintenance } Rate per Patient ... }	s. d. 10 6		s. d. 10 2½		s. d. 9 11		s. d. 9 7½		s. d. 9 4		s. d. 9 4		s. d. 9 4		s. d. 9 7½	

JOHN S. SKAIFE,  
Clerk to the Visitors.



Statement of Lunatics and Idiots chargeable to the County and Parishes and Unions in the County, in each Year from 1851.

PARISH OR UNION.	GROSS NUMBERS IN THE YEARS.																						
	1851.	1852.	1853.	1854.	1855.	1856.	1857.	1858.	1859.	1860.	1861.	1862.	1863.	1864.	1865.	1866.	1867.	1868.	1869.	1870.	1871.	1872.	1873.
<b>UNIONS.</b>																							
Barnet (part of) ...	10	13	16	10	11	17	16	15	17	20	18	15	21	23	26	19	35	22	42	25	33	22	29
Brentford ...	49	52	51	54	54	61	62	68	67	69	75	80	86	90	96	99	97	104	101	104	103	110	103
East London (part of) ...	3	3	1	3	3	3	3	3	3	5	4	3	4	3	3	3	3	3	3	1	1	2	2
Edmonton (ditto) ...	38	38	35	42	48	42	46	51	55	88	92	102	112	113	105	113	124	103	97	105	119	137	131
Fulham ...	18	24	31	45	56	53	61	69	75	79	89	85	99	93	101	108	189	117	127	142	141	146	147
Hackney ...	64	69	76	84	90	95	105	111	117	124	114	128	136	142	141	169	172	180	197	223	223	284	319
Hendon ...	20	20	21	23	24	25	25	26	24	29	26	29	32	32	34	37	32	32	33	35	42	41	41
Holborn ...	62	63	72	82	87	70	70	66	4	71	74	87	86	80	86	87	113	468	526	625	670	738	738
Kingston (part of) ...	9	8	9	11	3	2	3	8	4	6	6	9	6	13	10	9	11	6	86	3	1	19	15
Poplar ...	53	59	55	55	64	66	85	86	95	97	121	113	109	127	132	164	230	230	329	348	353	301	307
Staines ...	8	12	14	18	20	20	19	21	23	24	31	26	32	34	31	31	31	31	31	30	34	28	29
Stepney ...	185	184	172	210	246	224	140	166	163	177	182	187	181	75	179	180	185	220	217	217	210	222	219
Strand ...	80	90	99	107	102	101	106	116	109	114	120	125	126	137	157	161	168	184	184	167	194	194	198
Uxbridge ...	22	26	26	26	25	19	23	31	30	28	31	47	142	44	46	44	40	40	40	63	68	76	76
Westminster ...	—	—	—	—	—	—	—	—	—	—	—	—	—	—	—	—	—	164	170	162	172	171	188
Whitechapel ...	120	137	145	136	145	145	167	168	180	184	182	198	76	203	234	250	278	264	290	294	312	306	301
<b>PARISHES.</b>																							
Hampstead ...	23	24	29	31	34	31	28	31	29	29	32	37	33	30	30	32	33	35	37	51	34	50	52
Kensington ...	54	57	61	64	70	74	56	76	88	82	101	91	89	112	118	151	137	146	190	199	195	184	186
(a) Mile End Old Town ...	—	—	—	—	—	—	99	104	97	115	123	25	135	137	135	124	163	180	167	216	226	214	213
Paddington ...	27	33	39	45	49	54	66	64	60	62	72	72	79	85	84	85	90	99	116	135	162	171	183
St. George in the East ...	56	71	96	85	93	78	88	100	97	102	108	125	123	122	140	151	137	136	146	144	162	167	191
St. George, Hanover Sq. ...	92	93	92	97	96	109	104	103	104	109	111	111	122	115	117	114	112	130	125	356	381	388	455
St. Giles and Bloomsbury ...	52	61	68	64	74	138	72	71	74	76	71	71	80	73	72	88	101	106	119	125	131	138	160
(c) Clerkenwell ...	63	69	94	89	111	113	112	120	127	118	140	137	148	152	150	218	170	175	—	—	—	—	—
b) St. James, Westminster ...	62	65	81	77	81	81	88	82	98	96	101	99	107	107	105	113	105	—	—	—	—	—	—
Shoreditch ...	156	182	183	191	205	212	225	290	222	252	142	267	272	283	291	290	318	366	402	429	438	457	459
(c) St. Luke, Chelsea ...	70	83	82	94	94	95	93	112	120	120	126	127	133	134	145	152	155	162	—	—	—	—	—
St. Luke, Chelsea ...	64	80	81	97	112	115	125	120	120	132	134	132	140	146	152	161	159	179	181	191	208	219	225
(b) St. Martin in the Fields ...	88	88	98	111	90	84	78	73	68	72	3	76	73	65	74	74	77	—	—	—	—	—	—
(d) St. Margaret and St. John, Westminster ...	78	91	107	117	127	131	125	134	126	131	135	135	141	133	149	153	172	192	198	—	—	—	—
St. Marylebone ...	230	217	209	291	305	282	319	330	341	350	434	361	364	360	378	392	440	473	524	576	560	574	593
St. Mary, Islington ...	65	69	77	87	119	111	126	143	133	152	152	170	176	194	206	239	270	290	301	370	424	459	475
Bethnal Green ...	78	100	105	100	121	137	113	133	115	133	161	146	174	180	186	226	268	286	309	363	413	430	435
St. Pancras ...	237	261	265	262	300	305	313	347	335	451	469	521	570	569	588	513	604	644	636	668	718	727	753
County of Middlesex ...	231	214	270	286	291	300	321	337	336	342	335	401	438	426	456	471	486	488	501	555	572	572	580
<b>TOTAL</b> ...	<b>2,465</b>	<b>2,646</b>	<b>2,857</b>	<b>3,101</b>	<b>3,350</b>	<b>3,391</b>	<b>3,490</b>	<b>3,699</b>	<b>3,765</b>	<b>4,048</b>	<b>4,333</b>	<b>4,425</b>	<b>4,650</b>	<b>4,748</b>	<b>4,950</b>	<b>5,320</b>	<b>5,609</b>	<b>5,900</b>	<b>6,267</b>	<b>6,823</b>	<b>7,293</b>	<b>7,479</b>	<b>7,863</b>

(a) Previously included in Stepney Union. (b) Now the Westminster Union. (c) Now included in the Holborn Union. (d) Now in St. George, Hanover Square Union.

**Colney Hatch Asylum.**

ABSTRACT of the Number of Patients belonging to the several Parishes and Unions in the County of Middlesex on the 1st day of January, 1874, stating the places in which they are confined, taken from the Returns made by the Clerks to the Guardians to the Committee of Visitors.

	At the County Asylum at Colney Hatch.		At the County Asylum at Hanwell.		At other County Asylums or Licensed Houses.		At the Metropolitan District Imbecile Asylums		At the Workhouse.		With Friends or in Lodgings.		TOTAL.		
	M.	F.	M.	F.	M.	F.	M.	F.	M.	F.	M.	F.	M.	F.	Total.
Barnet Union (Part of)	8	10	1	2	...	...	...	...	4	4	...	...	13	16	29
City of London Union (Part of)	1	1	...	...	...	...	...	...	...	...	...	...	1	1	2
Edmonton Union (Part of)	31	46	7	3	9	15	...	...	16	...	2	...	49	82	131
Hackney Union	36	56	7	19	11	36	55	...	...	22	22	...	131	188	319
Holborn Union	99	133	36	43	25	48	140	155	32	32	5	4	323	415	738
Poplar Union	38	53	18	24	4	5	47	46	3	3	26	41	135	172	307
Stepney Union	19	57	6	8	2	8	36	78	2	2	1	1	65	154	219
Whitechapel Union...	37	58	8	9	9	15	63	86	12	12	...	2	119	182	301
Hamlet of Mile End Old Town	25	44	3	11	2	2	47	60	3	3	3	13	80	133	213
St. George in the East	25	39	2	7	2	7	31	49	8	21	...	...	68	123	191
Shoreditch	53	79	15	29	15	31	99	129	5	4	...	...	187	272	459
Islington	78	99	17	15	21	45	61	54	33	24	17	11	227	248	475
Bethnal Green	54	65	7	10	67	95	47	67	3	5	8	7	186	249	435
St. Pancras	93	130	21	26	20	32	138	256	16	20	...	1	288	465	753
Brentford Union	4	12	24	48	1	3	...	...	5	6	...	...	34	69	103
Fulham Union	1	4	43	52	1	1	24	21	...	...	...	...	69	78	147
Hendon Union	3	9	6	13	2	4	...	...	3	1	...	...	14	27	41
Kingston Union (Part of)	...	...	5	9	...	...	...	...	...	...	...	...	5	10	15
Staines Union	...	2	4	18	...	1	...	...	2	2	...	...	6	23	29
Strand Union	9	5	29	57	1	3	32	60	2	2	...	...	71	127	198
Uxbridge Union	...	...	17	31	...	...	...	...	10	6	5	7	32	44	76
Westminster Union	3	4	44	59	1	5	30	42	...	...	...	...	78	110	188
Kensington	6	10	42	60	1	3	21	33	4	5	...	...	74	112	186
Paddington	8	10	38	61	...	5	26	29	1	6	2	3	69	114	183
St. George's Union	23	25	79	110	3	57	55	66	12	25	...	...	172	283	455
St. George and St. Giles, Bloomsbury	11	13	17	33	2	3	23	58	...	...	...	...	53	107	160
St. Luke, Chelsea	10	3	30	76	2	7	34	57	3	3	...	...	79	146	225
St. Marylebone	26	65	78	121	2	...	107	136	2	2	24	30	239	354	593
Hampstead	7	5	6	9	...	1	11	13	...	...	...	...	24	28	52
Patients belonging to the County of Middlesex	109	183	105	140	12*	31	...	...	...	...	...	...	226	354	580
Patients belonging to Parishes in other Counties	5	17	6	12	...	...	...	...	...	...	...	...	11	29	40
<b>TOTAL</b> .....	<b>822</b>	<b>1,237</b>	<b>715</b>	<b>1,115</b>	<b>215</b>	<b>463</b>	<b>1,121</b>	<b>1,550</b>	<b>140</b>	<b>204</b>	<b>115</b>	<b>146</b>	<b>3,128</b>	<b>4,715</b>	<b>7,843</b>

\* This number (at Broadmoor Criminal Asylum) are not acknowledged as chargeable to this County. J. S. SKAIFE, Clerk to the Visitors.

# Middlesex County Lunatic Asylum, Colney Hatch.

## Account Current for the Year ending 31st December, 1873.

	£	s.	d.		£	s.	d.
1873.							
Jan. 1st.	To Balance of Cash ...	832	19	5			
	To ditto of Petty Cash ...	297	9	8			
Dec. 31st.	To Cash received from Parishes in Middlesex for Maintenance, &c., of Patients ...	43,147	9	2			
"	To ditto from Parishes in other Counties ...	912	5	8			
"	To ditto from County Treasurer for County Patients ...	7,117	8	3			
"	To ditto from ditto for the Ordinary Repairs of the Asylum ...	5,477	6	1			
"	To ditto for Improvements ...	400	0	0			
"	To ditto for New Bath House ...	709	17	5			
"	To ditto from Deposit Account ...	21,500	0	0			
"	To Interest upon Deposit Account ...	105	19	0			
		£80,500	14	8			
1873.							
Dec. 31st.	By Cash paid on account of Maintenance, &c., of Patients—						
	For Provisions ...	24,766	13	0			
	House and other Expenses ...	9,021	7	8			
	Clothing ...	4,390	17	8			
	Medicine, Wine, &c. ...	1,508	7	10			
	Salaries £4,748 1 2						
	Wages 7,813 2 1						
		12,561	3	3			
		52,248	9	5			
		481	8	2			
		5,762	17	9			
		26	8	0			
		691	2	2			
		16,500	0	0			
		4,578	16	9			
		211	12	5			
		4,790	9	2			
		£80,500	14	8			

Examined by the Committee of Accounts,  
20th Jan., 1874.

Submitted to the Committee of Visitors, 20th Jan., 1874.  
WILLIAM H. WYATT, *Chairman.*

CORNELIUS NICHOLSON, *Chairman.*  
J. B. PRICE.

# MIDDLESEX COUNTY LUNATIC ASYLUM, COLNEY HATCH.

INCOME AND EXPENDITURE from 1st January to 31st December, 1873.

INCOME.							EXPENDITURE.								
Date.	HEADS OF INCOME.	QUARTERS ENDING				Year ending 31st Dec.	Total.	Date.	HEADS OF EXPENDITURE.	QUARTERS ENDING				Year ending 31st Dec.	Total of General Heads of Expenditure.
		31st March.	30th June.	30th Sept.	31st Dec.					31st March.	30th June.	30th Sept.	31st Dec.		
1873.	From Weekly Rate.						1873.	From Weekly Rate.							
Dec. 31.	From Parishes in Middlesex for Maintenance...	£ s. d.	£ s. d.	£ s. d.	£ s. d.	£ s. d.	Dec. 31.	Provisions.	£ s. d.	£ s. d.	£ s. d.	£ s. d.	£ s. d.	£ s. d.	
	From County Treasurer for Maintenance	1645 4 0	1659 18 11	1660 18 11	1651 2 7	6567 4 5		By Meat ...	209 1 5	206 4 2	222 12 2	202 13 10	842 11 8		
	From Parishes in other Counties for Maintenance	1733 16 0	1607 2 1	1619 8 7	1617 1 9	7167 5 11		By Flour ...	1169 7 0	1228 12 6	1293 5 0	1218 18 9	4898 3 6		
	For Patients	25 6 0	27 17 0	25 4 9	29 16 9	106 4 6		By Tea and Coffee ...	13 18 0	7 18 0	...	...	25 11 33		
	For Clothing to discharged Patients	9 18 4	25 14 11	17 4 0	9 1 1	60 18 4		By Sugar and Treacle ...	179 4 2	178 7 5	209 3 2	195 17 0	662 19 39		
	For Interest allowed by Treasurer on Deposit Account	0 12 4	87 17 6	5 5 2	36 3 10	105 19 0		By Sundry Groceries ...	115 14 5	122 8 9	130 13 2	127 5 11	475 7 5		
	For Incidentals	...	...	...	36 9 2	36 9 2		By Tobacco and Snuff ...	32 14 5	32 14 8	107 1 10	159 0 2	481 19 29		
	Total Income from Weekly Rate, &c.	2147 18 10	1810 6 6	1811 9 5	1819 4 8	8197 1 4		By Cheese, Eggs, &c. ...	394 12 11	431 13 11	394 10 3	413 13 4	1604 14 6		
	From County Rate.							From County Rate.							
	Repairs.							By Potatoes and other Vegetables ...	305 0 4	302 2 5	206 16 1	209 18 2	1044 15 2		
	From County Treasurer	1290 1 2	1642 6 9	1697 18 6	705 14 11	5336 1 4		By Fats (see Farm Returns) ...	396 8 10	321 13 9	134 4 4	345 18 2	1199 5 1		
	Improvements.				400 0 0	400 0 0		Total	4261 17 2	6061 2 7	6104 6 19	5874 5 5	24522 22 0		
	New Bath House.		144 2 5	585 15 0	273 7 6	983 4 11		By Boots and other Expenses							
	From County Treasurer							By Cords ...	499 15 11	1212 10 0	2217 1 5	893 19 2	4929 2 7		
	Total Income from County Rate	1290 1 2	1696 9 2	2283 13 6	1429 2 5	6705 6 3		By Soap ...	131 16 5	120 4 0	95 4 0	106 1 0	448 5 0		
	Total Income	3437 0 0	3507 17 7	3495 2 11	3248 7 1	14902 7 7		By Search, Soda, &c. ...	29 17 10	24 14 1	33 3 9	37 15 6	144 17 2		
				Balance from Dec. 31st, 1872	2792 1 4	7141 8 11		By Oil, Candles, &c. ...	19 19 10	2 3 4	11 0 6	11 2 4	35 6 0		
								By Furnitures, Bedding, and Linen ...	845 11 2	379 17 9	430 13 4	226 12 3	1883 14 6		
								By Ironmongery, Cutlery, &c. ...	90 8 9	25 18 9	33 4 2	44 6 8	206 28 4		
								By Turnery ...	74 7 9	23 7 4	27 14 1	80 1 5	215 19 2		
								By Brushes, &c. ...	63 16 7	130 4 8	29 16 11	63 19 2	325 3 8		
								By Earthenware and Glass ...	9 18 2	59 1 2	1 9 9	47 5 4	83 29 3		
								By Stationery, Printing, &c. ...	65 10 1	48 8 4	47 6 11	65 0 5	226 11 9		
								By Stationery, Printing, &c. ...	27 8 1	25 14 0	45 7 0	22 8 9	125 17 10		
								By Freight and Carriage ...	20 5 5	7 4 2	3 10 2	0 8 9	31 14 4		
								By Retaining Patients ...	27 12 1	45 17 4	45 4 0	70 4 0	188 19 3		
								By Patients on Trial ...	50 5 4	12 39 9	27 6 3	2 9 6	9 9 9		
								By Law Expenses ...	20 18 0	27 19 11	22 18 11	37 14 6	141 12 0		
								By Periodicals ...	13 12 0	12 7 9	7 16 0	33 10 0	55 5 0		
								Total	1492 4 4	2270 0 4	2324 1 2	1725 12 2	8623 18 1		
								By Clothing	1029 16 0	808 21 5	1402 2 4	1243 11 10	4684 3 7		
								By Salaries and Wages							
								By Salaries of Officers	1202 11 0	1239 28 2	1219 16 0	1184 16 0	4788 1 2		
								By Wages of Servants	1961 17 9	1822 17 11	1879 9 2	1969 18 3	7632 7 1		
								Total	3163 9 9	3062 26 1	3199 4 2	3153 14 3	12461 9 3		
								By Medicine, &c.							
								By Drugs, Lint, &c.	88 9 9	76 9 8	75 2 1	79 1 11	320 2 2		
								By Trepan, &c.	150 1 0	155 25 0	112 12 0	77 8 0	475 8 0		
								By Wine and Spirits	115 12 0	111 6 0	102 14 0	107 8 0	437 0 0		
								By Porter	64 7 4	62 10 0	66 6 5	29 3 5	262 7 2		
								By Fish, Poultry, Oranges, &c.	408 9 1	375 15 3	337 14 6	302 16 4	1424 15 4		
								Total	92 6 2	165 2 2	207 5 9	...	464 14 1		
								Total Expenditure from Weekly Rate	2260 3 6	2723 6 0	2424 14 10	1350 0 0	9228 6 4		
								By Incidentals							
								Total Expenditure from County Rate	1290 1 2	1696 9 2	2283 13 6	1429 2 5	6705 6 3		
								By Labour							
								By Building and other Materials, viz.:							
								By Bricks, Stones, &c.	1290 1 2	1642 6 9	1697 18 6	705 14 11	5336 1 4		
								By Timber							
								By Iron, Lead, Zinc, &c.							
								By Glass							
								By Paint, &c.							
								By Sundries							
								By Insurance							
								By Improvements							
								By New Bath House		144 2 5	585 15 0	273 7 6	983 4 11		
								Total Expenditure from County Rate	1290 1 2	1696 9 2	2283 13 6	1429 2 5	6705 6 3		
								Total Expenditure	3550 4 8	3419 17 2	3707 9 4	2779 2 5	14937 12 1		
								Balance					12482 16 4		
								Total					71431 8 11		

Submitted to the Committee of Visitors, 20th January, 1874.  
WILLIAM H. WYATT, Chairman.

Examined by the Committee of Accounts, 20th January, 1874.  
CORNELIUS NICHOLSON, Chairman.  
J. B. PRICE.

Average Weekly Expenditure for each Patient from Weekly Rate.

	QUARTERS ENDING.				For the Year 1873.
	31st March.	30th June.	30th Sept.	31st Dec.	
Provisions	£ s. d.	£ s. d.	£ s. d.	£ s. d.	£ s. d.
Home and other Expenses	0 4 9½	0 4 6½	0 4 6	0 4 6	0 4 7
Clothing	0 1 1	0 1 7	0 2 4½	0 1 2½	0 1 6½
Salaries and Wages	0 0 2½	0 0 7½	0 1 0½	0 0 11½	0 0 10½
Medicine and Incidentals	0 2 4½	0 2 3½	0 2 4½	0 2 4	0 2 4
Total	0 9 4½	0 9 5½	0 10 7½	0 9 5½	0 9 8½
Weekly Rate for the Quarters and Year, Middlesex Parishes	0 9 4	0 9 7½	0 9 7½	0 9 7½	0 9 6½
Ditto ditto, Parishes in other Counties..	0 14 0	0 14 0	0 14 0	0 14 0	0 14 0
Average number of Patients					
Males	823	821	820	819	822
Females	1,235	1,241	1,237	1,237	1,238
Total	2,058	2,062	2,057	2,056	2,060

ROBT. A. BURROWS,  
Clerk of the Asylum.

# MIDDLESEX COUNTY

airman.

From County Treasurer	1871	1872	1873
Total Income from County Rate	1250	1250	1250
Total Income	1250	1250	1250

Submitted to the Committee of Finance, 20th January 1874  
 WILLIAM B. WYATT, Chairman.

Average

---

Provisions  
 House and other expenses  
 Clothing  
 Salaries and Wages  
 Medicine and Incidentals

Total

Weekly Rate for the  
 Year, Middlesex 1874  
 Ditto ditto, 1873 in 1874

Average number of

# Middlesex County Lunatic Asylum, Colney Hatch.

## Balance Sheet for the Year ending 31st December, 1873.

	£	s.	d.	£	s.	d.
1873. Dec. 31. To Amount due to sundry Tradesmen on account of Maintenance, &c., of Patients ... ..	5,819	10	5			
" To Amount due to sundry Tradesmen on account of Repairs, &c., of the Asylum ... ..	557	7	5	4,578	16	9
				211	12	5
				4,790	9	2
" Surplus ... ..				10,556	0	11
				244	11	9
				1,822	16	5
				12,623	9	1
By ditto from ditto for ordinary Repairs of the Asylum ... ..				765	14	11
By ditto for Improvements ... ..				400	0	0
By ditto for New Bath House ... ..				273	7	6
By ditto Great Northern Railway Company for Water ... ..				7	10	0
By ditto W. Davey, for Tar ... ..				5	2	6
By ditto Rev. H. Hawkins, for Coal ... ..				5	1	0
				18,870	14	2

Examined by the Committee of Accounts,  
20th Jan., 1874.

Submitted to the Committee of Visitors, 20th Jan., 1874.

WILLIAM H. WYATT, *Chairman.*

CORNELIUS NICHOLSON, *Chairman*  
J. B. PRICE.

# Middlesex County Lunatic Asylum, Colney Hatch.

## VICTORIA FUND.

### Statement of Receipts and Expenditure for the Year ending 31st December, 1873.

1873.		1873.		1873.			
Dec. 31.	To	£	s.	By	£	s.	d.
Dec. 31.	Balance from last Account	147	18 9	Relief afforded to sundry Patients from 1st January to this date	168	9 1	
	To amount received from the Hanwell "Queen Adelaide Fund," one year	200	0 0	By Cash paid for the purchase of £147 14s. 8d. New Three per Cent. Annuities	135	11 3	
	To amount received, half-year's Dividend on £697 15s. 3d. Consolidated Three per Cent. Annuities	10	9 3	By Balance	80	7 10	
	To amount received, half-year's Dividend on £450 New Three per Cent. Annuities	6	15 0				
	To amount received half-year's Dividend on £1,300 New Three per Cent. Annuities	19	5 2				
		<u>£384 8 2</u>			<u>£384 8 2</u>		

Submitted to the Committee of Visitors, 20th January, 1874.  
WILLIAM H. WYATT, *Chairman*.

Examined by the Committee of Accounts, 20th January, 1874.

CORNELIUS NICHOLSON, *Chairman*.  
J. B. PRICE.

# Middlesex County Lunatic Asylum, Colney Hatch.

Return of the Number of Admissions, Discharges, and Deaths of Patients during the Year ending 31st December, 1873.

	QUARTERS ENDING														
	31st March.			30th June.			30th September.			31st December.			YEAR ENDING 31st December.		
	Males.	Females.	Total.	Males.	Females.	Total.	Males.	Females.	Total.	Males.	Females.	Total.	Males.	Females.	Total.
Remaining in the Asylum } per previous Return } ADMISSIONS ... .. } RE-ADMISSIONS ... .. }	822	1,225	2,047	823	1,241	2,064	825	1,248	2,073	817	1,236	2,053	822	1,225	2,047
Total ... ..	891	1,298	2,189	924	1,352	2,276	903	1,313	2,216	897	1,332	2,229	1,150	1,570	2,720
DISCHARGES AND DEATHS.															
Cured.	12	20	36	12	19	31	13	21	34	14	21	35	15	23	38
Relieved or not Improved.	68	57	125	99	104	203	86	77	163	75	95	170	328	333	661
Died.	...	...	...	...	...	...	...	...	...	...	...	...	...	...	...
Males ... ..	12	20	36	12	19	31	13	21	34	14	21	35	15	23	38
Females ... ..	11	25	36	11	25	36	11	25	36	11	25	36	11	25	36
Males ... ..	32	37	69	32	37	69	32	37	69	32	37	69	32	37	69
Females ... ..	37	54	91	37	54	91	37	54	91	37	54	91	37	54	91
Males ... ..	36	21	57	36	21	57	36	21	57	36	21	57	36	21	57
Females ... ..	29	35	64	29	35	64	29	35	64	29	35	64	29	35	64
Males ... ..	23	19	42	23	19	42	23	19	42	23	19	42	23	19	42
Females ... ..	40	35	75	40	35	75	40	35	75	40	35	75	40	35	75
Total } { Males ... .. } { Females ... .. }	103	97	200	103	97	200	103	97	200	103	97	200	103	97	200
REMAINING in the Asylum ... ..	823	1,241	2,064	825	1,248	2,073	817	1,236	2,053	822	1,237	2,059	822	1,237	2,059

ROBT. A. BURROWS, Clerk of the Asylum.





## Colney Hatch Lunatic Asylum.

*Return of Patients annually admitted into the Asylum, from its opening on the 17th July, 1851, to the 31st Dec., 1873, distinguishing the Admissions, Discharges, Deaths, and those now remaining in the Asylum.*

Year ending Dec. 31st.	Admitted.			TOTAL.									Remaining in Asylum 31st December, 1873.			YEAR.
				Discharged.						Died.						
	Cured.			Relieved or not Improved.												
	Males.	Females.	TOTAL.	Males.	Females.	TOTAL.	Males.	Females.	TOTAL.	Males.	Females.	TOTAL.	Males.	Females.	TOTAL.	
1851	411	669	1,080	59	81	140	60	162	222	261	352	613	31	74	105	1851
1852	354	270	624	93	56	149	67	90	157	180	106	286	14	18	32	1852
1853	254	138	392	87	30	117	40	37	77	118	59	177	9	12	21	1853
1854	219	111	330	69	31	100	35	24	59	105	46	151	10	10	20	1854
1855	151	59	210	43	15	58	24	12	36	80	23	103	4	9	13	1855
1856	137	140	277	33	44	77	24	39	63	66	47	113	14	10	24	1856
1857	150	164	314	50	59	109	28	50	78	58	41	99	14	14	28	1857
1858	157	145	302	53	58	111	39	44	83	56	29	85	9	14	23	1858
1859	380	508	888	93	83	176	56	175	231	197	161	358	34	89	123	1859
1860	273	253	526	75	66	141	39	63	102	126	84	210	33	40	73	1860
1861	251	272	523	86	79	165	39	62	101	109	88	197	17	43	60	1861
1862	205	223	428	67	75	142	27	50	77	92	62	154	19	36	55	1862
1863	234	180	414	55	62	117	29	34	63	120	52	172	30	32	62	1863
1864	230	174	404	65	57	122	41	42	83	97	47	144	27	28	55	1864
1865	242	198	440	66	64	130	30	36	66	118	56	174	28	42	70	1865
1866	198	144	342	56	41	97	29	24	53	83	46	129	30	33	63	1866
1867	147	159	306	46	49	95	14	19	33	66	46	112	21	45	66	1867
1868	213	168	381	80	52	132	31	29	60	77	40	117	25	47	72	1868
1869	222	161	383	82	57	139	30	30	60	79	35	114	31	39	70	1869
1870	253	209	462	77	71	148	52	31	83	78	31	109	46	76	122	1870
1871	439	436	875	132	130	262	106	84	190	101	65	166	100	157	257	1871
1872	296	273	569	102	83	185	41	31	72	61	30	91	92	129	221	1872
1873	328	345	673	70	59	129	26	19	45	48	27	75	184	240	424	1873
	5,744	5,399	11,143	1,639	1,402	3,041	907	1,187	2,094	2,376	1,573	3,949	822	1,237	2,059	

ROBT. A. BURROWS, *Clerk of the Asylum.*



## Middlesex County Lunatic Asylum, Colney Hatch.

THE ESTABLISHMENT—31st December, 1873.

## OFFICERS.

Resident Medical Superintendents—	Per Ann.		Per Ann.
	£ s. d.		£ s. d.
(a) Mr. W. G. Marshall, Female Department ...	700 0 0	Brought forward	3,354 4 0
(a) Dr. E. Sheppard, Male ditto ...	700 0 0	(c) Mr. R. T. Eade, Assistant Clerk (e) ...	120 0 0
(d) The Rev. H. Hawkins, Chaplain ...	280 0 0	(c) Mr. W. B. Sterland, Assistant Clerk (e) ...	70 0 0
(c) Mr. R. A. Burrows, Clerk of the Asylum (e)...	325 0 0	(b) Mr. E. A. Clarke, Assistant Storekeeper ...	110 0 0
(c) Mr. J. S. Skaife, Clerk to Committee of Visitors ...	240 0 0	(c) Mr. W. C. Arlott, Steward's Clerk (e)...	95 0 0
(a) Mr. G. H. Henderson, Steward ...	550 0 0	(a) Mr. J. Walker, Engineer	250 0 0
Dr. T. B. Dyer, Assistant Medical Officer, Female Department ...	150 0 0	Mr. W. H. Cowley, Inspector	70 0 0
Dr. J. M. Skelton, ditto, Female Department ...	150 0 0	Mr. G. Blowfield, ditto ...	60 0 0
Mr. G. Millson, ditto, Male Department ...	150 0 0	(a) Miss S. Builder, Matron...	300 0 0
(c) Mr. W. P. Dendy, Apothecary (e)* ...	109 4 0	Miss S. Moore, Assistant Matron ...	70 0 0
		Miss M. C. Plaistowe, ditto ...	55 0 0
		Mrs. A. J. Bate, Work Mistress ...	50 0 0
		Mrs. E. Welham, Superintendent of Laundry ...	75 0 0
		Miss E. Hemmings, Head Attendant...	40 0 0
Carried forward	£3,354 4 0		£4,719 4 0

\* £5 per quarter in addition as Organist.

## SERVANTS—MALE.

1 Head Attendant ... at	48 0 0	per annum	48 0 0
1 " " " " "	46 0 0	"	46 0 0
1 " " " " "	45 0 0	"	45 0 0
1 " " " " "	43 0 0	"	43 0 0
1 " " " " "	42 0 0	"	42 0 0
1 " " " " "	41 0 0	"	41 0 0
4 Attendants ...	40 0 0	" each	160 0 0
2 " " " " "	37 0 0	"	74 0 0
1 " " " " "	36 0 0	"	36 0 0
2 " " " " "	35 0 0	" each	70 0 0
1 " (Head Night Watch) "	38 0 0	"	38 0 0
3 " " " " "	34 0 0	" each	102 0 0
3 " " " " "	33 0 0	"	99 0 0
1 " (Night Watch) "	33 0 0	"	33 0 0
1 " " " " "	32 0 0	"	32 0 0
5 " " " " "	32 0 0	" each	160 0 0
1 " (Night Watch) "	31 0 0	"	31 0 0
1 " " " " "	30 0 0	"	30 0 0
1 " " " " "	28 0 0	"	28 0 0
7 " " " " "	27 0 0	" each	189 0 0
13 " " " " "	26 0 0	"	338 0 0
19 " " " " "	25 0 0	"	475 0 0
1 House Porter ...	40 0 0	"	40 0 0
1 Assistant ditto ...	15 0 0	"	15 0 0
1 Laundryman ...	39 0 0	"	39 0 0
1 Messman ...	37 0 0	"	37 0 0
		And Uniform.	
75		Carried forward	£2,291 0 0

(a) Lodged, and allowed Coals, Gas, Butter, Milk, and Vegetables. The Matron washing.

(b) Boarded only.

(c) Neither Boarded nor Lodged.

(d) With House and Garden

(e) Dinner allowed daily.

All the others have Board, Lodging, and Washing.

## THE ESTABLISHMENT—continued.

		£	s.	d.			£	s.	d.
75	Brought forward				Brought forward	2,291	0	0	
(f)	2 Gate Porters ...	at	1	4	0	per week and Uniform	124	16	0
(b)	2 Porters (Store room)	{1 at	1	2	0	"	109	4	0
(b)	1 Labourer, ditto ...	at	0	15	0	"	39	0	0
(b)	1 Butcher ...	at	0	19	0	"	49	8	0
(b)	1 Cook ...	at	1	0	0	"	218	8	0
(b)	5 Assistant ditto ...	{3 at	0	14	0	"	104	0	0
(b)	1 Baker ...	at	1	8	0	"	106	12	0
(b)	1 Assistant ditto ...	at	0	12	0	"	46	16	0
(c)	1 Brewer ...	at	1	4	0	"	517	8	0
(c)	1 ditto Labourer ...	at	0	17	0	"	270	8	0
(c)	1 Labourer in Building ...	at	0	18	0	"	135	4	0
(c)	10 Tailors ...	{1 at	1	4	0	"	54	12	0
(c)	5 Shoemakers ...	{8 at	1	0	0	"	358	16	0
(c)	1 Upholsterer ...	at	1	11	0	"	148	4	0
(c)	1 Assistant ditto ...	at	1	1	0	"	54	12	0
(e)	1 Laundry Stoker ...	at	1	1	0	"	299	0	0
(e)	8 Coal Carriers ...	{1 at	0	19	0	"	280	16	0
(e)	3 Attendants (Garden)	{7 at	0	17	0	"	62	8	0
(c)	1 Labourer (Cleaning Vegetables) ...	{1 at	1	1	0	"	39	0	0
(c)	3 Gardeners — Front Grounds ...	{2 at	0	17	0	"	52	0	0
(c)	1 Gasman ...	at	1	17	0	"	65	0	0
(e)	3 Gas Labourers ...	{1 at	1	8	0	"	218	8	0
(e)	5 Stokers ...	{1 at	1	6	0	"	23	8	0
(d)	1 Cowman ...	at	1	4	0	"	70	0	0
(e)	1 Pigman ...	at	0	15	0	"	33	0	0
(c)	1 Carter ...	at	1	0	0	"	31	0	0
(c)	1 Head Gardener ...	at	1	5	0	"	30	0	0
(c)	5 Labourers ...	{1 at	0	18	0	"	34	0	0
(e)	1 Boy employed on Farm... at	{3 at	0	17	0	"	33	0	0
		{1 at	0	15	0	"			
		at	0	9	0	"			
	<u>144</u>						<u>£5,798</u>	<u>8</u>	<u>0</u>

## SERVANTS—FEMALE.

		£	s.	d.			£	s.	d.
2	Head Attendants ...	at	35	0	0	per annum each	70	0	0
1	Ditto ...	at	33	0	0	"	33	0	0
1	Ditto ...	at	31	0	0	"	31	0	0
1	Ditto ...	at	30	0	0	"	30	0	0
1	Attendant (Head Night Watch) at		34	0	0	" and Uniform	34	0	0
1	Ditto ...	at	33	0	0	"	33	0	0
	<u>7</u>						<u>Carried forward</u>	<u>£231</u>	<u>0</u>

(b) Boarded only.

(d) House, Coals, and Milk.

(f) Lodged and allowed Coals, Gas, Milk, Vegetables, and Beer

The others have Board, Lodging, and Washing.

(c) Neither Boarded nor Lodged.

(e) Dinner allowed daily.

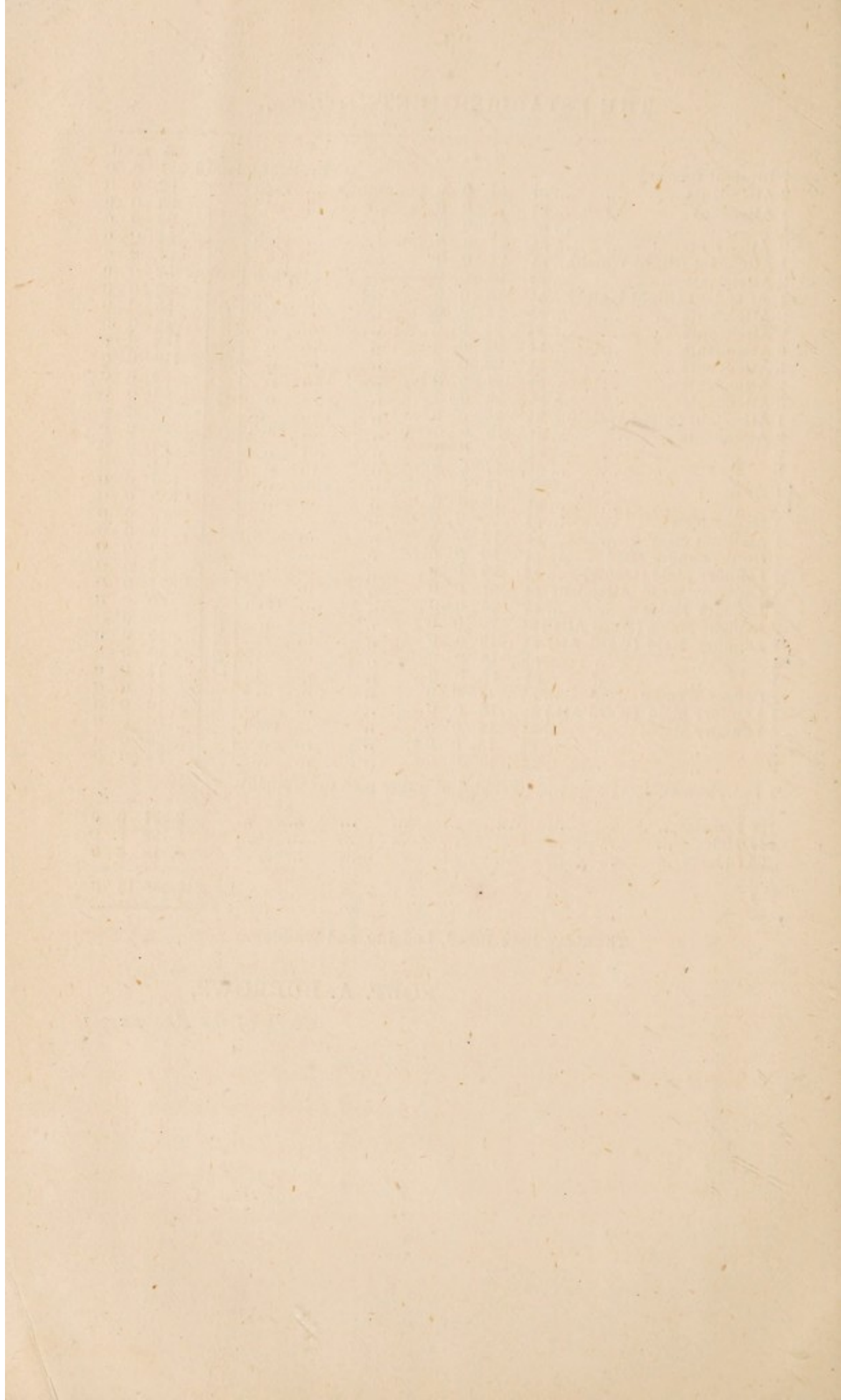
THE ESTABLISHMENT—*continued.*

		£	s.	d.			£	s.	d.
7	Brought forward				Brought forward		231	0	0
2	Attendants ... .. at	31	0	0	per annum ... each	} And Uniform.	62	0	0
1	Attendant ... .. at	29	0	0	" ...		29	0	0
1	" ... .. at	28	0	0	" ...		28	0	0
2	Attendants  ... .. at	27	0	0	" ... each		54	0	0
1	Attendant (Night Watch)... at	27	0	0	" ...		27	0	0
2	Attendants ... .. at	26	0	0	" ... each		52	0	0
1	Attendant (Night Watch)... at	26	0	0	" ...		26	0	0
2	Attendants ... .. at	25	0	0	" ... each		50	0	0
2	Attendants ... .. at	24	0	0	" ... "		48	0	0
6	Attendants ... .. at	23	0	0	" ... "		138	0	0
5	Attendants ... .. at	22	0	0	" ... "		110	0	0
2	Attendants ... .. at	21	0	0	" ... "		42	0	0
3	Attendants ... .. at	20	0	0	" ... "		60	0	0
1	Attendant (Night Watch)... at	20	0	0	" ...		20	0	0
2	Attendants ... .. at	19	0	0	" ... each		38	0	0
2	" ... .. at	18	0	0	" ... "	36	0	0	
3	" ... .. at	17	0	0	" ... "	51	0	0	
21	" ... .. at	16	0	0	" ... "	336	0	0	
35	" ... .. at	15	0	0	" ... "	525	0	0	
1	Messwoman ... .. at	20	0	0	" ...	20	0	0	
1	Assistant ditto ... .. at	12	0	0	" ...	12	0	0	
1	Head Laundry Maid ... .. at	30	0	0	" ...	30	0	0	
1	Laundry Maid (Ironer) ... .. at	22	0	0	" ...	22	0	0	
1	Laundry Ward Attendant at	21	0	0	" ...	21	0	0	
4	Laundry Maids ... .. at	20	0	0	" ... each	80	0	0	
2	Laundry Maids (Ward Atts.) at	20	0	0	" ... "	40	0	0	
1	Laundry Maid (Ward Att) at	19	0	0	" ...	19	0	0	
1	" ... .. at	18	0	0	" ...	18	0	0	
1	" ... .. at	17	0	0	" ...	17	0	0	
1	Copper Woman ... .. at	17	0	0	" ...	17	0	0	
1	Laundry Maid (Ward Att.) at	16	0	0	" ...	16	0	0	
4	Laundry Maids ... .. at	14	0	0	" ... each	56	0	0	
2	" ... .. at	13	0	0	" ... "	26	0	0	
2	" ... .. at	12	0	0	" ... "	24	0	0	
1	Dairywoman ... .. (included in wages paid to Cowman)								
126	Females ... ..						2,381	0	0
144	Males ... ..						5,798	8	0
23	Officers ... ..						4,719	4	0
293							£12,898	12	0

The above have Board, Lodging, and Washing.

ROBT. A. BURROWS,

*Clerk of the Asylum.*



## MALE DEPARTMENT.

---

### REPORT OF THE MEDICAL SUPERINTENDENT OF THE MALE DEPARTMENT.

---

THE annals of the Male Department for 1873 do not yield anything of an unusually eventful kind. There is the same record, with slight numerical variations, of disease, recovery, and death.

On the morning of January 1st, there were in the Asylum 822 Males; at the close of December 31st, there was precisely the same number.

The daily average is also represented by the same figures.

The Admissions during the year have been 328, containing 26 re-admissions and 22 transfers (not included in the re-admissions) from other Asylums.

Many of those received have been in fatally impaired health, and some in a state of such feebleness and exhaustion as could hardly have justified their removal from the Workhouse.

The Deaths have been 128, caused chiefly by General Paralysis, Epilepsy, Phthisis, and Exhaustion.



These numbers show a death rate upon the total cases under treatment (1,150) of 11 per cent. Of these deaths, 47 have occurred in Patients admitted during the year.

One of them was the result of self-destruction, on May 13th, in a Patient of known suicidal propensities, and concerning whom I had given instructions for special vigilance. Although visited and seen to be asleep (or apparently asleep) within half-an-hour of the fatal act, Edward Wise managed to hang himself.

The case was duly investigated, and a Coroner's jury returned a verdict of "Death from strangulation by hanging, while in a state of unsound mind."

At the same time, the Asylum authorities were exonerated from all blame.

Here we have one of those instances of determined suicide in which gloving the hands would have been the best security against a fatal casualty. But we are naturally reluctant to resort to measures which are made to assume the aspect of cruelty by theoretical philanthropists, and the official dicta of those who are too prone to gauge the excellence of an Asylum's management by the paucity of its "restraint."

The discharges during the past year have been 200, of whom 103 have been "recovered," and 97 "relieved."

The percentage of recoveries upon the total number under treatment will be represented by 8.9, or a close approximation to 9, while upon the daily average it will be 12 and a fraction.

The importance of early treatment is indicated by the circumstance that of these 103 recoveries, 70 have taken place in admissions of the current year.

A percentage per annum of 67·96 on what are termed recent cases, is one of which we have reason to be proud.

It is among this moving and fluctuating class that we can alone work any number of cures; for it is unfortunately true that there are not in the Asylum at the present time more than, if so many as, 40 Male cases susceptible of real improvement.

The casualties of 1873, with a larger daily average of Patients, have been 706—less by 47 than in the previous year.

The number of ascertained epileptic fits has also been less—13,164, against 14,211 in 1872.

The total number of walking parties, excursions, and picnics outside the Asylum grounds has been 437, exclusive of single visits paid by different Patients to their friends in London and elsewhere.

There have been 23 changes in the Staff of Attendants, 13 less than in the previous twelve months.

The resignation of one of the Ward Inspectors has secured, and subsequent events have fully justified, the promotion of the oldest original Attendant in the building, Mr. Blowfield, who is working harmoniously and efficiently with his colleague, Inspector Cowley.

The number of our dances and general entertainments has not been so great as usual, owing to the disorganization of the Asylum band. Unfortunately four of our best instrumentalists resigned, and left behind only a working few, who are unequal to the task of carrying on effectually the sustained music which is needed when we assemble the Patients together for purposes of recreation.

Mr. Millson, the Assistant Medical Officer, is zealous in his duties, and renders me valuable assistance.

The Wards have been considerably embellished and improved during the past year; and another billiard table has been provided, which is most thoroughly appreciated.

The sanitary condition of the Asylum has been good, and our present Staff of Attendants is efficient and satisfactory.

By a recent arrangement, taking effect from the 1st inst., the married Attendants (so desiring) are to receive an equivalent for lodging and washing—a measure which will increase our accommodation for Patients by 24 beds.

It remains for me to thank the Committee of Visitors for their kindness and support.

EDGAR SHEPPARD, M.D.

*January 6th, 1874.*

## FEMALE DEPARTMENT.

---

TO THE VISITING JUSTICES OF THE MIDDLESEX  
COUNTY LUNATIC ASYLUM, COLNEY HATCH.

31st December, 1873.

GENTLEMEN,

The following Report of the admissions, discharges, and deaths that have taken place in the Female Department of this Establishment during the past year, I have the honour to present—

There were on the Books on 1st January, 1873—

Female Patients .. .. .	1,225
Admitted during the year .. .. .	345
	1,570
Total under care and treatment ..	1,570

of whom there have been discharged—

Recovered .. .. .	117
Relieved .. .. .	148
Not Improved .. .. .	1
Died .. .. .	67
	333
Total Discharged and Died	333

Remaining on the Books 31st December,

1873 .. .. .	1,237
--------------	-------

The daily average number is 1,238.

Of the 345 Patients admitted, there have been discharged—

Recovered .. .. .	59
Relieved .. .. .	16
Not Improved .. .. .	1
Died .. .. .	27
Remaining on the Books .. .. .	242

The bodily health of the Patients admitted (with few exceptions) was not so much impaired as it used to be in former years, and the cleanliness of the cases is much improved; very few Patients have been admitted in the strait-waistcoat, or any other mode of restraint, thus evincing greater care and attention on the part of the authorities who have had the management of the Patients prior to admission. Of the 345 admissions, 94 had been previously under treatment; of these 29 were cases of re-admission into this Asylum, 25 were transferred from other Institutions, and 40 had been inmates of other Asylums. Many of the cases had been of unsound mind for years prior to admission, others suffered from epilepsy and paralysis. The prospect of recovery in the Patients admitted is not very encouraging. The number of curable cases does not appear to be more than 68 of the 1,237 Patients in this department of the Institution. Of the 117 Patients discharged as recovered, 59 were cases of this year's admissions, 44 of the admissions of 1872, 8 of the admissions of 1871, 4 of the admissions of 1870, and 1 of the year 1869, and 5 of the year 1861.

Of the 148 Patients discharged as relieved to the various workhouses, many of these cases were sent away with the prospect of their being transferred to one of the Metro-

politan Asylums, which Institutions are peculiarly adapted for the care and treatment of chronic demented cases, and Patients of weak minds.

The deaths were chiefly from paralysis and apoplexy, pulmonary consumption, general paralysis, bronchitis, and exhaustion from mania and general decay. The mortality of the year has been much lessened by the removal of the Patients who had been many years in this Asylum to their respective Workhouses.

Two inquests have been held during the year, in the one case upon a Patient who was found dead by the Nurse when called to get up in the morning; the other inquiry was unfortunately upon a Patient who had strangled herself in her bed-room with a piece of string and a boot lace, which she had tied round her neck. In addition to the Coroner's inquiry, a lengthened investigation was made in each case by the Committee of Visitors, also full reports were sent to the Commissioners in Lunacy.

The general health of the inmates has been good during the year, and it is with gratitude that I have to report this department of the Establishment having been free from any disease of an epidemic character. The casualties also have been fewer, and of a less dangerous character. One Patient unfortunately fell down in the ward during an epileptic seizure, and severely fractured both bones of the right leg. One also fell on the airing ground, and fractured the neck of the thigh bone. Both of these cases have done well. It has been necessary in one case also to have recourse to restrain a Patient for fractured ribs, a record of which was entered in the "Medical Journal." One Patient has re-

quired to be operated upon for femoral hernia (which was done while she was under the influence of chloroform), from which she made a good recovery. Two Patients who were admitted pregnant were safely delivered, neither showing any affection for their offspring; the children were removed by the authorities. There have been several instances of attempts at self-destruction by strangulation, but fortunately the vigilance of the Nurses has prevented the Patients effectually carrying out their purpose, excepting in the case remarked upon. One Patient attempted suicide by swallowing a piece of iron wire which she had wrenched off the handle of a cover. It was thought for a time that she had not swallowed the piece of wire (which was more than three inches long), as no unpleasant symptoms appeared; however, an abscess formed above the navel a few weeks after, which opened, and the piece of wire safely passed through the opening, which has since healed completely, and no unfavourable symptom took place.

Two Patients dislocated their right shoulder from falling down accidentally. The injured limbs were quickly reduced while the Patients were under chloroform.

In consequence of a Patient having been found dead, the alteration made in the night nursing of this portion of the building, by which the Patients are visited every hour, will, I trust, prevent another occurrence of a similar character. Many of the Patients were at first very averse in being so continually looked after; however, this feeling appears to be gradually subsiding, and they are becoming more reconciled to the change.

Walking parties of Patients are continually made in the neighbourhood in the care of Nurses; also, many of the

Patients are permitted to visit their relatives in care of an Attendant, and visits have been made to many of the amusements in London, and to the Crystal Palace during the summer. Great disappointment and consternation occurred among the Patients during the burning of the Alexandra Palace in the summer, as much anticipated pleasure was hoped for by many in being able to go to a place of amusement so near. However, the rebuilding of the place affords much pleasure.

The distribution of small shawls to many of the aged women has produced much additional comfort to them during the winter months.

I beg to thank the Committee for their counsel in the management of this department of the Asylum. I am obliged to my fellow Officers for their ready co-operation in my duties, and it affords me much pleasure in stating that the general conduct of the large staff of Nurses has been very praiseworthy during the past year, and they have shewn great attention in their various and onerous occupation.

I am, Gentlemen,

Your most obedient Servant,

WILLIAM GURSLAVE MARSHALL,

*Medical Superintendent,*

*Female Department.*



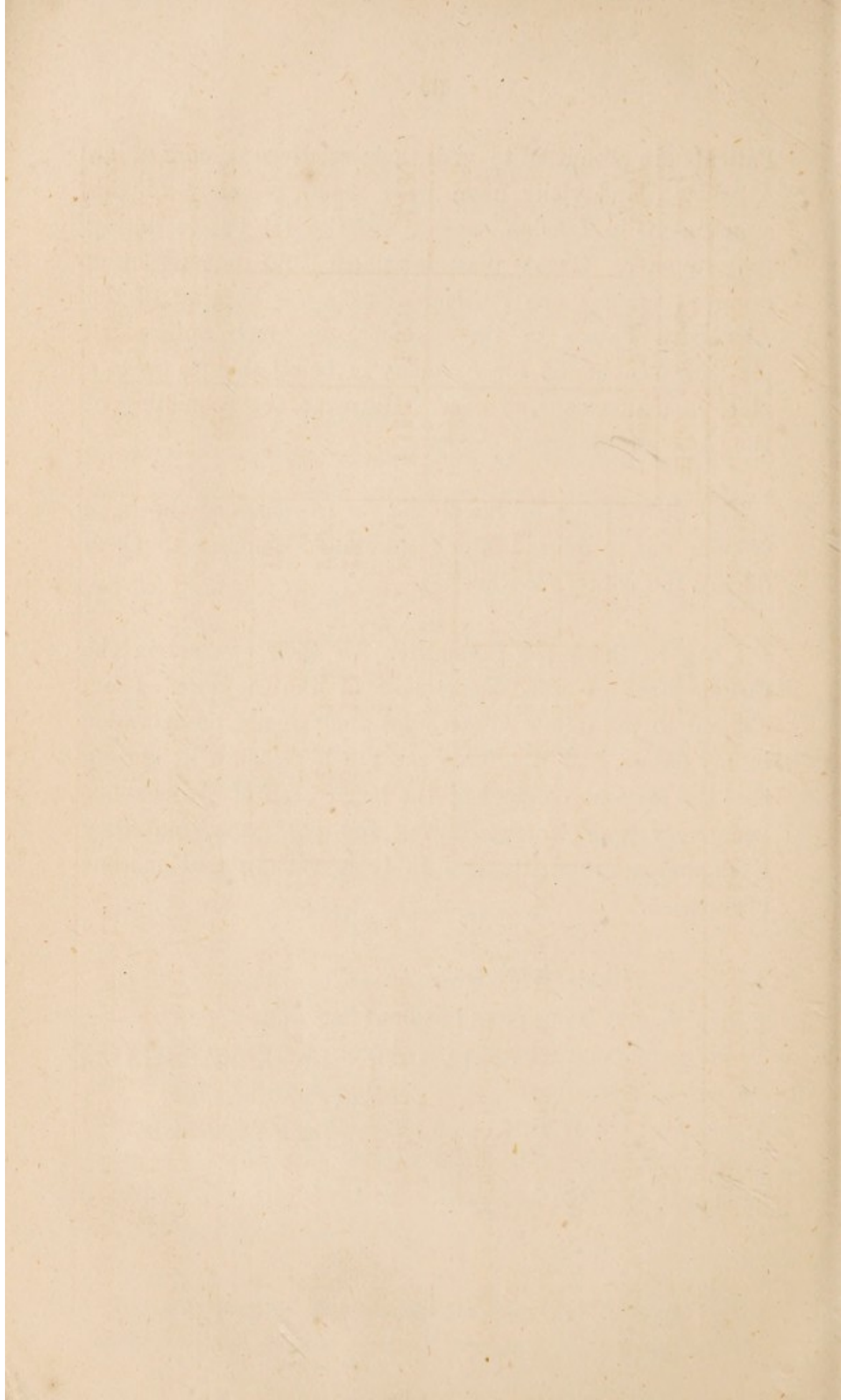


TABLE I.

*Showing the Admissions, Re-admissions, Discharges and Deaths, during the Year 1873.*

	Male.		Female.		Total.
	Male.	Female.	Male.	Female.	
In the Asylum 1st January, 1873 .. .. .	822		1,225		2,047
Admitted for the first time during the Year .. .. .	302	316	618		
Re-admitted during the Year .. .. .	26	29	53		
Total under care during the year .. .. .	1,150		1,570		2,720
Discharged or removed—					
Recovered .. .. .	103	117	220		
Relieved .. .. .	97	148	245		
Not improved.. .. .	..	1	1		
Died .. .. .	128	67	195		
Total discharged and died during the year .. .. .	328		333		661
Remaining in the Asylum, 31st December, 1873 (inclusive of absent on trial—Males and Females) .. .. .	822		1,237		2,059
Average numbers resident during the year .. .. .	822		1,238		2,060

TABLE II.

*Showing the Admissions, Re-admissions and Discharges from the opening of the Asylum to the present date,  
31st December, 1873.*

	Male.	Female.	Total.	Discharged or removed--		
				Male.	Female.	Total.
Admitted during the period of 23 years	..	..	..	1,639	1,402	3,041
Re-admissions..	..	..	..	815	1,012	1,827
Total of cases admitted	5,744	5,399	11,143	92	175	267
				2,376	1,573	3,949
Total discharged and died during the 23 years	4,922	4,162	9,084	..	..	..
Remaining, 31st December, 1873	822	1,237	2,059	..	..	..
Average numbers resident during the 23 years	670	1,006	1,676	..	..	..



**TABLE IV.**—Showing the History of the Annual Admissions since the Opening of the Asylum, with the Discharges and Deaths, and the Numbers of each Year remaining on the 31st December of the Year reported on.

YEAR.	Admitted.				Of each Year's Admissions Discharged and Died in 1873.								Total Discharged and Died of each Year's Admissions to 31st December, 1873.								Remaining of each Year's Admissions, 31 December, 1873.		YEAR.							
	New Cases.		Relapsed Cases.		Recovered.		Relieved.		Not Improved.		Died.		Recovered.		Relieved.		Not Improved.		Died.		Males.			Females.		Total.				
	Males.	Females.	Males.	Females.	Males.	Females.	Males.	Females.	Males.	Females.	Males.	Females.	Males.	Females.	Males.	Females.	Males.	Females.	Males.	Females.	Males.	Females.		Males.	Females.	Males.	Females.	Total.		
1851	411	689	...	...	...	...	...	...	...	...	...	...	...	...	...	...	...	...	...	...	...	...	...	...	...	...	...	...		
1852	349	268	5	2	624	...	...	...	...	...	...	...	...	...	...	...	...	...	...	...	...	...	...	...	...	...	...	...		
1853	241	130	13	8	392	...	...	...	...	...	...	...	...	...	...	...	...	...	...	...	...	...	...	...	...	...	...	...		
1854	197	107	22	4	330	...	...	...	...	...	...	...	...	...	...	...	...	...	...	...	...	...	...	...	...	...	...	...		
1855	137	57	14	2	210	...	...	...	...	...	...	...	...	...	...	...	...	...	...	...	...	...	...	...	...	...	...	...		
1856	129	135	8	5	277	...	...	...	...	...	...	...	...	...	...	...	...	...	...	...	...	...	...	...	...	...	...	...		
1857	136	156	14	8	314	...	...	...	...	...	...	...	...	...	...	...	...	...	...	...	...	...	...	...	...	...	...	...		
1858	144	134	13	11	302	...	...	...	...	...	...	...	...	...	...	...	...	...	...	...	...	...	...	...	...	...	...	...		
1859	342	491	38	17	888	...	...	...	...	...	...	...	...	...	...	...	...	...	...	...	...	...	...	...	...	...	...	...		
1860	250	232	23	21	526	...	...	...	...	...	...	...	...	...	...	...	...	...	...	...	...	...	...	...	...	...	...	...		
1861	224	253	27	19	523	...	...	...	...	...	...	...	...	...	...	...	...	...	...	...	...	...	...	...	...	...	...	...		
1862	185	200	20	23	428	...	...	...	...	...	...	...	...	...	...	...	...	...	...	...	...	...	...	...	...	...	...	...		
1863	214	170	20	10	414	...	...	...	...	...	...	...	...	...	...	...	...	...	...	...	...	...	...	...	...	...	...	...		
1864	206	157	24	17	404	...	...	...	...	...	...	...	...	...	...	...	...	...	...	...	...	...	...	...	...	...	...	...		
1865	218	185	24	13	440	...	...	...	...	...	...	...	...	...	...	...	...	...	...	...	...	...	...	...	...	...	...	...		
1866	180	133	18	11	342	...	...	...	...	...	...	...	...	...	...	...	...	...	...	...	...	...	...	...	...	...	...	...		
1867	135	153	12	6	306	...	...	...	...	...	...	...	...	...	...	...	...	...	...	...	...	...	...	...	...	...	...	...		
1868	199	159	14	9	381	...	...	...	...	...	...	...	...	...	...	...	...	...	...	...	...	...	...	...	...	...	...	...		
1869	208	152	14	9	383	...	...	...	...	...	...	...	...	...	...	...	...	...	...	...	...	...	...	...	...	...	...	...		
1870	234	189	19	20	462	...	...	...	...	...	...	...	...	...	...	...	...	...	...	...	...	...	...	...	...	...	...	...		
1871	393	409	46	27	875	...	...	...	...	...	...	...	...	...	...	...	...	...	...	...	...	...	...	...	...	...	...	...		
1872	267	258	29	15	569	...	...	...	...	...	...	...	...	...	...	...	...	...	...	...	...	...	...	...	...	...	...	...		
1873	302	316	26	29	673	...	...	...	...	...	...	...	...	...	...	...	...	...	...	...	...	...	...	...	...	...	...	...		
TOTALS	5301	5113	443	286	11143	103	117	220	97	148	245	1	1	1128	67	195	1402	3041	907	971	1878	...	216	216	2376	1573	3949	822	1237	2059

SUMMARY OF THE TOTAL ADMISSIONS.

Per-centage of Cases	Recovered		Not Improved		Died		Remaining		Both Sexes.	
	Male	Female	Male	Female	Male	Female	Male	Female	Male	Female
Percentage of Cases	28.54	25.97	...	...	...	...	...	...	27.29	27.29
Recovered	14.19	17.98	...	...	...	...	...	...	16.85	16.85
Not Improved	1.60	4.00	...	...	...	...	...	...	1.94	1.94
Dead	41.36	29.14	...	...	...	...	...	...	35.44	35.44
Remaining	14.31	22.91	...	...	...	...	...	...	18.48	18.48
	100.00	100.00	...	...	...	...	...	...	100.00	100.00

TABLE V.

*Showing the Causes of Death during the Year.*

CAUSES OF DEATH.	Male.	Female.	Total.
CEREBRAL OR SPINAL DISEASES:—			
Apoplexy and Paralysis .. ..	4	21	25
Epilepsy and Convulsions .. ..	11	2	13
General Paresis .. .. .	37	10	47
Maniacal and Melancholic Exhaustion or Decay .. .. .	33	8	41
Inflammation and other diseases of the Brain, Softening, Tumours, &c. .. .. .	10	..	10
THORACIC DISEASE:—			
Inflammation of the Lungs, Pleuræ, and Bronchi .. .. .	5	8	13
Pulmonary Consumption .. ..	13	14	27
Disease of the Heart, &c. .. ..	2	..	2
ABDOMINAL DISEASE:—			
Inflammation and Ulceration of the Stomach, Intestines, or Peritoneum .. .. .	..	..	..
Dysentery and Diarrhoea .. ..	9	..	9
Pelvic Abscess .. .. .	..	..	..
Exanthemata .. .. .	..	..	..
Erysipelas .. .. .	1	1	2
Cancer .. .. .	..	1	1
Anæmia .. .. .	..	..	..
General Debility and Old Age .. ..	2	..	2
Accidents .. .. .	..	..	..
Suicide .. .. .	1	1	2
Carbuncle .. .. .	..	1	1
TOTAL .. .. .	128	67	195

TABLE VI.

*Showing the Length of Residence in those discharged Recovered,  
and in those who have Died during the Year.*

Length of Residence.	Recovered.			Died.		
	Male.	Female.	Total.	Male.	Female.	Total.
Under 1 month ..	9	..	9	17	10	27
From 1 to 3 months	33	13	46	14	13	27
" 3 " 6 "	32	43	75	13	10	23
" 6 " 9 "	12	24	36	22	3	25
" 9 " 12 "	4	12	16	4	1	5
" 1 " 2 years	9	13	22	21	5	26
" 2 " 3 "	3	8	11	6	4	10
" 3 " 5 "	1	3	4	7	3	10
" 5 " 7 "	..	1	1	5	3	8
" 7 " 10 "	..	..	..	5	3	8
" 10 " 12 "	..	..	..	3	5	8
" 12 " 15 "	..	..	..	3	4	7
" 15 " 20 "	..	..	..	6	..	6
" 15 " 22 "	..	..	..	..	3	3
" 22 " 25 "	..	..	..	2	..	2
TOTAL .. ..	103	117	220	128	67	195

TABLE VII.

*Showing the duration of the Disorder on Admission in the Admissions, Discharges, and Deaths, during the Year.*

CLASS.	Duration of Disease on Admission in four Classes.												
	The Admissions.			The Discharges.				The Deaths.					
	Male.	Female.	Total.	Recovered.		Removed, Relieved, or otherwise.		Male.	Female.	Total.	Male.	Female.	Total.
				Male.	Female.	Male.	Female.						
FIRST CLASS— First attack, and within three months on admission ..	178	197	375	60	76	136	43	67	110	54	41	95	
SECOND CLASS— First attack above three, and within twelve months on admission ..	26	28	54	2	10	12	5	18	23	9	10	19	
THIRD CLASS— Not first attack, and within twelve months on admission	45	67	112	21	27	48	6	20	26	8	6	14	
FOURTH CLASS— First attack or not, but of more than twelve months on admission ..	31	36	67	4	2	6	14	32	46	14	7	21	
UNCERTAIN ..	48	17	65	16	2	18	29	12	41	43	3	46	
TOTAL ..	328	345	673	103	117	220	97	149	246	128	67	195	



TABLE VIII.—Showing the Ages of the Admissions, Discharges, and Deaths during the Year.

AGES.	The Admissions.			The Discharges.						The Deaths.				
	Male.	Female.	Total.	Recovered.			Removed, Relieved, or otherwise.			Male.	Female.	Total.		
				Male.	Female.	Total.	Male.	Female.	Total.					
From 5 to 10 years	1	..	1	..	1	..	2	..	3	..	..	..	..	..
" 10 to 15 "	1	2	3	..	16	..	4	6	10	..	4	..	4	..
" 15 to 20 "	20	21	41	22	34	56	15	24	39	16	4	20	..	..
" 20 to 30 "	63	88	151	36	33	69	22	41	63	36	11	47	..	..
" 30 to 40 "	104	79	183	25	23	48	20	41	61	37	18	55	..	..
" 40 to 50 "	61	78	139	9	13	22	17	25	42	21	14	35	..	..
" 50 to 60 "	51	44	95	4	3	7	14	9	23	9	13	22	..	..
" 60 to 70 "	22	21	43	..	1	1	3	2	5	5	6	11	..	..
" 70 to 80 "	4	10	14	..	..	..	..	..	..	..	1	1	..	..
" 80 to 90 "	1	2	3	..	..	..	..	..	..	..	..	..	..	..
" 90 and upwards	..	..	..	..	..	..	..	..	..	..	..	..	..	..
Not stated ..	..	..	..	..	..	..	..	..	..	..	..	..	..	..
TOTAL ..	328	345	673	103	117	220	97	149	246	128	67	195	..	..

TABLE IX.  
*Condition as to Marriage in the Admissions, Discharges, and Deaths during the Year.*

Condition in reference to Marriage.	The Admissions.			The Discharges.					The Deaths.			
	Male.	Female.	Total.	Recovered.		Removed, Relieved, or otherwise			Male.	Female.	Total.	
				Male.	Female.	Total.	Male.	Female.				Total.
Single .. ..	129	137	266	37	46	83	58	79	137	55	22	77
Married .. ..	150	151	301	58	55	113	32	44	76	57	30	87
Widowed .. ..	32	52	84	8	16	24	7	24	31	14	14	28
Not known .. ..	17	5	22	..	..	..	..	2	2	2	1	3
TOTAL .. ..	328	345	673	103	117	220	97	149	246	128	67	195

TABLE X.  
*Showing the probable Causes, Apparent or Assigned, of the Disorder, in the Admissions, Discharges, and Deaths, of the Year.*

CAUSES.	The Admissions.			The Discharges.			The Deaths.		
	Male.	Female.	Total.	Recovered.		Removed, Relieved, or otherwise.	Male.	Female.	Total.
				Male.	Female.				
<b>MORAL—</b>									
Mental anxiety	..	13	13	7	..	..	..	6	6
Domestic troubles	6	18	24	..	3	2	2	9	9
Religious excitement	6	2	8	2	6	2	2	4	4
Disappointments in love	..	4	4	7	..	..	..	..	..
Business anxiety	33	..	33	5	..	2	2	4	4
Fright.	2	5	7	3	..	..	..	1	1
Wife's Infidelity	2	..	2	1	..	..	..	..	..
Slander	..	4	4	..	..	..	..	..	..
<b>PHYSICAL—</b>									
Natural decay	32	..	32	..	1	6	2	2	2
Hereditary taint	38	5	43	..	8	7	5	2	2
Intemperance	60	11	71	16	24	7	2	2	7
Onanism	7	..	7	2	2	1	1	..	1
Sunstroke	..	..	..	1	1	1	..	..	..
Unascertained	109	239	348	58	119	73	93	37	130
Epilepsy	21	11	32	1	..	2	12	6	18
Brain disease	1	..	1	..	..	..	2	..	2
Injury to the head	7	..	7	..	..	..	7	..	7
Destitution	4	..	4	3	..	1	..	..	..
Parturition	..	18	18	..	20	..	..	..	..
Protracted Lactation	..	14	14	..	11	..	..	..	..
Lead poison	..	1	1	..	1	..	..	..	..
<b>TOTAL</b>	328	345	673	103	117	220	97	149	246
							128	67	195

## THE CHAPLAIN'S REPORT, 1873.

---

The Report of matters, for 1873, within the Chaplain's Department, naturally commences with the Chapel Services.

*Sundays.*—All the Sunday Services have been, uninterruptedly, performed. On every Sunday morning during the year the Holy Communion was celebrated. On each of these occasions, and on Ascension and Christmas Days, there was an attendance of Patients, varying in numbers between 13 and 45. This Service appears to be highly valued by the Patients, who frequent it, and some are rarely or never absent.

At Morning Prayer, which almost immediately follows the Celebration, the practice is continued of concluding the Service with a short address. At present a course of lectures is being given on a portion of the Prayer Book. The Male attendance both at morning and afternoon services has slightly increased. No particular observation is required with reference to the Household Service, at which there is a small but steady attendance of men, in addition to the larger number of Females.

*Week Days.*—More Male Patients have attended the Week-day Services, which, there is reason to believe, have proved a source of consolation. One Patient, just before his departure, remarked, "The Services at the Chapel which I have had the privilege of attending, have been to me as it were wayside seats, where I have often sat and refreshed myself." The Chaplain appreciates the consider-

ateness of the Visitors in authorising, as a measure of relief to himself, the omission of one afternoon Service in the week; once only, however, has he availed himself of this privilege.

*Wards.*—In his visits to the Wards, the Chaplain has had frequent and interesting conversations with Patients to whom he trusts he may have administered some comfort. To some of the new comers he has given a little Tract called “Friendly Talk with a new Patient,” which he has written as a word of welcome upon admission. On taking leave of Convalescents, on their discharge, he takes the opportunity of accompanying his farewell with friendly advice appropriate to their special circumstances. Very frequently, in the case of Male Convalescents, parting advice has to take the form of serious warning against recurrence to former habits of intemperance, the fruitful cause of mental disease.

*Lent and Advent.*—In Lent and Advent special Services were held, and variety was infused into the Chapel ministrations by the kind attendance of various Preachers, on the Chaplain’s invitation. By such additional ministrations a twofold advantage is secured. A welcome change is afforded to a congregation which has, otherwise, no opportunity of listening to fresh Pastoral instruction, and, also, persons from without are brought into sympathetic relations with Asylum life.

*Preachers.*—The following Preachers delivered Sermons in the Chapel in the course of the year:—

January. Rev. E. C. Hawkins, Head Master,  
St. John’s, Leatherhead.

February. Rev. H. Chamberlain, Curate, Friern  
Barnet.

March. Rev. J. L. Knight, Vicar of St. Paul’s,  
New Southgate.

- March. Rev. S. Cheetham, Chaplain, Dulwich College.
- „ Rev. J. Baird, Vicar of Southgate.
- „ Rev. A. Pyne (twice), Curate of Southgate.
- April. Rev. H. G. Henderson, Vicar, Holy Trinity, Shoreditch.
- „ Rev. H. Morris, late Chaplain Royal Navy.
- „ Rev. N. Liberty, Chaplain Cancer Hospital.
- „ Rev. G. M. Squibb, Rector of Totteridge.
- „ Rev. R. Morris, Rector of Friern Barnet.
- November. Rev. G. H. Lee, Lyonsdown.
- December. Rev. H. N. Collier, Vicar, Holy Trinity, Finchley.
- „ Rev. G. Gainsford, Vicar, St. Saviour's, Hitchin.
- „ Rev. R. Hutton, Rector of Chipping Barnet, and formerly Chaplain of the Asylum.

*Summer Entertainment.*—As in the previous year, the Summer Entertainment was preceded by a Chapel Service, in which the Revs. R. Morris, G. H. Lee, and S. Kirkman, with the Chaplain, took part. There was a very large congregation, which, both during the Service, and in dispersing, behaved with perfect order.

*Occasional Services.*—In the early part of the year an infant of one of the Patients, F. C. Barnes, was baptized. The Communion of the Sick was administered on a few occasions. Four nurses were confirmed, on 4th April, at Highgate.

*Burials.*—The Asylum Cemetery, consecrated on July 1st 1851, by Bishop Blomfield, was closed on 26th May, 1873; 59 Burials had taken place in that year. During these nearly 22 years, not many less than 2,800 interments have taken place in the ground. Reckoning three interments in each of the 941 graves, the total would amount to 2,823; but a slight abatement has to be made for some cases in which fewer than three were consigned to one grave. Thus our dead outnumber the living. Though the Chaplain is now no longer able to have personal communication with the mourners, he still endeavours to place himself in kindly relation to them by forwarding a memorial card. The interments now take place in the Great Northern Cemetery. The average number of deaths for 22 years may be stated approximately as 170.

*Classes.*—A Female writing class has been resumed on Monday evenings, and the offer of a Scripture class has been made for Fridays. The Chaplain ventures to suggest the desirableness of establishing a class, under a qualified teacher, for the instruction of some of the younger Patients.

*Missions.*—Occasional Missionary Readings have been given in Chapel. The Rev. H. Rowley, formerly associated with Bishop Mackenzie, in the Central African Mission, delivered in May an interesting Missionary Address. The Day of Intercession was marked by a special Household Service. The sum of £15 16s. 2d. has been forwarded to the usual Society, through Miss Builder, the Treasurer.

*Library.*—A grant of Books, of no great value, was given to the Library by one of the Societies. The Committee placed £5 at the Chaplain's disposal for the purchase of new Books, and 100 volumes have been procured from Mudie's

Library. A friend of the Chaplain's has kindly transmitted a similar sum to be expended in the interests of the Institution. It is proposed still further to replenish the Library shelves.

*Hospital Sunday.*—The largest hospital of its kind could scarcely fail to take an interest in Hospital Sunday, on 15th June. A small contribution of £2 15s. 8d., was transmitted from the Household to the Treasurer of that Fund.

*Obituary.*—Of the Household, Margaret Kellard, many years a Nurse in the Asylum, died in June, and was buried, at the expense of the Establishment, in Islington Cemetery, by the Chaplain.

*Decorations of Chapel.*—Through the kind assistance of willing workers, the Chapel has been tastefully decorated on certain occasions.

*Vacation.*—The Chaplain was unable to take his usual autumn vacation, but a severe bereavement rendered his absence necessary in the commencement of November. The Rev. G. H. Lee officiated in his absence.

A New Year's Eve Service in the afternoon of the 31st December was attended by many of the Patients. Appropriate hymns were played by Mr. Dendy (whose ready co-operation with him at all times is deserving of the Chaplain's acknowledgment), and a summary of the chief events of the year, in connection with the Institution, was delivered by the Chaplain. The wish for New Year's happiness which he then expressed, he may be allowed to



repeat, for all with whom he is associated, in closing his record of the ministerial duties and kindred subjects of another year.

HENRY HAWKINS.

*January, 1874. ]*

## THE STEWARD'S REPORT.

---

THE Annual Returns and Accounts, showing the estimated profit of the Farm, the value of the Patients' work, and the consumption of provisions during the year, are appended to this short Report.

The profit of the Farm and Gardens is considered to be £1,059 18s. 9d., a small increase upon previous years, and this has arisen principally from the abundant crop of fruit which the gardens have produced.

The Stock at the Farm has been tolerably healthy during the year, and the usual supplies of Milk, Pork, &c., have been furnished to the House.

It has been found necessary to purchase 2 cart horses for the use of the Farm and for the other work of the Asylum, but a large price had to be paid for them. They were bought at 60 and 62 guineas each, being 6 years old. It was also thought advisable to part with one of the horses which had been upon the Farm for about 10 years. The horse was bought in October, 1863, at 6 years old, for £39, and was sold at the hammer in April, 1873, being 16 years old, for £84. This shows the enormous increase in the value of horses, and also that the Asylum cattle are well cared for.

Large crops of Oats, Mangold Wurtzell, Swedes, Cabbage, Rye Grass, &c., have been grown upon the Farm.

The profit derived from the Tailor's Shop is £267 1s. 6½*d.*; from the Shoemaker's Shop, £320 16s. 4*d.*; and from the Upholsterer's Shop, £226 15s. 2*d.*

The Master Shoemaker, after a service of 22 years, left the Asylum in July last, and an efficient tradesman has been appointed in his place.

The new Diet which was introduced about 12 months since, continues to give satisfaction.

Several important alterations have been made in the machinery used in the Laundry, which promise great economy in time and labour. The new Washing Machines are now at work, and although sufficient time has not elapsed to enable the Superintendent to form a proper estimate of their value, it is evident that there is great improvement upon the system formerly in use, and she has already reduced the staff from 26 to 17.

A new turntable has been placed near the weighbridge on the coal siding, upon which the trucks are brought from the Railway Station, but the siding requires to be properly relaid.

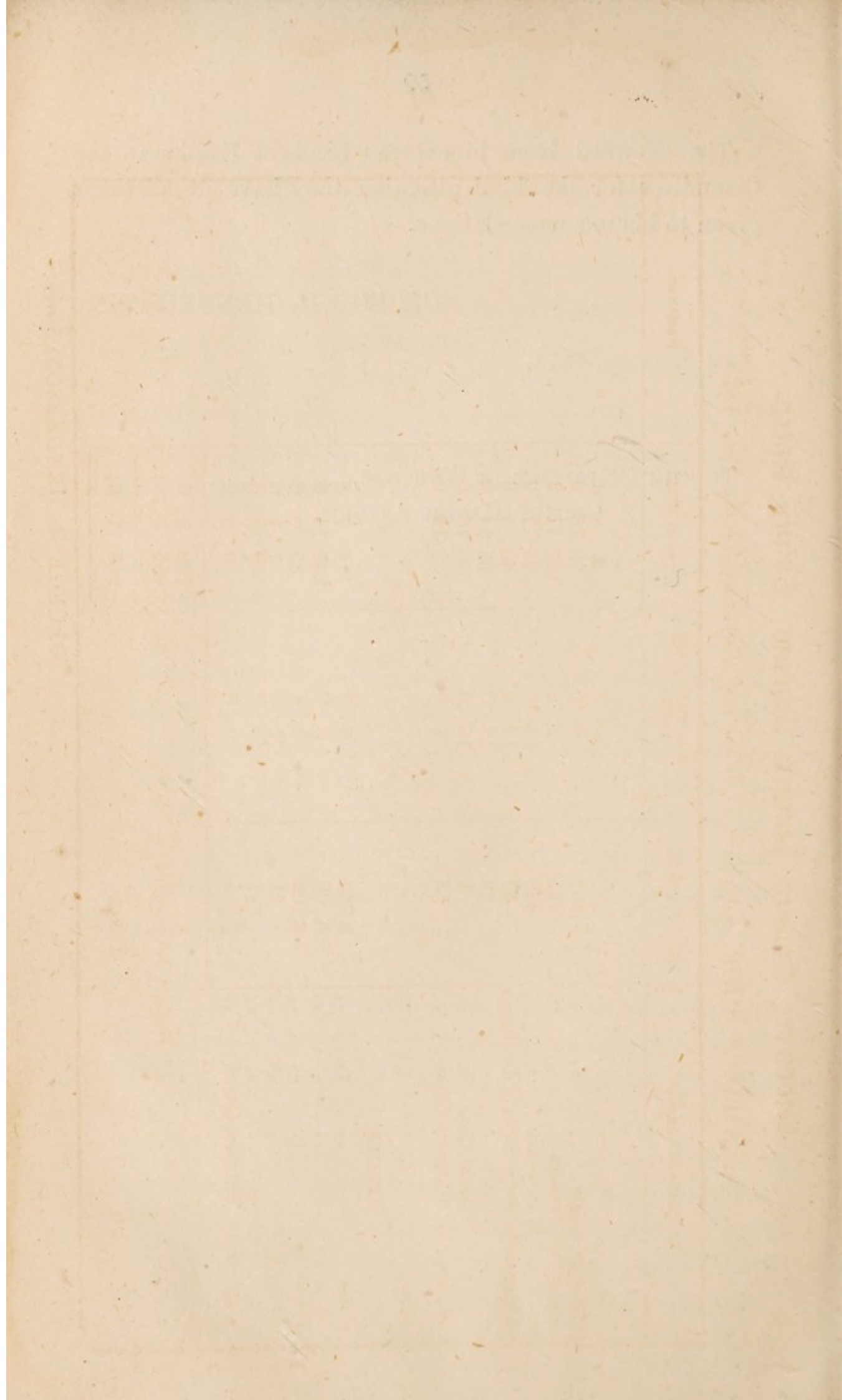
Very little addition has been made to the retaining walls at the sides of the brook at the back of the Farm. It is most desirable that this work should be proceeded with, as the ground on either side is constantly breaking away from the scour of the water after heavy rain.

The Steward begs to express his best thanks to the Committee for the kind attention they have at all times given to his recommendations.

GEORGE H. HENDERSON.

*1st January, 1874.*

TO THE COMMITTEE OF VISITORS,  
COLNEY HATCH ASYLUM.



## Middlesex County Lunatic Asylum, Colney Hatch.

TAILOR'S SHOP.—Account of Work and Earnings for the Year 1873.

CLOTHING MADE UP.	No. of Articles.	Price of Making per Article.	Value of Work.	REMARKS.
		s.      d.	£      s.      d.	
Patients' Coats .. .. .	532	3      0	79   16   0	
"  Trousers .. .. .	855	2      9	117   11   3	
"  Waistcoats .. .. .	338	1      6	25      7   0	
Attendants' Serge Suits of Uniforms	67	12   0	40      4   0	
"  Cloth .. .. .	73	18   0	65   14   0	
"  Great Coat .. .. .	1	16   0	0   16   0	
Waterproof Mattress Cases .. .. .	52	1      0	2   12   0	
<b>REPAIRS.</b>				
Coats .. .. .	3,050	0      9	114      7   6	
Trousers .. .. .	6,206	0      9	232   14   6	
Waistcoats .. .. .	2,102	0      4	35      0   8	
Strong Sheets .. .. .	21	1      0	1      1   0	
"  Dresses .. .. .	287	0      6	7      3   6	
Waterproof Mattress Cases .. .. .	4	0      6	0      2   0	
		Deduct Journeymen's Wages .. .. .	722   9   5	
		TOTAL .. .. .	455   7   10½	
		TOTAL .. .. .	267   1   6½	

GEORGE H. HENDERSON, Steward.

Middlesex County Lunatic Asylum, Colney Hatch.

SHOEMAKER'S SHOP.

Account of Work and Earnings for the Year 1873.

ARTICLES MADE UP.	No. of Articles.	Price of Making per Article.	Value of Work.	REMARKS.
		s. d.	£ s. d.	
Men's Leather Boots ..	2	3 6	0 7 0	
" Shoes ..	12	3 0	1 16 0	
Cloth and Canvas Boots ..	437	2 0	43 14 0	
Male Attendants' Belts ..	30	0 4	0 10 0	
Female " ..	32	0 4	0 10 8	
REPAIRS.				
Boots and Shoes Repaired ..	2,247	0 8	74 18 0	
" Soled & Weltd ..	5,634	1 6	422 11 0	
Boots Locked and Strapped ..	1,715	0 2	14 5 10	
Attendants' Belts ..	371	0 2	3 1 10	
Patient's Dress Straps..	24	0 2	0 4 0	
			561 18 4	
Deduct Journeymen's Wages ..		..	241 2 0	
TOTAL ..		..	320 16 4	

GEORGE H. HENDERSON, Steward.

Middlesex County Lunatic Asylum, Colney Hatch.  
 UPHOLSTERER'S SHOP.

Account of Work and Earnings for the Year 1873.

ARTICLES MADE UP.	Price of Making per Article.		No. of Articles.	Value of Work.		REMARKS.
	s.	d.		£	s.	
Sackings ...	0	8	36	1	4	0
Strong Rugs ...	4	0	113	22	12	0
Carpets ...	0	2	714	5	19	0
Mattresses ...	1	6	428	32	2	0
Mattings ...	0	2	256	2	2	8
Pillows ...	0	3	13	0	3	3
Canvas Shirts ...	5	0	3	0	15	0
REPAIRS.						
Sackings ...	0	3	1,604	20	1	0
Strong Rugs ...	1	6	68	5	2	0
Carpets ...	0	1	54	0	4	6
Mattresses ...	1	3	686	42	17	6
Mattings ...	0	1	50	0	4	2
Sofa Cushions ...	1	0	209	10	9	0
Pillows ...	0	1	360	1	10	0
Padded Rooms ...	10	0	21	10	10	0
Canvas Shirts ...	1	0	24	1	4	0
PICKING.						
Horse Hair ...	...	...	13,033 lbs.	108	12	2
Cocoa Fibre ...	...	...	1,514 "	12	12	4
Deduct Journeyman's Wages ...				278	4	7
TOTAL ...				51	9	5
				£226	15	2

GEORGE H. HENDERSON, Steward.



## Middlesex County Lunatic Asylum,

### COLNEY HATCH.

*Provisions consumed during the Year ending December 31st,  
1873.*

Meat—Bacon	..	..	..	4,629	lbs.
Beef and Mutton	..		..	226,252	„
Pork	..	..	..	45,760	„
Fish	..	..	..	50,870	„
Beer	..	..	..	92,881	gals.
Bread	..	..	..	830,109	lbs.
Butter	..	..	..	42,361	„
Cheese	..	..	..	50,317	„
Cocoa	..	..	..	8,632	„
Coffee	..	..	..	3,924	„
Eggs	..	..	..	3,085	No.
Flour	..	..	..	629,255	lbs.
Malt	..	..	..	744	qrs.
Milk	..	..	..	25,501	gals.
Hops	..	..	..	7,021	lbs.
Potatoes	..	..	..	381,306	„
Sugar	..	..	..	48,110	„
Tea	..	..	..	10,701	„
Molasses	..	..	..	24,514	„

*For the Sick.*

Wine	..	..	..	5,257	pints
Brandy	..	..	..	2,834	„
Gin	..	..	..	341	„
Porter and Ale	..	..	..	84,048	„
Fish	..	..	..	8,068	No.
Biscuits	..	..	..	3,084	„
Eggs	..	..	..	66,012	„

GEORGE H. HENDERSON,

*Steward.*

MIDDLESEX COUNTY LUNATIC ASYLUM, COLNEY HATCH.

DIET TABLE.

M A L E S.		F E M A L E S.	
BREAKFAST ...	...	...	...
TUESDAY ...	...	TUESDAY ...	...
MONDAY ...	...	MONDAY ...	...
THURSDAY ...	...	THURSDAY ...	...
FRIDAY ...	...	FRIDAY ...	...
SUNDAY ...	...	SUNDAY ...	...
DINNER ...	...	WEDNESDAY ...	...
SATURDAY ...	...	SATURDAY ...	...
TEA or SUPPER ...	...	TEA ...	...
6 oz. Bread and $\frac{1}{2}$ -oz. Butter. 1 pint Cocoa.	...	5 oz. Bread and $\frac{1}{2}$ -oz. Butter. 1 pint Tea.	...
13 oz. Pie (containing 4 oz. Meat). 9 oz. Vegetables. $\frac{1}{2}$ -pint Beer.	...	13 oz. Pie (containing 4 oz. Meat). 8 oz. Vegetables. $\frac{1}{2}$ -pint Beer.	...
5 oz. Cooked Meat. 9 oz. Vegetables. 4 oz. Bread. $\frac{1}{2}$ -pint Beer.	...	4 oz. Cooked Meat. 8 oz. Vegetables. 4 oz. Bread. $\frac{1}{2}$ -pint Beer.	...
1 pint Stew and 6 oz. Bread, as on Saturday. or 9 oz. Fish. 9 oz. Vegetables. 4 oz. Bread. $\frac{1}{2}$ -pint Beer (with either Dinner).	...	1 pint Soup, made with 4oz. Meat and the Liquor from Meat of previous day, Peas, Rice, Scotch Barley, Herbs, &c. 5 oz. Bread. or 8 oz. Fish. 8 oz. Vegetables. 4 oz. Bread. or 12 oz. Currant Dumpling.	...
1 pint Irish Stew, made with 3 oz. Meat and the Liquor from Meat of previous day, 12 oz. Potatoes and other Vegetables, and 1 oz. Dumpling. 6 oz. Bread. $\frac{1}{2}$ -pint Beer.	...	$\frac{1}{2}$ -pint Beer (with either Dinner). 1 pint Irish Stew, made with 3 oz. Meat and the Liquor from Meat of previous day, 12 oz. Potatoes and other Vegetables, and 1 oz. Dumpling.	...
6 oz. Bread. 2 oz. Cheese or $\frac{1}{2}$ -oz. Butter. $\frac{1}{2}$ -pint Beer or 1 pint Tea.	...	5 oz. Bread. $\frac{1}{2}$ -pint Beer. 5 oz. Bread. $\frac{1}{2}$ -oz. Butter. 1 pint Tea.	...

**Middlesex County Lunatic Asylum,**  
**COLNEY HATCH.**

**FARM AND GARDEN ACCOUNTS.**

*Abstract of Receipts and Payments from 1st January to 31st  
December, 1873.*

RECEIPTS.	PAYMENTS.																																																																																																																				
<p>To Sale of—</p> <table style="width: 100%; border-collapse: collapse;"> <thead> <tr> <th style="width: 80%;"></th> <th style="text-align: right;">£</th> <th style="text-align: right;">s.</th> <th style="text-align: right;">d.</th> </tr> </thead> <tbody> <tr> <td>11 Calves ... ..</td> <td style="text-align: right;">24</td> <td style="text-align: right;">14</td> <td style="text-align: right;">6</td> </tr> <tr> <td>6 Pigs ... ..</td> <td style="text-align: right;">21</td> <td style="text-align: right;">18</td> <td style="text-align: right;">0</td> </tr> <tr> <td>Bones ... ..</td> <td style="text-align: right;">7</td> <td style="text-align: right;">11</td> <td style="text-align: right;">3</td> </tr> <tr> <td>Grass ... ..</td> <td style="text-align: right;">11</td> <td style="text-align: right;">18</td> <td style="text-align: right;">9</td> </tr> <tr> <td>Horse ... ..</td> <td style="text-align: right;">17</td> <td style="text-align: right;">0</td> <td style="text-align: right;">0</td> </tr> <tr> <td>3 Cows and 1 Bull ...</td> <td style="text-align: right;">108</td> <td style="text-align: right;">18</td> <td style="text-align: right;">0</td> </tr> <tr> <td>Calf Skin ... ..</td> <td style="text-align: right;">0</td> <td style="text-align: right;">8</td> <td style="text-align: right;">0</td> </tr> <tr> <td style="text-align: right;">£</td> <td style="text-align: right;">s.</td> <td style="text-align: right;">d.</td> <td></td> </tr> <tr> <td>Horse, less com- mission ... ..</td> <td style="text-align: right;">79</td> <td style="text-align: right;">6</td> <td style="text-align: right;">10</td> </tr> <tr> <td>Dc., purchased</td> <td style="text-align: right;">63</td> <td style="text-align: right;">0</td> <td style="text-align: right;">0</td> </tr> <tr> <td style="border-top: 1px solid black;"></td> <td style="text-align: right; border-top: 1px solid black;">16</td> <td style="text-align: right; border-top: 1px solid black;">6</td> <td style="text-align: right; border-top: 1px solid black;">10</td> </tr> <tr> <td>Balance ... ..</td> <td style="text-align: right;">1,198</td> <td style="text-align: right;">5</td> <td style="text-align: right;">1</td> </tr> <tr> <td style="border-top: 1px solid black;"></td> <td style="text-align: right; border-top: 1px solid black;">£1,407</td> <td style="text-align: right; border-top: 1px solid black;">0</td> <td style="text-align: right; border-top: 1px solid black;">5</td> </tr> </tbody> </table>		£	s.	d.	11 Calves ... ..	24	14	6	6 Pigs ... ..	21	18	0	Bones ... ..	7	11	3	Grass ... ..	11	18	9	Horse ... ..	17	0	0	3 Cows and 1 Bull ...	108	18	0	Calf Skin ... ..	0	8	0	£	s.	d.		Horse, less com- mission ... ..	79	6	10	Dc., purchased	63	0	0		16	6	10	Balance ... ..	1,198	5	1		£1,407	0	5	<p>By Cash for—</p> <table style="width: 100%; border-collapse: collapse;"> <thead> <tr> <th style="width: 80%;"></th> <th style="text-align: right;">£</th> <th style="text-align: right;">s.</th> <th style="text-align: right;">d.</th> </tr> </thead> <tbody> <tr> <td>8 Cows ... ..</td> <td style="text-align: right;">227</td> <td style="text-align: right;">0</td> <td style="text-align: right;">0</td> </tr> <tr> <td>1 Bull ... ..</td> <td style="text-align: right;">25</td> <td style="text-align: right;">0</td> <td style="text-align: right;">0</td> </tr> <tr> <td>1 Horse ... ..</td> <td style="text-align: right;">65</td> <td style="text-align: right;">2</td> <td style="text-align: right;">0</td> </tr> <tr> <td>Meadow Mower and Sickle</td> <td style="text-align: right;">22</td> <td style="text-align: right;">12</td> <td style="text-align: right;">0</td> </tr> <tr> <td>Oats, Oil Cake, Barley Meal, Pollard, and Rice</td> <td></td> <td></td> <td></td> </tr> <tr> <td>Meal ... ..</td> <td style="text-align: right;">272</td> <td style="text-align: right;">10</td> <td style="text-align: right;">9</td> </tr> <tr> <td>Straw ... ..</td> <td style="text-align: right;">96</td> <td style="text-align: right;">3</td> <td style="text-align: right;">2</td> </tr> <tr> <td>Rowen ... ..</td> <td style="text-align: right;">112</td> <td style="text-align: right;">0</td> <td style="text-align: right;">0</td> </tr> <tr> <td>Seeds ... ..</td> <td style="text-align: right;">35</td> <td style="text-align: right;">3</td> <td style="text-align: right;">0</td> </tr> <tr> <td>Repairing Cart and Har- ness ... ..</td> <td style="text-align: right;">54</td> <td style="text-align: right;">10</td> <td style="text-align: right;">8</td> </tr> <tr> <td>Wages ... ..</td> <td style="text-align: right;">470</td> <td style="text-align: right;">13</td> <td style="text-align: right;">3</td> </tr> <tr> <td>Veterinary Attendance ...</td> <td style="text-align: right;">10</td> <td style="text-align: right;">1</td> <td style="text-align: right;">0</td> </tr> <tr> <td>Incidentals ... ..</td> <td style="text-align: right;">16</td> <td style="text-align: right;">4</td> <td style="text-align: right;">7</td> </tr> <tr> <td style="border-top: 1px solid black;"></td> <td style="text-align: right; border-top: 1px solid black;">£1,407</td> <td style="text-align: right; border-top: 1px solid black;">0</td> <td style="text-align: right; border-top: 1px solid black;">5</td> </tr> </tbody> </table>		£	s.	d.	8 Cows ... ..	227	0	0	1 Bull ... ..	25	0	0	1 Horse ... ..	65	2	0	Meadow Mower and Sickle	22	12	0	Oats, Oil Cake, Barley Meal, Pollard, and Rice				Meal ... ..	272	10	9	Straw ... ..	96	3	2	Rowen ... ..	112	0	0	Seeds ... ..	35	3	0	Repairing Cart and Har- ness ... ..	54	10	8	Wages ... ..	470	13	3	Veterinary Attendance ...	10	1	0	Incidentals ... ..	16	4	7		£1,407	0	5
	£	s.	d.																																																																																																																		
11 Calves ... ..	24	14	6																																																																																																																		
6 Pigs ... ..	21	18	0																																																																																																																		
Bones ... ..	7	11	3																																																																																																																		
Grass ... ..	11	18	9																																																																																																																		
Horse ... ..	17	0	0																																																																																																																		
3 Cows and 1 Bull ...	108	18	0																																																																																																																		
Calf Skin ... ..	0	8	0																																																																																																																		
£	s.	d.																																																																																																																			
Horse, less com- mission ... ..	79	6	10																																																																																																																		
Dc., purchased	63	0	0																																																																																																																		
	16	6	10																																																																																																																		
Balance ... ..	1,198	5	1																																																																																																																		
	£1,407	0	5																																																																																																																		
	£	s.	d.																																																																																																																		
8 Cows ... ..	227	0	0																																																																																																																		
1 Bull ... ..	25	0	0																																																																																																																		
1 Horse ... ..	65	2	0																																																																																																																		
Meadow Mower and Sickle	22	12	0																																																																																																																		
Oats, Oil Cake, Barley Meal, Pollard, and Rice																																																																																																																					
Meal ... ..	272	10	9																																																																																																																		
Straw ... ..	96	3	2																																																																																																																		
Rowen ... ..	112	0	0																																																																																																																		
Seeds ... ..	35	3	0																																																																																																																		
Repairing Cart and Har- ness ... ..	54	10	8																																																																																																																		
Wages ... ..	470	13	3																																																																																																																		
Veterinary Attendance ...	10	1	0																																																																																																																		
Incidentals ... ..	16	4	7																																																																																																																		
	£1,407	0	5																																																																																																																		

ROBT. A. BURROWS,

*Clerk of the Asylum.*

