

The twenty-eighth report of the Committee of Visitors of the County Lunatic Asylum at Hanwell : January quarter session, 1873 / [Middlesex County Lunatic Asylum].

Contributors

Middlesex Lunatic Asylum at Hanwell.
Palmer Phillips, Charles.
Wilkes, James, 1932-
Owens, Jesse.
Nicholson, Richard.
Northall Laurie, Peter.
Partridge, Richard William.
Martin, Henry.
Hogarth, John Rayer.
Larcome, Alfred H.
Hicks, Isabella E.
Peeke Richards, J.
Rayner, Henry.
May, John.

Publication/Creation

London : Printed by Harrison and Sons, 1873.

Persistent URL

<https://wellcomecollection.org/works/ntf6sek2>

License and attribution

This work has been identified as being free of known restrictions under copyright law, including all related and neighbouring rights and is being made available under the Creative Commons, Public Domain Mark.

You can copy, modify, distribute and perform the work, even for commercial purposes, without asking permission.



Wellcome Collection
183 Euston Road
London NW1 2BE UK
T +44 (0)20 7611 8722
E library@wellcomecollection.org
<https://wellcomecollection.org>

C. 3.
Middlesex.

THE
TWENTY-EIGHTH REPORT
OF THE
COMMITTEE OF VISITORS

OF THE
County Lunatic Asylum at Hanwell,

JANUARY QUARTER SESSION,

1873.

London :
HARRISON AND SONS, ST. MARTIN'S LANE,
Printers in Ordinary to Her Majesty.

Hanwell Lunatic Asylum.

COMMITTEE OF VISITORS,

1872.

CHAIRMAN :

PETER NORTHALL LAURIE, Esq.

- PETER NORTHALL LAURIE, Esq., 9, Park Crescent, Regent's Park, N.W.
HENRY MORRIS KEMSHEAD, Esq., Westbourne Park, Paddington, W.
HENRY JOHN BAXTER, Esq., 5, Pembridge Villas, Bayswater, W.
Captain F. B. MORLEY, 14, Norland Place, Notting Hill, W.
Captain ARTHUR PALLISER, 6, Leinster Square, W.
Lieutenant-Colonel WILLIAM ELSEY, West Lodge, Ealing, W.
HENRY E. PELLEW, Esq., 22, Boltons, West Brompton, S.W.
JOHN RAYER HOGARTH, Esq., Heston Hall, Heston, W.
THOMAS JERVIS, Esq., M.D., 32, Connaught Square, W.
Colonel WILLIAM WOOD, 4, Hyde Park Terrace, W.
HENRY GRIFFITH, Esq., 30, Princes Gardens, W.
The Hon. EDWARD CECIL CURZON, Scarsdale House, Wright's Lane,
Kensington, W.
BORLASE HILL ADAMS, Esq., 55, Torrington Square, W.C.
Captain DONATUS O'BRIEN, 16, Gloucester Place, Hyde Park, W.
Major-General TREMENHEERE, Spring Grove, Isleworth.
THOMAS ROBERT TUFNELL, Esq., Belmont, near Uxbridge.
Colonel EDWARD JOHN STRACEY CLITHEROW, Boston House, Brent-
ford.
JOHN GRAY, Esq., 4, Westbourne Terrace Road, Paddington, W.

Middlesex.

TO HER MAJESTY'S JUSTICES OF THE PEACE FOR
THE COUNTY OF MIDDLESEX, IN GENERAL QUARTER
SESSION ASSEMBLED.

*The TWENTY-EIGHTH REPORT of the
Committee of Visitors of the Lunatic Asylum
for the County of Middlesex, situate at
Hanwell.*

THE Visitors are thankful in being able to report that the Asylum has been free from any Epidemic during the past year, and that the health of the Patients has been ordinarily good.

The number of Patients in the Asylum on the 31st December, 1872, was 1,795; of whom 700 were Males, and 1,095 Females; 6 Males and 6 Females also on the books, were out on probation, being a decrease of two.

At the same period in 1871, the number was 1,797, of whom 701 were males, and 1,096 Females.

In 1872, the numbers admitted were 301, of whom 121 were Males and 180 Females; of these, 17 Males and 11 Females were cases of re-admission, being a decrease of 244.

In 1871, the numbers admitted were 545, of whom 271 were Males, and 274 Females. 71 Males (including 60 received back from the Sussex County Asylum) and 24 Females were cases of re-admission.

The number discharged recovered in 1872 was 112, of whom 36 were Males and 76 Females.

At the same period in 1871, the number was 127, of whom 44 were Males and 83 Females.

52 Patients were discharged in 1872 to the care of friends and to other Asylums, of whom 11 were discharged to their friends and 21 to other Asylums. 2 Patients were also discharged to the Workhouse relieved, and 1 failed to return at the expiration of his probationary absence; but who, it was ascertained, had recovered and gone abroad.

In 1871, 228 Patients were discharged, of whom 21 were transferred to the care of friends, and 207 to other Asylums.

In 1872, the recoveries were at the rate of 37·21 per cent. on the admissions, and 6·25 per cent. on the number resident in the Asylum.

In 1871, 23·30 per cent. on the admissions, and 7·22 on the number resident.

In 1872, the Deaths were 144, of whom 63 were Males and 81 Females, being a decrease of 34.

In 1871, the Deaths were 178, of whom 93 were Males and 85 Females.

It will be seen from the Reports of the Medical Superintendents that the mental and bodily condition of the great

proportion of the inmates is very unfavorable as regards the prospect of recovery. The Patients admitted in 1872 were of an equally unfavorable class, many of them being of a very advanced age, and in such a state of bodily weakness as to involve danger to their lives while being conveyed to the Asylum. Patients in this condition cannot derive any advantage from the treatment in the Asylum, and exclude others who might be expected to recover or improve.

Inquests.—11 Inquests have been held, which are detailed in the Reports of the Superintendents. In two instances, negligence on the part of two nurses, and the non-observance of well-known rules, undoubtedly contributed to the deaths. Both nurses were dismissed; and it should be known that every dismissal from an Asylum being reported to the Commissioners in Lunacy, precludes an attendant or nurse from ever being again employed in any public or private institution subject to their visitation, and is therefore a more severe punishment than might appear at first sight.

Employment.—Considering the large proportion of Patients incapacitated for employment, the number of working Patients is satisfactory; above 500 or more than one half of the Females are employed daily; of the other half, above 300 are imbecile, paralysed, or suicidal; and the residue cannot be induced to occupy themselves with any degree of regularity or advantage to their health. The number of Male Patients employed has been considerably increased, and more will be employed, when the front field is further prepared for cultivation, in market gardening.

The employment of Male Patients is attended with much difficulty, for of those whose bodily health is sufficiently

good, the greater number are "Londoners" unused to agricultural occupation; and many others cannot be entrusted with the tools required for the few practicable trades to which they have been accustomed. It must also be borne in mind that no compulsion can be used, no money payments can be made, nor can any other inducements be offered, beyond some trifling indulgence in dress and food. The Visitors fully appreciate the value of employment as a remedial agent, and its extension engages their constant attention.

The Commissioners in Lunacy visited the Asylum in September last; their Report is appended, and the Visitors have also appended some explanatory observations bearing on the remarks of the Commissioners.

Ward Visitation.—Due consideration has been given to the suggestion of the Commissioners in Lunacy, that hourly visits should be made to all the Wards at night. The lengthened experience of the Visitors, supported by the opinions of their Medical Officers, prevents their concurring in the necessity or expediency of such frequent visits generally, knowing that considerable disturbance would be caused to a large number of sensitive Patients to whom unbroken sleep is of the greatest value; but hourly visits are made to the Wards which are more especially appropriated to Epileptic Patients. The importance of efficient supervision of the Wards at night can hardly be over-rated. "Tell-tale Clocks" only partially secure this, as the night attendant may be occupied, or allege occupation with a sick or excited Patient, and thereby be prevented from depressing the "Tell-tale" at the stated intervals. By way of experiment, the Visitors have tried an electrical telegraph apparatus in some of the Wards on the Female

side, by which every visit, the exact time when made, and the duration of it, is recorded with unerring precision; and while any omission must be detected, vigilant attendants have conclusive evidence of the due discharge of their duties. This apparatus, invented by Mr. Spagnoletti, at the suggestion of Mr. Partridge, has, up to this time, so effectually answered the desired requirements, that the Visitors have resolved to apply it throughout the Asylum.

Maintenance Charges.—The increase in the prices of all provisions and household stores, clothing, coals, and of materials generally, have pressed heavily on the resources of the Asylum; but it has not yet been found necessary to increase the weekly rate which has been maintained at 9s. 7½d., and the Committee feel it due to the Medical Officers to recognize their anxiety for economy in their Departments.

Considerable variety has been given to the Dietary. The weekly fish dinner which was introduced nearly two years ago is much liked by the Patients. The use of Australian tinned Meat has been increased considerably. Eaten cold with salads during the summer months, and by careful preparation as a hot meal, it has proved not only nutritious, but extremely acceptable to the Patients; while, in an economical point of view, it has contributed materially to balance the increased cost of meat contracted for.

Medical Staff.—On the occurrence of the vacancy in the Office of Medical Superintendent of the Female Department, as stated in the Report for 1871, the Visitors placed Mr. Joseph Peeke Richards, M.R.C.S., England, and L.S.A., First Assistant Medical Officer, in temporary charge of the Department. Mr. Richards had filled the office of Assistant Medical Officer for upwards of three years and a half; and

during that time he had gained the confidence of the Visitors by his professional ability, attention to his duties, and kindness to the Patients ; and after several months' probation "in charge," the Visitors feeling fully satisfied with his qualifications for the superior appointment, elected him Medical Superintendent of the Female Department.

In the early part of the year, Dr. Begley expressed his desire to retire from his appointment of Medical Superintendent of the Male Department, which he had filled with so much credit and advantage to the Patients for more than 34 years ; and after so long and honourable a service, the Visitors felt themselves bound to accede to his wishes. They have recorded their appreciation of Dr. Begley's professional merits and unremitting devotion to his duties and the interests of the Asylum, in a Resolution which is appended to this Report, and by awarding him the highest retiring Annuity which it was in their power to recommend.

The Visitors selected from a large number of highly qualified candidates, Dr. Henry Rayner, then Assistant Resident Physician of the Royal Hospital of Bethlem, as successor to Dr. Begley.

Mr. J. Frederick Wright has been appointed second Assistant Medical Officer of the Female Department, vice Mr. H. Beaumont Pattinson, promoted to be First Assistant Medical Officer on that side.

The Visitors have also to report the retirement of Mr. George Willson, who was compelled to resign his appointment after 18 years' good service in consequence of continuous and increasing illness which wholly incapacitated him from the longer discharge of his duties.

On reference to the Report of the Engineer, it will be seen that much progress has been made in effecting many improvements in the Buildings and Airing Courts. This Asylum, which is now one of the oldest in the country, having been originally built for 300 Patients only, has structural defects from which modern Asylums are free, and which tend to make alterations less easy and more expensive. Considerable expense has been incurred in improving and deepening the drains which, from defects in construction both as regards depth and material, caused much uneasiness.

The Visitors desire to acknowledge the confidence and liberality of the Court of Quarter Sessions in granting the means of effecting many of these improvements, which modern requirements have rendered indispensable, and to assure the Court of their desire to confine the expenditure within the narrowest possible limits.

Considering the large number of Attendants and Nurses, and the very trying nature of their duties, the Visitors have to report that their conduct has been satisfactory; and although it has been necessary to dispense with the services of several on both sides, no dismissal has arisen from any charge of illusage towards a Patient.

Reviewing the proceedings of the past year, the Visitors consider the Asylum to be in a satisfactory condition. It is a pleasing duty to record their opinion of the zealous and judicious discharge of their duties by the Medical Superintendents, and by the Assistant Medical Officers, by Mrs. Hicks the Matron, and by the other Officers of the Establishment. The alterations of the Building, and the improvements of the Wards—the employment and amuse-

ments of the Patients, and the general economy of the Asylum—have entailed much additional consideration and labour on the Medical and General Staff; and the Visitors feel that the spirit of harmonious and suggestive co-operation which has been evinced by all, has materially contributed to promote the comfort of the Patients and the reputation of the Asylum.

The Members of the present Committee who retire are :—

H. M. KEMSHEAD, ESQ.

H. J. BAXTER, ESQ.

CAPTAIN MORLEY.

COLONEL WOOD.

MAJOR-GENERAL TREMENHEERE.

COLONEL CLITHEROW.

P. NORTHALL LAURIE,

Chairman.

APPENDICES.

	Page
1 Entry made in the Visiting-Book by the Commissioners in Lunacy, together with remarks of the Committee of Visitors thereon	13
2 Resolution of Committee of Visitors upon Dr. Begley's retirement	26
3 Dr. Rayner's Report	27
4 Mr. Richards' Report... ..	38
5 Chaplain's Report	48
6 Matron's Report	53
7 Farm and Garden, Report as to	58
8 Engineer's Report	61
9 List of Establishment and Salaries	65
10 List of Contract Prices	67
11 Average number of Officers and Patients Boarded at Expense of Establishment	68
12 Account Current for the Year	69
13 Income and Expenditure (to face)	70
14 Balance Sheet for the Year	70
15 Adelaide Fund Account	71
16 Holling's Fund Account	72
17 Quantity of Land and its appropriation	73
18 Farm and Garden Accounts... ..	74
19 Employments. Total number employed in each Quarter	76
20 Employment of Male Patients and estimated Value of Labour	77
21 Ditto Female Patients ditto	78
22 Return of Clothing, &c., manufactured and made up by the Patients	79
23 Ditto Clothing issued	80
24 Ditto Clothing in Store... ..	81
25 Provisions consumed during the Year	82
26 Ordinary Diet Table for Patients employed	83
27 Ditto ditto unemployed	84
28 Sick and Extra Diet List.—Male Side	85
29 Ditto ditto Female Side	86
30 Abstract of Annual Returns (to face)	86

MEDICAL STATISTICS.

1 Showing the Admissions, Re-admissions, Discharges and Deaths during the year 1872	87
2 Showing the Admissions, Re-admissions, and Discharges from the opening of the Asylum, 1st May, 1831, to 31st December, 1872	88
3 Showing the Admissions, Discharges and Deaths, with the mean Annual Mortality and proportion of Recoveries per cent. of the Admissions, for each year since the opening of the Asylum, 1st May, 1831	89

APPENDICES—(*continued*).

MEDICAL TABLES.

	Page
4 Showing the History of the Annual Admissions since the opening of the Asylum, 1st May, 1831, with the Discharges and Deaths, and the Numbers of each Year remaining on the 31st December of the Year reported on (to face)	90
5 Showing the Causes of Death during the year 1872	90
6 Showing the length of Residence in those Discharged Recovered, and in those who have Died during the year 1872	91
7 Showing the duration of the Disorder on Admission, in the Admissions, Discharges and Deaths, during the year 1872	92
8 Showing the Ages of the Admissions, Discharges and Deaths, during the year 1872	93
9X Condition as to Marriage in the Admissions, Discharges and Deaths, during the year 1872	94
10 Showing the probable Causes, Apparent or Assigned, of the Disorder in the Admissions, Discharges and Deaths, of the year 1872	95
11 Showing Form of Mental Disorder in the Patients admitted during the year 1872	96
12 Showing the Station, or Occupation of Patients, admitted during the year 1872	97
Clerk of the Peace's Report as to Lunatics' Settlements	99

REPORT OF THE COMMISSIONERS IN LUNACY.

HANWELL COUNTY ASYLUM.

September 20th, 1872.

REPORT.

WE have this morning concluded a four days' inspection of the Asylum for the County of Middlesex, at Hanwell, and have now seen every Patient except 3 of each sex absent on leave. There are upon the Asylum books 1,799 Patients, *i.e.*, 707 Males and 1,092 Females. These numbers leave 2 vacant beds only in each division, and since November last when our colleagues visited the Asylum, 96 Males and 184 Females have been refused admission for want of accommodation. Since that visit the admissions have been 245, *i.e.*, 104 of Men, and 141 of Women. The discharges have been 114, *i.e.*, 38 in the Male, and 76 in the Female department; of them, 86 are stated to have been upon recovery.

OBSERVATIONS OF THE COMMITTEE OF VISITORS.

The mortality has been 128, the deaths being thus apportioned: 62 of Men, 66 of Women. The chief causes appear to have been as follows:— General Paralysis in 25 cases, other cerebral diseases in 28, and diseases of the heart and respiratory organs in 44.

Post mortem examinations were made upon all who died, with 5 exceptions.

Inquests were held on the deaths of 6 Men and 4 Women. The deaths of 2 resulted from Apoplexy (1 of these in a struggle with another Patient), 3 had received fatal injury from accidental falls, 2 died of Epilepsy, and were found dead in bed.

Upon another Patient an inquest was only held on account of his sudden death the day after his admission. In the remaining two cases (both of men) inquiry was necessary in consequence of fractured ribs and other injuries, the cause of which was not however ascertained.

Post mortem examinations were not made in these five cases, as the friends of the deceased objected.

See reports on these cases of the Medical Superintendents in 1871-2.

There has not been any instance of restraint in either division. Seclusion has been employed with 47 Male Patients on 81 occasions, and with 62 Females in 143 instances.

The number of curable Patients in this Asylum is now apparently very small, and the aged, paralysed, and epileptic form a large proportion of the inmates. Persons so afflicted were the majority of the 12 Men and 15 Women whom we found in bed. The general health of the Asylum is fairly good, though as many as 37 Men and 132 Women are registered as under medical treatment for various reasons.

We visited all the wards, dormitories, single rooms, offices and workshops; and with the exception of a few, chiefly women, the Patients were quiet and orderly. We found no Patients under mechanical restraint or in seclusion in either division.

Few complaints were made

Since the removal to Leavesden and Caterham Asylums of the greater part of the Imbecile Patients, and indeed since the opening of these Institutions, a large proportion of recent and severe cases have been admitted; hence the increase in the number of Patients registered under medical treatment.

to us in reference to diet or treatment, and several Patients, in answer to our enquiries, expressed satisfaction on these points; but complaints of unnecessary detention were not less numerous than usual. In both divisions we noticed many cases which, we think, hardly require to be kept in an Asylum if they could, after a preliminary trial under section 79 of the Lunatic Asylums Act, 1853, be placed with a relative able and willing to receive them with some pecuniary assistance from their Union. In view of such an arrangement, we think that the Medical Officers should be requested to examine the Patients here, and then to select such as they consider fit for that treatment.

The difficulty of carrying out this suggestion is much greater among an urban than among a rural population. The Visitors never hesitate, upon the recommendation of the Medical Superintendents, to discharge Patients to the care of their friends, under Section LXXXI of the "Lunatic Asylums Act," provided such friends are capable of entering into the necessary undertaking. The question of pecuniary aid for such cases as are here referred to by the Commissioners, is exclusively for the consideration of the Guardians of the Unions to which the Patients are chargeable. The Visitors always give those Patients, whom they send out for a month's probation or longer, an allowance during the period as sanctioned by Section LXXIX of the "Lunacy Act."

The clothing of the Male Patients is less satisfactory than that of the other sex, in many instances we found their dress much worn and not in a tidy state; both as to material and variety of colour we think that an alteration is required, and we are also of opinion that a provision of special suits for Sundays would be attended with many advantages. In reference to the beds and bedding throughout the Asylum, we are glad to state that, with the exception of 5 beds on the Female side, sacking and stretchers without mattresses have been done away with. All the beds which we examined were quite clean and well supplied with bedding; a large number of the mattresses and also pillows are of cocoa-nut fibre, for which we strongly recommend the gradual substitution of horse-hair; and in all cases the wooden bottoms of the box-bedsteads, which are partly covered with lead should be removed, and replaced by sackings.

The clothing is of good quality, and has been, and will gradually be more varied in colour, as the old stock diminishes. The second or "Sunday suit" has been for a long time used for the patients who are employed in out-door work; and the extension of a second or "Sunday suit" for a larger number of patients is under the consideration of the Committee.

Sacking Stretchers without Mattresses to these five beds have been discontinued.

This substitution, entailing a largely increased cost, must of necessity be introduced gradually, but it has been and still is in progress.

The Chapel Attendance on Sundays averages 570 in the morning, and 490 in the evening; on week days 211 and 173.

There has been little addition to the number of Patients usefully employed; but we are glad to find that this subject is under consideration, and that measures will be shortly adopted to extend considerably the means of occupation in both divisions. The daily returns show that only 234 of the 707 Male Patients are employed, *viz.*, 71 on the farm and grounds, 12 in the cowhouse, 13 as tailors, 1 as tinman, 3 as painters, 5 as carpenters, 4 as shoemakers, 31 in the upholsterer's shop, 18 in the kitchen, and other offices, and 75 in the wards. Of the Women, 124 are engaged in the laundry, 13 in the kitchen, 199 in needlework, 7 in the Officers' houses, 213 in the Wards, making a

The chapel accommodation for the patients is reported by the officers to be sufficient. The Visitors and Medical Officers consider too large a congregation of the insane (who are especially liable to occasional disturbance) in any one place undesirable.

The Visitors intend to alter the position of the Pulpit and Reading-desk, and to substitute a smaller Pulpit, by which an addition of 40 sittings will be obtained; and to move the Organ Gallery, placing the Organ near the Chancel, thus gaining 20 additional seats.

The employment of patients and its extension, has long engaged the consideration of the Visitors. The number of patients employed has recently been considerably increased, but the large number described by the Commissioners as "aged, paralysed, and epileptic," precludes any large increase.

total of 556 out of 1,092
Female Patients.

Little change has at present taken place in reference to the means adopted for the amusement and recreation of the Patients, and we found in both divisions a great want of amusing books and illustrated papers, and in-door games; this matter, however, we are assured will receive attention, and the stock will be largely increased. We trust that the Attendants will be instructed to encourage those who can amuse themselves, and to assist (by reading aloud and otherwise) those who are incapable of that effort.

Parties of both sexes are sent out as heretofore for occasional walks and picnics, beyond the grounds.

But very little increase in the number of Female Patients employed can be obtained, owing, as in the case of the Male Patients, to the large number of the aged, paralysed, and epileptic class. All that are capable are employed in the Laundry, Workroom, Kitchen, or in their Wards.

In the 39 Wards of the Asylum there are 8 pianos, 15 sets of chess, 36 draught boards, 45 sets of dominoes 111 packs of cards, 44 cribbage boards, 19 bagatelle boards, and 7 miscellaneous games, besides 58 daily papers, 112 weekly illustrated and other papers, 35 monthly periodicals, and several religious publications.

The Library contains upwards of 1,200 volumes, and is constantly increasing in extent.

Much has been done already in parts of the Female division to render the Wards cheerful and lively, by the introduction of flowering plants and birds, additions to the furniture, supply of blinds and vallances to the windows, papering, coloring, and painting the day-rooms and corridors. Progress also has been made in removal of the tile and stone floors in the single and other rooms. No time we are informed will be lost in carrying out these essential improvements through the Asylum.

The Female Airing Courts have also been greatly improved; sunshades have been constructed in those attached to Nos. 6 and 20, and in the last, where the more troublesome Patients take exercise, tar pavement has been laid down; preparations are made for planting them both with shrubs and flowers. The early conversion of the Airing Courts from yards into pleasure grounds is a matter which we would strongly urge. Much progress has been made in the

This has been effected to a great extent, and is in course of execution to the remaining Airing Courts.

new day-rooms and water-closet blocks, the construction of which, as at present sanctioned, will shortly be completed.

In reference to the water-closet block connected with Female Wards 3 and 10, we find that it is proposed altogether to remove the existing bath-rooms; we strongly recommend the reconsideration of this subject, as we think that a bath in each of those Wards is absolutely necessary for the Patients who occupy them. The accommodation for personal washing on the Male side is certainly deficient, and two or more additional water-closets are much required in No. 3 Male Ward, where for the use of 50 Patients and upwards there is but one closet available.

We also wish to call the attention of the Committee of Visitors to the objectionable position and limited size of the sitting-room of the Deputy

The addition so urgently required of more Single-rooms, will more than compensate for the removal of these two rooms, each containing only one bath, while the proximity of Wards 3 and 10 to the general Bath-room, and a supply of moveable baths to each of these wards, will effectually supply the bathing requirements.

The Visitors have obtained from the Court of Quarter Sessions a grant wherewith to erect these washing rooms and water closets.

The Visitors propose to give effect to this suggestion, which has long been

Matron and other Female Officers. The present room would no doubt be sufficient as an office, and there seems to be a very suitable position for a sitting-room for these Officers in the adjoining Laundry Court.

The present Medical Staff consists of 1 chief and 2 assistant medical officers in the Female division, and 1 chief and 1 assistant on the Male side, and 1 qualified dispenser for the Patients on both sides. Instead of employing as heretofore a gentleman as Assistant Medical Officer during the successive holidays of the Medical Staff, it is now proposed that the Dispenser shall perform that duty, and that a substitute for him shall be obtained during the six months he is so employed. The engagement of a second Assistant Medical Officer on the Male Side (the Dispenser being retained) would we think be a far more satisfactory arrangement, and it could be effected at little additional cost.

under consideration. Plans for carrying out this work were prepared by the Engineer several years ago, but not then carried out, on account of more urgent requirements for the comfort of the Patients.

The Visitors do not admit that the Medical Staff on the Male side is insufficient, and they are supported in this view by the report of the Medical Superintendent. The appointment of a qualified

Apothecary, who will take the duties of each Assistant Medical Officer, while these gentlemen are absent on leave (his place in the Dispensary being supplied by a temporary Dispenser), will provide against any inconvenience in this department.

The Case Books are too much in arrear in regard to entries, especially of the Male Side.

There is a misapprehension on the part of the Commissioners in this matter. The former Medical Superintendents were in the habit of entering their cases in what they termed a "Clinical Journal," instead of in the Statutory "Case Book." The present Superintendents will in future make all their entries in the "Case Book."

The present Staff of Attendants consists in the Male division, of 2 Inspectors, 53 Ordinary, and 3 Night Attendants; and in the Female, of 2 Head Attendants, 81 Ordinary, and 5 Night Attendants. According to last night's return, the wet and dirty cases among the

Male Patients amounted to 40, and on the Female side there were 83. As respects the visits of the Night Attendants, we think that they should be made every hour, and that the attention of those visiting should be specially directed to the improvement of the Patients of uncleanly habits.

The Visitors are of opinion (and this is shared by the Medical Superintendents) that hourly visits to the Patients are undesirable (except in special cases). Arrangements are however in contemplation to increase the number of the night visits, especially to the Epileptic Patients and those of unclean habits.

Amongst the more important additions and alterations made since the last visit, not above adverted to, we may mention the construction in the basements of Attendants' rooms for both sexes; the warming No. 19 Female Infirmary and single rooms, and No. 1 Male Ward; a new Dressing-room to general Bath-room on Female side; new machinery for Bread-making, the construction of Nurses' Rooms connected with Female basement Dormitories the increase (by removal of beds) of cubical space in Women's Dormitories so as to

give about 480 feet to each Patient, and plastering ceilings of 2 Dormitories in No. 17 Male Ward.

Inference to observations made at last visit, we may state that at present no steps have been taken to provide a detached Hospital for contagious cases, nor for increasing the Chapel accommodation and enlarging the Recreation-room. All these matters, of much importance, will, we trust, not be lost sight of.

We had the advantage of meeting the Chairman, Mr. Laurie, on the second day of our visit, and had the gratification of hearing from him that active steps would now be taken to remedy existing defects in this Asylum, and to endeavour to make it in every respect "A Model Institution."

(Signed) CHARLES PALMER PHILLIPS,
JAMES WILKES,

Commissioners in Lunacy.

RESOLUTION OF COMMITTEE OF VISITORS UPON
DR. BEGLEY'S RETIREMENT.

At a Meeting of the Committee of Visitors, duly appointed for the purposes of the Middlesex Pauper Lunatic Asylum, held at Hanwell on the 4th day of April, 1872 :

Resolved unanimously—"That this Committee receive with great regret the resignation of Dr. Begley, and desire to express their high opinion of the manner in which he has performed the arduous duties as Medical Superintendent during the long period of 34 years, of his unvaried kindness to the Patients, and the deep interest which he has evinced in the welfare of the Asylum; and that this be communicated to Dr. Begley, together with the assurance that the Committee will not fail to give their cordial support to his claim for a good service pension."

REPORT
OF
THE MEDICAL SUPERINTENDENT
OF
THE MALE DEPARTMENT.

GENTLEMEN,

I have the honour of placing before you the Medical Report of the Male Department for the year ending December 31st, 1872, during the last four months of which, I have held the office of Medical Superintendent, my predecessor, Dr. Begley, having retired from that post, after thirty-four years of most honourable service.

On the 1st January, 1872, there were remaining in the Asylum 701 Male Patients; during the year 121 have been admitted—the average number daily resident having been 702, an increase of 31 on last year.

Of the 822 Patients who have been under treatment during the year, 700 remained in the Asylum, and 6 were absent on leave on the 31st December; 63 died during the year; and 53 were discharged, of whom 36 were recovered, 8 relieved, and 9 not improved.

The percentage of deaths on the average number resident was 8.95.

Post-mortem examinations were made in every case, with one exception.

Inquests were held in 5 instances. In the first case, the verdict was returned,—“That death had occurred from Pleuro-pneumonia, arising from a fractured rib; but how this was caused there was no evidence to show.”

The subject of this accident was an infirm old man. Taking into consideration the fact of one rib only being broken, together with the situation of the fracture, the inference may fairly be drawn, that the injury was caused by a fall against some projecting angle of furniture, and this was, I believe, the view held by Dr. Begley. The Patient, not having spoken for a long time, could himself give no account of the accident.

In the second case, the Patient died from Epilepsy, and the verdict was “death from natural causes.”

In the third, a verdict of “death from misadventure” was given, the Patient having died twenty-four hours after an attack of Apoplexy, which occurred while he was engaged in a struggle with another Patient.

In the fourth, the verdict was “Accidental death from suffocation in an Epileptic fit,” occurring while eating.

In the fifth, the Patient had died of Apoplexy a few days after his admission, and a verdict of “death from natural causes” was returned.

Of the total number of deaths, 26 or equal to 41·2 per cent., were due to general Paralysis; in thirteen other cases the Patients were advanced in years.

The percentage of recoveries, calculated on the admissions, was 29·7 per cent.; calculated on the average number resident, it was 5·1.

The admissions have been of a generally unfavourable class as regards the prospect of recovery. No less than 20 per cent. were either pronounced to be suffering from general paralysis on admission, or have since developed the symptoms of that disease. A considerable number were aged persons, in whom the mental condition was simply a part of the general decay of the vital powers. In several of these the case was described as of recent origin and in the first attack, thus coming under Class I. of the Medical Tables; and being associated, statistically, with the most curable cases. For the same reasons these cases have, doubtless, been the cause of excluding many others standing in much greater need of Asylum treatment, and several of these, in fact, could have been as well cared for in the Infirmary of a Workhouse as in the Infirmary of an Asylum for the Insane.

Of the cases now remaining in the Asylum not more than 4 per cent. can be considered curable. About 12 per cent. are general paralytics; in 13 per cent. the mental disease has an Epileptiform character, and a very large proportion of the remainder are aged or demented.

I would here advert to the difficulty of placing the manageable insane under the care of their friends amidst the population of a large city, although every effort is

made by the Medical Officers to bring about such arrangements.

The proof of the existence of this difficulty lies in the comparison of the statistics of those counties which have a large urban population with those which are agricultural.

Thus, according to the Reports of the Commissioners in Lunacy for the last year, it is found that the proportion of lunatics residing under the care of their friends, is in Middlesex, 4·8 per cent., in Surrey, 5·3, and in Lancashire 5·6, while in Somerset it is 26·4 per cent., in Hereford 30·0, in Oxford 21·0; bearing in fact, a very close proportion to the relative number of town population in those counties.

There has been no casualty during the year requiring special remark, with the exception of the case of fractured ribs already alluded to.

In no instance has mechanical restraint been employed.

Seclusion has been resorted to in 76 instances for 48 persons, the total duration being 179 hours 10 minutes, the average period being 2 hours 21 minutes.

Of these 23 Epileptics furnished 37 instances, the duration of whose seclusion was 102 hours 5 minutes.

The general health of the Asylum has been satisfactory, and there has been no prevalence of any special form of bodily disease.

During the year 137 walking parties made excursions in the neighbourhood, and seven parties of 18 Patients each, made picnics.

There have been weekly dances, several concerts, readings by the Chaplain, and an entertainment of conjuring &c., by the Brothers Nemo, which was greatly appreciated. Two parties of 12 Patients have attended concerts in the neighbourhood.

The number of Patients employed has been considerably increased during the last few months; the daily average for December being 270, having been 211 at the same period of last year.

The Committee, having at my recommendation, appointed a Painter Attendant, the painting, papering, colouring, and whitewashing of the Male side are now undertaken by a party of Patients under his direction, and considerable progress has already been made. The glazing repairs are also done in the same way, these alone having formerly occupied nearly the whole time of one man.

Patients' labour has taken the place of a paid labourer in the coal porting, and the cinder sifting is now done by Patients. By these means a considerable economy has been effected, and at the same time the Patients have been advantaged by increased means of occupation.

While dwelling on the subject of employment, I take the opportunity of expressing my belief in its paramount importance in the treatment and management of the insane. I consider it essential that every well managed Asylum should possess ample and varied means of occupation for its inmates, and am fully convinced that there is nothing which conduces more to the well-being of this unfortunate class.

In curable cases it is a great means of hastening the return to health, not only by preventing that reaction of the mind on itself, which in inactivity often tends to prolong and keep up the morbid condition; but, by the improvement it effects in the bodily health, improving that of the mind also. Even in less hopeful cases it is often the means of bringing the disorderly, destructive and discontented to the condition of quiet and tractable Patients.

I would in this place beg to draw attention to the special difficulties in regard to employment that this Asylum labours under, as compared with similar institutions in other parts of the country. Thus, in many Asylums the inmates are derived almost exclusively from the agricultural class or from one or two manufacturing pursuits; for the former the provision is easy, and for the latter the special manufacture of the district is generally provided.

In Hanwell, on the contrary, the Patients are derived from the mixed population of a metropolis, which yields every variety of handicraft occupation; while the great majority of them have been altogether unused to out-door occupation, many also have not been accustomed to manual labour, and would consider themselves degraded by it. For such Patients, I need scarcely say, it is very difficult to provide employment.

Moreover, of the Middlesex insane, a large proportion of the orderly and working Patients have been removed to the District Asylums at Caterham and Leavesden, leaving to Colney Hatch and Hanwell a much larger proportion of excited and violent Patients than falls to the lot of most County Asylums.

With a view to the encouragement of employment among the Patients, the Committee has sanctioned the addition of cheese to the luncheon of the working Patients, and that these should have an additional meat dinner. These Patients are also being supplied with a second suit of clothes, to be worn on Sunday and other special occasions. A certain number are allowed to sit up for an hour beyond the usual time of going to bed, an indulgence that is much appreciated.

The *structural changes* of most importance that have been made during the year, have been the building of new Day Rooms in connection with Wards 1A, 5, 6 and 15; they are so well lighted, give so much additional room, and have so pleasant an outlook, that they constitute a most valuable addition to the Asylum.

Two small Dormitories in No. 2 Ward have had their cubic space increased, by the removal of a partition and a bed from each.

The boarding of the Sleeping Rooms in Wards 1, 2, 9 and 11, has also been carried out, and is a very great improvement.

The Single Rooms and small Dormitories in the Infirmary have been supplied with a steam pipe, and are now satisfactorily warmed.

The west centre Staircase has been re-arranged and much improved.

The ventilation and lighting of the Workshops has also been greatly improved.

The Electric Clock for recording the visits of the Night Attendants, which has been in use on the Female side during the last few weeks with very satisfactory results, is also to be supplied to the Male department. It is to record not only the hour of the visit but also its duration, and by it the Medical Officer can at any time see the exact Ward through which the Night Attendant is passing. It is unnecessary to point out the great advantages which such a system promises.

In the wards the Day Rooms of 8, 9 and 11, have been papered, giving them a much more cheerful and homely aspect; the walls of the corridors, and of the adjacent staircases have also been coloured, and by the substitution of lighter tints for the dark blue formerly used, a brighter look has been given to them. This work has been done by the Painter's party of Patients.

Several bagatelle boards have been supplied to the Wards.

Vallances have been fitted to the windows in most of the Wards. Easy chairs have been distributed. Flowers have been introduced in every Ward, and the supply of birds increased.

A considerable number of framed prints have also been added to the wall decorations.

Linoléum has been substituted for matting in the Epileptic Ward, the former being much less liable to abrade the skin, in the falls to which these Patients are prone.

We have to acknowledge a very handsome donation o

books for the Library, by the Chairman of the Committee, and the receipt of eighty numbers of the "Graphic," from the editor of that paper. Arrangements have been made by which every ward is to have a small book-case of its own in connection with the main library, and the circulation of the books will be thereby facilitated. The number of daily papers has been doubled, and the periodicals considerably increased.

The Airing Court of 1A Ward, formerly gravelled, has been greatly improved by being laid out with turf and shrubs. The Courts adjoining No. 16 and 17 Wards are also being planted with shrubs, and creepers are to cover the present bare walls.

The Diet has been varied during the year by the introduction of Australian Meat; the majority of the Patients who objected to it at first have now overcome their prejudice.

A Soup Dinner has been introduced on Mondays for those who are not on sick diet, or engaged at work. A dinner of fish, either boiled or fried, is given once a-week. Boiled pork, bacon, and roast pork, have been more frequently given, and every effort made to give variety to the diet.

Bread has been substituted, at my recommendation, for the dumplings hitherto given with the meat dinners.

Amongst the changes in the Staff, I have with regret to record the death of Inspector Gowings, in whom the Asylum has lost a most valuable officer.

One Attendant has been superannuated on a pension, and 14 others have left for various reasons. One cause of the number of changes in our Staff is the facility with which a Hanwell Attendant of some experience obtains an appointment in other Asylums, either public or private. From the proximity to London, there is also great opportunity of procuring other employment, especially at the present time, when there is so great a demand for labour, and that at an increased rate of pay. The Committee, having these facts in view, have under consideration the question of increasing the wages' scale, so that inducements may be held out to those who have gained experience in the service of the Asylum to remain, and that a good class of men may be attracted to fill up the vacancies that unavoidably occur.

This, I feel certain, will be found to be productive of the most satisfactory results in the working of the establishment.

I wish to express my satisfaction at the generally efficient manner in which the Attendants have performed their duties, under the intelligent supervision of Inspectors Cullen and Gowings, and, since the latter officer's lamented death, of Acting-Inspector Brewster.

I have great pleasure in recording the cordial co-operation I have received from my colleague Dr. Hawkes, as also from the other Officers of the Asylum.

To you, Gentlemen, my best thanks are due for the prompt support you have given to the suggestions I have made during the short time I have held office, and for the uniform

kind consideration you have shewn me while making myself acquainted with the details of this extensive establishment.

I have the honour to be, Gentlemen,

Your obedient Servant,

HENRY BAYNER, *M.D.*

REPORT OF THE MEDICAL SUPERINTENDENT OF
THE FEMALE DEPARTMENT.

TO THE COMMITTEE OF VISITORS,

January 1st, 1873.

GENTLEMEN,

My predecessor, Dr. Lindsay, having left the Asylum in the early part of February last, and my having been appointed to take charge of the Female Department from that time, enables me to lay before you an epitome of nearly all the principal changes and events which have taken place during the year; but before doing so, I think it right to state that on my accession to office I found the working of this department in excellent order.

On the 31st of December, 1871, there were 1,096 female patients remaining in the Asylum. During the year 180 patients have been admitted; of these 11 were cases which had previously been under treatment in this Asylum; 94 have been discharged; 81 have died, leaving 1,101 patients in the Asylum at the close of the year, including 6 out on trial. The daily average number resident has been 1,090, being 2 more than the corresponding number last year. The maximum number has been 1,104; the minimum 1,078; and the total number under treatment 1,276.

The Admissions.—These have been fewer than last year by 96, and below the average of the last 10 years by 33. The

re-admissions have also been below the usual number; but on the other hand very many of the cases had been immediately under treatment elsewhere, 30 having been transferred here from other asylums. Of the 180 admissions, 15 have been discharged recovered. One case showed no symptom of insanity after admission; 2 were discharged to the care of friends; and 18 died. The advanced age and precarious state of health of many of those admitted is worthy of note, 17 being between 60 and 70, 7 between 70 and 80, and 4 between 80 and 90 years of age. In many instances these old women have been simply brought here to die; and the wonder is, that many of them survived the long and tedious journey of their removal. All the patients admitted, with a few exceptions, have, in accordance with the instructions of the Committee of Visitors, been re-vaccinated previously to being brought to the Asylum, the exceptions mentioned being those cases in which the certifying Medical Officer has reported officially that it would be inexpedient to subject them to such treatment, either in consequence of the extreme age, or bad state of health of the patient.

Discharges.—94 patients have been discharged; 75 recovered; 9 relieved; 9 not improved; and 1 not insane. The recoveries are at the rate of 42·6 per cent. upon the admissions for the year, and 6·97 per cent. upon the average numbers resident. The proportion of the recoveries upon the admissions is much larger than last year, the proportion then being 28·8; but this is simply due to the fact that this year the admissions have been 96 less, and the recoveries being nearly the same, the proportion is of necessity much greater. 11 Patients have been transferred to other Asylums, and 6, although not recovered, have been discharged to the care of their friends

upon their giving a satisfactory guarantee that they were enabled to exercise proper care and control over them.

Deaths.—During the year 81 deaths have occurred, being 4 less than during the previous year; the percentage upon the average number resident has been 7.44. Last year it was 7.81; and in 1870, 8.12.

The average age at death was 50. The principal causes of death have been General Paralysis in 14 cases, white Softening of the Brain, with ordinary Paralysis, in 8 cases, and Pulmonary Consumption in 16 cases. With regard to the latter disease, I may here remark how very seldom cases of true Miliary Tubercle appear in Asylum patients; but in the majority of instances the pathological conditions are clearly those resulting from low forms of Pneumonia, the exudation from which degenerates into Caseous Tubercle.

The Death rate this year is much increased by the fact before mentioned, of so many aged and feeble women having been brought to the Asylum during the year, many of them from the time of their admission never having risen from their bed. As an example of this, 5 between the ages of 60 and 70 died within 4 months of admission, 2 within the twelvemonth, and 3 between the ages of 80 and 90 were only alive for 2 months after being brought to the Asylum. Of the Patients who died above the age of 60, one had been resident in the Asylum 12 years, one 13, one 15, one 16, and one 20 years.

Post-mortem Examinations have been made in every case, with 4 exceptions. In these cases the friends of the Patients had requested that no autopsy should take place, and their wishes were complied with.

Two Female Children have been born in the Asylum during the past year. One was stillborn; the other is thriving well, and will shortly be removed.

Six Inquests have been held. The first was upon a girl aged 16, who died suddenly after an attack of excitement from Meningeal Apoplexy, a large quantity of blood having been poured out at the base of the brain, filling up the spinal canal, and pressing upon the medulla oblongata.

2. A woman, aged 44, an Epileptic, who, in consequence of her restless habits at night, often tumbling about and injuring herself, had been sleeping in a padded room, was found dead by the Night Nurse. She had had an Epileptic fit, turned over on her face, and was suffocated.

3. A restless General Paralytic, who had only been admitted a few days, was out exercising with a few other Patients in the Infirmary Airing Court, when during the temporary absence of the Nurse, she took a chair from another Patient, and climbing over some iron railings which separated this Court from an adjoining one, she fell, dropping about $4\frac{1}{2}$ feet, and almost immediately expired. At the Post-mortem Examination, no traumatic lesions were found, and death was recorded to have resulted from "Shock." The Nurse who had charge of this Patient in the Court was dismissed, as she had most clearly broken one of the Rules of the Asylum, which states, "That no Patient is to be left in any Airing Court without constant observation."

4. A demented Patient, 49 years of age, had her dinner taken to her in a single room; and when the Nurse went to fetch the plate, she found the Patient dead, having been

choked by a piece of meat which had become impacted in the larynx. She had never shown any symptoms of impairment of the power of swallowing previously. In this instance, as in the former, the Nurse was dismissed, as she had allowed the woman to take her dinner alone in the Single-room, and not in the Day-room with the other Patients, and contrary to the rules she had received when entering the service of the Asylum.

The two remaining deaths were sudden—the cause of one being “Fatty Degeneration of the Heart,” and of the other, “Sanguineous Apoplexy.” Verdicts were returned in the first and last two cases as “Death from Natural Causes;” in the Epileptic case as “Accidental Death from Suffocation during an attack of Epilepsy;” and in the two remaining cases as “Death from Misadventure.”

Although a large number of the Patients who have been admitted during the year have had suicidal tendencies, 22 having attempted, and 34 threatened, self-destruction before admission, I am glad to state that no suicide has happened.

The general health of the Inmates of this Department has been good, there having been comparatively little autumnal diarrhoea or sporadic dysentery, which often occurs in the later summer months; and this is the more remarkable considering how much the Patients have been confined to the House in consequence of the continuous unfavourable weather throughout the year. One case of “Scarlet Fever” has occurred on a girl 17 years of age. This patient had the same disease, well marked, in December of last year (1871), after having been in the Asylum but a very short time. On that occasion she was removed to a smaller and partially detached ward,

isolated as far as practicable, and all went well. After some little time she was sent back to her old ward, having been supplied with entirely new clothing, and she had the usual weekly bath. At the latter end of October in this year she was again attacked with the same disease, but in a milder form. She had not been visited by any of her friends or relations for many weeks previously; and I am inclined, though with hesitation, to attribute the cause of this second attack to some particles of desquamated epithelium, which had retained their power of infection, and had adhered to her body, becoming the source of the second outbreak.

At the commencement of the year all the Nurses and Female Servants were re-vaccinated; and any new ones now entering the Service are required to produce a certificate of successful re-vaccination.

The Dietary remains much the same, with the exception that Australian beef and mutton is now supplied to the Patients as a dinner *twice* a week—once cold, with salad during the summer months; and on the other occasion as a stew. I still continue to consider it a most nutritious article of diet; and I think that many of the Patients who, upon its introduction here, were rather prejudiced against that “foreign meat,” are now taking to it much more kindly. A fish dinner is still continued to be supplied one day a week. On Sundays, during the winter, the dinner of roast pork, Home produce, seems to be in especial favour with the Patients.

Considerable improvements and alterations have taken place in the Building during the last 12 months. The passages, staircases, &c., which were formerly white-

washed, have now been colour-washed, of an agreeable and warm tint, entirely altering their appearance for the better, and taking away that cold and somewhat cheerless aspect they formerly wore. Many of the Day-Rooms have been re-papered and painted, and the galleries attached to some of them have also been papered, giving them more the comfortable appearance of a room than a long gallery or passage. An additional supply of easy and arm chairs for the aged and infirm, of which we have a very large proportion, have been distributed throughout the wards. Two capital and commodious "sunshades" have been placed in Airing Courts 6 and 20. Two of the Airing Courts, designated respectively 5 and the North Court, and used by the more excitable Patients, and which were formerly nothing more or less than large gravelled yards, have now been laid out most tastefully with large grass plots, broad gravel walks, and planted with trees, shrubs, &c. Creepers, &c., have also been trained against the walls. The effect of the whole is most pleasing, reminding one somewhat of a People's Park of the present day on a diminutive scale; and the change from the cheerless aspect they formerly presented will, I anticipate, have a tranquillizing and beneficial effect upon the Patients. The stone flagging in some of the Dormitories and Single-rooms is being replaced by tongued wooden flooring; and I have every reason to hope that the number of Catarrhal and Pulmonary diseases amongst the Patients will be lessened, as it is impossible to keep some Patients during the night time off the stones, even though matting, &c., is provided for them.

Several of the Dormitories were much overcrowded. To remedy this 37 beds have been reduced, thereby giving the remaining beds their proper cubical space; and this reduction has been compensated for by the additional

accommodation which the block of building at the south end of the western wing affords.

The recreation and amusements for the Patients have been much as usual, viz., the Weekly Dances, the Christmas Ball, several Readings by the Chaplain, Conjuring Entertainments, Concerts, &c. A considerable addition has been made in the number of Daily Papers and Periodicals supplied to the wards, as well as Games for Evening Amusement, such as Bagatelle, Draughts, and other Parlour pastimes. We have here to acknowledge the great kindness of Mr. Mansfield, the proprietor of the "Graphic" newspaper, who most generously, and quite unsolicited, presented, for the use of the Patients, 80 uncut numbers of his most interesting and ably conducted paper. The larger engravings have been framed in Oxford frames, and show off to great advantage on the newly-papered walls; the other portions of the paper have been distributed throughout the wards. During the summer months there were 54 "Picnic" parties to places in the neighbourhood; in these 518 Patients participated; and there have also been 43 Walking Parties, and 518 Patients of the more quiet and orderly class have gone out in them. And finally, 13 Patients have been to Town, accompanied by a Nurse, to spend the day with their friends, a privilege which they much appreciated.

Two additional Nurses have been added to the staff of our Night Attendants; by this addition we have now 7 Night Nurses; and the Patients are visited every 2 hours, the Epileptic and sick every hour. By this means it is to be hoped we shall be able to reduce such casualties as was

the subject of enquiry at one of the Inquests, namely, Patients becoming suffocated by turning over on their faces in an Epileptic fit.

Many mechanical contrivances and arrangements have been produced from time to time for registering the visits of the Night Attendants, but the majority of them need separate clocks at each point where a visit is required to be recorded, and are liable to be tampered with. To remedy this, Mr. Spagnoletti, the Electrician to the Great Western and Metropolitan Railways, at the suggestion of Mr. Partridge, Clerk to the Visitors, has devised and patented an "Electric Telltale Clock," which has been working well in the Female Department for some weeks; and I consider it a most valuable application of telegraphy.

At the commencement of last November, Mr. J. Frederick Wright was appointed additional Assistant Medical Officer, and by the zeal and assiduity which he has exhibited, and the readiness with which he has undertaken his duties since he has been here, I am sure he will make an efficient Officer as well as an agreeable Colleague.

My thanks are due to Mr. H. Beaumont Pattinson for the valuable assistance which his lengthened experience in Lunacy has enabled him to afford me.

To Mrs. Hicks, the Matron, and the rest of my fellow Officers I beg likewise to tender my acknowledgments for the cordial manner in which they have at all times co-operated with me in my duties.

And now, Gentlemen, in conclusion, permit me respect-

fully to tender you my most sincere thanks for the kindness and consideration you have constantly shown me during the past year, which has been one which has involved constant care and much anxiety, not only on account of its being the first year of my holding so important an office, but also from the fact, that the many structural alterations and changes that have taken place have required more than ordinary supervision.

I am, Gentlemen,

Your obedient Servant,

J. PEEKE RICHARDS.

CHAPLAIN'S REPORT.

TO THE COMMITTEE OF VISITORS, HANWELL
ASYLUM.

January 1st, 1873.

GENTLEMEN,

I have the pleasure to be able to report that the religious services of the Institution have been held regularly during the past year.

Divine service in the Chapel was performed on each Sunday by myself, with the exception of four Sundays, when in my absence the Rev. James Back kindly officiated for me. The congregations, consisting of about 200 men and 350 women, with the complement of Attendants and Officers, was, with one single exception, undisturbed, and then only for a moment. This outbreak had no reference to the service, but was caused by a recently admitted Patient, who was excited, and laboured under the delusion that his wife and children were being murdered. The general attention and devout demeanour of the Patients is most gratifying.

A very interesting service was held on the day of Thanksgiving for the recovery of the Prince of Wales. Great interest and sympathy had been evinced during the progress of the malady by a large number of the Patients; and scarcely can more fervent prayers have been offered

anywhere than by them. Their joy was sincere at the Prince's restoration to health; and a large congregation assembled to unite their thanksgivings with those of the Queen and the nation. The Thanksgiving Hymn was heartily joined in by the assembled worshippers. With this service of praise to God, the day, which was kept as a holiday, began—the dinner, of a somewhat extra kind, cheered their bodies; the afternoon was devoted to innocent recreation, and a pleasant entertainment was provided in the evening. The day was a very happy one, and I heard of no drawback.

The Thanksgiving for harvest, held on a Sunday, afforded a very pleasing service, and was followed on a week-day by a more solid, but not more hearty commemoration of the labours of the year and their results, in the form of a harvest supper.

The attendance at the celebration of the Holy Communion during the year varied from 60 to 70. These numbers represent an aggregate of more than 100 persons; for from death, illness, or discharge, many were present at only one or two celebrations.

Of the 144 Patients who died during the year, 95 were buried in the Asylum ground. The greater portion of the persons removed were those who had belonged to Benefit Societies.

To return to the subject of the Chapel: The cleansing of the Chapel, which had been from time to time postponed in consequence of the press of business, has been recently carried out in a very satisfactory manner by Mr. Martin, the Engineer. The walls have been coloured, the roof

toned, and the beams brought out in relief. Modest as is the ornament introduced, the effect is very good. The Patients seemed much pleased with the alteration; and I doubt not a beneficial result will follow. The organ has been brought down to the pulpit end of the Chapel. The tone is improved by the change of position; the singing of the Choir is better followed, and the tendency of the Patients to turn round and face the singers is avoided. By the various arrangements about 55 seats are gained.

The Organist, Miss Harrison, has conducted the musical part of the services very efficiently, and has taken great pains with the training of the Choir. This will now, I hope, be strengthened by the voices of some of the Male Attendants. Hitherto we have only had female singers. My object in having a Choir at all is simply to lead the singing of the congregation. The Insane, even when they know how to do anything, still need guiding. We see this in the different kinds of employment in which our people are occupied, and this is the case with singing in Church. Some years ago I tried to form a Choir from among the Patients, but they could not be relied on.

The private intercourse with the Patients has been in many instances interesting and gratifying. The struggle which the sane person has with a sinful nature, when he desires to serve God, seems to exist often in the Insane in aggravated intensity. I know that many Patients do strive to become good, and fight stoutly against their besetting infirmities.

I forbear entering upon any of the very interesting cases which my duties have brought before me. Many of these make me hopeful that the seed sown finds its way to the hearts of many among us.

I have for some time past held short services in the Imbecile Wards. I do not think they were entirely without good result. A poor blind man spoke to me about these services when dying; but at the same time I must confess that the benefit derived is, I fear, very small; but at least there is the satisfaction of having attempted to gather up for the Lord some of these fragments of humanity.

The Libraries on both sides of the establishment are in good working order. They have been increased by grants from the funds of the Asylum, and also very liberally by gifts of books from various members of your Committee and your friends. The Library for the women needs little help from me. The Matron and the Superintendent of the Work-room well carry out the arrangements for a constant supply of books to the Wards. The Men's Library is also in good working order. Books are issued to the several Wards from the Central Dépôt, and whilst in the Wards, are circulated to the Patients belonging to them. When quite done with, they are returned to the Central Library, and a fresh supply is issued. A bookcase will be placed in each Day-room, and then all the advantages which would accrue from a separate Library for each Ward will be attained. A large supply of Periodicals is circulated on each side of the Asylum. These, I think, furnish to the great majority the kind of reading which suits them best. "The Sunday at Home," "The Leisure Hour," "The Sunday Magazine," "Good Words," and "Chambers' Journal" are always in great request. These Periodicals, when bound up, form valuable volumes for our Library.

My Bible Class continues to be fairly attended. The familiar style of address which I can use in a room, together with the illustrations given by means of maps and pictures, keeps up the attention.

For the amusement of a class of Patients who do not care much for the other entertainments, I have given from time to time miscellaneous readings. These are attentively listened to, and I am assured by my auditors, give much pleasure.

JOHN MAY,

Chaplain.

THE MATRON'S REPORT.

TO THE CHAIRMAN AND COMMITTEE OF VISITORS FOR HANWELL ASYLUM.

THE year just passing away has been attended with considerable anxiety; but much has been done during its progress that is gratifying to look back upon.

There have been no casualties by suicide or escapes. Two patients met their death by accident, caused in both cases by the nurses having neglected to carry out the printed rules of the Asylum. These servants were immediately suspended, and subsequently dismissed by the Committee.

While such accidents are to be deplored, it seems scarcely reasonable to expect that none should ever occur amongst such a number of lunatic inmates; the more so as the quiet classes are constantly diminishing, and recent and violent cases are taking their places.

Much anxiety has been caused by the changes among the nurses, who, notwithstanding the increased advantages of their position, appear unable to resist the desire "for a change." The necessity of drawing persons to fill their places from the less experienced number left, has furnished matter for perplexing deliberation to those placed over them.

The Committee have lately offered an inducement to long service, by giving an immediate increase of £3 a year to all who have served as charge attendants for a period of five years, and the Staff has been increased by four persons. Two of these are night attendants (the number of whom now amounts to seven). This addition has been made chiefly for the benefit of the Epileptics, who are now visited hourly during the night.

The improvements effected during the year have been considerable, and much has been done to add to the cheerfulness of the wards. Birds, flowers, numerous pictures, and other ornaments have been supplied. Linoleum is gradually laid down in the place of matting, and five of the long galleries have been papered or stencilled. The effect is strikingly pleasant to the eye, and highly appreciated by the Patients.

Twelve of the Day-rooms have been re-papered and painted, and light chintz valances placed over the windows, rendering them at once cheerful and homely looking.

Most extensive and desirable alterations have been made in the Airing Courts. Two new summer-houses, after an improved pattern, have been erected; and the old gravel replaced by asphalt, turf, and flower beds, and planted with trees and shrubs. The progress of these was constantly watched from the windows by the Patients with extreme interest.

While the more public portions of the Asylum have received so much attention, those less prominently situated have not been overlooked. The basement dormitories have been much improved, particularly those in the centre of the

building. A slope has been cut in the front grounds so as to give more light and air. The walls are painted in cheerful colours, and six beds have been removed, thereby increasing the cubic space for each patient. A nurses' room has also been built in this basement, and another in the Western Tower basement.

Some disused kitchen offices in the basement of 18 Ward have been lately converted into nurses' bedrooms, by which an increase of single rooms (much needed in the wards) has been obtained, and additional comfort been afforded these persons by this arrangement.

A large addition to the building has been effected at the Western Tower, in which closets and lavatories have been built for three Wards (where they were much needed), as well as two small dormitories and several single rooms. Another block of closets has also been added to Wards 3, 10 and 15.

The extensive nature of the works in progress during the year has rendered the employment of many extra workmen constantly necessary, and it is very satisfactory to note, that the conduct of the persons employed has been unexceptionable.

A comfortable dressing-room has been built adjoining the general bath-room for the use of the patients, and has been found a great convenience.

A new room has been added to the Laundry, exclusively for the male patients' linen—a considerable improvement, because the linen of both departments was formerly sorted in one small one, leading to many unavoidable mistakes.

The want of accurate means of registering the visits of the night nurses has long been felt, and the Committee have recently adopted a valuable invention in electricity to produce this effect, which is now available for more than half the wards, and the result is so entirely satisfactory, that the "Spagnoletti and Partridge Clock" is to be extended to every Ward in the Asylum.

In the midst of work the pleasures of the Patients have not been neglected, but have been promoted and increased in various ways.

The ever-to-be-remembered "Thanksgiving Day" was kept loyally in the Asylum, and the Patients were gratified by being allowed an opportunity of taking part in the general joy. It was interesting to observe the anxiety evinced by them during the illness of the Prince, the eagerness with which they looked for news, and the many expressions of sympathy given to the "poor Mother," and the anxious wife of the illustrious sufferer. Proportionately great was their gladness that all danger was past.

The annual winter and summer Entertainments were given as usual, and the Patients have been further amused by an exhibition of dissolving views, and one of conjuring, by professionals specially engaged. Two tea parties on a large scale were arranged for Laundry-workers and Needlewomen, the ever attractive dance forming a great part of each evening's amusement.

Additional entertainment has been provided for the Patients when in-doors, by a large increase in games of various kinds, and also of daily newspapers, the number of which now supplied admitting of every ward being furnished with at least one.

The Library has received from the Committee a grant, by which over one hundred books were purchased; this has allowed many old and imperfect ones to be withdrawn.

Two Members of the Committee, the Chairman, P. Northall Laurie, Esq., and Captain Arthur Palliser, have again given presents of books to the library of useful and entertaining reading for the patients.

The Matron concludes by offering her sincere thanks to the Committee for their continued kindness.

ISABELLA E. HICKS,

Matron.

31st December, 1872.

REPORT OF THE FARM AND GARDEN COMMITTEE.

THE Farm and Garden Committee report that the Live Stock on the Farm this day consists of 5 Horses, 31 Cows, 1 Bull, 6 Heifers, 2 Calves, and 153 Pigs, all of which are healthy and in good condition.

10 Cows, 1 Bull, and 2 Pigs, have been purchased during the year, at a cost of £306 4s.

12 Cows not yielding milk have been killed for consumption in the establishment, producing 9,032lbs. of Beef, charged at the contract price, realising £298 15s. 8d. 123 Pigs also have been killed during the year, producing 18,312lbs. of Pork, value £572 5s.

The Sales during the year have been 1 Bull, 7 Calves, and 3 Pigs, realising £44 2s.

The Farm and Garden have been very productive, the whole of the establishment having been well supplied with green vegetables during the year, and the surplus sold.

The principal crops were 3,202 bushels of Potatoes, 6,648 bushels Cabbage, 929 bushels Beans and Peas, 560 bushels Onions and Leeks, 1,508 bushels Parsnips, 150 bushels Carrots, and 986 bushels Turnips, 750 Score Lettuce; and of the above there is now in Store, 1,288 bushels Parsnips, 38 bushels of Carrots, and 40 bushels Onions.

120 tons of Mangold Wurtzel (from 3 acres of land) have been produced and stored in good order, about 85 tons of which are still unconsumed.

From 7 acres of land, 232 tons of Italian Rye Grass have been cut and consumed.

It was thought advisable to plough up the North Meadow, (it being in a very impoverished state,) so as to bring it into cultivation, for the purpose of growing a larger crop of Potatoes and other Vegetables. The greater portion of this has been done, and will be completed in early spring, all Farm work having been greatly retarded through the incessant rain.

The Airing Courts have received special attention during the year, and several have been planted with Ornamental Shrubs; others are in progress, and will be completed as soon as the weather will permit.

Trees also have been planted round the Summer Houses in the different Courts, for the purpose of affording shade to the Patients.

On the resignation of the Cowman, Philip Appleton, after 31 years' service, Joseph Everett and wife were appointed jointly as Cowman and Dairy-woman at 21s. weekly, (which was the amount paid to Appleton); by this arrangement a Dairy-maid will not, henceforward, be required.

The Committee have much satisfaction in reporting, that the number of Patients sent out to work on the Farm and Grounds are gradually increasing, and there is every reason to expect, with the extra indulgences recently granted, that the number will still further be increased. The average number daily employed is 54.

The Stock and Produce have been fairly valued at market prices, and the actual profit which the Farm and Gardens have realised, after deducting all payments and expenses, amounts to £1,033 4s. 6d.

The Farm and Garden Committee have met several times during the year, and found the Farm Garden and Outbuildings in a good and satisfactory condition.

J. R. HOGARTH,

Chairman.

January 9th, 1873.

THE ENGINEER'S REPORT.

TO THE COMMITTEE OF VISITORS OF THE
HANWELL ASYLUM.

GENTLEMEN,

I have the pleasure to report that the various matters under my supervision have been maintained throughout the year just past in a state of efficiency, and making fair allowance for depreciation from long service, are now in a satisfactory condition. Much of the Plant is as old as the original building (now in its 41st year), and still gives promise to continue useful for many years to come.

During the year many important alterations have been carried out in the Asylum, to meet in some cases the requirements of the Commission in Lunacy, and in others the increasing wants of this large establishment.

Much has been done also in decorating, in as simple a manner as possible, the various Wards and Corridors, to render them more cheerful and agreeable to those who spend many weary hours within their walls, and the expenditure during the year has thus been rendered necessarily high.

Arrangements have been made for the future to utilize to a greater extent than heretofore the labour of the Male Patients in painting, decorating, &c., by the appointment of an Attendant Painter in special charge of this trade; and it is hoped and believed that much expenditure will in this way be saved, and the condition of the building still thoroughly maintained.

The Court of Quarter Sessions granted the sum of £5,500 early in the year for the construction of new Day-rooms, new Water-closet Blocks, &c., &c.; and out of this amount the sum of £3,947 9s. 7d. has been already expended on the following works:—

On the Female side, in the construction of a new block of Water-closets, with Lavatories and Sinks, for Wards 4, 9, 14, and 21, and an Office for the Medical Superintendent of this division.

A new block of Water-closets, with Lavatories and Sinks for Wards 3, 10, and 15.

These Closets have been constructed upon the same principle as those built last year, and which were highly approved of by the Commissioners in Lunacy at their inspection.

24 Beds were gained by these extensions in Dormitories, and some Single-rooms; and the Committee were enabled to take advantage of this gain to diminish the Beds in several rooms in which the cubic space was less than 500 feet per Bed.

The floors of many Single and other Rooms have been boarded where tile or brick previously existed, and this work continues until the whole are completed.

On the Male side, Day-rooms have been constructed for Wards 1A, 5, 6, and 15.

The Wards 5, 6, and 15 had previously no Day-rooms, a portion of the Gallery being used for the purpose, and sadly interfering with the limited space at disposal for excited Patients: each Ward has now a cheerful well-lighted room, with two open fire-places, and well furnished.

The floors on this side also are being boarded, and the tiles removed.

Of other works completed may be mentioned—

Summer Houses for Nos. 6 and 20 Courts, on the Female side.

Forming Nurses' Rooms in the basements of the Centre and West Towers for supervision at night.

A Dressing-room adjoining the Females' General Bath-room.

The reconstruction of the East Centre Staircase, formerly steep and dangerous.

The alteration of 2 Dormitories in No. 2 Male Ward to give increased cubic space.

The warming of the Bed-rooms in the Male Infirmary.

The erection of Dough-Mixing Machinery in the Bake-house, entirely dispensing with hand labour.

Fixing Shutters to many Single Bed-rooms.

The removal of the Drains beneath the basement of the West Centre Dormitories, and diverting their course outside the building; and

The General Repair, Painting, and Alteration of the Chapel, removing the Organ nearer the Chancel, and fixing additional seats for 54 Patients, making a total accommodation at present of 673 seats.

The remaining works to complete the amount granted by the Court are now in active progress.

The great rise in cost of coals has, I am sorry to say, caused an increased expenditure of £250 for this article over last year, although the consumption has been less.

The cost of Gas for the year for Cooking, Lighting, and Warming, amounted to £837 3s. 8d., the consumption being 8,379,890 cubic feet, and the number of burners 1,777.

The cost per 1,000 cubic feet was 1s. 11 $\frac{3}{4}$ d. This sum includes every expense, interest on capital alone excepted. Last year the cost was 1s. 7 $\frac{1}{4}$ d.

There was a decrease in consumption compared with last year of 809,090 cubic feet, and an increase in cost of £98 12s. 4d., due to the rise in price of Coals. Everything has been done that could be to reduce the consumption as far as possible, but additional burners are still being supplied for new blocks (123 burners have been added during the year); and no very great diminution can therefore be expected except at a sacrifice of efficiency.

The sewage from the Asylum still continues to be delivered into the Irrigating Tanks for distribution over the land, to which it is still applied with great success, as the farm returns will no doubt show.

87,053 gallons per day has been the average for the last year, and of this quantity the distribution has been at the rate of 1,344 tons per acre in the New Field, and of 6,050 tons per acre in the Old Field.

It would be advisable to give the Old Field some rest this year, and the New Field would be specially benefited by a larger quantity of sewage.

HENRY MARTIN.

2nd January, 1873.

Hanwell Lunatic Asylum.

THE ESTABLISHMENT, 31st December, 1872.

OFFICERS.

Resident Medical Superintendents—	Per Ann.		Per Ann.
(a) Mr. Joseph Peeke Richards, Female Department	£600 0	(d) Mr. S. Lambert, 1st Assist. Clerk	125 0
a) Dr. Henry Rayner, Male Department	600 0	(d) Mr. T. B. Sheppard, 2nd Assist. Clerk	99 0
(d) The Rev. J. May, Chaplain	400 0	Mr. H. Coates, Assistant Storekeeper	75 0
(d) Mr. R. W. Partridge, Clerk to the Committee of Visitors	200 0	(c) Mrs. Isabella E. Hicks, Matron	420 0
Dr. J. Hawkes, Assistant Medical Officer, Male Department	175 0	Miss M. A. Duce, Depty. do.	70 0
Mr. Henry Beaumont Pattinson, ditto Female Department	150 0	Miss M. A. Sparks, Assist. do.	50 0
Mr. J. Frederick Wright, Additional do. do.	150 0	Mrs. Ellen Hancock, House-keeper	65 0
(b) Mr. H. Martin, Engineer ...	400 0	Miss Ellen Bradford, Work-mistress	35 0
(d) Mr. J. Owens, Clerk of the Asylum	300 0	Miss Anna Pike, Superintendent of Laundry	40 0
(a) Mr. A. H. Larcome, Store-keeper	450 0	Miss H. Harrison, Matron's Assistant and Organist ...	25 0
		<i>Deputy Female Officers</i>	£4,549 0
(a) Furnished house, rates and taxes free, coals, gas, milk, and vegetables.			
(b) Do. do. do. do. do. do. washing, milk, vegetables.			
(c) Furnished apartments, attendance, coals, gas, washing, milk, vegetables, and butter.			
(d) Neither boarded or lodged.			
The others have board, lodging, and washing.		<i>and attendance</i>	

SERVANTS—MALES.

2 Inspectors.....	£60 and £52	0 0	per ann.....	£112 0 0
1 Charge Infirmery Atten.	41 0 0	ditto	41 0 0	
1 Charge Attendant	41 0 0	ditto	41 0 0	
5 Ditto	40 0 0	ditto each ...	200 0 0	
3 Ditto	36 0 0	ditto each ...	108 0 0	
3 Ditto	34 0 0	ditto each ...	102 0 0	
1 Ditto	33 0 0	ditto	33 0 0	And a Suit of Uniform every 8 months.
2 Ditto	32 0 0	ditto each ...	64 0 0	
1 Attendant	28 0 0	ditto	28 0 0	
2 Ditto	27 0 0	ditto each ...	54 0 0	
10 Ditto	26 0 0	ditto each ...	260 0 0	
11 Ditto	25 0 0	ditto each ...	275 0 0	
13 Ditto	24 0 0	ditto each ...	312 0 0	
1 Ditto (Artizan)	40 0 0	ditto	40 0 0	
1 Ditto (Funeral)	1 2 0	per week { 1 suit uniform } and { annually }	57 4 0	
1 Ditto (Garden)	1 2 0	per week	57 4 0	
1 Ditto (ditto) & Assist. Gate Porter.....	1 8 0	per week ditto.....	72 16 0	
1 Ditto (Night)	40 0 0	per ann. (2 suits annually)	40 0 0	
2 Ditto (ditto)	30 0 0	ditto each (ditto.).....	60 0 0	
2 Tailors	£1 7s. &	per week each	135 4 0	
1 Machine Boy	0 18 0	ditto	46 16 0	
2 Upholsterers ...	£1 5s. &	ditto each	119 12 0	
2 Ditto	18s. &	ditto each	88 8 0	
2 Shoemakers ...	£1 7s. &	ditto each	124 16 0	
1 Tinman	1 8 0	ditto.....	72 16 0	
1 Brewer.....	1 10 0	ditto.....	78 0 0	
1 Ditto Labourer	0 16 0	ditto.....	41 12 0	
1 Storeroom do.....	1 1 0	ditto.....	54 12 0	
3 Engine Drivers ...	£1 7s., } £1 1s., & }	1 0 0	ditto each	176 16 0

2 Engine Drivers to be taken out - F

THE ESTABLISHMENT—*continued.*SERVANTS—MALES—*continued.*

78 Brought forward.			Brought forward.....	£2,895 16 0
2 Stokers	£1 & 0 16 0		per week each	93 12 0
3 Ditto	0 18 0		ditto each	186 6 0
2 Gas Makers.....	£1 1 & 1 0 0		ditto each	106 12 0
2 Ditto	18s. & 0 16 0		ditto each	88 8 0
1 Cowman	1 1 0		ditto.....	54 12 0
1 Ditto	0 16 0		ditto.....	41 12 0
1 Carter	0 18 0		ditto.....	46 16 0
2 Coal Carters	0 18 0		ditto each	93 12 0
2 Farm & Garden Labrs. 18s. & 16 0			ditto each	88 8 0
1 Gardener's Boy	0 12 0		ditto	31 4 0
1 Kitchen Man	1 4 0		ditto	62 8 0
2 Bakers.....	£1 5s. & 1 1 0		ditto each	119 12 0
1 Gardener.....	1 10 0		ditto	78 0 0
2 Vegetable Shed Labrs. 18s. & 16 0			ditto each	88 8 0
1 House Porter.....	1 4 0		ditto 1 suit uniform annually	62 8 0
1 Gate Porter.....	1 1 0		ditto do. do.....	54 12 0
2 Laundry Men	1 3 0		ditto each	119 12 0
2 Ditto.....	£1 1s. & 1 0 0		ditto each	106 12 0

107

£1,418 10 0

SERVANTS.—FEMALES.

2 Head Attendants	£25 0 0	per ann. each		£50 0 0
1 Night Nurse	28 0 0	ditto		28 0 0
1 Ditto.....	26 0 0	ditto		26 0 0
1 Ditto.....	25 0 0	ditto		25 0 0
1 Assistant ditto	17 0 0	ditto		17 0 0
2 Ditto ditto	16 0 0	ditto each.....		32 0 0
1 Infirmary Attendant.....	30 0 0	ditto		30 0 0
2 Assistant ditto.....	£23 & 17 0 0	ditto each.....		40 0 0
1 Infirmary Night Nurse...	25 0 0	ditto	And 3 Suits	25 0 0
3 Charge Attendants	26 0 0	ditto each.....	of Uniform	78 0 0
2 Ditto	23 0 0	ditto each.....	every eight	46 0 0
2 Ditto	22 0 0	ditto each.....	months.	44 0 0
4 Ditto	21 0 0	ditto each.....		84 0 0
7 Ditto	20 0 0	ditto each.....		140 0 0
6 Ditto	19 0 0	ditto each.....		114 0 0
1 Attendant	18 0 0	ditto		18 0 0
4 Ditto	17 0 0	ditto each.....		68 0 0
13 Ditto	16 0 0	ditto each.....		208 0 0
38 Ditto	15 0 0	ditto each.....		570 0 0
2 Ward Supernumeraries.	10 10 0	ditto each.....		21 0 0
1 Servant to Asst. Med. } Officers	16 0 0	ditto		16 0 0
1 Servant to Female Officers	14 0 0	ditto		14 0 0
1 Housemaid	10 10 0	ditto		10 10 0
1 Servant to Matron.....	15 0 0	ditto		15 0 0
1 Distribution Maid	15 0 0	ditto		15 0 0
1 Laundress (Head)	23 0 0	ditto		23 0 0
1 Laundry Maid ditto	18 0 0	ditto	And 3 Suits of	18 0 0
1 Ditto.....	18 0 0	ditto	Uniform every	18 0 0
2 Ditto	17 0 0	ditto each	8 months.	34 0 0
1 Ditto.....	16 0 0	ditto		16 0 0
6 Ditto	15 0 0	ditto each		90 0 0
1 Cook	30 0 0	ditto		30 0 0
2 Assistant ditto	£19 & 15 0 0	ditto each		34 0 0
2 Kitchen Maids ...	£16 & 15 0 0	ditto each	Ditto	31 0 0
1 Vegetable ditto	12 0 0	ditto		12 0 0
1 Kitchen Supernumerary	10 10 0	ditto		10 10 0
1 Dairy Woman (Wages included in money paid to Cowman).				

119 Females.

£2,051 0 0

107 Males.

4,418 10 0

21 Officers.

4,549 0 0

247

£11,018 10 0

1st January, 1873.

JESSE OWENS, Clerk of the Asylum.

Danwell Lunatic Asylum.

CONTRACT PRICES of the Principal Articles of Consumption for the Four Quarters of the Year ending 31st December, 1872.—The Articles are delivered at the Asylum free of Carriage.

	Quarter to 31st Mar.	Quarter to 30th June.	Quarter to 30th Sept.	Quarter to 31st Dec.
	£ s. d.	£ s. d.	£ s. d.	£ s. d.
Ox Beef	0 7 11	0 7 10	0 7 10	0 7 11
Wether Mutton, the whole Carcase (without head, shanks, or inside suet)	0 7 11	0 9 1	0 9 1	0 9 4
Beef and Mutton Suet	0 7 0	No contract.	No contract.	0 9 4
Australian Beef	No contract.	0 0 5 $\frac{3}{4}$	0 0 5 $\frac{3}{4}$	0 0 6
" Mutton	"	0 0 5 $\frac{1}{8}$	0 0 5 $\frac{1}{8}$	0 0 5 $\frac{1}{2}$
Flour	1 19 6	2 0 6	2 0 6	2 4 6
Malt (pale)	3 3 0	3 4 0	3 4 0	3 7 0
Hops	4 16 0	No contract.	contract	taken.
Potatoes	4 5 0	6 6 0	6 6 0	No contract.
Cheese	3 6 0	3 0 0	3 0 0	3 0 0
Butter (3rd Cork)	4 18 0	4 13 0	4 13 0	4 12 0
Sugar (Raw)	1 10 6	1 13 0	1 13 0	1 13 0
Sugar (Refined)	2 4 0	2 3 0	2 3 0	2 3 0
Treacle	0 13 0	No contract.	contract	taken.
Coals (Steam)	0 16 9	0 16 9	"	"
Coals (House)	0 19 9	0 19 9	"	"
Coals (Gas)	0 16 9	0 16 9	"	"

RICHARD WILLIAM PARTRIDGE,

Clerk to the Committee of Visitors.

1st January, 1873.

Danwell Lunatic Asylum.

RETURN of the average number of OFFICERS, &c., boarded at the Expense of the Establishment during the Year ending 31st December, 1872.

DESCRIPTION.	QUARTERS ENDING				YEAR ENDING 31st December.
	31st March.	30th June.	30th September.	31st December.	
Officers	14	12	11	11	12
Families of ditto	4	4	2
Servants of ditto	7	7	4	4	5
Attendants { Male ..	58	57	58	59	58
{ Female ..	89	90	88	94	90
Servants .. { Male
{ Female ..	21	15	18	20	18
Patients .. { Male ..	699	696	706	706	702
{ Female ..	1,090	1,085	1,088	1,098	1,090
Total	1,982	1,966	1,973	1,992	1,977

JESSE OWENS,
Clerk of the Asylum.

1st January, 1873.

Danwell Lunatic Asylum.

The ACCOUNT CURRENT for the Year ending 31st December, 1872.

	£	s.	d.		£	s.	d.
1871. Dec. 31 To Balance of Cash this day	2,390	6	8				
1872, Dec. 31 To Cash received from Parishes for Maintenance, &c., of Patients	38,189	8	9		21,556	5	0
To ditto from County Treasurer, for ditto of County Patients	6,313	16	1		7,045	13	7
" Sale of Dripping	44,503	4	10		3,377	0	7
" Sale of Farm Produce	71	6	3		1,550	4	11
" Rags, &c.	141	9	5		4,309	12	7
" Furniture	91	13	10		6,563	8	4
" Old Type	4	10	0		10,873	0	11
" Stores	47	16	6		418	18	4
" Potters	6	8	0		6,410	11	3
" Board of Officers	1	7	0		397	13	8
" Sales in Bazaar	103	1	7		238	12	3
" Ditto received from County Treasurer on account of the Ordinary Repairs of the Asylum	20	1	0		1,994	19	3
" Ditto on account of Additions and Alterations	5,902	4	8				
" Ditto on account of Lands and Buildings	340	17	9				
Total	238	12	3		£53,862	19	9
1871. Dec. 31 By Cash paid on account of Maintenance, &c., of Patients, viz.:—							
For Provisions					21,556	5	0
" House and other expenses					7,045	13	7
" Clothing					3,377	0	7
" Medicine and Wine					1,550	4	11
" Salaries of Officers					4,309	12	7
" Wages of Servants					6,563	8	4
" Incidental Expenses					10,873	0	11
By Cash paid on account of the Ordinary Repairs of the Asylum to this day					418	18	4
" Ditto ditto of Additions and Alterations					6,410	11	3
" Ditto ditto of Lands and Buildings					397	13	8
" Balance					238	12	3
Total					1,994	19	3

Submitted to the Committee of Visitors,
23rd January, 1873.

(Signed) P. NORTHAL LAURIE, Chairman of the Committee.

Examined by the Committee of Accounts,
20th January, 1873.

(Signed) THOS. JERVIS, Chairman.

£53,862 19 9

Hanwell Lunatic Asylum.

BALANCE SHEET for the Year ending 31st December, 1872.

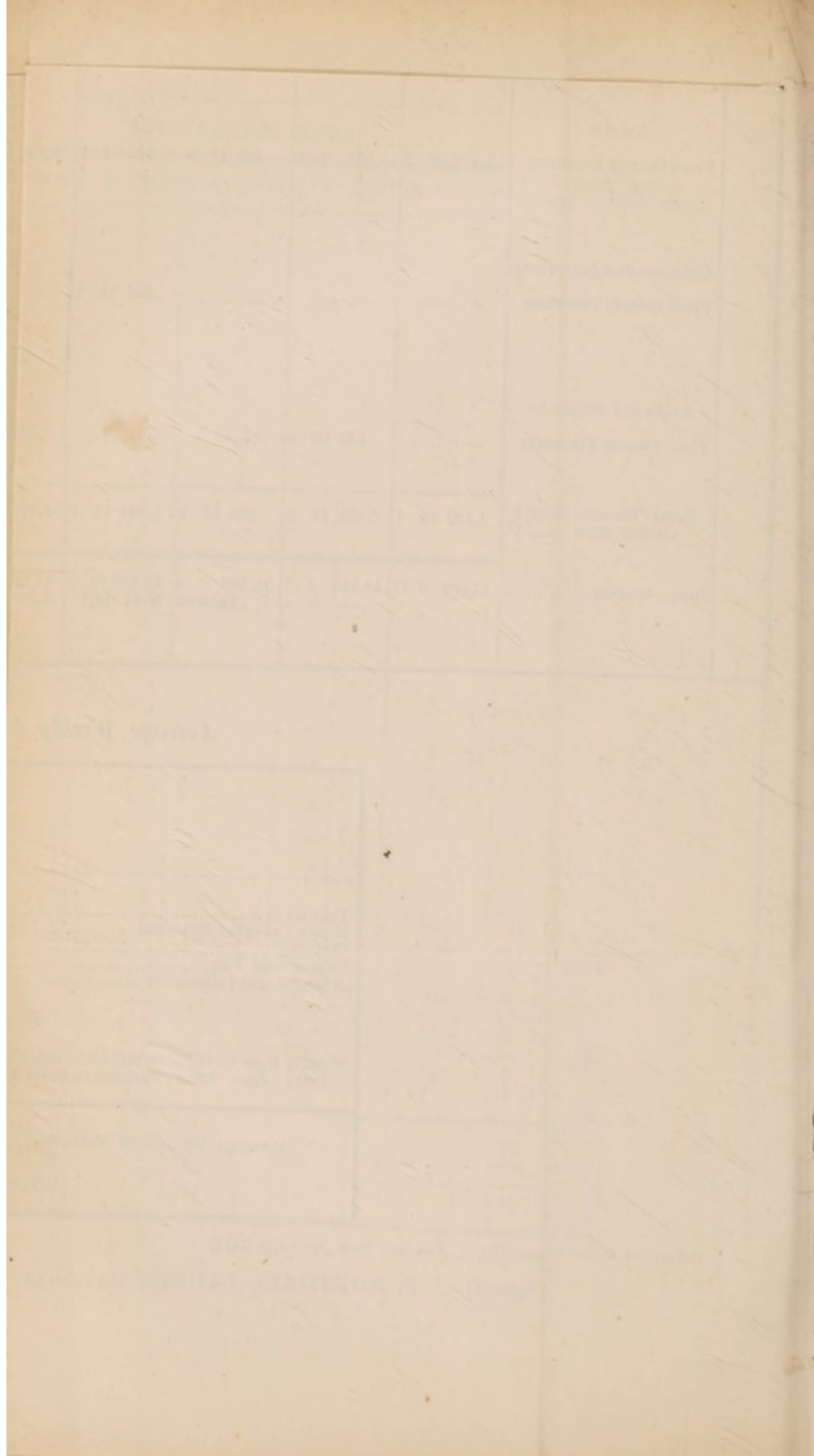
1872.		£	s.	d.
Dec. 31. To balance of Cash this day (see Account Current) ...		1,994	19	3
To amount due for Maintenance, &c., of Patients, viz.:—				
From Parishes in the County ...	£	9,799	16	0
Do. other Counties ...	s.	104	18	0
Do. County Treasurer	d.	1,556	11	4
To amount due for Funerals from Parishes in the County ...		11,461	5	4
Do. other Counties ...		22	19	0
Do. County Treasurer		0	0	0
		1	14	0
		24	13	0
To amount due from County Treasurer for ordinary Repairs, &c., of the Asylum, under Act 16 and 17 Vict., cap. 97, sec. 38, viz.:		11,485	18	4
Repairs ...		972	1	0
Additions and Alterations ...		397	13	8
		1,369	14	8
		£14,850	12	3

Submitted to the Committee of Visitors,
23rd January, 1873.

(Signed) P. NORTHALL LAURIE, Chairman of the Committee.

Examined by the Committee of Accounts,
20th January, 1873.

(Signed) THOS. JERVIS, Chairman.



QUEEN ADELAIDE FUND.

General Statement of the Accounts of the Charity, from its Establishment, 24th June, 1835, to 31st December, 1872.

	£	s.	d.	1871.		£	s.	d.		
Dec. 31. To amount of Subscriptions and Benefactions from the establishment of the Fund to this date	5,923		1	1	By Sundry Purchases of Stock from the Establishment of the Fund to this date, amounting to £6,905 2s. 10d. Consols, and £363 14s. 10d. Reduced.....			6,687	4	6
" To ditto of Dividends on amounts of Stock invested to same date	11,215		2	10	By Relief afforded to sundry Patients during the same period	£5,899		11	4	
" To ditto Fines for neglect of duty	64		12	3	By Amount paid to Colney Hatch Asylum in aid of "The Queen Victoria Fund," to this date.....			3,800	0	0
" To ditto transferred from "William Hollings" Fund... ..	73		14	5	By Sundry Payments for Printing, Law, and other Expenses.....			475	4	1
Jan. 6. To Half-year's Dividend on £13,000 Consols, due January, 1872								9,699	11	4
April 6. To Half-year's ditto on £2,500 Reduced, due April, 1872								37	10	
July 6. To Half-year's ditto on £13,000 Consols due July, 1872								195	0	0
Oct. 6. To Half-year's ditto on £2,500 Reduced, due October, 1872								37	10	0
July 3 To amount of Dividends on £500, transferred from "William Hollings" Fund	465		0	0	1872. Dec. 31. By Relief afforded to sundry Patients from 1st January to this date			147	11	1
Dec. 31. To Donation	13		14	9	By Amount paid to Colney Hatch Asylum in aid of "The Queen Victoria Fund," ditto			200	0	0
	5		0	0	By Sundry Payments for Printing, Law, and other Expenses			0	0	3
	£17,760		5	4	By Balance.....			550	14	1
								£17,760	5	4

STOCK ACCOUNT.

	£	s.	d.	1873.		£	s.	d.	
Amount purchased out of Subscriptions, &c., as above					£3 per Cent. Consols. Reduced.				
Amount of Legacy by Miss Phillips, transferred by the Accountant-General of the Court of Chancery	6,905		2	10	£	363		14	10
Amount of Legacy, £500 (less duty, £50) by Mrs. Harriet Dunlop, invested by her executors	5,644		17	2		2,136		5	2
Total.....	£13,000		0	0		£2,500		0	0

The said Stock is invested in the names of H. POWNALL and E. HALSWELL, Esqrs., THE RIGHT HON. SIR ALEXANDER YOUNG SPEARMAN, Bart., and H. M. KEMSHEAD, Esq.

Submitted to the Committee of Visitors, 23rd January, 1873.
(Signed) P. NORTHALL LAURIE, Chairman of Committee.

Examined by the Committee of Accounts, 20th January, 1873.
(Signed) THOS. JERVIS, Chairman.

Manwell Lunatic Asylum.

“WILLIAM HOLLINGS’ FUND.”

Dr.

From its commencement, February, 1870, to 31st December, 1872.

Cr.

	£	s.	d.		£	s.	d.
1870.				1870.			
Feb. 1. To Arrears of Interest paid by Court of Chancery <i>in re</i> Bequest of £500 Reduced, by late William Hollings ..	51	11	6	April 14. By transfer to Queen Adelaide Fund Account	51	11	6
1871.				1871.			
Dec. 31. To Dividends on Stock to date	22	2	11	Dec. 31. By Transfer to Queen Adelaide Fund Account	22	2	11
1872.				1872.			
July 3. To Half - Year's Dividend on £500, 3 per cent. Reduced (less Income Tax), due Oct. 5, 1871 .	6	17	5	July 3. By do. do.	6	17	5
To Half-year's do. do., due April 5, 1872	6	17	4	By do. do.	6	17	4
	<u>£87</u>	<u>9</u>	<u>2</u>		<u>£87</u>	<u>9</u>	<u>2</u>

Submitted to the Committee of Visitors,
(Signed) 23rd January, 1873,

Examined by the Committee of Accounts,
20th January, 1873.

P. NORTHALL LAURIE, *Chairman of the Committee.* (Signed) THOS. JERVIS, *Chairman.*
 N.B.—The Stock is invested in the names of H. Morris Kemshead, Esq., Capt. F. B. Morley, and
 P. Northall Laurie, Esq.

Hanwell Lunatic Asylum.

The Quantity of Land connected with the Asylum, and its Appropriation.

	A.	R.	P.
Site of the Asylum and Building.	3	2	17
Shrubberies	3	3	0
East Front Airing Courts, Males	6	0	0
West do. do. do. Females	5	3	20
Airing Courts, Males	3	0	0
Do. do. Females.....	3	0	20
Farm Buildings	1	0	23
Burial Ground	2	0	0

UNDER CULTIVATION.

	A.	R.	P.
Kitchen Garden.....	3	2	0
Orchard.....	1	2	0
Old Field.....	20	0	27
New Field.....	21	0	10
Brent Meadow.....	6	0	0
Front Field	18	2	0
	70	2	37
Total....	99	0	37

ALFRED H. LARCOME, *Storekeeper.*

31st December, 1872.

Hanwell Lunatic Asylum.

FARM AND GARDEN ACCOUNTS,

From the 1st January, 1872, to the 31st December, 1872.

Abstract of Receipts and Payments on Farm Account.

EXPENDITURE.			RECEIPTS.		
By Purchase of—	£	s. d.	To Sale of—	£	s. d.
10 Cows and 1 Bull.....	297	0 0	1 Bull.....	21	0 0
2 Pigs.....	9	4 0	7 Calves.....	12	2 0
Hay and Straw	438	12 6	3 Pigs.....	11	0 0
Sharps, Bran and Barley } Meal	198	11 6	Hides and Offal	22	17 5
Oats, Beans, and Peas	75	0 0	Onions, Wurtzel, & Cabbage	24	2 3
Barley and Screenings	13	1 0	Vegetables and Milk	1	0 6
Seed Potatoes and other } Seeds	110	1 10	Balance from Maintenance	1,673	3 5
Implements, &c.....	58	18 5			
Repairing Harness, &c.	11	1 9			
Farriery and Medicine	25	9 6			
Sundry Payments	14	2 0			
Ploughing North Meadow...	27	12 0			
Wages, as per Book	380	7 10			
Ditto, for Sewage Men	106	3 3			
	<u>£1,765</u>	<u>5 7</u>		<u>£1,765</u>	<u>5 7</u>

Estimated Value of Stock on Farm.

1871, December 1st—			1872, December 31st—		
	£	s. d.		£	s. d.
5 Horses.....	80	0 0	5 Horses	85	0 0
1 Bull.....	12	10 0	1 Bull	17	0 0
33 Cows	759	0 0	31 Cows	713	0 0
4 Calves.....	10	10 0	3 Heifers	42	0 0
143 Pigs	353	0 0	3 Yearlings	27	0 0
Poultry	8	0 0	2 Calves.....	8	10 0
Implements and Dead Stock	238	0 0	153 Pigs	380	0 0
	1,461	0 0	Poultry	11	0 0
Increase December 31, 1872	21	0 0	Implements and Dead Stock	198	10 0
	<u>£1,482</u>	<u>0 0</u>		<u>£1,482</u>	<u>0 0</u>

FARM AND GARDEN ACCOUNTS (*continued*).

TOTAL OF EXPENDITURE.				PRODUCE AND VALUE.			
To—	£	s.	d.	By—	£	s.	d.
Balance of Cash brought forward	1,673	3	5	5,303 lbs. Beef, at 7d. per lb.	154	13	5
Estimated Value of 52 acres at £3 per acre.....	156	0	0	1,468 lbs. do, at 7½d. ,,	45	17	6
Estimated Increase on yearly Value of the above, with sewage laid on, at £5 per acre.....	260	0	0	2,261 lbs. do. at 8d. ,,	75	7	4
Rent of 18 acres 2 roods Meadow Land, at £5 per acre	92	10	0	18,312 lbs. Pork, at 7½d. ,,	572	5	0
Estimated Rates and Taxes...	30	0	0	3,096 lbs. Butter at 1s. 4d. ,,	206	8	4
Ditto Value of Waste from House.....	100	0	0	27,750 gals. Milk, at 10d. per gallon	1,156	5	0
Ditto Value of 699 qrs. grains, at 3s. per qr.....	104	17	0	5,797 Eggs, at 1d. each.....	24	3	1
Balance in favour of Farm... 1,033 4 6				3,202 bushels Potatoes, at 2s. 6d. per bushel ...	400	5	0
				6,648 bushels Cabbage, at 10d. per bushel	277	0	0
				929 bushels Beans and Peas, at 2s. 6d. per bus.	116	2	6
				560 bushels Onions and Leeks, at 1s. 6d. per bus.	42	0	0
				1,508 bushels Parsnips, at 1s. 6d. per bushel ...	113	2	0
				150 bushels Carrots, at 1s. 6d. per bushel ...	11	5	0
				986 bushels Turnips, at 1s. per bushel	49	6	0
				Salad and Herbs	120	9	7
				Fruit and Rhubarb	52	2	8
				Poultry	12	2	6
				Increase in value of Stock ...	21	0	0
	<u>£3,449</u>	<u>14</u>	<u>11</u>		<u>£3,449</u>	<u>14</u>	<u>11</u>

The following Crops were also produced on the Farm, part of which have been consumed, and the remainder included in the Valuation.

	£	s.	d.
232 tons Italian Rye Grass at 15s. per ton.....	174	0	0
120 tons Mangold Wurtzel, at 18s. per ton!.....	108	0	0
39 tons Hay, at 75s. per ton.....	146	5	0
	<u>£428</u>	<u>5</u>	<u>0</u>

ALFRED H. LARCOME,
Storekeeper.

Hantwell Lunatic Asylum.

EMPLOYMENT.

1872.

	Mar. 30th.	June 29th	Sept. 30th	Dec. 31st
MALES.				
In Front Grounds, &c.....	6	12	17	18
Garden, Orchard, Farm Grounds, &c..	48	52	68	39
Cow House and Piggery.....	11	8	10	9
As Coal Porters and Wood Chopping ..	2	2	2	4
Bricklayers, Whitewashers, Masons, &c.	—	—	—	—
In Tinman's Shop	—	—	—	—
Carpenter's Shop.....	5	5	5	8
Painter's and Plumber's Shop	2	2	3	8
Smith's Shop, Gas House, Engine } House and Boilers	—	—	—	3
Store Room and other Offices.....	1	1	—	1
Tailor's Shop	17	17	16	20
Shoemaker's Shop	5	4	5	7
Printing and Bookbinding.....	—	—	—	—
Upholsterer's Shop and Picking Coir..	31	30	31	38
Brewhouse and Bakehouse.....	5	5	6	8
As Helpers in the Wards and Officers' } Houses	93	93	98	103
At Laundry Work	2	2	2	2
Employed.....	228	233	263	268
Unemployed.....	388	397	401	384
Sick	81	74	44	54
Total in Asylum	697	704	708	706
FEMALES.				
At Needlework in the Wards, Bazaar, } and Work-room	198	203	205	189
In Bakehouse, Kitchen, and Dairy	11	13	12	12
In Laundries	92	96	92	99
At Officers' Apartments	5	7	8	6
Helpers in Wards & Servants' Hall....	182	214	210	219
Employed.....	488	533	527	525
Unemployed.....	418	433	426	436
Sick	180	120	140	140
Total in Asylum	1086	1086	1093	1101
Total Patients in Asylum ..	1783	1790	1797	1807

1st January, 1873.

JESSE OWENS, *Clerk of the Asylum.*

Hanwell Lunatic Asylum.

*The Average Number of Male Patients Daily Employed and
the Estimated Value of Labour for the Year 1872.*

Average Number of Patients.	Employment.	Value.		
		£	s.	d.
10	Preparing Vegetables, &c. ..	75	0	0
46	Farm and Garden	460	0	0
15	In Grounds	112	10	0
10	Cowhouse and Piggeries ..	120	0	0
80	In Workshops, &c.	600	0	0
100	In Wards	304	3	4

A. H. LARCOME,
Storekeeper.

December 31st, 1872.

Hanwell Lunatic Asylum.

*Employment of Female Patients, and its Estimated Value,
for the Year ending 31st December, 1872.*

Average Number of Patients.	Employment.	£ s. d.
198 $\frac{3}{4}$	Needlework { Workroom } Wards	516 15 0
12	Kitchen and Dairy	46 16 0
206	Helpers in Wards	536 5 0
6	Helpers in Officers' Houses ..	15 12 0
94 $\frac{3}{4}$	In Laundry	492 14 0
		£ 1,608 2 0

ISABELLA E. HICKS,

Matron.

Hanwell Lunatic Asylum.

A RETURN

Of Clothing, Bedding, &c., manufactured or made up by Patients, &c., from the 1st January to the 31st December, 1872.

Mattresses.....	335	Aprons and Pinafores.....	387
" re-made.....	2,383	Bedgowns.....	294
Bolsters.....	185	Flannel Jackets.....	554
" re-made.....	1,092	Flannel Drawers.....	413
Feather beds.....	22	Handkerchiefs.....	2,483
" pillows.....	35	Neckerchiefs.....	1,178
Strong Rugs.....	81	Petticoats.....	401
Bedsackings.....	240	Stays.....	74
Hearthrugs.....	67	Shifts.....	732
Ticken Frocks.....	18	Shirts.....	740
Canvas Frocks.....	6	Shawls, Mantles and Cloaks	195
Cloth Coats and Jackets ..	576	Gowns.....	1,271
" " (locked).....	—	Women's Caps.....	108
" Waistcoats.....	445	Washing Dresses.....	—
" Trousers.....	552	Table Cloths.....	30
Canvas Coats.....	13	Table and Toilet Covers... ..	39
" Waistcoats.....	16	Sun Hoods.....	180
" Trousers.....	11	Shrouds and Caps.....	—
Men's Cloth Capes.....	76	Pillow-cases.....	962
Curtains and Blinds.....	303	Sheets.....	1,142
Men's Leather Boots.....	2	Towels.....	161
Women's Leather Boots... ..	10		
Women's Leather Shoes... ..	134	Repairs in Tailor's Shop ..	15,895
Men's Cloth Boots.....	420	Do. in Upholsterer's do.	9,197
Women's Cloth Boots.....	29	Do. in Shoemaker's do.	3,490
Women's Cloth Shoes.....	52		
Velvet Boots and Shoes ..	4		
Canvas Boots.....	192		

ALFRED H. LARCOME,

Storekeeper.

31st December, 1872.

Hanwell Lunatic Asylum.

A RETURN

*Of Clothing, Bedding, &c., issued from the 1st January to
the 31st December, 1872.*

MALES.

Cloth Coats and Jackets ..	639
Cloth Coats, (locked).....	1
Cloth Waistcoats	542
Cloth Waistcoats, (tied) ..	7
Cloth and Cord Trousers ..	649
Cloth Capes	93
Canvas Coats.....	13
Canvas Waistcoats.....	15
Canvas Trousers	6
Ticken Frocks.....	14
Flannel Drawers	348
Flannel Jackets	402
Handkerchiefs	1,019
Neckerchiefs.....	1,178
Hats and Caps	1,552
Braces.....	456
Gloves.....	195
Shirts	894
Stockings	1,670
Leather Boots.....	559
Leather Shoes.....	381
Cloth Boots	1,982
Canvas Boots.....	195
Mattresses.....	22
Bolsters.....	25
Strong Rugs.....	34
Blankets	216
Rugs	127
Sheets	398
Pillow-cases	319
Macintosh Sheets.....	26
Canvas Bedsackings.....	50
Towels.....	329

FEMALES.

Aprons and Pinafores	387
Bedgowns... ..	294
Shifts.....	732
Stockings.....	1,704
Flannel Jackets	78
Handkerchiefs and Neck- erchiefs.....	1,464
Gowns.....	1,271
Petticoats	401
Shawls, Mantles, & Cloaks..	215
Bonnets.....	618
Sun Hoods	180
Caps.....	108
Gloves.....	144
Stays	74
Leather Boots.....	2,274
Leather Shoes.....	136
Cloth Boots.....	606
Cloth Shoes.....	62
Velvet Boots	3
Velvet Shoes	4
Canvas Frocks	6
Mattresses.....	313
Bolsters.....	160
Strong Rugs.....	20
Blankets	151
Rugs	102
Sheets	550
Pillow-cases.....	482
Macintosh Sheets.....	26
Canvas Bedsackings.....	98
Towels.....	58

ALFRED H. LARCOME,

Storekeeper.

31st December, 1872.

Hanwell Lunatic Asylum.

*A RETURN of Clothing, &c., in Store on the 31st December, 1871,
and the 31st December, 1872, and its Value.*

31st December, 1871.					31st December, 1872.						
	s.	d.	£	s.	d.		s.	d.	£	s.	d.
125 Men's Leather Boots	6	0	37	10	0	65 Men's Leather Boots	7	6	24	7	6
5 Ditto do. Shoes	4	0	1	0	0	44 Ditto do. Shoes	5	6	12	2	0
203 Ditto Cloth Boots ...	3	3	32	19	9	117 Ditto Cloth Boots...	3	5	19	19	9
233 Women's Leather Boots	3	3	37	17	3	20 Women's Leather Boots ...	3	6	3	10	0
12 Ditto do. Shoes	2	6	1	10	0	46 Ditto do. Shoes ...	2	6	5	15	0
173 Ditto Cloth Boots...	3	0	25	19	0	34 Ditto Cloth Boots ...	3	2	5	7	8
14 Ditto do. Shoes...	1	6	1	1	0	4 Ditto do. Shoes ...	1	9	0	7	0
60 Cloth Coats	10	6	31	10	0	42 Cloth Coats ...	10	6	22	1	0
61 Ditto Waistcoats ..	4	9	14	9	9	9 Ditto Waistcoats ...	4	0	1	16	0
104 Ditto Trousers ...	8	0	41	12	0	1 Ditto Trousers ...	8	0	0	8	0
64 Cord do.	7	9	24	16	0	115 Cord ditto ...	7	9	44	11	3
14 Cloth coats (locked)	16	0	11	4	0	13 Cloth Coats (locked)	16	0	10	8	0
33 Ditto Capes (Men's)	8	3	13	12	3	16 Ditto Capes (Men's)	8	3	6	12	0
7 Canvas Coats ...	9	0	3	3	0	7 Canvas Coats ...	9	0	3	3	0
6 Ditto Waistcoats ...	4	6	1	7	0	7 Ditto Waistcoats...	4	6	1	11	6
9 Ditto Trousers ...	10	0	4	10	0	14 Ditto Trousers ...	10	0	7	0	0
9 Ditto Frocks ...	12	0	5	8	0	9 Ditto Frocks ...	12	0	5	8	0
— T icken Frocks ...	—	—	—	—	—	4 Ticken Dresses ...	10	6	2	2	0
46 Stockings ...	0	8½	8	14	3	496 Stockings ...	0	10	20	13	4
18 Shirts ...	3	6	3	3	0	41 Shirts ...	3	6	7	3	6
25 Flannel Jackets ...	3	3	4	1	3	6 Flannel Jackets ...	3	3	0	19	6
54 Ditto Drawers ...	3	3	8	15	6	33 Ditto Drawers ...	3	3	5	7	3
290 Neckerchiefs ...	0	5	6	0	10	146 Neckerchiefs ...	0	4¾	2	17	9½
469 Handkerchiefs ...	0	2½	4	17	8½	36 Handkerchiefs ...	0	2½	0	6	9
52 Braces ...	0	4¼	0	18	5	29 Braces ...	0	4¼	0	10	3¼
236 Gloves ...	0	9	8	17	0	185 Gloves ...	0	9	6	18	9
63 Hats...	2	0	6	6	0	42 Hats ...	2	0	4	4	0
23 Epileptic Hats ...	3	6	4	0	6	4 Epileptic Hats ...	3	6	0	14	0
98 Straw Hats ...	1	0	4	18	0	333 Straw Hats ...	0	9½	13	3	7½
389 Day Caps ...	0	10	16	4	2	92 Day Caps ...	0	10	3	16	8
150 Night Caps...	0	4	2	10	0	236 Night Caps ...	0	3½	3	8	10
141 lbs. Leather, of sorts	1	0	7	1	0	189 lbs. Leather, of sorts	1	1	10	4	9
146 Yds. Men's Cloth	3	4	24	6	8	152½ Yds. Men's Cloth...	3	6	26	13	9
84 " Flannel ...	0	9½	3	6	6	494 " Flannel ...	0	10½	21	12	3
510 " Calico & Lining	0	6½	13	16	3	429 " Calico & Lining	0	5¾	10	5	6¾
44½ " Macintosh ...	4	3	9	9	1½	20 " Macintosh ...	3	11	3	18	4
126 " Cap Material	1	10	11	11	0	353 " Cap Material	1	9	30	17	9
295 " Canvas ...	1	1	15	19	7	34 " Canvas ...	0	11	1	11	2
355½ " Ticken ...	1	0	17	15	6	367½ " Ticken ...	1	0	18	7	6
9 " Blue Uniform Cloth	9	7	4	6	3	22 " Blue Uniform Cloth	9	11	10	18	2
30 " Do. do. Kersey	9	8	14	10	0	31 " Do. do. Kersey	10	2	15	15	2
50 Attendants' Caps ...	4	0	10	0	0	37 Attendants' Caps ...	4	0	7	8	0
<u>£500 17 6</u>					<u>£404 6 4</u>						

	£	s.	d.
Amount of Clothing purchased 1871.....	3,482	13	10
" " 1872.....	3,119	12	1

	Males.	Females.	Total.
Average Number of Patients 1871 ...	671	1,088	1,759
" " 1872 ...	702	1,090	1,792

31st December, 1872.

ALFRED H. LARCOME, Storekeeper.

Hanwell Lunatic Asylum.

Provisions consumed during the Year ending 31st December, 1872.

Number of Officers and Servants	185
Ditto Male Patients	702
Ditto Female ditto	1,090
Total	1,977
Meat—Beef and Mutton	194,322 lbs.
„ Ditto (Australian)	56,718 lbs.
„ Extract of Beef	513 lbs.
„ Bacon	16,664 lbs.
„ Pork	20,145 lbs.
Fish	23,615 lbs.
Bread	609,771 lbs.
Butter	40,105 lbs.
Cheese	22,429 lbs.
Cocoa	7,280 lbs.
Coffee	1,230 lbs.
Eggs	42,843 No.
Flour	2,072 sacks.
Malt	699 qrs.
Hops	5,143 lbs.
Oatmeal	670 lbs.
Rice	5,589 lbs.
Arrowroot	1,942 lbs.
Potatoes	7,373 bus.
Other Vegetables	11,740 bus.
Milk	28,007 gals.
Sugar	44,698 lbs.
Tea	10,689 lbs.
Treacle	16,080 lbs.
Beer	82,667 gals.
Porter and Ale	48,920 pints.
Wine	6,229 pints.
Brandy	1,180 pints.
Gin	530 pints.
Lemonade	550 botls.
Oranges	10,556 No.
Biscuits	764 No.

ALFRED H. LARCOME,

31st December, 1872.

Storekeeper.

HANWELL LUNATIC ASYLUM.

Diet Table for Patients employed.

	BREAKFAST.				LUNCHEON.				DINNER.										SUPPER.											
	MALES.		FEMALES.		MALES.		FEMALES.		MALES.					FEMALES.					MALES.		FEMALES.									
	Cocoa.	Bread.	Butter.	Tea.	Bread.	Butter.	Bread.	Butter.	Cheese.	Beer.	Cooked Meat, free from bone.	Fish.	Pie.	Stew.	Vegetables.	Bread.	Dumplings.	Beer.	Cooked Meat, free from bone.	Fish.	Pie.	Stew.	Vegetables.	Bread.	Beer.	Tea.	Bread.	Butter.	Tea.	Bread.
SUNDAY	pt. 1	oz. 6	oz. 3	pt. 1	oz. 5	oz. 3	pt. 1	oz. 1	pt. 1	oz. 5	oz. 5	oz. 4	oz. 4	oz. 8	oz. 3	oz. 3	pt. 1	oz. 4	oz. 4	oz. 4	oz. 4	oz. 8	oz. 3	pt. 1	oz. 6	oz. 3	pt. 1	oz. 6	oz. 3	
MONDAY	1	6	3	1	5	3	1	1	1	5	5	3	4	3	3	3	1	4	4	4	4	12	3	3	1	6	3	1	6	3
TUESDAY	1	6	3	1	5	3	1	1	1	5	5	3	4	3	3	3	1	4	4	4	4	12	3	3	1	6	3	1	6	3
WEDNESDAY	1	6	3	1	5	3	1	1	1	5	5	3	4	3	3	3	1	4	4	4	4	12	3	3	1	6	3	1	6	3
THURSDAY	1	6	3	1	5	3	1	1	1	5	5	3	4	3	3	3	1	4	4	4	4	12	3	3	1	6	3	1	6	3
FRIDAY	1	6	3	1	5	3	1	1	1	5	5	3	4	3	3	3	1	4	4	4	4	12	3	3	1	6	3	1	6	3
SATURDAY	1	6	3	1	5	3	1	1	1	5	5	3	4	3	3	3	1	4	4	4	4	12	3	3	1	6	3	1	6	3
TOTAL	7	42	21	7	35	21	7	7	3 1/2	25	10	4	16	71	15	8	3 1/2	21	8	4	16	60	19	3 1/2	7	42	3 1/2	7	35	1 1/2

DINNER—MALE PATIENTS.

- Sunday Roast Pork, Beef, or Mutton.
- Monday Boiled Bacon or Pickled Pork.
- Tuesday Boiled Australian Beef or Mutton.
- Wednesday ... Meat Pies.
- Thursday ... Fish, fried and boiled, with melted Butter.
- Friday Boiled Bacon or Pickled Pork.
- Saturday ... Irish Stew.

DINNER—FEMALE PATIENTS.

- Roast Pork, Beef, or Mutton.
- Boiled Bacon or Pickled Pork.
- Boiled Beef or Mutton.
- Meat Pies.
- Boiled Australian Beef or Mutton.
- Fish, fried or boiled, with melted Butter.
- Irish Stew.

Diet Table for Patients not employed.

	BREAKFAST.				DINNER.										SUPPER.														
	MALES.		FEMALES.		MALES.					FEMALES.					MALES.		FEMALES.												
	Cocoa.	Bread.	Butter.	Tea.	Bread.	Butter.	Tea.	Cooked Meat, free from bone.	Soup.	Fish.	Pie.	Stew.	Vegetables.	Bread.	Beer.	Cooked Meat, free from bone.	Soup.	Fish.	Pie.	Stew.	Vegetables.	Bread.	Beer.	Tea.	Bread.	Butter.	Tea.	Bread.	Butter.
SUNDAY	1	6	1	1	5	3	9	3	8	3	1	4	8	3	1	6	1	5	6	1	5
MONDAY	1	6	1	1	5	6	...	2	1	4	1	2	4	1	6	1	5	6	1	5
TUESDAY	1	6	1	1	5	...	9	3	...	4	12	3	1	6	1	5	6	1	5
WEDNESDAY	1	6	1	1	5	...	12	4	3	4	12	...	1	6	1	5	6	1	5
THURSDAY	1	6	1	1	5	3	9	3	...	10	4	8	3	1	6	1	5	6	1	5
FRIDAY	1	6	1	1	5	...	16	2	8	3	1	6	1	5	6	1	5
SATURDAY	1	6	1	1	5	6	...	2	16	4	1	6	1	5	6	1	5
TOTAL	7	42	3½	7	35	3½	22	1	10	4	16	55	18	8	3½	19	1	8	4	16	48	20	3½	7	42	3½	7	35	13½

DINNER—MALE PATIENTS.

SundayRoast Pork, Beef, or Mutton.
 MondaySoup, thickened with Oatmeal, Rice, and Peas, and containing 2 oz. Meat for each Patient, with a proportion of Ramornie Extract.
 TuesdayBoiled Australian Beef or Mutton.
 WednesdayMeat Pies.
 Thursday ...Fish, fried or boiled, with melted Butter.
 FridayBoiled Bacon or Pickled Pork.
 Saturday ...Irish Stew.
 2 oz. Cheese and ½ pint Beer given to the Male Patients for Supper, in lieu of 1 pint Tea and ½ oz. Butter, if requested.

DINNER—FEMALE PATIENTS.

Roast Pork, Beef, or Mutton.
 Soup, thickened with Oatmeal, Rice, and Peas, and containing 2 oz. Meat for each Patient, with a proportion of Ramornie Extract.
 Boiled Bacon or Pickled Pork.
 Meat Pies
 Boiled Australian Beef or Mutton.
 Fish, fried or boiled, with melted Butter.
 Irish Stew.

(For Extras, see Summaries of Sick Lists.)

For 1 pint of Cocoa—½ oz. Cocoa, 1 oz. Treacle, and ½ of a pint of Milk.
 For 1 pint of Tea—½ oz. Tea, ½ oz. Sugar, and ½ of a pint of Milk.
 Irish Stew (liquor of the Meat cooked the previous day) with 2 oz. cooked Australian Meat (and a proportion of Ramornie Extract), with 12 oz. vegetables for each Patient.

Hanwell Lunatic Asylum.

TOTALS OF SUMMARIES OF SICK AND EXTRA DIET LISTS FOR THE LAST DAY OF EACH MONTH IN THE YEAR ENDING DECEMBER 31st, 1872.
MALE SIDE.

	No. of Patients.	Meat Dinner.	Mutton Chop.	Bacon.	Fish.	Minced Meat.	Eggs.	Mutton Broth.	Beef Tea.	Strong Beef Tea.	Milk.	Arrowroot.	Sago.	Bread and Milk.	Porridge.	Rice Milk.	Gruel.	Barley Water.	Rice Pudding.	Batter Pudding.	Sago Pudding.	Custard Pudding.	Butter.	Tea in Morning.	Coffee.	Sugar.	Biscuits.	Oranges.	Lemons.	Fruit.	Vinegar.	Tobacco.	Snuff.	Extra Bread.	Cheese.	Lemonade.	Soda Water.	Apples.	Extra Beer.	Scotch Ale.	Porter.	Sherry.	Orange.	Brandy.	Gin.	
																																														oz.
January	704	36	1	5	12	34	50	154	19	20	16	6	2	4	4	...	11	10	3	9	17	79	1	8	2	23	...	18	...	6	2	1	9	2	71	38	60	3	10	6
February	695	6	...	5	4	35	50	155	22	22	13½	6	2	3	4	...	6	8	2	10	18	81	1	8	2	25	...	18½	...	6	2	1	9	...	71½	25	61	3	10	7
March	695	7	...	5	4	35	51	157	25	26	11	6	2	3	4	...	6	10	2	8	18	85	1	8	2	25	...	18½	...	6	1	1	8	...	71½	34	77	4	6	7
April	689	6	...	3	5	32	48	170	27	29	10	6	17	...	2	2	9	3	...	13	13	4	9	13	87	1	20	...	5	29	...	20½	...	7	1	1	10	2	74½	41	92	6	7	6
May	690	7	1	5	22	33	48	165	26	28	15½	6	2	2	8	3	...	13	17	3	13	100	2	4	...	1	34	...	21¼	...	7	1	3	1	...	10	...	84½	39	96	4	9	6	
June	702	8	...	4	6	24	49	158	27	33	14½	6	2	2	7	5	...	11	15	3	12	8	97	1	4	...	1	25	...	21	...	8	1	1	...	10	...	91	33	94	3	9	4	
July	706	46	4	4	16	23	56	169	30	39	11½	9	3	1	7	5	...	15	22	3	15	8	102	1	...	1	27	...	24	...	8	2	2	...	11	...	100½	44	90	3	9	4		
August	702	53	5	5	21	23	55	178	30	43	11	8	1	...	2	1	8	4	...	18	25	3	14	8	106	1	...	1	15	...	23½	...	8	3	2	...	11	...	102	36	91	3	9	4		
September	703	8	1	3	6	23	53	173	31	43	13	9	1	...	2	1	7	4	...	9	14	4	8	8	104	1	...	1	15	...	23	...	2	8	5	2	...	2	12	...	98½	26	58	6	8	6
October	700	6	3	5	4	23	47	110	28	...	11	8	1	...	2	1	...	3	...	1	11	...	7	...	68	1	...	1	4	22	...	6	1	2	...	11	...	74½	18	41	1	7	5	
November	702	34	6	4	11	85	39	90	23	...	9	7	1	3	...	3	4	...	3	16	...	6	...	64	1	...	1	19½	...	6	...	1	...	13	...	75½	18	27	...	7	4		
December	701	5	1	3	7	81	37	95	30	1	12	7	1	2	...	2	4	...	2	17	...	6	1	78	1	...	1	22½	...	5	1	1	...	15	...	74	25	27	...	7	6		

31st December, 1872.

ALFRED H. LARCOMBE, Storekeeper.

Hanwell Lunatic Asylum.

TOTALS OF SUMMARIES OF SICK AND EXTRA DIET LISTS FOR THE LAST DAY OF EACH MONTH IN THE YEAR ENDING 31st DECEMBER, 1872.
FEMALE SIDE.

	No. of Patients.	Meat Dinner.	Mutton Chop.	Beef Steak.	Bacon.	Fish.	Minced Meat.	Eggs.	Pints of Mutton Broth.	Pints of Strong Beef Tea.	Pints of Beef Tea.	Pints of Milk.	Pints of Arrowroot.	Pints of Sago.	Pints of Gruel.	Rice Milk.	Rice Pudding.	Custard Pudding.	Bread Pudding.	Sago Pudding.	Dry Tea.	Sugar.	Biscuits.	Lemons.	Oranges.	Snuff.	Dripping.	Cheese, 1 oz. each.	Bread, 3 ozs. each.	Extra Beer.	Extra Beer, 4 p.m.	Soda Water.	Pale Ale.	Porter.	Wine.				Gin.						
																																			Port.	Sherry.	Orange.	Brandy.							
January	1093	64	2	...	1	2	49	14	12	1	22	11½	77	29	4	1	13	3	...	1	oz	...	2	3	...	oz	283	293	297	142	37	56	14	3	12	6					
February	1077	1	1	56	20	6	1	32	16½	71	26½	3	...	13	1	1	297	305	306	142	35½	62	7	2	17	6					
March	1080	...	1	...	1	...	53	22	8	...	20	14	66½	23½	4	...	13	1	1	36	54	18	2	20	8			
April	1080	...	2	...	1	1	57	21	6	...	24	12½	72½	27	1	...	13	1	1	308	300	313	142	34½	50	19	...	21	8			
May	1080	20	2	...	3	30	57	32	5	...	17	18	71	19½	1	...	13	2	2	...	302	284	308	141	33½	57	11	...	25	10			
June	1082	25	2	2	62	13	7	1	12	18	72½	18½	1	...	13	1	34½	54	14	...	27	10	
July	1082	70	7	...	1	...	61	16	9	...	24	18½	72½	17½	1	...	13	1	1	296	287	312	141	37½	77	31	...	28	9	
August	1080	...	6	1	2	3	60	28	9	...	26	20½	82½	17½	2	...	14	2	7	296	291	314	141	37	84	19	...	28	10	
September	1085	...	2	...	1	3	59	16	4	2	34	22½	82½	19½	1	...	14	2	20	120	5	3	310	291	325	141	38½	71	19	...	30	8
October	1093	...	5	...	1	3	59	21	6	...	24	23	65	20½	1	...	13	2	4	3	...	3	328	292	323	136	36	46	13	...	18	9
November	1090	20	5	1	1	2	64	34	10	4	30	23	72	20	1	1	13	4	1	1	4	2	2	4	319	319	311	141	2	...	30	60	15	...	1	30	10
December	1096	...	6	...	1	3	63	26	3	4	35	30½	74	23	1	...	13	3	4	3	319	319	311	149	32½	59	16	...	2	43	9

MEDICAL STATISTICS.

TABLE I.

Showing the Admissions, Re-admissions, Discharges, and Deaths, during the Year 1872.

			Male.	Female.	Total.
						Male.	Female.	Total.			
In the Asylum, 1st January, 1872	701	1096	1797
Admitted for the first time during the Year	104	169	273			
Re-admitted during the Year	17	11	28			
Total admitted	121	180	301
Total under care during the Year	822	1276	2098
DISCHARGED OR REMOVED:—											
Recovered	36	76	112			
Relieved	8	9	17			
Not Improved	9	9	18			
Died	63	81	144			
Total Discharged and Died during the Year	116	175	291
Remaining in the Asylum 31st December, 1872 (inclusive of Absent on Trial, 6 Male, 6 Females)	706	1101	1807
Average numbers Resident during the Year	702	1090	1792

1st January, 1873.

JESSE OWENS, Clerk of the Asylum.

TABLE II.

Showing the Admissions, Re-admissions, and Discharges, from the opening of the Asylum, 1st May, 1831, to the 31st December, 1872.

	Male.	Female.	Total.	Male.		Female.		Total.	Male.	Female.	Total.
				Male.	Female.	Male.	Female.				
TOTAL CASES :—											
Admitted during the period of 40 $\frac{1}{2}$ Years	4452	5232	9684
Re-admitted during the last 3 Years	98	56	154
Including 60 transferred from Sussex County Asylum on expiration of agreement.			
Total of Cases admitted ..	4550	5288	9838
DISCHARGED OR REMOVED :—											
Recovered	1047	1541	2588
Relieved	353	323	676
Not Improved ..	343	327	670
Died	2101	1996	4097
Total Discharged and Died during the 40 $\frac{1}{2}$ Years	3844	4187	8031
Remaining 31st December, 1872	706	1101	1807
Average numbers Resident during the last 12 Years..	617	1038	1655

JESSE OWENS, Clerk of the Asylum.

1st January, 1873.

TABLE III.

Showing the Admissions, Discharges, and Deaths, with the mean Annual Mortality and proportion of Recoveries per Cent. of the Admissions, for each Year since the opening of the Asylum, 1st May, 1831.

YEAR.	ADMITTED.			DISCHARGED.						DIED.			Remaining 31st Decem-ber in each year.			Average Numbers Resident.			Per Centage of Recoveries on Admissions.			Per Centage of Deaths on average Numbers Resident.						
	Male.	Female.	TOTAL.	Recovered.			Relieved.			Not Improved.			Male.	Female.	TOTAL.	Male.	Female.	TOTAL.	Male.	Female.	TOTAL.	Male.	Female.	TOTAL.				
				Male.	Female.	TOTAL.	Male.	Female.	TOTAL.	Male.	Female.	TOTAL.																
1831	3951	4618	8569	918	1312	2230	322	306	628	240	180	420	1854	1739	3593	617	1081	1698	23.2	28.4	26.3	
to 1869	207	216	423	49	70	119	11	5	16	12	7	19	91	91	182	661	1124	1785	656	1120	1776	23.67	32.40	27.31	13.87	8.12	10.25	
1870	271	274	545	44	83	127	12	8	15	82	131	213	93	85	178	701	1096	1797	671	1088	1759	16.23	30.29	23.3	13.85	7.81	10.11	
1871	121	180	301	36	76	112	8	9	17	9	9	18	63	81	144	706	1101	1807	702	1090	1792	29.75	42.22	37.21	8.97	7.43	8.03	
1872
TOTAL...	4550	5283	9838	1047	1541	2588	353	323	676	343	327	670	2101	1996	4097	706	1101	1807	* 617	* 1038	* 1655	23.01	29.14	26.30	

* For the last 12 years.

1st January, 1873.

JESSE OWENS, Clerk of the Asylum.

TABLE V.

Showing the Causes of Death during the Year 1872.

CAUSES OF DEATH.*	Male.	Female.	Total.
CEREBRAL OR SPINAL DISEASES:			
Apoplexy and Paralysis	7	5	12
Epilepsy and Convulsions	5	3	8
General Paresis	26	14	40
Maniacal and Melancholic Ex- haustion or Decay	5	8	13
Inflammation and other Diseases of the Brain, Softening, Tu- mours, &c.	8	8
Softening of Spinal Cord	1	1
THORACIC DISEASE:			
Inflammation of the Lungs, Pleuræ, and Bronchi	1	7	8
Pulmonary Consumption	8	16	24
Disease of the Heart, &c.	3	5	8
ABDOMINAL DISEASE:			
Inflammation and Ulceration of the Stomach, Intestines, or Peritoneum	1	1
Dysentery and Diarrhoea
Renal Disease	3	3
Disease of Knee Joint	1	1
Disease of Hip Joint	1	..	1
Carbuncle	1	1
Cancer	1	1
General Debility and Old Age	6	6	12
Accidents	1	1	2
Suicide
Total	63	81	144
* <i>Ascertained by Post-Mortem Examina- tion in</i>	62	77	139

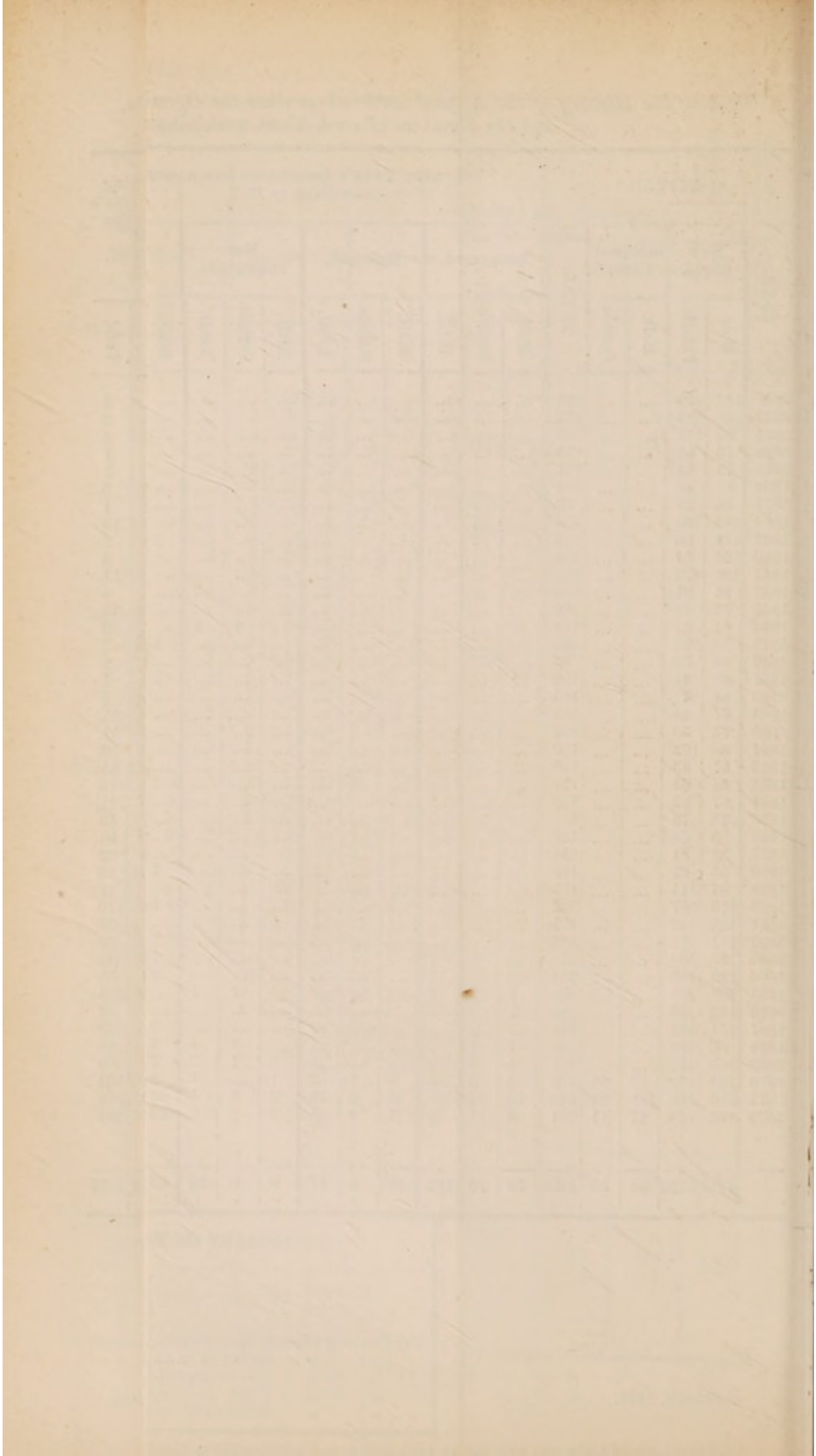


TABLE VI.

Showing the Length of Residence in those Discharged Recovered and in those who have Died during the Year 1872.

LENGTH OF RESIDENCE.	RECOVERED.			DIED.		
	Male.	Female.	Total.	Male.	Female.	Total.
Under 1 month	4	7	11
From 1 to 3 months	..	6	6	6	9	15
" 3 " 6 "	13	22	35	4	7	11
" 6 " 9 "	7	11	18	4	4	8
" 9 " 12 "	4	7	11	11	1	12
" 1 " 2 Years	6	14	20	13	10	23
" 2 " 3 "	1	4	5	4	6	10
" 3 " 5 "	3	4	7	5	12	17
" 5 " 7 "	2	3	5	2	6	8
" 7 " 10 "	..	5	5	2	6	8
" 10 " 12 "	5	5
" 12 " 15 "	2	3	5
" 15 " 20 "	2	2
" 20 " 25 "	1	1	2
" 25 " 30 "	1	1	2
" 30 " 35 "	4	1	5
" 35 " 40 "
TOTAL ..	36	76	112	63	81	144

TABLE VII.
Showing the Duration of the Disorder on Admission in the Admissions, Discharges, and Deaths, during the Year 1872.

CLASS.	DURATION OF DISEASE ON ADMISSION IN FOUR CLASSES.											
	THE ADMISSIONS.			THE DISCHARGES.				THE DEATHS.				
	Male.	Female.	Total.	RECOVERED.		REMOVED, RELIEVED, OR OTHERWISE.		Male.	Female.	Total.		
FIRST CLASS.												
First Attack, and within Three Months on Admission ..	40	74	114	12	32	44	3	11	14	4	28	32
SECOND CLASS.												
First Attack, above Three, and within Twelve Months on Admission ..	18	25	43	5	10	15	3	3	6	5	16	21
THIRD CLASS.												
Not First Attack, and within Twelve Months on Admission	20	43	63	5	25	30	2	4	6	1	11	12
FOURTH CLASS.												
First Attack or not, but of more than Twelve Months on Admission ..	43	38	81	9	8	17	6	1	7	45	21	66
Not known	5	..	5	3	..	3	8	5	13
TOTAL ..	121	180	301	36	75	111	17	19	36	63	81	144

TABLE VIII.

Showing the Ages of the Admissions, Discharges, and Deaths, during the Year 1872.

AGES.	THE ADMISSIONS.			THE DISCHARGES.					THE DEATHS.						
	Male.	Female.	Total.	RECOVERED.		REMOVED, RELIEVED, OR OTHERWISE.			Male.	Female.	Total.				
				Male.	Female.	Total.	Male.	Female.				Total.			
From 5 to 10 Years	2	..	2
" 10 " 15	..	2	2	1	..	1
" 15 " 20	1	12	13	..	3	2	..	2
" 20 " 30	19	34	53	..	19	4	..	4
" 30 " 40	37	40	77	..	24	9	..	9
" 40 " 50	29	42	71	..	9	18	..	18
" 50 " 60	17	22	39	..	12	15	..	15
" 60 " 70	11	17	28	..	6	10	..	10
" 70 " 80	7	7	14	..	2	6	..	6
" 80 " 90	..	3	3	1	..	1
" 90 Years and upwards	..	1	1	4	..	4
Unascertained
TOTAL	121	180	301	36	75	111	17	19	36	63	81	144			

TABLE IX.

Condition as to Marriage in the Admissions, Discharges, and Deaths, during the Year 1872.

Condition in Reference to Marriage.	THE ADMISSIONS.			THE DISCHARGES.						THE DEATHS.		
	Male.	Female.	Total.	RECOVERED.			REMOVED, RELIEVED, OR OTHERWISE.			Male.	Female.	Total.
				Male.	Female.	Total.	Male.	Female.	Total.			
Single ..	37	82	119	11	32	43	7	6	13	17	31	48
Married ..	74	59	133	18	33	51	6	9	15	38	32	70
Widowed ..	10	38	48	2	11	13	1	3	4	4	18	22
Unascertained..	..	1	1	5	..	5	3	..	3	4	..	4
TOTAL ..	121	180	301	36	76	112	17	18	35	63	81	144

CAUSES.

CAUSES.	THE ADMISSIONS.			THE DISCHARGES.			THE DEATHS.					
	Recovered.			Removed, Relieved, or otherwise.			Total.					
	Male.	Female.	Total.	Male.	Female.	Total.	Male.	Female.	Total.			
MORAL—Mental Anxiety, Grief, and Poverty	8	36	44	6	11	17	3	2	5	12	16	28
Domestic Troubles ...	5	14	19	2	12	12	1	3	4	3	5	8
Religious Excitement ...	2	5	7	...	2	4	...	2	2	1	3	3
Disappointments in Love ...	4	7	11	...	6	6	1	1	1	1	1	3
Fright... ..	1	1	2	...	2	2	...	1	1	1	1	3
Irregular Habits ...	4	2	6	1	...	1	3	4
Seduction and Remorse ...	4	...	4	2	2	4	...	1	1	1	1	4
Disappointments and Reverses ...	1	...	1	1	...	1	1
Over-Study ...	9	26	35	6	11	17	4	2	6	10	8	18
PHYSICAL—Hereditary Taint ...	23	7	30	6	10	16	1	...	1	7	9	16
Intemperance ...	2	...	2	2	...	2	2	...	2
Onanism ...	8	...	8
Sunstroke ...	8	46	54	1	28	30	1	1	1	3	3	3
Over-work ...	1	2	3	3	3	6	1	...	1	9	12	21
Previous Attacks ...	7	1	8	1	3	4
Ill-health ...	8	4	12	1	1	2	1	...	1	4	4	8
Old Age ...	1	1	2	3	2	5
Epilepsy ...	4	...	4	1	1	2	2	2	4
Cerebral Disease ...	2	2	4
Injury to Head from Falls or Blows	2	2	4
Metallic Poisoning ...	2	2	4
Congenital ...	2	8	10	...	5	5	1	1	1	1	1	4
Puerperal State ...	2	...	2
Acute Rheumatism... ..	2	...	2	...	1	1
Super-Lactation ...	2	2	4	1	1	2
Typhus Fever	2	2	2
Climacteric Period	1	1	1
Miscarriage ...	29	63	92	7	10	17	6	6	12	16	22	38
Menstrual Irregularity	...	1	1	...	1	1	1
Unascertained	1	1
Not Insane ...	124	233	357	42	108	150	21	22	43	80	96	176
Deduct Repetitions for Combined Causes	3	53	56	6	32	38	4	4	8	17	15	32
TOTAL	121	180	301	36	76	112	17	18	35	63	81	144

TABLE XI.

Showing form of Mental Disorder in the Patients Admitted during the Year 1872.

FORM OF MENTAL DISORDER.						Male.	Female.	Total.
MANIA	36	92	128
„	Acute	9	9
„	Recurrent	3	3
„	Chronic	1	1
„	Senile	7	7
„	Suicidal	2	1	3
„	Puerperal	2	2
„	with General Paralysis	8	10	18
„	with Epilepsy	5	4	9
„	„	„	„	„	„
MELANCHOLIA	24	21	45
„	Suicidal	8	11	19
„	Puerperal
„	with General Paralysis	2	..	2
„	with Epilepsy	1	..	1
DEMENTIA	1	7	8
„	Senile	2	..	2
„	with General Paralysis	1	5	6
„	with Epilepsy
„	with Paralysis
IMBECILITY	20	2	22
„	Congenital
„	with General Paralysis	9	..	9
„	with Epilepsy	2	3	5
IDIOCY
„	with Epilepsy
„	„	„	„	„	„
NOT INSANE	2	2
TOTAL						121	180	201

TABLE XII.

Showing the Station or Occupation of Patients admitted during the Year 1872.

MALES.

Artist	1	Brought forward ..	61
Comedian	1	Hatter	1
Compositors	2	Ironmonger	1
Printer	1	Hosier	1
Fishmonger	1	Silversmith	1
Waterman	1	Gold Chain Maker	1
Seamen	2	Turner	1
Shipwright	1	French Polisher	1
Mast and Block Maker	1	Retired Builder	1
Cooper	1	Stonemason	1
Carpenters	4	Marble Polisher	1
Coachbuilder	1	Railway Inspector	1
Saddler	1	Dispenser	1
Jockey	1	Exciseman	1
Grooms	2	Clerks	5
Coachmen	7	Hairdresser	1
Cabdriver	1	Trimming Manufacturer	1
Omnibus Conductor	1	Gas Fitter	1
Carman	1	Brass Finisher	1
Bill Poster	1	Labourers	13
Potman	1	Dock Labourers	2
Cigar Maker	1	Discharged Soldier	1
Coffeehouse Keepers	2	Sons of Pensioners	2
Shopkeeper	1	Brush Makers	2
Butler	1	Plasterers	2
Servants	3	Commission Agent	1
Waiter	1	Law Student	1
Porters	6	Draper's Assistant	1
Grocer's Porter	1	Hawkers	2
Greengrocer	1	House Painters	4
Tailors	6	No occupation, or not ascer-	
Shoemaker	4	tained	7
Bootcloser	1		
		Total	121
Carried forward	61		

TABLE XII.—*continued.*

*Showing the Station or Occupation of Patients admitted
during the Year 1872.*

FEMALES.

Servants	52	Brought forward	119
Tailoresses	4	Builder	1
Needlewomen	12	Sawyer	1
Housekeepers	2	Gas Fitter	1
Kitchen Maid	1	Coal Agent	1
Baker's Shopwoman	1	Milkman	1
Led a Blind Man about	1	General Dealer	1
Draper's Assistant	1	Labourers	77
Book Folder	1	Painter	1
Street Hawkers	3	German Baker	1
Housewives	2	Hawker	1
Dressmakers	3	Lighterman	1
Governesses	2	Carter	1
Cooks	4	Carpet Beater	1
Monthly Nurses	2	Tailors	33
Laundrywomen	3	Hall Porter	1
Prostitutes	3	Bricklayers	2
Charwomen	5	Policeman	1
Machinist	1	Shipwright	1
Cap Maker	1	Marble Polisher	1
Seamstress	1	Watchmaker	1
Silk Weaver	1	Organ Builder	1
Lady	1	Bootmakers	2
Milliners	2	Coachman	1
Lodging-House Keeper	1	Jeweller	1
At School	1	Carman	1
Wives, widows, and daughters of—		Naval Officer	1
Road Sweeper	1	Mechanic	1
Clerks	3	Butler	1
Engineer	1	Workhouse Master	1
Carpenters	2	Compositor	1
Paper Stainer	1	Superannuated Military Officer	1
		No occupation, or not ascer- tained	20
Carried forward....	119	Total.....	186

J. PEEKE RICHARDS.

HENRY RAYNER, M.D.

Middlesex.

TO HER MAJESTY'S JUSTICES OF THE PEACE FOR
THE COUNTY OF MIDDLESEX, IN QUARTER
SESSION ASSEMBLED.

*THE EIGHTH REPORT of the Clerk of the
Peace of the said County (1) as to Lunatics
made chargeable to the County, pursuant
to 16th and 17th Victoria, Cap. 97, Sec.
98; and (2) as to Lunatics sent to Asylums
from the different Prisons of the County
under Warrants of Her Majesty's Secretary
of State for the Home Department.*

THE CLERK OF THE PEACE begs to report that he has attended at the Metropolitan Police Courts, at Petty Sessions, and on different Parish Officers throughout the Metropolitan District and its suburbs relative to *eighty-eight* cases, in consequence of notices given to him under the Act by Parish Officers of their intention to apply for Orders charging the County with the Lunatics' maintenance, and for repayment of the cost of past maintenance, and of expenses incurred within twelve months previous to the notices.

In five of the cases the applications were either abandoned, or the Magistrates having cognizance of them refused to make orders upon the County Treasurer, in consequence of the action of the Clerk of the Peace.

Of the remaining *eighty-three cases*, two were adjourned for further information, and eighty-one were deemed chargeable to the County. Of this number, *seventy-seven* were either natives of Scotland or Ireland, or were foreigners having no settlement in England.

THE CLERK OF THE PEACE has also inquired into two cases removed to the Asylums under Warrants of the Secretary of State. In one case an order was made upon the County; in the other upon the Parish of Saint Marylebone. The expenses have altogether amounted to the sum of *two hundred and fourteen pounds nine shillings and tenpence* for the past year, while it is matter for observation that but for the abandonment of the application in the five cases above referred to, and for the orders made at the instance of the Clerk of the Peace for the removal of some Criminal Lunatics to Broadmoor, the County rate would have been charged, not only for the maintenance of the Lunatics for twelve months previous to the notice of application in each case, but also for their future maintenance, so long as they might remain in the Asylum.

Assuming that, but for the action of the Clerk of the Peace, the Lunatics in the cases in which he succeeded, had only been chargeable to the County for twelve months each, the saving to the County, according to the present weekly expense of each Patient, has amounted to *one hundred and sixty-two pounds*, and to the further sum of *one hundred and sixty-two pounds* for repayment of past maintenance, exclusive of expenses of examination and removal to the Asylum.

THE CLERK OF THE PEACE has also attended at the different

Pension Offices in the County, and has received and paid over to the County Treasurer the pensions of three Pauper Lunatics, now inmates of one or other of the County Asylums, amounting during the year to the sum of *fifty-six pounds nine shillings and eight pence.*

*

Which the Clerk of the Peace submits, &c.

RICHD. NICHOLSON,

Clerk of the Peace.

... Office in the County, and has received and paid
over to the County Treasurer the balance of three hundred
dollars, being the amount of one or other of the County
Assessors' accounts during the year to the end of August
... and eight pence.

Which the Clerk of the Peace submits, for
... RICHARD WATKINS

Clerk of the Peace

