

**Annual report of the County Lunatic Asylum, at Wotton, near Gloucester :
1871 / Gloucestershire General Lunatic Asylum.**

Contributors

Gloucestershire General Lunatic Asylum.
Hayward, J. Curtis.
Forster, John, 1927-1982.
Cleaton, John D.

Publication/Creation

Gloucester : Printed by Smart, machine printer, [1872]

Persistent URL

<https://wellcomecollection.org/works/xs8ds8hq>

License and attribution

This work has been identified as being free of known restrictions under copyright law, including all related and neighbouring rights and is being made available under the Creative Commons, Public Domain Mark.

You can copy, modify, distribute and perform the work, even for commercial purposes, without asking permission.



Wellcome Collection
183 Euston Road
London NW1 2BE UK
T +44 (0)20 7611 8722
E library@wellcomecollection.org
<https://wellcomecollection.org>

ANNUAL REPORT

OF THE

COUNTY



LUNATIC ASYLUM,

AT WOTTON,

NEAR GLOUCESTER.

1871.

Gloucester :

SMART, MACHINE PRINTER, LITHOGRAPHER, BOOKBINDER, ETC.,

38, NORTHGATE STREET.



Digitized by the Internet Archive
in 2018 with funding from
Wellcome Library

OFFICERS FOR THE YEAR 1872.

Visiting Magistrates for the County.

The Right Hon. the Earl of Ducie
John Curtis Hayward, Esq., CHAIRMAN
Granville Edwin Lloyd Baker, Esq.
John Altham Graham Clarke, Esq.
Wm. Rutherford Ancrum, Esq., M.D.
Thomas Barwick Lloyd Baker, Esq.
Sebastian Stewart Dickinson, Esq., M.P.
Henry Forbes, Esq.
Henry Hurry Goodeve, Esq., M.D.

Sir T. Hyde Crawley Boevey, Bart.
Thomas Marling, Esq.
William Charles Lucy, Esq.
John Daniel Thomas Niblett, Esq.
Thomas Gambier Parry, Esq.
The Rev. Thomas Peters
William Nash Skillicorne, Esq.
Joseph Yorke, Esq.
John Edw. Dorrington, jun., Esq.

Visiting Justices for the City.

John Knight, Esq.

Thomas Robinson, Esq.

Honorary Consulting Physician.

W. W. Williams, Esq., M.D., F.L.S.

Superintendent.

Ebenezer Toller, Esq., M.R.C.S., L.S.A.

Senior Assistant Medical Officer.

Thomas A. Buck, Esq., M.B., Lond.

Junior Assistant Medical Officer.

James A. Philip, Esq., M.A., M.B., Aberdeen.

Matron.

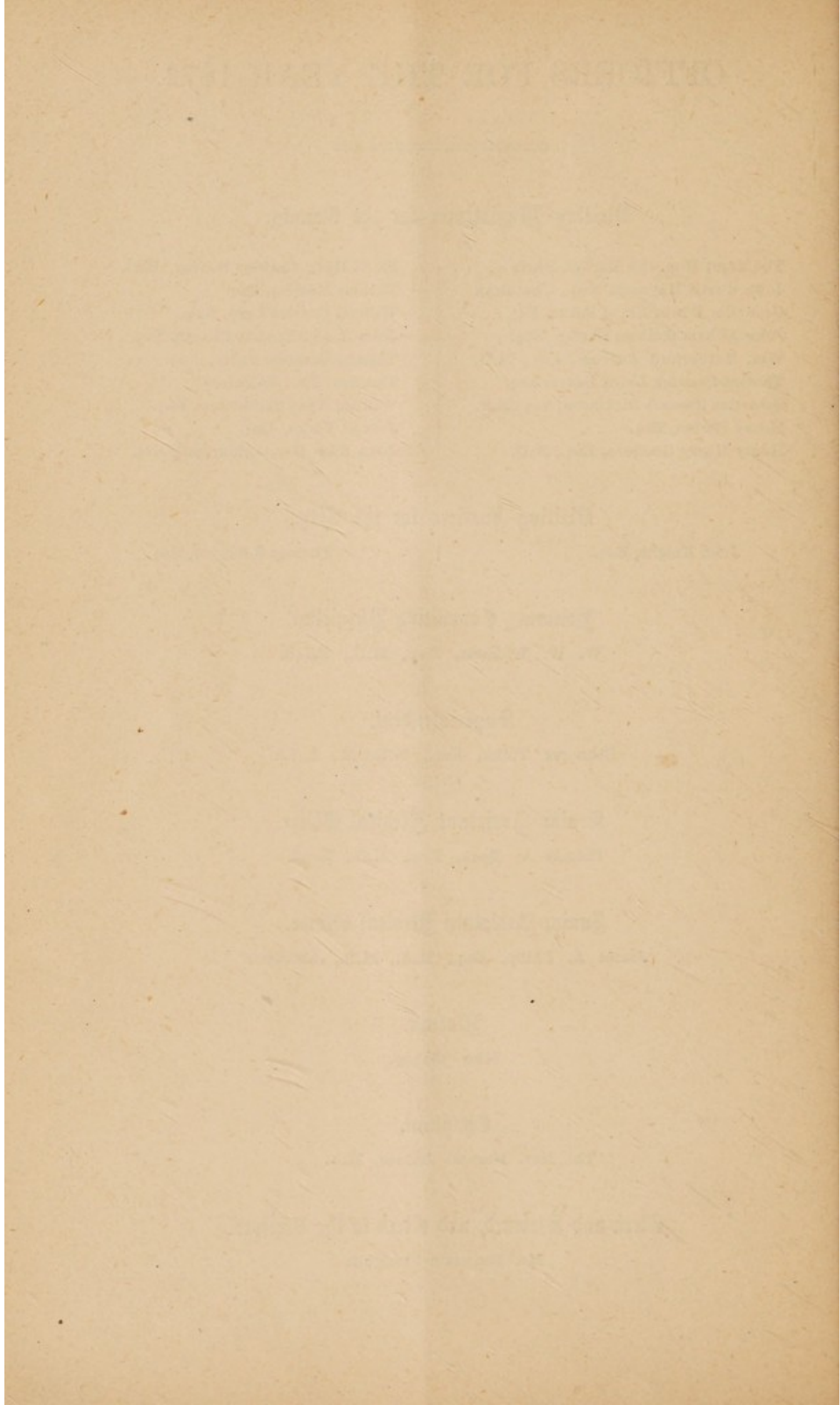
Miss Bishop.

Chaplain.

The Rev. Herbert Haines, M.A.

Clerk and Steward, and Clerk to the Visitors.

Mr. Benjamin Shadgett.



REPORT

OF

THE VISITING JUSTICES.

The following Report of the Visitors of the Lunatic Asylum at Wotton, in and for the County of Gloucester, made in accordance with the provisions of the "Lunatic Asylums' Act, 1853," was laid before the Epiphany Court of Quarter Sessions, held at Gloucester, for the County of Gloucester :—

THE Visitors have pleasure in reporting that the Works at the County Lunatic Asylum, which were sanctioned by the Court at the last Easter Quarter Sessions, are progressing favourably.

The two separate dayrooms on the male side are nearly completed, and the alterations and additions in the lower male wards are considerably advanced, and it is hoped will be fit for occupation before next summer. These promise to impart quite a new aspect to a part of the building which had long been an opprobrium to the institution, having been constructed long ago, when the provision thought necessary for the care of lunatics was very different from what has been since found to be most advantageous for them. It was gloomy, and unsuitable for promoting those habits and feelings which, for the sake of cure and improvement, it is most important to encourage.

The alterations on the female side promise also, when completed, to become great improvements: it is hoped that this portion will also be again occupied in the summer.

The enlargement of the Recreation-Hall is nearly completed, and seems likely to afford the means of a large proportion of the patients being present at these occasional entertainments, which they enjoy so much, and which are found from experience, not only to cheer them and promote good feeling among all parties, but to conduce actively towards cure.

The Chapel is not so much advanced as the other buildings; the foundations, however, were laid and built up to the ground-line before winter, so that the work may be proceeded with vigorously as soon as the season permits.

The progress of such works in the midst of the Institution has of necessity rendered the management of it much more difficult, not only from the immediate contiguity of so many strange workmen, but also from the curtailment of airing-yards and the closing of some ordinary dayrooms, causing an undesirable crowding of patients both indoors and in the yards. The Visitors have therefore the more satisfaction in reporting that the establishment has been maintained in a satisfactory condition throughout the year. No serious accident of any kind has occurred nor anything to interfere with the harmonious working of the Institution.

The health of the patients has been generally good, and although rather more than the ordinary number of deaths, amounting to 87, have occurred, they have been principally among the aged and feeble cases.

The number of cures, however, has been very satisfactory, amounting to 82 discharged as cured, and 25 sent home relieved; so that the whole number of discharges from the house, including seven out on trial, two escapes, and one returned not insane, have amounted to 204, exceeding the number of admissions, which have been 181, by 23. Diminishing by that amount the pressure upon the means of accommodation which existed at the close of 1870, this has prevented the necessity of refusing admission to any patients sent direct from parishes within the county, which it was feared must have been resorted to, until the new buildings were completed. It is now hoped that those pauper lunatics belonging to unions in the county who are confined in other county asylums may soon be received here also.

The number of patients remaining in the Asylum at this time is 581, against 604 at the close of last year, and less than in the year 1863, when the numbers were 593. Considering that the admissions during 1863 had been 152, and those of the three preceding years had barely exceeded an annual average of 140, and that the rate of admissions for the last four years had risen to an average of 180, the fact that the pauper lunatics remaining in the County Asylum have not increased with this great increase of admissions, but have rather decreased, is very remarkable, and can only be accounted for by the greatly increased proportion of discharges.

Such a result could be effected only by great skill in general management and unwearied attention to each individual case shown by the superintendent, Mr. Toller, supported as he has been this year by two very able medical assistants, Dr. Thomas A. Buck and Dr. James A. Philip. It is the more creditable to them because the circumstances before alluded to have placed this year unusual difficulties in the way of management.

The ordinary entertainments, too, which have been kept up in spite of the difficulty of finding sufficient space, have entailed upon the officers and those who have had the arrangement of them a greatly-increased amount of care and labour, and it is highly creditable to them that they have been maintained at all.

Increased license to visit their friends has this year been granted to a large class of patients who have long been inmates of the Asylum, and it is believed with good effect. The friends, also, of patients who, though not cured, did not appear likely to derive material benefit by remaining at the Asylum, have been encouraged to remove them; and the guardians in many instances have shown a disposition to assist by giving a liberal allowance to the parties at their homes, and in other cases have afforded some extra diet and comforts in the Workhouse to those sent there: the number of such cases discharged relieved is 25.

Arrangements have been made for the employment of two additional night attendants. Also, in consequence of alterations, the engineer is enabled to occupy a lodge and sleep upon the premises, which is considered a circumstance of advantage in case of any emergency arising at night.

A coal-ash walk has been made round the Asylum grounds, which enables the female patients to have a day walk almost every day in winter.

Miss Martha Mary Davies, who died in August last, by her will gave and bequeathed to the governors and trustees for the time being of the Gloucester Lunatic Asylum, for the benefit of that institution, the sum of £10,000. 3 per Cent. Reduced Annuities. This legacy has been claimed by the trustees of Barnwood House Institution, as representing the charity portion of the Gloucester Lunatic Asylum as it existed from its commencement until the separation in 1856, and has been continued since under the same trusts and for the same objects. The Visitors, having carefully considered this question, are disposed to agree in this view, reserving, however, their right in case of dispute to assert their claim under the will.

The Commissioners in Lunacy visited the Asylum on the 18th of March, and made a report, which was read to the Court at the next sessions, and is appended hereto.

J. CURTIS HAYWARD, *Chairman.*

REPORT OF THE COMMISSIONERS IN LUNACY.

GLOUCESTER COUNTY ASYLUM,
SATURDAY, 18TH MARCH, 1871.

YESTERDAY and to-day we have visited every part of this Asylum, and seen all the patients excepting seven, who are at present away on leave. The structural changes, which have been submitted to and generally approved by our Board, will be begun as soon as the vote is taken for the cost of them next week; and besides other conveniences and advantages much required, will include a detached chapel for the accommodation of 320 patients and 30 officers.

Since this Asylum was last visited in October, there have been 63 admissions (of which 18, or somewhat over a fourth, were re-admissions), 33 males and 30 females; 38 discharges, 16 males and 22 females, of which all but 3 of the former and 7 of the latter were recoveries; and 38 deaths, 22 males and 16 females, all from disorders ordinary in Asylums. No inquest was found necessary in any case: the principal causes having been general palsy and epilepsy, apoplexy, and other forms of brain disease, senile decay and exhaustion, phthisis, and other diseases of the lungs. Nineteen post mortem examinations were made, the proper notification having been given in each case, and the due consent obtained. (Since this was written Mr. Toller has handed to us the form employed, with a view to its being laid before our Board.)

The numbers on the books are 599, 279 males and 320 females, leaving in each division 17 vacant beds; and of these patients, 278 males and 314 females were seen by us in the several wards and the farm cottage yesterday. Their condition upon the whole was good, their persons and their clothing in both divisions being well attended to: but we very strongly recommend that, for winter wear, all the men should have under flannels, and the women more woollen dresses. In other personal respects there is also satisfactory report to make; absence of excitement being the rule in all the wards, and the exceptions limited to two or three inmates of the female epileptic ward, and one noisy woman in lower fourteen: while of strong or unsightly dresses we noticed none among the women, and not more than one or two in the men's division.

It gives us pleasure to have still to remark, as on many former occasions, how much is done here to counteract disadvantages incident to the many structural defects of the wards by the liberal supply, not alone of associated amusements, but of ward entertainment and occupation. The library is unusually good, and the arrangements for frequent and sufficient distribution of the books all that we could wish. The schools also continue to work fairly well, especially on the female side, where we found twenty patients variously occupied to-day, there being an average attendance daily of about twenty-five, and by the services of a schoolmistress (formerly a patient), having evident interest in the duty, elementary instruction being actually imparted to many adults. The average attendance on the men's side is about 20, but here the work is hardly so well done; and it will be well worth the attempt to obtain, when practicable, equal efficiency as on the women's side. The associated recreations are frequent and various; the numbers present varying from 140 to 250—the former at the weekly dances, and the latter at the theatricals, and magic lanthorn, and other winter shows.

The beds and bedding throughout the Asylum we found to be in fair condition, but we must make exception as to some of the coir beds, which will, however, we are assured, be all replaced ultimately by hair. Such earth closets as are in the wards we thought were in an unsatisfactory state; and we regretted to learn that arrangements have not yet been made to supply a change of water in bathing to each patient. A difficulty is doubtless interposed by the inadequate bath-rooms, but this defect will be partly supplied on the men's side by the room with two baths, which the impending structural changes will involve; and we should strongly recommend that a new general bath-room be built in the female division.

The records show that the regular daily employment is as usual: on the men's side 58 being engaged on the land, 28 at trades, 18 in other general useful work, and 2 as lodge porters: while on the women's, 68 are at needlework, 40 in the laundry department, and 7 in the kitchen offices: the mere workers in the wards of both sexes being about 100. The numbers at the Religious Services, limited still by the inadequacy of existing accommodation, average 220 of both sexes on Sundays, and 52 on week days. We saw the dinner in the wards yesterday, which consisted of beef-steak pudding and potatoes, boiled in their jackets, with half-a-pint of ale to each person, and thought it good as well as properly served.

The seclusion since the last visit which we find recorded comprises 57 instances, applicable to 25 patients; but this no longer includes the class of cases—of which we observed some as we passed through the wards, and specially adverted to at the last visit—where

the door is locked upon patients in the day time, to prevent intrusion from others. We think it desirable, as well as necessary, still to include these, which will accordingly be done. From the same records we learn that 44 of both sexes are under treatment for bodily disease, one woman suffering from typhoid fever. There has not, however, been any special cause for what will have been noticed as a somewhat high rate of mortality during the last five or six months; this having resulted from the many old cases and the unusual severity of the winter. The numbers seen by us in bed yesterday were not more than 5 of each sex, the health of the Asylum being at present generally good: but these were scattered over all parts of the building, and it seems to us especially desirable that such arrangements should at once be made as will admit of a ward being set apart in each division as an infirmary for the sick, where there should be special nursing and hospital comforts. The suggestion for additional night attendance made at the last visit, has not yet received the favourable reception to which it is entitled, and which we trust will shortly be given to it.

Mr. Toller, who continues to labour zealously and successfully in his important duties, has now very efficient help from his Assistant Medical Officers, Dr. Buck and Dr. Philip.

(Signed,)

JOHN FORSTER,
JOHN D. CLEATON, } *Commissioners in Lunacy.*

Statistical Tables.

TABLE I.

Shewing the Admissions, Re-admissions, Discharges, and Deaths, during the Year 1871.

	M.	F.	Total.
In the Asylum January 1st, 1871	278	326	604
Admitted for first time during the year	74	66	140
Re-admitted during the year	19	22	41
Total under care during the year	371	414	785
Discharged or removed :—			
" recovered	40	42	82
" relieved	9	16	25
" not relieved	0	0	0
" not insane... ..	1	0	1
Escaped	2	0	2
Died	44	43	87
Total Discharged and Died	96	101	197
Remaining in Asylum, Dec. 31st, 1871 (inclusive of 3 males and 4 females absent on trial	275	313	588
Average number resident during the year	278	321	599

TABLE II.

Shewing the Admissions, Discharges, and Deaths, from the Opening of the Asylum to the present date, Dec. 31st, 1871.

	Total.
Patients admitted during the period of 47 years	5340
Discharged or removed :—	
" recovered	2500
" relieved	438
" not improved	30
" removed or transferred	324
" harmless or improper	85
Died	1569
Total discharged and died during the 47 years	4946
Remaining 31st December, 1871	588

TABLE IV.

Shewing the History of the Annual Admissions since the Opening of the Asylum, with the Discharges and Deaths, and the Numbers of each Year Remaining on the 31st December, 1871.]

Year.	Admitted.				Of each Year's Admissions, Discharged and Died in 1871.						Total Discharged and Died of each Year's Admissions to December 31st, 1871.						Remaining of each Year's Admissions, Dec. 31, 1871.					
	New Cases.		Relap- sed Cases.		Recov'd		Not Reliev- ed.		Died.		Recovered.		Relieved		Not Re- liev'd.		Died.		M	F	T	
	M	F	M	F	M	F	M	F	M	F	M	F	M	F	M	F	M	F	M	F	T	
Previous to																						
1864	
1864	81	51	11	12	155	12	16	28	1140	
1865	59	79	10	14	162	1	1	2	4	1	1	2	34	35	69	4	10	
1866	58	47	17	17	139	1	1	2	3	2	3	5	26	39	65	9	14	
1867	61	56	6	23	146	2	3	5	23	31	54	4	10	
1868	*74	69	14	28	185	1	0	1	31	40	71	4	7	11	1	1	2	21
1869	†59	51	25	21	156	3	2	5	29	42	71	5	7	12	1	1	2	35
1870	‡73	84	13	24	194	14	15	29	3	2	1	3	36	33	69	11	7	18
1871	§74	66	19	22	181	25	23	48	5	9	9	21	35	45	80	6	13	19	1	1	2	21
Total	539	503	115	161	5534	40	42	82	11	45	43	87	239	288	2439	50	57	551	3	3	82	201
																						130
																						1471
																						275
																						313
																						588

* Of these, 4 being found not Insane did not remain in the house.
 † Of these, 1 being found not Insane did not remain in the house.
 ‡ Of these, 2 being found not Insane did not remain in the house.
 § Of these, 1 being found not Insane did not remain in the house.

14
TABLE V.

Shewing the Causes of Death during the Year 1871.

CAUSES OF DEATH.						Male.	Female.	Total.
<i>Cerebral, or Spinal Diseases:—</i>								
Epilepsy						7	4	11
Softening of the Brain						13	3	16
General Paralysis						4	2	6
Melancholic Exhaustion...	2	2
Maniacal Exhaustion						1	3	4
Apoplexy						1	2	3
<i>Thoracic Diseases:—</i>								
Disease of the Heart						2	2	4
Phthisis						6	6	12
Pleurisy and Empyema	1	1
Acute Bronchitis	1	1
Broncho-Pneumonia	1	1
Pneumonia	1	1
<i>Abdominal Diseases:—</i>								
Rectocele and Diarrhœa	1	1
Tubercular Peritonitis						1	...	1
Pyelitis	1	1
Acute Bright's Disease						1	...	1
Hepatitis from Gall Stones	1	1
Cirrhosis of the Liver						1	...	1
Cancer of Uterus	1	1
Fibroid Tumor of Uterus	1	1
Caries of Vertebræ	1	1
Erysipelas	1	1
Pyœmia						1	1	2
Enteric Fever	1	1
Atrophy...	1	1
Senile Decay						6	5	11
TOTAL						44	43	87

TABLE VI.

Shewing the length of Residence of those Discharged Recovered, and of those who have died in the Year 1871:

Length of Residence.	Recovered.			Died.		
	Male.	Female.	Total.	Male.	Female.	Total.
Under 1 month	3	...	3	4	5	9
From 1 to 3 months	8	6	14	3	2	5
„ 3 months to 6 months... ..	14	16	30	5	6	11
„ 6 „ to 9 „	4	9	13	3	2	5
„ 9 „ to 12 „	3	1	4	2	1	3
„ 1 year to 2 years	7	7	14	5	2	7
„ 2 years to 3 „	2	2	3	1	4
„ 3 „ to 4 „	1	...	1	2	1	3
„ 4 „ to 6 „	4	3	7
„ 6 „ to 8 „	1	1	2	4	6
„ 8 „ to 10 „	2	3	5
„ 10 „ to 15 „	5	9	14
„ 15 „ to 20 „	2	3	5
„ 20 „ to 25 „	1	1
„ 25 „ to 30 „	1	...	1
„ 30 „ to 40 „	1	...	1
TOTAL... ..	40	42	82	44	43	87

TABLE VII.

Shewing the Social condition of Patients admitted in 1871

	Married	Single	Widowed	Total
Males	47	38	8	93
Females	40	33	15	88
Total	87	71	23	181

TABLE VIII.

Shewing the Education of those admitted in 1871

	Can read	Can read & write	Neither read nor write	Unknown	Total
Males	8	52	20	13	93
Females	22	41	12	13	88
Total	30	93	32	26	181

TABLE IX.

Shewing the Religion of those admitted in 1871

	Church of England	Independent	Wesleyan	Baptist	Primitive Methodist	Congregationalist	Unitarian	Bible Christian	Roman Catholic	Unknown	None	Total
Males	62	7	3	4	4	1	2	7	3	93
Females	55	5	8	11	3	...	1	1	...	2	2	88
Total	117	12	11	15	7	1	1	1	2	9	5	181

TABLE X.

Shewing the Probability of Cure of Patients when admitted in 1871.

	Probably Curable	Incurable, or Chronic	Total
Males	30	63	93
Females	33	55	88
Total	63	118	181

TABLE XI.

Shewing the Age of the Patients admitted in 1871.

	Males	Females	Total
Above 10 and under 20 years	6	3	9
" 20 " 30 "	18	18	36
" 30 " 40 "	17	13	30
" 40 " 50 "	18	17	35
" 50 " 60 "	20	20	40
" 60 " 70 "	13	14	27
" 70 " 80 "	1	2	3
" 80 " 90 "	1	1
Total	93	88	181

TABLE XII.

Shewing the Occupation of the Patients admitted in 1871.

MALES.			
Fly Drivers	2	Hawker	1
Porter	1	Jockey	1
Baker	1	Leather Cutter	1
Butchers	3	Gentleman's Servant	1
Ornamental Carver	1	Basket Maker	1
Woodcutter	1	Groom... ..	1
Carpenters	3	Page	1
Miners	5	Plasterer	1
Farmer	1	Commercial Traveller	1
Telegraph Labourer	1	Gardener	1
Coal Merchant	1	None	7
Mason's Labourer	1	Unknown	1
Cloth Workers	2	Total	93
Farm Labourers	4	—	
Omnibus driver	1	FEMALES,	
School Teacher	1	Housekeeper	1
Labourers	18	Dressmaker	1
Corn Porter	1	Charwomen	4
Discharged Soldiers	2	Schoolmistress	1
Wool Sorter	1	Seamstresses	2
Miller	1	Hucksters	3
Supercargo	1	Housewives	26
Policeman	1	Domestic Servants	9
Stone Masons	3	Labourers	7
Watchmaker	1	Straw Bonnet Maker	1
Mariner	1	Worker in Paper Mill	1
Gamekeeper	1	Cloth Workers	3
Accountant	1	Milliners	2
Innkeepers	3	Shop Assistant	1
Shoemakers	2	Laundress	1
Pork Butchers	2	Shoebinder	1
Sawyer	1	Daily Governess	1
Blacksmith	1	Factory Hand	1
Waterman	1	None	22
Coachman	1	Total	88
Labourers at Wagon Works... ..	2		
Printer	1		

TABLE XIII.

*Shewing the Probable Causes of Insanity in 68 of the Patients admitted
in 1871.*

MORAL.				PHYSICAL.			
	M	F	T		M	F	T
Grief	4	6	10	Softening of Brain ...	1	...	1
Pecuniary & Domestic } Anxiety ... }	3	10	13	Injury to Head ...	2	...	2
Marriage	1	...	1	Epilepsy	3	3	6
Religious Excitement ...	1	2	3	Intemperance ...	5	2	7
Love (blighted)... ..	1	...	1	Overwork	1	...	1
Fright	1	1	2	Low Fever	2	3	5
Illegitimate Pregnancy...	...	2	2	Brain Fever	1	...	1
				Debility after Diarrhoea	1	...	1
				Rheumatism in Head ...	1	...	1
Total	11	21	32	Sunstroke	1	...	1
				Congenital	3	...	3
				Lactation	1	1
				Puerperal State...	4	4
				Paralysis...	1	1
				Cancer of Uterus	1	1
				Total	21	15	36

Hereditary taint in 20 Males and 24 Females. Total 44.

TABLE XIV.

Shewing the Probable Curable Cases in the Asylum, December 31st, 1871.

Males.	Females.	Total.
8	15	23

TABLE XV.

Meteorological Observations taken at the County Lunatic Asylum during the Year 1871. Latitude, 51° 53' N; Longitude, 2° 15' W; Elevation above Sea, 100 feet.

Year 1871.	Months.	Pressure of Atmosphere in month.		Temperature of Air in Month						Vapour.			Mean degree of Humidity, satn. = 100.	Mean weight of a cubic foot of air.	Mean reading of Ther. mometer.			Mean Amount of Ozone.	Wind, Relative proportions of.				Mean Amount of Cloud.	Rain.		
		Mean.	Range.	Highest.	Lowest.	Range.	Of all highest.	Of all lowest.	Mean.	Daily Range.	Air.	Dew Point.			Elastic force.	Weight.	Short of saturatn.		grs.	in sun.	Minim. on grass.	Mean force.		N	E	S
January	...	29.793	1.512	45.5	6.0	39.5	38.1	29.6	8.5	33.7	29.8	.166	1.9	0.4	560	49.4	24.5	0.6	8	8	6	9	7	5.8	7	1.28
Feb.	29.939	1.178	63.0	28.0	35.0	51.0	38.9	12.1	44.2	38.1	.230	2.7	0.7	551	69.2	34.0	0.7	4	3	8	13	14	8.0	14	1.35
March	...	29.966	1.074	73.0	27.0	46.0	58.5	38.2	20.3	46.4	40.2	.249	2.9	0.7	549	94.9	34.0	0.7	7	5	8	11	9	4.5	9	1.26
April	29.747	1.045	68.0	30.0	38.0	60.6	43.0	17.6	49.8	43.6	.285	3.3	0.8	540	101.8	41.7	0.8	6	4	6	14	13	6.6	13	2.35
May	30.034	0.528	85.0	33.0	52.0	66.8	41.6	25.2	53.8	43.1	.278	3.1	1.5	542	106.4	43.1	0.6	8	10	5	8	4	5.2	4	1.19
June	29.897	0.736	84.0	36.0	48.0	67.7	48.8	18.9	55.8	49.2	.351	3.9	1.0	536	109.4	49.6	0.5	9	9	5	7	15	7.7	15	2.92
July	29.787	0.766	81.0	46.5	34.5	69.3	52.2	17.1	60.9	53.7	.413	4.6	1.4	529	115.7	54.5	0.8	6	1	9	15	22	6.1	22	4.36
August	...	29.927	1.110	92.5	45.0	47.5	77.7	52.7	25.0	65.2	55.4	.439	4.8	2.0	527	132.5	54.5	0.6	6	5	8	12	3.5	8	1.65	
Sept.	29.854	1.341	79.5	39.5	40.0	64.2	48.2	16.0	56.3	49.8	.358	4.0	1.0	535	97.5	49.1	0.7	7	10	5	8	5.7	13	5.75	
Oct.	29.871	1.438	66.8	33.0	33.8	58.9	44.8	14.1	51.4	46.9	.323	3.6	0.7	541	85.9	43.5	0.5	4	4	10	13	5.6	15	1.48	
Nov.	29.954	0.923	54.5	21.0	33.5	45.0	32.5	12.5	38.9	33.2	.191	2.2	0.6	557	60.6	34.4	0.4	11	9	4	6	5.3	8	0.67	
Dec.	30.037	1.235	53.2	18.7	34.5	44.2	32.6	11.6	38.8	34.7	.203	2.4	0.4	558	51.4	31.6	0.7	6	3	9	13	5.7	12	1.92	
Means and Totals		29.900	1.074	92.5	6.0	86.5	58.5	41.9	16.6	49.6	43.1	.290	3.3	0.9	544	89.6	41.2	0.6	82	71	83	129	5.8	140	26.18	

TABLE XVI.

*Shewing the Articles Made and Repaired in the Workroom and Wards
during the Year 1871.*

MADE.		REPAIRED.	
Aprons472	Aprons...3408
Bonnets (Garden)185	Bonnets (Garden)1304
" Straw, trimmed	... 86	Caps (Day) 694
Caps (Day) 62	" (Night) 71
" (Night) 52	Chemises4248
Chemises239	Drawers, pairs of 15
Drawers, pairs of 24	Dresses5752
Dresses447	Dressing Gown 1
Dressing Gown... 1	Frocks 2
Frocks 3	Hose, pairs of	20635
Hose, pairs of (run) 34	Jackets (Cloth) 15
Night Dresses 13	Hats 568
Neckerchiefs317	Night Dresses...1296
Petticoats (Top) 58	Neckerchiefs 275
" (Flannel) 91	Pinafores 81
Shirts375	Petticoats (Flannel)2615
Stays, pairs of 36	" (Top)2169
Waistcoats (Flannel)191	Shawls 15
Pocket Handkerchiefs...	...729	Shirts9032
Bed and Mattress Cases 62	Stays, pairs of 869
Bolster and Pillow 97	Waistcoats (Flannel)... 583
Bolster and Pillow Slips 97	Bed and Mattress Cases 485
Blankets, pairs of (Hanked) 63	Blankets, pairs of 488
" Ironing 3	Bolster Slips 587
Blinds, Window210	Blinds, Window 38
Bags 10	Bags 2
Counterpanes 38	Curtains 13
Curtains (Netted) 4	Counterpanes1450
Draperies, Window 60	Sheets, pairs of1683
Sheets, pairs of...137	Towels, Roller 195
Towels, Roller 39	" Chamber 151
" Tea156	" Bath 89
" Knife 6	" Tea 299
" Mangle 3	" Knife 22
" Toilet 6	" Toilet... 24
Table Cloths 27	Table Cloths 653
" Napkins... 6	Draperies, Window 39
TAILORS' SHOP.			
Trousers, pairs of132	Trousers, pairs of 892
Waistcoats135	Waistcoats 529
Jackets142	Jackets 544
SHOEMAKERS' SHOP.			
Boots, pairs of515	Boots, pairs of 716
Slippers, pairs of 7	Slippers, pairs of 2

[A]

Payments.

1.—SALARIES.

ESTABLISHMENT.

Officers:—

		£	s.	d.
1 Superintendent, with house, coal, candles, washing, vegetables, &c.	}	without board	600	0 0
1 Chaplain	}	ditto	80	0 0
1 Matron	}	with board, &c.	55	0 0
1 Storekeeper	}	ditto	20	0 0
1 Medical Assistant, $\frac{3}{4}$ year and 69 days at £150	}	ditto	140	17 1
1 ditto, $\frac{3}{4}$ year and 83 days at £80	}	ditto	78	3 10
1 Auditor,	}	without board	30	0 0
1 Steward and Clerk and Clerk to the Visitors	}	ditto	140	0 0
1 Assistant Steward, $\frac{1}{4}$ year at £60	}	ditto	15	0 0
1 ditto, $\frac{3}{4}$ year, at £65	}	ditto	48	15 0
			£1207	15 11

WAGES.

Attendants—Male:—

		£	s.	d.
1 Male, 1 year and 2 months, at £47...with board		54	16	8
1 ditto, 1 year and 2 months, at £37...ditto		43	3	4
1 ditto, $\frac{1}{2}$ year and 2 months, at £36...ditto		24	0	0
5 ditto, 1 year and 2 months, at £34...ditto		198	6	8
1 ditto $\left\{ \begin{array}{l} 1 \text{ year and 1 month} \\ \text{£34 } 0 \text{ } 0 \text{ } \dots \\ \frac{1}{4} \text{ year and 1 month} \\ \text{£8 } 10 \text{ } 0 \text{ } \dots \end{array} \right\}$ at £34...ditto		42	10	0
1 ditto, 1 year,at £30...ditto		30	0	0
1 ditto, $\frac{3}{4}$ year and 42 days...at £30...ditto		25	18	7
5 ditto, 1 year and 2 months, at £29...ditto		169	3	4
1 ditto, 60 daysat £29...ditto		4	15	7
1 ditto, $\frac{3}{4}$ year, 2 months, } and 28 daysat £28...ditto		27	13	2
1 ditto, 6 daysat £28...ditto		0	9	2
1 ditto, $\frac{1}{4}$ year and 83 days...at £27...ditto		12	17	4
1 ditto, $\frac{1}{4}$ year and 44 days...at £25...ditto		9	5	3
5 ditto, 1 year and 2 months, at £24...ditto		140	0	0
1 ditto, $\frac{3}{4}$ year and 32 days...at £24...ditto		20	2	8
1 ditto, $\frac{3}{4}$ year and 40 days...at £18...ditto		15	9	5
			818	11 2
Carried forward	2026	7 1

Attendants—Females :—

	£	s.	d.	£	s.	d.
Brought forward...				2026	7	1
1 Female at £20 ... with board	20	0	0			
1 ditto, 67 days at £20 ... ditto	3	13	5			
3 ditto, at £18 ... ditto	54	0	0			
1 ditto, 22 days at £18 ... ditto	1	1	1			
1 ditto, $\frac{3}{4}$ year and 12 days, at £17 ... ditto	13	6	2			
1 ditto, at £16 ... ditto	16	0	0			
1 ditto, $\frac{1}{2}$ year and 39 days, at £16 ... ditto	9	14	2			
1 ditto, at £15 ... ditto	15	0	0			
1 ditto, 42 days, at £15 ... ditto	1	16	10			
6 ditto, at £14 ... ditto	84	0	0			
1 ditto, $\frac{1}{4}$ year and 10 days, at £14 ... ditto	3	17	11			
2 ditto, at £13 ... ditto	26	0	0			
1 ditto, 60 days, at £13 ... ditto	2	2	7			
11 ditto, at £12 ... ditto	132	0	0			
1 ditto, $\frac{1}{4}$ year and 24 days, at £12 ... ditto	3	15	8			
				386	7	10

Servants—Indoor :—

	£	s.	d.			
1 Porter, 1 year and 2 months, at £22 with board	25	13	4			
1 Messenger at £10 ditto	10	0	0			
1 ditto, 72 days at £10 ditto	1	19	7			
1 ditto, 8 weeks and 2 days ... at 5/- ditto	2	1	6			
1 Cook at £25 ditto	25	0	0			
1 Kitchen Girl... .. at £12 ditto	12	0	0			
1 ditto at £10 ditto	10	0	0			
1 Housemaid at £10 ditto	10	0	0			
1 ditto, 48 days at £10 ditto	1	7	10			
1 Laundress, $\frac{1}{4}$ year at £30 ditto	7	10	0			
1 ditto, $\frac{3}{4}$ year at £26 ditto	19	10	0			
1 ditto at £14 ditto	14	0	0			
1 ditto, 30 days at £14 ditto	1	2	10			
1 ditto, $\frac{1}{2}$ year and 9 days ... at £13 ditto	6	16	2			
1 ditto at £12 ditto	12	0	0			
1 ditto, $\frac{3}{4}$ year and 35 days ... at £12 ditto	10	2	9			
1 Seamstress, $\frac{1}{2}$ year & 52 days, at £14 ditto	8	19	10			
1 ditto, $\frac{1}{4}$ year and 39 days ... at £13 ditto	4	12	9			
1 Schoolmistress at £12 ditto	12	0	0			
				194	16	7

Servants—Out-door :—

	£	s.	d.			
1 Shoemaker, 312 days, ... at 2/6 without board	39	0	0			
1 Tailor, 50 weeks 4 days, at 16/- ... ditto	40	10	8			
1 ditto, 51 weeks 3 days, at 15/- ... ditto	38	12	6			
1 Upholsterer, 52 weeks, at 24/- ... ditto	62	8	0			
1 Brewer, 52 weeks ... at 21/- ... ditto	54	12	0			
1 Farm Labourer, 51 } weeks, 6 days ... } at 14/- ... ditto	36	6	0			
1 Stoker, 49 weeks ... at 16/- ... ditto	39	4	0			
1 Seamstress with board	10	0	0			
1 Portress... .. without board	5	0	0			
				325	13	2
Carried forward				2933	4	8

Servants—Occasional :—

	£	s.	d.	£	s.	d.
Brought forward				2933	4	8
Laundry	12	14	0			
Male Attendant	0	5	0			
Nurses	3	17	6			
	<hr/>			16	16	6
				<hr/>		
				2950	1	2

2.—PROVISIONS.

	£	s.	d.		£	s.	d.
Apples	0	0	6				
Bread, 65,477 loaves	1415	0	0				
Butter, 13,560½ lbs.	872	5	7				
Buns, &c.	1	14	2				
Bacon, drying of	5	14	0				
Cheese, 193 cwt. 1 qr. 25 lbs.	571	5	4½				
Coffee, 389 lbs.	20	4	0½				
Chicory, 801 lbs.	18	19	11				
Cocoa	0	0	8				
Currants, 571½ lbs.	8	15	1				
Eggs	48	10	6				
Fish	107	9	1				
Fowls	1	6	0				
Flour, 48 sacks, 3¼ pecks	92	19	8				
Hops, 1575 lbs.	80	10	8				
Honey and Jelly	0	6	6				
Lemons and Oranges	6	4	0				
Lemon Peel and Carraways	4	19	1				
Malt, 2550 bushels	992	1	8				
Meat, 100,089 lbs.	2868	19	3				
Do. Preserved 12 lbs. (with knife)	0	7	2				
Milk, 2,611 gallons	119	12	2				
Do. Carriage of	1	4	4				
Miscellaneous, as Sago, Arrowroot, &c.	26	4	6				
Oatmeal, 10 cwt. 3 qrs. 21 lbs.	9	12	0				
Peas, 13 bushels,	4	3	6				
Raisins, 147 lbs.	2	16	4½				
Rice, 16 cwt. 2 qrs. 27 lbs.	11	4	10½				
Sugar, Lump, 2,831¾ lbs.	57	0	9½				
Ditto, Moist, 14,380¼ lbs.	192	0	9				
Sweetmeats and Sauces	0	13	4				
Tea, 2373¾ lbs	181	18	7				
Tea Paper	3	0	2				
Tobacco and Snuff	102	16	0				
Vinegar, Salt, Mustard, Pepper, and Spices	34	2	1½				
	<hr/>			7864	2	5	

3.—NECESSARIES, FUEL, LIGHTING, &
WASHING.

	£	s.	d.		£	s.	d.
Candles, Moulds, 92 lbs.	2	9	10				
	<hr/>			2	9	10	
Carried forward	2	9	10	10814	3	7	

	£	s.	d.	£	s.	d.
Brought forward	2	9	10	10814	3	7
Candles, Dips, 151 lbs.	3	11	0			
Ditto, Coloured, 9 lbs.	1	0	0			
Coal, 1293 tons 4 cwt. 2 qrs.	803	14	9			
Coke, 78 tons, 14 cwt. 1 qr.	87	0	10			
Gas	303	15	7			
Gishurst's Compound, &c.	0	11	10			
Lamp Oil, 233 gallons	51	11	9			
Lamp Cotton & Wicks, Matches, &c.	4	15	3			
Soap (Yellow), 6 tons, 5 cwt.	165	0	0			
Ditto (Scented)	0	15	0			
Soda, 5 tons, 19 cwts. 1 qr. 27 lbs.	30	4	2			
Starch and Blue	6	1	0			
	<hr/>			1460	11	0

4.—SURGERY AND DISPENSARY.

	£	s.	d.			
Bottles and Boxes	4	18	7			
Bandages	0	8	0			
Corks and Bungs	0	6	10			
Drugs	106	18	6			
Lint, Cotton Wool, &c.	3	18	0			
Labels	0	11	9			
Measures	2	3	10			
Mortar	0	2	0			
Oiled Silk	0	0	0			
Ozone Papers	0	6	6			
Plasters	4	16	4			
Surgical Instruments	7	19	10			
Surgical Appliances	1	14	3			
Tests	0	14	6			
Trusses	0	16	6			
	<hr/>			135	15	5

5.—WINES AND SPIRITS.

	£	s.	d.			
Wines and Spirits	198	14	11			
Porter, 948 gallons	63	4	0			
	<hr/>			261	18	11

6.—CLOTHING.

	£	s.	d.			
Buttons	5	6	3½			
Braces, Materials for	2	6	6			
Bonnets	7	4	5			
Calico	61	5	1¼			
Cloth, Woollen	39	9	6½			
Cord, Galloon, Laces, Ribbon, Velvet, Webbing } Whalebone, and Bobbin }	12	14	5			
Cotton, Silk, Thread, Tapes, Worsted, &c.	36	2	7½			
Drill	3	9	5			
Gloves	1	12	0			
Hats	16	2	6			
Handkerchiefs	20	14	1			
Hose	39	17	7½			
	<hr/>			246	4	6¼
Carried forward	12672	8	11			

	£	s.	d.	£	s.	d.
Brought forward	246	4	6½	12672	8	11
Jaconet, Muslin, Jean, Net, Shalloon, and Cambric	8	18	1			
Leather for Shoes, &c.	127	18	0			
Lining	1	0	7			
Llama	0	5	8			
Linen Stamps	0	9	6			
Marking Ink	1	18	6			
Moleskin	68	19	1			
Needles, Pins, Hooks and Eyes, Thimbles, &c.	5	10	8½			
Night Caps	0	6	0			
Print	75	2	7½			
Shirting	72	8	9			
Shoes and Boots	36	8	10			
Stays	6	2	4			
Shawls	28	16	0			
Wool Linsey, with Croton Cloth	17	6	1			
				697	15	3¼

7.—FURNITURE.

	£	s.	d.		£	s.	d.
American Cloth	4	14	0				
Bed Sackings, Bed Cord, Twine, &c.	6	13	5				
Blankets	79	11	3				
Bedsteads	3	3	7				
Blind Furniture	9	12	11				
Blind Cord	3	2	11				
Bagatelle Boards	2	7	0½				
Book Shelves, Cases, &c.	2	6	6				
Brass Hooks, Rings, &c.	2	12	10				
Culinary and other Utensils	92	18	11½				
Crockery, Brushes, Baskets, &c.	104	11	2				
Chairs	24	2	2½				
Clocks	2	0	6				
Cotton, Gymp, &c.	3	10	7				
Counterpanes, Quilts, &c.	21	17	0				
Cheese Cloth (for pillow-slips) and flax casing } (for bedding) }	40	2	6½				
Curtains	1	18	6				
Cocoa Fibre	10	8	0				
Furniture for Doors	9	3	1				
Flocks	7	16	10½				
Floor Cloth	5	5	0				
Hat Pins	0	4	4				
Huckaback	5	7	9				
Horsehair	21	17	0				
Knife Boards (Leather for)	0	11	11				
Lining	4	7	2				
Looking-Glasses	2	0	7				
Mats and Rugs	5	12	8				
Marking Ink	1	8	6				
Materials for Polish	1	14	8				
Needles, &c.	0	0	0				
Ottomans	0	0	9				
Carried forward	481	4	2½	13370	4	2¼	

	£	s.	d.	£	s.	d.
Brought forward	481	4	2½	13370	4	2¼
Sheetings	81	6	0½			
Settees	5	5	6			
Silecia	13	14	5¾			
Table and Tray Cloths	34	18	5			
Tables	3	2	1			
Tassels	1	1	0			
Upholsterers' Tools	0	10	6			
Waterproof Bedding	23	15	11			
Washstands	2	7	2			
Washing machine (repairing)	1	16	11			
Window Muslin	5	2	1½			
Webbing	1	0	0			
				655	4	4¼

8.—FUNERAL EXPENSES.

	£	s.	d.			
Burial Fees	32	9	0			
Coffins, &c.	35	8	0			
				67	17	0

9.—BUILDINGS AND REPAIRS.

	£	s.	d.			
Blacksmith	5	17	9			
Bricklayers' Wages	85	14	4			
Ditto Tools	0	4	0			
Bricks	9	3	4			
Burrs	1	10	2			
Brewing Furnace (repairing)	3	6	1			
Carpenters...	76	14	10			
Ditto	4	10	9			
Clerk of Works	24	16	0			
Cement	3	1	10			
Closet Pans	0	12	0			
Cartage	3	7	3			
Castings	5	12	0			
Engineers	95	7	6			
Ditto Tools	0	3	3			
Gas Fittings	12	17	1			
Glass	8	2	10			
Gravel and Sand	14	7	3			
Ironmongery	33	14	10½			
Iron Girder	1	6	4			
Lime, &c.	10	16	10			
Labourers	56	2	7			
Lead	5	18	6			
Laths	0	7	6			
Masons	9	3	11			
Ovens in Kitchen (repairing)	7	18	3			
Paint	33	17	7			
Painters', Plumbers', and Glaziers' Wages	44	8	4			
Ditto, ditto, Tools	1	6	0			
Paper for Walls	3	16	2			
Pipes, Tiles, &c.	13	14	6			
Plasterers	9	11	3			
Carried forward	587	10	10½	14093	5	6½

	£	s.	d.	£	s.	d.
Brought forward	587	10	10½	14093	5	6½
Repairing Steam Boiler	10	12	0			
Sundry Materials, as Glue, Yarn, Lubricating Oil, &c.	3	13	8½			
Slates	3	1	8			
Stone	4	3	4			
Steam Pipes, Valves, &c.	9	3	8			
Sash Line	0	0	0			
Tanks and Pipes to Kitchen Boiler (repaired)	4	0	8			
Timber	32	12	8			
Water Hydrants (repaired)	1	13	0			
				656	11	7

10.—ADDITIONS AND ALTERATIONS.

	£	s.	d.		£	s.	d.
Removing old Dormitories, and re-building Walls, &c., for extension and fitting up Recreation Room, including New Floor throughout... ..	492	15	6				
Enlarging Cottage at Entrance Lodge	44	15	7				
New Heating Apparatus, with New Air Flues, and sundry alterations... ..	172	15	8				
New Plant and Garden House, with Pit for Apparatus	52	6	9				
Taking down Wall at end of Airing Ground 7 and 8, extending and Re-building same	21	2	11				
Completion of Alterations to Superintendent's House... ..	17	0	9				
	800	17	2				
Clerk of Works	16	3	0				
				817	0	2	

GARDEN AND LAND.

	£	s.	d.		£	s.	d.
Bean and Pea Sticks	0	11	0				
Cows bought	40	10	0				
Cart bought (and Repairs to ditto)	6	9	6				
Drain Pipes and Tiles	3	9	8				
Food for Horses	10	17	6				
Do. for Pigs	151	16	1				
Do. for Cattle	4	0	0				
Gunpowder, Shot, &c.	0	13	0				
Gun, repaired	0	4	6				
Hire of Horse	4	8	4				
Harness	7	8	5				
Hurdles, Fencing, &c., including Gates	12	12	3				
Hay	47	16	4				
Implements	17	6	11				
Killing Pigs	5	1	0				
Labour, (Sawing Timber for Trees)	0	14	10				
Marline	0	5	8				
Carried forward	314	5	0	15566	17	3½	

	£	s.	d.	£	s.	d.
Brought forward ...	314	5	0	15566	17	3½
Manure ...	30	4	8			
Rent of Land ...	218	8	10			
Rick Cloth and Ropes ...	16	0	9			
Seed, including Potatoes, Plants, and Bulbs ...	48	3	2			
Stock ...	4	13	0			
Straw ...	21	4	0			
Sundries, as Mats, Sand and Peat, } Flower Pots, &c. ... }	7	18	6			
Sack Hire, with Tarpaulings ...	0	8	4			
Trees, Shrubs, &c. ...	6	9	0			
Tan... ...	0	19	0			
Veterinary and Farrier ...	2	6	10			
Weighing Machine, repaired ...	0	9	9			
					671	10 10

MISCELLANEOUS.

	£	s.	d.		£	s.	d.
Advertisements and Printing ...	19	10	0				
Annuities ...	407	10	0				
Blacking and Black Lead ...	5	13	6				
Books and Newspapers ...	45	14	11				
Bird Cages ...	0	8	4				
Money to Attendants in lieu of board ...	7	12	0				
Cap Paper... ...	5	12	6				
Combs and Brushes for the hair, ...	30	3	0				
Cricket Bats and Balls, with Foot, } Tennis, and Bagatelle Balls, ... }	2	12	6				
Carriage of Parcels ...	6	4	0				
Clogs ...	4	18	0				
Emptying Privies... ...	0	11	0				
Entertainments ...	9	13	1				
Fuller's Earth, Pipe Clay, Whiting, } Knife Brick, Sand Paper, &c. ... }	1	3	0				
Food for Birds ...	2	1	5½				
Gratuity to Servant ...	5	0	0				
Insurance, Tithe Rent Charge, Rates and Taxes	72	2	3¼				
Kingsholm Drainage Rent ...	15	0	0				
License for Dog ...	0	5	0				
Members of Band to Musical Festival ...	3	10	0				
Musical Instruments repaired ...	0	15	2				
Musical Instruments ...	12	16	3				
Music ...	1	2	0				
Money given to Patients on visiting their Friends	10	1	3				
Maintenance of a Patient in Fisherton } House Asylum ... }	54	15	0				
Out-Allowance to Patients ...	1	6	0				
Organ tuned ...	0	12	6				
Postage and Stationery, including Stamps ...	42	10	11				
Patients visiting Entertainments ...	4	3	5				
Piano, Repaired and Tuned ...	11	16	0				
Parrot, bought ...	1	5	0				
Removal of Patients ...	4	18	9				
Carried forward ...	791	6	9¼	16238	8	1½	

		£	s.	d.	£	s.	d.
Brought forward	...	791	6	9 $\frac{1}{4}$	16238	8	1 $\frac{1}{2}$
Re-captures	3	15	11			
Registering for Servants	0	10	0			
Sweeping Chimneys	18	0	0			
Spectacles...	2	8	6			
Strings and Reeds for Musical Instruments	3	8	10			
Sundries, as Repairing Patient's Ring, and } Fees to City Clerk of Peace	0	5	7			
Thermometers	1	7	6			
Turnpikes	0	7	0			
Telegrams (and delivery of)	1	2	0			
Travelling Expenses	3	11	0			
Type, for Printing	7	12	3			
Umbrellas	2	4	0			
Water Rates	233	4	6			
					1069	3	10 $\frac{1}{2}$
Total paid				17307	12	0 $\frac{1}{4}$

[B]

PATIENTS' ACCOUNT.

DR.

Dec. 31st, 1871.

To Arrears, as per Report of 1870...

£	s.	d.
3352	5	9
3336	4	2
3406	0	0
3423	19	11
<hr/>		
	95	18 10
	13518	9 10
	<hr/>	
	13614	8 8

£ s. d.
3403 17 8

CR.

Dec. 31st, 1871.

By Cash received during year, viz. :—

1st Quarter	£	s.	d.
2nd ditto	3183	18	8
3rd ditto	3504	10	6
4th ditto	3286	13	8
	3378	8	4
	<hr/>		
Balance	13353	11	2
	3664	15	2

£17018 6 4

£17018 6 4

[C] BUILDINGS AND OTHER EXPENSES CHARGEABLE TO THE COUNTY AND CITY
IN ACCOUNT WITH THE ASYLUM.

DR.		CR.	
	£	s.	d.
To Balance due from County, as per Report of 1870	540	17	11
" Balance due from City, as £ ditto	33	1	7
" Additions and Alterations	1022	6	1
" Repairs	575	12	1
" Furniture	563	6	11
" Repairs to Gas Fittings	4	7	9
" Tools for Carpenters, Bricklayers, Engineers, &c.	7	3	1
" Land, Rent of...	218	8	10
" Water Rates	153	11	9
" Rates and Taxes	53	16	7
" Sundries, as Printing, Insurance, Advertising, Stationery, &c.	170	16	0
" Maintenance of Carpenters, Painters, &c., in the House	59	8	11
" Annuities	414	0	0
	3242	18	0
Dec. 31st, 1871.			
By Profit on Pauper Patients belonging to places not contributing to the Asylum	116	2	0
" Cash received from the County, as £ Schedule D.	2323	13	6
" Cash received from the City, as £ Schedule E.	137	16	5
" Balance due from the County, as £ Schedule D.	1170	6	6
" Balance due from the City, as £ Schedule E.	68	19	1
	£3816	17	6

£3816 17 6

£3816 17 6

[D] THE COUNTY OF GLOUCESTER IN ACCOUNT WITH THE ASYLUM, IN RESPECT
OF BUILDINGS AND OTHER EXPENSES.

DR.		CR.	
	£ s. d.		£ s. d.
Dec. 31st, 1871.		Dec. 31st, 1871.	
To Balance, as H^{e} Report of 1870	540 17 11	By Cash, March 11	540 17 11
" $\frac{1}{8}$ of £3242 18s. 0d., for Buildings and other	3062 15 1	" Ditto, June 9	599 14 0
Expenses, as H^{e} Schedule C.		" Ditto, Sept. 18	601 14 11
		" Ditto, Dec. 11	581 6 8
			<hr/>
		By $\frac{1}{8}$ of £116 2s. 0d., for surplus from Pauper	109 13 0
		Patients belonging to places not contributing	31
		to the Asylum	
		Balance due	1170 6 6
			<hr/>
			2323 13 6
			<hr/>
			109 13 0
			<hr/>
			1170 6 6
			<hr/>
			£3603 13 0
			<hr/>
			£3603 13 0
			<hr/>

[E] THE CITY OF GLOUCESTER IN ACCOUNT WITH THE ASYLUM, IN RESPECT OF BUILDING AND OTHER EXPENSES.

DR.		CR.	
	£ s. d.		£ s. d.
Dec. 31st, 1871.		Dec. 31st, 1871.	
To Balance as ff Report of 1870	33 1 7	By Cash, March 16th, ...	33 1 7
” ½ of £3242 18s. 0d., for Buildings and other Ex- penses, as ff Schedule C	180 2 11	” Ditto, May 22nd ...	35 5 5
		” Ditto, Oct. 20th ...	35 7 10
		” Ditto, Dec. 8th ...	34 1 7
			<hr/>
		By ¼ of £116 2s. 0d., being surplus received from Pauper Patients belonging to places not contri- buting to to the Asylum	6 9 0
		Balance due ...	68 19 1
			<hr/>
			<hr/>
			<hr/>
			<hr/>
			<hr/>
			<hr/>
			<hr/>
			<hr/>
			<hr/>

£213 4 6

£213 4 6

[F] BALANCE SHEET OF THE ASYLUM.

DR.		CR.	
Dec. 31st, 1871.	£ s. d.	De. 31st, 1871.	£ s. d.
To Amount of outstanding Bills for Maintenance ...	2866 9 3	By sums due from Patients as ff ' Schedule B. ...	3664 15 2
Salaries ...	305 0 0	" Bills due from County, as ff ' Schedule D. ...	1170 6 6
" Wages charged to Maintenance of Establishment ...	210 9 6	" Bills due from City, as ff ' Schedule E. ...	68 19 1
	3381 18 9	" Balance due from Steward, as ff ' his Cash Book...	29 18 3
" Amount outstanding for Buildings and Repairs, including Mr. Ansell's Salary and the Annuities	670 15 7	" Balance due from Matron, as ff ' her Cash Book...	0 7 3½
" Wages charged to Buildings and Repairs ...	17 1 0	" Balance in Treasurer's hands ...	2922 2 6
	687 16 7		
	4069 15 4		
Balance in favour of the Asylum ...	3786 13 5½		
	<u>£7856 8 9½</u>		<u>£7856 8 9½</u>

CASH ACCOUNT.

DR.		CR.	
Dec. 31st, 1871.		Dec. 31st, 1871.	
	£ s. d.		£ s. d.
To Balance in Treasurer's hands, as £ Report of 1870	3984 4 2	By Balance due to Matron, as £ Report of 1870 ...	0 0 11
" Ditto in Steward's hands, as £ his Cash Book, } see Report of 1870 ... }	31 13 11 ³ / ₄	" Payment of Bills for Maintenance, Buildings, } and other Expenses ... }	17307 12 0 ¹ / ₄
" Cash from County, as £ Schedule D. ...	2323 13 6	" Cash in Steward's hands, as £ his Cash Book ...	29 18 3
" Ditto from City, as £ Schedule E. ...	137 16 5	" Cash in Matron's hands, as £ her Cash Book ...	0 7 3 ¹ / ₂
" Ditto from Parishes and Patients as £ Schedule B	13353 11 2	" Cash in Treasurer's hands ...	2922 2 6
" Cash Receipts from Farm ...	268 1 2		
" Cash Receipts from the Sale of Barm, Grains, } Bones, Lard, Dripping, Rags, and Tea Lead. }	110 18 4		
" Cash from the Sale of Gutta Percha ...	1 3 0		
" Interest allowed by Bank ...	48 18 3		
" Cash of United Kingdom Telegraph Company ...	0 1 0		
	<u>£20,260 0 11³/₄</u>		<u>£20,260 0 11³/₄</u>

BENJAMIN SHADGETT, Clerk to the Asylum.

March 28th, 1872.

At a General Meeting of Visitors allowed and passed,

Examined—T. H. PIKE, Auditor.

J. CURTIS HAYWARD, Chairman.