

**Reports upon Broadmoor Criminal Lunatic Asylum, with statistical tables,
for the year 1885.**

Contributors

Broadmoor Criminal Lunatic Asylum.
Orange, W.
Ashe, Thomas.

Publication/Creation

London : H.M.S.O., 1887 (London : Eyre and Spottiswoode.)

Persistent URL

<https://wellcomecollection.org/works/td7584kx>

License and attribution

This work has been identified as being free of known restrictions under copyright law, including all related and neighbouring rights and is being made available under the Creative Commons, Public Domain Mark.

You can copy, modify, distribute and perform the work, even for commercial purposes, without asking permission.

REPORTS

UPON

BROADMOOR CRIMINAL LUNATIC ASYLUM,

WITH STATISTICAL TABLES,

For the Year 1885.



LONDON:

PRINTED BY EYRE AND SPOTTISWOODE,

PRINTERS TO THE QUEEN'S MOST EXCELLENT MAJESTY.

FOR HER MAJESTY'S STATIONERY OFFICE

1887.

CONTENTS.

	Page
REPORT OF MEDICAL SUPERINTENDENT	3
PLANS OF THE ASYLUM, 1886 -	12
REPORT OF CHAPLAIN -	14
REPORT OF THE COMMISSIONERS IN LUNACY -	15

APPENDIX TO THE SUPERINTENDENT'S REPORT, CONTAINING STATISTICAL AND OTHER TABLES -	19
---	----

REPORTS

ON

BROADMOOR CRIMINAL LUNATIC ASYLUM

1885.

TWENTY-THIRD ANNUAL REPORT OF THE MEDICAL SUPERINTENDENT.

*Broadmoor Criminal Lunatic Asylum,
Crowthorne, Berks,*

SIR,

27th May 1886.

I HAVE the honour to present, for the consideration of the Council of Supervision, the following Report, with the usual statistical tables, for the year 1885-86.

Those tables which have reference to the admissions, discharges, and deaths, include the period from the 1st of January to the 31st of December 1885; whilst those which relate to financial matters cover the 12 months commencing on the 1st of April 1885, and ending on the 31st of March 1886, in order that they may correspond with the Parliamentary financial year. Tables.

On the 1st of January 1885 the number of inmates was 549, of whom 406 were men, and 143 were women. Change in the numbers.

During the year, 30 men and 14 women were admitted; 3 men and 7 women were discharged out of custody; 22 men and 10 women were transferred to other asylums; and, 10 men and 4 women died; so that at the end of the year there were 537 inmates, of whom 40 were men and 136 were women. Admissions discharges, and deaths

Accommodation and vacancies.

The asylum, when full, is capable of accommodating 405 men and 150 women; and thus, on the 31st of December there were four vacancies in the men's division, and 14 in women's.

Re-admissions.

Amongst those who were admitted in 1885 there were four who had previously been inmates of the asylum. Of these, one was an imbecile lad who was admitted on the first occasion in the year 1877, having been found insane when arraigned on a charge of arson. He was at that time only 11 years of age, and he had set fire to a stack, for no other reason, apparently, than that he might enjoy the sight of the fire and smoke. After remaining in the asylum four years and a half, he was discharged, in 1881, to the workhouse of the union to which he belonged. Nothing was heard of him for more than three years, and then he was brought back in consequence of having again committed an act of arson. He was tried in the usual course, and the verdict of the jury was that he was guilty of the act, but not responsible at the time of its commission, in the terms of the "Trial of Lunatics Act, 1883"; and it is a little remarkable that in this instance not only was the offence the same, but the place of the trial was the same, and even the judge before whom the case was tried was the same, on both occasions.

Another of the cases of re-admission was that of a man who had been an inmate for a period of more than 20 years. He had been comparatively tranquil for a long time, and, at the urgent request of his sister, he was discharged to her care, in May; but he had been absent from the asylum only a few weeks when he became acutely maniacal, and had to be re-admitted.

In another case the patient was brought back from a private asylum, to which he had been transferred five years previously; and the remaining case of re-admission was that of a man who was sent to a county asylum in 1877, and who is now re-admitted in consequence of having been found insane on being arraigned on a charge of arson.

First admissions.

Amongst the men who were admitted during the year for the first time there were three who were transferred from county asylums in consequence of having committed murderous assaults whilst inmates of those asylums. In one of these cases the person attacked was the Superintendent of the asylum, in another it was an attendant, and in the other it was a fellow patient. Happily it was only in the

last of these cases that the attack actually proved fatal, although very grave injuries were caused in the other cases.

The 16th table shows the offences which had been committed by the whole of the persons who were admitted during the year; whilst the 20th table gives similar information with respect to the whole of the persons who have been admitted since the opening of the asylum; and the 21st table gives details as to the whole of the re-admissions.

It will be seen that, since the date of opening, in 1863, there have been 39 re-admissions, which may be distributed as follows:

Ten men and six women have been re-admitted out of the 69 men and 69 women who have been discharged out of custody; six men and two women have come back out of the 50 men and 10 women who have been sent from this asylum to various prisons; eight men and three women have been re-admitted out of the 487 men and 104 women who have been transferred to other asylums; whilst recapture after escape accounts for three re-admissions, and the remaining case was a re-transfer from a private asylum.

The foregoing are only small numbers on which to found per-centages, but, as far as they go, they show that, of those who have been discharged out of custody, $14\frac{1}{2}$ per cent. of the men, and $8\frac{3}{4}$ per cent. of the women have returned. Of those sent from this asylum to prisons, 12 per cent. of the men and 20 per cent. of the women have come back; whilst of those transferred to county asylums $1\frac{2}{3}$ per cent. of the men and nearly 3 per cent. of the women have, for various causes, been re-admitted at different times during the past 23 years.

Amongst the discharges during the year 1885, there were 21 men and one woman who were removed under the provisions of the "Criminal Lunatics Act, 1884." Of these 21 men, there were 10 who were transferred to Dundrum with a view to their subsequent distribution to the districts to which they belong; whilst the other 11 were transferred as ordinary pauper lunatics to various English county asylums; and care has been taken to endeavour to select for transfer only such cases as are not likely to cause annoyance in the asylums to which they are transferred.

Whilst, however, the proportion of the men transferred to county asylums is greater than that of the women, the proportion of the women who are discharged out of custody is, on the other hand, greater than that of the men. The

Offences.

Total re-admissions since opening of the asylum.

Discharges under the Criminal Lunatics Act, 1884.

Removals to Dundrum.

Transfer to county asylums.

Difference in the proportion of discharges of men and of women.

4th table shows that upon the total numbers, since the opening of the asylum, nearly 18 per cent. of the women have been discharged, as compared with $5\frac{1}{2}$ per cent. of the men. In dealing, however, with the total numbers, persons of very different classes are included, and it is, therefore, worth while to look a little further into the matter.

The 13 tables from the 15th to the 27th afford the means of stating results which are more definite and also more interesting. The 20th table, for example, shows that, from the opening of the asylum down to the 31st of December 1885, 276 men and 175 women charged with murder were admitted, whilst the 22nd table shows that 19 men and 46 women charged with that crime were, during the whole of that period, discharged. These figures give a proportion of discharges of more than one in four for the women under this head, and of less than one in 14 for the men.

The 21st table affords full particulars with respect to relapses, and it is not, therefore, necessary to reproduce the details in the body of this Report.

If the investigation be carried a little further, so as to include not only murder cases, but also all other offences, it will be seen by the 20th and 21st tables that the total number of men admitted up to the end of last year, belonging to the class not under sentence of penal servitude or imprisonment was (excluding re-admissions) 638, and that the total number of women of the same class was 218. Also by the 21st and 22nd tables, it will be seen that the number of men of this class who have been discharged out of custody and have not been re-admitted has been 51, whilst the number of women has been 58. And from these figures it again appears that while rather more than one in four of the women have been discharged and have not returned, the proportion amongst the men has been rather less than one in 12.

Amongst the reasons for this difference are the following :— A considerable number of the women have been sent to this asylum in consequence of having killed their children; and the mere lapse of time removes to a great extent the risk of the repetition of this offence.

But, beyond this, there is less difficulty in the case of women than there is in the case of men in finding relatives or friends who are not only willing to provide a home, but who are also able to exercise due supervision, so as to prevent as far as possible any further harm being done by the discharged patient, in the event of the occurrence of a relapse. The usage with respect to the discharge of inmates of this asylum

being that no persons, and especially none who have committed grave offences, are set at liberty unless under such circumstances and conditions as to render it reasonably probable that they will not again prove a danger to the community, it necessarily happens that, as it is more difficult to ensure these conditions in the case of men than in the case of women, the proportion of men who are discharged is less than that of women.

It must not, however, be supposed that those women who are discharged consist only, or indeed chiefly, of those who have taken the lives of new-born infants.

The number of women discharged in 1885 was seven; and, of these, five had killed their children, and in four cases out of the five the ages of the children were above a year, the average age, indeed, having been four years.

With further reference to this point it may be of some interest to give the following statistics with respect generally to the women who have been admitted into this asylum since the date of opening in consequence of having killed their children. In about one fourth of the cases the ages of the children were under three months; in about another fourth the ages were between three and 12 months; whilst in about one half of the whole the ages of the children were above 12 months, and of these last the average age was four years.

The rate of mortality in 1885 was 2.45 per cent. for the men, calculated upon the basis of the average number resident, and 2.85 for the women, or 2.55 for both sexes taken together; and the average age at the time of death was 53 years for the men and 57 years for the women, or 54 for both sexes.

Deaths.
Rate of
mortality.

In 1884 the average age at death, for both sexes, was 54; in 1883 it was 57; in 1882 it was 52; in 1881 it was 57; in 1880 it was 54; and in 1879 it was 51; and from these figures it will appear that 54 may be regarded as being about the general average age at death in this asylum.

Average age
at death.

It is the rule at this asylum for the county coroner to hold an inquest in every case of death, and the verdicts that were returned in 1885 are recorded in the 5th table in the Appendix. No death during the year was due either to suicide or violence. A post-mortem examination was made in every case, and a record of the chief points of interest will be found at page 62.

Inquests.

Not only was the death rate low during the year 1885, but it must be added that the general health of the inmates

General
health.

Distribu-
tion of
sewage.

was satisfactory; and there was an entire absence of those diseases which owe their origin to impure air or bad drainage. In connexion with this point it may be observed that the sewage of the asylum is carried straight to the land, without being delayed in its course for the purpose of undergoing any process of settlement, filtration, or deodorisation. It is conveyed in an iron pipe six inches in diameter and 900 yards in length, with valves at various points so as to allow of applying the sewage, wherever it may be wanted, over an extent of more than 50 acres. Having thus so wide an area of ground over which the sewage can be distributed, and having the means of varying at will the spot to which it is applied, there is never the slightest inconvenience experienced from its utilization, whilst the poor and sandy soil to which it is applied is greatly benefited.

Inmates
whose sen-
tences have
expired.

In former years attention has been directed to the number of persons who were detained in this asylum after the expiration of the terms of their sentences, for want of the statutory power to remove them. It is now satisfactory to be able to state that, owing to the provisions made by the "Criminal Lunatics Act" of 1884, there were, on the 31st of last December, only nine inmates whose sentences had then expired, and, of these, four were transferred to Perth on the 1st of January, so that there are now only four men and one woman remaining in the asylum whose sentences have expired; and these five persons are detained for various adequate reasons which are stated in the 31st table.

Visit of
commis-
sioners in
lunacy.

Two members of the Board of Commissioners in Lunacy visited the asylum on the 23rd and 24th of September; and a copy of their report will be found at page 14.

Absence of
casualties to
patients.

It speaks well for the vigilance of the attendants that no serious casualty occurred to any patient during the year, and that there were no instances of escape; but I regret to have to record that a male attendant was struck by a patient on the head with a chair in the month of January, and that the resulting injury rendered his retirement necessary. He had been in the service for a period of 15 years, and a pension of 38*l.* 12*s.* 7*d.* per annum was awarded to him by the Treasury on his retirement.

Epileptics.

The number of epileptics in the asylum at the end of the year was 34. As many as possible of these are placed, at night, in large associated dormitories, in which attendants are constantly on duty; whilst those whose condition renders it necessary to provide them with separate sleeping rooms

are seen at least every half hour during the night, and for this purpose their rooms are provided with means for enabling the attendants to see them without opening their doors; and in order to guard, as far as possible, against accident, the attendants are required not only to see the patient, but also to distinctly see the nose and mouth at every half-hourly visit.

A woman who was admitted in July and who had killed Childbirth. her child and attempted to kill herself a few weeks previously, gave birth to a child in the following month, which she nursed for five weeks, after which she became too restless to be any longer trusted with it. The child was sent to the Saint Alban's Home at Worcester when it was ten weeks old, and the mother gradually recovered, and is now tranquil, although often very depressed and melancholic.

The 33rd table shows the kinds of industrial occupation Occupation. in which patients were employed during the year, together with the estimated value of the work done by them. The system by which the workers receive payment at the rate of one eighth of the estimated value of their work continues to yield very satisfactory results, and tends very materially to mitigate the position of those inmates whose continued detention is rendered necessary by regard to the public safety.

During the year the Medical Staff was strengthened by the Medical staff. addition of a junior assistant medical officer; and Dr. Charles E. Paterson, who had rendered efficient temporary assistance during the preceding winter, was appointed to the post. He gives every promise of proving a valuable officer.

The number of attendants employed in the male division is 74, and in the female division 27. Leave of absence on one day in nine, in addition to 10 days annually, is granted to each attendant; so that, unless on the sick list, every attendant is on duty on 315, and is relieved from duty on 50 days during the year. Number and distribution of attendants

There are nine attendants on duty during the night in the men's division, and four in the women's division, and thus those patients who require nursing are as well cared for by night as they are by day.

Deducting those who are on leave and those who are told off for night duty, the number of attendants available for duty by day is in the proportion of about one to eight of the patients on the average, but the actual proportion varies considerably in different wards according to the character of the inmates.

Changes amongst the attendants infrequent.

The changes amongst the attendants are not frequent, and I am glad to be able to speak very highly of the careful, considerate, and attentive manner in which they discharge their duties. Only four per cent. of the whole number had, at the end of the year, been less than 12 months in the service, whilst more than 50 per cent. had been in the service over 10 years.

No mechanical restraint.

It was not found necessary to employ any form whatever of mechanical restraint during the year.

Works and improvements.

The buildings in the men's division were improved during 1885 by considerable alterations to the east main wing, and by laying hot-water pipes in three of the blocks. The alteration to the east main wing were similar to those which were carried out in the west main wing in 1884. The wing has accommodation for 100 inmates; and it is three storeys in height, and 250 feet in length, and originally there was only one staircase, which was placed in the centre. This staircase has been removed and placed at one extremity, and a new staircase has been constructed at the other extremity; and, in this way, adequate means of egress have been afforded, so that, in the event of an outbreak of fire in this block, no fear can now be reasonably entertained of any of the patients being cut off from escape. Whilst these works were in progress the single rooms were increased in number by 15, and two small associated dormitories were done away with. There are now 257 separate sleeping rooms in the male division; and of these 132 are provided with inspection windows for the purpose of enabling the attendants who are on duty at night to exercise supervision over the inmates without disturbing them by opening their doors; and it may be added that 71 of these rooms now possess the means of being lighted by gas from the outside.

Apparatus for heating with hot water.

The works for warming with hot water the two main blocks (Nos. 3 and 4) and the north-west block (No. 6), which were commenced in the year 1884, were completed in 1885, and were brought into full use during the past winter. The boiler house has been constructed in the central courtyard; and in it have been placed two circulating hot-water boilers, which can be worked either together or separately. From the boilers, two five-inch pipes for the flow, and two of the same size for the return, are carried for a distance of 50 feet, in a common channel as far as the central corridor, where they divide and thence run east and west to the points at which they enter the blocks. The distance from the point of division to the entrance of No. 3 block is 143 feet,

and from thence to the end of No. 3 block is 227 feet farther. From the point of division to the entrance of No. 4 block the distance is 89 feet, and from thence to the farthest point to which the pipes extend in No. 6 block is 500 feet. Upon entering the blocks each of the five-inch pipes branches off into two four-inch pipes.

Supply cisterns for keeping the pipes full of water are fixed in convenient spots; whilst there is an expansion cistern connected with the boilers. Each boiler also has a safety-valve, loaded just sufficiently to prevent the water from escaping at the normal pressure.

The hot-water pipes are carried in channels, constructed in brickwork, the dimensions of which are 2 feet 9 inches by 2 feet 9 inches: and from these channels flues of various dimensions convey the warmed air into the single rooms and corridors and other parts of the wards.

The number of single rooms which have, since 1884, been provided with independent flues of this description is 74, of which 28 are in No. 3 block, 26 in No. 4, and 20 in No. 6 block; and in them a temperature of fully 60° Fahrenheit can now be maintained in the coldest weather without any difficulty, whilst in the other single rooms, which are only occupied at night, the temperature is prevented from falling below a suitable point by the warm air circulating in the corridors.

At present, in the north-west block no flues have been constructed for warming any other part of the building excepting the ground floor; but in the two main wings flues have been carried to both of the upper storeys. Open fire-places will, however, still be used in the sick dormitories and in the day rooms.

The admission of fresh air into the channels containing the hot-water pipes is provided for in two distinct modes.

By one of these modes the air is admitted through several inlets placed at various points, whilst by the other mode air is sent in by means of a fan; and when the fan is at work the ordinary inlets are closed by iron doors.

The fan, which is placed in the boiler-house, is 36 inches in diameter and is capable of making 500 revolutions per minute, and at that rate of speed it causes about 7,500 cubic feet of air to pass through the channels per minute. It is driven by a three horse-power horizontal engine, supplied with steam from the boilers in the kitchen.

Air is supplied to the fan through a specially constructed duct, having its inlet at a spot where there is no risk of the contamination of the air by emanations from

drains or by any other impurity. The length of this supply duct is 46 feet, and its dimensions are 4 feet by 3 feet; After the air passes the fan, it is driven for a short distance in a separate channel, and it then enters the channels which contain the hot-water pipes, and after thereby becoming warmed it passes on into the wards and rooms.

The working of the apparatus during the past exceptionally cold and long winter was perfectly satisfactory. The entire work has been carried out under the direction of Mr. Stephens, the foreman of works, and the cost has been as follows:—Boilers and boiler-house and fittings, 690*l.*; pipes and fittings in east main wing 300*l.*; pipes and fittings in west wing and central corridor, 330*l.*; pipes and fittings in north-west block, 250*l.*; making a total of 1,570*l.*

Expendi-
ture.

The customary details with regard to the general expenditure are given in the tables numbered from 37 to 41 inclusive. The yearly cost of maintenance, calculated upon the basis of the daily average number resident was, for all charges excepting those relating to the buildings, at the rate of 45*l.* 18*s.* 2*d.* per head.

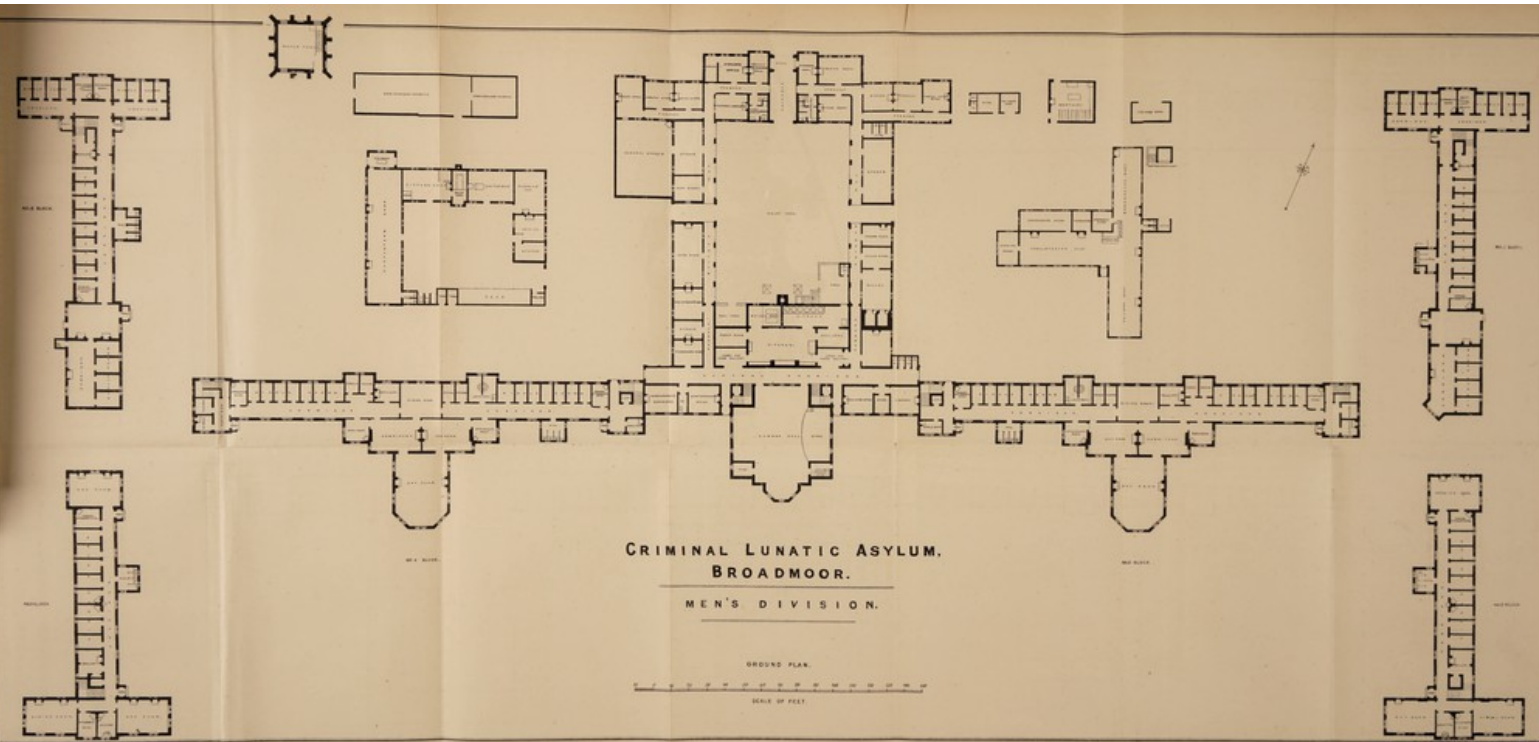
Tables.

The tables appended to this Report have gradually increased in number owing to the desire to afford, in a convenient form, the fullest possible information upon every point upon which information is likely to be desired, and in the preparation of those tables I have to acknowledge my indebtedness, as regards the medical tables, to Dr. Nicolson, Dr. Isaac, and Dr. Paterson; as regards the financial tables, to Mr. Phelps; and as regards the statistical tables, to Mr. Hazle. The plans of the Asylum buildings, printed with this Report, have been prepared under the direction of Mr. Stephens.

Conclusion.

In bringing this Report to a close, it becomes my unwelcome task to record that it is the last which I shall have the honour of presenting. The persistent continuance of impaired health, resulting from the effects of the injury which I was unfortunate enough in 1882 to sustain at the hands of one of the patients, had rendered it some time ago impossible for me any longer to resist the conviction that I had become unable to continue to discharge the duties of my office with the necessary degree of active energy, or in a way that I could regard as satisfactory; but it was not without the keenest regret that, acting upon medical advice, I ultimately felt myself compelled to apply for permission to resign my post.

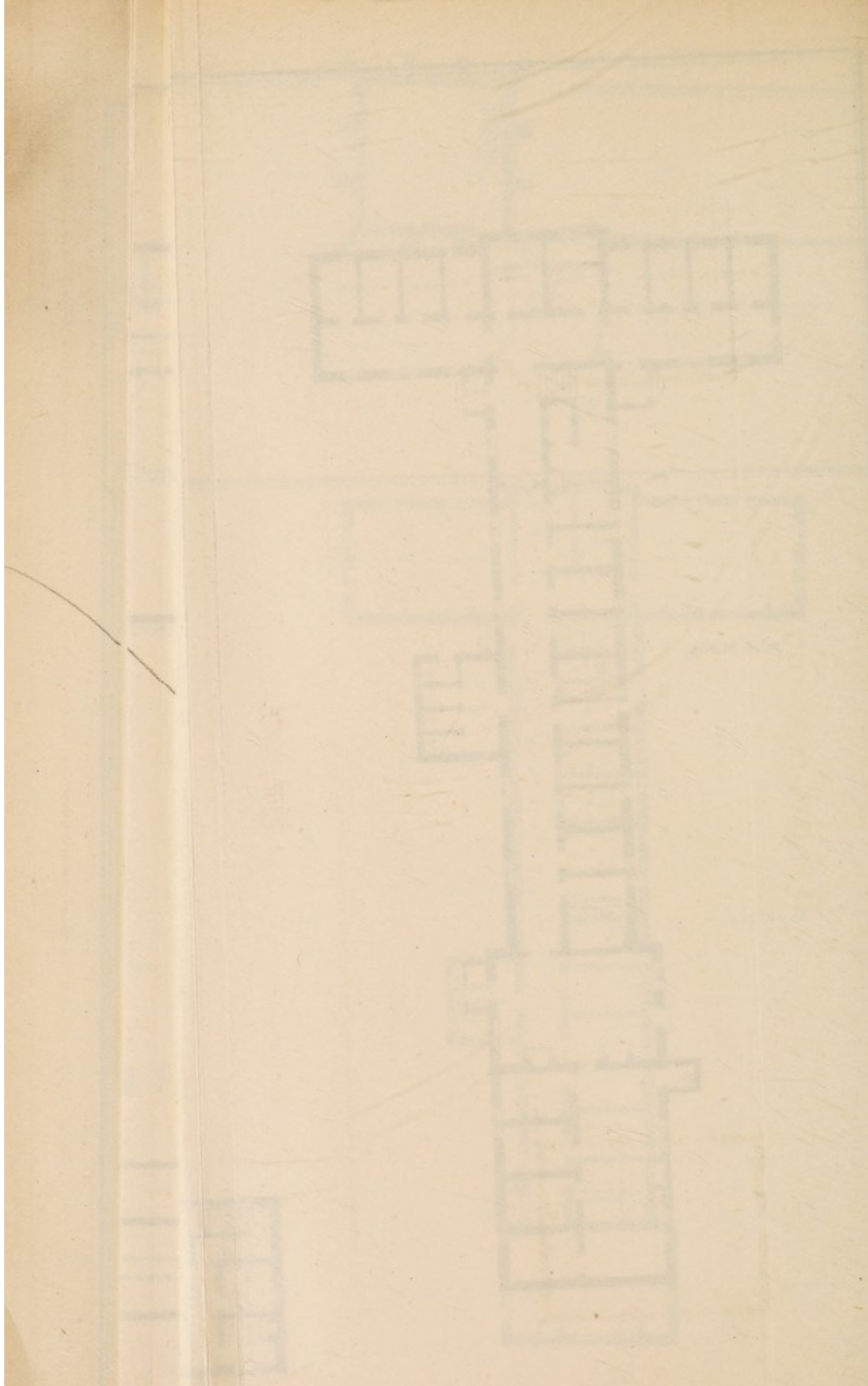
I cannot speak too gratefully of the uniform support afforded me by the Council of Supervision, nor of the cordial assistance rendered by my medical colleagues and by the other



CRIMINAL LUNATIC ASYLUM.
BROADMOOR.
MEN'S DIVISION.

GROUND PLAN.
SCALE OF FEET.

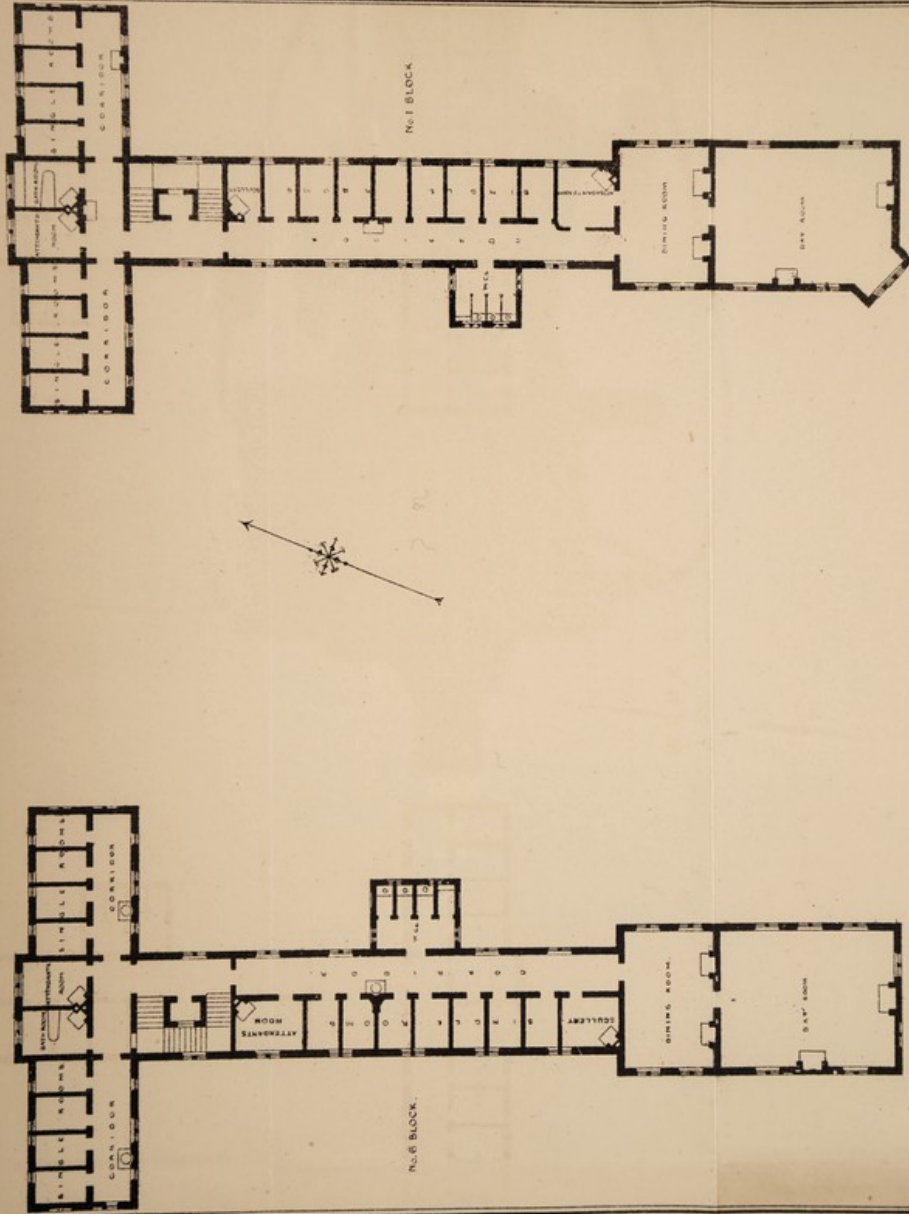
Architectural and Engineering Department, 1897-1900.



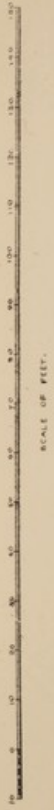
CRIMINAL LUNATIC ASYLUM,
BROADMOOR.

MEN'S DIVISION.

BLOCKS I AND 6.



FIRST FLOOR PLAN.



ВРОСКИ ЛУНО В

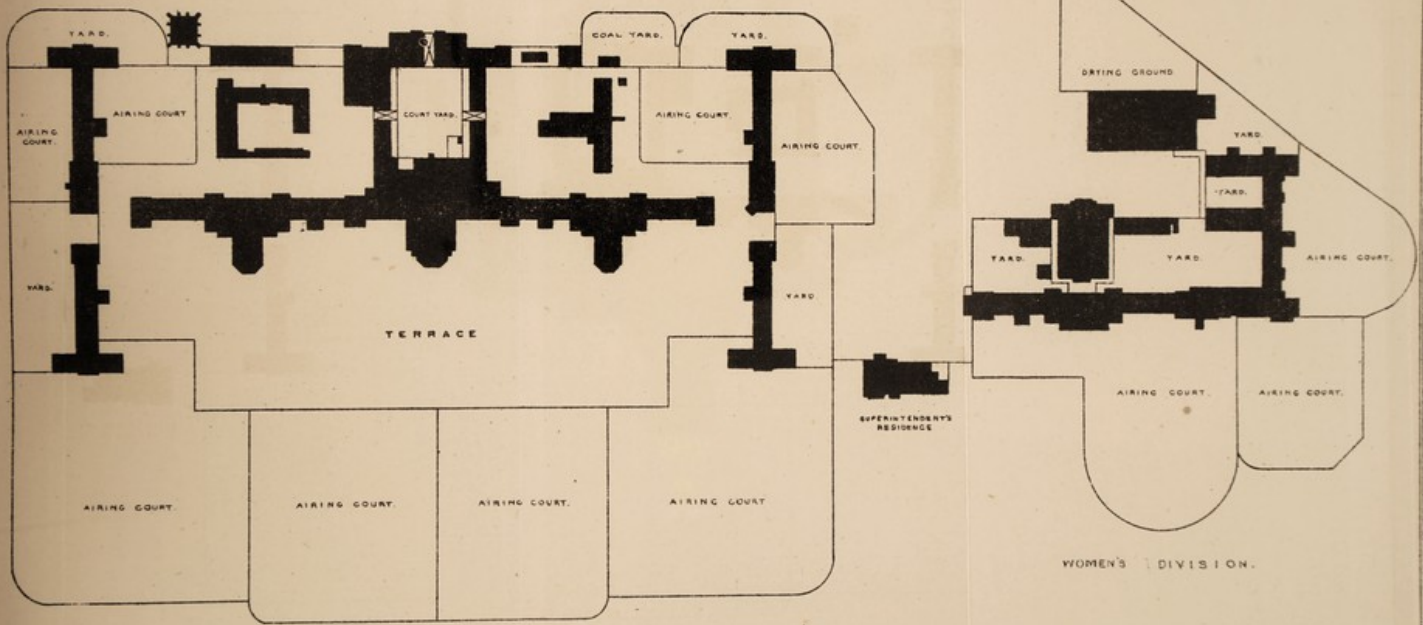
ШЕНС ДІАГНОС

ВРОСКИ ЛУНО В

СВІШІНІУГ ГІПІУЛІС УЗЛУМ

CRIMINAL LUNATIC ASYLUM, BROADMOOR.

BLOCK PLAN.



SUPERINTENDENT'S
RESIDENCE

MEN'S DIVISION

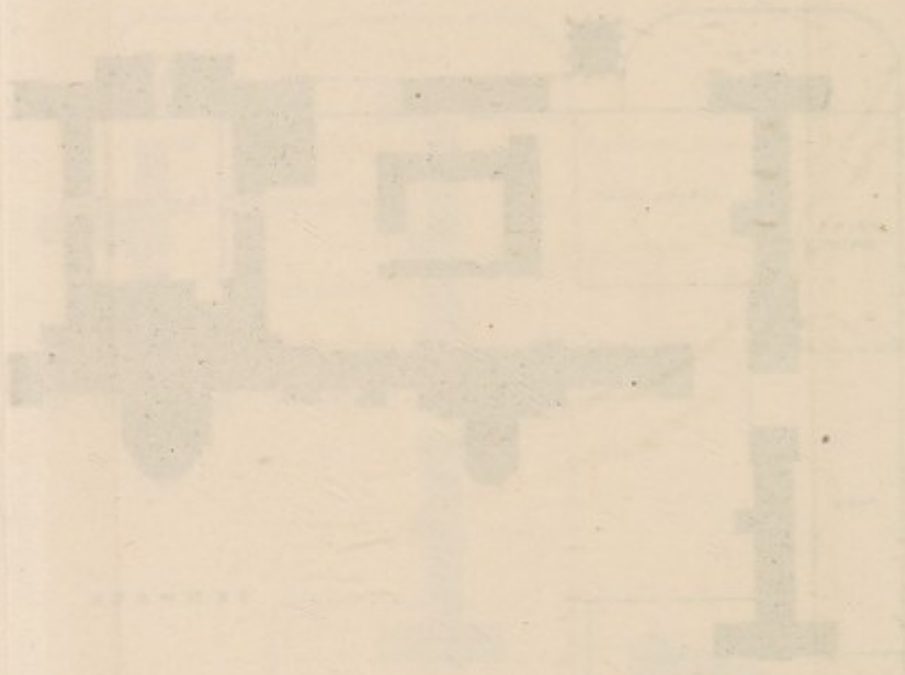
SUPERINTENDENT'S
RESIDENCE

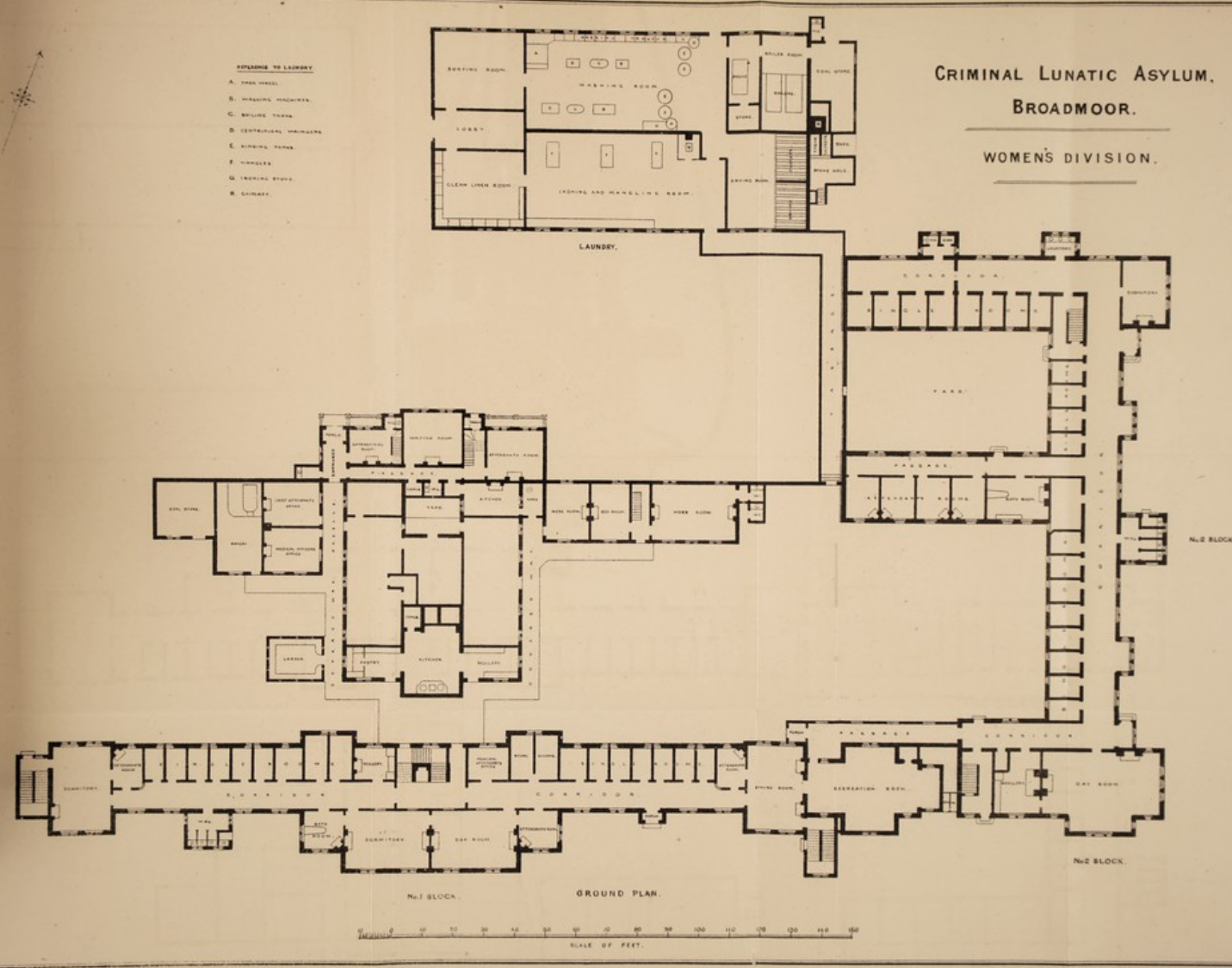
WOMEN'S DIVISION.

SCALE OF FEET.
0 100 200 300 400 500

REPUBLICAN CRIMINALS
AND OTHERS

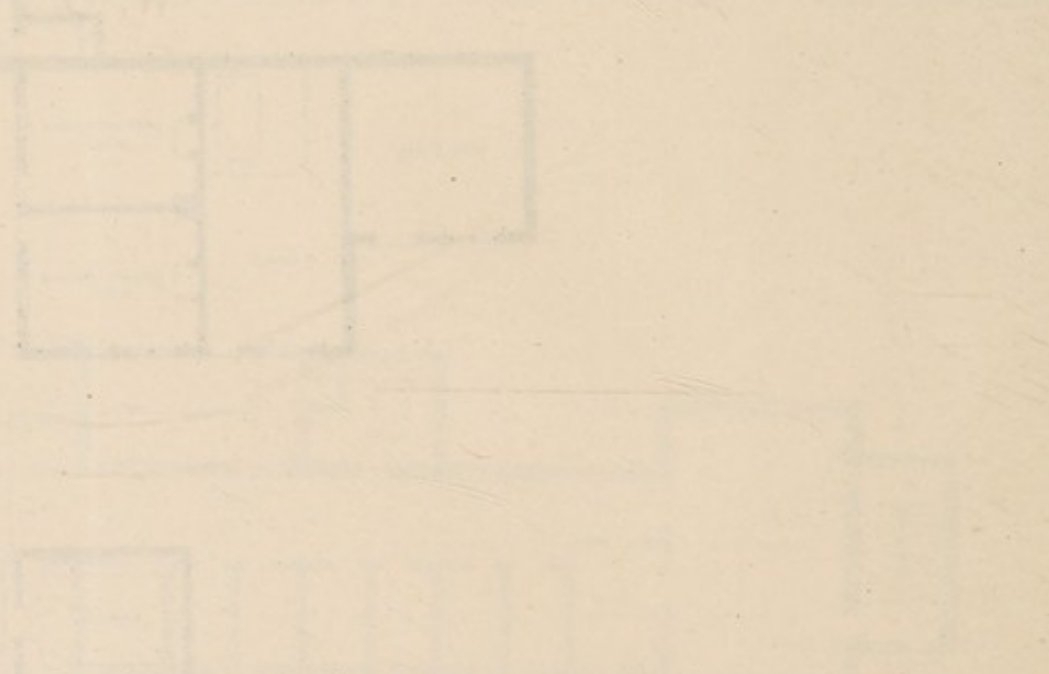
THEY ARE





Faint, illegible text at the top of the page, possibly a header or introductory paragraph.

Main body of faint, illegible text, appearing to be several paragraphs of a letter or report.



members of the staff; and no one is more fully aware than I am that, had it not been for such support and assistance, it would not have been possible for me to continue to hold my office until now.

It only remains for me to again express my most sincere thanks to you, Sir, and to the other members of the Council, for the many acts of kindness received from you in the past, and to record my grateful acknowledgment of the very considerate arrangements which have been made with respect to my retirement.

I have the honour to be,

Sir,

Your most obedient and faithful Servant,

W. ORANGE, M.D.

Sir W. C. Morshead, Bart.,

Chairman of the Council of Supervision.

P.S.—May 31st. It affords me very great satisfaction to be now able to add that, upon the recommendation of the Council, the Secretary of State has been pleased to appoint Dr. Nicolson to succeed me in the office of Superintendent. Dr. Nicolson has, with great credit to himself, and with equally great advantage to the asylum, held the office of Deputy Superintendent for the past 10 years, having previously acquired extensive knowledge of the criminal classes as Medical Officer in the Convict service; and I have every reason for feeling fully assured that in his hands, the affairs of the asylum will, in all respects, be thoroughly well and ably administered.

W. O.

THE CHAPLAIN'S REPORT.

SIR, *Broadmoor Asylum, 13th May 1886.*

The appointed services of the church were held, as usual in the chapel of this asylum, on all Sundays during the year 1885, both in the morning and afternoon, also on Good Friday, and in the morning on Ash Wednesday and Christmas Day; on other days, shortened morning prayer was said in the chapel at 8.30 a.m., with a short intermission on account of my illness. The average attendance was about the same as previously. Holy Communion was administered in the chapel on Easter Day, Whitsunday, and Christmas Day, and on the first Sunday in each month. The number of communicants was 19 men and 18 women, of whom one man and one woman died during the year, and one woman was discharged. Holy Communion was also administered in the female wing to sick and infirm patients. The short form of Evening Prayer continued to be said in all parts of the asylum. The customary addition was made to the library, and the supply of books found sufficient. The annual inspection of the school took place on the 24th November. The amount of the grant from the Education Department was 100*l.* 14*s.* 6*d.* The average attendance was 110, and percentage of passes 87. The Inspector reports, "This school " is a good one, the discipline excellent, and the general quality " of the work very fair." I have great pleasure in expressing my sincere thanks to the Superintendent and all the officers of the asylum for the kind consideration I have uniformly experienced, and for their cordial support in the execution of my duties.

I have the honour to be, Sir,

Your most obedient humble Servant,

THOS. ASHE, M.A., Chaplain.

*To the Chairman of the
Council of Supervision.*

REPORT OF THE COMMISSIONERS IN
LUNACY.

To the Right Honourable HUGH C. E. CHILDERS, one of
Her Majesty's Principal Secretaries of State.

THE Report of the Commissioners in Lunacy made under
the Act 23 and 24 Vict. c. 75, intituled "An Act to make
"better provision for the custody and care of criminal
"lunatics," for the year ending December 31st 1885.

(1.) The Commissioners in Lunacy have the honour to
report that, in the year 1885, the asylum for criminal
lunatics at Broadmoor (being the only asylum appointed
under the Act above mentioned) was visited by two of the
Commissioners, namely, C. S. Bagot, Esq., Barrister-at-Law
and John D. Cleaton, Esq., Member of the Royal College of
Surgeons, on the 23rd and 24th September 1885.

(2.) A copy of the memorandum of the visit of the Visiting
Commissioners is appended hereto.

Dated this 9th day of March 1886.

The common seal of the Com-
missioners in Lunacy, affixed
in presence of
CHAS. SP. PERCEVAL,
Secretary.



STATE CRIMINAL ASYLUM, BROADMOOR.

16th October 1885.

ON the 23rd and 24th September ultimo we visited the
Broadmoor Criminal Lunatic Asylum for the purpose of
official inspection.

Detained in it were 551 patients, of whom 410 were Statistics.
males, and 141 females. The total number was three less
than on November 1st, 1884, when the asylum was last
visited by members of our Commission.

The following table, kindly furnished by Dr. Orange,
shows the change among the patients between the dates of
our visit and that last preceding it.

	Classified with reference to the circumstances under which detained.																				
	TOTALS.			Certified to be Insane whilst awaiting Trial or Judgment.			Found Insane by Jury on Arraignment.			Acquitted on the ground of Insanity, including those cases in which special verdicts have been found in the terms of 46 & 47 Vict. ch. 38.			Rerieved on the ground of Insanity.			Certified to be Insane whilst undergoing Sentences of Penal Servitude.			Certified to be Insane whilst undergoing shorter Terms of Imprisonment.		
	M.	F.	T.	M.	F.	T.	M.	F.	T.	M.	F.	T.	M.	F.	T.	M.	F.	T.	M.	F.	T.
In the Asylum on the 1st of November 1884 . . .	412	142	554	44	14	58	94	32	126	69	278	19	1	20	43	26	69	3	—	—	3
Since admitted, first time . . .	28	14	42	4	2	6	10	3	13	2	13	1	—	1	2	7	9	—	—	—	—
Re-admitted . . .	4	—	4	—	—	—	3	—	3	—	1	—	—	—	—	—	—	—	—	—	—
Total under treatment . . .	444	156	600	48	16	64	107	35	142	71	292	20	1	21	45	33	78	3	—	—	3
Recovered and discharged - Removed to other asylums (ceased to be classed as criminal lunatics, and be- coming ordinary pauper lunatics)	2	3	5	1	—	1	1	1	2	2	2	—	—	—	—	—	—	—	—	—	—
Died	22	10	32	1	—	1	6	2	8	—	4	—	—	—	11	8	19	—	—	—	—
Total discharged, re- moved, and died . . .	34	15	49	4	1	5	8	4	12	2	13	—	—	—	11	8	19	—	—	—	—
Remaining under treatment on the 24th September 1885	410	141	551	44	15	59	99	31	130	69	279	20	1	21	34	25	59	3	—	—	3

The daily average number resident between the 1st of November 1884 and the 23rd of September 1885 (both days inclusive) was :—
Males, 407; Females, 142; both sexes, 549.

The deaths (which are in all cases followed by coroner's inquests) were, it will be observed, very few, and represent an annual death-rate for both sexes, of only about 2·5 per cent. of the average number of patients resident. They were all due to ordinary causes, and, excluding one non-fatal case of erysipelas, no contagious or exceptional disorder appeared in the asylum.

We saw every patient and conversed with many. The complaints made to us were on the score of detention, but, in answer to appeals for discharge, we explained that the power to order this rested with the Secretary of State alone. No patient complained of cruelty or improper treatment. Upon the question of fitness for discharge it is difficult for us to express an opinion, the cases being so peculiar; but it appeared to us that if some of those we saw were inmates of an ordinary asylum, their mental condition would probably entitle them to be set at liberty.

General
condition of
the patients.

The clothing of the patients was good and clean, and their personal appearance was evidence of proper attention on the part of the attendants.

Clothing.

On the first day of our visit we saw a very good dinner served, and the diet is, we think, liberal.

Dietary.

Inquiring into the general course of treatment, we learnt that 138 males and 88 females engage in some useful employment; that on the Sunday preceding our visit about 70 men and 35 women attended Divine Service in the morning, and about as many in the afternoon; that 17 patients attended the last Roman Catholic Service, and an equal number the last Wesleyan Service; that on seven occasions since November 1st, 1884, amusements had been provided in the central hall, which were severally attended by from 170 to 200 patients of both sexes, and that weekly parties of 12, selected from among the working women, walk on the asylum estate, outside the airing courts. The supply of books, papers, and indoor games appears to be liberal.

Occupations,
religious
services,
recreation,
and exercise.

The proportion of patients usefully employed is about 34 per cent. of the males, and 62 per cent. of the females. The former would, in an ordinary asylum, be considered low; but we are alive to the difficulties which must exist here. Still, we doubt not that the authorities are fully aware of the value of employment, and will encourage it as far as possible. We are glad to find that the inducement of a small pecuniary reward is still offered to the patients.

Restraint
and seclu-
sion.

Mechanical restraint of patients was not used in the interval between the present and preceding visits, but involuntary seclusion was employed in the cases of 24 patients for a total duration of 8,815 hours, and 52 individuals were secluded at their own request for a total of 18,227 hours. A record is kept also of those patients who are detained in bed in single rooms, and under medical treatment. These were 62 in number, and this form of seclusion amounted to 46,544 hours.

Staff of
attendants.

Excluding the head attendants, cook, and workwoman, the staff comprises 74 men and 26 women. Night duty is taken by these in turn, those who sit up at night having no day duty. The proportion of attendants to patients is high, and necessarily so, and we are glad to find that long service in the asylum is still the rule.

The only serious attack by a patient which has been reported to us was made upon a male attendant, who was struck on the head with a chair, the resulting injury obliging him to be invalided from the public service.

Structural
precautions
against fire.

Reference was made in our colleagues' report last year to the provision of additional staircases for some of the blocks. This provision has been continued, and the work is in progress in No. 3 male block. The importance of alternative exits, in case of fire, is obvious, and all wards should possess them.

Warming
and ventila-
tion.

Provision has also been made for warming and ventilating a number of the single rooms, and we are informed that before the close of the year 28 single rooms in No. 3 block, 26 in No. 4, and 19 in No. 6 will be warmed. It is proposed to drive fresh air into the rooms by a Blackman air propeller. We have not had any experience of this system, and cannot say if it is likely to be successful. Other minor improvements have been carried out.

Needed
renovations.

We think that some extensive internal painting and re-decoration is needed in the male division, especially in blocks Nos. 5 and 6. Block No. 3 will, of course, be attended to in this way, on the completion of the work now in hand.

In conclusion, we have much pleasure in expressing our most favourable opinion of the general management of the asylum.

APPENDIX TO THE SUPERINTENDENT'S REPORT.

TABLE 1.

Showing the ADMISSIONS, RE-ADMISSIONS, DISCHARGES, and
DEATHS during the Year 1885.

	Male.	Female.	Total.
In the asylum on the 1st January 1885 -	406	143	549
	Male.	Female.	Total.
Cases admitted during the year:			
First admissions -	26	14	40
Not first admissions	4	—	4
Total cases admitted during the year -	30	14	44
Total cases under care during the year -	436	157	593
	Male.	Female.	Total.
Cases discharged, removed, and died during the year:			
Recovered and discharged -	3	7	10
Recovered and removed to prisons	—	—	—
Transferred to other asylums -	22	10	32
Transferred to workhouses -	—	—	—
Died -	10	4	14
Escaped -	—	—	—
Total cases discharged, removed, and died during the year -	35	21	56
Remaining in the asylum on 31st December 1885	401	136	537
Average number resident during the year 1885	408	140	548
Persons under care during the year -	435	157	592
Persons admitted during the year -	30	14	44
Persons recovered during the year -	3	7	10
Persons transferred to this asylum during the year -	1	—	1
Persons transferred from this asylum during the year -	22	10	32

TABLE 2.

Showing the ADMISSIONS, RE-ADMISSIONS, DISCHARGES, DEATHS and ESCAPES, from the opening of the Asylum to the 31st December 1885.

		Male.	Female.	Total.
Cases admitted during the period of 22 $\frac{2}{3}$ $\frac{1}{2}$ years	First admissions	1,233	378	1,611
	Re-admissions -	28	11	39
Total cases admitted - - -		1,261	389	1,650
		Male.	Female.	Total.
Discharged, removed, died, &c., during the period of 22 $\frac{2}{3}$ $\frac{1}{2}$ years:	Recovered and discharged -	69	69	138
	Recovered and removed to prisons -	50	10	60
	Transferred to other asylums -	486	103	589
	Transferred to workhouses -	1	1	2
	Died - - -	249	69	318
	Escaped; and recaptured in subsequent years -	3	—	3
	Escaped, and not recaptured up to 31st December 1885 -	2	1	3
Total cases discharged, removed, died, &c., during the 22 $\frac{2}{3}$ $\frac{1}{2}$ years - - -		860	253	1,113
Remaining 31st December 1885 - - -		401	136	537
Average number resident during the 22 $\frac{2}{3}$ $\frac{1}{2}$ years		355	108	463
Persons transferred to this asylum during the 22 $\frac{2}{3}$ $\frac{1}{2}$ years - - -		460	122	582
Persons transferred from this asylum during the 22 $\frac{2}{3}$ $\frac{1}{2}$ years - - -		487	104	591

TABLE 3.

Showing the ADMISSIONS, DISCHARGES, DEATHS, and ESCAPES, with the Mean Annual MORTALITY and the Proportion of RECOVERIES, for each Year since the opening of the Asylum.

Years.	Admitted.			Discharged.						Died.			Escaped and not Recaptured on 31st December of each Year.			Re-maining on 31st December of each Year.			Per-centage of Recoveries on Admissions, including those recovered and removed to Prison.			Per-centage of Deaths on average Number resident.					
	Recovered.			Removed to Prisons.			Transferred to other Asylums or Workhouses.			Died.			Escaped and not Recaptured on 31st December of each Year.			Re-maining on 31st December of each Year.			Per-centage of Recoveries on Admissions, including those recovered and removed to Prison.			Per-centage of Deaths on average Number resident.					
	Discharged.			Removed to Prisons.			Transferred to other Asylums or Workhouses.			Died.			Escaped and not Recaptured on 31st December of each Year.			Re-maining on 31st December of each Year.			Per-centage of Recoveries on Admissions, including those recovered and removed to Prison.			Per-centage of Deaths on average Number resident.					
	M.	F.	T.	M.	F.	T.	M.	F.	T.	M.	F.	T.	M.	F.	T.	M.	F.	T.	M.	F.	T.	M.	F.	T.			
From 27th May to 31st Dec, 1863	—	—	—	—	—	—	—	—	—	—	—	—	—	—	—	—	—	—	—	—	—	—	—	—			
In the year 1864	222	6	228	4	3	7	—	—	—	—	—	—	—	—	—	—	—	—	—	—	—	—	—	—			
" 1865	131	4	135	5	—	5	—	—	—	—	—	—	—	—	—	—	—	—	—	—	—	—	—	—	—		
" 1866	35	8	43	2	—	2	—	—	—	—	—	—	—	—	—	—	—	—	—	—	—	—	—	—	—		
" 1867	47	28	75	4	1	5	2	—	—	—	—	—	—	—	—	—	—	—	—	—	—	—	—	—	—		
" 1868	173	16	189	4	4	8	—	—	—	—	—	—	—	—	—	—	—	—	—	—	—	—	—	—	—		
" 1869	—	29	6	2	1	3	3	—	—	—	—	—	—	—	—	—	—	—	—	—	—	—	—	—	—		
" 1870	27	4	31	3	2	5	3	2	—	—	—	—	—	—	—	—	—	—	—	—	—	—	—	—	—		
" 1871	60	17	77	4	4	8	6	3	9	12	4	16	9	—	—	—	—	—	—	—	—	—	—	—	—		
" 1872	40	28	68	2	7	9	3	—	—	—	—	—	—	—	—	—	—	—	—	—	—	—	—	—	—		
" 1873	44	11	55	3	2	5	2	1	3	19	1	20	11	2	—	—	—	—	—	—	—	—	—	—	—		
" 1874	19	12	31	—	—	—	—	—	—	—	—	—	—	—	—	—	—	—	—	—	—	—	—	—	—		
" 1875	30	12	42	1	—	1	10	1	11	13	3	16	12	2	—	—	—	—	—	—	—	—	—	—	—		
" 1876	36	9	45	2	5	7	8	1	9	17	5	22	14	—	—	—	—	—	—	—	—	—	—	—	—		
" 1877	34	9	43	7	5	12	—	—	—	—	—	—	—	—	—	—	—	—	—	—	—	—	—	—	—	—	
" 1878	26	16	42	6	4	10	—	—	—	—	—	—	—	—	—	—	—	—	—	—	—	—	—	—	—	—	
" 1879	33	16	49	4	1	5	—	—	—	—	—	—	—	—	—	—	—	—	—	—	—	—	—	—	—	—	
" 1880	46	16	62	3	5	8	—	—	—	—	—	—	—	—	—	—	—	—	—	—	—	—	—	—	—	—	
" 1881	51	13	64	2	3	5	—	—	—	—	—	—	—	—	—	—	—	—	—	—	—	—	—	—	—	—	
" 1882	46	16	62	2	3	5	—	—	—	—	—	—	—	—	—	—	—	—	—	—	—	—	—	—	—	—	
" 1883	58	17	75	5	1	6	—	—	—	—	—	—	—	—	—	—	—	—	—	—	—	—	—	—	—	—	
" 1884	44	12	56	1	1	2	—	—	—	—	—	—	—	—	—	—	—	—	—	—	—	—	—	—	—	—	
" 1885	30	14	44	3	7	10	—	—	—	—	—	—	—	—	—	—	—	—	—	—	—	—	—	—	—	—	
Yearly average	55.79	17.21	73.00	3.05	3.05	6.10	2.21	0.44	2.65	21.55	4.60	26.15	11.02	3.05	14.07	0.22	0.04	0.26	362.109	471.355	108.463	9.43	20.30	12.00	3.09	2.83	3.03

TABLE 4.—Showing the HISTORY of the ANNUAL ADMISSIONS, &c.—continued.

* The Re-admissions may be classified as follows :	Male.		Female.		Summary of the Total Admissions and Re-admissions.	Male.		Female.		Total.
Persons under orders of detention during Her Majesty's pleasure, who have been conditionally discharged, and who have subsequently relapsed	9	6	15		Percentage of Cases Recovered and discharged	5.47	17.74	8.36		
Persons under orders of detention during Her Majesty's pleasure who have been discharged to the care of guardians of union work-houses ; and re-admitted under fresh warrants	1	—	1		“ Recovered and removed to prisons	3.96	2.57	3.64		
Persons under orders of detention during Her Majesty's pleasure who have been transferred to private licensed houses ; and re-admitted under fresh warrants	1	—	1		“ Transferred to other asylums	38.62	26.73	35.82		
Persons removed to prisons, recovered ; and re-admitted under fresh warrants	5	2	7		“ Died	19.75	17.74	19.27		
Persons removed to other asylums on completion of sentences of penal servitude ; and re-admitted under fresh warrants	8	3	11		“ Escaped and subsequently recaptured	0.24	0.00	0.18		
Persons removed to prison for trial ; and re-admitted under orders of detention during Her Majesty's pleasure	1	—	1		“ Escaped and not recaptured	0.16	0.26	0.18		
Persons recaptured after escape	3	—	3		“ Remaining	31.80	34.96	32.55		
	28	11	39			100.00	100.00	100.00		100.00

* Further particulars with respect to the whole of the re-admissions from the opening of the asylum are given in the 21st Table.

TABLE 5.
Showing the CAUSES of DEATH during the Year 1885.

Causes of Death.	Male.	Female.	Total.
Diseases of the brain and nervous system :			
Meningitis - - - - -	—	1	1
Meningitis, thrombosis, and red softening of brain.	1	—	1
Meningitis and pleurisy - - -	2	—	2
Diseases of the respiratory system :			
Phthisis - - - - -	2	—	2
Pneumonia - - - - -	1	—	1
Pneumonia and peritonitis - - -	—	1	1
Pleurisy - - - - -	2	—	2
Pleuro-pneumonia - - - - -	1	—	1
Diseases of the digestive system :			
Cancer of stomach - - - - -	—	1	1
Diseases of the urinary system :			
Cancer of bladder and prostate -	1	—	1
General diseases :			
Caries of Spine - - - - -	—	1	1
Total - - - - -	10	4	14

Table 5—continued.

An INQUEST was held in every case of DEATH, and the following were the Verdicts returned:—

Initials.	Date of Admission.	Date of Death.	Verdict.
Males.			
M. C.	14 July 1880	20 Mar. 1885	Died of pleurisy.
H. C.	22 May 1875	29 Mar. „	Died of pleuro-pneumonia.
W. B.	27 April 1883	9 July „	Died of inflammation of pleura and lungs.
E. B.	3 Sept. 1873	16 „ „	Died of cancer of prostate and bladder.
T. K.	17 Feb. 1865	21 Aug. „	Died of consumption.
F. H.	7 May 1868	22 Aug. „	Died of consumption.
C. A. B.	10 July 1884	1 Sept. „	Died of meningitis and pleurisy.
W. S.	15 April 1864	7 „ „	Died of pleurisy and pneumonia.
J. S.	30 Jan. 1885	30 Nov. „	Died of inflammation of the lungs.
P. W.	30 Aug. 1864	20 Dec. „	Died of inflammation of brain and membranes.
Females.			
J. S.	17 June 1863	31 Jan. „	Died of pneumonia and peritonitis.
E. D.	30 May „	17 Feb. „	Died of disease of brain.
A. E.	4 Mar. 1885	20 Oct. „	Died of caries of spine and paralysis of brain.
M. McN.	30 May 1863	31 Dec. „	Died of cancer of stomach.

TABLE 6.

Showing the LENGTH of RESIDENCE in the Broadmoor Asylum of those discharged recovered, and of those who have died, during the Year 1885.

Length of Residence.	Recovered and discharged.			Died.		
	Male.	Female.	Total.	Male.	Female.	Total.
Under 1 month - -	—	—	—	—	—	—
From 1 to 3 months -	—	—	—	—	—	—
„ 3 „ 6 „ -	—	—	—	—	—	—
„ 6 „ 12 „ -	—	—	—	1	1	2
„ 1 „ 2 years -	—	1	1	1	—	1
„ 2 „ 3 „ - -	1	—	1	1	—	1
„ 3 „ 5 „ - -	1	1	2	1	—	1
„ 5 „ 7 „ - -	—	2	2	—	—	—
„ 7 „ 10 „ - -	—	1	1	1	—	1
„ 10 „ 12 „ - -	—	1	1	1	—	1
„ 12 „ 15 „ - -	—	1	1	—	—	—
„ 15 „ 20 „ - -	—	—	—	1	—	1
„ 20 „ 25 „ - -	1	—	1	3	3	6
Total - -	3	7	10	10	4	14

TABLE 7.

Showing the DURATION of the DISORDER on ADMISSION, of the ADMISSIONS, DISCHARGES, and DEATHS, during the Year 1885.

Class.	The Admissions.			The Discharges.					The Deaths.		
	Male.	Female.	Total.	Recovered.		Transferred to other Asylums or Workhouses.			Male.	Female.	Total.
				Male.	Female.	Total.	Male.	Female.			
Class I.—First attack, and within three months on admission	2	1	3	1	1	2	1	1	2	—	2
Class II.—First attack, above three months and within twelve months on admission	5	6	11	1	2	3	1	1	2	—	1
Class III.—Not first attack, and within twelve months on admission	5	1	6	—	3	3	—	1	1	—	4
Class IV.—First attack or not, but of more than twelve months on admission	18	6	24	1	1	2	20	7	27	4	7
Total	30	14	44	3	7	10	22	10	32	4	14

TABLE 8.
Showing the AGES with respect to the ADMISSIONS, DISCHARGES, and DEATHS during the Year 1885.

Ages.	The Admissions.			The Discharges.				The Deaths.							
	Male.	Female.	Total.	Recovered.		Transferred to other Asylums or Workhouses.		Male.	Female.	Total.					
				Male.	Female.	Male.	Female.				Male.	Female.	Total.		
From 5 to 10 years	-	-	-	-	-	-	-	-	-	-	-	-	-	-	-
" 10 " 15	1	-	1	-	-	-	-	-	-	-	-	-	-	-	-
" 15 " 20	1	-	1	-	-	-	-	-	-	-	-	-	-	-	-
" 20 " 30	6	7	13	-	-	-	1	1	2	-	-	-	-	-	-
" 30 " 40	8	2	10	1	1	2	1	4	5	4	1	2	2	1	2
" 40 " 50	7	4	11	1	1	2	1	9	5	5	4	1	4	3	7
" 50 " 60	4	1	5	-	2	1	5	4	2	4	2	1	2	1	3
" 60 " 70	3	-	3	-	-	1	4	2	2	2	1	1	1	1	1
" 70 " 80	-	-	-	-	-	-	-	-	-	-	-	-	-	-	-
" 80 " 90	-	-	-	-	-	-	-	-	-	-	-	-	-	-	-
" 90 and upwards	-	-	-	-	-	-	-	-	-	-	-	-	-	-	-
Total	30	14	44	3	7	10	22	10	32	10	4	14	10	4	14

	Males.	Females.	Both Sexes.
The average age at the time of admission was —	-	33 years,	36 $\frac{3}{4}$ years.
" " " of recovery "	38 $\frac{1}{2}$ years.	45 "	46 "
" " " of transfer "	48 "	37 "	47 "
" " " of death "	51 $\frac{1}{2}$ "	57 "	54 "
" " " "	53 "	57 "	54 "

TABLE 9.

Showing the CONDITION as to MARRIAGE of the ADMISSIONS, DISCHARGES, and DEATHS during the Year 1885.

Condition with reference to Marriage.	The Admissions.			The Discharges.				The Deaths.				
	Male.	Female.	Total.	Recovered.		Transferred to other Asylums or Workhouses.		Male.	Female.	Total.		
				Male.	Female.	Male.	Female.				Male.	Female.
Single	17	2	19	2	1	3	18	7	25	1	1	2
Married	8	12	20	1	4	5	3	3	6	3	3	6
Widowed	5	—	5	—	2	2	—	—	—	6	—	6
Not ascertained	—	—	—	—	—	—	1	—	1	—	—	—
Total	30	14	44	3	7	10	22	10	32	10	4	14

TABLE 10.
Showing the probable CAUSES, apparent or assigned, of INSANITY, in the ADMISSIONS, DISCHARGES,
and DEATHS during the Year 1885.

Causes.	The Admissions.			The Discharges.					The Deaths.															
	Male.	Female.	Total.	Recovered.		Removed to Prison.		Transferred to other Asylums or Workhouses.		Male.	Female.	Total.												
				Male.	Female.	Total.	Male.	Female.	Total.				Male.	Female.	Total.									
Congenital	-	-	-	-	-	-	-	-	-	-	-	-	-	-	-	-	-	-	-	-	-	-		
Do. and adverse circumstances and intemperance	-	1	1	-	-	-	-	-	-	-	-	-	-	-	-	-	-	-	-	-	-	-	-	-
Do. and intemperance	-	1	1	-	-	-	-	-	-	-	-	-	-	-	-	-	-	-	-	-	-	-	-	-
Do. and bodily illness	2	-	2	-	-	-	-	-	-	-	-	-	-	-	-	-	-	-	-	-	-	-	-	-
Hereditary	3	-	3	-	-	-	-	-	-	-	-	-	-	-	-	-	-	-	-	-	-	-	-	-
and intemperance	1	-	1	-	-	-	-	-	-	-	-	-	-	-	-	-	-	-	-	-	-	-	-	-
and congenital	3	-	3	-	-	-	-	-	-	-	-	-	-	-	-	-	-	-	-	-	-	-	-	-
sunstroke and intemperance	2	-	2	-	-	-	-	-	-	-	-	-	-	-	-	-	-	-	-	-	-	-	-	-
and previous attack	1	-	1	-	-	-	-	-	-	-	-	-	-	-	-	-	-	-	-	-	-	-	-	-
and pregnancy	2	-	2	-	-	-	-	-	-	-	-	-	-	-	-	-	-	-	-	-	-	-	-	-
and puerperal	1	-	1	-	-	-	-	-	-	-	-	-	-	-	-	-	-	-	-	-	-	-	-	-
and nervous shock	-	1	1	-	-	-	-	-	-	-	-	-	-	-	-	-	-	-	-	-	-	-	-	-
and love affairs	-	-	-	-	-	-	-	-	-	-	-	-	-	-	-	-	-	-	-	-	-	-	-	-
and domestic trouble	-	-	-	-	-	-	-	-	-	-	-	-	-	-	-	-	-	-	-	-	-	-	-	-
Domestic trouble	2	-	2	-	-	-	-	-	-	-	-	-	-	-	-	-	-	-	-	-	-	-	-	-
and loss of relations	3	-	3	-	-	-	-	-	-	-	-	-	-	-	-	-	-	-	-	-	-	-	-	-
Intemperance in drink	1	-	1	-	-	-	-	-	-	-	-	-	-	-	-	-	-	-	-	-	-	-	-	-
and previous attack	-	-	-	-	-	-	-	-	-	-	-	-	-	-	-	-	-	-	-	-	-	-	-	-
and business anxiety	-	-	-	-	-	-	-	-	-	-	-	-	-	-	-	-	-	-	-	-	-	-	-	-
Sunstroke	-	-	-	-	-	-	-	-	-	-	-	-	-	-	-	-	-	-	-	-	-	-	-	-
and intemperance	1	-	1	-	-	-	-	-	-	-	-	-	-	-	-	-	-	-	-	-	-	-	-	-
and adverse circumstances	1	-	1	-	-	-	-	-	-	-	-	-	-	-	-	-	-	-	-	-	-	-	-	-
Adverse circumstances	-	-	-	-	-	-	-	-	-	-	-	-	-	-	-	-	-	-	-	-	-	-	-	-
Previous attacks	-	1	1	-	-	-	-	-	-	-	-	-	-	-	-	-	-	-	-	-	-	-	-	-
Mental anxiety	2	-	2	-	-	-	-	-	-	-	-	-	-	-	-	-	-	-	-	-	-	-	-	-
and lactation	1	-	1	-	-	-	-	-	-	-	-	-	-	-	-	-	-	-	-	-	-	-	-	-
Over study and disappointed prospects	1	-	1	-	-	-	-	-	-	-	-	-	-	-	-	-	-	-	-	-	-	-	-	-
Puerperal	-	1	1	-	-	-	-	-	-	-	-	-	-	-	-	-	-	-	-	-	-	-	-	-
and previous attack	-	1	1	-	-	-	-	-	-	-	-	-	-	-	-	-	-	-	-	-	-	-	-	-
Pregnancy	-	1	1	-	-	-	-	-	-	-	-	-	-	-	-	-	-	-	-	-	-	-	-	-
Lactation	-	1	1	-	-	-	-	-	-	-	-	-	-	-	-	-	-	-	-	-	-	-	-	-
Accident, or injury	-	1	1	-	-	-	-	-	-	-	-	-	-	-	-	-	-	-	-	-	-	-	-	-
Bodily disease and intemperance	-	1	1	-	-	-	-	-	-	-	-	-	-	-	-	-	-	-	-	-	-	-	-	-
Love affairs and pregnancy	-	1	1	-	-	-	-	-	-	-	-	-	-	-	-	-	-	-	-	-	-	-	-	-
Unknown	1	-	1	-	-	-	-	-	-	-	-	-	-	-	-	-	-	-	-	-	-	-	-	-
Total	30	14	44	3	7	10	-	-	-	-	-	22	10	32	10	4	10	3	1	4	14			

TABLE 11.

DEGREE of EDUCATION in the ADMISSIONS during the Year 1885.

Education.	Male.	Female.	Total.
None - - - - -	7	1	8
Read only - - - - -	—	2	2
Read and write - - - - -	18	10	28
Good - - - - -	5	1	6
Total - - - - -	30	14	44

TABLE 12.

PREVIOUS HISTORY of the ADMISSIONS during the Year 1885.

—	Male.	Female.	Total.
Stated not to be first attack of insanity - -	10	6	16
First attack, or no information on the subject -	20	8	28
Total - - - - -	30	14	44
Known to have actually attempted suicide -	4	3	7
Regarded as being suicidal - - - - -	13	6	19
Stated not to have attempted suicide, or no } information on the subject - - - - - }	13	5	18
Total - - - - -	30	14	44
Affected with epilepsy or epileptiform convul- } sions - - - - - }	5	—	5
Not so affected - - - - -	25	14	39
Total - - - - -	30	14	44

TABLE 13.

SHOWING the Numbers remaining in the Asylum on 31st December 1885 affected with EPILEPSY and PARALYSIS.

—	Male.	Female.	Total.
Epilepsy - - - - -	25	7	32
Paralysis - - - - -	20	4	24
Epilepsy and paralysis - - - - -	2	—	2
Total - - - - -	47	11	58

TABLE 14.

Showing the PREVIOUS OCCUPATION with respect to the ADMISSIONS, DISCHARGES, and DEATHS, during the Year 1885.

Previous Occupation.	The Admissions.			The Discharges.				The Deaths.		
	Male.	Female.	Total.	Recovered.		Transferred to other Asylums or Workhouses.		Male.	Female.	Total.
				Male.	Female.	Total.	Male.			
Baker	1		1				2			1
Blacksmith										
Carter	1		1							
Charwoman							1			
Chimney-sweeper							1			
Clerk										
Commercial traveller										
Cork-cutter										
Cotton-spinner										
Engineer										
Factory hand										
Farmer	3		3	1						
Fisherman	1		1							
Grocer										
House-keeper		2	2							
House-wife		12	12				1			3
Labourer, general	7		7	2			1			1
Labourer, agricultural	3		3							
Laundress										
Magistrate in Indian Civil Service	1		1							
Painter, &c.										
Pensioner (Naval)										
Potter										
Railway guard	1		1				1			
Seaman										
Servant	2		2	1			3			
Shoemaker	1		1							
Soldier										
Stock-broker	1		1				1			
Tailor										
Watch-maker	1		1							
Weaver	3		3				3			
None, or not known										
Total	30	14	44	3	7	10	22	10	4	14

TABLE 15.

CLASSIFICATION of the CRIMES and SENTENCES of Patients remaining in the Asylum on 31st December 1884.

Crimes.	Total Number remaining in the Asylum on the 31st of December 1884			Classified with reference to the Period at which Insanity was recognised.																				
	M.	F.	T.	Certified to be Insane whilst awaiting Trial, or Judgment.			Found Insane by Jury on Arraignment.			Acquitted on the ground of Insanity.			Reprived on the ground of Insanity.			Certified to be Insane whilst undergoing Sentences of Penal Servitude.			Certified to be Insane whilst undergoing shorter Terms of Imprisonment.					
				M.	F.	T.	M.	F.	T.	M.	F.	T.	M.	F.	T.	M.	F.	T.	M.	F.	T.			
				M.	F.	T.	M.	F.	T.	M.	F.	T.	M.	F.	T.	M.	F.	T.	M.	F.	T.			
Murder	167	94	261	26	13	39	30	24	54	88	54	142	19	1	20	4	2	6	—	—	—	—	—	—
Manslaughter	6	7	13	1	3	4	1	1	2	2	—	2	—	—	—	2	3	5	—	—	—	—	—	—
Attempt to murder, maim, &c.	122	19	141	8	1	9	29	3	32	78	14	92	—	—	—	7	1	8	—	—	—	—	—	—
Concealment of birth	—	2	2	—	—	—	3	—	3	—	—	—	—	—	—	—	—	—	—	—	—	—	—	—
Rape	3	—	3	—	—	—	—	—	—	—	—	—	—	—	—	—	—	—	—	—	—	—	—	—
Assault, common	8	—	8	1	—	1	—	—	—	6	—	6	—	—	—	—	—	—	—	—	—	—	—	—
Assault with intent to ravish	7	—	7	—	—	—	4	—	4	3	—	3	—	—	—	—	—	—	—	—	—	—	—	—
Unnatural offence	7	—	7	—	—	—	2	—	2	4	—	4	—	—	—	—	—	—	—	—	—	—	—	—
Treasonable and seditious offences	3	—	3	—	—	—	2	—	2	1	—	1	—	—	—	—	—	—	—	—	—	—	—	—
Burglary and housebreaking	11	1	12	3	—	3	3	—	3	4	—	4	—	—	—	—	—	—	—	—	—	—	—	—
Robbery with violence	1	—	1	—	—	—	—	—	—	1	—	1	—	—	—	—	—	—	—	—	—	—	—	—
Sheepstealing	1	—	1	—	—	—	—	—	—	1	—	1	—	—	—	—	—	—	—	—	—	—	—	—
Horsestealing	1	—	1	—	—	—	—	—	—	—	—	—	—	—	—	—	—	—	—	—	—	—	—	—
Larceny and petty thefts	7	17	24	—	—	—	6	—	6	—	—	—	—	—	—	—	—	—	—	—	—	—	—	—
Receiving stolen goods	—	1	1	—	—	—	—	—	—	—	—	—	—	—	—	—	—	—	—	—	—	—	—	—
Obtaining goods by false pretences	1	—	1	—	—	—	—	—	—	—	—	—	—	—	—	—	—	—	—	—	—	—	—	—
Arson and malicious burning	24	1	25	2	—	2	8	—	8	11	—	11	—	—	—	3	1	4	—	—	—	—	—	—
Wilful damage and other malicious offences	2	—	2	—	—	—	1	—	1	1	—	1	—	—	—	—	—	—	—	—	—	—	—	—
Forgery	1	—	1	—	—	—	—	—	—	—	—	—	—	—	—	—	—	—	—	—	—	—	—	—
Uttering counterfeit coin, &c.	—	1	1	—	—	—	—	—	—	—	—	—	—	—	—	—	—	—	—	—	—	—	—	—
Libel	—	—	—	—	—	—	—	—	—	—	—	—	—	—	—	—	—	—	—	—	—	—	—	—
Under the vagrant laws	2	—	2	—	—	—	—	—	—	—	—	—	—	—	—	—	—	—	—	—	—	—	—	—
Felony (not otherwise described)	3	—	3	—	—	—	—	—	—	3	—	3	—	—	—	—	—	—	—	—	—	—	—	—
Threatening by letters	3	—	3	—	—	—	1	—	1	2	—	2	—	—	—	—	—	—	—	—	—	—	—	—
Other misdemeanors	1	—	1	—	—	—	—	—	—	—	—	—	—	—	—	—	—	—	—	—	—	—	—	—
Deserters from the army and navy	3	—	3	—	—	—	—	—	—	—	—	—	—	—	—	—	—	—	—	—	—	—	—	—
Insubordination as soldiers	17	—	17	—	—	—	—	—	—	—	—	—	—	—	—	—	—	—	—	—	—	—	—	—
Attempting self-murder	4	—	4	—	—	—	—	—	—	4	—	4	—	—	—	—	—	—	—	—	—	—	—	—
Total	406	143	549	44	12	61	90	30	120	211	68	279	19	1	20	39	27	66	—	—	—	—	—	—

TABLE 16.

CLASSIFICATION of the CRIMES and SENTENCES of Patients admitted into the Asylum during the Year 1885.

Crimes.	Total Number admitted during the Year 1885.			Classified with reference to the Period at which Insanity was recognised.																					
	M.	F.	T.	Certified to be Insane whilst awaiting Trial, or Judgment.			Found Insane by Jury on Arraignment.			Acquitted on the ground of Insanity.			Reprived on the ground of Insanity.			Certified to be Insane whilst undergoing Sentences of Penal Servitude.			Certified to be Insane whilst undergoing shorter Terms of Imprisonment.						
				M.	F.	T.	M.	F.	T.	M.	F.	T.	M.	F.	T.	M.	F.	T.	M.	F.	T.				
				Murder.	11	8	19	2	1	3	6	3	9	2	4	6	1	—	—	—	—	—	—	—	—
Attempt to murder, maim, &c.	10	1	11	1	—	1	3	1	4	6	—	6	—	—	—	—	—	—	—	—	—	—	—	—	—
Assault with intent to ravish	1	—	1	—	—	—	1	—	1	—	—	—	—	—	—	—	—	—	—	—	—	—	—	—	—
Unnatural offences	2	—	2	—	—	—	1	—	1	1	—	1	—	—	—	—	—	—	—	—	—	—	—	—	—
Larceny and petty thefts.	—	4	4	—	—	—	—	—	—	—	—	—	—	—	—	—	—	—	—	—	—	—	—	—	—
Receiving stolen goods	—	1	1	—	—	—	—	—	—	—	—	—	—	—	—	—	—	—	—	—	—	—	—	—	—
Obtaining goods by false pretences	1	—	1	—	—	—	—	—	—	—	—	—	—	—	—	—	—	—	—	—	—	—	—	—	—
Arson and malicious burning	4	—	4	—	—	—	2	—	2	2	—	2	—	—	—	—	—	—	—	—	—	—	—	—	—
Wilful damage and other malicious offences	1	—	1	—	—	—	1	—	1	—	—	—	—	—	—	—	—	—	—	—	—	—	—	—	—
Total	30	14	44	3	1	4	14	4	18	11	4	15	1	—	—	—	—	—	—	—	—	—	—	—	—

TABLE 18.
CLASSIFICATION of the CRIMES and SENTENCES of Patients transferred to other Asylums or Workhouses during the Year 1885.

Crime.	Total Number transferred to other Asylums or Workhouses during the Year 1885.			Classified with reference to the Period at which Insanity was recognised.																					
	M.	F.	T.	Certified to be Insane whilst awaiting Trial or Judgment.			Found Insane by Jury on Arraignment.			Acquitted on the ground of Insanity.			Reprieved on the ground of Insanity.			Certified to be Insane whilst undergoing Sentences of Penal Servitude.			Certified to be Insane whilst undergoing shorter Terms of Imprisonment.						
				M.	F.	T.	M.	F.	T.	M.	F.	T.	M.	F.	T.	M.	F.	T.	M.	F.	T.				
Manslaughter -	1	-	1	-	-	-	-	-	-	-	-	-	-	-	-	-	-	-	-	-	-	-	-	-	-
Attempts to murder, main, &c. -	1	-	1	-	-	-	-	-	-	-	-	-	-	-	-	-	-	-	-	-	-	-	-	-	-
Concealment of birth -	-	1	1	-	1	-	-	-	-	-	-	-	-	-	-	-	-	-	-	-	-	-	-	-	-
Burglary and housebreaking -	-	1	1	-	-	-	-	-	-	-	-	-	-	-	-	-	-	-	-	-	-	-	-	-	-
Sheepstealing -	1	-	1	-	-	-	-	-	-	-	-	-	-	-	-	-	-	-	-	-	-	-	-	-	-
Larceny and petty thefts -	1	8	9	1	-	-	1	-	-	-	-	-	-	-	-	-	-	-	-	-	-	-	-	-	-
Forgery -	1	-	1	-	-	-	-	-	-	-	-	-	-	-	-	-	-	-	-	-	-	-	-	-	-
Felony (not otherwise described) -	1	-	1	-	-	-	-	-	-	-	-	-	-	-	-	-	-	-	-	-	-	-	-	-	-
Other misdemeanors -	1	-	1	-	-	-	-	-	-	-	-	-	-	-	-	-	-	-	-	-	-	-	-	-	-
Deserters from the army and navy -	1	-	1	-	-	-	-	-	-	-	-	-	-	-	-	-	-	-	-	-	-	-	-	-	-
Insubordination as soldiers -	12	-	12	-	-	-	-	-	-	-	-	-	-	-	-	-	-	-	-	-	-	-	-	-	-
Attempting self-murder -	2	-	2	-	-	-	-	-	-	-	-	-	-	-	-	-	-	-	-	-	-	-	-	-	-
Total -	22	10	32	1	1	2	4	4	-	-	-	-	-	-	-	-	-	-	-	-	-	-	-	-	-

TABLE 19.

CLASSIFICATION of the CRIMES and SENTENCES of Patients who died during the Year 1885.

Crimes.	Total Number of Deaths during the year 1885.			Classified with Reference to the Period at which Insanity was recognised.																				
	M.	F.	T.	Certified to be Insane whilst awaiting Trial or Judgment.			Found Insane by Jury on Arraignment.			Acquitted on the ground of Insanity.			Reprived on the ground of Insanity.			Certified to be Insane whilst undergoing Sentences of Penal Servitude.			Certified to be Insane whilst undergoing shorter Terms of Imprisonment.					
				M.	F.	T.	M.	F.	T.	M.	F.	T.	M.	F.	T.	M.	F.	T.	M.	F.	T.			
Murder -	8	2	10	2	-	2	1	1	2	4	1	5	1	-	1	-	-	-	-	-	-	-	-	-
Manslaughter -	-	1	1	-	1	1	-	-	-	-	-	-	-	-	-	-	-	-	-	-	-	-	-	-
Attempt to murder, maim, &c. -	2	-	2	-	-	-	-	-	-	2	-	2	-	-	-	-	-	-	-	-	-	-	-	-
Larceny -	-	1	1	-	-	-	-	-	-	-	-	-	-	-	-	-	-	-	-	1	-	-	-	-
Total -	10	4	14	2	1	3	1	1	2	6	1	7	1	1	1	-	-	-	1	1	-	-	-	-

OF THE ASYLUM TO THE 31ST DECEMBER 1855.

Crimes.	Total Number admitted from the opening of the Asylum down to the 31st December 1855.						Classified with reference to the Period at which Insanity was recognised.																		
	M.		F.		T.		Certified to be Insane whilst awaiting Trial, or Judgment.			Found Insane by Jury on Arraignment.			Acquitted on the ground of Insanity.			Reprieved on the ground of Insanity.			Certified to be Insane whilst undergoing Sentences of Penal Servitude.			Certified to be Insane whilst undergoing shorter Terms of Imprisonment.			
	M.	F.	M.	F.	M.	F.	M.	F.	T.	M.	F.	T.	M.	F.	T.	M.	F.	T.	M.	F.	T.	M.	F.	T.	
Murder	276	175	451	43	21	64	52	44	96	149	102	251	23	1	24	9	7	16	—	—	—	—	—	—	—
Manslaughter	15	10	25	1	4	5	5	1	6	2	1	3	—	—	—	7	4	11	—	—	—	—	—	—	—
Attempt to murder, maim, etc.	245	39	284	15	1	16	49	6	55	138	26	164	—	—	—	43	6	49	—	—	—	—	—	—	—
Concealment of birth	—	3	3	—	—	—	3	2	2	—	—	—	—	—	—	14	—	—	—	—	—	—	—	—	—
Rape	18	—	18	—	—	—	3	—	3	—	—	—	—	—	—	3	1	4	—	—	—	—	—	—	—
Assault, common	18	3	21	1	—	1	3	—	7	—	—	—	—	—	—	1	—	—	—	—	—	—	—	—	—
Do. with intent to ravish	12	—	12	—	—	—	7	—	7	—	—	—	—	—	—	—	—	—	—	—	—	—	—	—	—
Do. indecent	1	—	1	—	—	—	—	—	—	—	—	—	—	—	—	—	—	—	—	—	—	—	—	—	—
Unnatural offences	20	—	20	1	—	1	4	—	4	7	—	7	—	—	—	7	—	—	—	—	—	—	—	—	—
Treasonable and seditious offences	7	—	7	1	—	1	3	—	3	2	—	2	—	—	—	1	—	—	—	—	—	—	—	—	—
Burglary and housebreaking	113	7	120	4	—	4	8	1	9	7	—	7	—	—	—	6	1	7	—	—	—	—	—	—	—
Robbery on the highway	6	1	7	—	—	—	—	—	—	—	—	—	—	—	—	—	—	—	—	—	—	—	—	—	—
Robbery with violence	8	2	10	—	—	—	—	—	—	—	—	—	—	—	—	—	—	—	—	—	—	—	—	—	—
Sheep stealing	8	—	8	—	—	—	—	—	—	—	—	—	—	—	—	—	—	—	—	—	—	—	—	—	—
Horse stealing	9	—	9	—	—	—	—	—	—	—	—	—	—	—	—	—	—	—	—	—	—	—	—	—	—
Larceny and petty thefts	262	119	381	2	1	3	12	3	15	7	4	11	—	—	—	237	101	338	—	—	—	—	—	—	—
Frauds and embezzlements	4	2	6	—	—	—	—	—	—	—	—	—	—	—	—	4	—	—	—	—	—	—	—	—	—
Receiving stolen goods	10	2	12	—	—	—	—	—	—	—	—	—	—	—	—	10	2	12	—	—	—	—	—	—	—
Obtaining goods by false pretences	7	—	7	—	—	—	—	—	—	—	—	—	—	—	—	5	—	—	—	—	—	—	—	—	—
Arson and malicious burning	96	7	103	4	—	4	21	2	23	30	1	31	—	—	—	41	4	45	—	—	—	—	—	—	—
Willful damage and other malicious offences	4	3	7	—	—	—	2	—	2	1	—	1	—	—	—	1	—	—	—	—	—	—	—	—	—
Forgery	7	—	7	—	—	—	—	—	—	—	—	—	—	—	—	7	—	—	—	—	—	—	—	—	—
Uttering counterfeit coin, coining, etc.	10	3	13	—	—	—	—	—	—	—	—	—	—	—	—	10	3	13	—	—	—	—	—	—	—
Riot and breach of the peace	1	1	2	—	—	—	—	—	—	—	—	—	—	—	—	—	—	—	—	—	—	—	—	—	—
For want of sureties	1	3	4	—	—	—	—	—	—	—	—	—	—	—	—	—	—	—	—	—	—	—	—	—	—
Libel	2	—	2	1	—	1	—	—	—	1	—	1	—	—	—	—	—	—	—	—	—	—	—	—	—
Under the Vagrant Laws	3	—	3	—	—	—	—	—	—	—	—	—	—	—	—	—	—	—	—	—	—	—	—	—	—
Night poaching, being armed	1	—	1	—	—	—	—	—	—	—	—	—	—	—	—	—	—	—	—	—	—	—	—	—	—
Felony (not otherwise described)	45	9	54	1	—	1	—	—	—	—	—	—	—	—	—	—	—	—	—	—	—	—	—	—	—
Threatening by letter	6	1	7	—	—	—	2	—	2	3	—	3	—	—	—	1	—	—	—	—	—	—	—	—	—
Other misdemeanours	3	1	4	—	—	—	—	—	—	—	—	—	—	—	—	—	—	—	—	—	—	—	—	—	—
Deserters from the army and navy	6	—	6	—	—	—	—	—	—	—	—	—	—	—	—	—	—	—	—	—	—	—	—	—	—
Insubordination as soldiers	29	—	29	—	—	—	—	—	—	—	—	—	—	—	—	—	—	—	—	—	—	—	—	—	—
Attempting self-murder	8	—	8	—	—	—	2	—	2	6	—	6	—	—	—	—	—	—	—	—	—	—	—	—	—
Total	1,261	889	1,650	76	27	103	175	60	235	377	136	513	23	1	24	590	140	730	20	—	—	—	—	—	—

TABLE 21.
PARTICULARS with respect to the WHOLE of the RE-ADMISSIONS from the OPENING of the ASYLUM to the 31st December 1885.

Register Numbers.	Patient's Initials.	Date of First Admission.	Offence for which first admitted.	Sentence or Order of the Court.	Circumstances under which discharged from the Asylum.	Date of Discharge, or Removal, or Escape.	Date of Re-admission.	Cause of Re-admission.
94 and 594	<i>Males.</i> J. Q.	27 April 1864	Attempt to murder.	Found insane by jury on arraignment.	Discharged conditionally.	11 May 1868	7 Aug. 1868	Relapsed.
24 and 612	J. T.	5 Mar. 1864	Burglary	8 years P.S.	Escaped	8 Nov. 1868	7 Jan. 1869	Recaptured.
338 and 617	J. B.	8 July 1867	Larceny	7 years P.S.	Escaped	4 Nov. 1868	10 Feb. 1869	Recaptured.
55 and 631	B. C. B.	19 Mar. 1864	Attempt to murder.	Acquitted on the ground of insanity.	Discharged conditionally.	28 June 1869	3 July 1869	Relapsed.
332 and 632	C. M. or F. L.	18 April 1867	Larceny	Found insane by jury on arraignment.	To prison; not insane.	16 July 1867	14 Nov. 1870	Certified to be insane whilst undergoing a sentence of 7 years P.S. for a fresh offence (larceny); sent back to prison again January 6th, 1871, not insane.
275 and 713	F. M.	6 Mar. 1865	Arson	Acquitted on the ground of insanity.	Discharged conditionally.	19 Aug. 1871	19 Aug. 1871	Relapsed.
259 and 727	J. M. or T. H.	24 Feb. 1865	Burglary	8 years P.S.	To a county asylum upon expiration of sentence.	3 Aug. 1868	3 Jan. 1872	Certified to be insane whilst undergoing a sentence of 5 years P.S. for a fresh offence (larceny).

TABLE 21.—continued.

Register Numbers.	Patient's Initials.	Date of First Admission.	Offence for which first admitted.	Sentence or Order of the Court.	Circumstances under which discharged from the Asylum.	Date of Discharge, or Removal, or Escape.	date of Re-admission.	Cause of Re-admission.
328 and 729	<i>Males.</i> R. M.	19 May 1865	Embezzlement.	14 years transportation.	To a county asylum upon expiration of sentence.	6 Mar. 1871	22 Jan. 1872	Certified to be insane whilst undergoing a sentence of 7 years P.S. for a fresh offence (larceny).
397 and 733	B. D.	11 July 1867	Larceny	5 years P.S.	To a county asylum upon expiration of sentence.	3 Nov. 1871	26 Feb. 1872	Certified to be insane whilst under committal for trial for the murder of a fellow-inmate of a county asylum.
24; 612 and 791	J. T. or C. W.	5 Mar. 1864	Burglary	8 years P.S.	To prison; re-covered.	11 May 1870	9 Sept. 1873	Certified to be insane whilst undergoing a sentence of 5 years P.S. for a fresh offence (larceny).
717 and 844	S. E.	11 Oct. 1871	Murder	Under committal for trial.	To prison; for trial.	28 Sept. 1874	30 June 1875	Acquitted, on the ground of insanity of the charge of murder for which he was first admitted.
479 and 897	G. W. or G. J.	17 Feb. 1868	Larceny	4 years P.S.	To a county asylum upon expiration of sentence.	20 Feb. 1868	1 Jan. 1877	Certified to be insane whilst undergoing a sentence of 7 years P.S. for a fresh offence (larceny).
686 and 908	S. T.	8 April 1871	Arson	5 years P.S.	To a county asylum upon expiration of sentence.	31 Mar. 1873	30 April 1877	Tried for a fresh offence of arson, and acquitted on the ground of insanity.

TABLE 21.—*continued.*

Register Numbers.	Patient's Initials.	Date of First Admission.	Offence for which first admitted.	Sentence or Order of the Court.	Circumstances under which discharged from the Asylum.	Date of Discharge, or Removal, or Escape.	Date of Re-admission.	Cause of Re-admission.
99 and 982	<i>Males.</i> F. P. K.	21 June 1864	Manslaughter.	Found insane by jury on arraignment.	Discharged conditionally.	4 June 1872	28 Feb. 1878	Committed an assault upon his wife.
406 and 947	J. W.	20 Aug. 1867	Burglary	10 years P.S.	Escaped	7 Aug. 1873	29 Sept. 1878	Recaptured.
730 and 996	W. N.	29 Jan. 1872	Murder	Acquitted on the ground of insanity.	Discharged conditionally.	24 Sept. 1879	16 Feb. 1880	Relapsed.
714 and 1,013	M. C.	7 Sept. 1871	Murder	Acquitted on the ground of insanity.	Discharged conditionally.	13 Mar. 1878	14 July 1880	Relapsed.
676 and 1,016	D. G.	13 Feb. 1871	Larceny	12 years P.S.	To prison; recovered.	17 July 1876	27 Aug. 1880	Relapsed (retransferred from prison).
672 and 1,034	E. M. or W. B.	11 Feb. 1871	Attempt to murder.	5 years P.S.	To a county asylum upon expiration of sentence.	16 Dec. 1872	31 Dec. 1880	Certified to be insane whilst undergoing a sentence of 7 years P.S. for a fresh offence (larceny).
170 and 1,058	T. D. or T. K.	16 Sept. 1864	Striking a superior officer.	10 years P.S.	To prison; recovered.	7 May 1870	21 June 1881	Certified to be insane whilst undergoing a sentence of 6 months imprisonment with hard labour for a fresh offence (assaulting a police constable).
682 and 1,136	W. R. or J. B.	4 Mar. 1871	Larceny	7 years P.S.	To prison; recovered.	9 Aug. 1875	24 Feb. 1883	Certified to be insane whilst under committal for trial, on a fresh charge of larceny.

TABLE 21.—continued.

Register Numbers.	Patient's Initials.	Date of First Admission.	Offence for which first admitted.	Sentence or Order of the Court.	Circumstances under which discharged from the Asylum.	Date of Discharge, or Removal, or Escape.	Date of Re-admission.	Cause of Re-admission.
251 and 1,138	<i>Males.</i> J. P. or J. C. E.	27 Feb. 1865	Larceny	4 years P.S.	To a county asylum upon expiration of sentence.	12 Dec. 1867	9 Mar. 1883	Certified to be insane whilst undergoing a sentence of 5 years P.S. for a fresh offence of larceny.
293 and 1,146	J. F.	3 April 1865	Attempt to murder.	Acquitted on the ground of insanity.	Discharged conditionally.	22 Dec. 1873	14 April 1883	Relapsed.
711 and 1,212	G. L.	4 July 1871	Attempt to murder.	Acquitted on the ground of insanity.	Discharged conditionally.	12 Mar. 1880	19 June 1884	Relapsed.
910 and 1,237	T. O.	6 June 1877	Arson	Found insane, by jury, on arraignment.	Discharged to the care of the Guardians of a Union Work-house.	20 Dec. 1881	26 Jan. 1885	Tried for a fresh offence of arson and again ordered to be detained during Her Majesty's pleasure.
1,009 and 1,240	T. J. M.	6 June 1880	Murder	Found insane, by jury, on arraignment.	Transferred to a private licensed house.	29 July 1880	12 Mar. 1885	Re-transferred to Broadmoor under a fresh warrant.
895 and 1,242	A. B.	29 Dec. 1876	Larceny	7 years P.S., and 7 years police supervision.	To a county asylum upon expiration of sentence.	5 Feb. 1877	28 April 1885	Found insane, by jury, on arraignment for a fresh offence (arson).
239 and 1,250	E. L.	10 Feb. 1865	Maliciously maiming seven bullocks.	Found insane, by jury, on arraignment.	Discharged conditionally.	7 May 1885	10 June 1885	Relapsed.

TABLE 21.—*continued.*

Register Numbers.	Patient's Initials.	Date of First Admission.	Offence for which first admitted.	Sentence or Order of the Court.	Circumstances under which discharged from the Asylum.	Date of Discharge, or Removal, or Escape.	Date of Re-admission	Cause of Re-admission.
98 and 124	<i>Females.</i> A. D.	15 July 1863	Attempt to murder.	10 years P.S. -	To Fisherton House Asylum.	17 Nov. 1863	15 Nov. 1867	Relapsed after removal from Fisherton Asylum to prison
137 and 166	A. L.	12 Dec. 1867	Murder -	Acquitted on the ground of insanity.	Discharged conditionally.	26 Sept. 1868	8 Aug. 1869	Relapsed.
112 and 203	S. E. D.	12 April 1866	Murder -	Acquitted on the ground of insanity.	Discharged conditionally.	4 June 1872	22 June 1874	Relapsed.
132 and 221	A. McL. or A. C.	26 Jan. 1869	Larceny -	7 years P.S. -	To prison; re-covered.	7 Jan. 1871	16 July 1873	Certified to be insane whilst undergoing a sentence of 7 years P.S. for a fresh offence (larceny).
226 and 269	C. D.	23 May 1873	Murder -	Acquitted on the ground of insanity.	Discharged conditionally.	31 Oct. 1877	21 Nov. 1877	Relapsed.
222 and 282	C. C. or C. K.	16 July 1873	Larceny -	7 years P.S. -	To a county asylum upon expiration of sentence.	25 July 1877	24 Oct. 1878	Certified to be insane whilst undergoing a sentence of 8 years P.S. for a fresh offence (larceny).
228 and 301	E. M.	14 Jan. 1874	Murder -	Acquitted on the ground of insanity.	Discharged conditionally.	19 Sept. 1879	15 Dec. 1879	Relapsed, but again discharged on the 7th November 1885.

TABLE 21—continued.

Register Numbers.	Patient's Initials.	Date of First Admission.	Offence for which first admitted.	Sentence or Order of the Court.	Circumstances under which discharged from the Asylum.	Date of Discharge, or Removal, or Escape.	Date of Re-admission.	Cause of Re-admission.
25 and 304	<i>Females.</i> M. B.	2 June 1863	Murder -	Acquitted on the ground of insanity.	Discharged conditionally.	13 May 1868	21 Feb. 1880	Relapsed.
309 and 331	A. G.	14 June 1880	Arson -	15 years P.S. -	To prison; re-covered.	9 Feb. 1881	26 Jan. 1882	Relapsed (retransferred from prison).
265 and 340	C. K.	28 Mar. 1877	Murder -	Acquitted on the ground of insanity.	Discharged conditionally.	15 Nov. 1881	7 Aug. 1882	Relapsed.
160 and 351	A. D. or A. P.	26 Nov. 1868	Larceny -	7 years P.S. -	To a county asylum upon expiration of sentence.	28 April 1873	25 April 1883	Certified to be insane whilst undergoing a sentence of 7 years P.S. for a fresh offence of larceny.

N.B.—Where the word "Relapsed" is used in the 9th column, it is to be understood that no fresh offence was committed.

TABLE 25.

CLASSIFICATION of the CRIMES and SENTENCES of PATIENTS who have escaped, at various Times, from the opening of the Asylum down to the 31st of December 1885, and who were not re-captured before making up the Books on the 31st of December of the year of escape.

Crimes.	Total Number to the 31st December 1885.						Classified with reference to the Period at which Insanity was recognized.																		
	M.		F.		T.		Certified to be Insane whilst awaiting Trial or Judgment.			Found Insane by Jury on Arraignment.			Acquitted on the ground of Insanity.			Reprived on the ground of Insanity.			Certified to be Insane whilst undergoing Penial Servitude.			Certified to be Insane whilst undergoing shorter Terms of Imprisonment.			
	M.	F.	T.	M.	F.	T.	M.	F.	T.	M.	F.	T.	M.	F.	T.	M.	F.	T.	M.	F.	T.	M.	F.	T.	
Murder	1	-	1	-	-	-	-	-	-	-	-	-	-	-	-	-	-	-	1	-	-	-	-	-	-
Rape	1	-	1	-	-	-	-	-	-	-	-	-	-	-	-	-	-	-	1	-	-	-	-	-	-
Burglary and house-breaking	2	-	2	-	-	-	-	-	-	-	-	-	-	-	-	-	-	-	2	-	-	-	-	-	-
Larceny	1	1	2	-	-	-	-	-	-	-	-	-	-	-	-	-	-	-	1	1	2	-	-	-	-
Total	5	1	6	-	-	-	-	-	-	-	-	-	-	-	-	-	-	-	5	1	6	-	-	-	-

N.B.—Three of the above persons were re-captured in subsequent years.

TABLE 27.

CLASSIFICATION of the CRIMES and SENTENCES of PATIENTS remaining in the Asylum on 31st December 1885.

Crimes.	Total Number remaining in the Asylum on the 31st of December 1885.			Classified with reference to the Period at which Insanity was recognized.																					
	M.	F.	T.	Certified to be Insane whilst awaiting Trial or Judgment.			Found Insane by Jury on Arraignment.			Acquitted on the ground of Insanity.			Reprieved on the ground of Insanity.			Certified to be Insane whilst undergoing Sentences of Penal Servitude.			Certified to be Insane whilst undergoing shorter Terms of Imprisonment.						
				M.	F.	T.	M.	F.	T.	M.	F.	T.	M.	F.	T.	M.	F.	T.	M.	F.	T.				
Murder	170	95	265	26	14	40	35	24	59	86	54	140	19	1	20	4	2	6	—	—	—	—	—	—	—
Manslaughter	5	6	11	1	2	3	1	1	2	2	—	2	—	—	—	1	3	4	—	—	—	—	—	—	—
Attempt to murder, maim, &c.	127	18	145	—	8	9	32	4	36	81	12	93	—	—	—	6	1	7	—	—	—	—	—	—	—
Concealment of birth	—	1	1	—	—	—	3	1	3	—	—	—	—	—	—	—	—	—	—	—	—	—	—	—	—
Rape	3	—	3	—	—	—	—	—	—	—	—	—	—	—	—	—	—	—	—	—	—	—	—	—	—
Assault, common	8	—	8	1	—	1	—	—	—	6	—	6	—	—	—	—	—	—	—	—	—	—	—	—	—
Assault with intent to ravish	8	—	8	—	—	—	5	—	5	3	—	3	—	—	—	—	—	—	—	—	—	—	—	—	—
Unnatural offence	9	—	9	—	—	—	3	—	3	5	—	5	—	—	—	—	—	—	—	—	—	—	—	—	—
Treasonable and seditious offences	3	—	3	—	—	—	2	—	2	1	—	1	—	—	—	—	—	—	—	—	—	—	—	—	—
Burglary and housebreaking	11	—	11	3	—	3	3	—	3	4	—	4	—	—	—	—	—	—	—	—	—	—	—	—	—
Robbery with violence	1	—	1	—	—	—	—	—	—	—	—	—	—	—	—	—	—	—	—	—	—	—	—	—	—
Horse stealing	1	—	1	—	—	—	—	—	—	—	—	—	—	—	—	—	—	—	—	—	—	—	—	—	—
Larceny and petty thefts	6	12	18	—	—	—	5	—	5	—	—	—	—	—	—	—	—	—	—	—	—	—	—	—	—
Receiving stolen goods	—	2	2	—	—	—	—	—	—	—	—	—	—	—	—	—	—	—	—	—	—	—	—	—	—
Obtaining goods by false pretences	2	—	2	—	—	—	—	—	—	1	—	1	—	—	—	—	—	—	—	—	—	—	—	—	—
Arson and malicious burning	28	1	29	2	—	2	10	—	10	13	—	13	—	—	—	—	—	—	—	—	—	—	—	—	—
Wilful damage and other malicious offences	2	—	2	—	—	—	1	—	1	1	—	1	—	—	—	—	—	—	—	—	—	—	—	—	—
Uttering counterfeit coin, coining, &c.	—	1	1	—	—	—	—	—	—	—	—	—	—	—	—	—	—	—	—	—	—	—	—	—	—
Libel	1	—	1	1	—	1	—	—	—	—	—	—	—	—	—	—	—	—	—	—	—	—	—	—	—
Under the vagrant laws	2	—	2	—	—	—	—	—	—	—	—	—	—	—	—	—	—	—	—	—	—	—	—	—	—
Felony (not otherwise described)	2	—	2	—	—	—	—	—	—	2	—	2	—	—	—	—	—	—	—	—	—	—	—	—	—
Threatening by letters	3	—	3	—	—	—	—	—	—	—	—	—	—	—	—	—	—	—	—	—	—	—	—	—	—
Deserters from the army and navy	2	—	2	—	—	—	1	—	1	2	—	2	—	—	—	—	—	—	—	—	—	—	—	—	—
Insubordination as soldiers	5	—	5	—	—	—	—	—	—	—	—	—	—	—	—	—	—	—	—	—	—	—	—	—	—
Attempted self-murder	2	—	2	—	—	—	—	—	—	2	—	2	—	—	—	—	—	—	—	—	—	—	—	—	—
Total	401	136	537	43	17	60	101	30	131	211	66	277	19	1	20	25	22	47	—	—	—	—	—	—	2

TABLE 28.

SHOWING the NUMBER of PATIENTS in the Asylum during the Year 1885 who had committed HOMICIDE; together with the Degree of Relationship of those whose Deaths were caused.

Degree of Relationship or otherwise of those whose Deaths were caused.	In Asylum 1st January 1885.		Admitted.		Discharged.		Removed.		Escaped.		Died.		In Asylum 31st December 1885.	
	Male.	Fe- male.	Male.	Fe- male.	Total.	Male.	Fe- male.	Total.	Male.	Fe- male.	Total.	Male.	Fe- male.	Total.
Father	5	-	-	-	5	-	-	-	-	-	-	1	-	4
Father and another person	1	-	-	-	1	-	-	-	-	-	-	-	-	1
Step-father	1	-	-	-	1	-	-	-	-	-	-	-	-	1
Mother	8	1	-	-	9	-	-	-	-	-	-	-	-	11
Both parents	1	-	-	-	1	-	-	-	-	-	-	-	-	1
Husband	-	1	-	-	1	-	-	-	-	-	-	-	-	1
Husband and child	-	1	-	-	1	-	-	-	-	-	-	-	-	1
Wife	27	-	-	-	27	-	-	-	-	-	-	-	-	25
Wife and child or children	4	-	-	-	4	-	-	-	-	-	-	5	-	4
Own children	32	85	-	-	117	8	5	13	-	-	-	1	2	31
Brother or brothers	1	-	-	-	1	-	-	-	-	-	-	-	-	1
Brother-in-law	1	-	-	-	1	-	-	-	-	-	-	-	-	1
Sister	2	1	-	-	3	-	-	-	-	-	-	-	-	1
Sister-in-law	1	-	-	-	1	-	-	-	-	-	-	-	-	1
Uncle	2	-	-	-	2	-	-	-	-	-	-	-	-	3
Nephew	2	-	-	-	2	-	-	-	-	-	-	-	-	1
Niece	2	-	-	-	2	-	-	-	-	-	-	-	-	2
Grandson	1	-	-	-	1	-	-	-	-	-	-	-	-	2
Grand-daughter	1	-	-	-	1	-	-	-	-	-	-	-	-	2
Man or woman with whom cohabiting	5	1	-	-	6	-	-	-	-	-	-	-	-	1
Women to whom engaged	8	-	-	-	8	-	-	-	-	-	-	-	-	6
Fellow patients in asylums	15	2	-	-	17	1	-	1	-	-	-	-	-	8
Fellow inmates of work-houses	1	-	-	-	1	-	-	-	-	-	-	-	-	2
Commissioner in Lunacy	1	-	-	-	1	-	-	-	-	-	-	-	-	1
Attendant	2	-	-	-	2	-	-	-	-	-	-	-	-	2
Prison warder	1	-	-	-	1	-	-	-	-	-	-	-	-	1
Police officer in charge	1	-	-	-	1	-	-	-	-	-	-	-	-	1
Surgeon attending	1	-	-	-	1	-	-	-	-	-	-	-	-	1
Other persons while under care as lunatics	3	1	-	-	4	-	-	-	-	-	-	-	-	4
Other persons	43	6	-	-	49	5	-	-	-	-	-	1	1	51
Total	173	101	274	11	8	19	5	1	-	-	8	3	11	276

TABLE 29.
SHOWING the NUMBER of Patients in the Asylum on 31st December 1885, who had been tried by CIVIL COURTS.

Where tried.	Certified to be Insane whilst awaiting Trial or Judgment.		Found Insane by Jury on Arraignment.		Acquitted on the ground of Insanity.		Reprieved on the ground of Insanity.		Convicted and certified to be Insane after Sentence.						Total Number in the Asylum, 31st Dec. 1885.								
									Number whose Sentences have expired.		Number whose Sentences have not expired.												
	M.	F.	M.	T.	M.	F.	M.	T.	M.	F.	M.	T.	M.	F.		T.							
In England and Wales	43	17	60	99	30	129	208	66	274	1	19	1	20	2	1	3	16	21	37	387	136	523	
„ Scotland	-	-	-	-	-	-	-	-	-	-	-	-	-	1	-	1	-	-	-	1	-	1	-
„ Ireland	-	-	-	-	-	-	-	-	-	-	-	-	-	-	-	-	-	-	-	-	-	-	-
At Foreign Stations	-	-	-	2	-	2	3	-	3	-	-	-	-	-	-	-	-	-	-	-	5	-	5
Total	43	17	60	101	30	131	211	66	277	1	19	1	20	3	1	4	16	21	37	393	136	529	

TABLE 30.
SHOWING the NUMBER of Patients in the Asylum on 31st December 1885, who had been tried by MILITARY and NAVAL COURTS.

Where tried.	Certified to be Insane whilst awaiting Trial or Judgment.			Found Insane by Jury on Arraignment.			Acquitted on the ground of Insanity.			Reprieved on the ground of Insanity.			Convicted and certified to be Insane after Sentence.						Total Number in the Asylum 31st Dec. 1885.														
	Number whose Sentences have expired.			Number whose Sentences have not expired.			Number whose Sentences have expired.			Number whose Sentences have not expired.			M.	F.	T.	M.	F.	T.	M.	F.	T.												
	M.	F.	T.	M.	F.	T.	M.	F.	T.	M.	F.	T.	M.	F.	T.	M.	F.	T.	M.	F.	T.												
In England and Wales	-	-	-	-	-	-	-	-	-	-	-	-	-	-	-	-	-	-	-	-	-	-	-	-	-	-	-	1	7	8			
" Scotland	-	-	-	-	-	-	-	-	-	-	-	-	-	-	-	-	-	-	-	-	-	-	-	-	-	-	-	-	-	-	-		
" Ireland	-	-	-	-	-	-	-	-	-	-	-	-	-	-	-	-	-	-	-	-	-	-	-	1	-	-	-	-	-	-	-	-	
At Foreign Stations	-	-	-	-	-	-	-	-	-	-	-	-	-	-	-	-	-	-	-	-	-	-	-	4	3	-	3	7	-	-	-	-	
Total	-	-	-	-	-	-	-	-	-	-	-	-	-	-	-	-	-	-	-	-	-	-	-	5	3	-	3	8	8	-	-	-	-

TABLE 31.
Showing the PARTICULARS of PATIENTS whose Sentences had expired on 31st December 1885.

Reg ^r No.	Initials.	Occupation.	Convicted.		Crime.	Sentence.	When Sentence expired.
			Where.	When.			
	<i>Males.</i>						
184	D. McP.	Soldier	London, Canada	December 1862	Striking superior officer	4 years P.S.	December 1866.
311	A. W.	"	Pireus, Greece	December 1855	Insubordination with violence	14 years tpn.	December 1869.
550	J. Y.	"	Dinapore	September 1863	"	4 "	September 1867.
555	P. M.	"	Birr, Ireland	October 1863	Insubordination	4 "	October 1867.
556	P. M.	"	Gibraltar	September 1845	Desertion	7 "	September 1852.
1058	T. K.	Seaman	Portsmouth	March 1881	Assault	6 months imp.	September 1881.
1143	H. W.	Soldier	North Walsham	March 1883	Incorrigible rogue	14 days imp.	March 1883.
203	J. D.	Labourer	Glasgow	April 1864	Theft	3 years P.S.	April 1867.
22	<i>Female.</i> C. C.	Not known	Salford	December 1856	Receiving stolen goods	4 "	December 1860.

555 P. M. detained, being not in sufficiently good health to be removed.

1058 T. K. detained after expiration of sentence in consequence of having murderously assaulted a warder in Portsmouth Gaol.

1143 H. W. detained on account of his history.

203 J. D. detained, being not in sufficiently good health to be removed.

22 C. C. detained after expiration of sentence in consequence of having murdered a fellow patient in the Fisherton House Asylum.

TABLE 32.

The following FIGURES, extracted from the ANNUAL VOLUMES of the JUDICIAL STATISTICS for ENGLAND and WALES, show the RATE of MORTALITY which has prevailed amongst CRIMINAL LUNATICS since the Year 1856, and also show the EXTENT to which the Rate of Mortality, and the Degree of safe Custody, have been affected by the opening of Broadmoor Asylum. In this Table each Year, up to 1883 inclusive, ends on the 29th of September, and from 1884, the year ends on the 31st of October.

(1.) Returns relating to the Seven Years immediately preceding the opening of Broadmoor.

Year.	Total Number of Criminal Lunatics under Detention in England and Wales during each Year.	Number of Deaths in each Year.	Number who escaped and who were not recaptured before the end of each Year.
1856	686	21	6
1857	749	39	7
1858	798	33	1
1859	901	43	4
1860	957	51	9
1861	970	49	4
1862	1,017	43	7
Totals -	6,078	279	38

(2.) Returns relating to the period subsequent to the opening of Broadmoor.

Year.	In all other ASYLUMS in ENGLAND and WALES excepting Broadmoor.			IN BROADMOOR.		
	Total Number of Criminal Lunatics under Detention during each Year.	No. of Deaths in each Year.	Number who escaped and who were not recaptured before the end of each Year.	Total Number of Criminal Lunatics under Detention during each Year.	No. of Deaths in each Year.	Number who escaped and who were not recaptured before the end of each Year.
1863	1,050	53	6	98	—	—
1864	1,017	38	6	292	4	1
1865	860	53	5	446	12	—
1866	723	49	2	455	18	—
1867	767	49	2	477	10	—
1868	309	11	3	644	7	—
1869	250	21	6	497	14	2
1870	310	21	4	488	13	—
1871	338	22	6	524	12	—
1872	313	20	3	562	10	—
1873	278	12	5	559	11	2
1874	299	21	3	554	13	—
1875	319	31	3	544	19	—
1876	338	18	6	546	16	—
1877	348	23	6	541	15	—
1878	341	15	3	526	10	—
1879	323	15	4	528	23	—
1880	316	16	1	532	16	—
1881	318	14	3	554	12	—
1882	309	12	3	564	14	—
1883	340	12	—	574	28	—
1884	388	20	2	595	19	—
Totals	9,854	546	82	11,100	296	5

TABLE 32—continued.

The foregoing figures, reduced to per-centages, for the sake of more ready comparison, give the following results :—

Description of Asylums.	Rate per cent. of Deaths calculated upon the aggregate of the Yearly Totals of Numbers of Criminal Lunatics under Treatment, during the Periods specified.	Rate per cent. of Instances in which Criminal Lunatics escaped and were not recaptured before the end of each year, during the Periods specified.
In all the ASYLUMS in ENGLAND and WALES, taken together, in which criminal lunatics were confined during the seven years immediately preceding the opening of Broadmoor, from 1856 to 1862 inclusive	4·59	0·62
In all the ASYLUMS in ENGLAND and WALES, taken together, in which criminal lunatics were confined from 1863 to 1884 inclusive, with the EXCEPTION of Broadmoor - - - - -	5·54	0·83
In BROADMOOR, from the date of its opening in 1863 to the 31st of October 1884 - - -	2·66	0·04

The following TABULAR STATEMENT shows every instance of ESCAPE that has taken place, from the opening of the Asylum, in 1863, up to the 31st of December 1885, together with the date of recapture where recapture has been effected.

Under Detention during Her Majesty's pleasure.		Under current Sentences of Penal Servitude or Imprisonment.		Date of escape.	Date of recapture.
M.	F.	M.	F.		
—	—	—	1	6th October 1863 -	6th October 1863.
—	—	—	1	8th June 1864 -	9th June 1864.
—	—	1	—	19th September 1864	8th November 1864.
—	—	—	1	29th October 1864 -	29th October 1864.
1	—	—	—	25th November 1864	25th November 1864.
—	—	1	—	8th April 1865 -	9th April 1865.
—	—	1	—	8th " " -	9th " "
—	—	1	—	21st May 1865 -	21st May 1865.
1	—	—	—	26th July 1867 -	26th July 1867.
1	—	—	—	29th September 1868	2nd October 1868.
—	—	1	—	4th November 1868	9th February 1869.
—	—	1	—	8th " " -	30th November 1868.
—	—	1	—	8th " " -	6th January 1869.
—	—	1	—	25th December 1868	Not recaptured.
—	—	—	1	27th July 1869 -	Not recaptured.
1	—	—	—	11th January 1871 -	16th January 1871.
—	—	1	—	14th August 1871 -	20th August 1871.
1	—	—	—	10th December 1872	10th December 1872.
—	—	1	—	26th May 1873 -	26th May 1873.
—	—	1	—	12th July 1873 -	Not recaptured.
—	—	1	—	7th August 1873 -	29th September 1878.
—	—	1	—	12th November 1873	13th November 1873.
—	—	1	—	6th December 1874	6th December 1874.
1	—	—	—	12th October 1878 -	13th October 1878.

TABLE 33.

SHOWING the Kinds of INDUSTRIAL OCCUPATION in which PATIENTS were employed during the year ended 31st March 1886, with the ESTIMATED VALUE of their LABOUR.

Description of Employment.	Value of Labour.
	£ s. d.
Making and repairing uniform clothing - - -	82 9 0
Making and repairing clothing for patients, and bed and house linen for patients and attendants - - -	520 4 5
Making and repairing boots, shoes, &c. - - -	211 1 10
Making and repairing mattresses, carpets, mats, matting, &c.	115 19 2
Making and repairing furniture, tinware, &c. - - -	141 8 7
Printing, book-binding, writing, &c. - - -	265 8 11
In the garden, and on the terraces and farm - - -	307 2 0
In the kitchens, bakehouse, and stores - - -	206 16 5
In the laundry - - - - -	380 1 3
Cleaning the wards, &c. - - - - -	655 8 4
Carrying coals and cutting up firewood - - - - -	34 2 11
Carpenters, Bricklayers, Painters, Labourers, employed in repairs and alterations to buildings - - - - -	361 3 11
Total - - - - -	£ 3,221 6 9

The above estimate refers only to the work done by patients, and does not include the work performed by the attendants and journeymen in the various wards and shops.

The number of patients employed in the work above described was 186 men and 109 women. A large number occupy themselves with reading, writing, music, and other pursuits, who are not inclined for industrial employment.

TABLE 34.

SHOWING the Number of Cases of the Principal DISEASES among the PATIENTS, that came under Medical Treatment during the Year 1885.

DISEASES.	Remain- ing under Treat- ment 31st Dec. 1884.		Admitted under Treat- ment during 1885.		Total Number treated.		Recovered, Relieved, or Removed from Treat- ment.		Died.		Remaining under Treat- ment 31st Dec. 1885.	
	M.	F.	M.	F.	M.	F.	M.	F.	M.	F.	M.	F.
General diseases.												
Rheumatism - - -	-	-	4	4	4	4	4	4	-	-	-	-
Gout - - -	-	-	2	-	2	-	2	-	-	-	-	-
Catarrh - - -	7	5	32	7	39	12	39	11	-	-	-	1
Erysipelas - - -	-	-	1	-	1	-	1	-	-	-	-	-
Cancer of lip - - -	-	-	1	-	1	-	1	-	-	-	-	-
Cancer of stomach - - -	-	-	-	1	-	1	-	-	-	1	-	-
Cancer of liver - - -	-	-	-	1	-	1	-	-	-	-	-	1
Cancer of prostate - - -	1	-	-	-	1	-	-	-	1	-	-	-
Diseases of nervous system.												
Mania - - -	5	5	11	6	16	11	14	8	-	-	2	3
Melancholia - - -	3	3	4	4	7	7	6	5	-	-	1	2
Epilepsy - - -	25	5	2	3	27	8	-	1	-	-	27	7
Paralysis - - -	19	3	3	1	22	4	-	-	-	-	22	4
Serous apoplexy - - -	-	1	-	-	-	1	-	1	-	-	-	-
Cerebral congestion - - -	-	1	-	-	-	1	-	1	-	-	-	-
Meningitis - - -	-	-	2	1	2	1	-	-	2	1	-	-
Hemiplegia - - -	-	-	3	-	3	-	2	-	-	-	1	-
Neuralgia - - -	-	-	5	1	5	1	5	1	-	-	-	-
Hysteria - - -	-	-	-	1	-	1	-	1	-	-	-	-
Diseases of the respi- ratory system.												
Phthisis - - -	4	-	5	1	9	1	2	1	2	-	5	-
Pneumonia - - -	-	-	2	3	2	3	1	2	1	1	-	-
Pleurisy - - -	-	-	4	-	4	-	2	-	2	-	-	-
Pleuro-pneumonia - - -	-	-	2	-	2	-	-	-	2	-	-	-
Congestion of lungs - - -	-	-	10	2	10	2	3	1	-	-	7	1
Bronchitis - - -	3	-	5	1	8	1	7	-	-	-	1	1
Bronchial catarrh - - -	-	-	1	1	1	1	1	1	-	-	-	-
Asthma - - -	-	-	-	2	-	2	-	1	-	-	-	1
Cynanche - - -	-	-	3	2	3	2	3	2	-	-	-	-
Hæmoptysis - - -	-	-	1	-	1	-	1	-	-	-	-	-
Diseases of the circula- tory system.												
Varicose veins - - -	-	-	2	-	2	-	1	-	-	-	1	-

Table 34—continued.

DISEASES.	Remain- ing under Treat- ment 31st Dec. 1884.		Admitted under Treat- ment during 1885.		Total Number treated.		Recovered, or Removed from Treat- ment.		Died.		Remaining under Treat- ment 31st Dec. 1885.	
	M.	F.	M.	F.	M.	F.	M.	F.	M.	F.	M.	F.
Diseases of the diges- tive system.												
Dyspepsia	-	-	7	1	7	1	7	1	-	-	-	-
Congestion of liver	-	-	4	-	4	-	4	-	-	-	-	-
Diarrhœa	-	-	8	12	8	12	8	12	-	-	-	-
Constipation	-	-	1	-	1	-	1	-	-	-	-	-
Peritonitis	-	1	-	-	1	-	-	-	-	-	1	-
Colic	-	-	2	-	2	-	2	-	-	-	-	-
Tonsillitis	-	-	2	-	2	-	2	-	-	-	-	-
Hæmorrhoids	-	-	4	-	4	-	2	-	-	-	2	-
Fistula-in-ano	-	1	1	-	2	-	2	-	-	-	-	-
Diseases of the urinary and generative systems.												
Gonorrhœa	-	-	1	-	1	-	1	-	-	-	-	-
Diseases of the skin.												
Psoriasis	-	-	2	-	2	-	1	-	-	-	-	-
Eczema	-	-	1	-	1	-	1	-	-	-	-	-
Erythema	-	-	-	1	-	1	-	1	-	-	-	-
Diseases of the eye.												
Conjunctivitis	-	-	1	-	1	-	1	-	-	-	-	-
Surgical Diseases.												
Caries of spine	-	-	-	1	-	1	-	-	-	1	-	-
Cystic goitre	-	-	1	-	1	-	-	-	-	-	1	-
Synovitis	-	-	1	-	1	-	1	-	-	-	-	-
Ulcer	-	-	1	-	1	-	1	-	-	-	-	-
Anomalous.												
Child-birth	-	-	-	1	-	1	-	1	-	-	-	-

TABLE 35.

SHOWING the Number of Cases of the Principal DISEASES among the PERSONS in the ASYLUM SERVICE, and Members of their Families, which came under Treatment during the Year 1885.

DISEASES.	Remain- ing under Treat- ment 31st Dec. 1884.		Admitted under Treat- ment- during 1885.		Total Number treated.		Recovered, Relieved, or Removed from Treat- ment.		Died.		Remaining under Treat- ment 31st Dec. 1885.	
	M.	F.	M.	F.	M.	F.	M.	F.	M.	F.	M.	F.
General diseases.												
Rheumatism - - -	-	-	8	3	8	3	8	3	-	-	-	-
Rheumatic Fever - - -	-	-	2	-	2	-	1	-	1	-	-	-
Lumbago - - -	1	-	6	2	7	2	7	2	-	-	-	-
Gout - - -	-	-	2	-	2	-	2	-	-	-	-	-
Erysipelas - - -	1	-	1	-	2	-	1	-	-	-	1	-
Catarrh - - -	1	-	11	10	12	10	10	10	-	-	2	-
Mumps - - -	-	-	1	-	1	-	1	-	-	-	-	-
Diseases of the nervous system.												
Cerebral congestion - - -	1	-	-	-	1	-	1	-	-	-	-	-
Tubercular meningitis - - -	-	-	1	-	1	-	-	-	1	-	-	-
Hemiplegia - - -	-	-	1	-	1	-	-	-	-	-	1	-
Sciatica - - -	-	-	1	-	1	-	-	-	-	-	1	-
Neuralgia - - -	-	-	2	2	2	2	2	2	-	-	-	-
Diseases of the respi- ratory system.												
Congestion of lungs - - -	-	-	1	1	1	1	1	-	-	-	-	1
Pulmonary catarrh - - -	-	-	1	-	1	-	1	-	-	-	-	-
Bronchitis - - -	-	2	9	4	9	6	8	6	1	-	-	-
Bronchial catarrh - - -	-	-	2	4	2	4	1	4	-	-	1	-
Asthma - - -	-	-	-	1	-	1	-	1	-	-	-	-
Cynanche - - -	-	-	1	3	1	3	1	3	-	-	-	-
Laryngitis - - -	1	-	-	-	1	-	1	-	-	-	-	-
Hæmoptysis - - -	-	-	2	1	2	1	2	1	-	-	-	-
Diseases of the circula- tory system.												
Heart disease - - -	-	-	1	1	1	1	-	-	-	1	1	-
Palpitation of the heart - - -	-	-	-	1	-	1	-	1	-	-	-	-
Diseases of the diges- tive system.												
Dyspepsia - - -	-	-	3	3	3	3	3	3	-	-	-	-
Colic - - -	-	-	2	2	2	2	2	2	-	-	-	-
Colica pictonum - - -	-	-	1	-	1	-	1	-	-	-	-	-
Diarrhœa - - -	1	-	1	4	2	4	2	4	-	-	-	-
Congestion of liver - - -	-	-	-	2	-	2	-	2	-	-	-	-
Hæmatemesis - - -	-	-	-	1	-	1	-	1	-	-	-	-

TABLE 35—continued.

DISEASES.	Remain- ing under Treat- ment 31st Dec. 1884.		Admitted under Treat- ment during 1885.		Total Number treated.		Recovered, Relieved, or Removed from Treat- ment.		Died.		Remaining under Treat- ment 31st Dec. 1885.	
	M.	F.	M.	F.	M.	F.	M.	F.	M.	F.	M.	F.
Diseases of the diges- tive system— <i>cont.</i>												
Tonsillitis - - -	-	-	5	4	5	4	5	4	-	-	-	-
Gumboil - - -	-	-	-	1	-	1	-	1	-	-	-	-
Hæmorrhoids - - -	-	-	1	-	1	-	1	-	-	-	-	-
Diseases of the urinary and generative sys- tems.												
Bright's disease, chronic	-	-	-	1	-	1	-	-	-	1	-	-
Metritis - - -	-	-	-	1	-	1	-	-	-	-	-	1
Metrorrhagia - - -	-	-	-	1	-	1	-	1	-	-	-	-
Menorrhagia - - -	-	-	-	1	-	1	-	1	-	-	-	-
Amenorrhœa - - -	-	-	-	3	-	3	-	3	-	-	-	-
Diseases of the cuta- neous system.												
Eczema - - -	-	-	1	1	1	1	1	1	-	-	-	-
Furuncle - - -	-	-	1	1	1	1	1	1	-	-	-	-
Tinea trichophytina - - -	-	-	1	-	1	-	1	-	-	-	-	-
Diseases of the eye.												
Conjunctivitis - - -	-	-	2	2	2	2	2	2	-	-	-	-
Foreign body imbedded in cornea - - -	-	-	1	-	1	-	1	-	-	-	-	-
Injuries and surgical diseases.												
Injury to head - - -	1	-	-	-	1	-	1	-	-	-	-	-
Scalp wound - - -	-	-	2	-	2	-	2	-	-	-	-	-
Fracture of radius - - -	-	1	-	-	-	1	-	1	-	-	-	-
Contusion - - -	2	-	-	-	2	-	2	-	-	-	-	-
Wound of hand - - -	-	-	1	-	1	-	1	-	-	-	-	-
Cut finger - - -	-	-	2	-	2	-	2	-	-	-	-	-
Muscular strain - - -	-	-	2	-	2	-	2	-	-	-	-	-
Sprained foot - - -	-	-	2	-	2	-	1	-	-	-	1	-
Synovitis - - -	-	-	-	1	-	1	-	1	-	-	-	-
Abscess - - -	-	1	-	-	-	1	-	1	-	-	-	-
Tumour of palate - - -	-	-	1	-	1	-	1	-	-	-	-	-

TABLE 36.

POST-MORTEM RECORDS.

*

No.	Sex	Age	Color	Complexion	Build	Stature	Weight	Temp.	Pulse	Respiration	Pressure	Diagnosis	Remarks
1	M	25	W	Fair	Medium	5' 8"	160	98.6	72	16	120	Typhoid	...
2	F	35	W	Rose	Slender	5' 2"	110	98.4	80	18	110	Scarlet	...
3	M	40	W	Dark	Robust	6' 0"	180	98.8	90	20	130	Dysentery	...
4	F	20	W	Fair	Slender	5' 0"	100	98.2	70	14	100	Typhoid	...
5	M	30	W	Rose	Medium	5' 6"	140	98.5	75	15	115	Scarlet	...
6	F	45	W	Dark	Slender	5' 4"	120	98.3	85	17	110	Dysentery	...
7	M	28	W	Fair	Medium	5' 8"	150	98.7	78	16	120	Typhoid	...
8	F	38	W	Rose	Slender	5' 2"	115	98.4	82	18	115	Scarlet	...
9	M	42	W	Dark	Robust	6' 0"	185	98.9	95	22	135	Dysentery	...
10	F	22	W	Fair	Slender	5' 0"	105	98.2	72	14	105	Typhoid	...
11	M	32	W	Rose	Medium	5' 6"	145	98.5	76	15	115	Scarlet	...
12	F	48	W	Dark	Slender	5' 4"	125	98.3	88	19	115	Dysentery	...
13	M	26	W	Fair	Medium	5' 8"	155	98.7	80	16	125	Typhoid	...
14	F	36	W	Rose	Slender	5' 2"	120	98.4	85	18	120	Scarlet	...
15	M	44	W	Dark	Robust	6' 0"	190	99.0	100	24	140	Dysentery	...
16	F	24	W	Fair	Slender	5' 0"	110	98.2	75	15	110	Typhoid	...
17	M	34	W	Rose	Medium	5' 6"	150	98.5	78	16	120	Scarlet	...
18	F	46	W	Dark	Slender	5' 4"	130	98.3	90	20	120	Dysentery	...
19	M	27	W	Fair	Medium	5' 8"	160	98.7	82	17	130	Typhoid	...
20	F	37	W	Rose	Slender	5' 2"	125	98.4	88	19	125	Scarlet	...

TABLE 36.

No. in Register.	Sex, Age, Height, Date of Admission and of Death.	HISTORY.		
		General History.	Mental State during Residence.	Bodily State during Residence.
61	J. S., Female, 67. June 17, 1863. Jan. 31, 1885.	Widow: was tried for the manslaughter of a neighbour by striking her with a broom handle. Found to be insane and ordered to be detained during Her Majesty's pleasure. Admitted from Stafford County Asylum.	Demented, rambling, and incoherent.	Her general state of her health was indifferent: she died of pneumonia and peritonitis.
16	E. D., Female, 57. May 30, 1863. Feb. 17, 1885.	Wife of a labourer; tried at Stafford for the murder of her child, aged one month, by throwing it down a well; was found to be insane and ordered to be detained during Her Majesty's pleasure. Admitted from Bethlem Hospital.	Suffered from prolonged attacks of mania. Latterly became demented.	Indifferent. About a year before her death she had an apoplectic seizure from which she never fully recovered.
1013	M.C., Male, 57. 5 ft. 8 in. July 14, 1880. Mar. 20, 1885.	A watchmaker; tried at York assizes, 27th July, 1871 for murder of his wife; found not guilty on ground of insanity. Admitted from York Castle 7th September 1871. He remained in this asylum till 13th March 1878, when he was discharged conditionally to care of his brother-in-law. A relapse having taken place he was re-admitted on 14th July 1880.	Chronic mania with delusions; said the attendants put stuff in his mouth while asleep.	Good up to 28th February when he was found to be suffering from pleurisy, of which disease he died.

TABLE 36.

POST-MORTEM NOTES.			
Head and Spine.	Thorax.	Abdomen.	Absolute Weights of Principal Organs in ounces avoirdupois.
Calvaria soft; the two lateral halves unsymmetrical, and the diploë deeply congested. Dura mater thickened, with lymph-deposit on vertex. Grey matter of brain wasted. Corpora amylacea in ventricles.	Both pleuræ very firmly and extensively adherent: both lungs extensively diseased, showing tubercular nodular deposits in apices and upper lobes; and consolidation at bases. Patches of atheromatous thickening on mitral and aortic valves.	Tubercular nodules deposited in mesentery; peritoneal investment of intestines congested. The coils of the small intestine were adherent, and congested at the seats of deposit of nodules of miliary tubercle, mucous coat showed extensive tubercular ulceration. Liver fatty and much congested. Kidneys congested. Cyst about size of a walnut in upper extremity of right kidney.	Right hemisphere 20½ Left " - 20½ Cerebellum - 5 Pons and medulla 1 <hr/> Total encephalon 47½ <hr/> Right lung - 13½ Left " - 13 Heart " - 13½ Liver - 46½ Spleen - 2½ Right kidney - 6½ Left " - 6½
Calvara greatly thickened, especially outer table of frontal and left parietal bones; right half larger than left, which was flattened and less capacious. Dura mater greatly thickened and deeply congested; sinuses and veins full of blood; arachnoid and pia mater much thickened, tough, opaque, granular on vertex, deeply congested in parts; much exuded lymph on outer surface. Grey matter of cerebrum wasted in vertical and frontal regions, unduly firm; but at some points soft as if breaking down. White matter of cerebrum injected throughout; vessels larger than normal.	Both pleuræ had some old adhesions. Right lung slightly congested throughout. Left lung in a state of almost complete collapse and nearly devoid of air; emphysematous however, at borders. Pericardium thickened and covered with old and recent lymph. Heart hypertrophied; visceral layer of pericardium closely adherent to myocardium by a layer of lymph averaging a quarter of an inch in thickness. Aortic and pulmonary valves incompetent; mitral valve stenosed; segments of tricuspid thickened.	Liver: capsule thickened and opaque; substance firm and tough from fibrous tissue, and in a marked "nutmeg" condition. Spleen large, tough, and fibrous.	Right hemisphere 18½ Left " " 18½ Cerebellum - 5½ Pons and medulla 1 <hr/> Total encephalon 43½ <hr/> Right lung - 19½ Left " - 9½ Heart - 29 Liver - 66 Spleen - 6½ Right kidney - 4½ Left " - 4½
Dura mater thickened and congested; arachnoid and pia mater congested, thickened, and adherent to brain substance; vessels of brain very atheromatous. A limpet-shaped bony deposit found in falx cerebri.	Recent extensive pleurisy on both sides. Both pleuræ contained in all 71 ozs. of fluid. Lungs congested behind and at bases. Heart, valves competent; dark clots in right auricle and ventricle.	Liver contracted and pale in colour; gall stones ½ ounce in weight and 20 in number. Kidneys fatty.	Right hemisphere 22 Left " " 22½ Cerebellum - 5½ Pons and medulla 1 <hr/> Total encephalon 50½ <hr/> Right lung - 19 Left " - 20 Heart " - 21½ Liver - 56 Spleen - 5 Right kidney - 8½ Left " - 8½

Table 36—continued.

No. in Register.	Sex, Age, Height, Date of Admission and of Death.	HISTORY.		
		General History.	Mental State during Residence.	Bodily State during Residence.
838	H. C., Male, 65. 5 ft. 7½ in. May 22, 1875. Mar. 29, 1885.	A farm labourer; committed by a coroner's jury at Kettering to take his trial for the wilful murder of a little boy between 3 and 4 years old by cutting his throat with a clasp knife he being under the delusion at the time that the boy's mother had put some stuff in his food to make him sleepy. Admitted from Northampton County Prison.	Chronic mania, very incoherent. Had hallucinations of sight, said he used to see beautiful angels, &c.	Latterly indifferent. Displeurisy and pneumonia.
1147	W. B., Male, 53. 5 ft. 5 in. April 27, 1883. July 9, 1885.	A negro, born in Demerara. Labourer (pensioner from Royal Navy); tried at Lewes, 14th April 1883, for murder of wife, by striking her with a hatchet; acquitted on ground of insanity. He also attempted to kill his step-son, and to commit suicide by cutting his throat. Admitted from Lewes Prison.	Very melancholy, low-spirited, and suicidal.	Indifferent. Ultimately of pleurisy and pneumonia.
788	E. B., Male, 54. 5 ft. 6½ in. Sept. 3, 1873. July 16, 1885.	A blacksmith; tried at Stafford Assizes on 10th March 1871 for the murder of one of his children, and found not guilty on the ground of insanity. Admitted from Stafford Prison.	Chronic melancholia, with recurrent fits of acute depression.	Fairly good till about eight months before death, when spinal sclerosis began to manifest itself. Cancerous enlargement of prostate.

Table 36—continued.

POST-MORTEM NOTES.			
Head and Spine.	Thorax.	Abdomen.	Absolute Weights of Principal Organs in ounces avoirdupois.
Calvaria somewhat dense; Dura mater thickened. Arachnoid and pia mater thickened and cloudy, from old chronic inflammation. Grey matter of convolutions not well marked. Atrophy of left optic nerve, corresponding to loss of left eye. Vessels of brain slightly atheromatous.	Recent extensive pleurisy on both sides. Both lungs inflamed behind and at bases. Heart contracted and small; slight endocarditis in all cavities; foramen ovale patent.	Slight inflammation at cardiac orifice. Kidneys contracted.	Right hemisphere 20½ Left " 20½ Cerebellum - 5½ Pons and medulla 1 <hr/> Total encephalon 46½ <hr/> Right lung - 38 Left " - 36½ Heart - 9½ Liver - 50½ Spleen - 6½ Right kidney - 3½ Left " - 4
Scalp thick; calvaria very dense; dura mater thickened. Arachnoid and pia mater cloudy from old chronic inflammation, slightly adherent to brain substance. Convolutions closely packed. Sulci not well marked.	Signs of extensive pleurisy on both sides, lining membrane of bronchial tubes inflamed, remains of old chronic inflammation in left lung, with a large cavity in lower lobe. Right lung recently inflamed low down and posteriorly. Both ventricles of heart filled with clots.	Liver normal. Kidneys slightly congested. A small supernumerary spleen about size of a nut, close to but isolated from the spleen.	Right hemisphere 17½ Left " 17½ Cerebellum - 4½ Pons and medulla ½ <hr/> Total encephalon 40½ <hr/> Right lung - 31½ Left " - 37 Heart - 11 Liver - 57 Spleen - 5½ Super. spleen - ½ Right kidney - 14½ Left " - 5½
Scalp thin; calvaria dense, with spot size of a walnut in centre of sagittal suture, soft and infiltrated, apparently by cancerous deposit; dura mater, arachnoid, and pia mater thickened; brain substance congested throughout.	Lungs both exhibited some small secondary deposits of cancer. Heart small and flabby; Right auriculo-ventricular valve very incompetent. Commencement of aorta inflamed and atheromatous.	Peritoneum covering small intestine congested. Rectum constricted about one inch above anus by a cancerous growth which extended from prostate in front and encircled the gut, which would barely admit a goose quill. Pancreas contained some minute cancerous nodules. Kidneys cystic, pelvis and ureters much dilated; cortex much atrophied. Mucous membrane of bladder much thickened; coats infiltrated with nodules of cancer, from size of millet seed to that of a large pea. Prostate much enlarged, and the seat of scirrhous cancer, of which a large mass was deposited between neck of bladder and rectum.	Right hemisphere 21 Left " 20½ Cerebellum - 4½ Pons and medulla 1 <hr/> Total encephalon 47½ <hr/> Right lung - 20 Left " - 19½ Heart - 10 Liver - 49½ Spleen - 4½ Right kidney - 3½ Left " - 5½

Table 36—continued.

No. in Register.	Sex, Age, Height, Date of Admission and of Death.	HISTORY.		
		General History.	Mental State during Residence.	Bodily State during Residence.
246	T. K., Male, 54. 5 ft. 10½ in. Feb. 17, 1865. Aug. 21, 1885.	A weaver; was tried at Lancaster in February 1858 for the murder of his father, and acquitted on the ground of insanity. Admitted from Fisherton House Asylum.	Had delusions of persecution, and believed his food was poisoned; at times maniacal and irritable, at other times depressed.	Had been in delicate for five years before suffering from consumption, of which he ultimately died.
548	F. H., Male, 52. 5 ft. 8 in. May 7, 1868. Aug. 22, 1885.	A plumber; was tried at Bury St. Edmunds, in March 1868, for shooting at his sister with intent to kill her, and was acquitted on the ground of insanity. Admitted from Ipswich Gaol.	Chronic mania, with delusions; recurrent attacks of melancholia, which caused him latterly to refuse his food frequently.	Only moderately good; latterly suffered from consumption, of which he died.
1216	C. A. B., Male, 34. 5 ft. 9½ in. July 10, 1884. Sept. 1, 1885.	Grocer's assistant; was tried at Essex Assizes in June 1884, for the murder of his wife by shooting: found to be insane. Admitted from Chelmsford Prison. Had previously been an inmate of an asylum.	Chronic mania, with periodical exacerbations. Irritable and dangerous.	General health good. He suffered from a sharp attack of inflammation of the lungs and its membranes, together with suppurative pleuro-pneumonia, which proved fatal.

Table 36—continued.

POST-MORTEM NOTES.			
Head and Spine.	Thorax.	Abdomen.	Absolute Weights of Principal Organs in ounces avoirdupois.
<p>Scalp thin, calvaria thin; dura mater, arachnoid and pia mater adherent to brain-substance and congested. Grey matter congested, soft and flabby, numerous <i>puncta cruenta</i> in white matter. About half a drachm of fluid in lateral ventricles, velum interpositum œdematous; cerebellum soft and flabby.</p>	<p>Pleuræ very adherent. Bronchi full of mucus. Left lung totally disorganised and hollowed out with large cavities containing pus and broken-down tissue. Right lung interspersed with masses of tubercular deposit; lower two-thirds congested and œdematous; upper lobe emphysematous; pericardium contained about $\frac{1}{2}$ oz. of fluid. Heart: both auricles filled with dark-clotted blood; ventricles largely occupied by firm adhesive fibrinous clots; cavities small, muscular structure flabby. Long fibrinous clot stretching from right ventricle up pulmonary artery.</p>	<p>Liver studded with tubercular nodules; kidneys anæmic and fatty; cortices much atrophied.</p>	<p>Right hemisphere 22$\frac{1}{2}$ Left " 22$\frac{1}{2}$ Cerebellum - 5$\frac{1}{2}$ Pons and medulla 1$\frac{1}{2}$ <hr/> Total encephalon 51$\frac{1}{2}$ <hr/> Right lung - 33$\frac{1}{2}$ Left " - 28$\frac{1}{2}$ Heart " - 8$\frac{3}{4}$ Liver - 42$\frac{1}{2}$ Spleen - 5$\frac{1}{2}$ Right kidney - 5 Left " - 5$\frac{1}{2}$</p>
<p>Scalp thin, calvaria rather thin and dense. Dura mater congested and parchmenty, not adherent; arachnoid and pia mater and vessels of brain and cord congested; convolutions of brain closely packed.</p>	<p>Adhesions of both pleuræ; left lung much disorganised; broken-down tubercular masses with pus in numerous cavities. Right lung presented patches of tubercle and pus throughout its substance. Pericardium contained $\frac{1}{2}$ oz. of serum; heart small and firm, auricles full of dark clots, coronary arteries atheromatous, aorta atheromatous.</p>	<p>Omentum very translucent and devoid of fat. Intestines inflated. Liver dark and congested. Kidneys normal in appearance.</p>	<p>Right hemisphere 23$\frac{1}{2}$ Left " 23$\frac{1}{2}$ Cerebellum - 5$\frac{1}{2}$ Pons and medulla 1$\frac{1}{2}$ <hr/> Total encephalon 54$\frac{1}{2}$ <hr/> Right lung - 20$\frac{1}{2}$ Left " - 20 Heart " - 7$\frac{1}{2}$ Liver - 36$\frac{1}{2}$ Spleen - 3 Right kidney - 4$\frac{1}{2}$ Left " - 5$\frac{1}{2}$</p>
<p>Calvaria somewhat thick. The investing membranes of the brain were all much congested and adherent to brain-substance. Brain-surface showed wasting and depressions. One of the latter, the size of half a filbert, being on the anterior superior frontal convolution, and another, size of a pea, on the right superior parietal convolution; numerous <i>puncta cruenta</i>; vessels of brain and cord much congested.</p>	<p>Recent pleurisy, with lymph adhesions on right side. Bronchi congested; right lung deeply congested from inflammatory exudation; portions cut from base sink in water; pulmonary vessels of both sides filled with recent clots; pericardium red and congested, left auricle and ventricle empty. Right ventricle has a large buff-coloured clot extending into auricle. Right auricle contained large buff-coloured clots. The clots weighed fully an ounce. Thickening of mitral and aortic valves; aorta showed commencing atheroma. Dark clots in jugular veins.</p>	<p>Liver congested large, and nutmeggy; spleen large and congested. Kidneys congested, punctiform ecchymoses on surface of pelvis.</p>	<p>Right hemisphere 22$\frac{1}{2}$ Left " 22$\frac{1}{2}$ Cerebellum - 6 Pons and medulla 1 <hr/> Total encephalon 51$\frac{1}{2}$ <hr/> Right lung - 21 Left " - 16$\frac{1}{2}$ Heart " - 13$\frac{1}{2}$ Liver - 72 Spleen - 7$\frac{1}{2}$ Right kidney - 7 Left " - 6$\frac{1}{2}$</p>

Table 36—continued.

No. in Register	Sex, Age, Height, Date of Admission and of Death.	HISTORY.		
		General History.	Mental State during Residence.	Bodily State during Residence.
93	W. S., Male, 50. 5 ft. 3½ in. April 15, 1864. Sept. 7, 1885.	A publican, formerly in the Royal Navy; tried at the Devon Assizes, on 8th March 1864, for wounding his wife with intent to murder her, and found not guilty on the ground of insanity. Admitted from Exeter Prison.	Subject to recurrent attacks of acute mania.	Good until within 10 days of his death, when pleurisy and pulmonary congestion came on.
377	A. E., Female, 50. Feb. 3, 1885. Oct. 20, 1885.	Married; was sentenced at the Middlesex Sessions, in December 1878 to eight years' penal servitude. Admitted from Woking Prison.	Mania, with delusions that her food was poisoned or otherwise tampered with; also that she was persecuted and tortured by those about her. Extremely irritable, at times much depressed.	In bad health. Caric spine; psoas abscess; lysis of left side of body; also of left side of face during last few days of her life.
1233	J. S., Male, 33. 4 ft. 6 in. Jan. 30, 1885. Nov. 30, 1885.	A tailor; tried at Reading, 13th January 1885, for murder of wife, by striking her on the head with a flat-iron, found guilty, sentenced to death, and afterwards respited on the ground of insanity. Admitted from Reading Gaol.	Chronic mania, with delusions that he was going to be killed, and that gas was blown into his mouth and nose at night.	Indifferent. Died of inflammation of lungs.

Table 36—continued.

POST-MORTEM NOTES.			
Head and Spine.	Thorax.	Abdomen.	Absolute Weights of Principal Organs in ounces avoirdupois.
<p>s. Scalp and calvaria moderately thick; dura mater slightly adherent over vertex; sinuses full of dark fluid blood; arachnoid and pia congested; convolutions atrophied on vertex; small depression, size of a hazel nut, on orbital surface of left frontal lobe; ventricles contained much fluid; brain-substance congested throughout.</p>	<p>Lungs congested and adherent, right side especially; heart and aorta showed fatty degeneration.</p>	<p>Peritoneum slightly congested; liver cyanotic; kidneys much congested, each contained a calculus in its substance.</p>	<p>Right hemisphere 20½ Left " - 20½ Cerebellum - 5½ Pons and medulla 1½ <hr/>Total encephalon 48½</p> <p>Right lung - 27½ Left " - 17½ Heart " - 11½ Liver - 45½ Spleen - 3½ Right kidney - 5½ Left " - 5½</p>
<p>s. Calvaria somewhat thick; dura mater not adherent to skull; arachnoid and pia matter opaque and containing a considerable amount of fluid; ventricles dilated with fluid; in centre of left parietal lobe there was a pulpy softening of the white cerebral substance about as large as a big walnut; vessels of brain and cord congested.</p>	<p>Old adhesions left pleura; right pleura contained about a pint of serous fluid. Bronchi congested. Right lung: upper lobe emphysematous, lower lobe œdematous; left lung œdematous throughout, except anterior border, which was emphysematous. Cavities of heart all full of dark-coloured clots (2½ oz.); all the valves were thickened, the mitral and aortic showing warty growths; atheromatous patches on aorta.</p>	<p>Liver nutmeggy; kidneys congested; cortex wasted.</p>	<p>Right hemisphere 17½ Left " - 18 Cerebellum - 5 Pons and medulla 1 <hr/>Total encephalon 41½</p> <p>Right lung - 24½ Left " - 15½ Heart " - 10½ Liver - 45½ Spleen - 5 Right kidney - 6 Left " - 4½</p>
<p>rs. Scalp thick; calvaria thin; dura mater thickened and much congested; arachnoid and pia mater thickened and congested with dark fluid blood, and slightly adherent at points to brain-substance; brain-substance generally congested, with dark fluid blood; vessels of brain slightly atheromatous.</p>	<p>Right pleura contained 3 oz. of fluid; extensive old adhesions on left side; trachea and bronchial tubes congested; both lungs in early stage of general and extensive pneumonia; pericardium adherent to chest wall, contained about 4 drs. of fluid; tricuspid and mitral valves considerably thickened; a semi-fibrinous clot, about size of half a walnut, in left auricle; the surface of the anterior aspect of œsophagus showed a depression with surrounding thickening of inner and muscular coats, caused by a small spicula of bone (1½ in. × by ½ in.) which lay across the passage; no penetration into trachea.</p>	<p>Liver fatty and congested; kidneys congested.</p>	<p>Right hemisphere 20½ Left " - 20½ Cerebellum - 5 Pons and medulla ½ <hr/>Total encephalon 47½</p> <p>Right lung - 15 Left lung - 12 Heart - 9½ Liver - 40 Spleen - 3½ Right kidney - 3½ Left " - 4</p>

Table 36—continued.

No. in Register.	Sex, Age, Height, Date of Admission and of Death.	HISTORY.		
		General History.	Mental State during Residence.	Bodily State during Residence.
165	P. W., Male, 74. 5 ft. 2½ in. Aug. 30, 1864. Dec. 20, 1885.	A cotton spinner, tried at Lancaster for murder of wife (he attempted suicide by cutting his throat). Found to be insane. Transferred to Broadmoor from Lancaster County Asylum.	Chronic mania, with numerous delusions.	Generally fair; latterly and enfeebled. Suffered eczema. On the 16th December 1885 showed symptoms of meningitis, from which disease he died. He suffered from facial paralysis on the right side, tongue and lips only being involved.
751	M McN., Female, 53. May 30, 1863. Dec. 31, 1885.	Was tried at the Central Criminal Court, in January 1856, for the murder of two of her illegitimate children. Found not guilty on the ground of insanity. Admitted from Bethlem Hospital.	Irritable, nervous, and hysterical; suffered from recurrent attacks of melancholia.	Health bad, confined to bed paralytic for about 20 years before death. Latterly suffered from cancer of stomach which caused her death.

Table 36—continued.

POST-MORTEM NOTES.			
Head and Spine.	Thorax.	Abdomen.	Absolute Weights of Principal Organs in ounces avoirdupois.
<p>Membranes of brain thickened and much congested, and slightly adherent to brain-substance. Brain-substance congested; a patch of softening about the size of a filbert was found involving the adjacent margin of the uncinate convolution and the occipital lobule, due to plugging of the vessel running in the calcarine fissure of the left hemisphere.</p> <p>Scalp thin; calvaria normal. Dura mater thick, arachnoid and pia mater cloudy. Cerebral substance somewhat pale. Spinal cord pale and contracted; grey matter wasted. Vessels of cord tortuous and injected.</p>	<p>Old pleuritic adhesions on both sides. Both lungs inflamed. Heart small. Muscular walls thickened. Mitral valve thickened at edges.</p> <p>Slight congestion of right lung at posterior base. Pericardium enveloped in masses of hard fat. Heart small, but normal in structure. Cavities empty, with the exception of the left ventricle, which contained a few small clots amongst its <i>chor-dæ tendineæ</i>.</p>	<p>Liver contracted. Kidneys small and contracted.</p> <p>Peritoneum loaded with fat. The cardiac end of the stomach and the parts around the œsophageal opening were the seat of a large soft cancerous mass whose free surface upon the stomach was much eroded and covered with a film of translucent gelatinous substance. The tumour extended to and involved the tissues behind, and came in close contact with the spleen. Under the microscope abundant cancer cells and pigment granules were seen. Left kidney large and dark.</p>	<p>Right hemisphere 20½ Left " 19½ Cerebellum - 4½ Pons and medulla 1</p> <hr/> <p>Total encephalon 45½</p> <p>Right lung - 30½ Left " - 14 Heart " - 11½ Liver - 37½ Spleen - 2 Right kidney - 3½ Left " - 3½</p> <p>Right hemisphere 18½ Left " 18½ Cerebellum - 4½ Pons and medulla 1</p> <hr/> <p>Total encephalon 42½</p> <p>Right lung - 17½ Left " - 9½ Heart " - 8½ Liver - 45 Spleen - 3½ Right kidney - 4½ Left " 6½</p>

TABLE 37.

COPY of the APPROPRIATION ACCOUNT presented to PARLIAMENT.

ACCOUNT of the Sum expended compared with the Sum granted to defray the expense of the maintenance of criminal lunatics in the Broadmoor Criminal Lunatic Asylum, England, and of one Criminal Lunatic in Bethlem Hospital, in the year ended 31st March 1886, showing the Surplus or Deficit upon each Sub-Head of the Vote.

Service.	Grant.	Expenditure.	Expenditure compared with Grant.	
			Less than granted.	More than granted.
	£ s. d.	£ s. d.	£ s. d.	£ s. d.
A. Salaries and wages - -	9,799 0 0	9,766 12 7	32 7 5	—
B. Victualling for patients, attendants, and servants, and allowances to attendants and servants in lieu - -	9,873 0 0	9,352 0 0	521 0 0	—
C. Tobacco - - - -	194 0 0	188 14 6	5 5 6	—
D. Uniform for attendants and servants - - - -	478 0 0	477 16 5	0 3 7	—
E. Clothing for patients - -	1,110 0 0	1,144 17 3	—	34 17 3
F. Bedding - - - -	280 0 0	279 19 9	0 10 3	—
G. Medicines, surgical instruments, &c. - - - -	160 0 0	159 19 7	0 0 5	—
H. Furniture, kitchen utensils, crockery, &c. - - - -	470 0 0	469 18 5	0 1	—
I. Fuel, light, and water - -	1,780 0 0	2,029 18 0	—	249 18 0
J. Soap, scouring and cleaning articles - - - -	320 0 0	319 19 7	0 0 5	—
K. Allowance in lieu of quarters - - - -	188 0 0	182 7 9	5 12 3	—
L. Escort and conveyance of patients - - - -	250 0 0	75 6 4	174 13 8	—
M. Allowances to patients, and gratuities on discharge - -	430 0 0	401 8 10	28 11 2	—
N. New buildings and alterations - - - -	2,040 0 0	2,139 16 2	—	99 16 2
O. Ordinary repairs of buildings, roads, fences, and drains - -	1,600 0 0	1,599 14 7	0 5 5	—
P. Incidental expenses - - - -	380 0 0	441 19 10	—	61 19 10
BETHLEM HOSPITAL.				
Q. Maintenance of criminal lunatic - - - -	65 0 0	7 17 0	57 3 0	—
Total expenditure - - - -	—	29,038 6 7	—	—
Farm and garden:—				
Receipts - - - -	£ s. d.			
Payments - - - -	2,276 14 2			
Surplus - - - -	0 1 1			
	29,417 0 0	29,038 5 6	825 5 9	446 11 3
Deduct deficit - - - -	—	—	446 11 3	—
Net surplus to be surrendered - - - -	—	—	378 14 6	—
Estimated amount of extra receipts payable to Exchequer - - - -			£ s. d.	
Amount of extra receipts realised in the year 1885-86, and paid over to Exchequer - - - -			753 0 0	
			943 11 2	
Number of criminal lunatics estimated for - - - -			555	
Daily average number of criminal lunatics actually maintained - - - -			546	

NOTE.—For further particulars see the following table.

TABLE 38.

SUMMARY of EXPENDITURE in the Year ended 31st March 1886.

	Males.	Females.	Total.
Average number of Attendants and Servants rationed	86	33	119
Patients	407	139	546

Head of Service.	Amount.	Yearly Average Cost per Patient resident.
	£ s. d.	£ s. d.
A. Salaries and wages - - -	9,611 12 7	17 12 1
B. { Victualling for attendants and servants - - -	2,668 18 9	4 17 9
{ Victualling for patients - - -	6,683 1 3	12 4 10
C. Tobacco - - -	188 14 6	0 6 11
D. Uniform for attendants and servants -	477 16 5	0 17 6
E. Clothing for patients - - -	1,144 17 3	2 1 11
F. Bedding - - -	279 19 9	0 10 3
G. Medicines, surgical instruments, &c. -	159 19 7	0 5 11
H. Furniture, kitchen utensils, crockery, &c. - - -	469 18 5	0 17 3
I. Fuel, light, and water - - -	2,029 18 0	3 14 4
J. Soap, scouring and cleaning articles -	319 19 7	0 11 9
K. Allowance in lieu of quarters - - -	182 7 9	0 6 8
L. Escort and conveyance of patients -	75 6 4	0 2 9
M. Allowances to patients and gratuities on discharge - - -	401 8 10	0 14 8
N. Ordinary repairs of roads, drains, and fences - - -	99 18 9	0 3 8
O. Incidental expenses - - -	441 19 10	0 16 2
	£ 25,235 17 7	46 4 5
Less Receipts; viz.,	£ s. d.	
Sale of old stores - - -	51 15 9	
Sale of gas and gas tar - - -	40 17 9	
Rent of cottages - - -	76 14 6	
Farm and garden - - -	0 1 1	
	169 9 1	0 6 3
	£ 25,066 8 6	45 18 2

* The following items would have to be added to this total in order to make it correspond with the total given in Table No. 37, viz.—Salary of foreman of works, 155*l.*; new buildings and alterations, 2,139*l.* 16*s.* 2*d.*; repairs of buildings, 1,499*l.* 15*s.* 10*d.*; and maintenance of one patient in Bethlem Hospital, 7*l.* 17*s.*

Table 38—continued.

DETAILS of the foregoing.

		£			s.			d.		
A. Salaries and wages		-	-	-	-	-	-	9,611	12	7
(For details, see page 77.)										
B. Victualling for patients, and attendants and servants:										
		<i>Attendants and Servants.</i>			<i>Patients.</i>					
		£ s. d.			£ s. d.					
Meat	-	938	12	8	2,573	18	9			
Australian meat	-	—			91	19	0			
Extract of meat	-	—			30	12	0			
Fish	-	—			24	9	8			
Bacon	-	196	18	11	235	19	5			
Butter	-	116	17	2	603	19	0			
Cheese	-	108	17	2	131	3	0			
Flour	-	118	4	0	848	17	0			
Potatoes and vegetables	-	49	9	4	387	8	8			
Fruit	-	7	11	7	55	11	8			
Tea, coffee, and cocoa	-	85	17	11	272	6	0			
Groceries	-	43	1	6	266	13	9			
Salt, mustard, vinegar, pepper, &c.	-	10	13	0	60	4	9			
Milk	-	61	14	6	453	5	4			
Eggs	-	40	15	0	200	6	1			
Beer	-	193	6	0	354	16	0			
Wines, spirits, and bottled beer	-	2	16	6	25	4	0			
Money allowances to attendants in lieu of rations	-	691	11	6	—					
Sundries	-	2	12	0	65	7	7			
Carriage	-	—			0	19	7			
		2,668 18 9			6,683 1 3			9,352 0 0		
C. Tobacco		-			-			188 14 6		
D. Uniform for attendants and servants:										
Material, males	-	-			231	19	4			
Do. females	-	-			43	6	10			
Journeyman's wages	-	-			122	19	6			
Caps, males	-	-			12	19	6			
Linings and pocketings	-	-			42	9	9			
Waterproof coats, goloshes, &c.	-	-			7	13	8			
Sundries	-	-			16	7	10			
					477 16 5					
E. Clothing for patients:										
Army cloth, Melton, &c.	-	-			72	1	6			
Cord and fustian	-	-			75	6	0			
Flannel, baize, and serge	-	-			153	5	3			
Shirting	-	-			115	15	11			
Stockings	-	-			159	9	11			
Print, check, and gown stuffs	-	-			31	7	1			
Calico, Forfar, and canvas	-	-			75	11	7			
Haberdashery	-	-			64	1	2			
Linings and pocketings	-	-			24	9	1			
Handkerchiefs, shawls, &c.	-	-			43	7	5			
Stays	-	-			16	5	6			
Carried forward		-			831 0 5			19,630 3 6		

Table 38—continued.

	£	s.	d.	£	s.	d.
Brought forward - - - -	831	0	5	19,630	3	6
E. Clothing for patients—continued.						
Leather - - - -	259	16	0			
Grindery - - - -	12	11	10			
Journeymen's wages (Tailors) -	24	13	11			
Caps, males - - - -	-	-	-			
Sundries - - - -	16	15	1			
	<hr/>			1,144	17	3
F. Bedding :						
Counterpanes and rugs - - - -	33	13	4			
Sheeting (linen and waterproof) -	125	9	10			
Towelling, table and house linen -	55	17	0			
Blankets - - - -	33	6	3			
Ticking and canvas - - - -	22	19	1			
Sundries - - - -	3	14	3			
	<hr/>			279	19	9
G. Medicines, surgical instruments, &c. :						
Drugs, instruments, bottles, and sundries - - - -	-	-	-	159	19	7
H. Furniture, kitchen utensils, crochery, &c. :						
Furniture and upholstery - - - -	72	15	7			
Material for making and repairs -	60	7	5			
Carpets, floorecloth, &c. - - - -	37	19	0			
Journeymen's wages - - - -	46	2	1			
Brushes, mats, &c. - - - -	77	18	0			
Ironmongery, &c. - - - -	71	4	7			
Scales, weights, and repairs - - -	10	2	9			
Earthenware - - - -	71	2	2			
India-rubber and composition basins	15	16	4			
Thermometers - - - -	-	-	-			
Sundries - - - -	6	10	6			
	<hr/>			469	18	5
I. Fuel, light, and water :						
House coal - - - -	647	17	5			
Coke - - - -	94	1	0			
Welsh coal - - - -	744	9	6			
Oil, candles, &c. - - - -	31	19	5			
Firewood - - - -	-	-	-			
Coal bags and repairs - - - -	3	4	2			
Gas coals - - - -	460	13	4			
Lime for purifying - - - -	18	3	0			
Retorts, furnaces, &c. - - - -	28	14	3			
Tools and repairs - - - -	0	15	11			
	<hr/>			2,029	18	0
J. Soap, scouring and cleaning articles :						
Hard soap - - - -	147	0	0			
Soft soap - - - -	37	16	0			
House flannel - - - -	45	12	0			
Starch, blue, soda - - - -	22	11	11			
Oils, tallow, cotton waste, &c. -	40	13	0			
Sundries - - - -	26	6	8			
	<hr/>			319	19	7
Carried forward - - - -	-	-	-	24,034	16	1

Table 38—continued.

	£	s.	d.
Brought forward - - - -	24,034	16	1
K. Allowances to attendants and servants in lieu of quarters	182	7	9
L. Escort and conveyance of patients -	75	6	4
M. Allowances to patients and gratuities on discharge -	401	8	10
N. Ordinary repairs of roads, drains, and fences:			
	£	s.	d.
Drain-pipes, bricks, &c. - - -	-	-	-
Material for fences, &c. - - -	21	15	10
Wages - - - - -	75	1	2
Repair of tools - - - - -	0	17	9
Trees and shrubs - - - - -	2	4	0
Iron fencing and repairs - - -	-	-	-
	<hr/>	99	18 9
O. Incidental expenses:			
Grant to school - - - - -	30	0	0
Funeral expenses - - - - -	89	18	1
Books, newspapers, &c. - - -	50	17	11
Amusements - - - - -	13	8	5
Music and musical instruments -	15	0	9
Advertising - - - - -	9	16	11
Stamps - - - - -	45	18	1
Travelling expenses - - - - -	47	4	6
Carriage of goods - - - - -	20	13	0
Tithe rentcharge - - - - -	1	6	0
Sundries - - - - -	3	16	1
Marking ink, &c. - - - - -	10	3	6
Repairs to Turret clock - - -	4	17	6
Travelling expenses in connection with special inquiries during 1884 and 1885 - - - - -	98	19	1
	<hr/>	441	19 10
	<hr/>	<hr/>	<hr/>
		£25,235	17 7

Table 38—continued.

DETAILED STATEMENT of SALARIES and WAGES, showing the RATES of PAY and ALLOWANCES, as well as the ACTUAL PAYMENTS, for the Year ended 31st March 1886.

—	Description of Office.	Salary of Office.			Amounts actually paid during the Year.		
		Minimum.	Annual Increase.	Maximum.	£	s.	d.
1	Superintendent, with unfurnished quarters and garden, and labour for garden - - -	—	—	1000	1,000	0	0
	Allowance to Superintendent for services in connection with special inquiries (for 8 months)	—	—	100	66	13	4
1	Deputy superintendent, with unfurnished quarters and garden -	400	20 0	500	500	0	0
1	Chaplain Do. Do. -	350	10 0	400	392	10	0
1	Visiting Roman Catholic chaplain, with actual travelling expenses -	—	—	50	50	0	0
1	Assistant medical officer, with furnished quarters, coals, gas, and attendance - - -	200	5 0	225	225	0	0
1	Junior Do. Do. Do. -	175	5 0	200	79	0	8
1	Steward, with unfurnished quarters and garden, and personal allowance, 50 <i>l.</i> - - -	200	10 0	300	350	0	0
2	Clerks, 1st class, with unfurnished quarters and garden - -	140	5 0	190	351	13	4
3	Clerks, 2nd class, with unfurnished quarters and garden - -	80	5 0	130	251	9	6
1	Bailiff, with unfurnished quarters and garden - - -	100	5 0	120	120	0	0
1	Chief attendant, with unfurnished quarters and garden and uniform	130	5 0	160	135	16	8
*7	Principal attendants, Male - -	60	2 0	74	489	0	0
*33	Attendants Do. - -	45	1 15	59	1,678	8	9
*34	Assistant attendants Do. - -	40	1 0	45	1,447	16	7
*1	Cook Do. - -	50	1 0	55	55	0	0
*2	Assistant cooks Do. - -	40	1 0	45	90	0	0
*1	Baker Do. - -	45	1 15	59	53	18	9
*1	Messenger Do. - -	45	1 15	59	53	18	9
*1	Compounder Do. - -	60	2 0	74	74	0	0
*1	Gatekeeper Do. - -	60	2 0	74	74	0	0
*1	Assistant gatekeeper Do. - -	45	1 15	59	53	18	9
¶1	Coal porter Do. - -	40	1 0	45	45	0	0
†1	Chief attendant, Female - -	65	2 0	75	75	0	0
†2	Principal attendants, Do. - -	40	2 0	50	100	0	0

Carried forward - 7,812 5 1

Table 38—continued.

—	Description of Office.	Salary of Office.			Amounts actually paid during the Year.
		Minimum.	Annual Increase.	Maximum.	
	Brought forward -	£	£ s.	£	£ s. d.
†5	Attendants, 1st class, Do. - -	—	—	—	7,812 5 1
†9	Do. 2nd „ Do. - -	30	1 0	35	172 12 8
†12	Do. 3rd „ Do. - -	25	1 0	30	228 12 8
†4	Laundrymaids Do. - -	18	1 0	21	236 5 9
*1	Gatekeeper (Fem. Div.) Male -	18	1 0	21	72 5 1
†2	Stokers Do. - -	45	1 15	59	53 18 9
†1	Mattress maker Do. - -	—	—	78	156 0 0
†1	Shoemaker Do. - -	—	—	78	78 0 0
†1	Tailor Do. - -	—	—	78	78 0 0
§2	Gardeners Do. - -	40	1 0	45	78 0 0
	Allowance for conducting music -	—	—	20	78 0 0
	Substitute for chaplain when on leave - - - -	—	—	18/18	20 0 0
	Miscellaneous labour, viz:—				
	Assistant engine driver - -	—	—	—	18 18 0
	„ stoker - - - -	—	—	—	65 4 2
	Labourer in stables - - - -	—	—	—	54 15 0
	„ „ „ - - - -	—	—	—	52 3 4
	„ „ „ stores - - - -	—	—	—	41 14 8
	Sundry labour - - - -	—	—	—	39 2 6
	Gas men - - - -	—	—	—	44 6 3
	Temporary Assistant Medical Officer 26½ weeks at 3 guineas per week - - - -	—	—	—	137 1 8
	Total - - - -	-	-	- £	82 7 0
					9,611 12 7

* The male attendants and servants marked * have board, lodging, and uniform. Of those who are married, 40 were provided with cottages on the Asylum Estate rent free, and 23 others received an allowance of 3s. per week in lieu of quarters.

† The female attendants and servants marked † have board, lodging, uniform, and washing.

‡ Those marked ‡ have no allowances.

§ Those marked § have board, with house and garden.

¶ Those marked ¶ have board, lodging, and working clothes.

TABULATED STATEMENT of EXPENDITURE for each Year from 1868-69 to 1885-86 inclusive, together with the ANNUAL COST per PATIENT, under each head of Service.

	Year ending March 31st, 1869.			Year ending March 31st, 1870.			Year ending March 31st, 1871.			Year ending March 31st, 1872.		
	Male.	Female.	Total.	Male.	Female.	Total.	Male.	Female.	Total.	Male.	Female.	Total.
	Expenditure. Rate per head.			Expenditure. Rate per head.			Expenditure. Rate per head.			Expenditure. Rate per head.		
Average daily number of attendants and servants rationed	89	27	116	87	27	114	88	26	114	93	26	119
Average daily number of patients rationed	366	85	451	375	85	460	374	80	454	407	84	491
HEAD OF SERVICE.												
Salaries and wages	8,413 4 7	18 13 1	8,431 5 8	9,036 15 8	19 12 11	9,055 7 9	8,758 17 9	19 5 10	8,777 7 9	9,427 6 5	19 4 0	9,446 0 5
Rations for attendants and servants	2,832 10 0	6 5 7	2,838 5 7	2,830 0 0	6 3 1	2,836 3 1	2,785 0 0	6 2 8	2,791 2 8	2,910 0 0	5 18 6	2,928 8 6
Uniform for attendants and servants	494 13 5	1 1 11	495 4 6	499 0 0	1 1 9	500 1 9	495 1 3	1 1 10	496 2 3	649 10 3	1 6 5	660 6 8
Allowance in lieu of quarters	-	-	-	22 8 4	0 1 0	23 8 4	31 11 5	0 1 5	32 12 0	45 1 10	0 1 10	46 2 0
Victualling for patients	8,187 15 6	18 3 1	8,205 8 7	8,418 16 1	18 6 0	8,436 12 1	8,087 16 8	17 16 3	8,104 12 1	9,148 19 10	18 12 8	9,166 12 8
Tobacco	2,143 14 2	4 15 1	2,147 8 3	2,118 19 7	4 12 1	2,122 11 8	2,188 2 4	4 16 5	2,192 6 9	2,172 18 3	4 8 6	2,176 12 9
Clothing for patients	348 11 8	0 15 5	349 6 13	469 0 10	1 1 8	470 11 8	396 7 10	0 17 6	397 6 16	549 19 7	1 2 5	550 11 2
Bedding for patients and attendants	151 7 4	0 6 9	152 3 13	147 14 0	0 6 5	148 20 5	149 0 3	0 6 7	149 6 10	148 5 6	0 6 0	148 11 6
Medicines, surgical instruments, &c.	7 0 0	0 0 4	7 0 4	9 0 0	0 0 5	9 0 5	4 0 0	0 0 2	4 0 2	7 10 0	0 0 4	7 10 4
Gratuities to patients	1,047 11 8	2 6 5	1,049 7 13	848 5 10	1 16 10	849 6 26	1,146 12 2	2 10 6	1,148 2 12	799 12 4	1 12 7	800 14 1
Furniture, kitchen utensils, &c.	2,389 17 2	5 6 0	2,394 12 8	2,399 0 3	5 4 4	2,404 4 7	2,396 19 8	5 5 7	2,401 14 5	2,399 19 9	4 17 9	2,403 13 8
Fuel, light, and water	374 9 10	0 16 7	375 5 7	431 18 5	0 18 9	432 7 4	366 7 3	0 16 2	367 7 5	349 17 8	0 14 3	350 12 1
Soap, scouring and cleaning articles	138 1 7	0 6 2	139 7 9	68 15 7	0 8 0	69 4 7	59 4 5	0 2 7	60 6 2	73 13 6	0 3 0	74 16 6
Escort and conveyance of patients	548 10 2	1 4 4	549 14 6	552 14 0	1 4 0	553 18 0	547 7 1	1 4 1	548 8 2	554 18 9	1 2 7	555 10 6
Incidental expenses	463 0 3	0 17 10	464 17 13	399 16 3	0 17 5	400 13 8	397 7 10	0 17 6	398 7 16	400 0 0	0 16 4	400 16 4
Ordinary repairs of roads, drains, and fences	27,480 7 4	60 18 7	27,540 26 1	28,282 13 10	61 9 8	28,343 13 18	27,809 15 11	61 5 1	27,870 16 12	29,637 13 8	60 7 2	29,697 13 8
Less receipts	503 17 7	1 2 4	504 19 1	258 7 11	0 11 3	259 8 14	193 3 11	0 8 6	194 3 17	229 3 5	0 9 4	230 3 9
Net	26,976 9 9	59 16 3	27,036 11 2	28,024 5 11	60 18 5	28,084 11 1	27,616 12 0	60 16 7	27,676 12 7	29,408 10 3	59 17 10	29,467 10 3
Rates and taxes	122 12 10	-	122 12 10	130 12 11	-	130 12 11	108 19 2	-	108 19 2	111 12 6	-	111 12 6
New road	353 5 0	-	353 5 0	-	-	-	-	-	-	-	-	-
BUILDINGS.												
Salaries	170 0 0	-	170 0 0	170 0 0	-	170 0 0	170 0 0	-	170 0 0	170 0 0	-	170 0 0
Additions and alterations	3,438 7 6	-	3,438 7 6	1,686 19 8	-	1,686 19 8	6,659 5 3	-	6,659 5 3	1,151 17 2	-	1,151 17 2
Ordinary repairs	2,220 18 7	-	2,220 18 7	2,332 0 0	-	2,332 0 0	2,137 18 3	-	2,137 18 3	2,482 2 10	-	2,482 2 10
	33,281 13 8	-	33,281 13 8	32,343 18 6	-	32,343 18 6	36,692 14 8	-	36,692 14 8	33,324 2 9	-	33,324 2 9

TABLE 39—continued.

	Year ending March 31st, 1873.			Year ending March 31st, 1874.			Year ending March 31st, 1875.			Year ending March 31st, 1876.		
	Male.	Female.	Total.	Male.	Female.	Total.	Male.	Female.	Total.	Male.	Female.	Total.
	Rate per head.			Rate per head.			Rate per head.			Rate per head.		
Average daily number of attendants and servants rationed	92	27	119	92	28	120	94	31	125	93	31	124
Average daily number of patients rationed	409	97	506	408	103	511	403	108	511	394	109	503
HEAD OF SERVICE.												
	Expenditure.			Expenditure.			Expenditure.			Expenditure.		
	Rate per head.			Rate per head.			Rate per head.			Rate per head.		
	£	s.	d.	£	s.	d.	£	s.	d.	£	s.	d.
Salaries and wages	9,495	10	5	9,566	3	1	9,761	10	5	9,819	6	9
Rations for attendants and servants	2,907	10	0	2,952	10	0	3,200	15	0	3,175	19	0
Uniform for attendants and servants	636	19	10	636	18	11	644	18	3	644	8	5
Allowance in lieu of quarters	46	17	8	46	17	7	46	17	6	77	17	5
Victualling for patients	8,721	9	10	8,814	9	10	8,442	13	2	7,638	13	4
Tobacco	2,227	19	9	2,257	19	5	2,283	9	8	190	4	3
Clothing for patients	599	7	10	599	18	5	598	16	11	2,034	17	9
Bedding for patients and attendants	149	6	10	149	10	4	149	15	8	519	4	11
Medicines, surgical instruments, &c.	6	16	0	5	15	0	0	5	10	147	7	8
Gratuities to patients	799	18	3	799	3	3	—	—	—	5	10	0
Furniture, kitchen utensils, &c.	2,508	16	7	3,474	17	10	859	19	1	859	19	0
Fuel, light, and water	398	7	1	399	19	10	3,493	9	4	2,895	18	10
Soap, scouring and cleaning articles	170	2	7	80	17	1	397	15	7	397	0	0
Escort and conveyance of patients	461	15	10	601	11	11	65	19	7	133	7	3
Incidental expenses	284	16	6	249	15	11	503	7	0	503	15	1
Ordinary repairs of roads, drains, and fences	29,410	15	0	30,636	8	5	30,697	15	1	29,353	9	5
Less receipts	165	8	2	228	10	5	209	5	3	246	16	3
Net	29,245	6	10	30,407	18	0	30,488	9	10	29,106	13	2
	Rate per head.			Rate per head.			Rate per head.			Rate per head.		
	57 16 0			59 10 1			59 13 3			57 17 3		
Rates and taxes	114	6	4	60	16	7	113	17	2	—	—	—
BUILDINGS.												
Salaries	170	0	0	170	0	0	170	0	0	170	0	0
Additions and alterations	387	7	7	8,286	10	2	3,062	18	0	3,749	15	9
Ordinary repairs	2,363	0	0	2,110	0	0	2,150	0	0	2,240	0	0
	Rate per head.			Rate per head.			Rate per head.			Rate per head.		
	32,280 0 9			41,035 4 9			35,985 5 0			35,266 8 11		

NOTE.—From the 1st April 1872 the administration of the works connected with the maintenance and repairs of the buildings was placed under Her Majesty's Office of Works, and so continued until the 31st March 1879, when it was again re-transferred to the control of the Council of Supervision. During the years whilst the buildings were under the care of the Office of Works the expenditure was £34,444 11s. 11d. and the receipts were £34,444 11s. 11d.

	Year ending March 31st, 1877.			Year ending March 31st, 1878.			Year ending March 31st, 1879.			Year ending March 31st, 1880.		
	Male.	Female.	Total.	Male.	Female.	Total.	Male.	Female.	Total.	Male.	Female.	Total.
	Expenditure.			Expenditure.			Expenditure.			Expenditure.		
Average daily number of attendants and servants rationed	89	30	119	86	30	116	80	27	107	79	27	106
Average daily number of patients rationed	390	105	495	382	105	487	373	107	480	366	115	481
HEAD OF SERVICE.												
Salaries and wages	9,716 3 7	19 12 7	19 12 7	9,529 2 3	19 11 2	19 11 2	8,847 3 3	18 8 8	18 8 8	8,881 11 3	18 9 4	18 9 4
Rations for attendants and servants	3,046 17 0	6 3 1	6 3 1	3,078 15 0	6 6 5	6 6 5	2,681 8 0	5 11 9	5 11 9	2,645 10 0	5 10 0	5 10 0
Uniform for attendants and servants	549 14 6	1 2 3	1 2 3	515 8 0	1 1 2	1 1 2	433 8 8	0 18 1	0 18 1	442 12 7	0 18 5	0 18 5
Allowance in lieu of quarters	77 19 8	0 3 2	0 3 2	99 2 0	0 4 1	0 4 1	122 17 7	0 5 1	0 5 1	129 1 0	0 5 4	0 5 4
Victualling for patients	7,361 3 2	14 17 5	14 17 5	7,179 16 9	14 14 11	14 14 11	6,141 17 2	12 15 11	12 15 11	6,201 9 9	12 17 10	12 17 10
Tobacco	175 7 2	0 7 0	0 7 0	179 19 10	0 7 5	0 7 5	164 6 0	0 6 10	0 6 10	159 9 6	0 6 8	0 6 8
Clothing for patients	1,821 10 4	3 13 7	3 13 7	1,364 4 6	2 16 0	2 16 0	958 3 5	1 19 11	1 19 11	965 19 2	2 0 2	2 0 2
Bedding for patients and attendants	449 12 5	0 18 2	0 18 2	362 16 11	0 14 11	0 14 11	232 16 10	0 9 8	0 9 8	229 16 9	0 9 7	0 9 7
Medicines, surgical instruments, &c.	149 17 5	0 6 1	0 6 1	149 6 8	0 6 2	0 6 2	134 8 2	0 5 7	0 5 7	120 16 1	0 5 0	0 5 0
Gratuities to patients	1 0 0	—	—	0 12 6	—	—	0 15 0	—	—	—	—	—
Furniture, kitchen utensils, &c.	690 13 7	1 7 11	1 7 11	605 11 11	1 4 11	1 4 11	501 15 0	1 0 11	1 0 11	457 7 4	0 19 0	0 19 0
Fuel, light, and water	2,205 11 1	4 9 2	4 9 2	2,134 6 7	4 10 1	4 10 1	1,984 9 9	4 2 8	4 2 8	1,990 17 3	4 3 2	4 3 2
Soap, scouring and cleaning articles	358 15 11	0 14 6	0 14 6	318 11 6	0 13 1	0 13 1	295 1 5	0 12 4	0 12 4	290 15 7	0 12 1	0 12 1
Escort and conveyance of patients	112 12 6	0 4 7	0 4 7	138 12 2	0 5 8	0 5 8	71 16 9	0 3 0	0 3 0	105 9 3	0 4 5	0 4 5
Incidental expenses	422 6 10	0 17 1	0 17 1	347 16 3	0 14 4	0 14 4	360 4 9	0 15 0	0 15 0	377 11 4	0 15 8	0 15 8
Ordinary repairs of roads, drains, and fences	249 19 9	0 10 1	0 10 1	248 6 8	0 10 3	0 10 3	199 6 0	0 8 4	0 8 4	190 11 7	0 8 4	0 8 4
Less receipts	27,390 4 11	55 6 8	55 6 8	26,312 9 6	54 0 7	54 0 7	23,129 17 9	48 3 9	48 3 9	23,206 18 5	48 5 0	48 5 0
Net	186 19 4	0 7 7	0 7 7	171 8 5	0 7 0	0 7 0	148 10 11	0 6 3	0 6 3	232 16 4	0 9 8	0 9 8
	27,203 5 7	54 19 1	54 19 1	26,141 1 1	53 13 7	53 13 7	22,981 6 10	47 17 6	47 17 6	22,974 2 1	47 15 4	47 15 4
BUILDINGS.												
Salaries	170 0 0	—	—	175 0 0	—	—	180 0 0	—	—	125 0 0	—	—
Additions and alterations	—	—	—	—	—	—	898 8 6	—	—	899 8 11	—	—
Ordinary repairs	3,390 12 3	—	—	2,015 6	—	—	2,000 0 0	—	—	*1,999 16 3	—	—
BETHLEM HOSPITAL.	—	—	—	—	—	—	—	—	—	65 0 0	—	—
	30,763 17 10	—	—	28,331 7 7	—	—	26,059 15 4	—	—	26,063 7 3	—	—

* NOTE.—In this year (commencing on the 1st of April 1879) the control the works relating to the Building Department was re-transferred to the Council of Supervision. In the sum of 1,999*l.* 16*s.* 3*d.* put down as the expenditure for this year, there is included a sum of 23*l.* 7*s.* 10*d.* on account of bills incurred by the Office of Works in the previous year.

TABLE 39—continued.

	Year ending March 31st, 1881.			Year ending March 31st, 1882.			Year ending March 31st, 1883.			Year ending March 31st, 1884.		
	Male.	Female.	Total.	Male.	Female.	Total.	Male.	Female.	Total.	Male.	Female.	Total.
	Expenditure.	Rateperhead.	Expenditure.	Rateperhead.	Expenditure.	Rateperhead.	Expenditure.	Rateperhead.	Expenditure.	Rateperhead.		
Average daily number of attendants and servants rationed	76	26	102	76	27	103	77	28	105	79	30	109
Average daily number of patients rationed	367	120	487	375	124	499	381	129	510	390	140	530
HEAD OF SERVICE.												
Salaries and wages	£ 8,617 0 2	£ s. d. 17 13 11	£ 8,509 7 6	£ s. d. 17 1 1	£ 8,649 17 0	£ s. d. 16 19 3	£ 8,890 17 6	£ s. d. 16 15 10	£ 2,629 0 0	£ s. d. 5 3 11	£ 2,694 4 1	£ s. d. 5 1 8
Rations for attendants and servants	413 18 6	0 17 0	414 14 2	0 16 8	414 19 11	0 16 3	435 19 11	0 16 6	139 9 8	0 5 9	137 19 9	0 5 7
Uniform for attendants and servants	6,470 13 3	13 5 9	6,517 12 2	13 1 3	6,798 4 9	13 6 7	6,968 13 6	13 3 0	6,470 13 3	13 5 9	6,517 12 2	13 1 3
Allowances in lieu of quarters	158 16 4	0 6 6	159 19 10	0 6 5	159 19 10	0 6 3	160 0 0	0 6 0	158 16 4	0 6 6	159 19 10	0 6 5
Victualling for patients	899 19 3	1 17 0	937 18 5	1 17 7	937 18 5	2 0 8	1,119 18 3	2 2 3	899 19 3	1 17 0	937 18 5	1 17 7
Tobacco	184 15 5	0 7 7	184 19 6	0 7 5	199 17 4	0 7 10	214 16 3	0 8 1	184 15 5	0 7 7	184 19 6	0 7 5
Clothing for patients	149 16 2	0 6 2	149 10 4	0 6 0	162 5 10	0 6 5	148 18 3	0 5 8	149 16 2	0 6 2	149 10 4	0 6 0
Bedding for patients and attendants	429 19 4	0 17 8	430 0 0	0 17 3	429 15 1	0 16 10	429 18 4	0 16 3	429 19 4	0 17 8	430 0 0	0 17 3
Medicines, surgical instruments, &c.	1,939 8 8	3 19 8	1,879 13 6	3 15 4	1,766 13 10	3 9 3	1,899 6 4	3 11 8	1,939 8 8	3 19 8	1,879 13 6	3 15 4
Furniture, kitchen utensils, crockery, &c.	299 16 5	0 12 4	299 19 11	0 12 0	267 14 1	0 10 6	299 15 7	0 11 4	299 16 5	0 12 4	299 19 11	0 12 0
Fuel, light, and water	94 16 11	0 3 11	110 19 7	0 4 5	103 19 7	0 4 1	91 5 11	0 3 5	94 16 11	0 3 11	110 19 7	0 4 5
Soap, scouring and cleaning articles	354 10 3	0 14 7	375 19 9	0 15 1	363 15 8	0 14 3	400 0 0	0 15 1	354 10 3	0 14 7	375 19 9	0 15 1
Escort and conveyance of patients	386 2 9	0 15 10	332 8 9	0 13 4	378 12 6	0 14 10	340 6 6	0 12 10	386 2 9	0 15 10	332 8 9	0 13 4
Allowances to patients and gratuities on discharge	100 0 0	0 4 1	99 19 3	0 4 0	99 19 11	0 3 11	99 17 6	0 3 9	100 0 0	0 4 1	99 19 3	0 4 0
Incidental expenses	23,168 3 1	47 11 8	23,088 1 8	46 5 5	23,564 13 11	46 4 1	24,350 17 8	45 18 11	23,168 3 1	47 11 8	23,088 1 8	46 5 5
Ordinary repairs of roads, drains, and fences	170 4 3	0 7 0	175 18 11	0 7 1	146 3 2	0 5 9	143 7 6	0 5 5	170 4 3	0 7 0	175 18 11	0 7 1
Less receipts	22,997 18 10	47 4 8	22,912 2 9	45 18 4	23,418 10 9	45 18 4	24,207 10 2	45 13 6	22,997 18 10	47 4 8	22,912 2 9	45 18 4
Net												
BUILDINGS.												
Salaries	130 0 0	—	135 0 0	—	140 0 0	—	145 0 0	—	130 0 0	—	135 0 0	—
Additions and alterations	479 9 8	—	786 19 8	—	759 19 4	—	1,235 16 10	—	479 9 8	—	786 19 8	—
Ordinary repairs	1,769 16 6	—	1,699 11 10	—	1,600 0 0	—	1,499 7 10	—	1,769 16 6	—	1,699 11 10	—
BETHLEM HOSPITAL.												
For the maintenance of one criminal lunatic	65 0 0	—	65 0 0	—	65 0 0	—	65 0 0	—	65 0 0	—	65 0 0	—
	25,442 5 0	—	25,598 14 3	—	25,983 10 1	—	27,152 14 10	—	25,442 5 0	—	25,598 14 3	—

	Year ending March 31st, 1885.			Year ending March 31st, 1886.		
	Male.	Female.	Total.	Male.	Female.	Total.
	Average daily number of attendants and servants rationed	85	32	117	86	33
Average daily number of patients rationed	408	143	551	407	139	546
HEAD OF SERVICE.						
Salaries and wages	£ 9,533	£ 9 5	£ 17 6	£ 9,611	£ 12 7	£ 17 12 1
Rations for attendants and servants	2,754	10 0	5 0	2,668	18 9	4 17 9
Uniform for attendants and servants	469	15 10	0 17 1	477	16 5	0 17 6
Allowances in lieu of quarters	177	0 4	0 6 5	182	7 9	0 6 8
Victualling for patients	6,625	12 10	12 0 6	6,683	1 3	12 4 10
Tobacco	193	19 6	0 7 0	188	14 6	0 6 11
Clothing for patients	1,099	11 3	1 19 11	1,144	17 3	2 1 11
Bedding for patients and attendants	389	19 9	0 14 2	279	19 9	0 10 3
Medicines, surgical instruments, &c.	147	16 3	0 5 4	159	19 7	0 5 11
Furniture, kitchen utensils, crockery, &c.	469	15 8	0 17 1	469	18 5	0 17 3
Fuel, light, and water	2,029	4 3	3 13 8	2,029	18 0	3 14 4
Soap, scouring and cleaning articles	299	18 6	0 10 11	319	19 7	0 11 9
Escort and conveyance of patients	82	17 5	0 3 0	75	6 4	0 2 9
Allowances to patients and gratuities on discharge	422	19 6	0 15 4	401	8 10	0 14 8
Incidental expenses	357	4 4	0 12 11	441	19 10	0 16 2
Ordinary repairs of roads, drains and fences	100	0 2	0 3 7	99	18 9	0 3 8
Less receipts	25,153	15 0	45 13 0	25,235	17 7	46 4 5
Net	147	10 7	0 5 4	169	9 1	0 6 3
	25,006	4 5	45 7 8	25,066	8 6	45 18 2
BUILDINGS.						
Salaries	15	0 0	-	155	0 0	-
Additions and alterations	1,413	18 5	-	2,139	16 2	-
Ordinary repairs	1,499	13 10	-	1,499	15 10	-
	65	0 0	-	7	17 0	-
BETHLEM HOSPITAL.						
For the maintenance of one criminal lunatic	28,134	16 8	-	28,803	17 6	-

TABLE

BROADMOOR CRIMINAL

TABULAR STATEMENT showing the TOTAL EXPENDITURE, as well as
and the rate per caput per

Year.	1.	2.	3.	4.	5.	6.
	Expenditure on account of New Buildings.	Repairs of Buildings, &c.	Salaries relating to the foregoing.	Rates and Taxes.	Bethlem Hospital; Amount included in the Broadmoor Vote, but paid over to Bethlem.	Expenditure upon all the other items of the Broadmoor Vote, excepting those included in the five foregoing columns.
	£ s. d.	£ s. d.	£	£ s. d.	£ s. d.	£ s. d.
1868-69	3,791 12 6	2,220 18 7	170	122 12 10	—	27,480 7 4
1869-70	1,686 19 8	2,332 0 0	170	130 12 11	—	28,282 13 10
1870-71	6,659 5 3	2,137 18 3	170	108 19 2	—	27,809 15 11
1871-72	1,151 17 2	2,482 2 10	170	111 12 6	—	29,637 13 8
1872-73	387 7 7	2,363 0 0	170	114 6 4	—	29,410 15 0
1873-74	8,286 10 2	2,110 0 0	170	60 16 7	—	30,636 8 5
1874-75	3,062 18 0	2,150 0 0	170	113 17 2	—	30,697 15 1
1875-76	3,749 15 9	2,240 0 0	170	—	—	29,353 9 5
1876-77	—	3,390 0 0	170	—	—	27,390 4 11
1877-78	—	2,015	175	—	—	26,312 9 6
1878-79	898 8 6	2,000 0 0	180	—	—	23,129 17 9
1879-80	899 8 11	1,999 16 3	125	—	65 0 0	23,206 18 5
1880-81	479 9 8	1,769 16 6	130	—	65 0 0	23,168 3 1
1881-82	786 19 8	1,699 11 10	135	—	65 0 0	23,088 1 8
1882-83	759 19 4	1,600 0 0	140	—	65 0 0	23,564 13 11
1883-84	1,235 16 10	1,499 7 10	145	—	65 0 0	24,350 17 8
1884-85	1,143 18 5	1,499 13 10	150	—	65 0 0	25,153 15 0
1885-86	2,139 16 2	1,499 15 10	155	—	7 17 0	25,235 17 7

LUNATIC ASYLUM.

THE AVERAGE NUMBER of CRIMINAL LUNATICS resident in each year, from 1868 to 1885-86.

7.	8.	9.	10.	11.	
Total Gross Expenditure.	Amount received for the Sale of old Stores, Rent of Cottages on the Estate, &c.	Rate <i>per caput</i> after deducting from the gross Expenditure the Receipts and also the Expenditure incurred upon New Works, Rates and Taxes, and Bethlem Hospital, as shown in columns 1, 4, 5, and 8, but including Expenditure upon repairs of Buildings.	Rate <i>per caput</i> after deducting, in addition to the items mentioned in the preceding column, the Expenditure upon Repairs of Buildings and upon Salaries relating thereto, as shown in columns 1, 2, 3, 4, 5, and 8.	Average Number of Criminal Lunatics resident.	Year.
£ s. d.	£ s. d.	£ s. d.	£ s. d.		
33,785 11 3	503 17 7	65 2 4	59 16 3	451	1868-69
32,602 6 5	258 7 11	66 7 3	60 18 5	460	1869-70
36,885 18 7	193 3 11	65 18 3	60 16 7	454	1870-71
33,553 6 2	229 3 5	65 5 11	59 17 10	491	1871-72
32,445 8 11	165 8 2	62 16 1	57 16 0	506	1872-73
41,263 15 2	228 10 5	63 19 4	59 10 1	511	1873-74
36,194 10 3	209 5 3	64 4 1	59 13 3	511	1874-75
35,513 5 2	246 16 3	62 13 2	57 17 3	503	1875-76
30,950 4 11	186 19 4	62 3 0	54 19 1	495	1876-77
28,502 16 0	171 8 5	58 3 6	53 13 7	487	1877-78
26,208 6 3	148 10 11	52 8 5	47 17 6	480	1878-79
26,296 3 7	232 16 4	52 3 7	47 15 4	481	1879-80
25,612 9 3	170 4 3	51 2 6	47 4 8	487	1880-81
25,774 13 2	175 18 11	49 11 10	45 18 4	499	1881-82
26,129 13 3	146 3 2	49 6 7	45 18 4	510	1882-83
27,296 2 4	143 7 6	48 15 6	45 13 6	530	1883-84
28,282 7 3	147 10 7	48 7 7	45 7 8	551	1884-85
29,038 6 7	169 9 1	48 18 10	45 18 2	546	1885-86

TABLE 41.
ACCOUNT of the PRINCIPAL ARTICLES of PROVISIONS, &c.,
consumed in the Year ended 31st March 1886.

				Males.	Females.	Total.
Average daily number of attendants and servants						
			rationed	58	29	87
Do.	do.	patients	do.	407	139	546

Articles.				Quantity.	
				Patients.	Attendants, &c.
Butcher's meat	-	-	-	94,575 lbs.	31,072 lbs.
Australian meat (preserved)	-	-	-	4,757 "	—
Extract of meat	-	-	-	128 "	—
Fish	-	-	-	468 "	—
Flour	-	-	-	183,505 "	26,215 lbs.
Ale and porter	-	-	-	12,734 galls.	5,799 galls.
Butter	-	-	-	12,352 lbs.	2,407 lbs.
Bacon	-	-	-	7,089 "	6,085 "
Cheese	-	-	-	4,950 "	4,133 "
Eggs	-	-	-	49,580 No.	9,780 No.
Coffee	-	-	-	912 lbs.	650 lbs.
Cocoa	-	-	-	475 "	—
Tea	-	-	-	2,440 "	735 lbs.
Sugar, moist	-	-	-	19,145 "	3,603 "
" loaf	-	-	-	1,239 "	1,767 "
Milk from farm	-	-	-	12,173 galls.	1,646 galls.
Do. condensed	-	-	-	981 tins.	—
Potatoes	-	-	-	134,476 lbs.	23,898 lbs.
Carrots and parsnips	-	-	-	22,406 "	3,310 "
Vegetable marrows	-	-	-	1,244 "	350 "
Cabbage and greens	-	-	-	30,521 "	4,892 "
Broad beans, peas, and French beans	-	-	-	152 bush.	42 bush.
Turnips	-	-	-	1,194 lbs.	—
Onions	-	-	-	2,078 "	—
Apples	-	-	-	166 bush.	29 bush.
Rhubarb	-	-	-	10,333 lbs.	1,550 lbs.
Currants and raisins	-	-	-	2,808 "	201 "
Oatmeal	-	-	-	7,802 "	—
Corn flour	-	-	-	874 "	—
Sago	-	-	-	1,278 "	2 lbs.
Rice	-	-	-	688 "	11 "
Pearl barley	-	-	-	129 "	—
Split peas	-	-	-	6,205 "	—
Wines (port, sherry, and claret)	-	-	-	28 galls.	3½ galls.
Spirits (brandy and gin)	-	-	-	9¼ "	1½ "
Bottled ale and stout	-	-	-	60 bottles.	—
Lemonade and soda water	-	-	-	324 "	24 bottles.
Lime juice	-	-	-	128 galls.	30½ galls.
Vinegar	-	-	-	—	234 galls.
Salt	-	-	-	—	10,228 lbs.
Pepper	-	-	-	—	268 "
Mustard	-	-	-	—	778 "

TABLE 42.
 CONTRACT and other PRICES of the PRINCIPAL ARTICLES of
 CONSUMPTION during the Year ending 31st March 1886.

Articles.	1st	2nd	3rd	4th	Average for the Year.
	Quarter.	Quarter.	Quarter.	Quarter.	
	s. d.	s. d.	s. d.	s. d.	s. d.
Beef - per stone of 8lbs.	5 1 $\frac{3}{4}$	5 1	4 11	4 11 $\frac{1}{4}$	5 0
Mutton do.	4 9	4 5 $\frac{1}{4}$	4 0 $\frac{1}{4}$	4 3	4 4 $\frac{1}{4}$
Legs and shins of beef (boned) do.	4 0	4 0	4 0	4 0	4 0
Flour, per sack of 280 lbs.	25 0	25 6	25 6	25 0	25 3
Butter - - per cwt.	105 2	95 7	115 0	119 6	108 9 $\frac{3}{4}$
Cheese - - "	67 10	62 8	49 1	56 5	59 0
Bacon - - "	72 11	75 0	69 9	72 7	72 6 $\frac{3}{4}$
Tea - - per lb.	1 7 $\frac{1}{2}$	1 7 $\frac{1}{2}$	1 7 $\frac{1}{2}$	1 7 $\frac{1}{2}$	1 7 $\frac{1}{2}$
Coffee - - per cwt.	90 0	90 0	90 0	90 0	90 0
Sugar (moist) - "	14 0	14 0	14 0	14 0	14 0
„ (loaf) - "	23 0	23 0	23 0	23 0	23 0
Oatmeal - - "	15 0	15 0	15 0	15 0	15 0
Currants - - "	26 0	26 0	26 0	26 0	26 0
Raisins - - "	40 0	40 0	40 0	40 0	40 0
Pepper - - per lb.	0 8	0 8	0 8	0 8	0 8
Mustard - - "	0 5 $\frac{1}{2}$	0 5 $\frac{1}{2}$	0 5 $\frac{1}{2}$	0 5 $\frac{1}{2}$	0 5 $\frac{1}{2}$
Ale - - per brl.	20 0	20 0	20 0	20 0	20 0
Porter - - "	24 0	24 0	24 0	24 0	24 0
Soap, yellow - per cwt.	24 6	24 6	24 6	24 6	24 6
„ mottled - "	24 6	24 6	24 6	24 6	24 6
„ soft - per fkn.	10 6	10 6	10 6	10 6	10 6
Soda - - per cwt.	4 3	4 3	4 3	4 3	4 3
Starch - - "	32 6	32 6	32 6	32 6	32 6
Black lead - "	35 0	35 0	35 0	35 0	35 0
Coals, Welsh - per ton	20 8	20 8	20 8	20 8	20 8
Do. Wallsend - "	21 0	21 0	21 0	21 0	21 0
Do. Gas - "	18 11	18 11	18 11	18 11	18 11
Coke - per chaldron	11 0	11 0	11 0	11 0	11 0

TABLE 43.

PATIENTS' DIETARY.

BREAKFAST.

Every day - Males and Females } Tea with bread and butter.

DINNER.

Males.

- Sunday - Beef or mutton, without bone, and weighed after cooking 4 ozs. ; potatoes, weighed raw, 12 ozs. ; currant pudding, 8 ozs., or fruit pie, 12 ozs. ; beer, $\frac{3}{4}$ pint ; and bread.
- Monday - Bacon or pork, without bone, and weighed after cooking, 5 ozs., or corned beef, 6 ozs. ; potatoes, weighed raw, 12 ozs. ; peas pudding, 4 ozs. ; beer, $\frac{3}{4}$ pint ; and bread.
- Tuesday - Beef or mutton, without bone, and weighed after cooking, 4 ozs. ; potatoes, weighed raw, 12 ozs. ; raisin pudding, 8 ozs., or soup, 1 pint ; beer, $\frac{3}{4}$ pint ; and bread.
- Wednesday - Beef or mutton, without bone, and weighed after cooking, 5 ozs. ; potatoes, weighed raw, 12 ozs. ; fruit pie, 12 ozs., or suet pudding, 4 ozs. ; beer, $\frac{3}{4}$ pint ; and bread.
- Thursday - Australian meat 6 ozs. ; potatoes, weighed raw, 12 ozs. ; beer, $\frac{3}{4}$ pint ; and bread.
- Friday - Pork or bacon, without bone, and weighed after cooking, 5 ozs. ; potatoes, weighed raw, 12 ozs. ; peas pudding, 4 ozs. ; beer, $\frac{3}{4}$ pint ; and bread.
- Saturday - Beef or mutton, without bone, and weighed after cooking, 5 ozs. ; potatoes, weighed raw, 12 ozs. ; suet pudding, 4 ozs. ; beer, $\frac{3}{4}$ pint ; and bread.

Females.

- Sunday - Beef or mutton, without bone, and weighed after cooking, 3 ozs. ; potatoes, weighed raw, 12 ozs. ; currant pudding 8 ozs., or fruit pie 12 ozs. ; beer, $\frac{1}{2}$ pint ; and bread.
- Monday - Bacon or pork, without bone, and weighed after cooking, 4 ozs., or corned beef, 5 oz. ; potatoes, weighed raw, 12 ozs. ; beer, $\frac{1}{2}$ pint ; and bread.
- Tuesday - Beef or mutton, without bone, and weighed after cooking, 3 ozs. ; potatoes, weighed raw, 12 ozs. ; raisin pudding 8 ozs., or soup, 1 pint ; beer, $\frac{1}{2}$ pint ; and bread.
- Wednesday - Beef or mutton, without bone, and weighed after cooking, 4 ozs. ; potatoes, weighed raw, 12 ozs. ; fruit pie 12 ozs., or suet pudding 4 ozs. ; beer $\frac{1}{2}$ pint ; and bread.

- Thursday - Australian meat 5 ozs. ; potatoes, weighed raw, 12 ozs. ; beer $\frac{1}{2}$ pint ; and bread.
- Friday - Pork or bacon, without bone, and weighed after cooking, 4 ozs. ; potatoes, weighed raw, 12 ozs. ; peas pudding, 4 ozs. ; beer $\frac{1}{2}$ pint ; and bread.
- Saturday - Beef or mutton, without bone, and weighed after cooking, 4 ozs. ; potatoes, weighed raw, 12 ozs. ; suet pudding, 4 ozs. ; beer $\frac{1}{2}$ pint ; and bread.

Fish dinners are given occasionally.

Meat pie is occasionally substituted for the usual Saturday's dinner.

On four days of the week, other vegetables, such as may be in season, are given in lieu of 4 ozs. potatoes, according to the following scale—weighed, or measured, before cooking :—

Cabbage 12 ozs. ; French beans, $\frac{3}{4}$ pint ; Broad beans, shelled, $\frac{3}{4}$ pint ; Green peas, shelled, $\frac{1}{2}$ pint ; Vegetable marrows, 1 lb. ; Carrots, 12 ozs. ; Parsnips, 12 ozs. ; Onions, 8 ozs.

TEA.

Every day - Males and Females } Tea with bread and butter.

Seed bread is given twice weekly in lieu of bread and butter to those of the patients who like it.

Oatmeal gruel at bed time is supplied to those who wish for it.

The sick are dieted at the discretion of the superintendent.

Working patients are allowed 4 ozs. bread and 1 oz. of cheese for lunch, with oatmeal and water.

Every patient is allowed $1\frac{1}{2}$ ozs. tea, 7 ozs. sugar, 7 ozs. butter, and $1\frac{3}{4}$ pts. milk weekly. Bread is unlimited ; the quantity consumed daily averages 17 ozs. for males, and 14 ozs. for females.

The soup consists of the liquor from the boiling of the meat with the addition of $12\frac{1}{2}$ lbs. of peas and barley, and 10 lbs. of vegetables, for 100 patients.

Currant pudding consists of flour, $37\frac{1}{2}$ lbs., currants, $12\frac{1}{2}$ lbs., and suet or dripping, $12\frac{1}{2}$ lbs., to make 100 lbs. when cooked.

Fruit pies consist of flour, 3 ozs., fruit 8 ozs., sugar 1 oz., and dripping 1 oz., to make 12 ozs. when cooked.

Seed bread is made from dough with the addition of 10 lbs. dripping, 9 lbs. sugar, and $1\frac{1}{4}$ lbs. carraway seeds to 100 lbs. dough.

Meat pies consist of 4 ozs. meat without bone, 7 ozs. mixed dough, and 8 ozs. vegetables, for males ; $3\frac{1}{2}$ ozs. meat without bone, 6 ozs. mixed dough, and 8 ozs. vegetables, for females.

Suet pudding consists of flour 50 lbs., and suet $12\frac{1}{2}$ lbs., to make 100 lbs. when cooked.

TABLE 44.

FARM AND

ABSTRACT OF RECEIPTS, TRANSFERS, and PAYMENTS

RECEIPTS.		£	s.	d.	£	s.	d.
Cash received for sales of produce and stock &c., viz. :							
134 sheep	-	-	-	-	366	10	0
1 bull	-	-	-	-	21	0	0
1 heifer	-	-	-	-	17	0	0
21 calves	-	-	-	-	57	0	0
92 Pigs	-	-	-	-	124	12	6
Milk, 2,779 $\frac{5}{8}$ galls. at 1s.	-	-	-	-	138	19	5
Butter, 943 $\frac{1}{4}$ lbs. at 1s. 4d.	-	-	-	-	62	17	8
Tailing wheat, 4 $\frac{1}{2}$ qrs.	-	-	-	-	6	3	9
Skins, hides, and offal -	-	-	-	-	33	2	10
H. M. Woods and Forests, for use of gateways	-	-	-	-	0	10	0
					827	16	2
Transfers—Amount transferred from the Vote for victualling, to the credit of the Farm Account, for produce supplied to the establishment, viz. :							
New milk, 11,588 $\frac{1}{2}$ galls. at 9d.	-	-	-	-	434	11	7
Skim „ 2,284 „ at 6d.	-	-	-	-	57	2	3
Butter, 28 $\frac{1}{2}$ lbs. at 1s. 4d.	-	-	-	-	1	18	0
Beef, 11,800 lbs.	-	-	-	-	347	18	9
Pork, 8,951 $\frac{1}{2}$ lbs. at 6d.	-	-	-	-	223	15	9
Apples, 196 $\frac{3}{4}$ bushels, at 3s.	-	-	-	-	29	10	3
Broad beans, 120 bushels at 1s.	-	-	-	-	6	0	0
French beans, 138 bushels, at 1s. 3d.	-	-	-	-	8	12	6
Cabbage, 786 $\frac{3}{4}$ bushels, at 1s.	-	-	-	-	39	6	9
Carrots, 83 $\frac{5}{8}$ cwt. at 3s.	-	-	-	-	12	10	1
Celery, 3,249 heads at 1d.	-	-	-	-	13	10	9
Fruit, 371 lbs., at 3d.	-	-	-	-	4	12	9
Greens, 203 bushels, at 1s.	-	-	-	-	10	3	0
Herbs, 43 bunches at 2d.	-	-	-	-	0	7	2
Lettuce, 416 score at 8d.	-	-	-	-	13	17	4
Onions, 30 $\frac{1}{2}$ bushels at 3s.	-	-	-	-	4	10	8
Parsnips, 115 $\frac{2}{3}$ cwt. at 3s.	-	-	-	-	17	6	9
Peas, 6 bushels at 1s. 4d.	-	-	-	-	0	8	0
Potatoes, 1,166 $\frac{2}{3}$ cwt. at 3s. 4d.	-	-	-	-	194	7	4
Rhubarb, 11,671 lbs. at $\frac{1}{2}$ d.	-	-	-	-	24	6	3
Turnips, 11 $\frac{1}{2}$ bushels at 1s.	-	-	-	-	0	11	6
Vegetable marrows, 1,695 lbs. at $\frac{1}{2}$ d.	-	-	-	-	3	10	7
					1,448	18	0
					£2,276	14	2
					£2,276	14	2

The prices placed upon the articles supplied by the farm to the Victualling only such as to cover

TABLE 44.

GARDEN ACCOUNT.

for the Year ended 31st March 1886.

PAYMENTS.					£	s.	d.
Paid for purchase of :—							
135 sheep	-	-	-	-	307	6	8
11 cows	-	-	-	-	212	10	0
6 heifers	-	-	-	-	84	0	0
Chalk	-	-	-	-	25	10	0
Farmyard manure	-	-	-	-	29	5	0
Nitrate of soda, superphosphate, guano, &c.	-	-	-	-	107	19	10
Seed and plants	-	-	-	-	96	14	5
Trees and shrubs	-	-	-	-	17	1	6
Hay, corn, straw, &c.	-	-	-	-	196	14	7
Oil cake and feeding stuffs	-	-	-	-	242	1	6
Mangolds and carrots	-	-	-	-	62	1	0
Brewers' grains	-	-	-	-	201	15	8
Implements and garden tools	-	-	-	-	68	16	9
Harness and repairs	-	-	-	-	18	0	2
Wages	-	-	-	-	530	13	7
Thrashing and grinding corn	-	-	-	-	23	5	5
Medicines	-	-	-	-	3	8	2
Killing pigs and bullocks	-	-	-	-	10	9	0
Baskets, brooms, &c.	-	-	-	-	11	6	3
Rail carriage	-	-	-	-	0	12	8
Travelling expenses of bailiff	-	-	-	-	8	6	6
Ironmongery, shoeing, &c.	-	-	-	-	5	17	7
Insurance of farm produce	-	-	-	-	3	15	0
H. M. Woods and Forests, for use of gateways	-	-	-	-	0	10	0
Killing rats	-	-	-	-	1	4	4
Dairy cloth	-	-	-	-	0	14	6
Garden pots	-	-	-	-	2	11	9
Bean sticks	-	-	-	-	1	0	0
Rick pegs	-	-	-	-	0	2	6
One ladder	-	-	-	-	2	18	9
Balance	-	-	-	-	0	1	1

£2,276 14 2

Sub-head are such as not to cause either profit or loss to the farm ; but are the net working expenses.

TABLE 45.

STATEMENT OF LIVE STOCK, the property of the ASYLUM, for the Year 1885-86.

	Horses.	Bulls.	Cows.	Heifers.	Calves.	Sheep.	Pigs.
Number on the 1st April 1885 -	12	1	28	4	10	—	126
Purchased during the financial year -	—	—	11	6	—	135	—
Transferred from list of calves to that of bulls and heifers -	—	1	—	5	—	—	—
Do. heifers to that of cows -	—	—	6	—	—	—	—
Born during the financial year -	—	—	—	—	24	—	174
	12	2	45	15	34	135	300
Less :—							
Sold during the financial year -	—	1	—	1	21	134	—
Killed for Asylum use in the year -	—	—	14	2	—	—	137
Died during the year -	—	—	—	—	—	1	14
Transferred from list of calves to that of bulls and heifers -	—	—	—	—	6	—	—
Do. heifers to that of cows -	—	—	—	6	—	—	—
	—	1	14	9	27	135	243
Remaining on the 31st March 1886 -	12	1	31	6	7	—	57

TABLE 46.

SUMMARY of the VALUATION of the FARM STOCK on the
31st March 1886.

Description.	Valuation.		
	£	s.	d.
Cattle - - - - -	717	0	0
Pigs - - - - -	146	0	0
Horses - - - - -	355	0	0
Feeding stuffs - - - - -	161	11	0
Manures - - - - -	232	0	0
Hay, straw, and corn, in ricks - - - - -	586	0	0
Garden stuff - - - - -	25	0	0
Seed potatoes and other seeds - - - - -	59	13	0
Growing crops, cultivations, and tillages - - - - -	461	0	0
Implements and tools - - - - -	180	0	0
	2,923	4	0
Deduct liabilities :—Accounts unpaid, carried forward - - - - -	5	8	11
Net valuation - - - - -	2,917	15	1

TABLE 47.

SHOWING the AMOUNT of LAND connected with the ASYLUM,
and its appropriation, on the 31st March 1886.

	A.	R.	P.	A.	R.	P.
Within asylum walls, male side - - - - -	14	0	0			
" female side - - - - -	3	3	0			
Kitchen garden - - - - -	9	0	0			
Cemetery - - - - -	1	0	0			
Reservoirs - - - - -	3	0	0			
Shrubberies and plantations - - - - -	20	1	0			
Gravelled roads, about 4 miles 875 yds. - - - - -	11	0	6			
Houses, cottages, schools, and reading room, with shrubberies and gardens and yards attached - - - - -	28	0	0			
				90	0	6
Under cultivation outside the walls:—						
Wheat - - - - -	10	0	0			
Oats - - - - -	15	0	0			
Rye - - - - -	17	0	0			
Grass for hay - - - - -	40	0	0			
" for pasture and rye grass - - - - -	44	2	0			
Mangolds, turnips, &c. - - - - -	19	0	0			
Potatoes - - - - -	18	0	0			
Cabbage - - - - -	5	0	0			
				168	2	0
Uncultivated heath land - - - - -				65	0	0
Total - - - - -				323	2	6

TABLE 48.

The following STATEMENT shows the LENGTH of SERVICE of the ATTENDANTS on the 31st of December 1885.

Period of Service.	Male.	Female.	Total.
Under 1 year - - - -	2	2	4
Above 1 year and under 2 years	8	2	10
" 2 years " 3 "	9	5	14
" 3 " " 4 "	3	6	9
" 4 " " 5 "	4	2	6
" 5 " " 10 "	4	3	7
" 10 " " 15 "	17	3	20
" 15 " " 20 "	15	3	18
" 20 " - - -	12	1	13
	74	27	101

One of the chief reasons why fewer changes occur amongst the men than amongst the women is that the men are retained in the service after their marriage, provided they obtain leave to marry, whilst marriage usually, although not always, leads to the retirement of women from the service. It will be seen by the foregoing figures, that nearly 65 per cent. of the male attendants have been in the service more than five years, whilst 59 per cent. have been in the service for periods above ten years. Of the female attendants 37 per cent. count above five years' service, whilst nearly 26 per cent. count above ten years.

Leave of absence for the day is granted every ninth day ; and, in addition, every attendant has a holiday of ten days annually.

Age	Number	Percentage	Age	Number	Percentage
Under 2 years	2	0.5	15	10	2.5
2 years	3	0.8	16	12	3.2
3 years	4	1.1	17	15	4.0
4 years	5	1.4	18	18	4.8
5 years	6	1.7	19	20	5.3
6 years	7	1.9	20	25	6.7
7 years	8	2.2	21	30	8.0
8 years	9	2.5	22	35	9.5
9 years	10	2.8	23	40	10.8
10 years	11	3.1	24	45	12.2
11 years	12	3.4	25	50	13.6
12 years	13	3.7	26	55	15.0
13 years	14	4.0	27	60	16.4
14 years	15	4.3	28	65	17.8
15 years	16	4.6	29	70	19.2
16 years	17	4.9	30	75	20.6
17 years	18	5.2	31	80	22.0
18 years	19	5.5	32	85	23.4
19 years	20	5.8	33	90	24.8
20 years	21	6.1	34	95	26.2
21 years	22	6.4	35	100	27.6
22 years	23	6.7			
23 years	24	7.0			
24 years	25	7.3			
25 years	26	7.6			
26 years	27	7.9			
27 years	28	8.2			
28 years	29	8.5			
29 years	30	8.8			
30 years	31	9.1			
31 years	32	9.4			
32 years	33	9.7			
33 years	34	10.0			
34 years	35	10.3			
35 years	36	10.6			
36 years	37	10.9			
37 years	38	11.2			
38 years	39	11.5			
39 years	40	11.8			
40 years	41	12.1			
41 years	42	12.4			
42 years	43	12.7			
43 years	44	13.0			
44 years	45	13.3			
45 years	46	13.6			
46 years	47	13.9			
47 years	48	14.2			
48 years	49	14.5			
49 years	50	14.8			
50 years	51	15.1			
51 years	52	15.4			
52 years	53	15.7			
53 years	54	16.0			
54 years	55	16.3			
55 years	56	16.6			
56 years	57	16.9			
57 years	58	17.2			
58 years	59	17.5			
59 years	60	17.8			
60 years	61	18.1			
61 years	62	18.4			
62 years	63	18.7			
63 years	64	19.0			
64 years	65	19.3			
65 years	66	19.6			
66 years	67	19.9			
67 years	68	20.2			
68 years	69	20.5			
69 years	70	20.8			
70 years	71	21.1			
71 years	72	21.4			
72 years	73	21.7			
73 years	74	22.0			
74 years	75	22.3			
75 years	76	22.6			
76 years	77	22.9			
77 years	78	23.2			
78 years	79	23.5			
79 years	80	23.8			
80 years	81	24.1			
81 years	82	24.4			
82 years	83	24.7			
83 years	84	25.0			
84 years	85	25.3			
85 years	86	25.6			
86 years	87	25.9			
87 years	88	26.2			
88 years	89	26.5			
89 years	90	26.8			
90 years	91	27.1			
91 years	92	27.4			
92 years	93	27.7			
93 years	94	28.0			
94 years	95	28.3			
95 years	96	28.6			
96 years	97	28.9			
97 years	98	29.2			
98 years	99	29.5			
99 years	100	29.8			
Total	101	100			

One of the chief reasons why a war change necessitates a change in the manner the woman is treated in the service area is that the woman is not only a woman but also a soldier. She is a member of the fighting force and must have the same rights and privileges as the man. She is also a citizen and must have the same rights and privileges as the man. She is a human being and must be treated as such. She is not a property of the government and must not be treated as such. She is a person and must be treated as such. She is a woman and must be treated as such. She is a soldier and must be treated as such. She is a citizen and must be treated as such. She is a human being and must be treated as such. She is not a property of the government and must not be treated as such. She is a person and must be treated as such. She is a woman and must be treated as such. She is a soldier and must be treated as such. She is a citizen and must be treated as such. She is a human being and must be treated as such.

LONDON: Printed by EYRE and SPOTTISWOODE,
Printers to the Queen's most Excellent Majesty.
For Her Majesty's Stationery Office.
[12125.—250.—3/87.]