

General report of the Royal Hospitals of Bridewell and Bethlem, and of King Edward's Schools (London & Witley), for the year ending 31st December, 1880 : printed for use of the governors / Bridewell Royal Hospital and Bethlem Royal Hospital.

Contributors

Bridewell Royal Hospital.
Rudge, E.
Haydon, George H.
Savage, George H. 1842-1921.
Bagot, C. S.
Nairne, Robert.
Baggallay, John.
Jeaffreson, A. M.
Bethlem Royal Hospital (London, England)
Bridewell Royal Hospital. King Edward's Schools.

Publication/Creation

London : Batten & Davies, [1881]

Persistent URL

<https://wellcomecollection.org/works/hs62w7ff>

License and attribution

This work has been identified as being free of known restrictions under copyright law, including all related and neighbouring rights and is being made available under the Creative Commons, Public Domain Mark.

You can copy, modify, distribute and perform the work, even for commercial purposes, without asking permission.



Wellcome Collection
183 Euston Road
London NW1 2BE UK
T +44 (0)20 7611 8722
E library@wellcomecollection.org
<https://wellcomecollection.org>

GENERAL REPORT

OF

THE ROYAL HOSPITALS

OF

BRIDEWELL AND BETHLEM,

AND OF

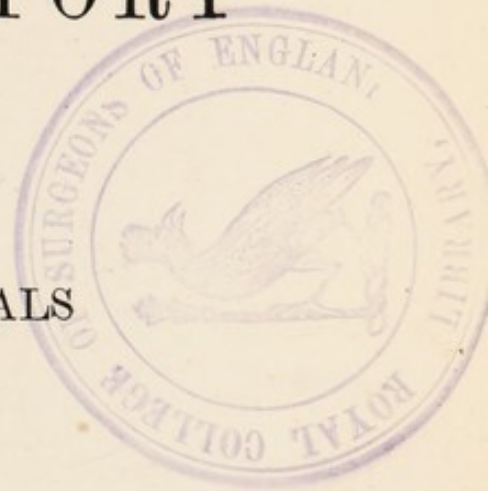
KING EDWARD'S SCHOOLS,

(*LONDON & WITLEY,*)

FOR THE YEAR ENDING 31ST DECEMBER,

1880.

PRINTED FOR THE USE OF THE GOVERNORS.



GENERAL REPORT

BATTEN AND DAVIES, PRINTERS, CLAPHAM, S.W.

CONTENTS.

BRIDEWELL HOSPITAL.

	Page.
APPRENTICES COMMITTED TO BRIDEWELL	6
LIST OF OFFICERS AND SERVANTS	7
General Account of Receipt and Expenditure <i>after</i>	7

KING EDWARD'S SCHOOLS.

REPORT.. .. .	9
TABLES—	
Expenditure in the years 1879 and 1880.. .. .	17
General Return from 1830 to 1880	18
Number of Inmates admitted from 1830 to 1880	19
Occupations of Inmates	20
Ability of Inmates to read on entry	20
Degrees of Acquirements	21
WORK—	
The Shoemaker's	22, 23
The Tailor's	22, 23
Girls' Needlework	24
Summary of Profits on Trades and Needlework.. .. .	25
Daily Routine (Witley)	25
Ditto (London)	26
Dietary	27, 28
LIST OF OFFICERS AND SERVANTS	29

BETHLEM HOSPITAL.

REPORT.. .. .	31
TABLES—	
Patients admitted and discharged.. .. .	48
Average number of Patients in the Hospital attending Chapel, and under restraint, during the last forty years	49
Total number of curable patients admitted during 100 years, ending the 31st December, 1880, with the amount of cures and deaths	49
Annual admissions, cures, and deaths of curable patients during the last sixty years	50
Forms of mental disease	51

BETHLEM HOSPITAL—*continued.*

	Page.
Monthly admissions, cures, and deaths	51
Ages	52
Duration of disease before admission	52
Degree of education	53
Religious persuasion	53
Domestic condition	54
Residence	54
State of general health	55
Behaviour	55
Suicidal tendency	56
Number of previous attacks	56
Apparent or assigned cause of disease	57
Occupation of curable patients admitted during 1880	58
" " discharged cured in 1880	59
" " discharged uncured in 1880	60
" " who died during 1880	61
Particulars of patients who died during 1880, as reported to Bethlem Sub-Committee	62
Return of employment, June 30th, 1880	63
Females employed on June 30th, 1880	63
Time in Hospital	64
Patients cured	65
Daily average number of patients in the Hospital during the year 1880	66
Return of the incurable patients now in Hospital	67
Time the incurable patients have been in Hospital	70
Degree of education of incurable patients in Hospital	70
DIETARY TABLE	71
LIST OF OFFICERS, ATTENDANTS, and SERVANTS	73
Other Officers, Attendants, and Servants—Males	74
Other Officers, Attendants, and Servants—Females	75
Witley Convalescent Establishment—Officers and Servants	76
General Account of Receipt and Expenditure for the year 1880 }	after 76
General Account of both Hospitals	}

WINDMILL HILL
HOSPITAL

A certificate is hereby given that
the City of London in 1881
has been a part of the
Hospital and has been

A. M. LEITCH

BRIDEWELL HOSPITAL.

APPRENTICES committed to Bridewell Hospital by the Chamberlain of the City of London in 1880 :--

1 for 21 days.

7 for 14 „

In two of these cases a part of the period for which the committal had been made was remitted.

A. M. JEAFFRESON,

Clerk, Receiver, &c.


BRIDEWELL HOSPITAL.

LIST OF OFFICERS AND SERVANTS.

	£	s.	d.
1 Surveyor	125	0	0
*1 Clerk, Receiver and Accountant.. .. .	385	0	0
*†1 Beadle	88	0	0
2 Clerk's Assistants, at £100 and £70	170	0	0
	<hr/>		
	£768	0	0
	<hr/>		

* Lodged and furnished with coals, &c.

† The Beadle has a suit of clothes, and a hat, with twenty-one shillings every year for shoes, and a great coat every three years.



Digitized by the Internet Archive
in 2018 with funding from
Wellcome Library

<https://archive.org/details/b30303205>

1887

Date	Particulars	Debit	Credit
Jan 1	Balance forward		100.00
Jan 15	Received from A. B.	50.00	
Jan 20	Received from C. D.	25.00	
Jan 25	Received from E. F.	15.00	
Jan 30	Received from G. H.	10.00	
Feb 5	Received from I. J.	5.00	
Feb 10	Received from K. L.	5.00	
Feb 15	Received from M. N.	5.00	
Feb 20	Received from O. P.	5.00	
Feb 25	Received from Q. R.	5.00	
Feb 30	Received from S. T.	5.00	
Mar 5	Received from U. V.	5.00	
Mar 10	Received from W. X.	5.00	
Mar 15	Received from Y. Z.	5.00	
Mar 20	Received from AA. BB.	5.00	
Mar 25	Received from CC. DD.	5.00	
Mar 30	Received from EE. FF.	5.00	
Apr 5	Received from GG. HH.	5.00	
Apr 10	Received from II. JJ.	5.00	
Apr 15	Received from KK. LL.	5.00	
Apr 20	Received from MM. NN.	5.00	
Apr 25	Received from OO. PP.	5.00	
Apr 30	Received from QQ. RR.	5.00	
May 5	Received from SS. TT.	5.00	
May 10	Received from UU. VV.	5.00	
May 15	Received from WW. XX.	5.00	
May 20	Received from YY. ZZ.	5.00	
May 25	Received from AA. BB.	5.00	
May 30	Received from CC. DD.	5.00	
Jun 5	Received from EE. FF.	5.00	
Jun 10	Received from GG. HH.	5.00	
Jun 15	Received from II. JJ.	5.00	
Jun 20	Received from KK. LL.	5.00	
Jun 25	Received from MM. NN.	5.00	
Jun 30	Received from OO. PP.	5.00	
Jul 5	Received from QQ. RR.	5.00	
Jul 10	Received from SS. TT.	5.00	
Jul 15	Received from UU. VV.	5.00	
Jul 20	Received from WW. XX.	5.00	
Jul 25	Received from YY. ZZ.	5.00	
Jul 30	Received from AA. BB.	5.00	
Aug 5	Received from CC. DD.	5.00	
Aug 10	Received from EE. FF.	5.00	
Aug 15	Received from GG. HH.	5.00	
Aug 20	Received from II. JJ.	5.00	
Aug 25	Received from KK. LL.	5.00	
Aug 30	Received from MM. NN.	5.00	
Sep 5	Received from OO. PP.	5.00	
Sep 10	Received from QQ. RR.	5.00	
Sep 15	Received from SS. TT.	5.00	
Sep 20	Received from UU. VV.	5.00	
Sep 25	Received from WW. XX.	5.00	
Sep 30	Received from YY. ZZ.	5.00	
Oct 5	Received from AA. BB.	5.00	
Oct 10	Received from CC. DD.	5.00	
Oct 15	Received from EE. FF.	5.00	
Oct 20	Received from GG. HH.	5.00	
Oct 25	Received from II. JJ.	5.00	
Oct 30	Received from KK. LL.	5.00	
Nov 5	Received from MM. NN.	5.00	
Nov 10	Received from OO. PP.	5.00	
Nov 15	Received from QQ. RR.	5.00	
Nov 20	Received from SS. TT.	5.00	
Nov 25	Received from UU. VV.	5.00	
Nov 30	Received from WW. XX.	5.00	
Dec 5	Received from YY. ZZ.	5.00	
Dec 10	Received from AA. BB.	5.00	
Dec 15	Received from CC. DD.	5.00	
Dec 20	Received from EE. FF.	5.00	
Dec 25	Received from GG. HH.	5.00	
Dec 30	Received from II. JJ.	5.00	
Total		1000.00	1000.00

KING EDWARD'S SCHOOLS.

CHAPLAIN'S REPORT, 1880.

To the Right Worshipful the PRESIDENT, the
Worshipful the TREASURER, and the
GOVERNORS of King Edward's Schools.

MY LORDS AND GENTLEMEN,

I have the honour to present to you my Report for the year 1880, and I think I may congratulate you that your Schools have progressed with undiminished usefulness.

During the year there were—

ADMITTED.					DISCHARGED.							
Boys	101	Boys	87
Girls	59	Girls	50
Total	160	Total	137

There were remaining in the two Schools at the end of the year 197 boys, and 198 girls; making a total of 395 inmates, in addition to four male and two female pupil teachers.

No male pupil teachers have competed for Queen's Scholarships, but two of the female pupil teachers having completed their time in the Girls' School, have obtained suitable situa-

tions as Mistresses in other schools, and will, no doubt, in due course be awarded certificates of competency after examination by H.M. Inspectors.

You have again increased the number in both schools, and there are now 200 boys and 200 girls educated, maintained, and clothed by the Charity. This is the normal number contemplated by the Court of Chancery's Scheme for its regulation, but there is still dormitory accommodation for a few more.

The inmates discharged during the last year have been disposed of as follows :—

BOYS.

Royal Navy.. .. .	8
Army	11
Situations	62
Removed at request of Friends	4
Emigrated	1
Sent home for physical causes	1
	<hr/>
	87

GIRLS.

To Situations	47
Removed at request of Friends	3
	<hr/>
	50

The Boys' School was examined by the Government Inspector on the 22nd July, and the Girls' School by the same gentleman on the 18th July. The Rev. L. BURROWS, Vicar of Witley, acting for the Diocesan Inspector in Religious knowledge, also examined the Boys' School in

that special subject on the 15th April. I transcribe for your information the Reports of these gentlemen, and although you will observe the Government Inspector detects a weak point or two in each School (which shows the value of these examinations), I trust you will be of opinion that on the whole the children are well and sufficiently taught.

“BOYS’ SCHOOL.

The Boys’ School continues to be well taught and trained. Reading throughout the School is somewhat monotonous and confused, and especial attention should be given to this subject, to punctuation, and to spelling in the lower classes, as on a thorough foundation being laid amongst the younger boys depend the maintenance of the efficiency of the School in future years. The boys’ *viva voce* examination was hardly so brilliant a one as I have known them pass, but this is to be accounted for, partly by their being removed from the School now at a somewhat earlier age, and partly by the exceptional excitement caused by so large and illustrious a company of visitors. The singing is excellent, and the School fully maintains its position for good order and high moral tone. I am glad to find that an efficient band-master has been appointed, and that he is not only giving his pupils a sound musical education, but is identifying himself with the boys in their out-door pursuits.

I have the honour to be, Sir,

Your obedient Servant,

WYNDHAM HOLGATE,

H.M. Inspector.

To the Treasurer, King Edward’s Schools.”

“GIRLS’ SCHOOL,

July 26th, 1880.

SIR,

The examination of King Edward’s Girls’ School, in St. George’s road, on Tuesday, 13th instant, gave me great pleasure. It was the first occasion, I believe, in which the School has been

tested by individual examination according to the Standards of the New Code, and consequently some allowance has to be made for want of accuracy in certain details, but the general efficiency of the School is satisfactory. The religious knowledge is good, the reading is fairly fluent and distinct, though somewhat wanting in intelligence in the upper classes. The spelling and handwriting are very creditable; the arithmetic good for a Girls' School, though in some cases numeration is a little defective. The tone is decidedly good, and the industrial training appears to be thoroughly effective. I have no doubt that by a closer adherence to the Standard of the New Code, Miss WILSON will soon place her school in the front rank for a sound, accurate, and intelligent knowledge of elementary subjects.

WYNDHAM HOLGATE,

H.M. Inspector.

To the Treasurer, King Edward's Schools."

" REPORT OF DIOCESAN INSPECTOR,

April 15th, 1880.

Everything about this School is most satisfactory and does great credit to the careful and reverential teaching. The short time that many have been in the Institution accounts for a little weakness in saying by heart and writing from memory.

(Signed) L. F. BURROWS,

For J. W. GEDGE,

Diocesan Inspector."

Tabulated, the result of the above examination is as follows:—

	Upper Classes.	Lower Classes.
Old Testament	v.g.	v.g.
New Testament	v.g.	v.g.
Catechism—Repetition ..	g.	g.
Explanation	g.	g.
Answers in Writing	f.	f.

The great event of the year has been the State visit of the Lord Mayor and Lady Mayoress to the Boys' School at Witley. I mentioned in my last Report that Alderman Sir FRANCIS WYATT TRUSCOTT had been present at the examination in 1879, and had announced his intention, in the event of his being elected Lord Mayor, to present a Medal to the School, in commemoration of his Mayoralty, to be worn on all public occasions for one year, by the boy whose general good conduct entitled him to that distinction. That intention has now been carried out, but with additional liberality to the first proposal. Instead of giving one Medal to be retained in the School for ever for the purpose named, Sir FRANCIS TRUSCOTT has made provision for a separate Medal to be given each year, and which will become the absolute property of the boy on his leaving the School. Accordingly, on the day of the Annual Examination, July 22nd, the Lord Mayor and Lady Mayoress, accompanied by Mr. Sherriff WOOLLOTON, Mr. Under-Sherriff CRAWFORD, the Lord Mayor's Chaplain, the Sword and Mace bearers, and the City Marshal, went down to Godalming with the President, Treasurer, and a large number of Governors, and drove from thence to Witley in the State carriages. They were present during a part of the Examination, which on this occasion was conducted in the Central Hall of the building. His Lordship had made it the condition of his Gift, that the boys should themselves elect the "Truscott Medalists," and perhaps I shall best describe the nature and purpose of the arrangement, by transcribing from the Illuminated Scroll which the Governors have had prepared, as a perpetual record of this event.

IN THE YEAR OF OUR LORD 1880.

THE RIGHT HONORABLE
SIR FRANCIS WYATT TRUSCOTT, KNIGHT,
Lord Mayor of London,

Was pleased in commemoration of his Mayoralty, and for the promotion of

DISCIPLINE, INTEGRITY, AND PERSEVERANCE,

To give annually

A SILVER MEDAL

to the boy in

KING EDWARD'S SCHOOL, WITLEY,

Who, in the opinion of his School-fellows, and with the Approval of the
Chaplain-Superintendent, is the best entitled to this

HONORABLE DISTINCTION.

*The Boys are referred to the printed rules approved by the Governors of the
School, for the conditions under which this Medal will be awarded.*

"BE WHAT THOU SEEDEST TO BE."

At the conclusion of the examination by H.M. Inspector, the elected boy, HENRY KERDELL, (admitted into the School on the 10th July, 1878), was presented to the President, and at his request, the Lady Mayoress attached the Medal to the breast of his School uniform. The names of all boys who are elected to this honour will be inscribed on an ornamental board, which has been placed in the large dining hall.

I have the pleasure to mention also, a pleasing instance of liberality to the Schools on the part of another Governor. Sir JAMES TYLER has transferred to the Governors the sum of £100 in Government Securities, for the purpose of founding one or more prizes, annually, (as may hereafter be

determined) for proficiency in Religious Knowledge. As the Chaplain of the Schools, I hope I may be permitted to tender my personal thanks to Sir JAMES TYLER for the encouragement he has thus given to that branch of instruction, which, of course, I regard as the most important of all.

I beg to refer you to the Statistical Tables, which will be found appended to this Report. They will give some interesting information as to the Educational acquirements of the inmates, on their admission to the Schools, and their present attainments.

One hundred and ninety-five rewards (twenty-five more than last year) were given by the Committee to former inmates who attended with good characters from their employers. Of these forty-five boys and thirty-two girls were rewarded for the first time ; forty-four boys and twenty-two girls were rewarded for the second time ; and thirty-two boys and nineteen girls for the third and last time.

The usual Entertainment at the Boys' School took place on the 9th January, and was largely attended by our country neighbours. The preparation for these entertainments, extending over several weeks previous to the public night, helps us to fill up the Winter's evenings in a very pleasant manner, and has a very elevating and wholesome influence upon the boys. I trust they will long be continued.

The conduct of the children in both Schools has been entirely satisfactory, and their health has been remarkably good.

I continue to receive very zealous and efficient support from all the officers and servants of both Establishments. With the exception of the change of Band Master, referred to in the Inspector's Report, there has been no alteration in the Staff during the year. But I regret to say, that since the year has closed, we have lost our Master Shoemaker by death. He had been with us ever since the Boys' School was removed to Witley in 1867, and until his health failed him, was a very useful man.

In bringing this Report to a close, I am reminded that a quarter of a century has elapsed since I was elected Chaplain and subsequently Superintendent of the Institution. I must acknowledge with gratitude, first to the Giver of all good, the measure of health and strength which has enabled me to carry on my interesting work for twenty-five years without being absent for a single day from illness; and secondly, I must express my thanks to the Governors for the constant support and kindness with which I have been honoured.

I am,
My Lords and Gentlemen,
Your obedient Servant,
EDWARD RUDGE.

WITLEY, *January*, 1881.

No. 1.

1880.

EXPENDITURE IN THE KING EDWARD'S SCHOOLS IN THE
YEARS 1879 AND 1880.

	1879.			1880.		
	£	s.	d.	£	s.	d.
Meat	1255	2	4	1334	3	0
Bread and Flour	944	9	5	989	19	11
Potatoes, Oatmeal, &c.	326	17	6	377	6	1
Milk	517	13	0	538	18	0
Cheesemongery, &c.	864	17	11	1066	7	9
Tea and Groceries	332	16	6	413	13	0
Beer	169	13	6	135	17	0
Total Cost of Provisions.. ..	4411	10	2	4856	4	9
Clothing and Bedding	1617	19	0	1859	10	4
Soap, Oil, and Candles	405	7	2	376	13	2
Coals and Firewood.. .. .	599	17	9	383	0	8
Medicine	233	5	7	214	7	4
Furniture and Repairs	671	3	2	811	8	0
Salaries of Officers, Wages of Servants, &c. ..	2292	4	7	2375	10	6
Rent and Taxes	543	5	6	494	15	0
Printing and Stationery	188	1	4	168	11	6
Workmen's Bills for Repairs	1742	5	2	1167	13	1
Casual Payments and Sundries	295	8	7	569	11	1
Outfit of Inmates, and Gratuities	799	7	10	666	10	2
Superannuation Annuities	180	0	0	200	0	0
Washing	272	1	4	297	11	6
	£14251	17	2	14441	7	1

No. 2.
1880.

GENERAL RETURN, from October, 1830, to 31st December, 1880.

Years.	Average Daily Number.			In the House on the 1st January.			Admitted.			DISCHARGED.												Rewarded for good conduct and continuance in service.																		
	Average Daily Number.			In the House on the 1st January.			Admitted.			Outfitted & sent to Stations.				Emigrated.			Expelled.			Absconded.			By request of parents or friends.			Ill, Pregnant or Imbecile.			Died.			Total.			1st			2nd & 3rd		
	M.	F.	T.	M.	F.	T.	M.	F.	T.	M.	F.	T.	M.	F.	T.	M.	F.	T.	M.	F.	T.	M.	F.	T.	M.	F.	T.	M.	F.	T.	M.	F.	T.							
20 years ending Dec. 31, '58	1346	1056	2402	738	620	1358	..	9	9	56	68	124	124	5	129	260	203	463	54	47	101	7	7	14	1239	959	2198	338	143	481	197	41	238				
1859 to 1864, inclusive	689	333	1022	555	271	826	4	4	8	15	3	109	37	146	16	12	28	2	2	4	697	359	1056	489	123	612	588	98	686				
1865 to 1870, inclusive	344	270	614	233	225	458	2	..	2	3	..	3	..	4	..	74	23	97	7	3	10	1	..	1	324	251	575	235	111	346	534	104	638				
1871 to 1875, inclusive	352	279	631	220	210	430	7	4	11	..	1	1	1	88	19	107	5	3	8	4	3	7	325	240	565	171	126	297	274	140	414				
1876	146	160	306	65	51	116	36	49	85	..	1	1	19	2	21	1	1	2	1	..	1	57	53	110	26	30	56	55	26	81					
1877	154	157	311	72	50	122	37	45	82	30	3	33	1	..	1	68	48	116	25	34	59	71	33	104					
1878	158	159	317	64	53	117	49	42	91	..	1	1	3	2	5	1	..	1	53	45	98	35	34	69	36	35	71					
1879	169	167	336	74	70	144	50	46	96	8	1	9	2	1	3	60	48	108	42	30	72	59	39	98					
1880	183	189	372	101	59	160	81	47	128	1	..	1	4	3	7	1	..	1	87	50	137	44	32	76	72	42	114					
Total Discharges				3107	2221	5328	1999	1556	3554	10	15	25	59	73	132	144	8	152	595	293	886	88	67	155	15	12	27	2910	2023	4933	1405	663	2068	1886	558	2444				
In the House, Dec 31, 1880.				197	198	395																																		

GEORGE H. HAYDON,
Steward, &c.

No. 3.

1880.

ADMISSIONS.

Years.	Bridewell Hospital.			From Prisons or been in Prison			Hospitals.			Home.			Total.		
	M.	F.	T.	M.	F.	T.	M.	F.	T.	M.	F.	T.	M.	F.	T.
From 1830 to 1839 inclusive.	73	55	128	69	46	115	1	67	68	66	101	167	209	69	478
1840 to 1849 inclusive.	146	39	185	47	41	88	2	10	12	158	235	393	353	325	678
1850 to 1859 inclusive.	40	11	51	287	77	364	1	1	2	612	432	1044	940	521	1461
1860 to 1869 inclusive.	35	7	42	4	3	7	788	487	1275	827	497	1324
1870 to 1879 inclusive.	3	..	3	681	550	1231	684	550	1234
1880	101	59	160	101	59	160
	259	105	364	441	171	612	8	81	89	2406	1864	4270	3114	2221	5335

GEO. H. HAYDON,

Steward, &c.

No. 4.

1880.

STATE OF SCHOOL for the Year ending 31st December, 1880.

OCCUPATIONS OF INMATES (BOYS AND GIRLS).

MONITORS.		OCCUPATIONS.	M.	F.
M.	F.			
..	..	Tailors	42	..
..	..	Shoemakers	42	..
..	..	Engineers	6	..
..	..	Garden	20	..
..	..	Band	26	..
..	..	Needlework	47
..	..	Laundry and Washing	30
..	..	Household	39	57
..	..	Kitchen	6	13
..	..	Gate Keepers	2	1
..	..	Attending School only	14	50
17	14	TOTAL	197	198

ABILITY OF INMATES TO READ ON ENTRY.

		M.	F.
Very Good Readers
Good ditto		10	28
Very Fair ditto		12	42
Fair ditto		92	64
Indifferent ditto		60	36
Read Monosyllables only		19	21
Knew Letters only		4	5
Did not know their Letters	2
TOTAL		197	198

NOTE.—Some boys and girls are in more than one employment.

No. 4.—(continued.)

DEGREES OF ACQUIREMENTS of present Inmates, December 31st, 1880.

READING AND SPELLING.	WRITING.				ARITHMETIC.								CHURCH CATECHISM.				Learning English History.		Learning Geography.		Learning Singing for Church Service.								
	Good.	Pair.	Indifferent.	Learning.	Good.	Pair.	Indifferent.	Learning.	Working Weights and Measures, Practice, Proportion, &c.	Working Compound Rules (money) and Reduction.	Working Simple Rules.	Learning.	Perfect.	Learning.	M.	F.	M.	F.	M.	F.	M.	F.	M.	F.	M.	F.	M.	F.	
M. 60	F. 62	M. 82	F. 80	M. 42	F. 38	M. 13	F. 18	M. 66	F. 71	M. 82	F. 77	M. 40	F. 38	M. 9	F. 12	M. 24	F. 83	M. 16	F. 18	M. 147	F. 112	M. 50	F. 86	M. 197	F. 126	M. 197	F. 198	M. 197	F. 198

Average present Age of Inmates.. ..	Males.		Females.	
	Years.	Months.	Years.	Months.
	13	4	14	1
Average Time of Stay in School.. ..	Years.	Months.	Years.	Months.
	2	6	3	1

No. 5.

Dr.

1880.

SHOEMAKER'S ACCOUNT.

WITLEY.

	£	s.	d.
Stock on hand Jan. 1st, 1880	56	7	10
Materials received during the year, and petty cash paid	292	14	1
	<hr/>		
	£349	1	11
Stock on hand Dec. 31st, 1880	114	0	6
	<hr/>		
	£235	1	5
Shoemaker's Wages	121	9	0
Allowance for House-rent, Garden, &c.	15	0	0
Coals, Gas, Lights, and Sundries.....	8	0	0
Profit on the year	13	4	7
	<hr/>		
	£392	15	0

No. 6.

Dr.

1880.

TAILOR'S ACCOUNT.

WITLEY.

	£	s.	d.
Stock on hand Jan. 1st, 1880	137	18	10
Goods received during the year, and petty cash payments.....	138	18	4
	<hr/>		
	£276	17	2
Stock on hand Dec. 31st, 1880	118	5	10
	<hr/>		
	£158	11	4
Tailor's Wages	79	4	0
Allowance for House-rent, Garden, &c.	15	0	0
Coals, Gas, Lights, and Sundries.....	8	0	0
Profit on the year	144	18	4

£405 13 8

No. 5.

1880.

Cr.

SHOEMAKER'S ACCOUNT.

WITLEY.

	£	s.	d.
Boots and Shoes supplied to Girls, King Edward's Schools, London, with repairs.....	120	15	0
Boots and Shoes supplied to Boys, King Edward's Schools, Witley, with repairs.....	272	0	0

AMOUNT OF WORK DONE.

	Made.	Repaired.
Boys' Boots and Shoes, K. E. S. W.—pairs	300	2684
Girls' ditto K. E. S. L.	340	436
Boys' Slipperspairs	12	—

 £392 15 0

No. 6.

1880.

Cr.

TAILOR'S ACCOUNT.

WITLEY.

	£	s.	d.
Clothes supplied to Boys, K. E. S. W., with repairs	405	13	8

AMOUNT OF WORK DONE.

	Made.	Repaired.
Jackets	61	—
Vests.. .. .	77	—
Trousers	352	2139
Blue Serges	—	120
Canvas Jumpers	296	1938
Pairs Braces	168	—
Rugs	—	321
Beds and Hammocks	—	299
Blankets	—	72
Navy Shirts	—	60
Boys' Caps	—	200
Pupil Teachers—		
Jackets	5	20
Waistcoats	5	12
Trousers	8	39
Sundries—		
Tweed Suits	3	—
Canvas Jackets	2	—
„ Trousers	2	—
Flannel Jackets	2	—
Blue Pilot Overcoat (Baker's Assistant)	1	—
Repaired for Drill Sergeant (2 suits)		
Repairing and Fitting Stair Carpet in Superintendent's House.		

 £405 13 8

GIRLS' NEEDLEWORK.

No. 7.

1880.

FOR BOYS—NEW WORK, K. E. S. W.

					s.	d.	£	s.	d.	£	s.	d.	
477	Shirts..	at	0 6	each	..	11	18	6		
400	Neckerchiefs	"	0 1	"	..	1	13	4		
100	Sheets	"	0 1	"	..	0	8	4		
322	Flannel Shirts	"	0 6	"	..	8	1	0		
											22	1	2

FOR OUTFITS, K. E. S. L.

192	Gowns	at	2 0	each	..	19	4	0		
576	Handkerchiefs and Collars	"	0 1	"	..	2	8	0		
144	Pairs of Stockings	"	0 1	"	..	0	12	0		
384	Aprons	"	0 2	"	..	3	4	0		
192	Petticoats	"	0 3	"	..	2	8	0		
144	Chemises	"	0 4	"	..	2	8	0		
288	Towels	"	0 0½	"	..	0	12	0		
96	Bodices	"	0 4	"	..	1	12	0		
96	Nightgowns..	"	0 4	"	..	1	12	0		
											34	0	0

FOR INMATES—NEW WORK, K. E. S. L.

166	Gowns	at	2 0	each	..	16	12	0		
821	Aprons	"	0 2	"	..	6	16	10		
96	Caps	"	0 3	"	..	1	4	0		
16	Tablecloths	"	0 1	"	..	0	1	4		
228	Chemises	"	0 4	"	..	3	16	0		
159	Nightgowns..	"	0 4	"	..	2	13	0		
461	Petticoats	"	0 3	"	..	5	15	3		
477	Stockings, Rim	"	0 1	"	..	1	19	9		
477	Stockings, Marked	"	0 1	"	..	1	19	9		
52	Quilts	"	0 1½	"	..	0	6	6		
138	Sheets	"	0 1	"	..	0	11	6		
34	Pillowcases	"	0 1	"	..	0	2	10		
10	Mittens	"	0 1	"	..	0	0	10		
136	Towels	"	0 0½	"	..	0	5	8		
270	Dusters	"	0 0½	"	..	0	11	3		
200	Collars	"	0 3	"	..	2	10	0		
76	Lindsey Jackets	"	0 4	"	..	1	5	4		
10	Bags	"	0 1	"	..	0	0	10		
200	Handkerchiefs	"	0 1	"	..	0	16	8		
69	Bed Ticks	"	0 1½	"	..	0	8	7½		
											47	17	11½

FOR INMATES—REPAIRS, K. E. S. L.

2,135	Gowns	at	0 3	each	..	23	13	9		
3,293	Aprons	"	0 1	"	..	13	14	5		
190	Caps	"	0 1	"	..	0	15	10		
80	Quilts..	"	0 1	"	..	0	6	8		
4,816	Chemises	"	0 1	"	..	20	1	4		
1,652	Nightgowns..	"	0 1½	"	..	10	6	6		
3,519	Petticoats	"	0 1½	"	..	21	19	10½		
4,680	Pairs of Stockings	"	0 1	"	..	19	10	0		
832	Sheets	"	0 2	"	..	6	18	8		
903	Pillowcases	"	0 1	"	..	3	15	3		
786	Jackets	"	0 3	"	..	9	16	9		
128	Towels	"	0 0½	"	..	0	5	4		
3	Pairs of Drawers	"	0 1	"	..	0	0	3		
701	Mittens	"	0 1	"	..	2	18	5		
113	Blankets	"	0 2	"	..	0	18	10		
216	Bed Ticks	"	0 1	"	..	0	18	0		
65	Coilars	"	0 1	"	..	0	5	5		
											139	5	0½

SUMMARY.

New Work, K. E. S. W.	22	1	2	
Girls' Outfits, K. E. S. L.	34	0	0	
New Work, "	47	17	11½	
Repairs "	139	5	0½	

Cost of Materials, &c. £243 4 2
88 8 6

Profit on the Year £154 15 8

LONDON AND WITLEY.

No. 8.

1880.

SUMMARY OF PROFITS ON TRADES AND NEEDLEWORK.

	£	s.	d.
Profit on Girls' Needlework, London.. .. .	154	15	8
Profit on Tailor's Work, Witley.. .. .	144	18	4
Profit on Shoemaker's Work, Witley.. .. .	13	4	7
	£312	18	7

KING EDWARD'S SCHOOL, WITLEY.

No. 9.

1879.

FROM.	TO.	DAILY ROUTINE.	DURATION.
H. M.	H. M.		H. M.
*6.0	6.30	Boys rise, Wash, be inspected, and marched to Shops, or other employment	30
6.30	8.0	Boys employed in Shops or other Employment	1.30
8.0	9.0	Prayers, Breakfast, and Recreation.. .. .	1.0
9.0	12.45	School, Shops, and other Employment. (School dismissed at 12 o'clock)	3.45
12.45	1.0	Preparation and Inspection for Dinner	15
1.0	2.0	Dinner and Recreation	1.0
2.0	5.45	School, Shops, and other Employment. (School dismissed at 4.30: and at 3.30 on Wednesdays)	3.45
5.45	6.0	Preparation and Inspection for Supper	15
6.0	7.45	Supper and Recreation (Night School Library open in Winter)	1.45
7.45	8.0	Prayers and Bed.. .. .	15
SUNDAY ROUTINE.			
7.0	8.0	Boys rise, Wash, and prepare for the proper spending of Sunday	1.0
8.0	10.0	Prayers, Breakfast, and Walking in Grounds	2.0
10.0	11.0	All Boys in School	1.0
11.0	1.0	Divine Service	2.0
1.0	6.0	Dinner and Walking in Grounds (Sunday School Library open)	5.0
6.0	7.0	Supper and Walking in Grounds	1.0
7.0	8.0	Divine Service and Bed	1.0

REGULATIONS.

1. The Boys are in two divisions, which attend the Shops, &c., and the Schools, on alternate days, receiving on an average 15½ hours Instruction in School, and 24 hours Industrial Employment per week.

2. Half Holiday every Saturday, from 12 a.m., when boys are to bathe.

3. Choir practice, and Brass Band, on alternate days, from 12 to 12.45 p.m.

4. Drill for School Boys in summer from 5 to 5.45; and in winter from 12 to 12.45, when weather will permit.

The whole School to Drill twice-a-week during the summer months, after supper.

* Half-an-hour later in Winter Months.

No. 10.

1880.

LONDON.

DAILY ROUTINE.

Hours of Rising.

Six o'clock in the summer months, and not later than 7 o'clock in the winter months.

After private prayer in each dormitory, washing, dressing, &c.

On Week Days.

The girls selected for employment in the Laundry and Kitchen, and in Household Work, to be engaged in their particular occupations, and the rest in making beds, and sweeping and cleaning the dormitories and other apartments.

From 8 to 9 o'clock.—Prayers, breakfast, and recreation.

Girls selected for particular employments to be at their respective occupations from 9 to 1 o'clock, as the Matron shall direct; and on alternate days at School during the same hours.

From 1 to 2 o'clock.—Dinner and recreation.

Girls selected for particular employments to be at their respective occupations, and the rest at needlework, from 2 till 5 o'clock, and in occupation from 5 till 6 o'clock, as the Matron shall direct.

From 6 to 7 $\frac{3}{4}$ o'clock.—Supper and recreation.

From 7 $\frac{3}{4}$ to 8 o'clock.—Prayer.

8 o'clock.—Bed-time.

On Saturdays.

No school to be kept, either in the morning or afternoon. The girls on this day to be engaged in cleaning the establishment, assorting and distributing clean linen, using the bath, and in such other occupations as the Matron shall direct. The recreation of the inmates to be, when the weather will permit, in the airing grounds, and at other times in the day-rooms, which are to be provided with suitable books for amusement and instruction.

On Sundays.

Until 8 o'clock.—The inmates to be occupied in *making beds, changing linen, and delivering up all that is dirty*, and preparing for the proper spending of the day.

From 8 to 10 o'clock.—Breakfast, and walking in the airing grounds, when the weather will permit.

From 10 to 11 o'clock.—In school rooms, reading the Lessons for the day, repeating Catechism, and answering questions on scriptural subjects.

From 11 to 1 o'clock.—In Chapel for Morning Service and Sermon.

1 o'clock.—Dinner.

From 1 $\frac{1}{2}$ to 3 o'clock.—In the day rooms, and airing courts.

3 o'clock.—Afternoon Service in Chapel and Sermon.

7 o'clock.—Supper.

8 o'clock.—Bed-time.

No. 11.

1880.

DIETARY TABLE—BOYS—WITLEY.

	BREAKFAST.			DINNER.									SUPPER.				
	Bread.	Butter.	*Porridge.	†Roast Mutton.	†Boiled Beef.	†Roast Beef.	Bread.	Vegetables.	Baked Plum Pudding.	Baked Batter Pudding.	Baked Rice Pudding.	‡Soup.	Cheese.	Butter.	Bread.	Cheese.	Milk.
	oz.	oz.	pt.	oz.	oz.	oz.	oz.	oz.	oz.	oz.	oz.	pt.	oz.	oz.	oz.	oz.	pt.
Sunday	8	1	1	6	-	-	4	12	-	-	-	-	-	-	8	1½	½
Monday ..	8	1	1	-	-	-	4	-	Wtr. 16	Smr. 8	-	-	1	-	8	1½	½
Tuesday ..	8	1	1	-	6	-	4	12	-	-	-	-	-	-	8	1½	½
Wednesday	8	1	1	-	-	-	¶4	-	-	-	Smr. 8	Wtr. 1	-	Smr. 1	8	1½	½
Thursday ..	8	1	1	6	-	-	4	12	-	-	-	-	-	-	8	1½	½
Friday	8	1	1	-	-	6	4	12	-	-	-	-	-	-	8	1½	½
Saturday ..	8	1	1	-	-	-	4	-	Wtr. 16	Smr. 8	-	-	1	-	8	1½	½
	56	7	7	12	6	6	28	48	32	16	8	1	2	1	56	10½	3½

WEEKLY SUMMARY.

Summer ..	140	8	7	24	-	48	-	16	8	-	-	-	-	-	12½	3½
Winter	142	7	7	26	-	48	32	-	-	1	-	-	-	-	12½	3½

Males—Solid Food per head. { Summer 256 oz. Weekly, or 36 oz. per day.
Winter 267 oz. Weekly, or 38 oz. per day.

Christmas Eve—1 lb. Plum Cake to each Boy, and Tea.

Christmas Day—8 oz. Cooked Roast Beef, free from bone, 1 lb. Plum Pudding, and 2 Oranges each.

New Year's Day—8 oz. Cooked Roast Beef, free from bone, and a large Mince Pie each.

Annual Concert—1 lb. Plum Cake and Tea, 2 Oranges each.

The Sick are dieted at the discretion of the Medical Officer.

The Steward has liberty to vary the Diet occasionally by Fruit Pies, Fish, and Fruit, &c., when plentiful and good.

The above to be considered maximum allowances, and all quantities unconsumed are to be taken in diminution of the next supply from the Stores.

* Porridge—composed of 1½ oz. oatmeal, ½ oz. sugar, and ½ pint of new milk.

† Meat—cooked and free from bone. Occasionally Australian tinned meat.

‡ Soup—Liquor from boiled meat, with the addition of not less than 14 lbs. of leg of beef or other good meat, with Scotch barley, rice, herbs, &c.

¶ Wednesday's Dinner, in winter, 6 oz. in lieu of 4 oz. of Bread.

For the Summer Months Porridge for Breakfast is discontinued, and cold Milk substituted, with Bread and Butter.

No. 12.

1880.

DIETARY TABLE—GIRLS—LONDON.

	BREAKFAST.					DINNER.							SUPPER.			
	Bread.	Butter.	Cocoa.	*Boiled Beef.	*Roast or Boiled Mutton.	Vegetables.	Plum or Batter Pudding.	Baked Rice Pudding.	Boiled Suet Pudding.	+Soup.	Cheese.	Bread.	Butter.	Bread.	Cheese.	Milk.
	oz.	oz.	pt.	oz.	oz.	oz.	oz.	oz.	oz.	pt.	oz.	oz.	oz.	oz.	oz.	pt.
Sunday	6	1	1	6	-	12	-	-	-	-	-	4	-	6	1½	½
Monday ..	6	1	1	-	-	-	8	-	-	-	1	4	-	6	1½	½
Tuesday ..	6	1	1	-	-	-	-	Smr. 7	-	Wtr. 1	-	4	-	6	1½	½
Wednesday	6	1	1	-	6	12	-	-	-	-	-	4	-	6	1½	½
Thursday ..	6	1	1	-	-	-	-	-	8	-	1	4	-	6	1½	½
Friday	6	1	1	-	6	12	-	-	-	-	-	4	-	6	1½	½
Saturday ..	6	1	1	-	-	-	8	-	-	-	-	4	1	6	1½	½
	42	7	7	6	12	36	16	7	8	1	2	28	1	42	10½	3½

WEEKLY SUMMARY.

Summer ..	112	8	7	18	36	16	7	8	-	-	-	-	-	12½	3½
Winter	112	8	7	18	36	16	-	8	1	-	-	-	-	12½	3½

Females—Solid Food per head, 209 oz. weekly, or 30 oz. per day, nearly.

The Six Kitchen Girls have Tea and Bread and Butter daily at 4 o'clock.

Twenty Laundry Girls have Tea and Bread and Butter on Monday and Tuesday.

Three Mangling Girls have Tea daily.

Christmas Day—7 oz. cooked Roast Beef, and a large Mince Pie each.

New Year's Day—Plum Pudding, 1 lb., and 7 oz. cooked Roast Beef.

The Sick are dieted at the discretion of the Medical Officer.

The Steward has liberty to vary the Diet occasionally by Fruit Pies, Fish, and Fruit, &c., when plentiful and good.

The above to be considered maximum allowances, and all quantities unconsumed are to be taken in diminution of the next supply from the Stores.

* *Meat*—Cooked, and free from bone. Occasionally Australian tinned meat.

† *Soup*—Liquor from boiled meat, with meat added, and Scotch barley, rice, herbs, &c.

No. 13.

1880.

LIST OF OFFICERS AND SERVANTS.

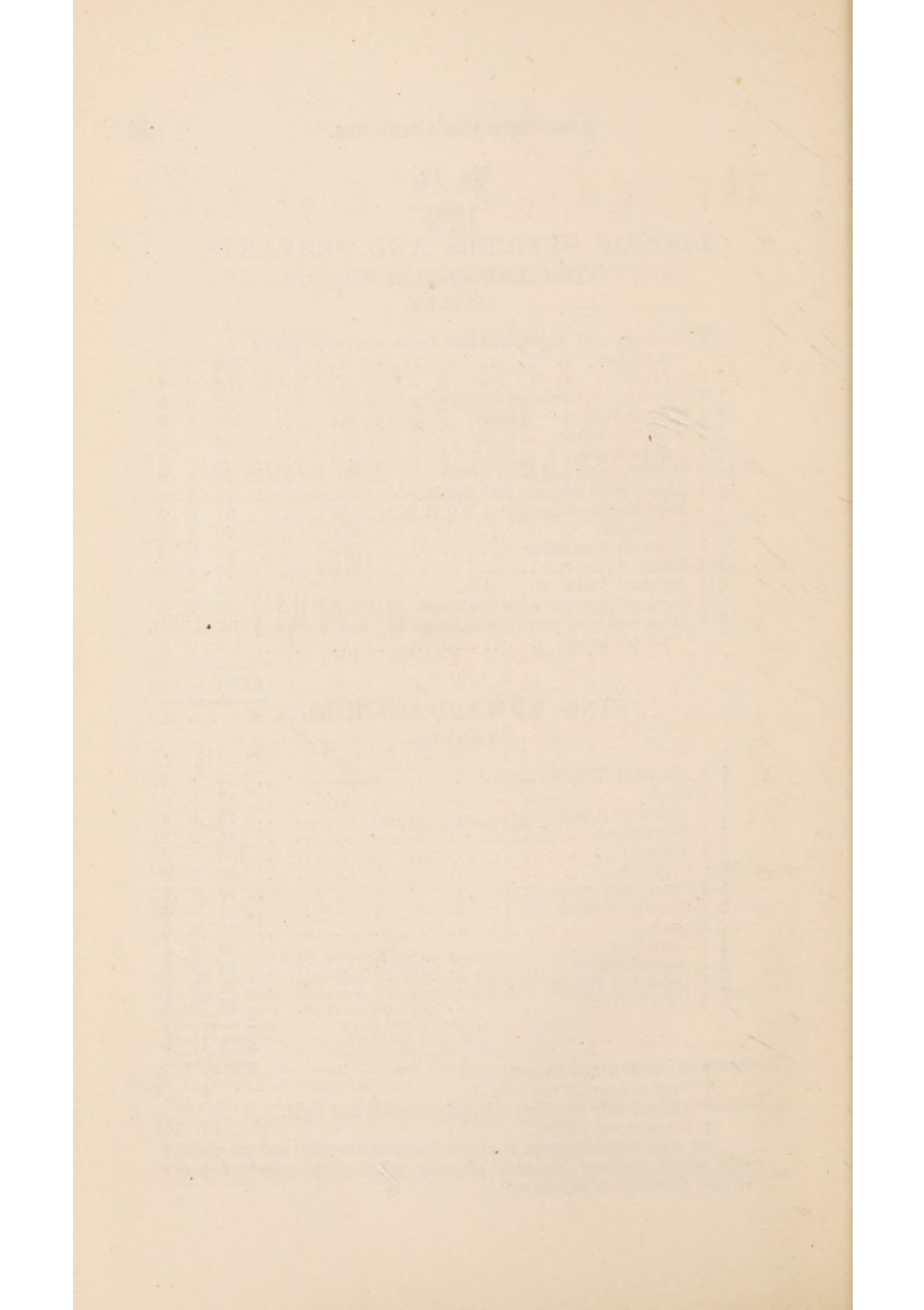
KING EDWARD'S SCHOOLS,
WITLEY.

	£	s.	d.
1 Chaplain and Superintendent (with residence partly furnished)	600	0	0
* 1 Steward	100	0	0
* 1 Storekeeper (furnished residence)	140	0	0
* 1 Schoolmaster (ditto)	180	0	0
‡ 1 Cook and Baker	40	0	0
‡ 1 Assistant Baker	5	0	0
†† 1 Drill Serjeant and Gate Porter 27s. per week	70	4	0
† 1 Assist. Drill Serjeant and Bandmaster, 27s. per week	70	4	0
† 1 Engineer (occasionally at B.C.H.W.).. 35s. „	91	0	0
† 1 Shoemaker 27s. „	70	4	0
1 Assistant Shoemaker 25s. „	65	0	0
† 1 Tailor 27s. „	70	4	0
‡ 1 Assistant Tailor	5	0	0
1 Gardener (30s. per week and house—half to B.C.H.W.)	39	0	0
3 Labourers (one part time stoking, &c., and overtime) 4d. per hour	176	0	0
	£1721	16	0

KING EDWARD'S SCHOOLS,
LONDON.

	£	s.	d.
1 Assistant Chaplain	150	0	0
1 Clerk	40	0	0
1 Steward's Clerk	70	0	0
† 1 Storekeeper	140	0	0
† 1 Matron	165	0	0
1 Organist	20	0	0
‡ 1 Schoolmistress	60	0	0
‡ 1 Sewing Mistress	24	0	0
‡ 1 Cook	25	0	0
‡ 1 Laundress	30	0	0
‡ 1 Assistant ditto	18	0	0
‡ 1 Industrial Trainer	24	0	0
† 1 Gate Portress	12	10	0
	£778	10	0

- * Furnished Apartments.
- || Neither boarded nor lodged.
- † Lodged only and limited supply of coals and light.
- ‡ Boarded and lodged.
- †† The Drill Serjeant is allowed a uniform suit and an undress suit, which becomes his own property *after every completed year's service, from date of engagement.*



BETHLEM ROYAL HOSPITAL.

REPORT.

To the Right Worshipful the PRESIDENT, the
Worshipful the TREASURER, and the
GOVERNORS of the Royal Hospital of
Bethlem.

MY LORDS AND GENTLEMEN,

I have to present to you my Report for the year 1880,
accompanied by the usual Statistical Tables.

	Curables.			Incurables.			Total.		
	M.	F.	T.	M.	F.	T.	M.	F.	T.
In the Hospital January									
1st, 1880	69	121	190	24	27	51	93	148	241
At Witley	—	2	2	—	3	3	—	5	5
Admitted during 1880 ..	119	187	306	1	4	5	120	191	311
Totals	188	310	498	25	34	59	213	344	557

Discharged in 1880:—									
Cured	38	108	146	—	2	2	38	110	148
Uncured	48	51	89	—	—	—	48	51	89
Disqualified.. ..	8	4	12	—	—	—	8	4	12
Transferred from Curable to									
Incurable Establishment	1	4	5	—	—	—	1	4	5
Discharged relieved ..	2	6	8	—	—	—	2	6	8
„ escaped.. .. .	1	—	1	—	—	—	1	—	1
Died.. .. .	6	10	16	—	1	1	6	11	17
Died before admission by									
Committee	2	—	2	—	—	—	2	—	2
Out on leave	—	3	3	—	—	—	—	3	3
In Hospital, Dec. 31st, 1880	82	124	206	25	31	56	107	155	262
Totals	188	310	498	25	34	59	213	344	557

During the past year a large number of cases has been received, the number exceeding that of the previous year by four, in fact, during the past two years, the chief difficulty has been to select from the numerous applicants those most suitable, socially as well as medically. As usual far more female patients have been admitted, and these have been of a more favourable type than those received on the male side.

Throughout the year the average numbers have been :—
males, 104; females, 156; total 260.

We have continued during the whole of the year to keep as complete a list as possible of the applications that have been made, either for admission, or for advice as to what should be done by friends, in cases of insanity. I think that although this list numbers 600, it does not represent more than two-thirds of the applications made, for a certain number of cases will not give their names, or the names of the patients, and others as soon as they have heard the nature of the Hospital, decline to give references of any kind. In giving help of this kind, I believe the Hospital is doing as much as it ever did for the insane of the middle classes of England, and what is more, cases are constantly being referred to Bethlem by the Physicians connected with large Metropolitan Hospitals.

No step has yet been taken towards the establishment of a dispensary or true "Out Patient Department," in connection with the Hospital. Numbers of the Students and Medical Men, both English and Foreign, interested in Lunacy, have

visited the Wards during the year, and the resident Physicians have made it a point to encourage such visits, especially by men connected with other Metropolitan Hospitals: these frequent visits give the patients confidence in the place where they are detained, showing them, as it does, that nothing is done in secret.

During the year we have had no suicide to record, although, as may be seen in the tables, we have had a very large number of suicidal and anxious cases. I never remember to have had in Bethlem a larger number of determined suicidal men, some even who have done what is unusual in an asylum, viz: combined to assist each other in self-destruction.

The death rate for the year has again been unusually small; only 6 deaths occurred among the presumably curable males, and 10 among the similar class of females. On the incurable side only 1 female died; this patient was admitted in 1834, and died in 1880, at the age of 73 years.

The Committee has decided that for the present no further additions shall be made to our incurable establishment.

One patient who was discharged cured after many years residence in Bethlem, and who was well known to many of your Governors, left England in the ill-fated "American," to be married to her sweetheart of 27 years before. The Hospital provided her with an outfit. She was one of those who were transferred from the "American" to the "Congo," and had to return to Madeira, but in the end she arrived in South Africa, was met by her future husband, and married: since her safe arrival, we have had interesting details of her adventures and final reception at home.

The numbers of re-admissions are as follows :—Males, 31 ; females, 55 ; total 86.

It has been decided by the Committee that in future the number of times a patient has received the advantages of Bethlem, shall be taken carefully into consideration, in order to prevent the too frequent re-admission of the same patient.

We have had one escape from the Hospital during the year ; the patient who was convalescing, and only detained in Bethlem for a time until domestic and other arrangements were completed, managed to escape from the garden. He kept in concealment until the expiration of his certificates, got a passage to America, and arrived there in safety.

From Witley we have had one or two attempts at escape, but in each case the patient was recaptured without difficulty.

The ordinary work of the Hospital has been conducted by the attendants and servants to the complete satisfaction of the Resident Physician, who is happy to be able to record a year without a single dismissal for misconduct. No changes have taken place on the female side.

We have had some difficulty in finding men thoroughly well suited, both physically and mentally, for the work of attendants, but we trust that we have now secured a young and energetic staff, who will grow up under our training into useful attendants.

Of the many suggestions that we made last year, some have been carried out, and others are still being considered.

During the past autumn the Resident Physician has been enabled to get several parties of patients occupied in garden work of a kind that has never been tried in Bethlem before. It was proposed that two lawn-tennis courts should be made, and after some little trouble, gravel was found a few feet from the surface in the back garden. Relays of patients have been occupied in digging, wheeling, and laying down the gravel to precede the layer of asphalte, and before the issue of this Report, it is to be hoped that one or both courts will be in a state for playing upon.

Changes in diet have been made, and others are contemplated: the method of serving the food has been improved, so that in the convalescent galleries the patients sit down to the table before the joints are carved; they have vegetables, and beer, and water before them, so that they are able to help themselves as at home. So much depends, in an asylum like Bethlem, on the surroundings of the patients, and the more home-like we can make them, the better for us and for the patients.

Most of the galleries on the female side have been improved by the addition of extra pianos, and by having curtains, which divide the galleries, and thus break up the great length that gave them too barrack-like an appearance.

Still further improvements are contemplated. The Resident Physician is anxious to try the experiment of having

parts of the galleries furnished as small drawing-rooms. The more he sees of other asylums, the firmer is his conviction that one great boon that Bethlem confers upon its patients is, that the space it affords enables them to divide themselves into little groups; by this means, patients who are worrying and nervous, do not disturb and annoy the convalescent or quiet ones.

During the year Resident Students have continued to give satisfaction, and to prove useful aids to both patients and physicians.

A very large number of patients were sent home on leave of absence, the leaves lasting from one night, in a few cases, to three weeks or a month in many. Although some danger is necessarily incurred in letting so many go on leave, we believe it is for the good of the patients, and in many cases gives confidence to the friends. Some of the patients were brought back not improved, but hardly ever worse for the change; in not a few cases a partial failure was followed by a second and more successful trial. In all 232 "leaves" for more than a night were granted during the year.

Five or six patients have been granted free passes on parole, and at the present time we have two female and three male patients who go about without attendance.

The experiments having thus far proved eminently successful, other means of employing the patients have been made use of. An attempt was made to continue the "Bethlem Star," which is necessarily irregular in its appearance. Some

patients have been allowed to do turning, planing, drawing, and I have a fret saw for my next trial.

During the whole of last winter, Bethlem Hospital Convalescent Establishment was kept up at Witley, there being a certain number of chronic cases, and a supply of recovering acute ones to send there, but by November 1880, the supply of suitable cases was failing, and the Resident Physician determined on closing the establishment for the winter, about the middle of December, to open it again as soon as the weather permits. During the year 105 females, and 42 male patients were sent down for periods of from two weeks to several months; the last returned on December 15th, 1880.

As far as amusements are concerned, the subjoined will prove that nothing to complain of rests there. Besides a weekly dance and a weekly choral class, under the conduct of Dr. WOOD and Mr. WILSON, theatrical performances have been given by kind amateurs, who seem always willing to do such kindnesses to institutions like Bethlem. We have to thank Captain D'ARCY and his Thalian Company, for an evening's entertainment of a very high order given to the patients. Lady MONKTON and Sir CHARLES YOUNG followed with a most choice and well-acted performance, for which we feel greatly indebted.

During the year we have had two visits from the Commissioners in Lunacy, it being considered by the Board of the Commissioners that all hospitals should be visited more frequently, and the Resident Physician has great pleasure in laying the Reports of the Commissioners before the Governors, as they speak favourably of the conduct of this noble charity. (See Reports.)

Our Governors have continued their kindly and useful presents; I. J. MILES, Esq. having not only contributed books of general interest, but on my suggestion that educational books, especially those in modern languages, would be valuable, sent nearly 100 volumes. HENRY GRAVES, Esq. has most kindly given large numbers of most valuable engravings, which greatly add to the appearance of our galleries. J. W. SILVER, Esq. has fitted up a new padded room lined with mackintosh cloth of strong nature and six feet wide, so that the walls are surrounded by an unjoined and unbroken surface; this has been severely tested, and has proved in every way satisfactory. We have now two strong padded rooms of mackintosh cloth which can be used for the most violent and filthy patients. Others have shown an interest in the Hospital by sending seasonable presents of fruit and flowers, and at Christmas every patient received at least one Christmas card.

In a Report of this kind it would be out of place to enter into details of the medical work that is done, and it must suffice to say that every new and improved remedy is fairly tried and the result recorded. No definite aim is made to control the patients by medicine any more than by mechanical means, and the treatment followed is in the attempt at cure and not to restrain or quiet.

Nearly every case that died was examined with the consent of the friends, and we rarely find objections raised to the proceeding.

We had one inquest on a patient suffering from general

paralysis of the insane. This patient was rapidly losing strength and sinking from the disease, was pushed over by another patient who fell on him, in the struggle two ribs were broken, and though carefully attended no symptoms of injury were detected; it was only at the post-mortem that the injury was discovered. As so often happens with the insane, no complaints were made and no symptoms were to be found during life. This case points to the importance of the post-mortem examination, which clears up what would otherwise have remained hidden.

The Masters in Lunacy have held several inquisitions on patients in the Hospital, and at present we have two Chancery cases.

Every endeavour has been made to reduce the expenditure as much as possible, and the Resident Physician can refer with satisfaction to the reduction, which will be found under the heads of Beer, Wine, and Spirits during past years.

The chief objects in view for the ensuing year, are the steady improvement of the diet lists, so that without any extra expense, greater variety will be given. Soup has already been given, and during the winter months, at least, will be added weekly. This has been welcomed by the patients. Fish more frequently, and pudding more generally, have been given with great satisfaction.

The most useful out-door labour of making lawn-tennis courts, and digging gravel and sand will be continued, the patients working most willingly, and the result being most

satisfactory ; many young patients, who seemed to be steadily losing mental power, rapidly rallying under the labour treatment.

The construction of a laundry presented more difficulties than was expected, as Bethlem Hospital is so unlike County Asylums in having to pay for all labour. The Resident Physician has visited many Asylums and Hospitals to inspect the laundries, and hopes to be able soon to lay a Report before the Committee.

It is intended to try to make more use of the patients during the annual cleaning, and this is to be understood to be more for the good of the patients than for any other reason.

The great desideratum is employment for our male patients ; the dismal hours spent in an aimless walking round the airing courts must be altered sooner or later in some way. Lawn-tennis and rackets are constantly played and thoroughly enjoyed. The time spent in doors is as a rule not wearisome, for the galleries are well supplied with books and games. Any attempt at frequent lectures or other amusements to be provided by the Staff is out of the question, the immense correspondence taking up so much time.

In concluding this Report, it is pleasant to be able to say that the Officers one and all have worked harmoniously, each doing his part heartily for the good of the Hospital. I can only repeat my thanks to Dr. Wood, my colleague, for his uniform desire to do his utmost, and for the great success

which has followed his management of the entertainments. Mr. HAYDON has ever been ready to aid in the various plans for improvement, and the Rev. J. S. VAUGHAN is as popular and as much respected as possible, always being a friend to the patients in the Hospital, and an adviser in many cases after they have left our care.

The Head attendant Mr. SMEEETH, is as watchful and trustworthy as he has been for nearly forty years, and the Matron is ever ready to help. The question of having Lady-companions has often been raised by men whose experience is of value, and I should be glad to see a way to try it, but at present there are difficulties, and it is to be feared that the harmony of the Hospital might be partly marred by their too hasty adoption.

To the Treasurer and Committee I am deeply indebted for their uniform kindness and consideration, and their hearty support in every endeavour to do good to the patients.

I have the honour to be,
My Lords and Gentlemen,
Your obedient Servant,
GEO. H. SAVAGE, M.D.

January 27th, 1881.

COMMISSIONERS IN LUNACY REPORT OF
BETHLEHEM ROYAL HOSPITAL.

BETHLEM HOSPITAL,
March 25th, 1880.

Having just completed our inspection of this Hospital, we are able to give a favourable report of its condition. We have been through all the wards, and have seen all the present patients of the Hospital, except 13 females who are at the Convalescent Home at Witley, and 3 patients who are out on short, and 6 who are absent on long leave.

Several of those who we have seen are better, and some convalescent; and in the Patients' book we have noticed all in whom we have noticed improvement. There are several women in the wards 1 A and 1 B of the excited class who were to-day noisy, but generally speaking, the patients of both sexes behaved well, and there was very little complaint. One woman complained of some rough usage by the nurses, but we do not think that, beyond the employment of some necessary force, there was any real ground for the complaint.

As a rule the female patients were neatly dressed and tidy in person, but some of the excited class formed an exception. We fully recognize the difficulty of inducing such patients to attend to personal appearance, but we think some greater effort in this direction should be made. The dress of the male patients is not generally so good as that of the other sex, and we saw some instances where more attention by the attendants would have been desirable.

We saw dinner served on the female side; it consisted of roast mutton and potatoes, with puddings. The fare appeared good and abundant, but it was somewhat roughly served. Dr. SAVAGE, however, anticipates improvement in the manner of serving and cutting up the food, which we shall be glad to see carried out. He also hopes to introduce some variety in the dietary, at present rather monotonous, and we doubt not, that without any increase of expense it will be found possible to do this and make the meals more attractive.

The wards generally were clean, comfortable and in good order. Some whitewashing is in progress, and in the male ward on the ground floor a day-room has been altered, so as to have direct access to the airing court, and it will be supplied with a billiard table. This will be an undoubted improvement. When the time comes for re-papering the upper galleries, we trust that paper more cheerful in pattern and colour than the present may be selected. Very great improvement in the aspect of the galleries may be effected by a judicious selection.

The patients now on the books are 89 males and 158 females, total 247. Of these, besides those already mentioned to be on leave, 13 females are at Witley, which has this year been kept open through the winter. The patients on the permanent or "incurable" list are 25 males and 30 females.

Since the last visit on June 19th, 1879, there have been the following changes:—

	M.	F.	Total.
Admitted	87	146	233
Discharged	96	133	229
(Of whom Recovered)	41	74	115
Died.. .. .	3	8	11

One of these deaths was a suicide while the patient was on leave. The causes of the other deaths do not call for notice. The mortality it will be observed was very low. Post-mortem examinations were made in all the cases. At present the health of the patients is good. Four, all females, were to-day in bed, and we find that the latest register of persons under "medical treatment" contains the names of 13 males and 17 females.

Mechanical restraint by the gloves has been used in two cases to prevent destruction of clothing or self-injury, and one patient was "wet-packed" on three days for three or four hours at a time. Fourteen patients have been in seclusion, 4 males and 10 females; and on twenty-five occasions. The seclusion lasted from two hours to the entire day, the latter however only in the case of 3 patients who were weak and exhausted.

The usual amount of entertainment has been provided for the patients, and we observed in the wards a good supply of books, papers, games, &c., for their amusement. Every ward but one is now supplied with a pianoforte.

We shall take an early opportunity of visiting the Establishment at Witley.

C. S. BAGOT, } *Commissioners*
ROBERT NAIRNE, } *in Lunacy.*

BETHLEM HOSPITAL,

November 2nd, 1880.

We have to-day, and for the second time this year, visited and inspected this Hospital. We are able to report very favourably of its state and of the condition of the patients. Many of these are improving, or convalescent, and as regards the dress and personal appearance generally of the patients we were glad to observe much improvement.

The patients on the books to-day are 117 males, and 157 females. Three of the males and 10 females are absent on leave; 1 male is out for the day, and 6 males and 11 females are at Witley. All the rest have been seen by us.

Since the date of our last visit, March 25th, there have been—

	M.	F.	Total.
Admitted	89	110	199
Discharged	55	105	160
Died	6	9	15

Twenty-two males and 76 females are stated to have been cured; of those on the books at present, 92 males and 126 females are on the curable, and 25 males and 31 females on the incurable list.

As regards seclusion, we find that since the last visit 4

female patients were secluded, 1 for ten days, another half the day during three weeks, the third for two days, and the fourth for three and a half hours, and 1 male was similarly treated on one occasion. One female was dry-packed to enforce her lying down, her feet having been swollen from constant standing.

The patient who was secluded three and a half hours died of epilepsy while in the seclusion, no attendant being present. She had not been visited as frequently as the general rule of the Asylum required. This rule was not then in writing, but it has since, on the suggestion of our Board, been printed, and a copy is now hung up in every attendant's room.

There has been no serious casualty since the last visit, and there is nothing special to notice in the causes of the deaths.

We learn that the series of Winter Entertainments will shortly commence, and five theatrical representations are already promised. The weekly dances are attended by 80 to 100 patients.

C. S. BAGOT, } *Commissioners*
ROBERT NAIRNE, } *in Lunacy.*

INDEX TO TABLES.

No.		Page
1	Patients admitted and discharged	48
2	Average number of patients in the Hospital, attending chapel, and under restraint, during the last forty years	49
3	Total number of curable patients admitted into Bethlem Hospital during 100 years, ending the 31st December, 1880, and the amount of cures and deaths	49
4	Annual admissions, cures, and deaths, of curable patients during the last sixty years	50
5	Form of mental disease	51
6	Monthly admissions, cures, and deaths	51
7	Ages	52
8	Duration of disease before admission.	52
9	Degree of education	53
10	Religious persuasion	53
11	Domestic condition	54
12	Residence	54
13	State of general health	55
14	Behaviour	55
15	Suicidal tendency	56
16	Number of previous attacks	56
17	Apparent or assigned causes.	57
18	Occupation of curable patients admitted during 1880	58
18	" " discharged cured during 1880	59
18	" " discharged uncured in 1880	60
18	" " who died in 1880	61
19	Particulars of patients who have died during the year 1880, as reported to the Bethlem Sub-Committee	62
20	Return of employment, June 30th, 1880	63
21	Females employed on June 30th, 1880	63
22	Time in Hospital	64
23	Patients cured	65
24	Daily average number of patients in the Hospital during the year 1880	66
25	Return of the incurable patients now in the Hospital	67
26	Time the incurable patients have been in the Hospital	70
27	Degree of education of incurable patients in the Hospital	70

No. 1.
PATIENTS ADMITTED AND DISCHARGED,
1820 AND 1879 INCLUSIVE.

1880.

	Between the Years 1820 and 1879 inclusive.												During 1880.																					
	Curables.				Incurables.				Criminals.				Total.				Curables.				Incurables.				Total.									
	M.	F.	T.	Total	M.	F.	T.	Total	M.	F.	T.	Total	M.	F.	T.	Total	M.	F.	T.	Total	M.	F.	T.	Total	M.	F.	T.	Total						
Remained in Hospital 1st Jan. 1820, including those out on leave of absence	29	52	81	13392	28	41	69	622	41	9	50	98	102	200	69	121	190	24	27	51	93	2	3	3	5	119	187	306	1	4	5	120	191	311
	Admitted during the years 1820 to 1879 inclusive	5354	8038	13473	153	185	338	663	123	786	909	14597	6101	8296	14397	188	310	498	25	34	59	213	344	557										
Discharged, viz.	2556	4420	6976	12	32	44	102	37	139	176	276	2670	4489	7159	38	108	146	..	2	2	38	110	148											
Cured.....	1491	2336	3827	..	4	4	3	..	3	3	6	1494	2340	3834	48	51	99	48	51	99											
Uncured.....	3	10	13	3	10	13	2	6	8	2	6	8											
Relieved.....	781	695	1476	30	20	50	..	1	1	2	2	811	716	1527	8	4	12	8	4	12											
For special reasons	34	68	102	..	1	1	34	69	103								
Disqualified or rejected by the Committee.....	7	3	10	7	3	10	1	4	5	1	4	5											
Having been sent out on leave of absence, and no account since received of their state of mind.....	2	..	2								
Transferred from Curables to Incurables	..	1	1								
Removed by order of the Secretary of State	439	428	867	86	98	184	116	25	141	166	251	641	551	1192	6	10	16	..	1	..	6	1	6	11	1	17				
Escaped.....	1	6	7	1	6	7	2	..	2	2				
Died before admission by Committee	..	2	2	..	3	3	5	5	..	3	3	3				
At B.C.H.W. Dec. 31	82	124	206	25	31	56	107	155	262											
Out on month's leave.	69	121	190	24	27	51	93	148	241	188	310	498	25	34	59	213	344	557											
In Hospital Dec. 31, 1879.....	5383	8090	13473	153	185	338	663	123	786	909	14597	6199	8398	14597	188	310	498	25	34	59	213	344	557											

1880.
In Hospital 31st Dec. }
1879 }
At B.C.H.W. ditto ... }
Admitted in 1880..... }
Recovered..... }
Uncured }
Relieved..... }
Disqualified and re- }
jected by Committee }
and special reasons. }
Transferred from Cu- }
rables to Incurables }
Escaped..... }
Died }
Died in Hospital, but }
before admitted by }
Committee }
Out on month's leave, }
Dec. 31st, 1880 ... }
In Hospital ditto ... }

No. 2.

1880.

AVERAGE NUMBER OF PATIENTS in the HOSPITAL, attending Chapel, and under restraint, during the last Forty years.

During the Years	Number of Patients.	Sunday Chapel Attendance.	Weekly average of Patients under restraint.
1841 } to } 1850 } inclusive.	382	*113, or 29 per cent.	2 per cent.
1851 } to } 1860 } inclusive.	345	166, or 48 per cent.	None.
1861 } to } 1870 } inclusive.	278	†141, or 51 per cent.	None.
1871 } to } 1875 } inclusive.	243	98, or 40·7 per cent.	None.
1876	270	92, or 32·9 per cent.	None.
1877	246	89, or 36·2 per cent.	None.
1878	242	77, or 31·8 per cent.	None.
1879	238	86, or 36·1 per cent.	None.
1880	242	119, or 49·1 per cent.	None.

AVERAGE DAILY NUMBER OF PATIENTS EMPLOYED.

Males	76
Females	78

154

* Attendance partially suspended during the enlargement of the Chapel.

† Criminals being removed during the Years 1863 and 1864.

No. 3.

1880.

TOTAL NUMBER OF CURABLE PATIENTS admitted into BETHLEM HOSPITAL during One Hundred Years, ending the 31st December, 1880, with the amount of Cures and Deaths.

Total number of Patients admitted	20,189.
Discharged cured	9,361, or 46·32 per cent.
Died	1,338, or 6·62 per cent.

No. 4.

1880.

ANNUAL ADMISSIONS, CURES, and DEATHS of CURABLE PATIENTS during the last Sixty years.

Years.	Admitted.			Cured.			Died.		
	M.	F.	T.	M.	F.	T.	M.	F.	T.
From 1821 to 1830 inclusive.	686	995	1681	303	488	791	37	40	77
1831 to 1840 inclusive.	983	1462	2445	463	816	1279	58	62	120
1841 to 1850 inclusive.	1191	1855	3046	639	1008	1647	76	94	170
1851 to 1860 inclusive.	784	1311	2095	426	732	1158	68	72	140
1861 to 1870 inclusive.	789	1147	1936	359	644	1003	101	84	185
1871	62	117	179	35	72	107	8	8	16
1872	78	109	187	29	56	85	12	12	24
1873	88	119	207	30	34	64	10	8	18
1874	93	139	232	41	87	128	11	10	21
1875	91	138	229	48	75	123	13	7	20
1876	114	139	253	45	68	113	10	8	18
1877	108	119	227	32	71	103	17	6	23
1878	113	146	259	45	81	126	13	5	18
1879	121	181	302	49	105	154	4	8	12
1880	119	187	306	38	108	146	6	10	16
	5420	8164	13584	5822	4445	7027	444	434	878

No. 5.
1880.

FORMS OF MENTAL DISEASE.

	Admitted.			Discharged.								
	M.	F.	T.	Cured.			Uncured.			Died.		
				M.	F.	T.	M.	F.	T.	M.	F.	T.
Acute Mania ..	41	69	110	11	33	44	6	6	12	2	5	7
Chronic Mania	4	4	8	7	15	22	..	1	1
Recurrent Mania	3	4	7	2	1	3
Acute Melan- cholia }	49	75	124	24	58	82	6	12	18	1	4	5
Dementia	10	10	7	7
Insanity of Pregnancy, Parturition, & Lactation }	..	19	19	..	18	18
General Paralysis	12	2	14	1	..	1	4	..	4	3	1	4
Mania with Epilepsy .. }
Disqualified, not admitted by Committee, or discharged for special reasons.	109	183	292	38	110	148	23	40	63	6	11	17
	10	4	14	36	21	57
	119	187	306	38	110	148	59	61	120	6	11	17

No. 6.
1880.

TIME OF ADMISSION and DISCHARGE of CURABLE PATIENTS.

	Admitted.			Discharged.								
	M.	F.	T.	Cured.			Uncured.			Died.		
				M.	F.	T.	M.	F.	T.	M.	F.	T.
January	6	17	23	1	2	3	5	1	6	..	2	2
February ...	5	15	20	3	7	10	..	5	5	..	1	1
March	12	11	23	7	6	13	2	5	7
April	11	6	17	2	8	10	3	2	5	2	1	3
May	16	16	32	6	12	18	..	2	2	..	2	2
June	14	15	29	1	6	7	..	1	1	..	2	2
July	13	22	35	2	20	22	1	3	4	1	..	1
August	9	19	28	3	9	12	3	7	10	2	..	2
September ..	6	18	24	3	9	12	1	2	3	..	2	2
October	9	9	18	2	12	14	..	1	1	1	1	2
November ..	3	18	21	2	7	9	6	5	11
December ..	5	17	22	6	12	18	2	6	8
Disqualified, not admitted by Committee, or discharged for special reasons.	109	183	292	38	110	148	23	40	63	6	11	17
	10	4	14	36	21	57
	119	187	306	38	110	148	59	61	120	6	11	17

No. 7.
1880.

AGES.

	Admitted.			Discharged.								
	M.	F.	T.	Cured.			Uncured.			Died.		
				M.	F.	T.	M.	F.	T.	M.	F.	T.
Under 15 years	1	2	3	1	5	6
From 15 to 20	9	10	19	4	17	21
— 20 to 25	10	25	35	3	24	27	1	5	6	..	1	1
— 25 to 30	14	18	32	8	17	25	2	6	8	1	2	3
— 30 to 35	16	29	45	2	18	20	5	9	14	1	3	4
— 35 to 40	17	31	48	6	11	17	9	3	12
— 40 to 45	14	20	34	2	5	7	4	5	9	1	3	4
— 45 to 50	10	16	26	5	3	8	..	4	4	1	1	2
— 50 to 55	5	7	12	3	4	7	..	3	3	1	..	1
— 55 to 60	5	8	13	4	3	7	2	2	4	1	1	2
— 60 to 65	8	17	25	..	3	3	..	3	3
	109	183	292	38	110	148	23	40	63	6	11	17
Disqualified, not admitted by Committee, or discharged for special reasons.	10	4	14	36	21	57
	119	187	306	38	110	148	59	61	120	6	11	17

No. 8.
1880.

DURATION of DISEASE before Admission.

	Admitted.			Discharged.								
	M.	F.	T.	Cured.			Uncured.			Died.		
				M.	F.	T.	M.	F.	T.	M.	F.	T.
Under 1 month	44	80	124	2	50	52	3	5	8	2	5	7
— 2 — ..	25	35	60	7	18	25	7	8	15	1	2	3
— 3 — ..	18	28	46	2	12	14	2	6	8	1	3	4
— 4 —	10	10	4	8	12	4	7	11	1	..	1
— 5 — ..	3	4	7	4	3	7	2	4	6	..	1	1
— 6 — ..	9	11	20	3	4	7	2	3	5
— 7 — ..	4	4	8	1	3	4	..	1	1	..	1	1
— 8 —	2	2	5	5	10	2	2	4
— 9 — ..	2	4	6	8	3	11	..	1	1	1	..	1
— 10 — ..	3	3	6	2	2	4	1	1	2
— 11 and over	1	2	3	..	1	1	..	2	2
Not stated	1	1
	109	183	292	38	110	148	23	40	63	6	11	17
Disqualified, not admitted by Committee, or discharged for special reasons.	10	4	14	36	21	57
	119	187	306	38	110	148	59	61	120	6	11	17

BETHLEM HOSPITAL.

No. 9.

1880.

DEGREE OF EDUCATION.

	Admitted.			Discharged.								
	M.	F.	T.	Cured.			Uncured.			Died.		
				M.	F.	T.	M.	F.	T.	M.	F.	T.
Superior	2	8	10	1	1	2	1	1	2	1	1	2
Good	45	50	95	14	34	48	11	21	32	3	3	6
Moderate ...	61	120	181	23	75	98	11	18	29	2	7	9
Indifferent ..	1	5	6
	109	183	292	38	110	148	23	40	63	6	11	17
Disqualified, not admitted by Committee, or discharged for special reasons.	10	4	14	36	21	57
	119	187	306	38	110	148	59	61	120	6	11	17

No. 10.

1880.

RELIGIOUS PERSUASION.

	Admitted.			Discharged.								
	M.	F.	T.	Cured.			Uncured.			Died.		
				M.	F.	T.	M.	F.	T.	M.	F.	T.
Church of England } Roman Catholic .. }	74	120	194	28	78	106	16	35	51	4	11	15
Wesleyan.....	3	4	7	1	3	4	1	..	1
Baptist.....	9	12	21	2	7	9	2	..	2	1	..	1
Independent..	3	9	12	2	6	8	1	1	2
Dissenter	7	8	15	1	5	6	3	3	6
Lutheran.....	1	4	5
Jew	1	4	5	..	1	1
Unitarian ..	1	2	3	1	..	1	1	..	1
Episcopalian .	1	4	5	..	1	1
Chinese
Not stated ..	5	12	17	2	6	8
	109	183	292	38	110	148	23	40	63	6	11	17
Disqualified, not admitted by Committee, or discharged for special reasons.	10	4	14	36	21	57
	119	187	306	38	110	148	59	61	120	6	11	17

No. 11.

1880.

DOMESTIC CONDITION.

	Admitted.			Discharged.								
	M.	F.	T.	Cured.			Uncured.			Died.		
				M.	F.	T.	M.	F.	T.	M.	F.	T.
Married	51	70	121	21	50	71	11	12	23	3	3	6
Single	53	98	151	17	54	71	11	24	35	3	6	9
Widowed	5	15	20	.	6	6	1	4	5	..	2	2
	109	183	292	38	110	148	23	40	63	6	11	17
Disqualified, not admitted by Committee, or discharged for special reasons.)	10	4	14	36	21	57
	119	187	306	38	110	148	59	61	120	6	11	17

No. 12.

1880.

RESIDENCE.

	Admitted.			Discharged.								
	M.	F.	T.	Cured.			Uncured.			Died.		
				M.	F.	T.	M.	F.	T.	M.	F.	T.
London Pos-) tal District. }	66	99	165	17	63	80	14	26	40	4	9	13
Provinces	39	80	119	20	45	65	9	13	22	2	2	4
Abroad	4	4	8	1	2	3	..	1	1
	109	183	292	38	110	148	23	40	63	6	11	17
Disqualified, not admitted by Committee, or discharged for special reasons.)	10	4	14	36	21	57
	119	187	306	38	110	148	59	61	120	6	11	17

No. 13.

1880.

GENERAL HEALTH.

	Admitted.			Discharged.								
	M.	F.	T.	Cured.			Uncured.			Died.		
				M.	F.	T.	M.	F.	T.	M.	F.	T.
Good	71	88	159	13	25	38	4	9	13	..	2	2
Weak	25	58	83	19	65	84	12	27	39	2	2	4
Bad	13	37	50	6	20	26	7	4	11	4	7	11
Disqualified, not admitted by Committee, or discharged for special reasons.	109	183	292	38	110	148	23	40	63	6	11	17
	10	4	14	36	21	57
	119	187	306	38	110	148	59	61	120	6	11	17

No. 14.

1880.

BEHAVIOUR.

	Admitted.			Discharged.								
	M.	F.	T.	Cured.			Uncured.			Died.		
				M.	F.	T.	M.	F.	T.	M.	F.	T.
Dangerous or violent } }	20	37	57	12	26	38	10	12	22	2	2	4
Not danger- ous or violent } }	89	146	235	26	84	110	13	28	41	4	9	13
Disqualified, not admitted by Committee, or discharged for special reasons.	109	183	292	38	110	148	23	40	63	6	11	17
	10	4	14	36	21	57
	119	187	306	38	110	148	59	61	120	6	11	17

BETHLEM HOSPITAL.

No. 15.

1880.

SUICIDAL TENDENCY.

	Admitted.			Discharged.								
	M.	F.	T.	Cured.			Uncured.			Died.		
				M.	F.	T.	M.	F.	T.	M.	F.	T.
Suicidal	38	59	97	17	33	50	8	8	16	2	1	3
Non-Suicidal	71	124	195	21	77	98	15	32	47	4	10	14
	109	183	292	38	110	148	23	40	63	6	11	17
Disqualified, not admitted by Committee, or discharged for special reasons.)	10	4	14	36	21	57
	119	187	306	38	110	148	59	61	120	6	11	17

No. 16.

1880.

NUMBER OF PREVIOUS ATTACKS.

	Admitted.			Discharged.								
	M.	F.	T.	Cured.			Uncured.			Died.		
				M.	F.	T.	M.	F.	T.	M.	F.	T.
First.....	75	124	199	24	66	90	19	32	51	6	11	17
Second.....	18	22	40	11	25	36	4	8	12
Third	7	19	26	1	9	10
Fourth	2	7	9	2	5	7
Fifth.....	1	4	5	..	3	3
Sixth	3	3
Several.....	6	4	10	..	2	2
	109	183	292	38	110	148	23	40	63	6	11	17
Disqualified, not admitted by Committee, or discharged for special reasons.)	10	4	14	36	21	57
	119	187	306	38	110	148	59	61	120	6	11	17

No. 17.

1880.

APPARENT OR ASSIGNED CAUSES.

	Admitted.			Discharged.								
	M.	F.	T.	Cured.			Uncured.			Died.		
				M.	F.	T.	M.	F.	T.	M.	F.	T.
PSYCHICAL.												
Mental anxiety	21	14	35	6	8	14	8	2	10	..	1	1
Mental work	13	6	19	4	..	4	3	1	4	1	1	2
Religious excitement..	1	12	13	..	1	1	1	1
Pecuniary embarrass- ments	5	..	5	1	3	4	..	2	2	1	..	1
Love affairs	2	2	4	1	2	3	..	2	2	..	1	1
Domestic circum- stances	2	9	11	2	2	4	..	1	1
Fright	1	7	8	..	4	4	..	1	1	..	1	1
Grief	4	7	11	..	6	6
PHYSICAL.												
Intemperance	4	3	7	..	1	1	1	1	2
Dyspepsia and Hypo- chondriasis	1	..	1
Coup-de-soleil	1	..	1
Masturbation.....	3	..	3	1	..	1
Organic disease of the brain	1	..	1
General ill health....	..	4	4	1	4	5	..	1	1	..	2	2
Blow on head	2	..	2
Epilepsy
Veneral excess.....
Climacteric	9	9	..	2	2	..	6	6
Uterine disturbance..	..	2	2	..	2	2	..	2	2
Pregnancy — parturi- tion and lactation..	..	18	18	..	19	19	..	5	5
Previous attacks	3	6	9
Hereditary.....	2	4	6
No cause, apparent or assigned.....	42	72	114	11	38	49	8	12	20	2	2	4
Cases where hereditary tendency has existed, with other causes ..	4	10	14	10	17	27
Albumunuria	1	1	2
Phthisis.....	1	1	1	1	2
Syphilis	1	..	1
Post Connub.....	..	2	2
	109	183	292	38	110	148	23	40	63	6	11	17

No. 18.

1880.

OCCUPATION OF CURABLE PATIENTS *admitted* during 1880.

MALES.	FEMALES.
Architects 2	Actresses.. .. . 2
Butcher 1	Domestic Servants.. .. . 10
City Missionary 1	Governesses 22
Clergymen.. .. . 2	Housekeepers.. .. . 10
Clerks 29	Milliners.. .. . 10
Commercial Travellers 7	Mission Woman 1
Correctors of Press 2	Shopwomen 15
Farmers 6	Wives, widows, or daughters } 44
Grocers 3	of clerks, or tradesmen .. }
Licensed Victualler 1	Of no occupation or none } 69
Mariner 1	stated }
Mechanics 4	
Merchant 1	
Policeman 1	
Preacher 1	
School-boy.. .. . 1	
Shoemakers 2	
Shopmen 25	
Solicitor 1	
Surgeons 2	
Tutors 2	
Waiters 2	
Watchmakers 3	
Not stated 10	
<hr style="width: 10%; margin-left: auto; margin-right: 0;"/> 110	<hr style="width: 10%; margin-left: auto; margin-right: 0;"/> 183

No. 18.—*continued.*OCCUPATION OF CURABLE PATIENTS *discharged Cured* during 1880.

MALES.		FEMALES.	
Clergyman	1	Governesses	16
Clerks	16	Milliners.. .. .	4
Farmers	4	Servants	3
Mechanics	3	Shopwomen	3
Merchant	1	Wives of farmers	2
Shopmen	12	Wives, widows, or daughters of professional men	6
Waiter	1	Wives, widows, or daughters of tradesmen	
		Wives, widows, or daughters of mechanics	4
		None, or none stated	
	38		110

No. 18.—*continued.*OCCUPATION OF CURABLE PATIENTS *discharged Uncured* during 1880.

MALES.					FEMALES.						
Clergyman..	1	Dressmaker	1
Clerks	10	Governesses	8
Commercial Travellers	2	Servant	1
Farmers	2	Wives of clerks and tradesmen	4
Grocer	1	Wife of mechanic	1
Mechanic	1	None, or none stated	25
Shopmen	4						
Servants	2						
					<hr/> 23						<hr/> 40

No. 18.—*continued.*OCCUPATION OF CURABLE PATIENTS who *Died* during 1880.

MALES.		FEMALES.	
Bootmaker.. .. .	1	Governesses	5
Clerk	1	Servant	1
Clergyman.. .. .	1	Wives of tradesmen	2
Lawyer	1	None, or none stated	4
Station Master	1		
Surgeon	1		
	6		12

No. 19.

1880.

PARTICULARS of PATIENTS who have DIED during 1880, as reported to the Bethlem Sub-Committee.

	Sex.	Age.	Condition.	Admitted.	Died.	Cause of Death.	Time in Hospital.
1	Male..	60	Married	July, 1879	July, 1880	Albumunuria : melancholia	12 mths.
2	Male..	30	Single	Sept., 1879	August, 1880	Phthisis : melancholia	11 mths.
3	Male..	55	Married	May, 1880	„	General paralysis	3 mths.
4	Male..	60	„	April, 1880	„	Acute mania ; exhaustion	4 mths.
5	Male..	35	Single	May, 1879	Oct., 1880	General paralysis	17 mths.
6	Male..	40	„	Oct., 1879	Dec., 1880	General paralysis	2 mths.
7	Female	55	Widow	Jan., 1880	Jan., 1880	Acute mania : exhaustion	2 weeks
8	Female	70	Single	Nov., 1833	„	Chronic mania ; bronchitis	47 years
9	Female	54	„	July, 1879	May, 1880	General paralysis	10 mths.
10	Female	35	„	August, 1879	„	Urcamia : albumunuria	9 mths.
11	Female	45	Widow	Jan., 1879	June, 1880	Acute mania : exhaustion	5 mths.
12	Female	23	Single	May, 1880	May, 1880	Epilepsy	10 days
13	Female	45	Married	„	„	Acute mania : exhaustion	9 days
14	Female	43	„	Nov., 1879	April, 1880	Acute melancholia ; exhaustion	5 mths.
15	Female	54	„	July, 1880	Sept., 1880	Acute mania : pneumonia	2 mths.
16	Female	65	Single	June, 1880	„	Acute mania : bronchitis	3 mths.
17	Female	31	„	July, 1880	Oct., 1880	Acute melancholia ; phthisis	3 mths.

No. 20.

1880.

RETURN OF EMPLOYMENT, JUNE 30th, 1880.

MALES.																							
GALLERIES.	Gardener.	Mason.	Plasterer.	Bricklayer.	Plumber.	Painter and Glazier.	Carpenter.	Engineer & Smith.	Tailor.	Shoemaker.	Knitting and Glove Making.	Household Work.	Reading, Writing, Drawing, &c.	Lace Making.	Kitchen.	Straw Plaiting.	Cooper.	Baker.	Mattress Making.	Engraver.	Blanket Quilting.	Brush Making.	TOTAL.
M. 1	1	9	9	20
M. 2	2	1	6	11	20
M. 3	6	22	28
M. 4	4	6	2	12
M.I.
M.I.
	7	1	27	44	80

Employed... 80. | Unemployed... 24.

In Hospital.. 104.

No. 21.

1880.

FEMALES EMPLOYED ON JUNE 30th, 1880.

	Curables	Incurables	TOTAL.
Needle Work	21	4	25
Fancy do.	12	2	14
Laundry and Household Work	18	2	20
Music, Reading, &c.	12	4	16
	63	12	75
Total employed	63	12	75
Ditto unemployed	41	14	55
Patients in Hospital	104	26	130

No. 24.
1880.

Daily Average Number of Patients in the Hospital, during the Year 1880.

(These numbers include B. H. and B. C. H. W.)

Curables.			Incurables.			Total.		
M.	F.	T.	M.	F.	T.	M.	F.	T.
79 $\frac{32}{366}$	125 $\frac{262}{366}$	204 $\frac{301}{366}$	24 $\frac{338}{366}$	3 $\frac{558}{366}$	55 $\frac{230}{366}$	104 $\frac{11}{366}$	156 $\frac{154}{366}$	260 $\frac{165}{366}$
Curables.			Incurables.			Total.		
74,968			20,360			95,328.		

Number of Daily Rations during 1880.

Curables.

74,968

Incurables.

20,360

Total 95,328.

No. 25.

1880.

RETURN of the INCURABLE PATIENTS IN HOSPITAL, 31st DEC., 1880.

No.	—	Sex.	Age when Admitted to Incur- able Estab- lishment.	Date of Admission to Incurable Establishment.
1	W.C.	Male	20	16th September, 1831.
2	P.R.	Female	25	28th March, 1834.
3	H.M.	Male	27	5th February, 1836.
4	G.G.	Male	34	20th July, 1838.
5	E.B.P.	Male	26	27th March, 1840.
6	G.C.H.	Male	28	15th January, 1841.
7	E.G.	Female	35	22nd June, 1842.
8	C.L.	Male	28	19th July, 1844.
9	G.P.	Male	29	20th December, 1844.
10	S.T.	Female	29	28th February, 1845.
11	E.J.	Female	46	13th June, 1845.
12	C.C.	Male	50	21st November, 1845.
13	W.B.N.	Male	39	14th February, 1848.
14	W.S.	Male	28	14th February, 1848.
15	M.A.H.	Female	26	3rd January, 1851.
16	H.B.	Female	41	18th July, 1851.
17	C.M.	Male	30	6th August, 1852.
18	E P.C.	Female	35	13th August, 1852.
19	T.Q.	Male	56	29th April, 1853.
20	S.B.	Male	36	27th October, 1854.
21	A.R.	Female	29	15th December, 1854.

Continued.

No. 25.—*continued.*

1880.

RETURN OF INCURABLE PATIENTS—*continued.*

No.	—	Sex.	Age when Admitted to Incurable Establishment.	Date of Admission to Incurable Establishment.
22	G.F.	Female	42	22nd June, 1855.
23	S.A.	Female	31	21st November, 1856.
24	J.J.P.	Female	40	11th December, 1857.
25	J.S.	Female	23	29th April, 1859.
26	E.J.	Female	25	27th May, 1859.
27	M.S.M.	Female	43	12th June, 1868.
28	E.B.	Female	44	23rd April, 1869.
29	E.G.	Female	37	15th October, 1869.
30	E.B.	Female	45	11th November, 1870.
31	J.A.C.	Male	48	18th November, 1870.
32	A.M.H.	Female	57	10th May, 1872.
33	A.B.	Female	42	10th July, 1872.
34	T.A.C.	Male	30	23rd October, 1872.
35	H.McN.	Male	33	17th September, 1873.
36	J.W.E.	Male	40	25th February, 1874.
37	E.F.	Female	37	25th February, 1874.
38	E.L.G.	Female	37	11th November, 1874.
39	M.A.S.	Female	33	17th March, 1875.
40	M.C.M.	Female	33	3rd November, 1875.
41	M.W.	Female	64	27th December, 1876.
42	J.S.C.	Male	35	28th February, 1877.
43	M.A.B.	Female	49	2nd January, 1878.

Continued.

No. 25.—*continued.*

1880.

RETURN OF INCURABLE PATIENTS—*continued.*

No.	—	Sex.	Age when Admitted to Incur- able Estab- lishment.	Date of Admission to Incurable Establishment.
44	S.P.V.	Male	41	27th February, 1878.
45	W.H.	Male	32	18th September, 1878.
46	A.N.	Male	35	9th December, 1878.
47	A.B.	Female	56	9th December, 1878.
48	A L.	Female	62	9th December, 1878.
49	R.J.C.	Male	46	7th April, 1879.
50	T.K.G.	Male	31	2nd July, 1879.
51	E.H.	Male	72	9th July, 1879.
52	H.C.	Male	47	28th January, 1880.
53	M.A.W.	Female	37	28th January, 1880.
54	M.R.S.	Female	66	28th January, 1880.
55	A.C.W.M'L	Female	63	28th April, 1880.
56	L.M.A.T.	Female	41	28th April, 1880.

No. 26.

1880.

TIME the INCURABLE PATIENTS have been in the Hospital.

	Males.	Females.	Total.
Upwards of 30 years	5	2	7
— 20 —	5	3	8
— 15 —	1	7	8
— 10 —	8	13	21
5 — or under..	6	5	11
	25	30	55

No. 27.

1880.

DEGREE of EDUCATION of Incurable Patients in the Hospital.

	Males.	Females.	Total.
Good	11	23	34
Moderate.....	8	4	12
Imperfect.....	3	2	5
None	2	..	2
Not ascertained	1	1	2
	25	30	55

1880.

No. 28.

DIETARY TABLE.

BREAKFAST.

Every Day.. Males .. Tea, with 7 oz. of Bread and Butter.

Females.. ,, 6 ,, ,,

DINNER.

Sunday Males { 6 oz. Boiled Beef } 4 oz. Bread, $\frac{3}{4}$ lb. Vegetables, 1 pt. Beer.
free from boneFemales.. 5 ,, ,, 4 ,, $\frac{1}{2}$,, $\frac{1}{2}$ Monday Males.... 6 ,, Roast Mutton, 4 ,, $\frac{3}{4}$,, 1Females.. 5 ,, ,, 4 ,, $\frac{1}{2}$,, $\frac{1}{2}$ Tuesday Males.... 6 ,, Boiled Mutton 4 ,, $\frac{3}{4}$,, 1Females.. 5 ,, ,, 4 ,, $\frac{1}{2}$,, $\frac{1}{2}$ Wednesday. Males.... 6 ,, Roast Beef, 4 ,, $\frac{3}{4}$,, 1 ,,Females.. 5 ,, ,, 4 ,, $\frac{1}{2}$,, $\frac{1}{2}$,

Thursday.. .. . Same as Monday.

Friday Same as Tuesday.

Saturday .. Males.... 16 oz. Meat Pie, 4 oz. Bread, 1 oz. Cheese, 1 pt. Beer.

Females.. 14 ,, ,, 4 ,, 1 ,, $\frac{1}{2}$,

TEA.

Every Day.. Males .. Same as at Breakfast.

Every Day.. Females.. Same as at Breakfast.

SUPPER.

Every Day.. Males .. 3 oz. Bread, 1 oz. Cheese, $\frac{1}{2}$ pt. Beer.Every Day.. Females.. $\frac{1}{4}$ oz. Cocoa, 1 $\frac{1}{2}$ oz. Milk, 2 oz. Bread, $\frac{1}{2}$ oz. Butter.

No. 28.—*continued.*

Patients in employment in the Grounds, Workshops, or Laundry, to be allowed 4 oz. of Bread, 1 oz. of Cheese or $\frac{1}{2}$ oz. of Butter, and $\frac{1}{2}$ a pint of Beer for Luncheon, and $\frac{1}{2}$ a pint of Beer in the Afternoon.

Every Patient to be allowed $1\frac{3}{4}$ oz. of Tea, 8 oz. of Sugar, 8 oz. of Butter, and $1\frac{1}{2}$ pints of Milk weekly.

On Christmas Day the Dinner to be Roast Beef and Plum Pudding.

On New Year's Day, a Mince Pie to be added to the usual fare.

On Good Friday, a Bun.

On Easter and Whit Monday, 6 oz. of Roast Veal to be allowed instead of the usual Meat for the day.

The Steward has liberty to vary the diet occasionally by Pork and Bacon, when Peas and Beans are in season; and by Fish, Fruit Pies, &c., when Fish and Fruit are plentiful and good.

The Sick to be dieted at the discretion of the Resident Physician.

The Attendants to have at all times the means of obtaining Gruel for such Patients as may require it.

The above to be considered maximum allowances, and all quantities unconsumed are to be taken in diminution of the next supply from the Stores of the Hospital.

No. 29.

1880.

BETHLEM HOSPITAL.

LIST OF OFFICERS, ATTENDANTS, AND SERVANTS.

PRINCIPAL OFFICERS.

	£	s.	d.
*1 Resident Physician	700	0	0
*1 Assistant Medical Officer	300	0	0
†1 Chaplain	220	0	0
†1 Surveyor	125	0	0
*1 Clerk, Receiver, and Accountant	425	0	0
*1 Steward	500	0	0
*1 Matron	175	0	0
	<hr/>		
	£2445	0	0
	<hr/>		

* Lodged and partly furnished, with Coals, &c.

† Neither boarded nor lodged.

No. 30.

1880.

OTHER OFFICERS, ATTENDANTS, AND SERVANTS.

MALES.

	£	s.	d.
*2 Receiver's Clerks (£100 and £70 per annum)	170	0	0
*1 Steward's Clerk	70	0	0
*1 Organist.. .. .	25	0	0
1 Chapel Clerk (£5)—see below			
†1 Under Storekeeper	80	0	0
†1 House Porter (a great coat once in three years)	47	0	0
†1 Assistant ditto (a great coat once in three years)	40	0	0
‖1 Gate Keeper (a great coat once in three years).. .. .	50	0	0
†1 Cutter of provisions	50	0	0
†1 Cook	47	0	0
†1 Assistant ditto	40	0	0
1 Head Attendant (boarded and lodged, and suit of uniform) ..	75	0	0
†1 Attendant (D.H.) at £49 per annum ..	49	0	0
†3 Attendants £47 per annum each	141	0	0
†1 Do. (and Chapel Clerk).. .. . £45 per annum ..	45	0	0
†2 Do. £40 per annum ..	80	0	0
†2 Do. £35 per annum ..	70	0	0
†9 Do. £30 per annum each	270	0	0
¶1 Night Watch, 32s. per week	83	4	0
*†1 Carpenter, Head of Workshops per annum	110	0	0
*†2 Do. (with occasional help) 30s. per week each	156	0	0
*†1 Plumber 30s. per week ..	78	0	0
*†1 Engineer 45s. per week ..	117	0	0
*†1 Bricklayer 26s. per week ..	67	12	0
*†1 Painter and Window Cleaner 30s. per week ..	78	0	0
*2 Window Cleaners, &c... .. . 15s. and 25s. per week ..	104	0	0
*2 Stokers and Scrubbers.. .. . 27s. per week each	140	8	0
*†1 Shop Labourer (with occasional help) .. 27s. per week ..	70	4	0
†1 Gardener (with house and coals, &c.) .. 30s. per week ..	78	0	0
*†1 Assistant Gardener 25s. per week ..	65	0	0
*†4 Labourers (with occasional help) 23s. per week each	239	4	0
*†1 Mattress maker (with occasional help) .. 27s. per week ..	70	4	0
*†1 Shoemaker 26s. per week ..	67	12	0
	<u>£2873</u>	<u>8</u>	<u>0</u>

* Neither boarded nor lodged.

† In addition to board and lodging, have each a suit of clothes, a hat, a cap, and two working blouses, which become their own *after every completed year's service, from the date of engagement.*

‡ Occasionally employed at, or for, King Edward's Schools.

‖ Lodged only, with a suit of clothes and a hat.

The Head and Second Attendants of Male Ward 1, and Female Wards 1A and 1B are allowed Donations at Christmas, amounting in all to £11.

¶ No other allowance whatever.

No. 30—*continued.*

FEMALES.

										£	s.	d.	
7	Attendants	£35 per annum each	245	0	0
4	Do.	£28 per annum each	112	0	0
5	Do.	£24 per annum ..	120	0	0
8	Do.	£20 per annum each	160	0	0
1	Work-woman	28	0	0
1	Night Watch	24	0	0
1	Do.	24	0	0
1	Housemaid	30	0	0
1	Assistant Nurse	20	0	0
1	Laundrymaid	35	0	0
1	Assistant do.	28	0	0
1	Portress at K. E. S. Gate	12	10	0
1	Students' Servant	24	0	0
											<hr/>		
											£862 10 0		
											<hr/>		

The wages of ordinary male attendants are £30 per annum for the first three years, next four years £35 per annum, and for the next three years £40 per annum. Attendants of ten years standing and upwards £42 per annum, Female attendants wages are £20 per annum for the first three years, next four years £24 per annum, and the next three years £28 per annum. Attendants of ten years standing and upwards £30 per annum. Attendants in charge of a Ward are allowed £5 per annum extra, and on the recommendation of the Resident Physician, in the event of an attendant, male or female, being appointed as second in charge he or she may be rated as an attendant of seven years standing.

BETHLEM
CONVALESCENT ESTABLISHMENT,
WITLEY.

No. 31.

1880.

OFFICERS AND SERVANTS.

	£	s.	d.
*1 Deputy Superintendent per annum	140	0	0
1 Female Head Attendant „	35	0	0
†1 Cook (temporary) „	25	0	0
†1 Kitchenmaid (temporary) „	15	0	0
†1 Housemaid „	14	0	0
†1 Page Boy „	8	0	0
1 Gardener (30s. per week and house—-not boarded—half to K. E. S. W.) „	39	0	0
‡2 Garden Labourers (4d. per hour) „	104	4	0
Engineer (partial employment) 5s. per week „	13	0	0
	£393	4	0

* Furnished Apartments with coals.

† Boarded and Lodged.

‡ Neither boarded nor lodged.

. The Cook and Kitchenmaid's places were temporarily filled during the
time the Establishment was occupied.

Boys from K.E.S.W. occasionally assist.

GENERAL ACCOUNT OF RECEIPT AND EXPENDITURE OF BETHLEHEM HOSPITAL, FOR THE YEAR ENDING 31st DEC., 1880.

Dr.

Cr.

RECEIPT.		Total.	Bethlehem.	Incurables.	EXPENDITURE.		Total.	Bethlehem.	Incurables.
		£ s. d.	£ s. d.	£ s. d.			£ s. d.	£ s. d.	£ s. d.
1880	To REST, Land Tax, Rent-charges and Insurance, viz.—				By Balance of Account audited to 31st December, 1879	3,121 6 10	4,012 1 4	4,012 1 4	
Jan 1	BETHLEHEM—Arrears, 31st December, 1879.	1,461 11 3			Meat	1,136 18 6			
	One Year's Rent, Land Tax, &c. from Mich., 1879 to Mich., 1880	12,159 15 5			Beer	688 5 8			
	Paid in advance.	762 0 0			Bread and Flour	310 19 7			
		£14,383 6 8			Potatoes, &c.	284 7 0			
	To RECEIVED, viz.—				Milk	1,232 7 4			
	Bishopsgate Street Without	£366 14 10			Tea and Groceries	634 17 7	8,779 2 6	6,370 1 7	1,709 0 11
	Piccadilly, Duke Street, Jermyn Street, and				Clothing and Bedding	1,075 11 0			
	Ormond Mews	4,801 14 2			Soap, Oil, &c.	755 11 3			
	Lime Street, Lime Street Square	2,732 9 7			Medicine, &c.	27 17 6			
	Albâtre	189 14 6			Wine, Spirits, &c.	297 18 0			
	Whitechapel	176 5 0			Coal and Firewood	387 0 6			
	Fowkes Court, Tower Street	493 16 8			Washing	1,144 18 0			
	Gardner's Terrace, Mile End	140 19 2			Salaries of Officers, Wages of Servants, &c.		4,288 16 3	3,381 11 3	907 5 0
	St. George's Fields	565 8 0			Taxes, &c., on the Hospital	1,065 14 9	6,312 0 5	4,976 16 1	1,335 4 4
	Moorgate	526 11 3			Repairs of Buildings, &c.	1,650 14 7			
	Shepherd's Bush	169 14 6			Printing and Stationery	384 10 3			
	Crouch Hill, Hornsey	298 14 1			Furniture and Repairs	1,067 2 6			
	Clapton	3 19 9			Books, &c.	94 8 2			
	Waltham Cross	224 10 1			Incidental Expenses	£134 18 2			
	Kent	1,311 11 7			Amusements, Excursions, &c.	319 12 10			
	Lincolnshire	218 3 1			Superannuation Annuities	408 10 0	5,326 1 3	4,199 7 11	1,126 13 4
	Rent Charges	79 1 8			Law Charges	174 12 5			
	Allowed.	£11,779 7 11	11,779 7 11	11,779 7 11	Deductions from Rental—				
	Property Tax allowed	48 0 0			Premiums of Insurance	170 5 0			
	Arrears of Rent to Mich., 1880, unpaid 31st Dec., 1880	2,328 9 3			Repairs of Houses	645 12 6			
		£14,383 6 8			Paid for Purchase of Freehold Ground Rents, at Crouch Hill		1,604 19 11	1,604 19 11	
	INCURABLES—Arrears, 31st December, 1879	4,045 8 2			" " at Clapton		13,538 8 0	13,538 8 0	
	One Year's Rent of Estate in Lincolnshire to Mich., 1880.	7,018 6 1			" " Foreshore, Grange		7,530 9 0	7,530 9 0	
		11,063 14 3					2,000 0 0	2,000 0 0	
	To RECEIVED, viz.—				LINCOLNSHIRE.				
	Wainfleet St. Mary	£4,315 4 4			Salaries, &c., Curate and Agent	500 0 0			
	Wainfleet All Saints, Claxby, Mumby, &c.	1,793 15 1			School at Wainfleet	183 5 6			
		£6,108 19 5	6,108 19 5	6,108 19 5	Plantations	36 2 4			
	Allowed	600 7 6			Sea Bank	19 2 6			
	Property Tax allowed	135 18 10			Deductions from Rental—				
	Arrears to Mich., 1880, unpaid 31st Dec., 1880	4,218 8 6			Premiums of Insurance	44 15 6			
		£11,063 14 3			Taxes and Rates	310 0 9			
	Tithe Rent-charge, Wainfleet St. Mary—				Casual Expenses	107 5 8			
	One Year to Michaelmas, 1880	687 1 1			New Buildings and Repairs	1,671 4 6			
	To Received, Tithe Rent Charge		687 1 1	687 1 1	Law Charges	22 16 7			
					Quit Rent		2,788 13 4		2,788 13 4
					For Purchase of Two Cottages at Wainfleet		0 12 6		0 12 6
							120 0 0		120 0 0
285	3,000 0 0 Bank Stock	285 0 0			A. M. JEFFERSON, Receiver, &c.				
285	21,000 0 0 New 2½ per Cent. Stock	525 0 0							
286	59,294 5 2 3 per Cent. Consols (in Chancery) Tax £37 1 2	1,741 15 4							
287	1,000 0 0 3 per Cent. Reduced Annuities, "Wm. Hollis's Gift"	30 0 0							
288	605 15 11 3 per Cent. Consols (in Chancery) Tax 0 8 8	20 8 10							
289	37,608 11 11 " " " " Tax 23 10 0	1,104 15 0							
		4,726 19 2	4,726 19 2		We find that the sum of £1,312 6s. is due from the Incurable Establishment to Bethlehem Hospital, being interest at the rate of 4 per cent. per annum upon the sum of £37,831 6s. 4d., in conformity with the resolution of the General Quarterly Court, 29th November, 1880.				
160	To CASUAL RECEIPTS, viz.—								
	Received of Government for one Patient	55 0 0			We, whose names are hereunto subscribed, have Examined and Audited the preceding Account for the Year One Thousand Eight Hundred and Eighty, and find the same correct and the Balance as specified, this Twenty-ninth day of March, One Thousand Eight Hundred and Eighty-one.				
	" Donation from Charles Woolston, Esq.	26 5 0							
	" " William Henry Goodair, Esq.	26 5 0			JNO. BAGGALLAY, Treasurer, WALTER D. CRONIN, JOHN MILES.				
	" Property Tax on Stocks to January, 1880	62 13 6							
	" " on Rents to March, 1879	240 3 2							
	" for Timber Shore, Lime Street	5 0 0							
	" for Sale of Timber at Barfreston	26 7 2							
		451 13 11	451 13 11						
236	To CASUAL RECEIPTS—INCURABLES, viz.—								
	Received for Sale of Wood at Wainfleet	51 16 0							
	" Property Tax on Rents to March, 1879	163 15 4							
		215 12 4		215 12 4					
350	To Received for Sale of £13,797 2s. Od. Consols, part of £59,194 6s. 2d. Consols (in Chancery)	13,538 8 0	13,538 8 0						
	" " £7,684 2s. 6d. Consols, part of £37,695 11s. 11d. Consols (in Chancery)	7,530 9 0	7,530 9 0						
	" " £2,000 Consols, part of £24,000 Consols	2,000 0 0	2,000 0 0						
	" " £4,000 Consols, part of £32,000 Consols	3,939 17 6	3,939 17 6						
		50,978 8 4	43,966 15 6	7,011 12 10					
	To Balance	4,422 16 2	3,446 19 7	975 16 7					
		55,401 4 6	47,413 15 1	7,987 9 5					
							55,401 4 6	47,413 15 1	7,987 9 5

CHAPTER I

The first part of the theory is devoted to the study of the ...

In the second part we shall consider the ...

The third part of the theory is devoted to the study of the ...

In the fourth part we shall consider the ...

The fifth part of the theory is devoted to the study of the ...

In the sixth part we shall consider the ...

The seventh part of the theory is devoted to the study of the ...

In the eighth part we shall consider the ...

The ninth part of the theory is devoted to the study of the ...

In the tenth part we shall consider the ...

GENERAL ACCOUNT OF BOTH HOSPITALS, 1880.

BRIDEWELL HOSPITAL—Balance in favor of the Hospital	£7,848 18 1
BETHLEHEM HOSPITAL—Balance against the Hospital	4,422 16 2
						£3,426 1 11
Cash at Bankers, Messrs. Glyn & Co.	£3,501 1 11
Cheque drawn—not paid	75 0 0
						£3,426 1 11

INCURABLE FUND.

Debt and Interest, 31st December, 1879	£32,831 6 4
One Year's Interest at 4 per cent.	1313 5 0
						£34,144 11 4
Excess of Expenditure over Receipts	975 16 7
						£35,120 7 11

BRIDEWELL HOSPITAL.

INCOME, 1881.

RENT—Rent-charges and Insurances	£16,550 11 7
Deductions	761 15 8
						15,788 15 11
DIVIDENDS on Stock in the Public Funds, viz.—						
£48,000 0 0, New 3 per Cent. Stock	1,440 0 0
21,063 5 9, 3 per Cent. Consols (in Chancery)	631 17 10
5,061 5 4, 3 per Cent. Reduced Annuities (in Chancery)	151 16 10
1,509 8 8, 3 per Cent. Consols (in Chancery)	45 5 8
1,510 13 8, 3 per Cent. Consols	45 6 4
100 0 0, 3 per Cent. Consols "Sir James Tyler's Gift"	3 0 0
						2,317 6 8
Net Annual Income	£18,106 2 7

BETHLEHEM HOSPITAL.

INCOME, 1881.

CURABLES—Rent, Land Tax, Rent-charges, &c.	£12,592 8 11
INCURABLES—Rent, Rent-charges, &c.	7,686 9 11
						£20,278 18 10
Deductions	221 0 6
						20,057 18 4
DIVIDENDS on Stock in the Public Funds, viz.—						
£32,000 0 0, 3 per Cent. Consols, Half-year	£480 0 0
28,000 0 0, ditto ditto	420 0 0
3,000 0 0, Bank Stock	315 0 0
21,000 0 0, New 2½ per Cent. Stock	525 0 0
45,499 3 2, 3 per Cent. Consols (in Chancery)	1,364 18 3
695 15 11, 3 per Cent. Consols	20 17 6
29,924 9 3, 3 per Cent. Consols	897 14 8
1,000 0 0, 3 per Cent. Reduced, "William Hollins' Gift"	30 0 0
						4,953 10 5
Net Annual Income	£24,111 8 9

A. M. JEAFFRESON,

Receiver, &c.

March, 1881.

1871

1872

1873

1874

1875

1876

1877

1878

1879

1880