

**Annual report and list of subscribers for the year ending 31st March, 1925 /
Western Counties Institution, Starcross (for mental defectives) near
Exeter.**

Contributors

Western Counties Institution, Starcross.
Courtnay, Henry H.
Mayer, Charles W.
Pasmore, I. W.
Iles, John H.
Locke, R. Lionel.

Publication/Creation

Exeter : Printed by William Pollard & Co., 1925.

Persistent URL

<https://wellcomecollection.org/works/absz4hxf>

License and attribution

Conditions of use: it is possible this item is protected by copyright and/or related rights. You are free to use this item in any way that is permitted by the copyright and related rights legislation that applies to your use. For other uses you need to obtain permission from the rights-holder(s).



Wellcome Collection
183 Euston Road
London NW1 2BE UK
T +44 (0)20 7611 8722
E library@wellcomecollection.org
<https://wellcomecollection.org>

Western Counties Institution, Starcross

(For Mental Defectives),
NEAR EXETER.

ESTABLISHED NOVEMBER 1864.

Report of the Committee

FOR
THE YEAR ENDING
MARCH 31st, 1925.

SECRETARY AND SUPERINTENDENT :
CAPT. C. W. MAYER.

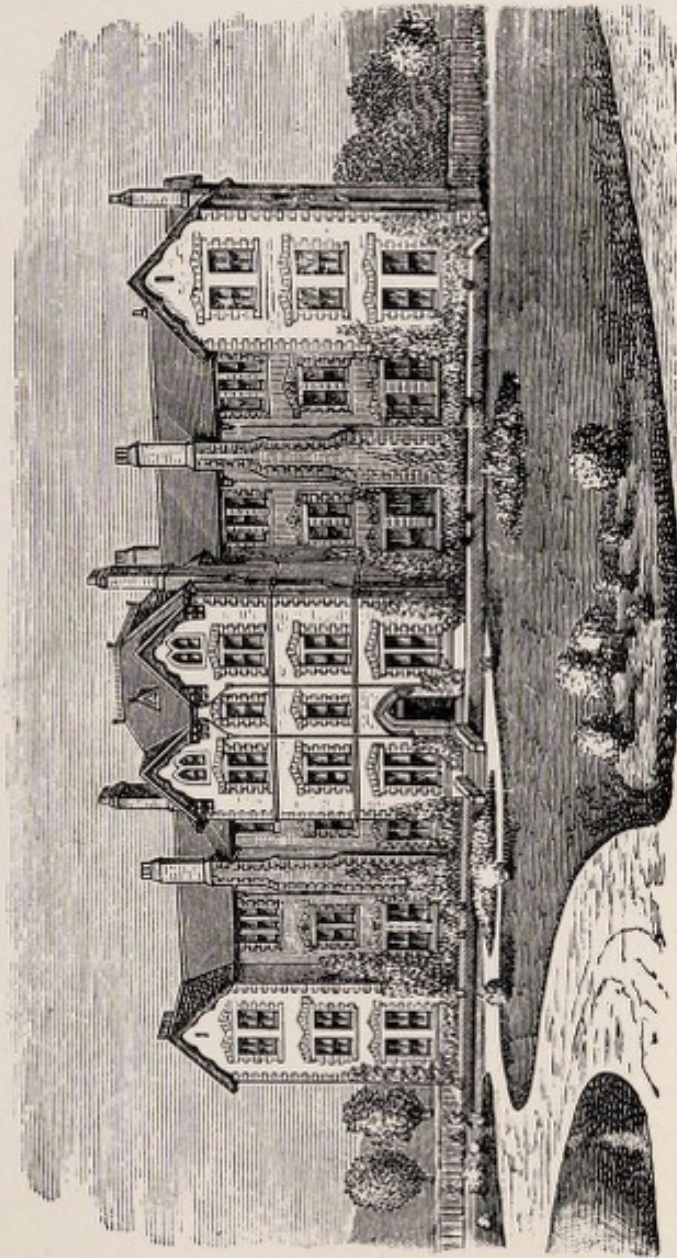
—o—
REGISTERED OFFICES :
THE INSTITUTION, STARCROSS.

EXETER :
WILLIAM POLLARD & Co. LTD., PRINTERS, BAMPFYLDE STREET,
1925.

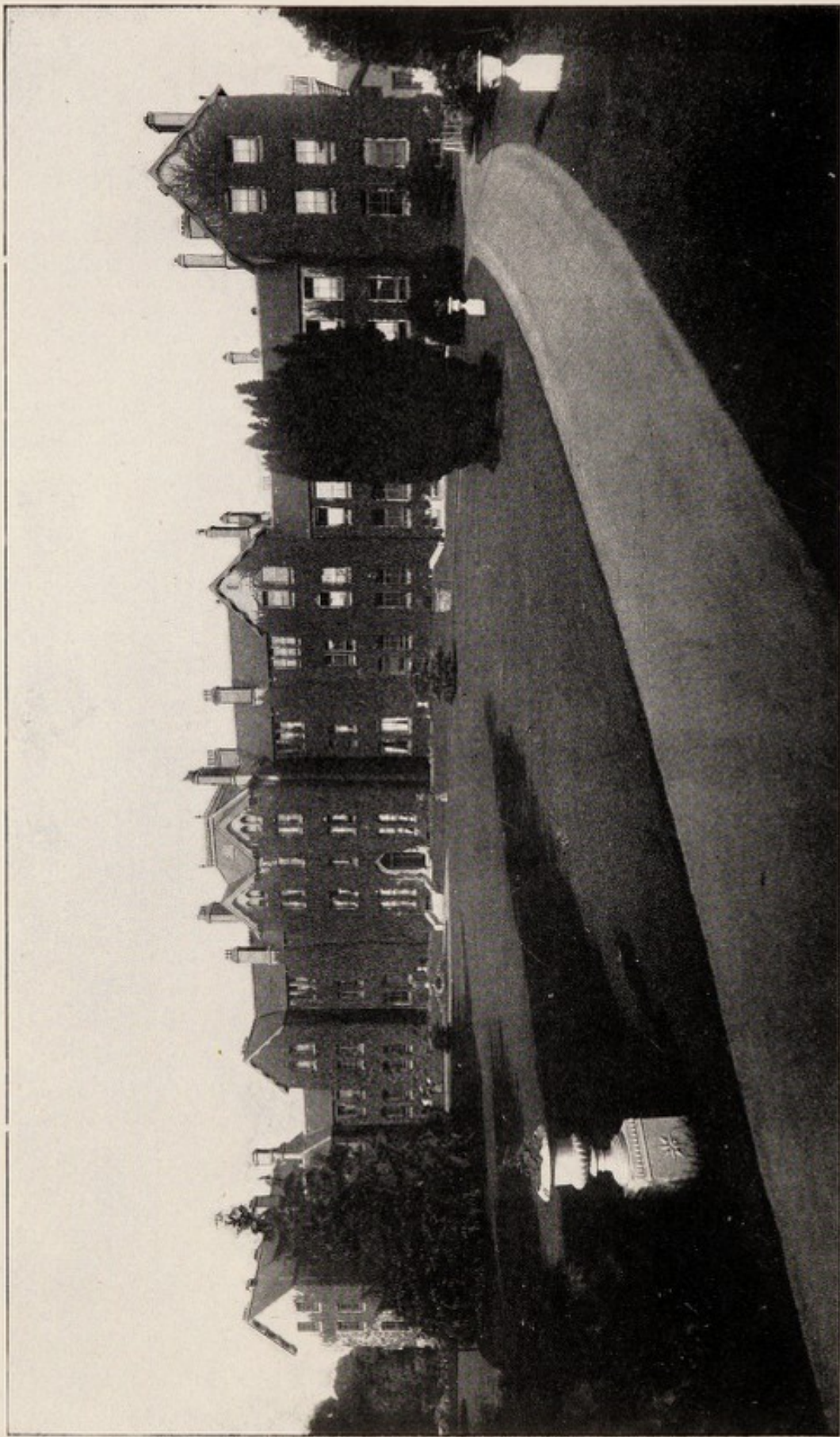
WELLS INSTITUTE LIBRARY	
Call	we 2000
Call	Ann-Rep
No.	WLM 28
	• BE 5
	W 52
	1924-25



22501408624



THE INSTITUTION IN 1876.



THE INSTITUTION, PRESENT DAY.

Western Counties Institution,
Starcross

(For Mental Defectives),

NEAR EXETER.

ESTABLISHED 1864.

ANNUAL REPORT

AND

LIST OF SUBSCRIBERS

FOR THE YEAR ENDING 31st MARCH,

1925.

EXETER :

WILLIAM POLLARD & CO. LTD., PRINTERS, BAMPFYLDE STREET.

1925.

WESTERN COUNTIES INSTITUTION, STARCROSS.

(For Mental Defectives),
NEAR EXETER.

President:

REV. THE HON. H. H. COURTENAY.

Vice-Presidents:

THE RT. HON. THE EARL FORTESCUE.	SIR JOHN SHELLEY, BART.
THE RT. HON. THE EARL OF MOUNT EDGUMBE.	SIR HENRY LOPES, BART.
THE RT. HON. THE EARL OF ELDON.	SIR ROBERT NEWMAN, BART., M.P.
THE RT. HON. VISCOUNT CLIFFDEN.	JOHN H. LEY, ESQ., J.P.
THE RT. REV. THE LORD BISHOP OF EXETER.	LT.-COL. E. H. VAUGHAN.
THE RT. HON. LORD CLINTON.	MAJOR E. F. MORRISON-BELL, M.P.
	MISS V. E. WILLS.

Committee of Management:

Chairman.—REV. THE HON. H. H. COURTENAY.

Vice-Chairman.—CAPT. C. W. M. PLENDERLEATH, R.N., C.B.E.

WM. C. BARNES, ESQ.	*W. P. HIERN, ESQ., M.A.,	REV. A. POULTON,
REV. W. H. CARTER.	F.R.S., J.P.	S. C. SNOW, ESQ.
J. GOULD DREW, ESQ., J.P.	*E. W. MATTHEWS, ESQ., J.P.	*MRS. L. E. WIMBUSH.
H. FALKNER, ESQ.	C. P. NEWMAN, ESQ.	*G. YOUNG, ESQ., J.P.
	*MRS. J. M. PHILLIPS, J.P.	

* Nominated by the Devon County Council.

Treasurer:

S. C. SNOW, ESQ., THE NATIONAL PROVINCIAL BANK, LIMITED, EXETER
BANK, EXETER.

Chaplain:

Secretary and Superintendent:

CAPT. C. W. MAYER.

Matron:

MRS. A. M. THOMAS.

Medical Officer:

JOHN H. ILES, ESQ., M.A., M.B., B.C. CANTAB., STARCROSS, EXETER.

Honorary Consulting Physician:

W. GORDON, ESQ., M.D., F.R.C.P. LOND., ETC., BARNFIELD CRESCENT, EXETER.

Honorary Consulting Surgeon:

BRENNAN DYBALL, ESQ., M.B., F.R.C.S., 37, SOUTHERNHAY WEST, EXETER.

Oculist:

G. P. D. HAWKER, ESQ., M.D., B.C., 32, SOUTHERNHAY WEST, EXETER.

Dental Surgeon:

IVAN W. PASMORE, ESQ., L.D.S. ENG., D.M.D. HARVARD.

Bankers:

THE NATIONAL PROVINCIAL BANK, LIMITED, EXETER BANK, EXETER.

Auditors:

MESSRS. THOMAS MARTIN, BALL & CO., ACCOUNTANTS, EXETER.

Architects:

MESSRS. LOCKE, SON & LAND, NEWTON ABBOT.

Solicitors:

MESSRS. SPARKES, POPE, THOMAS & MATHEW, EXETER.

REPORT OF THE COMMITTEE OF MANAGEMENT.

PRESENTED AT THE ANNUAL MEETING OF MEMBERS,
30TH MAY, 1925.

In presenting the 61st Annual Report, the Committee of Management are glad to be able to give a satisfactory account of the work of the Institution during the past year, and the continuous progress in the various departments cannot but be gratifying to its Friends and Subscribers.

The financial position of the Institution is satisfactory as evidenced in the Statement of Accounts annexed, but owing to the continued advance in the prices of provisions and all necessaries, the average weekly cost per head, exclusive of Special Expenditure, rose last year to 19/9, as against 18/3 for 1923. This is accounted for under the following heads: improved dietary recommended by the Board of Control, the greatly advanced price of flour, superannuation, increased cost of clothing, the wiring up of Elm Court, and the overhauling of the heating apparatus.

It has been decided, in view of the Board of Control's call for a more varied diet, including extra fruit and butter, to raise the Interim Charge to 19/6 this year.

The Books and Accounts have again been thoroughly examined by the Auditors, Messrs. Martin, Ball & Co., whose report is appended to the Balance Sheet.

In their 1923 Report the Committee stated that the Institution had been granted exemption from payment of Income Tax. This was under Schedules "A" and "B." Early in the year the local Inspector of Taxes claimed payment of Tax on the Overhead Charge,

submitting that the sum received was "trading profit" and assessable under Schedule "D."

The Committee consider the assessment an injustice and through their agent, Mr. J. H. Knight, Income Tax Expert, of Exeter, they have urged that in the work of the Institution the elements proper to commercial undertaking are absent, and that it is not reasonable to bring it under the charging section of Schedule "D" when it is carried on by unpaid governors and rent-free buildings, with capital subscribed by charitable persons; and when the work it is engaged upon is not of a profit-making character any more than the same work carried on by local authorities would be.

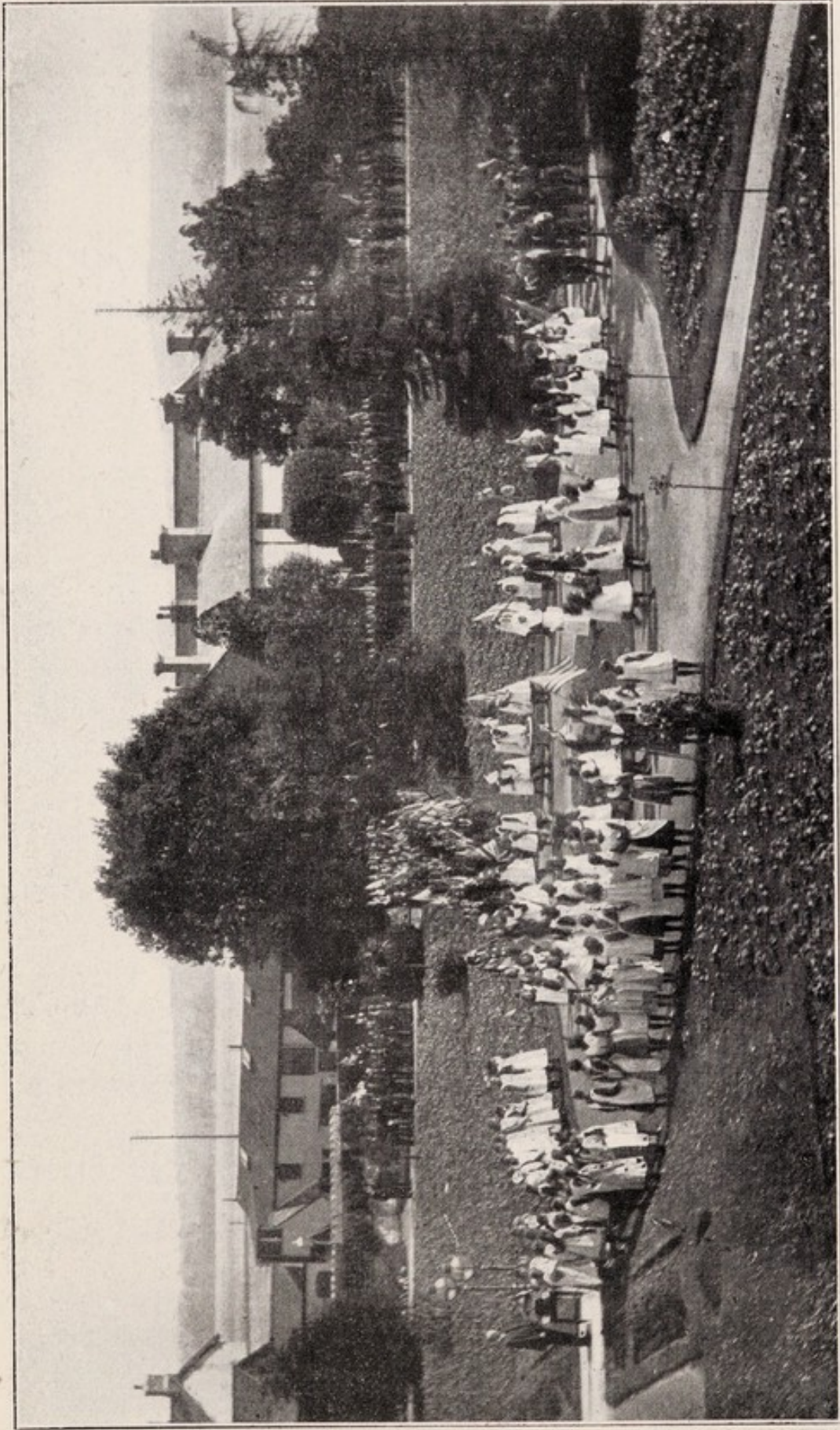
A case in many respects parallel with that of the Institution has recently been taken to Court by the Brighton College; a decision was at first given in its favour, but upset on appeal. This case is being taken to the House of Lords and the Committee are awaiting the result before considering what further action is necessary.

It is earnestly hoped the Committee will be successful in their appeal against the assessment because a failure must very seriously affect the finances of the Institution.

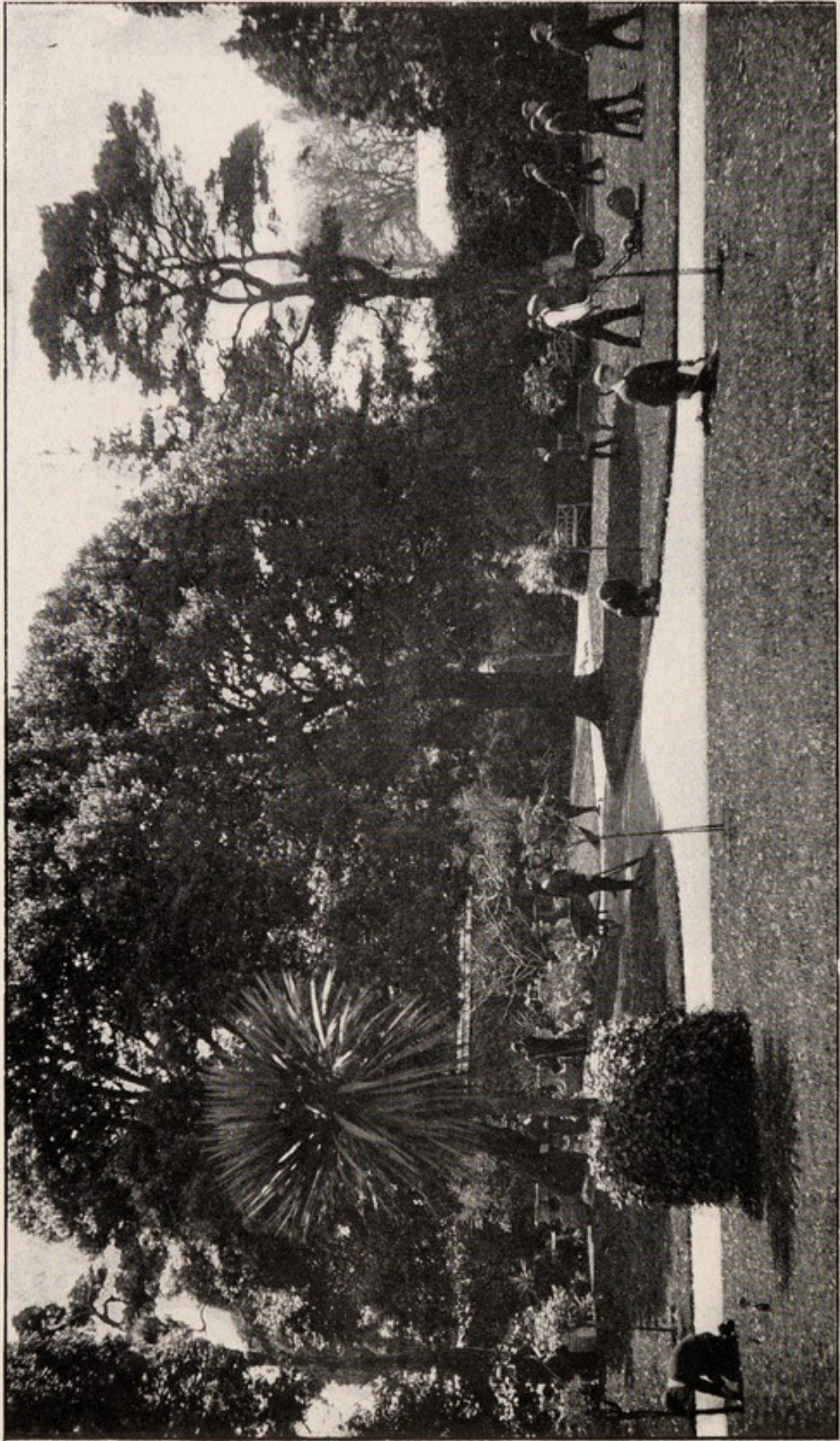
At the close of the year there were in the Institution 482 pupils, viz., 309 Males and 173 Females, the total number under training being 539. The present inmates may be thus classified according to the Counties from which they are received:—

	Devon.	Dorset.	Somerset.	Cornwall.	Other Counties.	Total.
Under 16	113	1	11	3	20	148
16 and						
under 21	76	—	31	8	49	164
21 and over	41	4	16	5	104	170
	230	5	58	16	173	482

In view of the fact that vacancies were badly needed for cases from the four Western Counties, particularly in the Special School, the Committee decided some time since to discharge all Education



EMPIRE DAY CELEBRATION.



A JUNIOR GARDENING CLASS.

Authority cases outside that area, and also, when necessary, to order the gradual removal of all Mental Deficiency Act cases chargeable to out-County Authorities. This means that a considerable number of high grade defectives are leaving the Institution and the number of Western Counties cases is steadily on the increase.

The Committee, subsequent to a report from the Superintendent, decided to arrange for the medical examination of the whole of the inmates once quarterly. This has been the means of ascertaining several cases of incipient tuberculosis on the Boys' Side, which has enabled the Medical Officer to prescribe open air treatment and, in some instances, light farm work, thus combating the disease in its earliest stage.

During a recent visit of the Commissioners of the Board of Control, the purchase of a Disinfector for use in disinfecting bedding, blankets, etc., was recommended. This apparatus will be placed in a specially built house and the work of installation will shortly be commenced.

The Superintendent and Medical Officer will, in their Reports, give detailed information respecting the training and health of the pupils, but, speaking generally from our own observation, we are pleased to report that the educational results, both in the Workshops and Schools, are most satisfactory, whilst the health of the inmates, in spite of the long spell of wet and inclement weather experienced during the greater part of the year has been well maintained.

Having regard to the fact that the acreage of the land owned or rented by the Institution is much less than is required for an establishment of its size and character, the Committee gladly availed themselves of the opportunity which occurred in the Autumn of renting Witcombe Farm from the Rt. Hon. the Earl of Devon. The Farm is quite close to the Institution, and consists of 47 acres of arable and 19 of grass land, with a small Farm House and Cottage.

The live and dead stock was taken over by valuation and amounted to the sum of £831. Owing to the wet season the tenant left a lot of oats uncarried and certain ricks of barley unthreshed, but this was soon taken in hand and the Farm Bailiff together with our farm lads have since got the land in good order. This is now planted and sown, the hedges properly pruned, and we are proceeding with dilapidations on the farm buildings as arranged with the owner.

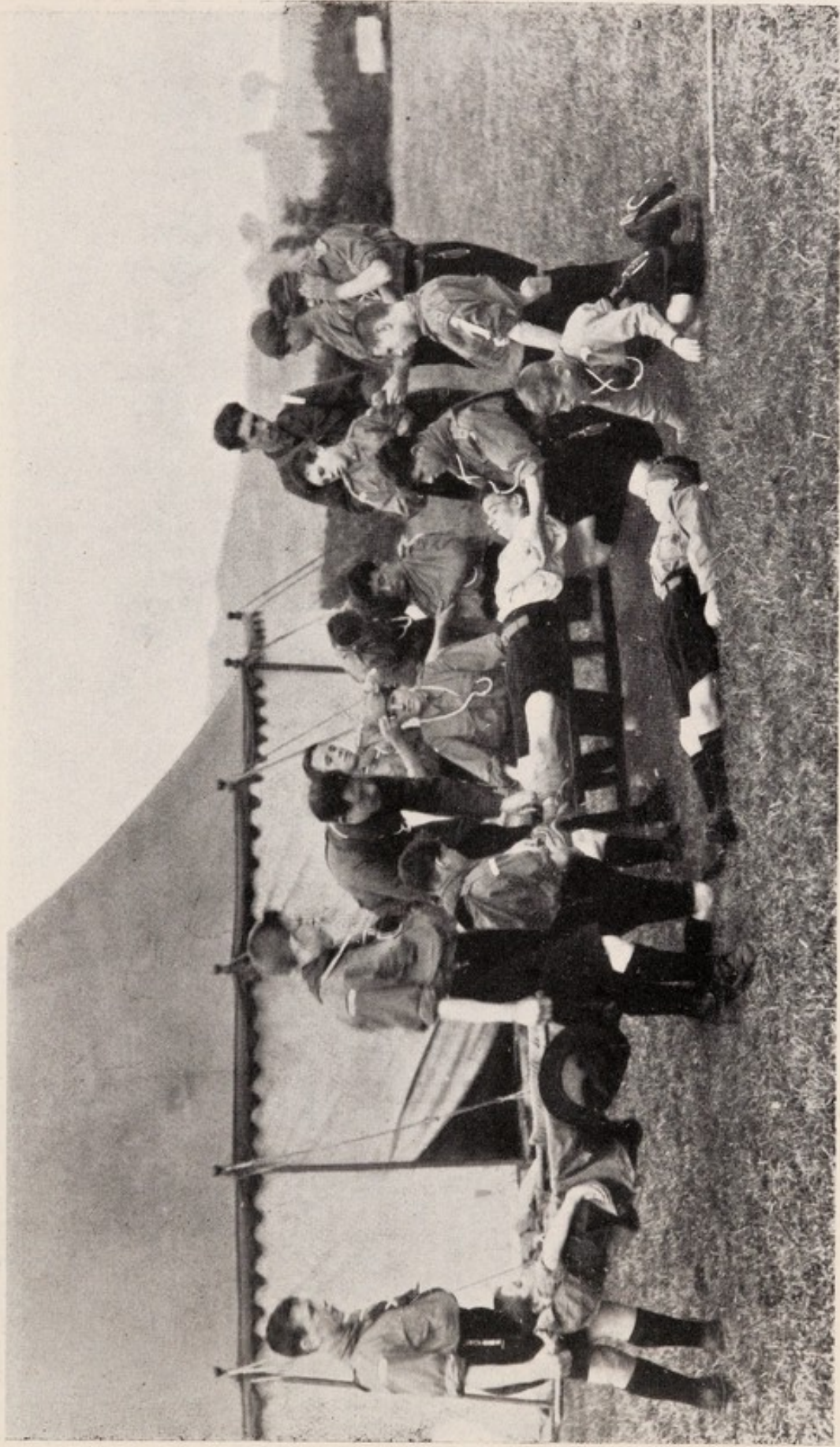
The proceeds on the sale of work this year are practically the same as last, viz., £1,342 15s. 11d. We have, however, two accounts for work just completed, which will add £200 to our next year's Balance Sheet.

The extension of the Open-air Shelter on the Girls' Side, for cases of tubercular tendency, has been completed and the beds increased from three to seven. The question of the erection of an Open-air Shelter for the Boys' Side is for the present in abeyance.

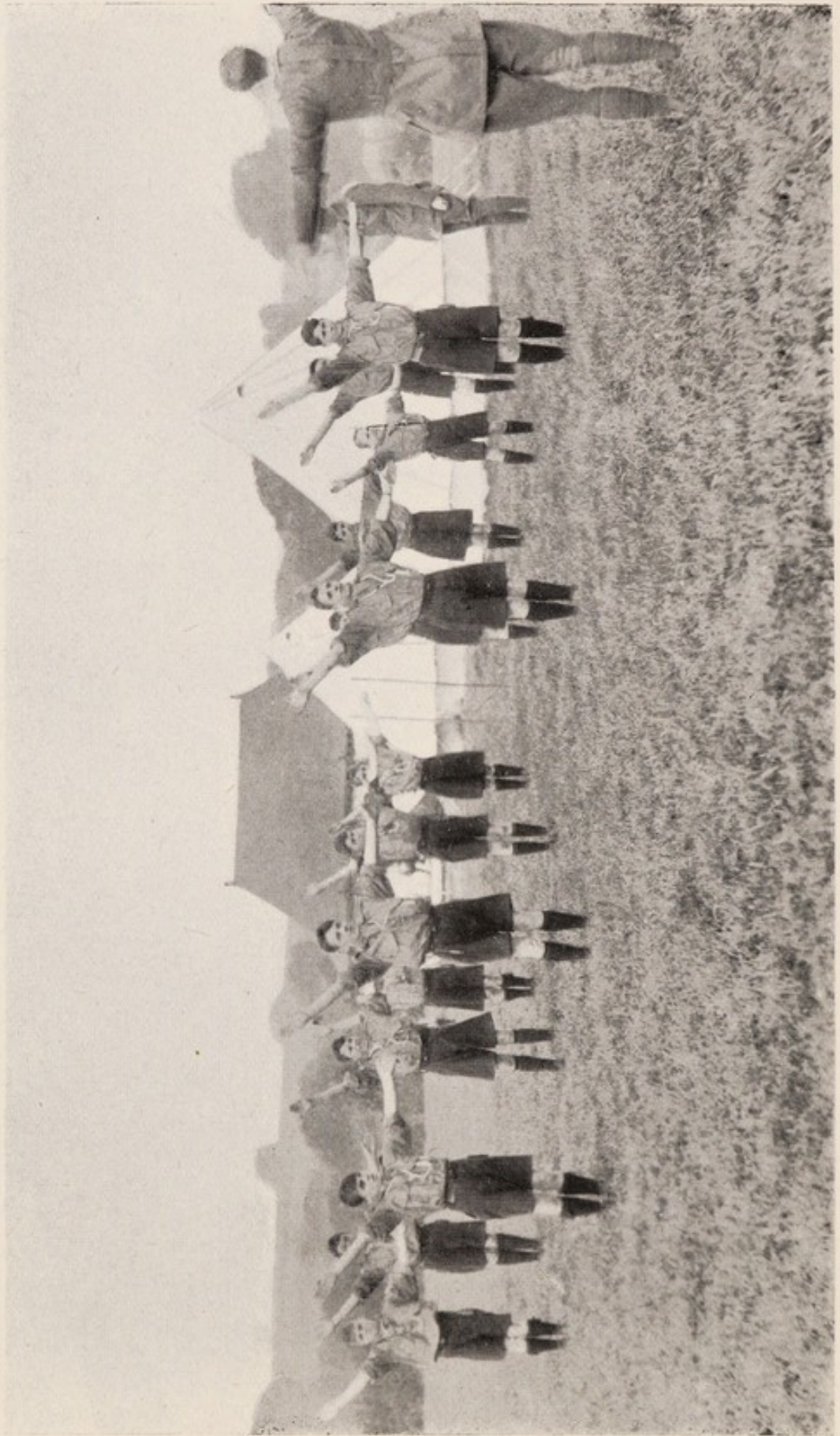
The painting of the exterior wood and ironwork at the front of the Institution has been carried out and, taking advantage of the long ladders being in position, the whole of the chimneys have been repointed.

The furnishing of the Chapel Annexe at the large Recreation Hall is nearing completion. The fine two-manual Organ, presented by Miss V. E. Wills, is being erected and the stained glass windows, also presented by her, are in hand. The Committee wish to put on record their sincere thanks to Miss Wills for her great generosity.

The Lighting Installation having proved highly satisfactory, it was decided some time since to do away with gas entirely and prior to dispensing with this, the question of the purchase of a duplicate lighting plant had to be considered to avoid all possible chance of breakdown. The Committee decided to instal a 45 h.p. Vickers-Petter two-stroke crude oil engine with a direct coupled dynamo capable of generating ample power for lighting, driving the



BOY SCOUTS—FIRST AID.



SEMAPHORE DRILL.

various electric motors and fire pumps. This plant cost the sum of £835 and is housed in a shed specially erected for the purpose.

The electric light has been installed at Elm Court and power points have been put in for the tailors' irons. This has proved a great saving in our gas bill.

A porch has been added at Elm Court outside the Matron's apartments to exclude draughts, and is a great improvement.

Another improvement has been effected in the building up of the porch at the Recreation Hall, for use as a Cinema Operator's Box which is steel lined and has a concrete floor. An up-to-date cinema plant has been installed, driven by motor, and arrangements made to control the Hall lighting both from the Operator's Room and the Hall. The chairs have been screwed down and the whole has been passed and licensed.

The Bell Circuit of the Internal Fire Alarm System having twice proved ineffective, the wiring was overhauled and, being found faulty, has been entirely renewed.

The alterations in the Dining and Recreation Halls necessitated a visit from Messrs. Longbottom to alter the heating circuit. As the system had not been overhauled for twenty years, it was decided to have this attended to and the Coils in the Heating Cisterns were found to be very much corroded. These have been replaced, which was an unforeseen expense.

Another charge upon our Repairs of Premises was the scraping and renovation of the Fire Stairs on the Girls' Side, where the iron rails, plates and girders were scaling badly. This was taken in hand, and here again a fairly heavy expenditure has been incurred. The Fire Steps on the Boys' Side will be overhauled next year.

The matter of Staff Superannuation having been reviewed, it

was found that at a date not far distant many of the Male Staff will have attained the age of 65. In one year no fewer than five members reach that age. The Committee, in the past, have granted small pensions to members of the Staff who had been in their service many years and were incapacitated from various causes from rendering further service, and it was foreseen that later on a heavy charge would devolve on the running expenses of the Institution. Under these circumstances a Sub-Committee was appointed to investigate the best method of dealing with the matter and, after considering proposals put forward by several Insurance Companies together with a local mutual plan, it was decided to put the mutual scheme before Mr. Duncan Fraser, M.A., F.I.A., of Liverpool, together with a proposal for Staff Contributions. Mr. Fraser having reported on the soundness of such a fund being started, the Staff were approached in the matter and unanimously decided to accept the scheme. The Committee obtained the sanction of the Commissioners of the Board of Control and it was arranged to commence contributions on July 1st, 1924, the Staff paying $2\frac{1}{2}$ per cent. on their salaries and emoluments and the Committee $6\frac{1}{2}$ per cent. The scheme is working very successfully and several kindred Institutions are adopting it.

Following upon a Meeting of the Committee with the Devon Mental Deficiency Authority upon the question of accommodation of all grades of mental defect at Starcross, the Board of Control called a Conference at the Guildhall, Exeter, and summoned representatives from Local Authorities of the Western Counties, and of Bath, Plymouth and Exeter to attend. Sir Frederick Willis, K.B.E., C.B., Chairman of the Commissioners of the Board of Control, took the Chair, supported by Mrs. Pinsent, a Commissioner, and the views of the various Authorities were solicited in the matter of a Colony Scheme for the West of England. Sir Frederick urged the Committee of the Western Counties Institution to take steps to obtain about 100 acres of land in the immediate vicinity, upon

which could be erected villas to accommodate 50 cases each, in order that all grades might be dealt with, and suggested that the scheme be formulated to deal with cases from Devon and Cornwall only. The Committee are now giving the matter their serious attention, with a view to falling in with the proposals of the Board of Control.

We have again to thank our numerous kind friends for their gifts of books, illustrated papers, toys, and money, and particularly the British Red Cross and Order of St. John Hospital Societies for their valuable addition of books to our Library. A list of all those who have helped towards the recreation and amusement of our large family will be found on another page.

To the Honorary Treasurer, Mr. S. C. Snow, Dr. W. Gordon, Consulting Physician, and the Consulting Surgeon, Mr. Brennan Dyball, the Committee beg to tender their thanks for services so ungrudgingly rendered; also to Mr. Hawker, the Oculist, and to Mr. Pasmore for his assistance in Dental Surgery.

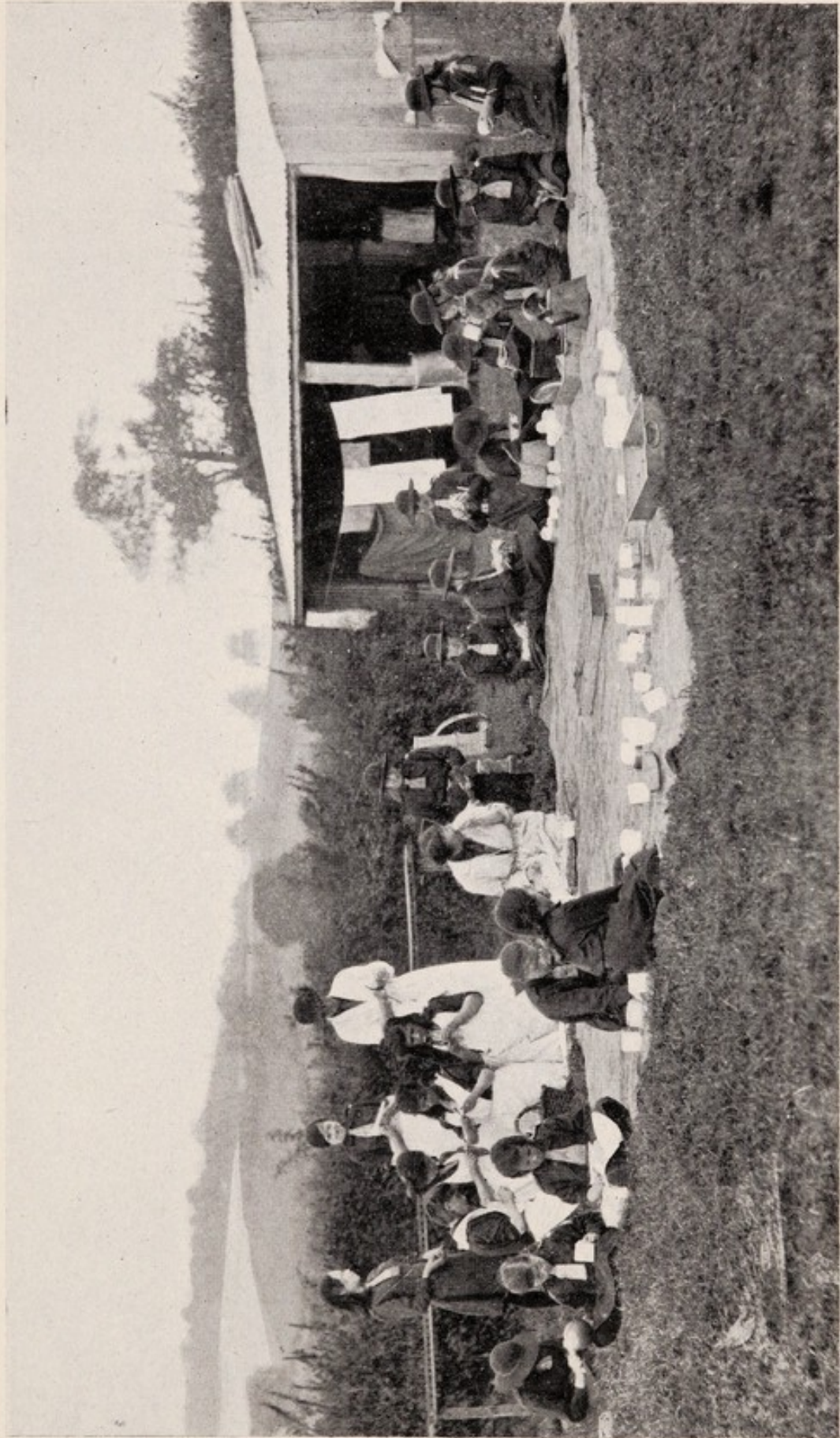
The Committee greatly regret the loss of the services of their Chaplain, the Rev. R. L. Locke, who has recently left Starcross. They desire to thank the Medical Officer, Dr. J. H. Iles, for his care and attention to the health and well-being of the Staff and Pupils.

It is with much regret the Committee have to record the death of Miss Norsworthy, late Head Nurse, who retired last year on pension, after thirty years' service, an operation, following a long and painful illness resulting in her decease.

The Committee cannot conclude their Report without thanking the Staff for the care and devotion shown by them in all and every detail of their work. As the Institution grows such details increase in every department, and it is because the Staff, both in the office and in the actual intercourse

with the patients follow the lead given them by the Superintendent and Matron that the Institution holds such a good position among similar organizations in the country.

HENRY H. COURTENAY,
Chairman.



GIRL GUIDES PREPARING FOR DINNER.



A CLASS IN OPEN-AIR SCHOOL.

REPORT OF THE SUPERINTENDENT.

To the President of the Western Counties Institution, Starcross.

MY LORD,

I have the honour to submit the following Report upon the condition and management of this Institution for the year ending 31st March, 1925.

At the beginning of the year the number of pupils in residence was 491, viz., 323 males and 168 females. During the year 42 males and 21 females have been admitted, and 54 males and 16 females discharged. Eight males and 1 female were placed in situations, 1 male was removed to a Mental Hospital, some were discharged for medical reasons, and others have been removed either to their homes or to other Institutions where their work can be utilized. Eight males and 9 females have been granted long leave of absence. Two males have died. Fifteen cases have been technically discharged and re-admitted. The average number resident in the Institution during the year has been 477.

Of the 63 pupils admitted, 33 were sent by Mental Deficiency Authorities, 26 by Education Authorities, 3 by Boards of Guardians, and 1 was a private case. Their ages ranged from 5 years to 23 years, the average being 13 years.

Whilst some of the newly admitted cases were of the average physique and intelligence usually exhibited by our pupils on their arrival, there were some who were more or less handicapped by physical disability and weak health which, together with their limited mental capacity, rendered it very doubtful if much improvement could be effected in their condition. The majority of pupils admitted during the year have, however, made good progress

in many ways and will without doubt derive permanent benefit from our system of training.

The recent decision of the Board of Management, brought about by the lack of accommodation for cases from the Western Counties, to discharge all Education and Mental Deficiency cases from outside that area, has led to the removal of quite a number of promising lads and young women. These have all been sent to situations under care, to Institutions similar to our own where they are awaiting leave of absence or to the care of their friends.

The fact that 12 of our males and 13 of our female pupils are at present on leave of absence and are reported to be doing well in the situations which have been found for them, proves that the value of our training in the building up of character cannot be over-estimated. Of the males, four are on farms, one is a hall boy, four are bootmakers, one is a tailor, another is working a delivery round for a butcher, and the remaining case, being crippled, is helping at home. The females are employed in domestic work. It is also gratifying to note that with few exceptions all those who have left the Institution during the past year shewed considerable improvement as a result of the training they had received.

The introduction of long leave of absence materially assists me in giving opportunity to our adult pupils to go out into the world. Being under kindly supervision and possessed of the knowledge that should they fail they can return to their old home, the pupils are helped and comforted. One girl who found she could not satisfactorily perform the duties of a housemaid and withstand the temptations and trials of our every-day life, quite happily returned to the Institution, fully realising her limitations.

The health of the establishment during the year has been excellent. The average death rate over the past ten years is under one per cent., which is remarkably low. The cause of this is not difficult to seek, and it points clearly to the fact that the pupils are well and kindly treated, that they are kept clean, warm and well clothed, that

their minds are kept amused and occupied, their rooms well ventilated and that a watch is kept for the first symptoms of disease. Without the utmost care and attention on the part of the nurses and attendants, these excellent results could not be attained, and I am glad to bear witness to the close observation given by them to the health of their young charges and their readiness to report any abnormal conditions.

The syllabus of training in the schools has been slightly altered, to incorporate suggestions made by the Chief Inspector of the Board of Education. Fortnightly conferences of teachers are held when the work of the school is reviewed, the best methods of training discussed and future work planned. Mr. Williams and Miss Taylor, our Schoolmaster and Mistress, who have been with us for some years, have recently introduced several new ideas for training, and by their visits to other educational establishments have been able to judge for themselves the success attained from methods other than their own. Speaking generally of the schools, both boys and girls have improved considerably in elementary knowledge, reading, writing and easy arithmetic, a large number of the pupils being able to write letters unaided and read books for their own amusement. In this connection the use of the Cinema as an aid to reading cannot be overlooked and there is no doubt much good can be accomplished by the exhibition of well-chosen films as a pleasant and quick method of education. The outdoor school inaugurated last summer was a happy innovation and helped materially in building up the children's stamina against the winter months.

That the usefulness of the Institution and the care and attention bestowed on the pupils is appreciated by the parents, friends and the pupils themselves, is evidenced by the numerous grateful letters received, of which the following are examples:—

“ I feel I must write and thank you for the very nice time
 “ our little girl has had this Xmas with the rest of the
 “ Institution. It makes parents feel grateful that our

“ children can go to such places, to know that they are being
 “ taught so wonderfully and that there is such happiness
 “ with it all.”—M.D.

“ When one compares ‘ D.’ now with what he was seven
 “ years ago one realises how good the discipline and training
 “ have been for him. The improvement is so great, and I
 “ am most grateful for all the care and interest taken in
 “ him.”—A.L.S.

“ I feel I must write to you all to thank you for the
 “ care given me when I was at the Institution and the kind
 “ way I was treated by the Doctor and hospital staff. Were
 “ it not for this I feel I should not be alive to-day. Every-
 “ thing was done for our comfort and happiness, and the
 “ Superintendent and staff try every day to make lives
 “ brighter.”—H.H.

“ I am very sorry I could not write before but I have had
 “ a lot of work to do and had little time for writing. I
 “ am getting on very well indeed with my work and as I
 “ was taught at the Institution, I always do what I am told.
 “ I thank you with my whole heart for all you did for me.
 “ I met ‘ B.’ on Sunday, and I am sure you will be pleased
 “ to know he is doing well also.”—H.B.

One parent, upon hearing that a Chapel Annexe was being built, has sent me a pair of very handsome brass altar vases as a small token of thankfulness for the training given her daughter.

The various trades and manual occupations on the Boys’ Side have been carried on in the workshops as usual and good progress has been made in every direction. A list of the articles made and sold will be found on another page. In passing I may say that a Rectors’ Commemoration Board and a very beautiful carved oak Altar Table have been made by the Carving Class for a local church,

and a Lectern for our new Chapel Annexe. The oak table forms the subject of one of the illustrations included in this Report. An indication of the progress made by the lads in the Engraving and Signwriting Class is provided by the work they have done in the furnishing of our Chapel Annexe. It includes the cutting in wood of a large text, "Glory to God in the Highest," and the painting of two panels containing the Ten Commandments.

Samples of the articles made in the course of industrial training were exhibited at the British Empire Exhibition last year, resulting in our receiving many orders for goods which were greatly admired. By the kind permission of Messrs. J. Wippell and Co., of Exeter, a large lace altar superfrontal was exhibited in their windows, and critics have spoken of the splendid way the work was executed. At the Bristol Eisteddfod recently held, our pupils secured two first class and two second certificates and as only four exhibits were sent for competition the result was very satisfactory.

The leasing of Witcombe Farm has enabled me to increase the training given in agricultural work and to employ more lads out-of-doors for the benefit of their health. In the short time the farm has been in our possession much good work has been done; the hedges have been trimmed, ditches cleared, and the land tilled. The farm supplies a long-felt want, and I am hoping that by growing more vegetables, fruit, etc., a saving will be effected in the cost of provisions, and that the Institution will further benefit by the sale in the market of wheat, oats, barley and other produce.

The industrial occupations of the girls remain substantially the same as mentioned in my last Report; a list of these and of the trades taught on the Male Side will be found on page 33. Much activity has been displayed in the Knitting Department where many woollen coats, costumes, jerseys and pull-overs have been made and in the Lacemaking Class where several beautiful

altar superfrontals, to the order of Miss V. E. Wills, have been executed.

It has always been our aim to assist our pupils to be as self-supporting as possible, and all girls over the age of fourteen years who are likely to return to their own homes or take up situations are specially instructed in the care of their own linen, darning, etc., and in cooking. Cooking classes are held several times weekly and lessons are given in the preparation of plain meals. When considered proficient the girls are provided with essential ingredients and left to cook food entirely on their own responsibility. The experiment has been attended with much success.

Our Boys' Brass Band has proved a great asset during the year and has fulfilled many engagements in addition to entertaining our own pupils. Two Brass Quartettes were entered for the Devon Eisteddfod and succeeded in gaining a First and Second Class Certificate—a result which must be gratifying to those who had trained them.

The Boy Scouts were enrolled by the District Commissioner, Mr. G. R. Bowes, in June last, and have since been inspected by Colonel Couchman who, after examining their Drill, Ambulance Work and Signalling, expressed himself to be extremely pleased with their training. A few days later, Mrs. Carew, District Commissioner of the Girl Guides, enrolled our Troop of Guides. During August the Scouts went under canvas for a week, and the Guides also had their training at the Camp.

Taking advantage of the summer holidays, I sent all the boys whose parents could not have them home, to the camp for a week and in spite of the unsettled weather they all thoroughly enjoyed their new experience. Rations were sent up daily and the Scouts acted as cooks and carried out the necessary fatigue duties. The excitement of helping to cook their own food, make their own beds,

etc., added to a most enjoyable holiday, and I propose to make the camp an annual event.

Sports and pastimes enter largely into our programme of training and our cricket team has been engaged in many matches with local clubs, and in the majority of cases proved the winners. Football is always the most popular game, and a large number of matches has been played. The lads who have not taken part have thoroughly enjoyed looking on and have displayed a keen interest in the style and play of the various visiting teams. We have a Senior and a Junior team, and even teams of Lilliputians. The last named consist of boys about eight years of age and the serious manner in which they have played has been amusing to all.

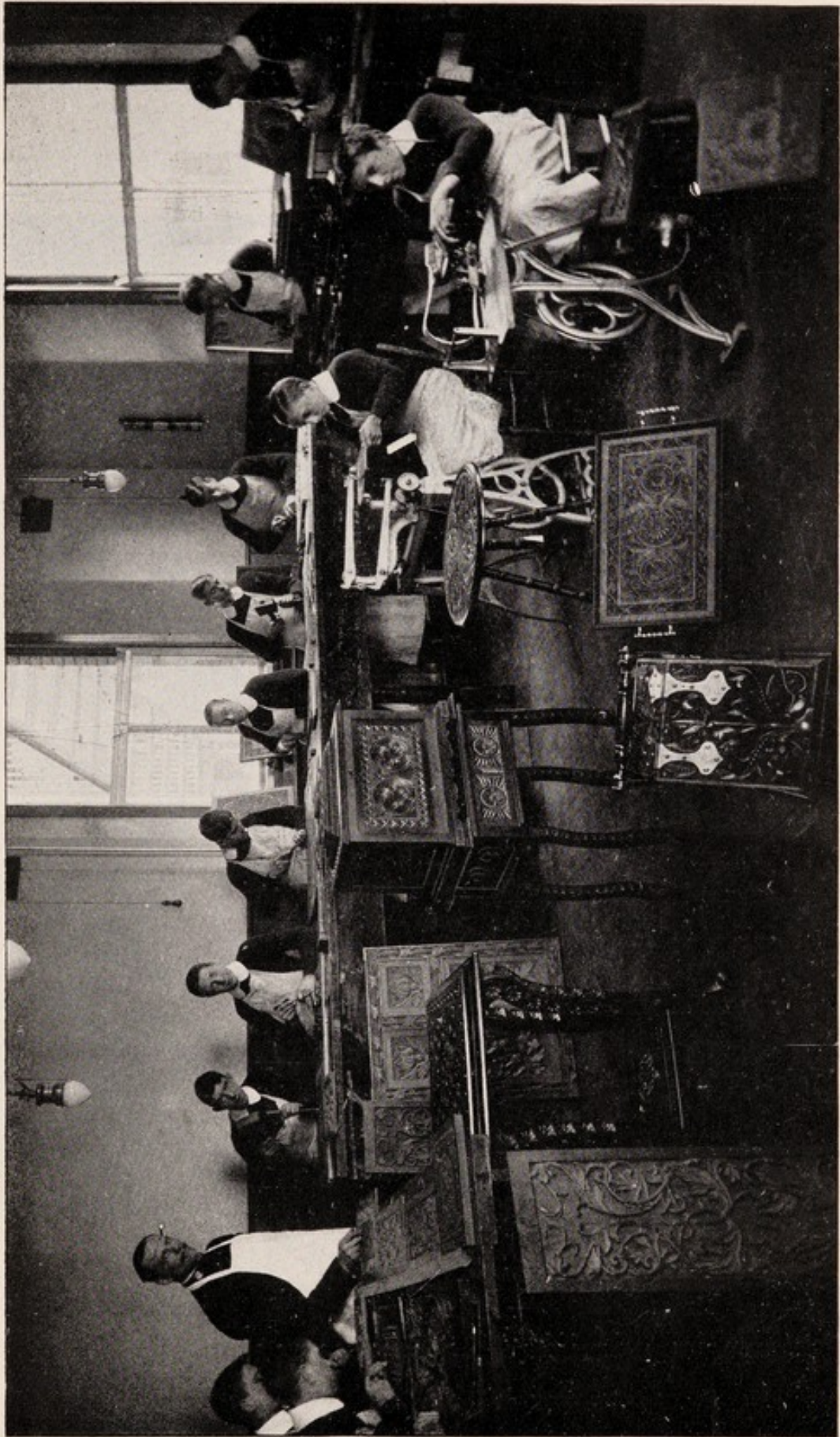
The following is the list of matches played during the year :—

CRICKET.

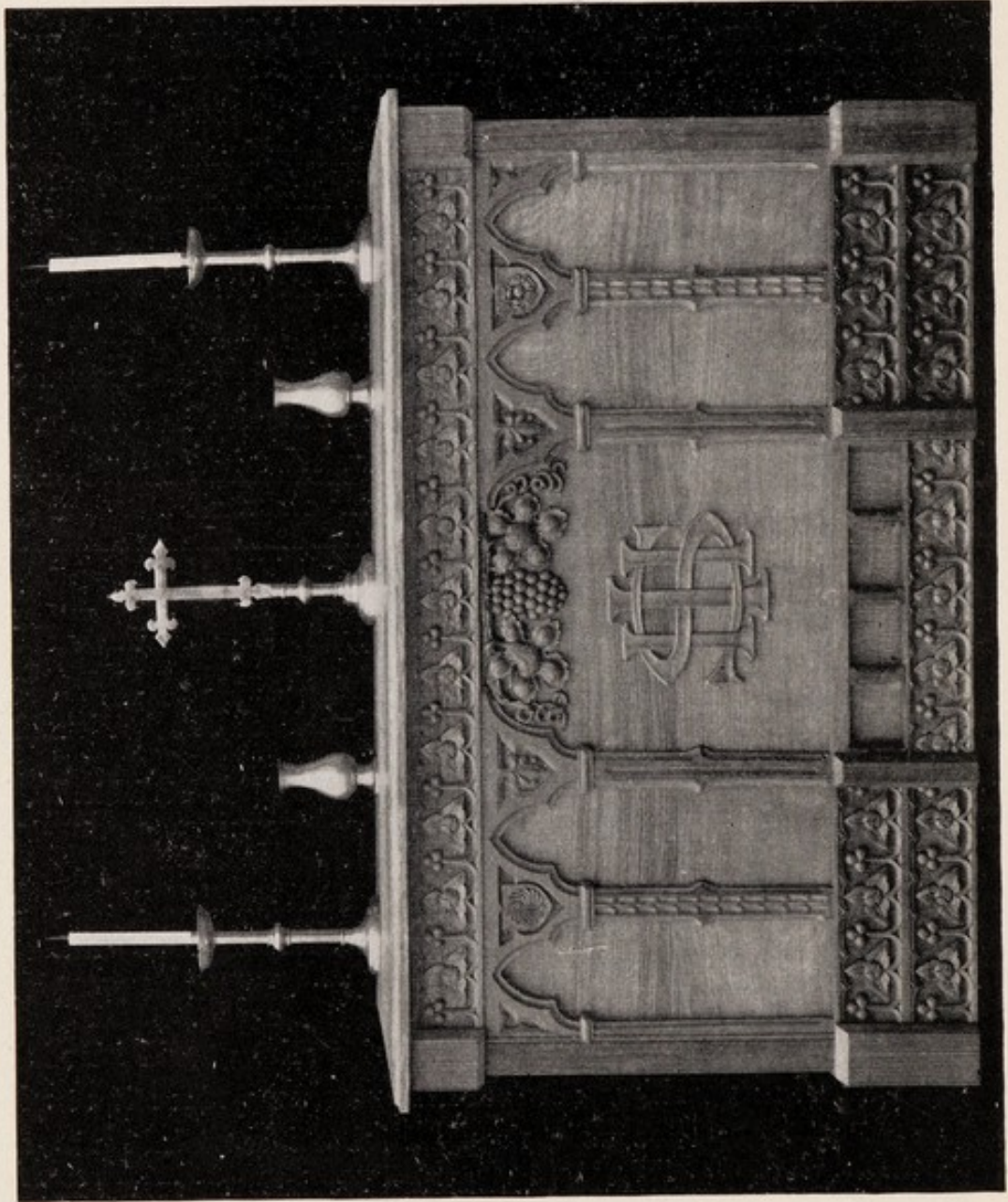
1924.			Runs.	
June 28.	W.C.I.	128	Won by 98 runs.
	St. Sidwell's	..	30	
July 1	W.C.I.	57	
	Starcross	..	71	Won by 14 runs.
„ 10	W.C.I.	78	Won by 28 runs.
	Starcross	..	50	
„ 12	W.C.I.	134	Won by 119 runs.
	St. Sidwell's	..	15	
„ 22	W.C.I.	42	Won by 18 runs.
	Starcross	..	24	
„ 24	W.C.I.	62	Won by 8 runs.
	Starcross	..	54	
„ 26	W.C.I.	51	
	Exmouth	..	93	Won by 42 runs.
„ 31	Starcross	..	102	
	W.C.I.	65	for 2 wickets.

FOOTBALL.

Date.		Clubs.	Goals for.	Goals against.
1924.				
Sept. 6	W.C.I.	Seniors v. St. Thomas ..	1	1
" 13	"	Seniors v. Kenton ..	2	3
" 20	"	Seniors v. Southernhay O.B.	1	0
" 23	"	School Boys v. Starcross School	1	1
" 30	"	School Boys v. Starcross School	6	5
Oct. 2	"	Juniors v. Starcross Juniors	3	0
" 4	"	Seniors v. Fulford's College	14	2
" 9	"	School Boys v. Starcross School	2	2
" 11	"	Seniors v. St. Edmund's, Exeter ..	3	1
" 14	"	School Boys v. Starcross School	3	2
" 18	"	Seniors v. Dawlish Reserves	9	0
" 22	"	School Boys v. Starcross School	1	2
Nov. 4	"	School Boys v. Starcross School	3	3
" 6	"	Seniors v. Newton Corinthians	4	1
" 14	"	School Boys v. Starcross School	3	2
" 28	"	Seniors v. Newton Corinthians	2	5
Dec. 13	"	School Boys v. Ladysmith Road	0	4
" 13	"	Seniors v. Exeter Rovers	10	0
" 20	"	Seniors v. Exeter Y.M.C.A.	1	1
" 26	"	Seniors v. Newton Corinthians	4	2
" 27	"	Seniors v. Exeter ..	2	5
1925.				
Jan. 3	"	Seniors v. Newton United	2	1
" 17	"	School Boys v. Starcross School	1	1
" 17	"	Seniors v. Exwick Reserves	6	1
" 24	"	School Boys v. Teignmouth B.L.B.	2	1
" 31	"	School Boys v. Starcross School	1	1
" 31	"	Seniors v. Kenton ..	4	0
Feb. 7	"	School Boys v. Ladysmith Road	1	2
" 7	"	Seniors v. Exmouth Y.M.C.A.	4	1



WOOD-CARVING.



ALTAR TABLE SUPPLIED FOR DODDISCOMBLEIGH CHURCH.

Feb.	14	W.C.I. Seniors	v. Newton St. Leonard's ..	5	1
„	14	„ School Boys	v. Starcross School	6	2
„	21	„ School Boys	v. Newtown, Exeter	1	1
„	21	„ Seniors	v. Newton Congregational ..	7	0
„	28	„ Seniors	v. Starcross ..	3	5
Mar.	7	„ Seniors	v. Exmouth Y.M.C.A.	1	1
„	12	„ School Boys	v. Starcross School	3	0
„	14	„ Seniors	v. Newton United	3	0
„	26	„ School Boys	v. Starcross School	3	3
„	31	„ School Boys	v. Starcross School	4	0

SENIORS.—Goals for, 85; against, 31. SCHOOL BOYS.—goals for, 47; against, 32.

For the girls hockey has proved a great attraction and we propose to meet opposing teams next season. My thanks are due to Miss Balster, of Newton Abbot, who attended regularly every week throughout the season and undertook the arduous work of coaching our young ladies in the rudiments of the game. Her services were all the more appreciated in that they were given gratuitously.

Cinematograph entertainments, Magic Lantern Shows to teach the children fairy tales, Wireless Entertainments, Whist Drives, Table Tennis and Badminton Tournaments, with concerts and variety performances have kept our large family happily occupied during the winter months. The following is a list of some of the entertainments and pastimes:—

1924.

Sept.	24	Whist Drive (Seniors).
Oct.	7	Whist Drive (Seniors).
„	8	Draught Tournament.
„	8	Whist Drive (School Boys).
„	21	Entertainment (Mr. Harry Rice).
„	30	Whist Drive (Seniors).

- Nov. 5 Whist Drive (School Boys).
 „ 10 Entertainment (Mr. Will Hitchings).
 „ 18 Entertainment (Staff).
 Dec. 25 Entertainment (Girls) (“ Princess Yolande ”).
 „ 26 Entertainment (Boys) (“ Lollipop Land ”).
 „ 31 Entertainment (Boys) (Committee).
 1925.
 Jan. 6 Entertainment (Girls) (Public).
 „ 7 Entertainment (Boys) (Public).
 „ 12 Entertainment (Girls) (Public).
 „ 13 Entertainment (Boys) (Public).
 „ 21 Cinematograph Entertainment.
 January. Table Tennis Tournament.
 Jan. 27 Exeter Pantomime (100 Boys and Girls).
 Feb. 3 Whist Drive (School Boys).
 „ 4 Cinematograph Entertainment
 „ 19 Cinematograph Entertainment
 „ 26 Cinematograph Entertainment
 Mar. 5 Entertainment (Staff).
 „ 11 Cinematograph Entertainment.
 March. Table Tennis Tournament.
 „ 26 Cinematograph Entertainment.
 April 1 Entertainment (arranged by Mr. F. W. Thomas,
 Exeter).
 „ 7 Entertainment (Girls).
 „ 8 Cinematograph Entertainment.
 „ 13 Cinematograph Entertainment.

I should like to take this opportunity of expressing my cordial thanks to the many generous friends who so kindly contributed to make our Christmas Festivities such a success. The books and magazines were particularly acceptable and help materially towards the intellectual well-being of our pupils. A list of gifts will be found on page 41.

The Christmas Pantomimes were again very successful, over

eighty children taking part. The boys rendered a musical play, "Lollipop Land," and acquitted themselves very well indeed. Mr. Williams, the Schoolmaster, is to be congratulated upon obtaining such excellent results. The fact that this play has since been staged in at least two different parts of Devon may, perhaps, be taken as a compliment to our young performers. Miss Taylor, Schoolmistress, again wrote the play for the girls, entitled "Princess Yolande." The children faithfully interpreted a very pretty fable and won her the highest praise. Many educational people were present at the various performances and were favourably impressed by the absence of self-consciousness and the verve displayed by the young actors and actresses. Over 2,000 persons witnessed the final performances of the plays, and subscribed sufficient money to enable me to send all those who had taken part to the Exeter Pantomime—a treat very much appreciated.

Tuck Shops have been built at the Boys' and Girls' Recreation Halls. The chief object of these is to teach the pupils the value of money, the weighing of commodities, etc., and thus attain worldly wisdom under the kindly eye of their teachers. Sweets and fancy goods—in fact everything wanted by the pupils—are stocked, the goods being purchased at prices giving definite advantages to the pupils.

The Staff Rifle Club have finished a good season, and the shooting of the members of the League team has proved too good for the neighbouring clubs. I am pleased to say they have won the League Cup with a very fine aggregate.

The Matron has been a great help in the nursing of the sick and supervision of general household work of the Institution, and my thanks are due to her especially in the matter of the revision of the Dietary.

I take this opportunity of expressing my obligation to the Heads of the various departments, all of whom, with one exception, have been with us for many years, and who, by their energy, fidelity and the interest they take in their work, have contributed so much to the success the Institution has achieved.

I regret the loss of our Chaplain, the Rev. R. Lionel Locke, who has helped us in our work for many years past, and I wish him every success in his new Parish. To my medical colleague, Dr. J. H. Iles, I tender my sincere thanks for his cordial co-operation and assistance.

In conclusion, I beg to express my gratitude to the Chairman and Members of the Managing Committee for their confidence and support, which it will be my earnest endeavour, always, to merit.

I have the honour to be,

My Lord,

Your Lordship's obedient Servant,

CHARLES W. MAYER,

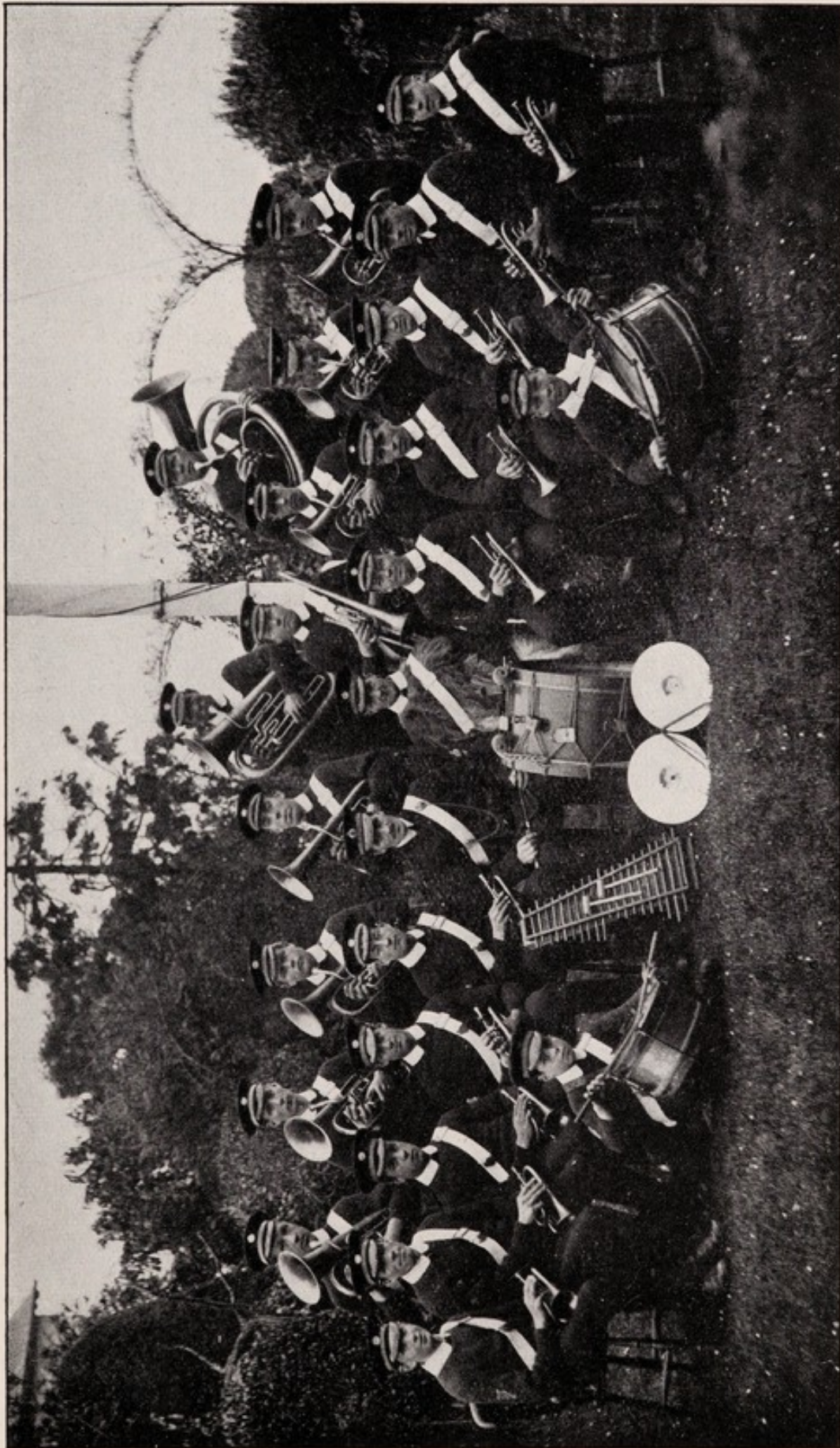
Superintendent.



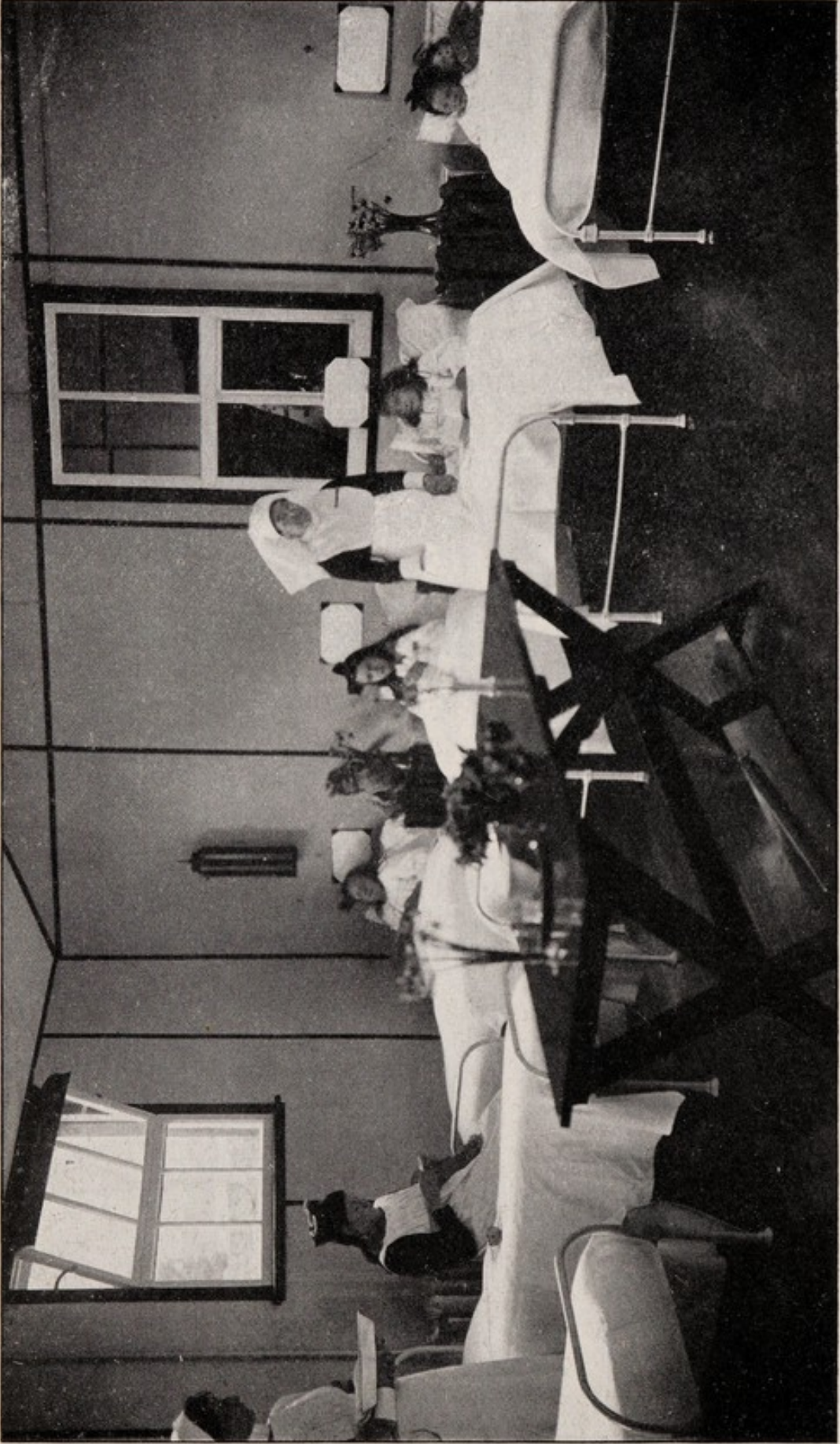
SENIOR FOOTBALL TEAM.



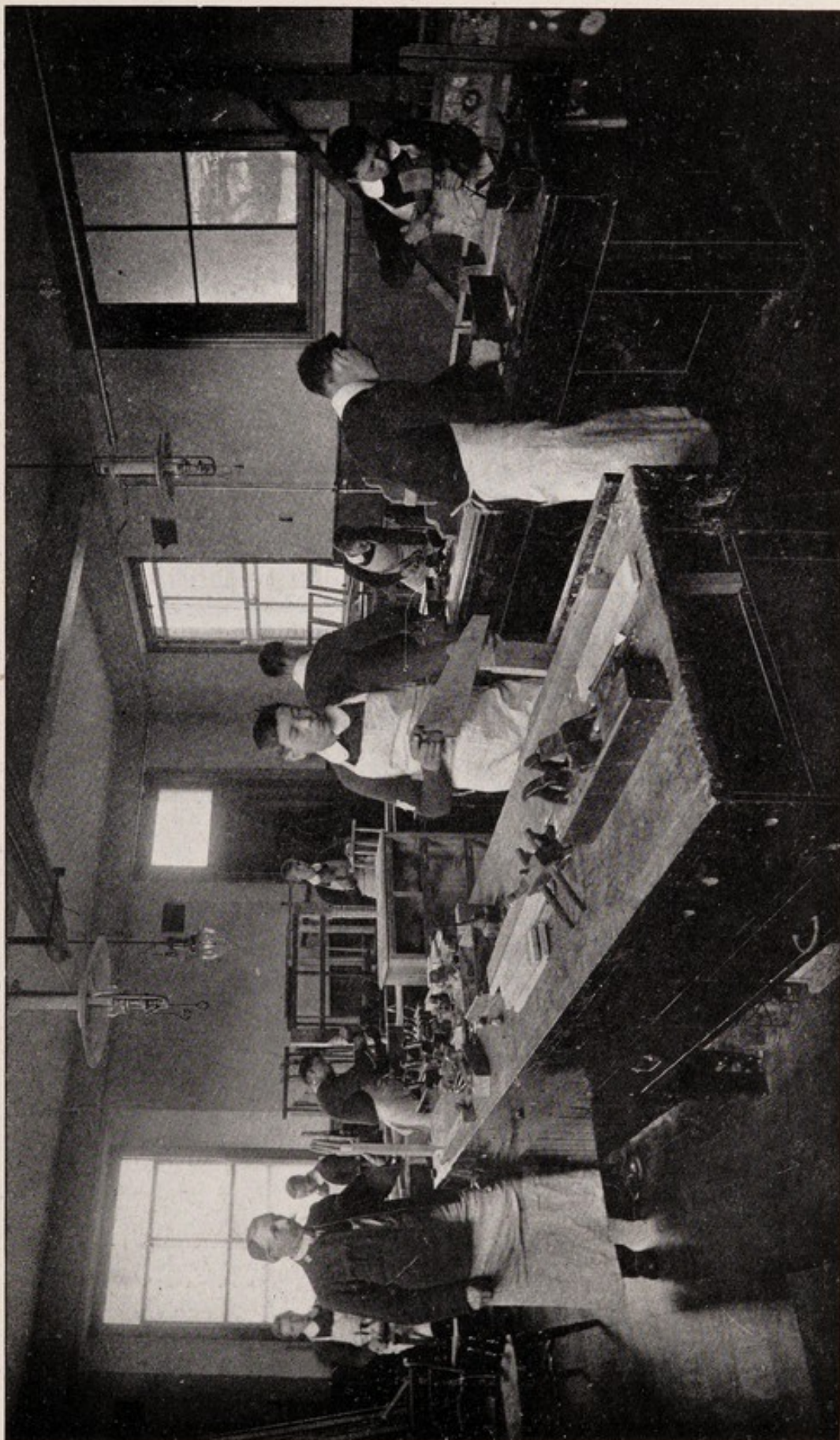
JUNIOR FOOTBALL TEAM.



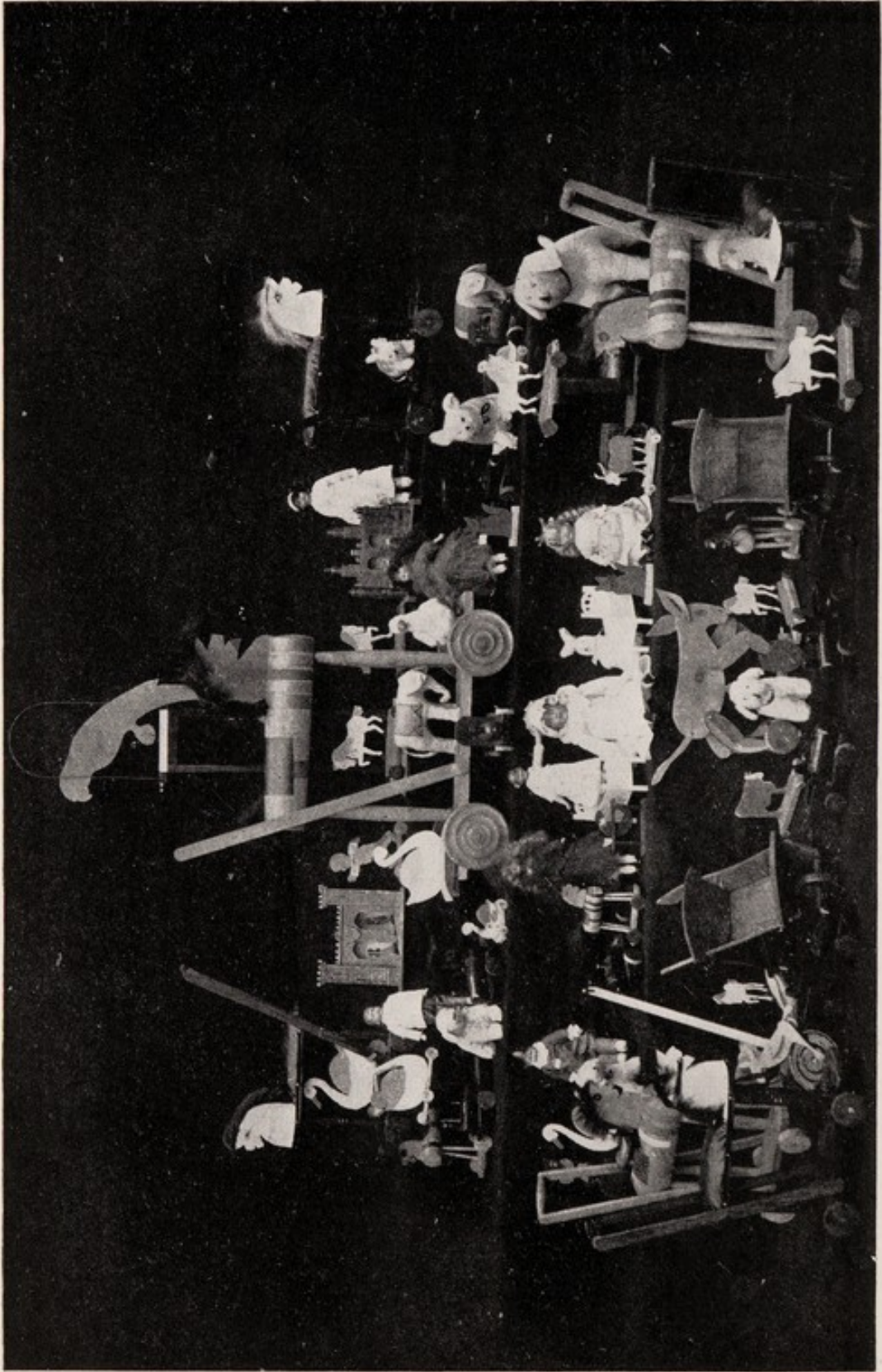
THE INSTITUTION BAND.



A CORNER OF THE GIRLS' HOSPITAL.



CARPENTRY.



TOYS.



HONITON LACE MAKERS.



SPECIMEN OF HONTON LACE.

REPORT OF THE MEDICAL OFFICER.

To the President of the Western Counties Institution, Starcross.
 MY LORD,

I have the honour to submit the Annual Medical Report for the year ending March 31st, 1925.

The health of the children has on the whole been good and we have escaped all epidemics with the exception of an outbreak of mild influenza in April, in which there were 34 cases on the Boys' Side and 4 on the Girls'. The winter was a long and trying one, and there was an unusual number of lung and bronchial cases, of which 7 were pneumonias—6 boys and 1 girl—all of whom made good recoveries; there were several cases of pleurisy and acute bronchitis also. Of zymotic disease, 2 cases of chicken-pox and 1 of combined diphtheria and scarlet fever also have to be recorded.

Four cases were sent to the Exeter Hospital for operation: 1 acute appendicitis, 1 parotid abscess, 1 papilloma of rectum, and an old case of sarcoma of thigh for amputation.

One lad became insane and was removed to a Mental Hospital.

During the year there were two deaths, one from paratyphoid and one from tubercular enteritis, both boys.

The health of the girls has been very much better than that of the boys. The enlargement of the girls' open-air Sleeping Shelter has been of very great value. Similar accommodation for the boys would be a great help in the treatment of early or threatened tuberculosis.

I should like to thank the Superintendent and the Matron for their kindly co-operation and assistance, which have been a great help to me. The Nursing Staff on both sides has done excellently.

I am,

Your Lordship's obedient Servant,
 JOHN H. ILES, M.A., M.B., B.C.
Medical Officer.

REPORT OF THE DENTAL SURGEON.

To the President of the Western Counties Institution, Starcross.

MY LORD,

I beg to submit to you a report on the Dental Treatment of the inmates during the past twelve months.

The far-reaching effects of dental disease on the general health of the body, as well as the importance of hygiene of the mouth, are at the present time more than ever before being recognised by all medical authorities. There is no doubt that in the future treatment of all mental disorders particular attention will be given to ensure that no microbial toxæmia is present in the patient commencing by a thorough examination of the mouth.

During the year the usual periodical inspections have taken place, newly admitted cases have been seen and treated as soon as possible ; all septic and badly decayed teeth have been removed, while at the same time similar teeth which could be made useful were saved.

Special attention has been given to the inspection and early treatment of all Pyorrhoea cases in order that the gum infection might be dealt with before the later stages of this disease are reached when drastic treatment must be given.

Boys Treated	..	--	--	269
Girls Treated	..	--	--	121
Permanent Extractions		..	--	253
Temporary Extractions		--	--	82
Teeth Filled	..	--	--	162

I have the honour to be,

My Lord,

Your obedient Servant,

I. W. PASMORE, L.D.S., R.C.S., Eng.,
Dental Surgeon.

REPORT OF THE CHAPLAIN.

To the President of the Western Counties Institution, Starcross

MY LORD,

I have much pleasure in stating the Services have been held regularly during the past year.

The attention of the inmates is much marked, and they have talked to me on several occasions on the subjects mentioned in my Addresses to them. Several have been Baptized recently after careful instruction thereon, and also all those who have been Confirmed have received instruction before making their Communion. It has always been a great pleasure to minister to them and it is with much regret I am now separated from them.

I wish to express my deep gratitude to all the officials during my nineteen years' sojourn in Starcross.

Your obedient Servant,

R. LIONEL LOCKE.

EXTRACTS FROM THE VISITORS' BOOK.

Assistant Medical Officer, Royal Albert Institution, Lancaster :—

“ I have had a most interesting visit to the Industries and Departments of this Institution to-day and am extremely impressed with the quality and variety of the work I have seen. I would like to record my thanks to the Matron for her kindness in showing me everything. I was also delighted with the happy look all the children had.”

Head Teacher of a London Mental Deficiency School :—

“ I have to-day visited the Institution—the beautiful finish to all the handwork, the happiness and contentment of the patients and the enthusiasm of the Staff are excellent features. I should like to add that the courtesy of Captain Mayer and the Matron made the visit most enjoyable.”

President of the Minda Home, Adelaide, Australia :—

“ I am delighted with this Institution and the admirable way in which it is conducted. With all the various industries I can see that the majority of the inmates will be turned out as finished tradesmen. Best of all is the contented, happy natures of the inmates. The Institution which I am connected with is much lower grade and therefore is not comparable. I congratulate all concerned.”

Member of the Plymouth Council :—

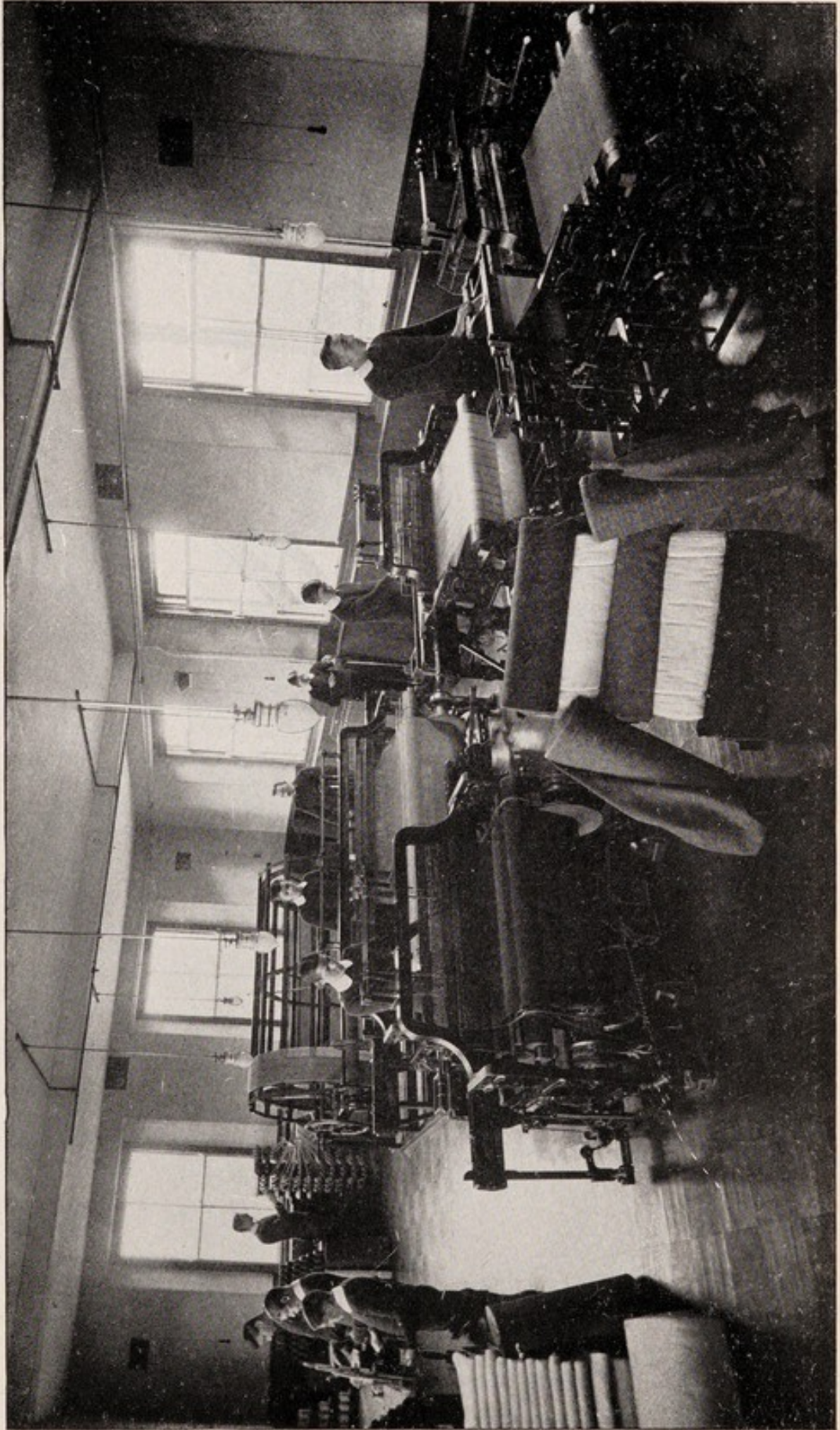
“ I have visited the Plymouth cases at this Institution and am fully satisfied that they are being cared for and trained in the best possible manner. The workshops and schoolrooms show that they are being fully occupied, and the work there is a credit to the Institution.”

Member of the West Ham Council :—

“ Visited Institution from West Ham Council to see ‘ A.T.’ I have been very much impressed with the progressive character of the training given and by the healthy and happy appearance of the children generally.”

Member of the Kent County Council :—

“ As a member of the Kent County Council and a Governor of Stanhope County School under that Authority I was delighted to have the opportunity to inspect the Western Counties Institution. Evidently the Institution is doing splendid work. One cannot fail to be impressed by the generally happy state of the inmates, showing that the methods of instruction are conceived on right lines. Everywhere in the classes



WEAVING.



THE STAFF RIFLE TEAM. WINNERS OF THE LEAGUE CUP, 1923-25.

and workrooms there appeared to be intelligent interest in their work displayed by boys and girls alike. When passing through the classrooms with the Headmaster there was no indication of any apprehensiveness on the part of the youngsters, as is sometimes apparent in Institutions. The touch of personal sympathy and understanding was indicated in the readiness with which boys and girls responded to questions. Craftsmanship is apparently carefully taught and results justify the teaching. Order and cleanliness are most marked in the wards and personal cleanliness is carefully and tactfully enforced. My visit has been most instructive and enjoyable."

Member of the Surrey Joint Poor Law Committee :—

" I have visited the Institution to-day on behalf of the Surrey Joint Poor Law Committee, this being my third visit, and the more I see of the Institution the more impressed I am of the wonderful work being done here. Great credit is due to the Staff for the variety and quality of the work and the way in which the patients are taught. I have seen all the patients chargeable to the Surrey Joint Poor Law Committee and so far as one can judge they are quite happy ; many of them have much improved since my last visit."

Deputation from the Exeter Education Committee :—

" Visited on behalf of the Exeter Education Committee and have been very much impressed with all we have seen."

Deputation from the Devonport Board of Guardians :—

" We, the undersigned, have this day visited Starcross Institution and have seen the children chargeable to the Devonport Parish, and although they are of the most backward class we are very pleased to find that the majority of our cases are making very good progress."

Deputation from the Portsmouth Board of Guardians :—

" We, the undersigned, a deputation from the Portsmouth Board of Guardians, have this day visited the Institution at Starcross and interviewed the patients chargeable to the Parish. We have seen each one separately and are delighted with their appearance and evident happiness. We have taken the opportunity of inspecting the dormitories, day rooms, and work rooms, and desire to testify our great appreciation of the wonderful work being done and the care and interest bestowed on the inmates."

GENERAL
FOR THE YEAR ENDING

RECEIPTS.			
1925. March 31st.		£	s. d.
To Annual Subscriptions	49	18 6
„ Maintenance of Private Patients	517	11 1
„ „ Aided „	25,370	11 7
„ Proceeds of Industrial Occupations	1,342	15 11
„ Dividends on Investments	44	17 6
„ Rents of Properties	58	16 0
„ Interest on Bank Balance	30	10 6
„ Farm and Garden Account:—			
(a) Sale of Live Stock and Produce	596	6 8
(b) Value of Produce supplied to the Institution	1,072	9 10
„ Government Grant	108	10 0
„ Balance due to Bank	1,500	17 4
		£30,693 4 11	

I have carefully examined the Books of the Western Counties certify that they are correct and well kept. All my requirements

HENRY H. COURTENAY, }
C. W. M. PLENDERLEATH, } *Members of Committee.*

CHARLES W. MAYER, *Secretary.*

ACCOUNT

MARCH 31ST, 1925.

PAYMENTS.

1925. March 31st.	£	s.	d.
By Balance due to Bank, March 31st, 1924 ..	147	16	7
„ Salaries and Wages	8,239	17	5
„ Provisions	6,297	15	1
„ Produce of Farm and Gardens ..	1,072	9	10
„ Uniforms and Patients' Clothing ..	2,109	2	4
„ Medical Requisites and Drugs ..	421	4	8
„ Furniture and Bedding (Repairs and Renewals)	1,270	11	10
„ Fuel, Lighting and Water	1,245	16	3
„ Washing and Cleaning Articles, &c. ..	364	4	10
„ Postage, Printing, Stationery, and Advertisements	385	9	1
„ School Materials	56	1	7
„ Rates, Taxes and Insurance	924	3	7
„ Maintenance and Repairs of Buildings and Machinery	2,238	14	8
„ Rents	122	15	8
„ Sundries	153	7	7
„ Legal Expenses	69	15	10
„ Officers' Superannuation Fund	451	16	2
„ Industries :—			
(a) Wages on Profitable Occupations ..	460	1	6
(b) Materials for ditto	676	12	0
„ Farm and Garden :—			
(a) Wages	385	8	3
(b) Live Stock Purchased	106	1	5
(c) Provender, Seeds and Manure ..	513	18	10
(d) Implements	117	11	1
„ Additional Buildings and Adaptations ..	2,862	8	10
	<u>£30,693</u>	<u>4</u>	<u>11</u>

Institution, Starcross, for the Year ending March 31st, 1925, and as Auditor have been complied with.

H. J. BALL, F.S.A.A.,

(Thomas Martin, Ball & Co.)

EXETER, April 22nd, 1925.

SCHOOL
FOR THE YEAR ENDING
Mentally Defective

RECEIPTS.		£	s.	d.
1925. March 31st.				
To Annual Subscriptions	16	12	10
„ Maintenance of Private Patients	172	10	4
„ „ Aided „	8,456	17	2
„ Proceeds of Industrial Occupations	447	12	0
„ Dividends on Investments	14	19	2
„ Rents on Properties	19	12	0
„ Interest on Bank Balance	10	3	6
„ Farm and Garden Account:—				
(a) Sale of Live Stock and Produce	198	15	7
(b) Value of Produce supplied to the Institution	357	9	11
„ Government Grant	36	3	4
„ Balance due to Bank	500	5	9

£10,231 1 7

I have carefully examined the Books of the Western Counties certify that they are correct and well kept. All my requirements

HENRY H. COURTENAY,
C. W. M. PLENDERLEATH, } *Members of Committee.*

CHARLES W. MAYER, *Secretary.*

ACCOUNT

31st MARCH, 1925.

School, No. 29585.

PAYMENTS.

1925. March 31st.	£	s.	d.
By Balance due to Bank, March 31st, 1924 ..	49	5	6
„ Salaries and Wages	2,746	12	6
„ Provisions, including Produce of Farm and Gardens	2,456	14	11
„ Uniforms and Patients' Clothing	703	0	9
„ Medical Requisites and Drugs	140	8	3
„ Furniture and Bedding (Repairs and Renewals)	423	10	8
„ Fuel, Lighting and Water	415	5	5
„ Washing and Cleaning Articles, etc.	121	8	4
„ Postage, Printing, Stationery, Advertisements ..	128	9	8
„ School Materials	18	13	10
„ Rates, Taxes and Insurance	308	1	2
„ Maintenance and Repairs of Buildings and Machinery	746	4	11
„ Rents	40	18	7
„ Sundries	51	2	6
„ Legal Expenses	23	5	3
„ Officers' Superannuation Fund	150	12	1
„ Industries :—			
(a) Wages on Profitable Occupations	153	7	2
(b) Materials for Ditto	225	10	8
„ Farm and Garden :—			
(a) Wages	128	9	5
(b) Live Stock purchased	35	7	2
(c) Provender, Seeds and Manure	171	6	3
(d) Implements	39	3	8
„ Additional Buildings and Adaptations	954	2	11
	£10,231	1	7

Institution, Starcross, for the Year ending March 31st, 1925, and as Auditor have been complied with.

H. J. BALL, F.S.A.A.,

(Thomas Martin, Ball & Co.).

EXETER, APRIL 22ND, 1925.

WORK EXECUTED IN THE MALE & FEMALE DEPARTMENTS
From 1st April, 1924 to 31st March, 1925.

Male Department.	Made.	Re- paired.	Male Department.	Made.	Re- paired.
Baskets	3,042	65	Raffia Bags.. ..	192	
Blankets	137		Repoussé-work Articles	73	
Blanketing (yards) ..	107½		Sashcord (lbs). ..	33	
Boots, girls' (pairs) ..	183		Serge (yards) ..	464	
" boys " ..	469		Shirting	1,055	
Boots and Slippers ..		8,411	Slippers	166	
Brushes and Brooms ..	3,968		Suits	133	
Calico (yards)	52		Tabling (yards) ..	290	
Carved Articles	39		Towelling (yards)	399	
Chairs		64	Tweed	1,518	
Coats	21		Uniforms	16	
Face Flannels	294		Various Garments ..		6,105
Knickers and Trousers	439		Vests	60	
Mats, Yarn	395		Wooden Toys	973	
Pants	555				

Female Department.	Made,	Re- paired.	Female Department.	Made.	Re- paired.
Aprons	994		Knickers (pairs) ..	628	
" Staff	483		Leather-work Articles	248	
Baskets	136		Legginettes (pairs) ..	6	
Bedties	114		Nightdresses	115	
Bedticks	48		Nightshirts	97	
Bed Socks (pairs)	32		Overalls	5	
" Stockings ..	24		Pants	179	
" Jackets	11		Petticoats	35	
B. and C. Bags	111		Pillow Cases	545	
Blankets	79		" Ticks	112	
Bonnets	2		Pullovers	10	
Brushes, Wired	346		Raffia Bags & Baskets	85	
Caps	69		" Mats	107	
" Woollen	32		Sheets	417	
Cardigans	18		Shirts	579	
Chemises	199		Skirts, Woollen	48	
Cloaks	2		Sleeves (pairs)	160	
Coats, Woollen	63		Socks (pairs)	611	
" White	20		Stays	76	
" Tweed	30		Stockings (pairs) ..	1,765	
Covers	7		Suits	47	2,042
Curtains	64		Sundry Garments ..		
Drawers	198		Tablecloths.. ..	178	34,402
Dresses, Print	190		Tea Cloths	239	
" Woollen	19		Ties, Woollen	944	
" Staff	38		Towels	471	
Dusters	82		Tray Cloths	17	
Fancy Work	100		Trousers	6	
Handkerchiefs	1,664		Uniforms	12	
Hand-Knitted Articles	88		" Coats	14	
Honiton Lace Work ..	30		Vests, Flannel	148	
Jerseys	576	2,096	" Woollen	66	
Jersey Suits	38		Waistcoats	5	
Jumpers	11		Woollen Rugs & Slips	80	
Knee Caps (pairs) ..	7				

MANUAL OCCUPATIONS TAUGHT IN THE INSTITUTION.

BOYS' DEPARTMENT.

Shoe-making.	Repoussé Work (Metal).
Tailoring.	Weaving.
Basket-making (Wicker and Cane).	Toy-making.
Mat-making.	Tooled and Raised Leather Work.
Brush-making.	Sashcord-making.
Carpentry.	Baking.
Woodcarving.	Elementary Plumbing and Glazing.
House-painting.	Farm and Garden Work.
Straw, Raffia and Chip Basket-making.	Domestic Work.
Engraving and Signwriting.	

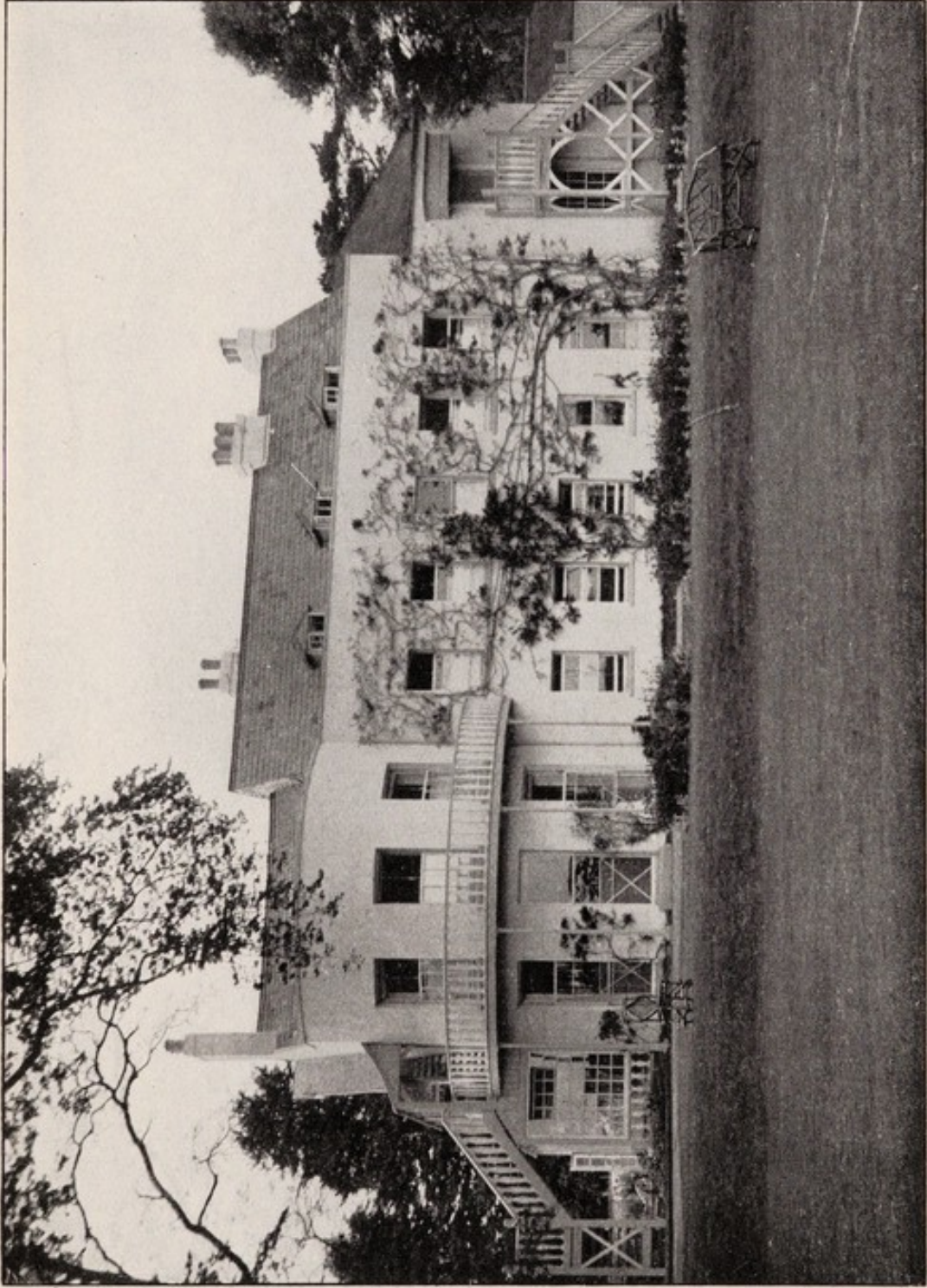
GIRLS' DEPARTMENT.

Dressmaking.	Embroidery.
Tailoring.	Straw Work (Hats and Baskets).
Shirtmaking.	Raffia Basketry.
Needlework (Plain and Fancy).	Wool Rugs and Scarf-making.
Honiton Lace-making.	Fancy Leather Work.
Knitting (Hand and Machine).	Doll-making.
Brush-making.	Laundry Work.
Crochet.	Cooking and Domestic Work.

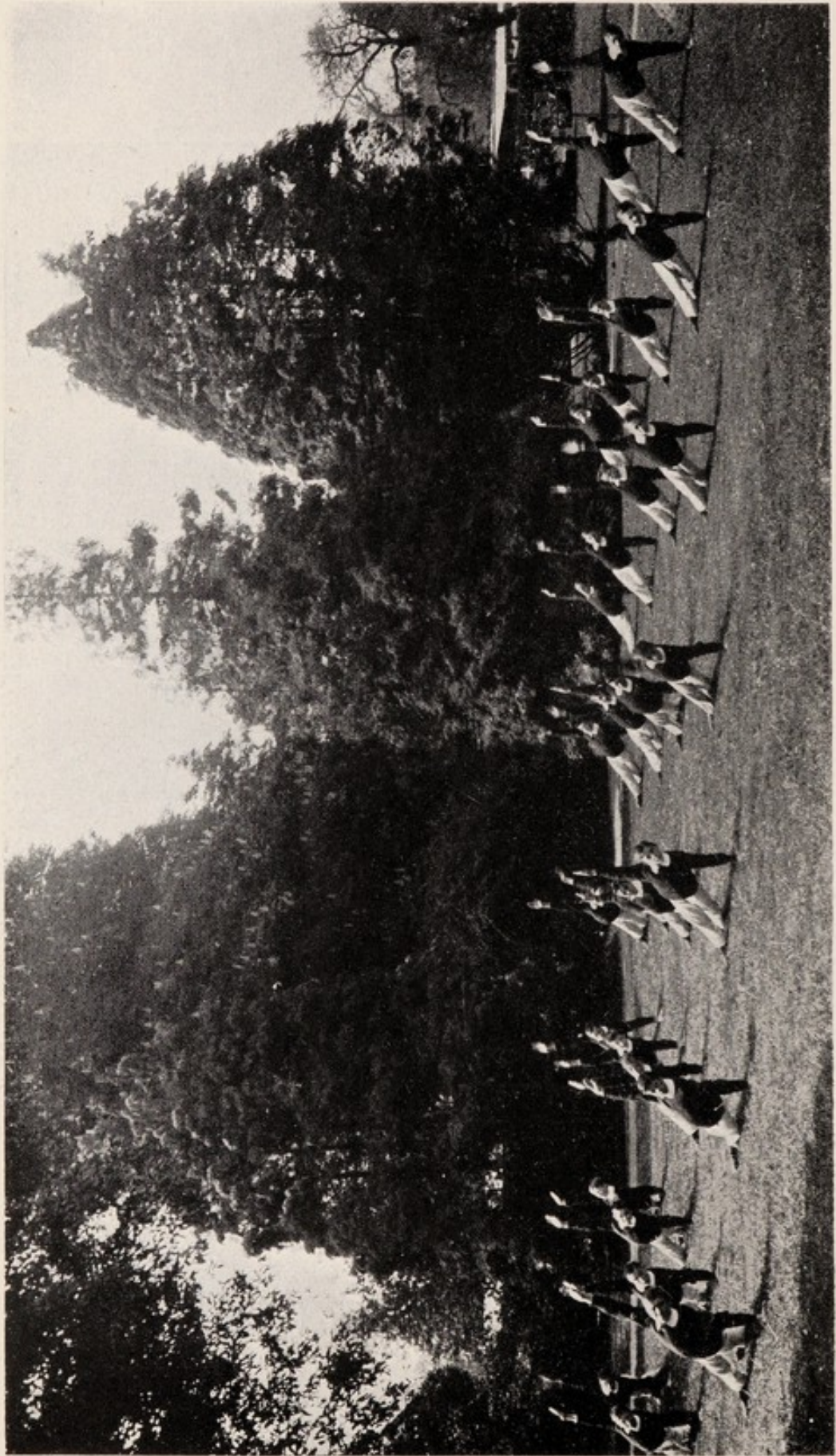
LIST OF SUBSCRIBERS AND DONORS.

It will be esteemed a favour if any error, omission or change of Address be discovered in this List, for notice thereof to be sent to the Secretary at the Institution.

		<i>Life.</i>		<i>Annual.</i>
A.		£	s.	d.
"A Friend," per the late John Drew, Kenton ..		52	10	0
"Anonymous," per Messrs. Milford, Snow & Co. ..		100	0	0
Ashley, Miss		5	0	0
B.				
Bannatyne, Mrs., Collipriest Cottage, Tiverton ..		5	0	0
Barnes, William C., Millbrook House, Exeter ..		5	0	0
Broadmead, Miss, Olands, Milverton		10	0	0
Browne, the Rev. Preb. Bevil, 6, Archibald Road, Exeter				1 1 0
Buller, Rev. R., Landreath, Duloe		5	0	0
Bullock, James		5	0	0
C.				
Crayton, A. G., 39, Courtenay Street, Newton Abbot ..				1 1 0
Carter, Rev. W. H., The Vicarage, Cofton ..				10 6
Coode, Edward, Polapit Tamar, Launceston ..	28	0	0	
Courtenay, Rev. The Hon. H. H., Powderham Exeter				1 1 0
D.				
Devon, The Right Hon. the Earl of, J.P., Powderham Castle, Exeter				1 1 0
Dickinson, T. H., Kingweston, Somerton ..	10	0	0	
Drake, Rev. F. E. T.	5	5	0	
Drew, J. Gould, J.P., Northbrook, Starcross, Exeter ..				1 1 0



ELM COURT.



PHYSICAL DRILL.

	<i>Life.</i>	<i>Annual.</i>
	£ s. d.	£ s. d.
E.		
"E.H.C.," per the late Mrs. Cookson	5 0 0	
Edgcumbe, The Lady Ernestine, Honeycomb, St. Ann's Chapel, Tavistock	5 0 0	
F.		
Falkner, H., Staplake, Starcross		1 1 0
Fleming, J., Bigaden, Buckfastleigh	29 0 0	
Follett, Sir Charles J., Culm Davey, Hemyock ..	5 0 0	
Fortescue, The Right Hon. Earl, K.C.B., Castle Hill, South Molton		5 0 0
Fortescue, The Lady Susan	10 0 0	
Fortescue, Miss E., Southtown, Lympstone ..		1 1 0
"Friends," per M ^{ss} Hustler	5 0 0	
Fulford, F. A., Great Fulford, Dunsford, Exeter ..		1 0 0
G.		
Gabriel & Sons, Messrs. T., Commercial Road, Exeter	5 0 0	
Gamlen, Miss M. B., Charlton House, Dawlish ..	5 0 0	
Glyn, Sir Richard, Bart., Gaunt's House, Wimborne	10 0 0	
Griffiths, Mrs. R. R.	5 0 0	
H.		
Halifax, The Right Hon. Viscountess, Doncaster Hall, Hickleton	5 0 0	
Hamilton, Mrs. B. Baillie, Cambusmore, Callandar, N.B.	7 0 0	
Hawker, Miss E., Burleigh, Plymouth		10 6
Hawker, Miss J. L., ditto ditto		10 6
Heathcote-Amory, Lady, Knightshayes Court, Tiverton	5 0 0	
Hoskins, H. W., Mount Perrott, Crewkerne ..	5 0 0	
Hoyle, Edw., Southbrook, Starcross		2 0 0
I.		
Iles, J. H., M.B., B.C., Starcross		10 0
J.		
Jago, Miss, Alverton, Penzance	5 0 0	

	<i>Life.</i>			<i>Annual.</i>		
	£	s.	d.	£	s.	d.
K.						
Kekewich, Sir Trehawke H., Bart., Peamore, Exeter				1	1	0
Kelly, Rev. Maitland, Kelly House, Lifton, North Devon				1	1	0
Kennaway, Lady, Escot, Ottery St. Mary ..	5	0	0			
Kingsbridge Union, Guardians of				4	4	0
Knight, J. H., Queen Street Chambers, Exeter ..				1	1	0
Knyfton, Mrs., Uphill Castle, Weston-Super-Mare	5	0	0			
L.						
Ley, J. H., Trehill, Exeter				2	2	0
Ley, Richard, Duncroft, Exmouth	5	0	0	1	1	0
Locke, Son & Land, Newton Abbot				1	1	0
Luttrell, G. Fownes, Dunster Castle, Somerset ..	30	0	0			
Luttrell, Mrs. ditto	5	0	0			
M.						
Martin, Ball & Co., Messrs., Bedford Circus, Exeter				1	1	0
Matthews, E. W., J.P., Lyndhurst, Honiton ..				1	1	0
Moorman, Miss	8	0	0			
Mules, Miss B. M., M.D., Court Hall, Kenton ..				1	1	0
Morris, Miss, Orestone, St. Mary Church, Torquay				10		0
N.						
Newcombe & Co., Exeter				1	1	0
Newman, Sir Robert, Bart., M.P., D.L., J.P., Mamhead Park, Kenton, Exeter				10		0
Newman, C. P., Eastburn, Teignmouth				1	1	0
Norman & Pring, Messrs., City Brewery, Exeter ..	10	0	0			
O.						
O'Connell, Mrs.	11	0	0			
P.						
Parsons, J., Inswork Mill, Devonport	10	0	0			
Palairot, Mrs. H. Hamilton	10	0	0			
Pasmore, Ivan W., L.D.S., Speranza, Exeter ..				10		0
Plonderleath, Miss E., 6, Haldon Terrace, Dawlish				1	0	0

	<i>Life.</i>	<i>Annual.</i>
	£ s. d.	£ s. d.
Plenderleath, Captain C. W. M., R.N., C.B.E., The Grove, Teignmouth		1 1 0
Pollard & Co. W., Ltd., Exeter		1 1 0
Poulton, Rev. A., The Vicarage, Kenton, Exeter ..		10 6
R.		
Rivington, John	5 0 0	
S.		
"S.W."	40 0 0	
Sanders, Mrs. E. A., Stoke House, Exeter ..	5 0 0	
Shelley, Sir John, Bart., D.L., J.P., Shobrooke Park, Crediton		2 2 0
Shorland, H. F., Staplake, Starcross		1 1 0
Singer, Mrs. Washington, Steartfield, Paignton ..		10 0 0
Snow, S. C., Weir Cliff, Exwick, Exeter		1 1 0
Sparkes, Pope & Thomas, Messrs., Upper Paul Street, Exeter	5 0 0	
Spencer, J. Maitland, UMBERLEIGH, Oakhill, Bath ..	5 0 0	
Sterry, Rev. F., Fort Hill, Barnstaple	5 0 0	
St. Audries, The Right Hon. Lord, St. Audries, Bridgwater	20 0 0	
T.		
Temple, Miss	10 0 0	
Templeman, Bros., Starcross		10 0
Thomas, Lewis D., Chessington, Elwyn Road, Exmouth	5 0 0	
Thornycroft, C. E., J.P., Highfield House, Exmouth		1 1 0
Tremayne, J., Heligan, St. Austell	15 0 0	
Tupman, F., Starcross		1 1 0
V.		
Vaughan, Lieut.-Colonel E. H., "Penhayes," Kenton, Exeter		1 1 0
Veitch & Sons, Messrs., Exeter		1 1 0
Vivian, Quintus, Trevegethan Manor, Truro ..	5 0 0	
Vivian, Sir A., Pendarves, K.C.B., V.D., D.C.L., Glenafon, Taibach, S. Wales	5 0 0	
W.		
Were, The Misses	10 0 0	
Whiteford, Charles, 5, Sussex Terrace, Plymouth ..	5 0 0	

	<i>Life.</i>	<i>Annual.</i>
	£ s. d.	£ s. d.
Williams, Colonel Sir R., Bart., M.P., V.H., D.L., J.P., Bridehead, Dorchester		1 1 0
Williams, M. Scott, Woolland House, Blandford ..	10 0 0	
Wood, John B., Walland Hill, Murchinton, Chagford	5 0 0	

X.

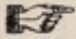
" X " (per Messrs. Milford, Snow & Co.)	25 0 0
---	--------



IRONING CLASS.



BOOT-MAKING.

 *SUBSCRIPTIONS and DONATIONS may be paid to the Honorary Treasurer, S. C. SNOW, National Provincial Bank, Limited, (Exeter Bank), Exeter, or to the Secretary, The Institution, Starcross.*

REGULATIONS AS TO VISITORS.

1. The Institution is open for Inspection by Visitors on Mondays, Wednesdays, and Fridays, between the hours of Two and Four p.m.

2. Relatives and friends may visit the Inmates on the above days and during the same hours, but in case of sickness this rule will be relaxed.

LEGACIES RECEIVED.

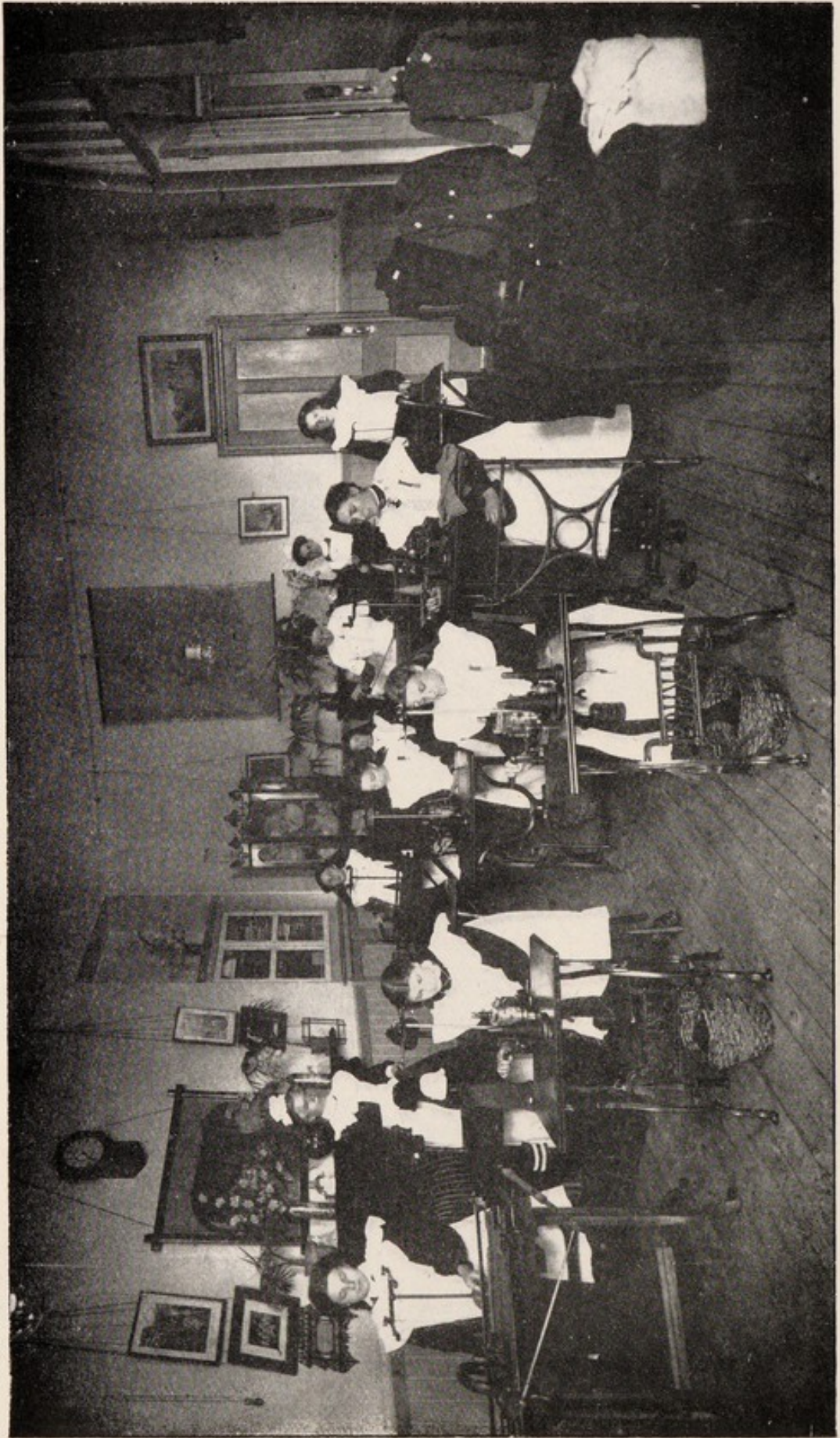
1875.	Mr Thos. Peek	£450
"	Mr. Thos. Brooke	£600
"	Dr. H. May	£180
1878.	Mr. W. Rookes	£45
1879.	Mr. B. Elliott	£10
1880.	Mrs. E. White	£100
1881.	Mr. W. Miles	£181 2s. 6d.
1882.	Mr. W. Marshall	£90
1883.	Miss Churchill	£100
1891.	Rev. T. Smyth	£100
"	Mr. G. W. Ormerod	£100
"	Mrs. Brice	£10
"	Miss Meyrick	£50
"	Mr. W. Millard	£9
"	Mr. W. Brown	£100
1892.	Miss Ann Pyne	£150
1893.	Miss Sophia Mackrell	£300
"	Mrs. Stephens	£250
1894.	Miss Frances Lewis	£206 19s. 8d.
"	Mrs. J. E. Babb	£112 10s. 0d.
1895.	Mrs. M. J. Law	£200
1900.	Mrs. H. Martin	£90
1901.	Mr. Godfrey Ermen	£105 6s. 6d.
"	Mr. R. B. West	£1,000
"	Miss Selina Northcote	£500
1903.	Miss L. Bluett	£90
1904.	Mr. J. Passmore	£200
1906.	Miss G. E. Sanders	£270
"	Miss E. Matthews	£45
1908.	Mrs. Fanny Yarde	£135
1909.	Mr. R. G. Abrahams	£50
1911.	Mr. John Sampson	£77 19s. 4d.
"	Mr. R. G. Abraham	£300
"	Mrs. G. M. Naish	£22 7s. 11d.
1915.	Miss H. J. Kitson	£50

FORM OF BEQUEST FOR LEGACY.

I Give and Bequeath to the Treasurer, for the time being, of the "Western Counties Institution, Starcross," situate at Starcross, in the County of Devon, the sum of.....free from all duties, towards the benevolent designs of that Institution. And I direct the said-mentioned Legacy to be paid exclusively out of such part of my personal estate as may be legally applied in payment of charitable legacies.



TAILORING.



KNITTING CLASS.

LIST OF PRESENTS.

Arnold & Sons, Ltd., Messrs.	5s.
Ashworth Bros. & Co., Messrs.	10s. 6d.
Ball, J., Mr.	£3 3s. 0d.
Beer, Mr. W.	10s.
Bitulac, Ltd., Messrs.	10s.
Blackmore, Mrs.	5s.
Blackmore, Mr. H.	3s.
Bonza Polish Co., Ltd., Messrs.	5s.
Bricknell, Mrs.	Handkerchiefs, etc.
Bricknell, Mrs.	Scrapbooks, etc.
Brock & Co., Ltd., Messrs.	10s.
Burridge & Cannicott, Messrs.	£1
Chamberlain & Co., Messrs.	Books, etc.
Chappell, Mr. W.	10s. Books & Magazines.
Chown, Mr. H.	Theatrical Costumes.
Chudleigh Electricity Co., Ltd.	Motor for Cinema.
Clark, Mrs. E. M.	10s.
Clogg & Co., Messrs.	5s.
Cockwill, Mr.	5s.
Colson & Co., Messrs.	10s.
Cornish, Mr. J. A.	10s. 6d.
Cowell, Mr. H.	£2
Crayton, Mr. A.	£1 1s.
Crossman, Mr. T.	£1 1s.
Curry & Paxton, Ltd., Messrs.	10s. 6d.
Dart, Mr. H.	£1
Dick & Co., Ltd., Messrs.	10s. 6d.
Drew, Mr. and Mrs. J. G.	5s.
Evans, Gadd & Co., Ltd., Messrs.	Box of Sweets.
Ferris, Miss N.	Periodicals.
French, & Co., Messrs. W.	£1 1s.
"Friend"	£1
Gater, Mr. A. E.	3s.
Gibbons, Ltd., Messrs.	£1
Gidley, Mrs.	10s.
Gould & Wills, Messrs.	Toys.
Guest, Mr. J. C.	5s.
Hall & Sons, Ltd., Messrs.	10s. 6d.
Harrisons, Ltd., Messrs.	£2 2s.
Harris & Sons, Ltd., Messrs.	Toilet Soap.
Herbert, Miss	Honiton Lace Materials.
Hibberd & Co., Ltd., Messrs.	Nuts and Dates.
Hicks, Mr. J.	£2 2s.
Hill & Sons, Ltd., Messrs.	£1
Hockin, Miss	Scrap Books, Fancy Work, etc.

Hudson, Dr.	Playing Cards.
Huntley & Co., Messrs.	5s.
Iles, Dr.	10s.
Knight, Mr. J. H.	£1 1s.
Lear, Browne & Co., Messrs.	£2 2s.
Lendon & Sons, Ltd., Messrs.	10s.
Lindsey & Sons, Messrs.	10s.
Longbottom & Co., Messrs.	£1 1s.
Mairs, Mr. C. H.	10s.
Marshall, Miss	Toys.
Merrifield, Mrs.	1s.
Metal Agencies Co., Ltd., The	5s.
Mitchell & Son, Messrs.	£1
Mock & Son, Messrs.	Two Geese.
Mules, Dr.	£1 1s.
Munk, Mr. E. I.	Knives and Scissors.
Newcombe & Co., Messrs.	£1 1s.
Parkhouse, Messrs. J and W. H.	£1
Parratt, Mr. F. J.	10s.
Pearse & Co., Messrs. J.	£1 1s.
Pinder & Tuckwell, Messrs.	£1
Pinniger & Ackroyd, Messrs.	£1 1s.
Pollard & Co., Ltd., Messrs. W.	Fountain Pens, Pencils, etc.
Polysulphin Co., Ltd., Messrs.	£1 1s.
Rand, Mr. A.	£1
Randall, Mr. W.	10s.
Reeves, Mrs.	5s.
Rice, Mr.	5s.
Ripolin, Ltd., Messrs.	£1 1s.
Rowe Bros. & Co., Ltd., Messrs.	£2 2s.
Rowe & Sons, Messrs. Mark	£1 1s.
Rowe, Mr.	Toys.
Rowe, Mr. T. Bradley	£1 1s.
Salway & Co., Messrs.	£1 1s.
Sandy, Mr. Louis	5s.
"Sanitas" Co., Ltd., Messrs.	Tooth Pastes.
Saunders, Mrs.	Apples.
Sharp, Messrs. R. W. and F. C.	£1 1s.
Shaws, Ltd., Messrs.	10s.
Shorland, Ltd., Messrs.	10s. 6d.
Simon, Ltd., Messrs. Camille	10s. 6d.
Starcross and Kenton Gas Co., Ltd.	£1 1s.
Stewart & Co., Messrs.	£1 1s.
Stone & Son, Ltd., Messrs.	Case of Oranges.
Stoneycombe Lime and Stone Co., Ltd.	10s. 6d.
Thiselton, Miss	10s. 6d.
Thomas, Mrs. Nevill	£1 1s.
Thomas, The Misses	5s.
Thomson, Miss	10s.
Townsend & Sons, Messrs.	10s.
Tupman, Mr.	Sweets.
Vavasseur, Ltd., Messrs. J. H.	10s.

Verinder & Sons, Ltd., Messrs.	£1
Ward & Co., Messrs.	£1 1s.
Ware & Son, Messrs.	10s.
Webber & Sons, Messrs.	Toys.
Western Confectionery Co., Ltd., The	Toys and Sweets.
Western Pigment Co., Ltd., The	£1
Wheaton & Co., Ltd., Messrs.	Books.
Whitaker, Mrs.	Books.
Wright, Mr.	Apples.
Yacht Beverage Co., Ltd.	Mineral Waters.

Faint, illegible text, possibly bleed-through from the reverse side of the page. The text is arranged in several columns and appears to be a list or index of names and dates.

