

Annual report for the year ended 31st March, 1954 / The hospital management committee for St. Augustine's.

Contributors

St. Augustine's Hospital (Chartham Down). Hospital Management Committee.
Shepherd, C. E. Alan.
Scott, F. L.
Campbell, J. Fraser M.
Lilly, G. A.
St. Martin's Hospital (Canterbury, England)

Publication/Creation

[Place of publication not identified] : [publisher not identified], [1954?]

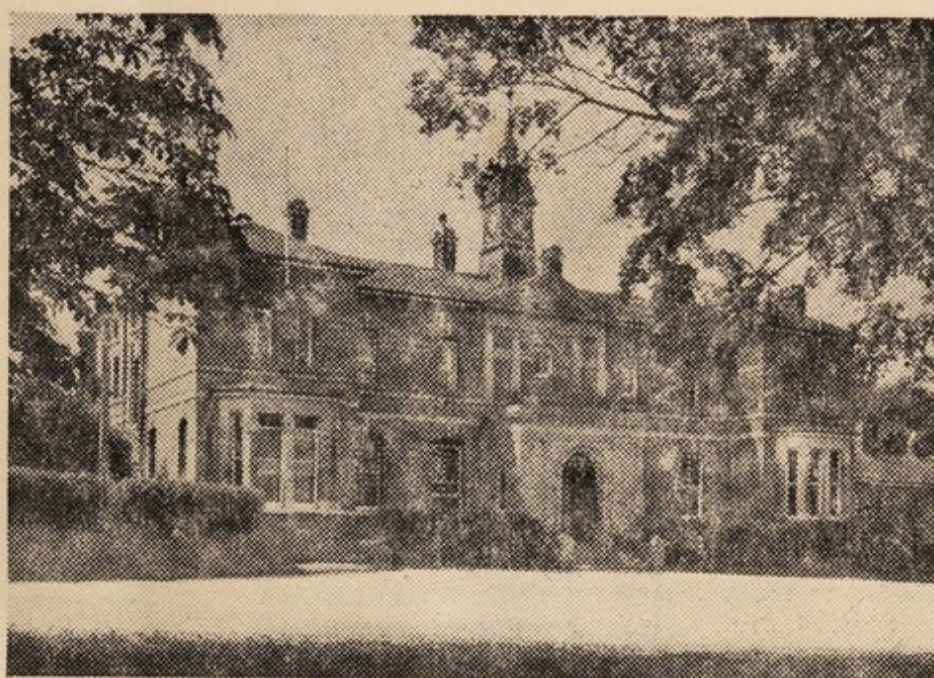
Persistent URL

<https://wellcomecollection.org/works/qexjth6x>

License and attribution

Conditions of use: it is possible this item is protected by copyright and/or related rights. You are free to use this item in any way that is permitted by the copyright and related rights legislation that applies to your use. For other uses you need to obtain permission from the rights-holder(s).

THE
HOSPITAL MANAGEMENT
COMMITTEE
FOR
ST. AUGUSTINE'S



MINISTRY OF HEALTH
LIBRARY
ANNUAL
REPORT

FOR THE
YEAR ENDED 31st MARCH, 1954

| | |
|-------------------------------|----------|
| WELLCOME INSTITUTE LIBRARY | |
| Coll. | welMOmec |
| Call | Ann-Rep |
| No. | WLM 28 |
| | - BE 5 |
| | C 48 |
| | 1953-54 |



22501297245

THE HOSPITAL MANAGEMENT COMMITTEE FOR ST.AUGUSTINE'S

Chairman and Patron:

J. H. Johnson, Esq., J.P.

who is appointed for the period ending 31st Mar. 1957.

Other Members:

- (a) W.H.Chessell, Esq.,
Mrs.G.R.Hews, C.B.E.,
F.P.King, Esq.,
Miss M.Sheehan, S.R.N., S.C.M.
T.S.Stigger, Esq., (Vice-Chairman from 1/4/54)

who are appointed for the period ending 31st Mar. 1955.

- (b) A. Wallace Fowler, Esq.,
Mrs.Una Giffard,
S.C.Post, Esq., L.D.S., R.C.S.,
Mrs.M.Sharpe,
I.H.K.Stevens Esq., M.D., M.R.C.P.,

who are appointed for the period ending 31st Mar. 1956.

- (c) M.S.Harvey, Esq., M.B., Ch.B., D.P.M.

who is re-appointed for the period ending 31st Mar. 1957

- (d) C.O.P.Gange, Esq., M.B., Ch.B.,
A.A.Johnson, Esq.,
T.S.Pettman, Esq.,

who are newly appointed for the period ending 31st Mar.1957.

- (e) L.C.Cook, Esq., M.D., D.P.M.
B.J.Pearson, Esq.,
W.C.Redman, Esq., C.B.E. (Vice-Chairman to
31st Mar. 1954)

who retired from office on 31st March, 1954.

ADMINISTRATIVE STAFF

Group Secretary, Finance Officer and Supplies Officer

H.F.Levitt, F.H.A.

Deputy Group Secretary, Finance and Supplies Officer

G.Lock, F.H.A.

Group Engineer: A.C.Pearson, Assoc. I. Mech E, M.I.H.E.

Staff of the Hospitals

St.Augustine's Hospital

Medical Superintendent (Consultant Psychiatrist)

C.E.Alan Shepherd, M.R.C.S., L.R.C.P., D.P.M.

Deputy Medical Superintendent (Consultant Psychiatrist)

J.A.Ainslie, B.Sc., M.R.C.S., L.R.C.P., D.P.M.

Senior Hospital Medical Officer (Assistant Psychiatrist)

J.H.S.Whyte, M.B., Ch.B., D.P.M.

Senior Registrar (Locum Tenens)

M.A.Morgan, M.B., B.S.

Junior Hospital Medical Officers

Joan Kerr, M.B., Ch.B., B.A.O.

F.Murray, M.R.C.S., L.R.C.P.

R.Sander, M.B., B.S.

Senior House Officer

W.Kerr, M.B., Ch.B.

Secretary: H.F.Levitt, F.H.A.

Matron: Miss I.R.Taylor, M.B.E., S.R.N., R.M.N., S.C.M.

Chief Male Nurse: A.J.Claydon, S.R.N., R.M.N., R.M.P.A.

Anglican Chaplain: Revd. J. Cross.

Farm Manager: R.J.Reed.

Staff of the Hospitals

St.Martin's Hospital

Medical Superintendent (Consultant Psychiatrist)

F.L.Scott, M.R.C.S., L.R.C.P., D.P.M.

Secretary

A.G.Webb, F.H.A.

Sub-Committees.

Finance Sub-Committee

W.H.Chessell, Esq., (Chairman)
L.C.Cook, Esq., M.D., D.P.M.
Mrs.G.R.Hews, C.B.E.
B.J.Pearson, Esq.,
S.C.Post Esq., L.D.S., R.C.S.
W.C.Redman, Esq., C.B.E.
Mrs.M.Sharpe,
Miss M.Sheehan, S.R.N., S.C.M.
T.S.Stigger, Esq.,
J.H.Johnson, Esq., J.P. (Ex Officio)

Works Sub-Committee

W.C.Redman, Esq., C.B.E.
(Chairman)
Mrs.Una Giffard,
M.S.Harvey, Esq.,
M.B., Ch.B., D.P.H.
B.J.Pearson, Esq.,
T.S.Stigger, Esq.,
J.H.Johnson, Esq., J.P.
(Ex Officio)

Farm Sub-Committee

F.P.King, Esq.,
(Chairman)
M.S.Harvey, Esq.,
M.B., Ch.B., D.P.H.
W.C.Redman, Esq., C.B.E.
A.Wallace Fowler, Esq.,
J.H.Johnson, Esq., J.P.
(Ex Officio)

Establishment Sub-Committee

T.S.Stigger, Esq.,
(Chairman)
W.H.Chessell, Esq.,
Mrs.G.R.Hews, C.B.E.
I.H.K.Stevens, Esq.,
M.D., M.R.C.P.
J.H.Johnson, Esq., J.P.
(Ex Officio)

THE HOSPITAL MANAGEMENT COMMITTEE FOR ST.AUGUSTINE'S

Annual Report for the year ended
31st March, 1954.

In presenting the Fifth Annual Report for the year 1953/54, it is natural for one's thoughts to turn to the outstanding event of the year, namely the Coronation of Her Majesty Queen Elizabeth II. The morning of Tuesday, 2nd June, opened with Holy Communion Services for Patients and Staff, after which the Sound and Vision Programmes of the B.B.C. were enjoyed to the full, as were the special catering arrangements. At St. Augustine's Hospital, a Fancy Dress Dance was held in the evening and during the remainder of the week, Ward Parties were arranged, when picnic teas were enjoyed in the Gardens. The climax of the week occurred on Friday, when the Patients' Sports and Field Day was revived after some fourteen years. The day was fine and thoroughly enjoyed by all. In expressing to the Staff its appreciation of all the work undertaken to make the week so successful, the Committee arranged for as many as possible of the Staff to be taken to London by Motor Coach to view the Coronation Illuminations.

In reviewing the year's work, priority must be given to one of the most important problems with which the Members have been faced, namely the gradual increase in the number of patients accommodated at St. Augustine's. The following table shows at a glance that the problem of overcrowding is far from being solved:-

| Year ended 31st Dec. | Average number of patients resident | | |
|-------------------------|-------------------------------------|---------|-------|
| | Males | Females | Total |
| 1949 | 692 | 832 | 1,524 |
| 1950 | 696 | 829 | 1,525 |
| 1951 | 682 | 854 | 1,536 |
| 1952 | 676 | 868 | 1,544 |
| 1953 | 687 | 891 | 1,578 |
| at 31/3/54 | 714 | 911 | 1,625 |

It was hoped that with the opening of Oak House (the Admission Hospital) in July, 1951, providing 42 male and 42 female additional beds, some relief would be found for the overcrowding then existing in the female wards - that this hope has remained unfulfilled is a matter of great disappointment.

The Members were very pleased to learn in the early part of the year that the Regional Hospital Board had been able to allocate from Capital Monies the sum of £25,000 for the re-instatement of half the damaged main building at St.Martin's thus providing accommodation for 100 female patients. Contractors have been busily engaged upon the work and at the close of the year, it is gratifying to learn that most of the work has been completed. Application has been made to the Board for the necessary revenue monies to enable the beds to be opened during the coming summer months. By transferring the more stable type of patient from St.Augustine's, the Members hope to ease the overcrowding in the Wards.

The Committee is also planning to open one of its Convalescent Villas at St.Augustine's which will provide accommodation for 22 female patients.

The Committee's attention has been centred constantly upon the need to recruit more nurses, particularly female students. In an attempt to focus local attention upon this need, it was decided to hold, early in the year, a Nurses' Prize Giving Ceremony. Silver badges, for presentation to nurses upon qualification, were designed and purchased, but before the event could take place, a request from the Regional Hospital Board to hold a Recruitment Campaign was received and arrangements were made for the two events to coincide. The Campaign was very widely publicised throughout East Kent and on 8th March, 1954, the Chairman formally opened the Campaign Week. The Badges and Prizes were presented to the Nursing Staff by Mrs.B.A.Bennett, O.B.E., the Principal Nursing Officer of the Ministry of Labour and National Service

The film "Out of True" was shown and a light tea was provided for the visitors, representatives of many Local Public Bodies and of Voluntary Organisations. During the remainder of the week, conducted tours were made to wards and ancillary departments before the parties saw the film and were entertained to a light tea. Although immediate recruiting was disappointing, much local interest was centred upon the Hospital, its work and its needs, and the Committee feels that much prejudice has been dispelled and the effort well worthwhile.

In an attempt to improve the accommodation and conditions for Senior Female Nursing Staff, the Committee has made available some single rooms on the ground floor of its Night Nurses' Home which have minimum furnishings and may be rented to staff at an economical figure on a non-resident basis. The Staff provide all their own meals when off duty, keep the rooms clean, provide their own crockery, cutlery and such additional furniture as they choose.

Much time has been devoted to the water supply for St. Augustine's as the pollution of No.1. Well continues and this water can be used only for laundry purposes. Sanction to the scheme to connect the Hospital with the main service of the Canterbury & District Water Company has been received from the Ministry of Health and it is expected that the laying of the pipes will commence in the early summer.

During past years, the effluent from the Sewage Farm has been irrigated over the surrounding pasture and arable fields of the St. Augustine's Hospital Farm. With the introduction of a dairy herd, the Committee realised the dangers of such a practice and an experimental plot has been fenced off within which it is hoped all the effluent may soak away. This is regarded as a temporary measure pending either a link up with the proposed scheme of the local Rural District Council or capital monies being available to pipe the effluent direct to the River Stour.

The Works Maintenance Staff has been kept busy with day to day repairs and general improvements to building fabric, machinery and equipment, and St.Martin's Hospital Annexe has been completely re-decorated internally, as have many departments at St.Augustine's. A new Sanitary Annexe has been built for Male D Ward, and on the Farm, Pig Sties have been reconditioned.

The Joint Consultative Committee has met with regularity and is proving its worth. One of the results of its deliberations is the publication of a quarterly magazine which, though subsidised from the Amenities Funds, finds a ready sale.

For some years now, a part-time Chiropodist has been employed in the female wards at St.Augustine's Hospital and during the year, an appointment of an additional part-time officer has been made for the male patients.

The chief changes amongst the staff have been the retirement by the Regional Hospital Board of Dr.A.K.McCowan, the Deputy Medical Superintendent, after 26 years service, replaced by Dr.J.A.Ainslie; the resignation of Mr.D.Brown, the Farm Manager, replaced by Mr.R.J.Reed; the retirement of Mr.H.V.Mallyon, Chief Laboratory Technician, replaced by Mr.A.R.Darling; and the retirements of Charge Male Nurses L.H.Bushell, G.A.Sims, Deputy Charge Male Nurse S.W.Lockwood and Hall Porter E.Reed. The Members would like to place on record their sincere appreciation of all the work so ably performed by Dr.McCowan at St.Augustine's Hospital and the Clinics in South East Kent and their regret that his services have thus been terminated. To the other members of the Staff who have retired or left the service, the Committee extends its best wishes. To the family of part-time Nurse Mrs.B.New, who died on 11th February, 1954, the Members express their sincere sympathy.

The following table shows the approximate net cost per patient per week over the past years:-

| Year | St. Augustine's | St. Martin's |
|---------|-----------------|--------------|
| 1948/49 | 53/5d | 107/3d |
| 1949/50 | 62/10d | 106/10d |
| 1950/51 | 65/6d | 122/2d |
| 1951/52 | 73/2d | 115/3d |
| 1952/53 | 79/6d | 127/1d |
| 1953/54 | 81/1d | 147/2d |

*** *** *** *** ***

REPORTS OF MEDICAL SUPERINTENDENTS

(a) St. Augustine's Hospital.

Mr. Chairman, Ladies and Gentlemen,

I beg to present the Annual Report for the year ended 31st December, 1953.

A study of Appendix "A" will show that there has been the usual increase in the average number of patients resident, 1578 as compared with 1544. It will also be noticed that the figure for admissions has increased by 99, 863 in 1953 against 764 in 1952. If the number of admissions is analysed it will be found that there were 87 male patients over 65 years of age admitted during the year; of these, 16 died, 42 were discharged, and 29 remained in hospital, not perhaps a very startling result. If, however, the corresponding figures on the female side are examined, a very different state of affairs will be found. There were 224 females over 65 admitted, of whom 17 died, 69 were discharged, and 138 are still in hospital. This is disturbing and shows how, especially on the female side, the hospital is becoming clogged with the old and infirm, and the condition shows every sign of becoming steadily worse again, especially on the female side.

The over 65's accounted for 25% of the total admissions on the male side for 1952 and in 1953 the figure was 25.36%, in other words practically no change. On the female side the figures were 26.8% for 1952 and 43.07% for 1953.

The death rate shows a slight overall drop, 116 as against 129, but this has been gained by a considerable drop in the male deaths, 46 this year against 72 last year, as the female death rate shows a rise, 70 this year against 57 last year.

TREATMENT

There is nothing outstanding to report in the way of new treatments, and all the recognised methods are being carried out as before.

Of the 855 new admissions, 526 were treated by Electro-Convulsive Therapy, about 20% of these with Scoline, 431 being discharged as recovered or improved. There is a busy Out-patient E.C.T. Clinic, 176 attending during the year, about 25% of these also receiving Scoline. Of these, 160 were considered to be recovered or improved.

There was a decrease in the number treated in the Insulin Department, only 9 compared with 37 last year. This was due to staffing difficulties, both nursing and Medical, and the department had to be closed for 6 months. Of the 9 all were discharged, 4 as recovered and 5 improved.

There were 12 leucotomy operations performed, 9 female and 3 male. Of these, 3 females were discharged, 1 as recovered and 2 relieved, and of the remaining 6, 4 are improved but still require hospital treatment and 2 show no change. Of the 3 males, 2 were discharged relieved and 1 shows no change.

OUT-PATIENT CLINICS

There has been little change to report. The same $8\frac{1}{2}$ sessions are working, the half session being represented by Deal which is held on the 2nd, 4th and 5th Friday in each month, instead of once a week as is the case with all the other ones. The figures are shown below:-

| Clinic | New Cases | | Re-attendances | | |
|---------------|-----------|------|----------------|------|-----------------------|
| | 1952 | 1953 | 1952 | 1953 | |
| ASHFORD | (134) | 139 | (226) | 229 | * 2 weekly clinics |
| CANTERBURY* | (249) | 237 | (542) | 523 | |
| DEAL | (74) | 66 | (186) | 221 | |
| DOVER | (108) | 127 | (315) | 328 | |
| FOLKESTONE | (146) | 137 | (501) | 352 | |
| MARGATE | (99) | 114 | (251) | 273 | |
| RAMSGATE | (86) | 108 | (166) | 213 | |
| SITTINGBOURNE | (128) | 119 | (200) | 166 | |
| <u>TOTALS</u> | (1024) | 1047 | (2387) | 2305 | |

There is again a slight increase in the number of new cases seen with a drop in the number of old cases. In spite of complaints, there is no doubt that South-East Kent is well served in this respect.

PSYCHIATRIC SOCIAL WORKER

This department is suffering from a shortage of staff. Miss A. Williams left on 26/9/53, and Miss A. Tanner, another trainee, joined in her place. In spite of this severe shortage, Miss E.C. Selley and Miss Tanner continue to get through a vast amount of very important work.

OCCUPATIONAL THERAPY

Miss M.S. Gibberd remains in charge. There have been some changes in personnel, Miss N. Conway and Miss B. Bailey have both left, and have been replaced by Miss I. Shepherdson and Miss P. Hey, with Mrs. J.P. Roscoe as an unqualified assistant.

Tentative plans have been discussed for enlarging this department, but as these things cost money they will have to wait.

PATHOLOGICAL DEPARTMENT

During the year the Laboratory Technician, Mr.H.V. Mallyon left after 34 years service. His place has been taken by Mr.A.R.Darling. The Laboratory is now under the supervision of Dr.I.B.Morris, Consultant Pathologist to the Kent and Canterbury Hospital. The following work has been done:-

Blood

| | | | | |
|------------------------------------|-----|-----|-----|-----|
| Counts - White Cells | ... | ... | ... | 487 |
| Red Cells | ... | ... | ... | 456 |
| Haemoglobins | ... | ... | ... | 48 |
| Differentials | ... | ... | ... | 43 |
| Eosinophils | ... | ... | ... | 16 |
| Meinicke and Kahn Tests | ... | ... | ... | 430 |
| Bromide | ... | ... | ... | 396 |
| Ureas | ... | ... | ... | 54 |
| Sugars (including Tolerance Tests) | ... | ... | ... | 110 |
| Malarial Films | ... | ... | ... | 45 |
| Widals | ... | ... | ... | 1 |

Faeces

| | | | | |
|--------------|-----|-----|-----|-----|
| Bacteriology | ... | ... | ... | 307 |
| Occult Blood | ... | ... | ... | 31 |
| T.B. | ... | ... | ... | 12 |

Urine

| | | | | |
|--------------|-----|-----|-----|------|
| Chemical | ... | ... | ... | 1034 |
| Bacteriology | ... | ... | ... | 27 |
| Cytology | ... | ... | ... | 30 |

C.S.F.

| | | | | |
|----------|-----|-----|-----|---|
| Lange | ... | ... | ... | 9 |
| Chemical | ... | ... | ... | 9 |

| | | | | |
|------------------------------|-----|-----|-----|----|
| Sputum T.B. Film and Culture | ... | ... | ... | 40 |
|------------------------------|-----|-----|-----|----|

| | | | | |
|---------------|-----|-----|-----|----|
| Miscellaneous | ... | ... | ... | 94 |
|---------------|-----|-----|-----|----|

| | | | | |
|--------------|-----|-----|-----|----|
| Post Mortems | ... | ... | ... | 37 |
|--------------|-----|-----|-----|----|

| | |
|-------|------|
| Total | 3716 |
|-------|------|

NURSING STAFF

There is no change to report here, the figures at the end of the year were:-

111 males full-time

3 males part-time (giving periods of service
equivalent to 2 full-time nurses)

67 females full-time

149 females part-time (giving periods of service
equivalent to 90 full-time nurses)

The prospects for improvement in the number of student nurses seem to be as remote as ever, and the proper staffing of wards depends very largely on the part-time nurses. The fate of the hospital without their assistance is too horrible to contemplate.

MEDICAL STAFF

During the year, Dr.A.K.McCowan retired. He joined the staff in 1927 and was Deputy Medical Superintendent and Consultant Psychiatrist when he left. The loss to the hospital was a severe one. Everyone wishes him well in his retirement. The post of Deputy Medical Superintendent was filled by Dr.J.A.Ainslie, and Dr.J.H.S.Whyte became an Assistant Psychiatrist. The post of Senior Registrar vacated by Dr.Whyte is still vacant. Dr.F.L.Scott is still with us whilst waiting for the completion of St.Martin's Hospital. Dr.F.Murray, Dr.R.Sander, Dr.M.Morgan and Dr. and Mrs.W.Kerr complete the list of medical staff. We are more than fortunate to have such a band of faithfuls who carry steadily on in the face of difficulties and frustrations of all kinds.

To you, Mr.Chairman, and to all the members of the Committee, I offer my grateful thanks for the help and encouragement you have given me throughout the year.

I have the honour to be,
Mr.Chairman, Ladies & Gentlemen,
Your obedient Servant,
(Signed) C.E.Alan Shepherd.
Medical Superintendent.

RETURN OF PATIENTS, 1953. Appendix 'A'

| | VOLUNTARY | | | TEMPORARY | | | CERTIFIED | | | TOTAL | | |
|--|-----------|-----|-----|-----------|----|----|-----------|-----|------|-------|-----|------|
| | M. | F. | T. | M. | F. | T. | M. | F. | T. | M. | F. | T. |
| DIRECT ADMISSIONS :— | | | | | | | | | | | | |
| (a) From Home ... | 195 | 254 | 449 | 5 | 10 | 15 | 82 | 188 | 270 | 282 | 452 | 734 |
| (b) From Hospital designated for purposes of Sect. 20 L. A. 1890 ... | — | — | — | — | — | — | 2 | — | 2 | 2 | — | 2 |
| (c) From elsewhere ... | 10 | 10 | 20 | 3 | 7 | 10 | 43 | 46 | 89 | 56 | 63 | 119 |
| TOTAL DIRECT ADMISSIONS | 205 | 264 | 469 | 8 | 17 | 25 | 127 | 234 | 361 | 340 | 515 | 855 |
| ADMITTED ON TRANSFER ... | — | — | — | — | — | — | 3 | 5 | 8 | 3 | 5 | 8 |
| DEPARTED OR DISCHARGED ... | 187 | 254 | 441 | 1 | 13 | 14 | 66 | 144 | 210 | 254 | 411 | 665 |
| Of whom had recovered... | 61 | 118 | 179 | — | 10 | 10 | 29 | 78 | 107 | 90 | 206 | 296 |
| TRANSFERRED TO OTHER STATUTORY CARE ... | — | — | — | — | 1 | 1 | 4 | 6 | 10 | 4 | 7 | 11 |
| ALLOWED OUT ON TRIAL ... | — | — | — | — | — | — | 18 | 71 | 89 | 18 | 71 | 89 |
| Of whom received allowances ... | — | — | — | — | — | — | 4 | 9 | 13 | 4 | 9 | 13 |
| ALLOWED OUT ON LEAVE ... | 150 | 52 | 202 | — | 1 | 1 | 190 | 77 | 267 | 340 | 130 | 470 |
| DIED ... | 10 | 7 | 17 | 2 | 4 | 6 | 34 | 59 | 93 | 46 | 70 | 116 |
| AVERAGE NUMBER OF PATIENTS RESIDENT ... | 91 | 111 | 202 | 3 | 3 | 6 | 593 | 777 | 1370 | 687 | 891 | 1578 |

(b) St.Martin's Hospital.

Mr.Chairman, Ladies and Gentlemen,

During the year under review, it has not been possible to do more than maintain the one ward, Stone House Annexe, containing 28 elderly male patients.

In October, however, work started on re-conditioning four wards in the Main Building, the General Kitchen, the Matron's and Medical Officer's Houses and various mess rooms. The completion of this work, next Spring, will provide accommodation for 104 female patients.

Patients.

Apart from one patient, E.J., who was transferred to St.Augustine's Hospital for surgical treatment, the health of this small community has remained satisfactory and there have been no cases of infectious disease. There have been no injuries.

During the summer months the patients went for charabanc drives but in the winter they now prefer to watch the television rather than attend the cinema shows at St.Augustine's.

The weekly visits of the Revd.J.Cross are much appreciated.

On the suggestion of the Regional Catering Adviser, the diet has been supplemented by more milk puddings and an additional course at tea time.

Staff

There have been no changes in the Nursing Staff, which consists of 6 fully and 1 partly qualified nurses.

Though the recruitment of nursing and other staff will present some difficulty, it is hoped that the ensuing year will see the re-opening of the female side of this hospital and consequent relief of the gross overcrowding at St.Augustine's Hospital.

Patient Numbers.

| | <u>Voluntary</u> | | | <u>Certified</u> | | | <u>Total</u> | | |
|--------------------------|------------------|-----------|-----------|------------------|-----------|-----------|--------------|-----------|-----------|
| | <u>M.</u> | <u>F.</u> | <u>T.</u> | <u>M.</u> | <u>F.</u> | <u>T.</u> | <u>M.</u> | <u>F.</u> | <u>T.</u> |
| <u>St. Martin's</u> | | | | | | | | | |
| Resident 31/12/52 | 1 | - | 1 | 27 | - | 27 | 28 | - | 28 |
| Admissions | - | - | - | 1 | - | 1 | 1 | - | 1 |
| | 1 | - | 1 | 28 | - | 28 | 29 | - | 29 |
| Transfer | - | - | - | 1 | - | 1 | 1 | - | 1 |
| | 1 | - | 1 | 27 | - | 27 | 28 | - | 28 |
| Remaining 31/12/53 | 1 | - | 1 | 27 | - | 27 | 28 | - | 28 |
| <u>Bexley Hospital</u> | | | | | | | | | |
| Resident 31/12/52 | - | 7 | 7 | - | 46 | 46 | - | 53 | 53 |
| Regradings | - | 6 | 6 | - | 6 | 6 | | | |
| | - | 13 | 13 | - | 40 | 40 | | | |
| Discharges | - | - | - | - | 1 | 1 | - | 1 | 1 |
| Deaths | - | - | - | - | 3 | 3 | - | 3 | 3 |
| | - | 13 | 13 | - | 36 | 36 | - | 49 | 49 |
| Remaining 31/12/53 | - | 13 | 13 | - | 36 | 36 | - | 49 | 49 |
| <u>Netherne Hospital</u> | | | | | | | | | |
| Remaining 31/12/53 | - | - | - | 7 | - | 7 | 7 | - | 7 |
| | | | | No changes | | | | | |

I have the honour to be,
Mr. Chairman, Ladies & Gentlemen,
Your obedient Servant,

(Signed) F. L. SCOTT
Medical Superintendent.

REPORTS OF THE BOARD OF CONTROL

(a) St. Augustine's Hospital

5th August, 1953

There are today in residence, 1584 patients (687 men and 897 women). During 1952 there were 754 direct admissions; of these, 417 were voluntary, 13 were temporary and 324 were certified. Five hundred and ninety seven patients were discharged; 15 were transferred to other statutory care and 10 men and 47 women were allowed out on trial.

During the period under review, 129 patients died (72 men and 57 women) giving a mortality rate of 10.7% for men and 6.6% for women.

Forty-five post mortem examinations were made, the majority of the deaths resulted from diseases of the cardio vascular system and from pneumonia. Ten patients (8 men and 2 women) died from tuberculosis.

Since last visit 3 inquests have been held and 49 casualties have been recorded, mostly fractures due to accidental falls, a possible explanation is that many of the patients are elderly and frail.

The general physical health has been good, many of the patients are elderly and have to be nursed in bed on account of their physical infirmities.

The standard of nursing is high, and the patients are treated with kindness and consideration by the staff - many of these expressed appreciation of the care and attention they are receiving.

During June of this year, there was an outbreak of severe diarrhoea, 62 female patients being affected but at the time of our visit the hospital was free of all intestinal infections. The organism responsible could not be determined at the pathological laboratory at Canterbury where these investigations were made.

There are at present 10 patients (8 men and 2 women) under treatment for tuberculosis. They are nursed on verandahs and are suitably isolated; masks and gowns are provided and worn by the nurses when attending to the patients on these verandahs.

All wards and dormitories were well kept and maintained and the sick wards especially were well equipped. The poison cupboards are satisfactory and regularly inspected by the pharmacist.

Occupational Therapy is well organised, but on the women's side, the premises are rather small for their commitments; more space could be obtained for the patients if the unused stock and equipment could be stored elsewhere.

Arrangements for recreation and amusements are good - television is provided in a great number of the wards, and is much appreciated by the patients. The usual forms of physical psychiatric treatment are available to suitable cases, but at present the deep insulin unit is out of action on account of the shortage of medical staff experienced in this form of therapy.

Outpatient clinics are held at Ashford, Canterbury, Deal, Dover, Folkestone, Margate, Ramsgate and Sittingbourne.

Pocket money as pocket money is not given to any of the patients. Tobacco is given on the male side and small amounts of money up to 2/6d a week are given to women workers, for special tasks performed.

Lately, a few women workers, who are really helpful in the hospital wards, have been given 10/- a week. This practice is being developed.

The nursing staff consists of 114 men and 53 women, all full time. Of these, 72 of the men and 27 of the women are certificated or registered mental nurses; in addition there are 4 men and 130 part-time women.

Among the improvements observed by us at this visit were the sanitary annexes in Male D and Male H1, and the new clinical room in Female A1 ward was quite attractive. In passing it should be mentioned that the overcrowding generally present in the wards, has removed the margin for repairs in the W.C. accommodation.

The laundry is well conducted and the arrangements for the collection of foul linen from the wards are good. Bags are now used. Thirty thousand articles pass through this department every week - another Twin Rapid Press would be of great help in dealing with such a large number of pieces.

A dental surgeon attends once a week in a well equipped dental surgery.

Consultants in all branches of medicine and surgery are available and visit the hospital when required.

Four private interviews were given.

Dr.C.E.Allan Shepherd has to assist him as deputy Medical Superintendent Dr.J.A.Ainslie, who has been promoted to the place of Dr.A.K.McCowan, recently resigned on retirement. Dr.J.H.S.Whyte is S.H.M.O., the position of Senior Registrar is vacant. Drs. Joan Kerr, F.Murray and N.A.Martin are J.H.M.O's, the position of S.H.O. is vacant. We hope that Dr.A.K.McCowan will enjoy his retirement.

We have to thank Dr.Shepherd and his staff for the assistance and information given us during our visit.

(Signed) J. Fraser M. Campbell

G. A. Lilly

Commissioners

Board of Control

(b) St.Martin's Hospital

9th March, 1953

There are in residence today 27 certified and one voluntary patient.

During 1952, four patients were admitted on transfer; one was transferred to other statutory care and one patient died.

The general physical health is satisfactory, the patients are well nourished and they are treated with kindness and consideration.

The wards and dormitories are clean and well heated.

Arrangements for recreation and amusements are suitable for the type of patient in residence. Television is now provided.

A number of the men are employed in the grounds, and 2 work in the Tailor's and Shoemaker's shops. The others assist in the wards.

As rewards for work one issue of tobacco or cigarettes is made. No money is given, but it is understood that at Xmas time, some of the patients received small sums of money.

The nursing staff consists of six certificated or Registered Male Nurses and one Assistant Nurse.

During the visit, I was accompanied by Dr.Scott who gave every assistance.

(Signed) J. Fraser M. Campbell.

Commissioner
Board of Control

...the ... of ...
...the ... of ...
...the ... of ...
...the ... of ...
...the ... of ...

...the ... of ...
...the ... of ...
...the ... of ...
...the ... of ...
...the ... of ...

...the ... of ...
...the ... of ...
...the ... of ...
...the ... of ...
...the ... of ...

...the ... of ...
...the ... of ...
...the ... of ...
...the ... of ...
...the ... of ...

...the ... of ...
...the ... of ...
...the ... of ...
...the ... of ...
...the ... of ...

...the ... of ...
...the ... of ...
...the ... of ...
...the ... of ...
...the ... of ...

...the ... of ...
...the ... of ...
...the ... of ...
...the ... of ...
...the ... of ...

...the ... of ...
...the ... of ...
...the ... of ...
...the ... of ...
...the ... of ...

...the ... of ...
...the ... of ...
...the ... of ...
...the ... of ...
...the ... of ...

...the ... of ...
...the ... of ...
...the ... of ...
...the ... of ...
...the ... of ...

