

Fourteenth annual report of the State Asylum for the Chronic Insane of Pennsylvania : for the year ending September 30, 1907 South Mountain.

Contributors

State Asylum for the Chronic Insane of Pennsylvania.

Dechert, Henry M.

Smith Hill, Samuel.

Wheeler, Lucia A.

Shenk, J. M.

Bricker, T. C.

Guilford, W. M.

Publication/Creation

Lebanon, Pa. : Printed by Report Publishing Co., [1908?]

Persistent URL

<https://wellcomecollection.org/works/drmg9e8c>

License and attribution

Conditions of use: it is possible this item is protected by copyright and/or related rights. You are free to use this item in any way that is permitted by the copyright and related rights legislation that applies to your use. For other uses you need to obtain permission from the rights-holder(s).



Wellcome Collection
183 Euston Road
London NW1 2BE UK
T +44 (0)20 7611 8722
E library@wellcomecollection.org
<https://wellcomecollection.org>

ANN-REP
WLM 28
.FP4
S79
1906-07

STATE ASYLUM FOR CHRONIC INSANE OF PA.



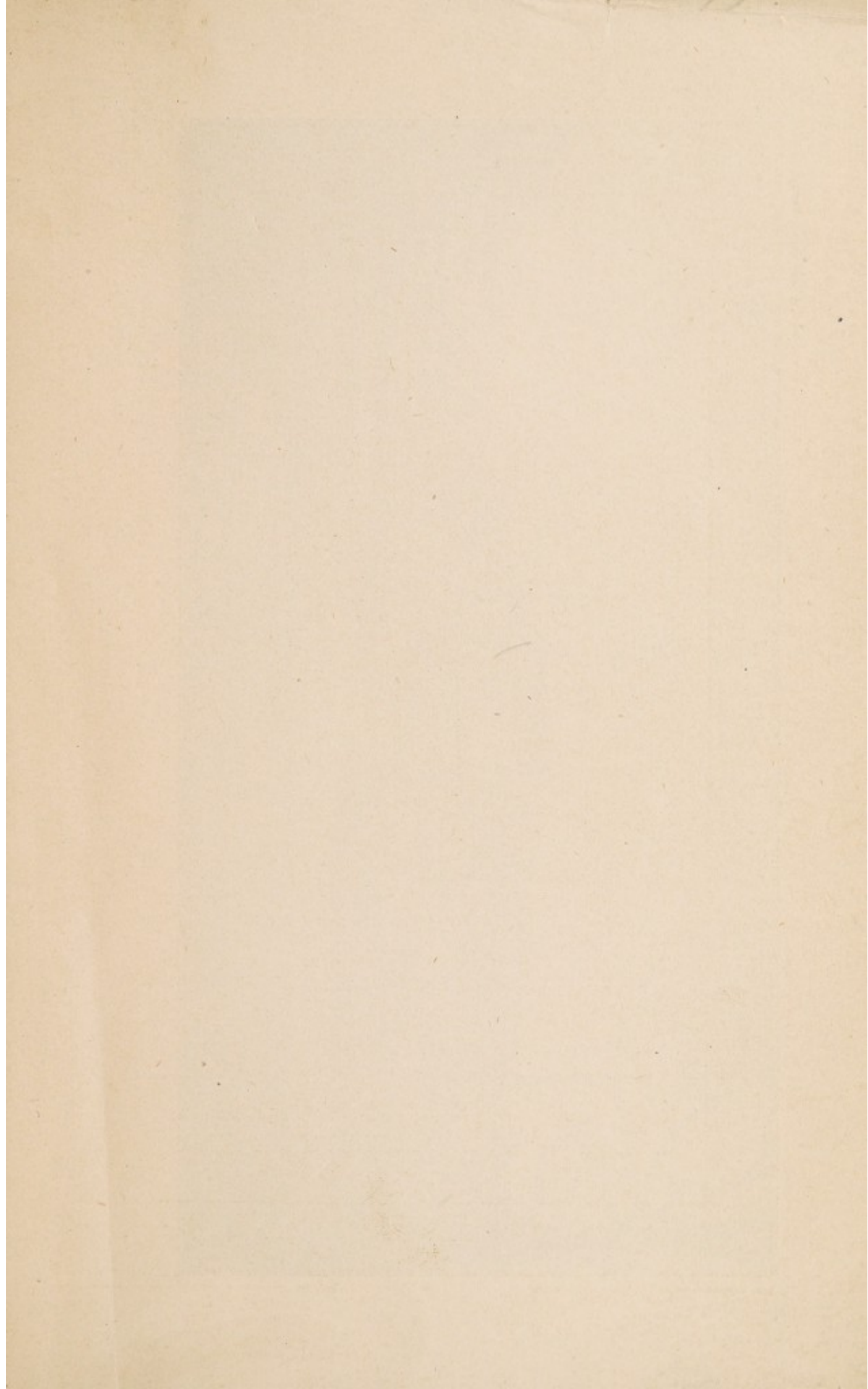
SOUTH MOUNTAIN
WERNERSVILLE POST OFFICE

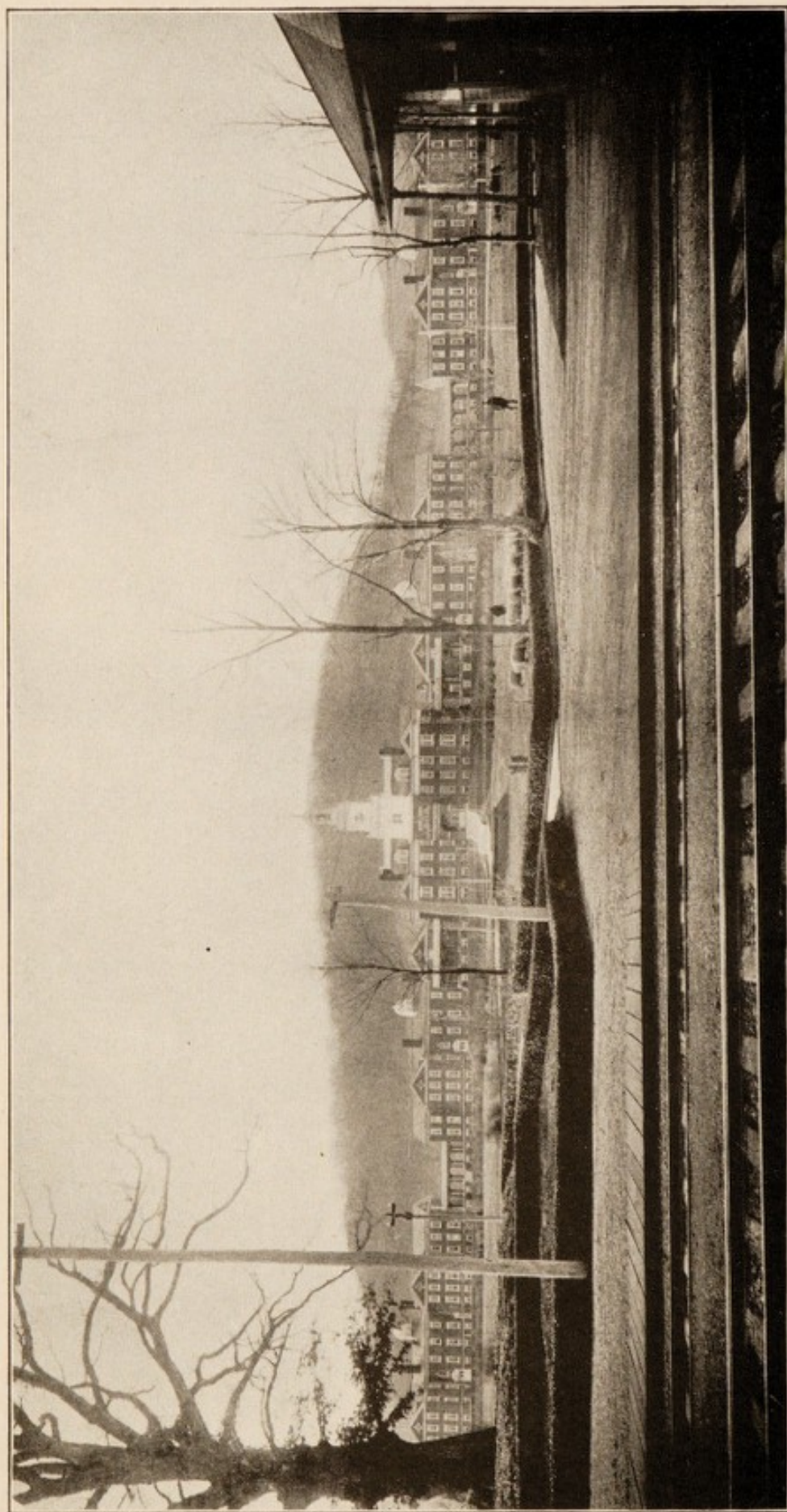
FOURTEENTH ANNUAL REPORT
FOR YEAR ENDING SEPTEMBER
THE THIRTIETH, 1907. :: :: :: :: ::

WELLCOME INSTITUTE LIBRARY	
Coll.	wellMomec
Call	Ann. Rep
No.	WLM 28
	• FP4
	579
	1906-07



22501663303





FOURTEENTH ANNUAL REPORT
OF
THE STATE ASYLUM
FOR
THE CHRONIC INSANE
OF PENNSYLVANIA

For the Year Ending September 30, 1907

SOUTH MOUNTAIN



Press of
REPORT PUBLISHING COMPANY
Lebanon, Penn'a

Digitized by the Internet Archive
in 2018 with funding from
Wellcome Library

<https://archive.org/details/b3030278x>

OFFICERS OF THE ASYLUM

BOARD OF TRUSTEES.

HENRY M. DECHERT . . .	<i>President</i> . .	Philadelphia.
JACOB M. SHENK . . .	<i>Treasurer</i> . .	Lebanon.
JOSEPH L. LEMBERGER . .	<i>Secretary</i> . .	Lebanon.
SAVERY BRADLEY		Philadelphia.
WALTER T. BRADLEY		Philadelphia.
HORACE BROCK		Lebanon.
J. B. KREMER		Philadelphia.
THOMAS P. MERRITT		Reading.
THOMAS C. ZIMMERMAN		Reading.

RESIDENT OFFICERS.

SAMUEL SMITH HILL, M.D. .	Superintendent.
ALDEN B. McDONALD, M.D. .	First Assistant Physician.
LUCIA WHEELER, M.D. . .	Second Assistant Physician.
THOS. C. BRICKER	Steward.
ANNA KING	Matron.
FRANCIS B. OWEN	Chief Clerk.

CONSULTING STAFF.

Physicians.

WM. M. GUILFORD, M.D.	Lebanon.
WM. F. MUHLENBERG, M.D.	Reading.
D. L. EDSALL, M.D.	Philadelphia.
SAMUEL W. MORTON, M.D.	Philadelphia.
THOMAS S. STEWART, M.D.	Philadelphia.

Surgeons.

DEFOREST WILLARD, M.D.	Philadelphia.
D. B. D. BEAVER, M.D.	Reading.
EDWARD MARTIN, M.D.	Philadelphia.
JAMES C. CARPENTER, M.D.	Pottsville.

Neurologists.

WHARTON SINKLER, M.D.	Philadelphia.
CHARLES K. MILLS, M.D.	Philadelphia.
JAS. HENDRIE LLOYD, M.D.	Philadelphia.
FRANCIS X. DERCUM, M.D.	Philadelphia.

Gynecologists.

CHAS. P. NOBLE, M.D.	Philadelphia.
CAROLINE M. PURNELL, M.D.	Philadelphia.

Ophthalmologist.

CHARLES A. OLIVER, M.D.	Philadelphia.
---------------------------------	---------------

REPORT OF THE TRUSTEES

To His Excellency, Edwin S. Stuart, Governor, the Senate and House of Representatives and the Board of Public Charities of Pennsylvania:

The Board of Trustees of the State Asylum for the Chronic Insane of Pennsylvania present their Annual Report for the year ending September 30th, 1907.

The number of patients in the Asylum on October 1, 1906, was: men, 597; women, 202; total, 799.

During the year there were admitted: men, 75; women, 6; died: men, 8; women, 2. Transferred to other hospitals: men, 3; women, 0. Discharged to their own families: men, 6; women, 2. Total remaining in the Asylum September 30th, 1907: men, 653; women, 206; total, 859.

The reports of the Treasurer, Superintendent, Woman Physician, Steward and Consulting Staff are presented herewith.

The expenditures for the year amounted to \$138,236.56, and the weekly cost for each patient was \$3.056.

Expenditures. These include all of the expenses incurred in the comfortable maintenance of the patients, for the necessary repairs to the buildings and for improving the land and renewing the farm and garden implements. Great care is taken to provide a suitable variety of good food and sufficient clothing to make the inmates comfortable at all seasons of the year. All this has been accomplished at the moderate weekly cost for each patient, as already stated, of Three Dollars (\$3.056). The Treasurer's Report shows these expenses in detail.

Products and Manufactures. The Steward's Report shows the remarkable amount of productions of the farm and garden; although the weather was unfavorable during the spring and early summer, the growth is very satisfactory. This report also exhibits the work done and articles made in the shops by the inmates. Some of these industries are exceedingly useful in furnishing employment during the winter season; during the other months the men are employed on the farm and garden. They work voluntarily, and some of them do so effectively. Although the net result of the shop work during the

winter is not large, yet it is valuable in furnishing employment during the inclement hours of winter. We regret that the recent Act of the Legislature forbids the sale of these manufactured goods to any purchaser, except the other State Institutions for the Insane.

Health. The reports of the Superintendent, Woman Physician and Consulting Staff show that during the year the general physical health of the patients has been good, and that we have escaped every form of contagious or infectious disease. Pure air and water, work in the open and constant inspection by the Medical Officers have combined in producing this excellent condition.

Appropriations. The Legislature of 1907 made appropriation for the extension of the dining room with a day room for women, upon the second floor, and also for an infirmary. The Board of Trustees appointed a Building Committee and selected an architect. Plans and specifications have been prepared and approved by the Board of Trustees and the State Board of Public Charities. Proposals will be received from builders in January, 1908, and the erection of the two buildings will be begun during the following Spring.

Land Needed. We regret that no appropriation was made for the purchase of the triangular tract of land containing nine acres, near the northwest corner of the dormitories. We regard it as a matter of importance, as the vicinity to our buildings and to the lawn and grove used by the women patients makes the ownership of this small tract necessary for the comfort and even the safety of the Asylum and its inmates.

Official Visitation. The State Commission to examine and report upon the State Hospitals for the Insane, Hon. Henry F. Walton, President, visited the Asylum and made a complete examination of the buildings, farms and inmates. Their report, made last winter to the Legislature, expresses their entire satisfaction with the condition of the patients and the style and condition of the Asylum buildings. They say, however, perhaps owing to an error in printing the report, that our Board did not advertise for the supplies; in fact all of our supplies are purchased from the lowest bidders, after advertisements in various newspapers, inviting sealed bids. These are

opened by the Executive Committee, in the presence of the bidders, and upon the report of the Committee the contracts are always awarded to the lowest bidders, they having furnished approved bonds. This course has been followed since 1894, to the mutual satisfaction of the bidders and the Asylum authorities.

A Joint Committee of the Select and Common Councils of the City of Philadelphia upon Health and Charities, visited the Asylum and made a complete inspection of the farm and buildings. They were accompanied by Joseph S. Neff, M.D., Director of the Department of Health and Charities of Philadelphia. They also expressed their satisfaction with the methods pursued in caring for the insane. The City of Philadelphia contributes to the support of 397 patients.

The State Medical Society, holding its annual session at Reading, visited the Asylum and likewise commended the authorities. The sight of insane men working in the fields without any except the ordinary farm fences was a striking novelty to many of the visitors.

The Association of Superintendents and Trustees of the Hospitals for Insane in Pennsylvania, Dr. John B. Chapin, President, held their semi-annual meeting at the Asylum in September, 1906, and as a part of their official duties visited the various buildings and the farm. They likewise expressed their satisfaction with the condition of the patients and buildings.

Tree Planting. Under the supervision of the Superintendent and the advice of the Landscape Committee and Mr. Ogelsby Paul, the landscape gardener of Fairmount Park, Philadelphia, 2,000 trees were planted during the year in the tract recently bought to protect the water supply. Many of these trees and the bushes also planted will be nut-bearing. This fact, and the opening of park roads through the large tract, will add to the enjoyment of the patients in future years. We propose to erect there shelters and to make it a Recreation Park where the patients can be taken during the summer months. The action of the Governor and Legislature, in authorizing the purchase of this tract at a very moderate cost, will prove to be of great value in future years.

Officials. We commend Dr. Samuel S. Hill, our faithful Superintendent, and his excellent assistants, Dr. Alden B. McDonald and Dr. Lucia A. Wheeler; Miss Anna King, Matron; Thomas C. Bricker, Steward, and Francis B. Owen, Chief Clerk, for their continued discharge of duty. The men and women supervisors and attendants who are now at the Asylum have, by their faithful attention to the patients, largely assisted in producing the good order and health of the Asylum.

We take pleasure in acknowledging the assistance in our work received from the Board of Public Charities and the Committee on Lunacy. The Consulting Staff of Physicians and Surgeons have cheerfully given their aid and assistance to the Resident Physicians in special cases. For their attention, we tender them our sincere thanks.

The Superintendent has, at different times, provided concerts, dancing and other entertainments for the patients in the Assembly Hall. We return our thanks to the benevolent friends in Reading and Lebanon who gave some of these concerts.

A Library for the attendants, other employees and those of the patients who can appreciate it is being slowly enlarged. Contributions of books, magazines, illustrated and other newspapers are invited from our friends. Packages can be sent by United States Express, charges to be paid at the Asylum.

The Asylum is located at South Mountain Station, on the Lebanon Valley Railroad, ten miles west of Reading. It is easily accessible by numerous daily trains to and from all parts of the State, and by the electric cars.

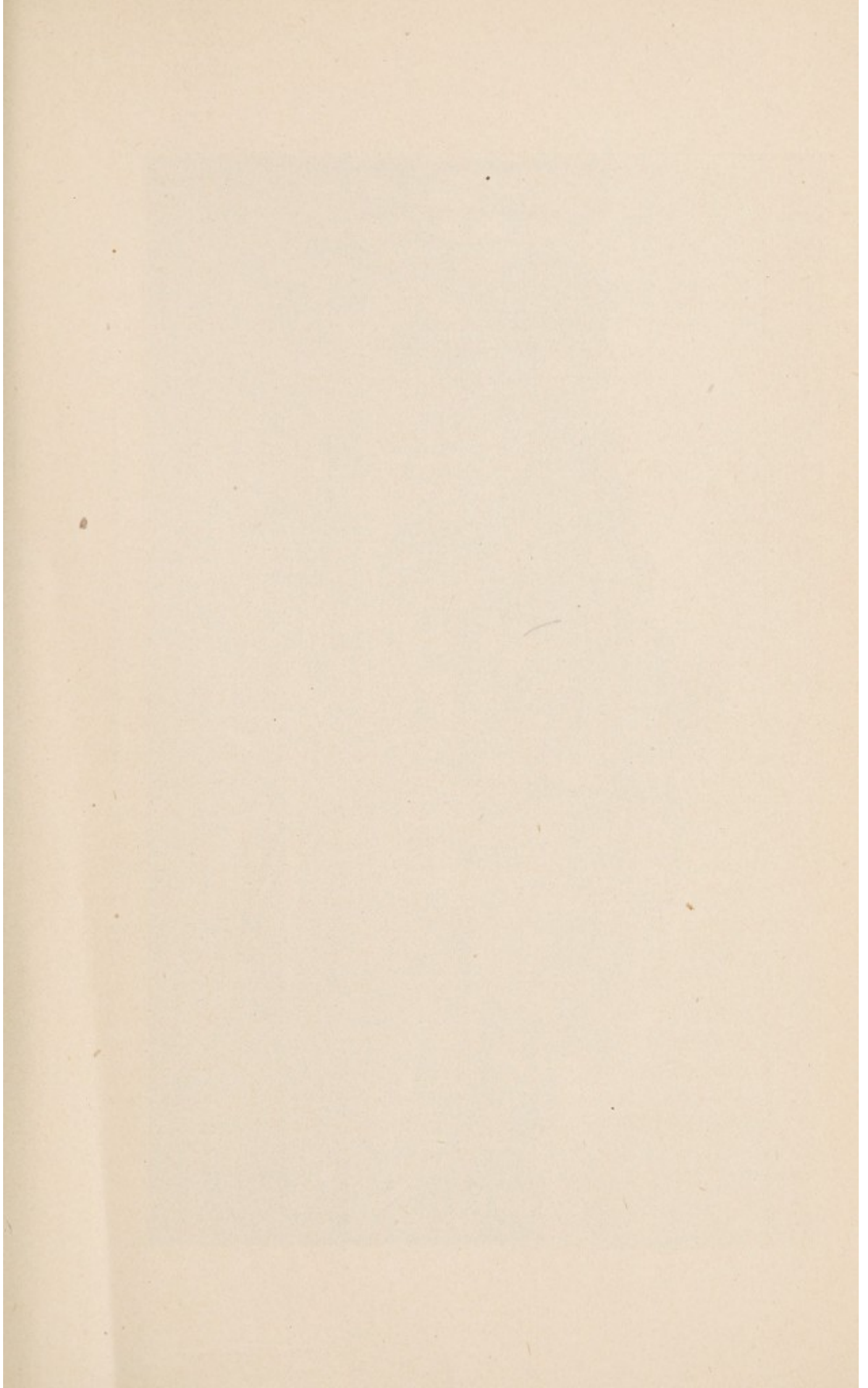
The post-office address is Wernersville, Berks County, Pa.

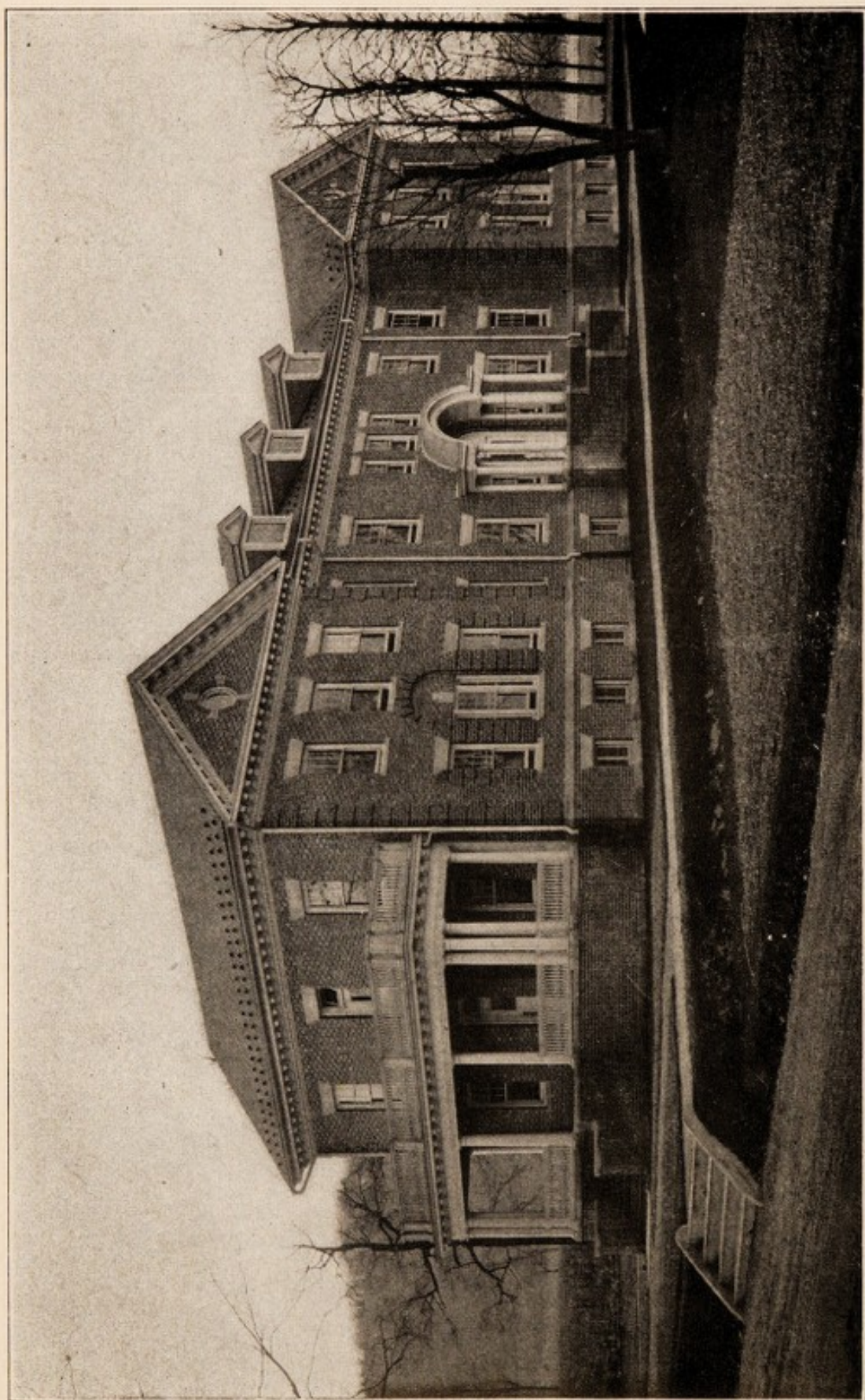
Visitors are invited on Friday of each week from ten o'clock a. m. until four o'clock p. m. Relatives wishing to visit the patients will be received daily.

HENRY M. DECHERT,

President Board of Trustees.

South Mountain, Pa., November 30, 1907.





THE ATTENDANTS' DORMITORY BUILDING, ERECTED 1906.

REPORT OF THE SUPERINTENDENT

GENTLEMEN: The following report of the Asylum for the year ending September 30th, 1907, is herewith presented:

The following table shows the movement of population:

	Men	Women	Total
Number of patients in Institution September 30th, 1906	597	202	799
Number of patients admitted September 30th, 1906, to September 30th, 1907.....	75	6	81
Total	672	208	880
Paroled in care of relatives	2	0	2
Discharged			
Recovered	1	0	1
Improved	2	1	3
Unimproved	8	1	9
Died	8	2	10
Total	21	4	25
Number of patients remaining September 30th, 1907	653	206	859

We have had only ten deaths during the year, which is less than 2 per cent. (1.182 per cent.) of the population, and as usual the largest percentage of these is due to tuberculosis in some form. For more than five years we have had our patients suffering from tuberculosis live in tents, and considering the difficulties we encounter in their treatment we feel that the results are good. We have in use now for these patients an inexpensive shelter which is an improvement on the tent, in that it offers better protection from storms and at the same time gives them the benefit of the open air life.

Following out the idea of the incorporators of this institution, and believing that a proper amount of work is beneficial to our patients, we, therefore, continue the methods we have used with success since the institution was started. We have endeavored for years to employ our people in useful ways, and in so doing to lessen the cost of their maintenance and thus lessen the burden to the taxpayers, thus all those who are able are encouraged to devote considerable time to some useful employment, though no constraint is used. A large proportion

of our men are employed in farming, gardening, road-making, assisting in the kitchen, laundry, refectory, and a small number in the bakery, paint shop, carpenter shop, wheelwright shop, blacksmith shop and tailor shop. The work in the green-houses is entirely done by patients, one who is expert in the work having charge and assistance rendered by several others. Two other men find employment at carpet weaving. The women are employed at ward work, assisting in housework in the administration building, working in the kitchen, laundry, sewing and mending rooms. We have taken up the manufacture of several articles with considerable success, the shops being operated inexpensively and showing a good profit. We regret that an Act passed at the last Legislature has restricted the manufacture of any article unless these be used in our own Asylum or disposed of to other like institutions. We feel that in a measure this tends to defeat the purpose of the institution, for we were not only making a little money, but were employing a considerable number of men who were much better and happier at work than sitting in idleness in the wards. Unfortunately the general character of our patients is not such as to admit of their employment to a large extent in shop work. We have but a few men, now able to do any but irregular work, who have been trained mechanics or men accustomed to shop work, and almost all in our care are of such an age as to render any but the simplest mechanical operations beyond their teaching.

For the better protection of our water supply we have purchased almost two hundred acres of woodland and we are now engaged in reforesting this tract, and improving it by building drives and roadways over it. About 2,000 trees have already been planted, and we expect to continue this work under the supervision of the State Department of Forestry.

We have remodeled and built an addition to a frame cottage so that it will now have rooms for three small families of our employes. We have reconstructed our coal dump by building ten concrete piers and replacing the wooden stringers with steel beams and two concrete bins for coal have also been built, replacing the old wooden ones. A hot house, 100 feet long and 20 feet wide, with concrete foundation and benches and the

superstructure made of old material, has been built for the use of the gardener; 65,000 feet of macadam road has been built, and 15,000 cubic feet of excavating has been done for same; 5,000 tons of stone have been crushed for use in road making, and a large amount of post and rail fence has been built.

We have endeavored to make our farm and garden as profitable as possible, therefore we pay considerable attention to the operations of that department of our work and try to raise crops that will bring the best returns.

We do not consider that we are justified in expending large sums of money for finely bred dairy stock, but we select good milk cows and give them proper care in the way of sanitary surroundings and selected food. Our herd is regularly tested for tuberculosis and any found to have the disease are promptly killed. All of our calves are vaccinated and no new cows purchased unless they have proved to be free from disease.

The last Legislature made to us an appropriation of \$30,000 for an infirmary building, and we now have completed plans for a modern building well adapted to our needs, and expect to let the contract and commence its erection very soon. We have been handicapped during our whole existence in that we have not had a proper place in which to care for our sick people. We hope also to equip a small laboratory in this building, so that we may enlarge the scope of our Pathological work.

We have also an appropriation of \$50,000 for the erection of an addition to our dining room, the second floor to be used as a day room for women. The addition to the dining room will give us much needed space, as our main dining room has always been crowded, and the day room for women will be greatly appreciated, as at present we are using a building for the purpose which is not connected with the main building by corridor, and the women are put to considerable inconvenience and some discomfort in going from their wards to this temporary day room.

The usual Sunday praise service is held, in part conducted by visiting clergymen and at other times by the Superintendent, but no one is compelled to attend these non-sectarian services. Those who are members of the Catholic Church regularly re-

ceive the ministrations of the clergymen of that denomination who reside in Reading.

The usual careful attention has been given to the selection of entertainment and amusement for the patients. The wards are supplied with cards, checkers, dominoes, etc. The library furnishes good reading matter to those who wish to use it and frequent contributions of magazines and pictorial papers give pleasure to a large number of those who can appreciate them. The regular dances are continued and frequent vocal and instrumental concerts are given in our Assembly Hall. The various holidays were observed in the usual manner.

In closing this brief report, I wish to thank the Board of Trustees for their kindness to me personally and officially.

Respectfully,

S. S. HILL,
Superintendent.

MOVEMENT OF POPULATION.

September 30th, 1906, to September 30th, 1907.

	Men	Women	Total
Number of patients in Institution September, 30th, 1906	597	202	799
Number of patients admitted, September 30, 1906, to September 30, 1907.....	75	6	81
Total	672	208	880
Paroled in care of relatives.....	2	2
Discharged:			
Recovered	1	1
Improved	2	1	3
Unimproved	8	1	9
Died	8	2	10
Total	21	4	25
Remaining September 30th, 1907.....	653	206	859
Average number during the year.....	642	204	846
Lowest number during the year.....	617	201	818
Highest number during the year	662	207	869

NUMBER OF PATIENTS RECEIVED FROM STATE AND COUNTY
HOSPITALS FOR THE INSANE.

September 30th, 1906, to September 30th, 1907.

	Men	Women	Total
State Hospital for Insane, Norristown.....	25	6	31
State Hospital for Insane, Dixmont.....	20	20
State Lunatic Hospital, Harrisburg.....	30	30
Total	75	6	81

CIVIL CONDITION OF THOSE ADMITTED.

September 30th, 1906, to September 30th, 1907.

	Men	Women	Total
Single	39	5	41
Married	17	17
Widowed	2	2
Divorced
Unknown	17	1	18
Total	75	6	81

FORM OF MENTAL DISEASE OF THOSE ADMITTED.

September 30th, 1906, to September 30th, 1907.

	Men	Women	Total
Mania, Chronic	16	2	18
Melancholia, Chronic	3	3
Dementia, Chronic	34	4	48
Imbecility	6	6
Paresis	4	4
Paranoia	12	12
Total	75	6	81

CAUSE OF INSANITY OF THOSE ADMITTED.

September 30th, 1906, to September 30th, 1907.

	Men	Women	Total
Alcoholism	7	7
Congenital Defect	6	1	7
Death of Child	1	1
Exposure	1	1
Homesickness	1	1
Heredity	5	5
Injury to Head	3	3

CAUSE OF INSANITY OF THOSE ADMITTED (CONTINUED).

	Men	Women	Total
Loss of Property	1	1
Masturbation	3	3
Overwork	1	1
Overstudy	1	1
Religious Excitement	1	1	2
Result of Injuries	1	1
Sexual Excesses	1	1
Syphilis	1	1
Smoking	1	1
Sunstroke	1	1
Typhoid Fever	1	1
Worry	1	1	2
Unknown	38	2	40
Total	75	6	81

NATIVITY OF THOSE ADMITTED.

September 30th, 1906, to September 30th, 1907.

	Men	Women	Total
Pennsylvania	37	4	41
New York	2	2
Delaware	1	1
United States	3	3
Germany	4	4
England	1	1
Wales	1	1
Ireland	1	1
Austria	3	3
Hungary	3	3
Poland	3	3
Russia	1	1
Italy	1	1
Unknown	15	1	16
Total	75	6	81

PATIENTS DISCHARGED

SEPTEMBER 30, 1906, TO SEPTEMBER 30, 1907.

NUMBER	MEN	WOMEN	COLOR	AGE	CIVIL CONDITION.	NATIVITY.	TIME IN HOSPITAL			FORM OF MENTAL DISEASE.	WHOLE DURATION		
							Years	Months	Days		Years	Months	Days
1	1	..	W	39	Sg.	Sweden	1	5	28	Mania, chronic	12	5	28
2	..	1	W	72	Sg.	Pennsylvania	1	5	28	Mania, chronic	25	5	28
3	..	1	W	63	Wd.	England	12	..	5	Mania, chronic
4	1	..	W	61	Mr.	Wales	12	..	15	Mania, chronic
5	1	..	W	38	Sg.	Pennsylvania	9	4	22	Mania, chronic	15	4	22
6	1	..	W	27	Sg.	United States	..	2	16	Paranoia
7	1	..	W	25	Sg.	Pennsylvania	..	2	16	Imbecility
8	1	..	W	36	Sg.	Pennsylvania	9	10	27	Mania, chronic	10	10	27
9	1	..	W	22	Sg.	Pennsylvania	..	7	27	Mania, chronic, acute
10	1	..	W	22	Sg.	Pennsylvania	..	10	4	Melancholia, recurrent
11	1	..	W	36	Sg.	Pennsylvania	..	4	26	Mania, recurrent
12	1	..	W	27	Sg.	Pennsylvania	..	10	4	Paranoia	14	4	26
13	1	..	W	60	Mr.	Poland	6	2	12	Dementia
										Dementia, chronic

Eloped and never returned to the institution.
 Paroled in care of relatives and never returned.
 Paroled in care of relatives and never returned.
 Discharged in care of his son.
 Transferred to Chester Co. Hospital for Insane.
 Transferred to Blair Co. Hospital for Insane.
 Transferred to Blair Co. Hospital for Insane.
 Paroled in care of relatives and never returned.
 Discharged in care of relatives.
 Discharged in care of relatives.
 Eloped and never returned to the institution.
 Paroled in care of relatives and never returned.
 Paroled in care of relatives and never returned.

NUMBER OF PATIENTS DISCHARGED EACH MONTH.

September 30th, 1906, to September 30th, 1907.

		Men	Women	Total
October,	1906.....	1	2	3
November	".....	1	1
December,	".....	1	1
January,	1907.....	2	2
February,	".....
March,	".....
April,	".....
May,	".....
June,	".....
July,	".....	2	2
August,	".....
September,	".....	4	4
Total	11	2	13

CIVIL CONDITION AND COLOR OF THOSE REMAINING

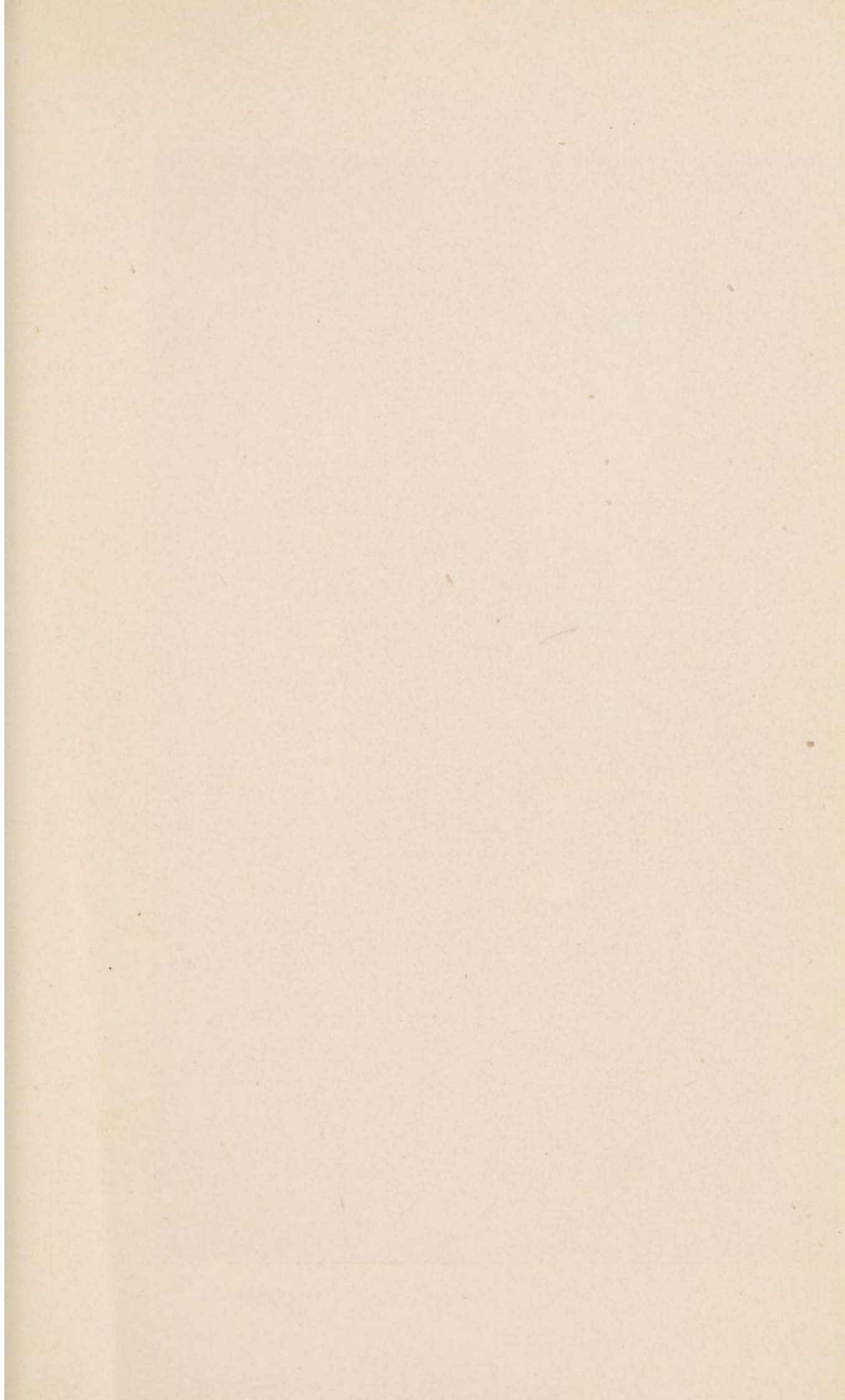
September 30th, 1907.

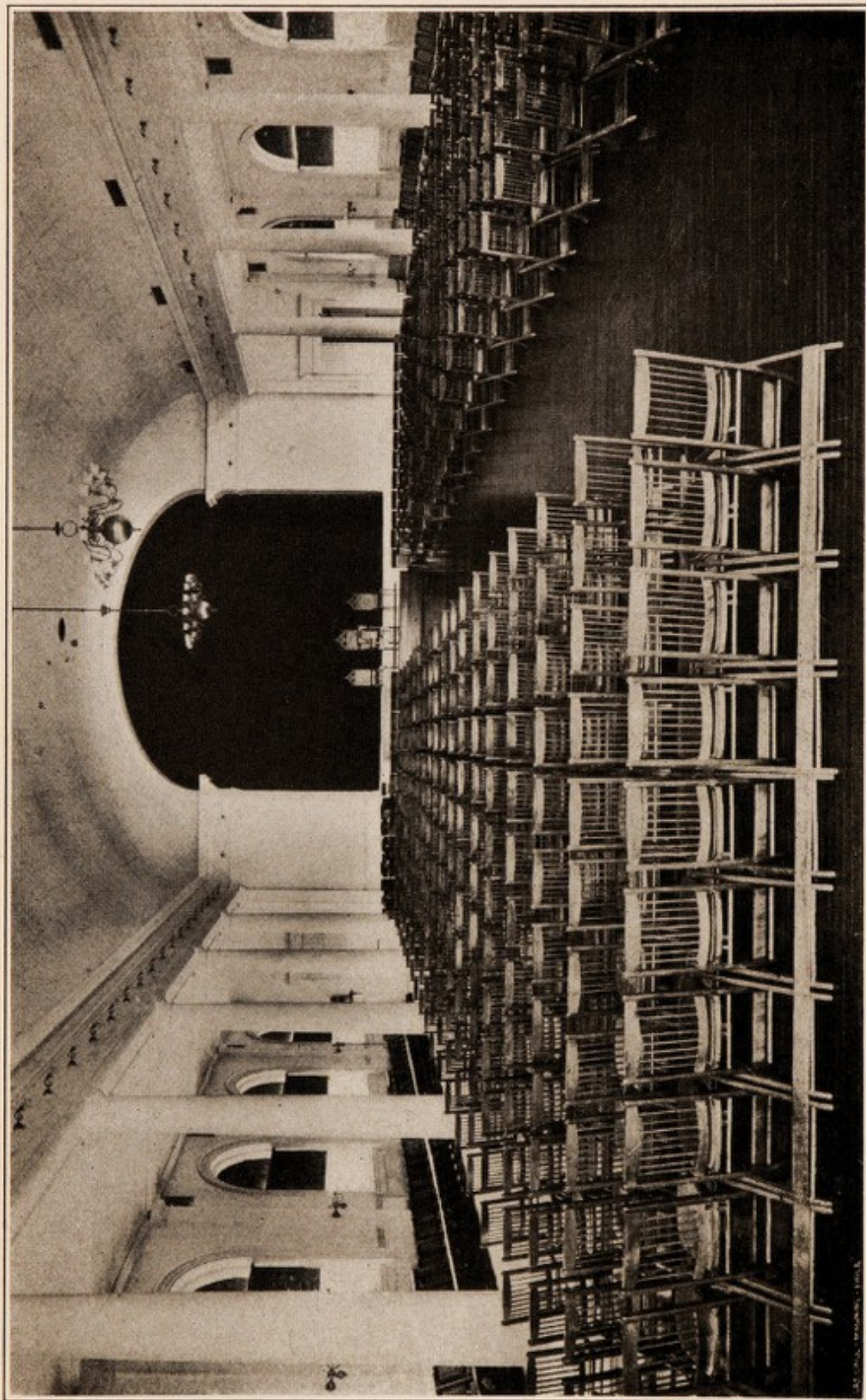
	Men	Women	Total
Single	429	94	523
Married	143	79	222
Widowed	14	23	47
Divorced	2	1	3
Unknown	65	9	74
Total	653	206	859
COLOR.			
White	625	193	818
Colored	28	13	41
Total	653	206	859

NATIVITY OF THOSE REMAINING.

September 30th, 1907.

	Men	Women	Total
United States	397	135	532
Austria	17	17
Bulgaria	1	1
Canada	1	1
China	1	1
England	13	3	16
East Indies	1	1





ASSEMBLY HALL.

NATIVITY OF THOSE REMAINING (CONTINUED).

	Men	Women	Total
France	1	1	2
Finland	1	1
Germany	74	19	93
Hungary	6	6
Holland	1	1
Ireland	54	37	91
Italy	5	1	6
Norway	3	3
Poland	16	16
Russia	11	11
Roumania	1	1
Sweden	7	2	9
Scotland	6	1	7
Unknown	32	5	37
West Indies	1	1	2
Wales	3	1	4
Total	653	206	859

FORM OF MENTAL DISEASE OF THOSE REMAINING.

September 30th, 1907.

	Men	Women	Total
Mania, Chronic	390	93	483
Melancholia, Chronic	26	17	43
Dementia, Chronic	154	63	217
Imbecility	47	26	73
Paresis	5	5
Paranoia	31	7	38
Total	653	206	859

PERIOD OF RESIDENCE OF THOSE REMAINING.

September 30th, 1907.

	Men	Women	Total
1 to 2 months
2 to 4 months
4 to 6 months	24	6	30
6 to 8 months	20	20
8 to 10 months

PERIOD OF RESIDENCE OF THOSE REMAINING (CONTINUED).

	Men	Women	Total
1 year	34	8	42
2 years	14	5	19
3 "	18	3	21
4 "	29	6	35
5 "	15	8	23
6 "	27	4	31
7 "	53	15	68
8 "	28	8	36
9 "	14	1	15
10 "	68	7	75
11 "	36	17	53
12 "	34	6	40
13 "	199	89	288
14 "	40	23	63
Total	653	206	859

NUMBER OF PATIENTS ADMITTED AND DISCHARGED SINCE THE
OPENING OF THE INSTITUTION

July 21st, 1894.

	Men	Women	Total
Admitted	1348	412	1760
Discharged:			
Recovered	7	4	11
Improved	25	7	32
Unimproved	453	142	595
Died	208	53	261
Total	693	206	899

MORTUARY RECORD

SEPTEMBER 30, 1906, TO SEPTEMBER 30, 1907.

NUMBER	MEN	WOMEN	COLOR	AGE	CIVIL CONDITION.	NATIVITY.	PERIOD OF RESIDENCE			FORM OF MENTAL DISEASE.	WHOLE DURATION			CAUSE OF DEATH.
							Years	Months	Days		Years	Months	Days	
1	1	1	W	74	Sg.	Wales	12	4	12	Mania, chronic	33	10	8	Pneumonia.
2	1	1	W	47	Sg.	Pennsylvania	12	2	13	Mania, chronic	15	11	26	Acute Miliary Tuberculosis.
3	1	1	W	35	Sg.	Scotland	11	10	24	Mania, chronic	Pulmonary Tuberculosis.
4	1	1	W	26	Sg.	Pennsylvania	4	8	7	Imbecility	26	Pulmonary Tuberculosis.
5	1	1	W	40	Mr.	Ireland	4	2	15	Paranoia	7	2	15	Cerebral Hemorrhage.
6	1	1	W	67	Sg.	Germany	12	6	3	Mania, chronic	39	4	7	Chronic Parenchymatous Nephritis.
7	1	1	W	58	Mr.	Ireland	13	Mania, chronic	Chronic Parenchymatous Nephritis.
8	1	1	W	41	Sg.	New York	12	7	19	Mania, chronic	Pulmonary Tuberculosis.
9	1	1	W	47	Sg.	Pennsylvania	12	4	18	Mania, chronic	17	4	20	Chronic Parenchymatous Nephritis.
10	1	1	W	54	Mr.	Russia	6	7	3	Mania, chronic	Carcinoma of Stomach.

REPORT OF THE WOMAN PHYSICIAN

The following report for the year ending September 30th, 1907, is submitted.

Number of patients September 30th, 1906. . . 202

Number of patients September 30th, 1907. . . 206

Two patients have died during the year, one from pneumonia and one from cerebral hemorrhage. Six new patients have been admitted from the State Hospital at Norristown. General good health has been maintained among the women this year. There have been no epidemics and only one serious accident, which last rendered the patient permanently crippled. There have been a few cases of pneumonia and bronchitis, one psoas abscess and one carcinoma, but most of the cases of illness are due to indiscretions in diet or simple colds. Of the four cases of tuberculosis reported last year, two are practically well, one much improved, while the fourth maintains a fair degree of comfort, although her case is hopeless as regards recovery.

One of the tents has been replaced by a semi-canvas cottage, which proves to be far superior for the accommodation of three patients, being a more efficient protection from inclement weather, at the same time affording better facilities for thorough ventilation than the tent.

The mental condition of a few of the patients has shown a little improvement in that it has been possible to interest them in some minor tasks. One or two others have degenerated from the ranks of the workers to uselessness for no apparent reason. In the majority of cases the mental condition remains stationary.

During the Winter months the women patients continue to be interested in the fortnightly balls and entertainments which are well attended, although no one is forced to go who does not wish to do so. The daily drives are also very popular. Especial pleasure seems to be afforded by any form of an outing, such as the picnics on the grounds near the reservoir and

trips to Reading for shopping or excursions to the parks. Several of the women earn considerable amount of spending money by doing various kinds of needlework outside of the regular working hours. Two are even able to purchase their own clothing in this way.

Respectfully submitted,

LUCIA A. WHEELER, M.D.,
Second Assistant Physician.

REPORT OF THE CONSULTING STAFF

To the Trustees of the State Asylum for the Chronic Insane of Pennsylvania:

GENTLEMEN: The large number of insane poor State patients, committed to your Institution are here under such a standard of care as is best calculated for their health and comfort.

A large proportion have been accustomed to an open, outdoor life, and in the varied occupation about the farm and gardens find familiar and congenial employment. This is in accordance with the most recent teaching; at South Mountain it has, for years, been proven entirely practicable and satisfactory.

Diversion and entertainments have also helped to dispel the monotony of their lives and give them some little cheer and variety.

The Board of Trustees and all directly interested in this benevolent work of the Commonwealth are entitled to much praise.

Respectfully submitted,

W. M. GUILFORD, M.D.,
President of Consulting Staff.

TREASURER'S REPORT

For the Year Ending September 30, 1907

MAINTENANCE ACCOUNT.

Cash on hand as per last report\$ 24,980 05

RECEIPTS WERE

From the Commonwealth 86,678 81

" Sale of bags	\$ 1 50
" " Barrels	12 20
" " Bones and rags	112 85
" " Brushes	845 53
" " Clothing	10 60
" " Farm and garden products	27 96
" " Grease	1 04
" " Live Stock	27 00
" " Milk	52 93
" " Scrap metal and rubber	55 44
" " Stone	22 11
" " Wood	6 10
" Coal lost in transit	22 40
" Interest on bank balance	254 40
" Legal expenses refunded	7 84
" Telegram and telephone	1 05

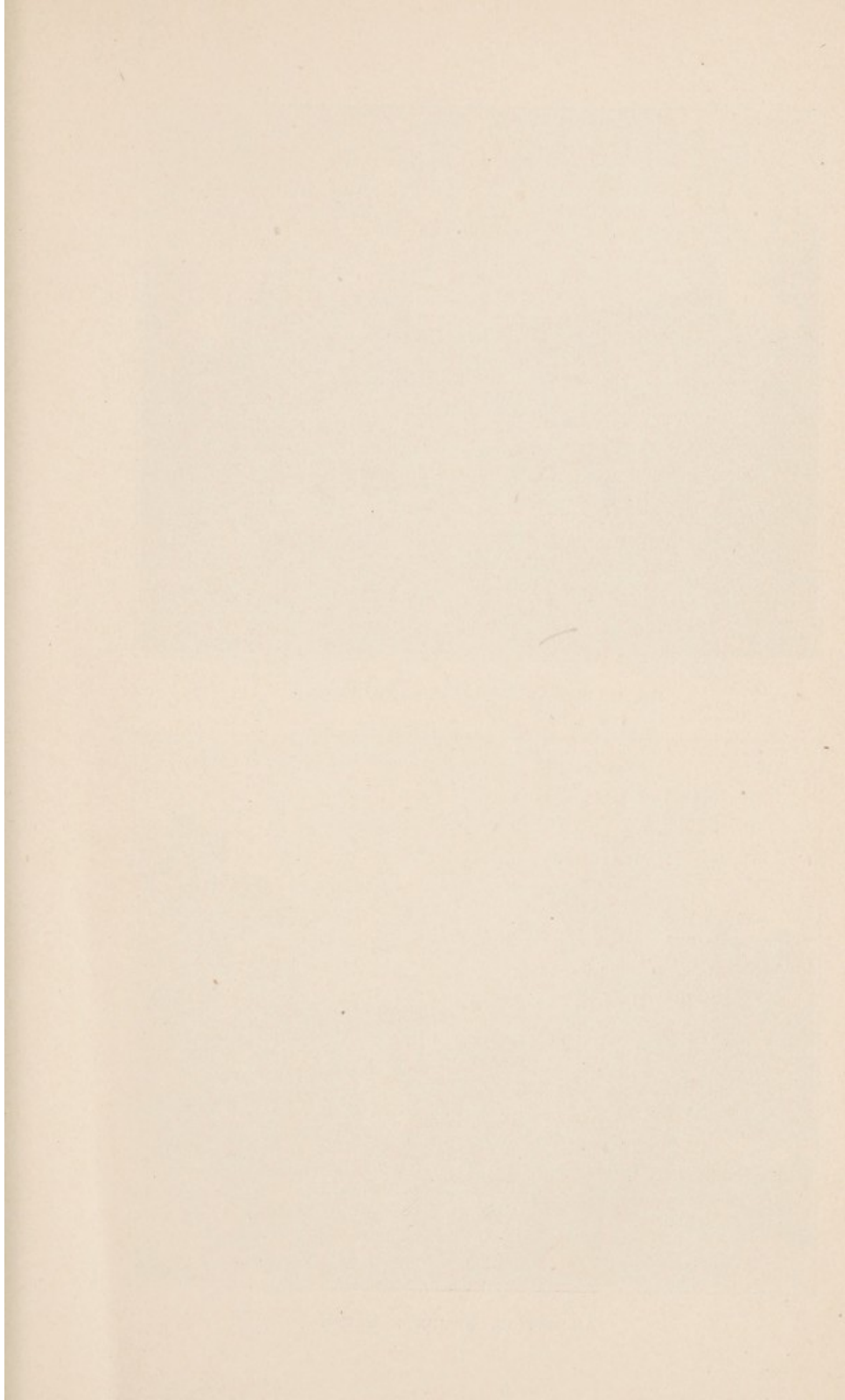
1,460 95

" Counties and Districts:

Adams	29 00
Allegheny	312 86
Armstrong	438 71
Blair	21 14
Bradford	104 29
Beaver	503 43
Berks	1,643 42
Bedford	42 14
Bucks	601 14

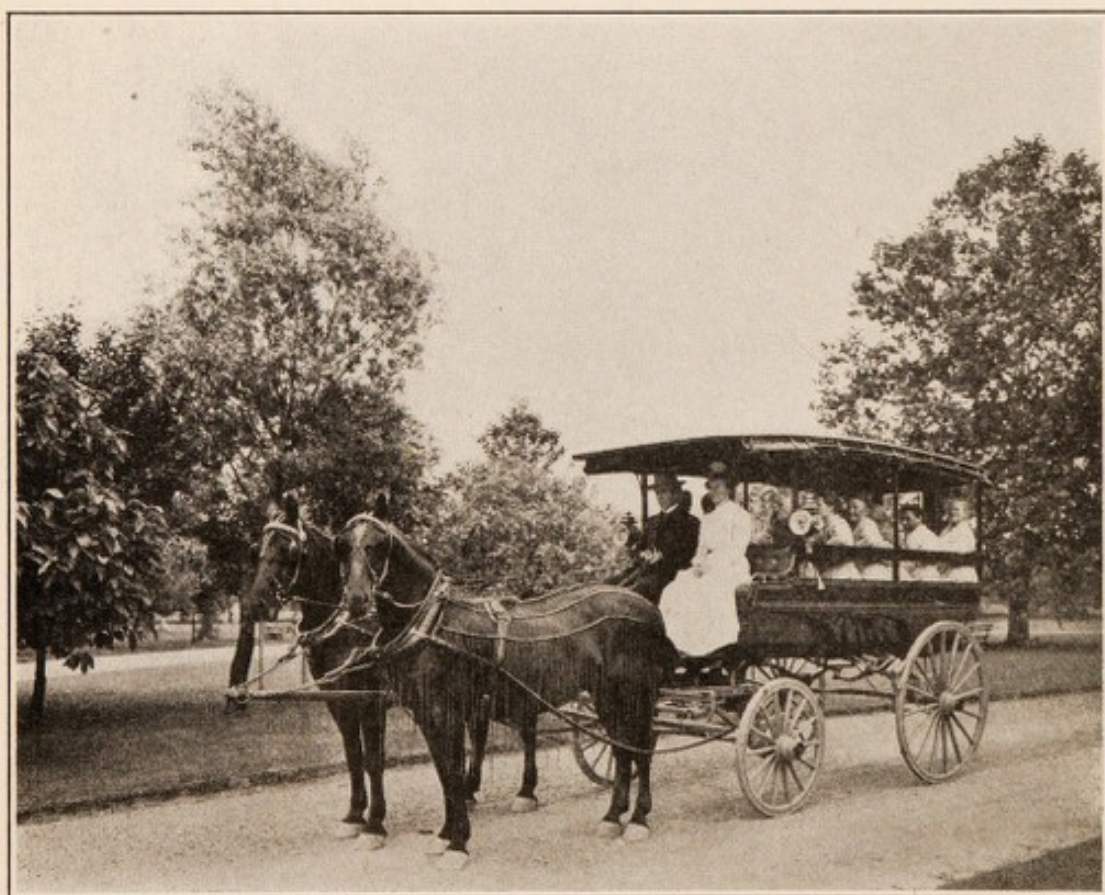
Amount carried forward..... 3,696 13

Amount brought forward	3,696	13
Butler	417	14
Cameron	26	14
Cambria	338	71
Clarion	159	86
Carbon	1,188	84
Crawford	117	00
Chester	17	14
Centre	299	99
Clearfield	573	57
Clinton	208	58
Columbia	281	76
Cumberland	250	72
Dauphin	407	14
Delaware	1,133	86
Erie	325	57
Fayette	942	85
Franklin	94	28
Fulton	52	14
Greene	104	29
Huntingdon	341	85
Indiana	143	28
Jefferson	78	00
Juniata	71	14
Lancaster	52	14
Lawrence	399	70
Lackawanna	664	26
Lebanon	466	71
Lehigh	782	71
Luzerne	426	86
Lycoming	532	13
McKean	237	43
Mifflin	21	57
Monroe	52	14
Montgomery	1,170	14
Northampton	859	43
Northumberland	893	74
Amount carried forward	17,828	94





THE INFIRMARY (ORIGINAL FARM HOUSE).



AN OUTING, WOMEN INMATES.

Tmount brought forward	17,828 94	
Philadelphia	20,606 01	
Somerset	39 00	
Sullivan	169 56	
Schuylkill	1,131 00	
Susquehanna	351 85	
Snyder	156 42	
Tioga	848 72	
Union	221 70	
Venango	208 67	
Warren	156 43	
Washington	451 28	
Wayne	442 99	
Westmoreland	490 86	
Wyoming	260 71	
York	407 14	
	<hr/>	\$ 43,771 28

Total receipts\$156,891 09

EXPENDITURES WERE FOR

Warrants drawn on the Treasurer ...	\$134,451 05	
Cash in Bank September 30, 1907	22,440 04	
	<hr/>	\$156,891 09

SPECIAL APPROPRIATION.

Cash on hand as per last report	\$ 926 88	
Received from the Commonwealth	3,353 58	
	<hr/>	4,280 46

EXPENDITURES WERE FOR

Dormitory	\$ 912 93	
Improving grounds	2,540 65	
Transportation of patients	\$312 10	
Reverting to Commonwealth..	19 83	
	<hr/>	331 93
Cash in bank September 30, 1907	494 95	
	<hr/>	4,280 46

Total cash on hand as per above:

On maintenance account	22,440 04	
On acc't of transportation of patients	494 95	
	<hr/>	22,934 99

SUMMARY OF PAYMENTS.

Salaries and wages	\$ 49,513 57	
Butter, 22,404 lbs.....	\$6,339 41	
Cheese, 6,842 lbs.....	938 15	
Eggs, 960 doz.	256 50	
Ice cream, 354 qts.	116 40	
	<hr/>	7,659 46
Cider making, 3,098 gals.....	30 98	
Cider barrels, 24	36 84	
Corn, 72 cans	5 40	
Fruit cans, etc., 798 cans	150 70	
Olives and Oil, 30 bottles	19 65	
Peas, 120 cans	13 76	
Peaches, 24 cans	5 50	
Salmon, etc., 62 cans	14 11	
Vinegar, 241 gals.	22 90	
	<hr/>	299 84
Chocolate and cocoa, 120 lbs.....	39 10	
Coffee, 12,034 lbs.	1,224 09	
Tea, 3,266 lbs.	338 34	
	<hr/>	1,601 53
Citron, 40 lbs.	8 40	
Currants, 1,020 lbs.	91 02	
Nuts	13 59	
Peaches, 7,725 lbs.	891 94	
Prunes, 9,550 lbs.....	540 84	
Raisins, 950 lbs.	86 03	
	<hr/>	1,631 82
Drain pipe	75 00	
Fodder twine, 406 lbs.	31 07	
Flower pots, 575	20 92	
Fruit trees, 446	57 21	
Farm tools and repairs	276 90	
Garden tools and repairs	171 14	
Manure, 54,360 lbs.	47 57	
Phosphates, 64,200 lbs.	972 29	
Potato digger	75 00	
	<hr/>	
Amount carried forward	1,727 10	

Amount brought forward	1,727 10	60,706 22
Paris green, etc.	15 30	
Seeds, farm and garden	424 12	
Seeds, potato, 727 bus.	496 35	
	<hr/>	2,662 87
Fish, fresh, 9,805 lbs.	636 37	
Fish, salt, 10,035 lbs.	778 48	
Fish, shell, 3,900	46 80	
	<hr/>	1,461 65
Baking powder, etc.	25 44	
Crackers, 5,733 lbs.	257 42	
Flour, Graham, etc. 124 lbs.	3 51	
Flour, wheat, 775 bbls.	3,352 75	
Macaroni, 2,550 lbs.	102 00	
Vermicelli, 825 lbs.	37 13	
Yeast, 1,138 lbs.	341 40	
	<hr/>	4,119 65
Cranberries	33 28	
Fruits, small,	29 04	
Grape fruit, 10 boxes	42 94	
Lemons and oranges, 23 boxes	81 61	
Melons	3 65	
Peaches	10 00	
Potatoes, 3,222 bus.	2,117 39	
Vegetables	16 26	
	<hr/>	2,334 17
Barley, pearl, 2,100 lbs.	55 51	
Beans, lima, 3,306 lbs.	164 07	
Beans, soup, 3,689 lbs.	98 12	
Corn, dried, 3,371 lbs.	162 21	
Cornmeal, 11,000 lbs.	184 95	
Cornstarch, 1,942 lbs.	50 14	
Hominy, 1,400 lbs.	22 68	
Oatmeal, 11,210 lbs.	312 02	
Peas, dried, 3,062 lbs.	71 90	
Rice, 7,632 lbs.	407 87	
Tapioca, 1,541 lbs.	98 13	
	<hr/>	1,627 60
Amount carried forward		72,912 16

Amount brought forward		72,912 16
Bran, 181,661 lbs.	1,986 04	
Chopping Corn, 22,255 lbs.	22 26	
Gluten, etc., 26,122 lbs.	290 90	
Linseed meal, 26,000 lbs.	411 25	
Oats and corn, 26,144 lbs.	162 49	
		<hr/> 2,872 94
Ammonia, anhydrous, 208 lbs.	54 08	
Ammonia oil, 53 gals	13 37	
Repairs to ice factory	74 65	
Salt for ice plant, 6,000 lbs.	27 00	
		<hr/> 169 10
Beef, corned, 56,747 lbs.	2,127 10	
Beef, fresh, 104,352 lbs.	6,353 06	
Mutton, 22,322 lbs.	2,058 25	
Poultry, 266 lbs.	60 94	
		<hr/> 10,599 35
Clay pipes, 9 gro.	7 75	
Salt, 20,160 lbs.	136 93	
Tobacco, 6,066 lbs.	1,546 47	
		<hr/> 1,691 15
Allspice, 70 lbs.	6 60	
Cinnamon, 60 lbs.	5 91	
Extracts	44 63	
Ginger, 60 lbs.	6 10	
Mustard, 30 lbs.	2 89	
Nutmegs, 5 lbs.	84	
Pepper, 112 lbs.	12 32	
		<hr/> 79 29
Bathbrick, 1,229	32 09	
Banner lye, 72 doz.	58 80	
Blueing, 12 doz.	4 80	
Beeswax and paraffine, 500 lbs.	78 49	
Pearline, 8,700	221 85	
Starch, 1,500 lbs.	50 70	
Soap, laundry, 360 lbs.	14 29	
Soap, scouring, 2,180 lbs.	78 29	
		<hr/>
Amount carried forward	539 31	88,323 99

Amount brought forward	539 31	88,323 99
Soap, toilet, 3,170 lbs.	192 58	
Soda, bi-carb., 372 lbs.	11 83	
Soda, caustic, 2,792 lbs.	69 61	
Whiting, 25 lbs.	25	
	<hr/>	813 58
Sugar, 54,018 lbs.	2,540 79	
Molasses, 1,662 gals.	358 24	
	<hr/>	2,899 03
Blankets, bedding, etc.	1,888 53	
Brooms, brushes, etc.	463 76	
Carpets, etc.	602 99	
Furniture, etc.	1,060 80	
Glassware and tableware	8 00	
Hardware, tinware, cutlery	662 16	
Queensware, etc.	531 91	
Table linen, etc.	27 09	
Towels, crash, etc.	20 69	
	<hr/>	5,265 93
Advertising	16 81	
Amusement and instruction for patients	845 28	
Brush and broom shop	9 25	
Freight and transportation	243 19	
Insurance	1,365 12	
Live stock, 2 brooders.....	18 00	
1 bull	68 14	
4 mules ..	706 00	
2 sows ..	61 38	
Implements, etc.	11 10	
Veterinary service	77 10	
	<hr/>	941 72
Petty expenses	70 97	
Printing and stationery	383 60	
Postage and telegraph	679 64	
Sundry supplies	3,279 94	
Tools and machinery	244 88	
Vehicles, harness and repairs	464 68	
	<hr/>	8,545 08
Amount carried forward		105,847 61

Amount brought forward		105,847 61
Boots and shoes, 778 prs.	1,559 12	
Clothing, ready made	2,022 28	
Clothing material	1,481 65	
Collars, 900	72 50	
Combs and pins	43 28	
Gloves, 240 prs.	115 00	
Hats and caps, 108	25 50	
Handkerchiefs, 480	22 00	
Hose and half hose, 2,701 prs.	202 44	
Neckties, 540	78 50	
Stays, 47	26 44	
Shawls, 14	42 56	
Shirts, 364	166 33	
Suspenders, 900 prs.	101 25	
Shoe findings	395 76	
		<hr/> 6,354 61
Coal, Anthracite, 5,865.05 tons.....	13,201 82	
Coal, Bituminous, 6.01 tons	22 89	
Coal oil, 734 gals.	93 40	
Lamps, incandescent, 450	76 50	
Lampwicks, 13 doz.	43	
Material for lighting	84 16	
Matches, 15 gro.	22 05	
		<hr/> 13,501 25
Medicine and medical supplies	1,150 96	
Ordinary repairs	6,739 91	
Traveling expenses	180 97	
Trustees' expenses	675 74	
		<hr/> 8,747 58
		<hr/> \$134,451 05

RECAPITULATION.

Salaries and wages	49,513 57
Provisions and supplies	42,523 03
Furniture, etc.	5,265 93
Miscellaneous expenses	8,545 08

Amount carried forward 105,847 61

Amount Carried forward	105,847 61
Clothing, etc.	6,354 61
Fuel and light	13,501 25
Medicine and medical supplies	1,150 96
Ordinary repairs	6,739 91
Traveling expenses	180 97
Trustees' expenses	675 74
	<hr/> \$134,451 05

J. M. SHENK, *Treasurer.*

REPORT OF THE STEWARD

To the Trustees of the State Asylum for the Chronic Insane of Pennsylvania:

GENTLEMEN: The following statement shows the operations of the various departments for the fourteenth year ending September 30th, 1907.

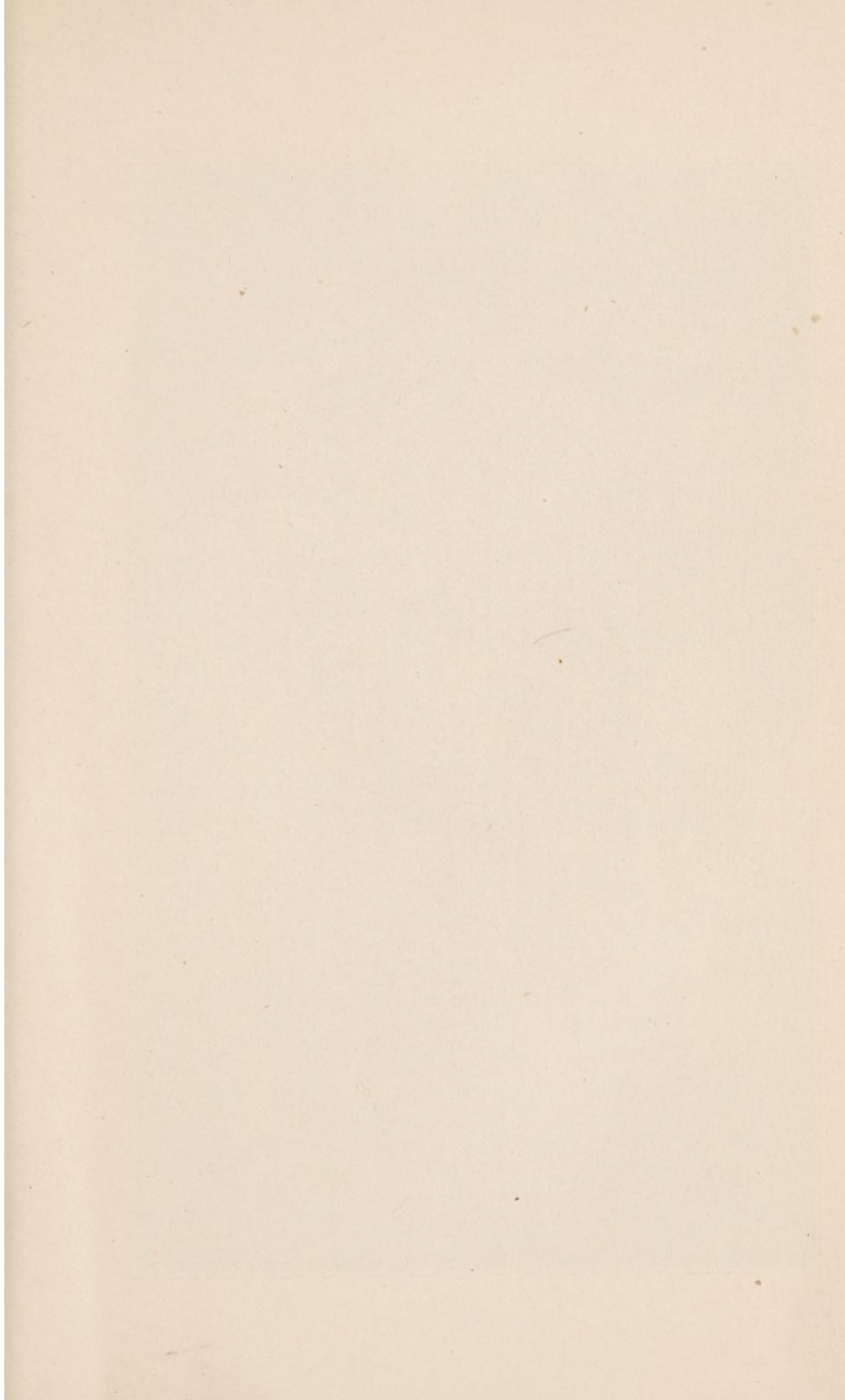
STATEMENT

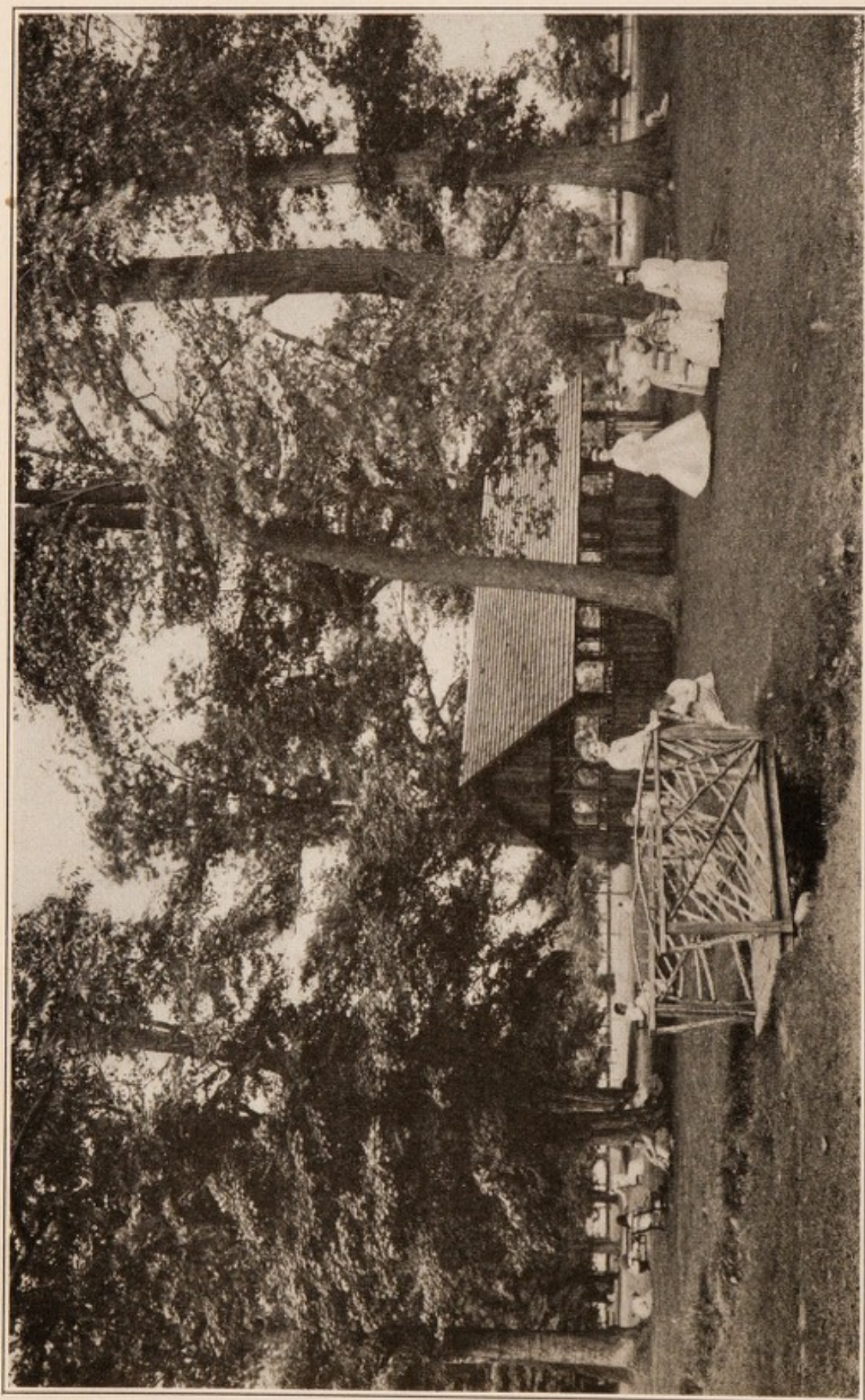
Of productions and expenses of farm, garden, piggery and poultry yard, shoemaker shop, tailor shop, brush shop, soap factory, sewing room No. 2 and sewing room No. 1 and mending room.

FARM.

EXPENSES.

Inventory, live stock and farming im- plements, September 30th, 1906....	\$ 12,250 00
Live stock purchased	930 00
Veterinary services	67 10
Feed of all kinds	4,497 47
7,500 bus. lime burned, .035	262 50
Dairy pails and fixtures	30 80
Freight	102 31
Tools	5 85
Sawing lumber for fences	129 42
Phosphate	725 90
Guano	26 25
Potash	10 25
South Carolina Rock	5 75
Nitrate soda	72 00
Fancy Canada peas	42 80
Fancy Utah alfalfa	24 57
Crimson clover	34 20
Seeds	615 40
Drain pipes	75 00
Bituminous coal	12 50
Cider, 3,502 gallons, .01	35 02
Amount carried forward	19,955 09





PAVILION PARK.

Amount brought forward	19,955 09	
Fence makers	520 52	
Lime and sulphur	20 27	
Dynamite	6 00	
Fruit pickers	1 34	
Twines and ropes	20 19	
Potato digger	75 00	
Sulky weeder	31 50	
Broad caster	32 00	
2 cultivators	38 00	
Halters and cow chains	10 60	
Harness	64 70	
Repairs	103 60	
Merchandise	17 99	
Ground salt	10 80	
Blacksmith work	300 00	
Wages and board	2,498 00	
	<hr/>	\$23,705 60

PRODUCTION.

183½ tons hay, 15.00	2,752 50	
1267 bu. wheat, .90	1,140 30	
257½ bu. rye, .70	180 25	
1063 bu. oats, .60	637 80	
3520 bu. shelled corn, .55.....	1,936 00	
Pumpkins	50 50	
80 bu. medium soup beans, 2.00.....	160 00	
215,683 pounds milk, .025	5,392 08	
9200 bu. potatoes, .50	4,600 00	
100 bu. small potatoes, .25	25 00	
230 tons ensilage, 2.00	460 00	
Live stock sold	125 00	
Milk sold	43 76	
Wood sold	9 00	
Hides sold	778 42	
Corn cobs sold	1 00	
68,629 lbs, beef	4,867 57	
84 beef tongues, .25	21 00	

Amount carried forward 23,180 18

Amount brought forward	23,180 18	
84 beef hearts, .25	21 00	
1720 lbs. tallow	78 50	
1503 lbs. veal, .12	180 36	
210 tons manure delivered to garden, 1.50	315 00	
Improvements to grounds by farm horses	348 00	
3502 gallons cider, .05	175 10	
815 bu. picked apples, .50	407 50	
350 bu. fallen apples, .25	87 50	
Inventory, live stock and farming im- plements, September 30th, 1907....	8,800 00	
	<hr/>	\$33,593 14

GARDEN.**EXPENSES.**

Inventory, live stock and tools, Sep- tember 30th, 1906	\$ 400 00	
Garden seeds	130 27	
Yellow Nansemond sweet potato plants	16 80	
Manure	29 90	
Freight	18 42	
210 tons manure from farm, at \$1.50.	315 00	
Phosphate	225 00	
Guano	26 25	
Potash	14 00	
South Carolina Rock	5 75	
Nitrate of soda	10 25	
Slug Shot	10 00	
Ground salt	2 70	
50 feet $\frac{3}{4}$ in. rubber hose	4 00	
200 $\frac{5}{8}$ wire-bound truck baskets.....	20 70	
Tools	7 50	
Plow repairs	4 60	
Wages and board	742 00	
	<hr/>	\$1,983 14

PRODUCTION.

16,280 heads cabbage, .04	\$ 651 20
28,720 stalks celery, .02	574 40
1884 beets, .65	12 25
227½ bu. beets, .70	159 25
250 bu. beets for feed, .35	87 50
154½ bu. carrots, .60	92 70
1214½ bu. tomatoes, .25	303 62
727 bu. parsnips, .60	436 20
180 bu. salsify, 1.00	180 00
286½ bu. lima beans, .60	171 90
576 bu. string beans, .60	345 60
337 egg plants, .05	16 85
1800 heads endive, .02	36 00
202 bu. lettuce, .50	101 00
27 bu. parsley, .50	13 50
1184 peppers, .01	11 84
286½ bu. turnips, .25	71 63
34,253 sweet corn, .65	222 64
1487 cantaloupes, .05	74 35
7322 stalks rhubarb, .01	73 22
1881 bunches asparagus, .15	282 15
1900 gallons sour krout, .15	285 00
11,926 scallions, .20	23 85
48,742 radishes, .25	121 86
103½ bu. radishes, .25	25 88
624 bu. onions, .80	499 20
331 melons, .10	33 10
31,074 cucumbers, .50	155 37
3182 squashes, .03	95 46
44 bu. spinach, .50	22 00
100 heads cauliflower, .08	8 00
310½ bu. peas, .70	217 35
102½ bu. sweet potatoes, .80	82 00
458 pumpkins, .05	22 90
2 bu. sage, 1.00	2 00
1506 stems horse radish, .01	15 06

Amount carried forward 5,526 83

Amount brought forward	5,526 83	
Corn fodder	18 00	
2 bu. popcorn, 2.25	4 50	
10 bu. onion sets, 2.50	25 00	
2595 lbs. grapes, .025	64 88	
59 doz. hotbed onions, .10	5 90	
48 bunches hotbed parsley, .02	96	
30½ bu. hotbed lettuce, 1.00	30 50	
339 doz. hot bed radishes, .10	33 90	
39 bu. pears, .60	23 40	
54 bu. plums, .80	43 20	
160 qts. currants, .08	12 80	
614 pts. blackberries, .08	49 12	
411 pts. raspberries, .10	41 10	
2080 pts. strawberries, .15	312 00	
Plants sold	25 58	
Inventory, live stock, tools, September 30th, 1907	400 00	
		\$6.617 67

PIGGERY AND POULTRY YARD.

EXPENSES.

Inventory, live stock, etc., September 30th, 1906	\$ 2,500 00	
Feed	1,414 20	
Live stock purchased	58 00	
Brooder	12 00	
Coal oil	19 75	
Tools,	2 75	
Thermometer	50	
Freight	51	
Veterinary services	10 00	
Merchandise	25	
		\$4,017 96

PRODUCTION.

22,583 pounds pork, .08	\$1,806 64
6661 pounds lard, .10	666 10
4171 dozen eggs	971 41
Amount carried forward	3,444 15

Amount brought forward	3,444 15	
4124 pounds dressed chicken, .12.....	494 88	
828 pounds dressed ducks, .12	99 36	
361 squabs, .20	72 20	
Inventory, live stock, etc., September 30th, 1907	2,000 00	
	<hr/>	\$6,110 59

SHOEMAKER SHOP.**EXPENSES.**

1080 pounds Hemlock and Leicester sole leather	\$283 55	
27 pounds harness leather	10 70	
430 yards hand made window shad- ing 4-4 and 5-4	104 30	
Shade rollers and fixtures	8 00	
Oil	3 00	
Flynet lashes	6 75	
Findings	18 50	
Wages and board	595 35	
	<hr/>	\$1,030 15

PRODUCTION.

188 new window shades made, .75 ...	141 00	
222 window shades repaired	22 20	
7 leather halters, .50	3 50	
13 hame straps, .25	3 25	
2 large hame straps, .35	70	
2 hose cart straps, .50	1 00	
1 check line	75	
1 double line	2 00	
1 coupling	50	
1 restraint muff	1 50	
3 pair handcuffs, .50	1.50	
7 large straps, .50	3 50	
2 small straps, .10	20	
Mending boots and shoes	930 00	
	<hr/>	\$1,111 60

TAILOR SHOP.

EXPENSES.

250 yards Columbia blue denim.....	\$	32	80
27 yards brown muslin 4-4 No. 2.....		1	58
135 yards duck, 12 oz.		17	00
20 yards strainer cloth		3	20
Carpet binding		3	75
Buttons		3	40
Pins and needles		3	80
41 doz. spool cotton		19	16
Merchandise		35	
Wages and board		625	60

 \$710 64

PRODUCTION.

22 pillow ticks, .30	\$6	60
18 laundry bags, .75	13	50
25 coffee sacks, .50	12	50
1 carriage cover	2	00
50 overalls cut, .60	30	00
5 corduroy trousers, 2.00	10	00
2 mattresses, .75	1	50
2 pair canvas mittens, .25	50	
3 oil cloth curtains, .25	75	
25 duck tent curtains, .75	18	75
10 carpet rugs, 1.00	10	00
Repairing and cleaning clothes	700	00

 \$806 10
BRUSH SHOP.

EXPENSES.

Inventory, Machinery, etc., September 30th, 1906	\$425	00
54 balls B. C. twine, No. 18.....	4	05
312 papers 2 and 3 ounce tacks.....	15	60
2 rolls sand paper, 30 in., No. 2.....	9	00
Sand paper	40	
Freight	27	

 Amount carried forward 454 32

Amount brought forward	454 32	
3 pair scissors	1 50	
Wire nails	25	
Lampblack and glue	75	
Wages and board	430 50	
		<hr/>
		\$887 32

PRODUCTION.

37 gross No. 5 cocoa scrubs, 1.00....	\$37 00
89 gross No. 5 white tampico, 1.00...	89 00
12 1-3 gross toy sinks, 1.00	12 33
62 7-12 gross No. 13 cocoa brushes, 2.20	137 68
57½ gross No. 13 rice root brushes, 2.50	143 75
3¼ gross No. 13 hindo fibre brushes, 2.50	8 13
7 5-12 gross white tampico toy scrubs, 1.00	7 42
2 gross square white tampico scrubs, 1.50	3 00
½ gross No. 68 nickel gray brushes, 1.40	70
1½ gross No. 84 nickel gray brushes, 1.70	2 55
1 gr. hoof India fibre brushes, 1.15....	1 15
29 3-12 gr. Dolly Varden brushes, 1.20	35 10
7 gr. No. 81 round end cocoa brushes, 2.00	14 00
24 1-3 gr. No. 17 cocoa brushes, 1.25.	30 42
9 7-12 gr. No. M 22 white tampico brushes, 2.20	21 08
12 1-3 gr. No. 33 white tampico brushes, 2.20	27 13
7½ gr. 7-row gray tampico clamp brushes, 2.00	15 00
1 gr. No. 81 bent black hair brushes..	1 75
1 gr. No. 129 bent black hair brushes.	2 75
	<hr/>
Amount carried forward	589 94

Amount brought forward	589 94	
1/2 gr. No. 50 cocoa brushes, 2.20....	1 10	
10 1/2 gr. No. 50 gray tampico, wrapped and strapped, 2.50	26 25	
24 1-12 gr. No. 70 gray tampico, wrapped and strapped, 1.75	42 15	
28 1-3 gr. square end hindo fibre brushes, 1.65	46 75	
1 1/2 gr. No. 50 rice root, 2.20.....	3 30	
19 2-3 gr. No. 50 gray tampico brushes, 2.25	44 25	
38 1-6 gr. No. 70 gray tampico brushes, 1.50	57 25	
4 1/2 gr. No. 112 white tampico brushes, 2.50	11 25	
1 1/2 gr. No. 05 hair brushes, handles and strapped, 3.50	5 25	
1 gr. No. 07 hair brushes, handles and strapped	2 75	
143 lbs. mixing gray stock, .03	4 29	
236 lbs. mixing gray stock, .05	11 80	
Inventory, September 30th, 1907	425 00	
		\$1,271 33

SOAP FACTORY.

EXPENSES.

4800 pounds fat, .015	72 00	
4485 pounds crushed caustic soda..	121 38	
		\$193 38

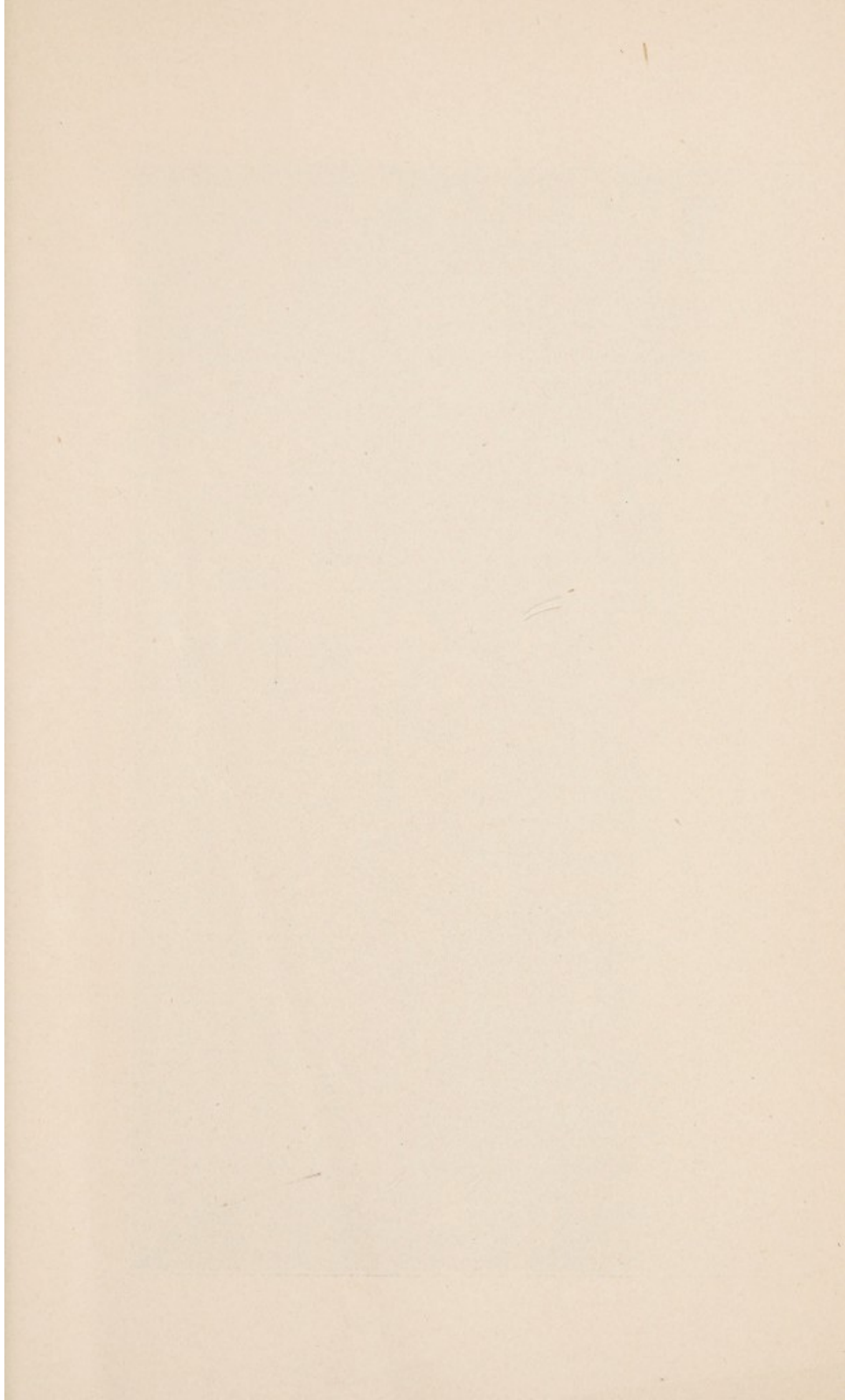
PRODUCTION.

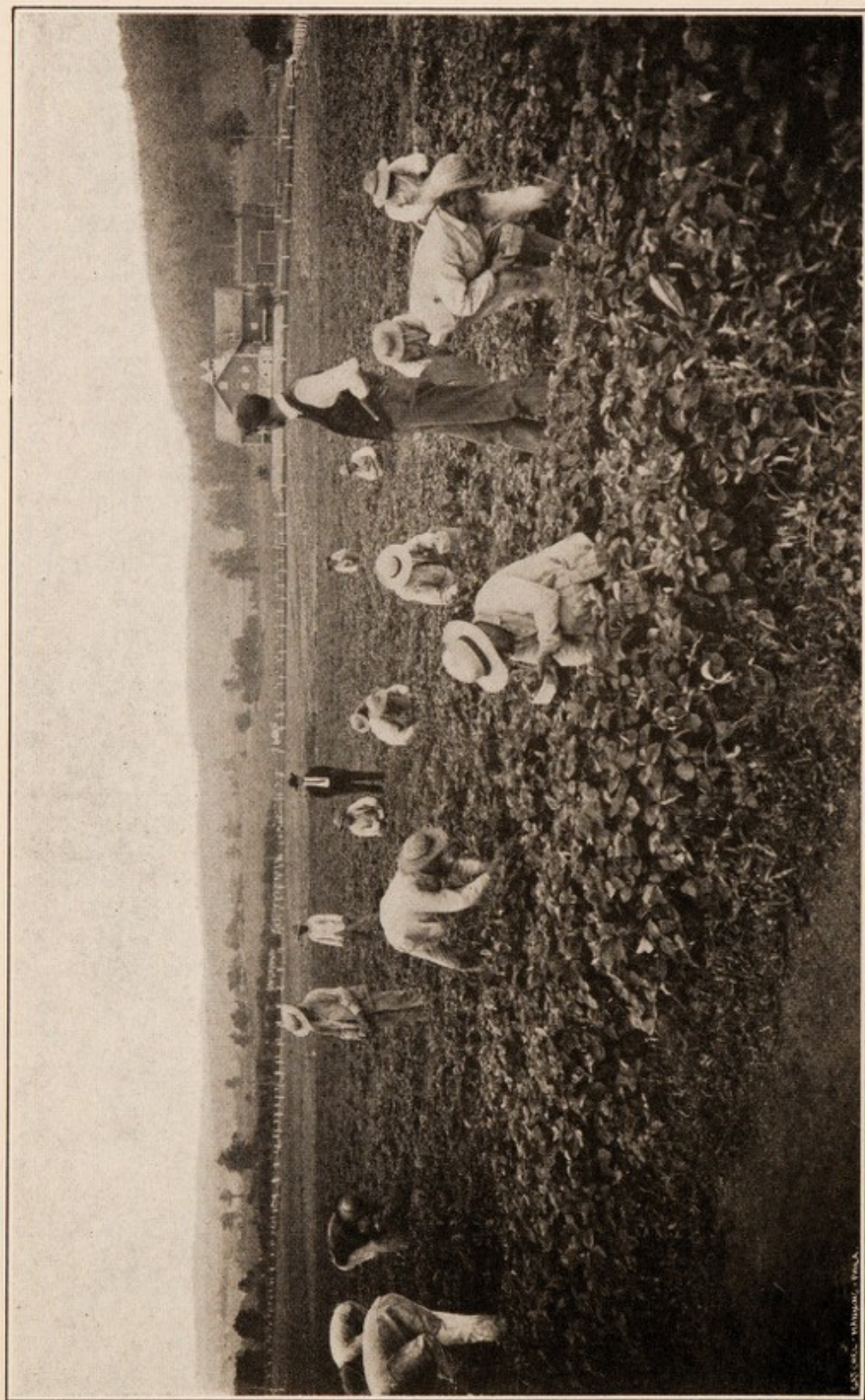
11,840 gallons soft soap, .04.....	\$473 60	
6666 pounds hard soap, .04	266 64	
		\$740 24

SEWING ROOM No. 2.

EXPENSES.

2297 1/2 yards canton flannel	\$218 12	
693 1/2 yards Conestoga ticking	103 91	
Amount carried forward	322 03	





INMATES PICKING STRAWBERRIES.

Amount brought forward	322 03
767 $\frac{3}{4}$ yards huckaback toweling.....	114 75
2175 yards Portsmouth stripe shirting	257 84
347 $\frac{1}{2}$ yards D. R. P. domestic flannel.	60 15
437 $\frac{1}{2}$ yards apron gingham	34 48
150 $\frac{3}{4}$ yards Columbia blue denim....	21 48
25 yards strainer cloth	4 25
5 yards brown cambric	50
479 $\frac{1}{2}$ yards table linen	192 79
1000 yards barnsley crash	103 93
14 yards embroidery linen	9 10
165 $\frac{1}{2}$ yards brown muslin, 4-4, no. 2.	18 83
465 yards brown muslin, 42 inch.....	55 18
1475 $\frac{3}{4}$ yards brown muslin, 8-4	346 30
107 $\frac{3}{4}$ yards bleached muslin, 4-4, No. 2	9 97
243 $\frac{3}{4}$ yards bleached muslin, 42 inch.	60 99
89 $\frac{1}{2}$ yards bleached muslin, 6-4	20 37
137 $\frac{3}{4}$ yards bleached muslin, 10-4...	48 21
6 $\frac{1}{2}$ yards raven duck	88
Tape	55
Elastic	1 20
Thimbles, needles, pins and buttons..	5 57
82 doz. sewing cotton	38 27
Scrim	3 00
Wages and board	453 00
Inventory, September 30th, 1907.....	40 00
	<hr/>
	\$2,223 62

PRODUCTION.

1056 unbleached pillow cases, .15....	\$158 40
6 rubber pillow cases, .25.....	1 50
12 bleached pillow cases, .20.....	2 40
70 mattresses, .75	52 50
765 Portsmouth stripe shirts, .50.....	382 50
2 white shirts, .75	1 50
396 canton flannel shirts, .45.....	178 20
6 large canton flannel shirts, .60.....	3 60
583 canton flannel drawers, .45	262 35

Amount carried forward 1,042 95

Amount brought forward	1,042 95
3 large canton flannel drawers, .75...	2 25
110 pair overalls, .20	22 00
151 huck towels, .15	22 65
183 roller towels, .20	36 60
818 tea towels, .10	81 80
4 barber's aprons, .20.....	80
218 gingham aprons, .15	32 70
35 white aprons, .15	5 25
6 canvas aprons, .15	90
588 unbleached double sheets, .75....	441 00
14 bleached double sheets, .80	11 20
18 milk strainers, .15	2 70
8 starch strainers, .15	1 20
216 table napkins hemmed, .10.....	21 60
128 pillow ticks, .30	38 40
8 canton flannel night gowns, .75....	6 00
107 D. R. P. petticoats, .75.....	80 25
2 table cloths, 7½ yards, 3.25.....	6 50
3 table cloths, 6 yards, 2.75.....	8 25
3 table cloths, 8 yards, 3.75	11 25
2 table cloths, 6½ yards, 3.00.....	6 00
57 table cloths, 5½ yards, 2.50.....	142 50
3 table cloths, 4½ yards, 2.25.....	6 75
4 table cloths, 3½ yards, 2.00.....	8 00
19 table cloths, 2½ yards, 1.50	28 50
11 tray cloths, .25	2 75
58 bib aprons, .20	11 60
12 muslin uniform aprons, .20	2 40
8 cooks' caps, .20.....	1 60
12 bakers' caps, .10	1 20
16 bolster cases, .75	12 00
4 cheesecloth curtains, .25	1 00
6 muslin camisoles, .75	4 50
55 hemstitched bureau scarfs, .75....	41 25
4 hemstitched muslin table covers, .75.	3 00
12 hemstitched bolster cases, 1.25....	15 00

Amount carried forward 2,164 30

Amount brought forward	2,164 30
46 hemstitched linen handkerchiefs, .35	16 10
9 hemstitched linen handkerchiefs, .40	3 60
14 hemstitched linen handkerchiefs, .50	7 00
2 drawn work linen handkerchiefs, .60	1 20
2 drawn work linen handkerchiefs, .70	1 40
5 drawn work linen doilies, .25.....	1 25
6 drawn work linen doilies, .35.....	2 10
1 drawn work linen doily, .40.....	40
12 drawn work linen doilies, .50.....	6 00
1 drawn work linen doily, .70.....	70
2 drawn work linen doilies, .75	1 50
5 drawn work linen doilies, .60.....	3 00
1 drawn work linen doily, 1.25.....	1 25
1 pair drawn work muslin pillow cases, .80	80
1 drawn work linen bureau scarf.....	1 00
1 drawn work linen stand cover	1 75
2 drawn work muslin table covers, 1.50	3 00
2 drawn work linen bureau scarfs, 2.25	4 50
2 drawn work linen bureau scarfs, 3.50	7 00
2 drawn work linen table covers, 3.50	7 00
4 drawn work linen collars, .25.....	1 00
1 drawn work linen collar	30
1 drawn work linen collar	35
4 drawn work linen collars, .40	1 60
1 drawn work linen collar	50
1 tatting collar	40
3 tatting collars, .50	1 50
2 steam table covers, .50.....	1 00
1 muslin screen	50
50 lawn neckties, .10.....	5 00
Tatting dress trimmings	5 00
24 pieces drawn work repaired, .25...	6 00
112 pounds carpet rags, .04.....	4 48
11 pen wipers, .25	2 75
1 straw hat	30

Amount carried forward 3,265 53

Amount brought forward	3,265	53
4 straw hats, .40	1	60
1 straw hat		30
28 straw hats, .15	4	20
1 doll straw hat		10
Paper flowers		60
1 toy rabbit		05
3 emery bags, .10		30
1 pin cushion		05
15 ball pin cushions, .20	3	00
35 rag dolls, .03	1	05
66 rag dolls, .05	3	30
12 rag dolls, .20	2	40
25 rag dolls, .25	6	25
20 pipe dolls, .25	5	00
3 straw baskets, .10		30
3 straw baskets, .15		45
6 straw baskets, .20	1	20
24 toy pigs, .10	2	40
Inventory, September 30th, 1907.....	87	15
	<hr/> \$2,385 23	

SEWING ROOM No. 1 AND MENDING ROOM.

EXPENSES.

Inventory, September 30th, 1906.....	\$52	00
1087½ yards dress cheviot.....	73	38
14 yards Columbia blue denim	1	82
268½ yards khaki	53	70
54 yards Conestoga ticking, 4-4, No. 1	7	56
2250½ yards Bates' dress gingham..	207	43
136 yards huckaback toweling.....	28	56
142 yards brown muslin, 4-4, No. 1..	12	78
1437 yards brown muslin, 4-4, No. 2..	95	64
298¾ yards brown muslin, 42 inch...	41	82
527¾ yards brown muslin, 8-4.....	138	60
484¾ yards bleached muslin, 4-4, No. 2	130	59
	<hr/>	
Amount carried forward	843	88

Amount brought forward	843 88	
249½ yards bleached muslin, 42 inch.	39 92	
142¼ yards bleached muslin, 8-4....	39 13	
133 doz. spool cotton	62 07	
Pins, needles, buttons and tape.....	23 88	
Darning cotton	7 35	
Shuttle	90	
Wages and board	814 00	
	<hr/>	\$1,831 13

PRODUCTION.

341 cheviot dresses, 1.50	\$511 50
40 cheviot dresses altered, .50	20 00
638 dresses mended, .10	63 80
34 shirt waist suits, 1.75	59 50
9 private dresses, 1.25	11 25
4 white muslin skirts, 1.00	4 00
1 private silk dress	1 50
9 private shirt waists, .50	4 50
2 private belts, .25	50
4 shirt waists altered, .25	1 00
2 petticoats made out of old dresses, .30	60
22 gingham aprons made out of old skirts, .10	2 20
20 pair trousers, .75	15 00
46 men's khaki coats, 1.25	57 50
201 unbleached double sheets, .75....	150 75
52 bleached double sheets, .80.....	41 60
47 pillow ticks, .30	14 10
135 huck towels, .15	20 25
473 unbleached pillow cases, .15.....	70 95
105 white aprons, .15	15 75
40 cheviot aprons, .15	6 00
145 pantalets, .35	50 75
59 night shirts, .40	23 60
112 night gowns, .40	44 80
322 chemise, .30	96 60
2 corset covers, .25	50

Amount carried forward 1,288 50

Amount brought forward	1,288 50	
3 sun bonnets, .25	75	
3 mattresses bound, .40	1 20	
50 double sheets mended, .20.....	10 00	
133 pillow ticks mended, .10	13 30	
120 white quilts mended, .20	24 00	
Mending	540 00	
Inventory, September 30th, 1907.....	89 90	
	<hr/>	\$1,967 65

RECAPITULATION.**EXPENSES.**

Farm	\$ 23,705 60	
Garden	1,983 14	
Piggery and Poultry Yard	4,017 96	
Shoemaker Shop	1,030 15	
Tailor Shop	710 64	
Brush Shop	887 32	
Soap Factory	193 38	
Sewing Room No. 2	2,223 62	
Sewing Room No. 1 and Mending Room	1,831 13	
	<hr/>	\$36,582 94

PRODUCTION.

Farm	\$ 33,593 14	
Garden	6,616 67	
Piggery and Poultry Yard	6,110 59	
Shoemaker Shop	1,111 60	
Tailor Shop	806 10	
Brush Shop	1,271 33	
Soap Factory	740 24	
Sewing Room No. 2	2,385 23	
Sewing Room No. 1 and Mending Room	1,967 65	
	<hr/>	\$54,602 55

LOSS AND GAIN.

Dr.

To Institution	\$18,019 61
----------------------	-------------

Cr.

By Farm	\$ 9,887 54	
By Garden	4,633 53	
By Piggery and Poultry Yard	2,092 63	
By Shoemaker Shop	81 45	
By Tailor Shop	95 46	
By Brush Shop	384 01	
By Soap Factory	546 86	
By Sewing Room No. 2	161 61	
By Sewing Room No. 1 and Mending Room	136 52	
	<hr/>	\$18,019 61

Respectfully submitted,

T. C. BRICKER, *Steward.*

