

**Report of the Committee of Visitors of the Lunatic Asylum for the Borough of Birmingham, presented to the Town Council in May, 1858, being their seventh annual report : together with the reports of the Medical Superintendent and Chaplain also an account of the receipts and payments to the end of the year 1857 / Birmingham Borough Lunatic Asylum.**

**Contributors**

Birmingham Borough Lunatic Asylum.  
Sturge, Charles.  
Onion, T. C.  
Green, Thomas.

**Publication/Creation**

Birmingham : printed by Benjamin Hall, 1858.

**Persistent URL**

<https://wellcomecollection.org/works/uwckbx6r>

**License and attribution**

This work has been identified as being free of known restrictions under copyright law, including all related and neighbouring rights and is being made available under the Creative Commons, Public Domain Mark.

You can copy, modify, distribute and perform the work, even for commercial purposes, without asking permission.

9  
REPORT  
OF THE  
COMMITTEE OF VISITORS  
OF THE  
LUNATIC ASYLUM

FOR THE

Borough of Birmingham,

PRESENTED TO THE TOWN COUNCIL IN MAY, 1858,

BEING THEIR

Seventh Annual Report;

TOGETHER WITH THE

REPORTS OF THE MEDICAL SUPERINTENDENT  
AND CHAPLAIN;


ALSO AN ACCOUNT OF THE

RECEIPTS AND PAYMENTS TO THE END OF THE  
YEAR 1857.

BIRMINGHAM:

PRINTED BY BENJAMIN HALL, 71, HIGH STREET.

1858.



Digitized by the Internet Archive  
in 2018 with funding from  
Wellcome Library

<https://archive.org/details/b30300678>

Birmingham Borough Lunatic Asylum.

---

Committee of Visitors.

FOR THE YEAR 1857.

J. RATCLIFF, Esq., MAYOR.

ALDERMAN STURGE, CHAIRMAN.

ALDERMAN J. W. CUTLER.

ALDERMAN H. MANTON.

COUNCILLOR F. DEE.

COUNCILLOR J. CARTER.

COUNCILLOR C. W. ELKINGTON.

COUNCILLOR G. NORMAN.

COUNCILLOR G. SMITH.

COUNCILLOR S. TONKS.

COUNCILLOR T. PRIME.

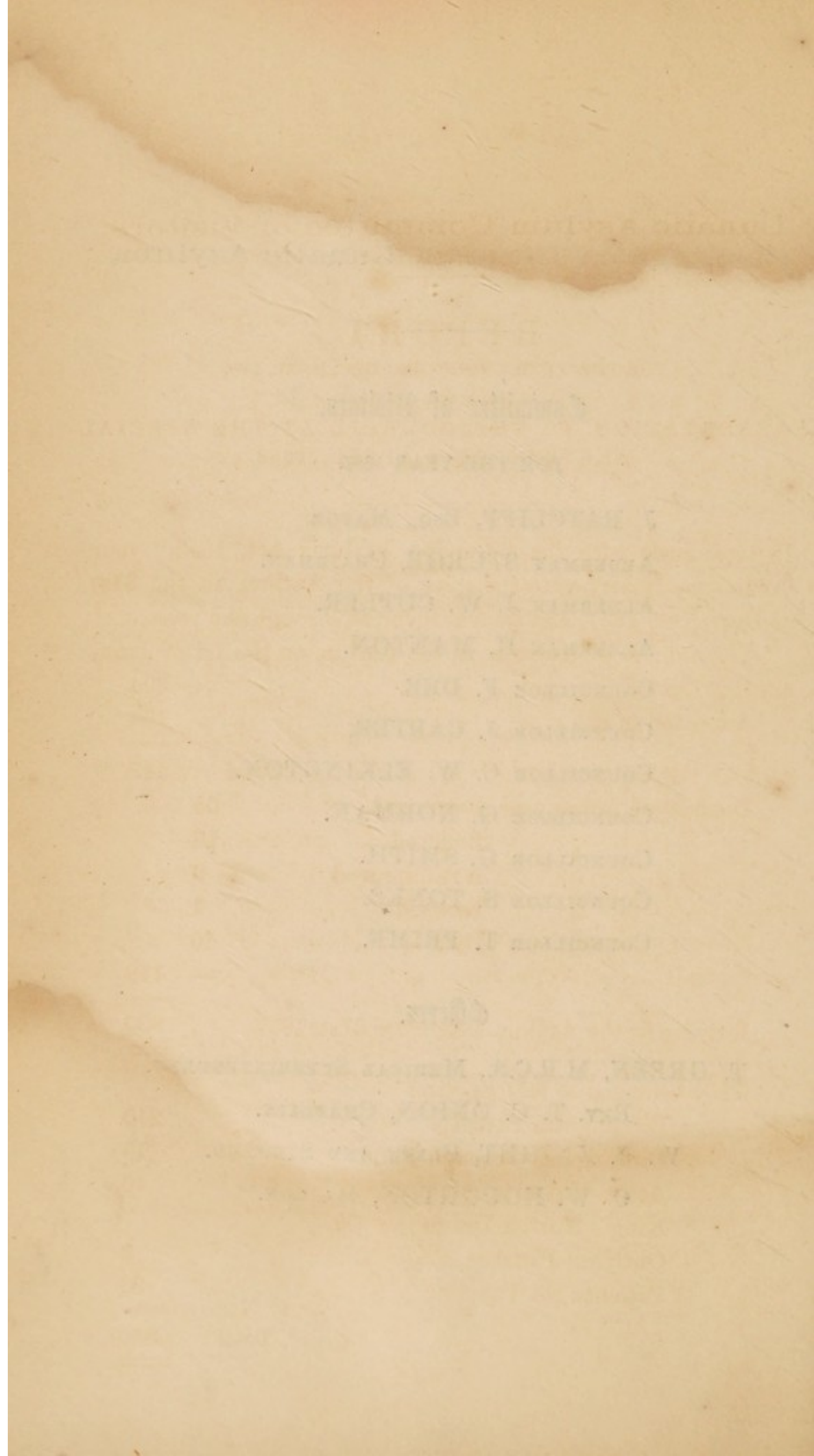
Officers.

T. GREEN, M.R.C.S., MEDICAL SUPERINTENDENT.

REV. T. C. ONION, CHAPLAIN.

W. F. KNIGHT, CLERK AND STEWARD.

C. W. HOUGHTON, MATRON.



# Lunatic Asylum Committee of Visitors.

## REPORT

FOR THE YEAR ENDING 31<sup>ST</sup> DECEMBER, 1857,

FOR

PRESENTATION TO THE COUNCIL AT THE SPECIAL  
MEETING, 13<sup>TH</sup> APRIL, 1858.

IN accordance with the "Lunatic Asylums Act, 1853," your Committee Report as to the state of the Asylum on the 31<sup>st</sup> of December, 1857, and its management through the year.

The number of patients in the Asylum on the 1<sup>st</sup> of January, 1857, was . . . . . 294

Admitted in the year . . . . . 154

Total . 448

Discharged in the year, Recovered . . . . . 55

    "    "    Relieved . . . . . 13

    "    "    Not improved . . . . . 9

    "    "    Escaped . . . . . 1

    "    "    Died . . . . . 40

— 118

Leaving in the Asylum December 31<sup>st</sup>, 1857 . . . . . 330

They belonged as follows, viz. :

Birmingham Parish . . . . . 240

Birmingham Borough Fund . . . . . 15

Aston Union . . . . . 40

King's Norton Union . . . . . 7

Outlying Parishes . . . . . 8

Patients not Paupers . . . . . 20

Total . 330

The Income for the year, as connected with the Patients, is . . . . .	£7509	11	7
The Expenditure . . . . .	6932	12	4
		<hr/>	
Balance in favour of Asylum . . . . .	£576	19	3
		<hr/> <hr/>	
 The Receipts from the Farm and Garden	£2103	10	9
The Expenditure . . . . .	1948	3	5
		<hr/>	
Balance in favour of Asylum . . . . .	£155	7	4
		<hr/> <hr/>	

making a Total Balance in favour of £732. 6s. 7d., or 10 $\frac{3}{4}$ d. per patient per week.

These accounts, with many other interesting details, are fully set forth in appended tables, which will be found to contain much information as to the working of the Asylum.

The charges per week per patient to Parishes within the Borough of Birmingham have, for three-fourths of the year, been 8s.6d., instead of 9s. and 9s.6d. in previous years; this charge includes salaries, provisions, wines, spirits, drugs, necessaries (viz., coal, gas, soap, &c.), clothing, per centage on wear and tear of all furniture, &c.—rates, taxes, insurance, &c.

To afford accommodation to the growing increase of lunatics, your Committee have had thirty-eight bedsteads made in the Asylum, and distributed over it; thus giving sleeping accommodation for 356 patients, and do inform the Council, that the Asylum, in its present extent, is not capable of further accommodation.

The alteration in laying out the grounds in the front of the house steadily progresses, and when completed will enhance the value of the land to a great extent. During the past year more than one-half of the kitchen garden has been resoiled: all this work is done by the patients, and affords them good occupation.

The boundary walls this year have been repointed, and a wall by the canal side built; improvements are also going on in the interior, in completing and furnishing the galleries, day and bed-rooms; and the main buildings in every part are in good condition.

The health of the patients throughout the year has been as favourable as heretofore reported, and the Asylum has again been favoured with a freedom from any epidemic disease; no instance of restraint has taken place, and the <sup>se</sup>exclusions have been very few. The dietary has again been improved by giving Irish stew in place of one of the soup dinners. The dietary on the whole is now very good.

The amusements and recreation of the patients have been carried on throughout the year with great spirit, and the monthly lectures through the summer season were attended by a good number of the patients, and listened to with seeming interest. Your Committee take this opportunity of thanking those gentlemen who so kindly gave them their assistance.

The supply of water from the well through the last long drought has somewhat failed (this will be reported on at a future period), and the ventilation, warming, and drainage, continue satisfactory.

The Cash Accounts of the establishment have been audited and found correct; the Visiting by Members of the Committee continues as heretofore, and by their reports on such occasions, the whole of the establishment has been found in due order, the provisions good, and the patients clean and comfortable.

Two of the Commissioners in Lunacy visited the Asylum in August last, saw the whole of the patients, and inspected the galleries, farm, and other parts of the establishment. The following extract is from their Report on the occasion :

“ We have to-day seen all the patients, and inspected their various rooms. The patients, with two or three exceptions, were tranquil during our visit. They are neat and well dressed, particularly the females, and appeared comfortable. The rooms and galleries were clean, well ventilated, and contain many objects of interest. These, with new furniture, new papering, &c., gave a very cheerful aspect to the establishment. The bedding, some of which we minutely inspected, was very clean, and the sinks and water-closets free from any unpleasant smell.

Upon the whole, we consider the Asylum to be in a very creditable condition, and that much of this is owing to the care and attention of the resident officers."

No change in the superior officers has taken place through the year, and but few amongst the attendants and servants.

The Rev. T. C. Onion having obtained the Chaplaincy of the Lancaster Lunatic Asylum, resigns his office on the 1st of March next; his successor will be reported on a future occasion.

C. STURGE,

CHAIRMAN.

---

## Birmingham Borough Lunatic Asylum.

## SALARIES FOR THE YEAR, 1857.

	£.	s.	d.
*Medical Superintendent . . . . .	350	0	0
Chaplain . . . . .	100	0	0
†Matron . . . . .	60	0	0
†Clerk of Asylum, of Visitors, and Steward . . . . .	160	0	0
†Assistant Clerk . . . . .	30	0	0
*Engineer . . . . .	78	0	0
Stoker . . . . .	54	12	0
Carpenters and Wheelwright . . . . .	104	10	11
*Farm Bailiff and Dairy Women . . . . .	78	0	0
*Gardener and Lodge Keeper . . . . .	72	10	0
†Baker and Brewer . . . . .	30	0	0
†Laundress and under ditto . . . . .	33	10	0
†Cook and Kitchen Maid . . . . .	29	0	0
†House Maids . . . . .	18	0	0
†7 Male Attendants . . . . .	176	9	3
†1 Ditto Night Attendant . . . . .	25	0	0
†9 Female Attendants . . . . .	156	12	3
†1 Ditto Night Attendant . . . . .	17	10	0
Farm and Garden Labourers . . . . .	122	7	1
	<u>£1696</u>	<u>1</u>	<u>6</u>

Marked thus \* have Apartments, Fuel, and Gas.

Marked thus † have Maintenance, Apartments, &c.

## MALE DIETARY.

## BREAKFAST.

1 Pint of Coffee, 6 oz. Bread,  $\frac{1}{2}$  oz. Butter.

## DINNER.

- Sunday* { 10 oz. Meat (undressed), free from Bone (roasted).  
16 oz. Vegetables.  
3 oz. Bread,  $\frac{1}{2}$  pint Beer.
- Monday and Thursday.* { Meat and Potatoe Pie—Crust 12 oz., Meat  $2\frac{1}{2}$  oz.  
 $\frac{1}{2}$  pint of Beer; or 16 oz. Suet Pudding, with  
Rasins and Sweet Dip, and  $\frac{1}{2}$  pint of Beer.
- Tuesday and Friday.* { 9 oz. Meat (undressed), free from Bone (boiled).  
16 oz. Vegetables.  
3 oz. Bread, and  $\frac{1}{2}$  pint of Beer.
- Wednesday.*  $1\frac{1}{2}$  lbs. Irish Stew, and  $\frac{1}{2}$  pint of Beer.
- Saturday.* {  $1\frac{1}{2}$  Pint Pea Soup, and 6 oz. Bread; or 16 oz. of  
Rice or other Pudding, and  $\frac{1}{2}$  pint of Beer; extra  
diet on Soup days, of Meat and Vegetables.

## TEA.

1 pint of Tea, 6 oz. Bread, and  $\frac{1}{2}$  oz. of Butter.

*Extra Diet, as per Medical Order.*

## TO WORKING PATIENTS.

At 11 o'Clock, 4 oz. Bread, 1 oz. Cheese, and  $\frac{1}{2}$  pint of Beer.  
At 4 o'Clock,  $\frac{1}{2}$  pint of Beer, from Lady-day to Michaelmas Day.

manic Asylum, 1857.

## FEMALE DIETARY.

### BREAKFAST.

1 pint of Coffee, 6 oz. Bread,  $\frac{1}{2}$  oz. Butter.

### DINNER.

- Sunday* . { 9 oz. Meat (undressed), free from bone (roasted).  
 { 12 oz. Vegetables.  
 { 3 oz. Bread, and  $\frac{1}{2}$  pint of Beer.
- Monday* { Meat and Potatoe Pie—Crust 9 oz., Meat 2 oz., and  
*and* {  $\frac{1}{2}$  pint of Beer; or 12 oz. of Suet Pudding, with  
*Thursday.* { Rasins and Sweet Dip, and  $\frac{1}{2}$  pint of Beer.
- Tuesday* { 8 oz. Meat (undressed), free from Bone (boiled).  
*and* { 16 oz. Vegetables.  
*Friday.* { 3 oz. Bread, and  $\frac{1}{2}$  pint of Beer.
- Wednesday.* 1 lb Irish Stew, and  $\frac{1}{2}$  pint of Beer.
- Saturday.* { 1 pint Pea Soup, and 6 oz. of Bread, or 12 oz. of  
 { Rice or other Pudding, and  $\frac{1}{2}$  pint of Beer; extra  
 { diet on Soup Days, of Meat and Vegetables.

### TEA.

1 pint of Tea, 6 oz. Bread, and  $\frac{1}{2}$  oz. Butter.

*Extra Diet, as per Medical Order.*

### LAUNDRY WORKERS, AND HOUSE CLEANERS.

At 11 o'Clock, 4 oz. Bread, 1 oz. Cheese, and  $\frac{1}{2}$  pint of Beer.

Birmingham Borough Lunatic Asylum.

MONTHLY AVERAGE NUMBER OF PATIENTS FOR THE YEAR, 1857.

	Jan.	Feb.	Mar.	April.	May.	June.	July.	Aug.	Sept.	Oct.	Nov.	Dec.	Year's Average.
Males .	134	133	134	132	134	142	150	153	150	144	153	157	143
Females .	162	164	164	166	167	167	172	173	173	175	174	174	169
Total .	296	297	298	298	301	309	322	326	323	319	327	331	312

Greatest number of Patients in the Asylum in the Year, 333.  
 Lowest number of Patients in the Asylum in the Year, 292.

MONTHLY AVERAGE NUMBER OF PATIENTS EMPLOYED FOR THE YEAR, 1857.

	Jan.	Feb.	Mar.	April.	May.	June.	July.	Aug.	Sept.	Oct.	Nov.	Dec.	Year's Average.
Males .	63	64	69	65	67	73	72	72	75	78	77	71	70
Females .	127	126	122	125	125	126	129	131	130	131	131	132	128
Total .	190	190	191	190	192	199	201	203	205	209	208	203	198

Number of times Patients have been visited in the Year, 4265.

Number of Friends to visit Patients in the Year, 6474.

## Birmingham Borough Lunatic Asylum.

### ARTICLES OF CLOTHING, &c., MADE BY THE FEMALE PATIENTS, IN THE YEAR, 1857.

Aprons . . . . .	251
Bath Towels . . . . .	49
Blankets . . . . .	56
Blinds for Windows . . . . .	19
Chemises . . . . .	155
Chamber Towels . . . . .	45
Chair Cushions . . . . .	36
Dresses . . . . .	190
Day Caps . . . . .	278
Frocks for Men . . . . .	27
Hose (pairs) . . . . .	142
Ditto Re-footed (pairs) . . . . .	138
Mattress Cases . . . . .	43
Night Jackets . . . . .	13
Neckerchiefs . . . . .	72
Pillow Cases . . . . .	372
Petticoats . . . . .	95
Pocket Neckerchiefs . . . . .	216
Pillow Ticks . . . . .	48
Sheets . . . . .	367
Shrouds . . . . .	18
Shirts . . . . .	208
Table Covers . . . . .	10
Table Cloths . . . . .	11
Flannel Vests . . . . .	55
Vallances for Windows . . . . .	68
Counterpanes . . . . .	39
Pairs of Drawers . . . . .	7
Hurden Aprons . . . . .	154
Patch Quilt . . . . .	1
Round Towels . . . . .	22
Knife Cloths . . . . .	26
Cocoa Mats . . . . .	18
Carpets . . . . .	26
Pudding Cloths . . . . .	12
Piano-Forte Covers . . . . .	2
Mats for Flower Pots . . . . .	48

# Birmingham Borough Lunatic Asylum.

## AN ACCOUNT OF PROVISIONS, &c., DELIVERED OUT OF STORE DURING THE YEAR, 1857.

PROVISIONS, &c.	January.	February.	March.	April.	May.	June.	July.	August.	September.	October.	November.	December.	TOTAL.
Meat ..	3703	3458	3965	3546	3860	3552	3666	4183	3409	3906	3923	4278	453,49 lbs.
Flour ..	930	800	200	800	400	800	800	800	400	400	800	500	7630 stones
Bread ..	11,346	9874	10,068	10,298	10,250	9898	10,634	10,014	10,860	11,106	10,190	11,432	125,470 lbs.
Potatoes ..	85	80	79	83	71	82	56	40	41	75	73	58	823 bushels
Vegetables ..	£4/14/1	£3/16/10	£4/1/3	£5/2/11	£11/8/3	£7/15/10	£14/6/8	£22/19/10	£11/6/9	£10/8/6	£5/0/3	£6/9/8	£107/10/10
Cheese ..	266	122	245	247	255	253	280	271	290	312	293	297	3131 lbs.
Butter ..	545	498	604	447	495	599	537	662	540	586	733	534	6780 lbs.
Eggs ..	91	264	299	199	278	299	290	276	151	160	158	154	2619
Fish ..	—	£1/3/6	£1/10/6	£1/8/3	£1/5/3	£1/8/1	—	—	2/-	—	10/9	—	£7/8/4
Poultry and Game ..	5/8	2/6	5/2	—	3/-	£1/7/-	£1	£1/1/6	£2/8/-	£2/13/-	9/-	15/6	£10/10/4
Malt ..	78	30	75	30	45	45	74	40	74	66	56	45	658 bushels
Hops ..	82	36	81	45	65	56	79	44	79	72	60	51	750 lbs.
Beer Brewed ..	1510	580	1000	900	900	900	1270	630	1170	760	920	825	11,365 gallons
Ale "	390	—	255	—	—	—	100	60	90	240	60	—	1195 gallons
Porter ..	—	72	—	—	72	—	—	72	72	—	—	72	360 pints
Wine ..	3	—	1	—	7	2	3	—	4	1	2	8	31 bottles
Spirits ..	4	—	1	1	—	1	1	1	1	2	1	6	19 bottles
Milk ..	288	217	244	247	215	186	211	256	283	259	204	207	2817 gallons
Tea ..	77	62	70	61	67	58	62	65	64	66	68	64	784 lbs.
Coffee ..	45	74	80	74	75	81	82	81	89	76	80	82	919 lbs.
Raw Sugar ..	447	403	449	426	449	464	524	481	427	427	473	529	5499 lbs.
Lump "	8	6	7	9	8	9	7	6	6	5	9	8	88 lbs.
Rice ..	30	40	48	40	20	10	20	30	20	30	24	10	322 lbs.
Oatmeal ..	—	—	—	28	—	—	—	—	—	—	—	—	28 lbs.
Arrowroot ..	12	16	20	10	14	8	8	11	8	16	8	8	139 lbs.
Split Peas ..	197	156	176	198	198	154	170	176	198	198	176	88	2085 lbs.
Currants ..	—	5	4	9	2	1	2	2	1	2	13	35	76 lbs.
Raisins ..	22	30	50	28	50	54	56	65	104	71	76	101	707 lbs.



## Birmingham Borough Lunatic Asylum.

ARTICLES OF CLOTHING DELIVERED OUT OF  
STORE IN 1857.

MALES.		FEMALES.	
Blue Cloth Jackets . . . . .	42	Aprons . . . . .	168
Blue Cloth Coats . . . . .	32	Print and Merino Dresses	209
Cloth Vests . . . . .	61	Bonnets . . . . .	91
Cloth Trowsers . . . . .	71	Boots and Shoes (pairs)	175
Cord Trowsers . . . . .	39	Day and Night Caps	246
Caps and Hats . . . . .	81	Flannel Vests . . . . .	8
Boots and Shoes (pairs)	150	Stockings (pairs) . . . . .	153
Flannel Vests . . . . .	16	Bed Gowns . . . . .	47
Stockings (pairs) . . . . .	86	Stays (pairs) . . . . .	42
Stocks, Neckerchiefs, } and Scarfs . . . . . }	250	Shawls and Neck Ties . . . . .	21
Shirts . . . . .	195	Jean Petticoats . . . . .	17
Braces (pairs) . . . . .	76	Flannel Petticoats . . . . .	55
Garters (pairs) . . . . .	22	Chemises . . . . .	167
Aprons . . . . .	40	Neck and Pocket Kerchiefs	105
Summer Frocks . . . . .	22	Shrouds . . . . .	8
Gloves (pairs) . . . . .	3		
Shrouds . . . . .	12		

## Birmingham Borough Lunatic Asylum.

### DRAPERY FURNITURE DELIVERED OUT OF STORE IN THE YEAR 1857.

Blankets . . . . .	166
Counterpanes . . . . .	50
Air Cushions . . . . .	2
Carpets (Yards) . . . . .	123
Bed Sackings . . . . .	13
Toilet Covers . . . . .	4
Valances . . . . .	28
Moreen (Yards) . . . . .	48
Cocoa Matting (Yards) . . . . .	61
Ironing Blankets . . . . .	2
Huckaback Towels . . . . .	19
Waterproof Sheets . . . . .	24
Round Towels . . . . .	30
Bathing Towels . . . . .	56
Tea Cloths . . . . .	32
Table Cloths . . . . .	11
Table Covers . . . . .	9
Cheese Cloths . . . . .	10
Scouring Flannel (Pieces) . . . . .	33
Pillow Cases . . . . .	240
Linen Sheets . . . . .	351
Palliasses . . . . .	24
Horsehair Mattresses . . . . .	36
Horsehair Bolsters . . . . .	36
Feather Pillows . . . . .	12
Feather Beds . . . . .	1
Door Mats . . . . .	22
Box Covers . . . . .	4

## BIRMINGHAM BOROU

## INCOME AND EXPENDITURE FOR

## Income.

HEADS OF INCOME.	March 31.	June 30.	September 30.	December 31.	TOTAL.
	£. s. d.	£. s. d.	£. s. d.	£. s. d.	£. s.
To Maintenance, &c., for Patients from Parishes and Unions, received and due .....	1572 3 4	1639 11 3	1685 11 2	1734 15 7	6632 1
To Maintenance, &c., of Private Patients .....	215 15 9	194 3 3	194 11 10	164 7 6	768 18
To Sundries Sold from the House .....	13 8 4	19 0 8	15 10 3	33 1 2	81 0
To Repayments for Fu- neral Expenses and Certifying Patients ..	8 17 6	7 0 0	4 12 0	6 2 0	26 11
Total .....	1810 4 11	1859 15 2	1900 5 3	1938 6 3	7509 11 1

## N A T I C A S Y L U M , 1 8 5 7 .

ENDING DECEMBER 31.

## Expenditure.

HEADS OF EXPENDITURE.	March 31.			June 30.			September 30.			December 31.			TOTAL.		
	£.	s.	d.	£.	s.	d.	£.	s.	d.	£.	s.	d.	£.	s.	d.
Meat (viz. Mutton, Beef, } Pork, and Veal) . . . . . }	278	13	6	274	17	11	283	8	1	300	3	6	1137	3	0
Flour . . . . .	212	5	9	216	10	0	215	6	8	168	2	6	812	4	11
Tea, Coffee, and Chicory ..	45	1	6	42	11	8	45	6	0	44	19	11	177	19	1
Butter and Cheese . . . . .	104	9	2	98	2	2	109	14	1	116	19	5	429	4	10
Sugars . . . . .	29	16	0	33	14	0	36	4	7	32	9	0	132	3	7
Beer, Ale, and Porter— <i>i.e.</i> } Malt and Hops . . . . . }	95	1	3	63	12	9	93	9	3	83	0	8	335	3	11
Wines and Spirits . . . . .	1	11	4	1	13	10	1	13	6	3	3	11	8	2	7
Fish, Poultry, and Game ..	3	7	4	5	11	7	4	11	6	4	8	3	17	18	8
Potatoes & other Vegetables	73	12	2	79	5	6	76	12	0	66	10	11	296	0	7
Wheatmeal and Split Peas ..	3	11	1	4	0	0	3	12	1	3	1	3	14	4	5
Taro, Arrowroot, Rice, and Sago	3	12	2	2	4	8	2	2	0	2	2	8	10	1	6
Raisins, Currants, and Fruit	4	15	10	4	5	7	11	9	1	11	0	8	31	11	2
Milk and Eggs . . . . .	27	13	10	24	16	8	27	19	9	24	6	0	104	16	3
Vinegar, Salt, Mustard, } and Pepper . . . . . }	2	3	7	2	14	10	4	4	5	3	15	2	12	18	0
Honey and Treacle . . . . .	0	16	0	1	5	2	3	3	6	1	9	7	6	14	3
Tobacco and Snuff . . . . .	5	11	11	6	6	2	6	12	8	7	5	4	25	16	1
Candles . . . . .	10	5	5	11	3	4	10	5	4	15	1	4	46	15	5
<i>House and other Expenses.</i>															
Salaries . . . . .	78	8	0	81	18	0	85	19	0	92	12	6	338	17	6
Expenses . . . . .	56	14	10	17	3	2	10	16	7	51	7	10	136	2	5
Sawwood and Matches . . . .	5	18	8	5	16	2	5	15	9	6	0	7	23	11	2
Candles and Lamp Oil . . . .	2	1	9	1	5	0	1	6	2	2	3	9	6	16	8
Soda, Starch, and Blue	19	12	9	21	6	11	22	8	8	20	13	5	84	1	9
Washes & Scouring Flannel	15	12	7	14	16	6	12	1	0	15	13	9	58	3	10
Blackening, Black Lead, and } Bath Bricks . . . . . }	0	11	0	0	13	11	0	13	3	0	12	8	2	10	10
Air Brushes and Combs . . . .	0	15	9	0	7	8	0	5	0	0	5	10	1	14	3
Trunks, Books, Station- } ery, and Printing . . . . }	23	7	7	10	8	8	20	9	3	12	12	1	66	17	7
Salaries and Wages . . . . .	366	11	6	365	13	7	372	0	8	372	2	0	1476	7	9
Patients' Clothing . . . . .	93	12	0	86	19	10	106	9	4	111	5	3	398	6	5
Medicating Patients, &c. . . .	0	7	6	3	4	6	0	19	9	1	14	6	6	6	3
Advances for Private Patients	6	19	6	4	9	7	4	4	5	8	3	4	23	16	10
Repair and Tear of Furni- } ture, &c. . . . . }	161	13	2	161	12	8	161	8	8	161	8	3	646	2	9
General Expenses . . . . .	7	7	6	4	19	0	5	9	0	4	4	6	22	0	0
Expenses and Insurance . . . .	5	11	6	5	11	6	7	9	0	8	10	0	27	2	0
Expenses . . . . .	3	0	5	3	6	6	5	16	11	2	12	3	14	16	1
Balance . . . . .	59	11	1	197	6	2	140	18	4	178	3	8	576	19	3
Total . . . . .	1810	4	11	1859	15	2	1900	5	3	1938	6	3	7509	11	7

## Birmingham Borough Lunatic Asylum.

## ADMISSIONS, DISCHARGES, &amp;c., FOR THE YEAR 1857.

Parishes, Unions, and Private Patients.	In the Asylum, 1st January 1857.	Admitted since.	Total.	Discharged since.	Transferred from.	Transferred to.	Died.	Total discharged and died.	Remaining in the Asylum, December 31, 1857.
Birmingham Parish . . . . .	207	108	315	38	5	...	32	75	240
Birmingham Borough . . . . .	15	4	19	3	...	...	1	4	15
Aston Union . . . . .	32	15	48	5	...	1	3	8	40
King's Norton Union . . . . .	3	3	7	...	...	1	...	...	7
Boston Union . . . . .	1	...	1	...	...	...	...	...	1
Bridgnorth Union . . . . .	3	1	4	1	...	...	...	1	3
Cheltenham Union . . . . .	1	...	1	1	...	...	...	1	...
Epping Union . . . . .	1	...	1	1	...	...	...	1	...
Daventry Union . . . . .	1	...	1	...	...	...	1	1	...
Kidderminster Union . . . . .	...	...	1	1	...	1	...	1	...
Madeley Union—Salop . . . . .	...	...	1	...	...	1	...	...	1
Strand Union . . . . .	1	...	1	...	...	...	...	...	1
Temple Parish, Bristol . . . . .	1	...	1	...	...	...	...	...	1
Tamworth Union . . . . .	...	...	1	...	...	1	...	...	1
Worcester Union . . . . .	1	...	1	1	...	...	...	1	...
Private Patients . . . . .	27	22	49	26	...	...	3	29	20
Total . . . . .	294	153	452	77	5	5	40	122	330

## Birmingham Borough Lunatic Asylum.

## INCOME FROM PARISHES, UNIONS, &amp;c., FOR EACH QUARTER AND THE YEAR 1857.

Parishes, Unions, &c.	March 31.		June 30.		September 30.		December 31.		For the Year.	
	£.	s. d.	£.	s. d.	£.	s. d.	£.	s. d.	£.	s. d.
Birmingham Parish . . . . .	1210	5 11	1277	3 0	1292	17 5	1334	6 4	5115	12 8
Birmingham Borough . . . . .	90	19 4	89	7 10	86	8 0	89	4 4	355	19 6
Aston Union . . . . .	199	9 7	212	6 2	229	2 1	220	9 1	861	6 11
King's Norton Union . . . . .	18	12 11	21	0 9	31	2 0	37	19 2	108	14 10
Boston Union . . . . .	7	1 5	7	3 0	7	4 7	7	4 7	28	13 7
Bridgnorth Union . . . . .	21	1 2	14	6 0	15	0 2	21	13 9	72	1 1
Cheltenham Union . . . . .	7	1 5	7	3 0	1	11 5	...	...	15	15 10
Epping Union . . . . .	3	10 9	...	...	...	...	...	...	3	10 9
Daventry Union . . . . .	1	14 1	...	...	...	...	...	...	1	14 1
Kidderminster Union . . . . .	...	...	...	...	5	3 9	...	...	8	1 11
Madeley Union—Salop . . . . .	...	...	...	...	...	...	2	18 2	5	8 5
Strand Union . . . . .	7	1 5	7	3 0	7	4 7	7	4 7	28	13 7
Temple Parish, Bristol . . . . .	7	1 5	7	3 0	7	4 7	7	4 7	28	13 7
Tamworth Union . . . . .	...	...	1	8 4	7	4 7	7	4 7	15	17 6
Worcester Union . . . . .	7	1 5	2	7 2	...	...	...	...	9	8 7
Private Patients . . . . .	215	15 9	194	3 3	194	11 10	164	7 6	768	18 4
Sundries sold from the house . . . . .	13	8 4	19	0 8	15	10 3	33	1 2	81	0 5
Total . . . . .	1810	4 11	1859	15 2	1900	5 3	1938	6 3	7509	11 7

## Birmingham Borough Lunatic Asylum.

DAILY AVERAGE NUMBER OF PATIENTS,  
WITH THE WEEKLY COST FOR EACH QUARTER,  
THE AVERAGE NUMBER OF PATIENTS FOR THE  
YEAR 1857,  
AND THE AVERAGE COST PER WEEK FOR THE SAME.

Daily average Number of Patients for the Quarter ending March 31st . . . . .	297
Weekly Cost per Patient for the same period . . . . .	8s. 11d.

---

Daily average Number of Patients for the Quarter ending June 30th . . . . .	303
Weekly Cost per Patient for the same period . . . . .	8s. 5d.

---

Daily average Number of Patients for the Quarter ending September 30th . . . . .	324
Weekly Cost per Patient for the same period . . . . .	8s. 4d.

---

Daily average Number of Patients for the Quarter ending December 31st . . . . .	326
Weekly Cost per Patient for the same period . . . . .	8s. 3½d.

---

Daily average Number of Patients for the Year . . . . .	312
Average Weekly Cost per Patient for the Year . . . . .	8s. 5¼d.

---

SUMMARY OF THE COST PER PATIENT PER WEEK  
FOR THE YEAR 1857.

Provisions, Drugs, Wine, &c., per Patient . . . . .	3 11
Provisions for Officers, Attendants, and Servants . . . . .	0 6¼
House and other expenses, with wear and tear of Furniture, &c. . . . .	1 8¾
Patients' Clothing, with repairs of the same . . . . .	0 5¾
Salaries and Wages . . . . .	1 10
<b>TOTAL</b>	<b>8 5¾</b>
Less for Produce, Goods sold, &c. . . . .	0 3½
	<b>8 2¼</b>

## Birmingham Borough Lunatic Asylum.

## GARDEN ACCOUNT FOR THE YEAR 1857.

RECEIPTS.		EXPENDITURE.	
£.	s. d.	£.	s. d.
To Vegetables supplied to House . . .	106 15 5	By Stock as per valuation, Dec. 31, 1856	32 15 0
” Ditto Refuse ditto Farm . . .	2 10 0	Manure from Farm . . .	5 0 0
” Stock on the Grounds, as per valuation	39 17 6	” Ditto purchased . . .	19 4 10
		” Garden Seeds and Roots . . .	5 7 1
		” Repairing Mowing Machine . . .	1 1 0
		” Gardener's Knife . . .	0 3 6
		” 3 Spades and Shovels . . .	0 11 6
		” Rent of Land, as before . . .	9 8 1
		” Pea Sticks . . .	0 12 10
		” 52 Weeks' Wages to Gardeners @ 22/9	59 3 0
		” Profit . . .	15 16 1
	<u>£149 2 11</u>		<u>£149 2 11</u>

## BIRMINGHAM BOROUGH

## FARM ACCOUNT FOR THE

## Receipts.

	£.	s.	d.
To 29 Fat Beasts killed, 21,495 lbs. Beef, @ 6d.....	537	7	6
„ 91 Sheep „ 7,449 lbs. Mutton, 6d.....	186	4	6
„ 56 Pigs „ 11,289 lbs. Pork, 6d.....	282	4	6
„ 5 Calves „ 590 lbs. Veal, 6d.....	14	15	0
„ 1 ditto sold .....	1	0	0
„ Refuse Fat ditto.....	51	7	10
„ Hides and Skins ditto .....	61	18	10
„ 1,977½ gallons of New Milk ditto to Prison .....	98	17	3
„ Sundry Roots sold .....	5	7	0
„ 1 Yelt ditto .....	6	6	0
„ Use of Hog .....	0	17	6
„ Trespass .....	0	5	0
„ Poultry supplied to the House .....	10	7	0
„ 524¾ lbs. Fresh Butter .....	@ 1s.	26	4 9
„ 2,817½ gallons of Milk .....	8d.	93	18 4
„ 2,458 New-laid Eggs .....	1d.	10	4 10
„ 349 Bushels of Potatoes .....	3s. 6d.	61	1 6
„ 330 ditto Fluke ditto .....	5s.	82	10 0
„ 242 ditto Pig ditto .....	9d.	9	1 6
„ Crop of Hay .....		20	0 0
„ 29 tons of Swede Turnips.....	@ 20s.	29	0 0
„ 24 tons of Mangold Wurzel.....	20s.	24	0 0
„ Bailiff, Milk, Butter, &c. ....		7	16 0
„ Manure from Farm Yard .....		20	0 0
„ Live Stock as per valuation .....		268	10 0
„ Provender, &c. ....		45	3 0

---

£1,954 7 10

---

## LUNATIC ASYLUM, 1857.

YEAR ENDING 31st DECEMBER.

## Expenditure.

	£.	s.	d.
By Live Stock, &c., as per Valuation, Dec. 31, 1856 . . . . .	310	11	3
„ 30 Fat Beasts, 1 Milking Cow, and 3 Calves . . . . .	562	6	8
„ 91 Fat Sheep . . . . .	204	7	8
„ 20 Pigs . . . . .	48	14	6
„ Difference in exchange of Cow . . . . .	2	0	0
„ 167½ cwt. Sharps . . . . .	68	8	6
„ 19 bushels Oats . . . . .	4	11	0
„ 12 cwt. Bran . . . . .	3	11	6
„ 18½ qrs. Barley . . . . .	35	9	6
„ 9 bags Beans . . . . .	9	0	0
„ 3 ditto Peas . . . . .	3	6	6
„ 4 ditto Poultry Corn . . . . .	1	13	6
„ 12 cwt. Linseed Cake . . . . .	7	5	0
„ 6 ditto Bean Meal . . . . .	3	5	0
„ 118 ditto Hay . . . . .	23	12	8
„ 94½ ditto Straw . . . . .	12	8	6
„ 29 tons Swede Turnips . . . . .	29	0	0
„ 24 ditto Mangold Wurzel . . . . .	24	0	0
„ Pig-wash from Prison and Asylum . . . . .	20	0	0
„ Ditto from Workhouse, to Lady-day, 1858 . . . . .	8	0	0
„ 2,156 bushels Grains, purchased . . . . .	36	14	16
„ 520 ditto ditto, from House . . . . .	10	6	3
„ 49 ditto Fluke Potatoes, being a deficiency of last year's produce . . . . .	12	5	0
„ 34 bags Seed Potatoes . . . . .	26	11	3
„ Cotterill—Rent of Land . . . . .	25	0	0
„ 242 bushels Potatoes . . . . .	9	1	6
„ Manure purchased . . . . .	13	2	2
„ Taxes . . . . .	3	16	10
„ Wheelwright—Repairing Implements . . . . .	7	10	9
„ Extra Farm Labour . . . . .	18	7	1
„ Ploughing Land . . . . .	3	15	0
„ Wurzel Seed . . . . .	0	4	6
„ Saddler—Repairing Harness, &c. . . . .	0	10	4
„ 12 Iron Troughs . . . . .	3	9	3
„ Wash Carriage . . . . .	4	16	0
„ Dock Iron . . . . .	0	3	6
„ 54 tons 1 cwt. of Coal . . . . .	19	10	11
„ Refuse Vegetables from Garden . . . . .	2	10	0
„ Horse Shoeing and Sundries . . . . .	9	8	0
„ 52 Weeks' Wages to Bailiff and Wife . . . . . @ 30s.	78	0	0
„ 52 ditto ditto each to 2 Farm Labourers . . . . . 20s.	104	0	0
„ Per Centage on Farm Implements . . . . .	19	0	4
„ Ditto ditto of Repairs . . . . .	5	1	4
„ Profit . . . . .	159	11	3
	<hr/>		
	£1,954	7	10
	<hr/>		



## Birmingham Borough Lunatic Asylum.

---

### MEDICAL SUPERINTENDENT'S REPORT.

THE MEDICAL SUPERINTENDENT has again the satisfaction to report the enjoyment of good general health throughout the year. There has been no epidemic, endemic, or contagious disease, except three slight cases of facial erysipelas in the early part of December, and one in the month of May; neither has there been any serious accident or sudden death.

During the year 154 patients have been admitted, of whom 98 were males and 56 females, which, together with the 294 left at the end of the previous year, make a total of 448 who have been under treatment; of which number 57 have been discharged recovered, and 40 have died: 24 were re-admissions, 8 of that number having relapsed within the year: 22 were private patients, all males except one. The admissions exceed those of the previous year by 28, which increase would have been larger had it not been found necessary, for want of room, nearly to discontinue receiving private patients. The average daily number of patients has been 312. During the latter half of the year it was 325, whilst in the former half it was only 299. The highest number at any one time was 333—the lowest 293.

Table III, which is now introduced for the first time, is an instructive one. It shews that after the lapse of a period of somewhere about two years, the insane condition has not much tendency to change. Thus, of 232 patients admitted into the

Asylum from 1850 to 1855, both inclusive, and remaining on the first of January, 1857, only 20 have since been disposed of, leaving 212 of that number still in the house. Both the recoveries and the deaths occur chiefly from the recent cases: 35 of the recoveries and 20 of the deaths resulted from cases admitted during the year.

Table V does not present a very favourable view of the admissions in 1857, as regards their prospects of recovery: eighteen epileptics and 24 paralytics—together 42 hopeless cases—make a large hole in the 154 admitted; and besides these complications, there were others of nearly or quite as grave a character.

Among the causes of insanity intemperance, as usual, takes the most prominent place, though it may be that in some few of these instances, it is not justly so chargeable. It is no uncommon thing for a person habitually temperate, under the influence of some mental disturbance which may have escaped the notice of his friends, suddenly to take to drinking; and this being soon followed by an outbreak of insanity, in some form which cannot be overlooked or mistaken, the drinking is at once set down as the cause, though, in truth, it was but the first overt act of the malady; hastening the catastrophe, perhaps, but not its exciting cause. On the other hand, some cases are due to intemperance, either wholly or in part, when some other cause, or no cause, has been assigned. Where the habit of intemperance has been of long continuance some organic change in the delicate structure of the brain, or its membranes, is generally the consequence, whereby the prospect of recovery is very much diminished. To this cause 28 cases are attributed, being a fourth of all the causes ascertained. Twenty-four cases were due to epilepsy, or other cerebral disease, and in 29 no cause whatever was assigned or could be ascertained. Twenty-eight had relatives insane.

The mortality of the year has been larger than that of the two preceding years, but not equal to that of 1853 and 1854. And having regard to the greater number of patients under treatment

in 1857, it is below the average of the previous six years. By a glance at the Obituary Table it will be seen that the deaths arose mainly from paralysis, and other cerebral affections, the too frequent sequence of the insane condition, and none from any cause that could be traced to local influence. It will further be observed, that three-fourths of these patients were in bad health—many labouring under obvious mortal disease—at the time of their admission. Three died soon after they came, severally at the end of 71, 69, and 58 hours. Three were above 70 years of age, and four others above 60.

Among the admissions of last year were 37 patients reported to be suicidal, many of whom, before they came, had made serious attempts at self-destruction. Only two patients have made such attempts at the Asylum. Both were females. One thought to succeed by strangulation, and also by knocking her head violently against the wall; the other by throwing herself down an area, a depth of about ten feet. A few severe bruises was in both cases the only result.

Nine patients escaped during the year, but all were retaken after short absences, except one, a private patient, who, having concealed himself for a fortnight, to secure his liberation, then voluntarily came up to the Asylum to shew himself in order to remove any apprehension which might be felt as to his safety.

The change lately made in the dietary, by the substitution of Irish stew one day in the week for soup, is highly appreciated by the patients, and has proved in every way to be a satisfactory alteration.

In the treatment of insanity there is no single point of more importance to its successful issue, than such an occupation for the patient as will tend to put his thoughts into new channels, and thus prevent his mind from dwelling exclusively, as it is too apt to do, upon its own morbid ideas. For the attainment of this end different means are in pretty constant operation. Besides the various regular employments specified in Table XI, the patients are encouraged to engage themselves in different games, both within doors and without, and to make frequent

walking excursions into the country. Occasionally they are permitted to attend some place of public amusement; in the summer three separate parties went to the Music Hall; twice, by the kind permission of Mr. Tonks, to musical performances; and the third time Professor Anderson liberally allowed between 60 and 70 to witness his feats of legerdemain. Again, in the summer months, the patients were indebted to many gentlemen for their kindness in giving interesting and instructive readings and lectures upon various popular subjects: and the weekly winter parties for the enjoyment of music and dancing continue to be a leading feature, and certainly a beneficial one, in the management of the institution. Usually about one-half the patients attend these meetings, but on Christmas Eve (an extra day) 210 were present. They are all pleased with the entertainments. Even those who sit still all the evening, and appear to take no interest in what is going on, are so, as is evidenced in their anxiety to be present, and by their often thanking the Superintendent the next day for their enjoyment the previous evening.

THOMAS GREEN,

*Medical Superintendent.*

*January 22, 1858.*

---

## STATISTICAL TABLES.

### TABLE I.

#### SUMMARY OF ADMISSIONS, DISCHARGES, AND DEATHS DURING THE YEAR 1857.

	Private.		Pauper.		M.	F.	Total.
	M.	F.	M.	F.			
Patients in the House Jan. 1, 1857	19	8	114	153	133	161	294
Admitted during that year	21	1	77	55	98	56	154
	40	9	191	208	231	217	448

	Private.		Pauper.		M.	F.	Total.
	M.	F.	M.	F.			
Discharged Recovered . . .	10	2	19	26	75	43	118
" Improved . . .	7		3				
" Unimproved . . .	6		1	3			
" By Escape . . .	1						
" By Death . . .	3		25	12			

	Private.		Pauper.		M.	F.	Total.
	M.	F.	M.	F.			
Remaining on the 1st of Jan. 1858	13	7	143	167	156	174	330

Average daily number, 143 Males, 169 Females—Total, 312.

TABLE II.  
TOTAL ADMISSIONS, DEATHS, AND DISCHARGES.

	Admissions.			Deaths.			DISCHARGES.									Total Deaths and Discharges.			Remain from each Year's Admissions.		
	M.	F.	Total	M.	F.	Total	Recovered.			Improved.			Unimproved.			M.	F.	Total	M.	F.	Total
							M.	F.	Total	M.	F.	Total	M.	F.	Total						
1850	112	95	207	7	3	10	6	3	9	1	—	1	5	—	5	19	6	25	43	44	87
1851	89	87	176	20	11	31	21	27	48	2	4	6	5	5	10	48	47	95	15	17	32
1852	58	62	120	24	13	37	15	31	46	8	7	15	15	14	29	62	65	127	10	13	23
1853	87	87	174	32	15	47	31	42	73	4	3	7	12	6	18	79	66	145	9	10	19
1854	71	70	141	28	18	46	30	37	67	7	9	16	11	11	22	76	75	151	6	19	25
1855	56	66	122	18	10	28	31	28	59	5	6	11	7	7	14	61	51	112	10	16	26
1856	78	48	126	19	12	31	33	24	57	7	4	11	14	4	18	73	44	117	11	20	31
1857	98	56	154	28	12	40	29	28	57	11	—	11	7	3	10	75	43	118	52	35	87
	649	571	1220	176	94	270	196	220	416	45	33	78	76	50	126	493	397	890	156	174	330

TABLE III.

Shewing how the Patients remaining on the 1st of January, 1857, from each Year's Admissions, have been disposed of during that Year.

Number of Patients remaining from the Admissions of.	Cured.	Improved	Unimproved.	Died.	Still remain.
1850—92	1	...	...	4	87
1851—34	...	...	...	2	32
1852—24	...	...	1	...	23
1853—23	1	1	...	2	19
1854—27	...	...	1	1	25
1855—32	2	1	...	3	26
1856—62	18	3	3	8	30
294	22	5	5	20	242

TABLE IV.

STATE OF PATIENTS IN THE ASYLUM ON THE  
31st OF DECEMBER.

	M.	F.	TOTAL	
As to probability of Recovery	Curable . . . . .	26	43	69
	Incurable . . . . .	130	131	261
			—	330
Social State	Married . . . . .	57	64	121
	Single . . . . .	86	87	173
	Widowed . . . . .	13	23	36
			—	330
Epileptics . . . . .	37	26	63	
Paralytics . . . . .	16	9	25	
Congenital Imbeciles . . . . .	12	7	19	
Criminal Lunatics . . . . .	4	7	11	

TABLE V.  
FORM OF DISORDER IN THE 154 CASES  
ADMITTED IN 1857.

	M.	F.	TOTAL
Mania . . . . .	43	28	71
Ditto with Paralysis . . . . .	12	2	14
Ditto with Epilepsy . . . . .	9	2	11
Melancholia . . . . .	18	22	40
Ditto with Epilepsy . . . . .	3	0	3
Ditto with Paralysis . . . . .	4	1	5
Dementia . . . . .	1	0	1
Ditto with Paralysis . . . . .	5	0	5
Ditto with Epilepsy . . . . .	3	1	4
	—	—	—
	98	56	154

TABLE VI.  
DURATION OF DISORDER AT THE TIME OF  
ADMISSION.

	M.	F.	TOTAL
Not exceeding One Month . . . . .	27	25	52
"    "    Three Months . . . . .	23	10	33
"    "    Six " . . . . .	11	8	19
"    "    Twelve " . . . . .	14	4	18
"    "    Two Years . . . . .	8	2	10
Above Two Years . . . . .	15	7	22
	—	—	—
	98	56	154
Cases of more than One Attack . . . . .	15	8	23

TABLE VII.  
AGES OF THE 154 PATIENTS ON ADMISSION.

	M.	F.	TOTAL
From 15 to 20 . . . . .	8	6	14
"    20 " 30 . . . . .	9	11	20
"    30 " 40 . . . . .	36	23	59
"    40 " 50 . . . . .	26	9	35
"    50 " 60 . . . . .	10	4	14
"    60 " 70 . . . . .	5	2	7
"    70 " 80 . . . . .	4	0	4
Above 80 . . . . .	0	1	1
	—	—	—
	98	56	154

TABLE VIII.  
CIVIL AND RELIGIOUS CONDITION.

	M.	F.	TOTAL	
Social State {	Married . . . . .	63	23	86
	Single . . . . .	27	25	52
	Widowed . . . . .	8	8	16
			— 154	
Of Fair Education . . . . .	5	0	5	
Able to Read and Write . . . . .	74	35	109	
Able to Read only . . . . .	9	12	21	
Uneducated . . . . .	10	9	19	
			— 154	
Established Church . . . . .	68	36	104	
Roman Catholic . . . . .	10	6	16	
Protestant Dissenters . . . . .	19	13	32	
Jewish . . . . .	1	1	2	
			— 154	

TABLE IX.  
SUPPOSED CAUSES OF DISORDER.

	M.	F.	TOTAL
Privation . . . . .	2	4	6
Epilepsy . . . . .	13	2	15
Disease of Brain . . . . .	2	1	3
Injury to Head . . . . .	6	0	6
Dissipation—Intemperance . . . . .	21	7	28
Old Age . . . . .	3	1	4
Ill Health . . . . .	2	0	2
Loss of Leg . . . . .	0	1	1
Fever . . . . .	0	1	1
Puerperal . . . . .	0	6	6
Troubles—Family and Pecuniary . . . . .	14	4	18
Religious Anxiety . . . . .	3	0	3
Over Study . . . . .	1	0	1
Death of Friends or Relatives . . . . .	5	3	8
Love Disappointment . . . . .	1	5	6
Fright . . . . .	1	1	2
Husband's Ill-usage . . . . .	0	2	2
Jealousy . . . . .	0	1	1
Son's Insanity . . . . .	1	1	2
Unassigned . . . . .	23	16	39
	—	—	—
	98	56	154
Hereditary Disposition ascertained . . . . .	19	8	27

TABLE X.  
PREVIOUS OCCUPATION OF PATIENTS  
ADMITTED IN 1857.

	M.	F.	TOTAL
Mechanics and Artizans.	37	10	47
Wives of Ditto	0	16	16
Labourers	6	0	6
Land Surveyor	1	0	1
Portrait Painter	1	0	1
Engineers	2	0	2
Soldier	1	0	1
Accountant	1	0	1
Architect	1	0	1
Railway Guard	1	0	1
Wellsinker	1	0	1
Tailors	4	0	4
Shoe-makers	3	0	3
Domestic Servants	2	10	12
Clerks	5	0	5
Gardeners	3	0	3
Bricklayer	1	0	1
Farmer	1	0	1
Shopkeepers and Tradesmen	15	1	16
Carpenters	5	0	5
Dress-makers	0	7	7
Nurse	0	1	1
Laundresses	0	4	4
Charwomen	0	2	2
None	7	5	12
	98	56	154

TABLE XI.  
NUMBER OF PATIENTS EMPLOYED AND MODE  
OF EMPLOYMENT.

MALES.		FEMALES.	
On Grounds and Farm	28	Needlework	55
House Porters	2	Knitting	17
Messengers	2	Laundry	25
Ward & House Cleaning	29	Kitchen	7
Mill	4	Gallery Cleaning	20
Tailor	1	House Cleaning	3
Upholsterer	1		—
Carpenters	3		127
Whitewashing	1		
Stokers	3		
Baker	1		
Stores	1		
Kitchen	1		
Stone Breaking	4		
Road Making	1		

TABLE XII.

## DISCHARGES ON RECOVERY, WITH DURATION AND FORM OF INSANITY.

Sex.	Age.	Duration of Insanity.		Form of Malady.
		Before Admission.	After Admission.	
M.	46	Three months	1 year 197 days	Melancholia
"	16	Two weeks	187 days	Acute mania
"	47	Four months	134 "	Mania, partial
"	24	Five weeks	116 "	Acute mania
"	27	Two weeks	49 "	Ditto ditto
"	30	Four days	64 "	Ditto ditto
"	55	Two months	59 "	Ditto ditto
"	36	Three weeks	30 "	Mania a potu
"	42	Six months	190 "	Melancholia
"	51	Two months	61 "	Mania, partial
"	51	A few days	26 "	Mania a potu
"	33	Three days	20 "	Ditto ditto
"	38	Two months	89 "	Acute mania
"	54	Three days	74 "	Melancholia
"	47	One week	36 "	Ditto
"	51	Three weeks	64 "	Acute mania
"	38	Two months	35 "	Mania, partial
"	28	Ten months	40 "	Mania
"	21	A few days	34 "	Mania a potu
"	40	Three months	93 "	Mania
"	33	Three weeks	73 "	Mania a potu
"	31	Three days	25 "	Acute mania
"	51	A few days	121 "	Recurrent mania
"	32	Three days	355 "	Acute mania
"	42	A week	54 "	Ditto ditto
"	39	Three days	22 "	Ditto ditto
"	43	Some weeks	97 "	Acute melancholia
"	23	Three months	96 "	Melancholia
"	45	Three days	44 "	Recurrent mania
F.	42	Eight days	29 "	Puerperal mania
"	45	Some years	7 years 58 days	Moral insanity
"	19	Unknown	1 " 250 "	Mania
"	41	A fortnight	1 " 324 "	Ditto
"	46	Eight months	1 " 33 "	Ditto
"	20	A week	1 " 36 "	Puerperal mania
"	36	Some years	284 days	Acute dementia
"	20	Unknown	253 "	Mania
"	57	Twelve days	150 "	Melancholia
"	49	Ten days	109 "	Acute mania
"	25	Ten weeks	224 "	Melancholia
"	55	Two months	89 "	Ditto
"	19	Three days	50 "	Puerperal mania
"	40	Three months	84 "	Mania
"	34	A week	87 "	Melancholia
"	36	Two weeks	57 "	Ditto
"	28	Seven days	131 "	Mania
"	36	A month	183 "	Melancholia
"	19	Two years	204 "	Mania
"	50	Three weeks	89 "	Acute dementia
"	32	Five days	30 "	Acute mania
"	19	Unknown	62 "	Moral insanity
"	24	Seven weeks	112 "	Melancholia
"	27	Four months	71 "	Mania
"	20	Unknown	124 "	Ditto
"	19	A week	89 "	Acute mania
"	43	Six months	101 "	Melancholia
"	58	A week	3 years 242 days	Oinomania

TABLE XIII.—OBITUARY.

Sex.	Duration of Insanity.		Assigned Cause of Death.	State on Admission.
	Before Admission.	After Admission.		
M.	48	From childhood	Pulmonary emphysema	Epileptic mania, lungs emphysematous
"	44	Six weeks	General paralysis	Mania, health shaken
"	46	Fifteen months	Ditto	Dementia, paralysis
"	66	Nine months	Bronchitis	Melancholia, moribund
"	31	Six months	Coma	Mania
"	21	Some years	Phthisis	Epileptic dementia
"	42	Six months	General paralysis	Mania and general paralysis
"	47	Six months	Ditto	Mania, pupils asynchronous
"	64	Two weeks	Ditto	Mania and general paralysis
"	41	A year	Ditto	Dementia, paralysis
"	42	Two years	Ditto	Dementia and cerebral disease
"	39	Unknown	Ditto	Mania and general paralysis
"	44	Several weeks	Pleuro-pneumonia	Mania, consolidated lung
"	39	Eight weeks	Ditto	Melancholia
"	56	Five months	General paralysis	Mania and general paralysis
"	66	Two weeks	Coma	Melancholia, much exhausted
"	46	A few weeks	Pleurisy and cerebral disease	Ditto
"	42	Ten months	General paralysis	Mania and general paralysis
"	34	A year	Ditto	Melancholia and general paralysis
"	35	Some weeks	Phthisis	Melancholia and phthisis
"	33	Eighteen months	Apoplexy	Mania and general paralysis
"	36	Eighteen months	General paralysis	Mania, bad health
"	73	Unknown	Gangrene and paralysis	Melancholia, bad health
"	65	Six months	General paralysis	Mania and general paralysis
"	43	Nineteen months	Ditto	Dementia and general paralysis
"	41	Two months	Apoplexy	Mania, phthisis
"	72	Unknown	Gangrene of arm	Mania, bad health
"	30	Two months	General paralysis	Mania and general paralysis
"	39	One year	Valvular disease of heart	Dementia and paralysis
F.	52	Two weeks	General dropsy	Mania, much reduced
"	47	Twelve years	Exhaustion	Epileptic dementia
"	34	Three weeks	General paralysis	Dementia, general paralysis
"	52	A year	Ditto	Dementia and paralysis
"	40	Unknown	Coma	Mania
"	33	Six weeks	Pulmonary disease	Melancholia, consolidated lungs
"	26	Congenital	Exhaustion	Epileptic imbecility
"	79	Three years	Apoplexy	Melancholia
"	52	Two weeks	Phthisis and cerebral diseases	Mania, partial
"	48	Some months	Ditto	Melancholia, phthisis
"	27	Unknown	Syncope	Epileptic mania

Average Age at Death—Males 46; Females, 44.

## Birmingham Borough Lunatic Asylum.

---

### TO THE COMMITTEE OF VISITORS OF THE BOROUGH OF BIRMINGHAM LUNATIC ASYLUM.

GENTLEMEN,

I have the gratification again to report favourably respecting the general results of my ministrations in the Asylum during the past year. The order of services and their nature have been similar to those observed in former years; and they appear to have been highly appreciated by the patients, especially in their lucid intervals, or during the progress of their recovery. And there appears not to be the slightest doubt that many who are incurably insane are susceptible of religious instruction, and are considerably edified and consoled by the truths and promises of the Gospel.

In the last report which I had the honour of laying before you, I mentioned that the Medical Superintendent had caused the epileptic, and other patients not able to attend Divine Service in the Chapel, to be assembled together once a week, the men in one room and the women in another, for the purpose of religious instruction and devotion; this practice has been continued, and though I cannot say that my endeavours have always appeared to be of advantage to this class of patients, yet, from remarks which I have occasionally heard, and the thanks which I have sometimes received from some of them, as well as having heard others join with me in the Lord's Prayer, or repeat after me familiar passages of Holy Writ, I cannot but hope and believe that some good has resulted, though not very manifest to human observation.

I have continued to receive all the kindness, attention, and assistance I could desire from the highest to the lowest officer in this Institution; and now that I am about to retire from the office of Chaplain in the Birmingham Lunatic Asylum, I beg very respectfully and sincerely to tender my thanks to the Committee of Visitors and to the Officers for the invariably kind consideration which I have received at their hands for upwards of six years.

I have the honour to be, &c.,

T. C. ONION, M.A.

*Chaplain.*

*February 18, 1858.*