

**The report of Saint Andrew's Hospital for Mental Diseases, at Northampton, for the upper and middle classes, from January 1, 1909, to December 31, 1909.**

**Contributors**

Saint Andrew's Hospital for Mental Diseases (Northampton, England)  
Smyth, C.  
Coupland, Sidney.  
Trevor, A. H.  
Needham, F.  
Cunningham, John.

**Publication/Creation**

Northampton, Eng. : Saint Andrew's Hospital for Mental Diseases, 1910.

**Persistent URL**

<https://wellcomecollection.org/works/rc6w59vu>

**License and attribution**

This work has been identified as being free of known restrictions under copyright law, including all related and neighbouring rights and is being made available under the Creative Commons, Public Domain Mark.

You can copy, modify, distribute and perform the work, even for commercial purposes, without asking permission.

# THE REPORT

OF

SAINT ANDREW'S HOSPITAL

FOR MENTAL DISEASES,

AT

NORTHAMPTON,

FOR THE

UPPER AND MIDDLE CLASSES,

FROM

JANUARY 1, 1909, TO DECEMBER 31, 1909.

---

NORTHAMPTON:

Printed at Saint Andrew's Hospital, Northampton.

---

1910.



WELLCOME INSTITUTE LIBRARY	
Coll	welMOmec
Call	Ann - Rep
No.	WLM 28
	. BE 5
	S 134
	1 909



22501660994









# THE REPORT

OF

## SAINT ANDREW'S HOSPITAL FOR MENTAL DISEASES,

AT

NORTHAMPTON,

FOR THE

UPPER AND MIDDLE CLASSES,

FROM

JANUARY 1, 1909, TO DECEMBER 31, 1909.

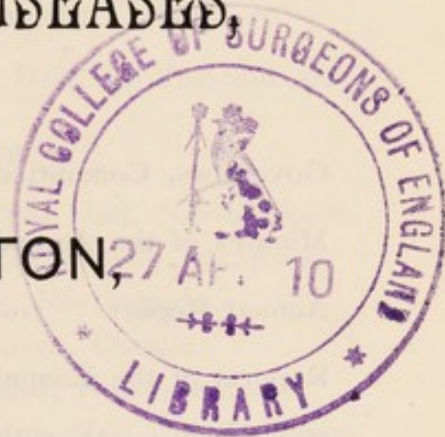
---

NORTHAMPTON :

Printed at Saint Andrew's Hospital, Northampton.

---

1910.



## CONTENTS.

---

	PAGE.
Governors, Committee, and Staff ... ..	3
Minutes of the Annual Court ... ..	6
Annual Report ... ..	7
Reports of the Commissioners in Lunacy ...	9
Report of the Medical Superintendent ... ..	14
Statistical Tables ... ..	19
Report of the Chaplain ... ..	51
Return of Patients assisted by the Charity ...	52
Abstract of Benefactions and Legacies towards the Erection and Establishment of the Hospital ...	53



# OFFICERS OF THE INSTITUTION.

## GOVERNORS.

### Perpetual President :

- 1 The Lord-Lieut. of the County, the Rt. Hon. the Viscount Althorp.

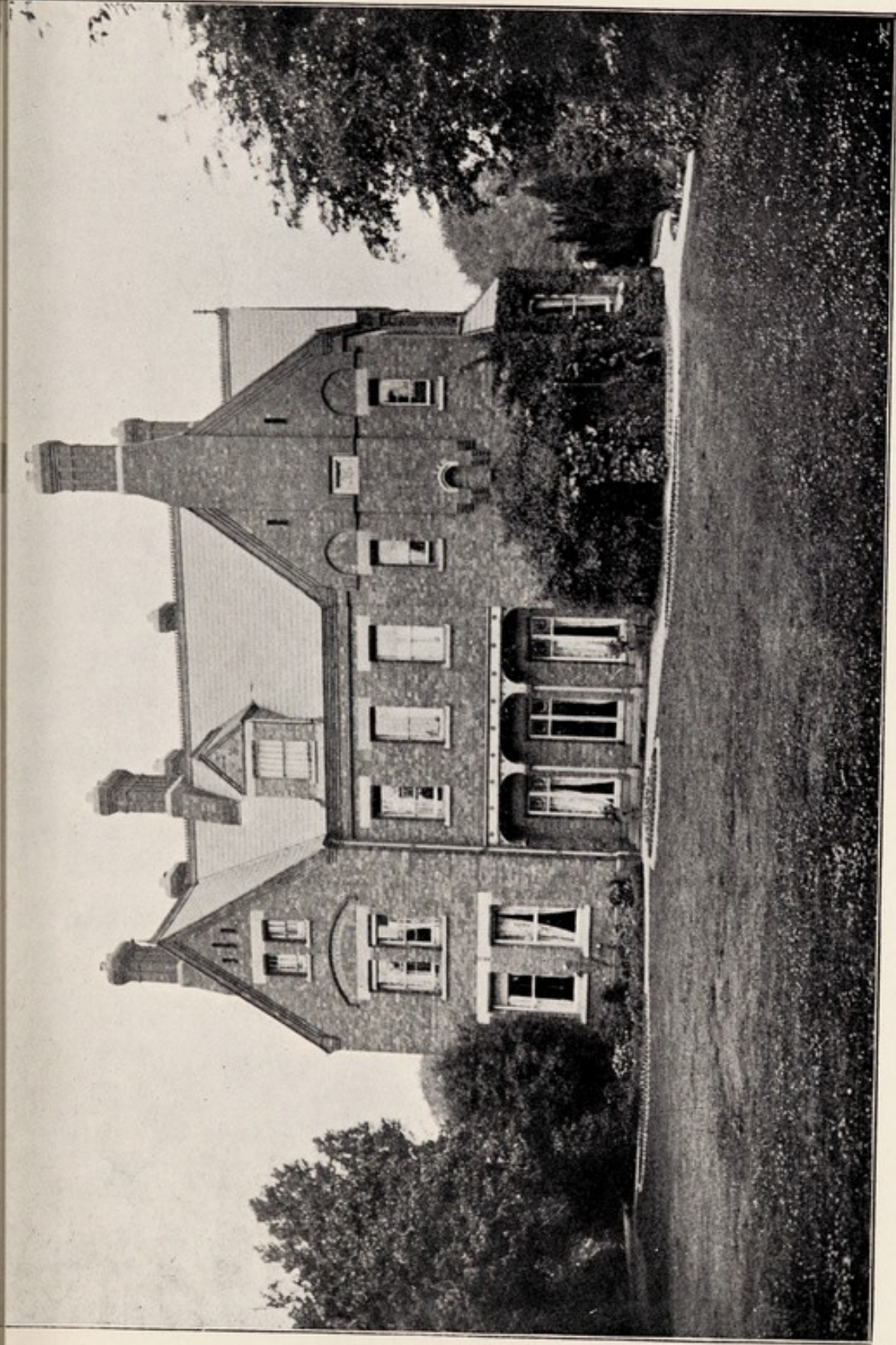
### Vice-Presidents :

- 2 The Right Hon. Lord Erskine, Spratton Hall, Northampton.
  - 3 S. G. Stopford-Sackville, Esq., Drayton House, Thrapston.
  - 4 H. M. Stockdale, Esq., Mears Ashby, Northampton.
  - 5 E. P. Monckton, Esq., Laundimer House, Oundle.
  - 6 C. Smyth, Esq., Little Houghton House, Northampton.
  - 7 Lieut.-Colonel Rawlins, Great Houghton Hall, Northampton.
- 
- 8 Annaly, The Lord, Holdenby House, Northampton.
  - 9 Bell, Major Alexander, The Priory, Weston Favell.
  - 10 Blackwood, Major Price, 52, Queen's Gate Terrace,  
London, S.W.
  - 11 Brooke, Sir Arthur R. de Capell, Bart., Oakley Hall, Kettering.
  - 12 Buccleuch, The Duke of, K.G., Boughton House, Kettering.
  - 13 Cardigan, The Countess of, Deene Park, Wansford.
  - 14 Carey, Rowland D., Esq., Cogenhoe, Northampton.
  - 15 Champion de Crespigny, G. H., Esq., Burton Latimer,  
Kettering.
  - 16 Clarke, Captain J. R. P.
  - 17 Crawley, Rev. H. H., Church Stowe, Weedon.
  - 18 Downe, The Viscount, Dingley, Market Harborough.
  - 19 Dryden, Arthur, Esq., Canon's Ashby, Byfield.
  - 20 Euston, The Earl of, Wakefield Lodge, Stony Stratford.
  - 21 Exeter, The Marquis of, Burghley House, Stamford.
  - 22 Fitz-Roy, The Hon. E. A., M.P., Fox Hill, West Haddon.
  - 23 Grafton, The Duke of, K.G., Wakefield Lodge, Stony Stratford.
  - 24 Grafton, The Duchess of, Harleston Hall, Northampton.
  - 25 Grant, E., Esq., Lichborough Hall, Weedon.




- 26 Grant-Ives, W. D., Esq., Bradden, Towcester.
- 27 Gunning, Sir Charles V., Bart., Benefield, Oundle.
- 28 Hazlehurst, Thomas F., Esq., Cold Ashby, Rugby.
- 29 Henley, The Lord, Watford Court, Rugby.
- 30 Hibbert, P. E. T., Esq., Ashby St. Ledgers, Rugby.
- 31 Hill, Colonel J., C.B., Wollaston Hall, Wellingborough.
- 32 Howard-Vyse, H. H., Esq., Stoke Place, Slough.
- 33 Isham, Sir Vere, Bart., Lamport Hall, Northampton.
- 34 Knightley, Sir Charles V., Bart., Fawsley, Daventry.
- 35 Leicester, The Bishop of, Canonry House, Peterborough.
- 36 Leslie-Melville-Cartwright, T. R. B., Esq., Newbottle Manor,  
Banbury.
- 37 Lilford, The Lord, Lilford Hall, Oundle.
- 38 Loder, R. B., Esq., Maidwell Hall, Northampton.
- 39 Macdonald, C. Falconar, Esq., Green's Norton, Towcester.
- 40 Manfield, H., Esq., M.P., Moulton Grange, Northampton.
- 41 Manfield, J., Esq., Weston Favell House, Northampton.
- 42 Moore, The Ven. Archdeacon, Benefield Rectory, Oundle.
- 43 Northampton, The Marquis of, K.G., Castle Ashby, Northampton.
- 44 Nugent, Lieut.-Colonel J. V., Portaferry, Co. Down.
- 45 Pender, Sir James, Bart., Donhead St. Andrew, Salisbury.
- 46 Penrhyn, The Lord, Wicken Park, Stony Stratford.
- 47 Percival, F. S., Esq., Portmadoc, North Wales.
- 48 Peterborough, The Bishop of, The Palace, Peterborough.
- 49 Robinson, Sir Frederick V. L., Bart., Cranford St. John, Kettering.
- 50 Sartoris, A. H., Esq., Weekley, Kettering.
- 51 Sawbridge, E. H. B., Esq., Basildon Park, Reading.
- 52 Stockdale, H. M., jun., Esq., Elm Bank, Kettering.
- 53 Strong, C. I., Esq., Thorpe Hall, Peterborough.
- 54 Thicknesse, The Right Rev. Bishop, Oxendon, Market Harboro'.
- 55 Thicknesse, The Rev. F. N., Hornsey, London, N.
- 56 Thornton, F. H., Esq., Kingsthorpe Hall, Northampton.
- 57 Thornton, T. W., Esq., Brockhall, Weedon.
- 58 Vaux of Harrowden, The Lord, Harrowden, Wellingborough.
- 59 Verney-Cave, The Hon. A., Stanford, Market Harborough.
- 60 Vernon, B. Wentworth, Esq., Stoke Bruerne Park, Towcester.
- 61 Wake, Sir Herewald, Bart., Courteenhall, Northampton.
- 62 Watson, Rev. Wentworth, Rockingham Castle, Uppingham.
- 63 Wickham, Henry, Esq., Barnwell Castle, Oundle.





FERNSIDE (IN THE HOSPITAL GROUNDS).





Digitized by the Internet Archive  
in 2018 with funding from  
Wellcome Library

<https://archive.org/details/b30300484>

## COMMITTEE OF MANAGEMENT.

C. Smyth, Esq., Chairman.  
 Lieut.-Colonel Rawlins, Vice-Chairman.  
 The President and the Vice-Presidents.\*  
 The Most Honble. The Marquis of Northampton, K.G.  
 Sir Arthur R. de Capell Brooke, Bart.  
 Sir Charles Gunning, Bart.  
 Sir Vere Isham, Bart.  
 Sir Charles V. Knightley, Bart.  
 Sir Herewald Wake, Bart.

Major Alexander Bell.	Thos. F. Hazlehurst, Esq.
Rowland D. Carey, Esq.	Colonel J. Hill, C.B.
The Rev. H. H. Crawley.	C. Falconar Macdonald, Esq.
Edward Grant, Esq.	H. M. Stockdale, jun., Esq.

\* The President and Vice-Presidents are *Ex-officio* members of all Committees.

---



---

**Medical Superintendent—**

Joseph Bayley, M.R.C.S., Eng., and L.S.A., Lond.

**Senior Assistant Medical Officer—**

J. H. Bayley, M.B. and C.M., Edin., L.R.C.P., Lond.

**Second Assistant Medical Officer—**

S. E. Martin, M.B., B.Ch., Edin.

**Third Assistant Medical Officer—**

N. R. Phillips, M.D., Brux., M.R.C.S., L.R.C.P., Lond.

**Chaplain—**Rev. John Cunningham.

**Accountant—**Mr. J. Walker.      **Clerk—**Mr. E. E. Cæsar.

**Steward—**Mr. H. W. Clarke.

---

SEASIDE HOUSE: BRYN-Y-NEUADD, LLANFAIRFECHAN.

**Resident Medical Officer and Manager—**

M. T. Archdall, L.R.C.P. & S., Edin., L.S.A., Lond.

AT THE  
**General Stated Annual Court of Governors,**

*Held on the 24th day of February, 1910,*

The Annual Reports of the Committee of Management, the Medical Superintendent, and the Chaplain, and the Audited Accounts for the year 1909, were laid before the Court.

And it was resolved—

That the above-named Reports and Accounts be approved and adopted; and that they, together with the usual Financial and Statistical Tables, be published. Also that the Reports of the Commissioners in Lunacy be printed therewith.

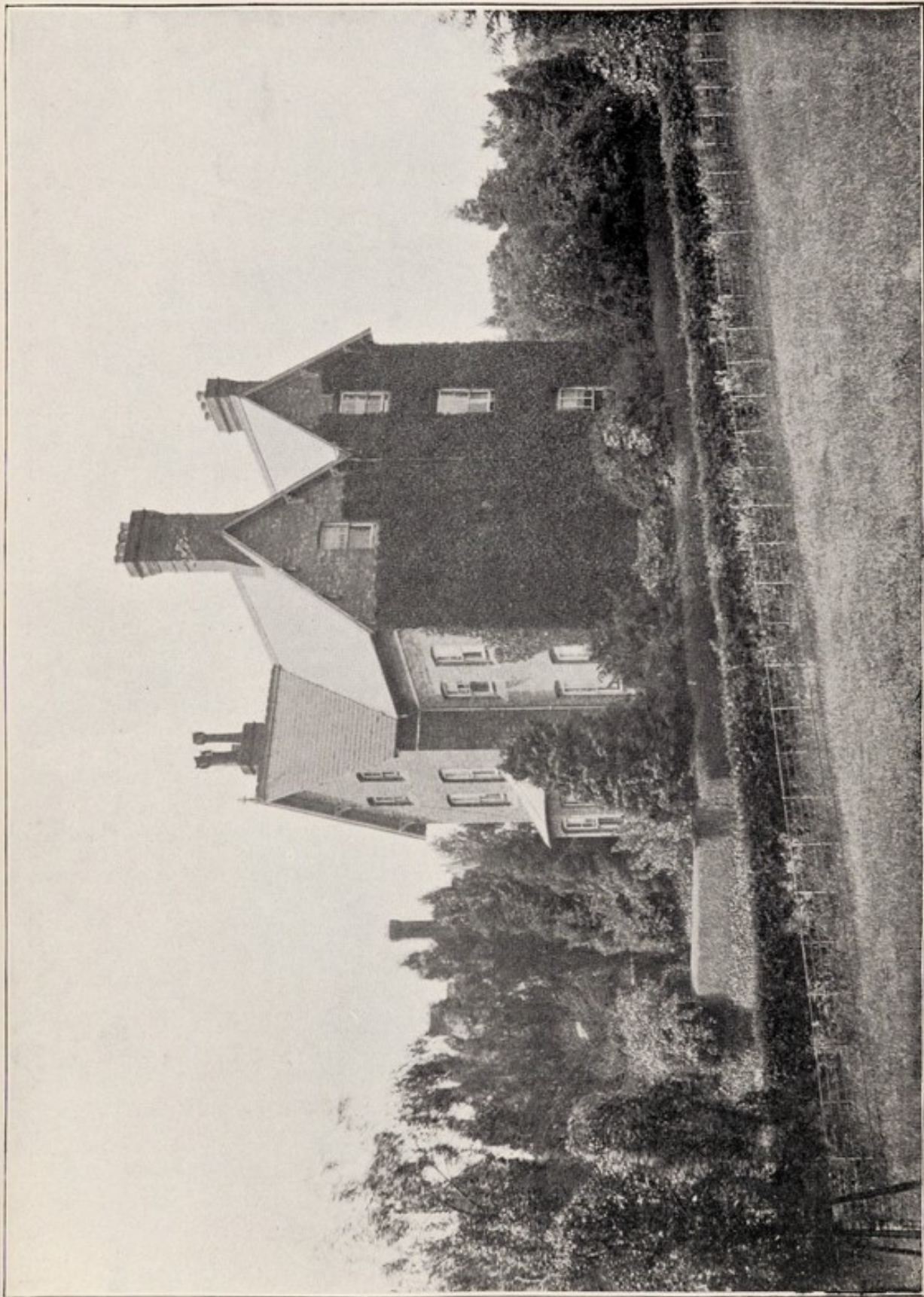
It was resolved unanimously—

1. That the Thanks of this Court be presented to the Chairman and Vice-Chairman of the Committee of Management, for the very valuable services they have rendered to the Institution during the past year.
2. That the Thanks of this Court be presented to the Noblemen and Gentlemen composing the Committee of Management, for their very valuable services during the year.
3. That the Thanks of this Court be given to the Officers of the Institution, for their care and attention in carrying on the work of the past year.

The following Annual Appointments were made :—

1. A Committee of Management.
2. A Treasurer.
3. Auditors.





ROSE VILLA (IN THE HOSPITAL GROUNDS).



THE REPORT OF  
The Committee of Management,

FOR THE YEAR 1909.

---

The Committee are thankful to be able again to report favourably of the state of the Hospital during the year.

The Hospital and its dependencies have been fully occupied throughout the year. One hundred and eighty-four patients visited the seaside house—this is the same number as in 1908, but a number of patients now reside there permanently.

The number of admissions (87) has been greater by 17 than in 1908.

The average number resident (421) has been greater by 7 than in the previous year.

There has been an increase of 10 in the number of recoveries, and an increase of 10 in the number of deaths. The increase in the deaths is due to the number of old patients who have died—16 being over 65 years of age.

The per-centage of recoveries to admissions (excluding transfers from other Asylums) has been 41·37 males, 58·33 females, total 50·76.

The per-centage of deaths to the total number under treatment has been 4·31 males, 6·10 females, total 5·29.



During the past year the number of patients assisted in their payments has been 107, of whom 51 belonged to the County of Northampton, and 56 were out-County cases. The amount of assistance rendered to make up the payments to the lowest rates ordinarily charged was—County cases, £2,314 8s. 6d. ; out-County cases, £1,702 12s. 6d., being a total of £175 8s. od. more than in the previous year.

The result of the working of the Farm at Moulton Park during the past year has been very satisfactory. The balance in favour at the end of the year was £1,619 6s. 8d., as compared with £1,194 15s. 2d. in 1908.

With regard to the financial state of the Hospital, the receipts from patients amounted to £64,474 os. 7d., being £1,129 10s. 7d. more than in any previous year.

There has been no change in the staff of Officers.

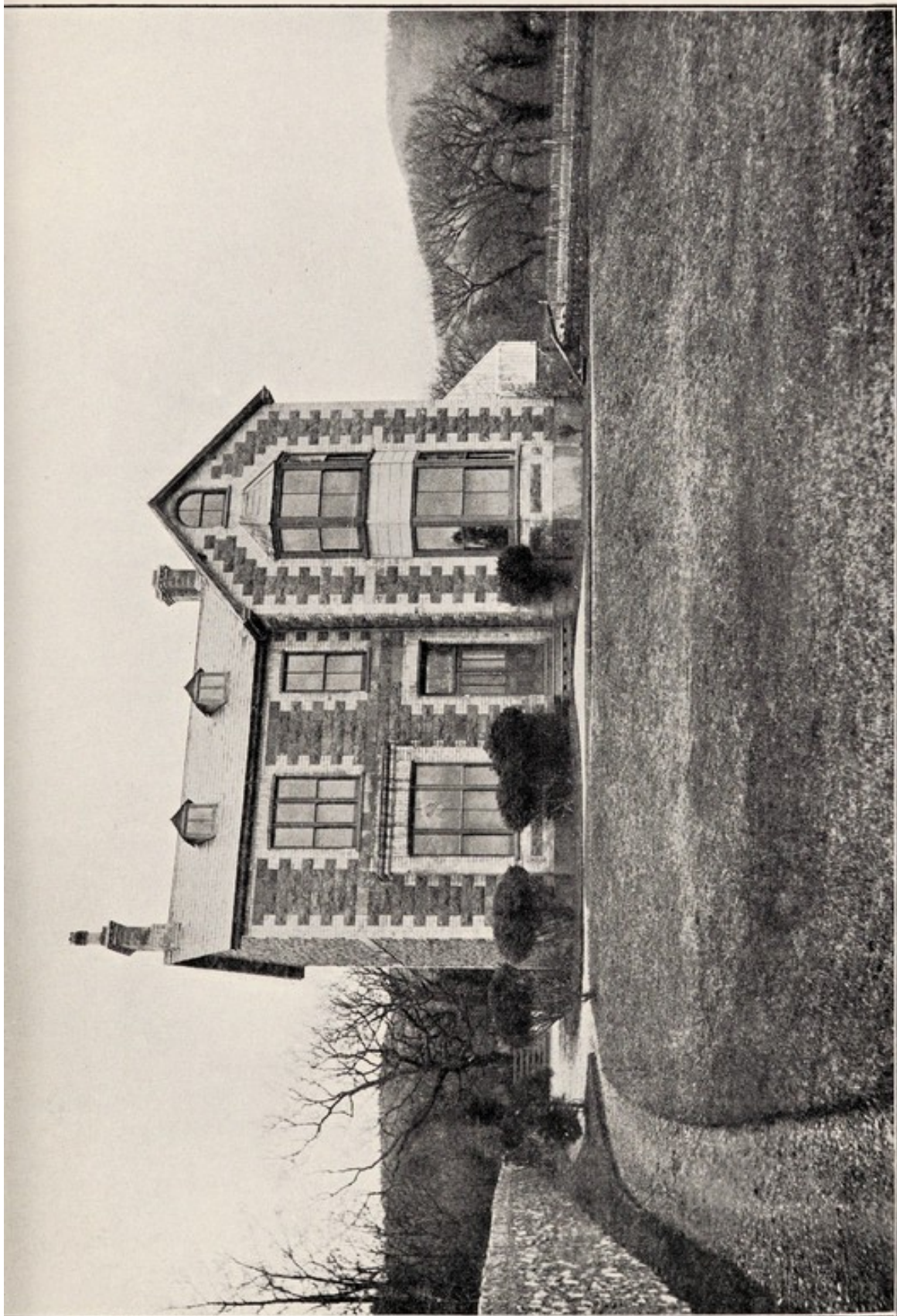
The Hospital has sustained a heavy loss by the death of Colonel Lowndes, M.V.O., and V. D. H. Cary Elwes, Esq.

Lord Penrhyn has been appointed a Governor.

The Committee desire to record their high appreciation of the zealous services of Dr. Bayley and the other Officers of the Hospital during the past year.

C. SMYTH,

Chairman.



“HAFOD FADOG,” ONE OF THE VILLAS AT BRYN-Y-NEUADD.





# THE REPORTS OF The Commissioners in Lunacy.

---

## FIRST VISIT.

MAY 1st, 1909.

We have yesterday and to-day visited this Hospital and its dependencies, including the Farm House, Red House, and the Ladies' House, on the Moulton Park estate. As the result of our inspection, we are able to report that the whole Institution is maintained in admirable order.

Since our colleagues' visit in December last, 27 patients have been admitted, 15 discharged or removed—of whom 9 had recovered, and 11 have died, all the deaths being due to natural causes. There are now on the books the names of 202 gentlemen and 223 ladies, making a total of 425 patients. Of these—75 are away on leave or trial, 10 gentlemen and 26 ladies being at Moulton Park; 3 gentlemen and 31 ladies at Bryn-y-Neuadd, the branch in North Wales; and 5 ladies on leave elsewhere. There is also one lady voluntary boarder, who is a fit case to remain upon that footing.

We saw all the patients in residence here and at Moulton Park, and found them for the most part happy and contented, neat and tidy in their dress and personal appearance, and generally free from complaints, and none calling for special mention here. We gave private interviews to 8 patients.

The general health of the Hospital is good, very few of the patients being confined to bed at our visit.

All the day-rooms and dormitories presented a bright and pleasing appearance, and it is evident that great pains are taken to render the lives of the patients as happy and comfortable as is possible under the circumstances.

We thought that the Farm House at Moulton Park is somewhat overcrowded; and we noticed a deficiency of



comfortable chairs and sofas in the day rooms there, and an absence of proper toilet requisites in the w.c's.

Seclusion has been employed in 39 cases, on 331 occasions, for a total of 1,960 hours; and mechanical restraint in one case, on 39 occasions, for a total of 351 hours.

The Sunday Services are usually attended by 127 of the patients, and the associated entertainments by 152; 162 are usefully employed. Three walk out alone, and 101 attended beyond the Hospital grounds; and the same number enjoy carriage exercise eight times a month.

The staff of attendants and nurses consists of 62 of each for day, and 6 of each for night duty; 29 attendants and 12 nurses can show over 5 years' service. One nurse has been dismissed for misconduct, not, however, in any way affecting the patients.

The average weekly cost of maintenance is £2. 11s. 11½d. Three patients are received gratuitously; the per-centage of those paying 10s. a week or less is 5·89; 6·81 pay from 10s. to 21s. a week; and 56·71 from 21s. to 42s. a week; 29·88 per-cent. pay more than two guineas a week.

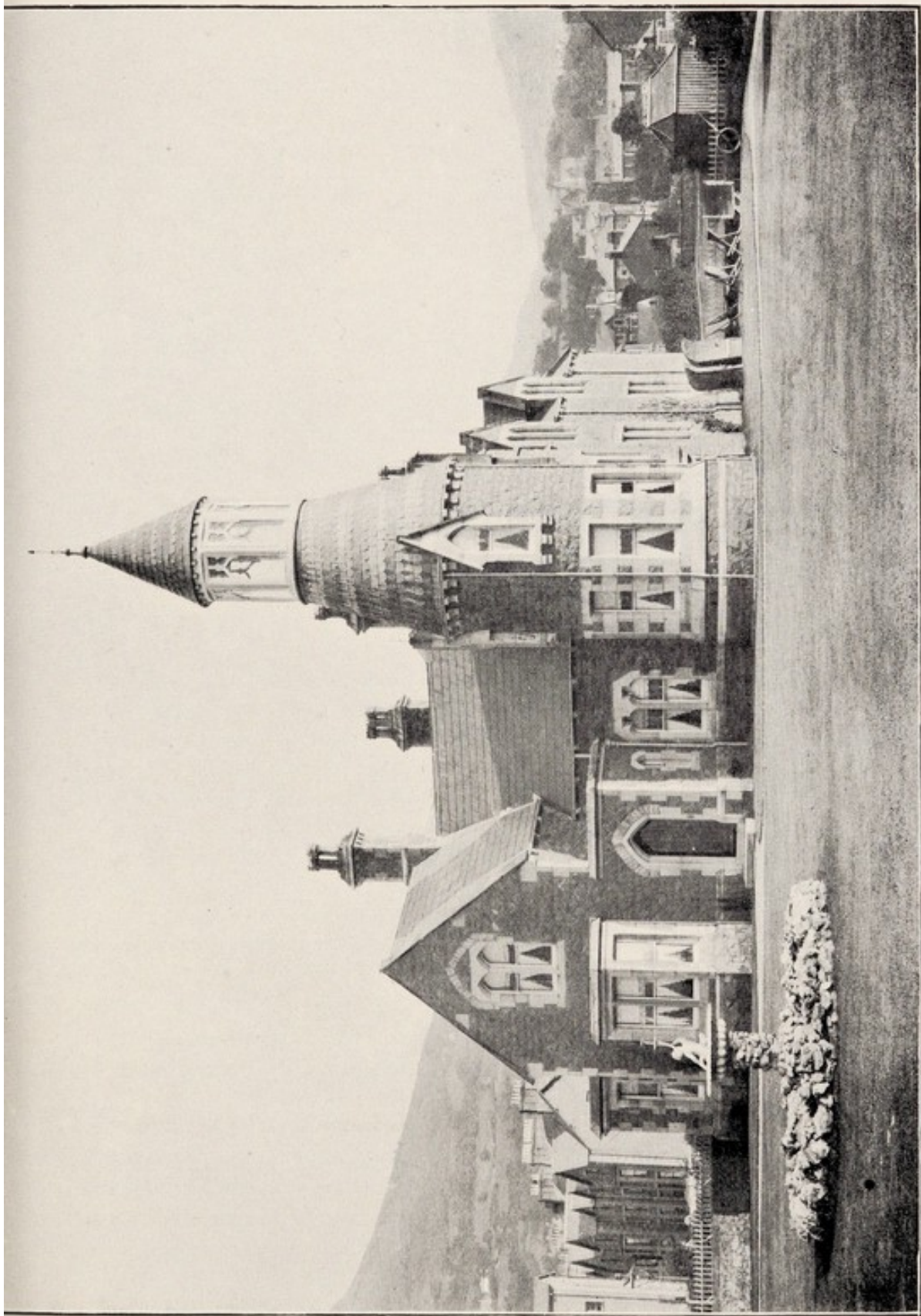
We are glad to learn that the Hospital is in a flourishing condition financially, and that the Committee keep clearly before them the development of the charitable side of the work, in accordance with the intention of the founders of the Hospital.

We cannot help thinking the principle of dividing patients into classes based upon the amounts that they are able to pay, objectionable. Except in the case of patients who pay large sums, and are, therefore, entitled to special accommodation and attendance, such a classification appears to us unnecessary, and serves only to place patients of the second division in an inferior position in their own estimation. The only proper classification of patients appears to us to be that based upon the character of their mental disorders.

The Case Books and other Medical Records are carefully kept.

A. H. TREVOR, } Commissioners  
F. NEEDHAM, } in Lunacy.





“MORANEDD,” ONE OF THE VILLAS AT BRYN-Y-NEUADD.





## SECOND VISIT.

NOVEMBER 18th, 1909.

Since our last visit to this Hospital on May 1st, the following changes have taken place among the patients:—there have been 54 admissions; 51 discharges, 19 upon recovery, and 14 deaths, all from natural causes.

There are to-day on the books the names of 199 gentlemen and 229 ladies, making a total of 428 patients; of these—45 are away on leave or trial, 23 gentlemen and 8 ladies being at Moulton Park, 11 at Bryn-y-Neuadd in Wales, and 3 elsewhere. There is also one voluntary boarder who is a fit case to remain upon that footing.

We have seen yesterday and to-day all the patients in residence, as well as those on leave at Moulton Park. They were for the most part happy and contented, and are evidently well cared for.

The Hospital is in good order throughout, and with its dependencies maintains the high standard of comfort which we are accustomed to find here.

Some minor points require attention:—We think that the day rooms of No. 3 on the male side require to be very much brightened, and provided with many more objects of interest. The pads of the inspection inlets of all the padded rooms are dangerously hard; and very much closer attention should be paid to the general condition and cleanliness of the clothing of the gentlemen who occupy the rooms of No. 6.

The general health of the Hospital is good, only 3 gentlemen and 5 ladies being confined to bed.

There has been a large amount of seclusion—this form of treatment having been employed in 64 cases on 869 occasions, for a total of 5,210 hours; two patients have had to be mechanically restrained on 96 occasions for 1,125 hours, for reasons detailed in the Patients' Book.

We have satisfied ourselves as to the propriety of the detention of all the newly admitted cases.



We have had private interviews with four patients whose names are mentioned in the Patients' Book.

The Case Books are carefully kept.

A. H. TREVOR, } Commissioners  
F. NEEDHAM, } in Lunacy.









BRYN-Y-NEUADD HALL & PARK (THE SEASIDE HOUSE OF ST. ANDREW'S HOSPITAL).

BRYN-Y-NEUADD,

LLANFAIRFECHAN,

MAY 3rd, 1909.

I have to-day seen the 3 gentlemen and 31 ladies who are residing here on leave from St. Andrew's Hospital. They were—with the exception of one lady, who was keeping to her room owing to a cold—in good health, and several expressed to me the benefit they were deriving from the change.

The fine and genial weather to-day has enabled them to take full advantage of exercise in the extensive grounds, which are now fresh and green with the early foliage. One or two of them appealed to be discharged, but otherwise there was general contentment, and it is evident that no pains are spared to render their life here comfortable and happy.

The gentlemen are residing in the Hafod Fadog house, which is within the estate.

The whole establishment is maintained in very good order.

I had the pleasure of meeting Mr. Bayley, as well as the Resident Medical Officer, Dr. Archdall.

SIDNEY COUPLAND,

Commissioner in Lunacy.



THE REPORT OF  
The Medical Superintendent,

FOR THE YEAR 1909.

---

MY LORDS AND GENTLEMEN,

I beg leave to submit to you my Annual Report for the year 1909.

On January 1st, 1909, there were 423 patients in the Hospital: of these 192 were males and 231 females.

During the year, 87 patients have been admitted—40 males and 47 females.

Fifty-seven patients have been discharged—21 males and 36 females.

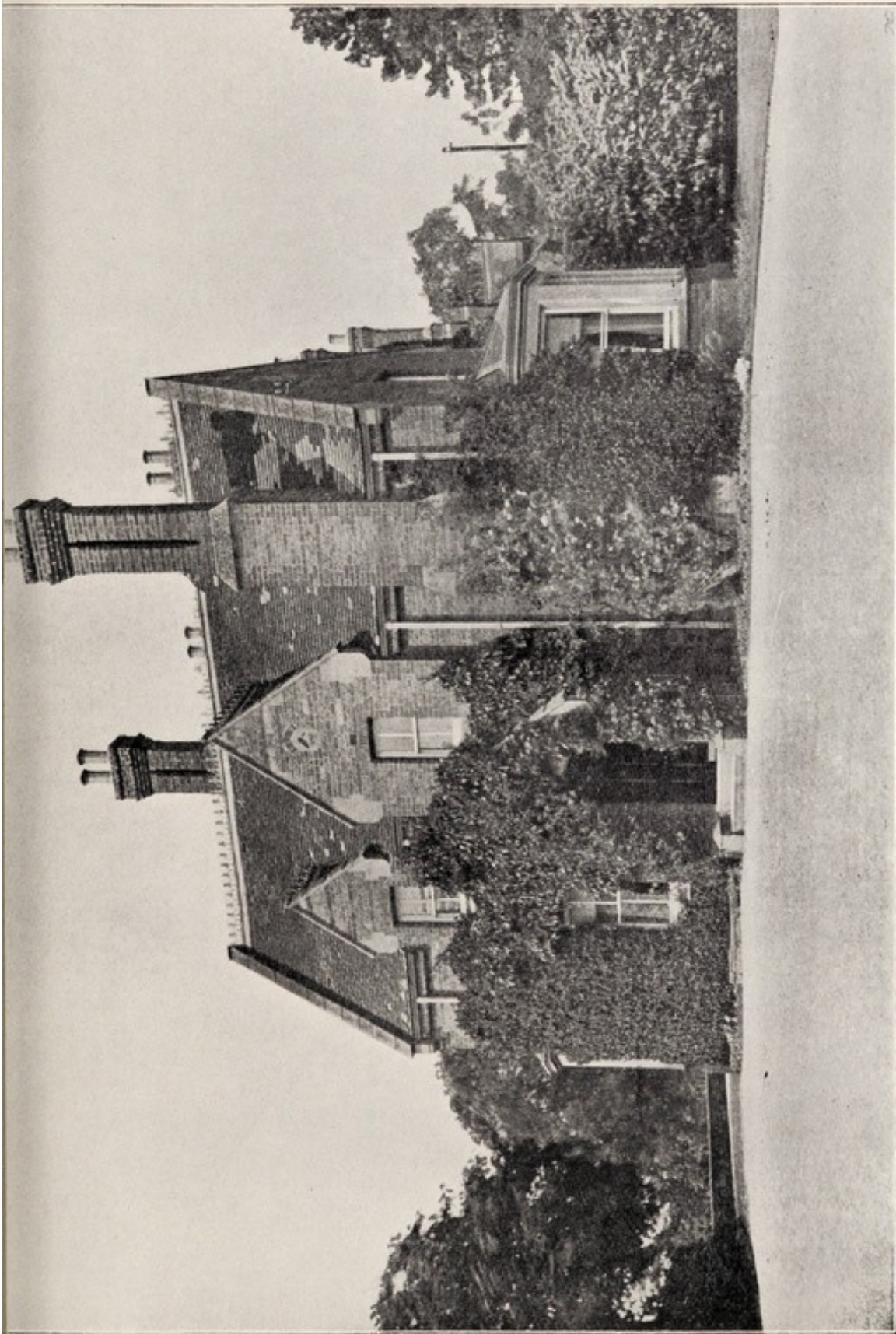
Twenty-seven deaths have occurred: 10 males and 17 females.

The total number under treatment during the year was 510: of these, 232 were males and 278 females.

The average number resident has been 421—197 males and 224 females.

The numbers remaining on the books of the Hospital on December 31st, 1909, were 201 males and 225 females, total 426. This number includes one female voluntary boarder.

The Statistical Tables will be found at the end of this report.



MOULTON PARK HOUSE (2 MILES FROM ST. ANDREW'S HOSPITAL).





Four males and 10 females admitted during the year had been previously under treatment in the Hospital.

The number discharged—57—includes 33 recovered ; 12 males and 21 females.

The per-centage of recoveries to the total number of admissions during the year has been 30·00 males, 44·68 females, total 37·93.

The proportion per cent. of recoveries to admissions (excluding transfers from other Asylums) has been 41·37 males, 58·33 females, total 50·76.

The per-centage of deaths to the average number resident has been 4·56 males, 8·03 females, total 6·41.

The per-centage of deaths to the total number under treatment has been 4·31 males, 6·10 females, total 5·29.

In the past year, as compared with 1908, there is an increase of 17 in the number of admissions.

There is an increase of 10 in the number of recoveries.

The average number resident has been greater by 7 than in 1908.

The total number under treatment has been greater by 25 than in the year 1908.

All the deaths have been from natural causes.

The health of the patients and officials generally has been good during the year.

The only case of infectious disease has been that of a nurse in the Hospital, who fell ill with measles. She was isolated, and soon recovered. There has been no other case.

The number of patients who have visited Bryn-y-Neuadd has been 184, the same number as the year before, and the



house and villas have been occupied during the whole year. We still have a number of patients who remain there the whole year round. Under the careful supervision of Dr. Archdall, the establishment has worked most satisfactorily, and no difficulty whatever has occurred. The farm, garden, and all the other out-door departments have also been under his supervision for the past year, and there is a great improvement in the state of things generally.

The employment of a very large number of patients has been continued, as will be seen by the figures given below :—

#### MALES.

On Farm and Garden .....	58
In Upholsterer's Shop.....	7
„ Printer's Shop .....	3
„ Painter's Shop.....	1
Clerical work and Library.....	3
Various .....	25
	—
	97

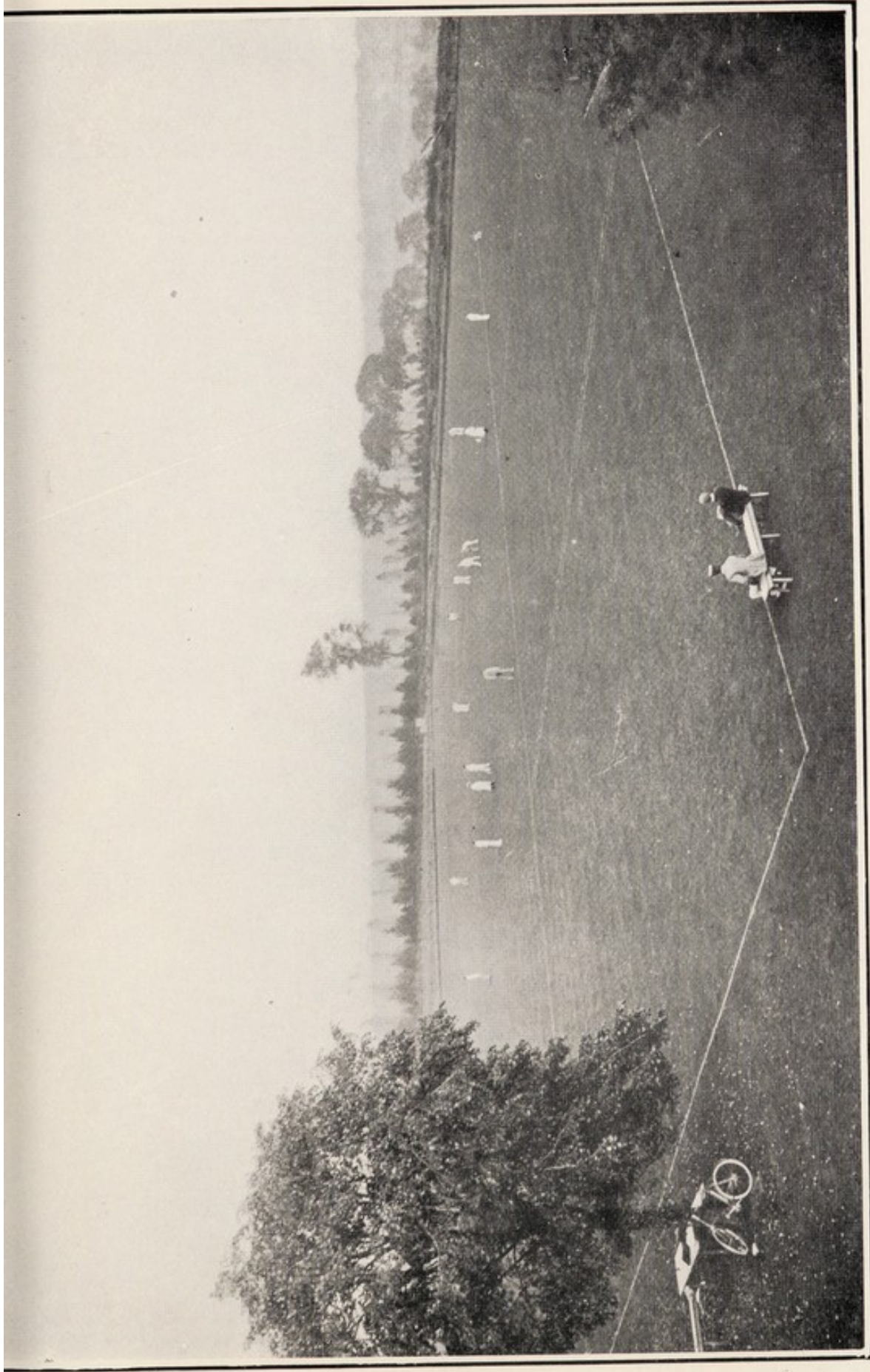
#### FEMALES.

Needlework .....	68
Linen Room .....	1
Dining Hall .....	4
Dormitories .....	4
Other work .....	13
	—
	90

The following is the list of amusements and entertainments which have been given during the year :—

Hockey Matches .....	32
Football „ .....	6
Cricket „ .....	28
Croquet Tournaments .....	12
Band on Terrace .....	16
Boating Parties.....	6
Billiard Handicaps .....	5
Parties to Shows .....	6
„ Football Matches*.....	49

\*Outside the Grounds.



THE CRICKET GROUND, ST. ANDREW'S HOSPITAL.





Parties to Cricket Matches* .....	38
Theatre in Town .....	40
Concerts in Town.....	7
Smoking Concerts .....	13
Other Concerts .....	7
Theatricals.....	10
Dances .....	4
Whist Drives .....	8
Excursions .....	13

The following works have been carried out :—

At the Hospital :

A Motor House has been built.

At Bryn-y-Neuadd :

The House for the Resident Medical Officer has been completed, and is now occupied.

There has been no change in the staff of officers during the past year.

The Hospital has been visited as usual during the year by the Commissioners in Lunacy and the Lord Chancellor's Visitors.

The Assistant Medical Officers have performed their duties in a most satisfactory manner, and I must acknowledge the great assistance I have received from them in carrying out the work of the Hospital.

I am also glad to be again able to report that the members of the clerical staff in the different departments have performed their duties to my entire satisfaction.

With one or two exceptions, the conduct of the attendants and nurses, and of the staff generally, has been very good during the year.

\* Outside the Grounds.



To the Chairman and Committee of Management, and to the whole of the Governors of the Hospital, my thanks are due for their continued confidence and support.

I have the honour to be,

My Lords and Gentlemen,

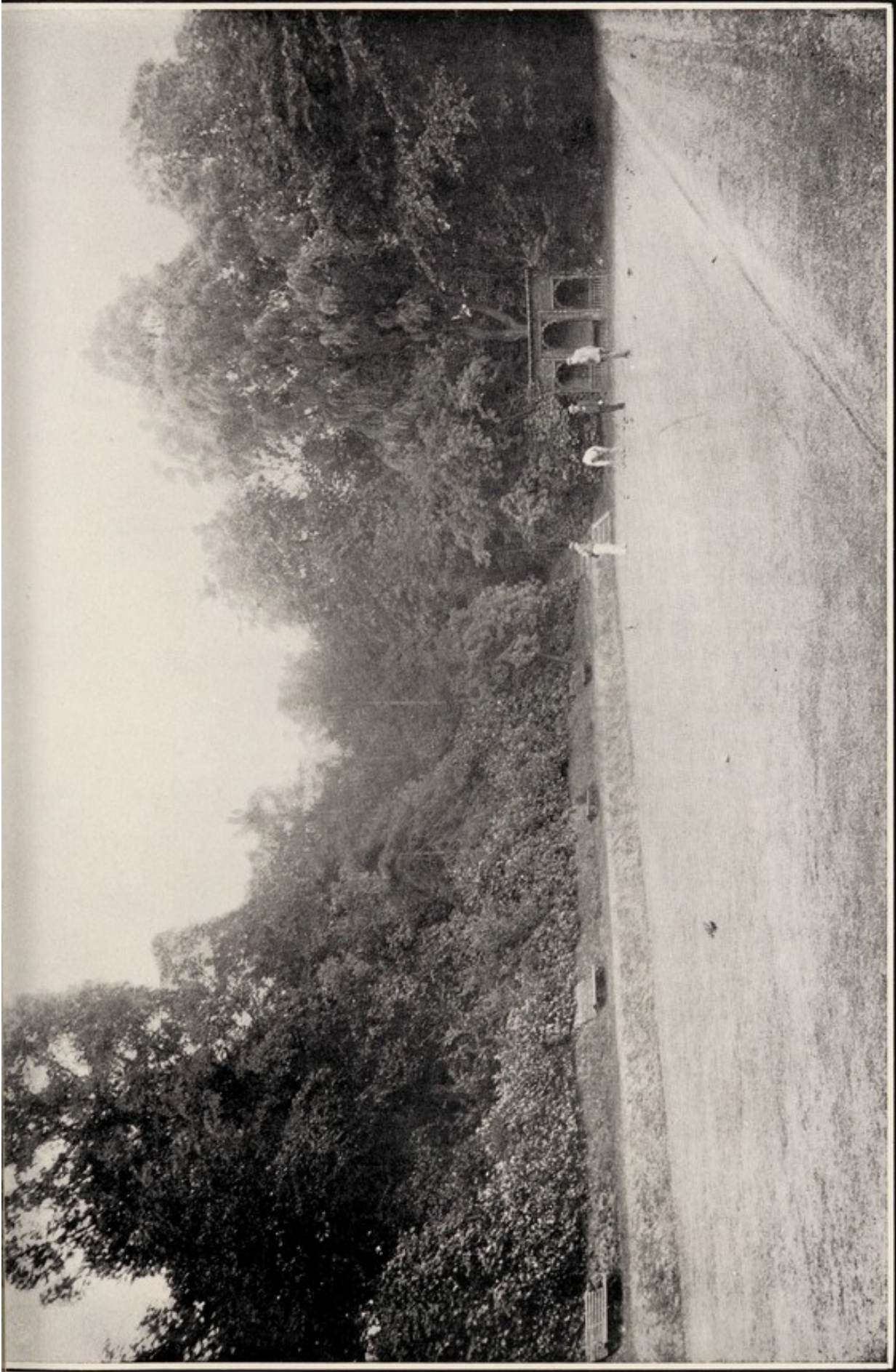
Your obedient Servant,

J. BAYLEY,

Medical Superintendent.

January, 1910.





THE BOWLING GREEN, ST. ANDREW'S HOSPITAL.





# STATISTICAL TABLES.

For the Year ending 31st December, 1909.

TABLE VI.—General Ledger showing the movement of the Hudson's Bay Company's funds for 1909.

	1909	1908	1907	1906	1905	1904	1903	1902	1901	1900	1899	1898	1897	1896	1895	1894	1893	1892	1891	1890	
Balance forward	105,454,454	101,352,458	101,221,454	101,111,454	101,001,454	100,891,454	100,781,454	100,671,454	100,561,454	100,451,454	100,341,454	100,231,454	100,121,454	100,011,454	99,901,454	99,791,454	99,681,454	99,571,454	99,461,454	99,351,454	99,241,454
Income	100,000,000	100,000,000	100,000,000	100,000,000	100,000,000	100,000,000	100,000,000	100,000,000	100,000,000	100,000,000	100,000,000	100,000,000	100,000,000	100,000,000	100,000,000	100,000,000	100,000,000	100,000,000	100,000,000	100,000,000	100,000,000
Expenses	(100,000,000)	(100,000,000)	(100,000,000)	(100,000,000)	(100,000,000)	(100,000,000)	(100,000,000)	(100,000,000)	(100,000,000)	(100,000,000)	(100,000,000)	(100,000,000)	(100,000,000)	(100,000,000)	(100,000,000)	(100,000,000)	(100,000,000)	(100,000,000)	(100,000,000)	(100,000,000)	(100,000,000)
Balance	105,454,454	101,352,458	101,221,454	101,111,454	101,001,454	100,891,454	100,781,454	100,671,454	100,561,454	100,451,454	100,341,454	100,231,454	100,121,454	100,011,454	99,901,454	99,791,454	99,681,454	99,571,454	99,461,454	99,351,454	99,241,454





TABLE A 2.—General Table, showing the movement of the Hospital Population during each year since the year 1838, together with the Recovery and Death Rates (excluding Voluntary Boarders).

Table with columns for Year, Admissions (Direct, Indirect, Total), Total Number under Treatment, Discharged or Transferred (Recovered, Relieved, Not Improved, Died), Remaining on Register, Average Daily Number on Registers, and various percentages of recoveries and deaths. Rows range from 1838 to 1909, with a Total row at the bottom.



Year	County	Town	Village	City	Assessed Value		Total
					1900	1901	
1900	Albany	Albany	Albany	Albany	1000000	1000000	1000000
1901	Albany	Albany	Albany	Albany	1000000	1000000	1000000
1902	Albany	Albany	Albany	Albany	1000000	1000000	1000000
1903	Albany	Albany	Albany	Albany	1000000	1000000	1000000
1904	Albany	Albany	Albany	Albany	1000000	1000000	1000000
1905	Albany	Albany	Albany	Albany	1000000	1000000	1000000
1906	Albany	Albany	Albany	Albany	1000000	1000000	1000000
1907	Albany	Albany	Albany	Albany	1000000	1000000	1000000
1908	Albany	Albany	Albany	Albany	1000000	1000000	1000000
1909	Albany	Albany	Albany	Albany	1000000	1000000	1000000
1910	Albany	Albany	Albany	Albany	1000000	1000000	1000000
1911	Albany	Albany	Albany	Albany	1000000	1000000	1000000
1912	Albany	Albany	Albany	Albany	1000000	1000000	1000000
1913	Albany	Albany	Albany	Albany	1000000	1000000	1000000
1914	Albany	Albany	Albany	Albany	1000000	1000000	1000000
1915	Albany	Albany	Albany	Albany	1000000	1000000	1000000
1916	Albany	Albany	Albany	Albany	1000000	1000000	1000000
1917	Albany	Albany	Albany	Albany	1000000	1000000	1000000
1918	Albany	Albany	Albany	Albany	1000000	1000000	1000000
1919	Albany	Albany	Albany	Albany	1000000	1000000	1000000
1920	Albany	Albany	Albany	Albany	1000000	1000000	1000000
1921	Albany	Albany	Albany	Albany	1000000	1000000	1000000
1922	Albany	Albany	Albany	Albany	1000000	1000000	1000000
1923	Albany	Albany	Albany	Albany	1000000	1000000	1000000
1924	Albany	Albany	Albany	Albany	1000000	1000000	1000000
1925	Albany	Albany	Albany	Albany	1000000	1000000	1000000
1926	Albany	Albany	Albany	Albany	1000000	1000000	1000000
1927	Albany	Albany	Albany	Albany	1000000	1000000	1000000
1928	Albany	Albany	Albany	Albany	1000000	1000000	1000000
1929	Albany	Albany	Albany	Albany	1000000	1000000	1000000
1930	Albany	Albany	Albany	Albany	1000000	1000000	1000000

TABLE B I.—Analysis of the Admissions during the year 1909  
(excluding Voluntary Boarders).

CLASSES OF ADMISSIONS.	Congenital.			ACQUIRED.									Total.		
				First attack.			Not first attack.			Unknown whether first attack or not.					
				M.	F.	T.	M.	F.	T.	M.	F.	T.			
	M.	F.	T.	M.	F.	T.	M.	F.	T.	M.	F.	T.	M.	F.	T.
Direct ... ..	1	...	1	16	20	36	12	16	28	...	...	...	29	36	65
Indirect { Transfers ... .. Statutory re-admissions...	...	...	...	8	9	17	3	2	5	...	...	...	11	11	22
Total Admissions ... ..	1	...	1	24	29	53	15	18	33	...	...	...	40	47	87



TABLE B 2.—Showing the Duration of the present attack of Mental Disorder on Admission in the Admissions during the year 1909, distinguishing between the Direct and the Transfers, and stating (in those not congenital) whether First Attack or not (Voluntary Boarders excluded).

DURATION OF MENTAL DISORDER PRIOR TO ADMISSION.	DIRECT ADMISSIONS.											
	First attack.			Not first attack.			Unknown whether first attack or not.			Total.		
	M.	F.	T.	M.	F.	T.	M.	F.	T.	M.	F.	T.
Less than 2 weeks	1	5	6	3	7	10	...	...	...	4	12	16
2 weeks and less than 1 month	1	2	3	...	1	1	...	...	...	1	3	4
1 month	4	5	9	4	3	7	...	...	...	8	8	16
3 months	3	5	8	1	1	2	...	...	...	4	6	10
6 "	2	1	3	1	...	1	...	...	...	3	1	4
9 "	...	...	...	...	...	...	...	...	...	...	...	...
12 "	1	1	2	2	...	2	...	...	...	3	1	4
18 "	...	...	...	...	...	...	...	...	...	...	...	...
2 years	1	...	1	...	...	...	...	...	...	1	...	1
3 "	3	...	3	1	2	3	...	...	...	4	2	6
5 "	...	...	...	...	1	1	...	...	...	...	1	1
30 "	...	...	...	...	...	...	...	...	...	...	...	...
Duration unknown	...	1	1	...	1	1	...	...	...	...	2	2
Congenital cases	...	...	...	...	...	...	...	...	...	1	...	1
Totals	16	20	36	12	16	28	...	...	...	29	36	65





TABLE B 4.—Showing in the Direct Admissions during the year 1909, excluding the Congenital Cases and the cases “Unknown whether First Attack or not” —

(a) The age at commencement of the Present Attack of mental disorder in both the First-Attack and Not-First-Attack cases, respectively arranged according to their civil state; (b) The age on First-Attack in the Not-First-Attack cases; and (c) A statement of the number of Previous Attacks in the Not-First-Attacks, known to have been treated to recovery in an institution or elsewhere (Voluntary Boarders excluded).

FIRST-ATTACK CASES.	AGES IN QUINQUENNIAL PERIODS.																		
	10-14		15-19		20-24		25-29		30-34		35-39		40-44		45-49		50-54		
	M.	F.	T.	M.	F.	T.	M.	F.	T.	M.	F.	T.	M.	F.	T.	M.	F.	T.	
CIVIL STATE.																			
Single ...	...	...	3	3	3	2	5	2	2	1	1	2	2	2	2	2	2	3	3
Married ...	...	...	...	...	...	...	...	1	1	1	1	2	2	2	2	2	2	2	1
Widowed ...	...	...	...	...	...	...	...	...	...	...	...	...	...	...	...	...	...	...	...
Unknown ...	...	...	...	...	...	...	...	...	...	...	...	...	...	...	...	...	...	...	...
Totals ...	...	...	3	3	3	2	5	2	1	3	2	4	1	3	4	2	2	4	6
THE AGES AT COMMENCEMENT OF THE PRESENT ATTACK.																			
Single ...	...	...	...	...	2	1	3	2	3	5	3	3	1	1	2	3	3	5	1
Married ...	...	...	...	...	...	...	...	...	...	...	1	1	...	...	...	4	4	...	...
Widowed ...	...	...	...	...	...	...	...	...	...	...	...	...	...	...	...	...	...	...	...
Unknown ...	...	...	...	...	...	...	...	...	...	...	...	...	...	...	...	...	...	...	...
Totals ...	...	...	...	...	2	1	3	2	3	5	3	1	4	1	1	2	3	4	2
NOT-FIRST-ATTACK CASES.																			
Totals of First-Attack and Not-First-Attack Cases ...	...	...	3	3	5	3	8	4	4	8	5	3	8	2	4	6	3	3	6
The Ages on First-Attack in the Not-First-Attack Cases ...	2	2	2	2	3	5	8	2	3	5	1	1	4	3	7	1	1	1	1

TABLE B 4 (continued).

FIRST-ATTACK CASES.	THE AGES AT COMMENCEMENT OF THE PRESENT ATTACK.		AGES IN QUINQUENAL PERIODS.												Totals.								
			55-59		60-64		65-69		70-74		75-79		80-84					Age un- known.					
			M.	F.	T.	M.	F.	T.	M.	F.	T.	M.	F.	T.	M.	F.	T.						
CIVIL STATE.	Single ...	...	...	1	1	...	1	1	...	1	1	...	2	2	1	...	1	...	6	13	19		
	Married ...	...	...	1	1	...	2	2	...	2	1	...	2	1	...	1	...	10	5	15			
	Widowed ...	...	...	...	...	...	1	1	...	1	1	...	...	...	...	...	...	...	...	2	2		
	Unknown ...	...	...	...	...	...	...	...	...	...	...	...	...	...	...	...	...	...	...	...	...	...	
	Totals ...	...	...	2	2	1	...	2	2	1	3	1	...	1	...	...	...	16	20	36	...	...	
	Single ...	...	...	...	...	...	...	...	...	...	...	...	...	...	...	...	...	...	8	14	22		
	Married ...	...	...	...	...	...	...	...	...	...	...	...	...	...	...	...	...	...	4	1	5		
	Widowed ...	...	...	...	...	...	...	...	...	...	...	...	...	...	...	...	...	...	...	...	1	1	
	Unknown ...	...	...	...	...	...	...	...	...	...	...	...	...	...	...	...	...	...	...	...	...	...	...
	Totals ...	...	...	...	...	...	...	...	...	...	...	...	...	...	...	...	...	...	12	16	28	...	...
NOT-FIRST-ATTACK CASES.	Totals of First-Attack and Not-First-Attack Cases ...		...	2	2	1	...	2	2	1	3	1	...	1	...	...	...	28	36	64	...	...	
	The Ages on First-Attack in the Not-First-Attack Cases ...		...	...	...	...	...	...	...	...	...	...	...	...	...	...	...	...	1	...	1	12	16
Number of Previous Attacks, in the Not-First-Attack Direct Admissions, known to have been treated to recovery in an Institution or elsewhere—																							
Have had 1 previous attack ...		...	...	...	...	...	...	...	...	...	...	...	...	...	...	...	...	6	7	13	...	...	
Have had 2 previous attacks ...		...	...	...	...	...	...	...	...	...	...	...	...	...	...	...	...	3	4	7	...	...	
Have had 3 or more previous attacks ...		...	...	...	...	...	...	...	...	...	...	...	...	...	...	...	...	...	...	2	2	2	
Not the first attack, but number of previous attacks unknown ...		...	...	...	...	...	...	...	...	...	...	...	...	...	...	...	...	3	3	6	...	...	



TABLE B 5.—Showing the Form of Mental Disorder on admission in the Direct Admissions and Transfers during the year 1909 (Voluntary Boarders excluded).

FORMS OF MENTAL DISORDER.	Direct Admissions.			Transfers.			Totals.		
	M.	F.	T.	M.	F.	T.	M.	F.	T.
	*CONGENITAL—	...	...	...	...	...	...	...	...
1. Intellectual { <i>a.</i> With epilepsy ... <i>b.</i> Without epilepsy ...	1	...	1	...	...	...	1	...	1
2. Moral ...	...	...	...	...	...	...	...	...	...
INSANITY OCCURRING LATER IN LIFE—	...	...	...	...	...	...	...	...	...
1. Insanity with epilepsy ...	1	1	2	...	...	...	1	1	2
2. General paralysis of the insane ...	2	...	2	1	...	1	3	...	3
3. Insanity with grosser brain lesions ...	1	...	1	...	...	...	1	...	1
4. Acute delirium ...	...	...	...	...	...	...	...	...	...
5. Confusional insanity ...	...	2	2	...	...	...	...	2	2
6. Stupor ...	1	3	4	...	...	...	1	3	4
7. Primary dementia ...	1	...	1	1	...	1	2	...	2
8. Mania { <i>a.</i> Recent ... <i>b.</i> Chronic ... <i>c.</i> Recurrent ...	4	8	12	1	1	2	5	9	14
9. Melancholia { <i>a.</i> Recent ... <i>b.</i> Chronic ... <i>c.</i> Recurrent ...	1	2	2	4	4	8	4	6	10
10. Alternating insanity ...	6	6	12	...	1	1	1	7	8
11. Delusional insanity { <i>a.</i> Systematised ... <i>b.</i> Non-systematised ...	7	2	9	2	2	4	8	4	16
12. Volitional insanity { <i>a.</i> Impulse ... <i>b.</i> Obsession ... <i>c.</i> Doubt ...	3	1	3	...	...	...	...	1	4
13. Moral insanity ...	...	...	...	...	...	...	...	...	...
14. Dementia { <i>a.</i> Senile ... <i>b.</i> Secondary ...	1	1	2	...	...	...	1	1	2
Totals ...	29	36	65	11	11	22	40	47	87

\*Congenital or infantile mental deficiency (idiocy or imbecility) occurring as early in life as it can be observed.





TABLE 1A. Showing the Occurrence of the Dimeric Protein Casein Non-Reduced Casein and its Derivatives according to the age at Consumption

Age at Consumption	Year of Consumption	Occurrence	
		Present	Absent
1	1911	1	0
2	1912	1	0
3	1913	1	0
4	1914	1	0
5	1915	1	0
6	1916	1	0
7	1917	1	0
8	1918	1	0
9	1919	1	0
10	1920	1	0
11	1921	1	0
12	1922	1	0
13	1923	1	0
14	1924	1	0
15	1925	1	0
16	1926	1	0
17	1927	1	0
18	1928	1	0
19	1929	1	0
20	1930	1	0
21	1931	1	0
22	1932	1	0
23	1933	1	0
24	1934	1	0
25	1935	1	0
26	1936	1	0
27	1937	1	0
28	1938	1	0
29	1939	1	0
30	1940	1	0
31	1941	1	0
32	1942	1	0
33	1943	1	0
34	1944	1	0
35	1945	1	0
36	1946	1	0
37	1947	1	0
38	1948	1	0
39	1949	1	0
40	1950	1	0
41	1951	1	0
42	1952	1	0
43	1953	1	0
44	1954	1	0
45	1955	1	0
46	1956	1	0
47	1957	1	0
48	1958	1	0
49	1959	1	0
50	1960	1	0
51	1961	1	0
52	1962	1	0
53	1963	1	0
54	1964	1	0
55	1965	1	0
56	1966	1	0
57	1967	1	0
58	1968	1	0
59	1969	1	0
60	1970	1	0
61	1971	1	0
62	1972	1	0
63	1973	1	0
64	1974	1	0
65	1975	1	0
66	1976	1	0
67	1977	1	0
68	1978	1	0
69	1979	1	0
70	1980	1	0
71	1981	1	0
72	1982	1	0
73	1983	1	0
74	1984	1	0
75	1985	1	0
76	1986	1	0
77	1987	1	0
78	1988	1	0
79	1989	1	0
80	1990	1	0
81	1991	1	0
82	1992	1	0
83	1993	1	0
84	1994	1	0
85	1995	1	0
86	1996	1	0
87	1997	1	0
88	1998	1	0
89	1999	1	0
90	2000	1	0
91	2001	1	0
92	2002	1	0
93	2003	1	0
94	2004	1	0
95	2005	1	0
96	2006	1	0
97	2007	1	0
98	2008	1	0
99	2009	1	0
100	2010	1	0





Section	Title	Page
I	1. General instructions for the analysis of foods	1
	2. Sampling	2
	3. Preparation of samples	3
	4. Moisture	4
	5. Ash	5
	6. Protein	6
	7. Fat	7
	8. Carbohydrate	8
	9. Fiber	9
	10. Vitamins	10
II	11. Methods for the analysis of specific foods	11
	12. Cereals	12
	13. Legumes	13
	14. Meat and meat products	14
	15. Fish and fish products	15
	16. Eggs and egg products	16
	17. Dairy products	17
	18. Fats and oils	18
	19. Beverages	19
	20. Miscellaneous	20





TABLE C 1.— An Analysis of the Discharges and Transfers during the year 1909 (Voluntary Boarders excluded).

	M.	F.	T.	M.	F.	T.	M.	F.	T.
DISCHARGED AS RECOVERED—									
From Direct Admissions—									
First-Attack Cases ... ..	4	8	12						
Not First-Attack Cases ... ..	5	10	15						
Cases unknown whether First Attack or not ... ..	...	1	1						
Total from Direct Admissions	...	...	...	9	19	28			
From Transfers—									
First-Attack Cases ... ..	1	1	2						
Not First-Attack Cases ... ..	2	1	3						
Cases unknown whether First Attack or not ... ..	...	...	...						
Total from Transfers ... ..	...	...	...	3	2	5			
Total Discharged as Recovered	...	...	...	12	21	33			
DISCHARGED (NOT RECOVERED) AS—									
Relieved ... ..	2	1	3	Relieved.			Not Improved.		
Not Improved ... ..	2	4	6	2	1	3	2	4	6
Total ... ..	4	5	9						
REASONS FOR SUCH DISCHARGE—									
To go to care of friends ... ..	3	5	8						
„ workhouse ... ..	...	...	...						
„ metropolitan asylum (Eng.)	...	...	...						
To be boarded out ... ..	...	...	...						
Statutory, by irregularity in Recep- tion Order ... ..	...	...	...						
„ by lapsing of ditto ... ..	...	...	...						
To go to Scotch asylum ... ..	1	...	1						
Total ... ..	4	5	9						
TRANSFERRED AS—									
Relieved ... ..	1	2	3	1	2	3			
Not Improved ... ..	4	8	12	...	...	...	4	8	12
Total ... ..	5	10	15						
DESTINATIONS OF SUCH TRANSFERS—									
To other asylums, reg. hospitals, and licensed houses ... ..	5	8	13						
To “single care” ... ..	...	2	2						
Other destinations ... ..	...	...	...						
Total ... ..	5	10	15						
TOTAL DISCHARGED AND TRANSFERRED AS—									
Relieved ... ..	...	...	...	3	3	6			
Not Improved ... ..	...	...	...	...	...	...	6	12	18



TABLE C 2.—Showing in the Total Cases Discharged Recovered during the year 1909, the Ages in Quinquennial Periods—(a) On Recovery, and (b) at the Commencement of the Recent Attack of Mental Disorder, arranged according to the Total Length of such Attack (Voluntary Boarders excluded).

AGE PERIODS ...	AGE AT COMMENCEMENT OF RECENT ATTACK OF MENTAL DISORDER.										Total.									
	10-14	15-19	20-24	25-29	30-34	35-39	40-44	45-49	50-54	55-59	60-64	65-69	70-74	75-79	80-84	M.	F.	T.		
AGE ON RECOVERY ...	1	2	3	1	2	3	1	5	1	3	2	1	4	1	1	1	12	21	33	
Total Length of this Attack of Mental Disorder.	AGE AT COMMENCEMENT OF RECENT ATTACK OF MENTAL DISORDER.																			
Less than 1 month ...	...	...	...	...	...	...	...	...	...	...	...	...	...	...	...	...	...	...	...	...
1 month and less than 3 months	1	3	1	1	3	1	1	1	1	1	1	1	1	1	1	1	3	9	12	...
3 months	1	1	1	1	1	1	1	1	1	1	1	1	1	1	1	1	2	2	4	...
6 "	1	1	1	1	1	1	1	1	1	1	1	1	1	1	1	1	2	3	3	...
9 "	1	1	1	1	1	1	1	1	1	1	1	1	1	1	1	1	2	2	2	...
12 "	1	1	1	1	1	1	1	1	1	1	1	1	1	1	1	1	2	2	2	...
18 "	1	1	1	1	1	1	1	1	1	1	1	1	1	1	1	1	2	2	2	...
2 years	1	1	1	1	1	1	1	1	1	1	1	1	1	1	1	1	3	1	4	...
3 "	1	1	1	1	1	1	1	1	1	1	1	1	1	1	1	1	3	1	4	...
5 "	1	1	1	1	1	1	1	1	1	1	1	1	1	1	1	1	3	1	4	...
10 "	1	1	1	1	1	1	1	1	1	1	1	1	1	1	1	1	3	1	4	...
Over 10 years ...	1	1	1	1	1	1	1	1	1	1	1	1	1	1	1	1	3	1	4	...
Duration unknown ...	1	1	1	1	1	1	1	1	1	1	1	1	1	1	1	1	3	1	4	...
Totals ...	1	2	3	1	2	2	1	6	4	2	1	2	1	1	1	1	12	21	33	...



TABLE C 3.—Showing the Form of Mental Disorder, on admission, in those Discharged Recovered during the year 1909 (Voluntary Boarders excluded).

Forms of Mental Disorder (on Admission).	M.	F.	T.
1. Intellectual—			
<i>a.</i> With Epilepsy ... ..	...	...	...
<i>b.</i> Without Epilepsy ... ..	...	...	...
2. Moral ... ..	...	...	...
1. Insanity occurring later in life—			
1. Insanity with Epilepsy ... ..	...	...	...
2. General Paralysis of the Insane ... ..	...	...	...
3. Insanity with the grosser brain lesions ... ..	...	...	...
4. Acute Delirium (acute delirious mania) ... ..	...	...	...
5. Confusional Insanity ... ..	...	1	1
6. Stupor... ..	...	2	2
7. Primary Dementia ... ..	...	1	1
8. Mania—			
<i>a.</i> Recent ... ..	1	6	7
<i>b.</i> Chronic... ..	1	3	4
<i>c.</i> Recurrent ... ..	2	4	6
9. Melancholia—			
<i>a.</i> Recent ... ..	3	2	5
<i>b.</i> Chronic... ..	...	...	...
<i>c.</i> Recurrent ... ..	3	2	5
10. Alternating Insanity ... ..	...	...	...
11. Delusional Insanity—			
<i>a.</i> Systematised ... ..	2	...	2
<i>b.</i> Non-Systematised ... ..	...	...	...
12. Volitional Insanity—			
<i>a.</i> Impulse ... ..	...	...	...
<i>b.</i> Obsession ... ..	...	...	...
<i>c.</i> Doubt ... ..	...	...	...
13. Moral Insanity ... ..	...	...	...
14. Dementia—			
<i>a.</i> Senile ... ..	...	...	...
<i>b.</i> Secondary or Terminal ... ..	...	...	...
Totals ... ..	12	21	33





No.	Name of Compound	Chemical Tests
1	ACETIC ACID	1. Turns blue litmus red 2. Gives white precipitate with calcium carbonate 3. Gives white precipitate with calcium hydroxide 4. Gives white precipitate with calcium chloride 5. Gives white precipitate with calcium acetate
2	ACETIC ANHYDRIDE	1. Turns blue litmus red 2. Gives white precipitate with calcium carbonate 3. Gives white precipitate with calcium hydroxide 4. Gives white precipitate with calcium chloride 5. Gives white precipitate with calcium acetate
3	ACETYL SALICIC ACID	1. Turns blue litmus red 2. Gives white precipitate with calcium carbonate 3. Gives white precipitate with calcium hydroxide 4. Gives white precipitate with calcium chloride 5. Gives white precipitate with calcium acetate
4	ACETYL SALICIC ANHYDRIDE	1. Turns blue litmus red 2. Gives white precipitate with calcium carbonate 3. Gives white precipitate with calcium hydroxide 4. Gives white precipitate with calcium chloride 5. Gives white precipitate with calcium acetate
5	ACETYL SALICIC ESTER	1. Turns blue litmus red 2. Gives white precipitate with calcium carbonate 3. Gives white precipitate with calcium hydroxide 4. Gives white precipitate with calcium chloride 5. Gives white precipitate with calcium acetate
6	ACETYL SALICIC ESTER ANHYDRIDE	1. Turns blue litmus red 2. Gives white precipitate with calcium carbonate 3. Gives white precipitate with calcium hydroxide 4. Gives white precipitate with calcium chloride 5. Gives white precipitate with calcium acetate

TABLE C 6.—Showing in the Recoveries during the Year 1909 the duration of the present attack previous to admission, either direct to this Institution or to any other Institution under the existing Reception Order, and also the Duration of Residence (including absence "on leave") in this and any other Institution from which the patient may have been transferred, arranged according to whether the attack is the "First," "Not First," or "Unknown whether First or not" (Voluntary Boarders excluded).

Duration of this Attack Previous to Admission either to this Institution or to any other Institution under the existing Reception Order.	DURATION OF RESIDENCE (including any absence "on leave") in this, and any other Institution from which the patient may have been transferred here.																			
	First Attack Cases.																			
	Under 1 month.		1 month and under 3 months.		3 months and under 6 months.		6 months and under 9 months.		9 months and under 1 year.		1 year and under 2 years.		2 years and under 3 years.		3 years and over.		Total.			
	M.	F.	M.	F.	M.	F.	M.	F.	M.	F.	M.	F.	M.	F.	M.	F.	M.	F.	T.	
Within 2 weeks ...	...	...	...	...	...	...	...	...	...	...	...	...	...	...	...	...	...	...	...	...
2 weeks and within 1 month ...	...	...	...	...	...	...	...	...	...	...	...	...	...	...	...	...	...	...	...	...
1 month	...	...	1	...	...	2	...	...	...	...	...	...	...	...	...	...	...	...	...	...
3 months	1	...	...	1	...	...	...	...	...	...	...	...	...	...	...	...	...	...	...	...
6 "	...	...	...	...	...	...	...	...	...	...	...	...	...	...	...	...	...	...	...	...
9 "	...	...	...	...	...	...	...	...	...	...	...	...	...	...	...	...	...	...	...	...
12 "	...	...	...	...	...	...	...	...	...	...	...	...	...	...	...	...	...	...	...	...
18 "	...	...	...	...	...	...	...	...	...	...	...	...	...	...	...	...	...	...	...	...
2 years	...	...	...	...	...	...	...	...	...	...	...	...	...	...	...	...	...	...	...	...
3 "	...	...	...	...	...	...	...	...	...	...	...	...	...	...	...	...	...	...	...	...
Duration unknown ...	...	...	...	...	1	...	...	...	...	...	...	...	...	...	...	...	1	...	...	1
Totals	1	...	1	3	2	6	...	...	1	...	...	...	1	...	...	...	5	10	...	15



TABLE C 6 (continued).

Duration of this Attack Previous to Admission either to this Institution or to any other Institution under the existing Reception Order.		DURATION OF RESIDENCE (including any absence "on leave" in this, or any other Institution from which the patient may have been transferred here.																				
		Not First Attack.																				
		Under 1 month.		1 month and under 3 months.		3 months and under 6 months.		6 months and under 9 months.		9 months and under 1 year.		1 year and under 2 years.		2 years and under 3 years.		3 years and over.		Total.		Grand Total.		
M.	F.	M.	F.	M.	F.	M.	F.	M.	F.	M.	F.	M.	F.	M.	F.	M.	F.	M.	F.	T.		
Within 2 weeks	...	...	...	...	...	...	...	...	...	...	...	...	...	...	...	...	...	...	...	...	...	...
2 weeks and within 1 month	...	...	...	...	...	...	...	...	...	...	...	...	...	...	...	...	...	...	...	...	...	...
1 month	...	1	1	1	1	1	1	1	1	1	1	1	1	1	1	1	1	1	1	1	1	1
3 months	...	1	...	...	...	...	...	...	...	...	...	...	...	...	...	...	...	...	...	...	...	...
6 "	...	...	...	...	...	...	...	...	...	...	...	...	...	...	...	...	...	...	...	...	...	...
9 "	...	...	...	...	...	...	...	...	...	...	...	...	...	...	...	...	...	...	...	...	...	...
12 "	...	...	...	...	...	...	...	...	...	...	...	...	...	...	...	...	...	...	...	...	...	...
18 "	...	...	...	...	...	...	...	...	...	...	...	...	...	...	...	...	...	...	...	...	...	...
2 years	...	...	...	...	...	...	...	...	...	...	...	...	...	...	...	...	...	...	...	...	...	...
3 "	...	...	...	...	...	...	...	...	...	...	...	...	...	...	...	...	...	...	...	...	...	...
Duration unknown	...	...	...	...	...	...	...	...	...	...	...	...	...	...	...	...	...	...	...	...	...	...
Totals	...	2	1	1	2	...	...	...	2	4	2	...	1	...	3	7	11	18	21	33	...	

TABLE D I.—Showing all the Causes of Death that entered into the Deaths during the year 1909, arranged as Principal, Contributory, and the Totals of these; also the number of times each Cause (whether Principal or Contributory) was associated with certain Selected Causes; and the number of occasions each principal Cause of Death was verified by Post-mortem Examination (Voluntary Boarders excluded).

NAMES OF CAUSES OF DEATH.	Instances when returned as PRINCIPAL.			No. verified P. M.	Instances when returned as CONTRIBUTORY.			Total Incidence.		
	M.	F.	T.		M.	F.	T.	M.	F.	T.
	Atrophy of Brain	...	1		1	...	...	...	...	1
Bronchitis	...	1	1	...	...	...	...	1	1	2
Cerebral Hemorrhage	...	3	3	...	...	...	...	3	3	6
Diarrhea	...	...	...	...	...	...	...	1	1	2
Epilepsy	1	...	1	...	...	...	...	1	1	2
Exhaustion from Mania	...	...	...	...	...	...	...	1	1	2
General Paralysis of the Insane	4	...	4	...	...	...	...	4	4	8
General Tuberculosis	...	1	1	...	...	...	...	1	1	2
Phthisis	...	3	3	...	...	...	...	3	3	6
Pneumonia (Broncho)	1	...	1	...	...	...	...	1	1	2
Senile Decay	3	4	7	...	...	...	...	3	4	7
Senile Gangrene	...	1	1	...	...	...	...	1	1	2
Spinal Sclerosis	...	1	1	...	...	...	...	1	1	2
Syncope	1	1	2	...	...	...	...	1	1	2
Tumour of Brain	...	1	1	...	...	...	...	1	1	2
Total	10	17	27	1	...	...	...	10	17	27





TABLE D 2.—Showing the Principal cause of death in each death during the year 1909, together with the ages at death in quinquennial periods (Voluntary Boarders excepted).

PRINCIPAL CAUSES OF DEATH.	AGES AT DEATH IN QUINQUENNIAL PERIODS.														TOTAL.		
	15-19	20-24	25-29	30-34	35-39	40-44	45-49	50-54	55-59	60-64	65-69	70-74	75-80	80 & over.	M.	F.	T.
	M.	F.	M.	F.	M.	F.	M.	F.	M.	F.	M.	F.	M.	F.			
Atrophy of Brain ...												1			...	1	1
Bronchitis ...												1			...	1	1
Cerebral Hemorrhage ...										1	2				...	3	3
Epilepsy ...											1				...	1	1
General Paralysis of Insane ...				1	1		2								...	4	4
General Tuberculosis ...										1					...	1	1
Phthisis ...												2			...	3	3
Pneumonia (Broncho)...								1							...	1	1
Senile Decay ...											2	1		1	...	4	7
Senile Gangrene ...											1				...	1	1
Spinal Sclerosis ...										1					...	1	1
Syncope ...							1				1				...	1	2
Tumour of Brain ...															...	1	1
Totals ...				1	1	1	1	2	1	3	1	6	1	4	10	17	27



TABLE D 3.—Showing the Total Duration of the Present Attack of Mental Disorder in the Deaths during the year 1909, arranged according to the Form of Mental Disorder on admission (Voluntary Boarders excluded).

FORM OF MENTAL DISORDER (on Admission).	TOTAL DURATION OF PRESENT ATTACK OF MENTAL DISORDER.																				
	1 m. and less than 3 m.		3 m. and less than 6 m.		6 m. and less than 9 m.		9 m. and less than 12 m.		12 m. and less than 2 years.		2 yrs. and less than 3 yrs.		3 yrs. and less than 5 yrs.		5 yrs. and less than 10 yrs.		10 yrs. and less than 15 yrs.		15 yrs. and less than 20 yrs.		
	M.	F.	M.	F.	M.	F.	M.	F.	M.	F.	M.	F.	M.	F.	M.	F.	M.	F.	M.	F.	
*Congenital—																					
1. Intellectual { <i>a.</i> With epilepsy ... { <i>a.</i> Without epilepsy ...	...	...	...	...	...	...	...	...	...	...	...	...	...	...	...	...	...	...	...	...	...
2. Moral ...	...	...	...	...	...	...	...	...	...	...	...	...	...	...	...	...	...	...	...	...	...
Insanity Occurring Later in Life—																					
1. Insanity with epilepsy ...	...	...	...	...	...	...	...	...	...	...	...	...	...	...	...	...	...	...	...	...	...
2. General paralysis of the insane ...	...	...	...	...	...	...	...	...	...	...	...	...	...	...	...	...	...	...	...	...	...
3. Insanity with grosser brain lesions ...	...	...	...	...	...	...	...	...	...	...	...	...	...	...	...	...	...	...	...	...	...
4. Acute delirium ...	...	...	...	...	...	...	...	...	...	...	...	...	...	...	...	...	...	...	...	...	...
5. Confusional insanity ...	...	...	...	...	...	...	...	...	...	...	...	...	...	...	...	...	...	...	...	...	...
6. Stupor ...	...	...	...	...	...	...	...	...	...	...	...	...	...	...	...	...	...	...	...	...	...
7. Primary dementia ...	...	...	...	...	...	...	...	...	...	...	...	...	...	...	...	...	...	...	...	...	...
8. Mania { <i>a.</i> Recent ... { <i>b.</i> Chronic ... { <i>c.</i> Recurrent ...	1	1	...	...	...	...	...	...	...	...	...	...	...	...	...	...	...	...	...	...	...
9. Melancholia { <i>a.</i> Recent ... { <i>b.</i> Chronic ... { <i>c.</i> Recurrent ...	...	...	...	...	...	...	...	...	...	...	...	...	...	...	...	...	...	...	...	...	...
10. Alternating insanity ...	...	...	...	...	...	...	...	...	...	...	...	...	...	...	...	...	...	...	...	...	...
11. Delusional insanity { <i>a.</i> Systematised ... { <i>b.</i> Non-systematised ...	...	...	...	...	...	...	...	...	...	...	...	...	...	...	...	...	...	...	...	...	...
12. Volitional insanity { <i>a.</i> Impulse ... { <i>b.</i> Obsession ... { <i>c.</i> Doubt ...	...	...	...	...	...	...	...	...	...	...	...	...	...	...	...	...	...	...	...	...	...
13. Moral insanity ...	...	...	...	...	...	...	...	...	...	...	...	...	...	...	...	...	...	...	...	...	...
14. Dementia { <i>a.</i> Senile ... { <i>b.</i> Secondary ...	...	...	...	...	...	...	...	...	...	...	...	...	...	...	...	...	...	...	...	...	...
Totals	1	1	1	1	3	...	...	2	...	1	...	3	2	...	...	3	2	...	...	1	...

\* Congenital or infantile mental deficiency (idiocy or imbecility) occurring as early in life as it can be observed.







TABLE E I.—Showing the ages (in quinquennial periods) of those on the Registers on the 31st December, 1909, arranged according to the Total Duration of present Attack of Mental Disorder (Voluntary Boarders excluded).

		AGES on 31st December, 1909, of those on Registers at that date.															
		15—19		20—24		25—29		30—34		35—39		40—44		45—49		50—54	
		M.	F.	M.	F.	M.	F.	M.	F.	M.	F.	M.	F.	M.	F.	M.	F.
Total duration of present attack of mental disorder.																	
Congenital	...	...	...	...	...	...	...	...	...	...	...	...	...	...	...	...	...
Less than 3 months	...	...	...	...	...	...	...	...	...	...	...	...	...	...	...	...	...
3 months and less than 6 months	...	...	...	...	...	...	...	...	...	...	...	...	...	...	...	...	...
6 "	12 "	...	...	...	...	...	...	...	...	...	...	...	...	...	...	...	...
12 "	18 "	...	...	...	...	...	...	...	...	...	...	...	...	...	...	...	...
18 "	2 years	...	...	...	...	...	...	...	...	...	...	...	...	...	...	...	...
2 years	3 "	...	...	...	...	...	...	...	...	...	...	...	...	...	...	...	...
3 "	5 "	...	...	...	...	...	...	...	...	...	...	...	...	...	...	...	...
5 "	10 "	...	...	...	...	...	...	...	...	...	...	...	...	...	...	...	...
10 "	20 "	...	...	...	...	...	...	...	...	...	...	...	...	...	...	...	...
20 "	30 "	...	...	...	...	...	...	...	...	...	...	...	...	...	...	...	...
30 "	40 "	...	...	...	...	...	...	...	...	...	...	...	...	...	...	...	...
40 "	50 "	...	...	...	...	...	...	...	...	...	...	...	...	...	...	...	...
50 "	60 "	...	...	...	...	...	...	...	...	...	...	...	...	...	...	...	...
60 "	70 "	...	...	...	...	...	...	...	...	...	...	...	...	...	...	...	...
Totals		1	2	14	4	16	10	18	15	24	14	18	21	23	31	24	35

TABLE E 1 (continued).

Total duration of present attack of mental disorder.	AGES on 31st December, 1909, of those on Register at that date.												Totals.				
	55—59		60—64		65—69		70—74		75—80		80—84					85 and over.	
	M.	F.	M.	F.	M.	F.	M.	F.	M.	F.	M.	F.	M.	F.	M.	F.	T.
Congenital	1	2	1	...	...	...	...	...	...	...	...	...	...	...	6	5	11
Less than 3 months	1	1	...	...	...	...	...	...	...	...	...	...	...	...	4	4	8
3 months and less than 6 months	...	...	...	...	...	...	...	...	...	...	...	...	...	...	3	7	10
6 "	...	2	3	1	...	1	...	...	...	...	...	...	...	11	10	21	
12 "	...	...	1	...	...	...	...	...	...	...	...	...	...	11	16	27	
18 "	...	...	1	...	...	...	...	...	...	...	...	...	...	5	4	9	
2 years	1	...	1	...	...	1	...	...	...	...	...	...	...	11	14	25	
3 "	...	4	1	...	...	...	...	...	...	...	...	...	...	17	26	43	
5 "	1	3	3	4	...	3	...	...	...	...	...	...	...	30	38	68	
10 "	4	5	4	9	2	3	1	3	...	...	...	...	...	48	51	99	
20 "	3	8	8	4	1	1	3	3	...	...	...	...	...	34	25	59	
30 "	5	3	6	2	1	6	1	2	...	...	...	...	...	16	20	36	
40 "	...	...	2	1	...	2	...	1	...	...	...	...	...	3	4	7	
50 "	...	...	...	...	...	...	...	...	...	...	...	...	...	1	1	2	
60 "	...	...	...	...	...	...	...	...	...	...	...	...	...	1	...	1	
70 "	...	...	...	...	...	...	...	...	...	...	...	...	...	...	...	...	
Totals	16	28	30	21	5	17	6	12	2	10	3	5	1	201	225	426	



TABLE E 2.—Showing the Form of Mental Disorder on 31st December, 1909, of those on the Registers at that date (Voluntary Boarders excluded).

FORMS OF MENTAL DISORDER ON DEC. 31st.	M.	F.	T.
*CONGENITAL—			
1. Intellectual { <i>a.</i> With Epilepsy ... ..	1	1	2
{ <i>b.</i> Without Epilepsy ... ..	5	4	9
2. Moral ... ..	...	...	...
INSANITY OCCURRING LATER IN LIFE—			
1. Insanity with Epilepsy ... ..	6	5	11
2. General Paralysis of the Insane... ..	5	...	5
3. Insanity with grosser brain lesions ... ..	3	...	3
4. Acute Delirium ... ..	...	...	...
5. Confusional Insanity ... ..	...	8	8
6. Stupor ... ..	...	10	10
7. Primary Dementia ... ..	3	2	5
8. Mania { <i>a.</i> Recent ... ..	3	4	7
{ <i>b.</i> Chronic ... ..	52	92	144
{ <i>c.</i> Recurrent ... ..	10	7	17
9. Melancholia { <i>a.</i> Recent ... ..	2	11	13
{ <i>b.</i> Chronic ... ..	22	18	40
{ <i>c.</i> Recurrent ... ..	1	6	7
10. Alternating Insanity ... ..	1	4	5
11. Delusional Insanity { <i>a.</i> Systematised ... ..	2	8	10
{ <i>b.</i> Non-Systematised ... ..	...	13	13
12. Volitional Insanity { <i>a.</i> Impulse ... ..	...	...	...
{ <i>b.</i> Obsession ... ..	...	...	...
{ <i>c.</i> Doubt ... ..	1	...	1
13. Moral Insanity ... ..	...	...	...
14. Dementia { <i>a.</i> Senile ... ..	5	6	11
{ <i>b.</i> Secondary ... ..	79	26	105
Totals ... ..	201	225	426
Prospect of Mental Recovery { Favourable... ..	10	17	27
{ Doubtful ... ..	7	20	27
{ Unfavourable ... ..	184	188	372

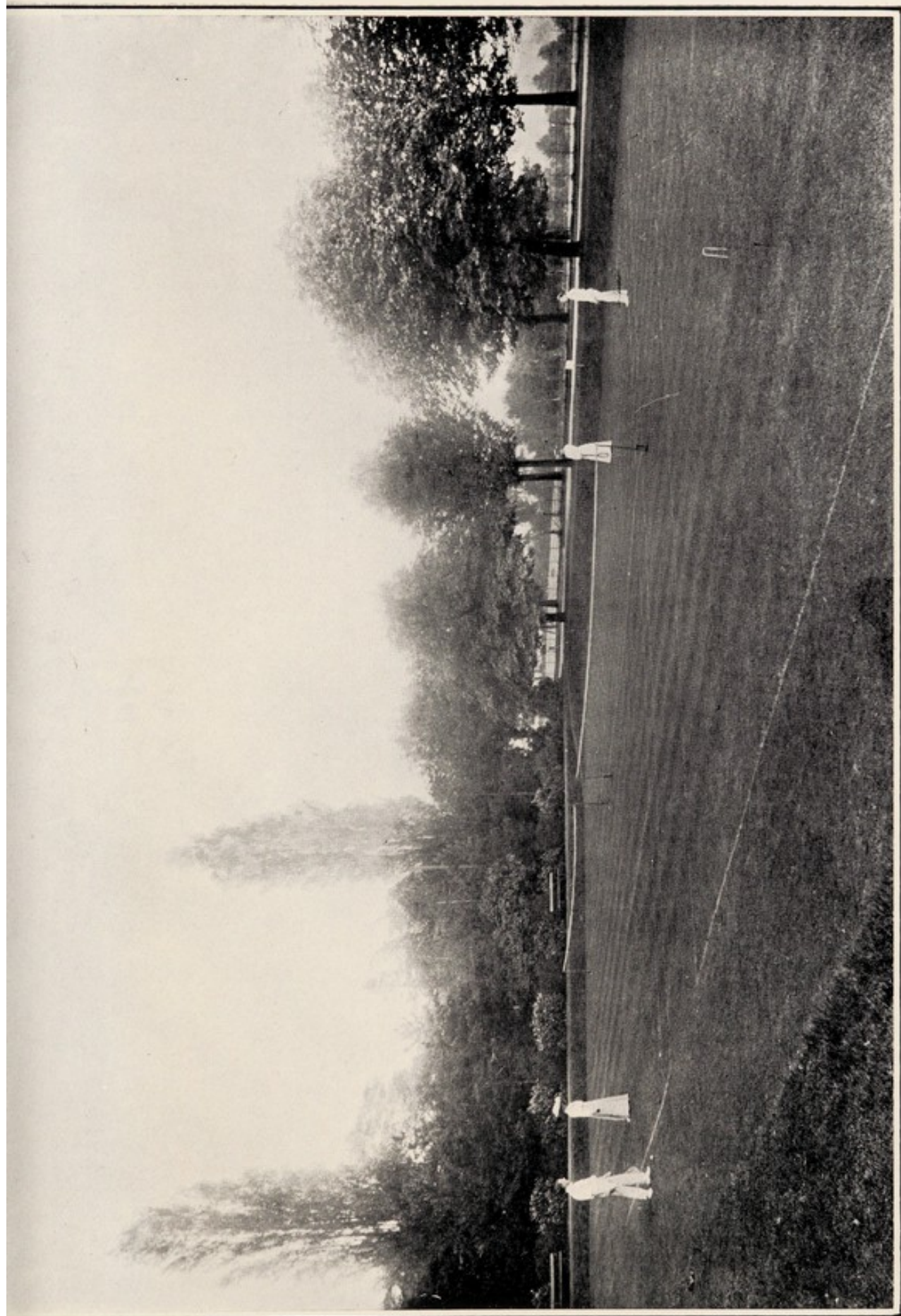
\*Congenital or infantile mental deficiency (idiocy or imbecility) occurring as early in life as it can be observed.





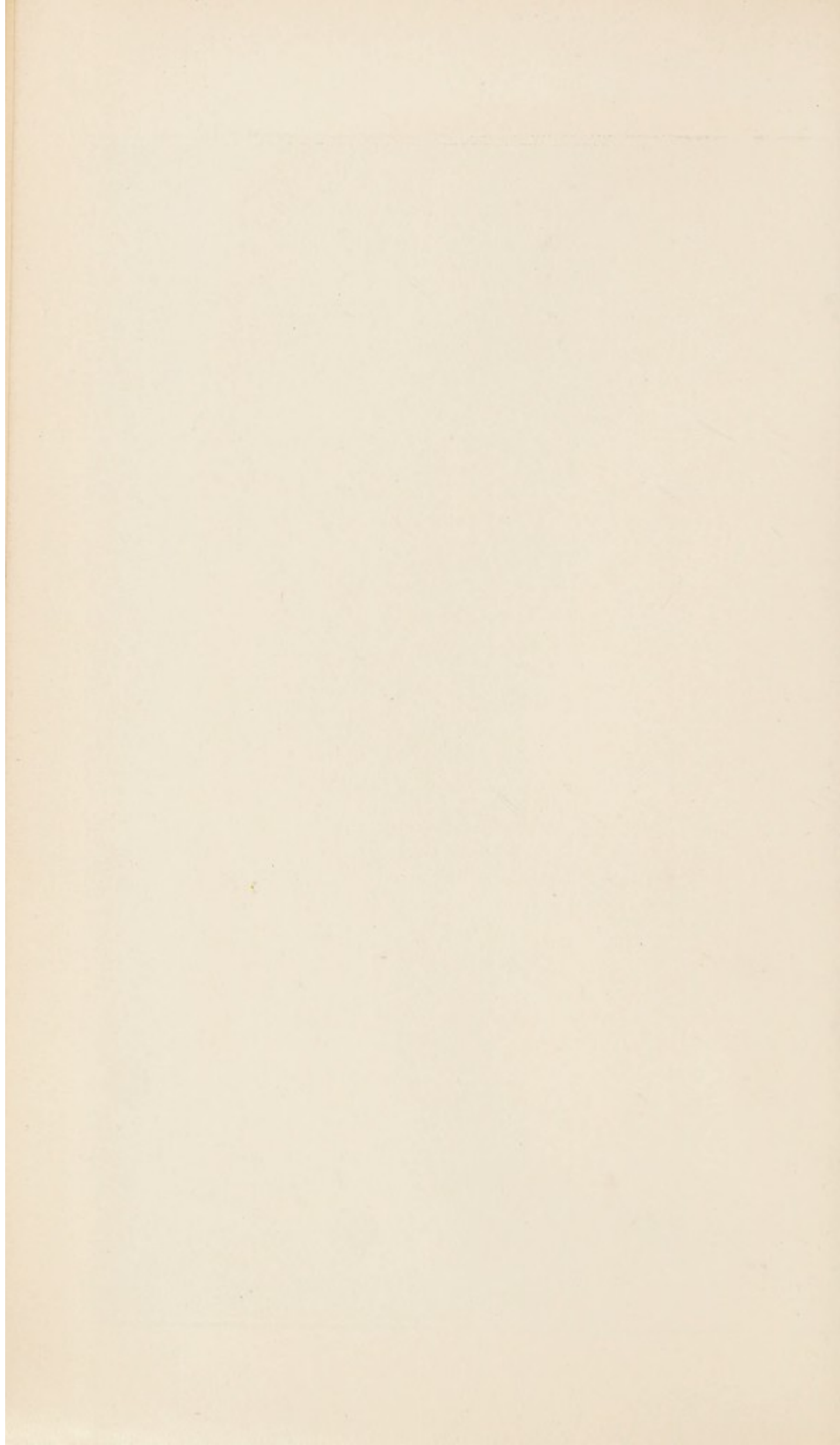






THE TENNIS COURT, ST. ANDREW'S HOSPITAL.





THE  
Report of the Chaplain,

FOR THE YEAR 1909.

---

January 24th, 1910.

My Lords and Gentlemen,

I beg to submit to you my Annual Report for the year 1909.

The Sunday and Week-day Services have been held with the usual regularity, save on a few occasions of very inclement weather. The statistics give an average attendance on Sunday of 57 males and 73 females, and on week-days of 19 males and 16 females: which shows a slight increase on Sunday, and a slight decrease on week-days, in comparison with the figures of the previous year. The behaviour of the patients at Divine Service continues to be very satisfactory.

In my daily visits to the various wards and private apartments, and in my fortnightly visits to Moulton Park, I have been received in the same kindly manner as heretofore.

I am again enabled to report that the Library is well used and appreciated. There is a very good supply of newspapers and periodicals, and their circulation is actively kept up under my own superintendence.

In a holiday absence of twelve days in the month of September, my duties were fulfilled by the Rev. B. Mathews.

I have again to thank the Medical Superintendent and other officials for much courtesy and kindness in the discharge of the duties of my office.

I remain,

Your obedient servant,

JOHN CUNNINGHAM,

Chaplain.



A RETURN showing the Weekly Payments of Patients  
who received Charitable Assistance in the year 1909.

FIRST CLASS.

*Lowest Remunerative Payment 42s. a week, for Board, Lodging, Care,  
and Medical Treatment.*

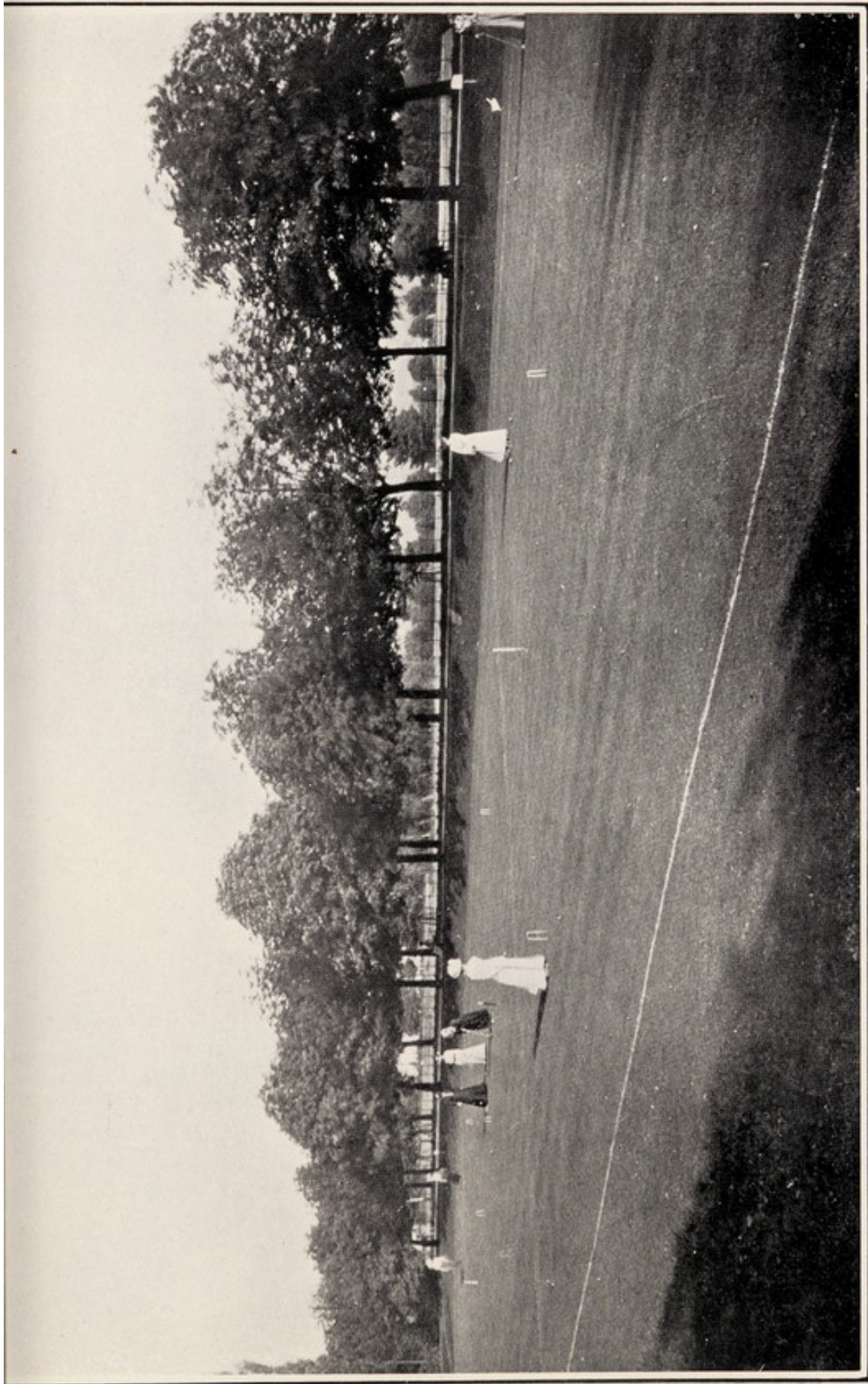
1 for 52 weeks at 10s.	1 for 52 weeks at 26s. 11d.
1 " 52 " " 15s. 6d.	1 " 52 " " 31s. 6d.
2 " 52 " " 20s.	1 " 21 " " 35s.
1 " 13 " " 20s.	1 " 52 " " 38s. 6d.
1 " 52 " " 21s.	1 " 52 " " 40s. 6d.
1 " 9 " " 21s.	

SECOND CLASS.

*Lowest Remunerative Payment 31s. 6d. a week, for Board, Lodging, Care,  
and Medical Treatment.*

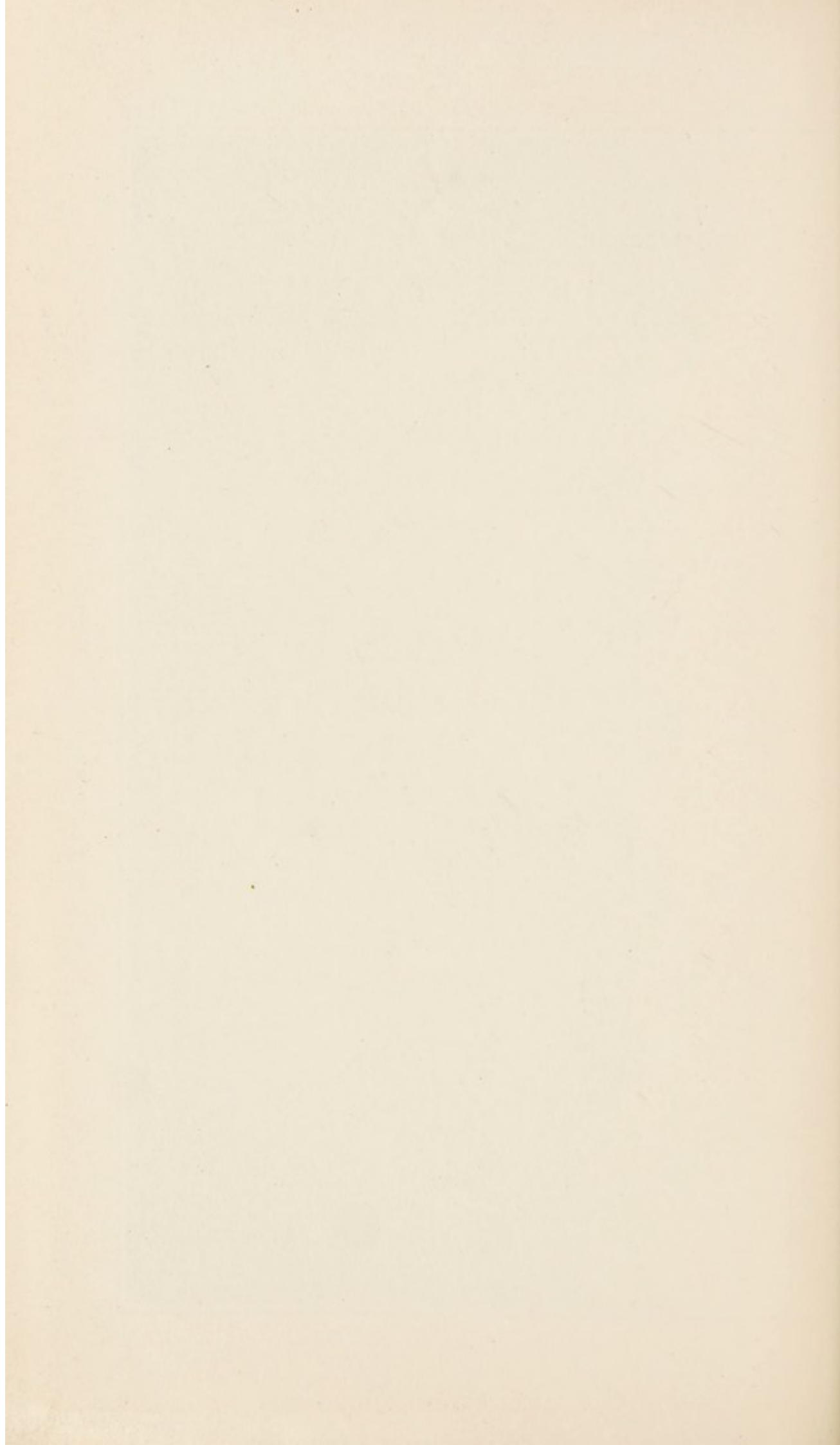
3 for 52 weeks... no payment.	1 for 52 weeks at 12s.
1 " 23 " at 6d.	2 " 52 " " 15s.
1 " 52 " " 1s.	1 " 36 " " 15s.
1 " 37 " " 1s.	1 " 25 " " 15s.
1 " 16 " " 1s.	1 " 16 " " 15s.
1 " 52 " " 2s.	1 " 9 " " 15s.
3 " 52 " " 2s. 6d.	1 " 52 " " 15s. 6d.
1 " 52 " " 3s.	1 " 27 " " 16s.
1 " 52 " " 3s. 7d.	1 " 22 " " 16s.
2 " 52 " " 5s.	2 " 52 " " 19s. 3d.
1 " 15 " " 5s.	1 " 26 " " 19s. 3d.
1 " 8 " " 5s.	9 " 52 " " 20s.
1 " 4 " " 5s.	1 " 46 " " 20s.
1 " 2 " " 5s.	1 " 22 " " 20s.
1 " 52 " " 7s. 6d.	2 " 9 " " 20s.
1 " 52 " " 8s. 6d.	1 " 7 " " 20s.
2 " 52 " " 9s.	4 " 52 " " 21s.
1 " 26 " " 9s.	1 " 33 " " 21s.
5 " 52 " " 10s.	1 " 52 " " 21s. 6d.
1 " 39 " " 10s.	2 " 52 " " 24s.
1 " 32 " " 10s.	1 " 52 " " 24s. 6d.
1 " 16 " " 10s.	11 " 52 " " 25s.
1 " 8 " " 10s.	1 " 33 " " 25s.
1 " 7 " " 10s.	1 " 7 " " 25s.
1 " 52 " " 10s. 6d.	3 " 52 " " 27s.
1 " 34 " " 10s. 6d.	1 " 52 " " 30s.
3 " 52 " " 11s. 6d.	1 " 52 " " 30s. 9d.
1 " 16 " " 11s. 6d.	1 " 30 " " 31s.

The Committee also voted the sum of £150 towards sending poor Patients for a change to the seaside.



THE CROQUET GROUND, ST. ANDREW'S HOSPITAL.





## ABSTRACT OF BENEFACTIONS

and Legacies towards the Erection and Establishment  
of the Hospital.

	£	s.	d.
The Donation from the Surplus of the Fund for raising and maintaining the late Regiment of NORTHAMPTONSHIRE YEOMANRY CAVALRY, £336 2s. 9d. Long Annuities, standing in the Names of the Right Hon. George John (2nd) Earl Spencer, K.G., the highly respected Colonel of the late Corps; and Captain the Right Hon. the Lord Viscount ALTHORP, M.P., sold out and re-invested in the same names in £7,000 Three per cent. Reduced Annuities; which, with Dividends accrued thereon, amounted to.....	7,848	12	7
Benefactions and Legacies.....	16,340	18	6
The Proceeds of Two Concerts, given under the direction of the late Mr. C. MCKORKELL, for which he was appointed an Honorary Director	105	13	9
The Northamptonshire Agricultural Society ...	10	10	0
Congregational Collections .....	565	9	4
Total received to 31st December, 1851.....	24,871	4	2
Benefactions and Legacies received between Jan. 1, 1851, and Dec. 31, 1857; and also Legacies up to Dec. 31, 1861, including Dividends on an invested portion thereof (see the Report for 1860, page 33) .....	1,695	17	0
Subscriptions received towards the Erection of a Chapel between the 1st January, 1858, and the 31st December, 1862 .....	2,147	0	10
Proceeds of a Flower Show at Blisworth for the Benefit of the Chapel Fund, by the late H. O. NETHERCOTE, Esq., 1859 .....	145	0	0
Benefactions and Legacies in the years 1862 to 1907.....	1,892	10	5
Benefaction, in Memory of the late Duke of GRAFTON, from his Widow, 1884.....	1,000	0	0
Total Benefactions and Legacies .....	£31,751	12	5

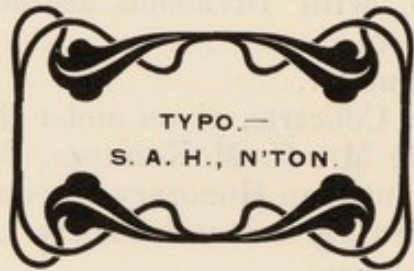


ABSTRACT OF BENEFACTIONS

and legacies towards the Election and Establishment of the Hospital.

24,871	4	2
1,000	0	0
1,802	10	5
145	0	0
2,117	0	10
1,008	17	0
24,871	4	2

The donation from the surplus of the fund for raising and maintaining the late Regiment of Northamptonshire Foot Guards (Voluntary) £2000 for long Annular standing in the name of the Right Hon. George John (2nd) Viscount Spencer, K.G., the highly respected Colonel of the late Corps; and Captain the Right Hon. the Lord Viscount Spencer, M.P., sold out and re-invested in the same name in £7,000 Three per cent. Reduced Annuities; which the Trustees and the Benefactors and the Friends of the Hospital which he was appointed Director of the Northamptonshire Hospital Corporation (Total received to 31st December, 1881)



Transactions and legacies received between Jan. 1, 1851, and Dec. 31, 1857; and also legacies up to Dec. 31, 1861, including Dividends on an invested portion thereof (see the Report for 1860, page 38). Subscriptions received towards the erection of a Chapel between the 1st January, 1852, and the 31st December, 1862. Friends of a Tower show at Bicester for the benefit of the Chapel Fund by the late H. O. Kinnear, Esq., 1858. Benefactions and legacies in the years 1862 to 1867. Benefactions in Memory of the late Duke of Devon, from his Widow, 1864. Total Benefactions and legacies

