

The report of Saint Andrew's Hospital for Mental Diseases, at Northampton, for the upper and middle classes, from January 1, 1908, to December 31, 1908.

Contributors

Saint Andrew's Hospital for Mental Diseases (Northampton, England)
Smyth, C.
Coupland, Sidney.
Trevor, A. H.
Shadwell, L. L.
Cunningham, John.

Publication/Creation

Northampton, Eng. : Saint Andrew's Hospital for Mental Diseases, 1909.

Persistent URL

<https://wellcomecollection.org/works/nyd485y4>

License and attribution

Conditions of use: it is possible this item is protected by copyright and/or related rights. You are free to use this item in any way that is permitted by the copyright and related rights legislation that applies to your use. For other uses you need to obtain permission from the rights-holder(s).



Wellcome Collection
183 Euston Road
London NW1 2BE UK
T +44 (0)20 7611 8722
E library@wellcomecollection.org
<https://wellcomecollection.org>

THE REPORT
OF
SAINT ANDREW'S HOSPITAL
FOR MENTAL DISEASES,

AT
NORTHAMPTON,

FOR THE
UPPER AND MIDDLE CLASSES,

FROM
JANUARY 1, 1908, TO DECEMBER 31, 1908.




Printed at Saint Andrew's Hospital, Northampton.

1909.

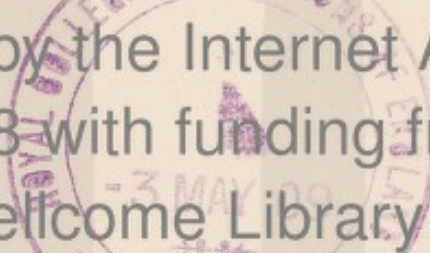
WELLCOME INSTITUTE LIBRARY	
Coll.	weIMOmoc
Call	Ann-Rep
No.	WLM 28
	• BE 5
	S 134
	1908

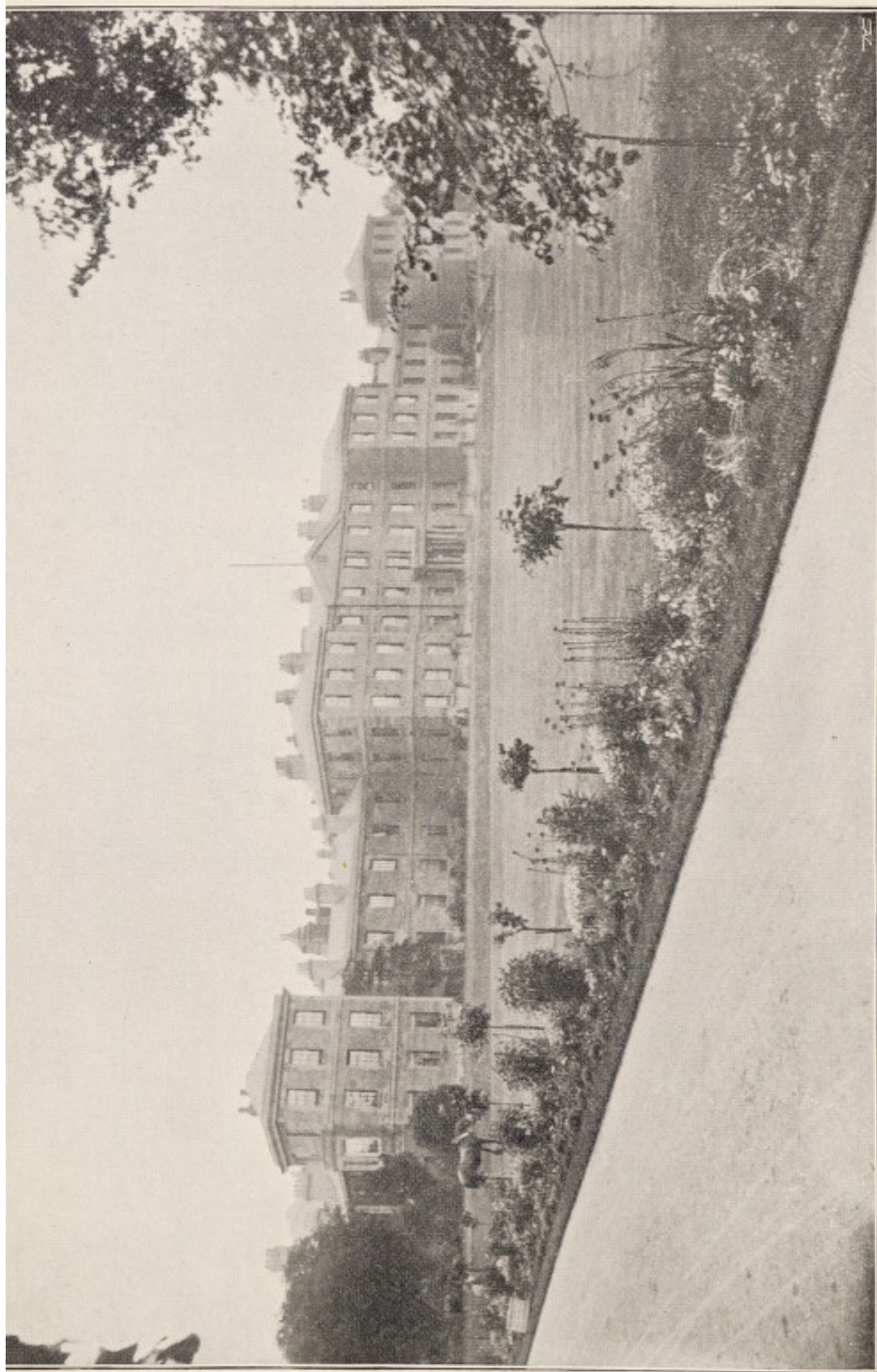


22501660985



Digitized by the Internet Archive
in 2018 with funding from
Wellcome Library





SAINT ANDREW'S HOSPITAL.

THE REPORT
OF
SAINT ANDREW'S HOSPITAL
FOR MENTAL DISEASES,

AT
NORTHAMPTON,

FOR THE
UPPER AND MIDDLE CLASSES,

FROM
JANUARY 1, 1908, TO DECEMBER 31, 1908.

NORTHAMPTON:

Printed at Saint Andrew's Hospital, Northampton.

CONTENTS.

	PAGE.
Governors, Committee, and Staff	3
Minutes of the Annual Court	6
Annual Report	7
Reports of the Commissioners in Lunacy ...	9
Report of the Medical Superintendent	14
Statistical Tables	19
Report of the Chaplain	41
Return of Patients assisted by the Charity ...	42
Abstract of Benefactions and Legacies towards the Erection and Establishment of the Hospital ...	43

OFFICERS OF THE INSTITUTION.



GOVERNORS.

Perpetual President :

The Lord-Lieut. of the County, the Right Hon. the Viscount Althorp.

Vice-Presidents :

The Right Hon. Lord Erskine, Spratton Hall, Northampton.

S. G. Stopford-Sackville, Esq., Drayton House, Thrapston.

H. M. Stockdale, Esq., Mears Ashby, Northampton.

E. P. Monckton, Esq., Laundimer House, Oundle.

C. Smyth, Esq., Little Houghton House, Northampton.

Lieut.-Colonel Rawlins, Great Houghton Hall, Northampton.

Lieut.-Colonel Lowndes, M.V.O., Braunston, Rugby.

Annaly, The Lord, Holdenby House, Northampton.

Bell, Major Alexander, Stanwick, Higham Ferrers.

Blackwood, Major Price, 52, Queen's Gate Terrace, London, S.W.

Brassey, H. L. C., Esq., Apethorpe Hall, Wansford.

Brooke, Sir Arthur R. de Capel, Bart., Oakley Hall, Kettering.

Buccleuch, The Duke of, Boughton House, Kettering.

Cardigan, The Countess of, Deene Park, Wansford.

Carey, Rowland D., Esq., Cogenhoe, Northampton.

Cary-Elwes, V. D. H., Esq., Great Billing, Northampton.

Champion de Crespigny, G. H., Esq., Burton Latimer, Kettering.

Clarke, Captain J. R. P.

Crawley, Rev. H. H., Church Stowe, Weedon.

Downe, The Viscount, Dingley, Market Harborough.

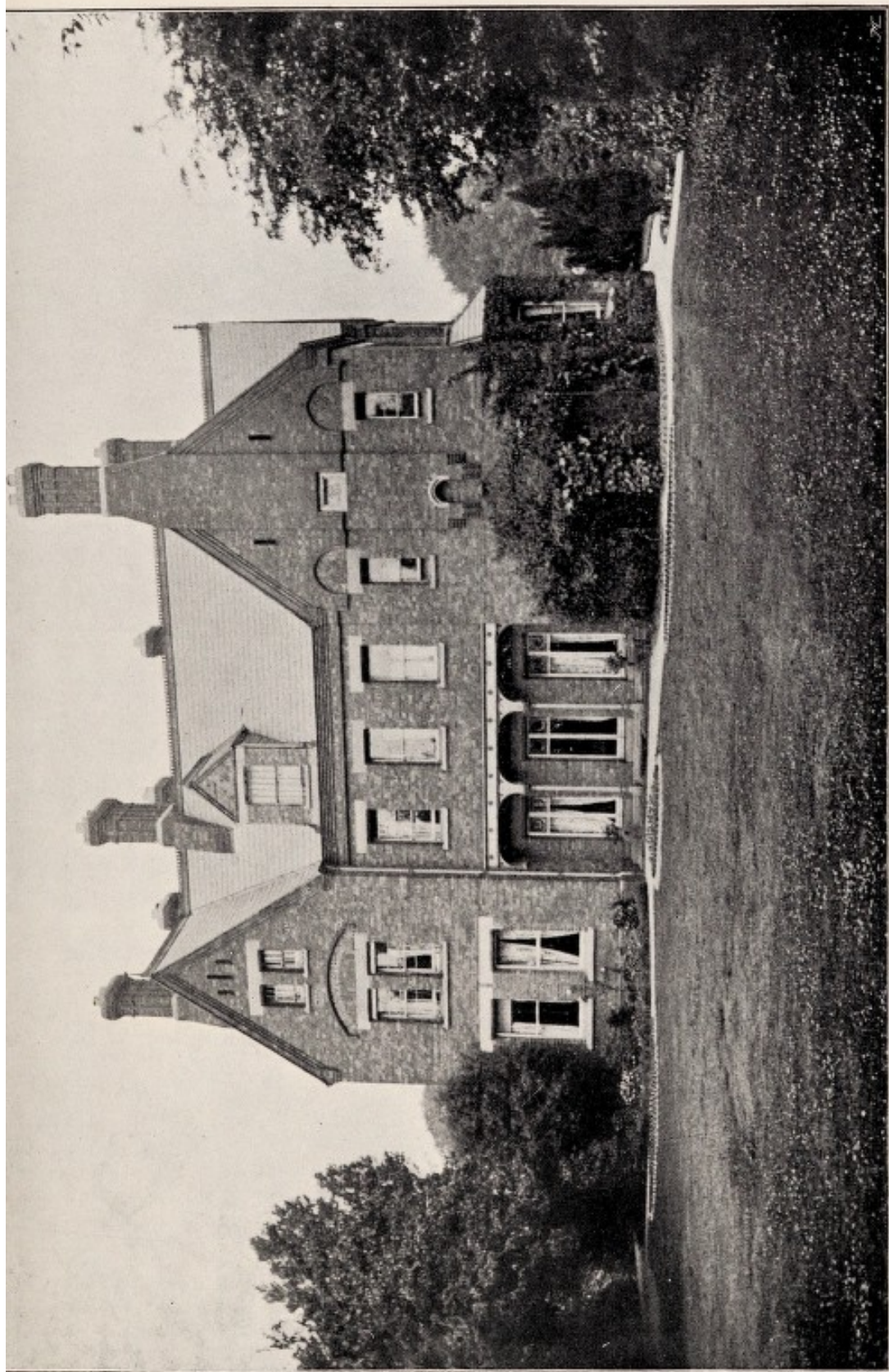
Dryden, Arthur, Esq., Canon's Ashby, Byfield.

Euston, The Earl of, Wakefield Lodge, Stony Stratford.

Exeter, The Marquis of, Burghley House, Stamford.

Fitz-Roy, The Hon. E. A., Fox Hill, West Haddon.

Grafton, The Duke of, K.G., Wakefield Lodge, Stony Stratford.
 Grafton, The Duchess of, Harleston Hall, Northampton.
 Grant, E., Esq., Lichborough Hall, Weedon.
 Grant-Ives, W. D., Esq., Bradden, Towcester.
 Gunning, Sir Charles V., Bart., Benefield, Oundle.
 Hazlehurst, Thomas F., Esq., Cold Ashby, Rugby.
 Henley, The Lord, Watford Court, Rugby.
 Hibbert, P. E. T., Esq., Ashby St. Ledgers, Rugby.
 Hill, Colonel J., C.B., Wollaston Hall, Wellingborough.
 Howard-Vyse, H. H., Esq., Stoke Place, Slough.
 Isham, Sir Vere, Bart., Lamport Hall, Northampton.
 Knightley, Sir Charles V., Bart., Fawsley, Daventry.
 Leicester, The Bishop of, Canonry House, Peterborough.
 Leslie-Melville-Cartwright, T. R. B., Esq., Newbottle Manor, Banbury.
 Lilford, The Lord, Lilford Hall, Oundle.
 Loder, R. B., Esq., Maidwell Hall, Northampton.
 Macdonald, C. Falconar, Esq., Green's Norton, Towcester.
 Manfield, H., Esq., M.P., Moulton Grange, Northampton.
 Manfield, J., Esq., Weston Favell House, Northampton.
 Moore, The Ven. Archdeacon, Benefield Rectory, Oundle.
 Northampton, The Marquis of, Castle Ashby, Northampton.
 Nugent, Lieut.-Colonel J. V., Portaferry, Co. Down.
 Pender, Sir James, Bart., Donhead St. Andrew, Salisbury.
 Percival, F. S., Esq., Portmadoc, North Wales.
 Peterborough, The Bishop of, The Palace, Peterborough.
 Robinson, Sir Frederick V. L., Bart., Cranford St. John, Kettering.
 Sartoris, A. H., Esq., Weekley, Kettering.
 Sawbridge, E. H. B., Esq., Basildon Park, Reading.
 Stockdale, H. M., jun., Esq., Elm Bank, Kettering.
 Strong, C. I., Esq., Thorpe Hall, Peterborough.
 Thicknesse, The Right Rev. Bishop, Oxendon, Market Harborough.
 Thicknesse, The Rev. F. N., Hornsey, London, N.
 Thornton, F. H., Esq., Kingsthorpe Hall, Northampton.
 Thornton, T. W., Esq., Brockhall, Weedon.
 Vaux of Harrowden, The Lord, Harrowden, Wellingborough.
 Verney-Cave, The Hon. A., Stanford, Market Harborough.
 Vernon, B. Wentworth, Esq., Stoke Bruerne Park, Towcester.
 Wake, Sir Herewald, Bart., Courteenhall, Northampton.
 Watson, Rev. Wentworth, Rockingham Castle, Uppingham.
 Wickham, Henry, Esq., Barnwell Castle, Oundle.



FERNSIDE (IN THE HOSPITAL GROUNDS).



COMMITTEE OF MANAGEMENT.

C. Smyth, Esq., Chairman.
 Lieut.-Colonel Rawlins, Vice-Chairman.
 The President and the Vice-Presidents.*
 The Most Honble. The Marquis of Northampton.
 Sir Arthur R. de Capel Brooke, Bart.
 Sir Charles Gunning, Bart.
 Sir Vere Isham, Bart.
 Sir C. V. Knightley, Bart.
 Sir Herewald Wake, Bart.

Major Alexander Bell.	Thos. F. Hazlehurst, Esq.
Rowland D. Carey, Esq.	Colonel J. Hill, C.B.
The Rev. H. H. Crawley.	C. Falconar Macdonald, Esq.
Edward Grant, Esq.	H. M. Stockdale, jun., Esq.

* The President and Vice-Presidents are *Ex-officio* members of all Committees.

Medical Superintendent—

Joseph Bayley, M.R.C.S., Eng., and L.S.A., Lond.

Senior Assistant Medical Officer—

J. H. Bayley, M.B. and C.M., Edin., L.R.C.P., Lond.

Second Assistant Medical Officer—

S. E. Martin, M.B., B.Ch., Edin.

Third Assistant Medical Officer—

N. R. Phillips, M.D., Brux., M.R.C.S., L.R.C.P., Lond.

Chaplain—Rev. John Cunningham.

Accountant—Mr. J. Walker. Clerk—Mr. E. E. Caesar.

Steward—Mr. H. W. Clarke.

SEASIDE HOUSE: BRYN-Y-NEUADD, LLANFAIRFECHAN.

Resident Medical Officer—

M. T. Archdall, L.R.C.P. & S., Edin., L.S.A., Lond.

AT THE
General Stated Annual Court of Governors,

Held on the 25th day of February, 1909,

The Annual Reports of the Committee of Management, the Medical Superintendent, and the Chaplain, and the Audited Accounts for the year 1908, were laid before the Court.

And it was resolved—

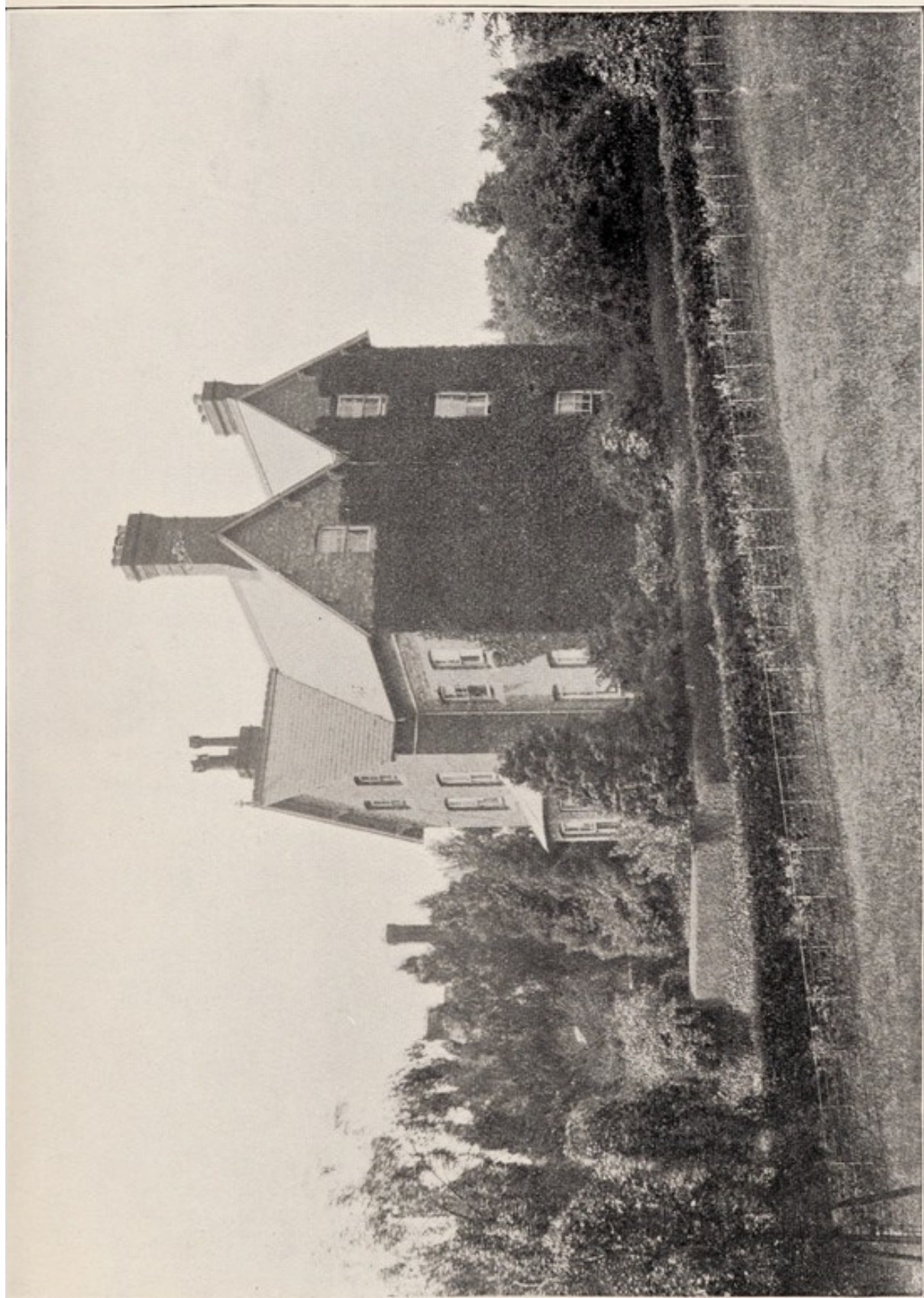
That the above-named Reports and Accounts be approved and adopted ; and that they, together with the usual Financial and Statistical Tables, be published. Also that the Reports of the Commissioners in Lunacy be printed therewith.

It was resolved unanimously—

1. That the Thanks of this Court be presented to the Chairman and Vice-Chairman of the Committee of Management, for the very valuable services they have rendered to the Institution during the past year.
2. That the Thanks of this Court be presented to the Noblemen and Gentlemen composing the Committee of Management, for their very valuable services during the year.
3. That the Thanks of this Court be given to the Officers of the Institution, for their care and attention in carrying on the work of the past year.

The following Annual Appointments were made :—

1. A Committee of Management.
2. A Treasurer.
3. Auditors.



ROSE VILLA (IN THE HOSPITAL GROUNDS).





THE REPORT OF
The Committee of Management,
FOR THE YEAR 1908.

The Committee are thankful to be able to report favourably of the state of the Institution during the year.

The Hospital, and the houses at Moulton Park, and at Bryn-y-Neuadd, North Wales, have been fully occupied during the year. One hundred and eighty-four patients visited the seaside house as compared with 174 in 1907.

The number of admissions (70) has been less by 14 than in 1907.

The average number resident (414) has been greater by 4 than in the previous year.

There has been a decrease of 11 in the number of recoveries, and an increase of 4 in the number of deaths.

The per-centage of recoveries on admissions (excluding transfers from other Asylums) has been 38·09 males, 50·00 females, total, 45·09.

The per-centage of deaths on the total number under treatment has been 5·88 males, 1·51 females, total 3·50.

During the past year the number of patients assisted in their payments has been 101, of whom 45 belonged to the County of Northampton, and 56 were out-county cases. The amount of assistance rendered to make up the payments to the lowest rates ordinarily charged was—county cases, £2,253 14s. od. ; out-county cases, £1,587 19s. od., being a total of £200 9s. od. more than in the previous year.

The result of the working of the Farm at Moulton Park during the past year has been very satisfactory. The balance in favour at the end of the year was £1,194 15s. 2d., as compared with £117 17s. 9d. in 1907.

With regard to the financial state of the Hospital, the receipts from patients amounted to £63,344 10s. od., being about £2,000 more than in any previous year.

The expenditure has been higher than usual, this being caused by the gratuity to the Medical Superintendent, and the taking over of the live and dead stock at Bryn-y-Neuadd.

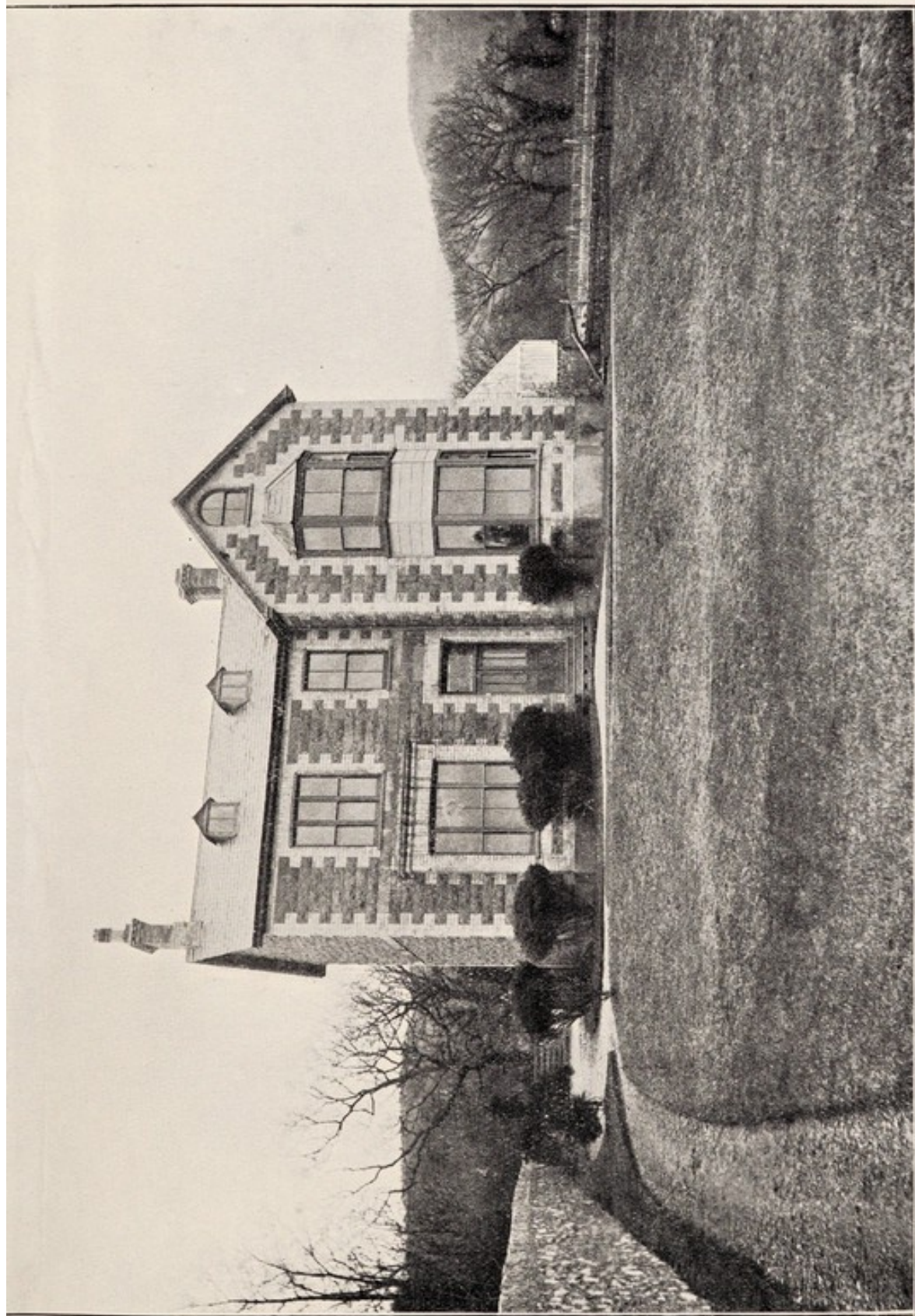
There has been no change in the staff.

H. L. C. Brassey, Esq., has been appointed a Governor.

The Committee desire to record their sense of indebtedness to the Medical Superintendent and the other Officers of the Institution for their able and zealous services during the past year.

C. SMYTH,

Chairman.



“HAFOD FADOG,” ONE OF THE VILLAS AT BRYN-Y-NEUADD.







BRYN-Y-NEUADD HALL & PARK (THE SEASIDE HOUSE OF ST. ANDREW'S HOSPITAL).

THE REPORTS OF The Commissioners in Lunacy.

FIRST VISIT.

3rd JUNE, 1908.

Since this Hospital was visited by two of our colleagues in July, 1907, the following changes have occurred among the patients :—68 have been admitted, 52 have been discharged or removed, of whom 29 had recovered ; and 20 have died. There are today on the books the names of 187 gentlemen and 223 ladies, a total of 410.

The deaths with one exception (that of a lady who committed suicide while out on trial) have all been from natural causes. *Post mortem* examination was made in three instances, and two inquests have been held, one on the case of suicide, and the other on a male patient resulting in a verdict of death from heart disease. The only serious casualty, not resulting in death, was a fracture of the collar bone of a male patient who fell while playing football.

Three gentlemen and 41 ladies are at Bryn-y-Neuadd, and one lady is on leave with her friends. We saw in the course of our inspection yesterday and today the rest of the patients—365 in number, who are in residence at the Hospital and at Moulton Park with their respective dependencies, and in addition one gentleman and one lady who are here as voluntary boarders, the former of whom is unfit to remain on that footing.

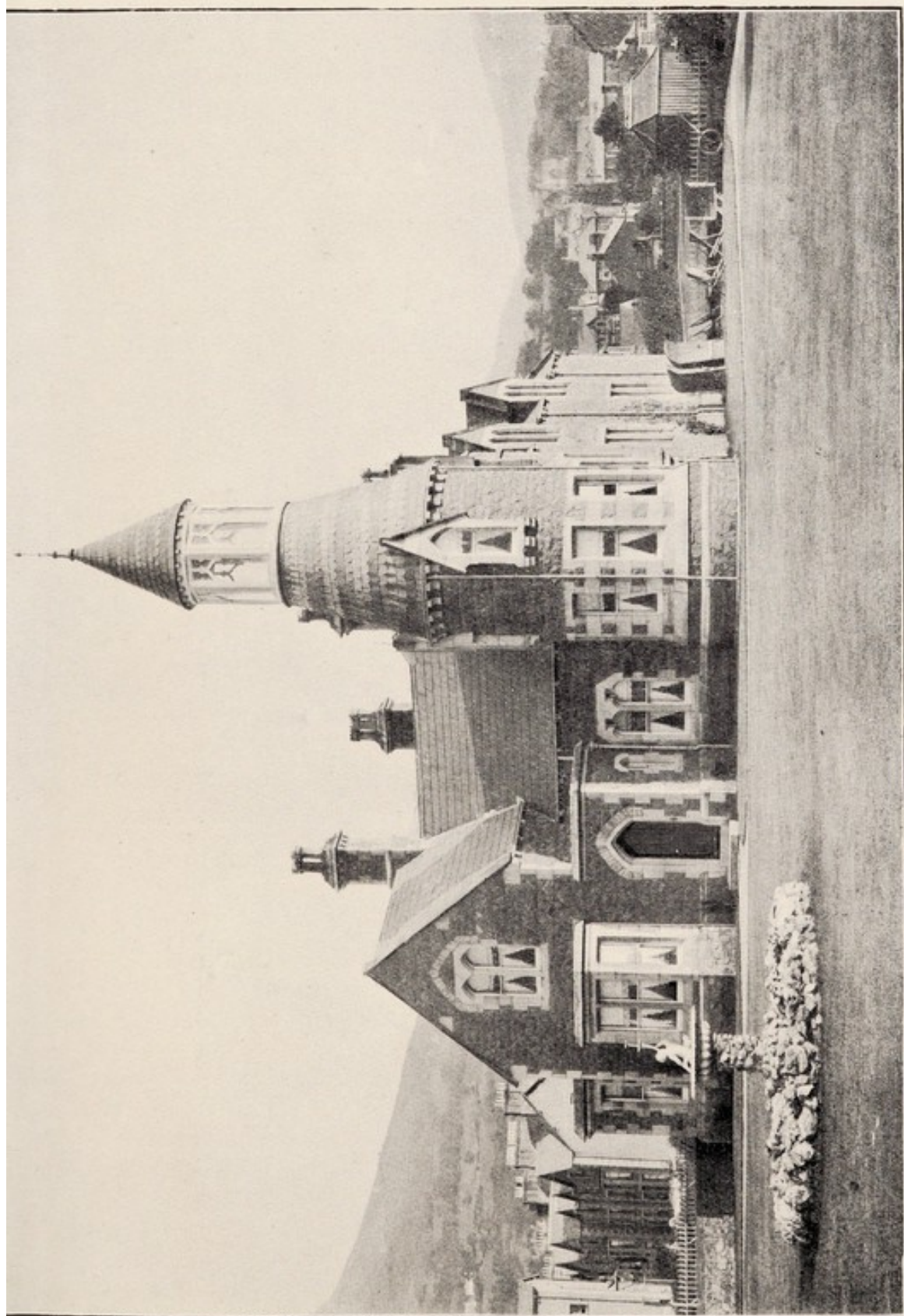
We found the patients well looked after and generally contented with their treatment. The health of the Institution is good, two being in bed on the male side and 6 on the female side, but for the most part not on account of physical illness. We give in the Patients' Book the names of four patients who show mental improvement. To two of each sex we granted at their request private interviews, and we paid special attention to all the newly admitted cases, satisfying ourselves in each instance of the propriety of their detention.

The Hospital and the buildings in connection therewith continue to be maintained in excellent order. In accordance with the recommendation made at the last visit of Commissioners, new padded rooms of the best construction have been provided—one on each side. The scheme of alterations and improvements of the Hospital commenced over 40 years ago has now been completed, and we congratulate the Committee and Mr. Bayley upon the high standard of efficiency to which the Institution has thus been raised. The heavy cost which has been incurred has been borne entirely by income, and in addition a considerable reserve fund has been accumulated. We are glad to learn that the proportion of the income devoted to reducing the charge for maintenance of the poorer patients will in future be largely increased.

Since the last visit 70 patients have been secluded on 977 occasions for a total duration of 5,907 hours; and three have been mechanically restrained on 167 occasions for 3,635 hours in all.

Ninety-four patients usually attend Divine Service on Sundays, and 104 the associated entertainments; 124 are usefully employed. Three of the gentlemen are allowed their parole beyond the grounds, and 87 patients go for walks attended; 90 have carriage exercise from four to eight times a month.

The staff of attendants consists of 59 men and 61 nurses for day, and 6 and 7 respectively for night duty. Forty-five have served in the Institution less than a year, and 40 upwards of 5 years. One male attendant has been dismissed since the last visit for misconduct not directly affecting any of the patients.



“MORANEDD,” ONE OF THE VILLAS AT BRYN-Y-NEUADD.



The average weekly cost of maintenance last year was £2 10s. 4½d. The proportion of those received gratuitously was 0·73 per cent. ; 5·62 per cent. paid 10/- or under ; 5·13, above 10/- and not more than 21/- ; 58·45, above 21/- and not above 42/- ; and 30·07, 42/- and upwards.

L. L. SHADWELL, { Commissioners
SIDNEY COUPLAND, { in Lunacy.



SECOND VISIT.

17th DECEMBER, 1908.

Since our visit in June to this Hospital, 40 patients have been admitted; 21 discharged, of whom 9 had recovered; and 5 have died. These changes leave on the books the names of 424 patients—193 being on the male, and 231 on the female side; and one lady is residing as a voluntary boarder, who is a suitable case to be on that footing.

The deaths were from natural causes with one exception, on which an inquest was held resulting in a verdict of "suicide by drowning." The facts of this case were duly reported at the time to our Board.

We have in the course of our visit yesterday and today seen all the patients—384 in number—who are in residence at the Hospital: and in addition 24 gentlemen and 6 ladies who are on leave at Moulton Park. Seven gentlemen are at Bryn-y-Neuadd, and one gentleman and two ladies are absent on trial.

The health of the Institution is good, and we found none of the male patients in bed; and of the 8 females who were in bed only two were seriously ill. The patients were generally tidy in their dress and persons, and we heard but few complaints. We gave private interviews to ten of them, and satisfied ourselves that each of these was insane and properly detained. In the Patient's Book we give the names of those who appeared to be mentally improved.

The Hospital and its dependencies continue to be maintained in excellent order.

Mechanical restraint has since the last visit been employed in the cases of two patients on each side on 242 occasions, for an aggregate of 2,644 hours; and 51 patients have been secluded on 1,433 occasions for 3,767 hours in all.

Two female patients have during the period been attacked by erysipelas; but there have been no other cases of zymotic disease.

The factory inspector has visited the Hospital and made certain recommendations, all of which have been carried out.

L. L. SHADWELL, { Commissioners
SIDNEY COUPLAND, { in Lunacy.

BRYN-Y-NEUADD,

LLANFAIRFECHAN,

NORTH WALES,

28th JULY, 1908.

I found 42 gentlemen residing in this house today; they arrived, most of them, last week; the ladies who have been here for the last few weeks having returned to St. Andrew's. I saw all the present inmates except one who was out for the day cycling. They were all in good health, and appear to be appreciating the change. They are very well looked after, and no pains are spared to make them happy and contented.

The bedrooms which were added last year are now in full occupation, and are proving very useful.

Four gentlemen are now residing at Hafod Fadog, which is proving thoroughly suitable for its purpose.

The whole place is maintained in capital order, and was looking very bright and attractive.

A. H. TREVOR,

Commissioner in Lunacy.

THE REPORT OF
The Medical Superintendent,
FOR THE YEAR 1908.

MY LORDS AND GENTLEMEN,

I beg leave to submit to you my Annual Report for the year 1908.

On January 1st, 1908, there were 415 patients in the Hospital: of these 189 were males and 226 females.

During the year, 70 patients have been admitted—32 males and 38 females.

Forty-five patients have been discharged—16 males and 29 females.

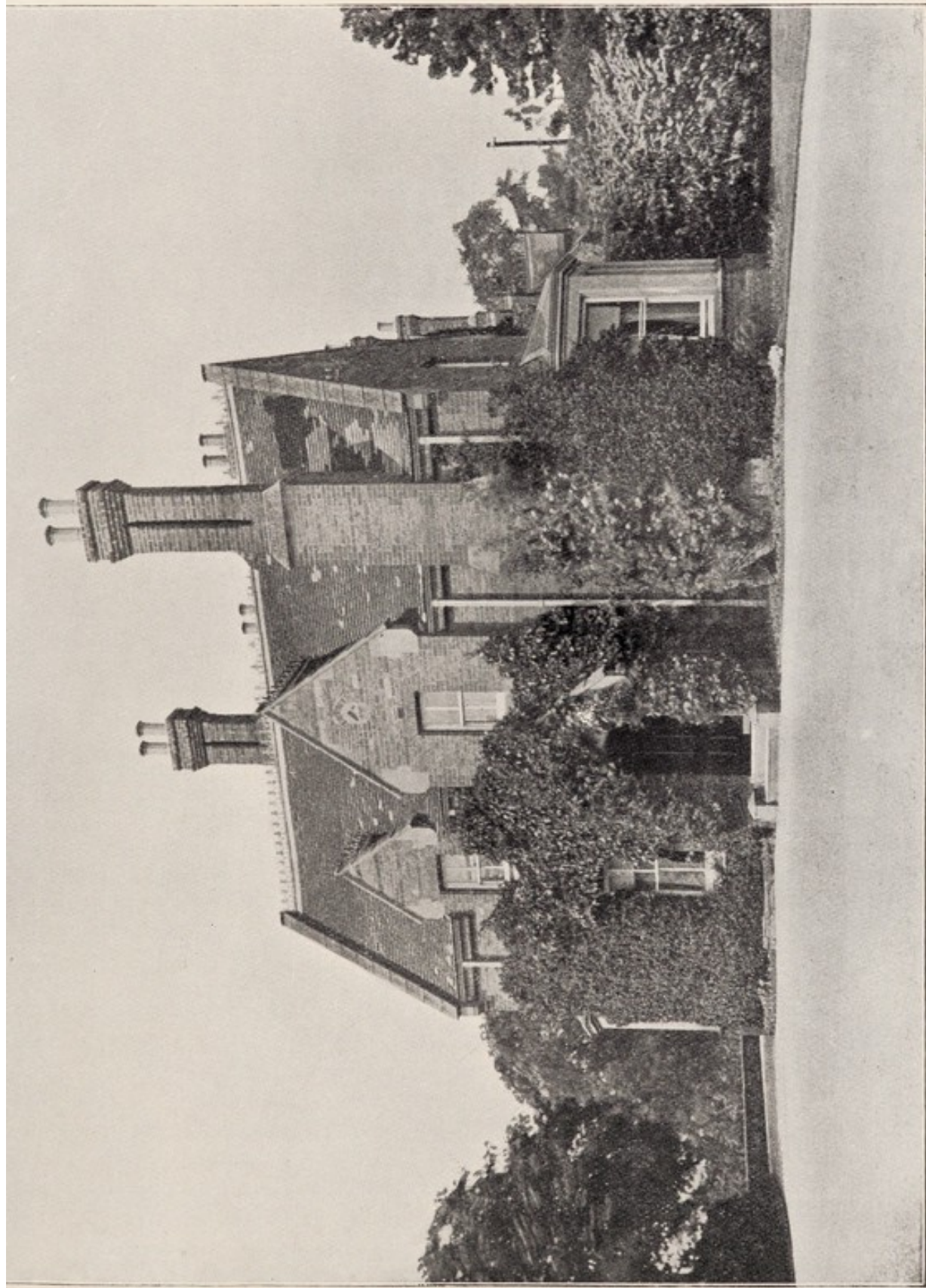
Seventeen deaths have occurred: 13 males and 4 females.

The total number under treatment during the year was 485: of these, 221 were males and 264 females.

The average number resident has been 414—188 males and 226 females.

The numbers remaining on the books of the Hospital on December 31st, 1908, were 192 males and 231 females, total 423.

As the Statistical Tables (as altered by the Medico-Psychological Association) take up so much more space than formerly, they have been placed at the end of this report.



MOULTON PARK HOUSE (2 MILES FROM ST. ANDREW'S HOSPITAL).



Five males and 8 females admitted during the year had been previously under treatment in the Hospital.

The number discharged—45—includes 23 recovered : 8 males and 15 females.

The per-centage of recoveries on the total number of admissions during the year has been 25·00 males, 39·47 females, total 32·85.

The proportion per cent. of recoveries on admissions (excluding transfers from other Asylums) has been 38·09 males, 50·00 females, total 45·09.

The per-centage of deaths on the average number resident has been 6·91 males, 1·76 females, total 4·10.

The per-centage of deaths on the total number under treatment has been 5·88 males, 1·51 females, total 3·50.

In the past year, as compared with 1907, there is a decrease of 14 in the number of admissions.

There is a decrease of 11 in the number of recoveries.

The average number resident has been greater by 4 than in 1907.

The total number under treatment has been less by 11 than in the year 1907.

All the deaths have been from natural causes except one male who committed suicide by drowning.

This gentleman had been in the habit of walking in the grounds with his wife, and on this occasion when at the bottom of the park he refused to return to the Hospital with her. Instead of calling to her assistance two or three of the gardeners who were close at hand, she left her husband alone and came back to the Hospital to fetch the attendant. During her absence the patient escaped, and although every effort was made to find him nothing could be seen of him. He was found in the river on the following morning, having drowned himself. An inquest was held, and full reports were also sent to the Commissioners in Lunacy. The jury returned a verdict of "suicide whilst insane," not blaming anyone.

No case of infectious disease has occurred in the Hospital, or in any of the houses belonging to it, at Moulton Park or at Llanfairfechan.

The number of patients who have visited Bryn-y-Neuadd, our seaside house at Llanfairfechan, has been 184, the largest on record; and the house and villas have been occupied during the whole of the year. Many patients now prefer to remain there all the year round. Dr. Archdall, the Resident Medical Officer, has been most zealous in his work: and the advantage of having a gentleman who can combine the position of Medical Officer and Manager at the head of the establishment has been very evident.

A very large number of patients continue to be usefully employed, as will be seen by the average number stated below:—

MALES.		FEMALES.	
On Farm and Garden	56	Needlework	69
In Upholsterer's Shop	6	Linen Room	1
„ Printer's Shop	3	Dining Hall	3
„ Painter's Shop	1	Dormitories	4
Clerical work and Library...	4	Other work	9
Various	26		
	—		—
	96		86

The following is the list of amusements and entertainments which have been given during the year:—

Hockey Matches	35	Parties to Cricket Matches*	21
Football „	6	Theatre in Town	44
Cricket „	30	Concerts in Town.....	8
Croquet Tournaments.....	11	Smoking Concerts	11
Band on Terrace	18	Other Concerts	2
Boating Parties.....	5	Theatricals.....	10
Billiard Handicaps	5	Dances	5
Parties to Shows	5	Whist Drives	6
„ Football Matches*	24	Excursions	21

* Outside the Grounds.



THE CRICKET GROUND, ST. ANDREW'S HOSPITAL.



STATISTICAL TABLES.

For the Year ending 31st December, 1908.

The following works have been carried out :—

At the Hospital :

A Cricket Pavilion has been built.

At Bryn-y-Neuadd, Llanfairfechan :

- (1) Early in the year it was decided to build a house for the Resident Medical Officer. This work is still in hand.
- (2) A considerable addition has been made to the sea wall, which is now completed. This is a great improvement to the estate, and it makes a splendid promenade of about a mile in length along the sea front.

Land in Wales :

In accordance with the decision of the Governors, arrived at some time since, Mr. Hughes, the tenant, gave up the land at Bryn-y-Neuadd in November last, and it is now (like the land at Moulton Park) in our own hands. It is full early to say much about the result from a farming point of view, but there can be no doubt that it is a great advantage in securing the privacy of the park and grounds.

There has been no change in the staff of officers during the year.

The Hospital has been visited as usual during the year by the Commissioners in Lunacy and the Lord Chancellor's Visitors.

I must acknowledge the valuable assistance which I have received from the Assistant Medical Officers, who have performed their duties in a most punctual, methodical, and satisfactory manner.

In my last report I was glad to be able to state that the alterations which the Committee of Management had made in the different administrative departments worked very satisfactorily. I am very pleased to be able to repeat this report. All the members of the clerical staff have been most regular and punctual in their duties, and I have never known the work in these departments to run as smoothly as it does at the present time.

The conduct of the attendants and nurses, and of the staff generally, has been very satisfactory during the year.

To the Committee of Management, and to the Governors generally, I beg to tender my sincere thanks for their great kindness, and for the support and valuable assistance they have at all times given me in the performance of my duties.

I have the honour to be,

My Lords and Gentlemen,

Your obedient Servant,

J. BAYLEY,

January, 1909.

Medical Superintendent.





THE BOWLING GREEN, ST. ANDREW'S HOSPITAL.



TABLE A 1.—General Table, showing the movement of the Asylum Population during the year 1908.

	CERTIFIED PATIENTS.						VOLUNTARY BOARDERS.					
	M.	F.	T.	M.	F.	T.	M.	F.	T.	M.	F.	T.
On the Asylum Registers, Jan. 1st, 1908	189	226	415				3	3	6			
Total cases admitted during the year ...	32	38	70									
Total cases under treatment during the year ...				221	264	485				3	3	6
Cases discharged or transferred during the year—												
Recovered ...	8	15	23									
Relieved ...	2	5	7									
Not improved ...	6	9	15									
Died during the year ...	13	4	17									
Total cases discharged, transferred, and died during the year ...				29	33	62				3	2	5
On the Asylum Registers, Dec. 31st, 1908				192	231	423				—	1	1
Average daily number on the Registers during the year ...				188	226	414						
Certified Persons (<i>i.e.</i> , separate persons in contradistinction to “cases,” which may include the same individual more than once).												
							M.	F.	T.			
Certified Persons under care during the year ...							221	261	482			
“ ” admitted ...							32	35	67			
“ ” recovered ...							8	15	23			



TABLE A 2.—General Table, showing the movement of the Asylum Population during each year since the year 1838, together with the Recovery and Death Rates (excluding Voluntary Boarders).

YEAR.	Admissions.									Total Number under Treatment.									Discharged or Transferred.									Died.									Remaining on Registers 31st December.									Average Daily Number on Registers.									Percentage of Total Recoveries on the Total Number of Admissions.									Percentage of Total Recoveries on the Direct Admissions.									Percentage of Recoveries yielded by Direct Admissions on the Direct Admissions.									Percentage of Deaths on Average Daily Number on Registers.																																																																																																																																																																																																																																																																																																																																																																																																																																																																																																																																																																																																																																																																																																																																																																																																																																																																																																																																																																																																																																																																																																																																																																																																																																																																																																																																																																																																																																																																																									
	Direct.			Indirect.			Total.			M.			F.			T.			Recovered.			Relieved.			Not Improved.			M.			F.			T.			M.			F.			T.			M.			F.			T.			M.			F.			T.			M.			F.			T.			M.			F.			T.			M.			F.			T.			M.			F.			T.			M.			F.			T.			M.			F.			T.			M.			F.			T.			M.			F.			T.			M.			F.			T.			M.			F.			T.			M.			F.			T.			M.			F.			T.			M.			F.			T.			M.			F.			T.			M.			F.			T.			M.			F.			T.			M.			F.			T.			M.			F.			T.			M.			F.			T.			M.			F.			T.			M.			F.			T.			M.			F.			T.			M.			F.			T.			M.			F.			T.			M.			F.			T.			M.			F.			T.			M.			F.			T.			M.			F.			T.			M.			F.			T.			M.			F.			T.			M.			F.			T.			M.			F.			T.			M.			F.			T.			M.			F.			T.			M.			F.			T.			M.			F.			T.			M.			F.			T.			M.			F.			T.			M.			F.			T.			M.			F.			T.			M.			F.			T.			M.			F.			T.			M.			F.			T.			M.			F.			T.			M.			F.			T.			M.			F.			T.			M.			F.			T.			M.			F.			T.			M.			F.			T.			M.			F.			T.			M.			F.			T.			M.			F.			T.			M.			F.			T.			M.			F.			T.			M.			F.			T.			M.			F.			T.			M.			F.			T.			M.			F.			T.			M.			F.			T.			M.			F.			T.			M.			F.			T.			M.			F.			T.			M.			F.			T.			M.			F.			T.			M.			F.			T.			M.			F.			T.			M.			F.			T.			M.			F.			T.			M.			F.			T.			M.			F.			T.			M.			F.			T.			M.			F.			T.			M.			F.			T.			M.			F.			T.			M.			F.			T.			M.			F.			T.			M.			F.			T.			M.			F.			T.			M.			F.			T.			M.			F.			T.			M.			F.			T.			M.			F.			T.			M.			F.			T.			M.			F.			T.			M.			F.			T.			M.			F.			T.			M.			F.			T.			M.			F.			T.			M.			F.			T.			M.			F.			T.			M.			F.			T.			M.			F.			T.			M.			F.			T.			M.			F.			T.			M.			F.			T.			M.			F.			T.			M.			F.			T.			M.			F.			T.			M.			F.			T.			M.			F.			T.			M.			F.			T.			M.			F.			T.			M.			F.			T.			M.			F.			T.			M.			F.			T.			M.			F.			T.			M.			F.			T.			M.			F.			T.			M.			F.			T.			M.			F.			T.			M.			F.			T.			M.			F.			T.			M.			F.			T.			M.			F.			T.			M.			F.			T.			M.			F.			T.			M.			F.			T.			M.			F.			T.			M.			F.			T.			M.			F.			T.			M.			F.			T.			M.			F.			T.			M.			F.			T.			M.			F.			T.			M.			F.			T.			M.			F.			T.			M.			F.			T.			M.			F.			T.			M.			F.			T.			M.			F.			T.			M.			F.			T.			M.			F.			T.			M.			F.			T.			M.			F.			T.			M.			F.			T.			M.			F.			T.			M.			F.			T.			M.			F.			T.			M.			F.			T.			M.			F.			T.			M.			F.			T.			M.			F.			T.			M.			F.			T.			M.			F.			T.			M.			F.			T.			M.			F.			T.			M.			F.			T.			M.			F.			T.			M.			F.			T.			M.			F.			T.			M.			F.			T.			M.			F.			T.			M.			F.			T.			M.			F.			T.			M.			F.			T.			M.			F.			T.			M.			F.			T.			M.			F.			T.			M.			F.			T.			M.			F.			T.			M.			F.			T.			M.</		



TABLE B 2.—Showing the Duration of the present attack of Mental Disorder on Admission in the Admissions during the year 1908, distinguishing between the Direct and the Transfers, and stating (in those not congenital) whether First Attack or not (Voluntary Boarders excluded).

DIRECT ADMISSIONS.												
DURATION OF MENTAL DISORDER Prior to Admission.	First attack.			Not first attack.			Unknown whether first attack or not.			Total.		
	M.	F.	T.	M.	F.	T.	M.	F.	T.	M.	F.	
Less than 2 weeks	3	2	5	3	2	5	6	4	10
2 weeks and less than 1 month	1	2	3	...	1	1	...	1	...	1	4	5
1 month	1	4	5	4	3	7	5	7	12
3 months	1	4	5	1	...	1	2	4	6
6 "	1	1	2	...	1	1	1	2	3
9 "	1	...	1	...	1	1	1	1	2
12 "	...	1	1	1	...	1	1	1	2
18 "	...	2	2	2	2
2 years	3	1	4	3	1	4
3 "	1	1	1	1
20 "	1	...	1	1	...	1
Duration unknown	...	1	1	1	1
Congenital cases												
	1	1
Totals	12	18	30	9	9	18	...	1	1	21	29	50



TABLE B 3.—Showing the Ages and Civil State on Admission, in the Admissions, Direct and Transfers grouped together, and in the Congenital Cases of the Direct Admissions (Voluntary Boarders excluded)

[illegible]



(Voluntary Boards excluded).

[illegible]



TABLE B 6.—Showing the Occupations of the Direct Admissions, excluding the Congenital Cases, during the year 1908, distinguishing between First-Attack Cases, Not-First-Attack Cases, and Cases Unknown-whether-First-Attack-or-not; and, in respect of the First-Attack Cases, arranged according to the age at Commencement of the Mental Disorder (Voluntary Boarders excluded).

SYMBOL.			NAME OF OCCUPATIONS.	FIRST ATTACK CASES.																				Not-First-Attack Cases.			Unknown-whether-First-Attack-or-not.			Total Direct Admissions, excluding Congenital Cases.					
Group.	Sub-group.	Sub-division.		Age at commencement of the Mental Disorder.																		Total.													
				10—14		15—19		20—24		25—34		35—44		45—54		55—64		65—74		75 and upwards.													Not known.		
				M.	F.	M.	F.	M.	F.	M.	F.	M.	F.	M.	F.	M.	F.	M.	F.	M.	F.														
				A	a	1	Post-master	1	...	1	1	...	1
A	a	1	Customs Officer	1	...	1	1	...	1			
A	a	1	Colonial Civil Service	1	1	...	1	...	2	...	2				
C	a	1	Clerk in Holy Orders	1	1	...	1	...	1	...	1				
C	b	1	Barrister	1	1	...	1	...	1	...	1				
C	e	1	Journalist	1	...	1	1	...	1			
C	g	4	Teacher of Music	1	1	...	1	...	1	...	1				
E	a	1	Shipping Merchant	1	1	...	1	1	...	1			
E	b	1	Private Secretary	1	1	...	1	1	...	1			
E	c	1	Bank Manager	1	1	...	1	1	...	1			
F	a	1	Railway Clerk	1	1	...	1	1	...	1			
G	a	11	Agricultural Student	1	1	1	...	1	1	...	1			
I	a	12	Coal Agent	1	1	...	1	1	...	1			
R	b	1	Printer's Apprentice	1	2	...	2	2	...	2	...	2		
V	a	16	Grocer	2	1	1	...	1	...	2	...	2	...	2		
Y	a	3	Of Independent Means...	2	4	...	3	...	4	...	1	1	...	1	2	15	17	4	7	11	...	1	1			
Y	a	4	Of no Occupation	1	2	15	17	4	7	11	...	1	1			
				Totals ...																				12	18	30	9	9	18	...	1	1	21	28	49



TABLE B 5.—Showing the Form of Mental Disorder on admission in the Direct Admissions and Transfers during the year 1908 (Voluntary Boarders excluded).

FORMS OF MENTAL DISORDER.		Direct Admissions.			Transfers.			Totals.		
		M.	F.	T.	M.	F.	T.	M.	F.	T.
Congenital or infantile mental deficiency (idiotcy or imbecility) occurring as early in life as it can be observed.	1. Intellectual { <i>a.</i> With epilepsy
	<i>b.</i> Without epilepsy	1	1	1	1
	2. Moral
INSANITY OCCURRING LATER IN LIFE.	1. Insanity with epilepsy
	2. General paralysis of the insane ...	1	...	1	1	...	1
	3. Insanity with grosser brain lesions
	4. Acute delirium
	5. Confusional insanity
	6. Stupor
	7. Primary dementia ...	3	2	5	3	2	5
	8. Mania { <i>a.</i> Recent ...	3	10	13	1	2	3	4	12	16
	<i>b.</i> Chronic	1	1	1	4	5	1	5	6
	<i>c.</i> Recurrent ...	4	4	8	1	2	3	5	6	11
	9. Melancholia { <i>a.</i> Recent ...	2	7	9	1	...	1	3	7	10
	<i>b.</i> Chronic	1	1	...	1	1
	<i>c.</i> Recurrent ...	1	3	4	1	...	1	2	3	5
	10. Alternating insanity
	11. Delusional insanity { <i>a.</i> Systematised
	<i>b.</i> Non-systematised ...	1	...	1	1	...	1	2	...	2
	12. Volitional insanity { <i>a.</i> Impulse ...	1	...	1	1	...	1	2	...	2
	<i>b.</i> Obsession
	<i>c.</i> Doubt
	13. Moral insanity
	14. Dementia { <i>a.</i> Senile ...	2	...	2	2	...	2	4	...	4
	<i>b.</i> Secondary ...	3	1	4	2	...	2	5	1	6
Totals ...		21	29	50	11	9	20	32	38	70



TABLE C 2.—Showing in the Total Cases Discharged Recovered during the year 1908, the Ages in Quinquennial Periods—(a) On Recovery, and (b) at the Commencement of the Recent Attack of Mental Disorder, arranged according to the Total Length of such Attack (Voluntary Boarders excluded).

AGE PERIODS ...	Less than 10		10-14		15-19		20-24		25-29		30-34		35-39		40-44		45-49		50-54		55-59		60-64		65-69		70-74		75-79		80-84		Age unknown.		Total.			
	M.	F.	M.	F.	M.	F.	M.	F.	M.	F.	M.	F.	M.	F.	M.	F.	M.	F.	M.	F.	M.	F.	M.	F.	M.	F.	M.	F.	M.	F.	M.	F.	M.	F.	T.			
AGE ON RECOVERY	1	2	...	1	2	1	...	4	1	1	1	2	...	2	1	2	2	8	15	23	
Total Length of this Attack of Mental Disorder.	AGE AT COMMENCEMENT OF RECENT ATTACK OF MENTAL DISORDER.																																					
Less than 1 month	
1 month and less than 3 months	1	1	1	1	1	1	1	2	1	3	
3 months	1	1	1	3	2	5		
6 "	1	1	2	3		
9 "	1	4	2	4	
12 "	2	2	1	2	
18 "	1	1	2	1
2 years	1	...	1	1	2	1
3 "	1	1	1	2	
5 "	1	1	
Duration unknown	
Totals	1	3	1	1	1	4	1	2	1	1	...	2	1	...	1	1	1	1	8	15	23		



TABLE C 3.—Showing the Form of Mental Disorder, on admissions, in those Discharged Recovered during the year 1908 (Voluntary Boarders excluded).

Forms of Mental Disorder (on Admission).	M.	F.	T.
1. Intellectual—			
<i>a.</i> With Epilepsy
<i>b.</i> Without Epilepsy	1	1	2
2. Moral
1. Insanity occurring later in life—			
1. Insanity with Epilepsy
2. General Paralysis of the Insane
3. Insanity with the grosser brain lesions
4. Acute Delirium (acute delirious mania)
5. Confusional Insanity
6. Stupor...
7. Primary Dementia
8. Mania—			
<i>a.</i> Recent	4	4	8
<i>b.</i> Chronic...
<i>c.</i> Recurrent	7	7
9. Melancholia—			
<i>a.</i> Recent	2	2	4
<i>b.</i> Chronic...
<i>c.</i> Recurrent	1	1
10. Alternating Insanity—			
<i>a.</i> Systematised
<i>b.</i> Non-Systematised
12. Volitional Insanity—			
<i>a.</i> Impulse
<i>b.</i> Obsession
<i>c.</i> Doubt
13. Moral Insanity
14. Dementia—			
<i>a.</i> Senile
<i>b.</i> Secondary or Terminal	1	...	1
Totals	8	15	23



TABLE C 4.—Showing the Aetiological Factors ascertained in the Recoveries during the year 1908, distinguishing between cases—First-Attack, Not-First-Attack, and Unknown-whether-First-Attack-or-Not (Voluntary Boarders excluded).

AETIOLOGICAL FACTORS AND ASSOCIATED CONDITIONS.		FIRST-ATTACK CASES.									NOT-FIRST-ATTACK CASES.									CASES UNKNOWN-WHETHER-FIRST-ATTACK-OR-NOT.									TOTAL DIRECT RECOVERIES.								
		Principal.			Contributory.			Total Incidence.			Principal.			Contributory.			Total Incidence.			Principal.			Contributory.			Total Incidence.			Total Principal.			Total Contributory.			Grand Total Incidence.		
		Instances where regarded as the essential or chief factor.			Instances where regarded as a contributory factor or associated condition.						Instances where regarded as the essential or chief factor.			Instances where regarded as a contributory factor or associated condition.						Instances where regarded as the essential or chief factor.			Instances where regarded as a contributory factor or associated condition.						Total instances where regarded as the essential or chief factor.			Total instances where regarded as contributory factor or associated condition.					
		M.	F.	T.	M.	F.	T.	M.	F.	T.	M.	F.	T.	M.	F.	T.	M.	F.	T.	M.	F.	T.	M.	F.	T.	M.	F.	T.	M.	F.	T.	M.	F.	T.			
A. HEREDITY (excluding cousins, nephews, nieces and offspring).		1		1			1		1																		1		1				1		1		
1. Insane		1		1			1		1																		1		1				1		1		
2. Epileptic																																					
3. Neurotic (including only Hysteria, Neurasthenia, Spasmodic (idiopathic) Asthma and Chorea)																																					
4. Eccentricity (in marked degree)																																					
5. Alcoholism																																					
B. MENTAL INSTABILITY, as revealed by—																																					
1. Moral Deficiency																																					
2. Congenital Mental Defect, not amounting to Imbecility		1	1	2			1	1	2				3	3					3	3							1	4	5				1	4	5		
3. Eccentricity																																					
C. DEPRIVATION OF SPECIAL SENSE.																																					
1. Smell or Taste																																					
2. Hearing																																					
3. Sight																																					
D. CRITICAL PERIODS.																																					
1. Puberty Adolescence																																					
2. Climacteric																																					
3. Senility																																					
E. CHILD-BEARING.																																					
1. Pregnancy																																					
2. Puerperal State (not septic)																																					
3. Lactation																																					
F. MENTAL STRESS.																																					
1. Sudden																																					
2. Prolonged		3	4	7			3	4	7				2	2					2	2							3	6	9				3	6	9		
G. PHYSIOLOGICAL DEFECTS AND ERRORS.																																					
1. Malnutrition in early life (signs of Rickets, etc.)																																					
2. Privation and Starvation																																					
3. Over-exertion (physical)																																					
4. Masturbation																																					
5. Sexual excess																																					
H. TOXIC.																																					
1. Alcohol		1		1			1		1																		1		1				1		1		
2. Drug Habit (morphia, cocaine, etc.)																											1		1								
3. Lead and other such poisons																																					
4. Tuberculosis																																					
5. Influenza																																					
6. Puerperal Sepsis																																					
7. Other Specific Fevers																																					
8. Syphilis, acquired																																					
9. Syphilis, congenital																																					
10. Other Toxins																																					
I. TRAUMATIC.																																					
1. Injuries																																					
2. Operations																																					
3. Sunstroke																																					
K. DISEASES OF THE NERVOUS SYSTEM.																																					
1. Lesions of Brain																																					
2. Lesions of Spinal Cord and Nerves																																					
3. Epilepsy																																					
4. Other defined Neuroses (limited to Hysteria, Neurasthenia, Spasmodic Asthma, and Chorea)																																					
5. Other Neuroses which occurred in Infancy or Childhood (limited to Convulsions and Night-terrors)																																					
L. OTHER BODILY AFFECTIONS.																																					
1. Hemopoietic System (Anæmia, etc.)																																					
2. Cardio-vascular degeneration																																					
3. Valvular Heart Disease																																					
4. Respiratory System (excluding Tuberculosis)																																					
5. Gastro-intestinal System																																					
6. Renal and Vesical System																																					
7. Generative System (excluding Syphilis)																																					
8. Other General Affections, not included above (e.g. Diabetes, Myxædema, etc.)																																					
M. CASES IN WHICH NO PRINCIPAL FACTOR COULD WITH CERTAINTY BE ASSIGNED, but in which one or more factors were ascertained and were returned as contributory																																					
N. NONE ASSIGNABLE, notwithstanding full History and Observation																																					
O. NONE ASCERTAINED, History defective																																					
Totals		7	6	13	Total First-Attack Cases.			1	9	10	Total Not-First-Attack Cases.			Total Cases Unknown-whether-First-Attack-or-not.			8	15	23	Total Direct Recoveries.																	



TABLE C 6.—Showing in the Recoveries during the Year 1908 the duration of the present attack previous to admission, either direct to this Institution or to any other Institution under the existing Reception Order, and also the Duration of Residence (including absence "on leave") in this and any other Institution from which the patient may have been transferred, arranged according to whether the attack is the "First," "Not First," or "Unknown whether First or not" (Voluntary Boarders excluded).

[illegible]



TABLE D 1.—Showing all the Causes of Death that entered into the Deaths during the year 1908, arranged as Principal, Contributory, and the Totals of these; also the number of times each Cause (whether Principal or Contributory) was associated with certain Selected Causes; and the number of occasions each principal Cause of Death was verified by Post-mortem Examination (Voluntary Boarders excluded).

[illegible]



TABLE D 2.—Showing the Principal cause of death in each death during the year 1908, together with the ages at death in quinquennial periods
(Voluntary Boarders excepted).

PRINCIPAL CAUSES OF DEATH.	AGES AT DEATH IN QUINQUENNIAL PERIODS.																														
	Less than 10		10—14		15—19		20—24		25—29		30—34		35—39		40—44		45—49		50—54		55—59		60—64		65—69		70 and over.		Total.		
	M.	F.	M.	F.	M.	F.	M.	F.	M.	F.	M.	F.	M.	F.	M.	F.	M.	F.	M.	F.	M.	F.	M.	F.	M.	F.	M.	F.	T.		
Abscess	1	1	...	1		
Asphyxia by Drowning	1	1	...	1			
Cancer of Breast	1	1	...	1		
Enteritis	1	...	1		
General Paralysis of Insane	1	...	1		
Heart, Fatty Degeneration of	1	1	...	1		
Intestinal Obstruction (Strangulation)	1	1	...	1	
Mania, Exhaustion from	4	3	4	3	7		
Senile Decay	1	1	...	1		
Syncope...	1	1	...	1		
Urethra, Stricture of		
Totals	2	2	...	3	...	2	...	4	4	13	4	17	





TABLE E 1.—Showing the ages (in quinquennial periods) of those on the Registers on the 31st December, 1908, arranged according to the Total Duration of present Attack of Mental Disorder (Voluntary Boarders excluded).

Total duration of present attack of mental disorder.	AGES on 31st December, 1908, of those on Registers at that date.																				Totals.												
	15—19		20—24		25—29		30—34		35—39		40—44		45—49		50—54		55—59		60—64					65—69		70—74		75—80		80—84		85 and over.	
	M.	F.	M.	F.	M.	F.	M.	F.	M.	F.	M.	F.	M.	F.	M.	F.	M.	F.	M.	F.	M.	F.	M.	F.	M.	F.	M.	F.	M.	F.	T.		
Congenital	1	1	1	2	...	1	2	1	1	5	5	10
Less than 3 months	2	1	2	1	2	2	2
3 months and less than 6 months	1	1	...	1	1	1	...	1	1	1	4	4	8
6 " " " " " "	...	1	...	1	3	...	2	1	1	1	4	...	3	1	2	3	1	12	12	24	
12 " " " " " "	...	1	...	2	1	1	1	1	4	3	7	
18 " " " " " "	...	2	...	1	3	1	2	1	3	1	...	1	...	2	3	6	9	
2 years " " " "	...	3	...	2	3	1	2	4	2	2	2	2	4	...	3	1	...	1	...	1	1	11	17	28	
3 " " " " " "	...	10	...	3	...	2	3	4	10	3	4	4	2	4	...	1	3	3	6	...	2	1	1	1	17	28	45	
5 " " " " " "	...	1	...	3	1	3	3	4	10	3	4	4	2	5	2	9	1	3	3	6	...	2	3	1	1	30	41	71	
10 " " " " " "	1	...	6	1	8	7	9	10	7	10	6	5	4	6	4	9	2	3	1	1	...	3	48	55	103	
20 " " " " " "	3	1	5	3	8	8	4	2	1	3	3	36	26	62	
30 " " " " " "	2	1	7	1	3	...	5	16	24	40	
40 " " " " " "	6	2	1	3	3	6	9	
50 " " " " " "	1	2	1	...	2	2	4	
60 " " " " " "	1	1	...	1	
Totals	2	1	7	4	10	8	18	15	23	20	20	21	22	28	23	32	17	29	31	23	6	19	6	15	2	10	4	6	1	1	192	231	423



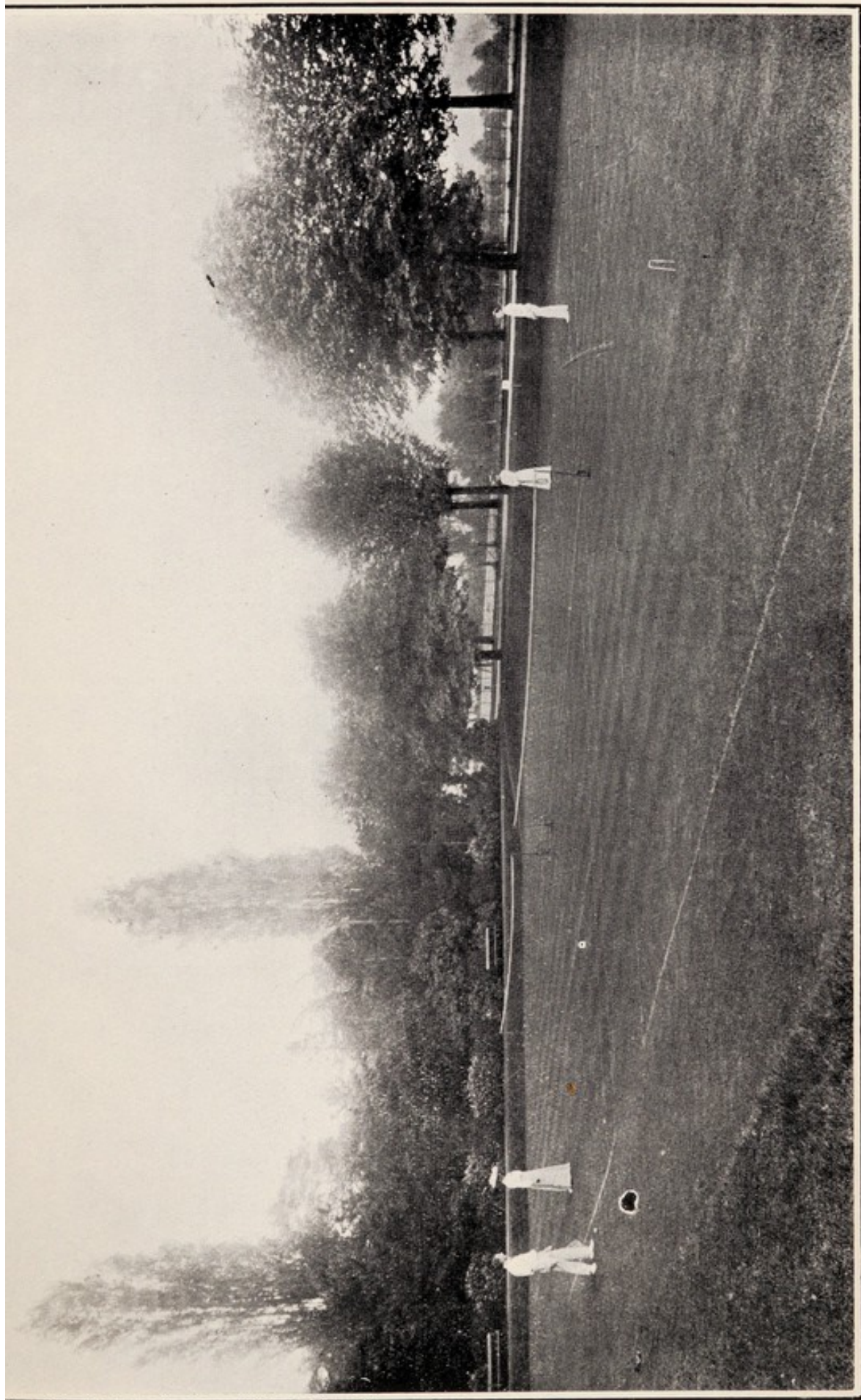
TABLE E 2.—Showing the Form of Mental Disorder on the 31st December, 1908, of those on the Registers at that date (Voluntary Boarders excluded).

FORMS OF MENTAL DISORDER ON 31ST DECEMBER.		M.	F.	T.
Congenital or infantile mental deficiency (idiocy or imbecility) occurring as early in life as it can be observed.	1. Intellectual { <i>a.</i> With epilepsy
	2. Moral	2	5	7
INSANITY OCCURRING LATER IN LIFE.	1. Insanity with epilepsy	6	3	9
	2. General paralysis of the insane	4	...	4
	3. Insanity with grosser brain lesions	3	...	3
	4. Acute delirium
	5. Confusional insanity... ..	1	11	12
	6. Stupor	20	20
	7. Primary dementia	1	1
	8. Mania { <i>a.</i> Recent	1	3	4
	<i>b.</i> Chronic	57	107	164
	<i>c.</i> Recurrent	6	6	12
	9. Melancholia { <i>a.</i> Recent	3	3	6
	<i>b.</i> Chronic	25	20	45
	<i>c.</i> Recurrent	4	2	6
	10. Alternating insanity	3	3	6
	11. Delusional insanity { <i>a.</i> Systematised	2	6	8
	<i>b.</i> Non-systematised	3	18	21
	12. Volitional insanity { <i>a.</i> Impulse
<i>b.</i> Obsession	
<i>c.</i> Doubt	1	...	1	
13. Moral insanity	1	1	2	
14. Dementia { <i>a.</i> Senile	5	6	11	
<i>b.</i> Secondary	65	16	81	
Totals		192	231	423
Prospect of Mental Recovery	{ Favourable	10	15	25
	{ Doubtful	16	13	29
	{ Unfavourable	166	203	369



TABLE E 3.—Showing the History of the Annual Admissions since 1847, with the Discharges and Deaths, and the Numbers of each year remaining on the 31st December, 1908.

Admitted.				Of each year's Admissions, Discharged, and Died, in 1908.								Total Discharged and Died of each Year's Admissions to 31st December, 1908.								Remaining of each year's Admissions, Dec. 31st, 1908.		
Year.	First Time.		Re-admitted.	Recovered.		Relieved.		Not Improved.		Died.	Recovered.		Relieved.		Not Improved.		Died.	Males.	Females.	Total.		
	Males.	Females.		Males.	Females.	Males.	Females.	Males.	Females.		Males.	Females.	Males.	Females.	Males.	Females.					Males.	Females.
Previous years.....																					Remaining from previous years	
1847	57	38	11	8	114	27	16	43	6	10	16	5	11	29	15	44	
1848	47	47	8	8	110	13	20	33	9	9	18	7	8	15	24	16	40
1849	50	54	6	0	110	18	22	40	9	10	19	7	10	15	22	14	36
1850	47	53	1	1	102	13	19	32	9	12	21	6	12	20	17	37	0
1851	56	41	5	4	106	19	15	34	11	11	22	14	6	20	17	13	30
1852	45	56	0	1	102	13	14	27	7	10	17	5	14	19	19	19	38
1853	58	45	4	5	112	17	18	35	11	9	20	9	5	14	24	18	42
1854	48	47	2	1	98	19	20	39	8	5	13	5	6	11	18	17	35
1855	35	29	0	0	64	11	10	21	6	5	11	3	4	7	15	10	25
1856	33	25	3	3	64	13	16	29	5	6	11	5	2	7	13	4	17
1857	37	30	4	4	75	10	18	28	6	3	9	5	0	5	20	13	33
1858	57	62	4	13	136	30	33	51	8	9	17	8	3	11	27	30	57
1859	46	51	6	3	106	18	37	67	4	8	12	7	2	9	11	7	18
1860	39	48	6	5	98	17	23	40	10	4	14	2	3	5	15	23	38
1861	42	41	8	9	100	24	23	47	7	9	16	5	4	9	14	14	28
1862	51	38	10	8	107	21	19	40	10	4	14	5	3	8	25	19	44
1863	52	55	2	4	113	26	21	47	8	6	14	2	11	13	18	21	39
1864	47	38	10	10	105	22	24	46	9	12	21	8	3	11	18	9	27
1865	48	50	8	3	109	25	28	53	11	10	21	6	5	11	14	10	24
1866	42	50	8	11	111	16	27	43	9	9	18	3	5	11	20	20	42
1867	61	66	7	10	144	27	27	54	9	19	28	6	5	11	26	25	51
1868	48	41	9	12	110	15	24	39	11	5	16	7	13	20	24	11	35
1869	47	55	11	7	120	20	28	48	10	13	23	7	9	16	21	12	33
1870	41	54	8	12	115	22	37	59	7	6	13	2	5	7	17	17	34
1871	59	52	10	13	134	23	35	58	14	11	25	8	5	13	23	13	36
1872	62	63	11	8	144	29	35	64	15	9	24	4	8	12	25	16	41
1873	82	93	12	12	199	32	40	72	15	11	26	22	25	47	22	27	49
1874	83	77	15	10	185	36	42	78	18	11	29	11	10	21	32	22	54
1875	76	72	7	12	167	39	39	78	12	7	29	6	11	13	23	19	42
1876	52	72	5	3	132	18	21	39	13	26	39	6	11	17	17	16	33
1877	58	53	9	7	127	17	28	45	20	12	32	8	16	18	11	29	4
1878	44	51	8	9	112	20	33	53	12	6	18	4	5	9	13	8	21
1879	38	43	5	9	95	16	27	43	10	6	16	5	6	11	11	10	21
1880	49	38	6	10	103	19	15	34	9	10	19	8	10	18	11	9	20
1881	25	31	5	5	66	8	20	28	4	6	10	4	2	6	12	4	16
1882	32	27	0	6	65	14	16	30	3	7	6	2	1	3	10	9	19
1883	33	27	4	7	71	16	18	34	3	7	14	5	5	1	3	10	19
1884	24	30	7	9	70	13	17	30	3	5	8	2	6	8	8	16	5
1885	32	21	7	9	69	16	18	34	7	6	13	7	2	9	7	4	11
1886	26	22	3	5	56	12	12	24	3	5	8	5	6	11	9	2	11
1887	29	25	6	6	65	11	13	24	7	4	11	7	5	6	7	13	4
1888	23	17	2	6	48	7	14	21	6	2	8	3	2	5	5	2	7
1889	28	15	2	3	48	11	12	23	2	3	5	3	1	4	10	0	10
1890	26	27	2	3	58	7	14	21	4	2	6	4	4	8	13	6	19
1891	29	26	3	6	64	7	22	29	7	3	10	4	2	6	10	3	13
1892	31	5	7	72	10	5	15	4	6	10	4	2	6	10	7	2
1893	28	37	6	10	81	15	22	37	5	11	16	6	4	10	7	5	12
1894	27	36	5	7	74	11	19	30	4	11	15	3	6	8	3	11	4
1895	33	25	4	4	71	15	14	29	5	6	11	7	8	15	7	4	11
1896	38	25	4	7	83	1	0	10	20	30	7	1	8	3	6	16	1
1897	37	27	6	3	73	13	7	20	9	8	17	4	3	7	14	6	20
1898	35	40	7	4	86	0	1	13	7	20	3	13	16	7	2	9	8
1899	29	55	6	13	103	14	37	51	4	9	13	4	8	12	7	6	13
1900	38	44	3	13	98	12	26	38	7	14	21	7	7	14	9	5	14
1901	32	52	12	11	107	13	31	44	10	9	19	9	5	14	8	3	11
1902	32	48	10	10	100	1	1	27	38	6	6	12	5	10	15	10	6
1903	25	32	10	9	76	7	17	24	3	6	9	7	5	12	9	5	14
1904	36	42	5	15	98	15	21	36	4	7	11	5	8	13	9	5	14
1905	25	41	4	8	78	9	25	34	3	6	9	5	7	12	3	4	7
1906	29	43	6	13	91	8	15	23	2	4	6	4	13	17	6	5	11
1907	32	36	5	11	84	5	4	9	5	1	6	7	8	15	5	2	7
1908	27	32	5	6	70	2	4	6	1	2	3	0	3	3	2	0	2



THE TENNIS COURT, ST. ANDREW'S HOSPITAL.



THE
Report of the Chaplain,
FOR THE YEAR 1908.

January 27th, 1909.

My Lords and Gentlemen,

I beg to submit to you my Annual Report for the year 1908.

The Chapel Services on Sundays and Week-days have been held with the usual regularity. The statistics give an average attendance on Sunday of 56 males and 71 females, and on week-days of 21 males and 18 females; which shows a slight increase in comparison with the previous year's attendance.

The reception accorded to my daily visits to the various wards and private apartments, as well as to my fortnightly visits to Moulton Park, is almost invariably of a friendly character.

The Library appears to be as much appreciated as ever, as shown by the number of books issued.

The supply of newspapers and periodicals is amply sufficient to meet the wants of our readers.

In my holiday absence of five days in the month of August, and twelve days in the month of October, my duties were fulfilled by the Revd. A. H. Birks.

The kindly co-operation of the Medical Superintendent and other officials, which contributes so materially to the proper discharge of the duties of my office, again merits my best thanks.

I remain,

Your obedient servant,

JOHN CUNNINGHAM,

Chaplain.

A RETURN showing the Weekly Payments of Patients who received Charitable Assistance in the year 1908.

FIRST CLASS.

*Lowest Remunerative Payment 42s. a week, for Board, Lodging, Care,
and Medical Treatment.*

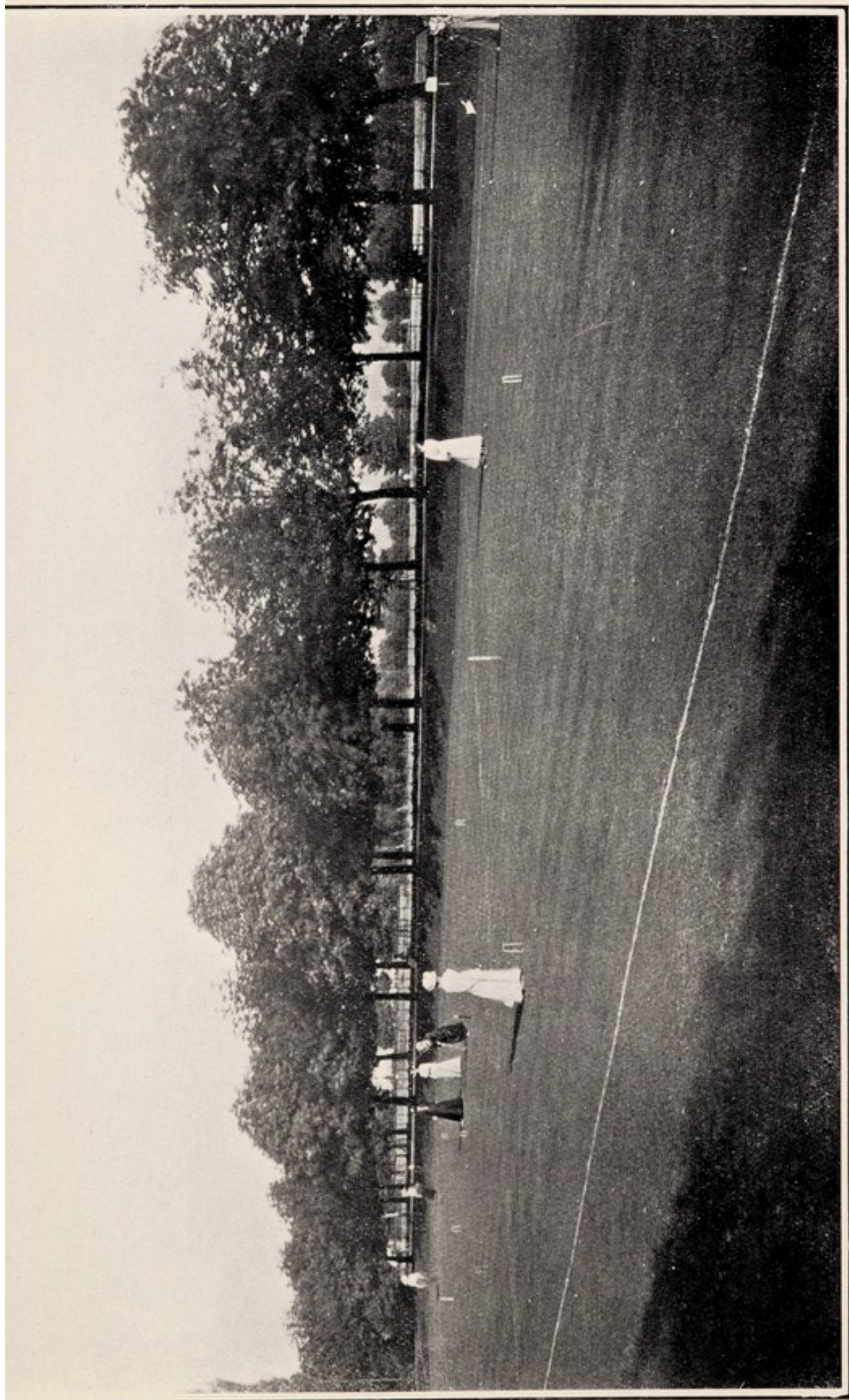
1 for 27 weeks at 10s.	1 for 52 weeks at 26s. 11d.
1 " 6 " " 10s.	1 " 52 " " 31s.
1 " 15 " " 10s. 6d.	2 " 52 " " 31s. 6d.
1 " 5 " " 11s. 6d.	1 " 41 " " 31s. 6d.
1 " 52 " " 15s. 6d.	1 " 9 " " 31s. 6d.
1 " 52 " " 20s.	1 " 52 " " 36s. 6d.
1 " 2 " " 20s.	2 " 52 " " 38s. 6d.
1 " 52 " " 21s.	1 " 52 " " 40s. 6d.

SECOND CLASS.

*Lowest Remunerative Payment 31s. 6d. a week, for Board, Lodging, Care,
and Medical Treatment.*

3 for 52 weeks... no payment.	1 for 7 weeks at 15s.
1 " 38 " at 6d.	1 " 2 " " 15s.
3 " 52 " " 1s.	1 " 52 " " 15s. 6d.
1 " 1 " " 1s.	2 " 52 " " 19s. 3d.
3 " 52 " " 2s. 6d.	6 " 52 " " 20s.
1 " 52 " " 3s. 7d.	1 " 40 " " 20s.
1 " 11 " " 4s.	1 " 31 " " 20s.
4 " 52 " " 5s.	1 " 18 " " 20s.
1 " 30 " " 5s.	1 " 52 " " 21s.
1 " 15 " " 5s.	1 " 27 " " 21s.
1 " 52 " " 7s. 6d.	1 " 11 " " 21s.
1 " 52 " " 8s.	1 " 10 " " 21s.
1 " 52 " " 8s. 6d.	1 " 5 " " 21s.
3 " 52 " " 9s.	1 " 52 " " 21s. 6d.
2 " 52 " " 10s.	2 " 52 " " 24s.
1 " 27 " " 10s.	1 " 26 " " 24s. 6d.
1 " 22 " " 10s.	11 " 52 " " 25s.
1 " 14 " " 10s.	1 " 26 " " 25s.
1 " 6 " " 10s.	1 " 3 " " 25s.
2 " 52 " " 10s. 6d.	3 " 52 " " 27s.
1 " 11 " " 11s.	1 " 6 " " 27s. 6d.
3 " 52 " " 11s. 6d.	1 " 52 " " 30s.
1 " 52 " " 12s.	1 " 52 " " 30s. 9d.
2 " 52 " " 15s.	1 " 52 " " 31s.

The Committee also voted the sum of £150 towards sending poor Patients for a change to the seaside.



THE CROQUET GROUND, ST. ANDREW'S HOSPITAL.

ABSTRACT OF BENEFACTIONS

and Legacies towards the Erection and Establishment of the Hospital.

	£	s.	d.
The Donation from the Surplus of the Fund for raising and maintaining the late Regiment of NORTHAMPTONSHIRE YEOMANRY CAVALRY, £336 2s. 9d. Long Annuities, standing in the Names of the Right Hon. George John (2nd) Earl Spencer, K.G., the highly respected Colonel of the late Corps; and Captain the Right Hon. the Lord Viscount ALTHORP, M.P., sold out and re-invested in the same names in £7,000 Three per cent. Reduced Annuities; which, with Dividends accrued thereon, amounted to.....	7,848	12	7
Benefactions and Legacies.....	16,340	18	6
The Proceeds of Two Concerts, given under the direction of the late Mr. C. McKORKELL, for which he was appointed an Honorary Director	105	13	9
The Northamptonshire Agricultural Society ...	10	10	0
Congregational Collections	565	9	4
Total received to 31st December, 1851.....	24,871	4	2
Benefactions and Legacies received between Jan. 1, 1851, and Dec. 31, 1857; and also Legacies up to Dec. 31, 1861, including Dividends on an invested portion thereof (see the Report for 1860, page 33)	1,695	17	0
Subscriptions received towards the Erection of a Chapel between the 1st January, 1858, and the 31st December, 1862	2,147	0	10
Proceeds of a Flower Show at Blisworth for the Benefit of the Chapel Fund, by the late H. O. NETHERCOTE, Esq., 1859	145	0	0
Benefactions and Legacies in the years 1862 to 1907.....	1,892	10	5
Benefaction, in Memory of the late Duke of GRAFTON, from his Widow, 1884.....	1,000	0	0
Total Benefactions and Legacies	£31,751	12	5

PRINTED AT ST. ANDREW'S HOSPITAL, NORTHAMPTON.



