

The report of Saint Andrew's Hospital for Mental Diseases, at Northampton, for the upper and middle classes, from January 1, 1907, to December 31, 1907.

Contributors

Saint Andrew's Hospital for Mental Diseases (Northampton, England)
Smyth, C.
Marriott Cooke, E.
Giffard, Hardinge F.
Shadwell, L. L.
Bayley, Joseph.
Cunningham, John.

Publication/Creation

Northampton, Eng. : Saint Andrew's Hospital for Mental Diseases, 1908.

Persistent URL

<https://wellcomecollection.org/works/thcvktq3>

License and attribution

This work has been identified as being free of known restrictions under copyright law, including all related and neighbouring rights and is being made available under the Creative Commons, Public Domain Mark.

You can copy, modify, distribute and perform the work, even for commercial purposes, without asking permission.



Wellcome Collection
183 Euston Road
London NW1 2BE UK
T +44 (0)20 7611 8722
E library@wellcomecollection.org
<https://wellcomecollection.org>

THE REPORT
OF
SAINT ANDREW'S HOSPITAL
FOR MENTAL DISEASES,
AT
NORTHAMPTON,
FOR THE
UPPER AND MIDDLE CLASSES,
FROM
JANUARY 1, 1907, TO DECEMBER 31, 1907.

NORTHAMPTON :

Printed at Saint Andrew's Hospital, Northampton.

1908.

WELLCOME INSTITUTE LIBRARY	
Call	wel140mec
Call	Ann. Rep
No.	WLM 28
	• BE5
	S 134
	1907

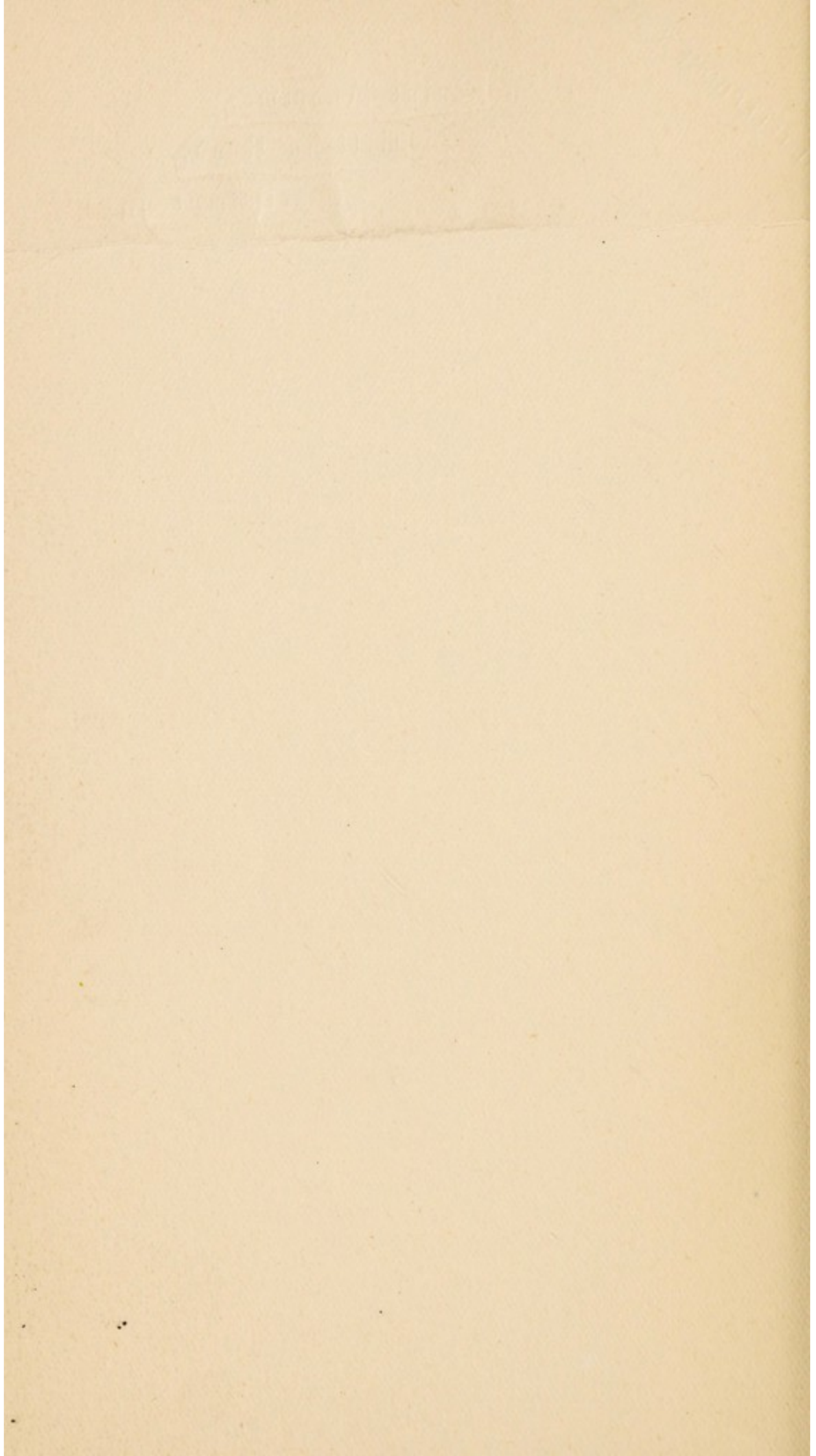



22501660976

NATIONAL TELEPHONE No. 56.

Saint Andrew's,
Billing Road,
Northampton.

*With the
Medical Superintendent's
Compliments.*





Digitized by the Internet Archive
in 2018 with funding from
Wellcome Library



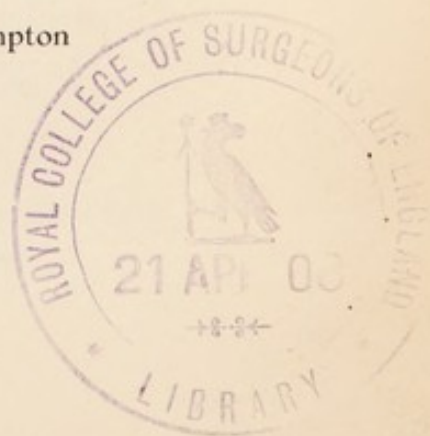
SAINT ANDREW'S HOSPITAL.

THE REPORT
OF
SAINT ANDREW'S HOSPITAL
FOR MENTAL DISEASES,
AT
NORTHAMPTON,
FOR THE
UPPER AND MIDDLE CLASSES,
FROM
JANUARY 1, 1907, TO DECEMBER 31, 1907.

NORTHAMPTON :

Printed at Saint Andrew's Hospital, Northampton

1908.



CONTENTS.

	PAGE.
Governors, Committee, and Staff	3
Minutes of the Annual Court	6
Annual Report	7
Reports of the Commissioners in Lunacy ...	10
Report of the Medical Superintendent	16
Report of the Chaplain	33
Return of Patients assisted by the Charity ...	34
Abstract of Benefactions and Legacies towards the Erection and Establishment of the Hospital ...	35
Terms of Admission	36

OFFICERS OF THE INSTITUTION.



GOVERNORS.

Perpetual President :

The Lord-Lieut. of the County, the Right Hon. the Earl Spencer, K.G.

Vice-Presidents :

The Right Hon. Lord Erskine, Spratton Hall, Northampton.

S. G. Stopford-Sackville, Esq., Drayton House, Thrapston.

H. M. Stockdale, Esq., Mears Ashby, Northampton.

E. P. Monckton, Esq., Laundimer House, Oundle.

C. Smyth, Esq., Little Houghton House, Northampton.

Lieut.-Colonel Rawlins, Great Houghton Hall, Northampton.

Lieut.-Colonel Lowndes, M.V.O., Braunston, Rugby.

Althorp, The Viscount, Dallington Hall, Northampton.

Annaly, The Lord, Holdenby House, Northampton.

Bell, Major Alexander, Stanwick, Higham Ferrers.

Blackwood, Major Price, 52, Queen's Gate Terrace, London, S.W.

Brassey, H. L. C., Esq., Apethorpe Hall, Wansford.

Brooke, Sir Arthur R. de Capel, Bart., Oakley Hall, Kettering.

Buccleuch, The Duke of, Boughton House, Kettering.

Cardigan, The Countess of, Deene Park, Wansford.

Carey, Rowland D., Esq., Cogenhoe, Northampton.

Cary-Elwes, V. D. H., Esq., Great Billing, Northampton.

Champion de Crespigny, G. H., Esq., Burton Latimer, Kettering.

Clarke, Captain J. R. P., Welton Place, Daventry.

Crawley, Rev. H. H., Church Stowe, Weedon.

Downe, The Viscount, Dingley, Market Harborough.

Dryden, Arthur, Esq., Canon's Ashby, Byfield.

Euston, The Earl of, Wakefield Lodge, Stony Stratford.

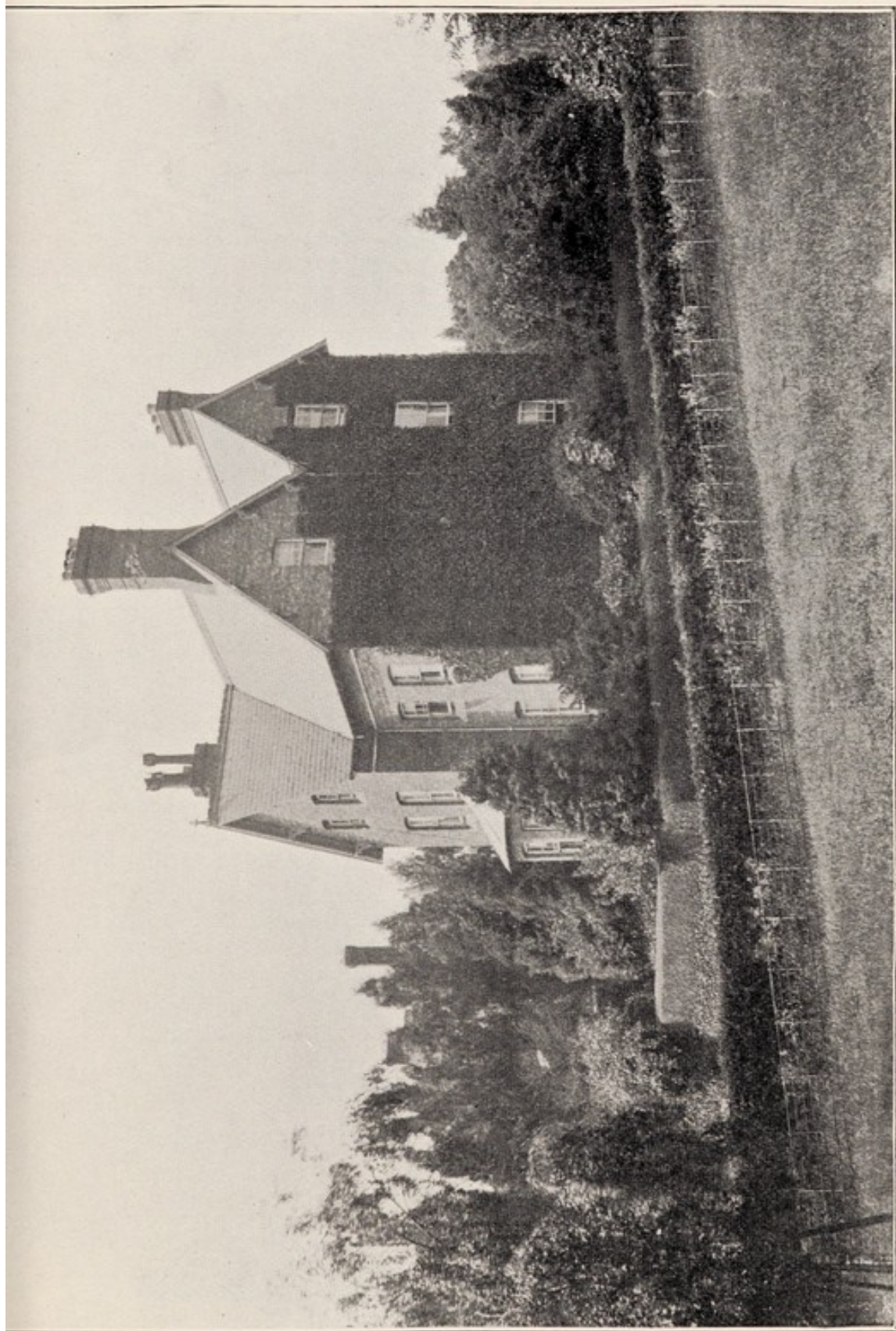
Exeter, The Marquis of, Burghley House, Stamford.

Fitz-Roy, The Hon. E. A., Fox Hill, West Haddon.

Grafton, The Duke of, K.G., Wakefield Lodge, Stony Stratford.

Grafton, The Duchess of, Harleston Hall, Northampton.

Grant, E., Esq., Lichborough Hall, Weedon.
 Grant-Ives, W. D., Esq., Bradden, Towcester.
 Gunning, Sir Charles, Bart., Benefield, Oundle.
 Harrison, Rev. E. W., Bugbrooke, Weedon.
 Hazlehurst, Thomas F., Esq., Cold Ashby, Rugby.
 Henley, The Lord, Watford Court, Rugby.
 Hibbert, P. E. T., Esq., Ashby St. Ledgers, Rugby.
 Hill, Colonel J., C.B., Wollaston Hall, Wellingborough.
 Howard-Vyse, H. H., Esq., Stoke Place, Slough.
 Isham, Sir Vere, Bart., Lamport Hall, Northampton.
 Knightley, Sir Charles V., Bart., Fawsley, Daventry.
 Leicester, The Bishop of, Canonry House, Peterborough.
 Leslie-Melville-Cartwright, T. R. B., Esq., Newbottle Manor, Banbury.
 Lilford, The Lord, Lilford Hall, Oundle.
 Loder, R. B., Esq., Maidwell Hall, Northampton.
 Macdonald, C. Falconar, Esq., Green's Norton, Towcester.
 Manfield, H., Esq., M.P., Moulton Grange, Northampton.
 Manfield, J., Esq., Weston Favell House, Northampton.
 Moore, The Ven. Archdeacon, Benefield Rectory, Oundle.
 Northampton, The Marquis of, Castle Ashby, Northampton.
 Nugent, Lieut.-Colonel J. V., Portaferry, Co. Down.
 Pender, Sir James, Bart., Donhead St. Andrew, Salisbury.
 Percival, F. S., Esq., Portmadoc, North Wales.
 Peterborough, The Bishop of, The Palace, Peterborough.
 Robinson, Sir Frederick V. L., Bart., Cranford St. John, Kettering.
 Sartoris, A. H., Esq., Weekley, Kettering.
 Sawbridge, E. H. B., Esq., Basildon Park, Reading.
 Sotheby, Major-General, Ecton Hall, Northampton.
 Stockdale, H. M., jun., Esq., Mears Ashby, Northampton.
 Strong, C. I., Esq., Thorpe Hall, Peterborough.
 Thicknesse, The Right Rev. Bishop, Oxendon, Market Harborough.
 Thicknesse, The Rev. F. N., Hornsey, London, N.
 Thornton, F. H., Esq., Kingsthorpe Hall, Northampton.
 Thornton, T. W., Esq., Brockhall, Weedon.
 Vaux of Harrowden, The Lord, Harrowden, Wellingborough.
 Verney-Cave, The Hon. A., Stanford, Market Harborough.
 Vernon, B. Wentworth, Esq., Stoke Bruerne Park, Towcester.
 Wake, Sir Herewald, Bart., Courteenhall, Northampton.
 Watson, Rev. Wentworth, Rockingham Castle, Uppingham.
 Wickham, Henry, Esq., Barnwell Castle, Oundle.



ROSE VILLA (IN THE HOSPITAL GROUNDS).



COMMITTEE OF MANAGEMENT.

C. Smyth, Esq., Chairman.
 Lieut.-Colonel Rawlins, Vice-Chairman.
 The President and the Vice-Presidents.*
 The Most Honble. The Marquis of Northampton.
 Sir Arthur R. de Capel Brooke, Bart.
 Sir Charles Gunning, Bart.
 Sir Vere Isham, Bart.
 Sir C. V. Knightley, Bart.
 Sir Herewald Wake, Bart.

Major Alexander Bell.	Colonel J. Hill, C.B.
R. D. Carey, Esq.	C. Falconar Macdonald, Esq.
The Rev. H. H. Crawley.	Major General Sotheby.
Edward Grant, Esq.	H. M. Stockdale, jun., Esq.
Thos. F. Hazlehurst, Esq.	

* The President and Vice-Presidents are *Ex-officio* members of all Committees.

Medical Superintendent—

Joseph Bayley, M.R.C.S., Eng., and L.S.A., Lond.

Senior Assistant Medical Officer—

J. H. Bayley, M.B. and C.M., Edin., L.R.C.P., Lond.

Second Assistant Medical Officer—

S. E. Martin, M.B., B.Ch., Edin.

Third Assistant Medical Officer—

N. R. Phillips, M.D., Brux., M.R.C.S., L.R.C.P., Lond.

Chaplain—Rev. John Cunningham.

Accountant—Mr. J. Walker. Clerk—Mr. E. E. Cæsar.

Steward—Mr. H. W. Clarke.

SEASIDE HOUSE: BRYN-Y-NEUADD, LLANFAIRFECHAN.

Resident Medical Officer—

M. T. Archdall, L.R.C.P. & S., Edin., L.S.A., Lond.

AT THE
General Stated Annual Court of Governors,

Held on the 27th day of February, 1908,

The Annual Reports of the Committee of Management, the Medical Superintendent, and the Chaplain, and the Audited Accounts for the year 1907, were laid before the Court.

And it was resolved—

That the above-named Reports and Accounts be approved and adopted ; and that they, together with the usual Financial and Statistical Tables, be published. Also that the Reports of the Commissioners in Lunacy be printed therewith.

It was resolved unanimously—

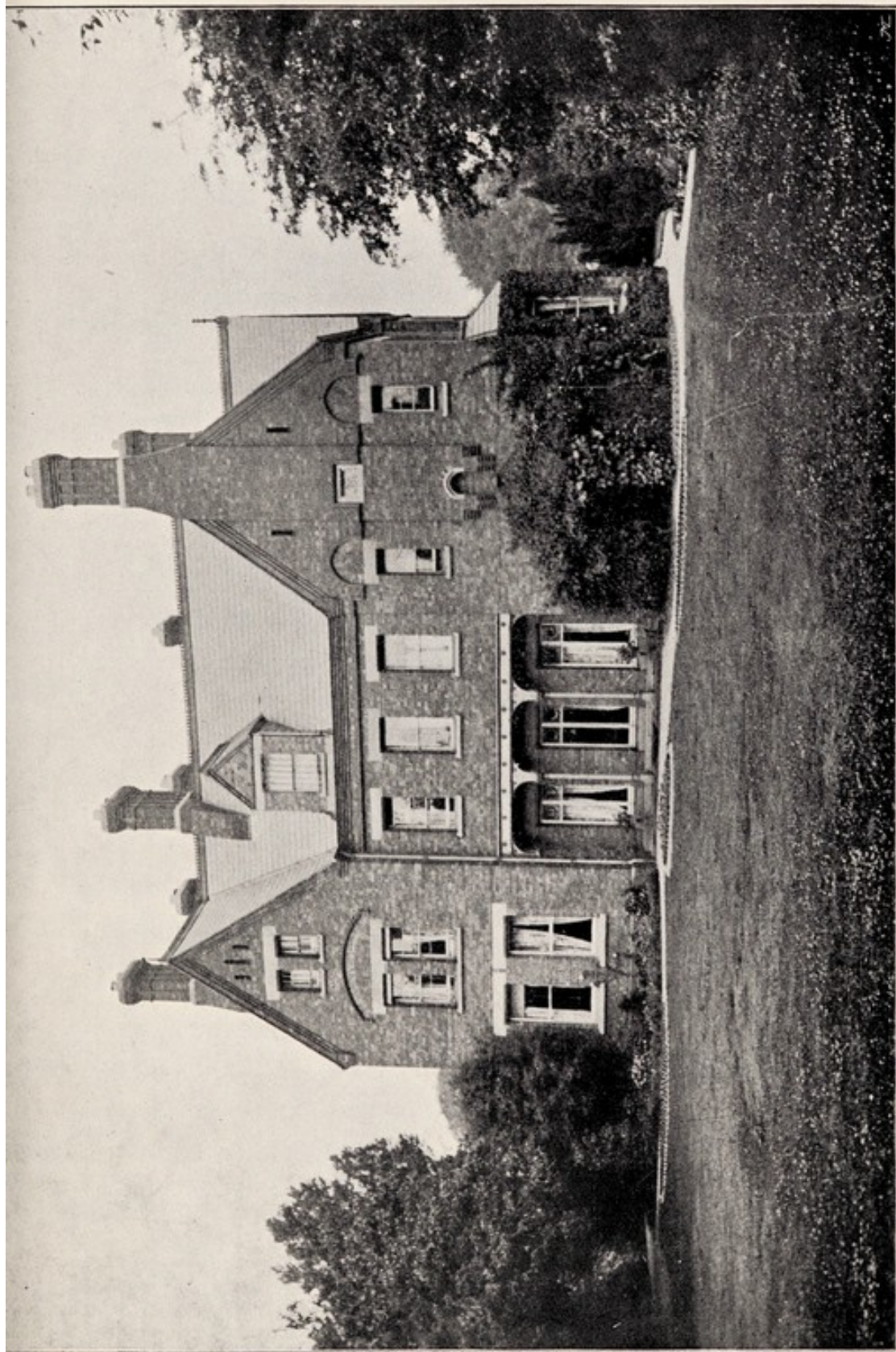
1. That the Thanks of this Court be presented to the Chairman and Vice-Chairman of the Committee of Management, for the very valuable services they have rendered to the Institution during the past year.

2. That the Thanks of this Court be presented to the Noblemen and Gentlemen composing the Committee of Management, for their very valuable services during the year.

3. That the Thanks of this Court be given to the Officers of the Institution, for their care and attention in carrying on the work of the past year.

The following Annual Appointments were made :—

1. A Committee of Management.
2. A Treasurer.
3. Auditors.



FERNSIDE (IN THE HOSPITAL GROUNDS).



THE REPORT OF
The Committee of Management,
FOR THE YEAR 1907.

The Committee are thankful to be able to again report favourably of the state of the Institution during the year.

The Hospital and the houses at Moulton Park and at Bryn-y-Neuadd, North Wales, have been fully occupied during the greater part of the year. One hundred and seventy-four patients visited our seaside house as compared with 158 in 1906.

The number of admissions (84) has been less by 7 than in 1906.

The average number resident (410) has been exactly the same as in 1905 and 1906.

There has been an increase of 12 in the number of recoveries, and a decrease of 7 in the number of deaths.

The per-centage of recoveries on admissions (excluding transfers from other Asylums) has been 51·72 males, 55·88 females, total 53·96.

The per-centage of deaths on the total number under treatment has been 2·67 males, 2·57 females, total 2·62.

During the past year the number of patients assisted in their payments has been 89, of whom 43 belonged to the County of Northampton, and 46 were out-county cases. The amount of assistance rendered to make up the payments to the lowest rates ordinarily charged was—county cases, £2,192 os. 6d; out-county cases, £1,449 3s. 6d., being a total of £405 17s. 6d. more than in the previous year.

The result of the working of the Farm at Moulton Park during the past year has not been so satisfactory as in the year before, but this was caused chiefly by the failure of the fruit crops. The balance in favour at the end of the year was £117 17s. 9d. as compared with £692 14s. 4d. in 1906.

The financial state of the Hospital during the year has been very satisfactory. As was predicted in last year's report, the expenditure has been less by about £10,000. This was caused chiefly by the alterations and additions being now completed.

The only alterations in the staff have been caused by the resignation of Dr. Bryan, B.A., M.B., B.C., Cantab., to go into private practice, and the appointment of Dr. Phillips, M.D., Brux., M.R.C.S., Eng., L.R.C.P., Lond., in his place; also the appointment of Dr. Archdall, L.R.C.P. & S., Edin., L.F.P.S., Glas., L.S.A., Lond. (formerly Assistant Medical Officer at the Hospital), to be Resident Medical Officer in charge of Bryn-y-Neuadd.

The conduct of the attendants and servants generally has been satisfactory.

The Hospital has sustained a heavy loss by the death of Lord Penrhyn. The Bishop of Leicester and Archdeacon Moore have been appointed Governors.

The Committee desire to tender their best thanks to Dr. Bayley, and the other Officers of the Institution, for their constant and zealous services during the past year.

C. SMYTH,

Chairman.

P.S.—The Committee think the following comparison of the condition of the Hospital in the years 1866 and 1907 may be of interest to the Governors:—

	1866.	1907.
Estate	100 acres	940 acres
Average Number of Private Patients	86	410
Private Patients Admitted	20	84
Income from Private Patients	£5,783	£61,356
Capital Account	£74,304	£407,294
Reserve Fund	nil	£51,818

Since 1866, practically the whole of the Hospital has been re-modelled, and several new buildings have been added. The cost of these alterations has been almost £130,000, which has been paid entirely out of income, and the Reserve Fund has not been touched.

	1866.	1907.
Amount rendered to Poor Patients	£535.	£3641.

Now that the financial position of the Hospital will probably improve very much every year, it is hoped to carry out even more fully the intention of the Founders of the Hospital, and add considerably to the number of patients admitted on the Charity.

C. S.



THE REPORTS OF

The Commissioners in Lunacy.

FIRST VISIT.

9TH FEBRUARY, 1907.

Since the visit of our colleagues to this Hospital in November last, 18 patients have been admitted; 13 discharged or removed, of whom 6 had recovered; and 3 have died. These changes leave on the books the names of 410 patients, 185 being males and 225 females. Of these, 37 patients are at Moulton Park, 6 are on leave of absence elsewhere, and one gentleman is absent on trial.

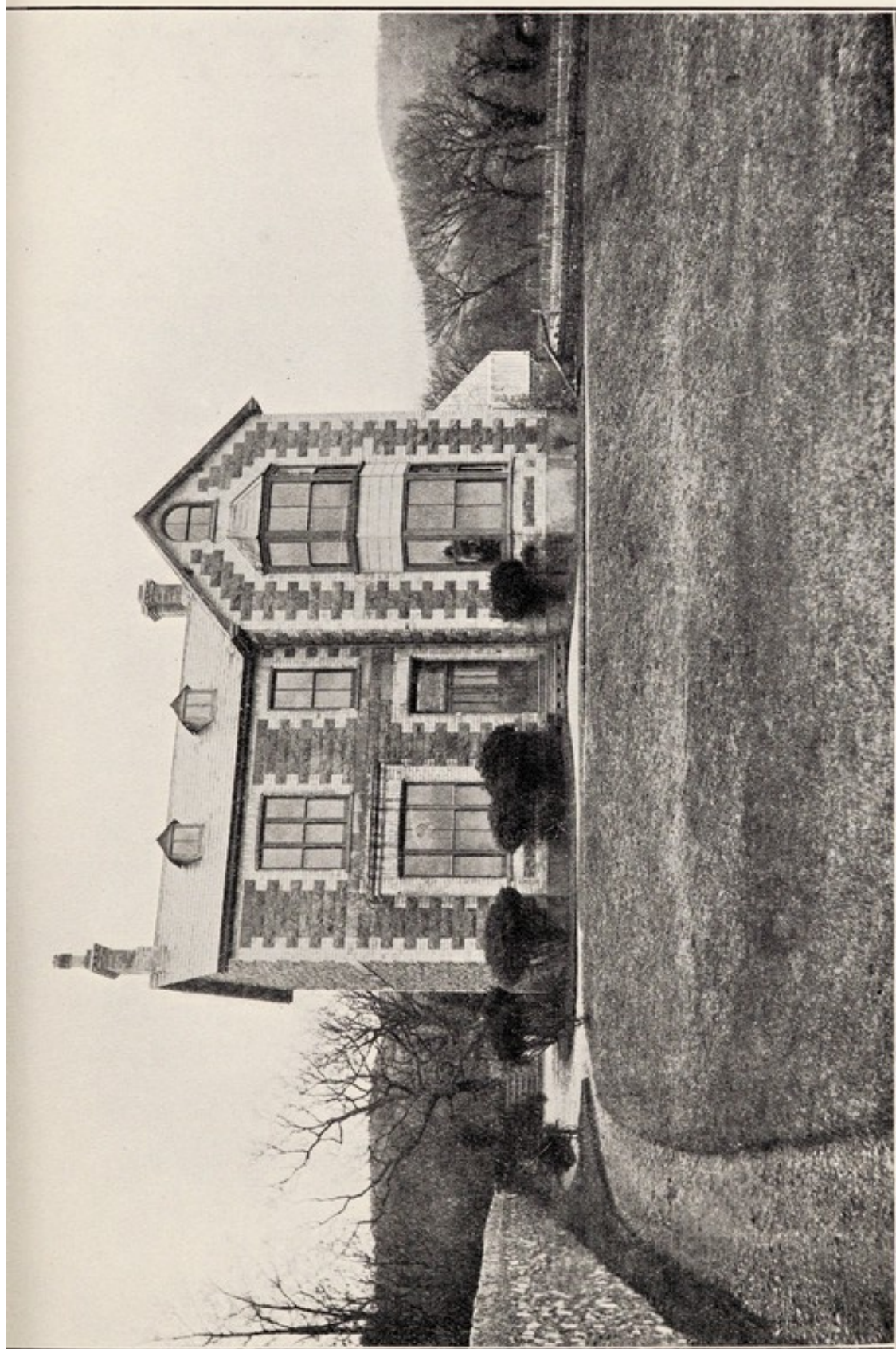
We have, during our visit yesterday and today, seen all the patients in residence at the main building, Moulton Park, and the Villas, and we can report in very favourable terms on their dress and personal tidiness.

No complaints calling for comment were made to us—the majority of the patients being contented—apart from the subject of detention. We can also report that the behaviour of the patients was quiet and orderly and free from excitement.

We noticed some mental improvement in several patients whose names will be found in the Patients' Book.

We found the Hospital in excellent order, and we can report that No. 1 Gallery on the female side—the last of the alterations to be undertaken—is approaching completion.

We understand that a considerable addition to the furniture of this gallery has been ordered, and that more furniture is to be added to the other galleries where needed, especially to the third division of the first-class patients.



"HAFOD FADOG," ONE OF THE VILLAS AT BRYN-Y-NEUADD.



The general health of the Hospital is good—only 2 gentlemen and 7 ladies being confined to bed.

We gave separate interviews to several patients whose names are mentioned in the Patients' Book.

One gentleman is in residence as a voluntary boarder and may remain on that footing.

The three deaths that have occurred were due to natural causes, but in one instance, in which a gentleman died suddenly from rupture of the heart when getting into bed, an inquest was held.

No patient has been mechanically restrained, but 27 patients—six being gentlemen and 21 ladies—have been secluded on 251 occasions for 1863¾ hours in all.

Of the staff of attendants and nurses, 8 of the former and 9 of the latter have left since the last visit, but no one has been dismissed or allowed to resign to escape dismissal.

It is proposed to abolish the office of Secretary at this Hospital, and to appoint in its stead two officers—one to act as Financial Clerk and Accountant, and the other as Medical Superintendent's Clerk and Clerk of Statutory Work. We understand that Revised Rules embodying these alterations will shortly be submitted to our Board.

We are glad to be able to report that a Third Assistant Medical Officer has been appointed at this Institution.

With regard to our colleagues' suggestion that the Farm and Ladies' House at Moulton Park should be better lighted, we can report that the lighting has been improved though the proposal to introduce the electric light has not been found to be practicable. In the Cedars, however,—one of the Villas in the Hospital Grounds—the electric light will shortly be introduced.

The Case Books are well kept.

HARDINGE F. GIFFARD, } Commissioners
E. MARRIOTT COOKE, } in Lunacy.

SECOND VISIT.

9TH JULY, 1907.

During yesterday and today we have visited for the second time this year this Hospital and its dependencies, and can report that it continues to be maintained in its usual good order.

The galleries and dormitories were clean and comfortable, and we may mention that the additional furniture for some of the galleries, to which we referred at our last visit, has been provided. No. 1 gallery on the female side has been practically completed, and will shortly be furnished, when it will be ready for occupation and will afford excellent accommodation.

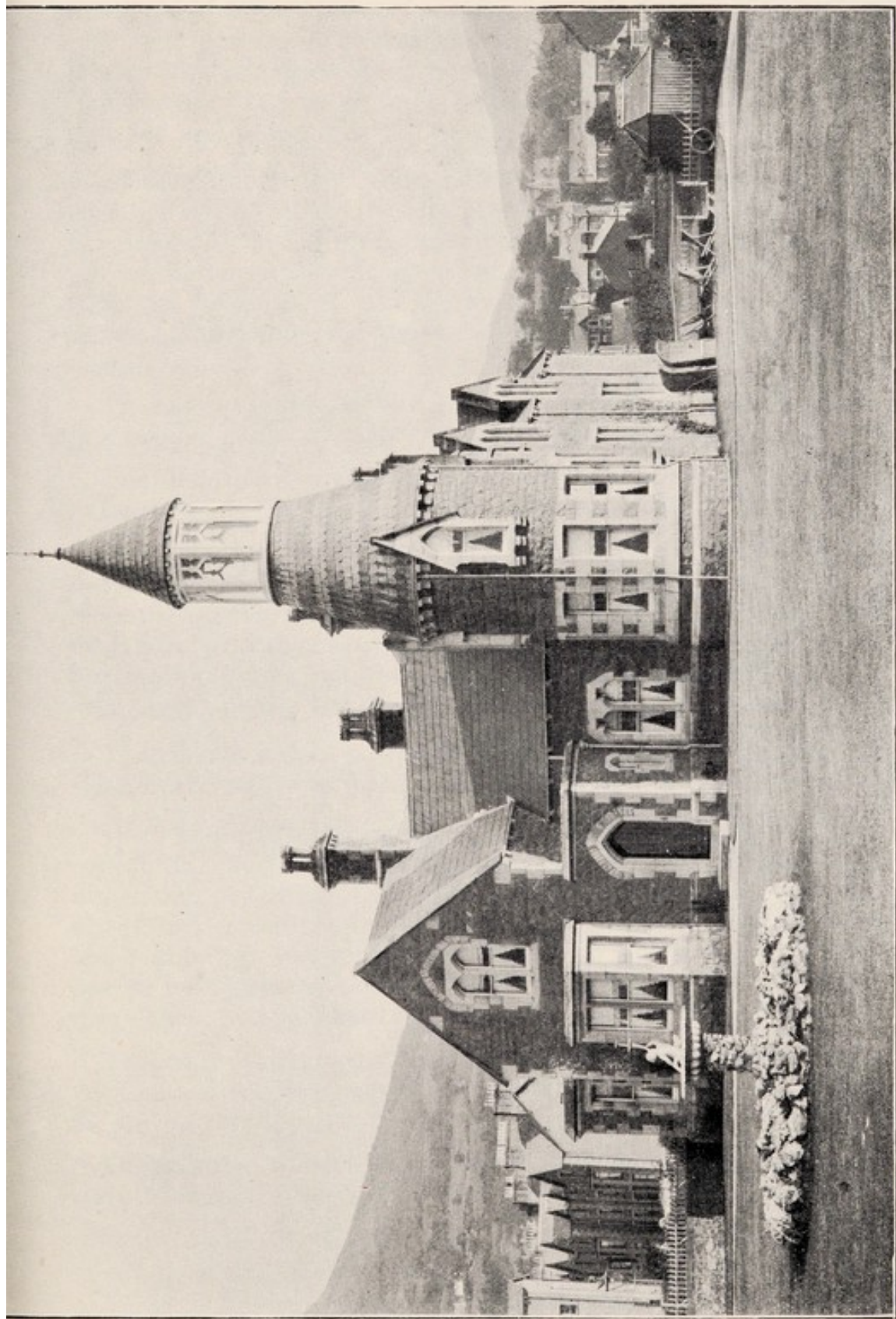
On the male side of the Hospital we thought that the pads in one of the padded rooms were hard and should be replaced by pads of a more modern style.

There are today on the books of the Institution the names of 413 patients, in the proportion of 190 gentlemen to 223 ladies. Of these, 42 ladies are on leave at Bryn-y-Neuadd, 3 gentlemen are on leave with friends, and 33 patients, 25 being males and 8 females, are on leave at Moulton Park.

We have seen all the patients at this place last mentioned, and those in residence at the Hospital and Villas, and we can report generally in very favourable terms on their dress and personal tidiness, and on the care and attention bestowed on them.

We must, however, call special attention to the cases of two ladies who were in seclusion and quite naked—both patients being very destructive and troublesome. Although the rooms were warm and comfortable we cannot but regard this mode of treatment of dirty and destructive patients as most unsatisfactory, and we think that such patients ought to be supplied by the Hospital, from stock always available, with garments made of specially strong material and of such pattern as will not permit of the patients stripping themselves. We have expressed this opinion to Mr. Bayley, who has informed us that he will give effect thereto.

The patients were free from complaint of their treatment, but not a few of the more deluded patients appealed for discharge. Three patients manifested some mental improve-



“MORANEDD,” ONE OF THE VILLAS AT BRYN-Y-NEUADD.

ment, one of these being practically recovered. We gave private interviews to several patients, including one gentleman whose wife is anxious that he should be discharged: in our opinion this course is most undesirable, the patient being deluded and potentially dangerous.

Of the total patients, about 92 usually attend Divine Service on Sundays; 106 are usually present at the associated entertainments; 150 are usefully employed; 7 are allowed out on parole, and 95 walk out attended beyond the grounds; and 78 have the privilege of carriage exercise, 34 gentlemen and 44 ladies being taken for drives about eight times during the month.

There is in residence one gentleman voluntary boarder, who is a proper subject for this form of treatment.

The health of the Institution is satisfactory, only eleven patients being confined to bed during our visit.

Since our last visit on the 9th February, 35 patients have been admitted; 33 discharged, 16 on recovery; and 3 have died from natural causes; only one patient, a lady, has been mechanically restrained on 17 occasions for 206 hours, but as many as 52 patients have been secluded on 193 occasions, for the very large total of 3,578 hours in all.

The dinner served yesterday to the gentlemen of the second class in the hall was good and substantial.

With regard to the payment made by the patients, we can report the average weekly cost being £2 9s. 6¾d.—that under one per cent. of the patients are received gratuitously; about 11 per cent. are received for one guinea per week and less; about 59 per cent. are received for sums varying from one to two guineas per week; and about 30 per cent. pay more than two guineas weekly.

The staff of attendants and nurses comprises 59 males and 56 females, for day only: 4 attendants and 7 nurses being employed on night duty.

Of the total staff, 20 have served under one year, while 33 have been in the service of the Hospital more than five years.

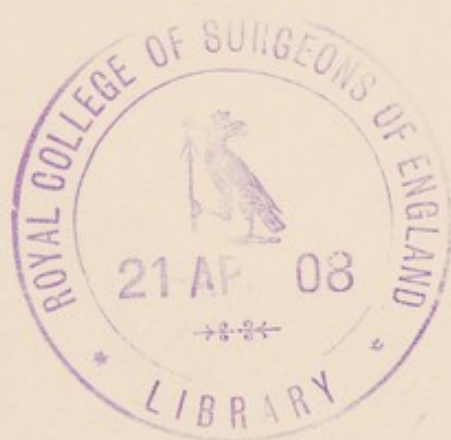
With regard to the Medical staff, we can report that the Committee propose to appoint another Medical Officer, with a view to having always in residence at Bryn-y-Neuadd a Medical Officer.

We can also report that the Revised Rules of this Hospital have been forwarded by our Board for the approval of the Secretary of State.

In conclusion, it is satisfactory to be able to record that due attention is paid to the keeping of the Case Books and other Medical Records of the Hospital.

HARDINGE F. GIFFARD, } Commissioners
E. MARRIOTT COOKE, } in Lunacy.







BRYN-Y-NEUADD HALL & PARK (THE SEASIDE HOUSE OF ST. ANDREW'S HOSPITAL).

BRYN-Y-NEUADD,

LLANFAIRFECHAN,

NORTH WALES,

9TH JULY, 1907.

There are today 42 ladies residing in this house on leave from St. Andrew's Hospital. One was out spending the day with her family in the village, and one was out walking. I saw the others, and found them all properly cared for and generally contented.

The house continues to be maintained in excellent order, and the grounds are beautifully kept.

The new storey providing accommodation for nine or ten patients is nearly completed, and some of the rooms are already occupied—they are bright and pleasant rooms, and will form a useful addition to the house.

L. L. SHADWELL,

Commissioner in Lunacy.

THE REPORT OF
The Medical Superintendent,
FOR THE YEAR 1907.

MY LORDS AND GENTLEMEN,

I beg leave to submit to you my Annual Report for the year 1907.

On January 1st, 1907, there were 412 patients in the Hospital : of these 187 were males (including one boarder) and 225 females.

During the year, 84 patients have been admitted—37 males and 47 females.

Sixty-seven patients have been discharged—28 males and 39 females.

Thirteen deaths have occurred : 6 males and 7 females.

The total number under treatment during the year was 496 : of these, 224 were males and 272 females.

The average number resident has been 410—189 males and 221 females.

The numbers remaining on the books of the Hospital on December 31st, 1907, were 189 males and 226 females, total 415.

The following are the Statistical Tables given with this Report :—

TABLE II.—Showing (1) the previous Attacks among persons admitted during the year 1907, and (2) the number of times they have previously recovered in this, or any, Asylum.

(1) NUMBER OF PREVIOUS ATTACKS.	PERSONS.		
	Male.	Female.	Total.
Have had 1 Attack	8	15	23
„ 2 Attacks	4	4	8
„ 3 „	0	1	1

(2) NUMBER OF TIMES PATIENTS RECOVERED.	IN THIS ASYLUM.			IN ANY ASYLUM.		
	M.	F.	T.	M.	F.	T.
Once	2	4	6	6	5	11
Twice	2	2	4	1	2	3
Three times	0	0	0	0	1	1

TABLE III.—Showing the Admissions, Discharges and Deaths, with the Mean Annual Mortality and proportion of Recoveries per cent. of the Admissions from the Year 1847 to the Year 1907.

Year.	Admitted.						Discharged.						Died.	Remaining 31st Dec., in each year.						Average Number Resident.						Per-centage of Recoveries on Admissions.						Per-centage of deaths on average numbers resident.					
	Recovered.			Not Improved.			Relieved.			Total.				Total.			31st Dec., in each year.			Total.			Total.			Total.			Total.			Total.			Total.		
	Males.	Females.	Total.	Males.	Females.	Total.	Males.	Females.	Total.	Males.	Females.	Total.		Males.	Females.	Total.	Males.	Females.	Total.	Males.	Females.	Total.	Males.	Females.	Total.	Males.	Females.	Total.	Males.	Females.	Total.	Males.	Females.	Total.			
1847	67	47	114	24	26	50	9	16	23	8	14	23	25	18	43	132	119	251	129	121	250	353	565	438	193	148	172	17-2	14-8	15-5	10-5	8-2	9-4				
1848	55	55	110	22	18	40	7	16	23	8	14	22	14	10	24	135	124	259	133	122	255	400	327	363	105	80	95	9-4	8-2	9-0	10-9	8-0	9-5				
1849	57	53	110	16	22	38	10	9	19	14	7	21	15	10	25	138	125	263	138	122	260	407	345	352	109	80	95	9-4	8-2	9-0	10-9	8-0	9-5				
1850	48	54	102	16	22	38	10	9	19	14	7	21	15	10	25	138	125	263	138	122	260	407	345	352	109	80	95	9-4	8-2	9-0	10-9	8-0	9-5				
1851	61	45	106	17	14	31	5	10	15	9	24	21	11	32	134	137	271	134	132	266	278	311	292	156	83	120	12-5	15-0	15-6	8-3	12-0	12-5					
1852	45	57	102	15	19	34	9	18	27	8	16	24	16	18	34	130	137	267	134	135	270	333	333	333	118	133	126	12-5	15-0	15-6	8-3	12-0	12-5				
1853	63	49	112	16	11	27	8	6	14	8	14	22	16	18	34	130	137	267	134	135	270	333	333	333	118	133	126	12-5	15-0	15-6	8-3	12-0	12-5				
1854	50	48	98	17	23	40	6	12	18	23	41	19	12	31	130	129	259	145	145	290	340	480	408	131	82	107	13-1	15-0	15-6	8-3	12-0	12-5					
1855	35	29	64	10	20	2	2	4	4	4	3	7	20	14	34	127	128	255	131	130	261	285	345	312	152	107	13-1	15-0	15-6	8-3	12-0	12-5					
1856	36	28	64	9	13	22	4	9	13	1	0	1	8	16	140	126	266	134	130	264	250	465	343	60	61	60	13-1	15-0	15-6	8-3	12-0	12-5					
1857	41	34	75	12	15	27	9	2	11	6	1	7	9	13	162	145	307	142	121	263	292	442	360	63	107	83	13-1	15-0	15-6	8-3	12-0	12-5					
1858	54	82	136	17	25	42	3	4	7	4	3	7	15	26	157	159	316	150	147	297	278	333	309	100	74	87	13-1	15-0	15-6	8-3	12-0	12-5					
1859	52	54	106	22	42	64	7	2	9	4	6	10	16	12	28	161	157	318	159	147	297	278	333	309	100	74	87	13-1	15-0	15-6	8-3	12-0	12-5				
1860	45	53	98	24	18	42	4	3	7	2	2	4	12	13	25	166	175	341	160	165	325	533	339	428	75	78	77	13-1	15-0	15-6	8-3	12-0	12-5				
1861	50	50	100	23	23	46	1	4	5	2	1	3	20	14	34	174	182	356	172	181	353	400	460	430	116	77	96	13-1	15-0	15-6	8-3	12-0	12-5				
1862	61	46	107	18	26	44	3	7	10	4	0	4	18	16	34	191	180	371	185	180	365	295	265	280	97	88	93	13-1	15-0	15-6	8-3	12-0	12-5				
1863	54	59	113	21	11	32	6	3	9	0	1	1	20	17	37	199	207	406	198	185	383	389	186	283	101	92	96	13-1	15-0	15-6	8-3	12-0	12-5				
1864	56	49	105	25	18	43	2	1	3	7	3	10	19	22	41	202	212	414	205	213	418	435	375	409	92	103	98	13-1	15-0	15-6	8-3	12-0	12-5				
1865	57	52	109	17	31	48	2	5	7	4	0	4	23	12	35	213	216	429	211	219	430	303	585	440	109	54	81	13-1	15-0	15-6	8-3	12-0	12-5				
1866	50	61	111	28	34	62	4	9	13	1	0	1	22	24	46	209	206	415	209	211	420	560	557	558	105	113	109	13-1	15-0	15-6	8-3	12-0	12-5				
1867	68	76	144	26	25	51	5	4	9	1	1	2	20	25	45	225	227	452	228	225	447	368	471	418	117	97	107	13-1	15-0	15-6	8-3	12-0	12-5				
1868	57	53	110	21	25	46	7	5	12	2	1	3	26	22	48	226	227	453	222	225	447	368	471	418	117	97	107	13-1	15-0	15-6	8-3	12-0	12-5				
1869	58	62	120	17	22	39	12	16	28	1	0	1	37	20	57	217	231	448	219	238	447	293	354	325	168	87	127	13-1	15-0	15-6	8-3	12-0	12-5				
1870	49	66	115	24	42	66	5	19	24	11	18	29	22	22	44	204	196	400	209	224	433	510	621	325	168	87	127	13-1	15-0	15-6	8-3	12-0	12-5				
1871	69	65	134	25	29	54	1	4	5	0	15	25	28	14	36	219	205	424	208	198	406	362	446	403	134	157	118	13-1	15-0	15-6	8-3	12-0	12-5				
1872	73	71	144	31	34	65	21	14	35	2	0	2	16	22	38	222	206	428	226	206	432	424	478	454	70	106	88	13-1	15-0	15-6	8-3	12-0	12-5				
1873	94	105	199	28	39	67	17	8	23	19	30	49	26	59	215	229	444	216	211	427	297	371	341	157	118	137	13-1	15-0	15-6	8-3	12-0	12-5					
1874	98	87	185	36	46	82	15	8	23	19	30	49	26	59	217	209	426	219	218	437	367	528	448	118	105	112	13-1	15-0	15-6	8-3	12-0	12-5					
1875	83	84	167	30	39	69	9	12	21	32	37	69	25	23	48	204	182	386	213	199	412	361	464	413	112	115	118	13-1	15-0	15-6	8-3	12-0	12-5				
1876	57	75	132	25	28	53	73	64	137	13	14	27	13	21	137	140	277	169	163	332	438	373	401	76	67	72	13-1	15-0	15-6	8-3	12-0	12-5					
1877	67	60	127	16	24	40	21	26	47	4	7	11	16	24	147	135	282	142	137	279	208	400	304	119	58	89	13-1	15-0	15-6	8-3	12-0	12-5					
1878	52	60	112	21	34	55	13	8	21	4	4	8	13	9	22	148	140	288	147	135	282	403	566	484	88	66	77	13-1	15-0	15-6	8-3	12-0	12-5				
1879	43	52	95	19	23	42	14	9	23	5	3	8	11	10	21	142	147	289	147	139	286	452	482	452	52	52	52	13-1	15-0	15-6	8-3	12-0	12-5				
1880	55	48	103	17	25	42	9	5	14	5	3	8	7	14	159	155	314	157	153	310	309	521	407	44	45	45	13-1	15-0	15-6	8-3	12-0	12-5					
1881	30	36	66	13	18	31	11	10	21	4	1	5	9	4	13	152	158	310	155	157	312	433	500	469	58	25	41	13-1	15-0	15-6	8-3	12-0	12-5				
1882	32	33	65	10	19	29	6	7	13	4	2	6	9	6	15	155	157	312	156	156	312	312	575	446	58	38	48	13-1	15-0	15-6	8-3	12-0	12-5				
1883	37	34	71	12	16	28	5	5	10	3	8	11	13	7	16	155	155	310	156	157	313	324	476	394	96	44	70	13-1	15-0	15-6	8-3	12-0	12-5				
1884	31	39	70	15	18	33	3	4	7	6	5	11	13	22	151	164	315	153	163	316	484	461	471	85	18	50	13-1	15-0	15-6	8-3	12-0	12-5					
1885	39	30	69	10	14	24	5	6	11	2	9	11	9	5	16	164	160	324	160	167	327	256	466	347	55	31	43	13-1	15-0	15-6	8-3	12-0	12-5				
1886	29	27	56	11	13	24	3	1	4	2	3	5	8	6	16	161	161	324	165	157	327	256	466	347	55	31	43	13-1	15-0	15-6	8-3						

TABLE IV.—Showing the History of the Annual Admissions since 1847, with the Discharges and Deaths, and the Numbers of each year remaining on the 31st December, 1907.

Admitted.				Of each year's Admissions, Discharged, and Died, in 1907.												Total Discharged and Died of each Year's Admissions to 31st December, 1907.												Remaining of each Year's Admissions, Dec. 31st, 1907.			
Year.		First Time.		Re-admitted.		Total.		Re-covered.		Relieved.		Not Improved.		Died.		Recovered.		Relieved.		Not Improved.		Died.		Males.		Females.					
Males.	Females.	Males.	Females.	Males.	Females.	Males.	Females.	Males.	Females.	Males.	Females.	Males.	Females.	Males.	Females.	Males.	Females.	Males.	Females.	Males.	Females.	Males.	Females.	Males.	Females.	Males.	Females.				
Previous years.....																															
1847	57	38	11	8	114	27	16	43	6	10	16	5	11	29	15	44	1	0	1	0	0	0	0	0	0	0	0				
1848	47	47	6	6	110	18	22	40	9	12	21	8	12	20	17	37	0	0	0	0	0	0	0	0	0	0	0				
1849	50	54	1	1	102	13	19	32	9	12	21	6	6	12	20	17	37	0	0	0	0	0	0	0	0	0	0				
1850	47	53	5	5	106	19	15	34	11	11	22	14	5	14	19	19	38	1	0	1	0	1	0	1	0	1	0				
1851	56	41	1	1	102	17	18	35	11	9	20	5	5	13	5	6	11	18	35	0	0	0	0	0	0	0	0				
1852	45	56	0	0	112	19	20	39	8	5	13	5	13	5	6	11	18	35	0	0	0	0	0	0	0	0	0				
1853	58	45	4	4	112	17	18	35	11	9	20	39	8	5	13	5	6	11	18	35	0	0	0	0	0	0	0				
1854	48	47	2	2	108	11	10	21	6	5	11	3	4	7	15	10	25	0	0	0	0	0	0	0	0	0	0				
1855	35	29	0	0	64	11	10	21	6	5	11	3	4	7	15	10	25	0	0	0	0	0	0	0	0	0	0				
1856	33	25	3	3	64	13	16	29	5	6	11	5	2	7	13	4	17	0	0	0	0	0	0	0	0	0	0				
1857	37	30	4	4	75	18	28	46	8	9	17	8	3	11	27	30	57	0	0	0	0	0	0	0	0	0	0				
1858	57	62	4	4	136	18	33	51	8	9	17	8	3	11	27	30	57	0	0	0	0	0	0	0	0	0	0				
1859	46	51	6	6	106	30	37	67	10	4	14	2	2	4	9	11	7	18	0	0	0	0	0	0	0	0	0				
1860	39	48	6	6	98	17	23	40	7	4	11	5	4	9	14	14	28	0	0	0	0	0	0	0	0	0	0				
1861	42	41	8	8	100	24	23	47	7	4	14	5	4	9	14	14	28	0	0	0	0	0	0	0	0	0	0				
1862	51	38	10	10	107	21	19	40	8	6	14	5	3	8	25	19	44	0	0	0	0	0	0	0	0	0	0				
1863	52	55	2	4	113	26	21	47	9	12	21	8	3	11	18	9	27	0	0	0	0	0	0	0	0	0	0				
1864	47	38	10	10	105	22	24	46	9	12	21	8	3	11	18	9	27	0	0	0	0	0	0	0	0	0	0				
1865	48	50	8	8	109	25	28	53	11	10	21	6	5	11	14	10	24	0	0	0	0	0	0	0	0	0	0				
1866	42	50	8	11	111	16	27	43	9	9	18	3	3	6	22	20	42	0	0	0	0	0	0	0	0	0	0				
1867	61	66	7	10	144	17	27	54	9	19	28	6	5	11	26	25	51	0	0	0	0	0	0	0	0	0	0				
1868	48	41	9	12	110	15	24	39	11	5	16	7	13	20	24	11	35	0	0	0	0	0	0	0	0	0	0				
1869	47	55	11	7	120	20	28	48	10	13	23	7	9	16	21	12	33	1	1	2	1	1	2	1	1	2	1				
1870	41	54	8	12	115	22	27	49	7	6	13	2	5	7	17	17	34	1	1	2	1	1	2	1	1	2	1				
1871	59	52	10	13	134	23	35	58	14	11	25	8	5	13	23	13	36	1	1	2	1	1	2	1	1	2	1				
1872	62	63	11	8	144	29	35	64	15	9	24	4	8	12	26	16	41	0	0	0	0	0	0	0	0	0	0				
1873	82	93	12	12	199	36	42	78	15	11	26	11	10	21	32	22	54	1	2	3	5	3	5	3	5	3	5				
1874	83	77	15	10	185	39	42	81	18	12	30	11	10	21	32	22	54	1	2	3	5	3	5	3	5	3	5				
1875	76	72	7	12	167	36	42	78	12	17	29	7	6	13	23	19	42	1	2	3	5	3	5	3	5	3	5				
1876	52	72	5	3	132	18	21	39	13	9	22	6	11	17	17	16	33	3	1	4	5	3	5	3	5	3	5				
1877	58	53	5	7	127	17	28	45	20	12	32	8	8	16	18	11	29	4	1	5	6	4	6	4	6	4	6				
1878	44	51	8	9	112	16	27	43	10	6	16	4	5	9	13	8	21	3	8	11	3	8	11	3	8	11	3				
1879	38	43	5	9	95	19	15	34	9	10	19	7	10	17	10	19	21	1	3	4	4	4	4	4	4	4	4				
1880	49	38	6	10	103	14	16	30	4	6	10	4	2	6	12	4	16	2	4	6	4	6	4	6	4	6	4				
1881	25	31	5	5	66	8	20	28	3	3	6	2	1	3	10	9	19	3	3	6	3	6	3	6	3	6	3				
1882	32	27	0	6	65	16	18	34	7	7	14	5	5	10	6	6	12	4	16	2	4	6	4	6	4	6	4				
1883	33	27	4	7	71	13	17	30	3	5	8	7	7	14	5	10	6	12	4	16	2	4	6	4	6	4	6				
1884	24	30	7	9	70	16	18	34	7	6	13	7	7	14	5	10	6	12	4	16	2	4	6	4	6	4	6				
1885	32	21	7	9	69	12	12	24	3	5	8	7	7	14	5	10	6	12	4	16	2	4	6	4	6	4	6				
1886	26	22	3	5	56	11	13	24	3	5	8	7	7	14	5	10	6	12	4	16	2	4	6	4	6	4	6				
1887	29	25	6	5	65	11	14	25	6	2	8	3	3	6	12	5	5	10	6	12	4	6	4	6	4	6	4				
1888	23	17	2	6	48	7	14	21	6	2	8	3	3	6	12	5	5	10	6	12	4	6	4	6	4	6	4				
1889	28	15	2	3	48	11	14	25	6	2	8	3	3	6	12	5	5	10	6	12	4	6	4	6	4	6	4				
1890	26	27	2	3	58	7	14	21	6	2	8	3	3	6	12	5	5	10	6	12	4	6	4	6	4	6	4				
1891	29	26	3	6	64	14	19	33	10	5	15	4	4	8	13	6	19	4	4	8	13	6	19	4	4	8	13				
1892	29	31	5	7	72	15	22	37	5	5	10	4	4	8	13	6	19	4	4	8	13	6	19	4	4	8	13				
1893	28	37	6	10	81	15	22	37	5	5	10	4	4	8	13	6	19	4	4	8	13	6	19	4	4	8	13				
1894	27	36	6	7	74	15	14	29	5	5	10	4	4	8	13	6	19	4	4	8	13	6	19	4	4	8	13				
1895	33	35	5	4	77	15	14	29	5	5	10	4	4	8	13	6	19	4	4	8	13	6	19	4	4	8	13				
1896	38	25	4	4	71	13	13	26	7	1	8	3	3	6	12	5	14	4	7	11	16	6	5	11	16	6	5				
1897	37	27	6	3	73	13	13	26	7	1	8	3	3	6	12	5	14	4	7	11	16	6	5	11	16	6	5				
1898	35	40	7	4	86	17	13	30	9	3	12	4	4	8	12	7	15	18	7	7	14	7	9	16	7	9	16				
1899	29	55	6	6	103	14	37	51	4	4	8	12	4	8	12	7	15	18	7	7	14	7	9	16	7	9	16				
1900	38	44	3	13	98	12	26	38	7	14	21	7	7	14	5	14	6	19	4	4	8	13	6	19	4	4	8				
1901	32	52	12	11	107	11	27	38	10	6	16	5	5	10	15	14	6	19	4	4	8	13	6	19	4	4	8				
1902	32	48	10	10	100	10	16	26	6	6	12	3	3	6	12	5	12	9	5	14	10	9	19	5	14	10	9				
1903	25	32	10	9	76	9	14	21	6	6	12	3	3	6	12	5	12	9	5	14	10	9	19	5	14	10	9				
1904	36	42	5	15	98	14	21	35	4																						

TABLE V --Showing the Causes of Death during the year 1907, together with the Ages at Death.

Causes of Death.	30 and under 35			35 and under 40			45 and under 50			50 and under 55			55 and under 60			70 and under 75			75 and under 80			80 and under 85			85 and under 90			Totals.		
	M	F	T	M	F	T	M	F	T	M	F	T	M	F	T	M	F	T	M	F	T	M	F	T	M	F	T			
Cerebral Hemorrhage	0	1	1	0	1	1		
General Paralysis of Insane	1	0	1	1	1	2		
Heart Disease (Valvular)	0	1	1	0	1	1	
Mania, Exhaustion from	0	1	1	0	1	1		
Obstruction of Bowels	0	1	1		
Phthisis	1	0	1		
Rupture of Heart	0	1	1	0	1	1		
Senile Decay	1	0	1	1	0	1		
Septicæmia	1	0	1	1	1	2		
Suicide whilst absent on trial	0	1	1	0	1	1		
Syncope	1	0	1	1	0	1		
Totals	1	0	1	0	2	2	1	1	2	1	1	2	1	1	2	1	0	1	0	1	1	1	0	1	1	6	7	13		

TABLE VI.—Showing the length of Residence in those Discharged Recovered, and in those who have Died, during the year 1907.

LENGTH OF RESIDENCE.	Recovered.			Died.		
	M.	F.	T.	M.	F.	T.
Under 1 month	1	1	2	0	0	0
1 month and under 3 months	4	4	8	0	0	0
3 months and under 6 months	3	5	8	0	1	1
6 " " 9 "	3	3	6	0	1	1
9 " " 12 "	2	1	3	1	0	1
1 year and under 2 years ...	2	2	4	1	1	2
2 years and under 3 years...	0	1	1	0	1	1
3 " " 5 " ...	0	1	1	1	1	2
5 " " 7 " ...	0	0	0	0	0	0
7 " " 10 " ...	0	1	1	0	0	0
10 " " 12 " ...	0	0	0	1	0	1
12 " " 15 " ...	0	0	0	0	0	0
15 " " 20 " ...	0	0	0	0	0	0
20 " " 25 " ...	0	0	0	0	0	0
25 " " 30 " ...	0	0	0	2	1	3
30 " " 35 " ...	0	0	0	0	1	1
35 " " 40 " ...	0	0	0	0	0	0
40 " " 45 " ...	0	0	0	0	0	0
45 " " 50 " ...	0	0	0	0	0	0
TOTALS.....	15	19	34	6	7	13

TABLE VII.—Showing the Duration of the Disorder on Admission in the Admissions, Discharges, and Deaths, during the Year 1907.

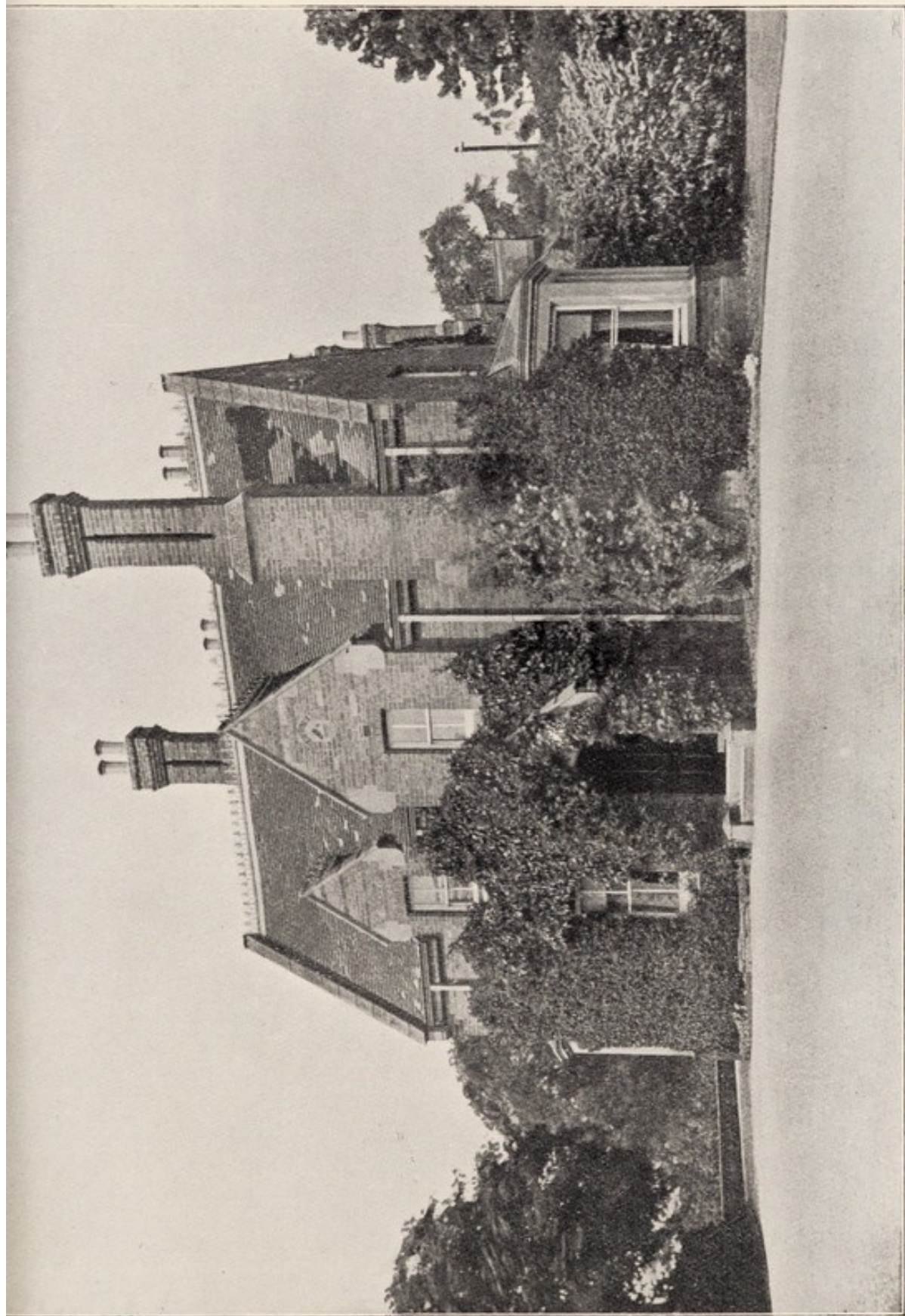
CLASS.	THE ADMISSIONS.			THE DISCHARGES.						THE DEATHS.		
	M.	F.	T.	RECOVERED.			REMOVED, RELIEVED, OR OTHERWISE.			M.	F.	T.
				M.	F.	T.	M.	F.	T.			
FIRST CLASS. First Attack, and within Three Months on admission	17	14	31	7	7	14	4	3	7	1	2	3
SECOND CLASS. First Attack, above Three, and with- in Twelve Months on Admission...	6	7	13	3	4	7	3	3	6	1	1	2
THIRD CLASS. Not First Attack, and within Twelve Months on Admission	10	20	30	5	5	10	2	3	5	3	2	5
FOURTH CLASS. First Attack or not, but of more than Twelve Months on Admission ...	4	6	10	0	3	3	4	10	14	1	2	3
FIFTH CLASS. Congenital	0	0	0	0	0	0	0	1	1	0	0	0
TOTALS	37	47	84	15	19	34	13	20	33	6	7	13

TABLE VIII.—Showing by Quinquennial Periods the Ages of those Admitted, Recovered, and Died, during the year 1907.

AGES.	ADMISSIONS.			RECOVERIES.			DEATHS.		
	M.	F.	T.	M.	F.	T.	M.	F.	T.
15 years and under 20 years	1	1	2	1	0	1	0	0	0
20 years and under 25 years	4	2	6	2	1	3	0	0	0
25 years and under 30 years	4	5	9	2	1	3	0	0	0
30 years and under 35 years	5	6	11	2	0	2	1	0	1
35 years and under 40 years	2	5	7	1	2	3	0	2	2
40 years and under 45 years	2	5	7	0	6	6	0	0	0
45 years and under 50 years	3	10	13	2	5	7	1	1	2
50 years and under 55 years	1	4	5	1	1	2	1	1	2
55 years and under 60 years	6	2	8	1	0	1	1	1	2
60 years and under 65 years	5	1	6	2	0	2	0	0	0
65 years and under 70 years	3	1	4	1	1	2	0	0	0
70 years and under 75 years	0	3	3	0	2	2	1	0	1
75 years and under 80 years	1	0	1	0	0	0	0	1	1
80 years and under 85 years	0	2	2	0	0	0	1	0	1
85 years and under 90 years	0	0	0	0	0	0	0	1	1
90 years and under 95 years	0	0	0	0	0	0	0	0	0
TOTALS ...	37	47	84	15	19	34	6	7	13

TABLE XI.—Showing the form of Mental Disorder on Admission in the Admissions, Recoveries, and Deaths of the Year 1907, and the form of Mental Disorder of the Inmates on 31st December, 1907.

FORM OF MENTAL DISORDER.	ADMISSIONS.			RECOVERIES.			DEATHS.			REMAINING. Form of Mental Disorder, 31 Dec., 1907.		
	M.	F.	T.	M.	F.	T.	M.	F.	T.	M.	F.	T.
Congenital— <i>a</i> with Epilepsy	0	0	0	0	0	0	0	0	0	0	0	0
” <i>b</i> without Epilepsy	1	1	2	0	0	0	0	0	0	3	5	8
Epilepsy acquired	1	0	1	0	0	0	0	0	0	5	0	5
General Paralysis of the Insane	2	0	2	0	0	0	1	1	2	2	0	2
Mania—												
” Acute	10	7	17	5	7	12	0	2	2	2	12	14
” Chronic	4	3	7	0	0	0	1	2	3	50	110	160
” Recurrent	5	10	15	6	2	8	0	0	0	9	8	17
” Puerperal	0	1	1	0	0	0	0	0	0	0	1	1
” Senile	1	1	2	0	0	0	0	0	0	1	4	5
Melancholia—												
” Acute	6	9	15	4	7	11	0	1	1	2	10	12
” Chronic	3	3	6	0	0	0	3	0	3	22	30	52
” Recurrent	2	6	8	0	3	3	0	0	0	5	1	6
” Puerperal	0	0	0	0	0	0	0	0	0	0	0	0
Dementia—												
” Primary	1	1	2	0	0	0	0	0	0	1	5	6
” Secondary	0	4	4	0	0	0	0	0	0	85	38	123
” Senile	1	1	2	0	0	0	1	1	2	2	2	4
” Organic (<i>i.e.</i> , from Tumours, } Coarse Brain Disease, &c.)	0	0	0	0	0	0	0	0	0	0	0	0
TOTALS	37	47	84	15	19	34	6	7	13	189	226	415



MOULTON PARK HOUSE (2 MILES FROM ST. ANDREW'S HOSPITAL).



Five males and 11 females admitted during the year had been previously under treatment in the Hospital.

The number discharged—80—includes 34 recovered, 15 males and 19 females.

The per-centage of recoveries on the total number of admissions during the year has been 40·54 males, 40·42 females, total 40·47.

The proportion per cent. of recoveries on admissions (excluding transfers from other Asylums) has been 51·72 males, 55·88 females, total 53·96.

The per-centage of deaths on the average numbers resident has been 3·17 males, 3·16 females, total 3·17.

The per-centage of deaths on the total number under treatment has been 2·67 males, 2·57 females, total 2·62.

In the past year, as compared with 1906, there is a decrease of 7 in the number of admissions.

There is an increase of 12 in the number of recoveries.

The average number resident has been the same as in 1906.

The total number under treatment has been greater by 4 than in the year 1906.

All the deaths have been from natural causes, except one female who committed suicide by hanging whilst out upon trial with her friends.

No case of infectious disease has occurred in the Hospital, or in any of the houses belonging to it, at Moulton Park, or in North Wales.

One hundred and seventy-four patients have been sent to the Seaside House, Bryn-y-Neuadd, Llanfairfechan, North Wales, for periods varying from one month upwards, and the house has been occupied during the whole of the year. The house, Hafod Fadog, which was recently purchased, has been altered and made suitable for four patients who have their own rooms. It has been fully occupied for the past three months.

The number of patients employed remains about the same as last year ; the average daily number being as follows :—

MALES.		FEMALES.	
On Farm and Garden	53	Needlework	67
In Tailor's Shop	1	Linen Room	3
„ Upholsterer's Shop	6	Dining Hall	3
„ Printer's Shop	3	Dormitories	7
„ Painter's Shop	1	Other work.....	13
Clerical work.....	4		
Various	25		
	93		93

The following is the list of amusements and entertainments which have been given during the year :—

Hockey Matches	49	Theatre in Town	22
Football „	10	Concerts in Town.....	3
Cricket „	28	Smoking Concerts	6
Croquet Tournaments	10	Other Concerts	5
Band on Terrace	20	Theatricals	10
Boating Parties.....	4	Cafe-Chantants	3
Billiard Handicaps	4	Dances	7
Parties to Shows	12	Whist Drives	5
„ Football Matches*	15	Book Parties	2
„ Cricket Matches*	12	Excursions	16

* Outside the Grounds.

The following works have been carried out :—

At the Hospital and Moulton Park :

Installation of Water Softening Apparatus.

At Bryn-y-Neuadd :

Six bedrooms have been added to the mansion.

Hafod Fadog (a villa in the park) has been altered to make it suitable for patients.

I am glad to be able to report that the extensive alterations and additions which have been carried on for many years past to bring this Hospital up to the standard of more modern buildings, and to make it suitable for the present requirements for the treatment of the insane, have been completed. The whole of the interior of the Hospital has been altered and re-modelled, and many new buildings have been added to it.

Those Governors who recollect the old buildings will, I think, bear testimony to the vast improvement that these alterations have made, both in the appearance of the wards themselves (which are now entirely free from all prison-like appliances, such as iron bars and windows, bare brick walls, etc.,) and also to the comfort of the patients.

The cost of these alterations, and also of a large quantity of furniture which has been purchased, has been paid for out of the income, and it has not been necessary to touch the Reserve Fund.

During the many years that these alterations have been going on the works have not affected at all the admission of patients, and we have been able, by transferring them from one part of the building to another, to continue to receive patients, and the numbers have gone on increasing. In the year 1866 (when the alterations commenced) the number of private patients admitted was 20. During 1907, 84 patients have been admitted. In 1866, the number of private patients resident was 82, as compared with 415 during last year.

In addition to the alterations to the interior of the Hospital, much has been done to improve the appearance of the gardens and ornamental grounds. In 1866, the whole of the land below the Chapel was ploughed and used as a kitchen garden and farm, and the front lawn was enclosed as a meadow. The whole of this has now been converted into a park and ornamental grounds, making suitable exercising grounds for those patients who are unable to take walks outside as their conduct would attract attention.

The Hospital estate has also been considerably enlarged by the purchase of 40 acres formerly occupied by Mr. Perkins, and of three villas with land attached to them on the Billing Road and Cliftonville. The land round the Hospital now comprises about 200 acres as compared with 100 acres in 1866.

Moreover, within the period named (1866 to 1907) two large estates, one at Moulton Park of 500 acres, and another at Llanfairfechan, North Wales, of almost 300 acres, have been purchased: the first to be used as a farm and kitchen garden, where a number of patients are employed, and the other as a seaside convalescent home.

During the year the following change has taken place in the staff of officers. Dr. Bryan, the Third Assistant Medical Officer, resigned to go into private practice, and Dr. Phillips, Assistant Medical Officer at the Canterbury Asylum, was appointed in his place.

In July last, in consequence of the great increase in the number of patients resident at our seaside house, Bryn-y-Neuadd, it was considered necessary to appoint a Resident Medical Officer, and Dr. M. T. Archdall (who had previously been for five years Assistant Medical Officer in this Hospital, and was well acquainted with the patients) was appointed to act as Medical Officer, and to be responsible for the management of the Institution.

I am glad to be able to report that the alterations in the administrative departments have continued to work most satisfactorily.

The Hospital has been visited twice during the year by the Commissioners in Lunacy and the Lord Chancellor's Visitors, and at each visit their reports have been satisfactory.

I am much indebted to the Assistant Medical Officers, and to all the other members of the staff for the assistance they have rendered me during the past year.

I beg leave to tender my sincere thanks to the Committee of Management for the support and encouragement that they have at all times given me in the performance of my duties.

I have the honour to be,

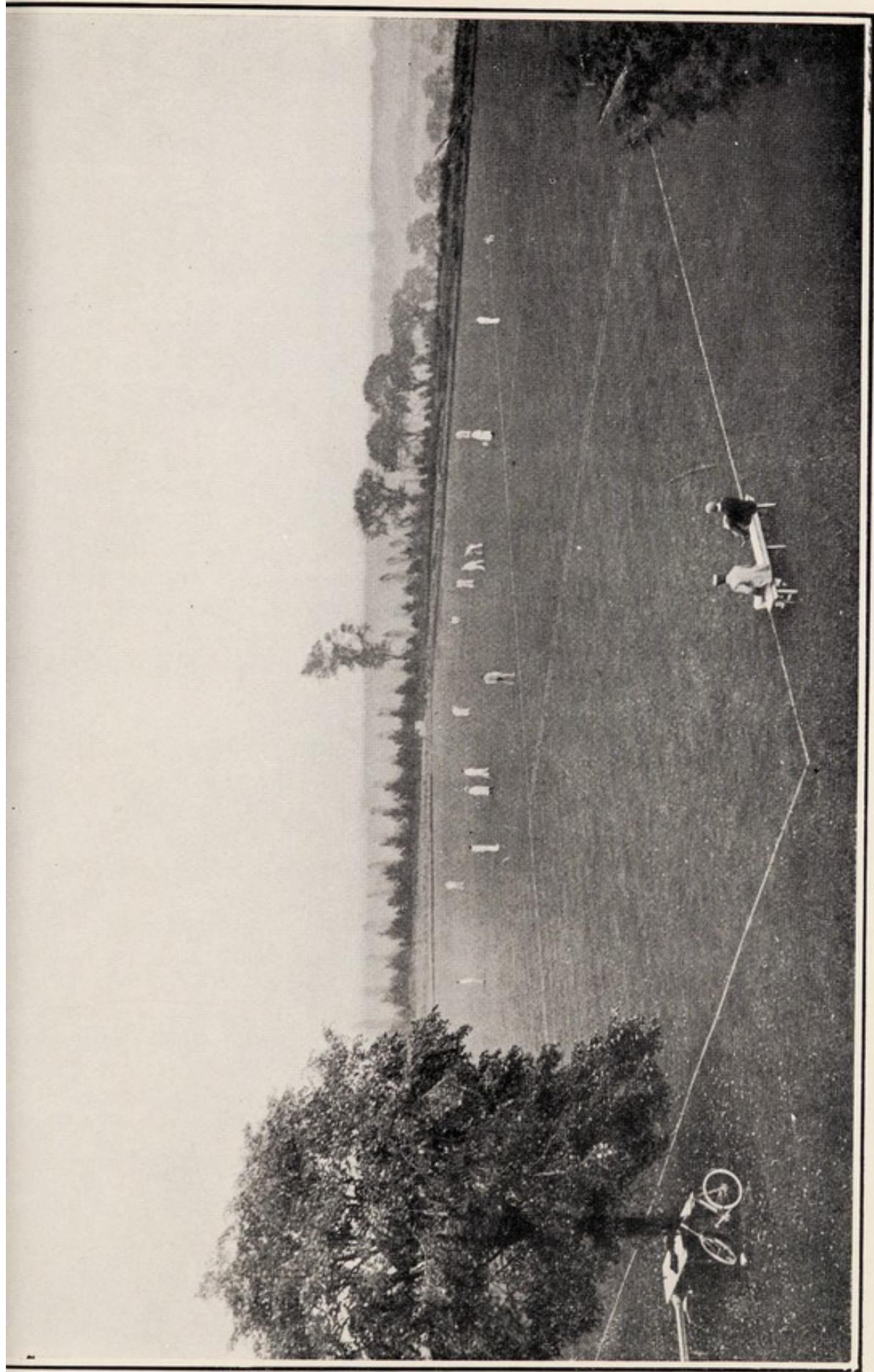
My Lords and Gentlemen,

Your obedient Servant,

J. BAYLEY,

January, 1908.

Medical Superintendent.



THE CRICKET GROUND, ST. ANDREW'S HOSPITAL.



THE
Report of the Chaplain,
FOR THE YEAR 1907.

JANUARY 29TH, 1908.

MY LORDS AND GENTLEMEN,

I beg to submit to you my Annual Report for the year 1907.

The Sunday and week-day services have been held with the usual regularity save on a few occasions of very inclement weather. The statistics give an average attendance on Sunday of 53 males and 66 females, and on week-days of 20 males and 11 females, which shows a marked increase in the female attendance on Sunday as compared with the previous year. The behaviour of the patients at Divine Service continues to be very satisfactory.

In my daily visits to the various wards and private apartments, and in my fortnightly visits to Moulton Park I have been received in the same kindly manner as heretofore. I am again enabled to report that the Library is well used and appreciated. A large number of well-assorted works have been purchased and placed in bookcases in the wards. There is a very good supply of Newspapers and Periodicals, and their circulation is actively kept up under my own superintendence.

In my holiday absence of eleven days in the month of June, and twelve days in the month of September, my duties were performed by the Rev. Canon Jones and the Rev. B. Mathews.

I have again to thank the Medical Superintendent and other Officials for much courtesy and kindness in the discharge of the duties of my office.

I remain,

Your obedient Servant,

JOHN CUNNINGHAM,

Chaplain.

A RETURN showing the Weekly Payments of Patients who received Charitable Assistance in the year 1907.

FIRST CLASS.

*Lowest Remunerative Payment 42s. a week, for Board, Lodging, Care,
and Medical Treatment.*

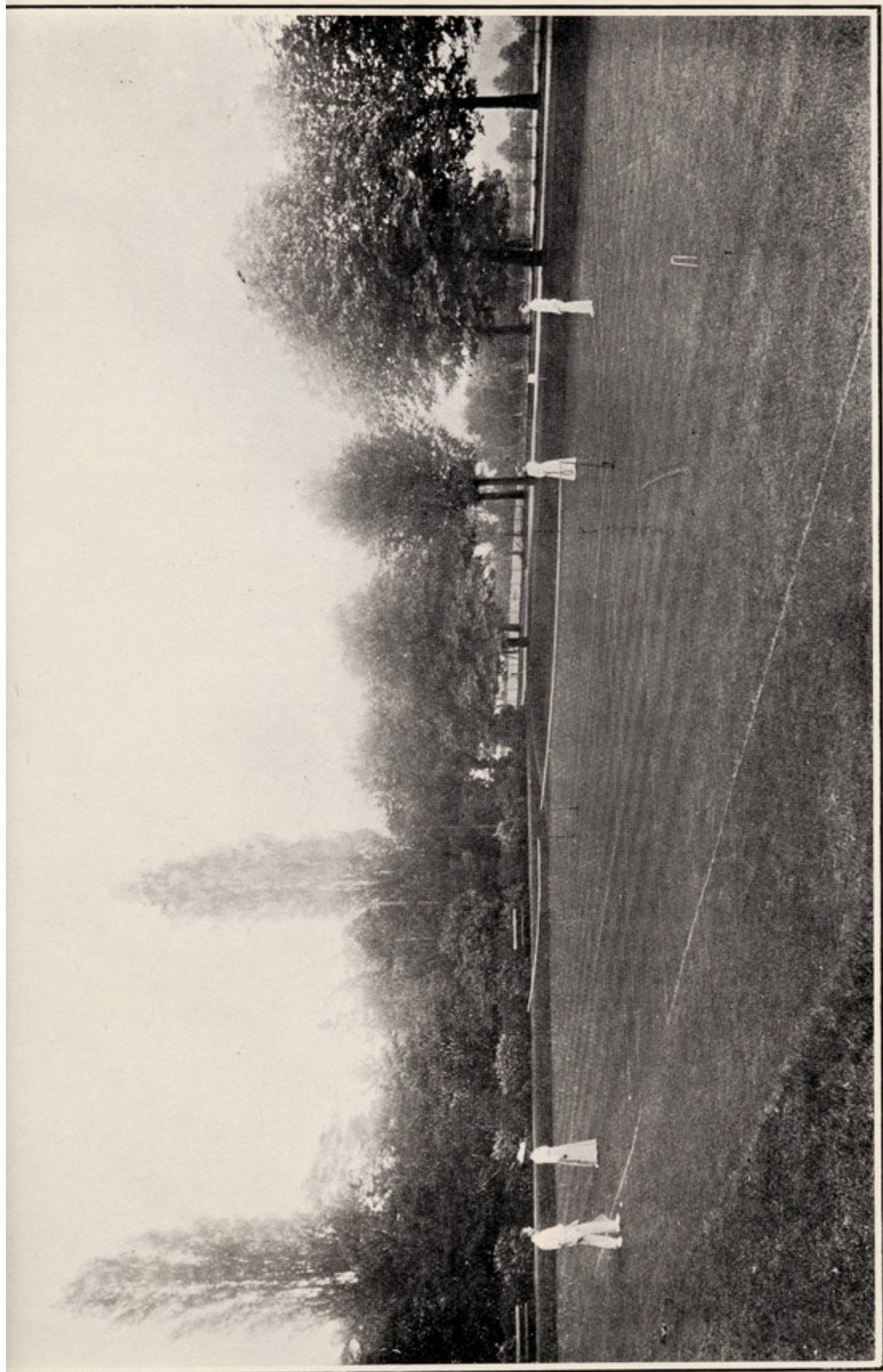
1 for 52 weeks... no payment.	1 for 52 weeks at 31s.
1 „ 26 „ at 10s.	4 „ 52 „ „ 31s. 6d.
1 „ 15 „ „ 10s. 6d.	1 „ 52 „ „ 36s. 6d.
1 „ 52 „ „ 11s. 6d.	1 „ 52 „ „ 38s.
2 „ 52 „ „ 20s.	1 „ 52 „ „ 38s. 6d.
1 „ 52 „ „ 21s.	1 „ 52 „ „ 40s. 6d.
1 „ 52 „ „ 26s. 11d.	

SECOND CLASS.

*Lowest Remunerative Payment 31s. 6d. a week, for Board, Lodging, Care,
and Medical Treatment.*

2 for 52 weeks... no payment	2 for 52 weeks at 15s.
1 „ 15 „ at 6d.	1 „ 45 „ „ 15s.
1 „ 10 „ „ 6d.	1 „ 34 „ „ 15s.
2 „ 52 „ „ 1s.	2 for 52 „ „ 15s. 6d.
1 „ 4 „ „ 1s.	1 „ 26 „ „ 17s. 6d.
3 „ 52 „ „ 2s. 6d.	2 „ 52 „ „ 19s. 3d.
1 „ 10 „ „ 4s.	4 „ 52 „ „ 20s.
3 „ 52 „ „ 5s.	1 „ 26 „ „ 20s.
1 „ 18 „ „ 5s.	1 „ 52 „ „ 21s.
2 „ 52 „ „ 6s. 6d.	1 „ 7 „ „ 21s.
1 „ 26 „ „ 7s. 6d.	2 „ 52 „ „ 21s. 6d.
1 „ 52 „ „ 8s.	1 „ 9 „ „ 23s.
1 „ 52 „ „ 8s. 6d.	1 „ 52 „ „ 24s.
3 „ 52 „ „ 9s.	1 „ 26 „ „ 24s.
2 „ 52 „ „ 10s.	10 „ 52 „ „ 25s.
1 „ 17 „ „ 10s.	1 „ 9 „ „ 25s.
1 „ 12 „ „ 10s.	3 „ 52 „ „ 27s.
1 „ 52 „ „ 10s. 6d.	1 „ 52 „ „ 30s.
1 „ 28 „ „ 11s.	1 „ 52 „ „ 30s. 9d.
4 „ 52 „ „ 11s. 6d.	1 „ 36 „ „ 31s.
1 „ 52 „ „ 12s.	

The Committee also voted the sum of £150 towards sending poor Patients for a change to the seaside.



THE TENNIS COURT, ST. ANDREW'S HOSPITAL.



ABSTRACT OF BENEFACTIONS and Legacies towards the Erection and Establishment of the Hospital.

	£	s.	d.
The Donation from the Surplus of the Fund for raising and maintaining the late Regiment of NORTHAMPTONSHIRE YEOMANRY CAVALRY, £336 2s. 9d. Long Annuities, standing in the Names of the Right Hon. George John (2nd) Earl Spencer, K.G., the highly respected Colonel of the late Corps; and Captain the Right Hon. the Lord Viscount ALTHORP, M.P., sold out and re-invested in the same names in £7,000 Three per cent. Reduced Annuities; which, with Dividends accrued thereon, amounted to.....	7,848	12	7
Benefactions and Legacies.....	16,340	18	6
The Proceeds of Two Concerts, given under the direction of the late Mr. C. McKORKELL, for which he was appointed an Honorary Director	105	13	9
The Northamptonshire Agricultural Society ...	10	10	0
Congregational Collections	565	9	4
Total received to 31st December, 1851.....	24,871	4	2
Benefactions and Legacies received between Jan. 1, 1851, and Dec. 31, 1857; and also Legacies up to Dec. 31, 1861, including Dividends on an invested portion thereof (see the Report for 1860, page 33)	1,695	17	0
Subscriptions received towards the Erection of a Chapel between the 1st January, 1858, and the 31st December, 1862	2,147	0	10
Proceeds of a Flower Show at Blisworth for the Benefit of the Chapel Fund, by the late H. O. NETHERCOTE, Esq., 1859	145	0	0
Benefactions and Legacies in the years 1862 to 1907.....	1,892	10	5
Benefaction, in Memory of the late Duke of GRAFTON, from his Widow, 1884.....	1,000	0	0
Total Benefactions and Legacies	£31,751	12	5

Rules for the Admission, Visiting, and Discharge of Patients.



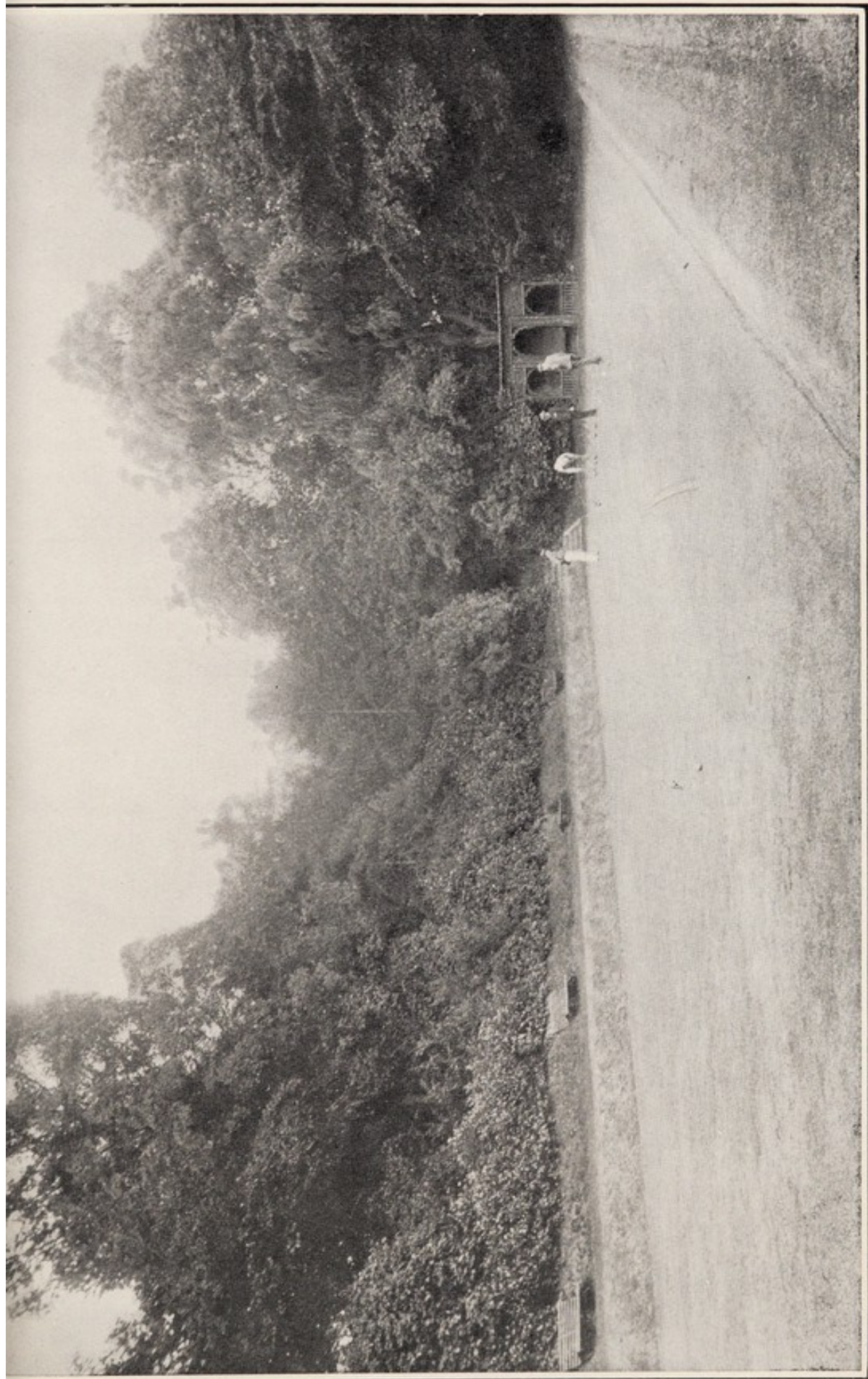
The main object of this Institution is to provide accommodation and comforts suitable to the former social and present mental condition of persons belonging to the Upper and Middle Classes, at moderate rates of payment.

No publicity whatever is implied as to individual Patients by the term 'Hospital.' Such term simply means that the institution is conducted by a Board of Governors, whose sole object is the comfort and well-being of the Patients, and who have no pecuniary interest in its prosperity.

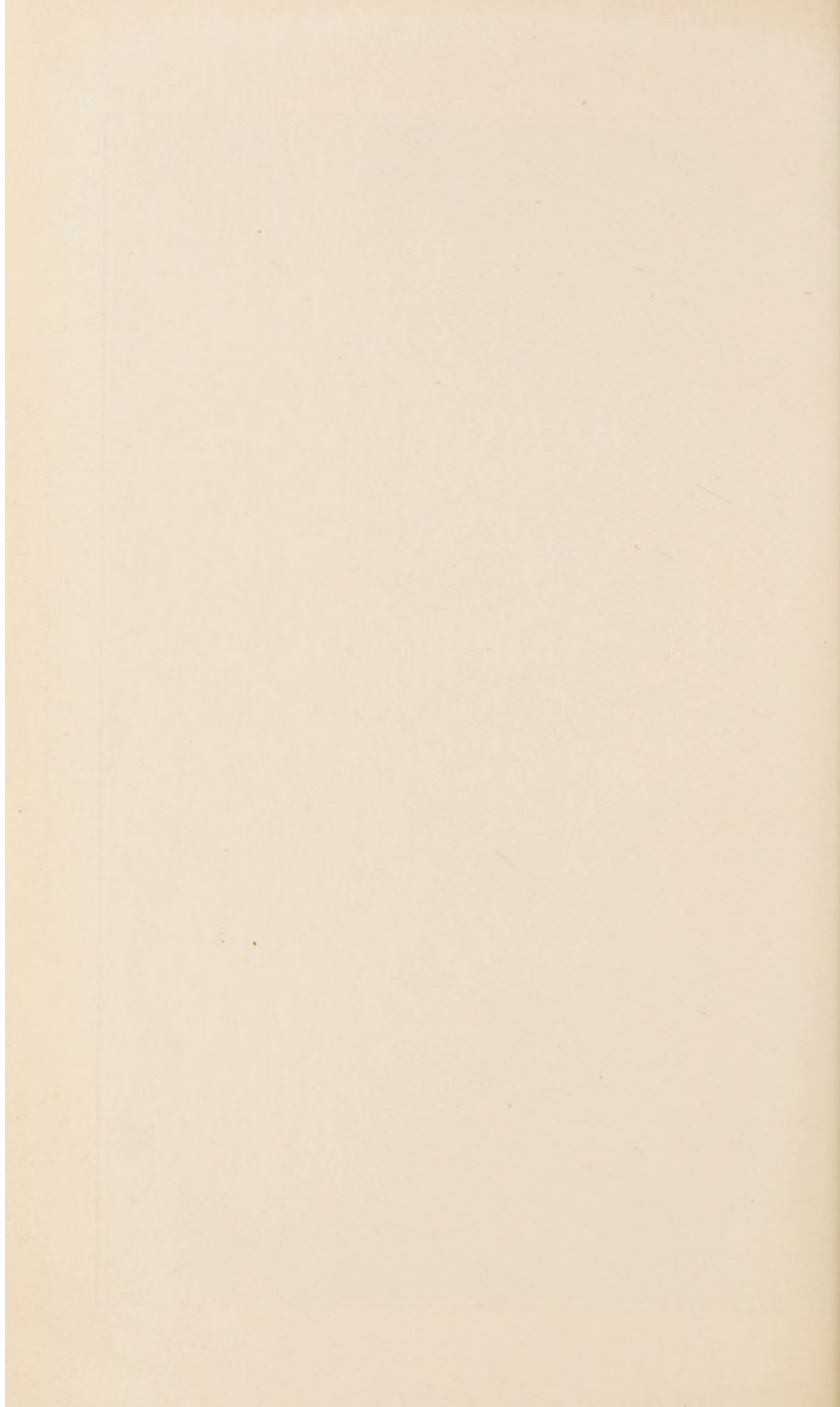
The Commissioners in Lunacy have more than once, in their Reports to the Lord Chancellor, pointed out the urgent need of Hospitals for the care and treatment of the Insane of the Upper and Middle Classes; and their extension formed one of the recommendations of the Select Parliamentary Committee of 1878; the Governors of this Institution therefore determined, so far as might be practicable, to meet this want.

To accomplish this object large sums have been expended in altering, re-furnishing, and decorating the apartments; in laying out, and improving the gardens; and in making the Institution as home-like and cheerful as possible.

Applications for the Admission of Patients, or for information regarding the various rates of payment at which Patients are received, must be addressed to the resident Medical Superintendent; from whom may be obtained printed forms of the papers necessary to be completed and signed before the Patient can be received into the Institution, and all other information required as to the means of conveying the Patient.



THE BOWLING GREEN, ST. ANDREW'S HOSPITAL.



The Papers required under the LUNACY ACT, 1890, are :—

1.—For an ordinary admission—

- (a) The Petition to a Judicial Authority.
- (b) Two Medical Certificates to be presented with such Petition.
- (c) The Order of the Judicial Authority.

2.—If the case be one of great emergency the Patient may be received on an "Urgency Order," with one Medical Certificate: but can be retained for seven days only, unless the papers mentioned in the preceding paragraph are meanwhile obtained.

3.—If a Patient is already certified Insane, the above-named papers will not be required; but application must be made to the Commissioners in Lunacy for an Order of Transfer.

If the Patient has been found Lunatic by Inquisition, the following papers will be required, viz. :—An Order signed by the Committee of the Person, a form for which may be obtained from the Hospital; and two copies of the Judge's Order sanctioning the appointment of the Committee of the Person, to be obtained from the Registrar in Lunacy, Royal Courts of Justice, London.

In every case an Obligation for payment of board, &c., to be signed by two responsible persons, is required. Fourteen days are allowed for the Signatures to be obtained to this document after a Patient has been admitted.

The Terms of Admission per week are as follows :—First Division, from £2 2s. to £4 4s.; Second Division, from £1 11s. 6d. to £2 2s.; according to the requirements of the case.

Patients may be admitted at lower rates, or the terms reduced, if the friends can satisfy the Committee of Management that so much cannot be afforded.

Patients paying higher rates can have private apartments in the Hospital, or in detached Villas, and special attendants, carriages, horses, &c.

There are also Houses at Moulton Park, a Branch Establishment two miles from the Hospital, and a Sea-side House to which Patients can be sent.

The terms include board, lodging, medical advice, medicines, and all other necessities ; washing, clothing, repairs to clothing, and wines and spirits only excepted. Terms to include the latter items may be proposed.

In the event of a Special Attendant being constantly required, on account of suicidal or homicidal tendencies, or other reason, an extra charge would be made.

One quarter's payment is made at the time of admission, and the payments are afterwards made quarterly and in advance. The Committee do not bind themselves to make any return of payment on account of the first quarter.

The friends of Patients are invited to satisfy themselves of the condition of their relatives, and the treatment they receive, by making frequent visits to the Institution.

Whenever the Superintendent shall deem it unadvisable to allow friends or relations to have an interview with a patient, he may decline to allow such interview.

Patients may be visited once a fortnight, on any day except Sunday, between the hours of ten and twelve, or two and four.

If the friends, or those who are security for the Board, wish to remove a Patient, they shall give five days' notice in writing to the Medical Superintendent.

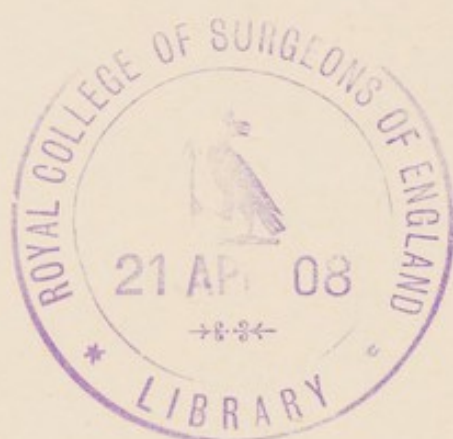
Every Patient, upon admission, must have suitable clothing : and every article should be marked with the Patient's name. Any article afterwards required should be supplied immediately upon notice to that effect being received by the Obligor. *Should such notice not be attended to, the Medical Superintendent may order what is required at the Obligor's expense.*

Boxes or Portmanteaux, in which the clothing of Patients is brought, will be returned immediately to the friends after the admission, there not being room to keep them at the Institution.

The utmost attention and care are exercised in the classification of the Patients, according to their habits and different degrees of mental aberration, so that those who are quiet or convalescent may not associate with those whose minds are more affected.



THE CROQUET GROUND, ST. ANDREW'S HOSPITAL.



Ample means of amusement and occupation are provided, including large grounds laid out for cricket, croquet, lawn-tennis, and archery ; billiard rooms, a large recreation hall and theatre, with a central drawing-room, are also provided for winter entertainments. A band plays on the terrace of the tennis courts in the afternoon, twice a week in the summer ; and every method is resorted to for the amelioration of the condition of the inmates. The utmost liberty consistent with safety is permitted ; and carriage exercise is provided daily for those requiring it.

Divine Service is performed twice every Sunday in the Chapel, and Prayers are read every morning by the Chaplain, who devotes the whole of his time to his duties at the Institution.

Newspapers, Periodicals, and a Library containing publications of a cheerful and instructive character, are provided for the use of the Patients, and distributed by the Chaplain.

The Institution is pleasantly situated in a healthy locality, within a short distance of the town of Northampton, and is surrounded by more than one hundred acres of pleasure grounds.

Northampton is only $1\frac{1}{2}$ hours from London on the main line of the London and North-Western Railway, and there is an excellent train service.

Experienced Attendants can be sent to assist in the removal of a Patient at any time.

For further information apply to the Medical Superintendent.

The following are Extracts from the Reports of the Commissioners in Lunacy, Lord Chancellor's Visitors, &c. :—

February 27th, 1877.

"This Institution continues to be managed with the same ability and zeal for the welfare of the inmates which we have been able to report on former occasions."

October 29th, 1880.

"It is with satisfaction we report that in neither division was any complaint brought to our notice, except on the score of needless prolonged detention, and even these were rare."

"The state of the Wards and Dormitories was commendable, and great attention is shown to the Bedding and Dress of the Patients, whose general condition is creditable to the Attendants in each division.

"In conclusion, we have only to express our gratification at the condition in which we find the Hospital, under the able superintendence of Mr. Bayley; and we hope that nothing will prevent the full development of this Institution; supplying, as it does, accommodation for a class not easy to provide for in many places."

October 30th, 1880.

"I have had an opportunity of looking round this Hospital in company with Mr. Bayley, and having read the above report of the Commissioners in Lunacy, I need only add that I entirely concur in their general expressions of gratification. Indeed, I can hardly imagine that any arrangements could be more satisfactory than those which I have had real pleasure in inspecting."—RICHARD BAGGALLAY, Lord Justice of Appeal

May 31st, 1881.

"The Wards and Dormitories were alike in good order, and the general condition of this Hospital was creditable to the Staff.

"We have in conclusion, only to express our hope that this Institution may be able to extend its charitable work, and again to state our satisfaction at the management by Mr. Bayley, whose zeal and anxiety for the welfare of the Patients remain unabated."

October, 1882.

"There was general tranquillity in the Wards while we were with the Patients; and there was abundant evidence that they are kindly and judiciously treated by the Medical Superintendent.

"Everywhere cleanliness and good order are maintained, and amusements are liberally supplied."

May, 1883.

"We passed many hours in the Wards, and saw every Patient, overlooking no person. We were well satisfied with the personal appearance in regard to dress and general appearance.

"The development of the Charity of this prosperous Hospital, will, we have no doubt, be the aim of the Committee and Medical Superintendent, who have already so ably and successfully enlarged and improved the Institution."

April 17th, 1885.

"I have to-day visited the Chancery Patients confined in this Hospital, and have seen all the rooms occupied by them. This has necessarily taken me all through the Establishment. I am entirely satisfied with the care and treatment bestowed upon the Chancery Patients; and I am glad to record here, what I have for years stated on every occasion, the very high opinion I entertain of the conduct and management of this Hospital, which I regard as second to none in the kingdom."—C. LOCKHART ROBERTSON, Lord Chancellor's Visitor.

November 30th, 1886.

"We have seen the Patients at Moulton Park, as well as those at the Hospital. The men at the former place are all employed at out-door labour, which they like, and the results of which are evidently beneficial



No. 1 GALLERY (Male side).



"The system of employment instituted by Mr. Bayley is deserving of all praise, and most worthy of imitation. The system is not only confined to Patients at Moulton Park, but is also in force at the Hospital, and is successful in engaging a considerable number of gentlemen in work which is healthful for body and mind."

April 19th, 1887.

"I have to-day visited St. Andrew's Hospital, Northampton, and the branch establishment at Moulton Park. I may record that the general impression left on my mind by the inspection of the Hospital is of a very pleasing description. I found the sanitary arrangements excellent, the wards well ventilated and scrupulously clean, and so furnished and decorated as to secure comfort and please the eye; while the state of the Patients, and their private communications to me, afforded abundant evidence that they are treated with the utmost kindness, and with thoughtful attention. I was particularly struck by the comfortable and even luxurious accommodation provided for those Patients whose payments are too small to cover the cost of even the simplest style of living. As enlarged, structurally altered, and organised under wise and judicious management, and highly skilled superintendence, St. Andrew's Hospital is now admirably adapted for the treatment of the mentally afflicted of the Middle and Upper Classes."—J. CRICHTON BROWNE, Lord Chancellor's Visitor.

November 11th, 1889.

"The amusements provided for the Patients are frequent and varied; and one of the excellent features in this Hospital, viz., the employment of the Patients, continues as heretofore."

July 16th, 1890.

"The history of the Hospital has been great structural improvement for many years past, and its high order, and good management, reflect credit on those in authority here."

July 16th, 1891.

"We gave private interviews to many Patients, paying attention to all, and giving every one opportunity of telling us their wishes or complaints. We had no complaints not founded on delusion, and we were satisfied that the Patients were, on the whole, contented and happy."

February 20th, 1892.

"The house was in very good order, and the general arrangements for the care, comfort, exercise, and amusements of the Patients seem to be highly satisfactory.

"A great feature of this Institution is the work in which it is found possible to employ the Patients, and 82 gentlemen and 50 ladies are more or less occupied during the day with work useful to the Hospital. No fewer than 61 gentlemen work on the land, with great advantage to themselves. It is more difficult to find work suitable for ladies, but still on the female side, we see many are able to help in the wards, or with their needle."

March 3rd, 1893.

"We found the Hospital generally, as well as its dependences, viz., the various houses at Moulton Park, and the Villas, in excellent order."

April 27th, 1894.

"We inspected every part of the Hospital, including the detached houses and villas, and the high order maintained in every direction is

admirable, and it would be difficult to increase the general comforts of the Institution. The extensive pleasure grounds are also kept in excellent order, and with the growth of trees and shrubs each year promises to make the grounds still more beautiful."

July 20th, 1895.

"The Hospital was in its usual good order, and the state of the day-rooms and dormitories reflected the greatest credit upon the Attendants, and testified to excellent supervision everywhere.

"The great feature of this Institution is, and always has been, the employment and diversion of the Patients; and in both directions we observe with pleasure how much is done here for the gentlemen in the farm-work, and in gardening; and among the ladies in encouraging outdoor exercise and in-door occupations. Many are taken out for walks beyond the Hospital grounds, and a large proportion attend the associated entertainments, as well as Chapel."

April 23rd, 1896.

"The gentlemen at Moulton Park, who are 24 in number, all engage in farm or garden work, and were in their working clothes. We questioned them, and all capable of answering assured us that they liked the occupation, and enjoyed their life there."

September 30th, 1896.

"The useful employment of Patients continues to be promoted, and we are pleased to find that 77 gentlemen and 61 ladies engage in various occupations. Of the gentlemen 56 work on the farm or in the garden."

April 14th, 1897.

"Making allowance for the work in progress, the Hospital was in excellent order. The rooms were clean, bright, and pleasant; the bedrooms carefully looked after, and no unpleasant odour was perceived anywhere. The Patients were properly dressed, and we had no complaints, except on the score of detention, made, as usual, by very insane Patients."

February 4th, 1899.

"We found the Hospital and the Villas in connection with it, both here and at Moulton Park in excellent order."

Bryn-y-Neuadd, Llanfairfechan,

July 23rd, 1901.

"I have to-day paid the first visit of a member of the Board to this house and estate, which have been purchased by the Committee of St. Andrew's Hospital, Northampton, for the purpose of a branch establishment. The estate comprises about 230 acres of park and gardens, and is situated most picturesquely in the midst of fine mountain, sea, and woodland scenery, with ready access to the sea, and in close proximity to a railway station. The house is a large, well-built, modern structure, containing 28 good bedrooms and 8 large sitting-rooms, which have been furnished in very good taste, and afford excellent accommodation. There is also ample provision of stables and other offices.

There are to-day resident in it, on leave from St. Andrew's, 37 ladies—who are in charge of 8 nurses. Most of them were in the grounds when I arrived, and all of them expressed their satisfaction with their change to this charming place. I visited all parts of the house and the offices, and found both them and the grounds in the best possible order.—

F. NEEDHAM, Commissioner in Lunacy."



No. 1 GALLERY (Female side).



Bryn-y-Neuadd,
May 24th, 1902.

"This branch of St. Andrew's Hospital, which I have now visited for the first time, is in the best order and exceedingly comfortable. The park and gardens are now in great beauty, and the place affords to the patients a most agreeable and beneficial change. There are at present 30 ladies, all of whom I have seen, and who appear to enjoy the change and appreciate the beauty of the surroundings. They are in good health. There is an adequate staff in charge.—S. BAGOT, Commissioner in Lunacy."

St. Andrew's Hospital,
December, 9th, 1902.

"During our inspection of this Hospital and its dependencies, commenced yesterday and concluded to-day, we have seen all the patients in residence, and can give a very favourable report on their condition as regards dress and personal neatness. . . At our visit we found the Hospital in its usual excellent order, the day-rooms, dormitories, and bedding, being in a thoroughly satisfactory condition throughout."

Bryn-y-Neuadd,
July 11th, 1903.

"I find to-day at my visit to this house 31 ladies in residence. I spoke with them, and without exception they were contented, and expressed pleasure at their stay here. They were all in good health. The house and grounds are maintained in the best of order, and the rooms very comfortable. The surroundings give the place the idea of beauty combined with comfort.—G. HAROLD URMSON, Commissioner in Lunacy."

St. Andrew's Hospital,
November 5th, 1904.

"During our inspection of the Institution we found the galleries and dormitories in thoroughly good order, and the bedding in excellent condition throughout the building."

Bryn-y-Neuadd, Llanfairfechan,
May 26th, 1904.

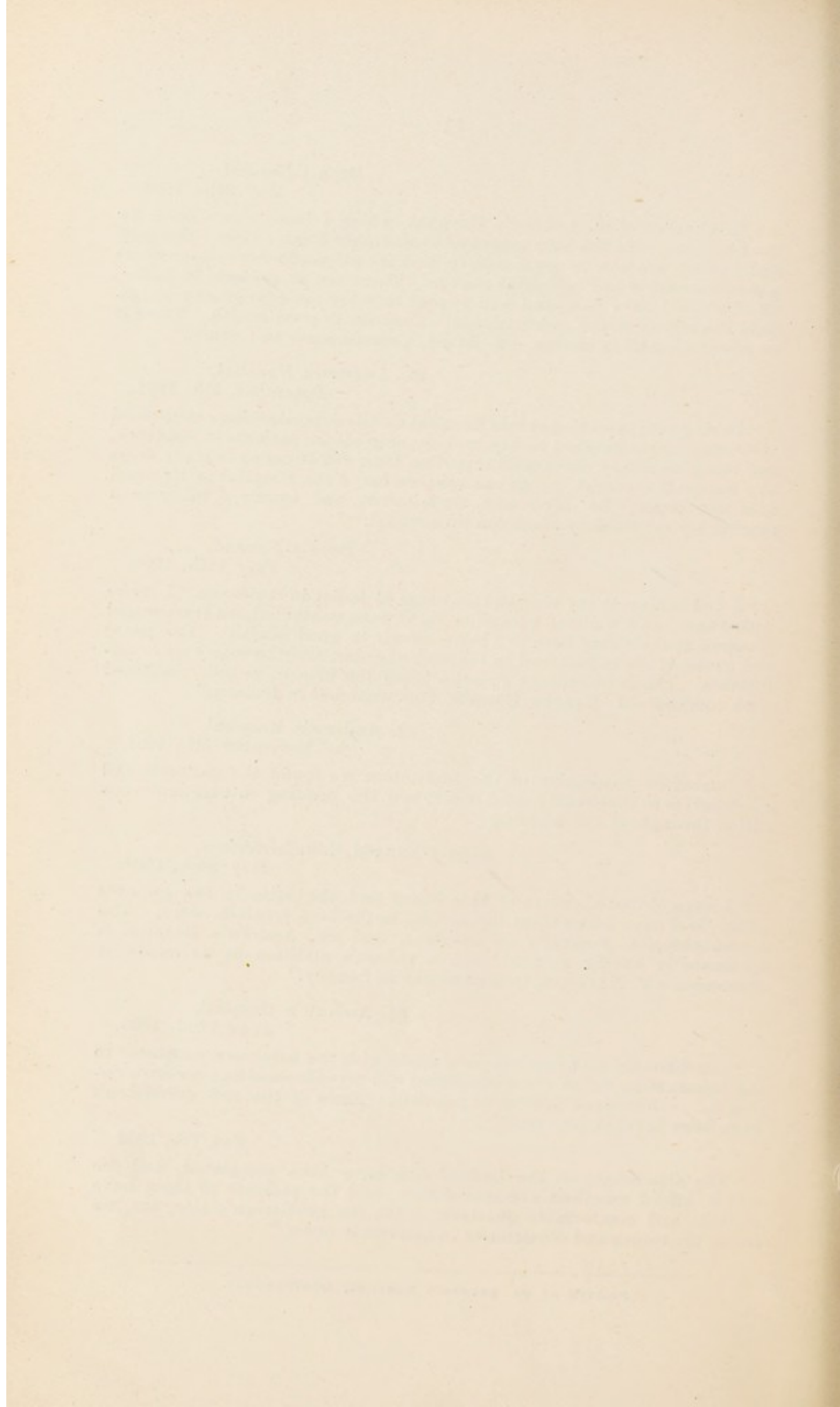
"I have visited all parts of this house and the villa in the grounds today, and have found them throughout in the best possible order. The accommodation generally is excellent, and St. Andrew's Hospital is fortunate in having secured such a valuable addition to its means of treatment.—F. NEEDHAM, Commissioner in Lunacy."

St. Andrew's Hospital,
June 22nd, 1905.

"Considerable progress has been made with the extensive additions to the female side, which when completed will provide excellent accommodation for an increased number of patients. Some of the new dormitories have been brought into use."

Nov. 9th, 1906.

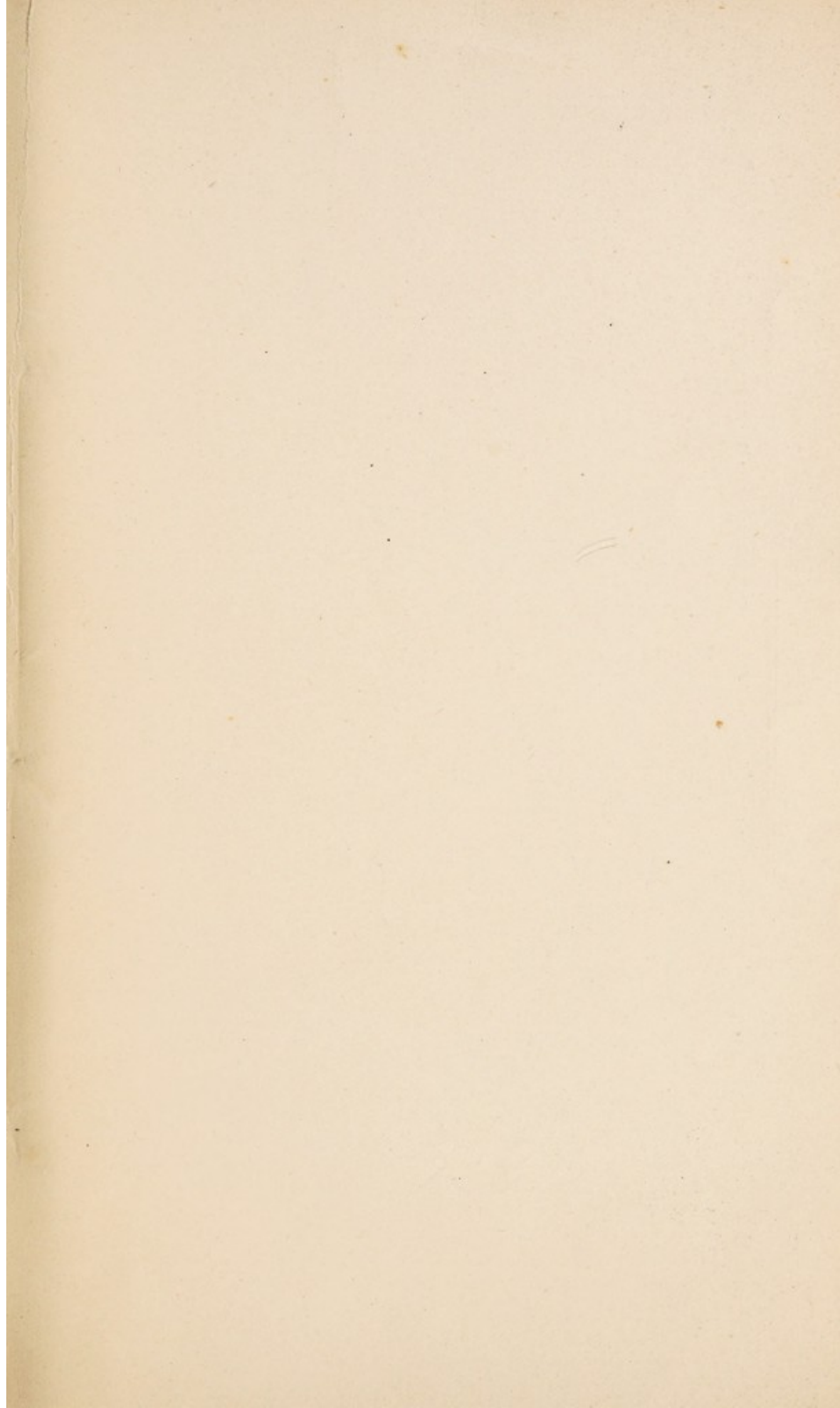
"The alterations on the Ladies' side have been completed, and the wards afford excellent accommodation, and the patients in them have suitable and comfortable quarters. On the gentlemen's side, too, we found the rooms and dormitories in admirable order."





No. 2 GALLERY (Male side).





NOTICE.

TERMS OF ADMISSION SHOWN AT PAGE 36.