

[Report 1940] / Medical Officer of Health, Workington Port Health District.

Contributors

Workington (England). Port Health District.

Publication/Creation

1940

Persistent URL

<https://wellcomecollection.org/works/dkha7ka6>

License and attribution

You have permission to make copies of this work under a Creative Commons, Attribution license.

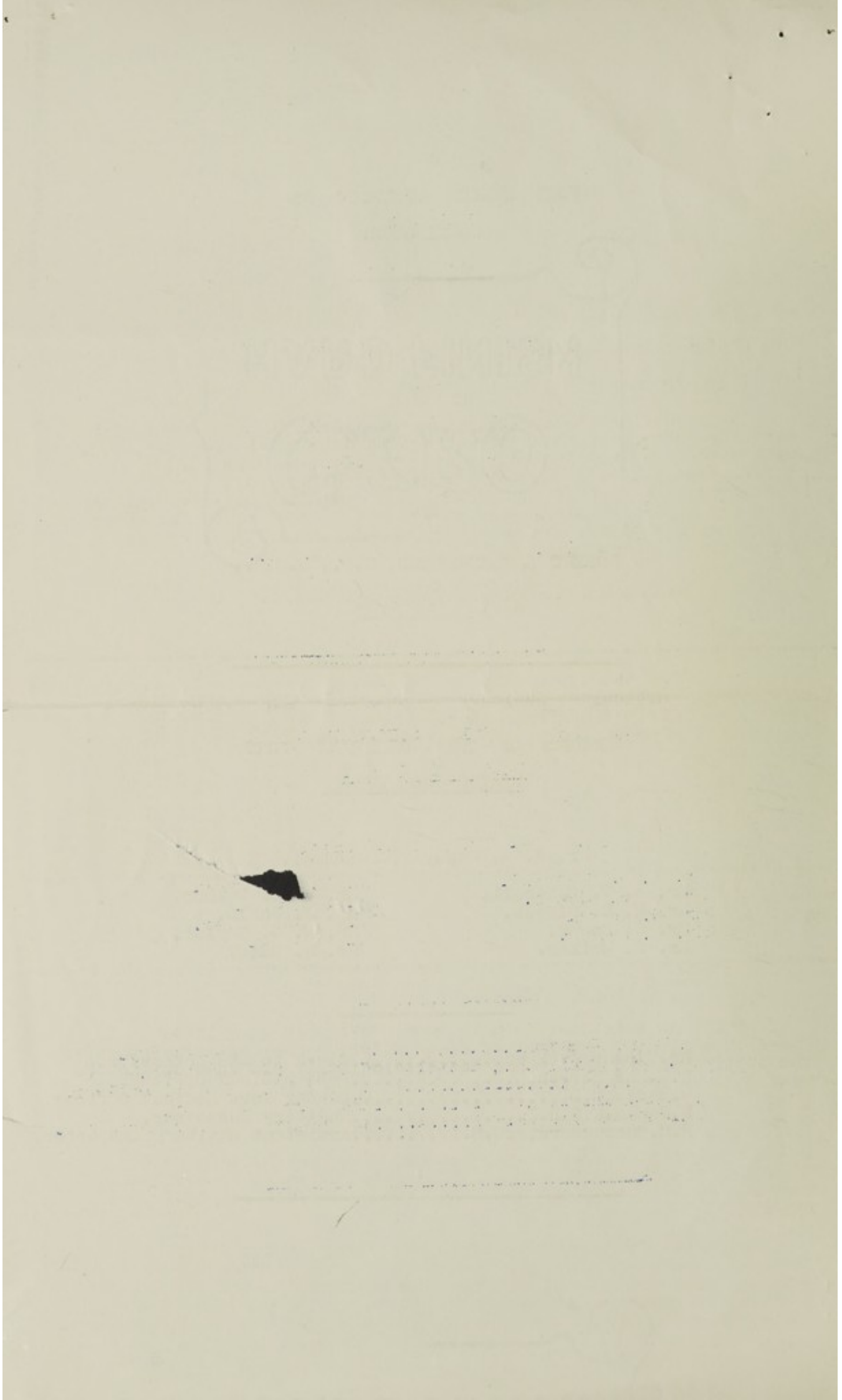
This licence permits unrestricted use, distribution, and reproduction in any medium, provided the original author and source are credited. See the Legal Code for further information.

Image source should be attributed as specified in the full catalogue record. If no source is given the image should be attributed to Wellcome Collection.



Wellcome Collection
183 Euston Road
London NW1 2BE UK
T +44 (0)20 7611 8722
E library@wellcomecollection.org
<https://wellcomecollection.org>

Unable to display this page



Town Hall,
Workington.
March, 1941.

ANNUAL REPORT FOR THE YEAR 1940, of the MEDICAL
OFFICER OF HEALTH FOR THE WORKINGTON
PORT HEALTH AUTHORITY.

Mr. Chairman and Gentlemen,

I beg to submit my Annual Report for the year 1940.

The Report has been prepared and modified in accordance with Circular 1937 of the Ministry of Health dated 11th. January, 1940, with a view to avoiding as far as possible disclosure of information relating to the movements of ships, &c., Furthermore in view of the present emergency the Minister suggests that the Report should not be published, a small number of copies being reproduced for the necessary minimum circulation to the Authority and the Ministry.

1. Amount of Shipping entering the Port
during the year.

	By the Medical Officer of Health.	By the Sanitary Inspector.	Number reported to be defective.	Number of vessels on which defects were remedied.	Number of vessels reported as having, or having had during the voyage infectious disease on board.
Vessels inspected.	67.	465.	85.	76.	2.

2. - Water Supply.

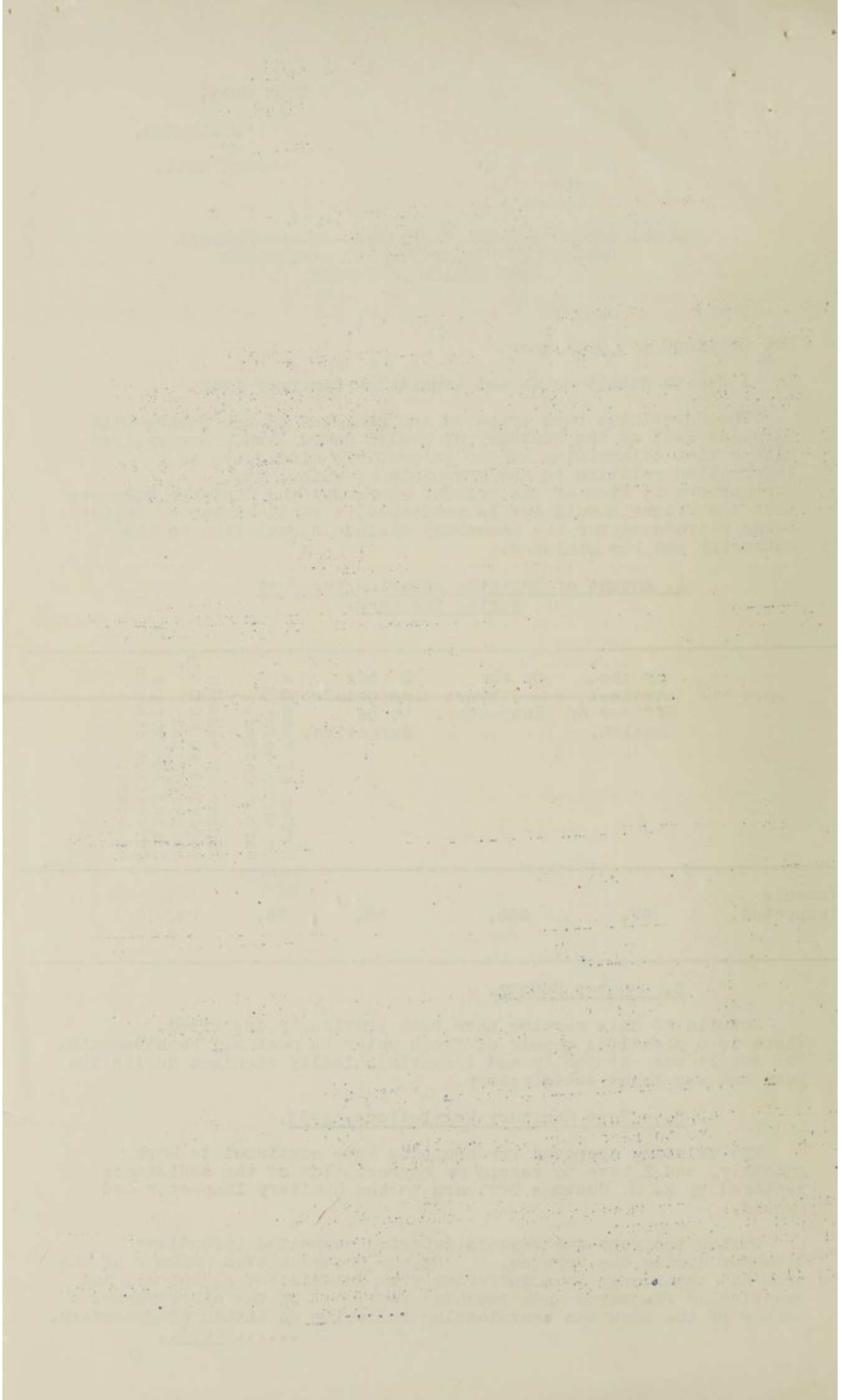
Details of this service have been previously described. There is a plentiful supply of fresh water to meet all requirements. The supply was chemically and bacteriologically examined during the year and was found satisfactory.

3. - Port Sanitary Regulations, 1933.

The existing approved arrangements have continued to work smoothly, and I have to record my appreciation of the assistance rendered by H. M. Customs Officers to the Sanitary Inspector and myself.

During the year two vessels reported suspected infectious diseases during the voyages. On one vessel eleven members of the crew had apparently been suffering from Malaria Fever, but all had practically recovered when reaching Port. On the other vessel a member of the crew was convalescing following an attack of Dysentery.

.....Contd.,



.....Contd.,

Sixteen other reports of sickness were received from other vessels, but all proved of a non-infectious character.

A number of seamen required treatment for Venereal Diseases, and instruction cards were issued affording free treatment at the County Council Clinics at Whitehaven and Carlisle. I must, however, reiterate my opinion that the existing facilities are not utilised by seamen requiring treatment, and the establishment of a clinic at Workington is the only remedy.

The question of vermin on vessels continues to receive the careful attention of the Sanitary Inspector, and rigorous disinfection methods are adopted whenever the slightest trace of vermin is discovered. There has been a decided increase in the number of vessels found infested with bed bugs.

4. - Measures against Rodents.

All vessels were carefully examined for the presence of rats, and in two instances the Masters of vessels were requested to put rat guards on mooring ropes as a matter of precaution. Deratisation Certificates were examined and on numerous occasions were found to have expired. Notices were given to renew at the first available Approved Port, but in seven instances it was impracticable, and requests had to be made to the next Approved Port for officials to come through to issue exemption certificates. The Minister of Health has on three occasions received applications from this Committee for the Port to be recognised as an Approved Port for this work, and I trust this will soon be granted.

During the year the Harbour and Dockside were periodically examined for the presence of rats.


5. - Hygiene of Crew's Spaces.

CLASSIFICATION OF NUISANCES.

Nationality of Vessel.	Number inspected during the year.	Defects of original construction.	Structural defects through wear and tear.	Dirt, vermin, and other conditions prejudicial to health.
British.	419.	-	28.	70.
Other Nations.	46.	-	5.	11.

During the year 85 informal notices were served by the Sanitary Inspector for various defects or other conditions prejudicial to health.

.....Contd.,



Digitized by the Internet Archive
in 2018 with funding from
Wellcome Library

<https://archive.org/details/b30293789>

Contd.,

6. - General.

The foreshore has been periodically inspected during the year, and carcasses of sheep, dogs, cats and seagulls were removed and destroyed.

The Dock and Harbour have been maintained in a satisfactory condition.

I must again record my appreciation to H. M. Customs Officials and the Sanitary Inspector for their co-operation during the year.

I am, Gentlemen,

Your obedient servant,

ROBERT W. MACPHERSON, M.D., D.P.H.,

Medical Officer to the Authority.

The following information was obtained from the records of the Department of the Interior, Bureau of Land Management, for the year 1900.

The following information was obtained from the records of the Department of the Interior, Bureau of Land Management, for the year 1901.

The following information was obtained from the records of the Department of the Interior, Bureau of Land Management, for the year 1902.

The following information was obtained from the records of the Department of the Interior, Bureau of Land Management, for the year 1903.

The following information was obtained from the records of the Department of the Interior, Bureau of Land Management, for the year 1904.