

**[Report 1941] / Medical Officer of Health, Wakefield City.**

**Contributors**

Wakefield (England). City Council.

**Publication/Creation**

1941

**Persistent URL**

<https://wellcomecollection.org/works/r2rfqe58>

**License and attribution**

You have permission to make copies of this work under a Creative Commons, Attribution, Non-commercial license.

Non-commercial use includes private study, academic research, teaching, and other activities that are not primarily intended for, or directed towards, commercial advantage or private monetary compensation. See the Legal Code for further information.

Image source should be attributed as specified in the full catalogue record. If no source is given the image should be attributed to Wellcome Collection.



Wellcome Collection  
183 Euston Road  
London NW1 2BE UK  
T +44 (0)20 7611 8722  
E [library@wellcomecollection.org](mailto:library@wellcomecollection.org)  
<https://wellcomecollection.org>

LIBRARY



CITY OF WAKEFIELD.



# ANNUAL REPORT

OF THE

MEDICAL OFFICER

OF HEALTH

FOR THE YEAR 1941

---

R. P. Dodgson, Trinity Church Gate, Kirkgate, Wakefield.

## INDEX.

	Page
Anti-Diphtheria Immunisation Clinic .. .. .	25 44
Ante-Natal Clinic .. .. .	33
Births .. .. .	8
Cancer .. .. .	26 27
Child Life Protection .. .. .	37
Child Welfare Centres.. .. .	36 37
Clinics and Treatment Centres .. .. .	10
Deaths .. .. .	8 9 41
Food and Drugs .. .. .	17—19
Health Services—General Provision .. .. .	9—11
Health Visitors—Home Visiting .. .. .	36
Hospital, Municipal Isolation .. .. .	30
Hospital, Maternity .. .. .	34
Housing .. .. .	24
Infantile Mortality .. .. .	9
Infectious Diseases .. .. .	} 25—27 42 43
Maternal Mortality .. .. .	9
Maternity and Child Welfare .. .. .	32—37
Medical Examinations (Superannuation Act) .. .. .	38
Mental Deficiency .. .. .	37 38
Midwives .. .. .	32 33
Midwives, Training of Pupil.. .. .	35
Milk Supply .. .. .	17 18
Offensive Trades .. .. .	23 24
Officers—Public Health .. .. .	4—6
Orthopaedic Clinic .. .. .	37
Population, etc. .. .. .	8
Post-natal Clinic .. .. .	35
Sanitary Circumstances .. .. .	11 12
Sanitary Inspection .. .. .	12—17
Slaughterhouses .. .. .	20—23
Statistics—General .. .. .	7—9, 39, 40
Tuberculosis .. .. .	28—31
Vaccination .. .. .	26
Venereal Diseases .. .. .	31 32

PUBLIC HEALTH DEPARTMENT,  
TOWN HALL CHAMBERS,  
KING STREET,  
WAKEFIELD.

13th October, 1942.

*To the Mayor, Aldermen and Councillors  
of the City of Wakefield.*

MR. MAYOR, LADIES AND GENTLEMEN,

I present my Report for the year 1941.

As in the previous two years, it contains little more than statistical data relative to the health of the City and the work of the Department. The conditions under which we are working at present do not permit of any analysis of the available information.

I desire to record my appreciation of the co-operation and devotion to duty shown by all members of my staff and also to acknowledge the valuable assistance I have received in the compilation of this Report from Dr. Eeles, Mr. W. Roberts (Chief Sanitary Inspector) and Mr. C. G. Tomlinson (Chief Clerk).

I am,

Yours faithfully,

FRANK ALLARDICE,  
*Medical Officer of Health.*

## PUBLIC HEALTH STAFF.

Medical Officer of Health, School Medical Officer, Tuberculosis Officer, Medical Superintendent of Municipal Hospitals.	Frank Allardice, M.D., Ch.B. (Edin.), D.P.H. (Edin.)
Deputy Medical Officer of Health (on Military Service).	Alan C. Stevenson, B.Sc., M.B., Ch.B. (Glasgow), L.R.C.P., L.R.C.S. (Edin.), L.R.F.P. and S.G., M.R.C.P. (London), D.P.H. (London)
Deputy Medical Officer of Health (temporary).	Lionel W. Bradshaw, L.R.C.P., L.R.C.S., L.R.F.P. and S.G.
Assistant Medical Officer of Health and Assistant Medical Officer for Maternity and Child Welfare; Resident Obstetrician, Maternity Hospital.	Jessie Eeles, M.D., Ch.B. (Edin.)
Junior Assistant Medical Officer (on Military Service).	S. A. Hugh Lesser, M.A., (Cantab.), M.B., B.Ch., (Cantab.), M.R.C.S. (Eng.) L.R.C.P. (London).
Junior Assistant Medical Officer (temporary).	Maurice E. Tapissier, M.B., B.Ch., B.A.O. (commenced 1/9/41).
School Dental Officer.	G. S. Cubitt, L.D.S., R.C.S. (Eng.)
Consultant Obstetric Surgeon (part-time).	W. Gough, F.R.C.S. (Eng.), M.R.C.S., L.R.C.P. (Lond.)
Dental Officer to the Ante-Natal Clinics (part-time).	W. Crook, L.D.S., R.C.S. (Eng.)
Consultant Orthopaedic Surgeon (part-time).	H. L. Crockatt, M.B., Ch.B. (Leeds).
Public Analyst (part-time).	F. W. Richardson, F.I.C.

Chief Sanitary Inspector and Canal Boats Inspector.	William Roberts ( <i>a, b</i> ).
Deputy Chief Sanitary Inspector	John P. Whitehead ( <i>b, c</i> ).
District Sanitary Inspectors	Herbert H. Johnson ( <i>b, c</i> ) (resigned 31/8/41). Leslie J. Carter ( <i>b, c</i> ). George Cayton ( <i>b, c</i> ). John Holmes ( <i>b, c</i> ). Gordon Ellis ( <i>b, c</i> ). (commenced 1/11/41).
Senior Health Visitor ; School Nurse and Tuberculosis Nurse	Sarah S. Thorp ( <i>a, d, e, g, h</i> ).
Health Visitors, School Nurses and Tuberculosis Nurses	Hilda Staniforth ( <i>a, e, f, g, h</i> ). Hilda Robertshaw ( <i>f, g, h</i> ). Maggie Dearden ( <i>f, g, h</i> ). Jennett Gardner ( <i>f, g, h</i> ). Hannah Bell ( <i>f, g, h</i> ).
Orthopaedic and Ultra-Violet Ray Clinic Nurse	Olive I. Burton, ( <i>f</i> ), C.S.M. M.G. (M., R.E. and M.E.)
Matron, Municipal Hospital for Infectious Diseases	A. J. Peck ( <i>j</i> ).
Matron, Maternity Hospital	Kate P. Perkins ( <i>f, g</i> ).
Municipal District Midwives	Elizabeth A. Halls ( <i>f, g</i> ). Elsie M. Marshall ( <i>g</i> ). Minnie Hanby ( <i>f, g</i> ). Ida Lessons ( <i>f, g</i> ).
School Clinic Nurse	Louie Milner ( <i>f, g</i> ).
Dental Attendant	Edna M. Pickering.
Chief Clerk and Vaccination Officer	Charles G. Tomlinson, B.A. (Admin.)
Deputy Chief Clerk (on Military Service)	Kenneth Birdsall.

## Clerks

Herbert W. Tate (School Medical).

Beatrice Lake.

Thomas P. McKniff (on Military Service).

Phyllis Goldthorpe.

Ronald Justice (on Military Service).

John W. Foster.

Irvine I. Mosby (temporary).

Lois Berry (temporary).

Mrs. Ida Shepherd (temporary (commenced 24/2/41, resigned 6/9/41).

Derek Raynor (temporary). (commenced 1/9/41).

Mary E. Reynolds (P.C.W.C.)

\*Roland Murgatroyd (on Military Service).

\*Alwyne Firth (on Military Service).

\*Margaret E. Richardson (Resigned 8/3/41).

\*Audrey V. Naylor (commenced 11/4/41).

\*Marjorie Allenby (temporary), (resigned 15/3/41).

\*Mrs. Margaret Waring (temporary), (commenced 9/4/41 resigned 20/12/41).

\*Derek Clayton (temporary), (commenced 29/12/41).

(a) Certificate of Royal Sanitary Institute for Inspector of Nuisances.

(b) Certificate of Royal Sanitary Institute for Inspector of Meat and Other Foods.

(c) Certificate of Royal Sanitary Institute for Sanitary Inspectors.

(d) Certificate of Royal Sanitary Institute for Maternity and Child Welfare.

(e) Certificate of Royal Sanitary Institute for Health Visitor and School Nurse.

(f) Trained Nurse.

(g) State Certified Midwife.

(h) New Certificate of Royal Sanitary Institute for Health Visitors.

(j) Trained Fever Nurse.

\* Sanitary Inspector's Office.

## GENERAL STATISTICS.

Area (in acres) .. .. .	5,300
Population (a) Census, 1931 .. .. .	59,311
(b) Registrar-General's estimate, mid-year, 1941 (civilians only) .. .. .	56,190

Number of inhabited houses.

(a) Census, 1931 .. .. .	14,259
(b) End of 1941, according to Rate Books	16,000

Rateable Value, 1st April, 1941 .. .. . £383,649

Sum represented by a penny rate, 1941-42 .. £1,513 9s. 8d.

	<i>Total</i>	<i>M.</i>	<i>F.</i>
Registered Live Births : Legitimate .. .. .	738	382	356
Illegitimate.. .. .	34	16	18
	<u>772</u>	<u>398</u>	<u>374</u>

Birth-rate per 1,000 estimated population .. .. . 13.7

	<i>Total</i>	<i>M.</i>	<i>F.</i>
Still-Births .. .. .	24	17	7

Still-birth rate per 1,000 (live and still) births) .. 30

	<i>Total</i>	<i>M.</i>	<i>F.</i>
Deaths .. .. .	671	360	311

Death-rate per 1,000 population .. .. . 11.9

## Maternal Deaths

Puerperal Infection.. .. .	—	$\left\{ \begin{array}{l} \text{Rates per} \\ \text{1,000 total} \\ \text{(live and} \\ \text{still) births} \end{array} \right\}$	—
Other puerperal causes .. .. .	2		2.51
Total .. .. .	2		<u>2.51</u>

Deaths of infants under 1 year of age :—

All infants.. .. .	44	Rate per 1,000 live births ..	56
Legitimate infants	44	Rate per 1,000 leg. live births..	58
Illegitimate infants	—	Rate per 1,000 illeg. live births	—

Deaths from Cancer (all ages) .. .. .	106
Deaths from Measles (all ages) .. .. .	—
Deaths from Whooping Cough (all ages) .. .. .	4
Deaths from Diarrhoea (under 2 years) .. .. .	7

### Population.

The civilian population in June 1941, as estimated by the Registrar-General, was 56,190, an increase of 140 over the corresponding figure for 1940. During the same period the natural increase, i.e. the excess of births over deaths was 101.

### Births.

The total number of live births registered in the City among residents was 761. The Registrar-General's total figure, including births in respect of residents confined outside the City, was 772 as compared with 812 for the previous year. The birth-rate per 1,000 of the population for 1941 was therefore 13.7 as compared with 14.5 in 1940 and 13.5 in 1939.

Of the live births 34 (4.4 per cent.) were illegitimate. The net number of still-births registered was 24.

Notifications of births totalled 1,004, including 33 still-births

### Deaths.

During the year 1941 the total deaths registered in Wakefield amounted to 1,006. Of these, 379 were deaths of non-residents. The net deaths amounted to 671, giving a death-rate of 11.9 per 1,000 of the population. The corresponding figures for 1940 and 1939 were 13.5 and 12.8 respectively. The crude death-rates are given in each case as the Registrar-General is unable to supply comparability factors for 1941.

The death-rate of 11.9 compares with 12.9 for England and Wales and 16.3 for London.

More than 49 per cent. of the deaths occurred in persons over 65 years of age. The principal causes of death were as follows :

	<i>No. of deaths</i>	<i>Percentage of total deaths</i>
Heart Disease .. .. .	169	25.2
Cancer .. .. .	106	15.8
Intra-cranial vascular lesions .. .. .	67	10.0

Table III. summarises all deaths belonging to the City under causes, age-groups and wards.

#### **Infant Mortality.**

The deaths of infants occurring under one year of age was 44 (24 males and 20 females) giving an infant mortality rate of 56 per 1,000 live births compared with 60 in 1940 and 57 in 1939. The corresponding rates for England and Wales and for the County Boroughs and great towns in 1941 were 59 and 71 respectively.

The neo-natal mortality rate (i.e. during the first four weeks of life) was 19 as compared with 36 in 1940 and 38 in 1939.

The causes of infant deaths were as follows :—

Premature birth .. .. .	13
Congenital malformation, birth injury, infantile disease..	7
Diarrhoea .. .. .	5
Pneumonia .. .. .	5
Bronchitis .. .. .	4
Whooping Cough .. .. .	3
Other causes .. .. .	7
	<hr/>
	44
	<hr/>

#### **Maternal Mortality.**

Two maternal deaths belonging to Wakefield occurred in 1941, both being in the Maternity Hospital. This gives a maternal mortality rate of 2.51 per 1,000 total (live and still) births, compared with 2.23 for the country as a whole.

### **GENERAL PROVISION OF HEALTH SERVICES.**

#### **Laboratory Facilities.**

These remain as described in my report for 1938.

#### **Ambulance Facilities.**

The City Ambulance Service for sickness and accident cases was transferred from the Police to the Public Health Department in December, 1941, and is now operated by the personnel of the York Street Civil Defence Ambulance Depot. Thus in the event of a heavy raid the City ambulances are readily available for dealing with casualties, while in quiet times they can be supplemented by the Civil Defence ambulances should the need arise.

#### **Nursing in the Home.**

There were no changes during the year 1941.

**Clinics and Treatment Centres.**

<i>Situation.</i>	<i>Days and Hours.</i>
Principal Child Welfare Centre, 15 Margaret Street	Monday to Thursday, 2 p.m. to 4 p.m.
Manygates Child Welfare Centre, Barnsley Road	Tuesday, 2 p.m. to 4 p.m.
Snapethorpe Hall Child Welfare Centre	Wednesday, 2 p.m. to 4 p.m.
Ante-Natal Clinic, Maternity Hospital	Monday, 2 p.m. to 4 p.m. Wednesday, 10 a.m. to 12 noon Thursday, 10 a.m. to 11.30 a.m.
Ante-Natal Clinic, Principal Child Welfare Centre	Friday, 2 p.m. to 4 p.m.
Post-Natal Clinic, Maternity Hospital	Monday, 2 p.m.
Tuberculosis Dispensary, Almshouse Lane	Thursday, 2 p.m. to 4 p.m. and 6 p.m. to 7 p.m.
Venereal Diseases Clinic, Clayton Hospital	<i>Men.</i> Wednesday, 5.30 to 7.30 p.m. Friday, 10 a.m. to 12 noon. <i>Women and Children.</i> Monday, 4 to 6 p.m. Wednesday, 10 a.m. to 12 noon. Friday, 3 to 5 p.m.
Orthopaedic Clinic, Principal Child Welfare Centre.	By appointment.
Anti-Diphtheria Immunisation Clinic, Principal Child Welfare Centre	Monday afternoon, by appoint- ment.
School Clinics, Town Hall Chambers :	
Minor Ailments	Monday to Saturday, 10 a.m.
Dental	Daily by appointment.
Ophthalmic	By appointment.
Minor Ailments :	
Snapethorpe C. School	Daily, 9 a.m.
Manygates C.W. Centre	Daily, 9 a.m.

## **Hospitals, Public and Voluntary.**

The public and voluntary hospitals in Wakefield are as follows :—

### **1. The Municipal Hospital for Infectious Diseases.**

This hospital contains accommodation for 97 patients and includes a tuberculosis pavilion of 16 beds, a cubicle block of 12 beds and a discharge block of 4 beds. Particulars of the patients treated during 1941 are given in the section of this report dealing with infectious diseases.

### **2. The Municipal Maternity Hospital.**

This provides accommodation for 33 patients and there are also two isolation beds. Ante-natal, post-natal and child welfare clinics are provided in the attached clinic block, where the dental treatment of expectant mothers is also carried out. Details of the year's work are given in the Maternity and Child Welfare section of this report.

### **3. The West Riding Mental Hospital.**

This hospital contains 1,632 mental beds and is controlled by the West Riding Mental Hospitals Board. In my report for 1940 the number of beds was given as 2,435. The difference in the bed state is due to the Military Authorities having taken over part of the hospital.

### **4. The White Rose County Hospital.**

This hospital is administered by the West Riding County Council and contains 200 beds.

### **5. The Clayton Hospital and General Dispensary.**

This is a voluntary general hospital and contains 187 beds and 17 cots.

## **Maternity and Nursing Homes.**

There are two private Maternity Homes in the City but no nursing homes. The Maternity Homes are inspected periodically by the Assistant Medical Officer for Maternity and Child Welfare.

## SANITARY CIRCUMSTANCES OF THE AREA.

### **Water Supply.**

There were no alterations in 1941. Normal supplies were maintained and samples taken regularly showed that the water was still of a high quality. I am indebted to the Waterworks Engineer for this information.

### **Sewage and Refuse Disposal.**

This has been fully described in previous reports.

## SANITARY INSPECTION OF THE AREA.

(By William Roberts, Chief Sanitary Inspector.)

### **General Remarks.**

The following is a brief summary setting out the main activities of the Sanitary Inspectors carried out in the City during 1941. The work of the Sanitary Inspectors has been somewhat curtailed owing to additional duties brought about by the national emergency. It might be stated that owing to shortage of labour and materials, much difficulty has been experienced in effecting the remedy of urgent and essential housing repairs, and it is to be expected that this condition is likely to become more acute in the future. Generally speaking the urgent nuisances and housing defects have been remedied, as will be seen by the number of notices served during the period under review.

The supervision and inspection of food has continued to receive a good deal of attention particularly as regards the production and distribution of milk. The general supervision of milk supplies both at cowsheds and dairies has been carried out much the same as in previous years. Cows at the several cowsheds inside the City have been subject to periodical inspection by Veterinary Officers of the Ministry of Agriculture and Fisheries. The results of the samples of milk submitted for bacteriological examination show that milk produced both inside and outside the City has been maintained in a reasonably clean condition.

The work of inspection of meat and other foods has taken up a large amount of time during the year, as will be seen from the tables of the numbers of animals slaughtered and the condemnation of unsound meat and other foodstuffs.

The several premises coming under the control and administration of the Health Department have continued to receive attention, regular inspections having been made at all the premises referred to.

## DETAILS OF INSPECTIONS MADE.

Total number of inspections made .. .. .	11,838
<b>Dwellinghouses.</b>	
Ordinary .. .. .	1,676
Re Notifiable Disease .. .. .	171
Housing Act, 1936. Clearance Areas (Clearance of Buildings) .. .. .	205
Applications for Municipal Houses .. .. .	344
<b>Sanitary Conveniences.</b>	
Water closets .. .. .	622
Privies and pail closets .. .. .	42
Urinals .. .. .	73
<b>Refuse Storage.</b>	
Ashplaces .. .. .	201
Ashbins .. .. .	290
<b>Drains and Sewers.</b>	
Drains .. .. .	182
Sewers .. .. .	62
Street gullies .. .. .	176
<b>Factories.</b>	
Factories (with mechanical power) .. .. .	69
Factories (without mechanical power) .. .. .	21
Other premises (including restaurant kitchens and stables) .. .. .	45
Outworkers .. .. .	1
<b>Food Storage, Preparation, etc.</b>	
Bakehouses (with mechanical power) .. .. .	44
Bakehouses (without mechanical power) .. .. .	40
Butchers' Shops, Stalls, etc... .. .	249
Cowsheds .. .. .	80
Dairies, Milk Shops, Milk Stores .. .. .	324
Fishmongers' Shops and Stalls .. .. .	115
Fruit and Vegetable Shops and Stores (including Hawkers' Stores) .. .. .	139
Fish Frying Premises .. .. .	176
General Provision Shops and Stores .. .. .	112
Ice Cream Premises .. .. .	37
Markets (Borough) .. .. .	94
Meat and Fish Product Manufacturers .. .. .	119
Slaughterhouse (Public) .. .. .	261

**Miscellaneous.**

Air Raid Shelters .. .. .	96
Common Lodging Houses .. .. .	22
Canal Boats .. .. .	24
Dangerous Structures .. .. .	3
Entertainment Houses .. .. .	22
Houses Let in Lodgings .. .. .	25
Meetings with Owners and Tradesmen .. .. .	462
Miscellaneous (including Cesspools, Watercourses, Refuse Tips, etc.) .. .. .	44
Offensive Trades .. .. .	96
Piggeries .. .. .	36
Special Notice of Slaughter .. .. .	5
Schools .. .. .	25
Shops (Shops Act) .. .. .	20
Streets or Back Roads .. .. .	33
Sanitary Inspections .. .. .	1,151
Special Visits (not classified) .. .. .	2,714
Visits to Premises <i>re</i> Rat Infestation .. .. .	170
Yards and Courts .. .. .	310
Requisitioned Houses .. .. .	64
Billets (Private) .. .. .	546

**Notices Served.**

Informal Notices served .. .. .	278
Informal Notices complied with .. .. .	244
Statutory Notices served .. .. .	54
Statutory Notices complied with .. .. .	39
Notices outstanding at end of 1941 .. .. .	49
Notices served under S.125, Wakefield Corporation Act, 1924, <i>re</i> Ashbins .. .. .	83
Verbal notices given and complied with for the Remedy of Defects, etc. .. .. .	233
Letters sent .. .. .	316
Matters referred to the City Engineer .. .. .	136
Matters referred to the Waterworks Engineer .. .. .	4
Complaints received .. .. .	445
Complaints confirmed .. .. .	398
Nuisances found .. .. .	81

**NUISANCES AND SANITARY DEFECTS REMEDIED.****Dwellinghouses.**

Cleansed or limewashed .. .. .	23
Vermin infested (disinfested) .. .. .	27
Overcrowding abated .. .. .	5

Dampness remedied .. .. .	140
Roofs repaired .. .. .	63
Eaves spouts or down spouts repaired .. ..	47
Rainwater fall pipes disconnected .. .. .	1
External walls, chimneys, repaired or repointed ..	15
Inside walls, ceilings, etc., repaired .. ..	49
Ventilation improved .. .. .	1
New floors laid or repaired .. .. .	15
Fireplaces, ovens or set pots repaired .. ..	18
Washing accommodation provided or improved ..	3
Doors repaired .. .. .	9
Yards paved .. .. .	4
Yards cleansed .. .. .	4
<b>Drains.</b>	
• Repaired .. .. .	12
Drains choked .. .. .	164
Drains cleansed by owners .. .. .	164
New drains provided .. .. .	3
<b>Sinks.</b>	
New sinks provided .. .. .	7
Sink waste pipes trapped .. .. .	2
Sink waste pipes repaired .. .. .	14
Other waste ipes repaired .. .. .	2
<b>Water Closets.</b>	
Cleansed or limewashed .. .. .	10
Repaired .. .. .	85
Reconstructed .. .. .	1
Additional provided .. .. .	3
<b>Urinals.</b>	
Cleansed or improved .. .. .	3
Repaired .. .. .	2
<b>Accumulations Removed.</b>	
Other than manure .. .. .	26
<b>Ashbins and Ashplaces.</b>	
Moveable galvanised iron ashbins renewed (at shops, stores, etc.) .. .. .	10
Moveable galvanised iron ashbins provided in lieu of ashpits .. .. .	27
Dry ashpits abolished .. .. .	4

**Closet Accommodation.**

The total closet accommodation in the City is as follows :—

Water closets (including 223 trough water closets)	17,992
Privies .. .. .	30
Pit closets .. .. .	12

(Two trough water closets were abolished during the year).

**REFUSE STORAGE ACCOMMODATION.**

The following is a summary giving details of the operation of the provision of section 125 of the Wakefield Corporation Act, 1924 :—

Total number of ashbins operating under the maintenance scheme at the end of 1940 .. ..	3,436
Number of ashbins placed on maintenance during 1941 :—	
Ashbins supplied by the Corporation.. ..	109
Ashbins supplied by owner .. ..	14
	— 123
Ashbins discontinued due to demolition of properties during 1941 .. .. .	19
Total number of ashbins in City on maintenance at end of 1941 .. .. .	3,540
Number of ashbins renewed at properties under the maintenance scheme during 1941 .. ..	130
Number of dry ashplaces abolished during 1941..	4

**CANAL BOATS.**

During 1941, 24 canal boats were inspected. The boats were occupied by 30 adult males, 6 adult females and 8 boys and 4 girls under 14.

No infringements of the Regulations were detected.

No boats were registered during the year and the number on the register remains at 6.

**COMMON LODGING HOUSES.**

Number on Register at end of 1941 .. ..	6
For both sexes.. .. .	3
For men only .. .. .	3
Number of persons for which registered .. ..	328

## HOUSES LET IN LODGINGS.

Number on Register at end of 1941 .. ..	7
Total accommodation (adults) at end of 1941 ..	214

## MILK SUPPLY.

## Registration of Cowkeepers, etc.

Cow-keepers and milk purveyors resident in the City	15
Milk purveyors resident in the City (including 68 who are registered to sell milk from a shop in sealed bottles only) .. .. .	106
Milk purveyors from districts outside the City ..	32
Milk purveyors added to the Register during the year .. .. .	3
Milk purveyors who have discontinued business during the year (7 purveyors inside the City, 4 outside the City, and 51 purveyors of milk in sealed bottles) .. .. .	62

## Bacteriological Examination of Milk,

During the year 93 samples of the several grades of milk were submitted to the County Health Department Laboratory for bacteriological examination. The results of the examination of the samples were as follows :—

Total	Grade	Inside City		Outside City	
		Satisfactory	Unsatisfactory	Satisfactory	Unsatisfactory
69	Ordinary .. ..	16	4	26	23
6	Accredited .. ..	4	1	—	1
17	Pasteurised .. ..	5	5	6	1
1	Tuberculin Tested	—	—	1	—

All 93 samples were examined by inoculation for tuberculosis infection, and 4 samples or 4.30 per cent. gave positive results as against 1.27 per cent. in 1940. Two samples were produced outside the City, one inside the City, and one pasteurised inside the City. The results of these examinations were sent to the

Divisional Veterinary Officer of the Ministry of Agriculture and Fisheries.

The results of samples submitted for bacteriological examination show that of the 93 samples, 58 or 62.36% were reported to be satisfactory, all of which came within the standard of that required for "Accredited" milk.

**Milk (Special Designations) Orders, 1936-41.**

Number of licences in operation during 1941 .. 17

Licences issued under the following conditions :—

3 licences to retail Tuberculin Tested (Certified) Milk  
(1 is a supplementary licence).

2 licences are to produce Accredited Milk.

4 licences are to produce and bottle Accredited Milk (1  
licence is to bottle and sell Accredited Milk).

3 licences are to retail Accredited Milk (2 are supplementary  
licences).

1 licence is to pasteurise milk.

3 licences are to retail pasteurised milk (2 are supplementary  
licences).

2 dealers' licences to retail Tuberculin Tested Milk were  
not renewed.

1 licence to produce Accredited Milk was transferred to  
a licence to produce and bottle Accredited Milk.

**FOOD AND DRUGS ACT, 1938.**

**ANALYSIS OF FOOD AND DRUGS.**

During the year 250 samples (162 formal, 88 informal) of food and drugs were submitted to the City Analyst (Mr. F. W. Richardson, F.I.C.) at the laboratory situated in Bradford, for analysis under the above Act. This number represents 4.4 samples for each thousand of the population of the City (i.e. 56,000). The Ministry of Health has suggested a standard of 3 per thousand.

Appended below is a comparative table giving details of adulterated samples for the past five years.

TOTAL SAMPLES				MILK SAMPLES		
Year	Number Examined	Number Adulterated	Percentage adulterated	Number Examined	Number adulterated	Percentage Adulterated
1937	230	19	8.26	144	17	11.81
1938	267	23	8.61	163	21	12.88
1939	231	29	12.55	137	23	16.8
1940	243	28	11.52	168	25	15.00
1941	250	37	14.80	158	24	15.20

### Prosecutions under the Food and Drugs Act, 1938.

<i>No. of sample</i>	<i>Offence.</i>	<i>Result.</i>
144	The sale of milk containing 34.7% added water.	Fine £3. Costs £1 1s.
253	The sale of milk containing 12% added water.	Case dismissed on payment of £1 12s. costs.
256	The sale of milk containing 8.93% added water.	Purveyor fined £5 and £1 8s. costs. Employee fined £5 and £1 8s. costs.
272	Misleading statement on packet of Egg Powder, and not of the nature, substance or quality demanded.	Case against retailer dismissed on payment of £3 11s. costs.
321	Misleading statement on packet of Egg Powder, and not of the nature, substance or quality demanded.	Wholesaler fined £10 and £4 4s. costs.
347	The sale of milk containing 5.88% of added water.	Case against retail purveyor dismissed on payment of £1 2s. costs. Employee fined £5 and 18s. 0d. costs.

## SLAUGHTERHOUSES.

Licences were renewed in respect of 12 private slaughter-houses.

A total of 5 special notices to slaughter animals outside general slaughtering hours were received during the year. In each instance a licence to slaughter had been granted by the Food Executive Officer.

**Slaughter of Animals Act, 1933.**

A total of 42 licences were issued during the year, being renewals of existing licences. One new licence was granted.

**Number of Animals Slaughtered in the City during 1941.**

By the Licensing (Restriction of Slaughter) Order, 1940, the control of slaughtering continued to be under the control of the Ministry of Food, and meat inspection at the Borough Slaughterhouse has taken up a large amount of the Sanitary Inspectors' time.

<i>Animals.</i>				<i>Ministry of Food, Borough Slaughterhouse.</i>
Cows	..	..	..	1,511
Heifers	..	..	..	603
Bulls	..	..	..	51
Bullocks	..	..	..	1,518
Calves	..	..	..	660
Pigs	..	..	..	2,622
Sheep	..	..	..	13,464
Total ..				<u>20,429</u>

From the above table it will be seen that a total of 20,429 animals were slaughtered in 1941 as against 36,587 in the previous year, being a decrease of 16,158. The number of cows slaughtered has dropped from 1,983 in 1940 to 1,511 during 1941, a reduction of 472. The number of heifers has decreased from 804 to 603, and bullocks from 2,422 to 1,518. Sheep also show a decrease of 12,356 under the previous year. The pigs killed numbered 2,460 less.

# Condemnation of Unsound Food.

					No. of Condemnations	Weight (stones)
Meat .. .. .	..	..	..	..	1128	3846 $\frac{1}{4}$
Fruit .. .. .	..	..	..	..	2	99
Potatoes.. ..	..	..	..	..	1	160
Peas .. .. .	..	..	..	..	1	22
Meat Pies (84) ..	..	..	..	..	1	1 $\frac{1}{2}$
Fruit pulp .. ..	..	..	..	..	1	83 $\frac{1}{2}$
Fish—Wet .. ..	..	..	..	..	4	78
Cured .. ..	..	..	..	..	1	4
Shell (mussels) ..	..	..	..	..	1	8
Cheese .. .. .	..	..	..	..	3	3 $\frac{3}{4}$
Bacon .. .. .	..	..	..	..	6	51
Ham .. .. .	..	..	..	..	1	12
Eggs—in Shell ..	..	..	..	..	11	341 doz.
Canned .. ..	..	..	..	..	1	6
Frozen .. ..	..	..	..	..	1	5
Puff paste .. ..	..	..	..	..	2	6

## Canned Foodstuffs.

					No. of Cans		stones.
Fruit .. .. .	..	..	..	..	28	4	4
Meat .. .. .	..	..	..	..	488	13	167 $\frac{3}{4}$
Vegetables .. ..	..	..	..	..	44	5	4
Fish .. .. .	..	..	..	..	28	3	1
Milk .. .. .	..	..	..	..	91	2	7
					679	1192	4567 $\frac{3}{4}$

### Carcases Inspected and Condemned.

	Cattle, exclud- ing Cows	Cows	Calves	Sheep & Lambs	Pigs
Number Killed .. ..	2172	1511	660	13464	2622
All Diseases except Tuberculosis—					
Whole carcases condemned	3	16	4	8	9
Carcases of which some part or organ was condemned	80	241	2	62	34
Percentage of the number inspected affected with disease other than tuber- culosis .. ..	3.82	17.00	0.90	0.52	1.64
Tuberculosis Only—					
Whole carcases condemned	11	54	—	—	7
Carcases of which some part or organ was condemned	100	598	—	—	135
Percentage of the number inspected affected with Tuberculosis .. ..	5.11	43.00	—	—	5.42

### Tuberculosis Order, 1938.

During the year a total of 52 animals was sent into the Borough Slaughterhouse by the Superintendent Inspector of the Ministry of Agriculture and Fisheries under the Tuberculosis Order, 1938.

A total of 21 whole carcases and 3 part carcases together with edible offal, were subject to condemnation. The total weight of these condemnations was 5 tons 7 cwt.

### OFFENSIVE TRADES.

#### Offensive Trades on the Register at the end of 1941.

Trade.	Number
Tripe Boiling .. ..	3
Gut Scraping .. ..	2
Rag and Bone Dealing .. ..	3
Total .. ..	8

By the terms of Section 107 (6), Public Health Act, 1936, the business of fish fryer has now ceased to be an offensive trade. Up to the 30th September, 1941, 58 premises were occupied to carry on the business of fish fryer. The premises were conducted in a satisfactory manner.

#### FACTORIES ACT, 1937.

Number of Factories : Part A, 110 ; Part B, 213.

During the year 90 inspections have been made at factories (69 with and 21 without mechanical power).

#### HOUSING.

##### **New Houses Erected.**

During the year 3 houses (1 with 4 rooms, 2 with 5 rooms) have been built.

##### **Demolitions.**

A total of 74 houses in clearance areas was demolished during the year. The houses were principally those in a dangerous and decrepit condition.

#### PREVALENCE OF, AND CONTROL OVER, INFECTIOUS AND OTHER DISEASES.

The total number of notifications received during the year in respect of infectious diseases other than tuberculosis, and excluding cases where the diagnosis was revised, was 997. A statistical summary of the cases notified is set out in Table IV and the work of the Municipal Hospital is summarised in Table V.

##### **Scarlet Fever.**

61 cases were notified during 1941 as compared with 91 in the previous year. The average for the previous five years was 196. The number of cases removed to Hospital was 55. There were no deaths.

##### **Diphtheria.**

116 cases were notified during the year, all of which were removed to hospital. The total of 116 compares with 73 for the year 1940 and an average of 103 for the quinquennium 1936-40. There were 5 deaths.

**Enteric Fever.**

One case was notified during 1941. This occurred in the West Riding Mental Hospital and was treated there.

**Cerebro-Spinal Fever.**

14 cases were notified during the year, all of which were removed to hospital. There were two deaths.

**Dysentery.**

103 cases were notified during the year, 100 of which occurred and were treated in the West Riding Mental Hospital. There were 10 deaths.

**Immunisation against Diphtheria.**

The work of the special immunisation clinic underwent a considerable expansion during the year. The total number of persons attending rose to 1,502 and these made 5,814 attendances, the corresponding figures for 1940 being 455 and 1,306. Table VI. gives details of the work carried out at the clinic.

**VACCINATION.**

The vaccination statistics for the years 1940 and 1941 are as follows :—

**Year 1940.**

Number of Births registered in 1940 .. ..	971
Number of above children successfully vaccinated	353
Number in whose case vaccination was postponed	2
Number of children who died unvaccinated ..	54
Number of children who removed to other districts or places unknown, etc... ..	37
Number of children whose parents made statutory declarations of "Conscientious Objection" ..	525

**Year 1941.**

Number of certificates of successful primary vaccination of children under fourteen received during the year .. .. .	373
Number of declarations of "Conscientious Objection" received during the year .. .. .	467

Excluding deaths, removals and postponements, 40.2 per cent. of the children born in 1940 were vaccinated, as compared with 33.6 per cent. in the previous year. Statutory declarations of conscientious objection to vaccination were made in 59.8 per cent. of cases.

## CANCER.

Deaths of Wakefield residents due to cancer numbered 106 during the year. The classification of causes of death separates deaths from cancer under five headings. Particulars will be found in Table III.

The City Council accept financial responsibility for the radium treatment of Wakefield cancer sufferers at the Leeds General Infirmary. Both in-patients and out-patients treatment is available. When a patient is a member of a hospital contributory scheme part of the cost is borne by the fund in question and the Corporation does not attempt to recover any portion of the balance from the patient. In the case of patients who are non-contributors the question of recovery is considered by the Health Committee who assess each case on its merits.

12 cases were accepted under this scheme in 1941, 9 contributed and 3 were non-contributors.

**Disinfection.**

During 1941, the following disinfection work was carried out :—

No. of Houses disinfected .. .. .	300
„ Rooms disinfected .. .. .	371
„ Schools disinfected .. .. .	2
„ Classrooms disinfected .. .. .	5
„ Times Steam Disinfector used .. .. .	479
„ Mattresses disinfected .. .. .	327
„ Blankets disinfected .. .. .	720
„ Sheets disinfected .. .. .	317
„ Counterpanes disinfected .. .. .	289
„ Pillows and Bolsters disinfected .. .. .	680
„ Curtains disinfected .. .. .	153
„ Carpets and Rugs .. .. .	161
„ Pairs of Boots disinfected .. .. .	84
„ Articles of men's clothing disinfected .. .. .	46
„ Articles of women's clothing disinfected .. .. .	76
„ Articles of children's clothing disinfected .. .. .	437
Miscellaneous Articles disinfected .. .. .	194
Babies' Anti-Gas Protective Helmets .. .. .	588
Articles disinfected for Municipal Isolation and Maternity Hospitals .. .. .	1082

## TUBERCULOSIS.

New Cases of Tuberculosis notified during 1941, including cases notified after death and cases transferred from other areas.

(The figures in parentheses are the corresponding numbers in 1940).

## (a) Pulmonary Tuberculosis.

			Total number of cases notified	Number of cases in which the diagnosis was cancelled.	Number of definitely Tuberculous new cases.
Males	..	..	31	1	30 (25)
Females	..	..	18	—	18 (21)
Total	..	..	49	1	48 (46)

## (b) Non-Pulmonary Tuberculosis.

			Total number of cases notified	Number of cases in which the diagnosis was cancelled	Number of definitely Tuberculous new cases
Males	..	..	12	—	12 (9)
Females	..	..	3	—	3 (5)
Total	..	..	15	—	15 (14)

Three cases of Pulmonary Tuberculosis and two cases of Non-Pulmonary Tuberculosis, included in the above tables, died prior to notification.

## New Cases and Mortality, 1941.

AGE PERIOD.	NEW CASES				DEATHS.			
	Pulmonary		Non-pulmonary		Pulmonary		Non-pulmonary	
	M.	F.	M.	F.	M.	F.	M.	F.
0—1 year .. ..	—	—	—	—	—	—	—	—
1—5 years .. ..	—	—	2	—	—	—	2	—
5—10 „ .. ..	—	—	1	—	—	—	2	—
10—15 „ .. ..	—	—	2	1	1	—	—	—
15—20 „ .. ..	3	5	4	1	—	1	1	2
20—25 „ .. ..	1	2	—	—	—	1	—	—
25—35 „ .. ..	9	8	3	1	2	2	—	—
35—45 „ .. ..	7	1	—	—	1	2	—	—
45—55 „ .. ..	8	1	—	—	2	—	1	—
55—65 „ .. ..	2	1	—	—	1	—	—	—
65 years and over ..	—	1	—	—	—	—	—	—
Totals .. ..	30	19	12	3	7	6	6	2

## TUBERCULOSIS DISPENSARY.

During 1941, 120 persons (including 4 transfers from other areas) were examined at, or in connection with, the Dispensary for the first time, and of these 41 were found to be tuberculous, 36 affected with pulmonary and 5 with non-pulmonary disease.

## Cases of Tuberculosis on the Dispensary Register at the end of 1941.

	TOTAL.	ADULTS.		CHILDREN.	
		Males.	Females.	Males.	Females.
Pulmonary ..	126	67	47	7	5
Non-pulmonary ..	61	13	12	21	15
Total ..	187	80	59	28	20

## PULMONARY TUBERCULOSIS—SANATORIUM TREATMENT.

The Wakefield Corporation continued to use accommodation at the Westmorland Sanatorium, Meathop, Grange-over-Sands.

During 1941, 20 persons received sanatorium treatment, compared with 16 in the previous year.

6 persons remained in residence at the end of the year.

## NON-PULMONARY TREATMENT—INSTITUTIONAL.

### The Adela Shaw Orthopaedic Hospital.

(Children under the age of 16 years.)

On the 1st January, 1941, one male patient was undergoing treatment. During the year 2 patients (1 male and 1 female) were admitted, there were no discharges, leaving 3 patients (2 males and 1 female) under treatment at the end of the year.

The following is an analysis of the Wakefield cases treated in the Adela Shaw Orthopaedic Hospital, Kirbymoorside, during 1941 :—

Committee Responsible	Cases remaining in Hospital at end of 1940	Cases admitted during 1941	Cases discharged during 1941	Cases remaining in Hospital at end of 1941
Education ..	2	5	6	1
Health .. ..	1	2	—	3
Mental and Child Welfare ..	1	2	2	1
Totals ..	4	9	8	5

### Other Institutions.

On the 1st January, 1941, one male patient was undergoing treatment at the Robert Jones and Agnes Hunt Orthopaedic Hospital, Oswestry, Shropshire. During the year one male patient was admitted and one male patient admitted during the previous year died, leaving one male patient under treatment at the end of the year. Three patients paid short visits for the purpose of review.

# VENEREAL DISEASES.

1. Number of Wakefield persons dealt with for the first time at the Clayton Hospital Clinic and found to be suffering from :—

	<i>Total.</i>	<i>Males.</i>	<i>Females.</i>
Syphilis .. .. .	41	18	23
Gonorrhoea .. .. .	31	18	13
Non-Venereal Conditions	37	25	12
	<u>109</u>	<u>61</u>	<u>48</u>

2. Total number of attendances for attention by the Medical Officer :—

	<i>Total.</i>	<i>Males.</i>	<i>Females.</i>
Syphilis .. .. .	2235	925	1310
Gonorrhoea .. .. .	472	277	195
Non-Venereal conditions..	182	116	66
	<u>2889</u>	<u>1318</u>	<u>1571</u>

3. Number of attendances for intermediate treatment .. 1267      766      501

4. Number of in-patient days :—

Syphilis .. .. .	10	—	10
Gonorrhoea .. .. .	—	—	—
	<u>10</u>	<u>—</u>	<u>10</u>

5. Total number of doses of approved arsenobenzene compounds .. .. . 511

6. Number of pathological specimens examined .. 744

As compared with 1940, the number of male patients has increased by 13, but the number of female patients has fallen by 2. The total attendances has fallen from 4,158 in 1940, to 4,156 in 1941.

Three new patients from Wakefield attended the Leeds General Infirmary Clinic during the year, one of whom was found to be suffering from venereal disease (gonorrhoea). The total number of attendances was 101 as compared with 117 in 1940.

## MATERNITY AND CHILD WELFARE.

(By Dr. Jessie Eeles, Medical Officer for Maternity and Child Welfare.)

**Supervision of Midwives.**

29 Midwives gave notice of intention to practice in 1941. Of these 5 were Municipal midwives, two were in private practice, 3 attached to a nursing association, one in a private nursing home and 18 on staffs of institutions.

District cases attended by midwives as midwives..	319
District cases attended by midwives as maternity nurses .. .. .	42
District cases attended by midwives of nursing associations .. .. .	28
Total .. .. .	<u>389</u>

**Medical Help.**

113 notifications (35.4 per cent. of midwives' cases) of sending for medical aid were received in respect of home confinements. 93 related to the mother and 20 to the infant.

**Private Maternity Homes.**

Two private maternity homes are on the register and were inspected.

**Ante-Natal Clinics.**

Number of weekly sessions .. .. .	4
Total number of patients attending .. .. .	979
Number of new cases in 1941 .. .. .	803
Number of cases carried over from 1940 .. .. .	176

	<i>City</i>	<i>West Riding</i>	<i>Other</i>	<i>Total</i>
Ante-natal Patients (old)	151	24	1	176
Ante-natal Patients (new)	672	120	11	803
	<u>823</u>	<u>144</u>	<u>12</u>	<u>979</u>

Total number of attendances of all cases .. .. .	5106
Number of patients referred to clinic by midwives .. .. .	178

Number of patients referred to clinic by private Doctors .. .. .	47
80% of patients had abnormalities requiring attention.	
Number of patients admitted from Ante-Natal Clinic to hospital for treatment .. .. .	110
Number of patients X-Rayed .. .. .	14
Number of V.D. patients .. .. .	6

#### \*Dental Treatment of Expectant Mothers.

Totals for January—December, 1941.

Number of patients examined .. .. .	472
Number of fillings .. .. .	21
Number of extractions .. .. .	665
Other operations .. .. .	195
Dentures supplied .. .. .	44

#### The Maternity Hospital.

Number of cases admitted .. .. .	515
Number of cases from outside City .. .. .	142
Number of emergency cases .. .. .	39
Of these 20 were from Wakefield and 19 from outside.	
Cases delivered by Midwives .. .. .	418
Cases delivered by Doctors .. .. .	93
Average duration of stay of patients .. .. .	17.38 days

Medical treatment was required for an abnormality in the following number of patients :—

1. Ante-natal .. 129	3. After delivery .. 140
2. During labour .. 124	4. For baby .. 79
5. In addition ruptured Perineum or episiotomy required to be sutured in 250 cases.	

Forceps delivery was required in 36 cases, i.e. 7.0 per cent. of the cases.

Caesarean section was performed 5 times.

These were the reasons :—

Central Placenta Praevia in twin pregnancy ..	1
Central Placenta Praevia with Toxaemia ..	1
Disproportion (second Caesar) .. .. .	1
Mitral Stenosis with recent decompensation ..	1
Transverse lie absence of liquor and two previous still-births .. .. .	1
Two of these patients were also sterilized.	

Other forms of operative treatment performed were these :—

Surgical Induction of labour .. .. .	26
Willet's Forceps .. .. .	1
Hydrocephalus perforated and extracted .. .. .	2
Rupture of membranes for accidental haemorrhage .. .. .	6
Manual removal of adherent placenta .. .. .	7
Internal Version for prolapse of cord .. .. .	1
Internal Version for transverse lie .. .. .	1
Brow converted to face .. .. .	1
Number of breech deliveries.. .. .	14

3 cases of Puerperal Pyrexia occurred and were notified.

No cases of Pemphigus occurred.

There were 3 cases of ophthalmia neonatorum, two definitely due to the gonococcus. All recovered.

There were 23 still-births and 16 infant deaths within 10 days of birth.

There was one Maternal Death due to serious heart disease complicating labour.

#### **Training Pupil Midwives.**

14 pupils finished their Part II. training at Wakefield and 13 passed the examination.

One pupil having previously failed in Part II. elsewhere came for 3 months extra training and passed the examination.

20 pupils commenced training but only 18 of these continued as two of them received notice that they had not passed the Part I. examination.

#### **Post-Natal Clinic.**

This clinic was held weekly throughout 1941 on Mondays at 2 p.m.

299 patients attended. The total number of visits was 363.

225 of the patients were from Wakefield and 74 from outside the City.

**Contraception.**

Number of patients attending .. .. .	12
Number of visits .. .. .	31

**Puerperal Pyrexia.**

Number of notifications .. .. .	7
3 were treated at the Maternity Hospital.	
One was treated in the Municipal Hospital.	
3 were treated in the County Hospital.	
One patient died.	

**Ophthalmia Neonatorum.**

Number of notifications .. .. .	6
3 from the Maternity Hospital and 3 from the district.	
3 cases were treated in the Maternity Hospital, one in the Municipal Hospital and two at home.	

All 6 cases recovered completely.

**Pemphigus Neonatorum—No notifications.****Child Life Protection.**

Cases under supervision at beginning of 1941 ..	4
4 cases were added during the year.	
Cases under supervision at end of 1941 .. ..	8

**Home Visiting by Health Visitors.****Infant Visiting—**

Primary .. .. .	776
Re-visits under 1 year .. .. .	7657
Re-visits 1 to 5 years .. .. .	8672

---

17105

---

**Expectant Mothers—**

Primary visits .. .. .	200
Re-visits .. .. .	117
Visits <i>re</i> Stillbirths and Infant Deaths .. ..	14
Attendances at Child Welfare Centres .. ..	318
Attendances at Tuberculosis Dispensary .. ..	74
Visits to Tuberculous Patients .. .. .	701
Visits to Schools .. .. .	532
Examinations at Schools <i>re</i> cleanliness, etc. ..	19729
Home visits <i>re</i> Contagious diseases.. ..	779

Home visits <i>re</i> Verminous and Neglected Children	19
Home visits <i>re</i> Treatment .. .. .	1701
Total number of home visits <i>re</i> school children ..	2498
Home visits <i>re</i> Mental Defectives .. .. .	483
Home visits for purposes of nursing .. .. .	29
Miscellaneous visits .. .. .	60
Total number of home visits (all purposes) ..	21207

### Child Welfare Centres.

Total number on Register at all six centres :—

<i>Mothers</i>	<i>Infants</i>	<i>Children, 1-5</i>	<i>Expectant Mothers</i>
1454	1174	638	4
Total Attendances :—			
12472	10029	4083	19

Total number of Medical Examinations :—

<i>Children</i>			<i>Mothers</i>	
<i>Primary examined</i>	<i>Re- exams</i>	<i>Total exams</i>	<i>Re- exams</i>	<i>Total exams</i>
1278	6220	7498	231	356

### Supply of Dried Milk at Welfare Centres.

Sold at Cost Price .. .. .	350 lbs.
Sold at Half Price .. .. .	32 lbs.
Sold at Quarter Price .. .. .	264 lbs.
Supplied Free .. .. .	492 lbs.
	<hr/>
	1138 lbs.

From August 17th, 1940, National Dried Milk issued by the Government has been in use at the Wakefield Welfare Centres and this has materially reduced the cost to the Corporation of milk which would otherwise have been issued at reduced rates under the Corporation's own scheme.

### Lactagol Supplied.

Sold at Cost Price .. .. .	60 lbs.
Sold at Half Price .. .. .	514 lbs.
Sold at Quarter Price .. .. .	22 lbs.
Supplied Free .. .. .	478 lbs.
	<hr/>
Total .. .. .	1074 lbs.

### Distribution of Vitamin Preparations.

The distribution of cod liver oil and fruit juices to children under two years of age commenced on 8th December, 1941. The distributive work was carried out at the Child Welfare Centres and at selected points in Alverthorpe Road, Denby Dale Road and Eastmoor Road for the convenience of mothers who were not in the habit of bringing their children to the Centres. It is regrettable that insufficient use was made of the additional premises and that much congestion was caused at the Child Welfare Centres.

Our thanks are due to the willing help given by the ladies of the Babies' Welcome, the Women's Voluntary Service and others who have borne the brunt of this work.

The issues up to the end of the year were as follows :—

Cod Liver Oil	..	..	..	1357 bottles
Orange Juice	..	..	..	44 bottles
Black Currant Syrup	..	..	..	537 bottles
Black Currant Puree	..	..	..	3224 cans

### Issue of Clothing Coupons to Expectant Mothers.

As a result of the rationing of clothes the Public Health Department was charged with the issue of additional clothing coupons to expectant mothers as from the 7th August, 1941. During the remainder of the year 426 expectant mothers were supplied with 50 coupons each.

## MENTAL DEFICIENCY.

### Ascertainment and Classification.

The arrangements for ascertainment, medical examination and further action were fully described in my report for 1930.

At the end of 1941 there were 148 mental defectives (78 males and 70 females) on the register. These were classified as follows :—

	<i>Total</i>	<i>Males.</i>	<i>Females.</i>
In institutions .. .. .	40	20	20
On licence from institutions ..	5	2	3
Under statutory supervision ..	41	25	16
Under voluntary supervision ..	62	31	31
Total ..	148	78	70

In addition to the above, 56 children (34 boys and 22 girls) were on the register of the Education Authority as feeble-minded.

### **MEDICAL EXAMINATIONS.**

During 1941, the Medical Officers of the Department carried out 44 medical examinations in connection with the Local Government Superannuation Act, 1937.

TABLE I.  
VITAL STATISTICS FOR THE LAST TEN YEARS.

Year	Popula- tion	Births	Birth Rate	Deaths	Death Rate*	Infant- ile Deaths	Infant Death Rate	Number of Cases.			
								Smallpox	Enteric Fever	Scarlet Fever	Diph- theria
1932	59,678	945	16.7	759	13.4	68	72	—	4	385	416
1933	60,160	906	15.8	791	13.8	67	74	—	1	318	173
1934	60,300	914	16.0	659	12.4	49	54	—	—	335	281
1935	60,100	967	17.0	758	14.4	62	64	—	4	109	178
1936	59,746	882	15.6	798	15.2	70	79	—	1	189	151
1937	59,250	819	14.7	688	13.3	45	55	—	1	154	104
1938	59,000	902	16.3	685	13.4	54	60	—	—	301	75
1939	59,040	781	13.2	748	13.8	45	58	—	4	244	113
1940	56,050 (civilian only).	812	14.5	759	14.4	49	60	—	2	91	73
1941	56,190	772	13.7	671	11.9	44	56	—	1	61	116

\* The Registrar-General's "comparability factor" has been used in calculating the death-rates for 1934 to 1940 inclusive.

TABLE II.

Birth-Rates, Civilian Death-rates, Analysis of Mortality and Case Rates for Certain Infectious Diseases in the year 1941.

	England and Wales	126 County Boroughs and Great Towns including London	148 Smaller Towns (resident popula- tions 25,000— 50,000 at 1931 Census	London	Wakefield
	Rates per 1,000 Civilian Population.				
Live Births .. .. .	14.2	14.7	16.4	8.9	13.7
Still Births .. .. .	0.51	0.58	0.60	0.33	0.43
Deaths :—					
All Causes .. .. .	12.9	14.9	13.0	16.3	11.9
Typhoid and Paratyphoid .. .. .	0.00	0.00	0.00	0.01	—
Scarlet Fever .. .. .	0.00	0.00	0.00	0.00	—
Whooping Cough .. .. .	0.06	0.07	0.06	0.04	0.07
Diphtheria .. .. .	0.07	0.08	0.06	0.03	0.09
Influenza .. .. .	0.19	0.17	0.20	0.15	0.09
Smallpox .. .. .	—	—	—	—	—
Measles .. .. .	0.03	0.03	0.03	0.02	—
Notifications :—					
Typhoid Fever .. .. .	0.03	0.02	0.03	0.04	0.02
Paratyphoid Fever .. .. .	0.09	0.12	0.09	0.05	—
Cerebro-spinal Fever .. .. .	0.25	0.31	0.20	0.30	0.25
Scarlet Fever .. .. .	1.47	1.49	1.51	1.01	1.26
Whooping Cough .. .. .	4.39	4.37	4.50	3.50	5.01
Diphtheria .. .. .	1.25	1.53	1.19	0.93	2.06
Erysipelas .. .. .	0.30	0.36	0.27	0.50	0.23
Smallpox .. .. .	—	—	—	—	—
Measles .. .. .	10.33	8.27	10.47	4.77	5.09
Pneumonia .. .. .	1.25	1.53	1.04	1.07	1.94
	Rates per 1,000 Live Births.				
Deaths under 1 year of age ..	59	71	56	68	56
Deaths from Diarrhoea and Enteritis under 2 years age	5.1	7.5	4.6	6.8	8.8
	Rates per 1,000 Total Births. (Live and Still)				
Maternal Mortality :—					
Puerperal Infection ..	0.48	} Not available		{	—
Others .. .. .	1.75				2.51
Total .. .. .	2.23				2.51
Notifications :—					
Puerperal Pyrexia ..	11.91	15.64	9.43	19.3	8.79

TABLE III.  
CAUSES OF DEATH, 1941.

Causes of Death	Totals	Uncertified.	Coroner's Enquiries.	Public Institutions.	Age Distribution.																				Wards									
					0—		1—		2—		5—		15—		25—		45—		65—		75—		Alver-thorpe.	North Westgate	South Westgate.	St. John's	Eastmoor	Northgate	Kirkgate	Primrose Hill	Calder	Belle Vue	Sandal	
					M.	F.	M.	F.	M.	F.	M.	F.	M.	F.	M.	F.	M.	F.	M.	F.	M.	F.												
1. Typhoid and Paratyphoid Fevers ..	—	—	—	—	—	—	—	—	—	—	—	—	—	—	—	—	—	—	—	—	—	—	—	—	—	—	—	—	—	—	—	—	—	—
2. Cerebro-Spinal Fever ..	3	—	—	2	1	—	—	—	—	1	—	—	—	—	—	—	—	1	—	—	—	—	—	—	—	—	—	—	—	—	—	—	—	—
3. Scarlet Fever ..	—	—	—	—	—	—	—	—	—	—	—	—	—	—	—	—	—	—	—	—	—	—	—	—	—	—	—	—	—	—	—	—	—	
4. Whooping Cough ..	4	—	—	—	1	2	—	—	1	—	—	—	—	—	—	—	—	—	—	—	—	—	—	—	—	—	—	—	—	—	—	—	—	
5. Diphtheria ..	5	—	—	4	—	—	—	—	—	—	—	3	1	—	—	—	—	—	—	—	—	—	—	1	—	—	—	—	—	—	—	—	—	
6. Tuberculosis of Respiratory System ..	13	—	—	6	—	—	—	—	—	—	—	1	—	2	3	4	3	—	—	—	—	—	—	1	—	—	—	—	—	—	—	—	—	
7. Other forms of Tuberculosis ..	8	—	—	1	—	—	—	—	1	—	—	—	—	1	2	—	—	—	—	—	—	—	—	—	—	—	—	—	—	—	—	—	—	
8. Syphilitic Disease ..	4	—	—	3	—	—	—	—	—	—	—	—	—	—	—	1	1	—	—	—	—	—	—	—	—	—	—	—	—	—	—	—	—	
9. Influenza ..	5	—	—	—	—	—	—	—	—	—	—	—	—	—	—	1	1	—	—	—	—	—	—	—	—	—	—	—	—	—	—	—	—	
10. Measles ..	—	—	—	—	—	—	—	—	—	—	—	—	—	—	—	1	1	—	—	—	—	—	—	—	—	—	—	—	—	—	—	—	—	
11. Acute poliomyelitis and polioencephalitis ..	—	—	—	—	—	—	—	—	—	—	—	—	—	—	—	—	—	—	—	—	—	—	—	—	—	—	—	—	—	—	—	—	—	
12. Acute infectious encephalitis ..	1	—	—	1	—	—	—	—	—	—	—	—	—	—	—	—	—	—	—	—	—	—	—	—	—	—	—	—	—	—	—	—	—	
13M. Cancer of buccal cavity and oesophagus ..	—	—	—	—	—	—	—	—	—	—	—	—	—	—	—	—	—	—	—	—	—	—	—	—	—	—	—	—	—	—	—	—	—	
13F. Cancer of the Uterus ..	6	—	—	—	—	—	—	—	—	—	—	—	—	—	—	—	4	—	—	—	—	—	—	—	—	—	—	—	—	—	—	—	—	
14. Cancer of Stomach and Duodenum ..	14	—	—	4	—	—	—	—	—	—	—	—	—	—	—	—	5	1	4	1	2	1	—	—	—	—	—	—	—	—	—	—	—	
15. Cancer of the Breast ..	10	—	—	2	—	—	—	—	—	—	—	—	—	—	—	—	1	—	—	—	—	—	—	—	—	—	—	—	—	—	—	—	—	
16. Cancer of all other sites ..	76	—	—	23	—	—	—	—	—	—	—	—	—	—	—	—	2	4	18	15	16	7	8	5	8	14	5	9	6	5	4	1	6	
17. Diabetes ..	7	—	—	3	—	—	—	—	—	—	—	—	—	—	—	—	—	—	—	—	—	—	—	—	—	—	—	—	—	—	—	—	—	
18. Intra-cranial vascular lesions ..	67	—	—	21	1	—	—	—	—	—	—	—	—	—	—	—	—	—	—	—	—	—	—	—	—	—	—	—	—	—	—	—	—	
19. Heart Disease ..	169	—	—	54	—	1	—	—	—	—	—	—	—	—	—	—	—	—	—	—	—	—	—	—	—	—	—	—	—	—	—	—	—	
20. Other diseases of the circulatory system ..	32	—	—	12	—	—	—	—	—	—	—	—	—	—	—	—	—	—	—	—	—	—	—	—	—	—	—	—	—	—	—	—	—	
21. Bronchitis ..	30	—	—	2	2	—	—	—	—	—	—	—	—	—	—	—	—	—	—	—	—	—	—	—	—	—	—	—	—	—	—	—	—	
22. Pneumonia ..	24	—	—	8	3	—	—	—	—	—	—	—	—	—	—	—	—	—	—	—	—	—	—	—	—	—	—	—	—	—	—	—	—	
23. Other respiratory diseases ..	3	—	—	1	—	—	—	—	—	—	—	—	—	—	—	—	—	—	—	—	—	—	—	—	—	—	—	—	—	—	—	—	—	
24. Ulceration of the stomach and duodenum ..	5	—	—	3	—	—	—	—	—	—	—	—	—	—	—	—	—	—	—	—	—	—	—	—	—	—	—	—	—	—	—	—	—	
25. Diarrhoea ..	8	—	—	3	4	1	1	—	—	—	—	—	—	—	—	—	—	—	—	—	—	—	—	—	—	—	—	—	—	—	—	—	—	
26. Appendicitis ..	3	—	—	3	—	—	—	—	—	—	—	—	—	—	—	—	—	—	—	—	—	—	—	—	—	—	—	—	—	—	—	—	—	
27. Other digestive diseases ..	18	—	—	13	1	—	—	—	—	—	—	—	—	—	—	—	—	—	—	—	—	—	—	—	—	—	—	—	—	—	—	—	—	
28. Nephritis ..	16	—	—	6	1	—	—	—	—	—	—	—	—	—	—	—	—	—	—	—	—	—	—	—	—	—	—	—	—	—	—	—	—	
29. Puerperal and post-abortive sepsis ..	—	—	—	—	—	—	—	—	—	—	—	—	—	—	—	—	—	—	—	—	—	—	—	—	—	—	—	—	—	—	—	—	—	
30. Other maternal causes ..	2	—	—	1	—	—	—	—	—	—	—	—	—	—	—	—	—	—	—	—	—	—	—	—	—	—	—	—	—	—	—	—	—	
31. Premature Birth ..	13	—	—	11	5	8	—	—	—	—	—	—	—	—	—	—	—	—	—	—	—	—	—	—	—	—	—	—	—	—	—	—	—	
32. Congenital malformations, birth injury, infantile disease ..	7	—	—	2	4	3	—	—	—	—	—	—	—	—	—	—	—	—	—	—	—	—	—	—	—	—	—	—	—	—	—	—	—	
33. Suicide ..	5	—	—	5	1	—	—	—	—	—	—	—	—	—	—	—	—	—	—	—	—	—	—	—	—	—	—	—	—	—	—	—	—	
34. Road traffic accidents ..	5	—	—	5	—	—	—	—	—	—	—	—	—	—	—	—	—	—	—	—	—	—	—	—	—	—	—	—	—	—	—	—	—	
35. Other violent causes ..	42	—	—	31	15	1	—	—	—	—	—	—	—	—	—	—	—	—	—	—	—	—	—	—	—	—	—	—	—	—	—	—	—	
36. All other causes ..	66	—	—	44	1	—	—	—	—	—	—	—	—	—	—	—	—	—	—	—	—	—	—	—	—	—	—	—	—	—	—	—	—	
TOTALS ..	671	—	—	68	238	24	20	2	3	6	5	13	3	7	11	33	29	100	85	97	73	78	82	80	131	54	58	56	41	37	41	49	67	

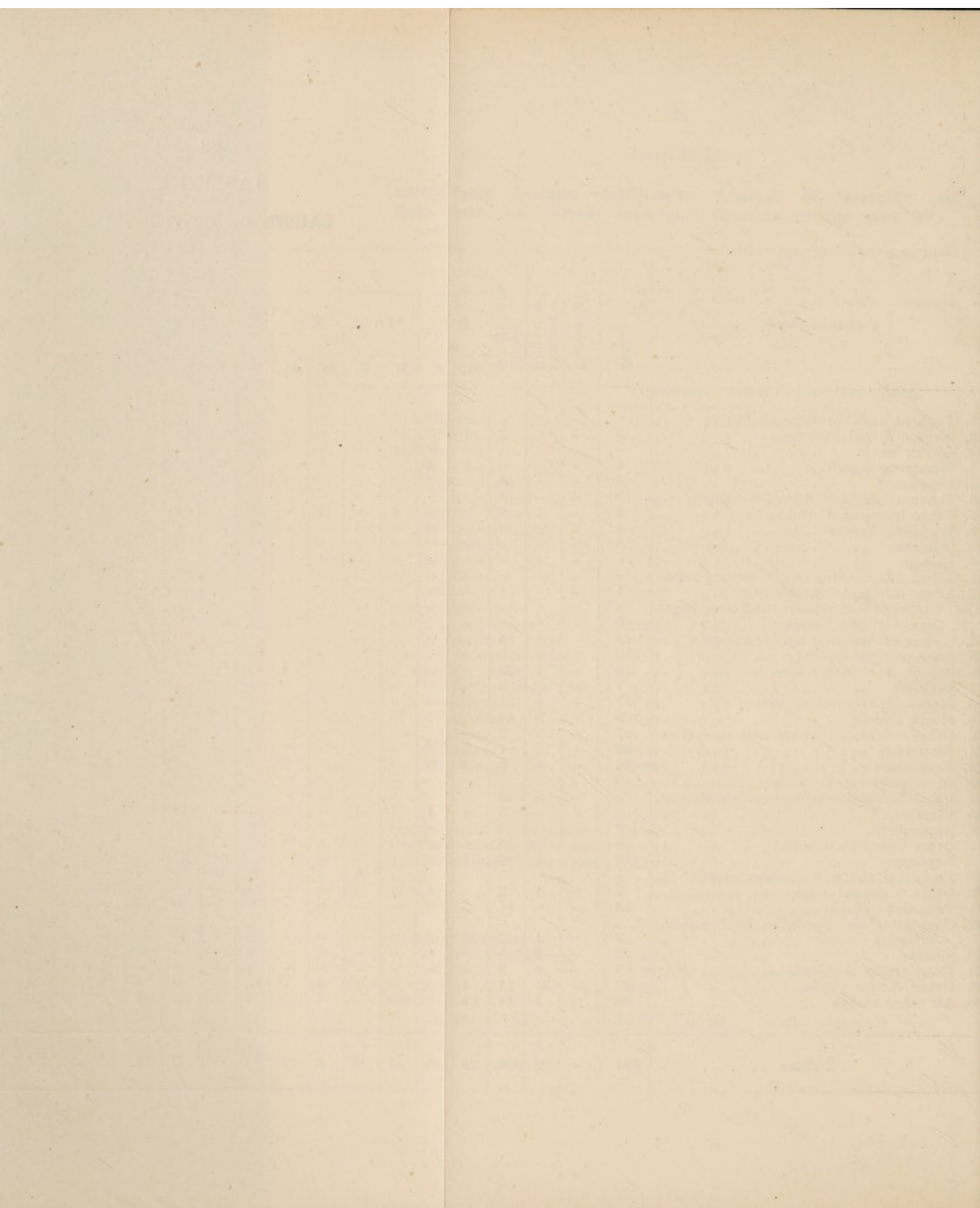


TABLE IV.  
INFECTIOUS DISEASES NOTIFIED DURING THE YEAR 1941.

DISEASE	AGE DISTRIBUTION												Cases sent to Hospital	Deaths	WARDS											
	Total all ages																									
	0-1 year	1-2 years	2-3 years	3-4 years	4-5 years	5-10 years	10-15 years	15-20 years	20-35 years	35-45 years	45-65 years	65 years & up			Alverthorpe	Nth. Westgate	St. John's	Eastmoor	Northgate	Kirkgate	Primrose Hill	Calder	Belle Vue	Sandal		
Smallpox	-	2	1	4	7	31	10	2	3	1	-	-	55	-	825	1	5	4	3	3	1	5	5	-		
Scarlet Fever	-	3	8	4	8	34	23	17	15	1	2	-	116	5	824	4	2	6	15	6	5	10	12	24		
Diphtheria	1	-	-	-	-	-	-	-	-	-	-	-	-	-	-	-	-	1	-	-	-	-	-			
Enteric Fever	-	-	22	35	62	117	4	3	4	-	-	-	-	-	2590	12	17	16	3	36	3	9	32	43		
Measles	10	29	6	5	1	17	4	7	6	6	29	7	47	23	17	27	5	5	11	7	9	6	10	6		
Pneumonia	12	9	1	-	1	1	2	1	4	2	2	-	14	2	1	2	3	5	1	1	-	1	-	-		
Cerebrospinal Fever	-	1	1	-	-	-	-	-	-	-	-	-	-	-	-	-	-	-	-	-	-	-	-	-		
Acute Poliomyelitis	-	-	-	-	-	-	-	-	-	-	-	-	-	-	-	-	-	-	-	-	-	-	-	-		
Polio-encephalitis	-	-	-	-	-	-	-	-	-	-	-	-	-	-	-	-	-	-	-	-	-	-	-	-		
Encephalitis Lethargica	-	-	-	-	-	-	-	-	-	-	-	-	-	-	-	-	-	-	-	-	-	-	-	-		
Dysentery	-	-	-	-	1	2	1	4	12	22	44	17	-	10	-	-	-	100	-	2	1	-	-	-		
Ophthalmia	-	-	-	-	-	-	-	-	-	-	-	-	-	-	-	-	-	-	-	-	-	-	-	-		
Neonatorum	6	-	-	-	-	-	-	-	-	-	-	-	2	-	1	2	1	-	-	-	-	1	1	1		
Puerperal Pyrexia	-	-	-	-	-	-	-	-	6	1	-	-	1	1	1	-	1	1	1	1	1	1	1	1		
Erysipelas	-	-	-	-	-	-	1	-	1	-	9	2	-	-	4	1	2	2	-	1	-	-	3	-		
Malaria	-	-	-	-	-	-	-	-	-	-	-	-	-	-	-	-	-	-	-	-	-	-	-	-		
Whooping Cough	24	41	32	32	50	88	5	1	1	1	-	-	2	1	34	94	14	40	15	11	14	15	17	9		
TOTALS	997	85	70	86	129	290	50	35	53	34	86	26	233	42	92	267	41	52	180	50	67	34	47	79	88	

TABLE V.

## MUNICIPAL HOSPITAL FOR INFECTIOUS DISEASES.

Statistics for the Period 31st December, 1940 to 31st December, 1941

Disease for which admitted	No. of cases in Hospital 31.12.40	No. of cases admitted, 1941	Total number of cases under Treatment, 1941.	No. of cases discharged 1941.	No. of deaths, 1941.	No of Diagnoses Revised	Case mortality per cent (excluding cases where the diagnosis was revised.	No. of cases remaining in Hospital on 31.12.41.
Scarlet Fever	5	59	64	59	—	4	—	5
Diphtheria ..	23	135	158	138	4	19	3.25	16
Diphtheria Carriers ..	1	2	3	3	—	—	—	—
Pneumonia ..	5	66	71	62	6	18	8.3	3
Enteric Fever	—	2	2	2	—	2	—	—
Erysipelas ..	—	1	1	1	—	1	—	—
Mastitis ..	—	2	2	2	—	—	—	—
Ophthalmia Neonatorum	—	2	2	2	—	—	—	—
Puerperal Pyrexia ..	—	1	1	—	1	—	100.0	—
Rubella ..	—	1	1	1	—	—	—	—
Tonsillitis ..	—	3	3	3	—	—	—	—
Dysentery ..	—	1	1	1	—	1	—	—
Mumps ..	—	1	1	—	—	—	—	1
Whooping Cough ..	—	4	4	4	—	—	—	—
Pulmonary Tuberculosis	9	19	28	11	3	—	21.5	14
Observation <i>re</i> Tuberculosis	—	1	1	1	—	—	—	—
Undiagnosed ..	—	1	1	—	1	—	100.0	—

TABLE VI.  
IMMUNISATION, 1941.

Category	Attendances				No. of persons attending			
	Total	Age group classification			Total	Age group classification		
		0-5 yrs.	5-14 yrs.	14 × yrs.		0-5 yrs.	5-14 yrs.	14 × yrs.
A. COMPLETED CASES (i.e. full completion of immunising injections)								
1. Commenced and completed in 1941 .. .. .	5325	2314	2832	179	1288	620	608	60
2. Commenced 1940, completed in 1941 .. .. .	211	130	74	7	65	42	21	2
<i>Preliminary Schick Test :—</i>								
(a) Positive .. .. .					452	13	422	17
(b) Negative .. .. .					139	3	105	31
Failed to attend for reading ..					3	2	1	—
<i>Number of doses of Immunising Agent :—</i>								
1. Alum-precipitated Toxoid ..					235	235	—	—
2. Toxoid-Antitoxin Mixture ..					2497	1272	1222	3
3. Toxoid-Antitoxin Floccules ..					293	70	168	55
<i>Post-Immunisation Schick Test.</i>								
(a) Positive .. .. .					71	26	42	3
(b) Negative .. .. .					827	392	412	23
(c) Not Read .. .. .					51	32	19	—
B. FAILED TO COMPLETE .. .. .	157	62	95	—	89	45	44	—
<i>Preliminary Schick Test :—</i>								
(a) Positive .. .. .					33	—	33	—
(b) Not read .. .. .					12	—	12	—
<i>Number of Doses of Immunising Agent :—</i>								
1. Alum-precipitated Toxoid ..					3	3	—	—
2. Toxoid-Antitoxin Mixture ..					96	59	37	—
3. Toxoid-Antitoxin Floccules ..					9	1	8	—
C. IN PROCESS OF IMMUNISATION. . .	121	14	104	3	60	13	46	1
<i>Preliminary Schick Test :—</i>								
(a) Positive .. .. .					43	1	41	1
(b) Not read at end 1941 ..					3	—	3	—
<i>Number of Doses of Immunising Agent :—</i>								
1. Alum-precipitated Toxoid ..					12	12	—	—
2. Toxoid-Antitoxin Mixture ..					55	1	54	—
3. Toxoid-Antitoxin Floccules ..					7	—	5	2
D. <i>Preliminary Schick Tests after Previous Scarlet Fever.</i>								
(a) Positive .. .. .					43	2	39	2
(b) Negative .. .. .					27	1	21	5
<i>Preliminary Schick Tests after previous Diphtheria</i>								
(a) Positive .. .. .					21	1	20	—
(b) Negative .. .. .					21	2	17	2

