

[Report 1894] / Medical Officer of Health, Trawden U.D.C.

Contributors

Trawden (England). Urban District Council.

Publication/Creation

1894

Persistent URL

<https://wellcomecollection.org/works/gdrpczw6>

License and attribution

You have permission to make copies of this work under a Creative Commons, Attribution license.

This licence permits unrestricted use, distribution, and reproduction in any medium, provided the original author and source are credited. See the Legal Code for further information.

Image source should be attributed as specified in the full catalogue record. If no source is given the image should be attributed to Wellcome Collection.



Wellcome Collection
183 Euston Road
London NW1 2BE UK
T +44 (0)20 7611 8722
E library@wellcomecollection.org
<https://wellcomecollection.org>

To the Trawden Urban District Council

Gentlemen

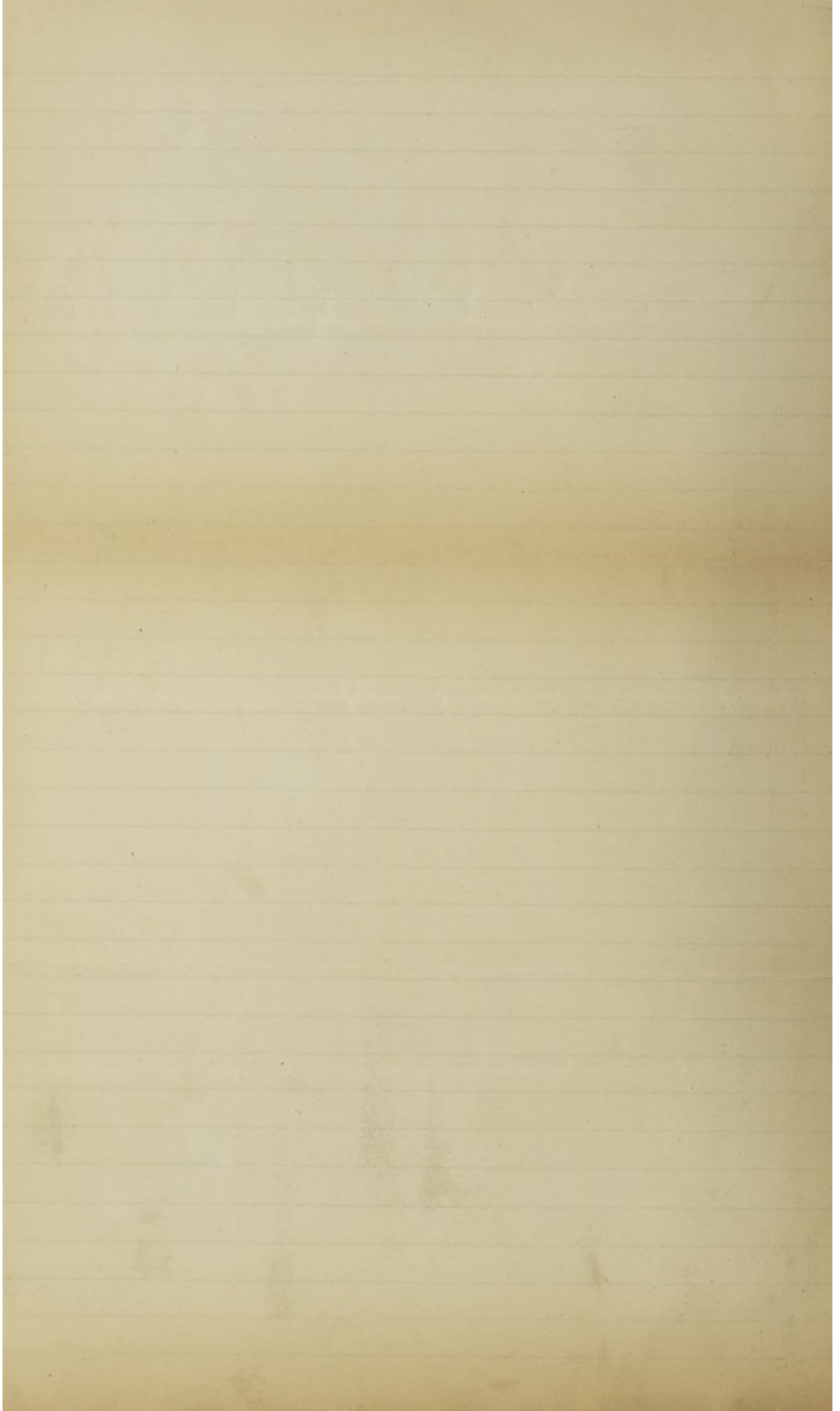
In the year ended December 1894 there were 40 deaths of which 20 were males and 20 females, there were 81 births of which 44 were males and 37 females, which calculated on a population of 2411 gives an annual death rate of 16.59 and a birth rate of 33.59 per thousand of the population.

The deaths under 5 years were 10, the deaths in 1st year 12, in 2nd year 3, in 3rd year 1. The deaths in older people were as follows: - Between 5 and 15 years 4 deaths, between 15 and 25 years 3 deaths, between 25 and 65 years 12 deaths, above 65 years 5 deaths.

There was 1 death from Scarlatina, 1 from Typhoid Fever, 1 from Pneumonia, 2 from Phthisis, 14 from Bronchitis and Pneumonia, 1 from injury, 2 from Heart Disease and 18 from other diseases.

The average age at death was 25 years. The greatest mortality was in the months of April, June, October, November and December, the least in January and July.

Few deaths occurred from Zymotic Diseases. The removal of ashes, night soil and other refuse by the Council continues to work very satisfactorily; many street improvements have taken place which will ensure a better sanitary condition. The water supply



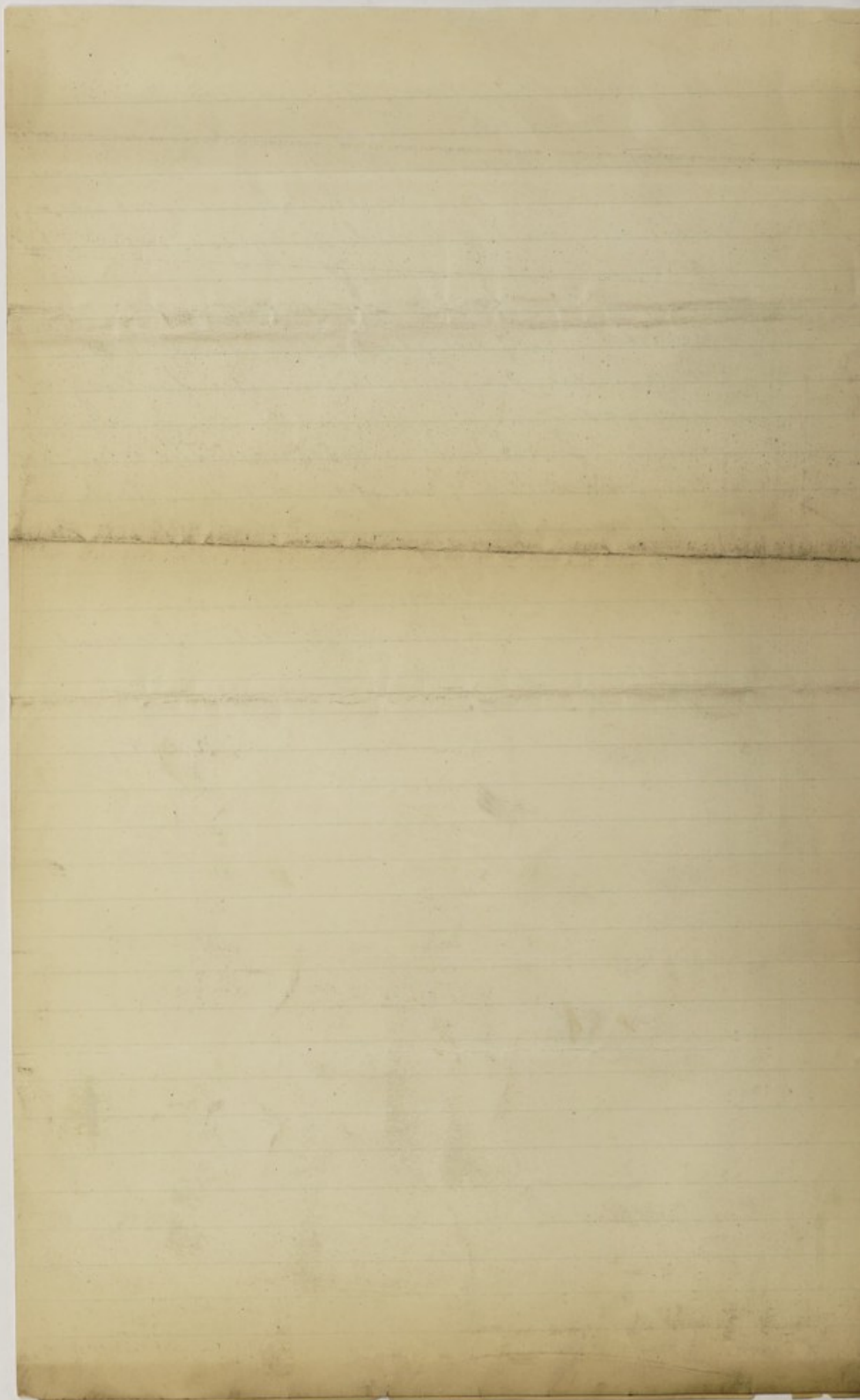
is good. The slaughter houses are in good condition. The Council have adopted a sewerage scheme, but owing to the inclement weather have not been able to make much progress, when completed however, it will be a great improvement as regards the sanitary condition of the district, and it will also be a means of preventing the fouling of the river.

I again impress on the Council the necessity of adopting the Infectious Diseases (Notification) Act 1889.

I am, Gentlemen
Your Obedient Servant

Colne
March 5th 1895

J. J. Dierow,
M. O. H.



NOTES ON TABLES A AND B.

NOTE 1. *Medical Officers of Health of "Combined Districts" must make a separate Return for the District of each District Council.*

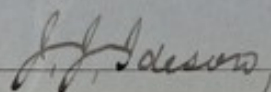
2. *Medical Officers of Health acting for a portion only of the District of a District Council should write, in the heading of the Table, the designation of the Division for which they act.*
3. *The words "Urban," "Rural," or "Metropolitan" must be inserted in the appropriate space in the heading, according as the District is Urban or Rural, or is within the Metropolitan Area.*
4. *The "Localities" adopted for the purpose of these statistics should be areas of known population; such as parishes, groups of parishes, townships or wards.*

As stated at the head of the first column in each Table, *Public Institutions* should be regarded as separate localities, and the deaths in them should be separately recorded. Workhouses, Hospitals, Infirmaries, Asylums, and other establishments into which numbers of people, and especially of sick people, are received are *Public Institutions* for the purpose of these statistics.

5. *The deaths which have to be classified in this Table (A), and summed up in the horizontal line of "Totals," are the whole of those registered as having actually occurred in the several localities comprised within the Division or District. But the registered number of deaths frequently requires correction before it can give an exact view of the mortality of a Division or District; and the two lowest horizontal lines are provided for the purpose of enabling Medical Officers of Health to indicate, to the best of their ability, what the extent of such corrections should be. Details concerning the corrective figures, e.g., the institutions that have been considered, or the particular localities to which corrections apply, may appear in the text of the report or in supplementary tables.*

Area and Population of the District or Division to which this Return relates.	
Area in Acres	6807
Population (1891)	23574
Death Rates.	{ General 16.59 per 1,000 { Population.
	{ Infant ———— (per 1,000 { Births Registered.

In recording the facts under the various headings of Tables A and B, attention has been given to the notes endorsed on the Tables.


 Medical Officer of Health.

(Date) March 5th, 1895.

NOTES ON TABLE **B.**

(See also Notes on back of Table A.)



- NOTE 1. The present *Table B.* is concerned with population, births, and sickness (not with mortality) in the district or division to which the Table relates.
2. As stated in the heading of Col. (a), *Public Institutions* should be regarded as separate localities, and the new cases of sickness in them should be separately recorded. Workhouses, Hospitals, Infirmaries, Asylums, and other establishments into which numbers of people, and especially of sick people, are received, are *Public Institutions* for the purpose of these statistics.
3. *Comments on any unequal incidence of notifiable disease upon the several localities, and considerations as to the local incidence of consumption and other prevalent diseases, should be made in the text of the Report.*