

**[Report 1904] / Medical Officer of Health, Ringwood R.D.C.**

**Contributors**

Ringwood (England). Rural District Council.

**Publication/Creation**

1904

**Persistent URL**

<https://wellcomecollection.org/works/dh4w2cwf>

**License and attribution**

You have permission to make copies of this work under a Creative Commons, Attribution, Non-commercial license.

Non-commercial use includes private study, academic research, teaching, and other activities that are not primarily intended for, or directed towards, commercial advantage or private monetary compensation. See the Legal Code for further information.

Image source should be attributed as specified in the full catalogue record. If no source is given the image should be attributed to Wellcome Collection.



Wellcome Collection  
183 Euston Road  
London NW1 2BE UK  
T +44 (0)20 7611 8722  
E [library@wellcomecollection.org](mailto:library@wellcomecollection.org)  
<https://wellcomecollection.org>

1904.

*Ringwood  
Hants.*

MEDICAL OFFICER'S REPORT.

In presenting the Annual Report of the Ringwood Rural Sanitary District for the past year I have to state that the general health of the District compares very favourably with the previous year. The death rate was 17.2 per thousand, excluding those who died at the Sanatorium, 16.7 - as compared with 14.3 in 1903.

The deaths are distributed as follows :-

Ringwood.	78.
Burley.	15.
Broomy.	4. (Sanatorium).
Ellingham.	4.
Harbridge.	2.
Ibsley.	3.
Workhouse.	6.

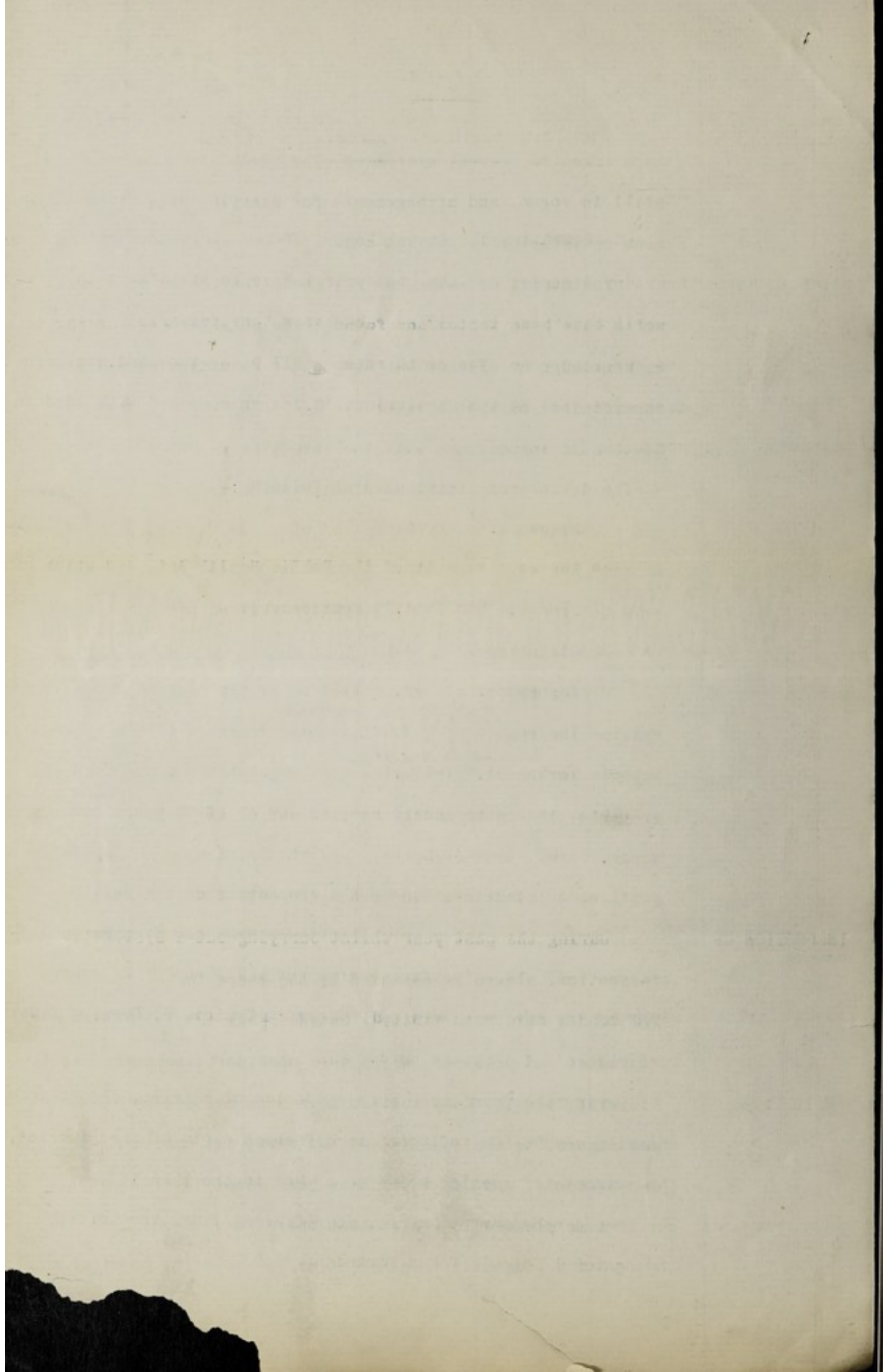
There were 18 deaths under one year and 48 of 65 years and upwards.

INFECTIOUS  
DISEASES.

Amongst infectious diseases there were 2 deaths due to enteric fever, and these were imported cases, one from Newcastle-on-Tyne, and the other from Bournemouth. The number of cases notified for the year were as follows :- Typhoid 3, Scarlet fever 7, Diphtheria 4, Erysipelas 4.

EPIDEMICS.

During the year there were epidemics of measles, chicken pox, whooping cough, and influenza in different parts of the District, the epidemic of measles being so severe in the town it was considered necessary to close, at different times, the British and National Schools for a fortnight each.





GENERAL SANITARY  
CONDITIONS.

The sewerage and drainage are good, and precautions have been taken to prevent stoppages. The earth closet system is still in vogue, and arrangements for carrying away the soil have been satisfactorily carried out.

WATER SUPPLY.

The supply of water is very good. The waters of several new wells have been tested and found to be satisfactory. So far to my knowledge no disease has come under my notice caused by insufficient or impure water.

SLAUGHTER HOUSES  
&C.,

Systematic inspections with the Inspector of Nuisances have been made of slaughter houses, dairies, cow-sheds, milk shops, and factories. With the exception of a few trivial discrepancies to meet the requirements of the Public Health Act, and which were pointed out and readily remedied, there has been nothing to complain of.

PUBLIC SCHOOLS.

During the year I was called on by the District Council to examine and report on the Offices and drainage of the various Schools in the District, when many suggestions & improvements were made and subsequently carried out by the Managers, except in two cases, that of Burley, and the British School which are still under consideration by the respective authorities.

INSPECTION OF  
HOUSES.

During the past year whilst carrying out a systematic inspection, always accompanied by the Inspector of Nuisances, 270 houses have been visited, besides many special visits made to houses and premises, which were considered necessary by the District Council. Many notices have been served, upon owners and others, to abate nuisances and carry out sanitary improvements, most of which have been complied with.

ISOLATION  
HOSPITAL.

I am pleased to report that there is a movement on foot to erect a long felt requirement of an Isolation Hospital for



this District. My predecessors have always supported the  
requirement of such an Institution for the benefit and safety  
of the inhabitants in case of any serious epidemic.

Medical Officer of Health.

RINGWOOD.

27th. January 1905.

CLYDE HOUSE,  
RINGWOOD.

16 March. 05.

The Librarian,  
British Medical Association  
Library,  
429 - Strand. W.C.

Dear Sir, -

I am sending  
you a typed copy of  
my report, as Medical  
Officer of Health, for the  
use of your library as  
requested. Yours faithfully  
C. H. F. J. J. J.



This District. By professional men always concerned the  
advancement of such an institution for the benefit and safety  
of the inhabitants in case of any serious epidemic.

Medical Officer of Health.

Witness.

Wm. Henry Jones.

