

[Report 1894] / Medical Officer of Health, Portsmouth Borough.

Contributors

Portsmouth (England). Borough Council.

Publication/Creation

1894

Persistent URL

<https://wellcomecollection.org/works/psmezyq9>

License and attribution

You have permission to make copies of this work under a Creative Commons, Attribution license.

This licence permits unrestricted use, distribution, and reproduction in any medium, provided the original author and source are credited. See the Legal Code for further information.

Image source should be attributed as specified in the full catalogue record. If no source is given the image should be attributed to Wellcome Collection.



Wellcome Collection
183 Euston Road
London NW1 2BE UK
T +44 (0)20 7611 8722
E library@wellcomecollection.org
<https://wellcomecollection.org>

.. 1894 ..



Borough of Portsmouth

REPORT

ON THE

Health of Portsmouth

FOR THE YEAR 1894

BY

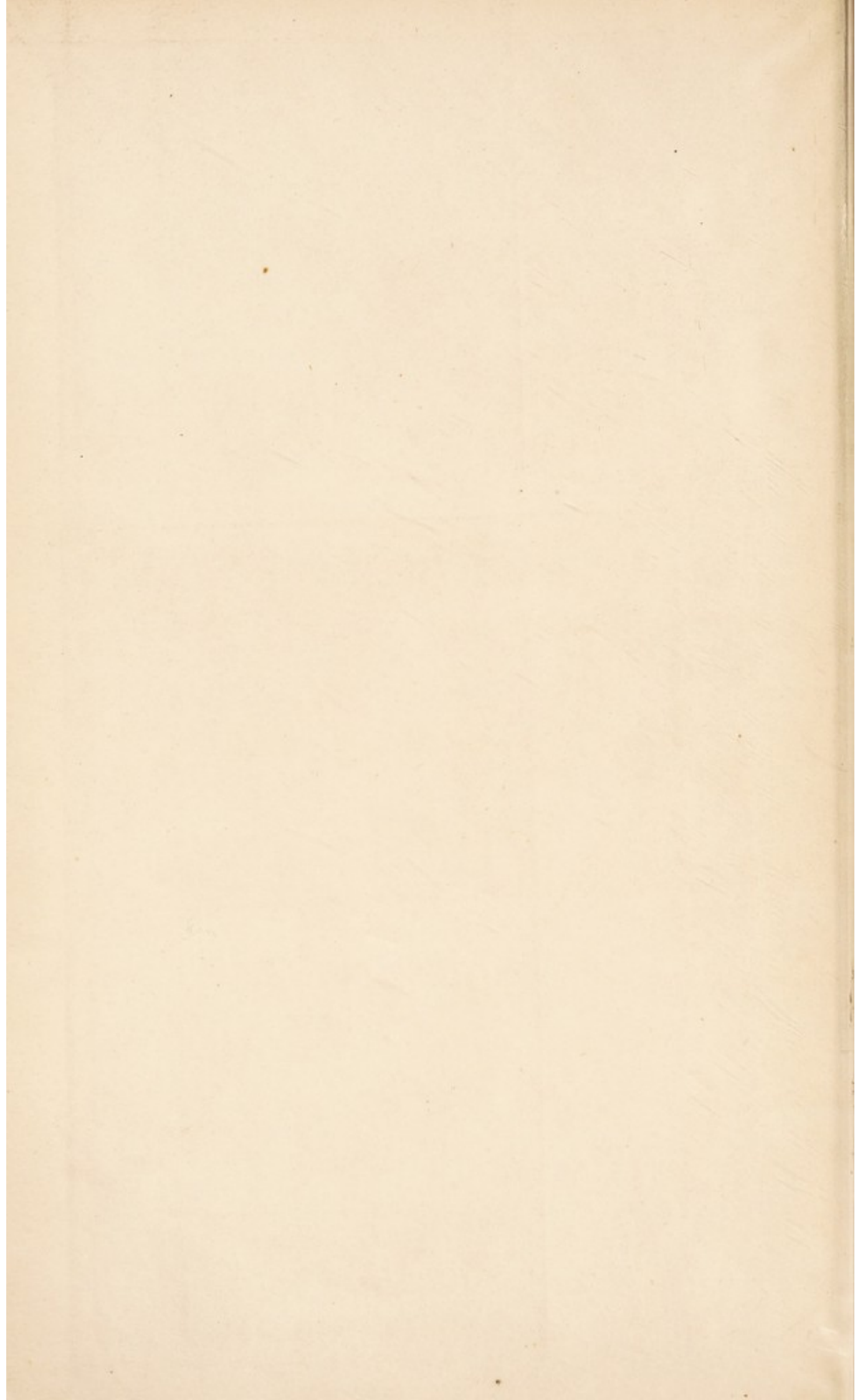
B. H. MUMBY, M.D.,

D.P.H. Cambs., F.R. Met. S., F.S.S.

Medical Officer of Health and Public Analyst for the Borough ;
Medical Officer of Health for the Port of Portsmouth ; and
Medical Officer to the Milton Infectious Diseases Hospital.

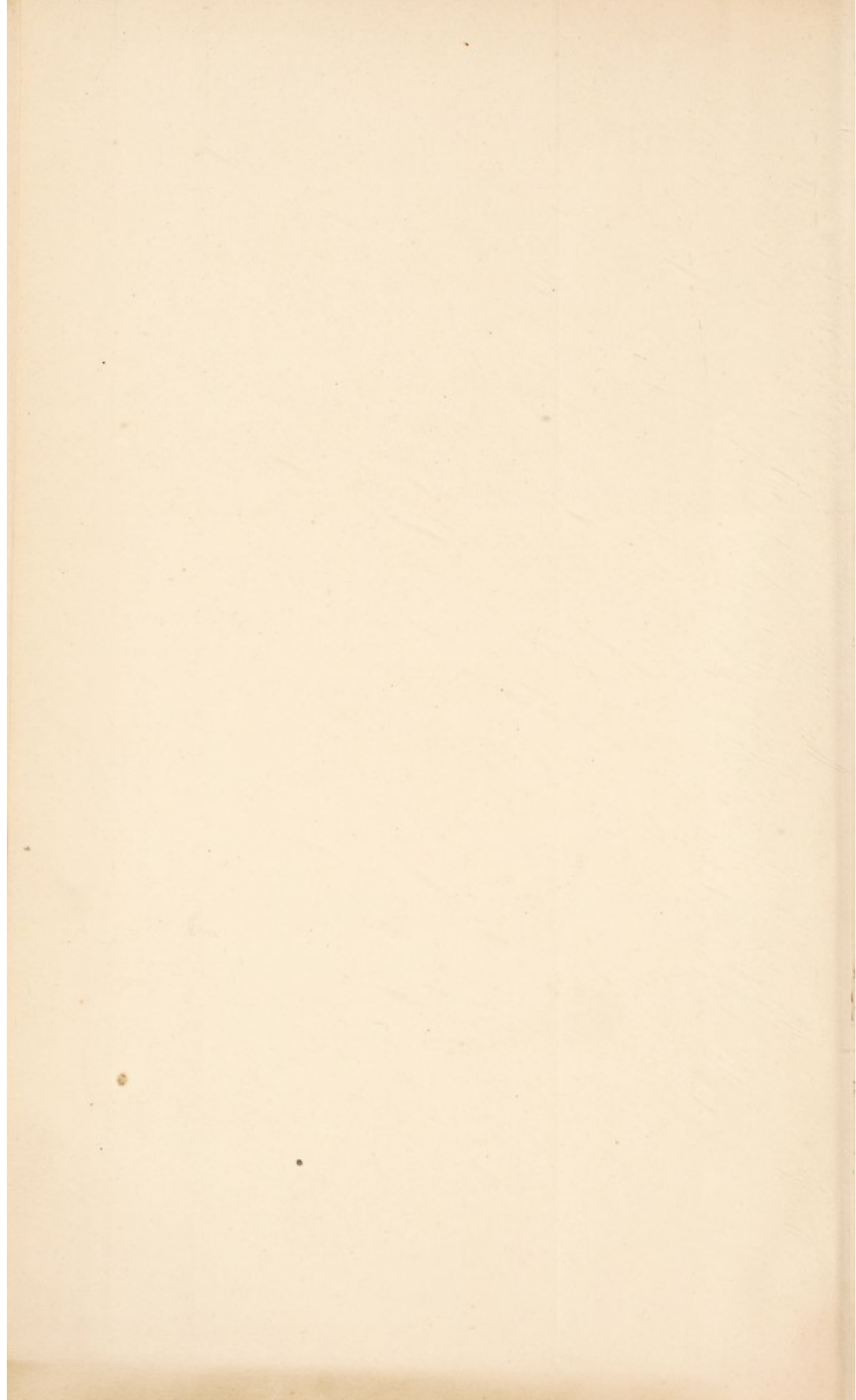
Portsmouth :


HENRY LEWIS, CAXTON PRINTING WORKS,
114, HIGH STREET.



With the Compliments of the

Medical Officer of Health





Digitized by the Internet Archive
in 2018 with funding from
Wellcome Library

<https://archive.org/details/b29995395>

... 1894 ...



Borough of Portsmouth

REPORT

ON THE

Health of Portsmouth

FOR THE YEAR 1894

BY

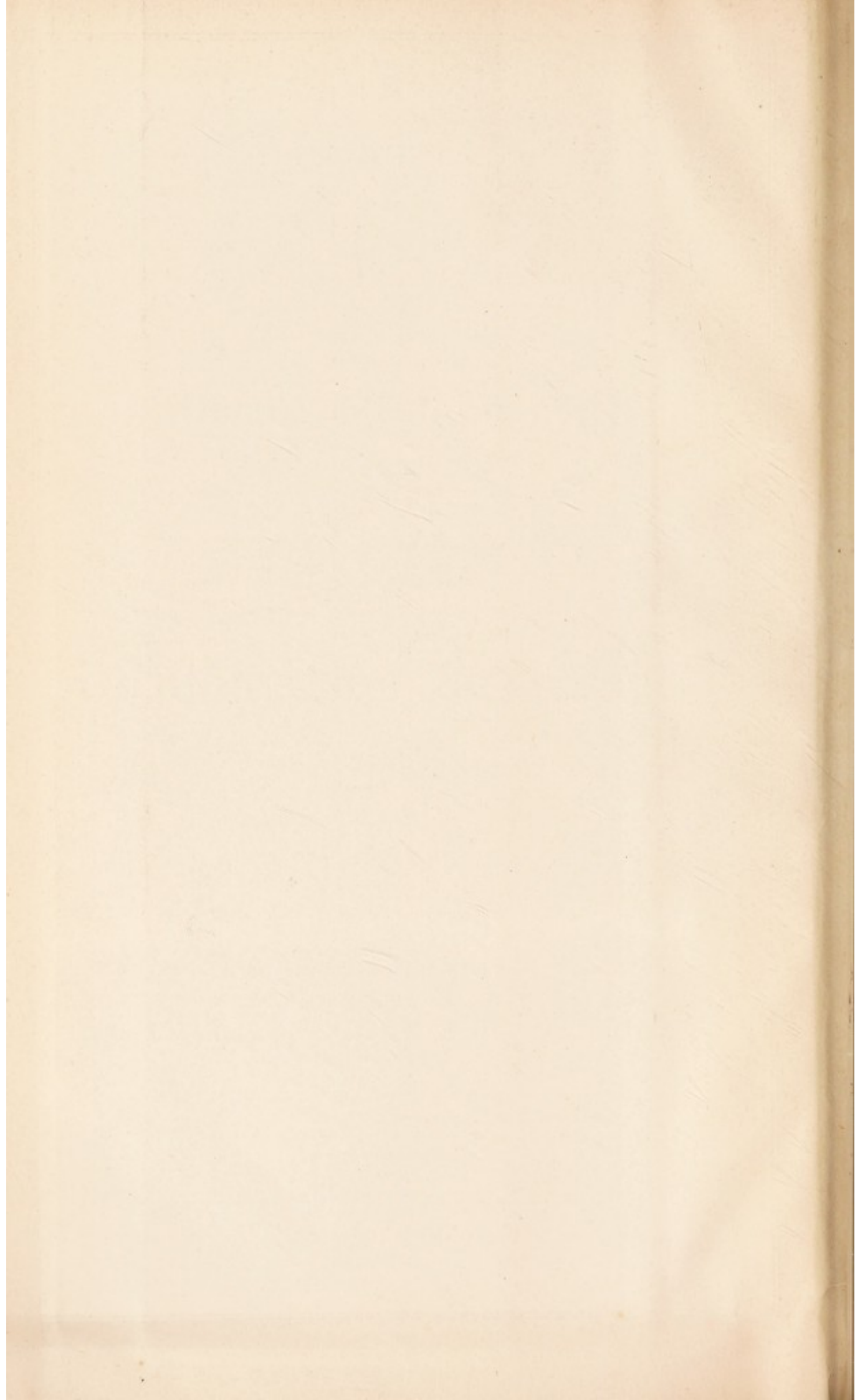
B. H. MUMBY, M.D.,

D.P.H. Cambs., F.R. Met. S., F.S.S.,

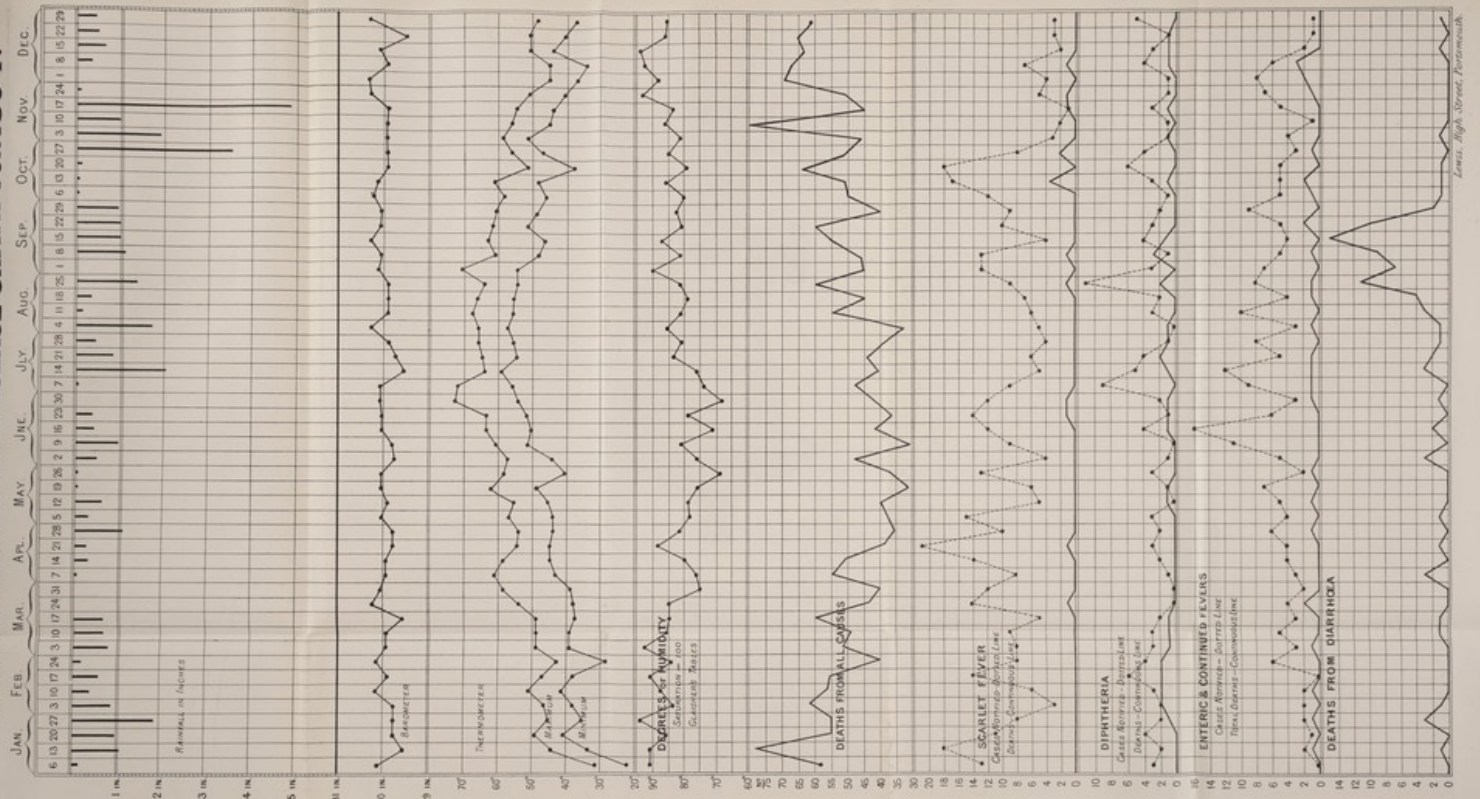
Medical Officer of Health and Public Analyst for the Borough ;
Medical Officer of Health for the Port of Portsmouth ; and
Medical Officer to the Milton Infectious Diseases Hospital.

Portsmouth :

HENRY LEWIS, CAXTON PRINTING WORKS,
114, HIGH STREET.



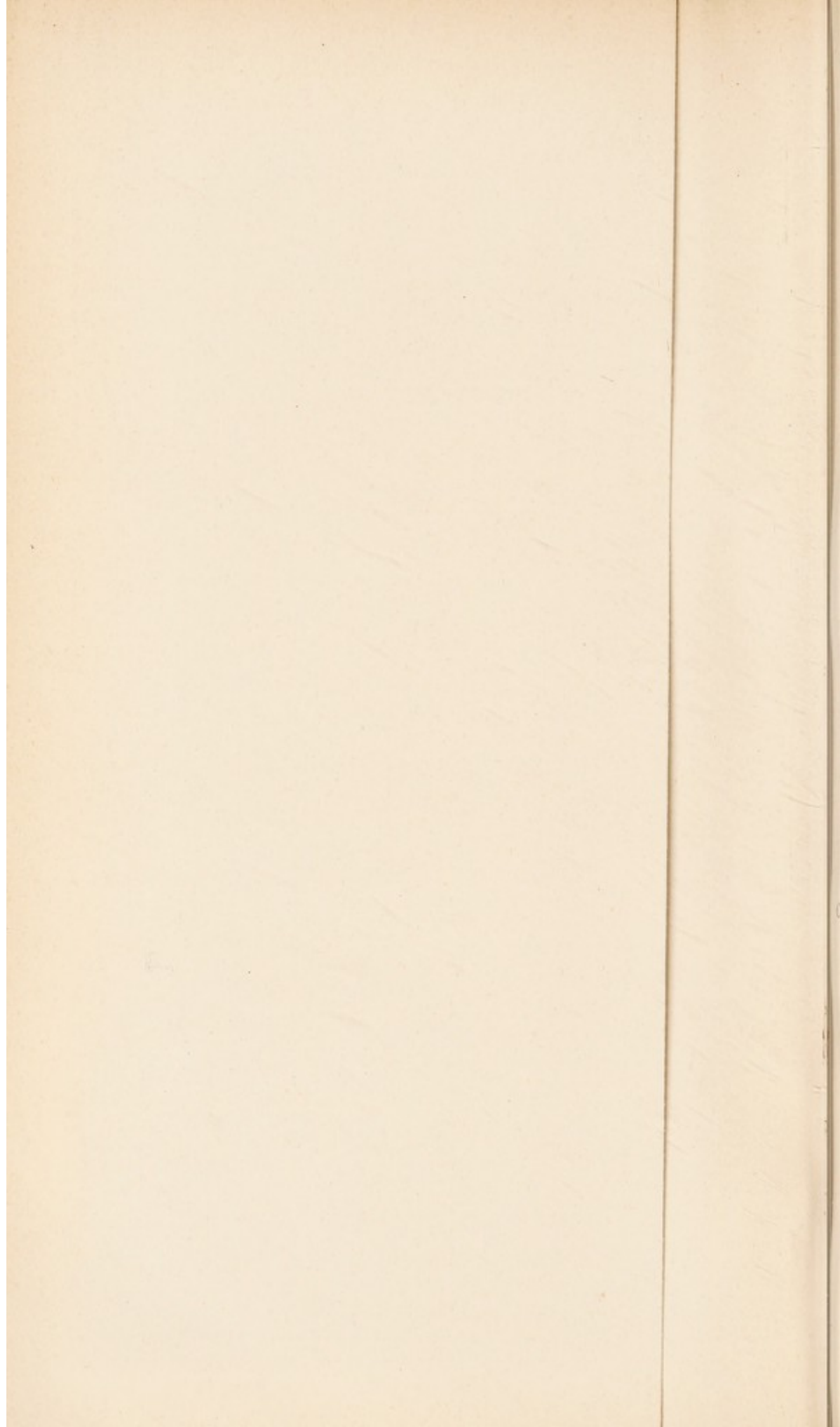
METEOROLOGICAL AND DISEASE CHART FOR 1894.





ABSTRACT OF METEOROLOGICAL OBSERVATIONS made at Milton Hospital during the Year 1894

DATE		Barometer reduced to Sea Level and 32° F.	TEMPERATURE												WET BULB	Humidity	Total Sunshine registered by Jordan's recorder	Cloud, Mean Amount, 9 a.m.	WIND							RAINFALL					
			IN SHADE						IN SUN			ON GRASS		Mean of earth below ground					Number of Days							Total	No. of days on which more than 1/16 in. fell	Greatest fall in 24 hours	Date of Greatest Fall		
			Mean 9 a.m.	Mean 9 a.m.	Mean Max.	Mean Min.	Mean of Max. & Min.	Mean Range	Highest Max.	Lowest Min.	R. in vacuo	B. in vacuo	Bright	Mean					Mean Min.	Lowest Min.	1 ft.	4 ft.	Mean 9 a.m.	N.	N.E.					E.	S.E.
Week ending			Mean 9 a.m.	Mean 9 a.m.	Mean Max.	Mean Min.	Mean of Max. & Min.	Mean Range	Highest Max.	Lowest Min.	R. in vacuo	B. in vacuo	Bright	Mean	Mean Min.	Lowest Min.	1 ft.	4 ft.	Mean 9 a.m.	N.	N.E.	E.	S.E.	S.	S.W.	W.	N.W.	Total	No. of days on which more than 1/16 in. fell	Greatest fall in 24 hours	Date of Greatest Fall
January	6 ..	30.18	27.6	32.7	23.2	27.9	9.5	40.5	14.0	67.6	44.1	18.1	13.0	35.7	45.9	26.8	91.0	22 5	3-4	..	6	1	0.12	2	0.11	January 5	
"	13 ..	29.62	39.4	44.9	49.4	33.3	39.1	11.6	51.0	20.0	74.9	54.1	29.5	20.0	39.1	44.1	38.1	91.0	10 15	2-3	1	1.01	4	0.43	" 8	
"	20 ..	29.81	44.8	49.5	44.0	41.4	44.0	8.1	51.0	39.0	77.9	59.0	34.8	29.0	43.1	43.8	43.9	85.0	13 15	6.6	1	..	5	0.99	6	0.24	" 15	
February	27 ..	29.89	41.1	46.9	35.9	41.4	11.0	50.0	27.0	75.3	55.6	29.7	15.0	41.8	44.9	40.2	94.0	18 45	5.6	..	1	4	1	2	1.50	6	0.77	" 22
"	3 ..	29.88	43.2	47.8	39.9	43.8	7.9	51.5	35.0	81.0	58.1	33.5	28.0	42.5	45.9	41.3	83.0	25 40	5.1	4	1	2	0.50	5	0.29	" 30
"	10 ..	29.82	46.8	50.2	42.4	49.3	7.8	52.0	35.0	73.0	56.8	36.7	26.0	45.0	49.0	45.6	87.0	9 40	7.3	6	1	0.34	6	0.26	February 5	
"	17 ..	29.97	42.4	47.5	38.6	43.0	8.9	52.0	34.0	82.7	58.8	38.5	29.0	43.1	46.0	41.0	91.0	22 0	5.4	2	3	1	1	0.59	3	0.39	" 17
"	24 ..	30.21	33.7	43.9	29.1	35.9	13.9	50.0	25.0	99.9	59.5	22.5	16.0	38.1	44.0	39.4	84.0	59 45	3.7	1	5	1	0.23	2	0.22	" 27
March	3 ..	29.90	44.0	49.8	39.5	44.7	10.3	54.0	32.0	81.4	61.4	33.0	25.5	42.7	44.6	43.0	92.0	22 35	7.4	1	4	1	1	0.84	6	0.54	" 27
"	10 ..	29.69	45.1	49.7	39.2	44.4	10.5	52.5	34.0	91.0	62.9	36.6	23.0	43.6	45.0	42.9	86.0	24 55	6.9	..	1	4	2	1	0.60	5	0.19	March 7
"	17 ..	29.68	43.9	49.7	38.2	43.9	11.5	53.0	33.0	101.1	68.9	33.3	21.0	44.7	45.3	41.5	85.0	49 55	4.3	1	4	..	2	0.60	5	0.25	" 12
"	24 ..	30.12	45.1	54.1	38.1	46.1	16.0	57.0	33.0	106.6	72.4	31.0	21.0	41.7	45.0	43.2	85.0	54 0	2.0	1	3	2	1	" ..	
April	31 ..	30.05	50.1	58.5	39.3	49.9	19.2	60.9	31.5	113.3	77.1	29.1	26.0	46.7	46.2	46.3	75.0	65 30	1.0	2	4	1	" ..	
"	7 ..	29.97	53.1	61.6	43.4	52.5	18.2	68.0	49.0	117.4	81.3	34.7	29.0	49.4	47.2	49.3	77.0	47 45	4.4	..	3	1	0.04	1	0.04	April ..	
"	14 ..	29.99	54.9	59.3	45.4	54.4	13.9	67.5	42.0	116.6	79.9	35.6	27.0	52.8	48.6	51.0	80.0	49 40	4.8	..	1	1	2	..	1	..	2	0.31	4	0.18	" 14
"	21 ..	29.79	56.2	54.2	45.9	50.1	9.3	59.0	44.0	115.5	75.2	41.6	35.0	52.6	49.6	48.5	85.0	29 50	8.1	..	2	1	1	..	2	..	1	0.29	3	0.14	" 15
"	28 ..	29.72	50.9	54.8	44.6	49.7	10.2	57.5	37.0	117.8	76.8	37.7	26.0	51.6	49.9	48.6	82.0	37 30	6.0	..	1	2	1	..	2	..	1.03	6	0.52	" 24	
May	5 ..	30.07	51.6	57.2	44.0	51.0	12.3	59.5	41.0	121.3	78.6	36.9	28.0	52.6	50.5	48.6	78.0	35 0	4.7	..	1	3	..	3	0.29	3	0.13	" 29, May 2	
"	12 ..	29.91	52.0	56.1	46.8	51.4	9.3	59.5	40.0	119.9	78.3	36.6	26.0	53.6	51.1	48.9	79.0	30 35	6.4	1	..	4	..	2	0.55	3	0.28	May 11	
"	19 ..	30.03	56.1	62.7	49.0	55.8	11.7	69.5	41.0	125.6	84.6	43.4	33.0	56.6	54.1	51.9	76.0	46 25	3.1	1	2	3	..	1	..	1	0.08	2	0.07	" 15	
"	26 ..	30.01	50.8	58.8	40.8	48.8	18.0	69.0	33.5	124.6	77.1	35.0	28.0	53.6	53.0	45.8	69.0	46 30	3.4	2	3	2	0.07	2	0.04	" 22	
June	2 ..	29.75	52.4	57.6	44.7	51.1	12.9	63.0	38.5	123.7	81.1	36.7	27.5	55.3	53.0	48.4	79.0	51 40	7.0	5	..	1	0.45	3	0.26	June 1
"	9 ..	29.86	56.0	61.0	52.2	59.5	8.8	63.0	48.5	115.7	79.2	47.4	44.0	57.7	53.6	51.9	86.0	19 40	9.8	..	1	..	1	..	5	..	0.93	4	0.38	" 6	
"	16 ..	30.02	57.9	64.6	50.1	57.3	14.5	71.5	47.0	126.6	85.4	43.3	37.0	58.4	54.3	53.2	72.0	38 20	6.0	1	2	2	2	0.26	4	0.11	" 12 & 15	
"	23 ..	30.06	58.6	63.2	53.2	57.6	10.9	60.0	40.5	123.1	80.8	45.3	40.0	60.9	55.3	55.1	79.0	24 25	6.4	1	..	4	2	..	0.32	3	0.18	" 20
July	30 ..	30.10	65.0	73.3	54.0	65.7	19.3	81.5	48.5	129.6	92.9	47.1	39.0	64.4	56.5	59.0	68.0	68 35	2.2	..	4	1	..	2	" ..	
"	7 ..	30.16	67.0	72.5	59.8	64.6	15.7	82.0	33.0	131.5	94.3	48.7	38.0	68.6	64.3	69.0	61 40	2.1	..	1	1	1	..	2	1	1	0.03	2	0.02	July 6	
"	14 ..	29.67	60.9	64.7	55.1	59.0	9.6	67.5	54.0	129.7	87.5	48.3	45.0	65.1	59.7	57.1	79.0	51 55	7.0	6	2.05	5	0.44	" 8	
"	21 ..	29.86	60.1	64.2	55.3	60.2	9.0	67.5	51.5	124.8	86.2	49.0	42.0	60.9	59.0	57.1	83.0	18 15	7.3	5	..	1	0.86	7	0.47	" 20	
"	28 ..	29.91	61.9	66.6	56.3	61.4	10.3	70.5	53.0	127.9	87.2	50.7	42.5	64.7	59.6	60.6	81.0	34 45	8.3	..	1	1	..	1	0.32	5	0.17	" 24	
August	4 ..	29.42	61.2	66.3	57.4	61.9	8.9	69.5	55.0	120.4	85.2	50.9	49.5	64.6	60.0	58.8	86.0	30 10	5.0	..	1	3	..	3	1.74	5	1.50	" 29
"	11 ..	29.91	62.2	67.1	56.9	64.0	10.2	70.0	52.0	128.4	86.9	51.4	45.0	64.7	60.4	57.3	79.0	34 15	5.4	6	1	..	1	0.44	4	0.09	August 8
"	18 ..	29.97	60.5	66.3	55.0	60.9	10.7	68.5	48.0	124.9	86.4	49.0	40.0	61.1	60.5	57.3	79.0	34 15	5.4	3	..	4	0.38	5	0.19	" 16	
"	25 ..	29.94	59.5	64.5	54.7	59.6	9.8	68.0	47.0	119.3	86.4	49.0	39.0	61.5	60.1	56.9	82.0	21 55	7.4	2	..	5	1.03	6	0.38	" 22	
September	8 ..	30.15	62.7	70.1	53.9	61.9	16.2	71.5	56.5	123.8	85.1	47.5	48.5	63.1	60.0	59.8	53 30	3.0	..	3	1	2	1	" ..		
"	15 ..	30.37	56.4	61.4	47.6	55.5	13.8	66.0	45.0	118.1	82.2	41.4	36.0	57.2	59.2	53.1	89.0	30 25	4.9	3	2	1	2	" ..		
"	22 ..	30.14	56.7	62.6	52.1	57.4	10.5	69.0	41.0	101.9	79.9	45.7	43.0	58.4	58.3	55.4	82.0	12 25	8.6	1	5	1	1.00	4	0.70	" 22	
October	6 ..	30.21	53.9	58.2	47.1	52.6	11.1	61.5	43.0	101.2	72.4	38.9	35.5	53.9	57.4	53.0	86.0	21 30	6.0	..	2	4	..	1	0.66	2	0.04	" 25	
"	13 ..	30.17	54.4	61.5	48.9	55.1	12.6	65.5	39.5	103.5	75.5	42.9	33.0	55.1	58.3	53.1	86.0	21 5	3.7	3	3	0.02	1	0.02	October 10	
"	20 ..	29.91	45.8	52.7	39.3	43.3	13.4	55.0	35.0	108.2	72.7	30.6	27.0	50.9	55.8	41.6	79.0	27 55	6.9	4	3	0.19	1	0.19	" 20	
"	27 ..	29.52	52.8	57.1	47.2	52.1	9.9	60.0	49.0	99.2	74.7	41.6	28.5	51.1	54.5	50.1	83.0	10 45	8.0	..	1	1	..	3	1	..	3.53	7	1.41	" 26	
November	3 ..	29.84	55.8	58.3	52.0	55.1	6.3	60.0	49.0	91.8	68.9	47.1	41.0	53.5	54.0	53.8	81.0	1													



Drainage & Sanitary Committee

The Worshipful the Mayor—THOS. KING, Esq., J.P.

Chairman—

ALDERMAN SIR WILLIAM PINK, J.P., K.L.H.

Vice-Chairman—

ALDERMAN A. CUDLIPP

ALDERMAN ROBERT BARNES, J.P.

COUNCILLOR	H. P. FOSTER	COUNCILLOR	MULVANY, L.R.C.P.
"	BEALE	"	DUMMER
"	ASHDOWNE	"	BASKETT
"	G. YOUNG	"	BLESSLEY
"	H. KIMBER	"	DUPREE
"	MERRITT	"	H. R. PINK
"	EVANS	"	EMMETT, L.R.C.P.

Officers of the Medical Officer of Health's Department

Medical Officer of Health—

B. H. MUMBY, M.D., D.P.H.

Inspector of Nuisances—

F. L. BELL, CERT. SAN. INST.

Inspector C.D.A. Act, and Inspector of Nuisances—

G. W. MONCKOM

Clerk—

C. W. HEARN

Inspectors of Nuisances—

H. J. LOVELOCK, CERT. SAN. INST.

H. G. GRAY, CERT. SAN. INST.

W. H. TURNER, CERT. SAN. INST.

G. L. SCOTT, CERT. SAN. INST.

G. T. BILLING, CERT. SAN. INST.

Inspector of Workshops and Inspector of Nuisances—

W. E. BENJAMIN, CERT. SAN. INST.

Assistant Clerk—

T. V. SMITH

Disinfector—

A. AYLMER

Infectious Diseases Hospital

Matron—

MRS. M. A. ANTRAM

REPORT
OF THE
MEDICAL OFFICER OF HEALTH
TO THE
URBAN SANITARY AUTHORITY
OF THE
BOROUGH OF PORTSMOUTH

For the Year ending the 31st day of December, 1894.

GENTLEMEN,

I have the honour to present to you my Report on the Health of Portsmouth during the year 1894.

It is a pleasing fact to call attention to, that the death rate for 1894 is lower than for any previous year for which I can find records, by as much as 1·55 per thousand persons living; in other words, 264 persons more would have died in Portsmouth during 1894 if the death-rate had been the same as the lowest recorded, viz., 16·71 in the year 1889.

Meteorological conditions no doubt very largely aided in this result, the low temperature and heavy rain during the late summer and autumn prevented the prevalence of Diarrhœa usually present during that part of the year; but the improved sanitary condition of the town has borne good fruit which should encourage the Authority to continue their good work of Sanitation.

I have the honour to remain, Gentlemen,

Your obedient Servant,

B. H. MUMBY, M.D.,

Medical Officer of Health.

Statistics.

The *area* under the control of the Sanitary Authority is 4,486 acres, of which 881 acres are water and foreshore.

The *population* in the middle of the year 1894 was estimated to be 170,973. This number is calculated upon the assumption that the same rate of increase has obtained since the census in 1891 as during the ten years previous to the last census; but whether this estimate is correct, no one can tell; it may be an over-estimate, or it may be an under-estimate, but upon it, whether right or wrong, the figures in this Report are calculated, as it is the best method known of forming estimates of populations; it is adopted by the Registrar-General for England and by statisticians generally. It would be a great assistance to the Public Health if a census, or even a simple enumeration of the population, was taken every five years, instead of every ten as at present, as it would give a certainty to vital statistics every five years instead of waiting for ten years. The *mean density of population* is 38·1 persons to the acre; but the density varies greatly, there being a considerable amount of agricultural land within the limits of the borough.

The population limits in each of the sub-districts is as follows:—Portsmouth, 6,933; Portsea, 15,260; Kingston, 69,519; Landport, 69,519; Southsea, 14,958.

In 1893 the sub-districts for registration purposes were altered: a small part of the Landport sub-district being added to the Portsmouth sub-district, and the enlarged sub-district was named the Portsmouth and Southsea sub-district. I have, however, retained the former sub-districts in my Report as they contained a certain known population in 1891, and for the sake of certainty,—whilst the conditions of those classed together with Portsmouth and Southsea sub-district are widely dissimilar; therefore they appear separately in this Report.

TABLE I.

Table, showing the Population, Marriages, Inhabited Houses, Births and Deaths, for the year 1894, and the 10 preceding years.

Year.	Estimated Population.	No. of Inhabited Houses.	Marriages.	Registered Births.	Correct No. of Deaths.		
					Total all Ages.	Under 1 Year.	Under 5 Years.
1894	170,973	31,377	1,462	4,709	2,593	611	967
1893	167,285	30,984	1,459	4,708	3,058	763	1,171
1892	163,667	30,305	1,464	4,563	3,026	719	1,068
1891	160,128	29,544	1,429	4,803	3,053	665	1,143
1890	156,667	28,875	1,318	4,881	2,847	648	941
1889	153,279	28,206	1,460	4,943	2,565	697	1,036
1888	149,966	27,539	1,385	4,976	2,614	671	988
1887	146,724	26,873	1,395	5,004	2,681	725	1,056
1886	143,552	26,204	1,471	4,918	3,257	885	1,461
1885	140,448	25,537	1,322	4,592	2,676	608	945
1884	137,412	24,870	1,316	4,675	2,587	592	1,023
Average ten years 1884-93	151,912	27,893	1,401	4,805	2,837	697	1,083

NOTES.

- 1.—Population at Census, 1891 159,255
- 2.—Area in Acres 4,486
- 3.—Average number of persons in each house at Census.. 5.4
- 4.—Average number of persons per acre at Census .. 35.5

TABLE II.

Table showing the Annual Birth Rate, Rate of Mortality, and Death Rates among Children for the Year 1894, and 10 years preceding.

Years	Birth Rate per 1000 of the Population.	Annual Rate of Mortality per 1000 living from all causes.	Annual Rate of Mortality per 1000 living from 7 principal zymotic diseases.	Deaths of Children under 1 year. Percentage of Total Deaths.	Percentage of Deaths of Children under 1 year to Registered Births	Deaths of Children under 5 years. Percentage of Total Deaths.
1894	27.54	15.16	2.07	23.5	12.9	37.3
1893	28.14	18.28	3.09	24.9	16.4	38.3
1892	27.88	18.49	1.89	20.4	15.5	35.3
1891	29.90	19.16	2.49	21.7	13.8	37.4
1890	30.15	18.16	1.69	22.5	13.5	32.7
1889	31.25	16.71	1.95	27.1	14.1	40.3
1888	33.18	17.43	1.33	25.6	13.4	37.5
1887	34.10	18.27	2.24	27.0	14.3	39.2
1886	34.26	22.68	4.87	27.1	17.0	44.6
1885	32.91	19.05	2.24	26.4	13.2	35.2
1884	34.11	19.22	2.89	22.9	12.7	39.6
Average ten years 1884-93	31.58	18.73	2.46	24.5	14.3	38.01

TABLE III.

Showing the Population, Birth Rates, Recorded Death Rates, Corrected Death Rates, Zymotic Rates, and Deaths under 1 Year to 1000 Births in the 33 large Towns for the Year 1894.

NAME OF TOWNS.	Estimated Population middle of 1894.	PER 1000 LIVING.			ZYMOTIC DEATH RATE.							Deaths of Children under one year of age to 1000 Births.	
		Birth Rate.	Recorded Death Rate.	Corrected Death Rate.	Small Pox.	Measles.	Scarlet Fever.	Diphtheria.	Whooping Cough.	Fever.	Diarrhoea.		Total
33 Towns ..	10,458,442	30.7	18.1		0.04	0.62	0.20	0.38	0.48	0.19	0.49	2.4	152
32 PROVINCIAL TOWNS ..	6,109,276	31.2	18.4		0.06	0.53	0.19	0.02	0.02	0.21	0.56	2.3	159
CROYDON ..	111,921	25.0	13.2	13.76	..	0.35	0.07	0.28	0.55	0.06	0.20	1.5	121
PORTSMOUTH ..	170,973	27.6	15.2	15.54	0.02	0.80	0.08	0.19	0.23	0.15	0.43	2.0	131
LEICESTER ..	189,136	31.5	14.7	15.96	..	0.56	0.15	0.06	0.06	0.14	0.93	1.9	162
DERBY ..	98,796	29.3	15.0	16.55	..	0.66	0.15	0.05	0.16	0.26	0.34	1.6	123
BRIGHTON ..	118,715	25.8	16.4	16.58	..	0.30	0.03	0.13	0.11	0.09	0.43	1.2	138
HALIFAX ..	92,861	23.1	16.5	17.37	0.04	0.35	0.03	0.12	0.20	0.06	0.04	0.9	135
WEST HAM ..	238,184	34.0	16.2	17.48	0.20	0.96	0.15	0.79	0.42	0.18	0.45	3.2	138
PLYMOUTH ..	87,931	28.8	18.3	17.79	0.05	0.03	0.09	0.05	0.88	0.12	0.32	1.6	169
NORWICH ..	105,645	29.8	18.7	17.91	..	0.13	0.14	0.17	0.36	0.21	0.40	1.5	164
BRISTOL ..	226,578	28.2	17.3	18.07	0.07	0.50	0.07	0.21	0.77	0.09	0.30	2.0	150
CARDIFF ..	184,890	34.4	16.2	18.08	0.01	0.74	0.05	0.46	0.82	0.05	0.45	1.9	141
HULL ..	212,679	32.4	17.4	18.28	0.01	0.43	0.18	0.13	0.38	0.18	0.41	1.8	142
HUDDESFIELD ..	98,511	20.2	15.8	18.37	..	0.13	0.23	0.22	0.54	0.12	0.18	1.4	160
NOTTINGHAM ..	223,584	28.6	17.2	18.49	0.01	0.55	0.22	0.08	0.52	0.27	0.59	2.3	174
SWANSEA ..	95,399	32.3	17.0	18.57	..	0.27	0.24	0.10	0.80	0.12	0.20	1.8	163
LONDON ..	4,349,166	30.1	17.8	18.97	0.02	0.75	0.22	0.61	0.48	0.15	0.40	2.7	143
GATESHEAD ..	93,372	34.2	17.7	19.01	0.01	0.99	0.06	0.22	0.33	0.24	0.47	2.4	152
BRADFORD ..	223,985	26.7	17.0	19.46	0.12	0.51	0.32	0.07	0.30	0.13	0.29	1.8	145
SHEFFIELD ..	338,316	33.4	17.8	19.79	..	0.19	0.11	0.19	0.70	0.18	0.49	2.3	157
LEEDS ..	388,761	32.2	17.9	19.84	0.01	0.74	0.13	0.18	0.33	0.13	0.45	2.0	155
BIRKENHEAD ..	105,627	30.6	18.1	19.90	0.01	0.87	0.11	0.38	0.63	0.16	0.45	2.6	143
NEWCASTLE ..	201,947	31.0	18.3	19.93	..	0.47	0.14	0.15	0.76	0.13	0.48	2.2	157
BLACKBURN ..	125,797	28.8	17.9	20.10	..	0.10	0.07	0.14	0.33	0.26	0.68	1.6	169
BIRMINGHAM ..	492,301	31.7	18.6	20.55	0.34	0.66	0.15	0.15	0.43	0.21	0.52	2.5	163
BOLTON ..	188,303	31.5	18.8	21.30	..	0.17	0.07	0.08	0.49	0.21	0.73	1.8	162
OLDHAM ..	138,755	27.2	18.6	21.30	0.16	0.40	0.15	0.28	0.41	0.10	0.31	1.8	161
BURNLEY ..	96,478	32.2	18.7	21.48	..	0.37	0.52	0.30	0.17	0.27	0.79	2.5	170
WOLVERHAMPTON ..	85,036	34.1	20.7	21.66	0.05	0.84	0.62	0.41	0.32	0.19	0.75	3.2	166
SUNDERLAND ..	136,101	35.1	20.8	21.73	..	0.83	0.18	0.06	0.51	0.62	0.82	3.1	167
PRESTON ..	111,425	32.1	20.8	22.87	0.01	0.33	0.10	0.07	0.41	0.26	1.40	2.6	217
MANCHESTER ..	520,211	32.0	20.4	23.12	0.04	0.43	0.21	0.28	0.55	0.18	0.66	2.4	160
SALFORD ..	205,828	31.3	21.0	23.61	0.01	0.70	0.54	0.30	0.68	0.30	0.68	3.3	169
LIVERPOOL ..	507,230	35.4	23.8	26.40	0.03	0.58	0.45	0.19	0.54	0.58	1.00	3.4	179

TABLE IV.

Deaths Registered at several groups of Ages from different classes of Diseases during the Year ending December 30th, 1894.

CAUSE OF DEATH	AGES											DISTRICTS					Totals	
	0 to 1	1 to 5	5 to 15	15 to 25	25 to 35	35 to 45	45 to 55	55 to 60	60 to 65	65 to 75	75 to 85	85 and over	Portsmouth	Portsea	Kingston	Landport		Southsea
Classes.																		
I.—ZYMOTIC DISEASES	145	167	42	17	24	10	13	6	6	10	8	2	15	19	242	141	13	430
II.—PARASITIC DISEASES	2	1	1	..	2
III.—DIETIC DISEASES	2	2	4	1	1	1	2	3	3	1	10
IV.—CONSTITUTIONAL DISEASES	33	32	27	57	53	83	66	27	32	39	14	4	15	28	221	176	27	467
V.—DEVELOPMENTAL DISEASES	115	6	63	99	40	4	18	182	107	12	323
VI.—LOCAL DISEASES	227	150	45	34	74	87	131	74	84	174	90	10	36	92	516	449	87	1180
VII.—DEATHS FROM VIOLENCE	13	4	9	9	6	4	7	3	4	1	3	3	3	4	37	19	3	66
VIII.—NOT SPECIFIED OR ILL-DEFINED	94	3	1	..	4	2	3	1	3	2	2	..	4	6	50	53	2	115
TOTALS	611	356	124	117	163	190	221	112	135	289	216	59	79	169	1251	949	145	2593
Class I.																		
ZYMOTIC DISEASES—																		
Order I.—Miasmatic Diseases																		
Small Pox	1	1	..	2	4	4
Measles	23	102	14	6	9	68	53	3	139
Scarlet Fever	2	6	5	1	1	1	11	1	..	14
Whooping Cough	25	15	1	2	1	20	17	1	41
Diphtheria	2	19	13	2	1	23	7	1	34
Simple Continued Fever	..	2	1	1	4	4
Enteric or Typhoid Fever	..	4	4	7	6	1	1	2	1	2	14	8	..	25
Other Miasmatic Diseases	4	3	2	2	5	2	5	2	2	4	5	1	1	2	19	10	5	37
Order 2.—Diarrheal Diseases																		
Cholera Nostras	1	1	1
Diarrhoea, Dysentery	60	14	1	2	..	3	4	2	1	2	2	1	1	1	54	35	1	92

TABLE IV.—continued

CAUSE OF DEATH	AGES										DISTRICTS					Totals
	0 to 1	1 to 5	5 to 15	15 to 25	25 to 35	35 to 45	45 to 55	55 to 65	65 to 75	75 to 85	85 to and over	Portsmouth	Portsea	Kingston	Landport	Southsea
Class I.																
<i>Order 4—Venereal Diseases—</i>																
Syphilis ..	5	1	2	1	1	2	7	1	..
Gonorrhoea, Stricture of Urethra	1	1	2	1	1	..	2	2	..
<i>Order 5—Septic Diseases—</i>																
Erysipelas ..	2	1	2	1	..	2	1	1	6	4	..
Pyæmia, Septicæmia ..	1	..	1	1	3	..	1	..	1	6	1	1
Puerperal Fever	1	5	3	2	1
Class II.																
<i>PARASITIC DISEASES—</i>																
Thrush and other Vegetable Parasitic Diseases ..	2	1	..
Class III.																
<i>DIETIC DISEASES—</i>																
Want of Breast Milk, Starvation ..	2	2	..
Chronic Alcoholism	2	3	..	1	2	2	1	1
Delirium Tremens	1	1	1	..	1
Class IV.																
<i>CONSTITUTIONAL DISEASES—</i>																
Rheumatic Fever, Rheumatism of Heart ..	2	..	1	1	1	2	3	..
Rheumatism	2	1	1	..	2	..	2	3	5	..
Gout	1	..	1	1	..	1	3	1	..
Rickets ..	2	3	3	2	..
Cancer, Malignant Disease ..	1	5	19	24	17	14	10	4	5	8	50	44	12
Tabes Mesenterica ..	14	10	2	2	18	10	..
Tubercular Meningitis ..	5	9	6	1	1	7	13	..
Phthisis ..	1	4	13	44	43	61	38	10	14	10	3	6	17	119	85	14
Other forms of Tuberculosis, Scrofula ..	7	4	3	5	1	1	1	2	1	11	8	..
Purpura Hæmorrhagica, Diathesis ..	1	1
Anæmia, Chlorosis, Leucocythæmia	2	1	1	1	1	..

Class	DISEASES	Number of Cases																Total
		1	2	3	4	5	6	7	8	9	10	11	12	13	14	15	16	
Class V.	CONSTITUTIONAL DISEASES—continued																	
	Glycosuria, Diabetes, Mellitus	1	2	1	1	6
	Other Constitutional Diseases	..	2	4
	DEVELOPMENTAL DISEASES—																	
Class VI.	Premature Birth	104	104
	Congenital Malformations	11	11
	Old Age	208
	LOCAL DISEASES—																	
Class VI.	Order 1.— <i>Diseases of Nervous System</i>																	
	Inflammation of Brain or Membranes	22	13	12	3	1	2	3	59
	Apoplexy, Softening of Brain,	1	3	1	16	18	12	21	34	19	4	1	8	64	43	129
	Hemiplegia, Brain Paralysis	1	19
Class VI.	Insanity, General Paralysis of the	1	..	2	..	4	1	6	1	2	2	10
	Insane	1	3	2	1	1	76
	Epilepsy	63	13	8
	Convulsions	15
Class VI.	Laryngismus Stridulus, (Spasm of	8	8
	Glottis)	15
	Diseases of Spinal Cord, Paraplegia,	1	1	3	2	4	2	1	1	8
	Paralysis, Agitans	1	1	..	3	2	..	1	15
Class VI.	Other Diseases of Nervous System	8
	Order 2.— <i>Diseases of Organs of Special</i>																	
	Sense, (e.g. of Ear, Eye, Nose)	1	2
	Order 3.— <i>Diseases of Circulatory</i>																	
Class VI.	System—																	
	Pericarditis	..	1	1	2
	Acute Endocarditis	1
	Valvular Disease of Heart	2	..	3	3	5	2	5	2	3	5	4	34
Class VI.	Other Diseases of Heart	8	3	7	3	10	15	37	11	18	35	20	2	7	11	75	67	169
	Aneurism	4
	Other Diseases of Blood Vessels	1	2	1	5
	Order 4.— <i>Diseases of Respiratory</i>																	
Class VI.	System—																	
	Laryngitis	3	5	1	2	2	4	9
	Croup	1	2	2	5
	Emphysema, Asthma	4
Class VI.	Bronchitis	58	54	4	2	3	9	8	13	10	48	25	5	7	12	97	102	239

TABLE IV.—continued

Class VI.	CAUSE OF DEATH	AGES											DISTRICTS					Totals	
		0 to 1	1 to 5	5 to 15	15 to 25	25 to 35	35 to 45	45 to 55	55 to 60	60 to 65	65 to 75	75 to 85	85 to over	Port- mouth	Portsea	Kingston	Landport		Southsea
	LOCAL DISEASES—continued																		
	Pneumonia ..	22	31	5	4	8	7	9	5	5	8	1	1	5	13	49	31	8	106
	Pleurisy	2	..	1	3	..	3
	Other Diseases of Respiratory System ..	14	9	4	1	2	2	2	..	1	3	2	1	..	9	17	12	3	41
	Order 5.—Diseases of Digestive System																		
	Dentition ..	7	8	1	10	3	1	15
	Diseases of Stomach ..	3	1	1	1	2	..	2	1	..	4	4	1	10
	Enteritis ..	7	1	..	1	2	2	1	1	1	1	7	5	1	15
	Obstructive Diseases of Intestines ..	7	1	2	2	..	5	3	3	7	8	2	20
	Peritonitis	1	1	2	3	1	3	1	1	2	1	4	5	2	3	15
	Cirrhosis of Liver	3	6	7	2	2	1	1	..	1	2	5	10	4	22
	Jaundice and other Diseases of Liver ..	1	1	1	1	2	3	2	3	2	3	1	..	1	2	8	7	2	20
	Other Diseases of Digestive System	1	2	1	2	..	3
	Order 7.—Diseases of Glandlike Organs of uncertain use (e.g., Bronchocoele, Addison's Disease)	1	1	1
	Order 8.—Diseases of Urinary System																		
	Nephritis	1	2	1	7	6	9	1	3	5	2	4	23	8	2	37
	Bright's Disease	2	6	7	6	5	4	1	..	1	..	15	15	..	31
	Diseases of Bladder or of Prostate	1	1	1	6	4	1	3	8	1	13
	Other Diseases of Urinary System ..	1	1	1	1	1	2	1	4
	Order 9.—Diseases of Reproductive System																		
	(a) Of Organs of Generation																		
	Female Organs	1	1	1	1	2
	(b) Of Parturition																		
	Puerperal Convulsions	1	1	1
	Placenta Prævia, Flooding	1	1
	Other Accidents of Child Birth ..	1	5	1	1	..	4	2	..	7

[illegible]

Summary of Table IV.

CLASS	DISEASES			NUMBER OF DEATHS.
I.	ZYMOTIC DISEASES—			
	1. Miasmatic Diseases	298
	2. Diarrhoeal Diseases	93
	3. Malarial Diseases	—
	4. Zoogenous Diseases	—
	5. Venereal Diseases	15
	6. Septic Diseases	24
II.	PARASITIC DISEASES	2
III.	DIETIC DISEASES	10
IV.	CONSTITUTIONAL DISEASES	467
V.	DEVELOPMENTAL DISEASES	323
VI.	LOCAL DISEASES—			
	1. Diseases of the Nervous System	324
	2. " Organs of Special Sense	2
	3. " Circulatory System	215
	4. " Respiratory System	407
	5. " Digestive System	120
	6. " Lymphatic System	—
	7. " Gland-like Organs of Uncertain Use	1
	8. " Urinary System	85
	9. " Reproductive System—			
	(a) Organs of Generation	2
	(b) Parturition			9
	10. " Bones and Joints	4
	11. " Integumentary System	4
VII.	VIOLENCE—			
	1. Accident or Negligence	58
	2. Homicide	1
	3. Suicide	9
VIII.	ILL-DEFINED AND NOT SPECIFIED CAUSES	116

TABLE V.

Deaths Registered at several groups of Ages from different classes of Diseases during the Quarter ending March 31st, 1894.

CAUSE OF DEATH	AGES											DISTRICTS					Totals	
	0 to 1	1 to 5	5 to 15	15 to 25	25 to 35	35 to 45	45 to 55	55 to 60	60 to 65	65 to 75	75 to 85	85 and over	Portsmouth	Portsea	Kingston	Landport		Southsea
Class ZYMOTIC DISEASES— I.																		
Order 1.— <i>Miasmatic Diseases</i>																		
Measles	1	2	3	3
Scarlet Fever	1	1	..	1
Whooping Cough	6	7	7	6	..	13
Diphtheria	2	3	7	1	1	8	2	..	12
Continued Fever	..	1	1	1
Enteric or Typhoid Fever	..	2	..	1	1	1	1	2	2	..	5
Other Miasmatic Diseases	2	2	1	2	1	5	3	1	..	3	4	1	..	1	12	8	4	25
Order 2.— <i>Diarrhœal Diseases</i>																		
Diarrhœa, Dysentery	1	2	1	1	1	..	1	5	2	..	7
Order 4.— <i>Veneral Diseases</i> —																		
Syphilis	1	1	1	1	2	3
Order 5.— <i>Septic Diseases</i> —																		
Erysipelas	2	1	1	4	4
Puerperal Fever	1	1	2	2
II.—PARASITIC DISEASES																		
III.—DIETIC DISEASES	2	1	1	1	1	1	4
IV.—CONSTITUTIONAL DISEASES	8	7	4	17	11	26	14	4	7	6	3	..	3	5	56	35	8	107
V.—DEVELOPMENTAL DISEASES	34	2	21	31	14	3	9	56	31	3	102
VI.—LOCAL DISEASES	63	52	15	13	29	15	43	25	17	56	27	4	9	29	161	132	28	359
VII.—DEATHS FROM VIOLENCE	7	2	2	2	1	4	3	..	2	1	3	2	14	4	1	24
VIII.—DEATHS FROM ILL-DEFINED AND NOT SPECIFIED CAUSES	23	..	1	1	1	1	3	..	2	..	1	1	17	12	..	31
TOTALS ..	149	80	30	36	47	55	66	32	33	88	67	20	21	50	351	236	45	703

TABLE VI.
Deaths Registered at several groups of Ages from different classes of diseases during the Quarter
ending June 30th, 1894.

CAUSE OF DEATH	AGES										DISTRICTS					Totals		
	0 to 1	1 to 5	5 to 15	15 to 25	25 to 35	35 to 45	45 to 55	55 to 60	60 to 65	65 to 75	75 to 85	85 and over	Portsmouth	Portsea	Kingston		Landport	Southsea
Class I.																		
ZYMOTIC DISEASES—																		
I.																		
Order 1—Miasmatic Diseases																		
Small Pox	1	1	...	2	4	4
Measles	1	2	3	3
Scarlet Fever	1	1	1	1	1	1	3
Whooping Cough	9	3	1	...	5	6	...	12
Diphtheria	...	5	1	...	3	1	...	5
Simple Continued Fever	...	1	1	1	...	2	2
Enteric or Typhoid Fever	1	1	1	1	...	2
Other Miasmatic Diseases	1	1	1	1	1	2	1	1	1	5	...	1	8
Order 2—Diarrhoeal Diseases																		
Cholera Nostras	1	1	1
Diarrhoea, Dysentery	5	2	1	2	1	1	...	9	1	...	11
Order 4—Venereal Diseases																		
Syphi	2	1	2	1	...	3
Order 5—Septic Diseases																		
Erysipelas	1	1	1	2	1	...	3
Pyæmia, Septicæmia	3	1	2	1	1	4
Puerperal Fever	1	1	...	1
II.—PARASITIC DISEASES																		
III.—DIETIC DISEASES																		
IV.—CONSTITUTIONAL DISEASES																		
V.—DEVELOPMENTAL DISEASES	30	4	39	25	4
VI.—LOCAL DISEASES	37	25	11	6	13	25	31	15	23	31	18	2	9	19	99	92	18	237
VII.—DEATHS FROM VIOLENCE	1	2	2	3	2	...	2	1	8	5	...	13
VIII.—NOT SPECIFIED OR ILL-DEFINED	16	1	2	...	1	1	3	9	9	...	21
TOTALS ..	111	51	28	27	44	45	50	20	36	57	41	16	24	39	237	193	33	526

TABLE VII.

Deaths Registered at several groups of Ages from different Causes for the Quarter ending September 29th, 1894.

CAUSE OF DEATH	AGES												DISTRICTS					Total
	0 to 1	1 to 5	5 to 15	15 to 25	25 to 35	35 to 45	45 to 55	55 to 60	60 to 65	65 to 75	75 to 85	85 and over	Portsmouth	Portsea	Kingston	Landport	Southsea	
Class I.	ZYMOTIC DISEASES—																	
	Order 1.— <i>Miasmatic Diseases</i>																	
	2	9	6	4	1	11
Measles	..	1	1	2	2
Scarlet Fever	6	4	1	1	1	4	4	1	11
Whooping Cough	..	7	4	9	1	1	11
Diphtheria	1	1	1
Continued Fever	..	2	3	1	2	5	3	..	8
Enteric or Typhoid Fever	2	1	..	3
Other Miasmatic Diseases	1	1	1
	Order 2.— <i>Diarrhoeal Diseases</i>																	
Diarrhoea, Dysentery	49	9	1	2	..	1	1	..	1	1	2	1	..	1	37	29	1	68
	Order 3.— <i>Veneral Diseases</i>																	
Syphilis	1	1	2	2
Gonorrhoea, Stricture of Urethra	1	1	1
	Order 4.— <i>Septic Diseases</i>																	
Erysipelas	1	1	..	1
	II.—PARASITIC DISEASES																	
	1	1	..	1
	III.—DIETIC DISEASES																	
	13	12	6	10	10	26	24	15	7	8	3	1	3	9	65	52	6	135
	IV.—CONSTITUTIONAL DISEASES																	
	29	1	12	31	5	..	4	41	29	4	78
	V.—DEVELOPMENTAL DISEASES																	
	55	21	3	7	16	16	25	12	18	35	20	3	8	22	101	85	15	231
	VI.—LOCAL DISEASES																	
	1	..	3	2	1	..	1	2	1	..	1	2	7	6	1	14
	VII.—DEATHS FROM VIOLENCE																	
	VIII.—DEATHS FROM ILL-DEFINED AND NOT SPECIFIED CAUSES																	
	25	2	2	1	..	1	1	..	10	18	2	31
	183	67	24	22	30	43	54	30	29	58	58	12	13	37	293	235	32	610

TABLE VIII.

Deaths Registered at several of Ages from different classes of Diseases during the Quarter ending December 29th, 1894.

CAUSE OF DEATH	AGES										DISTRICTS					Totals		
	0 to 1	1 to 5	5 to 15	15 to 25	25 to 35	35 to 45	45 to 55	55 to 60	60 to 65	65 to 75	75 to 85	85 and over	Portsmouth	Portsea	Kingston		Landport	Southsea
Class I. ZYMOTIC DISEASES—																		
Order 1— <i>Miasmatic Diseases</i>																		
Measles	19	89	14	6	9	56	49	2	122
Scarlet Fever	..	4	3	1	8	8
Whooping Cough	4	1	4	1	..	5
Diphtheria	..	4	2	3	3	..	6
Enteric or Typhoid Fever	1	4	3	..	1	1	1	7	2	..	10
Other Miasmatic Diseases	1	1	..	1
Order 2— <i>Diarrhoeal Diseases</i>																		
Diarrhoea, Dysentery	5	1	3	3	..	6
Order 4— <i>Veneral Diseases</i>																		
Syphilis	1	1	1	1	1	2
Gonorrhoea, Stricture of Urethra	1	1	1	1	1	..	1	2	..	4
Order 5— <i>Septic Diseases</i>																		
Erysipelas	1	1	2	..	2
Pyæmia, Septicæmia	1	..	1	1	1	4	4
Puerperal Fever	3	1	1	1	3
II.—PARASITIC DISEASES
III.—DIETIC DISEASES	1	1	1
IV.—CONSTITUTIONAL DISEASES	8	6	3	16	11	17	15	6	7	14	5	2	2	5	60	39	4	110
V.—DEVELOPMENTAL DISEASES	22	3	19	18	8	..	1	46	22	1	70
VI.—LOCAL DISEASES	72	52	16	8	16	31	32	22	26	52	25	1	10	22	153	142	26	353
VII.—DEATHS FROM VIOLENCE	4	..	2	2	2	..	1	..	1	1	2	2	8	4	1	15
VIII.—NOT SPECIFIED OR ILL-DEFINED	30	1	1	2	2	14	14	..	32
TOTALS ..	167	158	42	33	37	51	51	31	40	82	50	12	21	43	370	285	35	754

TABLE IX.

Tables showing the Numbers and Death Rates per 1000 of Population from the Seven Principal Zymotic Diseases, from Lung Diseases (excluding Phthisis), from Phthisis, and from all causes, during each Quarter of the Year 1894, and for the whole Year 1894.

	The Seven Principal Zymotic Diseases.		Lung Diseases (excluding Phthisis).		Phthisis.		From all Causes.	
	Num-ber	Rate per 1000	Num-ber	Rate per 1000	Num-ber	Rate per 1000	Num-ber	Rate per 1000
Quarter ending March 31	32	0.74	144	3.36	60	1.40	703	16.45
Quarter ending June 30	43	1.01	64	1.49	61	1.42	526	12.31
Quarter ending Sept. 29	112	2.62	52	1.21	65	1.52	610	14.27
Quarter ending Dec. 29	157	3.67	132	3.08	55	1.28	754	17.64
THE YEAR 1894 —	344	2.01	392	2.29	241	1.41	2593	15.16

TABLE X.

Shewing the Death Rates from the Seven Principal Zymotic Diseases for each of the four decades: 1851-1860, 1861-1870, 1871-1880, 1881-1890, and the years 1891-1894.

		1851 to 1860	1861 to 1870	1871 to 1880	1881 to 1890	1891 to 1894
Deaths from all Causes	..	228	211·9	198·8	189·5	177·40
Zymotic Diseases	..	49	43·6	37·2	26·6	24·17
Small Pox	..	4·6	2·4	5·0	0·05	0·05
Measles	..	4·1	4·0	4·0	4·29	7·78
Scarlet Fever	..	8·8	8·3	5·5	1·27	1·10
Diphtheria	..	0·6	1·5	1·0	4·37	1·67
Whooping Cough	..	4·8	3·6	4·1	3·53	3·50
Fever	..	13·8	8·8	7·4	4·90	2·42
Diarrhoea and Cholera	{	13·1 —	13·1 0·9	10·1 0·2	8·23 —	7·65 —
Consumption	..	28·1	25·5	21·9	19·21	15·30

TABLE XI.

Showing the number of Deaths from all ages from certain groups of diseases, and proportions of deaths of 1000 of Population and to 1000 deaths from all causes.

Infants under one year of age from other groups of diseases, and proportions to 1000 Births, and to 1000 Deaths from all causes under one year.

DIVISION I.

Diseases	Total Deaths	Deaths per 1000 of Population at all ages	Proportion of Deaths to 1000 Deaths
1—Principal Zymotic Diseases	354	2'07	236
2—Pulmonary Diseases (excluding Consumption) —	407	2'32	187
3—Principal Tubercular Diseases —	296	1'73	114

DIVISION II.

Infants under 1 year	Total Deaths	Deaths per 1000 Births	Deaths per 1000 of Total Deaths under 1 year
4—Wasting Diseases --	204	43'3	333
5—Convulsive Diseases —	119	25'2	195

NOTES.

- (1) Includes Small Pox, Measles, Scarlet Fever, Diphtheria, Whooping Cough, Typhoid or Enteric Fever, Continued Fevers, and Diarrhœa.
- (3) Includes Phthisis (or Consumption), Scrofula, Tuberculosis, Rickets, and Tabes Mesenterica.
- (4) Includes Marasmus, Atrophy, Want of Breast Milk, and Premature Birth.
- (5) Includes Hydrocephalus, Infantile Meningitis, Convulsions and Teething.

TABLE XII.

Showing the number of Deaths in the Years 1861 to 1893 from the Seven principal Zymotic Diseases, and the Number in 1894.

DISEASES	1861	1862	1863	1864	1865	1866	1867	1868	1869	1870	1871	1872	1873	1874	1875	1876	1877	1878	1879	1880	1881	1882	1883	1884	1885	1886	1887	1888	1889	1890	1891	1892	1893	Annual Average of 10 years 1884-93	1894	
Small Pox	..	1	..	12	228	3	1	..	1	1	39	514	45	2	..	1	1	1	3	..	2	0.6	4	
Measles	..	3	42	80	6	14	16	82	46	57	39	42	52	16	56	54	109	12	36	10	42	7	156	10	164	7	197	8	50	8	4	223	38	120	81.9	139
Scarlet Fever	..	5	226	134	17	20	34	15	107	295	119	30	5	12	36	47	457	36	16	11	9	25	40	16	9	5	18	26	12	11	19	9	18	32	15.9	14
Diphtheria	..	9	20	24	17	7	26	4	18	18	13	10	21	15	19	18	11	5	1	4	20	205	106	20	41	42	65	47	17	33	47	23	26	29	37.0	34
Whooping Cough	..	11	36	16	48	50	46	23	57	26	46	66	17	19	104	8	42	59	92	9	48	66	36	54	9	44	102	41	26	92	39	38	87	36	51.4	41
Fever	..	111	128	57	72	74	85	74	119	105	91	72	112	97	101	103	71	87	96	62	70	66	107	93	58	93	124	53	27	32	50	33	42	54	64.4	29
Diarrhoea	..	152	71	68	118	122	119	140	179	100	121	107	113	106	149	141	131	153	170	73	192	73	111	80	116	123	191	151	98	122	105	73	99	247	132.5	93
Totals	..	292	523	391	498	317	330	338	526	602	430	366	834	310	470	371	822	322	411	169	381	436	556	274	397	314	698	329	230	300	265	399	310	518	375.9	354

TABLE XIII.

Table showing the Death Rates per 1000 Inhabitants from the chief Zymotic Diseases, Consumption and Diseases of the Lungs, in the Sub-Districts, and in the whole Borough. Deaths from Zymotic Diseases occurring in Public Institutions are entered in the Districts from which the Patients who died were removed. Deaths from the other Diseases occurring in Public Institutions, are distributed to the various Sub-Districts in accordance with the Population for the Year 1894: and also the means of the 10 Years 1884-1893 for the whole Borough.

DISEASES	Ports-mouth	Portsea	King-ston	Land-port	South-sea	Whole Boro.	Means of 10 years
Small Pox	0.05	0.01	..	0.02	0.00
Measles	0.86	0.58	0.90	0.91	0.20	0.81	0.50
Scarlet Fever	0.14	0.06	0.16	0.01	..	0.08	0.10
Diphtheria	0.28	0.06	0.03	0.11	0.06	0.20	0.24
Whooping Cough	0.28	0.06	0.29	0.27	0.06	0.24	0.36
Fever	0.14	0.13	0.25	0.12	..	0.17	0.36
Diarrhœa	0.14	0.06	0.79	0.54	0.06	0.53	0.87
Principal Zymotic Diseases	1.87	1.08	2.86	1.91	0.38	2.05	2.48
Consumption	1.86	1.21	1.71	1.33	0.93	1.41	1.79
Other Tubercular Diseases	0.28	0.06	0.46	0.31	..	0.32	0.59
Lung Diseases	1.72	2.62	2.36	2.37	2.13	2.29	3.34
FROM ALL CAUSES	12.87	11.61	15.08	17.19	12.16	15.16	19.10

BIRTHS.—The number of births reported in 1894 was 4,709, only one in excess of those reported in the preceding year. The birth-rate was 27·54 (see Table II), and like the death-rate, lower than any previously recorded year; it is two lower than that for England and Wales as a whole, which for the same period was 29·6, and also the lowest ever recorded. The birth-rate for Portsmouth is, as in England and Wales, steadily diminishing; this means that there are comparatively fewer lives at the tender age of less than one year, and to some extent renders the death-rate lower, but in course of time, unless corrected by the immigration of young adults, will by-and-bye have a contrary effect.

The illegitimate births numbered 165, which is equal to 3·5 per cent of the total number registered. The mean percentage for the past ten years is 3·2.

The Births were reported in the four quarters as follows:—

		Legitimate			Illegitimate	
		M.	F.		M.	F.
First quarter ending March 31st	—	618	587	—	23	15
Second „ „ June 30th	—	525	516	—	24	23
Third „ „ September 29th	—	589	581	—	21	18
Fourth „ „ December 29th	—	592	556	—	29	12
		<hr/>	<hr/>		<hr/>	<hr/>
		2304	2240	—	97	68
		<hr/>	<hr/>		<hr/>	<hr/>
		4544		—	165	

And in the various sub-districts thus:—

Portsmouth	—	123	equal to a birth-rate of	17·7	per 1000.
Portsea	—	323	„ „ „ „	21·2	„ „
Kingston	—	2087	„ „ „ „	32·7	„ „
Landport	—	1965	„ „ „ „	28·2	„ „
Southsea	—	211	„ „ „ „	13·3	„ „

Portsea Island Union is situated in Kingston sub-district, in it there occurred 53 births.

MARRIAGES.—Fifteen hundred and sixty-two marriages took place during 1894, which thus numbered three more than in the previous year. The marriage-rate was 18·29.

The marriages occurred in the four quarters thus:—

First quarter	—	319
Second „	—	345
Third „	—	377
Fourth „	—	421

DEATHS.—The deaths registered numbered 2593, less by 465 than in the previous year, and only six more than occurred ten years ago in 1884, when the population was smaller by about 30,000 persons. The general death-rate has declined continuously in Portsmouth during the last forty-five years. In the decade 1851-1860 the death-rate was 22·8, in the next decade 1861-1870 it was 21·2, in the next decade 1871-1880 it was 19·9, in the next 1881-1890 it was 18·9, and during the four years 1891-1894 it was 17·77.

The rates for the four quarters of 1894 were as follows:

First quarter	—	16·55	per 1000.
Second „	—	12·30	„
Third „	—	13·47	„
Fourth „	—	17·64	„

The rate for the fourth quarter was raised by 1·85 owing to 122 deaths from measles.

Table III has been compiled from a table which appeared in the *British Medical Journal* on February 23rd, and the factors for correction in the Registrar-General's Summary for the year 1892. As is well-known the rate of mortality varies according to age and sex, being very high in the first year of life and gradually decreasing to early adult age, after which it again increases; it is also higher in the male sex than the female. The 33 great towns having, with two exceptions, populations containing many young adults, are more favourably placed in this respect than England as a whole. The Registrar-General has prepared factors by which the recorded death-rates in these towns can be multiplied in order to make them comparable with that of England as a whole, and also with one another. Portsmouth takes the second position among the 33 great towns after the correction has been made.

In the zymotic class Portsmouth does not take so favourable a place, this is owing to an outbreak of measles which caused 139 deaths, raising the rate 0·81 per 1000.

SMALL POX after being absent from the death returns in Portsmouth for four years, re-appeared in 1894; its re-appearance being a most instructive one. A family came to Portsmouth from Bristol leaving a house there from which a person had recently been removed to the Small Pox hospital; the family consisted of four persons, father, mother, and two children, one of them one year and ten months old and the other an infant of three months. Only one of the four—the mother—was vaccinated. About a week after their arrival the little boy was taken ill, but no medical man saw the child until the fourth day of his illness. It was clearly seen to be a case of Small Pox and removed at once to the Milton Hospital, and on the same evening all those who had been in the house were vaccinated or re-vaccinated, although without any certainty of being in time to stop the infection as the disease had four days' start. Six days after the little boy was removed the baby was taken ill, and the next day both father and mother were seized. Most unfortunately three of the four died, the only one who recovered being the mother, who was vaccinated; it was indeed an object lesson to illustrate the advantage of vaccination. These cases formed a centre from which eight other persons contracted the disease, only one of whom died, and he showed no marks of vaccination. Ten other cases were reported, they were all admitted to the Milton Hospital and all recovered. During the year, altogether 22 cases of Small Pox were reported, of these there were 18 showing good vaccination marks, all these recovered; three were certainly unvaccinated, they showed no marks and I was told their history which left no doubt upon the matter, all these died; one showed no signs of ever having been vaccinated, he also died. In face of such facts as these there should be no difficulty in getting children vaccinated, yet I am told by Mr. Lancaster that he has a yearly increasing difficulty to enforce the law as to vaccination. He has kindly given me the Table XIV, which gives the facts as to vaccination for the last twelve months. Sanitary defects were found in the premises on which Small Pox existed in four instances, or 12·9 per cent.

TABLE XIV.

VACCINATION. Return for the Period, January—June, 1894.

DISTRICTS	No. of Births returned in Birth List Sheets so registered from 1st Jan. to 30th June, 1894	No. of those Births duly entered by 31st Jan., 1893 in columns 10, 11, and 13, of the Vaccination Register ("Birth List Sheets"), viz.—				No. of these Births which on the 31st Jan. 1894, remained un-entered in the Vaccination Register on account of				No. of these Births remaining
		10 Successfully vaccinated	11		13 Dead Unvaccinated	Postpone-ment by Med. Cert.	Removed to Districts the Vacc. Officer of which has been apprized	Removed to Places unknown, &c.		
			Insusceptible of Vaccination	Had Small Pox						
Kingston	1022	891	4	—	97	18	2	9	1	
Portsea	163	138	3	—	12	5	—	5	—	
Portsmouth	135	114	—	—	11	3	1	6	—	
Landport	1010	892	2	—	67	27	7	13	2	
Totals	2330	2035	9	—	187	53	10	33	3	
VACCINATION OF CHILDREN whose Births were Registered in this District from Jan. 1st to Dec. 31st, 1893, inclusive										
Kingston	1952	1679	5	—	219	9	8	31	1	
Portsea	352	299	—	—	39	3	1	9	1	
Portsmouth	178	148	—	—	21	—	1	8	—	
Landport	2224	1908	32	—	204	18	14	46	2	
Totals	4706	4034	37	—	483	30	24	94	4	

SCARLET FEVER.—This disease, which had been unduly prevalent (though mild in character) during the years 1892 and 1893, showed a marked decline. The number of cases reported was 458, which was 173 below the mean of the previous nine years, notwithstanding increase of population; the disease was of a benignant type, the fatal cases forming only 3·06 per cent. of the whole. Two hundred and thirty-eight patients were admitted to the Milton Hospital of whom eight died, a mortality of 3·38 per cent.

In 116 cases, 12·9 per cent., some defect was discovered in the premises on which the case of Scarlet Fever was reported.

The disease was pretty evenly distributed over the borough, but Landport for once suffered more than Kingston.

As usual the largest proportion of cases, this year 67 per cent., occurred amongst children of the school-going age; indeed it is probable that most of the cases were contracted at school, notwithstanding all the efforts taken to prevent the disease spreading at school. As soon as a case is reported it is at once found out whether there are any children going to school from the same house, and if so a notice is dispatched to the Clerk of the School Board, the Manager of any Public Elementary School, or the Master of any other School, as the case may be, stating that Scarlet Fever exists on certain premises, and requesting that the children attending school from the infected premises may be kept therefrom for six weeks. Disinfection is carried out before the children return to school. However, this prevailing Scarlet Fever is of so mild a nature that it is probable that there are a good many cases which are never recognised to be Scarlet Fever at all, and there are certainly a considerable number not attended by medical men until the third, fourth, or even fifth week of the disease; such mild cases naturally spread infection broadcast unless they are discovered.

During November and December very few cases were reported, as will be seen by referring to Table XXII.

TABLE XV.

Table showing the number of cases of **Scarlet Fever** notified, the number of deaths, and the percentage of deaths to cases notified for the years 1884-1894.

Year	Cases Notified	No. of Deaths	Percentage of deaths to notified cases
1884	266	9	3.37
1885	314	5	1.59
1886	343	18	5.24
1887	647	26	4.01
1888	465	12	2.58
1889	728	11	1.51
1890	573	19	3.31
1891	326	9	2.76
1892	1023	18	1.75
1893	1170	32	2.68
1894	458	14	3.06
	6313	172	2.72

Table showing the number of cases of **Scarlet Fever** admitted to the Milton Hospital, the number of deaths, and the percentage of deaths to number of cases of Scarlet Fever admitted for the years 1884-94.

Year	Cases Admitted	No. of Deaths	Percentage of deaths to cases admitted
1884	13	—	—
1885	16	—	—
1886	29	—	—
1887	56	1	1.78
1888	120	1	0.88
1889	278	1	0.36
1890	384	11	2.60
1891	180	3	1.66
1892	532	6	1.10
1893	600	6	1.00
1894	238	8	3.36
	2446	37	1.51

DIPHTHERIA.—This disease, which is so rapidly increasing in England as a whole, is not becoming more prevalent in Portsmouth. During 1894, 139 cases of Diphtheria were reported, whilst the mean for the previous nine years is 169 per annum; the death-rate for Diphtheria in 1894 was 0·20 per 1000, and for the previous ten years, 0·24 per 1000. It will be noticed that the incidence of the disease fell most heavily upon the Kingston district; this is in accordance with its usual custom, and is no doubt due to the damper soil upon which it is situated: the greater part of Kingston being the London clay and the remainder on the Bagshot sand, with the exception of a small portion which is over-lying the Woolwich and Reading beds. The rest of the borough is situated upon the Bagshot sand.

Most of these cases were of school age,—only two being under one year of age,—and there can be little doubt that the gathering of large numbers of children together in schools is the chief cause of the increase of Diphtheria. The reports of the Medical Officer of the Local Government Board contain many instances of epidemics spreading by attendance at school, such epidemics are often preceded by a great prevalence of sore-throat.

In Portsmouth the Board Schools are at present very much over-crowded, a condition of things most favourable to the spread of any of the infectious diseases, and even to the production of Diphtheria from infectious sore-throat. It is to be hoped that the existing over-crowding will soon be removed.

Sanitary Defects were found in 62 instances, or 35·7 per cent.

TABLE XVI.

Table showing the number of cases of **Diphtheria** notified, the number of Deaths and the percentage of Deaths to cases notified for the Years 1884 to 1894.

Year	Cases notified	No. of Deaths	Percentage of Deaths to cases notified
1884	174	41	23'44
1885	173	42	24'25
1886	232	65	26'72
1887	260	47	19'08
1888	128	17	13'28
1889	126	33	26'19
1890	212	47	22'69
1891	140	23	16'42
1892	121	26	21'48
1893	140	29	21'48
1894	139	34	24'46
	1845	404	21'90

Table showing the number of cases of **Diphtheria** admitted to the Milton Hospital, the number of Deaths, and the percentage of Deaths to cases of **Diphtheria** admitted for the years 1884 to 1894.

Year	Cases admitted	No. of Deaths	Percentage of Deaths to cases admitted
1884	4	1	25'00
1885	6	—	—
1886	11	1	9'09
1887	27	8	23'70
1888	23	—	—
1889	18	—	—
1890	64	18	28'12
1891	51	4	7'84
1892	27	6	22'22
1893	12	4	33'33
1894	38	8	21'05
	281	50	17'90

MEASLES.—Again I have to report an epidemic of Measles, no less than 1129 cases were reported to me, although it is not notifiable compulsorily; thus most of them were reported by the School Board Officers and the diagnosis home-made. Some mothers made Measles an excuse to keep their children home from school, others more anxious for their children's education than their health sent them to school with the eruption still on them. But whilst the number of cases is uncertain, we know that the number of deaths registered was 139, and yet it was often argued, that because Measles is not amongst those diseases which have to be notified, it was not a dangerous infectious disorder; as if a disease which killed 139 children in 1894, and 819 in the previous ten years, is one of no importance,—as a matter of fact it has caused many more deaths in Portsmouth than Small Pox, Diphtheria, and Scarlet Fever combined, indeed it caused half as many again. The deaths are by no means the only mischief caused by Measles, for no disease except Small Pox leaves behind it greater debility and more complications than Measles. Unfortunately the popular idea is that Measles is a trifling ailment which every child must have, so the sooner it is over and done with the better. It is because of this fatal error that this fell disease is as deadly now as it was 50 years ago, in spite of all the sanitary improvements which have taken place during that period. It is the only disease, except Diphtheria, which has not enormously decreased in those 50 years; but if the ignorance and apathy which now prevail, were replaced by intelligence, energy, and an earnest desire to prevent this disease, many lives now lost would be saved, and a great amount of suffering and disease prevented. A reference to Table X. on page 22, will show the stagnation which has existed in the case of Measles during the last 50 years.

As far as was possible with the present staff means were taken to prevent the spread of the epidemic: children were kept from school, an extract from the laws relating to exposure of infected persons' clothes, etc., and other matters, and dis-

infectants were supplied, books belonging to the Public Library taken away, and after recovery the rooms disinfected. No means which a Sanitary Authority can take will be effectual unless those efforts are supported by the great force of public opinion.

FEVERS.—Typhus Fever has been again absent from the town during 1894, no case of this disease has occurred since I have had the honour to be your Medical Officer of Health, now rather more than nine years. Typhoid Fever was much less prevalent than usual; yet there were 201 cases reported, a number far from satisfactory when we consider the causation of this disease—a disease caused by filth. The number of deaths was 25, which is less than half that of the previous year. Still I look and hope for a further reduction of this filth-caused disease when the schemes of sewerage are carried out, which early in 1894 were approved by the Sanitary Authority, but are still waiting for the sanction of the Local Government Board.

Two hundred and one cases were reported; they were more frequent in the summer and autumn, but as Table XXII shows there were one or more cases reported in every week of the year except the first. This disease attacked the five sub-districts in the following order of frequency:—Kingston (1·4 attacks per 1000), Landport (1·3 attacks per 1000), Portsea (0·8 attacks per 1000), Portsmouth (0·6 attacks per 1000), and Southsea (0·5 attacks per 1000). Sanitary defects were found in 41 per cent. of the premises on which Typhoid Fever was reported to exist.

TABLE XVII.

MEASLES.

Showing the Districts in which cases occurred, the Schools attended, and the weeks in which they were taken ill.

DATE	Names of Sub-Districts and Board Schools																									
	P'rts- m'th	Portsea				Kingston							Landport													
	Portsmouth Town	Roman Catholic	Kent Street	Beneficial	St. John's	Flying Bull Lane	Tipnor	St. Mary's Road	Wellington Place	New Road	Binsteed Road	Penhale Road	Church Street	Conway Street	Fratton Street	Omega Street	Bramble Road	Cottage Grove	St. Luke's	Albert Road	Swan Street	Highland Road	Arundel Street	Circus	Private	No School
Jan. 1 to } May 19 }	8	5
May 26	27
June 2	29	2	2
" 9	22	..	4	8
" 16	4
" 23	1	1	9	3
" 30	..	1	1	19	1	1	..	1	1	2
July 7	10	1	3	1	..	14	..	7	5	5	
" 14	5	3	2	
" 21	1	2	
" 28	3	
Aug. 4	1	
" 11	
" 18	1	1	
" 25	1	7	1	5	
Sept. 1	1	2	..	1	1	2
" 8	1	1	2	
" 15	2	2	2	
" 22	11	2	
" 29	9	1	1	2	
Oct. 6	1	1	6	1	11	3	
" 13	1	1	8	1	15	..	1	3		
" 20	1	..	8	3	..	12	8	20	..	3	13		
" 27	1	..	1	3	12	10	19	1	1	7		
Nov. 3	2	1	2	1	4	6		
" 10	3	1	3	2	..	26	15	11	..	11	5	5	..	19		
" 17	5	3	12	..	1	2	3	1	2	5	7	5	4	1	29		
" 24	3	..	1	8	2	..	17	2	10	..	1	30	8	1	..	2	..	25	..	2	1	28		
Dec. 1	9	15	..	3	..	2	..	11	9	5	1	11	1	..	11	4	1	22		
" 8	1	1	3	..	3	3	21	..	9	1	4	..	6	5	6	2	2	1	21		
" 15	16	1	9	2	5	..	28	1	1	..	7	5	..	2	..	5	..	9	3	28		
" 22	1	1	3	1	2	..	4	1	2	10		
" 29	1	1	1	2	11		

TABLE XVIII.

Cases of Measles coming to the knowledge of the Medical
Officer of Health.

Week ending	SUB-DISTRICTS					AGES					Total
	Portsmouth	Portsea	Kingston	Landport	Southsea	0-1	1-5	5-15	15-25	25-60	
Jan. 6	3	1	2	2	4
" 13	1	1	1
" 20	0
" 27	1	1	1
Feb. 17	1	1	1
Mar. 17	..	1	1	1
April 14	1	1	1
May 12	3	..	1	..	2	3
" 19	1	1	..	1
" 26	27	5	22	27
June 2	31	..	2	..	8	25	33
" 9	33	1	..	2	16	16	34
" 16	4	3	1	4
" 23	12	1	1	2	8	4	14
" 30	..	4	21	1	8	18	26
July 7	16	30	..	4	15	26	1	..	46
" 14	8	2	6	4	10
" 21	3	3	3
" 28	3	3	3
Aug. 4	1	1	1
" 18	1	..	1	..	2	2
" 25	14	..	2	8	4	14
Sept. 1	1	3	3	1	4
" 15	6	6	6
" 22	10	3	..	1	8	4	13
" 29	11	2	9	4	13
Oct. 6	2	12	..	1	7	6	14
" 13	2	26	..	2	20	6	28
" 20	13	55	..	3	29	36	68
" 27	4	51	..	4	30	21	55
Nov. 3	4	12	..	1	6	9	16
" 10	1	..	9	91	..	3	51	47	101
" 17	..	8	33	39	..	5	44	31	80
" 24	3	12	39	87	..	6	88	47	141
Dec. 1	9	..	20	75	1	4	68	33	105
" 8	2	9	47	31	..	10	57	22	89
" 15	17	19	29	57	..	7	79	35	1	..	122
" 22	2	7	6	10	..	1	16	8	25
" 29	..	4	5	5	2	4	11	1	16
Totals ..	34	64	399	624	8	65	623	438	3	..	1129

TABLE XIX.

Table showing the number of cases of **Typhoid Fever** notified, the number of Deaths, and the percentage of Deaths to cases notified for the years 1884 to 1894.

Year	Cases notified	No. of Deaths	Percentage of Deaths to cases notified
1884	539	58	10·76
1885	762	93	11·48
1886	1249	124	9·90
1887	554	53	9·52
1888	313	27	8·60
1889	317	32	10·01
1890	457	50	10·94
1891	265	33	12·40
1892	330	38	11·51
1893	361	54	14·96
1894	201	25	12·44
	5348	587	10·98

Table showing the number of cases of **Typhoid Fever** admitted to the Milton Hospital, the number of Deaths, and the percentage of Deaths to cases of Typhoid Fever admitted for the years 1884 to 1894.

Year	Cases admitted	No. of Deaths	Percentage of Deaths to cases admitted
1884	2	—	—
1885	6	—	—
1886	66	4	6·06
1887	37	1	2·70
1888	35	—	—
1889	48	6	12·50
1890	108	5	4·63
1891	51	4	7·84
1892	81	6	7·41
1893	103	3	2·91
1894	53	3	5·85
	610	32	5·66

WHOOPING COUGH.—This disease caused the death of 41 children in 1894; but, as in the case of Measles, it is considered a trivial complaint by many people, who therefore take no trouble to prevent it spreading, yet this malady is one of the most frequent causes of deformed chests, and is often the forerunner of diseases of the lungs.

Sanitary defects were found in five instances, or 15·1 per cent.

DIARRHŒA.—Thanks to the low temperature which prevailed during the summer and autumn, and also to the quantity of rain which fell in that part of the year, the deaths from Diarrhœa were many fewer than usual. It caused 93 deaths in 1894, and 247 in 1893; the mean for the last ten years being 132. Here again Kingston takes the unenviable position of first in order of frequency, (fatal attacks 0·79 per 1000), Landport next (fatal attacks 0·54 per 1000), then Portsmouth (0·14 per 1000), and Portsea and Southsea being equal for the best place (0·06 per 1000). I have given Table XX as it may be useful for future reference.

Sanitary defects were found in 28 instances, or 33·3 per cent.

INFLUENZA.—This disease, which first appeared in the winter of 1890, has not been absent from the death returns for any year since; in 1894 it was held to be responsible for 37 deaths. This is the number in which "Influenza" appears on the certificate of cause of death; no doubt it indirectly caused many more deaths especially amongst those attributed to diseases of the lungs.

PUERPERAL FEVER.—Nine cases were reported, of these six ended fatally. In each case care was taken to disinfect the nurse or mid-wife in charge of the case.

In three cases, or 27·2 per cent., sanitary defects were found upon the premises.

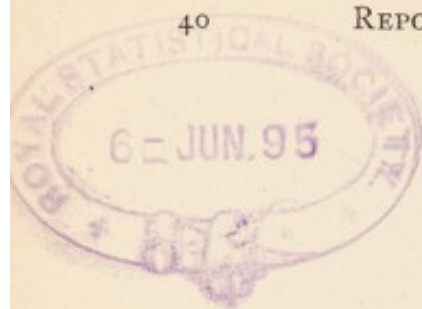


TABLE XX.

Week ending		Temperature of Air		Temperature by earth Thermometer 1 ft.	Temperature by earth Thermometer 4 ft.	Total Rainfall in inches	Deaths from Diarrhoea
		Mean of Maximum	Mean of Minimum				
1894							
June	23	63.2	52.3	60.9	55.3	0.32	0
"	30	73.35	54.0	64.4	56.5	...	1
July	7	72.5	56.8	68.6	58.4	0.03	0
"	14	64.7	59.9	65.1	59.7	2.08	3
"	21	65.2	55.3	62.9	59.6	0.86	2
"	28	66.6	56.3	64.7	59.6	0.32	1
August	4	66.3	57.4	64.6	60.0	1.74	1
"	11	67.1	56.9	64.7	60.4	0.14	3
"	18	66.3	55.6	63.1	60.5	0.38	4
"	25	64.5	54.7	61.5	60.1	1.03	11
September	1	70.1	53.9	63.3	60.0	...	7
"	8	61.7	48.1	60.1	60.0	1.07	9
"	15	63.4	47.6	57.2	59.2	...	15
"	22	62.6	52.1	58.4	58.3	1.00	10
"	29	60.7	49.0	58.0	58.0	0.96	2
October	6	58.2	47.1	53.9	57.4	0.06	1
"	13	61.5	48.9	55.1	56.3	0.02	1
"	20	52.7	39.3	50.9	55.8	0.19	1
"	27	57.1	47.2	51.1	54.5	3.53	0

NOTIFICATION.—Notification of infectious diseases were fewer than in any previous year, except 1891: they numbered 878. In each disease, except Small Pox, the notifications were below the means of the previous nine years; for the first year notification was in force the record is lost. Notification has been now in force for eleven years, during that time the death-rate from the seven principal zymotic diseases has been reduced from 3.30, the mean of the previous eleven years, to 2.42 per 1000, the mean for the eleven notification years. Four are compulsorily notified, for these the mean rate for the eleven years before notification was 1.54, whilst for the eleven notification years it was 0.69; a reduction of 56 per cent. Notification cannot have done the town much harm.

MILTON HOSPITAL, FOR INFECTIOUS DISEASES.—The Hospital was not so full last year as during 1892 and 1893, owing to there being so much less sickness of an infectious nature in the town. The new block for twenty-six patients, and the addition to the administrative block of ten cubicles and other accommodation for nurses was commenced; when completed the hospital will afford far greater facilities for the comfort of both patients and nurses than it has done in the past.

The number of patients was 439; particulars as to the disease under treatment and the ages of the patients are given in Table XXV.

The average daily number of patients was 49.

TABLE XXI.

Cases of Infectious Diseases coming to the knowledge of the Portsmouth Urban Sanitary Authority during the year 1894.

	0-1	1-5	5-15	15-25	25-35	35-45	45-55	55-65	65-75	75-85	85 and over	Totals
SMALL POX												
Portsmouth
Portsea
Kingston	6	5	6	17
Landport	2	2	1	5
Southsea
Total	6	7	8	1	22
SCARLET FEVER												
Portsmouth	7	28	35
Portsea	..	1	4	17	1	23
Kingston	..	6	55	85	16	4	2	1	169
Landport	..	1	70	117	14	3	205
Southsea	..	1	6	26	1	3	37
Total	..	9	142	273	32	10	2	1	469
DIPHTHERIA												
Portsmouth	1	3	..	1	5
Portsea	3	..	1	1	5
Kingston	..	1	20	24	13	5	2	2	67
Landport	..	1	11	25	12	4	3	..	3	59
Southsea	1	4	2	1	8
Total	..	2	36	56	28	12	5	2	3	144
ENTERIC FEVER												
Portsmouth	2	1	1	4
Portsea	2	3	1	3	2	..	1	12
Kingston	..	1	18	43	18	11	2	1	2	..	1	97
Landport	12	37	9	11	6	1	3	1	..	80
Southsea	4	3	1	8
Total	..	1	32	85	33	29	11	2	6	1	1	201
CONTINUED FEVER												
Portsmouth	1	1
Portsea	2	1	1	4
Kingston	8	11	5	3	1	2	30
Landport	3	9	2	1	..	1	16
Southsea	1	1
Total	13	21	9	4	1	3	1	52
PUERPERAL FEVER												
Portsmouth
Portsea
Kingston	2	4	6
Landport	3	1	4
Southsea	1	1
Total	2	8	1	11

TABLE XXII.

WEEKLY RETURN of Cases of Infectious Diseases reported in accordance with the Portsmouth Corporation Act, 1883, during the Year, 1894.

Week ending		Small Pox	Scarlet Fever	Diph- theria	Fevers		Puer- peral Fever	Total
					Enteric	Con- tinued		
1894								
January	6	13	3	16
"	13	18	2	22
"	20	11	4	1	..	17
"	27	8	2	1	..	12
February	3	3	2	1	1	8
"	10	6	3	2	..	12
"	17	14	6	20
"	24	8	4	5	1	18
March	3	8	3	2	1	14
"	10	9	3	5	..	17
"	17	5	2	3	..	11
"	24	14	..	4	..	18
"	31	13	..	2	..	15
April	7	8	1	1	2	12
"	14	..	1	14	2	3	1	21
"	21	..	8	21	3	1	3	36
"	28	..	3	10	2	6	..	21
May	5	..	1	15	3	2	2	23
"	12	..	1	5	..	5	..	11
"	19	6	1	6	1	14
"	26	..	1	13	3	1	1	19
June	2	4	1	4	1	10
"	9	9	..	7	4	20
"	16	12	4	8	8	32
"	23	14	1	6	..	21
"	30	..	1	12	2	3	..	18
July	7	..	4	9	9	7	2	31
"	14	5	5	11	1	22
"	21	6	4	4	1	15
"	28	4	1	6	2	13
August	4	5	..	3	..	8
"	11	6	3	9	1	19
"	18	7	2	3	1	13
"	25	9	11	8	..	28
September	1	13	3	6	1	23
"	8	13	1	4	1	19
"	15	4	4	3	1	13
"	22	10	3	4	1	18
"	29	9	2	7	2	20
October	6	12	1	3	2	18
"	13	17	3	4	1	26
"	20	18	6	5	..	31
"	27	8	4	3	..	16
November	3	3	1	2	2	8
"	10	..	2	2	1	1	..	6
"	17	1	3	5	..	9
"	24	5	1	5	2	13
December	1	4	1	7	1	13
"	8	7	4	6	..	17
"	15	2	3	2	..	7
"	22	3	1	1	..	5
"	29	3	5	1	..	9
Totals		..	22	458	139	201	49	878

TABLE XXIII.

Shewing the number of Infectious Diseases reported to the Medical Officer of Health under the Portsmouth Corporation Act.

Year	Small Pox	Scarlet Fever	Diphtheria	Fevers		Puerperal Fever	Totals
				Enteric	Continued		
1885	8	314	173	762	—	2	1259
1886	7	343	232	1249	—	14	1845
1887	23	647	260	554	—	11	1495
1888	3	465	128	313	—	11	920
1889	6	728	126	317	—	6	1183
1890	—	573	212	457	125	4	1371
1891	—	350	138	265	52	15	820
1892	—	1023	121	330	76	2	1552
1893	6	1153	135	366	69	25	1754
Totals	53	5596	1525	4613	322	90	12199
Means	5.9	621.8	169.4	512.5	35.8	10	1355.4
1894	22	458	139	201	49	9	878

TABLE XXV.

Cases under treatment at the Milton Hospital.

DISEASES	AGES									Total
	0-1	1-5	5-15	15-25	25-35	35-45	45-55	55-65	65 and over	
Scarlet Fever —	1	65	175	31	6	1	—	—	—	279
Typhoid Fever	—	5	40	7	7	3	—	—	—	62
Diphtheria —	1	9	17	12	3	1	—	—	—	43
Measles —	1	7	9	5	1	—	1	—	—	24
Small Pox —	1	6	6	8	1	—	—	—	—	22
Puerperal Fever	—	—	—	1	2	—	—	—	—	3
Continued Fever	—	—	2	—	—	—	—	—	—	2
Erysipelas —	—	—	1	—	—	—	1	—	—	2
Chicken Pox —	—	—	1	—	—	—	—	—	—	1
Tonsilitis —	—	—	—	1	—	—	—	—	—	1
TOTALS —	4	92	251	65	20	5	2	—	—	439

TABLE XXVI.

Number of Patients admitted to the Hospital for the Years
1883 to 1894.

DISEASES	1883	1884	1885	1886	1887	1888	1889	1890	1891	1892	1893	1894
Scarlet Fever —	1	13	16	29	56	120	278	384	180	532	503	238
Enteric or Typhoid —	2	6	66	37	35	48	114	51	81	94	53	
Diphtheria —	—	4	6	11	27	23	18	69	52	27	12	38
Measles —	1	2	1	11	4	8	5	1	22	—	6	22
Small Pox —	5	1	8	7	20	4	6	1	—	—	6	22
Other Diseases —	—	—	—	1	3	8	8	7	18	5	5	9
Total —	7	22	37	125	147	194	363	576	322	645	626	382

WATER SUPPLY.—As usual I have analysed each month the water supplied by the Borough of Portsmouth Water Company, and have reported the result of these analyses to the Sanitary Committee. I here append a summary of the analytical results, together with the results of a few other analyses.

TABLE XXVII.

Date when taken	Where taken from	Grains per gallon			Total Hardness	Parts per Million		Poisonous Metals
		Total Solid Residue	Chlorine	Nitrogen as Nitrates		Free Ammonia	Albuminoid Ammonia	
1894								
Jan. 11	Corporation Laboratory {	21.8	1.4	..	16.2	0.00	0.01	—
Feb. 19	" "	22.3	1.5	0.093	16.6	0.00	0.02	—
Mar. 5	The Locks, Milton..	55.3	13.9	0.000	12.6	0.04	0.06	Grey in colour, slight deposit, chlorine affected by proximity to sea
" 19	Well, Fratton Rd. ..	93.1	9.7	0.000	8.9	0.08	0.19	Quite unfit for drinking purposes
" 19	Corporation Yard ..	24.2	1.4	0.280	16.4	0.01	0.02	Slight deposit of sand
Apl. 16	" " ..	20.6	1.1	0.178	15.9	0.01	0.01	—
May 10	" " ..	23.1	1.3	0.999	16.7	0.00	0.01	Pure, slightly green in colour
" 10	Water from Rangoon, per Bargue "Enterprise" }	83.3	1.2	..	6.4	0.04	0.16	Unfit for drinking purposes
" 10	Another sample from same ship }	82.6	1.2	..	6.6	0.06	0.14	Ditto
" 10	Water from St. Helena, from same ship }	54.3	16.8	..	9.8	0.02	0.08	—
June 15	Well in Fratton Rd.	121.7	10.8	..	18.6	0.06	0.08	Unfit for drinking purposes
" 18	Corporation Yard ..	22.1	1.4	0.175	16.6	0.03	0.01	—
July 16	" " ..	21.7	1.4	0.157	17.2	0.02	0.04	—
Aug. 18	" " ..	22.6	1.7	0.180	16.9	0.01	0.03	—
Sep. 27	" " ..	21.8	1.6	0.157	16.1	0.00	0.02	—
Oct. 11	" " ..	23.8	1.6	0.140	16.8	0.06	0.03	—
" 11	Well at O. E. H., Milton }	33.6	5.9	..	7.1	1.36	0.84	Unfit for drinking purposes
Nov. 19	Corporation Yard ..	21.7	1.3	0.175	15.1	0.03	0.04	Turbid, yellowish brown in colour
Dec. 17	" " ..	23.8	1.6	0.192	16.8	0.03	0.06	Light Grey in colour, slight deposit of suspended matter

HOUSES UNFIT FOR HABITATION.—Under the Bye-Law I have certified 21 houses to be unfit for human habitation, and these houses have upon such certificate been declared unfit by the Sanitary Authority. I have also written 28 letters, referring to 56 houses, calling upon the owners of insanitary property to remedy the defects, warning them that unless this is done it will be my duty to certify such property as unfit for human occupation.

PREMISES CONDEMNED IN 1894.

SITUATION OF PREMISES				DATE
4,	King's Bench Alley,	Portsea	—	February 20th
10,	do.	do.	—	" "
11,	do.	do.	—	" "
1,	Catherine Row	do.	—	August 21st
2,	do.	do.	—	" "
3,	do.	do.	—	" "
4,	do.	do.	—	" "
6,	Matrimony Street,	Landport	—	December 18th
21,	Voller Street	do.	—	" "
25,	do.	do.	—	" "
35,	do.	do.	—	" "
37,	do.	do.	—	" "
39,	do.	do.	—	" "
48,	do.	do.	—	" "
60,	do.	do.	—	" "
54,	do.	do.	—	" "
38,	do.	do.	—	" "
32,	do.	do.	—	" "
22,	do.	do.	—	" "
20,	do.	do.	—	" "
18,	do.	do.	—	" "

PROSECUTIONS.—In all the Prosecutions of the Authority, in which my evidence was wanted, I have been a witness; they were 21 in number, being as follows:—

Initials	Charge	Result
H. C. H.	Non-compliance of Nuisance Notice	Case withdrawn, work being done
M. H.	Exposing for sale 22 pieces of Meat which were diseased	Fined £1 14s., including costs
G. A. M.	Non-compliance with Slaughter-house Bye-Law No. 11	Fined £1, including costs
H. L.	Non-compliance of Nuisance Notice	Order to abate Nuisance in 14 days, and costs 15s. 6d.
E. L.	Ditto (2 cases) ..	Order to abate Nuisance in 14 days, and costs 14s. 6d.
J. P.	Ditto ..	Order to abate Nuisance in 14 days, and costs 10s. 6d.
W. G.	Ditto ..	Order to abate Nuisance in 14 days, and costs 9s. 6d.
G. S.	Ditto ..	Order to abate Nuisance in 14 days, and 16s. costs
G. G.	Ditto ..	Order to abate Nuisance in 14 days, and 17s. costs
G. B.	Ditto ..	Case withdrawn, work done
G. H.	Ditto ..	Ditto
C. M.	Non-compliance with Shop Hours Act	Case dismissed
W. T.	Ditto ..	Fined 20s., including costs
T. P.	Ditto ..	Fined 20s., including costs
D. W.	Non-compliance with Nuisance Bye-Law, No. 13	Ordered to do the work and pay 10s. costs
F. S.	Ditto, No. 13 ..	Fined 30s., including costs
A. W.	Ditto, No. 13 ..	Fined 40s., including costs
S. W.	Exposing a person whilst suffering from a dangerous infectious disorder	Case dismissed
F. S.	Non-compliance with Nuisance Bye-Law No. 13	Case withdrawn, work done
W. W.	Ditto ..	Fined 30s., including costs
G. W.	Ditto ..	Work done, case withdrawn
P. I. M.	Exposing for sale 1 piece of Beef ..	Case dismissed
C. S.	Do. Exposing 10 pieces of Beef which were unsound, and which were intended for the food of man	Fined £10 and 12s. costs
S. S. W.	Non-compliance of Nuisance Notice	Ordered to do the work in 14 days, and pay 14s. 6d. costs
Do.	Ditto ..	Ordered to do the work in 14 days, and pay 10s. costs
Do.	Ditto ..	Ordered to do the work in 14 days, and pay 11s. costs
Do.	Ditto ..	Case withdrawn, work done
E. G.	Ditto ..	Ordered to do the work in 14 days, and pay 16s. 6d. costs
R. T.	Ditto ..	Fined £1 and 14s. 6d. costs, and ordered to do the work in 14 days
Do.	Ditto ..	Ordered to do the work in 14 days, and pay costs 15s. 6d.
G. G.	Ditto ..	Ordered to do the work in 14 days, and pay 16s. 6d. costs
Do.	Ditto ..	Ordered to do the work in 14 days, fined 10s. and costs 11s.
Do.	Ditto ..	Case withdrawn, work done
Do.	Ditto ..	Ditto

SLAUGHTER HOUSES.—These number 191, of which 106 are in actual use. It is quite impossible for the Inspectors to maintain an efficient supervision over this large number of slaughter-houses spread all over the borough as they are. During the year no less than 4836 visits of inspection were paid, as a result many notices were served upon the occupiers, calling upon them to remedy conditions in the slaughter-houses likely to prove prejudicial to the meat contained in them. One permanent licence has been given up in order to obtain a licence for new premises; the new licence granted was for one year, but renewable annually at the pleasure of the Authority.

COWSHEDS, DAIRIES, AND MILKSHOPS.

—The number of these registered in 1894 was as follows:—Milkshops and dairies, 193; cowsheds, 50. These places receive daily attention from your Inspectors, 2658 visits were paid altogether, and many notices were served which were all complied with.

INSPECTION OF WORKSHOPS.—This work has been continued and increased during the year. Inspector Benjamin, who was specially appointed for this work, paid 4794 visits of inspection. Two hundred and eighty-four notices have been served to remove conditions injurious to health, such as to reduce over-crowding (38 cases), repair sanitary defects (157 cases), to cleanse and lime-wash (24 cases), and to cleanse water-closets (16 cases). All these notices have been complied with. A great improvement has taken place since the inspection of workshops, as far as sanitary conditions is concerned, has been performed by the Inspector of the Sanitary Authority in place of Her Majesty's Inspector of Factories and Workshops. It would be better if the Local Authority were also empowered to inspect and, where necessary, call upon the owners to improve the sanitary condition of factories in the same manner as it can in workshops.

Two hundred and sixty-two notices were sent to Her Majesty's Inspector of Factories and Workshops informing him of new occupation of workshops.

THE SHOP HOURS ACT.—Inspector Benjamin has been appointed to look after infringements of this Act; he reported eight persons to be acting contrary to the Act: in three cases proceedings were taken and fines inflicted of £1 each in two of them, and in the other the case was dismissed.

REFUSE DESTRUCTOR.—At last there is a scheme to deal with the town refuse collected by the scavengers so often adverted to as a nuisance in my reports. It is proposed to erect a destructor close to the present sewage pumping station using the energy developed for lifting the sewage, and it is thought that this will yield sufficient power to work the pumps at all times, except during heavy rains, thus saving the very large outlay now spent on coals.

THE SYSTEMATIC INSPECTION OF THE DISTRICT has been efficiently and energetically performed by your Inspectors and myself. At no time since I have known the Borough has its condition been more zealously inspected than during the year under review.

TABLE XXX.

TABLE OF DEATHS during the Year 1894, in the Portsmouth Urban Sanitary District, classified according to Diseases, Ages, and Localities.

Names of Localities adopted for the purpose of these Statistics; public institutions being shown as separate localities.	Mortality from all Causes, at subjoined Ages							Mortality from subjoined Causes, distinguishing Deaths of Children under Five Years of Age																								
	At all ages	Under 1 year	1 and under 5	5 and under 15	15 and under 25	25 and under 65	65 and upwards	Smallpox	Scarlatina	Diphtheria	Membranous Croup	Fevers					Cholera	Erysipelas	Measles	Whooping Cough	Diarrhea and Dysentery	Rheumatic Fever	Ague	Phthisis	Bronchitis, Pneumonia, and Pleurisy	Heart Disease	Injuries	All other Diseases	Total			
												Typhus	Enteric or Typhoid	Continued	Relapsing	Puerperal																
Portsmouth (sub dist.)	72	14	11	3	3	33	8	Under 5... 5 upwards...	..	1	1	10	25
Portsea	139	35	14	8	5	51	26	Under 5... 5 upwards...	..	1	1	1	25
Kingston	873	274	145	34	38	227	155	Under 5... 5 upwards...	..	11	2	49
Landport	935	244	140	46	46	262	197	Under 5... 5 upwards...	..	4	3	90
Southsea	145	13	11	3	11	56	51	Under 5... 5 upwards...	..	2	11	419
Union Workhouse	242	12	9	5	8	104	104	Under 5... 5 upwards...	..	1	7	384
Boro' Lunatic Asylum	43	1	29	13	Under 5... 5 upwards...	3	454
Royal Hospital	59	1	9	7	8	30	4	Under 5... 5 upwards...	3	384
Naval & Mil. Barrks. H.M. Dockyard .. Ships in Harbour.. Garr. Stat. Hospital	43	10	5	..	6	21	1	Under 5... 5 upwards...	1	14	551
Infectious Dis. Hos. ..	33	2	12	14	1	4	..	Under 5... 5 upwards...	2	5	3	1	15
Nazareth Home	5	..	1	2	..	1	1	Under 5... 5 upwards...	2	3	5	2	3	19
Convict Prison	2	2	..	Under 5... 5 upwards...	2	4
Kingston Prison	1	1	..	Under 5... 5 upwards...	1
Seamen's & Marines' Orphan Home ..	1	1	Under 5... 5 upwards...	1
Totals	6,222	1,622	1,254	1,044	1,044	9,844	2,484	Under 5... 5 upwards...	2	8	21	4	2	..	1	..	3	125	41	74	2	4	162	11	18	484	962	

TABLE XXXI.

Table of Population, Births, and of New Cases of Infectious Sickness, coming to the knowledge of the Medical Officer of Health, during the Year 1894, in the Portsmouth Urban Sanitary District; classified according to Diseases, Ages and Localities.

Names of Localities adopted for the purpose of these Statistics; Public Institutions being shown as separate localities.	Aged under 5 or over 5	New Cases of Sickness in each Locality, coming to the knowledge of the Medical Officer of Health											Number of such Cases removed from their Homes in the several Localities for Treatment in Isolation Hospital																	
		1	2	3	4	5	6	7	8	9	10	11	Small Pox	Scarlatina	Diphtheria	Membranous Group	Fevers					Typhus	Enteric or Typhoid	Continued	Relapsing	Puerperal	Cholera	Erysipelas	Measles	Other Diseases
																	Typhus	Enteric or Typhoid	Continued	Relapsing	Puerperal									
Portsmouth	Under 5	..	6	1	22	3
Portsea	Under 5	..	28	4	4	1	1	3
Kingston	5 upwards	..	18	3	2	2	7
Landport	Under 5	6	60	21	10	1	24	3	3
Southsea	5 upwards	11	103	46	18	8	..	6	52	9	9	21	1	..	2	3
Naval and Military Establishments	Under 5	..	71	12	72	22	24	6	6	2	1	2
Union Workhouse	5 upwards	5	132	47	67	13	..	4	79	17	17	19	1	..	1	9
Royal Hospital	Under 5	..	7	1	8	1	..	1	2	..	3	2	2
Lunatic Asylum	5 upwards	..	30	7	13	3	3	2
Seamen's and Marines' Orphan Home	Under 5	..	1	1	1
TOTALS	Under 5	6	151	38	33	13	..	11	..	2	6	56	9	29	4	3	7	..	2
	5 upwards	26	318	106	168	38	8	16	180	29	48	2	15

Report of the Public Analyst.

GENTLEMEN,

During the year 1894 I analysed 238 samples of food and drugs, of which 227 were taken by your Inspectors under my direction, and eleven samples submitted by private individuals.

Of the total number of samples 27, or 11·34 per cent., were found adulterated. The percentage of adulterated articles taken by the Inspectors was 8·37, and the percentage of adulterated articles submitted by private individuals was 72·73.

The following is a list of the samples analysed:—

Milk	-	-	-	-	126
Butter	-	-	-	-	28
Coffee	-	-	-	-	6
Bread	-	-	-	-	1
Pepper	-	-	-	-	12
Whiskey	-	-	-	-	8
Rum	-	-	-	-	4
Gin	-	-	-	-	8
Beer	-	-	-	-	29
Mineral Waters	-	-	-	-	6
Drugs	-	-	-	-	10

Table showing the number of Samples Analysed during
the last Eleven Years.

Year	Total	Milk	Butter	Bread and Flour	Gro- ceries	Wine and Spirits	Drugs	Sun- dries	No. of Samples found adulterated
1884	125	101	..	8	8	6	..	2	18
1885	141	74	18	8	19	14	..	4	16
1886	131	68	24	2	24	11	..	2	17
1887	169	143	5	..	7	8	..	6	35
1888	200	106	42	..	34	9	..	9	17
1889	206	102	11	5	64	22	..	1	35
1890	187	121	25	1	33	7	16
1891	206	110	11	11	48	25	..	1	40
1892	203	124	24	6	24	18	..	7	30
1893	218	141	9	10	12	14	..	32	31
1894	238	126	28	1	18	20	10	35	27

The following Table shows the Articles which were adulterated, by whom they were obtained, the amount of adulteration, and the amount of fines which were imposed by the Magistrates, viz.:—

Nature of Sample	By whom obtained	Amount of Adulteration	Remarks
Milk	Private person	37 per cent. Cream abstracted ...	No prosecution, card in bar
Rum	Inspector ...	48 degrees under proof ...	
Milk	Private person	26 per cent. Cream abstracted ...	Prosecuted, case withdrawn; Inspector's part broken by decomposition
Ditto	Inspector ...	8 per cent. added Water ...	
Ditto	Ditto ...	34 per cent. Cream abstracted and 8 per cent. added Water	Fined £2, including costs
Ditto	Ditto ...	40 per cent. Cream abstracted ...	Fined 30s., including costs
Ditto	Ditto ...	67 per cent. Cream abstracted ...	Fined 30s., including costs
Ditto	Ditto ...	10 per cent. Cream abstracted and 6 per cent. added Water	Taken in course of delivery; no prosecution; no contract
Ditto	Ditto ...	20 per cent. added Water ...	Prosecuted, case withdrawn; Inspector's part broken by decomposition
Ditto	Private person	13 per cent. added Water ...	Fined £2, and £1 1s. 6d. costs
Ditto	Inspector ...	39 per cent. Cream abstracted ...	
Ditto	Ditto ...	49 per cent. Cream abstracted ...	Fined £1, and 8s. costs
Ditto	Ditto ...	80 per cent. Cream abstracted and 19 per cent. added Water	Fined £5, including costs
Ditto	Ditto ...	56 per cent. Cream abstracted ...	Fined £2, including costs
Ditto	Ditto ...	18 per cent. Cream abstracted ...	Fined £1, and 11s. costs
Ditto	Ditto ...	83 per cent. Cream abstracted and 18 per cent. added Water	Fined £5, including costs
Beer	Private person	5 per cent. added Water ...	Fined £1, and 9s. costs
Milk	Ditto ...	10 per cent. added Water ...	
Ditto	Ditto ...	8 per cent. Cream abstracted ...	Fined £1, including costs
Ditto	Inspector ...	28 per cent. Cream abstracted ...	
Ditto	Ditto ...	5 per cent. added Water ...	Fined £2, including costs
Ditto	Ditto ...	8 per cent. Cream abstracted ...	
Ditto	Private person	10 per cent. Cream abstracted ...	Fined £1, including costs
Gin	Inspector ...	41·4 degrees under proof ...	
Whiskey	Ditto ...	35·13 degrees under proof ...	Prosecuted; case dismissed
Ditto	Ditto ...	28·52 degrees under proof ...	No prosecution
Milk	Private person	10 per cent. Cream abstracted ...	

The samples of Milk analysed numbered 126, of these 17 per cent. were found sophisticated. The standard I am obliged to adopt is that in use by the Chemists at Somerset House, which is a very low one, so low that in my opinion it is unfair to the honest milkseller who does not either take from or add to the milk he sells. For four years the Guardians of the Poor have stipulated in their contracts for milk of a much higher standard than that I can adopt, yet only once has this high standard not been reached. The peculiar result is that the paupers in the workhouse get much better milk than the Ratepayers who support them. The standard adopted by the Board of Guardians is, fat 3 per cent., and solids, not fat, 8.5 per cent.; in 28 samples taken in course of delivery at the Union many have been much above this standard and only one below it, in which 20 per cent. of water was added. If this standard can be maintained by the contractor to the Union it ought to be possible for other milksellers, who have the mixed milk of a number of cows, to provide milk of an equally good quality for their customers; unfortunately there are many whose milk falls much below this standard, and yet I am obliged to let the samples pass, but working within a low standard 17 per cent. of the samples are found either skimmed or watered. This is the reason that milk forms such a large proportion of the samples taken.

I am, Gentlemen,

Your obedient Servant,

B. H. MUMBY, M.D.,

Public Analyst.

Port Sanitary Authority.

GENTLEMEN,

During the year 7916 vessels have arrived at this port; they have been boarded and inspected by Mr. Meads, the Port Inspector of Nuisances, and many of them have been seen by me.

5064 arrived from the Solent, 2404 British vessels coastwise, and 335 British vessels from foreign; the foreign being as follows:—French, 41; Norwegian, 24; German, 20; Danish, 12; Dutch, 6; Swedish, 5; Russian, 4; and Italian, 1.

Great care was taken during the summer and autumn to prevent Cholera gaining access to the port, and generally to carry out the orders of the Local Government Board relating to Cholera.

In the spring the Sanitary Committee decided to give up the vessel which they had on hire and had fitted up as a cholera floating hospital; so at present there is no floating hospital available for cholera or any other disease.

I have the honour to be, Gentlemen,

Your obedient Servant,

B. H. MUMBY, M.D.,

Medical Officer of Health.

Report of the Inspector of Nuisances

FOR THE YEAR 1894.

NOTICES SERVED.

To Cleanse	Cesspits	-	57
„	Dwellinghouses	-	145
„	Bakehouses	-	17
„	Drains	-	471
„	Water Closets	-	177
„	Yards, Stables, Sties, &c.	-	106
„	Slaughterhouses	-	10
„	Rain Water Spouts	-	12
„	Rain Water Tanks	-	3
„	Workshops	-	24
„	Urinals	-	3
„	Ditch	-	1
To Remove	Animals	-	9
„	Soil Pipe	-	1
„	Manure	-	105
„	Refuse	-	106
„	Offal	-	1
„	Human Excrement	-	2
„	Stagnant Water	-	16
„	Rags	-	6
„	Decomposing bodies of Animals	-	5
„	Bones	-	3
To Repair	Cesspit	-	1
„	Cellar Coverings	-	23
„	Drains	-	831
„	Soil Pipes	-	7
„	Rain Water Spouts	-	329
„	Water Closets	-	14
„	Urinals	-	2

To Repair	Water Closet Fittings	-	142
„	Workshops	-	10
„	Dwellinghouses	-	132
„	Manure Pits	-	2
„	Sanitary Defects in Dwellinghouses	-	946
„	Sanitary Defects in Workshops	-	45
To Construct	Smoke Consuming Apparatus	-	5
„	Urinals	-	1
To Provide	Yard traps	-	2
„	Rain Water Spouting	-	33
„	New Water Closet Basins	-	22
To Repave	Yards, Stables, Sties, &c.	-	515
To Ventilate	Workshops	-	4
„	Drains	-	42
To Repair or Raise	Ventilating Shafts	-	17
To Drain	Yards, Stables, Sties, &c.	-	8
To Comply with	Slaughterhouse Bye-laws	-	3
„	Nuisance Bye-laws	-	49
To Tank	Urinals	-	2
To Fill in	Dead Wells	-	1
To Discontinue	Overcrowding in Dwellinghouses	-	7
„	„	Workshops	38
To Connect	Premises with Main Sewer	-	1
To Disconnect	Rain Water Pipes and Waste Pipes from Drains	-	2
Total			4516

NUISANCES REMOVED.

Cesspits	-	Cleansed	-	75
Drains	-	„	-	546
Slaughter-houses	-	„	-	9
Dwelling-houses	-	„	-	141
Yards, stables, sties, etc.	-	„	-	117
Water Closets	-	„	-	172
Bakehouses	-	„	-	16

Rain Water Tanks	-	Cleansed	-	2
Workshops	-	"	-	23
Rain Water Pipes	-	"	-	8
Urinal	-	"	-	1
Ditch	-	"	-	1
Manure	-	Removed	-	110
Animals	-	"	-	12
Refuse	-	"	-	92
Stagnant Water	-	"	-	16
Rags	-	"	-	7
Human Excrement	-	"	-	2
Decomposing Bodies of Animals Removed	-		-	2
Offal	-	Removed	-	1
Bones	-	"	-	4
Water Closet Fittings		Repaired	-	143
Water Closets	-	"	-	18
Drains	-	"	-	968
Rain Water Spouts	-	"	-	287
Cellar Coverings	-	"	-	35
Manure Pits	-	"	-	2
Workshops	-	"	-	9
Dwelling-houses	-	"	-	136
Soil Pipes	-	"	-	11
Urinals	-	"	-	4
Sanitary Defects in Dwelling-houses Repaired	-		-	785
" Workshops "	-		-	26
Yard Traps	-	Provided	-	3
Ash Bins	-	"	-	2
Rain Water Pipes	-	"	-	43
New Water Closet Basins		"	-	27
Waste Pipes	-	"	-	2
Smoke Nuisances Abated	-		-	5
Workshops Ventilated	-		-	5
Drains	"		-	52
Ventilating Shafts Raised or Repaired	-		-	25
Premises connected with Main Sewer	-		-	1
Yards, Stables, Sties, etc., Repaved	-		-	565

Waste and Rain Water Pipes Disconnected with Drains	5
Stables Drained	- 2
Dead Well Filled in	I
Nuisance Bye-Laws Complied with	- 41
Slaughter-house Bye-Laws Complied with	- 3
Overcrowding Discontinued in Dwelling-houses	- 6
„ „ Workshops	- 32
Total	- <u>4601</u>

The under-mentioned Articles of Food have been destroyed during the year, as unfit for the Food of Man, namely:—

MEAT AND POULTRY.

Carcase of Ox	.	.	I
Carcases of Cows	.	.	8
„ Sheep	.	.	7
„ Pigs	.	.	8
„ Calves	.	.	2
„ Lambs	.	.	3
Quarters of Beef	.	.	4
Pieces of „	.	.	lbs. 90
„ Mutton	.	.	„ 56
„ Pork	.	.	„ 5
Side of Bacon	.	.	I
Bullock's Liver	.	.	I
Rabbits	.	.	33
Geese	.	.	8
Duck	.	.	I

FISH.

Bloaters	.	Boxes 762
„ (loose)	.	103
Herrings	.	(Boxes of 600) 14

Herrings (loose)	.	.	.	200
"	.	.	(Barrels of 600)	2
Kippers	.	.	Boxes	220
Haddock	.	.	"	134
Cod Fish	.	.	"	2
"	.	.	Barrel	1
Ling	.	.	"	1
Mixed Fish	.	.	Boxes	5
"	.	.	Barrel	1
Haddock	.	.	Stones	7
Cod Ling	.	.	"	2
Smelts	.	.	Boxes	56
Plaice	.	.	"	5
"	.	.	Kits	3
"	.	.	Stones	11
Mackerel	.	.	Barrels	4
"	.	.	Pads	15
" (Smoked)	.	.	Boxes	3
Soles	.	.	"	1
Whiting	.	.	"	5
"	.	.	cwts.	2
Mullett	.	.	Boxes	6
Sprats	.	.	Tons	2
"	.	.	Barrel	1
Escalops	.	.	Bags	5

FRUIT.

Plums	.	.	Gallons	5
Apples	.	.	Barrels	20
"	.	.	Bushels	6
Apples and Pears	.	.	.	222
Pears	.	.	Gallons	7
Chestnuts	.	.	"	20
Oranges	.	.	Bushel	1
Bananas	.	.	Bunch	1

INSPECTION.

During the year 4516 notices were served to abate nuisances, and 4601 nuisances were removed.

9115 dwelling-houses were inspected.

4836 visits have been made to the various slaughter-houses.

2658 visits have been made to the various dairies, cow-sheds, and milkshops.

1029 inspections have been made of the common lodging houses, of which number 401 were night visits.

1459 visits have been made by the Sanitary Inspectors to the different bakehouses, and 480 visits were made by the Workshop Inspector.

4794 visits were made by the Workshop Inspector to the various workshops.

1004 complaints relative to nuisances have been made at the office, and received attention.

INFECTIOUS DISEASES.

During the year 2088 cases of Infectious or Zymotic Diseases have been visited and investigated.

1396 rooms have been disinfected, and disinfectants supplied at all houses where cases of Infectious Diseases have occurred.

FOOD AND DRUGS ACTS.

During the year 227 samples of Food and Drugs have been obtained by the Inspectors and submitted to the Public Analyst for analysis.

DRAINS.

4454 Drains have been tested or re-tested, out of which number your Inspectors found 1975, or 44.34 per cent., defective.

PROSECUTION AND FINES.

Public Health Act:—

For non-compliance with Notices under the Nuisance Clauses of this Act proceedings were instituted in 20 cases. Orders were made by the Court for the abatement of the nuisances in 15 instances and the payment of the costs, fines were inflicted in two cases, and the remaining cases were withdrawn on the work being done to the satisfaction of the Authority. The fines and costs amounted to £12 2s. 6d.

For exposing for sale and having deposited on the premises meat which was unfit for food, three summonses were issued. One person was fined £1, and 14s. costs, the information in one case was dismissed, and in the remaining case a fine of £10, and 12s. costs, was imposed.

Proceedings were also taken against one person for exposing in a public place a patient whilst suffering from Scarlet Fever. The case after two adjournments was eventually dismissed.

Food and Drugs Acts:—

Fourteen purveyors of milk were summoned during the year for selling adulterated milk. Fines and costs amounting to £27 9s. 6d. were imposed by the Court in twelve cases. Two cases were withdrawn, in one case because the milk had undergone such a change that the Somerset House Chemists (to whom a part had been sent at the request of the Defendant) could not analyse it, and the other on account of the part which had been retained by the Inspector for future comparison having burst in the office.

Bye-Laws with respect to Nuisances :—

During the year two persons were summoned for keeping swine within 100 feet of dwelling-houses, and fines amounting to £3 10s. inflicted.

Four persons were also summoned for failing to provide properly constructed receptacles for manure, one person was fined 30s., one was mulcted in the costs 10s., and the other cases were withdrawn on the necessary work being carried out.

Slaughter-house Bye-Laws :—

One person was summoned for non-compliance with these Bye-Laws and was convicted, being fined £1, including costs.

I am, Gentlemen,

Your obedient Servant,

FRED. L. BELL,

Inspector of Nuisances.

Contagious Diseases (Animals) Act, 1878.

INSPECTOR'S REPORT

FOR THE YEAR ENDING DECEMBER 31st, 1894.

INSPECTION OF CATTLE.—The undermentioned Cattle have been inspected during the year, most of which have arrived at the Portsmouth Town Railway Station from the various Markets and Districts, viz. :—

Beasts	7,811
Sheep	45,334
Calves	5,227
Pigs	17,306
Total			75,678

INSPECTION OF CATTLE TRUCKS, ETC.—

The following Cattle Trucks, etc., have been inspected, and in every case I found them thoroughly cleansed and limewashed as required by the Orders of the Board of Agriculture, they are as follows :—

Cattle Trucks	...	2,238
Horse Boxes	...	1,265
Tow Boats	...	423

FOREIGN ANIMALS' WHARF.—Owing to the Board of Agriculture restricting the importation of Animals into this country, the Wharf has not been utilised during the whole year.

SWINE FEVER.—Owing to the prevalence of Swine Fever in many districts throughout England and Wales, the Board of Agriculture deemed it necessary to cause very stringent regulations to be enforced as to the sale of Swine in markets and fairs and which prevented store pigs being exposed for sale, and restricted fat pigs from being removed without the necessary licence. This necessarily caused a great number of licences to be issued, amounting in all to 889, which allowed the removal of 5755 pigs.

The pigs, according to the Orders, were licenced to slaughter-houses, and had to be killed within five days. For the purpose of seeing that the pigs were killed within the prescribed time a great amount of work was entailed, and if it were not for the kindness of the Medical Officer of Health who permitted his staff to assist in the supervision, I feel sure that the Orders could not have been carried out in an efficient manner by myself.

Only one infringement of the Orders was detected, in which case my Committee ordered proceedings to be instituted.

The beneficial effect of the Board of Agriculture's Orders to this borough is shown by there having been no outbreak of Swine Fever during the whole year. During my 14 years tenure of office this is the first time I have been able to report such a favourable condition of affairs.

GLANDERS AND FARCY.—I am pleased to be able to report that only one case of this dangerous disease presented itself in Portsmouth during the year. The case was immediately isolated and attended to by Veterinary Surgeon Knott. The animal was attacked by the disease in a very acute form and quickly succumbed. The Orders of the Board of Agriculture were strictly adhered to.

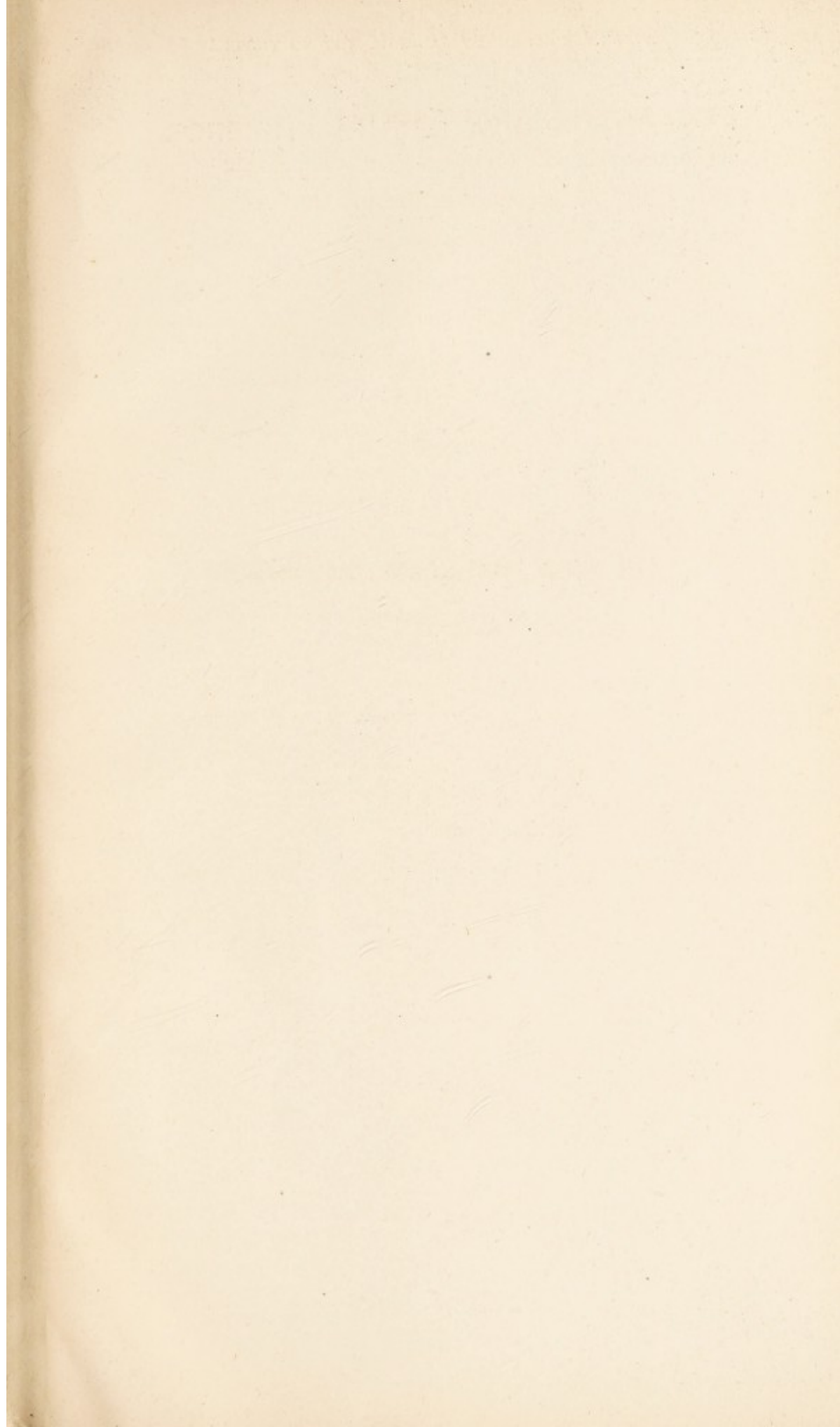
I remain, Gentlemen,

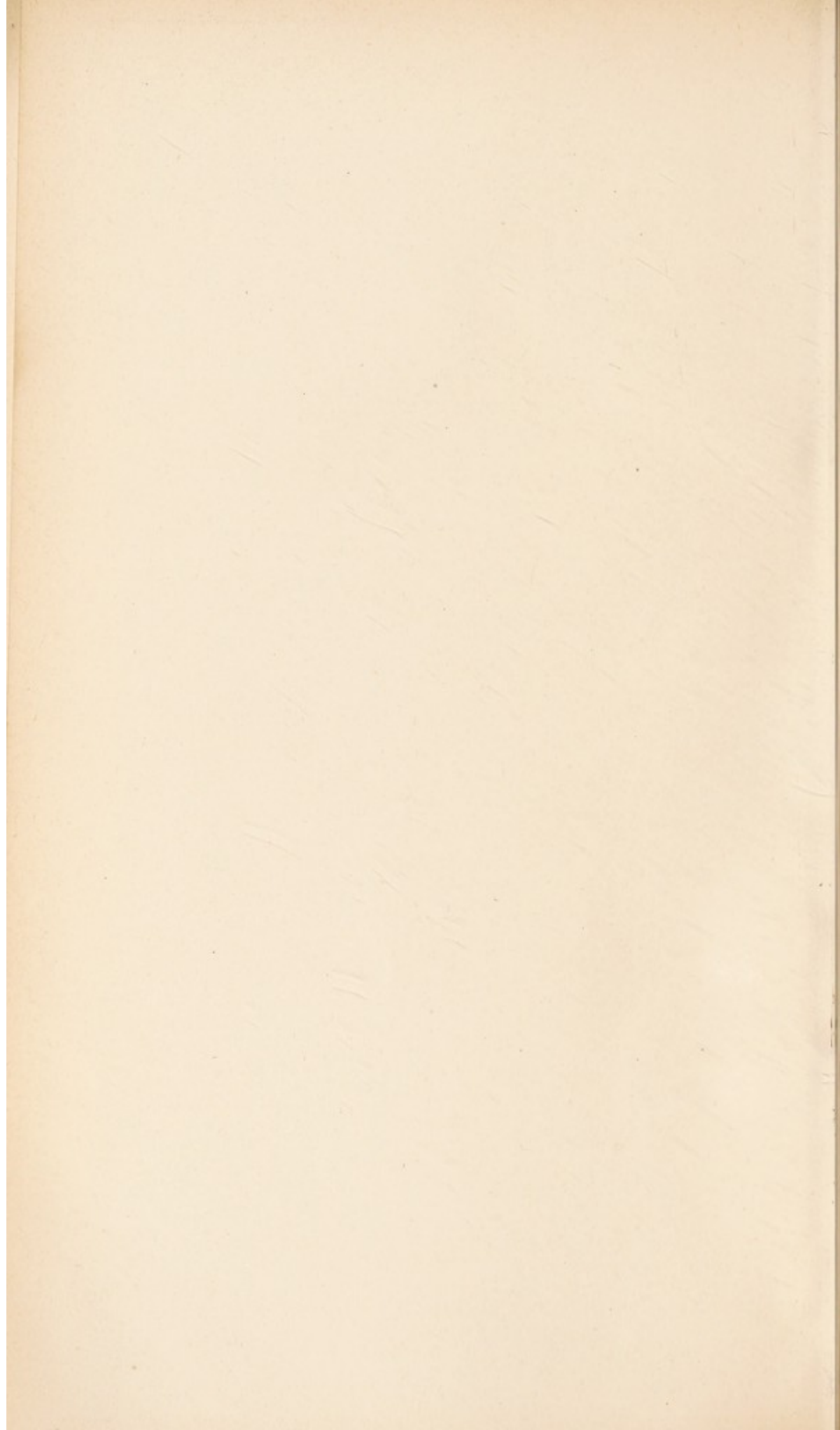
Your obedient Servant,

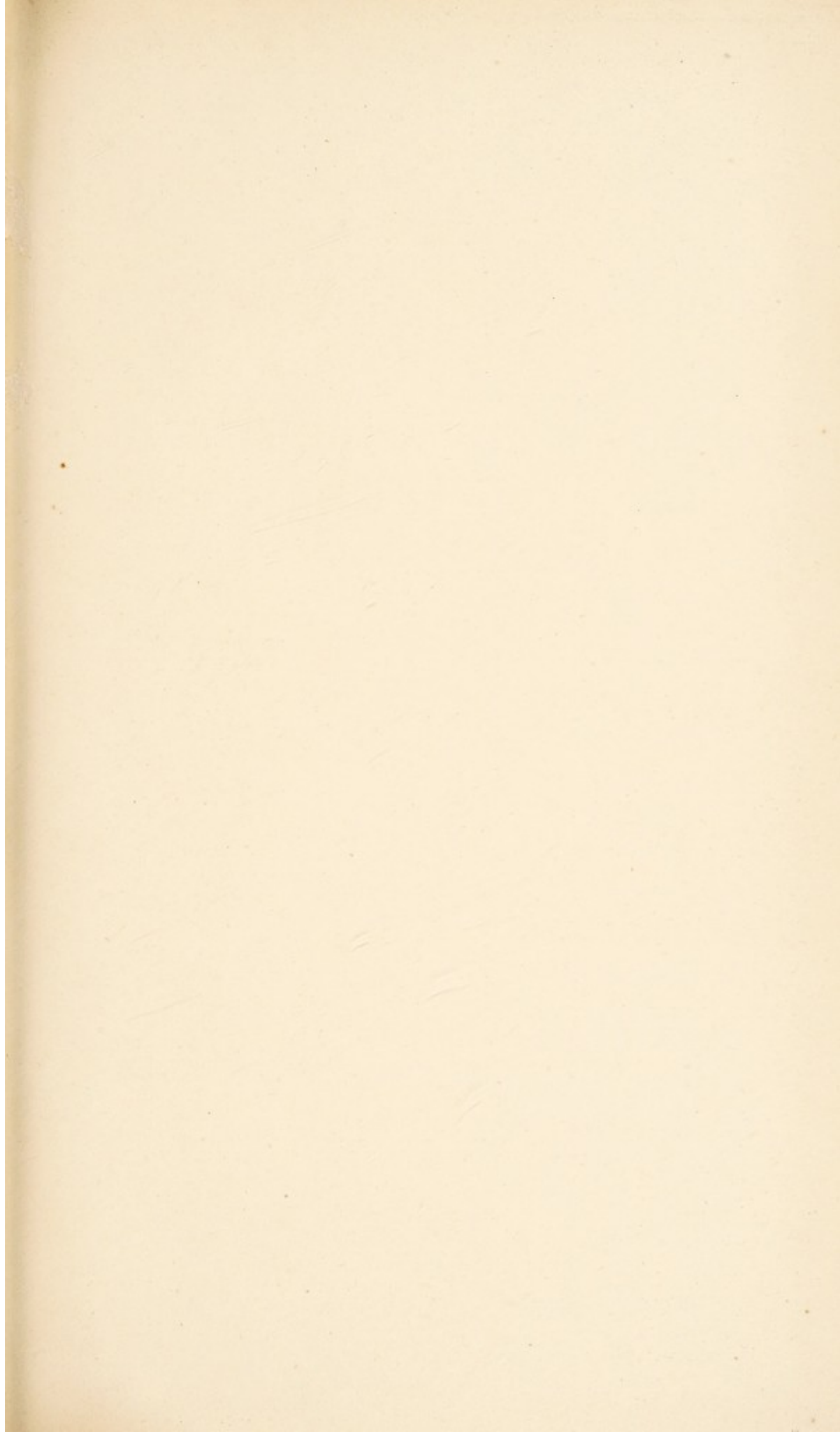
GEORGE WILLIAM MONKCOM,

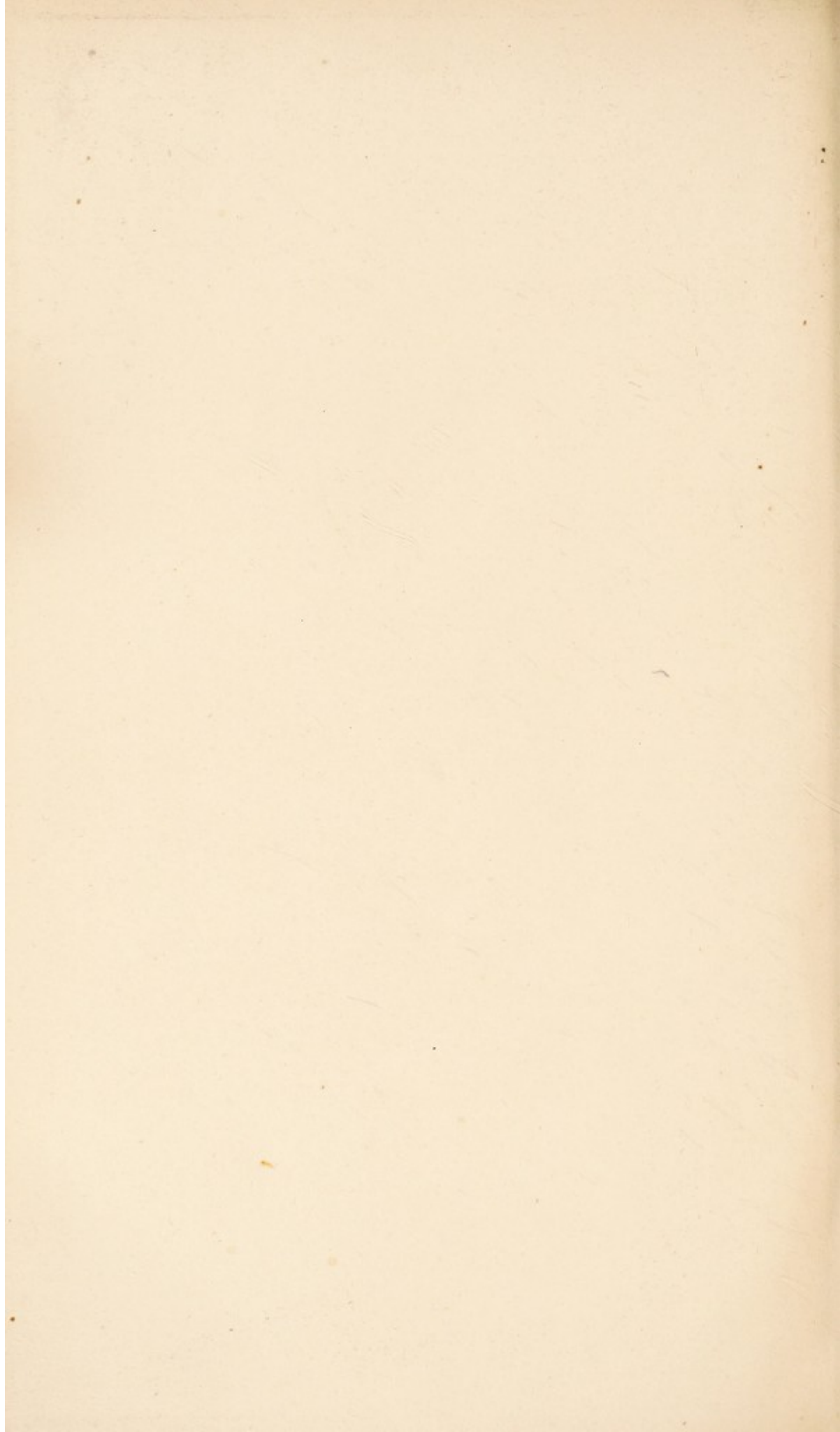
Inspector under the Contagious Diseases (Animals) Act.

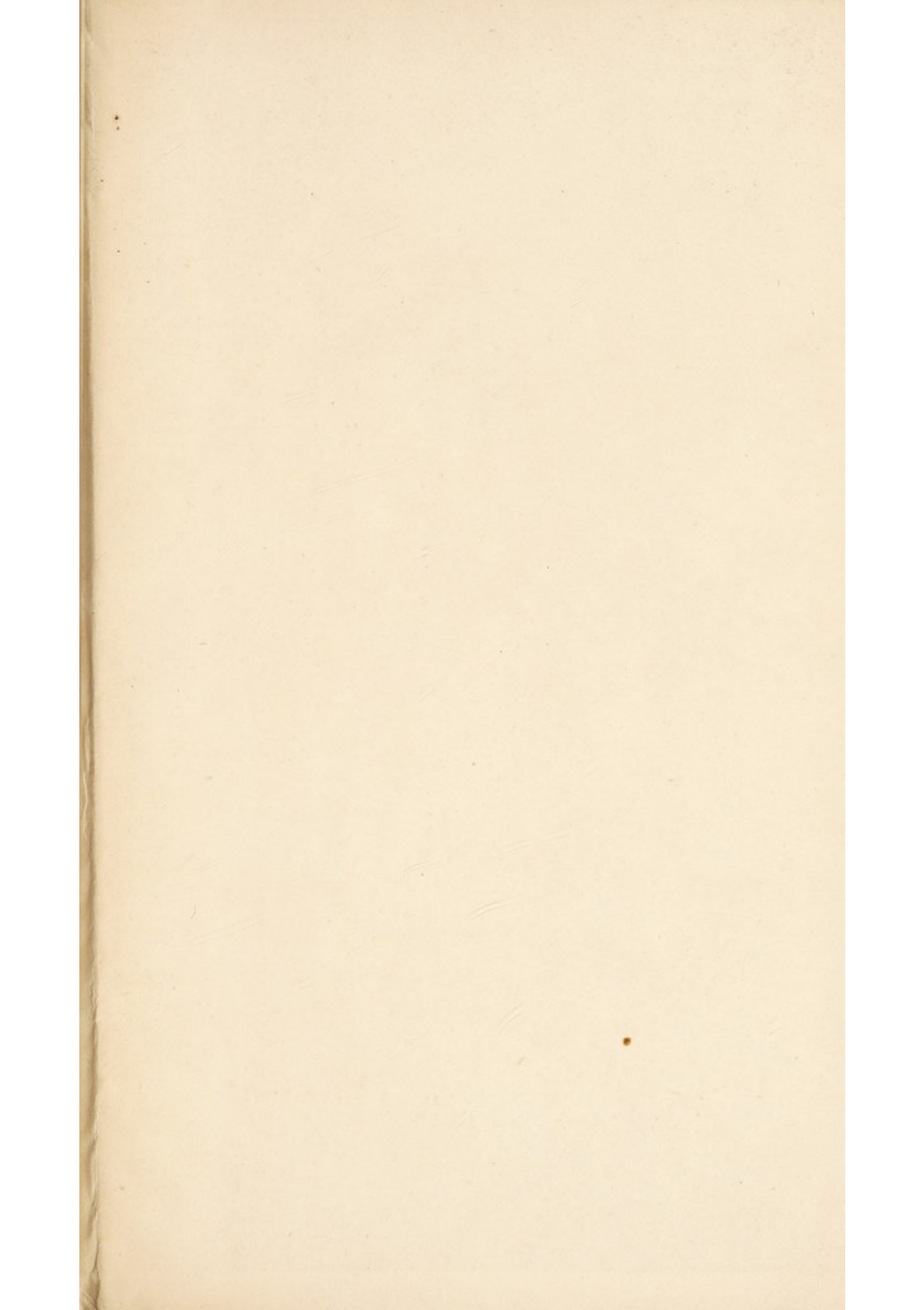












LIBRARY
OF THE
MUSEUM
OF
COMMERCE
JUN 95

