

**[Report 1955] / Medical Officer of Health, Newport Pagnell R.D.C.**

**Contributors**

Newport Pagnell (England). Rural District Council.

**Publication/Creation**

1955

**Persistent URL**

<https://wellcomecollection.org/works/dr9h9ekb>

**License and attribution**

You have permission to make copies of this work under a Creative Commons, Attribution license.

This licence permits unrestricted use, distribution, and reproduction in any medium, provided the original author and source are credited. See the Legal Code for further information.

Image source should be attributed as specified in the full catalogue record. If no source is given the image should be attributed to Wellcome Collection.



Wellcome Collection  
183 Euston Road  
London NW1 2BE UK  
T +44 (0)20 7611 8722  
E [library@wellcomecollection.org](mailto:library@wellcomecollection.org)  
<https://wellcomecollection.org>

*Library*

HEALTH  
19 SEP 57  
C.F.

NEWPORT PAGNELL RURAL DISTRICT COUNCIL



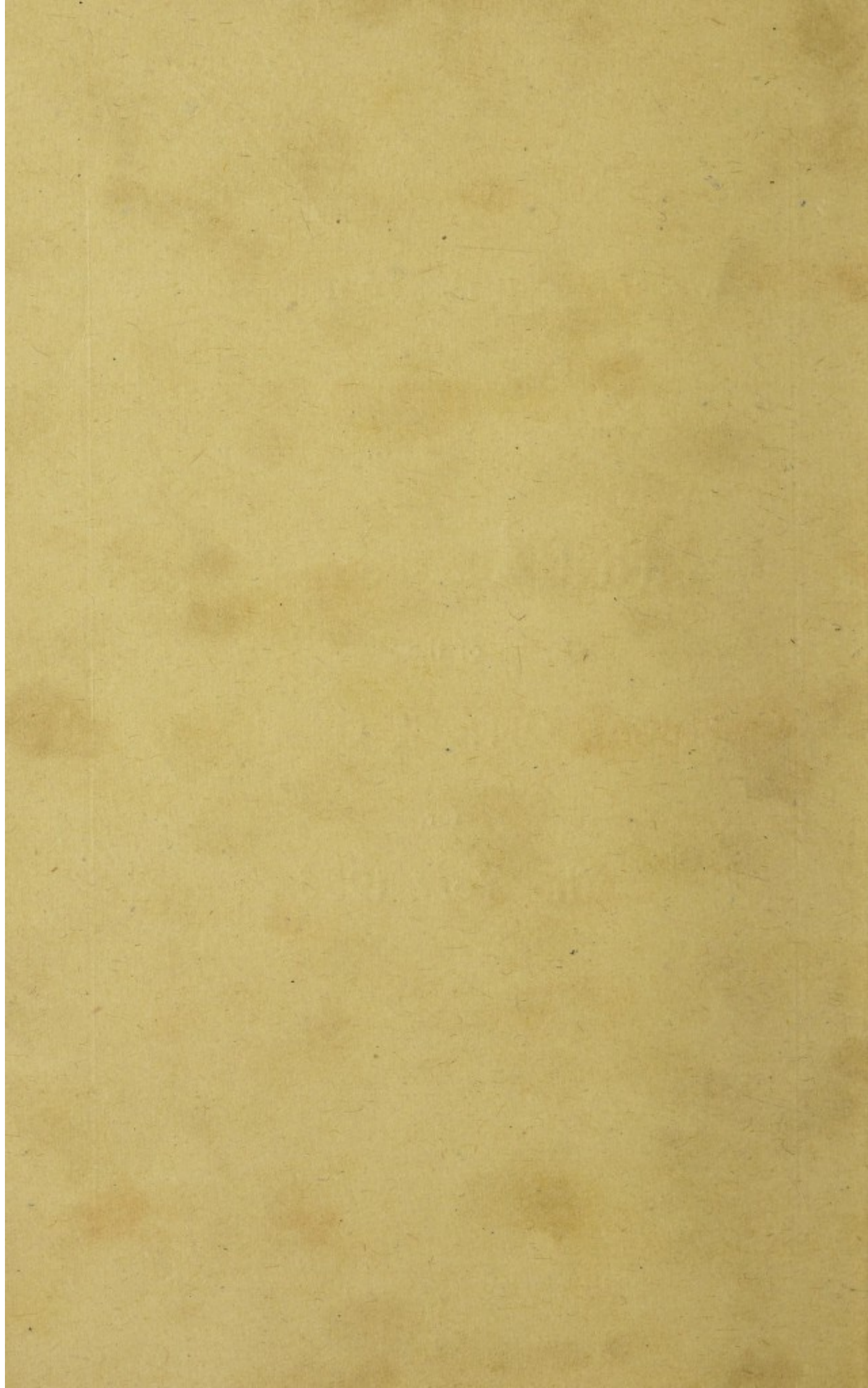
# ANNUAL REPORT

of the

## MEDICAL OFFICER OF HEALTH

for

### The Year 1955



NEWPORT PAGNELL RURAL DISTRICT COUNCIL

---

# ANNUAL REPORT

OF THE

## MEDICAL OFFICER OF HEALTH

FOR THE YEAR

1955

*Chairman of the Council* : ALDERMAN S. W. LORD, J.P.

### **PUBLIC HEALTH COMMITTEE**

*Chairman* : Colonel N. B. C. Byam-Grounds

Councillors : W. Beesley, Genl. H. Blount, D.S.O., J.P., R. G. Bellchambers, L. H. Blanshard, A. Crouch, H. F. Dolling, R. Eakins, M. Farrer, W. F. Finn-Kelcey, J. S. Goss, J. H. Green, J.P., E. Gurney, N. J. Gurney, Mrs. V. M. Hatton, Revd. P. Hemming, M.A., E. Holdom, C. Hutton, W. E. Jarvis, Mrs. M. Konig, O.B.E., A. Lyon, H. J. Osborn, J. R. Powell, R. O. Sharpe, J.P., J. W. Shirley, H. J. Simpson, H. W. Tarrant, Miss S. K. A. Uthwatt, G. F. Wesley, G. Williams, Sir Philip Wombwell, Bt., M.B.E.

### **PUBLIC HEALTH STAFF**

#### MEDICAL OFFICER OF HEALTH

D. H. WALDRON, O.B.E., M.D., D.P.H., D.T.M.&H., COL. I.M.S. (RETD.).  
(The Medical Officer of Health is also M.O.H. for Buckingham M.B., the Urban Districts of Bletchley, Linslade, Newport Pagnell and Wolverton, the Rural Districts of Buckingham and Wing, Area M.O. for North Bucks. and Buckingham and Winslow Division.)

#### CHIEF SANITARY INSPECTOR

F. LOCKWOOD, M.INST.B.E., M.R.SAN.I., M.S.I.A.

#### ADDITIONAL SANITARY INSPECTOR

W. R. H. GILLING, A.R.S.I., M.S.I.A.

COUNCIL OFFICES,  
7 STATION ROAD,  
NEWPORT PAGNELL,  
BUCKS.

TO THE CHAIRMAN AND COUNCILLORS OF THE  
RURAL DISTRICT OF NEWPORT PAGNELL

LADIES AND GENTLEMEN,

I have the honour to present the Annual Report for the year 1955.

The Birth Rate, although lower than last year, is nevertheless at quite a satisfactory level, being 2 points higher than that for England and Wales.

The Death Rate shows a satisfactory drop from last year and at 9.1 per 1,000 population compares very favourably with the figure of 11.7 for England and Wales. Of the total deaths of 173 no less than 135 were due to Allied and Heart Diseases and Cancer.

The Infantile Mortality Rate is also satisfactorily low being more than 10 points less than the rate for England and Wales.

It is heartening to report that at last a positive measure against acute poliomyelitis has emerged in the form of the new poliomyelitis vaccine. This vaccine, which had been extensively tried in America, South Africa, Canada and Germany, was at last given the blessing of the Ministry of Health in this country. Unfortunately we were told that only a very limited amount would be available for use early in 1956.

Further, I am glad to report that 32 children in the Newport Pagnell District have had the benefit of this inoculation. We have been promised larger supplies in the late autumn of 1956 and it is hoped that in time to come everybody will have the opportunity of getting the benefit of this protection against a disease, the epidemiology of which still puzzles the Public Health Authorities.

I should like to record a happy year of co-operation with your Clerk, Mr. Dunbabin, your Chief Sanitary Inspector, Mr. Lockwood, and their staffs.

I am,

Your obedient servant,

D. H. WALDRON.

*Medical Officer of Health.*

**SECTION A.**

GENERAL STATISTICS:—

	1954	1955
Area (in acres) .. .. .	61,686	61,686
Population .. .. .	14,120	14,150
Number of inhabited houses ..	4,948	4,970
Rateable Value .. .. .	£68,062	£67,452
Sum represented by a 1d. Rate (estimated)	£265/0/0.	£270/0/0.

VITAL STATISTICS :—

BIRTHS—						1954	1955
Legitimate (Males)	..	..	..	..	..	118	111
„ (Females)	..	..	..	..	..	106	86
Illegitimate (Males)	..	..	..	..	..	4	4
„ (Females)	..	..	..	..	..	6	5
Stillbirths	..	..	..	..	..	2	1
Birth Rate per 1,000 population	..	..	..	..	..	19.4	17.0
„ „ „ „	„	„	„	„	„	(Bucks.) 15.6	15.4
„ „ „ „	„	„	„	„	„	(England & Wales) 15.2	15.0

DEATHS—

Males	..	..	..	..	..	101	89
Females	..	..	..	..	..	94	84
Death Rate per 1,000 population	..	..	..	..	..	10.3	9.1
„ „ „ „	„	„	„	„	„	(Bucks.) 9.5	9.8
„ „ „ „	„	„	„	„	„	(England & Wales) 11.3	11.7
Maternal Mortality	..	..	..	..	..	Nil.	Nil.
„ „ (Bucks.)	..	..	..	..	..	0.47	0.31
Infantile Mortality	..	..	..	..	..	17.1	14.6
„ „ (Bucks.)	..	..	..	..	..	22.4	20.0
„ „ (England & Wales)	..	..	..	..	..	25.5	24.9

PRINCIPAL CAUSES OF DEATH—

	1954			1955		
	M.	F.	T.	M.	F.	T.
Tuberculosis, respiratory	1	0	1	0	0	0
Tuberculosis, other	0	0	0	0	0	0
Meningococcal Infections	0	0	0	0	0	0
Acute Poliomyelitis	0	0	0	0	0	0
Cancer	15	22	37	19	12	31
Leukæmia	1	0	1	0	0	0
Diabetes	1	0	1	0	1	1
Cerebral Hæmorrhage	12	14	26	12	14	26
Heart Disease	42	30	72	28	38	66
Other Circulatory Diseases	1	2	3	3	9	12
Influenza	1	0	1	1	0	1
Pneumonia	5	5	10	5	3	8
Bronchitis	3	1	4	2	1	3
Digestive Diseases	1	0	1	4	0	4
Nephritis	1	0	1	1	0	1
Hyperplasia of Prostate	3	0	3	2	0	2
Pregnancy, Childbirth, Abortion	0	0	0	0	0	0
Congenital Malformations	1	1	2	2	0	2
Accidents	3	5	8	3	2	5
Suicide	3	1	4	1	0	1
All other causes	7	13	20	6	4	10
Totals	101	94	195	89	84	173

## SECTION B.

### GENERAL PROVISION OF HEALTH SERVICES

#### 1. LABORATORY SERVICES.

Specimens for bacteriological investigation were sent to the Public Health Laboratories at Northampton and Bedford. Specimens for qualitative and quantitative analysis were sent to London.

#### 2. AMBULANCE SERVICES.

This service, which is controlled by the County Health Department maintains two motor ambulances and one sitting case car in Newport Pagnell, supplemented if necessary by ambulances from other areas in North Bucks.

#### 3. HOME NURSING AND MIDWIFERY.

The District Nurses in the Newport Pagnell Rural Area carried out their duties in their usual conscientious manner.

#### 4. CLINICS.

##### (a) *Child Welfare Centres* :—

There are five static Welfare Centres serving the district. They are located as follows :—

Castlethorpe (once monthly).	Olney (twice monthly).
Hanslope (once monthly).	Woburn Sands (twice monthly).
Newport Pagnell (twice monthly).	

In addition the following villages were visited monthly by the Mobile Welfare Unit :—

Stoke Goldington	Willen	Simpson	Sherington
Ravenstone	Woolstone	Milton Keynes	Lavendon
Filgrave	Woughton	Little Brickhill	Newton
Astwood	North Crawley	Loughton	Blossomville

The District Nurse and Health Visitor attended each session and a Medical Officer attended once a month. In addition to the normal work of a Child Welfare Centre, immunisation against Diphtheria and Whooping Cough was also carried out. These centres have done excellent work during the year and total attendances of children was 2,957. I should like to draw attention to the valuable work done by the Ladies Voluntary Committees at these centres.

##### (b) *Chest Clinics* :—

Administered jointly by the County Health Department and the Regional Hospital Board, Chest Clinics serving this area are held at Wolverton and Bletchley. A specialist in Chest Diseases attends once a week and these Clinics are doing excellent work particularly in the fight against Tuberculosis.

(c) *Orthopaedic Clinic.*

This Clinic administered by the Regional Hospital Board is held twice monthly at Wolverton Road, Newport Pagnell.

5. HOME HELPS SERVICE.

This Service, introduced under the National Health Service Act, 1946, is helping a lot of people annually. During 1955 a total of 66 cases were assisted.

6. HOSPITALS.

The following hospitals have received cases from the area during the year :—

Northampton General  
Harborough Road  
Creaton Sanatorium  
Renny Lodge

Bedford General  
Royal Bucks.  
Tindal House, Aylesbury  
Westbury, Newport Pagnell

### SECTION C.

#### SANITARY CIRCUMSTANCES OF THE AREA

(A) WATER :

*Sources of Supply—Olney.*

During the year this source of supply has at times been stripped to its uttermost limits and in spite of assistance from the Wood Lane, Hanslope, source and by transferring part of Emberton on to the Birchmoor via Sherington balancing tank supply to increase pressures a curtailment of supply had to be carried out on several occasions. Chlorination of supplies has been carried out and regular bacteriological examinations of the water have been submitted for analysis by the Public Health Department, all of which have proved satisfactory.

*Great Linford Source.*

The supply has been adequate in quantity throughout the year but the utmost difficulty and very careful supervision of the chlorination and standard of the water have been necessary to maintain a reasonably satisfactory quality.

The proposal to lay a main from Woolstone has not yet received the sanction of the Ministry but I trust that this will be carried out before the end of 1956 owing to the risks in having a public supply which is only satisfactory bacteriologically by very careful and variable chlorination. Due to the chlorination having to take place in the well rather than in the supply reservoir it means that an increased consumption, unforeseen, immediately reduces the standard of the water.



### *Haversham Source.*

The constant supply has been maintained throughout the year except during temporary breakdowns through electrical faults at the pumping station.

Supplies have been regularly chlorinated and samples on examination have proved very satisfactory on all occasions.

Owing to the difficulty, however, of maintaining the outlying automatic pumping station of this type, I trust that the new trunk main now laid will soon be satisfactorily tested to enable the supply to be obtained from the Birchmoor source.

I trust also that nothing will occur to delay the construction of the service reservoir required to cover Haversham in case of damage to the trunk main.

### *Tyringham Private Supply.*

Since the installation of the chlorination plant at the above works I am pleased to report that samples have proved satisfactory on every occasion.

### *Birchmoor Source.*

This source of supply continues to give every satisfaction but owing to the inadequacy of the capacity of the existing mains, plus a number of bursts, the supply to the consumers especially in the fringe areas leaves much to be desired.

The new trunk main is laid and I trust that the final tests on this will soon be satisfactorily completed as this will enable the fringe areas to maintain a good pressure and any bursts in supply mains to cause a minimum of interference of supply.

The quality of this water has remained satisfactory throughout the year.

### *General.*

I trust that it will soon be possible to complete the mains extension to Cold Brayfield, East End, North Crawley, and Great Linford, to give supplies to the villages of Filgrave, Gayhurst and Little Linford from the new trunk main supply and thus enable every village and hamlet in the Rural District to obtain a wholesome and sufficient supply of main water.

*Total Consumption for the Whole District for All Purposes for the Year 1955 from All Sources :—*

	GALLONS
Overbrook Works, Weston Underwood .. .. .	53,817,000
Birchmoor Total .. .. .	70,747,000
Bucks. Water Board Total .. .. .	5,539,000
Newport Pagnell Urban District Council via Lathbury	1,050,000
Great Linford Works .. .. .	6,571,200
Haversham Works .. .. .	18,884,000
Hanslope Works .. .. .	2,954,500
	159,562,700

*Number of Supplies Connected to the Council Mains during the Year :—*

Domestic Supplies—84, Metered Agricultural and Trade—21,  
Field Troughs—4.

*Chemical Analysis.*

*Source of Supply :* Haversham Public Supply.

*Date :* 4.7.55. *Time :* 12.30 p.m.

Chemical results in parts per million

*Appearance :* Bright with a very slight deposit. *Microscopical examination :*  
amorphous iron hydroxide with particles of calcium carbonate.

*Colour :* Nil. *Odour :* Nil.

	Parts per Million
pH .. .. .	7.3
Electric Conductivity .. .. .	740
Chlorine present as Chloride .. .. .	21
Residual Chlorine .. .. .	Absent
Nitrate Nitrogen .. .. .	5.0
Nitrite Nitrogen .. .. .	Less than 0.01
Ammoniacal Nitrogen .. .. .	0.000
Albuminoid .. .. .	0.013
Alkalinity as Calcium Carbonate	285
Carbonate .. .. .	285
Non-carbonate .. .. .	160
Oxygen absorbed .. .. .	0.15
Turbidity .. .. .	Less than 3
Hardness (Total) .. .. .	445
Total Solids .. .. .	495
Metals .. .. .	Iron 0.24, others absent
Free Carbon Dioxide .. .. .	20

This sample is reasonably clear and bright in appearance and free from metals apart from a trace of iron. The water is neutral in reaction, very hard

in character but it contains no excess of salinity or mineral constituents in solution. It is of satisfactory organic quality.

From the aspect of the chemical analysis and apart from the objection that the water is very hard, these results are indicative of a pure and wholesome character and suitability for drinking and domestic purposes.

#### *Chemical Analysis.*

*Source of Supply* : Great Linford Public Supply (Chlorinated).

*Date* : 4.7.55. *Time* : 1.00 p.m.

Chemical results in parts per million.

Appearance : Bright with very few mineral particles.

Colour : Nil. Odour : Nil.

	Parts per Million
pH .. ..	7.3
Electric Conductivity .. ..	840
Chlorine present as Chloride ..	36
Residual Chlorine .. ..	Absent
Nitrate Nitrogen .. ..	4.2
Nitrite Nitrogen .. ..	Less than 0.01
Ammoniacal Nitrogen .. ..	0.000
Albuminoid Nitrogen .. ..	0.013
Alkalinity as Calcium Carbonate	310
Carbonate .. ..	310
Non-carbonate .. ..	150
Oxygen absorbed .. ..	0.20
Turbidity .. ..	Less than 3
Hardness (Total) .. ..	460
Total Solids .. ..	560
Metals .. ..	Absent
Free Carbon Dioxide .. ..	22

This sample is practically clear and bright in appearance, neutral in reaction and free from iron and other metals. The water is very hard in character but it contains no excess of salinity or mineral constituents in solution. It is of satisfactory organic quality.

From the aspect of the chemical analysis and apart from the objection that the water is very hard, these results are indicative of a pure and wholesome character and suitability for drinking and domestic purposes.

*Chemical Analysis.*

*Source of Supply :* Birchmoor Source.

*Date :* 4.7.55. *Time :* 12.15 p.m.

Chemical results in parts per million.

Appearance : Clear and bright.

Colour : Nil. Odour : Nil.

	Parts per Million
pH .. .. .	6.7
Electric Conductivity .. ..	145
Chlorine present as Chloride ..	21
Residual Chlorine .. ..	Absent
Nitrate Nitrogen .. .. .	3.2
Nitrite Nitrogen .. ..	Less than 0.01
Ammoniacal Nitrogen .. ..	0.000
Albuminoid Nitrogen .. ..	0.000
Alkalinity as Calcium Carbonate	17
Carbonate .. .. .	17
Non-carbonate .. .. .	33
Oxygen absorbed .. .. .	0.00
Turbidity .. .. .	Nil
Hardness (Total) .. .. .	50
Total Solids .. .. .	100
Metals .. .. .	Iron 0.05, others absent.
Free Carbon Dioxide .. ..	5

This sample is clear and bright in appearance and free from metals apart from a negligible trace of iron. The water is on the acid side of neutrality, soft in character and has a comparatively low content of alkalinity; from the aspect of restraining corrosive activity a higher pH is considered desirable. The water contains no excess of salinity or mineral constituents and it is of the highest standard of organic quality.

From the aspect of the chemical analysis and apart from the objection to corrosive characteristics, these results are indicative of a pure and wholesome water suitable for drinking and domestic purposes.

*Chemical Analysis.*

*Source of Supply :* Weston Underwood Public Supply (Treated).

*Date :* 4.7.55. *Time :* 11.30 a.m.

Chemical results in parts per million.

Appearance : Bright, with very few mineral particles.

Colour : Nil. Odour : Nil.

	Parts per Million
pH .. .. .	8.2
Electric Conductivity .. ..	530
Chlorine present as Chloride ..	27
Residual Chlorine .. ..	Absent
Nitrate Nitrogen .. ..	6.0
Nitrite Nitrogen .. ..	Less than 0.01
Ammoniacal Nitrogen .. ..	0.000
Albuminoid Nitrogen .. ..	0.031
Alkalinity as Calcium Carbonate	110
Carbonate .. ..	110
Non-carbonate .. ..	95
Oxygen absorbed .. ..	0.25
Turbidity .. ..	Less than 3
Hardness (Total) .. ..	205
Total Solids .. ..	355
Metals .. ..	Iron less than 0.03, others absent
Free Carbon Dioxide .. ..	Absent

This sample is practically clear and bright in appearance, on the alkaline side of neutrality and free from metals apart from a negligible trace of iron. The water is hard in character but not unduly so and it contains no excess of salinity or mineral constituents in solution. It is of satisfactory organic quality.

From the aspect of the chemical analysis these results are indicative of a pure and wholesome water suitable for drinking and domestic purposes.

*Chemical Analysis.*

*Source of Supply :* Bow Brickhill Reservoir (Birchmoor).

*Date :* 20.7.55. *Time :* 12 noon.

Chemical results in parts per million.

Appearance : Clear and bright.

Colour : Nil. Odour : Very faint chlorinous.

	Parts per Million
pH .. .. .	6.5
Electric Conductivity .. ..	150
Chlorine present as Chloride ..	20
Residual Chlorine .. ..	0.15
Nitrate Nitrogen .. ..	3.0
Nitrite Nitrogen .. ..	Absent

	Parts per Million
Ammoniacal Nitrogen .. ..	0.000
Albuminoid Nitrogen .. ..	0.000
Alkalinity as Calcium Carbonate	20
Carbonate .. ..	20
Non-carbonate .. ..	30
Oxygen absorbed .. ..	0.00
Turbidity .. ..	Nil
Hardness (Total) .. ..	50
Total Solids .. ..	100
Metals .. ..	Absent
Free Carbon Dioxide .. ..	10

This sample is clear and bright in appearance and is free from metals. It has, however, a reaction on the acid side of neutrality on account of which corrosive characteristics would be anticipated. The water is soft in character and has a very moderate content of mineral and saline constituents. It conforms to the highest standard of organic quality.

These results are indicative of a water which, from the aspect of the chemical analysis, is pure and wholesome in character and suitable for public purposes apart from the objection to corrosive tendencies.

## (B) DRAINAGE AND SEWERAGE.

### *Existing Sewage Works.*

#### *Olney Works :*

The pumps and motors have worked very satisfactorily throughout the year. Modifications have been made to the weir controlling the storm water tank diversion so that during dry weather or moderate storms the whole of the sewerage passes through the full disposal works and only in torrential downpours when the 2nd pump comes into operation does any water pass into the storm water tanks. This modification has been necessary to improve our effluent during wet weather.

#### *Sherington Works :*

This plant still continues to give every satisfaction. Frequent cleansing of the precipitation tanks has been increased to cover the increased number of houses and a satisfactory effluent has been maintained throughout the year.

#### *Haversham Works. Fields Estate:*

These works are continuing to deal efficiently with the sewerage from this estate, a good effluent having been maintained throughout the year.

*Haversham Works. Manor Estate :*

Since my last report these works have given every satisfaction, a good effluent having been maintained throughout the year.

The chain-link fencing which has been agreed to, should be erected as soon as practicable to prevent damage by children.

*Milton Keynes Works :*

No trouble has been experienced on this plant and no complaints have been received.

*Little Brickhill Works :*

Since the modification to the storm overflow this plant has given every satisfaction. The fencing of the deep effluent ditch is to have attention in the near future and works to be carried out to prevent the flow scouring the sand and deepening the ditch should prevent further damage.

*Weston Underwood Works :*

This plant is working satisfactorily, a good effluent has been maintained and the remaining properties have now been connected thereto.

*Bow Brickhill Works :*

This plant has now been completed and the works of conversion and connection thereto in the village are proceeding satisfactorily. Nearly all the properties have now been connected.

*Birchmoor Joint Committee Scheme :*

Construction and development of these works is now completed and the capacity is sufficient to enable the Wavendon village to be sewered and pumped thereto. The Ministry, however, consider that this scheme should not proceed at present as some of the other villages are more urgently in need of a scheme.

*Emberton :*

This scheme should proceed early in 1956.

*Hanslope and Lavendon Schemes :*

These schemes are prepared in outline, site negotiations are completed and we await the Ministry's inquiry.

*Bradwell :*

This scheme is making reasonable progress and should be completed in July or August, 1956.

### Castlethorpe :

This scheme is prepared and approved in principle but is not to be carried out until the Hanslope and Lavendon schemes are underway, as the Hanslope scheme is a first priority due to the need for the development of housing sites which cannot proceed until the sewer is available.

### Wavendon :

The scheme is approved in principle but deferred by the Ministry for the time being.

## NORTHERN DEPOT

### Night Soil Collection and Cesspool Cleansing, etc.

	HKX:319	WPP:40
		Since 18.10.55
Total hours worked .. .. .	5,491 $\frac{3}{4}$	1,091
Absence due to sickness, holidays, etc. ..	97 hrs.	466 hrs.
Mileage covered .. .. .	7,823	2,012
Fuel consumed, gallons .. .. .	1,492	173 $\frac{1}{2}$
Average miles per gallon .. .. .	5.243	11.597
<i>Details of Work Carried Out :</i>		
Number of pails cleansed .. .. .	38,880	8,940
Number of privies cleansed .. .. .	28	3
Number of cesspools cleansed .. .. .	156	59
Number of visits to trade premises ..	58	17

## SOUTHERN DEPOT

### Night Soil Collection and Cesspool Cleansing, etc.

	JPP:480	WPP:39
Total hours worked .. .. .	4,324	1,264
Absence due to sickness, holidays, etc. ..	123 hrs.	54 hrs.
Mileage covered .. .. .	10,590	3,193
Fuel consumed, gallons .. .. .	1,136	226
Average miles per gallon .. .. .	7.927	14.128
<i>Details of Work Carried Out :</i>		
Number of pails cleansed .. .. .	26,276	8,278
Number of privies cleansed .. .. .	859	240
Number of cesspools cleansed .. .. .	209	41
Number of visits to trade premises ..	8	—

## NORTHERN DEPOT REFUSE COLLECTION

Total hours worked .. .. .	9,805 $\frac{1}{2}$
Absence due to sickness and holidays .. .. .	1,602 hrs.
Mileage covered .. .. .	10,919
Petrol consumed, gallons .. .. .	1,388 $\frac{1}{2}$
Average miles per gallon .. .. .	7.864
<i>Details of Work Carried Out :</i>	
Number of properties cleansed .. .. .	85,578
Number of bins cleansed .. .. .	99,555

In addition 3 loads of street sweepings have been removed.



## SOUTHERN AREA REFUSE COLLECTION

Total hours worked	8,886 $\frac{3}{4}$
Absence due to sickness and holidays	1,496 hrs.
Mileage covered	7,738
Petrol consumed	1,162
Average miles per gallon	6.659
<i>Details of Work Carried Out :</i>	
Number of properties cleansed	61,845
Number of bins cleansed	75,840
In addition 1 $\frac{3}{4}$ loads of trade refuse have been collected.	

### SECTION E.

#### CARCASSES AND OFFAL INSPECTED AND CONDEMNED IN WHOLE OR IN PART.

	Cattle exclud- ing Cows	Cows	Calves	Sheep & Lambs	Pigs	Horses
Number killed (if known)	476	118	27	1159	806	Nil
Number inspected ...	476	118	27	1159	806	Nil.
<b>All diseases except Tuberculosis and Cysticerci :</b>						
Whole carcasses condemned ...	Nil.	Nil.	Nil.	3	2	Nil.
Carcases of which some part or organ was condemned ...	46	34	1	60	10	Nil.
Percentage of the number inspected affected with disease other than tuberculosis and cysticerci ...	9.66	28.81	3.70	5.43	1.49	Nil.
<b>Tuberculosis only :</b>						
Whole carcasses condemned ...	Nil.	Nil.	Nil.	Nil.	1	Nil.
Carcases of which some part or organ was condemned ...	31	20	Nil.	Nil.	10	Nil.
Percentage of the number inspected affected with tuberculosis ...	6.51	16.10	Nil.	Nil.	1.36	Nil.
<b>Cysticercosis :</b>						
Carcases of which some part or organ was condemned ...	Nil.	Nil.	Nil.	Nil.	Nil.	Nil.
Carcases submitted to treatment by refrigeration ...	Nil.	Nil.	Nil.	Nil.	Nil.	Nil.
Generalised and totally condemned ...	Nil.	Nil.	Nil.	Nil.	Nil.	Nil.

## SECTION F.

### PREVALENCE OF AND CONTROL OVER INFECTIOUS AND OTHER DISEASES.

#### 1. GENERAL.

We have had a mild epidemic of Measles during the year, most of the cases occurring in the 2nd and 3rd quarter.

#### 2. NOTIFICATIONS.

Whooping Cough	..	4	Measles	..	..	..	134
Scarlet Fever	..	3	Dysentery	..	..	..	2
Abortus Fever	..	1					

#### 3. TUBERCULOSIS.

Five cases were notified during the year, 4 pulmonary and 1 non-pulmonary. There were no deaths.

## SECTION G.

### FACTORIES ACTS, 1937 & 1948.

#### 1. INSPECTIONS (Including Inspections made by Sanitary Inspectors)

Premises	No. on Register	Number of Inspections      Written Notices	
(i) Factories under Local Authority Control ... ..	59	128	1
(ii) Factories under Local Authority Control (for sec. 7 only) ...	71	142	8
(iii) Other premises (excluding Out-workers) ... ..	16	32	—
Total ...	146	302	9

## 2. DEFECTS FOUND.

Particulars	Found	Remedied	Referred by H.M. In- spector
Want of cleanliness ... ..	3	3	Nil.
Overcrowding ... ..	Nil.	Nil.	Nil.
Unreasonable temperature ... ..	Nil.	Nil.	Nil.
Inadequate ventilation ... ..	1	1	Nil.
Ineffective drainage of floors ... ..	Nil.	Nil.	Nil.
Sanitary Conveniences :			
(a) Insufficient ... ..	Nil.	Nil.	Nil.
(b) Unsuitable or defective ... ..	2	2	Nil.
(c) Not separate for sexes ... ..	Nil.	Nil.	Nil.
Other offences against the Act (not in- cluding offences relating to Out- work) ... ..	3	3	Nil.
	9	9	Nil.

3. PROSECUTIONS.—Nil.

4. OUTWORKERS (Sections 110 & 111).

Number of outworkers making wearing apparel	4
	—
	4
	==

DANIEL H. WALDRON,  
*Medical Officer of Health.*



