

[Report 1958] / Medical Officer of Health, Newcastle-under-Lyme Borough.

Contributors

Newcastle-under-Lyme (England). Borough Council.

Publication/Creation

1958

Persistent URL

<https://wellcomecollection.org/works/ku63mjb3>

License and attribution

You have permission to make copies of this work under a Creative Commons, Attribution license.

This licence permits unrestricted use, distribution, and reproduction in any medium, provided the original author and source are credited. See the Legal Code for further information.

Image source should be attributed as specified in the full catalogue record. If no source is given the image should be attributed to Wellcome Collection.



Wellcome Collection
183 Euston Road
London NW1 2BE UK
T +44 (0)20 7611 8722
E library@wellcomecollection.org
<https://wellcomecollection.org>

2 Library

Borough of Newcastle-under-Lyme

Stoffs



Annual Report

of the

Medical Officer of Health

for the Year 1958



JOHN WARRACK, M.B., Ch.B., D.P.H.

Medical Officer of Health

CHRISTOPHER A. WOOD, M.A.P.H.I., M.Inst.P.C.

Chief Public Health Inspector

15





BOROUGH OF NEWCASTLE-UNDER-LYME

CONTENTS

	Page
Members of Health Committee	2
Staff	3
Introduction	4
Statistics and Social conditions of the area	6
Public Health Services	7
Medical examinations of Corporation Employees	8
Atmospheric Pollution	9
Water Supply	13
Drainage and Sewerage	14
Swimming Baths	14
Sanitary Inspection of the area	16
Inspection of Factories	17
Housing	18
Inspection and Supervision of Food	21
Common Lodging Houses, Vans, etc., Smoke Abatement, Eradication of bed bugs, Shop Sanitation, Offensive Trades	27
Sanitary Accommodation	28
Public Cleansing	28
Street Cleansing	29
Public Conveniences	30
Rodent Control	31
Vermin Infestation	32
Tables—Causes of Death	33
Food Poisoning	33
Cases of Notifiable Diseases (other than Tuberculosis)	34
Deaths from Notifiable Diseases (other than Tuberculosis)	35
Notifications of and Deaths from Tuberculosis	36

Borough of Newcastle-under-Lyme
PUBLIC HEALTH COMMITTEE

(as at 31st December, 1958).

HIS WORSHIP THE MAYOR (ex-officio).
Councillor Miss E. Shaw (Chairman).
Councillor Mrs. L. Whalley (Vice-Chairman).
Alderman T. Bethell.
Alderman W. Evanson.
Alderman H. Huxley.
Alderman C. S. Whalley.
Councillor J. Bowler.
Councillor N. F. Bradshaw.
Councillor C. Carroll.
Councillor A. J. C. DeRenzi.
Councillor Mrs. E. Jones.
Councillor J. G. Jones.
Councillor C. E. Mitchell.
Councillor C. G. Mothershaw.
Councillor W. Nixon.
Councillor G. A. Poole.

PUBLIC HEALTH DEPARTMENT STAFF.

Medical Officers—

John Warrack, M.B., Ch.B., D.P.H.,
Medical Officer of Health and Borough School Medical Officer.

Sheila M. Durkin, M.B., Ch.B., D.P.H.,
Deputy Medical Officer of Health and Deputy Borough School
Medical Officer. (Resigned 20/2/58).

Hugh Rintoul Morrison, M.B., Ch.B., D.P.H.,
Deputy Medical Officer of Health and Deputy Borough School
Medical Officer. (Appointed 10/6/58).

Public Health Inspectors—

C. A. Wood, M.A.P.H.I., M.Inst.P.C., Cert. Meat Insp.,
Chief Public Health Inspector and Cleansing Superintendent.

T. H. Evans, M.A.P.H.I., Cert. Meat Insp.,
Deputy Chief Public Health Inspector and Deputy Cleansing
Superintendent.

J. W. Millington, M.A.P.H.I., A.R.S.H., Cert. Meat Insp.,
District Public Health Inspector.

E. Warrillow, M.A.P.H.I., A.R.S.H., Cert. Meat Insp.,
District Public Health Inspector.

R. P. Tabbinor, M.A.P.H.I., Cert. Meat Insp.,
District Public Health Inspector.

D. B. Morris, M.A.P.H.I., A.R.S.H., Cert. Meat Insp.,
District Public Health Inspector.

R. C. Price, M.A.P.H.I., A.R.S.H. (Appointed 1/6/58).
District Public Health Inspector.

B. J. Simcock, M.A.P.H.I., A.R.S.H. (Appointed 1/8/58).
District Public Health Inspector.

Sanitary Assistant—

C. C. Wood.

Clerical Staff—

Chief Clerk	...	Miss M. E. White.
Wages and Costing Clerk	...	Mr. A. Gumbley.
Senior Shorthand Typist	...	Mrs. D. Warrillow.

General Clerks and Shorthand Typists—

Mrs. E. Plant, Mrs. G. Palin, Miss A. Hoare, Miss Z. Cooper,
Miss J. Wootten, Mrs. T. Garratt.

Junior Clerks—

Miss S. Harper, Miss J. M. Ford, Mr. J. M. Rigby.

Public Health Department,
6 Queen Street,
Newcastle-under-Lyme,
Staffs.

Telephone : Newcastle, Staffs. 67801/2.

July, 1959.

**To His Worship the Mayor, Aldermen and Councillors of the
Borough of Newcastle-under-Lyme.**

Ladies and Gentlemen,

I beg to submit my report on the health of the Loyal and Ancient Borough for the year 1958. This report has been prepared in accordance with Ministry of Health Circular 22/58 and as instructed more detailed information is given under 'Vital Statistics' than has been the recent practice.

The birth rate in the Borough continues to exceed that for England and Wales as a whole, but unfortunately, the still-birth rate has increased from the previous year's figure of 28.12. The death rate for 1958 of 10.6 is even better than the previous year's rate of 11.17.

Under Table 1, 'Causes of Death,' it will be seen that the increase in deaths from malignant diseases continues. In 1958, 152 deaths occurred from this cause whilst in the previous year 134 deaths were so recorded. The steady increase, however, from cardiovascular lesions has apparently eased during the year under review as there are only 2 more than in the previous year.

From Table 3 it will be observed that the notifiable disease most prevalent during the year was measles, but even so the figure showed a marked drop in cases from the 1957 figure of 810. Dysentery and food poisoning notifications both showed an increase over the previous year's figure and in fact the outbreak of the former infection which commenced in 1957 continued unabated throughout 1958. The fact that this is so shows the great need for increased vigilance over the preparation of food and in personal hygiene generally. The treatment of these cases is being made more difficult by the organisms becoming resistant to some antibiotics. This more readily occurs in households in which the infection appears to pass amongst the inmates over periods of months.

It is gratifying to note from the information supplied by the Chief Public Health Inspector that progress has been made in the inspection of premises associated with the preparation and retail of foods. It is to be hoped that by raising the general standards of hygiene in those premises at least one of the reservoirs of intestinal infections will be removed.

The efficient prevention of the spread of food bourn infections depends largely on the prompt notification of cases to the Public Health Department and I would appeal to all general practitioners to continue to assist us in this work — especially when they find more than one case with gastro intestinal symptoms in a household.

In conclusion I record my gratitude to all members of the Council who have maintained an interest in public health matters during the year. I thank also the other officials of the Corporation for their co-operation during 1958 and the staff of my own department for their unfailing services in the cause of preventive medicine.

I am,

Ladies and Gentlemen,

Your obedient servant,

JOHN WARRACK.

STATISTICS AND SOCIAL CONDITIONS.

Area.

The area of the Borough is 8,882 acres.

Population, etc.

The Registrar-General's estimate of the population for 1958 is 74,200.

The number of inhabited houses at the end of 1958 was 24,312.

Rateable Value, etc.

The rateable value of the Borough is £721,671 and one penny rate in the £ (General Rate) produces £2,860.

Vital Statistics.

	Male	Female	Total
Live Births	668	646	1314
Legitimate	642	629	1271
Illegitimate	26	17	43

Live Birth Rate—per 1,000 estimated population 17.7.
(England and Wales 16.4).

Stillbirths	21	20	41
Legitimate	19	20	39
Illegitimate	2	—	2

Stillbirth Rate—per 1,000 live and still births 30.3.
(England and Wales 21.6).

Total Live and Stillbirths—1,355.

Infant Deaths	24	9	33
Legitimate	22	9	31
Illegitimate	2	—	2

Infant Mortality Rate per 1,000 total live births 25.1. (England and Wales 22.5).

Infant Mortality Rate per 1,000 legitimate live births 24.4.

 " " " " " illegitimate live births 46.5.

Neo-natal Mortality Rate (First four weeks) per 1,000 live births 17.5.
(England and Wales 16.2).

Illegitimate Live Births per cent of total live births 3.3.

Maternal Deaths (including abortion) 1.

Maternal Mortality Rate per 1,000 live and stillbirths 0.74. (England and Wales 0.43).

	Male	Female	Total
Total Deaths	427	362	789

 Rate per 1,000 population 10.6 (England and Wales 11.7).

PUBLIC HEALTH SERVICES.

National Assistance Act, 1948, and National Assistance (Amendment) Act, 1951.

Removal to suitable premises of persons in need of care and attention.

It is gratifying to record that during 1958 only one person was found to require removal under the powers contained in the above Acts.

National Assistance Act, 1948, Section 50.

Burial of Destitute Persons.

This Section of the Act enables a local authority to arrange for the burial or cremation of "the body of any person who has died or been found dead in their area, in any case where it appears to the authority that no suitable arrangements for the disposal of the body have been or are being made."

During the year no burials took place in which the cost was borne by the Council.

Post-Mortem Examinations.

During 1958, 77 bodies were removed to the City General Hospital Mortuary on the instructions of the Borough Coroner and in each case post-mortems were carried out.

MEDICAL EXAMINATION FOR SUPERANNUATION AND SICK PAY PURPOSES.

During 1958, 53 Corporation Employees were medically examined for fitness for admission to the Corporation Superannuation Scheme. The examinations were carried out by the medical staff of the Public Health Department.

Arrangements were made with a General Practitioner for 15 employees to be medically examined for suitability for inclusion in the Corporation's Sick Pay Scheme.

The following table gives details of the numbers of employees and staff examined and the Departments concerned :—

Department	Superannuation Scheme			Sick Pay Scheme		
	Total	Passed	Failed	Total	Passed	Failed
Borough Surveyor's	25	21	4	7	7	—
Borough Treasurer's	1	1	—	—	—	—
Cemeteries	4	3	1	1	1	—
Cleansing	3	3	—	—	—	—
Estate Office	2	2	—	1	1	—
Libraries	2	2	—	2	2	—
Parks	8	5	3	3	3	—
Public Baths	—	—	—	—	—	—
Public Health	4	4	—	—	—	—
Town Clerk's	4	4	—	—	—	—
Weights and Measures	—	—	—	1	—	1
Markets and Fairs	—	—	—	—	—	—

ATMOSPHERIC POLLUTION.

Complaints were received from the May Bank area of heavy falls of dust and grit and investigations were carried out by the Staff of this Department and the District Alkali Inspector.

The nuisance was attributed to the Shelton Iron and Steel Co. Works, which are situated across the valley from May Bank and to the adjoining Wolstanton Colliery where extensive site works are being carried out in connection with the sinking of a new shaft. Consultations took place with the Shelton Company when it was learned that new plant was to be installed to give better control of the blast furnaces and so reduce pollution. In addition the colliery agreed to take steps to minimize the dust arising from the workings.

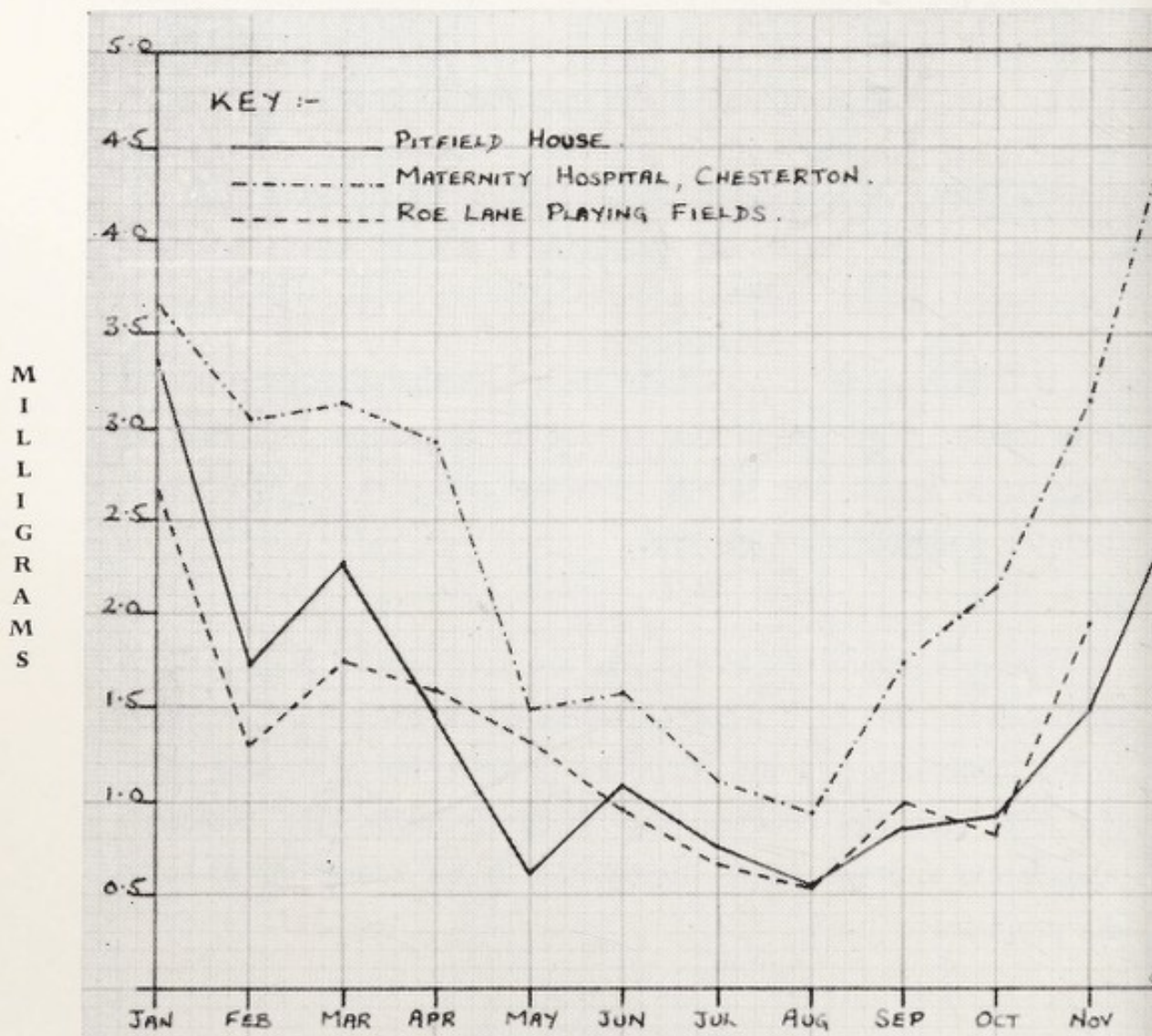
It is interesting to note from the tables that deposited matter from smoke is greater in the residential Brampton area than at Chesterton, which has always been considered a "Black Spot" from the pollution point of view.

Heavy volumes of black smoke are still omitted in the manufacture of blue bricks. This is considered by the trade to be necessary in the manufacture of this particular product, but a working party has been set up between the Brick Industry, the Research Association and the Alkali Inspectorate in an endeavour to solve the problem.

ATMOSPHERIC POLLUTION

Sulphur Dioxide Deposits

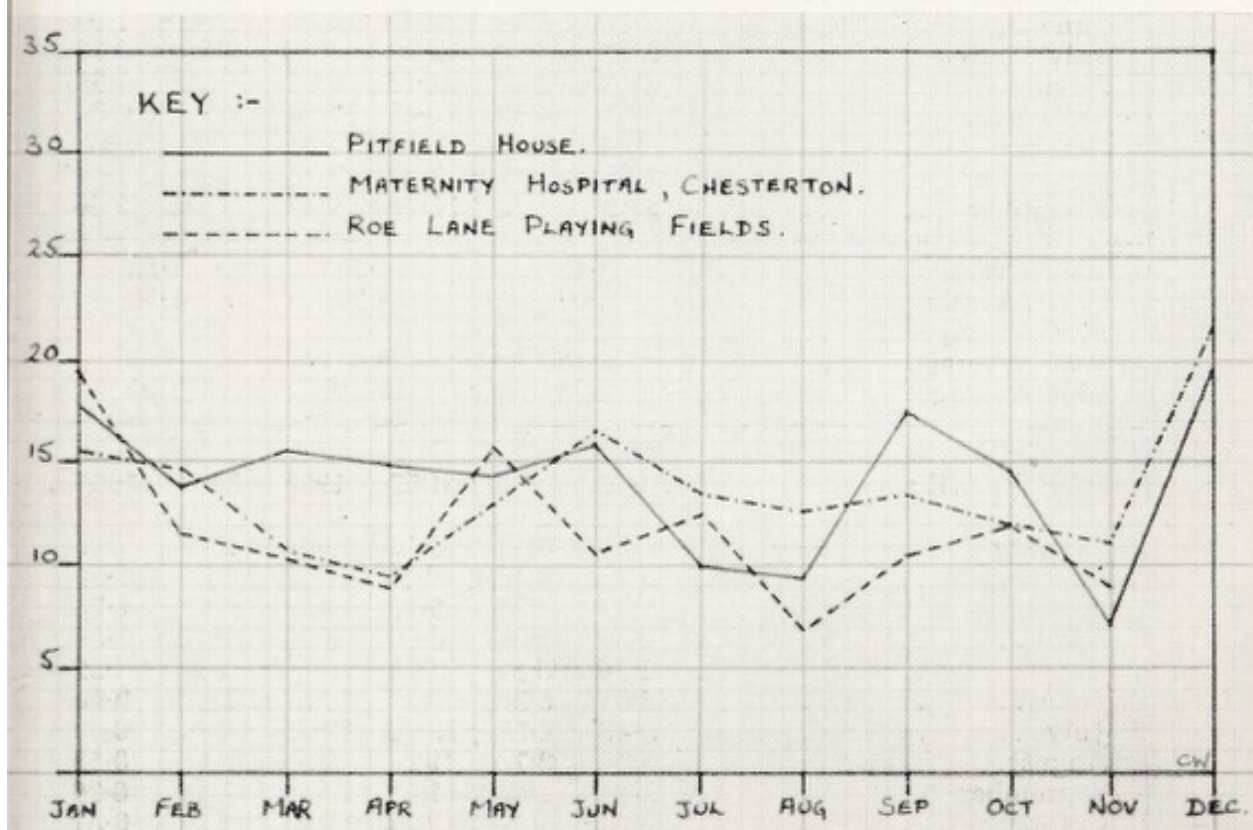
(expressed as Mg/SO_3 / Day / 100 sq. cm. of Batch 'A' Lead Peroxide
exposed under a louvered cover)



ATMOSPHERIC POLLUTION

Monthly Deposits in tons per square mile

Smoke Deposited Matter



A record on the rainfall and the pollution of the atmosphere is kept at three sites within the Borough. The following shows the rainfall and pollution at each station :—

MONTH	Rainfall in inches		Total solids in tons per square mile		SO ₃ Mg/DAY/100 SQ. CMS.	
	1957	1958	1957	1958	1957	1958
PITFIELD HOUSE :						
January	2.36	3.51	11.82	17.82	1.39	3.37
February	2.96	4.37	10.72	13.85	1.39	1.72
March	3.43	2.13	11.44	15.47	1.47	2.26
April	0.47	1.34	6.70	14.92	1.40	1.48
May	1.18	3.62	4.84	14.35	1.25	0.61
June	2.13	5.40	32.53	15.82	0.90	1.09
July	5.75	3.94	16.49	9.99	0.66	0.77
August	5.99	3.43	28.53	9.33	0.60	0.56
September	5.61	4.30	16.48	17.33	0.97	0.86
October	2.84	3.90	7.94	14.51	1.21	0.92
November	1.93	2.13	7.88	7.16	2.41	1.99
December	2.13	3.31	16.16	19.42	1.94	2.64
1958 Average	3.45		14.16		1.52	
1957 Average	3.07		14.29		1.30	
1956 Average	2.77		18.79		1.84	
1955 Average	2.23		18.53		1.65	
1954 Average	3.74		16.35		1.37	
ROE LANE :						
	1957	1958	1957	1958	1957	1958
January	2.25	3.43	8.70	19.41	2.08	2.66
February	2.72	4.10	8.10	11.72	1.80	1.30
March	3.27	1.85	5.12	10.32	0.99	1.74
April	0.39	1.38	6.60	8.99	1.47	1.59
May	1.34	3.59	5.84	15.79	1.28	1.31
June	2.05	5.38	9.49	10.67	1.00	0.96
July	5.48	4.53	13.10	12.51	0.86	0.67
August	5.95	3.78	19.61	6.93	0.68	0.53
September	5.40	4.57	11.08	10.50	1.63	0.99
October	2.99	3.59	7.56	11.98	1.22	0.81
November	2.05	2.17	6.11	8.96	1.97	1.94
December	1.81	—	18.87	—	1.71	—
1958 Average	3.45		11.62		1.32	
1957 Average	2.98		10.02		1.39	
1956 Average	2.54		11.98		1.61	
1955 Average	2.16		10.61		1.47	
1954 Average	3.47		12.00		1.08	

MONTH	Rainfall in inches		Total solids in tons per square mile		SO ₃ Mg/DAY/100 SQ. CMS.	
	1957	1958	1957	1958	1957	1958
CHESTERTON :						
January	1.77	2.88	18.29	15.39	2.88	3.64
February	2.64	3.62	9.76	14.72	3.40	3.05
March	2.99	1.46	10.30	10.87	2.55	3.14
April	0.35	1.30	8.84	9.65	2.35	2.92
May	1.26	—	9.55	—	1.96	1.49
June	1.77	4.73	9.42	16.60	1.18	1.58
July	5.52	3.59	16.86	13.55	1.51	1.11
August	—	3.31	—	12.71	1.13	0.95
September	5.51	4.22	14.42	13.39	1.60	1.73
October	2.52	3.59	10.70	12.03	2.76	2.14
November	1.73	2.01	5.64	11.15	4.36	3.16
December	1.89	2.96	11.89	21.58	3.41	4.85
1958 Average	3.06		13.79		2.48	
1957 Average	2.54		11.42		2.42	
1956 Average	2.36		17.04		2.52	
1955 Average	2.06		15.54		2.33	
1954 Average	3.40		15.10		1.83	

WATER SUPPLY.

The following information on water supply has been supplied to me by (1) the Chief Public Health Inspector and by (2) the Engineer and Manager of the Staffordshire Potteries Water Board.

(1) "The whole of the area is served by a piped supply on the constant system through the Staffordshire Potteries Water Board, the Borough Council being a constituent authority of that Board. Fourteen outlying isolated houses and farm premises derived their water supplies from wells and springs, and in four instances where water is not reasonably accessible, the houses involved are included in the five year housing clearance programme.

Four samples of drinking water were examined and reported as satisfactory.

(2) "The water supplied by the Board to the Newcastle Borough area is derived from two sources, being deep wells and boreholes sunk in the New Red Sandstone. All the water is treated with chlorine, being chloramination at both sources.

"During 1958 bacteriological examinations on 140 samples were made, of which 59 were of untreated waters at the sources, and 81 of the chloraminated water going into supply. All were of the highest purity and 100% free from Faecal coli organisms. 14 Chemical samples were analysed, showing moderate mineral and saline content, neutral reaction and an absence of metals. The water is also of moderate hardness ; it is not softened, nor is it plumbo-solvent.

“ All the waters in supply were certified by the Board’s chemist as conforming to the highest standards of bacterial purity and organic quality, indicative of a water pure, wholesome, and suitable for purposes of public and domestic supply.

“ The consumption of water for domestic purposes, unmetered trade and waste in the whole of the Board’s area of supply for the year 1958 averaged 30·11 gallons per head per day.”

The Chief Public Health Inspector has reported to me as follows :—

DRAINAGE AND SEWERAGE

The greater part of the district is sewered, one portion on the combined system, the remainder having a separate system for surface water. Portions of the area as yet unsewered include (a) Audley Road (part) and Springwood, (b) High Lane and Black Bank and (c) Seabridge.

During the year 373 yards of new foul sewers and 190 yards of storm water sewers were laid. 128 inspections regarding sewers, street gullies, etc., were made and seventeen nuisances in connection with complaints were abated.

SWIMMING BATHS

During the year samples of water were taken from the two swimming baths in use in the Borough. The results were as follows :

High School Bath—6 Bacteriological—6 satisfactory.

” ” ” —6 Free Chlorine —5 satisfactory.

—1 unsatisfactory.

King’s Memorial Bath—6 Bacteriological—6 satisfactory.

” ” ” —6 Free Chlorine —6 satisfactory.



THE LARGE SWIMMING POOL IN KING'S MEMORIAL BATHS.

SANITARY INSPECTION OF THE AREA.

Record of Inspections and Results.

Inspections made with respect to :	No of Inspections	Nuisances or defects reported	Re-visits made re abatement	Nuisances or defects remedied
Public Health Acts—				
Housing	197	407	358	585
Other Nuisances	150	112	188	84
Water Supply	82	52	96	41
Overcrowding	23	—	—	—
Drains—Inspected	386	95	213	100
Tested	177	2	28	2
Sewers, Street Gullies, etc ..	128	22	19	17
Sanitary Accommodation ..	77	10	16	11
Ashes Accommodation ..	967	—	—	—
Accumulations	81	11	26	7
Swine, Fowl or other Animals	14	2	5	—
Rivers Pollutions Acts ..	14	—	—	—
Rats and Mice Infestations	235	13	31	11
(Visits by Inspectors)				
Houses let in Lodgings ..	5	—	1	—

Other visits :—

Infectious Diseases	537
Verminous Conditions	96
Disinfection	31
Schools, Public Buildings, Cinemas, etc.			53
Miscellaneous Visits	2287
Interviews—owners and tradesmen	...		1047

Notices served and complied with

	Notices served		Notices complied with	
	Prelim.	Statutory	Prelim.	Statutory
Public Health Acts—				
Housing Defects ..	119	21	145	20
Nuisances	73	4	63	7
Smoke Nuisance ..	1	—	—	—
Housing Acts	3	—	1	—
Factories Acts	6	—	9	1
Food and Drugs Act ..	70	—	25	—
Bye-Laws and Local Acts ..	—	—	—	—
Shops Acts	—	—	1	—
Prevention of Damage by				
Pests Act, 1949	7	—	4	—
Milk and Dairies Act, 1950..	—	—	—	—
Quarry Fencing Act ..	2	—	1	—

Inspection of Factories.

(a) Inspections.

Premises	Number on Register	Number of		
		Inspections	Written Notices	Occupiers Prosecuted
Factories in which Sections 1, 2, 3, 4 and 6 are to be enforced by the Local Authorities	60	21	—	—
Factories not included above in which Section 7 is enforced by the Local Authority	210	114	6	—
Other premises in which Section 7 is enforced by the Local Authority (excluding out-workers' premises) ..	34	35	—	—
Total	304	170	6	—

(b) Cases in which defects were found.

Particulars	Number of cases in which defects were :—				No. of cases in which prosecutions were instituted
	Found	Remedied	Referred to H.M. Inspector	by H.M. Inspector	
Want of Cleanliness (S.1) ..	—	—	—	—	—
Overcrowding (S.2) ..	—	—	—	—	—
Unreasonable temperature (S.3)	—	—	—	—	—
Inadequate ventilation (S.4)	—	—	—	—	—
Ineffective drainage of floors (S.6)	—	—	—	—	—
Sanitary conveniences (S.7)—					
(a) Insufficient	1	1	—	1	—
(b) Unsuitable or defective	5	6	—	2	—
(c) Not separate for sexes	—	—	—	—	—
Other offences against the Act (not including offences relating to outwork) ..	2	2	—	—	—
Total	8	9	—	3	—

(c) Outworkers' premises.

Business carried on	No. of Premises	No. of Visits
Making of Wearing Apparel	14	14
Furniture and Upholstery	2	2
Plastics (make-up)	—	—
Watch Repairs	—	—
Total	16	16

HOUSING.

Housing Census :—

- | | |
|---|--------|
| (1) Total number of inhabited houses in the Borough | 24,311 |
| (2) Number of new houses erected during the year :— | |
| (a) by Private Enterprise | 193 |
| (b) by Local Authority | 253 |
| | } 446 |

The principal work done under the Housing Act, 1936, can be summarised as follows :—

Clearance Areas.

Eleven areas were represented involving a total of 239 houses and necessitating 1,628 visits.

The following 12 areas were confirmed by the Minister :—

AREA	No. of Houses involved	No. of Families	No. of Persons
Rye Bank, Newcastle, Area No. 104 C.P.O.	8	8	19
Liverpool Road, Newcastle (No. 3) Area No. 106, C.P.O.	10	11	22
Liverpool Road, Newcastle (No. 4), Area No. 107, C.P.O.	13	14	33
Silverdale Road, Wolstanton Area No. 109, C.O.	8	7	17
Victoria Street, Silverdale Area No. 110, C.O.	19	21	54
New Street, Wolstanton Area No. 111, C.P.O.	140	134	359
Wedgewood Street, Wolstanton Area No. 112, C.P.O.	3	4	6
Copes Row, Red Street, Chesterton Area No. 113, C.O.	3	3	6
Liverpool Road, Red Street, Chesterton Area No. 114, C.P.O.	6	6	15
Meadow Street, Chesterton Area No. 115, C.O.	2	2	7
London Road, Chesterton Area No. 116, C.P.O.	66	68	179
Wilton Street, Cross Heath Area No. 117, C.P.O.	61	64	174

Inspection of Dwelling-houses during the year :—

- | | |
|---|-----|
| (a) Total number of dwelling-houses inspected for housing defects (under Public Health or Housing Acts) | 124 |
| (b) Number of inspections made for the purpose | 238 |
| (c) Number of unfit houses made fit and houses in which defects were remedied | 190 |

In addition 5 individual unfit houses were dealt with as follows :—

Section 17, Housing Act, 1957 — Demolition Orders — 3.
Closing Orders — 2.

Overcrowding.

The number of cases recorded as legally overcrowded at the end of the year was 1.

In the absence of a census it is impossible accurately to assess the present position with regard to overcrowding. Four new cases brought to notice were recorded, and twelve cases were abated.

Housing Act, 1949, Housing Repairs and Rents Act, 1954 and Rent Act, 1957.

Improvement Grants.

100 applications for grant for improvements and conversions have been received and in 76 cases it has been recommended that they are suitable for consideration for grant.

Expenditure ranking for grant approved during the year on 34 applications £5,331 4 0

Expenditure ranking for grant on 28 applications completed during the year £5,007 2 0

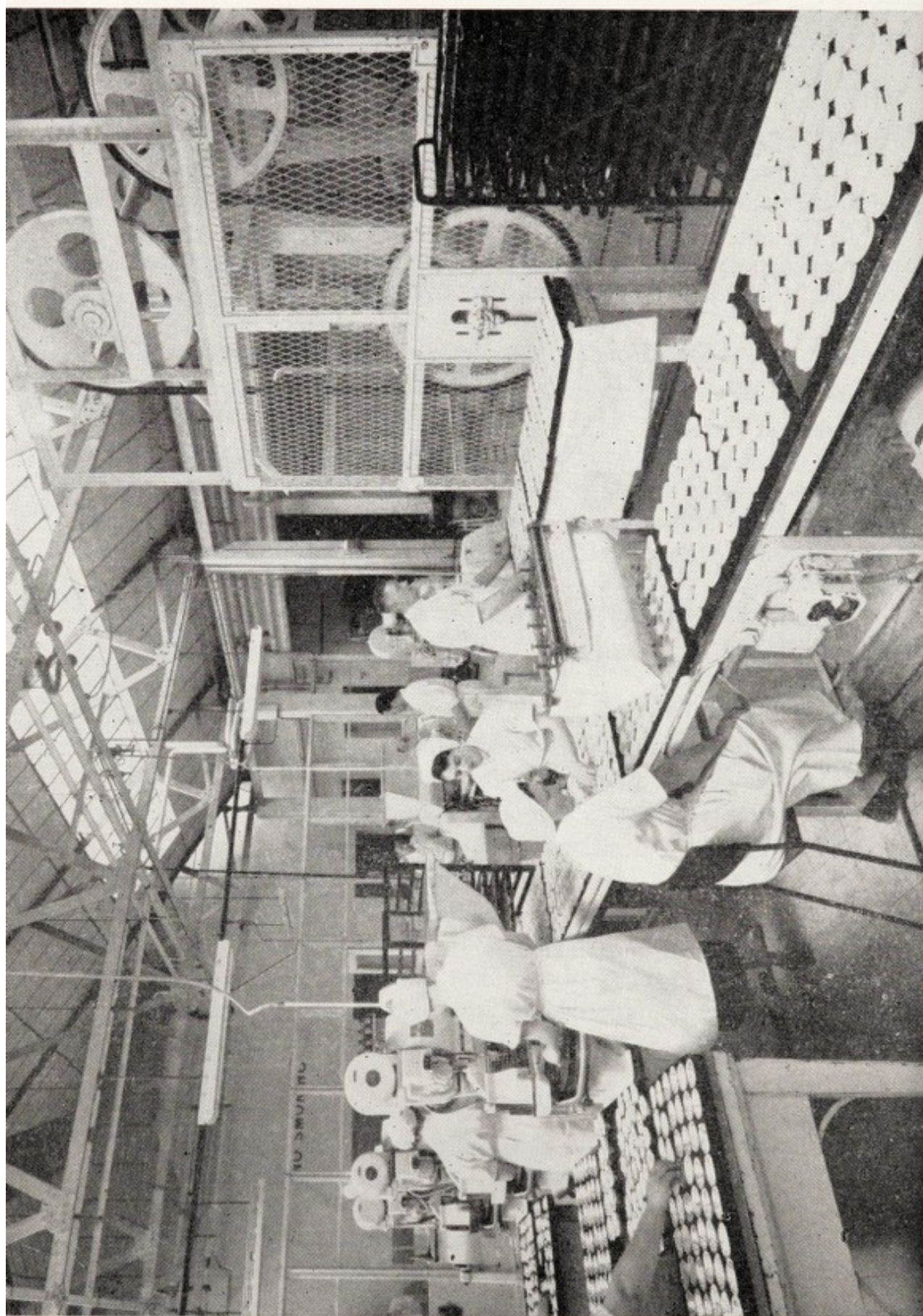
Certificates of Disrepair.

Applications for Certificates of Disrepair.

(1) Number of applications for certificates	...	64
(2) Number of decisions not to issue certificates	...	1
(3) Number of decisions to issue certificates—		
(a) in respect of some but not all defects		48
(b) in respect of all defects	18
(4) Number of undertakings given by landlords under paragraph 5 of the First Schedule	...	14
(5) Number of undertakings refused by Local Authority under proviso to paragraph 5 of the First Schedule	Nil
(6) Number of Certificates issued	49

Applications for Cancellation of Certificates.

(7) Applications by landlords to Local Authority for cancellation of certificates	15
(8) Objections by tenants to cancellation of certificates		Nil
(9) Decisions by Local Authority to cancel in spite of tenant's objection	Nil
(10) Certificates cancelled by Local Authority	...	15



INSPECTION AND SUPERVISION OF FOOD.

Food Hygiene Regulations, 1956.

Despite the pressure of other work in the department it is pleasing to report that all the following types of food premises have received an inspection during the year :—

Food Preparing Premises, Bakehouses, Slaughterhouses, Butchers' Shops and Market Stalls.

Food premises generally continue to improve and the condition of the covered market is now much more satisfactory.

A high standard of personal hygiene of everyone in contact with food is a vital factor in providing food free from disease.

There has been a 100% inspection of all animals slaughtered at slaughterhouses in the Borough.

Record of Inspections and Results.

	No. of Premises	Inspections	Re-Inspections	No. of Premises Visited	Nuisances or defects	
					Found	Abated
Dairies & Milkshops	218	105	7	96	2	2
Ice Cream Premises	195	123	10	111	13	6
Food Preparing Premises ..	45	294	40	45	182	92
Bakehouses ..	23	65	19	23	20	14
Slaughterhouses ..	3	358	2	3	2	2
Butchers' Shops ..	74	172	20	74	50	39
General Shops selling Food ..	723	479	64	320	176	90
Market & Stall Inspections ..	23	376	11	23	3	4

(a) **Milk Supply.**

Number of Dairy Farms in the Borough	...	28
Producers of graded milk	12
Number of Retail Purveyors of milk	265
(a) Resident	249
(b) Non-Resident	16

Of the resident purveyors, 207 retail sterilised bottled milk only.

Number of Dairy Milk Shops	11
----------------------------	--------	----

Fifty-eight retail purveyors hold licences for the sale of graded milk.

The following licences in connection with such grades were issued during the year—

Tuberculin Tested	52
Pasteurised	58

Two bottling licences were issued during the year—

Tuberculin Tested	1
Pasteurised	1

There is one licensed pasteurising plant in the Borough.

Number of Ice Cream premises registered under Private Act—

Sale only	191	} 195
Manufacture and Sale	4	

Bacteriological Samples.

Type	No. Submitted	No. failed Cleanliness Test
MILK:		
Heat Treated	*96	—
Ice Cream and Lollipops	23	—

* All samples passed Heat-treatment Test

Other articles examined in connection with food inspection, etc. :—

Article	Purpose of Examination
Pork Pie	Presence of pathogenic organisms
Pressed Hock	” ” ” ”
Brawn	” ” ” ”
Savoury Duck	” ” ” ”
Pressed Tongue	Suspected food poisoning
School Meal	” ” ”
Pressed Tongue	” ” ”
Pressed Beef	” ” ”
Sausage	” ” ”
Specimen from carcase of cow	Presence of pathogenic organisms
Tins of Chopped Pork ...	Presence of bacterial growth

Method of Disposal of Condemned Food.

All meat condemned by the Food Inspectors is stained in accordance with the Ministry's recommendations and disposed of either by the Local Authority by incineration in the case of small quantities or where whole carcases are involved through approved collectors.

With regard to other foods (tinned goods, etc.,) these are incinerated or buried at the Council's controlled tip.

(b) Meat and Other Foods.

Number of butchers' shops registered under Private Act (including Market Stalls) ...	74
Number of Preserved Food preparing premises registered (including Fish Fryers, 34) ...	76
Number of licensed slaughterhouses ...	3
Number of men licensed to slaughter animals in accordance with the Slaughter of Animals Act, 1933	9
Number of Meat and Food inspections ...	546

**Carcases and Offal inspected and condemned
in whole or in part.**

	Cattle exclud'g Cows	Cows	Calves	Sheep and Lambs	Pigs	Horses
Number Killed (if known) ..	161	64	2	885	241	—
Number Inspected	161	64	2	885	241	—
All Diseases except Tuberculosis and Cysticerci						
Whole carcases condemned	—	—	—	2	3	—
Carcases of which some part or organ was condemned ..	58	22	—	119	38	—
Percentage of the number inspected affected with disease other than Tuberculosis and Cysticerci ..	36.0	34.4	—	13.7	17.0	—
Tuberculosis only						
Whole carcases condemned	—	—	—	—	—	—
Carcases of which some part or organ was condemned ..	29	15	—	—	14	—
Percentage of the number inspected affected with Tuberculosis	18.0	23.4	—	—	6.1	—
Cysticercosis						
Carcases of which some part or organ was condemned...	2	1	—	—	—	—
Carcases submitted to treatment by refrigeration ...	2	1	—	—	—	—
Generalised and totally condemned	—	—	—	—	—	—

Total weight condemned, 1 Ton, 7 Cwt, 9 lbs.

Surrenders of Other Food

Poultry, Game, etc.	
Cooked Meats	
Bacon and Ham	256
Wet Fish	105
Cheese	128
Pickles and Sauces	18
Preserves	7
Dried Fruits	39
Tinned Meat	1888
Tinned Fish	134
Tinned Vegetables	745
Tinned Milk	183
Tinned Soup	198
Tinned Fruit	3456
Fresh Fruit	14

Total 7,256

(3 tons, 4 cwts., 88 lbs.)

Food and Drugs Act, 1955.

Total number of samples taken — 160.

Milk	130	Bisto	1
Cheese	2	Natural Lemon Juice			1
Butter	2	Currants	3
Margarine	3	Sultanas & Raisins	...		3
Sausages	1	Cochineal	1
Lard	1	Aspirin	1
Self-Raising Flour	...		2	Bicarbonate of Soda	...		1
Cake Mix	1	Seidlitz Powders	...		1
Tea	1	Express Powders	...		1
Coffee & Chicory	...		2	Beechams Powders	...		1
Jam	1				

Two samples were adversely reported upon by the Public Analyst :—

1. Sample No. 381 of sterilised milk was found to be 6.7% deficient in fat. At the processing dairy surplus milk was held in bulk for a day previous to sterilising and was run off from the storage tank to the sterilizer before thoroughly mixing. The firm was warned to ensure proper mixing by greater use of agitator fitted in the tank. Follow up samples were genuine.

2. Sample No. 18 of cleaned currants contained 0.2% of sandy matter which was considered excessive.

Subsequent follow up samples proved genuine.

All the milk samples were reported by the Analyst to be free from preservative and artificial colouring matter.

Number of approved premises—

Wholesale Dealers in Margarine ... 6

Common Lodging Houses.

During the year the last remaining lodging house in the Borough closed after being in existence as such for many years. This was at 13, Lower Street, which provided beds for 39 males.

Three inspections were made during the year.

Tents, Vans and Sheds.

Number of Vans existing at the end of the year :—

(a) 1 Permanent Site	22
(b) 8 Other Sites	17
Number of vans, etc., in possession of owner-occupiers	36
Number of vans, etc., known to be overcrowded				2
Number of vans, etc., unfit for habitation			...	2
Number of visits and inspections made			...	145
Nuisances or defects found	3
Nuisances or defects remedied	3

Smoke Abatement.

Number of recorded observations made	...	23
Number of notices served	...	1
Number of notices complied with	...	—
Premises visited following observations	...	18

Eradication of Bed Bugs.

Particulars of action taken is as follows :—

COUNCIL HOUSES				PRIVATE HOUSES			
Inspections	Infested	Dis-Infested		Inspections	Infested	Dis-Infested	
		HCN	Other Insecticides			HCN	Other Insecticides
59	3	—	3	37	8	—	8

Shop Sanitation

Number of sanitary visits made to shops	...	8
Number of nuisances or defects found	...	5
Number of nuisances or defects remedied	...	4

Offensive Trades.

Number recorded as being within the Borough		9
Fat Melters, etc.	...	6
Tripe Boilers	...	1
Rag and Bone Dealers	...	1
Bone Boiler	...	1
Number of new offensive trades established	...	Nil
Number of inspections made	...	24
Nuisances or defects found	...	—
Nuisances or defects remedied	...	—

SANITARY ACCOMMODATION.

The following is a summary of the various types of sanitary convenience existing in the Borough at the end of the year :—

No. of houses served by waste water closets	...	128
No. of houses served by hand-flushed water closets	...	84
No. of houses and premises served by privies (56)	...	43
No. of houses and premises served by pail closets (61)	...	56
No. of houses and premises served by ash pits (2)	...	2

Particulars of conversions made during the year :—

Privies converted to water closets	...	4
Pail closets converted to water closets	...	4
Waste water closets converted to flushed water closets	...	5
Hand-flushed closets provided with cisterns	...	3
Standard dustbins replaced or provided through the Local Authority (excluding new houses erected)	...	2,030

PUBLIC CLEANSING.

SERVICES :

The following is a summary of the cleansing services performed during the year ending 31st March, 1959 :—

Refuse Collection :—

Number of houses and other premises receiving regular refuse collection service	...	24,837
Number of premises receiving special trade refuse collection service	...	670
Average number of ashbins cleansed per week	...	24,282
Number of separate Waste Food Bins in use	...	104
Average number of privies cleansed per week	...	55
Average number of pail closets cleansed per week	...	62

Number of cesspools cleansed during the year (excluding work undertaken outside the area) ...	31
Total refuse collected—Dry (estimated) ...	22,250 tons
Salvage (estimated) ...	870 tons
Wet (estimated) ...	350 tons
Weight collected per 1,000 population per day (Dry refuse and salvage) ...	16.4 cwts.

Refuse Disposal :—

Total estimated refuse dealt with at Destructor Plant or Tips (excluding wet refuse, or cover- ing material) ...	25,570 tons
(Incineration 3 %, Tipped 97 %).	

Most of the refuse collected in the Borough is disposed of at disused marlholes at Crackley Bank, Chesterton. The first marlhole is nearing completion and when levelled will be used for industrial development. In the case of the second one the water has been pumped out, approach roadways are almost constructed and it can be brought into use when required.

STREET CLEANSING.

Mileage : Trunk Road (4.36 miles), County Roads (30.68 miles), District Roads (64.48 miles), Unadopted Roads (19.98 miles).
Total 119.50 miles.

Mileage of Streets cleansed : 99.52.

Frequency of Cleansing.

(a) At least once daily ...	1 %
(b) Three to five times weekly ...	3 %
(c) Twice weekly ...	8 %
(d) Once weekly ...	63 %
(e) Less than once weekly ...	25 %

Number of Street Gullies :— 6,475.

Number of Gully Cleansings during year :— 27,753.

The Staff employed in these services is as follows :—

	Average
Refuse collection and salvage ...	74
Refuse disposal ...	5
Street cleansing ...	21

In addition to the above there is one cleansing foreman, a foreman mechanic and two mechanics for vehicle maintenance.

COSTS :—

The following figures show the estimated total cost for all services, with salvage income shown separately.

Net Expenditure—

Refuse Collection	£46,160
Refuse Disposal	£2,808
(Salvage Income £5,753).				
				<hr/>
				£48,968
Street Cleansing (all roads)	£13,269
Gully Cleansing	£2,725

PUBLIC CONVENIENCES :

The following conveniences are maintained and supervised :—

Newcastle :—

Pepper Street (Males and Females)
Marsh Street (Males and Females)
Liverpool Road Urinal

Wolstanton :—

High Street (Males and Females)
Bradwell Lane (Males and Females)
Jubilee Road Urinal

Silverdale :—

Crown Street (Males)

Knutton :—

Cross Roads Urinal and W.C. (Males)

Chesterton :—

Victoria Street (Males)
Dragon Square (Males and Females)

Net Cost of Services — £6,852.

RODENT CONTROL.

One full-time and two part-time operators are employed to undertake treatment on all Council and Private properties and to give advice generally following receipt of complaint. In addition, systematic treatment is carried out in connection with the 57 annual contracts with traders affecting factory and business premises.

Sewer maintenance treatments carried out during May and October with an operating squad consisting of two rodent operators, two sewer men and the use of a van. A total of 1,515 sewer manholes were inspected and of these 1,444 were baited and 300 showed pre-bait takes.

3,058 visits were made by the operators and the number of rats destroyed was :—

(a) Caught and Trapped 659. (b) Estimated by baits 2,098.

The rodent problem in the Borough is still mainly minor scattered infestation and the maintenance treatments of sewers, together with block control measures has kept the district reasonably satisfactory.

The refuse disposal tips receive regular attention and give very little trouble.

The two methods of rat destruction employed are gassing and poisoning. The poisons and baits used are those approved by the Ministry of Agriculture, Fisheries & Food, which include : oatmeal, sausage rusk, zinc phosphide, warfarin, red squills, arsenic, antu, tracking dust and cymag gas.

The following is a copy of the table included in the annual return submitted to the Ministry of Agriculture, Fisheries & Food :—

	Type of Property				(5) Agri- cultural
	Non-Agricultural				
	(1) Local Author- ity	(2) Dwelling houses (in. C'ncil houses)	(3) All other (includ'g business premises)	(4) Total of Cols (1) (2) & (3)	
I. Number of properties in Local Authority's District	87	23,234	2,309	25,630	47
II. Number of properties inspected as a result of:					
Notification	18	150	12	180	3
Otherwise (e.g. when visited primarily for some other purpose)	24	240	71	335	3
III. Number of properties inspected (in Section II) which were found to be infested by :					
(a) Rats					
Major ..	2	—	4	6	—
Minor ..	6	65	19	90	2
(b) Mice					
Major ..	—	1	12	13	—
Minor ..	18	44	16	78	—
IV Number of infested prop- erties (in Section III) treated by the L.A.	24	109	51	184	2

The gross expenditure on rodent control during the year was £844

Vermin Infestation.

In addition to the service for rats and mice destruction, the Department gives advice on methods to eradicate most known insects found in and about dwellings and other premises.

Where a house from which a tenant is to be re-housed in a Council house is found to be infested with vermin, the house and furniture, etc., are disinfested before removal takes place.

Table 1—CAUSES OF DEATH

CAUSES OF DEATH			MALES	FEMALES
All Causes			427	362
1. Tuberculosis, respiratory	4	3
2. Tuberculosis, other	—	—
3. Syphilitic disease	1	—
4. Diphtheria	—	—
5. Whooping Cough	—	—
6. Meningococcal infections	—	—
7. Acute Poliomyelitis	—	—
8. Measles	—	—
9. Other infective and parasitic diseases	—	1
10. Malignant neoplasm, stomach	17	9
11. Malignant neoplasm, lung, bronchus	26	3
12. Malignant neoplasm, breast	—	18
13. Malignant neoplasm, uterus	—	4
14. Other malignant and lymphatic neoplasms			34	41
15. Leukæmia, aleukæmia	1	—
16. Diabetes	1	—
17. Vascular lesions of nervous system	54	72
18. Coronary disease, angina	91	36
19. Hypertension with heart disease	8	7
20. Other heart disease	37	60
21. Other circulatory disease	12	18
22. Influenza	—	1
23. Pneumonia	23	12
24. Bronchitis	22	9
25. Other diseases of respiratory system	11	2
26. Ulcer of stomach and duodenum	11	1
27. Gastritis, enteritis and diarrhoea	2	1
28. Nephritis and nephrosis	1	3
29. Hyperplasia of prostate	5	—
30. Pregnancy, childbirth, abortion	—	1
31. Congenital malformations	7	4
32. Other defined and ill-defined diseases	34	33
33. Motor vehicle accidents	8	3
34. All other accidents	13	11
35. Suicide	4	8
36. Homicide and operations of war	—	1

Table 2—FOOD POISONING

The following table shows the position regarding the cases of food poisoning which occurred in the Borough during the year:

poisoning which occurred in the Borough during the year.					
(a) Food Poisoning Notifications (corrected) as returned to Registrar General.					
1st Quarter	2nd Quarter	3rd Quarter	4th Quarter	Total	
7	3	4	4	18	
(b) Cases otherwise ascertained.					
1st Quarter	2nd Quarter	3rd Quarter	4th Quarter	Total	
—	43	1	—	44	
(c) Symptomless Excreters.					
1st Quarter	2nd Quarter	3rd Quarter	4th Quarter	Total	
—	—	—	—	Nil	
(d) Fatal Cases.					
1st Quarter	2nd Quarter	3rd Quarter	4th Quarter	Total	
—	—	—	—	Nil	

Table 3.—Cases of Notifiable Diseases (other than Tuberculosis) notified during 1958

NOTIFIABLE DISEASES	AT ALL AGES	TOTAL CASES NOTIFIED AT ALL AGES										
		Under 1	1 and under 2	2 and under 3	3 and under 4	4 and under 5	5 and under 10	10 and under 15	15 and under 20	20 and under 35	35 and under 65	65 years and over
Small-pox	—	—	—	—	—	—	—	—	—	—	—
Enteric Fever (including Paratyphoid)	—	—	—	—	—	—	—	—	—	—	—
Diphtheria (including Membranous Group)	119	2	1	5	17	10	73	10	—	1	—	—
Scarlet Fever	—	—	—	—	—	—	—	—	—	—	—
Puerperal Pyrexia	—	—	—	—	—	—	—	—	—	—	—
Pneumonia	22	2	—	—	—	—	1	2	1	3	10	3
Ophthalmia Neonatorum	—	—	—	—	—	—	—	—	—	—	—
Pemphigus Neonatorum	—	—	—	—	—	—	—	—	—	—	—
Encephalitis Lethargica (Post-Infectious)	—	—	—	—	—	—	—	—	—	—	—
Cerebrospinal Fever	—	—	—	—	—	—	—	—	—	—	—
Erysipelas	3	—	—	—	—	—	—	—	—	1	2	—
Poliomyelitis and Polio-Encephalitis	—	—	—	—	—	—	—	—	—	—	—
Paralytic	1	—	—	—	1	—	—	—	—	—	—	—
Non-Paralytic	2	—	—	—	—	—	—	—	—	—	1	—
Measles	477	17	47	60	57	53	239	2	1	1	—	—
Whooping Cough	13	1	—	3	2	3	4	—	—	—	—	—
Dysentery	162	7	6	10	9	13	59	16	4	23	15	—
Food Poisoning	18	3	1	—	3	3	2	3	—	1	2	—
Meningococcal Infection	2	1	—	—	—	—	—	—	—	—	1	—
Malaria	—	—	—	—	—	—	—	—	—	—	—

Table 4.—Deaths from Notifiable Diseases (other than Tuberculosis) during 1958.

Notifiable Diseases	Total Number of Deaths												
	AT ALL AGES	At All Ages											
		Under 1	1 and under 2	2 and under 3	3 and under 4	4 and under 5	5 and under 10	10 and under 15	15 and under 20	20 and under 35	35 and under 45	45 and under 65	65 years and over
Diphtheria (including Membranous Croup)	—	—	—	—	—	—	—	—	—	—	—	—	—
Other Infective and Parasitic Diseases	1	—	—	—	—	—	—	—	—	1	—	—	—
Pregnancy, Childbirth Abortion ..	1	—	—	—	—	—	—	—	—	—	1	—	—
Meningococcal Infections ..	—	—	—	—	—	—	—	—	—	—	—	—	—
Pneumonia ..	35	2	—	—	—	—	—	—	1	—	3	29	—
Whooping Cough ..	—	—	—	—	—	—	—	—	—	—	—	—	—
Measles ..	—	—	—	—	—	—	—	—	—	—	—	—	—
Acute Poliomyelitis	—	—	—	—	—	—	—	—	—	—	—	—	—

Table 5.—Notification of and Deaths from Tuberculosis during 1958

AGE PERIODS	NEW CASES				DEATHS			
	Respiratory		Non-Respiratory		Respiratory		Non-Respiratory	
	M	F	M	F	M	F	M	F
Under 1	—	—	—	—	—	—	—	—
1 and under 5	1	—	—	—	—	—	—	—
5 and under 15	1	1	—	1	—	—	—	—
15 and under 25	6	1	3	—	—	—	—	—
25 and under 35	1	4	—	—	1	2	—	—
35 and under 45	4	1	—	—	—	—	—	—
45 and under 55	4	3	—	—	—	—	—	—
55 and under 65	3	2	—	—	—	—	—	—
65 and upwards	3	—	—	—	3	1	—	—
TOTAL	23	12	3	1	4	3	—	—