

[Report 1954] / Medical Officer of Health, Newcastle-under-Lyme Borough.

Contributors

Newcastle-under-Lyme (England). Borough Council.

Publication/Creation

1954

Persistent URL

<https://wellcomecollection.org/works/z3bnrzh6>

License and attribution

You have permission to make copies of this work under a Creative Commons, Attribution license.

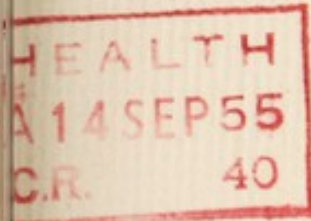
This licence permits unrestricted use, distribution, and reproduction in any medium, provided the original author and source are credited. See the Legal Code for further information.

Image source should be attributed as specified in the full catalogue record. If no source is given the image should be attributed to Wellcome Collection.



Wellcome Collection
183 Euston Road
London NW1 2BE UK
T +44 (0)20 7611 8722
E library@wellcomecollection.org
<https://wellcomecollection.org>

C4492(1) - Newcastle-under-Lyme
Borough of Newcastle-under-Lyme.



Annual Report


of the

Medical Officer of Health

for the Year 1954

JOHN WARRACK, M.B., Ch.B., D.P.H.
Medical Officer of Health.

CHRISTOPHER A. WOOD, M.S.I.A., M.Inst.P.C.
Chief Sanitary Inspector.



Digitized by the Internet Archive
in 2017 with funding from
Wellcome Library

<https://archive.org/details/b29903841>



BOROUGH OF NEWCASTLE-UNDER-LYME

CONTENTS

| | Page |
|---|-------|
| Members of Health Committee | 2 |
| Staff | 3 |
| Introduction | 4 |
| Statistics and Social conditions of the area | 8 |
| Public Health Services | 9 |
| Medical examinations of Corporation Employees | 10 |
| Mass X-Ray Unit Public Survey | 10 |
| Atmospheric Pollution | 12 |
| Water Supply | 14 |
| Drainage and Sewerage | 15 |
| Swimming Baths | 16 |
| Sanitary Inspection of the area | 17 |
| Inspection of Factories | 18 |
| Housing | 19 |
| Inspection and Supervision of Food | 22 |
| Rag Flock, etc., Regulations 1951 | 27 |
| Common Lodging Houses, Vans, etc., Smoke Abatement, Eradication of bed bugs, Shop Sanitation, Offensive Trades | 28 |
| Sanitary Accommodation | 29 |
| Public Cleansing | 29 |
| Public Conveniences | 31 |
| Rodent Control | 32 |
| Tables | 34—36 |

Borough of Newcastle-under-Lyme

PUBLIC HEALTH COMMITTEE

(AS AT 31ST DECEMBER, 1954)

HIS WORSHIP THE MAYOR (*ex-officio*).

Alderman W. E. WELSBY (Chairman).

Councillor W. NIXON (Vice-Chairman).

Alderman W. EVANSON.

Alderman A. HOWARD

Councillor J. BOWLER.

Councillor J. W. BILLINGTON.

Councillor T. BETHELL.

Councillor N. F. BRADSHAW.

Councillor Mrs. E. JONES.

Councillor T. LOWTHER.

Councillor B. PARRY.

Councillor A. RYLES.

Councillor F. W. SHEPLEY.

Councillor L. SKERRETT.

Councillor W. H. TOMS.

Councillor C. S. WHALLEY.

PUBLIC HEALTH DEPARTMENT STAFF

Medical—

JOHN WARRACK, M.B., Ch.B., D.P.H.

Medical Officer of Health and School Medical Officer.

I. ASH, M.D. Rome, D.P.H.

Deputy Medical Officer of Health and Deputy School Medical Officer.

Sanitary Inspectors—

C. A. WOOD, M.S.I.A., M.Inst.P.C., Cert. Meat Insp.

Chief Sanitary Inspector and Cleansing Superintendent.

T. H. EVANS, M.S.I.A., Cert. Meat Insp.

Deputy Chief Sanitary Inspector and Deputy Cleansing Superintendent.

G. R. HALL, M.S.I.A., A.R.San.I., Cert. Meat Insp.

District Sanitary Inspector.

J. W. MILLINGTON, M.S.I.A., A.R.San.I., Cert. Meat Insp.

District Sanitary Inspector.

E. WARRILLOW, M.S.I.A., A.R.San.I., Cert. Meat Insp.

District Sanitary Inspector.

K. W. WILLANS, M.S.I.A., Cert. Meat Insp.

District Sanitary Inspector.

Clerical—

Miss M. E. WHITE, Chief Clerk.

Mr. A. GUMBLEY, Wages and Costing Clerk.

Mrs. D. WARRILLOW, Senior Shorthand Typist.

Mrs. E. PLANT, Mrs. M. TILSTONE, Miss S. KIRKHAM,
Miss Z. COOPER, General Clerks and Shorthand Typists.

Mr. B. SIMCOCK, Junior Clerk.

Miss T. DALE, Miss S. HARPER, Junior Clerks.

PUBLIC HEALTH DEPARTMENT,
6, QUEEN STREET,
NEWCASTLE-UNDER-LYME,
STAFFS.

July, 1955.

His Worship the Mayor, Aldermen and Councillors of the Borough of Newcastle-under-Lyme.

Ladies and Gentlemen,

I have pleasure in presenting the Annual Report on the health of the Borough for 1954 as required by the Ministry of Health under the Sanitary Officers (Outside London) Regulations, 1935 and the Sanitary Officers Order, 1926.

The estimate of the population for 1954 as given by the Registrar General shows an increase of 740 over the previous year and 934 greater than the corrected 1951 Census figure.

It is interesting to note that the total number of live births within the Borough has increased from the previous year's figure of 1,105 while the still-birth figure has decreased by 2 from the previous year. The apparent increase in the population thus resulting is, however, off-set to some extent by the number of deaths in 1954 having risen by 79. A marked drop in the death rate of infants under one year is shown and at least some of the credit for this most gratifying improvement must be attributed to the efficiency of the Maternity and Child Welfare Services in the area.

In Table 1, towards the end of the report, is listed the "Causes of Death" and it is most disturbing to observe that deaths from malignant neoplasm of the stomach has exactly doubled from the previous year's figures of 8 males and 11 females. The return for deaths from malignant neoplasm of lung and bronchus is approximately the same as in 1953 when the figures were 19 males and 4 females. Deaths from cancer of the breast have increased by 8 from the previous year while deaths from cancer of the uterus has dropped by 2. There is also an increase in deaths from other malignant and lymphatic neoplasms, the corresponding figures for 1953 being 24 males and 27 females. Apart from malignant disease it is becoming an established fact that the stress and strain of modern life is showing its effect by the considerable increase in deaths from heart disease which are now recorded. The return for the Borough for the year under review bears out this fact. Under coronary disease and angina it will be noted that the total for

males and females for the year 1954 is 111, whereas the total for males and females for 1953 was 85. Deaths from hypertension with heart disease has increased from 11 in 1953 to 20 in 1954.

During 1954, there occurred a sharp outbreak of measles when 758 cases were notified; fortunately with only one death. Notifications of scarlet fever also showed a marked increase, being 94 for 1954 compared to 45 for the previous year. During 1954, 123 cases of sonne dysentery were notified whereas in 1953 no case of this infection was reported to the department. The majority of these cases were in the age group of five to ten years which is in accordance with the usual findings in such outbreaks. This is mainly due to the difficulty in ensuring that children between these ages observe the strictest rules of personal hygiene, for the spread of this infection is by personal contact with infected persons or food.

Contained in the report will be found details of the results of the Mass X-ray Unit Public Survey which was carried out in the Borough during 1954. This information has been provided by Dr. E. Posner, the Medical Director of the Unit, to whom, along with his staff, our grateful thanks must be extended. Dr. Posner, commenting on the number of clinically significant pulmonary tuberculosis cases found, states that the incidence of such cases in the Borough is approximately the same as is found in the country as a whole.

With the introduction in 1954 of the Housing Repairs and Rents Act local authorities were enabled to consider again slum clearance programmes and consequent upon the extra work which this would entail an increase in the Sanitary Inspector Establishment in the department was approved. Unfortunately, owing to the difficulty in obtaining suitably qualified Sanitary Inspectors, the full staff complement has not been obtained so far.

Prior to 1954 only households in which cases of active tuberculosis occurred were considered for re-housing on medical grounds, such cases being provided with alternate accommodation on the recommendation of the Chest Physician. In November of the year under review a much more comprehensive scheme for re-housing on medical grounds was evolved by the Borough Council. When such an application for re-housing is received by the Housing Department the case is passed to this office and it is then my duty to obtain reports from General Practitioners, Consultants, etc., and also on the present housing conditions of the applicant. When all these facts are correlated a report is prepared for the guidance of the Housing Management Committee.

Within recent years the country has become much more atmospheric pollution minded and this fact was made very clear when the National Smoke Abatement Society Conference took place during 1954. Consequent upon my attending as one of the Council's representatives at this Conference, I arranged for a film on this subject, which I had seen, to be shown to the members of the Council as I felt that much could be done by the Local Authority to encourage the improvement of the atmospheric conditions locally.

During the year a display board for Health Education purposes was erected for the use of the department in the Queen's Gardens and it is hoped that by this means the people generally will become interested in this important aspect of Public Health and so be gradually educated towards a healthier and better life.

In conclusion, I wish to convey my most grateful thanks to the members of the Council who have continued to show an interest in the working of the department and Public Health matters generally, and also to the other officials of the Corporation and their staffs for their continued co-operation and assistance throughout the year.

To the medical, technical and clerical members of the staff of the Health Department I wish to record my most sincere appreciation of their loyalty and support during 1954.

I am,

Ladies and Gentlemen,

Your obedient Servant,

JOHN WARRACK.



HEALTH EDUCATION DISPLAY BOARD
IN QUEEN'S GARDENS

STATISTICS AND SOCIAL CONDITIONS OF THE AREA

Area

The area of the Borough is 8,882 acres.

Population, etc.

The Registrar-General's estimate of the population for 1954 is 70,970.

Population according to 1951 Census (corrected), 70,036.

The number of inhabited houses at the end of 1954 was 22,473.

Rateable Value, etc.

The rateable value of the Borough is £361,054 and one penny rate in the £ (General Rate) produces £1,340.

Extracts from Vital Statistics for the Year.

| | Total | Male | Female | Rate | England & Wales | |
|--------------|-------|------|--------|-------|--------------------|---|
| Live Births— | 1140 | 602 | 538 | 16·06 | 15·2 | { per 1,000 estimated population |
| Legitimate | 1098 | 582 | 516 | — | — | |
| Illegitimate | 42 | 20 | 22 | — | — | |
| Stillbirths | 26 | 17 | 9 | 0·36 | 0·36 | { per 1,000 estimated population |
| | | | | 22·29 | 24·0 | { per 1,000 total live and still-births |
| Deaths | 743 | 365 | 378 | 10·46 | 11·3 | { per 1,000 estimated population |

Deaths and death-rates from puerperal causes :—

| | Deaths | Rate per 1,000 total live and still-births |
|------------------------------------|--------|--|
| Pregnancy, Childbirth, Abortion .. | 1 | 0·85 |

Death rate of Infants under 1 year of age per 1,000 live births :—

| | | Male | Female | | England & Wales |
|-----------------|----|------|--------|-------|--------------------|
| Total .. | .. | 15 | 14 | 25·43 | 25·5 |
| Legitimate .. | .. | 14 | 13 | 23·68 | — |
| Illegitimate .. | .. | 1 | 1 | 1·75 | — |

PUBLIC HEALTH SERVICES

National Assistance Act, 1948 Section 47 and

National Assistance (Amendment) Act, 1951

REMOVAL TO SUITABLE PREMISES OF PERSONS IN NEED OF CARE AND ATTENTION.

The Local Authority is given power under the above Acts to compulsorily remove to hospital or other similar premises persons suffering from grave chronic disease, or who being aged, infirm, or physically handicapped, are living in insanitary conditions and unable to devote to themselves and are not receiving from other people proper care and attention.

During the year 2 cases were removed to the City General Hospital, Stoke-on-Trent.

National Assistance Act, 1948, Section 50

BURIAL OF DESTITUTE PERSONS.

One destitute person was buried by the Council under the powers conferred on it under the above mentioned Act.

Borough Mortuary—

During 1954, 36 cases were admitted to the Mortuary and 29 post-mortems were carried out.

Laboratory Facilities—

As in previous years specimens under the Food and Drugs Acts and the Milk and Cream Regulations were dealt with by the County Analyst at Stafford. Specimens for bacteriological and pathological examination are dealt with by the Public Health Laboratory Service at Martin Street, Stafford. Results of the examinations of the samples and specimens investigated during the year are given in the appropriate sections.

MEDICAL EXAMINATION FOR SUPERANNUATION AND SICK PAY PURPOSES

During 1954, 77 Corporation Employees were medically examined for suitability for admission to the Corporation Superannuation Scheme. The examinations were carried out by the medical staff of the Public Health Department.

Arrangements were made with one of the local General Practitioners for 10 employees to be medically examined for suitability for admission to the Corporation's Sick Pay Scheme.

The following table gives details of the numbers of employees and staff examined and the Departments concerned :—

| Department | Superannuation Scheme | | Sick Pay Scheme | |
|----------------------|-----------------------|--------|-----------------|--------|
| | Passed | Failed | Passed | Failed |
| Borough Surveyors | 12 | — | 8 | 1 |
| Borough Treasurers | 1 | — | — | — |
| Cemeteries | 3 | — | 4 | — |
| Cleansing | 9 | 2 | 9 | 2 |
| Estate Office | 3 | — | — | — |
| Libraries | 5 | — | — | — |
| Parks | 4 | 2 | 8 | 2 |
| Public Baths | 1 | 1 | 1 | 1 |
| Public Health | 3 | — | — | — |
| Town Clerks | 4 | — | 1 | — |
| Weights and Measures | — | — | — | — |

MASS X-RAY UNIT PUBLIC SURVEY

During the two weeks commencing 28th June, the Mass Radiography Unit was operating within the Borough. Members of the public and also employees of various firms, etc., were offered facilities for chest x-ray. The following is a summary of the results found by the Unit—

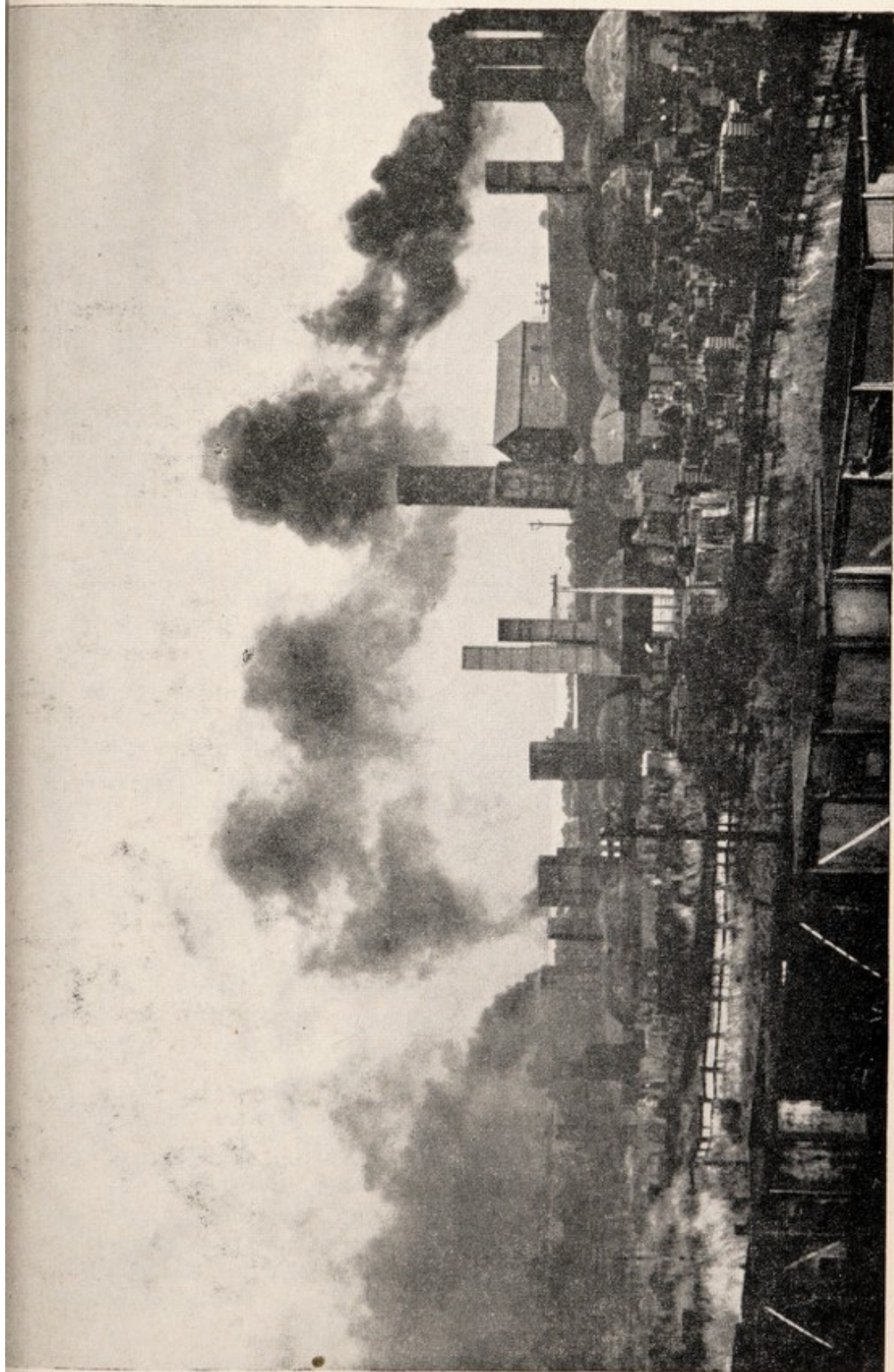
Incidence of Active and Clinically Significant Pulmonary Tuberculosis According to Sex and Age

| MEN | | | | WOMEN | | | |
|--------------|-------------------|--|------------------|--------------|-------------------|--|------------------|
| Age Group | Number X-Rayed | Cases of Clinically Significant P.T.B. or Silica Tb. | Rate per 1000 | Age Group | Number X-Rayed | Cases of Clinically Significant P.T.B. or Silica Tb. | Rate per 1000 |
| —14 | 58 | — | — | —14 | 100 | — | — |
| 15—24 | 577 | — | — | 15—24 | 450 | — | — |
| 25—34 | 599 | 2 | 3.3 | 25—34 | 707 | 6 | 8.4 |
| 35—44 | 615 | 3 | 4.8 | 35—44 | 732 | — | — |
| 45—59 | 763 | 2 | 2.6 | 45—59 | 982 | 3 | 3.0 |
| Over 60 | 382 | 9 | 23.5 | Over 60 | 387 | — | — |
| Total | 2,994 | 16 | 5.3 | Total | 3,358 | 9 | 2.6 |

ATMOSPHERIC POLLUTION

A record on the rainfall and the pollution of the atmosphere is kept at three sites within the Borough. The following shows the rainfall and pollution at each station :—

| MONTH | | | | Rainfall in inches | Total solids in tons per square mile | SO ² MG/DAY/100 SQ. CMS. |
|------------------|----|----|----|--------------------------|--|---|
| PITFIELD HOUSE : | | | | | | |
| January | .. | .. | .. | 1.73 | 12.13 | 2.39 |
| February | .. | .. | .. | 3.04 | 19.05 | 2.74 |
| March | .. | .. | .. | 2.58 | 13.86 | 1.85 |
| April .. | .. | .. | .. | 0.96 | 17.18 | 1.29 |
| May .. | .. | .. | .. | 2.88 | 17.14 | 1.25 |
| June .. | .. | .. | .. | 4.53 | — | 0.78 |
| July .. | .. | .. | .. | 4.22 | 12.83 | 0.59 |
| August | .. | .. | .. | 5.55 | 19.97 | 0.63 |
| September | .. | .. | .. | 3.86 | 12.93 | 0.71 |
| October | .. | .. | .. | 5.72 | 15.86 | 1.35 |
| November | .. | .. | .. | 5.75 | 22.32 | 1.67 |
| December | .. | .. | .. | 4.06 | 16.53 | 1.23 |
| 1954 Average | .. | .. | .. | 3.74 | 16.35 | 1.37 |
| 1953 Average | .. | .. | .. | 2.46 | 14.13 | 1.09 |
| 1952 Average | .. | .. | .. | 2.62 | 16.86 | 1.21 |
| 1951 Average | .. | .. | .. | 3.44 | 14.97 | 0.86 |
| 1950 Average | .. | .. | .. | 2.53 | 22.14 | — |
| ROE LANE : | | | | | | |
| January | .. | .. | .. | 1.73 | 8.16 | 2.20 |
| February | .. | .. | .. | 2.82 | 26.49 | 1.79 |
| March | .. | .. | .. | 2.17 | 8.70 | 1.11 |
| April .. | .. | .. | .. | 0.87 | 6.77 | 1.16 |
| May .. | .. | .. | .. | 2.52 | 13.87 | 1.59 |
| June .. | .. | .. | .. | 4.61 | 12.44 | 0.58 |
| July .. | .. | .. | .. | 3.43 | 8.23 | 0.56 |
| August | .. | .. | .. | 5.03 | 14.47 | 0.68 |
| September | .. | .. | .. | 3.74 | 7.94 | 0.59 |
| October | .. | .. | .. | 5.48 | 6.57 | 0.49 |
| November | .. | .. | .. | 5.59 | 16.59 | 1.10 |
| December | .. | .. | .. | 3.59 | 13.81 | 1.07 |
| 1954 Average | .. | .. | .. | 3.47 | 12.00 | 1.08 |
| 1953 Average | .. | .. | .. | 2.36 | 9.11 | 0.85 |
| 1952 Average | .. | .. | .. | 2.63 | 9.08 | 0.92 |
| 1951 Average | .. | .. | .. | 3.19 | 10.64 | 0.80 |
| 1950 Average | .. | .. | .. | 2.73 | 8.39 | — |



SMOKE NUISANCE

| MONTH | Rainfall in inches | Total solids in tons per square mile | SO ² MG/DAY/100 SQ. CMS. |
|--------------------|--------------------------|--|---|
| CHESTERTON : | | | |
| January | 1.58 | 8.43 | 2.75 |
| February | 3.04 | 16.83 | 3.07 |
| March | 2.10 | 7.68 | 2.18 |
| April | 0.68 | 4.11 | 1.55 |
| May | 2.01 | 17.54 | 1.87 |
| June | 4.77 | 18.15 | 2.14 |
| July | 3.74 | 12.99 | 1.06 |
| August | 5.36 | 21.41 | 1.05 |
| September | 3.14 | 13.57 | 1.02 |
| October | 5.48 | 18.63 | 1.57 |
| November | 5.24 | 23.93 | 2.09 |
| December | 3.66 | 17.95 | 1.66 |
| 1954 Average | 3.40 | 15.10 | 1.83 |
| 1953 Average | 2.23 | 13.56 | 1.29 |
| 1952 Average | 2.45 | 19.26 | 1.48 |
| 1951 Average | 3.22 | 17.34 | 1.26 |
| 1950 Average | 2.8 | 13.43 | — |

The problem of smoke and grit emissions from collieries has been given special attention and schemes for improvement are in hand.

Manufacturers generally continue to introduce improved methods of firing which considerably reduces the risk of atmospheric pollution, but increased use of smokeless fuels in domestic heating appliances would be even a greater step towards a cleaner and healthier atmosphere.

WATER SUPPLY

The following information on water supply has been supplied to me by (1) the Chief Sanitary Inspector and by (2) the Engineer and Manager of the Staffordshire Potteries Water Board.

(1) "The whole of the area is served by a piped supply on the constant system through the Staffordshire Potteries Water Board, the Borough Council being a constituent authority of that Board. Houses in the Apedale area are served by a piped supply previously taken from the Newcastle Rural District Council and at times is unsatisfactory due to condition of service main. Of the 22,457 houses in the Borough which are supplied with water by the Staffordshire Potteries Water Board, all, with the exception of eight which are supplied by two common stand pipes, are served with water direct to the houses. Sixteen outlying isolated houses and farm premises derived their water supplies from wells and springs, and in seven instances where water is not reasonably accessible, the houses involved are included in the five year housing clearance programme.

Samples of drinking water were examined with the following results—

3 samples of Staffordshire Potteries Water Board—Satisfactory
Chemical and Bacteriological.

Samples from spring water supplying two tileries—

| | | |
|-------------------|----|------------------|
| 2 Chemical | .. | Satisfactory |
| 6 Bacteriological | .. | 1 unsatisfactory |

(2) "The water supplied by the Board to the Newcastle Borough area is derived from three sources, being deep wells and boreholes sunk in the New Red sandstone. All the water is treated with chlorine, being chloramination at two sources and chlorination at the third.

"During 1954 bacteriological examinations were made of 134 samples of which 64 were of untreated waters at the sources and 70 of the chloraminated water going into supply. All were 100% free of Faecal Coli organisms.

"Twelve samples were analysed for chemical quality, showing moderate mineral and saline content, neutral reaction and absence of metals. The water is also of moderate hardness: it is not softened nor is it plumbo-solvent.

"All the waters in supply were certified by the Board's Chemist as conforming to the highest standards of bacterial purity and organic quality, indicative of water pure, wholesome and suitable for purposes of public and domestic supply.

"The consumption of water for domestic purposes, unmetered trade and waste in the whole of the Board's area of supply for the year 1954 averaged 27·70 gallons per head per day."

The Chief Sanitary Inspector has reported to me as follows—

DRAINAGE AND SEWERAGE

The greater part of the district is sewered, one portion on the combined system, the remainder having a separate system for surface water. Portions of the area as yet unsewered include (a) Audley Road (part) and Springwood, (b) High Lane and Black Bank, (c) Ravensdale and (d) Seabridge.

During the year 5·58 miles of new sewers were laid and one hundred and forty-seven yards relaid. Three hundred and two inspections regarding sewers, street gullies, etc., were made and twenty-seven nuisances in connection with complaints were abated.

RIVERS AND STREAMS

The Lyme Brook flows through the area from north to south and then, having crossed the southern boundary, discharges into the River Trent. This brook, which previously was much polluted, has shown marked improvement in recent years although it still receives some waste water notably from two collieries and a large factory.

The Fowlea Brook runs in a general direction from north to south on the east side of the area forming for part of its course the eastern boundary of the district. After passing through the City of Stoke-on-Trent it also discharges into the River Trent. This brook receives trade waste from tributary streams entering it from the City, from the Wolstanton Colliery and the Staffordshire Chemical Company Works at Ravensdale and the effluent from the Burslem and Tunstall Sewage Works. This stream is considerably polluted and obstruction to its natural flow interfered with drainage from houses at Ravensdale, now included in the five year housing clearance programme.

Eleven inspections of brooks were made during the year.

SWIMMING BATHS

During the year samples of water were taken from the two swimming baths in use in the Borough. The results are as follows :

| | |
|------------------------|--------------------------------|
| High School Bath—4 | Bacteriological (satisfactory) |
| „ „ „ —4 | Free Chlorine (satisfactory) |
| King's Memorial Bath—4 | Bacteriological (satisfactory) |
| „ „ „ —4 | Free Chlorine (2 satisfactory) |
| | (2 unsatisfactory) |

SANITARY INSPECTION OF THE AREA

Record of Inspections and Results

| Inspections made with respect to : | No. of Inspections | Nuisances or defects reported | Re-visits made re-abatement | Nuisances or defects remedied |
|------------------------------------|--------------------|-------------------------------|-----------------------------|-------------------------------|
| P.H.A.—Housing | 462 | 1084 | 705 | 1206 |
| Other Nuisances | 93 | 12 | 40 | 20 |
| Water Supply | 17 | 2 | 5 | 5 |
| Overcrowding | 18 | — | 3 | — |
| Drains—Inspected | 319 | 85 | 226 | 69 |
| Tested | 108 | — | 4 | — |
| Sewers, Street Gullies, etc... | 273 | 19 | 29 | 17 |
| Sanitary Accommodation .. | 53 | 2 | 7 | 3 |
| Ashes Accommodation .. | 1041 | 1546 | — | 1546 |
| Accumulations | 105 | 32 | 33 | 31 |
| Swine, Fowl or other Animals | 13 | 3 | 2 | 2 |
| Rivers Pollutions Acts .. | 5 | — | 6 | — |
| Rats and Mice Infestations | 209 | 6 | 26 | 6 |
| (Visits by Inspectors) | | | | |
| Houses let in Lodgings .. | 6 | — | 1 | — |

Other visits :—

| | |
|--|------|
| Respecting Infectious Diseases | 2886 |
| Respecting Verminous Conditions | 66 |
| Respecting Disinfection | 3 |
| Respecting Schools, Public Buildings, Cinemas, etc. | 77 |
| Miscellaneous Visits | 1755 |
| Interviews—owners and tradesmen .. | 746 |

Notices served and complied with

| | Notices served | | Notices complied with | |
|--|----------------|-----------|-----------------------|-----------|
| | Prelim. | Statutory | Prelim. | Statutory |
| P.H.A.—Housing Defects .. | 311 | 31 | 324 | 58 |
| Nuisances | 19 | 1 | 22 | — |
| Smoke Nuisance .. | 3 | — | 3 | — |
| Housing Acts | — | — | — | — |
| Factories Acts | 18 | — | 8 | — |
| Food and Drugs Act .. | 14 | — | 16 | — |
| Bye-Laws and Local Acts .. | — | — | — | — |
| Shops Acts | 1 | — | 3 | — |
| Prevention of Damage by Pests Act, 1949 | 1 | — | 2 | — |
| Milk and Dairies Act, 1950.. | 1 | — | 1 | — |

Inspection of Factories

(a) Inspections.

| Premises | Number on Register | Number of | | |
|---|--------------------|-------------|-----------------|-----------------------|
| | | Inspections | Written Notices | Occupiers' Prosecuted |
| Factories in which Section 1, 2, 3, 4 and 6 are to be enforced by the Local Authorities | 50 | 46 | — | — |
| Factories not included above in which Section 7 is enforced by the Local Authority | 188 | 137 | 18 | — |
| Other premises in which Section 7 is enforced by the Local Authority (excluding out-workers' premises) .. | 25 | 30 | 8 | — |
| Total | 263 | 213 | 26 | — |

(b) Cases in which defects were found.

| Particulars | Number of cases in which defects were :— | | | | No. of cases in which prosecutions were instituted |
|--|--|----------|----------------------------|-------------------|--|
| | Found | Remedied | Referred to H.M. Inspector | by H.M. Inspector | |
| Want of Cleanliness (S.1) .. | 8 | 8 | — | — | — |
| Overcrowding (S.2) .. | — | — | — | — | — |
| Unreasonable temperature (S.3) | — | — | — | — | — |
| Inadequate ventilation (S.4) | 1 | 1 | — | — | — |
| Ineffective drainage of floors (S.6) | — | — | — | — | — |
| Sanitary conveniences (S.7)— | | | | | |
| (a) Insufficient | 3 | 3 | — | 1 | — |
| (b) Unsuitable or defective | 15 | 14 | — | 12 | — |
| (c) Not separate for sexes | 1 | 1 | — | — | — |
| Other offences against the Act (not including offences relating to outwork) .. | 1 | 1 | — | — | — |
| Total | 29 | 28 | — | 13 | — |

(c) Outworkers' premises.

| Business carried on | No. of Premises | No. of Visits |
|-----------------------------------|-----------------|---------------|
| Making of Wearing Apparel | 11 | 4 |
| Furniture and Upholstery | 2 | 2 |
| Plastics (make-up) | 24 | 7 |
| Watch Repairs | 1 | 2 |
| Total | 38 | 15 |

HOUSING

General

Housing Census :—

| | |
|---|--------|
| (1) Total number of inhabited houses in the Borough | 22,473 |
| (2) Number of new houses erected during the year :— | |
| (a) by Private Enterprise 144 | { 1353 |
| (b) by Local Authority 665 | |
| (c) by Coal Board 544 | |

The principal work done under the Housing Act, 1936, can be summarised as follows :—

| Inspections :— | Primary | Re-visits |
|---|---------|-----------|
| (a) Part 1—Clearance Areas .. | 171 | 75 |
| (b) Part 2—Section 9—Reconditioning | — | 18 |
| Sections 11/12—Demolition or closure .. | 37 | 189 |

Statistics

1. Inspection of Dwelling-houses during the Year :—

| | |
|---|-----|
| (1) (a) Total number of dwelling-houses inspected for housing defects (under Public Health or Housing Acts) | 348 |
| (b) Number of inspections made for the purpose | 537 |
| (2) (a) Number of dwelling-houses (included under sub-head (1) above) which were inspected and recorded under the Housing Consolidated Regulations, 1952 | 37 |
| (b) Number of inspections made for the purpose | 37 |
| (3) Number of dwelling-houses found to be in a state so dangerous or injurious to health as to be unfit for human habitation .. | 37 |
| (4) Number of dwelling-houses (exclusive of those referred to under the preceding sub-head) found not to be in all respects reasonably fit for human habitation | 311 |

2. Remedy of Defects during the Year without Service of formal Notices :—

| | |
|---|-----|
| Number of defective dwelling-houses rendered fit in consequence of informal action by the Local Authority or their officers | 324 |
|---|-----|

3. Action under Statutory Powers during the Year :—

(a) Proceedings under sections 9 and 10 of the Housing Act, 1936 :—

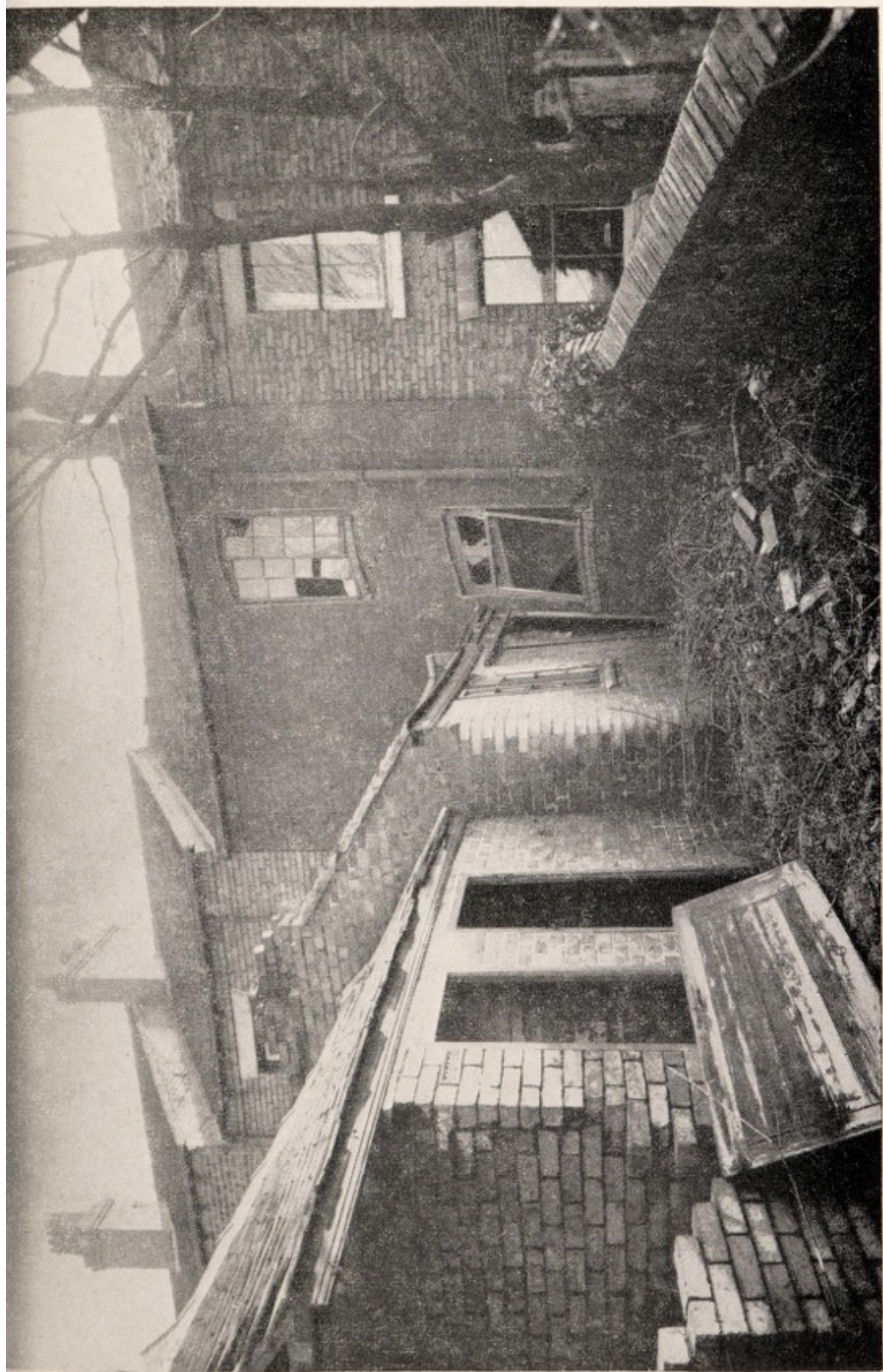
| | |
|---|-----|
| (1) Number of dwelling-houses in respect of which notices were served requiring repairs | Nil |
| (2) Number of dwelling-houses which were rendered fit after service of former notices :— | |
| (a) by Owners | Nil |
| (b) by Local Authority in default of owners | Nil |

(b) Proceedings under Public Health Acts :—

| | |
|--|-----|
| (1) Number of dwelling-houses in respect of which notices were served requiring defects to be remedied | 31 |
| (2) Number of dwelling-houses in which defects were remedied after service of formal notices :— | |
| (a) by Owners | 53 |
| (b) by Local Authority in default of owners | Nil |

(c) Proceedings under sections 11 and 13 of the Housing Act, 1936 :—

| | |
|--|-----|
| (1) Number of dwelling-houses in respect of which Demolition Orders were made .. | 19 |
| (2) Number of dwelling-houses demolished in pursuance of Demolition Orders .. | 17 |
| (3) Number of dwelling-houses demolished in anticipation of formal procedure .. | 2 |
| (4) Number of dwelling-houses closed on undertakings (not demolished) .. | 8 |
| (5) Number of dwelling-houses reconditioned on undertakings | Nil |



ONE OF THE 19 UNFIT DWELLING-HOUSES DEMOLISHED IN 1954

(d) Proceedings under Section 12 of the Housing Act, 1936 :—

- | | |
|---|-----|
| (1) Number of separate tenements or under-ground rooms in respect of which Closing Orders were made | 2 |
| (2) Number of separate tenements or under-ground rooms in respect of which Closing Orders were determined, the tenements or room having been rendered fit | Nil |

4. Housing Act, 1936—Part IV—Overcrowding.

The estimated number of cases recorded as legally overcrowded at the end of the year was 67*

* In the absence of a census it is impossible accurately to assess the present position with regard to overcrowding. Two new cases brought to notice were recorded and ten removed from register, having been rehoused by the local authority.

5. Housing Act, 1949, Housing Repairs and Rents, Act, 1954

- (a) 41 applications for grant for improvements and conversions have been received and in 33 cases it has been recommended that they are suitable for consideration for grant.

- (b) 13 Certificates of Disrepair have been issued.

INSPECTION AND SUPERVISION OF FOOD

Record of Inspections and Results

| | Inspections | Re- Inspections | Nuisances or defects | |
|------------------------------|-------------|--------------------|----------------------|--------|
| | | | Found | Abated |
| Dairies and Milkshops .. | 34 | 2 | — | — |
| Ice Cream Premises .. | 75 | 7 | — | — |
| Food Preparing Premises .. | 161 | 15 | 30 | 34 |
| Bakehouses | 59 | 25 | 6 | 18 |
| Slaughterhouses .. | 252 | — | 20 | 20 |
| Butcher's Shops .. | 86 | 4 | 10 | 4 |
| General Food Premises .. | 387 | 9 | 12 | 17 |
| Meat and Food Inspections .. | 385 | 21 | — | — |
| Market Inspections .. | 286 | — | — | — |

(a) **Milk Supply.**

Number of Dairy Farms in the Borough (including Producer/Retailer) 33

Producers of graded milk 7

Number of Retail Purveyors of milk 253

(a) Resident 239

(b) Non-Resident 14

Of the resident purveyors, 204 retail sterilised bottled milk only.

Number of Dairy Milkshops 13

Forty-nine retail purveyors hold licences for the sale of graded milk. The following licences in connection with such grades were issued during the year—

Tuberculin Tested 44

Pasteurised 49

Four bottling licences were issued during the year—

Tuberculin Tested 2

Pasteurised 2

Two premises are licensed as pasteurising plants.

Number of Ice Cream premises registered under Private Act—

| | | | |
|----------------------|-------|-----|-------|
| Sale only | | 150 | } 167 |
| Manufacture and Sale | | 17 | |

Bacteriological Samples

| Type | No. Submitted | No. failed Cleanliness Test | Examined for T.B. | |
|----------------------------|---------------|-----------------------------|-------------------|--------------|
| | | | No. Submitted | No. Positive |
| MILK: | | | | |
| Raw (T.T.) | 4 | 1 | 4 | Nil |
| Heat Treated | *98 | 2 | 4 | Nil |
| Ice Cream and Lollipops .. | 25 | 2 | Nil | Nil |
| Orange Juice | 8 | Nil | Nil | Nil |

* All samples passed Heat-treatment Test

(b) **Meat and Other Foods.**

Number of butchers' shops registered under
Private Act (including Market Stalls) .. 82

Number of Preserved Food preparing premises
registered (including Fish Fryers, 39) .. 92

There is no public slaughter-house in the Borough, and all slaughtering of animals for this area was undertaken in the City of Stoke-on-Trent area up to June.

The Council considered ten applications for license for slaughter-houses and, of these, three were issued and seven refused. One appeal was heard by the local Magistrates' Court when the local Authority's decision to refuse was upheld.

The number of men licensed to slaughter animals in accordance with the Slaughter of Animals Act, 1933, is 36.

Carcases Inspected and Condemned

| | Cattle exclud'g Cows | Cows | Calves | Sheep and Lambs | Pigs |
|---|----------------------------|------|--------|-----------------------|------|
| Number Killed (if known) .. | 136 | 82 | 52 | 511 | 305 |
| Number Inspected | 136 | 82 | 52 | 511 | 305 |
| ALL DISEASES EXCEPT TUBERCULOSIS Whole carcases condemned | — | — | — | — | 1 |
| Carcases of which some part or organ was condemned .. | 30 | 38 | 3 | 160 | 90 |
| Percentage of the number inspected affected with disease other than tuber- culosis | 22.1 | 46.3 | 5.8 | 31.3 | 29.8 |
| TUBERCULOSIS ONLY Whole carcases condemned | 2 | — | — | — | 2 |
| Carcases of which some part or organ was condemned .. | 25 | 33 | — | — | 24 |
| Percentage of the number inspected affected with Tuberculosis | 19.9 | 40.3 | — | — | 8.5 |

Total weight condemned, 2 Tons, 11 Cwts, 1 Qtr, 25 lbs.



SANITARY INSPECTOR EXAMINING A CARCASE

Surrenders of Other Food

| | lbs. |
|------------------------------------|-------|
| Cooked Meats and Sausages | 96 |
| Bacon and Ham | 68 |
| Wet Fish | 38 |
| Cheese | 308 |
| Cooking fats and Margarine | 2 |
| Pickles and Sauces | 5 |
| Packet Powders | 57 |
| Preserves | 71 |
| Dried Fruits | 196 |
| Tinned Meat | 1,857 |
| Tinned Fish | 230 |
| Tinned Vegetables | 730 |
| Tinned Milk | 1,112 |
| Tinned Soup | 112 |
| Tinned Fruit | 5,142 |
| Potatoes | 3,248 |
| Coffee | 1 |

Food and Drugs Act, 1938

Total Number of Samples taken, 181.

| | | | |
|------------------------------------|-----|---------------------------------|---|
| Milk | 140 | Sausages | 5 |
| Bicarbonate of Soda | 1 | Boracic Acid Crystals | 1 |
| Liquid Paraffin | 1 | Table Jellies | 1 |
| Sauce | 1 | Lemon Cheese | 1 |
| Aspirin Tablets | 2 | A.P.C. Tablets | 1 |
| Self-raising Flour | 1 | Ammoniated Quinine | 1 |
| Salmon Spread | 1 | Sodium Citrate | 1 |
| Gelatine | 1 | Cascara Sagrada | 1 |
| Meat Paste | 1 | Lemon Pie Filling | 1 |
| Epsom Salts | 1 | Semolina | 1 |
| Ground Ginger | 1 | Lemon Yellow Colouring | 1 |
| Cake Mixtures | 1 | Cochineal Colouring | 1 |
| Coffee and Chicory Essence | 1 | Baking Powder | 1 |
| Fruit Pudding | 1 | Synthetic Cream Powder | 1 |
| Tapioca | 1 | Sulphur Tablets | 1 |
| Ground Rice | 1 | Cream Whipping Compound | 1 |
| Flowers of Sulphur | 1 | Coffee Mixture | 1 |
| Salt Petre | 1 | Stomach Powders | 1 |
| | | Borax | 1 |

Observations

Two samples were adversely reported upon by the Public Analyst.

| Sample No. | Description | Result of Analysis | Remarks |
|------------|---------------------------|-------------------------|--|
| 403 | Milk Informal | 7·3% deficient of fat. | Warning to wholesale Dairy |
| 458 | Pork Sausage Formal | 5·5% deficient of meat. | Follow up sample genuine. Warning to manufacturers. |

All the milk samples were reported by the Analyst to be free from preservative and artificial colouring matter.

Number of approved premises—

Wholesale Dealers in Margarine .. 6

The Rag, Flock and Other Filling Materials

Regulations, 1951

Two premises were registered under the above Act during the year.

Common Lodging Houses

Number of registered houses in use at the end of the year 2

These provided the following accommodation :—

| | |
|----------------------------------|-----------------|
| 13 Lower Street, Newcastle .. | 39 beds (males) |
| 71/73 Lower Street, Newcastle .. | 16 beds (males) |
| Number of inspections made .. | 21 |

Tents, Vans and Sheds

Number of Vans existing at the end of the year :—

| | |
|------------------------------|----|
| (a) 1 Permanent Site | 22 |
| (b) 16 Other Sites | 31 |

| | |
|--|-----|
| Number of vans, etc., in possession of owner-occupiers | 52 |
| Number of vans, etc., known to be overcrowded .. | 5 |
| Number of vans, etc., unfit for habitation .. | 6 |
| Number of visits and inspections made | 594 |
| Nuisances or defects found | 1 |
| Nuisances or defects remedied | 2 |

Smoke Abatement

| | |
|---|----|
| Number of recorded observations made | 18 |
| Number of notices served | 3 |
| Number of notices complied with | 3 |
| Premises visited following observations | 26 |

Eradication of Bed Bugs

Particulars of action taken is as follows :—

| COUNCIL HOUSES | | | | PRIVATE HOUSES | | | |
|----------------|----------|-------------|--------------------|----------------|----------|-------------|--------------------|
| Inspections | Infested | De-Infested | | Inspections | Infested | De-Infested | |
| | | HCN | Other Insecticides | | | HCN | Other Insecticides |
| 23 | 3 | — | 3 | 31 | 1 | — | 1 |

Shop Sanitation

| | |
|--|----|
| Number of sanitary visits made to shops .. | 14 |
| Number of nuisances or defects found | 6 |
| Number of nuisances or defects remedied .. | 8 |

Offensive Trades

| | |
|--|-----|
| Number recorded as being within the Borough .. | 18 |
| Fat Melters, etc... .. . | 6 |
| Tripe Boilers | 7 |
| Rag and Bone Dealers | 4 |
| Bone Boiler | 1 |
| Number of new offensive trades established .. | Nil |
| Number of inspections made | 19 |
| Nuisances or defects found | 2 |
| Nuisances or defects remedied | 2 |

SANITARY ACCOMMODATION

The following is a summary of the various types of sanitary convenience existing in the Borough at the end of the year :—

| | |
|--|--------|
| No of houses served by flushed water closets | 21,981 |
| No of houses served by waste water closets | 160 |
| No of houses served by hand-flushed water closets .. | 87 |
| No of houses and premises served by privies(137) .. | 118 |
| No of houses and premises served by pail closets (89) .. | 70 |
| No of houses and premises served by standard dustbins | 22,492 |
| No of houses and premises served by ash pits (2) .. | 2 |

Particulars of conversions made during the year :—

| | |
|---|-------|
| Privies converted to water closets.. .. . | 2 |
| Pail closets converted to water closets | — |
| Waste water closets converted to flushed water closets.. | 14 |
| Hand-flushed closets provided with cisterns | 1 |
| Privies converted to pail closets | — |
| Cesspools abolished and drains connected direct to public sewers | — |
| New or additional water closets provided | 10 |
| Standard dustbins replaced or provided through the Local Authority (excluding new houses erected) .. | 1,546 |

PUBLIC CLEANSING

SERVICES :

The following is a summary of the cleansing services performed during the year ending 31st March, 1955 :

Refuse Collection :—

| | |
|--|--------|
| Number of houses and other premises receiving regular refuse collection service | 22,500 |
| Number of premises receiving special trade refuse collection service | 650 |
| Average number of ashbins cleansed per week .. | 12,400 |

The system of alternate weekly refuse collection from dwellings (commenced in 1940) operated until the year end in the majority of houses. A separate salvage collection service was maintained but has since terminated.

| | |
|---|-----|
| Number of separate Waste Food Bins in use .. | 62 |
| Average number of privies cleansed per week .. | 115 |
| Average number of pail closets cleansed per week .. | 81 |

| | |
|---|-------------|
| Number of cesspools cleansed during the year (excluding work undertaken outside the area) .. | 65 |
| Total refuse collected—Dry (estimated) .. | 18,600 tons |
| Salvage (estimated) .. | 1,240 tons |
| Wet (estimated) .. | 850 tons |
| Weight collected per 1,000 population per day (Dry refuse and salvage) | 15.31 cwts. |

Refuse Disposal :—

| | |
|--|-------------|
| Total estimated refuse dealt with at Disposal Plant or Tips (excluding wet refuse, or covering material) | 21,350 tons |
| (Incineration 5%, Tipped 95%.) | |

Street Cleansing :—

| | |
|---|--------|
| Number of Gullies | 5,768 |
| Total number of gulley cleansings | 26,680 |
| Approximate mileage of streets cleansed daily (including Sunday) | 1.05% |
| Approximate mileage of streets cleansed three times weekly | 3.25% |
| Approximate mileage of streets cleansed twice weekly | 7.50% |
| Approximate mileage of streets cleansed once weekly | 70.46% |
| Approximate mileage of streets cleansed less than once weekly | 17.74% |
| Total mileage — | 92.47 |

Trunk Road, 4.36 miles. County Roads, 30.68 miles.
District Roads, 57.43 miles. (Unadopted Roads, 21.73 miles.)

The Staff employed in these services is as follows :—

| | |
|---------------------------------------|----------------|
| | <i>Average</i> |
| Refuse collection and salvage | 68 |
| Refuse disposal | 5 |
| Street cleansing | 20 |

In addition to the above there is one cleansing foreman and assistant foreman (all services) and a foreman mechanic and three mechanics for vehicle maintenance.

Costs :—

The following figures show the estimated total cost for all services, with salvage income shown separately.

Net Expenditure—

| | | | | | |
|------------------------------|----|----|----|----|---------------|
| Refuse Collection | .. | .. | .. | .. | £34,133 |
| Refuse Disposal <i>Cr.</i> | .. | .. | .. | .. | £ 233 |
| (Salvage Income £7,247) | | | | | |
| | | | | | <hr/> £33,900 |
| Street Cleansing (all roads) | .. | .. | .. | .. | £10,049 |
| Gully Cleansing | .. | .. | .. | .. | £ 2,355 |
| Snow Removal | .. | .. | .. | .. | £ 2,661 |

PUBLIC CONVENIENCES :

The following conveniences are maintained and supervised:—

Newcastle :—

Pepper Street (Males and Females)
Marsh Street (Males and Females)
Liverpool Road Urinal

Wolstanton :—

High Street (Males and Females)
Bradwell Lane (Males and Females)
Jubilee Road Urinal

Silverdale :—

Crown Street (Males)

Knutton :—

Cross Roads Urinal

Chesterton :—

Victoria Street (Males)
Dragon Square (Males and Females)

The arrangement for the public to use facilities provided at a Billiard Hall, George Street, Newcastle, in place of conveniences demolished in the locality still continue.

Nett Cost of Services £3,788.

RODENT CONTROL

One full-time and two part-time operators are employed to undertake treatment on all Council and private properties and to give advice generally following receipt of complaint. In addition, systematic treatment is carried out in connection with the 51 annual contracts with traders affecting factory and business premises.

Sewer maintenance treatments carried out during March and April with an operating squad consisting of an inspector, a rodent operator, two sewer men and the use of a van. A total of 422 sewer manholes were inspected and of these 414 were baited and 133 showed pre-bait takes. The evidence as shown from the number of takes, is that infestation is limited to local areas, particularly in the older type of sewers.

3,150 visits were made by the operator and the number of rats destroyed were—

(a) Caught and trapped 448. (b) Estimated by baits 1,631.

The following is a copy of the table included in the annual return submitted to the Ministry :—

| | Type of Property | | | | (5) Agri- cultural |
|--|--------------------------------|---|--|--|--------------------------|
| | Non-Agricultural | | | | |
| | (1) Local Author- ity | (2) Dwelling houses (in, C'ncil houses) | (3) All other (includ'g business premises) | (4) Total of Cols (1) (2) & (3) | |
| I. Number of properties in Local Authority's District | 79 | 20,003 | 2,157 | 22,239 | 56 |
| II. Number of properties inspected as a result of: | | | | | |
| Notification | 17 | 182 | 21 | 220 | 2 |
| Otherwise (e.g. when visited primarily for some other purpose) | 11 | 395 | 66 | 472 | 8 |
| III. Number of properties inspected (in Section II) which were found to be infested by : | | | | | |
| (a) Rats (Major .. | 1 | — | 3 | 4 | — |
| (a) Rats (Minor .. | 3 | 124 | 20 | 147 | 2 |
| (b) Mice (Major .. | 1 | 12 | 8 | 21 | — |
| (b) Mice (Minor .. | 1 | 25 | 25 | 51 | — |
| IV. Number of infested properties (in Sections III) treated by the L.A. (Figures should NOT exceed those given at Section III) | 11 | 161 | 47 | 219 | — |
| V. Total treatments carried out including re-treatments | 26 | 241 | 146 | 413 | — |

The gross expenditure of rodent control during the year was £541

Table 1—CAUSES OF DEATH

| CAUSES OF DEATH | | | MALES | FEMALES |
|---|----|----|-------|---------|
| All Causes | | | 365 | 378 |
| 1. Tuberculosis, respiratory | .. | .. | 12 | 2 |
| 2. Tuberculosis, other | .. | .. | 1 | 2 |
| 3. Syphilitic disease | .. | .. | 1 | 1 |
| 4. Diphtheria | .. | .. | — | — |
| 5. Whooping Cough | .. | .. | — | — |
| 6. Meningococcal infections | .. | .. | — | — |
| 7. Acute Poliomyelitis | .. | .. | — | — |
| 8. Measles | .. | .. | — | 1 |
| 9. Other infective and parasitic diseases | .. | .. | 1 | — |
| 10. Malignant neoplasm, stomach | .. | .. | 20 | 18 |
| 11. Malignant neoplasm, lung, bronchus | .. | .. | 20 | 4 |
| 12. Malignant neoplasm, breast | .. | .. | 1 | 19 |
| 13. Malignant neoplasm, uterus | .. | .. | — | 9 |
| 14. Other malignant and lymphatic neoplasms | .. | .. | 31 | 28 |
| 15. Leukæmia, aleukæmia | .. | .. | 1 | 1 |
| 16. Diabetes | .. | .. | 1 | — |
| 17. Vascular lesions of nervous system | .. | .. | 30 | 62 |
| 18. Coronary disease, angina | .. | .. | 70 | 41 |
| 19. Hypertension with heart disease | .. | .. | 8 | 12 |
| 20. Other heart disease | .. | .. | 42 | 72 |
| 21. Other circulatory disease | .. | .. | 12 | 22 |
| 22. Influenza | .. | .. | 1 | — |
| 23. Pneumonia | .. | .. | 15 | 12 |
| 24. Bronchitis | .. | .. | 18 | 9 |
| 25. Other diseases of respiratory system | .. | .. | 10 | 1 |
| 26. Ulcer of stomach and duodenum | .. | .. | 6 | 4 |
| 27. Gastritis, enteritis and diarrhoea | .. | .. | — | 4 |
| 28. Nephritis and nephrosis | .. | .. | 4 | 5 |
| 29. Hyperplasia of prostate | .. | .. | 5 | — |
| 30. Pregnancy, childbirth, abortion | .. | .. | — | 1 |
| 31. Congenital malformations | .. | .. | 6 | 3 |
| 32. Other defined and ill-defined diseases | .. | .. | 23 | 33 |
| 33. Motor vehicle accidents | .. | .. | 9 | 2 |
| 34. All other accidents | .. | .. | 8 | 6 |
| 35. Suicide | .. | .. | 9 | 3 |
| 36. Homicide and operations of war | .. | .. | — | 1 |

Table 2—Food Poisoning

The following table shows the position regarding cases of food poisoning which occurred in the Borough during the year :

| Number of cases occurring | Number of deaths | Number of cases due to : | Foods involved |
|---------------------------|------------------|-----------------------------|--------------------------------|
| 54 | Nil | Salmonella infections 12 | Unknown |
| | | Unknown cause 42 | Re-heated roast beef and gravy |

Table 3.—Cases of Notifiable Diseases (other than Tuberculosis) notified during 1954

(Civilians only)

| NOTIFIABLE DISEASES | AT ALL AGES | TOTAL CASES NOTIFIED AT ALL AGES | | | | | | | | | | | Total cases re- moved to Hospital | Percentage of Cases removed to Hospital |
|---|-------------|-------------------------------------|------------------|------------------|------------------|------------------|-------------------|--------------------|--------------------|--------------------|--------------------|----------------------|--------------------------------------|---|
| | | Under 1 | 1 and under 2 | 2 and under 3 | 3 and under 4 | 4 and under 5 | 5 and under 10 | 10 and under 15 | 15 and under 20 | 20 and under 35 | 35 and under 65 | 65 years and over | | |
| Small-pox | .. | .. | .. | .. | .. | .. | .. | .. | .. | .. | .. | .. | .. | .. |
| Enteric Fever (including Paratyphoid) | .. | .. | .. | .. | .. | .. | .. | .. | .. | .. | .. | .. | .. | .. |
| Diphtheria (including Membranous Croup) | .. | .. | .. | .. | .. | .. | .. | .. | .. | .. | .. | .. | .. | .. |
| Scarlet Fever | 94 | .. | 5 | .. | 35 | .. | 47 | 7 | .. | .. | .. | .. | 61 | 64.9 |
| Puerperal Pyrexia | .. | .. | .. | .. | .. | .. | .. | .. | .. | .. | .. | .. | .. | .. |
| Pneumonia | 11 | .. | .. | 1 | .. | .. | .. | .. | .. | 1 | 8 | 1 | .. | * |
| Ophthalmia Neonatorum | .. | .. | .. | .. | .. | .. | .. | .. | .. | .. | .. | .. | .. | .. |
| Perthussis Neonatorum | .. | .. | .. | .. | .. | .. | .. | .. | .. | .. | .. | .. | .. | .. |
| Encephalitis Lethargica | .. | .. | .. | .. | .. | .. | .. | .. | .. | .. | .. | .. | .. | .. |
| Cerebro Spinal Fever | .. | .. | .. | .. | .. | .. | .. | .. | .. | .. | .. | .. | .. | .. |
| Erysipelas | 4 | .. | .. | .. | .. | .. | .. | .. | .. | .. | 1 | 3 | 2 | 50.0 |
| Poliomyelitis and Polio-Encephalitis | .. | .. | .. | .. | .. | .. | .. | .. | .. | .. | .. | .. | .. | .. |
| Measles | 758 | 24 | 175 | .. | 228 | .. | 324 | 6 | .. | 1 | .. | .. | 6 | .8 |
| Whooping Cough | 137 | 12 | 29 | .. | 52 | .. | 41 | 2 | .. | 1 | .. | .. | 6 | 4.4 |
| Dysentery | 123 | 1 | 2 | 3 | 7 | 14 | 60 | 8 | 5 | 8 | 15 | .. | 2 | 1.6 |
| Food Poisoning | 15 | .. | .. | .. | 3 | 1 | 4 | 3 | .. | 1 | 2 | 1 | 4 | 26.7 |
| Post-infectious Encephalitis | 1 | .. | .. | .. | .. | .. | 1 | .. | .. | .. | .. | .. | 1 | 100 |
| Meningococcal Infection | 1 | 1 | .. | .. | .. | .. | .. | .. | .. | .. | .. | .. | 1 | 100 |

* Information not available.

Table 4.—Deaths from Notifiable Diseases (other than Tuberculosis) during 1954

| Notifiable Diseases | Total Number of Deaths | | | | | | | | | | | | |
|--|------------------------|-------------|---------------|---------------|---------------|---------------|----------------|-----------------|-----------------|-----------------|-----------------|-----------------|-------------------|
| | AT ALL AGES | At All Ages | | | | | | | | | | | |
| | | Under 1 | 1 and under 2 | 2 and under 3 | 3 and under 4 | 4 and under 5 | 5 and under 10 | 10 and under 15 | 15 and under 20 | 20 and under 35 | 35 and under 45 | 45 and under 65 | 65 years and over |
| Diphtheria (including Membranous, Croup) | — | — | — | — | — | — | — | — | — | — | — | — | — |
| Other Infective and Parasitic Diseases | 1 | — | — | — | — | — | — | — | — | — | — | — | 1 |
| Pregnancy, Childbirth Abortion .. | 1 | — | — | — | — | — | — | — | — | — | 1 | — | — |
| Meningococcal Infections .. | — | — | — | — | — | — | — | — | — | — | — | — | — |
| Pneumonia .. | 27 | 6 | — | — | — | — | — | — | — | 1 | — | 1 | 19 |
| Whooping Cough .. | — | — | — | — | — | — | — | — | — | — | — | — | — |
| Measles .. | 1 | — | — | 1 | — | — | — | — | — | — | — | — | — |
| Acute Poliomyelitis | — | — | — | — | — | — | — | — | — | — | — | — | — |

Table 5.—Notification of and Deaths from Tuberculosis during 1954

| AGE PERIODS | NEW CASES | | | | DEATHS | | | |
|-----------------|-------------|----|-----------------|---|-------------|---|-----------------|---|
| | Respiratory | | Non-Respiratory | | Respiratory | | Non-Respiratory | |
| | M | F | M | F | M | F | M | F |
| | | | | | | | | |
| Under 1 | — | — | — | — | — | — | — | — |
| 1 and under 5 | 2 | — | — | — | — | — | — | — |
| 5 and under 15 | 5 | 2 | — | 1 | — | — | — | — |
| 15 and under 25 | — | 5 | 2 | 1 | — | — | 1 | — |
| 25 and under 35 | 6 | 7 | — | — | — | 1 | — | — |
| 35 and under 45 | 10 | 8 | — | — | 2 | 1 | — | — |
| 45 and under 55 | 9 | 5 | — | — | 2 | — | — | — |
| 55 and under 65 | 8 | 3 | — | — | 4 | 1 | — | — |
| 65 and upwards | 5 | — | — | — | 1 | 1 | — | — |
| TOTAL | 45 | 30 | 2 | 2 | 9 | 4 | 1 | — |