

**[Report 1944] / Medical Officer of Health, Melton Mowbray U.D.C.**

**Contributors**

Melton Mowbray (England). Urban District Council.

**Publication/Creation**

1944

**Persistent URL**

<https://wellcomecollection.org/works/fvac3hc8>

**License and attribution**

You have permission to make copies of this work under a Creative Commons, Attribution license.

This licence permits unrestricted use, distribution, and reproduction in any medium, provided the original author and source are credited. See the Legal Code for further information.

Image source should be attributed as specified in the full catalogue record. If no source is given the image should be attributed to Wellcome Collection.



Wellcome Collection  
183 Euston Road  
London NW1 2BE UK  
T +44 (0)20 7611 8722  
E [library@wellcomecollection.org](mailto:library@wellcomecollection.org)  
<https://wellcomecollection.org>

LIBRARY



MELT ON MOWBRAY URBAN DISTRICT  
COUNCIL

ABRIDGED ANNUAL REPORT

of the

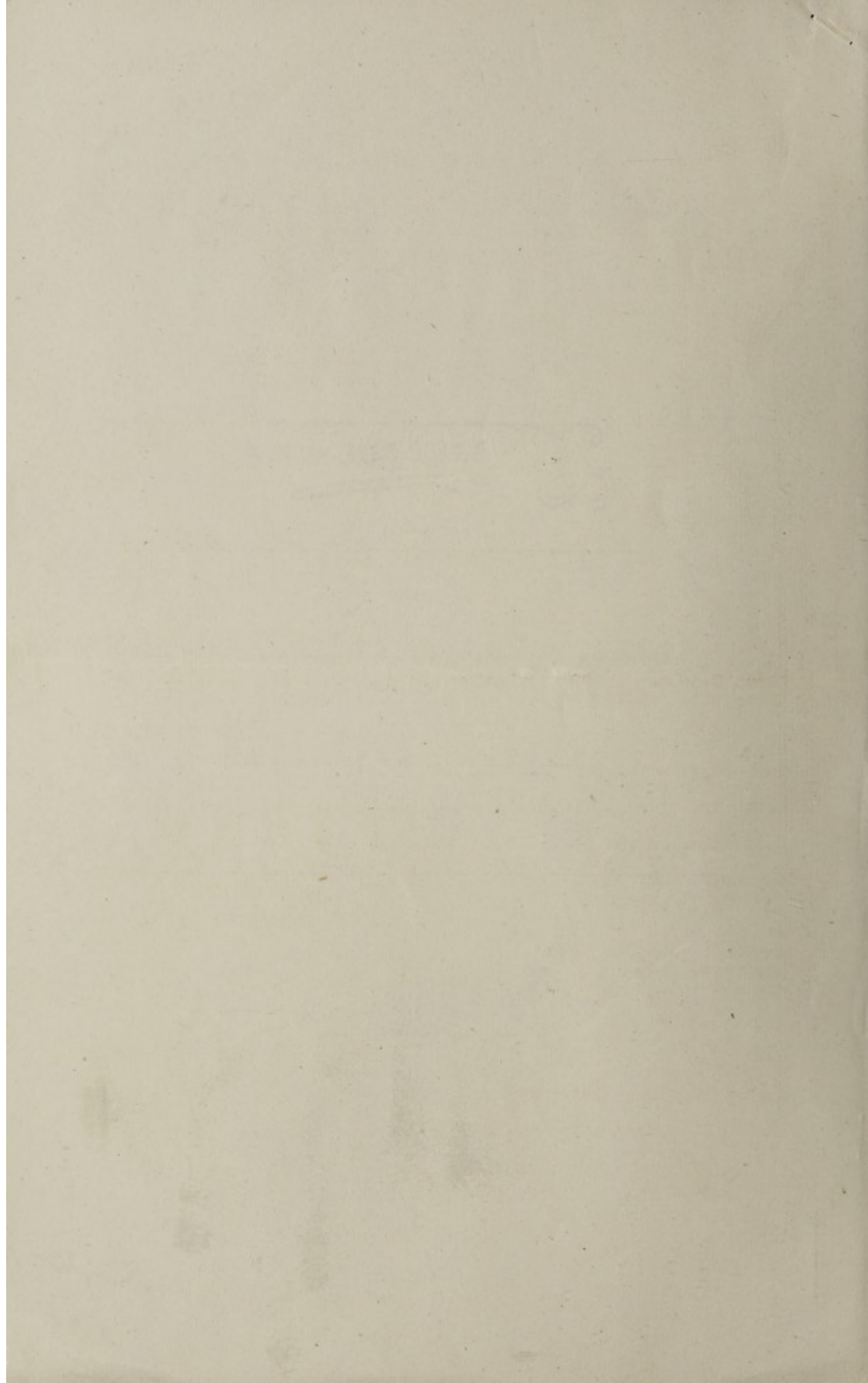
MEDICAL OFFICER OF HEALTH

&

SANITARY INSPECTOR

for the

YEAR ENDING 31st. DECEMBER, 1944



# GENERAL STATISTICS

Area (in acres) ... ..	5,658
Registrar General's estimate of population ... ..	11,800
Number of inhabited houses ... ..	3,300
Rateable value ... ..	276,821
Sum represented by a penny rate... ..	2298

# VITAL STATISTICS

		<u>Males</u>	<u>Females</u>	<u>Totals</u>
Live Births	Legitimate	128	128	256
	Illegitimate	10	12	22
		<u>138</u>	<u>140</u>	<u>278</u>
Still Births	Legitimate	5	1	6
	Illegitimate	1	2	3
		<u>6</u>	<u>3</u>	<u>9</u>
Birth Rate per 1,000 population ..		...	...	23.6
Birth Rate for England and Wales..		...	...	17.6
		<u>Males</u>	<u>Females</u>	<u>Totals</u>
Number of Deaths ... ..		81	71	152
Death Rate per 1,000 population ..		...	...	12.9
Death Rate for England and Wales..		...	...	11.6
Deaths from puerperal causes (headings 29 and 30) ... ..				Nil
		<u>Males</u>	<u>Females</u>	<u>Totals</u>
Deaths of infants under				
1 year of age	Legitimate	6	5	11
	Illegitimate	-	2	2
		<u>6</u>	<u>7</u>	<u>13</u>
Infant Mortality Rate per 1,000 live Births ... ..		...	...	46
Infant Mortality Rate for England & Wales ... ..		...	...	46



THE HISTORY OF THE

... of the ...  
... of the ...  
... of the ...

THE HISTORY OF THE

... of the ...  
... of the ...  
... of the ...

THE HISTORY OF THE

... of the ...  
... of the ...  
... of the ...

THE HISTORY OF THE

... of the ...  
... of the ...  
... of the ...

THE HISTORY OF THE

... of the ...  
... of the ...  
... of the ...

THE HISTORY OF THE

... of the ...  
... of the ...  
... of the ...

THE HISTORY OF THE

... of the ...  
... of the ...  
... of the ...

# CAUSES OF DEATH

	<u>Males</u>	<u>Females</u>
Whooping Cough ... ..	1	1
Tuberculosis of respiratory system...	3	2
Other forms of Tuberculosis ... ..	1	1
Syphilitic Diseases ... ..	1	-
Cancer of the buccal cavity & oesophagus	1	-
Cancer of the Uterus... ..	-	2
Cancer of the stomach and Duodenum...	3	3
Cancer of the Breast... ..	-	4
Cancer of all other sites... ..	7	5
Diabetes ... ..	-	1
Intracranial vascular lesions ... ..	6	5
Heart Disease ... ..	28	23
Other disorders of the circulatory system ... ..	1	2
Bronchitis ... ..	2	2
Pneumonia... ..	2	5
Other respiratory diseases.. ..	-	1
Ulcer of stomach or duodenum ... ..	3	-
Diarrhoea under 2 years ... ..	-	-
Appendicitis ... ..	2	-
Other digestive disorders ... ..	3	-
Nephritis... ..	1	2
Congenital malformation - birth injury, infant diseases ... ..	4	4
Other violent causes... ..	2	-
All other causes ... ..	10	8
	<hr/>	<hr/>
	81	71
	<hr/>	<hr/>

TABLE OF CONTENTS

1	Introduction
2	1. General Principles
3	2. The Nature of the Problem
4	3. The Scope of the Inquiry
5	4. The Method of Investigation
6	5. The Results of the Study
7	6. The Conclusions of the Study
8	7. The Significance of the Study
9	8. The Limitations of the Study
10	9. The Acknowledgments
11	10. The Bibliography
12	11. The Appendixes
13	12. The Index
14	13. The Glossary
15	14. The List of Figures
16	15. The List of Tables
17	16. The List of References
18	17. The List of Abbreviations
19	18. The List of Symbols
20	19. The List of Units
21	20. The List of Formulas
22	21. The List of Equations
23	22. The List of Diagrams
24	23. The List of Photographs
25	24. The List of Maps
26	25. The List of Charts
27	26. The List of Graphs
28	27. The List of Figures
29	28. The List of Tables
30	29. The List of References
31	30. The List of Abbreviations
32	31. The List of Symbols
33	32. The List of Units
34	33. The List of Formulas
35	34. The List of Equations
36	35. The List of Diagrams
37	36. The List of Photographs
38	37. The List of Maps
39	38. The List of Charts
40	39. The List of Graphs
41	40. The List of Figures
42	41. The List of Tables
43	42. The List of References
44	43. The List of Abbreviations
45	44. The List of Symbols
46	45. The List of Units
47	46. The List of Formulas
48	47. The List of Equations
49	48. The List of Diagrams
50	49. The List of Photographs
51	50. The List of Maps
52	51. The List of Charts
53	52. The List of Graphs
54	53. The List of Figures
55	54. The List of Tables
56	55. The List of References
57	56. The List of Abbreviations
58	57. The List of Symbols
59	58. The List of Units
60	59. The List of Formulas
61	60. The List of Equations
62	61. The List of Diagrams
63	62. The List of Photographs
64	63. The List of Maps
65	64. The List of Charts
66	65. The List of Graphs
67	66. The List of Figures
68	67. The List of Tables
69	68. The List of References
70	69. The List of Abbreviations
71	70. The List of Symbols
72	71. The List of Units
73	72. The List of Formulas
74	73. The List of Equations
75	74. The List of Diagrams
76	75. The List of Photographs
77	76. The List of Maps
78	77. The List of Charts
79	78. The List of Graphs
80	79. The List of Figures
81	80. The List of Tables
82	81. The List of References
83	82. The List of Abbreviations
84	83. The List of Symbols
85	84. The List of Units
86	85. The List of Formulas
87	86. The List of Equations
88	87. The List of Diagrams
89	88. The List of Photographs
90	89. The List of Maps
91	90. The List of Charts
92	91. The List of Graphs
93	92. The List of Figures
94	93. The List of Tables
95	94. The List of References
96	95. The List of Abbreviations
97	96. The List of Symbols
98	97. The List of Units
99	98. The List of Formulas
100	99. The List of Equations
101	100. The List of Diagrams
102	101. The List of Photographs
103	102. The List of Maps
104	103. The List of Charts
105	104. The List of Graphs
106	105. The List of Figures
107	106. The List of Tables
108	107. The List of References
109	108. The List of Abbreviations
110	109. The List of Symbols
111	110. The List of Units
112	111. The List of Formulas
113	112. The List of Equations
114	113. The List of Diagrams
115	114. The List of Photographs
116	115. The List of Maps
117	116. The List of Charts
118	117. The List of Graphs
119	118. The List of Figures
120	119. The List of Tables
121	120. The List of References
122	121. The List of Abbreviations
123	122. The List of Symbols
124	123. The List of Units
125	124. The List of Formulas
126	125. The List of Equations
127	126. The List of Diagrams
128	127. The List of Photographs
129	128. The List of Maps
130	129. The List of Charts
131	130. The List of Graphs
132	131. The List of Figures
133	132. The List of Tables
134	133. The List of References
135	134. The List of Abbreviations
136	135. The List of Symbols
137	136. The List of Units
138	137. The List of Formulas
139	138. The List of Equations
140	139. The List of Diagrams
141	140. The List of Photographs
142	141. The List of Maps
143	142. The List of Charts
144	143. The List of Graphs
145	144. The List of Figures
146	145. The List of Tables
147	146. The List of References
148	147. The List of Abbreviations
149	148. The List of Symbols
150	149. The List of Units
151	150. The List of Formulas
152	151. The List of Equations
153	152. The List of Diagrams
154	153. The List of Photographs
155	154. The List of Maps
156	155. The List of Charts
157	156. The List of Graphs
158	157. The List of Figures
159	158. The List of Tables
160	159. The List of References
161	160. The List of Abbreviations
162	161. The List of Symbols
163	162. The List of Units
164	163. The List of Formulas
165	164. The List of Equations
166	165. The List of Diagrams
167	166. The List of Photographs
168	167. The List of Maps
169	168. The List of Charts
170	169. The List of Graphs
171	170. The List of Figures
172	171. The List of Tables
173	172. The List of References
174	173. The List of Abbreviations
175	174. The List of Symbols
176	175. The List of Units
177	176. The List of Formulas
178	177. The List of Equations
179	178. The List of Diagrams
180	179. The List of Photographs
181	180. The List of Maps
182	181. The List of Charts
183	182. The List of Graphs
184	183. The List of Figures
185	184. The List of Tables
186	185. The List of References
187	186. The List of Abbreviations
188	187. The List of Symbols
189	188. The List of Units
190	189. The List of Formulas
191	190. The List of Equations
192	191. The List of Diagrams
193	192. The List of Photographs
194	193. The List of Maps
195	194. The List of Charts
196	195. The List of Graphs
197	196. The List of Figures
198	197. The List of Tables
199	198. The List of References
200	199. The List of Abbreviations
201	200. The List of Symbols
202	201. The List of Units
203	202. The List of Formulas
204	203. The List of Equations
205	204. The List of Diagrams
206	205. The List of Photographs
207	206. The List of Maps
208	207. The List of Charts
209	208. The List of Graphs
210	209. The List of Figures
211	210. The List of Tables
212	211. The List of References
213	212. The List of Abbreviations
214	213. The List of Symbols
215	214. The List of Units
216	215. The List of Formulas
217	216. The List of Equations
218	217. The List of Diagrams
219	218. The List of Photographs
220	219. The List of Maps
221	220. The List of Charts
222	221. The List of Graphs
223	222. The List of Figures
224	223. The List of Tables
225	224. The List of References
226	225. The List of Abbreviations
227	226. The List of Symbols
228	227. The List of Units
229	228. The List of Formulas
230	229. The List of Equations
231	230. The List of Diagrams
232	231. The List of Photographs
233	232. The List of Maps
234	233. The List of Charts
235	234. The List of Graphs
236	235. The List of Figures
237	236. The List of Tables
238	237. The List of References
239	238. The List of Abbreviations
240	239. The List of Symbols
241	240. The List of Units
242	241. The List of Formulas
243	242. The List of Equations
244	243. The List of Diagrams
245	244. The List of Photographs
246	245. The List of Maps
247	246. The List of Charts
248	247. The List of Graphs
249	248. The List of Figures
250	249. The List of Tables
251	250. The List of References
252	251. The List of Abbreviations
253	252. The List of Symbols
254	253. The List of Units
255	254. The List of Formulas
256	255. The List of Equations
257	256. The List of Diagrams
258	257. The List of Photographs
259	258. The List of Maps
260	259. The List of Charts
261	260. The List of Graphs
262	261. The List of Figures
263	262. The List of Tables
264	263. The List of References
265	264. The List of Abbreviations
266	265. The List of Symbols
267	266. The List of Units
268	267. The List of Formulas
269	268. The List of Equations
270	269. The List of Diagrams
271	270. The List of Photographs
272	271. The List of Maps
273	272. The List of Charts
274	273. The List of Graphs
275	274. The List of Figures
276	275. The List of Tables
277	276. The List of References
278	277. The List of Abbreviations
279	278. The List of Symbols
280	279. The List of Units
281	280. The List of Formulas
282	281. The List of Equations
283	282. The List of Diagrams
284	283. The List of Photographs
285	284. The List of Maps
286	285. The List of Charts
287	286. The List of Graphs
288	287. The List of Figures
289	288. The List of Tables
290	289. The List of References
291	290. The List of Abbreviations
292	291. The List of Symbols
293	292. The List of Units
294	293. The List of Formulas
295	294. The List of Equations
296	295. The List of Diagrams
297	296. The List of Photographs
298	297. The List of Maps
299	298. The List of Charts
300	299. The List of Graphs
301	300. The List of Figures
302	301. The List of Tables
303	302. The List of References
304	303. The List of Abbreviations
305	304. The List of Symbols
306	305. The List of Units
307	306. The List of Formulas
308	307. The List of Equations
309	308. The List of Diagrams
310	309. The List of Photographs
311	310. The List of Maps
312	311. The List of Charts
313	312. The List of Graphs
314	313. The List of Figures
315	314. The List of Tables
316	315. The List of References
317	316. The List of Abbreviations
318	317. The List of Symbols
319	318. The List of Units
320	319. The List of Formulas
321	320. The List of Equations
322	321. The List of Diagrams
323	322. The List of Photographs
324	323. The List of Maps
325	324. The List of Charts
326	325. The List of Graphs
327	326. The List of Figures
328	327. The List of Tables
329	328. The List of References
330	329. The List of Abbreviations
331	330. The List of Symbols
332	331. The List of Units
333	332. The List of Formulas
334	333. The List of Equations
335	334. The List of Diagrams
336	335. The List of Photographs
337	336. The List of Maps
338	337. The List of Charts
339	338. The List of Graphs
340	339. The List of Figures
341	340. The List of Tables
342	341. The List of References
343	342. The List of Abbreviations
344	343. The List of Symbols
345	344. The List of Units
346	345. The List of Formulas
347	346. The List of Equations
348	347. The List of Diagrams
349	348. The List of Photographs
350	349. The List of Maps
351	350. The List of Charts
352	351. The List of Graphs
353	352. The List of Figures
354	353. The List of Tables
355	354. The List of References
356	355. The List of Abbreviations
357	356. The List of Symbols
358	357. The List of Units
359	358. The List of Formulas
360	359. The List of Equations
361	360. The List of Diagrams
362	361. The List of Photographs
363	362. The List of Maps
364	363. The List of Charts
365	364. The List of Graphs
366	365. The List of Figures
367	366. The List of Tables
368	367. The List of References
369	368. The List of Abbreviations
370	369. The List of Symbols
371	370. The List of Units
372	371. The List of Formulas
373	372. The List of Equations
374	373. The List of Diagrams
375	374. The List of Photographs
376	375. The List of Maps
377	376. The List of Charts
378	377. The List of Graphs
379	378. The List of Figures
380	379. The List of Tables
381	380. The List of References
382	381. The List of Abbreviations
383	382. The List of Symbols
384	383. The List of Units
385	384. The List of Formulas
386	385. The List of Equations
387	386. The List of Diagrams
388	387. The List of Photographs
389	388. The List of Maps
390	389. The List of Charts
391	390. The List of Graphs
392	391. The List of Figures
393	392. The List of Tables
394	393. The List of References
395	394. The List of Abbreviations
396	395. The List of Symbols
397	396. The List of Units
398	397. The List of Formulas
399	398. The List of Equations
400	399. The List of Diagrams



## GENERAL PROVISIONS OF HEALTH SERVICES FOR THE AREA

### 1. (1) Public Health Officers of the Authority

J. Young, M.B., Ch.B., D.P.H. (Camb)

Medical Officer of Health for the Leicestershire & Rutland Combined Districts.

H. Buxton, M.R., San.I.M.S.I.A.,  
Sanitary Inspector and Meat & Foods Officer.

### (ii) Laboratory Facilities

The following examinations were carried out during the year in the County Laboratory, Leicester:-

Sputa for T.B. ....	90
Blood for Wassermann test ....	71
Urine (general and bacteriological) ....	60
Milk examinations (bacteriological) ....	53
Urine for T.B. ....	43
Swabs for Diphtheria ....	35
Films for Gonococci ....	24
Phosphatase test ....	6
Miscellaneous ....	18

400

## SANITARY CIRCUMSTANCES OF THE AREA

### 1. (1) WATER

Number of samples taken:-

(a) from wells ....	Nil
(b) from pipe supply ..	8

6 samples for bacteriological examination and 2 samples for chemical analysis were all satisfactory.

The Reports obtained by the Water Engineer show that the water supply was satisfactory as regards quality, but some supplies had to be restricted in the early months of the year.

Efforts are being made to obtain an additional supply and application has been made to the Ministry of Health to sink a trial bore.

Practically all houses are supplied with water from the works directly to the houses.

In one case a piped supply was substituted for well water.

### (ii) DRAINAGE AND SEWERAGE

Number of cesspools in the District at the end  
of 1944 .... 8

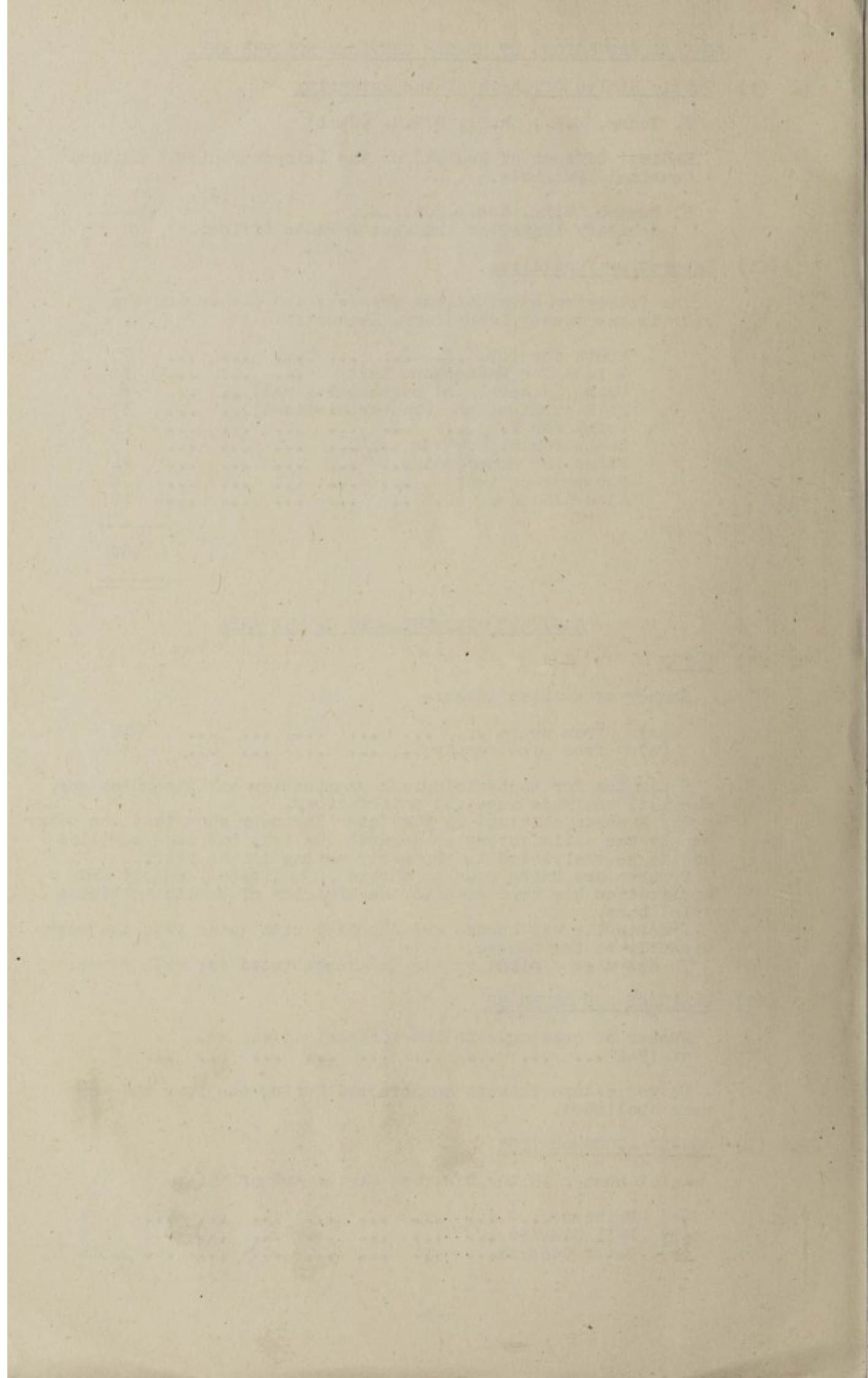
No new cesspools were constructed during the year and none were abolished.

### 2. (1) CLOSET ACCOMMODATION

Total number in the District at the end of 1944:-

(a) Privies ....	1
(b) Pail Closets ....	9
(c) Water Closets ....	3,360





(11) PUBLIC CLEANSING

House refuse is collected fortnightly by direct labour for disposal at the Destructor Works.

Practically all houses are provided with moveable dustbins.

Salvage

House-to-house collections are made during alternate weeks. Larger accumulations are collected as requested

Good progress was made in the salvaging of all classes of materials, the value of the salvage dealt with during the year being £1,853.

3. SANITARY INSPECTION OF THE AREA

Total number of complaints received ... ..	114
Total number of defects or nuisances discovered ... ..	354

	<u>Number of Inspections</u>	<u>Revisits</u>
Dwelling houses (all purposes)	542	355
Animal keeping	5	9
Bakehouses	12	15
Dairies and cowsheds	30	35
Drainage works	18	31
Food premises	45	65
Rats and mice destruction	39	45
Schools	6	5
Shops	8	12
Slaughterhouses and Meat Inspection	6	482
Verminous premises and scabies	56	59
Water supplies	10	12
Workshops, etc.	12	8
Other inspections	39	24
Total	834	1,164

NOTICES

<u>Preliminary</u>	<u>Housing</u>	<u>Other</u>
Outstanding on 1st. January	5	10
Issued during the year	49	108
Complied with during the year	34	102
Outstanding 31st. December	20	16
Statutory action necessary	Nil	7
<u>Statutory</u>		
Issued during the year	-	7
Complied with during year	-	7
Number of summonses issued	-	-
Number of convictions obtained	-	-

4. SHOPS

Action under the provisions of the Shops Act, 1934:-

5 defects found relating to sanitary conveniences and all were remedied.

5. REGULATED BUILDINGS

	<u>Number in District</u>	<u>Number of Inspections</u>
Common Lodging houses	2	21





## SWIMMING BATHS AND POOLS OPEN TO THE PUBLIC

- (a) Publicly owned. One Children's Swimming Pool owned by the Town Estate and one Paddling Pool owned by the Urban District Council.
- (b) Privately owned. One open-air swimming pool.

## H O U S I N G

### 1. INSPECTION OF DWELLING HOUSES DURING THE YEAR

- (1) (a) Total number of dwelling houses inspected for housing defects (under Public Health or Housing Acts) ... .. 218
- (b) Number of inspections made for the purpose ... 536
- (2) Number of dwelling houses found not to be in all respects reasonably fit for human habitation ... .. 218

### 2. REMEDY OF DEFECTS DURING THE YEAR WITHOUT SERVICE OF FORMAL NOTICE.

Number of defective dwelling houses rendered fit in consequence of informal action ... .. 182

### 3. ACTION UNDER STATUTORY POWERS DURING YEAR.

- (1) Proceedings under Public Health Acts:-
- (a) Number of dwelling houses in respect of which notices were served requiring defects to be remedied... .. 7
- (b) Number of dwelling houses in which defects were remedied after service of formal notices:-
- (i) by owners ... .. 7
- (ii) by Local Authority in default of owners ... .. Nil

### 4. HOUSING ACT, 1936 - PART IV - OVERCROWDING

A survey of the 230 Council Houses only was made during the year when it was found that the "permitted number" was exceeded in 26 cases.

15 cases of overcrowding were due to relatives or lodgers living in the houses.

12 cases were relieved during the year, in which 34 persons were concerned.

### 5. SCHEME FOR REPAIR, ETC. OF HOUSES. (Ministry of Health Circular 2871)

Number of Certificates of essentiality issued during the year for work to be carried out by private owners ... .. 317

Number of houses in respect of which certified work has been completed ... .. 282

Estimated cost of works completed ... .. £980





# INSPECTION AND SUPERVISION OF FOOD

## (a) MILK SUPPLY

	<u>Cowkeepers</u>	<u>Dairymen or Purveyors of Milk (other than Cowkeepers)</u>
Number on the Register ... ..	23	10
Number of inspections of premises ... ..	41	24
Number of contraventions outstanding from 1943... ..	7	Nil
Number of contraventions found during the year .. ..	11	4
Number of contraventions remedied during the year .. ..	12	4
Number of contraventions outstanding 31st. December .. ..	6	Nil

<u>Contraventions</u>	<u>Outstanding from previous year</u>	<u>Found during Year</u>	<u>Remedied during Year</u>	<u>Outstanding on 31st. Dec.</u>
Cleansing	Nil	8	8	Nil
Structural alterations	7	2	3	6
Utensils	Nil	5	5	Nil

## MILK SAMPLING

36 samples of milk were taken during the year as follows:-

<u>Class</u>	<u>Number of samples for bact. exam.</u>	<u>Number satisfactory</u>	<u>Number Unsatisfactory</u>
Designated	6	6	Nil
Ordinary	30	26	4

In the case of unsatisfactory samples an inspection is made of the premises, advice given on methods of production and repeat samples taken.

3 repeat samples taken and were satisfactory.

A new cowshed is being provided at one dairy farm.

## (b) MEAT AND OTHER FOODS

Number of Regional Slaughterhouses in area ... ..	1
Number of animals slaughtered... ..	12,643
Number of animals examined ... ..	12,643
Number of inspections of meat at times of slaughter... ..	482
Number of knacker yards in area. ....	1
Number of visits to Knacker yards ... ..	12





CARCASES INSPECTED & CONDEMNED

	<u>Cattle excluding Cows</u>	<u>Cows</u>	<u>Calves</u>	<u>Sheep and Lambs</u>	<u>Pigs</u>	<u>Totals</u>
Number killed	2,062	752	631	8,694	504	12,643
Number inspected	2,062	752	631	8,694	504	12,643
<u>All Diseases except T.B.</u>						<u>Weight in lbs.</u>
Whole carcasses condemned	26	38	8	40	2	29,297
Carcases of which some part or organ was condemned	237	188	Nil	65	13	10,745
Percentage of number inspected affected with disease other than T.B.	12.75%	10.05%	1.26%	1.20%	2.98%	40,042
<u>Tuberculosis only</u>						
Whole carcasses condemned	20	59	2	Nil	2	42,637
Carcases of which some part or organ was condemned	85	47	Nil	Nil	18	3,947
Percentage of number inspected affected with Tuberculosis	5.09%	14.09%	0.31%	Nil	3.57%	46,584

Total weight in lbs 86,626

38 tons, 13 cwt. 50 lbs. of meat condemned during the year  
compared with 33 tons, 10 cwt. 23 lbs. last year.

	<u>Number of Inspections</u>
Meat shops, Meat stores, etc. ....	34
Places where food (other than meat) is kept or prepared for sale ....	75





The following foods were condemned and voluntarily surrendered:-

432 tins meat - 573 lbs.	27 lbs Fish
76 " milk	112 " mussels
107 " vegetables	90 " imported pork trimmings
95 " Fish	20 " cooked ham
6 " Preserves	23 " cereals
	112 " peas
	73 " biscuits
716 tins	160 " sausages
	224 " sausage meat
	140 " groats
	60 meat pies

Food exposed for sale in the open Market is regularly inspected.

PREVALENCE OF AND CONTROL OVER INFECTIOUS AND OTHER DISEASES.

Notifiable Diseases (other than Tuberculosis) during 1944:-

<u>Disease</u>	<u>Total cases notified</u>	<u>Cases admitted to Hospital</u>	<u>Total Deaths</u>
Scarlet Fever	75	60	-
Membranous Croup	3	1	-
Erysipelas	6	4	-
Puerperal Pyrexia	1	-	-
Whooping Cough	106	-	2
Measles	8	-	-
Pneumonia	32	2	7
Cerebro-spinal Meningitis	2	2	-
Ophthalmia Neonatorum	1	-	-

AGE GROUPS

<u>Disease</u>	<u>Under one</u>	<u>1</u>	<u>2</u>	<u>3</u>	<u>4</u>	<u>5</u>	<u>10</u>	<u>15</u>	<u>20</u>	<u>35</u>	<u>45</u>	<u>65 and over</u>
						9	14	19	34	44	64	
Scarlet Fever	1	-	3	4	11	30	10	6	7	2	-	1
Whooping Cough	12	5	18	17	13	37	2	-	1	-	-	1
Erysipelas	-	-	-	-	-	-	-	-	-	3	3	-
Puerperal Pyrexia	-	-	-	-	-	-	-	-	1	-	-	-
Pneumonia	4	1	5	-	1	6	1	-	3	2	8	1
Measles	1	1	1	-	-	2	-	1	1	1	-	-
Cerebro Spinal Meningitis	2	-	-	-	-	-	-	-	-	-	-	-
Membranous Croup	-	1	-	-	2	-	-	-	-	-	-	-
Ophthalmia Neonatorum	1	-	-	-	-	-	-	-	-	-	-	-

IMMUNISATION AGAINST DIPHTHERIA

Good progress continues with the scheme for immunisation of children against Diphtheria.

A special Birthday Card together with a Card of Consent for immunisation is sent when each child is one year of age. Arrangements are made for free treatment by private Doctors if desired and sessions are held at Egerton Lodge every four weeks. Much valuable propaganda work and advice to parents on immunisation has been given by Miss K. Marsh, the local Health Visitor.

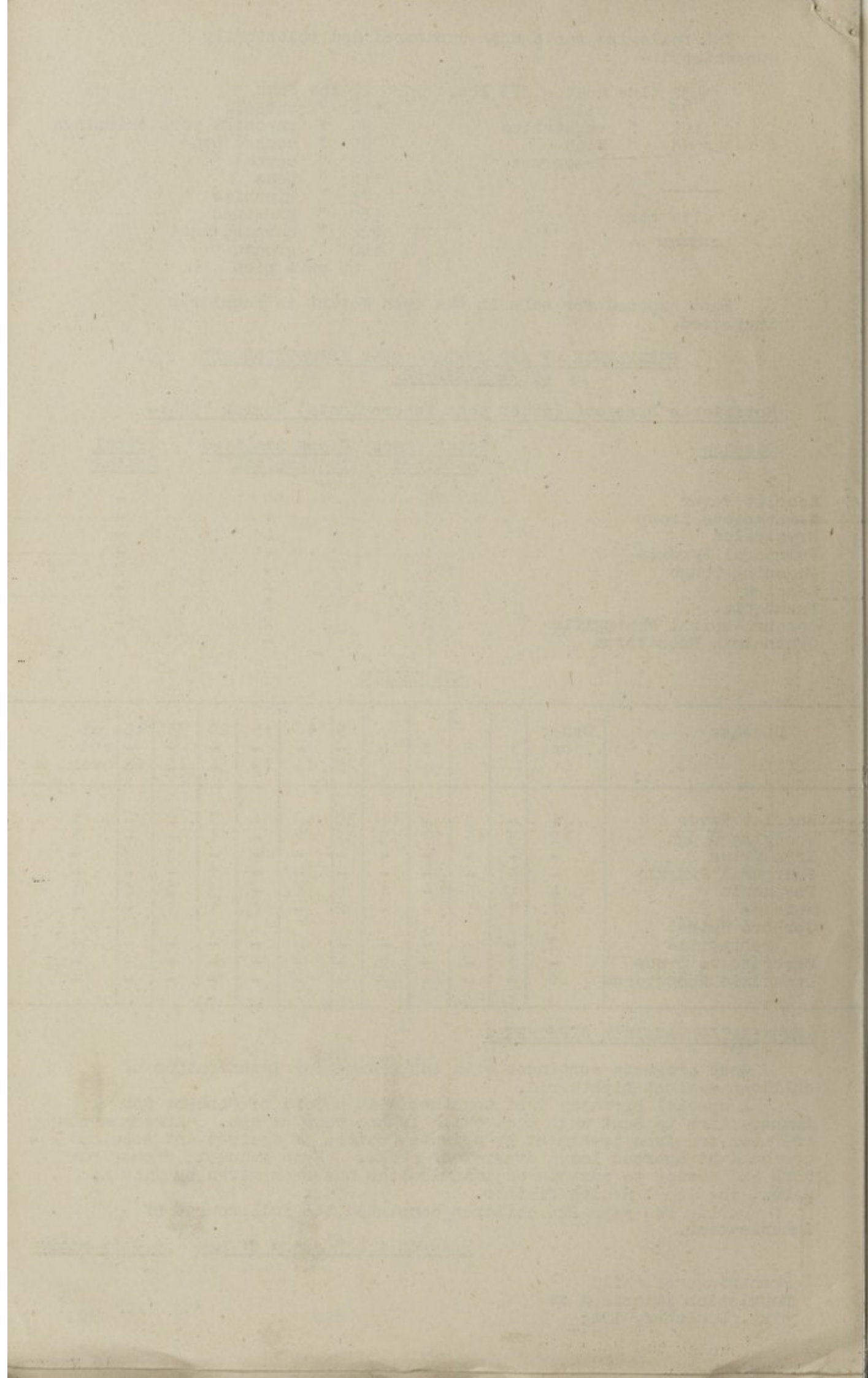
During the year 226 children completed the full course of immunisation.

Between 1 & 5 years of age      5 - 15 years

Percentage of child  
population immunised at  
31st. December, 1944

85%

90%





Number of cases of Diphtheria in children under  
15 years of age notified during the year 1944 ... Nil

#### TREATMENT FOR SCABIES

A Centre was opened in May, 1942, for the out-patient treatment of Scabies cases from the Melton Mowbray Urban and the Melton & Belvoir Rural Districts.

73 cases from the Urban District were treated during the year, compared with 195 cases last year and 246 cases in 1942.

	<u>Under</u> <u>15 years</u>	<u>Over</u> <u>15 years</u>	<u>Total</u>
Males	21	8	29
Females	27	17	44
Total	<u>48</u>	<u>25</u>	<u>73</u>

#### TUBERCULOSIS

AGE GROUPS	New Cases				Deaths			
	Pulmonary		Non-pulmonary		Pulmonary		Non-pulmonary	
	M	F	M	F	M	F	M	F
1 - 5	-	-	1	1	-	-	-	1
5 - 15	1	-	2	2	-	-	1	-
15 - 25	2	1	-	-	-	-	-	-
25 - 35	1	1	-	2	2	1	-	-
35 - 45	1	-	-	-	-	-	-	-
45 - 55	2	-	-	-	1	-	-	-
55 - 65	-	1	-	-	-	1	-	-
	7	3	3	5	3	2	1	1



