

[Report 1896] / Medical Officer of Health, Maidstone R.D.C.

Contributors

Maidstone (England). Rural District Council.

Publication/Creation

1896

Persistent URL

<https://wellcomecollection.org/works/emkmndjb>

License and attribution

You have permission to make copies of this work under a Creative Commons, Attribution license.

This licence permits unrestricted use, distribution, and reproduction in any medium, provided the original author and source are credited. See the Legal Code for further information.

Image source should be attributed as specified in the full catalogue record. If no source is given the image should be attributed to Wellcome Collection.



Wellcome Collection
183 Euston Road
London NW1 2BE UK
T +44 (0)20 7611 8722
E library@wellcomecollection.org
<https://wellcomecollection.org>



ANNUAL REPORT ON THE HEALTH

OF THE

Maidstone Rural Sanitary District

IN 1896.

CENSUS, 1881.		CENSUS, 1891.	
Number of Acres	34,670	Number of Acres	34,670
Inhabited Houses	3,204	Inhabited Houses	3,275
Population	15,492	Population	15,907

The **Population** of the Maidstone Rural District was estimated by the method adopted by the Registrar-General to be **16,129** at the middle of 1896, showing an increase of 41 since the middle of 1895.

The registered Births amounted to 455, including 238 of males and 217 of females, and giving a **Birth-rate** of **28.2**, as against 26.7 in 1895 and 29.4 in 1894.

Three hundred and four deaths were registered, which included 178 of males and 126 of females.

These deaths included 9 of non-resident hop-pickers, and 59 among inmates of the Union Workhouse, 38 of whom were resident outside the District.

The **Death-rate** was **16.4** per 1,000.

The **Infant Mortality**, i.e., the number of deaths of infants under one year per each 1,000 births was **116**, as against 139 in 1895 and 102 in 1894.

Of the 304 total deaths 39 were caused by one or other of the seven principal zymotic diseases. One was attributed to Scarlet Fever, 6 to Diphtheria, 1 to Enteric Fever, 16 to Measles, 9 to Whooping-cough, and 6 to Diarrhoea.

The **Zymotic Death-rate** was **2.4**, as against 1.6 in 1895 and 1.5 in 1894.

During the year 1896 the birth-rate throughout England and Wales was 29.7, the general death-rate 17.1, and the zymotic death-rate 2.18 per 1,000 of population. The rate of mortality among infants under one year of age to 1,000 registered births was 148.

Notifiable Diseases.—Under the Infectious Disease (Notification) Act, 1889, 78 cases were reported, as compared with 95 in 1895 and 104 in 1894.

They included 2 of Small-pox, 37 of Scarlet Fever, 18 of Diphtheria, 6 of Enteric Fever, 1 of Puerperal Fever, and 14 of Erysipelas.

Small-pox.—A boy aged 7 years and a baby aged 1½, the children of a tinware hawker, were the only persons attacked by Small-pox in the District during the year.

The family was encamped at Marden when the nature of the disease was recognised on April 27th, and it was clearly traced to their having come in contact with a tramp at a common lodging-house in a neighbouring district, who fell ill with Small-pox a short time previously.

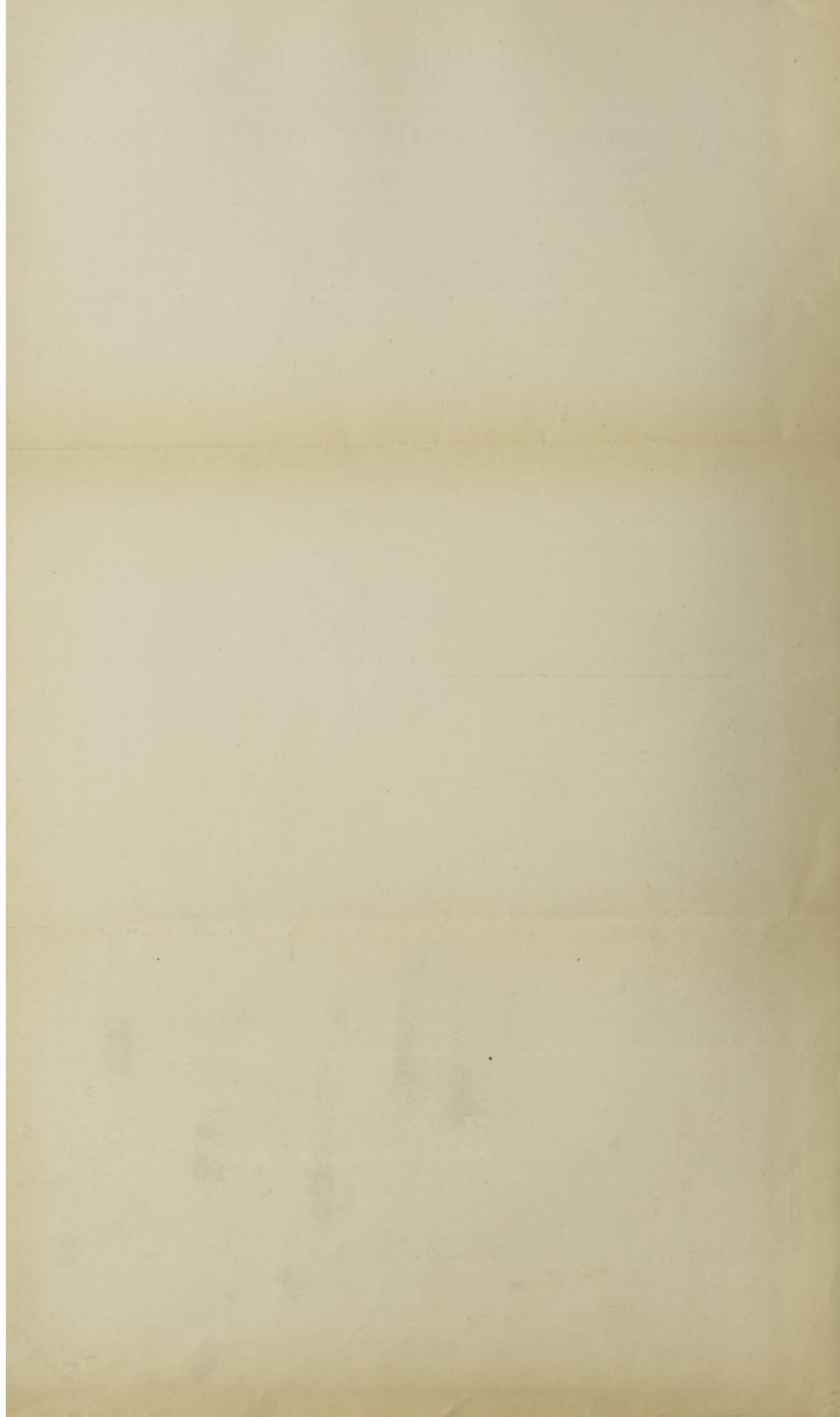
Both cases were simultaneously notified and promptly removed to the Coxheath Isolation Tents. The parents accompanied the children to the tents and were re-vaccinated as a matter of precaution, and were detained until sufficient time had elapsed to show that they were not likely to contract the disease, when they and their belongings were disinfected and discharged. The children made good recoveries and no one else became infected.

Scarlet Fever.—Of the 37 notified cases 1 was reported in Barming, 2 in Boughton Monchelsea, 3 in East Farleigh, 1 in West Farleigh, 10 in Hunton, 7 in Loose, 3 in Marden, 1 in Nettlestead, 3 in Otham, and 6 in Yalding.

One case only proved fatal on February 4th at Boughton Monchelsea. It was that of a girl aged 10 years, who died without having been seen by a medical man and on whom an inquest was held. The age-periods at which the cases occurred were as follows:—

1—5 years	5—15 years.	25—65 years.	
10	22	5	= 37 cases.

The majority of the cases (24) arose during the last quarter of the year. Five occurred in February, 2 in April, 7 in September, 13 in October, 5 in November, and 5 in December.



Diphtheria.—This disease showed a much greater mortality, 6 out of 18 notified cases ending fatally. The cases were reported 1 in Barming, 2 in Bearsted, 2 in Boughton-Monchelsea, 1 in Hunton, 7 in Marden, and 5 in Staplehurst. Two ended fatally in Boughton-Monchelsea, 3 in Marden, and 1 in the Hospital Tents at Coxheath.

Three cases occurred in the first, 1 in the second, 10 in the third, and 4 in the fourth quarter of the year.

The case mortality of Diphtheria was 33·3 per cent.; that of patients under 5 years of age was 50 per cent., and that of persons over 5 years, 31·3.

The following shows the age-periods of cases and of deaths :—

1—5 years.	5—15 years.	15—25 years.	25—65 years.	
<u>2</u>	<u>8</u>	<u>4</u>	<u>4</u>	= 18 cases.
1	2	1	2	= 6 deaths.

Enteric Fever.—The district was very free from this fever, and the few cases which did arise occurred during the latter part of the year—1 in September, 2 in October, 2 in November, and 1 in December.

One case was reported at each of the following places:—Barming, Boughton-Monchelsea, West Farleigh, Hunton, Marden and Yalding. The case at Marden—that of an adult female—ended fatally in December.

One non-fatal case of **Puerperal Fever** was reported from Yalding in March.

Erysipelas.—Cases of Erysipelas were reported throughout the year to the number of 14, with the exception of during the months of May, June and August. The cases and deaths were as follows :—

1—5 years.	5—15 years.	15—25 years.	25—65 years.	65 upward years.	
<u>1</u>	<u>2</u>	<u>2</u>	<u>8</u>	<u>1</u>	= 14 cases.
			2	1	= 3 deaths.

Of the deaths, one occurred in September, at Marden, one in August, at West Farleigh, and one in December, at Linton.

Non-notifiable Diseases.

Measles was very prevalent throughout the district, and caused many more deaths than any of the other Zymotic Diseases, including Whooping-cough.

It was also responsible for the closure of the following Schools:—East Farleigh, from January 13th to January 27th; Teston National School, from February 11th to March 2nd; Nettlestead Schools, from February 10th to March 16th; Bearsted National School, from March 7th to March 17th; Hunton School from July 16th to July 30th.

Three deaths occurred in January, 5 in February, 5 in March, 1 in May, 1 in June, and 1 in September.

The fatal nature of the disease among young children is seen from the age-periods below :—

0—1 years.	1—5 years.	5—15 years.	
<u>4</u>	<u>9</u>	<u>3</u>	= 16 deaths.

Whooping-cough was, as usual, particularly fatal among very young children, five of the nine being under a year old, and all under four years.

Three deaths occurred at Marden, 3 at Yalding, 2 at Staplehurst, and 1 at Boughton-Monchelsea.

Diarrhoea.—Six deaths only were attributed to Diarrhoea among persons varying from 3 months to 77 years. Two occurred in Loose, 2 in Boughton-Monchelsea, 1 in Yalding, and 1 in the Union Workhouse.

Influenza caused three deaths, one in the month of January, and one in each of the last two months of the year, the patients being 43, 69 and 11 years respectively.

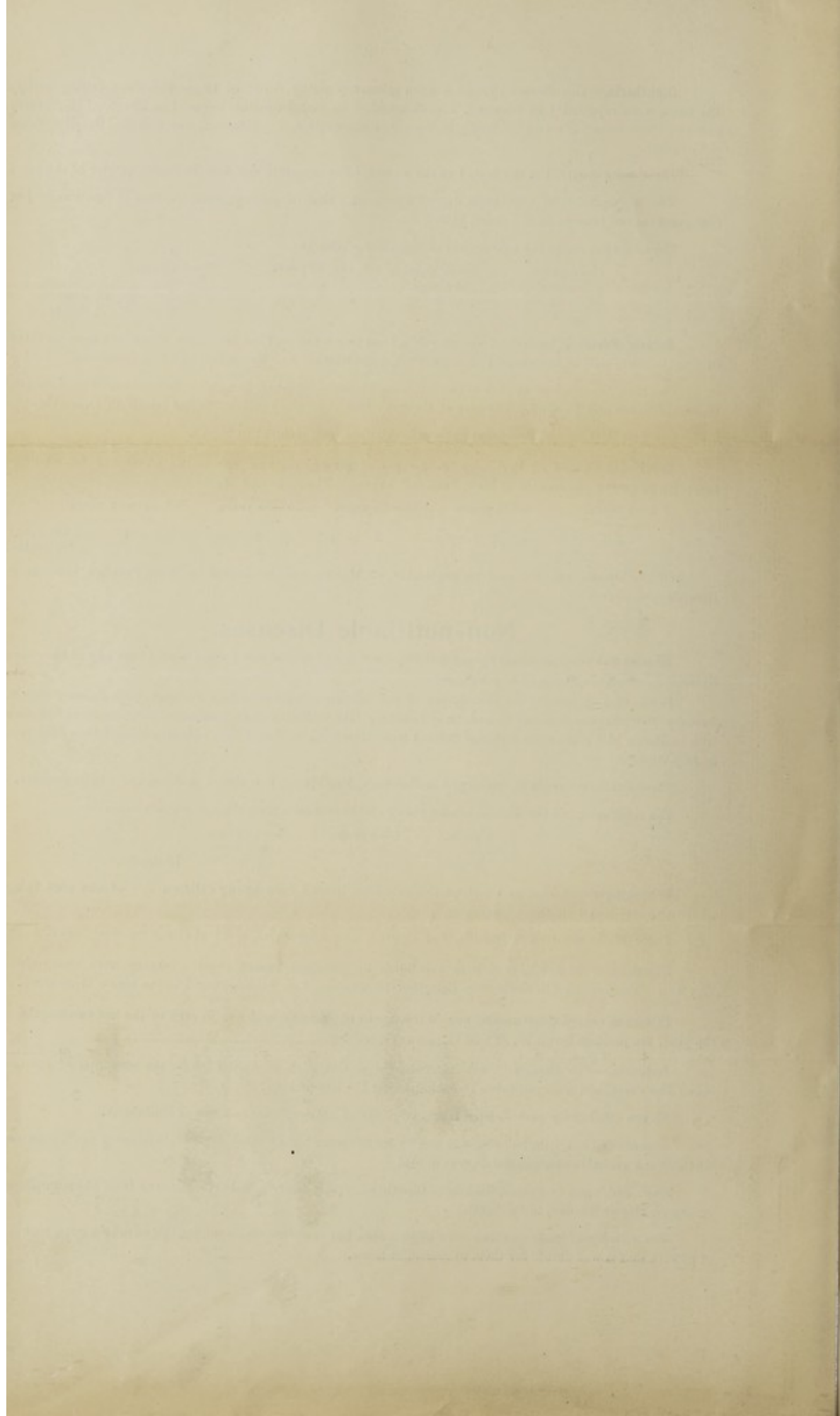
Isolation.—The Hospital Tents were erected at Coxheath on April 27th for the reception of the two Small Pox cases, and were not taken down until after the hop-picking.

Eleven other cases were isolated there, viz.: Six of Scarlet Fever and five of Diphtheria.

A new wood and iron building was put up for the reception of three cases of Diphtheria in September, when all the available accommodation was in use.

One child, aged five years, died from Diphtheria shortly after he had been removed from an encampment of hop-pickers at Marden, to Coxheath.

The majority of those removed were hop-pickers, but two were residents, though so near a large number of pickers that it was unsafe for them to remain at home.



One case of Typhoid Fever was isolated in the West Kent General Hospital. Many other cases would have been much better removed, as effective isolation is impossible in ordinary small houses.

The Tents are in an unfit condition for re-erection, and a proper permanent Isolation Hospital is required, not only for the isolation of hop-pickers, but for the infectious cases which are constantly arising throughout the year among the ordinary residents.

I have the honour to be, Gentlemen,

Your obedient Servant,

JAMES SCOTT TEW, M.D.

Feb. 22nd, 1897.

MAIDSTONE RURAL DISTRICT COUNCIL.

Work carried out by Mr. Stallard, Year ending December 31st, 1896.

Number of Blocks of Houses inspected	331
" Hopper Houses inspected	3469
" Costers' Barrows, etc., about	600
" Nuisances discovered	24
" Cooking Houses inspected	261
" Tents inspected	220
" Revisits made	300

GENERAL INSPECTION WORK:—

Nuisances discovered and notices sent	56
Dairies inspected	38

TABLE A.

The number of Deaths from all causes and from the seven principal Zymotic Diseases with their Death Rates; the principal causes of Death, and the Infant Mortality in the Maidstone Rural District, in each quarter of 1896.

Quarters.	Total Deaths.	Death Rate per 1,000.	Deaths from 7 principal Zymotic Diseases.	Zymotic Death Rate.	Small-pox.	Scarlet Fever.	Diphtheria.	Membranous Croup.	Etiotic Fever.	Erysipelas.	Measles.	Whooping-cough.	Diarrhoea.	Rheumatic Fever.	Phthisis.	Bronchitis, Pleurisy, Pneumonia.	Heart Disease.	Influenza.	Injuries.	All other Diseases.	Deaths of Infants under 1 year per 1,000 Births.
1st	80	19.8	15	3.7	...	1	13	1	7	11	9	1	1	36	111
2nd	60	12.6	5	1.2	1	1	11	11	1	30	84
3rd	75	14.1	13	3.2	4	2	6	5	...	6	45	87
4th	89	19.3	6	1.4	1	...	1	1	12	9	51	170
Totals	304	16.4	39	2.4	...	1	6	...	1	3	16	9	6	...	28	39	25	3	5	162	116

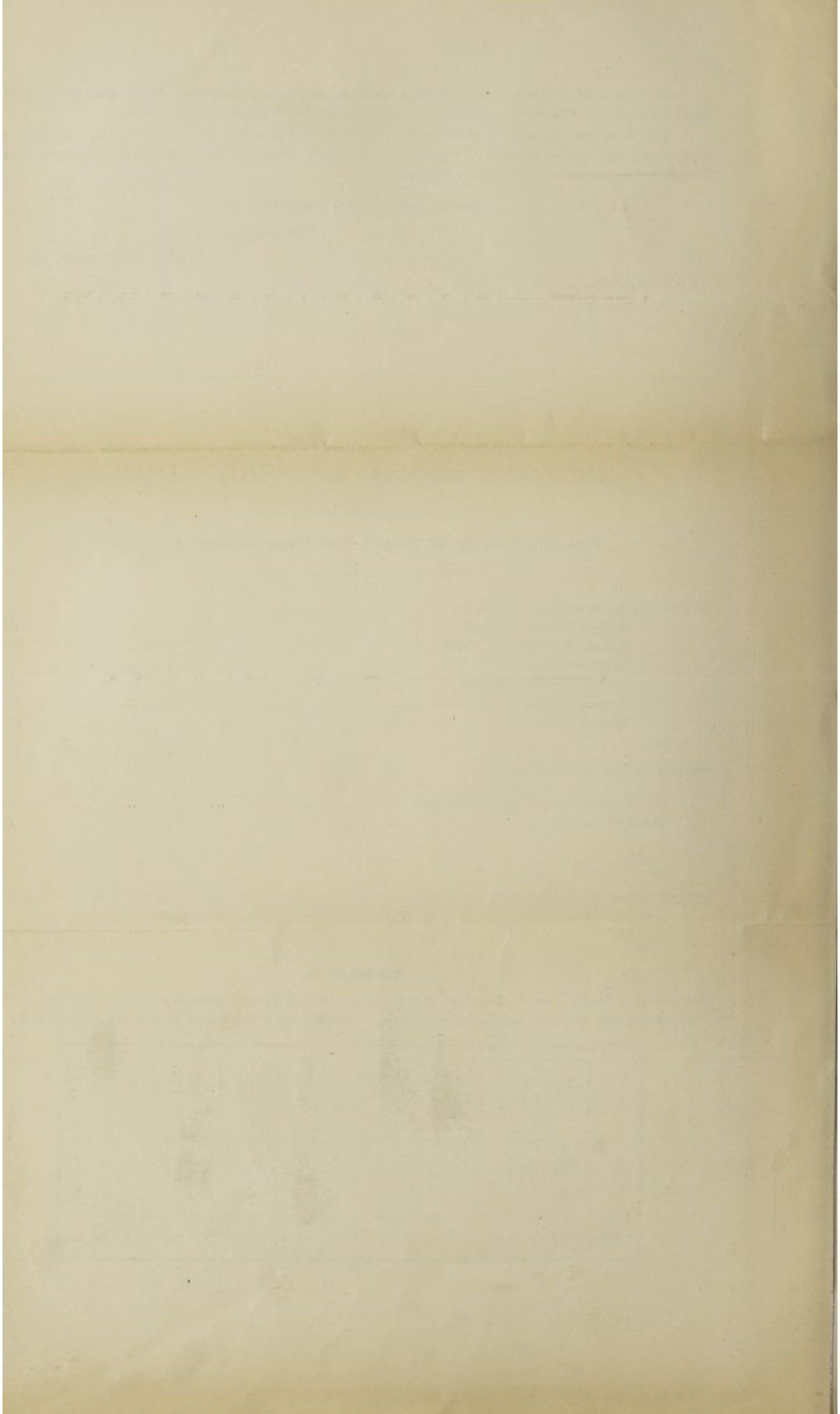


TABLE B.

Deaths from Zymotic Diseases during the past ten years and in 1896.

Zymotic Diseases.	1886	1887	1888	1889	1890	1891	1892	1893	1894	1895	Average of 10 years.	1896
SMALL POX	0.0	0
SCARLET FEVER	1	1	...	1	2	3	...	0.8	1
DIPHTHERIA	1	2	...	1	4	2	2	10	2	8	3.2	6
FEBERS	1	2	...	1	1	1	...	2	1	...	0.9	1
MEASLES	1	2	...	7	1	...	5	3	3	...	2.2	16
WHOOPING-COUGH	3	...	13	6	6	3	...	3	13	1	4.8	9
DIARRHŒA	7	3	3	7	6	1	4	8	2	17	5.8	6
TOTAL ZYMOTICS	13	9	16	23	19	7	12	28	24	26	17.7	39
OTHER ZYMOTICS	4	4	2	2	5	5	23	7	5	16	7.3	6
TOTALS	17	13	18	25	24	12	35	35	29	42	25.0	45

TABLE C.

The more populous Parishes in the Maidstone Rural District ranged in order of their Death-rates; total Deaths, Deaths from the seven principal Zymotic Diseases, and the Zymotic Death-rate for the year 1896.

Parishes.	Census Population in 1891.	Total Deaths.	Death Rate per 1000.	Deaths from 7 principal Zymotic Diseases.	Zymotic Death-rate.
NETTLESTEAD	514	5	9.9	0	0.0
STAPLEHURST	1818	22	11.9	5	2.6
YALDING	2595	34	14.2	4	1.1
HUNTON	934	13	14.4	1	1.0
EAST FARLEIGH	1611	25	15.6	4	2.4
LINTON	990	12	16.7	0	0.0
BOUGHTON MONCHELSEA	1117	19	16.8	7	6.2
EAST AND WEST BARMING	794	11	17.1	1	1.4
MARDEN	2350	39	17.7	7	2.9
BEARSTED	645	11	17.9	1	1.5
LOOSE	1501	31	22.6	3	2.0

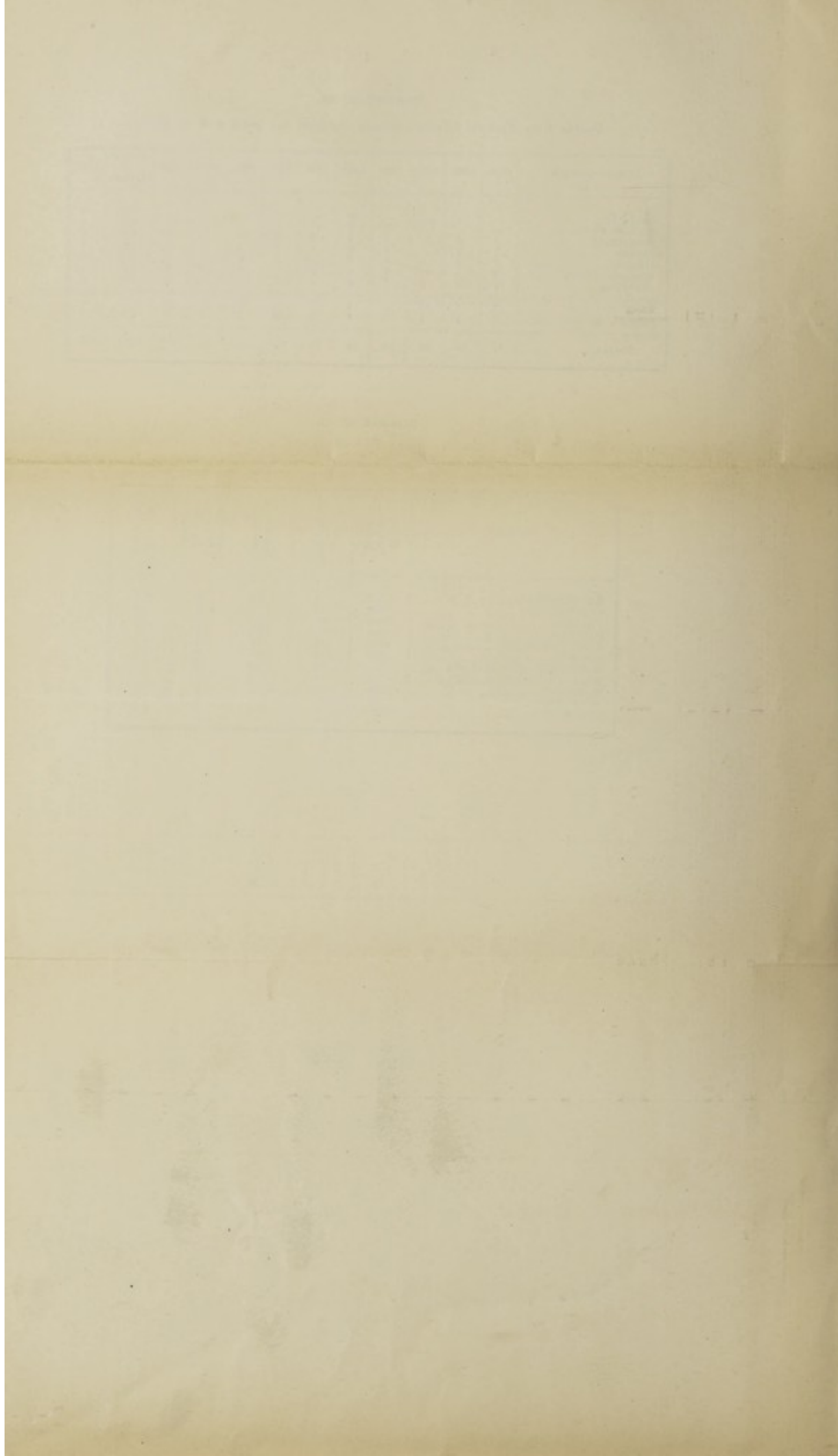


TABLE OF POPULATION, BIRTHS, AND OF NEW CASES OF INFECTIOUS SICKNESS, coming to the knowledge of the Medical Officer of Health during the year 1896, in the Maidstone Rural Sanitary District, classified according to Diseases, Ages and Localities.

NAMES OF LOCALITIES adopted for the purpose of these Statistics; Public Institutions being shown as separate locali- ties.	POPULATION AT ALL AGES.		Registered Births.	Aged under 5 or over 5.	NEW CASES OF SICKNESS IN EACH LOCALITY, COMING TO THE KNOWLEDGE OF THE MEDICAL OFFICER OF HEALTH.													NUMBERS OF SUCH CASES REMOVED FROM THEIR HOMES IN THE SEVERAL LOCALITIES FOR TREATMENT IN ISOLATION HOSPITAL.																																																																																																																																																																																																																																																																																																																																																																																																																																																																																																																																																																																																																																																																																																																																																																																																																																																																																																																																																																																																																																																																																																																																																																																																													
	Census 1891.	Estimated to middle of 1896.			Smallpox.	Scarlatina.	Diphtheria.	Membranous Croup.	FEBRILE.				Typhus.	Enteric Typhoid.	Continued.	Relapsing.	Puerperal.	Cholera.	Krysipelas.	11	12	13	Smallpox.	Scarlatina.	Diphtheria.	Membranous Croup.	Typhus.	Enteric Typhoid. or	Continued.	Relapsing.	Puerperal.	Cholera.	Krysipelas.	11	12	13																																																																																																																																																																																																																																																																																																																																																																																																																																																																																																																																																																																																																																																																																																																																																																																																																																																																																																																																																																																																																																																																																																																																																																																											
East and West Barming	704	698		Under 5 5 Upwards.	1																																																																																																																																																																																																																																																																																																																																																																																																																																																																																																																																																																																																																																																																																																																																																																																																																																																																																																																																																																																																																																																																																																																																																																																																																										

NOTE.—Notification of Infectious Diseases compulsory since January, 1890. No Isolation Hospital.

REPORT ON THE HEALTH
OF THE
MAIDSTONE RURAL DISTRICT

IN
1896,

BY

JAMES SCOTT TEW, M.D., D.P.H.,

Medical Officer of Health.

MAIDSTONE:
W. E. DICKINSON, PRINTER, HIGH STREET.
1897.

