

[Report 1964] / Medical Officer of Health, Haslemere U.D.C.

Contributors

Haslemere (England). Urban District Council.

Publication/Creation

1964

Persistent URL

<https://wellcomecollection.org/works/n4zehc24>

License and attribution

You have permission to make copies of this work under a Creative Commons, Attribution license.

This licence permits unrestricted use, distribution, and reproduction in any medium, provided the original author and source are credited. See the Legal Code for further information.

Image source should be attributed as specified in the full catalogue record. If no source is given the image should be attributed to Wellcome Collection.



Wellcome Collection
183 Euston Road
London NW1 2BE UK
T +44 (0)20 7611 8722
E library@wellcomecollection.org
<https://wellcomecollection.org>

HASLEMERE URBAN DISTRICT



ANNUAL REPORT

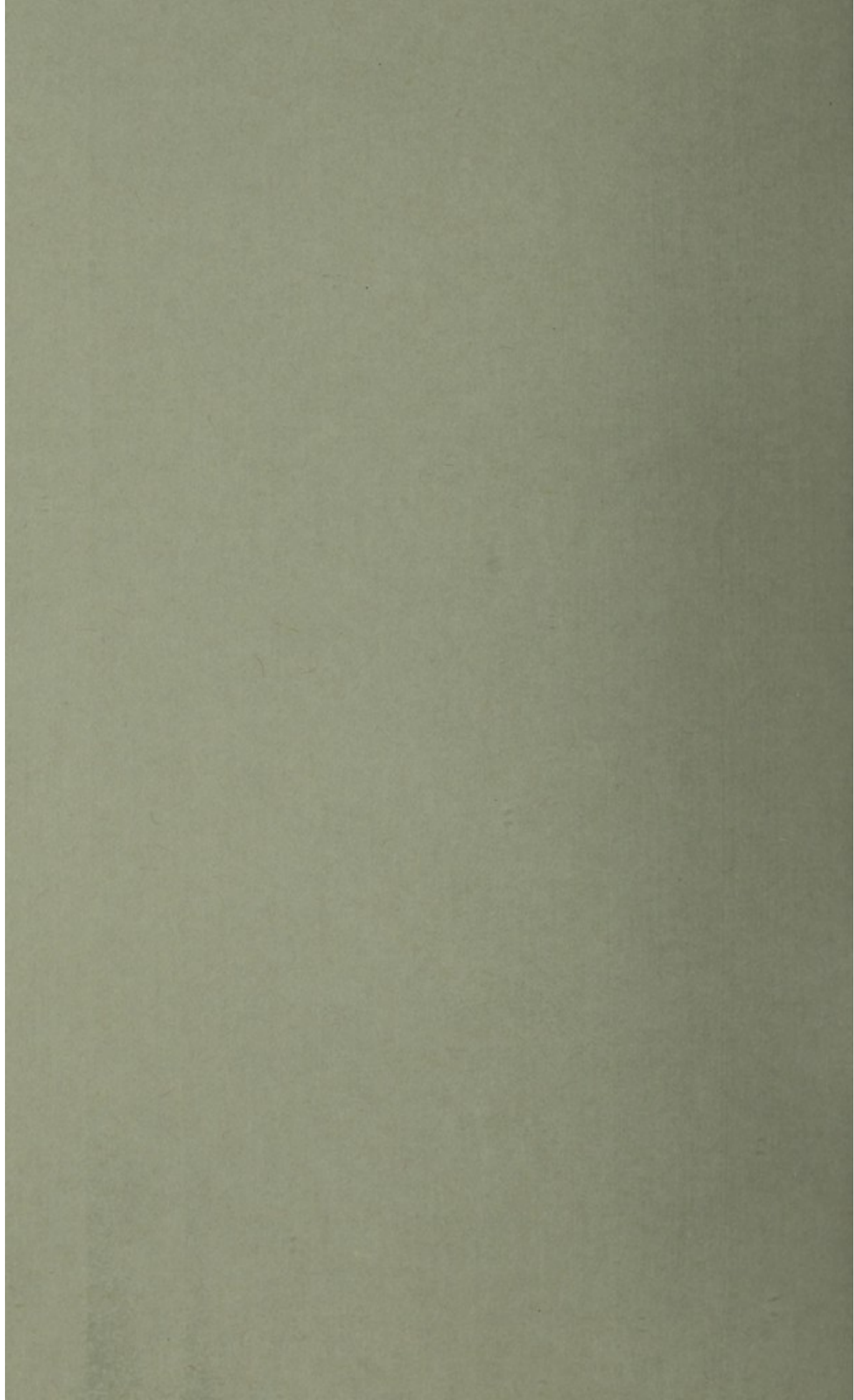
of the

Medical Officer of Health

For the Year

1964

**Together with the Annual Report of the
Chief Public Health Inspector**



Hastemere Urban District Council

With Compliments

*The Medical Officer of Health,
Half Moon House,
High Street,
Hastemere.*

Washburne Urban District Council

With Compliments

The Medical Officer of Health
Stephenson House
Stephenson Street
Washburne

Haslemere Urban District Council

STAFF OF THE PUBLIC HEALTH DEPARTMENT

Medical Officer of Health:

T. R. BENNETT, M.B. CH. L.R.C.P., D.P.H.

Deputy Medical Officer of Health:

H. C. MORTON, M.B. CH. D.P.H.

CONTRACTS

JAMES J. SHIPLEY, A.M.S., M.A., M.B.

Pages

6-9

10-13

13-17

18

19

20-27

Digitized by the Internet Archive
in 2017 with funding from
Wellcome Library

Chief Clerk:

Medical Officer of Health's Department:

Miss F. WADEY

Public Health Inspector's Department:

<https://archive.org/details/b29414921>

CONTENTS

	<i>Pages</i>
Statistical and Social Conditions of the Area	6—9
General Provision of Health Services for the Area ...	10—13
Prevalance of, and Control over, Infectious and other Diseases	13—17
Sanitary Circumstances of the Area	18
Inspection and Supervision of Food	19
Chief Public Health Inspector's Report	20—37

Haslemere Urban District Council

STAFF OF THE PUBLIC HEALTH DEPARTMENT

Medical Officer of Health:

T. R. BENNETT, M.R.C.S., L.R.C.P., D.P.H.

Deputy Medical Officer of Health:

I. H. C. MORTON, M.B., Ch.B., D.P.H.

Chief Public Health Inspector:

JAMES J. SHIRLEY, A.R.San.I., M.A.P.H.I.
(retired 31st December, 1964.)

Additional Public Health Inspector:

A. R. PRUE, M.R.S.H., M.A.P.H.I.
(appointed Chief Public Health Inspector to take effect
1st January, 1965)

Rodent Operative:

R. KOBAYASHI

Clerical Staffs:

Medical Officer of Health's Department:
Miss F. WADEY

Public Health Inspector's Department:
Miss E. PAICE

STAFF OF THE PUBLIC HEALTH DEPARTMENT

Medical Officer of Health:

T. R. BENNETT, M.R.C.S., L.R.C.P., D.P.H.

Deputy Medical Officer of Health:

I. H. C. MORTON, M.B., Ch.B., D.P.H.

Chief Public Health Inspector:

JAMES J. SHIRLEY, A.R.S.A., M.A.P.H.I.

Sanitary Inspectors	1-6
General Public Health Inspectors	7-11
Assistant Public Health Inspectors	12-15
A. R. PRUE, M.R.S.H., M.A.P.H.I.	16
(appointed Chief Public Health Inspector to take effect in January 1928)	17
Public Health Inspectors	18-22

Reagent Operator:

R. KOBAYASHI

Clinical Staff:

Medical Officer of Health's Department:

Miss F. WALDRY

Public Health Inspector's Department:

Miss E. PAICE

HASLEMERE URBAN DISTRICT COUNCIL

Public Health Department,
Half Moon House,
Haslemere.

Mr. Chairman, Ladies and Gentlemen,

I have the honour to present my Annual Report on the work of the Public Health Department for the year 1964. The report has been prepared in accordance with the Ministry of Health Circular 1/65 and includes the Report of the Chief Public Health Inspector.

The health of the District has remained very good and there was no major outbreak of infectious disease; indeed, the number of cases notified by the hospitals and general practitioners was remarkably low.

The number of deaths of residents in the District decreased considerably in the year, although there was a slight increase in the number of deaths due to carcinoma. There was also a welcome decrease in the infant mortality rate as compared with the previous year.

The total number of live births was higher than in 1963, although our birth rate per 1,000 of population is still lower than the figure for England and Wales.

The outbreak of typhoid fever in Aberdeen caused considerable extra work on the part of the staff of the Department, especially in the withdrawal of corned beef at the request of the Ministry of Health. No case of typhoid fever occurred in the District during the year.

The retirement of Mr. Shirley from the post of Chief Public Health Inspector after more than thirty-one years' service with the Council marked the end of the year. Together with other members of the staff I wish him every happiness in his well earned retirement.

Once again I should like to conclude by thanking the staff of the Department for their loyal co-operation at all times, and in particular my Deputy, Dr. Morton, for his assistance in preparing the draft of this Report.

I have the honour to be,

Your obedient Servant,

T. R. BENNETT.

July 1965.

Medical Officer of Health

STATISTICS AND SOCIAL CONDITIONS
OF THE AREA

SUMMARY

	1963	1964
Area in Acres	5,751	5,751
Estimated resident population in June (estimate supplied by Registrar-General)	13,020	13,210
Number of Inhabited Houses (at 31st March, 1965 according to Rate Books (including shop dwellings))	3,784	3,792
Rateable Value as at 1st April, 1965	£670,403	£681,141
A sum represented by a Penny Rate (estimated)	£2,661. 6s.	£2,650
Number of Births (legitimate and illegitimate)	153	172
Birth-Rate (actual) per 1,000 of the population	11.75	13.02
Birth -Rate (after correction by the Registrar-General's Comparability Factor)	13.63	15.10
Number of Still Births	2	2
Number of Deaths	198	158
Death-Rate (actual) per 1,000 of the population	15.21	11.96
Death-Rate (after correction by the Registrar-General's Comparability Factor)	11.41	8.97
Natural increase of population during year by excess of births over deaths	—45	14
Number of Deaths of Infants (under the age of one year)	8	5
Infant Mortality per 1,000 live births	52.29	29.07
Number of women dying in, or in consequence of, child-birth	Nil	Nil
Death-Rates per 1,000 of the population from:—		
Influenza	0.07	0.00
Pneumonia (all forms)	1.23	0.91
Bronchitis	0.61	0.30
The seven principal zymotic diseases: Smallpox; Whooping Cough; Measles; Gastritis; Enteritis and Diarrhoea; Diphtheria; Scarlet Fever and "Fever" (Typhoid, Enteric and Typhus)	0.07	0.00
All forms of Tuberculosis	0.07	0.00
Cancer	2.46	2.88
Heart Disease	4.84	3.94

EXTRACTS FROM VITAL STATISTICS

Live Births:

Number	172
Rate per 1,000 population (actual)	13.02
			(comparable)	15.10

Illegitimate Live Births per cent of total live births ... 9.3

Still Births:

Number	2
Rate per 1,000 total live and still births	11.49

Total Live and Still Births ... 174

Infant Deaths (deaths under one year) ... 5

Mortality Rates:

Infant (deaths under 1 year per 1,000 live births):

Total	29.07
Legitimate only	25.64
Illegitimate	62.5

Neo-natal (deaths under 4 weeks per 1,000 total live births) ... 17.44

Early Neo-natal (deaths under 1 week per 1,000 total live births) ... 11.63

Perinatal (still births and deaths under 1 week combined per 1,000 total live and still births) ... 22.98

Maternal Mortality (including abortion)

Number of deaths ... NIL

COMPARATIVE BIRTH AND DEATH RATES

The following Table shows the birth- and death-rates per 1,000 of the population for the District, and for England and Wales, for 1963 and 1964.

	Annual Rates per 1,000 of the Population				Infantile Mortality per 1,000 live births		Maternal Deaths (including Abortion) 1,000 total (live and still) Births	
	Birth-Rate		Death-Rate		1963	1964	1963	1964
	1963	1964	1963	1964				
Haslemere U.D. Crude	11.75	13.02	15.21	11.96	52.29	29.07	0.00	0.00
Comp.	13.63	15.10	11.41	8.97	—	—	—	—
England and Wales	18.20	18.40	12.20	11.30	20.90	20.00	0.28*	0.31

*Estimated

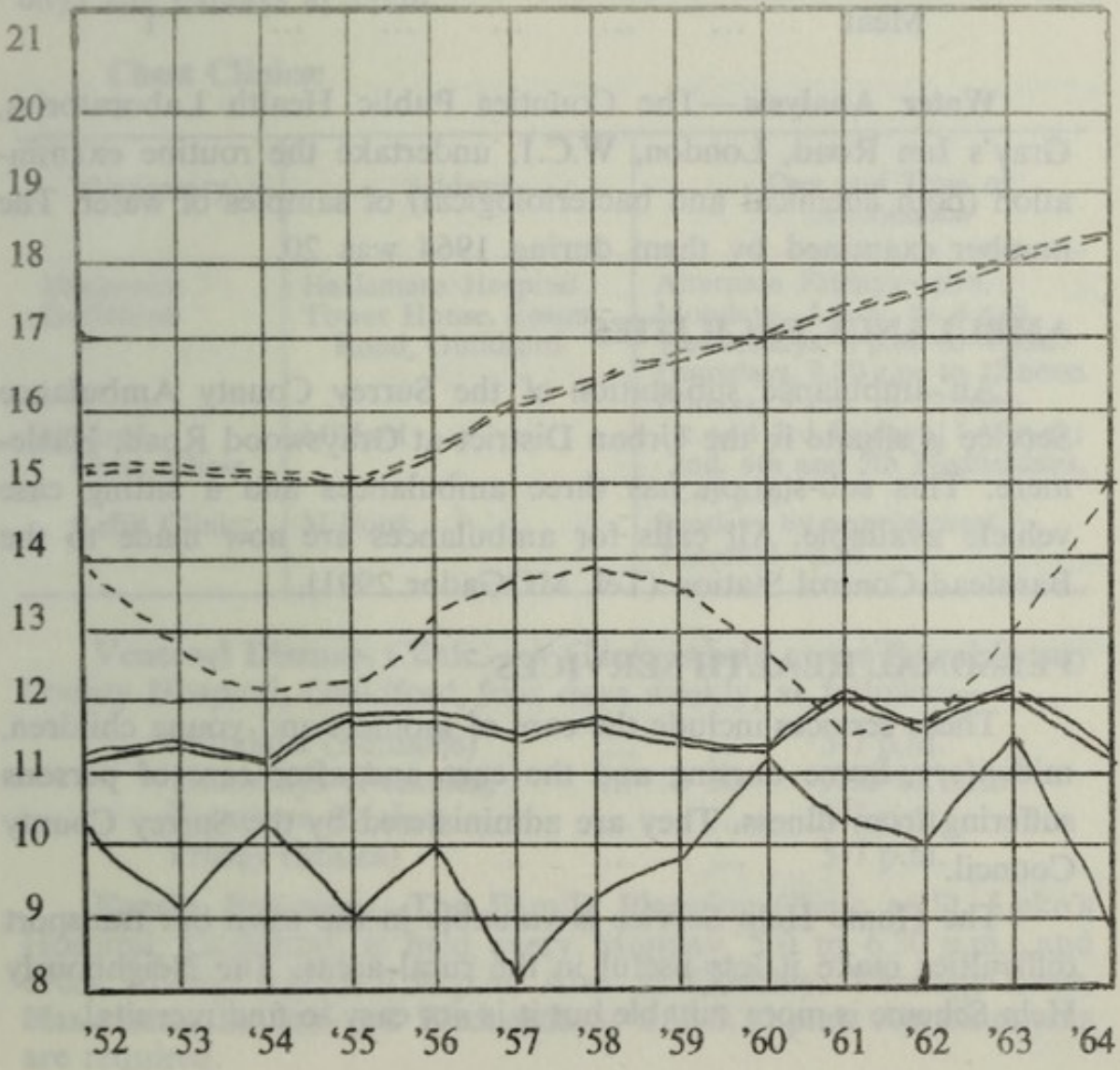
CAUSES OF DEATH (ALL AGES), 1964

(Figures supplied by Registrar-General)

Cause of Death	Male	Female	Total
Tuberculosis, respiratory	—	—	—
Tuberculosis, other	—	—	—
Syphilitic disease	—	—	—
Diphtheria	—	—	—
Whooping Cough	—	—	—
Meningococcal infections	—	—	—
Acute Poliomyelitis	—	—	—
Measles	—	—	—
Other infective and parasitic diseases	—	—	—
Malignant neoplasm, stomach	3	1	4
" " lung, bronchus	7	1	8
" " breast	—	2	2
" " uterus	—	2	2
Other malignant and lymphatic neoplasms	14	8	22
Leukaemia, aleukaemia	—	—	—
Diabetes	—	—	—
Vascular lesions of nervous system	10	12	22
Coronary disease, angina	22	13	35
Hypertension with heart disease	—	—	—
Other heart disease	5	12	17
Other circulatory disease	1	2	3
Influenza	—	—	—
Pneumonia	7	5	12
Bronchitis	3	1	4
Other disease of respiratory system	1	2	3
Ulcer of stomach and duodenum	—	—	—
Gastritis, enteritis, diarrhoea	—	—	—
Nephritis and nephrosis	—	—	—
Hyperplasia of prostate	1	—	1
Pregnancy, childbirth, abortion	—	—	—
Congenital malformation	2	3	5
Other defined and ill-defined diseases	5	8	13
Motor vehicle accidents	—	1	1
All other accidents	3	—	3
Suicide	1	—	1
Homicide and operations of war	—	—	—
Totals	85	73	158

**GRAPH SHOWING BIRTH AND DEATH RATES
PER 1,000 OF THE POPULATION**

				Haslemere U.D. (Corrected by the Registrar-General's Comparability Factor.)	England and Wales
Births	-----	=====
Deaths	—————	=====



GENERAL PROVISION OF HEALTH SERVICES FOR THE AREA

LABORATORY FACILITIES

Laboratory examinations are carried out at the Guildford Public Health Laboratory and at the Group Hospital Laboratory at King George V. Hospital for Chest Diseases. The Guildford Laboratory sends copies of reports on all specimens examined for infectious organisms to the Public Health Department as well as to the private doctor or hospital concerned. Examinations carried out at the Guildford Laboratory during the year were:—

Milk and allied samples	185
Water (examined for pH value)	13
Water (swimming pool)	2
Meat	1

Water Analysis.—The Counties Public Health Laboratories, Gray's Inn Road, London, W.C.1, undertake the routine examination (both chemical and bacteriological) of samples of water. The number examined by them during 1964 was 20.

AMBULANCE FACILITIES

An ambulance sub-station of the Surrey County Ambulance Service is situated in the Urban District at Grayswood Road, Haslemere. This sub-station has three ambulances and a sitting case vehicle available. All calls for ambulances are now made to the Banstead Control Station (Tel. MOGador 2991).

PERSONAL HEALTH SERVICES

These services include the care of mothers and young children, midwifery, home nursing and the care and after care of persons suffering from illness. They are administered by the Surrey County Council.

The Home Help Service is valuable in the town but transport difficulties make it less useful in the rural areas. The Neighbourly Help Scheme is more suitable but it is not easy to find recruits.

CLINICS AND TREATMENT CENTRES

Maternity and Child Welfare.—Centres within the District are as set out in the Table below:—

Centre	Address	Days of Centre
Haslemere	Quedley, Vicarage Lane, Haslemere	1st, 3rd and 5th Tuesdays—p.m. Speech Therapy Deaf Teacher Eye and Dental—by appointment only
Hindhead (Beacon Hill)	Congregational Church Rooms, Hindhead	2nd and 4th Fridays
Haslemere Hall	Bridge Street, Haslemere	2nd and 4th Tuesdays—p.m.

Ante-Natal Clinic.—Held at St. Georges Wood Annexe (Haslemere Hospital) on Mondays, Tuesdays, Wednesdays, Thursdays and Fridays at 2 p.m.

Chest Clinics:

Dispensary	Address	Day and Time of Attendance
Haslemere Guildford	Haslemere Hospital Tower House, Epsom Road, Guildford	Alternate Fridays—p.m. Mondays, 1 p.m. to 4 p.m. Wednesdays, 1 p.m. to 4 p.m. Thursdays, 9.30 a.m. to 12 noon Fridays, 9 a.m. to 12 noon
Milford Chest Clinic	Milford	1st and 3rd Fridays, 1.45 p.m.; 2nd, 4th and 5th Wednesdays, 2.45 p.m.
Refill Clinic	Milford	Sundays by appointment Tuesdays—a.m.

Venereal Diseases Clinic.—A Clinic is held at the Royal Surrey County Hospital, Guildford, four days weekly, as follows:—

Mondays (Females)	3-7 p.m.
Thursdays (Females)	9.30-11 a.m.
Tuesdays (Males)	5-7 p.m.
Friday (Males)	5-7 p.m.

Family Planning.—The Family Planning Clinic at St. Luke's Hospital, Guildford, is held every Monday, 5.0 to 6.30 p.m., and every Friday, 6.0 to 7.30 p.m. Also at Quedley, Vicarage Lane, Haslemere, 1st and 3rd Wednesdays, 6.30-7.30 p.m. Appointments are required.

HOSPITALS

The hospitals serving the Haslemere Urban District are :—

General:

Haslemere and District Hospital, Haslemere, 69 beds, 16 maternity beds.

Green Lane Hospital, Farnham, 40 chronic sick beds.

Holy Cross Hospital, Haslemere, 100 beds. (A certain number contracted for by the Guildford Group Hospital Management Committee).

Infectious Disease:

Green Lane Hospital, Farnham, 28 beds.

Chest Diseases:

Milford Chest Hospital, near Godalming, 312 beds.

MORTUARIES

The arrangement for reception of bodies at Milford Chest Hospital mortuary continues satisfactorily. 15 bodies were sent to Milford Hospital and 17 bodies (which were accident cases) were sent to Haslemere Hospital in 1964.

BURIAL OF THE DEAD.—SECTION 50, NATIONAL ASSISTANCE ACT, 1948

No burials were arranged under this section during 1964.

NATIONAL ASSISTANCE ACT, 1948, SECTION 47, AND CARE OF THE AGED

No action was necessary under Section 47.

ACCIDENTS IN THE HOME

Figures are supplied by the Ambulance Service of Home Accident cases removed to hospital.

Home Accident cases removed to Hospital by ambulance, 1964:

Falls	1	3	4
Poisoning or overdose			2	1	3
Other	1	-	1
Stabbing	1	-	1

CHIROPODY SERVICE

A Chiropody Service for elderly people is run by the Surrey Association for the Elderly. The Headquarters of the Association are at Kingston and the Honorary Organiser is Dr. H. L. Hodgkinson.

HEALTH PROPAGANDA

The anti-smoking campaign was followed up by displays of posters on public boards.

During the summer months particularly, food hygiene posters were circulated.

In the Autumn, posters on venereal disease were displayed.

PREVALENCE AND CONTROL OF INFECTIOUS AND OTHER DISEASES

INFECTIOUS DISEASE, 1964, AGE INCIDENCE (Other than tuberculosis)

NOTIFIABLE DISEASE	At all Ages	At Ages—Years				
		1-5	5-10	10-15	20-30	65
Salmonella Infections	—	—	—	—	—	—
Measles	11	4	4	2	—	1
Whooping Cough ...	—	—	—	—	—	—
Scarlet Fever ...	—	—	—	—	—	—
Dysentery ...	—	—	—	—	—	—
Acute Pneumonia ...	—	—	—	—	—	—
Meningoccal Infection	—	—	—	—	—	—
Poliomyelitis ...	—	—	—	—	—	—
Puerperal Pyrexia	1	—	—	—	1	—
Totals	12	4	4	2	1	1

Two cases of Infective Hepatitis occurred—quite unconnected with each other.

TUBERCULOSIS

The number of cases on our Tuberculosis Register at the end of 1964 was 30 male and 15 Female, and the following Table summarises the register as at 31st December for the last twelve years:—

Year	Pulmonary		Non-Pulmonary		Total No. on Register at 31st December
	Male	Female	Male	Female	
1953	28	34	12	10	84
1954	24	31	10	10	75
1955	23	27	5	6	61
1956	22	28	4	5	59
1957	23	26	4	4	57
1958	22	22	3	4	51
1959	23	23	4	3	53
1960	27	24	2	1	54
1961	29	22	—	1	52
1962	28	23	—	2	53
1963	29	23	—	2	54
1964	30	13	—	2	45

The following Table shows the notifications and deaths in the District, with the corresponding rates per 1,000 of the population, during the past twelve years:—

Year	Cases Notified		Notification Rate (New Cases)	Deaths	Death-Rate per 1,000 of the Population
	Trans-in	New Cases			
1953	5	4	0.34	1	0.08
1954	10	8	0.68	1	0.08
1955	2	1	0.08	2	0.17
1956	4	3	0.25	0	0.00
1957	5	1	0.08	0	0.00
1958	1	2	0.16	0	0.00
1959	4	7	0.57	0	0.00
1960	10	4	0.33	1	0.08
1961	4	4	0.31	0	0.00
1962	1	6	0.46	0	0.00
1963	3	3	0.23	1	0.07
1964	3	—	0.00	0	0.00

The transferred in cases were 2 male, aged 45 and 51, and 1 female, aged 28, all pulmonary.

B.C.G. Vaccination—This is available through the County School Health Services to school children of 13 and upwards and also to students at universities, colleges, etc. There are three private schools and Woolmer Hill County Secondary School concerned.

In 1964 there were 206 children eligible of whose parents 88.35 per cent agreed to participate. After eliminating those who were already positive and the absentees, 162 children (78.64 per cent) received the vaccination.

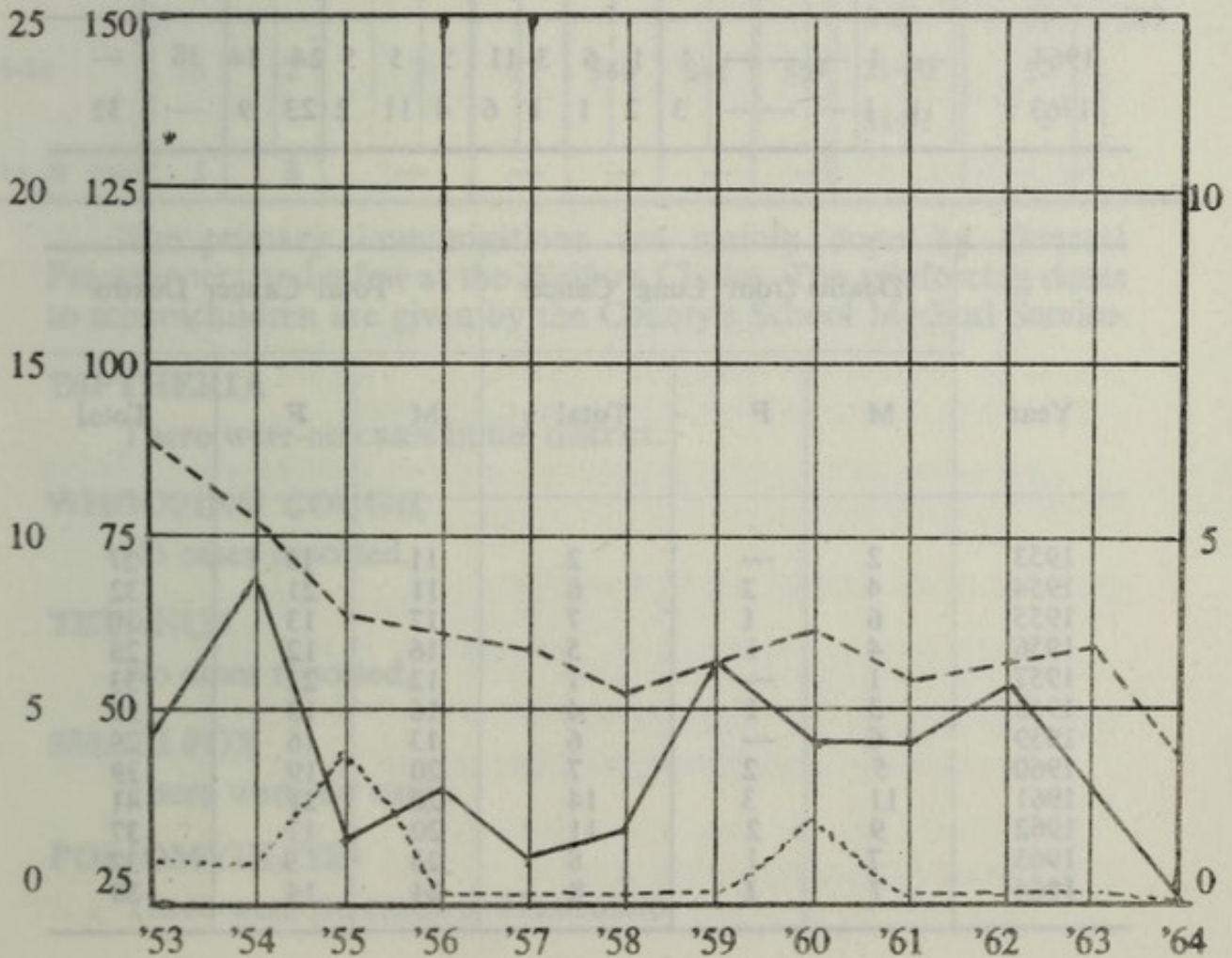
Mass X-Ray—480 patients were X-rayed during the year, in public sessions in Haslemere and 210 at special sessions at Industrial sites. This is nearly 100 more than in 1963.

GRAPH SHOWING THE ANNUAL NOTIFICATIONS AND DEATHS FROM TUBERCULOSIS AND DEATHS FROM TUBERCULOSIS

Notifications of Tuberculosis (0 to 25) ... —————

Deaths from Tuberculosis (0 to 10)
(excluding deaths of tuberculosis patients from other diseases)

Numbers on Register of notified cases (25 to 150) - - - - -



CANCER

The Table below shows the deaths from cancer during the year, compared with those for 1963.

DEATHS FROM CANCER

Site	Age												Totals		Grand Total	
	0-10		25—		35—		45—		55—		65—					
	M	F	M	F	M	F	M	F	M	F	M	F	M	F	1964	1963
Alimentary Canal	—	—	—	—	1	—	1	—	1	1	—	—	3	1	4	10
Breast	—	—	—	—	—	1	—	—	—	—	—	1	—	2	2	2
Lung	—	—	—	—	—	—	1	—	4	1	2	—	7	1	8	8
Liver	—	—	—	—	—	—	—	—	—	—	—	—	—	—	—	1
Tongue	—	—	—	—	—	—	—	—	—	—	—	—	—	—	—	—
Uterus	—	—	—	—	—	—	—	1	—	1	—	—	2	—	2	—
Other	—	1	—	—	—	—	4	2	6	2	3	4	14	8	22	11
1964	—	1	—	—	1	1	6	3	11	5	5	5	24	14	38	—
1963	1	1	—	—	3	2	1	1	6	4	11	2	23	9	—	32

Year	Deaths from Lung Cancer			Total Cancer Deaths		
	M	F	Total	M	F	Total
1953	2	—	2	11	16	27
1954	4	2	6	11	21	32
1955	6	1	7	17	13	30
1956	4	1	5	16	12	28
1957	1	—	1	12	21	33
1958	3	1	4	16	13	29
1959	6	—	6	13	16	29
1960	5	2	7	20	19	39
1961	11	3	14	20	21	41
1962	9	2	11	20	17	37
1963	7	1	8	23	9	32
1964	7	1	8	24	14	38

IMMUNISATION

The same scheme of immunisation continues in force i.e., in infancy Diphtheria, Whooping Cough and Tetanus as Triple Immunisation, with Poliomyelitis and Smallpox separately.

Reinforcing doses of Diphtheria and Tetanus are given at ages 5 and 10 to children who had the primary course in infancy, and a reinforcing dose of Poliomyelitis at age 5 only.

The figures given below are supplied by the South West Surrey Divisional Office in Guildford which keeps all immunisation records.

Age	Smallpox		Whooping Cough	Diphtheria		Tetanus		Poliomyelitis		
	Primary	Reinforcing		Primary	Reinforcing	Primary	Reinforcing	Age	Primary	Reinforcing
Under 1	3	—	92	92	—	92	—	Under 1	26	} 307
1-2	87	—	99	100	—	100	—	1-2	121	
2-4	26	—	21	22	—	22	—	2-3	14	
								3-20	57	
5-14	10	12	7	27	344	241	369	21-30	10	
15 & over	3	8	—	—	—	—	—	31-41	5	

The primary immunisations are mainly done by General Practitioners and a few at the Welfare Clinics. The reinforcing doses to schoolchildren are given by the County's School Medical Service.

DIPHTHERIA

There were no cases in the district.

WHOOPING COUGH

No cases reported.

TETANUS

No cases reported.

SMALLPOX

There were no cases.

POLIOMYELITIS

There were no cases in Haslemere.

SANITARY CIRCUMSTANCES OF THE AREA

WATER SUPPLIES

The District is supplied partly by the Guildford, Godalming and District Water Board and partly by the Wey Valley Water Company.

The quality of the water in supply is checked by us independently and frequently in accordance with the routine established during the years.

The fluoride content is less than 0.1p.p.m. from all sources.

DRAINAGE AND SEWERAGE

Hindhead sewerage scheme is completed. Certain defects have however appeared and required rectification by the Contractors.

SCAVENGING

The refuse collection service is a weekly collection. The removal of trade refuse was reconsidered and a new scheme incorporated for all business premises commencing on the 1st January, 1964.

CESSPOOL EMPTYING

This service provides monthly emptying of cesspools in unsewered areas, and is administered by the Council's Surveyor.

SWIMMING POOLS

In addition to Shottermill County Junior School swimming pool there are many swimming pools at private schools and houses.

The swimming pool at Shottermill School is well maintained and is in continuous heavy use during the summer months. The purification and chlorination plant is satisfactory.

Notes and advice on management and purification are available to all on request.

SMOKE AND NOISE ABATEMENT

There were no instances of infringement in this District.

ERADICATION OF BED BUGS

No cases of infestation by bed bugs came to our notice during 1964.

COMMON LODGING HOUSES

There are no such premises in the Haslemere Urban District.

INSPECTION AND SUPERVISION OF FOOD

MILK SUPPLY

Details of milk supplies are given in the report of the Chief Public Health Inspector.

The Public Health Department acts as agent for the County Council for inspections and sampling milk under the Milk (Special Designations) Regulations, 1960/63.

FOOD AND DRUGS ACT, 1955

This Act is administered by the Surrey County Council, and I am indebted to the County Medical Officer of Health for the information in the Table below showing the number of samples analysed and action taken in respect of this District during the year.

Articles	Analysed			Adulterated or Irregular		
	Formal	Informal	Total	Formal	Informal	Total
Food:						
Chestnut Puree	—	1	1	—	—	—
Coffee, Instant	—	1	1	—	—	—
Fruit, Fresh various	—	2	2	—	—	—
Milk	31	8	39	*1	—	1
Peas, Processed tinned	—	1	1	—	—	—
Ravioli with Tomato sauce	—	1	1	—	—	—
Vegetables, Fresh various	—	1	1	—	—	—
Drugs:						
Benadic Elixir	—	1	1	—	—	—
	31	16	47	1	—	1

*Legal proceedings were instituted against a dairy farmer for selling milk containing 13% added water. On conviction he was fined £20 with £3 3 0d. costs.

FOOD HYGIENE REGULATIONS, 1955

Details of work carried out under these Regulations are given in the appended Report of the Chief Public Health Inspector.

LIQUID EGG (PASTEURISATION) REGULATIONS, 1963.

There are no egg pasteurisation plants in this District. No samples of liquid egg have been submitted to the Alpha-Amylase test and I have no comments to make.

THE CHIEF PUBLIC HEALTH INSPECTOR'S
ANNUAL REPORT, 1964.

Half Moon House,
High Street,
Haslemere
Surrey.

To the Chairman and members of the Haslemere Urban
District Council

Mr. Chairman, Ladies and Gentlemen,

Mr. James J. Shirley retired on the 31st December, 1964 after nearly thirty-two years' service and this report covers the work carried out in the Department during the last year of his Office.

It is interesting to note the manner in which many things that at one time are considered "desirable" gradually come to be regarded, through public demand as "essential". An instance of this during the past year has been the introduction, through the Offices, Shops and Railway Premises Act, 1963, of standards of space, ventilation, temperature, toilet and washing facilities, safety and other measures in offices and shops. Although all the provisions of the Act are not yet in force, improvements are already being made. 143 premises were registered employing 837 people.

Steady progress has continued in dealing with the comparatively small number of houses in the schedule of unfit properties. Quite a lot of rented houses are still without some modern amenities, their owners continuing to show a reluctance to take advantage of improvement grants. There were no applications for certificates of disrepair under the Rent Act, 1957.

A 100% inspection of meat was carried out at the slaughterhouse and in this respect the co-operation of Godalming Borough Council in the loan of the services of their Public Health Inspectors when needed has been much appreciated. Nearly 5,000 carcasses with offal were inspected and the weight of meat condemned was over two tons.

At other premises approximately 7 cwt. of various foods were condemned as unfit for human consumption. All of this was voluntarily surrendered for disposal.

At the time of the Aberdeen typhoid epidemic special visits were made to all food premises, resulting in the withdrawal of 26 tins of corned beef.

The Council has continued to act as agent for the County Council for inspection and sampling under the Milk (Special Designation) Regulations, 1960/63. Under the Regulations designations have now been reduced to three, i.e., Pasteurised, Sterilized and Untreated.

Routine sampling of water and milk was carried out throughout the year, with sampling of other commodities as required.

Under the Prevention of Damage by Pests Act, 1949, isolated infestations of rats or mice, either discovered or reported, were quickly dealt with and only one major infestation was found. 19 business establishments in the area have disinfection contracts with the Council.

During the year 42 licences for storage of petroleum spirit were issued.

I am,

Your obedient Servant,

A. R. PRUE.

Chief Public Health Inspector.

SANITARY INSPECTION OF THE AREA

The number of inspections of premises and visits made in respect of the various duties are as follows:—

Housing:

Inspections and re-inspections (under Public Health and Housing Acts)	566
Overcrowding	11
Miscellaneous	61

Factories, Work-places and Outworkers Premises 228

Food Shops and Food Preparing Places:

Food shops and food preparing places	326
Restaurants and canteens	263
Slaughterhouse and butchers shops	474
Dairies and milk retailers	70
Food premises re Aberdeen typhoid outbreak	151

General:

Water supplies	74
Drainage	198
Infectious diseases	7
Atmospheric pollution	55
Public and private conveniences ...	66
Miscellaneous	547
Prevention of Damage by Pests Act ...	2,018
Petroleum Acts	65
Hackney Carriages	37

Offices, Shops and Railway Premises Act ... 18

Visits in connecting with Sampling:

Water sampling	35
Milk sampling	181
Ice cream sampling	4
Other sampling	1

Number of dwelling houses at which nuisances or defects were discovered 77

Number of other premises at which nuisances or defects were discovered (excluding rats or mice) 53

Number of nuisances under Prevention of Damage by Pests Act, 1949 297

Total number of Statutory Notices served ... 1

Total number of Statutory Notices complied with ... 1

Total number of Informal Notices served ... 171

Total number of Informal Notices complied with ... 163

FORMAL ACTION

During the year it became necessary to issue a Statutory Notice under the Public Health Act, 1936 and the Water Act, 1945, Section 30. The owners complied with the notice.

HOUSING

Housing List

The number on the housing list was 170 compared with 160 in 1963

Rent Act, 1957

There were no applications for Certificates of Disrepair under the above Act.

Unfit Houses

During 1964 Undertakings were accepted in respect of six properties and two Undertakings cancelled on completion of repairs and improvement works to render the properties fit for human habitation.

The following table shows the position since the commencement of the programme.

Number of houses demolished	6
" " " with Undertakings accepted vacant	18
" " " with Undertakings accepted still occupied	9
" " " repaired and modernised	39
" " " remaining for attention	12
			Total	84

Overcrowding

No cases of overcrowding came to the attention of the Department during the year.

New Dwellings

During 1964, 44 houses were built by private enterprise.

Improvement Grants

I am indebted to the Surveyor who has kindly supplied the following information in respect of improvement grants for the year 1964:—

		Discretionary grants	Standard grants
Number of applications	...	30	13
Number approved	...	30	13

INSPECTION AND SUPERVISION OF FOOD

MILK SUPPLY

At the end of the year there were 16 milk retailers in the District, whilst 6 retailers from outside sell milk within the District. 70 inspections were made during the year.

The licensing is, of course, administered by the County, but the inspection and sampling has, as agreed, been continued by this Council.

ICE CREAM

There are 61 premises registered under Section 16 of the Food and Drugs Act, 1955, for the storage and sale of ice cream. Routine inspections and sampling were carried out during the year.

MANUFACTURE OF SAUSAGES, PRESERVED FOOD, ETC.

There are 13 premises registered under Section 16 of the Act in respect of the manufacture of sausages, preserved food, etc., and no adverse comment was called for during the year.

HOTELS AND RESTAURANTS

Routine inspections of these premises showed a well maintained standard of cleanliness and personal hygiene.

BAKEHOUSES

There are 4 bakehouses in the District and 29 visits of inspection were made.

GAME LICENCES

Nine shopkeepers were licenced to deal in game, the fee for which is 7/6.

MEAT

There is one licensed slaughterhouse which is under private management.

370 visits were made in the course of inspecting animals slaughtered. Two licences were issued to slaughtermen:.

There are 14 butchers' shops in the District, all of which are kept in a satisfactory manner.

FOOD HYGIENE REGULATIONS, 1955

217 inspections were made of food premises under the Food Hygiene Regulations resulting in the following requirements:—

FOOD SHOPS

Protection of displayed food	3
Provision of nail-brushes	3
Provision of soap	3
Provision of "Wash Hands" notices to W.C.			3
Provision of hot water	1
Provision of intervening ventilated space to W.C.			1
			—
			14
			—

CAFES AND RESTAURANTS

110 inspections were made of 21 cafes and restaurants under Food Hygiene Regulations, resulting in the following requirements

Kitchens:

Redecorations	5
Provision of "Wash Hands" notices	...		4
Provision of nail-brushes, towels and soap			5

W.Cs.:

Provision of "Wash Hands" notices	...		5
Intervening ventilated spaces	1
Provision of W.C.'s	1
Provision of wash hand basin	1

—
22
—

FOOD SUPPLY

The number and types of food premises in the District (excluding milk supply) are as follows:—

Bakehouses	4
Butchers	14
Canteens	44
Cafes and Catering Establishments	...				21
Chemists	8
Clubs	13
Coffee and Tea	1
Confectioners (Flour)		12
Confectioners (Sugar)		18
Delicatessen	1
Fishmongers	5
Fruiterers and Greengrocers			18
Grocers and Provision Merchants	...				28
Hotels	21
Poulterers	15
Locker-freeze Storage		1
Licensed Premises		30
Market Stall (W.I.)		1
Street Vendors	3
Village Stores	2
General Stores		1

SUMMARY OF SAMPLES

Article	Number of Samples	Examination	Conforming to Standard	Not Conforming to Standard
MILK:				
Untreated	21	Biological—Animal Inoculation	21	—
Untreated	25	Methylene Blue Test (4 void)	25	—
T.T Pasteurised	101	Methylene Blue and Phosphatase Tests	96	5 (4 void)
Pasteurised	24	Methylene Blue and Phosphatase Tests	24	—
Sterilised	10	Turbidity Test	10	—
ICE CREAM	4	Methylene Blue Reductase	4	—
WATER:				
Main Supply	16	Bacteriological	16	—
Main Supply	4	Chemical	4	—
Main Supply	13	pH	10	3
Swimming Pool	1	Bacteriological	1	—
Swimming Pool	1	Free Chlorine	1	—
MEAT:				
Animal Food	1	Salmonella	1	—
TOTALS	221		213	8

ANALYSIS OF WATER SAMPLES

Guildford, Godalming and District Water Board's Supply

Sampling Point	Number of Samples	Examination	Conforming to Standard	Not Conforming to Standard
Main tap ...	12	Bacteriological	12	—
Main tap ...	4	Chemical	4	—
Main tap ...	13	pH	10	3
Totals ...	29		26	3

Wey Valley Company' Supply

Sampling Point	Number of Samples	Examination	Conforming to Standard	Not Conforming to Standard
Main tap ...	4	Bacteriological	4	—
Swimming Pool ...	1	Bacteriological	1	—
Swimming Pool ...	1	Free Chlorine	1	—
Totals ...	6		6	—

MEAT AND OTHER FOODS

CARCASES INSPECTED AND CONDEMNED

Ante and Post-Mortem Examination of Animals

	Cattle excluding Cows	Cows	Calves	Sheep and Lambs	Pigs	Horses
Number killed ...	737	103	444	1,871	1,723	—
Number inspected ...	737	103	444	1,871	1,723	—
All diseases except Tuberculosis and Cysticerci						
Whole carcasses condemned	—	4	4	2	7	—
Carcasses of which some part or organ was condemned	33	4	3	20	41	—
Percentage of the number inspected affected with disease other than tuberculosis and cysticerci ...	4.478	7.767	1.576	1.175	2.786	—
Tuberculosis only						
Whole carcasses condemned	—	—	—	—	—	—
Carcasses of which some part or organ was condemned	—	—	—	—	62	—
Percentage of the number inspected affected with tuberculosis	—	—	—	—	3.598	—
Cysticerci						
Carcass of which some part or organ was condemned	10	1	—	—	—	—
Carcass submitted to treatment by refrigeration	10	1	—	—	—	—
Generalised and totally condemned	—	—	—	—	—	—

The total weight of meat and offals condemned at the slaughterhouse during the year was:—

Due to Tuberculosis	557lbs.
Other Causes	4,059lbs.
		Total	4,616lbs.

RETAIL SALE INSPECTION

The following foods were condemned at retail premises as unfit for human consumption:—

Meat and Meat Products:

16 pkts. Frozen Beef	6 lbs.	10½ ozs.
28 pkts. Frozen Beefburgers	11 lbs.	4 ozs.
4 tins of Ham	38 lbs.	8 ozs.
1 tin of Lambs Liver	10 lbs.	
3 tins of Luncheon Meat	2 lbs.	4 ozs.
3 tins of Pork	8 lbs.	12 ozs.
1 Leg of Pork	10 lbs.	8 ozs.
48 Pork Pies	16 lbs.	8 ozs.
Beef Sausages	42 lbs.	14 ozs.
Pork Sausages	121 lbs.	12 ozs.
7 pkts. of Frozen Sausage Rolls			3 lbs.	15 ozs.
3 tins of Steak	1 lb.	15½ ozs.
5 pkts. of Frozen Steaklets	1 lb.	11½ ozs.
1 tin of Stew	1 lb.	
1 tin of Veal	4 lbs.	

Poultry and Poultry Products:

6 Chickens	21 lbs.	12 ozs.
12 Chicken Quarters	5 lbs.	10 ozs.
6 pkts. of Frozen Chicken and Mushroom Casserole	1 lb.	14 ozs.
21 pkts. of Frozen Chicklets	5 lbs.	14½ ozs.
1 Turkey	22 lbs.	

Fish:

49 pkts of Frozen Cod	35 lbs.	6 ozs.
30 pkts. of Frozen Fish Cakes	12 lbs.	6 ozs.
25 pkts of Frozen Fish Fingers	15 lbs.	10 ozs.
22 pkts. of Frozen Haddock	15 lbs.	8 ozs.
21 pkts. of Frozen Kippers	12 lbs.	4 ozs.
30 pkts. of Frozen Plaice	19 lbs.	14 ozs.
2 tins of Pilchards	1 lb.	14 ozs.
4 jars of Shrimp Salad	1 lb.	8 ozs.
2 jars of Crab Salad		12 ozs.

Fruit:

8 tins of Apricots	11 lbs.	4½ ozs.
3 tins of Black Currants	2 lbs.	11½ ozs.
5 tins of Cherries	28 lbs.	12 ozs.
5 tins of Fruit Salad	4 lbs.	12 ozs.
1 tin of Gooseberries	1 lb.	3 ozs.
5 tins of Grapefruit	5 lbs.	15 ozs.
21 tins of Mandarins	14 lbs.	7 ozs.
5 tins of Peaches	11 lb.	8 ozs.
10 tins of Pears	22 lbs.	4 ozs.
13 tins of Pineapple	12 lbs.	12 ozs.
2 tins of Plums	2 lbs.	2 ozs.
2 tins of Prunes	1 lb.	15 ozs.
4 tins of Strawberries	3 lbs.	14 ozs.

Vegetables:

36 pkts of Frozen Beans	15 lbs.	1 oz.
19 pkts. of Frozen Brussel Sprouts			7 lbs.	8 ozs.
169 pkts. of Frozen Peas	97 lbs.	8 ozs.
15 pkts. of Frozen Potato Chips			5 lbs.	10 ozs.
15 pkts. of Frozen Spinach	10 lbs.	2 ozs.
24 tins of Tomatoes	46 lbs.	8 ozs.

Miscellaneous:

8 pkts. of Frozen Cheeseburger			2 lbs.	
5 pkts of Frozen Eclairs	1 lb.	6½ ozs.
2 tins of Evaporated Milk	2 lbs.	
5 Frozen Mousse		10 ozs.
29 pkts. of Frozen Pastry	15 lbs.	6 ozs.
2 tins of Rice Pudding	2 lbs.	
1 tin of Semolina		15½ ozs.
3 Frozen Sponge Cakes	1 lb.	2 ozs.
			<hr/>	
			785 lbs.	4 ozs.
			<hr/>	

All these foods were voluntarily surrendered to the Department, and were disposed of at the Councils' refuse tip.

OFFICES, SHOPS AND RAILWAY PREMISES ACT, 1963.

The following extract from the Annual Report under the Offices, Shops and Railway Premises Act, 1963 shows the registration figures during the period.

Two accident reports were received but on investigation it was found that the accidents were not notifiable.

General inspections under the Act are to be commenced early in 1965.

TABLE A				
REGISTRATIONS AND GENERAL INSPECTIONS	Offices	35	35	—
	Retail shops	92	92	—
	Wholesale Shops warehouses	4	4	—
	Catering establishments open to the public, canteens	11	11	—
	Fuel storage depots	1	1	—
		Class of premises	Number of premises registered during the year	Total number of registered at end of year

TABLE B — Number of visits of all kinds by inspectors to registered premises — 18

TABLE O	Class of workplace	Number of persons employed
ANALYSIS OF PERSONS EMPLOYED IN REGISTERED PREMISES BY WORKPLACE	Offices	327
	Retail shops	410
	Wholesale departments, warehouses	27
	Catering establishments open to the public	67
	Canteens	2
	Fuel storage depots	4
	Total	837
Total Males	376	
Total Females	461	

FACTORIES ACT, 1961—INSPECTION OF FACTORIES

	Number on Register	Number of		
		Inspec- tions	Written Notices	Occupiers Prosecuted
(i) Factories in which Sections 1, 2, 3, 4 and 6 are to be enforced by the Local Authority ...	13	27	1	—
(ii) Factories not included in (i) above in which Section 7 is enforced by the Local Authority ...	74	201	—	—
(iii) Other premises in which the Local Authority* Section 7 is enforced by (excluding out-workers' premises) ...	1	1	—	—
Totals	88	229	1	—

*Electrical Stations (Sections 103 (1) 1, Institutions (Section 104) and sites of Building Operations and Works of Engineering Construction (Sections 107 and 108).

Cases in which defects were found:

Particulars	Number of Cases in which defects were found				Number of cases in which prosecu- tions were instituted
	Found	Remedied	Referred		
			To H.M. Inspector	By H.M. Inspector	
Want of Cleanliness (S.1)	—	—	—	—	—
Overcrowding (S.2)	—	—	—	—	—
Unreasonable Temperature (S.3)	—	—	—	—	—
Inadequate Ventilation (S.4)	—	—	—	—	—
Ineffective Drainage of Floors (S.6)	—	—	—	—	—
Sanitary Conveniences (S.7)					
(a) Insufficient	3	3	—	—	—
(b) Unsuitable or defective	2	2	—	—	—
(c) Not separate for sexes	—	—	—	—	—
Other offences against the Act (not including offences relating to Outwork)	—	—	—	—	—
Totals	5	5	—	—	—

Outwork (Sections 110 and 111):

Nature of Work	M.C. Line No.	Section 110		Section 111			
		No. of out-workers in August required by Sec. 110 (i) (c)	No. of cases of default in sending list to the Council	No. of prosecutions for failure to supply lists	No. of instances of work in unwholesome premises	Notices served	Prosecutions
Wearing Apparel (Making, etc.)	13	3	—	—	—	—	—
Total	—	3	—	—	—	—	—

Complaints.—During the year 341 complaints were received, of which 209 were in connection with rats and mice and were dealt with under the Pests Act, and 153 visits were made in the investigation of the remainder.

Shops.—Under the Shops Act, 1934, the Public Health Inspector is responsible for ensuring that there is adequate ventilation, warming and sanitary conveniences, while the County Council controls other accomodation, hours of employment, etc. 180 inspections were made.

MOVABLE DWELLINGS

No new licences for caravans were issued this year by the Council.

PET ANIMALS ACT, 1951

Two licences were issued under this Act and the requirements embodied in the licences were those largely recommended by the R.S.P.C.A. Routine inspections were carried out.

ANIMAL BOARDING ESTABLISHMENTS ACT, 1963

Two applications were received for licences under the above Act, in each case the type of animal intended to be accommodated being cats. The accommodation and arrangements were satisfactory and licences were issued.

PETROLEUM (REGULATIONS) ACTS, 1928 and 1936

As Petroleum Officer I submit the following report:—

There are 42 premises licenced for the storage of Petroleum Spirit. From 16 of these premises petrol is sold, while at the other 26 premises petrol is stored for private use only. No licences were issued for the storage of Carbide of Calcium. 65 visits were made in all.

HACKNEY CARRIAGES

There are 13 licenced Hackney Carriages operating in the district and 18 Hackney Carriage Drivers' Licences were issued during the year.

PREVENTION OF DAMAGE BY PESTS ACT, 1949
Report for 12 Months ended 31st December, 1963

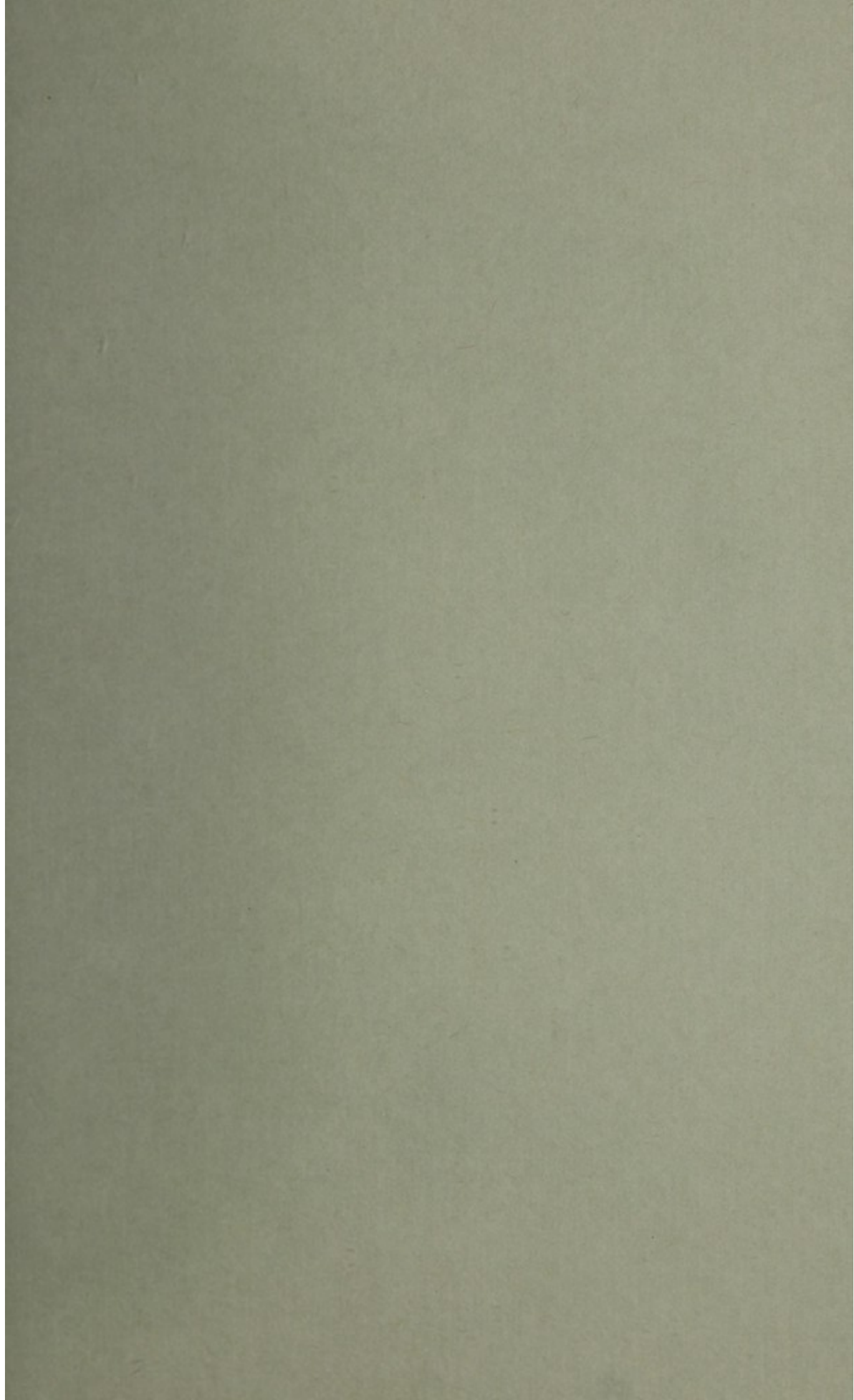
	TYPE OF PROPERTY				
	Non-Agricultural				(5) Agricultural
	(1) Local Authority	(2) Dwell- ing Houses (Incl. Council Houses)	(3) All Other (including Business Premises)	(4) Total of Cols. (1) (2) & (3)	
1. Number of properties in Local Authorities District.	46	3,737	843	4,626	25
2. Total number of properties inspected as a result of notification.	—	157	49	206	3
Number of such properties found to be infested by:					
Common rat	—	—	—	—	—
Major	—	—	—	—	—
Minor	—	137	19	156	3
Ship rat	—	—	—	—	—
Major	—	—	—	—	—
Minor	—	—	—	—	—
House mouse	—	—	—	—	—
Major	—	—	—	—	—
Minor	—	16	26	42	—
3. Total number of properties inspected in the course of survey under the Act	15	256	135	406	—
Number of such properties found to be infested by:					
Common rat	—	—	—	—	—
Major	8	4	23	35	—
Minor	—	—	—	—	—
Ship rat	—	—	—	—	—
Major	—	—	—	—	—
Minor	—	—	—	—	—
House mouse	—	—	—	—	—
Major	2	2	23	27	—
Minor	—	—	—	—	—
4. Total number of properties otherwise inspected (e.g. when visited primarily for some other purpose)	—	—	—	—	—
Number of such properties found to be infested by:					
Common rat	—	—	—	—	—
Major	—	—	—	—	—
Minor	—	—	—	—	—
Ship rat	—	—	—	—	—
Major	—	—	—	—	—
Minor	—	—	—	—	—
House mouse	—	—	—	—	—
Major	—	—	—	—	—
Minor	—	—	—	—	—

	TYPE OF PROPERTY				
	Non-Agricultural				(5) Agricultural
	(1) Local Authority	(2) Dwell- ing Houses (Incl. Council Houses)	(3) All Other (including Business Premises)	(4) Total of Cols. (1) (2) & (3)	
5. Total inspections carried out, including re-inspections (to be completed only if figures are readily available).	128	1,074	798	2,000	18
6. Number of infested properties (in Sections 2,3 and 4) treated by the Local Authority.	10	159	91	260	3
7. Total treatments carried out, including re-treatments (to be completed only if figures are readily available).	15	166	113	294	3
8. Number of notices served under Section 4 of the Act: (a) Treatment (b) Structural Work (i.e., Proofing)	— —	— —	— —	— —	— —
9. Number of cases in which default action was taken following the issue of a notice under Section 4 of the Act	—	—	—	—	—
10. Legal Proceedings. (See 12 below)	—	—	—	—	—
11. Number of "Block" control schemes carried out	73				
12 Where legal proceedings have been instituted by the Local Authority brief particulars should be given here:—	—				
13. Any other points of interest	—				

INDEX

	<i>Pages</i>
Accidents in the Home	12
Ambulance Facilities	10
Animal Boarding Establishments Act, 1963	35
Ante-Natal Clinic	11
Area	6
Bakehouses	24
B.C.G. Vaccination	14
Bed Bugs, Eradication of	18
Birth and Death-Rates	7&9
Burial of the Dead	12
Cafes and Restaurants	25
Cancer	16
Causes of Death	8
Cesspool Emptying	18
Chest Clinics	11
Chiropody Service	12
Clinic and Treatment Centres	11
Complaints	34
Diphtheria	17
Drainage and Sewerage	18
Factories Act, 1961	33&34
Family Planning	11
Food Unfit for Human Consumption	29,30,31
Food and Drugs Act, 1955	19
Food Hygiene Regulations, 1955	25
Food Supply	26
Game Licences	24
Graph—Births and Deaths	9
Graph—Tuberculosis	15
Hackney Carriages	35
Health Propaganda	13
Hospitals	12
Hotels and Restaurants	24
Home Help Service	10
Housing	23
Ice Cream	24
Immunisation	17
Infant Mortality	7
Infectious and other Diseases	13—17
Laboratory Facilities	10
Liquid Egg (Pasteurisation) Regulations, 1963	19
Lodging Houses	18
Mass X-Ray	15
Maternal Mortality	7
Maternity and Child Welfare Centres	11

Meat and other Foods	24,29,30,31
Measles	13
Midwives	10
Milk Supply	19&24
Mortuaries	12
Movable Dwellings	35
National Assistance Act	12
Offices, Shops and Railway Premises Act, 1963	32
Personal Health Service	10
Pet Animals Act, 1951	35
Petroleum (Regulations Acts, 1928 and 1936	35
Poliomyelitis	17
Population	6
Prevention of Damage by Pests Act, 1949	36&37
Puerperal Pyrena	13
Rateable Value	6
Refuse Collection	18
Retail Sale Inspection	30&31
Rats and Mice	36&37
Samples, Summary of	27
Sanitary Inspection of the Area	22
Sausages, Preserved Food, etc.	24
Shops	34
Staff	3
Smallpox	17
Smoke and Noise Abatement	18
Statistical Summary	6
Statutory Notices	23
Still Births	7
Swimming Baths	18
Tetanus	17
Tuberculosis	14&15
Venereal Diseases Clinic	11
Vital Statistics	7
Water Analyses	18,27,28
Water Supplies	18
Whooping Cough	17
Zymotic Diseases	6



D. R. JOHNS Printers Haslemere