

Mercurius botanicus. Sive plantarum gratiâ suscepti itineris, anno MDCXXXIV descriptio ... Ejusdem Mercurii botanici pars altera. Sive itineris in Camriam descriptio ... Londini 1641 / Nup. edit. T.S. Ralph.

Contributors

Johnson, Thomas, -1644.
Ralph, T. S. 1813-1892.

Publication/Creation

Londini : Pamplin, 1849.

Persistent URL

<https://wellcomecollection.org/works/veq8273x>

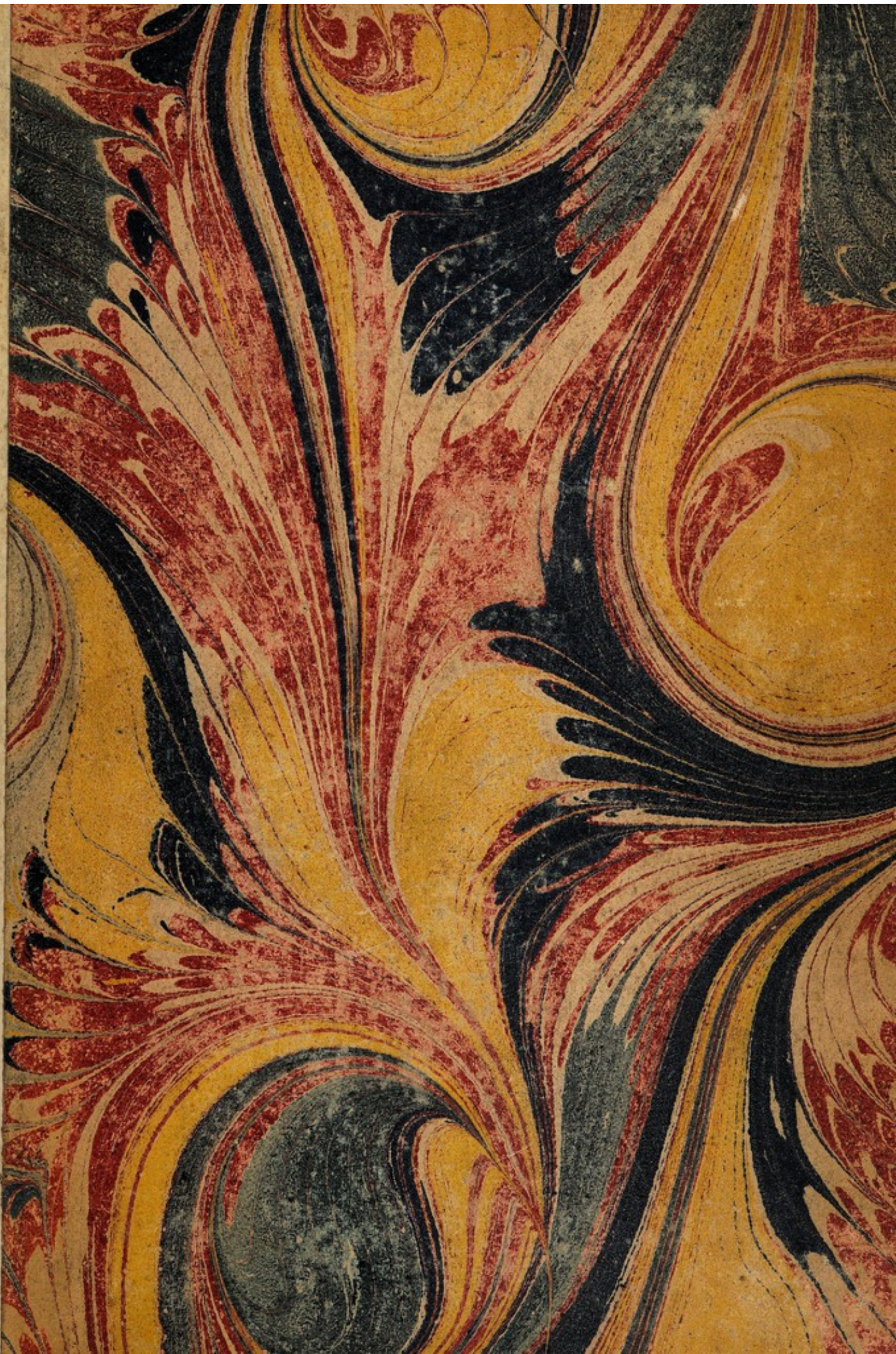
License and attribution

This work has been identified as being free of known restrictions under copyright law, including all related and neighbouring rights and is being made available under the Creative Commons, Public Domain Mark.

You can copy, modify, distribute and perform the work, even for commercial purposes, without asking permission.

**wellcome
collection**


Wellcome Collection
183 Euston Road
London NW1 2BE UK
T +44 (0)20 7611 8722
E library@wellcomecollection.org
<https://wellcomecollection.org>



30536/B

Lxxv. h. 1

1700-1850 stack



Digitized by the Internet Archive
in 2017 with funding from
Wellcome Library

<https://archive.org/details/b2929020x>



THOMÆ JOHNSONI
Mercurius Botanicus.

SIVE

Plantarum gratiâ suscepti

Itineris, Anno

M.DC.XXXIV.

Descriptio.

ꝙc. ꝙc. ꝙc.

Ejusdem

Mercurii Botanici

pars altera.

Sive

ITINERIS in CAMBRIAM

Descriptio.

ꝙc. ꝙc. ꝙc.

Londini 1641.

.....
Nup. edit. T. S. RALPH.
.....

Londini:

Sumptibus GULIEL. PAMPLIN.

M.DCCC.XLIX.

304194



*eadem aliquandiu versatus est ; ἑκάστος δὲ κρίνει
καλῶς (inquit Philosophus) ἃ γινώσκει, καὶ τέτων
ἐστὶν ἀγάδος κριτῆς. Vos in hac palæstra aliquan-
diu non sine laude versatos novimus, ideoq̄
optimo jure Vos V.V.Cl. nostrarum actio-
num Botanicarum Iudices constituimus.
Quamvis enim (teste Fernelio) simplicium
cognitio, collectio, delectus, expurgatio,
conservatio, præparatio, correctio, & mi-
scendi industria seorsim ad Pharmacopæ-
os referuntur ac pertinent ; tamen Medico-
rum est horum omnium gnaros & peritos
esse. Sed cùm pauci admodum inveniantur,
qui aliquos laude dignos profectus in hac
Medicinæ parte fecerunt, fato nescio quo
comparatum est, ut nos nostris conatibus bo-
tanicis invidiam potius quàm laudem à
multis meriti simus. Attamen aliquid so-
latii & oblectamenti nobis præbet, quod
maximi viri & Medici & Pharmacopæi
operam & otium, sic collocarunt ; Iulius Cæ-
sar Scaliger hac arte ad Artem Medicam
adductus fuit. Namque hujus Artis ardo-
rem accendebat usus & familiaritas Me-
dici Taurinensis, nescio cujus, & Pharma-
copolæ rei herbariæ peritissimorum ; qui
ubi eum semel & iterum in montana ad
her-*

*Ios. Scal.
Ep. 1. ad
Jan. Dou-
sam.*

herbarum investigationem deduxissent, accidit, ut eum nihil minus quàm tale cogitantem, alter disputationibus suis, alter peritiâ ὅλης ἰατρικῆς, ad Medicinæ studium incitarent. *Sed ut ad alios veniam, Anguillara, Rondeletius, Matthiolus, Bellonius, Pena, Lobelius, Clusius, Camerarius, Pennius, Bauhinus, Spigelius, & multi alii doctissimi viri in herbarum investigatione multum operis impendérunt. Conradus Gesnerus hujusmodi scriptum de itinere ad Montem Fractum publicum fecit. Montemque Baldum plantasque ibi & in via à Verona ad Baldum crescentes primùm descripsit Franciscus Calceolarius Pharmacopæus Veronensis; Post eum Iohannes Pona, ejusdem Civitatis Pharmacopæus, alteram itineris ad Baldum descriptionem nobis dedit. Itaque horum exemplo confirmati decrevimus majores in plantarum investigatione progressus facere, ad ulteriorem hujus herbariæ scientiæ promotionem.*

Vosque V.V. Cl. rogatos velimus, ut quanto aliis hâc peritiâ superiores estis, tanto paratiores inveniamini ad eorum patrocinium suscipiendum, qui hujusmodi studiis dediti sunt, quò meliùs vobis &

*aliis usui esse possint ; Hácque vestrá hu-
manitate & benevolentíá freti gratias plu-
rimas, easque maximas cum debita ob-
servantia Vobis referre satagent*

Vestrum

Studiosissimi

SOCII ITINERANTES.

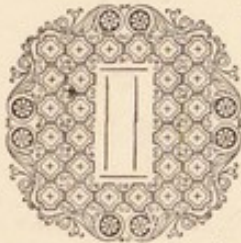
M E R -



Mercurius Botanicus.

five

**Plantarum gratiâ fuscepti
Itineris Descriptio.**



Nter tot, tantaque a Deo Opt. Maximo in usus mortalium creata, nihil tantâ varietate præditum, nihil tam utile, tam jucundum, quam Plantarum genus. Si earum antiquitatem respicias, fuerunt ante Animalia, Sole etiam & Luna nondum existentibus, condita; si varios usus in cibus, medicinâ, arte tinctoriâ, agriculturâ, navigatione, militiâ, &c. enumerare velim, nullo modo potissim. Recte de his *Plinius*; In ipsis (inquit) providentiam naturæ satis admirari, amplectique non est. Dederat quas diximus molles, cibusque gratas. Pinxerat remedia in floribus, visuque ipso animos invitaverat, etiam delitijs auxilia permiscens. Inde excogitavit aliquas
aspectu

*Lib. 22,
cap. 6.*

aspectu hispidas, tactu truces, ut tantum non vocem ipsius singentas illas, rationemque reddentis exaudire videamur, ne se depascat avida quadrupes, ne procaces manus rapiant, ne neglecta vestigia obterant, ne insidens ales infringat; his muniendo aculeis, telisque armando remedijs ut tuta ac salva sint. Ita hoc quoque quod in ijs odimus hominum causâ excogitatum est.

Sed ut non effusius laudare videar, ea quæ ab omnibus frequenti usu sat laudis habeant, alio me vertam nempe ad earum cognitionem. Quanto enim sua natura aliquid excellentius est, tanto major ejus cognitio habetur; veluti enim Deitas cætera cuncta in unum collata multo superat, sic Theologia alijs scientijs palmam merito præripuit. Huic proximum locum tenet Medicina quæ ut recte summus ejus Author *Hippocrates* Τεχνέων μὲι πασέων ἐστίν ἐπιφανεστάτη. Omissis ergo, quæ in alijs plantæ præstare possint, quid antiquitatis, dignitatis & necessitatis, hic habent (quæ omnia ex earum cognitione pendent) paucis expediam. Herbarum peritia antiquissima, Artis enim fundamenta jecit, ἡ ἀρχαία ἰατρικὴ (ut recte Homeri Scholiastes annotavit) ἐν Βοταναίς ἦν. Apollo ille Ovidanus cui antiquitas medicinæ inventum tribuit, maxime gloriatur hisce verbis.

Metam.
Lib. I.

Inventum medicina meū est, opiferque per orbem

Dicor; & herbarum subjecta potentia nobis;

Quasi plantarum scientia præcipua Artis medicæ (ejus inventi) pars esset; statim etiam subjicit.

Hei

Hei mihi quod nullis amor est medicabilis herbis.
Ac si morbus esset incurabilis, qui non herbarum viribus cedat.

Pro hujus botanicæ peritiæ dignitate stant mortalium sapientiss. ille Schalomo Iudeorum Rex, ut etiam Gentius Illyrij, Lysimachus Macedoniæ, Mithridates Ponti, Iuba Mauritanianæ, Attalus Pergami, Evax Arabum Rex : ut reliquos Imperatores, Reges, Heroas taceam. Si Medicorum, Philosophorum, & reliquorum catervam, qui ad hujus defensionem in pro-cinctu steterunt, enumerare velim, ætas deficeret.

Ejas tanta, talisque necessitas semper extitit, ut nemo sine eâ recte medicinam facere possit, ut cum *Orobasio* testatur ipsa veritas. Sed obijcias, unde tantus hujus, (si modo tam necessaria ejus cognitio sit) apud multos nostri seculi medicos neglectus? *Fabij Columnæ* viri doctissimi verbis respondeo; Hæc prefecto potissima ignorationis hujus Medicinæ partis primariæ connexa occasio, summo hominum damno, ut medicorum quorundam proveniat superbia, ac invidia, qui ne ipsi hac parte deficere videantur, illam spernunt velut ignobilem. Sed unde Medici dicuntur, nisi ab ipso medendi actu? in quo ille medebitur Medicus, si locis contingat pharmacopolis carentibus artem exercere? anne verbis? an sufficiet noscere morbum? Medici quidem nomine ex seipso privari videbitur; tunc enim reipsa medicamenta novisse oportere fatebitur. Sed hic tacendum.

*Minus cogn
stirp. cap.*

Hactenus

Hactenus breviter de plantarum, & botanicæ peritiæ excellentia verba feci; nunc, quæ ad hanc scientiam acquirendam necessaria sint, paucis narrabo. Conditiones quæ ab *Hippocrate* necessariae ad totam medicinam comparandam judicatæ sunt, ad hanc peritiam assequendam requiruntur φύσις, διδασκαλία, τόπος ἐν φύσῃ, παιδομαθία, φιλοπονία, χρόνος. *Natura* primas tenet, quâ invitâ omnes conatus irriti cadunt.

Doctrina percipitur vel ex mutis magistris, vel vocalibus, ex neutris multum perficitur, nisi accedat αὐτοψία, quâ mediante alijs auxilijs non destitutus magnos brevi progressus, aliquis facere possit. *Locus aptus* non sub unâ voce cadit, est enim sylvis, pratis, montibus, agris, hortis, & denique ubicunque plantæ crescere possint. *Institutio* a teneris annis, aut saltem per multum temporis hic requiritur ad exactam harum notitiam acquirendam, scitè *Galenus* lib. I. de Antidotis. Quemadmodum (inquit) in pueris gemellis invicem similibus, qui quidè non eis assuerunt, alterú ab altero nequeunt discernere, his autem qui unâ vixerunt facillima est dignotio, ita habet in omnibus quoque medicamentis, nam qui inter ea educatus est, frequenter vidit ex facili vel parvas differentias & invenit & cognoscit. Qui vero semel aut bis conspexerit, tanquam indifferens alterum ab altero spectabit, quod nonnunquam manifestissimum habet discrimen, ei qui frequenter intuitus est manifesto apparens, ut etiam ex uno accidentium ipsius facile sit cognoscere. *Industria* maxim hic se exercere ultra satietatem

satietatem possit, & mediocris magnos progressus haud factura est. Indefatibilem oportet esse, qui maritima, clivosa, aspera, montosa, pratensia, rigua, sata & similia loca curiosè lustrare satagit. Nec omnis fert omnia tellus, exoticæ quotannis nostrorum hortorum inquilini factæ sunt, & omnis fere dies aliquid apportat novi. Zalapium & Pistolochiam Virginianam nobis primum nostrâ ætate transmisit America, sed quid de illis jam omnibus notis? Quis vero de Matalista (ut, multa novitè reperta, quæ nondum in usum ducuntur, taceam) aliquid publicè commentatus est? Multa veniens ætas nobis planè ignota visura est. Diligentiae, industriæque locus in hac arena nunquam defuturus est. *Tempus* opportunū in hoc studium impendi ex Dioscoride habe. Quare cui in animo est harum peritiā assequi, necesse est eum primâ germinatione solo emergentibus, adultis & senescentibus adesse. Nam qui pullulanti herbæ duntaxat adstiterit, adultam cognoscere non potest, neque qui adultam tantum inspexerit, nuper erumpentem noscet. Quo fit, ut propter mutatam foliorum faciem, caulium proceritates, florum seminisque magnitudinem, & id genus alias peculiare notas, nonnulli qui harum rerum varietates non perspexerunt magno in errore versentur.

His talibusque diligenter consideratis, nos qui *φαρμακευτικὴν, θεραπευτικῆς κάλλιστον μέτρον* possidemus, in Artis usu enutriti, qui *πολλὰ ἐξ ἐκείνων τὰ φάρμακα κάλιστα κευάζομεν*, nostrū esse duximus solerti studio inquirere & investigare
quic-

quicquid plantarum, felix hæc fertilisque Insula nostra producit, & in hunc finem, Agrum Cantianum retrò elapsis annis, majore ex parte lustravimus, & herbarum quicquid ibi observavimus ex scriptâ relatione alijs commune fecimus. Sed hoc anno crescente in dies nocendi cupiditate, majora suscipere non dubitavimus, itaque (præter solitum sumptis in subsidium equis) ad hoc negotium paratos, 14 Julij se præbent *Richardus Edwards* Societatis Pharmaceutices *Lond.* eo temporis Magister *Edwardus Cooke* Guardianus superior, *Tho. Hickes* Magister nuper electus, *Rogerus Henricus Yonge*, *Gulielmus Broad*, *Robertus Lorkin*, *Iacobus Clarke*, cum tribus alijs ijs famulantibus. Hi conscensis equis, & vulgatâ viâ triginta nostratum milliarium spatium emensi Reading satis amplum & notum oppidum perveniunt; ibique pernoctantes fruebantur societate viri doctiss. *Iohannis Bird* Medici, ut etiam *Iohannis Watlington* Pharmacopæi, qui eos comitatus est usque ad Marleborrow, ubi sequente nocte hospitio excipiuntur; & egomet Bathoniâ ijs huc usque obviam processit.

Hic postero mane ferè ad Meridiem præstolabamur adventum Socij nostri *Iohannis Buggs* Med. Doctoris, qui sole jam ad occasum vergente *Oxoniâ* una cum Ornatiss. Viro *Philippo Parsons Aulæ Cervinæ* Principali, Medicinæ Doctore, & multum amiciss. viris *Gul. Iacksono* Oxoniensi, & *Rich. Kendallo*, Londonensi, nostræ artis socijs huc tandem venit. Sed nos eo die Bathoniam pervenientes, Urbem, Thermas,

Thermas, & quicquid ibi notatu dignum lustramus. Illic etiam in posterum diem morantes, mane hortum honestissimi viri *Georgij Gibs* ingredimur, plantasque quarum nomina sequuntur illic crescentes invenimus.

Rha rotundifolium.

Iasminum album.

Iasminum luteum, sive Trifolium fruticans, Polemonium Ger.

Tuliparum varietates plurimæ.

Cotyledon minus montanum, Palmaria Tab.

Vmbilicus veneris minor, Ger.

Vmbilicus Veneris sive Cotyledon altera, Ger. e-mac. Sedum serratum.

Fragaria fructu magno, Boëmica, Qorund.

Asclepias flore albo.

Lilium album.

Valeriana Græca.

Sabina.

Branca Vrsina.

Geranium longius radicatatum, Lob.

Geranium Romanum variegatum.

Raphanus rusticanus, Offic.

Ruta.

Periclymenum perfoliatum.

Laurus vulgaris.

Doronicum Romanum.

Trachelium majus flo. albo.

Gramen Lupuli glumis, sive Tremulum max.

Bauh.

Cucumis asininus, Offic.

Coriandrum.
Consolida regalis.
Flos solis major.
Rhabarbarum Monachorum.
Geranium Moschatum.
Rhabarbarum verum.
Blattaria purpurea.
Lotus hortorum, Lob. sive Trifolium odoratum.
Lavendula vulgaris.
Lavendula flo. albo,
Papaver sativum simp. & multipl. flo.
Thymum durius.
Cyanus flo. albo, carneo, &c.
Cyanus major.
Cerinte. Flos Adonis.
Parthenium flo. multipl.
Chrysanthemum Creticum.
Nigella Romana.
Phalangium Virginianum.
Phalangium non ramosum.
Tamariscus Narbonensis.
Majorana.
Marum sive Mastich Gallorum & Anglorum.
Salvia angustifolia.
Salvia major vulgaris.
Salvia variegata.
Glycyrrhiza vulgaris.
Serpilli 3. spec.
Aristolochia Clematites.
Viola mariana.
Abrotanum mas.
Polium luteum.
Pentaphyllum surrectum.

Scabiosa

- Scabiosa montana max.*
Convolvulus cæruleus minor.
Thalictrum majus Hispanicum.
Chamæcyparissus.
Stæchas vulg. Offic.
Leucoium flo. albis & purp.
Faba Græcorum.
Scordium.
Chamædrys.
Lilium montanum.
Thlaspi Creticum.
Astrantia nigra.
Colutea vulgaris.
Campanula Persicifolia, Lob.
Costus hortorum.
Ageratum.
Gentianella verna flo. amplo.
Helleborus niger verus.
Lychnis hortensis.
Lychnis Chalcedonica.
Lychnis syl. flo. multipl.
Chamæxyris, Lob.
Tragopogon flo. purp.
Lysimachia cærulea.
Lysimachia lutea Virginiana.
Scorzonera. Meum.
Allium max. radice simplici.
Lilium non bulbosum.
Arbor vitæ.
Saponaria flo. multipl.
Vinca pervinca, sive Clematis Daphnoides.
Viola matronalis flo. pleno.
Caryophyllorum hortensium variæ. spec.
Hepatica

Hepatica nobilis.
Allium vulgare.
Gladiolus Narbonensis.
Hyssopus vulgaris.
Aster Italarum.
Muscipula.
Astragalus Lusitanicus.
Psyllium.
Caltha flo. multiplici.
Iris latifolia vulgaris.
Iris bulbosa.
Gnaphalium Americanum.
Antirrhinum majus flo. albo.
Sumach Virginianum.
Mentha sativa rubra.
Imperatoria.
Hipposelinum.
Myrrhis sativa.
Oxalis rotundifolia.
Cochlearia Batava.
Iacea tricolor vulg.
Iacea tricolor flo. amplo lut.
Absinthium tenuifolium, quibusdam Romanum,
alijs Ponticum.
Bolbonach, sive Lunaria Græca.
Auricula ursi.
Napellus cæruleus.
Crocus vernus.
Leucoium bulbosum & alia verna, quæ tunc
temporis non apparuerunt.

Hisce

Hisce visis prata, loca saxosa, aspera, & vicinas sylvas, plantarum gratia circumspicimus. Reversis statim affuerunt desiderati amici Dr. *Buggs & Kendall*, qui amicis Oxoniensibus gratias pro tantâ eorum humanitate agentes (ijs domum reversis) nos Bathoniam sequuti sunt. Iamque totâ societate junctâ læte unâ cœnavimus. Hicque nobiliss. & omnibus virtutis dotibus instructissimæ Dom. *Annæ Gualteræ* (quâcum ipse bimestre spatium ejus valetudinis ergo Bathoniæ moratus sum) munificentiam experti sumus. Postquam illuxit dies *Thermarum* urbem reliquimus, & *Bristoliam* versus sed non vulgari viâ cursum direximus; ad dextram enim deflexi *Mangersfeild* prevenimus, & in ædes divertimus verè nobilis & generosi viri *Philippi Langlæi* cui---*grates persolvere dignas Non opis est nostræ.*

Virg.

Statim enim postquam ingressi sumus,
 ——— *domus interior regali splendida luxu
 Instruitur, medijsque parant convivium tectis,
 Tum dapibus mensas onerant, & pocula ponunt.
 Postquam prima quies epulis, mensæque remotæ
 Crateras magnos statuunt, & vina coronant.*

Hic nuntio admonitus aderat *Iohannes Pri-seus* *Bristolien-sis* non minus doctus *Pharmacopæus*, quam jucundus socius, qui inclinante jam die (postquam *Gen. D. Langlæo* pro eximiâ & munificâ suâ hospitalitate gratias, ut potuimus, maximas, dedimus) nos ad hospitium *Bristolie* comitatus est. Hic nobis ad octavam posteræ diei horam indulsimus, & deinde (so-
 cio

cio nostro *Richardo Kendallo* Glocestriam v̄ersus dimisso) nos unà cum *Priseo* nostro ad famosos Divi Vincentij clivos, & pr̄ruptas rupes Avonæ ripæ impositas tendimus hicque primum ad fontem hodie non incelebrem aquæ tepidæ, gustuique gratæ, ex fissurâ immanis saxi profluentis pervenimus. Multum laudatur hæc aqua ad ulcera & calculosus renū affectus internè sumpta, & externè ad ulcera antiqua sananda usus ejus non infrequens, nec successu caret, ut ab expertibus audivi. Ferrivena illic in terræ visceribus continetur; unde vires aqua acquirit, & majorem calorem (nisi me mea fallat opinio) quem longiore cursu amittit, antequam emergere valeat. Hujus scaturigo ad rupium radicem erumpit, unde æstu aliquantulum ingresso, turbidis Avonæ fluvij aquis submergitur, donec refluxu amnis iterum auræ apertæ redditur. Effodiuntur in superiore horum confragororum collium parte lapilli pellucidi, sexanguli & quadranguli, nóstrates Adamantes vocant, quia apprime eos mentiuntur; Nonnulli Crystallos volunt; sed ad Fluorum naturam rectius meâ sententiâ accedunt; memini enim *Priseum* nostrum mihi retulisse, quod loci Dominus eos nollet è ferri minera (eorū matrice) eximi; quoniâ major eorum quantitas magis fluidum reddit metallum. Et Fluores (teste Agricola) gēmis sunt simillimi, sed minus duri, dum metalla excoquantur adhiberi solent, reddunt enim materiam in igne non paulo fluidiorem. Etiam Kentmannus in ejus Foss. catal. enumerat Fluores pellucidos, sexangulos, Crystallo similes. Vt-
cunque

cunque se res habet, non multum moror, sententiam posui & doctiorum iudicio relinquo.

Hinc Avonæ fluenta, ferè ad Sabrinianum æstuarium sequimur, tum bis trajecto amni demum Bristoliam revertimur; sumptisque equis & V. honestiss. *Matthæo Chock* Cainshamæ salutato, post solis occasum Bathoniam iterum ingredimur. Diem Dominicam hic solito more peregrimus, & posterâ luce intermissum iter aggressi per vias vix commodas ad Thrubridge venimus, ubi commodiore multo hospitio excipimur; D. enim *Thomas Pellinge* eò loci divini verbi minister se nobis benignum hospitem præbuit, & lautissimo prandio nobis moram injecit. Tandem gratijs actis opt. Viro, (cui multum pro singulari ejus humanitate debemus) vulgarem viam ingressi per latam planitiem Sarisburiam sub vesperam introimus.

Nocte peractâ, speciosum Templum & limpidae aquæ rivulis irriguas urbis plateas manè circumivimus; & ædes Doctiss. viri *Richardi Haydocki M.D.* ingressi vidimus Opus ejus Anatomicum, quod jam diu præ manibus habuit & cui finem ferè imposuit. Opus sane miro artificio concinnatum figuris ære exquisitissimè incisis & summo iudicio dispositis (more quo *Io. Remmelinus* suum Catoptrum microcosmicum edidit) Hisce cõmentarios doctissimos & utilissimos adjuncturus est, quæ omnia brevi, ut spero, publicâ luce fruitura sunt. Hicq; etiâ peropportunè nobis obviâ factus est medicus doctiss. *Iacobus Lake*, cui ut etiam *Guliel. Wilsono* Pharmacopæo Sarisburiensi gratias amoris ergo, quo nos prosequuti sunt, reddimus. Ami-

Amicis & urbe tandem relictis, regiam viam ingredimur, & 18 emensi miliaria Southamptoniæ hospitio excipimur: deinde sequente mane conductis duabus naviculis, & *Io. Cropp* ejus loci Pharmacopæo in societatem nostram admissis, è portu solvimus & paucis horis in Vectam insulam trajecimus. Egressi navigijs Cowes adimus, & pransi ejus loci propugnaculum mari impositum visitamus, ibique *Humfredus Turneyus* loci (ut vocant) Capitaneus, patrio more impletis vino poculis nos benigne excepit, & ei (quod tum solum potuimus) gratias persoluimus. Deinde ascensis equis *Newport* advenimus, & non longe hinc Castellum amplissimum quondam munitissimum, & regnante divâ *Elizabethâ* novis operibus auctum, lustramus; *Casbro* ei nomen est, & nonnulli Insulæ Castellum vocant. Namque illic ad Insulæ tutelam instructissimum asservatur armamentarium. Demum reversi & cibis refecti ut etiam societate amicorū *D. Thomæ Basketi* & *Capit. Andreae Jamesij*, tandem nos quieti dedimus.

Sole iterum suum gratum lumen mortalibus impertiēte nos excitamur a somno, festinanter equos conscendimus, & ad maris littus, quod Austrum respicit nos conferimus, aliquantulum temporis inter Algas & fucos consumpsimus; deinde nos non longe hinc opiparo prandio excepit *Gulielmus Kitchin* Chirurgus in domicilio suo *Stonyplace* vocato; finitis epulis cum eo, *Tho. Iuningo* Noviportensi, & *Iohanne Croppo* Southamtoniensi, Pharmacopæis, *Ridam* versus cursum dirigimus; ubi paratis naviculis


naviculis excepti Portismutham paucarum horarum spatio appulimus.

Hinc sequente aurorâ descessimus, associante *Io. Brooke* ejus loci generoso Cicestriam usque, hic pransi urbem reliquimus, & sub vesperam *Anthonij Housi* Medici & *Isaacii Thornbury* Chirurgi Cicestrensis ductu Petwortham venimus. Posterâ luce, amicis demissis, per Godliman & Guilford Londinum petimus & sub noctem quisque proprium larem ingreditur; sicque tandem 26 Iulij finem itineri imposuimus.

Nunc restat, ut vobis impertiamus quid plantarum in tanto itinere invenimus, & cur non solito more descripserimus quid in hoc aut illo loco vidimus. Consilij nostri rationẽ paucis habe. Hoc anno plerasq; plantas sponte in hac Insulæ parte nascentes vidimus, quâ de causâ, ut lectoris usui consuleremus, non sine ordine, ut sese oculis nostris obtulerunt, in librum retulimus, sed eas methodo alphabetica cum nominibus Anglicis & nonnullis synonomijs comprehensimus; & ne locus, ubi inveniri possint, deesset, singularum non ubique occurrentium, generalem nascendi locum annotavimus, idq; Latinè: sed rarioribus particulare locum assignavimus Anglicè, quo melius a nostratibus intelligeretur. Huc etiam nonnullas ex prioribus Itinerarijs transtulimus; quod facile ex locis nominatis intelligat Lector haud indoctus, qui ut spero, nostris incæptibus amicus, nostris laboribus liberè, & cum voluptate frui possit.

Catalogus Plantarum.

A

- 
Absinthium vulgare latifolium.
Common Wormewood.
- A**bsinthium marinum, sive Seriphium. ubique in salsis & maritimis. *Sea Wormewood.*
- A**canthium *Matth. Dod. Lob.* Spina alba syl. Fuchs. ad sepes & in fimetis. *The Cotton Thistle.*
- A**cer minus. *The Common Maple.*
- A**cer majus, sive Platanus Scotica Cardani. plurimis locis juxta ædes nobilium. *The great Maple, but commonly, (yet falsely) the Sycamore tree.*
- A**cetosa, sive Oxalis vulgaris. ubique in pratis. *Sorrell.*
- A**cetosa sive Oxalis minima *Tragi, Dod.* minor *Matth.* Ovina, *Tab.* in arvis & pratis siccioribus. *Sheepes sorrell.*
- A**ctosella, vide Trifolium acetos.
- A**cinus Anglica, *Clus.* in montosis cretaceis. *Small stone Basill.*
- A**corus nostras palustris *Lob.* Iris palustris lutea, *Tab.* Pseudoiris, *Dod.* *Yellow water Flowerdeluce, Water-flagges. Seggs.*
- A**diantum aureum majus *Tab.* Polytrichum majus, *Trag. Fuch.* in Ericetis, *Great goldylocks, or Golden-maidenhair.*
- A**diantum aureum minus. Polytrichum minus, *Trag. Fuch.* Musci capillaris altera spec. *Dod.*

- Dod.* in muris passim. *Little Goldy-lockes.*
 Adiantum album. *Lonic. Cam. Taber.* Ruta
 muraria, *Dod. Ger.* Salvia vitæ, *Ad. Lob.*
Lugd. Saxifraga seu Empetron, *Fuch.* Paro-
 nychia, *Matth. Wall-Rue, Tent-worte.* **On the**
Rockes by Bathe and Bristow.
 Adiantum nigrum. vid. Capillus ven.
 Ægilops. v. Festuca.
 Agrimonia *Offic.* Eupatorium *Diosc.* *Agrimo-*
nyc.
 Agrifolium *Dod.* Aquifolium, *Matth. Lob.*
Tab. In sepibus. *Holly.*
 Aizoon, vid. Sedum.
 Alcea vulgaris, *Dod. Lob.* Malva verbenaca,
Ger. in sepibus & pratis. *Vervaine Mal-*
lowes.
 Alchimilla, *Dod. Lob.* Pes leonis, *Fuch.* Stella-
 ria, *Matth.* in sylvis & umbrosis. *Ladyes*
mantle.
 Alektorolophos. V. Pedicularis.
 Alga membranacea ceranoides, *Bauh.* in ma-
 ritimis. *Wracke.*
 Alliaria, *Trag. Matth. Fuch.* Pes Asini, *Pan-*
dectarij. passim ad sepes. *Sauce alone, Jacke*
by the hedge.
 Allium sylvestre tenuifolium *Lob.* Ophiosco-
 ridon, *Matth.* in pascuis. *Crow Garlicke.*
 Allium sylvestre latifolium, *Dod.* Vrsinum
Fuch. Matth. Lob. in sylvis & sepibus. *Ram-*
sons.
 Alnus vulgaris, *Tragi, Matth. Dod. Lob.* ad
 aquas. *The Alder.*
 Alnus nigra baccifera, *Tab. Lob.* Frangula.
Matth.

Matth. Dod. in sylvis humidis. *The blacke Alder.*

Alopecuros maxima Anglica paludosa *Lob. Ger. emac.* ——— *Great Marsh Foxtaile.* In **Dartford Salt marsh and divers such places.**

Alsine major. *Dod. Lob. Ger.* Maxima *Lob.* ad sepes *Great chickweed.*

Alsine aquatica major, *Bauh.* palustris. *Tab. Ger.* *Great water Chickweed.*

Alsine hirsuta, *Myosotis Ad.* *Auricula muris quibusdam.* *Dod. Gal. & Angl.* *Alsine spuria* 3. eidem Latinè. *Alsine hispida.* 1. *Thal. passim.* *Mouseare-chickweed.*

Alsine media *Dod. Ger.* passim ad sepes. *Middle Chickweed.*

Alsine minor multicaulis. *Bauh.* minima, *Dod. Lob. Ger.* in muris & tectis. *Fine Chickweed.*

Alsine rotundifolia, sive *Portulaca aquatica.* *Ger. emac.* in palustribus. *Water Purslaine.*

Alsine palustris minor serpillifolia, *Bauh. Ger. emac.* *Creeping water Chickweed.*

Alsine folijs Veronicæ. *Tab. Ger.* *Alysson Col.* in arvis & tectis. *Speedwell Chickweed.*

Alsine hederacea, *Tab. Ger.* *Morsus gallinæ folio hederulæ,* *Lob.* in agris & eorum marginibus. *Ivy Chickweed, or small Henbit.*

Alsine folijs Trissaginis, *Lob. Ger.* in arvis & agrorum marginibus. *Germander Chickweed.*

Alsine hederula altera, *Ger.* *Morsus gallinæ folio hederulæ alter,* *Lob.* *Ballote crispa minor,* *Ludg.* in arvis. *Great Henbit.*

Alsine palustris folijs tenuissimis, sive *Saxifraga palustris alsine folia.* *Ger. emacul.* *Small water*

- water Saxifrage. It growes on Boggs about Bath and Divers other places.*
- Althæa. Ibisus, *Ger.* Bismalva, Malvaviscus, *Offic.* passim in maritimis. *Marsh Mallows.*
- Anagallis mas flore phæniceo. In agris. *Male red Pimpernell.*
- Anagallis fœmina flore cæruleo, etiam in arvis sed rarius. *Female Pimpernell.*
- Anagallis lutea nemorum. *Yellow Pimpernell. In the wood betweene Highgate and Hamstead.*
- Anagallis aquatica major, *Ger.* Berula maj. *Tab.* *Great long leaved Brookelime.*
- Anagallis aquatica vulgaris, sive Becabunga *Offic.* *Brookelime.*
- Anagallis aquatica rotundifolia *Ger. emac.* aquatica 3. *Lob.* *Round leaved water Pimpernell. It growes on Boggs neere Bath.*
- Anchusa degener facie Milij solis *Lob.* Anchusa arvensis minor, *Tab.* Lithospermum syl. *Tra.* Inter segetes. *Bastard Grommell, Salferne.*
- Androsæmum *Dod.* Clymenum Italorum, sive Siciliana *Lob.* *Tutsan, or Parke leaves.*
- Androsæmum magnum *Ad. Lob.* Ruta syl. Hypericoides, *Dod.* *Tutsan - Saint - Iohns-wort, or Great S. Iohns-wort. In a wood by S. Vincents rocks nigh Bristow.*
- Anemone nemorum *Ger.* forte λειμώνια. *Theoph.* Ranunculus nemorosus, sive sylvat. *Lob. Clus.* *The wood Anemone, or Windfloure.*
- Angelica sylvestris. In sylvis humidis. *Wild Angelica,*
- Anonis sive Ononis, Resta bovis, Remora aratri. *Rest harrow, Petty-whin.*

An-

- Antirrhinum. 1. *Matth.* Medium, *Cam.* rubrum arvense, *Thalij.* In agris. *Midle Calves-nout, or snap-dragon.*
- Antirrhinum arvense minimum, *Thal. Cam.* *Little snapdragon, or Calves snout.*
- Anthyllis leguminosa Belgarum, *Lob.* Lagopodium, *Tab.* In montosis pratis. *Kidney Vetch. Lady fingers.*
- Anthyllis prior lentifolia Peplios effigie maritima, *Lob.* Alsines genus pelagicum, *Clusij.* Alsine cruciata marina. *Sea Pimpernell.*
- Aparine : passim in sepibus. *Goose grasse, Clivers.*
- Aphaca, *Lob. Dod.* Elatine 3. *Tab.* in arvis sed rarius. *Yellow Fetchling.*
- Aphacoides. V. Lathyrus.
- Apium, *Offic.* sive Paludapium : in uliginosis & salsis. *Smallage.*
- Apium risus, *Lob.* V. Ranunculus aq.
- Aracus, *Tab.* Galega syl. *Dod.* passim in pratis & sylvis. *Birdes Tares.*
- Aracus sive Cracca major. *Lob. Ger.* in agris *Strangle-Tare, Tine, wilde Fetch.*
- Aracus, sive Cracca minima, in agris. *Small wilde Tare.*
- Arctium montanum & Lappa minor Galeni, *Lob. Button-Burre. Mangersfeld, in Master Langleys yarde.*
- Argemone capitulo torulis canulato, sive Argemone Lacunæ, *Lob.* in satis sed non ubique. *Bastard wild Poppye, or rough headed Poppye.*
- Argemone capitulo longiore, *Lob.* in arvis, priore frequentior. *Long rough headed Poppye.*
- Argentina

Argentina, *Dod. Lob.* Potentilla, *Matth.* Anserina Tragi; passim in areis. *Silver weed, wilde Tansye.*

Aria. Vid. Sorbus.

Armerius syl. *Dod.* Armeria pratensis syl. *Lob.* Flos Cuculi pratens. *Trag.* Caryophyllus pratensis, *Tab.* passim in pratis humidis. *Crowfloures and wilde Williams.*

Armeria syl. altera caliculo foliolis fastigiatis cincto. *Lob.* Caryophyllus Pratensis, *Ger. emacul.* Collibus & nonnullis pascuis. *Deptford Pinke.*

Artemisia vulgaris, passim in satis & agrorum marginibus. *Mugwort.*

Arum vulgare. *Wake Robin, Cuckow-pinte.*

Arundo vulgaris, vallatoria, *Lob.* palustris, *Matth.* *Common reede.*

Ascyrum, *Matth. Lob.* Hypericum in dumetis 2. *Tragi.* *S. Peters worte.*

Ascyrum supinum ἐλώδης, *Clus.* sive villosum palustie. *Bauh.* *Round leaved S. Peters worte.*
It growes abundantly on a rotten moorish ground not farre from Southampton.

Asparagus vulgaris. *Sparagus.* **In the Marshes beyond Bristow.**

Asperula odorata, *Dod. Clus.* Hepatica stellata, *Tab.* *Matrisylva, Trag.* in sylvis. *Woodrooffe.*

Asperula cærulea arvensis. *Blew woodrooffe.*

Asphodelus bulbosus, *Galen, V.* *Ornithogalum.*

Asphodelus minimus luteus Acorifolius palustris, *Lob.* *Asphodelus Lancastriæ Ger. Lancashire*

- cashire Asphodill.* It grows in a Bogge on a heath in the mid-way betweene Sarisbury and Southampton.
- Asplenium, sive Ceterach. Scolopendria vera. *Trag.* Scolopendrium verum, *Loniceri.* In Saxorum crepidinibus & Templorum muris. *Ceterach, Milte-wast, Spleenewort.*
- Astragalus sylvaticus, *Thalij.* Wood-pease, or Heath-pease.
- Atriplex marina repens, *Lob.* Sea Orach.
- Atriplex olida, *Lob.* Canina, *Trag.* Garosum, *Dod.* juxta semitas in suburbijs. *Stinking Orach, or Notch-weed.*
- Atriplex angusto oblongo folio, sive sylvestris Polygoni aut Helxines folio, *Lob.* In rudibus. *Narrow leaved Orach.*
- Atriplex sylvestris folio sinuato candicante. *Bauh.* sylvestris vulgaris *Ger.* In fimetis & rudibus. *Common wild Orach.*
- Atriplex syl. altera, *Ger.* cum priore reperitur. *The other wild Orach,*
- Atriplex syl. latifolia *Lob.* Pes anserinus. *Fuch. Dod. & Chenopodium 1. Tab.* cum prioribus. *Goose foote, or sow-bane.*
- Atriplex syl. latifolia acutiore folio. *Bauh. Blitum 5. Trag. Chenopodium 2. Tab.* cum prioribus. *The other Goose foote, or sow-bane.*
- Atriplex sylvestris sive Polyspermon *Ger.* Polyspermon Cassani Bassi *Lob.* cum prioribus, sed rarior. *All-seed.*
- Auricula muris. *Vid.* Alsine hirsut. & Pilosella.

B

- B**accharis Monspel. *Lob.* V. Conyza major.
 Ballote; Marrubium nigrum fœtidum, ad
 sepes. *Stinking Horehound.*
- Barbarea, Pseudobunias *Lob.* Nasturtium hy-
 bernum, *Quorund.* ad agrorum margines.
Winter Cresses.
- Bardana, sive Lappa major, Personata *Fuch.*
Lob. *Great Bur-docke.*
- Bardana minor, V. Arctium.
- Behen album, *Monspell, & Offic.* Papaver spu-
 meum, *Lob.* Herba articularis, *Tab. Spatling*
Poppie. White Bottle.
- Bella donna, V. Solanum Lethale.
- Bellis minor vulgaris, consolida min. *Quo-*
rund. ubique. *Little Daisyes.*
- Bellis major, *Trag. Matth.* Consolida media
 vulnerariorum. In pratis. *Great Daisyes, and*
of some, Oxe-eye.
- Berberis, *Offic.* V. Oxyacanthus.
- Beta alba vulgaris. In maritimis. *White Beete.*
- Betonica vulgaris. In sylvis. *Betonie.*
- Betonica aquatica. *Dod. Lob.* Ocymastrum
 majus *Trag.* *Water Betonye.*
- Betonica Pauli, V. Veronica.
- Betula, *Matth. Lob.* In sylvis humidis. *The*
Birch tree.
- Betulus *Lob.* Carpinus, *Matth.* Ostrys Theo-
 phrasti, *Clus.* In sylvis. *The Hornebeame tree.*
- Bifolium, *Lob.* Ophris, *Matth.* In humidis pra-
 tis & sylvis. *Twablade.*

- Bistorta, *Matth. Dod.* Serpentaria fœmina, *Fuch.* in pratis humidis, & umbrosis. *Bistorte.*
- Blattaria major flore luteo, sive Blattaria Plinij, *Lob. Great Moth Mullein.*
- Bonus Henricus, *Trag. Matth. Tab.* Rumicis 3. gen. *Fuch.* Tota bona, *Lob. Dod.* In pratis & fimetis. *Common Mercurie, or All-good.*
- Brassica marina monospermos, *Lob. Sea Coleworts.*
- Bryon Lactuæ folijs, *Lob. Lactuca marina, Tab. Lichen marinus, Ger. Sea Lungewort, or Oyster-greene.*
- Bryonia alba, *Dod. Vitis alba. Matth. ad sepes & sylvas. White Bryonie.*
- Bryonia nigra, Sigillum beatæ Mariæ, *Offic. Tamus, Dod.* In sylvis. *Blacke Bryonie.*
- Bromos sterilis. V. Festuca.
- Buglossa syl. minor. *Dod. Ger. emac. Echium Germanicum spinosum, Fuch. Borago syl. Trag. In arvis. Small wilde Buglosse.*
- Buglossum Lut. *Ger. Echioïdes luteum, Lob. ad agrorum margines. Lang-de-Beefe.*
- Bugula, *Dod. Lob. Consolida media, Matth. Fuch. Tab. In humidis sylvis & pratis. Bugle.*
- Bulbocastanon, *Dod. Nucula terrestris Septentrionalium, Lob. In collibus. Earth-nut, or Ear-nut.*
- Bunias syl. V. Napus syl.
- Bursa pastoris major. ubique. *Sheepeheards purse.*
- Bursa pastoris minor. *Little sheepeheards purse.*
- Buxus

Buxus, in viridarijs. *Boxe.*

C

Calamintha montana vulgaris, *Lob. Offic.*
Common Calamint.

Calamintha Pulegij odore, *Nepeta vera Antiquorum*; In pratis & collibus. *Feild Calamint.*

Calamintha aquatica, *Matth.* Polycnemon Lobelij, *Lugd.* Ad fossas. *Water Calamint.*

Caltha palustris, *Dod. Lob.* Tussilago altera, *Matth.* in humidis pratis. *Marsh Marigold.*

Campanula, V. Trachelium.

Campanula minor rotundifolia, *Lob.* Rapunculus syl. minor, *Tab.* In pratis. *Small Bell-floure.*

Cannabis vulgaris. seritur in Agris. *Hempe.*

Cannabis spuria, flo. albo. Lamium, *Quorundam.* Ad sepes & in agris. *Wilde Hempe.*

Cannabis spuria altera flore purp. In agris. *Nettle Hempe.*

Cannabina aquatica. V. Eupatorium cannab.

Capillus veneris, *Offic.* Polytrichum, Trichomanes. *Trag. Math. Dod. Lob.* In saxosis & muris. *Common Maidenhaire.*

Caput gallinaceum Belgarum. *Ad. Lob.* Onobrychis. *Dod. Clus. Ger. Medicke Fitchling, or Cockes-head. On the farther end of Sarisbury Plaine.*

Caprifolium, *Offic.* V. Periclymenum.

Cardamine, *Ger.* altera, *Lob.* Nasturtium pratense, *Trag.* Flos cuculi, *Dod.* Sisymbrium aquaticum alterum, *Matth.* ubique in pratis humidis. *Lady-smocke, or Cuckow floure.*

Cardamine

- Cardamine altera flo. pleno. *Clus. Ger. emac.*
cum priore sed multo rarior.
Double floured Lady-smocke.
- Cardamine flosculis minoribus, sive impatiens.
Sium minimum, *Alpini.* Sium minus impatiens,
Ger. emac. Impatient Cuckow-floure, or Lady smocke. **In rills, and ditch sides about Bath, and in some other places.**
- Cardamine pumila Bellidis folio Alpina. *Ger. emac.*
Plantula Cardamines æmula, *Clus.* Nasturtium Alpinum bellidis folio minus,
Bauh. Rock-creeses, or Dwarfse dasye-leaved Lady-smocke. **On the rockes nigh the Quarrie by Bath.**
- Carduus acaulis, *Lob.* Carlina minor flo. purpureo.
Clus. In montosis & collibus siccioribus.
Dwarfse Carline Thistle.
- Carduus stellatus, *Dod.* sive Calcitrapa Ejusd. & *Lob.*
juxta semitas. *Star-thistle.*
- Carduus arvensis major purpureo flore, (ut etiam albo)
qui flore nondum nato moschum olet. *Ges. Ger. Muske thistle.*
- Carduus spinosissimus vulgaris *Lob.* Aculeosa Gazæ,
Adv. Polyacanthos Theophrasti, Tab. ad agrorum margines. *Thistle upon thistle.*
- Carduus asininus sive Onopyxos *Dod. Lugd.* cum priore.
Asses Box.
- Carduus spinosissimus, capitulis minoribus sive Polyacantha,
Lob. cum prioribus. *Small wetted Thistle.*
- Carduus spinosissimus altissimus, forte Carduus palustris,
Bauh. Tall heath thistle.
- Carduus lanceatus, sive lanceolatus, *Tab. Ger.*
In

- In pratis. *Speare thistle.*
- Carduus lacteus *Matth.* Mariæ, *Trag. Fuch.*
Silybum, *Ang.* Leucographis *Plinij, Lugd.*
ad agrorum margines. *Milke Thistle.*
- Carduus vulgatissimus radice repente, $\kappa\epsilon\alpha\nu\omega\delta\textcircled{C}$
Theophrasti, *Col.* ubique nimis frequens. *The
way Thistle.*
- Carduus eriocephalus, *Dod. Clus.* tomentosus,
Lob. Onopordon *Plinii, Lugd.* In montosis,
sed non ita frequens, ut reliqui. *Woolly-hea-
ded Thistle.*
- Carduus vulgaris, *Matth.* Carlina syl. *Dod.*
Ger. Carthamus syl. *Lonic.* Heracantha, *Tab.*
In montosis. *Wilde Carline Thistle.*
- Caryophyllata vulgaris, *Herba benedicta,*
Brunf. Geum, *Turn.* ad sepes. *Avenes. Herbe
Bennet.*
- Caryophyllus. *v. Armeria.*
- Caryophyllus marinus minimus, *Lob. Ger.*
Gramen marinum minus, *Tab.* Armerius
montanus tenuifolius. *Clus.* In maritimis.
Thrift, or Sea-gilliflowre.
- Carlina, *v. Carduus acaulis & vulgaris.*
- Carpinus *Matth.* Ornus, *Tragi,* Ostrys *Theo-
phrasti, Clus.* Betulus, *Lob.* in sylvis: *Horne-
beame.*
- Castanea vulgaris: In sylvis nonnullis & viri-
dariis. *Chesnut-tree.*
- Catanance, *Quorund.* Ervum syl. *Dod.* in pra-
tis. *Crimson grasse Fetch.*
- Caucalis minor flosculis rubentibus, *Ger. Emac.*
ad sepes: *Hedge parsley.*
- Caucalis nodosa echinato sem. *Bauh. Ger. E-
mac.*

- mac.* ad agrorum margines. *Knotted Parsley.*
 Caucalis Apii foliis, floribus rubris. *Ger. emac.*
Hedgehog Parsley. **In the corne-fields a-**
bout Bathe.
 Cauda equina : *v.* Equisetum.
 Centaurium minus vulgare, flor. carneis & al-
 bis. in pratis & arvis : *Common or little Cen-*
tory.
 Centaurium luteum perfoliatum, *Cam.* In mon-
 tosis & siccioribus pratis. *Yellow Centory.*
 Cerasus sylvestris : *The wilde Cherry tree.* **In a**
wood by Bathe.
 Cerefolium syl. *Tab. Ger. emac.* passim ad se-
 pes. *Hedge Chervill.*
 Ceterach, *Offic. v.* Asplenium.
 Chamæacte : *v.* Ebulus.
 Chamæcistus vulgaris flo. luteo ; Panax chiro-
 nium sive flos solis, *Matth. Lugd.* Helian-
 themum, *Lob.* Hyssopus camp. *Trag.* In
 montibus saxosis. *Dwarfe Cistus, or little sun-*
flowre.
 Chamædrys syl. *Clus. Ger.* Teucrium pratense,
Lob. Verbenaca supina mas, *Dod.* ubique in
 pratis : *Wilde Germander.*
 Chamæmelum vulgare. In pascuis humidis.
Chamomill.
 Chamæpytis, Iva arthritica, sive moschata, *Of-*
fic. in arvis : *Ground-pine.*
 Chelidonium majus, ad sepes. *Great Celandine.*
 Chelidonium minus, sive Scrophularia minor.
 ubique in pratis humidis : *Pilewort.*
 Chrysanthemum segetum, *Lob. Clus.* Bellis
 major lutea, *Trag.* in satis. *Corne Marigold ;*
or

or *Goldes*.

Cichoreum syl. flo. cæruleo: In arvis: *Wilde Succory*.

Cicuta vulgaris. *Hemlock*.

Cicutaria fatua, *Lob.* *Petroselini vitium*, *Trag.*

Cicutaria tenuifolia, *Ger.* *Dogges-parsley*.

Cicutaria palustris, *Lob. Ger.* *Phellandrium* *Plinii*, *Dod.* in aquis: *Wilde water Hemlock*.

Cicutaria alba, *Lugd.* *palustris* flo. candido, *Cam.* *Myrrhis* syl. *Fuch.* ubique in locis humidis: *Wilde Cicely*.

Circæa Lutetiana, *Lob.* *Lappa* syl. *Trag.* *Herba D. Stephani*, *Tab.* in umbrosis & humidis: *Inchanters Nightshade*.

Cirsium Anglicum, *Lob. Clus. Ger. emac.* *Single-headed Thistle*: **On Early Heath a mile from Reading.**

Clymenon, *v. Androsæmum*.

Clinopodium vulgare, *Matth.* *Origanum* 4 *Trag.* in dumetis. *Wilde Basill*.

Cochlearia vulgaris longo & sinuato folio. In maritimis: *Sea Scurvy-grasse*.

Colchicum commune purpureum, ut etiam flo. albo, sed rarius. *Meadow safron*. **In some meadows about Bathe, & in divers parts of the West Countrey.**

Conferva, *Plinii*, *Lob.* *Hairy river-weede*.

Conyza major, *Matth.* *Baccharis Monspelliensium*, *Lob. Ger.* in montosis, *Plow-mans Spikenard*.

Conyza media, *Matth.* *Calaminthæ* 3 genus, *Fuch.* in humidis: *Midle Fleawort, or Fleabane*.

Conyza minor. *Trag. Matth.* *minima*, *Lob. Dod.*

- In aquosis : *Dwarfe Fleabane.*
- Conyza cærulea acris, Tinctorius flos alter, Trag. Amellus montana, Col. In montosis prasis & antiquis muris. Blew flowered Fleabane.*
- Consolida major, sive symphytum majus flo. albo. In aquosis. Great Comfrey.*
- Consolida major, sive symphytum maj. flo. purpureo, cum priore : Great Comfrey with purple flowres.*
- Consolida media, v. Bellis, & Bugula.*
- Convolvulus major flo. albo. Volubilis major, Tab. Trag. Smilax lævis, Matth. Dod. In sepibus : Great Bindeweede.*
- Convolvulus minor flo. purp. vel albo : Lob. Volubilis minor Trag: Helxine cissampelos, Matth. Fuch. Smilax lævis minor, Lob. In agris. Small Bindeweede.*
- Convolvulus niger, Dod. Orobanche, Trag. Volubilis nigra, Tab. Helxine cissampelos altera atriplicis effigie, Lob. Inter segetes : Black Bindeweede.*
- Corallina ramosa parva ; inter scopulos : Branched Coralline.*
- Corallina pennata longior. cum priore : Winged Coralline.*
- Cornu cervinum, Offic. Coronopus, sive herba stella, Matth. Lob. In maritimis hirsutum, in montosis plerumq; glabrum : Harts-horne, or Buck-horne Plantaine.*
- Cornus fœmina, Lob. Tab. Virga sanguinea, Matth. Dod. In dumetis & sepibus : Doggetree.*

Coronopus

- Coronopus Ruellii, cornu Cervi alterum vulgi,
Lob. Dod. Ambrosia, *Matth.* Ad agrorum
margines, & juxta semitas : *Swines Cresses.*
- Corylus sylvestris, *Trag. Matth.* Nux avella-
na syl. *Fuch. Dod.* In sylvis : *The hazel nut-*
tree.
- Cotyledon aquatica, sive acris septentrionali-
um, *Lob.* In uliginosis : *Water Penny-wort,*
white rot.
- Cotula alba, *Dod.* fœtida, *Lob.* Parthenium
Fuch. Tab. Est etiam non fœtida, & flo. mul-
tiplici : In agris : *Mathes, or Mayweede.*
- Cracca, v. Arachus.
- Cratæogonon, *Lob.* Milium sylvaticum, *Tab.*
Sideritis pratensis lutea, *Lugd.* In sylvis : *Wilde*
Cow-wheate.
- Cratæogonon Euphrosine, *Ger.* Euphasia rubra,
sive altera, *Dod. Lob.* in montosis & pratis
siccioribus : *Eyebright Cow-wheate.*
- Crithmum sive Fœniculum marinum : *Sampire :*
On the white Cliffes on the South side of
the Isle of Wight.
- Crista Galli, v. Pedicularis.
- Cruciata *Dod.* minor, *Lob.* Gallium 2. *Trag.*
in dumetis : *Crosse-wort, or Mugweet.*
- Cuscuta, *Matth.* Cassytha, *Dod. Lob.* in agris
& ericetis circa varias plantas, *Dodder.*
- Cyanus minor vulgaris, *Matth. Lob.* Baptise-
cula *Trag.* inter segetes : *Blew-bottle.*
- Cynocrambe, Mercurialis sylv. mas & fœmina :
in sylvis & sepibus : *Dogges-mercury.*
- Cynoglossum majus vulgare : passim ad agro-
rum margines : *Great Hounds-tongue.*

Cynoglossum minus folio virente, *Ger. emac.*
ad agrorum margines sed rarius. *Small*
Hounds-tongue.

Cynosorchis, *v.* Orchis.

Cyperus rotundus, inodorus septentrionalium,
Lob. rotundus littoreus, Ger. emac. frequens
in maritimis. *Round salt-marsh Cyperus.*

Cyperus gramineus milliaceus, *Lob. Ger. emac.*
In aquosis. *Millet Cyperus grasse.*

D

DAucus vulgaris, *Offic.* Pastinaca syl. tenui-
folia, *Dod. Ger. in agris: Wilde Carrot,*
or Bees-nest.

Dens Leonis, Caput Monachi, Rostrum porci-
num, Taraxacon, ubique in pratis. *Dande-*
lion.

Dentaria major, *Matth. Lob. Ger. in sylvis*
quibusdam. *Great Toothwort, or Lungwort.*

Dipsacus vulgaris, Labrum Veneris, ad agro-
rum margines. *Wilde Teasell, or Venus bason.*

Dipsacus minor, sive Virga pastoris, *Matth. ad*
sepes. *Sheepheards-rod.*

Digitalis purpurea, *Dod. Lob. Ephemeri Di-*
osc. alia species major, *Col. Campanula sylv.*
Trag. in ericetis. Fox-glove.

Dulcamara, *v.* Solanum lignosum.

E

EBulus, Chamæacte, sive Sambucus humilis.
In agris & cæmiteriis. *Walwort, Dwarf*
Elder, or Daneweed.

Echium alterum, *Dod. Lycopsis Anglica, Lob.*
In

- In agris siccioribus & muris. *Wall Buglosse.*
 Elæagnus Cordi, *Lob.* Chamæliagnus, *Dod.*
 Gagel Germanorum, Myrtus Brabantica,
Ger. In humidis & uliginosis sed non ubique.
Gaule, sweet Willow, Dutch Mirtle.
- Elaphoboscum erraticum, *Tab.* Pastinaca syl-
 vestris, *Dod.* ad agrorum margines. *Wilde*
Parsenep.
- Elatine Dioscor, sive Veronica fœmina, *Fuch.*
 & *Dod.* inter segetes. *Female Fluellin, or*
Speedwell.
- Elatine, *Matth.* altera, *Dod. Lob. Ger.* inter
 segetes & ad agrorum margines. *Sharpe*
pointed Fluellin.
- Enula campana, *Offic.* sive Helenium. In hu-
 midis pratis. *Elecampane.*
- Equisetum 1. *Matth.* Hippuris major, *Dod.*
Great Horse-taile, or Shave-grasse.
- Equisetum nudum, *Ger.* Iunceum, *Trag.* In hu-
 midis & uliginosis. *Naked Horse-taile.*
- Equisetum longissimis foliis, sive palustre ma-
 jus, *Tab.* sylvaticum, *Ger.* In fossis & hu-
 midis pratis. *Wood Horse-taile.*
- Equisetum arvense longioribus setis, sive sege-
 tale, *Ger.* *Corne Horse-taile.*
- Equisetum, sive Hippuris lacustris foliis mansu-
 arenosis, *Gesn.* Hippuris coralloides, *Ger.*
emac. Horse-taile Coralline. On a bogge by
Smochall a wood nigh Bathe.
- Equisetum fœtidum sub aquis repens, *Bauh.*
Stinking-water Horse-taile.
- Erica vulgaris, *Trag. Ger. prima, Matth. Dod.*
 In ericetis. *Common Heath.*

Erica

Erica tenuifolia, Ger. caliculato Vnedonis flo.
Lob. cum priore. *Small leaved Heath.*

Erica major flo. purpureo, Ger. Lob. cum pri-
oribus. *Great purple flowered Heath.*

Erigerum, v. *Senecio.*

Eryngium marinum vulgare : ad maris littus.
Sea-holly, or Eringoes.

Erysimum Diosc. v. *Irio.*

Erysimum cereale, v. *Fegopyron.*

Eruca marina, Lob. *Sinapi marinum* Ægypti-
um, Alpini : ad maris littus. *Sea-rocket.*

Eruca sylvestris, Matth. Dod. In fissuris muro-
rum : *Wilde rocket.*

Esula major Germanica Ad. Lob. Ger. *Tithy-
malus palustris fruticosus*, Cam. Bau. *Quack-
salvers Turbith : Water spurge : **By a wood
side, some mile South of Bathe.***

Esula exigua, Trag. Lob. Ger. *emac.* inter se-
getes : *Dwarfe Esula, or Spurge.*

Euonymus Theophrasti, Lob. Dod. *Carpinus*,
Trag. in sepibus. *Spindle tree, prick wood.*

Eupatorium vulgare, Agrimonia, *Offic.* in pra-
tis : *Agrimony.*

Eupatorium cannabinum mas ; vulgare : *Matth.
Dod. Herba S. Kunigundis. Trag. ad rivulos :*
Water hempe, or hempe Agrimony.

Eupatorium cannabinum fœmina Septentrio-
nalianum, Lob. *Hepatorium aquatile*, Dod.
Verbena supina, Trag. In aquosis. Variat
folio tripartitò diviso, & non diviso : *Bastard
Agrimony.*

Euphrasia vulgaris, sive alba, Dod. *Eyebright.*

Euphrasia rub. v. *Cratæogonon Euphosine.*

Euphrasia

Euphrasia cærulea, v. Myosotis scorpioides.

F

FAba major vulgaris, sive Phaselus major, *Dod.* Seritur in hortis & arvis. *Great garden Beanes.*

Faba minor vulgaris, Boona sive Phaselus minor, *Dod.* Seritur passim in agris. *Common Beanes.*

Fagus, in sylvis & montibus. *The Beech tree.*

Farfara, v. Tussilago.

Ferrum equinum siliquis in summitate, *Bauh.*

Hedysarum minus, *Tab. Horse-shoe: On the Hills about Bath, and betweene Bath and Marleborow.*

Fegopyron, *Dod.* Erysimum Theophrasti, *Lob.*
Ocymum cereale, *Clus.* Frumentum Sarra-
cenicum, *Matth.* seritur in agris: *Buck, or Buck-wheate.*

Festuca & Avena Græca, *Lon. Cæs.* Bromos sterilis, *Lob. Ger. Ægilops: 1. Matth. Tab. ad sepes: Wilde Oates.*

Festuca altera, *Dod.* Bromos sterilis altera, *Lob. Ger. inter segetes: Dranke, or small wilde Oates.*

Filipendula vulgaris, Oenanthe, *Fuch. Lob. in pratis quibusdam: Dropwort.*

Filipendula aquat, v. Oenanthe.

Filix mas ramosa pinnulis dentatis: *Ger. Emac. In uliginosis & umbrosis locis. Branched male Ferne.*

Filix mas non ramosa, pinnulis latis densis minutim incis, *Ger. emac. Filix mas, Matth. Fuch.*

- Fuch. Dod.* ubiq; ad sepes. *Common male ferne.*
 Filix mas non ramosa pinnulis angustis raris,
 profundè dentatis, *Ger. emac.* In locis asperis & umbrosis. *Rock male Ferne.*
- Filix mas non ramosa pinnulis latis auriculatis spinosis, *Ger. emac.* Ad sepes in locis saxosis, humidis, umbrosis. *Pointed male Ferne.*
- Filix ramosa major, sive fœmina, *Matth. Dod.*
Ger. ubiq; in sterilibus. *Female Ferne, or brakes.*
- Filix florida, sive *Osmunda regalis*, in uliginosis. *Water Ferne, or Osmond royal.*
- Filix saxatilis parva, sive *Dryopteris candida*,
Dod. *Adiantum album* *Plinii*, *Lob.* In saxis & muris antiquis. *Wall Ferne.*
- Flammula, v. *Ranunculus flam.*
- Fragaria vulgaris*, sive *Trifolium Fragiferum*,
Tab. In sylvis & dumetis. *Strawberry.*
- Fragaria minime vesca*, sive sterilis, *Lob. Ger.*
 In ericetis. *Barren Strawberry.*
- Fraxinus vulgaris*, ubique in sepibus & sylvis.
The Ash tree.
- Fucus Phasganoides* & *Polyschides*, *Ger. emac.*
 Ex mari. *Sea-girdle and hangers.*
- Fucus spongiosus nodosus*, *Ger. emac.* cum priore. *Sea Ragged-staffe.*
- Fucus marinus rotundus*, (quem à forma *Guil. Broad* nominavit) *Ligula marina.* *Sea-points or laces.* **On the South side of the Isle of Wight amongst the Rocks.**
- Fumaria vulgaris.* In satis. *Fumitory.*
- Fumaria alba latifolia*, *claviculata*, *Ger.* *Capnos alba latifolia*, *Lob.* ad sepes, sed rarior. *White broad-leaved Fumitory.*

Galega

G

- G** Alega syl. *Dod. v. Aracus, Tab.*
- G** Galeopsis *Diosc. Clus. Vrtica herculea, Tab. Trag. ad sepes. Hedge-nettle.*
- G**allium album, *Tab. Ger. palustre, Dod. White flowered Ladyes Bedstraw.*
- G**allium album minus, *Tab. In montosis. Little white Ladyes Bedstraw.*
- G**allium luteum, *Lob. Ger. ubique in pratis. Ladyes Bedstraw, Cheese-rening, and in Yorkshire, Maydens-haire.*
- G**enista vulgaris. *Common Broome.*
- G**enista spinosa vulgaris. *Furze, Whins, Gorsse.*
- G**enistella, *Trag. Dod. Genistella aculeata, Lob. Ger. in ericetis. Needle Furze, or petty Whin.*
- G**enistella infectoria, *Lob. Ger. Genista tinctoria, Dod. cum priore, & in montosis pascuis. Green-weed, Diars-weed, Wood-waxen.*
- G**entianella fugax autumnalis minor, *Ger. in montosis. Bastard, or Dwarfe Felwort.*
- G**eranium arvense, *Tab. Gruinum, Dod. Cicutæfolio, Bauh. in agris & fossis gramineis. Unsavory field Cranes-bill.*
- G**eranium batrachoides, sive Gratia Dei Germanorum. *In humidis pratis. Crow-foote Cranes-bill.*
- G**eranium columbinum, sive Pes Columbinus, *Dod. Lob. Geranium 2. Diosc. Trag. Matth. Fuch. ad agrorum margines. Est & ejus altera species, foliis majoribus & magis dissectis. Doves-foote.*
- G**eranium Rupertianum, sive herba Roberti,
ad

- ad sepes, & in umbrosis. *Herbe Robert.*
- Geranium hæmatodes, sive sanguinale. *Red or bloody Cranes-bill.* **It growes about S. Vincents rock nigh Bristow.**
- Geranium saxatile, *Cam.* In muris antiquis & saxorum fissuris. *Rock Cranes-bill.*
- Gladiolus aquaticus, sive palustris, *Cordi.* Iuncus floridus, *Matth.* in paludosis. *Water Gladiole.*
- Glastum, Isatis, seritur nonnullis in agris. *Woade.*
- Glaux exigua maritima. *Lob.* *Black salt-wort.*
- Glaux vulgaris, *Lob.* Glycyrrhiza syl. *Gesn.* Fœnugræcum syl. *Trag.* in montosis. *Wilde Liquorice, or Liquorice Hatchet-fetch.*
- Gnaphalium vulgare, Filago, Centūculus, *Herba impia*: in agris & juxta vias. *Cud-weed, or Cotton-weed.*
- Gnaphalium longiore folio, Anglicum, *Lob. Ger.* in sylvis. *English Cud-weed.*
- Gnaphalium minus repens, sive minimum, *Lob.* Filago minor, *Ger.* in agris. *Small Cud-weed.*
- Gramen pratense vulgare. *Lob. Ger.* *Meadow-grasse.*
- Gramen paniculatum pratense minus. *Lob. Ger.* *Small Meadow-grasse.*
- Gramen pratense paniculatum molle, *Bauh.* lanatum *Daleschampi.* *Hoary Meadow-grasse.*
- Gramen pratense paniculatum minus, minimum album. *Ger.* *Dwarfe-grasse.*
- Gramen caninum vulgare. *Common Dogges-grasse.*

Gramen

- Gramen caninum marinum spicâ siligineâ. *Sea Dogges-grasse.*
- Gramen caninum supinum. *Creeping Dogges-grasse.*
- Gramen caninum nodosum avenaceâ paniculâ. *Knotty Dogges-grasse.*
- Gramen tremulum, v. Phalaris pratensis minor.
- Gramen agrorum latiore arundinaceâ & comosâ paniculâ, sive Agrorum venti spica, *Lob. Reed-grasse, Bent, Windle-straw.*
- Gramen minus duriusculum, *Lob. Ger. Small hard Grasse.*
- Gramen junceum, *Ger. Bufonium, Tab. Rush-grasse, or Toade-grasse.*
- Gramen sylvaticum miliaceum. *Millet-grasse.*
- Gramen majus aquaticum. *Great water-grasse.*
- Gramen arundinaceum paniculatum, sive Calamogrostis. *Sheere-grasse, wilde-reed, Hen.*
- Gramen sorghinum. *Sorgh-grasse.*
- Gramen sylvaticum majus, *Ger. Spicis asperis, Bauh. The greater Wood-grasse.*
- Gramen Alopecurinum majus, *Ger. Great bastard Fox-taile grasse.*
- Gramen alopecuroides minus, *Small Fox-taile grasse.*
- Gramen alopecuroides minus alterum, *Lob. Small bastard Fox-taile grasse.*
- Gramen typhoides, sive typhinum minus, *Ger. Small Cats-taile grasse.*
- Gramen typhoides spicâ longissimâ, *Bauh. Long eared Cats-taile grasse.*
- Gramen aquaticum, sive junceum folio articulato.

- lato. *Water-grasse with joynted leaves.*
 Gramen junceum sylvaticum folio articulato.
Wood Rushy-grasse.
 Gramen marinum spicatum. *Sea Spike-grasse.*
 Gramen parvum marinum paniculâ loliaceâ.
Little Darnell grasse.
 Gramen junceum leucanthemum, fortè, Iun-
 ceum aquaticum, *Ger. majus, Tab. White*
flowred Rush-grasse.
 Gramen fluviatile, *Ger. Floate-grasse.*
 Gramen palustre echinatum. *Hedge-hogge-*
grasse.
 Gramen capitulis Psyllii, sive exile hirsutum,
Lob. Ger. Hairy-grasse.
 Gramen hirsutum nemorosum. *Hairy Wood-*
grasse.
 Gramen nemorale avenaceum rariore grano.
Shaking Haver-grasse.
 Gramen avenaceum lanuginosum glumis rari-
 oribus longis. *Hairy Haver-grasse.*
 Gramen spica Brizæ majus. *Barley-eared grasse.*
 Gramen spicâ secalinâ. *Rie-grasse.*
 Gramen pratense cristatum, *Bauh. Cox-combe*
grasse.
 Gramen murorum spicâ longissimâ. *Capons*
taile grasse.
 Gramen sparteum, *v. Spartum.*
 Gramen leucanthemum, *Dod. vid. Holosti-*
um.
 Gramen tomentosum & Linagrostis, *Tab. Iun-*
cus bombycinus, Lob. Linum pratense, Cord.
Gesn. in uliginosis. Cotton-grasse.
 Gramen caule triangulo, sive Cyperoides vul-
 gare.

- gare. *Common Cyperus-grasse.*
 Gramen cyperinum nemorosum, *Tab. Ger.*
Cyperus Wood grasse.
 Gramen palustre cyperoides, *Lob. Ger.* *Great*
Cyperus-grasse.
 Gramen cyperoides parvum. *Small Cyperus-*
grasse.
 Gramen cyperoides paniculâ sparsâ majus, sive
 Cyperoides aquat. vulgatus. *Lob. Ger.* *Wa-*
ter Cypresse-grasse.
 Gramen cyperoides spicatum, *Ger.* foliis Veto-
 nicæ, *Lob.* variat spicâ divulsâ, & simplici.
Spike Cypresse-grasse.
 Gramen cyperoides angustifolium majus spi-
 cis erectis. *Great narrow-leaved Cypresse-*
grasse.
 Gramen cyperoides spicis pendulis, Pseudocy-
 perus, *Lob. Dod.* Ad aquas. *Bastard Cyperus.*
 Gratiola angustifolia, sive minor, *Gesn.* Hysso-
 poides, *Cam.* In agris quibusdam. *Grasse Poley.*
 Gratiola latifolia, v. *Lysimachia galericulata.*

H

- H** Alimus vulgaris, sive *Portulaca marina.*
Sea-purslaine.
 Hedera arborea, sive *Corymbosa communis.*
Climing, or berryed Ivy.
 Hedera helix, sive *provoluta sterilis.* *Barren,*
or creeping Ivy.
 Hedera terrestris, *Chamæcissos.* *Ground Ivy,*
Ale-hoofe, Gill go by ground.
 Hederula aquatica, *Lob. Ger.* *Water Ivy.*
 Helenium, v. *Enula.*

Helian-

- Helianthemum minus, v. Chamæcistus.
- Helleborine latifolia montana. *i. Ger. Wilde white Hellebore. Amongst the rocks not farre from Bathe.*
- Helleborine angustifolia palustris, sive pratensis. *Narrow-leaved wilde white Hellebore.*
- Helxine, v. Parietaria.
- Hepatica alba, *Cord. Gramen hederaceum sive Parnassi, Lob. Ger. in uliginosis, sed rarius. Grasse of Parnassus.*
- Hepatica vulgaris, *Offic. v. Lichen.*
- Herba Gerardi, *Dod. Padagraria Germanica, Lob. juxta oppida, & in viridariis. Herbe Gerard, Ash-weed.*
- Herba Paris, *Matth. Dod. Solanum monococcum, tetraphyllum, Gesn. Vva Lupina, Lugd. Aster non Atticus, Trag. In Sylvis. Herbe Paris, one berry.*
- Hieracium minus præmorsâ radice, *Lob. minus sive Leporinum, Ger. Lactuca leporina, Trag. ubique in pratis. Et ejus altera varietas paulo minor foliis magis dissectis. Hares Lettice, or little Hawke-weed, yellow devills bit.*
- Hieracium foliis & facie Chondrillæ, *Lob. Aphacoides, Ger. In pratis. Succory Hawke-weed.*
- Hieracium fruticosum latifolium hirsutum, *Bauh. in montosis pratis. Rough mountaine Hawke-weed.*
- Hieracium fruticosum angustifolium majus, *Bauh. Sabaudum, Lob. Intybaceum, Ger. Endive Hawke-weed.*
- Hieracium macrorrhizon, *Tab. sive longius radicatum,*

- radicatum, *Lob. Ger.* In pratis. *Long-rooted Hawke-weed.*
- Hieracium Dentis leonis folio hirsutum. *Ger. emac. cum priore. Dandelion Hawke-weed.*
- Hieracium montanum hirsutum minus, *Bauh. montanum alterum saxatile, Col. Little mountaine Hawke-weed.*
- Hippuris, v. Equisetum.
- Holostium vernum flore majore, *Euphrasia gramen, Trag. Gramen, Fuch. alterum, Matth. Leucanthemum, Dod. Holostium Ruellii, Lob. Ad sepes passim. Stitchwort with large flowres.*
- Holostium alterum flo. minore; etiam ad sepes & in dumetis. *Stitchwort with lesser flowres.*
- Holostium pumilum, non descriptum, pervenit in ericetis. *Dwarfe Stitchwort.*
- Hordeum spontaneum spurium, *Holcus Plinii, Anguill. Wall Barley, way Bennet, or wilde Rye.*
- Hordeum distichon, ubique seritur in agris. *Common Barley.*
- Horminum sylv. sive Oculus Christi, *Offic. Ad agrorum margines, & muros. Wilde Clarye.*
- Hyacinthus Anglicus vulgaris, *Ger. ubique ad sepes & in sylvis. Ejus varietas flo. albo, rarior, ut etiam flo. carneo. Hare-bells, or English Iacinth.*
- Hyacinthus autumnalis minor, *Lob. Ger. in arenosis collibus. Small Autumn Iacinth.*
- Hydropiper, v. Persicaria.
- Hyoscyamus niger vulgaris. *Apollinaris, Al-turcum. in fimetis. Hen-bane.*
- Hypericum

- Hypericum vulgare, Perforata, Fuga dæmonum. In pratis siccis & arvis. *S. Johns-wort.*
 Hypericum minus erectum, *Bauh.* Hypericum pulchrum, *Trag.* In dumetis & sylvis. *Vpright S. Johns-wort.*
 Hypericum minus, *Dod.* supinum glabrum, *Bauh. Ger. emac.* In agris. *Creeping S. Johns-wort.*

I

- I**acea nigra vulgaris, ubique in pratis. *Knap-weed, mate-Fellon.*
 Iacea segetum purpurea major, *Lob. Ger.* Flos cyanoides, *Dod.* *Great mate-Fellon.*
 Iacea foliis dissectis, flo. albo, in arvis, & pratis, sed rarior. *White Knap-weed.*
 Iacea tricolor, *v.* Viola tricolor.
 Iacobæa major vulgaris, Senecio major, *Matth.* *Great Ragge-wort, Seggrum.*
 Iacobæa minor, muralis Belgarum. *Small Ragge-wort, or Seggrum.*
 Illecebra, *v.* Sedum minimum.
 Irio sive Erysimum, *Diosc. Lob.* Verbena fœmina, *Trag.* passim in viis. *Banke Cresses.*
 Juglans, sive Nux regia. In viridariis & agris. *The Walnut-tree.*
 Iuncus acutus vulgaris sive paniculâ sparsâ, *Sharpe-rush, or hard-rush.*
 Iuncus aquaticus maximus. *Bull-rush, Bumbles.*
 Iuncus sive Scirpus medius, sylvaticus, *Tab.* *The lesser Bull-rush.*
 Iuncus lævis vulgaris paniculâ sparsâ. *Common Rush.*

Iuncus

Iuncus lævis glomerato flore, *Lob.* *Smooth round-headed Rush.*

Iuncus lævis medullâ solidiore. *Candle-rush.*

Iuncus aquat. minor capitulis Equiseti, *Lob.*
Clavatus, *Dalesch.* *Club-rush.*

Iuncellus omnium minimus, *Chamæschoenos.*
Dwarfe-rush.

Iuncus floridus, *v.* Gladiolus.

Iuncus Bombycinus. *v.* Gramen tomentosum.

Iuniperus, in ericetis. *Iuniper.*

K

K Ali majus geniculatum, sive Salicornia. In locis maritimis. *Glasse-worte, Salt-wort, Sea-grape.*

Kali minus, sive Kali album, *Dod.* cum priore. *Small Glasse-wort.*

Kali spinosum, *Lob.* Tragon improbus, *Matth.* ad maris littus. *Prickly Glasse-wort, or bastard Sea-grape.*

Keiri Arabum & *Offic.* *v.* Leucoium luteum.

Knawell, Germanorum, *v.* Polygonū angustif.

L

L Abrum Veneris, *v.* Dipsacus.

Lactuca agnina, *Ger.* Olus album, *Dod.* Ad agrorum margines & in agris. *Lambeslettice, Corne-sallade.*

Lactuca syl. major odore Opii, sive Scariolæ hortensis folio, Lactucæ flore, Opii odore vehementi, soporifero & viroso. *Adv.* Ad agrorum margines, sed rarior. *Great stinking wilde Lettice.*

Lactuca syl. altera folio non laciniato, odore minus

- minus vehementi, Endivia, *Trag.* Thesion, *Daleschamp.* Ad agrorum margines. *Endive-leaved wilde Lettice.*
- Lactuca syl. foliis dissectis, sive sylvestris, *Matth. Fuch.* Seris domestica, *Lob.* cum priore. *Cut-leaved wilde Lettice.*
- Ladanum segetum Plinii, & Tetrahit angustifolium aliis, *Lugd.* Alyssum Galeni flore purp. *Tab.* Inter segetes. Variat flore albo. *Narrow-leaved All-heale, or Iron-wort.*
- Lagopus, sive pes leporinus minor vulgaris; In agris. *Hares-foote.*
- Lamium rubrum, *Ger.* Vrtica non mordax fœtens purpurea, *Lob.* *Red Archangell, small dead Nettle.*
- Lamium vulgare flor. albo, ubique ad sepes. *Archangell, dead Nettle.*
- Lamium flore luteo; ad sepes & in sylvis. *Yellow Archangell.*
- Lampsana, *Lob.* Sonchus sylvaticus, *Tab.* Papillaris, *Cam.* ad sepes. *Dock-cresses, Tetterwort.*
- Lapathum acutum, *Ger.* *Sharpe pointed Dock.*
- Lapathum acutum minimum, in pratis. *Small sharpe Dock.*
- Lapathum syl. folio minus acuto. *The roundish-leaved wilde Dock.*
- Lapathum aquaticum, sive Hydrolapathum majus. *Great Water-dock.*
- Lapathum aquaticum, sive Hydrolapathum minus. *Small Water-dock.*
- Lappa major, v. Bardana.
- Lathyrus latiore folio, *Lob.* Clymenum, *Matth.*
- Ervum sativum, *Cordi.* In sylvis & dumetis,
sed

- sed minus frequens. *Pease everlasting.*
- Lathyrus syl. flo. luteis, *Thalii*. *Vicia*, *Tab.*
 Legumen terræ glandibus simile, *Dod.* Apha-
 coides, *Quorund.* ubique in pratis & sylvis.
Tare everlasting.
- Laureola, *Dod.* *Ger.* Daphnoides, *Lob.* *Tab.*
 Thymælea, *Trag.* In sylvis. *Laureol*, *Spurg-*
laurell, *Lowry.*
- Lens palustris. *Water-lentill*, *Ducks-meate.*
- Leucoium luteum, *Viola lutea*, *Trag.* Keiri vel
 Cheiri, *Offic.* In muris. *Wall-flowre.*
- Lichen, *Matth.* *Fuch.* *Dod.* Iecoraria, sive
 Hepatica fontana, *Trag.* Hepatica, *Offic.* In
 humidis & umbrosis. *Liverwort.*
- Lichen petræus stellatus & umbellatus, sive
 Hepatica stellata & umbellata, *Ger.* uterque
 in humidis umbrosis. *Starry-headed, and*
round-headed Liverwort.
- Lichen arborum, sive Pulmonaria, *Trag.* *Matth.*
Fuch. *Dod.* Arboribus præsertim Quercui
 adnascitur. *Tree Lung-wort.*
- Lichen marinus, *Ger. v.* Bryon Lactuæ fol.
- Ligustrum vulgare, in sepibus. *Privet, or Prim-*
print.
- Lilium convallium, *Matth.* *Dod.* *Lob.* *Ger.* In
 ericetis. *Lilly-convall*, *May Lilly.*
- Limonium verum, *Diosc. & Antiquorum. v.*
Plantago aquat.
- Limonium vulgare, *Lob.* *Matth.* Behen ru-
 brum, *Quibusd.* Valerianæ rubræ similis pro
 Limonio missa, *Dod.* An Britannica, *Diosc.?*
 Ubique in maritimis. *Sea-lavander.*
- Linaria vulgaris flo. luteo, *Osyris*, *Matth.*
16
Fuch.

- Fuch. Lob. in pratis. Toade Flax.*
 Lingua cervina, *Offic. v. Phyllitis.*
 Linum vulgare sativum, seritur in arvis. *Common Flax, or Line.*
 Linum sylvestre Catharticum, *Ger. emac. in montosis. Mill mountaine.*
 Lithospermum majus, sive Milium solis, *Offic. In collibus. Gromill.*
 Lithospermum syl. *Trag. v. Anchusa degener.*
 Lolium album, *Ger. Triticum temulentum, Lob. Ad. Inter segetes. Darnell, Iuray, Ray.*
 Lolium rub. *Ger. Phœnix, Matth. Dod. Hordeum murinum Plinii, Lob. Tab. Iuxta semitas. Red Darnell, great Darnell grasse.*
 Lonchitis vulgaris, aspera. *Ger. altera Dioscoridis, Lob. In asperis & umbrosis. Comberne, rough Spleene-wort.*
 Lujula : *v. Trifolium acetosum.*
 Lunaria minor, *Matth. Dod. Ger. racemosa, Lob. Epimedium Dioscoridis, Col. In ericetis & montosis, sed rarior. Small Moone-wort.*
 Lupulus salictarius sive Lupus salictarius, *Plinii, Lob. Dod. In sepibus. Hopps.*
 Luteola, *Lob. Antirrhinum ; Trag. Catanance ; Tab. Luteum ; Vitruvii, Lutea ; Plinii, Pseudostruthium ; Matth. Yellow weede, and of some wilde woade.*
 Lycopsis Anglica ; *Lob. v. Echium alterum.*
 Lychnis marina Anglica ; *Lob. Ger. Sea-rose Campion.*
 Lychnis sylvestris flore rubello, fortè Hesperis, *Theophrasti ; Lob. Ocimastrum, sive Ocimoides ; Matth. Melandrium Plinii ; Clus. Saponaria*

caria hirsuta, *Italis*. ad sepes. *Wilde red rose
Campion*.

Lychnis syl. flore albo : cum priore. *Wilde white
rose Champion*.

Lychnis segetum parva viscosa flore albo. *Al-
sine spuria* 4 *Dod.* *Alsine viscaria*, *Cam.*
Mouse-eare Champion, or Catch-fly Champion.

Lysimachia lutea, *Trag. Fuch. Lob.* ad rivulos.
Loose strife, yellow Willow-herbe.

Lysimachia siliquosa hirsuta magno flor. *Bauh.*
Purpurea. 1. Fuch. cum priore. *Great coddled
Willow-herbe*.

Lysimachia siliquosa hirsuta parvo flore : In hu-
midis. *Small flowred Willow-herbe*.

Lysimachia siliquosa glabra major. *Smooth-cod-
ded Willow-herbe*.

Lysimachia siliquosa glabra minor, *Bauh.* In hu-
midis saxosis. *Little-coddled Willow-herbe*.

Lysimachia spicata purpurea, fortè *Plinii*, pas-
sim ad rivulos. *Spiked Willow-herbe*.

Lysimachia cærulea, galericulata, *Lob.* *Gratiola
cærulea, Quorund.* *Tertianaria, Tab.* cum pri-
ore. *Hooded Willow-herbe, or Loose-strife*.

*Lysimachia galericulata minor. sive Gratiola la-
tifolia, Ger.* In uliginosis. *Little hooded Wil-
low-herbe, bastard hedge Hyssope*.

M

M *Alva vulgaris, procerior*, *Lob. Dod.* ma-
jor; *Tab.* *Common Mallow*.

Malva syl. pumila, Fuch. Dod. repens pumila,
Lob. in ruderibus. *Dwarfe-Mallow*.

Malva verbenaca, Ger. v. Alcea.

Malus

- Malus sylvestris*, fructu majore, minore albo rubro. In sepibus & sylvis. *Crab-tree, or Wilden-tree.*
Marrubium album, Prassium, in collibus. *Horehound.*
Marrubium nigrum fœtidum; *v.* *Ballote.*
Marrubium aquaticum, *Trag. Dod. Lob.* *Sideritis*, 1. *Matth.* *Water Horehound.*
Marrubium aquaticum acutum, *Ger. vid.* *Sideritis.*
Matricaria: *v.* *Parthenium.*
Matrisylva: *v.* *Periclymenum.*
Medica: *v.* *Trifolium cordatum & luteum.*
Melilotus, *Offic.* *Sertula campana*, *Plinii*, *Lotus urbana*; *Matth.* in agris. *Melilote.*
Melilotus coronaria seu *coronata*, *Lob. v.* *Trifolium corniculatum.*
Menthastrum, *Trag. Matth.* *Mentha equina*, *Brunfelsii.* In pratis humidis. *Horse-mint.*
Mentha felina, vel *Cattaria*, *Nepeta* vulg. *Trag:* ad sepes. *Cats-mint.*
Mentha aquatica, sive *Sisymbrium*, *Fuch. Dod.* *Balsamita*, vel *Balsamine*, *Offic.* ad rivulos. *Water-mint.*
Mercurialis testiculata, sive *mas*, *Diosc. Plin. Matth.* *Male Mercury.*
Mercurialis spicata, sive *Fœmina* *Diosc. Plin. Matth.* *Female Mercury.* **Both those grow by the Sea side at Ride in the Isle of Wight.**
Mercurialis montana testiculata & spicata, *Bauh. v.* *Cynocrambe.*
Milium solis. *v.* *Lithospermum.*
Millefolium vulgare album, terrestre majus, *Tab.*

- Tab.* Stratiotes millefolia, *Fuch.* Achillea, *Dod.* In pratis. *Common Milfoile, or Yarrow.*
- Millefolium vulgare flo. diluti ruboris, *Trag.* purpureum, *Lob. Dod. Tab.* cum priore. *Red flowered Milfoile, or Yarrow.*
- Millefolium aquaticum caule nudo, *Bauh.* Myriophyllum equisetifolium palustre, *Lob.* Viola aquatilis, *Dod.* Fœniculum aquat. 2. *Tab.* Variat foliis crassioribus, & tenuioribus. *Water Violet.*
- Millefolium sive Maratriphyllum flore & semine Ranunculi aquat. Hepaticæ facie, *Ger.* Fœniculum aquaticum 3. *Tab.* *Water Fennell, Crow-foote Milfoile.*
- Millefolium fluviatile tenuifolium, *Ger. emac.* Myriophyllum maratriphyllum palustre alterum, *Lob.* *River Milfoile, or Fennell leaved water Milfoile.*
- Millegrana minima, *Lob.* Polygonum polyspermum, *Quorund.* In ericetis siccioribus. *Little Rupture-wort.*
- Mollugo montana, *Dod.* *Great bastard Madder.*
- Morsus diaboli, *Succisa, Pycnocomon, Dioscoridis, Col.* In sylvis. *Devils bit.*
- Morsus gallinæ, *v. Alsine heder.*
- Morsus Ranæ, *Dod. Lob.* in aquis. *Frogge-bit.*
- Muscus terrestris vulgaris. *Common earth mosse.*
- Muscus albus marinus vulgatissimus, *Lob.* *White sea mosse.*
- Muscus marinus ramosus multifido folio, *Marinus, Clusii, Ger. emac.* *Branchy sea mosse.*
- Muscus marinus, *Matth. 1.* *Corallina, Offic.*
Muscus

- Muscus coralloides, sive Corallina montana, *Tab. Ger.* in ericetis siccioribus, & montosis. *Corall Mosse, or Mountaine Coralline.*
- Muscus parvus stellaris, *Ger. emac.* *Small Heath Mosse.*
- Muscus terrestris, *Trag. Matth.* Clavatus & Lycopodium, *Lob. Ger.* Chamæpeuce *Cordi.* In ericetis. *Club Mosse, or Wolfes claw.*
- Muscus major denticulatus; In aquosis. *Great-toothed Mosse.*
- Muscus capillaris: v. Adiantum aureum.
- Muscus pyxoides, sive pyxidatus, *Ger.* In montosis & muris. *Cuppe or Chalice Mosse.*
- Muscus arboreus, *Trag. Matth. Dod.* Quernus, *Lob. Ger.* In quercu, pomo, &c. *Tree Mosse.*
- Muscus ramosus floridus, *Tab. Ger.* In quercubus. *Flowering branched Mosse.*
- Myosuros, sive cauda murina, *Dod. Lob. Ger.* In ericetis & pascuis sterilibus. *Mouse-taile.*
- Myosotis scorpioides arvensis hirsuta, *Ad. Lob.* Auricula muris cærul. *Tab.* Echiū palustre alterū, *Thal.* In agris. *Mouse-eare Scorpiō-grasse.*
- Myosotis scorpioides palustris, Euphrasia cærulea, *Trag. Tab.* Heliotropium minus in palustribus, *Cæsalp.* Echium palustre, *Cordi. Thal.* *Water Scorpion-grasse.*
- Myrrhis syl. v. Cicutaria alba.
- Myrrhis nova Æquicolorum, *Col.* Cicutaria parva tenuifolia. Ad agrorum margines. *Hemlock Chervill.*

N

N Apus, Bunias. *Fuch. Lob.* Ad agrorum margines. *Wilde Navew.*

Narcissus

- Narcissus luteus, *Trag. Ges.* Βαλβουκώδιον, *Theoph.*
 Pseudonarcissus, *Dod. Ger.* In locis humi-
 dis & umbrosis. *Daffadill, or Daffadowndilly.*
 Nasturtium aquaticum, *Offic. v. Sium.*
 Nasturtium hybernium, *v. Barbarea.*
 Nasturtium petræum, *Ger.* In agris. *Stone-
 Cresses.*
 Nidus avis, *Dod.* Satyrium abortivum, *Lob.*
Ger. In sylvis. *Birds nest.*
 Nepeta vera, est Calamintha Puleg. odore.
 Nepeta vulgaris, est Mentha Cattaria.
 Nucula terrestris, *v. Bulbocastanum.*
 Nummularia vulgaris, sive major lutea. In hu-
 midis pratis. *Yellow money-wort, or herbe
 Two-pence.*
 Nummularia minor purpurascens flore, *Bauh.*
Ger. emac. In uliginosis. *Little purplish-flowered
 Money-wort.*
 Nymphæa alba major. In fluviis & rivulis.
Great white water Lilly.
 Nymphæa alba minor. In rivulis & stagnanti-
 bus aquis. *Little white water Lilly.*
 Nymphæa lutea major, cum priore. *Great yel-
 low water Lilly.*
 Nymphæa lutea minor, cum reliquis. *Little yel-
 low water Lilly.*

O

- O Cymum cereale, *Clus. v. Fegopyron.*
 Oculus Christi, *v. Horminum syl.*
 Oenanthe aquatica; *Lob.* Filipendula aquat.
Ger. Iuncus odoratus aquatilis, *Dod.* *Water
 Dropwort.*

Oenanthe,

- Oenanthe, sive Filipendula virosa maxima, Cicutæ facie, *Lob. Ger.* Ad rivulos & fossas. *Hemlock Dropwort.*
- Onobrychis ; *v.* Caput gallinaceum.
- Ononis ; *v.* Anonis.
- Onopyxos ; *v.* Carduus asininus.
- Ophioglossum, Enophyllon ; *Ad. Lob.* Lingua vulneraria ; *Cord.* In pratis humidis. *Adders-tongue.*
- Ophris, *Matth.* Bifolium, *Dod. Lob.* In sylvis & pratis humidis. *Twablade.*
- Orchis morio mas foliis maculatis, sive Cynosorchis morio mas ; *Ger. emac.* *The male Foole-stones, or Crow-toes.*
- Orchis, sive Cynosorchis morio fœmina, *Lob. Ger.* In pratis ut etiam mas. *The female Foole-stones.*
- Orchis, sive Cynosorchis flor. purpurascente, Pannonica 4. *Clus.* in montosis pratis. *Little purple-flowered Dogges-stones.*
- Orchis alba calcare oblongo, sive Testiculus vulpinus. 1. *Lob.* Testiculus Psycodes ; *Ger. emac.* In sylvis & humidis pratis. *Gnat Satyrion.*
- Orchis, sive Testiculus vulpinus, 2. Sphegodes ; *Lob. Ger.* In collibus, sive montosis pratis. *Humble-Bee Orchis.*
- Orchis myodes prima, floribus muscam exprimens ; *Lob.* Myodes ; *Ger. emac.* *Fly Satyrion.* **This grew on a hill, South-west of Bathe.**
- Orchis flo. albo odorato, *Cam.* Testiculus odoratus ; *Lob. Ger.* In montosis pratis. *Lady-Traces.*
- Orchis

- Orchis spiralis autumnalis, Triorchis; *Ger.* In editioribus locis. *Triple Lady-Traces.*
- Orchis palmata minor calcaribus oblongis, Serapias minor nitente flo. *Lob. Ger.* In montosis. *Spurre-flowered Orchis, or Red-handed Orchis.*
- Orchis palmata pratensis major, sive Palma Christi mas, *Ger.* Satyrium basilicum mas *Dod.* In pratis. *Male Satyrion royall, Gander-gosses.*
- Orchis palmata pratensis maculata, *Bauh.* Palma Christi fœm. *Ger.* Satyrium basilicum fœm. *Dod.* *Female Satyrion royall.*
- Orchis palmata montana maculata, *Bauh.* Serapias candido flo. *Lob. Ger.* *White-handed Orchis.*
- Orchis palmata palustris latifolia, *Bauh.* Serapias palustris latifolia, *Lob. Ger.* In humidis pratis. *Marish Satyrion.*
- Orchis palmata palustris maculata, *Bauh.* *Spotted marish Satyrion.*
- Orchis radice repente, *Cam.* sive Palma Christi rad. repente, *Ger.* In sylvis & pratis humidis. *Creeping Satyrion.*
- Origanum vulgare, *Trag. Matth.* sylvestre; *Fuch. Dod.* Anglicum, *Ger.* Agrioriganum, sive Onitis major, *Lob.* Ad sepes & agrorum margines. *Wilde Marjerome.*
- Ornithogalum angustifolium majus floribus ex albo virescentibus, *Bauh.* Asphodelus bulbosus, *Galenii; Dod. Ger.* *Onion Asphodill, Greene starre flowre. It growes in the way betweene Bathe and Bradford, not farre from*

from little *Ashley*.

Orobanche, Rapum genistæ. In ericetis. *Broome Rape*.

Ornithopodion, *Dod. Lob. Ger.* In ericetis & locis aridis. *Birds Foote, or Birds Claw*.

Osmunda regalis ; v. Filix florida.

Oxyacantha, *Matth. Lob.* Spina appendix Plinii, *Ges.* In sepibus passim. *The white Thorne, or Haw-thorne-tree*.

Oxyacanthus Galeni, *Cam.* Crespinus, *Matth. Barbaris, Offic.* In viridariis & sepibus. *Berberries*.

Oxalis, v. Acetosa.

Oxymyrsine ; v. Ruscus.

Oxys, Plinii ; v. Trifolium acetosum.

P

PAlma Christi, i. Orchis Palmata.

Panax Coloni, v. Sideritis.

Papaver corniculatum flo. luteo. In maritimis. *Yellow horned Poppy*.

Papaver rhœas, *Lob. Ger.* Erraticum, *Matth. Dod.* Inter segetes. *Red Poppy, Corne-Rose*.

Papaver erraticum alterum, *Fuch. Dod.* erraticum minus, *Tab. cum priore.* *Little red Poppy, or Corne-Rose*.

Papaver spontaneum syl. *Lob. Ger. emac.* In agris & ad agrorum margines. *Wilde Poppy*.

Papaver spumeum ; *Lob. v.* Behen album.

Paralysis, *Offic. v.* Primula pratensis.

Paronychia vulgaris, *Dod.* alsinefolia, *Lob.* Bursa pastoria 6. *Trag.* in tectis & muris. *Chick-weed whittow-grasse*.

Pa-

- Paronychia altera, *Dod.* rutaceo folio; *Lob.*
 Alsine petræa rubra, & Paronychia 3. *Tab.*
 cum priore. *Rue Whitlow-grasse.*
- Parietaria vulgaris, Helxine, in muris antiquis,
 & ruderibus. *Pellitory of the wall.*
- Parthenium, *Matth.* Matricaria, *Dod.* *Lob.* Ar-
 temisia tenuifolia, *Fuch.* *Tab.* in muris &
 ad sepes. *Feverfew.*
- Pastinaca syl. *Dod.* v. Elaphoboscum.
- Pastinaca syl. tenuifolia, v. Daucus.
- Pecten Veneris, *Matth.* *Ger.* Scandix, *Dod.* Inter
 segetes. *Sheepheards-Needle, Venus Combe.*
- Pedicularis rubra, sive Ruta pedicularis, *Tab.*
 Alectorolophos; *Lob.* Fistularia, *Dod.* In pra-
 tis humidis. *Red Rattle, or Lowse-wort.*
- Pedicularis pratensis lutea, sive Crista galli her-
 bariorum, *Lob.* *Yellow Rattle, or Cockes-*
Combe.
- Pentaphyllum, sive Quinquefolium vulgare.
Common Cinquefoile, or Five-leaved grasse.
- Pentaphyllum, sive Quinquefolium petræum
 majus; *Tab.* Tormentillæ facie, *Ger.* Penta-
 phyllum album, *Matth.* exiguum alterum;
Trag. In agris siccioribus, & ad muros. *Wall*
Cinquefoile.
- Pentaphyllum rubrum palustre. *Marsh Cinque-*
foile.
- Perchpier Anglorum, *Lob.* *Ger. emac.* Alchimilla
 montana, *Col.* In agris siccioribus. *Parsley*
Breakestone.
- Perfoliata, *Matth.* *Dod.* *Lob.* *Ger.* In agris inter
 segetes. *Thorow-waxe.*
- Persicaria mitis maculosa; *Lob.* *Ger.* altera;
Trag.

- Trag. Matth.* ubique in aquosis. *Dead, or spotted Arsmarte.*
- Persicaria urens, Lob.* Hydropiper, *Matth. Fuch. Dod. Ger.* in aquosis. *Arsmarte, water-pepper.*
- Periclymenum, Trag. Fuch.* non perfoliatum septentrionalium, *Lob.* Caprifolium, *Matri-sylva, Offic. Dod.* In sepibus & sylvis. *Woodbinde, Hony-suckle.*
- Pes anserinus; v. Atriplex syl.*
- Pes columbinus; v. Geranium columbinum.*
- Petasites, Lob. Ger.* Tussilago major, *Matth.* Ad fluminum & rivulorum ripas. *Butterburre.*
- Peucedanum, Pinastellum, Fœniculum porcinum.* *Sulphure-wort, Harestrong, Hogges fennell, and of the vulgar Spreusidany. In Kent betweene Feversham and the Sea.*
- Peucedani facie pusilla planta, Lob.* Selinum montanum pumilum, *Clus.* Peucedanum pumilum, aut (quod magis arridet) Petroselinum. *Dwarfe Hogges-fennell, or Rock-persley. On S. Vincents Rock nigh Bristow.*
- Phalaris sativa, Matth. Dod. Lob.* Semen Canariense vulgi. Iuxta oppida ex seminibus inter domorum purgamenta ejectis. *Canary seede.*
- Phalaris pratensis minor, Lob.* Gramen leporinum, & Tremulum, *Tab.* In montosis pratis. *Quaking-grasse, Cow-quakes.*
- Phellandrium; v. Cicutaria palust.*
- Phœnix; v. Lolium rub.*
- Phu; v. Valeriana.*
- Phyllitis, Matth. Dod.* Lingua cervina, *Offic.*
Scolo-

- Scolopendrium, *Brunf.* Scolopendria vulg. *Trag.* In asperis & umbrosis. *Harts-tongue.*
- Pilosella major, *Fuch. Dod.* Auricula muris major, *Trag.* Ad agrorum margines. *Great Mouse-eare.*
- Pilosella siliquata, *Thal.* Paronychia altera Myagri folio, *Ges.* ad agrorum margines. *Codded Mouse-eare.*
- Pimpinella sanguisorba major, *Matth.* Italica major, *Thal.* sylvestris, *Ger.* In pratis. *Great Burnet.*
- Pimpinella sanguisorba minor, *Matth.* Italica minor, *Thal.* hortensis, *Ger.* In montosis pratis. *Small, or litle Burnet.*
- Pimpinella saxifraga major; *Trag. Fuch.* Saxifraga magna, *Dod. Lob.* Tragoselinum majus; *Tab.* In pratis & pascuis. *Burnet Saxifrage.*
- Pimpinella saxifraga minor. Bipennella, Saxifraga hircina minor, *Lob.* Tragoselinum petræum; *Trag.* In pratis & montibus. *Small Burnet saxifrage.*
- Pinguicula (vel Liparis) *Ges. Clus. Ger.* Cucullata, quibusdam Crias, Apulei, *Lugd.* Butterworts, *Yorke-shire Sanicle.* **In a bogge about the midde way betweene Sarisbury and South-hampton.**
- Pisum arvense, flore albo, aut roseo; fructu albido, aut cinericeo; Seritur in arvis. *White Pease, and gray Pease.*
- Plantago marina, *Lob. Dod. Ger.* *Sea-Plantaine.*
- Plantago major latifolia vulgaris. *Great Plantaine, or Waybreed.*
- Plantago major incana, *Lob. media, Fuch. Dod.*
- In

In pratis ; *Hoary Plantaine.*

Plantago panniculâ sparsâ, Sarothrodes, & Corematophora, sive Scoparia, *Lob. Besome Plantaine, or Plaintaine with spoakie tufts. We found this onely in the Isle of Tenet.*

Plantago minor angustifolia, Quinquenervia ; *Lob. Ger. lanceolata, Trag. Tab. ubique in pratis & pascuis. Rib-wort, or Rib-wort Plantaine.*

Plantago aquatica major, Limonium verum, *Diosc. & Antiq. Great water Plantaine.*

Plantago aquatica minor stellata, Damasonium stellatum, *Lugd. In stagnantibus aquis. Starry-headed water Plantaine.*

Plantago aquatica humilis angustifolia capitulis rotundis echinatis. In fossis. *Dwarfe water Plantaine.*

Podagraria ; *Lob. v. Herba Gerardi.*

Polyacantha ; *v. Carduus spinosiss.*

Polyanthemū palust. *Dod. v. Ranunculus aquat.*

Polygala Recentiorum, *Lob. Amarella, Ges. Flos ambervalis, Dod. Variat. flor. colore cæruleo, purpureo violaceo, carneo, albo. Nascitur montosis siccioribus. Milke-wort, and by some (but falsely, taking it for Gratiola) Hedge Hyssope.*

Polygonum fœm. *Diosc. Cauda equina fœmina, Ger. In aquosis. Female Horse-taile, short Shave-grasse : Paddow pipe.*

Polygonum mas vulgare, Centinodia. Sanguinaria, corrigiola, passim in areis & juxta semitas. *Common Knot-grasse.*

Polygonum angustissimo gramineo folio ; *Bauh. exiguum, Dod. minus Polycarpon, Tab. Knawell, Trag. & Germanorum. Polygonum selinoides,*

- noides; *Ger.* Inter segetes. *Parsley piert.*
 Polygonatum vulgare, Sigillum Solomonis,
Offic. In sylvis. *Salomons seale.*
 Polytrichum : *v.* Capillus Veneris.
 Polypodium vulgare. In quercubus & muris
 antiquis, *Polypody.*
 Populus nigra vulgaris, juxta rivulos. *Blacke*
Poplar.
 Populus tremula, Lybica, *Matth. Dod. Lob.*
Trag. In sepibus & sylvis humidis. *The Aspe,*
or Aspen-tree.
 Portulaca aquat : *v.* Alsine rotundifolia.
 Portulaca marina : *v.* Halimus.
 Potamogeton latifolium. In stagnantibus aquis
 & piscinis. *Pond-weed.*
 Potamogeton angustifolium, cum priore. *Nar-*
row-leaved Pond-weed.
 Potamogeton perfoliatum, sive 3. *Dod.* In flu-
 viis. *River-weed, or small Pond-weed.*
 Potentilla; *v.* Argentina.
 Prassium : *v.* Marrubium.
 Primula veris, sive Primula sylvarum, *Lob.* A-
 lisma sylvarum, *Col.* *Primrose.*
 Primula pratensis, herba Paralysis, *Offic.* Alisma
 pratorum, *Col.* *Cowes-lips.*
 Primula pratensis inodora, lutea pallida, *Lob.*
Ger. *Oxe-lips.*
 Prunella vulgaris, *Trag.* Consolido minor,
Matth. Variat flor. albis. In pratis. *Sel-
 heale.*
 Prunus sylvestris fructu majore, Pruni syl. al-
 tera spec. *Trag.* Pruna syl. præcocia, *Bauh.*
 In sepibus. *Bullas-tree.*

Prunus

Prunus sylvestris fructu minore serotino, *Prunellum*, vel *Prunulum*, *Offic.* *Acacia Germanica*, *Quorund.* In sepibus & dumetis. *The Sloe-tree, Snag-tree, or Black-thorne.*

Pseudomelanthium, *Matth.* *Nigellastrum*; *Dod.* *Lychnis segetum* sive *arvensis*; *Tab. Githago*; *Trag.* Inter segetes. *Cockle.*

Pseudonarcissus; *v.* *Narcissus.*

Parmica vulgaris, *Lob.* *Pyrethrum syl.* *Dod.* *Tanacetum album*, *Trag.* In pratis. *Sneese-wort, bastard Pellitory.*

Pulegium vulgare, sive *mas*: In locis humidis. *Penniroyall, Pudding-grasse.*

Pulmonaria; *v.* *Lichen arborum.*

Pulmonaria Gallorum Hieracii flore, sive *Aurea latifolia*, *Ger. emac.* *Auricula muris major*; *Trag.* *Corchorus*, *Dalesch.* *French or Golden Lung-wort.* **About Godliman in Surrey.**

Q

Q *Verucus vulgaris.* *The Oake-tree.*

Quercus marinæ variæ species. *Divers sorts of Sea-Oake or Wrack.*

Quinquefolium; *v.* *Pentaphyllum.*

R

R *Anunculus auricomus*, *Lob. dulcis*, *Trag.* In pratis & dumetis. *Goldylockes Crow-foote; Butter-flowre, or Butter-cup.*

Ranunculus arvensis echinatus, *Bauh.* *Arvorum*, *Lob. Ger.* Inter segetes. *Rough-headed Crow-foote.*

Ranunculus aquatilis; *Dod. Ger. aquat. hepaticæ*

- ticæ facie ; *Lob.* Polyanthemum aquaticum, vel palustre ; *Dod.* *Water Crow-foote.*
- Ranunculus aquaticus hederaceus luteus, *Bauh.* hederaceus, *Dalechamp. Lugd.* *Ivy-leaved water Crow-foote.*
- Ranunculus Apii folio, vel palustris rotundiore folio ; *Lob.* Herba Sardoia, *Guiland.* Ranunculus strumea & Apiastrum, *Plinii.* *Marish Crow-foote, or Round-leaved Speare-wort.*
- Ranunculus aquaticus lanceatus major ; *Tab.* Flammeus major, *Ger.* In uliginosis & stagnantibus aquis. *Great Speare-wort.*
- Ranunculus aquatilis angustifolius, *Lob.* Flammeus minor, *Ger.* Flammula, *Dod.* cum priore. *The lesser Speare-wort.*
- Ranunculus aquatilis angustifolius serratus, *Lob.* Flam. serratus, *Ger.* Flammula serrato folio ; *Dod.* *Jagged Speare-wort.*
- Ranunculus bulbosus, *Lob. Ger.* tuberosus ; *Dod.* In pratis. *Round-rooted Crow-foote.*
- Ranunculus minimus Septentrionalium herbido muscoso flore, *Lob.* Radix cava minima, *Ger.* In dumetis. *Dwarfe Crow-foote, or small Bunikins Hollwortell.*
- Ranunculus pratensis maculatus, surrectis cauliculis, *Lob. Ger.* *Tall meadow Crow-foote.*
- Ranunculus pratensis hirsutus, reptante cauliculo ; *Lob.* Pratensis etiamque hortensis, *Ger.* *Common Crow-foote, or Butter-cups.*
- Ranunculus parvus echinatus ; *Ger. emac.* Apuleii, quibusdam, *Clus.* In locis humidis. *Little rough-headed creeping Crow-foote.*
- Raphanus aquaticus, *Tab. Ger.* foliis in profundas

- fundas lacinias divisas, *Bauh.* *Cut-leaved Water-Radish.*
- Raphanus aquaticus alter foliis minus divisus, Rapistrum aquat; *Tab. Ger.* *Water-Radish with lesse cut leaves, water Chadlock.*
- Raphanus rusticanus, *Offic.* In locis quibusdam, ubi ex hortis radicum particulæ projectæ fuerunt. *Horse-radish.*
- Rapistrum arborum, *Lob. Ger.* Sinapi agreste. 4. *Trag.* In agris. *Charlock or Chadlock.*
- Rapistrum alterum foliis minus incisus glabris, Lampsana, *Matth.* In agris & ad eorum margines. *Great Charlock.*
- Rapistrum flore albo erucæ foliis, *Lob.* Raphanus sylvestris, *Ger.* Inter segetes. *Wilde Radish.*
- Rapum Genistæ, v. Orobanche.
- Rapuntium parvum, *Lob. Ger.* Rapunculus minor, *Matth. Dod.* Ad sepes & in viridariis. *Little Rapion.*
- Rapuntium corniculatum montanum, *Col.* Rapunculus corniculatus montanus, *Ger. emac.* *Horned Rampion. It growes plentifully betweene Selbury hill and Beacon hill, in the way to Bathe.*
- Regina prati, v. Vlmaria.
- Reseda vulgaris, Eruca peregrina, Italica, vel Cantabrica: *Lob.* In montosis. *Italian Rocket.*
- Resta Bovis; v. Anonis.
- Rhamnus catharticus, sive Spina infectoria, *Matth. Lob.* Spina cervina, *Gesn.* In sepibus & dumetis. *Buck-thorne.*
- Rorella foliis rotundis, sive Ros solis folio rotundo,

- tundo ; *Ger.* in uliginosis. *Sunne-dew, Rosa solis, Red-rot.*
- Rorella sive Ros solis foliis oblongis : cum priore. *Sundew, or Rosa solis with longish leaves.*
- Rosa sylvestris, *Matth. Dod.* Cynosbatos, *Diosc. Adv.* Cynorrhodos, *Plinii* : Canina, *Cam.* In sepibus & dumetis. *The Briar-Bush, or Dogges-rose.*
- Rosa syl. pomifera, *Lob.* Rosa arvina, *Tab.* Pimpinellæ folio ; *Ger.* In sterilibus pascuis, & ericetis. *Pimpernell Rose.*
- Rubia major, Erythrodanum, Rubia tinctorum ; *Offic. Madder.* **At S. Vincents** **Rockenigh** *Bristow.*
- Rubia syl. lævis, Rubia syl. *Matth. Fuch. Lob.* passim in sepibus. *Wilde Madder.*
- Rubia cynanchica, *Bauh.* Synanchica, *Lugd.* Saxifraga Anglica, *Advers.* In collibus siccoribus & cretaceis. *Squincie-wort, small English Saxifrage.*
- Rubeola arvensis repens cærulea, *Bauh.* Rubeola arvensis ; *Cam.* Inter segetes. *Little field Madder.*
- Rubus vulgaris fructu nigro. In sepibus & dumetis. *Bramble bush, or Blacke-berry bush.*
- Rubus repens fructu cæsio, *Bauh.* Rubus humilis, *Trag. minor, Dod.* In dumetis & sylvis. *Small Bramble, Dew-berry bush.*
- Ruscus, Bruscus, Oxymyrsine. In sepibus & dumetis. *Butchers broome, Bruscus.*
- Ruta muraria ; *v.* Adiantum album.
- Ruta pratensis ; *v.* Thalictrum.

S

- S**agitta major, *Matth. Dod.* Sagittaria a-
 quat. *Plin.* Pistana Magonis, *Lob.* In aquis.
Broad Arrow-head.
- Sagittaria sive sagitta minor, *Matth. Lob. Dod.*
Small Arrow-head.
- Saginæ Spergula ; v. Spergula.
- Salicornia : v. Kali majus.
- Salix vulgaris arborescens longis angustis foliis.
Common Willow.
- Salix humilis angustifolia, $\sigma\text{⊕}$, *Theophr.* Vi-
 minalis, *Dod.* amerina, *Plin.* *The Oysier.*
- Salix caprea rotundifolia, *Tab. Ger.* *Round*
leaved Sallow.
- Salix caprea latifolia, *Ger.* *Broad, or rather long*
leaved Sallow.
- Salix latifolia humilis, *Ger.* pumila, *Tab.* In uli-
 ginosis. *Dwarfe Sallow.*
- Salix angustifolia pumila : etiam in uliginosis.
Dwarfe Willow.
- Salvia agrestis, Salvia bosci, Scorodonia : In
 sylvis & dumetis. *Wood-sage.*
- Sambucus vulgaris. In sepibus. *Elder, Hiller,*
Bore-tree.
- Sambucus aquatica, *Trag. Matth. Lob.* In
 sylvis humidis. *Water-Elder.*
- Sanicula vulgaris, Diapensia, *Matth.* In sylvis.
Sanicle.
- Saponaria, *Lob. Dod. Ger.* Struthium sativum,
Fuch. In sylvis humidis. *Sopewort.*
- Satyrium basilicum v. Orchis palmata.
- Saxifraga alba, *Fuch. Dod. Ger.* In locis ari-
 dis.

- dis. *White Saxifrage.*
Saxifraga aurea; *Dod. Ger. Chrysospleniū, Tab.*
 In aquosis & umbrosis. *Golden saxifrage.*
Saxifraga Anglica umbellata, sive facie *Seseli*
pratens. Lob. Common Saxifrage.
Saxifraga Anglica, Advers. v. Rubia cynan-
chica.
Saxifraga Anglicana alsinefolia, Ger. emac. In
locis montosis sterilibus, ut etiam muris.
Pearle-wort, Chick-weed, Breake-stone.
Saxifraga palustris alsinefolia, Ger. emac. v. Al-
sine tenuiss.
Scabiosa major vulgaris. Variat floris colore,
cæruleo, aut albo. In satis & pratis. Common
Scabious.
Scabiosa minor, sive Columbaria; variat floris
colore. In montosis. Small Scabious.
Scabiosa minor, sive ovilla, Cam. Dod. Media,
Lob. Rapuntium alterum leptophyllum ca-
pitatum, Col. Invenitur flore albo. In mon-
tosis. Sheepes Scabious.
Scandix; v. Pecten Veneris.
Scolopendria; v. Ceterach, & Phyllitis.
Scrophularia major, Lob. Ocymastrum alterum,
Trag. In sylvis humidis. Browne-wort.
Scrophularia minor, v. Chelidonium minus.
Secale; seritur in agris. Rye.
Sedum, Aizoon, Sempervivum majus vulgare.
In antiquis muris & tectis. Great Houseleeke,
or Sengreene.
Sedum minus, flo. albo. Vermicularis, Crassu-
la minor, Offic. & Illecebra major, Lob. In
locis saxosis & asperis. White-flowered Prick-
madame. Sedum,

- Sedum medium teretifolium, *Lob. Ger.* In tectis. *Prick-madame.*
- Sedum, sive Aizoon Scorpoides, *Lob. Ger.* etiam in tectis. *Scorpion Sengreene.*
- Sedum sive Sempervivum minimum acre. Illecebra, *Offic. Sedum. 3. Diosc.* In muris, tectis, locis asperis & maritimis. *Stone-crop, Wall-pepper.*
- Senecio major, *Matth. v. Iacobæa.*
- Senecio, sive Erigeron vulgare, Carduncellus: ubique. *Grounsell.*
- Senecio, sive Erigerum tomentosum, *Ger.* Ad agrorum margines. *Cotton Groundsell.*
- Seriphium, *v. Absinthium marinum.*
- Serapias; *v. Orchis palmata.*
- Serpentina, *Matth. Coronopus. Ger.* In maritimis. *Sea Buck-horne, or Grasse-Plantaine.*
- Serpillum vulgare, Sarxifraga, *Dod.* ubique in montosis. *Wilde Thyme, mother of Thyme.*
- Serpillifolia, *Bauh. v. Alsine palust.*
- Serratula, *Matth. Dod. Lob. Ger.* Centauroides, vel Centaurium majus syl. Germanicum, *Thal.* Variat flore albo. In sylvis. *Saw-wort.*
- Sideritis Heraclia vel. 1. *Diosc. Col.* Stachys, *Fuch. Ger. Pseudostachys, Matth. Wilde stinking Horehound, or great Horehound. Nigh Witney Parke in Oxford-shire.*
- Sideritis alt. *Diosc.* est Pimpinella sanguisorba.
- Sideritis 3. *Diosc.* est Sanicula.
- Sideritis. 1. gravis odoris, *Thal.* Panax Coloni & Marrubium aquaticum acutum, *Ger.* Stachys palustris, *Ges. Cam. aquat. Tab.* In locis humidis, etiamq; in arvis. *Clownes All-heale.*
- Sideritis

- Sideritis humilis lato obtuso folio, Sideritis
 Alsines Trissaginis folio, *Bauh.* Inter segetes.
Petty All-heale.
- Sideritis arvensis, *Cam. v.* Ladanum segetum.
- Sigillum B. Mariæ : *v.* Bryonia nigra.
- Sigillum Solomonis : *v.* Polygonatum.
- Sinapi sativum vulgare : Ad agrorum margi-
 nes. *Common Mustard.*
- Sinapi sem. albo, Sinapi Apii, sive Lavaris folio,
Lob. Sativum alterum. *Dod.* ad sepes. *White
 Mustard.*
- Sinapi syl. minus Bursæ pastoris folio : *Lob.* Si-
 napi. 3. *Matth.* Irio Apulus alter lævifolio E-
 rucaë. *Col.* Ad agrorum margines. *Small wilde
 Mustard.*
- Sium erectum umbellatum, sive Pastinaca aqua-
 tica, *Lob.* Sium, *Matth.* odoratum, *Trag.* In ri-
 vulis. *Water Parsnep.*
- Sium umbellatum repens, fortè Sium Matthio-
 li, *Lugd.* In aquis ubique. *Creeping water
 Parsnep, or Bastard water Cresses.*
- Sium alterum Olusatri facie, *Lob. Ger.emac.* In
 piscinis & stagnantibus aquis, sed rariùs.
Long-leaved water Cresses.
- Sium Cratevæ Erucaëfolium, *Lob.* Nasturtium
 aquaticum, *Offic.* *Common water Cresses.*
- Sison, *Cordi,* Petroselinum Macedonicum,
Fuch. Dod. Amomum Germanicum, *Trag.*
 Ad fossas & sepes. *Bastard stone Parsley.*
- Smilax lævis : *v.* Convolvulus major.
- Solanum, sive Solatrum vulgare, hortense,
Matth. Dod. Lob. In fimetis. *Night-shade.*
- Solanum lignosum, sive Dulcamara, *Dod. Trag.*
 Vitis

- Vitis syl. *Matth.* In sepibus. *Woody Nightshade, Bitter-sweete.*
- Solanum somniferum, *Lob.* Lethale, *Dod.* Bella donna, *Italorum.* In locis umbrosis. *Deadly Night-shade, or Dwale.*
- Solanum tetraphyllum, v. *Herba Paris.*
- Soldanella, Κράμβη θαλασσία, *Diosc.* In maritimis. *Sea Binde-weede, sea Cole, Soldanella, Scottish Scurvy-grasse.*
- Sonchus asper vulgi, *Lob.* Sonchus asperior, *Ger.* In agris. *Prickly Sow-thistle.*
- Sonchus Asper, *Ger.* Lævis, *Lob.* In agris & ad sepes. *Lesse prickly Sow-thistle.*
- Sonchus lævis laciniatus vulgaris, *Lactuca leporina, Lob.* Inter olera & in agris. *Common Sow-thistle.*
- Sonchus lævis latifolius, *Ger.* cum priore. *Broad leaved Sow-thistle.*
- Sonchus alter folio sinuato hederaceo, *Lob.* Lævis muralis, *Ger. emac.* In umbrosis & muris. *Wall, or Ivy-leaved Sow-thistle.*
- Sonchus arborescens, *Tab. Ger.* Inter segetes & in locis humidis. *Tree Sow-thistle.*
- Sophia Chirurgorum, *Dod. Lob.* Nasturtium sylv. *Fuch.* Thalictrum, *Tab.* Ad agrorum margines. *Flix-weede.*
- Sorbus sylvestris Alpina, *Lob.* Ornus, *Dod.* Fraxinea arbor, *Trag.* Sorbus aucuparia: *Quorund.* In sylvis & sepibus. *Quicken-tree, Roane-tree, wilde Service.*
- Sorbus Aria cognominata, *Clus.* Sorbus pilosa, *Gesn.* Aria Theophrasti, effigie Alni, *Lob.* In montosis. *The white Beame-tree.*

Sorbus

- Sorbus torminalis, Plinii, *Matth. Lob. Dod.* In sepibus & sylvis. *Common Service-tree.*
- Sparganium ramosum, *Matth. Lob. Ger.* Platanaria, *Dod.* In aquis stagnantibus & paludosis. *Burre-flagge, or branched Burre-reede.*
- Spartum spicâ secalinâ, sive Spartum Anglicanum, *Ger.* Gramen sparteum. 2. Scœnanthium, *Tab.* *Great English Mat-weed, or Helm.*
On the further side of the Isle of Tenet.
- Spartum nostras alterum, *Lob.* Spartum Anglicanum alterum, *Ger.* In maritimis. *Small Mat-weede or Helme.*
- Spartum nostras parvum, *Lob.* In ericetis & montosis. *Heath Mat-weed.*
- Spatula foetida, v. Xyris.
- Speculum Veneris minus. *Ger. emac.* Inter segetes. *Codded corne Violet.*
- Spergula vulgaris flo. albo. sive Saginæ Spergula, *Lob.* Anthylloides, *Thal.* Alsine terrestris altera τριχοφυλλῶ, *Col.* In agris frumentaceis. *Spurry.*
- Spergula marina, *Lugd.* Anthylloides ad salinas Saxonicas, *Thal.* Alsine maritima Neapolitana, *Col.* *Sea Spurry.*
- Spergula flore rubro: Alsine spergulæ facie minor, *Bauh.* In locis arenosis & sterilibus. *Chick-weede Spurry, Red Spurry.*
- Sphondylium vulgare hirsutum, Acanthus Germanica, sive vulgaris, *Fuch.* Branca ursina, *Trag.* In pratis. *Cow Parsnep.*
- Spina infectoria, v. Rhamnus.
- Stachys, v. Sideritis.
- Stellaria aquat. *Lob.* Alsine aquat. *Lugd.* *Starre-headed*

headed water Chick-weed.

Succisa, *v.* Morbus Diaboli.

Synanchice, *Dod. v.* Rubia cynanchica.

Symphytum, *v.* Consolida.

T

TAnacetum vulgare luteum, Artemisia monoclonos sive tenuifolia, *Fuch.* Artemisia. Dioscoridis, *Tab.* In arenosis & rivulorum ripis. *Tansie.*

Tapsus barbatus, *Offic.* Candela regia, Verbascum aut Phlomos vulgaris mas, *Diosc. Lob.* Ad sepes & agrorum margines. *Higtaper, Mulleine.*

Taxus, Σμίλαξ, *Diosc. Μίλαξ, Theoph.* In cœmteriis. *The Yew Tree.*

Telephium vulgare, Fabaria, *Matth.* Faba inversa, Crassula major, *Lob.* ad agrorum margines. *Orpine, Live-long.*

Teucrium pratense; *v.* Chamædrys syl.

Thalictrum, sive Thaliolum, *Lob. Ger.* Ruta pratensis, *Cord.* Est majus & minus. In pratis humidis. *Bastard Rubarbe, Meadow Rue.*

Thlaspi vulgare, *Offic.* vaccariæ fol. *Lob.* Ad agrorum margines, & inter segetes. *Mithridate Mustard, Bastard Cresses.*

Thlaspi Dioscoridis, Drabæ aut Camelinae folio, *Lob. Ger.* Intersegetes. *Treacle Mustard, Penny-cresse.*

Tithymalus helioscopius, *Matth. Fuch. Lob. Ger.* In agris. *Sunne Spurge.*

Tithymalus characias amygdaloides, *Lob. Ger.* In sylvis. *Wood Spurge.*

Tithymalus paralius, *Lob. Ger.* In maritimis. *Sea Spurge.*

Tithy-

- Tithymalus leptophyllos, *Matth. v.* Esula exig.
 Tormentilla, *Offic.* & Consolida rubra, *Tab.*
 Heptaphyllum, *Fuch.* In ericetis & dumetis.
Tormentill.
- Trachelium majus, sive Cervicaria, *Lob.* Vvularia major, *Trag.* Variat flor. albo: nascitur in sepibus. *Great Throat-wort, or Canterbury bells.*
- Trachelium minus, *Lob. Dod.* ut etiam Viola Calathiana, *Ger.* Cervicaria minor, *Tab.* Vvularia exigua; *Trag.* In montosis & aridis cretaeis. *Little Throat-wort, or Canterbury Bells.*
- Tragon, *Matth.* Kali spinosum, *Quorundam.*
- Tragopogon vulgare, sive luteum; *Lob.* Barbulæ hirci, *Trag. Matth.* In pratis. *Goats-beard, Goe to bed at noone.*
- Tribulus aquaticus minor Quercus floribus, *Clus. Ger. emac.* Pusillum fontilapathum, *Lob.* In stagnantibus aquis. *Small water Caltrops, or Frogges lettice.*
- Tribulus aquat. minor Muscatellæ floribus: *Ger. emac.* In rivulis. *Small Frogges-lettice.*
- Trichomanes, *v.* Capillus Ven.
- Trifolium aquaticum, sive paludosum, *Lob. Ger.* Fibrinum; *Tab.* Isopyron, *Dod. Ges.* Menianthes palustre, *Lugd.* *Marsh Trefoile, Bucks Beanes.*
- Trifolium pratense album, *Fuch. Dod.* *White-flowered Trefoile, or three-leaved Grasse.*
- Trifolium pumilum supinum flosculis longis albis, nondum descriptum. In montosis. *White Dwarf Trefoile.*
- Trifolium pratense purpureum vulgatissimum.
Common

Common Trefoile, or three-leaved grasse.

Trifolium stellatum glabrum, Ger. emac. Smooth starry-leaved Trefoile.

Trifolium fragiferum, Clus. Ger. emac. Vesicarium, Quorund. Hoc cum priore nascitur in salsis & maritimis. Strawberry, or bladder Trefoile.

Trifolium luteum, vel agrarium, Dod. Luteum alterum lupulinum, sive Lupulus sylvaticus; Thal. Ger. emac. In agris & pratis. Hop-Trefoile.

Trifolium luteum minimum, Ger. emac. Luteum capitulo brevior, Thal. Trifolii genus Medicæ simile, Ges. Medica sem. racemoso. Little yellow Trefoile.

Trifolium cochleatum folio cordato maculato, Bauh. cordatum, Ger. Medica Arabica, Cam. In pratis. Heart Trefoile, or spotted snail Trefoile.

Trifolium syl. luteum siliqua cornuta, vel Medica frutescens, Bauh. Medica flav. flore, Clus. Lens major repens, Tab. In montosis. Yellow horne Trefoile.

Trifolium acetosum vulgare, Lujula, Alleluja, Offic. Oxys Plinii, Fuch. Dod. Panis Cuculi. Brunfelsii. In sylvis, Wood-sorrell.

Trifolium corniculatum primum, Dod. Thal. Siliquosum minus, Tab. Ger. In pratis. Small codded Trefoile, Birds-foote Trefoile.

Trifolium corniculatum majus hirsutum: In pratis humidis & ad sepes. Great-codded Trefoile, hairy Birds-foote Trefoile.

Trifolium odoratum; Dod. v. Melilotus vulgaris. Tri-

- Tripolium vulgare, *Lob. Ger.* Amelli species palust. *Col.* est majus, & minus. In maritimis & ad fluminum ripas. *Sea Starre-wort, blew sea Daisyes: Hogges Beanes.*
- Triticum, sive Siligo spicâ muticâ, *Lob. Ger.* Seritur in agris. *White Wheate.*
- Triticum aristis circumvallatum, Typhinum, *Dod.* Seritur in arvis. *Red Wheate.*
- Tussilago, Bechion, Farfara, Vngula caballina. In locis humidis. *Coltes-foote, Foles-foote.*
- Turritis major, Turrita major, *Clus.* Brassica syl. ramosa tota penè glabra; *Bauh.* Brassica syl. procera, *Thal.* *Towers Mustard.* **It growes a litle on this side the first Gate one passes through, after they are downe Beacon hill, going from Marleborrow towards Bathe.**
- Tragopyron; v. Fegopyron.
- Typha palustris, *Cord. Dod.* Variat magnitudine. *Cats-taile, Reed-mase.*

V

- V**Accinia nigra, *Dod.* Myrtillus, *Matth.*
 Vitis Idæa vulgaris, *Clus.* Idæa: 1. *Tab.*
 In ericetis & montosis. *Black-worts, Wortle or Hurtle-berries.*
- Vaccinia palustris, *Lob. Dod.* Oxycoccum, *Cordi.* Vitis Idæa palustris; *Clus.* In uliginosis. *Fenne berryes, Moore-berryes, Marsh Wortles.*
- Valeriana, sive Phu majus syl. *Dod.* palustris; *Cam.* In rivulorum ripis. *Great water Valerian.*

Vale-

- Valeriana syl. minor. In humidis pratis & sylvis. *Small wilde Valerian.*
- Valeriana petræa, Ger. Inter segetes. *Stone Valerian.*
- Verbascum ; v. Tapsus barbatus.
- Verbascum lychnite, Matth. candidum fœmina, Fuch. In montosis & cretaceis. *Candle-weeke Mulleine.*
- Verbena communis : ad semitas. *Vervaine.*
- Veronica mas, Dod. Fuch. vera, & major, Lob. In ericetis. *Speedwell Fluellen.*
- Veronica pratensis, Dod. minor, Tab. Betonica Pauli, Quorund. *Little Fluellin, or smooth Fluellin.*
- Veronica fœmina : v. Elatine.
- Viburnum, Matth. Viurna vulgi Gallorum & Ruellii, Lob. In sepibus. *Wayfaring tree, Cotton tree.*
- Vicia : Tab. v. Lathyrus syl.
- Vicia maxima sylvatica, nondum descripta, fortè Vicia maxima sylvatica ; Io. Bauhini. *Great wood Vetch, or Fetch. In a wood nigh Bathe.*
- Vicia vulgaris, vel sativa ; *Common Vetch, or Fetch.*
- Vicia dumetorum ; v. Aracus.
- Viola aquat ; v. Millefol. aquat.
- Viola purpurea sive Martia vulgaris, sub sepibus & dumetis. *Purple Violet, or March Violet.*
- Viola serotina, sive canina. In sylvis & agris. *Late Violet, Dogges Violet.*
- Viola, sive Iacea tricolor sylvestris parva, In agris. *Wilde Pansies.*

- Viorna vulgi, *Lob.* Ατραγένη, *Theophrasti, Clus.*
 Clematis, 3. *Matth.* Sepes ornat juxta vias.
Travellers joy.
- Virga aurea serratis foliis, *Tab.* vel margine
 crenato, *Dod.* In ericetis & montosis. *Golden*
Rodde.
- Virga pastoris ; v. *Dipsacus minor.*
- Viscus, vel *Viscum arborum* nascitur in *Quer-*
cubus, Pomis, Pyris, &c. *Misseltoe.*
- Vlmaria, Regina prati, *Dod.* Barba capri, *Lob.* In
 aquosis. *Meade-sweete.*
- Vlmus vulg. folio lato scabro. In sepibus. *The*
common Elme-tree.
- Vlmus minor folio angusto scabro ; *Ger. emac.*
 In sepibus. *The narrow-leaved Elme.*
- Vlmus folio latissimo scabro : *Ger. emac.* In se-
 pibus & sylvis. (*Elme.*)
- Vlmus folio glabro, *Ger. emac.* In sepibus. *Witch*
- Vmbilicus Veneris, *Matth.* Scatum cœli, *Herba*
coxendicum, Quorund. Cotyledon, *Lob.*
Clus. *Navillwort, Kidney-wort.* **Upon the**
Walls at Mangersfield, and about Bathe.
- Vulvaria, v. *Atriplex olida.*
- Vvularia, v. *Trachelium.*
- Vrtica vulgaris urens, *Trag.* Vrticæ fœmina &
 communis, *Dod.* *Common Nettle.*
- Vrtica minor acrior, *Lob.* urens minima, *Dod.*
Small stinging Nettle.
- Vrtica non mordax : v. *Lamium.*
- Vrtica herculea, *Tab.* v. *Galeopsis.*

X

X Yris, sive *Spatula fœtida, Matth. Lob. Ger.*
 In sylvis humidis. *Stinking Gladdon.*

Nomi-

*Nominum citatorum Authorum
explanatio.*

ADvers. *Adversaria Petri Penæ, & Matthiæ
de Lobell.*

Anguil. *Aloysius Anguillara.*

Bauh. *Casparus Bauhinus.*

Cam. *Ioachimus Camerarius.*

Clus. *Carolus Clusius.*

Colum. *Fabius Columna.*

Cord. *Valerius Cordus.*

Diosc. *Dioscorides Anazarbeus.*

Dod. *Rembertus Dodonæus.*

Fuch. *Leonardus Fuchsius.*

Ger. *Iohannes Gerardus.*

Ger. emac. *Gerardus à me emaculatus, & auctus.*

Ges. *Conradus Gesnerus.*

Lob. *Matthias de Lobell.*

Lon. *Adamus Lonicerus.*

Lugd. *Historia Plantarum Lugduni cusa.*

Matth. *Petrus Andreas Matthiolus.*

Offic. *Officinis usitatum nomen.*

Plin. *C. Plinius.*

Tab. *Iacobus Theodorus Tabernæmontanus.*

Thal. *Iohannes Thalius.*

Theoph. *Theophrastus Eresius.*

Trag. *Hieronymus Tragus.*

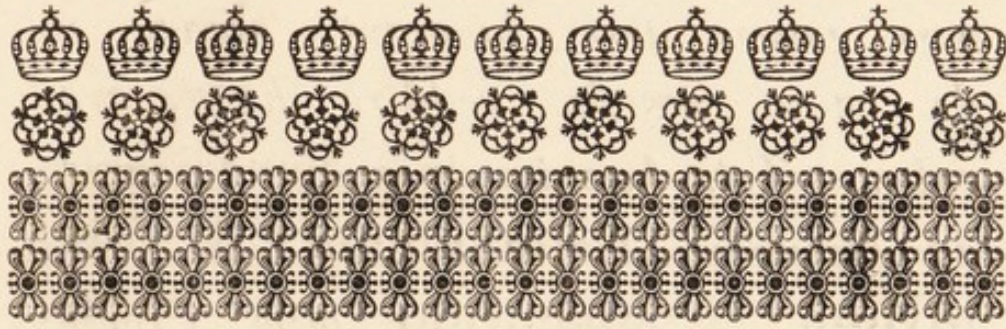
MERCVRII
BOTANICI
PARS ALTERA
SIVE
PLANTARVM GRA-
TIA SUSCEPTI ITINERIS
IN
CAMBRIAM five WALLIAM

Descriptio

Exhibens reliquarum Stirpium
nostratum (quæ in priore parte
non enumerabantur)
Catalogum.



LONDINI,
Excudebat T. & R. Cotes, M.DC.XLI.



V. Cl. vereq; Generoso

D. THO. GLYNNÆO

DE

GLYNN-LHIVONA

Armigero,

THO. JOHNSON S. P. O.



*Agnis & inusitatis a te V.
Cl. affectus beneficiis jam
diu obticui, quoniam digna
humanitate, digna gente
tua oratio mihi non contigerit. Gentem
tuā Antiquæ Britanniae reliquias, nul-
los nisi Generosos continere, a nostrati-
bus Anglis vulgo jactatum esse omnes
norunt, sed hujusce rei veram ratio-
nem*

nem omnes fere ignorant, quam ea de causa paucis reddere haud gravabor. Tota hæc insula a **Severi** muro ad Oceanum **Britannicum** & **Virgivium**, **Romanorum** olim *Provincia*, populi & rerum ad vitam necessariorum dives erat. Sed in ruinam tendente eorum imperio suis tutanda viribus relicta est *Provincia*; **Romani** enim **Italiam** & huic finitimas *Provincias* vix & ne vix quidem a **Barbarorum** incursibus tutari valebant. Primum in eam impetum fecerunt. Antiqui incolæ **Romanorum** victricibus armis in septentrionibus obtentam *Insulæ* partem pulsî; hique jam nunc non **Britannos**, sed a picta cute **Pictos** tantummodo a *Provincialibus* audiebant. Gens hæc cæli & soli asperitate fera & barbara plurimum a **Romana** provincia moribus, lingua, institutis distabat, ita ut non pro **Britannis**, sed nescio quos **Barbaros**, ab iis habe-

*habebantur. Hi Barbari dum luxu-
 ria perditam, armisque privatam Pro-
 vinciam invadunt, Britannos opem
 à Saxonibus eo temporis bello claris
 petere coegerunt; quorum opera non mo-
 do Pictos repulsos, sed Britannos
 in regionis angulum rejectos esse satis
 ex historiarum monumemtis notum
 est. Quingentos annos Romani hanc
 Insulæ partem possederunt, ideoque
 Saxones incolas (in quorum auxili-
 um advocati fuerunt, & in quos arma
 verterunt) pro Romanis, Italis * vel
 Gallis habebant, eorumque Jdiomate
 eos ¶ **Welsh = men**, regionemque
 hanc (iis ex tota Provincia relictam)
Wales vocabant; illiq; nos Anglos
 Saxonum progeniem **Sassons** in hunc
 usque diem nominant, ex quibus no-
 minibus utriusque Gentis origo clare
 pateat. Nec minus rationi consentane-
 um est hostem irruentem fugisse non
 ignobiles (quibus cui serviant non curæ
 est)*

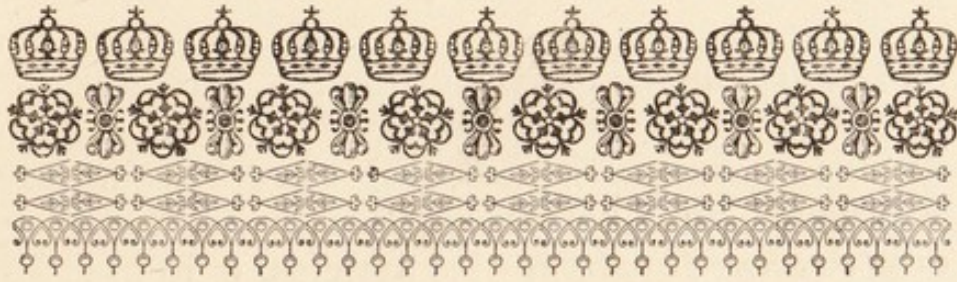
* Sic *Verste-
 gano* pla-
 cet. Hi e-
 nim eo tem-
 poris Ro-
 mani im-
 perii pars
 non con-
 temnenda
Germanis
 obtende-
 bantur,
 horumque
 etiam con-
 sanguine-
 os nostros
Britannos
 fuisse *Bri-
 tonum* in
Gallia Idi-
 oma per-
 suadet.
 ¶ Ipsa *Ita-
 lia* a *Ger-
 manis* ad
 hunc usq;
 diem
Welsh =
land voca-
 tur, unde
Sena Itali-
 ca **Welsh**
**Senet-
 kraut**, &
Buglossa
Italica
Welsh
Ochsen =
zung Ta-
bernæ-
montano
 dicuntur.

est) sed nobiles, generosos, & eos, qui vere libertatem æstimare potuerunt. Ex tota Provincia nobiles huc confluentes hunc tractum antea (ut verisimile est) etiam a plurimis nobilioribus (qui Romanorum prius dominium, quantum dabatur, fugiebant) excultum, nobilem, reddiderunt. Hæcque Insulæ pars ab eo tempore viros belli, pacisque studiis claros in hunc usque diem peperit. Nec alibi usquam homines magis generosos, magnanimos, probos, fidos & hospitaes facile invenias ; ideoque si vera nobilitas ex virtute originem trahit, hanc Gentem vere nobilem fatendum est.

Nec te V. Cl. minore quam qua splendet Gens tua laude dignum esse judico, ut qui antiqua & clara familia oriundus animum omnibus virtutis dotibus egregie instructum possidus, humanioresque literas, naturæ studia & horum studiosos amplecteris, foves.

foves. Me beneficiis tuis victum in Cambriam adduxisti, illicque incolarum humanitas, soli locorumque varietas in tantum delectarunt, ut mihi nihil optabilius, aut quod plus jucunditatis afferat, quam iterum majore otio, benignioreque cæli aspectu visere loca, quæ tam multa Naturæ miranda diligenter quærentibus præbere possint. Accipe igitur hanc rudi calamo delineatam Itineris descriptionem, & (quæ tua est humanitas) gratias beneficiorum loco retributas, ab illo qui tibi omnia semper ex animi tui voto accidere precatur.

Vale.



Mercurii Botanici.

Pars altera.



NON pauci elapsi sunt anni ab eo tempore, quo primum ad Rei herbariæ studium animum appuli, idq; eo consilio a me semper factum erat, ut Reipublicæ literariæ, & hominibus hujusmodi studiis deditis benefacerem. Et quamvis dispar sit fortuna, impares animi vires ad res tantas perficiendas, quantas in animo & votis semper habui, attamen tardo gradu, sed constante hæc studia prosequor.

Priore hujus operis parte notum feci me solerti studio inquirere & investigare quicquid plantarum fælix hæc fertilisque Insula nostra producit, & in hunc finem anteactis laboribus inventas in Catalogum digessi & evulgavi, hisque jam adjuncturus sum quascunque plantas in hac Insula sponte nascentes, aut Itinera no-

stra, aut amicorum benevolentia, aut scriptorum libri mihi notas fecerint. Hisce deinde figuras (quantum in me est) exactè delineatas adjungam, tum demum historiam juncto opere cum *Joanne Goodyero* viro amiciss. & in hac palæstra versatiss. editurus sum. Hæc Itinerum, hæc scriptionis causa & consilium fuit; ex hujusmodi enim Catalogis, omnibus rei herbariæ studiosis pateat, quæ sunt adhuc à nobis inventæ & observatæ plantæ; eosque rogatos velim, si quæ illis nondum a nobis observatæ occurrant, ut humaniter mihi significare non dedignentur, eis gratias debitas publicè reddi-
turo.

Sed hæc nostra studia a nonnullis pro nihilo
 “habentur; queruntur enim, quod, *Botanici* ut
 “plurimum meri sunt Nomenclatores, qui præ-
 “clare se rem gessisse arbitrantur, si perlustratis
 “variis plagis, nomina repertorum simplicium
 “& forsitan eorum icones redigunt in volumen,
 “quo operæ pretio arti satis cautū existimant.
 Vt huic objectioni satisfaciam, respondeo: Istiusmodi Nomenclationes rei herbariæ studiosis voluptatem & utilitatem afferunt; etenim ex aliorum scriptis (quorum ubique fere non contemnendus numerus) plantarum vulgarium descriptiones & vires notæ sunt, ex his discant quid huic loco vel regioni familiare vel peregrinum, & unde hæc vel istæ plantæ, quarum desiderio teneantur, petendæ sint; ita ut non opus sit è longinquo petere, quod quotidie fere sub pedibus habeant, ut aliquando a nonnullis factum esse novi. Præterea hujusmodi
 Cata-

Catalogi sunt instar materiæ ad ædificia paratæ. Sicuti enim qui egregia opera structuri sunt, primum ligna, lapides, calcem, tegulas & hujusmodi copiam quærunt, locisque aptis disponunt, ut quando tempus & usus postulant, ad manus sint: sic qui aliquid laude dignum in re Botanica scripturi sunt, prius in classes redigunt quæcunque exhibituri sunt, aliter incondite & preposterè rem totam tradere necesse habent hac spreta methodo. V. Cl. *Casparus Bauhinus*, qui hanc Spartam egregiè ornavit, iterato conatu Pinacem sive Indicem totius Operis, quod sub manibus habuit in ordinem digessit, synonymis ornavit, & in publicum emisit. Præterque hunc generalem Pinacem, Catalogum etiam Plantarum circa *Basileam* nascentium typis evulgavit, quo labore (ut ejus verbis utar) studiosi qui apud nos vivunt in excursionibus Herbarum inquirendarum causa uti poterunt. Sic non inutilem hunc nostrum laborem fore judicavi, si modo studiosis & tyronibus herbarum investigationi deditis usui esse possit, dum ex hisce quasi jactis seminibus, opera majora & fortasse iis, qui non iniquis oculis intueantur, non contemnenda prodeant.

Sed hæc missa faciam ut Itineri me accingam, cujus descriptio si alicui non arridebit, ejus lectione abstineat; namque benevolis non malevolis hæc scripta sunt.

D. *Paulus Sone* vir nobilis, harumque rerum studiosiss. & Egomet, Plantarum investigationis ergo, Iter in *Cambriam* suscipere in animo habuimus; sed nobis antiquæ Linguae *Britannicæ*

tannicæ ignaris opus erat interprete, in quem finem *Edoardum Morganum* rei herbariæ etiam studiosum nobis adjunximus, eiq; sumptus præbuimus. Hisce ita ordinatis *Londinum XXII. Julii* Anno *MCCXXXIX.* linquentes *Alisburiae* pernoctavimus, hinc discedentes in arvis sequente die plurimas (sed in priore Catalogo recitatas) plantas invenimus. Inclinate die tandem *Stratfordiam* ad *Avonæ* ripam conditam pervenimus. Mane sequente adest *V. Cl. D. Robertus Lee* nobiles aliquot amicos secum ducens, & nos ab eo ad *Bilsley* ædes suas verè hospitales, situ & ornatu egregias, taliq; domino haud indignas non inviti ducimur; hîc bidui moram ejus munificentia nobis iniecit, nihilque humanitatis omisit; vix tandem dimissi (ille enim, & amici ejus ad *Henley* in *Arden* se viæ duces & itineris comites perhumaniter præbuerunt) hinc actis gratiis ut potuimus maximis, discessimus & per *Bremicham* *Vulcani* municipium *Wolverhamptonem* petimus, hic juxta stabulum invenimus *Salicem* lato, glabro, serrato & odorato folio nondum descriptam. Sequente die, *Noviporta* post tergum relictâ ad *Shackerforth-Mill* paululum morantes *Vaccinia* palustria & *Acetosam* maximam loco uliginoso crescentia observavimus, dein *Cestriam* usque nil notatu dignum se obtulit. *Cestriæ* nos præstolatus est alter Itineris nostri socius *V. C. Gualterus Stonehousius* Theologus Doctiss. divinarum humanarumq; rerum Studiosiss. qui ex Agro *Eboracensi* huc usque nobis obviam processit. Ille, cum superiore

ore nocte, *Stock-portæ* (ea Agri Cestrensis est Emporiolum) hospitio nimis sordide exceptus esset: cauponæ, mane insequente, versiculis hisce, stilo nimirum oleastrensi ad cubiculi parietem fixis, valedixerat.

*Si mores cupias venustiores,
Si lectum placidum, dapes salubres,
Si sumptum modicum, hospitem facetum,
Ancillam nitidam, impigrum ministrum,
Huc diverte, Viator dolebis.*

*O Domina dignas, forma & fætore ministras!
Stock-portæ, si cui sordida grata, cubet.*

V. Cl. *Samuel Bispham* Cestriensis M. D. satis humaniter nos excepit; nec nisi diei mora impetrata, dimittere voluit, ita urbem, mœnia & circumvicina loca lustrantes, vespere lauta cœna ab eo excipimur.

Cestria relicta Cambriam ingressi per *Flint* Castrum (cui ejusdem nominis oppidulum adjacet) ad Fontem sacrum sive *Haliwell* pervenimus, illic fontem antiquis religionibus ob *Wenefridæ* virginis cædem cultum vidimus, & inter alias plantas circumjacentes colles ornantes *Ericam* vulgarem & tenuifoliam flosculis utramque albis variantem legimus, hîc pransi *Ruthlandæ* ea nocte hospitio excipimur. Sequente mane progredimur, sexto abhinc lapide Mons est incolis *Garth-gogo* dictus, hic *Caryophyllum* saxatilem *Ericæfolium Bauhini* collegimus; sed in ejus latere sub ingenti præcipitio specus amplum difficili clirosoque aditu, giganteo nomine *Ogo-Gumbyd* dictum ingressi sumus. *Polytrichum*, saxifragam

gam auream, Phyllitem &c. in ipso antro, sed in Clivo è saxorum fissuris Brassicam silvestrem copiose crescentem conspeximus; non longe hinc etiam Phyllitem multifidam eruimus. Dum ad octavum lapidem progressi amnem ad *Aberconwey* trajecturi sumus, adest famulus V. Cl. D. *Thomæ Glynnæi*, & significat herum suum nos expectare non procul hinc, sic divertimus ad *Bodskalan* ædes viri nobilis & antiquæ hospitalitatis D. *Roberti Wynn.* ibi reliquum diei, & sequentem noctem transigimus: postero mane generoso hospiti solutis pro humanitate gratiis, *Conovii* sive *Aberconwey* (Oppidum est situ amænum muris & castro etiam quondam munitissimum) paululum morati sumus. Dein priusquam ad quintum lapidem perventum est, duos horrore plenos transitus habuimus, *Pen-maen-bahen* & *Pen-maen-mawre*, hoc est, Promontorium minus & majus. Hic ingentes & excelsæ rupes mari eminentes angustum parumque fidum itinerantibus callem præbent, hinc enim saxa è rupibus minacia, illinc mare horrisonum sub ingenti præcipitio mortem errantibus minatur. Horum major transitus fere mille passus in longitudinem porrigitur, quo tandem post tergum relicto, ut etiam *Bangora* sede Episcopali, *Caernarvona* urbecula elegans aliquantulum moræ nobis iniecit. Castellum olim munitissimum ingressi Locum Regis *Edoardi* secundi (qui de *Caernarvon* cognomen habuit cunis nobilitatum invisimus. Hinc quatuor emensi miliaria *Glynn-lhivonam* ædes veré generosi V. *Tho. Gly-*

Glynnæi tandem ingredimur.

Sedes hæc peramæna, nemora hic sunt opaca, rivulorum lenis & susurrans per saxa decursus, horti hic & inde variis ornati flosculis & herbis, horū alter facili ascensu sublimior prospectum admodū oculis gratum exhibet; Ex una parte *Virgivium* mare, è regione jacentes insulæ *Mona*, ipsaque *Hibernia* cælo sereno sese visendas præbent, ex altera se exerunt Alpes nostræ Britannicæ montes totius Insulæ maximi, ita ut quocunque te vertis, aliquid haud vulgare visui objicitur. In hac amænitatum sede ne desides essemus, sequente aurora ad Maris littus, quod non longius hinc distat, quam mille passus, procedimus, illicque *Soldonellam*, & *Gnaphalium* marinum eruimus. Stationem hic in ipso Littore *Romani* milites habuerunt, cujus adhuc satis clara vestigia manent. Relicto littore reliquum diei in visendis hortis, silvis & pascuis consumpsimus.

Postquam illuxit dies *Augusti* III: ascensis equis nos ad Alpes nostras Britannicas conferimus. Mons est horum omnium altissimus ab Anglis *Snowdon*, a Britannis *Widhfa* vocatur,

Hic montes alios inter caput extulit altos

Quantum lenta solent inter Viburna Cupressi.

Hujus visendi desiderio capti festinamus, & a Rustico puerum viæ ducem impetramus (quia non solum caput, sed mons totus nubilus obvelatus erat) dein equis & vestimentis exterioribus relictis montem ascendere incipimus; ascensus primus difficilis, sed postea locus

se

se diffundit in ampliorem planitiem, sed æquè clivosam, ad sinistram ingentia præcipitia, ad dextram difficilis clivus, sic tria milliaria emensi ipsum montis verticem densis nubibus velatum tandem superavimus. Hic via admodum angusta est, horroremque ascendentibus maximum incutiunt præcipitia cautibus aspera ex utraque parte, stygiæ etiam hinc & inde paludes, quarum maxima Dæmonis domicilium ab incolis vocatur. Sed quando ventum est, ut ulterius in jugo progredi non potuerimus, illic inter nubula consedimus; primoque plantas inter saxa & præcipitia periculose collectas in ordinem digessimus, deinde viaticum nobiscum allatum sumpsimus. Plantarum rariores minusque obviæ fuerunt sequentes.

Nasturtium petræum.

Oxalis rotundifolia.

Viola Martia palustris.

Serpillum hirsutum.

Rhodia Radix.

Caryophyllus montanus minimus.

Sedum rotundifolium serratum.

Sedum minus flore albido.

Sedum tridactylites.

Cotyledon sive sedum petræum hirsutum.

Gentianella Bavarica.

Gramen sparteum spica foliacea minus.

Muscus Cupressi facie.

Muscus ceranoides Bauhini.

Carduus mollis.

Salix humilis saxatilis, sive

Cha-

Chamæitea repens montana.

Filix petræa elegans.

Et quod mireris (nisi tale aliquid in *Penæ & Lobelii Adv.* annotatum legeris) hic eruimus,

Gramen junceum marinum.

Caryophyllum marinum.

Lychnidem marinam Anglicam.

Relictis montibus sub vesperam *Glynn-
lhivonam* revertimur, illicque diem sequentem
quiete transegimus. Postero mane D. *Glyn-
næus* cum affine suo D. *Oweno* nos Monam ver-
sus ducit. Freto *Menai* ad *Abermenai* trajecto
cursum dirigimus sinistram versus ad Australe
Insulæ promontorium, quod non longius hinc
quam duo milliaria distat, *Landhwin dwyn-
wen* incolæ vocant. Hoc in angulo D. *Kyffin*
Bangorensis Ecclesiæ Decanus domicilium
habuit, qui olim regnante *Richardo* 3. occulte
res Comitis *Richmondiaë* (postea Regis
Henrici Septimi) hic agebat litterasque clan-
destino accipiebat & submisit. Nulla habita-
tio in propinquo fuit, sed statio navigiolo.
(quod huc ea de caussa appellere solebat) satis
commoda. Arenæ vento mobiles totum hunc
tractū occupant, excepto spatio ubi domiciliū.
In saxis mari elisis *Limonium* parvū & *Crith-
mū* crescebant, in domicilii parietibus *Chamæ-
filix* marina Anglica. Jaceæ tricoloris varietas
magna sterilem planitiem ornabat, ut etiam
Centaurii minoris biunciales plantulæ. Inter
Arenæ colles *Tithymali* *Paralii*, *Spartique* no-
stratis majoris satis copiosus proventus, hu-
jusce *Sparti* *Noviburgenses* (qui 2. abhinc la-
pide

pide distant) funes, storeas & id genus alia texunt, nec aliud opificium exercent. Postquam *Noviburgi* aliquantulum morati sumus, iter ad *Bellum-Mariscum* dirigimus, & ibidem hospitio excipimur. Die sequente ad lautum prandium invitati sumus in Ædibus nobilis Viri *D. Rich. Bucklæi*, quæ non ultra mille passus, a *Bellomarisco* sitæ sunt, & ab incolis (qui eo loci ut plurimum Anglicè loquuntur) *Baron-hill* vocantur. Finito prandio conscendimus equos & ad vivarium *D. Bucklæi* & promontoriolum cui parva insula objacet, equitamus; ex mari Muscos marinos elegantissimos habuimus; in citeriore Promontorioli parte *Triorchis* copiose florebat, ut etiam *Lathyrus major angustifolius*. Postquam nostri itineris causa *Belli-marisci* innotuit, nobis significatum est, quod nullibi, in toto illo tractu rariores aut plures stirpes nascebantur, quam in excelso monte, qui non ultra 4. lapidem *Bangora* distabat. Huc tendere postquam statutum erat, summo mane *Bellum-mariscum* reliquimus, fretum trajecimus, & *Bangora* post tergum relicta viculum rusticum *Lhan-lhechid* vocatum appulimus; Jam ter mille passus processeramus, sed nihilominus tantum spatii aberat mons ille famigeratissimus *Carnedh-lhewellyn* ab incolis vocatus. Hic ideo viæ ducem comparamus, sed progressi cælo admodum pluvioso parum proficimus; postquam enim ad montis jugum ventum est, humidis & densis nubibus circumdati à ductore circumducimur, sed nullo modo persuasus est, ut nos
ad

ad præcipitia duceret, ubi plantæ rariores solummodo crescunt; etenim colles vulgari gramine vestiti pascua satis grata ovibus & jumentis præbent. Rusticus noster illic nidificantes aquilas timebat, solent enim transversim præpeti penna in ora pascentium ad præcipitia pecorum devolantes, ea subito incusso terrore in ruinam dare prædæ causa. Hic ergo cæli injuria, ductorisque vecordia impediti nihil notatu dignum præter Gramen sparteum spicâ foliaceâ majus, & Consolidam mediam flore cæruleo Alpinam invenimus. *Bangoræ* reduces nocte sistimur, sequente aurora nobilissimum hospitem *Glynne-lhivonæ* revisimus. Postero die finito prandio hospitas ædes reliquimus, associante ad 4. lapidem generosiss. hospite, cui gratias multas solvimus, pluresque nos debere ingenuè profitemur. Dein 6. milliaria emensi *Penmervæ* pernoctavimus. Hinc progressi ante meridiem *Harlecham* advenimus, ubi paululum morati sumus, etenim eo die Pecorum, Lanæ, pannorum, &c. Nundinæ celebratæ fuerunt; antiquam hujus loci castrum excelsæ rupi impositum mare longe lateque prospicit. Toto hoc maritimo tractu Juncus marinus capitulis Sorghi & Atriplex marina semine lato satis copiose proveniunt. Pransi septem milliaria emensi sumus, dein *Bermuthæ* amnem cymba trajicientes statim clivoso montis latere transitum *Penmaen-mawr* æmulum invenimus (Altan-ownreth vocant Incolæ) & hic ingressi sumus

Nim-

*Nimborum in patriam, loca foeta furentibus
Austris.*

Vix enim ad medium transitus spatium venimus, quando.

*Madidis Notus evolat alis
Terribilem picea tectus caligine vultum,
Barba gravis nimbis, canis fluit unda capillis;
Fronte sedent nebulæ, rorant pennæque sinusque:
Vtque manu late pendentia nubila pressit
Fit fragor, & densi funduntur ab æthere nimbi.*

Nos irato Jovi ad resistendum minus validi latebram in proximo viculo (Llanguerel) quærimus & invenimus, tandem surgente aurora loci, latebrarumque pertæsi, nondum penitus sedata tempestate pergimus, de inde montem excelsum superantes nihil non ventorū nimborumq; experti sumus, incolæ *Meneth Bawghan*, nos *Μῆνιν βαρείαν* vocavimus. Jamque octo tantummodo milliaria emensi, totique madidi benigniorum cæli, solique aspectum invenimus, secundo dein lapide superato ad Mechenlleth hospitio fessis & humectis gratissimo fruimur. Quod reliquum erat diei in reficiendis corporibus, siccandisque vestibus impendimus. Hospitium pro natura loci optimum habuimus, quo relicto, Montem-gomerium usque nil notatu dignum invenimus. Hic pernoctantes experti sumus munificentiam Illustriss. Herois *Ed. Herberti* Baronis Cherburiae, &c. qui Castellum præruptæ rupi impositum, novis operibus, ut etiam adjacentibus

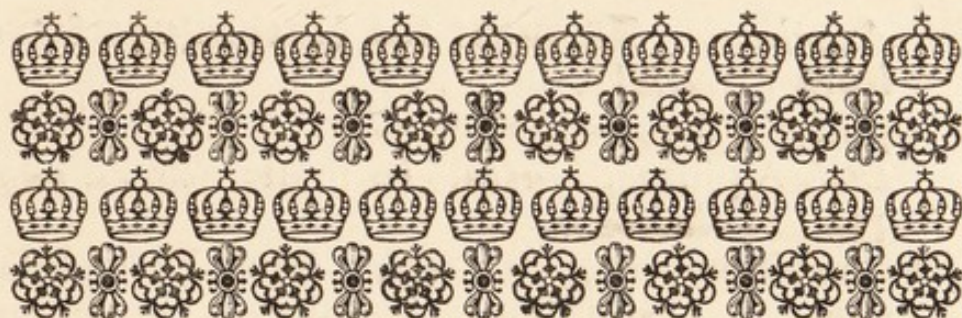
tibus silvis & vivariis decoratum hic possidet. Montem-gomerium linquentes recte ad *Guerndee* viculum tendimus, illicque in Alneto semina Persicariæ siliquosæ copiose illic crescentis collegimus, Solidaginem etiam Sarcenicam inter *Dudson* & *Guarthlow* eruimus. Hasce duas rariores plantas hic crescentes primum observavit amicus meus singularis *Georgius Bowles* Medicinæ candidatus. Eo loci socius itineris optimus D. *Gualterus Stonehousius* nos reliquit & per Salopiam in agrum Eboracensem rediit. Nos deinde continuatis itineribus per Ludloam, Lemsterem, Herefordiam, Glocestriam & Oxoniam, Londinum, tandem pervenimus.

Nunc restat ut Catalogū Plantarum exhibeam, quarum non fit mentio in priore operis parte, hicque non solum exhibeo in hoc Itinere inventas; sed etiam quascunque inveni in partibus hujus regni septentrionalibus, dum illas ante biennium peragravi. Hisce etiam adjuncturus sum quascunque V. V. amiciss. *Gualterus Stonehousius*, *Georgius Bowles*, *Joannes Goodyerus* invenerunt. Et ne aliquid deesset, denotavi etiam nonnullas, quæ a V. Cl. *Matthæo Lobelio* dum vixit, inventæ fuerunt, harumque notitiam ipse in animo habuit impertire in *Stirpium Illustrationibus*, quas ad umbilicum fere perductas morte ablatus ineditas reliquit, sed ex relicto opere multa, quasi tabulæ ex naufragio in Theatro Botanico *Johannis Parkinsoni* Botanici Regii (qui opus a *Lobelio* conditum suo ære proprium fecit) lucem

cem jam nuper aspexerunt. Sed ne alicui fraudem facerem, asterisco annotavi quicquid ex eo *Joannis Parkinsoni* libro mutuatus sum.

Lectorem etiam admonitum esse velim me ex aliorum scriptis nonnullas plantas in hoc Catalogo inseruisse, quas sponte nobiscum crescentes inveniri, mihi vix persuadere possim, hisce ea de causa hujusmodi notulam ¶ apposui.

Plan-



Plantarum Catalogus.

A

- A
Bies, In Alpibus Scoticis. *The Firre-Tree.*
- Ægilops, *Diosc. Dod. Ægilops bromoides Belgarum, Lob. Ger. in satis. Bearded Wilde Oates.*
- Alsine baccifera major *Clusii, Maxima Thal. Cyclaminus altera Dioscoridis, Ghini. Cucubalus Plinii, Lugd. in Sylvis udis, Advers. pag. 204. Berry-bearing Chickweed.*
- Alsine aquatica *Portulacæ folio verna, Spring Chickweede.*
- **Ammi vulgare Dod. Ger. Bishops-weed. In many places, as by the hedge beyond Greenehithe in the way to Gravesend. Parkins. pag. 912.*
- Anagallis aquatica 4^{ta} *Lob. angustifolia, Bauh. in uliginosis. Narrow leafed Brooklime.*
- ¶*Anchusa minor sive Alcibiadion, Lob. Ger. Emac. Secunda Matth. Red Alkanet. In the Isle of Thanet according to Gerard.*
- Angelica sativa, *Trag. Fuch. Matth. Ger. Garden Angeli-*

- Angelica.* **Amongst the Rockes not farre from Barwicke.**
- Aquilegia flore cæruleo,* Ger. *Aquileia Fuch. Dod. Aquilina, Matth. In pratis Advers. pag. 339. Columbine.*
- Artemisia marina,* Lob. Ger. folio *Lavendulæ Clus. Absinthium latifolium marinum, Cam. Sea Mugwort.*
- **Argemone lutea Cambrobritannica. Lo. Park. Yellow wilde Poppy of Wales.*
- Armeria sylvestris humilis flore unico rubello. Armerius flos 3. Dod. Caryophyllus repens humilis minimus vulgatiss. Lob. Caryophyll. syl. 1. Clus. In collibus & pratis sicci-rioribus. Dwarfe Pinkes or Maidens Pinkes.*
- **Asarum Matth. Dod. Ger. Asarum Baccaris Ad. Lob. Asarabacca. Found in Somersetshire by D. Lob. Parkins. pag. 267.*
- Asphodelus palustris carinato folio nondum descriptus. Small water Asphodill.*
- Atriplex marina semine lato nondum descripta. Sea Orach with broad seedes.*
- Avena nuda, seritur quibusdam locis. Naked Oates.*
- Avena vulgaris, ubique Copiose seritur, & ex semine prioris sæpe oritur. Common Oates or Haver.*

B

B*istorta minor, Clus. Ger. Small Bistorto or snakeweede. In Westmerland at Crosby Ravenswaith.*

Brassi-

Brassica sylvestris, *Trag. Dod. Ger.* In maritimis & asperis. *Wilde Coleworts.*

¶ *Bugula* sive *Consolida media* flore luteo *Bauhini*, (qui ex *Anglia* se habuisse affirmat) *Bugle with a yellow flower.*

Bugula sive *Consolida media cærulea Alpina*, *Bauhini.* *Mountaine Bugle or Siclewort.* **On Carnedh Lhewelyn in Wales.**

¶ *Bupleurum latifolium*, *Tab. Ger.* *Broad leaved Hares eares.*

¶ *Bupleurum angustifolium*, *Dod. Tab. Ger.* *Herba vulneraria*, *Trag.* *Isophyllon*, *Cordi.* *Narrow leafed Hares eares.* **These two last are affirmed by Gerard to grow here, as also by Parkins. pag. 578.**

C.

C *Alceolus Mariæ*, *Lob. Ger.* *Elleborine ferruginea*, *Daleschampii*, *Lugd.* *Alisma* *ώάνθεμον* aut *κοιλάνθεμον* *Thal.* *Ladyes slipper.* **In some woods in Lancashire.**

*¶ *Calamintha montana præstantior*, *Lob. Ger.* *Great mountaine Calamint.* **This growes wild with us according to Lobel, if rightly cited by Park. pag. 36.**

Campanula minor longifolia, sive *minor alba & purpurea*, *Ger.* In arenosis collibus. *Small long leaved Bell-flower.*

¶ *Campanula hortensis folio oblongo*, sive *Medium*, *Diosc. Matth.* *Viola mariana*, *Lob. Ger.* *Coventry Bells.* **Gerard affirmes it growes wilde by Coventry.**

- Campanula Cymbalariae foliis, vel folio hederaceo, *Bauh. Ger. Emac.* In collibus herbaceis. *Tender Ivy-leaved Bell-flower. Ivy-bells.*
- Cannabis spuria flore pallido, labro purpureo elegante. In fimetis & ruderibus. *Faire-flowered Nettle-hempe.*
- Carduus mollis flo. cæruleo, an Cardus mollis foliis Lapathi, *Clus. Ger. Emac.?* *Thistle Gentle. This growes on the Rocks on the highest part of Snowdon.*
- Caryophyllata montana. 1. *Clusii* purpurea *Ger. aquatica* nutante flo. *Bauh. Red Mountaine Avens.*
- Caryophyllus montanus minimus, sive Caryophyllus pumilio Alpinus, *Clus. Ger. Emac. Mosse-pinkes, or dwarfe mountaine Pinkes.*
- Caryophyllus saxatilis Ericæfolius umbellatis corymbis, *Bauh. Saxifraga alsinefolia major.* In montosis & asperis. *Great Pearlewort.*
- Caucalis tenuifolius, sive albis floribus vulgaris, *Lob. Ger. Daucus ἀκανθόκαρπ⊕* seu ἐχινόκαρπ⊕ minor, *Thal. Inter segetes. Hedgehogge Parsley* with white flowers.
- Cerasus avium, *Clus. nigra & racemosa, Ger. In sepibus & sylvis. Birds Cherry, Blacke grape Cherry; In the North Heg berry-tree.*
- Chamæfilix marina Anglica, *Lob. Lugd. Adiantum mas, Tab. Sea Maiden-haire.*
- Chamænerion, sive Epilobium; *Ges. Ger. Emac. Onagra Dioscoridis, Lugd. Oenothera Plinii, Bauh. In sylvis humidis. Rosebay willow herbe,*

- herbe, Rose withy, or Willow flower.*
- Christophoriana, *Dod. Lob. Ger.* Aconitum racemosum, *Bauh. Herbe Christopher or Baneberries. In the North according to Gerard.*
- Clematis Daphnoides minor, *Dod. Lob.* Vinca pervinca, *Brunfels. & Offic. in sepibus. Periwinkle.*
- Cochlearia rotundifolia, sive Batava, *Lob. in maritimis. Garden or round leafed Scurvigrasse.*
- Corallium album, *Lob. Ger.* In caulis marinis. *White Corall.*
- Cotyledon hirsuta, sive sedum petræum hirsutum: an sedum minus *x. Clus. Hist. Jasme montana, Dalesch. Lugd.? Hairy Kidneywort. Upon the moyst Rockes at Snowdon.*
- Crithmum, *ij. Matth.* Crithmum Chrysanthemum, *Dod. Tab. Ger.* In maritimis & salsis. *Golden Sampire.*
- Crocus genuinus, sive sativus. In arvis colitur. *True or Common Saffron.*
- *Cymbalaria, *Matth. Lob. Ger. Emac. Bastard Navelwort. About Hatfeild in Hartfordshire, and divers parts of Lancashire, Park. pag. 681.*

D.

- D**Entaria bulbifera, *Lob. Ger. coralloides, Cord. In sylvis. Toothed Violet.*
- Doronicum Romanum, *Gesn. primum, Tab. majus Officin. Ger. Great Doronicum, or Mountaine Marigold. On the high Mountaines*

taines of Northumberland.

Dryopteris, *Advers. Ger. Emac.* In uliginosis.
True Oke Ferne.

Dryopteris nigra, *Dod.* Onopteris mas, *Ger. Emac.* an Adiantum album, *Adver.?* In umbrosis & asperis. *Bastard Maidenhaire.*

Draba lutea maxima, Arabis quorundam, *Cam. Epit.* perperam Solidago Saracenicæ.
Yellow Cresse.

E.

EChium marinum, forte Buglossum dulce ex Jnsulis Lancastriæ, *Park. Sea Buglosse.*
By the salt pans betweene Barwicke and the Holy Island.

¶ Elatine, *Tragi*; Lappula rusticorum *Lugd.* Cynoglossum minus, *Bauh.* *Dogges-burre* vix semipalmaris in *Anglia* reperitur, *Bauh. Pin. pag. 257. N. x.*

Erica supina, maritima. Prope *Portsmouth*, ibidem fere loci ubi perpusillus supinus Lagopus maritimus oritur. *Verba sunt Lobelii. Sea Heathe.*

Erica baccifera, *Matth. Lob.* procumbens, *Bauh. Ger. Emac.* In montibus. *Berry-bearing Heath.* In *Yorkshire* *Crake-berries.*

¶ Eruca syl. angustifolia, *Lob. Lugd.* *Small Rocket.* *Gerard saith he found it by Lambeth Bridge.*

Eruca palustris minor, *Tab. Sinapi 1. genus Syl. Fuchs.* Eruca aquat. *Ger. Water Rocket.*

Felix

F.

Filix petræa elegans nondum descripta.
Rocke Ferne.

Filix saxatilis 2. *Clus.* Filicula petræa mas
Ger. Emac. an Adiantum nigrum *Plinii,*
Adver.? *Blacke Maiden-haire.*

Flos Adonis, *Lob. Cam. Ger. Eranthemum,*
Dod. Inter segetes. *Red Maithes, Red Camo-*
mile, Rose-a-ruby.

Fœnum Burgundiacum. *vide Trifolium.*

Fragaria fructu hispido, *Ger. Emac. Prickly*
Strawberry.

G.

GAlega sive Ruta Capraria, *Matth. Lob.*
Ger. Onobrychis Fracastorii. Goats-
Rue. In the Meadows by Linton in Cam-
bridgeshire, Park. pag. 418.

Genistella Anglica spinosa supina, sive Chamæ-
spartum supinum. Non procul a Castro
South Sea Castle in Comitatu *South-hampton,*
provenit ubi floret Julio & Augusto, spitha-
mæis, gracilibus ramulis procumbentibus.
Creeping Dwarfe furze or Whins.

Genistella sive chamæspartum rectum, spar-
tum item minus aculeatum rectum flore &
acutis spinis Sparto supino paribus & simi-
libus inter Spartum majus Julio florens, ver-
us *Portiostium* invenit *Lobelius,* (qui hanc
cum priore totidem verbis ad marginem suæ *Hi-*
storiæ

storiæ Plantarum Teutonicè editæ descripsit)
Dwarfe Furze or Whins.

Gentianella pratensis Bavarica minutissima,
Cam. fuit plantula in summis montium
 jugis reperta, si me mea non fallat conjectu-
 ra. *Dwarfe Gentian.*

Gentiana cruciata minor, *Mat. Lob. Tab. Ger.* In
 pratis. *Croswort Gentian.*

Glastum sativum. *Lob. Cam.* Isatis sativa, *Fuch.*
Dod. seritur quibusdam agris & a satione
 sponte oritur. *Woade.*

Glaux Hispanica, *Clus. Dioscoridis, Ger.* In
 montosis aridis. *Milke Tare, or Wilde Chich.*

Gnaphalium marinum, *Lob. Tab. Ger.* Legiti-
 mum, *Clus.* *Sea Cotton weede or Cudweed.*

Gnaphalium montanum album, *Lob. Ger.* Au-
 ricula muris, *Lonoceri, Pes Cati, Offic. Gallic.*
Mountaine Cudweed, or Catsfoote.

Gramen aquaticum harundinaceum panicu-
 latum, *Tab.* Gramen aquaticum majus &
 Calamagrostis sylvæ D. *Joannis, Lob. Park.*
pag. 1181. 1274. *Reede grasse with brownish*
tops.

Gramen arundinaceum acerosa gluma, *Lob.*
Park. ubique ad *Thamisis* ripas, *Reedgrasse*
with whitish tops.

Gramen avenaceum capillaceum minoribus
 glumis, *Bauh.* Anglo-britannicum avenace-
 um, *Lob.* In pratis. *Small Haver-grasse.*

Gramen Bromoides vernalis spicis erectis, *Ear-*
ly meadow Drauk, or Darnell-grasse.

Gramen Bromoides copiosa panicula, an Fe-
 stuca graminea effusa juba, *Bauh.?* ad agro-
 rum

rum margines. *Great Haver-grasse.*

*Gramen geniculatum, *Tab. Ger.* Paniceum spicâ asperâ, *Bauh.* In pratis humidis.

*Gramen geniculatum aquaticum, *Tab. Ger.* *Water kneed grasse.* **In the Meadow lying among the Bridges at Wilton Townes end. Park. 1177.**

Gramen junceum montanum subcærulea spica. *Mosse-crops.*

Gramen junceum maritimum, *Lob. Ger.* *Sea Rush-grasse.*

Gramen paniceum spica simplici. *Lob. Ger.* *Single eared Panicke grasse.*

Gramen Parnassi, *Dod. Lob. Ger.* *Hepatica alba, Cordi.* *Grasse of Parnassus or White Liverwort.*

Gramen sparteum montanum spicâ foliaceâ gramineâ majus. *The greater grasse-eared Grasse.* **Amongst the rockes at Carnedh Llewelyn.**

Gramen sparteum spicâ foliaceâ gramineâ minus; *The lesser grasse-eared Grasse or Grasse upon Grasse.* **On the Fells betweene Pereth and Kendall, as also on Snowdon.**


H

* **H**Edera saxatilis, *Ger.* *Asarina, sive Saxatilis hедера, Lob. Rocke Ale-hoofe.* **In some places of Somersetshire according to Lobell. Park. pag. 677.**

*Helleborus niger flo. viridi, *Bauh.* *Veratrum nigrum, Dod. Clus.* *Helleborastrum Ger.*
In

- In sylvis. *Wilde blacke Hellebore.*
 Helleborus niger fætidus, *Bauh.* Helleboraster
 maximus, *Lob. Ger.* & Consiligo *Ruellii*,
 Pulmonaria *Vegetii*, *Gesn.* Enneaphyllon
Plinii, *Cæsalp.* *Bearefoote*, *Setterwort*, *Oxe-*
heale.
 Hemionitis sterilis, *Lob. Minor, Ger.* In um-
 brosis & asperis. *Small Moone Ferne.*
 Hieracium asperum, *Tab. Ger.* an Cichoreum
 Luteum, *Tab. Ger.?* In montosis pratis.
Rough Hawkweede or yellow Succory.
 Hordeum tetrastichon, vel πολύσικον vernum,
Lob. Seritur in agris. *Barly-bigg,*

I

- I** Satis. *vid.* Glastum.
 Juncus maritimus acutus, sive capitulis
 Sorghi, *Bauh.* ὀξύχιν  *Diosc.* *Pricking Sea*
Rush.

L

- L** Agopus perpusillus supinus perelegans
 maritimus, provenit prope Castrum
South-Sea Castle Miliare Anglico a *Ports-*
mouth ad lævam, unciam vix æquans, nulli-
 bi antea vidi. *Ex Autographo Lobelii ad mar-*
ginem Edit. Teuton: Small Hares-foote.
 Lapathum fol. acuto, flore aureo *Bauh.* Lapa-
 thi syl. 4. genus *Daleschampii*, *Lugd.* In uli-
 ginosis. Magnitudine variat, ita ut caulis
 aliquando sesquicubitalis, aliquando vix triun-

- triuncialis reperiatur. *Golden Docke.*
- Lens major, *Lob. Ger.* in agris seritur. *Lentills.*
- Lepidium sive Piperitis, *Trag. Matth.* Raphanus syl. *Offic. Lob. Ger.* *Dittander or Peppervort.* **I found it upon a banke betweene Feversham towne and the Haven.**
- Leucoium marinum purpureum, *Ger.* maritimum majus, *Ad. Lob.* *Sea stocke gilloflowers.*
- Limonium vulgare Neotericorum sive Been rubrum minus. *Small sea Lavender.* **On the rockes in Anglesey.**
- Linaria adulterina, *Tab. Ger.* Anthyllis montana, *Lugd.* *Bastard Toade flaxe.*
- * *Lychnis exilis rubra.* *Park. pag. 638.* *The very small red wild Campion.* Quid sit, ignoro.
- * *Lychnis tenuifolia altera.* *Park. ibidem.* *The least wild Campion.* Hanc etiam ignoro.

M.

- * **M**Alva arborea marina nostras. *English sea tree Mallow* **In an Island called Dinnie five miles from Bristow, and neare Hurst Castle.** *Park. pag. 306.*
- * *Matricaria flore bullato aureo.* *Naked Fethefew.* **Found in Essex by Mr. Coys.** *Park. pag. 84.*
- Medica marina,* *Lob. Clus. Tab.* *Trifolium cochleatum marinum,* *Ger.* *Sea Medicke or Snaile Trefoile.*
- Mentha angustifolia spicata,* *Bauh. acuta,* *Tab. Romana,* *Lob. Ger. Emac.* *Spearemint.*

- Meum, *Matth. Dod. Ger.* Daucus Creticus, *Fuch. Mew or spignell, In Westmerland in Orton parish. Ger.*
- Militaris aizoides, *Lob. Ger.* Stratiotes Potamios, & sedum aquatile, *Dod.* Aloë palustris, *Bauh.* Water Housleeke, or fresh water Souldier. **In Holdernes and the Fenues of Lincolnshire.**
- * Millefolium umbellatum, sive aquaticum *Ger. Dod.* Myriophyllum, *Matth.* Water Yarrow. **Most frequent according to Park. pag. 1258. Yet I have not seene nor heard of it by any other.**
- Millefolium palustre galericulatum, *Ger.* flore luteo galericulato, *Lob.* Hooded water Milfoile.
- Millefolium, sive Myriophyllum aquaticum minus, *Clus. Ger. Emac.* Small Water Milfoile.
- Monophyllum, *Ad. Lob. Ger.* Vnifolium, *Dod. Cam.* Oneblade, or Oneleaf. **In Dingley wood in Lancashire. Ger.**
- Muscus clavatus foliis cypressi, *Bauh. Ger. Emac.* Sabina syl, *Trag.* Chamæcyparissus, *Turneri & Tab.* Heath Cypres. **On the top of Snowdon as also upon Cheviot hills in Northumberland.**
- Muscus ceranoides, *Bauh.* Corniculatus, *Ger.* quoad descriptionem, et enim ejus icon nulli extat. In herbosis montium jugis. *Horned Mosse.*
- Muscus marinus spiralis pennatus, nec describitur, nec depingitur. *Feathered Sea Mosse.*
In

In the coast of Anglesey.

Muscus marinus foliis multifidis, cum priore.
Fine Sea Mosse.

Myagrū sylvestre, sive Pseudomyagrū alterum, *Cam. Epit. Matth. Paronychia. 2. Tab.* In arvis inter Linum reperitur. *Bastard yellow Flax.*

N.

¶ **N**ardus Celtica, *Matth. Lob. Tab.* Spica Celtica, *Lugd. Celticke Spiknard.*

¶ Nardus Celtica altera, *Bauh.* sive fastigiato Flosculorum ordine. *Cam. Epit.* **The other Celticke Narde. Gerard saith these two grow about Ingleborow hill in Yorkeshire.**

O.

Oenanthe aquatica Selini folio non descripta. *Water Dropwort.*

* Ophris, sive Bifolium palustre. *Marsh Bifoile, or Twayblade.* **In the wet grounds betweene Hatfeild and S. Albons. Park. pag. 505.**

Ornithogalum candidum vulgare, *Lob.* Bulbus Leucanthemos minor. *Dod.* In pratis. *White starre of Bethlehem.*

Ornithogalum luteum sive Ceba agraria. *Ger.* Bulbus, *Tragi.* **Yellowstarre of Bethlehem. Lobel found it wild in Somersetshire.**

Orchis saurodes, sive Tragorchis Maximus, *Ger.* Testiculus Hirci, *Dod. Lob.* **The Lizard flower, or Great Goatestones. High the highway**

Way betweene Crayford and Dartford in Kent.

Orchis hiante cucullo, sive Cynosorchis major altera, *Ger. secunda species, Lob. Tab. Dogges stones with a gaping flower.*

Orchis Myodes lutea, *Ger. Emac. Testiculus muscarius, III. luteus, Tab. In montosis pratis. Yellow fly Satyrion.*

Orchis flore albo odorato, *Cam. sive Testiculus odoratus, Lob. Dod. Ger. cum priore. Lady Traces.*

Oxalis rotundifolia, *Dod. Franca, sive Romana, Ger. French sorrell or round leaved sorrell. On the Rockes of Snowdon and the like places.*

Oxalis major, forte major *Brockenburgensis, Thal. Montana maxima, Bauh. Great or large leaved Sorrell.*

P.

Pentaphyllum, (sive Quinquefolium minus repens) incanum, *Ger. In montosis. Hoary small Cinquefoile or five-leaved grasse.*

Persicaria siliquosa, *Lob. Ger. Noli me tangere Gesn. Impatiens herba, Dod. Mercurialis syl. & Esula, Trag. Chrysæa, Lugd. In umbrosis. Codded Arsmart, or Touch-me-not.*

Peplus, *Matth. Dod. Lob. Esula rotunda, Gesn. Ger. Inter segetes. Petty Spurge.*

Phyllitis multifida, sive multifido folio, *Lob. Ger. In umbrosis. Finger Harts tongue.*

Pimpinella saxifraga major altera, *Bauh. Tra-*
gose-

goselinum minus, *Tab. In pratis. The middle Burnet saxifrage.*

Pisa marina Anglica. *Forte hæc Pisa non differunt a sylvestribus Pisis mihi communicatis a D. Tho. Pennæo, & J. Jacobo Vectensi. D'amiciss. & eruditiss. Anglis observatis. 1. Primum syl. instar Convolvulorum se spargit foliis Medicæ cæruleæ, sed non serratis, in cauliculis quadratis fructum fert Piso minorem. 2. Alia Pisi sylvestris species radice perenni folio Ascyri fere rotundo, caule item rotundo striato, & fructu in siliquis minoribus. 3. Tertia species e radice longa lignosa, recta producit caules striatos, è quibus in pediculo, ordine quo in Cicere bina, & in summo terna obscure virentia longiuscula folia nascuntur longitudinis & magnitudinis Hyperici, fructus in siliquis longiusculis Pisi. Alia species foliis oblongis Ascyri, radice multum fibrata. Proculdubio Pisa hæc sylvestria è genere sunt Lathyridis Cicerculæ quam Rhizotomi Angli cum quodam fastu **Eberlasting Pease** vocant. Pusillum aliud Pisum syl. spontaneum in Cretaceis collibus *Kings-hey Kantii* Comitatus collegi non procul à Thamesi sarmen- to spithameo etiamque palmari, flosculis subalbidis, radice fibrosa, & foliolis vulgato Piso similibus, sed omnibus sui partibus longe minoribus, In *Essexia* è regione *Kantii* pratensibus editioribus hoc Pisi syl. genus multo majus reperi.*

Pisum spontaneum aliud maritimum Anglicum.

cum. In *Cantii* Comitatus maritimis inter silices juxta novam Romam vocatam istud syl. Pisi genus spontaneum oriri tradunt, quam plurimis viginti & triginta numero conjunctis siliquis floribus variorum colorum albis aut cinereis, radice perenni. *Totum hoc de Pisis syl. transtuli ex margine Historiæ Plantarum Teutonicæ Lobelii, ubi propriam manu has breviusculas eorum descriptiones exaravit.*

Pneumonante, *Lob. Ger.* Campanula autumnalis, *Dod.* Calathiana autumn. *Gesn.* In ericetis solo nigro & humido. *Calathian Violet.*

Polygonum alterum pusillo vermiculato Serpylli folio, *Lob.* In maritimis. *Round leaved Knotgrasse.*

Primula veris πολύμορφ[⊕], sive Primula veris, *Heskethi, Ger.* *The various Primrose, or Mr. Heskethes Primrose, being found by him in a wood called Clapdale 3. miles from Settle in Yorkeshire.*

Primula veris flore rubro, *Clus. Ger.* Sanicula Alpina minor, *Lob.* Arthritica flo. purpureo, *Cam.* *Red Birds-eyne.* Variat flore albo. **These are found in divers moyst yet Mountainous places of the North.**

Pulmonaria foliis Echii, *Lob. Ger.* *Long leaved Sage of Jerusalem.* **Found by Mr. Goodyer in a wood, in the New Forrest in Hampshire.**

Pulmonaria Gallorum flore Hieracii, *Lob.* Gallica sive aurea angustifolia. *Ger. Emac.* *The lesser*

lesser French or Golden Lungwort.

Pulsatilla vulgaris, *Lob. Ger.* Herba venti, *Trag.*
Anemone Limonia, & *Samolus Plinii*, *Daleschamp.* *Purple passe flowre.* **At Hildersham**
sixe miles from Cambridge.

¶ *Pyrola vulgaris*, *Lob. Clus. Ger.* *Winter Greene*
It growes in Landsdale and Craven as Gerard
affirmes.

Pyrola Alsines flore Europæa, *Bauh.* Herba tri-
entalis. *Cord.* *Alsinantheos*, *Thal.* *Bastard*
Winter greene. **It growes in woods and the**
shadowie places of Mountaines both in
Wales and Scotland.

R.

R *Anunculus montanus*, *Cam.* *globosus sive*
flore globoso, *Dod. Ger.* *Trollius flos*, *Ges.*
Globe Crowfoote, *Troll flowres*, *Lockron gow-*
lans. **In divers places of Yorkeshire and Lan-**
cashire.

Ranunculus pratensis erectus dulcis, *Bauh.*
Chrysanthemum simp. *Fuchs.* Variat ali-
quando flo. multiplici. *Gentle Crowfoote with*
single and double flowres.

* *Rhamnus secundus*, *Matth. Clus. Ger.* *Olea-*
ster Germanicus, *Cordi.* *Rhamnus primus*,
Dioscoridis, *Adv. Lob.* *Sallow Thorne.* **On**
the Sea Coast, *Park. pag. 1008.*

Rhodia (vel Rosea) radix, *Matth. Lob. Dod.*
Ger. *In præruptis montium jugis.* *Rose-wort,*
or Rose-roote.

Rosmarinum Syl. minus. *Cam. Epit. Syl. ῥοσμῶν,*
&

& *Cistus Silesiacus*, *Clus.* *Chamærododendros Alpina angustifolia*, *Tab.* In uliginosis. *Wilde Rosmary.*

Rubia minima saxatilis, *Lob. Ger.* *Dwarfe Madder.*

Rubus Idæus vulgaris, *Clus. Lob. Ger. Respas.*
This growes in many places of the North and of Wales.

S.

S *Alix rosea Anglica*, *Ger.* *Rose Willow.* **In many places of Cambridge-shire.**

Salix folio laureo, sive lato glabro odorato folio, nondum descripta. *Willow-Bay.*

Salix humilis saxatilis, sive Chamæitea repens montana rotundifolia. *Round leafed Mountaine Willow.*

Saponaria folio concavo, sive Gentiana concava, Ger. *Hollow Fellwort, or Sopewort.* **In a wood neare Lichbarrrow in Northamptonshire. Ger.**

Scordium, Matth. Dod. Ger. & Trixago palustris, Lob. *Scordium, or Water Germander.*

Sedum aquatile, vid. Militaris aizoides.

Sedum majus arborescens Anglicum sive maritimum, Adv. pag. 162. *Great Sea Housleeke.*

Sedum Alpinum 1. Clusii, Ger. Emac. sedum Alpinum flore pallido, Bauh. *Small Sengreene of the Alpes.*

Sedum minus flore albido, sive Alpinum 3. Clus. Ger. Emac. White Sengreene of the Alpes.

Sedum

Sedum serratum, sive Umbilicus Veneris alter
Matth. Cotyledon altera 4. *Clus. Hist.*
The Princes Feather.

Sedum tridactylites sive Alpinum trifido folio,
Bauh. Sedum minus decimumtertium, *Clus.*
Hist. Handed Housleeke or Sengreene. **All**
these Seda, or Sengreens grow on the Rockes
of the high Mountaines in Wales.

Selinum Sii foliis, *Ger. Emac. Honewort.*

Serpentaria omnium minima, *Lob. Dod.* Co-
 ronopus sive Serpentina minima, *Ger.* In
 maritimis. *Small grasse Plantaine.*

Serpillum alterum citratum, *Matth. Tab. Ger.*
Emac. In Montosis. *Lemon Time.*

Serpillum hirsutum, *Ger. Emac.* sive Serpillum
 Pannonicum, 3. *Clus. Hist.* In montosis, &
 asperis. *Hoary Wilde Time.*

Sium pusillum foliis variis, nondum descrip-
 tum, in aquosis. *Small water Parsley.*

Solidago Saracenicæ, *Trag. Fuch. Dod. Lob. Ger.*
 Consolida aurea, *Tab.* Virga aurea, *Gesn.*
Hort. Saracens consound.

* Sorbus sylvestris Anglicus, *Red Chesse Apples*
and Sea Oulers. **In Wetherslacke Parke in**
Westmerland. Park. pag. 1421.

Speculum veneris, *Ger.* Onobrychis & Cam-
 panula arvensis minima, *Dod.* Viola arven-
 sis & pentagonia, *Tab.* *Venus looking-glasse,*
or Corne Violet. **This is sayd to grow a-**
mongst the Corne at Greenhith and Dartford
by Gerard, and about Lilly in Hartfordshire
by Park. pag. 1331.

- Spongia ramosa, *Ger. Emac.* Confervæ marinæ genus, *Lob.* *Branched Sponge.*
- * Sphondylium majus aliud laciniatis foliis. *Jagged Cow Parsnep. Found by Mr. Bowles in Shropshire. Park. pag. 954.*
- * ¶ Stella leguminosa, *Lob. Ger.* Vicia sesameacea Apula, *Colum.* *Starry kidney Vetch, or Starre-Pulse. In many places, Park. 1095.*
- Stratiotes potameios, Vide *Militaris aizoides.*
- Staphilodendron, *Plinii, Matth. Lob.* Pistachia Germanica, *Lon.* Nux vesicaria, *Trag. Dod. Ger.* *The Bladder Nut. In some Woods on the further side of Yorkeshire.*

T.

- T**Elephium purpureum majus, *Bauh.* sive floribus purpureis, *Lob. Ger.* in montosis. *Purple Orpine.*
- Tilia fœmina (folio majore *Bauh.*) *Matth. Dod. Lob. Ger.* In areis & compitis. *The Linden or Limetree.*
- Tilia syl. *Trag. Minor. Ges.* in sylvis & sepiibus. *The Wilde or lesser Linden or Lime-tree.*
- Thlaspi hederaceum, *Lob. Ger. Emac.* in maritimis. *Ivie-leaved Mustard.*
- Thlaspi minus, *Lob. Ger.* minus Germanicum, *Tab. Nasturtium syl. Thal.* in maritimis. *Bowyers*

Bowyers Mustard, or Bastard Cresses.

Tribulus terrestris, Matth. Dod. Lob. Ger. Land Caltrops. In a moyst meddow by Croidon.

Trifolium nodiflorum, vel juxta folia floridum, nondum descriptum. In pratis. Kotted Trefoile.

Trifolium siliqua cornuta, Bauh. Medica legitima, Clus. Fænum Burgundiacum, Lob. Trifolium Burgundiacum, Ger. Burgundie Trefoile or Medicke fodder.

Trachelium majus Belgarum, Lob. & Giganteum, Ger. Giant Throatwort, or Bell-flower. In divers places of Yorkeshire.

V.

Vaccinia nubis, *Ger. & Chamæmorus Ejusdem & Clus. Knot berry and Cloud-berry. On the tops of the high Mountaines both in the North and in Wales.*

Vaccinia palustria, Dod. Lob. Ger. Oxycoccum, Cordi. Vitis Idæa 3. in palustribus, Clus. Acinaria palustris & Serpillum acinarium, Gesn. Marsh Worts, or wortles, Mosse-berries and Moore-berries.

Vaccinia rubra, Dod. Lob. Vitis Idæa buxeis foliis, Clus. Myrtillus exiguus, Trag. Red Wortle or Hurtle berries. In the wilde Moores of Northumberland and the like places.

Ver-

Verbascum nigrum folio Papaveris corniculati, *Bauh. Cam.* Verbascum purpureum Erucifolium, *Adv.* Intybaceum, *Tab.* In pratis & ruderibus. *Cut leaved Mullein.*

Vermicularis frutex major, *Ger. Emac.* Vermiculatæ fruticis varietas major, *Lob.* In maritimis. *Tree Stone-Crop.*

Veronica recta mas, *Lob. Ger.* vulgaris recta. *Clus. Great Speed-well or Fluellin.* **Found at Saint Vincents Rocks by Master Goodyer.**

Viola martia palustris, sive Viola montana, *Gesn.* Viola martia flore rubro purpurascente, *Eystet.* *Red Violets.* **Found by Mr. Stonehouse in Yorkeshire, as also about Snowdon and in divers other places.**

Viola Montana flo. luteis, *Lob.* Martia lutea, *Ger.* lutea inodora Alpina, *Cam.* *Yellow Violet.*

Viola tricolor, *Dod. Clus. Ger.* Iacea sive Flos Trinitatis, *Matth.* In arenosis & sterilibus locis magna harum varietas. *Harts-ease or Pansyes of divers colours.*

Vnifolium, vid. Monophyllum.

* Vrtica Romana, *Trag. Fuchs. Lob. Ger.* prima *Dioscoridis* semine *Lini.* *Romane Nettle.* **About Rumney in Kent. Park. Pag. 441.**

X.

X Anthium, *Matth. Dod. Tab.* & Stru-
maria, *Lob.* Bardana minor, *Ger. juxta*
semitas. *The lesser Burre Docke.*



