

Anatomical model of the bull.

Publication/Creation

London : Vinton, [between 1900 and 1999?]

Persistent URL

<https://wellcomecollection.org/works/cdnuh6zr>

License and attribution

Conditions of use: it is possible this item is protected by copyright and/or related rights. You are free to use this item in any way that is permitted by the copyright and related rights legislation that applies to your use. For other uses you need to obtain permission from the rights-holder(s).



Wellcome Collection
183 Euston Road
London NW1 2BE UK
T +44 (0)20 7611 8722
E library@wellcomecollection.org
<https://wellcomecollection.org>

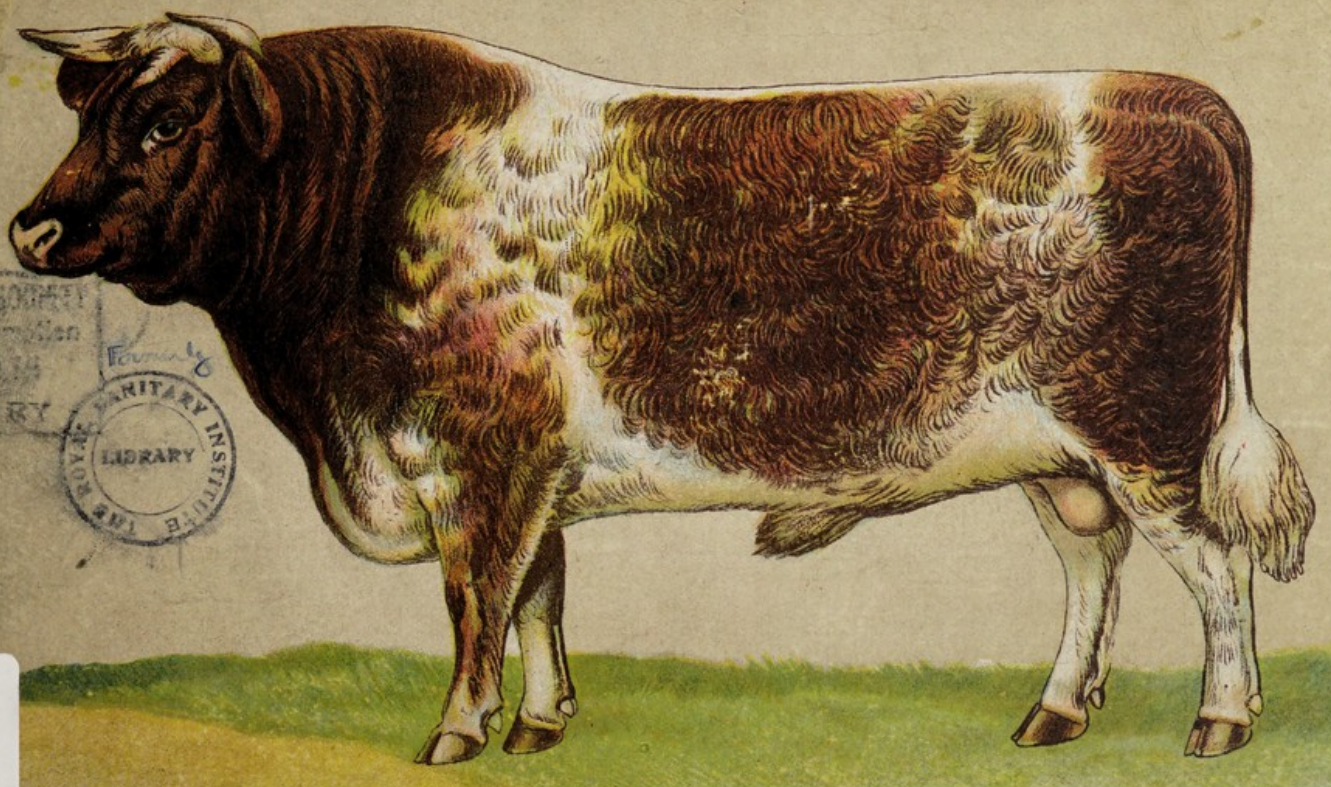
VINTON'S LIVE STOCK MODELS N^o3.

PRICE 3/6 NL.

9125

ANATOMICAL MODEL ^{OF} THE BULL.

COMPRISING FIVE PLATES, WITH KEY, SHOWING OUTWARD CONFORMATION, SKELETON, ARTERIES & VEINS, MUSCLES, & MODELS OF THE INTERNAL ORGANS IN POSITION.



VINTON & COMPANY L^{td}, 8 BREAMS BUILDINGS, CHANCERY LANE, LONDON. ENGLAND.

IN BAVARIA

DD
65

K53679

Formerly
ROYAL SANITARY INSTITUTE

LIBRARY REGULATIONS

1. Books may be borrowed by Fellows, Members and Associates personally or by a messenger producing a written order. The person to whom books are delivered shall sign a receipt for them in a book provided for that purpose.

2. Books may be sent through the post, or by some equivalent means of carriage, upon a written order. All charges of carriage to the Institute shall be defrayed by the borrower.

3. A borrower may not have more than three volumes in his possession at one time.

4. A borrower will be considered liable for the value of any book lost or damaged while on loan to him, and if it be a separate volume, for the value of the whole work rendered imperfect.

Marking or writing in the volumes is not permitted, and borrowers are requested to call attention to damage of this character.

5. Books may be retained for 28 days. Periodicals may be retained for 14 days. Applications for extension of the loan period must be made in writing before its expiry. No book may be kept longer than 3 months.

New books will not be lent until after the expiration of one month from the date of their having been received by the Institute. The current number of a periodical may not be borrowed.

6. Borrowers retaining books longer than the time specified, and neglecting to return them when demanded, forfeit the right to borrow books until the volume or volumes be returned, and for such further time as may be ordered.

Any borrower failing to comply with a request for the return of a book shall be considered liable for the cost of replacing the book, and the Council may, after giving due notice to him, order the book to be replaced at his expense.

No volume may be reissued to the same borrower until at least seven days have elapsed after its return, neither may it be transferred by one borrower to another.

7. Books may not be taken or sent out of the United Kingdom.

8. Volumes returned through the post must be securely packed in a box, or otherwise protected.

Parcels should be addressed:



22101850804

THE ROYAL SOCIETY
for the Promotion
OF HEALTH
LIBRARY

Formerly
THE ROYAL SANITARY INSTITUTE LIBRARY
90, Buckingham Palace Road, London, S.W.1.

Class No. *DD/65*

Acc. No. *9125*

This book is returnable on or before the last date Marked below.

26 MAY 1948

26 NOV 1948

6761831-21

17 FEB 1949

Please return as
soon as possible

19 MAR 1953

18 FEB 1954

12 JUN 1954

11 FEB 1956

12 DEC 1956

28 MAY 1957

23 JAN 1958

29 APR 1960

30 MAY

CANCELLED

Med
K53679

ANATOMICAL MODEL ^{OF}_{THE} BULL.

VINTON & COMPANY, LIMITED.

VINTON'S
PRIVATE HERD BOOK

No 1.

For

Recording the Progress and other
Particulars of

PEDIGREE STOCK

New and Revised Edition.

Columns for Pedigree,
Produce and Milk
Records.

Directions and Specimen

Entries,

284 Pages, Size 10 x 8 ins.

Ruled and Printed on
Strong Letter Paper.

All former features retained
Space for quarterly Butter.
Fat records added.

Gestation Tables.

Durable blue cloth binding.

An
**Essential Register
for
Permanent Records**

ORDER NOW

12/6 net.

13/0 by post.

VINTON'S
HERD REGISTER

Ample space provided for :

Pedigree

4 Generations

Service

Date

Name of Bull

Herd Book Reference

Date of Calving

Colour of Calf

Sex of Calf

Name of Calf

Outline Sketches for Filling in Colour Markings

This register is bound in strong, **LOOSE-LEAF BINDER**, ring principle, and consists of Title Page and 50 sheets, size 11 x 8½ ins, printed on stout ledger paper. It provides breeders with permanent yet live records of their herds.

SHEETS CAN ALSO BE USED AS SALES CERTIFICATES

Binder complete 8/6 net, 9/0 by post.

Refills 4/- net, 4/6 by post.

8, BREAMS BUILDINGS, CHANCERY LANE, LONDON, E.C.4

ANATOMICAL MODEL ^{OF} THE BULL.

FIVE COLOURED PLATES (WITH KEY)

PLATE I. OUTWARD CONFORMATION.

- „ II. SKELETON.
- „ III. ARTERIES AND VEINS.
- „ IV. MUSCLES.
- „ V. INTERNAL ORGANS.

(THIRD EDITION)

PRICE 3/6 net.

VINTON & COMPANY L^d.

8 BREAM'S BUILDINGS, CHANCERY LANE, LONDON, ENGLAND.

[ALL RIGHTS RESERVED.]

THE ROYAL SOCIETY
for the Promotion
OF HEALTH

VINTON'S LIVE STOCK MODELS.

Each Model comprises 5 coloured plates, with key, showing the Outward Conformation, Skeleton, Arteries and Veins, Muscles, and Models of the Internal Organs in position and movable. Size $7\frac{1}{2}$ ins \times $10\frac{1}{2}$ ins.

No. 1.	ANATOMICAL MODEL OF THE HORSE.					<div>PRICE</div> <div>3/6 NET EACH</div> <div>BY POST 3/9</div> <div>(SET OF SEVEN</div> <div>MODELS 25/-</div> <div>BY POST)</div>
" 2.	"	"	"	"	MARE.	
" 3.	"	"	"	"	BULL.	
" 4.	"	"	"	"	COW.	
" 5.	"	"	"	"	SHEEP.	
" 6.	"	"	"	"	PIG.	
" 7.	"	"	"	"	HEN.	

(Also showing Incubation from Egg to chick.)

HALF LIVE SIZE ANATOMICAL MODELS.

Models similar to above only mounted on linen attached to stout cardboard base—folds in two for easy transport, plates eyeletted for keeping them open for examination of interior organs—excellent for lecturers in Agricultural Colleges or Schools.

- No. 1 The Mare. £2-2-0 net. Carriage Forward.
 No. 2 The Cow. £2-2-0 net. Carriage Forward.

VINTON'S ANATOMICAL MODELS OF THE HUMAN BODY.

The most elaborate and inexpensive manikin models published. The figures, about 19 inches long, are compactly bound in covers 13 inches \times 8 inches, and are coloured for clear definition. (Internal organs movable.)

- No. 1. Male Model (6 plates with key.) } Price 3/6 net, each model,
 No. 2. Female Model (10 plates with key.) } by post 3/9 each.

VINTON & CO., LTD., 8, Bream's Buildings, Chancery Lane, London, England.

WELLCOME INSTITUTE LIBRARY	
Coll.	weIMOmec
Call	
No.	✓

KEY TO THE MODEL OF THE BULL.

PLATE I.—DIVISIONS OF THE BODY OF THE BULL.

HEAD.

1. Nose.
2. Nostrils.
3. Lower lip, chin.
4. Bridge of nose.
5. Forehead.
6. Frontal crest.
7. Horns.
8. Throat.
9. Eye.
10. Ears.
11. Jaws.

NECK.

12. Nape.
13. Crest.
14. Esophagus.
15. Dewlap.

TRUNK.

16. Withers.
17. Back.
18. Wall of chest.
19. Front breast.
20. Lower Breast.
21. Belly.
22. Loins.
23. Flanks.
24. Upper part of flank.

25. Rump.
26. Croup.
27. Root of tail.
28. Tail.
29. Tuft.
30. Scrotum.
31. Prepuce.

FORE LIMBS.

32. Shoulder.
33. Point of shoulder.
34. Fore-arm.
35. Elbow.
36. Knee.
37. Shin (metacarpal).
38. Fetlock joint.
39. Dew-claws.
40. Pastern.
41. Coronet.
42. Hoofs.

HIND LIMBS.

43. Upper thigh.
44. Hip-joint.
45. Stifle-joint.
46. Lower thigh.
47. Tibia and Fibula.
48. Point of hock.
49. Hock.

DIVISIONS OF THE BODY OF THE BULL—Continued.

50. Metatarsal.
51. Pastern.

52. Coronet.
53. Hoofs.

PLATE II.—THE SKELETON.

HEAD

1. Left nasal bone.
 2. Lower or under jaw.
 3. Occipital bone.
 4. Frontal protuberance.
 5. Horn cores.
 6. Frontal-bone.
 7. Lachrymal bone.
 8. Malar bone.
 9. Zygomatic bone.
 10. Right nasal bone.
 11. Great maxillary bone.
 12. Six upper molars.
 13. Small maxillary bone.
 14. Temporal bone.
 15. Orbital cavity.
- In the lower jaw (2) are:
16. The 6 lower molars. (Six on each side = 12.)
 17. The 8 incisors.

TRUNK.

- 18-24. 7 cervical vertebræ, the first is:

18. The atlas, and the second:
19. Dentata.
- 25-37. 13 dorsal vertebræ, with 1'-13'. The ribs, of which: 1'-8' are called true ribs, and 9'-13' False ribs.
- The first eight extend to
38. The breast-bone or sternum.
- 39-44. The 6 lumbar vertebræ.
45. The sacrum.
- 46-65. 20 coccygeal vertebræ; the number of these varies from 18-20.
- 66-68. Bones of the pelvis.
66. Ilium.
67. Ischium.
68. Os pubis.
69. Hip joint.

LIMBS.

70. Shoulder blade.
71. Point of shoulder.
72. Upper arm bone (Humerus).
73. Elbow-bone (Ulna).

KEY TO THE COLOURED PLATES. (BULL)

THE SKELETON—Continued.

- | | |
|--|---|
| 74. Fore-arm bone or radius. | 89. Navicular bones. |
| 75. Elbow-joint. | 90. Femur (thigh bone). |
| 76. Knee joint, consisting of: | 91. The tibia. (The fibula is rudimentary.) |
| 77. Pisiform bone. | 92. Patella. |
| 78. Trapezoid bone. | 93. Stifle joint. |
| 79. Cuneiform bone. | 94. Hock; this comprises: |
| 80. Scaphoid bone. | 95. Calcis (heel bone). |
| 81. Semi-lunar bone. | 96. Astragalus |
| 82. Unciform. | 97. Scaphoid. |
| 83. Metacarpal. | 98. First cuneiform bone. |
| 84. Splint bone. | 99. Second and third cunei- |
| 85. Sesamoid bones. | form bones. |
| 86. Suffragines or long pastern bones. | From the hock downwards, the bones are the same as on the fore limbs. |
| 87. Coronæ or short pastern bones. | |
| 88. Os pedes or coffin bones. | |

PLATE III.—CIRCULATION OF THE BLOOD.

Abbreviations: *H.* Heart, *I.* Trachea, or Windpipe, *S.* Œsophagus (breast portion), *L.* Liver, *M.* Stomachs, *R.V.* Right fore leg, *L.V.* Left fore leg, *R.H.* Right hind leg, *L.H.* Left hind leg, *Ms.* Spleen.

The arteries are traced in red and the veins in blue.

A. ARTERIES.

- | | |
|--|--|
| 1. The Aorta. | 11. The interior parotid gland artery, and |
| 2. Left coronary of the heart. | 12. The upper thyroid artery. |
| 3. Anterior aorta. | 13. The pharyngeal artery. |
| 4. Posterior aorta. | At the parotid gland, the carotid arteries divide into: |
| 5. Left innominate artery (section). | 14. The occipital artery (first portion only visible). |
| 6. Right innominate artery, giving off: | 15. The facial. |
| 7. The common carotid artery. | 16. The internal maxillary artery, hidden under parotid gland. |
| 8. The left carotid artery, and | 17. The lingual artery. |
| 9. The trachea. | 18. Sub-maxillary. |
| 10. Branches for the windpipe, Œsophagus, the neighbouring muscles, also | 19. Branches of the external maxillary to upper and lower lip. |
| | 20. |

CIRCULATION OF THE BLOOD—Continued.

- | | |
|---|---|
| From the inner maxillary artery rise and are seen: | 48. The internal spermatic arteries. |
| 21. The temporal artery with its branches. | 49. Circumflex iliac. |
| 22. The lower dental artery. | 50. The six pairs of lumbar arteries. |
| 23. The lateral nasal artery. | 51. Arteries of the thigh. |
| 24. The lower eyelid artery and artery in bridge of nose. | 52. The two pelvic arteries. |
| From the right innominate artery (9) come: | 53. The middle sacral artery. |
| 25. The anterior intercostal artery (section). | 54. The posterior mesenteric. |
| 26. The oblique cervical artery. | 55. Branch posterior tibial. |
| 27. Deep cervical artery. | 56. The artery of the abdominal integument. |
| 28. The vertebral artery. | 57. The deeper femoral artery. |
| 29. The inner pectoral artery. | 58. The external circumflex artery. |
| 30. The oblique shoulder artery (not visible). | 59. Posterior tibial artery. |
| 31. The outer pectoral artery, and | 60. Anterior tibial artery. |
| 32. The axillary artery (not visible). | 61. Posterior tibial artery. |
| 33. Ulnar. | 62. Anterior tibial artery. |
| 34. Radial. | 63. Small metatarsal artery. |
| 35. Small metacarpal artery. | 64. Large tarsal artery. |
| 36. Large metacarpal artery. | 65. Plantar artery. |
| 37. Small metacarpal artery. | 66. Umbilical artery. |
| 38. Anterior digital. | 67. The ilio-lumbar arteries. |
| 39. Semi-lunar anastomosis. | 68. The tail arteries. |
| 40. Circumflex artery of coronary cushion. | 69. The muscular (gluteal) arteries. |
| 41. The Œsophageal artery. | 70. The obturator artery. |
| 42. The bronchial artery. | 71. Internal pudic artery. |
| 43. 10 pairs of intercostal arteries. | 72. The sciatic artery. |
| 44. The posterior diaphragmatic arteries. | 73. The pulmonary artery. |
| 45. The cœliac axis. | |
| 46. The anterior mesenteric artery. | |
| 47. Arteries of the kidneys. | |

B. VEINS.

- | |
|--|
| 74. The anterior vena cava. |
| 75. Jugular veins. |
| 76. The posterior vena cava. |
| 77. The veins of the liver. |
| 78. Capillary network system to the portal vein. |
| 79. Portal vein. |
| 80. |

KEY TO THE COLOURED PLATES. (BULL)

PLATE IV.—THE MUSCLES.

- | | |
|--|---|
| 1. Levator labii superioris alæque nasi. | 32. Scapulo ulnaris. |
| 2. Zygomaticus. | 33. Latissimus dorsi. |
| 3. Proper elevator of the upper lip. | 34. Extensor oblique of abdomen. |
| 4. Dilator naris lateralis. | 35. Serratus magnus. |
| 5. Lachrymalis. | 36. Pectoralis major. |
| 6. Depressor muscle of the upper lip. | 37. Extensor of metacarpus. |
| 7. Masseter. | 38. Common extensor of the digits. |
| 8. Sterno maxillaris (maxillary portion). | 39. Extensor of external digit. |
| 9. Its sinew touching on the branch of the lower jaw. | 40. External flexor of metacarpus. |
| 10. Orbital cavity part of the circular muscle of the eyelid. | 41. Flexor of foot. |
| 11. Eyelid portion of the same. | 42. Oblique extensor of metacarpus. |
| 12. Superior } Adductors of the | 43. Tendon. |
| 13. Middle } ear. | 44. Deep flexor of toes. |
| 14. Inferior } | 45. Tendons. |
| 15. Abductor muscle of the ear. | 46. Tendon of extensor of foot. |
| 16. Cervical portion } of the muscles common to head, neck, and arm. | 47. Annular ligament of fetlock. |
| 17. Mastoid portion } | 48. Superficial gluteus. |
| 18. Arm portion } | 49. Tensor vaginæ femoris. |
| 19. Clavicular strip. | 50. Rectus femoris. |
| 20. Mastoid portion of the sterno-maxillary muscle. | 51. Biceps femoris. |
| 21. Superficial or broad pectoral muscle. | 52. Posterior portion of biceps. |
| 22. Posterior and } of the neck-band shoulder muscle. | 53. Semitendinosus. |
| 23. Anterior portion } | 54. Semi membranous. |
| 24. Lower elevator of the shoulder bone. | 55. Curvator of tail. |
| 25. Trapezius (posterior acromial muscle). | 56. Long flexor of tibia. |
| 26. Trapezius (its insertion tendon). | 57. Long extensor of foot. |
| 27. Anterior } brachial extensor. | 58. Short peroneus. |
| 28. Posterior } | 59. Long peroneus. |
| 29. External } | 60. Tendon of short peroneus. |
| 30. Thick } | 61. Ligaments. |
| 31. Long } | 62. Tendon of peroneus. |
| | 63. Internal gemellus or gastrocnemius. |
| | 64. Extensor metatarsi. |
| | 65. Tendo Achilles. |

PLATE V.—INTERNAL ORGANS, AND PART OF AN OBLIQUE SECTION OF THE BODY.

- | | |
|--|---|
| 1. Cerebrum. | 33. Palate with its ridges. |
| 2. Cerebellum. | 34. Pharynx. |
| 3. Pons varolii. | 35. Cervical and pectoral portion of the œsophagus. |
| 4. Medulla oblongata. | 36. First stomach. |
| 5. Spinal marrow. | 37. Its left or upper bag. |
| 6. Section of cervical-dorsal-lumbar, sacral and coccygeal vertebræ. | 38. Its right or lower bag. |
| 7. Ligamentum nuchæ. | 39. Pillars of the paunch. |
| 8. Turbinated bones. | 40. Paunch papillæ. |
| 9. Pharynx. | 41. Opening of the œsophagus. |
| 10. Entrance to larynx. | 42. Fore } division of the |
| 11. Windpipe or trachea. | 43. Middle } |
| 12. Thyroid gland. | 44. Back } |
| 13. Bronchi and their division in lungs. | 45. Spleen. |
| 14. Left lung. | 46. Opening into the second stomach. |
| 15. Right lung. | 47. Second stomach. |
| 16. Wall of pectoral cavity from inside. | 48. Its meshes or cells. |
| 17. Tendinous portion of the Diaphragm. | 49. Third stomach. |
| 18. Muscular part of same. | 50. Its leaves. |
| 19. Left ventricle. | 51. Fourth stomach. |
| 20. Right ventricle. | 52. Its folds of mucous membrane. |
| 21. Pulmonary artery. | 53. Pylorus. |
| 22. Aorta. | 54. Duodenum. |
| 23. Right auricle from within. | 55. Mesentary. |
| 24. Right ventricle from within. | 56. Jejunum. |
| 25. Left auricle from within. | 57. Ileum. |
| 26. Left ventricle from within. | 58. Its discharging into cæcum. |
| 27. Chordæ, tendinous fibres of the valves. | 59. Cæcum. |
| 28. Semi-lunar valve of the pulmonary artery in the right ventricle. | 60. Colon. |
| 29. Auriculo-ventricular valve. | 61. Rectum. |
| 30. Columnæ carneæ. | 62. Anus. |
| 31. Cavity of the mouth with the grinders. | 63. Liver. |
| 32. Tongue. | 64. Left. } lobes of the liver. |
| | 65. Right } |
| | 66. Spigelian. |
| | 67. Polyganal. |
| | 68. Gall-bladder. |
| | 69. Biliary ducts of liver. |
| | 70. Biliary duct of gall bladder. |

KEY TO THE COLOURED PLATES. (BULL)

INTERNAL ORGANS, &c.— *Continued.*

- 71. Common biliary duct.
- 72. Entrance of posterior vena cava.
- 73. Mouth of portal vein.
- 74. Right and left broad ligaments of the liver.

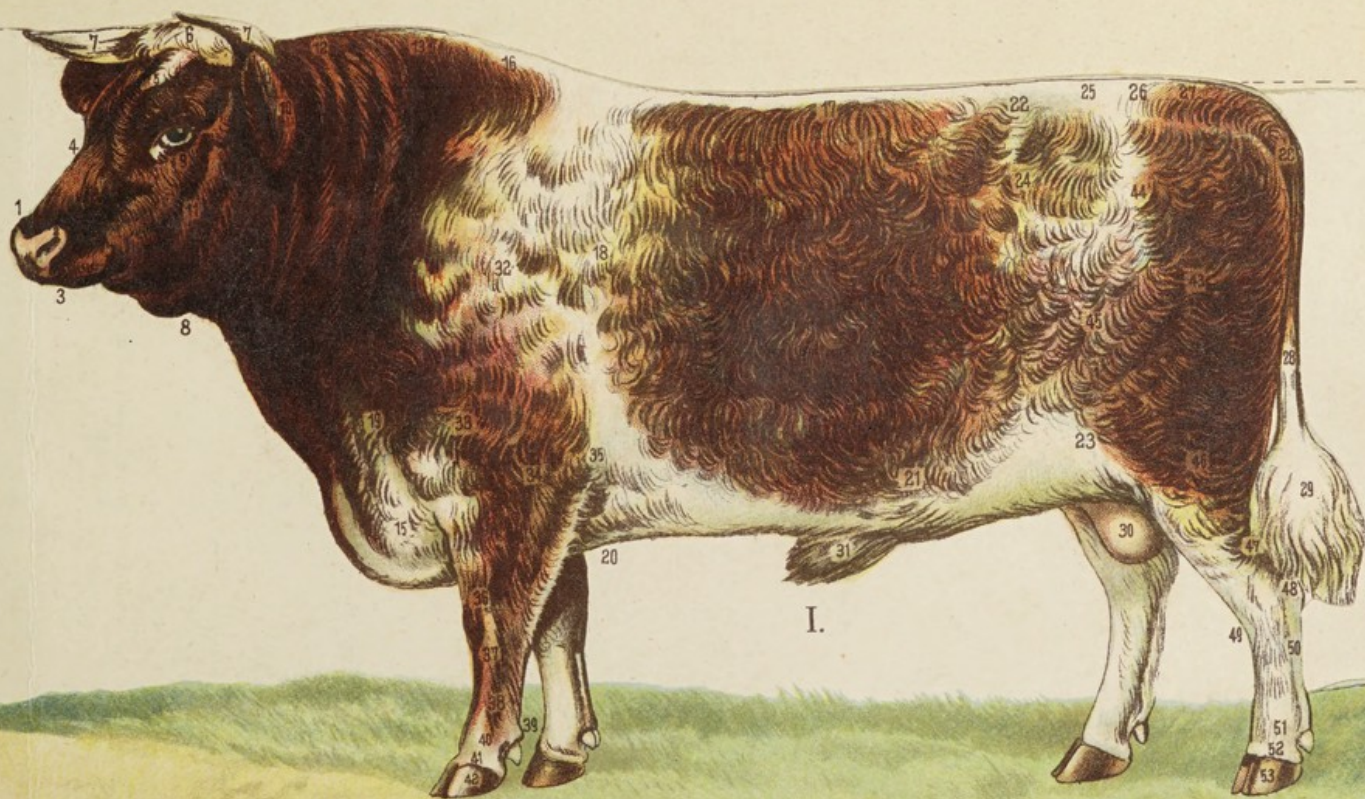
- 75. Left kidney.
- 76. Section of this.
- 77. Right kidney.
- 78. Ureter, going from the kidney basin and leading to :

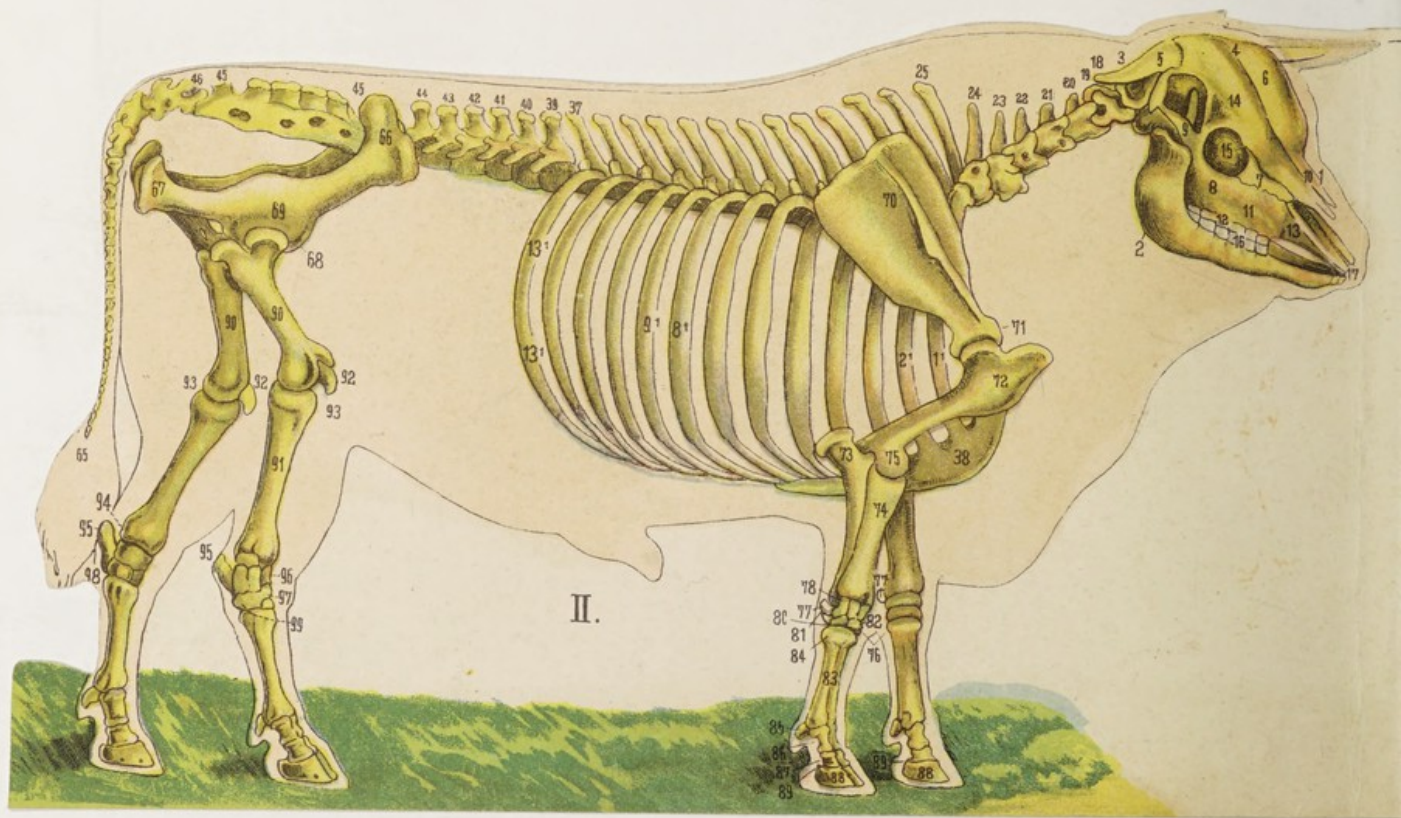
INTERNAL ORGANS, &c.— *Continued.*

- 79. The bladder.
- 80. Neck of bladder.
- 81. Meatus of bladder.
- 82. Urethra.
- 83. S-bend of the penis.
- 84. Glans penis.

- 85. Prepuce.
- 86. Spermatic ducts.
- 87. Scrotum from without.
- 88. Testicles.
- 89. Epididymus.
- 90. Abdominal cavity.

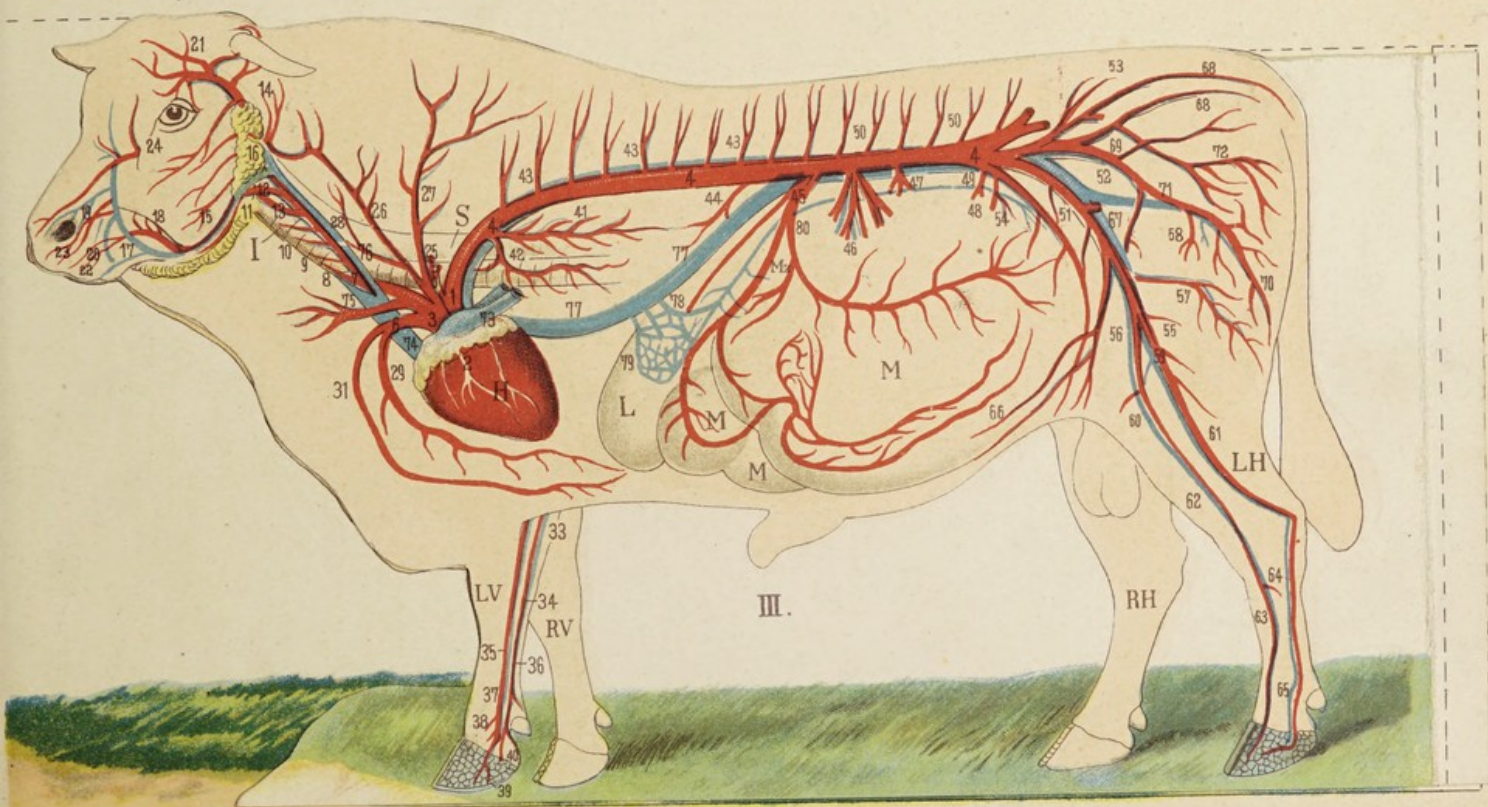


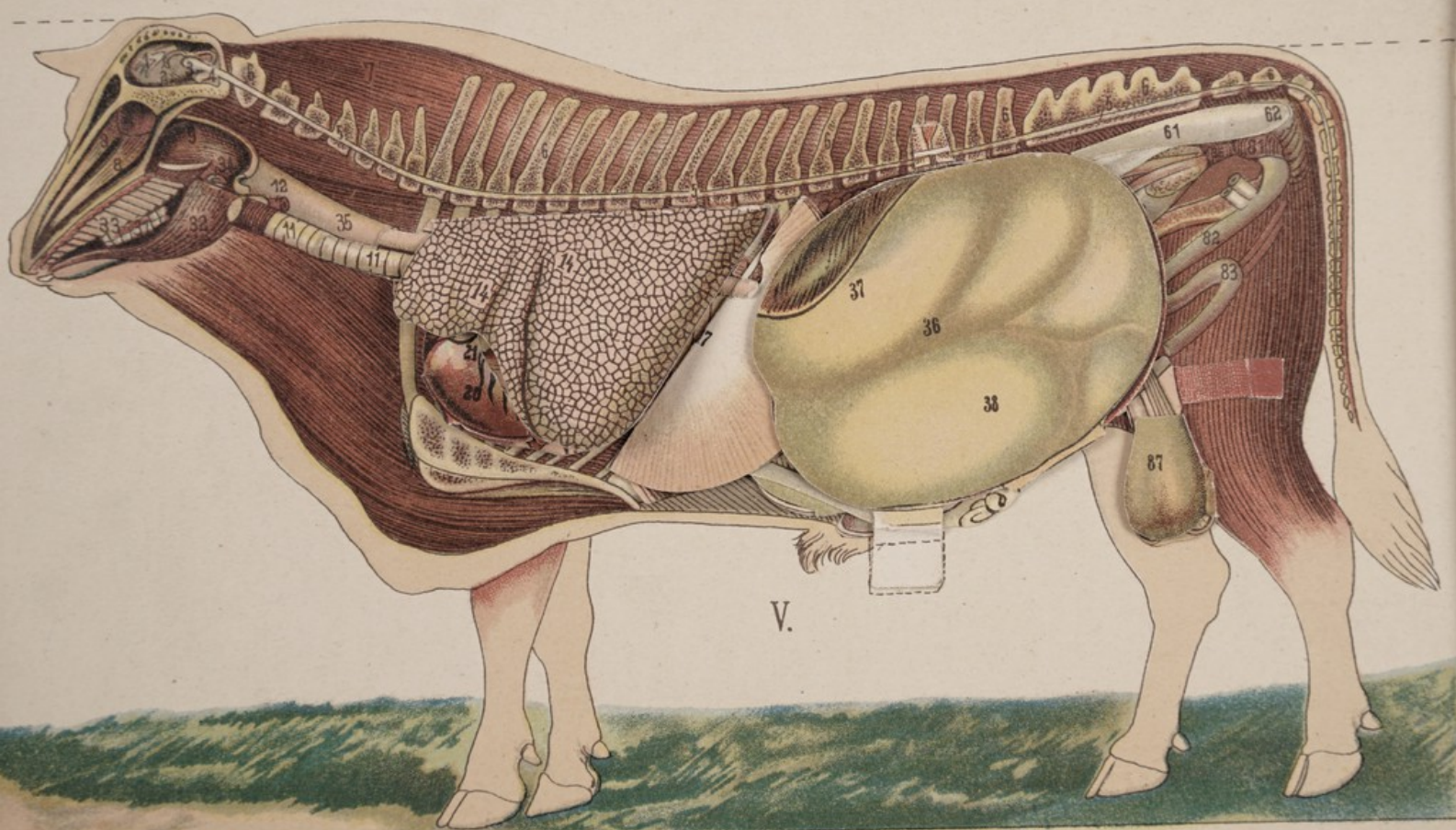


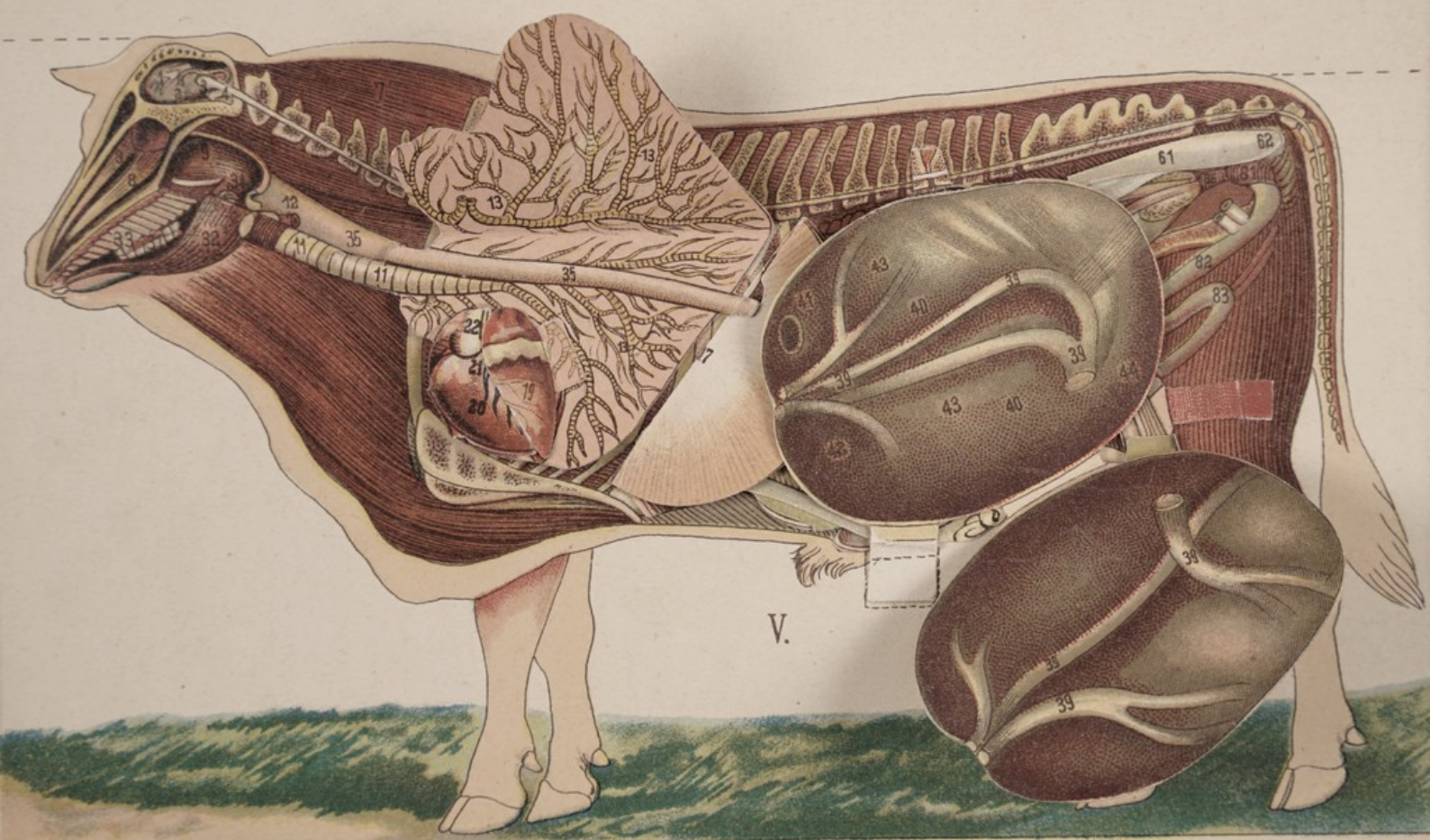


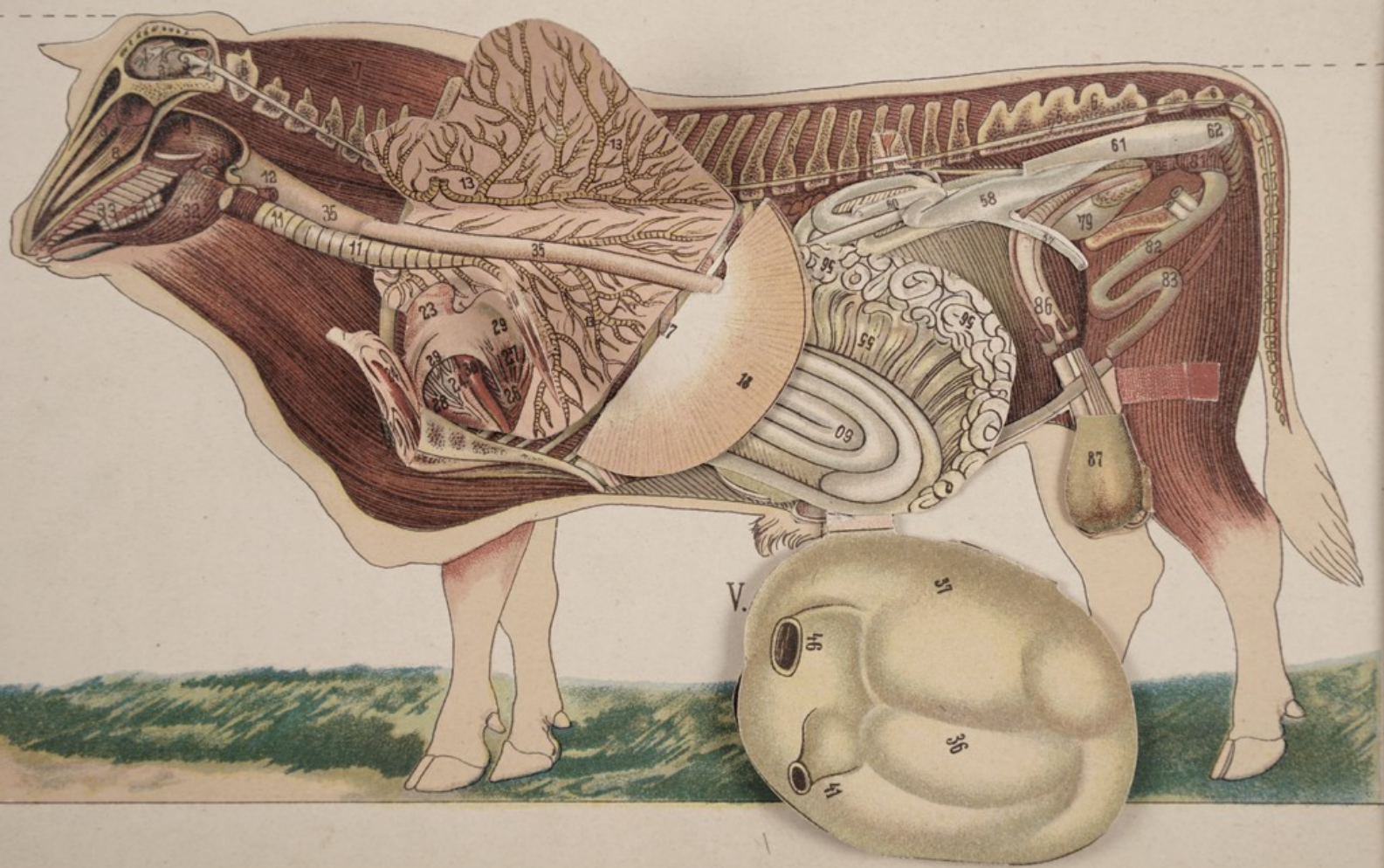
II.

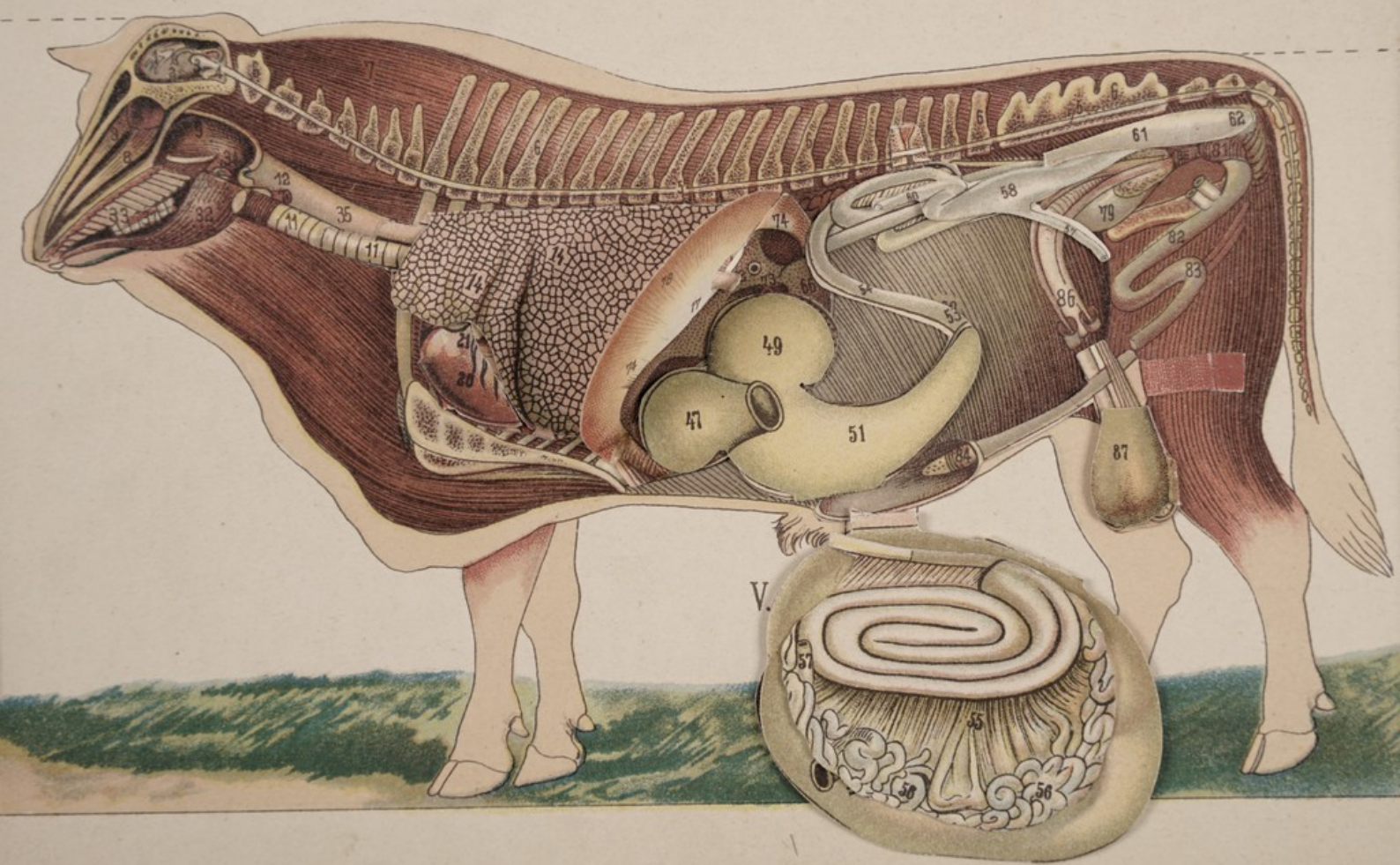
- | Number | Number | Number | Number |
|--------|--------|--------|--------|
| 1 | 25 | 51 | 88 |
| 2 | 26 | 52 | 89 |
| 3 | 27 | 53 | 90 |
| 4 | 28 | 54 | 91 |
| 5 | 29 | 55 | 92 |
| 6 | 30 | 56 | 93 |
| 7 | 31 | 57 | 94 |
| 8 | 32 | 58 | 95 |
| 9 | 33 | 59 | 96 |
| 10 | 34 | 60 | 97 |
| 11 | 35 | 61 | 98 |
| 12 | 36 | 62 | 99 |
| 13 | 37 | 63 | 100 |
| 14 | 38 | 64 | 101 |
| 15 | 39 | 65 | 102 |
| 16 | 40 | 66 | 103 |
| 17 | 41 | 67 | 104 |
| 18 | 42 | 68 | 105 |
| 19 | 43 | 69 | 106 |
| 20 | 44 | 70 | 107 |
| 21 | 45 | 71 | 108 |
| 22 | 46 | 72 | 109 |
| 23 | 47 | 73 | 110 |
| 24 | 48 | 74 | 111 |
| 25 | 49 | 75 | 112 |
| 26 | 50 | 76 | 113 |
| 27 | 51 | 77 | 114 |
| 28 | 52 | 78 | 115 |
| 29 | 53 | 79 | 116 |
| 30 | 54 | 80 | 117 |
| 31 | 55 | 81 | 118 |
| 32 | 56 | 82 | 119 |
| 33 | 57 | 83 | 120 |
| 34 | 58 | 84 | 121 |
| 35 | 59 | 85 | 122 |
| 36 | 60 | 86 | 123 |
| 37 | 61 | 87 | 124 |
| 38 | 62 | 88 | 125 |
| 39 | 63 | 89 | 126 |
| 40 | 64 | 90 | 127 |
| 41 | 65 | 91 | 128 |
| 42 | 66 | 92 | 129 |
| 43 | 67 | 93 | 130 |
| 44 | 68 | 94 | 131 |
| 45 | 69 | 95 | 132 |
| 46 | 70 | 96 | 133 |
| 47 | 71 | 97 | 134 |
| 48 | 72 | 98 | 135 |
| 49 | 73 | 99 | 136 |
| 50 | 74 | 100 | 137 |

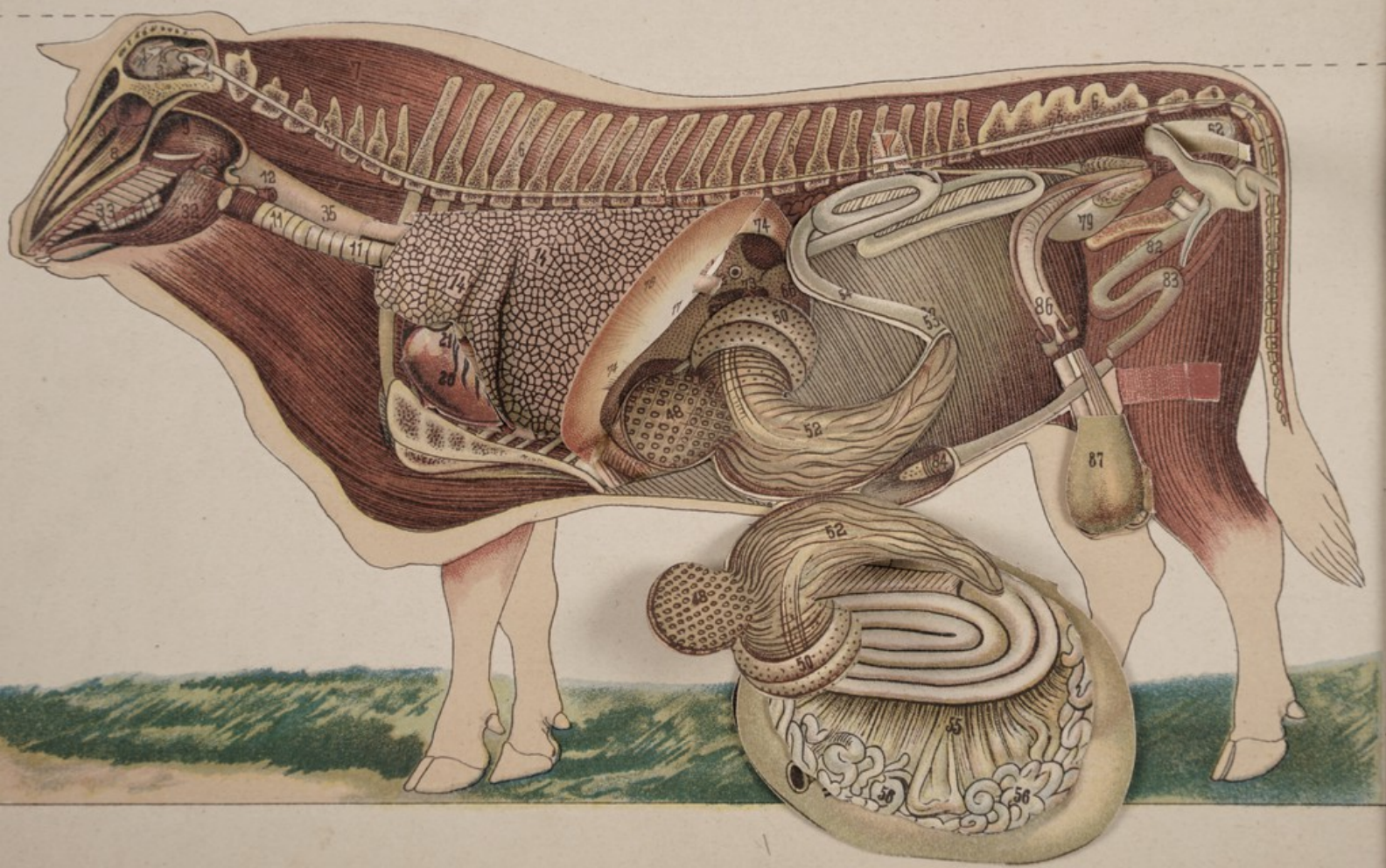


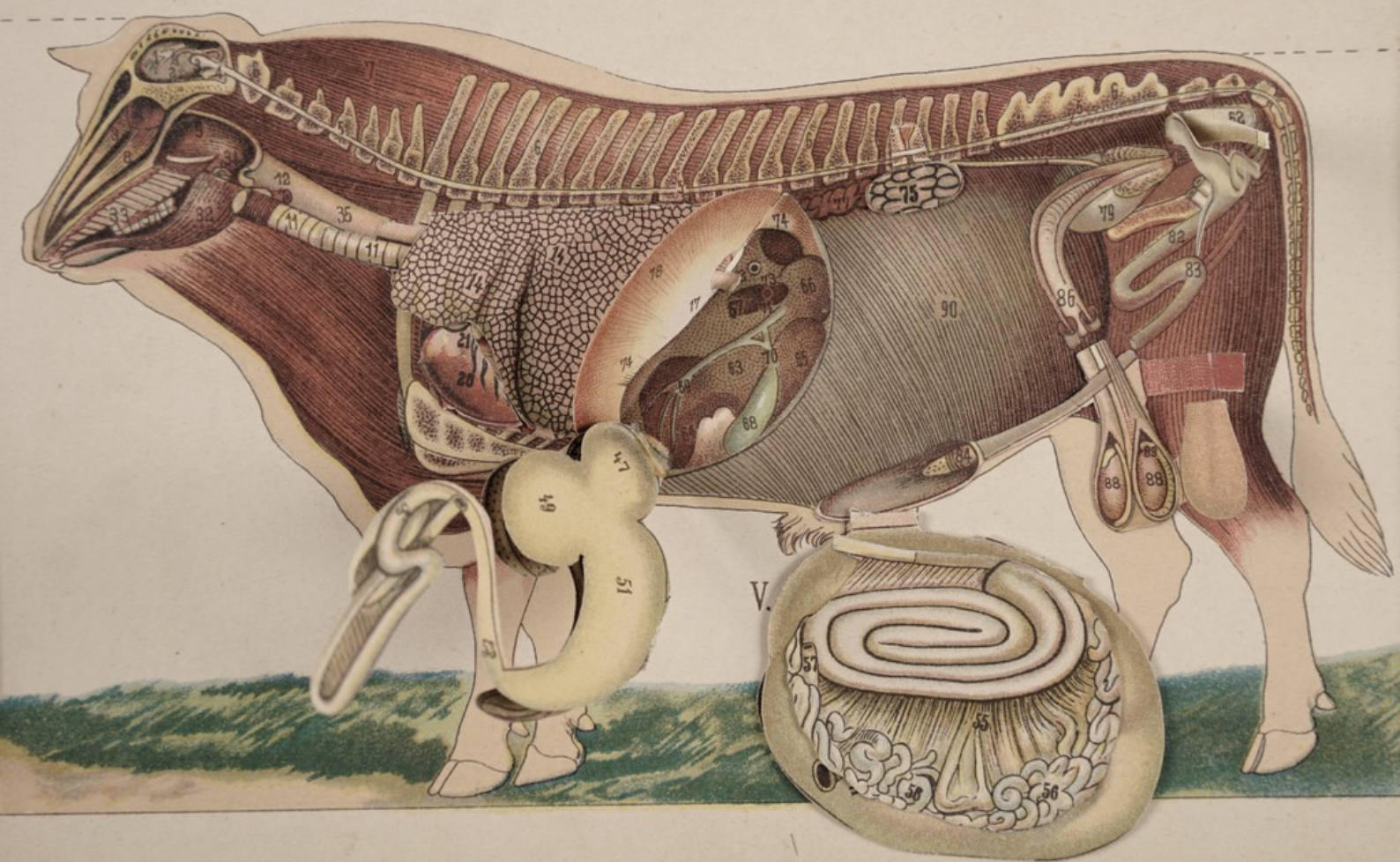


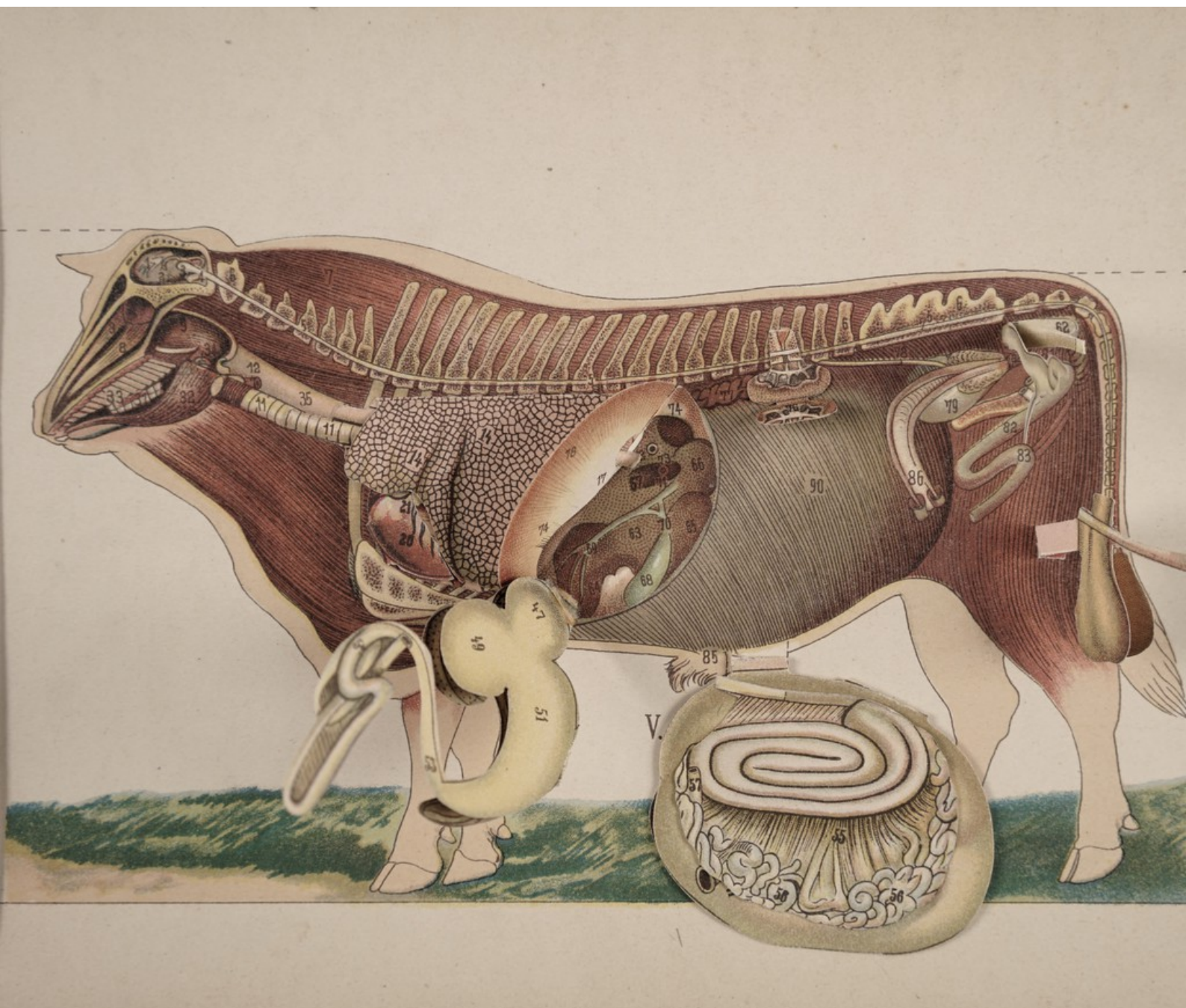












THE ROYAL SOCIETY
for the Promotion
OF HEALTH
LIBRARY

Formerly

