

[Report 1941] / Medical Officer of Health, Chelmsford Borough.

Contributors

Chelmsford (England). Borough Council.

Publication/Creation

1941

Persistent URL

<https://wellcomecollection.org/works/tdfgqeq6>

License and attribution

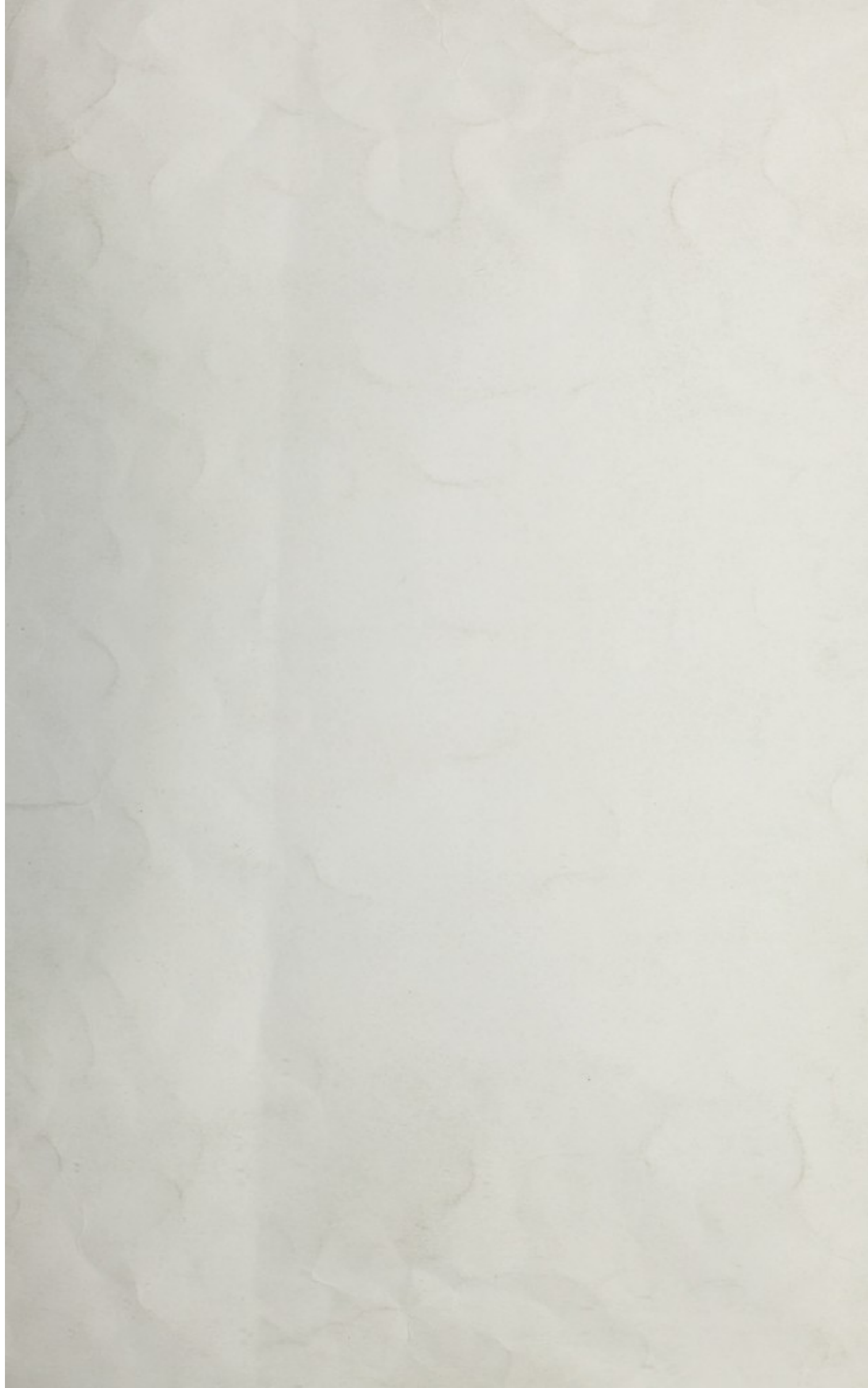
You have permission to make copies of this work under a Creative Commons, Attribution license.


This licence permits unrestricted use, distribution, and reproduction in any medium, provided the original author and source are credited. See the Legal Code for further information.

Image source should be attributed as specified in the full catalogue record. If no source is given the image should be attributed to Wellcome Collection.



Wellcome Collection
183 Euston Road
London NW1 2BE UK
T +44 (0)20 7611 8722
E library@wellcomecollection.org
<https://wellcomecollection.org>





Digitized by the Internet Archive
in 2017 with funding from
Wellcome Library

<https://archive.org/details/b29100835>

Min. Act 411 (1) CHELMSFORD

BOROUGH OF CHELMSFORD
=====



ANNUAL REPORT
=====

of the

M E D I C A L O F F I C E R O F H E A L T H
=====

for the

Year Ended 31st December, 1941.
=====

Including the
REPORTS OF THE CHIEF SANITARY INSPECTOR
and the
VETERINARY INSPECTOR.

o
o

J. MERVYN THOMAS, M.D., B.Sc., D.P.H.

Medical Officer of Health and
School Medical Officer.
Medical Officer - Maternity & Child Welfare.
Medical Superintendent - Joint Isolation Hospital.
Medical Officer - Casualty Services - A.R.P.

R.W. WYNN. C.R.S.I. M.S.I.A.
Chief Sanitary Inspector.

oooooooooooooooooooo

ooooooo



Faint, illegible text at the top center of the page, possibly a header or title.

Faint, illegible text located below the top center text.

Faint, illegible text in the middle section of the page.

Faint, illegible text in the lower middle section of the page.

Faint, illegible text in the lower middle section of the page.

Faint, illegible text in the lower section of the page.

Faint, illegible text in the lower section of the page.

Faint, illegible text in the lower section of the page.

BOROUGH OF CHELMSFORD
 =====

PUBLIC HEALTH OFFICERS OF THE BOROUGH

MEDICAL OFFICER OF HEALTH :

J.MERVYN THOMAS, M.D., B.Sc., D.P.H.

CHIEF SANITARY INSPECTOR :

R.F.WYNN, C.R.S.I. M.S.I.A.

SECOND SANITARY INSPECTOR :

E.A.SELLAR, M.R.S.I. M.S.I.A.

HEALTH VISITORS :

Miss E.E.GLASCODINE, S.R.N. S.C.M. H.v.Cert.
 Miss M.JENKINS. S.R.N. S.C.M. H.V.Cert. (Apptd: 1/1/41)
 Miss E.E.WILDEN. S.R.N. S.C.M. H.V.Cert. (" 1/6/41)

DENTAL SURGEON :

FRANCIS V.MAGUIRE, L.D.S., R.C.S., (Eng:)

CHIEF CLERK :

T.W.BUNTER. M.R.S.I.

CLERKS :

G.H.D.BROWN. (In H.M.Forces.)
 D.G.RUMSEY
 Miss PORTER - Temporary. Appointed July, 1941.
 Sanitary Inspectors - S.V.EDWARDS (In H.M.Forces)
 Department - R.ROOTS. Temporary.

DENTAL ATTENDANT :

Miss D.M. BARNES. (Resigned Feb:1941)
 Miss R.I. LEEKS. Appointed March, 1941.

VETERINARY INSPECTOR :

LIEUT.- COL. W.S.MULVEY, O.B.E., T.D., F.R.C.V.S.

THE UNIVERSITY OF CHICAGO
DEPARTMENT OF CHEMISTRY
540 EAST 57TH STREET
CHICAGO, ILLINOIS 60637
TEL. 773-936-3700
FAX 773-936-3701
WWW.CHEM.UCHICAGO.EDU

BOROUGH OF CHELMSFORD.

@@@@@@@@@@@@@@@@

Public Health Department,
Coval Lane,
Chelmsford.

September, 1942.

To the Mayor, Aldermen and Councillors
of the Borough of Chelmsford.

Mr. Mayor, and Gentlemen,

To comply with the requirements of the Ministry of Health Circular 2604 the following Statistical Review for the Year 1941 is appended. A short outline of the main features before the department during the year is given as it was felt that without this, little interest might be roused in Members of the Council not fully conversant with detailed health statistics.

I have the honour to be,

Your obedient Servant,

J. MERVYN THOMAS.

Medical Officer of Health.

SECRET
U.S. GOVERNMENT PRINTING OFFICE
1950

CONFIDENTIAL
U.S. GOVERNMENT PRINTING OFFICE
1950

CONFIDENTIAL

CONFIDENTIAL

CONFIDENTIAL

CONFIDENTIAL

CONFIDENTIAL

CONFIDENTIAL

The health of a community can only be estimated by its negative rather than its positive results. That is to say, frequent epidemics or obvious ill-health is an index of its failure to control and give service in health matters. I am happy to report once again that in spite of the continuation of hostilities the health of Chelmsford did not in any way deteriorate during the year 1941. In fact there was a decline in many diseases, e.g. cerebro-spinal meningitis where only 2 cases were reported; diphtheria- 9 notifications with one death, this being in a family who had refused free immunisation and the disease was brought by contact while a member of the family was away on holiday in the North; absence of scarlet fever, etc.

It is worth recording that the Maternity & Child Welfare Clinic attendances jumped considerably from 5430 in 1940 to 7085 in 1941, and the respective New Cases seeking advice- 435 to 816 for the two years, while the Ante-Natal Clinic rose from 148 to 167, during the same period.

That quiet and efficient officer-the Health Visitor (there are 3 in Chelmsford)- excelled themselves in performing no less than 7294 visits in 1941 compared with 3,196 in 1940, and of these 209 were in respect of expectant mothers. With the extension of the public health services to include the issuing of clothes coupons, fruit juices and cod liver oil, etc, the public are becoming more and more aware of the benefits that can be obtained by a visit to the clinic, Services which cannot be obtained through the busy practitioner. The old idea that the clinic was something to do with impecuniosity or related to "public assistance" dies hard, but it is encouraging that at any rate Chelmsford is laying this bogey.

Many consultations have been made during the year at the request of practitioners and the department is beginning to feel that there is co-operation at last and any sense of rivalry no longer exists. Our only concern is the health and well-being of the population of Chelmsford.

There were no maternal deaths in 1941 but the infant mortality although below the average for the country and considerably lower than in 1940, still gives cause for concern. Full investigation is made in every case reported with a view to making a detailed statement and recommendation in the future.

The following matters have arisen during the year under review :-

1. Miss Jenkins, Health Visitor, commenced her appointment on 1/1/41.
2. Miss E.E. Wilden, Health Visitor, commenced her appointment on 1/6/41.
3. Immunisation against Organisms of Diphtheria and the Typhoid Group was continued.
4. Occupation of the Clinic by the Ministry of Pensions at a charge of £52 per annum for one whole day per week.
5. A number of Superannuation cases were examined and as a result a scheme to place Superannuation on a definite footing was introduced and accepted by the Council.

The Scheme includes:-

- (a) High Standard required as for insurance schemes.
 - (b) Routine forms to be completed by Medical Officer of Health or candidates own doctor.
 - (c) Medical Officer of Health to act as advisor in these Medical Reports.
 - (d) Superannuation Committee to confirm or otherwise Medical Reports.
 - (e) Examinations and Report should be submitted by the Medical Officer of Health (or if impossible by reason of severe illness the employee's own practitioner) on continued absence from employment exceeding 1 month.
 - (f) All Medical records to be kept in the files of the Medical Officer of Health.
6. In May it was reported that 1,402 cases had accepted free immunisation against Diphtheria.
 7. Gift of 4 bottles of Concentrated Fish Liver Oil (Navitol) from U.S.A. and presented by the American Jewish Children to British Children.

The work of the Committee during the year 1911, in the field of the investigation of the causes of the disease, has been directed towards the study of the inheritance of the disease, and the study of the inheritance of the disease, and the study of the inheritance of the disease.

It is worthy of mention that the Committee has during the year 1911, in the field of the investigation of the causes of the disease, has been directed towards the study of the inheritance of the disease, and the study of the inheritance of the disease.

The work of the Committee during the year 1911, in the field of the investigation of the causes of the disease, has been directed towards the study of the inheritance of the disease, and the study of the inheritance of the disease, and the study of the inheritance of the disease.

Very respectfully,
The Secretary

There were no reported deaths in 1911, but the rate of mortality was higher than in 1910, and the rate of mortality was higher than in 1910, and the rate of mortality was higher than in 1910.

A detailed report on the work of the Committee during the year 1911, in the field of the investigation of the causes of the disease, has been directed towards the study of the inheritance of the disease, and the study of the inheritance of the disease.

Committee of the Board of Health, in the field of the investigation of the causes of the disease, has been directed towards the study of the inheritance of the disease, and the study of the inheritance of the disease.

Health Board, in the field of the investigation of the causes of the disease, has been directed towards the study of the inheritance of the disease, and the study of the inheritance of the disease.

Health Board, in the field of the investigation of the causes of the disease, has been directed towards the study of the inheritance of the disease, and the study of the inheritance of the disease.

Health Board, in the field of the investigation of the causes of the disease, has been directed towards the study of the inheritance of the disease, and the study of the inheritance of the disease.

8. The Education Committee permitted children between 4-5 years of age to attend school in the absence of Nursery Classes.
9. The Maternity Home at Writtle Park was visited and inspected.
10. On August 1st, the department arranged to issue 50 Clothing Coupons to an Expectant Mother at the request of the Government.
11. Arrangements were made re Mutual Assistance.
12. The question of a Blood Transfusion Scheme was before the Council.
13. Mr.G.D.W.Brown, Junior Clerk in the Public Health Department was called to the Services on 9th August, 1941.
14. The Maternity and Child Welfare Department were asked to take over the issue of free Fruit Juices and Cod Liver Oil.
15. The question of War-Time Nurseries was actively in mind and the final result will be reported in the 1942 Annual Report.
16. Alternative arrangements were made for disinfecting etc, with the St. John's Hospital.
17. The Medical Officer of Health was appointed to attend the Chelmsford Welfare Committee.
18. Homeless Persons Scheme.

The following Circulars were issued:-

- | | | |
|----|--------------------------------|--|
| a. | Ministry of Health Circular | 2283-Evacuation-Health and Welfare Services. |
| b. | do | 2342-Supply of Milk to Mothers, and Children. National Dried Milk. |
| c. | do | 2388-and Board of Education 1553 - War-Time Nurseries for Care of Children under 5 years of age. |
| d. | do | 2422-Care of Children who become Orphans as the result of Enemy Action. |
| e. | do | 246 - re Sanitary Inspectors and Age Reservation. |
| f. | do | 2520-Distribution of Fruit Juices and Cod Liver Oil. |
| g. | do | 2517- Scabies Order. Extended Powers to Local Authorities. |
| h. | National Service Acts 1939-41. | - Circular 2456. |

My thanks are due once again to Mr. Bunter, my Chief Clerk, and to members of the Health Department, for the constant support in these difficult and changing times

J. Mervyn Thomas.

Medical Officer of Health.

1. The Commission on the Status of Women was established in 1946 to study the status of women in the United States and to make recommendations for their improvement. The Commission was the first of its kind in the United States and was a direct result of the United Nations Conference on Women in 1945.

2. The Commission's first report, "The Status of Women in the United States," was published in 1947. It was the first time that the status of women in the United States was officially documented and analyzed.

3. The Commission's second report, "The Status of Women in the United States: A Progress Report," was published in 1950. It provided a detailed analysis of the progress made since the first report and identified areas where further action was needed.

4. The Commission's third report, "The Status of Women in the United States: A Progress Report," was published in 1953. It continued the analysis and provided recommendations for further action.

5. The Commission's fourth report, "The Status of Women in the United States: A Progress Report," was published in 1956. It provided a comprehensive overview of the status of women in the United States and made recommendations for further action.

6. The Commission's fifth report, "The Status of Women in the United States: A Progress Report," was published in 1959. It provided a detailed analysis of the progress made since the first report and identified areas where further action was needed.

7. The Commission's sixth report, "The Status of Women in the United States: A Progress Report," was published in 1962. It provided a comprehensive overview of the status of women in the United States and made recommendations for further action.

8. The Commission's seventh report, "The Status of Women in the United States: A Progress Report," was published in 1965. It provided a detailed analysis of the progress made since the first report and identified areas where further action was needed.

9. The Commission's eighth report, "The Status of Women in the United States: A Progress Report," was published in 1968. It provided a comprehensive overview of the status of women in the United States and made recommendations for further action.

10. The Commission's ninth report, "The Status of Women in the United States: A Progress Report," was published in 1971. It provided a detailed analysis of the progress made since the first report and identified areas where further action was needed.

11. The Commission's tenth report, "The Status of Women in the United States: A Progress Report," was published in 1974. It provided a comprehensive overview of the status of women in the United States and made recommendations for further action.

12. The Commission's eleventh report, "The Status of Women in the United States: A Progress Report," was published in 1977. It provided a detailed analysis of the progress made since the first report and identified areas where further action was needed.

13. The Commission's twelfth report, "The Status of Women in the United States: A Progress Report," was published in 1980. It provided a comprehensive overview of the status of women in the United States and made recommendations for further action.

14. The Commission's thirteenth report, "The Status of Women in the United States: A Progress Report," was published in 1983. It provided a detailed analysis of the progress made since the first report and identified areas where further action was needed.

15. The Commission's fourteenth report, "The Status of Women in the United States: A Progress Report," was published in 1986. It provided a comprehensive overview of the status of women in the United States and made recommendations for further action.

16. The Commission's fifteenth report, "The Status of Women in the United States: A Progress Report," was published in 1989. It provided a detailed analysis of the progress made since the first report and identified areas where further action was needed.

17. The Commission's sixteenth report, "The Status of Women in the United States: A Progress Report," was published in 1992. It provided a comprehensive overview of the status of women in the United States and made recommendations for further action.

18. The Commission's seventeenth report, "The Status of Women in the United States: A Progress Report," was published in 1995. It provided a detailed analysis of the progress made since the first report and identified areas where further action was needed.

19. The Commission's eighteenth report, "The Status of Women in the United States: A Progress Report," was published in 1998. It provided a comprehensive overview of the status of women in the United States and made recommendations for further action.

20. The Commission's nineteenth report, "The Status of Women in the United States: A Progress Report," was published in 2001. It provided a detailed analysis of the progress made since the first report and identified areas where further action was needed.

21. The Commission's twentieth report, "The Status of Women in the United States: A Progress Report," was published in 2004. It provided a comprehensive overview of the status of women in the United States and made recommendations for further action.

22. The Commission's twenty-first report, "The Status of Women in the United States: A Progress Report," was published in 2007. It provided a detailed analysis of the progress made since the first report and identified areas where further action was needed.

23. The Commission's twenty-second report, "The Status of Women in the United States: A Progress Report," was published in 2010. It provided a comprehensive overview of the status of women in the United States and made recommendations for further action.

24. The Commission's twenty-third report, "The Status of Women in the United States: A Progress Report," was published in 2013. It provided a detailed analysis of the progress made since the first report and identified areas where further action was needed.

25. The Commission's twenty-fourth report, "The Status of Women in the United States: A Progress Report," was published in 2016. It provided a comprehensive overview of the status of women in the United States and made recommendations for further action.

26. The Commission's twenty-fifth report, "The Status of Women in the United States: A Progress Report," was published in 2019. It provided a detailed analysis of the progress made since the first report and identified areas where further action was needed.

27. The Commission's twenty-sixth report, "The Status of Women in the United States: A Progress Report," was published in 2022. It provided a comprehensive overview of the status of women in the United States and made recommendations for further action.

Statistics:-

Area (in acres)	4,755.
Registrar-General's estimate of Civilian population, mid-year 1941				Omitted.
Number of inhabited houses (end of 1941) according to Rate Books				Omitted.
Rateable Value (1st April, 1941)	£340,472.
Sum represented by a Penny Rate Year ending 31st March, 1941.	£ 1,371.

EXTRACTS FROM VITAL STATISTICS.

Birth-rate per 1,000 estimated civilian population mid-1941
14.14

Rate per 1,000 total (live and still) births - 44.7

Death-rate per 1,000 civilian population - 10.7

Death-rate of infants under 1 year of age:-

(a) All infants per 1,000 live births - 42.54

(b) Legitimate infants per 1,000 legitimate live births - 40.42

(c) Illegitimate infants per 1,000 illegitimate live births - 45.45

Deaths from Puerperal causes:-

Puerperal Sepsis Nil - Rate per 1,000 total
Other Puerperal Causes .. Nil (live and still births)

Deaths from Cancer (all ages) 54

Deaths from Whooping Cough (all ages) 2

Deaths from Measles (all ages) 1

Deaths from Diarrhoea &c (under 2 years of age) .. Nil

COMPARATIVE TABLE OF BIRTH & DEATH RATES DURING THE YEAR 1941 :-

	Rate per 1,000 Civilian Population		Deaths under one year per 1,000 registered live births.
	Live Births	Deaths from all causes	
England & Wales	14.2	12.9	59
126 County Borough and great towns, including London ..	14.7	14.9	71
148 smaller towns with estimated resident population of from 25,000 to 50,000 (1931 Census)	16.4	13.0	56
Chelmsford Borough	14.14	10.7	42.54

DEED

Know all men by these presents that the undersigned, the State of Texas, do hereby certify that the within and foregoing is a true and correct copy of the original as the same appears in the records of the County Clerk of this County, Texas.

WITNESSETH

That the within and foregoing is a true and correct copy of the original as the same appears in the records of the County Clerk of this County, Texas.

Given under my hand and the seal of the County Clerk of this County, Texas, this 1st day of January, 1900.

ATTEST

Date	Page		Book
	Top	Bottom	
1900	100	100	100
1900	100	100	100
1900	100	100	100
1900	100	100	100

DEATHS

DEATHS AT VARIOUS AGES DURING THE YEAR 1941.

1	1-2	2-5	5-15	15-25	25-35	35-45	45-55	55-65	65-75	75 +
9	1	1	7	8	9	17	39	69	84	104

DEATHS FROM ALL CAUSES 1941 .

Causes of Death	Males	Females	TOTAL
Typhoid and Paratyphoid Fevers ..	-	-	-
Measles ..	1	-	1
Scarlet Fever ..	-	-	-
Whooping Cough ..	1	1	2
Diphtheria ..	-	1	1
Influenza ..	1	-	1
Cerebro-spinal Fever ..	1	1	2
Tuberculosis of the Respiratory System ..	8	6	14
Other Tuberculous Diseases ..	-	2	2
Syphilitic Diseases ..	1	-	1
Cancer of b.cav. & oesoph: (M)uterus(F) ..	3	6	9
Cancer of Stomach & duodenum ..	6	7	13
Cancer of Breast ..	-	2	2
Cancer of all sites ..	16	14	30
Diabetes ..	-	2	2
Intra Cran: Vasc: Lesions ..	15	13	28
Heart Disease ..	40	29	69
Other Circulatory Diseases ..	9	4	13
Bronchitis ..	10	10	20
Pneumonia ..	7	8	15
Other Respiratory Diseases ..	4	3	7
Ulcer of Stomach or Duodenum ..	5	-	5
Diarrhoea etc (under 2 years of age) ..	-	-	-
Appendicitis ..	-	1	1
Other Digestive Diseases ..	2	8	10
Nephritis ..	2	4	6
Puerperal & Post-abortion: Sepsis ..	-	-	-
Other Maternal Causes ..	-	-	-
Con:mal: birth inj: infant:dis: ..	4	5	9
Premature birth ..	4	3	7
Suicide ..	4	2	6
Other violent causes ..	16	5	21
Road Traffic Act ..	4	1	5
All other causes ..	25	30	55
Poliomyelitis ..	-	-	-
Ac:Inf:Encephalitis ..	1	-	1
TOTALS ..	190	168	358

1913
27
1913

RECORDS OF THE
COURT OF COMMONS

No.	Name	Profession	Residence	Age	Religion	Marital Status	Education	Other
1
2
3
4
5
6
7
8
9
10
11
12
13
14
15
16
17
18
19
20
21
22
23
24
25
26
27
28
29
30
31
32
33
34
35
36
37
38
39
40
41
42
43
44
45
46
47
48
49
50
51
52
53
54
55
56
57
58
59
60
61
62
63
64
65
66
67
68
69
70
71
72
73
74
75
76
77
78
79
80
81
82
83
84
85
86
87
88
89
90
91
92
93
94
95
96
97
98
99
100

GENERAL PROVISION OF HEALTH SERVICES:-

Public Health Officers of the Authority - See page 2.

NURSING IN THE HOME-

(a) General. There are four District Nurses practising in the Borough.

LABORATORY FACILITIES.

Pathological and bacteriological examinations and analyses of water, milk, food etc. are made by the Counties Public Health Laboratories.

LEGISLATION IN FORCE.

Ministry of Health Circulars and amendments received during the year have been mentioned.

HOSPITALS.

Chelmsford & Essex Hospital and Dispensary (Voluntary).

Accommodation:-

	M.	F.	Total.
General Medical	24	25	49
General Surgical	42	27	69
Children, medical and surgical	-	-	27
Private Wards	-	-	10
Total			<u>155</u>

Details of the Out-patients Department are as follows:-

Massage, Electrical and Sunlight Departments	These departments are open daily.
X - Ray Department	The Radiologist attends at the Hosp: on Monday, Wednesday and Friday afternoons.
Casualty Department	This department is open daily.

Out-patients Clinics :-

Tuesday - 11 a.m.	Surgical Genito-urinary	Mr. M. D. Sheppard.
- 3.30 p.m.	Ear, Nose & Throat	Mr. Martin Henry.
Thursday 10 a.m.	Diabetic Cases	Dr. F. E. Camps.
Friday 10 a.m.	Surgical Orthopaedic	Mr. H. A. H. Harris.
1.30 p.m.	Ophthalmic	Dr. S. G. Corner.
Saturday 9 a.m.	Medical Pathological	Dr. F. E. Camps.

THE UNIVERSITY OF CALIFORNIA
SCHOOL OF MEDICINE
DEPARTMENT OF PATHOLOGY

LABORATORY FACILITIES
The Department of Pathology is equipped with the following facilities:
1. Anatomical Laboratory
2. Bacteriology Laboratory
3. Biochemistry Laboratory
4. Hematology Laboratory
5. Histology Laboratory
6. Microbiology Laboratory
7. Pathology Laboratory
8. Pharmacology Laboratory
9. Physiology Laboratory
10. Radiology Laboratory

LABORATORY FACILITIES
The Department of Pathology is equipped with the following facilities:
1. Anatomical Laboratory
2. Bacteriology Laboratory
3. Biochemistry Laboratory
4. Hematology Laboratory
5. Histology Laboratory
6. Microbiology Laboratory
7. Pathology Laboratory
8. Pharmacology Laboratory
9. Physiology Laboratory
10. Radiology Laboratory

LABORATORY FACILITIES
The Department of Pathology is equipped with the following facilities:
1. Anatomical Laboratory
2. Bacteriology Laboratory
3. Biochemistry Laboratory
4. Hematology Laboratory
5. Histology Laboratory
6. Microbiology Laboratory
7. Pathology Laboratory
8. Pharmacology Laboratory
9. Physiology Laboratory
10. Radiology Laboratory

LABORATORY FACILITIES
The Department of Pathology is equipped with the following facilities:
1. Anatomical Laboratory
2. Bacteriology Laboratory
3. Biochemistry Laboratory
4. Hematology Laboratory
5. Histology Laboratory
6. Microbiology Laboratory
7. Pathology Laboratory
8. Pharmacology Laboratory
9. Physiology Laboratory
10. Radiology Laboratory

LABORATORY FACILITIES
The Department of Pathology is equipped with the following facilities:
1. Anatomical Laboratory
2. Bacteriology Laboratory
3. Biochemistry Laboratory
4. Hematology Laboratory
5. Histology Laboratory
6. Microbiology Laboratory
7. Pathology Laboratory
8. Pharmacology Laboratory
9. Physiology Laboratory
10. Radiology Laboratory

LABORATORY FACILITIES
The Department of Pathology is equipped with the following facilities:
1. Anatomical Laboratory
2. Bacteriology Laboratory
3. Biochemistry Laboratory
4. Hematology Laboratory
5. Histology Laboratory
6. Microbiology Laboratory
7. Pathology Laboratory
8. Pharmacology Laboratory
9. Physiology Laboratory
10. Radiology Laboratory

LABORATORY FACILITIES
The Department of Pathology is equipped with the following facilities:
1. Anatomical Laboratory
2. Bacteriology Laboratory
3. Biochemistry Laboratory
4. Hematology Laboratory
5. Histology Laboratory
6. Microbiology Laboratory
7. Pathology Laboratory
8. Pharmacology Laboratory
9. Physiology Laboratory
10. Radiology Laboratory

LABORATORY FACILITIES
The Department of Pathology is equipped with the following facilities:
1. Anatomical Laboratory
2. Bacteriology Laboratory
3. Biochemistry Laboratory
4. Hematology Laboratory
5. Histology Laboratory
6. Microbiology Laboratory
7. Pathology Laboratory
8. Pharmacology Laboratory
9. Physiology Laboratory
10. Radiology Laboratory

Chelmsford Public Assistance Institution (Managed by the Essex County Council).

The Chelmsford Joint Isolation Hospital:-

	Males	Females	Total
Diphtheria Block	4	6	10
Scarlet Fever Block	6	5	11
" " " for observation	1	1	2
Pavilion (Scarlet Fever or other diseases)	10	10	20
" " for observation	1	1	<u>2</u>
Total	<u>45</u>

AMBULANCE FACILITIES.

- (a) For Infectious Cases. A motor ambulance is maintained by the Chelmsford Joint Hospital Board for conveyance of patients. In addition an older motor ambulance is in use for carrying articles for disinfection and disinfection to and from the hospital.
- (b) For Non-infectious and Accident Cases, and
- (c) For Maternity Patients.

These cases are dealt with by the St. John's Ambulance Brigade under agreement with the Town Council at an inclusive cost of £275 per annum.

The number of cases dealt with in 1941, and the mileage covered by the ambulance are as follows:-

40 Accidents	202 miles.
596 Removals	2904 miles
<u>636</u> Cases	<u>3106</u> Miles.

This scheme automatically solves the problem of co-ordination of ambulance services with neighbouring authorities. The St. John's Ambulances are, of course, not restricted to the Borough. They also serve the surrounding district.

SMALLPOX.

Arrangements as in previous years.

MATERNITY.

Our arrangements for the Institutional treatment at St. John's Hospital, Wood St, of cases of complications arising during pregnancy or confinement, and for cases where the home environment is unsatisfactory, remains as before.

165 Borough Cases were admitted to St. John's Hospital for confinement during the year. Social and economic circumstances account for the marked increase.

THE UNIVERSITY OF CHICAGO
DEPARTMENT OF CHEMISTRY

REPORT ON THE PROGRESS OF RESEARCH
DURING THE YEAR 1954

BY
DR. ROBERT M. HARRIS

CHICAGO, ILLINOIS
1955

CHICAGO, ILLINOIS
1955

CHICAGO, ILLINOIS
1955

CHICAGO, ILLINOIS
1955

CHICAGO, ILLINOIS
1955

CHICAGO, ILLINOIS
1955

CHICAGO, ILLINOIS
1955

CHICAGO, ILLINOIS
1955

CHICAGO, ILLINOIS
1955

CHICAGO, ILLINOIS
1955

CHICAGO, ILLINOIS
1955

CHICAGO, ILLINOIS
1955

CHICAGO, ILLINOIS
1955

CHICAGO, ILLINOIS
1955

CHICAGO, ILLINOIS
1955

CHICAGO, ILLINOIS
1955

CHICAGO, ILLINOIS
1955

CHICAGO, ILLINOIS
1955

CHICAGO, ILLINOIS
1955

CHICAGO, ILLINOIS
1955

CHICAGO, ILLINOIS
1955

MATERNITY AND CHILD WELFARE

CLINIC AND TREATMENT CENTRES.

These are as set out in the Table on Page 15.

ATTENDANCES AT INFANT WELFARE CENTRES:-

Children under 1 year	1940 3182	1941 3053
Children between 1 and 5 years ..	2248	4032
Total	5430	7085

Number who attended for the first time during the year :-

Children under 1 year	251	382
Children between 1 and 5 years	204	434
Total	435	816

ANTE - NATAL CLINIC.

Attendances	148	167
---------------------	-----	-----

POST - NATAL CLINIC.

Attendances	5	6
---------------------	---	---

The Ante-Natal and Post-Natal Clinics are held on the first and third Wednesday's in each month. Mothers are encouraged to attend 6 weeks or so after confinement for post-natal examination.

In addition, married women, where pregnancy would endanger health, are, on their request, given instruction in Birth Control.

MILK.

The Maternity and Child Welfare Committee have instituted a scheme to supplement feeding in necessitous and difficult cases on the recommendation of the Medical Officer.

MUNICIPAL MIDWIVES.

1. Ritchie, Mrs. M.E.	79 Springfield Park Av:	Tel. No. 3815
2. Illingworth, Mrs. E.	40 Kings Road.	3817
3. Miller, Miss E.M.	"Lonicera", St. Mildred's Rd.	3816
4. Westlake, Miss I.G.	"Hemingway", 65 First Av:	3814
5. Wilkins, Miss M.A.	50, Bruce Grove.	2428

There are 5 other Certified Midwives in practice in the area and 1 Registered Nursing Home:- St. John's Nursing Home, Broomfield Rd.

INSPECTION OF NURSING HOMES, ETC.

Inspections are carried out by the Essex County Council, which is the Local Supervising Authority.

Page 1 of 1

1998

1998

1998

1998

1998

1998

1998

1998

1998

1998

1998

1998

1998

DENTAL SERVICE.

Dental treatment for expectant and nursing mothers and children under five years of age has been carried out during the year, and the following is a summary of the work done :-

No. of attendances made by patients	526
No. of Patients treated	422
<u>Fillings -</u>			
Permanent teeth	54
Temporary "	78
<u>Extractions-</u>			
Permanent "	198
Temporary "	99
<u>Other Operations -</u>			
Permanent "	175
Temporary "	164
Administrations of General anaesthetic for extractions	77

PUBLIC HEALTH ACT. 1936.

CHILD LIFE PROTECTION.

- (a) Number of persons who were receiving children for reward at the end of the year .. 8
- (b) Number of children on Register -
1. At the end of the year 17
 2. Who died during the year Nil
 3. On whom inquests were held during the year Nil
- (c) Proceedings taken during the year -
1. Number of cases Nil
 2. Act and Section under which the proceedings were taken Nil

HEALTH VISITING.

The Health Visitors have made the following visits during the year :-

	<u>1st Visits</u>	<u>Total Visits</u>
To expectant mothers	186	209
To children under 1 year of age ..	556	3053
To children between the ages of 1 and 5 years	-	4032
Totals	742	7,294

1

General Summary of the Report and Results of the
Investigation into the Cause of the
Failure of the Bridge at the City of New York

By the Honorable Board of Commissioners of the City of New York

Published by the City of New York, 1907

Printed by the City of New York, 1907

Price, 10 Cents

Copyright, 1907, by the City of New York

Published by the City of New York, 1907

Printed by the City of New York, 1907

Price, 10 Cents

Copyright, 1907, by the City of New York

Published by the City of New York, 1907

Printed by the City of New York, 1907

Price, 10 Cents

Copyright, 1907, by the City of New York

Published by the City of New York, 1907

Printed by the City of New York, 1907

Price, 10 Cents

Copyright, 1907, by the City of New York

INSTITUTIONAL PROVISION FOR -

- (a) Unmarried Mothers. The only arrangement is that supplied by the Public Assistance Committee of the Essex County Council.
After the lying-in period, however, they may be helped by the Girls' Aid Society, who have a Hostel just outside the Borough.
- (b) Illegitimate Infants
(c) Homeless Children
- } The Public Assistance Institution is available.

PREVENTION OF BLINDNESS.

No cases occurred requiring action under Section 176 of the Public Health Act, 1936.

SANITARY CIRCUMSTANCES OF THE AREA.

WATER :

Detailed Reports from the Water Engineer and Analyst have been examined.

Samples taken from a variety of sources are reported upon as a "wholesome water, suitable for the purposes of public supply."

DRAINAGE AND SEWERAGE :

Certain works have been carried out in connection with sewage and drainage during the year.

SEWERAGE WORKS :

No change since the last Report.

RIVERS AND STREAMS :

A close watch is kept on the rivers within the Borough, and all possible steps taken to prevent pollution.

PUBLIC CLEANSING :

There has been no alteration in the method of refuse collection and disposal during the year. The Refuse Tip has been further extended and land prepared for tipping.

NUMBER OF NEW HOUSES ERECTED DURING THE YEAR :

1. By the Local Authority	Nil
2. By other Local Authorities	Nil
3. By other Bodies or Persons	13
			13
Total	13

... ..
... ..
... ..

(a)
... ..
... ..

(b)
... ..
... ..

(c)
... ..
... ..

(d)
... ..
... ..

(e)
... ..
... ..

(f)
... ..
... ..

(g)
... ..
... ..

(h)
... ..
... ..

(i)
... ..
... ..

NUTRITION.

Any necessary advice on this subject is given at the various Clinics. Malnutrition continues to remain uncommon in the Borough.

TYPHOID IMMUNISATION.

This service was continued during the year.

DIPHTHERIA IMMUNISATION.

Active Immunisation was continued throughout the year.

CEREBRO-SPINAL MENINGITIS.

Only 2 cases reported during the year.

SCARLET FEVER.

The number of cases notified during the year was 14 .
This disease calls for no further comment for the present year.

MEASLES & WHOOPING COUGH .

No. of cases notified -	544
Measles			
No. of cases notified -			
Whooping Cough	133

A more accurate estimate has been obtained this year following a reminder to the practitioners of compulsory notification.

VACCINATION .

No vaccinations have been performed by the Medical Officer of Health.

PUBLIC VACCINATORS :-

C.W.Alford, Esq., M.D.	68, Duke St. Chelmsford.
R.W.Willcocks, Esq., M.B.	194, Springfield Rd. Chelmsford.
J.T.Whitley, Esq., M.B.	18, New London Road. Chelmsford.

TUBERCULOSIS.

The notified cases are shown on page 17 of this Report.

MORTUARIES.

The combined arrangements for Mortuaries of the Borough and Rural Councils has resulted in provision being made at Galleywood for extended Mortuary premises.

GENERAL HEALTH.

Although rationing is in force, the inauguration of the British Restaurants, so successful in Chelmsford, nutrition remains good and reflects in the continued high standard of health among all ages. No doubt the various Youth Organisations now in being will contribute largely to the future fitness of the nation with Chelmsford as no exception.

THE SECRETARY OF THE BOARD OF HEALTH
WASHINGTON, D. C.

REPORT

ON THE

PROGRESS

OF THE

WORK

FOR

1911

THE BOARD OF HEALTH OF THE DISTRICT OF COLUMBIA
HAS THE HONOR TO ACKNOWLEDGE THE RECEIPT OF THE
REPORT OF THE COMMISSIONER OF HEALTH FOR THE YEAR
1911.

THE BOARD OF HEALTH OF THE DISTRICT OF COLUMBIA
HAS THE HONOR TO ACKNOWLEDGE THE RECEIPT OF THE
REPORT OF THE COMMISSIONER OF HEALTH FOR THE YEAR
1911.

THE BOARD OF HEALTH OF THE DISTRICT OF COLUMBIA
HAS THE HONOR TO ACKNOWLEDGE THE RECEIPT OF THE
REPORT OF THE COMMISSIONER OF HEALTH FOR THE YEAR
1911.

THE BOARD OF HEALTH OF THE DISTRICT OF COLUMBIA
HAS THE HONOR TO ACKNOWLEDGE THE RECEIPT OF THE
REPORT OF THE COMMISSIONER OF HEALTH FOR THE YEAR
1911.

THE BOARD OF HEALTH OF THE DISTRICT OF COLUMBIA
HAS THE HONOR TO ACKNOWLEDGE THE RECEIPT OF THE
REPORT OF THE COMMISSIONER OF HEALTH FOR THE YEAR
1911.

1911

THE BOARD OF HEALTH OF THE DISTRICT OF COLUMBIA
HAS THE HONOR TO ACKNOWLEDGE THE RECEIPT OF THE
REPORT OF THE COMMISSIONER OF HEALTH FOR THE YEAR
1911.

1911

THE BOARD OF HEALTH OF THE DISTRICT OF COLUMBIA
HAS THE HONOR TO ACKNOWLEDGE THE RECEIPT OF THE
REPORT OF THE COMMISSIONER OF HEALTH FOR THE YEAR
1911.

1911

THE BOARD OF HEALTH OF THE DISTRICT OF COLUMBIA
HAS THE HONOR TO ACKNOWLEDGE THE RECEIPT OF THE
REPORT OF THE COMMISSIONER OF HEALTH FOR THE YEAR
1911.

1911

THE BOARD OF HEALTH OF THE DISTRICT OF COLUMBIA
HAS THE HONOR TO ACKNOWLEDGE THE RECEIPT OF THE
REPORT OF THE COMMISSIONER OF HEALTH FOR THE YEAR
1911.

1911

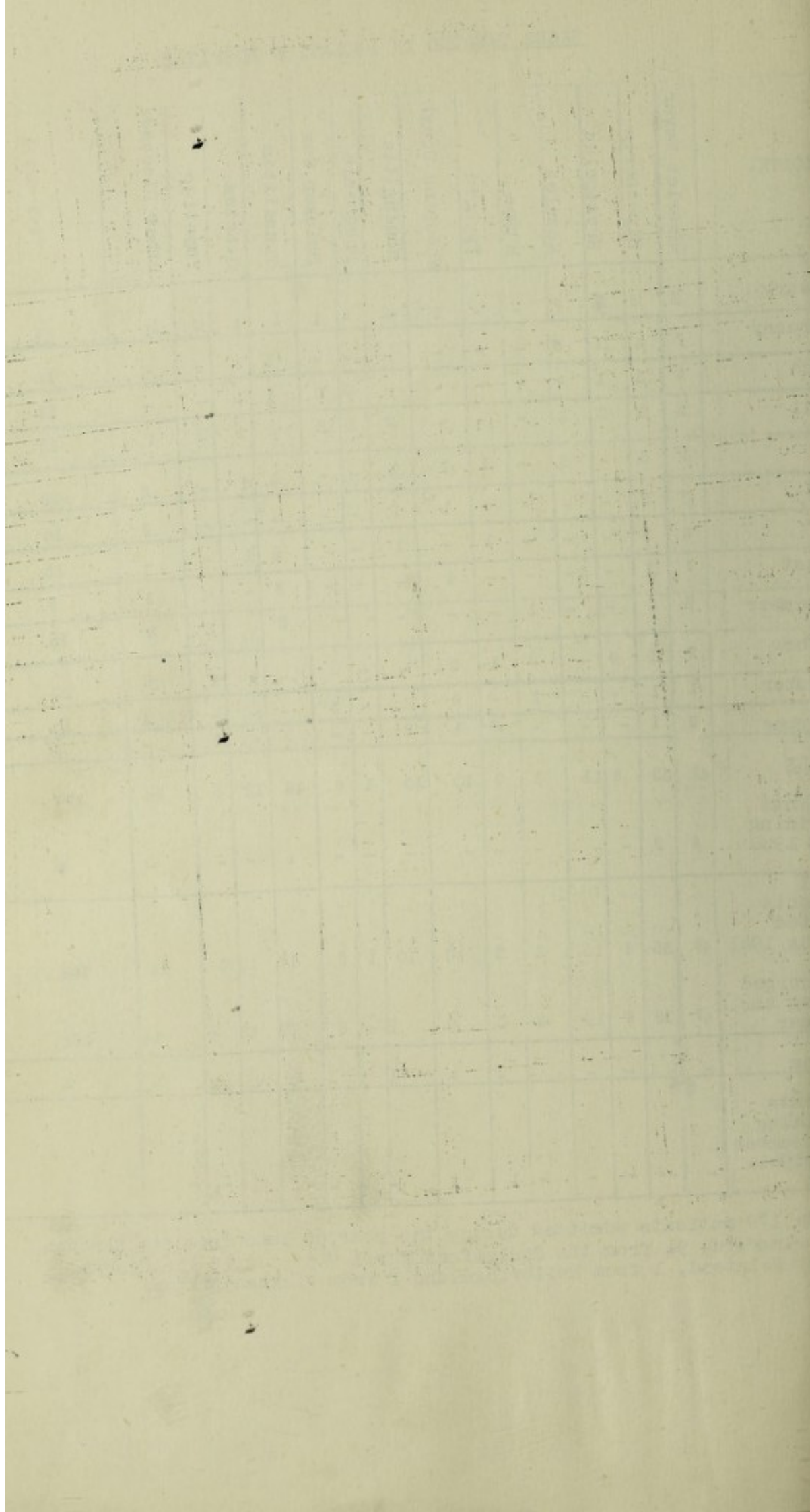
THE BOARD OF HEALTH OF THE DISTRICT OF COLUMBIA
HAS THE HONOR TO ACKNOWLEDGE THE RECEIPT OF THE
REPORT OF THE COMMISSIONER OF HEALTH FOR THE YEAR
1911.

Name	Accommodation	Purpose.	Sessions	By Whom Provided.
Minor Ailments Clinic	Public Health Offices, Coval Lane.	Consultation and treatment of School Children.	Daily 9 to 10a.m.	Local Authority.
Eye Clinic	Public Health Offices, Coval Lane.	Consultation and treatment of School Children.	When necessary & by appointment.	Local Authority.
Mental Clinic.	Public Health Offices, Coval Lane.	(a) Treatment of School Children. (b) Treatment for Expectant and Nursing Mothers and for Infants.	(a) Daily by appointment. (b) 3 Sessions per month by appointment.	Local Authority.
Maternity & Child Welfare Centres.	Public Health Offices, Coval Lane.	Consultation.	Tuesdays & Thursdays, 2 to 4.30 p.m.	Local Authority.
Ante-Natal Clinic and Post-Natal Clinic.	Public Health Offices, Coval Lane.	Consultation.	1st and 3rd Weds. in each month 2.30 to 4.30 p.m.	Local Authority.
Orthopaedic Clinic.	Public Health Offices, Coval Lane.	Consultation and Treatment.	2nd and 4th Monday in each month at 1.30 p.m.	Joint-Local Authority and Essex County Council
Aural Clinic.	Public Health Offices, Coval Lane.	Consultation and Treatment.	By arrangement with the Specialist.	Joint-Local Authority and Essex County Council.
Tuberculosis Dispensary.	Chelmsford & Essex Hospital, London Road.	Consultation and Treatment.	Wednesday 10a.m.	Essex County Council.
Ante-Natal Clinic.	Chelmsford & Essex Hospital, London Road.	Consultation for Chelmsford District cases only. Not for Borough Cases.	1st and 3rd Tues day each month.	Essex County Council.
Venereal Disease Clinic	Chelmsford & Essex Hospital, London Road.	Consultation and Treatment.	Tuesday 6 to 7 p.m. Fridays 11a.m. to 12 noon.	Essex County Council.

CASES TREATED IN ISOLATION HOSPITAL.

MONTH.	Scarlet Fever	Diphtheria	Erysipelas	Measles	Mumps	Typhoid	Whooping Cough	Meningitis	Pneumonia	Chicken Pox	Tonsillitis	Scabies	Impetigo	Other Diseases	TOTAL
January	3	5	5	7	-	-	1	-	-	1	-	1	-	1	21
February	7	4	1	3	-	-	-	-	-	-	2	-	-	-	16
March	5	3	1	-	-	-	-	-	-	2	1	-	-	-	12
April	5	2	2	2	-	-	-	2	1	2	2	1	2	1	22
May	5	8	-	3	-	1	1	3	-	-	4	1	-	2	25
June	2	3	-	-	-	-	1	1	-	-	-	-	-	3	10
July	4	3	-	-	-	1	-	1	-	-	5	1	-	-	15
August	1	1	-	-	-	-	1	-	-	-	3	-	-	1	7
September	3	1	-	-	1	-	-	-	-	-	2	-	1	2	10
October	2	1	2	-	-	1	3	-	-	-	-	9	1	3	22
November	1	1	-	-	1	-	2	1	-	3	-	-	-	1	10
December	3	1	-	-	-	-	1	2	-	-	1	-	1	-	9
TOTALS	41	33	8	15	2	3	10	10	1	8	16	13	5	14	179
Patients remaining from 1940	6	2	-	-	-	-	-	-	-	-	1	-	-	-	9
Total patients treated during 1941	47	35	8	15	2	3	10	10	1	8	17	13	5	14	188
Discharged during the year	47	33	8	15	2	2	9	9	-	8	15	13	4	14	181
Deaths	-	2	-	-	-	-	-	-	1	1	-	-	-	-	4
Patients remaining on December 31st, 1941.	-	-	-	-	-	1	1	-	-	-	-	-	1	-	3

Of the 179 patients admitted during the year, 66 came from the Borough of Chelmsford, 94 from the Chelmsford Rural District, 15 from Ongar, 1 from Felstead, 1 from Hallbridge, and 1 from Wickham Bishop.



NOTIFIABLE DISEASES (OTHER THAN TUBERCULOSIS) DURING THE YEAR 1941.

DISEASE.	Total Cases	Under 1 Year										Over 65	Cases Admitted to Hospital	Total Deaths	Total North Ward	Cases South Ward	Notified East Ward	in West Ward	
		1	2	3	4	5	10	15	20	35	45								
SCARLET FEVER	14	1	1	1	1	2	2	2	2	2	2	2	2	-	8	2	4	-	
DIPHTHERIA	9	-	-	1	2	-	-	2	2	2	2	4	1	2	2	5	2	2	
PUERPERAL FEVER	2	-	-	-	-	-	-	-	-	-	-	-	-	-	1	1	-	-	
PNEUMONIA	29	-	-	-	2	2	4	3	3	3	2	10	2	6	6	5	5	13	
ERYSIPELAS	11	-	-	-	-	1	-	1	4	1	3	1	2	-	5	3	-	3	
WHOOPING COUGH	133	5	15	30	24	26	25	3	-	3	2	-	2	46	31	30	26		
OPHTHALMIA NEONATORUM	4	4	-	-	-	-	-	-	-	-	-	-	-	3	-	1	-		
PARA-TYPHOID B.	2	-	-	-	-	1	-	-	1	-	-	-	2	1	1	-	-		
TYPHOID FEVER	1	-	-	-	-	-	-	1	-	-	-	-	1	-	1	-	-		
MEASLES	544	31	47	79	76	72	213	14	4	4	4	-	-	151	133	152	108		
CEREBRO-SPINAL MENINGITIS	2	-	-	-	-	2	-	-	-	-	-	-	2	1	1	-	-		
MALARIA - Non-Civilian	1	-	-	-	-	-	-	-	1	-	-	-	1	-	-	-	1		
TOTALS=	752	41	63	111	105	102	250	23	10	21	10	5	11	14	6	224	183	192	153

Year	Month	Day	Time	Location	Remarks
1900	Jan	1	10:00
1900	Jan	2	11:00
1900	Jan	3	12:00
1900	Jan	4	13:00
1900	Jan	5	14:00
1900	Jan	6	15:00
1900	Jan	7	16:00
1900	Jan	8	17:00
1900	Jan	9	18:00
1900	Jan	10	19:00
1900	Jan	11	20:00
1900	Jan	12	21:00
1900	Jan	13	22:00
1900	Jan	14	23:00
1900	Jan	15	24:00
1900	Jan	16	25:00
1900	Jan	17	26:00
1900	Jan	18	27:00
1900	Jan	19	28:00
1900	Jan	20	29:00
1900	Jan	21	30:00
1900	Jan	22	31:00
1900	Jan	23	32:00
1900	Jan	24	33:00
1900	Jan	25	34:00
1900	Jan	26	35:00
1900	Jan	27	36:00
1900	Jan	28	37:00
1900	Jan	29	38:00
1900	Jan	30	39:00
1900	Jan	31	40:00

TUBERCULOSIS.

New Cases and Mortality during 1941.

	New Cases.				Deaths.			
	Respiratory		Non-Respiratory		Respiratory		Non-Respiratory.	
	Male	Female	Male	Female	Male	Female	Male	Female
Under 1 year	-	-	-	-	-	-	-	-
to 5 years	-	-	1	1	-	-	-	-
to 15 years	1	-	2	-	-	-	-	-
- 25 years	3	5	1	-	1	-	-	1
- 35 years	5	1	-	-	1	1	-	-
- 45 years	5	3	1	-	2	-	-	-
- 55 years	4	2	-	-	1	2	-	-
- 65 years	-	1	1	-	1	1	-	-
Over 65 years	1	-	-	-	1	-	-	-
Totals	19	12	6	1	7	4	-	1

Non-notified Tuberculosis Deaths 4
 Total Tuberculosis Deaths.....16

PUBLIC HEALTH (TUBERCULOSIS) REGULATIONS 1930.

Statement of Particulars of Cases of Tuberculosis, compiled from the Register for the year ended 31st December, 1941.

	Pulmonary			Non-Pulmonary			Pulmonary and Non-Pulmonary TOTAL.
	Males	Female	Total	Males	Female	Total	
) Number of Cases on the Register on the 1st January, 1941.	78	49	127	30	32	62	189
) Number of Cases NOTIFIED to me under the Regulations for the 1st time during the year.	19	12	31	6	1	7	38
) Number of cases added to the Register during the year which have been brought to notice otherwise than by notification.	-	-	-	-	-	-	-
) Number of Cases removed from the Register during the year.	7	5	12	-	-	-	12
) Number of cases remaining on the Register on the 31st December, 1941.	90	56	146	36	33	69	215

OPHTHALMIA NEONATORUM.

Cases.	TREATED		Vision Unimpaired.	Vision Impaired.	Total Blindness.	Deaths
	At Home,	In Hospital,				
Notified	4	-	4	-	-	-

[The page contains extremely faint, illegible text, likely bleed-through from the reverse side of the paper. The text is scattered across the page and does not form any recognizable words or sentences.]

INSPECTIONS OF DWELLING HOUSES DURING THE YEAR.

(1) (a)	Total number of dwelling houses inspected for housing defects:-		
	Public Health Act	224	} 278
	Housing Act	54	
(b)	Number of inspections made for the purpose:-		
	Public Health Act	442	} 617
	Housing Act	175	
(2) (a)	Number of dwelling houses (included under sub-head (1) above) which were inspected and recorded under the Housing Consolidated Amendment Regulations		54
(b)	Number of inspections made for the purpose		175
(3)	Number of dwelling houses found to be in a state so dangerous or injurious to health as to be unfit for human habitation.. .. .		Suspended
(4)	Number of dwelling houses (exclusive of those referred to under the preceding sub-head) found not to be in all respects reasonably fit for human habitation:-		
	Public Health Act	135	} 142
	Housing Act.. .. .	7	

REMEDY OF DEFECTS DURING THE YEAR WITHOUT SERVICE OF FORMAL NOTICE.

Number of defective dwelling houses rendered fit in consequence of informal action by the Local Authority's Officers:-

Public Health Act	93	} 98
Housing Act	5	

ACTION UNDER STATUTORY POWERS DURING THE YEAR.

A. Proceedings under Sections 9, 10 and 16 of the Housing Act, 1936.

(1)	Number of dwelling houses in respect of which notices were served requiring repairs.. .. .	Nil
(2)	Number of dwelling houses which were rendered fit after service of formal notices:-	
(a)	By owners	Nil
(b)	By the Local Authority in default of owners	Nil

B. Proceedings under Public Health Acts.

(1)	Number of dwelling houses in respect of which notices were served requiring defects to be remedied..	Nil
(2)	Number of dwelling houses in which defects were remedied after service of formal notices:-	
(a)	By owners	Nil
(b)	By the Local Authority in default of the owner	Nil

C. Proceedings under Sections 11 and 13 of the Housing Act 1936.

(1)	Number of dwelling houses in respect of which demolition orders were made	Nil
(2)	Number of dwelling houses demolished in pursuance of Demolition Orders	Nil

D. Proceedings under Section 12 of the Housing Act, 1936.

(1)	Number of separate tenements or underground rooms in respect of which Closing Orders were made ..	Nil
(2)	Number of separate tenements or underground rooms in respect of which Closing Orders were determined, the tenement or room having been rendered fit	Nil

877

R.P. WYNN, M.S.I.A., C.R.S.I.

Public Health Department,

Coval Lane,

Chelmsford.

September, 1942.

TO THE MAYOR, ALDERMEN AND COUNCILLORS OF THE BOROUGH
OF CHELMSFORD.

r. Mayor, Gentlemen,

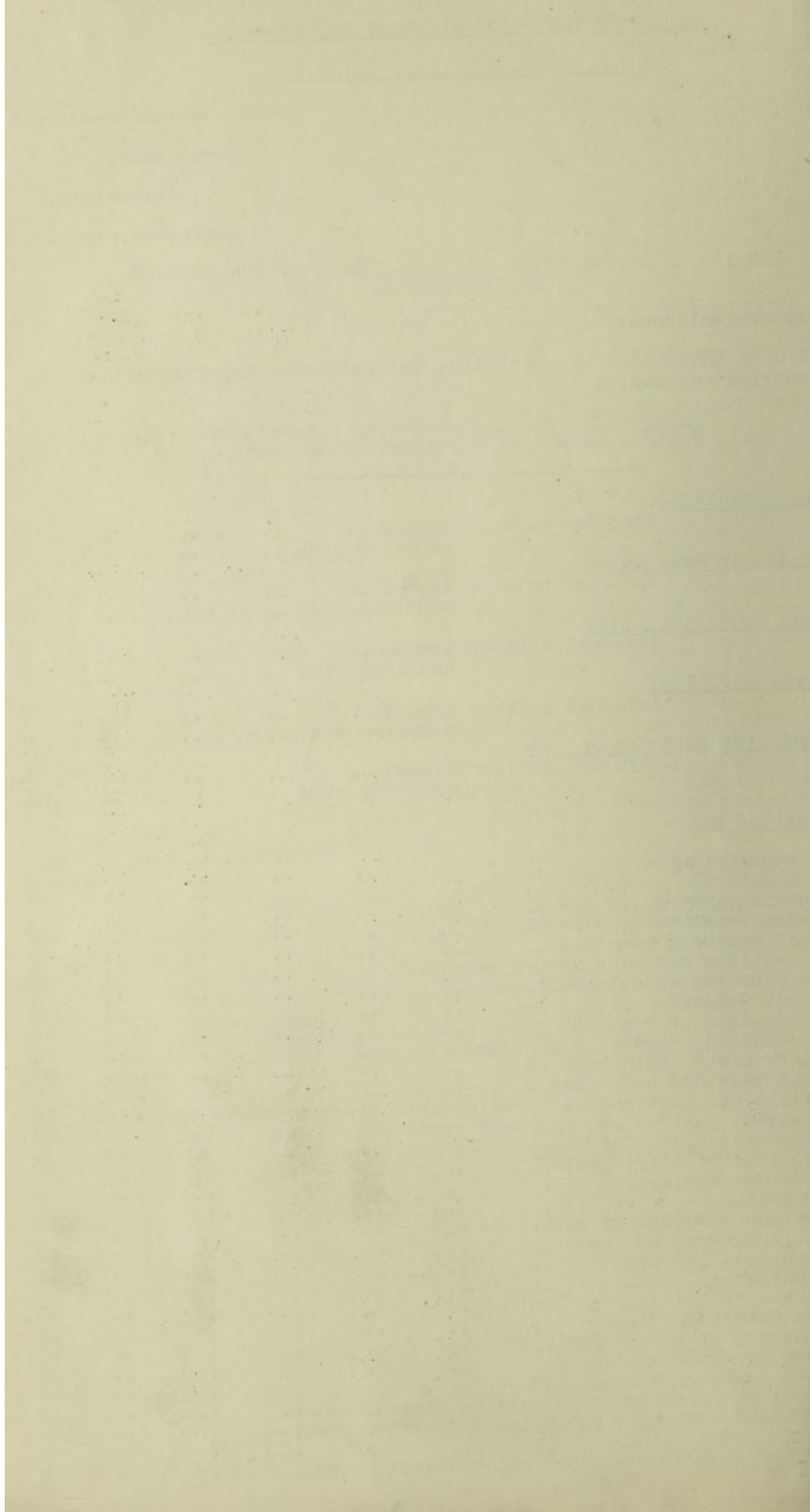
I have the honour of presenting the following brief report on the work carried out during 1941.

Summary of work carried out as a result of
Notices served or Recommendations made.

<u>Housing Act, 1936.</u>							
	Informal notices issued	7
	" " complied with	5
<u>Public Health Act, 1936.</u>							
	Informal notices issued	135
	" " complied with	93
<u>Food and Drugs Act, 1938.</u>							
	Informal Notices issued	9
	" " complied with	7
<u>Factories Act, 1937.</u>							
	Informal notices issued	5
	" " complied with	6
<u>Waste and Litter Destruction Act.</u>							
	Informal notices issued	10
	" " complied with	11

Work carried out:-

houses reconditioned	2
houses demolished	1
overcrowding abated	1
staircases repaired or renewed	18
doors and woodwork repaired	9
walls, ceilings and plasterwork repaired	30
windows repaired or enlarged	25
wash cords renewed	37
floors repaired or renewed	10
stairs repaired, handrails provided	4
unsanitary sinks abolished	10
new sinks provided and fixed	9
defective sink, bath and wash basin waste pipes repaired or renewed	16
roofs, eaves, gutters and chimneys repaired	28
roppers repaired or renewed	4
rainage repairs or renewals	44
houses re-drained	2
C.s repaired	28
road pavings provided or repaired	7
external brickwork repaired	12
water supplies improved	17
litter abolished	1
litter bins provided	16
illness remedied	12
accumulations of refuse removed	13
verminous houses disinfested	22
verminous articles disinfested	500
rooms fumigated following infectious disease	13
library books fumigated following infectious disease	140
cess-pools abolished	1
sewers and watercourses - pollution abated	4



The normal programme cannot be carried out during the present period of hostilities, but this work has been replaced to a great extent by inspections, schedules of condition, repairs and redecorations in respect of property requisitioned by the Billeting Officer.

Particulars of inspections made under the provisions of this Act are given in the Medical Officer of Health's report on Page 18. It is not possible to produce figures in respect of overcrowding owing to the influx of population, many housed by billeting. Nothing short of a complete overcrowding survey would produce figures showing the present situation.

The following inspections have been recorded:-

Public Health Act, 1936.

292	Complaints have been investigated.
666	Inspections made at dwelling houses.
2	" " in connection with offensive trade premises.
2	" " " " common lodging houses.
2	" " " " tents, vans and sheds.
16	" " at offices.
22	" " schools.
25	Inspections and enquiries made in connection with infectious disease.
7	Inspections made in connection with watercourse pollution.
7	" " at the Corporation Swimming Bath.
5	" " cat meat shops.
3	" " flour mills.
6	" " refuse dumps.
9	" " lands, allotments and piggeries.
7	" " 'gardens' Posts.

1 sample of water from the Chelmsford Corporation Swimming Bath was submitted for analysis and bacteriological examination and proved satisfactory.

1 sample of well water was submitted for analysis and bacteriological examination and proved unsatisfactory. The use of this well has been discontinued and a piped supply provided.

Shops Act, 1934.

9 Inspections made at shops.

Food and Drugs Act, 1938.

19	Inspections made at butchers' shops.
16	" " slaughterhouses.
23	" " cafes, restaurants and hotels.
68	" " dairies, milkshops and farms.

The following samples of milks were obtained, submitted for bacteriological examination and all unsatisfactory samples have been followed up:-

	<u>Samples taken.</u>	<u>Satisfactory.</u>	<u>Unsatisfactory.</u>
Ordinary Milk.	7	4	3
Pasteurised.	4	3	1
Accredited.	3	1	2
Tuberculin Tested.	18	17	1
Rinsings - bottles and utensils.	2	1	1
Phosphatase Tests.	4	4	-

17	Inspections made at bakehouses.
98	" " food stores and food shops.
43	" " food stalls on the Market.

The following report was prepared by the
Department of Health, State of New York,
Bureau of Sanitation, Division of Health
and Sanitation, during the year 1930.
The report covers the period from January 1,
1930, to December 31, 1930.

Sanitation and Health

Sanitation

The following table shows the number of
sanitary districts in the State of New York,
and the number of sanitary districts in each
county, during the year 1930. The number of
sanitary districts in each county is shown
in the following table:

The following table shows the number of
sanitary districts in the State of New York,
and the number of sanitary districts in each
county, during the year 1930. The number of
sanitary districts in each county is shown
in the following table:

Health

Health

Health

The following table shows the number of
sanitary districts in the State of New York,
and the number of sanitary districts in each
county, during the year 1930. The number of
sanitary districts in each county is shown
in the following table:

The following table shows the number of
sanitary districts in the State of New York,
and the number of sanitary districts in each
county, during the year 1930. The number of
sanitary districts in each county is shown
in the following table:

The following food has been condemned and surrendered as unfit:-

7 tins Beef. (28 lbs.)	36 lbs. Galantine.
2 - 6 lb. tins Ham.	30 $\frac{3}{4}$ lbs. Bacon.
2 - 6 lb. tins Pork.	182 lbs. Canadian Hams.
1 - 6 lb. tin Ox Tongue.	2 $\frac{1}{2}$ lbs. Meat Roll.
1 - 3 lb. tin Meat Roll.	10 lbs. Liver Sausage.
6 tins Corned Beef.	50 $\frac{1}{2}$ lbs. Luncheon Sausage.
13 tins Chicken and Ham Roll.	1 lb. Pork.
235 tins Fruit.	45 $\frac{1}{2}$ lbs. Butter.
203 tins Various.	4 $\frac{1}{2}$ lbs. Margarine.
129 tins Milk.	82 lbs. Cheese.
1 jar Meat Paste.	1 bottle Sauce.
6 jars Pickles.	2 pkts. Custard.
7 jars Various.	2 lbs. Biscuits.
886 lbs. Fish.	162 lbs. Tomato Puree.
48 $\frac{1}{2}$ lbs. Sausages.	57 $\frac{1}{2}$ lbs. Dundee Cake.
50 lbs. Pig Brawn.	14700 lbs. Flour.
8 $\frac{1}{2}$ lbs. Corned Beef.	3 $\frac{1}{2}$ cwts. Potatoes.
12 lbs. Veal and Ham Galantine.	1 pkt. Sago.
	1360 Canadian Eggs.

2 samples plums and 1 sample cheese were submitted for examination and found satisfactory.

SSEX COUNTY COUNCIL ACT, 1933.

0 Inspections made at ice cream manufacturers' premises.
 6 Inspections made at massage establishments.
 7 samples of ice cream have been submitted for analysis,
 3 satisfactory, 4 unsatisfactory.

RATS AND MICE (DESTRUCTION) ACT.

0 Inspections made at stores and shops.

FACTORIES ACT, 1937.

5 Inspections made at factories and work places.

PETROLEUM ACTS.

The situation of petroleum storage is controlled, for the time being, in conjunction with the requirements of the Military Authority.

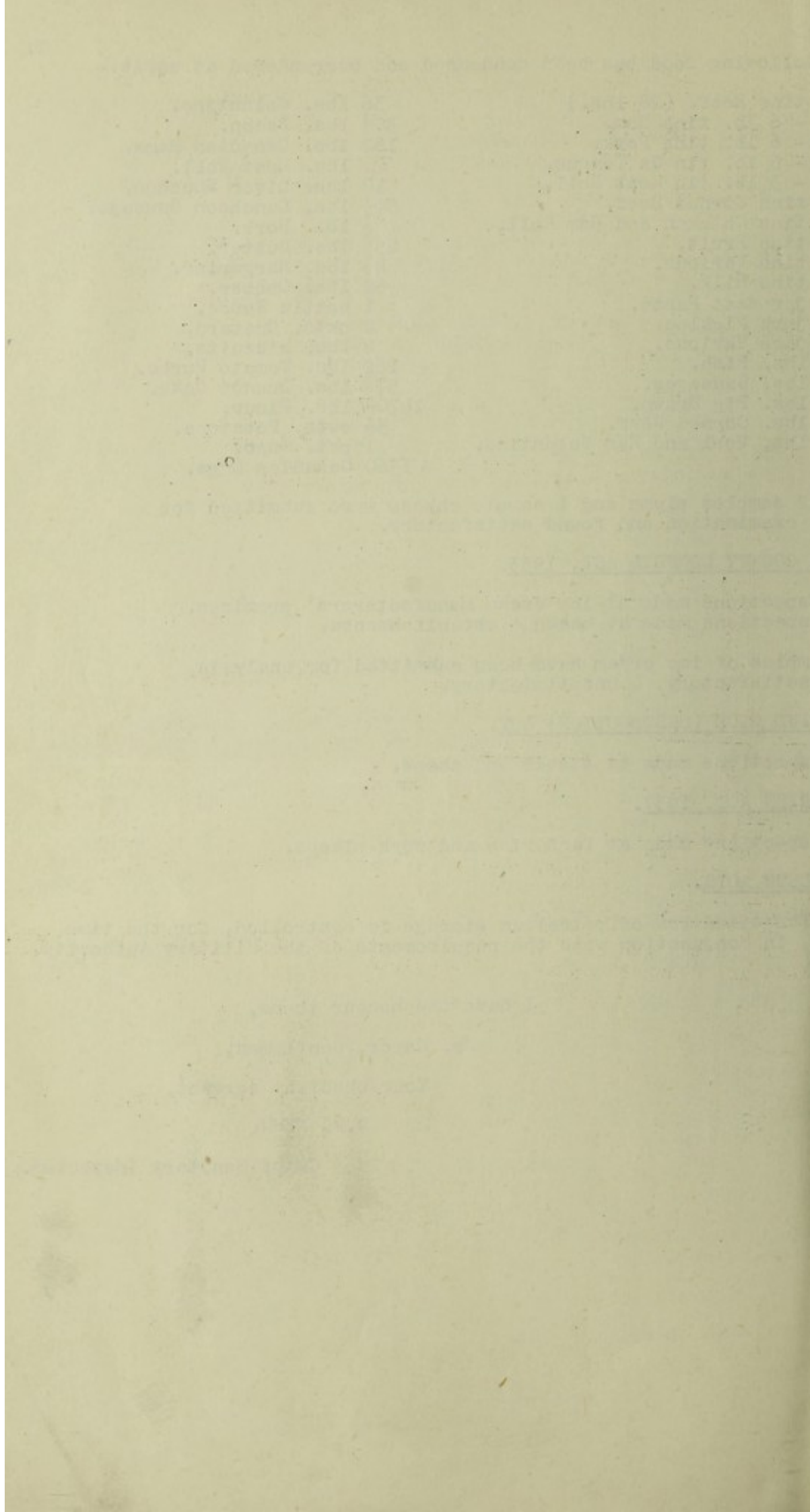
I have the honour to be,

Mr. Mayor, Gentlemen,

Your obedient servant,

R.F. WYNN.

Chief Sanitary Inspector.



TO THE MAYOR, ALDERMEN AND COUNCILLORS OF
THE BOROUGH OF CHELMSFORD.

Mr. Mayor and Gentlemen,

I have much pleasure in submitting the following concentrated report in connection with my duties as Veterinary Inspector to the Borough during the year ending 31st December, 1941.

The Contagious Diseases of Animals Acts are administered by the Divisional Veterinary Officer of the Ministry of Agriculture.

SLAUGHTERHOUSES

The number of animals slaughtered in the Borough for human food during the year 1941 was approximately :-

	<u>1940</u>	<u>1941</u>
Beasts	3,981	3,564
Sheep	17,751	13,501
Calves	8,374	6,495
Pigs	8,969	3,974

FOOD CONDEMNED AND SURRENDERED.

	<u>1938</u>	<u>1939</u>	<u>1940</u>	<u>1941</u>	
Sheep	1	4	50	22	Veal 142 lbs
Pigs	10	10	73	24	
Beasts	5	8	103	81	Skirts 23
Livers	365	273	784	439	Tripe 1)1240
Heads	141	141	573	384	Heels) lbs
Lungs	170	161	866	345	Brawn 63 lbs.
Tinned Livers	80lbs	140	-	8lbs.	Timed Beef)
Calves			30	9	12lbs.)
Tails			2	2	
Spleens			44	19	Timed 28)
Udders			4	16	Mutton lbs)
Flucks			711	186	
Beef			14,841½lbs.	9640lbs	
Kidneys			23	8	
Offal			7,682 "	131 sets	
Fork			1,059 "	564 lbs	
Gut Fat			1½ "	630 "	
Hearts			99	15	
Tongues			114	112	
Mutton			221 "	172 "	
Rabbits			12	126	

Three slaughterhouses, viz, Springfield Road, Mildmay Road and Coval Lane were taken over by the Ministry of Food. These have been visited twice every day, including Sundays and a very great many other times for emergency slaughtering. Mildmay Road was closed on 24th October.

The old slaughterhouses are only used for War Casualties or on special occasions by permission of the Ministry. Cattle condemned under the Tuberculosis Order are sent to Harrison and Barber's slaughterhouse with the exception of any in very good condition. These are then examined by the Inspector of the Ministry of Agriculture who sent them in- and by myself. Any portions of them that are quite free from disease are used for manufacturing purposes. All condemned meat is stained with blue dye and removed by Messrs Harrison & Barber & Co. under contract with the Ministry.

Faint, illegible text at the top of the page, possibly a header or title.

Second section of faint, illegible text in the upper middle part of the page.

Third section of faint, illegible text in the middle part of the page.

Fourth section of faint, illegible text in the lower middle part of the page.

Fifth section of faint, illegible text at the bottom of the page.

The following glands are saved for the purpose of making drugs : -

Pancreas	{	Ox
	{	Calf
	{	Sheep

Phar: Livers
 Testes
 Thyroids
 Ovaries
 Suprarenals
 Prostates

Horse Flesh

No horses are slaughtered in the town for human food.

MARKET.

The Corporation Market has been regularly attended on each Market Day and Fair Day, and all animals deposited or exposed for sale have been examined.

ANIMALS SENT OUT OF MARKET 1941

17.1.41	2 animals
14.2.41	1
4.4.41	2
18.4.41	5
23.5.41	1
3.7.41	1
15.8.41.	1
5.9.41	1
26.9.41	2
12.12.41	2

ANIMALS EXPOSED FOR SALE IN 1938. 1939, 1940, 1941.

	<u>1938</u>	<u>1939</u>	<u>1940</u>	<u>1941</u>
Fat Pigs	30,328	24,641	15,475	9,340
Store Pigs	22,767	16,190	4,195	10,786
Rams	300	333	340	218
Fat Sheep	17,570	16,475	15,968	12,613
Store Sheep	10,159	10,927	13,548	13,032
Lambs	781	430	653	1,650
Bulls	809	1,002	303	391
Fat Beasts	6,021	6,535	1,953	1,463
Store Beasts	13,109	14,582	6,682	13,032
Cows	4,173	4,402	3,810	4,787
Fat Calves	225	382	279	175
Store Calves	7,288	8,277	7,151	8,094
Goats	9	21	6	95
Horses	686	656	628	862

There is a marked improvement in the quality of cattle exposed for sale.

The following figures may be of interest:-

	<u>1938</u>	<u>1939</u>	<u>1940</u>	<u>1941</u>
Poultry	87,756	78,546	69,710	68,311
Live Rabbits	914	1,168	4,603	20,686
Wild Rabbits	11,470	8,879	9,318	3,355
Day-old Chicks	111,240	158,360	110,531	100,712
Eggs	4498,563	4228,820	2885,926	560,825

The following items are listed for the year 1934:

- Income
- Expenses
- Net Income
- Capital Gains
- Dividends
- Interest
- Other Income

No income is reported in the year 1934.

NET INCOME

The following items are listed for the year 1934:

NET INCOME

Item	1934
Income	10.00
Expenses	2.00
Net Income	8.00
Capital Gains	1.00
Dividends	1.00
Interest	1.00
Other Income	1.00

NET INCOME

Item	1934	1935	1936	1937
Income	10.00	12.00	15.00	18.00
Expenses	2.00	3.00	4.00	5.00
Net Income	8.00	9.00	11.00	13.00
Capital Gains	1.00	2.00	3.00	4.00
Dividends	1.00	1.00	1.00	1.00
Interest	1.00	1.00	1.00	1.00
Other Income	1.00	1.00	1.00	1.00

Special Sales.

24

14.1.41	186 Store Beasts
14.3.41	36 Cows
	9 Calves
19.8.41	56 Cows
	16 Calves
22.10.41	39 Bulls
	63 Cows
	7 Calves
25.11.41	50 Bulls

I would again call your attention to the need of:-

- (1) Ringing of Bulls brought to the Market.
- (2) One-way traffic to do away with the great congestion.
- (3) Registration of Drivers.

Horses The two horses at Lanor Road are in good health and condition.

SEWERAGE FARM The Health of the animals has been generally good.

I have the honour to be,

Your Obedient Servant,

W.S. MULVEY. F.R.C.V.S.

Veterinary Inspector.

27

10

