

Pharmacopœia of the Seamen's Hospital Society ("Dreadnought").

Contributors

Seamen's Hospital Society (London, England)

Publication/Creation

Greenwich : printed by E.G. Berryman, 1910.

Persistent URL

<https://wellcomecollection.org/works/bdab33up>

License and attribution

Conditions of use: it is possible this item is protected by copyright and/or related rights. You are free to use this item in any way that is permitted by the copyright and related rights legislation that applies to your use. For other uses you need to obtain permission from the rights-holder(s).



Wellcome Collection
183 Euston Road
London NW1 2BE UK
T +44 (0)20 7611 8722
E library@wellcomecollection.org
<https://wellcomecollection.org>

The Pharmacopœia
of the
Seamen's Hospital Society
Dreadnought.

QV740

.BE5

1910

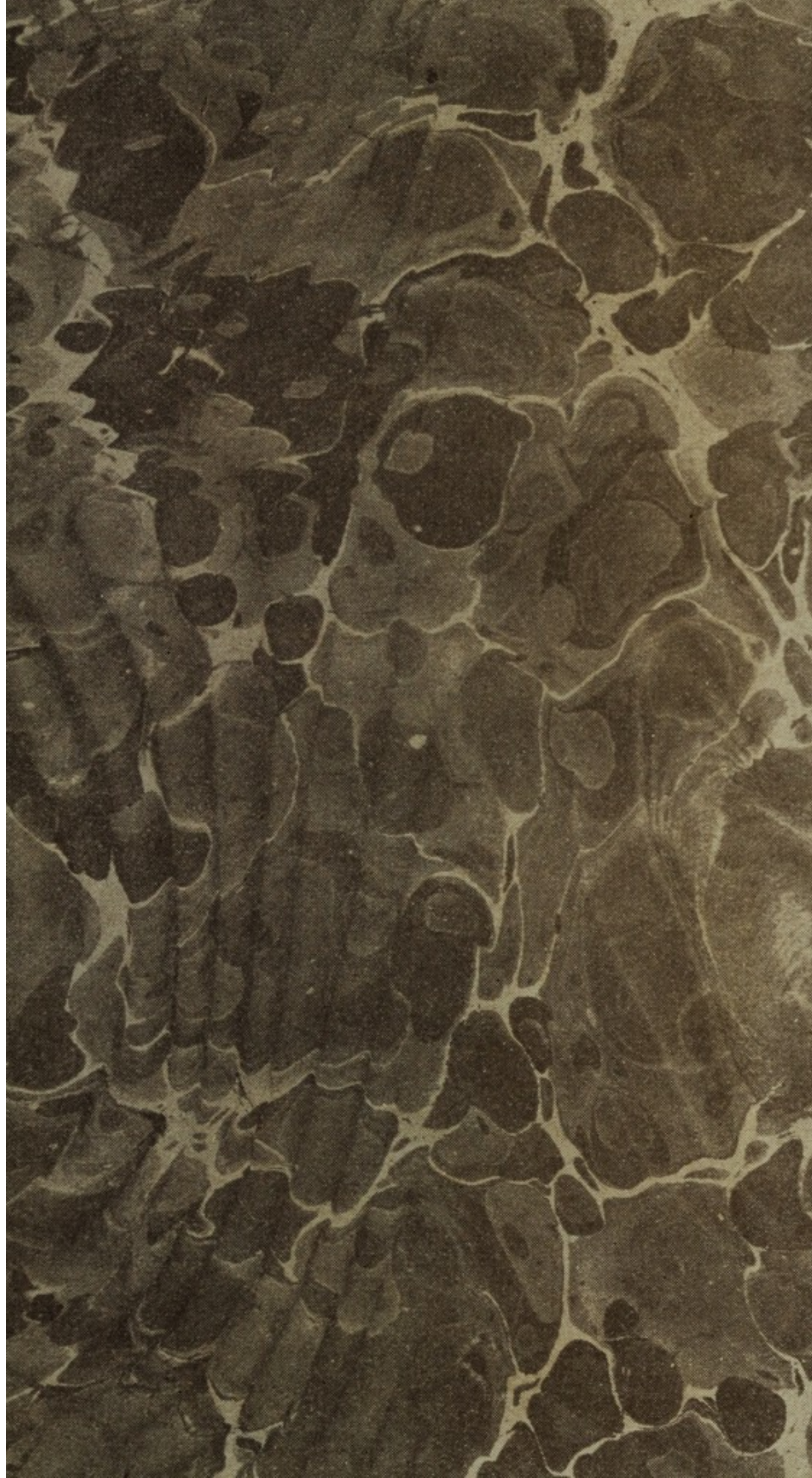
S43P

M

25331



22500484366



Property of Victor Field-Usher
MD FRCSEd [1880-1952]
Surgeon in Auckland NZ
Presented by his daughter
Dr Dorothy Potter

PHARMACOPŒIA

OF THE

SEAMEN'S HOSPITAL SOCIETY

“DREADNOUGHT”

EUROPEAN MEDICAL

Published by authority of the Medical Staff.

1910.

Sheworth

PRINTED BY E. G. SHEDDEN & SONS LTD.

SHEDDEN & SONS LTD.

Property of Victor Field-Walker
M3 FRCSEd. (1920-1952)
Surgeon in Australia N/2
Presented by his daughter
Dr. Rosemary Walker

PHARMACOPŒIA
OF THE
SEAMEN'S HOSPITAL SOCIETY
("DREADNOUGHT").

Published by authority of the Medical Staff.

1910.

Greenwich:

PRINTED BY E. G. BERRYMAN & SONS LTD.

BLACKHEATH ROAD S.E.

35301403

PHARMACOPŒIA

OF THE

SEAMEN'S HOSPITAL SOCIETY

M25331

WELLCOME INSTITUTE LIBRARY	
Coll.	welMOMec
Call	
No.	QV 740
	. BE 5
	1910
	S 43p

Greenwich:

PRINTED BY E. G. BERRYMAN & SONS LTD.

BLACKHEATH ROAD S.E.

CONTENTS.

	PAGE.
Formule ...	5
Metric System ...	44
Enemata ...	46
Fetus ...	47
Baths ...	48
Diet Scale ...	49
Special Preparations ...	51
Infant Feeding ...	52
Dentition Table ...	54
Urine Analysis ...	54
Antidote Table ...	59
Posological Table ...	65
Hypodermic Posological Table ...	76

36301-403

PHARMACOPOEIA

SEAMEN'S HOSPITAL SOCIETY

M25331

WELLCOME INSTITUTE LIBRARY	
Colln	welMOneC
Cell	
No.	1007-4-0
	525
	100
	542

CONTENTS.

	PAGE.
Formulæ ...	5
Metric System ...	44
Enemata ...	46
Fotus ...	47
Baths ...	48
Diet Scale ...	49
Special Preparations ...	51
Infant Feeding ...	52
Dentition Table...	54
Urine Analysis ...	54
Antidote Table ...	59
Posological Table ...	65
Hypodermic Posological Table ...	76

CONTENTS.

PHARMACOPŒIA.

CREMORIES.

CREMOR ZINCI OXIDI.

Zinc Oxide	180 grains.
Wool Fat	60 grains.
Olive Oil	$\frac{1}{2}$ fl. oz.
Solution of Lime	$\frac{1}{2}$ fl. oz.
	(See Dept.)

CREMOR ZINCI OXIDI CUM ICHTHYOL.

Ichthyol	10 grains.
Zinc Oxide Cream	1 oz.
	(See Dept.)

COLLODIUM.

COLLODIUM ACIDI SALICYLICI.

Salicylic Acid	60 grains.
Flexible Collodion	to 1 fl. oz.

COLLUNARIA.

COLLUNARIUM ACIDI CARBOLICI.

(Dobell's Solution).

Sodium Bicarbonate	} of each
Borax	
Glycerin of Carbolic Acid	12 minims.
Water	to 1 fl. oz.

Directions—Two Tablets to be added to 1 pint of warm water and used by sipping the water from the oblongated vial.

(See and Therap. Dept.)

PHARMACOPŒIA.

CREMORES.

CREMOR ZINCI OXIDI.

Zinc Oxide	-	-	-	180 grains.
Wool Fat	-	-	-	60 grains.
Olive Oil	-	-	-	$\frac{1}{2}$ fl. oz.
Solution of Lime	-	-	-	$\frac{1}{2}$ fl. oz.
(Skin Dept.)				

CREMOR ZINCI OXIDI CUM ICHTHYOL.

Ichthyol	-	-	-	10 grains.
Zinc Oxide Cream	-	-	-	1 oz.
(Skin Dept.)				

COLLODIUM.

COLLODIUM ACIDI SALICYLICI.

Salicylic Acid	-	-	-	60 grains.
Flexible Collodion	-	-	-	to 1 fl. oz.

COLLUNARIA.

COLLUNARIUM ACIDI CARBOLICI.

(Dobell's Solution).

Sodium Bicarbonate	-	-	} of each
Borax	-	-	
Glycerin of Carbolic Acid	-	-	6 grains.
Water	-	-	12 minims.
to 1 fl. oz.			

Directions—Two Tablespoonfuls to be added to 1 pint of warm water and used to syringe the nose from the obstructed side.

(Ear and Throat Dept.)

COLLUNARIUM ALKALINUM.

Borax	-	-	-	} equal weights.
Sodium Bicarbonate	-	-	-	
Sodium Chloride	-	-	-	

Directions—One Teaspoonful to be added to 1 pint of warm water and used to syringe the nose from the obstructed side.

COLLUNARIUM SODII.

Sodium Chloride	-	-
-----------------	---	---

Directions—One Teaspoonful to be added to 1 pint of warm water and used to syringe the nose from the obstructed side.

(Ear and Throat Dept.)

CONFECTIONES.

CONFECTIO SENNÆ ET PIPERIS.

Confection of Senna	-	-	} equal parts.
Confection of Pepper	-	-	

CONFECTIO SENNÆ ET SULPHURIS.

Confection of Senna	-	-	} equal parts.
Confection of Sulphur	-	-	

GARGARISMATA.

GARGARISMA ACIDI CHROMICI.

Chromic Acid	-	-	1 grain.
Water	-	-	to 1 fl. oz.

GARGARISMA ACIDI CARBOLICI.

Phenol	5 grains.
Glycerin	40 minims.
Tincture of Myrrh	12 minims.
Water	to 1 fl. oz.

GARGARISMA ACIDI TANNICI.

Glycerin of Tannic Acid	1 fl. dr.
Water	to 1 fl. oz.

GARGARISMA ALUMINIS.

Aluminum Chloride	10 grains.
Water	to 1 fl. oz.

GARGARISMA BORACIS COMPOSITUM.

Glycerin of Borax	1 fl. dr.
Tincture of Myrrh	12 minims.
Water	to 1 fl. oz.

GARGARISMA CHLORINATUM.

Potassium Chlorate	15 grains.
Hydrochloric Acid	2 minims.
Water	to 1 fl. oz.

*Allow the strong acid to be in contact
with the chlorate 15 minutes
before adding the water.*

GARGARISMA HYDRAURICI MERCURIIDI.

Mercuric Chloride	1 grain.
Diluted Hydrochloric Acid	10 minims.
Glycerin	15 minims.
Water	to 1 fl. oz.

COLLUNARIUM ALKALINUM.

Borax	}	equal weights.
Sodium Bicarbonate		
Sodium Chloride		

Directions—One Teaspoonful to be added to 1 pint of warm water and used to syringe the nose from the obstructed side.

COLLUNARIUM SODII.

Sodium Chloride

Directions—One Teaspoonful to be added to 1 pint of warm water and used to syringe the nose from the obstructed side.

(Ear and Throat Dept.)

CONFECTIOES.

CONFECTIO SENNAE ET PIPERIS.

Confection of Senna	}	equal parts.
Confection of Pepper		

CONFECTIO SENNAE ET SULPHURIS.

Confection of Senna	}	equal parts.
Confection of Sulphur		

GARGARISMATA.

GARGARISMA ACIDI CHROMICI.

Chromic Acid	1 grain.
Water	to 1 fl. oz.

GARGARISMA ACIDI CARBOLICI.

Phenol	-	-	5 grains
Glycerin	-	-	40 minims.
Tincture of Myrrh	-	-	12 minims.
Water	-	-	to 1 fl. oz.

GARGARISMA ACIDI TANNICI.

Glycerin of Tannic Acid	-	-	1 fl. dr.
Water	-	-	to 1 fl. oz.

GARGARISMA ALUMINIS.

Alum	-	-	10 grains.
Water	-	-	to 1 fl. oz.

GARGARISMA BORACIS COMPOSITUM.

Glycerin of Borax	-	-	1 fl. dr.
Tincture of Myrrh	-	-	12 minims.
Water	-	-	to 1 fl. oz.

GARGARISMA CHLORINATUM.

Potassium Chlorate	-	-	15 grains.
Hydrochloric Acid	-	-	2 minims.
Water	-	-	to 1 fl. oz.

*Allow the strong acid to be in contact
with the chlorate 15 minutes
before adding the water.*

GARGARISMA HYDRARGYRI PERCHLORIDI.

Mercuric Chloride	-	-	$\frac{1}{5}$ grain.
Diluted Hydrochloric Acid	-	-	10 minims.
Glycerin	-	-	40 minims.
Water	-	-	to 1 fl. oz.

GARGARISMA POTASSII CHLORATIS.

Potassium Chlorate	-	-	10 grains.
Water	-	-	to 1 fl. oz.

GARGARISMA POTASSII PERMANGANATIS.

Potassium Permanganate	-	$\frac{1}{8}$ grain.
Water	-	to 1 fl. oz.

GARGARISMA "SANITAS" COMPOSITUM.

(*"Sanitas" Mouth Wash*).

Boric Acid	-	-	10 grains.
Sanitas Oil	-	-	$\frac{3}{4}$ minim.
Rectified Spirit	-	-	15 minims.
Water	-	-	to 1 fl. oz.

GELATINUM.

GELATINUM ZINCI OXIDI CUM ICHTHYOL.

(*Unna's Ichthyol Paste*.)

Zinc Oxide	-	-	14	all by weight.
Ichthyol	-	-	3	
Gelatin	-	-	14	
Glycerin	-	-	35	
Water	-	-	34	

GLYCERINA.

GLYCERINUM BELLADONNÆ.

(*Pigmentum Belladonnæ*.)

Green Extract of Belladonna	-	-	4	all by weight.
Water	-	-	1	
Glycerin	-	-	7	
Powdered Tragacanth	-	-	$\frac{1}{32}$	

GLYCERINUM FERRI PERCHLORIDI.

Solution of Ferric Chloride 1 fl. oz.
Glycerin 1 fl. oz.

GLYCERINUM ICHTHYOL.

Ichthyol 44 grains.
Glycerin to 1 oz.

GLYCERINUM IODI.

(Morton's Fluid.)

Iodine 10 grains.
Potassium Iodide 30 grains.
Glycerin to 1 oz.

GUTTÆ PRO AURIBUS.

(Ear and Throat Drops.)

GUTTÆ ACIDI BORICI.

Boric Acid 10 grain.
Rectified Spirit 1 fl. oz.

GUTTÆ ACIDI CARBOLICI.

Phenol 20 grains.
Glycerin 1 fl. oz.

GUTTÆ ACIDI SALICYLICI.

Salicylic Acid 5 to 30 grs.
Rectified Spirit 2 fl. oz.
Solution of Ammonium Acetate to 1 fl. oz.

GUTTÆ HYDRARGYRI PERCHLORIDI.

Mercuric Chloride 1 grain.
Rectified Spirit to 1 fl. oz.

GARGARISMA POTASSII CHLORATIS.

Potassium Chlorate	10 grains.
Water	to 1 fl. oz.

GARGARISMA POTASSII PERMANGANATIS.

Potassium Permanganate	1 grain.
Water	to 1 fl. oz.

GARGARISMA "SANITAS" COMPOSITUM.

(Dr. J. C. "Sanitas" Mouth Wash).

Boric Acid	10 grains.
Sanitas Oil	1 minim.
Rectified Spirit	15 minims.
Water	to 1 fl. oz.

GELATINUM.

GELATINUM ZINCI OXIDI CUM ICHTHYOL.

(Unna's Ichthyol Paste.)

Zinc Oxide	14	all by weight.
Ichthyol	14	
Gelatin	14	
Glycerin	28	
Water	34	

GLYCERINA.

GLYCERINUM BELLADONNÆ.

(Pigmentless Belladonna.)

Green Extract of Belladonna	14	all by weight.
Water	24	
Glycerin	7	
Powdered Tragacanth	14	

GLYCERINUM FERRI PERCHLORIDI.

Solution of Ferric Chloride	-	1 fl. oz.
Glycerin	-	1 fl. oz.

GLYCERINUM ICHTHYOL.

Ichthyol	-	44 grains.
Glycerin	-	to 1 oz.

GLYCERINUM IODI.

(Morton's Fluid.)

Iodine	-	10 grains.
Potassium Iodide	-	30 grains.
Glycerin	-	to 1 oz.

GUTTÆ PRO AURIBUS.

(Ear and Throat Dept.)

GUTTÆ ACIDI BORICI.

Boric Acid	-	10 grain.
Rectified Spirit	-	1 fl. oz.

GUTTÆ ACIDI CARBOLICI.

Phenol	-	20 grains.
Glycerin	-	1 fl. oz.

GUTTÆ ACIDI SALICYLICI.

Salicylic Acid	-	5 to 30 grs.
Rectified Spirit	-	2 fl. drs.
Solution of Ammonium Acetate	-	to 1 fl. oz.

GUTTÆ HYDRARGYRI PERCHLORIDI.

Mercuric Chloride	-	$\frac{1}{2}$ grain.
Rectified Spirit	-	to 1 fl. oz.

GUTTÆ HYDROGENII PEROXIDI.

Solution of Hydrogen Peroxide (10 vol.)

GUTTÆ SODII BICARBONATIS.

Sodium Bicarbonate	-	-	10 grains.
Glycerin	-	-	1 fl. dr.
Water	-	-	to 1 fl. oz.

GUTTÆ SPIRITUS.

Rectified Spirit	-	-	50% to 100%
------------------	---	---	-------------

GUTTÆ PRO OCULIS.

(Ophthalmic Dept.)

GUTTÆ ADRENALIN HYDROCHLORIDI.

Solution of Adrenalin Hydrochloride	-	-	1 in 4000
-------------------------------------	---	---	-----------

GUTTÆ ATROPINÆ SULPHATIS.

Atropine Sulphate	-	-	4 grains.
Distilled Water	-	-	to 1 fl. oz.

GUTTÆ COCAINÆ.

Cocaine Hydrochloride	-	-	5 grains.
Distilled Water	-	-	to 1 fl. oz.

GUTTÆ CUPRI SULPHATIS.

Copper Sulphate	-	-	2 grains.
Distilled Water	-	-	to 1 fl. oz.

GUTTÆ ESERINÆ SALICYLATIS.

Eserine Salicylate	-	-	$\frac{1}{2}$ grain.
Distilled Water	-	-	to 1 fl. oz.

GUTTÆ HOMATROPINÆ.

Homatropine Hydrobromide	4 grains.
Distilled Water	to 1 fl. oz.

GUTTÆ HOMATROPINÆ ET COCAINÆ.

Homatropine Hydrobromide	5 grains.
Cocaine Hydrochloride	5 grains.
Distilled Water	to 1 fl. oz.

GUTTÆ ZINCI CHLORIDI.

Zinc Chloride	2 grains.
Distilled Water	to 1 fl. oz.

GUTTÆ ZINCI SULPHATIS.

Zinc Sulphate	2 grains.
Distilled Water	to 1 fl. oz.

HAUSTUS.

HAUSTUS FILICIS.

Liquid Extract of Male Fern	1 fl. dr.
Syrup of Ginger	1 fl. dr.
Tincture of Quillaja	30 minims.
Peppermint Water	to 1 fl. oz.

HAUSTUS SENNÆ COMPOSITUS.

Magnesium Sulphate	120 grains.
Strong Tincture of Ginger	6 minims.
Rectified Spirit	3 minims.
Chloroform	$\frac{1}{2}$ minim.
Oil of Caraway	$\frac{1}{2}$ minim.
Infusion of Senna	to 1 fl. oz.

GUTTÆ HYDROGENII PEROXIDI.

Solution of Hydrogen Peroxide (10 vol.)

GUTTÆ SODII BICARBONATIS.

Sodium Bicarbonate	-	10 grains.
Glycerin	-	1 fl. dr.
Water	-	to 1 fl. oz.

GUTTÆ SPIRITUS.

Rectified Spirit	-	50% to 100%
------------------	---	-------------

GUTTÆ PRO OCULIS.

(Ophthalmic Dept.)

GUTTÆ ADRENALIN HYDROCHLORIDI.

Solution of Adrenalin Hydrochloride

1 in 4000

GUTTÆ ATROPINÆ SULPHATIS.

Atropine Sulphate	-	4 grains.
Distilled Water	-	to 1 fl. oz.

GUTTÆ COCAINÆ.

Cocaine Hydrochloride	-	5 grains.
Distilled Water	-	to 1 fl. oz.

GUTTÆ CUPRI SULPHATIS.

Copper Sulphate	-	2 grains.
Distilled Water	-	to 1 fl. oz.

GUTTÆ ESERINÆ SALICYLATIS.

Eserine Salicylate	-	1 grain.
Distilled Water	-	to 1 fl. oz.

GUTTÆ HOMATROPINÆ.

Homatropine Hydrobromide	-	4 grains.
Distilled Water	-	to 1 fl. oz.

GUTTÆ HOMATROPINÆ ET COCAINÆ.

Homatropine Hydrobromide	-	5 grains.
Cocaine Hydrochloride	-	5 grains.
Distilled Water	-	to 1 fl. oz.

GUTTÆ ZINCI CHLORIDI.

Zinc Chloride	-	2 grains.
Distilled Water	-	to 1 fl. oz.

GUTTÆ ZINCI SULPHATIS.

Zinc Sulphate	-	2 grains.
Distilled Water	-	to 1 fl. oz.

HAUSTUS.

HAUSTUS FILICIS.

Liquid Extract of Male Fern	-	1 fl. dr
Syrup of Ginger	-	1 fl. dr.
Tincture of Quillaia	-	30 minims.
Peppermint Water	-	to 1 fl. oz.

HAUSTUS SENNÆ COMPOSITUS.

Magnesium Sulphate	-	120 grains.
Strong Tincture of Ginger	-	6 minims.
Rectified Spirit	-	3 minims.
Chloroform	-	$\frac{1}{3}$ minim.
Oil of Caraway	-	$\frac{1}{3}$ minim.
Infusion of Senna	-	to 1 fl. oz.

INJECTIONES.

INJECTIO ACIDI BORICI.

Boric Acid	-	-	-	60 grains.
Water	-	-	-	1 pint.

INJECTIO ACIDI TANNICI.

Tannic Acid	-	-	-	60 grains.
Water	-	-	-	1 pint.

INJECTIO IODOFORMI.

(Emulsion of Iodoform.)

Iodoform	-	-	-	10	All by weight.
Starch	-	-	-	2.77	
Glycerin	-	-	-	37.23	
Water	-	-	-	50	

INJECTIO POTASSII PERMANGANATIS.

Potassium Permanganate	-	-	-	5 grains.
Water	-	-	-	1 pint.

INJECTIO PROTARGOL.

Protargol	-	-	-	1
Distilled Water	-	-	-	99

INJECTIO ZINCI CHLORIDI.

Zinc Chloride	-	-	-	5 grains.
Water	-	-	-	1 pint.

INJECTIO ZINCI SULPHATIS CUM CATECHU.

Zinc Sulphate	-	-	-	1 grain.
Tincture of Catechu	-	-	-	10 minims.
Water	-	-	-	to 1 fl. oz.

LINCTUS.

LINCTUS COMMUNIS.

Ipecacuanha Wine	10 minims.
Compound Tincture of Camphor	16 minims.
Oxymel of Squill	20 minims.
Syrup of Tolu	20 minims.

LINCTUS HEROINÆ.

Heroin Hydrochloride	$\frac{1}{16}$ grain.
Syrup of Tolu	30 minims.
Water	to 3 fl. drs.

LINCTUS MORPHINÆ.

Morphine Hydrochloride	$\frac{1}{16}$ grain.
Chloroform	$\frac{1}{2}$ minim.
Rectified Spirit	2 minims.
Glycerin	12 minims.
Water	to 1 fl. dr.

LINCTUS SCILLÆ COMPOSITUS.

Compound Tincture of Camphor	20 minims.
Oxymel of Squill	20 minims.
Syrup of Tolu	20 minims.

LINIMENTA.

(Liniments of The British Pharmacopœia containing rectified spirit are prepared with methylated spirit.)

LINIMENTUM ACONITÆ COMPOSITUM.

(Linimentum A.B.C.)

Liniment of Aconite	
Liniment of Belladonna	equal parts.
Liniment of Chloroform	

INJECTIONES.

INJECTIO ACIDI BORICI.

Boric Acid	60 grains.
Water	1 pint.

INJECTIO ACIDI TANNICI.

Tannic Acid	60 grains.
Water	1 pint.

INJECTIO IODOFORMI.

(Emulsion of Iodoform.)

Iodoform	10	All by weight.
Starch	2.77	
Glycerin	37.23	
Water	30	

INJECTIO POTASSII PERMANGANATIS.

Potassium Permanganate	5 grains.
Water	1 pint.

INJECTIO PROTARGOL.

Protargol	1
Distilled Water	99

INJECTIO ZINCI CHLORIDI.

Zinc Chloride	5 grains.
Water	1 pint.

INJECTIO ZINCI SULPHATIS CUM CATECHU.

Zinc Sulphate	1 grain.
Tincture of Catechu	10 minims.
Water	to 1 fl. oz.

LINCTUS.

LINCTUS COMMUNIS.

Ipecacuanha Wine	-	-	10 minims.
Compound Tincture of Camphor	-	-	10 minims.
Oxymel of Squill	-	-	20 minims.
Syrup of Tolu	-	-	20 minims.

LINCTUS HEROINÆ.

Heroin Hydrochloride	-	-	$\frac{1}{10}$ grain.
Syrup of Tolu	-	-	30 minims.
Water	-	-	to 2 fl. drs.

LINCTUS MORPHINÆ.

Morphine Hydrochloride	-	-	$\frac{1}{16}$ grain.
Chloroform	-	-	$\frac{1}{3}$ minim.
Rectified Spirit	-	-	2 minims.
Glycerin	-	-	12 minims.
Water	-	-	to 1 fl. dr.

LINCTUS SCILLÆ COMPOSITUS.

Compound Tincture of Camphor	-	-	20 minims.
Oxymel of Squill	-	-	20 minims.
Syrup of Tolu	-	-	20 minims.

LINIMENTA.

(Liniments of The British Pharmacopœia containing rectified spirit are prepared with methylated spirit.)

LINIMENTUM ACONITI COMPOSITUM.

(Linimentum A.B.C.)

Liniment of Aconite	-	-	} equal parts.
Liniment of Belladonna	-	-	
Liniment of Chloroform	-	-	

LINIMENTUM BELLADONNÆ ET CHLOROFORMI.

Camphor	-	60 grains.
Chloroform	-	2 fl. drs.
Castor Oil	-	2 fl. drs.
Methylated Liniment of Belladonna	-	5 fl. drs.

LINIMENTUM COMMUNE.

Soft Soap	-	36 grains.
Methylated Spirit	-	24 minims.
Strong Solution of Ammonia	-	9 minims.
Water	-	to 1 fl. oz.

LINIMENTUM MENTHOL.

Menthol	-	60 grains.
Olive Oil	-	to 1 fl. oz.

LINIMENTUM T.A.B.

Oil of Turpentine	-	2 fl. drs.
Linseed Oil	-	1 fl. dr.
Olive Oil	-	5 fl. drs.
Glacial Acetic Acid	-	$\frac{1}{2}$ fl. dr.
Liniment of Belladonna	-	$1\frac{1}{2}$ fl. drs.

LIQUORES PRO OCULIS.

LIQUOR ARGENTI NITRATIS.

Silver Nitrate	-	5 to 10 grs.
Distilled Water	-	to 1 fl. oz.

LIQUOR FLUORESCENI.

Fluorescein	8 grains.
Sodium Bicarbonate	12 grains.
Distilled Water	to 1 fl. oz.

LIQUOR PROTARGOL.

Protargol	10% or 30%
-----------	------------

LOTIONES.

LOTIO ACIDI BORICI.

(Saturated Solution.)

Boric Acid	16 grains.
Water	to 1 fl. oz.

LOTIO ACIDI BORICI CUM ZINCI SULPHATE.

Zinc Sulphate	2 grains.
Lotion of Boric Acid	to 1 fl. oz.

(Ophthalmic Dept.)

LOTIO ACIDI CARBOLICI, 1 IN 20.

Phenol	1 oz.
Water	19 ozs.

Carbolic lotion is colored pink.

LOTIO CALAMINE.

Prepared Calamine	30 grains.
Zinc Oxide	30 grains.
Solution of Lime	to 1 fl. oz.

LINIMENTUM BELLADONNÆ ET CHLOROFORMI

Camphor	60 grains
Chloroform	2 fl. drs.
Castor Oil	2 fl. drs.
Methylated Liniment of Belladonna	5 fl. drs.

LINIMENTUM COMUNE

Soft Soap	36 grains
Methylated Spirit	24 minims
Strong Solution of Ammonia	9 minims
Water	to 1 fl. oz.

LINIMENTUM MENTHOL

Menthol	60 grains
Olive Oil	to 1 fl. oz.

LINIMENTUM T.A.R.

Oil of Turpentine	2 fl. drs.
Linseed Oil	1 fl. dr.
Olive Oil	5 fl. drs.
Glacial Acetic Acid	1 fl. dr.
Liniment of Belladonna	1½ fl. drs.

LIQUORES PRO OCULIS

LIQUOR ARGENTI NITRATIS

Silver Nitrate	5 to 10 grs.
Distilled Water	to 1 fl. oz.

LIQUOR FLUORESCEINI.

Fluorescein	-	-	8 grains.
Sodium Bicarbonate	-	-	12 grains.
Distilled Water	-	-	to 1 fl. oz.

LIQUOR PROTARGOL.

Protargol	-	-	10% or 20%
-----------	---	---	------------

LOTIONES.

LOTIO ACIDI BORICI.

(Saturated Solution.)

Boric Acid	-	-	16 grains.
Water	-	-	to 1 fl. oz.

LOTIO ACIDI BORICI CUM ZINCI SULPHATE.

Zinc Sulphate	-	-	2 grains.
Lotion of Boric Acid	-	-	to 1 fl. oz.

(Ophthalmic Dept.)

LOTIO ACIDI CARBOLICI, 1 IN 20.

Phenol	-	-	1 oz.
Water	-	-	19 ozs.

Carbolic lotion is coloured pink.

LOTIO CALAMINÆ.

Prepared Calamine	-	-	30 grains.
Zinc Oxide	-	-	15 grains.
Solution of Lime	-	-	to 1 fl. oz.

LOTIO EVAPORANS.

Methylated Spirit	-	-	2 fl. drs.
Water	-	-	to 1 fl. oz.

LOTIO EXCITANS.

Mercuric Chloride	-	-	1 pt.
Resorcin	-	-	10 pts.
Chloral Hydrate	-	-	20 pts.
Glacial Acetic Acid	-	-	5 pts.
Tincture of Cantharides	-	-	60 pts.
Methylated Spirit	-	-	750 pts.
Water	-	-	to 1000 pts.
(Skin Dept.)			

LOTIO HYDRARGYRI BINIODIDI, 1 IN 1000.

Mercuric Iodide	-	-	35 grains.
Potassium Iodide	.	-	35 grains.
Water	-	-	to 80 oz.

Biniodide of Mercury lotion is coloured orange.

LOTIO HYDRARGYRI PERCHLORIDI PRO
OCULIS, 1 IN 4000.

Mercuric Chloride	-	-	9½ grains.
Water	-	-	to 80 oz.

LOTIO HYDRARGYRI PERCHLORIDI, 1 IN 1000.

Mercuric Chloride	-	-	35 grains.
Water	-	-	to 80 oz.

Perchloride of Mercury lotion is coloured blue.

LOTIO NIGRA.

Solution of Lime	8 fl. ozs.
Suspension of Calomel (1 in 10)	6 fl. ozs.
Mucilage of Starch	to 12 fl. ozs.

LOTIO POTASSII PERMANGANATIS.

Potassium Permanganate	$\frac{1}{2}$ grain.
Water	to 1 fl. oz.

LOTIO PLUMBI.

Strong Solution of Lead Sub-	
acetate	6 minims.
Methylated Spirit	6 minims.
Water	to 1 fl. oz.

LOTIO PLUMBI CUM OPIO.

Strong Solution of Lead Sub-	
acetate	3 minims.
Tincture of Opium	18 minims.
Water	to 1 fl. oz.

LOTIO PLUMBI HYDROPHOBUS.

Strong Solution of Lead Sub-	
acetate	6 minims.
Methylated Spirit	60 minims.
Water	to 1 fl. oz.

LOTIO SODIOPICRANS.

Methylated Spirit	2 drs.
Water	to 80 oz.

LOTIO KACCIANS.

Mercuric Chloride	1 gr.
Resorcin	10 pts.
Chloral Hydrate	20 pts.
Glacial Acetic Acid	5 pts.
Fincture of Cantharides	50 pts.
Methylated Spirit	750 pts.
Water	to 1000 pts. (Skin Dept.)

LOTIO HYDRARGYRI IODIDI, 1 IN 1000.

Mercuric Iodide	35 grains.
Potassium Iodide	35 grains.
Water	to 80 oz.

*Iodide of Mercury lotion is
coloured orange.*

LOTIO HYDRARGYRI PERCHLORIDI, 1 IN 1000.
OCULIS, 1 IN 1000.

Mercuric Chloride	35 grains.
Water	to 80 oz.

LOTIO HYDRARGYRI PERCHLORIDI, 1 IN 1000.

Mercuric Chloride	35 grains.
Water	to 80 oz.

*Perchloride of Mercury lotion is
coloured blue.*

LOTIO NIGRA.

Solution of Lime	-	-	8 fl. ozs.
Suspension of Calomel (1 in 10)	-	-	6 fl. drs.
Mucilage of Starch	-	-	to 12 fl. ozs.

LOTIO POTASSII PERMANGANATIS.

Potassium Permanganate	-	-	$\frac{1}{2}$ grain.
Water	-	-	to 1 fl. oz.

LOTIO PLUMBI.

Strong Solution of Lead Sub-			
acetate	-	-	6 minims.
Methylated Spirit	-	-	6 minims.
Water	-	-	to 1 fl. oz.

LOTIO PLUMBI CUM OPIO.

Strong Solution of Lead Sub-			
acetate	-	-	3 minims.
Tincture of Opium	-	-	18 minims.
Water	-	-	to 1 fl. oz.

LOTIO PLUMBI EVAPORANS.

Strong Solution of Lead Sub-			
acetate	-	-	6 minims.
Methylated Spirit	-	-	90 minims.
Water	-	-	to 1 fl. oz.

LOTIO RUBRA.

Zinc Sulphate	-	3 grains.
Compound Tincture of		
Lavender	-	10 minims.
Water	-	to 1 fl. oz.

LOTIO SODÆ CHLORINATÆ.

Solution of Chlorinated Soda-		1 fl. dr.
Water	-	to 1 fl. oz.

LOTIO SODII BICARBONATIS.

Sodium Bicarbonate	-	10 grains.
Distilled Water	-	to 1 fl. oz.
		(Ophthalmic Dept.)

LOTIO SULPHURIS COMPOSITA.

(Acne Lotion).

Precipitated Sulphur	-	} of each 15 grains.
Zinc Sulphate	-	
Sulphurated Potash	-	
Water	-	to 1 fl. oz.
		(Skin Dept.)

LOTIO THYMOL COMPOSITA.

(Shampoo Wash).

Thymol	-	90 grains.
Soft Soap	-	4 ozs.
Methylated Spirit	-	3 fl. ozs.
Water	-	1 fl. oz.
		(Skin Dept.)

MISTURÆ.

N. B.—The dose of all Mixtures for adults is one fluid ounce, except in the case of Mixture of Aspirin of which the dose is half a fluid ounce.

MISTURA ACIDI ET NUCIS VOMICÆ.

Diluted Nitro-Hydrochloric

Acid	10 minims.
Tincture of Nux Vomica	7½ minims.
Compound Infusion of Gentian	to 1 fl. oz.

MISTURA ACIDI HYDROBROMICI ET
STRYCHNINÆ.

Solution of Strychnine Hydrochloride

5 minims.	
Diluted Hydrobromic Acid	30 minims.
Water	to 1 fl. oz.

MISTURA ACIDI SULPHURICI ET HÆMATOXILI.

Diluted Sulphuric Acid	15 minims.
Tincture of Catechu	40 minims.
Decoction of Logwood	to 1 fl. oz.

MISTURA ÆTHERIS CUM AMMONIA.

Spirit of Ether	of each
Aromatic Spirit of Ammonia	30 minims.
Tincture of Orange	10 minims.
Camphor-Water	to 1 fl. oz.

LOTIO ROSAE.

Zinc Sulphate	5 grains.
Compound Tincture of	
Lavender	10 grains.
Water	to 1 ℥.

LOTIO SODÆ CHLORINATÆ.

Solution of Chlorinated Soda	1 ℥.
Water	to 1 ℥.

LOTIO SODII BICARBONATÆ.

Sodium Bicarbonate	10 grains.
Distilled Water	to 1 ℥.
	(Op. 1000 15 p.)

LOTIO SULPHURIS COMPOSITA.

(Acne Lotion).

Precipitated Sulphur	10 grains.
Zinc Sulphate	10 grains.
Sulphurated Sugar	10 grains.
Water	to 1 ℥.
	(Op. 1000 15 p.)

LOTIO THYMOL COMPOSITA.

(Shampoo Wash).

Thymol	10 grains.
Soft Soap	4 grains.
Methylated Spirit	1 ℥.
Water	to 1 ℥.
	(Op. 1000 15 p.)

MISTURÆ.

N.B.—The dose of all Mixtures for adults is one fluid ounce, except in the case of Mixture of Aspirin, of which the dose is half a fluid ounce.

MISTURA ACIDI ET NUCIS VOMICÆ.

Diluted Nitro - Hydrochloric Acid	- - -	10 minims.
Tincture of Nux Vomica	-	7½ minims.
Compound Infusion of Gentian	-	to 1 fl. oz.

MISTURA ACIDI HYDROBROMICI ET STRYCHNINÆ.

Solution of Strychnine Hydrochloride	- - -	5 minims.
Diluted Hydrobromic Acid	-	30 minims.
Water	- - -	to 1 fl. oz.

MISTURA ACIDI SULPHURICI ET HÆMATOXYLI.

Diluted Sulphuric Acid	-	15 minims.
Tincture of Catechu	-	40 minims.
Decoction of Logwood	-	to 1 fl. oz.

MISTURA ÆTHERIS CUM AMMONIÂ.

Spirit of Ether	-) of each
Aromatic Spirit of Ammonia	-	
Tincture of Orange	-	30 minims.
Camphor Water	- - -	10 minims.
	-	to 1 fl. oz.

MISTURA ARSENICALIS CUM FERRO.

Arsenical Solution	-	-	4 minims.
Mixture of Iron and Ammonium Citrate	-	-	1 fl. oz.

MISTURA AMMONII ET IPECACUANHÆ.

(Mistura Expectorans).

Ammonium Carbonate	-	-	4 grains.
Solution of Ammonium Acetate	-	-	2 fl. drs.
Ipecacuanha Wine	-	-	10 minims.
Water	-	-	to 1 fl. oz.

MISTURA AMMONII ET SENEGÆ.

(Mistura Senegæ Composita.)

Ammonium Carbonate	-	-	5 grains.
Tincture of Squill	-	-	} of each 20 minims.
Tincture of Senega	-	-	
Infusion of Senega	-	-	to 1 fl. oz.

MISTURA ASPIRIN.

Aspirin	-	-	10 grains.
Mucilage of Tragacanth	-	-	2 fl. drs.
Water	-	-	to $\frac{1}{2}$ fl. oz.

MISTURA AMMONII ACETATIS COMPOSITA.

(Mistura Diaphoretica.)

Potassium Nitrate	-	-	10 grains.
Solution of Ammonium Acetate	-	-	3 fl. drs.
Spirit of Nitrous Ether	-	-	30 minims.
Spirit of Camphor	-	-	4 minims.
Water	-	-	to 1 fl. oz.

MISTURA BISMUTHI.

Bismuth Subnitrate	15 grains.
Mucilage of Starch	2 fl. drs.
Spirit of Cinnamon	5 minims.
Water	to 1 fl. oz.

MISTURA BISMUTHI CUM ACIDO HYDRO-
CYANICO.

Diluted Hydrocyanic Acid	3 minims.
Mixture of Bismuth	to 1 fl. oz.

MISTURA BISMUTHI CUM OPIO.

Tincture of Opium	10 minims.
Mixture of Bismuth	to 1 fl. oz.

MISTURA BISMUTHI CUM SODA.

Bismuth Carbonate	15 grains.
Sodium Bicarbonate	15 grains.
Spirit of Peppermint	10 minims.
Mucilage of Starch	2 fl. drs.
Water	to 1 fl. oz.

MISTURA BUTYL CHLORAL CUM GELICINIO.

Butyl Chloral Hydrate	2 grains.
Tincture of Gelicinium	5 minims.
Glycerin	15 minims.
Chloroform Water	to 1 fl. oz.

MISTURA ARSENICALIS CUM FERRO.

Arsenical Solution	4 minims.
Mixture of Iron and Ammonium Citrate	1 fl. oz.

MISTURA AMMONII ET IPECACUANHÆ.

(Mistura Expectorans).

Ammonium Carbonate	4 grains.
Solution of Ammonium Acetate	2 fl. drs.
Ipecacuanha Wine	10 minims.
Water	to 1 fl. oz.

MISTURA AMMONII ET SENEGÆ.

(Mistura Senegæ Composita.)

Ammonium Carbonate	5 grains.
Tincture of Squill	} of each
Tincture of Senega	
Infusion of Senega	20 minims.
	to 1 fl. oz.

MISTURA ASPIRIN.

Aspirin	10 grains.
Mucilage of Tragacanth	2 fl. drs.
Water	to 1 fl. oz.

MISTURA AMMONII ACETATIS COMPOSITA.

(Mistura Diaphoretica.)

Potassium Nitrate	10 grains.
Solution of Ammonium Acetate	8 fl. drs.
Spirit of Nitrous Ether	30 minims.
Spirit of Camphor	4 minims.
Water	to 1 fl. oz.

MISTURA BISMUTHI.

Bismuth Subnitrate	-	-	15 grains.
Mucilage of Starch	-	-	2 fl. drs.
Spirit of Cinnamon	-	-	5 minims.
Water	-	-	to 1 fl. oz.

MISTURA BISMUTHI CUM ACIDO HYDRO-
CYANICO.

Diluted Hydrocyanic Acid	-	-	3 minims.
Mixture of Bismuth	-	-	to 1 fl. oz.

MISTURA BISMUTHI CUM OPIO.

Tincture of Opium	-	-	10 minims.
Mixture of Bismuth	-	-	to 1 fl. oz.

MISTURA BISMUTHI CUM SODA.

Bismuth Carbonate	-	-	15 grains.
Sodium Bicarbonate	-	-	15 grains.
Spirit of Peppermint	-	-	10 minims.
Mucilage of Starch	-	-	2 fl. drs.
Water	-	-	to 1 fl. oz.

MISTURA BUTYL CHLORAL CUM GELSEMIO.

Butyl Chloral Hydrate	-	-	4 grains.
Tincture of Gelsemium	-	-	6 minims.
Glycerin	-	-	15 minims.
Chloroform Water	-	-	to 1 fl. oz.

MISTURA CASCARÆ SAGRADÆ.

Liquid Extract of Cascara	} of each
Sagrada - - -	
Liquid Extract of Liquorice -	
Glycerin - - -	} $\frac{1}{2}$ fl. dr.
Oil of Caraway - - -	
Water - - -	$\frac{1}{2}$ minim.
	to 1 fl. oz.

MISTURA CALCII LACTATIS.

Calcium Lactate - - -	15 grains.
Syrup - - -	1 fl. dr.
Chloroform Water - - -	to 1 fl. oz.

MISTURA CHLORAL COMPOSITA.

Chloral Hydrate - - -	15 grains.
Potassium Bromide - - -	20 grains.
Spirit of Chloroform - - -	10 minims.
Water - - -	to 1 fl. oz.

MISTURA CINCHONÆ ACIDÆ.

Diluted Nitro - hydrochloric	
Acid - - -	10 minims.
Decoction of Cinchona - - -	to 1 fl. oz.

MISTURA COLCHICI.

Colchicum Wine - - -	15 minims.
Potassium Bicarbonate - - -	20 grains.
Peppermint Water - - -	to 1 fl. oz.

MISTURA COPAIBA.

Balsam of Copaiba	10 minims.
Alcoholic Solution of Soap	5 minims.
Water	to 1 fl. oz.

MISTURA CRETÆ AROMATICA.

Aromatic Chalk Powder	30 grains.
Aromatic Spirit of Ammonia	1 fl. dr.
Spirit of Chloroform	10 minims.
Water	to 1 fl. oz.

MISTURA CRETÆ CUM OPIO.

Tincture of Opium	5 minims.
Tincture of Catechu	30 minims.
Mixture of Chalk	to 1 fl. oz.

MISTURA DIGITALIS ET FERRI.

Tincture of Digitalis	5 minims.
Solution of Ferric Chloride	15 minims.
Diluted Phosphoric Acid	10 minims.
Chloroform Water	to 1 fl. oz.

MISTURA DIURETICA.

Potassium Citrate	10 grains.
Solution of Ammonium Acetate	3 fl. drs.
Spirit of Nitrous Ether	30 minims.
Decoction of Broom	to 1 fl. oz.

MISTURA CASCARÆ SAGRADÆ.

Liquid Extract of Cascara	1 fl. dr.
Sagrada	1 fl. dr.
Liquid Extract of Liquorice	1 fl. dr.
Glycerin	1 fl. dr.
Oil of Caraway	1 minim.
Water	to 1 fl. oz.

MISTURA CALCII LACTATIS.

Calcium Lactate	15 grains.
Syrup	1 fl. dr.
Chloroform Water	to 1 fl. oz.

MISTURA CHLORAL COMPOSITA.

Chloral Hydrate	15 grains.
Potassium Bromide	20 grains.
Spirit of Chloroform	10 minims.
Water	to 1 fl. oz.

MISTURA CINCHONÆ ACIDÆ.

Diluted Nitro-hydrochloric	10 minims.
Acid	10 minims.
Decoction of Cinchona	to 1 fl. oz.

MISTURA COLCHICI.

Colchicum Wine	15 minims.
Potassium Bicarbonate	20 grains.
Peppermint Water	to 1 fl. oz.

MISTURA COPAIBÆ.

Balsam of Copaiba	-	10 minims.
Alcoholic Solution of Soap	-	5 minims.
Water	-	to 1 fl. oz.

MISTURA CRETÆ AROMATICA.

Aromatic Chalk Powder	-	30 grains.
Aromatic Spirit of Ammonia	-	$\frac{1}{2}$ fl. dr.
Spirit of Chloroform	-	10 minims.
Water	-	to 1 fl. oz.

MISTURA CRETÆ CUM OPIO.

Tincture of Opium	-	5 minims.
Tincture of Catechu	-	30 minims.
Mixture of Chalk	-	to 1 fl. oz.

MISTURA DIGITALIS ET FERRI.

Tincture of Digitalis	-	5 minims.
Solution of Ferric Chloride	-	15 minims.
Diluted Phosphoric Acid	-	10 minims.
Chloroform Water	-	to 1 fl. oz.

MISTURA DIURETICA.

Potassium Citrate	...	10 grains.
Solution of Ammonium Acetate	...	3 fl. drs.
Spirit of Nitrous Ether	...	30 minims.
Decoction of Broom	...	to 1 fl. oz.

MISTURA FERRI.

Solution of Ferric Chloride - 15 minims.
 Infusion of Quassia - to 1 fl. oz.

MISTURA FERRI CUM MAGNESII SULPHATE.

(*Mistura Ferri Aperiens.*)

Ferrous Sulphate - 2 grains.
 Magnesium Sulphate - 60 grains.
 Diluted Sulphuric Acid - 10 minims.
 Water - to 1 fl. oz.

MISTURA FERRI CUM POTASSII CHLORATE.

Potassium Chlorate - 10 grains.
 Tincture of Ferric Chloride - 15 minims.
 Glycerin - 30 minims.
 Water - to 1 fl. oz.

MISTURA FERRI ET AMMONII CITRATIS.

Iron and Ammonium Citrate 8 grains.
 Ammonium Carbonate - 3 grains.
 Spirit of Chloroform - 10 minims.
 Water - to 1 fl. oz.

MISTURA FERRI ET NUCIS VOMICÆ.

Tincture of Nux. Vomica - 7½ minims.
 Iron Mixture - to 1 fl. oz.

MISTURA FERRI PHOSPHATIS COMPOSITA.

Compound Syrup of Ferrous

Phosphate - - - - - 1 fl. dr.

Calcium Hypophosphite - - - - - 10 grains.

Compound Infusion of Gentian - - - - - to 1 fl. oz.

MISTURA FERRI SALICYLATIS.

Iron and Ammonium Citrate - - - - - 5 grains.

Sodium Salicylate - - - - - 10 grains.

Magnesium Sulphate - - - - - 15 grains.

Chloroform Water - - - - - to 1 fl. oz.

MISTURA FERRI ET STRYCHNINÆ.

Solution of Strychnine Hydro-

chloride - - - - - 5 minims.

Iron Mixture - - - - - to 1 fl. oz.

MISTURA GENTIANÆ ACIDÆ.

(Mistura Acidæ.)

Diluted Nitro-hydrochloric

Acid - - - - - 10 minims.

Compound Infusion of Gentian - - - - - to 1 fl. oz.

MISTURA GENTIANÆ ALKALINÆ.

Sodium Bicarbonate - - - - - 15 grains.

Diluted Hydrocyanic Acid - - - - - 3 minims.

Compound Infusion of Gentian - - - - - to 1 fl. oz.

MISTURA FERRI.

Solution of Ferric Chloride	15 minims.
Infusion of Quassia	to 1 fl. oz.

MISTURA FERRI CUM MAGNESII SULPHATE.

(Mistura Ferri Aperiens.)

Ferrous Sulphate	5 grains.
Magnesium Sulphate	50 grains.
Diluted Sulphuric Acid	10 minims.
Water	to 1 fl. oz.

MISTURA FERRI CUM POTASSII CHLORATE.

Potassium Chlorate	10 grains.
Tincture of Ferric Chloride	15 minims.
Glycerin	30 minims.
Water	to 1 fl. oz.

MISTURA FERRI ET AMMONII CITRATIS.

Iron and Ammonium Citrate	8 grains.
Ammonium Carbonate	3 grains.
Spirit of Chloroform	10 minims.
Water	to 1 fl. oz.

MISTURA FERRI ET NUCHI OMNIA.

Tincture of Nuc. Vomica	15 minims.
Iron Mixture	to 1 fl. oz.

MISTURA FERRI PHOSPHATIS COMPOSITA.

Compound Syrup of Ferrous
 Phosphate - - - 1 fl. dr.
 Calcium Hypophosphite - 10 grains.
 Compound Infusion of Gentian to 1 fl. oz.

MISTURA FERRI SALICYLATIS.

Iron and Ammonium Citrate 5 grains.
 Sodium Salicylate - - 10 grains.
 Magnesium Sulphate - - 15 grains.
 Chloroform Water - - to 1 fl. oz

MISTURA FERRI ET STRYCHNINÆ.

Solution of Strychnine Hydro-
 chloride - - - 5 minims.
 Iron Mixture - - - to 1 fl. oz.

MISTURA GENTIANÆ ACIDA.

(*Mistura Acida.*)

Diluted Nitro - hydrochloric
 Acid - - - 10 minims.
 Compound Infusion of Gentian to 1 fl. oz.

MISTURA GENTIANÆ ALKALINA.

Sodium Bicarbonate - - 15 grains.
 Diluted Hydrocyanic Acid - 3 minims.
 Compound Infusion of Gentian to 1 fl. oz.

MISTURA GENTIANÆ CUM SODA.

(Mistura Alkalina Amara.)

Sodium Bicarbonate	- -	15 grains.
Oil of Peppermint	- -	$\frac{1}{2}$ minim.
Spirit of Chloroform	- -	10 minims.
Compound Infusion of Gentian	- -	to 1 fl. oz.

MISTURA HYDRARGYRI.

Solution of Mercuric Chloride	- -	60 minims.
Infusion of Quassia	- -	to 1 fl. oz.

MISTURA HYOSCYAMI.

(Mistura Buchu Alkalina.)

Tincture of Hyoscyamus	- -	30 minims.
Potassium Bicarbonate	- -	20 grains.
Infusion of Buchu	- -	to 1 fl. oz.

MISTURA IPECACUANHÆ COMPOSITA.

Ipecacuanha Wine	- -	} of each 10 minims.
Tincture of Squill	- -	
Spirit of Chloroform	- -	
Infusion of Senega	- -	to 1 fl. oz.

MISTURA IPECACUANHÆ. *(For Children).**(Mistura Ammoniac et Ipecacuanhæ). For Children.*

Ammonium Carbonate	- -	1 grain.
Solution of Ammonium Acetate	- -	20 minims.
Ipecacuanha Wine	- -	3 minims.
Syrup of Tolu	- -	7 minims.
Water	- -	to 1 fl. dr.

MISTURA MAGNESII SULPHATIS.

(Mistura Alba)

Magnesium Sulphate	60 grains.
Light Magnesium Carbonate	15 grains.
Peppermint Water	to 1 fl. oz.

MISTURA OLEI MORRHUÆ.

Cod Liver Oil	4 fl. drs.
Oil of Cinnamon	$\frac{1}{2}$ minim.
Solution of Lime	to 1 fl. oz.

MISTURA OLEI MORRHUÆ ET FERRI.

Cod Liver Oil	equal parts
Compound Syrup of Phosphate of Iron	

MISTURA OLEI RICINI. *(For Children).*

Castor Oil	5 minims.
Glycerin	5 minims.
Tragacanth	$\frac{1}{8}$ grain.
Peppermint Water	to 1 fl. dr.

MISTURA OLEI RICINI CUM RHEO.

Castor Oil	10 minims.
Compound Tincture of Rhubarb	10 minims.
Glycerin	5 minims.
Tragacanth	$\frac{1}{8}$ grain.
Peppermint Water	to 1 fl. dr.

MISTURA GENTIANÆ COM SODA.

(Mistura Alkalina Astring.)

Sodium Bicarbonate	15 grains.
Oil of Peppermint	5 minims.
Spirit of Chloroform	10 minims.
Compound Infusion of Gentian	to 1 fl. oz.

MISTURA HYDRARGYRI.

Solution of Mercuric Chloride	10 minims.
Infusion of Quassia	to 1 fl. oz.

MISTURA HYOSCYAMÆ.

(Mistura Buchu Alkalina.)

Tincture of Hyoscyamus	30 minims.
Potassium Bicarbonate	20 grains.
Infusion of Buchu	to 1 fl. oz.

MISTURA IPECACUANHÆ COMPOSITA.

Ipecacuanha Wine	} of each
Tincture of Squill	
Spirit of Chloroform	10 minims.
Infusion of Senega	to 1 fl. oz.

MISTURA IPECACUANHÆ. *(For Children.)**(Mistura Ammonia et Ipecacuanhæ). For Children.*

Ammonium Carbonate	1 grain.
Solution of Ammonium Acetate	20 minims.
Ipecacuanha Wine	3 minims.
Syrup of Tolu	7 minims.
Water	to 1 fl. dr.

MISTURA MAGNESII SULPHATIS.

(Mistura Alba.)

Magnesium Sulphate	-	60 grains.
Light Magnesium Carbonate	-	15 grains.
Peppermint Water	-	to 1 fl. oz.

MISTURA OLEI MORRHUÆ.

Cod Liver Oil	-	4 fl. drs.
Oil of Cinnamon	-	$\frac{1}{4}$ minim.
Solution of Lime	-	to 1 fl. oz.

MISTURA OLEI MORRHUÆ ET FERRI.

Cod Liver Oil	-	} equal parts.
Compound Syrup of Phosphate of Iron	-	

MISTURA OLEI RICINI. (*For Children*).

Castor Oil	-	5 minims.
Glycerin	-	5 minims.
Tragacanth	-	$\frac{1}{16}$ grain.
Peppermint Water	-	to 1 fl. dr.

MISTURA OLEI RICINI CUM RHEO.

Castor Oil	-	10 minims.
Compound Tincture of Rhubarb	-	10 minims.
Glycerin	-	5 minims.
Tragacanth	-	$\frac{1}{16}$ grain.
Peppermint Water	-	to 1 fl. dr.

MISTURA OLEI SANTALI.

Oil of Sandalwood	-	-	15 minims.
Alcoholic Solution of Soap	-	-	7½ minims.
Water	-	-	to 1 fl. oz.

MISTURA OXYMELLIS COMPOSITA.

Oxymel	-	-	2 fl. drs.
Potassium Nitrate	-	-	7 grains.
Ipecacuanha Wine	-	-	5 minims.
Compound Tincture of Camphor	-	-	15 minims.
Water	-	-	to 1 fl. oz.

MISTURA PECTORALIS.

Ammonium Carbonate	-	-	4 grains.
Ipecacuanha Wine	-	-	10 minims.
Compound Tincture of Camphor	-	-	15 minims.
Water	-	-	to 1 fl. oz.

MISTURA POTASSII BROMIDI.

Potassium Bromide	-	-	20 grains.
Water	-	-	to 1 fl. oz.

MISTURA POTASSII CITRATIS CUM HYOSCYAMO.

Potassium Citrate	-	-	20 grains.
Tincture of Hyoscyamus	-	-	20 minims.
Infusion of Buchu	-	-	to 1 fl. oz.

MISTURA POTASSII IODIDI.

Potassium Iodide	-	-	10 grains.
Water	-	-	to 1 fl. oz.

MISTURA POTASSII IODIDI ALKALINA.

(Mistura Potassii Iodidi Composita.)

Potassium Iodide	5 grains.
Potassium Bicarbonate	15 grains.
Infusion of Quassia	to 1 fl. oz.

MISTURA POTASSII IODIDI AMMONIATA.

Potassium Iodide	10 grains.
Aromatic Spirit of Ammonia	20 minims.
Water	to 1 fl. oz.

MISTURA POTASSII IODIDI CUM CINCHONA.

Potassium Iodide	10 grains.
Aromatic Spirit of Ammonia	20 minims.
Decoction of Cinchona	to 1 fl. oz.

MISTURA POTASSII IODIDI CUM HYDRARGYRO.

Potassium Iodide	10 grains.
Solution of Mercuric Chloride	60 minims.
Infusion of Quassia	to 1 fl. oz.

MISTURA POTASSII IODIDI CUM STRAMONIO.

Extract of Stramonium	$\frac{1}{2}$ grain.
Potassium Iodide	3 grains.
Aromatic Spirit of Ammonia	10 minims.
Water	to 1 fl. oz.

MISTURA QUININE.

Quinine Sulphate	3 grains.
Diluted Sulphuric Acid	q. s.
Water	to 1 fl. oz.

MISTURA OLEI SANTALI.

Oil of Sandalwood	15 minims.
Alcoholic Solution of Soap	7½ minims.
Water	to 1 fl. oz.

MISTURA OXYMELLIS COMPOSITA.

Oxymel	2 fl. drs.
Potassium Nitrate	7 grains.
Ipecacuanha Wine	5 minims.
Compound Tincture of Camphor	15 minims.
Water	to 1 fl. oz.

MISTURA PECTORALIS.

Ammonium Carbonate	4 grains.
Ipecacuanha Wine	10 minims.
Compound Tincture of Camphor	15 minims.
Water	to 1 fl. oz.

MISTURA POTASSII BROMIDI.

Potassium Bromide	30 grains.
Water	to 1 fl. oz.

MISTURA POTASSII CITRATIS COM HYOSCYAMO.

Potassium Citrate	20 grains.
Tincture of Hyoscyamus	20 minims.
Infusion of Buchu	to 1 fl. oz.

MISTURA POTASSII IODIDI.

Potassium Iodide	10 grains.
Water	to 1 fl. oz.

MISTURA POTASSII IODIDI ALKALINA.

(Mistura Potassii Iodidi Composita.)

Potassium Iodide	-	5 grains.
Potassium Bicarbonate	-	15 grains.
Infusion of Quassia	-	to 1 fl. oz.

MISTURA POTASSII IODIDI AMMONIATA.

Potassium Iodide	-	10 grains.
Aromatic Spirit of Ammonia	-	20 minims.
Water	-	to 1 fl. oz.

MISTURA POTASSII IODIDI CUM CINCHONÆ.

Potassium Iodide	-	10 grains.
Aromatic Spirit of Ammonia	-	20 minims.
Decoction of Cinchona	-	to 1 fl. oz.

MISTURA POTASSII IODIDI CUM HYDRARGYRO.

Potassium Iodide	-	10 grains.
Solution of Mercuric Chloride	-	60 minims.
Infusion of Quassia	-	to 1 fl. oz.

MISTURA POTASSII IODIDI CUM STRAMONIO.

Extract of Stramonium	-	$\frac{1}{4}$ grain.
Potassium Iodide	-	3 grains.
Aromatic Spirit of Ammonia	-	10 minims.
Water	-	to 1 fl. oz.

MISTURA - QUININÆ.

Quinine Sulphate	-	2 grains.
Diluted Sulphuric Acid	-	q. s.
Water	-	to 1 fl. oz.

MISTURA QUININÆ ALKALINA.

Ammonium Carbonate	-	2 grains.
Potassium Bicarbonate	-	15 grains.
Quinine Sulphate	-	2 grains.
Mucilage of Starch	-	2 fl. drs.
Water	-	to 1 fl. oz.

MISTURA QUININÆ CUM FERRO.

Quinine Sulphate	-	2 grains.
Ferrous Sulphate	-	2 grains.
Diluted Sulphuric Acid	-	2 minims.
Citric Acid	-	1 grain.
Chloroform Water	-	2 fl. drs.
Water	-	to 1 fl. oz.

MISTURA QUININÆ, FERRI ET NUCIS

VOMICÆ.

Tincture of Nux Vomica	-	10 minims.
Diluted Hydrobromic Acid	-	20 minims.
Mixture of Quinine and Iron	-	to 1 fl. oz.

MISTURA QUININÆ SALICYLATIS.

Quinine Sulphate	-	4 grains.
Sodium Salicylate	-	10 grains.
Tragacanth	-	2 grains.
Chloroform Water	-	to 1 fl. oz.

MISTURA RHEI COMPOSITA.

Powdered Rhubarb	5 grains.
Potassium Bicarbonate	10 grains.
Sodium Bicarbonate	10 grains.
Aromatic Spirit of Ammonia	20 minims.
Peppermint Water	to 1 fl. oz.

MISTURA SALINA APERIENS.

Sodium Sulphate	30 grains.
Magnesium Sulphate	30 grains.
Sodium Chloride	5 grains.
Sodium Bicarbonate	10 grains.
Water	to 1 fl. oz.

MISTURA SCILLÆ COMPOSITA.

Tincture of Squill	15 minims.
Compound Tincture of Camphor	20 minims.
Infusion of Senega	to 1 fl. oz.

MISTURA SODII SALICYLATIS.

Sodium Salicylate	30 grains.
Camphor Water	to 1 fl. oz.

MISTURA SODII SALICYLATIS ALKALINA.

Sodium Bicarbonate	30 grains.
Salicylate of Sodium	to 1 fl. oz.

MISTURA QUININÆ ALKALINÆ.

Ammonium Carbonate	2 grains.
Potassium Bicarbonate	15 grains.
Quinine Sulphate	2 grains.
Mucilage of Starch	3 fl. drs.
Water	to 1 fl. oz.

MISTURA QUININÆ CUM FERRO.

Quinine Sulphate	2 grains.
Ferrous Sulphate	2 grains.
Diluted Sulphuric Acid	2 minims.
Citric Acid	1 grain.
Chloroform Water	2 fl. drs.
Water	to 1 fl. oz.

MISTURA QUININÆ, FERRI ET NUCIS

TONICÆ.

Tincture of Nux Vomica	10 minims.
Diluted Hydrobromic Acid	20 minims.
Mixture of Quinine and Iron	to 1 fl. oz.

MISTURA QUININÆ SALICYLATÆ.

Quinine Sulphate	4 grains.
Sodium Salicylate	10 grains.
Tragacanth	2 grains.
Chloroform Water	to 1 fl. oz.

MISTURA RHEI COMPOSITA.

Powdered Rhubarb	-	5 grains.
Potassium Bicarbonate	-	10 grains.
Sodium Bicarbonate	-	10 grains.
Aromatic Spirit of Ammonia	-	20 minims.
Peppermint Water	-	to 1 fl. oz.

MISTURA SALINA APERIENS.

Sodium Sulphate	-	30 grains.
Magnesium Sulphate	-	30 grains.
Sodium Chloride	-	5 grains.
Sodium Bicarbonate	-	10 grains.
Water	-	to 1 fl. oz.

MISTURA SCILLÆ COMPOSITA.

Tincture of Squill	-	15 minims.
Compound Tincture of Camphor	-	20 minims.
Infusion of Senega	-	to 1 fl. oz.

MISTURA SODII SALICYLATIS.

Sodium Salicylate	-	20 grains.
Camphor Water	-	to 1 fl. oz.

MISTURA SODII SALICYLATIS ALKALINA.

Sodium Bicarbonate	-	30 grains.
Salicylate of Sodium Mixture	-	to 1 fl. oz.

MISTURA STRYCHNINÆ ACIDA.

Solution of Strychnine Hydro-			
chloride	-	-	5 minims.
Diluted Nitro - hydrochloric			
Acid	-	-	10 minims.
Compound Tincture of Gentian			30 minims.
Water	-	-	to 1 fl. oz.

MISTURA STRYCHNINÆ ET ACIDI PHOSPHORICI.

Solution of Strychnine Hydro-			
chloride	-	-	5 minims.
Diluted Phosphoric Acid			15 minims.
Compound Tincture of Gentian			30 minims.
Water	-	-	to 1 fl. oz.

MISTURA STRYCHNINÆ ET ARSENICI.

Solution of Strychnine Hydro-			
chloride	-	-	3 minims.
Hydrochloric Solution of Arsenic			3 minims.
Spirit of Chloroform	-	-	10 minims.
Compound Infusion of Gentian			to 1 fl. oz.

MISTURA TOLUTANA.

Tincture of Tolu	-	-	10 minims.
Compound Tincture of Camphor			30 minims.
Mucilage of Acacia	-	-	30 minims.
Water	-	-	to 1 fl. oz.

MISTURA UROTROPINÆ COMPOSITA.

Urotropine	10 grains.
Magnesium Sulphate	60 grains.
Mixture of Potassium Citrate and Hyoscyamus	to 1 fl. oz.

MISTURA VALERIANÆ COMPOSITA.

Ammoniated Tincture of Valerian	80 minims.
Aromatic Spirit of Ammonia	10 minims.
Water	to 1 fl. oz.

MUCILAGO AMYL.

Starch	3 oss.
Boiling Water	5 fl. ; when cold add
Chloroform	60 minims.

NEBULA.

NEBULA EUCALYPTI.

Oil of Eucalyptus	5 minims.
Menthol	3 grains.
Liquid Paraffin	to 1 fl. oz.
(Ear and Throat Dept.)	

NEBULA MENTHOL.

Menthol	10 grains.
Liquid Paraffin	to 1 fl. oz.
(Ear and Throat Dept.)	

MISTURA STRYCHNINÆ ACIDÆ.

Solution of Strychnine Hydrochloride	5 minims.
Diluted Nitro-hydrochloric Acid	10 minims.
Compound Tincture of Gentian	30 minims.
Water	to 1 fl. oz.

MISTURA STRYCHNINÆ ET ACIDÆ PHOSPHORICÆ.

Solution of Strychnine Hydrochloride	5 minims.
Diluted Phosphoric Acid	15 minims.
Compound Tincture of Gentian	30 minims.
Water	to 1 fl. oz.

MISTURA STRYCHNINÆ ET ARSENICI.

Solution of Strychnine Hydrochloride	5 minims.
Hydrochloric Solution of Arsenic	3 minims.
Spirit of Chloroform	10 minims.
Compound Infusion of Gentian	to 1 fl. oz.

MISTURA TOLUTANA.

Tincture of Tolu	10 minims.
Compound Tincture of Camphor	30 minims.
Mucilage of Acacia	50 minims.
Water	to 1 fl. oz.

MISTURA UROTROPINÆ COMPOSITA.

Urotropine	-	-	-	10 grains.
Magnesium Sulphate	-	-	-	60 grains.
Mixture of Potassium Citrate and Hyoscyamus	-	-	-	to 1 fl. oz.

MISTURA VALERIANÆ COMPOSITA.

Ammoniated Tincture of Valerian	-	-	-	30 minims.
Aromatic Spirit of Ammonia	-	-	-	10 minims.
Water	-	-	-	to 1 fl. oz.

MUCILAGO AMYLI.

Starch	-	-	-	3 ozs.
Boiling Water	-	-	-	5 lb. ; when cold add
Chloroform	-	-	-	60 minims.

NEBULÆ.

NEBULA EUCALYPTI.

Oil of Eucalyptus	-	-	-	5 minims.
Menthol	-	-	-	5 grains.
Liquid Paraffin	-	-	-	to 1 fl. oz.

(Ear and Throat Dept.)

NEBULA MENTHOL.

Menthol	-	-	-	10 grains.
Liquid Paraffin	-	-	-	to 1 fl. oz.

(Ear and Throat Dept.)

OIL FOR CATHETERS.

Phenol	-	-	-	1
Castor Oil	-	-	-	7
Olive Oil	-	-	-	8

PASTA.

PASTA ZINCI COMPOSITA (LASSAR'S PASTE.)

Zinc Oxide	-	-	-	120 grains.
Starch	-	-	-	120 grains.
Salicylic Acid	-	-	-	10 grains.
Soft Paraffin	-	-	-	$\frac{1}{2}$ oz.

PIGMENTA.

PIGMENTUM ACIDI LACTICI COMPOSITUM.

Lactic Acid	-	-	-	$\frac{1}{2}$ fl. oz.
Formaldehyde (40%)	-	-	-	34 minims.
Phenol	-	-	-	48 grains.
Water	-	-	-	to 1 fl. oz.

(Ear and Throat Dept.)

PIGMENTUM ACIDI SULPHUROSI.

Sulphurous Acid	-	-	-	2 fl. drs.
Glycerin of Tannic Acid	-	-	-	2 fl. drs.
Glycerin	-	-	-	to 1 fl. oz.

(Ear and Throat Dept.)

PIGMENTUM CHRYSAROBINI.

Chrysarobin	-	-	-	1
Solution (1 and 9) of Gutta	-	-	-	9
Percha in Chloroform	-	-	-	1

(Skin Dept.)

PIGMENTUM IODI.

Strong Solution of Iodine }
 Tincture of Iodine } equal parts.

PIGMENTUM IODI ET MENTHOL.

(Pigmentum Mædell.)

Iodine 6 grains.
 Potassium Iodide 15 grains.
 Menthol 5 grains.
 Glycerin 10 fl. oz.
 (Ear and Throat Dept.)

PILULÆ.

PILULA ALOES ET NUCIS VOMICÆ.

Barbados Aloes 2 grains.
 Extract of Nux Vomica 1 grain.
 Powdered Soap 1 grain.

PILULA ALOES ET FERRI.

Ferrous Sulphate 1 grain.
 Barbados Aloes 1 grain.
 Powdered Ginger 1 grain.

PILULA CALOMELANOS ET COLOCYNTHIDIS.

Mercurious Chloride 1½ grains.
 Colocynth 1 grain.
 Scammony (gum-resin) 1 grain.
 Barbados Aloes 1 grain.
 Potassium Sulphate 1 grain.
 Oil of Cloves 1 minim.

OIL FOR CATHETERS.

Phenol	1
Castor Oil	7
Olive Oil	8

PASTA.

PASTA ZINCI COMPOSITA (LASSAR'S PASTE.)

Zinc Oxide	120 grains.
Starch	120 grains.
Salicylic Acid	10 grains.
Soft Paraffin	$\frac{1}{2}$ oz.

PIGMENTA.

PIGMENTUM ACIDI LACTICI COMPOSITUM.

Lactic Acid	$\frac{1}{2}$ fl. oz.
Formaldehyde (40%)	24 minims.
Phenol	48 grains.
Water	to 1 fl. oz.

Sulphurous Acid	2 drs.
Glycerin of Tannic Acid	2 fl. drs.
Glycerin	to 1 fl. oz.

(Ear and Throat Dept.)

PIGMENTUM CHRYSAROBINI.

Chrysarobin	1
Solution (1 and 9) of Gutta	9
Percha in Chloroform	15

(Skin Dept.)

PIGMENTUM IODI.

Strong Solution of Iodine	-	} equal parts.
Tincture of Iodine	-	

PIGMENTUM IODI ET MENTHOL.

(Pigmentum Mandl.)

Iodine	-	-	6 grains.
Potassium Iodide	-	-	15 grains.
Menthol	-	-	5 grains.
Glycerin	-	-	to 1 fl. oz.

(Ear and Throat Dept.)

PILULÆ.

PILULA ALOES ET NUCIS VOMICÆ.

Barbados Aloes	-	-	2 grains.
Extract of Nux Vomica	-	-	$\frac{1}{4}$ grain.
Powdered Soap	-	-	$\frac{1}{2}$ grain.

PILULA ALOES ET FERRI.

Ferrous Sulphate	-	-	$\frac{3}{4}$ grain.
Barbados Aloes	-	-	1 grain.
Powdered Ginger	-	-	1 grain.

PILULA CALOMELANOS ET COLOCYNTHIDIS.

Mercurous Chloride	-	-	$1\frac{1}{2}$ grains.
Colocynth	-	-	$\frac{1}{2}$ grain.
Scammony (gum-resin)	-	-	1 grain.
Barbados Aloes	-	-	1 grain.
Potassium Sulphate	-	-	$\frac{1}{8}$ grain.
Oil of Cloves	-	-	$\frac{1}{8}$ minim.

PILULA CASCARÆ COMPOSITA.

Extract of Barbados Aloes	-	1 grain.
Extract of Cascara Sagrada	-	1 grain.
Alcoholic Extract of Bella-		
donna	-	$\frac{1}{4}$ grain.
Extract of Nux Vomica	-	$\frac{1}{4}$ grain.
Hard Soap	- - -	1 grain.

PILULA COLOCYNTHIDIS CUM HYDRARGYRO.

Colocynth and Hyoscyamus	-	
	Pill -	$3\frac{1}{2}$ grains.
Mercury Pill	-	$1\frac{1}{2}$ grains.

PILULA DIGITALIS CUM HYDRARGYRO.

Digitalis Leaf in powder	-	$\frac{1}{2}$ grain.
Squill in powder	-	1 grain.
Mercury Pill	-	2 grains.

PILULA FERRI REDACTI COMPOSITA.

Mercury with Chalk	-	2 grains.
Reduced Iron	-	2 grains.
Compound Powder of Ipeca-		
cuanha	- - -	1 grain.

PILULA HYDRARGYRI CUM CRETÂ COMPOSITA.

(Hutchinson's Pill.)

Mercury with Chalk	-	1 grain.
Compound Powder of Ipeca-		
cuanha	- - -	1 grain.

PILULA HYDRARGYRI CUM OPIO.

Mercury Pill - 4 grains.
 Powdered Opium - 1 grain.

PILULA HYDRARGYRI CUM RHEO.

Mercury Pill - 2 grains.
 Compound Rhubarb Pill - 3 grains.

PILULA RHEI ET NUCIS VOMICÆ.

Compound Rhubarb Pill - 3 grains.
 Extract of Nux Vomica - 1 grain.
 Alcoholic Extract of Bella-
 donna - 1 grain.

PILULA ZINCI CUM BELLADONNA.

Zinc Oxide - 2 grains.
 Extract of Belladonna - 1 grain.

PULVERES.

PULVIS ACIDI BORICI COMPOSITUS.

Powdered Boric Acid - 1 part.
 Zinc Oxide - 1 part.
 Starch in powder - equal weights.

PULVIS CALOMELANOS ZINCI OXIDI ET AMYLI.

Mercurous Chloride - 1 part.
 Zinc Oxide - 2 parts.
 Powdered Starch - 1 part.

PILULA CASCARÆ COMPOSITA.

Extract of Barbados Aloes	1 grain.
Extract of Cascara Sagrada	1 grain.
Alcoholic Extract of Bella donna	1 grain.
Extract of Nux Vomica	1 grain.
Hard Soap	1 grain.

PILULA COLOCYNTHIDIS CUM HYDRARGYRO.

Colocynth and Hyoscyamus	
Pill	3½ grains.
Mercury Pill	1½ grains.

PILULA DIGITALIS CUM HYDRARGYRO.

Digitalis Leaf in powder	1 grain.
Squill in powder	1 grain.
Mercury Pill	2 grains.

PILULA FERRI WITH CHALK.

Mercury with Chalk	1 grain.
Reduced Iron	2 grains.
Compound Powder of Ipeca- cuanha	1 grain.

PILULA HYDRARGYRI CUM CRETA COMPOSITA.

(Hutchinson's Pill.)

Mercury with Chalk	1 grain.
Compound Powder of Ipeca- cuanha	1 grain.

PILULA HYDRARGYRI CUM OPIO.

Mercury Pill	-	-	4 grains.
Powdered Opium	-	-	$\frac{1}{4}$ grain.

PILULA HYDRARGYRI CUM RHEO.

Mercury Pill	-	-	2 grains.
Compound Rhubarb Pill	-	-	3 grains.

PILULA RHEI ET NUCIS VOMICÆ.

Compound Rhubarb Pill	-	-	3 grains.
Extract of Nux Vomica	-	-	$\frac{1}{4}$ grain.
Alcoholic Extract of Bella-	-	-	-
donna	-	-	$\frac{1}{8}$ grain.

PILULA ZINCI CUM BELLADONNÂ.

Zinc Oxide	-	-	2 grains.
Extract of Belladonna	-	-	$\frac{1}{4}$ grain.

PULVERES.

PULVIS ACIDI BORICI COMPOSITUS.

Powdered Boric Acid	-	-	-
Zinc Oxide	-	-	-
Starch in powder	-	-	-
			} equal weights.

PULVIS CALOMELANOS ZINCI OXIDI ET AMYLI.

Mercurous Chloride	-	-	1
Zinc Oxide	-	-	2
Powdered Starch	-	-	1

PULVIS HYDRARGYRI ET RHEI.

Powdered Rhubarb	--	-	3 grains.
Mercury with Chalk	--	-	of each
Heavy Magnesium Carbonate)	1½ grains.

PULVIS HYDRARGYRI CUM SODÂ.

Mercury with Chalk	-	½ grain.
Sodium Bicarbonate	-	1 grain.

PULVIS IODOFORMI ET ACIDI BORICI.

Powdered Iodoform	-	1
Powdered Boric Acid	-	2

PULVIS SANTONINI COMPOSITUS.

Santonin	-	-	3 grains.
Mercurous Chloride	-	-	1 grain.

PULVIS STRAMONII COMPOSITUS.

Powdered Stramonium Leaves	3
Powdered Lobelia	3
Powdered Nitrate of Potassium	2

A small teaspoonful to be ignited and the fumes inhaled.

PULVIS ZINCI OXIDI ET AMYLI.

Zinc Oxide	-	-	-	equal
Powdered Starch	-	-	-	weights.

SAL. APERIENS.

(Artificial Cathartic Salt.)

Exsiccated Sodium Sulphate	44
Potassium Sulphate	2
Sodium Chloride	18
Sodium Bicarbonate	36

Dose.—40 grains in warm water.

SAPONES.

SOLUTIO SAPONIS ALCOHOLICA.

Potassium Hydroxide	1	} by weight.
Rectified Spirit	4	
Castor Oil	5	

SOLUTIO SAPONIS ÆTHERIS.

Oleic Acid	36.4	} all by weight.
Solution of Potassium Hydroxide (47.7 p.c.)	15.0	
Methylated Spirit (Sp. gr. 0.819)	26.3	
Water	10.0	} by weight.
Methylated Ether (Sp. gr. 0.730)	7.8	
Thymol	0.5	
Oil of Cajuput	0.5	} by weight.
Chloroform	2.0	

PULVIS HYDRARGYRI ET RHUBI.

Powdered Rhubarb	33 grains.
Mercury with Chalk	17 of each.
Heavy Magnesium Carbonate	1½ grains.

PULVIS HYDRARGYRI CUM SODA.

Mercury with Chalk	½ grain.
Sodium Bicarbonate	1 grain.

PULVIS IODOFORMI ET ACIDI BORICI.

Powdered Iodoform	1
Powdered Boric Acid	2

PULVIS SANTONINI COMPOSITUS.

Santonin	3 grains.
Mercurous Chloride	1 grain.

PULVIS STRAMONIÆ COMPOSITUS.

Powdered Stramonium Leaves	3
Powdered Lobelia	3
Powdered Nitrate of Potassium	2

A small teaspoonful to be ignited and the fumes inhaled.

PULVIS ZINCI OXIDI ET AMYL.

Zinc Oxide	1 equal
Powdered Starch	1 weights.

SAL APERIENS.

(Artificial Carlsbad Salt.)

Exsiccated Sodium Sulphate	-	44
Potassium Sulphate	-	2
Sodium Chloride	-	18
Sodium Bicarbonate	-	36

Dose.—60 grains in warm water.

SAPONES.

SOLUTIO SAPONIS ALCOHOLICA.

Potassium Hydroxide	-	1	} by weight.
Rectified Spirit	-	4	
Castor Oil	-	5	

SOLUTIO SAPONIS ÆTHERIS.

Oleic Acid	-	-	36.4	} all by weight.
Solution of Potassium Hydroxide (47.7 p.c.)	-	-	15.0	
Methylated Spirit (Sp. gr. 0.819)	-	-	26.3	
Water	-	-	10.0	
Methylated Ether (Sp. gr. 0.730)	-	-	7.3	
Thymol	-	-	0.5	
Oil of Cajuput	-	-	0.5	
Chloroform	-	-	2.0	

SOLUTIO SAPONIS CRESOL.

(Soluble Cresol.)

Cresol (crude)	-	-	25 $\frac{1}{4}$ lbs.
Oleic Acid	-	-	10 lbs.
Solution of Potassium Hydroxide (47.7 p.c.)	-	-	4 lbs. 2 $\frac{1}{4}$ ozs.

TABELLA.

TABELLA PHENACETINI COMPOSITA.

Phenacetin	-	-	4 grains.
Caffeine	-	-	1 grain.
	-	-	<i>In each Tablet.</i>

UNGUENTA.

UNGUENTUM ACIDI BORICI MOLLE.

Boric Acid (in fine powder)	-	-	1
Soft Paraffin	-	-	6

UNGUENTUM ACIDI SALICYLICI ET SULPHURIS.

Salicylic Acid	-	-	10 grains.
Precipitated Sulphur	-	-	15 grains.
Benzoated Lard	-	-	to 1 oz.

(Skin Dept.)

UNGUENTUM ATROPINÆ.

Atropine	1
Vaseline	99
(Ophthalmic Dept.)	

UNGUENTUM ATROPINÆ ET COCAINÆ.

Atropine	1
Cocaine	2
Vaseline	97
(Ophthalmic Dept.)	

UNGUENTUM ATROPINÆ ET IODOFORMI.

Atropine	1
Iodoform	15
Vaseline	84
(Ophthalmic Dept.)	

UNGUENTUM BETULÆ COMPOSITUM.

Oil of Cade	10
Oil of Birch (pyroligneous)	of each 1
Ichthyol	
Resorcin	
Beeswax	5
Benzoyated Lard	25
(Skin Dept.)	

UNGUENTUM PLASTICUM.

Yellow Mercuric Oxide	1
Vaseline	28
(Ophthalmic Dept.)	

SOLUTIO SAPONIS CRESOL.

(Sapone Cresol.)

Cresol (crude)	25 lbs.
Oleic Acid	10 lbs.
Solution of Potassium Hydroxide (47.7 p.c.)	4 lbs. 2 ozs.

TABELLA.

TABELLA PHENACETINI COMPOSITA.

Phenacetin	4 grains.
Caffeine	1 grain.
In each Tablet.	

UNGUENTA.

UNGENTUM ACIDI BORICI.

Boric Acid (in fine powder)	1 lb.
Soft Paraffin	6 lbs.

UNGENTUM ACIDI SALICYLICI ET SULPHURIS.

Salicylic Acid	10 grains.
Precipitated Sulphur	15 grains.
Benzoated Lard	10 lbs.

UNGUENTUM ATROPINÆ.

Atropine	-	-	1
Vaseline	-	-	99
(Ophthalmic Dept.)			

UNGUENTUM ATROPINÆ ET COCAINÆ.

Atropine	-	-	1
Cocaine	-	-	2
Vaseline	-	-	97
(Ophthalmic Dept.)			

UNGUENTUM ATROPINÆ ET IODOFORMI.

Atropine	-	-	$\frac{1}{2}$
Iodoform	-	-	15
Vaseline	-	-	84 $\frac{1}{2}$
(Ophthalmic Dept.)			

UNGUENTUM BETULÆ COMPOSITUM.

Oil of Cade	-	-	10
Oil of Birch (pyroligneous)	-	-	} of each 1
Ichthyol	-	-	
Resorcin	-	-	
Beeswax	-	-	5
Benzoated Lard	-	-	25
(Skin Dept.)			

UNGUENTUM FLAVUM DILUTUM.

Yellow Mercuric Oxide	-	-	1
Vaseline	-	-	99
(Ophthalmic Dept.)			

UNGUENTUM FLAVUM DILUTUM CUM

I - ATROPINĀ.

Atropine	-	-	-	$\frac{1}{2}$
Yellow Mercuric Oxide	-	-	-	1
Vaseline	-	-	-	98 $\frac{1}{2}$

(Ophthalmic Dept.)

UNGUENTUM PARAFFINI CERATUM.

(*Cerated Paraffin.*)

Beeswax	-	-	-	$\frac{1}{4}$
Soft Paraffin	-	-	-	14

UNGUENTUM SULPHURIS COMPOSITUM.

(*Scabies Ointment.*)

Precipitated Sulphur	-	-	-	1
Potassium Carbonate	-	-	-	$\frac{1}{2}$
Water	-	-	-	$\frac{1}{2}$
Cerated Paraffin	-	-	-	2
Benzoated Lard	-	-	-	10

(Skin Dept.)

UNGUENTUM TRI-ACIDUM.

Phenol	-	-	-	1
Salicylic Acid	-	-	-	2
Tartaric Acid	-	-	-	3
Benzoated Lard	-	-	-	94

(Skin Dept.)

UNGUENTUM PICIS CARBONIS COMPOSITUM.

Methylated Solution of Coal Tar	12½ minims.
Ammoniated Mercury	12½ grains.
Soft Paraffin	1 oz.
Hard Paraffin	½ oz.

VAPORES.

1 teaspoonful in 1 pint of boiling water for all inhalations.

VAPOR BENZOINI.

Compound Tincture of Benzoin

VAPOR BENZOINI COMPOSITA.

Compound Tincture of Benzoin	1 fl. dr.
Oil of Eucalyptus	1 fl. dr.
Methylated Spirit	4 fl. drs.

VAPOR CREOSOTI.

Creosote	70 minims.
Light Magnesium Carbonate	30 grains.
Water	to 1 fl. oz.

(Ear and Throat Dept.)

VAPOR PINI SYLVESTRIS.

Oil of Pine	30 minims.
Light Magnesium Carbonate	20 grains.
Water	to 1 fl. oz.

(Ear and Throat Dept.)

UNGUENTUM FLAVUM DICTUM CUM

ATROPINA

Atropine

Yellow Mercuric Oxide

Vaseline

(Ophthalmic Dept.)

UNGUENTUM PARAFFINI CERATUM

(Cerated Paraffin.)

Beeswax

Soft Paraffin

14

UNGUENTUM SULPHURIS COMPOSITUM

(Sulphur Ointment.)

Precipitated Sulphur

Potassium Carbonate

Water

Cerated Paraffin

Benzoated Lard

(Skin Dept.)

UNGUENTUM TRI-ACIDUM

Phenol

Salicylic Acid

Tartaric Acid

Benzoated Lard

94

(Skin Dept.)

UNGUENTUM PICIS CARBONIS COMPOSITUM.

Methylated Solution of Coal Tar	12½ minims.
Ammoniated Mercury	12½ grains.
Soft Paraffin	1 oz.
Hard Paraffin	¼ oz.

VAPORES.

1 teaspoonful in 1 pint of boiling water for all inhalations.

VAPOR BENZOINI.

Compound Tincture of Benzoin

VAPOR BENZOINI COMPOSITA.

Compound Tincture of Benzoin	1 fl. dr.
Oil of Eucalyptus	1 fl. dr.
Methylated Spirit	4 fl. drs.

VAPOR CREOSOTI.

Creosote	70 minims.
Light Magnesium Carbonate	30 grains.
Water	to 1 fl. oz.

(Ear and Throat Dept.)

VAPOR PINI SYLVESTRIS.

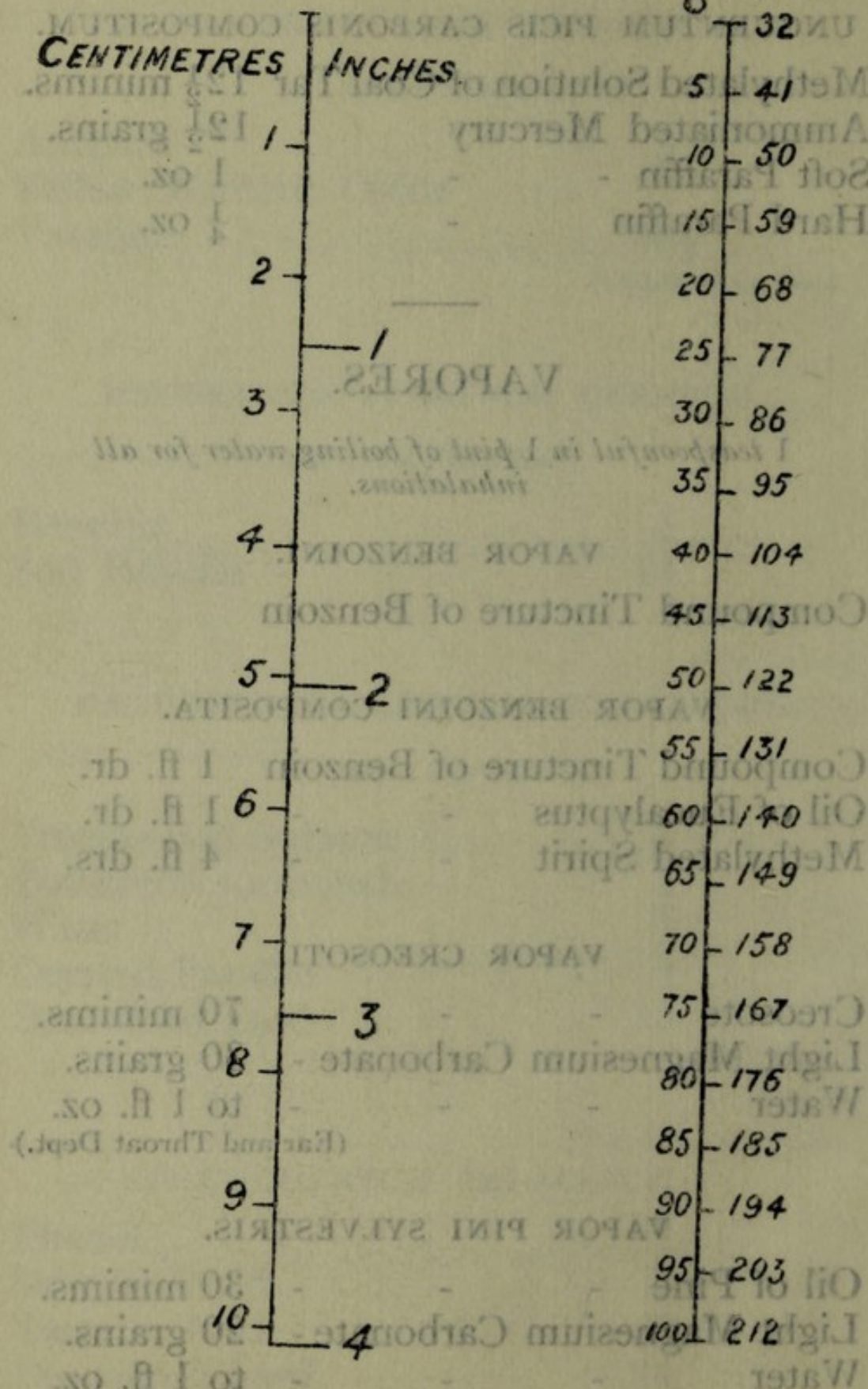
Oil of Pine	30 minims.
Light Magnesium Carbonate	20 grains.
Water	to 1 fl. oz.

(Ear and Throat Dept.)

C ° F

CENTIMETRES

INCHES



Note—

- (1) To convert degrees F. into degree C. deduct 32, multiply by 5, and divide by 9.
- (2) To convert degrees C. into degrees F. multiply by 9, divide by 5, and add 32.

1. The first of these is the *metre*, which is the length of the path travelled by light in a vacuum in a time of $\frac{1}{299,792,458}$ of a second. It is the only one of the units of the *Système International* which is not defined in terms of a physical object. The *metre* is the base unit of length, and all other units of length are derived from it. The *metre* is divided into *centimetres* and *millimetres*, and is also multiplied by powers of ten to give *kilometres*, *hectometres*, and *decametres*. The *metre* is the only unit of length which is not defined in terms of a physical object.

A Millimetre	= $\frac{1}{25.4}$ inch.
10 Centimetres	= 4 inches.
1 Metre	= 39.37 inches.
A Milligramme	= $\frac{1}{7000}$ grain.
A Gramme	= 15.4 grains.
100 Grammes	= 3.5 oz. avoirdupois.
A Kilogramme	= 2.2 lbs.
A Cubic Centimetre	= 15 minims.
100 Cubic Centimetres	= 3.4 fl. oz.
A Litre	= 1.05 pints.

The *metre* is the only unit of length which is not defined in terms of a physical object. The *metre* is the base unit of length, and all other units of length are derived from it. The *metre* is divided into *centimetres* and *millimetres*, and is also multiplied by powers of ten to give *kilometres*, *hectometres*, and *decametres*. The *metre* is the only unit of length which is not defined in terms of a physical object.

CENTIMETRES

INCHES

		32
		41
1		50
		59
2		68
	1	77
3		86
		95
4		104
		113
5	2	122
		131
6		140
		149
7		158
	3	167
8		176
		185
9		194
		203
10	4	212
		221

- (1) To convert degrees F. into degree C. deduct 32, multiply by 5, and divide by 9.
- (2) To convert degrees C. into degrees F. multiply by 9, divide by 5, and add 32.

RHEUMATA.

Emulsion Amygd. et Op..—To two ounces of thin nearly cold starch mucilage add thirty minims of tincture of opium, and inject slowly through tube and funnel.

Emulsion Glycerini.—One to two drachms of glycerin, which should be warmed, or mixed with warm water (a sufficient quantity) and given with special syringe with long nozzle, or with catheter and glass funnel.

Emulsion Nivosa.—For an adult:—

A Millimetre = $\frac{1}{25}$ inch.

10 Centimetres = 4 inches.

1 Metre = 39.37 inches.

A Milligramme = $\frac{1}{60}$ grain.

A Gramme = $15\frac{1}{2}$ grains.

100 Grammes = $3\frac{1}{2}$ oz. avoirdupois.

A Kilogramme = $2\frac{1}{5}$ lbs.

A Cubic Centimetre = 17 minims.

100 Cubic Centimetres = $3\frac{1}{2}$ fl. ozs.

A Litre = $1\frac{3}{4}$ pints.

Given 8 hourly. Time taken $\frac{1}{2}$ to 1 hour.
Nutrient Rheumata should be given through a No. 8 soft rubber catheter which is connected to a glass funnel by a rubber tube and glass connection, about 12 inches in length.
In any case where rectal feeding is used, the bowel should be washed out with a warm sterilized water enema, once in each 24 hours, about an hour previous to a feed.

ENEMATA.

Enema Amyli et Opii.—To two ounces of thin nearly cold starch mucilage add thirty minims of tincture of opium, and inject slowly through tube and funnel.

Enema Glycerini.—One to two drachms of glycerin, which should be warmed, or mixed with warm water (a sufficient quantity) and given with special syringe with long nozzle, or, with catheter and glass funnel.

Enema Nutriens.—For an adult:—

- (1.) Beef Tea 2 fluid ounces.
Milk 2 fluid ounces.

Heat together to about 140° F., then add Liquor Pancreaticus 1 fluid drachm, Bicarbonate of Soda 20 grains, and keep warm for one hour. Brandy, $\frac{1}{2}$ fluid ounce can be added if necessary.

- (2.) Milk 4 fluid ounces.
Yolk of 1 Egg.

Beat up together, warm to about 140° F.; then add:—

- Liquor Pancreaticus .. 1 fluid drachm.
Bicarbonate of Soda .. 20 grains.
Common Salt 30 grains.

and keep warm for one hour.

To be given at a temperature of 98° to 100° F.

- (3.) Normal Saline solution.. 18 fluid ounces.
Carrick's Liquid Pep-
tonoids 1 fluid ounce.
Brandy 1 fluid ounce.

Given 8 hourly. Time taken $\frac{3}{4}$ to 1 hour.

Nutrient Enemata should be given through a No. 8 soft rubber catheter which is connected to a glass funnel by a rubber tube and glass connection, about 12 inches in length.

In any case where rectal feeding is used, the bowel should be washed out with a warm sterilized water enema, once in each 24 hours, about an hour previous to a feed.

Enema Olei.—Add 4 fluid ounces of olive oil to 8 fluid ounces of simple enema.

Enema Olei Ricini.—Add 1 fluid ounce of castor oil to 12 fluid ounces of simple enema.

Enema Simplex.—Dissolve 1 ounce of yellow soap in a pint of boiling water. To be given at a temperature of 109° F. with Higginson's syringe. One to three pints can be given.

Enema Turbinthina.—Mix half to one ounce of turpentine with one pint of thin starch mucilage, thin gruel, or soap enema.

POTUS.

POTUS ACIDI BORICI.

Boiled lint dipped in hot water, lightly wrung out and applied under gutta-percha tissue and cotton wool by means of a bandage to the affected part.

POTUS BELLADONNÆ.

Paint the affected part with Glycerin of Belladonna, and apply lint lightly wrung out of hot water, and cover with gutta-percha tissue and cotton wool.

POTUS ICHTHYOL.

Paint the affected part with Glycerin of Ichthol and apply lint lightly wrung out of hot water and cover with gutta-percha tissue and cotton wool.

POTUS OPII.

Apply a little Tincture of Opium on a lint wrung out of hot water, and apply as above.

ENEMATA.

Enema Amyli et Opii.—To two ounces of thin nearly cold starch mucilage add thirty minims of tincture of opium, and inject slowly through tube and funnel.

Enema Glycerini.—One to two drachms of glycerin, which should be warmed, or mixed with warm water in sufficient quantity, and given with special syringe with long nozzle, or with catheter and glass funnel.

Enema Nutrients.—For an adult:—

- (1.) Beef Tea 2 fluid ounces.
Milk 2 fluid ounces.

Heat together to about 140° F., then add
Liquor Pancreaticus 1 fluid drachm. Bi-
carbonate of Soda 20 grains, and keep warm
for one hour. Brandy, 2 fluid ounces may be
added if necessary.

- (2.) Milk 1 fluid ounce.
Yolk of 1 Egg.

Beat up together, warm to about 140° F.,
then add:—

- Liquor Pancreaticus . . . 1 fluid drachm.
Bicarbonate of Soda . . . 20 grains.
Common Salt 20 grains.

and keep warm for one hour.

To be given at a temperature of 95° to 100° F.

- (3.) Normal Saline solution . . 15 fluid ounces.
Carriek's Liquid Peps-
toids 1 fluid ounce.
Brandy 1 fluid ounce.

Given 8 hourly. Time taken $\frac{1}{2}$ to 1 hour.

Nutrient Enemata should be given through a No. 8 soft rubber catheter which is connected to a glass funnel by a rubber tube and glass connection, about 12 inches in length.

In any case where rectal feeding is used, the bowel should be washed out with a warm sterilized water enema, once in each 24 hours, about an hour previous to a feed.

Enema Olei.—Add 4 fluid ounces of olive oil to 8 fluid ounces of simple enema.

Enema Olei Ricini.—Add 1 fluid ounce of castor oil to 12 fluid ounces of simple enema.

Enema Simplex.—Dissolve 1 ounce of yellow soap in a pint of boiling water. To be given at a temperature of 100° F. with Higginson's syringe. One to three pints can be given.

Enema Terebinthinæ.—Mix half to one ounce of turpentine with one pint of thin starch mucilage, thin gruel, or soap enema.

FOTUS.

FOTUS ACIDI BORICI.

Boric Lint dipped in hot water, lightly wrung out and applied under gutta-percha tissue and cotton-wool by means of a bandage to the affected part.

FOTUS BELLADONNÆ.

Paint the affected part with Glycerin of Belladonna, and apply lint lightly wrung out of hot water, and cover with gutta-percha tissue and cotton-wool.

FOTUS ICHTHYOL.

Paint the affected part with Glycerin of Ichthyol and apply lint lightly wrung out of hot water and cover with gutta percha tissue and cotton wool.

FOTUS OPII.

Sprinkle a little Tincture of Opium on a flannel wrung out of hot water, and apply as above.

BATHS.

Water baths are given at various degrees of temperature, *i.e.*, from just above freezing, 33° F. to 112° F. In all cases the temperature should be ascertained by bath thermometer and not the hand.

A cold bath should be	...	33° to 65° F.
" cool " "	" "	65° " 80° F.
" tepid " "	" "	80° " 90° F.
" warm " "	" "	90° " 100° F.
" hot " "	" "	100° " 112° F.

ACID BATH.—Add 4 ozs. Hydrochloric Acid to 30 gallons of water.

ALKALINE BATH.—Dissolve 8 ozs. Carbonate of Soda in 30 gallons of water, at temperature from 90°—106° F.

BRAN BATH.—Put 2 lbs. of Bran in a muslin bag and pour boiling water over it, and add enough hot water to make a bath.

CREOSOTE BATH.—Add 2 ozs. of Creosote and 2 ozs. of Glycerin to 30 gallons of water at 98° F.

LYSOL BATH.—Add 2 ozs. of Lysol to 30 gallons of water.

MUSTARD BATH.—The usual preparation is:—1 tablespoonful Mustard to 1 gallon of water. The mustard should be mixed into a smooth liquid paste, before adding it to the water. The quantity of mustard used varies according to circumstances.

OATMEAL BATH.—Put $\frac{3}{4}$ lb. of Oatmeal in a large muslin bag and pour boiling water over it. Add enough water to make a bath; squeeze the bag of oatmeal out in the water until the water feels soft.

STARCH BATH.—Dissolve 2 lbs. Starch in cold water. Add boiling water to make a mucilage, then pour the mucilage into 30 gallons of water of the required temperature.

SULPHUR BATH.—Dissolve 16 ozs. Sulphurated Potash in 30 gallons of water, at temperature from 90°—106° F.

TAR BATH.—Add 8 ozs. of Bitumen to 30 gallons of water.

No. 6.

Special Diet for Phthisical Patients only.

8 a.m.,	Porridge with Milk or Treacle.	
	Cocoa	1 pt.
8 a.m.,	Milk	1 pt.
	Butter	1 oz.
10 a.m.,	Beef Tea or Milk	1 pt.
	Scraped Raw Meat	1 lb.
12.30 p.m.,	Meat	12 oz.
	<i>or one of the following—</i>	
	Fish	12 oz.
	Rabbit (when in season)	8 oz.
	Chicken	8 oz.
	Cooked Fruit or Suet Pudding.	
4 p.m.,	Cocoa or Tea	1 pt.
	Milk (chilled)	1 pt.
	Butter	1 oz.
	Bread	(Q.S.)
7 p.m.,	Clear Soup or Milk	1 pt.
	Bread	

Patients are to be placed on No. 6 diet until a diet is
prescribed by the Surgeon.

The diet is to be continued until the patient is
able to take solid food, when it is to be discontinued.
The diet is to be supplied when the patient is
unable to take solid food.

It is to be continued for a period of 14 days, unless
the patient's progress is such as to require
it to be discontinued earlier.
It is requested that Medical Officers will inform the
Surgeon of the diet scale.

BATHS.

Water baths are given at various degrees of temperature, *viz.*, from just above freezing, 32° F. to 112° F. In all cases the temperature should be ascertained by bath thermometer and not by hand.

A cold bath should be	32° to 57° F.
" Cool "	58° " 80° F.
" Tepid "	80° " 90° F.
" Warm "	90° " 100° F.
" Hot "	100° " 112° F.

ACID BATH.—Add 4 ozs. Hydrochloric Acid to 30 gallons of water.

ALKALINE BATH.—Dissolve 8 ozs. Carbonate of Soda in 30 gallons of water, at temperature from 90° — 100° F.

BRAN BATH.—Put 2 lbs. of Bran in a muslin bag and pour boiling water over it, and add enough hot water to make a bath.

CREOSOTE BATH.—Add 2 ozs. of Creosote and 2 ozs. of Glycerin to 30 gallons of water at 90° F.

LYSOL BATH.—Add 2 ozs. of Lysol to 30 gallons of water.

MUSTARD BATH.—The usual proportion is 1 tablespoonful Mustard to 1 gallon of water. The number should be varied, the quantity of water being added according to the strength of the Mustard and the condition of the patient. The quantity of water should be such as to make the bath comfortable.

OATMEAL BATH.—Put 4 lbs. of Oatmeal in a muslin bag and pour boiling water over it. Add enough water to make a bath. The bag of oatmeal can be used over and over again, the water being changed.

STARCH BATH.—Dissolve 2 lbs. Starch in 30 gallons of water. Add boiling water to make a mucilage, then pour the mucilage into 30 gallons of water of the required temperature.

SULPHUR BATH.—Dissolve 16 ozs. Saturated Potash in 30 gallons of water, at temperature from 90° — 100° F.

TAR BATH.—Add 8 ozs. of Bitumen to 30 gallons of water.

DIET SCALE.

[49-50]

	No. 1. Full Diet.	No. 2. Convalescent Diet.	No. 3. Low Diet.	No. 4. Milk Diet.	No. 5. Children's Diet.	No. 6. Special Diet for Phthisical Patients only.
Breakfast	Tea .. $\frac{3}{4}$ pt. Butter .. $\frac{1}{2}$ oz.	Tea .. $\frac{1}{2}$ pt. Butter .. $\frac{1}{2}$ oz.	Tea .. $\frac{1}{2}$ pt. Butter .. $\frac{1}{2}$ oz.	Tea .. $\frac{1}{4}$ pt. Butter .. $\frac{3}{4}$ oz.	6 a.m., Porridge with Milk or Treacle. Cocoa 1 pt. 8 a.m., Milk 1 pt. Butter $\frac{1}{2}$ oz.
Tea	Tea .. $\frac{3}{4}$ pt. Butter .. $\frac{1}{2}$ oz.	Tea .. $\frac{1}{2}$ pt. Butter .. $\frac{1}{2}$ oz.	Tea .. $\frac{1}{2}$ pt. Butter .. $\frac{1}{2}$ oz.	Tea .. $\frac{1}{2}$ pt. Butter	10 a.m., Beef Tea or Milk .. 1 pt. Scraped Raw Meat .. $\frac{1}{2}$ lb.
During remainder of 24 hours		Mutton Chop 8 oz. <i>or one of the following—</i>	12.30 p.m., Meat 12 oz. <i>or one of the following—</i> Fish 12 oz. Rabbit (when in season) 8 oz. Chicken 8 oz. Cooked Fruit or Suet Pudding.
	Meat .. 12 oz. Fish .. 12 oz. (once a week)	Meat .. 6 oz. (Minced) Fish .. 8 oz. Rabbit .. 8 oz. (in season)	Meat .. 6 oz. (Minced) Fish .. 8 oz. (once a week)	4 p.m., Cocoa or Tea .. 1 pt. <i>or</i> Milk (boiled) .. 1 pt. Butter $\frac{1}{2}$ oz. Bread (Q.S.)
	Potatoes 8 oz. Pudding 4 oz.	Potatoes 6 oz. Pudding 8 oz.	Pudding 8 oz. (not suet)	Potatoes 4 oz. Pudding 4 oz.	7 p.m., Clear Soup or Milk .. 1 pt. Bread
	Milk .. 1 pt. Bread .. 16 oz.	Milk .. 1 pt. Bread .. 14 oz.	Milk .. 2 pts. Bread .. 12 oz.	Milk 3-4 pts.	Milk .. 1 pt. Bread .. 8 oz.	

MONDAY	Meat.
TUESDAY	Boiled Beef.
WEDNESDAY	Roast Mutton.
THURSDAY	Boiled Beef.
FRIDAY	Boiled Mutton.
SATURDAY	Boiled Beef.
SUNDAY	Roast Mutton.

Puddings.
Rice.
Sago.
Tapioca.

Patients on admission are to be placed on No. 3 diet until a diet is ordered by the Physician or Surgeon.

Beef essence, special beef tea, mutton essence, mutton broth, bacon, chicken, chicken broth, eggs, jelly, arrowroot, porridge, wines and spirits, cocoa and coffee, to be supplied only when specially ordered.

No extra to be ordered for a patient unless the Medical Officer considers it essential to the patient's proper treatment.

All diets as well as stimulants to be rewritten weekly.

It is particularly requested that Medical Officers will adhere as closely as possible to the above diet scale.

DIET SCALE

No. 1. 3. 5.		No. 2. 4. 6.		No. 3. 7. 9.	
Tea		Tea		Tea	
Butter		Butter		Butter	
Tea		Tea		Tea	
Butter		Butter		Butter	
Meat		Meat		Meat	
Fish		Fish		Fish	
Rabbit		Rabbit		Rabbit	
Potatoes		Potatoes		Potatoes	
Pudding		Pudding		Pudding	
Milk		Milk		Milk	
Bread		Bread		Bread	

Monday		Tuesday		Wednesday	
Thursday		Friday		Saturday	
Sunday		Monday		Tuesday	
Wednesday		Thursday		Friday	
Saturday		Sunday		Monday	
Tuesday		Wednesday		Thursday	
Friday		Saturday		Sunday	

SPECIAL PREPARATIONS.

Almond Milk.—Put $\frac{1}{2}$ pint of fresh milk and 1 pint of water into an enamelled saucepan. Heat up without actually boiling (140° F.); then pour into a jug containing 2 fluid drachms of liquor pancreatis and 30 grs. of bicarbonate of soda. Cover the jug with a lid or blanket, and keep in a warm place for 1 hour. At the end of that time bring the milk to the boil.

Fairchild's Zymine powder can also be used.

Milk.—To a pint of fresh milk (which has been warmed to about 100° F.) add 1 teaspoonful of essence of lemon. Let it stand before the fire until the curd sets; then break up the curd. Allow to stand 1 hour, then strain and heat the whey to boiling point.

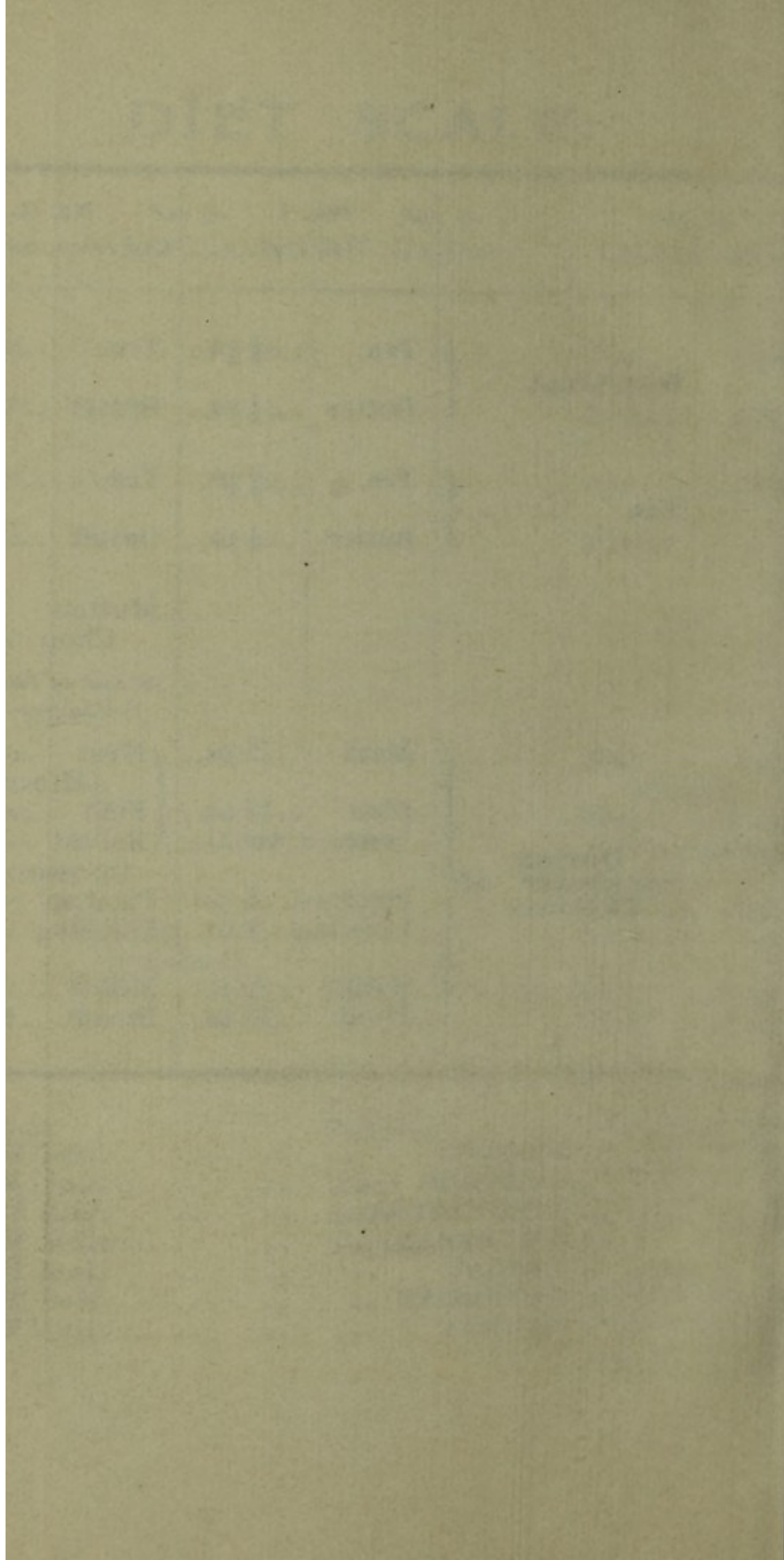
Barley Water.—Put a small tablespoonful of well-washed pearl barley into a pint of cold water. Simmer slowly down to $\frac{1}{2}$ of a pint, and strain.

Almond Water.—Take the whites of 2 to 4 eggs and mix with a pint of cold sterile water by shaking well together. This may be flavoured with a little lemon juice or cinnamon water and sifted sugar.

Almond Drink.—Dissolve 1 large teaspoonful of cream of tartar in 1 pint of boiling water. Add oil of lemon (3 minims) or lemon juice and a little sugar.

Barley Water.—Take 1 oz. of finely shredded barley and mix with 1 pint of cold water. Simmer slowly down to $\frac{1}{2}$ of a pint, and strain.

Beef Tea.—Take a pound of gravy beef with a little onion and salt. Put



SPECIAL PREPARATIONS.

Peptonized Milk.—Put $\frac{1}{2}$ pint of fresh milk and 1 gill of water into an enamelled saucepan. Heat up without actually boiling (140° F.), then pour into a jug containing 2 fluid drachms of liquor pancreaticus and 20 grs. of bicarbonate of soda. Cover the jug with a lid or flannel, and keep in a warm place for 1 hour. At the end of that time bring the milk to the boil.

Fairchild's Zymine powder can also be used.

Whey.—To a pint of fresh milk (which has been warmed to about 100° F.) add 1 teaspoonful of essence of rennet. Let it stand before the fire until the curd sets; then break up the curd. Allow to stand $\frac{1}{4}$ hour, then strain and heat the whey to boiling point.

Barley Water.—Put a small tablespoonful of well-washed pearl barley into a pint of cold water, simmer slowly down to $\frac{2}{3}$ rds of a pint, and strain.

Albumen Water.—Take the whites of 2 to 4 eggs and mix with a pint of cold sterile water by shaking well together. This may be flavoured with a little lemon juice or cinnamon water and sifted sugar.

Imperial Drink.—Dissolve 1 large teaspoonful of cream of tartar in 1 pint of boiling water. Add oil of lemon (3 minims) or lemon juice and a little sugar.

Raw Meat Juice.—Take 1 oz. of finely shredded beef or mutton and 1 tablespoonful of cold water. Put the meat into a jar, and stand in a warm place for 1 hour; strain and serve in coloured glass.

Beef Tea.—

(1) Finely mince a pound of gravy beef, with a knife removing all fat, skin and gristle. Put

in a saucepan with $1\frac{1}{2}$ pints of cold water and half a saltspoonful of salt. Bring to the boil, then gently simmer for 5 to 6 hours, and pour off the liquor, but do not strain it.

(2) Remove all fat and skin, and shred the meat. Place it in a jar with one pint of cold water and add a little salt. Stand the jar in a very moderate oven for 2 or 3 hours.

(3) Quick method.—Take 1 pint of cold water, 1 lb. of lean beef, and a $\frac{1}{4}$ teaspoonful of salt. Remove all fat, skin and gristle, then shred the meat finely. Put it in a saucepan with water and salt, to soak for $\frac{1}{4}$ hour, then put saucepan over moderate heat and stir for $\frac{1}{2}$ hour; strain through fine strainer.

Normal Saline Solution.—Dissolve 1 drachm of common salt in a pint of water, which has been previously sterilized by boiling for at least 15 minutes.

INFANT FEEDING.

BREAST FED.

Time of Nursing:—

During the 1st month—Every 2 hours during the day.

During 2nd & 3rd „ —Every $2\frac{1}{2}$ „ „

From the 4th to 9th „ —Every 3 „ „

After the 9th month a healthy child should as a rule be weaned, by gradual diminution of the number of Breast feeds per day, and lengthening the time between each feed. Cow's milk is substituted for mother's milk, and when the child is entirely weaned from the breast it should be fed about five times a day. At 7 a.m. it should have milk and barley water; at 11 a.m., white of egg with a little milk; at 3 p.m., a little Mellin's Food boiled in milk; at 7 p.m., some pure milk; at 10 p.m., milk and barley water.

BOTTLE FEED.

If from constitutional or local conditions the child cannot be fed on the breast, cow's milk ought to be substituted according to the following Table:

	During 1st Month.	During 2nd Month.
Milk	2-4 Teaspoonfuls.	2 Tablespoonfuls.
Barley Water	6-8 Teaspoonfuls.	3 Tablespoonfuls.
Cream	1 Teaspoonful.	1 Teaspoonful.
Sugar	1 small Teaspoonful.	1 small Teaspoonful.
	From 3rd to 6th Month.	From 6th to 9th Month.
Milk	3-4 Tablespoonfuls.	5-8 Tablespoonfuls.
Barley Water	3-4 Tablespoonfuls.	5-8 Tablespoonfuls.
Cream	1-2 Teaspoonfuls.	2-4 Teaspoonfuls.
Sugar	1 Teaspoonful.	1 Teaspoonful.

Cow's milk ought to be sterilized before use, by bringing it to boiling point.

From 9th to 10th month the child may have a little bread and milk, milk pudding and white of egg.

From 10th to 12th month the child may have bread, mutton broth, fish, bread and butter and soft-boiled egg.

From 12th to 18th month the child may have fish, potatoes, minced meat, gravy.

in a saucepan with $2\frac{1}{2}$ pints of cold water and half a saltspoonful of salt. Bring to the boil, then gently simmer for 5 to 6 hours, and pour off the liquor, but do not strain it.

(2) Remove all fat and skin, and shred the meat. Place it in a jar with one pint of cold water and add a little salt. Stand the jar in a very moderate oven for 2 or 3 hours.

(3) Quick method:—Take 1 pint of cold water, 1 lb. of lean beef, and a $\frac{1}{2}$ teaspoonful of salt. Remove all fat, skin and gristle, then shred the meat finely. Put it in a saucepan with water and salt, to soak for 1 hour, then put saucepan over moderate heat and stir for $\frac{1}{2}$ hour; strain through fine strainer.

Normal Saline Solution:—Dissolve 4 drachms of common salt in a pint of water, which has been previously sterilized by boiling for at least 15 minutes.

INFANT FEEDING.

BREAST-FEED.

Time of Weaning

During the 1st month—Nurse 7 times a day.

During 2nd & 3rd months—Nurse 6 times a day.

From the 4th month—Nurse 5 times a day.

After the 9th month—The child should as a rule be weaned. In perfect health, at the number of Breast feeds per day and lengthened the time between each feed. Give a good substitute for mother's milk, and when the child is entirely weaned from the breast it should be fed about five times a day. At 7 a.m. it should have milk and barley water; at 11 a.m., white of egg with a little milk; at 3 p.m., a little Mellin's Food boiled in milk; at 7 p.m., some pure milk; at 10 p.m., milk and barley water.

BOTTLE FED.

If from constitutional or local conditions the child cannot be fed on the breast, cow's milk ought to be substituted according to the following Table :—

	During 1st Month.	During 2nd Month.
Milk...	2-4 Teaspoonfuls.	2 Tablespoonfuls.
Barley Water	6-8 Teaspoonfuls.	3 Tablespoonfuls.
Cream ..	1 Teaspoonful.	1 Teaspoonful.
Sugar ..	1 small Teaspoonful.	1 small Teaspoonful.
	From 3rd to 6th Month.	From 6th to 9th Month.
Milk ..	3-4 Tablespoonfuls.	5-8 Tablespoonfuls.
Barley Water	3-4 Tablespoonfuls.	5-8 Tablespoonfuls.
Cream ...	1-3 Teaspoonfuls.	2-4 Teaspoonfuls.
Sugar ..	1 Teaspoonful.	1 Teaspoonful.

Cow's milk ought to be sterilized before use, by bringing it to boiling point.

From 9th to 10th month the child may have a little bread and milk, milk pudding and white of egg.

From 10th to 12th month the child may have bread, mutton broth, fish, bread and butter, and soft-boiled egg.

From 12th to 18th month the child may have fish, potatoes, minced meat, gravy.

DENTITION.

Temporary Teeth (20).

	<i>Date of Appearance.</i>
2 lower Central Incisors ..	about 6th month.
2 upper	8th ..
2 upper Lateral	10th ..
2 lower	12th ..
4 first Molars	16th ..
4 Canines	20th ..
4 second Molars	30th ..

Permanent Teeth (32).

	<i>Date of Appearance.</i>
4 first Molars	about 6th year.
8 Incisors	7th—9th ..
8 Bicuspids	10th—11th ..
4 Canines	12th ..
4 second Molars	13th—15th ..
4 Wisdom Teeth	20th—25th ..

All Temporary Teeth should be erupted by the time the child is $2\frac{1}{2}$ years of age.

URINE ANALYSIS.

A normal healthy adult passes about 50 ounces of urine in 24 hours. Colour, pale amber; reaction, acid; and specific gravity, 1.015—1.025.

The following are the commonest abnormal constituents which may be found in the urine in disease:—(1) Albumen, (2) Blood, (3) Pus, (4) Bile, Sugar, (6) Diacetic Acid and Acetone.

(1) TESTS FOR ALBUMEN.

Heat a small quantity of urine in a test tube. it shows any turbidity add a few drops of acetic or nitric acid. Any turbidity remaining is due to the presence of albumen. If the precipitate clears up on the addition of acid, it is due to the presence of phosphates.

HELLER'S TEST.

Pour about $\frac{1}{2}$ an inch of nitric acid into a test tube. On the surface of this allow a few drops of urine to flow. If a white ring forms in about 1 minute, it is due to the presence of albumen or albumose. The ring is dissolved by heat.

The presence of resinous bodies, such as balsams, may also give a white precipitate, but this clears up on addition to the urine of half its volume of alcohol.

POTASSIUM FERROCYANIDE TEST.

Add a few drops of a 10% solution of potassium ferrocyanide to a small quantity of urine, previously acidulated by the addition of acetic acid. A white precipitate indicates the presence of albumen or albumose. The latter clears up on heating.

PICRIC ACID TEST.

Place 2 cc. of picric acid in a test tube. With the aid of a pipette allow a drop of urine to fall on this. If a white cloud forms, it is due to the presence of albumen or albumose. The latter disappears on heating.

(2) TESTS FOR BLOOD.

GUAIACUM TEST.

Add 2 drops of tincture of guaiacum to about 1 inch of urine in a test tube and shake. A white precipitate of guaiacum resin forms. To this add about 1 inch of acetic acid, but do not shake. A blue colour soon appears at the junction of the two fluids if blood be present.

The presence of iodides in the urine will give the same colour with this test, but it appears much more slowly, not as a blue ring, but as a blue colour throughout the fluid.

DENTITION.

Temporary Teeth (30)

	<i>Date of Appearance.</i>
2 lower Central Incisors	about 6th month
2 upper "	8th "
2 upper Lateral "	10th "
2 lower "	12th "
4 first Molars	16th "
4 Canines	20th "
4 second Molars	30th "

Permanent Teeth (32)

	<i>Date of Appearance.</i>
4 first Molars	about 6th year.
8 Incisors	7th-8th "
8 Bicuspids	10th-11th "
4 Canines	15th "
4 second Molars	17th-18th "
4 Wisdom Teeth	20th-25th "

All Temporary Teeth should be erupted by the time the child is 2½ years of age.

URINE ANALYSIS.

A normal healthy adult passes about 40 ounces of urine in 24 hours. Color, pale yellow; reaction, acid; and specific gravity, 1.020-1.030.

The following are the recognized abnormal constituents which may be found in the urine in disease:—(1) Albumen, (2) Blood, (3) Pus, (4) Bile, Sugar, (5) Lactic Acid and Acetone.

(1) TESTS FOR ALBUMEN.

Heat a small quantity of urine in a test tube. If it shows any turbidity add a few drops of acetic or nitric acid. Any turbidity remaining is due to the presence of albumen. If the precipitate clears up on the addition of acid, it is due to the presence of phosphates.

HELLER'S TEST.

Pour about $\frac{1}{2}$ an inch of nitric acid into a test tube. On the surface of this allow a few drops of urine to flow. If a white ring forms in about 1 minute, it is due to the presence of albumen or albumose. The latter is dissolved by heat.

The presence of resinous bodies, such as balsams, may also give a white precipitate, but this clears up on addition to the urine of half its volume of alcohol.

POTASSIUM FERROCYANIDE TEST.

Add a few drops of a 10% solution of potassium ferrocyanide to a small quantity of urine, previously acidulated by the addition of acetic acid. A white precipitate indicates the presence of albumen or albumose. The latter clears up on heating.

PICRIC ACID TEST.

Place 2 cc. of pure picric acid in a test tube. With the aid of a pipette allow a drop of urine to fall on this. If a white cloud forms, it is due to the presence of albumen or albumose. The latter disappears on heating.

(2) TESTS FOR BLOOD.

GUAIAECUM TEST.

Add 2 drops of tincture of guaiacum to about 1 inch of urine in a test tube and shake. A white precipitate of guaiacum resin forms. To this add about 1 inch of ozonic ether, but do not shake. A blue colour soon appears at the junction of the two fluids if blood be present.

The presence of iodides in the urine will give the same colour with this test, but it appears much more slowly, not as a blue ring, but simultaneously throughout the fluid.

HELLER'S TEST.

Place about 2 inches of urine in a test tube, and add sufficient solution of caustic potash to make it strongly alkaline. On boiling, a brownish-red deposit of earthy phosphates forms, owing to the admixture of haematin derived from the blood pigment. The supernatant fluid is bottle-green in colour.

(3) TEST FOR PUS.

SOLUTION OF CAUSTIC POTASH mixed with an equal quantity of the urinary deposit forms a ropy gelatinous mixture.

TINCTURE OF GUAIACUM mixed with pus gives a green colour which disappears on heating.

(4) TESTS FOR BILE.

Urine which contains bile is greenish in colour and more viscid than normal, forming a yellow froth on shaking.

Tests:—

Pour some urine in a test tube, shake it up, and add a little fuming nitric acid. A play of colours from green, blue, red to yellow will occur.

The same play of colours can be got by placing a few drops of urine on a porcelain slab and pouring a few drops of fuming nitric acid over it.

(5) TESTS FOR SUGAR.

To detect the presence of sugar in the urine the following tests may be used:—

(1) FEHLING'S TEST.

Take 1 inch of fresh Fehling's solution in a test tube and boil. If no reduction occurs, add the urine drop by drop and again boil. Lay aside for a little time, and if sugar be present, a reddish-yellow precipitate of suboxide of copper is produced.

(2) PHENYL-HYDRAZINE TEST.

Half fill a test tube with urine, and add equal quantities of powdered phenyl-hydrazine hydrochloride and powdered sodium acetate. Bring the mixture to boiling point and keep boiling for 2 minutes; then set aside to cool, and examine the deposit under the microscope. If glucose be present the crystals will be needle-shaped, of a bright yellow colour, and arranged in stars and fans.

(3) FERMENTATION TEST.

This is an absolutely certain test for glucose. The following precautions are necessary:—

- (a) The urine should, if necessary, be acidified by adding tartaric acid.
- (b) Boil the urine for a little time so as to drive off any air it may contain.
- (c) Fill a test tube with the suspected urine, and another with normal urine, adding a piece of yeast to both.
- (d) Invert the two tubes in a bath of mercury. If after a few hours a little gas appears on the top of the urine, it indicates that fermentation is going on and that sugar is present.

QUANTITATIVE ESTIMATION OF SUGAR.

Fehling's Solution.—If the urine is of high specific gravity dilute it 20 times. Take 10 cc. of Fehling's solution and dilute 5 times.

Fill a burette with the diluted urine. Boil the diluted Fehling's, and whilst boiling run in the urine from the burette until the blue colour of the Fehling's solution has entirely disappeared.

Calculate from the amount of urine used to dispel the colour.

HELMHOLTZ'S TEST.

Place about 2 inches of urine in a test tube, and add sufficient solution of caustic potash to make it strongly alkaline. On boiling, a brownish-red deposit of earthy phosphates forms, owing to the admixture of haematin derived from the blood pigment. The supernatant fluid is bottle-green in colour.

(3) TEST FOR PUS.

SOLUTION OF CAUSTIC POTASH mixed with an equal quantity of the urinary deposit forms aropy gelatinous mixture.

TINCTURE OF GUAIACUM mixed with pus gives a green colour which disappears on heating.

(4) TESTS FOR BILE.

Urine which contains bile is greenish in colour and more viscid than normal, forming a yellow froth on shaking.

Tests—

Urine when shaken in a test tube, shake it up, and add a little sulphuric acid. A play of colours from green, blue, and to yellow will occur.

The same play of colour can be got by placing a few drops of urine on a porcelain slab and pouring a few drops of fuming nitric acid over it.

(5) TESTS FOR SUGAR.

To detect the presence of sugar in the urine the following tests may be used:—

(1) FERLING'S TEST.

Take 1 inch of fresh Ferling's solution in a test tube and boil. If no reduction occurs, add the urine drop by drop and again boil. Lay aside for a little time, and if sugar be present a reddish-yellow precipitate of suboxide of copper is produced.

(2) PHENYL-HYDRAZINE TEST.

Half fill a test tube with urine, and add equal quantities of powdered phenyl-hydrazine hydrochloride and powdered sodium acetate. Bring the mixture to boiling point and keep boiling for 2 minutes; then set aside to cool, and examine the deposit under the microscope. If glucose be present the crystals will be needle-shaped, of a bright yellow colour, and arranged in stars and fans.

(3) FERMENTATION TEST.

This is an absolutely certain test for glucose. The following precautions are necessary:—

- (a) The urine should, if necessary, be acidified by adding tartaric acid.
- (b) Boil the urine for a little time so as to drive off any air it may contain.
- (c) Fill a test tube with the suspected urine, and another with normal urine, adding a piece of yeast to both.
- (d) Invert the two tubes in a bath of mercury. If after a few hours a little gas appears on the top of the urine, it indicates that fermentation is going on and that sugar is present.

QUANTITATIVE ESTIMATION OF SUGAR.

Fehling's Solution.—If the urine is of high specific gravity dilute it 20 times. Take 10 cc. of Fehling's solution and dilute 5 times.

Fill a burette with the diluted urine. Boil the diluted Fehling's, and whilst boiling run in the urine from the burette until the blue colour of the Fehling's solution has entirely disappeared.

Calculate from the amount of urine used to dispel the colour.

10 cc. Fehling's = 0.05 grms. glucose.

If X = amount of urine used, and 5000 cc. = amount passed in 24 hours.

$$\therefore \frac{5000 \times 0.05}{X} \times 20 = \text{No. of grms. of sugar in the 24 hours.}$$

(6) TEST FOR DIACETIC ACID.

Take some fresh urine in a test tube and add a little ferric chloride solution. Immediately a pale sherry colour is produced, and a precipitate of phosphate of iron falls. Filter, and add to the filtrate a few more drops of the perchloride solution. The colour changes to a Burgundy red, and disappears on boiling.

Salicylate carbolic acid and other drugs present in the urine give a similar colour, but it does not disappear on boiling.

TESTS FOR ACETONE.

Acetone is detected by its ready conversion into iodoform by the addition of potassium iodide according to the following method:—

Distil the urine after adding a little phosphoric acid. To about 1 inch of the distillate add a few drops of a saturated solution of iodine in potassium iodide, and then add a few drops of a 10% solution of caustic potash. Heat gently. The liquid forms a yellow turbid precipitate of iodoform, which may be recognised by its odour.

Acetone may also be detected in the following way:—

Add to the urine a few drops of a 10% solution of sodium nitroprusside, then add a layer of solution of ammonia. On standing a purple or violet ring forms between the two liquids, if acetone is present.

ANTIDOTE TABLE.

EMETICS.

The following are the chief emetics most commonly used in case of poisoning:

- (1) Warm water in copious draughts.
- (2) Common Salt—two table-spoons dissolved in a tumblerful of warm water.
- (3) Mustard—two table-spoons of the powder mixed in a tumblerful of warm water.
- (4) Elix Saltpetre—30 grs. dissolved in half-tumblerful of warm water.
- (5) Ipecacuanha powder—50 grs. mixed with warm water, or half-fluid ounce of Ipecacuanha wine in warm water, and repeated if necessary.
- (6) Apomorphine hydrochloride— $\frac{1}{4}$ to 10 grs. hypodermically.

ANTIDOTES AND TREATMENT.

ACIDS.

Acid, Carbolic

TREATMENT.

- (1) Insert stomach tube carefully, and wash out the stomach with a weak alkaline solution of lime, 7 drachms to the pint of warm water, or with sodium or magnesium sulphate, $\frac{1}{2}$ oz. to the pint of warm water.
- (2) Milk and white of egg freely.
- (3) Stimulants freely, and apply warmth to extremities.

10 cc. Fehling's π 2500 grains glucose.

If X amount of urine used, and 5000 cc = amount passed in 24 hours.

$$5000 \times 0.05$$

$$= 250 \times X$$

$X = \frac{250}{5000} \times \text{No. of grains of sugar in the 24 hours.}$

(6) TEST FOR DIACETIC ACID.

Take some fresh urine in a test tube and add a little ferric chloride solution. Immediately a pale cherry colour is produced, and a precipitate of phosphate of iron falls. Filter, and add to the filtrate a few more drops of the perchloride solution. The colour changes to a deep red, and disappears on boiling.

Salicylate carbolic acid and other drugs present in the urine give a similar colour, but it does not disappear on boiling.

TESTS FOR ACETONE.

Acetone is a volatile liquid which is converted into acetic acid by the action of potassium bichromate according to the following reaction:

Distil the urine, adding a little perchloric acid. To about 1 cc. of the distillate add a few drops of a saturated solution of iodine in potassium iodide, and then add a few drops of a 10% solution of caustic potash. Heat gently. The liquid forms a yellow turbid precipitate of iodoform, which may be recognised by its colour.

Acetone may also be detected in the following way:—

Add to the urine a few drops of a 10% solution of sodium nitroprusside, then add a layer of solution of ammonia. On standing a purple or violet ring forms between the two liquids, if acetone is present.

ANTIDOTE TABLE.

EMETICS.

The following are the chief emetics most commonly used in case of poisoning:—

- (1) Warm water in copious draughts.
- (2) Common Salt—two tablespoonfuls dissolved in a tumblerful of warm water.
- (3) Mustard—one tablespoonful of the powder mixed in a tumblerful of warm water.
- (4) Zinc Sulphate—30 grs. dissolved in half-tumblerful of warm water.
- (5) Ipecacuanha powder—30 grs. mixed with warm water, or half-fluid ounce of Ipecacuanha wine in warm water, and repeated if necessary.
- (6) Apomorphine hydrochloride— $\frac{1}{2}$ to $\frac{1}{16}$ grs. hypodermically.

ANTIDOTES AND TREATMENT.

ACIDS.

Acid, Carbolic

TREATMENT.

- (1) Insert stomach tube carefully, and wash out the stomach with a saccharated solution of lime, 1 drachm to the pint of warm water, or with sodium or magnesium sulphate, $\frac{1}{2}$ oz. to the pint of warm water.
- (2) Milk and white of egg freely.
- (3) Stimulants freely, and apply warmth to extremities.

ACIDS.

Acid, Hydrochloric }
 Acid, Nitric }
 Acid, Sulphuric }

Do not use the stomach tube or emetic.

(a) Neutralise the acid by—

- (1) Whiting, chalk, sodium carbonate (washing soda).
- (2) Magnesia $\frac{1}{2}$ to 1 oz. in a tumblerful of warm water.
- (3) Large draughts of soap and warm water.

(b) After either of the above give—

- (1) Milk and egg.
- (2) Olive oil and water.

(c) To diminish shock, give morphine sulphate $\frac{1}{4}$ gr. hypodermically.

Acid, Hydrocyanic }
 and Cyanides }

These poisons act with great rapidity.

(1) Cold water poured on face and neck.

(2) Give an emetic or empty stomach by tube.

- (3) Free use of stimulants, *e.g.* (a) Brandy by mouth or rectum; (b) Ether hypodermically; (c) Inhalations of ammonia.

(4) Artificial respiration, if necessary.

Acid, Oxalic }
 Salt of Sorrel }
 Salt of Lemons }
 Acid, Acetic }

See Acid Hydrochloric, &c.

ALKALIES.

TREATMENT.

Do not use stomach tube or emetic. Neutralise alkali by

(1) Vinegar and water, or lemon juice and water, or fat-

teric acid, 1 drachm to the pint of warm water.

(2) When the alkali is neutralised, give freely of milk or

olive oil and water.

(1) Stomach tube or emetic. (2) Stimulants. (3) Tincture of

digitalis, 10 minims, or digitalin, 100 gr. hypodermically.

(1) Stomach tube or emetic. (2) Cold douches. (3) Stimulants

such as hot strong coffee. (4) Paraffin Current.

(1) Encourage vomiting by draughts of tepid water. (2) Strong

tea or tannic acid (20 grains) in warm water. (3) Milk and

white of egg freely. (4) Hypodermic injection of morphia

to relieve pain, if necessary. (5) Stimulants and warmth,

if necessary.

(1) Stomach tube or emetic. (2) 1 oz. of Tincture of ferric chloride

mixed with 1 oz. of sodium carbonate in a tumblerful of

warm water, to be given as a draught. (3) Stimulants.

(1) Stomach tube or emetic. (2) Pilocarpine nitrate gr.

(hypodermic). (3) Stimulants and hot coffee. (4) Artificial

respiration if necessary.

Caustic Potash

Caustic Soda

Strong Ammonia

Acetate

Alcohol

Antimony.

Compounds

Tartar Emetic

Butter of

Antimony

Arsenic and its

preparations

belladonna, Atropine

EXPERIMENT 1

ACIDS.

Acid, Hydrochloric
Acid, Nitric
Acid, Sulphuric

Do not use the stomach tube or emetic.

(a) Neutralise the acid by:

- (1) Washing, chalk, sodium carbonate (washing soda).
- (2) Magnesia 1 to 1 oz. in a tumblerful of warm water.
- (3) Large draughts of soup and warm water.

(b) Affect either of the above give:

- (1) Milk and egg.
- (2) Olive oil and water.

and the animal, shock, give morphine sulphate 4 gr. hypodermically.

Acid, Hydrocyanic
and Cyanides

These poisons act with great rapidity.

- (1) Cold water poured on face and neck.

(2) Give an emetic or empty stomach by tube.

- (3) Give use of stimulants, e.g. (a) brandy by mouth or rectum; (b) ether hypodermically; (c) inhalations of ammonia.

(4) Artificial respiration, if necessary.

Acid, Oxalic
Salt of Sorrel
Salt of Lemons
Acid, Acetic

See Acid Hydrochloric, &c.

WATER

ALKALIES.

TREATMENT.

Caustic Potash
Caustic Soda
Strong Ammonia

Do not use stomach tube or emetic. Neutralise alkali by
(1) Vinegar and water, or lemon juice and water, or Tartaric Acid, 1 drachm to the pint of warm water.

(2) When the alkali is neutralised, give freely of milk or olive oil and water.

Aconite

(1) Stomach tube or emetic. (2) Stimulants. (3) Tincture of digitalis, 10 minims, or digitalin. $\frac{1}{100}$ gr. hypodermically.

Alcohol

(1) Stomach tube or emetic. (2) Cold douches. (3) Stimulants such as hot strong coffee. (4) Faradic Current.

Antimony, }
Compounds }
Tartar Emetic }
Butter of }
Antimony }

(1) Encourage vomiting by draughts of tepid water. (2) Strong tea or tannic acid (30 grains) in warm water. (3) Milk and white of egg freely. (4) Hypodermic injection of morphia to relieve pain, if necessary. (5) Stimulants and warmth, if necessary.

Arsenic and its preparations

(1) Stomach tube or emetic. (2) 1 oz. of Tincture of ferric chloride mixed with $\frac{1}{2}$ oz. of sodium carbonate in a tumblerful of warm water, to be given as a draught. (3) Stimulants.

Belladonna, Atropine

(1) Stomach tube or emetic. (2) Pilocarpina nitrate gr. $\frac{1}{2}$ (hypodermic). (3) Stimulants and hot coffee. (4) Artificial respiration if necessary.

TREATMENT.

(1) Stomach tube or emetic. (2) Chalk and milk.

If there is no blistering of mucous membrane, use—

- (1) Stomach tube. If blistering give an emetic, such as apomorphine hydrochloride, gr. $\frac{1}{16}$ (hypodermic).
- (2) Morphine hydrochloride, hypodermically to relieve pain.
- (3) Milk and white of egg freely. Avoid oils and fats.

(1) Oxygen inhalations. (2) Artificial respiration. (3) Stimulants and warmth.

- (1) Stomach tube or emetic. (2) Strychnine sulph. gr. $\frac{1}{60}$ (hypodermic). (3) Stimulants and warmth. (4) Hot coffee. (5) Oxygen inhalations.

See Opium.

- (1) Pull tongue out. (2) Artificial respiration. (3) Fresh air. (4) Loosen clothes. (5) Raise foot of table. (6) Hypodermic injection of ether or strychnine hydrochloride. (7) Brandy for rectum.

Stimulants (brandy and ammonia).

Bichromate of

Potassium

Cantharides ..

Carbonic Acid Gas

Carbon Monoxide

Coal Gas

Cesspool Gas

Chloral, Hydrate

Chloralamide

Chlorodyne ..

Chloroform ..

Cocaine ..

Copper, Salts	(1) Milk and egg freely. (2) Stomach tube if vomiting has not occurred. (3) Demulcent drinks. (4) Morphine hydrochloride to relieve pain.
Cyanide of Potassium	See hydrocyanic acid.
Digitalis (Foxglove)	(1) Stomach tube or emetic. (2) Tannic acid, 30 grs. in 5 ounces of water. (3) Stimulants, tea or coffee. (4) Recumbent position.
Pangl	(1) Stomach tube, or emetic. (2) 1 oz. of castor oil. (3) Atropine sulphate $\frac{1}{4}$ gr. (hypodermic). (4) Stimulants.
Iodine, preparations	(1) Stomach tube or emetics. (2) Large draughts of sodium bicarbonate, milk and egg or milk and flour with water.
Lead, Salts	(1) Stomach tube or emetic. (2) $\frac{1}{2}$ oz. of magnesium sulphate in water. (3) Milk and egg freely. (4) Morphine hydrochloride hypodermically to relieve pain.
Mercury, Salts	(1) White of egg in milk or water, freely. (2) Stimulants. (3) Stomach tube or emetic. (4) Morphia (hypodermic) to relieve pain.
Morphine	See Opium.

TREATMENT.

Trichinematosis
Potassium
Cantharides

(1) Stomach tube or emetic. (2) Chalk and milk.

If there is no blistering of mucous membrane, use

- (1) Stomach tube. If blistering give an emetic, such as
morphine hydrochloride, gr. $\frac{1}{4}$ (hypodermic).
- (2) Morphine hydrochloride, hypodermically to relieve
pain.
- (3) Milk and white of egg freely. Avoid oils and fats.

Carbonic Acid Gas
Carbon Monoxide
Coal Gas
Cesspool Gas

(1) Oxygen inhalations. (2) Artificial respiration. (3) Stimulants and warmth.

Chloral. Hydrate
Chloroform

(1) Stomach tube or emetic. (2) Strychnine sulph. gr. $\frac{1}{10}$
(hypodermic). (3) Stimulants and warmth. (4) Hot coffee.
(5) Oxygen inhalations.

Chloroform
Chloroform

See Opium.

(1) Pull tongue out. (2) Artificial respiration. (3) Fresh air.
(4) Loose cloth. (5) Raise foot of table. (6) Hypodermic
injection of ether or strychnine hydrochloride. (7) Brandy
for revival.

Cocaine

Stimulants (brandy and ammonia).

TREATMENT.

- Copper, Salts ..
 ..
 ..
 Cyanide of Potassium ..
 Digitalis (Foxglove) ..
 ..
 Fungi ..
 ..
 Iodine, preparations ..
 ..
 Lead, Salts ..
 ..
 Mercury, Salts ..
 ..
 Morphine ..
- (1) Milk and egg freely. (2) Stomach tube if vomiting has not occurred. (3) Demulcent drinks. (4) Morphine hydrochloride to relieve pain.
 See hydrocyanic acid.
 (1) Stomach tube or emetics. (2) Tannic acid, 30 grs. in 5 ounces of water. (3) Stimulants, tea or coffee. (4) Recumbent position.
 (1) Stomach tube, or emetic. (2) 1 oz. of castor oil. (3) Atropine sulphate $\frac{1}{60}$ gr. (hypodermic). (4) Stimulants.
 (1) Stomach tube or emetics. (2) Large draughts of sodium bicarbonate, milk and egg, or milk and flour with water.
 (1) Stomach tube or emetic. (2) $\frac{1}{2}$ oz. of magnesium sulphate in water. (3) Milk and egg freely. (4) Morphine hydrochloride hypodermically to relieve pain.
 (1) White of egg in milk or water, freely, (2) Stimulants. (3) Stomach tube or emetic. (4) Morphia (hypodermic) to relieve pain.
 See Opium

TREATMENT.

- Opium .. (1) Stomach tube or emetic. (2) Wash out stomach with potassium permanganate solution. (3) Strong hot coffee. (4) Ammonia and ether mixture. (5) Rouse the patient by the application of cold douches or Faradic Current. (6) Atropine sulphate $\frac{3}{8}$ gr. (hypodermic).
- Morphia .. (1) Stomach tube or emetic (copper sulphate). (2) Old oil of turpentine, minims. 40, repeated. (3) Magnesia and magnesium sulphate. (4) Milk and egg.
- Laudanum .. (1) Stomach tube. (2) Chloroform inhalations if convulsions present. (3) Chloral hydrate 5 grs. (hypodermic). (4) Draughts of potassium bromide, 1 drachm to the oz.
- Paregoric .. (1) Stomach tube or emetic. (2) Strong coffee. Strychnine sulph. grs. $\frac{1}{60}$ (hypodermic).
- Nepenthe .. (1) Stomach tube or emetic. (2) Magnesium sulphate 1 oz. in 4 ozs. of water as a purge. (3) Milk and water freely. (4) Morphin (hypodermic) if necessary.
- Chlorodyne .. See Copper salts.
- Phosphorous .. See Zinc salts.
- Strychnine .. (1) White of egg with milk or water freely. (2) Sodium carbonate (washing soda), in dilute solution. Morphine hydrochloride hypodermically for relief of pain.
- Sulphonal, Trional..
- Turpentine ..
- Vitriol, Blue ..
- Vitriol, White ..
- Zinc, Salts ..

These preparations are non-official.

Much larger doses have been given.

Imperial.

Acetanilidum	gr. 1 to gr. 3
*Acidum Acetyl-salicylicum ..	gr. 5 to gr. 25
.. Arseniosum	gr. 5 to gr. 15
.. Benzoinum	gr. 5 to gr. 15
.. Boricum	gr. 5 to gr. 15
.. Camphoricum	gr. 10 to gr. 20
.. Carbolicum	gr. 1 to gr. 3
.. .. Liquefactum	min. 1 to min. 3
.. Citricum	gr. 5 to gr. 25
.. Gallicum	gr. 5 to gr. 15
.. Hydrobrom. Dil.	min. 15 to min. 60
.. Hydrochlor. Dil.	min. 5 to min. 30
.. Hydrocyanic Dil.	min. 2 to min. 8
.. Lacticum	min. 5 to min. 30
.. Nitricum Dil.	min. 5 to min. 20
.. Nux-hydrochlor Dil.	min. 5 to min. 20
.. Phosphoricum Dil.	min. 5 to min. 20
.. Salicylicum	gr. 5 to gr. 20
.. Sulphuricum	min. 5 to min. 20
.. .. Aromaticum	min. 5 to min. 20
.. Sulphuricum Dil.	min. 5 to min. 20
.. Sulphureum	dr. 4 to dr. 1
.. Tannicum	gr. 5 to gr. 20
.. Tartaricum	gr. 5 to gr. 20
Aconitina	gr. 5 to gr. 20
*Aconitina Hydrobromidum ..	gr. 5 to gr. 20
Ether	min. 10 to min. 60
Ether Aceticus	min. 20 to min. 60
Aloe	gr. 2 to gr. 5
Aluinum	gr. 1 to gr. 3
Ammonii Benzoas	gr. 5 to gr. 15
.. Bromidum	gr. 5 to gr. 30
.. Carbonas	gr. 5 to gr. 15
.. Chloridum	gr. 5 to gr. 20
.. Phosphas	gr. 5 to gr. 20
* .. Salicylas	gr. 5 to gr. 20

TREATMENT.

- Opium
Morphia
Laudanum
Paregoric
Nepenthe
Chlorodyne
Phosphorus
Strychnine
Sulphonal, Trional
Turpentine
Vinidol, Blue
Vinidol, White
Zinc, Salts
- (1) Stomach tube or emetic. (2) Wash out stomach with potassium permanganate solution. (3) Strong hot coffee. (4) Ammonia and ether mixture. (5) Rouse the patient by the application of cold douches or Faradic Current. (6) Atropine sulphate $\frac{1}{10}$ gr. (hypodermic).
- (1) Stomach tube or emetic (copper sulphate). (2) Oil of turpentine, minims. 40, repeated. (3) Magnesia and magnesium sulphate. (4) Milk and egg.
- (1) Stomach tube. (2) Chloroform inhalations if convulsions present. (3) Chloral hydrate 5 grs. (hypodermic). (4) Dose of potassium bromide, 1 drachm to the α .
- (1) Stomach tube or emetic. (2) Strong coffee. Strychnine sulphate $\frac{1}{10}$ grs. α (hypodermic).
- (1) Stomach tube or emetic. (2) Magnesium sulphate 1 oz. in 4 ozs. of water as a purge. (3) Milk and water freely. (4) Morphine (hypodermic) if necessary.
- See Copper salts.
See Zinc salts.
- (1) Whites of egg with milk or water freely. (2) Sodium carbonate washing sodal, in dilute solution. Morphine hydrochloride hypodermically for relief of pain.

Imperial.

Amyl Nitris (<i>mouth</i>)	min. $\frac{1}{2}$ to min. 1
" (<i>inhaled</i>)	min. 2 to min. 5
Antifebrinum	gr. 1 to gr. 3
Antimonii Oxidum	gr. 1 to gr. 2
Antimonium Sulphuratum	gr. 1 to gr. 2
" Tartaratum	{	gr. $\frac{1}{24}$ to gr. $\frac{1}{8}$
(<i>diaphoretic</i>)		
(<i>emetic</i>)		
Antipyrinum	gr. 1 to gr. 2
Apomorphinæ Hydrochloridum	gr. $\frac{1}{20}$ to gr. $\frac{1}{4}$
Aqua Laurocerasi	dr. $\frac{1}{2}$ to dr. 2
Argenti Nitras	gr. $\frac{1}{4}$ to gr. $\frac{1}{2}$
Arsacetin	gr. 1 to gr. 10
Arsenii Iodidum	gr. $\frac{1}{20}$ to gr. $\frac{1}{5}$
Asafetida	gr. 5 to gr. 15
'Aspirin'	gr. 5 to gr. 25
Atoxyl	gr. 1 to gr. 3
Atropina	gr. $\frac{1}{200}$ to gr. $\frac{1}{100}$
Atropinæ Sulphas	gr. $\frac{1}{200}$ to gr. $\frac{1}{100}$
Beta-Naphthol	gr. 3 to gr. 10
Bismuthi Carbonas	gr. 5 to gr. 20
" Citras	gr. 2 to gr. 5
* " et Ferri Citras	gr. 5 to gr. 10
* " et Lithii Citras	gr. 2 to gr. 5
" Oxidum	gr. 5 to gr. 20
" Oxychloridum	gr. 5 to gr. 20
" Salicylas	gr. 5 to gr. 20
" Subnitras	gr. 5 to gr. 20
Borax	gr. 5 to gr. 20
* Bromoformum	min. $\frac{1}{2}$ to min. 2
Butyl-Chloral Hydras	gr. 5 to gr. 20
Caffeina	gr. $\frac{1}{2}$ to gr. 5
Caffeinæ Citras	gr. 2 to gr. 10
" Citras Efferves.	gr. 60 to gr. 120
* " Hydrobromidum	gr. 1 to gr. 5
* " Valerianas	gr. $\frac{1}{2}$ to gr. 3
Calcii Chloridum	gr. 5 to gr. 15
* " Glycerophosphas	gr. 2 to gr. 5
" Hypophosphis	gr. 3 to gr. 10
* " Iodo-ricinoleas	gr. 3 to gr. 9
* " Lactas	gr. 5 and upwards
" Phosphas	gr. 5 to gr. 15
" Sulphidum	gr. $\frac{1}{4}$ to gr. 1

Imperial.

Calomelas	gr. $\frac{1}{2}$ to gr. 5
Camphora	gr. 2 to gr. 5
Monobromata	gr. 2 to gr. 10
*Cantharis Tinctura	gr. 5 to gr. 10
*Capsicinum	gr. $\frac{1}{2}$ to gr. 1
Carbo Lign.	gr. 60 to gr. 120
Cera Candelae	gr. 2 to gr. 10
Coloni Hydras	gr. 5 to gr. 20
*Chloralamidum	gr. 15 to gr. 30
Chloroformum	min. 1 to min. 5
Cocaine Hydrochloridum	gr. $\frac{1}{2}$ to gr. 1
Codina	gr. $\frac{1}{2}$ to gr. 2
Codinae Phosphas	gr. $\frac{1}{2}$ to gr. 2
Creosotum	min. 1 to min. 5
*Creosoti Carbonas	gr. 5 to gr. 30
Cubeba Fructus	gr. 20 to gr. 50
Cupi Sennes	(astringent) gr. $\frac{1}{2}$ to gr. 2
	(emetic) gr. 5 to gr. 10
*Digitalinum (Amorph.)	gr. $\frac{1}{2}$ to gr. 5
Elaterium	gr. $\frac{1}{2}$ to gr. 1
Elixirum	gr. $\frac{1}{2}$ to gr. 1
Ergota	gr. 20 to gr. 50
*Erythrina Citrea	gr. 5 to gr. 10
Erythrina	gr. 2 to gr. 5
*Erythri Tinctura	min. 30 to min. 60
*Eucaine Hydrochloridum	gr. $\frac{1}{2}$ to gr. 1
* Lactas	gr. $\frac{1}{2}$ to gr. 1
*Eucalyptol	min. 1 to min. 5
Eucalypti Gummi	gr. 2 to gr. 5
Eumyrrinum	gr. 1 to gr. 2
Euphorbia	gr. 5 to gr. 10
*Euphorbia	gr. $\frac{1}{2}$ to gr. 2
Ext. Aloes Barbadosis	gr. 1 to gr. 4
Belladonnae Alcoholicum	gr. $\frac{1}{2}$ to gr. 1
Vicide	gr. $\frac{1}{2}$ to gr. 1
Cannabis Indica	gr. $\frac{1}{2}$ to gr. 1
Cassia Sagra	gr. 2 to gr. 5
Liq.	dr. $\frac{1}{2}$ to dr. 1
Chinoidige Liq.	min. 5 to min. 30
Cinchona Liq.	min. 5 to min. 10
Colchici	gr. $\frac{1}{2}$ to gr. 1
Colocynthis Comp.	gr. 2 to gr. 5

Acryl Nitris (<i>powder</i>)	min. 1 to min. 1
(<i>inhaled</i>)	min. 2 to min. 5
Antifebrinum	gr. 1 to gr. 5
Antimonii Oxidum	gr. 1 to gr. 2
Antimonium Sulphuratum	gr. 2 to gr. 2
Tartaratum	gr. 1 to gr. 4
(<i>dio-phoretic</i>)	
(<i>leucic</i>)	gr. 1 to gr. 2
Antipyrinum	gr. 5 to gr. 20
Apomorphina Hydrochloridum	gr. 1 to gr. 1
Aqua Lauracetasi	gr. 1 to gr. 2
Argentii Nitras	gr. 1 to gr. 1
Arsacetin	gr. 1 to gr. 10
Arsenti Iodidum	gr. 1 to gr. 1
Asafetida	gr. 5 to gr. 15
Aspirin	gr. 5 to gr. 25
Atosyl	gr. 7 to gr. 8
Atropina	gr. 1 to gr. 10
Atropine Scobilia	gr. 1 to gr. 10
Beta-Naphthol	gr. 5 to gr. 10
Bismuthi Carbonas	gr. 5 to gr. 20
Citras	gr. 2 to gr. 5
et Ferri Citras	gr. 5 to gr. 10
et Lithii Citras	gr. 2 to gr. 5
Oxidum	gr. 5 to gr. 20
Oxychloridum	gr. 5 to gr. 20
Salicylas	gr. 5 to gr. 20
Sulphuricus	gr. 5 to gr. 20
Borax	gr. 5 to gr. 20
Bromoformum	min. 1 to min. 2
Butyl-Chlorid Hydrum	gr. 5 to gr. 10
Caffeins	gr. 1 to gr. 5
Caffeine Citras	gr. 2 to gr. 10
Citras Effervens	gr. 60 to gr. 120
Hydrocyanicum	gr. 1 to gr. 5
Valerianas	gr. 1 to gr. 5
Calcii Chloridum	gr. 5 to gr. 15
Glycophosphas	gr. 2 to gr. 10
Hypophosphis	gr. 5 to gr. 10
Iodo-Ricinolens	gr. 5 to gr. 5
Lactas	gr. 5 and upwards
Phosphas	gr. 5 to gr. 15
Sulphurata	gr. 1 to gr. 1

Imperial.

Calomelas	gr. $\frac{1}{10}$ to gr. 5
Camphora	gr. 2 to gr. 5
* „ Monobromata	gr. 2 to gr. 10
*Cannabinæ Tannas	gr. 3 to gr. 10
*Capsicinum	gr. $\frac{1}{8}$ to gr. $\frac{1}{4}$
Carbo Ligni	gr. 60 to gr. 120
Cerii Oxalas	gr. 2 to gr. 10
Chloral Hydras	gr. 5 to gr. 20
*Chloralamidum	gr. 15 to gr. 30
Chloroformum	min. 1 to min. 5
Cocainæ Hydrochloridum	gr. $\frac{1}{8}$ to gr. $\frac{1}{2}$
Codeina	gr. $\frac{1}{4}$ to gr. 2
Codeinæ Phosphas	gr. $\frac{1}{4}$ to gr. 2
Creosotum	min. 1 to min. 5
*Creosoti Carbonas	gr. 5 to gr. 20
Cubebæ Fructus	gr. 30 to gr. 60
Cupri Sulphas	{ (astringent)	gr. $\frac{1}{4}$ to gr. 2
	{ (emetic)	gr. 5 to gr. 10
*Digitalinum (Amorph.)	gr. $\frac{1}{100}$ to gr. $\frac{1}{30}$
Elaterinum	gr. $\frac{1}{40}$ to gr. $\frac{1}{10}$
Elaterium	gr. $\frac{1}{10}$ to gr. $\frac{1}{2}$
Ergota	gr. 20 to gr. 60
*Ergotinina Citras	gr. $\frac{1}{200}$ to gr. $\frac{1}{50}$
Ergotinum	gr. 2 to gr. 8
*'Ernutin'	min. 30 to min. 60
*Erythrol Tetranitras	gr. $\frac{1}{2}$ to gr. 1
*Eucaïnæ Hydrochloridum	gr. $\frac{1}{3}$ to gr. 1
* „ Lactas	gr. $\frac{1}{8}$ to gr. 1
*Eucalyptol	min. 1 to min. 4
Eucalypti Gummi	gr. 2 to gr. 5
Euonyminum	gr. 1 to gr. 2
Euquinina	gr. 5 to gr. 10.
*Exalginum	gr. $\frac{1}{2}$ to gr. 2
Ext. Aloes Barbadosensis	gr. 1 to gr. 4
„ Belladonnæ Alcoholicum	gr. $\frac{1}{4}$ to gr. 1
„ „ Viride	gr. $\frac{1}{4}$ to gr. 1
„ Cannabis Indicæ..	gr. $\frac{1}{4}$ to gr. 1
„ Cascaræ Sagradæ	gr. 2 to gr. 8
„ „ „ Liq.	dr. $\frac{1}{2}$ to dr. 1
„ Cimicifugæ Liq.	min. 5 to min. 30
„ Cinchonæ Liq.	min. 5 to min. 15
„ Colchici	gr. $\frac{1}{4}$ to gr. 1
„ Colocynthis Comp.	gr. 2 to gr. 8

Imperial.

Ext. Ergotæ	gr. 2 to gr. 8
„ Ergotæ Liq.	min. 10 to min. 30
„ Euonymi Siccum	gr. 1 to gr. 2
„ Filicis Liq.	min. 45 to min. 90
„ Hamamelidis Liq.	min. 5 to min. 15
„ Hydrastis Liq.	min. 5 to min. 15
„ Hyoscyami Viride	gr. 2 to gr. 8
„ Ipecacuanhæ (<i>expect.</i>)	min. $\frac{1}{2}$ to min. 2
„ „ Liq. (<i>emetic</i>)	min. 15 to min. 20
„ Jalapæ	gr. 2 to gr. 8
„ Krameriæ	gr. 5 to gr. 15
„ Nucis Vomicae	gr. $\frac{1}{4}$ to gr. 1
„ „ „ Liq.	min. 1 to min. 3
„ Opii	gr. $\frac{1}{4}$ to gr. 1
„ „ Liq.	min. 5 to min. 30
„ Physostigmatis	gr. $\frac{1}{4}$ to gr. 1
„ Strophanthi	gr. $\frac{1}{4}$ to gr. 1
Fel Bovinum Purificatum	gr. 5 to gr. 15
Ferri Arsenas	gr. $\frac{1}{16}$ to gr. $\frac{1}{4}$
„ Carbonas Saccharatus	gr. 10 to gr. 30
„ et Ammonii Citras	gr. 5 to gr. 10
„ et Quininae Citras	gr. 5 to gr. 10
* „ et Quininae et Strychninae Citras	gr. 3 to gr. 6
* „ Glycerophosphas	gr. 3 to gr. 6
* „ Hypophosphis	gr. 1 to gr. 5
* „ Iodidum	gr. 1 to gr. 5
* „ Phosphas	gr. 5 to gr. 10
* „ „ ē Acid, Arsenios.	gr. 5 to gr. 10
* „ Pyrophosphas	gr. 5 to gr. 10
„ Sulphas	gr. 1 to gr. 5
„ „ Exsiccatus	gr. $\frac{1}{2}$ to gr. 3
* „ Valerianas	gr. 3 to gr. 15
Ferrum Redactum	gr. 1 to gr. 5
„ Tartaratum	gr. 5 to gr. 10
* Gelseminæ Hydrochloridum	gr. $\frac{1}{120}$ to gr. $\frac{1}{30}$
Glycerinum Pepsini	dr. 1 to dr. 2
Guaiaci Resina	gr. 5 to gr. 15
* Guaiacol	min. 1 to min. 5
* „ Camphoras	gr. 5 to gr. 10
* „ Carbonas	gr. 5 to gr. 10
* Hæmoglobin	gr. 5 to gr. 20
* ' Hazeline '	dr. 1 to dr. 3

Imperial.

*Heroin Hydrochloridum	gr. $\frac{1}{2}$ to gr. 1
Homatropinae Hydrobromidum	gr. $\frac{1}{16}$ to gr. $\frac{1}{8}$
*Homatropinae Hydrochloridum	gr. $\frac{1}{16}$ to gr. $\frac{1}{8}$
*Homatropinae Salicylas	gr. $\frac{1}{16}$ to gr. $\frac{1}{8}$
Hydrarg. & Creta	gr. $\frac{1}{2}$ to gr. 5
*Iodina Flavum	gr. $\frac{1}{2}$ to gr. 1
Iodina Rubrum	gr. $\frac{1}{2}$ to gr. $\frac{1}{16}$
*Iodina Vitide	gr. $\frac{1}{2}$ to gr. 1
Perchloridum	gr. $\frac{1}{16}$ to gr. $\frac{1}{8}$
Sutchloridum	gr. $\frac{1}{16}$ to gr. 5
*Hydrastinae Hydrochloridum	gr. $\frac{1}{2}$ to gr. 1
*Hyoscina	gr. $\frac{1}{16}$ to gr. $\frac{1}{8}$
Hyoscinae Hydrobromidum	gr. $\frac{1}{16}$ to gr. $\frac{1}{8}$
Hyoscyaminae Sulphas	gr. $\frac{1}{16}$ to gr. $\frac{1}{8}$
*Ichthyol	gr. 24 to gr. 10
Iodoformum	gr. $\frac{1}{2}$ to gr. 5
Ipecacuaninae Rad. (expect.)	gr. $\frac{1}{2}$ to gr. 2
(emetic)	gr. 15 to gr. 30
*Ipecacuaninae sine Emetina	gr. 10 to gr. 30
*Iridinum	gr. 1 to gr. 5
Jalapa	gr. 5 to gr. 20
Jalapei Resina	gr. 2 to gr. 5
*Jalapinum	gr. 1 to gr. 5
Liquor Ammonii Acetatis	dr. 2 to dr. 6
" Arsenicallis (Powder)	min. 2 to min. 5
" Arsenici Hydrochlor.	min. 2 to min. 8
" Arsenii et Hydrarg.	min. 5 to min. 20
" Iodidi (Donovan)	min. 5 to min. 20
" Bism. et Ammon. Cit.	dr. $\frac{1}{2}$ to dr. 1
" Columbæ Conc.	dr. $\frac{1}{2}$ to dr. 1
" Chiratae Conc.	dr. $\frac{1}{2}$ to dr. 1
" Cuspariæ Conc.	dr. $\frac{1}{2}$ to dr. 1
" Ethyl Nitratis	min. 20 to min. 60
" Ferri Acetatis	min. 5 to min. 15
" Dialysatus	min. 10 to min. 30
" Perchloridi	min. 5 to min. 15
" Pernitratis	min. 5 to min. 15
" Hydrarg. Perchlor.	dr. $\frac{1}{2}$ to dr. 1
" Hydrogenii Peroxidi	dr. $\frac{1}{2}$ to dr. 2
" Morphine Acetatis	min. 10 to min. 60
" Hydrochloridi	min. 10 to min. 60
" Tartratis	min. 10 to min. 60
" Potassae	min. 10 to min. 30

	<i>Imperial.</i>
Rxi. Ergotæ	gr. 2 to gr. 8
.. Ergotæ Liq.	min. 10 to min. 30
.. Eucynini Succum	gr. 1 to gr. 2
.. Filicis Liq.	min. 45 to min. 90
.. Hamamelidis Liq.	min. 5 to min. 15
.. Hydrastis Liq.	min. 5 to min. 15
.. Hyoscyami Viride	gr. 2 to gr. 8
.. Ipecacuanhæ (aperct.)	min. 2 to min. 9
.. .. Liq. (emetic)	min. 15 to min. 30
.. Jalapæ	gr. 2 to gr. 8
.. Krameriæ	gr. 5 to gr. 15
.. Nucis Vomice	gr. 1 to gr. 1
.. .. Liq.	min. 1 to min. 3
.. Opii	gr. 2 to gr. 1
.. .. Liq.	min. 3 to min. 30
.. Physostigmatis	gr. 1 to gr. 1
.. Scrophanthi	gr. 1 to gr. 1
Fel Beccinum Purificatum	gr. 5 to gr. 15
Petri Arctas	gr. 5 to gr. 1
.. Carbonas Saccharatus	gr. 10 to gr. 30
.. et Animonii Citras	gr. 5 to gr. 10
.. et Quininas Citras	gr. 5 to gr. 10
.. et Quinine et Strychnina Citras	gr. 5 to gr. 5
* .. Glycophosphas	gr. 2 to gr. 6
* .. Hypophosphis	gr. 1 to gr. 4
* .. Iodine	gr. 1 to gr. 4
* .. Phosphor	gr. 3 to gr. 10
* .. 6 Arad, Arsenias	gr. 6 to gr. 10
* .. Pyrophosphor	gr. 6 to gr. 10
.. Sulphas	gr. 1 to gr. 5
.. .. Hexafluor	gr. 1 to gr. 3
* .. Valerianæ	gr. 3 to gr. 15
Perruii Resinatum	gr. 1 to gr. 5
.. .. Tannatum	gr. 5 to gr. 20
* Celsamine Hydrochloridum	gr. 1 to gr. 10
Glycerinum Pepsini	dr. 1 to dr. 2
Guaiaci Resina	gr. 5 to gr. 15
* Guaiacol	min. 1 to min. 6
* .. Camphoras	gr. 5 to gr. 10
* .. Carbonas	gr. 3 to gr. 10
* Hemoglobini	gr. 5 to gr. 20
* Hazelini	dr. 1 to dr. 3

Imperial.

*Heroin Hydrochloridum	..	gr. $\frac{1}{25}$ to gr. $\frac{1}{6}$
Homatropinæ Hydrobromidum	..	gr. $\frac{1}{80}$ to gr. $\frac{1}{20}$
*Hydrochloridum	..	gr. $\frac{1}{80}$ to gr. $\frac{1}{20}$
*Homatropinæ Salicylas	..	gr. $\frac{1}{80}$ to gr. $\frac{1}{20}$
Hydrarg. c̄ Cretâ	..	gr. $\frac{1}{4}$ to gr. 5
*Iodidum Flavum	..	gr. $\frac{1}{8}$ to gr. 1
„ „ „ Rubrum	..	gr. $\frac{1}{32}$ to gr. $\frac{1}{16}$
*„ „ „ Viride	..	gr. $\frac{1}{8}$ to gr. 1
„ „ „ Perchloridum	..	gr. $\frac{1}{32}$ to gr. $\frac{1}{16}$
„ „ „ Subchloridum	..	gr. $\frac{1}{10}$ to gr. 5
*Hydrastinæ Hydrochloridum	..	gr. $\frac{1}{4}$ to gr. 1
*Hyoscina	..	gr. $\frac{1}{200}$ to gr. $\frac{1}{100}$
Hyoscinae Hydrobromidum	..	gr. $\frac{1}{200}$ to gr. $\frac{1}{100}$
Hyoscyaminæ Sulphas	..	gr. $\frac{1}{200}$ to gr. $\frac{1}{100}$
*Ichthyol	..	gr. 2½ to gr. 10
Iodoformum	..	gr. $\frac{1}{2}$ to gr. 3
Ipecacuanhæ Rad.	{ (<i>expect.</i>) (<i>emetic</i>)	gr. $\frac{1}{4}$ to gr. 2 gr. 15 to gr. 30
*Ipecacuanha sine Emetinâ	..	gr. 10 to gr. 30
*Iridinum	..	gr. 1 to gr. 5
Jalapa	..	gr. 5 to gr. 20
Jalapæ Resina	..	gr. 2 to gr. 5
*Jalapinum	..	gr. 1 to gr. 5
Liquor Ammonii Acetatis	..	dr. 2 to dr. 6
„ Arsenicalis (Fowler)	..	min. 2 to min. 8
„ Arsenici Hydrochlor	..	min. 2 to min. 8
„ Arsenii et Hydrarg.	{	min. 5 to min. 20
„ Iodidi (Donovan)	{	
„ Bism. et Ammon. Cit.	..	dr. $\frac{1}{2}$ to dr. 1
„ Calumbæ Conc.	..	dr. $\frac{1}{2}$ to dr. 1
„ Chiratæ Conc.	..	dr. $\frac{1}{2}$ to dr. 1
„ Cuspariæ Conc.	..	dr. $\frac{1}{2}$ to dr. 1
„ Ethyl Nitritis	..	min. 20 to min. 60
„ Ferri Acetatis	..	min. 5 to min. 15
„ „ Dialysatus	..	min. 10 to min. 30
„ „ Perchloridi	..	min. 5 to min. 15
„ „ Pernitrat	..	min. 5 to min. 15
„ Hydrarg. Perchlor.	..	dr. $\frac{1}{2}$ to dr. 1
„ Hydrogenii Peroxidi	..	dr. $\frac{1}{2}$ to dr. 2
„ Morphinæ Acetatis	..	min. 10 to min. 60
„ „ Hydrochloridi	..	min. 10 to min. 60
„ „ Tartratis	..	min. 10 to min. 60
„ Potassæ	..	min. 10 to min. 30

Imperial.

Liquor Quassiae Conc...	..	dr. $\frac{1}{2}$ to dr. 1
„ Rhei Conc.	dr. $\frac{1}{2}$ to dr. 1
„ Sarsae Comp. Conc.	dr. 2 to dr. 8
„ Senegae Conc.	dr. $\frac{1}{2}$ to dr. 1
„ Sennae Conc.	dr. $\frac{1}{2}$ to dr. 1
„ Serpentariae Conc.	dr. $\frac{1}{2}$ to dr. 2
„ Sodii Arsenatis	min. 2 to min. 8
„ Strychninae Hydrochlor	min. 2 to min. 8
„ Thyroidei	min. 5 to min. 15
„ Trinitrini	min. $\frac{1}{2}$ to min. 2
*Lithii Benzoas	gr. 5 to gr. 10
„ Bitartras	gr. 5 to gr. 20
„ Carbonas	gr. 2 to gr. 5
„ Citras	gr. 5 to gr. 10
„ Citras Effervescens	gr. 60 to gr. 120
* „ Salicylas	gr. 5 to gr. 10
Magnesii Carbonas	gr. 5 to gr. 60
* „ Glycerophosphas	gr. 3 to gr. 10
„ Sulphas	gr. 30 to oz. $\frac{1}{2}$
„ „ Effervescens	gr. 60 to oz. 1
* „ Sulphis	gr. 10 to gr. 30
*Manganesii Citras	gr. 3 to gr. 10
* „ Dioxidum	gr. 2 to gr. 10
* „ et Ferri Citras	gr. 3 to gr. 10
* „ et Ferri Citras c̄ Acid, Arsenios	}	gr. 3 to gr. 10
* „ et Ferri Citras cum Quininā		
* „ et Ferri Citras cum Strych.	}	gr. 1 to gr. 3
* „ et Ferri Phosphas ..		
* „ Hypophosph	gr. 1 to gr. 10
Menthol	gr. $\frac{1}{2}$ to gr. 2
*Mercuric Potassium Iodide	gr. $\frac{1}{12}$ to gr. $\frac{1}{3}$
*Methylene Blue	gr. 1 to gr. 4
*Morphina	gr. $\frac{1}{10}$ to gr. $\frac{1}{2}$
Morphinae Acetas	gr. $\frac{1}{8}$ to gr. $\frac{1}{2}$
„ Hydrochloridum	gr. $\frac{1}{8}$ to gr. $\frac{1}{2}$
* „ Phosphas	gr. $\frac{1}{8}$ to gr. $\frac{1}{2}$
* „ Sulphas	gr. $\frac{1}{8}$ to gr. $\frac{1}{2}$
„ Tartras	gr. $\frac{1}{8}$ to gr. $\frac{1}{2}$
Naphthol β	gr. 3 to gr. 10

*Narcotina	gr. 1 to gr. 3
Nitroglycerinum (Trinitrinum)	gr. $\frac{1}{10}$ to gr. $\frac{1}{2}$
Oleum Cajuputi	min. 4 to min. 3
Oleum Croci	min. 4 to min. 1
Eucalypti	min. 4 to min. 3
Jasperi	min. 4 to min. 3
Phosphoreum	min. 1 to min. 5
Ricini	dr. 1 to dr. 4
Santal	min. 4 to min. 30
Terebinthinae	min. 2 to min. 10
(anthelmintic)	dr. 3 to dr. 4
Opium	gr. 4 to gr. 8
Oreocan	gr. 1 to 10
Oxymel	dr. 1 to dr. 2
Oxymel Scillae	dr. 4 to dr. 1
*Pancreatinum	gr. 2 to gr. 4
*Papaverum	gr. 1 to gr. 8
Paraisengidum	dr. 4 to dr. 2
Pepsinum	gr. 3 to gr. 10
Phenacetinum	gr. 5 to gr. 10
Phenatum	gr. 5 to gr. 20
Phenol	gr. 1 to gr. 3
Phosphorus	gr. $\frac{1}{10}$ to gr. $\frac{1}{2}$
*Physostegmina Hydrobrom.	gr. $\frac{1}{10}$ to gr. $\frac{1}{2}$
Salicylas	gr. $\frac{1}{10}$ to gr. $\frac{1}{2}$
Sulphas	gr. $\frac{1}{10}$ to gr. $\frac{1}{2}$
Picrotoxum	gr. $\frac{1}{10}$ to gr. $\frac{1}{2}$
*Pilocarpus Hydrochloridum	gr. $\frac{1}{10}$ to gr. $\frac{1}{2}$
Nitras	gr. $\frac{1}{10}$ to gr. $\frac{1}{2}$
Pil. Alcae Barbadosia	gr. 4 to gr. 8
et Asaetida	gr. 4 to gr. 8
et Ferri	gr. 4 to gr. 8
et Myrrhae	gr. 4 to gr. 8
Socotrinae	gr. 4 to gr. 8
Cambogiae Comp.	gr. 4 to gr. 8
Colocynthis Comp.	gr. 4 to gr. 8
et Hyoscyami	gr. 4 to gr. 8
Hemi	gr. 4 to gr. 15
Calbani Comp.	gr. 4 to gr. 8
Hydragyri	gr. 4 to gr. 8
Hydrag. Sublimis Obad.	gr. 4 to gr. 8
Ipecac. et Scilla	gr. 4 to gr. 8

Imperial.

*Narcotina	...	gr. 1 to gr. 3
Nitroglycerinum(Trinitrinum)	...	gr. $\frac{1}{200}$ to gr. $\frac{1}{50}$
Oleum Cajuputi	...	min. $\frac{1}{2}$ to min. 3
Oleum Crotonis	...	min. $\frac{1}{2}$ to min. 1
„ Eucalypti	...	min. $\frac{1}{2}$ to min. 3
„ Juniperi	...	min. $\frac{1}{2}$ to min. 3
„ Phosphoratum	...	min. 1 to min. 5
„ Ricini	...	dr. 1 to dr. 8
„ Santali	...	min. 5 to min. 30
„ Terebinthinæ	...	min. 2 to min. 10
„ „ (anthelmintic)	...	dr. 3 to dr. 4
Opium	...	gr. $\frac{1}{2}$ to gr. 2
Orsuda	...	gr. 1 to 10
		intramuscularly
Oxymel	...	dr. 1 to dr. 2
Oxymel Scillæ	...	dr. $\frac{1}{2}$ to dr. 1
*Pancreatinum	...	gr. 2 to gr. 4
*Papainum	...	gr. 1 to gr. 8
Paraldehydum	...	dr. $\frac{1}{2}$ to dr. 2
Pepsinum	...	gr. 5 to gr. 10
Phenacetinum	...	gr. 5 to gr. 10
Phenazonum	...	gr. 5 to gr. 20
Phenol	...	gr. 1 to gr. 3
Phosphorus	...	gr. $\frac{1}{100}$ to gr. $\frac{1}{20}$
*Physostigminæ Hydrobrom	...	gr. $\frac{1}{60}$ to gr. $\frac{1}{20}$
* „ Salicylas	...	gr. $\frac{1}{60}$ to gr. $\frac{1}{20}$
„ Sulphas	...	gr. $\frac{1}{60}$ to gr. $\frac{1}{20}$
Picrotoxinum	...	gr. $\frac{1}{100}$ to gr. $\frac{1}{25}$
*Pilocarpinæ Hydrochloridum	...	gr. $\frac{1}{20}$ to gr. $\frac{1}{2}$
„ Nitras	...	gr. $\frac{1}{20}$ to gr. $\frac{1}{2}$
Pil. Aloes Barbadosis	...	gr. 4 to gr. 8
„ „ et Asafetidæ	...	gr. 4 to gr. 8
„ „ et Ferri	...	gr. 4 to gr. 8
„ „ et Myrrhæ	...	gr. 4 to gr. 8
„ „ Socotrinæ	...	gr. 4 to gr. 8
„ Cambogiæ Comp.	...	gr. 4 to gr. 8
„ Colocynthis Comp.	...	gr. 4 to gr. 8
„ „ et Hyoscyami	...	gr. 4 to gr. 8
„ Ferri	...	gr. 5 to gr. 15
„ Galbani Comp.	...	gr. 4 to gr. 8
„ Hydrargyri	...	gr. 4 to gr. 8
„ Hydrarg. Subchlor Co.	...	gr. 4 to gr. 8
„ Ipecac. c Scillâ	...	gr. 4 to gr. 8

Imperial.

Pil. Phosphori	gr. 1 to gr. 2
„ Plumbi c̄ Opio	gr. 2 to gr. 4
„ Quininæ Sulphatis	gr. 2 to gr. 8
„ Rhei Comp.	gr. 4 to gr. 8
„ Saponis Comp.	gr. 2 to gr. 4
„ Scammonii Comp.	gr. 4 to gr. 8
„ Scillæ Comp.	gr. 4 to gr. 8
Piperazine	gr. 5 to gr. 10
*Pituitary Gland Substance	gr. 2 to gr. 6
Pix Liquida	gr. 1 to gr. 10
Plumbi Acetas	gr. 1 to gr. 5
Podophylli Resina	gr. $\frac{1}{4}$ to gr. 1
Potassii Acetas.	gr. 10 to gr. 60
„ Bicarbonas	gr. 5 to gr. 30
„ Bichromas	gr. $\frac{1}{10}$ to gr. $\frac{1}{5}$
„ Bromidum	gr. 5 to gr. 30
„ Carbonas	gr. 5 to gr. 20
„ Chloras	gr. 5 to gr. 15
* „ Chloridum	gr. 20 to gr. 60
„ Citras	gr. 10 to gr. 40
* „ Hypophosphis	gr. 1 to gr. 6
„ Iodidum	gr. 5 to gr. 20
„ Nitras	gr. 5 to gr. 20
„ Permanganas	gr. 1 to gr. 3
„ Tartras	gr. 30 to gr. 240
„ „ Acidus	gr. 20 to gr. 60
Pulvis Antimonialis	gr. 3 to gr. 6
„ Catechu Comp.	gr. 10 to gr. 40
„ Cinnamomi Comp.	gr. 10 to gr. 40
„ Cretæ Aromaticus	gr. 10 to gr. 60
„ „ „ c̄ Opio	gr. 10 to gr. 40
„ Elaterini Comp.	gr. 1 to gr. 4
„ Glycyrrh. „	gr. 60 to gr. 120
„ Ipecacuanhæ Comp.	gr. 5 to gr. 15
„ Jalapæ Comp.	gr. 20 to gr. 60
„ Kino Comp.	gr. 5 to gr. 20
„ Opii Comp.	gr. 2 to gr. 10
„ Rhei Comp.	gr. 20 to gr. 60
„ Scammonii Comp.	gr. 10 to gr. 20
*Quinina	gr. 1 to gr. 4
*†Quininæ Acetyl-salicylas	gr. 2 to gr. 5
† „ Bihydrochloridum	gr. 1 to gr. 10
*† „ Bisulphas	gr. 1 to gr. 10

	<i>Imperial.</i>
* Quinine Hydrobromidum ..	gr. 1 to gr. 10
† " Hydrochloridum ..	gr. 1 to gr. 10
† " Hydrochlor. Acid. ..	gr. 1 to gr. 10
*+ " Hypophosphia ..	gr. 1 to gr. 3
*+ " Lactas. ..	gr. 1 to gr. 5
*+ " Phosphas ..	gr. 1 to gr. 10
*+ " Salicylas ..	gr. 2 to gr. 5
† " Sulphas ..	gr. 1 to gr. 10
* Quinine Tannas ..	gr. 1 to gr. 4
*+ " Valerianas ..	gr. 1 to gr. 4
Rhei Radix ..	gr. 3 to gr. 50
Sedativum ..	gr. 5 to gr. 20
Salol ..	gr. 5 to gr. 15
Santonium ..	gr. 2 to gr. 5
Scammonia Mesina ..	gr. 3 to gr. 8
Scammon ..	gr. 1 to gr. 10
	<i>Intramuscularly</i>
Soda Tartarata ..	gr. 120 to gr. 240
Sodii Arsenas ..	gr. 1/2 to gr. 1/2
" Benzoes ..	gr. 5 to gr. 30
" Bicarbonas ..	gr. 5 to gr. 30
" Bromidum ..	gr. 5 to gr. 30
* " Cacodylas ..	gr. 1 to gr. 1
* " Chloras ..	gr. 10 to gr. 30
* " Citras ..	gr. 10 to gr. 60
* " Glycophosphas ..	gr. 2 to gr. 5
" Hypophosphis ..	gr. 3 to gr. 10
" Iodidum ..	gr. 5 to gr. 20
" Nitris ..	gr. 1 to gr. 2
" Phosphas ..	gr. 30 to oz. 1
" Effervescens ..	gr. 60 to oz. 1
" Salicylas ..	gr. 10 to gr. 30
" Salphas ..	gr. 30 to oz. 1
" Effervescens ..	gr. 60 to oz. 1
" Sulphis ..	gr. 5 to gr. 20
" Sulphocarbonas ..	gr. 5 to gr. 15
* Sparteine Sulphas ..	gr. 1/2 to gr. 1
Spiritus Aetheris ..	min. 20 to min. 60
" Comp. ..	min. 20 to min. 60
" Nitrosi ..	min. 20 to min. 60
" Animon. Arom. ..	min. 20 to min. 60
" Animon. Peptidus ..	min. 20 to min. 60
" Camphorae ..	min. 5 to min. 20

	<i>Imperial.</i>
Phosphori	gr. 1 to gr. 3
Plumbi & Opii	gr. 3 to gr. 4
Quininae Sulphas	gr. 2 to gr. 8
Rhei Comp.	gr. 4 to gr. 8
Saponis Comp.	gr. 2 to gr. 4
Scammonii Comp.	gr. 4 to gr. 8
Scilla Comp.	gr. 4 to gr. 8
Piperazine	gr. 5 to gr. 10
*Pituitary Gland Substance	gr. 2 to gr. 6
Mix Liquida	gr. 1 to gr. 10
Plumbi Acetas	gr. 1 to gr. 5
Podophylli Resina	gr. 1 to gr. 1
Potassii Acetas.	gr. 10 to gr. 50
Præparatio Carbonas	gr. 5 to gr. 30
Bichromas	gr. 15 to gr. 30
Bromidum	gr. 5 to gr. 30
Carbonas	gr. 5 to gr. 20
Chloras	gr. 5 to gr. 15
* Chloridum	gr. 10 to gr. 60
Citras	gr. 10 to gr. 60
* Hypophosphis	gr. 1 to gr. 60
Iodidum	gr. 5 to gr. 20
Nitras	gr. 5 to gr. 20
Permanganas	gr. 1 to gr. 3
Tartas	gr. 30 to gr. 240
Acidus	gr. 20 to gr. 80
Pulvis Astringens	gr. 5 to gr. 5
Cassia Comp.	gr. 10 to gr. 60
Chamaejas Comp.	gr. 10 to gr. 60
Crocus Comp.	gr. 10 to gr. 60
" & Opii	gr. 10 to gr. 40
Histerini Comp.	gr. 1 to gr. 4
Digerita	gr. 60 to gr. 120
Ipecacuanha Comp.	gr. 5 to gr. 15
Jalap Comp.	gr. 20 to gr. 60
Kino Comp.	gr. 5 to gr. 20
Opi Comp.	gr. 2 to gr. 10
Rhei Comp.	gr. 20 to gr. 60
Scammonii Comp.	gr. 10 to gr. 30
*Quinina	gr. 1 to gr. 5
*†Quininae Acetyl-salicylas	gr. 2 to gr. 5
† Bihydrochloridum	gr. 1 to gr. 10
*† Bisulphas	gr. 1 to gr. 10

Imperial.

*†	Quininæ Hydrobromidum	..	gr. 1 to gr. 10
†	„ Hydrochloridum	..	gr. 1 to gr. 10
†	„ Hydrochlor. Acid.	..	gr. 1 to gr. 10
*†	„ Hypophosphis	..	gr. 1 to gr. 3
*†	„ Lactas.	..	gr. 1 to gr. 5
*†	„ Phosphas	..	gr. 1 to gr. 10
*†	„ Salicylas	..	gr. 2 to gr. 6
†	„ Sulphas	..	gr. 1 to gr. 10
*†	Quininæ Tannas	..	gr. 1 to gr. 4
*†	„ Valerianas	..	gr. 1 to gr. 4
	Rhei Radix	..	gr. 3 to gr. 30
	Salicinum	..	gr. 5 to gr. 20
	Salol	..	gr. 5 to gr. 15
	Santoninum	..	gr. 2 to gr. 5
	Scammoniae Resina	..	gr. 3 to gr. 8
	Soamin	..	gr. 1 to gr. 10
			intramuscularly
	Soda Tartarata	..	gr. 120 to gr. 240
	Sodii Arsenas	..	gr. $\frac{1}{10}$ to gr. $\frac{1}{20}$
	„ Benzoas	..	gr. 5 to gr. 30
	„ Bicarbonas	..	gr. 5 to gr. 30
	„ Bromidum	..	gr. 5 to gr. 30
*	„ Cacodylas	..	gr. $\frac{1}{4}$ to gr. $\frac{1}{2}$
*	„ Chloras	..	gr. 10 to gr. 30
*	„ Citras	..	gr. 10 to gr. 60
*	„ Glycerophosphas	..	gr. 2 to gr. 5
	„ Hypophosphis	..	gr. 3 to gr. 10
	„ Iodidum	..	gr. 5 to gr. 20
	„ Nitris	..	gr. 1 to gr. 2
	„ Phosphas	..	gr. 30 to oz. $\frac{1}{2}$
	„ „ Effervescens	..	gr. 60 to oz. $\frac{1}{2}$
	„ Salicylas	..	gr. 10 to gr. 30
	„ Sulphas	..	gr. 30 to oz. $\frac{1}{2}$
	„ „ Effervescens	..	gr. 60 to oz. $\frac{1}{2}$
	„ Sulphis	..	gr. 5 to gr. 20
	„ Sulphocarbolas	..	gr. 5 to gr. 15
*†	Sparteinae Sulphas	..	gr. $\frac{1}{6}$ to gr. 1
	Spiritus Aetheris	..	min. 20 to min. 90
	„ „ Comp.	..	min. 20 to min. 90
	„ „ Nitrosi	..	min. 20 to min. 90
	„ Ammon. Arom.	..	min. 20 to min. 90
	„ Ammon. Fetidus	..	min. 20 to min. 90
	„ Camphoræ	..	min. 5 to min. 20

Imperial.

*Strontii Bromidum	..	gr. 5 to gr. 30
*,, Iodidum	..	gr. 5 to gr. 20
*,, Salicylas	..	gr. 5 to gr. 20
*Strophanthinum	..	gr. $\frac{1}{500}$ to gr. $\frac{1}{100}$
Strychnina	..	gr. $\frac{1}{60}$ to gr. $\frac{1}{16}$
Strychninæ Hydrochloridum	..	gr. $\frac{1}{60}$ to gr. $\frac{1}{16}$
*,, Nitras	..	gr. $\frac{1}{60}$ to gr. $\frac{1}{15}$
*,, Sulphas	..	gr. $\frac{1}{60}$ to gr. $\frac{1}{16}$
Sulphonal	..	gr. 10 to gr. 30
Sulphur Sublimatum	..	gr. 20 to gr. 60
Sulphur Præcipitatum	..	gr. 20 to gr. 60
*Supra-renal Gland	..	gr. 5 and upwards
Syrupus Calcii Lactophosph.		dr. $\frac{1}{2}$ to dr. 1
,, Cascaræ Aromat.	..	dr. $\frac{1}{2}$ to dr. 2
,, Chloral	..	dr. $\frac{1}{2}$ to dr. 2
,, Codeinæ	..	dr. $\frac{1}{2}$ to dr. 2
,, Ferri Phosph. \bar{o}	}	dr. $\frac{1}{2}$ to dr. 1
,, Quininâ et Strychninâ (Easton)		
,, Ferri Phosphatis	..	dr. $\frac{1}{2}$ to dr. 1
*,, Phosph. Co.	..	dr. $\frac{1}{2}$ to dr. 2
,, Limonis	..	dr. $\frac{1}{2}$ to dr. 1
,, Pruni. Virg.	..	dr. $\frac{1}{2}$ to dr. 1
,, Rhei	..	dr. $\frac{1}{2}$ to dr. 2
,, Scillæ	..	dr. $\frac{1}{2}$ to dr. 1
,, Sennæ	..	dr. $\frac{1}{2}$ to dr. 2
,, Tolutanus	..	dr. $\frac{1}{2}$ to dr. 1
,, Zingiberis	..	dr. $\frac{1}{2}$ to dr. 1
Terebenum	..	min. 5 to min. 15
*Tetronal	..	gr. 10 to gr. 20
Thymol	..	gr. $\frac{1}{2}$ to gr. 2
*Thymus Gland	..	gr. 5 to gr. 25
Thyroid Gland	..	gr. 3 to gr. 10
Tinctura Aconiti	..	min. 5 to min. 15
,, (repeated)	..	min. 2 to min. 5
,, Aloes	..	dr. $\frac{1}{2}$ to dr. 2
,, Asafetidæ	..	dr. $\frac{1}{2}$ to dr. 1
,, Aurantii	..	dr. $\frac{1}{2}$ to dr. 1
,, Belladonnæ	..	min. 5 to min. 15
,, Benzoin Co.	..	dr. $\frac{1}{2}$ to dr. 1
,, Buchu	..	dr. $\frac{1}{2}$ to dr. 1
,, Calumbæ	..	dr. $\frac{1}{2}$ to dr. 1
,, Camphoræ Comp.	..	dr. $\frac{1}{2}$ to dr. 1

Tinctura Cannabis Indicae	min. 5 to min. 15
Cantharidis	min. 2 to min. 15
Capaci	min. 1 to min. 15
Card Comp.	dr. 1 to dr. 1
Cascarilla	dr. 1 to dr. 1
Catechu	dr. 1 to dr. 1
Chirata	dr. 1 to dr. 1
Chloroform Morph. Co.	min. 5 to min. 15
Cimicifuga	dr. 1 to dr. 1
Cinchona	dr. 1 to dr. 1
Comp.	dr. 1 to dr. 1
Colchich. Seminum	min. 5 to min. 15
Confl.	dr. 1 to dr. 1
Convallaria	min. 5 to min. 20
Digitalis	min. 5 to min. 15
Ergotae Ammon.	dr. 1 to dr. 1
Ferri Perchloridi	min. 5 to min. 15
Gelsemii	min. 5 to min. 15
Guaiaci Ammon.	dr. 1 to dr. 1
Hamamelidis	dr. 1 to dr. 1
Hydrastis	dr. 1 to dr. 1
Hyoscyami	dr. 1 to dr. 1
Iodi	min. 2 to min. 5
Jaborandi	dr. 1 to dr. 1
Lobeliae Plicata	min. 5 to min. 15
Nucis Vomicae	min. 5 to min. 15
Opil	min. 5 to min. 20
Ammoniacata	dr. 1 to dr. 1
Podophylli	min. 5 to min. 15
Pruni Virginianae	dr. 1 to dr. 1
Quinine	dr. 1 to dr. 1
Ammon.	dr. 1 to dr. 1
Sedgwick	dr. 1 to dr. 1
Sella	min. 5 to min. 15
Serena	min. 5 to min. 15
Strophanthi	min. 5 to min. 15
Sumbac	dr. 1 to dr. 1
Tolutana	dr. 1 to dr. 1
Valeriana Ammon.	dr. 1 to dr. 1
Warburgi	dr. 1 to dr. 1
Zingiberis	dr. 1 to dr. 1
Trinitrinum (Nitroglycerinum)	gr. 10 to gr. 30
Triopal	gr. 10 to gr. 30

Imperial.

Tinctura Cannabidis Indicæ ..	min. 5 to min. 15
„ Cantharidis ..	min. 2 to min. 15
„ Capsici ..	min. 1 to min. 15
„ Card Comp. ..	dr. $\frac{1}{2}$ to dr. 1
„ Cascarillæ ..	dr. $\frac{1}{2}$ to dr. 1
„ Catechu ..	dr. $\frac{1}{2}$ to dr. 1
„ Chiratae ..	dr. $\frac{1}{2}$ to dr. 1
„ Chloroflet Morph. Co. ..	min. 5 to min. 15
„ Cimicifugæ ..	dr. $\frac{1}{2}$ to dr. 1
„ Cinchonæ ..	dr. $\frac{1}{2}$ to dr. 1
„ „ Comp. ..	dr. $\frac{1}{2}$ to dr. 1
„ Colchici Seminum ..	min. 5 to min. 15
„ Conii ..	dr. $\frac{1}{2}$ to dr. 1
* „ Convallariæ ..	min. 5 to min. 20
„ Digitalis ..	min. 5 to min. 15
„ Ergotæ Ammon. ..	dr. $\frac{1}{2}$ to dr. 1
„ Ferri Perchloridi ..	min. 5 to min. 15
„ Gelsemii ..	min. 5 to min. 15
„ Guaiaci Ammon. ..	dr. $\frac{1}{2}$ to dr. 1
„ Hamamelidis ..	dr. $\frac{1}{2}$ to dr. 1
„ Hydrastis ..	dr. $\frac{1}{2}$ to dr. 1
„ Hyoscyami ..	dr. $\frac{1}{2}$ to dr. 1
„ Iodi ..	min. 2 to min. 5
„ Jaborandi ..	dr. $\frac{1}{2}$ to dr. 1
„ Lobeliæ Ætherea ..	min. 5 to min. 15
„ Nucis Vomicae ..	min. 5 to min. 15
„ Opii ..	min. 5 to min. 30
„ „ Ammoniata ..	dr. $\frac{1}{2}$ to dr. 1
„ Podophylli ..	min. 5 to min. 15
„ Pruni Virginianæ ..	dr. $\frac{1}{2}$ to dr. 1
„ Quininæ ..	dr. $\frac{1}{2}$ to dr. 1
„ „ Ammon. ..	dr. $\frac{1}{2}$ to dr. 1
„ Senegæ ..	dr. $\frac{1}{2}$ to dr. 1
„ Scillæ ..	min. 5 to min. 15
„ Stramonii ..	min. 5 to min. 15
„ Strophanthi ..	min. 5 to min. 15
„ Sumbul ..	dr. $\frac{1}{2}$ to dr. 1
„ Tolutana ..	dr. $\frac{1}{2}$ to dr. 1
„ Valerianæ Ammon. ..	dr. $\frac{1}{2}$ to dr. 1
* „ Warburgi ..	dr. $\frac{1}{2}$ to dr. 4
„ Zingiberis ..	dr. $\frac{1}{2}$ to dr. 1
Trinitrinum (Nitroglycerinum) ..	gr. $\frac{1}{200}$ to gr. $\frac{1}{50}$
* Trional ..	gr. 10 to gr. 30

	Imperial.
*Tropacocainæ Hydrochlor.	gr. $\frac{1}{2}$ to gr. $\frac{1}{2}$
*Uranii Nitrates	gr. 1 to gr. 10
*Urotropina	gr. 3 to gr. 15
*Veronal	gr. 5 to gr. 10
Vinum Antimoniale (<i>diaphoretic</i>)	min. 10 to min. 30
„ „ (<i>emetic</i>)	dr. 2 to dr. 4
„ Colchici	min. 10 to min. 30
„ Ipecac. (<i>expectorant</i>)	min. 10 to min. 30
„ „ (<i>emetic</i>)	dr. 4 to dr. 6
*Warburg Tincture	dr. $\frac{1}{2}$ to dr. 4
Zinci Acetas	gr. 1 to gr. 2
„ Oxidum	gr. 2 to gr. 10
„ Sulphas (<i>tonic</i>)	gr. 1 to gr. 3
„ „ (<i>emetic</i>)	gr. 10 to gr. 30
„ Valerianas	gr. 1 to gr. 3
„ Zingiberis	gr. 1 to gr. 3
„ Warburgi	dr. $\frac{1}{2}$ to dr. 4
„ Valerianæ Ammon.	dr. $\frac{1}{2}$ to dr. 1
„ Toluana	dr. $\frac{1}{2}$ to dr. 1
„ Sumbul	dr. $\frac{1}{2}$ to dr. 1
„ Strophanthi	min. 5 to min. 15
„ Stramonii	min. 5 to min. 15
„ Scilla	min. 5 to min. 15
„ Senega	dr. $\frac{1}{2}$ to dr. 1
„ Ammon.	dr. $\frac{1}{2}$ to dr. 1
„ Quinine	dr. $\frac{1}{2}$ to dr. 1
„ Prun Virginianæ	dr. $\frac{1}{2}$ to dr. 1
„ Podophylli	min. 5 to min. 15
„ Ammoniac	dr. $\frac{1}{2}$ to dr. 1
„ Opii	min. 5 to min. 30
„ Nux Vomica	min. 5 to min. 15
„ LobeliaÆ Etherea	min. 5 to min. 15
„ Jaborandi	dr. $\frac{1}{2}$ to dr. 1
„ Iodi	min. 5 to min. 15
„ Hyoscyami	dr. $\frac{1}{2}$ to dr. 1
„ Hydrastis	dr. $\frac{1}{2}$ to dr. 1
„ Hamamelidis	dr. $\frac{1}{2}$ to dr. 1
„ Guaiaci Ammon.	dr. $\frac{1}{2}$ to dr. 1
„ Gelsemi	min. 5 to min. 15
„ Ferri Perchloridi	min. 5 to min. 15
„ Ferri Ammon.	dr. $\frac{1}{2}$ to dr. 1
„ Trinitratum (Nitroglycerinum)	gr. $\frac{1}{30}$ to gr. $\frac{1}{30}$

*Tropaeocaine Hydrochlor.	gr. 1 to gr. 4
*Uranii Nitrates	gr. 1 to gr. 10
*Urotropina	gr. 3 to gr. 15
*Veronal	gr. 5 to gr. 10
Vinum Antimoniale (diphoretic)	min. 10 to min. 30
" " (emetic)	dr. 2 to dr. 4
" Colchici	min. 10 to min. 30
" Ipecac (expectorant)	min. 10 to min. 50
" " (emetic)	dr. 2 to dr. 6
*Warburg Tincture	dr. 1 to dr. 4
Zinci Acetas	gr. 1 to gr. 2
" Oridum	gr. 2 to gr. 10
" Sulphur (tonic)	gr. 1 to gr. 3
" " (emetic)	gr. 10 to gr. 30
" Valeriana	gr. 1 to gr. 3

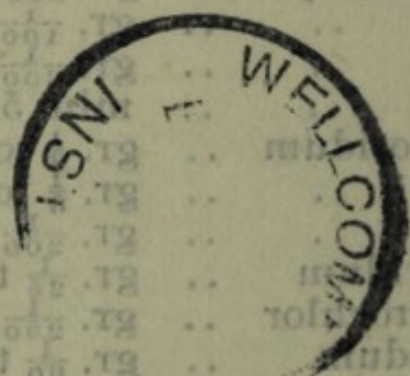
HYPODERMIC POSOLOGICAL TABLE

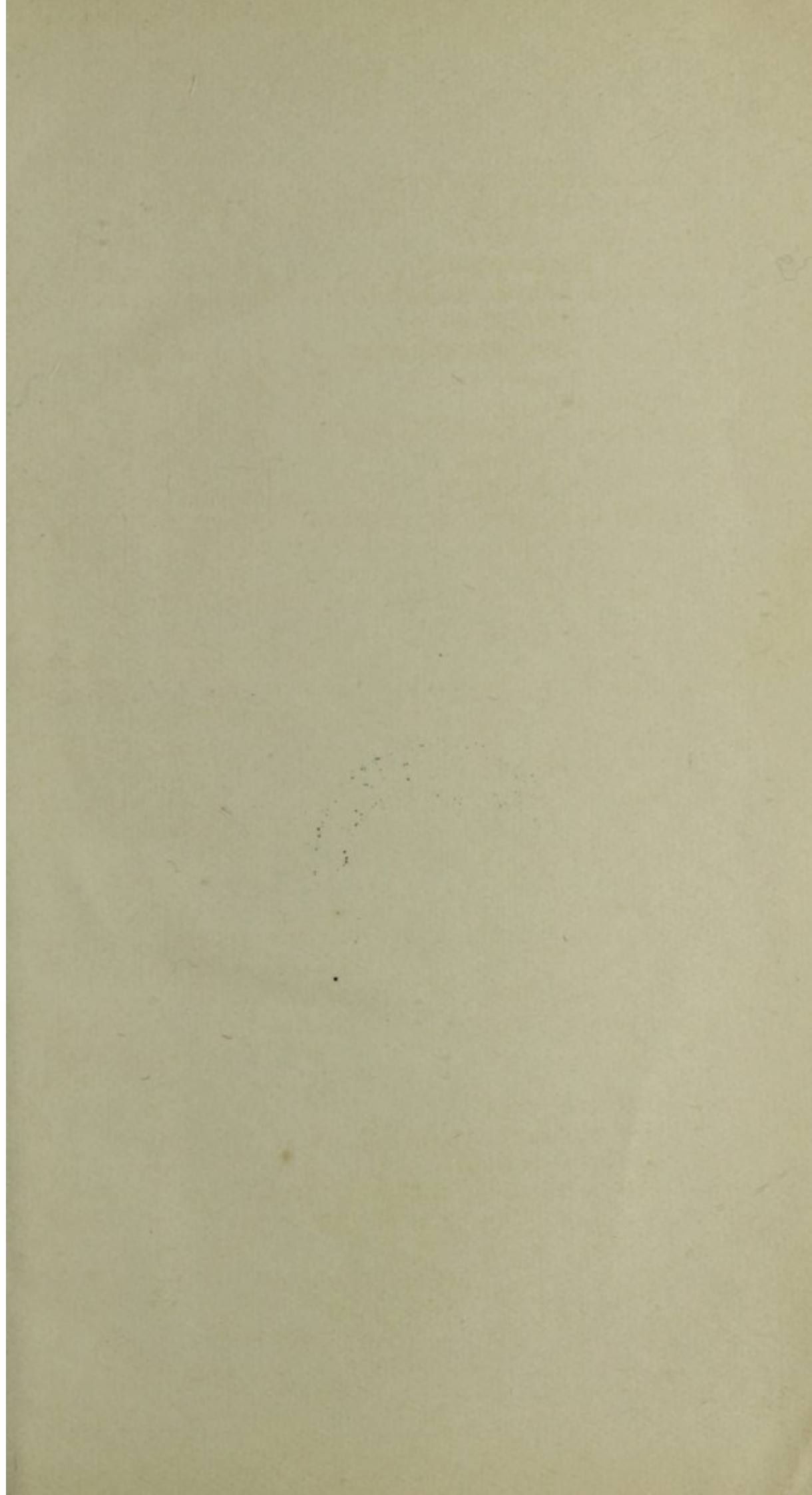
* *Non-Official.* † *Much larger doses have been given.*

		<i>Imperial.</i>
Apomorphinæ Hydrochlor	..	gr. $\frac{1}{20}$ to gr. $\frac{1}{10}$
Atropinæ Sulphas	..	gr. $\frac{1}{200}$ to gr. $\frac{1}{100}$
*Caffeinæ Sodio-salicylas	..	gr. $\frac{1}{2}$ to gr. 4
Cocainæ Hydrochloridum	..	gr. $\frac{1}{10}$ to gr. $\frac{1}{2}$
Codeinæ Phosphas	..	gr. $\frac{1}{4}$ to gr. 2
*Curara	..	gr. $\frac{1}{12}$ to gr. $\frac{1}{2}$
*Digitalinum Germanicum		
	(Amorph.)	gr. $\frac{1}{100}$ to gr. $\frac{1}{30}$
* „ Verum (Cryst.)	..	gr. $\frac{1}{500}$ to gr. $\frac{1}{130}$
Ergotoxina	..	gr. $\frac{1}{100}$ to gr. $\frac{1}{50}$
*Ergotinina Citras	..	gr. $\frac{1}{200}$ to gr. $\frac{1}{50}$
Ernutin	..	min. 5 to min. 10
*Eucainæ Hydrochloridum	..	gr. $\frac{1}{3}$ to gr. 2
* „ Lactas	..	gr. $\frac{1}{3}$ to gr. 2
†* 'Hemisine'	..	gr. $\frac{1}{200}$ to gr. $\frac{1}{50}$
*Heroin Hydrochloridum	..	gr. $\frac{1}{25}$ to gr. $\frac{1}{12}$
*Homatropinæ Hydrochlor	..	gr. $\frac{1}{250}$ to gr. $\frac{1}{20}$
Hydrarg. Perchloridum	..	gr. $\frac{1}{60}$ to gr. $\frac{1}{30}$
* „ Succinimidum	..	gr. $\frac{1}{6}$ to gr. $\frac{1}{4}$
Hyoscinæ Hydrobromidum	..	gr. $\frac{1}{200}$ to gr. $\frac{1}{100}$
Hyoscyaminæ Sulphas	..	gr. $\frac{1}{200}$ to gr. $\frac{1}{100}$
Injectiones Hypoderimicæ P.B.		
Apomorphinæ	..	min. 5 to min. 10
Cocainæ	..	min. 2 to min. 5
Ergotæ	..	min. 3 to min. 10
Morphinæ (Tartratis)	..	min. 2 to min. 5
Morphinæ Hydrochloridum	..	gr. $\frac{1}{8}$ to gr. $\frac{1}{4}$
* „ Meconas	..	gr. $\frac{1}{8}$ to gr. $\frac{1}{4}$
* „ Phosphas	..	gr. $\frac{1}{8}$ to gr. $\frac{1}{4}$
* „ Sulphas	..	gr. $\frac{1}{8}$ to gr. $\frac{1}{4}$
* „ Tartras	..	gr. $\frac{1}{8}$ to gr. $\frac{1}{4}$

Imperial.

*Physostigminæ Salicylas	..	gr. $\frac{1}{100}$ to gr. $\frac{1}{25}$
Picrotoxinum	..	gr. $\frac{1}{100}$ to gr. $\frac{1}{25}$
Pilocarpinæ Nitras	..	gr. $\frac{1}{50}$ to gr. $\frac{1}{2}$
Potassii Permanganas	..	gr. 1 to gr. 3
†Quininæ Bihydrochloridum	..	gr. 1 to gr. 5
*† „ Bisulphas	..	gr. 1 to gr. 5
*† „ Hydrobromidum	..	gr. $\frac{1}{2}$ to gr. 2
*† „ Lactas	..	gr. 1 to gr. 5
*Strophanthinum	..	gr. $\frac{1}{500}$ to gr. $\frac{1}{100}$
Strychninæ Hydrochloridum	..	gr. $\frac{1}{150}$ to gr. $\frac{1}{10}$
* „ Nitras	..	gr. $\frac{1}{150}$ to gr. $\frac{1}{10}$
* „ Sulphas	..	gr. $\frac{1}{150}$ to gr. $\frac{1}{10}$
Trinitrinum (Nitroglycerinum)	..	gr. $\frac{1}{250}$ to gr. $\frac{1}{50}$





Imperial

*Physostigmine Salicylas	gr. $\frac{1}{10}$ to gr. $\frac{1}{2}$
Picrotoxinum	gr. $\frac{1}{10}$ to gr. $\frac{1}{2}$
Pilocarpine Nitras	gr. $\frac{1}{10}$ to gr. $\frac{1}{2}$
Potassii Permanganas	gr. $\frac{1}{10}$ to gr. $\frac{1}{2}$
+Quinine Dihydrochloridum	gr. $\frac{1}{10}$ to gr. $\frac{1}{2}$
+ " Bisulphas	gr. $\frac{1}{10}$ to gr. $\frac{1}{2}$
+ " Hydrobromidum	gr. $\frac{1}{10}$ to gr. $\frac{1}{2}$
+ " Lactas	gr. $\frac{1}{10}$ to gr. $\frac{1}{2}$
*Strophanthinum	gr. $\frac{1}{10}$ to gr. $\frac{1}{2}$
Strychnine Hydrochloridum	gr. $\frac{1}{10}$ to gr. $\frac{1}{2}$
" Nitras	gr. $\frac{1}{10}$ to gr. $\frac{1}{2}$
" Sulphas	gr. $\frac{1}{10}$ to gr. $\frac{1}{2}$
Trinitrinum (Nitroglycerinum)	gr. $\frac{1}{10}$ to gr. $\frac{1}{2}$



