

Logical first choice in mild or moderate hypertension : 'Navidrex K'.

Contributors

Ciba Laboratories

Publication/Creation

1970.

Persistent URL

<https://wellcomecollection.org/works/y5jvqu3c>

License and attribution

Conditions of use: it is possible this item is protected by copyright and/or related rights. You are free to use this item in any way that is permitted by the copyright and related rights legislation that applies to your use. For other uses you need to obtain permission from the rights-holder(s).



Wellcome Collection
183 Euston Road
London NW1 2BE UK
T +44 (0)20 7611 8722
E library@wellcomecollection.org
<https://wellcomecollection.org>

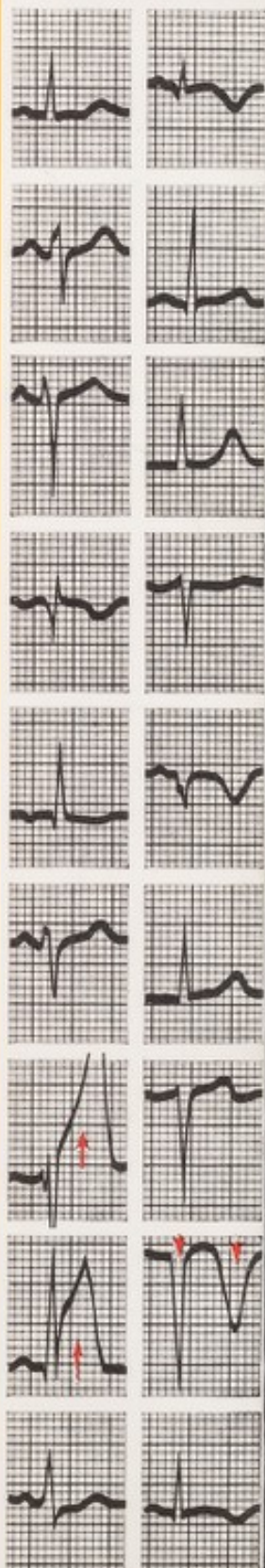
Logical first choice
in mild or moderate
hypertension

'Navidrex K'

Although the diuretic action of 'Navidrex K' lasts up to 12 hours, once daily dosage provides an antihypertensive effect which is virtually continuous. Where hypokalaemia is present, 'Navidrex K' treatment often brings about improvement in ECG changes

ACUTE
ANTERIOR
INFARCT

SUBACUTE
ANTERIOR
INFARCT

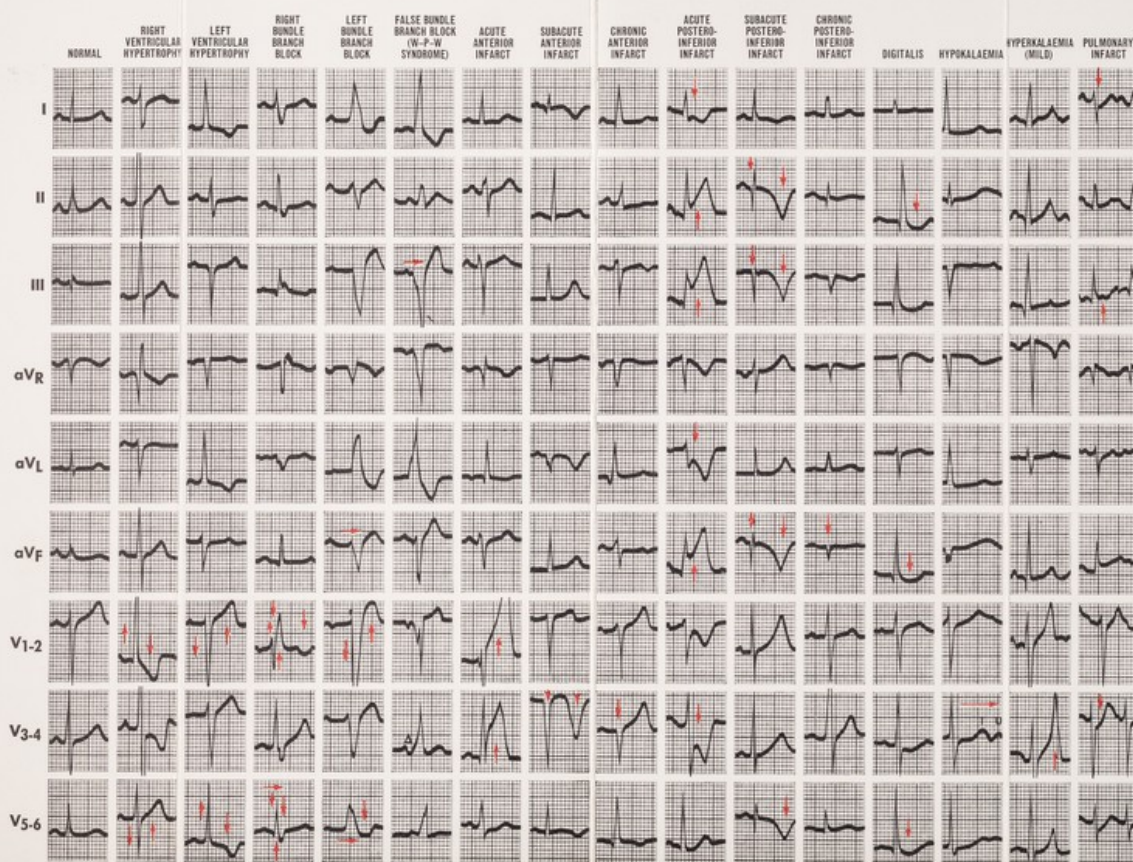


C I B A

→ indicates diagnostic features

ECG's in health and disease

(reproduced from
CIBA Clinical Symposia)



C I B A

For best results in hypertension and oedema

'Navidrex K'

12 hours' daytime diuresis

'Navidrex K' has the ideal duration of diuretic action: 12 hours. This allows the kidneys an interval free of diuretic stimulus and enables the patient to get a sound night's sleep.

Only in very rare cases of oedema is rapid diuresis required; the majority of patients are better treated by a steady, rather than a drastic diuretic action.

with continuous antihypertensive effect

'Navidrex K' has the added benefit of a hypotensive effect which is virtually continuous, ensuring smooth blood pressure control with little diurnal fluctuation.

'... it is perhaps wise invariably to use a diuretic (in hypertension) because this will at the same time reduce the tendency of most of the potent drugs to cause fluid retention and will also lessen the incidence of side effects by allowing a smaller dose of the potent drug to be used ...'

Today's Drugs, Br. med. J., 1969, 2, 431.

Only 'Navidrex K' contains 'Slow-K'

When daily doses of diuretics are used in the long-term treatment of hypertension and oedema, potassium supplements are essential. 'Navidrex K' contains the unique 'Slow-K' supplement described as 'the best and safest way of prescribing potassium'.

G.P., 1968, 5, 5, 4.

logical first choice diuretic

'Navidrex K'

cyclopenthiiazide 0.25 mg KCl 600 mg (8mEq K⁺)

Dosage

For the majority of patients, the dosage below may be taken most conveniently in a single daily dose.

Hypertension: Usually 1 to 2 tablets daily. For best results, doses should be given 7 days a week.

Oedema: Initially 2 to 4 tablets daily until a satisfactory response is seen. Rarely, 6 tablets (1.5 mg) daily may be required; this is the maximum effective dose.

Maintenance: 1 to 2 tablets daily, or 2 tablets on alternate days.

Precautions

In common with similar diuretics 'Navidrex K' may bring on an attack of gout in patients predisposed to this condition. In patients with impaired renal function, a rise in blood urea may occur during treatment with 'Navidrex K', responding to either a reduction in dosage or temporary interruption of treatment.

Administer cautiously to patients in advanced renal failure to avoid possible hyperkalaemia. 'Slow-K' tablets are designed to avoid the risks of gastrointestinal irritation. However, symptoms or signs which might indicate ulceration of the small bowel in patients taking tablets or capsules containing potassium salts are indications for stopping treatment with such preparations immediately.

Containers of 100 and 500.
Basic NHS price per 100: 9s 4d

'Navidrex K' and 'Slow-K' are trademarks
Full information on request from
CIBA Laboratories Limited, Horsham, Sussex