

Front (fragment) of carved chest. Valle d'Aosta. XVth century.

Contributors

Carlo Erba

Publication/Creation

[approximately 1964]

Persistent URL

<https://wellcomecollection.org/works/cc8hqs4g>

License and attribution

Conditions of use: it is possible this item is protected by copyright and/or related rights. You are free to use this item in any way that is permitted by the copyright and related rights legislation that applies to your use. For other uses you need to obtain permission from the rights-holder(s).



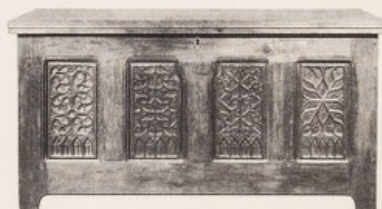
Wellcome Collection
183 Euston Road
London NW1 2BE UK
T +44 (0)20 7611 8722
E library@wellcomecollection.org
<https://wellcomecollection.org>



Front (fragment) of carved CHEST.
Valle d'Aosta. XVth century.

83 × 162 × 63.5 cm; oak Inv. no. 121

This chest has been almost entirely restored.
The carving of the panels consists of a series
of arches below a rich mixture of different
geometrical motives of Gothic style.



Reproduced from « I mobili nelle civiche raccolte artistiche di Milano » - edited by Gilda Rosa and published by Martello. Photographs taken in the « Castello Sforzesco » in Milan.
