

London Lighthouse christmas artist 1992 : Howard Hodgkin / London Lighthouse.

Contributors

London Lighthouse

Publication/Creation

1992.

Persistent URL

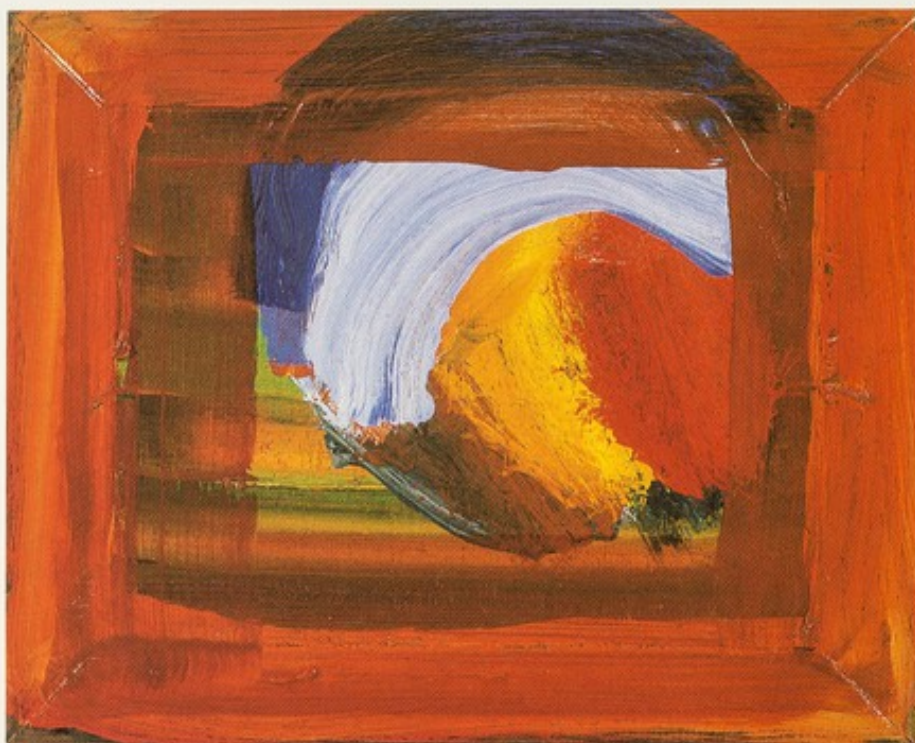
<https://wellcomecollection.org/works/edpc9hfv>

License and attribution

Conditions of use: it is possible this item is protected by copyright and/or related rights. You are free to use this item in any way that is permitted by the copyright and related rights legislation that applies to your use. For other uses you need to obtain permission from the rights-holder(s).



Wellcome Collection
183 Euston Road
London NW1 2BE UK
T +44 (0)20 7611 8722
E library@wellcomecollection.org
<https://wellcomecollection.org>



'Fruit' 1988-89 Oil on wood 340x407mm Private Collection

London Lighthouse Christmas Artist 1992

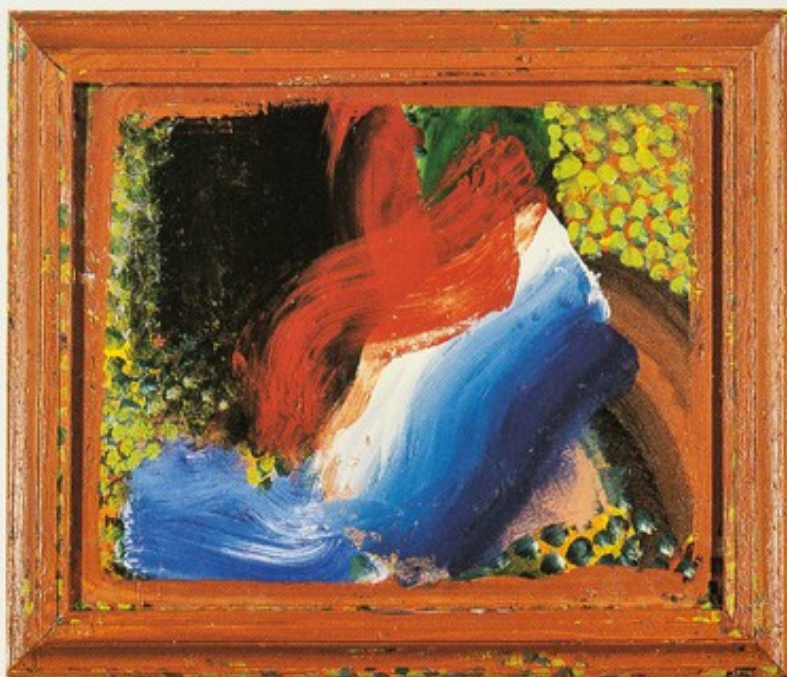
HOWARD HODGKIN

Internationally acclaimed British painter Howard Hodgkin has generously made available some of his finest paintings for the benefit of London Lighthouse at Christmas. Recently honoured with a knighthood, Howard Hodgkin was the winner of the 1985 *Turner Prize* and represented Britain at the *XLI Venice Biennale*.

We are proud to offer five of his extraordinary images as Christmas cards for 1992. Printed on heavyweight art board, they are available in packs of 10, two of each painting. The cards are A5 size (the same as this leaflet), and contain a printed message reading:

With Best Wishes

Packs of cards can be purchased at London Lighthouse or by post (see order form inside).



'Discarded Clothes' 1985-90 Oil on wood 795x930mm Private Collection



'The Green Chateau' 1976-80 Oil on wood 985x1236mm Private Collection

A key figure of British art for 30 years, Howard Hodgkin is regarded by many as one of our finest contemporary painters. His pictures are in public collections around the world, including: Arts Council of Great Britain; British Council, London; Contemporary Art Society, London; Museum of Modern Art, New York; São Paulo Museum, Brazil; Tate Gallery, London; Victoria & Albert Museum, London; Bristol City Art Gallery; Walker Art Centre, Minneapolis; National Gallery of Southern Australia; Museum of Modern Art, Edinburgh; and the Whitworth Gallery, Manchester.

About London Lighthouse

Established in 1986, Britain's first major residential and support centre for people affected by HIV and AIDS opened its doors in November 1988. In addition to a 23 bed Residential Unit, London Lighthouse provides a day care service, home support service, complementary and creative therapies, counselling and information, drop-in centre, cafe and garden. There are several facilities exclusively for women, and London Lighthouse was recently awarded a 1991 *National Training Award* by the Department of Employment. London Lighthouse receives a large part of its funding from statutory sources, but continues to rely on voluntary donations for the balance of its running costs. Your support, at Christmas and throughout the year, is invaluable.

Please return this order form to
Tara Treacy London Lighthouse 111-117 Lancaster Road London W11 1QT

Order Form

Christmas cards by Howard Hodgkin

10 cards (two each of five paintings) and envelopes per pack

Message reads: *'With Best Wishes'*

PRICE: £4.90 + postage & packing per pack of 10 (inclusive of VAT)

Name _____

Address _____

Number of packs _____

(£4.90 per

pack of 10)

Telephone _____

Please add postage and packing:

1 pack =	.85
2 packs =	£1.60
3 packs =	£2.50
4-7 packs =	£3.40
8-14 packs =	£4.50

TOTAL VALUE OF ORDER

Method of payment (please tick)

Cheque enclosed ☐
made payable to London Lighthouse

Please invoice me ☐

VAT receipt required ☐

Please debit my credit card - Visa/MasterCard ☐

Account number

--	--	--	--	--	--	--	--	--	--	--	--	--	--	--	--	--	--	--	--

Expiry date ____/____

Signature _____

OFFICE USE ONLY

Received by Finance _____ Date _____

Registered charity no 295171. VAT no 512 6796 38. Registered company no 2043745. Registered in England. Registered office as above.
London Lighthouse is registered under the Data Protection Act 1984.
Catalogue © Howard Hodgkin and London Lighthouse Ltd 1992.



'Egyptian Night' 1983-85 Oil on wood 496x589mm Private Collection



'Autumn Lake' 1985-87 Oil on wood 371x471mm Private Collection