

Beecham's school quiz No 6 : well known signs and symbols...do you know them?

Contributors

Beecham Pills Ltd.

Publication/Creation

[St. Helens, Lancashire] : Beecham's Pills Ltd., [between 1950 and 1959?]

Persistent URL

<https://wellcomecollection.org/works/py9vhqmr>

License and attribution

Conditions of use: it is possible this item is protected by copyright and/or related rights. You are free to use this item in any way that is permitted by the copyright and related rights legislation that applies to your use. For other uses you need to obtain permission from the rights-holder(s).



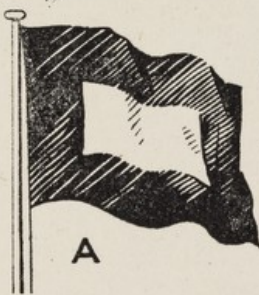
Wellcome Collection
183 Euston Road
London NW1 2BE UK
T +44 (0)20 7611 8722
E library@wellcomecollection.org
<https://wellcomecollection.org>

Beecham's

SCHOOL QUIZ No 6

WELL KNOWN SIGNS, SYMBOLS AND BADGES ... DO YOU KNOW THEM?

This card illustrates twelve signs, symbols and badges in common use—what does each of them mean?
Your Teacher has been provided with the key to the correct answers.



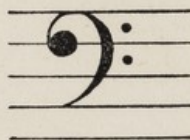
A



B



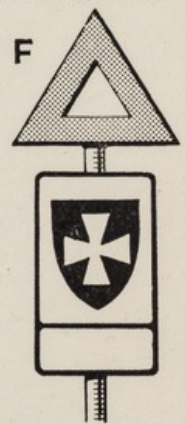
C



D



E



F



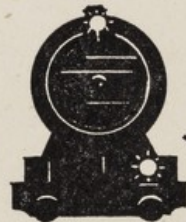
G



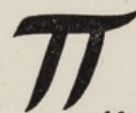
H



I



J



K



L



... —
stands for

VENO'S

*There is nothing to
touch it for
dealing with*



**COUGHS,
BRONCHITIS,
THROAT
AND
CHEST
AILMENTS**