

## **Hairstyles through history. 6, Rome, Patrician lady, 1st century A.D.**

### **Contributors**

Abbott Laboratories

### **Publication/Creation**

London : Abbott Laboratories, [1960?]

### **Persistent URL**

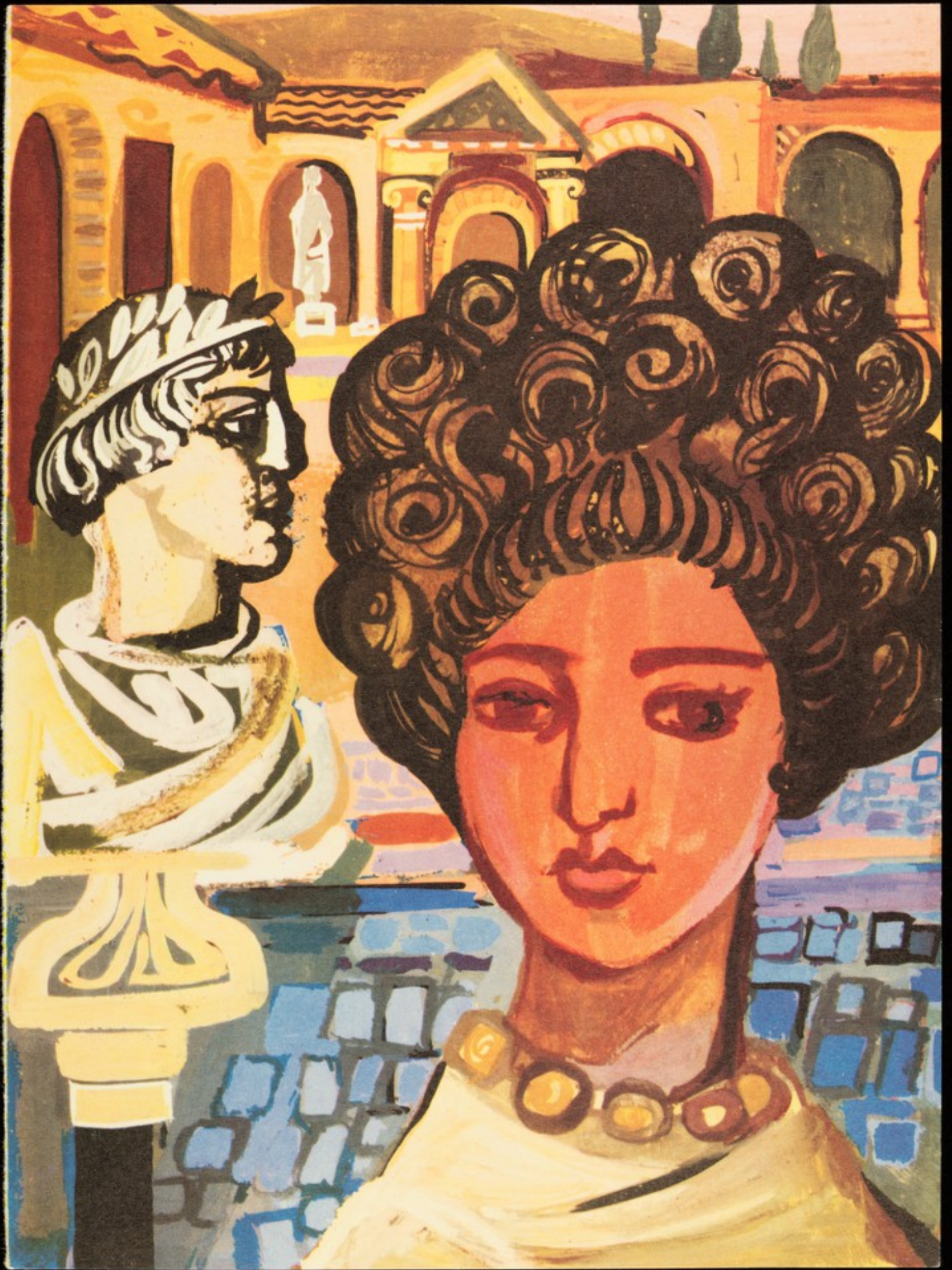
<https://wellcomecollection.org/works/gf9mz8yh>

### **License and attribution**

Conditions of use: it is possible this item is protected by copyright and/or related rights. You are free to use this item in any way that is permitted by the copyright and related rights legislation that applies to your use. For other uses you need to obtain permission from the rights-holder(s).



Wellcome Collection  
183 Euston Road  
London NW1 2BE UK  
T +44 (0)20 7611 8722  
E [library@wellcomecollection.org](mailto:library@wellcomecollection.org)  
<https://wellcomecollection.org>



# *Hair styles through history*

A series of illustrations by Ronald Glendenning which depict the changing mode of hair dressing since the days of early Egyptian culture . . .

## 6

## ROME

Patrician Lady, 1st Century A.D.

*The ladies applied oils and perfumes to their hair and sometimes dyed their locks with materials obtained from the Gauls who frequently dyed their hair red. Coiffures were elaborate and wigs were worn with very much the same outlook as the modern woman puts on a hat.*

*The Roman lady of the first century, like the one depicted, wore a toupee of Cypriote curls which provided a framework round the face. This was a mass of ringlets built up upon a wire frame reaching from ear to ear across the front of the head.*

*The short haircut was the prevailing style among the men of ancient Rome who were fastidious in their care of hair and beard. Baldness was considered a deformity and wigs were invariably worn to hide this fault.*

*Professors of Philosophy retained, if they could, a dignified beard and long hair, although the latter also was a sign of mourning.*

**SELSUN**