

[Postcard showing a Red Cross nurse (V.A.D.) cut into 12 pieces to make a jigsaw. Same as EPH464:39].

Publication/Creation

[Between 1939 and 1945?]

Persistent URL

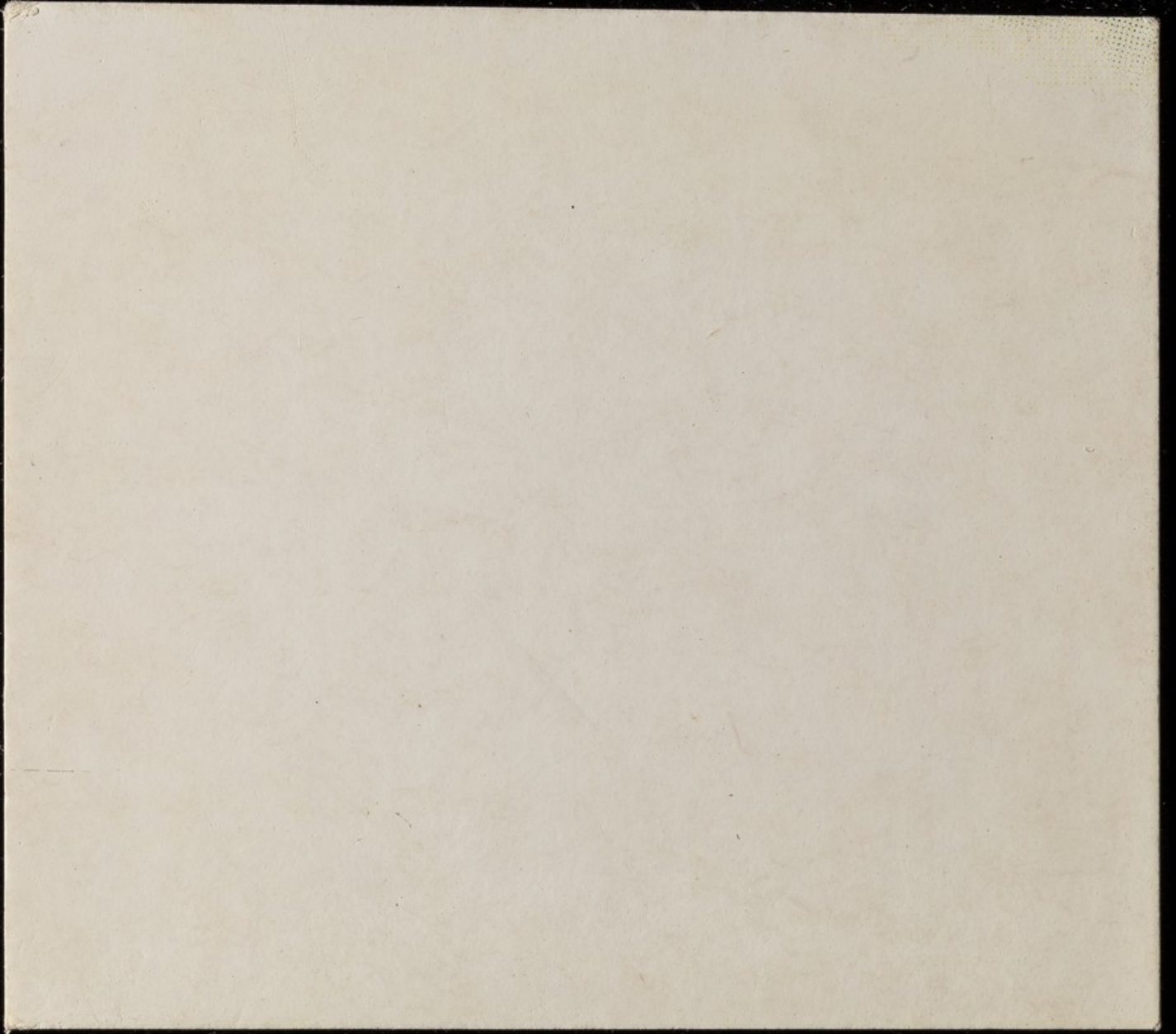
<https://wellcomecollection.org/works/dqmrntfa>

License and attribution

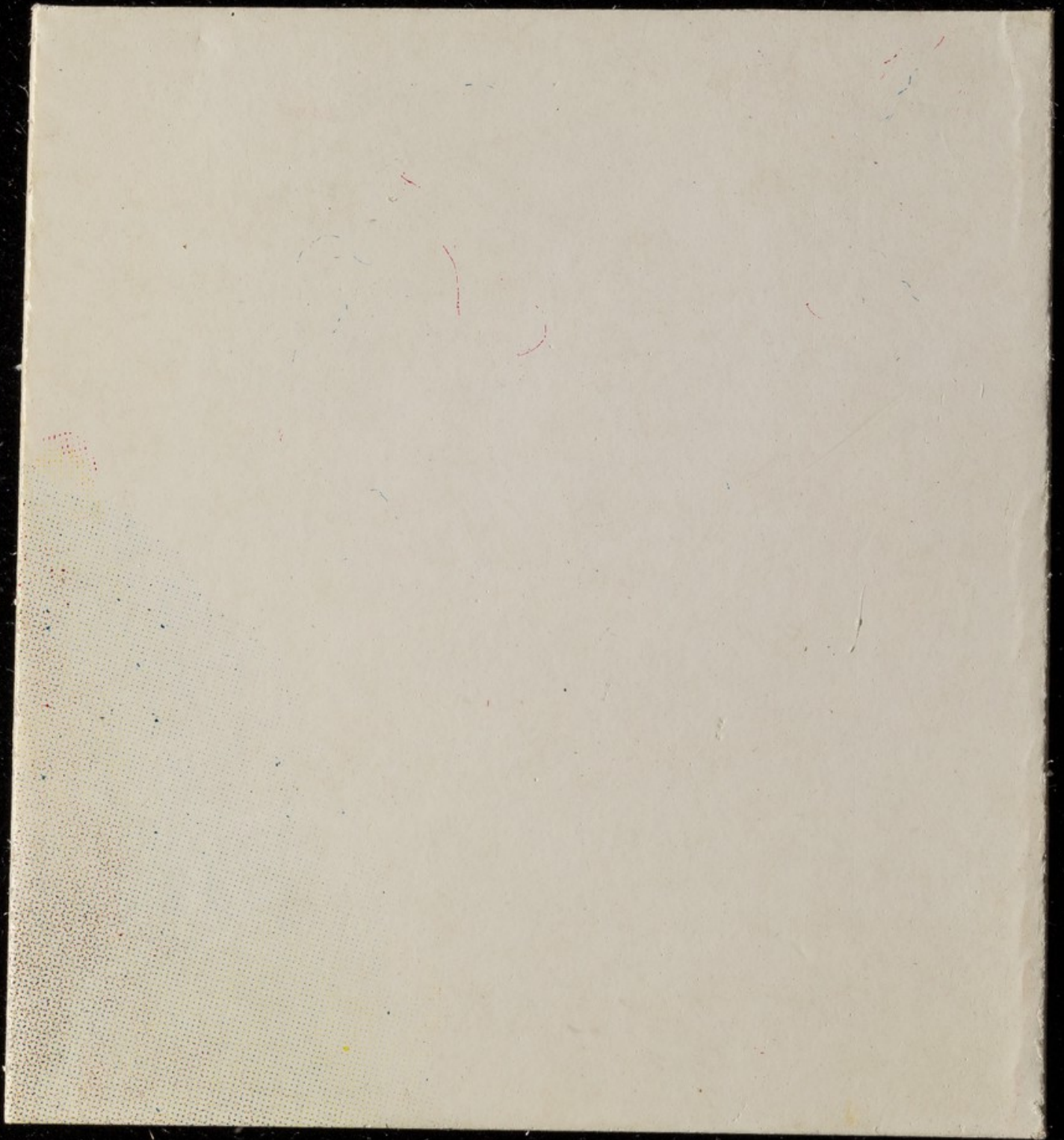
Conditions of use: it is possible this item is protected by copyright and/or related rights. You are free to use this item in any way that is permitted by the copyright and related rights legislation that applies to your use. For other uses you need to obtain permission from the rights-holder(s).

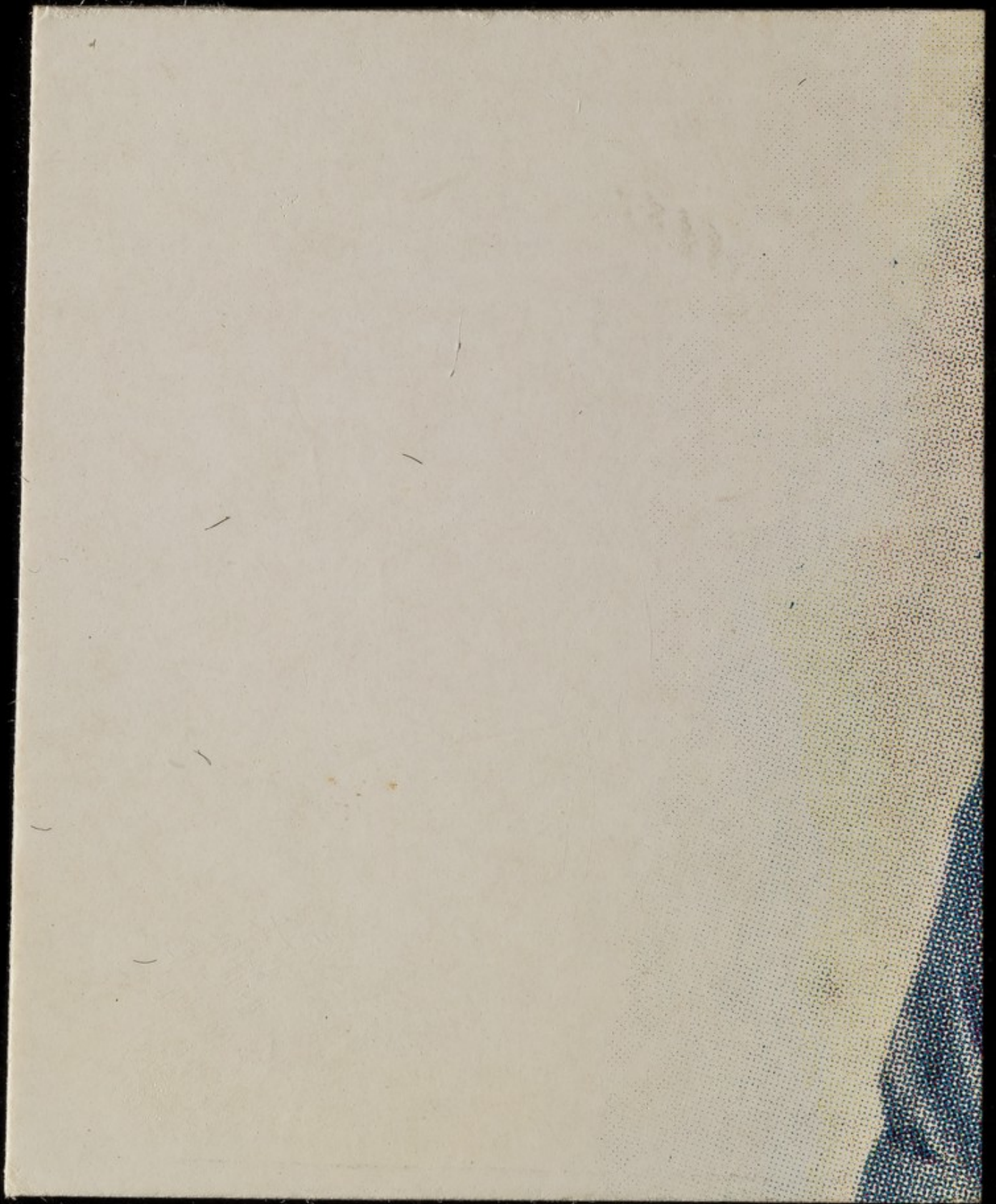


Wellcome Collection
183 Euston Road
London NW1 2BE UK
T +44 (0)20 7611 8722
E library@wellcomecollection.org
<https://wellcomecollection.org>





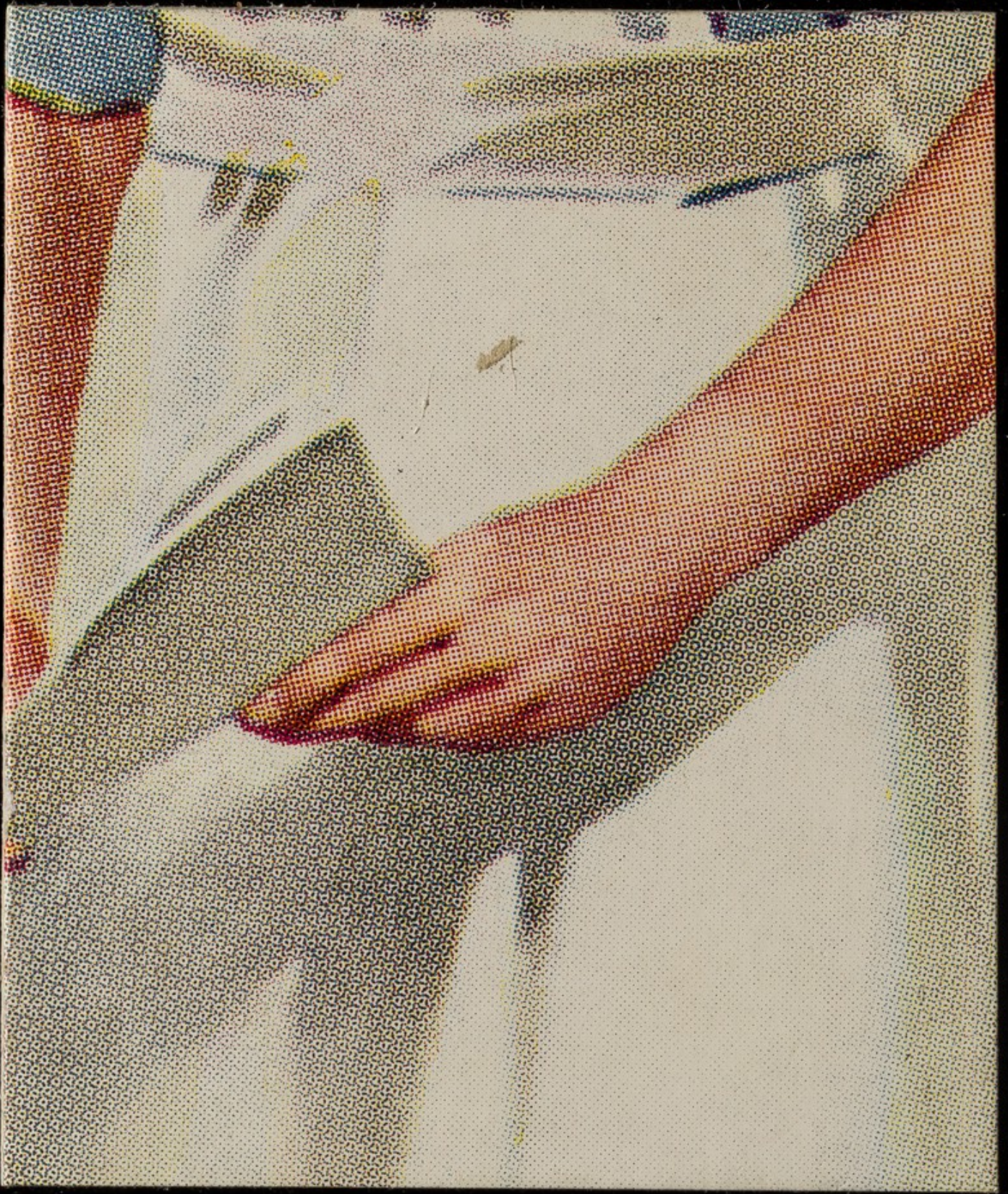


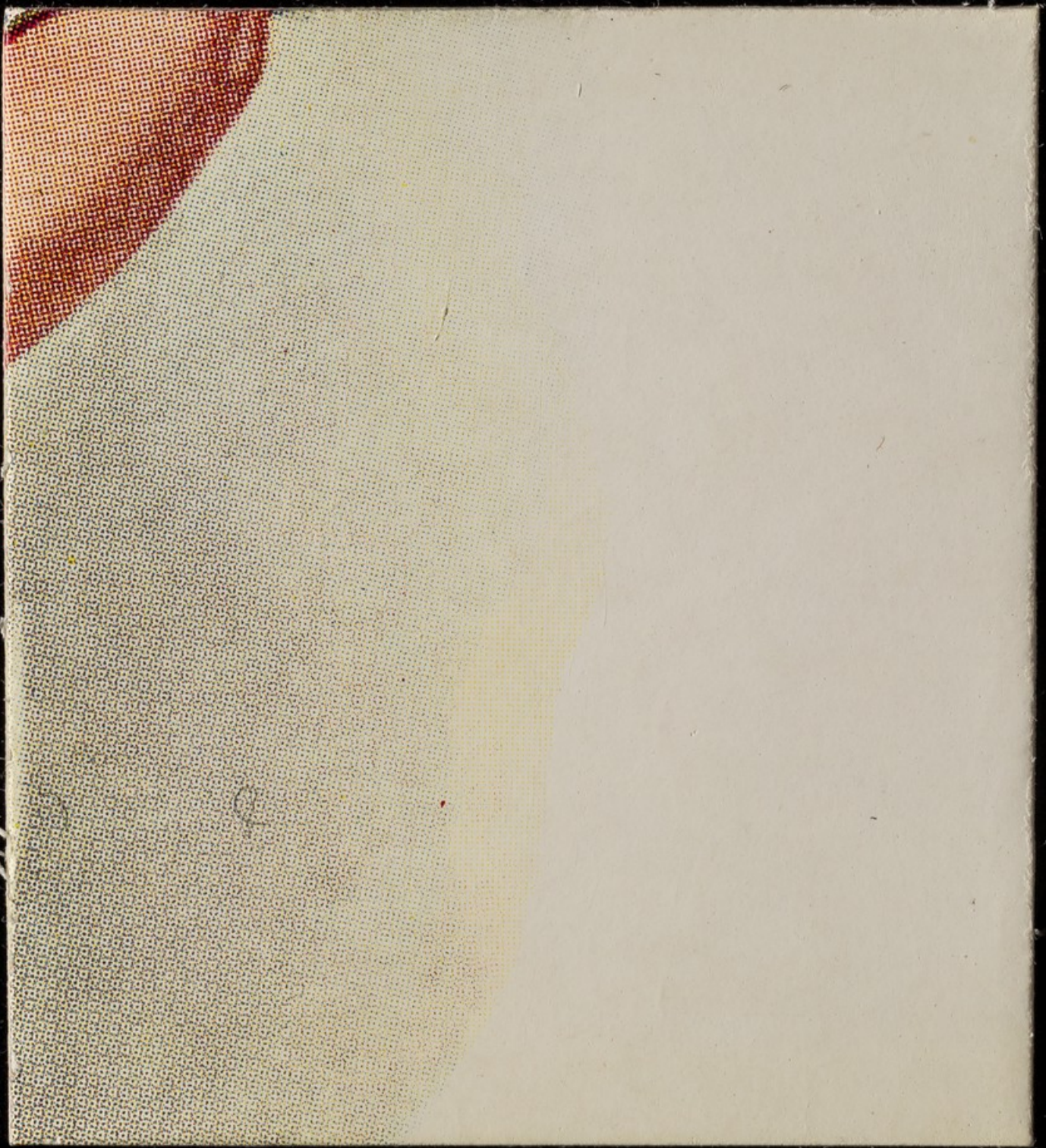


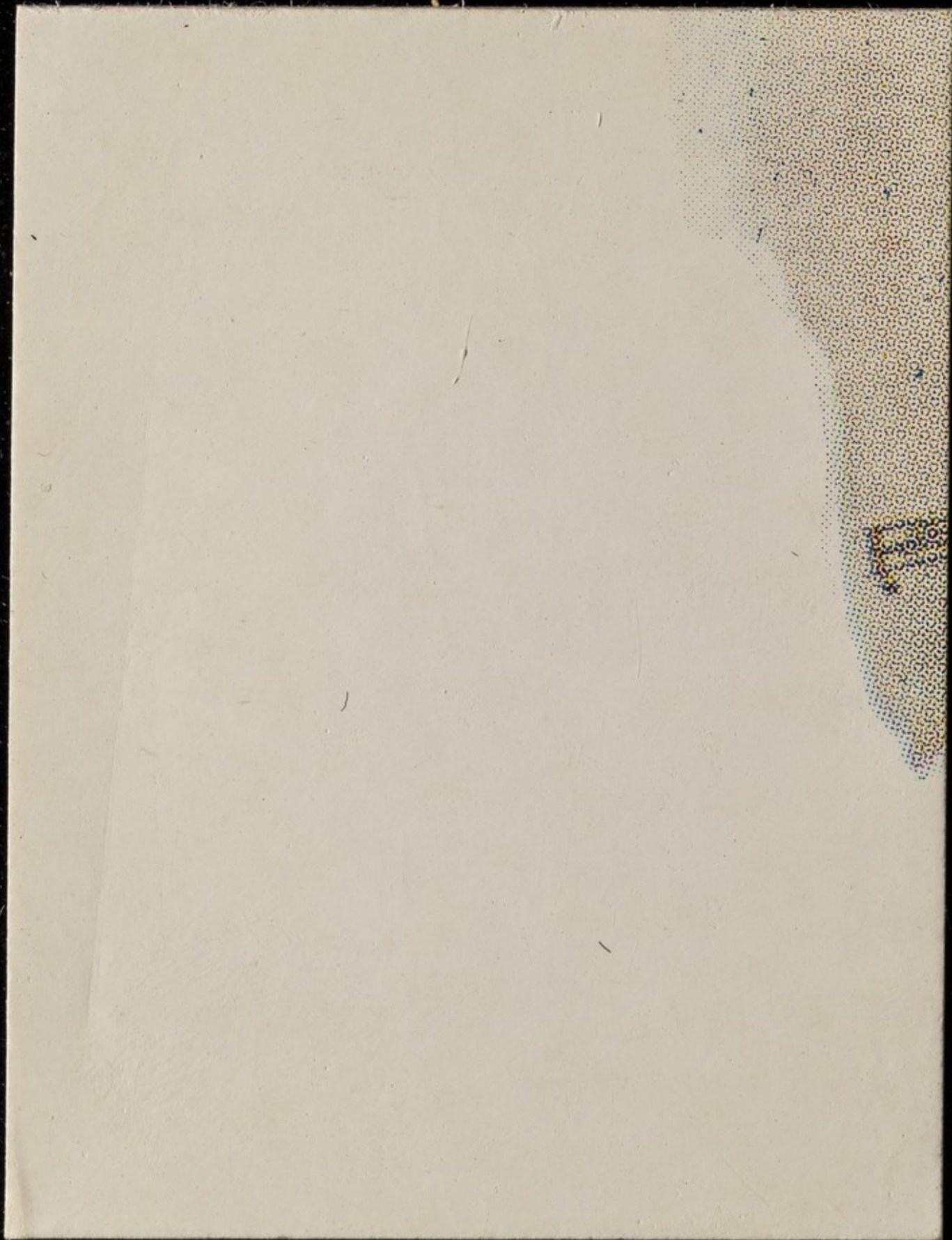












Red Cross
V.A.

S
I·D