

Check list of the macro-lepidoptera of America, north of Mexico.

Contributors

Brooklyn Entomological Society.

Publication/Creation

Brooklyn, N.Y. : Brooklyn Entomological Society, 1882.

Persistent URL

<https://wellcomecollection.org/works/n4a3bqnm>

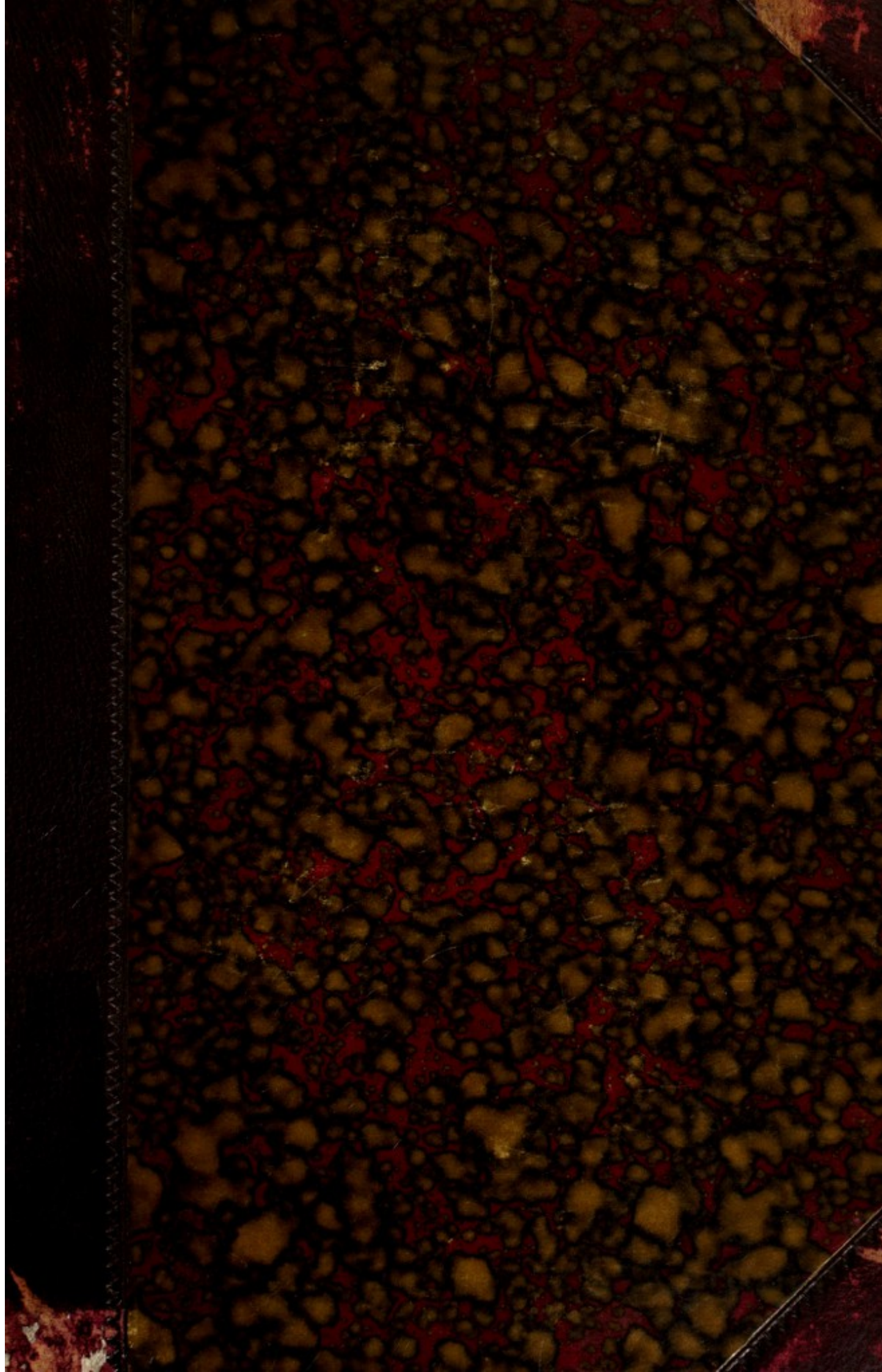
License and attribution

This work has been identified as being free of known restrictions under copyright law, including all related and neighbouring rights and is being made available under the Creative Commons, Public Domain Mark.

You can copy, modify, distribute and perform the work, even for commercial purposes, without asking permission.



Wellcome Collection
183 Euston Road
London NW1 2BE UK
T +44 (0)20 7611 8722
E library@wellcomecollection.org
<https://wellcomecollection.org>



WVA
B.4.



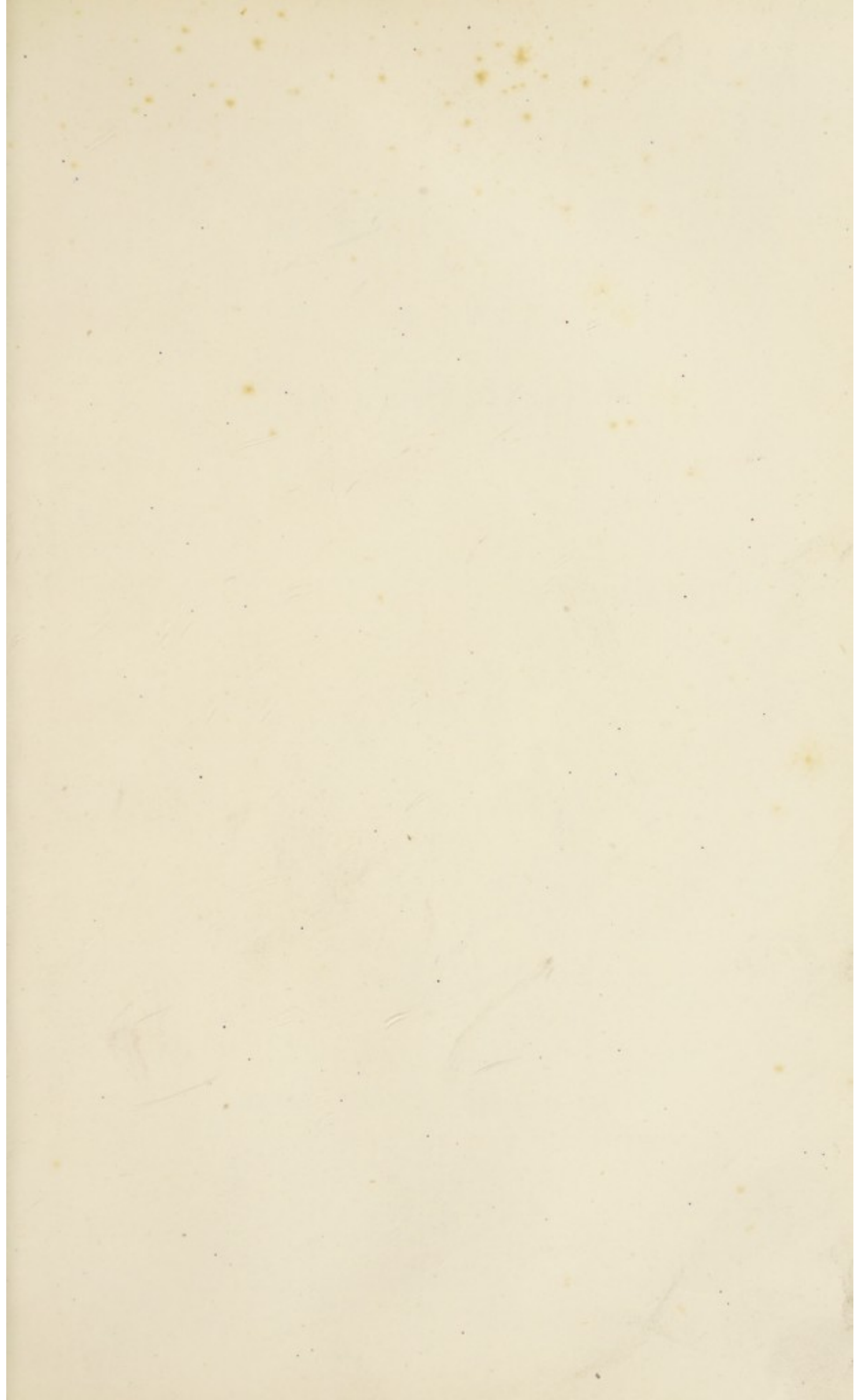
22102035533

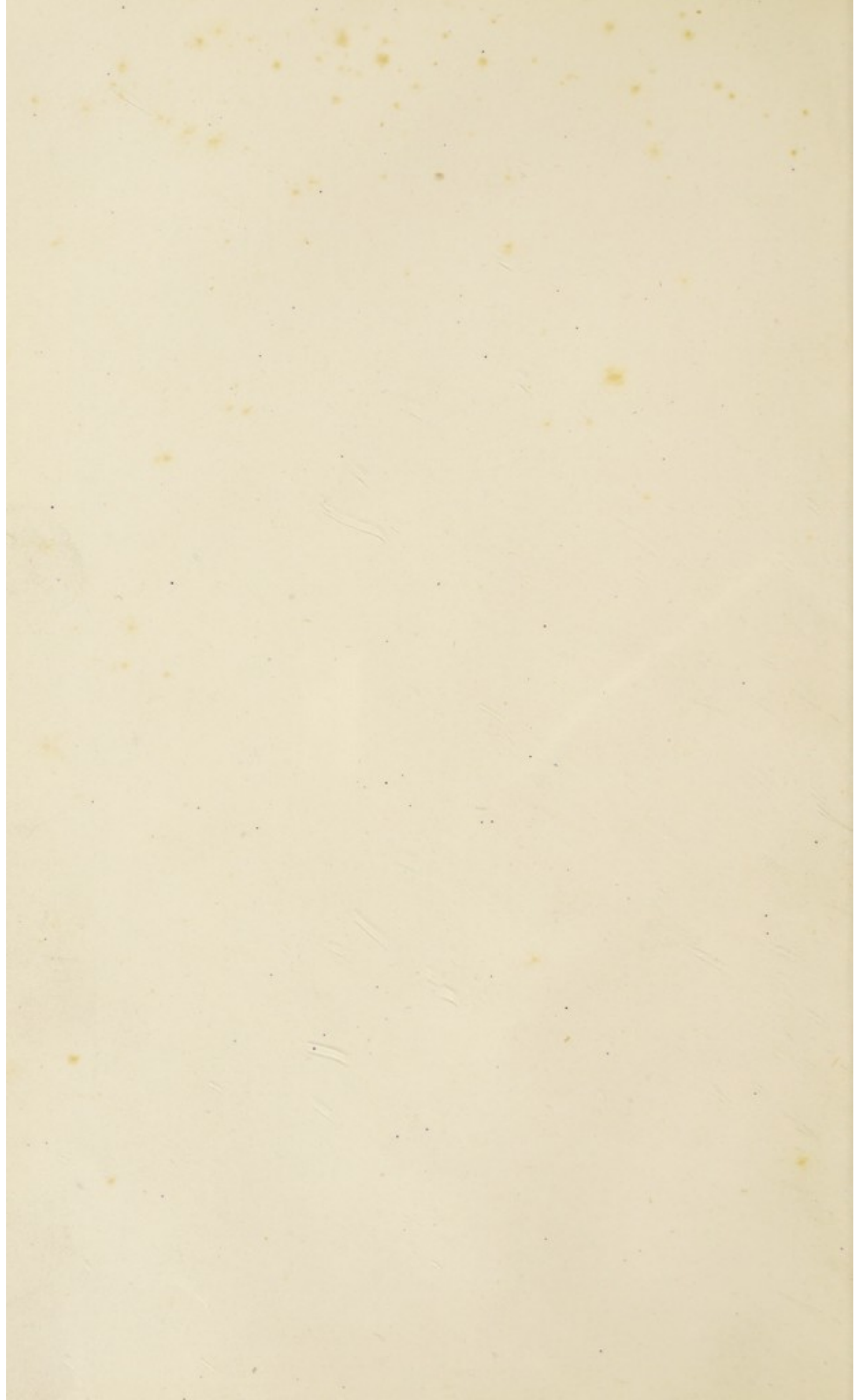
Med
K5699



Digitized by the Internet Archive
in 2016

<https://archive.org/details/b2809282x>





7747

CHECK LIST
OF THE
MACRO-LEPIDOPTERA
OF
AMERICA, NORTH OF MEXICO.



Published by the
Brooklyn Entomological Society.

BROOKLYN, N. Y.
JANUARY 1882.

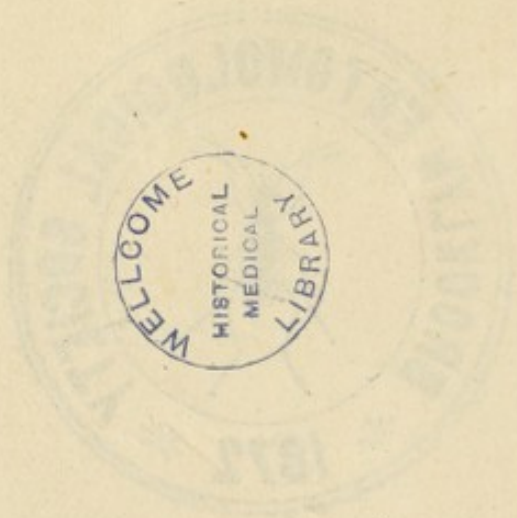
00

CHECK LIST

7 046440

WELLCOME INSTITUTE LIBRARY

WELLCOME INSTITUTE LIBRARY



WELLCOME INSTITUTE LIBRARY	
Coll.	welM0mec
Call	
No.	QV

PREFACE.

The following check list of the North American Macro-Lepidoptera was compiled to fill a want long felt by Lepidopterists, for a complete list on the general plan of Crotch's Check list of Coleoptera. Like that list it is intended more particularly to facilitate exchanges, and it is not to be held as having any authority or as in any way passing upon the validity of any of the genera or species contained in the list.

Some few changes have been made, and these require notice. Thoroughly agreeing as we do with Dr. Hagen, Mr. W. H. Edwards, and the Continental Entomologists in their estimate of Hübner's work we have rejected his generic names where not properly described, and substituted those recognizably described by later authors.

In the Diurnals we have in the main followed Mr. Edwards' arrangement, preferring it to Mr. Scudder's. In the Sphingidae we have followed Boisduval's system in preference to that of any other as seeming to us the most accurate and simple. In the Sesiidae Staudinger has been our guide. In the Zygænidæ Stretch has been pretty generally followed, and in the Bombycidae Mr. Packard has been the principal authority. Some of the genera which we considered as insufficiently distinguished we have united with others of which they seemed properly to form parts and the sequence of the genera has been somewhat changed. In the Noctuidæ also, while in general following Mr. Grote, we have brought the sequence of the genera into a closer agreement with Dr. Staudinger's arrangement of the European Noctuid fauna. We also consider that each author is entitled to due credit for the species described by him, and we have therefore throughout the Noctuidæ and Geometridæ restored the name of the describers of species in place of the names of Messrs. Grote and Packard, the authors of the generic references.

In conclusion we hope that though the present list may not be absolutely perfect, it may yet be useful to Entomologists and may prove the foundation of a future and more perfect list when once our noctuid fauna is subjected to a thorough and much needed revision.

THE PUBLICATION COMMITTEE

of the Brooklyn Ent. Society.

Brooklyn, December, 1881.

ADDITIONS AND CORRECTIONS.

To the *Rhopalocera* add:

14½ *Machaon*, v. *Aliaska*, Sc.

27½ *Amaryllis*, Feld.

33½ *Virginiensis*, Edw.

38½ *Hyantis*, Edw.

52½ *Fantasia*, Butl.

52¾ *Lanice*, Lint.

After 90 *a*, add:

Dircenna, Doubl.

90½ *Klugii*, Hb.

137½ *Boisduvallii*, S.

148 *b*, *Superba*, Streck.

After 227 add:

Diadema, Bd.

227½ *Missippus*, L.

234½ *Hulstii*, Edw.

239½ *Cocles*, Lint.

273½ *Ashtaroth*, Streck.

300½ *Larvata*, Streck.

187=186.

Omit 386 and 387=381 and 382.

To the *Sphingidæ* and *Bombycidæ*
add:

Euphanessa, Pack.

1167 *Mendica*, Wlk.

To 623 *a*, add Hy. Edw.

827 *a*, *Speciosa*, Wlk.

916 *a*, *Lena*, Bd.

916 *b*, *Dimidiata*, Str.

976 for *Shurteffii*, Pack., read *Shurteffii* Pack.

for 660 read 661 *a*.

after 734, 735 and 739 for G. and R.
read Bd.

after 861 for *Möxhl*, read *Möschl*.

To the *Noctuidæ* add:

Chytoroza, Grt.

2622 *Tecta*, Grt.

2211½ *Ranunculi*, Hy. Edw.

2383½ *Dulciola*, Grt.

2385 *b*, should read *Aholah*.

after 2453 add *Desperata*, Guen., as
a synonym.

2237, 38, 39 and 40 belong to **Tamila**,
Guen., and should come immedi-
ately after 2138.

RHOPALOCERA.

PAPILIONIDÆ.

Papilio, L.

- 1 Turnus, L.
- a*, Glaucus, L.
- 2 Rutulus, Bd.
- 3 Eurymedon, Bd.
- 4 Daunus, Bd.
- 5 Pilumnus, Bd.
- 6 Ajax, L.
- a*, Marcellus, Bd.
- 7 Zolicaon, Bd.
- 8 Asterias, F.
- a*, Asteroides, Reak.
- b*, Brevicauda, Saund.
- c*, Calverleyi, Gr.
- 9 Americus, Koll.
- 10 Indra, Reak.
- 11 Troilus, L.
- 12 Palamedes, Dru.
- 13 Cresphontes, Cram.
- 14 Philenor, L.
- 15 Bairdii, Edw.
- 16 Villiersii, Bd.
- 17 Sinon, F.
- 18 Polydamas, L.
- 19 Pergamus, H. Edw.
- 20 Hippocrates, Felder.
- a*, Oregonia, Edw.

Parnassius, Latr.

- 21 Smintheus, Doub.
- a*, Hermodur, H. Edw.
- 22 Clodius, Mén.
- 23 Clarius, Eversm.
- 24 Nomion, Fisch.
- 25 Thor, H. Edw.
- 26 Eversmanni, Mén.

Pieris, Schrk.

- 27 Menapia, Felder.
- 28 Ilaire, Godt.
- 29 Monuste, L.
- 30 Sisymbri, Bd.
- 31 Protodice, Bd.
- a*, Vernalis, Edw.
- b*, Occidentalis, Reak.
- c*, Calyce, Edw.
- 32 Beckeri, Edw.
- 33 Napi, L.
- a*, Venosa, Scud.
- b*, Castoria, Reak.
- c*, Frigida, Scud.

d, Oleracea, Bd.

34 Rapae, L.

a, Novangliae, Scud.

Nathalis, Bd.

35 Iole, Bd.

Anthocharis, Bd.

- 36 Ausonides, Bd.
- 37 Coloradensis, H. Edw.
- 38 Creusa, Doub.
- 39 Olympia, Edw.
- 40 Sara, Bd.
- 41 Reakirtii, Edw.
- 42 Julia, Edw.
- 43 Cethura, Felder.
- 44 Thoosa, Scud.
- 45 Genutia, F.
- 46 Morrisoni, Edw.
- 47 Stella, Edw.
- 48 Lanceolata, Bd.

Callidryas, Bd.

- 49 Eubule, L.
- a*, Sennae, L.
- 50 Argante, F.
- 51 Philea, Lin.

Kricogonia, Reak.

52 Lyside, Godt.

Colias, F.

- 53 Caesonia, Stoll.
- 54 Eurydice, Bd.
- 55 Philodice, Godt.
- 56 Occidentalis, Scud.
- 57 Alexandra, Edw.
- 58 Edwardsii, Behr.
- 59 Emilia, Edw.
- 60 Laurentina, Scud.
- 61 Chrysomelas, H. Edw.
- 62 Barbara, H. Edw.
- 63 Eriphyle, Edw.
- 64 Interior, Scud.
- 65 Christina, Edw.
- 66 Pelidne, Bd.
- 67 Scudderii, Reak.
- 68 Palaeno, L.
- a*, Chippewa, Edw.
- 69 Astraea, Edw.
- 70 Eurytheme, Bd.
- a*, Keewaydin, Edw.
- b*, Harfordii, H. Edw.
- c*, Ariadne, Edw.
- 71 Chrysotheme, Esp.

72 Meadii, Edw.

73 Hecla, Lef.

74 Hela, Streck.

75 Boothii, Curtis.

76 Nastes, Bd.

77 Moina, Streck.

78 Behrii, Edw.

Terias, Swain.

79 Lisa, Bd.

80 Delia, Cram.

81 Jucunda, Bd.

82 Westwoodi, Bd.

83 Nicippe, Cram.

84 Proterpia, F.

85 Mexicana, Bd.

86 Gundlachia, Poey.

87 Elathea, Cram.

NYMPHALIDÆ.

Heliconius, Latr.

88 Charitonia, L.

Danais, Latr.

89 Archippus, F.

90 Berenice, Cram.

a, Strigosa, Bates.

Colaenis, Hueb.

91 Julia, F.

92 Delila, F.

Agraulis, Bd. Lec.

93 Vanillae, L.

Argynnis, F.

94 Diana, Cram.

95 Idalia, Dru.

a, Ashtaroth, Fish.

96 Nokomis, Edw.

97 Nitocris, Edw.

98 Leto, Behr.

99 Cybele, F.

100 Carpenterii, Edw.

101 Aphrodite, F.

102 Alcestis, Edw.

103 Atlantis, Edw.

104 Electa, Edw.

105 Columbia, H. Edw.

106 Nausicaa, Edw.

107 Bremnerii, Edw.

108 Behrensii, Edw.

109 Bischoffii, Edw.

110 Opis, Edw.

111 Rhodepe, Edw.

- 112 Halcyone, Edw.
 113 Coronis, Behr.
 114 Callippe, Bd.
 115 Liliana, H. Edw.
 116 Irene, Bd.
 117 Nevadensis, Edw.
 118 Edwardsii, Reak.
 119 Rupestris, Behr.
 120 Inornata, Edw.
 121 Adiante, Bd.
 122 Clio, Edw.
 123 Laura, Edw.
 124 Hippolita, Edw.
 125 Eurynome, Edw.
 126 Montivaga, Behr.
 127 Arge, Streck.
 128 Egleis, Bd.
 129 Chitone, Edw.
 130 Artonis, Edw.
 131 Hesperis, Edw.
 132 Zerene, Bd.
 a, Hydaspes, Behr.
 b, Monticola, Behr.
 133 Macaria, Edw.
 134 Myrina, Cram.
 135 Triclaris, Hueb.
 136 Helena, Edw.
 137 Chariclea, Schneid.
 138 Freya, Thunb.
 139 Montinus, Scud.
 140 Polaris, Bd.
 141 Frigga, Thunb.
 142 Bellona, F.
 143 Epithore, Bd.
 144 Improba, Butler.
 145 Kriemhild, Streck.
Euptoieta, Doubl.
 146 Claudia, Cram.
 147 Hegesia, Cram.
Melitaea, Fab.
 148 Phaëton, Dru.
 a, Phaetusa, Hulst.
 149 Chalcedon, Bd.
 a, Dwinellei, H. Edw.
 150 Cooperi, Behr.
 151 Anicia, Doub.
 a, Wheeleri, H. Edw.
 152 Nubigena, Behr.
 153 Quino, Behr.
 154 Editha, Bd.
 155 Colon, Edw.
 156 Perdiccas, Edw.
 157 Baroni, H. Edw.
 158 Rubicunda, H. Edw.
 159 Helvia, Scud.
 160 Sterope, Edw.
 161 Palla, Bd.
 162 Hoffmannii, Behr.
 163 Whitneyi, Behr.
 164 Gabbii, Behr.
 165 Ulrica, Edw.
 Imitata, Streck.
 166 Dymas, Edw.
 Larunda, Streck.
 167 Leanira, Bd.
 a, Obliterata, H. Edw.
 168 Alma, Streck.
 169 Thekla, Edw.
 170 Minuta, Edw.
 171 Arachne, Edw.
 172 Bollii, Edw.
 173 Fulvia, Edw.
Phyciodes, Doub.
 174 Harrisii, Scud.
 175 Nycteis, Doub.
 176 Carlota, Reak.
 177 Vesta, Edw.
 178 Phaon, Edw.
 179 Tharos, Dru.
 a, Marcia, Edw.
 b, Morpheus, F.
 180 Batesii, Reak.
 181 Pratensis, Behr.
 182 Camillus, Edw.
 183 Orseis, Edw.
 184 Mylitta, Edw.
 185 Montana, Behr.
 186 Pieta, Edw.
 187 Canace, Edw.
Eresia, Doub.
 188 Frisia, Poey.
 189 Texana, Edw.
 190 Punctata, Edw.
Synchloe, Bd.
 191 Janais, Dru.
 192 Mediatrix, Feld.
 193 Adjutrix, Scud.
 194 Erostyle, Bates.
 195 Crocale, Edw.
Cystineura, Bd.
 196 Amymone, Men.
Grapta, Kirby.
 197 Interrogationis, F.
 a, Umbrosa, Lint.
 b, Fabricii, Edw.
 198 Comma, Harr.
 a, Harrisii, Edw.
 b, Dryas, Edw.
 199 Satyrus, Edw.
 200 Marsyas, Edw.
 201 Hylas, Edw.
 202 Rusticus, Edw.
 203 Faunus, Edw.
 204 Silvius, Edw.
 205 Zephyrus, Edw.
 206 Gracilis, Gr.-Rob.
 207 Oreas, Edw.
 208 Silenus, Edw.
 209 Progne, Cram.
 210 J Album, Bd.
Vanessa, F.
 211 Antiopa, L.
 a, Lintnerii, Fitch.
 212 Californica, Bd.
 213 Milberti, Godt.
 Furcillata, Say.
Pyrameis, Doub.
 214 Atalanta, L.
 215 Huntera, Drury.
 216 Cardui, L.
 217 Carye, Hüb.
Junonia, Doub.
 218 Lavinia, Cram.
 a, Cœnia, Hüb.
Anartia, Doub.
 219 Jatrophæ, L.
Eurema, Bd.
 220 Lethe, F.
Eunica, Feld.
 221 Modesta, Bates.
 222 Monima, Cram.
Timetes, Bd.
 223 Coresia, Godt.
 224 Petreus, Cram.
 225 Eleucha, Doub.
 226 Chiron, F.
Callicore, Doub.
 227 Clymena, Cram.
Limenitis, F.
 228 Ursula, F.
 Ephestion, Stoll.
 229 Proserpina, Edw.
 230 Arthemis, Drury.
 231 Weidemeyerii, Edw.
 232 Disippus, Godt.
 233 Eros, Edw.
 234 Floridensis, Streck.
 235 Lorquini, Bd.
Heterochroa, Bd.
 236 Californica, Butler.
 Bredowii, Edw.

- Apatura**, F.
 237 Celtis, Bd.
 238 Leilia, Edw.
 239 Alicia, Edw.
 240 Clyton, Bd.
 a, Proserpina, Scud.
 b, Ocellata, Edw.
 241 Flora, Edw.
 242 Antonia, Edw.
- Paphia**, West.
 243 Andria, Scud.
 244 Troglodyta, F.
- Neonympha**, West.
 245 Eurytris, F.
 246 Sosybius, F.
 247 Rubricata, Edw.
 248 Areolatus, Sm.-Abb.
 249 Gemma, Hüb.
 250 Henshawi, Edw.
 251 Canthus, L.
- Coenonympha**, West.
 252 California, West.
 a, Eryngii, H. Edw.
 b, Galactinus, H. Ed.
 253 Elko, Edw.
 254 Inornata, Edw.
 255 Ochracea, Edw.
 256 Ampelos, Edw.
 257 Kodiak, Edw.
 258 Brenda, Edw.
 259 Pamphiloides, Reak.
- Erebia**, Dalm.
 260 Fasciata, Butl.
 261 Discoidalis, Kirby.
 262 Vesagus, West.
 263 Rossii, Curtis.
 264 Mancinus, West.
 265 Haydenii, Edw.
 266 Callias, Edw.
 267 Epipsodea, Butl.
 268 Sofia, Streck.
 269 Magdalena, Streck.
- Debis**, West.
 270 Portlandia, F.
- Gyrocheilus**, Butl.
 271 Tritonia, Edw.
- Hipparchia**, F.
 272 Ridingsii, Edw.
- Satyrus**, West.
 273 Pegala, Fab.
 274 Alope, Fab.
 a, Texana, Edw.
 b, Maritima, Edw.
 c, Nephele, Kirby,
- d*, Incana, Edw.
e, Olympus, Edw.
f, Boopis, Behr.
 275 Gabbii, Ed.
 276 Ariana, Bd.
 277 Baroni, Edw.
 278 Paulus, Edw.
 279 Meadii, Edw.
 280 Wheeleri, Edw.
 281 Silvestris, Edw.
 282 Charon, Edw.
 283 Phocus, Edw.
 284 Sthenele, Bd.
 285 Oetus, Bd.
- Chionobas**, Bois.
 286 Gigas, Butl.
 287 Idana, Edw.
 288 Californica, Bd.
 289 Nevadensis, Feld.
 290 Chryxus, West.
 291 Uhleri, Reak.
 292 Tarpeia, Esper.
 293 Bore, Esper.
 294 Jutta, Hüb.
 295 Semidea, Say.
 296 Subhyalina, Curtis.
 297 Ivalda, Mead.
- Eurygona**, Bd.
 298 Abreas, Edw.
- Libythea**, F.
 299 Bachmanni, Kirt.
 300 Carinenta, Cram.
- ERYCINIDÆ.**
- Lemonias**, West.
 301 Mormo, Feld.
 302 Cythera, Edw.
 303 Virgulti, Behr.
 304 Palmerii, Edw.
- Charis**, West.
 305 Cænius, L.
 306 Borealis, Gr.-Rob.
 307 Guadeloupe, Streck.
 308 Nemesis, Edw.
 309 Australis, Edw.
- Eumenia**, Latr.
 310 Atala, Poey.
- Nemeobius**, Steph.
 311 Nais, Edw.
- LYCENIDÆ.**
- Thecla**, F.
 312 Grunus, Bd.
 313 Crysalus, Edw.
- a*, Citima, H. Edw.
 314 Halesus, Cram.
 315 M-Album, Bd.-Lec.
 316 Favonius, Sm.-Abb.
 317 Autolyceus, Edw.
 318 Alcestis, Edw.
 319 Humuli, Harr.
 a, Hyperici, Bd.-Lec.
 320 Melinus, Hüb.
 a, Pudica, H. Edw.
 321 Acis, Dru.
 322 Strigosa, Harr.
 323 Ontario, Edw.
 324 Calanus, Hüb.
 325 Edwardsii, Saund.
 326 Acadica, Edw.
 327 Californica, Edw.
 a, Cygnus, Edw.
 328 Auretorum, Bd.
 329 Sylvinus, Bd.
 330 Dryope, Edw.
 331 Putnami, H. Edw.
 332 Spadix, H. Edw.
 333 Adenostomatis, H. E.
 334 Tacita, H. Edw.
 335 Spadix, H. Edw.
 336 Tetra, Behr.
 337 Chalcis, Behr.
 338 Sæpium, Bd.
 339 Nelsoni, Bd.
 a, Exolata, H. Edw.
 340 Ninus, Edw.
 341 Muri, H. Edw.
 342 Spinetorum, Bd.
 343 Siva, Edw.
 344 Clytie, Edw.
 345 Sheridanii, Edw.
 346 Smilacis, Bd.
 Damon, Cr.
 347 Castalis, Edw.
 348 Poeas, Hüb.
 349 Columella, F.
 350 Behrii, Edw.
 351 Augustus, Kirby.
 352 Iroides, Bd.
 353 Irus, Godt.
 a, Arsace, Bd.
 b, Henrici, Gr.-Rob.
 c, Mossii, H. Edw.
 354 Eryphon, Bd.
 355 Niphon, Hüb.
 356 Affinis, Edw.
 357 Dumetorum, Bd.
 358 Læta, Edw.

- 359 Fuliginosa, Edw.
 360 Titus, F.
Feniseca, Grote.
 361 Tarquinius, F.
Chrysophanus, Doub.
 362 Arota, Bd.
 363 Virginiensis, Edw.
 364 Hermes, Edw.
 365 Xanthoides, Bd.
 366 Dione, Scud.
 367 Gorgon, Bd.
 368 Snowi, Edw.
 369 Thoe, Bd.-Lec.
 370 Editha, Mead.
 371 Mariposa, Reak.
 372 Zeroe, Bd.
 373 Helloides, Bd.
 374 Dorcas, Kirby.
 375 Epixanthe, Bd.-Lec.
 376 Americana, D'Urban.
 377 Cupreus, Edw.
 378 Rubidus, Behr.
 379 Sirius, Edw.
Lycaena, Fab.
 380 Heteronea, Bd.
 381 Clara, H. Edw.
 382 Speciosa, H. Edw.
 383 Lycea, Edw.
 384 Amica, Edw.
 385 Sagitifera, Feld.
 a, Viaca, Edw.
 386 Speciosa, H. Edw.
 387 Clara, H. Edw.
 388 Icaroides, Bd.
 a, Pardalis, Behr.
 389 Fulla, Edw.
 390 Pembina, Edw.
 391 Pheres, Bd.
 a, Evius, Bd.
 392 Phileros, Bd.
 393 Ardea, Edw.
 394 Kodiak, Edw.
 395 Orcus, Edw.
 396 Sæpiolus, Bd.
 a, Aehaja, Behr.
 397 Xerxes, Bd.
 398 Antiacis, Bd.
 a, Behrii, Edw.
 b, Mertila, Edw.
 399 Couperi, Grote.
 400 Lygdamas, Doub.
 a, Oro, Scud.
 401 Sonorensis, Feld.
 402 Tehama, Reak.
 403 Orbitulus, V. Prun.
 404 Aquilo, Bd.
 405 Enoptes, Bd.
 406 Glaucou, Edw.
 407 Battoides, Behr.
 408 Lupini, Bd.
 409 Melissa, Edw.
 410 Scudderii, Edw.
 411 Lotis, Lintn.
 412 Acmon, West.
 413 Anna, Edw.
 414 Piasus, Bd.
 415 Pseudargiolus, Bd.
 a, Violaeca, Edw.
 416 Neglecta, Edw.
 417 Lucia, Kirby.
 418 Amyntula, Bd.
 419 Comyntas, Godt.
 420 Shasta, Edw.
 421 Monica, Reak.
 422 Alce, Edw.
 423 Gyas, Edw.
 424 Filenus, Poey.
 425 Isophthalma, H. Sch.
 426 Ammon, Lef.
 427 Fea, Edw.
 428 Exilis, Bd.
 429 Marina, Reak.
 430 Theonus, Lef.
 431 Cyna, Edw.
 432 Lichas, Edw.
- HESPERIDÆ.**
- Carterocephalus**, Led.
 433 Mandan, Edw.
 434 Omaha, Edw.
 435 Libya, Scud.
Ancyloxypha, Feld.
 436 Numitor, F.
 Marginatus, Harr.
Copæodes, Speyer.
 438 Procris, Edw.
 a, Waco, Edw.
 438 Arena, Edw.
 439 Eunes, Edw.
Thymelicus, Speyer.
 440 Hylax, Edw.
 441 Garita, Reak.
Pamphila, F.
 442 Massasoit, Scud.
 443 Ursa, Worth.
 444 Zabulon, Bd.-Lec.
 a, Pocahontas, Scud.
 445 Sylvanus, F.
 446 Sylvanoides, Bd.
 447 Ruricola, Bd.
 448 Comma, L.
 a, Colorado, Scud.
 449 Sassacus, Scud.
 450 Pawnee, Dodge.
 451 Ottoe, Edw.
 452 Napa, Edw.
 a, Melane, Edw.
 453 Draco, Edw.
 454 Metea, Scud.
 455 Uncas, Edw.
 456 Licinus, Edw.
 457 Seminole, Scud.
 458 Attalus, Edw.
 459 Yuma, Edw.
 460 Meskei, Edw.
 461 Snowi, Edw.
 462 Leonardus, Harr.
 463 Nemorum, Bd.
 464 Agricola, Bd.
 465 Pratincola, Bd.
 466 Campestris, Bd.
 467 Huron, Edw.
 468 Phylæus, Drury.
 469 Brettus, Bd.-Lec.
 470 Pontiac, Edw.
 471 Chusca, Edw.
 472 Sabuleti, Bd.
 473 Otho, Sm.
 a, Egeremet, Scud.
 474 Pottawattomie, W.
 475 Peckius, Kirby,
 476 Mystic, Edw.
 477 Cernes, Bd.-Lec.
 478 Manataaqua, Scud.
 479 Vestris, Bd.
 480 Osceola, Lintn.
 481 Metacomet, Harr.
 a, Kiowah, Reak.
 482 Accius, Sm.
 a, Nortonii, Edw.
 483 Deva, Edw.
 484 Maculata, Edw.
 485 Panoquin, Scud.
 486 Ocola, Edw.
 487 Ethlius, Cram.
 488 Verna, Edw.
 489 Horus, Edw.
 490 Bimacula, Gr.-Rob.
 491 Arpe, Bd.-Lec.
 492 Bulenta, Bd.-Lec.
 493 Viator, Edw.
 494 Vitellius, Sm.-Abb.

495 Delaware, Edw.
 496 Byssus, Edw.
 497 Osyka, Edw.
 498 Comus, Edw.
 499 Eufala, Edw.
 500 Fusca, Gr.-Rob.
 501 Nereus, Edw.
 502 Hianna, Scud.
 503 Taxiles, Edw.
 504 Morrisoni, Edw.
 505 Harpalus, Edw.
 506 Cabelas, Edw.
 507 Rhesus, Edw.
 508 Shaton, Edw.
 509 Verus, Edw.
 510 Mardon, Edw.
 511 Siris, Edw.
 512 Regulas, Edw.
 513 Rhena, Edw.
 514 Lagus, Edw.
 515 Phylace, Edw.
Amblyscirtes, Speyer.
 516 Vialis, Edw.
 517 Eos, Edw.
 518 Samoset, Scud.
 519 Textor, Hüb.
 520 Libya, H. Edw.
 521 Nysa, Edw.
 a, Similis, Streck.
 522 Aenus, Edw.
 523 Nilus, Edw.
 524 Iomius, Edw.

Pyrgus, West.
 525 Ericetorum, Bd.
 526 Oceanus, Edw.
 527 Philetes, Edw.
 528 Xanthus, Edw.
 529 Notabilis, Streck.
 530 Tessellata, Scud.
 531 Centaureæ, Ramb.
 532 Ricara, Edw.
 533 Petreius, Edw.
 534 Cæspitatis, Bd.
 535 Scriptura, Bd.
Thanaos, Bd.
 536 Brizo, Bd.
 537 Somnus, Lint.
 538 Icelus, Lintn.
 539 Lucilius, Lintn.
 540 Ausonius, Lintn.
 541 Tages, L.
 a, Cervantes, Grasl.
 542 Persius, Scud.
 543 Afranius, Lint.
 544 Martialis, Scud.
 545 Juvenalis, E.
 546 Propertius, Scud.
 547 Petronius, Lint.
 548 Plautus, Scud.-Burg.
 549 Tristis, Bd.
 550 Funeralis, Scud.-B.
 551 Nævius, Lint.
 552 Pacuvius, Lint.
Systasea, Butler.
 553 Zampa, Edw.

Pholisora, Speyer.
 554 Catullus, Cram.
 555 Alpheus, Edw.
 556 Hayhurstii, Edw.
 557 Nessus, Edw.
 558 Oricus, Edw.
 559 Pirus, Edw.
Achylodes, West.
 560 Thraso, Hüb.
Eudamus, Swain.
 561 Pylades, Scud.
 562 Okeechobee, Lint.
 563 Bathyllus, Sm.-Abb.
 564 Lycidas, Sm.-Abb.
 565 Epigena, Butler.
 566 Cellus, Bd.
 567 Electra, Lint.
 568 Hesus, West.
 569 Amyntas, F.
 570 Tityrus, F.
 571 Oberon, Worth.
 572 Proteus, L.
 573 Simplicius, Stoll.
Erycides, West.
 574 Urania, West.
 575 Texana, Scud.
 576 Sanguinea, Scud.
Pyrrhopyga, West.
 577 Araxes, Hew.
Megathymus, Riley.
 578 Yuccæ, Bd.-Lec.
 579 Cofaqui, Streck.

HETEROCERA.

SPHINGIDÆ.

Smerinthus, Latr.
 600 Modesta, Harr.
 601 Occidentalis, H. Edw.
 602 Juglandis, Abb.
 603 Ophthalmicus, Bd.
 604 Cerisyi, Kirby.
 605 Geminatus, Say.
 a, Jamaicensis, Dru.
 606 Excæcatus, Abb.
 607 Myops, Sm. Abb.
 608 Astylus, Dru.
Ceratonia, Harr.
 609 Amyntor, Hb.

4 Cornis, Harr.

Sphinx,

610 Hageni, Grt.
 611 Undulosa, Walk.
 612 Rustica, Fab.
 613 Carolina, L.
 614 Celus, Hub.
 5 Maculata, Haw.
 615 Cingulata, F.
 616 Gordius, H.
 617 Luscitiosa, Clem.
 618 Eremitus, Hb.
 619 Lugens, Wlk.
 620 Drupiferarum, Abb.

a, Utahensis, H. Edw.

621 Kalmiæ, Abb.
 622 Plota, Streck.
 623 Chersis, Hub.
 a, Oreodaphne.
 624 Libocedrus, H. Edw.
 625 Perelegans, H. Edw.
 626 Vancouverensis, H. E.
 627 Congratulans, Grt.
 628 Cinerosa, Grt.
 629 Vashti, Streck.
 630 Albescens, Tepper.
 631 Halicarnie, Streck.
 632 Jasminearum, G. & R.

633 Leucophæata, Clem.
 634 Hylæus, Dr.
 635 Sequoiæ, Bd.
 636 Strobi, Bd.
 637 Plebeia, F.
 638 Poeyi, Grt.
 639 Dollii, Neum.
 640 Coniferarum, Abb.
 641 Bombycoides, Walk.
 642 Harrisii, Clem.
 643 Pineum, Lint.
 644 Antæus, Dr.
 Hydaspes, Cr.

Anceryx, Bd.

645 Ello, L.
 646 Obscura, F.
 647 Edwardsia, Butler.

Pachylia, Walk.

648 Ficus, L.
 649 Lyncea, Cl.

Deilephila, O.

650 Chamænerii, Harr.
 651 Lineata, F.

Philampelus, Harr.

652 Pandorus, Hb.
 653 Achemon, Dr.
 654 Mirificatus, Grt.
 655 Vitis, L.
 656 Jussieuæ, Hb.
 657 Linnei, Grt.
 658 Labruscæ, L.

Darapsa, Hb.

659 Myron, Cr.
 660 Cnotus, Hub.
 661 Choerilus, Wlk.
 662 Versicolor, Harr.

Chærocampa, Dup.

663 Tersa, L.
 664 Procne, Cl.

Arctonotus, G. & R.

665 Lucidus, Bd.

Enyo, Hb.

666 Lugubris, L.

Tricholon, Bd.

667 Inscriptum, Harr.

Pterogon, Hb.

668 Clarkiæ, Bodo.
 669 Gauræ, Abb.
 670 Juanita, Streck.

Amphion, Hb.

671 Nessus, Cr.

Thyreus, Swains.

672 Abbottii, Swains.

Macroglossa, O.

673 Titan, Cr.
 674 Tantalus, Hb.
 675 Erato, Bd.
 676 Flavofasciata, Brn.
 677 Thetis, Bd.
 678 Tenuis, Grt.
 679 Palpalis, Grt.
 680 Diffinis, Bd.
 681 Fumosa, Streck.
 682 Aethra, Streck.
 683 Rubens, H. Edw.
 684 Marginalis, Grt.
 685 Axillaris, Grt. & Rob.
 686 Gracilis, G. & R.
 687 Thysbe, Fab.
 Pelasgus, Harr.
 a, Ruficandis, Kirby.
 688 Senta, Streck.
 689 Fuscandis, Bd.
 690 Pyramus, Bd.

SESIIDÆ.**Trochilium**, Scop.

691 Apiformis, L.
 692 Marginatum, Harris.

Sciapteron, Staud.

693 Denudatum, Harris.
 694 Exitiosa, Say.
 695 Nigella, Hulst.
 696 Simulans, Grt.
 697 Robiniæ, H. Edw.
 698 Lustrans, Grt.
 699 Syringæ, Harr.

Melittia, Hb.

700 Satyriniformis, Hb.
 Cucurbitæ, Harr.

701 Ceto, West.

702 Flavitibia, Wlk.

703 Gloriosa, H. Edw.

Sesia, Fabr.

704 Pepsidiformis, H.

705 Quinquecauda, Rid.

706 Caudata, Harr.

707 Tricincta, Harr.

708 Fulvipes, Harr.

709 Hospes, Walsh.

710 Tipuliformis, L.

711 Pictipes, G. & R.

712 Scitula, Harr.

713 Pyri, Harr.

714 Acerni, Clem.

715 Bassiformis, Wlk.

716 Pyramidalis, Wlk.
 717 Pleciaformis, Wlk.
 718 Odyneripennis, Wlk.
 719 Emphytiformis, Wlk.
 720 Aureopurpura, H. E.
 721 Rubescens, Hulst.
 722 Hylotomiformis, Wk.
 723 Pyralidiformis, Wlk.
 724 Sapygæformis, Wlk.
 725 Geliformis, Wlk.

Zenodoxus, G. & R.

726 Maculipes, G. & R.

Thyris, Ill.

727 Maculata, Harr.

728 Lugubris, Bd.

a, Sepulchralis, Bd.

Dysodea, Clem.

729 Oculatana, Clem.

730 Vitrina, Bd.

731 Aequalis, Wlk.

ZYGÆNIDÆ.**Alypia**, Hb.

732 Octomaculata, F.
 733 Langtonii, Coup.
 734 Dipsaci, G. & R.
 735 Sacramenti, G. & R.
 736 Similis, Stretch.
 737 Maccullochii, Krb.
 738 Ridingsii, G. & R.
 739 Lorquini, G. & R.
 740 Mariposa, G. & R.
 Lunata, Stretch.
 741 Grotei, Stretch.
 742 Brannani, Stretch.

Pseudalypia, Edw.

743 Crotchii, Edw.

Edwardsia, Neum.

744 Brillians, Neum.

Psychomorpha, Harr.

745 Epimenis, Dr.

Eudryas, Bd.

746 Grata, F.

747 Unio, Hb.

748 Gloveri, Grt.

Horama, Hb.

749 Texana, Grt.

Lamocharis, H. Sch.

750 Pertyi, H. Sch.

Cosmosoma, Hb.

751 Omphale, Hb.

Syntomeida, Harr.

752 Ipomææ, Harr.

Dahana, Grt.
 753 Atripennis, Grt.
Scepsis, Walk.
 754 Fulvicollis, Hb.
 755 Matthewi, H. Edw.
 756 Edwardsii, Grt.
Ctenucha, Kb.
 757 Virginica, Charp.
 758 Walsinghamii, Str.
 759 Ochroscapus, G. & R.
 760 Multifera, Wlk.
 761 Pyrrhoura, Hulst.
 762 Robinsonii, Bd.
 763 Harrissii, Bd.
 764 Brunnea, Str.
 765 Venosa, Wlk.
 766 Cressonana, Grt.
 767 Sanguinaria, Streck.
Pygaretia, Grt.
 768 Abdominalis, Grt.
Gnophæla, Walk.
 769 Vermiculata, G. & R.
 770 Hopfferi, G. & R.
 771 Latipennis, Bd.
Acoloithus, Clem.
 772 Falsarius, Clem.
Harrisina, Pack.
 773 Americanus, Harr.
 774 Coracina, Clem.
 775 Texana, Str.
Triplocris, Grt.
 776 Smithsonianus, Grt.
Penthetria, H. Edw.
 777 Majuscula, H. Edw.
 778 Parvula, H. Edw.
Aglaope,
 779 Dimidiata, H. S.
Licomorpha, Harr.
 780 Pholus, Dr.
 781 Miniata, Pack.
 782 Palmerii, Bek.
 783 Constans, H. Edw.
 784 Desertus, H. Edw.
 785 Grotei, Pack.
 786 Fulgens, H. Edw.
Cydosia, Westw.
 787 Aurivitta, G. & R.
 788 Imitella, Str.
 789 Aurea, Fitch.

BOMBYCIDÆ.

Nola, Leach.
 790 Malana, Fitch.
 791 Nigrofasciata, Zell.

792 Minuscula, Zell.
 793 Fuscula, Grt.
 794 Melanopa, Zell.
 795 Strictalis, Zell.
 796 Zelleri, Grt.
 797 Anfracta, H. Edw.
 798 Sexmaculata, Grt.
Hypoprepia, Hb.
 799 Fucosa, Hb.
 a, Miniata, Krb.
 800 Cadaverosa, Streck.
Cisthena, Wlk.
 801 Subjecta, Wlk.
 a, Unifascia, G. & R.
 802 Nexa, Streck.
Lithosia, F.
 803 Argillacea, Pack.
 804 Cephalica, G. & R.
 805 Tenuifascia, Harr.
 806 Casta, Sanb.
 807 Candida, H. Edw.
Byssophaga, Behr.
 808 Faustinula, Bd.
 a, Fusca, Str.
 809 Nexa, Bd.
Emydia, Bd.
 810 Ampla, Grt.
Crambidia, Pack.
 811 Pallida, Pack.
Eustixis, Hb.
 812 Pupula, Hb.
 813 Subfervens, Wlk.
Clemensia, Pack.
 814 Albata, Pack.
 815 Umbrata, Pack.
 816 Irrorata, H. Edw.
Dysauxes, Hb.
 817 Mediastina, Hb.
Crocata, Hb.
 818 Rubicundaria, Hb.
 819 Quinaria, Grt.
 820 Nigricans, Reak.
 821 Immaculata, Reak.
 a, Trimaculosa, Reak.
 822 Ferruginosa, Wlk.
 823 Opella, Grt.
 824 Laeta, Bd.
 825 Ostenta, H. Edw.
 826 Fragilis, Streck.
Deiopeia, Stph.
 827 Bella, L.
 828 Ornatix, L.
Callimorpha, Latr.
 829 Interuptomarginata, B

830 Clymene, Esp.
 831 Lecontei, Bd.
 a, Confinis, Wlk.
 b, Contigua, Wlk.
 c, Fulvicosta, Clem.
Epicallia, Hb.
 832 Virginalis, Bd.
 a, Guttata, Bd.
Pleretes, Led.
 833 Parthenos, Harr.
 834 Hyperborea, Curt.
 835 Scudderi, Pack.
 836 Modesta, Pack.
Aretia, Schrk.
 837 Ornata, Pack.
 838 Caja, L.
 839 Opulenta, Hy. Edw.
 840 Virgo, L.
 841 Saundersii, Grt.
 842 Intermedia, Str.
 843 Achaia, G. R.
 a, Barda, Hy. Edw.
 844 Blakei, Grt.
 845 Incorrupta, Hy. Edw.
 846 Phyllira, Dru.
 847 Geneura, Streck.
 848 Figurata, Dru.
 849 Nais, Dru.
 850 F. Pallida, Streck.
 851 Yarrowii, Str.
 852 Superba, Str.
 853 Decorata, Saund.
 854 Nevadensis, G. R.
 855 Complicata, Wlk.
 856 Persephone, Grt.
 857 Flammea, Neum.
 858 4. Notata, Streck.
 859 Virguncula, Krb.
 860 Dahurica, Bd.
 861 Speciosa, Möxhl.
 862 Quensellii, Payk.
 a, Gelida, Mosch.
 863 Arge, Dru.
 864 Michabo, Grt.
 865 Placentia, Sm. Abb.
 866 Pallida, Pack.
 867 Williamsi, Str.
 868 Arizoniensis, Str.
 869 Bolanderi, Str.
 870 Autheola, Bd.
 871 Edwardsii, Str.
 872 Determinata, Neum.
Nemeophila, Stph.
 873 Plantaginis, L.

- a*, Petrosa, Wlk.
 874 Geometrica, Grt.
 875 Californiæ, Wlk.
Seiraretia, Pack.
 876 Echo, Abb.
 877 Clio, Pack.
Ectypia, Clem.
 878 Bivittata, Clem.
Spilosoma, Stph.
 879 Isabella, Abb.
 880 Californica, Pack.
 881 Rubricosa, Harr.
 882 Dubia, Wlk.
 883 Assimilans, Wlk.
 884 Vagans, Bd.
a, Proba, H. Ed.
 885 Rubra, Neum.
 886 Acræa, Pack.
 887 Packardii, Schaupp.
 Californica, Pack.
 888 Albida, Str.
 889 Virginica, F.
 890 Congrua, Wlk.
 891 Vestalis, Pack.
 892 Latipennis, Str.
 893 Antigona, Streck.
 894 Cunea, Dru.
a, Textor, Harr.
 Punctata, Fitch.
Eurythia, Haw.
 896 Pasma, Haw.
Arachnis, Hb.
 897 Picta, Pack.
Epantheria, Hb.
 898 Scribonia, Stoll.
Euchaetes, Harr.
 899 Egle, Dru.
 900 Collaris, Fitch.
 901 Oregonensis, Str.
 902 Eglensis, Clem.
 903 Elegans, St.
Euhalesidota, Grt.
 904 Longa, Grt.
Halesidota, Hb.
 905 Tesselaris, Hb.
 906 Cinctipes, Grt.
 907 Caryæ, Harr.
 908 Ambigua, Streck.
 909 Maculata, Harr.
 910 Edwardsii, Pack.
 911 Labecula, Grt.
 912 Argentata, Pack.
 913 Sobrina, Str.
 914 Trigona, Grt.
 915 Ingens, H. Edw.
Leptaretia, Stretch.
 916 Decia, Bd.
 Lena, Bd.
 Dimidiata, Str.
Kodiosoma, Strech.
 917 Fulva, Str.
 918 Nigra, Str.
a, Tricolor, Str.
b, Eavesii, Str.
Vanessodes, G. & R.
 919 Clarus, G. & R.
Orgyia, O.
 920 Nova, Fitch.
 921 Leucostigma, S. Abb.
 922 Cana, H. Edw.
 923 Definita, Pack.
 924 Vetusta, Bd.
 925 Gulosa, H. Edw.
Parorgyia, Pack.
 926 Plagiata, G. R.
 927 Clintonii, G. R.
 928 Leucophæa, S. Abb.
 929 Basiflava, Pack.
 930 Obliquata, G. R.
 931 Parallela, G. R.
 932 Achatina, S. Abb.
 933 Cinnamomea, G. R.
 934 Clandestina, Wlk.
Carama, Wlk.
 935 Cretata, Grt.
Dasychira, Steph.
 936 Rossii, Curt.
 937 Lintneri, Grt.
Lagoa, Harr.
 938 Crispata, Pack.
 939 Opercularis, S. Abb.
 940 Pyxidifera, S. Abb.
Euclea, Hb.
 941 Cippus, Harr.
 942 Querciola, H. S.
 943 Bifida, Pack.
 944 Ferruginea, Peck.
 945 Paenulata, Clem.
Parasa, Moore.
 946 Incisa, Harr.
 947 Chloris, H. S.
 948 Fraternalis, Grt.
Monoleuca, G. R.
 949 Semifascia, Walk.
 950 Sulfurea, Grt.
Nochelia, Clem.
 951 Tardigrata, Clem.
- Empretia**, Clem.
 952 Stimulea, Clem.
Phobetron, Hb.
 953 Pithecium, Sm. Abb.
 954 Hyalinum, Walsh.
 955 Nigricans, Grt.
Limacodes, Latr.
 956 Scapha, Harr.
 957 Undifera, Walk.
 958 Inornata, G. R.
 959 Biguttata, Pack.
 960 Lacomia, Harr.
 961 Yinversa, Pack.
 962 Flexuosa, Grt.
 963 Caesonia, Grt.
Lithacodes, Pack.
 964 Rectilinea, G. R.
 965 Fasciola, H. S.
Packardia, G. R.
 966 Cyrtosia, Pack.
 967 Fusca, Pack.
 968 Geminata, Pack.
 969 Goodellii, Grt.
 970 Ocellata, Grt.
 971 Nigropunctata, Good.
 972 Albiguttata, Pack.
Adoneta, Clem.
 973 Spinuloides, H. S.
 974 Leucostigma, Peck.
 975 Pygmæa, G. R.
Heterogenea, Knoch.
 976 Shurteffii, Pack.
Kronæa, Reak.
 977 Minuta, Reak.
Isa, Pack.
 978 Textula, H. S.
Tortricidia, Pack.
 979 Pallida, H. S.
 980 Testacea, Pack.
 981 Flavula, H. S.
Psyche, O.
 982 Confederata, G. R.
P hryganidia, Pack.
 983 Californica, Pack.
Thyridopteryx, Steph.
 984 Ephemeræformis, S.
 985 Meadii, H. Ed.
Oiketiscus, Harr.
 986 Abbottii, Grt.
Lacosoma, Grt.
 987 Chiridota, Grt.
Perophora, Harr.
 988 Melsheimeri, Harr.

- Clostera**, O.
 989 Inclusa, Hb.
 990 Ornata, Harr.
 991 Inversa, Pack.
 992 Indentata, Pack.
 993 Albosigma, F.
 994 Vau, Fitch.
- Apatelodes**, Pack.
 995 Torrefacta, Sm.
 996 Angelica, Grt.
- Datana**, Wlk.
 997 Ministra, Dru.
 998 Angusii, G. R.
 999 Major, G. R.
 1000 Floridana, Graef.
 1001 Robusta, Streck.
 1002 Integerima, G. R.
 1003 Contracta, Wlk.
 1004 Perspicua, G. R.
- Nadata**, Wlk.
 1005 Alastor, Bd.
 1006 Gibbosa, Sm. Ab.
 1007 Doubledayi, Pack.
- Hyparpax**, Hb.
 1008 Aurora, Sm. Abb.
- Gluphisia**, Bd.
 1009 Trilineata, Pack.
- Notodonta**, O.
 1010 Stragula, Grt.
 1011 Basistriens, Wlk.
 1012 Californica, Str.
 1013 Ferruginea, Pack.
 1014 Angulosa, Sm. Ab.
 1015 Georgica, G. R.
 1016 Rimosa, Pack.
 1017 Dimidiata, H. Sh.
- Lophopteryx**, Steph.
 1018 Americana, Harr.
- Drynobia**, Dup.
 1019 Tortuosa, Tepper.
- Nerice**, Wlk.
 1020 Bidentata, Wlk.
- Edema**, Wlk.
 1021 Albifrons, S. Abb.
- Cecrite**, Wlk.
 1022 Bilineata, G. R.
 1023 Mustelina, Pack.
- Oedemasia**, Pack.
 1024 Concinna, Sm. Ab.
 1025 Nitida, Pack.
 1026 Badia, Pack.
 1027 Eximia, Grt.
- Dasylophia**, Pack.
 1028 Anguina, Sm. Ab.
- 1029 Interna, Pack.
- Shizura**, Dbd.
 1030 Ipomeae, Dbd.
- Coelodasys**, Pack.
 1031 Unicornis, S. Abb.
 1032 Edmansii, Pack.
 1033 Apicalis, G. R.
 1034 Leptinoides, G. R.
 1035 Biguttata, Pack.
 a, Cinereofrons, Pack.
 1036 Harrisii, Pack.
- Ellida**, Grt.
 1037 Gelida, Grt.
- Janassa**, Wlk.
 1038 Lignicolor, Wlk.
- Heterocampa**, Dbd.
 1039 Astarte, Dbd.
 1040 Obliqua, Pack.
 1041 Brunnea, G. R.
 1042 Umbrata, Wlk.
 1043 Trouvelotii, Pack.
 1044 Pulverea, G. R.
 1045 Marthesia, Br.
 1046 Elongata, G. R.
 1047 Guttivitta, G. R.
 1048 Mucorea, H. S.
 1049 Biundata, Wlk.
 1050 Thyatiroides, Wlk.
 1051 Cinerea, Pack.
 1052 Unicolor, Pack.
 1053 Marina, Pack.
 1054 Subrotata, Harr.
 1055 Celtiphaga, Harr.
 1056 Belfragei, Grt.
 1057 Chapmanii, Grt.
 1058 Mantes, Dbd.
- Litodonta**, Harv.
 1059 Hydromeli, Harv.
- Platycerura**, Pack.
 1060 Furcilla, Pack.
- Harpyia**, O.
 1061 Borealis, Han.
 1062 Occidentalis, Lint.
 1063 Aquilonarius, Lint.
 1064 Cinerea, Wlk.
 1065 Citiscripta, Wlk.
 1066 Candida, Lint.
 1067 Scolopendrina, Bd.
 1068 Multiscripta, Riley.
- Drepana**, Schrk.
 1069 Arcuata, Wlk.
 1070 Siculifer, Str.
 1071 Genicula, Grt.
 1072 Bidentata, Pack.
- Dryopteris**, Grt.
 1073 Rosca, Wlk.
 a, Irrorata, Pack.
 1074 Formula, Grt.
 a, Marginata, Wlk.
- Antherea**,
 1075 Polyphemus, L.
- Actias**, Leach.
 1076 Luna, L.
- Attacus**, L.
 1077 Cynthia, Dru.
- Callosamia**, Pack.
 1078 Promethea, Dru.
 1079 Angulifera, Wlk.
- Samia**, Hb.
 1080 Cecropia, L.
 1081 Columbia, Sm.
 1082 Gloveri, Streck.
 1083 Ceanothi, Behr.
- Saturnia**, Schk.
 1084 Galbina, Clem.
 1085 Mendocina, Behr.
- Hyperchiria**, Hb.
 1086 Io, F.
 1087 Zelleri, G. & R.
 1088 Lilith, Strk.
- Coloradia**, Blake.
 1089 Pandora, Blk.
- Pseudohazis**, G. & R.
 1090 Pica, Wlk.
 a, Eglanterina, Bd.
 b, Nutalli, Strk.
- 1091 Hera, Harr.
 1092 Arizonensis, Strk.
- Hemileuca**, Wlk.
 1093 Maia, Dru.
 1094 Nevadensis, Str.
 1095 Grotei, Hopf.
 1096 Diana, Pack.
 1097 Juno, Pack.
 1098 Yavapai, Neum.
- Euleucophaeus**, Pack.
 1099 Tricolor, Pack.
 1100 Sororius, H. Edw.
 1101 Neumoegeni, H. E.
- Dryocampa**, Harr.
 1102 Imperialis, Dru.
- Ceratocampa**, Harr.
 1103 Regalis, F.
 1104 Sepulchralis, G. R.
- Quadrina**, Grt.
 1105 Diazoma, Grt.
- Adelocephala**, Bd.
 1106 Bicolor, Harr.

Anisota , Hb.	1126 Fragilis, Str.	Hepialus , F.
1107 Stigma, F.	1127 Constricta, Str.	1144 Argenteomaculata, H.
1108 Senatoria, Sm. Ab.	Artace , Wlk.	1145 Auratus, Grt.
1109 Virginiensis, Dru.	1128 Punctistriga, Wlk.	1146 Quadriguttata, Pack.
1110 Bisecta, Lint.	Tolype , Hb.	1147 Purpurascens, Pack.
1111 Heiligbrodti, Harv.	1129 Velleda, Stoll.	1148 Argentata, Pack.
1112 Rubicunda, F.	1130 Laricis, Fitch.	1149 Behrensii, Str.
<i>a</i> , Alba, Grt.	<i>a</i> , Minuta, Grt.	1150 Montana, Str.
Gloveria , Pack.	Heteropacha , Klug.	1151 Rectus, H. Edw.
1113 Arizonensis, Pack.	1131 Rileyana, Haro.	1152 Anceps, H. Edw.
Lasiocampa , Latr.	Cossus , Fabr.	1153 Thule, Strk.
1114 Ilicifolia, Sm. Abb.	1132 Robiniae, Harr.	1154 Inutilis, H. Edw.
Americana, Harr.	1133 Reticulates, Lint.	1155 Hyperboreus, Mös.
1115 Carpinifolia, Bd.	1134 Crepera, Harr.	1156 Labradorensis, Pack.
1116 Mildei, Str.	1135 Nanus, Strk.	1157 Mustelinus, Pack.
Bombyx , L.	1136 Querciperda, Fitch.	1158 Gracilis, Grt.
1117 Americana, Harr.	1137 MacMurtrici, Peale.	1159 Californicus, Bd.
1118 Thoracica, Str.	1138 Populi, Wlk.	1160 Hectoides, Bd.
1119 Castrensis, S. Ab.	1139 Undosus, Lint.	1161 Desolatus, Strk.
1120 Frutetorum, Bd.	1140 Centerensis, Lint.	1162 Sequoiolus, Behr.
1121 Disstria, Hb.	Zeuzera , Latr.	1163 Mendocinolus, Behr.
1122 Erosa, Str.	1141 Pyrina, F.	1164 Baroni, Behr.
1123 Silvatica, Harr.	1142 Canadensis, H. S.	1165 Lenzi, Behr.
1124 Drupacearum, Bd.	Hypopta , Hb.	Eutheca , Grt.
1125 Californica, Pack.	1143 Bertholdi, Grt.	1166 Mora, Grt.

NOCTUIDÆ.

Bombycia , Hb.	1214 Thaxterianus, Grt.	Acronycta , O.
1200 Improvisa, Hy. Ed.	1215 Damalis, Grt.	1227 Grisea, Bam.
1201 Semicircularis, Grt.	1216 Electilis, Morr.	1228 Tritona, Hb.
Leptina , Guén.	1217 Depilis, Grt.	1229 Falcula, Grt.
1202 Dormitans, Guen.	Arsilonche , Led.	1230 Dentata, Grt.
1203 Latebricola, Grt.	1218 Albovenosa, Goetze.	1231 Occidentalis, G. R.
1204 Ophthalmica, Guen.	Henrici, Grt.	1232 Telum, Guen.
1205 Doubledayi, Guen.	<i>a</i> , Evavidum, Grt.	1233 Morula, G. & R.
1206 Australis, Grt.	<i>b</i> , Fumosum, Morr.	1234 Lobeliæ, Guen.
Pseudothyatira , Grt.	1219 Absidum, Harv.	1235 Furcifera, Guen.
1207 Cymatophoroides, G.	1220 Album, Harv.	1236 Hasta, Guen.
1208 Expultrix, Grt.	Raphia , Hb.	1237 Radcliffei, Harv.
Gonophora , Bsd.	1221 Abrupta, Grt.	1238 Pallidicoma, Grt.
1209 Scripta, Gosse.	1222 Frater, Grt.	1239 Harveyana, Grt.
Thyatira , O.	Audela , Wlk.	1240 Quadrata, Grt.
1210 Pudens, Guen.	1223 Acronyctoides, Wlk.	1241 Interrupta, Bsd.
1211 Lorata, Grt.	Feralia , Grt.	1242 Spinigera, Guen.
Eutolype , Grt.	1224 Jocosa, Guen.	1243 Funerialis, G. & R.
1212 Rolandi, Grt.	Momophana , Grt.	1244 Connecta, Grt.
Dicopis , Grt.	1225 Comstocki, Grt.	1245 Innotata, Guen.
1213 Muralis, Grt.	Moma , Hb.	1246 Lupini, Behr.
	1226 Fallax, H. S.	

- 1247 Lepusculina, Guen.
 1248 Felina, Grt.
 1249 Insita, Wlk.
 1250 Americana, Harr.
 1251 Acericola, Guen.
 1252 Dactylina, Grt.
 1253 Tota, Grt.
 1254 Thoracica, Grt.
 1255 Theodori Grt.
 1256 Rubicoma, Guen.
 1257 Luteicoma, G. & R.
 1258 Brumosa, Guen.
 1259 Subochrea, Grt.
 1260 Noctivaga, Grt.
 1261 Superans, Guen.
 1262 Persuasa, Harr.
 1263 Afflicta, Grt.
 1264 Longa, Guen.
 1265 Claesceus, Guen.
 1266 Ovata, Grt.
 1267 Hamamelis, Guen.
 1268 Increta, Morr.
 1269 Dissecta, G. & R.
 1270 Alborufa, Grt.
 1271 Vinnula, Grt.
 1272 Paupereula, Grt.
 1273 Exilis, Grt.
 1274 Sperata, Grt.
 1275 Lithospila, Grt.
 1276 Perdita, Grt.
 1277 Xyliniformis, Guen.
 1278 Edolata, Grt.
 1279 Spinea, Grt.
 1280 Oblinita, Sm. Abb.
 1281 Lanceolaria, Grt.
 1282 Insolita, Grt.
Bryophila, Fr.
 1283 Lepidula, Grt.
 1284 Palliatricula, Guen.
 1285 Corticosa, Guen.
 1286 Percara, Morr.
 1287 Discitincta, Wlk.
 1288 Discivaria, Wlk.
 1289 Discinigra, Wlk.
 1290 Nana, Hb.
 1291 Teratophora, H. S.
 1292 Viridata, Haro.
 1293 Cora, Hb.
 1294 Hebraicum, Hb.
Microcoelia, Guen.
 1295 Fragilis, Guen.
 1296 Diphteroides, Guen.
 1297 Obliterata, Grt.
- Diphthera**, O.
 1298 Deridens, Guen.
 1299 Dispulsa, Morr.
 1300 Propinquilinea, Grt.
 1301 Palata, Grt.
Harrisimemna, Grt.
 1302 Sexguttata, Harr.
Agrotis, O.
 1303 Chardinyi, Boisd.
 1304 Badicollis, Gr.
 1305 Dilucida, Morr.
 1306 Janualis, Gr.
 1307 Pallidicollis, Gr.
 1308 Opacifrons, Gr.
 1309 Sigmoides, Guen.
 1310 Perattenta, Gr.
 1311 Attenta, Gr.
 1312 Stellaris, Gr.
 1313 Phyllophora, Gr.
 1314 Rubifera, Gr.
 1315 Conflua, Tr.
 1316 Perconflua, Gr.
 1317 Rosaria, Gr.
 1318 Elimata, Guen.
 1319 Hilliana, Harv.
 1320 Baja, S. V.
 1321 Quarta, Grt.
 1322 Normaniana, Gr.
 1323 Fishii, Gr.
 1324 Conchis, Gr.
 1325 Mirabilis, Gr.
 1326 C-nigrum, Linn.
 1327 Bicarnea, Guen.
 1328 Innotabilis, Gr.
 1329 Washingtoniensis, G.
 1330 Treatii, Gr.
 1331 Juncta, Gr.
 1332 Haruspica, Gr.
 1333 Sierræ Harv.
 1334 Mercenaria, Gr.
 1335 Inconcinna, Harv.
 1336 Immixta, Grt.
 1337 Docilis, Grt.
 1338 Viralis, Grt.
 1339 Auxiliaris, Gr.
 a, Agrestis, Gr.
 b, Introferens, Gr.
 1340 Perexcellens, Gr.
 1341 Wockei, Moeschl.
 1342 Okakensis, Pack.
 1343 Umbrata, Pack.
 1344 Gularis, Gr.
 1345 Turris, Gr.
 1346 Spissa, Guen.
- 1347 Fennica, Tausch.
 1348 Evanidalis, Gr.
 1349 Subgothica, Haw.
 1350 Tricosa, Lint.
 1351 Herilis, Gr.
 1352 Plecta, Linn.
 1353 Oehrogaster, Guen.
 1354 Vittifrons, Gr.
 1355 Obeliscoides, Guen.
 1356 Lacunosa, Morr.
 1357 Insularis, Gr.
 1358 Costata, Gr.
 1359 Idahoensis, Gr.
 1360 Formalis, Gr.
 1361 Facula, Gr.
 1362 Emarginata, Gr.
 1363 Exsertistigma, Morr.
 1364 Observabilis, Gr.
 1365 Bicollaris, Gr.
 1366 Lætula, Gr.
 1367 Cupidissima, Gr.
 1368 Cupida, Gr.
 a, Brunneipennis, Grt.
 b, Alternata, Gr.
 1369 Minimalis, Gr.
 1370 Placida, Gr.
 1371 Orbis, Gr.
 1372 Variata, Gr.
 1373 Discoidalis, Gr.
 1374 Brunneicollis, Gr.
 1375 Clandestina, Harr.
 a, Havilæ, Gr.
 1377 Rufipectus, Morr.
 1378 Incivis, Guen.
 1379 Lubricans, Guen.
 1380 Cænis, Gr.
 1381 Simplaria, Morr.
 1382 Nigrovittata, Gr.
 1383 Digna, Morr.
 1384 Bostoniensis, Gr.
 1385 Scandens, Riley.
 1386 Murrænula, G. & R.
 1387 Dolis, Gr.
 1388 Catenula, Gr.
 1389 Choris, Harv.
 1390 Atrifera, Gr.
 1391 Vernilis, Gr.
 1392 Imperita, Hübn.
 1393 Perquiritata, Morr.
 1394 Speciosa, Hübn.
 1395 Euroides, Gr.
 1396 Milleri, Gr.
 1397 Vocalis, Gr.
 1398 Hollemani, Gr.

- 1399 Silens, Gr.
 1400 Albalis, Gr.
 1401 Cloanthoides, Gr.
 1402 Infirmatis, Gr.
 1403 Lagena, Gr.
 1404 Biclavis, Gr.
 1405 Pluralis, Gr.
 1406 Pleuritica, Gr.
 1407 Ptychrous, Gr.
 1408 Niveivenosa, Gr.
 1409 Olivalis, Gr.
 1410 4-dentata, G. & R.
 1411 Cicatricosa, G. & R.
 1412 Recula, Harv.
 1413 Ridingsiana, Gr.
 1414 Lewisii, Gr.
 1415 Tessellata, Harr.
 a, Atropurpurea, Gr.
 1416 Versipellis, Gr.
 1417 Campestris, Gr.
 1418 Decolor, Morr.
 1419 Albipennis, Gr.
 a, Nigripennis, Gr.
 1420 Redimicula, Morr.
 1421 Verticalis, Gr.
 1422 Strigilis, Gr.
 1423 Apposita, Gr.
 1424 Geniculata, G. & R.
 1425 Collaris, G. & R.
 1426 Badinodis, Gr.
 1427 Bolii, Gr.
 1428 Hero, Morr.
 1429 Atrifrons, Gr.
 1430 Piscipellis, Gr.
 1431 Citricolor, Gr.
 1432 Perpolita, Morr.
 1433 Velleripennis, Gr.
 1434 Fauna, Morr.
 1435 Balanitis, Gr.
 1436 Messoria, Harr.
 1437 Friabilis, Gr.
 1438 Infracta, Morr.
 1439 Fuscigera, Gr.
 1440 Brunneigera, Gr.
 1441 Rubefactalis, Gr.
 1442 Satis, Harv.
 1443 Micronyx, Gr.
 1444 Plagigera, Morr.
 1445 Fumalis, Gr.
 1446 Comosa, Morr.
 1447 Rileyana, Morr.
 1448 Feniseca, Harv.
 1449 Littoralis, Pack.
 1450 Intrita, Morr.
 1451 Carissima, Harv.
 1452 Eriensis, Gr.
 1453 Rava, H.-S.
 1454 Fusca, Boisd.
 1455 Oblata, Morr.
 1456 Islandica, Staud.
 1457 Opipara, Morr.
 1458 Dissona, Moesch.
 1459 Worthingtoni, Gr.
 1460 Sublatis, Gr.
 1461 Munis, Gr.
 1462 Violaris, G. & R.
 1463 Staudingeri, Moesch.
 1464 Westermanni, Staud.
 1465 Edrewseni, Staud.
 1466 Olivia, Morr.
 1467 Wilsonii, Gr.
 1468 Aequalis, Harv.
 1469 Specialis, Gr.
 1470 Basalis, Gr.
 1471 Mimallonis, Gr.
 1472 Gagates, Gr.
 1473 Catherina, Gr.
 1474 Manifesta, Morr.
 1475 Hortulana, Morr.
 1476 Tristicula, Morr.
 1477 Fernaldi, Morr.
 1478 Orthogonia, Morr.
 1479 Brocha, Morr.
 1480 Morrisoniana, Riley.
 1481 Gladiaria, Morr.
 1482 Acclivis, Morr.
 1483 Venerabilis, Walk.
 1484 Vancouverensis, Gr.
 1485 Stigmosa, Morr.
 Volubilis, Harv.
 1486 Gravis, Gr.
 1487 Clodiana, Grt.
 1488 Vapularis, Gr.
 1489 Aeneipennis, Gr.
 1490 Opaca, Harv.
 1491 Rudens, Harv.
 1491½ Segetum, S. V.
 1492 Annexa, Treits.
 1493 Malefida, Guen.
 1494 Ypsilon, Rott.
 1495 Saucia, Hübn.
 1496 Texana, Gr.
 1497 Pyrophiloides, Harv.
 1498 Trabalis, Gr.
 1499 Pressa, Gr.
 1500 Prasina, Fab.
 1501 Occulta, Linn.
 1502 Astricta, Morr.
 1503 Præfixa, Morr.
 1504 Sculpta, Gr.
 1505 Sculptilis, Harv.
 1506 Chortalis, Harv.
 1507 Aratrix, Harv.
 1508 Parentalis, Gr.
 1509 Decipiens, Gr.
 1510 Alaskæ, Gr.
 1511 Carnea, Thunb.
 1512 Scropulana, Morr.
 1513 Orilliana, Gr.
 1514 Montana, Morr.
Polyphaenis, Bd.
 1515 Herbacea, Guen.
Adita, Grt.
 1516 Chionanthi, A. & S.
Fishia, Grt.
 1517 Enthea, Grt.
Mamestra, O.
 1518 Purpurissata, Grote.
 1519 Nimbosa, Guen.
 1520 Discalis, Grote.
 1521 Imbrifera, Guen.
 1522 Latex, Guen.
 1523 Conditia, Guen.
 1524 Adjuncta, Boisd.
 1525 Lubens, Grote.
 1526 Beanii, Grote.
 1527 Legitima, Grote.
 1528 Liquida, Grote.
 1529 Lilacina, Harv.
 1530 Illabefacta, Morr.
 1531 Noverca, Grote.
 1532 Goodellii, Grote.
 1533 Assimilis, Morr.
 1534 Rosea, Harvey.
 1535 Congermana, Morr.
 1536 Vindemialis, Guen.
 1537 W-Album, Guen.
 1538 Picta, Harris.
 1539 Farnhamii, Grote.
 1540 Grandis, Boisd.
 1541 Nevadæ, Grote.
 1542 Subjuncta, G. & R.
 1543 Atlantica, Grote.
 a, Discolor, Spey.
 1544 Dimmockii, Grote.
 1545 Distincta, Hubn.
 1546 Mucens, Hubn.
 1547 Confusa, Hubn.
 1548 Trifolii, Rott.
 1549 Crotchii, Grt.
 1550 Chartaria, Grote.
 1551 Defessa, Grote.

- 1552 Pensilis, Grote.
 1553 Vicina, Grote.
 1554 Anguina, Grote.
 1555 Acutipennis, Grote.
 1556 Capsularis, Guen.
 1557 Detracta, Walk.
 1558 Cuneata, Grote.
 1559 Sutrina, Grt.
 1560 Brachiolum, Harv.
 1561 Marinitincta, Harv.
 1562 Laudabilis, Guen.
 a, Illaudabilis, Grote.
 1563 4-Lineata, Grote.
 1564 Olivacea, Morr.
 1565 Alboguttata, Grote.
 1566 Comis, Grote.
 1568 Lustralis, Grote.
 1569 Meditata, Grote.
 1570 Innexa, Grote.
 1571 Cinnabarina, Grote.
 a, Ferrea, Grote.
 1572 Lorea, Guen.
 1573 Niveiguttata, Grote.
 1574 Leucogramma, Grt.
 1575 Palilis, Harv.
 1576 Repentina, Morr.
 1577 Ectypa, Morr.
 1578 Insolens, Grote.
 1579 Arietis, Grote.
 1580 Quadrannulata, M.
 1581 Rugosa, Morr.
 1582 Rogenhoferi, Moes.
 1583 Subdita, Moeschl.
 1584 Phoca, Moeschl.
Oncocnemis, Led.
 1585 Hayesii, Grt.
 1586 Dayi, Grt.
 1587 Mirificalis, Guen.
 1588 Levis, Grt.
 1589 Augustus, Harv.
 1590 Behrensi, Grt.
 1591 Glennyi, Grt.
 1592 Cibalis, Grt.
 1593 Homogena, Grt.
 1594 Oblita, Grt.
 1595 Meadiana, Morr.
 1596 Riparia, Morr.
 a, Chandleri, Grt.
 1597 Major, Grt.
 1598 Aqualis, Grt.
 1599 Atricollaris, Harv.
 1600 Saundersiana, Grt.
 1601 Occata, Grt.
 1602 Aterrima, Grt.
Eucoptocnemis, Grt.
 1603 Fimbriaris, Grt.
Copipanolis, Grt.
 1604 Cubilis, Grt.
Aporophyla, Guen.
 1605 Yosemiteae, Grt.
Pachypolia, Grt.
 1606 Atricornis, Grt.
Polia, Tr.
 1608 Acutissima, Grote.
 1609 Medialis, Grote.
 1610 Illepada, Grote.
 1611 Aspera, Morr.
 1612 Pallifera, Grote.
 1613 Speciosa, Morr.
 1614 Confragosa, Morr.
 1615 Aedon, Grote.
 1616 Theodori, Grote.
 1617 Epichysis, Grote.
Dryobota, Led.
 1618 Californica, Strk.
 1619 Stigmata, Grt.
 1620 Opina, Grt.
Morrisonia, Grt.
 1621 Evieta, Grt.
 1622 Infidelis, Grt.
 1623 Vomerina, Grt.
 1624 Peracuta, Grt.
Valeria, Germ.
 1625 Grotei, Morr.
Arthrochlora, Grt.
 1626 Februalis, Grt.
Chytonix, Grt.
 1627 Jaspis, Guen.
 1628 Sensilis, Grt.
Hadena, Schrk.
 1629 Delicata, Gr.
 1630 Burgessii, Morr.
 1631 Relicina, Morr.
 1632 Passer, Guen.
 a, Conspicua, Morr.
 1633 Sommeri, Lefb.
 1634 Exulis, Lefb.
 1635 Ducta, Gr.
 1636 Devastatrix, Brace.
 1637 Separans, Grote.
 1638 Castanea, Gr.
 a, Albina, Gr.
 1639 Occidens, Gr.
 1640 Arctica, Boisd.
 1641 Bridghamii, G. & R.
 1642 Violacea, Gr.
 1643 Exornata, Moeschl.
 1644 Hulstii, Gr.
 1645 Dubitans, Walk.
 1646 Sputatrix, Gr.
 1647 Suffusca, Morr.
 1648 Apamiformis, Guen.
 1649 Vultuosa, Gr.
 1650 Cristata, Harvey.
 1651 Lignicolor, Guen.
 a, Quaesita, Gr.
 1652 Genialis, Gr.
 1653 Auranticolor, Gr.
 1654 Cuculliformis, Gr.
 1655 Verbascoides, Guen.
 1656 Stipata, Morr.
 1657 Cariosa, Guen.
 1658 Sectilis, Guen.
 1659 Vulgaris, G. & R.
 1660 Patina, Harv.
 1661 Semilunata, Grote.
 1662 Inordinata, Morr.
 1663 Remissa, Hubn.
 1664 Basilinea, L.
 1665 Finitima, Guen.
 1666 Impulsa, Guen.
 1666½ Leucoscelis, Gr.
 1667 Olorina, Gr.
 1668 Diversilineata, Grt.
 1669 Hillii, Gr.
 1670 Algens, Gr.
 1671 Vigilans, Gr.
 1672 Senescens, Gr.
 1673 Diversicolor, Morr.
 1674 Mactata, Guen.
 1675 Turbulenta, Hubn.
 1676 Indirecta, Gr.
 1677 Divesta, Gr.
 1678 Tusa, Gr.
 1679 Tonsa, Gr.
 1680 Chryselectra, Gr.
 1681 Characta, Gr.
 1682 Genitrix, Gr.
 1683 Adnixa, Gr.
 1684 Curvata, Gr.
 1685 Fumosa, Gr.
 1686 Longula, Gr.
 1687 Tortilis, Gr.
 1688 Marina, Gr.
 1689 Miselioides, Guen.
 1690 Chlorostigma, Har.
 1691 Dunbari, Harv.
 1692 Modica, Guen.
 1693 Vulgivaga, Morr.
 1694 Fractilinea, Gr.
 1695 Modiola, Gr.

- 1696 Confederata, Gr.
 1697 Cinefacta, Grt.
 1698 Cylindrica, Gr.
 1699 Flava, Gr.
 1700 Singula, Gr.
 1701 Flavidens, Gr.
 1702 Aurea, Gr.
 1703 Chalcedonia, Hubn.
 1704 Versicolor, Gr.
 1705 Festivoides, Guen.
 1706 Arna, Guen.
 1707 Exesa, Guen.
 1708 Paginata, Morr.
 1709 Fuscimacula, Grote.
Metahadena, Morr.
 1710 Atrifasciata, Morr.
Copihadena, Morr.
 1711 Atricollaris, Morr.
Homohadena, Grt.
 1712 Chorda, Grt.
 1713 Badistriga, Grt.
 1714 Kappa, Grt.
 1715 Figurata, Haw.
 1716 Retroversa, Morr.
 1717 Incomitata, Harv.
 1718 Fortis, Grt.
 1719 Picina, Grt.
Dypterygia, Steph.
 1720 Scabriuscula, L.
Hyppa, Dup.
 1721 Xylinoides, Guen.
Cloantha, B.
 1722 Ramosula, Guen.
 1723 Stewarti, Grt.
 1724 Derupta, Morr.
Eriopus, Tr.
 1725 Molissima, Wlk.
 1726 Monetifera, Wlk.
 1727 Granitosa, Guen.
 1728 Floridensis, Guen.
 1729 Argentilinea, Wlk.
Laphygma, Guen.
 1730 Frugiperda, Sm. Ab.
 a, Fulvosa, Riley.
 b, Obscura, Riley.
 1731 Inflexa, Morr.
Prodenia, Guen.
 1732 Commelinae, Guen.
 1733 Signifera, Wlk.
 1734 Ornithogalli, Guen.
 1735 Flavimedia, Harv.
 1736 Lineatella, Harv.
 1737 Præfica, Grt.
- Eupsephopæctes**, Grt.
 1738 Procinctus, Grt.
Conservula, Grt.
 1739 Anodonta, Guen.
Trigonophora, Hb.
 1740 Periculosa, Guen.
 1741 V-brunneum, Grt.
Euplexia, Steph.
 1742 Lucipara, L.
Brotolomia, Led.
 1743 Iris, Guen.
Nephelodes, Guen.
 1744 Minians, Guen.
 1745 Violans, Guen.
Tricholita, Grt.
 1746 Semiaperta, Morr.
 1747 Fistula, Harv.
Helotropha, Led.
 1748 Reniformis, Grt.
 1749 Atra, Grt.
Hydroecia, Guen.
 1750 Purpuripennis, Grt.
 1751 Sera, G. & R.
 1752 Juvenalis, Grt.
 1753 Nictitans, Bonk.
 a, Erithrostigma, Hw.
 b, Lucens, Tr.
 1754 Inquæsitâ, G. & R.
 1755 Immanis, Guen.
 1756 Stramentosa, Guen.
 1757 Cerina, Grt.
 1758 Serrata, Grt.
 1759 Cataphracta, Grt.
 1760 Impecuniosa, Grt.
 1761 Nitela, Guen.
 a, Nebris, Guen.
 1762 Harrisii, Grt.
 1763 Speciosissima, G. R.
 1764 Marginidens, Guen.
 1765 Limpida, Guen.
 1766 Cerussata, Grt.
 1767 Erepta, Grt.
 1768 Rutila, Guen.
 1769 Purpurifascia, G. R.
 1770 Appassionata, Harv.
 1771 Necopina, Grt.
 1772 Obliqua, Harv.
 1773 Lorea, Guen.
 1774 Sambuci, Behrens.
 1775 Sanzalitæ, Grt.
 1776 Buffaloensis, Grt.
Achatodes, Guen.
 1777 Zeae, Harr.
- Lathosea**, Grt.
 1778 Pulla, Grt.
Arzama, Wlk.
 1779 Densa, Wlk.
 1780 Obliquata, G. & R.
 1781 Melanopyga, Grt.
 1782 Vulnifica, Grt.
 1783 Diffusa, Grt.
Nonagria, O.
 1784 Fodiens, Guen.
 1785 Inquinata, Guen.
 1786 Enervata, Guen.
 1787 Læta, Morr.
Ommatostola, Grt.
 1788 Lintneri, Grt.
Macronoctua, Grt.
 1789 Onusta, Grt.
Admetovis, Grt.
 1790 Oxymorus, Grt.
Euthisanotia, Hb.
 1791 Timais, Cram.
Cirrhophanus, Grt.
 1792 Triangulifer, Grt.
Scolecocampa, Guen.
 1793 Liburna, Geyer.
Amolita, Grt.
 1794 Fessa, Grt.
Thaumatopsis, Morr.
 1795 Longipalpus, Morr.
Eucalyptera, Morr.
 1796 Bipuncta, Morr.
Senta, Steph.
 1797 Defecta, Grt.
Platysenta, Grt.
 1798 Atriciliata, Grt.
Doryodes, Guen.
 1799 Acutaria, Guen.
 1800 Spadaria, Guen.
Tapinostola, Led.
 1801 Variana, Morr.
Leucania, O.
 1802 Pallens, L.
 1803 Prægracilis, Grt.
 1804 Albilinea, Guen.
 Harveyi, Grt.
 1805 Oxygale, Grt.
 1806 Bicolorata, Grt.
 1807 Pilipalpis, Grt.
 1808 Pertracta, Morr.
 1809 Rubripennis, G. & R.
 1810 Adjuta, Grt.
 1811 Amygdalina, Grt.
 1812 Ligata, Grt.
 1813 Phragmitidicola, G.

- 1814 Fareta, Grt.
 1815 Lapidaria, Grt.
 1816 Flabilis, Grt.
 1817 Adonea, Grt.
 1818 Commoides, Guen.
 1819 Dia, Grt.
 1820 Subpunctata, Haw.
 1821 Unipuncta, Haw.
 1822 Pseudargyria, Guen.
 1823 Scirpicola, Guen.
 1824 Juncicola, Bd.
 1825 Linita, Guen.
 1826 Insueta, Guen.
 1827 Extincta, Guen.
 1828 Videns, Guen.
 1829 Obusta, Guen.
 1830 Ebriosa, Guen.
 1831 Littera, Guen.
 1832 Diffusa, Wlk.
 1833 Contraria, Wlk.
 1834 Tripars, Wlk.
 1835 Vetusta, Wlk.
 1836 Rufostrigata, Pack.
 1837 Patricia, Grt.
 1838 Nigrofasciata, Hulst.
- Mythimna**, O.
 1839 Culea, Guen.
- Perigea**, Guen.
 1840 Xanthioides, Guen.
 1841 Infelix, Guen.
 1842 Falsa, Grt.
 1843 Albolabes, Grt.
 1844 Loculosa, Grt.
 1845 Enixa, Grt.
 1846 Luxa, Grt.
 1847 Fabrefacta, Haw.
 1848 Orbica, Morr.
 1849 Mersa, Morr.
 1850 Niveirena, Harv.
 1851 Iole, Grt.
 1852 Proxima, Morr.
- Zosteropoda**, Grt.
 1853 Hirtipes, Grt.
- Ufeus**, Grt.
 1854 Satyricus, Grt.
 1855 Plicatus, Grt.
 1856 Unicolor, Grt.
- Pteroscia**, Morr.
 1857 Atrata, Morr.
- Monodes**, Guen.
 1858 Nucicolora, Guen.
- Caradrina**, O.
 1859 Tarda, Guen.
 1860 Meskei, Speyer.
- 1861 Miranda, Grt.
 1862 Derosa, Morr.
 1863 Grata, Hb.
 1864 Clara, Grt.
 1865 Multifera, Wlk.
 1866 Flavimaculata, H.
 1867 Subaquila, Grt.
 1868 Conviva, Haw.
 1869 Meralis, Morr.
- Amphipyra**, Tr.
 1870 Pyramidoides, Gu.
 a, Inornata, Grt.
 b, Consersa, Riley.
 1871 Tragopogonis, L.
 1872 Glabella, Morr.
- Orthodes**, Guen.
 1873 Infirma, Guen.
 1874 Cynica, Guen.
- Pseudorthodes**, Morr.
 1875 Enervis, Morr.
 a, griseocincta, Harv.
- Himella**, Grt.
 1876 Fidelis, Grt.
 1877 Furfurata, Grt.
- Perigrapha**, Led.
 1878 Normalis, Grt.
 1879 Muricina, Grt.
 1880 Behrensiana, Grt.
 1881 Plusiiformis, H. E.
 1882 Erythrolita, Grt.
 1883 Præses, Grt.
- Tæniocampa**, Guen.
 1884 Oviduca, Guen.
 1885 Capsella, Grt.
 1886 Confluens, Morr.
 1887 Incerta, Hufn.
 1888 Garmani, Grt.
 1889 Modesta, Morr.
 1890 Alia, Guen.
 1891 Pacifica, Harv.
 1892 Rufula, Grt.
 1893 Carina, Morr.
 1894 Conspita, Grt.
 1895 Modifica, Morr.
 1896 Perbrunnea, Grt.
 1897 Arthrolita, Harv.
 1898 Agrotiformis, Grt.
 1899 Intractata, Morr.
 1900 Rubrica, Grt.
 1901 Pulchella, Harv.
 1902 Vegeta, Morr.
 1903 Revieta, Morr.
 1904 Contrahens, Grt.
 1905 Paviæ, Behrens.
- Crocigrapha**, Grt.
 1906 Normani, Grt.
- Parastichtis**, Hb.
 1907 Gentilis, Grt.
 1908 Perbellis, Grt.
 1909 Minuscula, Morr.
- Metalepsis**, Grt.
 1910 Cornuta, Grt.
- Pseudorthosia**, Grt.
 1911 Variabilis, Grt.
 1912 Pectinata, Grt.
- Choëphora**, G. & R.
 1913 Fungorum, G. & R.
- Pseudoglæa**, Grt.
 1914 Tædata, Grt.
 1915 Blanda, Grt.
 1916 Decepta, Grt.
- Zotheca**, Grt.
 1917 Tranquilla, Grt.
- Homoglæa**, Morr.
 1918 Hircina, Morr.
 1919 Carnosa, Grt.
- Calymnia**, H.
 1920 Ornica, Guen.
 1921 Calami, Harv.
- Plastenis**, Bd.
 1922 Pleonectusa, Grt.
 1923 Intexta, Haw.
 1924 Subvexa, Grt.
- Cirrædia**, Guen.
 1925 Pampina, Guen.
- Cleoceris**, Bd.
 1926 Onychina, Guen.
- Orthosia**, O.
 1927 Purpurea, Grt.
 1928 Crispa, Haw.
 1929 Bicolorago, Guen.
 a, Ferruginoides, Gu.
 Spureata, Walk.
 1930 Decipiens, Grt.
 1931 Ralla, Grt. & Rob.
 1932 Helva, Grt.
 1933 Euroa, Grt. & Rob.
 1934 Inops, Grt.
 1935 Aurantiago, Guen.
 1936 Illiterata, Grt.
 1937 Differta, Morr.
 1938 Americana, Morr.
 1939 Disticha, Grt.
 1940 Posticata, Haw.
 1941 Lutosa, And.
 1942 Conradi, Grt.
 1943 Perpura, Morr.
 1944 Infumata, Grt.

- 1945 Belangeri, Morr.
 1946 Insciens, Walk.
 1947 Chloropha, Morr.
 1948 Immaculata, Morr.
Xanthia, Hb.
 1949 Togata, Esp.
Jodia, Hb.
 1950 Rufago, Hb.
Orrhodia, Hb.
 1951 Viatica, Grt.
 1952 Decliva, Grt.
 1953 Inulta, Grt.
 1954 Olivata, Haw.
 1955 Tremula, Haw.
 1956 Apiata, Grt.
 1957 Sericea, Morr.
 Venustula, Grt.
 1958 Pastillicans, Morr.
 1950 Anchocelioides, G.
Scopelosoma, Curt.
 1960 Pettiti, Grt.
 1961 Ceromatica, Grt.
 1962 Græfiana, Grt.
 1963 Devia, Grt.
 1964 Morrisoni, Grt.
 1965 Sidus, Guen.
 a, Vinulenta, Grt.
 b, Walkeri, Grt.
 1966 Tristigmata, Grt.
Scoliopteryx, Germ.
 1967 Libatrix, L.
Xylina, O.
 1968 Disposita, Morr.
 1969 Hemina, Grt.
 1970 Petulca, Grt.
 1971 Contenta, Grt.
 1972 Ferrealis, Grt.
 1973 Signosa, Wlk.
 1974 Oriunda, Grt.
 1975 Bethunei, G. & R.
 1976 Semiusta, Grt.
 1977 Fagina, Morr.
 1978 Georgii, Grt.
 1979 Antennata, Wlk.
 Cinerea, Riley.
 1980 Unimoda, Lint.
 1981 Laticinerea, Grt.
 1982 Cinerosa, Grt.
 1983 Oregonensis, Harv.
 1984 Carbonaria, Harv.
 1985 Tepida, Grt.
 1986 Bayleyi, Grt.
 1987 Ingrica, H. Sch.
 a, Pexata, Grt.
- 1988 Viridipallens, Grt.
 1989 Querquera, Grt.
 1990 Capax, G. & R.
 1991 Lepida, Lint.
 1992 Lambda, F.
 a, Thaxteri, Grt.
Calocampa, Stph.
 1993 Nupera, Lint.
 1994 Cineritia, Grt.
 1995 Curvimacula, Morr.
 1996 Solodaginis, Hb.
 Germana, Morr.
Litholomia, Grt.
 1997 Napaea, Morr.
Xylomiges, Guen.
 1998 Dolosa, Grt.
 1999 Curialis, Grt.
 2000 Crucialis, Haro.
 2001 Hiemalis, Grt.
 2002 Patalis, Grt.
 2003 Confusa, Hd.
 2004 Mucens, Hb.
 2005 Phytolaccae, S. Ab.
 2006 Tabulata, Grt.
Cleophana, B.
 2007 Eulepis, Grt.
 2008 Antipoda, Strk.
Cucullia, Schrk.
 2009 Convexipennis, G.R.
 2010 Asteroides, Guen.
 2011 Postera, Guen.
 2012 Florea, Guen.
 2013 Intermedia, Speyer.
 2014 Speyeri, Lint.
 2015 Laetifica, Lint.
 2016 Serraticornis, Lint.
 2017 Luna, Morr.
 2018 Solodaginis, Behr.
 2019 Matricariae, Behr.
Adipsophanes, Grt.
 2020 Miscellus, Grt.
Crambodes, Guen.
 2021 Talidiformis, Guen.
Nolophana, Grt.
 2022 Zelleri, Grt.
 2023 Malana, Grt.
 2024 Labecula, Grt.
Anomis, Hb.
 2025 Erosa, Hb.
 2026 Luridula, Guen.
Pteretholix, Grt.
 2027 Bullula, Grt.
Aletia, Hb.
 2028 Xylina, Say.
- ? Argillacea, Hb.
 2029 Hostia, Harv.
Litoprosopus, Grt.
 2030 Futilis, G. & R.
Eurhipia, B.
 2031 Pulcherrima, Grt.
Marasmalus, Grt.
 2032 Ventilator, Grt.
 2033 Histrio, Grt.
Ingura, Guen.
 2034 Abrostoloides, Gue.
 2035 Delineata, Guen.
 2036 Praepilata, Grt.
 2037 Declinata, Grt.
 2038 Occulatrix, Guen.
 2039 Flabella, Grt.
Basilodes, Guen.
 2040 Pepita, Guen.
 2041 Chrysopis, Grt.
Hemiceras, Guen.
 2042 Cadmia, Guen.
Hypsoropha, Hb.
 2043 Hormos, Hb.
 2044 Monilis, F.
Phyprosopus, Grt.
 2045 Callitrichoides, Grt.
Telesilla, H. S.
 2046 Navia, Haro.
 2047 Cinereola, Grt.
Behrensia, Grt.
 2048 Conchiformis, Grt.
Plusiodonta, Guen.
 2049 Compressipalpis, G.
Calpe, Tr.
 2050 Canadensis, Beth.
Plusia, Tr.
 2051 Ovalis, Guen.
 2052 Urentis, Guen.
 2053 Palligera, Grt.
 2054 Purpurigera, Wlk.
 2055 Aereoides, Grt.
 2056 Aerea, Guen.
 2057 Balluca, Geyer.
 2058 Metallica, Grt.
 2059 Contexta, Grt.
 2060 Putnami, Grt.
 2051 Striatella, Grt.
 2062 Thyatiroides, Guen.
 2063 Formosa, Morr.
 2064 Mappa, G. & R.
 2065 Bimaculata, Steph.
 2066 Biloba, Steph.
 2067 Veruca, F.
 2068 Clyans, Grt.

- 2069 Precationis, Guen.
 2070 Laticlavata, Morr.
 2071 Labrosa, Grt.
 2072 Monodon, Grt.
 2073 Gamma, L.
 2074 Pseudogamma, Grt.
 2075 Ou, Guen.
 2076 Fratella, Grt.
 2077 U. aureum, Bd.
 2078 Celsa, Hy. Edw.
 2079 Octo scripta, Sand.
 2080 Viridisignata, Grt.
 2081 Brassicea, Riley.
 2082 Oxygramma, Sp.
 2083 Mortuorum, Guen.
 2084 Epigæa, Grt.
 2085 Ampla, Wlk.
 2086 Diasema, Dalm.
 2087 Pasiphæia, Grt.
 2088 Parilis, Hb.
 2089 Simplex, Guen.
 2090 Alticola, Wlk.
 2091 Sackenii, Grt.
 2092 Hochenwarthi, H.
 2093 Divergens, Hb.
 2094 Echinocystis, Behr.
Stiria, Grt.
 2095 Rugifrons, Grt.
Euros, Hy. Edw.
 2096 Proprius, Hy. Ed.
Aedis, Hb.
 2097 Simulatilis, Grt.
Anarta, Hb.
 2098 Crocea, Hy. Edw.
 2099 Myrtilli, L.
 2100 Cordigera, Thbg.
 2101 Melaleuca, Thbg.
 2102 Kelloggii, Hy. Ed.
 2103 Melanopa, Thbg.
 2104 Quadrolunata, Grt.
 2105 Subfuscula, Grt.
 2106 Schönherri, Zett.
 2107 Richardsoni, Curt.
 2108 Promulsa, Morr.
 2109 Nivaria, Grt.
 2110 Membranacea, Morr.
 2111 Laponica, Thbg.
 2112 Zetterstedtii, Stgr.
Lepipolys, Guen.
 2113 Perscripta, Guen.
Acopa, Harv.
 2114 Carina, Harv.
 2115 Perpallida, Grt.
Plagiomimicus, Grt.
 2116 Pityochromus, Grt.
Stibadium, Grt.
 2117 Spumosum, Grt.
Fala, Grt.
 2118 Ptycophora, Grt.
Autaplaga, Grt.
 2119 Dimidiata, Grt.
Schinia, Hb.
 2120 Trifascia, Hb.
 2121 Rectifascia, Grt.
 2122 Gracilentia, Hb.
 2123 Bifascia, Hb.
 2124 Gulnare, Streck.
Polenta, Morr.
 2125 Tepperi, Morr.
Chloridea, West.
 2126 Rhexiæ, West.
 2127 Subflexa, Guen.
Porrina, Grt.
 2128 Sanguinea, Grt.
Alaria, West.
 2129 Gauræ, West.
Rhodophora, Guen.
 2130 Florida, Guen.
Rhododipsa, Grt.
 2131 Volupia, Fitch.
 2132 Miniana, Grt.
Derrima, Wlk.
 2133 Stellata, Wlk.
 2134 Henrietta, Grt.
Bessula, Grt.
 2135 Luxa, Grt.
Pippona, Harv.
 2136 Bimatrix, Harv.
Tricopis, Grt.
 2137 Aleucis, Harv.
 2138 Chrysellus, Grt.
Euleucyptera, Grt.
 2139 Cumatilis, Grt.
Heliolonche, Grt.
 2140 Modicella, Grt.
Heliophana, Grt.
 2141 Mitis, Grt.
Heliosea, Grt.
 2142 Pictipennis, Grt.
Adonisea, Grt.
 2143 Pulchripennis, Grt.
 a, Languida, H. E.
Lygranthoecia, G. & R.
 2144 Lynx, Guen.
 2145 Bina, Guen.
 2146 Brevis, Grt.
 2147 Atrites, Grt.
 2148 Limbalis, Grt.
 2149 Arcifera, Guen.
 2150 Spraguei, Grt.
 2151 Packardia, Grt.
 2152 Nobilis, Grt.
 2153 Mortua, Grt.
 2154 Jaguarina, Grt.
 2155 Meskeana, Grt.
 2156 Rufimedia, Grt.
 2157 Ultima, Strk.
 2158 Scissa, Grt.
 2159 Regia, Strk.
 2160 Fastidiosa, Strk.
 2161 Siren, Strk.
 2162 Rubiginosa, Strk.
 2163 Imperspicua, Strk.
 2164 Nubila, Strk.
 2165 Inclara, Grt.
 2166 Tuberculum, Hb.
 2167 Roseitincta, Harv.
 2168 Celeris, Grt.
 2169 Saturata, Grt.
 2170 Thoreau, G. & R.
 2171 Balba, Grt.
 2172 Marginata, Gr.
 2173 Timida, Grt.
 2174 Seperata, Grt.
 2175 Acutilinea, Grt.
 2176 Walsinghani, H. E.
 2177 Spectanda, Strk.
 2178 Coercita, Grt.
Melieliptria, Hb.
 2179 Nexilis, Morr.
 2180 Villosa, Grt.
 2181 Elaborata, H. Ed.
 2182 Diminutiva, Grt.
 2183 Præminuta, H. E.
 2184 Persimilis, Grt.
 2185 Sueta, Grt.
 2186 Californiensis, Grt.
 2187 Prorupta, Grt.
 2188 Hoyi, Grt.
 2189 Venusta, Hy. Edw.
 2190 Oregonica, H. Ed.
 2191 Honestia, Grt.
 2192 Vacciniæ, H. Ed.
 2193 Fasciata, Hy. Ed.
 2194 Belladonna, H. E.
Heliothis, Hb.
 2195 Lucens, Morr.
 2196 Spinosæ, Guen.
 2197 Rivosula, Guen.
 2198 Sulmula, Strk.
 2199 Regia, Strk.

- 2200 Crotchii, Hy. Ed.
 2201 Phlogophagus, G. R.
 2202 Luteicinctus, Grt.
 2203 Armiger, Hb.
 2204 Nuchalis, Grt.
 2205 Lupatus, Grt.
 2206 Cupes, Grt.
 2207 Paradoxus, Grt.
Melaporphyria, Grt.
 2208 Immortua, Grt.
Triocnemis, Grt.
 2209 Saporis, Grt.
Aenigma, Streck.
 2210 Mirificum, Streck.
Xanthothrix, Hy. Ed.
 2211 Neumoegeni, H. E.
Oxylus, Grt.
 2212 Citrinellus, G. & R.
Aedophron, Led.
 2213 Snowi, Grt.
Chariclea, Steph.
 2214 Umbra, Hb.
 Exprimens, Wlk.
 2215 Angulata, Grt.
 2216 Illiterata, Grt.
 2217 Stilla, Grt.
 2218 Pernana, Grt.
Axenus, Grt.
 2219 Arvalis, Grt.
 2220 Ochraceus, Hy. Ed.
 2221 Amplus, Hy. Ed.
Annaphila, Grt.
 2222 Diva, Grt.
 2223 Depicta, Grt.
 2224 Decia, Grt.
 2225 Salicis, Hy. Edw.
 2226 Lithosina, Hy. Ed.
 2227 Germana, Hy. Ed.
 2228 Aurantiaca, Hy. Ed.
 2229 Mera, Harv.
 2230 Danistica, Grt.
 2231 Immerens, Harv.
 2232 Domina, Hy. Ed.
 2233 Pustulata, Hy. Ed.
 2234 Superba, Hy. Ed.
 2235 Divinula, Grt.
Trichotarache, Grt.
 2236 Assimilis, Grt.
Acontia, Ochs.
 2237 Meadi, Grt.
 2238 Nundina, Guen.
 2239 Velaris, Grt.
 2240 Tertia, Grt.
 2241 Vanella, Grt.
 2242 Crustaria, Morr.
 2243 Flavipennis, Grt.
 2244 Aprica, Hb.
 a. Biplaga, Guen.
 2245 Abdominalis, Grt.
 2246 Lanceolata, Grt.
 2247 Angustipennis, Grt.
 2248 Sutrix, Grt.
 2249 Tenuicula, Morr.
 2250 Erastrionides, Guen.
 2251 Sedata, Hy. Edw.
 2252 Debilis, Walk.
 2253 Arizonae, Hy. Ed.
 2254 Elegantula, Harv.
 2255 Semiopaca, Grt.
 2256 Binocula, Grt.
 a. Virginalis, Grt.
 2257 Cretata, G. & R.
 2258 Lactipennis, Harv.
 2259 Delecta, Walk.
 Metallica, Grt.
 2260 Terminimaculata, G.
 2261 Obatra, Morr.
 2262 Crustaria, Morr.
Grotella, Harv.
 2263 Septempunctata, H.
 2264 Sexseriata, Grt.
Chamyris, Guen.
 2265 Cerintha, Tr.
Erastria, Ochs.
 2266 Malaca, Grt.
 2267 Mitographa, Grt.
 2268 Albidula, Guen.
 2269 Secta, Grt.
 2270 Concinnimacula, Gu.
 a. Parvimacula, Grt.
 2271 Synochitis, G. & R.
 2272 Musta, G. & R.
 2263 Muscosa, Guen.
 2274 Carneola, Guen.
 Biplaga, Walk.
 2275 Apicosa, Haw.
 Nigritula, Guen.
 2276 Retis, Grt.
 2277 Caduca, Grt.
 2279 Aeria, Grt.
 2280 Dividua, Grt.
 2281 Mariae, Grt.
 Norma, Morr.
 2282 Olivula, Guen.
 2283 Obaurata, Morr.
Gyros, Hy. Edw.
 2284 Muirii, Hy. Edw.
 2285 Versutus, Hy. Edw.
 2286 Limbatus, Hy. Ed.
 2287 Opiparus, Hy. Ed.
Tripudia, Grt.
 2288 Quadrifera, Zell.
 2289 Flavofasciata, Grt.
Thalpocharès, Led.
 2290 Carmelita, Morr.
 2291 Aetheria, Grt.
 2292 Patula, Morr.
 Patruelis, Grt.
 2293 Mundula, Z.
 2294 Orba, Grt.
Lithacodia, Hb.
 2295 Bellicula, Hb.
 2295½ Penita, Morr.
Spragueia, Grt.
 2296 Onagrus, Guen.
 a. Leo, Guen.
 2297 Plumbifimbriata, Grt.
 2298 Dama, Guen.
 2299 Pardalis, Grt.
 2300 Guttata, Grt.
 2301 Funeralis, Grt.
 2302 Tortricina, Zell.
 2303 Apicella, Grt.
 a. Truncatula, Zell.
Fruva, Grt.
 2304 Accepta, Hy. Ed.
 2305 Fasciatella, Grt.
 2306 Obsoleta, Grt.
 2307 Acerba, Hy. Edw.
Xanthoptera, Guen.
 2308 Nigrofimbria, Guen.
 2309 Semiflava, Guen.
Exyra, Grote.
 2310 Semicrocea, Guen.
 2311 Ridingsii, Riley.
 a. Nigrocaput, Morr.
 2312 Fax, Grt.
 2313 Rolandiana, Grt.
Prothymia, Hub.
 2314 Coccineifascia, Grt.
 2315 Rosalba, Grt.
 2316 Orgiæ, Grt.
 a. Subolivacea, Harv.
Galgula, Guen.
 2317 Hepar, Guen.
 2318 Subpartita, Guen.
Lepidomys, Guen.
 2319 Irrenosa, Guen.
Metoponia, Dup.
 2320 Obtusa, Hb.
 2321 Perflava, Harv.

- Drasteria**, Hb.
 2322 *Erechtea*, Hb.
 a, *Agricola*, G. & R.
 b, *Ochrea*, Grt.
 2323 *Erichto*, Guen.
 2324 *Cærulea*, Grt.
 2325 *Convalescens*, Guen.
 2326 *Adversa*, Grt.
- Euclidia**, Hb.
 2327 *Cuspidea*, Guen.
 2328 *Capiticola*, Wlk.
 2329 *Petricola*, Wlk.
- Grammodes**, Guen.
 2330 *Smithii*, Guen.
 2331 *Similis*, Bsdv.
 2332 *Consobrina*, Guen.
- Panula**, Guen.
 2333 *Inconstans*, Guen.
 2334 *Remigipila*, Guen.
- Litocala**, Harv.
 2335 *Sexsignata*, Harv.
 a, *Deserta*, Hy. Ed.
- Synedoida**, Hy. Edw.
 2336 *Biformata*, Hy. Ed.
 2337 *Scrupulosa*, Hy. Ed.
 2338 *Sabulosa*, Hy. Ed.
 2339 *Inepta*, Hy. Ed.
 2340 *Morbosa*, Hy. Ed.
 2341 *Valens*, Hy. Ed.
- Syneda**, Guen.
 2242 *Oculata*, Hy. Edw.
 2343 *Graphica*, Hub.
 2344 *Alleni*, Grt.
 2345 *Divergeus*, Behr.
 2346 *Seposita*, Hy. Ed.
 2347 *Adumbrata*, H. E.
 a, *Saxea*, Hy. Edw.
 2348 *Howlandii*, Grt.
 2349 *Ingeniculata*, Morr.
 2350 *Hudsonica*, G. & R.
 2351 *Socia*, Behr.
 2352 *Ochracea*, Behr.
 2353 *Edwardsii*, Behr.
 2354 *Tejonica*, Behr.
 2355 *Nubicola*, Behr.
 2356 *Maculosa*, Behr.
 2357 *Deducta*, Morr.
 Incandescens, Grt.
 2358 *Sinualis*, Harvey.
 2359 *Jucunda*, Hub.
 2360 *Limbolaris*, Geyer.
 2361 *Pallescens*, G. & R.
 2362 *Nigrescens*, G. & R.
- a*, *Ochreipennis*, Harv.
 2363 *Fasciolaris*, Hub.
 2364 *Hadeniformis*, Behr.
 2365 *Agrotipennis*, Harv.
 2366 *Hastingsii*, Hy. Ed.
 a, *Perpallida*, Hy. Ed.
 2367 *Mirifica*, Hy. Ed.
 2368 *Tetrica*, Hy. Ed.
 2369 *Stigialis*, Grt.
 2370 *Tenella*, Hy. Ed.
 2371 *Faceta*, Hy. Edw.
- Eubolina**, Harv.
 2372 *Impartialis*, Harv.
- Stictoptera**, Guen.
 2373 *Divaricata*, Grt.
- Parthenos**, Hb.
 2374 *Nubilis*, Hb.
- Catocala**, Shrk.
 2375 *Messalina*, Guen.
 2376 *Belfragiana*, Harv.
 2377 *Amica*, Hubn.
 a, *Lineella*, Grt.
 b, *Nerissa*, Hy. Ed.
 2378 *Minuta*, Edw.
 a, *Parvula*, Edw.
 2379 *Timandra*, Hy. Ed.
 2380 *Gracilis*, Edw.
 Similis, Edw.
 2381 *Grynea*, Cram.
 a, *Alabama*, Grt.
 2382 *Præclara*, G. & R.
 2383 *Fratercula*, G. & R.
 a, *Atarah*, Strk.
 b, *Jaquenetta*, Hy. Ed.
 2384 *Olivia*, Hy. Edw.
 2385 *Formula*, G. & R.
 a, *Isabella*, Hy. Ed.
 b, *Ahola*, Streck.
 2386 *Amasia*, Westw.
 2387 *Cordelia*, Hy. Edw.
 2388 *Mycronympha*, Gu.
 2389 *Connubialis*, Guen.
 2390 *Polygama*, Guen.
 a, *Pretiosa*, Lint.
 b, *Cratægi*, Saun.
 c, *Mira*, Grt.
 2391 *Gisela*, Meyer.
 2392 *Nuptialis*, Walk.
 a, *Myrrha*, Streck.
 b, *Abreviatella*, Grt.
 c, *Whitneyi*, Dodge.
 2393 *Frederici*, Grt.
 2394 *Illecta*, Walk.
 2395 *Clintonii*, Grt.
- 2396 *Amestris*, Streck.
 a, *Wescottii*, Grt.
 2397 *Badia*, Grt. & Rob.
 2398 *Cœlebs*, Grt.
 2399 *Antinympha*, Hub.
 2400 *Serena*, Edw.
 2401 *Consors*, Guen.
 2402 *Muliercula*, Guen.
 2403 *Nebulosa*, Edw.
 2404 *Habilis*, Grt.
 a, *Basilis*, Grt.
 2405 *Innubens*, Guen.
 a, *Hinda*, French.
 b, *Scintillans*, G. & R.
 2406 *Paleogama*, Guen.
 a, *Phalanga*, Grt.
 2407 *Piatrix*, Grt.
 2408 *Neogama*, A. & S.
 2409 *Subnata*, Grt.
 2410 *Delilah*, Streck.
 Adoptiva, Grt.
 2411 *Calphurnia*, H. E.
 2412 *Cerogama*, Guen.
 a, *Bunkerii*, Grt.
 2413 *Zoe*, Behr.
 2414 *Ilia*, Cram.
 a, *Uxor*, Guen.
 b, *Snowiana*, Grt.
 2415 *Aholibah*, Streck.
 2416 *Parta*, Guen.
 a, *Perplexa*, Streck.
 2417 *Marmorata*, Edw.
 2418 *Faustina*, Streck.
 a, *Perdita*, Hy. Edw.
 b, *Zillah*, Streck.
 2419 *Irene*, Behr.
 a, *Virgilia*, Hy. Ed.
 b, *Volumnia*, Hy. Ed.
 c, *Valeria*, Hy. Edw.
 2420 *Augusta*, Hy. Ed.
 2421 *Unijuga*, Walk.
 a, *Junctura*, Walk.
 b, *Meskei*, Grt.
 2422 *Rosalinda*, Hy. Ed.
 2423 *Nupta*, Linn.
 2424 *Californica*, Ed.
 a, *Cleopatra*, Hy. Ed.
 2425 *Briseis*, Edw.
 a, *Semirelecta*, Grt.
 b, *Grotiana*, Bailey.
 2426 *Beaniana*, Grt.
 2427 *Pura*, Hulst.
 2428 *Verrilliana*, Grt.
 a, *Ophelia*, Hy. Ed.

- 2429 Violenta, Hy. Ed.
 2430 Ultronia, Hubn.
 a, Adriana, Hy. Ed.
 b, Celia, Hy. Edw.
 c, Mopsa, Hy. Edw.
 2431 Herodias, Streck.
 2432 Coccinata, Grt.
 a, Circe, Streck.
 b, Sinuosa, Grt.
 2433 Hermia, Hy. Edw.
 2434 Mariana, Hy. Edw.
 a, Francisca, Hy. Ed.
 2435 Jessica, Hy. Edw.
 2436 Stretchii, Behr.
 2437 Portia, Hy. Edw.
 2438 Hippolyta, Hy. Ed.
 2439 Amatrix, Hubn.
 a, Nurus, Walk.
 2440 Cara, Guen.
 a, Carissima, Hulst.
 b, Silvia, Hy. Edw.
 2441 Concumbens, Walk.
 a, Diana, Hy. Edw.
 2442 Luciana, Hy. Edw.
 a, Somnus, Dodge.
 2443 Aspasia, Streck.
 2444 Walshii, Edw.
 2445 Relicta, Walk.
 a, Phrynica, Hy. Ed.
 b, Bianca, Hy. Ed.
 2446 Tristis, Edw.
 2447 Judith, Streck.
 2448 Miranda, Hy. Ed.
 2449 Epione, Dru.
 2450 Robinsonii, Grt.
 2451 Retecta, Grt.
 2452 Flebilis, Grt.
 2453 Vidua, Ab. & Sm.
 2454 Viduata, Guen.
 2455 Dejecta, Streck.
 2456 Ulalume, Streck.
 2457 Lacrymosa, Guen.
 a, Paulina, Hy. Ed.
 b, Evelina, French.
 c, Zelica, French.
 d, Emilia, Hy. Ed.
 2458 Agrippina, Streck.
 a, Sub-viridis, Harv.
 2459 Sappho, Streck.
 2460 Obscura, Streck.
 2461 Insolabilis, Grt.
 a, Residua, Grt.
 b, Angusi, Grt.
- Allotria**, Hb.
 2462 Elonympha, Hb.
Ophideres, Bd.
 2463 Materna, L.
Toxocampa, Guen.
 2464 Victoria, Grt.
Spiloloma, Grt.
 2465 Lunilinea, Grt.
Harveya, Grt.
 2466 Auripennis, Grt.
Panapoda, Guen.
 2467 Rufimargo, Hb.
 2468 Roseicosta, Guen.
 2469 Carneicosta, Guen.
Pleonectyptera, Grt.
 2470 Pyralis, Hb.
 2471 Geometralis, Grt.
 2472 Phalaenalis, Grt.
 2473 Immaculalis, Harv.
Remigia, Guen.
 2474 Hexastylus, Haw.
 2475 Latipes, Guen.
 a, Texana, Morr.
 b, Indentata, Harv.
Phoberia, Hb.
 2476 Atomaris, Hb.
Homophobéria, Morr.
 2477 Cristata, Morr.
Celiptera, Guen.
 2478 Frustulum, Guen.
Pseudolimacodes, Grt.
 2479 Niveicostatus, Grt.
 2480 Glans, Grt.
Phurys, Guen.
 2481 Vinculum, Guen.
 2482 Lima, Guen.
Parallelia, Hb.
 2483 Bistriaris, Hb.
Agnomonia, Hb.
 2484 Anilis, Dru.
Poaphila, Guen.
 2485 Quadrifilaris, Guen.
 2486 Obsoleta, Grt.
 2487 Sylvarum, Guen.
 2488 Deleta, Guen.
 2489 Erasa, Guen.
 2490 Herbicola, Bd.
 2491 Contempta, Bd.
 2492 Flavistriaria, Hb.
 2493 Perplexa, Bd.
 2494 Bistrigata, Guen.
 2495 Herbarum, Guen.
 2496 Placata, Grt.
 2497 Irrorata, Grt.
- Trama**, Haw.
 2498 Arrosa, Haw.
 2499 Hinna, Geyer.
Eutoremma, Grt.
 2500 Tenuis, Grt.
Isogona, Guen.
 2501 Natatrix, Guen.
Anticarsia, Hb.
 2502 Gemmatilis, Hb.
Antiblemma, Hb.
 2503 Canalis, Grt.
Agassizia, Behr.
 2504 Urbicola, Behr.
Capnodes, Guen.
 2505 Californica, Behr.
Erebus, Latr.
 2506 Ódora, L.
 2507 Zenobia, Cr.
Zale, Hb.
 2508 Horrida, Hb.
Selenis,
 2509 Monotropa, Grt.
Homoptera, Bsd.
 2510 Lunifera, Hb.
 2511 Edusa, Dru.
 2512 Saundersii, Beth.
 2513 Nigricans, Beth.
 2514 Lunata, Dru.
 2515 Minerea, Guen.
 2516 Calycanthata, S. A.
 2517 Albofasciata, Beth.
 2518 Edusina, Harv.
 2519 Atricincta, Harv.
 2520 Rubi, Hy. Edw.
 2521 Galbanata, Morr.
 2522 Uniformis, Morr.
 2523 Cinerea, Morr.
 2524 Penna, Morr.
 2525 Unilineata, Grt.
 2526 Stylobata, Harv.
 2527 Mima, Harv.
 2528 Obliqua, Guen.
 2529 Duplicata, Beth.
 2530 Benesignata, Harv.
 2531 Woodii, Grt.
Ypsia, Guen.
 2532 Aeruginosa, Guen.
 2533 Umbripennis, Grt.
 2534 Undularis, Dru.
 2535 Coracias, Guen.
 2536 Cornix, Guen.
Matigramma, Grt.
 2537 Pulverilinea, Grt.
 2538 Læna, Harv.

- Argillophora**, Grt.
2539 Furcilla, Grt.
- Spargaloma**, Grt.
2540 Sexpunctata, Grt.
2541 Umbrifascia, Grt.
- Hexeris**, Grt.
2542 Enhydria, Grt.
- Selectra**, Hb.
2543 Erycata, Grt.
- Pangrapta**, Hb.
2544 Decoralis, Hb.
- Phalænostola**, Grt.
2545 Larentioides, Grt.
2546 Citima, Grt.
- Hompnyralis**, Grt.
2547 Tactus, Grt.
2548 Tantillans, Grt.
2549 Discalis, Grt.
2550 Repentis, Grt.
- DELTOIDES.**
- Pseudoglossa**, Grt.
2551 Lubricalis, Geyer.
2552 Scobialis, Grt.
- Helia**, Guen.
2553 Aemula, Hb.
2554 Americalis, Guen.
- Megachyta**, Grt.
2555 Lituralis, Hb.
2556 Subflavidalis, Grt.
2557 Deceptricalis, Zell.
2558 Gypsalis, Grt.
- Litognatha**, Grt.
2559 Nubilifascia, Grt.
2560 Litophora, Grt.
- Chytolita**, Grt.
2561 Morbidalis, Guen.
2562 Petrealis, Grt.
- Pityolita**, Grt.
2563 Pedipilalis, Guen.
- Zanclognatha**, Led.
2564 Lævigata, Grt.
2565 Ochreipennis, Grt.
2566 Cruralis, Guen.
2567 Marcidilinea, Grt.
2568 Obscuripennis, Grt.
2569 Mimialis, Grt.
- Cleptomita**, Grt.
2570 Atrilineella, Grt.
- Dercetis**, Grt.
2571 Vitrea, Grt.
2572 Pygmæa, Grt.
- Pallachira**, Grt.
2573 Bivittata, Grt.
- Coptocnemis**, Zell.
2574 Floccalis, Zell.
- Philometra**, Grt.
2575 Longilabris, Grt.
2576 Serraticornis, Grt.
- Salia**, Hb.
2577 Interpuncta, Grt.
- Rivula**, Guen.
2578 Propinqualis, Guen.
- Palthis**, Hb.
2579 Angulalis, Hb.
2580 Asopialis, Guen.
- Phalænoptera**, Grt.
2581 Rurigena, Grt.
- Pseudorgyia**, Harv.
2582 Versuta, Harv.
- Sisyrhyna**, Grt.
2583 Pupillaris, Grt.
- Renia**, Guen.
2584 Discoloralis, Guen.
2585 Brevirostralis, Grt.
2586 Alutalis, Grt.
2587 Restrictalis, Grt.
2588 Centralis, Grt.
2589 Belfragei, Grt.
- Tetanolita**, Grt.
2590 Lixalis, Grt.
- 2591 Plenilinealis, Grt.
- Bleptina**, Guen.
2592 Caradrinalis, Guen.
2593 Inferior, Grt.
- Hypenula**, Grt.
2594 Opacalis, Grt.
- Lomanaltes**, Grt.
2595 Lætulus, Grt.
- Bomolocha**, Hb.
2596 Baltimoralis, Guen.
2597 Scutellaris, Grt.
2598 Manalis, Wlk.
2599 Bijugalis, Wlk.
2600 Abalinealis, Wlk.
2601 Annulalis, Grt.
2602 Achatinalis, Zell.
2603 Trituberalis, Zell.
2604 Citata, Grt.
2605 Torenta, Grt.
2606 Sordidula, Grt.
2607 Profecta, Grt.
2608 Deceptalis, Wlk.
2609 Perangulalis, Harv.
2610 Vellifera, Grt.
2611 Lentiginosa, Grt.
- Hypena**, F.
2612 Humuli, Harr.
2613 Olivacea, Grt.
2614 Californica, Behr.
2615 Albopunctata, Tepp.
- Plathypena**, Grt.
2616 Scabra, F.
- Tortricodes**, Guen.
2617 Bifidalis, Grt.
Het. indivisalis, Grt.
- Brephos**, Hb.
2618 Infans, Möschl.
2619 Californicum, Bsd.
2620 Melanis, Bd.
- Leucobrephos**, Grt.
2621 Brephoides, Wlk.

G E O M E T R I D Æ.

- Eupithecia**, Curt.
2700 Albicapitata, Pack.
2701 Absynthiata, L.
2702 Zygadeniata, Pack.
2703 Miserulata, Pack.
a, Interropto-fasciata, Pack.
- 2704 Rotundopunctata, P.
2705 Longipalpata, Pack.
2706 Luteata, Pack.
2707 Strattonata, Pack.
2708 Behrensata, Pack.
2709 Ravocostaliata, P.
2710 Nevadata, Pack.
- 2711 Subapicata, Guen.
2712 Cretaceata, Pack.
2713 Anticaria, Wlk.
2714 Implicata, Wlk.
2715 Gelidata, Möschl.
2716 Tenuata, Hulst.
2717 Explanata, Wlk.

Eubolia, Bd.

- 2718 Perliniata, Pack.
2719 Duodecimlineata, P.
2720 Cambricaria, Curt.
2721 Dilutata, Bork.

Cidaria, Tr.

- 2722 Caesiata, Bork.
2723 Magnoliata, Guen.
2724 Implicata, Guen.
2725 Polata, Dup.
2726 Sabinaria, Curt.
2727 Phocataria, Möschl.
2728 Fluviata, Hb.
2729 Multiferata, Wlk.
2730 Abruptata, Wlk.
2731 Cretacea, Pack.
2732 Contractata, Pack.
2733 Truncata, Hufn.
 a, Bruneata, Pack.
2734 Hersiliata, Guen.
2735 Mancipata, Guen.
2736 Erythrata, Hulst.
2737 Cunigerata, Wlk.
2738 Prunata, Linn.
 a, Destinata, Möschl.
 b, Lugubrata, Möschl.
 c, Nubilata, Pack.
2739 Leoninata, Pack.
2740 Albolineata, Pack.
2741 Atrocolorata, G.&R.
2742 Testata, L.
2743 Populata, L.
2744 Packardata, Lint.
2745 Diversilineata, Hb.
2746 Flavata, Pack.
2747 Suspectata, Möschl.
2748 Cervinifasciata, Wlk.
2749 Ziczacata, Wlk.
2750 Remotata, Wlk.
2751 Propulsata, Wlk.
2752 Rigidata, Wlk.
2753 Explagiata, Wlk.
2754 Fumidotata, Wlk.
2755 Longipennata, Wlk.
2756 Luteolata, Hulst.
2757 Nocticolata, Hulst.
2758 Semiatrata, Hulst.
2759 Opacaria, Hulst.
2760 Mulleolata, Hulst.
2761 Trifasciata, Bork.
2762 Californiata, Pack.
2763 Sorditata, Fabr.
2764 Quinquefasciata, P.
2765 Speciosata, Pack.

- 2766 Munitaria, Hb.
 a, Labradoriensata, P.
 b, Striata, Pack.
 c, Algidata, Möschl.
2767 Lignicolorata, P.
2768 Abrasaria, H. S.
2769 Guenéceata, Pack.
2770 Carneata, Pack.
2771 Rubro-suffusata, P.
2772 Lacteata, Pack.
2773 Designata, Hufn.
2774 Ferrugaria, Clck.
 a, Unidentaria, Hw.
2775 Convallaria, Guen.
2776 Defensaria, Guen.
2777 Plebeculata, Guen.
2778 Inclinataria, Guen.
2779 Brunneicillata, P.
2780 Ruficillata, Guen.
2781 Basaliata, Wlk.
2782 Parinotata, Zell.
2783 Fluctuata, L.
2784 Intermediata, Guen.
2785 Lacustrata, Guen.
2786 Unangulata, Harr.
2787 Lugubrata, D. & S.
2788 Tristata, L.
2789 Hastata, L.
2790 Condensata, Wlk.
2791 Gratulata, Wlk.
2792 Propriaria, Wlk.
2793 Vasiliata, Guen.
2794 Latiruptata, Wlk.
2795 Intestinata, Guen.

Eucosmia, Steph.

- 2796 Undulata, Linn.

Scotosia, Steph.

- 2797 Albosignata, Wlk.
2798 Californiata, Pack.
2799 Meadiata, Pack.
2800 Multivagata, Hulst.

Triphosa, Steph.

- 2801 Dubitata, Linn.

Lobophora, Curt.

- 2802 Inequaliata, Thun.
2803 Montanata, Pack.
2804 Viridata, Pack.
2805 Vernata, Pack.
2806 Anguilineata, Grt.
2807 Geminata, Pack.
2808 Fuscifasciata, Wlk.
2809 Nivigerata, Wlk.
2810 Incommodata, Wlk.

Anaitis, Dup.

- 2811 Paludata, Thun.

Odezia, Bd.

- 2812 Albovittata, Guen.
2813 Californiata, Pack.

Heliomata, Grt.

- 2814 Infulata, Grt.
2815 Elaborata, Grt.
1816 Cycladata, Grt.

Heterophelps, H. S.

- 1817 Harveiata, Pack.
1818 Triguttata, H. S.

Lithostege, Hb.

- 2819 Triseriata, Pack.
2820 Rotundata, Pack.
2820½ Virginata, Graef.

Chimatobia, Steph.

- 2821 Boreata, Hb.

Gorytodes, Guen.

- 2822 Uncanaria, Guen.
2823 Personaria, H. Ed.
2824 Trilineararia, Pack.
2825 Dulcearia, Grt.

Euaspilates, Pack.

- 2826 Spinataria, Pack.

Aspilates, Tr.

- 2827 Quadrifasciaria, P.
2828 Pervaria, Pack.
2829 Coloraria, Fabr.

a, Sphaeromacaria, H.

- 2830 Dissimilaria, Hubn.
2831 Lintneraria, Pack.
2832 Gausaparia, Grt.
2833 Viridirufaria, Neum.
2834 Atropunctaria, Wlk.
2835 Abbreviata, Wlk.
2836 Donataria, Wlk.
2837 Canosaria, Wlk.
2838 Strigularia, Wlk.
2839 Olenusaria, Wlk.
2840 Bicoloraria, Pack.
2841 Profugaria, H. S.
2842 Meskaria, Pack.

Meskea, Grt.

- 2843 Dyspteraria, Grt.

Tornos, Morr.

- 2844 Rubiginosaria, Morr.
2845 Infumataria, Grt.
2846 Approximaria, P.

Zerene, Tr.

- 2847 Catenaria, Cram.
2848 Elegantaria, H. Ed.

Haematopis, Hb.

- 2849 Grataria, Fabr.

- Lythria**, Hb.
 2850 Rilevaria, Pack.
 2851 Snoviaria, Pack.
Loxofidonia, Pack.
 2852 Acidaliata, Pack.
Enfidonia, Pack.
 2853 Notataria, Wlk.
Fidonia, Tr.
 2854 Fimetaria, G. & R.
 2855 Truncataria, Wlk.
Ematurga, Led.
 2856 Faxoniata, Min.
Dasyfidonia, Pack.
 2857 Avuncularia, Guen.
Orthofidonia, Pack.
 2858 Exornata, Wlk.
Caripeta, Wlk.
 2859 Divisaria, Wlk.
 2860 Angustioraria, Wlk.
 2861 Latiorata, Wlk.
Selidosema, Hubn.
 2862 Juturnaria, Guen.
Lozogamma, Steph.
 2863 Disconventa, Wlk.
 2864 Detersata, Guen.
 2665 Atropunctata, Pack.
 2866 Defluata, Wlk.
 2867 Nigrosariata, Pack.
 2868 Extremaria, Wlk.
 2869 Subaequaria, Wlk.
 2870 Bifilata, Hulst.
Thamnonoma, Led.
 2871 Ribearia, Fitch.
 2872 Tripunctaria, Pack.
 2873 Marcescaria, Guen.
 2874 Guenécaria, Pack.
 2875 Quadrilinearia, P.
 2876 Wauaria, Linn.
 2877 Subcessaria, Wlk.
 2878 Sulphuraria, Pack.
 2879 Flavicularia, Pack.
 2880 Brunnearia, Thb.
 2881 Argillacearia, Pack.
 2882 Pervolata, Hulst.
Marmopteryx, Pack.
 2883 Strigularia, Minot.
 2884 Formosata, Streck.
 2885 Dryadata, Hulst.
 2886 Marmorata, Pack.
 2887 Tessellata, Pack.
Phasiane, Dup.
 2888 Atrofasciata, Pack.
 2889 Curvata, Grt.
 2890 Orillata, Wlk.
 2891 Nubiculata, Pack.
 2892 Snoviata, Pack.
 2893 Colata, Grt.
 2894 Meadiata, Pack.
 2895 Mellistrigata, Grt.
 2896 Trifasciata, Pack.
 2897 Sinuata, Pack.
 2898 Subminiata, Pack.
 2899 Irrorata, Pack.
 2900 Neptata, Guen.
 2901 Hypæthrata, Grt.
 2902 Haliata, Guen.
 2903 Muscariata, Guen.
 2904 Gnophosaria, Guen.
 2905 Monicaria, Guen.
 2906 Unicalcararia, Guen.
 2907 Sabularia, Guen.
 2908 Expressaria, Wlk.
 2909 Povelata, Wlk.
 2910 Hebetata, Hulst.
 2911 Eremitata, Guen.
Macaria, Curt.
 2912 S-signata, Pack.
 2913 Californiata, Pack.
 2914 Dislocaria, Pack.
 2915 Ocellinata, Guen.
 2916 Punctolineata, Pack.
 2917 Granitata, Guen.
 2918 Multilineata, Pack.
 2919 Respersata, Hulst.
 2920 Grassata, Hulst.
 2921 Vellivolata, Hulst.
 2922 Enotata, Guen.
 2923 Bisignata, Wlk.
 2924 Minorata, Pack.
 2925 Præatomata, Haw.
 2926 Distribuaria, Hubn.
 2927 Bicolorata, F.
 2928 Contemptata, Guen.
 2929 Aequiferaria, Wlk.
 2930 Transitaria, Wlk.
 2931 Inextricata, Wlk.
 2932 Tractata, Wlk.
 2933 Latiferrugata, Wlk.
 2934 Spilosaria, Wlk.
 2935 Proxanthata, Wlk.
 2936 Brunnearia, Pack.
Bapta, Steph.
 2937 Vestaliata, Guen.
 2938 Semiclarata, Wlk.
 a, Albata, Guen.
 2939 Hexaspilata, Wlk.
Eudeilinia, Pack.
 2940 Herminiata, Guen.
Cabera, Tr.
 2941 Glomeraria, Grt.
 2942 Variolaria, Guen.
 2943 Septemfluaria, Grt.
 2944 Erythemaria, Guen.
 2945 Pacificaria, Pack.
Gueneria, Pack.
 2946 Basiata, Wlk.
Stegania, Dup.
 2947 Pustularia, Guen.
 2948 Quadrinotata, Wlk.
Gonacidalia, Pack.
 2949 Furciferata, Pack.
Calledapteryx, Grt.
 2950 Dryopterata, Grt.
Callizzia, Pack.
 2951 Amorata, Pack.
Timandra, Dup.
 2952 Amaturaria, Wlk.
Acidalia, Tr.
 2953 Sericeata, Pack.
 2954 Floridata, Pack.
 2955 Gemmata, Pack.
 2956 Occidentata, Pack.
 2957 Ferrugata, Pack.
 2958 Gueneata, Pack.
 2959 Albogilvaria, Morr.
 2960 Brunneifasciata, P.
 2961 Lucata, Guen.
 2962 Ossulata, Hubn.
 2963 Granitaria, Pack.
 2964 Perirrorata, Pack.
 2965 Longipennata, P.
 2966 Peralbata, Pack.
 2967 Punctofimbriata, P.
 2968 Productata, Pack.
 2969 Insularia, Guen.
 2970 Pannaria, Guen.
 2971 Albocostaliata, P.
 2972 Rotundopennata, P.
 2973 Nivosata, Guen.
 2974 Minutularia, Hulst.
 2975 Lacteolata, Lint.
 2976 Quæsitata, Hulst.
 2977 Rubromarginata, P.
 2978 Inductata, Guen.
 2979 Californiata, Pack.
 2980 Sentinaria, Hubn.
 2981 Rubrolineata, Pack.
 2982 Subalbaria, Pack.
 2983 Quadrilineata, P.
 2984 Cacuminata, Morr.
 2985 Eucleata, Guen.
 2986 Quinquelinearia, P.

- 2987 Ordinata, Wlk.
 2988 Magnetaria, Guen.
 2989 Sideraria, Guen.
 2990 Balistaria, Guen.
 2991 Demisaria, Hb.
 2992 Placidaria, Guen.
 2993 Sublataria, Guen.
 2994 Temnaria, Guen.
 2995 Myrmidonata, Guen.
 2996 Purata, Guen.
 2997 Tacturata, Wlk.
 2998 Impauperata, Wlk.
 2999 Restrictata, Wlk.
 3000 Compensata, Wlk.
 3001 Timandrata, Wlk.
 3002 Rufilinearia, Wlk.
 3003 Ostentaria, Wlk.
 3004 Magniferaria, Wlk.
 3005 Basipunctaria, Wlk.
 3006 Retractaria, Wlk.
 3007 Reconditaria, Wlk.
 3008 Obfusaria, Wlk.
 3009 Violacearia, Wlk.
 3010 Mensurata, Wlk.
 3011 Continuaria, Wlk.
 3012 Consecutaria, Wlk.
 3013 Congruaria, Wlk.
 3014 Sobriaria, Wlk.
 3015 Favilliferaria, Wlk.
 3016 Repletaria, Wlk.
 3017 Albiferaria, Wlk.
 3018 Fidoniaria, Wlk.
 3019 Ferruminaria, Zell.
 3020 Hepaticaria, Guen.
Zonosoma, Led.
 3021 Pendulinearia, Gu.
 3022 Myrtaria, Guen.
 3023 Culicaria, Guen.
 3024 Lumenaria, Hb.
 3025 Serrulata, Pack.
Dyspteris, Hb.
 3026 Abortivaria, H. S.
Nemoria, Hb.
 3027 Zelleraria, Pack.
 3028 Chloroleucaria, Guen.
 3029 Subcroceata, Wlk.
 3030 Gratata, Wlk.
 3031 Pistaciata, Guen.
 3032 Fasciolaria, Guen.
 3033 Indiscriminata, Wlk.
 3034 Densaria, Wlk.
 3035 Unitaria, Pack.
 3036 Nevadaria, Pack.
 3037 Bistriaria, Pack.
 3038 Perviridaria, Pack.
Synchlora, Guen.
 3039 Tricoloraria, Pack.
 3040 Excurvaria, Pack.
 3041 Rubivoraria, Riley.
 3042 Rubifrontaria, Pack.
 3043 Liquoraria, Guen.
Racheospila, Guen.
 3044 Lixaria, Guen.
 3045 Cupedinaria, Grt.
Aplodes, Guen.
 3046 Rubrifrontaria, Pack.
 3047 Viridicaria, Hulst.
 3048 Brunnearia, Pack.
 3049 Mimosaria, Guen.
 3050 Junctolinearia, Græf.
 3051 Rubromarginaria, P.
 3052 Rubrolinearia, Pack.
 3053 Latitaria, Pack.
 3054 Approximaria, Pack.
 3055 Glaucaria, Pack.
 3056 Undinaria, Streck.
 3057 Pistaciaria, Pack.
Geometra, L.
 3058 Iridaria, Guen.
 3059 Rectaria, Grt.
 3060 Inclusaria, Wlk.
 3061 Mimicata, Wlk.
 3062 Euchloraria, Abb.
 3063 Deprivata, Wlk.
 3064 Superata, Wlk.
Anisopteryx, Steph.
 3065 Autumnata, Pack.
 3066 Vernata, Peck.
Phigalia, Dup.
 3067 Strigataria, Minot.
 3068 Cinctaria, French.
Hibernia, Latr.
 3069 Tiliaria, Harr.
Amphidasys, Tr.
 3070 Quernaria, Sm. Ab.
 3071 Cupidaria, Grt.
 3072 Cognataria, Guen.
Biston, Leach.
 3073 Ursaria, Wlk.
 3074 Virginaria, Grt.
Paraphia, Guen.
 3075 Unipunctaria, Haw.
 3076 Subatomaria, Guen.
 3077 Deplanaria, Guen.
Tephrosia, Bd.
 3078 Cognataria, Hb.
 3079 Californaria, Pack.
 3080 Falcataria, Pack.
 3080½ Anticaria, Wlk.
 3081 Cribrataria, Guen.
 3082 Canadaria, Guen.
Boarmia, Tr.
 3083 Crepuscularia, Tr.
 3084 Psilogrammaria, Z.
 3085 Plumosaria, Pack.
 3086 Quinquelinearia, P.
 3087 Pampinaria, Guen.
 3088 Humaria, Guen.
 3089 Larvaria, Guen.
 3090 Polygrammaria, Pk.
 3091 Umbrosaria, Hb.
 3092 Pulmonaria, Grt.
 3093 Californaria, Pack.
 3094 Titearia, Cram.
 3095 Sublunaria, Guen.
 3096 Divisaria, Wlk.
Bronchelia, Guen.
 3097 Hortaria, Fab.
 3098 Gravilinearia, And.
Gnophos, Tr.
 3099 Haydenata, Pack.
Hemerophila, Steph.
 3100 Latifasciaria, Pack.
 3101 Unitaria, H. S.
Stenotrachelis, Guen.
 3102 Approximaria, Hb.
 3103 Permagnaria, Pack.
Cleora, Curt.
 3104 Pulchraria, Minot.
 3105 Umbrosaria, Pack.
 3106 Nigrovenaria, Pack.
 3107 Clivinaria, Guen.
 3108 Porcelaria, Abb.
 3109 Sperataria, Wlk.
 3110 Filaria, Wlk.
 3111 Tinctaria, Wlk.
 3112 Limitaria, Wlk.
 3113 Divisaria, Wlk.
 3114 Ejectaria, Wlk.
 3115 Phigaliaria, Guen.
Eurymene, Dup.
 3116 Nyssaria, Abb.
 3117 Aesionaria, Wlk.
 3118 Floscularia, Grt.
 3119 Phlogosaria, Guen.
 3120 Fervidaria, H. S.
 3121 Keutzingaria, Grt.
 3122 Alcoolaria, Guen.
 3123 Serinaria, Pack.
 3124 Excelsaria, Streck.
Nematocampa, Guen.
 3125 Filamentaria, Guen.

- Caulostoma**, Led.
 3126 Occiduaria, Pack.
Angerona, Dup.
 3127 Crocataria, F.
Rumia, Dup.
 3128 Sulphuraria, Pack.
 3129 Baltearia, Hulst.
Heterolocha, Led.
 3130 Edwardsata, Pack.
Sicya, Guen.
 3131 Macularia, Harr.
Antepione, Pack.
 3132 Depontanata, Grt.
 3133 Sulphurata, Pack.
Epione, Dup.
 3134 Mollicularia, Zell.
Numeria, Dup.
 3135 Pulveraria, Linn.
 3136 Fritillaria, Guén.
Metrocampa, Latr.
 3137 Perlaria, Guén.
Ellopia, Tr.
 3138 Fervidaria, Hb.
 3139 Endropiaria, G.&R.
 3140 Seminudaria, Wlk.
 3141 Pultaria, Guén.
 3142 Placearia, Guén.
Epirranthus, Hb.
 3143 Obfirmaria, Hb.
Endropia, Guén.
 3144 Pilosaria, Pack.
 3145 Apiciaria, Pack.
 3146 Duaria, Guen.
 3147 Hypochraria, H. S.
- 3148 Marginata, Minot.
 3149 Vinulentaria, G.&R.
 3150 Textrinaria, G.&R.
 3151 Madusaria, Wlk.
 3152 Amoenaria, Guén.
 3153 Armataria, H. Sch.
 3154 Bilineararia, Pack.
 3155 Pectinaria, Schif.
 3156 Effectaria, Wlk.
 3157 Obtusaria, Hubn.
 3158 Serrataria, Drury.
 3159 Tiviararia, Wlk.
 3160 Adustaria, Wlk.
 3161 Incisaria, Wlk.
 3162 Helveolaria, Hulst.
- Azelina**, Guén.
 3163 Hübnerata, Guén.
 3164 Morrisonaria, H. E.
 3165 Behrensata, Pack.
 3166 Peplaria, Hb.
 3167 Zallissaria, Wlk.
 3168 Fædaria, Wlk.
 3169 Stygiaria, Wlk.
- Selenia**, Hb.
 3170 Alciphæaria, Wlk.
 3171 Kentaria, G. & R.
- Eugonia**, Hb.
 3172 Subsignaria, Hubn.
 3173 Alniaria, Linn.
 3174 Concisaria, Wlk.
 3175 Lutaria, Wlk.
- Caberodes**, Guén.
 3176 Cervinaria, Pack.
 3177 Cayennaria, Guén.
- 3178 Confusaria, Hubn.
 Metrocamparia, G.
 3179 Majoraria, Guén.
 3180 Interlinearia, Guén.
 3181 Varadaria, Wlk.
- Drepanodes**, Guén.
 3182 Varia, G. & R.
 3183 Puberaria, G. & R.
 3184 Olyzonaria, Wlk.
- Metanema**, Guén.
 3185 Carnaria, Pack.
 3186 Inatomaria, Guén.
 3187 Quercivoraria, Ab.
 3188 Forficaria, Guén.
 3189 Aeliaria, Wlk.
- Tetracis**, Guén.
 3190 Lorata, Grt.
 3191 Crocallata, Guén.
 3192 Trianguliferata, P.
 3193 Coloradaria, Grt.
 3194 Paralleliaria, Pack.
 3195 Aurantiacaria, Pack.
 3196 Cervinaria, Pack.
 3197 Grotearia, Pack.
 3198 Truxaliata, Guén.
 3199 Aegrotata, Guén.
- Chaerodes**, Guén.
 3200 Falcata, Pack.
 3201 Nubilata, Pack.
 3202 Furciferata, Pack.
 3203 Transversata, Drury.
 3204 Clematata, Ab.Sm.

110	111	112	113	114	115	116	117	118	119	120	121	122	123	124	125	126	127	128	129	130	131	132	133	134	135	136	137	138	139	140	141	142	143	144	145	146	147	148	149	150	151	152	153	154	155	156	157	158	159	160	161	162	163	164	165	166	167	168	169	170	171	172	173	174	175	176	177	178	179	180	181	182	183	184	185	186	187	188	189	190	191	192	193	194	195	196	197	198	199	200
-----	-----	-----	-----	-----	-----	-----	-----	-----	-----	-----	-----	-----	-----	-----	-----	-----	-----	-----	-----	-----	-----	-----	-----	-----	-----	-----	-----	-----	-----	-----	-----	-----	-----	-----	-----	-----	-----	-----	-----	-----	-----	-----	-----	-----	-----	-----	-----	-----	-----	-----	-----	-----	-----	-----	-----	-----	-----	-----	-----	-----	-----	-----	-----	-----	-----	-----	-----	-----	-----	-----	-----	-----	-----	-----	-----	-----	-----	-----	-----	-----	-----	-----	-----	-----	-----	-----	-----	-----	-----	-----

INDEX TO GENERA.

The reference is to the page : synonyms in *Italics* followed by the correct name in Roman. Where two or more genera have been united, the discarded generic name is in *Italics* followed by the numbers of the species formerly catalogued under it.

-
- | | | |
|-----------------------------------|---------------------------------|--|
| <i>Abrostola</i> , 2051 and 2052. | <i>Annemoria</i> , 3032. | Caberodes, 25. |
| <i>Acerra</i> , Perigrapha. | Anomis, 16. | <i>Calasymbolus</i> , 608. |
| Achatodes, 14. | <i>Antarctia</i> , 885 and 886. | Calcocampa, 16. |
| Achylodes, 5. | Antepione, 25. | <i>Callarctia</i> , 837. |
| Acidalia, 23. | Anthera, 9. | Calledapteryx, 23. |
| Acolothus, 7. | Anthocharis, 1. | Callicore, 2. |
| Acontia, 18. | Antiblemma, 20. | Callidryas, 1. |
| Acopa, 17. | Anticarsia, 20. | Callimorpha, 7. |
| Acronycta, 10. | <i>Anticlea</i> , 2791. | Callizzia, 23. |
| <i>Actinotia</i> , Cloantha. | <i>Anytus</i> , 1054 and 1990. | <i>Callopietria</i> , Eriopus. |
| Actias, 9. | <i>Apatela</i> , Acronycta. | Callosamia, 9. |
| Adelocephala, 9. | Apatelodes, 9. | Calpe, 16. |
| Adipsophanes, 16. | Apatura, 3. | <i>Calothysanis</i> , Timandra. |
| Adita, 12. | Aplodes, 24. | Calymnia, 15. |
| Admetovis, 14. | Aporophila, 13. | Capnodes, 20. |
| Adoneta, 8. | Arachnis, 8. | Caradrina, 15. |
| Adonisea, 17. | Arctia, 7. | Carama, 8. |
| Aedis, 17. | Arctonotus, 6. | Caripeta, 23. |
| Aedophron, 18. | <i>Argeus</i> , 658. | <i>Carsia</i> , Anaitis. |
| <i>Egeria</i> , Sesia. | Argillophora, 21. | Carterocephalus, 4. |
| <i>Aellopus</i> , 673 and 674. | Argynnis, 1. | Catocala, 19. |
| Aenigma, 18. | Arsilonche, 10. | Caulostoma, 24. |
| Agassizia, 20. | Artace, 10. | Cecrite, 9. |
| Aglaope, 7. | Arthrochlora, 13. | Celiptera, 20. |
| Agnomonina, 20. | Arzama, 14. | <i>Ceramica</i> , 1538. |
| Agraulis, 1. | Aspilates, 22. | Ceratocampa, 9. |
| Agrotis, 11. | <i>Asthenia</i> , 2957 to 2959. | <i>Ceratodalia</i> , 2956. |
| <i>Agrius</i> , 618 and 619. | Attacus, 9. | Ceratomia, 5. |
| Alaria, 17. | Audela, 10. | <i>Cerma</i> , 1293. |
| Aletia, 16. | Autaplaga, 17. | <i>Cerura</i> , Harpyia. |
| Allotria, 20. | Axenus, 18. | Chaerodes, 25. |
| Alypia, 6. | Azelina, 25. | Chamyris, 18. |
| Amblyscirtes, 5. | | <i>Charadra</i> , Diphtera. |
| Amolita, 14. | Bapta, 23. | Chariclea, 18. |
| Amphidasys, 24. | Basilodes, 16. | Charis, 3. |
| Amphion, 6. | Behrensia, 16. | Chimatobia, 22. |
| Amphipyra, 15. | Bessula, 17. | Chionobas, 3. |
| <i>Amphonyx</i> , 644. | Biston, 24. | <i>Chloraspilates</i> , 2838 and 2839. |
| <i>Anagoga</i> , Numeria. | Bleptina, 21. | Chloridea, 17. |
| Anaitis, 22. | Boarmia, 24. | <i>Chlorosea</i> , 3033 to 3035. |
| <i>Anaplodes</i> , 3054. | Bombycia, 10. | Choephora, 15. |
| Anarta, 17. | Bombyx, 10. | Choerocampa, 6. |
| Anartia, 2. | Bomolocha, 21. | Chrysophanus, 4. |
| <i>Anatolmis</i> , 785 and 786. | Brephos, 21. | Chytolita, 21. |
| Anceryx, 6. | Bronchelia, 24. | Chytonix, 13. |
| Ancyloxypha, 4. | Brotolomia, 14. | Cidaria, 22. |
| Anisopteryx, 24. | Bryophila, 11. | <i>Cirrhobolina</i> , 2357. |
| Anisota, 10. | Byssophaga, 7. | Cirrhophanus, 14. |
| Angerona, 24. | | Cirroedia, 15. |
| Annaphila, 18. | Cabera, 23. | Cisthene, 7. |

- Citherona*, Ceratocampa.
 Clemensia, 7.
 Cleoceris, 15.
 Cleophana, 16.
 Cleora, 24.
 Cleptomita, 21.
 Cloantha, 14.
 Clostera, 9.
 Coelodasys, 9.
 Coenonympha, 3.
 Colaenis, 1.
 Colias, 1.
 Coloradia, 9.
 Conservula, 14.
 Copaeodes, 4.
 Copihadena, 14.
 Copipanolis, 13.
 Coptocnemia, 21.
 Cosmosoma, 6.
 Cossus, 10.
 Crambidia, 7.
 Crambodes, 16.
Cressonia, 602.
 Crocata, 7.
 Crocigrapha, 15.
 Ctenucha, 7.
 Cucullia, 16.
 Cydosia, 7.
Cymatophora, Boarmia.
 Cystineura, 2.
 Dahana, 7.
 Danais, 1.
 Darapsa, 6.
Daremma, 611.
 Dasychira, 8.
 Dasyfidonia, 23.
 Dasylophia, 9.
 Datana, 9.
 Debis, 3.
Deidamia, Tricholon.
 Deilephila, 6.
Deilinea, Cabera.
 Deiopeia, 7.
 Dercetis, 21.
 Derrima, 17.
Dianthoecia, 1552, '56, '68, '69.
 '73 to '75, '78, '83 to '84.
 Dicopis, 10.
Dilophonota, Anceryx.
Diludia, 632 and 633.
 Diphthera, 11.
Dolba, 634.
 Doryodes, 14.
 Drasteria, 19.
 Drepana, 9.
 Drepanodes, 25.
 Drynobia, 9.
 Dryobota, 13.
 Dryocampa, 9.
 Dryopteris, 9.
Dupo, 655.
 Dypterygia, 14.
 Dysauxes, 7.
 Dysodea, 6.
 Dyspterys, 24.
Eacles, Dryocampa.
 Ecantheria, 8.
 Ectypia, 8.
 Edema, 9.
 Edwardsia, 6.
Ellema, 640 to 643.
 Ellida, 9.
 Ellopia, 25.
 Ematurga, 23.
 Empretia, 8.
 Emydia, 7.
 Endropia, 25.
 Enyo, 6.
Ephyra, Zonosoma.
 Epicallia, 7.
 Epione, 25.
 Epirranthus, 25.
Epirrita, Eubolia.
 Erastria, 18.
 Erebia, 3.
 Erebus, 20.
 Eresia, 2.
 Eriopus, 14.
 Erycides, 5.
Euacidalia, 2951 and 2952.
 Euaspilates, 22.
 Eubolia, 22.
 Eubolina, 19.
Eubyja, Amphidasis.
 Eucalyptera, 14.
 Euchaetes, 8.
Eucirroedia, Cirroedia.
 Euclea, 8.
 Euclidia, 19.
 Eucoptocnemis, 13.
 Eucosmia, 22.
Eucrostis, 3024 and 3025.
Euctenucha, 759 to 764.
 Eudamus, 5.
 Eudeilinea, 23.
 Eudryas, 6.
Euephyra, 3022.
 Euerythra, 8.
 Eufidonia, 23.
Eufitchia, 2869.
 Eugonia, 25.
 Euhalesidota, 8.
 Euleucophæus, 9.
 Euleucyptera, 17.
Eumacaria, 2934.
 Eumenia, 3.
Eunemoria, Synchlora.
 Eunice, 2.
 Eupithecia, 21.
 Euplexia, 14.
Euprepia, 838 and 839.
Euproscerpheus, 675.
 Eupsephopactes, 14.
 Euptoleta, 2.
 Eurema, 2.
 Eurhipia, 16.
 Euros, 17.
 Eurygona, 3.
 Eurymene, 24.
Euscirropterus, 748.
 Eustixis, 7.
Eustrotia, Erastria.
Eutelia, Eurhipia.
 Eutheca, 10.
 Euthisanotia, 14.
 Eutolyte, 10.
 Eutoremma, 20.
Eutrapela, Chaerodes.
Eutrichia, Lasiocampa.
Eutricopis, 2179.
 Exyra, 18.
 Fala, 17.
 Feniseca, 4.
 Ferialia, 10.
 Fidonia, 23.
 Fishia, 12.
 Fruva, 18.
 Galgula, 18.
 Geometra, 24.
Glaea, Orrhodia.
Glaucopteryx, 2721 to 2726.
 Gloveria, 10.
 Gluphisia, 9.
 Gnophæla, 7.
 Gnophos, 24.
 Gonacidalia, 23.
 Gonophora, 10.
Gortyna, Hydroecia.
 Gorytodes, 22.
 Grammodes, 19.
Graphiphora, Taeniocampa.
 Grapta, 2.
 Grotella, 18.
 Gueneria, 23.
 Gyrocheilus, 3.
 Gyros, 18.
Habrosyna, Gonophora.
 Hadena, 13.
 Haematopsis, 22.
Haemorrhagia, 686 to 690.
 Halesidota, 8.
 Harpyia, 9.
 Harrisimemna, 11.
 Harrisina, 7.
 Harveya, 20.
 Helia, 21.
 Heliconius, 1.
 Heliolonche, 17.
 Heliomata, 22.
 Heliophana, 17.
 Helioseca, 17.
 Heliothis, 17.
 Helotropha, 14.
Hemaris, 677 to 685.
 Hemerophila, 24.
 Hemiceras, 16.
 Hemileuca, 9.
 Hepialus, 10.
 Heterochroa, 2.
 Heterocampa, 9.
 Heterogenea, 8.
 Heterolocha, 25.
 Heteropacha, 10.
 Heterophelps, 22.
 Hexeris, 21.
 Hibernia, 24.
 Himella, 15.
 Hipparchia, 3.
 Homoglaea, 15.

- Homohadena, 14.
 Homophoberia, 20.
 Homoptera, 20.
 Homopyralis, 21.
 Horama, 6.
Hydria, Eucosmia.
Hydriomena, 2759 to 2763.
 Hydroecia, 14.
Hyloicus, 635 to 638.
 Hyparpax, 9.
 Hypena, 21.
 Hypenula, 21.
 Hyperchiria, 9.
Hyperetis, 3111 and 3112.
Hyphantria, 894.
 Hypoprepia, 7.
 Hypopta, 10.
 Hyppa, 14.
 Hypsoropha, 16.

 Ingura, 8.
 Isa, 16.
 Isogona, 20.

 Janassa, 9.
Jaspidea, Bryophila.
 Jodia, 16.

 Kodiosoma, 8.
 Kricogonia, 1.
 Kronea, 8.

 Lacosoma, 8.
 Læmocharis, 6.
 Lagoa, 8.
 Laphygma, 14.
 Lasiocampa, 10.
 Lathosea, 14.
 Lemonias, 3.
 Lepidomis, 18.
 Lepipolis, 17.
 Leptarctia, 8.
 Leptina, 10.
Lethia, 616 and 617.
 Leucania, 14.
Leucarctia, 886 to 888.
 Leucobrepheos, 21.
 Libythea, 3.
 Licomorpha, 7.
 Limacodes, 8.
 Limenitis, 2.
Lintneria, Systasea.
 Lithacodes, 8.
 Lithacodia, 18.
 Litholomia, 16.
Lithomia, 1996.
Lithophana, Xylina.
 Lithosia, 7.
 Lithostege, 22.
 Litocala, 19.
 Litodonta, 9.
 Litognatha, 21.
 Litoprosopus, 16.
Litosea, 2325 and 2326.
 Lobophora, 22.
Lochmæus, 1058.
 Lomanaltes, 21.
Loothoe, 600.

Lophodonta, 1013 to 1015.
 Lophoteryx, 9.
 Loxofidonia, 23.
 Lozogramma, 23.
 Lycaena, 4.
 Lygranthoecia, 17.
 Lythria, 23.

 Macaria, 23.
 Macroglossa, 6.
 Macrooctua, 14.
Macrosila, 613 and 614.
 Mamestra, 12.
 Marasmalus, 16.
 Marmopteryx, 23.
 Matigramma, 20.
 Megachyta, 21.
 Megathymus, 2.
 Melaporphyria, 18.
 Melicliptria, 17.
Melipotis, 2359 to 2369.
 Melitaea, 2.
 Melittia, 6.
 Meskea, 22.
 Metahadena, 14.
 Metalepsis, 15.
 Metanema, 25.
 Metaponia, 18.
Metopsilus, Choerocampa.
 Metrocampa, 25.
 Microcoelia, 11.
 Moma, 10.
 Momophana, 10.
 Monodes, 15.
 Monoleuca, 8.
 Morrisonia, 13.
 Mythimna, 15.

 Nadata, 9.
 Nathalis, 1.
 Nematocampa, 24.
 Nemeobius, 3.
 Nemeophila, 7.
 Nemoria, 24.
 Neonympha, 3.
 Nephelodes, 14.
 Nerice, 9.
 Nochelia, 8.
 Nola, 7.
 Nolophana, 16.
 Nonagria, 14.
 Notodonta, 9.
 Numeria, 25.

Ochria, 1775 and 1776.
 Odezia, 22.
 Oedemasia, 9.
Octa, 789.
 Oiketicus, 8.
 Ommatostola, 14.
 Oncocnemis, 13.
Operophtera, Chimatobia.
 Ophideres, 20.
Opistograptis, Rumia.
 Orgyia, 8.
 Orrhodia, 16.
 Orthodes, 15.
 Orthofidonia, 23.

 Orthosia, 15.
 Oxylos, 18.

 Pachyla, 6.
 Pachypolia, 13.
 Packardia, 8.
 Pallachira, 21.
 Palthis, 21.
 Pamphila, 4.
 Panapoda, 20.
 Pangrapha, 21.
 Panula, 19.
Paonias, 606 and 607.
 Paphia, 3.
 Papilio, 1.
 Parallelia, 20.
 Paraphia, 24.
 Parasa, 8.
 Parastichtis, 15.
 Parnassius, 1.
 Parorgyia, 8.
 Parthenos, 19.
 Penthretia, 7.
Perconia, 2852.
 Perigea, 15.
 Perigrapha, 15.
 Perophora, 8.
Petrophora, Cidaria.
 Phalenophana, 21.
 Phalenostola, 21.
 Phasiana, 23.
Pheocyma, 2510.
Pheosia, 1016 and 1017.
Phibalopteryx, 2792 and 2793.
 Phigalia, 24.
Philerme, Scotosia.
 Philamplelus, 6.
 Philometra, 21.
Philoros, 765 to 767.
 Phoberia, 20.
 Phobetron, 8.
 Pholisora, 5.
Phragmatobia, 881 to 883.
 Phryganidia, 8.
 Phurys, 20.
 Phyciodes, 2.
 Phyprosopus, 16.
 Pieris, 1.
 Pippona, 17.
 Pityolita, 21.
 Plagiomimicus, 17.
Plagodis, Eurymene.
 Plastenis, 15.
 Plathypena, 21.
 Platycerura, 9.
Platypteryx, 1072.
Platysamia, Samia.
 Platysenta, 14.
Plemyra, 2727 to 2729.
 Pleonectyptera, 20.
 Pleretes, 7.
 Plusia, 16.
 Plusiodonta, 16.
 Poaphila, 20.
 Polenta, 17.
 Polia, 13.
 Polyphaenis, 12.
 Porrina, 17.

- Prodenia, 14.
Proserpinus, Pterogon.
 Prothymia, 18.
Psammatodes, 2911.
 Pseudalypia, 6.
Pseudanthracia, 2535 and 2536.
 Pseudoglaea, 15.
 Pseudoglossa, 21.
 Pseudohazis, 9.
 Pseudolimacodes, 20.
 Pseudorgyia, 21.
 Pseudorthodes, 15.
 Pseudorthosia, 15.
 Pseudothyatira, 10.
 Psyche, 8.
 Psychomorpha, 6.
 Pteraetholix, 16.
 Pterogon, 6.
 Pteroscia, 15.
 Pygaretia, 7.
 Pyrameis, 2.
 Pyrgus, 5.
Pyromorpha, Aglaope.
Pyrophila, Amphipyra.
Pyrharctia, 879 and 880.
Pyrrhia, Chariclea.
 Pyrrhopyga, 5.

 Quadrina, 9.

 Racheospila, 24.
 Raphia, 10.
 Remegia, 20.
 Renia, 21.
Rheumaptera, Cidaria.
 Rhododipsa, 17.
 Rhodophora, 17.
 Rivula, 21.
 Rumia, 25.

 Salia, 21.
 Samia, 9.
 Saturnia, 9.
 Satyrus, 3.
 Scepsis, 7.
 Sciapteron, 6.
 Scolecocampa, 14.
 Scolipteryx, 16.
 Scopelosoma, 16.
 Scotosia, 22.

 Seiractia, 8.
Seirotonta, Cecrite.
 Selenia, 25.
 Selenis, 20.
 Selidosema, 23.
Semiethisa, Macaria.
 Senta, 14.
 Sesia, 6.
 Shinia, 17.
 Shizura, 9.
 Sicyia, 25.
 Sisyryhpena, 21.
 Smerinthus, 5.
 Spargaloma, 21.
 Sphinx, 5.
 Spiloloma, 20.
 Spilosoma, 8.
 Spragueia, 18.
 Stegania, 23.
Stenaspilates, 2840.
 Stenotrachelis, 24.
Stenopsis, Hepialus.
 Stibadium, 17.
 Stictoptera, 19.
 Stiria, 17.
 Sylectra, 21.
 Synchloe, 2.
 Synchlora, 24.
 Syneda, 19.
 Synedoida, 19.
 Syntomeida, 6.

 Taeniocampa, 15.
Tamila, 2237 to 2241.
 Tapinostola, 14.
Taracha, Acontia.
Telea, Anthera.
 Telesilla, 16.
 Tephrosia, 24.
 Terias, 1.
 Tetanolita, 21.
 Tetracis, 25.
 Thalpocharis, 18.
 Thamnonoma, 23.
 Thanaos, 5.
 Thaumatopsis, 14.
 Thecla, 3.
Thera, 2730.
Therina, Ellopia.
 Thyatira, 10.

 Thymelicus, 4.
 Thyreus, 6.
 Thyridopteryx, 8.
 Thyris, 6.
Thysania, 2507.
 Timandra, 23.
 Timetes, 2.
 Tolyte, 10.
 Tornos, 22.
 Tortricidia, 8.
 Tortricodes, 21.
 Toxocampa, 19.
 Trama, 19.
Trichoda, Bombyx.
 Tricholita, 14.
 Tricholon, 6.
 Trichotarache, 18.
 Tricopsis, 17.
 Trigonophora, 14.
 Triocnemis, 18.
 Triphosa, 22.
 Triplocris, 7.
 Tripudia, 18.
 Trochilium, 6.

 Ufeus, 15.
Utethesia, Deiopeia.

 Valeria, 13.
 Vanessa, 2.
 Vanessodes, 8.

 Xanthia, 16.
 Xanthoptera, 18.
 Xanthotrix, 18.
 Xylina, 16.
 Xylomiges, 16.
Xystus, Cossus.

 Ypsia, 20.

 Zale, 20.
 Zanclognatha, 21.
 Zenodoxus, 6.
 Zerene, 22.
 Zeuzera, 10.
 Zonosoma, 24.
 Zosteropoda, 15.
 Zothea, 15.



