

Methodus materiae medicae / auctore Francisco Home.

Contributors

Home, Francis, 1719-1813.
Royal College of Physicians of Edinburgh

Publication/Creation

Edinburgi : Impensis Jo. Bell & Gul. Creech, MDCCLXXXI [1781]

Persistent URL

<https://wellcomecollection.org/works/pphvznrx>

Provider

Royal College of Physicians Edinburgh

License and attribution

This material has been provided by This material has been provided by the Royal College of Physicians of Edinburgh. The original may be consulted at the Royal College of Physicians of Edinburgh. where the originals may be consulted.

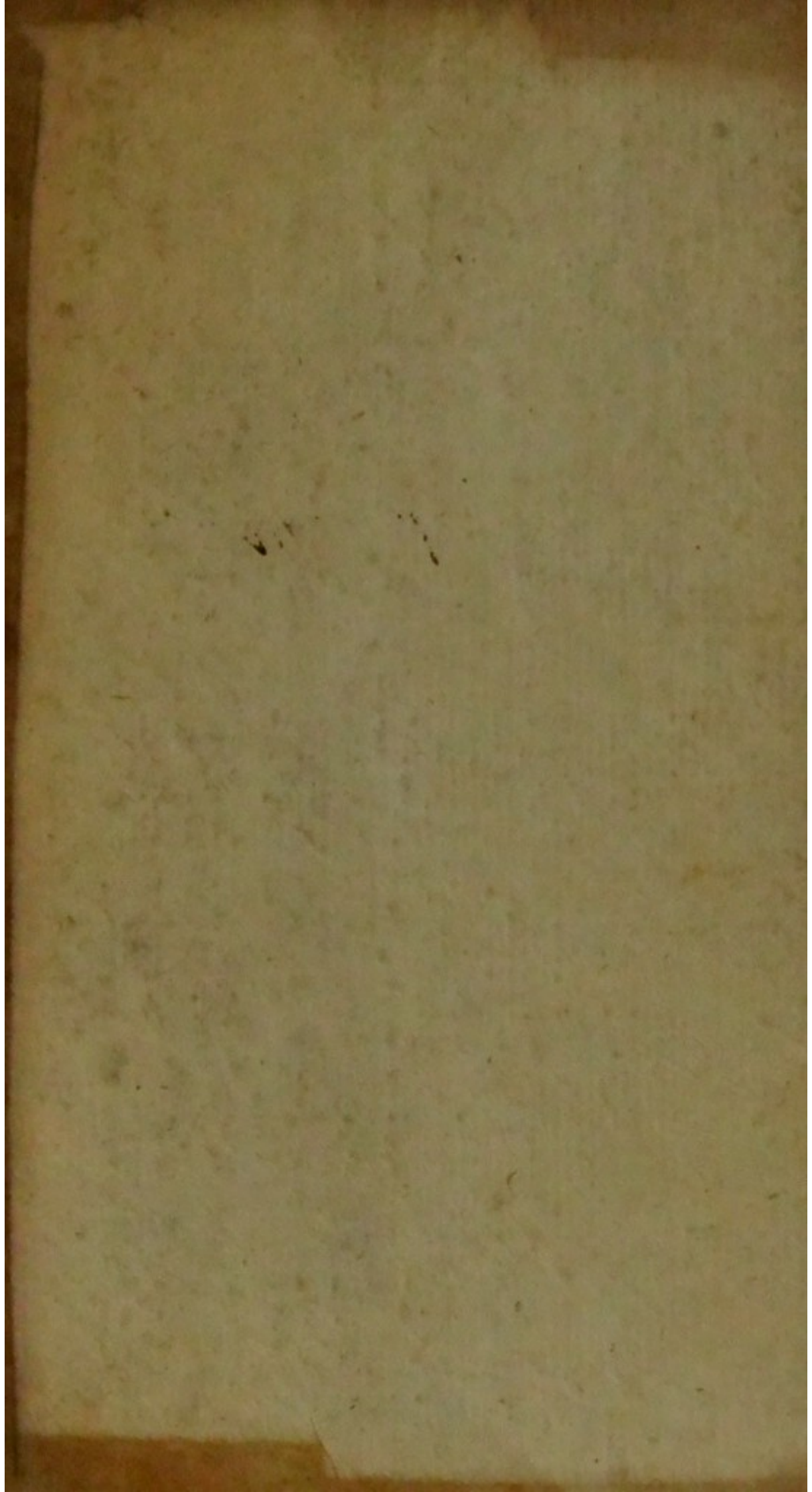
This work has been identified as being free of known restrictions under copyright law, including all related and neighbouring rights and is being made available under the Creative Commons, Public Domain Mark.

You can copy, modify, distribute and perform the work, even for commercial purposes, without asking permission.



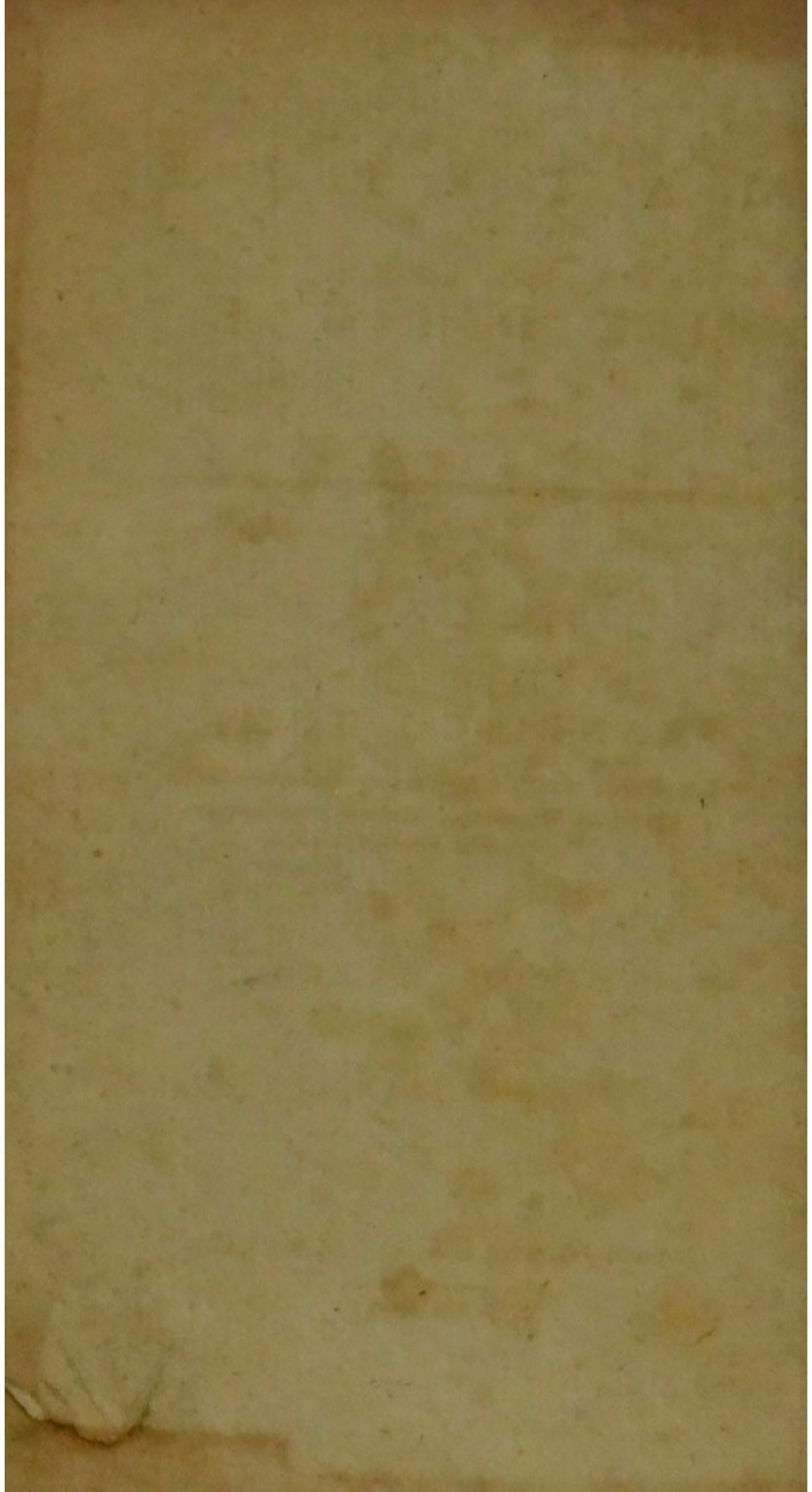
Wellcome Collection
183 Euston Road
London NW1 2BE UK
T +44 (0)20 7611 8722
E library@wellcomecollection.org
<https://wellcomecollection.org>





K 5/60.

R55737



M E T H O D U S
M A T E R I Æ
M E D I C Æ.

A U C T O R E

FRANCISCO HOME,

Medico Regio, Collegii Medicorum Edinburgi Socio,
et Medicinæ Materiaeque Medicæ Professore in
Academia Edinensi.

EDITIO ALTERA.

EDINBURGI:

Impensis JO. BELL & GUL. CREECH.

M,DCC,LXXXI.

THE UNIVERSITY OF CHICAGO

PHILOSOPHY DEPARTMENT

PHILOSOPHY DEPARTMENT

PHILOSOPHY DEPARTMENT

PHILOSOPHY DEPARTMENT

PHILOSOPHY DEPARTMENT

PHILOSOPHY DEPARTMENT

PHILOSOPHY DEPARTMENT

PHILOSOPHY DEPARTMENT

T A B U L A

Materiae Medicae Simplicis.

CLASSIS PRIMA.

Auxilia Adjicientia.

ORDO I. Cibus.

| Genus | Pag. |
|-----------------------------|------|
| 1. <i>Imbecilla materia</i> | 1 |
| 2. <i>Media materia</i> | 5 |
| 3. <i>Valens materia</i> | 6 |

ORDO II. Potus.

| | |
|----------------------------|----|
| 1. <i>Imbecillus potus</i> | 7 |
| 2. <i>Valens potus</i> | ib |

CLASSIS SECUNDA.

Auxilia Evacuantia.

ORDO I. Secretiones.

| Gen. | Pag. |
|--|------|
| 1. <i>Muci nasi et faucium. Errhina vel ptarmica et apophlegmati- santia</i> | 8 |
| 2. <i>Muci pulmonum et tracheae. Expectorantia</i> | ib |
| 3. <i>Salivae. Sialagoga</i> | 10 |
| 4. <i>Mensium. Emmenagoga</i> | 11 |

ORDO II. Excretiones a Tubo
Intestinali.

| | |
|--|----|
| 1. <i>Alvinarum faecum. Cathartica</i> | 12 |
| 2. <i>Intestinorum crassorum. Alvum ducentia</i> | 16 |
| 3. <i>Ventricularis materiae. Emetica</i> | 17 |

ORDO III. Excretiones a Vasis.

| | |
|---------------------------------------|----|
| 1. <i>Urinae. Diuretica</i> | 18 |
| 2. <i>Perpirationis. Diaphoretica</i> | 21 |
| 3. <i>Sudoris. Sudorifica</i> | 23 |

ORDO

ORDO IV. Evacuaciones Artificiales.

| Gen. | Pag. |
|-------------------------------|------|
| 1. <i>Humorum in genere</i> . | 24 |
| 2. <i>Tenuiorum humorum</i> . | ib |

CLASSIS TERTIA.

Auxilia alterantia Fluida.

ORDO I. Consistentiam Fluidorum.

| | |
|--|----|
| 1. <i>Spissitudinem fluidorum. Attenuantia</i> . . . | 25 |
| 2. <i>Tenuitatem fluidorum. Inspissantia</i> . . . | 26 |
| 3. <i>Obstructionem. Deobstruentia</i> | 28 |

ORDO II. Acrimoniam Fluidorum. Antacria.

| | |
|--|----|
| 1. <i>Acrimoniam ammoniacalem. Demulcentia</i> . . . | 30 |
| 2. <i>Acrimoniam acidam. Antacida</i> | 31 |
| 3. <i>Acrimoniam alkalinam. Antalkalina</i> . . . | 33 |

CLASSIS QUARTA.

Auxilia alterantia Solida.

ORDO I. Rigiditatem. Relaxantia.

| Gen. | Pag. |
|-----------------------------|------|
| 1. <i>Humectantia</i> . . . | 35 |
| 2. <i>Emollientia</i> . . . | ib |

ORDO II. Debilitatem. Corroborantia.

| | |
|------------------------------|----|
| 1. <i>Astringentia</i> . . . | 36 |
| 2. <i>Tonica</i> . . . | 39 |

CLASSIS QUINTA.

Auxilia permutantia Motus Solidorum et Fluidorum.

ORDO I. Motus Torpidos. Excitantia.

| | |
|----------------------------|--------------------|
| 1. <i>Analeptica</i> . . . | 42 |
| 2. <i>Balsamica</i> . . . | 44 |
| | <i>Stimulantia</i> |

| Gen. | Pag. |
|--|------|
| 3. <i>Stimulantia</i> | 45 |
| 4. <i>Convulsiva et Spasmodica</i> | 47 |

ORDO II. Motus enormes. Re-
primentia.

| | |
|--|----|
| 1. <i>Motus vitales Cordis et Arteri- arum. Sedantia</i> | 48 |
| 2. <i>Motus musculares. Antispasmo- dica</i> | 49 |

CLASSIS SEXTA.

Auxilia afficientia Sensus.

ORDO I. Temperiem Corporis.
Temperantia.

| | |
|---|----|
| 1. <i>Temperiem calidam. Refrige- rantia</i> | 50 |
| 2. <i>Temperiem frigidam. Calefa- cientia</i> | 51 |

ORDO

ORDO II. Nimiam Sensibilitatem Nervorum. Anodyna.

| Gen. | Pag. |
|-------------------------------|------|
| 1. <i>Hypnotica</i> | 52 |
| 2. <i>Narcotica</i> | 53 |

CLASSIS SEPTIMA.

Auxilia Topica Interna.

ORDO I. Organa non secretoria.

| | |
|--------------------------------------|----|
| 1. <i>Stomachica et Intestinalia</i> | 54 |
| 2. <i>Splenica</i> | 55 |
| 3. <i>Pneumonica</i> | ib |
| 4. <i>Cardiaca</i> | ib |

ORDO II. Organa Secretoria.

| | |
|-----------------------------------|----|
| 1. <i>Cephalica</i> | 56 |
| 2. <i>Uterina</i> | 57 |
| 3. <i>Spermatopoiia</i> | ib |
| 4. <i>Galactopoiia</i> | ib |
| 5. <i>Hepatica</i> | ib |

CLASSIS

CLASSIS OCTAVA.

Auxilia Topica Externa.

ORDO I. Repellentia.

| | | | |
|------------------------|---|---|----|
| 1. <i>Discutientia</i> | . | . | 58 |
| 2. <i>Cosmetica</i> | . | . | 59 |
| 3. <i>Styptica</i> | . | . | 60 |

ORDO II. Attrahentia.

| | | | |
|------------------------|---|---|----|
| 1. <i>Inflammantia</i> | . | . | ib |
| 2. <i>Vesicantia</i> | . | . | 61 |
| 3. <i>Corrosiva</i> | . | . | ib |

ORDO III. Confolidantia.

| | | | |
|-------------------------|---|---|----|
| 1. <i>Glutinantia</i> | . | . | 62 |
| 2. <i>Suppurantia</i> | . | . | 63 |
| 3. <i>Digestiva</i> | . | . | 64 |
| 4. <i>Catheretica</i> | . | . | ib |
| 5. <i>Cicatrisantia</i> | . | . | 65 |

CLASSIS

x T A B U L A.

CLASSIS NONA.

Auxilia expellentia vel destruentia
Corpora Extranea.

ORDO I. Corpora inanimata.

| Gen. | Pag. |
|---------------------------------------|------|
| 1. <i>Aërem. Carminativa</i> . | 65 |
| 2. <i>Venena. Alexipharmica</i> . | 66 |
| 3. <i>Calculus. Lithonthriptica</i> . | 67 |

ORDO II. Corpora animata.

| | |
|---------------------------------------|----|
| 1. <i>Pediculi diversi. Pthiriaca</i> | 68 |
| 2. <i>Vermes. Anthelminthica</i> . | ib |

TABULA

T A B U L A

Materiae Medicae Compositae.

CLASSIS PRIMA.

Pharmacia Mechanica.

ORDO I. Pharmacia Praeparativa.

| Gen. | Pag. |
|---|------|
| 1. <i>Suppellex pharmaceuticum</i> | 70 |
| 2. <i>Methodus colligendi simplicia,</i> <i>&c.</i> | ib |
| 3. <i>Methodus praeservandi, &c.</i> | ib |
| 4. <i>Methodus praeparandi nonnulla</i> <i>simplicia</i> | 71 |

ORDO II. Compositio solida per
juxtapositionem.

| | |
|----------------------------|--------------------|
| 1. <i>Pulvis</i> | 72 |
| 2. <i>Bolus</i> | ib |
| | <i>Electuarium</i> |

| Gen. | Pag. |
|------------------------------------|------|
| 3. <i>Electuarium et Confectio</i> | 72 |
| 4. <i>Pilulae</i> | 73 |
| 5. <i>Trochisci</i> | ib |
| 6. <i>Tabellae</i> | ib |
| 7. <i>Cataplasma</i> | 74 |

ORDO III. Compositio fluida
per mixturam.

| | |
|------------------------------|----|
| 1. <i>Julapium</i> | ib |
| 2. <i>Mixtura et Haustus</i> | ib |
| 3. <i>Mixtura contracta</i> | ib |

ORDO IV. Medicamenta per
expressionem.

| | |
|--------------------------|----|
| 1. <i>Succi expressi</i> | 75 |
| 2. <i>Olea expressa</i> | ib |
| 3. <i>Emulsio</i> | ib |

CLASSIS

CLASSIS SECUNDA.

Pharmacia chemica.

ORDO I. Menstruum aquosum.

| Gen. | Pag. |
|---|------|
| 1. <i>Infusio aquosa</i> | 76 |
| 2. <i>Decoctum aquosum</i> | ib. |
| 3. <i>Extractum</i> | ib. |
| 4. <i>Solutio gummatum</i> | 77 |
| 5. <i>Aquæ stillatitiæ simplices</i> | ib. |
| 6. <i>Olea essentialia distillata et Olea empyreumatica</i> | ib. |
| 7. <i>Solutiones saline</i> | 78 |
| 8. <i>Resinæ præcipitatæ</i> | 79 |

ORDO II. Menstruum mucilaginosum.

| | |
|--|------|
| 1. <i>Mixtura gum. Arab. cum sp. vin.</i> | 79 |
| 2. <i>Mixtura gum. Arab. cum sali- bus acidis.</i> | 80 |
| 3. <i>Mixtura gum. Arab. cum oleosis</i> | ib. |
| b | Gen. |

| Gen. | Pag. |
|---|------|
| 4. <i>Mixtura gum. Arab. cum metal-</i> <i>licis</i> | 80 |

ORDO III. Menstruum salinum.

| | |
|---|-----|
| 1. <i>Saccharum</i> | ib. |
| 2. <i>Sal ammoniacus</i> | 81 |
| 3. <i>Sal alkalinus fixus. Calx vi-</i> <i>vum</i> | ib. |
| 4. <i>Sal alkalinus volatilis</i> | 82 |
| 5. <i>Sal acidus</i> | ib. |

ORDO IV. Menstruum oleosum.

| | |
|-------------------------------------|-----|
| 1. <i>Olea expressa</i> | 84 |
| 2. <i>Oleum palmae</i> | 85 |
| 3. <i>Cerum</i> | ib. |
| 4. <i>Terebinthina</i> | ib. |
| 5. <i>Olea distillata</i> | ib. |
| 6. <i>Olea animalia</i> | ib. |

ORDO

ORDO V. Menstruum vinosum.

| Gen. | Pag. |
|---|------|
| 1. <i>Vinum</i> | 86 |
| 2. <i>Spiritus vini tenuior</i> | ib. |
| <i>Aquae stillatitiae spirituosae.</i> | 87 |
| 3. <i>Spiritus vini rectificati</i> | ib. |
| <i>Spiritus vini cum salibus</i> | ib. |
| <i>Spiritus stillatitii</i> | ib. |

ORDO VI. Menstruum ex ovo.

| | |
|------------------------------|-----|
| 1. <i>Albumen</i> | 88 |
| 2. <i>Vitellus</i> | ib. |

ORDO VII. Menstruum ex sulphure.

| | |
|--|-----|
| 1. <i>Sulphur cum oleosis</i> | 88 |
| 2. <i>Sulphur cum alkalinis</i> | 89 |
| 3. <i>Sulphur cum metallicis</i> | ib. |

ORDO

ORDO VIII. Menstruum ex
terra absorbente.

| Gen. | Pag. |
|----------------------------|------|
| 1. <i>Oculus cancrorum</i> | 89 |
| 2. <i>Magnesia</i> | 90 |

MATE-

MATERIA MEDICA
SIMPLEX.

METHODUS MATERIAE MEDICAE
SIMPLICIS.

CLASSIS PRIMA.

Auxilia Adjicientia.

ORDO I. Cibus.

Genus I. *Imbecilla Materia.*

Fructus liquidi.

Nomina Officinarum.

Nomina Linnaei.

Uva

Vitis

Ribesia

Ribes rubrum

Ribes nigrum

Ribes nigrum

Grossularia

Ribes grossularia

A

Fructus

Fructus pulposi.

| | |
|--------------|--------------------------|
| Fragaria | Fragaria vesca |
| Rubus idaeus | Rubus idaeus |
| Prunus | Prunus domestica |
| Cerasus | Prunus cerasus |
| Granatus | Punica granatum |
| Morus | Morus nigra |
| Myrtillus | Vaccinium myr- tillus |
| Aurantium | Citrus aurantium |
| Limonia | Citrus limon |

Fructus solidi.

| | |
|-----------|--------------------------|
| Cydonia | Pyrus cydonia |
| Armeniaca | Prunus armeniaca |
| Perfica | Amygdalus perfi- ca |
| Nectarium | |
| Ananas | Bromelia ananas |
| Pomum | Pyrus malus |
| Pyrus | Pyrus communis |
| Dactylus | Phoenix dactyli- fera |

Ficus

| | |
|-----------|---------------------|
| Ficus | Ficus Carica |
| Oliva | Olea Europaea |
| Cucumis | Cucumis fativus |
| Cucurbita | Cucurbita lagenaria |
| Melo | Cucumis melo |
| Cynara | Cynara scolymus |

Flores, et Succus florum.

Mel
Cera

Folia et Caules.

| | |
|------------------|-----------------------|
| Acetosa vulgaris | Rumex acetosa |
| Portulaca | Portulaca oleracea |
| Spinacia | Spinacia oleracea |
| Phaseolus | Phaseolus vulgaris |
| Lactuca | Lactuca fativa |
| Asparagus | Asparagus officinalis |
| Cichorium | Cichorium intybus |
| Endivia | Cichorium endyvia |

| | |
|---------------------------|---------------------------------|
| Celeri | Apium graveo- lens, var. b |
| Brassica | Brassica oleracea |
| Nasturtium aqua- ticum | Syftimbrium na- sturtium aq. |
| Nasturtium hor- tense | Lepidium fativum |
| Porrum | Allium porrum |
| Sago | Cycas circinalis |
| Saccharum | Saccharum offici- narum |

Radices.

| | |
|----------------|--------------------------|
| Rapa | Brassica rapa |
| Daucus fativus | Daucus carota |
| Beta | Beta vulgaris |
| Pastinacea | Pastinacea fativa |
| Scorzonera | Scorzonera humi- lis |
| Cicer | Cicer arietinum |
| Tragopogon | Tragopogon pra- tense |
| Botatos | Solanum tubero- fum |
| <i>Salep</i> | <i>Orchis moraea</i> |
| | Cepa |

| | |
|----------|------------------|
| Cepa | Allium cepa |
| Raphanus | Raphanus fativus |

Semina.

| | |
|-----------|--------------------------|
| Hordeum | Hordeum vulgare |
| Oryza | Oryza fativa |
| Triticum | Triticum |
| Avena | Avena fativa |
| Secale | Secale |
| Fagopyrum | Polygonum fago- pyrum |
| Mays | Zea mays |
| Panicum | Panicum |
| Milium | Milium |
| Faba | Vicia faba |
| Pisum | Pisum fativum |
| Phaseolus | Phaseolus vulgaris |

Lac

Genus 2. *Media Materia.*

| | |
|-----------------|-------------------------|
| Amygdala dulcis | Amygdalus com- munis |
|-----------------|-------------------------|

A 3

Pistacea

| | |
|----------|------------------|
| Pistacea | Pistacea vera |
| Juglans | Juglans regia |
| Avellana | Corylus avellana |
| Castanea | Fagus castanea |
| Cacao | Theobroma cacao |

Cremor lactis

Jusculum

Gelatina

Ovum

Caro vel piscis imbecillae materiae

Genus 3. *Valens Materia.*

| | |
|--------|---------------------|
| Fungus | Agaricus campestris |
|--------|---------------------|

Caseus

Butyrum, Oleum, Medulla

Aves terrestres et aquatici

Animalia quadrupeda mammalia

distinguuntur secundum naturam, magnitudinem, vitam et exercitium, aërem et terram, alimentum, pinguedinem, castrationem, diversas corporis partes, diversas aetates, conservationem, artem coquinariam, &c.

Pisces,

Pisces, secundum magnitudinem, motum, aquas.

ORDO II. Potus.

Genus 1. *Imbecillus Potus.*

Aqua mollis

—dura

—limonata

—avenacea

—hordeata

Lac ebutyratum

Serum lactis

Thea

Thea

Jusculum tenuissimum

Genus 2. *Valens Potus.*

Coffea

Coffea Arabica

Cerevisia

Vinum

CLASSIS

CLASSIS SECUNDA.

Auxilia Evacuantia.

ORDO I. Secretiones.

Genus 1. *Muci Nasi et Faucium.*

Errhina vel ptarmica et apophlegmatifantia.

Primula veris, flor. Primula veris off.
fol. et rad.

Afarum, fol. et Afarum Europæ-
rad. um

Nicotiana, fol. Nicotiana tabacum

Ptarmica, fol. et Achillea ptarmica
flor.

Euphorbium

Stimulantia

Genus 2. *Muci Pulmonum et Tracheæ.*

Expectorantia.

Attenuantia.

Hedera terrestris, Glechoma hedera-
fol. cea

Erysimum,

| | |
|------------------------------------|----------------------|
| Erysimum, fol. | Erysimum officinale |
| Muscus pexidatus | Lichen cocciferus |
| Glycyrrhiza, rad. | Glycyrrhiza glabra |
| Iris Florentina, rad. | Iris Florentina |
| Iris palustris lutea, rad. | Iris pseudocorus |
| Helenium, seu E-nula campana, rad. | Inula helenium |
| Arum, rad. | Arum maculatum |
| Pimpinella faxifraga, rad. | Pimp. faxifr. major. |
| Scilla, rad. | Scilla marina |
| <i>Colchicum</i> | |
| Benzoinum, resina | |
| Gum. ammoniacum | |
| <i>Balsama</i> | |
| <i>Sulphur</i> | |

Incrassantia.

| | |
|------------------------|-----------------------------|
| Tussilago, fol. et fl. | Tussilago farfara Althea |
|------------------------|-----------------------------|

| | |
|---|--------------------------|
| Althea, fol. et rad. | Althea officinalis |
| Jujuba, fr. | Rhamnus ziziphus |
| Linum, sem. | Linum usitatissimum var. |
| Gum. Arabicum | Mimosa Nilotica |
| Gum. Senegal | Mimosa Senegal |
| Gum. cerasorum | Prunus cerasus |
| Gum. tragacantha | Astragalus tragacantha |
| Gum. olibanum, seu Thus masculinum. | Juniperus |
| Olea expressa, uti ol. amygd. dulc. ol. olivar. ol. palmæ, &c. | |
| Sperma cetæ | |

Genus 3. *Saliva.**Sialagoga.*

| | |
|--------------------------|-----------------------|
| Eruca, fol. sem. rad. | Brassica eruca |
| Imperatoria, rad. | Imperatoria ostrutium |
| | Nigella, |

| | |
|-------------------|-----------------------------|
| Nigella, fem. | Nigella fativa |
| Stavifagria, fem. | Delphinium sta- vifagria |

*Ptarmica**Aromata**Salina stimulantia*

Mercurius vivus

Genus 4. *Mensium.**Emmenagoga.*

| | |
|--|----------------------------|
| Ruta, fol. | Ruta graveolens |
| Majorana, fol. | Origanum majo- rana |
| Hyfopus, fol. | Hyfopus officina- lis |
| Matricaria, fl. et fol. | Matricaria parthe- nium |
| Pulegium, fol. | Mentha pulegium |
| Marrubium al- bum, fol. et. fum. | Marrubium vulgare |
| Sabina, fol. et fum. | Juniperus sabina |

Aristolochia,

| | |
|---------------------------|----------------------------------|
| Aristolochia, rad. | Aristolochia longa et rotunda |
| Curcuma, rad. | Curcuma longa |
| Helleborus niger, rad. | Helleb. niger |
| <i>Rubia tinctorum</i> | |
| <i>Crocus</i> | |
| <i>Aloes</i> | |
| <i>Castor</i> | |
| <i>Ferrum</i> | |
| <i>Mercurius</i> | |
| <i>Purgantia</i> | |

ORDO II. Excretiones a Tubo In-
testinali.

Genus I. *Alvinarum Fæcum.*

Cathartica.

Cathartica laxantia.

*Fructus acidi vel
acescentes*

| | |
|---------------------|---------------------------------|
| Tamarindi, fr. | Tamarindus In- dica |
| Cassia fistula, fr. | Cassia fistula Hermodactyli, |

| | |
|--|-------------------------|
| Hermodactylus, rad. | Iris tuberosa |
| <i>Saccharum non pu- rificatum</i> | |
| <i>Mel</i> | |
| Manna, exudatio | Fraxinus ornus |
| Rosa pallida, fl. | Rosa Damascena Park. |
| Viola, fl. | Viola odorata |
| Myroballanus, fr. | Myroballanus |
| Ben, seu Ballanus myrepfica, fr. | |
| Tartarum | |
| Bilis animalis, seu Fel | |
| Magnesia alba | |
| Sulphur | |
| Aquæ sulphurææ, uti Aix, Barregees, Harrowgate, St Bernard, &c. | |
| <i>Olea expressa</i> | |
| <i>Oleum ricini</i> | |
| <i>Sapo</i> | |

Cathartica purgantia.

Sal catharticum a-
marum, feu fal
Epſom

Aquae minerales
purgantes, uti
Scarborough,
&c.

*Tartarum vitrio-
latum*

Tartarum ſolubile

*Sal Catharticum
Glauberi*

Sal polychriſtum

Sal marinum

Senna, fol.

Caffia ſenna

Linum catharti-
cum, fol

Linum catharti-
cum

Agaricus, fungus
laricis

Boletus

Rhabarbarum, feu
Rheum, rad.

Rheum palmatum

Aloes, fuccus

Aloe

Spina cervina, feu

Rham. cathart.

Rhamnus

| | |
|---------------------------------------|--------------------------|
| Rhamnus ca- tharticus, bac- cae | |
| Jalappa, feu jala- pium, rad. | Mirabilis jalappa |
| Mechoacanna, rad. | Convulvulus me- hoac. |

Cathartica drastica.

| | |
|-----------------------------------|-----------------------------|
| Gratiola, fol. | Gratiola officinalis |
| Digitalis fol. | Digitalis purpurea |
| Colocynthis, fr. | Cucumis colocyn- this |
| Granum cnidium, bac. | Daphne cnidium |
| Sambucus, cort. int. fl. bacc. | Sambucus niger |
| Ebulus, cort. int. fol. rad. | Sambucus ebulus |
| Bryonia alba, rad. | Bryonia alba |
| Helleborus albus, rad. | Veratrum album |
| Scammonium, suc. in sp. rad. | Convulvulus scam- monium |
| | B 2 Elaterium, |

| | |
|---------------------------------------|-----------------------|
| Elaterium, foecula cucumeris agrestis | Momordica elaterium |
| Turpethum rad. | Convolvulus turpethum |
| Gambogia, succ. concr. | Gambogia gutta |
| Euphorbium, succ. concr. | Euphorbia officinarum |

Genus 2. *Intestinorum crassorum.*

Alvum ducentia.

Clysmata ex cathartidis laxantibus

Clysmata ex cathartidis purgantibus

Clysmata ex cathartidis drastringentibus

Genus

Genus 3. *Ventricularis materiae.*

Emetica.

Emetica mitia.

| | |
|--------------------------|------------------|
| Erygerum, fol. | Senecio vulgaris |
| Ipecacuanha, rad. | Lonicera |
| <i>Sinapi</i> | |
| <i>Raphanus rustica-</i> | |
| <i>nus</i> | |
| <i>Scilla</i> | |
| <i>Amara</i> | |
| <i>Sp. corn. cervi</i> | |
| Vitriolum album | |

Emetica drastica.

| | |
|--|-------------------------|
| Sedum acre, fol. | Sedum acre |
| Cataputia minor, vel Tythimalus, f. fol. succ. | Euphorbia lythy- ris |
| Cataputia major, vel Palma Chri- sti, f. | Ricinus commu- nis |

B 3

Cyclamen,

Cyclamen, rad. Cyclamen Euro-
paeum

Nicotiana

Helleborus

Asarum

*Turpethum mine-
rale*

Antimonialia

Cuprum solutum

ORDO III. Excretiones a vasis.

Genus I. *Urinae.*

Diuretica.

Parietaria, fol.

Parietaria off.

Aparine, fol. caul.

Gallium aparine

Asperula, fol.

Asperula odorata

Dulcamara, fol.

Solanum dulca-
mara

Genista, fol. caul.
cineres

Spartium scoparia

Linaria, fol.

Antirrhinum lina-
ria

Perficaria

| | |
|--|------------------------------|
| Perficaria urens, fol. | Polygonum hy- dropiper |
| Alkekengi, fr. | Physalis alkekengi |
| Juniperus, bac.fol. lign. rad. gum. | Juniperus com- munis |
| Daucus silvestris, f. | Daucus carota |
| Daucus Creticus, f. | Athamanta Cre- tensis |
| Lithospermum, f. | Lithospermum of- ficinale |
| Sefeli Massiliense, f. | Sefeli tortuosum |
| Lignum nephriti- cum | Guilandina mo- ringa |
| Bardana major, cort. rad. | Arctium lappa |
| Petrofelinum, rad. | Apium petrofeli- num |
| Meum, rad. fem. | Athamanta meum |
| Eryngium, rad. | Eryngium mariti- mum |
| Ononis, rad. | Ononis spinosa |
| Pareira brava, rad. | Cissampelos parei- ra |

*Chaerifolium**Allium**Asparagus*

Asparagus

Raphanus rustica-
nus

Arum

Seneka

Pimpinella saxi-
fraga

Colchicum

Gramen

Ruta

Sabina

Scilla

Opium

Ol. stillat. junip.

rutae, sabinae,

&c.

Terebinthina

Salia acida

Sal succini

Vinum Rhenanum

Sal et cremor tar-
tari

Salia alkalina fixa

Sapo

Salia

Salia neutra, praecipue sal ammoniac.

Nitrum

Sal prunel.

Sp. nitri dulcis

Millipedes

Lumbricus terrestris

Formica

Apis

Cantharides

Oniscus asellus

Lumbricus terrestris

Formica Herculeana vel rufa

Apis mellifica

Meloe vesicatorius

Genus. 2. *Perspirationis.*

Diaphoretica.

Scordium, fol.

Galega, fol.

Alliaria, fol.

Calamintha, fol.

Teucrium scordium

Galega off.

Erysimum alliaria

Melissa calamintha

Contrayerva,

| | |
|--|----------------------------|
| Contrayerva, rad. | Dorstenia contra- yerva |
| Angelica fativa, rad. | Angelica Archan- gelica |
| Anthora, rad. | Aconitum anthora |
| Carlina, rad. | Carlina acaulis |
| Petasites, rad. | Tuffilago petasites |
| Guajacum, cort. lig. refin. | Guajacum offici- nale |
| China, rad. | Smilax china |
| Sarsaparilla, rad. | Smilax sarsaparilla |
| Sassafras, rad. | Laurus sassafras |
| <i>Seneca</i> | |
| <i>Salvia</i> | |
| <i>Sambucus</i> | |
| <i>Melissa</i> | |
| <i>Alexipharmaca</i> | |
| <i>Sudorifica</i> | |
| <i>Antimonium cru- dum, ejusque præ- parationes.</i> | |
| <i>Aura electrica</i> | |
| <i>Exercitium</i> | |
| <i>Friccio</i> | |

Genus 3. *Sudoris.*

Sudorifica.

| | |
|------------------------------------|-------------------------------|
| (Calendula, fl. et fol. | Calendula off. |
| (Carduus mariae, fol. rad. | Carduus marianus |
| (Levisticum, fem. fol. rad. | Ligusticum levif- ticum |
| (Serpentaria Vir- gineana, rad. | Aristolochia fer- pentaria |
| (Sambucus | |
| (Opium | |
| (Camphor | |
| (Olea essentialia | |
| (Acida vegetabilia | |
| (Acetum | |
| (Sales volatiles al- kalini | |
| (Moscus | |
| (Mercurialia | |
| (Antimonialia | |
| (Emetica | |
| (Cathartica | |
| (Diuretica | |

Balneum

Balneum calidum
Semicupium
Pedeluvium
Fomentatio

ORDO IV. Evacuaciones Artificiales.

Genus 1. *Humorum in genere.*

Abstinentia.

Detractio sanguinis per venaesectionem, cucurbitulas, hirudines.

Genus 2. *Tenuiorum humorum.*

Detractio per setacea, fontanellas, emp. epispasticum, actuale cauterium.

CLASSIS

CLASSIS TERTIA.

Auxilia Alterantia Fluida.

ORDO I. Consistentiam Fluidorum.

Genus I. *Spissitudinem Fluidorum,*

Attenuantia.

| | |
|---|----------------------------|
| Trifolium paluf- tre, fol. | Menyanthes tri- foliata |
| Scabiosa, fol. rad. | Scabiosa arvensis |
| Doronicum Ger- manicum, fol. flor. rad. | Arnica montana |
| Polygala, fol. | Polygala vulgaris |
| Seneka, rad. | Polygala feneka |
| Allium, rad. | Allium fativum |
| <i>Dulcamara</i> | |
| <i>Asparagus</i> | |
| <i>Asperula</i> | |
| <i>Lactuca</i> | |
| <i>Sinapi</i> | |
| <i>Alges</i> | |

C *Potus*

Potus diluentes
Expectorantia at-
tenuantia
Succi vegetabiles
acescentes vel a-
cidi, vel sales
Sales purgantes et
diuretici
Sales alkalini fixi
Sapo
Sales volatiles al-
kalini
Sal ammoniacum
crudum
Borax, sal sedati-
vum Homber-
gii
Calx vivum, aqua
calcis

Genus 2. *Tenuitatem Fluidorum.*

Inspissantia.

| | |
|----------------------|----------------|
| Bursa pastoris, fol. | Thlaspi bursa |
| Horminum sati- | Salvia sclarea |
| vum, fol. fem. | |

Rosa

| | |
|--------------------------|-----------------|
| Rosa rubra, fol. | Rosa Gallica |
| Plantago, fol. sem. | Plantago major |
| rad. | |
| Santalum rubrum, | Santalum |
| citrinum, al- | |
| bum, lig. | |
| zaalep, rad. | Orchis morea |
| Consolida major, | Symphytum offi- |
| feu symphy- | cinale |
| tum, rad. | |
| Acacia vera, succ. | Mimosa Nilotica |
| in sp. | |
| Sanguis draconis, | Pterocarpus |
| refin. | |
| <i>Expectorantia in-</i> | |
| <i>crassantia</i> | |
| <i>Alcohol</i> | |
| Kermes | |
| Ichthiocolla | Huso |
| Sp. et ol. vitrioli | |
| Sp. nitri | |
| Sp. falis marini | |

Genus 3. *Obstructionem.**Deobstruentia.*

| | |
|-----------------------------------|--|
| Agrimonia, fol. | Agrimonia eupatoria |
| Dens leonis, fol. rad. | Leontodon taraxicon |
| Botrys, fol. | Chenopodium botrys |
| Saponaria, fol. rad. | Saponaria off. |
| Filix | Polypodium filix |
| Saxifraga alba, fol. rad. | Saxifraga granulata |
| Bellis minor, fol. rad. | Bellis perennis |
| Quercus marina, fol. et utrici | Pulsatilla nigricans Fucus ferratus |
| Lobelia | Lobelia siphilitica |
| Mezerion, rad. | Daphne mezerion |
| Rubia tinctorum, rad. | Rubia tinctorum |
| Apium, rad. | Apium graveolens |
| Gramen caninum, rad. | Triticum repens |

Caparis,

Caparis, rad. fruct. Caparis spinosa

Curcuma

Pareria brava

Scilla

Gum. ammoniacum

Gum. guajacum

Pix liquida

Cicuta

Cremor tartari

Sapo

Millipedes

Bilis

Spongia usta

Spongia off.

Sulphur

Cinnabar

Mercurius

Antimonium

Ferrum

Aqua marina

Aqua calcis

ORDO 3

ORDO II. Acrimoniam Fluidorum.

Antacria.

Genus I. *Acrimoniam ammoniacalem.*

Demulcentia.

| | |
|----------------------|---------------------------|
| Branca ursina, fol. | Acanthus mollis |
| rad. | |
| Mercurialis, fol. | Mercurialis annua |
| Pulmonaria, fol. | Pulmonaria officinalis |
| Trichomanes, fol. | Asplenium trichomanes |
| caulis | |
| Adiantum, fol. | Adiantum capillus veneris |
| caulis | |
| Sebestena, fr. | Cordia myxa |
| Semina quatuor | |
| frigida majora, | |
| cucumeris, citrulli, | |
| cucurbitae, peponis | |
| Psyllium, sem. | Plantago psyllium |
| | Amylum |

Amylum
Verbascum

Vipera

Coluber berus

Limax

{ Helix pomatia
Limax rufus vel
ater

Ostrea

Ostrea edulis

Aqua Bristolensis

Genus. 2. *Acrimoniam acidam.*

Antacida.

Cornu cervi calci-
natum, et om-
nia ossa calcina-
ta

Bezoar orientale et
occidentale, a-
liique calculi

Os sepiaë

Sepia officinalis

Oculi cancerorum

Cancer astacus

Magnesia

Terra aluminosa

Osteocolla

Osteocolla

Creta

Lapides calcarii

Corallium Mandrepora rubra

Corallina

Margarita

Chelæ cancrorum

Testæ ostreorum

Testæ ovorum

Sales alkalini fixi
et volatiles.

Septica; uti alimentum animale, ali-
mentum semicorruptum, terræ ab-
sorbentes non calcariæ, terræ abfor-
bentes calcariæ non ustæ, sal ma-
rinus modica quantitate, calor, hu-
miditas, aër stagnans.

Genus

Oculi cancrorum

Albugo

Ysta albugo

Osteocolla

Genus 3. *Acrimoniam alkalinam.*

Antalkalina.

Acrimonia scorbutica.

Antiscorbutica.

| | |
|-----------------------------------|----------------------------|
| Cochlearia hor- tensis, fol. | Cochlearia offic- nalis |
| Lepidium, fol. | Lepidium latifo- lium |
| Becabunga, fol. | Veronica beca- bunga |
| <i>Nasturtium aqua- ticum</i> | |
| <i>Acetosa</i> | |
| <i>Mala aurantia</i> | |
| Abies ruber, fum. | Pinus abies |
| Winteranus, cor- tex | <i>winterana aromatica</i> |
| Raphanus rustica- nus, rad. | Cochlearia Armo- rica |

Acrimonia

Acrimonia septica.

Antiseptica.

Plantæ esculentes quamplurimæ

Amara

Adstringentia

Gummi resinosa

Olea essentialia

Aromata

Balsama

Vinum, præcipue rubrum

Spiritus vini

Omnia salia, præcipue saccharum, alumen, et acida

Aqua dura

Aqua Bristolensis

Aqua calcis

Frigus

Aër perflabilis

Aër omnino exclusus

Aër per fermentationem emissus, qui putredinem jam inceptam corrigit.

CLASSIS

CLASSIS QUARTA.

Auxilia Alterantia Solida.

ORDO I. Rigiditatem.

Relaxantia.

Genus 1. *Humectantia.*

Potus aquosi
Vapores tepidi
Balneum calidum

Genus 2. *Emollientia.*

| | |
|------------------------------------|---------------------------------|
| Malva vulgaris, fol. flor. rad. | Malva silvestris |
| Melilotus, fol. | Trifolium melilotus officinalis |
| Bonus Henricus, fol. | Chenopodium bonus Henricus |
| Alfina, fol. | Alfina media |
| | Verbascum, |

| | |
|--|--------------------------|
| Verbascum, fol. | Verbascum thap- fus |
| Lanium album, flor. | Lanium album |
| Sem. cydoniorum, f. | Pyrus cydonia |
| Foenum græcum, sem. | Trigonelli fœn. græc. |
| Lilium album, rad. | Lilium candidum |
| Cepa cocta, rad. | Allium cepa |
| Scorzonera, rad. | Scorzonera |
| <i>Farinacea</i> | |
| <i>Olea Vegetabilia</i> <i>expressa et ani-</i> <i>malia</i> | |
| Calor | |

ORDO II. Debilitatem.

Corroborantia.

Genus I. *Astringentia.*

| | |
|-----------------|---------------------------------|
| Argentina, fol. | Potentilla argen- tina |
| Sanicula, fol. | Sanicula Europæa Alchemilla, |

| | |
|-----------------------------------|--------------------------|
| Alchimilla, fol. | Alchimilla vulg. |
| rad. | |
| Lyfimachia, fol. | Lythrum falicaria |
| Uva ursi, fol. | Arbutus uva ursi |
| Berberis, fr. | Berberis vulgaris |
| Mespillus, fr. | Mespillus Germa- nica |
| Prunus silvestris, fr. | Prunus spinosa |
| Acacia Germani- ca | Prunus spinosa |
| Cynosbatus, fr. | Rosa canina |
| <i>Mala Cydonia</i> | |
| <i>Cynara</i> | |
| <i>Fl. balauftiorum</i> | |
| <i>Rosa rubra</i> | |
| <i>Morus et myrti- lus</i> | |
| Quercus, cort. | Quercus ruber |
| Galla, excrefcen- tia | |
| Viscus quercinus, fol. et rami | Viscum album |
| Chambanza | |
| Mangalabey | |
| Salix, cort. | |
| Cortex granati | |
| D | Flores |

| | |
|--------------------------------|------------------------------|
| Flores balauftio- rum | Punica granatum |
| Lignum Campe- chense | Haematoxylon Campechianum |
| Oxylapathum, rad. | Rumex acutus |
| Hydrolapathum, rad. | Rumex aquaticus |
| Pentaphillum, rad. | Potentilla repens |
| Tormentilla, rad. | Tormentilla errec- ta |
| Biftorta, rad. | Polygonum biftor- ta |
| Caryophyllata, rad. | Geum urbanum |
| Anchufa, rad. | Anchufa tinctoria |
| <i>Succus acaciae</i> | |
| <i>Sanguis draconis</i> | |
| Hypociftis, fucc. infpiff. | Afarum hypociftis |
| Terra Japonica, fucc. infp. | Areca Catechu |
| Gum. Kinou | |
| <i>Vina rubra auctera</i> | |
| Bolus Armena | |
| Terra Lemnia | |

Bolus

Bolus Gallica
 Terra Cimolia, al-
 ba et purpuref-
 cens
 Tegula Hibernica
 Alumen
 Plumbum
 Cuprum

Genus 2. *Tonica.*

| | |
|--------------------------------|---------------------------|
| Salvia, fol. | Salvia officinalis |
| Melissa, fol. | Melissa officinalis |
| (Chamaedrys, fol. fum. | Teucrium cha- maedrys |
| (Chamaepytis fol. | Teucrium chame- pytis |
| Fumaria, fol. | Fumaria officinalis |
| (Cardiaca, fol. fum. | Leonurus cardiaca |
| Ruta muraria, fol. | Asplenium ruta muraria |
| Millefolium, fol. | Achillea millefo- lium |
| (Carduus benedic- tus, fol. | Centauria bene- dicta |

D 2

Centaurium

| | |
|-----------------------------|-----------------------|
| Centaurium minus, fol. sum. | Gentiana centaurium |
| Gentianella, fol. | Gentiana verna |
| Abfinthium Romanum, fol. | Artemisia Pontica |
| Abfinthium vulgare, fol. | Artemisia abfinthium |
| Tanacetum, fl. fol. | Tanacetum vulgare |
| Chamaemelum, fl. | Anthemis nobilis |
| Cortex aurantium | |
| Aurantia curasflavenfia | |
| Lentiscus, lign. | } Pistacia lentiscus |
| Mastiche, res. | |
| Sima ruba, cort. | Bursera gummifera |
| Tamariscus, cort. | Tamarix Gallica |
| Cascarilla, cort. | Croton cascarilla |
| Eleutheria, cort. | Clusia eleutheria |
| Cortex Peruvianus | Chinchona officinalis |
| Fraxinella, rad. fol. | Dictamnus albus |
| Cassumuniar, rad. | |

Calamus

| | |
|-------------------------------|--------------------------------|
| Calamus aromati- cus, rad. | Acorus calamis vulg. |
| Gentiana, rad. | Gentiana lutea iā- tiva |
| Curfuta, rad. | Gentiana lutea fil- vestris |
| Zedoaria, rad. | Kaempferia rotun- da |
| Colombo, rad. | |
| Quassia, rad. | Quassia amara |

Ferrum
Rubrica fabrilis
Haematites
Aquae ferratae

Exercitium
Frictio
Balneum frigidum
Aër
Frigus.

D 3

CLASSIS

CLASSIS QUINTA.

Auxilia permutantia Motus Solido-
rum et Fluidorum.

ORDO I. Motus Torpidos.

Excitantia.

Genus I. *Analeptica.*

| | |
|-------------------------------|--------------------------|
| Mentha piperitis, fol. | Mentha piperitis |
| Nepeta, fol. | Nepeta cataria |
| Calamintha, fol. | Melissa calamin- tha |
| Satureia, fol. | Satureia hortensis |
| Thymus, fol. | Thymus vulgaris |
| Serpillum, fol. | Thymus serpillum |
| Origanum, fol. | Origanum vulgare fum. |
| Lilium convalli- um, flor. | Convallaria may- alis |
| | Lavendula, |

| | |
|------------------------------------|-------------------------|
| Lavendula, fl. | Lavendula spica |
| Rosmarinus, fum. fl. et calices | Rosmarinus officinalis |
| Crocus, fum. pistilli | Crocus sativus officin. |
| Baccae lauri | Laurus nobilis |
| Cinnamomum, cortex | Laurus cinnamomum |
| Cassia lignea, cort. | Laurus cassia |
| Malabathrum, fol. | Laurus |
| Canella alba, cort. | |
| Lignum Rhodium, seu Aspalathus | |
| <i>Santalum</i> | Santalum |
| Ginseng, rad. | Panax quinquefolium |
| Ninfi, rad. | Sium ninfi |
| Nardus Celtica, rad. | Valeriana Celtica |
| Nardus Indica, rad. caulis | Lagurus nardus |
| <i>Vinum</i> | |
| Coccinella | Coccus cacti |

Genus

Genus 2. *Balsamica.*

| | |
|---|---------------------------|
| Balsamum Gileaden- dense, seu Opo- balsamum | Amyris |
| B. Copayva, seu copaiba | Copayva |
| B. Peruvianum | |
| B. Tolutanum | Toluifera balsa- mum |
| B. Canadense | Pinus |
| Liquida ambra } Styrax liquida } | Liquidambra |
| Terebinthina communis | Pinus silvestris |
| Terebinthina Chia, seu Cy- pria | Pistacea terebin- thus |
| —Argentora- tensis | Pinus abies |
| —Veneta | Pinus laryx |
| Pix liquida | P. abies |
| Myrrha, gum. ref. | |
| Sagapenum, gum. ref. | |

Galbanum,

| | |
|--------------------------|-------------------------|
| Galbanum, gum. ref. | Bubon Macedoni- cum |
| Styrax calamita, ref. | Styrax officin. |
| Bdellium, gum. ref. | |
| Thus vulgare, ref. | Juniperus |
| Opoponax, gum. ref. | Pastinaca opopo- nax |
| Copal, ref. | Rhus copalinum |
| Labdanum, feu Ladanum | Cyrtus Creticus |
| <i>Benzoinum</i> | |
| <i>Ammoniacum</i> | |
| <i>Guajacum</i> | |

Petrolea diversa
Succinum
Aqua Bathonien-
fis
Aqua Barregensis

Genus 3. *Stimulantia.*

| | |
|---------------|-----------------|
| Sinapi, sem. | Sinapis alba |
| Thlapsi, sem. | Thlapsi arvense |
| | Amomum |

| | |
|--|------------------------------|
| Amomum verum, sem. | |
| Nux moschata, nu- cleus | Myristica |
| Macis, involucrium putaminis nuc. Mosch. | Myristica |
| Caryophyllus aro- maticus, calyx fl. non expansi | Caryophyllus aro- maticus |
| Pimento, fr. | Myrtus pimento |
| Cubebae, fr. | Piper |
| Costus, rad. | Costus Arabicus |
| Zinziber, rad. | Amomum zinzi- ber |

*Arnica**Arum**Serpentaria Virgi-
neana*✱ *Spiritus fermenta-
ti**Cantharides**Sal. corn. cerv.**Ol. stillatit. et em-
periumatica*

Aqua

Aqua marina
Sal marinus
Aqua Harregaten-
fis
Antimonium
Electrifatio
Pathemata exci-
tantia
Calor

Genus 4. *Convulsiva et Spasmodica.*

Nux vomica, fem.
Faba Indica, seu Sancti Ignatii, fem.
Lignum colubrinum
Narcotica ; uti hyoscyamus, aconitum,
laurocerasus
Sternutatoria
Tussiculosa
Singultuosa
Arsenicum

ORDO II. Motus enormes.

Reprimentia.

Genus I. *Motus vitalis Cordis et Arteriarum.*

Sedantia.

Acida

Melo

Cucumis

Opium

Camphor

Laurus camphora

Castor

Nitrum

Aqua frigida

Aqua Bristolensis

Pathemata reprimentia

Frigus

Adonis vernalis

Quies mensuralis

Genus

Genus 2. *Motus Musculares.**Antispasmodica.*

| | |
|--|--|
| Artemisia, fum. fol. | Artemisia vulgaris |
| Atriplex foetida, fol. | Chenopodium vulvaria |
| Dictamnus Creti- cus, fol. | Origanum dictam- nus |
| Fol. aurantium Paralysis, flor. | Citrus aurantium |
| Cardamines, fl. | Primula veris off. Cardamine pra- tensis |
| Peonia mas et foe- mina, fol. flor. rad. | Peonia officinalis |
| Valeriana silve- stris, rad. | Valeriana offici- nalis |
| Tacamahaca, ref. | Populus |
| Assa foetida, gum. resin. | Ferula assa foetida |
| <i>Galbanum</i> | |
| <i>Opium</i> | |
| Fuligo ligni | |

E

Castoreum

Castoreum

Castor fiber

Moschus

Moschus moschiferus

Zibethum

Viverra zibetha

Oleum et sal succini

Æther

Cinnabaris nativa

Ambragrifea

magas

CLASSIS SEXTA.

Auxilia Afficientia Sensus.

ORDO I. Temperiem Corporis.

Temperantia.

Genus I. *Temperiem Calidam.*

Refrigerantia.

Telephium, fol.

Sedum telephium

Gallium, fl. fol.

Gallium verum

Acetofella, seu Lujula, fol.

Oxalis acetofella

Melo

Melo

Cucumis

Acescentia et acida vegetabilia

Camphor

Acida mineralia

Nitrum

Potus frigidus

Aqua Bristolensis

Aqua Buxtonensis

Aqua Matlocensis

Aër externus frigidiusculus

Genus 2. *Temperiem frigidam.*

Calefacientia.

Cardamomum minus, fem.

Amomum cardamomum

Cardamomum majus, fem.

Grana paradisi, fem.

Amomum

E 2

Piper

| | |
|---|----------------------|
| Piper rotundum, fem. | Piper nigrum |
| Piper longum, fem. | Piper longum |
| Piper Indicum, feu Capficum, fem. | Capficum annu- um |
| Galanga minor, rad. | } Kæmpferia |
| Galanga major, rad. | |
| <i>Tonica</i> | |
| <i>Excitantia</i> | |

ORDO II. Nimiam Sensibilitatem
Nervorum.

Anodyna.

Genus I. *Hypnotica.*

| | |
|-------------------------|-----------------------------|
| Lactuca virofa, fol. | Lactuca virofa |
| Cynoglossum, fol. | Cynoglossum of- ficinale |
| | Nymphæa, |

Nymphæa, fl. rad. Nymphæa lutea
Crocus
Papaver, capita } Papaver somnife-
Opium, succ. in- } rum
 spiss.
Camphor
Vinum
Alcohol
Castor
Æther
Sal sedativum
 Hombergii

Genus 2. *Narcotica.*

Cicuta major, fol. Conium macula-
 et succ. inspiss. tum
Stramonium, succ. Datura stramoni-
 inspiss. um
Hyoscyamus, succ. Hyoscyamus ni-
 inspiss. ger
Aconitum, succ. Aconitum Napel-
 inspiss. lus
Cœnanthe, succ. Cœnanthe crocata
 inspiss.

E 3

Belladonna,

| | | |
|---------------------|-------------|----------|
| Belladonna, fol. | Atropa | Bella- |
| fuccus | dona | dona |
| Laurocerasus, succ. | Prunus | lauroce- |
| aqua stillatitia | rafus | rafus |
| Lolium, fem. | Lolium | temulen- |
| | tum | tum |
| Coculus Indicus, | Menispermum | co- |
| fem. | culus | culus |
| Mandragora, fol. | Mandragora | offi- |
| rad. | cin. | cin. |
| Colchicum, rad. | Colchicum | au- |
| | tumnale | tumnale |

CLASSIS SEPTIMA.

Auxilia Topica Interna.

ORDO I. Organa non Secretoria.

Genus I. *Stomachica et Intestinalia.*

Melissa

Mentha piperitis

Chamæmelum

Cortex Peruvianus

Rhabarbarum

Rhabarbarum

Amara

Aromata

Vinum

Spiritus vini

Chalybeata

Genus 2. *Splenica*

Lingua cervina, fol. Asplenium scolopendrium

Ceterach, fol. Asplenium ceterach

Adiantum

Tamariscus

Genus 3. *Pneumonica.*

Expectorantia

Genus 4. *Cardiaca.*

Marum Syriacum, fol. Teucrium marum

Ocimum,

| | | |
|------------------------------|-----------|-------------------|
| Ocimum, fol. | Ocimum | Basili- cum |
| Caryophyllus ru- ber, fl. | Dianthus | caryo- phyllus |
| Bechen album, rad. | Centaurea | bechen |
| Bechen rubrum, rad. | Statice | limonium |
| <i>Excitantia</i> | | |

ORDO II. Organa Secretoria.

Genus I. *Cephalica.*

| | | |
|--------------------------------|-------------|------------------|
| Abrotanum mas, fol. | Artemisia | abrota- num |
| Betonica, fol. | Betonica | officina- lis |
| Stæchas Arabica, fum. flor. | Lavendula | stæ- chas |
| Vanilla, fruct. | Epidendrion | va- nilla |

Excitantia

Genus

Genus 2. *Uterina.*

Cheiri, seu lucoi- Cheiranthus chei-
um luteum, ri
flor.

Emmenagoga

Genus 3. *Spermatopoa.*

Dieta nutriens gelatinosa

Calefacientia

Tonica

Cantharides

Genus 4. *Galactopoa.*

Dieta forbilis

Chærifolium

Genus 5. *Hepatica.*

Curcuma

Hepatica

Aloes

Aloes
Deobstruentia

CLASSIS OCTAVA.

Auxilia Topica Externa.

ORDO I. Repellentia.

Genus I. *Discussientia.*

| | |
|---------------------|---------------------------|
| Sedum majus, fol. | Sempervivum tec- torum |
| Auricula judæ | Tremella auricula |
| <i>Laurus</i> | |
| <i>Sambucus</i> | |
| <i>Bryonia</i> | |
| <i>Astringentia</i> | |
| <i>Camphor</i> | |
| Caranna, refina | |
| Lacca, gum. ref. | |
| Animi, ref. | Hymenea courba- ril |
| Fex vini rubri | |

Acetum

Acetum

Sp. vini

Albumen ovi

Sal ammoniacum

Urina putrida

Lapis calaminaris

Tutia

Pompholix

Plumbum

Mercurius

Sulphur

Ferrum

Plates Zinci

Genus 2. *Cosmetica.*

Sigillum Solomoni-
nis, rad.

Chelidonium mi-
nus, fol, rad.

Opobalsamum

Benzoinum

Ol. tart. p. d.

Convallaria poly-
gonatum

Ranunculus fica-
ria

Genus

Genus 3. *Styptica.*

Agaricus quercinus

Lycoperdon

Linamentum ficum

*Vinum rubrum, vel
sp. vini*

Inspissantia et astringentia

Tela araneorum

Sericum

Sp. acidi minerales

Lycoperdon

ORDO II. *Attrahentia.*

Genus 1. *Inflammantia.*

Dentillaria

Pyrethrum, rad.

Allium

Arum

Cyclamen

Plumbago Europaea.

Anthemis pyrethrum

Sinapi

Sinapi

Piper

Terebinthina

Sales alkalini

Flor. cerevisiae

Columba

Stercus columba-
rum

Cucurbitulae sine
ferro

Genus. 2. *Vesicantia.*

Ranunculus, fol. *Ranunculus scele-*
rad. *ratus*

Urtica, fol. fem. *Urtica dioica*

Clematis, fol. *Clematis officina-*
rum

Euthorbium

Inflammantia

Cantharides

Genus 3. *Corrosiva.*

Tithymalus, fuc- *Euphorbia*
cus

F

Perficaria

| | |
|--|-----------------------------|
| Perficaria urens, fol. | Polygonum hy- dropiper |
| Anacardium ori- entale, fructus | Avicennia offici- nalis |
| Anacardium occi- dentale, fructus | Anacardium oc- cidentale |
| <i>Sp. acidi minerales</i> | |
| Arsenicum | |
| Auripigmentum | |
| <i>Lapis septicus</i> | |
| <i>Causticum lunare</i> | |
| Moxa usta, lanugo | Artemisiae Japo- nicae |
| Actuale cauterium, <i>Folius Speculi.</i> | |

ORDO III. Consolidantia.

Genus I. *Glutinantia.*

| | |
|-------------------------|---------------------------------|
| Polium Creticum, fol | Teucrium Creti- cum |
| Hypericum, fol. | Hypericum per- foratum |
| Ulmus, fol. | Ulmus campestris |
| Caprifolium, fol. | Asperula odorata Perfoliata, |

Perfoliata, fol.

Bupleurum rō-
tundifolium

Consolida

Pulmonaria

Stavisagria

Astringentia

Tabacum

Aloes

Benzoinum

Balsama

Sp. vini

Sarcocolla, gum.
ref.

Pinea sarcocolla

Mummia

Genus 2. *Suppurantia.*

Farina tritici, vel avenae

Lilium album, rad.

Caepa cocta vel affata

Rapum coctum

Asphodelus, rad.

Caricae pingues

Crocus

Olea vegetabilia expressa, vel animalia

F 2

Cerum

Cerum
Gum. ammoniacum
Galbanum
Bdellium
Pix navalis
Pix Burgundina
Inflammantia
Cucurbitulae sine ferro

Genus 3. Digestiva.

Elemi, ref.
Mel
Pix liquida
Balsamica

Genus 4. Catheretica.

Alumen ustum
Mercurius pptus ruber
Lapis septicus
Causticum lunare
Squama aeris
Aes ustum
Ærugo aeris
Vitriolum coeruleum

Genus

Genus 5 *Cicatrisantia.*

Lapis calaminaris
Tutia
Aes solutum

CLASSIS NONA.

Auxilia expellentia vel destruentia corpora extranea.

ORDO I. Corpora Inanimata.

Genus 1. *Aërem.*

Carminativa.

| | |
|--------------------------------------|-------------------------|
| Coriandrum, fem. | Coriandrum fati- vum |
| Carvi fem. | Carum carvi |
| Foeniculum dulce et vulgare, fem. | Anethum foeni- culum |
| Anisum, fem. | Pimpinella anisum |
| F 3 | Anethum, |

| | |
|--------------------------------|-------------------------|
| Anethum, fem. | Anethum graveo- lens |
| Hypocelinum, fem. fol. rad. | Smyrnum olufa- trum |
| Cuminum, fem. | Cuminum cymi- num |

Chamaemelum

Mentha piperitis

Aromata

Genus 2. *Venena.*

Alexipharmica.

Aqua tepida

Lac

*Olea blanda vege-
tabilia, vel ani-
malia*

Acetum

Sudorifica

Seneka

*Lignum colubri-
num*

Axungia viperina

*Ophiorhiza mun-
gos*

Sal

Sal volatile vipe-
rinum

Lichen cinereus Lichen caninus
terrestris, tota
planta

Moschus

Cinnaberis

Mercurius

Balneum frigidum

Genus 3. *Calculum.*

Lithonthriptica.

Porrum

Caepe

Celleri

Manna

Sp. acidi minerales

Sapo albus

Calx vivum

Aqua calcis

Lixivium saponis

Aer mephiticus

ORDO

ORDO II. Corpora Animata.

Genus I. *Pediculi diversi.*

Pthiriaca

Nicotiana
Stavisagria
Helleborus albus
Aloes
Sulphur
Sal marinus.
Mercurius
Ferrum

Genus. 2. *Vermes.*

Anthelminthica.

Amara
Sabina
Tanacetum
Absinthium
Scordium
Rheum

Aloes

*Aloes*Santonicum, fem. *Artemisia* fantoni-
cosites cumLupulus, flor. *Humulus lupulus*Abrotanum foe- *Santolina* Cha-
mina, fol. maecypariffus*Spigelia* *Spigelia* anthel-
mia*Anthora*, rad. *Aconitum* antho-
raIndian pink *Lonicera* Mari-
landica*Corallina* *Sertularia**Aqua calcis**Sal marinum**Aqua Harregatensis**Ferrum**Mercurius**Stannum*

M A T E-

MATERIA MEDICA
COMPOSITA vel PHARMACIA.

METHODUS MATERIÆ MEDICÆ
COMPOSITÆ.

CLASSIS PRIMA.

Pharmacia Mechanica.

ORDO I. Pharmacia Praeparativa.

Genus I. *Suppellex Pharmaceuticum.*

Genus II. *Methodus colligendi simplicia medicamenta secundum solum, aërem, et tempus vegetationis.*

Genus III. *Methodus praeservandi per exsiccationem, per aequalem aëris temperiem, per antiseptica, viz. Spiritum vini, salem, acetum, et saccharum.*

Conservae.

Conf. fol. menth. E. L.

Conf. ros. rubr. E. L.

Conf.

Conf. cort. aurant. E. L.
Conf. prun. silvestr. E. L.

Condita.

Genus 4. *Methodus præparandi non-
nulla simplicia.*

Contusio, Levigatio, Ablutio
Test. ostreor. ppt. E.
Antim. præparatum, E.
Millipedes præparatæ, E. L.
Pulporum extractio, E. L.
Ferr. Limat. purificata et præparata, E.
Hydrargyrus ppt.
Gummi resinæ ppt.
Coctio scillæ
Exsiccatio scillæ, E.
Torrefactio rhei et nucis moschatæ, L.
Creta præparata, E.

ORDO

ORDO II. Compositio solida per
juxtapositionem.

Genus 1. *Pulvis.*

- Pulvis cretaceus, E.
- P. ari compositus, L.
- P. e scammonio compositus, E. L.
- P. stipticus, E.
- P. sudorificus seu Doveri, E.
- P. Ducis Portlandici.

Genus 2. *Bolus.*

Genus 3. *Electuarium et Confectio.*

- Elect. cardiacum, vulgo confectio
cardiaca, E. L.
- Confectio Japonica, E. Elect. e scor-
dio, L.
- Elect. lenetivum, E. L.
- Elect. thebaic. vulgo theriaca, E. Mi-
thridaticum, L. Theriaca Andro-
machi, L.

Genus

Genus 4. *Pilule.*

- Pil. mercuriales, E.
- Pil. Æthiopicæ, E.
- Pil. Plummerii, E.
- Pil. aloeticæ, E.
- Pil. rufæ seu communes, E. L.
- Pil. e colocynthide cum aloe, vulgo
Pil. cochiaæ, E. L.
- Pil. gummofæ, E. L.

Genus 5. *Trochifis.*

- Troch. bechici albi, E. L.
- Troch. bechici nigri, E. L.
- Troch. bechici nigri cum opio, E.

Genus 6. *Tabellæ.*

Tabellæ rosaceæ

G M Genus

Genus 7. *Cataplasma.*

Sinapismus

Epithema ad carcinoma Plunketti

ORDO III. Compositio fluida per
mixturam.

Genus 1. *Julapium.*

Potio cretacea, E.

Julap. e camphor. L.

Julap. e mosch. L.

Mixtura scillitica

Genus 2. *Mixtura et Haustus.*

Lac ammoniac. L.

Mixtura oleosa

Genus 3. *Mixtura contracta.*

ORDO IV. Medicamenta per ex-
pressionem.

Genus 1. *Succi expressi.*

Succ. ad scorbuti- Succ. scorbut. L.
cos, E.

Genus 2. *Olea expressa.*

Ol. amygdal. E. L.
Ol. fem. lin. E.

Genus 3. *Emulsio.*

Emulf. communis, E.
Em. Arabica, E. Em. communis, L.

CLASSIS SECUNDA.

Pharmacia chemica.

ORDO I. Menstruum aquosum.

Genus 1. *Infusio aquosa.*

Infus. amar. E. Infus. amar. sim-
plex, L.
Infus. vulgo tinct.
rosar. E. L.
Infus. tamar. cum
fenn. E.

Genus 2. *Decoctum aquosum.*

Decoct. lignorum, E.
Decoct. Kennedy

Genus 3. *Extractum.*

Extr. gentian. E. L.
Extr. cathartic. L.
Extr. jalap. E. L.

Genus

Genus 4. *Solutio gummatum.*

Mucilago gummi Arabis, E.

Mucilago gum. tragacanth. E.

Gum. et resina alois, L.

Lac ammoniac. L.

Genus 5. *Aquæ stillatitiae simplices.*

Aq. chamæm.

Aq. rosar.

Aq. meliss.

Aq. piper. Jamaic.

Aq. cinnam. simplex

Aq. aneth.

Aq. castor.

Genus 6. *Olea essentialia distillata.*

Ol. menth.

Ol. fabin.

Ol. lavendul.

Ol. rut.

Ol. carv.

Ol. terebinth.

Ol. fassafr.

Olea empyreumatica distillata

Genus 7. *Solutiones salinae.*

Serum aluminosum, L.

Sales essentialis crystalizati

Syrupi.

Syr. alth. E. L.

Syr. balsam. E. L.

Syr. papav. alb.

feu de meconio,
vulgo Diacodi-
on, E. L.

Syr. e cort. aurant.

E. L.

— Mel. rosar. L.

Sapa feu rob. fam-
buc. E.

— Acetum distill. E.

L.

Acidum

Acidum vitriol.

ten. E.

Aq. sulphurat. L.

Sal. lixiv. purific.

E.

Sal. tart. E. L.

Liquamen fal. tart.

vulgo ol. tart.

p. d. L.

Lixiv. caust. E.

Lixiv. sapon. L.

Aq. calc. L.

Sp. et fal. Sal.

ammon. E. L.

Genus 8. *Resinæ præcipitatæ.*

Ref. jalap.

Ref. scammon.

Ref. cort. Peruv.

Ref. guajac.

ORDO II. Menstruum mucilaginosum.

Genus I. *Mixtura gum. Arab. cum
sp. vin.*

Genus

Genus 2. *Mixtura g. Arab. cum salibus acidis.*

Genus 3. *Mixtura g. Arab. cum oleosis.*

cum oleis expressis

cum balsamis

cum resinis

cum oleis essentialibus

cum cera

cum sperm. cæt.

cum mosch.

Genus 4. *Mixtura g. Arab. cum metallicis.*

cum mercurio

ORDO III. Menstruum salinum.

Genus 1. *Saccharum.*

cum oleis expressis. Linctus.

cum oleis essentialibus

Jalap.

Jalap. e camph. L.
Jalap. e mosch. L.
cum metallicis
Pil. belloft.

Genus 2. *Sal ammoniacus.*

Flor. mart. L.
Aq. sapharin. E.
Solut. mercur. per deliq. Afruc.
Mercur. corrosiv. nitros. Ward.

Genus 3. *Sal alkalinus fixus.*

Lotio Saponac. L.
Hepar sulphur.
Jul. falin. River.
Tart. solubil. E. L.
Sal rupellanus
Tartar. regeneratum, E. Sal diureticus,
L.
Tartar. vitriolatum, E. L.
*Sal Polychrysalis &
Soda vitriolata seu S. leth. & leubers*
Calx vivum
Aq. calc. simplex, L.

Aq.

Aq. calc. minus comp. L.
Aq. calc. magis comp. L.
Beaume de vie

Genus 4. *Sal alkalinus volatilis.*

Linimentum volatile, L.
Empl. volatil.
Tinct. cort. Peruv. volat. L.
Spir. Minderer.
Spir. volat. sulph. Hoffman.
Cuprum ammoniacum, E.

Genus 5. *Sal acidus.*

Acetum *91.*
Acet. rofac.
Acet. Scillitic. E. L.
Acet. theriacal.
Ceruff. E.
Sacchar. Saturn. E.
Acet. lythargyrites
Aq. Saturn. Goulard.

Oxymel

Oxymel seu ungu. Ægyptiac. Mel. E-
gypt. L.

Tragea Keiferi.

Tartarum *℞.*
Mars solubilis, seu chalibis tartarizatus

Mecur. tartarizatus

Tart. emetic. E. L.

Vin. chalibeat.

Vin. millipedat, E.

Acidum vitriolicum *℞.*

Æther vitriolic. E.

Acidum vitriolicum vinosum, vulgo
sp. *℞.* vitr. dulc. E. L.

Vitr. mart. seu fal. chalib. E. fal. mart.
L.

Vitriol. caerul.

Vitriol. alb.

Merc. flav. vulgo turp. min. E. Merc.
emet. flav. L.

Acidum nitrosum *℞.*

Sp. nitr. dulc. E. L.

Aurum fulminans

Sal Jovis

Caustic. lunar. E. L.

Pil. lunar. Boylei

Merc.

Merc corrosiv. ruber, E.
Bezoard. miner.

Acidum marinum *℥*:

Merc. sublim. corros. E. L.

Merc. dulc. E. L.

Merc. praecipit. alb. E. L.

Butyr. antimon. E.

ORDO IV. Menstruum Oleosum.

Genus I. *Olea expressa.*

Ol. e mucilag. L.

Ung. sambucin. L.

Ol. chamaemel.

Ol. camphorat. E.

Bals. sulph. crass. E. Bals. sulph. simpl.

L.

Ung. e lapid. calam. E.

Ung. nutrit. Ung. tripharm. L.

Empl. commun. E.

Empl. adhaesiv. E.

Genus

Genus 2. *Oleum palmae.*

Ung. emolliens, E.

Genus 3. *Cerum.*

Empl. cereum, E. L.

Empl. vesicator. vulgo epispast. E. L.

Genus 4. *Teribinthina.*

Empl. mercur. E. Empl. com. cum
mercur. L.

Genus 5. *Olea distillata.*

Balf. sulph. terebinth.

Balf. viride.

Genus 6. *Olea animalia.*

Ung. mercur. E. Ung. caerul. fort. et
mit. L.

H

Ung.

Ung. epispast. mit.

ORDO V. *Menstruum vinosum.*

Genus 1. *Vinum.*

Vinum, vulgo tinct. ipecac. E. L.
Vinum aloetic. vulgo tinct. sac. E. L.
Vinum aloetic. alkalifat. L.
Tinct thebaic. L.
Vin. antimon. E.
Vin. chalibeat. L.
Vin. milleped. E.
Vin. viperin. L.

Genus 2. *Spiritus vini tenuior.*

Tinct. amar. E.
Elix. ex aloe et rheo, vulgo elix. sac. E.
Tinct. fenn. compos. vulgo elix. salutis,
E.
Elix. alois, vulgo El. proprietat. E. L.
Tinct. fuligin. E.
Tinct. stiptic. L.
Solutio mercur, subl, corrosiv, Swieten.
Aquae

Aquae stillatitiae spirituosae
 Aq. juniper. E.
 Aq. raphan. comp. E. L.

Genus 3. *Spiritus vini rectificati.*

Bals. anodyn. vulgo Bateanum, E.
 Bals. saponac. E.
 Bals. five elix. Traumatic. E. L.
 Elix. paregoric. L.
 Elix. guajacin. E.
 Sp. vin. camphorat. E.
 Tinct. cast. E.
 Tinct. mosch. E.
 Tinct. antiphthific. E. tinct. saturnin. L.
 Spiritus vini cum salibus. *℞.*
 Elix. aloes five propriet. vitriol. E.
 Elix. vitriol. acid. E. L.
 Tinct. mart. E. L.

Spiritus stillatitii *℞.*
 Spir. rorismarini, vulgo aq. reg. Hung.
 E. L.
 Spir. lavendul. compos. E. L.

Spir. sal. ammon. vin. E. sp. sal. Am-
 mon. dulc. L.

Tinct. valerian. volat. E. L.

Tinct. castor. compos. E.

Elix. paregoric. E.

Spir. volat. foetid. E. L.

Spir. vol. aromat. vulgo sp. vol. oleos.
et spir. sal. aromat. E. L.

ORDO VI. Menstruum ex ovo.

Genus 1. *Albumen.*

Coagulum aluminosum, L.

Linctus ex amylo, E. edit. prior.

Genus 2. *Vitellus.*

Solutio terebinthinae

Mixt. sperm. caet.

ORDO VII. Menstruum ex sulphure.

Genus 1. *Sulphur cum oleosis.*

Bals. Sulphur. crass.

Bals.

Balf. Sulphur. terebinth.

Genus 2. *Sulphur cum alkalinis.*

Hepar Sulphur.

Spir. volat. fulph. Hoffman.

Genus 3. *Sulphur cum metallicis.*

Æthiop. mineralis, E. L.

Mercur. violac. Astruct.

Cinnab. factit. E. L.

Kermes mineral.

Sulph. antim. praecip. E.

Tinct. antimon. L.

ORDO VIII. Menstruum ex terra ab-
forbente.

Genus 1. *Oculus cancrorum.*

Mercurius alkalifatus.

Genus

Genus 2. *Magnesia.*

Sal. cathart. amar. E.

Magnesia calcinata

cum camphor.

cum myrrh.

cum galban.

cum opio

cum bals. Tolutan.

F I N I S.

