

Wines and Spirits Account Book

Publication/Creation

January 1843 - June 1847

Persistent URL

<https://wellcomecollection.org/works/scfkf6s2>

License and attribution

You have permission to make copies of this work under a Creative Commons, Attribution, Non-commercial license.

Non-commercial use includes private study, academic research, teaching, and other activities that are not primarily intended for, or directed towards, commercial advantage or private monetary compensation. See the Legal Code for further information.

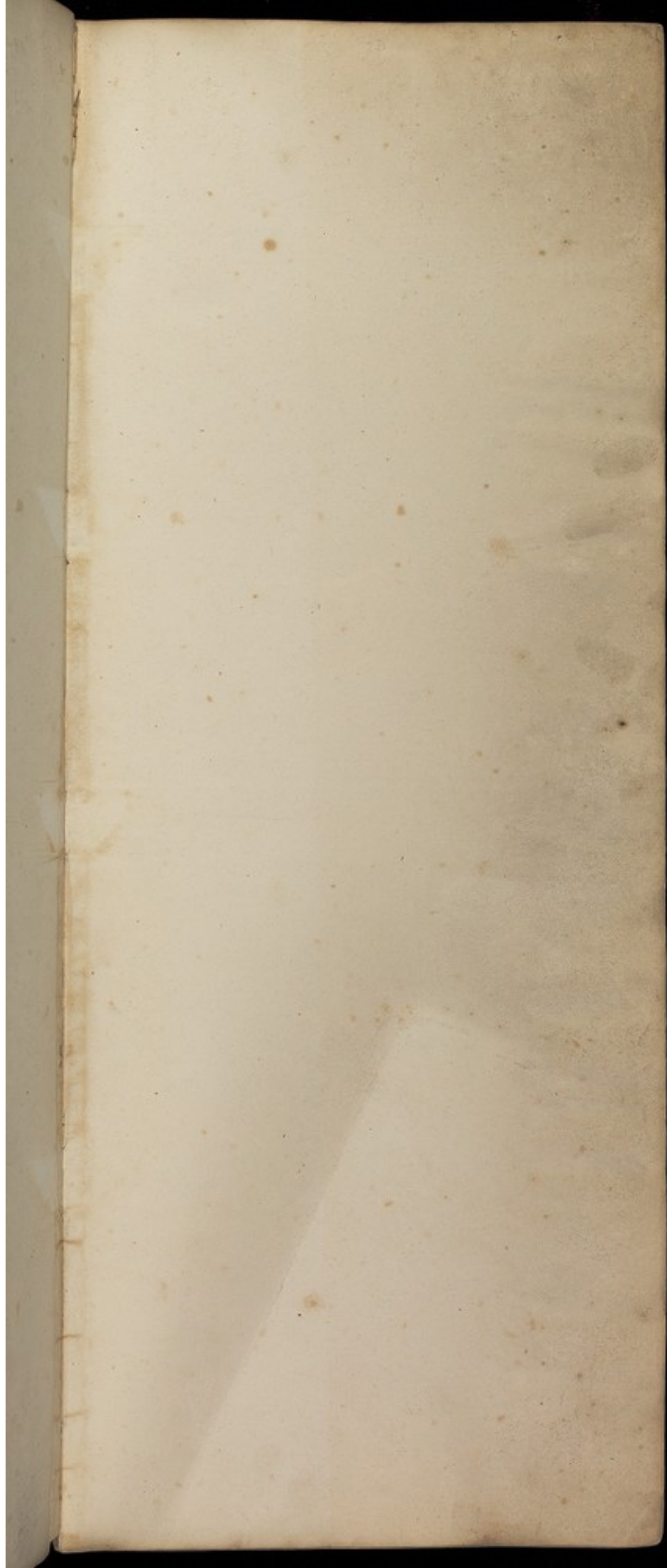
Image source should be attributed as specified in the full catalogue record. If no source is given the image should be attributed to Wellcome Collection.



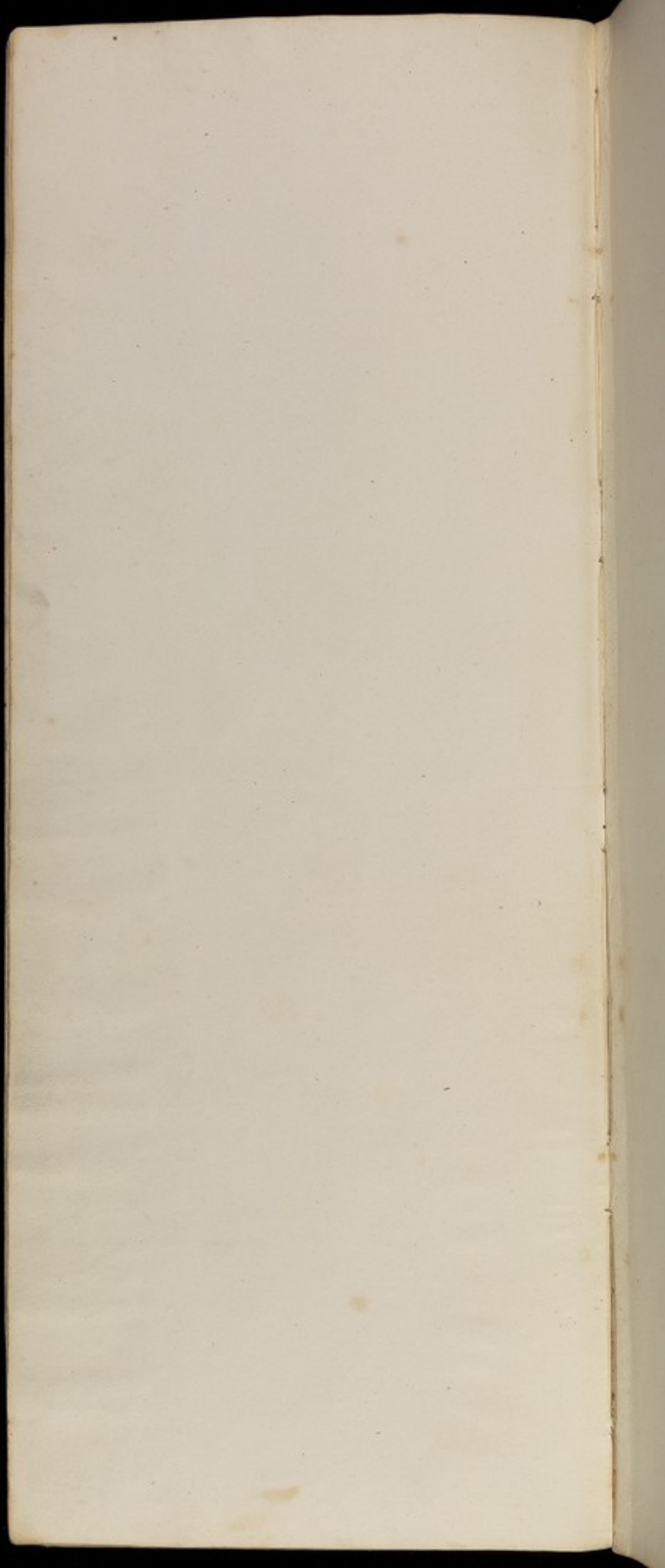
Wellcome Collection
183 Euston Road
London NW1 2BE UK
T +44 (0)20 7611 8722
E library@wellcomecollection.org
<https://wellcomecollection.org>

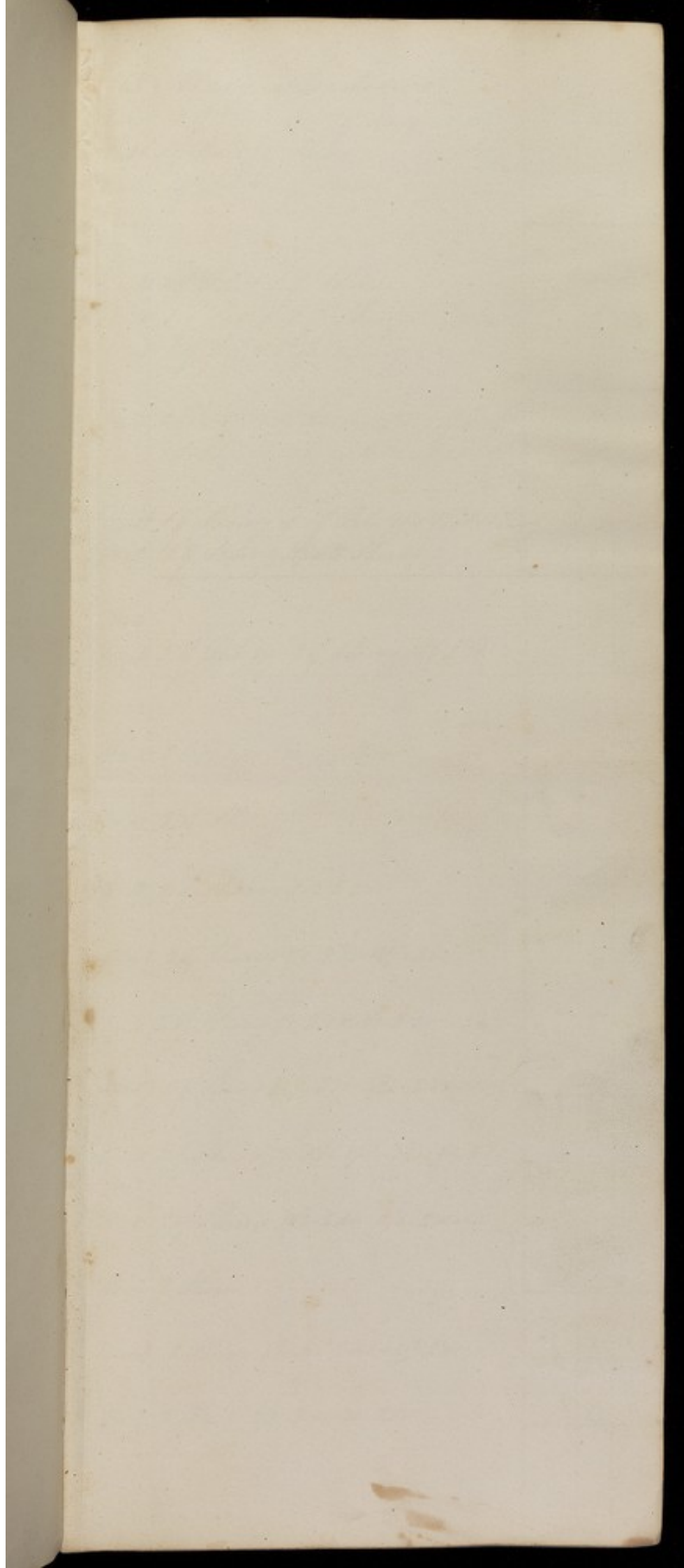
E/13/4





28
19
10
5.6





[Faint, illegible handwriting on a lined page, possibly bleed-through from the reverse side.]

[Handwritten notes on the right edge of the page, including dates and names.]

1841	Mar 1	...
1841	Mar 2	...
1841	Mar 3	...
1841	Mar 4	...
1841	Mar 5	...
1841	Mar 6	...
1841	Mar 7	...
1841	Mar 8	...
1841	Mar 9	...
1841	Mar 10	...
1841	Mar 11	...
1841	Mar 12	...
1841	Mar 13	...
1841	Mar 14	...
1841	Mar 15	...
1841	Mar 16	...
1841	Mar 17	...
1841	Mar 18	...
1841	Mar 19	...
1841	Mar 20	...
1841	Mar 21	...
1841	Mar 22	...
1841	Mar 23	...
1841	Mar 24	...
1841	Mar 25	...
1841	Mar 26	...
1841	Mar 27	...
1841	Mar 28	...
1841	Mar 29	...
1841	Mar 30	...
1841	Mar 31	...

1743 Mary Andrews

1 mo 7	2 of Put 15 - 1 of Sherry	8	6
2 mo 19	1 of Put + 1 of Sherry	5	9
3 mo 20	1 of Put + 1 of Sherry	5	9
		1	
4 mo 22	1 of Put + 1 of Sherry	5	6
5 mo 26	1 of Put + 1 of Sherry	5	6
6 mo 6	2 of Put + 2 of Sherry	5	8
		16	8
7 mo 1	1 of Put + 1 of Sherry 7/2 - 1 of Put + 1 of Sherry 7/26 - 1 of Put + 1 of Sherry	8	2
		8	15
		16	6
9 mo 23	1 of Sherry + 1 of Put 10/9 1 Put + 1 Sherry		
11 mo 7	2 of Sherry 12/15 2 Sherry -	1	2 4
7844			
1 mo 13	2 of Put 2/7 - 2 of Sherry 3/4 - 2 70	16	8
4 mo 6	2 of Put 5/4 2 70 - 6/4 - 2 70	16	
7 - 13	2 of Sherry		
7 - 18	2 of Sherry 9/8 2 80	17	
10 mo 9	2 of Sherry 4/9 2 80 - 12/7 - 2 80	17	
1 - 4	2 of Sherry 2/1 - 2 70 - 3/1 - 2 70	17	
3 mo 29	2 of Sherry 4/27 - 2 80 - 5/26 - 2 80	17	
6 - 21	2 of Sherry 7/19 - 2 80 - 8/16 - 2 80 - 9/15 - 2 80	1	2 8
10 - 11	2 of Sherry 1/8 - 2 80 - 12/6 - 2 80		
12 - 6	2 Sherry	1	2 8
1 mo 23	2 Sherry 3/26 - 2 80 - 3/7 - 2 80	17	
4 - 4	2 Sherry - 5/2 - 2 80 - 30 - 2 80	17	

6	27	2 Sherry	7/25	2 do	8/22	2 do		17			
9	Nov 19	2 Sherry	11/17	2 do	11/13	2 do	12/12	2 do	1.2		
12	..	26	2 Sherry	1/16	1 do	32	1 do	2/13	1 do		
2	..	37	1 do	3/13	1 do			7 bottles	2/9	10 3	
3	..	37	1 Sherry	1/10	1 do	26	1 do	5/13	1 do	22	1 do
6	..	5	1 do					6 Sherry	2/9	16	6

1.1 1/10
 2.2 1/11
 3.3 1/12
 4.4 1/13
 5.5 1/14
 6.6 1/15
 7.7 1/16
 8.8 1/17
 9.9 1/18
 10.10 1/19
 11.11 1/20
 12.12 1/21
 13.13 1/22
 14.14 1/23
 15.15 1/24
 16.16 1/25
 17.17 1/26
 18.18 1/27
 19.19 1/28
 20.20 1/29
 21.21 1/30
 22.22 1/31
 23.23 1/32
 24.24 1/33
 25.25 1/34
 26.26 1/35
 27.27 1/36
 28.28 1/37
 29.29 1/38
 30.30 1/39
 31.31 1/40

17 2163 John Harrison

1 mo 7	1 of Part 29 - 1 do 24 - 1 do 12 - 1 do	}	16	6	
3-1	1 of Part 20 - 1 do				
4 mo 4	1 of Part 4/31 - 1 of Part 56 - 1 of Part	}	13	5	
5 mo 22	1 of Part 6/5 1 do				
6 mo 24	1 of Part 7/9 - 1 of Part 26 - 1 Part	}	16		
8 mo 14	1 of Part 30 - 1 do 9/11 - 1 do				
4 mo 22	1 Part 10/1 - 1 Part 14 - 19 1/3 - 1 do	}	19	8	
11 mo 4	1 Part 12/1 - 1 do 15 - 1 do				
7 1/2	1 Part 22 - 1 do 2/5 - 19 2/3 - 22 - 1 Part	}	14		
2 mo 22	1 Part 3/1 1 do				
3 mo 25	1 of Part 4/12 - 1 do 23 - 1 do 5/3 - 1 do 12 - 1 do	}	1	1	14
5 mo 27	1 do 27 - 1 do 6/11 - 1 do				
6 mo 20	1 Part 7/2 - 1 do	}	16		
8-7	1 of Part 14 - 1 do 27 - 1 do 9/7 - 1 do				
9 mo 7	1 of Part 22 - 1 do 22 - 1 do 11/11 - 1 do 23 - 1 do	}	1	14	
11-3	1 do 13 - 1 do 12/2 - 1 do 7 - 1 do				
1-1	1 of Part 17 - 1 do 2/2 - 1 do 11 - 1 do 19 - 1 do	}	1	1	14
2-27	1 do 27 - 1 do 3/8 - 1 do 15 - 1 do				
3-26	1 of Part 4/6 - 1 do 19 - 1 do 5/1 - 1 do 16 - 1 do 23 - 1 do	}	18	8	
6-15	1 Part				
7-6	1 of Part 29 - 1 do 25 - 1 do 8/7 - 1 do 4/6 - 1 do 12 - 1 do	}	10	8	
4-27	1 Part 11/18 - 1 do 11/5 - 1 do 12/18 - 1 do				
12 mo 3	1 Part 1/4 - 1 do 2/4 - 1 do 28 - 1 do	}	10	8	
3-15	1 Part 3/1 - 1 do 4/6 - 1 do 27 - 1 do 16 - 1 do 28 - 1 do				
6-10	1 do	}	18	8	

6 .. 24	1 Pond 7/11	1 do 21	1 do 8/10	1 do 17	1 do	} 18 8
8 .. 31	1 do 4/5 1 do					
9 .. 29	1 Pond 17/16	1 do 29	1 do 1/10	1 do 24	1 do	} 15 6
12 .. 1	1 do					
1 .. 1	1 Pond 26	1 Sherry	2 Bottles of Brandy			15 4

10 .. 1 Pond
 11 .. 1 do
 13 .. 1 do
 14 .. 1 do
 15 .. 1 do
 16 .. 1 do
 17 .. 1 do
 18 .. 1 do
 19 .. 1 do
 20 .. 1 do
 21 .. 1 do
 22 .. 1 do
 23 .. 1 do
 24 .. 1 do
 25 .. 1 do
 26 .. 1 do
 27 .. 1 do
 28 .. 1 do
 29 .. 1 do
 30 .. 1 do
 31 .. 1 do

1843 *Rush Heywood*

1 mo 14 2 of Put 2/1 2 do 7- 2 do
 3- 5 2 of Put 20- 2 do } 1 7 6

5 mo 6 2 of Put 4/22 2 of Put 4/27 2 of Put
 6 mo 7 2 of Put } 1 1 4

6 mo 24 2 of Put 7/21 2 of Put 7/5 2 Put
 8 mo 19 2 Put 4- 2 do } 1 6 8

9 mo 23 2 of Put 1/4 2 do 31- 2 do 11/7 2 do
 12 mo 2 2 do 16- 2 do } 1 12

1844

1 mo 13 2 of Put 2/4 2 do 2/7 2 Put 24- 2 do
 2 mo 24 2 do 3/4 2 do } 1 8

3 mo 24 2 of Put 4/6 2 do 2/20 2 do 5/4 2 do 7/8 2 do
 6 mo 4 2 do } 1 12

6- 23 2 Put 7/13 2 do

7- 28 2 of Put 8/10 2 do 8/23 2 do 9/8 2 do } 1 12

9 mo 2 2 of Put 22 2 do 11/5 2 do 1/9 2 do
 11 mo 23 2 do 12/7 2 do 21- 2 do } 2 2 8

1- 14 2 Put 10 2 do 2/1 2 do 15- 2 do 3/1 2 do
 3- 15 2 do } 1 12

3 mo 19 2 Put 4/12 2 do 3/7 2 do 5/7 2 do 24- 2 do 6/7 2 do } 1 12

6- 21 2 Put 7/6 2 do 13- 2 of Put 19- 2 Put
 8- 16 2 do 30- 2 do 9/13 2 do = 12 put 2 put } 1 13

9- 27 2 Put 12/4 2 do 25- 2 do 1/3 2 do 11/22 2 do
 12- 6 2 do } 1 12

12 mo 13 2 Put 4/3 2 do 19- 2 do 24- 2 do 2/6 2 do
 2 mo 21 2 do 3/7 2 do } 1 17 4

3- 21 2 Put 4/4 2 do 18- 2 do 3/28 1 Put
 5/ 2 2 Put 16- 2 do 30- 2 do 6/13 2 do } 1 17 10

6.. 27 2 Prod 7/10 2 do 25-2 do 8/22- 2 do
9.. 6 2 do

1 6 8

9.. 19 2 Prod 11/3 2 do-17-2 do-31 2 do 11/15 2 do
11.. 27 2 do-12/12- 2 do- 11/26- 1 Prod 12/10- 1 do

1 17 2

12.. 26 2 Prod 1/2- 1 do- 16- 2 do 30- 2 do 2/2- 2 do
2.. 27 2 do 3/10- 1 do 13- 1 do

7 9
1 5 10

3.. 27 2 Prod 4/1- 1 do 17- 1 do 24- 2 do 5/3- 2 do
5.. 22 2 do 6/2- 1 do 5- 1 do 16- 1 do

13 Prod 2/7. 1 13 7

Edward Fox

1843

D. G. Garratt

1845

4-27 3 Poles 29-320 5/8. 320 10 320.

6

Apr. 2d

100

1 6

1 27

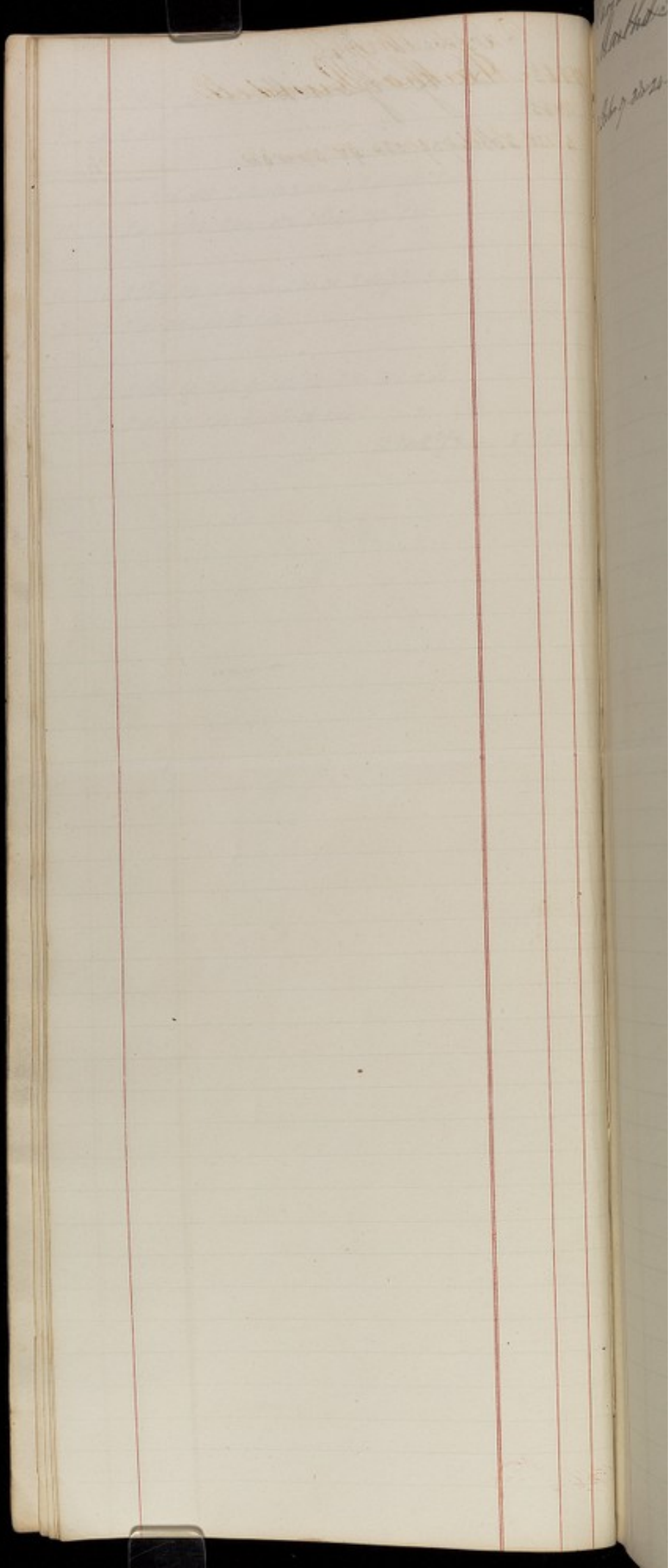
Apr. 2d

1 3

5/1-2d

100

1 10

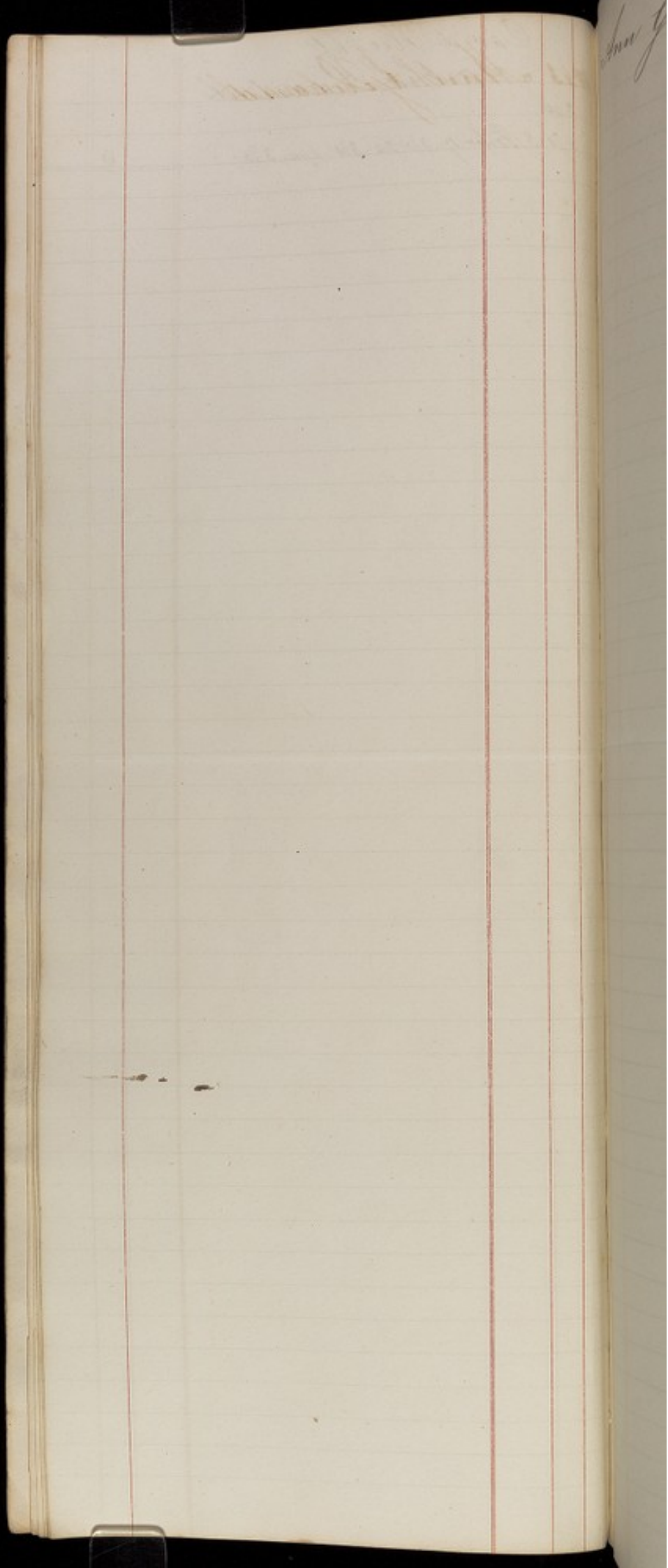


David Wright
1843 Martha Burdett

1845

3/1 3 Feb. 17. 3rd 24. 3rd 6/10. 3rd

6



1843 Ann Gouland

[Faint, illegible handwriting on a lined page, possibly bleed-through from the reverse side.]

[Vertical column of handwritten notes on the right edge of the page, including dates and names.]

- Henry 20
- Henry 21
- Henry 22
- Henry 23
- Henry 24
- Henry 25
- Henry 26
- Henry 27
- Henry 28
- Henry 29
- Henry 30
- Henry 31
- Henry 32
- Henry 33
- Henry 34
- Henry 35
- Henry 36
- Henry 37
- Henry 38
- Henry 39
- Henry 40
- Henry 41
- Henry 42
- Henry 43
- Henry 44
- Henry 45
- Henry 46
- Henry 47
- Henry 48
- Henry 49
- Henry 50

1863 Ann Anderson

2 mo 1 1/2 Sherry 30-1 do 5 8

4 mo 21 1/2 Sherry 17/19 - 1 do 11/23 - 1 Sherry 8 6

12 mo 21 1/2 Sherry 2/10 - 1 Sherry 2/10 1 do 8 6

12 mo 5 1/2 Sherry 25-1 do 3/7 - 1 do 24-1 do 11 4

6-17 1 Sherry 7/2 - 1 do 8/2 1 do Sherry
4 mo 7 1 do } 11 4

14 mo 2 - 1 Sherry 1/2 1 do 2 10

5-7 1 1/2 Pot 6/7 1 do 5 4

6-27 1 Pot 7/12 - 1 do 26-1 do 8/10 - 1 do 8/23 - 1 do
4-6 1 do - 16

4-23 1 Pot 1/2 - 1 do 18 - 1 do 1/1 - 1 do 1/1 - 1 do 24 - 1 do
12-12 1 do } 18 8

19 1 Pot 1/2 - 1 do 19 - 1 do 31 - 1 do 2/10 - 1 do
2-23 1 do 3/10 1 Sherry 18 10

3-23 1 Pot - 1/4 1 do 26 - 1 do 3/9 - 1 do 23 - 1 do
6-6 1 do - 16 - 1 do } 18 8

6-20 1 Pot 7/2 - 1 do 12 - 1 do 2/1 - 1 do 15 - 1 do
8-29 1 do - 9/10 1 do } 18 8

4-19 1 Pot 26 - 1 do 10/3 - 2 do 17 - 2 do 30 - 2 do
11-16 2 do 26 - 2 do 12/2 - 2 do } 1 16 2

12-23 2 Pot 1/4 - 2 do 23 - 2 do 2/6 - 2 do 24 - 2 do
3-6 2 do } 5 1
1 5 10

3-20 2 Pot 1/2 - 2 do 16 - 2 do 3/7 - 2 do 15 - 2 do
5-29 2 do - 6/12 - 2 do } 1 16 2
14 at 2/7

1863 Sarah Huddleston

3 me 16 1/2 of Porter 6

2 of Brandy

~~2 6~~

10

10 6

4 me 16 1/2 of Porter 5/2 - 1/2 of Porter 5/2 1 Porter

6 me 7 1 Do 6/4 Oct 15 1 Do 1/4 1 Do

1 Brandy

3 6

5

8 6

7 me 1 1/2 of Sherry - 12 - 1 Do - 23 - 1 Do

8 6

6 me 22 1 of Porter 7/1 1 Do 7/2 1 Do 15 - 1 Do

2

7 me 22 1 Do 29 - 2 Do 2/16 - 2 Do

2 6

8 me 13 1 Sherry 24 1 Do 9/3 1 Do 1/4 - 1 Do

10 4

2 of Brandy 1/4 - 2 Do 26 - 2 Do 4/2 - 2 Do 4 - 2 Do

5

4 me 16 2 Do

1

1 9 4

4 me 7 1/2 of Sherry 1/4 - 1 Do 28 - 1 Do 31 - 1 Do

11 4

4 me 22 2 of Porter 30 - 2 Do 1/1 1 Do 4 - 1 Do 7 - 1 Do

3 6

11 me 17 1 Do 13 - 1 Do 18 - 1 Do 23 - 1 Do 31 1 Do 4/4 - 1 Do

3

2 of Brandy 1/4 - 1 Sherry 22 - 1 Do

15 8

13 me 2 1 Sherry 16 1 Do 1/4 1 Porter 13 - 1 Do

6 8

11 - 14 1 Porter 28 1 Do 26 - 1 Do 29 - 1 Do 1/2 1 Do

2 6

12 - 6 1 Do 8 - 1 Do 11 - 1 Do 14 - 1 Do

2

2 4 8

7/1/14

1 me 1 1/2 of Sherry 11 - 1 Do 22 - 1 Do 2/2 - 1 Do

11 4

1 me 1 1/2 of Porter 8 - 1 Do 17 - 1 Do 23 - 1 Do 31 - 1 Do

3

2 me 7 1 Do - 25 1 Sherry 29 - 1 Do - 3/4 1 Porter

6 8

18 - 1 Porter 19 - 1 Do 26 - 1 Do 3/2 - 1 Do

2

3 me 9 1 Sherry 19 - 1 Do - 3/4 1 Porter 13 - 1 Do 17 1 Do

7 2

3 - 21 1 Porter

6

1 10 8

3 me 7 1/2 of Sherry 4/5 - 1 Do 15 - 1 Do 27 - 1 Do

11 4

5 me 6 1 Do 14 - 1 Do 22 - 1 Do 29 - 1 Do 6/4 - 1 Do

14 2

3 me 23 1/2 of Porter 26 - 1 Do 4/5 1 Do 4 - 1 Do 15 - 1 Do 21 - 1 Do

3

14 me 26 1 Do 31 - 1 Do 3/5 - 1 Do 11 - 1 Do 14 - 1 Do 24 - 1 Do

3

5 me 29 1 Do 6/4 - 1 Do 4 - 1 Do 15 - 1 Do

2

1 13 6

6 - 21 1 Sherry 7/1 - 1 Do 12 - 1 Do 17 - 1 Do

11 4

7 - 2 1 Porter 7 - 1 Do 11 - 1 Do 15 - 1 Do 19 - 1 Do

2 6

29 1 Sherry 4/4 - 1 Do 15 - 1 Do 25 - 1 Do 4/4 1 Do

11 4

23 1 Porter 28 - 1 Do 3/5 - 1 Do 7 - 1 Do 12 20 15 20 20 25 1 Do

6 6

8 me 30 1 Do 4/5 1 Do 11 - 1 Do 15 - 1 Do

2 8

9 me 10 - 1/2 of Port

1 10 12

9 mo 11	17 Sherry 20-122-27-122-143-170	}	19	10
10 - 10	177-15-170 25-170			
9 - 21	177-27-170-30-170-176-179-12-170-21-170		4	6
11 - 2	177-6-2 20 (Funeral)		6	
	1 Brandy		1	10 4

177-27-170-30-170-176-179-12-170-21-170
 177-15-170 25-170
 177-6-2 20 (Funeral)
 1 Brandy
 19 10
 4 6
 6
 1 10 4

1843 Sarah Newby
 1 mo 1 2 of Post 21-2 do - 3 of Postev
 14 3 Postev 21-3 do 2/4-2 of Post 11-2 do
 28 3 Postev 2/4-3 do 11-3 do 11-3 do 25-3 do
 3 mo 5 2 of Post 20-2 do - 3/4 3 of Postev 11-1 do
 11 3 do 25-3 do

12	6
14	
7	6
13	
3	
2	10

4 mo 6 2 of Post 4/1-3 of Postev 2-3 do
 15 3 of Postev 4/22-2 of Post 5/7-2 Post
 14-22 3 of Postev 2/9-3 Postev 5/6-3 Postev
 5 mo 2 2 of Post 6/7 2 of Post 5/13 3 of Postev
 21 3 Postev 5/27 3 Postev 6/3 3 Postev
 6 mo 11 3 Postev 1/4 3 Postev

8	4
12	2
4	6
12	2
4	6
3	
2	4 8

6 mo 24 2 of Post 7/1 2 do 21-2 do 9/6-2 do
 24 3 of Postev 7/1-3 do 7-3 do 15-3 do 22-3 do
 7 mo 29 3 do 7/5-3 do 8/19-2 Post 4-2 do
 8 mo 12 3 Postev 1/4 3 do 26-3 do 2/2-3 do 4/4 3 do
 4 mo 11 3 do

1	1 4
7	6
13	8
7	6
1	6
2	11 6

4 mo 22 2 of Post 1/7 2 do 21-2 do 1/4 2 do
 23 3 of Postev 3/1-3 do 1/7 3 do 14-3 do 21-3 do
 11-28 3 do 1/4-3 do 17-2 Post 12/2-2 do
 12-16 2 Post 1/11 3 Postev 78-3 do 28 3 do
 9 3 do 16-3 do

1	1 4
7	6
13	8
10	10
3	
2	15 4

1844
 1 mo 27 2 of Post 1/13-2 do 29-2 do
 3 of Postev 1/6-3 do 13 do 20-3 do 27-3 do 3/1-3 do
 3 mo 7 2 Post 24-2 do 3/11 3 Postev 7-3 do 24-3 do 3/4-3 do
 24 2 Post 3/4 2 do 3/11 3 Postev 16-3 do
 3 mo 23 3 Postev

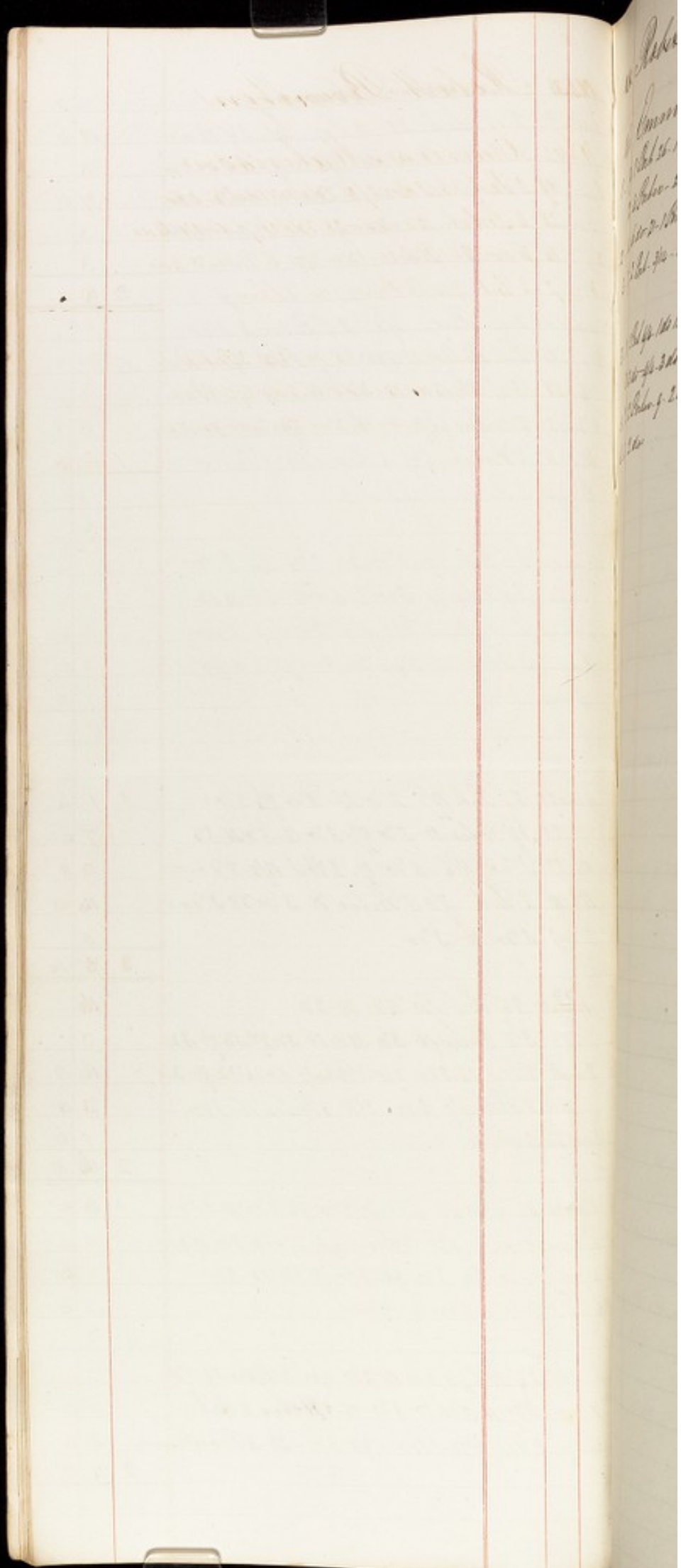
16	
9	
16	8
13	8
1	6
2	16 10

3 mo 23 2 of Post 4/6-2 do 21-2 do 5/4 2 do 11-2 do
 6 mo 2 2 do 3/20 3 Postev 4/6-3 do 13-3 do 21-3 do
 4 mo 27 3 do 5/4 3 do 5/4 3 do 78-3 do 25-3 do
 6 mo 1 3 do 7-3 do 15-3 do

1	6 8
11	4
7	6
4	6
2	10

6-22 2 of Post 7/6-2 do 13-2 do 6/22 3 Postev 2/4-3 do
 7-6 3 do 13-3 do 21-3 do 28-2 Postev 2 Post
 8-7 2 Post 7/28 3 Postev 8/3-3 do - 23-4 Postev (summed)

10	
0	10
10	4
7	19 2



Handwritten text at the top of the left page, possibly a title or header.

Handwritten text in the upper middle section of the left page.

Handwritten text in the middle section of the left page.

Handwritten text in the lower middle section of the left page.

Handwritten text in the lower section of the left page.

Handwritten list on the right page:
Common
Feb 15
Feb 20
Feb 25
Feb 30
Feb 31
Feb 32
Feb 33
Feb 34
Feb 35
Feb 36
Feb 37
Feb 38
Feb 39
Feb 40
Feb 41
Feb 42
Feb 43
Feb 44
Feb 45
Feb 46
Feb 47
Feb 48
Feb 49
Feb 50
Feb 51
Feb 52
Feb 53
Feb 54
Feb 55
Feb 56
Feb 57
Feb 58
Feb 59
Feb 60
Feb 61
Feb 62
Feb 63
Feb 64
Feb 65
Feb 66
Feb 67
Feb 68
Feb 69
Feb 70
Feb 71
Feb 72
Feb 73
Feb 74
Feb 75
Feb 76
Feb 77
Feb 78
Feb 79
Feb 80
Feb 81
Feb 82
Feb 83
Feb 84
Feb 85
Feb 86
Feb 87
Feb 88
Feb 89
Feb 90
Feb 91
Feb 92
Feb 93
Feb 94
Feb 95
Feb 96
Feb 97
Feb 98
Feb 99
Feb 100

1842 Robert Buxton

1846 Emma Malinson

1 - 19 1 Pnt 26-1 do 2/3-1 do 11-1 do 14-1 do

23 1/2 Pntev-24-4 do-28-3 do 31-7 do 3/4-6 do

2 - 14 6 do-21-1 Pnt 28-1 do-2/21-6 Pntev 28-1 do

3 - 7 2 Pnt-3/4-5 Pntev-14-1 Sherry

294

3 - 21 1 Pnt 4/4-1 do 19-1 do 26-1 do 3/21-3 Pntev

28 3 do-4/4-3 do 13-3 do 19-3 do 5/2-1 Pnt

5 - 2 2 Pntev-9-2 do-16-2 do 23-2 do 31-2 do

6 - 6 2 do

1610

[Faint, mirrored handwriting, likely bleed-through from the reverse side of the page.]

[Handwritten notes on the right edge of the page, including dates and names.]

Henry 1
Henry 2
Henry 3
Henry 4
Henry 5
Henry 6
Henry 7
Henry 8
Henry 9
Henry 10
Henry 11
Henry 12
Henry 13
Henry 14
Henry 15
Henry 16
Henry 17
Henry 18
Henry 19
Henry 20
Henry 21
Henry 22
Henry 23
Henry 24

1843 John H. Bragg

1 mo 3	1 of Sherry 9-1 do 14-1 do	9	
23	1 of Sherry 30-1 do 27-1 do 12-1 do 19-1 do	15	
27	1 do 3/2-1 Sherry 9-1 do 14-1 do 20-1 do	15	
		1	0
3 mo 31	1 of Sherry 4/5-1 do 11-1 do 19-1 do	2	10
		8	6
4 mo 26	1 of Sherry 5/4-1 do 5/11-1 Sherry 26-1 do	11	4
5 mo 31	1 Do- 6/6-1 Do- 15-1 Do-	8	6
		1	10 8
6 mo 22	1 of Sherry 29-1 Do- 7/6-1 Do- 11-1 Do-	11	4
7 mo 16	1 Do- 20-1 Do- 26-1 Do- 8/4-1 Do-	11	4
8 mo 11	1 Sherry 7-1 Do- 26-1 Do- 30-1 Do- 9/6-1 Do-	11	2
9 mo 11	1 Do- 7-1 Do-	5	8
		2	2 6
9 mo 24	1 of Sherry 30-1 Do- 1/11-1 Do- 14-1 Do- 23-1 Do-		
11 mo 29	1 Do- 4/3-1 Do- 10-1 Sherry 16-1 Do-		
11-24	1 Do- 12/1-1 Do- 7-1 Do-	1	11 2
12 mo 25	1 Sherry 1/4-1 Do- 12-1 Do- 20-1 Do- 29-1 Do-	11	2
2 mo 7	1 Do- 1/7-1 Do- 29-1 Do- 3/2-1 Do- 16-1 Do- 20-1 Do-	17	
		1	11 2
3 mo 26	1 of Sherry 4/1-1 Do- 7-1 Do- 23-1 Do- 3/1-1 Do-	17	
5 - 9	1 Do- 16-1 Do- 26-1 Do- 6/1-1 Do- 9-1 Do-	11	2
		1	11 2
6 - 17	1 Sherry 22-1 Do- 29-1 Do- 7/6-1 Do- 13-1 Do- 20-1 Do-		
7 - 28	1 Sherry 8/6-1 Do- 17-1 Do- 23-1 Do- 24-1 Do- 9/5-1 Do-	1	10 8
9 - 10	1 Sherry 14-1 Do-		
9 - 21	1 of Sherry 28-1 Do- 4/3-1 Do- 11-1 Do- 15-1 Do-		
11 - 26	1 Do- 11/1-1 Do- 7-1 Do- 14-1 Do- 23-1 Do- 24-1 Do-	1	10 8
12 - 4	1 Do- 13-1 Do- 21-1 Do-		
2 - 3	1 Sherry 1/4-1 Do- 11-1 Do- 7-1 Do- 23-1 Do-		
- 7	1 Do- 15-1 Do- 22-1 Do- 3/1-1 Do- 11-1 Do-	1	8 4
7 - 19	1 Sherry 24-1 Do- 4/7-1 Do- 15-1 Do-	11	4

(Below)

1843 William Gray

Jan 26 3 of Pikes 4/2 3 22-4 13 22-16 3 22

6

4 mo 3 3 of Pikes 31-3 do 17/2-3 22 14-3 22 21-3 22

11 mo 28 3 22 11/4-3 22 11-3 22 18-3 22 28 3 22

12-2 3 22 4-3 22 16-3 22

10 6

1844
1 mo 3 1 Pkt. 10-17 25-17 2/2-17 1/2-3 Pikes

12 2

1 mo 6 3 Pikes 13-3 22 20-3 22 27-3 22 2/2-3 22

7 6

2 mo 2 4 Pikes (Funeral)

2

1 1 8

1844

Lucy Farrand

6 mo 7 1 Pkt. 1/2 120-29 120-2/2-120

10 8

[Faint, illegible handwriting in cursive script, possibly bleed-through from the reverse side of the page.]

[Faint handwriting on the right edge of the page, possibly from an adjacent page.]

(Below)

1842 May¹ - Theaite (Indigo set)

1846 Catherine Corbin
1 - 16 1 Pub. 2/3 1 Sherry 16 - 1 do 28 - 1 do
3 - 18 1 Sherry

1/2

3 - 28 1 Sherry 4/10 - 1 do 25 - 1 do 5/9 - 1 do 22 - 1 do
6 - 6 1 do

1
16

6 - 28 1 Sherry 7/4 - 1 do 10 - 1 do 2/1 - 1 do 15 - 1 do
9 - 11 1 do

17

10 - 3 1 Pub - 7 - 1 do 11/7 - 1 do 3/2 - 1 do 12/12 - 1 Sherry

13 5

12 - 16 1 Sherry 1/2 - 1 do 16 - 1 do 27 - 1 do 2/6 - 1 do 20 - 1 do
2 - 26 1 do 3/13 - 1 do

1 2

14 - 3 1 Sherry 17 - 1 do 5/1 - 1 do 15 - 1 do 24 - 1 do
6 - 12 1 do

6 at 2/9

16 6

1843 Marg^t Shwaite (W. Dale)

3rd mo 1 3 of Peter 11-3rd 25-3rd 45 6

4th mo 1 3 of Peter 8-3rd do-15-2nd do-

25 2nd do 24-2nd do 5/6-2nd do 5/13-2nd do

5th mo 1 2nd do 27-2nd do 6/3-2nd do 11-2nd do

6th mo 1 2nd do

13

6th mo 2 2 of Peter 1/11 2nd do-2-2nd do-15-2nd do

7th mo 2 2nd do 29-2nd do 4/5-2nd do 12-2nd do 19-2nd do

8th mo 2 2nd do 4/2-2nd do 4-2nd do 16-2nd do

13

4th mo 23 2 Peter 31-2nd do 17-2nd do 14-2nd do 21-2nd do

11th mo 23 2nd do 1/4-2nd do 11-2nd do 18-2nd do 25-2nd do

12-2 2nd do 4-2nd do 16-2nd do

13

13th mo 2 2 Peter 1/6-2nd do 13-2nd do 20-2nd do 27-2nd do 3/5-2nd do

6

2nd mo 16 1 Peter 29-1st do 3/11-2 Peter 7-2nd do 24-2nd do

8 4

14 4

[Faint, illegible handwriting on the main page of the notebook, possibly bleed-through from the reverse side.]

[Faint handwriting on the right edge of the notebook, possibly bleed-through from the reverse side.]

1845 Elizabeth Appleton

~~1843 Emma Lacy~~

10. 18 3 Pntes 25-3 do 27-3 do 28-3 do 15-3 do
2 - 22 3 do 27-3 do 28-3 do 15-3 do

13 6

3 - 28 3 Pntes 29-3 do 4/5-3 do 12-3 do 19-3 do 26-3 do

5 - 1 3 do 11-3 do 17-3 do 24-3 do 31-3 do 6/7-3 do
6 - 12 3 do 21-3 do

1 1

6 - 28 3 Pntes 7/5-3 do 15-3 do 19-3 do 26-3 do

7 6

8 - 2 3 do 9-3 do 16-3 do 2/3-1 Sherry
28 3 do 31-3 do 4/6-3 do 13-3 do

7 14

6

4 - 28 1 Sherry 11/2-1 do 11-1 do 1/20-3 Pntes 27-3 do
4 3 do 10/10-3 do 19-3 do 25-3 do 1/1-3 do 8-3 do

11 - 22 1 Pnt 1/15-4 Pntes 24-3 do

3 Sherry 1 Pnt 31 Pntes

1 6 8

13 - 29 1 Sherry 1/6-1 do 20-1 do 12/19-3 Pntes
27 3 do 1/3-3 do 11-3 do 19-3 do 26-3 do

1 - 31 3 do 2/6-3 do 14-3 do 21-3 do 29-3 do 7-1 do
3 - 7 4 do 14-4 do

1 11

3 - 21 3 Pntes 28-3 do 4/4-3 do 12-3 do 19-3 do

4 - 25 3 do 5/2-3 do 9-3 do 16-3 do 23-3 do
5 - 30 3 do 6/6-3 do 13-3 do

10 6

6 - 27 1 Pnt 7/25-1 do 8/22-1 do

8

6 - 26 3 Pntes 27-3 do 7/6-3 do 11-3 do 18-3 do

7 6

7 - 25 3 do 8/1-3 do 8-3 do 15-3 do 22-3 do

7 6

4 - 5 1 Pnt 8/29-3 Pntes 9/6-3 do 13-3 do

7 2

9 - 19 1 Pnt 10/3-1 do 1/19 3 Pntes 26-3 do 17/3-3 do

10 - 17 1 Pnt 11/10 3 Pntes 17-3 do 24-3 do 31-3 do

11 - 7 4 do 14-3 do 21-3 do 28/7-1 Pnt
1 27 3 Pntes 12/5-3 do 13-3 do 19-3 do

2 7

1 0 3

1 - 2 1 Pnt 16-1 do 20-1 do 2/13-1 do 12/26 3 Pntes

2 - 27 1 Pnt 3/13-1 do

17

3 - 27 1 Pnt 4/4-1 do 24-1 do 5/3-1 do 22-1 do 6/6-1 Sherry

5 do 2/7 12 11
7 Sherry 2 9
15 8

15 8

[Faint, illegible handwriting on a lined page, possibly bleed-through from the reverse side.]

[Handwritten notes on the right edge of the page, including dates and names.]
... 16...
... 17...
... 18...
... 19...
... 20...
... 21...
... 22...
... 23...
... 24...
... 25...
... 26...
... 27...
... 28...
... 29...
... 30...
... 31...
... 32...
... 33...
... 34...
... 35...
... 36...
... 37...
... 38...
... 39...
... 40...

1863 John Proctor

1 mo 5 1 of Pub 12-1 do 22-1 do 24-1 do
 9 1 do 20-1 do 24-1 Pub 11-1 do 30-1 do } 1 15 0

3 mo 7 1 of Pub 14-1 do 14-1 do 21-1 do
 4 mo 27 1 of Pub 26-1 do 16-1 do 22-1 do
 5 mo 21 1 do 6/5-1 do 15-1 do } 1 9 1/2

6 mo 24 1 of Pub 17/5-1 do 19-1 do 20-1 do 26-1 do
 7 mo 7 1 do 10-1 do 24-1 do 27-1 do 11-1 do } 1 6 8

8 mo 21 1 Pub 17/1 1 do 9-1 do 23-1 do 11/3 1 do
 11-24 1 Pub 12/6 1 do 15-1 do } 1 1 1/2

12 mo 24 1 Pub 1/1-1 do 11-1 do 22-1 do 24-1 do 2/11-1 do
 3 mo 11 1 do 22-1 do 2/2-1 do 16-1 do } 1 6 8

3 mo 25 1 of Pub 14/4 1 do 15-1 do 2/5 1 do 11-1 do 22-1 do
 5 mo 29 1 do 6/4 1 do } 1 1 1/2

6-20 1 Pub 24-1 do 27/8-1 do 13-1 do 14-1 do 26-1 do
 7-4 1 do 19-1 do 23-1 do 2/11-1 do 10-1 do } 1 0 1/2

9 mo 10 1 Pub 17-1 do 27-1 do 11/4-1 do 13-1 do 19-1 do
 10-27 1 do 11/6 1 do 12-1 do 23-1 do 31-1 do 12/11-1 do } 1 11 8
 12-21-1 do

12-24 1 Pub 1/11-1 do 17-1 do 23-1 do 2/8-1 do 15-1 do
 2-23 1 do 3/4-1 do 11-1 do } 1 5

3-19 1 Pub 27-1 do 4/7-1 do 22-1 do 5/1-1 do 14-1 do
 3-21 1 do 24-1 do 6/12-1 do 20-1 do } 1 6 8

6-28 1 Pub 27/7-1 do 13-1 do 14-1 do 26-1 do 8/2-1 do
 8-9 1 do 15-1 do 23-2 do 9/6-2 do } 1 12

9-27 2 Pub 11/12-2 do 11/6-1 do 13-1 do 28-1 do
 11-21 1 do 12/12-1 do } 1 1/2

12-24 1 Pub 1/3-1 do 13-1 do 25-1 do 2/21-1 do
 2-16 1 do 24-1 do 3/9-1 do } 1 1 1/2

3	15	2 Pnd. 31-2 do 1/16-2 do 5/1-2 do 16-2 do	
6	28	2 do 6/10-2 do	1 17 4
6	24	2 Pnd 7/7-2 do 22-2 do 8/6-2 do 17-2 do	
2	31	2 do 11/10-2 do	1 17 4
4	29	2 Pnd 10/14-2 do 29-2 do 11/26-2 do	
12	16	2 do	1 5 10
1	1	2 Pnd 2/2-1 do 3/2-1 do	10 4
5	19	1 Pnd 6/2-1 do	
		2 Pnd 7/7	5 2

1843 Susanna Dean

11 mo 27	17	Put 12/5-1800	5	4
12 mo 26	17	Put 1/11-1800 21-1800 2/29-1800	13	4
3 mo 16	17	1800		
11 mo 13	17	Put 3/6-1800 26-1800	8	
3-16	17	Put	2	8
5-13		1 Put	2	8
6-21	1	Put 7/19-1800 8/16-1800 8/30-1800	13	4
9-27	1	Put-10/27-1 do 11/22-1 do	8	
1 mo 16	1	Put	2	8
1-15	1	Put 23-1 do 2/6-1 do Brandy		
2-23	1	Put 3/10-1 do 1/2 Bottle Brandy	17	10
3-23	1	Put 4/6-1 do 23-1 do 5/5-1 do 17-1 do 29-1 do	}	18
6-12	1 do	7 Put 2/7		

[Faint, mirrored handwriting, likely bleed-through from the reverse side of the page. The text is illegible due to fading.]

1-1-2
1-2-2
1-3-2
1-4-2
1-5-2
1-6-2
1-7-2
1-8-2
1-9-2
1-10-2
1-11-2
1-12-2
1-13-2
1-14-2
1-15-2
1-16-2
1-17-2
1-18-2
1-19-2
1-20-2
1-21-2
1-22-2
1-23-2
1-24-2
1-25-2
1-26-2
1-27-2
1-28-2
1-29-2
1-30-2
1-31-2
1-32-2
1-33-2
1-34-2
1-35-2
1-36-2
1-37-2
1-38-2
1-39-2
1-40-2
1-41-2
1-42-2
1-43-2
1-44-2
1-45-2
1-46-2
1-47-2
1-48-2
1-49-2
1-50-2
1-51-2
1-52-2
1-53-2
1-54-2
1-55-2
1-56-2
1-57-2
1-58-2
1-59-2
1-60-2
1-61-2
1-62-2
1-63-2
1-64-2
1-65-2
1-66-2
1-67-2
1-68-2
1-69-2
1-70-2
1-71-2
1-72-2
1-73-2
1-74-2
1-75-2
1-76-2
1-77-2
1-78-2
1-79-2
1-80-2
1-81-2
1-82-2
1-83-2
1-84-2
1-85-2
1-86-2
1-87-2
1-88-2
1-89-2
1-90-2
1-91-2
1-92-2
1-93-2
1-94-2
1-95-2
1-96-2
1-97-2
1-98-2
1-99-2
1-100-2

1843 Elizabeth Fisher				
1 mo 2	2 of Put-16-2 do 3/2-2 do 24-1 Sherry + 1 of Put-30-2 Put-26-2 do	1	13	3
4 mo 13	2 of Put-29-2 do 5/12-2 of Sherry	16	4	
5 mo 27	2 of Put-69-2 of Sherry	11		
		1	7	4
6 mo 21	2 of Sherry-79-2 do-8/11-2 do-30-2 Put-5	1	8	
9 mo 14	2 Sherry			
9 mo 30	2 of Sherry 17/4-2 Put 11/4 2 do	16	4	
11 mo 1	2 of Put-16-2 Sherry 24-2 do 12/7-2 Put	17	8	
12 mo 2	1 Sherry 13-2 Sherry-	2	8	
		2	2	6
12 mo 30	2 of Sherry 1/2-2 do 25-2 of Put			
2 mo 17	2 do 24-2 do 3/8-2 do 31-2 do	1	19	4
4 mo 14	2 of Sherry 15-2 do 24-2 do 5/4-2 do 25-2 do	1	8	4
6 - 4	2 do - 6/8-3 of Put-10	7	2	
		1	15	6
6 mo 31	2 Sherry 7/7-2 do-28-2 do 7/2-2 do 15-2 do	1	8	4
8 - 27	2 do-8/6-2 of Put-24-2 do 27-2 do	8	8	
9 - 10	2 do-12 do-14-2 do-9/10-2 of Sherry	7	8	
		2	4	8
9 mo 24	2 Sherry 17/6-2 do-15-2 do-35-2 do-11/7-2 do	2	2	2
11 - 7	2 do-23-3 of Put-13/4-3 do-27-2 do			
12 - 13	2 Sherry			
13 - 37	2 Sherry 1/2-2 do-17-2 do 24-2 do 3/7-2 do	1	8	4
2 - 21	2 do-27-2 do-3/10-2 Put	10	8	
1 mo 2	2 Put-27-2 do	2		
		2	7	
3 - 39	2 Put 11/4-2 do 5/1 2 Sherry 17-2 do	1	2	
4 - 26	3 of Put-5/27-2 do-6/13-2 do-3 Put-10	17	4	
		1	16	4
6 - 28	2 Sherry-7/7-2 do-26-2 do 8/4-2 do	1	2	8
7 - 7	2 Put-13-3 do-26-2 do 8/9-2 do-16-2 do	5	6	
8 - 23	2 Sherry-9/6-2 Put-4/6-3 Put-10	12	6	
9 - 30	2 Put-10/4-2 Sherry-27-2 do-14/5-2 do			
10 - 11	3 Put-1/1-2 do-22-2 Sherry-17/4-2 do-16-2 do			
12 - 6	3 Put-10	2	3	4

2 Put. 12 Sherry 8 Put

12 - 29 2 Sherry 1/7 - 2 do 19 - 2 Port do 2/10 2 Sherry
 1 26 3 Porter 2/18 3 do 2/10 2 Sherry

1 11

3 .. 28 2 Sherry 4/11 - 2 do 25 - 2 do 3/16 - 2 Porter
 28 2 do 4/13 - 2 do 6/9 - 2 Sherry - 23 - 2 do
 6 .. 6 2 do 4/29 - 2 Porter 6/9 - 2 do 30 - 2 do
 8 .. 31 2 do 6/8 - 2 do 18 - 2 do

2 3

6 .. 20 2 Sherry 7/10 - 2 do 18 - 2 do 8/11 - 1 Port + 1 Sherry
 8 .. 22 1 Port + 1 Sherry 6/29 2 Porter 7/8 - 2 do
 7 .. 16 2 Porter 25 2 do 2/5 - 2 do 15 - 2 do
 9 .. 7 2 Sherry 9/5 2 Porter 11 - 2 do
 10 Sherry 2 Port 16 Porter

2 1 8

9 .. 21 2 Sherry 1/3 - 2 do 9/6 2 Porter 20 - 2 do 27 - 2 do
 11 .. 3 2 do 17 - 2 Port 24 - 2 Sherry 1/7 - 1 Sherry
 1 of Port 11/19 2 Sherry 10/10 2 Porter 7 - 2 do
 10 .. 24 2 do 31 - 2 do 11/7 - 2 do 11/7 - 2 do 21 - 2 do
 11 .. 29 2 Sherry 12/18 - 2 do 11/27 - 2 Porter 12/6 2 do
 12 .. 12 2 Porter 19 - 2 do

2 18 6

12 - 26 2 Sherry 1/9 - 2 do 23 - 2 do 2/5 - 2 do 18 - 2 do
 " " 2 Porter 1/2 - 2 do 9 - 2 do 16 - 2 do 23 - 2 do 30 - 2 do
 2 .. 6 2 do 20 2 do 2/27 - 1 do 3/6 - 3 do 2/27 - 2 Porter
 3 .. 6 2 Porter

5 6

1 2

6

5

1

1 19 6

3 .. 23 3 Sherry 4/5 - 3 do 17 - 3 do 5/1 - 3 do 15 - 3 do
 20 2 Porter 7 - 2 do 4/4 - 2 do 10 - 2 do 17 - 2 do 26 - 2 do
 5 .. 1 2 do 8 - 2 do 15 - 2 do 22 - 2 do 5/29 - 3 Sherry
 6 .. 12 3 Sherry 5/29 3 Porter 6/5 - 3 do 12 - 3 do
 21 Sherry 2/7 2 do 2/9 2 Porter 6 - 2 do

3 12 3

10
 3 12 3

23

1843 Sarah Brown

Handwritten notes and numbers in the left margin, including '1.0', '2.1', '2.8', '1.3', '1.8', and '3.8'.

Main body of the page with faint, illegible handwriting and two vertical red lines.

[Faint, mirrored handwriting, likely bleed-through from the reverse side of the page. The text is illegible due to fading.]

[Handwritten notes on the right edge of the page, including a list of numbers:]

- 1. 2. 3. 4.
- 5. 6. 7. 8.
- 9. 10. 11. 12.
- 13. 14. 15. 16.
- 17. 18. 19. 20.
- 21. 22. 23. 24.
- 25. 26. 27. 28.
- 29. 30. 31. 32.
- 33. 34. 35. 36.
- 37. 38. 39. 40.
- 41. 42. 43. 44.
- 45. 46. 47. 48.
- 49. 50. 51. 52.
- 53. 54. 55. 56.
- 57. 58. 59. 60.
- 61. 62. 63. 64.
- 65. 66. 67. 68.
- 69. 70. 71. 72.
- 73. 74. 75. 76.
- 77. 78. 79. 80.
- 81. 82. 83. 84.
- 85. 86. 87. 88.
- 89. 90. 91. 92.
- 93. 94. 95. 96.
- 97. 98. 99. 100.

1843 Mary Jackson		
1 mo 25	2 of Sherry 3/4 - 2 of Sherry	12
4 mo 19	2 of Sherry 5/8 - 2 of Sherry 6/8 2 do	17
7 mo 12	2 of Sherry 4/6 2 do 4/1 2 do	17
8 mo 3	2 of Sherry 1/15 - 2 Sherry 28 - 1 do	14 2
12 mo 21	2 of Sherry 25 - 2 do 2/24 - 3 do 3/16 - 3 do	1 6 8
14 mo 17	3 of Sherry 4/6 - 3 do 6/4 3 do	1 5 6
7 mo 6	3 Sherry 7/3 - 3 do	17
9 - 20	3 Sherry - 10/2 - 3 do - 1/2 - 3 do - 11/4 - 3 do	1 14
12 - 24	3 Sherry 1/7 - 3 do 2/8 - 3 do 3/4 - 3 do	1 14
3 - 28	3 Sherry 4/8 3 do 5/3 3 do 26 - 3 do	1 14
6 - 28	3 Sherry 7/12 - 3 do 8/6 - 3 do 23 - 3 do	1 14
9 - 20	3 Sherry 10/11 - 3 do 1/1 - 3 do 25 - 3 do	1 14
12 - 26	3 Sherry 1/10 - 3 do 2/16 - 3 do 3/6 - 3 do	1 14
14 - 3	3 Sherry 25 - 3 do 5/16 - 3 do 6/6 - 3 do	1 14
6 - 20	3 Sherry 7/11 3 do 8/1 - 3 do 22 - 3 do	1 14
14 - 3	3 Sherry 19 - 3 do 1/7 - 3 do 27 - 3 do	2 1 3
12 - 12	3 do	
12 - 26	3 Sherry 1/2 - 1 Pod + 1 Sherry 16 - 1 Pod + 1 Sherry	2 3 4
1 - 27	1 Pod 2/6 3 Sherry 20 3 do - 26 1 Pod + 1 Sherry	
3 - 13	3 Sherry	
3 - 25	1 Pod 4/3 - 2 Sherry 17 2 do 5/1 - 1 Sherry & 1 Pod 15 1 Sherry 4 1 Pod - 29 - 1 Pod + 1 Sherry	1 14 9
6 - 12	2 Pod 6 Oct 7/7 15.6. 7 Sherry 7/9 15/2	

17.3
1.16.9

[Faint, illegible handwriting in a ledger format, possibly bleed-through from the reverse side. The page features horizontal ruling lines and two vertical red margin lines.]

[Vertical text on the right edge of the page, likely bleed-through from the adjacent page. It appears to contain a list of entries, possibly names and dates, such as "18th", "19th", "20th", etc.]

1763 Esther Tuckett

1 mo 6	2 of Put 27-2 do 2/11 2 do	}	1	7	6
3 mo 5	2 of Put 26-2 do				
4 mo 22	2 of Put 27-1 Do 6/1 2 Do				13
6 mo 26	2 of Put 7/19-2 do 23-2 do 2/19-2 do	}	1	6	8
9 mo 16	2 do				
11 mo 14	2 of Put 31-2 do 11/24-2 do 12/16-2 do		1	7	14
1764					
1 mo 13	2 of Put 2/17-2 do 3/4-2 do				16
4 mo 6	2 of Put 4/4-2 do 6/4-2 do				16
7 mo 13	2 Put 8/18-2 do 9/18-2 do				16
11 mo 9	2 Put 11/9-2 do 12/7-2 do				16
1 - 1	2 Put 2/1-2 do 3/1-2 do				16
3 - 29	2 Put 4/26-2 do 5/24-2 do				16
6 - 21	2 Put 7/19-2 do 8/16-2 do 9/18-2 do				18
11 - 11	2 Put 11/18-2 do 12/16-2 do				16
1 - 3	2 Put 2/16-2 do 3/17-2 do				16
4 - 4	2 Put 4/2-2 do 30-2 do				16
6 - 22	2 Put 7/28-2 do 8/22-2 do				16
9 - 19	2 Put 10/17-2 do 31-1 do 11/18-2 do	}	1	5	10
12 - 4	1 Put 12/18-2 do				
12 - 26	1 Put 1/2-1 do 16-1 do 31-1 do 2/18-1 do 24-1 do				18
3 - 13	1 do				1
26	1 Put 4/18-1 do 26-1 do 3/18-1 do 22-1 do 6/18-1 do				15
	1 Put 2/7				6

NLS William Lloyd
 3 mo 13 3 of Portev 20- 3 Do 27- 3 Do 4/3- 3 Do
 6 mo 11 3 Do 17- 3 Do

9

6 mo 26 3 of Portev 1/11 3 Do 2- 3 Do 15- 3 Do 22- 3 Do
 7 mo 29 3 Do 2/5- 3 Do 12- 3 Do 19- 3 Do 26- 3 Do
 9 mo 2 3 Do 4- 3 Do 16- 3 Do

19 6

4 mo 23 3 of Portev 21- 3 Do 1/12 3 Do 21- 3 Do 28- 3 Do
 11 mo 14 3 Do 18- 3 Do 25- 3 Do 1/4 3 Do 16- 3 Do

15

2 mo 31 3 of Portev 1/13 3 Do 20- 3 Do 2/3- 3 Do
 2 mo 17 3 Do 24- 3 Do 3/4- 3 Do 23- 3 Do

12

3 mo 31 3 Do 4/13 3 Do 21- 3 Do 27- 3 Do 3/4 3 Do
 5 - 7 3 Do 26- 3 Do 6/16 3 Do

12

6 - 23 3 Portev 8/10 3 Do 17- 3 Do 23- 3 Do 31- 3 Do
 9 - 7 3 Do 15- 3 Do

10 6

11 - 2 3 Portev 9- 3 Do 18- 3 Do 23- 3 Do 30- 3 Do
 12 - 7 3 Do 14 3 Do Cyden 12

16 6

15 - 28 3 Portev 1/4- 3 Do 11- 3 Do 18- 3 Do 25- 3 Do
 2 - 1 3 Do 7- 3 Do 23- 3 Do 3/3- 3 Do 8- 3 Do

15

3 - 24 3 Portev 24 3 Do 4/13 3 Do 14- 3 Do 26- 3 Do 5/3 3 Do
 2 - 11 3 Do 24- 3 Do 6/7 3 Do 14- 3 Do

15

6 - 21 3 Portev 28- 3 Do 7/26 3 Do 8/9- 3 Do 16- 3 Do
 8 - 23 3 Do 4/6- 3 Do 13- 3 Do

12

4 - 28 3 Portev 27- 3 Do 1/4 3 Do 11- 3 Do 18- 3 Do
 11 - 28 3 do 1/11 3 do 8- 3 do 15- 3 do 22- 3 do
 1 dayen 26

15

6. 6

12 - 27 3 Portev 2/7- 3 do

3

4 - 27 3 Portev

1 6

10 - 13 2 Portev

1

4 - 4 1 Portev

6

1863 John Harris

Jan 3 of Peter 16-3 72

3

Jan 23 3 of Peter 20-3 72 17 3 72 14 3 72 21-3 72

11 mo 28 3 72 11/4-3 72 11-3 72 18-3 72 25-3 72

13-2 3 72 9-3 72 16-3 72

10 6

12 mo 30 3 of Peter 1/6 3 72 13-3 72 20-3 72 27-3 72 3/4-3 72

3 mo 11 3 72

10 6

1863 James Lees

1 mo 3 1 of Feb 14 - 1 do - 27 - 1 do 24 - 1 do
 12 1 do 28 - 1 do 35 - 1 Feb 14 - 1 do

11
 11

1 2

3 mo 30 1 of Feb - 11 - 1 do 27 - 1 do - 36 - 1 do
 5 mo 19 1 do 29 - 1 do - 6/12 1 do

18 8

6 mo 29 1 of Feb 7/12 1 of Feb 26 - 1 do 3/11 - 1 Feb
 8 mo 23 1 do 30 - 1 do 4/13 - 1 do

18 8

4 mo 27 1 of Feb 17/4 - 1 do 12 - 1 do 19 - 1 do 26 - 1 do
 11 mo 3 1 do 9 - 1 Feb 16 - 1 do 24 - 1 do 13/7 - 1 do
 12 mo 16 - 1 do

1 9 4

2 mo 21 1 Feb 29 - 1 do 1/4 - 1 do 10 1 do 14 - 1 do 25 - 1 do
 1 mo 31 - 1 do 27 - 1 do 2/16 - 1 do 23 - 1 do 3/2 - 1 do
 3 mo 9 1 do 18 - 1 do - 21 - 1 do

1 17 4

3 mo 28 1 of Feb 4/4 - 1 do 11 - 1 do 17 - 1 do 25 - 1 do 3/3 - 1 do
 5 - 11 1 do 17 - 1 do 26 - 1 do 31 - 1 do 4/7 - 1 do

1 9 4

6 mo 20 1 Feb 29 - 1 do 7/6 - 1 do 13 - 1 do 20 - 1 do
 7 - 28 1 do 8/9 - 1 do 17 - 1 do 29 - 1 do 9/4 - 1 do
 4 - 1 do 1 do

1 9 4

4 - 1 do 1 Feb - 28 - 1 do - 10/12 - 1 do 25 - 1 do

10 8

[Faint, illegible handwriting in a ledger format, possibly bleed-through from the reverse side. The page is ruled with horizontal lines and vertical margin lines.]

[Faint, illegible handwriting on the right edge of the page, possibly from an adjacent page.]

(Below)

1843 Frederick Pollard

1 mo 7	1 of Sherry 23-1 do 24-1 do 24-1 do	12		
3 mo 17	1 of Sherry 24-1 do	6		
		18		
3 mo 24	1 of Sherry - 4/13 - 1 do 27 - 1 do 27 - 1 do			
5 mo 16	1 do 6/2 - 1 do	17		
6 mo 21	1 of Sherry 7/12 1 do 26 1 do 26 1 do	19	10	
7 mo 6	1 do 24 - 1 do 24 - 1 do			
4 mo 23	1 of Sherry 17/7 - 1 do 23 - 1 do 11/9 - 1 Sherry	1	2	8
11 - 30	2 do 18/6 - 2 do			
1 mo 23	2 of Sherry 29 - 2 do 2/16 - 2 do 3/7 - 1 do	10	10	
3 mo 16	2 of Portev - 14 2 do	2		
		1	1	10

1845 Frances Hitching

1 .. 11	2 Portev 18-2 do 25-2 do 31-2 do 2-2 do	10		
2 .. 15	2 do 22-2 do 31-2 do 8-2 do 15-2 do			
3 - 22	2 Portev 29-2 do 4/6-2 do 12-2 do 19-2 do 26-2 do	15		
5 - 6	2 do 11-2 do 17-2 do 24-2 do 31-2 do 6/7-2 do			
	14-2 do 31-2 do			
7 - 5	2 Portev 7/12-2 do 19-2 do + 1 Port 7/26	5	8	
	2 Portev 8/8-2 do 4-2 do 16-2 do + 1 Port	6	8	
8 - 23	2 do 31-2 do 9/6-2 do 13-2 do	4		
9 .. 22	2 Portev 27-2 do 17/11-2 do 11-2 do 18-2 do	15	8	
10 .. 25	1 do 14-1 do 8-1 do - 4/27-1 Sherry 17/27-1 Port			
11 - 22	1 Port			
	2 Port 1 Sherry 13 Port			
1 mo 16	1 Port	2	8	
7 .. 15	2 Portev 8/1-2 do 8-2 do 15-3 do 22-3 do	1	3	6
6 .. 27	1 Port 7/4-1 do 2/1-1 do 15-1 do 27-1 do 9/7-1 do			
4 .. 5	3 Portev - 15 Port 6 Port			
4 - 19	1 Port 1/3-1 do 4/15 3 Portev 22-3 do 17/3-3 do	1	10	7
10 - 11	1 Port 1/3-1 do 14-1 do 14/10 3 Portev 17-3 do 26-3 do			
10 .. 31	1 do 14/6 3 do 21-3 do 2/4-1 Port 17-1 do			

12 - 24 10 Pnd 1/4 - 1 do 23 - 1 do 2/5 - 1 do 23 - 1 do 3/4 - 1 do

15 6

3 23 10 Pnd 1/6 1 do

2/nt 2/7 5.2

5 2

(Below)

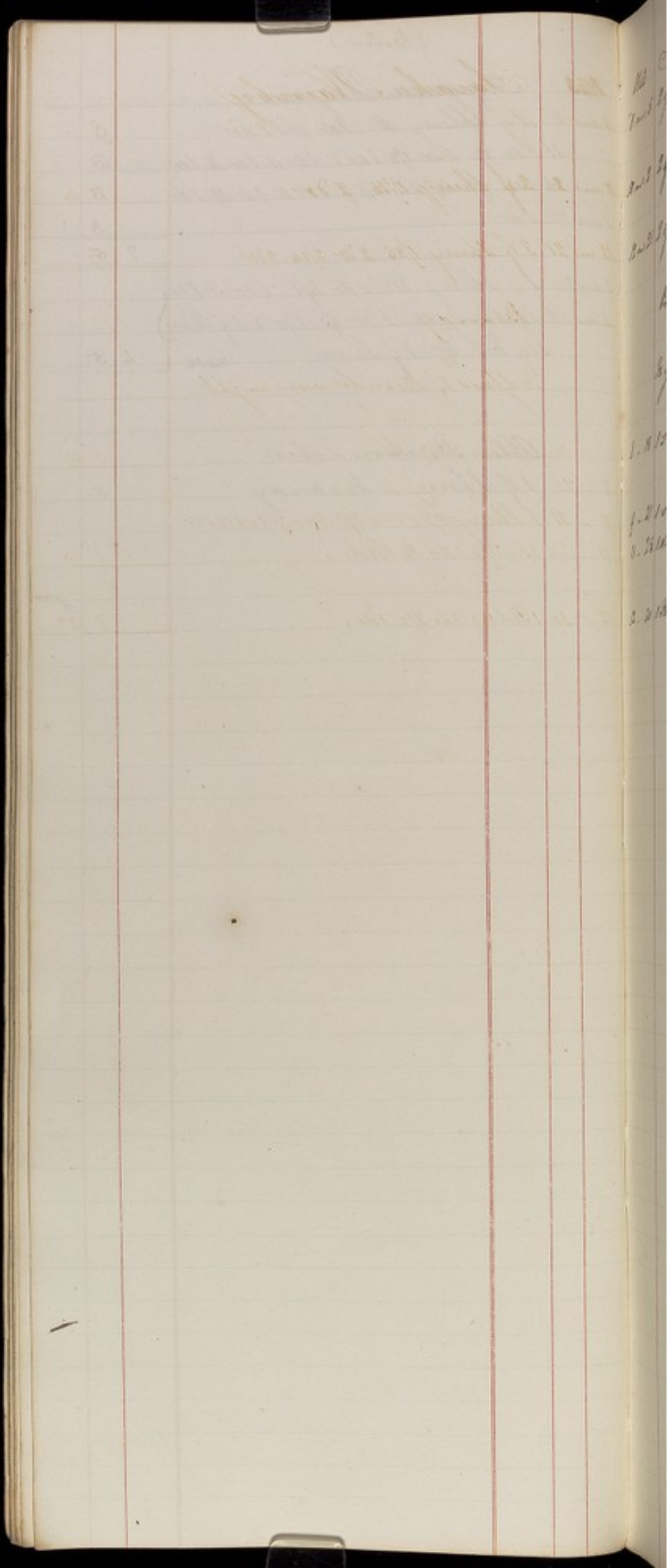
1863
1 mo 8 Angela Reynes
1 of Sherry 11 - 1 do 16 - 1 do 9
21 1 do 27 - 1 do 30 - 1 do 8 - 1 do 11 - 1 do 14 - 1 do 18
26 1 do 31 - 1 of Sherry 7 - 1 do 11 - 1 do 19 - 1 do 15
3 mo 22 1 do 3

2 5

3 mo 27 1 of Sherry 30 - 1 do 4/6 - 1 do 11 - 1 do 18
4 mo 15 1 of Sherry 24 - 1 do 31 - 1 do 3 - 1 of Sherry
1 of Port 5/7 - 1 of Sherry 10 24 4 5

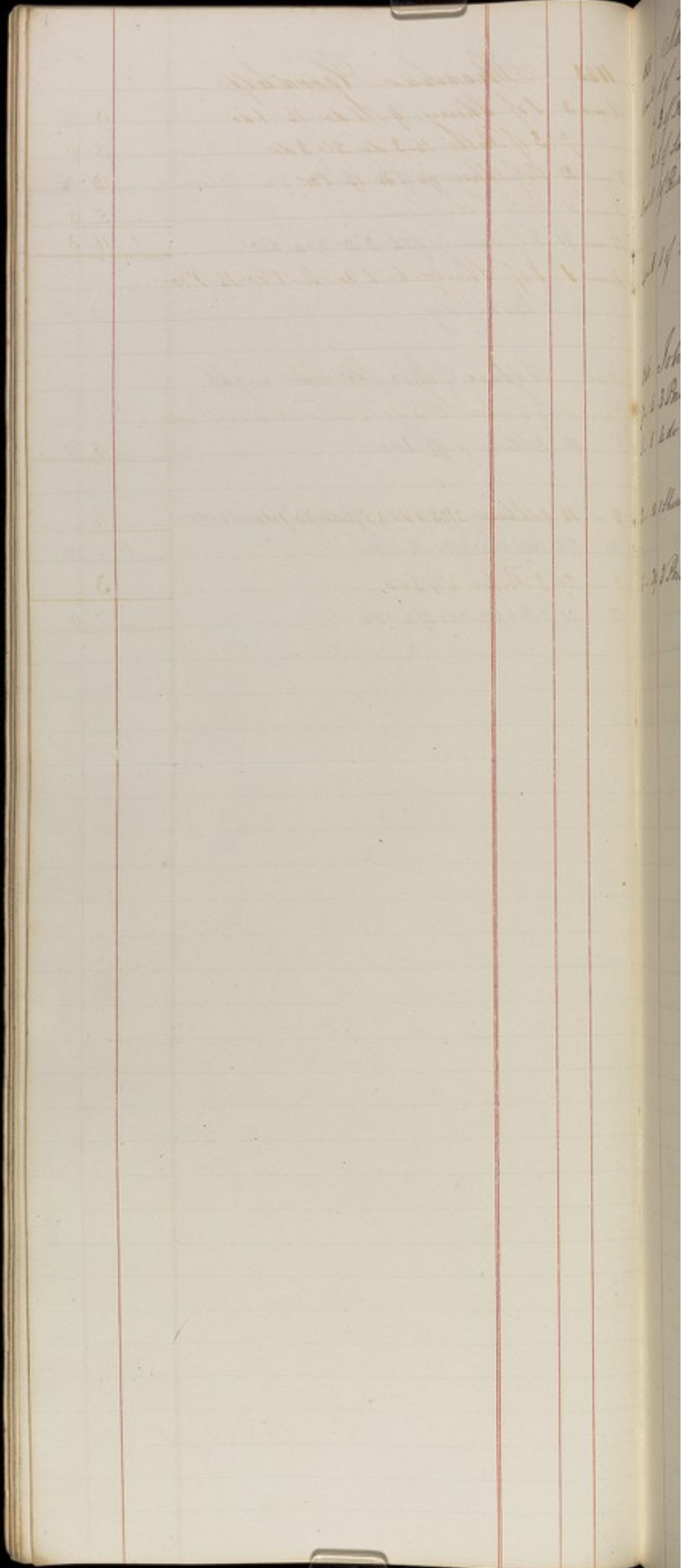
Peter Buckmaster

3 .. 11 1 of Sherry - Brandy 5



1. 8/10
2. 8/10
3. 8/10
4. 8/10
5. 8/10
6. 8/10
7. 8/10
8. 8/10
9. 8/10
10. 8/10

1843 Sarah Nainby		
7 mo 5	2 of Sherry 1/1 - 2 do	11 4
10 mo 2	2 of Sherry 1/15 - 2 do	11 4
12 mo 21	2 of Sherry 1/25 - 2 do 2/20 - 2 do	17
	Brandy	2 6
	1/2 glass of Brandy every night	
8 .. 18	1 Sherry 1/1 - 1 do	5 8
9 .. 21	1 Sherry 1/24 - 1 do 1/2 - 1 do 7 - 1 do 15 - 1 do	
11 .. 25	1 do 12/5 1 do 14 - 1 do	1 1 10
12 .. 30	1 do 1/18 - 1 do 2/2 - 1 do	7 9



(Below)

1843	Thomas Goodall -		
1 mo 3	1 of Sherry 4-11 do 14-1 do	9	
7	3 of Putto 14-3 do 21-3 do	4	6
23	1 of Sherry 2/3 1 do 10-1 do 3/3 - 1 Sherry	12	
3 mo 11	1 of Putt 20-1 Sherry	5	0
		1	11 3
4 mo 8	1 of Sherry - 6-1 do - 11-1 do - 18-1 do - 19-	11	4

1846	John G. Bull		
7 .. 4	3 Putto M. 3 do 18-4 do 25-4 do 3/1 4 do		
8 .. 8	4 do	11	
2 .. 18	1 Sherry 2/23-1 do 3/3-1 do 18-1 do	11	
3 .. 29	3 Putto 1/4 3 do	3	

[Faint, mirrored handwriting, likely bleed-through from the reverse side of the page. The text is illegible due to fading and mirroring.]

[Handwritten notes on the right edge of the page, including dates and names. Legible fragments include:]
1871
1872
1873
1874
1875
1876
1877
1878
1879
1880
1881
1882
1883
1884
1885
1886
1887
1888
1889
1890
1891
1892
1893
1894
1895
1896
1897
1898
1899
1900
1901
1902
1903
1904
1905
1906
1907
1908
1909
1910
1911
1912
1913
1914
1915
1916
1917
1918
1919
1920
1921
1922
1923
1924
1925
1926
1927
1928
1929
1930
1931
1932
1933
1934
1935
1936
1937
1938
1939
1940
1941
1942
1943
1944
1945
1946
1947
1948
1949
1950
1951
1952
1953
1954
1955
1956
1957
1958
1959
1960
1961
1962
1963
1964
1965
1966
1967
1968
1969
1970
1971
1972
1973
1974
1975
1976
1977
1978
1979
1980
1981
1982
1983
1984
1985
1986
1987
1988
1989
1990
1991
1992
1993
1994
1995
1996
1997
1998
1999
2000
2001
2002
2003
2004
2005
2006
2007
2008
2009
2010
2011
2012
2013
2014
2015
2016
2017
2018
2019
2020
2021
2022
2023
2024
2025
2026
2027
2028
2029
2030
2031
2032
2033
2034
2035
2036
2037
2038
2039
2040
2041
2042
2043
2044
2045
2046
2047
2048
2049
2050
2051
2052
2053
2054
2055
2056
2057
2058
2059
2060
2061
2062
2063
2064
2065
2066
2067
2068
2069
2070
2071
2072
2073
2074
2075
2076
2077
2078
2079
2080
2081
2082
2083
2084
2085
2086
2087
2088
2089
2090
2091
2092
2093
2094
2095
2096
2097
2098
2099
2100

1863 Ann Edgar

1 mo 7	2 of Poles 14-18 do 21-2 do	4	6
	28 2 do 2/4 2 do 18-2 do 25-2 do 3/4-2 do	5	
3 mo 11	2 do 18-2 do-25-2 do	3	
		12	6
4 mo 1	2 of Poles 8-2 do-15-2 do-22-2 do		
	29 2 do 5/6-2 do 13-2 do 20-2 do		
5 mo 27	2 do 6/3-2 do 19-2 do 17-2 do	12	
6 mo 26	2 of Poles 7/2 2 do 1-2 do 15-2 do 18-2 do		
7 mo 24	2 do 2/3 2 do 3/4-2 do 14-2 do 26-2 do	13	
8 mo 2	2 do 4-2 do 16-2 do		
9 mo 23	2 of Poles 30-2 do 17/2-2 do 14-2 do 21-2 do		
10 mo 28	2 do 1/2-2 do 11-2 do 18-2 do 25-2 do		
11 mo 3	2 do 9-2 do 16-2 do	13	
12 mo 31	2 Poles 1/6-2 do 13 do 20 2 do 27-2 do 2/3-2 do		
1 mo 18	2 do 17-2 do 24-2 do 3/4-2 do 10-2 do 16-2 do		
2 mo 23	2 do	13	
3 mo 30	2 Poles 1/6-2 do 13-2 do 20-2 do 27-2 do		
4 - 4	2 do 11-2 do 18-2 do 25-2 do 6/4-2 do 8-2 do		
6	15 2 do	12	
6 - 22	2 Poles 24-2 do 7/6-2 do 12-2 do 19-2 do		
7 - 28	2 do 2/3-2 do 11-2 do 17-2 do 23-2 do 30-2 do	13	
9 - 7	2 do 15-2 do		
9 - 24	2 Poles 31-2 do 17/6-2 do 13-2 do 19-2 do		
11 - 26	2 do 1/2-2 do 9-2 do 18-2 do 23-2 do 30-2 do	14	
12 - 7	2 do 14-2 do 21-2 do		
12 - 28	2 Poles 1/4 2 do 11-2 do 18-2 do 25-2 do 3/4-2 do		
2 - 7	2 do 15-2 do 22-2 do 3/4-2 do 8-2 do 15-2 do	12	
3 - 23	2 Poles 24-2 do 4/6-2 do 12-2 do 19-2 do 26-2 do		
5 - 3	2 do 11-2 do 17-2 do 24-2 do 31-2 do 6/4-2 do	14	
6 - 14	2 do 21-2 do		
6 - 28	2 Poles 1/6 2 do 12-2 do 19-2 do 26-2 do 3/4-2 do		
8 - 9	2 do 16-2 do 23-2 do 31-2 do 4/6-2 do 13-2 do	12	

4 .. 20 2 Pulu 27 2 do 10/16 2 do 11-2 do 11-2 do

10 .. 25 2 do 11/1 2 do 8-2 do

8

1 - 1 1 Sherry 10-1 do 2/3 1 do 3/4-1 do

11 4

3 - 25 1 Sherry 4/5 1 do 12-1 do 2/4-1 do

5 - 5 1 do 26 1 do 6/2-1 do 1/4-1 do

1 2 8

6 .. 22 1 Sherry 7/7-1 do 10-1 do 8/1-1 do 15-1 do

8 - 27 1 Sherry 8/7-1 do

10 10

4 - 11 1 Sherry 10/3-1 do 17-1 do 11/3-1 do 11/16-1 do

12 - 4 1 do 17-1 do

10 3

12 - 26 1 Sherry 1/4-1 do 23-1 do 2/5 1 do 23-1 do 3/4-1 do

10 6

3 - 23 1 Sherry 4/6 1 do 23-1 do 2/3 1 do 17-1 do

3 - 24 1 do 6/12-1 do

7 Sherry 2/9

19 3

1863 Mary Peacock

1 mo 7	2 of Pickles 14-2 do 21-2 do	4 6
28	2 do 2 1/2 2 do 11-2 do 25-2 do 3/4-2 do	5
3 mo 11	2 do 18-2 do 25-2 do	3
		12 6
4 mo 1	2 of Pickles 7-2 do 15-2 do 4/22-2 do	
29	2 do 5/6-2 do 13-2 do 20-2 do	
5 mo 3	2 do 6/8-2 do 11-2 do 17-2 do	12
6 mo 24	2 Pickles 7/11-2 do 7-2 do 15-2 do 22-2 do	
7 mo 29	2 do 7/5-2 do 8/12-2 do 19-2 do 26-2 do	13
8 mo 2	2 do 9-2 do 16-2 do	
9 mo 23	2 of Pickles 30-2 do 17/2-2 do 14-2 do 21-2 do	
11 mo 28	2 do 11/4-2 do	7
11 mo 27	1 of Pickles 11/9-1 Sherry 16-1 do 23-1 do	11 2
12 mo 9	1 do 11/11-2 Pickles 18-2 do 25-2 do	5 8
12 mo 2	2 do 9-2 do 16-2 do	3
		1 6 10
12 mo 28	1 Sherry 1/4-1 do 13 do 31-1 do 17/50-2 Pickles	9 6
1 mo 6	2 Pickles 13-2 do 20-2 do 27-2 do 3/3-2 do	5
2 mo 13	1 Sherry 25-1 do 3/4-2 Pickles 7-2 do 24-2 do	8 8
3 mo 2	2 Pickles 3/2 1 Sherry 14-1 do 3/11-2 Pickles	7 8
3 mo 16	2 do 23-2 do	2
		1 12 10
3 mo 28	1 Sherry 4/6 1 do 18-1 do 28-1 do 9/7-1 do 11-1 do	17
5 -	26 1 do 6/5-1 do 13-1 do	8 6
3 mo 3	2 of Pickles 4/6 2 do 13-2 do 21-2 do 27-2 do	5
5 -	4-2 do 11-2 do 17-2 do 25-2 do 6/4-2 do 7-2 do	6
6 -	15-2 do	1
		1 17 6
6 - 22	1 Sherry 7/2 1 do 13-1 do 20-1 do	14 4
- 22	2 Pickles 29-2 do 7/6-2 do 13-2 do 20-2 do	6 x
7 - 28	1 Sherry 2/6-1 do 12-1 do 17-1 do 23-1 do 29-1 do	17 6
28	2 Pickles 8/3-2 do 11-2 do 17-2 do 23-2 do 29-2 do	5 6 x
9 - 7	2 do 15-2 do 9/7 1 Sherry 16 1 do	7 8
		2 8 0
9 mo 26	2 Pickles 30-2 do 17/3-2 do 13-2 do 19-2 do	
10 - 26	2 do 11/3-2 do	7
9 - 23	1 Sherry 17/2-1 do 22-1 do 11/2-1 do 9-2 do	
11 - 18	2 do 23-2 do 30-2 do 17/7-2 do 14-2 do 21-2 do	1 16 8
- 21	1 Sherry 12/8 1 do 9-1 do 21-1 do	3 9 4

1/11/7	4	2 Puter 11-2 20-19-220-25-270-34-277	
2 ..	8	270-15-270-22-270-34-277	9
12 one	28	1 Sherry 1/7-180-25-170-2/3-177	11 4
2 ..	10	180-24-170-3/4-170	8 6
3 ..	8	2 Puter 15-2 20	2
			1 10 10
3 -	17	1 Sherry 29-170-4/10-170-4/20-1 Put 5/2 170	2 8
	15	180-29-170	10 6
3 -	22	2 Puter 29-2 20-4/5-2 20-18-2 20-14-2 20	
4 -	26	2 20 5/3-2 20-11-2 20 7-2 20 24-2 20-31-2 20 4/7-2 20	12
6 -	11	1 Put 14-2 Put 20 21-2 20	4 8
			1 15 10
6 -	28	2 Puter 7/5-2 20-12-2 20-14-2 20-26-2 20	5
8 -	2	2 20-9-2 20-16-2 20-6/30-1 Put 15-10 7/10-1 20	8 4
9 -	26	1 170 8/6-1 20-18-1 20	8
8 -	23	2 Puter 30-2 20 4/6-2 20-13-2 20	4
	23	1 Put 4/6-1 20-13-1 20	5 4
9 ..	20		
9 ..	20	2 Puter 27-2 do 17/4-2 do 11-2 do 18-2 do	
10 ..	26	2 do 14-2 do 8-2 do 4/22-1 Put Wine	
11 ..	15	2 Puter 22-2 do 29-2 do 17/4-2 do 12-2 do	15 8
12 -	19	2 Puter 1/3-2 do 10-2 do 19-2 do 24 do	
1 -	31	2 do 2/6-2 do 14-2 do 21-2 do 28-2 do	
3 -	7	2 do 14-2 do	12
3 ..	24	2 Puter 28-2 do 4/4-2 do 13-2 do 19-2 do	
4 ..	25	2 do 5/8-2 do 9-2 do 16-2 do 23-2 do	
5 ..	30	2 do 6/6-2 do 13-2 do	13
6 ..	22	2 Puter 27-2 do 7/4-2 do 11-2 do 18-2 do	
7 -	25	2 do 2/1-2 do 8-2 do 15-2 do 22-2 do	
8 ..	29	2 do 9/5-2 do 12-2 do	13
9 -	19	2 Puter 26-2 do 17/3-2 do 10-2 do 17-2 do	
10 ..	24	2 do 31-2 do 11/7-2 do 14-2 do 21-2 do	
11 ..	27	2 do 12/5-2 do 13-2 do 19-2 do	11 2
12 ..	20	2 Puter 1/3-2 do 9-2 do 16-2 do 23-2 do 30-2 do	
2 -	6	2 do 13-2 do 20-2 do 27-2 do 3/6-2 do 13-2 do	12
4 ..	8	1 Put 16-1 do 2/1-1 do 15-1 do	
3 ..	20	2 Puter 27-2 do 4/4-2 do 10-2 do 17-2 do 24-2 do	
8 -	26	2 do 24-2 do 6/6-2 do 12-2 do	
		6 Put 7/7-10/4-2 Puter 14/1-	

1843 James Hall.

Jan 3	1 Sherry 9-1 do 14-1 do	9	
23	1 do 24 1 do 25 1 do 19-1 do 21-1 Sherry	15	
Jan 20	1 do	3	
		1	2
Jan 30	1 Sherry 14/16-1 do-20-1 do	8	6
Jan 4	1 do 17-1 do-26-1 do 26 1 do 15-1 do	13	10
		1	2
Jan 1	1 Sherry 13-1 do-27-1 do 24 1 do		
Jan 13	1 do 30-1 do 24-1 do	10	10
Jan 27	1 Sherry 17/1-1 do 10-1 do 23-1 do		
Jan 3	1 do 16-1 do 24-1 do	10	10
Jan 24	1 Sherry 14-1 do-26-1 do 29-1 do 24-1 do		
Jan 29	1 do 29-1 do 26-1 do	10	10
Jan 26	1 Sherry 17/2 1 do 9-1 do 23-1 do 24-1 do		
5 - 11	1 do 26-1 do 24-1 do 9-1 do	1	5
6 - 7	1 Sherry 22-1 do-29-1 do 26-1 do-20-1 do		
7 - 20	1 do 26-1 do 27-1 do 23-1 do 24-1 do-14-1 do	1	11
Jan 23	1 Sherry 17/3 1 do 15-1 do 25-1 do 24-1 do		
11 - 18	1 do 29-1 do 24-1 do-13-1 do	1	5
Jan 27	1 Sherry 14-1 do-17-1 do-28-1 do 27-1 do		
2 - 23	1 do 24-1 do-8-1 do-11-1 do	1	5
3 - 19	1 Sherry 29-1 do 27-1 do-19-1 do-29-1 do 26-1 do		
5 - 17	1 do 24-1 do-31-1 do 27-1 do-14-1 do	1	11
6 - 25	1 Sherry 17/3 1 do-14-1 do-26-1 do 24-1 do		
8 - 9	1 do 21-1 do 24-1 do-13-1 do	1	5
10 - 14	1 Sherry 27-1 do 24-1 do 17-1 do 24-1 do		
12 - 16	1 do	17	
13 - 27	1 Sherry	2	10

[Faint, illegible handwriting in a ledger format, possibly bleed-through from the reverse side. The page is ruled with horizontal lines and vertical margin lines.]

[Faint, illegible handwriting on the right edge of the page, possibly bleed-through from the adjacent page.]

1845 Ann Staniland

~~1843 John Fitzgerald (Lodge)~~

1 May 1 Sherry 16-180-25-170-21-170-10-170
3 .. 1 170-

17

5 - 1 3 Puber 11 320-17-320-24-320-21-320-67-320

6 - 14 320-21-320

12

6 - 20 3 Puber 7/5-320-12-320-14-320-26-320

8 - 2 320-4-320-16-320-7/24-1 Pub. 87-170

23 1 Sherry-23-3 Puber-31-320-9/6-320-13-320

7 6

9 10

8 10

9 .. 21 1 Pub 17/5-1 do 11/1-1 do-9/20-3 Puber 27-3 do

11 .. 14 3 do 11-3 do-14-3 do-25-3 do 11/1 3 do-8-3 do

11- 13 1 Pub-26-1 do-12/11-1 do-14/1-3 Puber 24-3 do

12 - 1 3 do-14-3 do

1 14

6 Parc 36 Forter

1 - 10 1 Pub-24-1 do 2/7-1 do-21-1 do

1 - 21 3 Puber-2/5-3 do 3/7-1 Pub.

14 14

3 - 21 1 Sherry-28-1 do 1/6-1 do-13-1 do

4 - 20 1 do-27-1 do-5/5-1 do-16-1 do-25-1 do

6 - 2 1 do 2-1 do-16-1 do

1 14

6 .. 24 1 Sherry 7/2-1 do 11-1 do 18-1 do 2/1-1 do

8 .. 8 1 do 15-1 do-26-1 do-9/2-1 do 7-1 do

1 8 14

9 - 16 1 Sherry-22-1 do 30-1 do 10/6-1 do 14-1 do

10 .. 20 1 do 28-1 do 11/3-1 do 10-1 do 18-1 do 25-1 do

12 - 2 1 do 9-1 do 16-1 do

1 18 6

12 - 23 1 Sherry 30-1 do 1/5-1 do 13-1 do 20-1 do 26-1 do

2 - 8 1 do 10-1 do 17-1 do 2/3-1 do 3/2-1 do 10-1 do

3 - 16 1 do

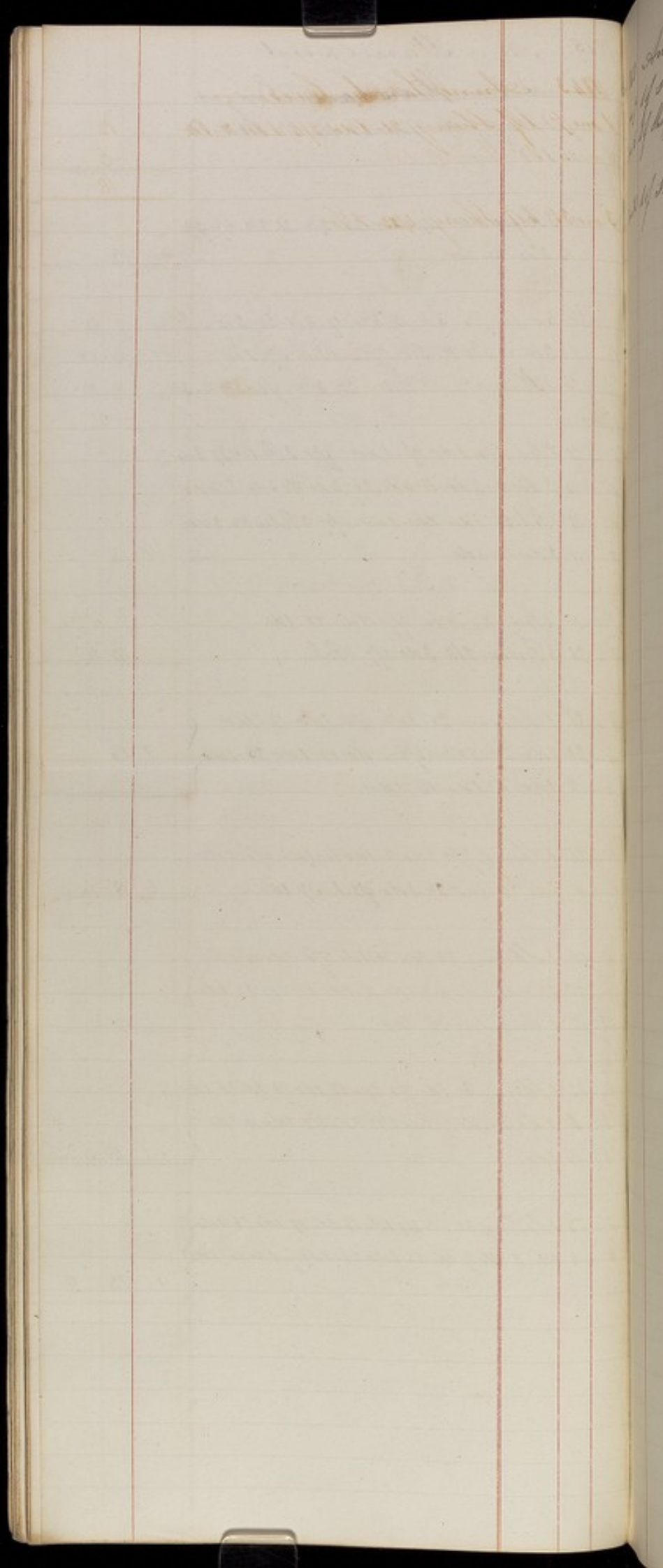
1 15 0

3 .. 23 1 Sherry 31-1 do 4/9-1 do 13-1 do 19-1 do 23-1 do

4 .. 4 1 do 11-1 do 17-1 do 25-1 do 6/1-1 do 9-1 do 16-1 do

13. 2/9

1 15 9



1843 Anne Sarah Cree

1 mo 7 1/2 of Sherry 21-1 do 2/4 1 do 18-190

3 mo 6 1/2 of Sherry 19-1 do

12

6

18

3 mo 31 1/2 of Sherry 4/22-1 90

5 9

[Faint, mirrored handwriting, likely bleed-through from the reverse side of the page. The text is illegible due to fading and mirroring.]

[Vertical column of handwritten text on the right edge of the page, possibly a list or index. The text is partially cut off and difficult to read.]

1843 Sarah Burleigh			
5 mo 20	2 1/2 Poles 27-1 do 6/3-1/2-18-1 do	3	
6 mo 17	1 do	4	6
6 mo 26	1 Pole 7/1 1 do 8-1 do 15-1 do 22-1 do		
7 mo 29	1 do 2/5 1 do 3/12-1 do 14-1 do 26 1 do	6	6
9 mo 2	1 do 9-1 do 16-1 do		
4 mo 23	1 Pole 31-1 do 17/7-1 do 14-1 do 21-1 do		
11 mo 28	1 do 11/4-1 do 11-1 do 18-1 do 25-1 do		
12 mo 2	1 do 9-1 do 16-1 do	6	6
12 mo 30	1 Pole 1/6-1 do 13-1 do 20-1 do 27-1 do 2/3 1 do	3	
2 mo 26	1 Sheny 2/11-1 Pole 17-1 do 3/7-1 Sheny	6	8
3 mo 19	1 Sheny	2	10
		12	6
3 mo 20	1 Sheny 4/5-1 do 11-1 do 28-1 do 5/8 1 do		
5 - 11	1 do 26-1 do 6/3-1 do 13-1 do	1	5 6
3 - 30	1 1/2 Poles 1/6-1 do 13-1 do 20-1 do 27-1 do		
5 - 4	1 do 11-1 do 15-1 do 18-1 do 6/4-1 do 8-1 do	6	
6 - 16	1 do		
		1	11 6
6 - 22	1 Sheny 7/2-1 do 13-1 do 20-1 do	11	14
23	2 Poles 24-2 do 7/1-2 do 13-2 do 21-2 do	5	
7 - 28	1 Sheny 4/6-1 do 12-1 do 17-1 do 23-1 do 29-1 do	17	
" "	2 Poles 7/3 2 do 10 2 do 17 2 do 23 2 do 30 2 do	6	
9 - 7	2 do 15-2 do 4/7-1 Sheny 15-1 do	7	8
		2	7
9 - 28	1 Sheny 11/11-1 do 22-1 do 11/2-1 do	11	14
24	2 Poles 30-2 do 10/5-2 do 21-2 do 19-2 do		
10 - 26	2 do 11/2 2 do 9 2 do 18 2 do 23 2 do	14	
11 - 30	2 do 13/7 2 do 14 2 do 21 2 do		
- 21	1 Sheny 12/2-1 do	5	8
		1	11
1 mo 4	2 Poles 11-2 do 2/22 2 do 31-2 do 8-2 do		
3 .. 15	2 do	6	
3 - 22	2 Poles 31 2 do 4/5 2 do 12 2 do 14 2 do 26 2 do		
5 - 3	2 do 10-2 do 17 2 do 24 2 do 31 2 do 6/7 2 do	14	
6 - 14	2 do 21 2 do		
6 - 28	2 Poles 7/5 2 do 13 2 do 19 2 do 26 2 do 8/8 2 do 9 2 do		
8 - 16	2 do 23 2 do 4/6 2 do 10 2 do 17 2 do	12	

4 .. 20 2 Pulas 27-2 do 17/4-2 do 11-2 do 18-2 do
10 .. 25 2 do 11/5-2 do 8-2 do 15-2 do 22-2 do 29-2 do
12 .. 6 2 do 12-2 do

13

12 - 19 2 Pulas 1/3-2 do 10-2 do 17-2 do 24-2 do
1 .. 31 2 do 2/6-2 do 14-2 do 21-2 do 28-2 do
3 .. 7 2 do 14-2 do

12

3 .. 21 2 Pulas 28-2 do 4/4-2 do 12-2 do 19-2 do
4 .. 25 2 do 5/2-2 do 9-2 do 16-2 do 23-2 do
8 .. 30 2 do 6/6-2 do 13-2 do

13

6 .. 28 2 Pulas 27-2 do 7/4-2 do 11-2 do 18-2 do
7 .. 26 2 do 8/1-2 do 8-2 do 15-2 do 22-2 do
8 .. 29 2 do 9/6-2 do 12-2 do

13

9 .. 19 2 Pulas 26-2 do 10/3-2 do 10-2 do 17-2 do
10 .. 24 2 do 31-2 do 11/7-2 do 14-2 do 21-2 do
11 .. 27 2 do 12/5-2 do 12-2 do 19-2 do

14

12 - 26 2 Pulas 1/2-2 do 9-2 do 16-2 do 23-2 do
1 .. 30 2 do 2/6-2 do 13-2 do 20-2 do 27-2 do 3/6-2 do
3 .. 13 2 do

12

21 .. 14 2 Pulas 10-2 do 17-2 do 24-2 do 31-2 do 8-2 do
5 .. 13 2 do 22-2 do 29-2 do 6/6-2 do 12-2 do

11

1843 Mary Cowles

2 mo 15	3 of Puter 11-3 do 25-3 do 3/11-3 do	6	
3 mo 11	3 do 11-3 do 25-3 do	4	6
		10	6
4 mo 1	3 of Puter 7-3 do 15-3 do 22-3 do		
29	3 do 5/6 3 do 13-3 do 20-3 do 27-3 do		
6 mo 3	3 do 11-3 do 17-3 do	10	
6 mo 24	3 Puter 7/11 3 do 7-3 do 15-3 do 22-3 do		
7 mo 29	3 do 7/5-3 do 7/12-3 do 14-3 do 26-3 do	19	6
9 mo 2	3 do 9-3 do 16-3 do		
9 mo 25	3 of Puter 30-3 do 11/7-3 do 14-3 do		
11 mo 21	3 do 23-3 do 11/4-3 do	10	6
3 mo 15	3 of Puter 21-3 do 31-3 do 6/9 3 do		
6	- 15 3 do	7	6
6	- 22 4 of Puter 24-9 do 7/6-4 do 13-4 do 20-4 do		
7	- 22 4 do 7/3-4 do 10-4 do 17-4 do 23-4 do 30-4 do	1	6
4	- 7 4 do 16-4 do		
4	- 24 4 Puter 30-4 do 10/5-4 do 13-4 do 19-4 do		
11	- 26 4 do 11/2-4 do 9-4 do 18-4 do 23-4 do	1	8
11	- 30 4 do 17/4-4 do 21-4 do		
12 mo 21	4 Puter 1/4-4 do 11-4 do 18-4 do 25-4 do		
2	- 1 4 do 7-4 do 15-4 do 22-4 do 31-4 do	1	
12 mo 29	1 Sherry 1/16-1 do 23-1 do 31-2 do 3/1-1 do	17	
3	- 8 4 Puter 15-4 do	4	
		2	1
3	- 19 2 Sherry 29-2 do 4/12-3 do 26-2 do 5/7-2 do	1	8 1/4
5	- 24 1 do 6/7 2 do	8	6
3	- 22 4 Puter 24-4 do 1/6-4 do 13 do 19-4 do 26-4 do		
5	- 3 4 do 10-4 do 17-4 do 24-4 do 31-4 do 6/7-4 do	1	1
	Keany occasionally 6/10-4 do 21-4 do	4	
		3	1 10
6	- 28 4 Puter 7/6-4 do 13-4 do 19-4 do 26-4 do	10	
8	- 2 4 do 9-4 do 16-4 do 6/7-2 Sherry 7/5-2 do	17	1/4
7	- 26 2 do 2/16-2 do 7/12-2 Sherry 8/23-4 Puter	9	8
8	- 30 4 do 4/6-4 do 13-4 do 19/7-2 Sherry 31-2 do	6	

9	..	30	2 Sherry 17/4 - 2 do 19 - 2 do 1/1 - 2 do			
"	"	4	Porter 27 - 4 do 17/4 - 4 do 11 - 4 do 18 - 4 do			
10	..	26	4 do 1/1 - 4 do 8 - 4 do 22 - 2 Sherry			
11	..	15	4 Porter 29 - 4 do		2	8 1/2
			10 Sherry 40 Porter			
12	..	21	2 Sherry 1/19 - 2 do 2/6 - 2 do			
		19	4 Porter 27 - 4 do 1/3 - 4 do 10 - 4 do 19 - 4 do			
1	..	24	4 do 31 - 4 do 2/6 - 4 do 14 - 4 do 21 - 4 do			
2	..	28	4 do 3/1 - 2 Sherry 37 - 4 Porter 12 - 4 do		2	8 3/4
4	..	4	2 Sherry 3/21 - 4 Porter 28 - 4 do 4/4 - 4 do			
		11	4 do 18 - 4 do 25 - 4 do 5/2 - 2 Sherry 30 - 2 do			
5	..	2	4 Porter 9 - 4 do 16 - 4 do 23 - 4 do			
1	..	30	4 do 6/6 - 4 do 13 - 4 do		2	3
6	..	27	2 Sherry 7/25 - 2 do 8/15 - 2 do 32 - 2 do	1	1	4
		28	4 Porter 27 - 4 do 7/4 - 4 do 11 - 4 do 18 - 4 do			
7	..	25	4 do 8/1 - 4 do 8 - 4 do 22 - 4 do			
8	..	29	4 Porter 9/6 - 4 do 12 - 4 do	1	4	
				2	5 1/4	
9	..	19	2 Sherry 10/3 - 2 do 9/19 - 4 Porter 36 - 4 do			
10	..	3	4 do 14/7 - 2 Sherry 31 - 2 do 11/6 - 4 Porter			
10	..	17	4 do 24 - 4 do 31 - 4 do 11/7 - 4 do 11 - 2 do			
11	..	21	4 do 27 - 3 Sherry 12/7 - 1 do 12 - 2 do			
		27	4 Porter 12/6 - 4 do 12 - 4 do 19 - 4 do	3	6	6
12	..	21	2 Sherry 26 - 2 do 1/2 - 2 do 11 - 1 do 14 - 1 do 15 - 1 do	1	4	9
1	..	23	1 do 30 - 1 do 2/2 - 1 do 6 - 1 do 1 1/2 Bottle Brandy		18	6
12	..	26	4 Porter 1/2 - 4 do 9 - 4 do 16 - 4 do 23 - 4 do		10	
1	..	30	4 do 2/6 - 4 do 13 - 4 do 20 - 4 do 2/20 - 2 Sherry		13	6
2	..	27	4 Porter 3/6 - 4 do 13 - 4 do 42 Bottle Brandy		8	6
				3	15	3
3	..	20	4 Porter 27 - 2 do 4/4 - 4 do 10 - 2 do 24 - 2 do			
5	..	1	3 do 8 - 2 do 15 - 2 do 22 - 4 do Brandy			
		29	3 Porter 6/6 - 4 do 12 - 3 do Brandy	1	3	
			36 do Brandy	1	3	

	1843	Charlotte Thompson		
	2 mo 9	1 of Sherry 24 180 3/11-1 of Sherry		0
	3 mo 26	1 do		3
				12
	4 mo 6	1 of Sherry 22-1 22 4/6-1 22-20-1 22		
	6 mo 2	1 do 15-1 do		17
	7 mo 1	1 Sherry 15-1 22-24-1 22 4/9-1 22		
	8 mo 26	1 do 4/8-1 22		17
	9 mo 27	1 of Sherry 1/6 1 22 22-1 22 1/3-1 22		
	11 mo 17	1 do 1/3-1 22-16-1 22		19 10
	12 mo 22	1 of Sherry 1/2 1 22 27-1 22 2/19-1 22 17-1 22		
	2 mo 24	1 do 3/4 1 22-8-1 22 16-1 22		1 5 6
	3 mo 22	1 Sherry 30-1 22 4/8-1 22-12-1 22 14-1 22		2 10
	4 - 26	1 22 2/3-1 22 11-1 22 17-1 22 26-1 22 30-1 22		1 11 2
	6 - 7	1 22 15-1 22		1 16 10
	6 - 7	1 Sherry 22-1 22 24-1 22 7/6-1 22 13-1 22 20-1 22		
	7 - 27	1 22 2/3-1 22 11-1 22 17-1 22 23-1 22 29-1 22		1 19 8
	9 - 7	1 Sherry 14-1 22		
	9 - 21	1 Sherry 28-1 22 11/6-1 22 12-1 22 24-1 22		
	10 - 26	1 22 1/2-1 22 9-1 22 7-1 22 30-1 22		1 11 2
	12 - 14	1 22		
	12 mo 22	1 Sherry 1/4-1 22 11-1 22 18-1 22 25-1 22		
	2 - 1	1 22 9-1 22 15-1 22 22-1 22 31-1 22 8-1 22		
	3 - 16	1 22		1 4
	3 - 22	1 Sherry 24 1 22 4/5 1 22 13-1 22 19-1 22 26-1 22		
	5 - 3	1 22 11 22 17-1 22 24-1 22 31-1 22 6/7-1 22		1 19 8
	6 - 12	1 22 21-1 22		
	6 - 28	1 Sherry 27-1 22 12-1 22 19-1 22 26-1 22 2/3 1 22		17
		And 2/9-1 Sherry 16-1 22-23-1 22-30-1 22		14
	9 - 6	1 22 13-1 22		5 8
	9 - 20			
	9 - 20	1 Sherry 27-1 do 11/6-1 do 11-1 do 13-1 do		
	10 - 23	1 do 1/4-1 do 8-1 do 17-1 do 24-1 do 19/2 1 do		
	12 - 6	1 do 13-1 do		1 16 10

12 - 19 1 Shany 27. 1 do 1/3. 1 do 12. 1 do 19. 1 do
 1 24. 1 do 31. 1 do 2/6. 1 do 14. 1 do 21. 1 do
 2 .. 28 1 do 3/7. 1 do

1 1/2

3 - 14 1 Shany 21. 1 do 28. 1 do 1/4. 1 do 11. 1 do
 4 .. 18 1 do 25. 1 do 5/2. 1 do 9. 1 do 16. 1 do
 5 - 23 1 do 30. 1 do 6/6. 1 do 13. 1 do

2 1/2

1 17 1/2

6 .. 20 1 Shany 27. 1 do 7/4. 1 do 11. 1 do 18. 1 do
 7 .. 25 1 do 2/1. 1 do 8. 1 do 15. 1 do 22. 1 do
 8 .. 29 1 do 9/7. 1 do 12. 2 Post — 12 Shany 2 Post

1 19 1/2

9 .. 19 1 Post 26. 2 do 1/3. 1 do 11. 2 do 17. 1 do
 10 .. 24 2 do 31. 1 do 11/7. 2 do 13. 1 Shany 31. 2 Post
 11 .. 27 1 Post 12/5. 3 do 12. 1 do 19. 2 do

2 14 1/2

12 .. 26 2 Post 1/2. 1 do 9. 2 do 16. 1 do 23. 2 do 30. 1 do
 2 .. 6 2 do 13. 1 do 20. 2 do 27. 2 do 3/6. 1 do 13. 2 do

2 9 1

3 - 20 1 Post 27. 2 do 1/3. 1 do 10. 2 do 17. 1 do 24. 2 do
 5 .. 1 1 do 27. 2 do 15. 1 do 31. 2 do 29. 2 do
 17 5 ret. 2/7

2 3 11

2 3 11

11 14
 8 6
 1 5
 2 2 11

(Below)

1843 William Birkett

1 mo 20 3 of Poter 2/7 3 20 11-3 20 25-3 20

6

3 mo 2 3 Do - 11-3 20

3

9

3 mo 30 2 of Sherry 4/11 1 20 24-1 20 26-1 20

3 mo 19 1 20 6/4 1 Do

10 10

6 mo 21 1 Sherry 7/6 1 20

5 8

Don 20 2 of Poter 4/4 3 20 11-3 20 18-3 20

11 mo 25 3 20 12/9 - 3 20

8 6

Don 30 3 of Poter 1/20 3 20

3

George Sedgwick

12.. 3 2 Poter - 6 - 2 do - 12 - 2 do -

3

1 - 13 1 Poter 17 - 1 do 23 - 1 do 31 - 1 do 2/10 - 1 do -

2 - 14 1 do - 12/19 - 2 Poter 27 - 2 do 1/3 - 3 do 10 - 3 do -

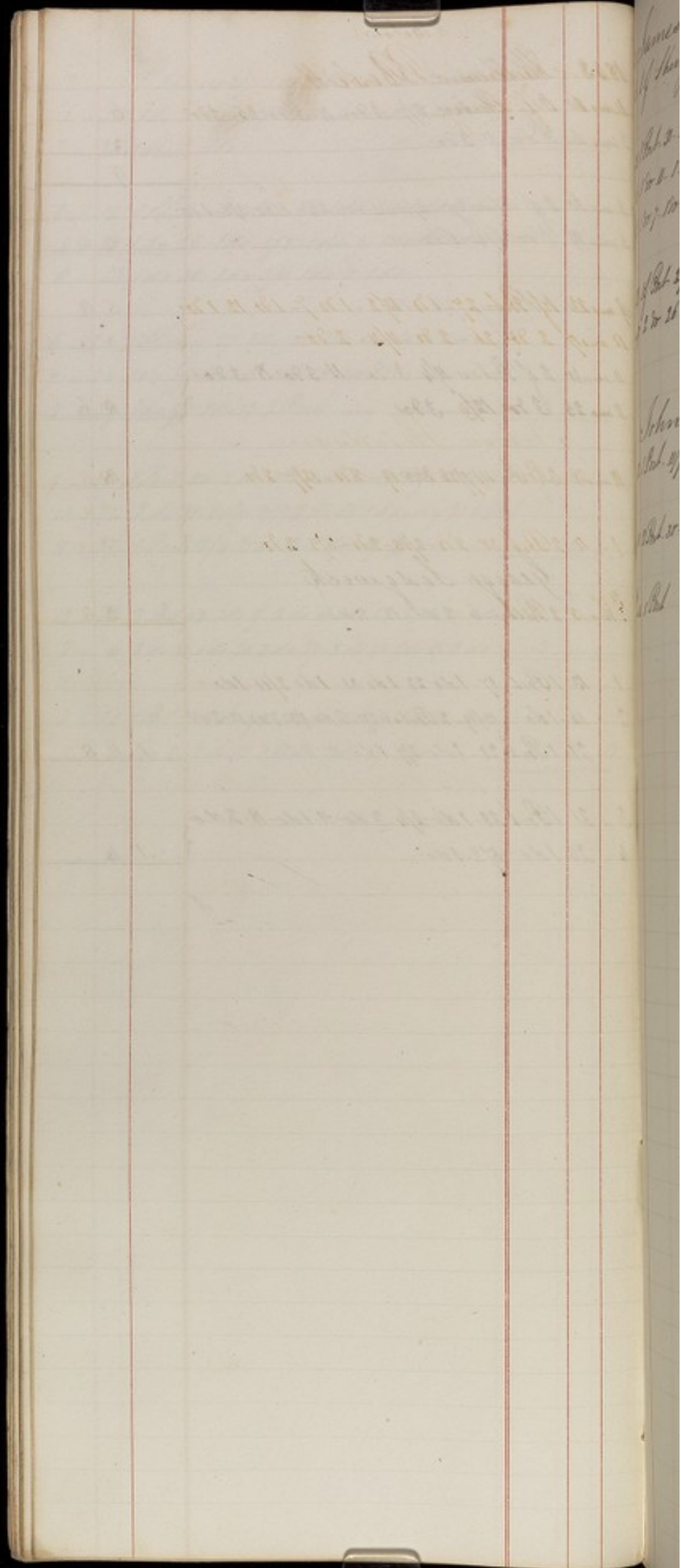
21 1 Poter 28 - 1 do 37 - 1 do 10 - 1 do -

1 11 8

3 - 21 1 Poter 28 - 1 do 4/4 - 2 do 11 - 1 do 18 - 2 do -

4.. 26 1 do 5/2 - 1 do -

1 14



(Below)

1843 James Blose

June 6 1 of Sherry

2 10

June 21 1 Pot. 20 - 1st 7/12 - 1st 20 - 1st 26 - 1st 20

June 6 1st 11 - 1st 19 - 1st 24 - 1st 27 - 1st 20

June 1 1st 7 - 1st 13 - 1st 20 - 1st 20

1 17 4

June 23 1st Pot. 27 - 1st 17/2 - 1st 7 - 1st 12 - 1st 20

June 17 2 20 26 - 2 20 - 1/4 - 2 20

1 9 4

John Hudson

8 - 21 1 Pot. 11/7 - 2 20 - 14 - 2 20 - 14/7 - 2 20

18 8

1 - 11 2 Pot. 30 - 2 20 - 2/16 - 2 20 - 3/8 - 2 20

2 8

18 8

1846
June 14 1 Pot

2 8

1847 Thomas Blakey
5 - 15 1st Feb 29 - 1^{do}
2 Feb 5 2

3

52

1843 Mary Jane Huswick
June 28 1/2 Sherry 5/9 - 1 1/2 - 1 Do
June 2 1 Do

11 1/4

June 21 1 Sherry 7/26 - 1 1/2 -

5 8

1847 A. Tattersall

3 i 20 2 Pulca 27 2 do 4/6 2 do 10 2 do 17 2 do

11 .. 24 2 do 5/1 2 do 8 2 do 15 2 do 22 2 do

5 .. 29 2 do 6/6 2 do 13 2 do

26 7/6

13

(Below)

17-2 do
2 do

1843 Margaret Johnston
3 mo 1/2 of Shury

2 10

6 mo 2/1 Shury 7/11 1840 1/2 1840

3 6

Martha Evans
6 mo 2/3 of Peter

1

1847 Ellen Gurnham

3/10 - 1 Prd

27

3 .. 20 1 Prd. 4/10 1 do 22-1 do 5/5-1 do 14-1 do

6 .. 2 1 do 16-1 do-

7 cont. 2/7

181

(Below)
Below

W 43 Mary Rich
June 5 1 of Peck 12-180

1

June 4 1 of Sherry 15-180

5 8

Wend 1 of Sherry
Brandy 1/2 bottles

2 10

7 6

11 mo 6 1/2 of Peck

2

12 1/2

Thomas Hodgson

12 mo 11 - 1 Peck - 21-380

2 6

Mary Benwell

1 - 26 1 Peck 2/1 1 do 10-1 do 17-1 do 23-1 do 3/2-1 do

15 6

4 - 8 1 Peck 15-1 do 28-1 do 5/7-1 do 17-1 do 29-1 do

6 - 9 1 do

18 1

7: Oct 7/7

15 1

1847 William Shillito
4 Dec 25 1 Sherry 5/1 1 do 15 1 do 25 1 do
20 3 Poles 8/2 1 Sherry 12 1 do 14 1 Poles 16 1 do } 1 3 8
6 - 13 1 Poles

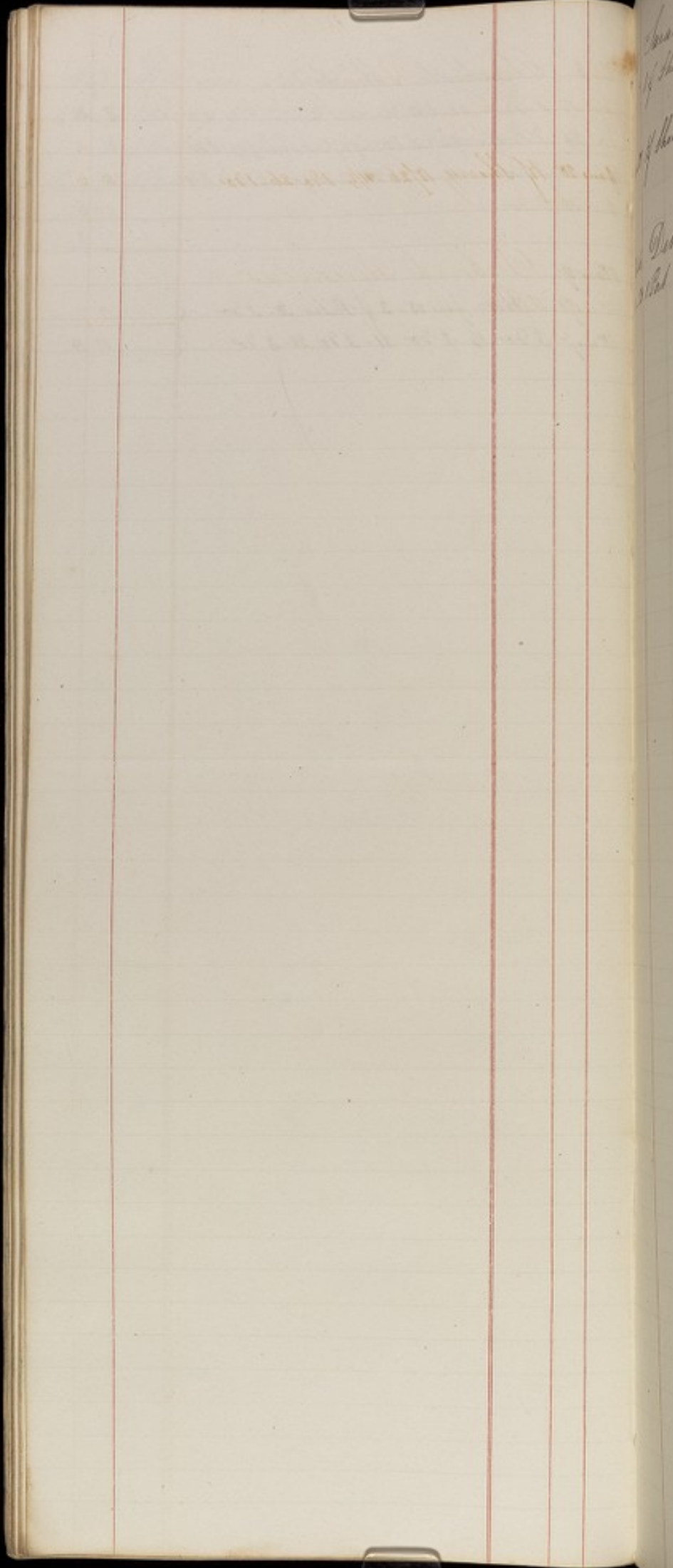
216-160

Elizabeth Morley

June 11	1 Put 22-1 2r	5	4
29	3 Put 25-3 2r-2r; 1 Put 27-1 2r	8	4
June 12	3 Put 19-3 2r 26-3 2r 27-4 2r 4 3 2r	6	
July 16	3 2r	1	6
		1	2

11 months

July 17	1 Put June 23-3 1 Put 27-3 2r	11	8
18 months	3 2r 14-3 2r 21-3 2r 28-3 2r		



(Below)

1843 Sarah Perfect

Dec 7 1/2 Sherry

2 10

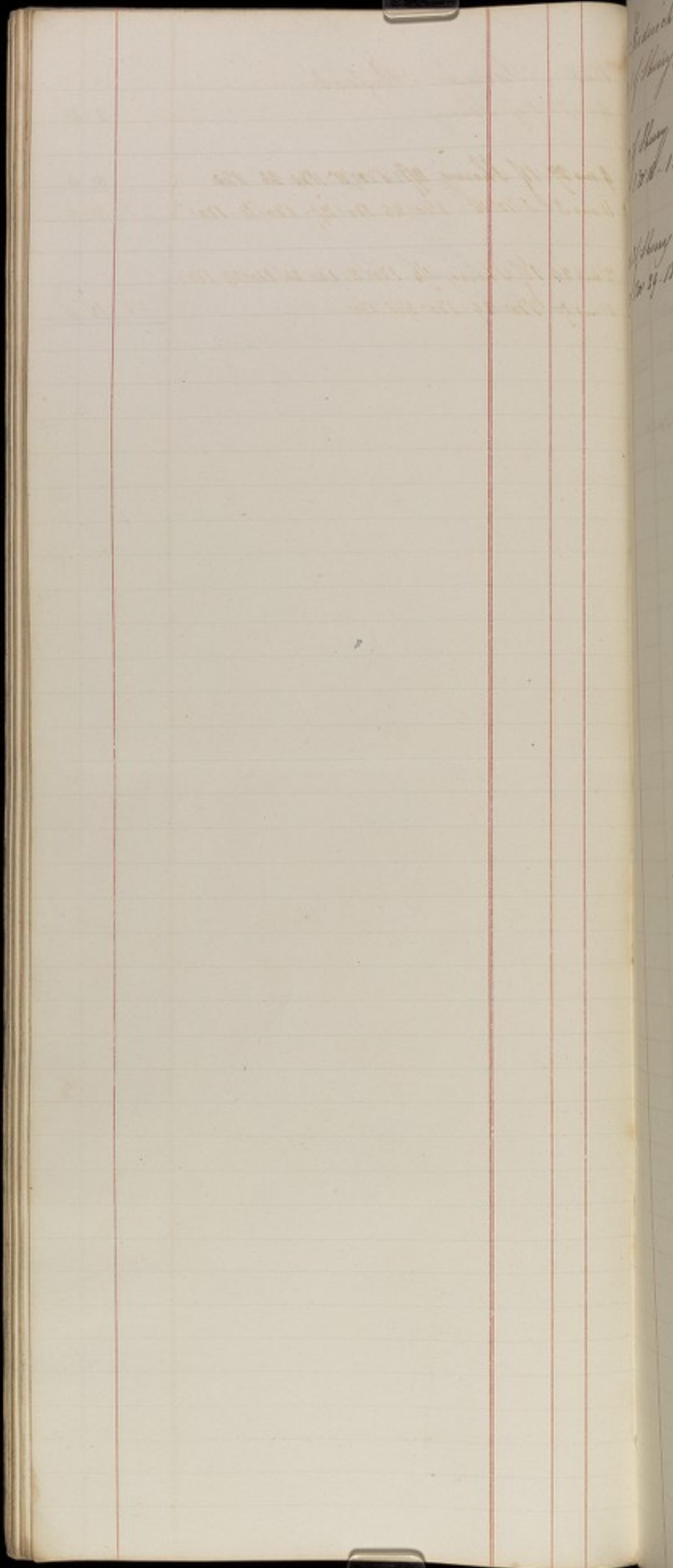
June 28 1/2 Sherry 10/26-11/9-1843-26-1844

8 6

1846 Deborah Reynolds

10 - 28 1 Pint

2 7



1863 Frederick Schlegel

Jan 10 1 of Sherry

2 10

4 mo 27 1 of Sherry 171 11-172 23-170

11 mo 3 1 27 16-170 25-170 27-170 29-170

1 5 6

13 mo 24 1 of Sherry 14-170 11-170 20-170 29-170

3 mo 17 170 29-170 3/16-170

1 4 8

(Below)
(Below)

1844 Thomas Vachell
 2 mo 19 2 Bottles of Beau-3/8 - 2 70-17-2 90

3 3

1845 James Walton
 1 .. 13 1 Sherry-9/6-10 8/33-100

8 6

Rosalind Keaton
 1 .. 13 2 Puke 23-4 do 30-3 do 1/6 3 do
 2 .. 13 3 do 20-3 do 27-3 do 3/6-3 do 13-3 do

13 6

3 .. 20 3 Puke 27-3 do 4/6-3 do 10-2 do 17-3 do 26-2 do
 3 .. 1 3 do 8-3 do 19-3 do 22-3 do 6/12-4 do

16

32 bottles 16/.

(Below)

1823 John. H. Jackson.

June 12 3 of Peter

1 6

Nov 1 1/2 Sherry 18-17-23-17-11/3-17-

Nov 16 19-25-19-12 1/2-19-17-19-

1 2 8

1826 Sarah Sanders

4 .. 20 3 Peter 6/2 3 do 4 3 do 16-3 do

6 .. 23 3 do 30-3 do 6/6 3 do 13 3 do

11 6

6 .. 20 3 Peter 24-3 do 7/4 3 do 11 3 do 13-3 do

4 .. 25 3 do 2/1 3 do 2-3 do 15-3 do

13 6

1844 Henry Decker

3 mo 12 1 of Henry

2 10

3 mo 28 1 of Henry 4/3 - 120-5 - 120-17 - 1 Prt

11 2

6 - 25 1 of Prt 5/3 - 120-17 - 120-38 - 120

10 8

1 1 10

6 - 20 1 Prt 29 - 120-7/2 - 120-28 - 120-87 - 120-17 - 120

8 - 29 120-9/2 - 120-14 - 120

1 14

4 - 28 1 Prt 10/11 - 120-25 - 120-1/2 - 120-24 - 120

12 - 7 120-20 - 120

18 8

1 - 4 1 Prt 11 - 120-22 - 120-2/2 - 120-11 - 120

18 8

2 - 22 120-3/2 - 120

18 8

3 - 22 1 Prt 4/6 - 120-14 - 120-26 - 120-5/3 - 120-16 - 120

6 - 7 120-21 - 120

18 8

8 - 12 1 Prt 8/2 - 120-13 - 120-9/23 - 120

10 8

(Below)
(Below)

1863 Mary McKie

11 mo 27 1/2 Sherry 1/11 1 do 23-1 do 19/9 1 Pch
13 mo 9 1 Sherry

1/2

2 mo 11 3 Pch 15-4 do - (Funeral)

4 6

Ann Jepson

11 mo 7 1 Sherry

2 10

2 - 16 1 Pch 30-1 Sherry

5 6

9 - 27 1 Sherry 10/27-1 do 11/22 1 do 12/10-1 do

11 1/2

1 - 10 1 Sherry 14-1 do 28-1 do 2/10-1 do 23-1 Pch

14

4 - 14 1 Pch 24-1 do 2/5 1 do 16-1 do 25-1 do

6 - 14 1 do 19-1 do

16 8

6 - 27 1 Pch 7/9-1 do 2/1-1 do 13-1 do 27-1 do

9 - 7 1 do

16

9 - 19 1 Pch 10/3-1 do 17-1 do

7 9

Jane Little

2 - 13 3 Pch 20-3 do

3

(Below)

1844 Elizabeth Johnson
2 mo 17 1 Sherry 3/4 180

5 8

4 mo 6 1 1/2 Sherry 25-170 5/21-170 6/1 170

11 2

7- 6 1 Sherry 8/2 180

5 8

10 - 1 1 Prob

2 10

1846 Amelia Charlesworth

6 .. 28 3 Puter 6/6-3 do 13 3 do

4 6

6 .. 20 3 Puter 3/7 3 do 7/4 3 do 11 3 do 18 3 do

7 .. 28 3 do 2/1 3 do 2 3 do 16 3 do 22 3 do

8 .. 29 3 do 9/6 3 do 12 3 do

10 6

9 .. 19 3 Puter 3/6 3 do 11/8 3 do 11 3 do 17 3 do

10 .. 26 3 do 3/1 3 do 11/7 3 do 14 3 do 21 3 do

11 .. 27 3 do 11/6 3 do 12 3 do 19 3 do

1 1

12 .. 26 3 Puter 1/2 3 do 9 3 do

4 6

(Below)

1863 Anne Hooper Watson

Nov 15 1 Post

2 8

20 1 Post

2 8

Jane Mansfield

3 - 20 3 Posts 4/4 - 3 do 11 - 3 do 18 - 3 do 25 3 do

6 - 2 3 do 9 - 3 do 16 - 3 do 23 - 3 do 30 - 3 do

6 - 6 3 do 13 - 3 do

18

6 - 20 3 Posts 27 1/2 do 7/6 - 1/2 do 11 1/2 do 18 1/2 do

7 - 26 1/2 do 27 1/2 do 8 1/2 do 15 1/2 do 22 1/2 do

8 - 29 1/2 do 1/6 - 1/2 do 12 1/2 do

1 5 6

9 - 19 1/2 Posts 26 1/2 do 17/3 - 1/2 do 10 1/2 do 17 1/2 do

11 - 21 1/2 do 31 1/2 do 17/7 - 1/2 do 14 1/2 do 21 1/2 do

11 - 27 1/2 do 17/6 - 1/2 do 18 1/2 do 19 1/2 do

1 8

12 - 26 1/2 Posts 1/2 - 1/2 do 9 - 1/2 do 16 - 1/2 do 23 - 1/2 do

1 - 30 1/2 do 2/6 - 1/2 do 13 - 1/2 do 20 - 1/2 do 27 - 1/2 do 3/6 - 1/2 do

3 - 13 1/2 do

1 4

2 - 24 1/2 Posts 27 1/2 do 1/6 - 1/2 do 10 1/2 do 17 1/2 do 24 1/2 do

3 - 1 1/2 do 8 1/2 do 15 1/2 do 22 1/2 do 29 1/2 do 6/6 - 1/2 do

6 - 18 1/2 do

1 3 6

52 P.

1 6 8

7844 <u>Dinah Peacock</u>		
2 mo 17	1 Pint 3/4 - 1 Sherry	5 6
3 mo 27	1 Sherry 4/6 - 190 23 - 190 5/6 - 190 1/7 - 190	
6	- 2 190	17
6 - 17	1 Pint 7/6 - 190 17 - 190 29 - 190 3/20 - 190	13 4
8 - 21	1 Sherry - 190 17 - 190	5 8
12 - 28	1 Sherry - 3/9 - 1 Pint	5 6
5 - 3	1 Pint 15 - 190 6/7 - 190	8
6 - 29	1 Pint 7/12 - 190 26 - 190 8/10 - 190 23 - 190 4/6 - 190	16
9 - 30	1 Pint 10/4 - 1 do 18 - 1 do 11/1 - 1 do	10 8
9 - 19	1 Pint 10/3 - 1 do 14 - 1 do 30 - 1 do 11/10 - 1 do	
11 - 27	1 do 12/1 - 1 do	18 1
12 - 16	1 Pint 1/9 - 1 do 23 - 1 Sherry 27 - 1 do 2/6 - 1 do	
2 - 20	1 Sherry 3/6 - 1 do	18 11
3 - 20	1 Sherry 4/3 - 1 do 16 - 1 Pint 5/1 - 1 do 2/3 - 1 Sherry	
5 - 15	2 Sherry 29 - 2 do 6/5 - 1 do 12 - 3 do -	
	16 Sherry 3/9 1 10 3 2 5 10 7/7 6/2	1 16 5
	5.2	
	1.16.5	

W. H. James Hinckston

12 mo 1 Oct 16 3 Poles

4 2

12 mo 20 3 Poles 1/6 3 20 13 - 3 20 20 - 3 20 27 - 3 20 3/11 3 20

2 mo 17 3 20 17 3 20 24 3 20 3/4 - 3 20 11 - 3 20 16 - 3 20

3 mo 23 3 20

10 6

3 mo 20 3 1/2 Poles 4/6 - 3 20

3

1846

(Below) - (Below)

Mary D Beardmore

6 .. 18 2 Pulw 13-4 do 3

6 .. 20 4 Pulw 27-4 do 7/16 4 do 11 4 do 13-4 do

7 .. 25 4 do 2/1 4 do 8-4 do 15-4 do 22-4 do

9 .. 5 4 do 13-4 do 1 4

9 .. 19 4 Pulw 2

Robert Hamiland

2 .. 11 1 Sheny 15-1 do 2/27-1 do 9-1 do 2/3 1 Pulw 11 6

3 .. 19 1 Sheny 27-1 do 4/8 1 do } 8 3
Sheny 2/9

Thomas Atkinson

6 .. 5 1 Pulw } 2 7

(Below)

1843 Ann Watson

11 mo 25 3 Peter 12/2 3 20 9 - 3 20

4 6

1846

Betsy Walker

5-2 2 Peter 9-2 do 16-2 do 23-2 do

30 2 do 6/6 2 do 13-2 do

7

8-18 1 Sherry 6/30 2 Peter 31 1 Sherry 9/10 1 do

9 6

4-21 1 Sherry 10/6 1 do 17-1 do 23-1 do 11/7 1 do

11-21 1 do 12/3 1 do

10 3

12-23 1 Sherry 1/9 1 do 28-1 do 2/19 1 do 3/2 1 do

13 0

3-27 1 Sherry

2 9

1844 George Hanson

1 mo 3	1 Pulley 6-320 13-320 20-320 27-320	
2 mo 3	3 20-14-320 17-320 24-320 31-320 18-320	
3 mo 16	320-23-320	18 6
3 mo 31	3 Pulley 4/6-320 13-320 20-320	
5 - 4	3 20-11-320 18-320 25-320 6/8-320	
6 - 15	320-	15
6 - 22	3 Pulley 29-320 7/6-320 13-320 21-320	
7 - 28	320 3/4-320 10-320 17-320 23-320 31-320	18 6
9 - 7	320-15-320	
9 - 24	3 Pulley 30-320 11/5-320 12-320 19-320	
10 - 26	3 20 11/2-320 9-320 18-320 23-320	1 1
11 - 30	320 13/7-320 14-320 21-320	
1 - 4	3 Pulley 11-320 1/18-320 25-320 31-320	
2 - 8	320 15-320 22-320 31-320 8-320	18 6
3 - 16	320-	
3 - 22	320 29-320 1/6-320 13-320 19-320 26-320	
5 - 3	320 10-320 17-320 24-320 31-320 6/7-320	1 1
6 - 14	320 21-320	
6 - 28	320 7/5-320 12-320 19-320 26-320 31-320	
8 - 9	320 16-320 23-320	13 6

1843

House

1 mo 7 1/2 Sherry 32-120 24-120 25-120
 3 mo 5 1/2 Sherry 14-120 25-120
 14 1/2 Port
 4 mo 1 1/2 Sherry 6-24 Port 11-1 Sherry
 11 1/2 Port 20-12 Sherry 24-1 Port
 20 1/2 Sherry 5/9-120 4/26-1 Port
 3 mo 24 1/2 Sherry 6/6-120 12-120 6/5 Port
 6 mo 13 1 Port 7/13-1 Port 14-1 Sherry
 7 mo 26 1 Sherry 7/4-120 4/2-1 Port
 8 mo 19 1 Sherry 24-120 30-120 9/5-120 12-120
 9 mo 21 1 Sherry 17/6-120 1 Port 17/18-1 Sherry
 11 mo 23 1 Sherry 11/6-120 11/19-120 37-120
 11 mo 4 1 Port 12/31-1 Sherry 1/10-120 24-120
 2 mo 2 1 Sherry 14-120 3/2-120

McKitchell 2 do.

do 4 Port

3^d Month 23. 1844

On hand	Port	66 bottles	2/6	}	32 12 11
	Sherry	136	2/10		
	Port	76	6		
	Empty bottles	23	4. 11		
					28 16 8

3 mo 23	1 Sherry	4/4-120 10-120 24-120 5/3-120	}	1 0 10
6	22	120 6/5-120 6/14 2 1/2 Port		

6 Month 19 1844

On hand	23	Bottle Sherry	2/10	3 5 2
do	161	Port		3 11 6
		Empty Bottles		2 8 11
				9 8 7

Porter 12 bottles 6

7 mo 1	1 Sherry	14 120 23 120 1 Port 2/2 1 Sherry	}	1 17 6
9	11	120 12-120 17-120 2/26 1 Port 1 Sherry 1/1-120		
26	2 1/2	Porter 4/12 1 Sherry 17-120		
				2 3 6

9 Month 19 1844 Brandy

On hand	73	Bottle Sherry		10 6 10
do	91	Port		12 2 8
do	46	Porter		1 3
		Empty Bottles		1 5 11

26 7 11

4 mo 25 1 Port + 11/2 Sherry - 27 - 1 Sherry
 10 - 14 1 Do - 25 - 170 - 11/10 - 170 - 23 - 1 Do 18/10 - 191
 12 mo 13 - 1 Port

1 3 2

12 Months 31 On hand

1/2 Bottle Brandy			1	4
108 do Port	2/8		26	8
135 do Sherry	2/10		19	2 6
0 do Port				
Empty Bottle				
	Lib. 14. 6		46	14 6

Port to be delivered out of

the Stock coming in 4c ... 16. 7

Value of Stock in hand 155. 17. 11

12 mo 24 1 Sherry - 1/10 - 1 Do - 24 - 1 Do - 2/3 - 2 Do - 11 - 1 Do
 2 .. 14 1 Port - 22 - 1 Do - 3/10 - 1 Sherry

1 5 2

3rd Month 27 On hand

Brandy	2 bottles	5		10
Port wine	151	2/8	18	8
Sherry	47	2/10	6	3 2
Port	77	6	1	18 6
			27	9 8

3 - 14 1 Sherry 30 - 1 Do 4/3 - 1 Do - 16 - 1 Do - 23 - 1 Do 5/4 - 1 Do
 5 - 13 1 Do 26 - 1 Do 8/9 - 1 Do

1 2

6th Month 20th 1815 On hand

Port	82 bottles	2/8	10	18 8
Sherry	121 do	2/10	17	11 4
Port	29 do	6		14 6
			29	4 6

6 mo 24 1 Sherry - 7/10 - 1 Do - 23 - 1 Do + 1 Port - 8/6 - 1 Sherry
 8 - 13 1 Do - 1 Port - 30 - 1 Sherry - 4/10 - 1 Do

14

9

9th Month 16th 1815 On hand

1/2 Bottle Port		2/8		
57 do Sherry		2/10	8	1 6
34 do Port		6		17
			8	18 6

9 - 20 1 Sherry 17/4 1 do - 18 - 1 do 25 - 2 do + 1 Port
 11 .. 8 1 Sherry - 8/10 - 1 Port - 11/24 1 Sherry 12/1 - 1 do
 1 Port 8 Sherry 1 Port

1 5 10

29 On hand 106 Port 139 Sherry 63 Port Value 35 8. 0

12 Dec 24 - 1 Sherry 27 - 1 do 1/18 - 1 do 17 - 1 do 23 - 1 do
 2 - 2 - 1 do 2/16 - 1 do 1/16 - 1 Portev - 9 - 1 do
 3 - 4 - 1 Sherry

1826
 3 No. 16 On hand 33 Port 71 Sherry 124 Porter 12 Brandy

Total Value Stock in hand £ 20. 15. 2

Apr 19 - 1 Sherry - 21 - 1 Port 28 - 1 Sherry 4/16 - 1 do
 .. 21 - 1 Portev - 29 - 1 do 4/16 - 1 do 17 - 3 do 2/3 - 1 Sherry
 6/16 - 1 do 31 - 1 do 6/18 - 1 do 5/1 - 1 Portev 7 - 1 do 18 - 1 do 6/19 - 1 do

1826 7 Sherry 8 Port 28 Portev - 1 - 4 - 6 2. 11. 8
 6 No 26. Stock in hand 128 Port 141 Sherry 111 Portev 12 Brandy Value £ 142. 16. 4

6. 21 - 2 Sherry 24 - 1 Port 7/23 - 1 Sherry 2/22 - 1 do
 6 - 23 - 1 Portev 9/7 - 1 Sherry 11 - 1 do = 1. 0. 2

9 Month 15 Stock in hand at unalt -
 58 Bottles Port 20 56 do Sherry 70 53 do Porter 6
 12 Bottles Brandy 4 (8 do Gen 20) Total Value £ 19 7. 10
 due for bottles say £ 5. 2. 10.

4 - 29 - 1 Sherry 5 of Sherry no date - 4/24 - 1 Portev
 12/16 - 1 Sherry 10 - 1 do 11/26 - 1 Portev 9 Port unaccounted for.

12 Month 23 Stock on hand
 114 Bottles Port 27 = 4s. 14 6
 117 " Sherry 29 = 16. 1. 9
 30 " Porter 6 = 15
 36 11. 3

12 Dec 15 - 1 Port 28 2 Sherry 1/10 - 1 do 19 - 1 do 20 - 1 do 2/15 - 1 do 16 - 1 do
 2 Dec 27 - 1 Sherry 3/12 - 1 do 13 bottles Port unaccounted for.

1827 3^d Month 19 Stock on hand
 11 Bottles Port 27 1 8. 5
 16 " Sherry 29 2 4. 0
 110 " Porter 6 2 15.
 6 7. 5

Apr 26 - 1 Sherry 4/1 - 1 do 19 - 1 do 26 - 1 do 3/1 - 1 do 4 - 1 do 10 - 1 do
 6/19 - 1 do 20 - 1 do 4/19 - 1 Portev - 3 Dec 27 - 2 Portev - 6 when out of Port
 5/29 - 1 Sherry 6/6 - 1 do 13 - 1 Port 4 - 1 Sherry -
 12 Sherry 27 1. 4. 0 2 Sherry 1/16 - 1 Port 2/7
 1. 11. 1

[Faint, illegible handwriting on a lined page, possibly bleed-through from the reverse side.]

