

Notes about the duties of the Baker and of the Glazier

Publication/Creation

Mid 19th century

Persistent URL

<https://wellcomecollection.org/works/dq6fagru>

License and attribution

You have permission to make copies of this work under a Creative Commons, Attribution, Non-commercial license.

Non-commercial use includes private study, academic research, teaching, and other activities that are not primarily intended for, or directed towards, commercial advantage or private monetary compensation. See the Legal Code for further information.

Image source should be attributed as specified in the full catalogue record. If no source is given the image should be attributed to Wellcome Collection.



Wellcome Collection
183 Euston Road
London NW1 2BE UK
T +44 (0)20 7611 8722
E library@wellcomecollection.org
<https://wellcomecollection.org>

Baker.

To perform every service Connected with the making & taking of bread - keeping the bakehouse clean &c.

To keep the windows in a state of repair & ~~with glazing~~ so far as the glazing of them is concerned. When an Attendant finds him informed that a window is broken, he is to take the earliest opportunity of glazing it.

He is charged with the care of the Burial Ground, & he is to keep the grass mown, & the edges cut, the walks clean from weeds, & in good order. He is also to keep the carriage walks from the entrance door of the Washington Road, & all the gravel roads & roads Connected with the Burial Ground in good order; all the grass & the coping wall, the

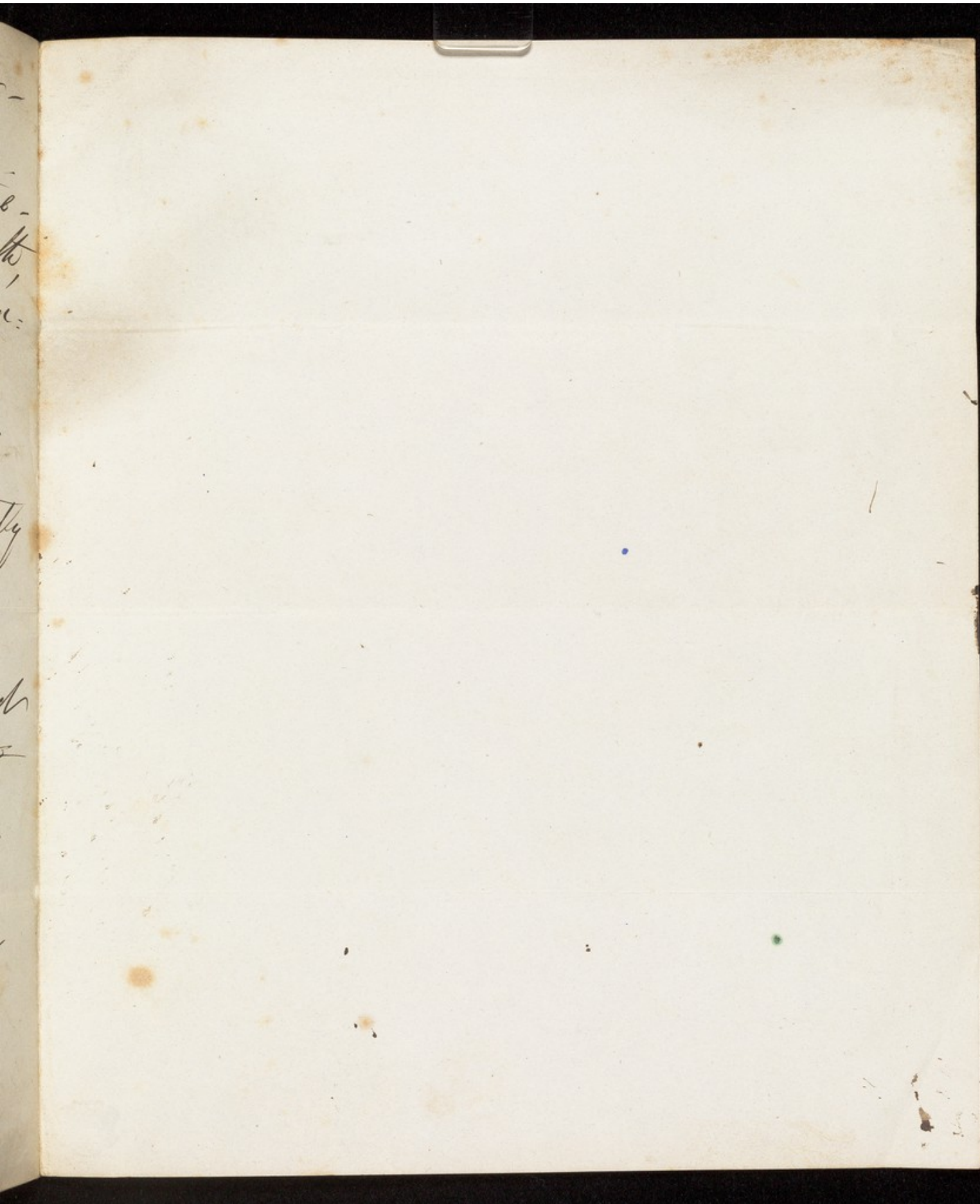
hedges clipped, the plantations & flower-
beds in good order. ~~§. X~~

He is charged with the trial of the Lib-
Engine on the first Sunday of every month,
his report to the House-Steward its con-
dition after every trial.

He is charged with the duty of seeing
that a depth of six feet of water is constantly
maintained in the Tank close to the
Easton end of the great Kitchen.

In the absence of the Coachman he is to be
for him, & when both are wanted to be
driven ~~at~~ at the same time.

& He is charged with the clipping of all
the hedges on the Estate except those which belong
to the Squire's use.





Letter of
Robert L
Glover