

## **Proposed alterations to Medical Superintendent's House, plans by Edward Taylor of York**

### **Publication/Creation**

February - April 1881

### **Persistent URL**

<https://wellcomecollection.org/works/hfa3pd6v>

### **License and attribution**

You have permission to make copies of this work under a Creative Commons, Attribution, Non-commercial license.

Non-commercial use includes private study, academic research, teaching, and other activities that are not primarily intended for, or directed towards, commercial advantage or private monetary compensation. See the Legal Code for further information.

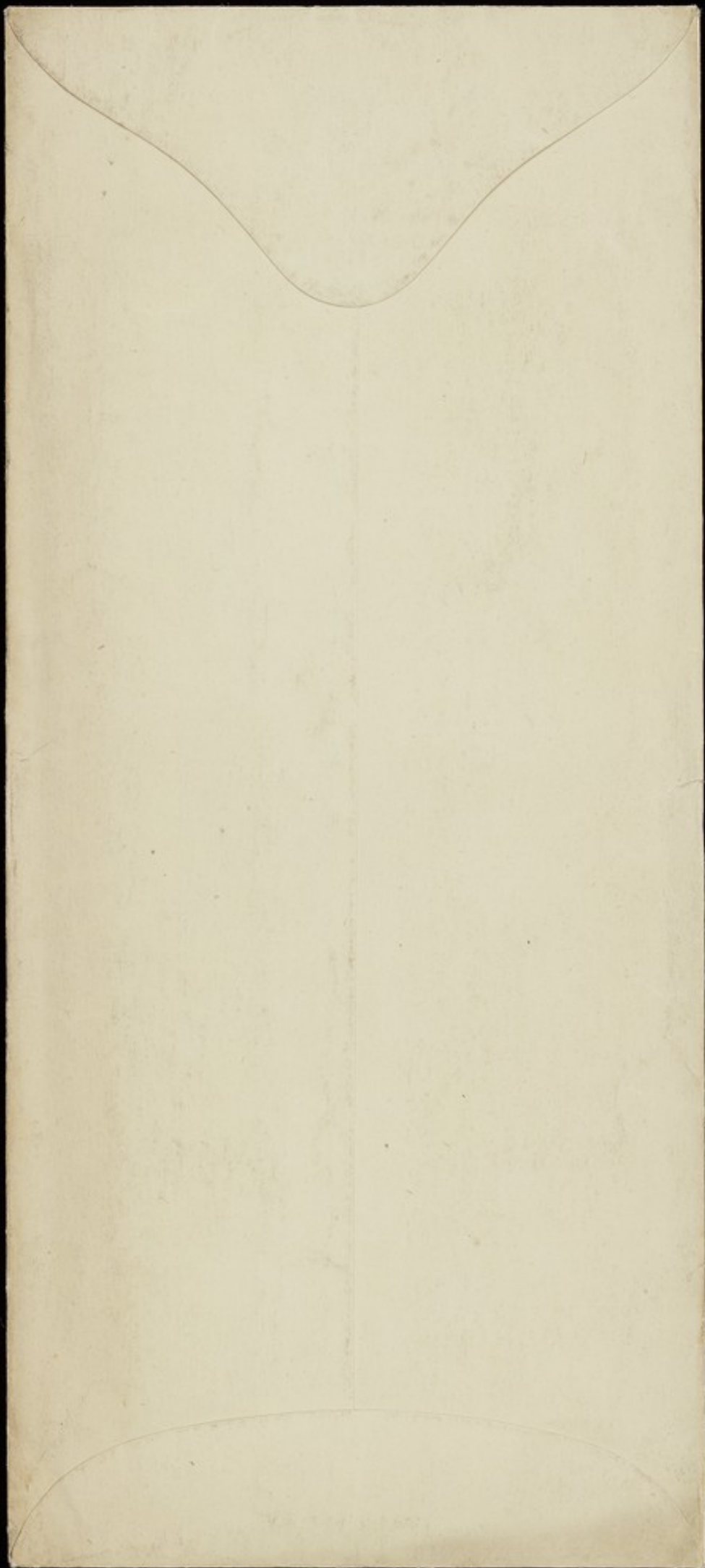
Image source should be attributed as specified in the full catalogue record. If no source is given the image should be attributed to Wellcome Collection.



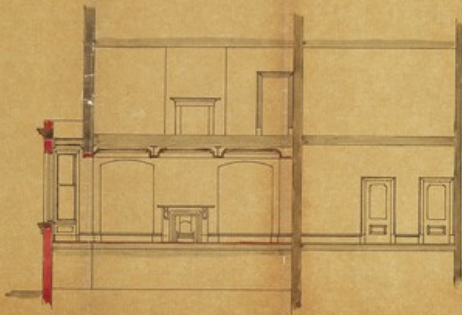
Wellcome Collection  
183 Euston Road  
London NW1 2BE UK  
T +44 (0)20 7611 8722  
E [library@wellcomecollection.org](mailto:library@wellcomecollection.org)  
<https://wellcomecollection.org>

Superintendent's  
House

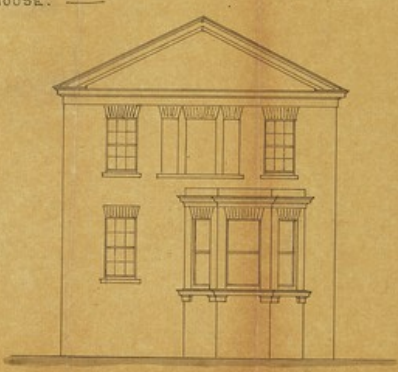
RET 2/1/17/1 (1) - (5)



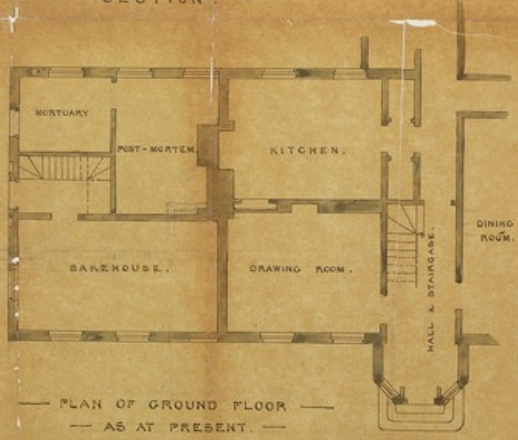
— THE RETREAT YORK. —  
 SKETCH FOR ALTERATIONS  
 TO MEDICAL SUPERINTENDENT'S HOUSE.  
 No. 1.



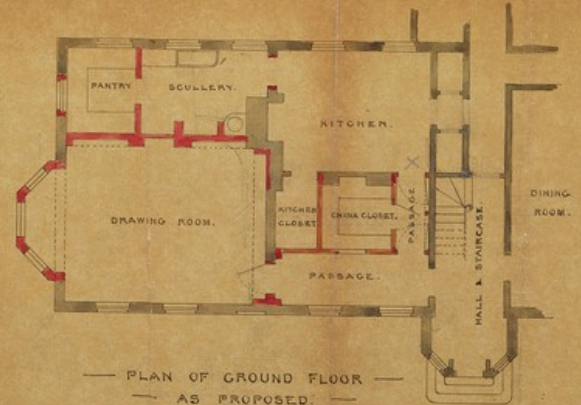
— SECTION —



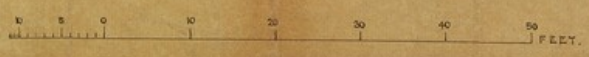
— END ELEVATION —



— PLAN OF GROUND FLOOR —  
 — AS AT PRESENT. —



— PLAN OF GROUND FLOOR —  
 — AS PROPOSED. —

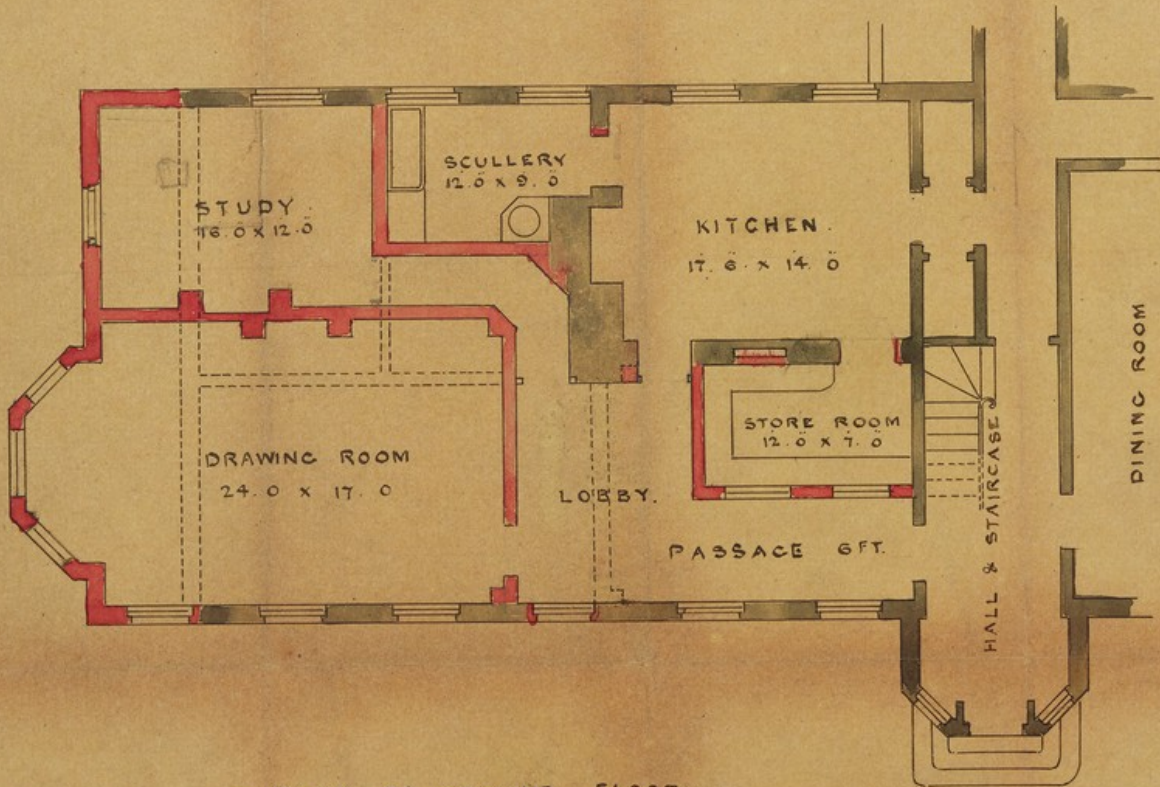


*Edward Taylor Smith*  
 7 Stonegate, York.  
 January, 1881.

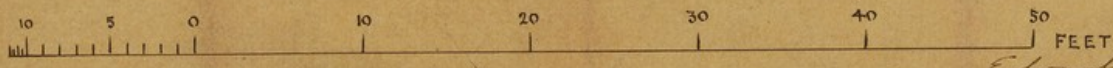
RC 2/17/1 (i)

— THE RETREAT YORK —

— SKETCH FOR ALTERATIONS  
TO MEDICAL SUPERINTENDENT'S HOUSE  
N<sup>o</sup> 4. —



— PLAN OF GROUND FLOOR. —

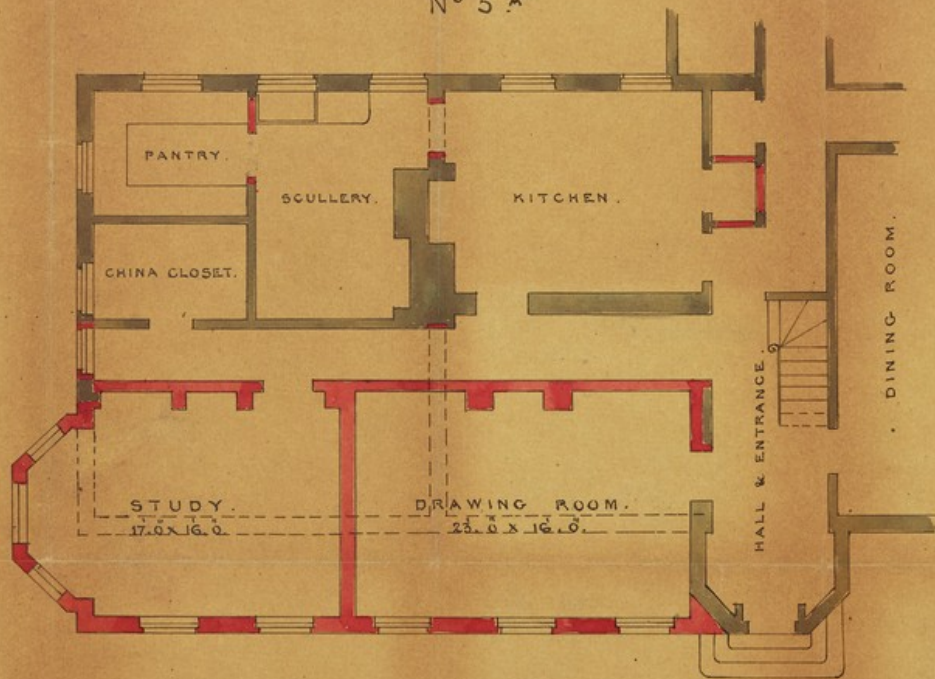


*Edward Taylor Archt*  
*7 Stoneygate York*  
*Feb 1881.*

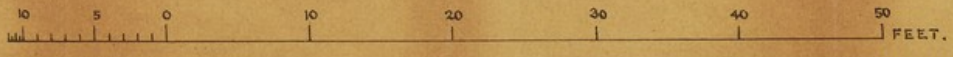
RET 2/1/17/1 (2)

— THE RETREAT YORK —

— SKETCH FOR ALTERATIONS  
TO MEDICAL SUPERINTENDENT'S HOUSE.  
N° 5 A



— PLAN OF GROUND FLOOR. —

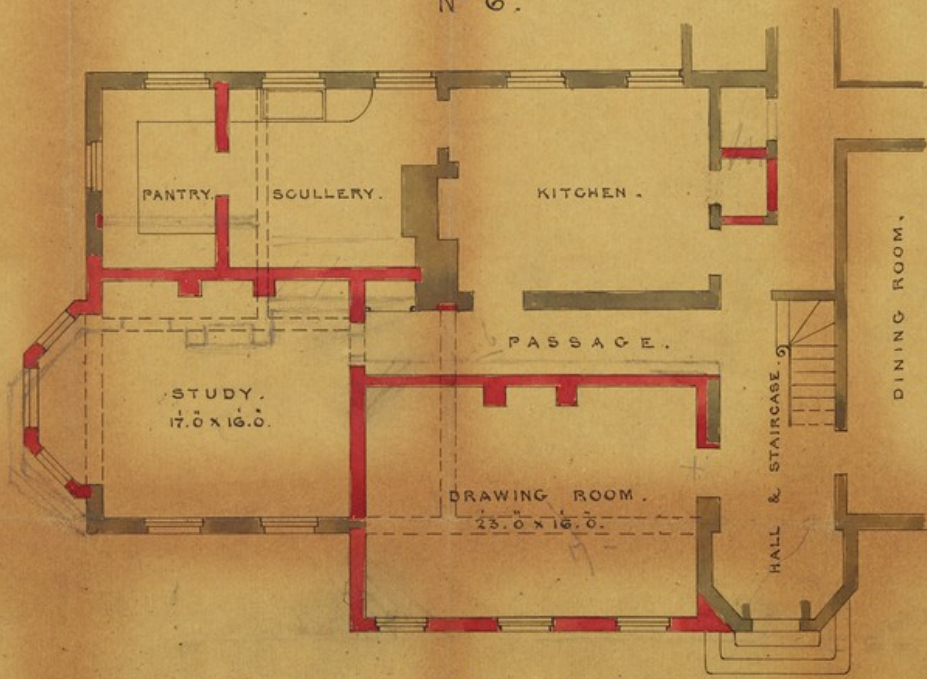


*Edward Taylor Arch<sup>t</sup>  
Stonegate, York.  
March, 1881.*

RET 2/1/17/1 (3)

— THE RETREAT YORK. —

— SKETCH FOR ALTERATIONS  
TO MEDICAL SUPERINTENDENT'S HOUSE.  
N° 6. —



— PLAN OF GROUND FLOOR. —

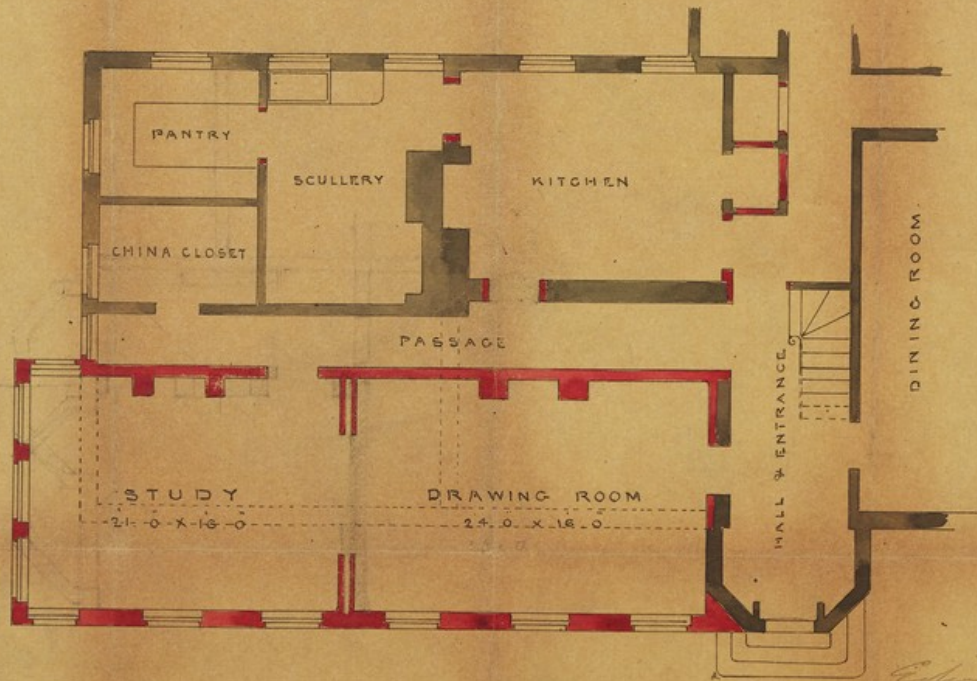
10 5 0 10 20 30 40 50 FEET.

*high parapet - kitchen  
+ position of door  
and window*

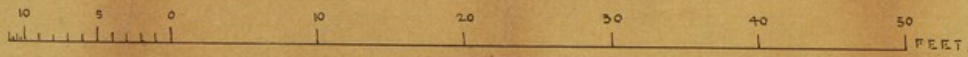
*Edward Taylor Archt &  
7 Stonegate, York.  
March, 1881.*

RET 2/1/17/1(4)

— THE RETREAT YORK —  
 — SKETCH FOR ALTERATIONS  
 TO MEDICAL SUPERINTENDENT'S HOUSE  
 N° 5 —



— PLAN OF GROUND FLOOR. —



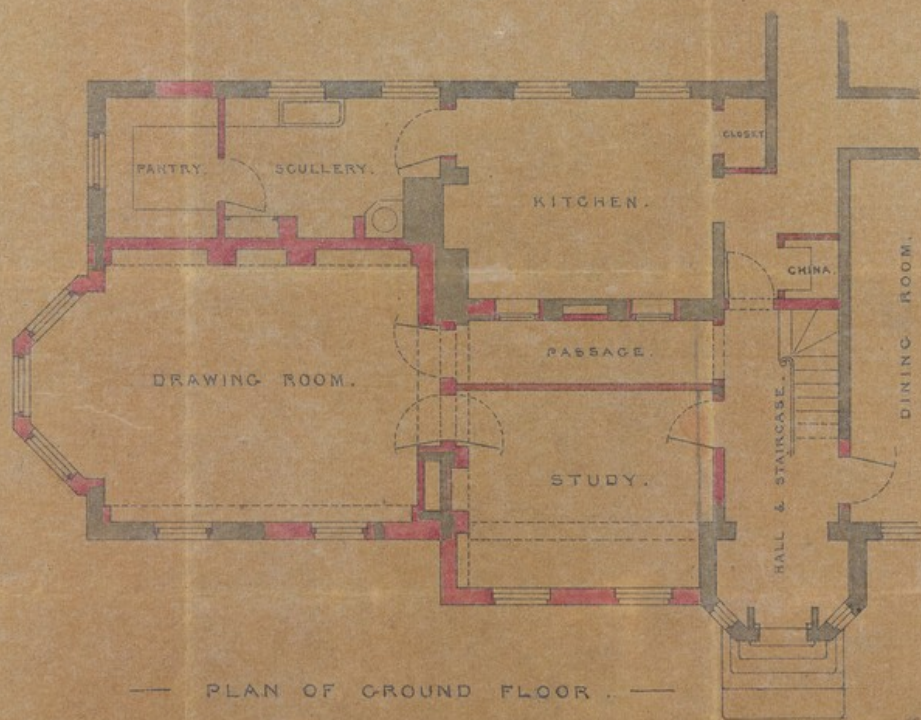
*Edward Taylor*

7 Stonegate York  
 March 1881

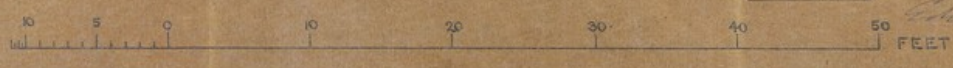
RET 2/1/17/1(5)

— THE RETREAT, YORK. —

— ALTERATIONS TO —  
— MEDICAL SUPERINTENDENT'S HOUSE. —



— PLAN OF GROUND FLOOR. —



*Edward Thompson Architect*  
7 Stonegate, York,  
April, 1881.

