

Proposed new bathroom and WC to Cottage Hospital, plans by Demaine and Brierley, York

Publication/Creation

1892

Persistent URL

<https://wellcomecollection.org/works/jqn28r6s>

License and attribution

You have permission to make copies of this work under a Creative Commons, Attribution, Non-commercial license.

Non-commercial use includes private study, academic research, teaching, and other activities that are not primarily intended for, or directed towards, commercial advantage or private monetary compensation. See the Legal Code for further information.

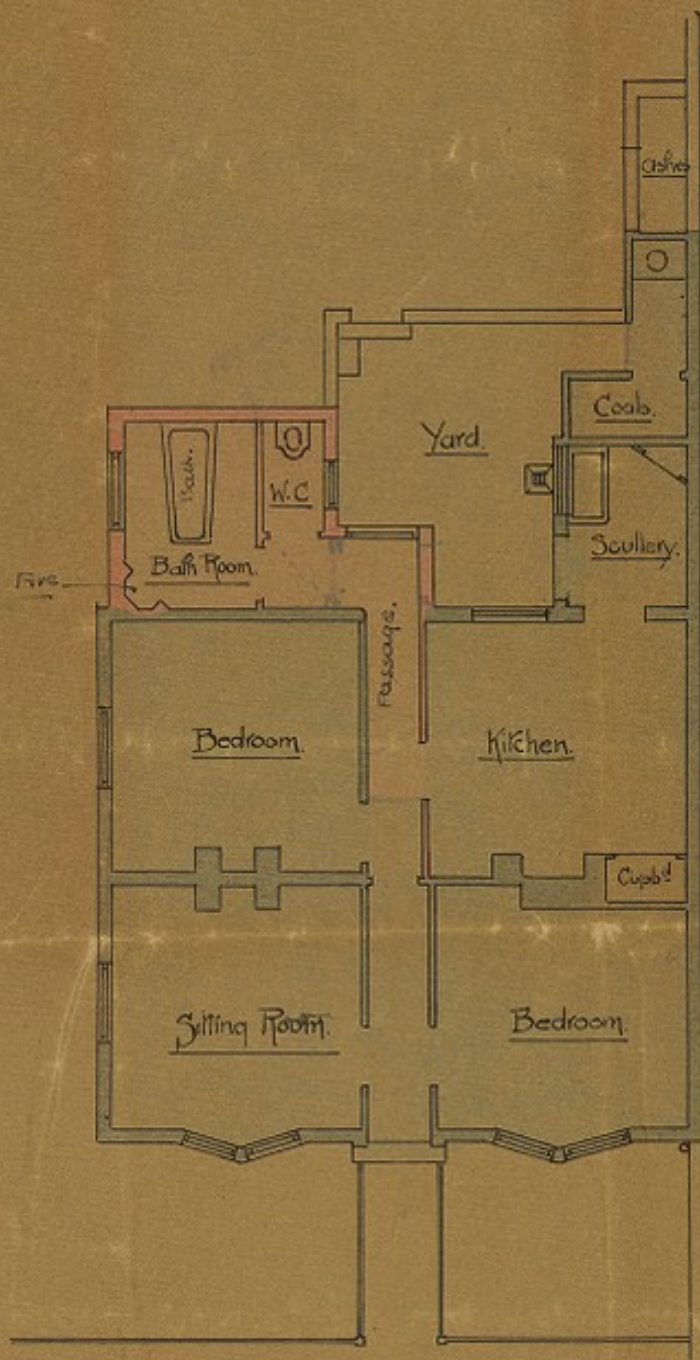
Image source should be attributed as specified in the full catalogue record. If no source is given the image should be attributed to Wellcome Collection.



Wellcome Collection
183 Euston Road
London NW1 2BE UK
T +44 (0)20 7611 8722
E library@wellcomecollection.org
<https://wellcomecollection.org>

Proposed New Bath Room + W.C.

to the Cottage Hospital, The Retreat, York.

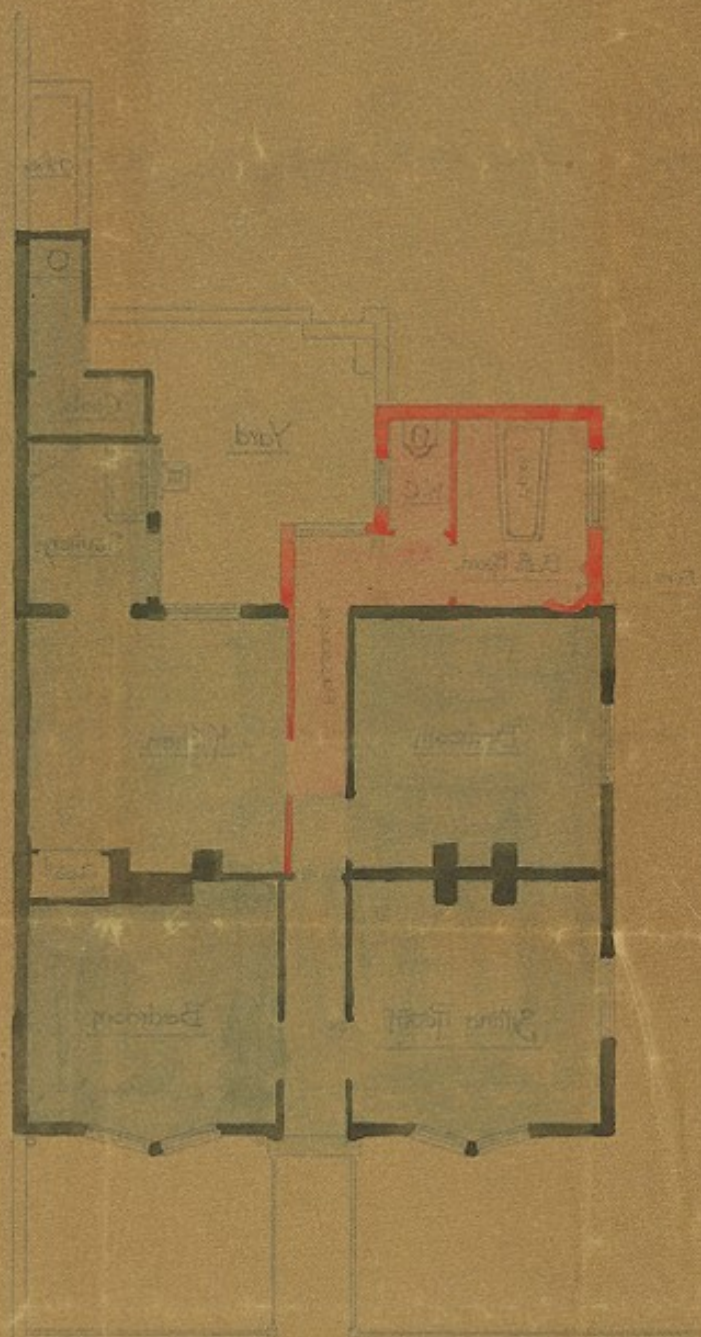


Scale of Eight Feet to an Inch.

Demaine & Brierley, arch'ts.
York & Westminster.
Dec: 1892.

A. 499

Proposed New Bath Room + W.C.
to the Cottage Hospital, The Retreat, York



42/29/14

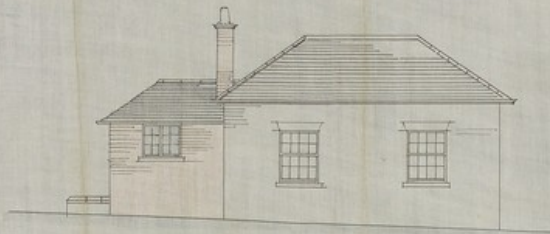
Approved
Dec 1904
York & Westmorland
Sanitary & Electrical Dept

Scale of 1/4" = 1 foot

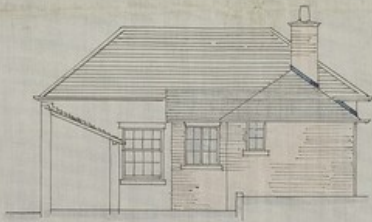
RET 2/11/19/6/10

RECEIVED
C. L. L.
15 FEB
1893

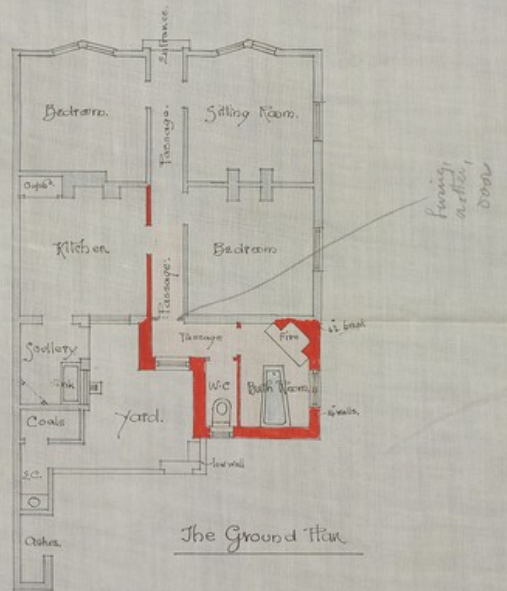
No. 4.



: North Elevation :



: East Elevation :



The Ground Plan

: Scale 8 feet to One Inch

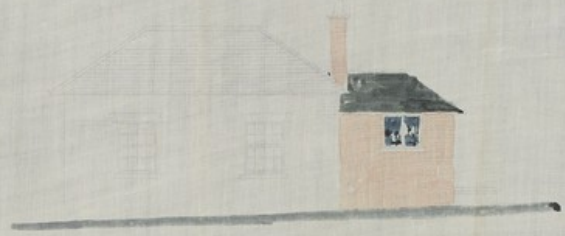
The Retreat York.
: Proposed New Bath Room and W.C. to the Cottage Hospital:

January, 1892:

Demaine and Grierley
York and Westminster.

A 506.

No. 100



Architectural details and notes at the bottom left corner.

Architectural details and notes at the bottom right corner.