

The horse : dissected model showing the internal structure.

Contributors

University of Glasgow. Library

Publication/Creation

London : The Gresham Pub. Co., [between 1900 and 1909?]

Persistent URL

<https://wellcomecollection.org/works/daqned59>

Provider

University of Glasgow

License and attribution

This material has been provided by This material has been provided by The University of Glasgow Library. The original may be consulted at The University of Glasgow Library. where the originals may be consulted. Conditions of use: it is possible this item is protected by copyright and/or related rights. You are free to use this item in any way that is permitted by the copyright and related rights legislation that applies to your use. For other uses you need to obtain permission from the rights-holder(s).



Wellcome Collection
183 Euston Road
London NW1 2BE UK
T +44 (0)20 7611 8722
E library@wellcomecollection.org
<https://wellcomecollection.org>

THE HORSE

Dissected Model

showing

THE INTERNAL STRUCTURE



LONDON: THE GRESHAM PUBLISHING COMPANY

Sp coll 2946

Glasgow
University Library



~~Veterinary
Branch
Library~~

SF 0816/15

GLASGOW
UNIVERSITY
LIBRARY

Glasgow University Library

8861 NOV 22

22 NOV 1968

GUL 68.18

EXPLANATIONS FOR THE MODEL "THE SKELETON OF THE HORSE"

- | | | |
|--------------------------------------|--|---|
| 1. Superior maxillary or upper jaw. | 23. The caudal vertebræ (18-20). | 36. The pastern joint. |
| 2. Inferior maxillary or lower jaw. | 24. The sternum or breast-bone. | 37. The lower and smaller pastern-bone. |
| 3. Occipital bone. | 25. The scapula or shoulder-blade. | 38. The coffin joint. |
| 4. Frontal bone. | 26. The shoulder joint. | 39. The coffin-bone. |
| 5. Nasal bone. | 27. The humerus. | 40. The haunch. |
| 6. Molar teeth. | 28. The elbow joint. | 41. The hip joint. |
| 7. Canine teeth. | 29. The radius. | 42. The femur or thigh-bone. |
| 8. Incisor teeth. | 30. The ulna. | 43. The patella or knee-cap. |
| 9-15. The seven cervical vertebræ. | 31. The carpel or knee-bones. | 44. The stifle. |
| 16-17. The eighteen dorsal vertebræ. | 32. The cannon or shank-bone. | 45. The tibia. |
| 18. The true ribs (eight). | 33. The splint-bone. | 46. The fibula. |
| 19. The false ribs (ten). | 34. The fetlock joint. | 47. The tarsus or hock. |
| 20-21. The six lumbar vertebræ. | 35. The upper and larger pastern-bone. | 48. The os calcis. |
| 22. The sacrum. | | |

THE HORSE

Digitized by the Internet Archive
in 2016

memo 30

<https://archive.org/details/b24932188>

EXPLANATIONS FOR THE MODEL
"DISSECTION OF THE HEAD AND BODY"

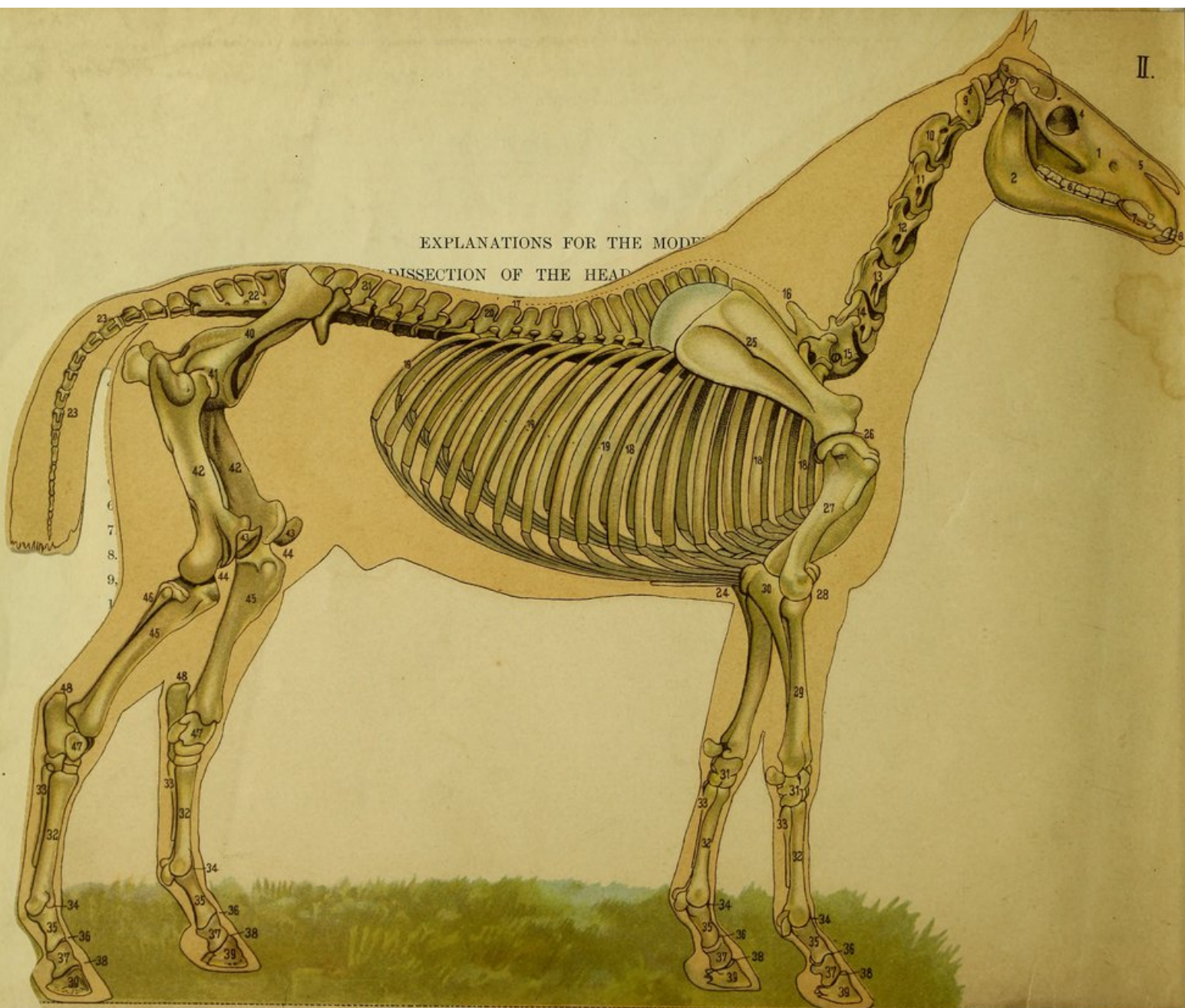
- | | | |
|---|--|---|
| <p>1. Brain:
 <i>a.</i> Cerebrum.
 <i>b.</i> Cerebellum.
 <i>c.</i> Medulla oblongata.</p> <p>2. Spinal cord.</p> <p>3. Tongue.</p> <p>4. Pharynx.</p> <p>5. Oesophagus.</p> <p>6. Diaphragm, anterior aspect.</p> <p>6a. Diaphragm, posterior aspect</p> <p>7. Stomach.</p> <p>8. Duodenum.</p> <p>9, 9. Jejunum and ileum.</p> <p>10. Cecum.</p> <p>11. Double colon:
 <i>a.</i> First portion.
 <i>b.</i> Suprasternal flexure.
 <i>c.</i> Second portion.
 <i>d.</i> Pelvic flexure.
 <i>e.</i> Third portion.
 <i>f.</i> Diaphragmatic flexure.
 <i>g.</i> Fourth portion.</p> <p>12. Small colon.</p> | <p>13. Rectum.</p> <p>14. Anus.</p> <p>15. Liver.</p> <p>16. Pancreas.</p> <p>17. Spleen.</p> <p>18. Kidney:
 <i>a, a.</i> Pelvis.</p> <p>19, 19. Ureters.</p> <p>20. Bladder.</p> <p>21. Urethra.</p> <p>22. Penis.</p> <p>23. Spermatie cord.</p> <p>24. Testicle.</p> <p>25. Spermatie duct.</p> <p>26, 26. Vesiculæ seminales.</p> <p>27. Larynx.</p> <p>28. Trachea.</p> <p>29, 29. Lungs cut open, showing
 bronchial tubes.</p> <p>30. Lungs.</p> | <p>31. Heart:
 <i>a.</i> Left auricle.
 <i>b.</i> Left ventricle.
 <i>c.</i> Right auricle.
 <i>d.</i> Right ventricle.
 <i>e.</i> Left auriculo ventricular or mitral valve.
 <i>f.</i> Right auriculo ventricular or tricuspid valve.
 <i>g, g.</i> Corde tendinae or tendinous cords.</p> <p>32. Aorta.</p> <p>33. Posterior aorta.</p> <p>34. Anterior aorta.</p> <p>35. Pulmonary artery.</p> <p>36. Posterior vena cava.</p> <p>37. Cervical vertebrae.</p> <p>38. Dorsal vertebrae.</p> <p>39, 39. Lumbar vertebrae.</p> <p>40. Sacrum.</p> <p>41, 41. Coccygeal vertebrae.</p> <p>42, 42. Ligamentum nuchæ.</p> <p>43. Septum nasi.</p> <p>44. True ribs.</p> <p>45. False ribs.</p> <p>46. Intercostal muscles.</p> <p>47. Sternum or breast bone.</p> <p>48. Floor of pelvis.</p> |
|---|--|---|

I.

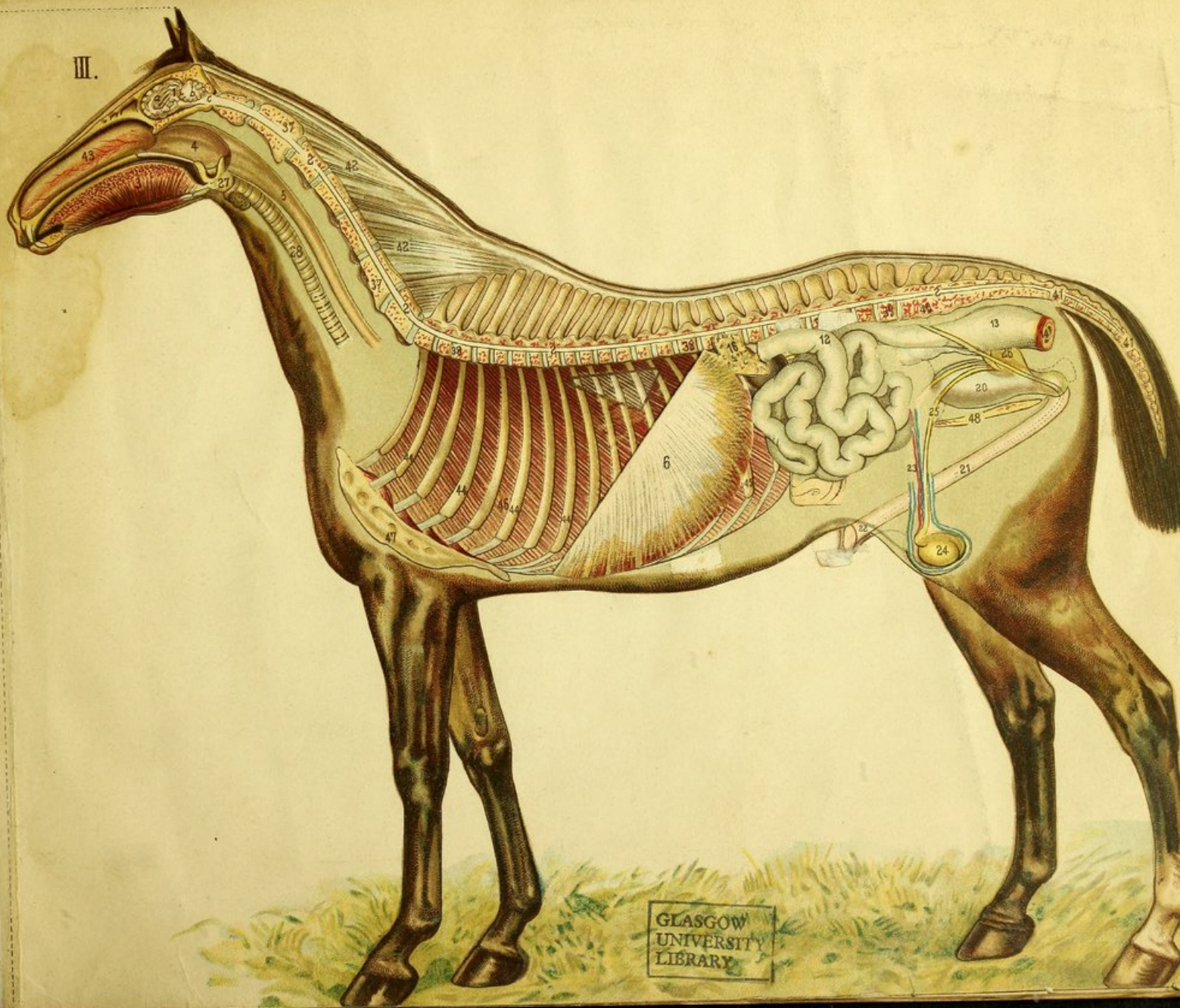


EXPLANATIONS FOR THE MODE

DISSECTION OF THE HEAD



III.



GLASGOW
UNIVERSITY
LIBRARY

