

**Report of the Pennsylvania Hospital for the Insane for the year 1862 /  
[Thomas S. Kirkbride].**

**Contributors**

Kirkbride, Thomas Story, 1809-1883.  
Pennsylvania Hospital for the Insane.

**Publication/Creation**

Philadelphia : Pennsylvania Hospital, 1863.

**Persistent URL**

<https://wellcomecollection.org/works/qkvejsak>

**License and attribution**

This work has been identified as being free of known restrictions under copyright law, including all related and neighbouring rights and is being made available under the Creative Commons, Public Domain Mark.

You can copy, modify, distribute and perform the work, even for commercial purposes, without asking permission.



Wellcome Collection  
183 Euston Road  
London NW1 2BE UK  
T +44 (0)20 7611 8722  
E [library@wellcomecollection.org](mailto:library@wellcomecollection.org)  
<https://wellcomecollection.org>

(2)


PP.RX.628

(2) PP. RX. 628

X 166737

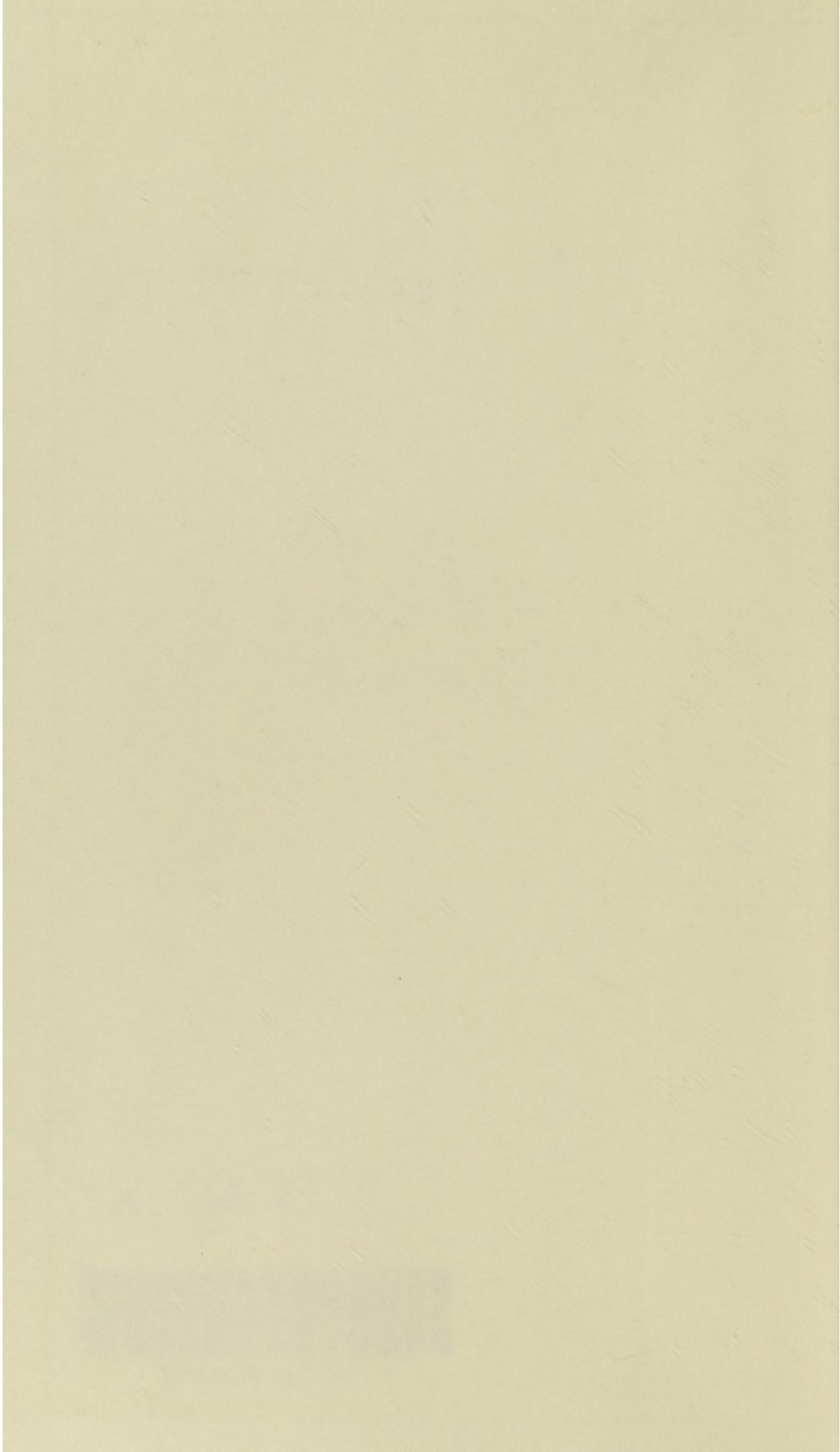


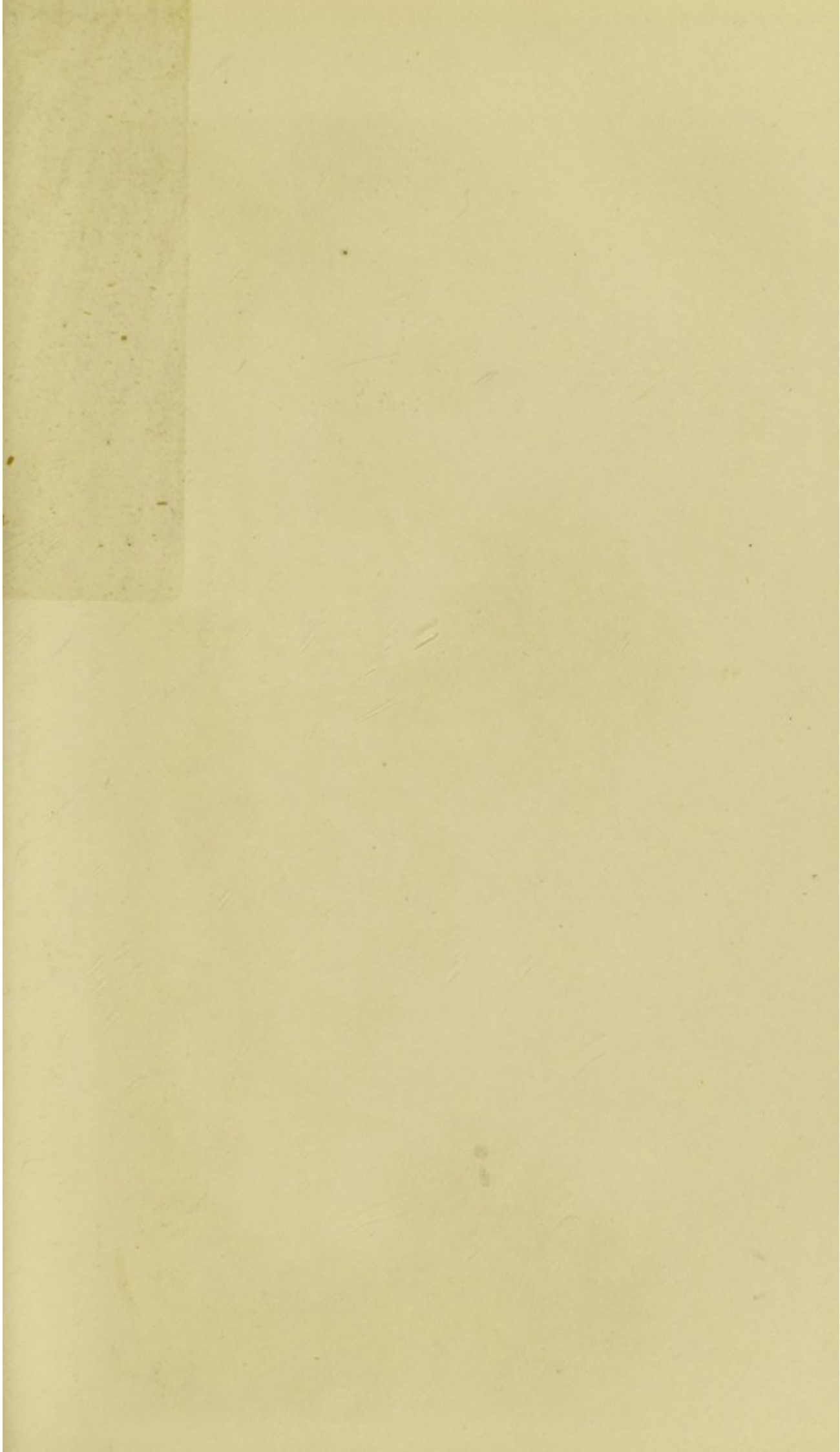
22101048754

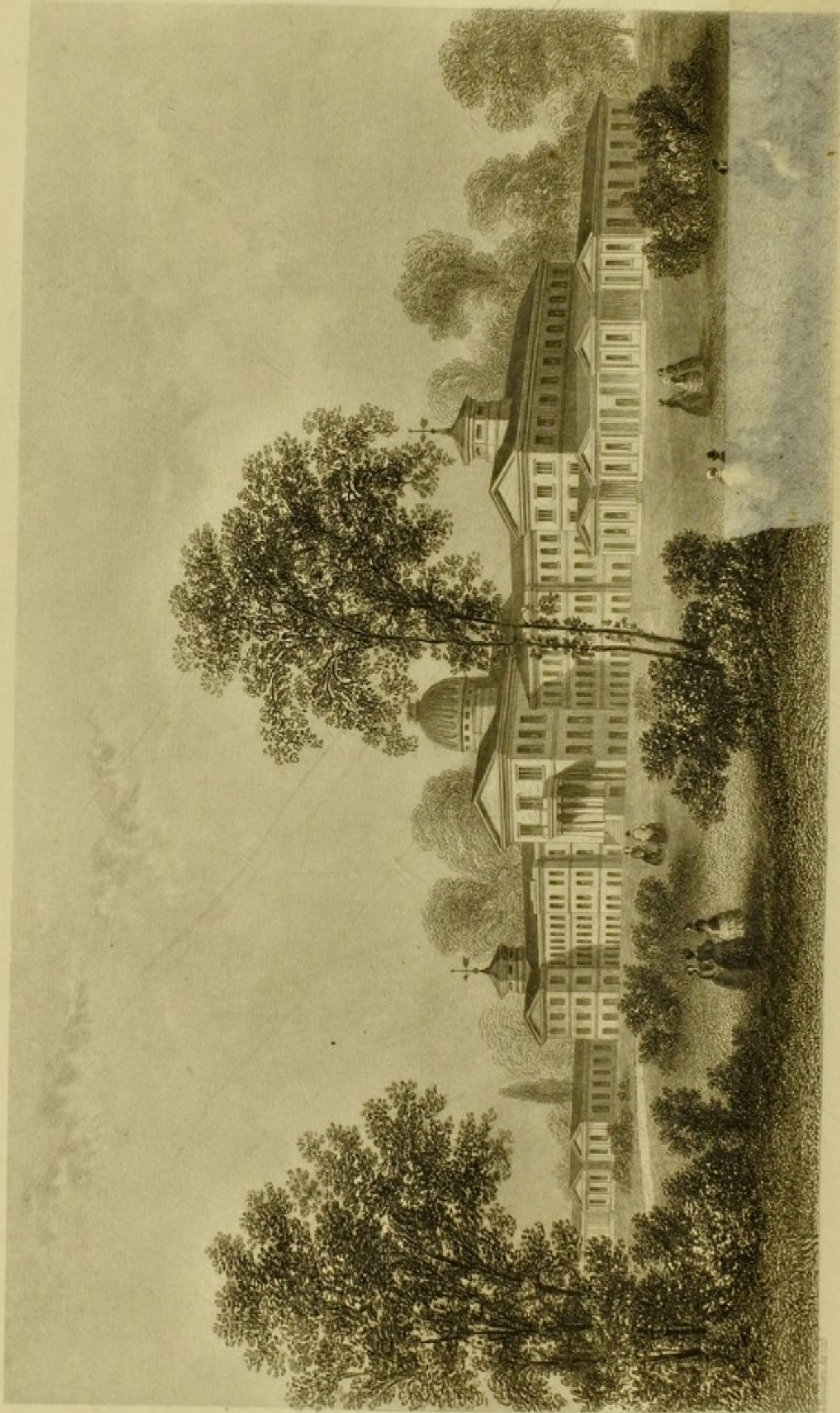


Digitized by the Internet Archive  
in 2016

<https://archive.org/details/b24860815>







PENNSYLVANIA HOSPITAL FOR THE INSANE.  
DEPARTMENT FOR FEMALES.

# R E P O R T

OF THE

PENNSYLVANIA HOSPITAL FOR THE INSANE

FOR

THE YEAR 1862.

---

BY THOMAS S. KIRKBRIDE, M. D.

PHYSICIAN IN CHIEF AND SUPERINTENDENT.

---

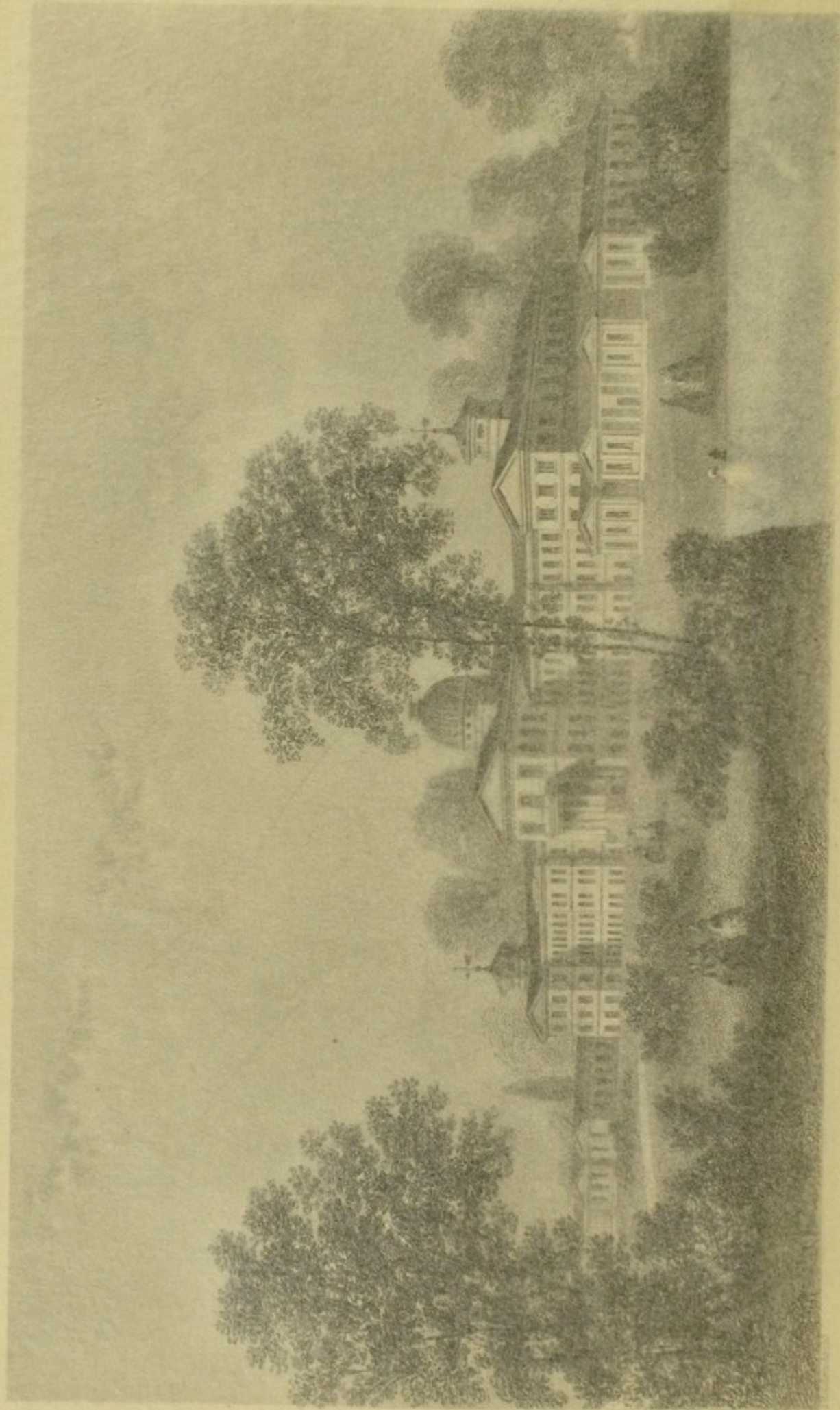
Published by Order of the Board of Managers.

---

PHILADELPHIA.

1863.





PENNSYLVANIA HOSPITAL FOR THE DEAF AND DUMB  
DESIGNED BY JOHN H. BROWN

# R E P O R T

OF THE

PENNSYLVANIA HOSPITAL FOR THE INSANE

FOR

THE YEAR 1862.

---

BY THOMAS S. KIRKBRIDE, M. D.

PHYSICIAN IN CHIEF AND SUPERINTENDENT.

---

Published by Order of the Board of Managers.

---

PHILADELPHIA.

1863.

11141

PHILADELPHIA: Hospitals (Pennsylvania  
Hosp' for the Insane): 19 cent.  
MENTAL HOSPITALS: U.S.A: 19 cent.

(2). PP. RX. 628



311473

## OFFICERS OF THE INSTITUTION.

---

### MANAGERS.

MORDECAI L. DAWSON, <i>President</i> ,	JOHN M. WHITALL,
WISTAR MORRIS, <i>Secretary</i> ,	A. J. DERBYSHIRE,
FREDERICK BROWN,	SAMUEL MASON,
JAMES R. GREEVES,	S. MORRIS WALN,
WILLIAM BIDDLE,	SAMUEL WELSH,
JOHN FARNUM,	CALEB COPE.

### TREASURER.

JOHN T. LEWIS.

### PHYSICIAN IN CHIEF AND SUPERINTENDENT.

THOMAS S. KIRKBRIDE, M. D.

#### Department for Males.

ASSISTANT PHYSICIAN.

S. PRESTON JONES, M. D.

2D ASSISTANT PHYSICIAN.

---

STEWARD.

JONATHAN RICHARDS.

MATRON.

MARGARET C. RICHARDS.

#### Department for Females.

ASSISTANT PHYSICIAN.

J. EDWARDS LEE, M. D.

STEWARD.

JOHN WISTAR.

MATRON.

MARGARET N. WISTAR.

---

Letters relative to the admission of patients may be addressed to any of the Managers, or to Dr. KIRKBRIDE, *Pennsylvania Hospital for the Insane, Philadelphia.*

---

Letters or small packages, for any of the officers or patients, may also be left at the Hospital gate, Eighth Street, between Spruce and Pine Streets, in the city of Philadelphia.

---

Entrance to "the Department for Males," on 49th Street, between Market and Haverford Streets.

Entrance to "the Department for Females," on Haverford Street, near 44th Street.

## CONTENTS.

---

Preliminary remarks . . . . .	5
Number of patients, &c. . . . .	6
Premature removals . . . . .	8
Statistical tables . . . . .	14
Gardens and pleasure grounds . . . . .	23
Workshops and mechanical department . . . . .	23
Evening entertainments, &c. . . . .	23
Museums and reading-rooms . . . . .	27
Improvements . . . . .	27
Acknowledgments . . . . .	28
Receipts and expenditures . . . . .	30
The new hospital . . . . .	33
Conclusion . . . . .	36

## APPENDIX.

Donations and subscriptions . . . . .	41
Form of legacy . . . . .	41
Free beds in hospital . . . . .	41
Admission of patients . . . . .	43
Collecting Committee for new hospital . . . . .	50
Contributors to building fund . . . . .	51
Collecting Committee for furnishing . . . . .	66
Subscribers to furniture fund . . . . .	67

# PHYSICIAN'S REPORT

TO THE

BOARD OF MANAGERS.

---

IN compliance with the requisitions of the By-Laws of the Pennsylvania Hospital for the Insane, the undersigned presents to its Board of Managers his Twenty-second Annual Report. In performing this duty he has the gratification to announce, that the year just closed, which, to many at its commencement, seemed to give anticipations of unusual difficulties in the management of the institution, has terminated in a manner highly satisfactory to all. The number of its patients has been steadily increasing, its usefulness among all classes of the community has gradually extended, and by a rigid, but liberal system of economy, it has been able to meet all its expenses, without in any way lowering its scale of accommodations, or diminishing the comforts of a single patient.

The system which was adopted at the opening of the new building, has been continued without essential variation, and has realized our anticipations. Another year's experience only adds to the strength of my convictions of the great value and decided advantages of our new arrangements. What was novel in the plan and fixtures of the new building has answered the purposes intended, so effectually, that if the work was to be again done, very few changes would be made, and

these would be of a comparatively unimportant character.

A vacancy among the medical officers of the hospital during a portion of the year, added materially to the labors of Dr. Jones, Assistant Physician, and of Jonathan Richards, Steward, at the Department for Males, and their efficient and cheerful performance of these increased, as of all their other duties, are worthy of special commendation.

In the early part of the summer, Dr. Edward A. Smith, who has for several years been mentioned in my reports as an efficient and valued assistant, resigned his office at the Department for Females to engage in private practice in the city of Philadelphia. His place has been supplied by the election of Dr. J. Edwards Lee, who formerly occupied the same position, and was entirely familiar with all the duties of the office. At the Department for Males, Dr. W. S. Longshore also resigned his post of Second Assistant Physician to engage in private practice. This office has not yet been filled, although the duties of the place have for some time been satisfactorily performed by Dr. J. M. Hall. Both the gentlemen who resigned left with the best wishes of all connected with the institution.

---

At the date of the last report, there were 255 patients in the institution, since which 194 have been admitted, and 164 have been discharged, or died, leaving 285, being an increase of 30, under care at the close of the year.

The total number of patients in the hospital during the year was 449. The highest number at any one

time was 285; the lowest was 255; and the average number under treatment during the whole period was 267.

The number of males in the hospital during the year was 232, and the number of females was 217. The highest number of males at any one time was 143, and the highest number of females was 146. The lowest number of males was 127, and of females was 126. At the beginning of the year, there were 128 males, and 127 females. At this date, there are 143 males, and 142 females. The number of males admitted during the year was 104, and the number of females 90.

Of the patients discharged during the year 1862, were—

	Males.	Females.	Total.
Cured	50	40	90
Much improved	4	8	12
Improved	15	18	33
Stationary	10	6	16
Died	10	3	13
Total	<u>89</u>	<u>75</u>	<u>164</u>

Of the patients discharged "cured," forty-two were residents of the hospital not exceeding three months; twenty-five between three and six months; twelve between six months and one year; and eleven for more than one year.

Of those discharged "much improved," two were under treatment less than three months; two between three and six months; five between six months and one year; and three for more than one year.

Of the "improved," five were under care less than



three months; seven between three and six months; twelve between six months and one year; and nine for more than one year.

Of those discharged and reported "stationary," two were under care less than three months; three between three and six months; six between six months and one year; and five for a longer period than one year.

Ten males and three females have died during the year. Of these deaths, three resulted from acute mania; three from chronic mania; two from paralysis; one from organic disease (softening) of the brain; one from epilepsy; one from old age; one from disease of the heart; and one from typhoid fever, while laboring under the delirium of which, the case was admitted.

Of the patients who died, four were admitted for mania, five for melancholia, one for monomania, two for dementia, and one for delirium. Of these, four were over seventy years old, and five others, over fifty.

Of the cases who died, two were in the house less than one month; four between three and six months; three between six months and one year; two between two and three years; one between three and four years; and one for more than twelve years.

**PREMATURE REMOVALS.**—There are many points connected with the care of the insane that cannot be too frequently referred to, while public sentiment is not firmly established on true principles. Besides, as has often been remarked, the reports of hospitals have, every year, a new class added to their readers, and those who now consult them most anxiously, have probably never before had their attention directed to the subject. The premature removal of patients, by which is meant their

being taken home before a proper trial of treatment, is one of the points alluded to. This results from a variety of causes, prominent among which may be placed the want of a correct understanding of the nature and generally chronic character of insanity by the friends, and the persistent importunities for removal on the part of uncured patients. When patients are fully restored, it is rare that this morbid anxiety to leave an institution—which is entirely different from the natural desire to be with one's own family—is found to exist. While some are then even anxious to remain, a considerable number who had been restless before, become perfectly willing to be governed by the opinions of their medical advisers. It is not natural that patients while believing that their minds are not affected, should desire to remain in a hospital specially intended for the treatment of that class of diseases. Recovering, and conscious of the serious character of the malady they had been suffering from, they recognize the importance of doing everything that will tend to secure to them, for the future, permanent and perfect good health. They then have no difficulty in seeing that the officers of such institutions, who receive credit only for those whom they send away, are more likely to err in recommending the too early, rather than the too tardy removal of their patients, and while in this state of mind, convalescents rarely fail to exercise a most beneficial effect on all around them.

Although it is not to be expected, as the general rule, that all who leave a hospital, even when well, should have pleasant recollections of their residence in it, still it is very safe to say, that those who are most uncomfortable in these reminiscences who seem to remember

only what was most painful in their illness, and are disposed to impeach the best motives and misconstrue the most kindly intended actions, will be found to be among those who have been removed while uncured, and who, although well enough to be among their friends without danger, are still frequently laboring under delusions, and at all times, to a greater or less extent, liable to have an aggravation of their maladies. It is true, that there are a few cases, where the recovery seems complete, in which the erroneous impressions existing during their illness seem to have been too strong for the returning reason fully to eradicate, and who remain for a considerable time with confused ideas of what happened during their treatment, although not belonging to that other class, in which long periods of their disease seem to be a perfect blank. The cases referred to, however, are rare. There are a very few others too, who, impressed with the feeling which formerly was almost universal, and is still too prevalent for an enlightened age, that there was some reproach in having suffered from an attack of insanity, and that their position in society might be lowered from having had a form of sickness from which they must know that not a single person who has a brain can certainly claim exemption—and from feelings of mortified pride, rather than from conviction, persist in declaring that their minds had never been affected, and that as a consequence, every one who has had anything to do with placing them in an institution or detaining them there, had been guilty of a great wrong. Still, these classes of dissatisfied persons are very small in comparison to those whose unpleasant feelings are directly or indirectly the effect of premature removals.

Premature removals are not to be too generally attributed to the patients, for every now and then they are found to be far in advance of their friends in regard to the importance of their entering a hospital for treatment, and of their remaining there till it has been effectually tried. More accustomed to acute diseases, which run their course in a few weeks or even days, the friends of patients become uneasy and discouraged, when they find that months are passing without obvious improvement; and yet in these very cases the change may be going on, which, in a few weeks more might lead to perfect health. In this way, a patient taken out just before the favorable change was about to occur, may recover in a very short time at home, or even in some more injudicious position, and yet notwithstanding this result, the removal may have been improper, and have risked all the good that had been gained by many months of previous treatment. Conclusions adopted from studying single cases are apt to be erroneous. Single cases indeed are of little value in establishing principles, which can only be arrived at by the careful observation of large numbers. Nothing is more uncertain in the study of a case of chronic disease, than the conclusion that because particular results followed the use of a certain remedy, the whole effect was caused by it. It may have been tried just when the recovery was about to take place and had little or no agency in its production, or it might really produce the best effects in one period of a case, when it could have had no salutary influence at another. Time, even a long time, is as necessary for relieving us of some forms of sickness, as of many kinds of sorrow. Many cases of insanity seem to run a definite course, and a

certain number of months are necessary for a recovery, no matter how persevering and enlightened the course of treatment may be ; and yet some do occasionally recover, that are treated injudiciously and in positions that all experience goes to show are unfavorable to the restoration of mental health. These facts only tend to prove, that in a limited number of cases, the restorative powers of nature are sufficient to overcome all obstacles, but they do not tell us how many, by such a course, are deprived of all hopes of a recovery and consigned to the saddest form of permanent insanity.

It cannot be too strongly impressed on every one, that a steady perseverance in treatment in every case of insanity is of incalculable importance. Too much care cannot be exercised in the primary decision to submit a case to Hospital treatment, nor in learning where the best and most enlightened can be had, but these points being satisfactorily settled, then let no temporary discouragement, no suggestions of officious friends, no histories of wonderful recoveries by marvellous appliances, nor importunities from the patients themselves, lead to the suspension of a course deliberately adopted, till after a fair and full trial. It is not easy to indicate exactly how long a period of treatment should be insisted on, because the character of cases vary so greatly, but it is quite safe to say that although so many do regain their health within three months, no one should ever become discouraged in a recent case, without at least a year's trial. Many of the best and most permanent recoveries are after this period, and our statistics prove the proportion of restorations to the whole number of cases, to be so large, that favorable results may reasonably be anticipated, where early treatment has not been neglected.

Facts, properly stated to the friends of patients, will generally satisfy them on these points ; but if this course is not sufficient, it may now and then be well to assent to a temporary leave of absence for a patient. In a large majority of cases this will lead to no immediate good result, but ultimately it may, for the friends will generally discover that the patient is not well enough to be at home ; they learn that the change is not producing the benefit they anticipated, and the case comes back sure that in the future there will be no further resort to experiments, but that the officers will have, what is always so important, the steady and unflinching support of the friends, in whatever course of treatment may be deemed advisable.

It becomes the officers of Hospitals for the Insane steadily to impress on the friends of patients, and themselves to remember, how difficult it is to say that any one is absolutely incurable. Every case, no matter what its character or duration, should be placed under the circumstances believed to be most favorable to secure a restoration, and should be steadily kept there. If the patients do not then recover, they will probably improve, and at any rate will not become worse from lack of proper care and treatment. It is behind the age at this day to speak of institutions for incurables. If there were no other objections to them—and there are many grave ones,—the fact that Omniscience alone can tell with certainty who are in this condition should be sufficient. Among the pleasant results of treatment in this institution within the last three years, has been the recovery of an unusual number, whose diseases, from their long continuance and discouraging character, seemed to offer but the faintest hope of a favorable change. More than one of these were placed here by

their friends, not with any prospect of their being cured, but that they might have a pleasant home, be protected from unnecessary exposure, and surrounded with as many of the comforts and enjoyments of life as were compatible with their unfortunate condition. Every such case is an important lesson, and teaches more forcibly than any essay that can be written, the value of hope and a perseverance that will not yield on account of discouragements in Hospitals for the Insane, and that the arrangements of no institution can well be too good for even the most unpromising class of patients. The more serious the case, the wider the field for labor, and successful results are never more pleasant than when least anticipated. Although the practice is often exactly the reverse, still it is not the less true, that the most unfortunate and unpromising class of patients require some of the highest attributes of Christian character and the most discriminating intelligence for their proper management.

STATISTICAL TABLES.—The number of cases embraced in the statistical tables of this institution is now becoming so large that many of the deductions that legitimately flow from them become curious and interesting. Without intending to enter fully on the subject at this time, reference may be made to a few facts from which erroneous conclusions are drawn every year and almost everywhere. This institution, like most others which receive a considerable portion of their cases from an agricultural district of country, shows a large number of farmers, farmers' wives, farmers' widows, and farmers' daughters among its patients—more, indeed, than of any other one class in the community. This fact being positive, surprise is at once expressed by many,

and it is declared that these statistics completely overturn the popular belief that a farmer's life is a healthful one, and demonstrate that nervous diseases are most prevalent where their existence ought to be least anticipated. Then very naturally follows a variety of theories for this unexpected condition of things. Some declare that it must be attributed to the hard work of our country friends, others think it is owing to their good, strong diet, and the use of fat pork has been especially suggested, while not a few see with equal clearness that the whole trouble comes from an insufficient amount of relaxation and the want of an elevating class of amusements!

Let not those who have the privilege of living under the bright skies of the country, or who are meditating such an independent life as that of agriculture, be discouraged by these theoretical discussions. The census tables help us out of this, as out of many other difficulties, and make plain what would otherwise have appeared unaccountable. We find, as was always believed, that no life is so generally conducive to health as one that, like agriculture, gives active exercise in the open air, that none is so little likely to be troubled with nervous affections, and none so generally to be preferred for those who are constitutionally disposed to this class of infirmities.

Agricultural pursuits, healthful as they are, cannot, however, always preserve every one from the physical, and especially from the moral causes, which frequently induce insanity; but the improved general good health which results from such a life, in a large number of cases, gives the power to resist their influence much more successfully than could be done under other circumstances.



By a reference to the census returns, it will be seen that the reason for the large number of the classes referred to who are admitted into this as into many other institutions, is the great preponderance of persons engaged in agricultural pursuits in the districts of country from which patients are received. Although the number of admissions is really greater, the ratio in proportion to population is much less than of those engaged in professional life or in mercantile and many other pursuits. Without such comparisons, almost any of the tables may lead to just such erroneous inferences as those which have been specially referred to.

The following tables exhibit a carefully prepared statement of all the cases received into the Pennsylvania Hospital for the Insane from its opening in 1841 to the present time.

TABLE I.—*Showing the number and sex of the admissions and discharges since the opening of the Hospital, and of those remaining at the end of the year.*

	Males.	Females.	Total.
Admissions . . . . .	2096	1851	3947
Discharges or deaths . . . . .	1953	1709	3662
Remain . . . . .	143	142	285

TABLE II.—*Showing the ages of 3,947 patients at the time of their admission.*

	M.	F.	T.		M.	F.	T.
Under 10 years	2	2	4	Between 50 and 55	146	111	257
Between 10 and 15	5	13	18	“ 55 and 60	79	70	149
“ 15 and 20	117	123	240	“ 60 and 65	69	56	125
“ 20 and 25	315	268	583	“ 65 and 70	26	36	62
“ 25 and 30	326	297	623	“ 70 and 75	24	32	56
“ 30 and 35	274	229	503	“ 75 and 80	16	11	27
“ 35 and 40	288	229	517	“ 80 and 85	1	3	4
“ 40 and 45	206	216	422	“ 85 and 90	—	—	—
“ 45 and 50	202	154	356	“ 90 and 95	—	1	1

TABLE III.—*Showing the occupation of 2,096 male patients.*

Farmers . . . . .	297	Contractor . . . . .	1
Merchants . . . . .	202	Author . . . . .	1
Clerks . . . . .	154	Tanners . . . . .	6
Physicians . . . . .	41	Artists . . . . .	18
Lawyers . . . . .	35	Hairdresser . . . . .	1
Clergymen . . . . .	25	Police Officers . . . . .	6
Masons . . . . .	21	Machinists . . . . .	34
Umbrella-makers . . . . .	3	Plane-maker . . . . .	1
Printers . . . . .	19	Iron-masters . . . . .	2
Teachers . . . . .	35	Weavers . . . . .	25
Officers of the Army . . . . .	7	Bricklayers . . . . .	10
“ “ Navy . . . . .	12	Brickmakers . . . . .	4
Students . . . . .	45	Sail-makers . . . . .	3
“ of Medicine . . . . .	14	Cooper . . . . .	1
“ of Law . . . . .	5	Jewellers . . . . .	12
“ of Divinity . . . . .	8	Potter . . . . .	1
Saddlers . . . . .	11	Chair & Cabinet makers . . . . .	22
Peddlers . . . . .	10	Blacksmiths . . . . .	27
Tobacconists . . . . .	20	Watchmakers . . . . .	4
Carpenters . . . . .	72	Hotel Keepers . . . . .	27
Bakers . . . . .	13	Second-hand dealers . . . . .	3
Seamen and Watermen . . . . .	47	Cap Manufacturer . . . . .	1
Planters . . . . .	29	Locksmiths . . . . .	3
Manufacturers . . . . .	45	Millers . . . . .	14
Coachmen . . . . .	3	Glassblowers . . . . .	2
Druggists . . . . .	14	Wheelwrights . . . . .	6
Laborers . . . . .	162	Gardeners . . . . .	9
Engineers . . . . .	15	Chemists . . . . .	4
Plasterers . . . . .	10	Print Cutters . . . . .	2
Bank Officer . . . . .	1	Curriers . . . . .	2
Conveyancer . . . . .	1	Tailors . . . . .	36
Bookbinders . . . . .	6	Shoemakers . . . . .	67
Hatters . . . . .	6	Brokers . . . . .	6
Rope-makers . . . . .	3	Waiter . . . . .	1
Tinmen . . . . .	13	Stove-makers . . . . .	2
Painters . . . . .	15	Dentists . . . . .	2
Brush-maker . . . . .	1	Victuallers . . . . .	7
Paper-hangers . . . . .	2	Soldiers U. S. A. . . . .	5
Boat-builder . . . . .	1	Brewer . . . . .	1
Carver . . . . .	1	Coach-trimmers . . . . .	2
Confectioners . . . . .	11	Auctioneer . . . . .	1
Coach-maker . . . . .	1	Plumber . . . . .	1
Public Officers . . . . .	2	Type Founder . . . . .	1
Shipwright . . . . .	1	No occupation . . . . .	273

TABLE IV.—Showing the occupation of 1,851 female patients.

Seamstresses, or Mantua-makers . . . . .	191	Wives of Plasterers . . . . .	2
Storekeepers . . . . .	16	“ Engineers . . . . .	6
Attendants in stores . . . . .	8	“ Artists . . . . .	10
Cigar-makers . . . . .	3	“ Bricklayers . . . . .	2
Teachers . . . . .	45	“ Collectors . . . . .	3
Domestics . . . . .	209	“ Brickmakers . . . . .	3
Nurses . . . . .	11	“ Seamen . . . . .	8
Artists . . . . .	3	“ Merchants . . . . .	113
Factory Girls . . . . .	3	“ Physicians . . . . .	18
Physician . . . . .	1	“ Lawyers and Judges . . . . .	20
Of the <i>Single</i> females, not pursuing a regular occupation, were—		“ Shoemakers . . . . .	24
<i>Daughters of</i> Farmers . . . . .	95	“ Hatters . . . . .	4
“ Merchants . . . . .	97	“ Cabinet-makers . . . . .	12
“ Masons . . . . .	2	“ Laborers . . . . .	114
“ Bank Officers . . . . .	4	“ Grocers . . . . .	5
“ Weavers . . . . .	5	“ Clergymen . . . . .	13
“ Laborers . . . . .	16	“ Tobacconists . . . . .	3
“ Sea Captains . . . . .	3	“ Weavers . . . . .	10
“ Auctioneer . . . . .	1	“ Sea Captain . . . . .	2
“ Innkeepers . . . . .	3	“ Victuallers . . . . .	7
“ Teachers . . . . .	6	“ Brush-makers . . . . .	2
“ Carpenters . . . . .	8	“ Tailors . . . . .	15
“ Paper-makers . . . . .	2	“ Millers . . . . .	4
“ Physicians . . . . .	9	“ Police Officers . . . . .	4
“ Planters . . . . .	19	“ Carpenters . . . . .	22
“ Watchmaker . . . . .	1	“ Druggists . . . . .	10
“ Curriers . . . . .	3	“ Planters . . . . .	9
“ Clerks . . . . .	20	“ Peddlers . . . . .	4
“ Engineer . . . . .	1	“ Manufacturers . . . . .	27
“ Clergymen . . . . .	5	“ Broker . . . . .	1
“ Miller . . . . .	1	“ Tanners . . . . .	5
“ Public Officers . . . . .	13	“ Officers of the Army . . . . .	4
“ Officer of Army . . . . .	1	“ “ Navy . . . . .	1
“ “ Navy . . . . .	1	“ Plumbers . . . . .	3
“ Lawyers . . . . .	10	“ Blacksmiths . . . . .	7
“ Machinists . . . . .	5	“ Bakers . . . . .	4
“ Bricklayers . . . . .	2	“ Confectioner . . . . .	2
“ Chair-maker . . . . .	1	“ Hair-dresser . . . . .	1
“ Manufacturers . . . . .	4	“ Contractor . . . . .	2
“ Tailors . . . . .	3	“ Dentist . . . . .	1
“ Waterman . . . . .	1	Of the <i>Widows</i> similarly situated, were—	
“ Bakers . . . . .	3	<i>Widows of</i> Merchants . . . . .	39
“ Printers . . . . .	4	“ Physicians . . . . .	5
“ Shoemakers . . . . .	3	“ Public Officers . . . . .	9
“ Druggist . . . . .	1	“ Sea Captains . . . . .	5
“ Artists . . . . .	3	“ Hotel Keepers . . . . .	3
“ Brickmaker . . . . .	1	“ Shoemakers . . . . .	18
“ Blacksmiths . . . . .	2	“ Clergymen . . . . .	3
Of the <i>Married</i> similarly situated, were—		“ Farmers . . . . .	37
<i>Wives of</i> Clerks . . . . .	48	“ Coopers . . . . .	3
“ Teachers . . . . .	10	“ Laborers . . . . .	20
“ Farmers . . . . .	170	“ Manufacturers . . . . .	8
“ Brass Founders . . . . .	4	“ Lawyers . . . . .	4
“ Gardeners . . . . .	5	“ Carpenters . . . . .	4
“ Saddlers . . . . .	4	“ Clerks . . . . .	6
“ Printers . . . . .	4	“ Tanner . . . . .	1
“ Machinists . . . . .	16	“ Teachers . . . . .	2
“ Masons . . . . .	2	“ Planters . . . . .	5
“ Painter . . . . .	1	“ Bricklayers . . . . .	2
“ Stage Owners . . . . .	2	“ Painter . . . . .	1
“ Cutler . . . . .	1	“ Seamen . . . . .	7
“ Bank Officers . . . . .	5	“ Engravers . . . . .	2
“ Innkeepers . . . . .	21	“ Engineers . . . . .	4
		“ Machinists . . . . .	3
		“ Mason . . . . .	1
		“ Printer . . . . .	1
		“ Blacksmith . . . . .	1

TABLE V.—*Showing the number of single, married, widows, and widowers in 3,947 patients.*

	Males.	Females.	Total.
Single . . . . .	1076	765	1841
Married . . . . .	928	852	1780
Widows . . . . .	—	234	234
Widowers . . . . .	92	—	92

TABLE VI.—*Showing the nativity of 3,947 patients.*

Natives of Pennsylvania	2166	Natives of England	186
“ New Jersey	189	“ Scotland	28
“ Delaware	82	“ Ireland	513
“ Maryland	107	“ Germany	202
“ Virginia	58	“ Poland	8
“ North Carolina	40	“ Prussia	7
“ South Carolina	42	“ Switzerland	4
“ Georgia	22	“ Bermuda, W. I.	2
“ Alabama	11	“ Jamaica, “	1
“ Tennessee	10	“ St. Domingo, “	3
“ Indiana	4	“ Barbadoes, “	3
“ Kentucky	16	“ Cuba, “	2
“ D. of Columbia	8	“ Guadaloupe, “	1
“ Maine	6	“ Martinique, “	1
“ Massachusetts	33	“ St. Croix, “	1
“ Connecticut	25	“ Isl. of Madeira	1
“ Missouri	3	“ Isle of Man	1
“ Ohio	16	“ Spain	1
“ New Hampshire	3	“ Italy	1
“ Louisiana	12	“ Denmark	1
“ Rhode Island	4	“ Holland	1
“ New York	78	“ Austria	3
“ Mississippi	6	“ Bavaria	2
“ Vermont	2	“ Venezuela, S. A.	1
“ Nova Scotia	2	“ Norway	1
“ Canada	13	“ Costa Rica	1
“ France	12	Born at Sea	1

TABLE VII.—*Showing the residence of 3,947 patients.*

Residents of Pennsylvania	3347	Residents of Iowa	2
“ New Jersey	117	“ Massachusetts	4
“ Delaware	65	“ Connecticut	3
“ Maryland	77	“ Maine	3
“ Virginia	43	“ Rhode Island	4
“ D. of Columbia	18	“ New York	38
“ North Carolina	36	“ Jamaica, W. I.	1
“ South Carolina	31	“ Barbadoes, “	4
“ Georgia	23	“ Cuba, “	4
“ Alabama	13	“ St. Croix, “	1
“ Louisiana	26	“ Isl. of Madeira	1
“ Tennessee	5	“ Florida	1
“ Kentucky	13	“ Germany	2
“ Arkansas	3	“ Wisconsin	1
“ Mississippi	6	“ Venezuela, S. A.	2
“ Vermont	1	“ California	1
“ Texas	4	“ Oregon	1
“ Illinois	5	“ England	1
“ Michigan	1	“ Norway	1
“ Ohio	17	“ Minnesota	1
“ Indiana	9	“ Costa Rica	1
“ Missouri	10		

TABLE VIII.—*Showing the supposed causes of insanity in 3,947 patients.*

	M.	F.	T.		M.	F.	T.
Ill health of various kinds . . . . .	325	312	637	Want of employment	37	—	37
Intemperance . . . . .	246	16	262	Mortified pride . . . . .	2	1	3
Loss of property . . . . .	111	32	143	Celibacy . . . . .	1	—	1
Dread of poverty . . . . .	3	2	5	Anxiety for wealth	2	—	2
Disappointed affections . . . . .	24	34	58	Use of opium . . . . .	5	8	13
Intense study . . . . .	35	10	45	Use of tobacco . . . . .	6	—	6
Domestic difficulties	27	62	89	Use of quack medicines . . . . .	2	1	3
Fright . . . . .	12	22	34	Puerperal state . . . . .	—	161	161
Grief, loss of friends, &c. . . . .	54	151	205	Lactation too long continued . . . . .	—	7	7
Intense application to business . . . . .	30	3	33	Uncontrolled passion	5	7	12
Religious excitement	65	77	142	Tight lacing . . . . .	—	1	1
Political excitement	12	—	12	Injuries of the head	38	6	44
Metaphysical speculations . . . . .	1	—	1	Masturbation . . . . .	55	—	55
Want of exercise . . . . .	6	2	8	Mental anxiety . . . . .	120	135	255
Engagement in a duel	1	—	1	Exposure to cold . . . . .	3	1	4
Disappointed expectations . . . . .	6	11	17	Exposure to direct rays of the sun . . . . .	30	1	31
Nostalgia . . . . .	—	6	6	Exposure to intense heat . . . . .	—	1	1
Stock speculations . . . . .	2	—	2	Unascertained . . . . .	828	781	1609
				Exposure in army . . . . .	2	—	2

TABLE IX.—*Showing the ages at which insanity first appeared in 3,947 patients.*

	M.	F.	T.		M.	F.	T.
Under 10 years	6	3	9	Between 45 and 50	147	124	271
Between 10 and 15	31	34	65	“ 50 and 55	84	76	160
“ 15 and 20	201	201	402	“ 55 and 60	63	71	134
“ 20 and 25	405	342	747	“ 60 and 65	42	29	71
“ 25 and 30	358	337	695	“ 65 and 70	16	9	25
“ 30 and 35	262	236	492	“ 70 and 75	11	6	17
“ 35 and 40	260	187	447	“ 75 and 80	9	3	12
“ 40 and 45	201	196	397	“ 80 and 85	—	3	3

TABLE X.—*Showing the forms of disease, for which 3,947 patients were admitted.*

	Males.	Females.	Total.
Mania . . . . .	974	902	1876
Melancholia . . . . .	479	576	1055
Monomania . . . . .	320	231	551
Dementia . . . . .	315	138	453
Delirium . . . . .	8	4	12

TABLE XI.—*Showing the duration of the disease at the time of admission in 3,947 patients.*

	Males.	Females.	Total.
Not exceeding 3 months . . . . .	1120	1029	2149
Between 3 and 6 months . . . . .	137	133	270
“ 6 months and 1 year . . . . .	262	221	483
“ 1 and 2 years . . . . .	255	181	436
“ 2 and 3 “ . . . . .	103	76	179
“ 3 and 4 “ . . . . .	47	45	92
“ 4 and 5 “ . . . . .	43	26	69
“ 5 and 10 “ . . . . .	61	61	122
“ 10 and 15 “ . . . . .	31	29	60
“ 15 and 20 “ . . . . .	16	24	40
“ 20 and 25 “ . . . . .	6	11	17
“ 25 and 30 “ . . . . .	6	9	15
“ 30 and 35 “ . . . . .	2	3	5
“ 35 and 40 “ . . . . .	3	—	3
“ 40 and 45 “ . . . . .	3	2	5
“ 45 and 50 “ . . . . .	1	1	2

TABLE XII.—Showing the number of the attack in 3,947 cases.

	M.	F.	T.		M.	F.	T.
				In the <i>periodical</i> cases,			
First attack	1487	1312	2799	9th paroxysm . . . . .	2	4	6
Second "	340	320	660	10th 2 m. 5 f., 11th 2 m. 3 f.	4	8	12
Third "	113	105	218	12th 2 f., 13th 1 f., 17th 1 m.	1	3	4
Fourth "	55	43	98	14th 2 f., 18th 3 m., 19th 1			
Fifth "	28	18	46	m. . . . .	4	2	6
Sixth "	45	10	55	20th & 21st each 1 m. & 1 f.	2	2	4
Seventh "	9	5	14	22d 1 m., and to 26th each 1 f	1	5	6
Eighth "	5	7	12	27th 2 f., 29th 1 f. . . . .	—	3	3
				30th, 31st, 32d, 33d each 1 f.	—	4	4

TABLE XIII.—Showing the state of 3,662 patients, who have been discharged, or died—their sex, and the forms of disease for which they were admitted.

	Males.	Females.	Total.	Mania.	Melancholia.	Monomania.	Dementia.	Delirium.
Cured . . . . .	1001	935	1936	1118	548	237	32	1
Much improved . . . . .	152	176	328	147	111	52	18	—
Improved . . . . .	293	279	572	225	159	96	92	—
Stationary . . . . .	247	148	395	139	84	66	105	1
Died . . . . .	260	171	431	192	87	23	119	10

TABLE XIV.—Showing the number of admissions, discharges, cures, and deaths in each month since the opening of the Hospital.

	Admissions.	Discharges.	Cures.	Deaths.
1st month . . . . .	320	277	145	44
2d " . . . . .	310	196	100	30
3d " . . . . .	381	296	166	30
4th " . . . . .	377	301	147	44
5th " . . . . .	371	335	162	41
6th " . . . . .	388	332	170	31
7th " . . . . .	299	356	187	37
8th " . . . . .	289	348	193	42
9th " . . . . .	306	307	161	38
10th " . . . . .	319	326	173	34
11th " . . . . .	303	288	164	30
12th " . . . . .	284	300	168	30

GARDENS AND PLEASURE GROUNDS.—The gardens at both departments have, as usual, been very productive. It is a great advantage to have at all times an abundant supply of perfectly fresh vegetables, but in addition to this, the judicious cultivation of a large garden, the growth of the plants, and the results of scientific experiments always offer matters of interest to a large number who do not take any active part in the labor. To many, however, in the Department for Males, such occupation is esteemed a privilege, and in certain stages of some cases, nothing is more certainly remedial.

The pleasure grounds, which are naturally very pleasant, and have been made much more so by the labor of past years, are being steadily improved and new drives and walks laid out, as circumstances will permit. The amount of riding in the different vehicles used by the patients, and also of horseback riding, inside of the grounds, has been greater than heretofore, while the carriages going out on the public roads have been kept in daily use. With the class of patients received here, this form of occupation and amusement, extended as it already is, can still be much and profitably increased.

WORKSHOPS AND MECHANICAL DEPARTMENT.—This department of the Hospital has not been materially changed during the year, but its importance and the great benefits that may be made to result from persistent and judicious efforts in this direction, have not been lost sight of.

EVENING ENTERTAINMENTS, INSTRUCTION AND AMUSEMENT OF THE PATIENTS.—The seventeenth annual course of lectures and evening entertainments was completed



at the usual period. The regular number of evenings of every year devoted to this purpose in the Pennsylvania Hospital for the Insane has now become fixed at two hundred and fifty, one-half of which are for the Department for Males and an equal number for the Department for Females, alternating, so that patients from one house can, when desired, attend at the other, as is frequently done, especially when objects of unusual interest are to be presented. These entertainments have, as heretofore, been of a diversified character, embracing lectures on a variety of subjects, exhibitions of dissolving views, with music, concerts, &c.

Most of the last course of lectures and evening entertainments was under the special charge of Drs. Smith and Jones, whose judicious efforts rendered them highly attractive. The eighteenth annual course now in progress—that portion at the Department for Males, under the care of Dr. Jones, and that at the Department for Females, of Dr. Lee,—bids fair to at least equal any that have preceded it, and novelties, as they become accessible, are constantly being introduced. A complete revision and classification of our stock of pictures has been made by Dr. Lee, and the result shows very satisfactorily the value and extent of our means of interesting the patients in this important department of the institution. We now have near one thousand pictures for our lanterns, varying in quality from the very common painted ones formerly in use, to the most beautiful products of the pencil and of the photographic art. This large stock, which has been very gradually accumulating, with other sources of supply which the kindness of friends have placed at our disposal, has enabled us to give something new at every evening of our long and

unintermitted course of nine months. Commencing with the humblest kind of apparatus and illustrations, we have every year made some improvement and extension in both, till our arrangements are now about as complete as we can obtain; and a moderate sum of money every year devoted to this object, will always give it new interest and value. No intelligent inquirer, who looks carefully into this matter, can well doubt the influence of these entertainments—not simply as a means of passing a pleasant hour, or for the information imparted, but for elevating the general tone of a Hospital, and breaking up the sad dulness and gloomy monotony too apt to reign in the evening, through the wards of many institutions;—and no diminution of their number or any lowering of their character can ever be permitted, while a proper appreciation of the high mission of a Hospital for the Insane is felt by those entrusted with its management. The humblest institution in the land, by making a beginning, and faithfully expending even a small sum every year on this object, will soon have means of much value, and which, as they are increased, will be more and more appreciated by those for whose special benefit they are intended. Wherever even a very moderate number of the insane are collected together, all such means are desirable, and the proper authorities can make no more legitimate appropriation of money, than that for their provision; and the establishment, whatever its character, which is provided with the means, and has no one enough interested to undertake the necessary labor of using them is truly unfortunate. The evenings in hospitals, even of the highest order, and where every possible appliance is brought into action, are none too bright or too cheerful,

but when all the more elevating means of occupation, instruction and amusement are neglected, and patients are left to their own resources, without encouragement from any one, they are dreary indeed;—and the appearance of the wards, between supper and a not too early bed-time, to a practiced eye, would perhaps give one of the best indications of the energy and efficiency of the internal administration of an institution.

All the other means of occupation and amusement often referred to in previous reports, have been kept steadily in use. The “Amusement Hall” at the Department for Females has been better furnished and has been much used. Immediately connected with it, besides various books and papers, there is now a great variety of games, including Billiards, Bagatelle, Holland Top, Chess, Backgammon, Checkers, Graces, Battledoor, Dominoes, &c., besides Swings, Jumping Boards, and other contrivances under the commodious shed immediately adjoining. This Hall is kept comfortably warmed in winter by steam, and its regular use nearly every day may be attributed to the care taken by the companions to the patients, and some of the attendants to have the patients regularly resort to it. Without this interest in having means of occupation and amusement regularly used, whatever their number and variety in an institution, they gradually become neglected. There seems to be a constant tendency to permit them to become disused, and this can only be prevented by an unflinching determination on the part of the officers, that when once obtained, they shall everywhere be made use of. This must be done systematically, or before long it will not be done at all. The use of such means should be as much a part of hospital system as washing or

bathing. All persons employed should be taught that it is a part, and an important part of their duties to see that the patients under their immediate care have, and use as steadily as possible, some means of occupation. When any have not the faculty of promoting this, they cannot be too soon notified that their sphere of usefulness is in some other position. An expert by simply walking through a ward, and noticing the general appearance of the patients, their dress and how they are employed, as well as how the attendants themselves are employed—making due allowance for the class under care—can commonly judge pretty fairly, not only of the condition of the patients, but also of the capacity of the attendants.

MUSEUMS AND READING ROOMS.—The museums and reading rooms are kept in good order, and through the kindness of friends some additions have been made to those at each department. As there are now two at each building, we have abundant space for books, periodicals, pictures, specimens of national history, or curiosities of any kind, which our citizens may have to spare, and which they would desire to see placed where they would be carefully preserved, and could not fail to be useful.

IMPROVEMENTS.—The improvements connected with the renovation of the original building, were about completed at the close of the last year. Owing to the general condition of financial affairs, some new improvements that were contemplated at both departments, and which are very desirable, have been postponed for the present. The extension of dry walks about the grounds

has been steadily prosecuted, and a number of comfortable seats have been added to those already in the groves. The only planting of trees done this year, has been a portion of those raised in our own nursery, and of which a considerable number of some varieties still remain.

ACKNOWLEDGMENTS.—Many friends of the institution have again afforded me the satisfaction of making acknowledgments for their kind remembrance of the Hospital and its inmates. To Mrs. Caroline Pennock we are indebted for a donation of \$100 for the purchase of furniture and \$60 for the purchase of books for the Department for Males; to Eliza P. Gurney for \$100 for additions to the patients' libraries; to a lady of New York for \$60 for the same object; to "a restored patient" for \$30; to Henry C. Lea for \$25; to Catharine Klingman for \$10; to Mr. Taylor for \$8; to Robert C. Clarke for seventy-five volumes of handsomely bound and valuable books; to Miss Eliza O. Butler for twenty volumes of very desirable books; to Mrs. W. W. Fisher for a complete set of Rees' Encyclopedia; to Miss Eastman for eleven volumes of books; to the Smithsonian Institution for a box of shells for the museum; to "a Friend of the Hospital" for a billiard table and fixtures, for the north wing of the Department for Males; to Joseph R. Evans for a second-hand Piano; to Dr. Casper W. Pennock and Mrs. Caroline Pennock for valuable furniture, two hundred and fifty volumes of books, and other articles of interest, for the Department for Males; to Uriah Hunt for twenty volumes of books; to various patients for ten dollars, towards the purchase of Billiard balls; to J. F. Eppelsheimer for a fine set of balls and pins for

the Bowling Alley at the Department for Males; to Wistar Morris for a lot of Rhododendrons for the groves; to Dr. J. H. Slack for thirty-three varieties of birds' eggs, and for a plaster-cast of the head of a Gorilla, for the Museum; to an "amateur" for various articles of furniture for Amusement Hall; to Henry Morris for an iron settee; to William Struthers for two handsome marble pedestals and other evidences of interest; to Caleb Cope for engravings; to the committee of the Union Volunteer Refreshment Saloon for two handsomely framed engravings of that interesting institution; to S. Morris Waln for a second-hand piano; to Wood & Perot for ornamental articles of iron; to "a friend" for refreshments and music, for various patients' entertainments; to John Wetherill, Jr., for a barrel of unfermented cider and a barrel of apples for the patients; to W. W. Ward for a collection of copper coins; to Alexander Young for five gallons of superior whiskey for medicinal purposes; to John P. Crosby for various contributions to the means of amusement; to E. J. Davis for a white rat for the Museum; to "a lady" for one hundred fans for the patients; to F. Langenheim for four dozen photographic pictures and his continued interest in this department; to Dr. Edward A. Smith for various lectures; to Rev. W. West for two lectures; to Professor Hiram Corson for several Readings from the English Poets; to Wm. Chapin for a lecture; to Dr. J. H. Slack for an exhibition of Prestigiatio; to Dr. Pliny Earle for a lecture; to Mrs. Samuel Crozer, to A. B. Durand, C. Vezin, S. Hassler, Mrs. Behrans, Mrs. Street, Miss Alexander and their friends, and the friends of C. Fauver, besides various associations, for their kindness in furnishing musical entertainments for the patients; to

F. A. Packard for hanging tablets; to Henry Seybert for engravings; to R. J. Dobbins for five loads of building stone; to C. Kelleher for hauling the same; to Mrs. Lawrence Lewis for the Illustrated London News for 1862; to Thomas Fitzgerald for a lecture and two copies of the City Item; to the proprietors of the Colonization Herald for a copy of that paper; to Wm. Welsh, McAllister & Bro., and James W. Queen & Co., for their aid in adding to the interest of our evening entertainments; and to John McAllister, Jr., for a valuable book and various engravings.

I would also make special mention of my associates in office, for their efficient and important services in carrying out the great objects of the institution, and of the teachers, supervisors, attendants and all others at both departments of the hospital, who are immediately engaged among the patients, for their many manifestations of interest in their charge and for fidelity in the performance of what are often onerous, as they always are, highly responsible duties.

RECEIPTS AND EXPENDITURES.—The following statements, prepared at my request by the Stewards of the Hospital, show the usual abstract of the receipts and expenditures of the institution during the past year. In that of the Department for Females has been included the sum of \$3,287 16, expended during the previous year for the repairs of the original building. Interest has also been paid to the amount of \$2,334 88. The loan on which interest is now paid for the repairs at the Department for Females, amounts to \$9,000. The building loan referred to last year has been paid off, or provision made for doing so. This was done through

the legacy of the late John Wright, a donation from the executors of the late Josiah Dawson and by a portion of the legacy of the late Abraham Miller.

I may again refer to the importance of paying off the remaining repair loan at as early a day as possible, as the applicants for the charity of the house are always more than its resources permit it to receive, and the steadily increasing number of patients makes it important that early provision be made for furnishing the now unoccupied wards at both departments. It will be remembered that the furniture fund was obtained wholly from the collections of a committee of ladies, and should they determine to complete the work so auspiciously commenced by them, it will add to the deep gratitude now felt by every friend of the hospital for their disinterested labors; and any appeal they may make for the purpose, could hardly fail to command the liberal consideration of every benevolent citizen.

The average number of patients at the Department for Males during the year just closed, has been 133; and at the Department for Females 134. The average number of free patients at the former was 15, and at the latter 21. The amount expended on free patients at both departments in 1862, was \$10,170 12.



## EXPENDITURES.

## DEPARTMENT FOR MALES.

Salaries and wages of all kinds . . . . .	\$12,919 99
Household expenses . . . . .	14,495 43
Furniture, fuel, and lights . . . . .	5,273 76
Garden, grounds, live stock, and carriages	1,266 94
Repairs and improvements . . . . .	897 42
Medicines . . . . .	584 74
Amusement of patients . . . . .	191 82
Stationery and printing . . . . .	260 30
Interest, &c., on loan to new building . . . . .	1,614 88
Miscellaneous . . . . .	245 74
Total expenditures . . . . .	<u>\$37,751 02</u>
Net receipts . . . . .	40,172 37
Average number of patients . . . . .	133
“    “    of free patients . . . . .	15
“    cost per week of each patient . . . . .	\$5 44
Amount expended in 1862 on free patients	\$4,200 00

## EXPENDITURES.

## DEPARTMENT FOR FEMALES.

Salaries and wages of all kinds . . . . .	\$12,545 54
Household expenses . . . . .	14,646 26
Furniture, fuel, and lights . . . . .	5,197 99
Garden, grounds, live stock, and carriages	1,776 32
Repairs and improvements . . . . .	1,026 78
Medicines . . . . .	667 70
Amusement of patients . . . . .	288 76
Stationery and printing . . . . .	122 61
Miscellaneous . . . . .	257 89
Interest on repair loan . . . . .	720 00
Total expenditures . . . . .	<u>\$37,249 85</u>
Payment for general repairs in 1861	3,287 16
Net receipts . . . . .	37,823 13

Average number of patients . . . . .	134
“ “ of free patients . . . . .	21
cost per week of each patient . . . . .	\$5 34
Amount expended in 1862 on free patients	\$5,970 12

THE NEW HOSPITAL.—The original Pennsylvania Hospital was founded in 1751—its Department for the Insane was removed to the present location in 1841—and it is nine years to-day since the first suggestion of a plan for adding to its accommodations, by erecting an entirely new hospital, and then treating the sexes in different buildings, was presented to the managers of the institution. That plan, with the necessary details, was afterwards adopted by the Board, approved by the contributors, and in due time carried forward to completion. The first stone of the building was laid on the 7th of July, 1856, and it was formally opened for the reception of patients on the 27th of October, 1859. The cost of the new hospital with all its outbuildings, the wall surrounding its grounds, all its varied and expensive fixtures of every kind, and the furniture in use, amounted to the sum of \$355,907 57. This whole sum has been paid, or there are in hand abundant means for doing so, to be derived from unrealized subscriptions, and from ground rents, a portion of the legacy of the late Abraham Miller (dec'd), and by him specifically appropriated to this object.

I regard it as quite safe to say that no intelligent person can visit this establishment, in all its great extent, examine the number and variety, and learn the object of its fixtures and arrangements, without seeing quite clearly how all this money has been expended, and acknowledging that the end attained is worth all the cost.

While everything like mere ornament was carefully avoided, no expense was spared in making as perfect as possible whatever was essential to the comfort of the patients, or the efficient working of the institution. The results have been abundantly satisfactory; the most costly of the fixtures have proved of the highest utility, and there is no risk in saying that, owing to the rigid system of supervision and economy adopted at the commencement, the same amount, variety, and quality of work could not be again done for less money, even with all the experience subsequently obtained.

The fact that this whole work has been provided and paid for entirely from private contributions is worthy of remembrance in our local history, and that the community may know the names of the benevolent men and women who, with such rare liberality and good feeling, supplied the entire amount required, a complete list of the contributors has now, for the first time, been made out, and is appended to this report.

It is not alone for the liberal bestowal of their means that obligations are due to this list of contributors, not alone that they have added another to the monuments of benevolence which illustrate the better character of our age and city, but because they have shown that there is amongst us that spirit which feels it a duty to take care of the afflicted, to provide for others as we would have provision made for ourselves, and encourages every one to believe that an object of unquestionable utility, properly presented to our community, will always be generously fostered.

While making a public recognition of our obligations to those who have aided in securing the completion of the work, it is only right to say that thanks are also

eminently due to those not immediately connected with the institution, who served most efficiently on the collecting committee, to the benevolent ladies who so promptly secured the means for furnishing the building, to many whose names do not appear on the list of contributors, for their valuable assistance in inducing others to subscribe, and to none more than to many of the conductors of the public journals of Philadelphia, for their ready and judicious advocacy of the measure.

In this connection, reference may again be made to what we must all feel to have been so providential in reference to the time at which the new hospital was commenced and completed. Every one knows how difficult it would have been to have even started such a work since. We have already abundant evidence how great the necessity for it has proved, and how sure this need is to go on increasing. But for these enlarged accommodations, many who have been carefully treated could not have entered the institution at all. Every coming year will only manifest still more clearly the wisdom of its commencement, of its extended plan, and of finishing the whole work at once; and judging by our past experience, the time will be much less distant than is commonly anticipated when every room in its spacious wards will be occupied.

Agreeably to the conditions proposed in the first appeal to the public, wards in the new hospital have been named in honor of Abraham Miller, Josiah Dawson, John Wright, and John Livezey, each of whom gave \$10,000 or more to the Building Fund; and additional *free beds* have also been established in consideration of the very liberal subscription, of \$6,000 by John P. Crozer,

and of \$5,000 each by Elliot Cresson, John Farnum, Joseph Harrison, Jr., Wistar Morris, and Jasper Cope.

CONCLUSION.—The commencement of the twenty-second year of this institution brought with it, to many, causes of anxiety in connection with the immediate future. Its close has given us renewed cause of thankfulness and gratitude to Almighty Providence that, as in all the past, its course has been prosperous and its usefulness steadily becoming more widely extended. The advantages of the new arrangements, as the number of patients is gradually increasing, become more and more apparent, and the comfort and benefit of having abundant space for as minute a classification as we could desire, and for perfect privacy for every case where it is important, can hardly be over-estimated. Under rather unfavorable circumstances, the institution may fairly be said to have fully maintained its character, and the unfortunate condition of the country, although somewhat contracting what would have been its sphere of usefulness, has not prevented it from gradually extending its numbers, and avoiding everything that could be regarded as a retrograde movement.

Considerable as the progress already made in the treatment of the insane has been, the road for advance is still as open as ever. The work may vary, and the fruits of the labor be somewhat different, but they will not, on that account, be any the less valuable. Further progress becomes more expensive, as it is more intellectual and refining in its tendencies, and those blessed with the means and the disposition to push forward the good cause need never be at a loss for objects that will, with entire certainty, not only diffuse the blessings

that flow from these institutions, but greatly elevate their character.

In this institution, from its somewhat peculiar character, these benefits flow alike to those on whom fortune seemed before to have lavished all her most cherished favors, as to those whose lives have been connected with all kinds of painful surroundings—to the useful, the gentle, and the good, as to those differently constituted—to the wealthiest, as to that much larger class, who, rich as they may be in the affections of their families and the respect of their associates, can boast of little more of this world's treasures. As long as all this is remembered, and that this hospital provides for a malady that commonly cannot be successfully treated, even in the most luxurious homes, a form of disease that comes to every class and to all ranks of life, it can hardly be necessary to make extended appeals for your continued interest in its welfare, or for the sympathy and generous consideration of the community.

THOMAS S. KIRKBRIDE.

Pennsylvania Hospital for the Insane. }  
1st mo. 1st, 1863. }

Faint, illegible text, likely bleed-through from the reverse side of the page.

# APPENDIX

Faint, illegible text, likely bleed-through from the reverse side of the page.

THOMAS & BIRNBAUM

Faint, illegible text, likely bleed-through from the reverse side of the page.

A P P E N D I X .



...and ... will be ... by any ...  
... of the ... of ... by ...  
... Philadelphia ...  
... of the ... of the ...  
... for the ...

... and ... to ... in the ...  
... of ... in ...  
... of ... in ...

# APPENDIX

... and ...

... and ...  
... and ...  
... and ...

... and ...  
... and ...  
... and ...  
... and ...  
... and ...

SUBSCRIPTIONS AND DONATIONS will be received by any member of the Board of Managers, by JOHN T. LEWIS, *Treasurer*, No. 231 South Front Street, Philadelphia, or by Dr. THOMAS S. KIRKBRIDE, at the Pennsylvania Hospital for the Insane.

LEGACIES intended to promote the objects of this Institution should be given in its corporate name, viz: to "THE CONTRIBUTORS TO THE PENNSYLVANIA HOSPITAL," and should specify that they are "TO BE DEVOTED TO EXTENDING AND IMPROVING THE ACCOMMODATIONS FOR THE INSANE."

Contributions of books, periodicals, pictures, engravings, curiosities for the museums, and whatever can tend to interest or occupy the patients, are always thankfully received.

Every contribution or legacy of \$5000 for extending and improving the accommodations for the insane, adds one FREE BED to the number already in use, and, judging from past experience, will thus be the means of restoring to reason, from one to two patients in every year the Institution shall exist.

THE HOSPITAL FOR THE INSANE, TENNESSEE

patients admitted to hospital the object of this  
institution should be given in its corporate name  
to "The Corporation to the Tennessee  
and should specify that they are to be received  
TO EXTENDING AND IMPROVING THE ADMINISTRATION FOR  
the benefit of insane persons without regard to the  
nature of the disease or of its curability and admitted  
to hospital of such persons as may be  
and in interest of occupy the patients are always  
received into this

every certificate of birth of a patient in this  
and improving the medical relations for the insane  
one that he or she shall be held in the name of  
from past experience, which be the name of the  
institution shall

The Board of Trustees will be held in the year of  
and this Board of Trustees shall be formed on application  
of the Board of Trustees of the Tennessee  
Board of Trustees of the Tennessee

ADMISSION OF PATIENTS  
 INTO THE  
 PENNSYLVANIA HOSPITAL FOR THE INSANE,\*  
 AT  
 PHILADELPHIA.

---

ALL classes of insane persons, without regard to the duration of the disease or of its curability, are admitted into this Institution. Idiots, however, it may be stated, are not received; and for the epileptic, a special agreement should be made.

Cases of Mania-à-Potu are not received into this Hospital; but into that in the city, *exclusively*.

Preparatory to the reception of a patient, it is necessary to arrange the rate of board, &c., with a member of the Board of Managers,† and to furnish a certificate

\* *This is the only title of this Institution, and the only proper direction for letters, &c.* Other names, occasionally used, are liable to make confusion, by confounding it with another institution in the same vicinity.

† The names of these gentlemen will be found in the front of this Report, and their places of residence can be learned, on application at the Hospital, in Eighth Street, between Spruce and Pine, Philadelphia, where blank forms for physician's certificate, bond, questions, &c., can always be obtained.

of the patient's insanity from some respectable graduate of medicine, with a request from a near relative or friend that the individual may be received into the Institution. A full and detailed history of each case is also particularly requested.

For the payment of board, and removal of a patient when discharged, security is always required from some responsible resident of the city of Philadelphia. Payment for board is always to be made quarterly in advance; and if the patient is removed *uncured*, before the expiration of the first three months, and contrary to the advice and consent of the Superintending Physician, board is always required for thirteen weeks; otherwise, the charge is only for the time actually passed in the Hospital, provided that time is more than four weeks.

Large chambers and private attendants can always be supplied, if desired by the friends of the patients.

THE following are the forms for Physician's Certificate, for the application for admission, and the Bond that is to be executed before the order of admission is given.

### CERTIFICATE.


I have seen and examined \_\_\_\_\_ of \_\_\_\_\_, and believe \_\_\_\_\_ to be insane.

\_\_\_\_\_, 1863. \_\_\_\_\_ M. D.

### APPLICATION.

I request that the above-named \_\_\_\_\_ may be admitted as a patient into the Pennsylvania Hospital for the Insane.

\_\_\_\_\_ 1863. \_\_\_\_\_ }

 To be signed by a guardian, near relative, or friend.

### OBLIGATION.\*

In consideration of \_\_\_\_\_ being admitted as a patient into the "*Pennsylvania Hospital for the Insane*,"

\* This obligation to be signed by a responsible person. The surety to be a resident of the city of Philadelphia.

established and maintained by "the Contributors to the Pennsylvania Hospital," we do jointly and severally promise to pay to the Steward of the said Hospital, or to his order, quarterly, in advance, ———— dollars ———— cents per week, for board, and to provide or pay for all requisite clothing and other things deemed necessary or proper for the health or comfort of said patient—to pay for all glass or furniture broken or destroyed by said patient; to remove ———— when discharged; and if taken away *uncured* against the advice and consent of the Superintending Physician before the expiration of three calendar months, to pay board for thirteen weeks.\*

Witness our hands the ———— day of ————, 1863.

\_\_\_\_\_  
\_\_\_\_\_

The above preliminaries having been complied with, an order is given by a Manager, authorizing the Physician of the Institution to receive the patient.

\* If the patient recovers before the expiration of the period paid for, and leaves with the full approbation of the Physician, the excess is refunded, unless that time should be less than four weeks, for which period, board is always required.

*The friends or relatives of persons applying for admission into the "PENNSYLVANIA HOSPITAL FOR THE INSANE," are requested, with the assistance of the family Physician, to annex full and precise answers to as many of the following questions as apply to the case, and to forward the same to Dr. Kirkbride, either before or when the patient is brought to the Institution.*

### QUESTIONS.

1. What is the patient's age?  
Married or single?  
If children, how many?
2. Where was the patient born?  
Where is ——— place of residence?
3. What has been the patient's occupation and reputed pecuniary circumstances?
4. When were the first symptoms of the disease manifested, and in what way?
5. Is this the first attack? if not, when did others occur, and what was their duration?
6. Does the disease appear to be increasing, decreasing, or stationary?
7. Is the disease variable, and are there rational intervals? if so, do they occur at regular periods?
8. Have any changes occurred in the condition of mind or body since the attack?
9. On what subjects, or in what way is derangement *now* manifested? Is there any permanent hallucination?
10. Has the patient shown any disposition to injure others? and if so, was it from sudden *passion* or *premeditation*?



11. Has suicide ever been attempted? if so, in what way? Is the propensity *now* active?

12. Is there a disposition to filthy habits, destruction of clothing, breaking glass, &c.?

13. What relatives, including grandparents and cousins, have been insane?

14. Did the patient manifest any peculiarities of temper, habits, disposition, or pursuits, before the accession of the disease?—any predominant passions, religious impressions, &c.?

15. Was the patient ever addicted to intemperance in the use of ardent spirits, opium, tobacco, in any form, &c.?

16. Has the patient been subject to any bodily disease? to epilepsy, suppressed eruptions, discharges or sores, or ever had any injury of the head?

17. Has restraint or confinement been employed? if so, of what kind, and how long continued?

18. What is supposed to be the cause of the disease?

19. What treatment has been pursued for the relief of the patient? Mention particulars, and the effects.

Please state any other matter supposed to have a bearing upon the case.

CONTRIBUTORS  
TO THE  
FUND FOR THE ERECTION  
OF THE NEW  
PENNSYLVANIA HOSPITAL FOR THE INSANE,  
(DEPARTMENT FOR MALES,)  
AT  
PHILADELPHIA.

## COLLECTING COMMITTEE FOR THE BUILDING FUND.\*

---

WILLIAM WELSH, *Chairman.*

WISTAR MORRIS, *Secretary.*

LAWRENCE LEWIS,

JAMES R. GREEVES,

FREDERICK BROWN,

JACOB G. MORRIS,

MORDECAI L. DAWSON,

CLEMENT C. BIDDLE,

JOHN FARNUM,

MORDECAI D. LEWIS,

WILLIAM BIDDLE,

JOHN M. WHITALL,

A. J. DERBYSHIRE,

SAMUEL MASON,

S. MORRIS WALN,

SAMUEL WELSH,

JOHN T. LEWIS,

THOMAS S. KIRKBRIDE, M. D.,

WILLIAM B. FLING,

ISAAC COLLINS,

JOSHUA W. ASH, M. D.,

JOHN LIVEZEY,

EDWARD YARNELL,

JOSEPH S. LEWIS,

HORATIO C. WOOD,

ELLIS YARNALL,

WASHINGTON BROWN,

WILLIAM HAY,

LAWRENCE LEWIS, Jr.,

ELLISTON PEROT,

HENRY CROSKEY,

WILLIAM L. REHN.

\* The first named eighteen (with the exception of those who died\*), served from the commencement to the end of the work; the others during different periods of its progress. The first meeting of the committee was held May 16th, 1855, and the last, Sept. 26th, 1859.

---

\* L. Lewis, J. G. Morris, and C. C. Biddle.

## CONTRIBUTORS TO BUILDING FUND.

---

Ashbridge, William	1000 00	Baldwin, M. W. & Co.	1250 00
Ashhurst, Richard	1000 00	Binney, Horace	1000 00
Audenried, Lewis	1000 00	Barcroft, Stacy B.	1000 00
Anspach, John, Jr.	550 00	Bucknell, William	1000 00
Andrade, Joseph	500 00	Backus, E. F.	1000 00
Allibone, Thomas	500 00	Blanchard, William A.	1000 00
Alburger, J. T. & Co.	250 00	Biddle, Thos. A.	900 00
Allibone, S. Austin	200 00	Butler, Benjamin F., of	
Alter, Jacob	200 00	N. Y. (legacy)	650 00
Ash, Joshua W., M. D.	150 55	Bond, James, M. D.	500 00
Agnew, John	100 00	Brown, Frederick	500 00
Antelo, A. J.	100 00	Barclay, Clement B.	500 00
Ashhurst, John	100 00	Brown, Washington	500 00
Ayres, George R.	100 00	Barton, Isaac	500 00
Austin, John B.	100 00	Blight, Maria	500 00
Ashhurst, Lewis R.	100 00	Baker, Charles H.	500 00
Abbott & Lawrence	100 00	Borie, Charles	500 00
Archer, Ellis S.	100 00	Biddle, William	400 00
Andrews, Joseph B.	100 00	Burroughs, H. N.	400 00
Abbott, William L.	100 00	Biddle, Alexander	300 00
Anderson, William V.	100 00	Biddle, Henry J.	300 00
Andrews, James	100 00	Budd, John B.	300 00
Ashhurst, Samuel	100 00	Brown, Alexander	250 00
Ashhurst, John, Jr.	100 00	Bute & Smith	250 00
Andrews & Dixon	60 00	Brock, John P.	250 00
Allen, John C.	50 00	Bullock, Benj.	250 00
Allen, W. & J.	50 00	Bates & Coates	200 00
Allen & Needles	50 00	Benson, Alexander	200 00
		Biddle, Clement	200 00
Brown, Joseph D.	3125 00	Biddle, J. Williams	200 00
Brown, John A.	2500 00	Brinton, Jane, of West-	
Bohlen, John	2000 00	chester, Pa.	200 00
Brock, John	2000 00	Brown, Benneville D.	200 00

Boker, Charles S.	200 00	Baily, Joshua L.	100 00
Borie, Henry P.	200 00	Blight, Atherton	100 00
Brown & Embley	200 00	Baugh, Saml.	100 00
Bucknor, McCammon & Co.	200 00	Branson, Saml.	100 00
Boyd, Wm. S.	200 00	Baker, Michael V.	100 00
Brown, Moses	200 00	Bedlock, Edward	100 00
Butcher & Brother	200 00	Bunting, Jacob T.	100 00
Benson, Gustavus S.	150 00	Brown, John A. (24th Ward)	80 00
Biddle, George W.	150 00	Biddle, Jno. W.	50 00
Bloodgood, J. B.	150 00	Biddle, Saml.	50 00
Benners, James	125 00	Baird, W. S.	50 00
Biddle, Elizabeth C.	100 00	Bookhammer, Allen H.	30 00
Brown, David S.	100 00	Budd, Joseph	30 00
Baldwin, Stephen	100 00	Bullock, Charles	30 00
Binney, Horace, Jr.	100 00	Bray, Mary	30 00
Budd & Comly	100 00	Blair, Henry C.	27 00
Baker, Abraham	100 00	Brinton, Lewis, of West- chester	25 00
Bowen, Wm. E.	100 00		
Bunn, Raiguel & Co.	100 00	Crozer, John P.	6000 00
Barton, Samuel & Co.	100 00	Cresson, Elliott	5125 00
Butler, John M.	100 00	Cope, Jasper	5000 00
Brady, Patrick	100 00	Cope, Alfred	2000 00
Baird, John	100 00	Clark, Jane	1700 00
Bancroft, M. & E.	100 00	Cope, Caleb	1000 00
Buist, Robert	100 00	Cope, Henry	1000 00
Baily & Brother	100 00	Clark, Enoch W.	1000 00
Brown, T. W. & M.	100 00	Cornelius & Baker	1000 00
Bennett, Joseph M.	100 00	Coxe, Chas. S. (Judge)	1000 00
Bacon, Josiah	100 00	Coxe, Edmund S.	1000 00
Bolton, Vandever & Co.	100 00	Croskey, Henry	600 00
Bouvier, Michael	100 00	Cannell, S. Wilmer	500 00
Benners, H. B. & J. M.	100 00	Cresson, Joseph	500 00
Brinton, George, of West- chester, Pa.	100 00	Curwen, John, M. D., of Harrisburg, Pa.	500 00
Beesley, T. E., M. D.	100 00	Cresson, John C.	500 00
Bayard, James	100 00	Coleman, G. Dawson	500 00
Bryan, Timothy M.	100 00	Colwell, Stephen	500 00
Buckley, M. B.	100 00	Cresson, James	300 00
Beaver, Thomas	100 00	Cox, John	300 00
Brown, Wm. H. & Co.	100 00	Cash, by S. Morris Waln	250 00
Baird, Wm. M.	100 00	Chancellor, Wharton	250 00
Barker, Abraham	100 00	Coleman, Harriet	200 00
Barnes, Rev. Albert	100 00	Colket, Coffin	200 00
Baily, Joel J.	100 00		

Cooke, Jay	200 00	Caldwell & English	100 00
Christian, Sam'l J.	200 00	Carpenter, W. & F.	100 00
Cope, Francis R.	200 00	Cummins, Dan'l B.	100 00
Cope, Thos. P.	200 00	Campbell, Hugh	100 00
Curtis, Benj. T.	200 00	Cattell, Alex. G.	100 00
Clark, Edward W.	200 00	Cabeen & Co.	100 00
Collins, T. K. & P. G.	200 00	Cresson, Cha's C.	100 00
Claghorn, James L.	200 00	Coates, Abraham	100 00
Cadwalader, John	150 00	Carson & Newbold	100 00
Cash, by S. Morris Waln	150 00	Cromelien, George	100 00
Cresson, Wm. P.	150 00	Castner, Sam'l	100 00
Camblos, Charles	100 00	Coates, Benjamin	100 00
Campbell, James R.	100 00	Childs & Peterson	100 00
Carey, Henry C.	100 00	Clark, John	50 00
Carter & Scattergood	100 00	Collins, Joseph H.	50 00
Cash, a Lady, by Joseph S. Lewis	100 00	Churchman, Craig & Co.	50 00
Cash, a Lady of Wilming- ton	100 00	Cattell, Elijah G.	50 00
Cash, a member of St. Peter's Church	100 00	Cummings, Chas. H.	50 00
Catherwood, H. & H. W.	100 00	Comegys, B. B.	50 00
Clark, Ephraim, Jr.	100 00	Chauncey, Nath'l	50 00
Cooper, Abigail	100 00	Cash (W. G.)	50 00
Comly, Franklin A.	100 00	Cash (K. & B.)	50 00
Cuthbert, Allen	100 00	Cash (J. W. S.)	50 00
Collins, Hannah W., of N. Y.	100 00	Creighton, Robert	50 00
Chandler, Joseph R.	100 00	Clark, Clarence H.	50 00
Clark, William (of South- wark)	100 00	Clark, Julia K., of Bur- lington, N. J.	50 00
Cash, from Charleston, S. C.	100 00	Caner, Wm. J.	50 00
Corbit, Daniel, of Odessa, Del.	100 00	Curren, Martin	50 00
Cooley, Aaron B.	100 00	Cope, John E.	33 33
Cummings, Wm.	100 00	Chambers, Mrs. D.	30 00
Coffin, Arthur G.	100 00	Cash, by Jos. S. Lewis	25 00
Croskey, Henry & Co.	100 00	Carney, Hagen	20 00
Coles, Edward	100 00	Carney, Maria	10 00
Craig, Andrew C.	100 00	Cash, by Dr. Ash	10 00
Coates, W. C.	100 00	Cash, (S. R.)	10 00
Chambers, Andrew R.	100 00	Cummings, Richard	9 95
Cadwalader, Geo. (Gen.)	100 00	Dawson, Josiah,	1000
Cochran & Russell,	100 00	Do. by M. L.	
		Dawson, Thos.	
		Williamson, & W. Biddle, Exrs.	16500
			17500 00
		Dundas, James	2000 00

Dawson, Mordecai L.	2000 00	Eyre, Joshua P., of Dela-	
Derbyshire, Alex. J.	1000 00	ware Co., Pa.	200 00
Donaldson, Sophia	500 00	Ebbs, William, of West-	
Dreer, Ferdinand J.	350 00	chester, Pa.	100 00
Dallett Brothers	300 00	Eisenbrey, Jno., Jr.	100 00
Dawson, Elizabeth	200 00	Elliston, Jno. B.	100 00
Dickinson, Sally N.	200 00	Earp, Thomas, Jr.	100 00
Dickson, Levi	200 00	Ewing, Robert (of Minor	
Dunlap, William	200 00	St.)	100 00
Davis, Benjamin	150 00	Evans & Watson	100 00
Downing, J. Perot	150 00	Edwards, George W.	100 00
Dulles, Joseph H.	133 34	Evans, Horace, M. D.	100 00
Davis, Isaac R.	100 00	Elkinton, George M.	100 00
Dawson & Hancock	100 00	Erringer, John L.	100 00
Douglass, Rev. B. J., of		Evans, Rowland W.	50 00
Towanda, Pa.	100 00	Evans John (of Northern	
Duhring, Henry	100 00	Lib. meas'r)	50 00
Dickson, James N.	100 00	Earl, Saml. W.	33 33
Dallett, Gillies	100 00	Evans Edward (in slates)	30 00
Davis, Elwood	100 00		
Dallett, Elijah	100 00	Farnum, John	5000 00
Drown, Wm. A.	100 00	Fisher, J. Francis,	1500 00
Day, Michael	100 00	Fisher, Chas. Henry	1000 00
Dutilh, Charles	100 00	Fox, Charles P.	1000 00
Davis, John C.	100 00	Fraley, Frederic	500 00
Danforth, Wright & Co.	100 00	Fell, J. Gillingham	500 00
Divine, William	100 00	Fullerton, Alexander	300 00
Dilworth, William	100 00	Fahnestock, B. A. & Co.	300 00
Dougherty, J. A. & Sons	100 00	Figueira, F. J.	250 00
Davis, Edward M., Jr.	100 00	French, Wm. H.	250 00
Dodd, George & Son,		Fahnestock, B. A.	200 00
carriage work	100 00	Fassitt, Alfred	200 00
Dale, Richard C.	50 00	Fales, Lothrop & Co.	200 00
Desilver, Charles	50 00	Fisher, Joseph	200 00
Devereux, John	50 00	Fennimore, Jason L.	200 00
Donnell, James C.	30 00	Field & Keehmle	200 00
Drayton, Wm. Heyward	30 00	Ford, Jno. M.	200 00
Dorsey, Stanton	30 00	Field & Hardie	150 00
Dorsey, William	30 00	Foster, Wm. B., Jr.	150 00
		Fling, Wm. B.	140 00
Earp, Thomas	1100 00	Fling, Henry	130 00
Eastwick, Andrew M.	500 00	Fling, William	130 00
Ellis, Charles & Co.	500 00	Fallon, John	100 00
Evans, Joseph R.	200 00	Farr, John C.	100 00
Errickson, Michael	200 00	Farnum, Geo. W.	100 00

Fearons & Smith	100 00	Gilpin, Mrs. Eliza	100 00
Fisher, Rodney	100 00	Gibson, John	100 00
Fallon, Christopher	100 00	Grant, Saml., Jr.	100 00
Fell, Franklin	100 00	Garrison, John	100 00
Fobes, Geo. W.	100 00	Gilbert, Henry R.	100 00
Fuguet, Stephen	100 00	Gibbons, Jane, of West-	
Faust, David	100 00	chester, Pa.	100 00
Flommerfelt, Armst. J.	100 00	Grove, Henry	100 00
Furness, Brinley & Ash	100 00	Garrett, Edward, of Dela-	
Fitzgerald, H. M.	100 00	ware Co., Pa.	100 00
French & Richards	100 00	Greiner & Harkness	100 00
Friend to the insane, by		Gans, Leiberman & Co.	100 00
S. Morris Waln	100 00	Graff, Eliza Ann	100 00
Female friend to the Hos-		Glenn, L. W.	100 00
pital, by M. L. Dawson	100 00	Gilbert, John & Co.	100 00
Fithian, Jones & Co.	100 00	Gorgas, E. W.	100 00
Fisher, Miss Mary P.	100 00	Greble, Edwin	100 00
Field, James	50 00	Gratz, Robert H.	75 00
Fling, Mrs. W. B.	50 00	Graham, James & Co.	50 00
Fling, Mrs. Wm.	50 00	Gerhard, Benj.	50 00
Folwell, Chas. S.	50 00	Gillespie, Thos. L.	50 00
Freas, Jacob	30 00	Glading, William	50 00
Fellowes, B. Wistar	26 67	Griffitts, Wm. F.	30 00
Grigg, John	2000 00	Harrison, Joseph, Jr.	5000 00
Greeves, James R.	1500 00	Hutchinson, I. Pemb.	3000 00
George, Jesse	1000 00	Hinds, William P.	1000 00
George, David	1000 00	Humphreys, May	500 00
George, Rebecca	1000 00	Hacker, Jeremiah	500 00
Gurney, Eliza P., of Bur-		Hacker, Isaiah	500 00
lington, N. J.	500 00	Hopkins, Edward M.	500 00
Gibson, John, Son & Co.	300 00	Harrisburg & Lancaster	
Garrett, Wm. E.	300 00	R. R. Co.	500 00
Gaul, William	300 00	Houston, Wm. C.	500 00
Gibbons, Abraham, of		Haupt, Herman	450 00
Chester, Pa.	300 00	Howell, George	350 00
Gray, Robert E.	250 00	Handy, Margaret J.	200 00
Garrett, Isaac P., of Up-		Hancock, S. P.	200 00
per Darby, Pa.	200 00	Harvey, Josiah L.	200 00
Gumbes, Rebecca	200 00	Hoffman, Christian J.	200 00
Grove & Brother	200 00	Horner, Mrs. W. E.	200 00
Gheen, John R.	200 00	Humphreys, Charles	200 00
Gibbons, Charles	200 00	Heberton G. Craig, M. D.	200 00
Gilpin, Henry D.	200 00	Howard, Philip R.	200 00
Gatchell, Francis R.	150 00	Hart, William H.	200 00



Hay, William	200 00	Haywood, Lewis	50 00
Hand, James C.	200 00	Heilman & Rank	50 00
Howell, Arthur H.	200 00	Hunt, William, M. D.	50 00
Howell, Joseph	200 00	Henderson, George	30 00
Hacker, Isaac	200 00	Harrison, A. W.	30 00
Harbert & Davis	200 00	Herkness, Alfred M.	30 00
Harding, John, Jr.	200 00	Hopper, Edward	30 00
Hansell, Robert	100 00	Hoover, Joseph E.	30 00
Hansell, Wm. S.	100 00	Hunt, Uriah (in books)	30 00
Haines, Ann	100 00	Hacker, George	25 00
Hodge, Hugh L., M. D.	100 00	H. D. W.	10 00
Hoskins, Hieskell & Co.	100 00	Haywood, Mrs., per Geo.	
Harrison, George L.	100 00	Hawkins	5 00
Hibberd, Mary	100 00		
Hutchinson, B. P.	100 00	Ingersoll, Joseph R.	1000 00
Heron & Martin	100 00	Iungerich, Lewis C.	150 00
Hinman, Daniel B.	100 00		
Hoopes, Thos. P.	100 00	Johnson, Lawrence	1300 00
Hildeburn & Brother,	100 00	Jayne, David, M. D.	1000 00
Hart, Abraham	100 00	Jenks, Joseph R.	1000 00
Hallowell, Morris L.	100 00	Jeanes, Samuel	1000 00
Hill, Marshall	100 00	Jones, Jacob P.	1000 00
Howell, John A.	100 00	Jeanes, Joshua T.	500 00
Howell, William	100 00	Jones, Andrew M.	500 00
Houston & Collins	100 00	Jones, Sam'l W.	500 00
Horn, Alexander E.	100 00	James, Thos. C.	300 00
Hacker, William P. &		Jackson, Chas. M.	250 00
George H.	100 00	Johnson, Robert S.	200 00
Howard & Co.	100 00	Jeanes, Joseph	200 00
Helmuth, Wm. S., M. D.	100 00	Jones, Wm. D.	200 00
Helmuth, George	100 00	Jones, Isaac T.	200 00
Harmer, Jas., per J. B. A.	100 00	James, Kent & Santee	150 00
Horstmann, W. & S.	100 00	Jordan, John, Jr.	100 00
Hinckle, John	100 00	Janney, Benj. S., M. D.	100 00
Herring, S. F.	100 00	Jones, Joseph	100 00
Harper, James	100 00	Jones, Mrs. Joseph	100 00
Harris, George W.	100 00	Jessup, A. D.	100 00
Hauel, Jules	100 00	Jessup, Mrs. A. D.	100 00
Hoopes, Curtis, of West-		Johnson, Israel H.	100 00
chester, Pa.	100 00	Jeanes & Scattergood	100 00
Hutchinson, Samuel	100 00	Justice, George R.	100 00
Hopper, William,	75 00	Jaurette & Carstairs	100 00
Houston, Henry H.	50 00	Justice, Philip S.	100 00
Hoxie, S. K.	50 00	Jeffries, James & Son	100 00
Hurley, Aaron A.	50 00	Jackson, Chas. C.	100 00

Johnson, Ruth, of West Chester, Pa.	100 00	Lowber, Edward, M. D.	1250 00
Jones, B. Muse	50 00	Lejee, William R.	1000 00
John, Frederick L.	50 00	Lewis, Lawrence	1000 00
Jayne, Eben C.	30 00	Linnard, James M.	1000 00
Jayne, David W.	30 00	Loper, R. F.	1000 00
Jeffries, Chalkley, of West- chester, Pa.	30 00	Landreth, David	500 00
		Lea, Isaac	500 00
Kuhn, Hartman	2000 00	Lewis, Robert M.	500 00
Kirkbride, Thomas S., M. D.	1200 00	Longstreth, William W.	500 00
Kirkbride, Ann W.	400 00	Lovering, Joseph S.	500 00
Kelly, Dennis, of Del. County, Pa.	500 00	Lewis, Mrs. Anna M.	300 00
Kimber, Thomas, Jr.	400 00	Lewis, John T.	300 00
Kimber, Thomas	300 00	Lowber, William T.	300 00
Kirkham, William	250 00	Leibrandt, Frederick	250 00
Kelly, Charles, of Dela- ware County, Pa.	200 00	Longstreth, Mary Anna	250 00
Kirkpatrick, David	200 00	Laguerenne, P. L.	200 00
Kirkbride, Ann J.	100 00	Lapsley, David	200 00
Kirkbride, Joseph John	100 00	Lapsley, Joseph B.	200 00
Kirkbride, John, of Bucks County, Pa.	100 00	Lewis, Charles S.	200 00
Kirkbride, Elizabeth, do.	100 00	Lewis, Lawrence, Jr.	200 00
Kirkpatrick, Rowland	100 00	Lippincott & Parry	200 00
Kirkpatrick, Dehaven & Co.	100 00	Ludwig, Kneeder & Co.	200 00
Knight, Edward C.	100 00	Lewis, Saunders	150 00
Knight, Mrs. Ann M.	100 00	Lewis, Edwin M.	100 00
Knight, Reeve L.	100 00	Lewis, Joseph S.	100 00
Krug, Frederick V.	100 00	Lewis, Mrs. Robt. M.	100 00
Kirk, William	100 00	Lewis, Francis S.	100 00
Koons, Isaac	100 00	Longstreth, Joshua	100 00
Koons, Charles	100 00	Lippincott, J. B. & Co.	100 00
Kelton Robert	100 00	Lippincott, George	100 00
Kirkpatrick, Edwin	50 00	Lancaster, Jacob B.	100 00
Kisterbock, Josiah	30 00	Leedom, Benj. J.	100 00
Kitchen, William K., of N. Y.	25 00	Lukens, Caspar P., M. D.	100 00
Klemm, Frederick A.	5 00	Lindsay & Blakiston	100 00
		Lindsay, John	100 00
Livezey, John	10,000 00	Leamy, Miss, and Mrs. Stout	100 00
Lewis, Mordecai D.	2500 00	Leland, Chas.	100 00
		Law, Edward E.	100 00
		Levick, Rasin & Co.	100 00
		Logan, Maria D.	100 00
		Lambert, John	100 00
		Lightfoot & Walton	60 00
		Lady, by John Farnum	50 00
		Lea, Joseph	50 00

Long, James	50 00	Moore, Samuel, M. D.	200 00
Lincoln, Abel	30 00	Miskey, A.	100 00
		Musser, William	100 00
Miller, Abraham	500 00	Molloy, Michael	100 00
" (Leg.) cash	3,559 73	Morrell, Robert, M. D.	100 00
" & G'd R'ts	12,833 33	Moore & Campion	100 00
	<hr/>	Maxfield, William R.	100 00
	16,893 06	Mason, John	100 00
Morris, Wistar	5000 00	Malone & Taylor	100 00
Morris, Henry	2500 00	Moss, E. L.	100 00
McKean, Borie & Co.	1500 00	Morrison, Anne D.	100 00
Merrick, Samuel V.	1255 00	Miles, Jacob & Son	100 00
Morris, Jacob G.	1000 00	Moorhead, William G.	100 00
Magee, James	1000 00	Moorhead, J. B.	100 00
Morris, Isaac P.	1000 00	Meigs, J. Forsyth, M. D.	100 00
Morris, Israel	1000 00	Miller, Hiram	100 00
Morris & Jones & Co.	1000 00	Miller, Wm.	100 00
Morris, Tasker & Mor-		Morris, Israel, Jr.	100 00
ris	1000 00	Moore, J. Wilson, M. D.	100 00
Morris, Catharine W.	1000 00	Myers, Joseph B.	100 00
Milne, David	600 00	Myers, Kirkpatrick & Co.	100 00
Mellor, Thomas	500 00	Marshall, Sarah	100 00
Macalester, Charles	500 00	Massey, Robert V.	100 00
McCrea, Jas. A., M. D.	500 00	Megargee & Brother	100 00
Marshall, Mary	500 00	Megargee, Samuel	100 00
Mason, Samuel	500 00	Maule, Israel	100 00
Mellon, Thomas	500 00	Maddock, Wm. L.	100 00
Moore, William Hill	500 00	Manderson, Andrew	100 00
Morris, Tasker & Co.	500 00	McAllister & Brother	100 00
Morris, Israel W.	500 00	McIlvain, James	100 00
Morton, Samuel C.	500 00	McCall, Catharine	100 00
Myers, John B.	500 00	McCallum, William	100 00
Marshall, Benjamin	300 00	McHenry, Alexander	100 00
Morris, Stephen P.	300 00	McCall, Henry, Jr.	100 00
Martin, James	250 00	McConkey, David, of	
Massey, William	250 00	Westchester, Pa.	100 00
Morris, Hannah	250 00	McBride, P.	50 00
Morris, Jane	250 00	McCurdy, John R.	50 00
McAllister, John, Jr.	200 00	Magear, Thomas J.	50 00
McIlvain, Hugh	200 00	Manderson, James	50 00
Magargee Charles,	200 00	Manderson, Thomas	50 00
Maris, John M.	200 00	Maule, Henry	50 00
Marshall, Richard M.	200 00	Moon, Mahlon, in trees	50 00
Maule, Edward	200 00	Meyer, Isaac	30 00
Miller, John S.	200 00	Morris, P. Pemberton	30 00

Matson, C. H.	30 00	Parry & Randolph	200 00
Medara, Joseph S.	30 00	Paul, Sarah R.	200 00
Mott, James	25 00	Perot, Edward	200 00
McMurtrie, Richard C.	25 00	Poultney, Letitia	200 00
Moore, Mary	10 00	Pritchett & Baugh	200 00
Moore, Mary, collected by her	2 50	Price, Richard	150 00
		Potts, David, Jr., of Potts- town	150 00
Newbold, Son & Aertsen,	1000 00	Perot, William S.	100 00
Norris, Samuel	1000 00	Perot, Elliston	100 00
Norris, Richard	500 00	Perot, Francis	100 00
Newhall, Thomas A.	300 00	Paul, James W.	100 00
Norris, Isaac	200 00	Pritchett, Thomas	100 00
Nicholson, Lindsey	200 00	Parrish, Dillwyn	100 00
Neall, Daniel	100 00	Parrish, Wm. D.	100 00
Newlin, Thomas S.	100 00	Parrish, George D.	100 00
Needles, Joseph A.	100 00	Patterson, Joseph	100 00
Nevins, James	100 00	Patteson, Edward	100 00
Norcross & Sheets	100 00	Phillips, Henry M.	100 00
		Penniston, John F.	100 00
Ord, George	1000 00	Pearsall, Robert	100 00
Outerbridge, Harvey & Co.	200 00	Palmer, Thomas & Co.	100 00
Orne, Benjamin	125 00	Philler, George	100 00
Orne, James H.	100 00	Palmer, Jonathan & Co.	100 00
Oakford, Charles	100 00	Palethorp, John H.	100 00
Okie, J. B.	100 00	Paschall, Robert S.	100 00
Ogden, Charles S.	100 00	Peters, Francis	100 00
Otto, Margaret J.	100 00	Pierpont, Frances	100 00
Oat, George R.	75 00	Potter, Thomas	100 00
Ogden, John M.	50 00	Perot, Joseph	60 00
Osbourne, Lewis G.	33 33	Paul, Daniel	50 00
		Paul, Daniel, Jr.	50 00
		Price, Joshua L.	50 00
Pennock, Caspar W., M. D.	1000 00	Price, Stephen S.	50 00
		Pratt, D. T.	30 00
Perot, Charles	700 00		
Poultney, Chas. W.	600 00	Queen, James W.	100 00
Powers, Thomas H.	600 00		
Pancoast, Joseph, M. D.	500 00	Roberts, A. S. & E.	2000 00
Pardee, A.	300 00	Richardson, Thomas & Co.	1250 00
Parke, Hannah	300 00	Rankin, David	1000 00
Packer, Asa	250 00	Ridgway, John J.	1000 00
Potts, Wm. F.	250 00	Rogers, Evans	1000 00
Page, G. Washington	200 00	Ronaldson, Richard	1000 00
Pardee & Co.	200 00		

Rice, John	500 00	Sparks, Thomas	2000 00
Rogers, Chas. H.	500 00	Scull, David	1000 00
Ross, Robert J., of Har- risburg, Pa.	500 00	Stewart, William H.	1000 00
Richardson, Richard	500 00	Seybert, Henry	1000 00
Ridgway, Thomas	300 00	Steadman, Rosa	1000 00
Roberts, Solomon W.	300 00	Swift, Joseph	1000 00
Rosengarten, Geo. D.	300 00	Stuart, George H.	600 00
Reeves, Samuel J.	250 00	Sansom, Hannah	500 00
Randolph & Jenks	200 00	Sharpless, John M., of Chester, Pa.	500 00
Richards, Geo. W.	200 00	Shipley, Joseph of Wil- mington, Del.	500 00
Redner, Joseph J.	121 50	Smith, Joseph Pancoast	500 00
Roberts, Mrs. Hugh	100 00	Smith, Newberry A.	500 00
Richards & Miller	100 00	Spangler, Christian E.	500 00
Richards, William H.	100 00	Smith, Jacob R.	350 00
Rhoads, Samuel	100 00	Smith, William S. & Co.	300 00
Robins, Thomas	100 00	Stevenson, Cornelius	300 00
Robbins, John, Jr. (Ken- sington)	100 00	Stevenson, Frances W., of N. Y.	300 00
Relf, Charles P.	100 00	Stokes, Samuel E.	300 00
Rue, John R.	100 00	Saunders, J. & M.	200 00
Riddle, Samuel, Delaware Co., Pa.	100 00	Scull, Gideon	200 00
Reynolds, Anna R.	100 00	Shannon, Elwood	200 00
Rutter, Newhall & Co.	100 00	Sharpless, Enos	200 00
Rutter, Clement S.	100 00	Sharpless & Brother	200 00
Repplier, John G.	100 00	Shoemaker, R. & Co.	200 00
Ricketts, John T.	100 00	Smith, Edward A., M. D.	200 00
Randolph, Richard	100 00	Smith, George, M. D., of Del. County, Pa.	200 00
Rowland, William	100 00	Smyth, Lindley	200 00
Rowland, James & Co.	100 00	Starr, Isaac	200 00
Ryers, Joseph W.	100 00	Stone, John & Sons	200 00
Rockhill & Wilson	100 00	Struthers, Thomas of Warren Co., Pa.	200 00
Rowland, Benjamin	100 00	Schaffer, Wm. L.	150 00
Rugan, Charles	100 00	Simmons, Samuel R.	150 00
Rehn, William L.	100 00	Starr, James	150 00
Randall, A. L.	50 00	Shannon, Jacob B.	100 00
Reilly, Philip	50 00	Simmons, Edward S.	100 00
Reed, Wm. B.	50 00	Stevenson, William E.	100 00
Richardson, John J.	50 00	Stokes, Granville	100 00
Riegel, Jacob	50 00	Small, Robert H.	100 00
Robb, James	50 00	Spooner, William S.	100 00
Reath, Benj. B.	30 00	Spooner, Edwin	100 00
Richardson & Carver,	30 00		
Ritter, Jacob B.	30 00		

Stratton & Brother	100 00	Stotesbury, Richard G.	50 00
Stroup & Brother	100 00	Sharpless, Edward	30 00
Steen, Robert	100 00	Sharpless, Joseph I.	30 00
Schott, James	100 00	Smith, Geo. K.	30 00
Sons of Malta	100 00	Stoddart, Curwen & Bro.	30 00
Shoemaker, Charles	100 00	Smith, Harrison	25 00
Sloan, Henry	100 00	Stokes, Charles	10 00
Sloan, Samuel, architect	100 00		
Silver, Joseph S.	100 00	Tasker, Thomas T., Sr.	2500 00
Sellers, William & Co.	100 00	Tatham & Brothers	1250 00
Sellers, William	100 00	Taylor, Charles	1000 00
Struthers, William	100 00	Thomas, John R. & Geo.	1000 00
Sellers & Pennock	100 00	Taylor, Gillespie & Co.	500 00
Slade, Alfred	100 00	Thompson, J. Edgar	500 00
Schaeffer, J. L.	100 00	Towne, John H.	500 00
Simes, Samuel	100 00	Trotter, Charles W.	450 00
Sloat, George B.	100 00	Thompson, John J.	300 00
Shuster, Lawrence	100 00	Trotter, William H.	300 00
Stillé, Maria	100 00	Trotter, Edward H.	300 00
Stitt & Brown	100 00	Taylor, Joseph W., M. D.,	
Sieger, Peter	100 00	of Burlington, N. J.	200 00
Swift, Edwin	100 00	Taylor, George E.	200 00
Stuart & Peterson	100 00	Thurlo, Hughes & Co.	200 00
Smith, Daniel, Jr.	100 00	Tilge, Henry & Co.	150 00
Smith, Samuel F.	100 00	Taylor, William	100 00
Smith, Alexander H.	100 00	Taylor, Mrs. Virginia, of	
Smith, John T.	100 00	Norfolk, Va.	100 00
Smith, James S., Jr.	100 00	Taylor, Nathan	100 00
Smith, Geo. R., Arch St.	100 00	Taylor, Mary A.	100 00
Smith, Cornelius (instock)	100 00	Thomas, Jane	100 00
Stoddart, Curwen	60 00	Thomas, George	100 00
Sartori, Victor A.	50 00	Thomas, Moses	100 00
Savage, J. R. & Co.	50 00	Thomas, Moses & Son	100 00
Sharpless, Wm. P. & A.	50 00	Thomas, William G.	100 00
Sheppard, Catharine W.	50 00	Thompson, Newcomb B.	100 00
Shober, John B.	50 00	Thompson, George	100 00
Shober, Samuel L.	50 00	Thomson, George H.	100 00
Sibley, Molton & Wood-		Thomson, Wm. & Geo.	100 00
ruff	50 00	Thomson, Lewis & Co.	100 00
Smith, Thomas M.	50 00	Thurlo, Paul	100 00
Spooner, David C.	50 00	Trucks, John	100 00
Smith, Edmund	50 00	Tyson, Job R.	100 00
Starr, Isaac, Jr.	50 00	Turnpenny, Jos. C.	100 00
Stevens & Miller	50 00	Taws, Lewis	100 00
Stillé, Alfred, M. D.	50 00	Tredick, Benjamin T.	100 00

Thain & McKeone	100 00	Welsh, Mrs. Samuel	500 00
Trump, Michael & Son	100 00	White, Ambrose	500 00
Townsend, Joseph B.	100 00	White, Rebecca	500 00
Taylor, Geo. W.	50 00	Willing, Richard	500 00
Thomas, Joseph M.	50 00	Wilmer, John R.	500 00
Thomson, T.	50 00	Wilson, Rathmell	500 00
Thomas, Isaac, M. D., of Westchester, Pa.	30 00	Wilstach, Wm. P.	500 00
Townsend, Henry C.	30 00	Wainwright, William	300 00
Townsend, Solomon	30 00	Watson, Geo. W.	300 00
Taylor, James, of West- chester, Pa.	15 00	Williamson, Isaiah V.	300 00
		Worthington, Henry R., of N. Y.	300 00
		Wagner, Mrs. Tobias	250 00
Urwiler, George	45 25	Wickersham, Morris S.	250 00
		Williamson, Passmore	250 00
Vansyckel, Mrs. S. B.	200 00	Womrath, George F.	250 00
Verree & Mitchell,	100 00	Weber, John C.	200 00
Vaux, Eliza H.	100 00	Welsford & Wilson	200 00
Vaux, Wm. S.	50 00	Wharton, Francis R.	200 00
Vaux, George	30 00	Whelan, E. S.	200 00
		White, William R.	200 00
Wright, John	500 00	Williams, Thomas R.	200 00
Do. legacy,		Wistar, Mifflin, M. D.	200 00
10 000, less		Woodnut, William	200 00
State tax &		Wood & Perot	200 00
interest, al-		Worrell, Albert	200 00
lowed Ex'rs		Worrell, John R.	200 00
for prompt		Wright, James A.	200 00
payment	8,879 34	Wurts, Charles S.	200 00
	<hr/>	Whetham, James D.	166 67
	9,379 34	Whitaker, Robert	150 00
Waln, S. Morris	2000 00	Willing, Charles, M. D.	150 00
Welsh, Samuel	2000 00	Warner, William, Jr.	100 00
Welsh, William	1500 00	Warner, Geo. W.	100 00
Welsh, John	1500 00	Warner, Miskey & Merrill	100 00
Whitall, John M.	1500 00	Williamson, Mahlon	100 00
Wood, Geo. B., M. D.	1500 00	Williams, Isabella	100 00
Whitney, Asa & Son	1225 00	Williams, Isaac S.	100 00
Warner, Joseph	1000 00	Williams, Howard	100 00
Wood, Horatio C.	1000 00	Williams & Co. (R. A. & J. J.)	100 00
Wood, Richard D.	1000 00	Williams, B. P. & Co.	100 00
Wagner, Tobias	750 00	Williams, Mary Ann	100 00
Williamson, Thomas	750 00	Wilmer, J. Ringgold	100 00
Williams, Henry J.	700 00	Wilson, William S.	100 00
Weightman, William	600 00		
Waterman, Osborne & Co.	500 00		

Wilson, William & Son	100 00	Warner, Harriet	50 00
Wilson, Joseph P., of Westchester	100 00	Wetherill, Charlotte W.	50 00
White, Thomas H.	100 00	Wetzlar, D. N.	50 00
Wattson, Lewis T.	100 00	Woodside, John & Co.	50 00
Watson, James V.	100 00	Wright, Samuel	50 00
Wattson, Thos. B.	100 00	Waterman, Isaac S.	33 34
Wharton, Thomas F.	100 00	Walker, John R.	30 00
Wistar, Elizabeth	100 00	Way, J. T.	30 00
Wallace, John W.	100 00	Weist, John	30 00
Walley, Samuel	100 00	Wetherill, Rachel P.	30 00
Weaver, George J.	100 00	Wilson, Oliver Howard	30 00
Warder, Benj. H.	100 00	Wistar, Bartholomew	26 67
Wilcox, Mark	100 00	Wistar, Caleb C.	26 67
Wise, Pusey & Wise	100 00	Wistar, Dillwyn	26 67
Winebrenner, David S.	100 00	Yarnall, Edward	1000 00
Wiegand, John	100 00	Yarnall, Charles	500 00
Woelpper, David	100 00	Young, Alexander	300 00
Weaver & Volkmar	100 00	Yard, Gillmore & Co.	200 00
Warnick, C. W.	100 00	Yarnall, Ellis	200 00
West, Robert	100 00	Young, Charles	133 33
Wilson, Thomas, M. D.	100 00	Yeaton, Wm. H.	100 00
Wright, R. & G. A.	100 00	Yarnall, Howard	50 00
Wetherill, George D.	70 00	Yardley, Mary Ann	30 00
Warner, Catharine A.	50 00	Young, Wm. J.	30 00



100 00	Wright, Harriet	100 00	Wright, Harriet & Son
50 00	Wright, Charlotte B.		
50 00	Wright, P. J.	100 00	Wright, P. J.
50 00	Wright, John & Co.	100 00	Wright, Thomas H.
50 00	Wright, Samuel	100 00	Wright, Lewis T.
50 00	Wright, Isaac S.	100 00	Wright, James T.
50 00	Wright, John H.	100 00	Wright, Thos. H.
50 00	Wright, J. T.	100 00	Wright, Thomas J.
50 00	Wright, John	100 00	Wright, Elizabeth
50 00	Wright, Rachel P.	100 00	Wright, John W.
50 00	Wright, Oliver Howard	100 00	Wright, Samuel
50 00	Wright, Bartholomew	100 00	Wright, George J.
50 00	Wright, Caleb C.	100 00	Wright, Paul H.
50 00	Wright, Dilwyn	100 00	Wright, Mary
		100 00	Wright, John & Wife
100 00	Wright, Edward	100 00	Wright, David S.
50 00	Wright, Charles	100 00	Wright, John
50 00	Wright, Alexander	100 00	Wright, David
50 00	Wright, Gillmore & Co.	100 00	Wright & Tolinger
50 00	Wright, Elias	100 00	Wright, G. W.
50 00	Wright, Charles	100 00	Wright, John
50 00	Wright, Wm. H.	100 00	Wright, Thomas M.D.
50 00	Wright, Howard	100 00	Wright, M. E. J.
50 00	Wright, Mary Ann	10 00	Wright, George D.
50 00	Wright, Wm. A.	50 00	Wright, Catherine J.

SUBSCRIBERS  
TO THE  
FUND FOR FURNISHING  
THE NEW  
PENNSYLVANIA HOSPITAL FOR THE INSANE,  
(DEPARTMENT FOR MALES.)  
AT  
PHILADELPHIA.  
[FROM THE MINUTES OF THE LADIES' COMMITTEE.]

COLLECTING COMMITTEE FOR THE FURNISHING FUND.

---

Mrs. ELIZABETH W. HORNER, <i>President.</i>	Miss MARY ANNA LONGSTRETH,
Mrs. MARY R. WELSH, <i>Secretary.</i>	Miss MARY A. RHOADS,
Mrs. ELIZABETH FARNUM, <i>Treasurer.</i>	Mrs. LETITIA L. CRESSON,
Mrs. ELIZABETH T. WELSH,	Miss SUSAN LINNARD,
Miss JULIANA RANDOLPH,	Mrs. ELIZA GIBBONS,
Mrs. CAROLINE PENNOCK,	Mrs. MARY W. VAUX,
Miss ELIZABETH LEWIS,	Miss ANNIE WALN,
Miss MARY ANNA BURGIN,	Miss H. B. BENNERS,
Miss SUSAN DICKSON,	Miss JANE ASHBRIDGE,
Miss SARAH CUYLER,	Miss ELIZABETH P. SMITH.

## SUBSCRIBERS TO FURNITURE FUND.

Ashbridge, William	200 00	Bunting, Jacob T.	25 00
Ashbridge, Jane	100 00	Benson, Alex.	25 00
Andrade, Joseph	100 00	Brown, Mrs. D. S.	25 00
Ashbridge, Thomasin	50 00	Brewster, Benj. H.	25 00
Ashhurst, Mrs. Lewis R.	50 00	Biddle, Miss A. E.	25 00
Archer & Warner	20 00	Barcroft, Mrs. S. B.	25 00
Allen, R.	10 00	Boyd, Miss	20 00
Abbott	10 00	Brown, Mrs. W.	20 00
Anable, Miss	5 00	Bodine, Sam'l T.	20 00
Aertsen, Miss	1 00	Bussier, Mrs. D. P.	10 00
A Poor Man	50	Benson, M. J.	10 00
		Brown, Miss Fanny	10 00
Borie, Mrs. A. E.	100 00	Brown, Miss Mary H.	10 00
Black, John	100 00	B. A. C.	10 00
Biddle, Mrs. Christine	100 00	Bishop, Uriah H., furni- ture	10 00
Biddle, Alex.	100 00	Barker, Mrs.	5 00
Barclay, Andrew C.	50 00	Brown, David Paul	5 00
Burgin, Geo. H., M. D.	50 00	Busby, George	5 00
Benners, Henry B.	50 00	Busby, Mrs.	5 00
Brown, Mrs. Moses	50 00	Busby, John	5 00
Ball, Mrs.	50 00	Busby, E. H.	5 00
Binney, Mrs. Horace	50 00	Bispham, Mrs. S.	5 00
Blight, Atherton	50 00	Burroughs, Mrs.	5 00
Brown, Mrs. John A.	50 00	Bacon, H. H.	5 00
Budd, Mrs. J. B.	50 00	B. Miss J.	5 00
Baker, Abraham	30 00	B., Miss M. M.	5 00
Brown, William	30 00	Buzby, J. L.	1 00
Boggs & Kirk	25 00	Bright, Miss W.	5 00
Baker, M. V.	25 00		
Bayard, Mrs. James	25 00	Casamajor, Prudent, of Cuba	500 00
Brown, T. Wistar	25 00		
Bucknell, Mrs.	25 00	Cope, Alfred	100 00
Beesley, Dr. T. E.	25 00		

Cope, Henry	100 00	Drake, Mrs. Thos.	100 00
Croskey Henry & Co.,	100 00	Dulles, Mrs. Jos. H.	100 00
Campbell, Archibald	100 00	Davis, Benjamin	50 00
Cash (through W. H. W.)	50 00	Desilver, H. T.	50 00
Cooper, Miss H.	50 00	Drayton, W. Heyward	50 00
Crozer, Mrs.	50 00	Dixon, Miss	50 00
Cuyler, Theodore	50 00	Dixon, Miss M.	50 00
Cummins, Mrs. D. B.	50 00	Dale, Mrs. R. C.	50 00
Cannell, Mrs. S. W.	50 00	Dallett, Mrs. John	50 00
Cresson, Joseph	30 00	Davis, Mary W.	25 00
Cresson, Priscilla, a melodeon.		Destouet, S.	25 00
Carter, John	30 00	Dreer	5 00
Cresson, M. A.	25 00	Dickson, Thos. S.	1 00
Cresson, R. G.	25 00		
Cresson, L. L.	25 00	Evans, Miss Jane	50 00
Cooper, William	25 00	Erwin, Mrs. John H.	50 00
Caldwell, James E. & Co.	25 00	Evans, Wm., Jr.	30 00
Cope, Francis R.	25 00	Ely, R. & M.	30 00
Clark, Edward S.	25 00	Emerson, Dr.	25 00
Code, T. P.	25 00	Ely, Miss	25 00
Colkit, Coffin	25 00	Eastwick, Mr.	25 00
Coleman, Mrs. James	25 00	Earl, Mrs. Harrison	10 00
Cope, E. W.	20 00	Earp, Miss Hannah	10 00
Carter, John E.	20 00	Erringer, Mr.	5 00
Coleman, Mrs. Edward	20 00	Eckfeldt, Adam	5 00
Croll, Mrs. M. I.	10 00	Elfreth, Mary	2 00
Craig, Andrew C.	10 00		
C. L.	10 00	Fling, Mrs. W. B.	100 00
Curry, W. H.	10 00	Fisher, Eliza G.	100 00
Clark, S. A.	10 00	Fisher, Ellen	100 00
Campbell, Mrs. James R.	10 00	Farnum, Geo. W.	100 00
Clapier, Mrs.	5 00	Farnum, J. Edward	100 00
Chauncey, Miss H.	5 00	Firth, Thomas	50 00
Canby, Samuel	5 00	Fullerton, Mrs. Alex.	50 00
Cowell, John V.	5 00	Fox, Miss Mary	50 00
Clark, Mrs. E. W.	5 00	Fisher, Mrs. W. W. and	
Care, S. H.	5 00	Miss	50 00
Campion, N. B.	5 00	Fahnestock, Mrs. G. W.	30 00
Chancellor, W.	5 00	Fraley, J. C.	25 00
Claghorn, Mrs. J. W.	5 00	Fell, Mrs. J. G.	25 00
Cash (through Mrs. Hol-		Fell, Miss Mary I.	25 00
man)	5 00	Fahnestock, Mrs.	20 00
Carll, James H.	5 00	Fisher, Mrs. Sally	20 00
Cash, sundry amounts		Fisher, Miss	10 00
without names	645 00	Ferguson, Mrs. Charles	5 00

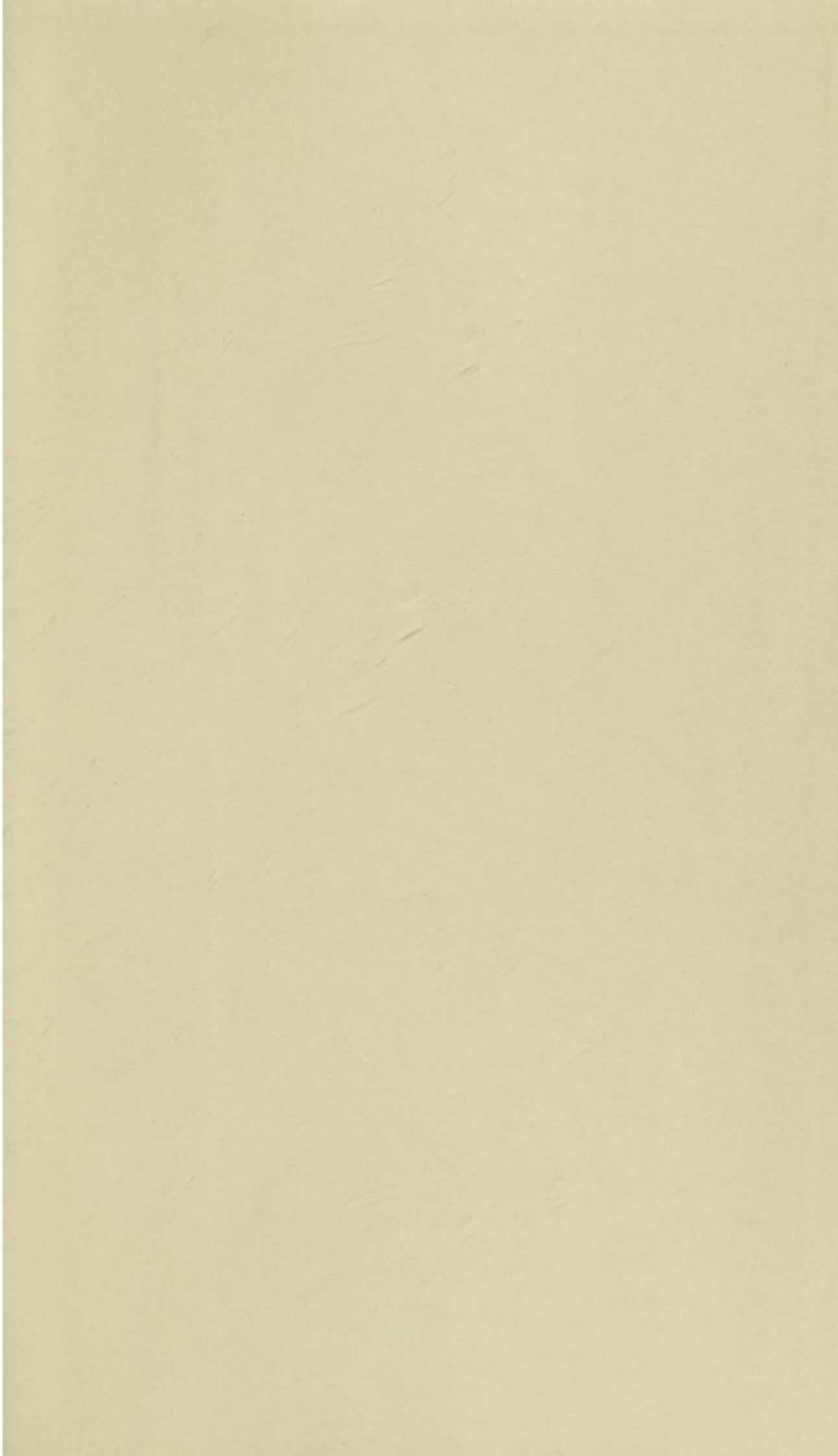
Friend, a	5 00	Holsman, Mrs.	10 00
Fennel, W.	2 50	Hood, S.	5 00
		Horner, A.	5 00
Games, from different parties.		Hatfield, Dr.	5 00
Grigg, John	100 00	Harris, Mrs. M. A.	5 00
Greeves, Elizabeth	100 00	Henry, Mrs. I. S.	5 00
Gumbes, Rebecca	50 00		
Gentleman, a	50 00	Ingersoll, Jos. R.	50 00
Gratz, R. H.	25 00	Irwin, Mrs. John H.	50 00
Gillespie, Mrs. W.	25 00		
Godey, L. A.	20 00	Jeanes, Joseph	50 00
Garrison, David R.	20 00	Jeanes, Joshua T.	50 00
Garrett, Thomas C.	15 00	Jones, Mrs. Samuel W.	50 00
Germantown friend	10 00	Jones, Mrs. B. M.	50 00
Gratz, Mrs. Robert H.	10 00	Jones, W. D.	25 00
Glenn, Mrs.	5 00	Johnston, Mary	25 00
Goodwin, Phebe	5 00	Jessup, Mrs.	25 00
Graff, Miss	2 00	Jacobs, Mrs. C. S.	20 00
Graff, Miss C.	2 00	James, Kent, Santee & Co.	20 00
		Janney, B.	5 00
Horner, Mrs. E. W.	200 00	James, Mrs.	2 50
Helmuth, Mrs. & Mr.	100 00		
Harrison, Mrs. Geo. L.	100 00	Kirk, Wm.	25 00
Hulme, John	50 00	Kenney, John B.	10 00
Hutchinson, Jos. H., M. D.	50 00	Kirkpatrick, J. T.	10 00
Hutchinson, Chas. H.	50 00	K., Mrs. J. D. L.	5 00
Hodgson, Mrs. M. A.	50 00		
Horstmann, Mrs.	50 00	Law, Mrs. Edward	100 00
Hallowell, Morris L.	50 00	Lewis, Miss M.	100 00
Hopkins, Edward M.	50 00	Lewis, Miss E.	100 00
Haines, Jane	50 00	Lewis, Miss S.	100 00
Hacker, Jeremiah	30 00	Lapsley, Mrs. Anna W.	100 00
Haines, Josiah	25 00	Longstreth, Mary Anna	100 00
Hopper, W.	25 00	Livezey, Mrs. S. M.	50 00
Hurley, Aaron A.	25 00	Lowber, Mrs. and Miss	50 00
Holland, Miss	25 00	Longstreth, Joshua	50 00
Haines, Robert B.	15 00	Lewis, Mrs. and Miss	50 00
Hunter, Mary	15 00	Lennig, Mrs. Frederick	50 00
Hibberd, Mary	15 00	Lewis, F. Mortimer	50 00
Hodge, Mrs. M. E.	10 00	Leamy, Miss A.	50 00
Hone, Mrs.	10 00	Lewis, Lawrence, Jr.	50 00
Haseltine, J.	10 00	Lewis, Mrs. A. M.	50 00
Hopper, Thos. C.	10 00	Lady, a	30 00
Huddy, Mrs. B. F.	10 00	"	25 00
Huber, Jas. S.	10 00	"	25 00

Lewis, Miss Kate	25 00	Newhall, T. A.	100 00
Lovering, Jos. S.	25 00	Newbold, Mrs. W. H.	25 00
Lewis, Theo. T.	25 00	Norris, Mrs. E. H.	20 00
Lejee, Mrs. W. R.	25 00	Norris, Mrs. Isaac	20 00
L. R. J.	20 00	Norris, Miss Hannah F.	10 00
Longstreth, W.	20 00	Neal, Daniel	10 00
Lancaster, J. B.	20 00	Nathans, Mr.	5 00
Lloyd, Susan P.	10 00	Newlin, Mrs. Jane	5 00
Lindsay, Mrs. John	10 00		
Lewis, Samuel A.	10 00	Orne, J. T. & E. B.	40 00
Lee, Miss Fannie	10 00	Orne, Mr.	10 00
Lady, a	10 00		
Lippincott, Mary	5 00	Patterson, Mrs. Morris	100 00
Lipman,	5 00	Pepper, Geo. S.	100 00
Lippincott Isabella	5 00	Preston, Jane	100 00
L. S.	4 00	Powers, Mrs. A. M.	50 00
L., Miss A. W.	2 50	Pennock, Sallie W.	50 00
		Pennock, Caroline	50 00
Morris, Stephen	100 00	Pleasants, Mary T.	50 00
Massey, Collins & Co.	100 00	Pepper, Mrs. Mary	30 00
Morrison, Anne D.	50 00	Parrish, George D.	30 00
McKean, Mrs. H. P.	50 00	Price, Eli K.	30 00
Magargee Chas.	25 00	Painter, Marshall & Jacob	25 00
McAllister, John	25 00	Paul, Mrs. S.	25 00
Morris, Mrs. I. P.	25 00	Parry, Rachel R.	25 00
Maris, Mrs. T. R.	25 00	Pepper, W. P.	25 00
Manderson, A.	25 00	Perot, Mary W.	20 00
Marsh, Benj. V.	25 00	Pugh, H. A.	10 00
Macalester, Miss Lillie L.	25 00	Parvin, W. & Co.	10 00
Miller, John C.	20 00	Pratt, Thos.	10 00
Miller, W.	20 00	Porter, Mrs.	5 00
Miles, Mrs. Edward	10 00	Peterson, Mrs. Chas. J.	5 00
Member of St. Stephen's Church	10 00	Perot, Mrs. Frances	5 00
Murtha, J. P.	10 00	Phipps, Sarah	5 00
Miller, Hannah	10 00	Porter, W. A.	5 00
Meyers, H. M.	5 00	Perkins, S. H.	5 00
Matlack, Sarah Ann	5 00	Patterson, R.	5 00
Middleton, Isabella	5 00	Patterson, Mrs. R.	5 00
McHugh, Mrs.	5 00	Potts, Emily	5 00
Middleton, Lydia	2 50	Parrish, Edward	2 00
Montmollin, Adelaide,	2 00	Queen, Jas. W. & Co.	20 00
Martin, Mrs. O.	2 00		
		Rhodes, Miss E.	100 00
Neilson, Mrs. Robert	100 00	Roberts, Mrs. Edward	100 00

Richardson, Hannah	50 00	Steiner, D. P.	10 00
Richardson, John	50 00	Sill, Mrs. Joseph	10 00
Randolph, Evan	50 00	Symington, Miss Mary T.	5 00
Randolph, Juliana	50 00	Symington, Matilda W.	5 00
Randolph, Richard	50 00	Styles, H. A.	5 00
Robins, Mrs. Thos.	50 00	Springs, W. L.	5 00
Robinson, Moucure	50 00	Staley, Mrs. A.	5 00
Rhoads, Mary A.	50 00	Schott, Miss Mary W.	5 00
Rhoads, Chas.	30 00	Smith, Miss E. P.	5 00
Rosengarten, Mr.	25 00	Sulger, The Misses	2 00
Rubicam, Chas.	20 00	Snodgrass, Mrs.	2 00
Roberts, Algernon S.	20 00		
Roberts, Mrs. Algernon	20 00	Taylor, Mrs. Chas.	100 00
Ross, John	15 00	Tesseire, Mrs.	50 00
Rogers, Evans	10 00	Thompson, Wm. R.	25 00
Reed, R. S.	10 00	Thomas, Moses	25 00
Relf, Mrs. John	10 00	Thomas, Anna	25 00
Roberts, Lydia	10 00	Taylor, Mrs. J. D.	25 00
Robbins, Rev. J. W.	10 00	Thomas, John D.	10 00
Randolph, Mrs. J.	5 00	Tilge, Mrs. Henry	10 00
Ridgway, Mrs. Sarah	2 00	Thompson, Lavinia	6 00
		Tobey, Mrs. Sam'l	5 00
Smith, Geo. P.	100 00	Tevis, Mrs. B.	5 00
Smith, The Misses	100 00	Tingley, Mrs.	5 00
Smith, Mrs. Newberry A.	100 00	Twells, S. A.	5 00
Stewart, Mrs. Wm. H.	100 00		
Stuart, Mrs. Geo. H.	100 00	Valentine, Rob't	10 00
Smith, Lindley	50 00	Vaux, Wm. S.	5 00
Smith, Jacob R.	50 00		
Starr, Mrs. Isaac	50 00	Welsh, Mrs. Samuel	250 00
Sharpless Brothers	50 00	Welsh, Miss Rebecca M.	100 00
Sharpless, Townsend	50 00	Welsh, Miss Josephine E.	100 00
Stokes, Jos. W.	30 00	Welsh, Mrs. Mary R.	100 00
Swain, Mrs.	25 00	Welsh, Miss Anna M.	100 00
Spencer, Chas.	25 00	Wistar, Sarah	100 00
Salomon, Mrs. David	25 00	Williamson, Thos.	100 00
Smith, Mrs. J. P.	20 00	Whitall, Mary	100 00
Scattergood, Jos.	20 00	Whitney, Mrs. Asa	100 00
Smith, Mrs. J. J.	15 00	Workmen in Gasmeter	
Stockham, George	15 00	Factory of Code, Hopper & Gratz	85 00
Smith, Mrs. Wm.	10 00	Wetherill & Bros.	50 00
Stiles, Mr.	10 00	Waterman, Osborn & Co.	50 00
Savage, W. L.	10 00	Welsh, John, Jr.	50 00
Styles, Henry	10 00		



Wattson, Thos. B.	50 00	Workman & Co.	10 00
Wilson, Jos. R., West- chester	50 00	Wright, Rich'd	5 00
Wagner, Mrs. Tobias	50 00	Wiegand, Mrs.	5 00
White, W. R.	25 00	Willing, Mrs. C.	5 00
Warner, Martha Ann	25 00	Whitman, Mrs.	5 00
Willing, Mrs. Chas.	25 00	Whitman, W. E.	5 00
Wetherill, Charlotte	20 00	Ward & Bro.	5 00
Watson, Miss H. C.	20 00	Wyeth, Mr.	5 00
Wood, Caroline	10 00	Wernag, Mrs.	2 50
White, J. D.	10 00	Wiltmer, Mrs. J. Ringgold	2 50
Warder, Ann	10 00	Workman, Mrs.	2 50
Wallett, Mr. M. F.	10 00	Yarnall & Cooper	80 00
Wurts, Miss Eliza	10 00		



✓

