

MS Ethiopian 20

Publication/Creation

Ethiopia, 18th-19th century

Persistent URL

<https://wellcomecollection.org/works/trf9njfq>

License and attribution

This work has been identified as being free of known restrictions under copyright law, including all related and neighbouring rights and is being made available under the Creative Commons, Public Domain Mark.

You can copy, modify, distribute and perform the work, even for commercial purposes, without asking permission.



Wellcome Collection
183 Euston Road
London NW1 2BE UK
T +44 (0)20 7611 8722
E library@wellcomecollection.org
<https://wellcomecollection.org>



Handwritten text in a cursive script, likely a form of Old English or Old Norse, written in black ink on a parchment strip.

Handwritten text in a cursive script, likely a form of Old English or Old Norse, written in black ink on a parchment strip.

Handwritten text in a cursive script, likely a form of Old English or Old Norse, written in black ink on a parchment strip.







Handwritten text in a script, likely Ge'ez, written in black ink with some red ink used for headings or emphasis. The text is arranged in approximately 15 lines, following the curve of the scroll.

Handwritten text in a script, likely Ge'ez, continuing from the previous section. It is written in black ink with some red ink used for emphasis. The text is arranged in approximately 15 lines.



Handwritten text in an ancient script, likely Coptic, on a narrow strip of papyrus. The text is arranged in approximately 25 horizontal lines. Some lines are written in red ink, serving as section headers or markers. The script is dense and appears to be a form of liturgical or magical text.

Additional lines of handwritten text in the same script, continuing the text from the upper section.

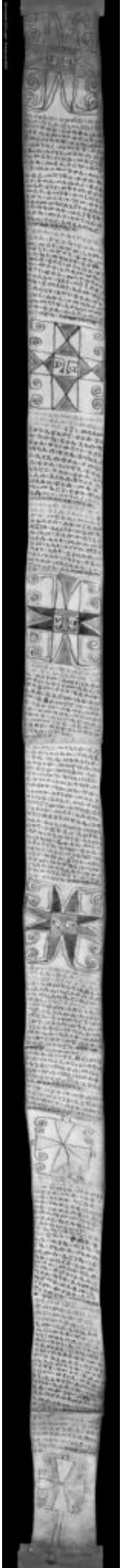




Handwritten text in Ge'ez script, likely a liturgical or historical document. The text is densely packed and follows the curve of the scroll. It begins with a large numeral '1' at the top. The script is a form of the Ethiopian Semitic languages, characterized by its unique characters and lack of vowels. The text appears to be a list or a series of entries, possibly names or titles, written in a formal, cursive hand.

Handwritten text in Ge'ez script, continuing the list or series of entries from the upper section. It is positioned above the decorative diagram and contains several lines of text.



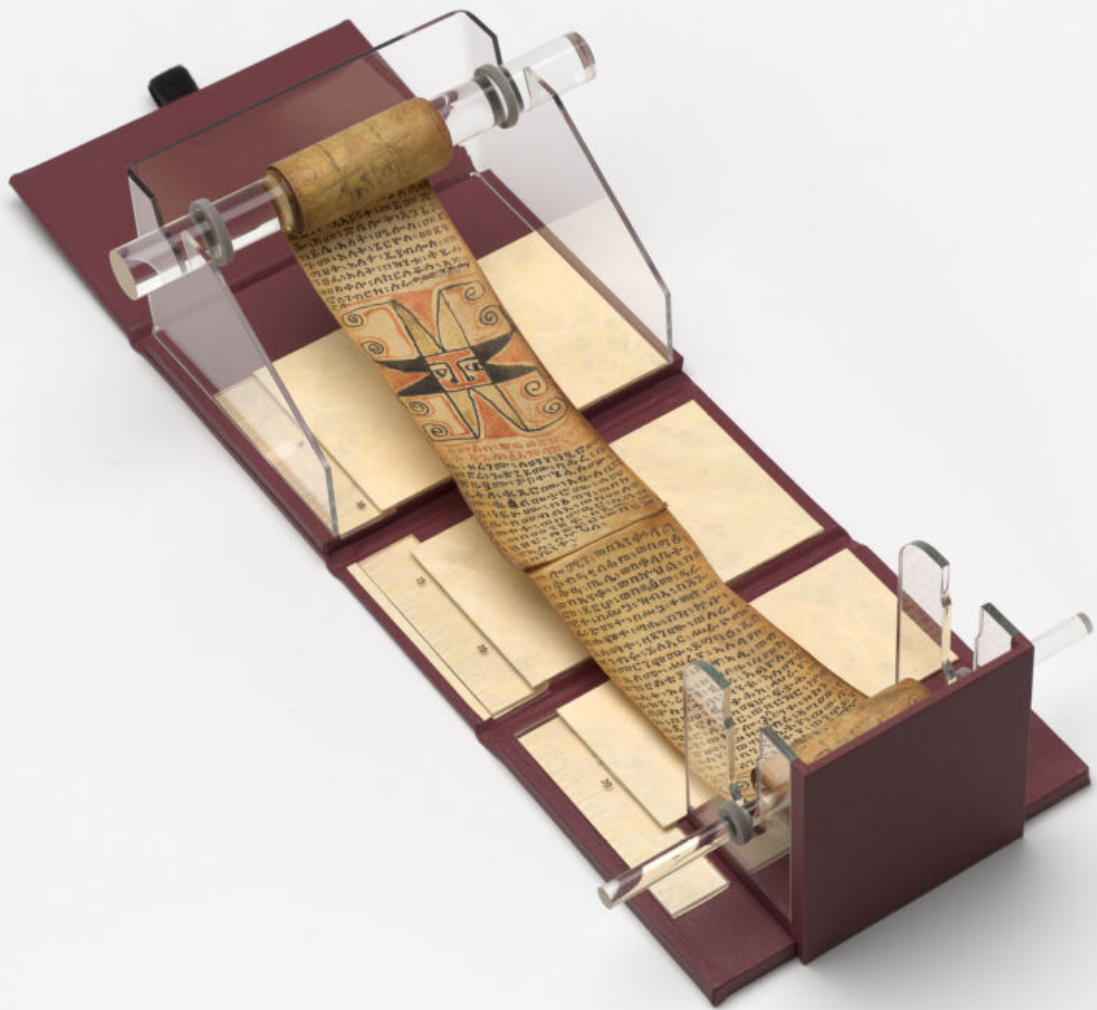


Handwritten text in an ancient script, likely Coptic, covering the upper portion of the scroll. The text is densely packed and follows the curve of the scroll.

Handwritten text in an ancient script, likely Coptic, covering the lower portion of the scroll, just above the drawing.



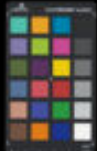












Handwritten text in a medieval script, likely Latin, consisting of several lines of dense, cursive handwriting.



Handwritten text in a medieval script, continuing the text from the previous section.



Handwritten text in a medieval script, continuing the text from the previous section.



Handwritten text in a medieval script, continuing the text from the previous section.



Handwritten text in a medieval script, continuing the text from the previous section.

