

Goldsmith, 1679. An almanack for the year of our Lord God, 1679. Being the third after leap-year, and from the creation, 5628. : Wherein are contained mainly observations, rules and tables both necessary and useful. With a description of the highways, marts and fairs in England and Wales, the like not extant in any other / calculated by John Goldsmith ; to which is added divers [sic] tables and other useful things which have not been in former years.

Contributors

Goldsmith, John, active 1678-1679
Clark, Mary, active 1677-1696
Stationers' Company (London, England)

Publication/Creation

London : Printed by Mary Clark, for the Company of Stationers, 1679.

Persistent URL

<https://wellcomecollection.org/works/xcmbv6ck>

License and attribution

This work has been identified as being free of known restrictions under copyright law, including all related and neighbouring rights and is being made available under the Creative Commons, Public Domain Mark.

You can copy, modify, distribute and perform the work, even for commercial purposes, without asking permission.



Wellcome Collection
183 Euston Road
London NW1 2BE UK
T +44 (0)20 7611 8722
E library@wellcomecollection.org
<https://wellcomecollection.org>



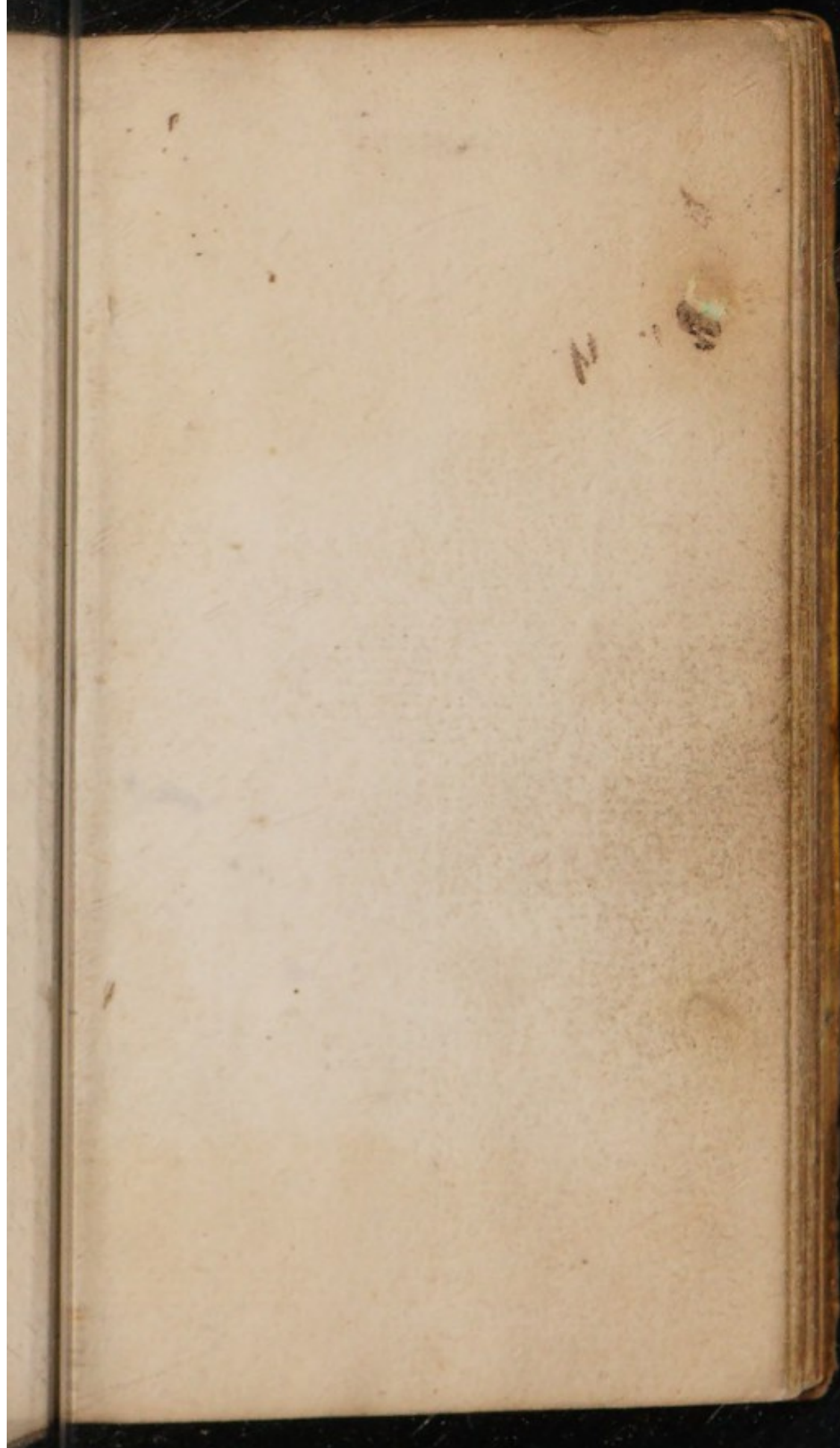


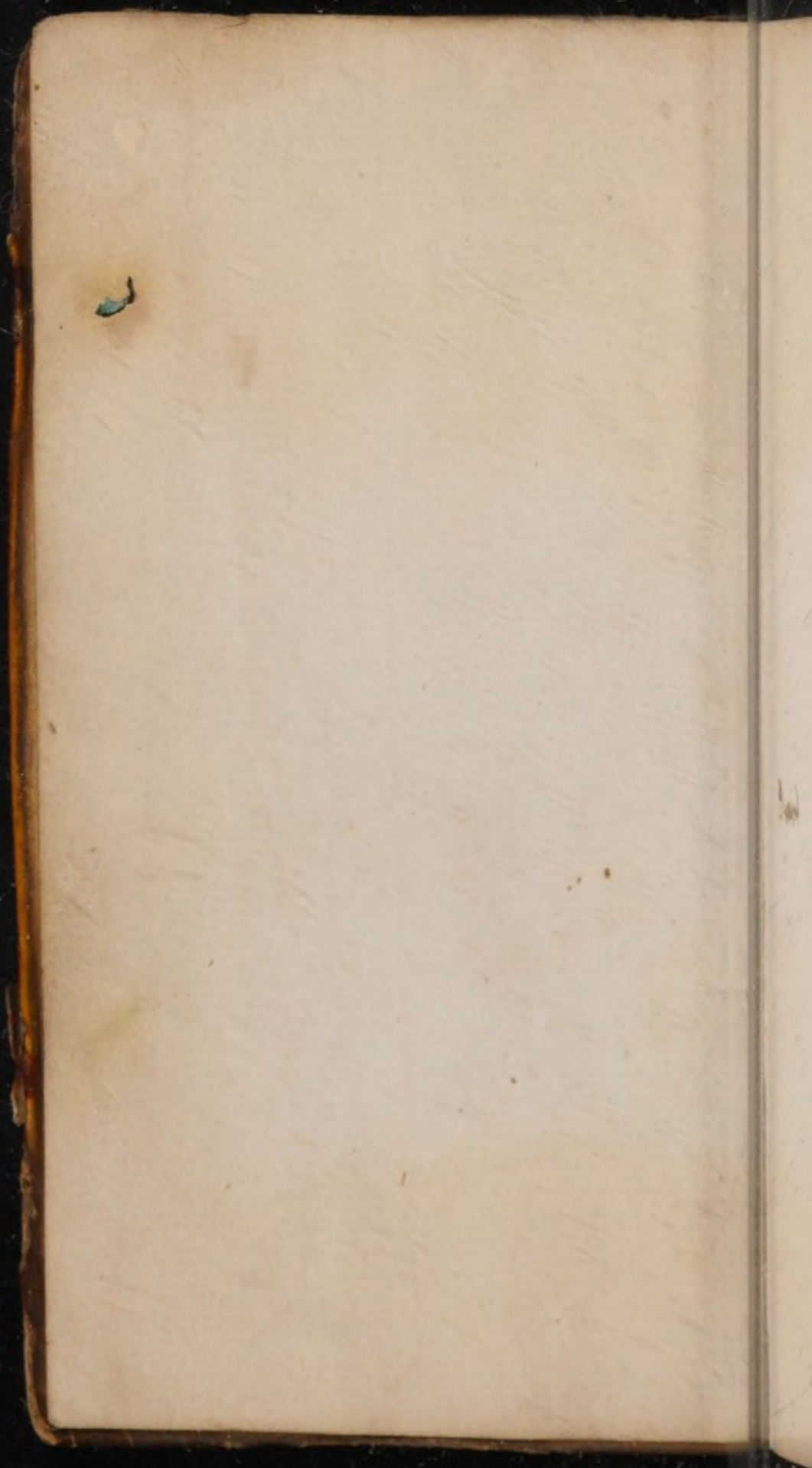


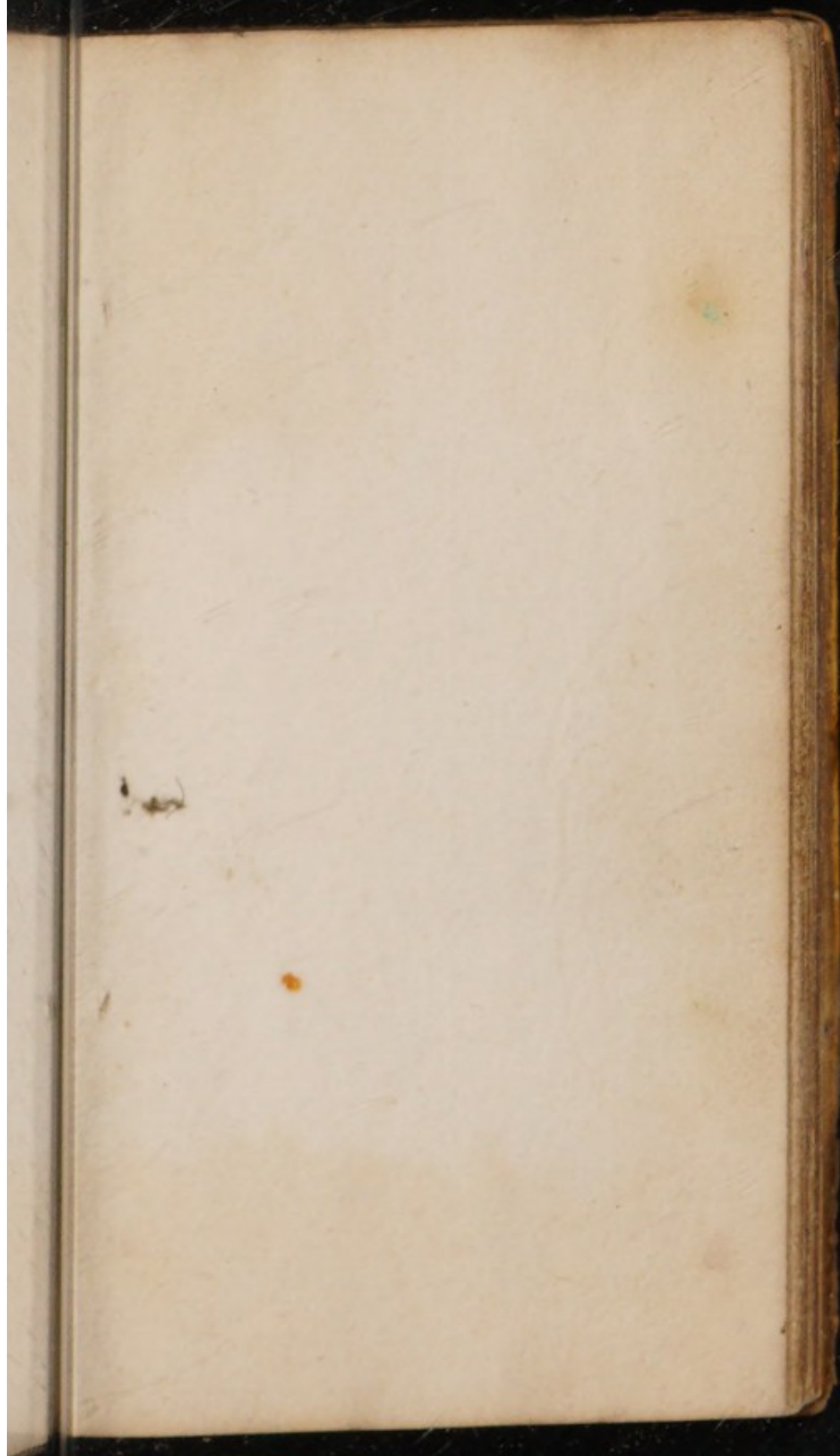


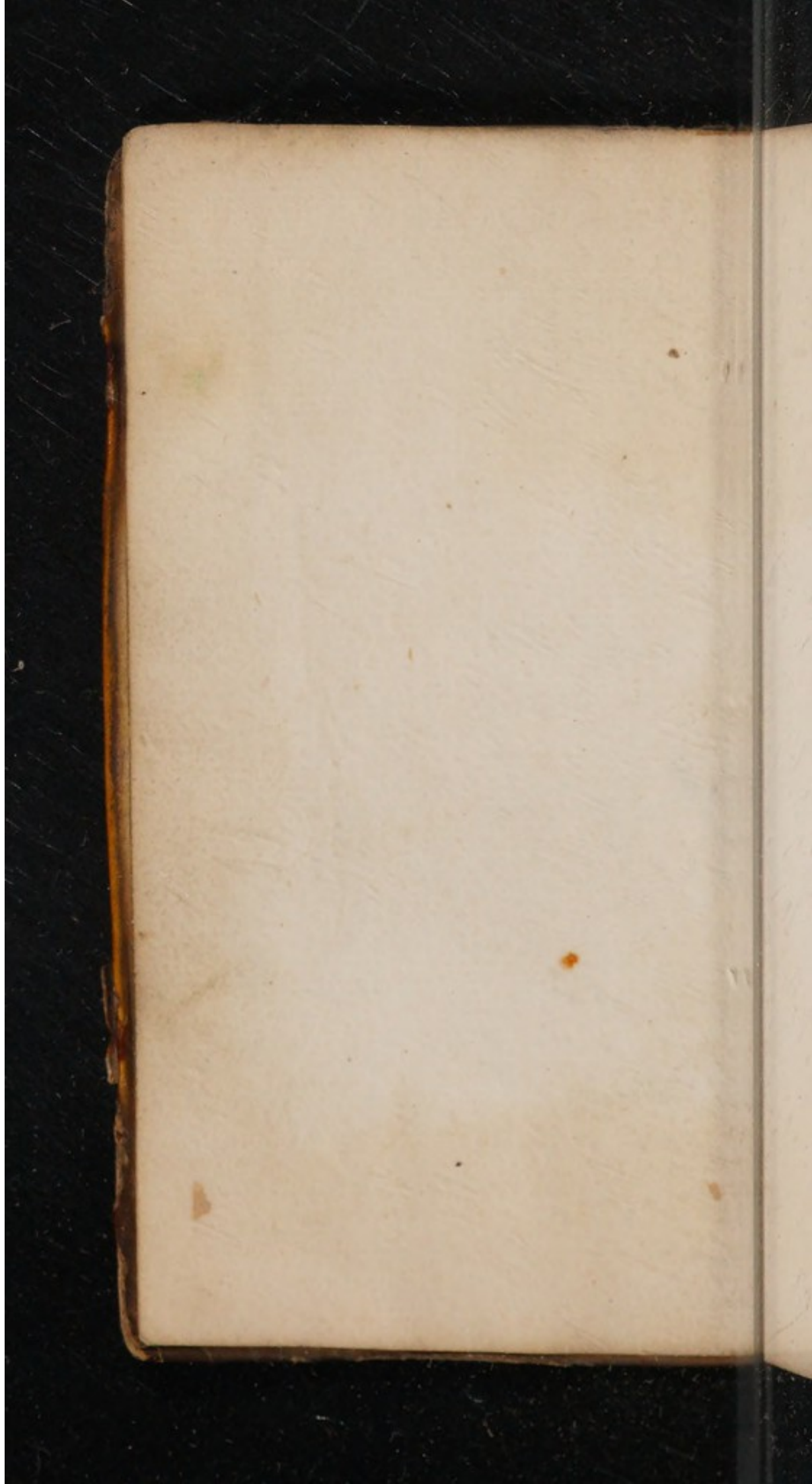


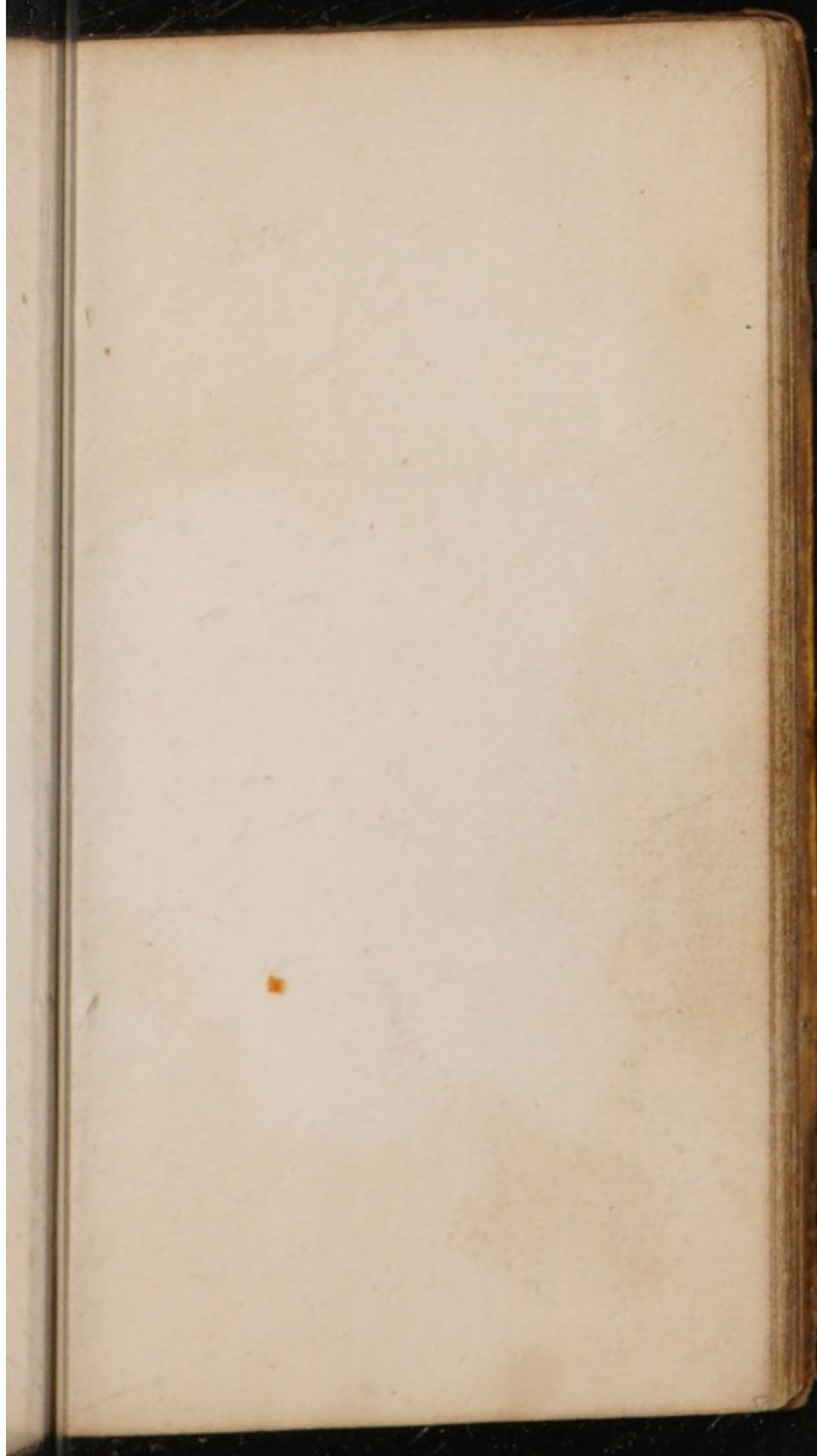
61971/A . F/H

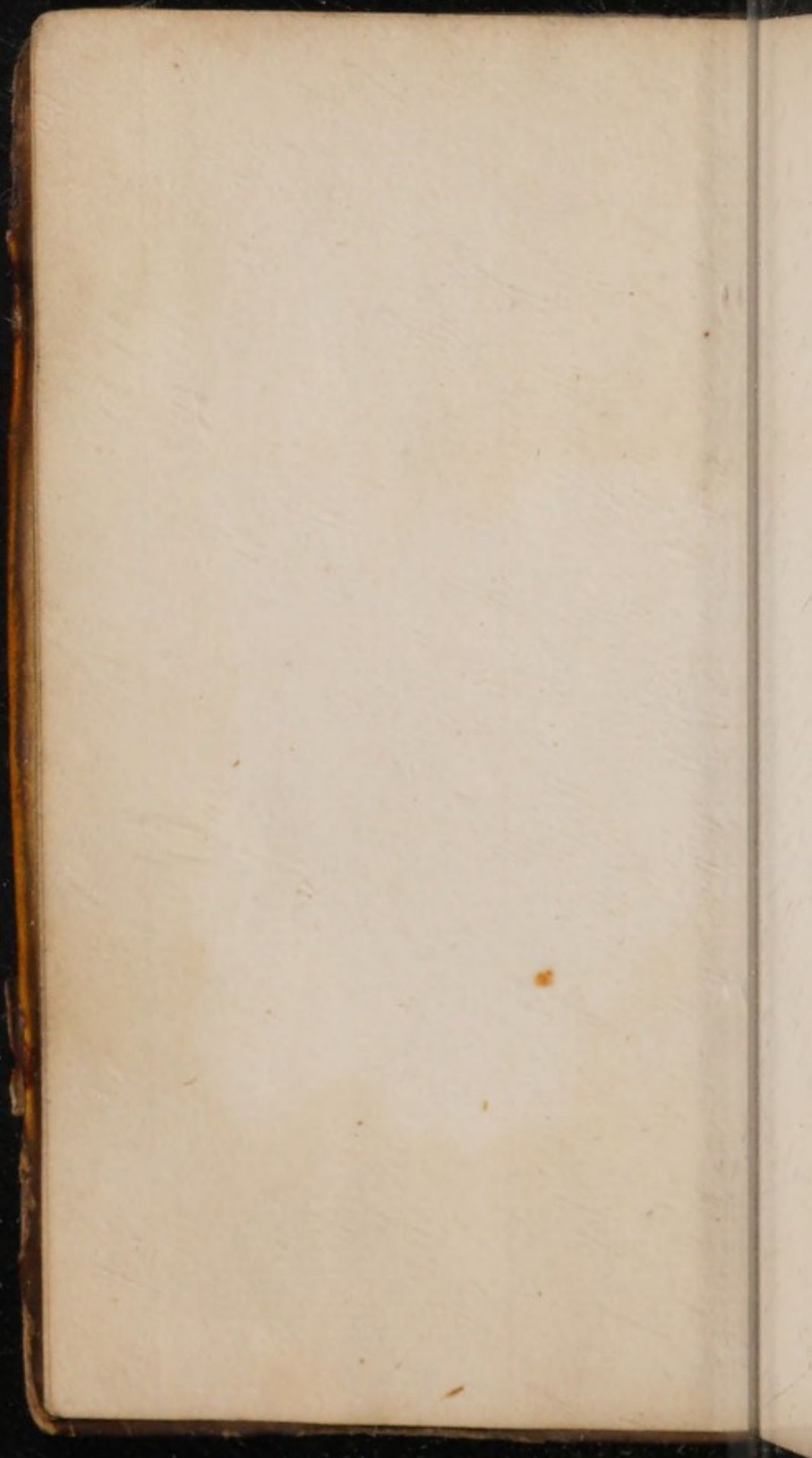


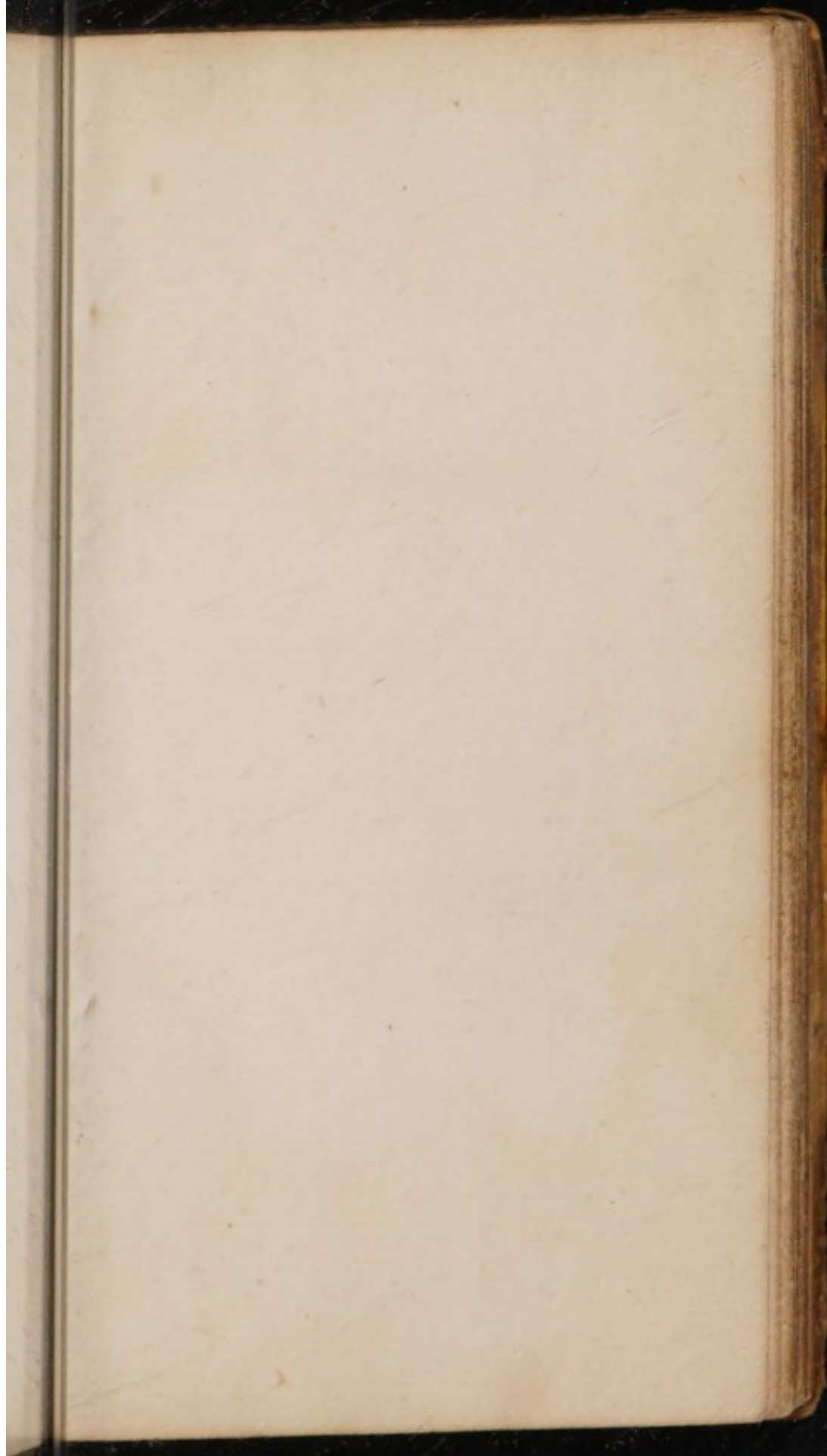


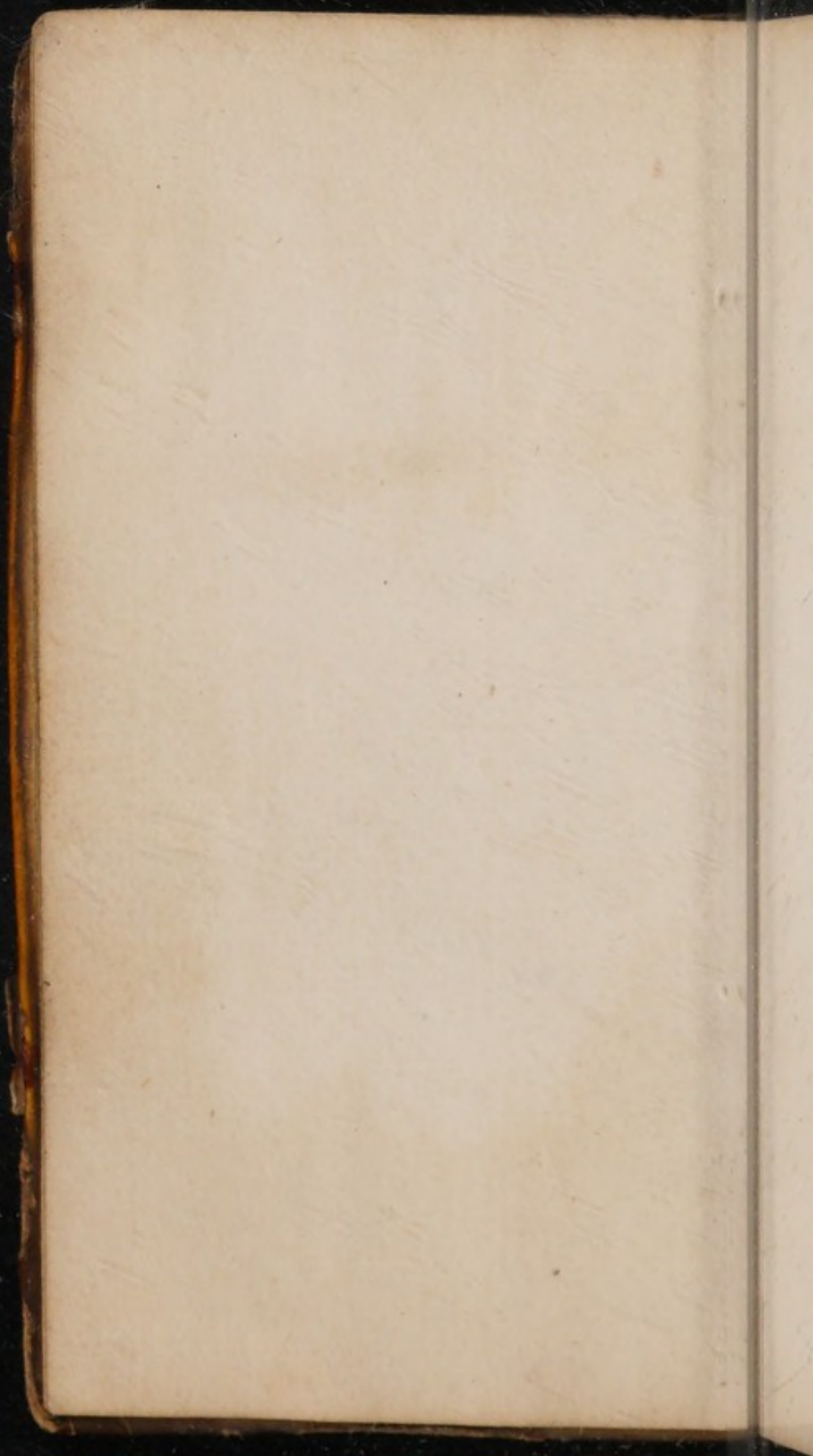




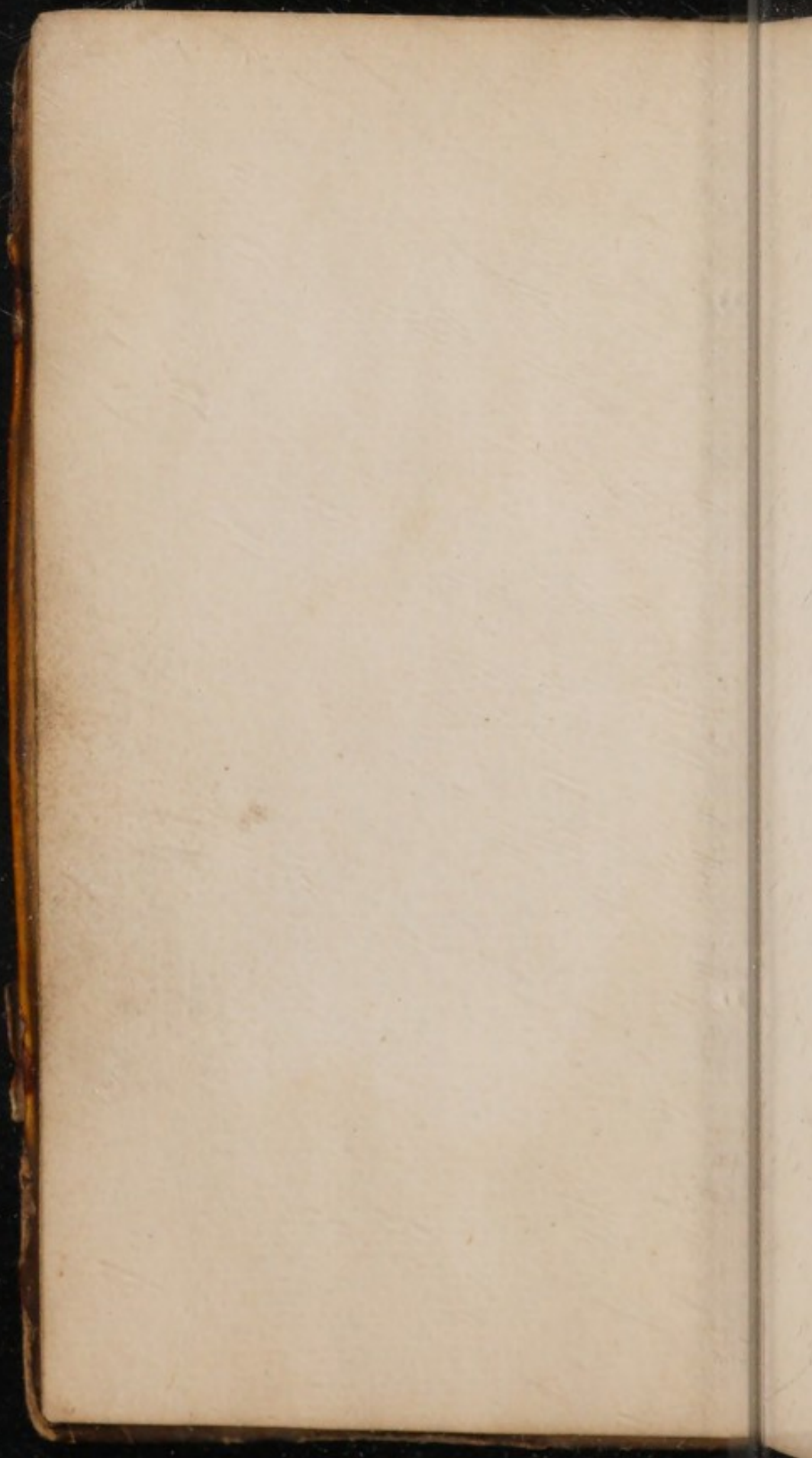


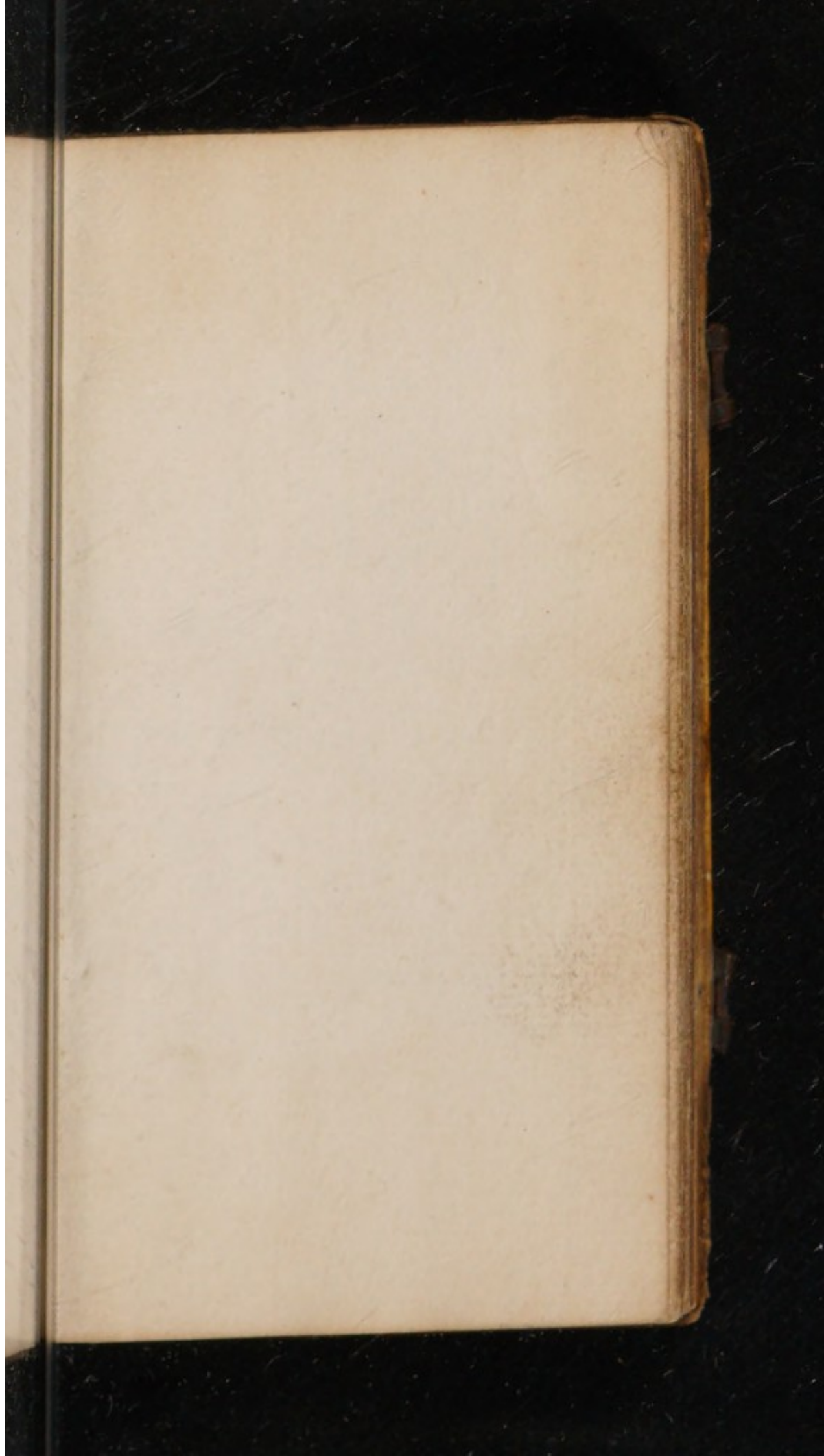












Q

A

The

Being

As

Whe

Ob

A De

En

Te

30

Dive

with

Prin

the c

Goldsmith, 1679.
A N
ALMANACK
F O R

The Year of our LORD GOD,

1 6 7 9.

Being the third after *Leap-Year*,
And from the Creation, 5628.

Wherein are contained many
Observations, Rules and Tables
both necessary and useful.

WITH
A Description of the *Highways*,
Marts and Fairs in

ENGLAND and WALES.

The like not extant in any other.

Calculated by

JOHN GOLDSMITH.

To which is added
Divers Tables and other useful things
which have not been in former years.

L O N D O N :

Printed by *Mary Clark*, for
the Company of **Stationers**, 1679.

January hath xxxi. days.

1	a	New year d.	capric.	8	2	4
2	b		capric.	8	0	4
3	c	Ciceron.	aquar.	7	58	5
4	d		aquar.	7	57	5
5	e	D. 8 h. 8 m.	pisces	7	56	5
6	f	Twelfth-da	pisces	7	55	5
7	g		aries	7	54	5
8	a	Lucie U.	aries	7	53	5
9	b		taurus	7	52	5
10	c	Sun in Aqu.	taurus	7	50	5
11	d		gemin.	7	49	5
12	e	1. aft. Epiph.	gemin.	7	47	5
13	f	Hillary B.	gemin.	7	46	5
14	g		cancer	7	45	5
15	a	D. 8 h. 32 m.	cancer	7	44	5
16	b		leo	7	42	5
17	c		leo	7	41	5
18	d		leo	7	39	5
19	e	2 aft. Epiph.	virgo	7	38	5
20	f	Fabian	virgo	7	36	5
21	g	Agnes	libra	7	34	5
22	a	Vincent	libra	7	32	5
23	b	Term begins	libra	7	31	5
24	c		scorpio	7	30	5
25	d	Conv. S. Paul	scorpio	7	28	5
26	e	3 aft. Epiph.	sagitt.	7	26	5
27	f		sagitt.	7	25	5
28	g	D. 9 h. 14 m.	capric.	7	23	5
29	a		capric.	7	21	5
30	b	K. Char. I. M.	aquar.	7	20	5
31	c		aquar.	7	18	5

14

2 4
0 4
58 5
57 5
56 5
55 5
54 5
53 5
52 5
50 5
49 5
47 5
46 5
45 5
44 5
43 5
41 5
39 5
38 5
36 5
34 5
33 5
31 5
29 5
28 5
26 5
25 5
23 5
21 5
20 5
19 5

1/3
2/4
3/4
4/5
5/6
6/7
7/7
8/8
9/9
10/10
11/11
12/12
13/13
14/14
15/15
16/16
17/17
18/18
19/19
20/20
21/21
22/22
23/23
24/24
25/25
26/26
27/27
28/28
29/29
30/30
31/31
32/32
33/33
34/34
35/35
36/36
37/37
38/38
39/39
40/40
41/41
42/42
43/43
44/44
45/45
46/46
47/47
48/48
49/49
50/50
51/51
52/52
53/53
54/54
55/55
56/56
57/57
58/58
59/59
60/60
61/61
62/62
63/63
64/64
65/65
66/66
67/67
68/68
69/69
70/70
71/71
72/72
73/73
74/74
75/75
76/76
77/77
78/78
79/79
80/80
81/81
82/82
83/83
84/84
85/85
86/86
87/87
88/88
89/89
90/90
91/91
92/92
93/93
94/94
95/95
96/96
97/97
98/98
99/99
100/100

January, 1679.

1	3	0	12 day	h	is with the D.	11	d
2	3	48	8 day	h		12	e
3	4	36	17 day	h		13	f
4	5	24	12 day	h		14	g
5	6	12	3 day	h		15	a
6	7	0	10 day	7*s		16	b
7	7	48	New Moon			17	c
8	8	36	The 2. day, 17 m.			18	d
9	9	24	past 12 at noon.			19	e
10	10	12	Wind and Rain.			20	f
11	11	0	First Quarter			21	g
12	11	48	The 9. day, 20 m.			22	a
13	12	36	past 3 in morn.			23	b
14	1	24	Fogs & Mists.			24	c
15	2	12	Full Moon			25	d
16	3	0	The 16. day, at 6			26	e
17	3	48	at night.			27	f
18	4	36	Frost & very Cold.			28	g
19	5	24				29	a
20	6	12				30	b
21	7	0	Last Quarter			31	c
22	7	48	The 24. day, at		Febr.	2	e
23	8	36	10 at night.			3	f
24	9	24	Windy and Wet.			4	g
25	10	12				5	a
26	11	0				6	b
27	11	48	New Moon			7	c
28	12	36	The 31. day, at			8	d
29	1	24	8 at night.			9	e
30	2	12	Hail Storms.			10	f
31	3	0					

High Water at London-Bridge.

February hath xxviii. days.

1	d		pisce	7	17	5
2	e	Purific. Ma.	pisces	7	16	5
3	f	D. 9 h. 32 m.	aries	7	14	5
4	g		aries	7	13	5
5	a		aries	7	11	5
6	b	D. 9 h. 40 m.	taurus	7	10	5
7	c		taurus	7	8	5
8	d		gemini	7	6	5
9	e	5 aft. Epiph.	gemini	7	4	5
10	f	Sun in Pisc.	cancer	7	2	5
11	g		cancer	6	59	6
12	a	Term ends	leo	6	58	6
13	b		leo	6	56	6
14	c	Valentine	leo	6	55	6
15	d		virgo	6	54	6
16	e	Septuagesima	virgo	6	53	6
17	f		libra	6	51	6
18	g		libra	6	48	6
19	a	Sabine	libra	6	46	6
20	b		scorpio	6	44	6
21	c		scorpio	6	42	6
22	d	D. 9 h. 40 m.	sagitta.	6	40	6
23	e	Sexagesima	sagitta.	6	38	6
24	f	S. Matthias	sagitta.	6	35	6
25	g		capric.	6	32	6
26	a		capric.	6	30	6
27	b	Augustine	aquar.	6	27	6
28	c	D. 11 h. 16 m.	aquar.	6	24	6

173.

77 5
76 5
74 5
73 5
71 9
70 5
68 5
66 5
64 5
62 5
60 6
58 6
56 6
54 6
52 6
50 6
48 6
46 6
44 6
42 6
40 6
38 6
36 6
34 6
32 6
30 6
28 6
26 6
24 6

1
2
3
4
5
6
7
8
9
10
11
12
13
14
15
16
17
18
19
20
21
22
23
24
25
26
27
28
29
30

February, 1679.

1	3	48	9 day	h	is with the D.	11	g
C	4	36	3 day	h		12	a
	5	24	12 day	o		13	b
	6	12	day	o		14	c
	7	0	28 day	o		15	d
	8	48	7 day 7 ^{*s}	o		16	e
	9	36	First Quarter			17	f
	10	24	The 7. day, 26 m.			18	g
C	11	12	past 2 afternoon			19	a
	12	0	Wind and Rain.			20	b
	13	48				21	c
	14	36				22	d
	15	24	Full Moon			23	e
	16	12	The 15. day, 26 m.			24	f
	17	0	aft. 12 at noon.			25	g
C	18	48	Snow or Slect.			26	a
	19	36				27	b
	20	24				28	c
	21	12				Marc.	
	22	0				2	e
	23	48	Last Quarter			3	f
	24	36	The 23. day, 26 m.			4	g
C	25	24	past 2 aftern.			5	a
	26	12	Moist Air & very			6	b
	27	0	Cold.			7	c
	28	48				8	d
		36				9	e
		24				10	f

March hath xxxi. days.

1	d	David B.	pisces	6	23	6
2	e	Shrove-Sun.	pisces	6	20	6
3	f		aries	6	18	6
4	g	Shrove Tuf.	aries	6	16	6
5	a	Ash-Wedn f.	taurus	6	14	6
6	b		taurus	6	11	6
7	c	D. 11h. 52m.	gemini	6	9	6
8	d		gemini	6	7	6
9	e	Quadrages.	cancer	6	5	6
10	f		cancer	6	3	6
11	g	Equinoctial	cancer	6	0	6
12	a	Day 12 hou.	leo	5	59	7
13	b	Ember week	leo	5	57	7
14	c	Candle	virgo	5	56	7
15	d		virgo	5	54	7
16	e	Reminiscere	virgo	5	52	7
17	f		libra	5	50	7
18	g	D. 12h. 24m.	libra	5	48	7
19	a		scorpio	5	46	7
20	b	Benedict.	scorpio	5	44	7
21	c		scorpio	5	42	7
22	d		sagitt.	5	40	7
23	e	Oculi	sagitt.	5	39	7
24	f		capric.	5	37	7
25	g	Annun. Mar.	capric.	5	36	7
26	a		aquar.	5	34	7
27	b		aquar.	5	32	7
28	c	Uital. B.	pisces	5	30	7
29	d		pisces	5	28	7
30	e	Letare	aries	5	26	7
31	f	D. 13h. 12m.	aries	5	24	7

23 6
22 6
18 6
16 6
14 6
11 6
9 6
7 6
5 6
4 6
6 6
57 7
57 7
56 7
54 7
52 7
50 7
48 7
46 7
44 7
42 7
40 7
38 7
36 7
34 7
32 7
30 7
28 7
26 7
24 7

March, 1679.

1	2	12	8 day	H	} is with the ☾	11	g
☾	3	0	3 day	W		12	ai
3	3	48	11 day	♂		13	b
4	4	36	3 day	♂		14	c
5	5	24	31 day	♂		15	d
6	6	12	6 day 7	*s		16	e
7	7	0	New Moon			17	f
8	7	48	The 7. day, 43 m.			18	g
☾	8	36	past 8 in morn.			19	ai
10	9	24	Wet and Windy.			20	b
11	10	12				21	c
12	11	0	First Quarter			22	d
13	11	48	The 9. day, 47 m.			23	e
14	12	36	past 3 in morn.			24	f
15	1	24	Fair.			25	g
☾	2	12				26	ai
17	3	0	Full Moon			27	b
18	4	52	The 17. day, 8 m.			28	c
19	4	43	after 4 morning.			29	d
20	5	35	Good Spring-wea.			30	e
21	6	26				31	f
22	7	18	Last Quarter			April	
☾	8	10	The 25. day, 15 m.			2	ai
24	9	2	after 3 morning.			3	b
25	9	53	White hoary fro.			4	c
26	10	45				5	d
27	11	37	New Moon			6	e
28	12	28	The 31. day, 32 m.			7	f
29	1	20	aft. 5 afternoon.			8	g
☾	2	11	Windy.			9	ai
31	3	0	A 4			10	b


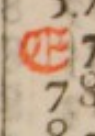
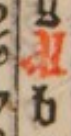






April hath xxx. days.

1	g		taurus	5	20	7
2	a	D. 13 ^h . 44 ^m .	taurus	5	18	7
3	b	Ambrose	gemini	5	16	7
4	c		gemini	5	14	7
5	d		gemini	5	12	7
6	e	Judica	cancer	5	10	7
7	f		cancer	5	7	7
8	g	D. 13 ^h . 52 ^m .	leo	5	4	7
9	a		leo	5	2	7
10	b	Day 14 ^h hon.	virgo	5	0	7
11	c	Leo 12.	virgo	4	58	8
12	d	Sun in Taur.	virgo	4	57	8
13	e	Palm-Sund.	libra	4	55	8
14	f		libra	4	53	8
15	g	D. 14 ^h . 16 ^m .	scorpio	4	52	8
16	a		scorpio	4	50	8
17	b	Maun. Thurs.	scorpio	4	48	8
18	c	Good Friday.	sagitt.	4	46	8
19	d		sagitt.	4	44	8
20	e	Easter-Day	capric.	4	42	8
21	f		capric.	4	40	8
22	g	D. 14 ^h . 42 ^m	aquar.	4	39	8
23	a		aquar.	4	37	8
24	b	Wilfride	aquar.	4	35	8
25	c	S. Mark Ev.	pisces	4	33	8
26	d		pisces	4	31	8
27	e	Quasimod.	aries	4	29	8
28	f		aries	4	27	8
29	g	D. 15 ^h . 10 ^m .	taur.	4	25	8
30	a		taur.	4	23	

20 7
18 7
16 7
14 7
12 7
10 7
7 7
4 7
2 7
0 7
58 8
57 8
55 8
53 8
51 8
49 8
47 8
45 8
43 8
41 8
39 8
37 8
35 8
33 8
31 8
29 8
27 8
25 8
23

13
24
35
46
57
67
78
89
910
1011
1111
1212
13
142
153
163
174
185
196
207
218
229
239
2410
2511
2612
271
281
293
303

April, 1679.

1	3	48	4 day	h	is with the 	11	c
2	4	36	28 day	h		12	d
3	5	24	8 day	h		13	e
4	6	12	1 day	h		14	f
5	7	0	day	h		15	g
	7	48	2 day 7	s		16	
7	8	36				17	b
8	9	24				18	c
9	10	12	First Quarter			19	d
10	11	0	The 7. day, 56 m.			20	e
11	11	48	after 6 at night.			21	f
12	12	36	Fair and clear.			22	g
	1	24				23	
14	2	12				24	b
15	3	0	Full Moon			25	c
16	3	52	The 15. day a			26	d
17	4	43	quarter before			27	e
18	5	35	12 at noon.			28	f
19	6	26	Flying Clouds			29	g
	7	18	and showers.			30	
21	8	10				May	
22	9	2				2	c
23	9	53	Last Quarter			3	d
24	10	45	The 23. day, at			4	e
25	11	37	12 at noon.			5	f
26	12	28	Windy.			6	g
	1	20				7	
28	2	11	New Moon			8	b
29	3	0	The 29. day, 26 m.			9	c
30	3	48	after 7 at night.			10	d
			Rain. A 5				

High-Water at London-Bridge.

May hath xxxi. days.

1	b	Phil. & Jacob	gemini	4	22	8
2	c	Athanasio	gemini	4	21	8
3	d		cancer	4	20	8
4	e	Misericordia	cancer	4	19	8
5	f		leo	4	17	8
6	g	J. Do. Lat	leo	4	15	8
7	a	Term begins	leo	4	13	8
8	b		virgo	4	12	8
9	c	D. 15 ^h . 38 ^m .	virgo	4	11	8
10	d		libra	4	10	8
11	e	Jubilate	libra	4	9	8
12	f	Sun in Gem.	libra	4	7	8
13	g	D. 15 ^h . 38 ^m .	scorpio	4	6	8
14	a		scorpio	4	5	8
15	b		sagitt.	4	3	8
16	c	Peregrine	sagitt.	4	2	8
17	d	Day 16 hou.	capric.	4	0	8
18	e	Cantate	capric.	3	59	9
19	f		capric.	3	58	9
20	g		aquar.	3	56	9
21	a	Julian A.	aquar.	3	55	9
22	b	D. 16 ^h . 12 ^m .	pisces	3	54	9
23	c		pisces	3	53	9
24	d		aries	3	53	9
25	e	Rogat. Sund	aries	3	52	9
26	f		taurus	3	52	9
27	g		taurus	3	52	9
28	a	D. 16 ^h . 18 ^m .	gemini	3	51	9
29	b	Ascension d.	gemini	3	51	9
30	c	K. Char. II. N	cancer	3	50	9
31	d		cancer	2	50	9

22 8
21 8
20 8
19 8
18 8
17 8
16 8
15 8
14 8
13 8
12 8
11 8
10 8
9 8
8 8
7 8
6 8
5 8
4 8
3 8
2 8
1 8
0 8
99 9
98 9
97 9
96 9
95 9
94 9
93 9
92 9
91 9
90 9
89 9
88 9
87 9
86 9
85 9
84 9
83 9
82 9
81 9
80 9
79 9
78 9
77 9
76 9
75 9
74 9
73 9
72 9
71 9
70 9
69 9
68 9
67 9
66 9
65 9
64 9
63 9
62 9
61 9
60 9
59 9
58 9
57 9
56 9
55 9
54 9
53 9
52 9
51 9
50 9
49 9
48 9
47 9
46 9
45 9
44 9
43 9
42 9
41 9
40 9
39 9
38 9
37 9
36 9
35 9
34 9
33 9
32 9
31 9
30 9
29 9
28 9
27 9
26 9
25 9
24 9
23 9
22 9
21 9
20 9
19 9
18 9
17 9
16 9
15 9
14 9
13 9
12 9
11 9
10 9
9 9
8 9
7 9
6 9
5 9
4 9
3 9
2 9
1 9
0 9
99 8
98 8
97 8
96 8
95 8
94 8
93 8
92 8
91 8
90 8
89 8
88 8
87 8
86 8
85 8
84 8
83 8
82 8
81 8
80 8
79 8
78 8
77 8
76 8
75 8
74 8
73 8
72 8
71 8
70 8
69 8
68 8
67 8
66 8
65 8
64 8
63 8
62 8
61 8
60 8
59 8
58 8
57 8
56 8
55 8
54 8
53 8
52 8
51 8
50 8
49 8
48 8
47 8
46 8
45 8
44 8
43 8
42 8
41 8
40 8
39 8
38 8
37 8
36 8
35 8
34 8
33 8
32 8
31 8
30 8
29 8
28 8
27 8
26 8
25 8
24 8
23 8
22 8
21 8
20 8
19 8
18 8
17 8
16 8
15 8
14 8
13 8
12 8
11 8
10 8
9 8
8 8
7 8
6 8
5 8
4 8
3 8
2 8
1 8
0 8

14
15
16
17
18
19
20
21
22
23
24
25
26
27
28
29
30
31
32
33
34
35
36
37
38
39
40
41
42
43
44
45
46
47
48
49
50
51
52
53
54
55
56
57
58
59
60
61
62
63
64
65
66
67
68
69
70
71
72
73
74
75
76
77
78
79
80
81
82
83
84
85
86
87
88
89
90
91
92
93
94
95
96
97
98
99
100

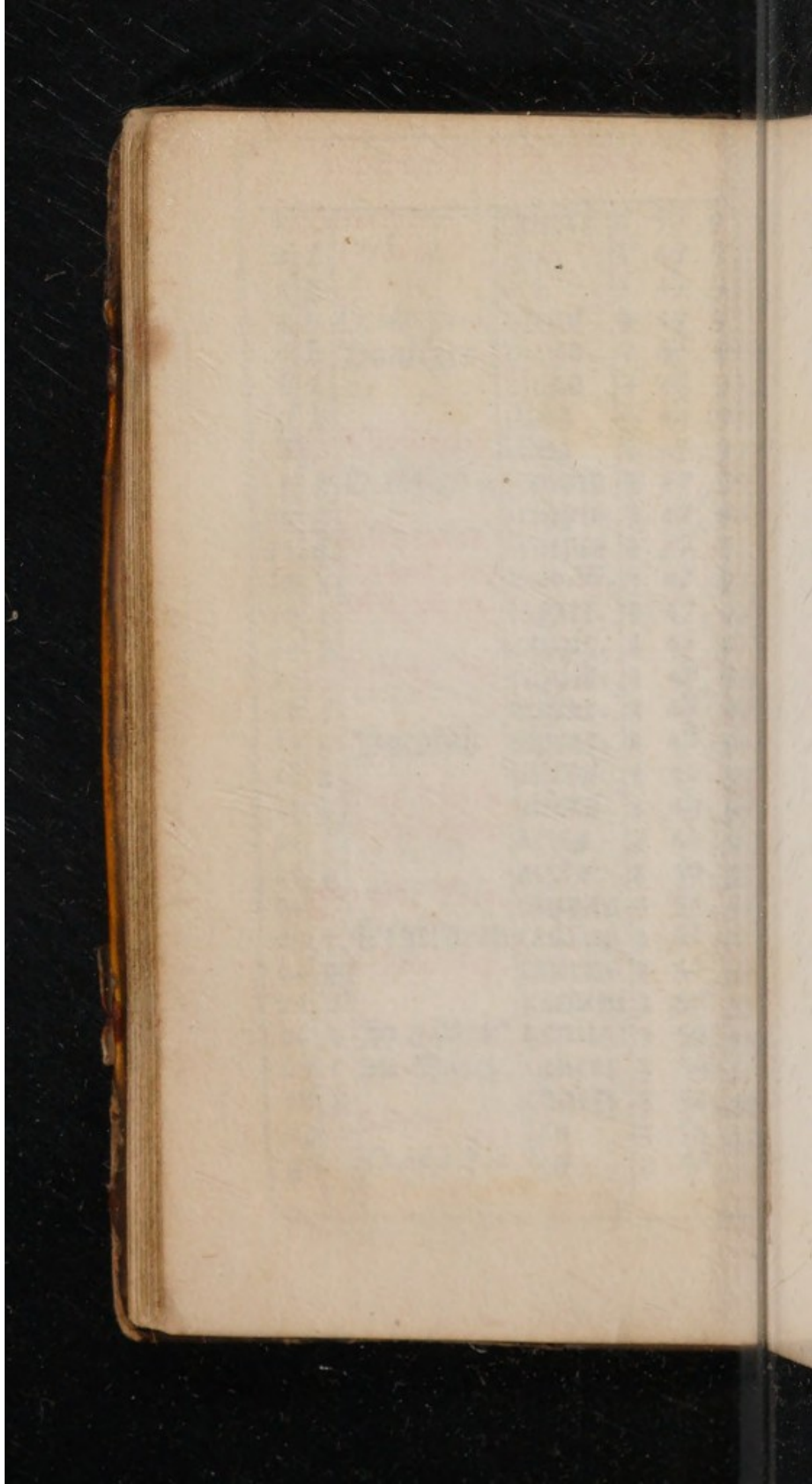
May, 1679.

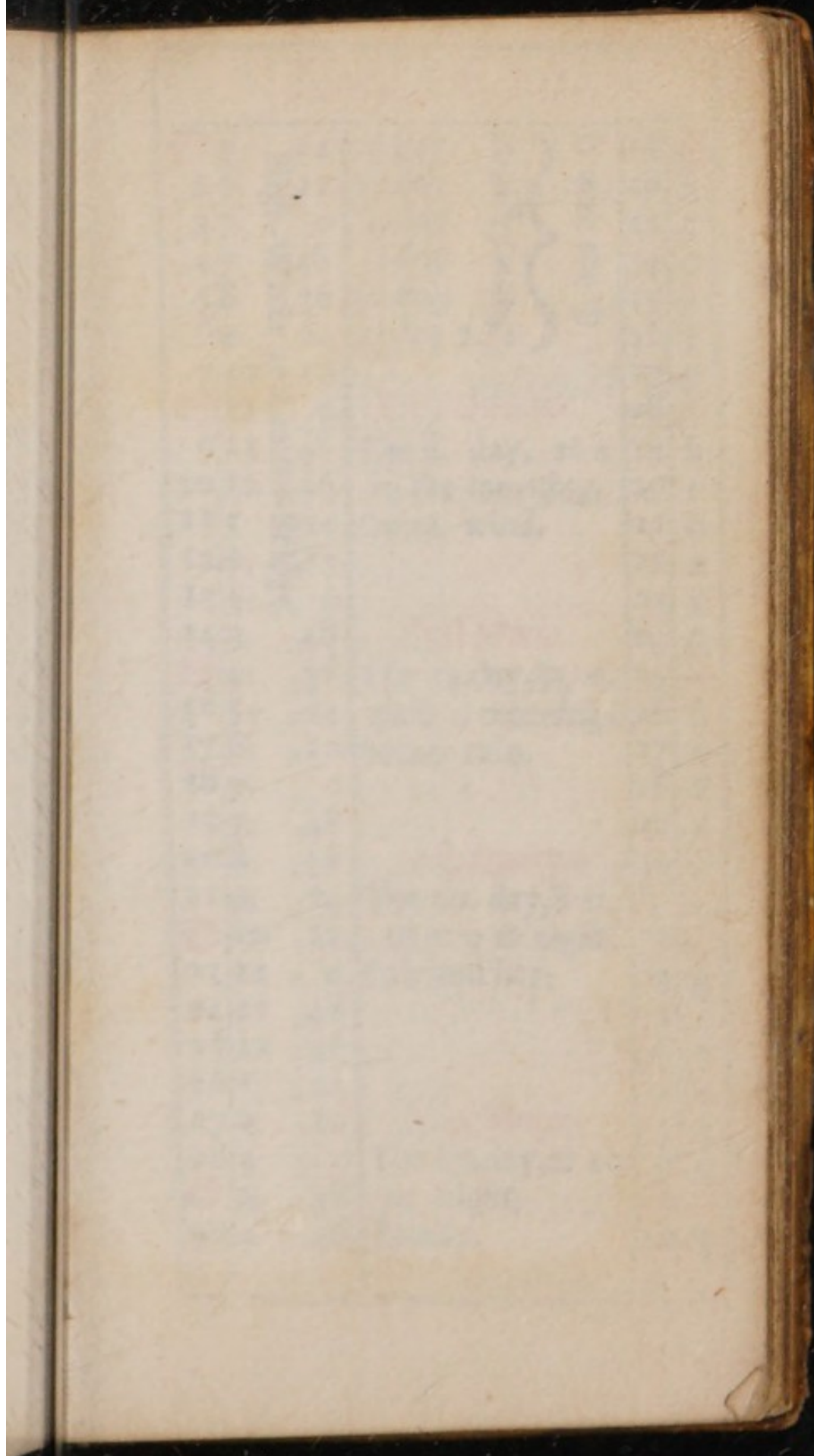
1	4	36	2 day	h	} is with the D.	11	e
2	5	24	26 day	V		12	f
3	6	12	6 day	o		13	g
CE 7	0	0	1 day	o		14	A
5	7	48	1 day	o		15	h
6	8	36	27 day 7	*s		16	i
7	9	24	First Quarter			17	D
8	10	12	The 7. day, at 11			18	e
9	11	0	before noon.			19	f
10	11	48	Fair and pleasant.			20	g
CE 12	36					21	A
12	1	24				22	b
13	2	12	Full Moon			23	c
14	3	0	The 15. day, 23 m.			24	D
15	3	48	past 12 at noon.			25	e
16	4	36	Very hot.			26	f
17	5	24				27	g
CE 6	12					28	A
19	7	0	Last Quarter			29	b
20	7	48	The 23. day at 33			30	c
21	8	36	m. in the morn.			31	D
22	9	24	Rain cooling the		June	2	e
23	10	12	Air.			3	f
24	11	0				4	A
CE 11	48					5	b
26	1	36	New Moon			6	c
27	1	24	The 29. day, 25			7	D
28	2	12	m. past 11 in the			8	e
29	3	0	forenoon.			9	f
30	3	48	Clear Air and				
31	4	36	fair weather.				

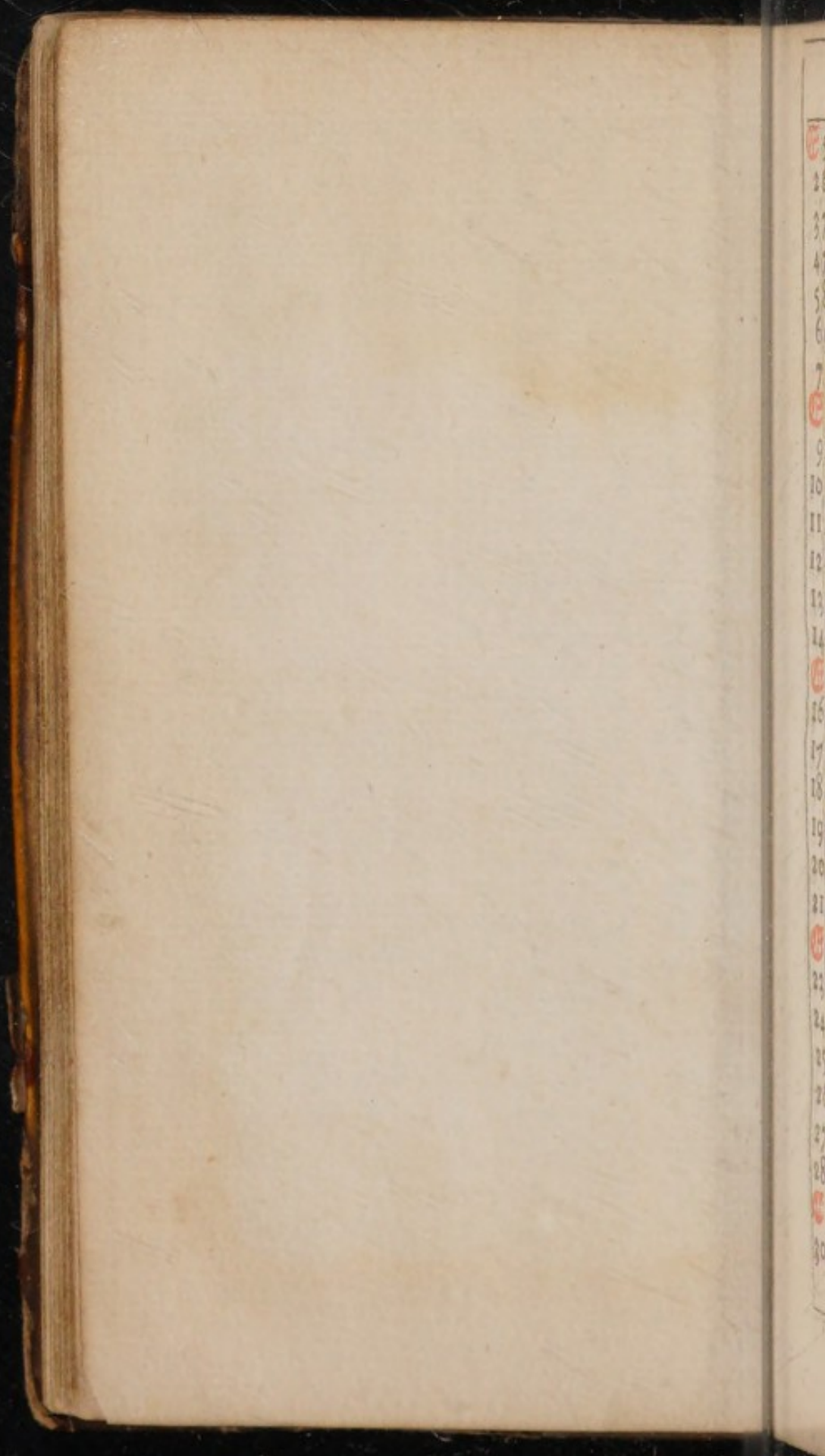
June hath xxx. days.

1	E	Exaudi	cancer	3	50	9
2	f	Term ends	leo	3	49	9
3	g		leo	3	49	9
4	a	D. 16h. 22 m.	virgo	3	49	9
5	b	Boniface	virgo	3	48	9
6	c		virgo	3	48	9
7	d		libra	3	48	9
8	E	Whitsunday	libra	3	47	9
9	f	D. 16h. 26 m.	scorpio	3	47	9
10	g		scorpio	3	47	9
11	a	S. Barnabas	scorpio	3	47	9
12	b	Longest Day	Emb. W.	3	47	9
13	c	16 h. 26 m.	sagitt.	3	47	9
14	d		capric.	3	47	9
15	E	Trinity Sun.	capric.	3	48	9
16	f		aquar.	3	48	9
17	g	Botolph	aquar.	3	48	9
18	a		pisces	3	49	9
19	b	Corp. Christi	pisces	3	49	9
20	c	Term begins	aries	3	49	9
21	d		aries	3	50	9
22	E	1 aft. Trin.	taurus	3	51	9
23	f	Ethelred	taurus	3	51	9
24	g	S. John Bap.	taurus	3	52	9
25	a		gemini	3	52	9
26	b	Jo. & Paul	gemini	3	53	9
27	c	vii. Sleep.	cancer	3	53	9
28	d		cancer	3	54	9
29	E	S. Peter Ap.	leo	3	55	9
30		D. 16 h. 8 m.	leo	3	56	9

50 9
49 9
49 9
49 9
48 9
48 9
48 9
47 9
47 9
47 9
47 9
47 9
47 9
47 9
48 9
48 9
49 9
49 9
49 9
50 9
51 9
51 9
52 9
52 9
52 9
53 9
54 9
55 9
56 9







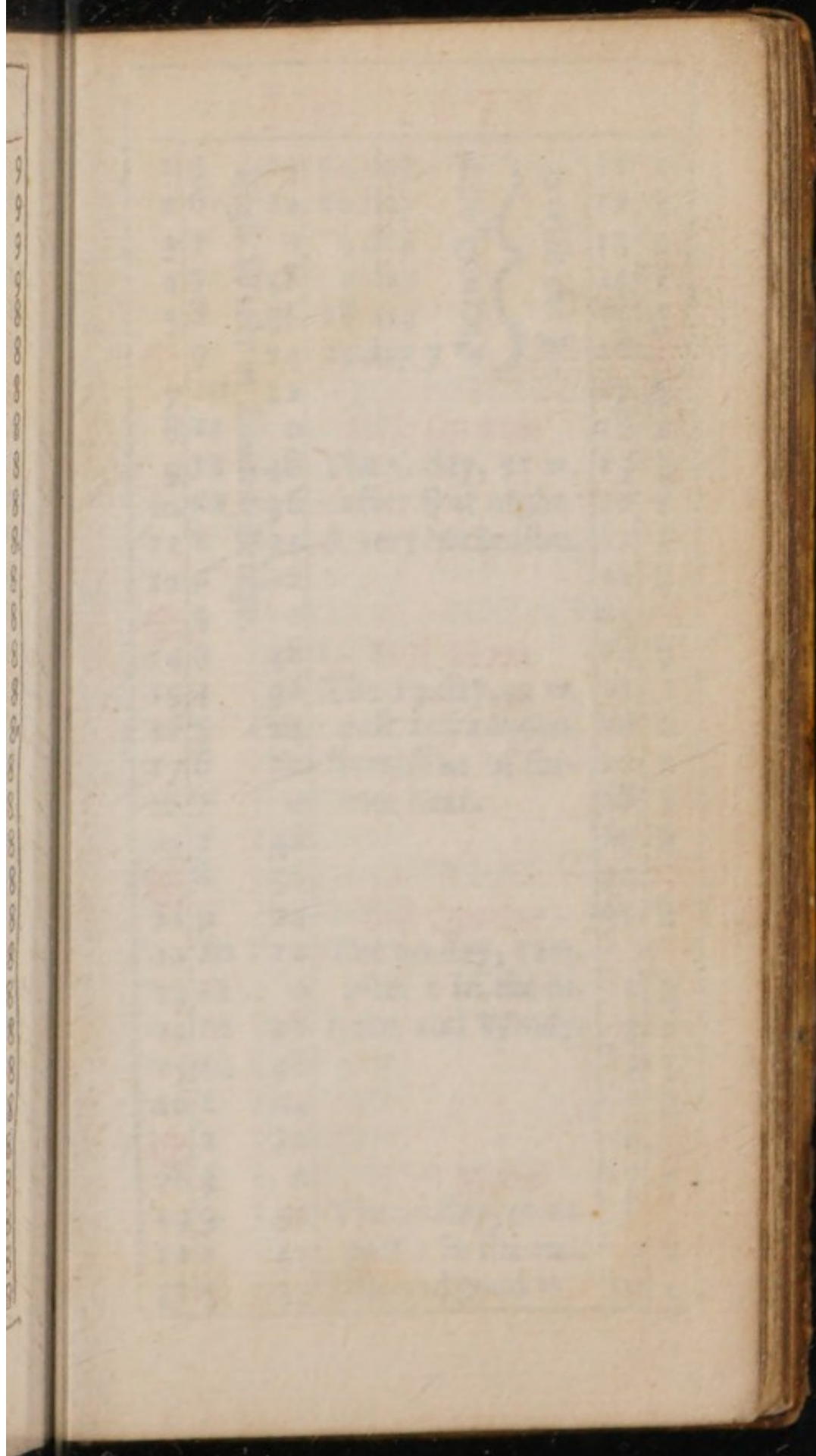
June, 1679.

☾	5	24	26 day	h	} is with the ☾	11	☾
	26	12	22 day	h		12	b
	37	0	4 day	☿		13	c
	47	48	1 day	☿		14	d
	58	36	26 day	☿		15	e
	69	24	23 day 7.*s	☿		16	f
	710	12				17	g
☾	11	0	First Quarter			18	☾
	911	48	The 6. day, at 4			19	b
	1012	36	in the morning.			20	c
	111	24	Great wind.			21	d
	122	12				22	e
	133	0				23	f
	143	48	Full Moon			24	g
☾	4	36	The 14. day, 34 m.			25	☾
	165	24	past 3 morning.			26	b
	176	12	Some rain.			27	c
	187	0				28	d
	197	48				29	e
	208	36	Last Quarter			30	f
	219	24	The 20. day, 8 m.			July	
☾	10	12	after 9 at night.			2	☾
	2311	0	Fair and hot.			3	b
	2411	48				4	c
	2512	36				5	d
	261	24				6	e
	272	12	New Moon.			7	f
	283	0	The 27. day, at 10			8	g
☾	3	48	at night.			9	☾
	304	36	Windy.			10	b

High-Water at London-Bridge.

July hath xxxi. days.

1	g		virgo	3	57	9
2	a	Visitat. Mary	virgo	3	57	9
3	b		virgo	3	58	9
4	c		libra	3	59	9
5	d	D. 16 hours	libra	4	0	8
6	e	3. aft. Trin.	scorpio	4	2	8
7	f	Thomas	scorpio	4	3	8
8	g		scorpio	4	5	8
9	a	Term ends	sagitt.	4	6	8
10	b	vlt. Beth.	sagitt.	4	8	8
11	c		capric.	4	9	8
12	d	Sun in Leo.	capric.	4	11	8
13	e	4. aft. Trin.	aquar.	4	12	8
14	f		aquar.	4	13	8
15	g	D. 15 h. 52 m.	pisces	4	14	8
16	a	Osmond	pisces	4	15	8
17	b		pisces	4	16	8
18	c	Dog-da. beg.	aries	4	17	8
19	d		aries	4	18	8
20	e	5. aft. Trin.	taurus	4	20	8
21	f		taurus	4	21	8
22	g	Mary Magd.	gemini	4	23	8
23	a		gemini	4	25	8
24	b	D. 15 h. 6 m.	cancer	4	27	8
25	c	S. James Ap.	cancer	4	29	8
26	d		leo	4	30	8
27	e	6. aft. Trin.	leo	4	32	8
28	f		leo	4	34	8
29	g	Beatrice	virgo	4	36	8
30	a		virgo	4	37	8
31	b	D. 14 h. 44 m.	libra	4	38	8



15
16
17
18
19
20
21
22
23
24
25
26
27
28
29
30
31
32
33
34
35
36
37
38
39
40
41
42
43
44
45
46
47
48
49
50
51
52
53
54
55
56
57
58
59
60
61
62
63
64
65
66
67
68
69
70
71
72
73
74
75
76
77
78
79
80
81
82
83
84
85
86
87
88
89
90
91
92
93
94
95
96
97
98
99
100

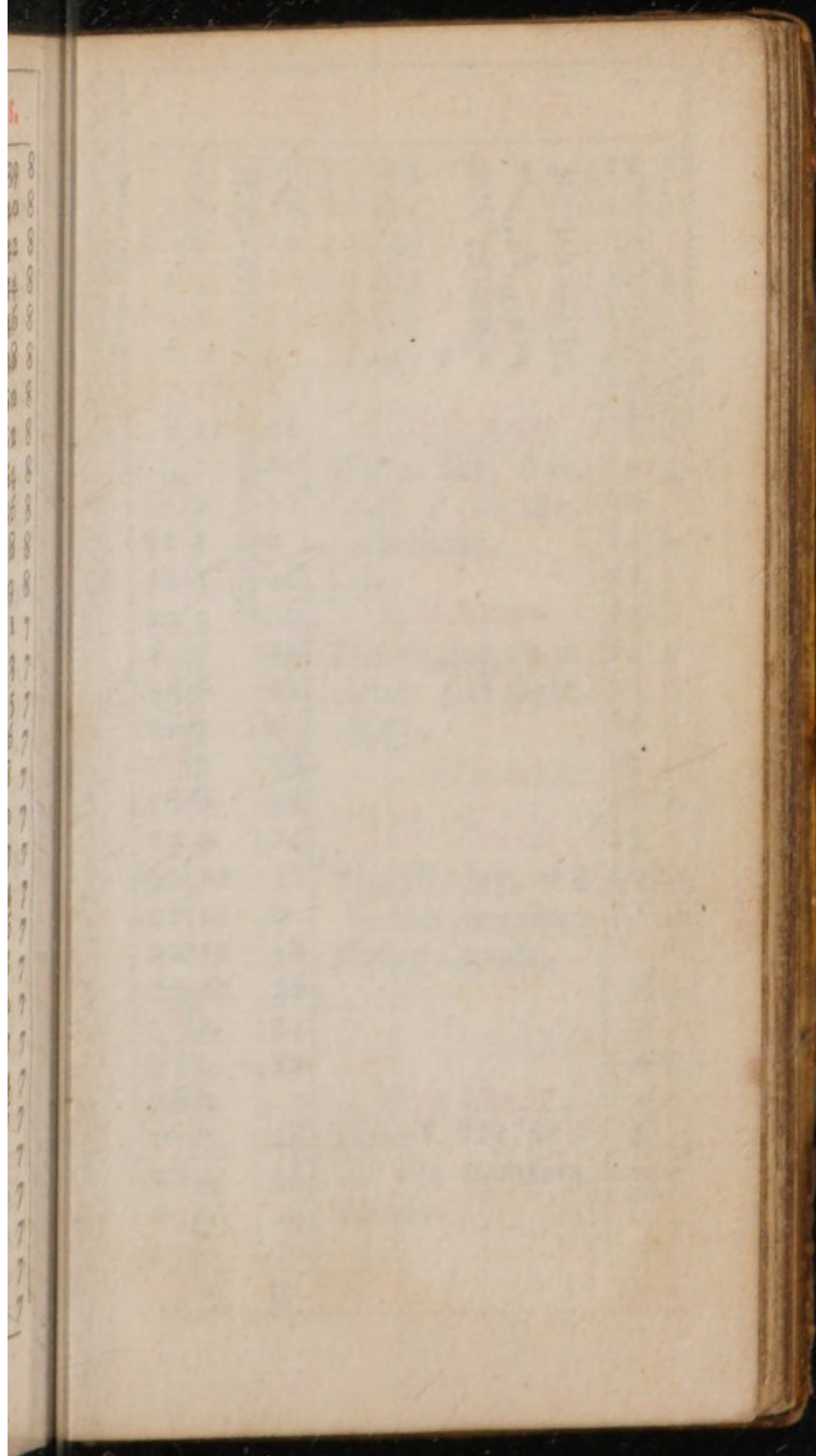
July, 1679.

1	5	24	24 day	h	} is with the D.	11	c
2	6	12	20 day	4		12	d
3	7	0	3 day	0		13	e
4	7	48	1 day	0		14	f
5	8	36	28 day	0		15	g
6	9	24	21 day 7 *s	s		16	h
7	10	12				17	b
8	11	0	First Quarter			18	c
9	11	48	The 5. day, 51 m.			19	d
10	12	36	after 8 at night.			20	e
11	1	24	A very hot Season.			21	f
12	2	12				22	g
13	3	0				23	h
14	3	48	Full Moon			24	b
15	4	36	The 13. day, 43 m.			25	c
16	5	24	past 10 forenoon.			26	d
17	6	12	Remission of former heat.			27	e
18	7	0				28	f
19	7	48				29	g
20	8	36				30	h
21	9	24	Last Quarter			31	b
22	10	12	The 20. day, 12 m.			Aug.	
23	11	0	after 1 in the m.			2	d
24	11	48	Rain and Windy.			3	e
25	12	36				4	f
26	1	24				5	g
27	2	12				6	h
28	3	0	New Moon			7	b
29	3	52	The 27. day, 30. m.			8	c
30	4	43	past 1 in the mo.			9	d
31	5	35	Fair and good w.			10	e

High-Water at London-Bridge.

August hath xxxi. days.

1	e	Lammias	libra	4	39	8
2	d		libra	4	40	8
3	e	7 aft. Trin.	scorpio	4	42	8
4	f		scorpio	4	44	8
5	g	D. 14h. 24m.	sagitt.	4	46	8
6	a		sagitt.	4	48	8
7	b	Donatus	sagitt.	4	50	8
8	c		capric.	4	52	8
9	d		capric.	4	54	8
10	e	8. aft. Trin.	aquar.	4	56	8
11	f	Sun in Virgo	aquar.	4	58	8
12	g	D. 14. hours.	pisces	4	59	8
13	a	Hypolite	pisces	5	1	7
14	b		aries	5	3	7
15	c		aries	5	5	7
16	d	Roeb	taurus	5	6	7
17	e	9. aft. Trin	taurus	5	8	7
18	f		gemini	5	60	7
19	g		gemini	5	67	7
20	a	D. 13h. 33m.	cancer	5	74	7
21	b		cancer	5	76	7
22	c		cancer	5	78	7
23	d	Zacheus	leo	5	70	7
24	e	S. Bartholo.	leo	5	77	7
25	f		virgo	5	74	7
26	g		virgo	5	76	7
27	a	Dog-da. end	virgo	5	78	7
28	b	D. 13 hours.	libra	5	30	7
29	c	S. Jo. Dec.	libra	5	37	7
30	d		scorp.	5	33	7
31	e	11 aft. Trin	scorp.	5	35	7



16
17
18
19
20
21
22
23
24
25
26
27
28
29
30
31
32
33
34
35
36
37
38
39
40
41
42
43
44
45
46
47
48
49
50
51
52
53
54
55
56
57
58
59
60
61
62
63
64
65
66
67
68
69
70
71
72
73
74
75
76
77
78
79
80
81
82
83
84
85
86
87
88
89
90
91
92
93
94
95
96
97
98
99
100

August, 1679.

1	6	26	20 day	h	11	f
2	7	18	16 day	h	12	g
3	8	10	29 day	h	13	a
4	9	2	29 day	h	14	b
5	9	53	28 day	h	15	c
6	10	45	17 day 7 ^h s	h	16	d
7	11	37		h	17	e
8	12	28		h	18	f
9	1	20		h	19	g
10	2	11		h	20	a
11	3	0		h	21	b
12	3	48		h	22	c
13	4	36		h	23	d
14	5	24		h	24	e
15	6	12		h	25	f
16	7	0		h	26	g
17	7	48		h	27	a
18	8	36		h	28	b
19	9	24		h	29	c
20	10	12		h	30	d
21	11	0		h	31	e
22	11	48		h	Sept	
23	12	36		h	2	g
24	1	24		h	3	a
25	2	12		h	4	b
26	3	0		h	5	c
27	3	48		h	6	d
28	4	36		h	7	e
29	5	24		h	8	f
30	6	12		h	9	g
31	7	0		h	10	a

High-Water at London-Bridge.

is with the D.

First Quarter

The 4. day, 6 m.
past 1 in the
afternoon.

Fair.

Full Moon

The 11. day, 15 m.
after 6 at night.
Rain.

Last Quarter

The 18. day, at 8
in the morning.
Flying Clouds.

New Moon

The 26. day, at 2
in the morning.
Windy.

September hath xxx. days.

1	f	Egidii	scorpio	5	37	7
2	g	Lond. Burnt	sagitt.	5	40	7
3	a	Anno 1666.	sagitt.	5	42	7
4	b	D. 12h. 40m.	capric.	5	44	7
5	c	Martin	capric.	5	45	7
6	d		aquar.	5	47	7
7	e	12. aft. Trin.	aquar.	5	49	7
8	f	Nat. Mary V.	pisces	5	50	7
9	g		pisces	5	51	7
10	a	Sun in Libra	aries	5	53	7
11	b	Equal d. & n.	aries	5	55	7
12	c		taurus	5	58	7
13	d		taurus	6	0	6
14	e	Holy Cr.	gemini	6	2	6
15	f		gemini	6	4	6
16	g		gemini	6	6	6
17	a	D. 11h. 48 m.	cancer	6	8	6
18	b	Ember week	cancer	6	10	6
19	c		cancer	6	12	6
20	d		leo	6	14	6
21	e	S. Matthew	leo	6	16	6
22	f		virgo	6	18	6
23	g		virgo	6	20	6
24	a	Androche	virgo	6	22	6
25	b		libra	6	24	6
26	c	D. 11 h. 8 m.	libra	6	26	6
27	d		scorpio	6	28	6
28	e	15. aft. Trin.	scorpio	6	30	6
29	f	S. Michael	sagitt.	6	32	6
30	g		sagitt.	6	34	6

78.

77

77

77

77

77

77

77

77

77

77

77

77

77

77

77

77

77

77

77

77

77

77

77

77

77

77

77

77

77

77

77

77

77

77

77

77

77

77

77

77

77

Sept

17

18

19

20

21

22

23

24

25

26

27

28

29

30

31

1

2

3

4

5

6

7

8

9

10

11

12

13

14

15

16

17

18

19

20

21

22

23

24

September, 1679.

17	48	16 day	h	is with the D.	11	b
28	36	12 day	h		12	c
39	24	27 day	h		13	d
4 10	12	28 day	h		14	e
5 11	0	24 day	h		15	f
6 11	48	13 day 7	*s		16	g
12	36				17	h
8 1	24	First Quarter			18	b
9 2	12	The 3. day at 5 in			19	c
10 3	0	the morning.			20	d
11 3	52	Fair.			21	e
12 4	43				22	f
13 5	35				23	g
14 6	26	Full Moon			24	h
15 7	18	The 10. day, 35 m.			25	b
16 8	10	after 2 in morn.			26	c
17 9	2	Dry Winds.			27	d
18 9	53				28	e
19 10	45				29	f
20 11	37	Last Quarter			30	g
21 12	28	The 16. day, 17 m.			1	h
22 1	20	past 6 at night.			2	c
23 2	11	Fair Weather.			3	d
24 3	0				4	e
25 3	48				5	f
26 4	36	New Moon			6	g
27 5	24	The 24. day, at 6			7	h
28 6	12	at night.			8	i
29 7	0	Wind and Rain.			9	b
30 7	48				10	c

High-Water at London-Bridge.

October hath xxxi. days.

1	a	Remigius	capric.	6	36	6
2	b		capric.	6	38	6
3	c	D. Ioh. 4om.	capric.	6	40	6
4	d		aquar.	6	42	6
5	e	16. aft. Trin.	aquar.	6	44	6
6	f		pisces	6	46	6
7	g		pisces	6	48	6
8	a	Victor	aries	6	50	6
9	b		aries	6	52	6
10	c		taurus	6	54	6
11	d	Sun in Scor.	taurus	6	56	6
12	e	18. aft. Trin.	gemini	6	58	6
13	f		gemini	7	0	5
14	g	D. 9 h. 56 m.	cancer	7	2	5
15	a		cancer	7	4	5
16	b		leo	7	6	5
17	c		leo	7	8	5
18	d	S. Luke Ev.	leo	7	10	5
19	e	18. aft. Trin	virgo	7	12	5
20	f	Wendel.	virgo	7	14	5
21	g		libra	7	16	5
22	a	D. 9 h. 26 m.	libra	7	17	5
23	b	Term begins	libra	7	19	5
24	c		scorpio	7	20	5
25	d	Crispine	scorpio	7	22	5
26	e	19. aft. Trin	sagitt.	7	24	5
27	f		sagitt.	7	26	5
28	g	S. Sim. & Ju.	capric.	7	28	5
29	a	Day 9 hours.	capric.	7	30	5
30	b		capric.	7	31	5
	c	Quintine	aquar.	7	33	5

October, 1679.

1	8	36	14 day	h	} is with the D.	11	D
2	9	24	10 day	h		12	e
3	10	12	26 day	♂		13	f
4	11	0	26 day	♀		14	g
5	11	48	23 day	♀		15	a
6	12	36	11 day	*s		16	b
7	1	24				17	c
8	2	12	First Quarter			18	D
9	3	0	The 2. day, 39 m.			19	e
10	3	48	past 6 at night.			20	f
11	4	36	Wet & Windy.			21	g
12	5	24				22	a
13	6	12				23	b
14	7	0	Full Moon			24	c
15	7	48	The 9. day, 16 m.			25	D
16	8	36	past 11 forenoon			26	e
17	9	24	High Wind.			27	f
18	10	12				28	g
19	11	0				29	a
20	11	48	Last Quarter			30	b
21	12	36	The 16. day, 39 m.			31	c
22	1	24	after 8 morning.			Nov.	
23	2	12	Warm & Temp.			2	e
24	3	0	New Moon			3	f
25	3	52	The 24. day, 30 m.			4	g
26	4	43	past 3 afternoon.			5	a
27	5	35	Fair and Cold.			6	b
28	6	26				7	c
29	7	18				8	D
30	8	10				9	e
31	9	2				10	f

High-Water at London-Bridge.

November hath xxx. days.

1	d	All Saints	aquar.	7	34	5
2	e	All Souls	pisces	7	36	5
3	f	D. 9 h. 44 m.	pisces	7	38	5
4	g		aries	7	39	5
5	a	Powder-Tr.	aries	7	40	5
6	b	Leonard	taurus	7	42	5
7	c		taurus	7	43	5
8	d	D. 8 h 30 m.	gemini	7	45	5
9	e	21. aft. Trin.	gemini	7	46	5
10	f	Sun in Sagit.	cancer	7	48	5
11	g	Martin	cancer	7	49	5
12	a		leo	7	50	5
13	b	Brice	leo	7	52	5
14	c		leo	7	53	5
15	d	D. 8 h. 10 m.	virgo	7	55	5
16	e	22. aft. Trin.	virgo	7	56	5
17	f		libra	7	57	5
18	g		libra	7	58	5
19	a	Elizabeth	libra	7	59	5
20	b	D. 8 hours.	scorpio	8	0	4
21	c		scorpio	8	1	4
22	d		sagitt.	8	2	4
23	e	23. aft. Trin.	sagitt.	8	3	4
24	f		sagitt.	8	4	4
25	g	Katherine	capric.	8	5	4
26	a	D. 7 h. 48 m.	capric.	8	6	4
27	b		aquar.	8	6	4
28	c	Term ends	aquar.	8	7	4
29	d		aquar.	8	8	4
30	e	S. Andr. A.	pisces	8	9	4
		& Adv. S.	pisces			

days

34 5

36 5

38 5

39 5

40 5

42 5

43 5

45 5

46 5

48 5

49 5

50 5

51 5

53 5

55 5

56 5

57 5

58 5

59 5

60 5

61 5

62 5

63 5

64 5

65 5

66 5

67 5

68 5

69 5

70 5

71 5

72 5

73 5

74 5

75 5

76 5

77 5

78 5

79 5

80 5

No

19
20
21
22
23
24
25
26
27
28
29
30
31
32
33
34
35
36
37
38
39
40
41
42
43
44
45
46
47
48
49
50
51
52
53
54
55
56
57
58
59
60
61
62
63
64
65
66
67
68
69
70
71
72
73
74
75
76
77
78
79
80
81
82
83
84
85
86
87
88
89
90
91
92
93
94
95
96
97
98
99
100

November, 1679.

1	9	53	10 day	h	is with the D.	11	g
C	10	45	6 day	v		12	a
3	11	37	24 day	o		13	b
4	12	20	21 day	o		14	c
5	1	20	23 day	o		15	d
6	2	11	7 day 7	*s		16	e
7	3	0	First Quarter			17	f
8	3	48	The 1. day, at 1			18	g
C	4	36	in the morning.			19	a
10	5	24	Frosty.			20	b
11	6	12				21	c
12	7	0				22	d
13	7	48	Full Moon			23	e
14	3	36	The 7. day, 10 m.			24	f
15	9	24	after 12 at noon.			25	g
C	10	12	Snow and sharp			26	a
17	11	0	Wind.			27	b
18	11	48				28	c
19	12	36				29	d
20	1	24	Last Quarter			30	e
21	2	12	The 15. day, 20 m.			Dec.	
22	3	0	past 2 morning.			2	g
C	3	48	Rain or Sleet.			3	a
24	4	36				4	b
25	5	24				5	c
26	6	12	New Moon			6	d
27	7	0	The 23. day, 43 m.			7	e
28	7	48	past 3 in morn.			8	f
29	8	36	Wet and Slabby.			9	g
C	9	24				10	a

High-Water at London-Bridge.

h
v
o
o
o
o
*s

December hath xxxi. days.

1	f	Longinus	aries	8	10	4
2	g		aries	8	11	4
3	a	Demond	aries	8	12	4
4	b		taurus	8	12	4
5	c		taurus	8	13	4
6	d	Nicolas	gemini	8	13	4
7	e	2. S. in Adv.	gemini	8	13	4
8	f		cancer	8	13	4
9	g		cancer	8	13	4
10	a	Sun in Capr.	leo	8	13	4
11	b	Shortest day	leo	8	13	4
12	c	7 h. 22 m.	virgo	8	13	4
13	d	Lucy El.	virgo	8	13	4
14	e	3. S. in Adv.	virgo	8	13	4
15	f		libra	8	13	4
16	g	D. Sapi-	libra	8	13	4
17	a	entia .	scorpio	8	12	4
18	b		scorpio	8	11	4
19	c	Ember week	scorpio	8	10	4
20	d		sagitt.	8	9	4
21	e	S. Thomas	sagitt.	8	8	4
22	f		capric.	8	7	4
23	g	Victor.	capric.	8	6	4
24	a		aquar.	8	5	4
25	b	Christmas d.	aquar.	8	5	4
26	c	S. Stephen	aquar.	8	4	4
27	d	S. John Ev.	pisces	8	4	4
28	e	Innocent	pisces	8	3	4
29	f	Th. Beck.	aries	8	3	4
30	g		aries	8	2	4
31	a	Sylvester	taurus	8	2	4

rys.

10 4

11 4

12 4

12 4

13 4

13 4

13 4

13 4

13 4

13 4

13 4

13 4

13 4

13 4

13 4

13 4

13 4

13 4

13 4

13 4

13 4

13 4

13 4

13 4

13 4

13 4

13 4

13 4

13 4

13 4

13 4

13 4

De

110

111

112

113

114

115

116

117

118

119

120

121

122

123

124

125

126

127

128

129

130

131

132

133

134

135

136

137

138

139

140

141

December 1679.

I	IO	High water at London Bridge.	I2	8 d. ♀	} Is with the Moon.	II	b
2	II		0	3 d. ♀		I2	c
3	II		48	23 d. ♀		I3	d
4	I2		36	19 d. ♀		I4	e
5	I		24	24 d. ♀		I5	f
6	2		I2	4 d. *	I6	g	
☾	3		0		I7	a	
8	3		48	Full Moon	I8	b	
9	4		36	The 7. day, 9 min.	I9	c	
IO	5		24	after 9 in the morn-	20	d	
II	6		I2	ing.	21	e	
I2	7		0	Wind and Rain.	22	f	
I3	7		48		23	g	
☾	8		36		24	a	
I5	9		24	Last Quarter	25	b	
I6	IO		I2	The 14. day, 30. min.	26	c	
I7	II		0	past 10. at night.	27	d	
I8	II		48	Inclining to Frost.	28	e	
I9	I2		36		29	f	
20	I		24		30	g	
☾	2		I2	New Moon	31	a	
22	3		0	The 22. day, 26. m.	16	80	
23	3		48	past 10. at night.	2	b	
24	4		36	Fair and Frosty.	3	c	
25	5		24		4	d	
26	6		I2	First Quarter	5	e	
27	7		0	The 24. day, 20. m.	6	f	
☾	7		48	at mid night.	7	a	
29	8		36	Very Cold.	8	b	
30	9		24		9	c	
31	IO		I2		10	c	

A plain Table, shewing the beginning & end of the Reign of all the Kings and Queens of *England* since the Conquest, to this present Year, 1679.

The K. names.	Began their Reign.	Since their Reign.
<i>Will. Con.</i>	1066 Octo. 14	592 Septem. 99
<i>Will. Ruf.</i>	1087 Sept. 9	579 August 11
<i>Henry 1</i>	1100 Aug. 1	544 Decem. 22
<i>Stephen.</i>	1135 Dec. 2	525 Octo. 255
<i>Henry 2</i>	1154 Octo. 25	490 July 65
<i>Richard 1</i>	1189 July 6	480 April 65
<i>K. John.</i>	1199 April 6	469 Octo. 199
<i>Henry 3</i>	1216 Octo. 19	407 Nov. 165
<i>Edward 1</i>	1272 Nov. 16	372 July 77
<i>Edward 2</i>	1307 July 7	349 Janu. 255
<i>Edward 3</i>	1326 Janu. 25	302 June 211
<i>Richard 2</i>	1377 June 21	280 Sept. 299
<i>Henry 4</i>	1399 Sept. 29	266 March 22
<i>Henry 5</i>	1412 Mar. 20	256 Aug. 311
<i>Henry 6</i>	1422 Aug. 31	219 March 44
<i>Edward 4</i>	1460 March 4	196 April 99
<i>Edward 5</i>	1483 April 9	196 June 222
<i>Richard 3</i>	1483 June 22	194 Aug. 222
<i>Henry 7</i>	1485 Aug. 22	170 April 222
<i>Henry 8</i>	1509 Apr. 22	133 Janu. 288
<i>Edward 6</i>	1546 Janu. 28	126 July 65
<i>Q. Mary</i>	1553 July 6	121 Nov. 177
<i>Q. Eliz.</i>	1558 Nov. 17	77 March 244
<i>K. James</i>	1602 Mar. 24	54 March 277
<i>Charles 1</i>	1625 Mar. 27	30 Janu. 300
<i>Charles 2</i>	1648 Janu. 30	Vivat Rex.

The Dominion of the Moon in Man's
Body, under the 12. Zodiacal Con-
stellations.

Aries Head and Face.

Taurus
Neck &
Throat
Cancer
Breast
Stom.
& Ribs
Virgo
Bowel
& Belly
Scorpio.
Secret
Mem.
Capri.
Knees



Gemini
Arms &
Shoul.
Leo
Heart
& Back
Libra
Reins
& Loins
Sagittar.
Thighs
Aquar.
Legs

Pisces

the Feet

The twelve Signs of the Zodiack.

Aries, Taurus, Gemini, Can-
cer, Leo, Virgo, Libra, Scorpio,
Sagit. Capricorn, Aquar. Pisces.

The seven Planets.

Saturnus, Jupiter, Mars, Sol,
Venus, Mercurius, Luna, The
Dragons Head, the Dragons
Tail.

A Compendious Chronology.

	Years since
T he Creation of the world	56288
Noah's Flood	39722
T he beginning of the Assyrian	
Monarchy	38522
Deucalion's deluge	31911
T he destruction of Troy	28611
T he build- ing of	Lond. by Brute 27166
	Oxford by Mem- 27266
	prick
Solomons temple	26995
T he first Olympiad	24544
T he building of Rome	24300
T he beginning of the Persian Mo- narchy	22377
T he beginning of the Grecian Monarchy by Alex.	21145
C æsar's first attempt on Brit.	17366
T he begin- ning of the	Roman Monar- 17266
	chy
Julian Account	17295
T he Nativity of Christ	16700
Lucius the first Christian Kin.	15000
Vortigern called in the Saxons	12200
T he com. of Aug. the Monk	10830
Mahomet the Impostor	10550
T he restoring the University Oxford by King Alfred	8000
T he Danes first came into Engl.	6660
William the Conquerour	6112
T he first Mayor of London	4839

The in- vention of	Guns by a Monk Printing by a Soul- dier	299 219
	Printing at Oxf. first in Engl.	211
	The first use of Coaches in En.	123
	The first build. the R. Exchange	114
	Tobacco first taken in England	94
	The Spanish Invasion	91
	The Gun-powder-treason	74
	The cru. of the Dutch at Amboy.	55
	Edge-hill Battle	37
	Cheap-side Crosse demolished	36
	Newberry first Battle	36
	Bishop of Canterbury beheaded	35
	Marston-Moor Fight	35
	Newberry second Battle	35
	Naseby Fight, June 14.	34
	R. Charles the I. martyred	31
	O. Crom. usurped the Governm.	26
	Dunkirk delivered to the English	21
	O. Cromwel dyed	21
	R. Charles II. arrived at London	19
	Harrison and the rest of the Regi- cides executed at Charing-Cross	19
	R. Charles II. Crowned	18
	Three Comets appeared	17
	The great Plague in Lon. where- of died 100000	14
	13000 Houses burnt in London	13
	2. Whales came up the Thames	10
	London Magnificently rebuilt	8
	The Camp at Black-Heath	6
	Peace with Holland Proclaim'd	6

A plain Table, shewing the interest of money from five shillings to 1000 pounds for a year or under, after the rate of 6 per Cent.

		1 Mo.			3 Mo.			6 Mo.			9 Mo.			A ye.		
		s.	p.	q.	s.	p.	q.	s.	p.	q.	s.	p.	q.	s.	p.	q.
Shill.	5	0	0	1	0	0	3	0	1	3	0	2	2	0	3	2
	10	0	0	2	0	1	3	0	3	2	0	5	2	0	7	0
	15	0	0	3	0	2	2	0	5	1	0	8	0	0	10	2
	1	0	1	0	0	3	2	0	7	0	0	10	2	1	2	1
	2	0	2	1	0	7	0	1	2	1	1	9	1	2	4	2
	3	0	3	2	0	10	2	1	9	1	2	7	3	3	6	3
	4	0	4	3	1	2	1	2	4	2	3	6	3	4	9	0
	5	0	6	0	1	6	0	3	0	0	4	6	0	6	0	0
	6	0	7	0	1	9	2	3	7	0	5	4	2	7	2	1
Pounds.	7	0	8	1	2	10	4	2	1	6	3	1	8	4	2	
	8	0	9	2	2	4	2	4	9	1	7	1	3	9	6	3
	9	0	10	3	2	8	1	5	4	2	3	0	3	10	9	0
		p.	s.	p.	p.	s.	p.	p.	s.	p.	p.	s.	p.	p.	s.	p.
	10	0	1	0	0	3	0	0	6	0	0	9	0	0	12	0
	20	0	2	0	0	6	0	0	12	0	0	18	0	1	4	0
	30	0	3	0	0	9	0	0	18	0	1	7	0	1	6	0
	40	0	4	0	0	12	0	1	4	0	1	16	0	2	8	0
	50	0	5	0	0	15	0	1	10	0	2	5	0	3	0	0
Tens of Pounds.	60	0	6	0	0	18	0	1	16	0	2	14	0	3	12	0
	70	0	7	0	1	10	2	2	0	33	0	4	4	0		
	80	0	8	0	1	4	0	2	8	0	3	12	0	4	16	0
	90	0	9	0	1	7	0	2	14	0	4	10	5	8	0	
	100	0	10	0	1	10	0	3	0	0	4	10	6	0	0	

Find your principal in the first Column, and right against the same is the interest due for 1, 3, 6, 9, or 12 months.

**A Table for the Purchases at 5l. 6s.
8l. and 10l. Per Cent.
Compound interest.**

	At 5 p. Cent.		At 6 p. Cent.		At 8 p. Cent.		At 10 p. Cent.	
	Y.	M.	Y.	M.	Y.	M.	Y.	M.
1	0	11	0	11	0	11	0	11
2	1	10	1	10	1	9	1	9
3	2	9	2	8	2	7	2	6
4	3	7	3	6	3	4	3	2
5	4	4	4	3	4	0	3	9
6	5	1	4	11	4	7	4	4
7	5	9	5	7	5	2	4	11
8	6	6	6	2	5	9	5	4
9	7	1	6	10	6	8	5	9
10	7	9	7	4	6	9	6	2
11	8	4	7	11	7	2	6	6
12	9	5	8	10	7	1	7	1
13	9	5	9	9	8	7	7	7
15	10	3	10	6	9	1	8	0
17	11	1	11	2	9	7	8	4
19	12	10	11	9	10	0	8	11
21	12	6	12	4	10	4	9	11
23	13	1	12	9	10	8	9	3
25	14	2	13	3	10	11	9	4
27	14	2	13	7	11	2	9	6
29	15	7	13	11	11	4	9	9
31	15	1	13	1	11	11	9	10
41	17	3	15	9	12	3	9	11
51	18	11	16	2	12	4	10	0
61	18	4	16	5	12	5	10	0
71	19	7	16	6	12	6	10	0
81	19	9	16	7	12	6	10	0
91	19	0	16	8	12	6	10	0
Fee.	20							

The Number of Years to be Purchased

The Value of the Purchase in

The Value of the Purchase in

The Value of the Purchase in

The Value of the Purchase in

The use of the foregoing Tables for
the Purchase of Leases, &c.

THe Table consists of 5 Columns,
The first contains any number of
years that are to be Purchased, from
1 year to 100.

The 2. tells you how many years and
odd Months purchase, such a Lease is
worth in ready Money, 5lb. per cent.
being allowed for the interest of the
Money laid out.

The 3 Column shews, what the same
is worth at 6lb. per cent. The 4 at 8lb.
per cent. And the last at 10lb. per cent.

Example, What is a Lease of 51
years to come, worth in ready Money,
at 5lb. per Cent. Also,

Look in the first Column for 51
years, and right against it under 5 per
Cent. you shall find 18. 3. which shews
the Lease is worth 18 years purchase, &
3 months, which is a quarter of a year.
So that if the Rent were 10*l.* a year,
then 18 times 10*l.* is 180*l.* and the quar-
ter of the year is 2*l.* 10*s.* in all 182*l.* 10*s.*
and so much is the Lease worth in rea-
dy Money, at 5 per cent.---- But if the
Purchaser would have 6*l.* 8*l.* or 10*l.*
profit for his Money, then

At $\left\{ \begin{array}{l} 1. \\ 6 \\ 8 \\ 10 \end{array} \right\}$ Profit for his Money the Lease is worth $\left\{ \begin{array}{l} \text{Years Mon.} \\ 15 \\ 12 \\ 9 \end{array} \right\}$ Purchase which comes to but $\left\{ \begin{array}{l} 1. \\ 157 \\ 122 \\ 99 \end{array} \right\}$ $\left\{ \begin{array}{l} 1. \\ 10 \\ 10 \\ 4 \end{array} \right\}$

And thus you may do for any other number of Years.

So, a Lease for $\left\{ \begin{array}{l} 1. \\ 5 \\ 6 \\ 8 \\ 10 \end{array} \right\}$ Per cent. is worth $\left\{ \begin{array}{l} \text{Years.} \\ 12 \\ 11 \\ 10 \\ 8 \end{array} \right\}$ Months $\left\{ \begin{array}{l} 10 \\ 9 \\ 0 \\ 11 \end{array} \right\}$ Purchase

let the Rent be what it will.

160 for

Johnny,

number of

years and

Lease is

per cent.

of the

the time

at 8 1/2

A Catalogue of the most Reverend,
Right Reverend, and Reverend the
Archbishops, Bishops and Deans,
now exercising of Ecclesiastical Ju-
risdiction in England, &c.

Bish. names.	Deans nam.	Bishopri. nam.
Dr. Sander.	Dr. Tillotson	Cant. } A.B.
Dr. Stern	Dr. Wickham	York. }
Dr. Barrow	Dr. Lloyd	St. Asaph
Dr. Lloyd	Dr. Williams	Bangor
Dr. Mew	Dr. Bathurst	Bath & Wells
Dr. Carleton	Dr. Tenngood	Bristol
D. Rainbow	Dr. Smith	Carlisle
Dr. Peirson	D. Bridgman	Chester
Dr. Bredock	D. Stradling	Chichester
Dr. Wood	D. Smallwood	Cov. & Lichf.
Dr. Lucy	Dr. Lucy	St. Davids
Dr. Crew	Dr. Sudbury	Durham
Dr. Gunning	D. Mapletost	Ely
Dr. Lamplu.	Dr. Carew	Exeter
D. Pritchard	D. Frampton	Gloucester
Dr. Crofts	Dr. Benson	Hereford
Dr. Lloyd	Dr. Gamage	Llandaff
Dr. Barlow	D. Honynwood	Lincolne
Dr. Compton	Dr. Stilling.	London
Dr. Sparrow	Dr. Astley	Norwich
Dr. Fell	Dr. Fell C.C.	Oxford
Dr. Henshaw	Dr. Duport	Peterborough
Dr. Dolben	D. Castillion	Rocheſter
Dr. Ward	Dr. Peirce	Salisbury
Dr. Morley	Dr. Clark	Wincheſter
D. Fleetwood	Dr. Thomas	Worceſter
	Dr. Dolben	Westminster
Dr. Bridgman Biſh. of the Ile of Man.		

The Names of the several Learned
Judges of the Law, in His Majesties
four Grand Courts of Record.

I. In the Chancery.

The Right Honourable *Hennage* Lord
Finch, Baron of *D'aventry*, Lord
High Chancellour of England.

Sir *Harbottle Grimstone*, Knight and
Baronet, Master of the Rolls.

II. In the Kings Bench.

Sir *William Scroggs*, Knight, Lord Chief
Justice.

Sir *Thomas Twisden*, Knight and Baro-
net.

Sir *William Wyld*, Knight and Baronet.

Sir *Thomas Jones*, Knight.

III. In the Common Pleas.

Sir *Francis North*, Kt. Lord Chief Justice.

Sir *Hugh Windham*, Knight.

Sir *Robert Atkins*, Knight of the Bath.

The honourable *Vere Bertie*, Esquire.

IV. In the Exchequer.

The Honourable *William Montague*, Esq.
Lord Chief Baron.

Sir *Timothy Littleton*, Knight.

Sir *Edward Thurland*, Knight.

Francis Bramston, Esquire.

Sir *William Jones* Attorney } Gene.
Sir *Fr. Winnington* Solicitor } ral.

A Table of Terms. 1679.

Hillary Term beg. Jan. 23. ends Feb. 12

<i>Octab. Hill.</i>	Jan. 21	22	23	23
<i>Quind. Hill.</i>	Jan. 28	29	31	31
<i>Craft. Purif.</i>	Feb. 3	4	5	6
<i>Octab. Purif.</i>	Feb. 10	11	12	12

Easter Term begins May 7. ends June 2

<i>Quind. Pasch.</i>	May 5	6	7	7
<i>Tres Pasch.</i>	May 12	13	14	15
<i>Mens. Pasch.</i>	May 19	20	21	22
<i>Quind. Pasch.</i>	May 26	27	28	29
<i>Craft. Ascens.</i>	May 30	31	J. 1	2

Trinity Term beg. June 20 ends July 9

<i>Craft. Trin.</i>	June 16	17	18	19
<i>Octab. Trin.</i>	June 23	25	25	26
<i>Quind. Trin.</i>	June 30	J. 1	2	3
<i>Tres Trin.</i>	July 7	8	9	9

Mich. Term beg. Oct. 23. ends Nov. 28

<i>Tres Mich.</i>	Octob. 20	21	22	23
<i>Mens. Mich.</i>	Octob. 27	28	29	30
<i>Craft. Animar.</i>	Nov. 3	4	6	6
<i>Craft. Mart.</i>	Nov. 12	13	14	15
<i>Octab. Mar.</i>	Nov. 19	20	21	22
<i>Quind. Mar.</i>	Nov. 26	27	28	28

The

1670.
Feb. 12
21 13
21 14
5 15
12 16
June 2
7 7
11 17
21 18
28 19
July 1
18 19
25 20
2 21
9 22
Nov. 23
23 24
20 25
6 26
14 27
27 28
28 29
The

The Geographical description of Waies
from one notable Town to another,
over all England, and thereby how
to travel from any of them to the
City of London.

From York to London, 150 miles.

Tadcaster 8. wentbridge 12.
Doncaster 17. tuxford 18. ne-
wark 10. grantham 10. hamford 16.
silton 12. huntington 9. royston 15.
ware 13. waltham 8. london 12.

From Cambridge to London, 44. mil.

To barkway 12. puckeridge 7.
ware 5. waltham 8. london 12.

From Norwich to London, 86. miles.

To windam 5. acleborough 5.
thetford 10. icklington-lands 6.
newmarket 10. whitford-bridge
10. barkway 10. puckeridge 5.
ware 5. waltham 8. london 12.

From St. Davids to Hereford
and Gloucester, and so to Lon-
don, 210. miles.

To arford 12. carmarthen 24.
newton 12. lanbury 10. brecknock
16. hay 10. hereford 14. rols 19.
gloucester 12. Cirencester 15. faring-
ton 10. abington 10. Dorchester 5.
henly 12. maidenhead 7. colebrook
7. hounslow 5. london 10.

From Bristol to London, 97. miles.

To marefal 10. chipnam 10.
malborough 15. hungerford 8. new-
berry

berry 8. reading 17. maidenhead 7.
colebrook 7. london 15.

From Exeter to London, 138. miles.

To honiton 12. chard 10. crook-
horn 6. sherborn 10. shaftsbury 12.
salisbury 18. andover 15. basin-
stoke 16. hartlerow 8. bagshot 8.
banes 8. london 15.

From Dover to London 55. miles.

To canterbury 12. sittingborn
12. colchester 8. gravelend 5. Dart-
ford 6. london 12.

From Yarmouth to Colchester, and
so to London, 92. miles.

To lestofte 6. blidbur 10. snap-
bridge 8. woodbridge 6. ipswich 7.
colchester 12. kelledon 8. chelms-
ford 10. bentwood 10. romford 5.
london 10.

From Carmarthen to London,
155. miles.

To landoverie 20. belth 14.
preston 12. worcester 26. ewisham
12. chippingnorton 14. islip 12.
wickham 20. beconsfield 5. ux-
bridge 7. london 15.

From Ludlow to Worcester, and
so to London, 108. miles.

To tenbury 3. worcester 16. ew-
sham 12. chippingnorton 14. islip
12. wickham 20. beconsfield 5.
uxbridge 7. london 15.

From Oxford to London, 47. miles.

To wheatlybridge 5. tetworths.
Boken.

Gokenchurch 5. wickham 5. becons-
field 5. urbridge 7. london 15.

From Walsingham to London,
82. miles.

To pickam 12. brandonferry 10.
newmarket 10. whitfordbridge 10.
barkway 10. puckeridge 5. ware 5.
waltham 8. london 12.

From Cockermouth to Lancaster,
and so to London, 223. miles.

To kilwick 6. grocener 8. ken-
dal 14. burton 7. lancaster 8. pre-
ston 20. wigan 14. warington 12.
newcastle 20. lichfield 20. colefil 12.
coventry 8. darenty 14. tocester 10.
Nonisratford 6. brickil 7. dunstable
7. S. albanes 10. barnet 10. lon-
don 10.

From Carnarven to Chester, and
so to London, 207. miles.

To conatway 24. denbigh 11. flint
12. chester 10. wich 15. stone 15.
lichfield 18. colefil 12. coventry 8.
darenty 14. tocester 10. Nonisrat-
ford 6. brickil 7. dunstable 7. S. al-
banes 10. barnet 10. london 10.

From Shrewsbury to Coventry, and
so to London, 126. miles.

To watling-street 7. shefnal 5.
bunning-hall 3. wolverhampton 5.
brenham 10. meriden 10. coventry
4. darenty 14. tocester 10. Noni-
stratford 6. brickil 7. dunstable 7.
S. albanes 10. barnet 10. london 10.

From

From Rye to London, 51. miles.

To plimwell 15. tunbridge 12.
chepstow 7. london 15.

From Southampton to Lon. 64. miles.

To twisford 8. alford 8. alton 7.
farnham 7. gilford 9. riply 5. cob-
ham 5. kingston 5. london 10.

From Chichester to Lon. 50. miles.

To midhurst 7. chiddingfold 10.
gilford 8. riply 5. cobham 5. king-
ston 5. london 10.

From Barwick to York, 108. miles.

To belford 12. intwick 12. mox-
pit 12. newcastle 12. durham 12.
darrington 14. northallerton 10.
topcliff 7. york 17.

From York to Shrewsbury, 103. mile.

To wetherby 7. otely 12. brad-
ford 6. halifax 6. blackstone-edge 6.
manchester 8. norwich 16. beeston-
wood 9. whitchurch 10. price 4.
Shrewsbury 12.

From Coventry to Cambridge, 46. mf.

To dunchurch 8. northampton 10.
highamferries 10. S. edes 8. cam-
bridge 12.

From Coventry to Oxford, 44. miles.

To southam 14. banbury 10.
woodstock 14. oxford 6.

From Bristol to Oxford, 48. miles.

To sudbury 10. Cirencester 12.
carrington 14. oxford 12.

The Names of the principal Fairs in
England and Wales, with the Month,
Day, and Place where they be kept.

January.

The 5 day at Wickeford in Lan-
cashire, the 6 at Salisbury,
Thursday after at Banbury, the
25 at Gravelend, Wickeford, Church-
inford, Northallerton in York-
shire every Wednesday from
Christmas till June.

February.

The 1 day at Bromley in Lan-
cashire, the 2 at Reading in Bark-
shire, at Baldston, Bicklesworth,
Bicklesfield, Bath, Kings Lyn,
Bagworth, 3 at Woburn. On
Valentines day at Dundle, Fe-
versham. 24 at Henley, Baldoak.
Ashwednesday at Roydon, Dun-
stable, Eaton, Camworth, Tun-
bridge, Lichfield, Exeter, Cice-
ter. The first Sunday in Lent
at Banbury.

March.

The 3 day at Bromelbrakes in
Norfolk, 4 at Bedford, 12 at Al-
son in Norfolk, Sudbury, Woo-
born. 13 at Wye, at Bodwin, 20
at Durham. Sunday before our
Lady day at Kendal, Wisbich.
25 at Huntington, Northampton,
Walden, at Ashwel in Hartford-
shire,

shire, Newcastle. Midlent at
Saffron-walden in Essex. Good-
friday at Norwich. Palm Sunday
even at Wisbich, Worcester, at
Pomfret.

April.

Easter Munday at Dny in Bed-
fordshire, Gainsborough. Easter
Tuesday at Daventry, Godman-
chester, Schole in Norfolk, S. Ed-
mundsbury. On Wednesday at
Wellingtonborough. On Friday at
Daroy. On Saturday at Bick-
leworth. 2 day at Hitchin, at
Kochford, Northfleet. 7 at Darby,
9 at Billingsworth, 11 at New
port-Pagnel, 22 at Stabfort,
23 at Ipswich, Warbin in Norfolk,
Northampton, Saplar, Charing,
Hunningham, Camworth, Bury
in Lancashire, St. Bombs in
Cornwel, 25 at Dunmow, Dck-
ham in Rutlandshire, Bucking-
ham, Darby, 27 at Tenderden in
Kent, Cleet. 30 at Beverly a
week.

May.

The first day at Swaffam, Be-
verly in Essex, Laytonbuzzard in
Huntingtonshire, Rippon, Read-
ing, Maidstone, Tuxford in the
Clay, Risin by Lyn. 3 at Strat-
ford upon Avon, Elko in Bedford-
shire, Non-Caton in Warwick-
shire,

Wre, Thetford in Norfolk;
Chelmsford in Essex, Waltham
Abby, Hunningham, Rochdale,
Bramyard. 7 at Newton in Lan-
cashire, Beverly, Oxford. 10 at
Rochester, Dunstable, Dagfield
in Suffolk. On Rogation Sun-
day at Reach. On Ascension day
at Charter, Beverly, Rippon,
Sudminster, Bishopscotford, St.
Neots, Wictham, Middlewich
in Cheshire, Freth in Darbshire.
On Whitlun-even at Skipton in
Craven. On Whitlun-Munday
at St. Ives, Rygate in Surry,
Bickleworth, Bradford, at Ag-
muntham. Munday before Whit-
londay at Spilsby, and Munday
14 daies after another. Another
on Munday 14 daies after at
Partney. On Whitlun Tuesday
at Wisbich, a great fair of horse &
cattle for 5 daies at Newmarket.
On Wednesday at Roydon.
Thursday at Odehill. 26. at Len-
ham, 29 at Cranbrook.

June.

Trinity-even at Rowel, Kendal.
On Corpus Christi day at Ban-
bury, Bishopscotford, St. Neots,
Coventry, Newbury. The 6, 7,
and 8 of June at Milton Abbas
in Dorsetshire. 9 at Maidstone.
11 a Horse fair at Horncastle, at
Wrems

Bieme in Norfolk, Bradfield in
Essex, 16 at Staw green a great
Horse fair begins, and ends the
24. 17 at Hadstock, 23 at St. Al-
bans, Derham in Norfolk,
Shrewsbury, 24 at Warson in
Suffolk, Barnwel, Bedford,
Colchester, Rumford, Reading,
Windsor, Hallifax, Hereford, Be-
verly, Hallingden, 26 at Bristol,
Darby, 27 at Burton on Trent,
Folstone. 28 at St. Pombes, 29 at
Peterborough, Ashwel, Sudbury,
Stebbing in Essex.

July.

The 1, 2, 3, Day at Congerton
in Cheshire, 7 at Roydon, Burnt-
wood. The Munday at Forbing-
ham, 12 at Partney for Horses. 15
at Stratford upon Avon, 20 at
Uxbridge, Coolridge, Woodstock,
Barkway, 25 at Ickleton, Nor-
wich, Colchester, 26 at Audley-
end, Malden, at Reading.

August.

The first at Bedford, Burnam,
St. Neots, Dunstable, Fever-
ham, Wisbich, Bicklestworth,
Stonestratford, 10 at Blackmore,
Harply, Charthead, St. Ives,
Bedford, Banbury, Farnam,
Wainford, 15 at Cambridge,
Huntington, Dunmow, Luton,
Northampton. 24 at London, Cut-
bury,

bury, Norwich, Oxford, Northallerton, Dover, Begger-bush, Burton. 29 at Walsdon in Suffolk, Harlow, Bush in Essex.

September.

The first day at St. Giles in the Bush. On Thursday and Friday next before the 8 day at Sandback in Cheshire. 7, 8, 9, 10 at Woodbury-hill in Dorsetshire, 7 at Ware, 8 at Huntingdon, Bury in Lancashire, Dartney, Wakefield, Northampton, Sturbreech, by Cambridge. 14 at Rippon, Waltham-Abby, Chesterfield in Darbshire, Richmond, 15 at Stratford upon Avon, 21 at Marlborough, Bedford, Baldock, St. Edmundsbury, Houlden in Holderness, Baintry, Brackly, Malden, 23 at Walton for Horses, 29 at St. Ives, Basingstoke, Market deeping, Shelford, Bishopstratford, Walton for Oxen, Stow, Sheldam: Thursday at Banbury.

October.

The 2 day at Salisbury, at Havent, Maidstone, Coolidge, Gaywood by Lyn, St. Faiths, 8 at Bishopstratford, Marlborough, 9 Gainsborough, 11 at Newport-pagnel, 13 at Windsor, Colchester, Gravesend, 18 at Ely, Bishop Hatfield,

Geld, Barnet, Banbury, Thirsk,
Burton on Trent, 21 at Saffron-
Walden, 23 at Bicklesworth, 28
at Newmarket, Dels in Nor-
folk, Wakefield, Rothdale in
Lancashire.

November.

The first day at Giles Hill
near Winchester, at Chelmsford,
2 at Epping, Kingstone on
Thames, Padamhaston in Suf-
folk, 6 at Newportpagnel, Bed-
ford, Harford, 11 at Ludden in
Norfolk, Lenton in Nottingham-
shire, Hempton in Norfolk, Fock-
ingham in Lincolnshire, Bridg-
stock in Northamptonshire, Har-
borough, 13 at Boston, 17 at
Spalding in Lincolnshire, Har-
low, Lincoln, Hyde, Northamp-
ton, 19 Northam in Kent. 20 at
St. Edmundsbury, Ingerston
in Essex, Heath. 23 at Sandwich,
at Houlst, 30 at Baldock, Barford,
Kolingborough, Maldenhead,
Warrington, Rochester.

December.

The first day at Northwel, and
Tring, 5 at Blackley, 9 at St.
Neots, at Woodstock, Spalding,
Northwich in Cheshire, at Exe-
ter, Senock, Arundel, Grantham,
at Stratford upon Avon, 7 at
Sandwich, 8 at Northampton.
Clithera

Ulthelial in Lancashire, Hunte-
ington, at Malpas in Cheshire,
11 day at Newport pagnel, 12 at
Stock, 19 day at Canterbury,
Salisbury.

The second Tuesday in January,
The Tuesday before Easter, The
first Tuesday in July, The Tues-
day before St. Luke at Potton in
Bedfordshire.

*Brief Notes for the Computation
of Expences.*

First,

Compute the Pence, but of one dayes
Expence ;

So many Pounds, Angels, Groats and
Pence

Are spent in one whole years Circum-
ference.

So that 7 Pence a day, is 7 Pound,
7 Angels, 7 Groats and 7 Pence in the
year, which is 10*l.* 12*s.* 11*d.* in the year.

Again,

One Weeks Expence in Farthings,
makes appear

The Shillings and Pence expended in
a year.

And so 21. Farthings by the Week,
is 22*s.* 9*d.* 3*q.* in the year.

To

3
2
1

day by
inches
your
undro
ball of
fe, and
part of
of the

