

**Royal bath Wildbad situated in the Black Forest of Württemberg :
prospectus of the baths / published by the Royal Board of Administration ;
author Th. Weizsaecker.**

Contributors

Weizsaecker, Th.
Royal College of Surgeons of England

Publication/Creation

[Wildbad] : Royal Board of Administration of the Baths, [between 1900 and 1909]

Persistent URL

<https://wellcomecollection.org/works/b9ztn58s>

Provider

Royal College of Surgeons

License and attribution

This material has been provided by This material has been provided by The Royal College of Surgeons of England. The original may be consulted at The Royal College of Surgeons of England. where the originals may be consulted. Conditions of use: it is possible this item is protected by copyright and/or related rights. You are free to use this item in any way that is permitted by the copyright and related rights legislation that applies to your use. For other uses you need to obtain permission from the rights-holder(s).

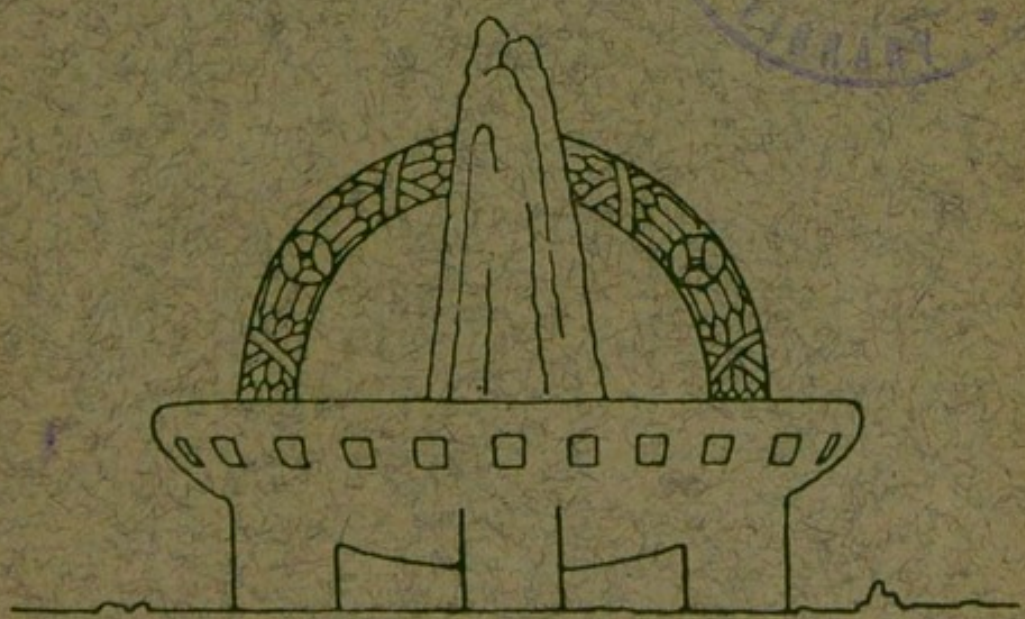


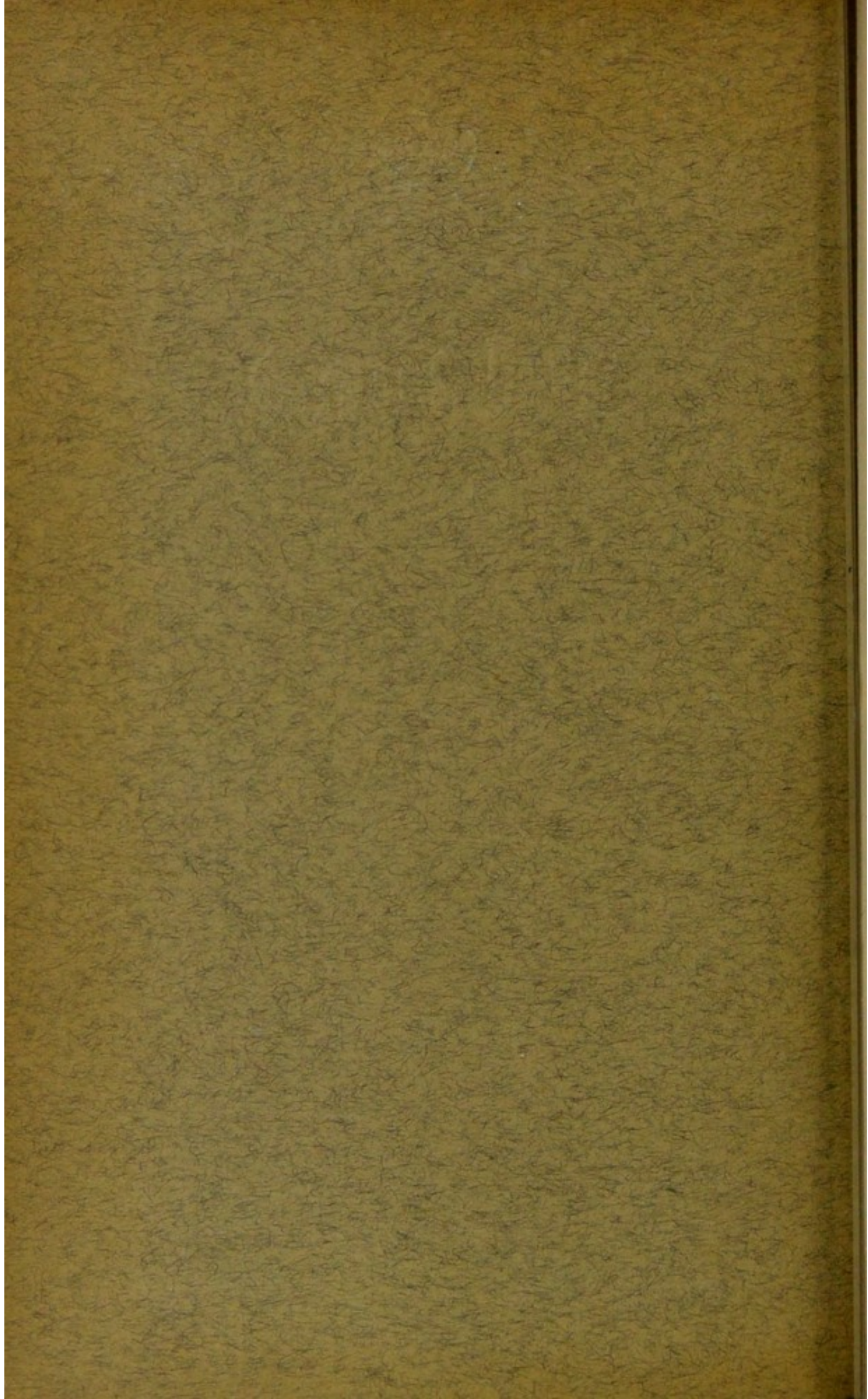
Wellcome Collection
183 Euston Road
London NW1 2BE UK
T +44 (0)20 7611 8722
E library@wellcomecollection.org
<https://wellcomecollection.org>

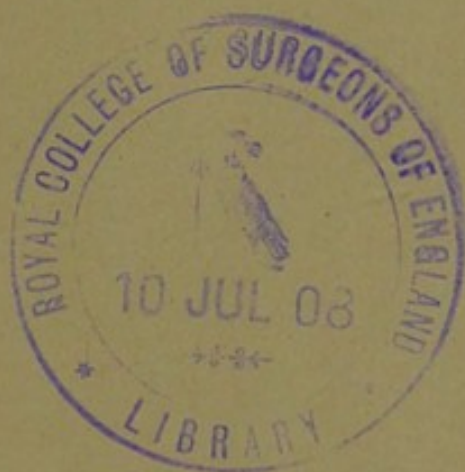
p. 16
4

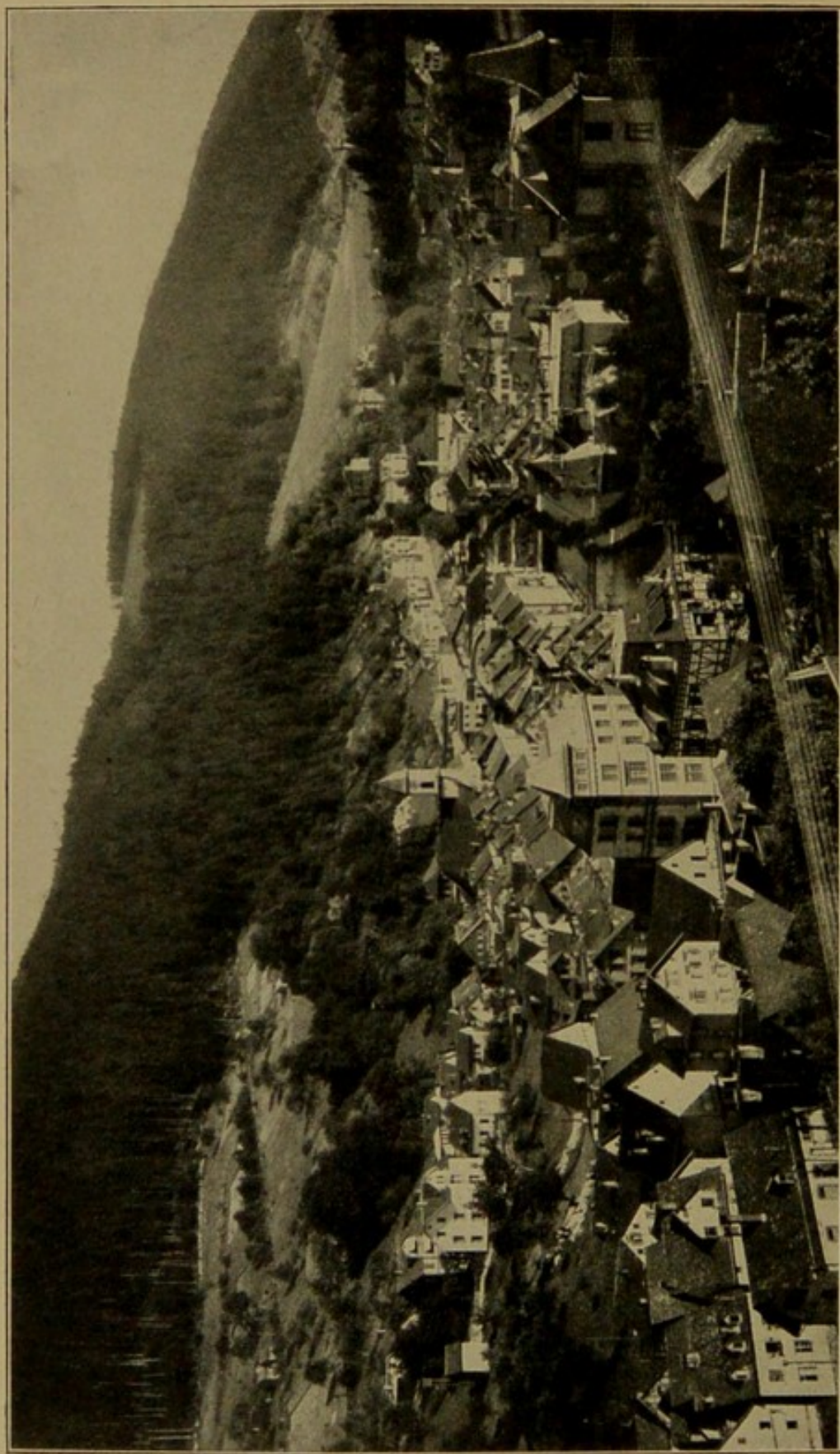


20









Taken by K. Blumenthal, Photographer to the Court, Wildbad.
Wildbad from the North-west.

Royal Bath Wildbad

situated in the
Black Forest of Württemberg

Prospectus of the Baths

published by the
Royal Board of Administration.

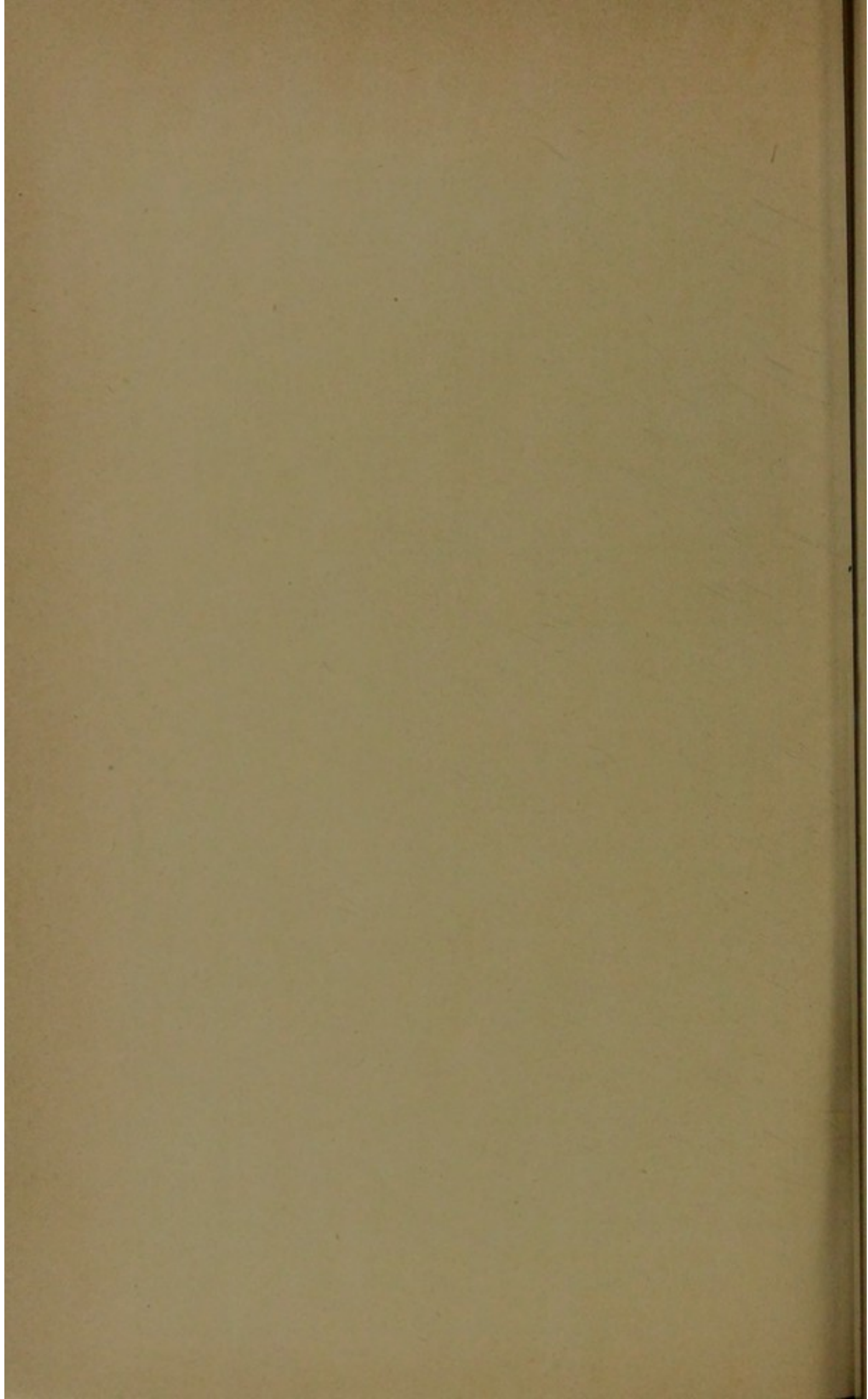
Author

Dr. Th. Weizsaecker

Physician to the Royal Baths.



ENGLISH EDITION.





Wildbad, Royal watering place in the Black Forest of Württemberg, situated 430 m above the level of the sea in the romantic valley of the Enz, bordered by magnificent pine-forests, has been visited and valued as a **healing spring** by people from all parts of the world **since the 14th century**. Even now it owes its world-wide fame to the **excellent healing power of its thermal water springing direct from primitive rocks**.

The watering place Wildbad with about 3800 inhabitants is the terminus of the railway which runs over a distance of 23 km through the valley of the Enz and branches off near Pforzheim in Baden from the great international line Vienna-Paris.

A few kilometer from Pforzheim the line runs as it were through a gate bordered by dark pine-trees into the narrow valley which has been furrowed through the northern spur of the Black Forest by the foaming

waters of the Enz gently winding its course up the valley in a southerly direction as far as Wildbad.

On our passing on to Wildbad we look with delight and surprise at the lovely landscape spread before our eyes and we are enraptured by the sight of the steep slopes covered with blue-black pine forests which have imprinted the name of Black Forest to the whole range of mountains extending as far as the Rhine. We behold the rich green meadows in the valley where smart villages have sprung up and numerous saw-mills, the principal industry of the valley of the Enz, have been established.

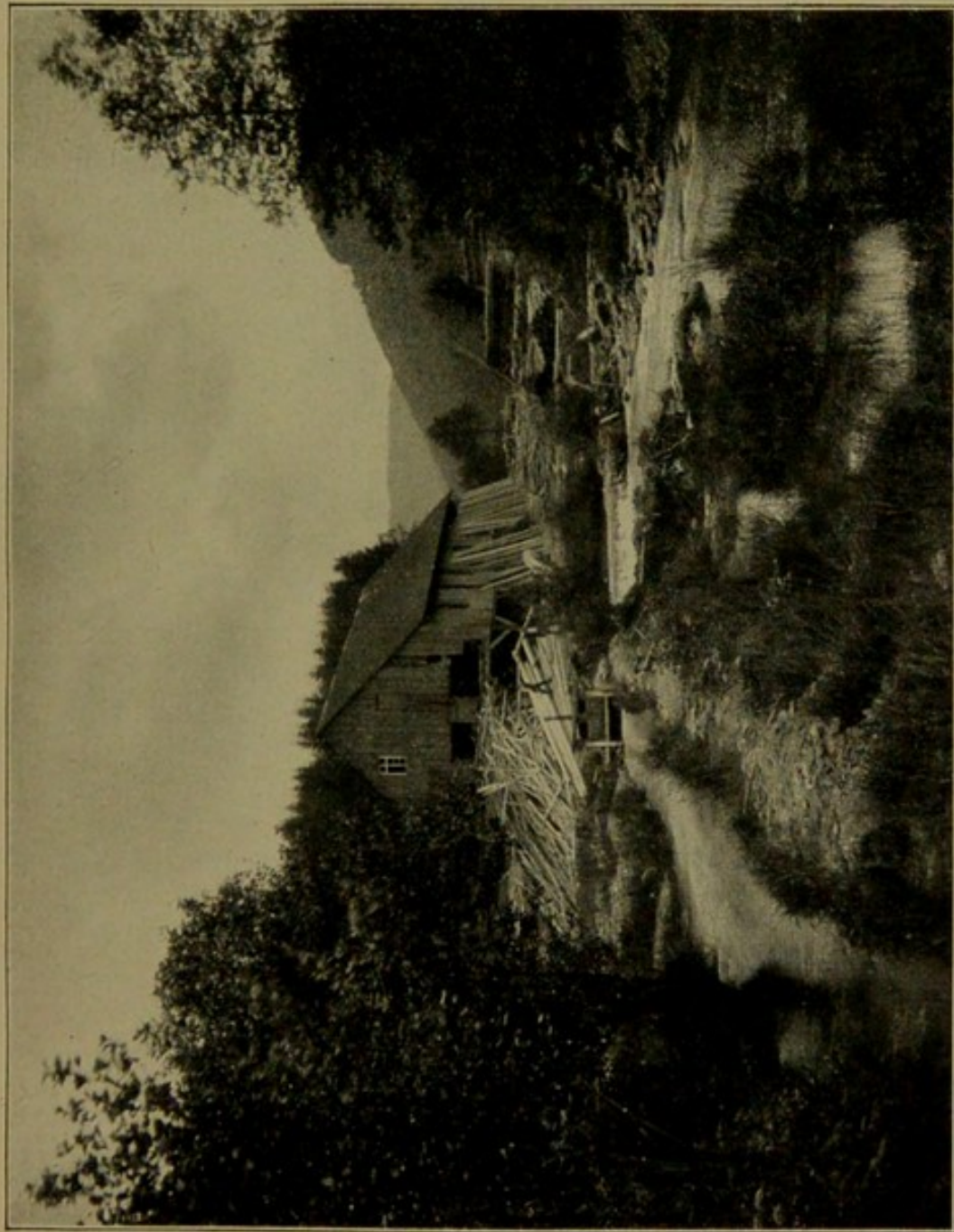
The official **time to begin the cure** in Wildbad is the 1th of May lasting till the 30th of September. During this time all the arrangements for the cure, baths, &c. are in full working order. A part of the thermal baths remains open the whole year, so that in favourable weather a cure may be successfully effected in spring and in the later part of autumn. The months of May, June and September are preferred by patients requiring quiet, the throng of visitors being smaller yet. Prices for lodgings are reduced at the beginning and the end of the season.

The number of visitors in Wildbad has been trebled during the last 20 years. (1890: 5—6000, 1900: 12—13000, 1907: 15—16000.)

Large first class hotels and good inns, boarding houses, villas and private houses in great number are ready for the reception of visitors.

The **salubrity** and **death rate** in Wildbad have always been favourable. The sanitary arrangements of the town are very efficient. There is an abundance of very excellent **spring water** of rare purity and softness, supplied by the water works.

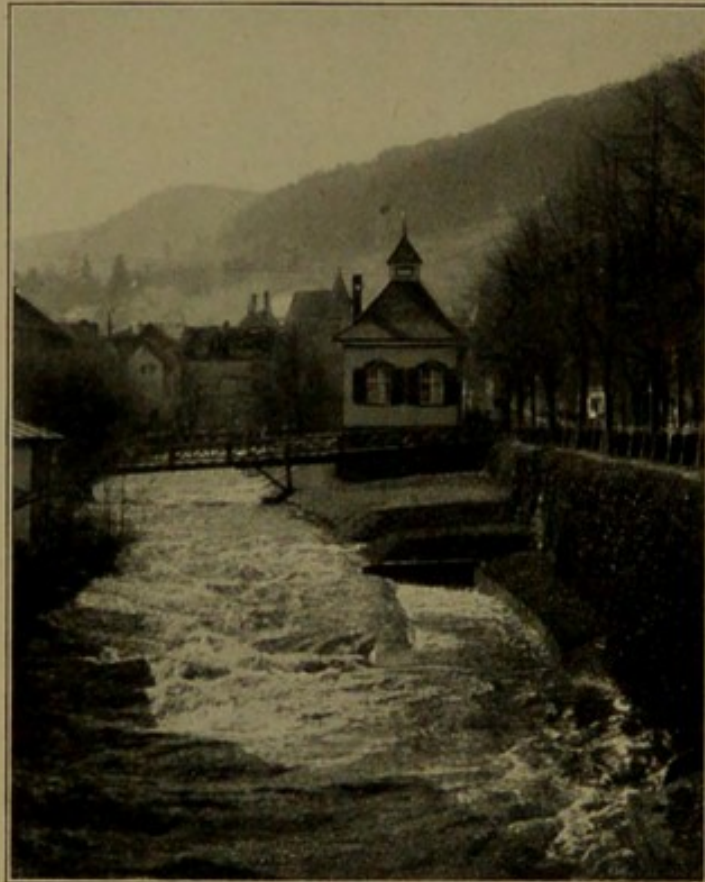
There are gas- and electrical works for lighting the



Taken by K. Blumenthal, Photographer to the Court, Wildbad.
Sprollen-Mill near Wildbad.

streets and houses, a slaughter-house with cooling rooms and in case of fire a well organised fire brigade.

The **climate** of Wildbad is very favourable and combines the characteristic advantages of the Black Forest: fresh air full of ozone, cool in the morning and evening, preventing the continuance of oppressive



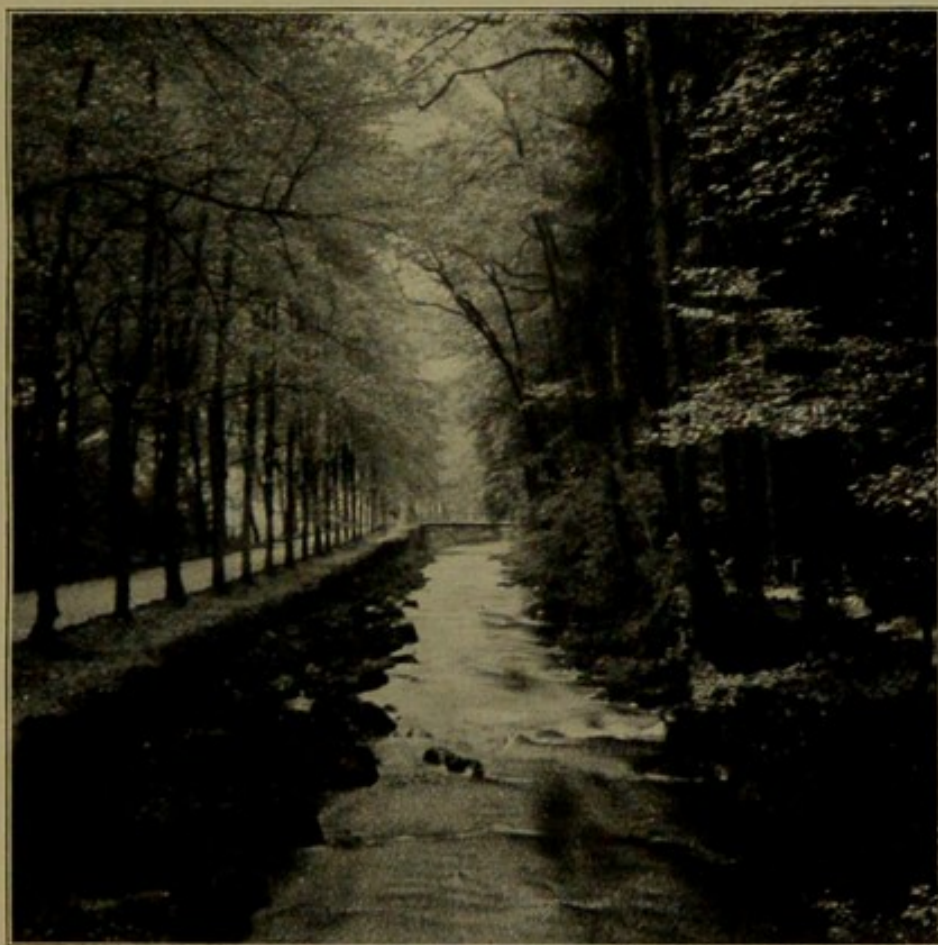
Taken by K. Blumenthal, Photographer to the Court, Wildbad.

Electric Works.

heat in the height of summer. The valley itself is protected against cold north and east winds. The characteristic of the geological formation of the environs of Wildbad is the sandy soil which quickly absorbs the rain, rendering thereby all the roads even those in the forests at once passable again.

All the **establishments for bathing** and **effecting a cure** as well as the extensive Kuranlagen with the

Enzpromenade, covering an area of about 20 h are the property of the State of Württemberg. All the **arrangements** are first class and new and of standard order. The different sections of the Administration in Wildbad are divided between the Royal Commissioner



Taken by K. Blumenthal, Photographer to the Court, Wildbad.

Part of the Kuranlagen. Enzpromenade.

(K. Badkommissär) and the Royal Board of Administration (K. Badverwaltung).

Wildbad's long approved natural remedy for effecting a cure are its thermal baths, the healing power of which lies in the water which with a natural warmth of 93—99,5° F. rises from 36 springs drilled in the granit.

In 100 000 g = 100 l thermal water we find according to v. Fehling's chemical analysis:

carbonate of lime	9,880 g
carbonate of magnesia	1,016 "
carbonate of soda	9,588 "
carbonate of iron	0,036 "
argillaceous earth	0,070 "
sulphate of soda	4,034 "
sulphate of potassa	1,435 "
chloride of sodium	24,269 "
silicic acid	6,304 "
total of solid constituents	56,632 g
free carbonic acid	11,877 "
spec. weight	1,006

Besides this the thermal waters contain small ingredients of organic substances, of sulphate of magnesia, boracic acid, phosphoric acid, arsenic acid, amoniac, lithion, baryt, strontion, manganoxydul, tin in quantities which can scarcely be fixed.

Owing to these proportionally small contents of solid constituents the thermal waters of Wildbad have been classified among the mineral springs of the group of indifferent thermal waters which on account of their wonderful healing power were in vulgar language simply called "Wildbäder".

To fully appreciate and rightly to understand the characteristic of Wildbad's thermal baths we must particularly point out that our thermal water with its natural warmth of 93—99,5° F. springs ready for use from the granit and therefore



Taken by K. Blumenthal, Photographer to the Court, Wildbad.
Count Eberhard. The Invasion of Wildbad.

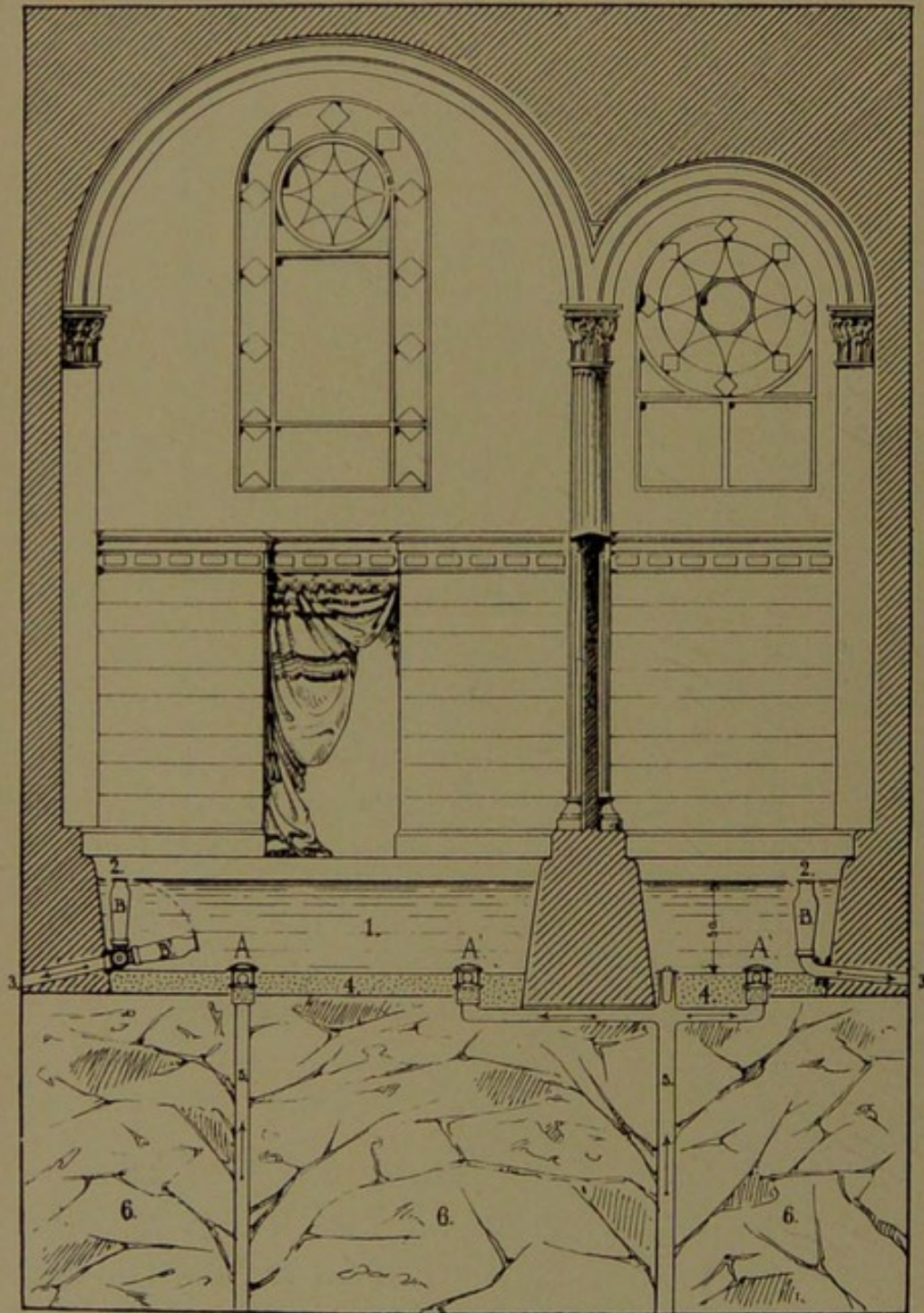
must not be brought to its proper bathing temperature by artificial cooling or warming or mixing, nor be conducted from a distance before being used as a healing bath. The **Bathhouses** have in olden times been built over the springs and these discharge their water direct into the cabins and basins, not being conducted



Old Baths after a woodcut.

from any distance. The patient therefore takes his bath as it were direct from the thermal spring (Bathhouses to the right of the Enz) and the powerful healing water is made use of under the most favourable conditions imaginable, so as to be able to exercise its healing effect on the diseased body with an infinitely small loss of its strength.

This also holds good especially with regard to the so-called **Radioactivity** of the thermal waters as proved and measured by the Engler-Sieveling process.



Aqueduct for providing the baths with thermal water.

1. Thermal water — 2. Gauge-pipe — 3. Waste-pipe leading the overflow into the
Enz — 4. Sand — 5. Bore-hole — 6. Primitive rocks with aquiferous clefts.

Although the physiological effect of this new form of energy upon the human organism will have to be investigated more minutely yet, we must nevertheless believe even now that Radioactivity must be of very great value to the peculiar therapeutic effect of our baths.

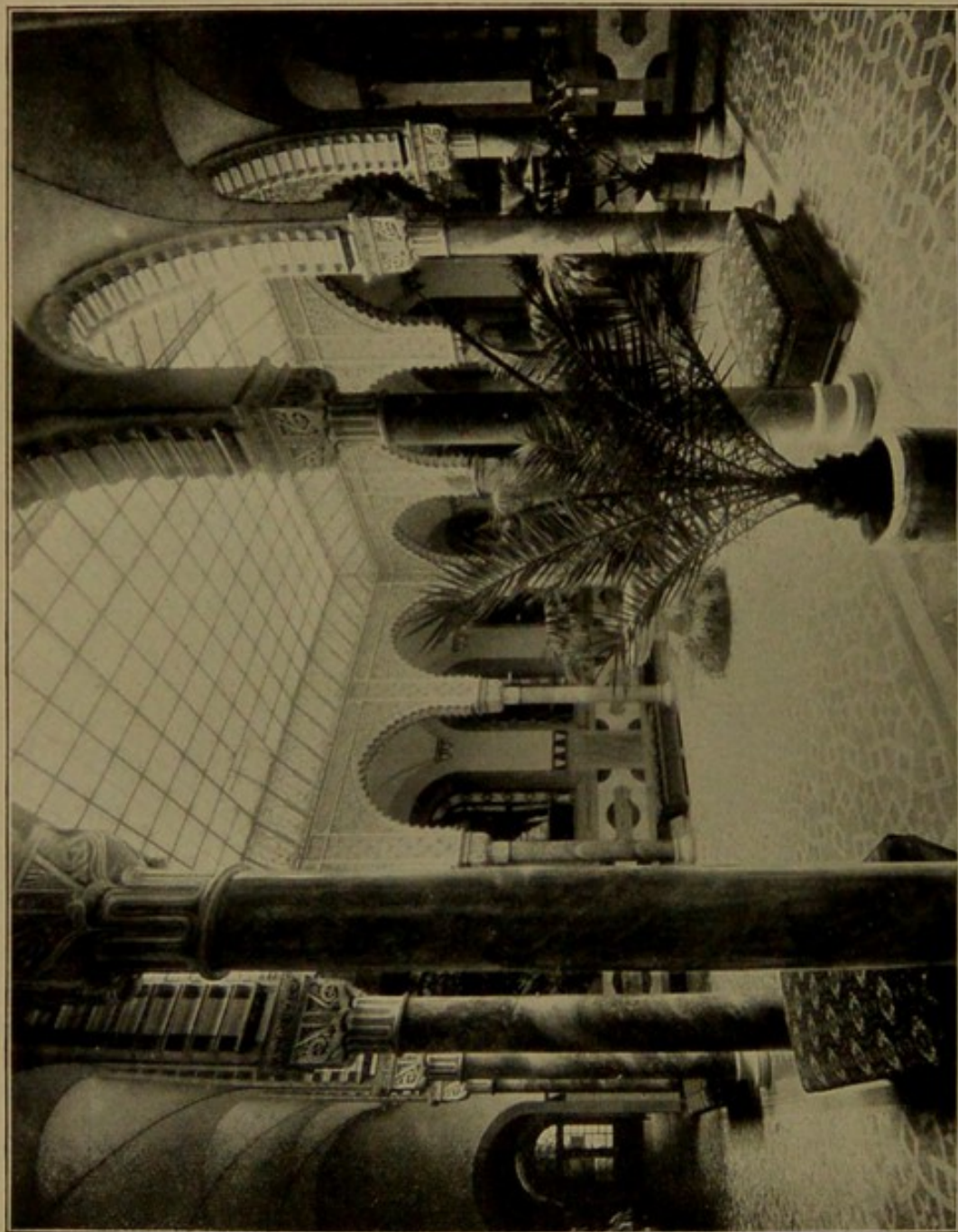
The separate **arrangements for using the baths and remedies** are as follows:

a) **Thermal Baths** to the right of the Enz.

1. The **large Bathing-House** situated at the Kurplatz connected by a lift with the Royal Badhotel. It

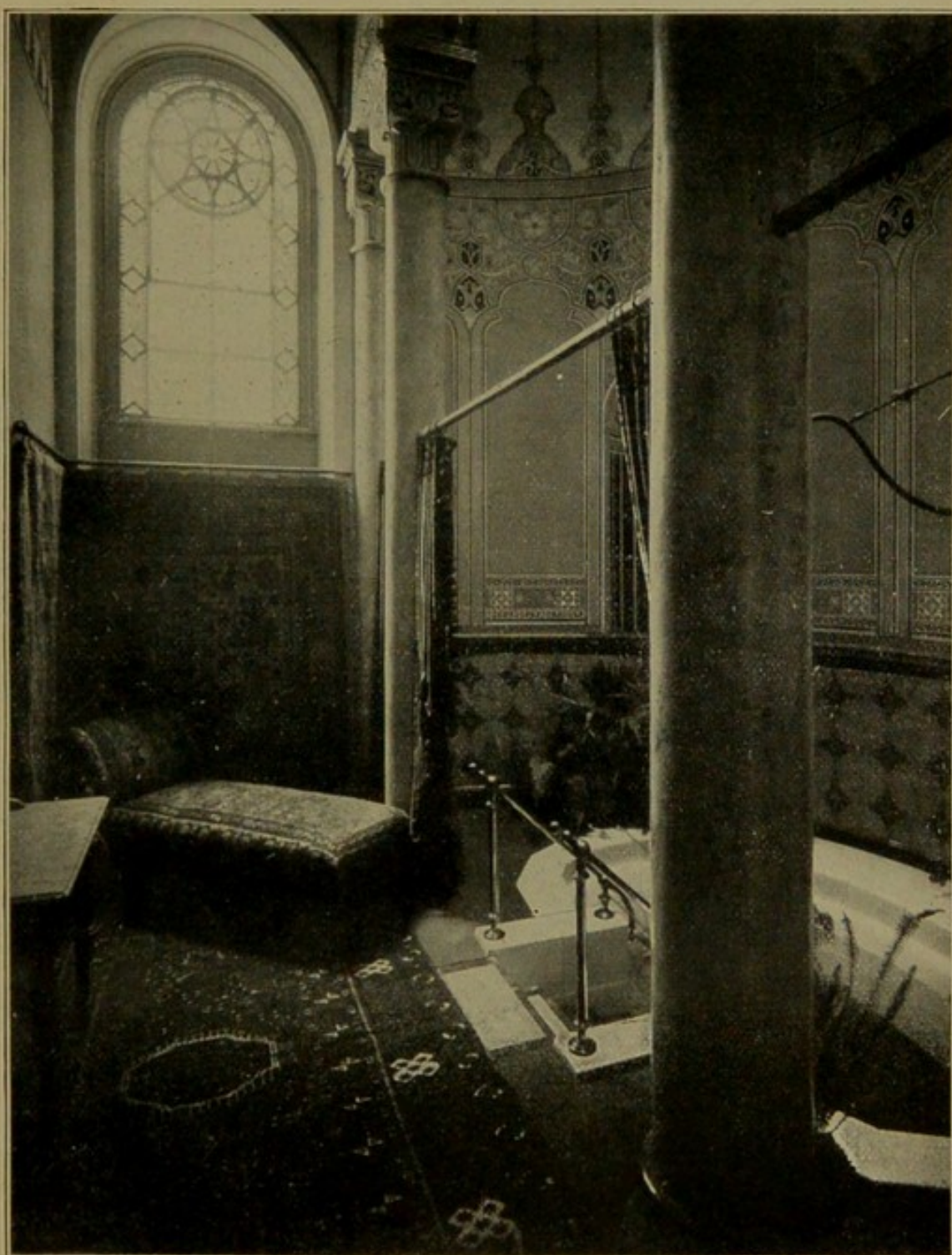


Taken by K. Blumenthal, Photographer to the Court, Wildbad.
Companion Bath for Gentlemen.



Taken by K. Blumenthal, Photographer to the Court, Wildbad.

Large Bad-building. Waiting-hall.



Taken by Brandseph, Photographer to the Court, Stuttgart.

Prince's Bath.

contains: 9 **Princes' baths** (single baths larger and more luxuriously fitted up), 41 **common single** baths and the so-called **Companion baths**, large basins for common use in separate divisions for ladies and gentlemen; they are in fine, lofty, airy halls and approved off from the earliest times as a favourite form of using them.

2. The **small Bathing-House** with 12 **single baths**.

3. The **Royal Katharinenstift**.

It contains companion and single baths for men and women fitted up in a simpler way. The rooms in the upper floors serve for the accomodation of poor Württembergians who have been admitted to the free use of the thermal waters.

The influx of the thermal water direct into the



Taken by K. Blumenthal, Photographer to the Court, Wildbad.

basins of all the single and companion baths is effected in the same characteristic way as described (page 11).

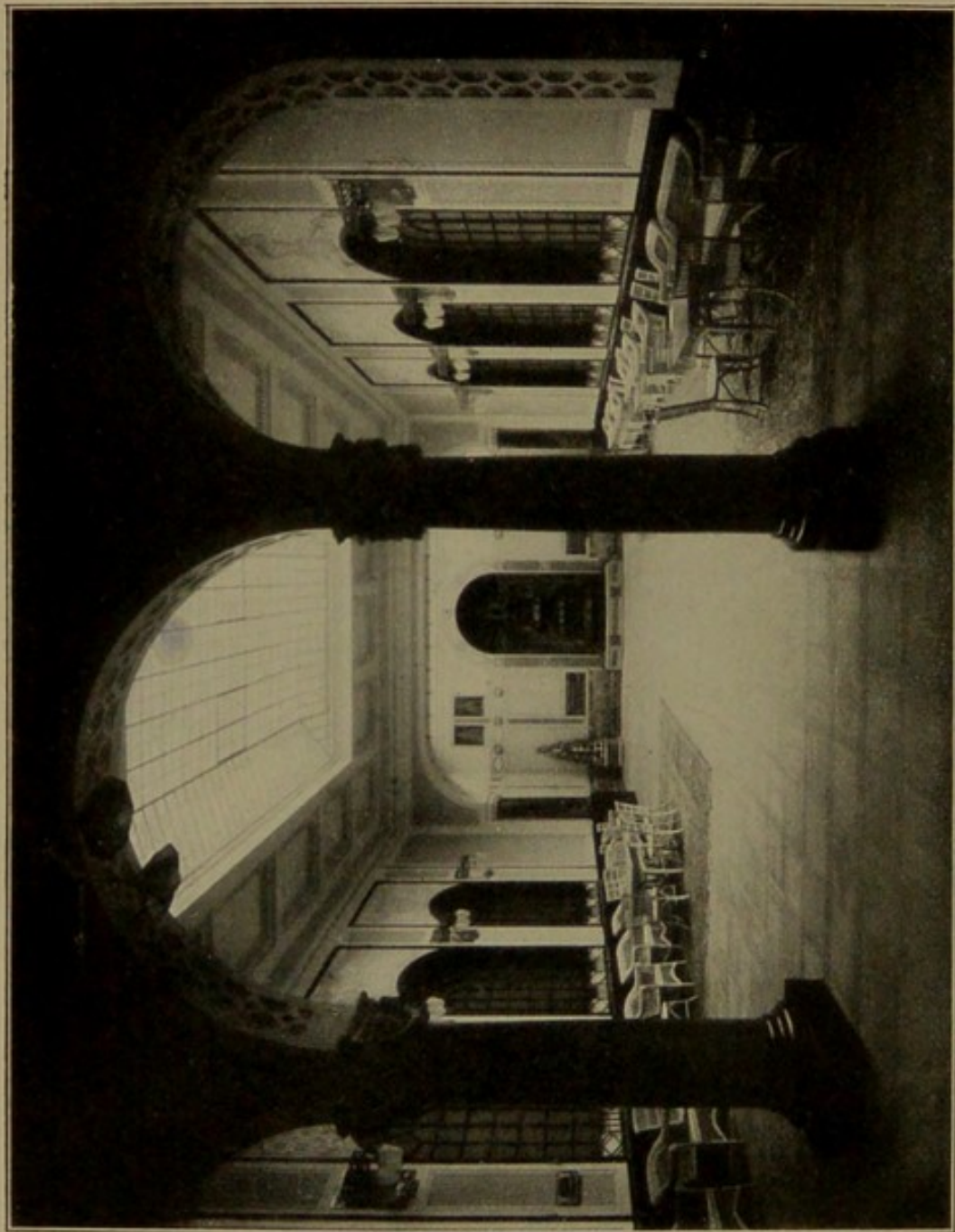
b) **Thermal-Baths** to the left of the Enz.

In a part at the back of the **König-Karl-Bad** there are on two floors on both sides of the waiting hall (it



Taken by K. Blumenthal, Photographer to the Court, Wildbad.
König-Karl-Bad.

serves at the same time as Foyer) 21 spacious and airy single cabins, among them 4 nobel cabins. These thermal baths are fed by means of pipes with slightly cooled thermal water (up to 93° F.); they may also be cooled to a lower temperature. They represent a milder form of the baths which are preferred in all those cases in which from some reason or other the stronger and warmer thermal baths to the right of the Enz do not appear suitable.



Taken by K. Blumenthal, Photographer to the Court, Wildbad.

König-Karl-Bad. Waiting-hall.



Taken by K. Blumenthal, Photographer to the Court, Wildbad.
König-Karl-Bad. Entrance-hall.

In the **König-Karl-Bad** there are also

c) **Vapour and Hot-air baths**

of which **two** separate divisions for ladies and gentlemen take up the whole ground floor. Besides the rooms for dressing and resting they each contain a room with Hot-air, Vapour, and Massage; adjoined to them is the Hall with the warm and cold water basin and the different kinds of warm and cold Douches. The warm bath is fed with thermal water of about 93° F., the cold bath by spring water of about 60° F. and with this arrangement may be combined the effect of the Vapour bath etc. and of the thermal bath. All these localities are splendidly fitted up.



Taken by K. Blumenthal, Photographer to the Court, Wildbad.

König-Karl-Bad. Hot-air Baths.

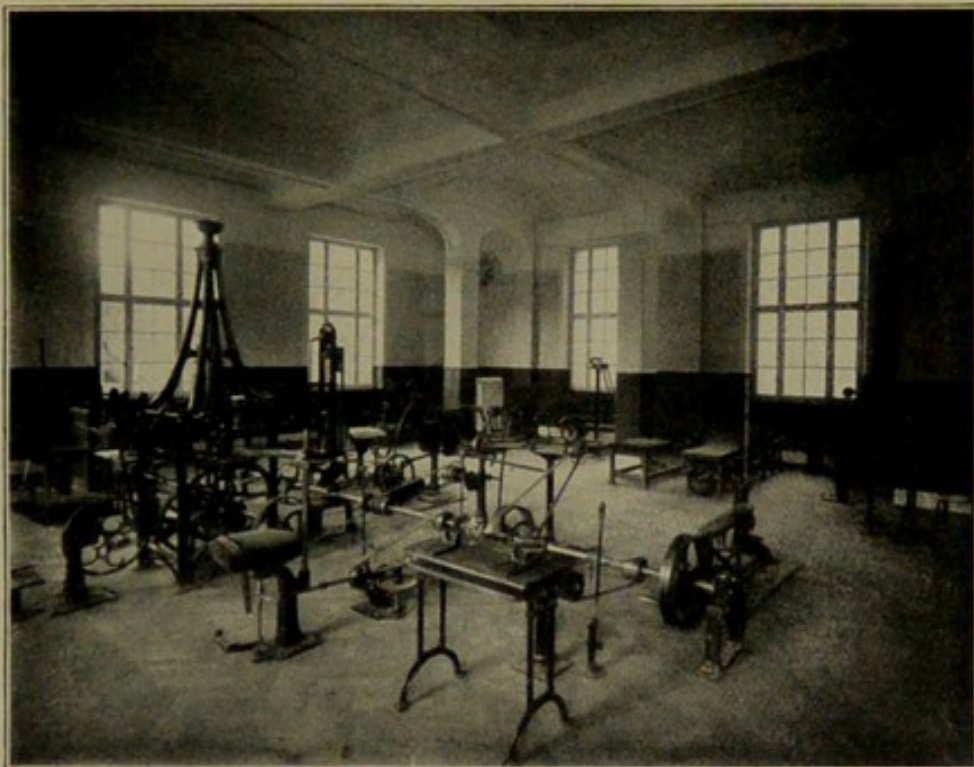
d) The **Hydroelectric Bath**

has likewise a place in this building. It is, however, only to be used with medical permission and under medical supervision.

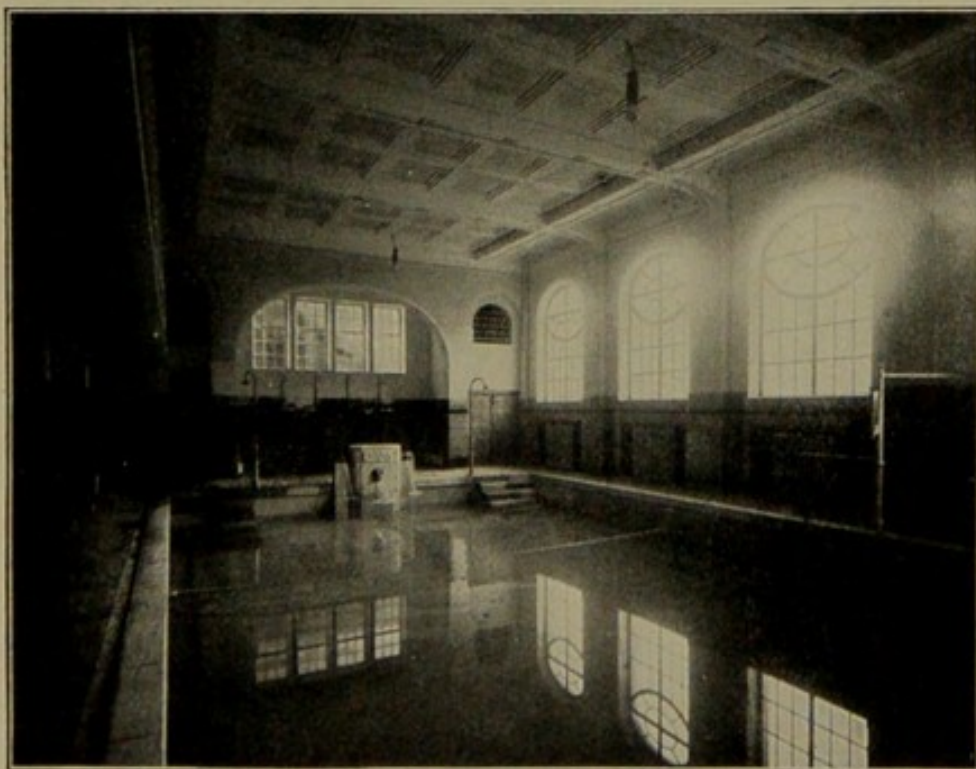
e) The **Medico-mechanical Institution.**

Beautiful rooms with all the necessary requisits have been fitted up on the first floor of the new Building in the Olgastrasse (1906/7). Besides a separate staircase there is also a lift leading up to them. All the active and passive Zander apparatuses desirable for effecting a cure are placed here.

On the ground-floor of the same building there is a new attraction to Wildbad



Taken by K. Blumenthal, Photographer to the Court, Wildbad.
Medico-mechanical Saloon.



Taken by K. Blumenthal, Photographer to the Court, Wildbad.
Swimming Basin

f) the **Swimming-Bath.**

It is fed by warmed spring water (60° F.); the basin is 13 m long, 8 m wide, the depth of the water from 0,80—2,5 m. It contains 28 dressing rooms. The fittings



Taken by K. Blumenthal, Photographer to the Court, Wildbad.

Swimming Bath.

and inner arrangements are throughout in accordance with the most modern principles. Its use by ladies or gentlemen is fixed for the present at certain hours. A space is, however, set apart in the building to provide a separate swimming bath for ladies later on.

g) **Fountains for drinking thermal water.**

1. The **Eberhardsbrunnen** on the Kurplatz under the balcony at the northern side of the large building. Temperature 93° F.

2. The **Königsbrunnen** in the northern pavilion of the Trinkhalle. Temperature 93° F.

3. Besides there is a **Trinkbrunnen** in the southern corner of the basement in the König-Karl-Bad, a flight of steps leading down to it. The same place is also much used for gargling.



Taken by K. Blumenthal, Photographer to the Court, Wildbad.

Milkcure with Marienbridge.

h) **Further remedies for effecting a cure.**

1. **Manual gymnastics and massage.** Trained nurses male and female are in attendance for that purpose.

2. **Electrotherapeutics** of all kinds, "**Vierzellenbad**", opportunity of photos being taken by X-rays.

3. **Milk cure.** There is a building in the Kernerstrasse where cold and warm milk fresh from the cow may be obtained in the morning and evening. All the cows have been vaccinated to prevent tuberculosis and stand under constant control of a veterinary surgeon. Sour milk, goats milk, wey and kephir are likewise to be had.

4. **Mineral water cure.** The leading mineral and artificial waters, always freshly filled may be obtained from the Court Apothecary Dr. Mezger or the druggist Heinen, also early in the morning at the stand in the northern Pavilion of the Trinkhalle.



Old woodcut (16 century).

The **diseases** and **infirmities** which from long experience have been cured or at least alleviated in Wildbad are:

1. Rheumatism in its various forms and complications: rheumatism of the joints, acute and chronic,

the first only when free from fever, rheumatism of the muscles, deforming inflammation of the joints.

2. Diseases of the motory organs: Diseases of the muscles and joints of rheumatic or gouty nature, consequences of any injury or wound, gun-shot wounds, fractured bones, stiff joints, shrinking scars, bruises, sprains, inflammation of the bones and the periosteum.

3. Disturbances in the metabolism and constitutional anomalies. First of all gout in its various forms with very excellent results after the use of Wildbad's thermal springs. Chronic cases of metallic poisoning (lead, mercury), later forms of syphilis, scrofula, and osteomalacia, scurvy, anæmia and chlorosis, certain phases of diabetes &c.

4. Diseases of the nervous system:

a) Neuralgia (pains of the nerves) of all kinds, especially sciatica, intercostal neuralgia, face ache.

b) Peripheral paralysis through some lesion, metallic- (lead-) poisoning, or through gouty rheumatic neuritis.

c) Disturbed functions and diseases without anatomical foundation: all kinds of neurosis, neurasthenics, hysterics (Vitus's dance), increased irritability of the nervous system &c.

d) Diseases with an anatomical foundation: paralysis of the nerves after apoplexy (hemorrhage and embolism), yet not before the lapse of 6 months, inflammation of the spinal marrow and its membranes, all kinds of chronic diseases of the spinal cord, especially tabes, progressive atrophy of the muscles in its initial stage, spinal paralysis in children, irritation of the spine, paralysis of the spinal marrow with inflammation or rupture of the vertebral column.

5. There are a great many infirmities and conditions of weakness of the body, some of which can not be described as illness in its proper sense, but which are the consequence of old age, overwork and such like. In such cases it is our endeavour to revive by our baths the sinking vitality of the body or to renew the impaired activity of the vital organs. To this category belong first of all the infirmities of old age, weakness of the bodily and sexual functions, weakness of the bladder, overwork and overexertion of the body, great loss of blood, childbed, all kinds of injuries and operations, in short every kind of weakness requiring rest.

6. Diseases of the urinary and genital organs: irritation of the bladder, chronic catarrh of the bladder, old catarrh of the urethra, urine sand and gravel, irritation and inflammation of the kidneys (drink cure), among married women especially amenorrhoe and dysmenorrhoe, inflammation and exudation in the organs of the pelvis.

7. Diseases of the digestive organs: catarrhal cases of the mucous membrane of the stomach and the bowels, diarrhoea and chronic obstipation (gymnastics).

8. Diseases of the organs of respiration and circulation: laryngitis, bronchial catarrh (Wildbad is, however, for climatic reasons not very suitable for patients of this kind), disturbances in the circulation of the blood and heart-diseases in persons suffering from rheumatism, nervous disturbances of the activity of the heart, consequences of phlebitis and thrombosis. Caution necessary in strongly developed sclerosis.

9. Skin-diseases: Itching, nervous cutaneous irritation, zoster, inclination to furuncle and inflammation

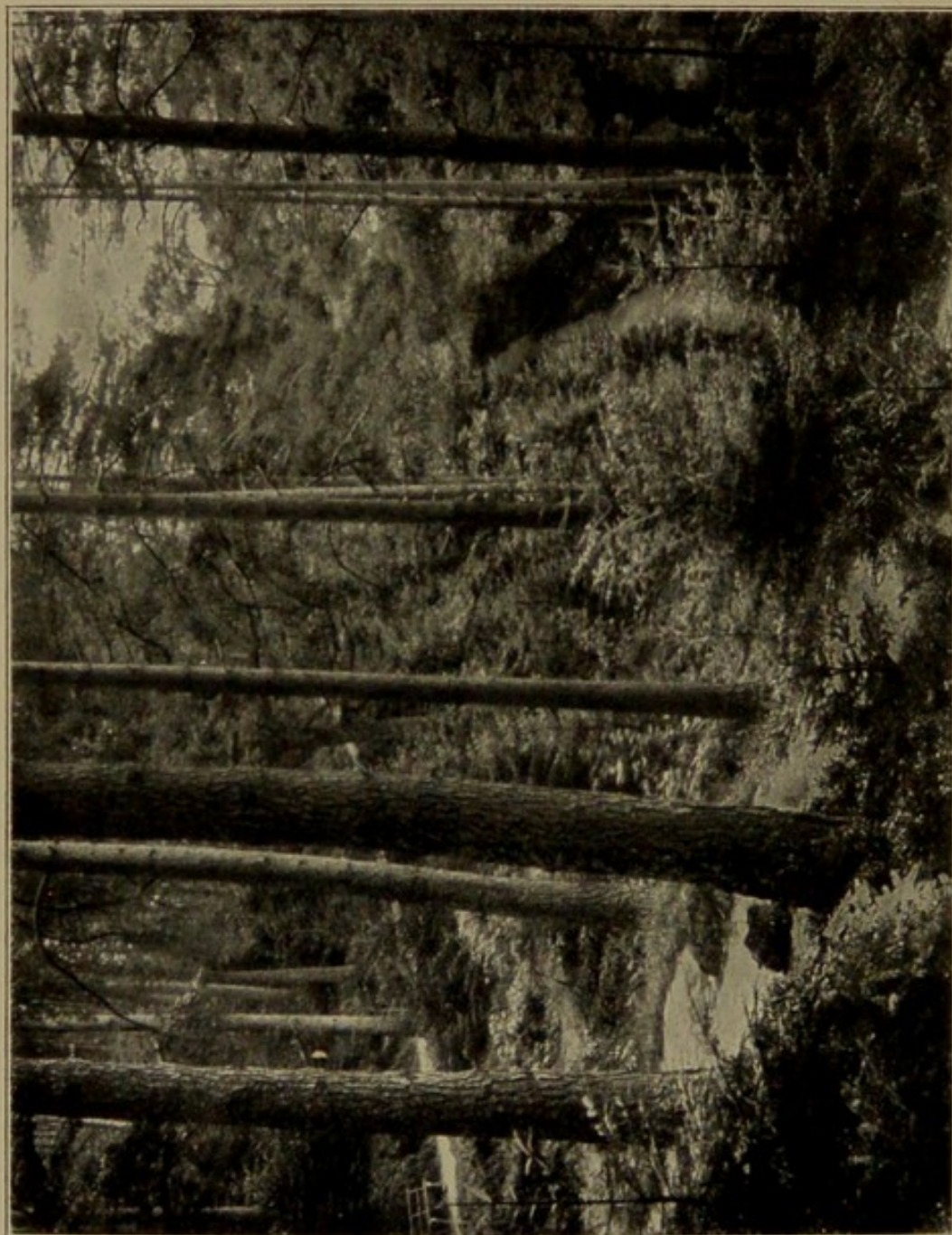
of the cellular tissues, torpid cutaneous ulcers. To treat wide-spreading skin-diseases, Wildbad is not the right place; they require treatment in special establishments.

10. We may still mention the favourable influence of our baths on the involution and the resorption of exudations and fluids in the soft parts or cavities of the body caused through injuries or inflammatory processes already mentioned in previous paragraphs.

Here we have come to the limit of the sphere of action of Wildbad's thermal springs and its other remedies. The most thankful field for the healing power of our baths are the diseases mentioned under 1—6 and 10. In 7—9 we have likewise supplemented those pathological conditions of the respective organs in which the external and internal use of our thermal springs have also shown good results; Wildbad and its remedies are, however, less characteristic for the treatment of such.

There are on the other hand a number of diseases and cases for the treatment of which Wildbad is not the proper place, and experience has shown that our baths have a direct injurious influence on the progress of such maladies. We are now going to mention them, as far as it has not been done yet: all kinds of fever, consumptive diseases, especially tuberculosis of the lungs and malignant new plasmatations and tumours, inclination to hemorrhage. Gravidity too requires at least great caution.

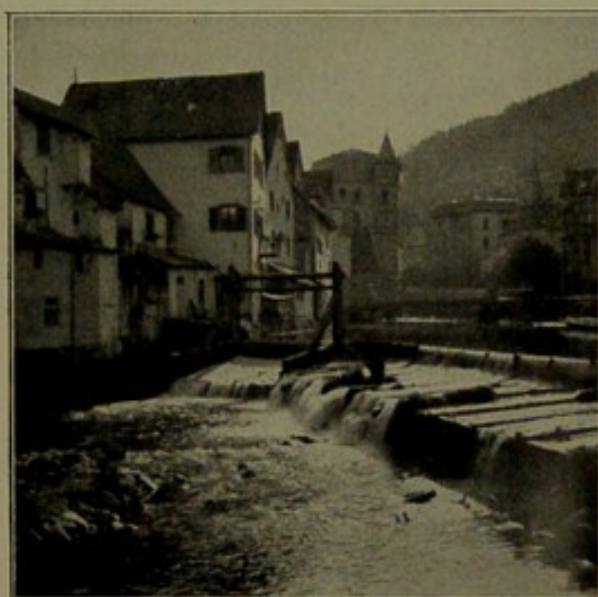
Wildbad with its **many attractions**, its climate, its magnificent and extensive Kuranlagen and promenades, as well as the large neighbouring forests with their various walks may well be recommended as a salubrious summer-residence. Visitors being at liberty to join in the pleasures and entertainments offered at Wildbad,



Taken by K. Blumenthal, Photographer to the Court, Wildbad.

Road in the Forest of tall trees.

or to lead a solitary life, people requiring rest and recreation will find all they may wish for, and particularly a pleasant and quiet home in the many villas lately built in the outskirts of the town. This very regard for such visitors and their families who do not require the proper cure has induced the Royal Board of Administration to build a **Swimming bath**. For the same reason the Town Council have decided to build a wire-rope railway up to the Sommersberg (730 m) to be opened in 1908. By this line the extensive high plateau to the west of the valley of the Enz, upwards of 1000 m high, will be within easy reach for less active visitors. On this plateau there are a restaurant and extensive promenades.



Taken by K. Blumenthal, Photographer to the Court, Wildbad.

Old Wildbad.

It is intended to build there a hotel for visitors requiring fresh air.

Prices of the Baths &c.

(inclusive of service and bathing linen)

- A. In the **baths to the right of the Enz**: pay-office in the building adjoining the large bathing house.

Thermal baths

a) in the **large and small bathing house**

Princes' bath I—III	M. 6. —, 5. —, 4. —
" IV—IX	M. 3. 50
Single bath	" 2. 50
Companion bath	" 1. 50
Thermal douches prescribed by a doctor free.	

b) in the **Royal Katharinenstift**

Single bath	M. 1. 20
Companion bath	" —. 70
Thermal douches	" —. 20



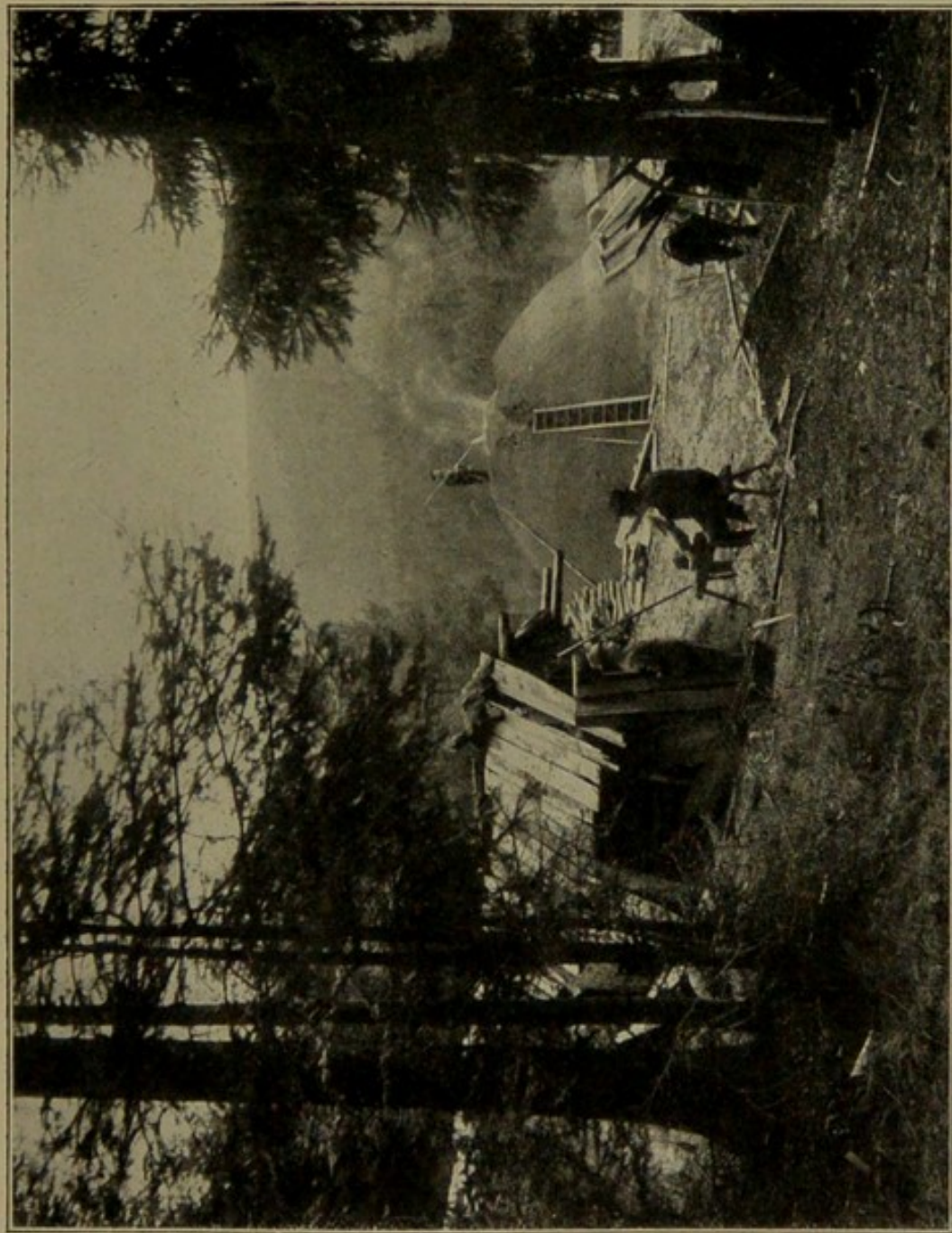
Taken by K. Blumenthal, Photographer to the Court, Wildbad.

Karlsberganlagen. Obelisk.

B. In the **König-Karl-Bad** (to the left of the Enz): pay-office in the vestibule.

1) **Thermal bath:**

1 Nobel bath	M. 3. —
Single bath from 6— $\frac{1}{2}$ 9 a. m. }	. . . " 2. —
or " 3—5 p. m. }	
$\frac{1}{2}$ 9—12 a. m.	" 2. 50
Thermal douche with the bath	" —. 40
Cold douche free.	



Taken by K. Blumenthal, Photographer to the Court, Wildbad.

Charcoal-Kiln in the Black-Forest.



New Anlagen. Grotto formed of rocks.

- 2) **Vapour and hot-air bath** M. 2.50
- 3) **Bath in Basin** (cold and warm, cold
douche) only in the afternoon " 1. —
For the use of a sofa " —.30
- 4) **Hydroelectric Bath** " 3. —
(only when prescribed by a doctor and under
medical supervision).
- C. In the **new building** in the Olgastrasse:
- a) **Swimming bath**: single bath incl. linen M. —.60
children under 14 " —.40
Subscription for 10 baths incl. linen " 5. —
children under 14 " 3. —
- b) **Medico-mechanical Institution**
Weekly ticket for 6 visits " 6. —

Cure-tax.

In the months of June, July, August for one person or the head of a family, 4 M. for one week, for 4 weeks M. 12. —; for a member of the family M. 3. — resp. M. 8. —; for a child or a servant M. 1. — resp. M. 3. —. In May and September the tax is lower.

Medical men. Apothecary.

M. D. Weizsaecker, Geh. Hofrat, Physician to the Royal Baths. Medical Superintendent of the Thermal Baths and Royal Institutions.

Other medical practitioners:

Asher, M. D., prakt. Arzt and Kurarzt.

Haussmann, M. D., Sanitätsrat.

Hiller, M. D., Districtsarzt.



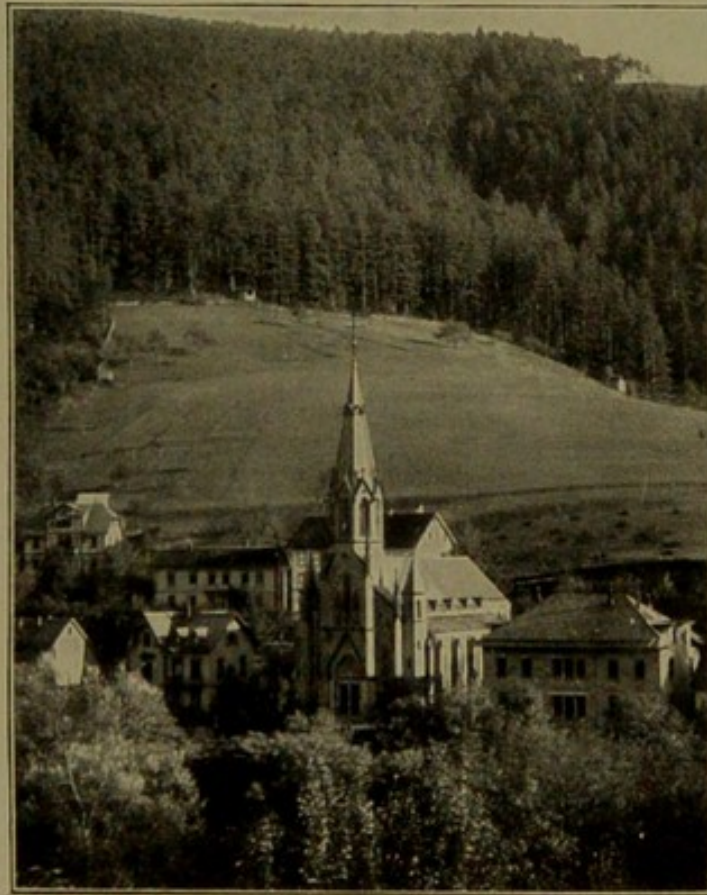
Taken by K. Blumenthal, Photographer to the Court, Wildbad.

Lutheran Church.

Josenhans, M. D., Kgl. Bahnarzt.
Layer, M. D., homeopathic Arzt.
Lorenz, M. D., Stadtarzt, Stabsarzt a. D.
Court-apothecary Dr. Mezger.

Attendance and care of patients.

There are well trained nurses to attend in cases of acute illness, Sisters of the evangelic Diakonissenstation and of the roman catholic Sisterhood.



Taken by K. Blumenthal, Photographer to the Court, Wildbad.

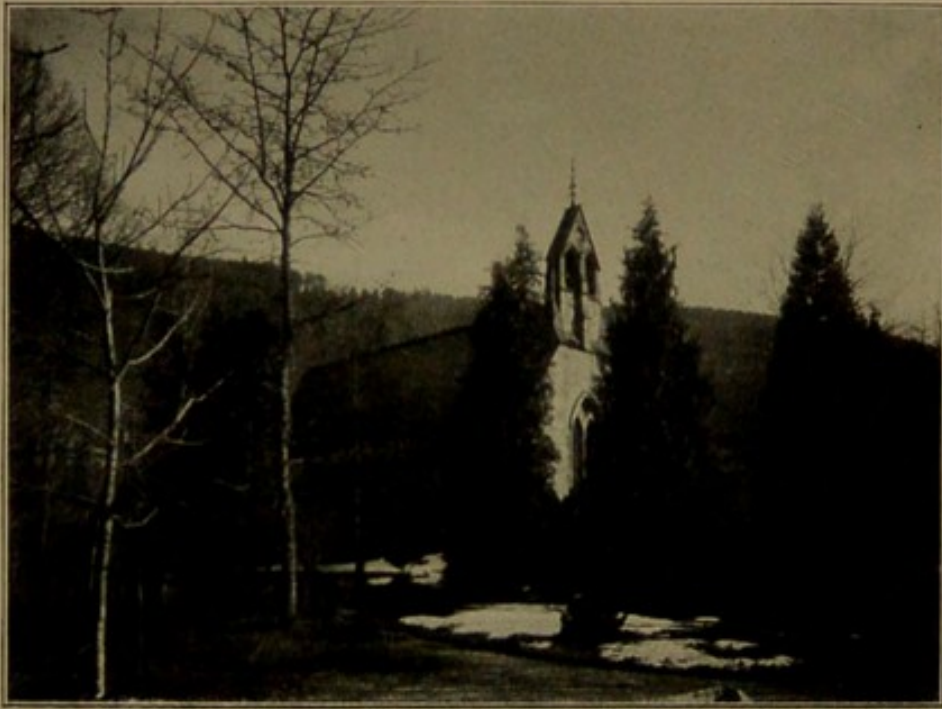
Roman Catholic Church.

Divine Service

is regularly held in the Evangelical and Roman Catholic churches and during the principal season in the English church and in the Jewish place of worship.

Banking business.

The Vereinsbank Wildbad and the Banking office of the Hotel Klumpp have connections with most of the large banks in the country and abroad.



Taken by K. Blumenthal, Photographer to the Court, Wildbad.
English Church.

Postal, telegraphic and telephonic arrangements.

The principal Post- and Telegraph-office is opposite the railway station. During the season there is also an office in the royal Badhotel at the Kurplatz. Wildbad is connected by telephon with the whole of South Germany and the most important points of Switzerland and North Germany.

Direct routes to Wildbad.

	single fare for all trains		
	I. Kl. M.	II. Kl. M.	III. Kl. M.
Berlin - Kassel - Frankfurt - Heidelberg - Bruchsal - Pforzheim - Wildbad	56.—	35.20	22.60
Berlin - Erfurt - Ritschenhausen - Würzburg - Bietigheim - Pforzheim - Wildbad			
Hamburg - Altona - Frankfurt - Heidelberg - Pforzheim - Wildbad . . .	61.10	36.70	23.50
Hannover - Kassel - Frankfurt - Wildbad	44.20	28.—	18.—
Wien - Linz - München - Augsburg - Stuttgart - Mühlacker - Wildbad . . .	79.10	51.60	—
Basel - Karlsruhe - Pforzheim - Wildbad	21.20	14.10	8.80
Zürich - Singen - Immendingen - Rottweil - Horb - Pforzheim - Wildbad return fare	25.30 —	17.20 25.70	11.40 17.90
Paris - Nancy - Metz - Strassburg - Karlsruhe - Pforzheim - Wildbad . . .	61.70	42.20	—

Direct carriages

run in the summer months between Stuttgart-Wildbad, München-Wildbad, Frankfurt-Wildbad and back.

Entertainments and Amusements.

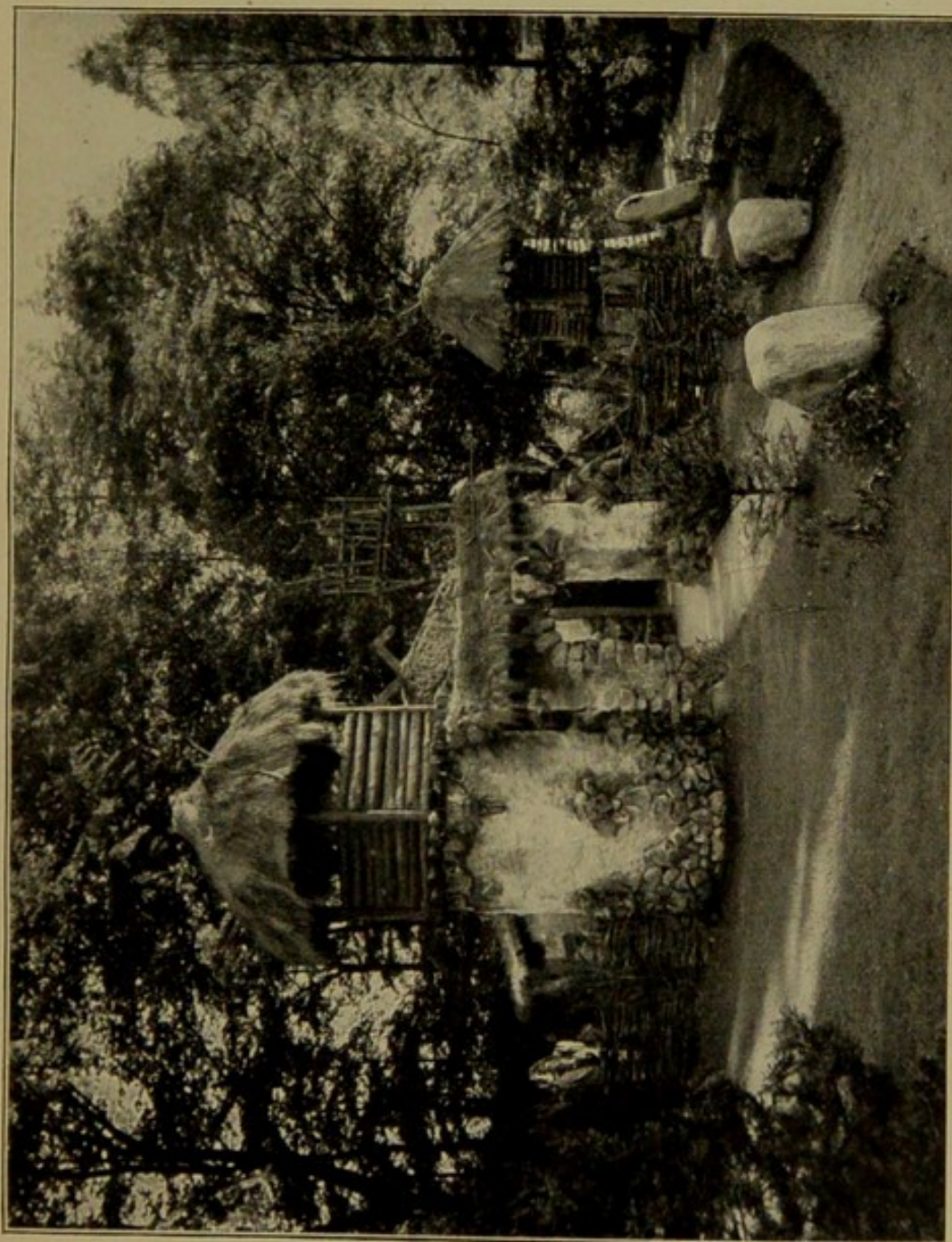
The social life in a watering place and the amusements and entertainments which are regularly offered to the visitor during the season are next to the arrangements for effecting a cure of very great importance. The arrangement and management of these entertainments are under the special direction of the Royal Commissioner. From the large and varied programme the following deserve to be mentioned:



Taken by K. Blumenthal, Photographer to the Court, Wildbad.

Kurplatz in Wildbad.

There are daily performances by the **Kurorchestra** of 35 professionals, at the Kurplatz, in the Trinkhalle and in the Royal Kuranlagen alternately. In the **Royal Kurtheater**, the Temple of the Muses on the Theaterplatz an approved Company perform regularly during the



Taken by K. Blumenthal, Photographer to the Court, Wildbad.
New Anlagen. Huntings-hut.



Taken by K. Blumenthal, Photographer to the Court, Wildbad.
König-Karl-Bad. Billard-tables.



Taken by K. Blumenthal, Photographer to the Court, Wildbad.
König-Karl-Bad. Reading-rooms.

months of Juni—September, while in the Konversations-saal (Royal Badhotel) **Concerts** by **artists** and **Symphony-Concerts** and **Dancing** alternately take place on fixed weckdays. In fine weather there are regular **Illuminations** of the most beautiful parts of the Anlagen, the Trinkhalle and the Kurplatz.

In the rooms newly fitted up on the upper-floor of the König-Karl-Bad (lift) there are the **Reading-rooms** with more than 100 of the most read german and foreign newspapers, comfortable Card- and Smoking-rooms and a large room with new first class Billiard-tables. The new tastefully fitted up Wartehalle on the ground-floor of the König-Karl-Bad offers especially in bad weather a pleasant lounge.

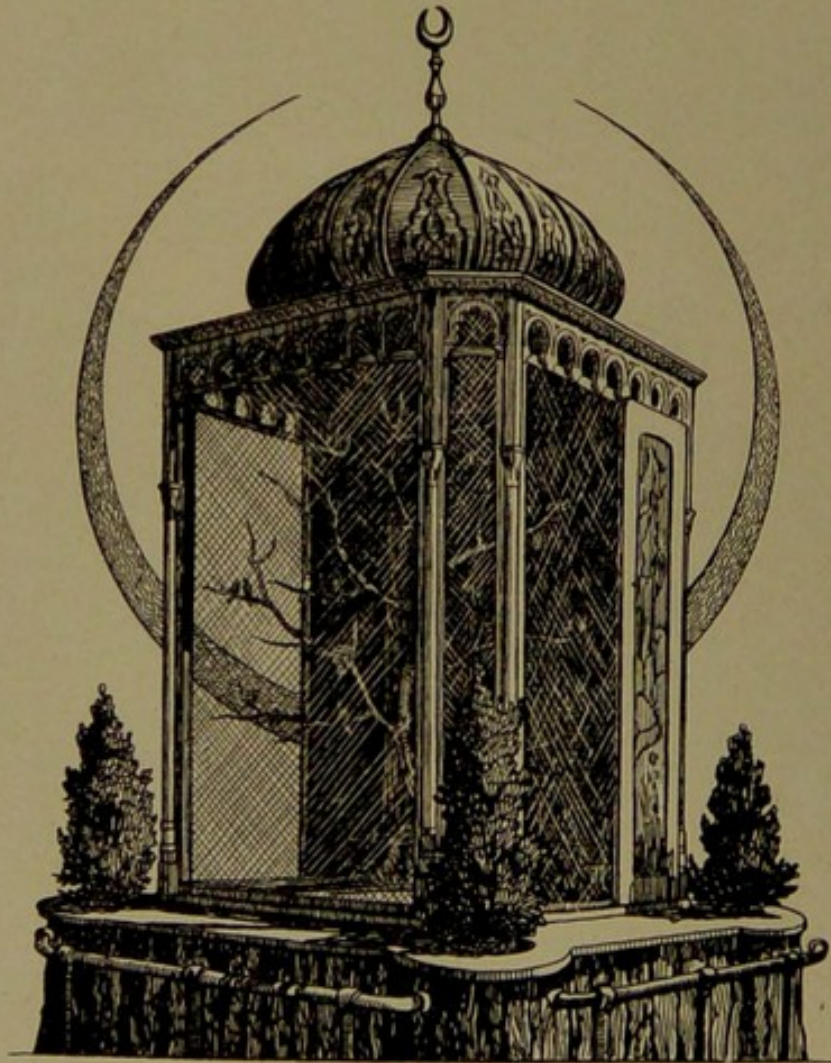


New Anlagen. Alpine Garden.

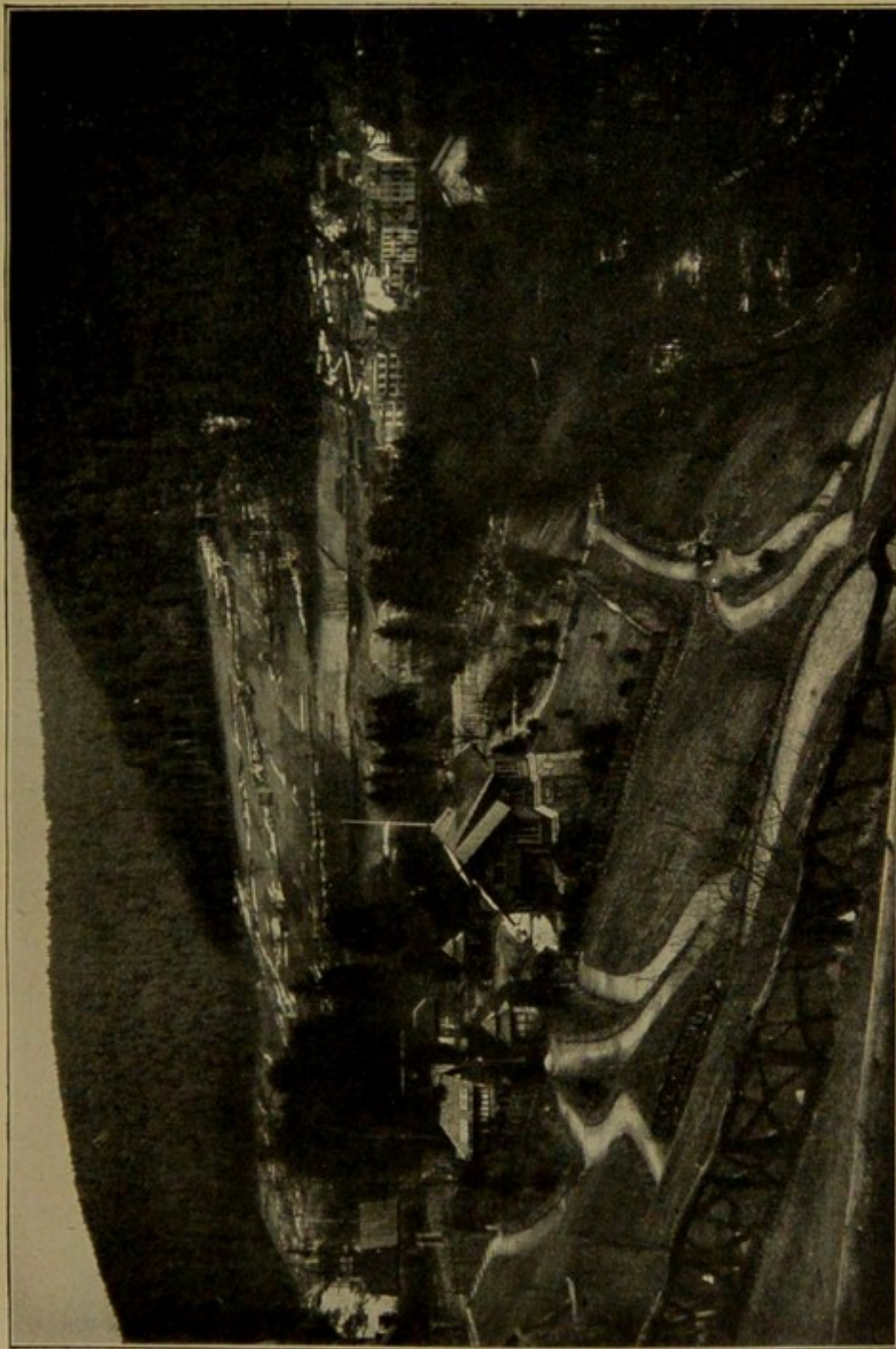
In the **Royal Kuranlagen** there is the so-called **Enz-Promenade**. It begins at the Trinkhalle, is about one mile long, running along on both sides of the Enz.

It then leads in the western part of the valley with the "reserved Kurgarten" over the "Charlottenweg" right up to the forest. The lover of nature will find there besides the beauties of the landscape all kinds of surprises, for instance: small **Zoological-** and **Botanic-gardens**, **Aviaries** for keeping **pheasants** and **other birds** and as a protection in bad weather the picturesque "Gartenhalle" with its original embellishment.

At the end of the Anlagen near the Schwanensee are the **Playgrounds**: lawn tennis ground and a stand for pistol shooting.



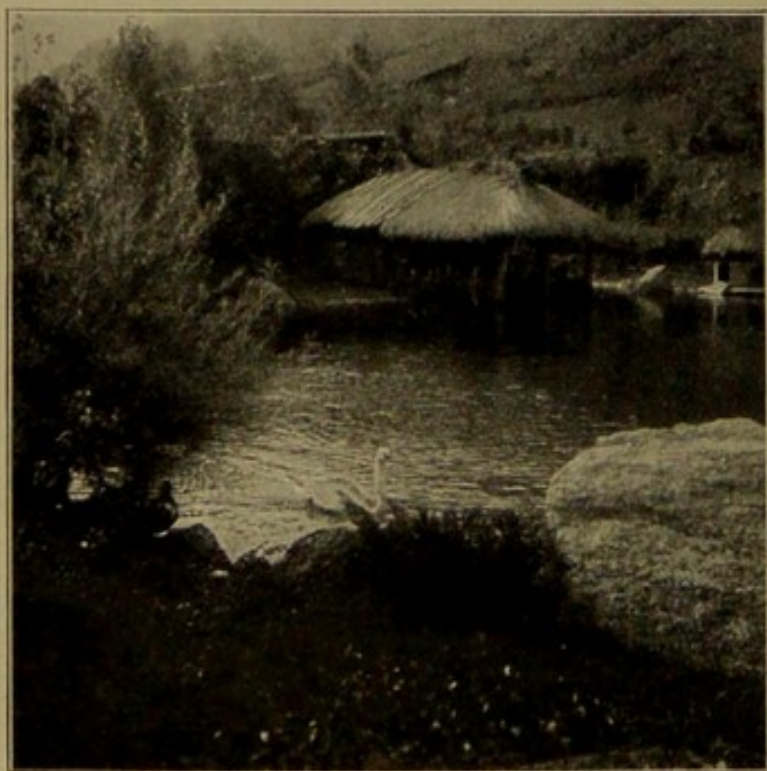
New Anlagen. Aviary in the Garden-hall.



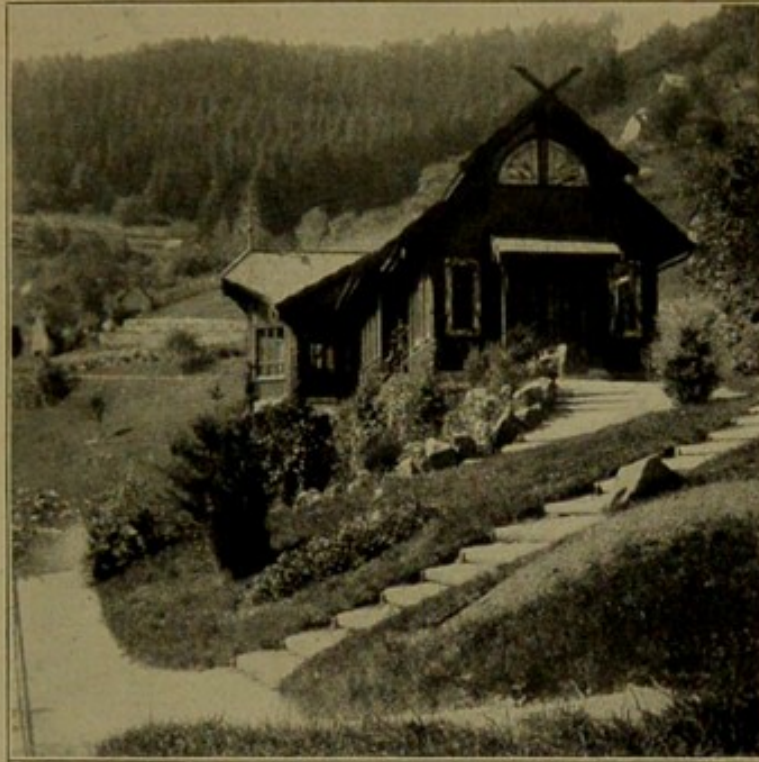
Charlottenweg in Winter.
Taken by K. Stumenthal, Photographer to the Court, Wildbad.



Taken by K. Blumenthal, Photographer to the Court, Wildbad.
Schwanensee.



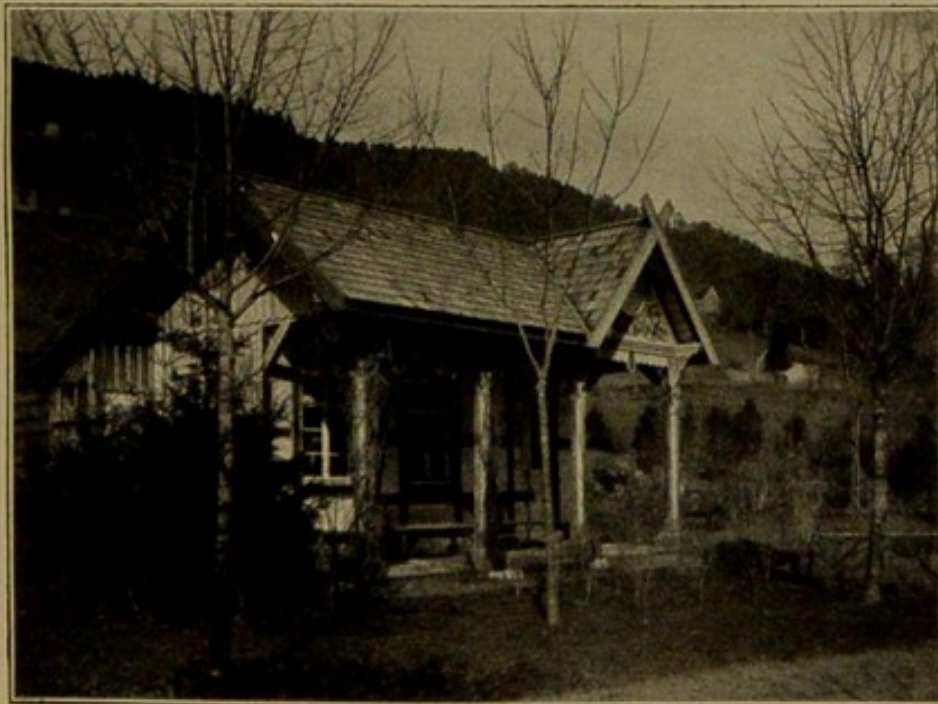
Taken by K. Blumenthal, Photographer to the Court, Wildbad.
Schwanensee. Boat house.



Taken by K. Blumenthal, Photographer to the Court, Wildbad.

New Anlagen. Garden-hall.

The sportsman will find opportunities for various kinds of sport: **Trout-Fishing** can be had in the fish-



Taken by K. Blumenthal, Photographer to the Court, Wildbad.

Anlagen. Shooting-gallery.

water of the Enz which is 18 km long and belongs to the Royal Board of Administration, and the **lover of**



Taken by K. Blumenthal, Photographer to the Court, Wildbad.
Trout Fishing.

the **chase** will find plenty of **big game**. The right of shooting has been leased by the proprietors of the hotels.



Taken by K. Blumenthal, Photographer to the Court, Wildbad.
Big Game (red-deer).

Literature about Wildbad.

Further information to be obtained by the following works:

1. Wildbad im württ. Schwarzwald. Ein Führer für Kurgäste von Geh. Hofrat Dr. Th. Weizsäcker, Kgl. Badarzt. 2. Aufl. Preis eleg. brosch. M. 1.40. Les Thermes de Wildbad. Edition française. M. 2.—.
2. Die Wildbad-Kur — The baths of Wildbad — La Cure de Wildbad — in gemeinverständlicher gedrängter Darstellung von Dr. med. Josenhans in Wildbad. Preis eleg. kart. M. 1.— für jede Ausgabe.
3. Wildbad im württ. Schwarzwald. Ein Führer für Kurgäste von Dr. med. Josenhans. Mit Illustrationen, Plänen, Karten etc. 128 Seiten. 8°. Preis eleg. geb. M. 2.—.
4. Wildbad im Schwarzwald. Ein Führer für Kurgäste von Dr. Wagner, revidiert von Sanitätsrat Dr. Haussmann. Preis M. 1.—.

Always to be obtained by Johannes Paucke, bookseller, who has a large assortment of german and foreign books as well as an extensive circulating library.

The Wildbad Badblatt

appears daily during the principal season from the 1st of May till September the 30th. Edited and published: by Alb. Wildbrett, König-Karlstrasse 68. It contains the official list of visitors and all the official publications.

Further information about Wildbad through the Royal Board of Administration of the Baths. (Königl. Badverwaltung, Wildbad.)

Railway-map.





