

**St. Thomas's Hospital Medical School, a school of the University of London
: prospectus for the year commencing October 1st, 1901, 1901 & 1902.**

Contributors

St. Thomas' Hospital (London, England). Medical School.
Royal College of Surgeons of England

Publication/Creation

London : Printed by W.P. Griffith & Sons, [1901]

Persistent URL

<https://wellcomecollection.org/works/bsw2rmq9>

Provider

Royal College of Surgeons

License and attribution

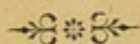
This material has been provided by This material has been provided by The Royal College of Surgeons of England. The original may be consulted at The Royal College of Surgeons of England. where the originals may be consulted. The copyright of this item has not been evaluated. Please refer to the original publisher/creator of this item for more information. You are free to use this item in any way that is permitted by the copyright and related rights legislation that applies to your use. See rightsstatements.org for more information.



Wellcome Collection
183 Euston Road
London NW1 2BE UK
T +44 (0)20 7611 8722
E library@wellcomecollection.org
<https://wellcomecollection.org>

St. Thomas's Hospital Medical School.

A SCHOOL OF THE UNIVERSITY OF LONDON.



PROSPECTUS

FOR THE

YEAR COMMENCING OCTOBER 1ST, 1901,



1901 & 1902.

LONDON :

PRINTED BY W. P. GRIFFITH & SONS LIMITED,

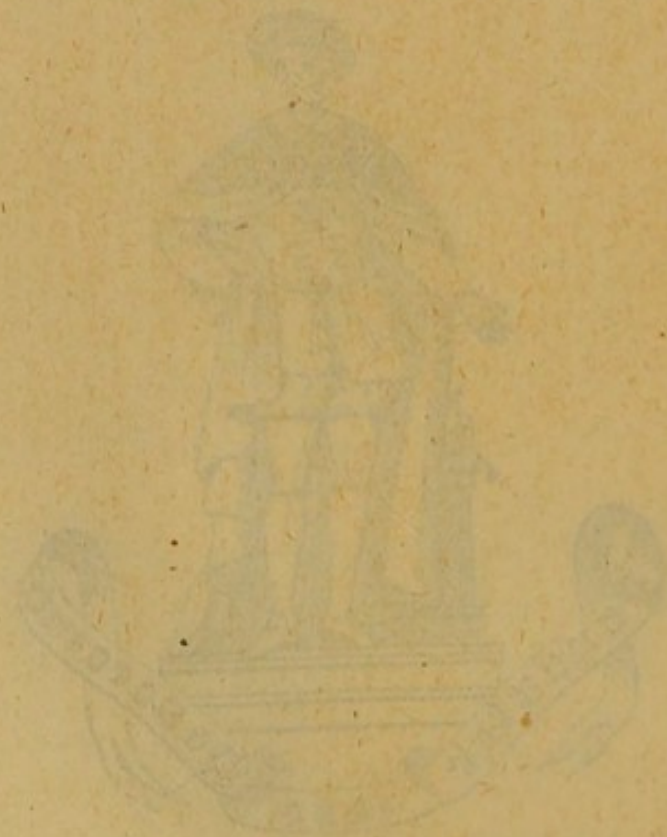
PRUJEAN SQUARE, OLD BAILEY, E.C.

St. Thomas's Hospital
Medical School.

A SCHOOL OF THE UNIVERSITY OF LONDON

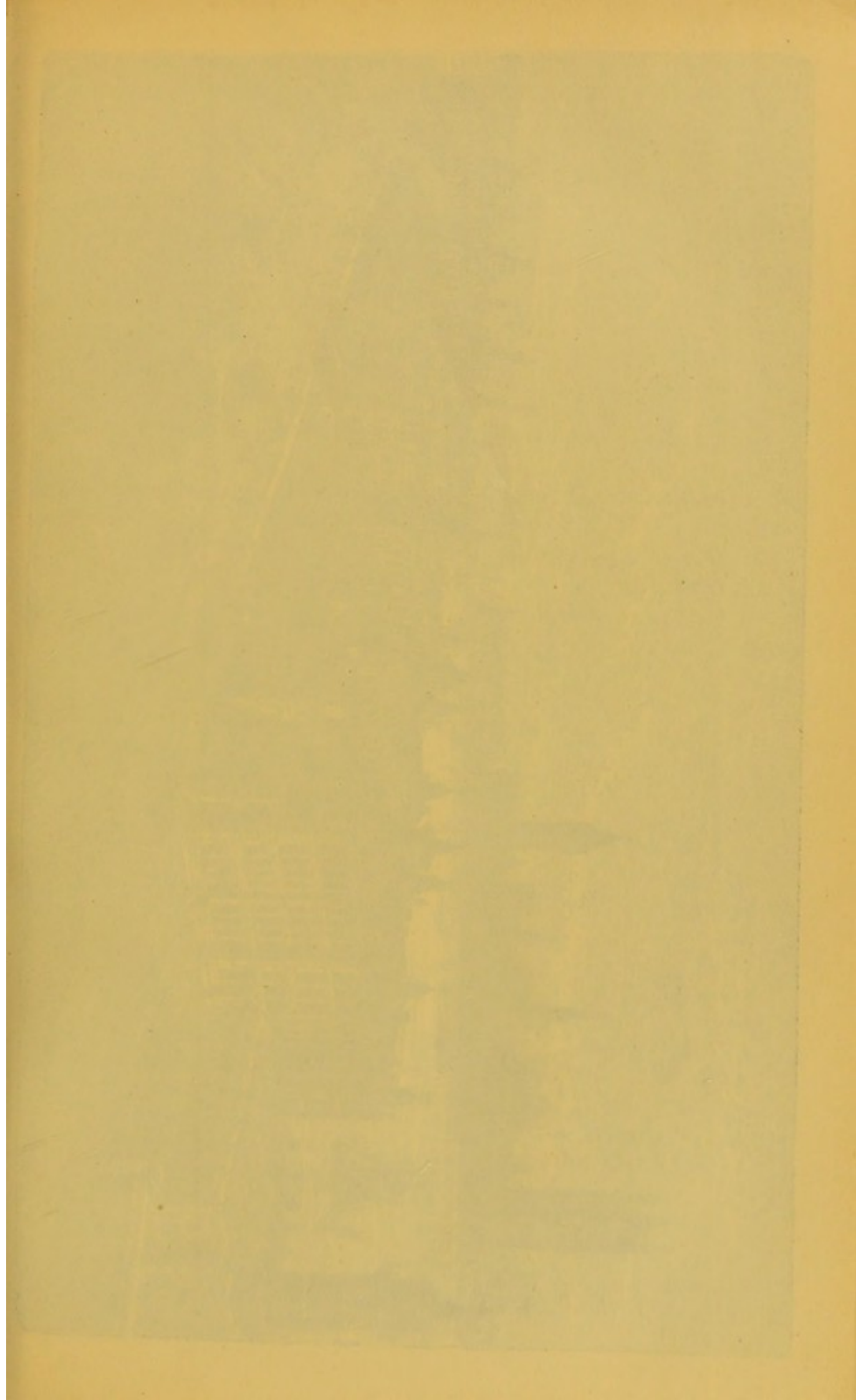
PROSPECTUS

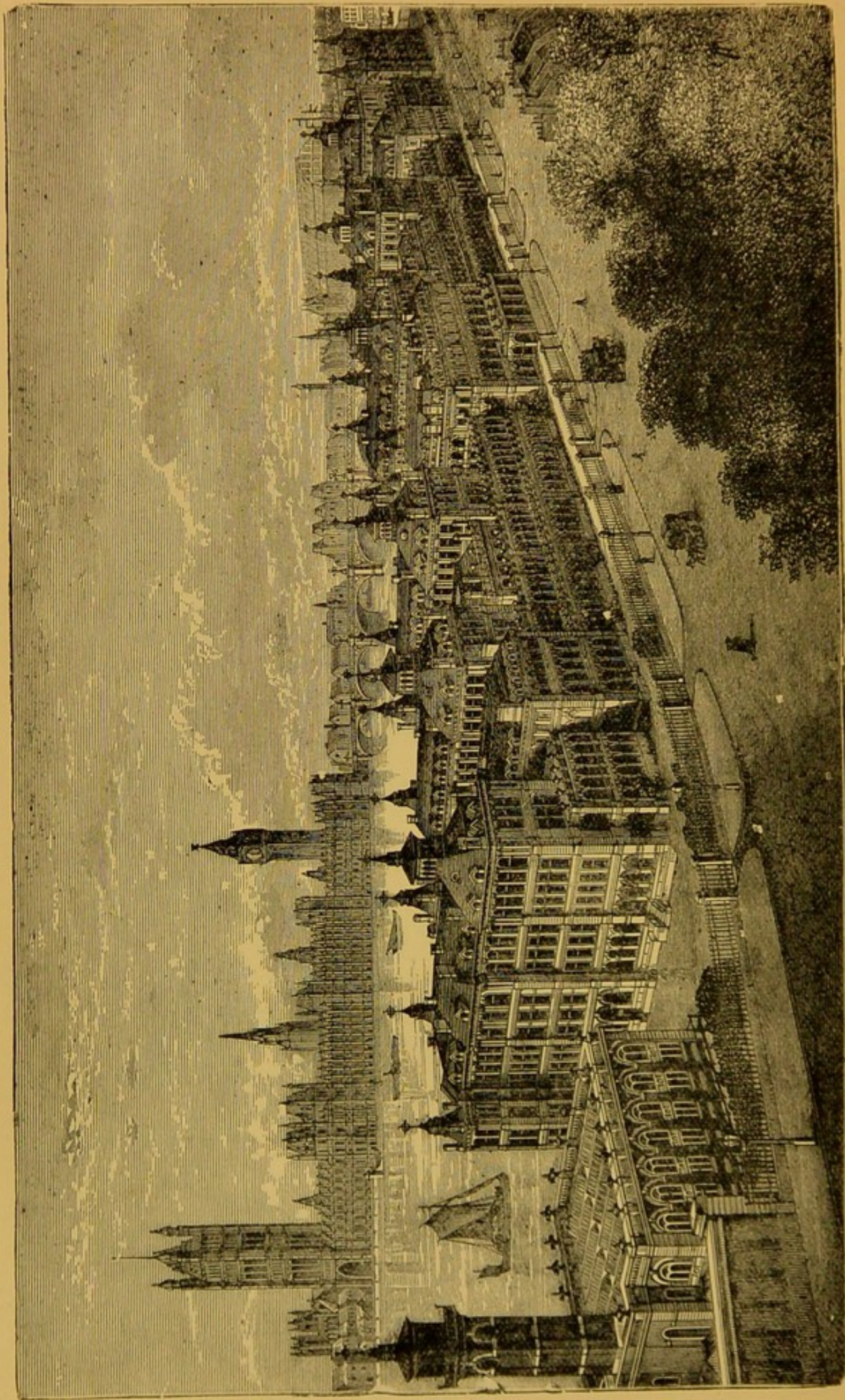
FOR THE YEAR 1891-2



1891-2

PRINTED BY W. & A. GILBERT, 15, ABchurch Lane, E.C. 4.
LONDON: 1891.





VIEW OF ST. THOMAS'S HOSPITAL FROM THE SOUTH-EAST.

CONTENTS.

	PAGE
Amalgamated Clubs	4
Anæsthetists (Time Table)	21
Annual Dinner	5
Appointments open to Students	31, 32
Clinical Instruction	21, 22
Course of Study Recommended	17, 18, 19
Examinations at Medical School	32, 33
Fees, Composition and Special	36, 37
Historical Notice of the Hospital and School	5 to 10
Hospital, The	11, 12
Hospital Practice	21, 22
Laboratories, Theatres and Class Rooms	14
Lecturers and Demonstrators	16
Lectures, Classes and Demonstrations	22 to 27
" " Time Table	28
Library	14
Lodgings	4
Medical and Physical Society	39
Medical and Surgical Officers and Lecturers	15
Museums	13, 14
Nightingale Training School for Nurses	10
Operation Days	21
Patients, Number of	12
Prizes, Medals and Scholarships	29—31
Prize Lists	33—35
Regulations for Students	19
School Buildings	12
Special Departments	20—22
St. Thomas's Hospital Reports	39
Students' Clubs, Social and Athletic	4
Suggestions to Students	17 to 19
Tables of Days and Hours of Attendance :—	
" " " in the Wards	20
" " " on the Out-Patients	20
" " " in the Special Departments	20
Tutorial Classes	22—27
University Classes	38

THE ST. THOMAS'S HOSPITAL AMALGAMATED CLUBS.

The several Students' Clubs were amalgamated in July, 1888, and are maintained by the subscriptions of the Members, and by a yearly grant from the Medical and Surgical Officers and Lecturers.

The Amalgamated Clubs comprise the Students' Club, the Medical and Physical Society, the St. Thomas's Hospital Gazette, and the following Clubs:—Athletic, Chess, Cricket, Cross Country, Football (Rugby and Association), Lawn Tennis, Rifle, Rowing, and Swimming.

All Students are strongly advised to join the Amalgamated Clubs when they enter the Medical School. They are then able to spend the whole day at the School, all meals being obtainable at a moderate tariff, and they are further provided with facilities for exercise and recreation.

New Club premises adjoining the Medical School were opened in June, 1894. They contain a Dining Room (51 ft. \times 39 ft.) and a Smoking and Reading Room (distinct from the School Library), 51 ft. \times 29 ft., supplied with Daily and Illustrated Weekly Papers, and a Gymnasium. A Cloak Room with Lockers, and a Lavatory with Bath Rooms, are in the main School-building.

A ground of more than nine acres in extent has been acquired for the Amalgamated Clubs. It is situated at Chiswick, and can be reached in 40 minutes from the Hospital, the fare being 7d. for a return ticket. It is admirably adapted for Football, Cricket, Lawn Tennis, and Athletic Sports. It is provided with a Pavilion where Refreshments can be obtained, and all Members have the use of it subject to the Rules of the various Clubs.

The Annual Subscription to the Amalgamated Clubs is Two pounds ten shillings for the 1st, 2nd, and 3rd years, and Two Guineas for the 4th and 5th years of Membership. After the payment of five consecutive subscriptions the Student becomes a Life Member.

Life Membership may be compounded for in the first year by payment of Eight Guineas; in other years, by payment of Seven Guineas.

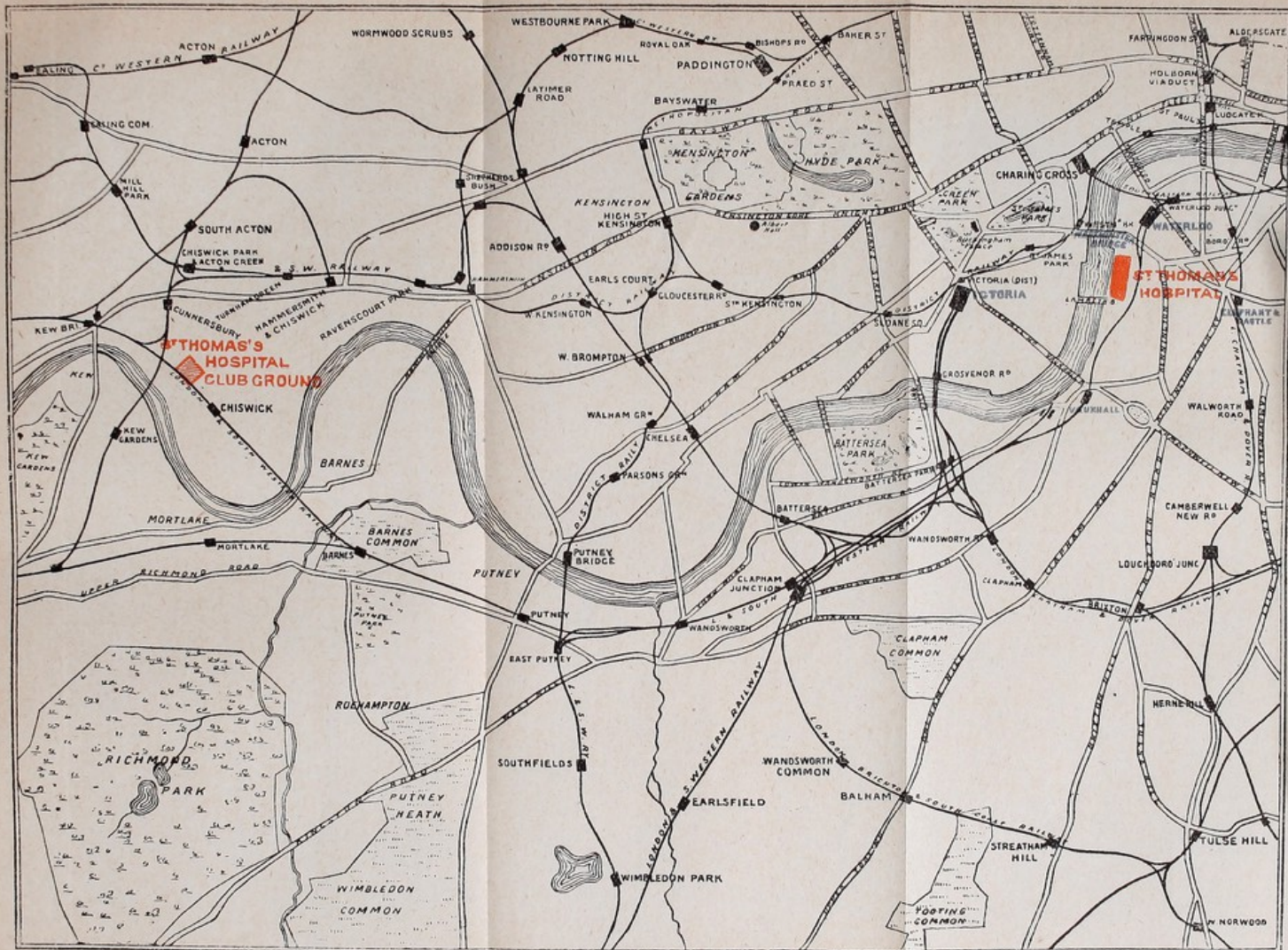
Subscriptions or Composition Fees may be paid to the Medical Secretary, Mr. G. RENDLE, or the Librarian, Mr. G. S. SAUNDERS.

MEDICAL SCHOOL.

A Register of LODGINGS suitable for Students has been recently revised, and is kept in the Secretary's Office. Information as to terms, accommodation, &c., can be obtained on application. This Register has been especially prepared with a view to the convenience of new Students for whose accommodation in lodgings or otherwise no definite arrangements have been made.

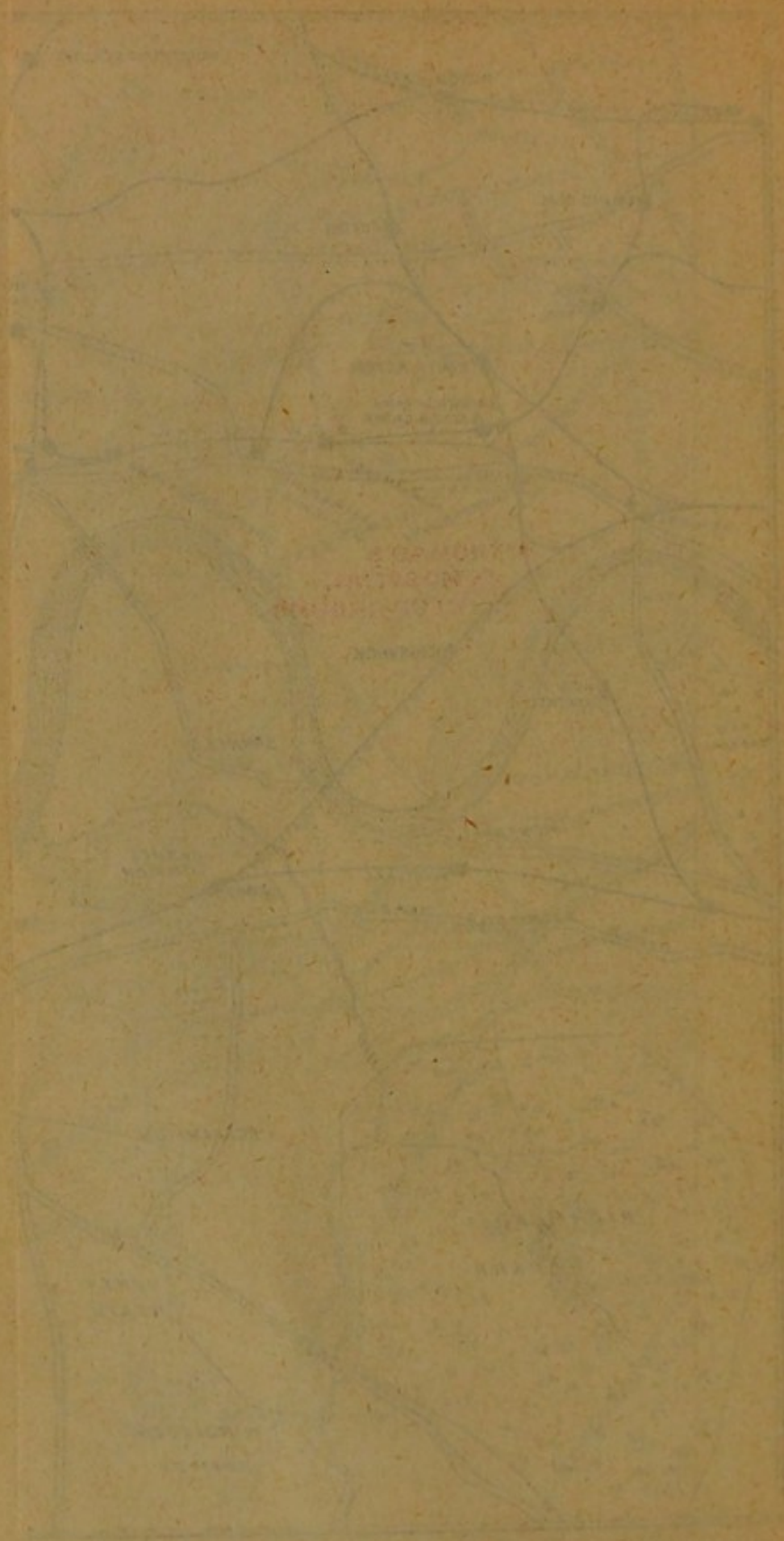
Medical Practitioners, Clergymen, and Private Families residing in the neighbourhood receive Students for residence and supervision.

For information on all matters relating to the Medical School, Prizes, Scholarships, &c., application should be made to the Medical Secretary, Mr. G. RENDLE, at the Hospital, Albert Embankment, S.E., personally (10 to 4, Saturday, 10 to 1) or by letter.



To face p. 4.]

W. P. GRIFFITH & SONS LTD., PRINCEAN SQUARE, OLD BAILEY, E.C.



St. Thomas's Hospital

MEDICAL SCHOOL.

The WINTER SESSION 1901-1902 will commence on October 2nd, and terminate on March 31st.

The SUMMER SESSION will begin on May 1st, and terminate on July 31st.

The Prizes will be distributed by MAJOR-GENERAL SIR IAN HAMILTON, K.C.B., in the Governors' Hall, on WEDNESDAY, October 2nd, at 3 P.M. During the afternoon the various Departments of the Hospital and School will be open for the inspection of Visitors.

Refreshments will be provided in the Student's Club.

The Annual Dinner, in which all former and present Students are invited to join, will take place the same evening at the Whitehall Rooms, Hotel Métropole, at 6.30 for 7 o'clock, H. H. CLUTTON, ESQ., in the Chair.

THE first Hospital of St. Thomas, within the precinct of the Priory of St. Mary Overie, being destroyed by fire in the year 1207, the prior and convent erected in the same year near the site of their house a temporary hospital. This building was in the emergency used for religious purposes; mass was said there until the priory was rebuilt. In 1228 Peter de Rupibus, Bishop of Winchester, built the Hospital of St. Mary or St. Thomas, Overie, on the opposite or eastern side of the highway, on land provided by Amicius, Archdeacon of Surrey, and dedicated it to St. Thomas the Martyr.

The following is a translation of the "charter" of 1228:—

"The Lord Peter's charter of indulgence for twenty days granted by him for this hospital.

"Peter, by the grace of God Bishop of Winchester, to all the faithful in Christ in the diocese of Winchester, greeting. In Him who is the salvation of the faithful. As saith the Apostle, bodily discipline which consists in fasts, vigils, and other mortifications of the flesh, profiteth little, while piety availeth for all things, having the promise of the life which now is, and of that which is to come.

"Our Lord Jesus Christ among the works of piety enumerates, commends, and teaches us to fulfil six, as though more praiseworthy and more meritorious than the rest, saying, 'I was an hungred, and ye gave Me to eat; I was thirsty, and ye gave Me to drink; I was a stranger, and ye took Me in; I was naked, and ye clothed Me; I was sick, and ye visited Me; in prison, and ye came to Me.' To them that perform these works of piety He shall grant His blessing and the glory of His heavenly kingdom, saying, 'Come, ye blessed of My Father, receive the kingdom which has been prepared for you from the beginning of the world.' But to them that neglect and do not perform works of compassion He threatens His curse and the penalty of eternal fire, saying, 'Go, ye cursed, into eternal fire, which has been prepared for the devil and his angels.' It is therefore to be borne in mind, my dearest sons, and more deeply laid to heart, how needful and how conducive to the salvation of our souls it is to exercise more readily

those works of piety whereby blessing is promised to us, and the felicity of eternal life is gained.

"Behold at Southwark an ancient hospital, built of old, to entertain the poor, has been entirely reduced to cinders and ashes by a lamentable fire. Moreover, the place wherein the old hospital had been founded was less suitable, less appropriate for entertainment and habitation, both by reason of the straitness of the place, and by reason of the lack of water and of many other conveniences : according to the advice of us, and of wise men, it is transferred and transplanted to another more commodious site, where the air is more pure and calm, and the supply of water more plentiful. But whereas this building of the new hospital calls for many and manifold outlays, and cannot be crowned with its due consummation without the aid of the faithful, we request, advise, and earnestly exhort you all, and with a view to the remission of your sins enjoin you, according to your abilities, from the goods bestowed on you by God, to stretch forth the hand of pity to the building of this new hospital, and out of your feelings of charity to receive the messengers of the same hospital coming to you for the needs of the poor to be therein entertained, that for these and other works of piety you shall do, you may, after the course of this life, reap the reward of eternal felicity from Him who is the Recompenser of all good deeds, and the loving and compassionate God. Now we, by the mercy of God, and trusting in the merits of the glorious Virgin Mary, and the Apostles Peter and Paul, and St. Thomas the Martyr, and St. Swithin, to all the believers in Christ, who shall look with the eye of piety on the gifts of their alms—that is to say, having confessed, contrite in heart and truly penitent, we remit to such twenty days of the penance enjoined on them, and grant it to them to share in the prayers and benefactions made in the church of Winchester, and other churches erected by the grace of the Lord in the diocese of Winchester. Ever in the Lord ; Farewell."

The Bishop of Winchester or the Archbishop seems to have granted, in 1277, to the Brethren power to elect their own Master ; in a visitation, 1323, they are ordered to follow the rule of St. Augustine—the rule of the parent house—in obedience, chastity, renunciation of individual property, and the Master to eat with the Brethren.

In 1417 the Master and Brethren formed a Court of themselves, and exercised authority within the precincts of the Hospital over persons regular or secular, and in cases civil or even criminal.

The hospital, built in 1228, had by 1507 become dilapidated and insufficient ; great efforts were then made to rebuild and enlarge it.

In the Duchy of Lancaster records there is "the Rentall of Thomas Becketts hospitall in Southwarke, of all the lands and tenements belonging to the hospitall." It contains the names of the tenants and the rents paid ; it is without date, but from internal evidence must be early in the sixteenth century.

Within the precincts of the hospital was the renowned printing press of James Nycolson, who, in 1527, signed the contract for the painted windows of King's College, Cambridge, as "James Nycolson, of St. Thomas's Spytell in Southwark." The most remarkable issue from this press was the first English Bible printed in England, inscribed thus—"Imprynted in Southwarke in St. Thomas Hospitale by James Nycolson. Dedicated by M. Coverdale to the King 1537."

About this time there were a Master, Brethren, and three Lay Sisters ; forty beds were made up for poor, infirm and impotent people, who were supplied with victuals and firing.

In the year 1535, Henry VIII. was excommunicated by Pope Paul III., and, declaring himself head of the church, proceeded to dissolve the Catholic houses, whose large revenues went to the Crown. There seem to have been 645 monasteries and abbeys thus treated, twenty-eight of which had abbots

with seats in Parliament, ninety colleges and free chapels, and 110 hospitals of various descriptions. It is certainly in favour of the sweeping change that so able and honest a man as Sir Richard Gresham, the Lord Mayor of London, should have put his hand to the following petition to the King :

"Most redowted, puyfant, and noble Prince * * * *—here and within the cytie of London be iij hospitalls or spytells commonly called Seynt Georges Spytell, Seynt Barthilmews Spytell, and Seynt Thomas Spytell, and the new Abbey of Tower Hill, founded of good devotion by auncient fathers and endowed with great possessions and rents only for the reliefe, comforte, and helping of the poore and impotent people lying in every street, offending every clene person passing by the way with theyre fylthy and nasty savors. Wherefore may it please your merciful goodness, enclyned to pytie and compassion, for the reliefe of Xts very images, created to his own similitude, to order by your high authoritie, as supreme head of this Church of England, or otherwise by your sage discretion, that your mayer of your cytie of London, and his brethren the aldermen for the time being, shall and may from henceforth have the order, disposition, rule and governaunce both of all the lands, tenements, and revenues apperteynyng and belongyn to the said hospitals, governors of them, and of the ministers which be or shall be withyn any of them, and then your grace shall facillie perceyve that where now a small number of Chanons, Priests, and Monkes be founde for theyr own profitt only, and not for the common utilitie of the realme, a great number of poore, needy, syke and indugent persones shall be refreshed, maynteyned, and comforted : and also healed and cured of their infermities frankly and freely by physicions, surgeons and potycaries, which shall have stipende and salarie only for that purpose ; so that all impotent persones not able to labour shall be releved, and all sturdy beggars not willing to labour shall be punished."

St. Thomas's Hospital being claimed by the King as Church property, was surrendered to him by Thomas Thirleby, the then master, on the 15th July, 1538. It was called St. Thomas à Becket's Spittil. Its yearly revenue was estimated at £266 17s. 6d., and an annual pension of 5s. 8d. was payable by the master, and another of 2s. 1d. by the curate, to the Archdeacon of Surrey. Soon after the seizure, we find that the citizens of London purchased of the Crown some of its landed estates, producing about £160 yearly. The want of the hospital thus destroyed was felt immediately. Wounded soldiers from the army in France, and the sick poor in general were without provision or help, and Henry proposed granting to the city the Mansion house of St. Bartholomew's, the dissolved house of Grey Friars adjoining, and the unoccupied fabric of St. Thomas's Hospital. The latter was intended by Henry to receive the name of the Hospital of the Holy Trinity, and to be allotted exclusively to lame, wounded, and diseased soldiers. The monastery of Grey Friars was to be for the education and maintenance of fatherless children and those of poor parents. The intentions of Henry were overtaken by death, but not before he had conferred upon the citizens of London the Hospital of St. Bartholomew's and also that of Bethlem for lunatics.

It is from the death of Henry that the connection of St. Thomas's Hospital with the City of London appears to begin. To meet the needs of the sick and destitute who had before depended on the charity of the religious houses, a Committee or Board of Inquiry was instituted by the citizens, with the sanction of King Edward. About 2,100 souls were reported as fit recipients of relief, as fatherless children and invalids, or as "Idle rogues of both sexes who were levyng contributions on public sympathy by feigned tales of sorrow." It was proposed to establish receptacles for each class in the unoccupied monastic buildings, and a pecuniary contribution was set on foot to complete the work. They bought the dissolved house of the Franciscans or Grey Friars near St. Bartholomew's Hospital, and also by charter from the King received a grant as follows : "That the said mayor, commonalty, and

citizens, and their successors, may have and enjoy all the franchises, immunities, and privileges whatever, which any Archbishop of Canterbury, and which the said Charles late Duke of Suffolk, or any master, brethren, or sisters of the late Hospital of St. Thomas in Southwark aforesaid; or any Abbot of the said monastery of St. Saviour, Saint Mary Bermondsey, next Southwark aforesaid, or any prior and convent of the priory of St. Mary Overie, ever had or enjoyed, or which we hold or enjoy, or our most dear father Henry the VIIIth, late King of England, or had enjoyed, or ought to have, hold, and enjoy the same: and that none of our heirs or successors may intermeddle with this our grant."

The Grey Friars became Christ's Hospital, and the Southwark site the Hospital of the Holy Trinity or St. Thomas's. The Lord Mayor and certain citizens then met on the 6th of October, 1552, and constituted themselves by royal permission governors of the Hospitals, and almoners of the money collected. The Hospital of the Holy Trinity they named in compliment to Edward, the "King's Hospital," and ordained it to receive 260 "wounded soldiers, blind, maimed, sick, and helpless objects."

They also directed that 380 children should be received into Christ's Hospital.

To complete the scheme, the old palace of Bridewell, in Blackfriars, where the Emperor Charles V. had lodged in 1522, when on a visit to Henry VIII., and where subsequently Wolsey had lived, was granted to the City by Edward as a house of correction for dissolute persons and idle apprentices, and for the temporary maintenance of distressed vagrants.

Lastly, the lands lately belonging to the Palace of the Savoy were conferred jointly on the three foundations; and a month only before the end of Edward's short reign, he incorporated by a second charter bearing date the 6th of June, 1553, the Lord Mayor and commonalty of the City of London in succession as perpetual governors of Saint Bartholomew's, Christ's, Bridewell, and the King's Hospital (which last received the name of ST. THOMAS THE APOSTLE), and secured to them the possession of all the estates and revenues appertaining to them by previous deeds of gift. So were the royal hospitals founded.

In 1557 the laws were framed and printed under the name of "The Order of the Hospitalls of K. Henry the VIII. and K. Edward the VI., viz., St. Bartholomew's, Christ's, Bridewell, St. Thomas's. By the Maior, Cominaltie, and Citizens of London," &c.

Successive bequests and donations continued to augment the property of the charities, but during the reigns of Elizabeth, James I., Charles I., and the Protectorate, there appear few facts to note. In the abstract of the charter of confirmation granted to the City in 1663 by Charles II. on his restoration, we find the charter of Edward acknowledged and confirmed. The Great Fire of London in 1666 injured St. Thomas's in its revenues only; and a fire in Southwark anno 1676 ceased, "as if by divine interposition," at the hospital, probably a strong and isolated block of building. Shortly after this, however, it was found necessary to rebuild the fabric, and in 1693 subscriptions were opened for this purpose. A long list of benefactions in this and the succeeding year, amounting in all to £37,769 3s., is given by Golding, who especially singles out Sir Robert Clayton for eulogium. The statue then erected to him, and still extant, was originally dated 1701, but this was altered on his death to 1714. He was the founder of the old square in which it stood, replacing what Golding terms "a low swampy structure of the monastic order." In 1707, Mr. Guy, founder of the neighbouring hospital, erected three wrds at his own charge. In 1717, the back block of buildings adjoining Gay's Hospital was added. With the exception of the two large blocks formng the Borough frontage, the north wing erected in 1833, and the south

wing in 1839, the fabric seems to have remained unchanged until its purchase by the railway. In the centre of the front quadrangle stood the brass statue of King Edward, by Scheemakers, erected first in 1737, in pursuance of the will of Charles Joye, some time treasurer of the hospital. It now stands in the grounds of the New Hospital.

It is a matter of more difficulty to trace the early history of the medical school in connection with the hospital. For the facts which follow we are indebted to the late R. G. Whitfield, Esq., who, from the long period during which his family had been associated with this foundation, was perhaps more qualified to speak than any other person.

The earliest mention in the hospital books of an apprentice is on December 31st, 1561. It is not until 1702 that a law is met with precluding pupils or surgeons from dissecting the dead body without permission from the treasurer.

In 1703 the grand committee resolved that no surgeon should have more than three "Cubbs," a term altered in 1758 to that of "Dressers." Besides these there were also apprentices to the surgeons of the hospital, and ordinary pupils. The first mention of lectures occurs soon after the appointment of Wm. Cheselden, in 1718. These he at first gave at his own house, but afterwards by permission in the hospital. They were on anatomy and surgery. In 1723 a regular registry was ordered to be kept by the apothecary, of pupils entering to surgical practice. In 1725, Guy's Hospital was opened for the reception of patients. In 1751 the assistant-physician was allowed to take two pupils for his own benefit. In 1768 an additional surgeon, Mr. Joseph Else, was elected to read lectures to the pupils.

The students of Guy's Hospital had by courtesy been allowed to attend the operations, and a similar favour admitted the St. Thomas's men to those at Guy's. But on the 8th November, 1768, it was formally resolved that the pupils of each hospital have the liberty of attending not only the operations, but surgical practice, and the money to be divided between the six surgeons and two apothecaries. Hence the appellation of the "United Hospital"; an amalgamation never extended beyond the surgical practice.

To Mr. Else is due the foundation of a regular anatomical school. Mr. Cline, who in 1781 was appointed to read lectures conjointly with Mr. Else, was mainly instrumental in bringing it to its greatest celebrity. At Mr. Else's death, Mr. Cline purchased the collection of preparations made by him and Mr. Girle, a former surgeon, which are now in the hospital museum, and became sole lecturer on anatomy. In 1788 he also became surgeon to the hospital. Mr., afterwards Sir Astley, Cooper was apprenticed to Mr. Cline in 1784, and before his election, as one of the surgeons to Guy's Hospital in 1800, was joint lecturer with his teacher on anatomy and surgery. They both added materially to the pathological museum.

In 1812 Mr. Henry Cline was elected surgeon to St. Thomas's Hospital on his father's resignation, and carried on the anatomical lectures conjointly with Astley Cooper. In 1813 a new anatomical theatre and museum were built, the hospital giving £3,000 for the purpose, and the two lecturers £1,000 each. In 1815 Mr. Benj. Travers, an apprentice of Astley Cooper's at Guy's, was elected surgeon, according to the established rule which gave the vacancy to the senior apprentice of either institution. Mr. Travers joined in the lectures, devoting his attention specially to ophthalmic surgery. In 1820 Mr. Joseph Henry Green was elected surgeon, on the death of his cousin, Mr. Hy. Cline, having been apprenticed to his uncle, Mr. Cline, in the year 1809. From 1820 to 1825 he lectured with Astley Cooper. At this period all the branches of medical study,—viz., medicine, chemistry, materia medica, midwifery, botany and physiology—were lectured on at Guy's Hospital, and no physician of St. Thomas's was allowed to share them.

In 1824 Sir A. Cooper resigned the surgical chair, and Mr. C. Aston Key, his apprentice and nephew by marriage, joined Mr. Green in the office. Mr. Frederick Tyrrell, standing in exactly the same relation to Cooper, received permission to lecture on diseases of the eye. In the following year Cooper showed signs of cerebral disturbance, and the family desired that his nephew, Mr. Bransby Cooper, should be his successor. But the claims of Mr. John Flint South were considered superior, and he was appointed. From this cause the "United Hospitals" were severed, and a complete school set up in both. The majority of the students clung to Guy's where the prestige of the great Sir Astley was still strong; and St. Thomas's school began to sink. The establishment of the Aldersgate Street private school under Tyrrell and Lawrence materially aided in this declension, as did also the secession of Dr. Elliotson to the newly-established University College, and the foundation of a fresh school at King's College, where for a time the surgical lectures were given by Mr. Joseph Henry Green, although a surgeon of St. Thomas's.

Owing to the unprosperous state of affairs in 1842, the Governors came forward to reorganize the school, and the aid of Mr. R. D. Grainger, whose popularity had been established in the Webb Street private school, was obtained. Mr. Joseph H. Green also rejoined the school; and Dr. Marshall Hall, Dr. Hodgkin, Dr. Martin Barry, Dr. Gregory, and Mr. Benjamin Travers contributed to its efficiency. In 1847 the Governors added to the School a lectureship on general pathology in connection with the hospital practice, and appointed to that lectureship and the associated clinical duties Mr. John Simon, whom afterwards (1853) they made one of the surgeons. In 1855 they added a lectureship on public health, and appointed to it Dr. Headlam Greenhow, who afterwards became physician to the Middlesex Hospital. This state of affairs continued until 1858, when the Governors gave back the management, and its attendant risks, into the hands of the lecturers.

For some years it was maintained with difficulty, and much self-sacrifice on the part of the staff, during what may be termed a transitional period, in the hope, now realized, of its once more developing into an institution worthy of its old traditionary glories.

From its foundation down to the year 1862, the hospital occupied the original site near London Bridge, but in that year the property was sold for the extension of the railway accommodation, and the establishment temporarily removed to the Surrey Gardens, where it was carried on till the summer of 1871. In 1868 the first stone of the New Hospital at Westminster Bridge was laid by the Queen, and the completed building was opened by her Majesty in 1871. In September the patients were first admitted into the New Hospital, and the Medical School was opened on October the 2nd.

NIGHTINGALE NURSING SCHOOL.

The Committee of the "NIGHTINGALE FUND" have arrangements with the authorities of St. Thomas's for educating Women in the practice of Hospital Nursing. On the satisfactory completion of one year's probationary training, they will be required to enter into service as Nurses in St. Thomas's or some other Hospital or Infirmary. A limited number of gentlewomen can be admitted under special agreements to this course of training, with a view to qualify themselves for superior appointments, or as District Nurses.

The Regulations as to the admission of Candidates may be obtained by writing to Miss L. M. Gordon, the Matron, St. Thomas's Hospital, London, S.E., to whom also application should be made by Institutions requiring trained Superintendents or Nurses.

Candidates should, whenever it is possible, make personal application to Miss Gordon, at the Matron's Office, at 10.30 a.m. on Tuesday or Friday.

The Nightingale Fund is the proceed of a public subscription raised at the close of the Crimean War, as a tribute to Florence Nightingale, for the services rendered by her in tending the sick and wounded soldiers in the Military Hospitals on the Bosphorus and at Balaklava. It was, by her request, vested in Trustees to enable her to establish an Institution for the training, sustenance, and protection of Nurses and Hospital attendants, and, as invested, produces an income of £1,400. The Fund is managed by a Council, appointed by her. The School was opened at old St. Thomas's in 1860 with 12 probationers, increased to 50 at the present time. More than 2,000 applications are received annually. 1,704 candidates have been admitted and 982 trained nurses have received appointments; many of these are now Matrons or Superintendents of Nurses.

The Secretary to the Council is Mr. Henry Bonham-Carter, 5 Hyde Park Square, W.

THE HOSPITAL.

The original Hospital latterly contained 500 beds. The present building contains in all 572 beds. It consists of six blocks appropriated to the reception of patients; with one for the administrative and other offices, and one for the Medical School. The Ward blocks, though connected by corridors, stand apart, so as to afford free exposure in all directions. The Wards, with the exception of four which are placed on the ground floor, occupy the first, second, and third floors. Generally, each Ward affords accommodation for 28 beds, which are placed against the piers between the windows, so as to secure thorough ventilation. In a small Ward annexed to each larger Ward there are two beds for cases requiring special care or treatment.

During year 1899 a Ward was specially re-arranged for the reception of Male accident cases, with a view to ensuring quietness in the other Surgical wards. The ward fittings and furniture have been brought up to the most recent requirements, a small theatre has been instituted in place of the original bathroom for the performance of the minor operations necessary, and two small wards are provided for the isolation of noisy cases.

The two large Operating Theatres are now undergoing alterations, by means of which the Hospital will obtain two Children's Wards and four Operating Theatres. One of the Wards and two of the Theatres are ready for use.

The Casualty Department is now being enlarged to obtain more spacious receiving rooms, and a larger number of small rooms for the examination of patients. The Eye Department is being altered and a new Operating Theatre constructed.

A Clinical Laboratory, which is quite distinct from the laboratories in the Medical School, has been recently erected on the east side of the Hospital, and is provided with every facility for bacteriological, microscopical, and chemical examination of the condition of the patients in the Wards. The investigations are carried on in the laboratory by the Superintendent, whose whole time is devoted to this work, which comprises all those methods of examination which from their difficulty and complexity cannot be carried out at the bedside, and they have in view the completion of the Hospital record of each patient.

Of the whole accommodation of the Hospital, about 210 beds are appropriated to Medical cases, and 270 to Surgical cases. There are special Wards for the reception of diseases peculiar to women (30 beds); for diseases of the eye (25 beds); and for children under 6 years of

age (30 beds). In one of the blocks, separated from the rest of the establishment, there are Wards for infectious diseases.

The space provided for each bed in the ordinary Wards is upwards of 1,800 cubic feet, and in the block appropriated to infectious diseases, about 2,500 cubic feet.

The Department for Out-patients has been recently re-arranged, and it is now perfectly adapted both for the management and treatment of patients and for the teaching of students. There have been added two large rooms, well ventilated, well lighted, provided with ample sitting accommodation, so arranged that large numbers of Students are able to follow and grasp the method of examination and the basis of treatment employed by the Assistant-Physician and Assistant-Surgeon.

A very complete aseptic operating room has been added to the Department, in order that the minor operations may be performed under the most satisfactory conditions.

The Ophthalmic Department when rebuilt will comprise a well-arranged out-patient room, a dark room for ophthalmoscopic examination, and an operating room.

There is also a series of rooms devoted to the other special departments, and a room set apart and fitted up for Physical Exercises.

A very complete department for the systematic use of the Röntgen Ray photography has been fitted up at considerable expense, and has proved to be of great value as an aid to diagnosis.

During the twelve months ending December 31st, 1900, the number of patients admitted into the Hospital amounted to 5,821. In the same period, 18,596 Out-patients have been treated, and in the Maternity department 2,585 women have been attended at their own homes. Casualties, to the number of 88,128 attendances, were treated during the same period.

THE MEDICAL SCHOOL.

The School buildings, isolated by a large quadrangle from the Hospital, stand at its southern extremity, between the river and the gardens of Lambeth Palace. They are very commodious, and every effort has been made to provide accommodation completely fulfilling modern requirements.

In the year 1885 the Anatomical Department was much enlarged and remodelled. In 1892 considerable alterations were carried out in the Physiological Department, giving increased space in the Laboratory and providing facilities for lectures and lantern demonstrations. In 1893-4 further extensive alterations were made. Two new wings were added to the main building, containing a large laboratory for the classes in Elementary Biology and Pathology, private working rooms for the teachers in those departments, a dissecting room for the Biology class, improved accommodation for the Operative Surgery class, and a large class room for the classes in Practical Surgery. At the same time the collection of Physical Apparatus was removed to a laboratory *en suite* with the Chemical Department.

New premises were also provided for the Students' Club, to which a Gymnasium has been added, and the arrangements are now such as to render it quite unnecessary for Students to leave the School buildings during the working hours of the day. Electric Lighting has been introduced into the new departments and part of the older building.

The plan inserted between pages 14 and 15 shows the arrangements in detail both on the ground and first floors.

THE MUSEUM OF HUMAN AND COMPARATIVE ANATOMY AND PATHOLOGY.

Curator.—S. G. SHATTOCK, ESQ., F.R.C.S.

The Museum, which is of ample size and well lighted, has two galleries devoted entirely to the display of specimens illustrating Pathology; the different series are each preceded by a normal preparation of the organ to which they refer.

On the ground floor are the collections of Normal Human, and of Comparative Anatomy; there is, moreover, a series of type specimens of Pathology, selected to facilitate the study of this subject.

THE COLLECTION OF HUMAN ANATOMY contains a large number of dissected Preparations, illustrating the individual Organs, and in addition a series of elaborate dissections.

THE PATHOLOGICAL COLLECTION contains above 3,000 specimens, arranged in series as follows:—Injuries and Diseases of the Organs of Motion; of the Organs of Digestion, of Circulation, of Respiration, of the Nervous System, of the Genito-Urinary System, and Malformations. The descriptive Catalogue of this collection has been entirely re-written by Mr. Shattock: the previous edition was edited by Mr. Sydney Jones.

Among the earliest contributors to the Museum were Mr. Cline, Sir A. Cooper, Mr. Travers, and Mr. Tyrrell; and many of the specimens are of great historical interest; those used by Sir A. Cooper to illustrate his works on Dislocations and Fractures, on Hernia, and on the Testis, are contained amongst them, as well as two preparations showing the result of Ligature of the Abdominal Aorta, one a case of Sir A. Cooper's, another that of Mr. J. F. South's. In the collection, too, are Mr. Travers's preparations illustrating the process of nature in repairing Injuries of the Intestines, and those furnished by his experiments on the ligature of Arteries.

The section of Fractures has been enriched by Sir William MacCormac, who presented numerous specimens of gun-shot injuries, etc., obtained from cases under his care during the Franco-German War (1870); that of Diseases of the Liver, by a large number of Biliary Calculi presented by Dr. Ord; and that of Diseases of the Larynx, by specimens presented by Sir Felix Semon.

The marble bust of G. B. Morgagni in the Museum was the gift of an Italian Committee, which included the chief Professors at the various Italian Universities. It was formally presented to the Hospital by the Italian Ambassador in October, 1899.

THE COLLECTION OF COMPARATIVE ANATOMY comprises about 400 dissected Preparations, and in addition an equal number of most carefully prepared osteological specimens. A large number of these dissections were made by Sir A. Cooper, to illustrate his Lectures, when Professor of Comparative Anatomy to the Royal College of Surgeons. A new Catalogue of this collection has been drawn up by Mr. F. G. Parsons.

THE CABINETS OF MICROSCOPICAL ANATOMY, which are under the charge of the Demonstrator of Practical Physiology, are available for

Students who wish to examine them, subject to such regulations as may be deemed necessary.

THE MATERIA MEDICA MUSEUM contains in cases a complete collection of the chemicals and organic substances included in the British Pharmacopœa; all these are named and numbered. A second collection of the chief medicinal substances is placed in drawers and is freely accessible to students. A large and very fine collection of dried medicinal plants, named according to the latest nomenclature, is displayed on the walls of the Museum.

The Museum is under the conjoint superintendence of the Lecturer on Pharmacy and Pharmacology and Mr. Shattock.

THE COLLECTION OF CHEMISTRY AND MINERALOGY is under the superintendence of Dr. Crossley. The majority of the specimens were presented by the late Dr. Bernays.

The Museums are open daily from 9 a.m. till 5 p.m., and every encouragement is given to Students to make use of the well-arranged educational series.

THE LIBRARY.

Librarian :—G. S. SAUNDERS, ESQ.

The Library, to which Students have access with the permission of the Librarian, and which can be used by them as a Reading Room, has been recently completely re-arranged and re-catalogued, and electric lighting has been introduced. It contains a valuable collection of standard works; various periodicals are regularly taken in, and a number of modern text books are added from time to time for reference.

LABORATORIES, THEATRES AND CLASS ROOMS.

The Chemical, Physiological, and Anatomical Departments are complete in themselves. They consist of large Laboratories for Classes, Private Laboratories, and each is provided with its own Lecture Room. A separate Laboratory for the practical teaching of Physics contains the Physical Apparatus.

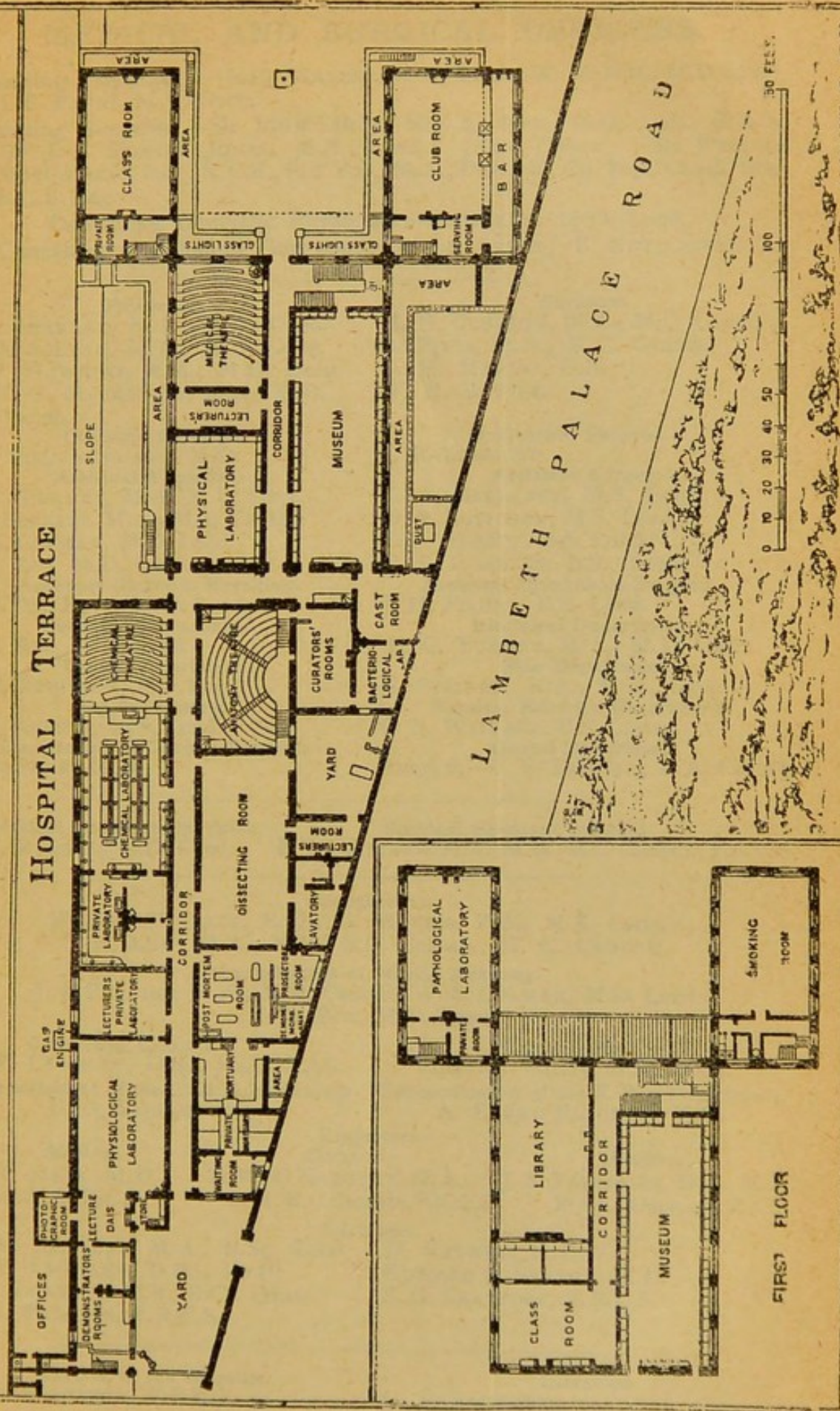
The Pathological Department beyond the Museum and Post Mortem rooms is provided with a large Laboratory for the Class in Pathological Histology, and a Bacteriological Laboratory under the charge of Mr. Shattock.

The Elementary Biology lectures and demonstrations are given in the large new Laboratory, and the Biological Dissecting Room and Lecturers' Private Room are contained in the same building.

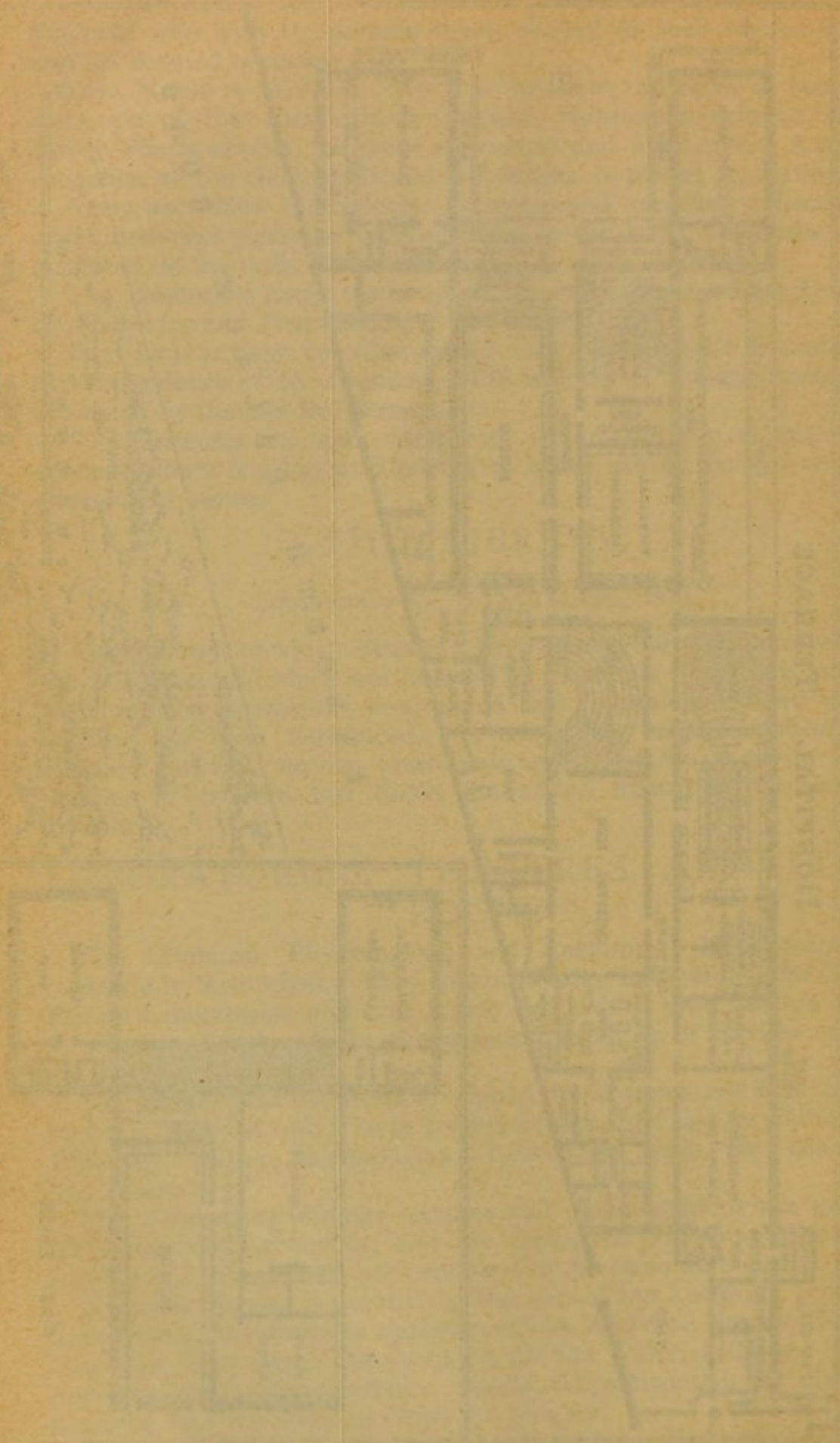
A special Theatre is devoted to the use of the Lecturers giving the more advanced systematic courses, such as Medicine, Surgery, &c., and two large class rooms are available for the Tutorial Classes held in connection with these courses. Special accommodation has also been provided for the Classes in Operative Surgery.

The new buildings were opened by H.R.H. the Duke of Connaught, K.G., President of the Hospital, on June 9th, 1894.

RIVER THAMES



GROUND PLAN.



MEDICAL AND SURGICAL OFFICERS.

Consulting Physicians.—JOHN HARLEY, M.D. Lond., W. M. ORD, M.D. Lond., J. F. PAYNE, M.D. Oxon.

Consulting Surgeons.—Sir JOHN SIMON, K.C.B., Hon. M.D. Dub., F.R.S., D.C.L.; SYDNEY JONES, M.B. Lond.; JOHN CROFT; Sir WILLIAM MACCORMAC, Bart., K.C.B., K.C.V.O., M.A., D.Sc., M. Ch. Hon. Causâ, Pres. R.C.S. Eng.

Consulting Obstetric Physician.—H. GERVIS, M.D. Lond.

Consulting Ophthalmic Surgeons.—R. LIEBREICH; E. NETTLESHIP.

Physicians.

S. J. SHARKEY, M.A., M.D. Oxon.
T. D. ACLAND, M.A., M.D. Oxon.
H. P. HAWKINS, M.A., M.D. Oxon.
H. W. G. MACKENZIE, M.A., M.D. Cantab.

Obstetric Physician.

C. J. CULLINGWORTH, M.D.

Assistant Physicians.

H. G. TURNER, M.A., M.D. Oxon.
J. J. PERKINS, M.A., M.B. Cantab.
W. S. COLMAN, M.D. Lond.
C. R. BOX, M.D. Lond.

Assistant Obstetric Physician.

W. W. H. TATE, M.D. Lond.

Children's Department.

C. R. BOX, M.D. Lond.

Throat Department.

H. B. ROBINSON, M.S. Lond.

Ear Department.

F. C. ABBOTT, M.S. Lond.

Department for Mental Diseases.

H. RAYNER, M.D.

Surgeons.

H. H. CLUTTON, M.A., M.C. Cantab.
B. PITTS, M.A., M.C. Cantab.
G. H. MAKINS, C.B.
W. H. BATTLE.

Ophthalmic Surgeon.

J. B. LAWFORD.

Assistant Surgeons.

C. A. BALLANCE, M.S. Lond.
H. B. ROBINSON, M.S. Lond.
F. C. ABBOTT, M.S. Lond.
C. S. WALLACE, B.S., Lond.

Assistant Ophthalmic Surgeon.

J. H. FISHER, B.S. Lond.

Electrical Department.

H. G. TURNER, M.A., M.D. Oxon.

Skin Department.

E. STAINER, M.A., M.B., Oxon.

Physical Exercise Department.

C. S. WALLACE, B.S. Lond.

Dental Department.

Surgeon.—C. E. TRUMAN, M.A. Cantab.

Resident Assistant Physician.

A. E. RUSSELL, M.D. Lond.

Resident Assistant Surgeon.

E. M. CORNER, M.A., M.B., B.C. Cantab., F.R.C.S.

Anæsthetists.

WALTER TYRRELL, E. H. G. MORRIS, B.A., M.B. Cantab.,
H. LOW, M.A., M.B., B.C. Cantab., H. C. CROUCH.

Demonstrators of Morbid Anatomy.

J. J. PERKINS, M.A., M.B. Cantab., W. S. COLMAN, M.D. Lond.,
C. R. BOX, M.D. Lond.

Consulting Chemist.

A. W. CROSSLEY, D.Sc., Ph.D., F.I.C.

Pharmaceutist.

EDMUND WHITE, B.Sc. Lond.

Superintendent of the Clinical Laboratory.

C. G. SELIGMANN.

Superintendent of the X Ray Department.

A. BARRY BLACKER, M.D.

Registrars.

Medical.

A. W. SIKES, M.D.
Lond., F.R.C.S.

Surgical.

P. W. G. SARGENT, M.A.,
M.B., B.C. Cantab., F.R.C.S.

Obstetric.

J. S. FAIRBAIRN, M.A., M.B.,
B. Ch. Oxon., F.R.C.S.

Lecturers.

A. W. BENNETT, M.A., B.Sc. Lond.
A. W. CROSSLEY, D.Sc., Ph.D.
J. B. LEATHES, M.B., B.Ch. Oxon.
F. G. PARSONS, F.R.C.S.

H. RAYNER, M.D.
EDWARD C. SEATON, M.D.
S. G. SHATTOCK, F.R.C.S.

Curator of the Museum.

S. G. SHATTOCK, F.R.C.S.

Librarian.

G. S. SAUNDERS.

Dean of the School.

H. G. TURNER, M.A., M.D. Oxon.

Secretary to the School.

GEORGE RENDLE, M.R.C.S.

LECTURERS AND DEMONSTRATORS.

LECTURERS.

<i>Elementary Biology</i>	Mr. PARSONS.
<i>Chemistry, Chemical Physics, and Practical Chemistry</i>	} Dr. CROSSLEY.
<i>Descriptive Anatomy</i>	
<i>General Anatomy and Physiology</i>	} Mr. LEATHES.
<i>Practical Physiology and Histology</i>	
<i>Midwifery and Diseases of Women</i>	Dr. TATE.
<i>Practical and Manipulative Surgery</i>	Mr. ROBINSON and Mr. ABBOTT.
<i>Medicine</i>	Dr. SHARKEY and Dr. HAWKINS.
<i>Surgery</i>	Mr. MAKINS and Mr. BALLANCE.
<i>Pathology and Bacteriology</i>	{ Dr. TURNEY, Dr. PERKINS and Mr. SHATTOCK.
<i>Forensic Medicine and Toxicology</i>	
<i>Pharmacology and Therapeutics</i>	Dr. MACKENZIE.
<i>Diseases of the Eye</i>	Mr. LAWFORD.
<i>Mental Diseases</i>	Dr. RAYNER.
<i>Public Health and Sanitary Science</i>	Dr. SEATON.
<i>Clinical Surgery</i>	{ Sir WILLIAM MACCORMAC, Bart. (EMERITUS LECTURER).
<i>Clinical Medicine</i>	
" <i>Gynæcology</i>	Dr. CULLINGWORTH.
" <i>Surgery</i>	The SURGEONS.
" <i>Ophthalmic</i>	Mr. LAWFORD.
<i>Botany</i>	Mr. BENNETT
<i>Comparative Anatomy and Zoology</i>	Mr. PARSONS.

TEACHERS AND DEMONSTRATORS.

<i>Chemistry and Physics</i>	Dr. LE SUEUR and Dr. STEVENS.
<i>Practical Pharmacy</i>	Mr. EDMUND WHITE.
<i>Practical Anatomy</i>	{ Mr. PARSONS, Mr. FISHER, and Dr. BOX.
<i>Physiology and Practical Physiology</i>	
<i>Practical Medicine</i>	{ Mr. LEATHES, with Dr. SOMMER- VILLE.
<i>Practical and Manipulative Surgery</i>	
<i>Operative Surgery</i>	{ Dr. PERKINS and Dr. BOX, with Dr. SIKES.
<i>Practical Obstetrics</i>	
<i>Electro-Therapeutics</i>	{ The LECTURERS, with Mr. SARGENT.
<i>Morbid Anatomy</i>	
<i>Morbid Histology and Bacteriology</i>	{ Mr. BATTLE, Mr. ROBINSON, and Mr. ABBOTT.
<i>Diseases of the Eye</i>	
" <i>Throat</i>	Dr. TATE.
" <i>Skin</i>	Dr. TURNEY.
" <i>Ear</i>	{ Dr. PERKINS, Dr. COLMAN, and Dr. BOX.
" <i>Teeth</i>	
<i>Vaccination</i>	Dr. PERKINS.
	Mr. FISHER.
	Mr. ROBINSON.
	Dr. STAINER.
	Mr. ABBOTT.
	Mr. TRUMAN.
	Dr. COPE.

SUGGESTIONS TO STUDENTS ABOUT TO ENTER THE MEDICAL PROFESSION.

Registration.*

The commencement of Medical Study cannot be registered at the Office of the General Medical Council until the Student has passed a Preliminary Examination in the subjects of General Education as specified in the following list :

(1) English Language ; (2) Latin ; (3) Arithmetic, Algebra, and Euclid -- Books I., II., III. ; (4) Either Greek, or any Modern Language.

Preliminary Examinations.

A student who has not passed such an examination is recommended to pass either the Matriculation of the University of London, or the Professional Preliminary Examination of the College of Preceptors. The regulations respecting these may be obtained from the Registrar, University of London, South Kensington, S.W., and the Secretary, College of Preceptors, Bloomsbury Square, W.C.

Certificates of Graduation, Matriculation, and the Local Examinations of British and Colonial Universities are accepted by the General Medical Council provided that the above-mentioned subjects be shown to have been included at one and the same time.

UNIVERSITY OF LONDON.

Students who have passed the Matriculation and Preliminary Scientific Examinations are advised to consult the Dean of the Medical School as to any details in which the University Course may differ from that prescribed by the "Conjoint Board."

For a Student who enters in October, intending to obtain the double qualification of the "Conjoint Board" (L.R.C.P. Lond. and M.R.C.S. Eng.), the following course of study is recommended. (For days and hours of Lectures, &c., see Time Table, p. 28.)

All Students are required to apply to the Medical Secretary for cards of Admission to the Lectures, attendance on which is in all cases registered.

First Winter Session.

Lectures.&c. Anatomy, Elementary Biology, Elementary Physiology, Chemistry, Practical Chemistry, and Physics. Anatomical and Physiological Demonstrations. Dissections.

Examinations. "Sessional" at Medical School in December and in March (see p. 33). Part III. (Elementary Biology)† of First Examination of the "Conjoint Board," in March.

First Summer Session.

Lectures.&c. Chemistry, Practical Chemistry, Histology, Demonstrations in Practical Pharmacy ; Practical Instruction in Pharmacy may be obtained from the Hospital Pharmaceutist. (Fee, three guineas for three months, p. 37.)

Examinations. "Sessional," (see p. 33) and Parts I. (Chemistry and Physics)† and II. (Practical Pharmacy) of the "First Conjoint," in July.

* The Regulations of the General Medical Council with regard to Registration may be obtained from Messrs. Spottiswoode & Co., 54, Gracechurch Street, London, E.C.

† Students cannot present themselves for the "Second Conjoint" until the lapse of twelve months from the date of passing Biology and Chemistry.

Second Winter Session.

- Lectures.** Anatomy and Physiology with Demonstrations and Dissections. Practical and Chemical Physiology. Tutorial Classes in Anatomy and Physiology.
- Examinations.** "Sessional" in December and in March (see p. 33); "Tests," and "Second Conjoint" (Anatomy and Physiology) in March, or June.

Second Summer Session.

- Lectures.** Practical Surgery, Tutorial Classes in Anatomy and Physiology, Dissections.
- The course of instruction in Practical Medicine must be attended by Candidates for Out-Patient Clinical Clerkships, and the course of Elementary Practical Obstetrics by Candidates for Obstetric Clerkships.

Third Winter Session.

- Lectures.** Hospital Practice, Medical and Surgical. Medicine, Surgery, and Surgical Pathology, Practical Surgery, Practical Course of Pathological Anatomy.
- Clinical Clerkship (if not held during July, August, and September), and Dressership, in the Out-Patient Departments.
- Maternity Cases may be attended by Students who have passed the "Second Conjoint," and who have attended the Lectures on Midwifery and a course of Practical Obstetrics.

Third Summer Session.

- Lectures.** Hospital Practice, Medical and Surgical, with Clerkship or Dressership.
- Practical Course of Pathological Anatomy (continued), including Practical instruction in Bacteriology, Therapeutics, Midwifery, and Practical Surgery.

Fourth Winter Session.

- Lectures.** Hospital Practice, Medical, Surgical, the Special Departments, and Post-mortem Examinations. Clerkship or Dressership in special Departments and Post-mortem Room. Instruction in Vaccination (Fee, one guinea and a half, p. 37).
- Practical Course of Pathological Anatomy (if not taken in third winter); Obstetric Demonstrations; Lectures on Diseases of Women, and on Diseases of the Eye. Clinical Lectures on Medicine and Surgery.

Fourth Summer Session.

- Lectures.** Hospital Practice, Medical and Surgical, and Special Departments. Midwifery, Forensic Medicine, Mental Disease, Public Health, Diseases of the Eye, Clinical Medicine, Clinical Surgery.

Fifth Year.

- Lectures.** Hospital Practice, Medical and Surgical, and the Special Departments.
- Tutorial Classes in Medicine, in Surgery (including operations upon the Dead Subject), and in Midwifery.
- Attendance at a Fever Hospital and Clinical Demonstrations at a recognised Lunatic Asylum.
- Examinations.** School Examinations in Medicine, Surgery, Midwifery, Pathology, Pharmacology, Forensic Medicine (including Insanity) and Public Health (see p. 33).

Advanced Students are strongly advised to avail themselves of the opportunities afforded for Clinical Study of Fevers at the Hospitals of the Metropolitan Asylums Board, and of Mental Diseases at Bethlem Hospital in their fifth year.

Candidates for part III. of the Final Examination for the Diploma in Medicine and Surgery of the "Conjoint Board" are required to produce a certificate of attendance on not less than twenty labours. Students who have passed the "Second Conjoint," and have attended Lectures on Midwifery, and a Course of Elementary Practical Obstetrics, may enter their names for the Rota of Obstetric Clerks.

Examina-
tions.

No Student is admitted to part I. or II. of the Third Examination of the "Conjoint Board" until at least two years after passing the Second Examination, four years from the date of passing Parts I. and III. of the First Examination, and five Winter and five Summer Sessions from the date of passing the Preliminary Examination.

Preliminary Summer Session.

If a Student enters in May, intending to obtain the qualification of the Conjoint Board, he is advised to pursue the following course of study:—

Lectures.

Elementary Biology, Lectures and Classes in Chemistry and Demonstrations in Practical Pharmacy.—Practical Instruction in Pharmacy may be obtained from the Hospital Pharmaceutist (Fee, three guineas for three months, p. 37).

Examina-
tions.

Botany (if required for a higher examination).

Part II. (Practical Pharmacy) of "First Conjoint" in July or October.

NOTE.—Students who join a Medical School in May have the advantage of an additional three months to devote to the preparation for the three parts of the First Examination of the "Conjoint Board," and of passing in Elementary Biology at Christmas.

All Students are required by the Governors to conform to the Regulations of the Hospital and Medical School, and the School Committee is empowered, with the approval of the Treasurer, to suspend or remove a Student at any time for adequate reason. (See also p. 36.)

During the fourth and fifth years, the greater part of the time can, and should, be given to the practical study of disease in the Wards, Out-Patient Departments, and Post-Mortem Room, but Students are reminded that such courses of lectures as relate to Final Examinations may be with advantage re-attended.

Students intending to prepare for **University Degrees and other higher Examinations** should apply to the Medical Secretary for information relating thereto. (For Special Classes for these Examinations see p. 38.)

Students when qualified should use every effort to obtain one of more of the senior appointments open to them, especially those of House Physician, House Surgeon, and Obstetric House Physician. These and other appointments, of which details are given at p. 31, afford opportunities for obtaining practical professional knowledge which cannot be estimated too highly. No payment is required for any of them.

N.B.—The Regulations for the Sessional Examinations and Prizes will be found on pp. 32-33.

TIMES OF ATTENDANCE OF THE PHYSICIANS AND
SURGEONS IN THE WARDS.

	Mon.	Tues.	Wed.	Thurs.	Fri.	Sat.
DR. SHARKEY	—	2	—	—	2	—
DR. ACLAND.....	2	—	—	2	—	—
DR. HAWKINS.....	2	—	—	2	—	—
DR. MACKENZIE	—	2	—	—	2	—
DR. CULLINGWORTH	—	2	—	—	2	—
MR. CLUTTON	—	2	—	—	2	—
MR. PITTS	2	—	—	2	—	—
MR. MAKINS	2	—	—	2	—	—
MR. BATTLE	—	2	—	—	2	—
MR. LAWFORD	—	2	—	—	2	—
CLINICAL LECTURES {	—	—	2	—	—	—
			9.30	—	—	—

TIMES OF ATTENDANCE OF THE ASSISTANT-PHYSICIANS
AND ASSISTANT-SURGEONS IN THE OUT-PATIENTS' ROOMS

	Mon.	Tues.	Wed.	Thurs.	Fri.	Sat.
DR. TURNEY	—	1.30	—	—	1.30	—
DR. PERKINS	1.30	—	—	1.30	—	—
DR. COLMAN	—	—	1.30	—	—	1.30
MR. BALLANCE	—	1.30	—	—	1.30	—
MR. ROBINSON	1.30	—	—	1.30	—	—
MR. ABBOTT	—	—	1.30	—	—	1.30

TIMES OF ATTENDANCE IN THE OUT-PATIENT SPECIAL
DEPARTMENTS.

	Mon.	Tues.	Wed.	Thurs.	Fri.	Sat.
MR. LAWFORD } (Diseases of {	—	1.30	—	1.30	1.30	—
MR. FISHER } the Eye) {	1.30	—	1.30	—	—	—
DR. TATE (Diseases of Women).....	—	—	1.30	—	—	1.30
DR. BOX (Diseases of Children)	—	—	10	—	—	10
MR. ROBINSON (Diseases of Throat)	—	—	1.30	—	—	—
DR. STAINER (Diseases of Skin)....	—	—	—	—	1.30	—
MR. ABBOTT (Diseases of Ear)	1.30	—	—	—	—	—
DR. TURNEY (Electro-Therapeutics)	—	—	—	2	—	—
DR. BLACKER (X Ray).....	—	2	—	—	2	—
MR. TRUMAN (Diseases of Teeth)..	—	10	—	—	10	—
DR. COPE (Vaccination)	—	—	11	—	—	—
DR. RAYNER (Mental Diseases) ...	—	—	—	10	—	—
MR. WALLACE (Physical Exercise)	—	4	—	—	4	—

DAYS AND HOURS FOR SURGICAL OPERATIONS.

	Mon.	Tues.	Wed.	Thurs.	Fri.	Sat.
Surgical Operations.....	2.0	2.0	2.0	2.0	2.0	2.0
Gynæcological „	—	—	—	2.0	—	—
Eye „	—	—	—	2.0	—	—
Throat „	9.30	—	—	—	—	—
Ear „	—	—	—	9.30	—	—

DAYS OF ATTENDANCE OF THE ANÆSTHETISTS.

Departments.	Mon.	Tues.	Wed.	Thurs.	Fri.	Sat.
Operating Theatre.	Mr. CLUTTON	Dr. Low	Mr. Tyrrell		A. H. S.	
	Mr. PITTS.....	Mr. Crouch	Dr. Morris	A. H. S.		
	Mr. MAKINS...	A. H. S.		Mr. Crouch		Mr. Tyrrell
	Mr. BATTLE ...	A. H. S.			Dr. Low	Dr. Morris
GYNÆCOLOGICAL WARD.....				Dr. Morris		
EYE DEPARTMENT				Mr. Tyrrell		
EAR DEPARTMENT				Dr. Low		
THROAT DEPARTMENT	Mr. Crouch			9.30 a.m.		
DENTAL DEPARTMENT	9.30 a.m.	Mr. Crouch				
		10 a.m.				

POST-MORTEM EXAMINATIONS.

	Mon.	Tues.	Wed.	Thurs.	Fri.	Sat.
Dr. PERKINS	—	—	2.0	—	—	2.0
Dr. COLMAN	2.0	—	—	2.0	—	—
Dr. BOX	—	2.0	—	—	2.0	—

HOSPITAL PRACTICE.

CLINICAL TEACHING OF MEDICINE AND SURGERY.

CLINICAL instruction is given daily by the Physicians and Surgeons during their visits to the Wards, and by the Assistant Physicians and Assistant Surgeons in the Out-Patient Departments (Time Table, p. 20). Clinical Lectures in Medicine and Surgery are given every Wednesday throughout the sessions at 2 p.m. and 9.30 a.m. respectively. *A Special Course is also given by Sir W. MACCORMAC, Bart., K.C.B., K.C.V.O.*

Diseases of Women.—Clinical instruction is given in Adelaide Ward on Tuesdays and Fridays at 2 p.m., and in the Out-Patient room on Wednesdays and Saturdays at 1.30 p.m.

Diseases of Children.—Instruction is given in the Out-Patient room on Wednesdays and Saturdays at 10 a.m. During the Winter Session Dr. Box will give a short course of lectures.

Midwifery.—A maternity department, under the supervision of the Assistant Obstetric Physician, is connected with the hospital, women being attended in confinement at their own homes by students of the hospital, (p. 32). Students are accompanied to their first five cases by one of the Obstetric House Physicians.

Diseases of the Eye.—Clinical teaching in the Out-Patient rooms daily except Saturday (Time Table p. 20). Clinical Lectures or Ophthalmoscopic Demonstrations weekly.

Diseases of the Skin.—Clinical instruction on Fridays by Dr. STAINER.

Diseases of the Throat.—Clinical instruction by Mr. ROBINSON on Wednesdays. During the Winter Session a short course of Clinical Lectures is given to senior students.

Diseases of the Ear.—Clinical instruction by Mr. ABBOTT on Mondays. During the Winter Session Mr. ABBOTT gives a short course of Lectures to senior students.

Mental Diseases.—Clinical instruction by Dr. RAYNER on Thursdays.

Diseases of the Teeth.—Mr. TRUMAN and Assistant give instruction in Dental Surgery on Tuesdays and Fridays.

Vaccination is taught practically by Dr. COPE, who is authorised by the Local Government Board to give certificates of proficiency in Vaccination at St. Thomas's Hospital. Fee, One Guinea and a-half (see p. 37).

Electro-Therapeutics.—Instruction is given by Dr. TURNEY on Thursdays.

Physical Exercise.—Instruction is given by Mr. WALLACE in the Department on Tuesdays and Fridays.

Anæsthetics.—The mode of Administration is taught practically by Mr. TYRRELL, Dr. MORRIS, Dr. LOW, and Mr. CROUCH.

LECTURES, CLASSES, & DEMONSTRATIONS.

A complete list of Lecturers and Demonstrators, p. 16.

Time-table of days and hours of Lectures, &c., p. 28.

The attendance on all courses of Lectures is registered.

ELEMENTARY BIOLOGY.

MR. PARSONS.

A six months' practical course to meet the requirements of the "Conjoint Board" is held from October to March, and a revision class from May to July.

Special classes, for the Preliminary Scientific, are commenced in October for the July examination of the University of London. (Fee, see p. 38.)

BOTANY.

MR. BENNETT, B.Sc.

A course of lectures on Systematic Botany is given during the Summer Session. It comprises the general principles of the classification of plants, with demonstrations of the characters of all the more important natural orders, especially those of medicinal value. The lectures are illustrated by diagrams and fresh specimens. (Fee, see p. 37.)

Special classes for the London University and other examinations commence in October. (Fee, see p. 38.)

St. Thomas's



Hospital.

OLD STUDENTS' ANNUAL DINNER.

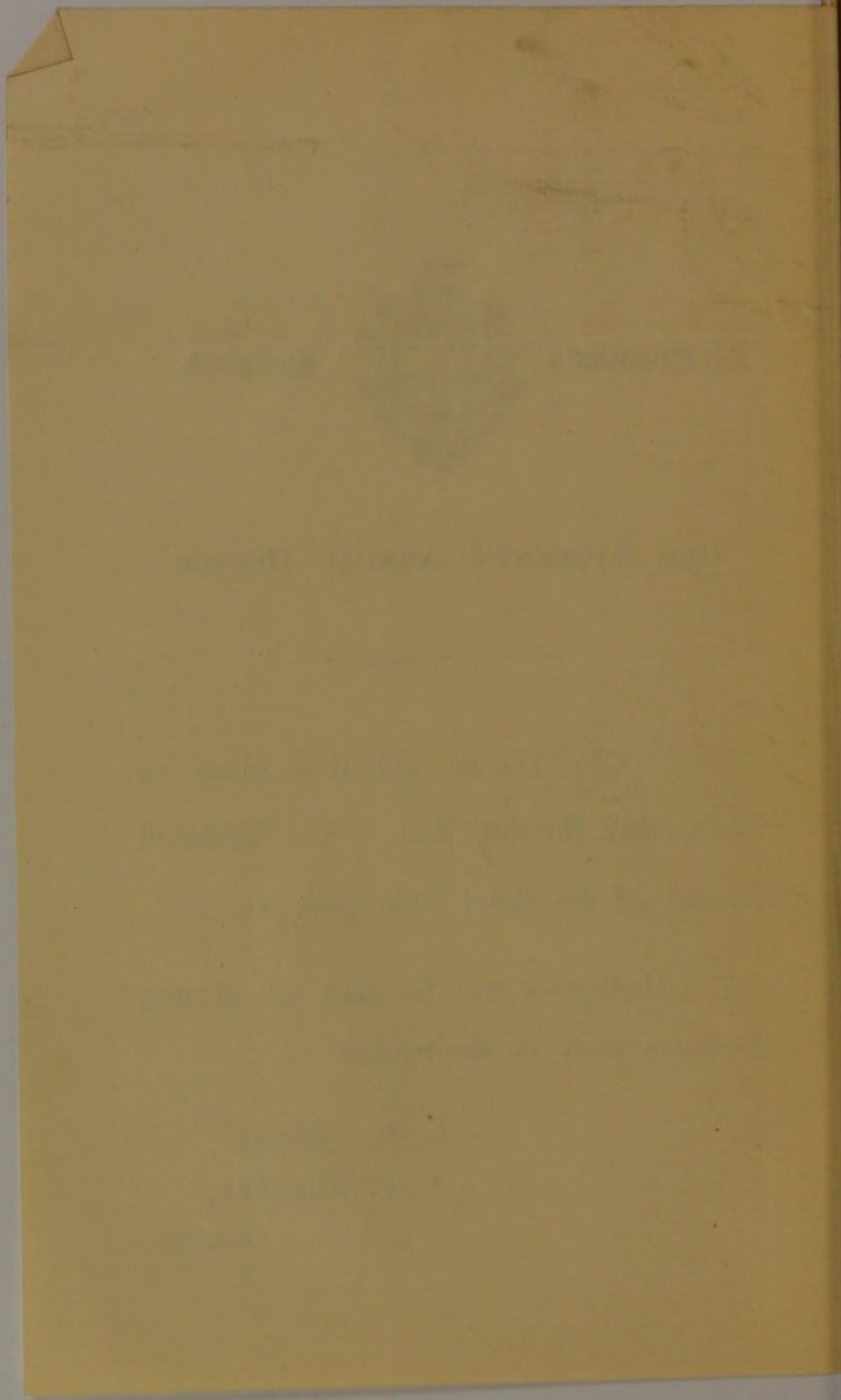
The Dinner will take place on
Wednesday, October 2nd, in the Whitehall
Rooms of the Hôtel Métropole.

Particulars will be sent to all Old
Students early in September.

E. M. CORNER,

A. E. RUSSELL,

Hon. Secs.



COMPARATIVE ANATOMY.

MR. PARSONS.

A course of six lectures, especially intended for the primary examination for the Fellowship of the College of Surgeons, is given twice yearly. (Fee, see p. 37.)

CHEMISTRY AND CHEMICAL PHYSICS.

DR. A. W. CROSSLEY.

LECTURES on Chemistry and Chemical Physics are given three times weekly during the Winter Session, and on Chemistry during the Summer Session. These lectures are fully illustrated by experiments.

A course of Practical Work is commenced in January and is continued during the Summer Session.

These courses include the subject-matter of the various Examining Boards, and are specially arranged to afford the student an insight into the principles of chemical science and their application in Medicine.

A course of Demonstrations on the detection of poisons is given in connection with the Lectures on Toxicology and Forensic Medicine.

Special classes are held for students preparing for the Preliminary Scientific and Intermediate M.B. Examinations of the University of London, and for the Examinations of other Universities. (Fee, see p. 38.)

A *special course* of Practical Instruction is given in the Laboratory to Candidates for Diplomas in Public Health. (Fee, see p. 37.)

Arrangements may be made for additional Practical Work (Elementary and Advanced) in the Chemical Laboratory at fees which may be ascertained from the Medical Secretary.

ANATOMY.

MR. PARSONS.

(a) ELEMENTARY.—A six months' course, consisting of two lectures and one oral examination weekly, is given for first-year students, dealing with osteology and attachments of muscles and ligaments.

(b) ADVANCED.—A six months' course, consisting of three lectures and one oral examination weekly, is given for second-year or more advanced students.

The lectures are illustrated by fresh dissections and preparations.

Classes, conducted partly by examination, partly by demonstration, are held during the latter half of the Winter Session, and deal with those sections of anatomy which cannot be included in the lecture course.

(c) PRACTICAL.—During both winter and summer sessions the dissecting room is open for the use of students, and the demonstrators attend daily. A number of stock preparations are displayed in the room, and the others are preserved for use in the tutorial classes.

Tutorial classes are held prior to the January, March and July examinations of the "Conjoint Board," which all candidates are allowed to attend. A verbal test examination is held three weeks prior to the examinations, at which candidates must satisfy the teachers as to their knowledge before obtaining the necessary signatures to their schedules.

Special classes in advanced anatomy are conducted by the lecturers and demonstrators for the various University and the Fellowship of the College of Surgeons examinations. (Fee, see pp. 37, 38.)

PHYSIOLOGY.

MR. LEATHES, M.B., B.Ch. OXON., F.R.C.S.

A systematic course of lectures is given throughout the Winter and Summer Sessions. As certain portions of the subject are dealt with more fully in some years than in others Students are required to attend the course both in the first and second years.

An elementary tutorial class for first year students is held twice a week during the first part of the Winter Session.

An elementary practical class for second year Students is held in the first half of the Winter Session. An elementary course of Chemical Physiology, also for second year Students, is given in the second half of the Winter Session.

A practical class in Histology is held three mornings a week during the Summer Session, and is attended by first year Students. Each Student is practically instructed in the methods of preparing histological specimens.

Each Student for the purposes of this class must provide himself with a microscope, slides and cover glasses, drawing-book and pencils, box to hold twelve dozen specimens, forceps, scalpel, scissors, section-lifter, mounted needles, and six watch glasses.

A table, cupboard and drawer, chemicals, staining and mounting fluids, &c., are provided for him. A deposit of 10s. is charged for the use of a key and apparatus, and this is repaid at the end of the course if both are returned in proper order.

Tutorial classes in Physiology are held by the Demonstrators prior to the January, April, and July examinations of the "Conjoint Board."

A *special class* in advanced practical Physiology is held twice a week from October to March and consists of two parts. The first half of the course is devoted to the use and study of those instruments and experiments which are fitted to class work. The second half is a course of advanced Chemical Physiology. During this class, demonstrations are given of many experiments which cannot be carried out by the Students themselves. This class is intended for those preparing for University Examinations (Cambridge, London, Oxford), or for the Fellowship of the College of Surgeons. For attendance in this class a special fee of six guineas is charged.

PHARMACY, PHARMACOLOGY, AND THERAPEUTICS.

DR. MACKENZIE.

Lectures are given three times a week during the Summer Session, the course being specially adapted to the requirements of candidates for the examination of the "Conjoint Board."

This course embraces the actions of the various medicinal agents on the healthy body, and on general morbid conditions.

Demonstrations are given in the Materia Medica Museum by Mr. White and two assistants.

PRACTICAL PHARMACY.—Instruction is given by the Hospital Pharmacist, Mr. E. White, B.Sc., to students requiring it. (Fee, see p. 37.)

Special classes are arranged to meet the requirements of—(a) the "Conjoint Board," (b) the intermediate M.B. of the University of London, (c) the first M.B. of Oxford and second M.B. of Cambridge.

MIDWIFERY AND DISEASES OF WOMEN.

DR. TATE.

A systematic course of lectures on Midwifery is delivered by Dr. Tate during the Summer Session, embracing the physiology and pathology of pregnancy, labour, and the puerperal state, preceded by an account of the anatomy and development of the female pelvis, and of the placenta and foetal membranes.

A short course of Obstetric demonstrations on the model is given by Dr. Tate during the Winter Session.

A course of about twenty Lectures (chiefly Clinical) on the Diseases of Women is delivered by Dr. Tate during the Winter Session.

A class is held by the Obstetric tutor for practical instruction in the mechanism and management of labour and the use of instruments. No student is allowed to attend maternity cases until he has attended this class.

Tutorial Classes are held prior to the January, April, and July Examinations of the "Conjoint Board."

MEDICINE.

DR. SHARKEY AND DR. HAWKINS.

A systematic course of lectures on the Principles and Practice of Medicine is given three times weekly during the Winter Session.

Clinical lectures on Medicine are given once weekly throughout the Academic year, by the physicians to the Hospital in rotation. The subject of each Lecture is advertised beforehand in the Hospital and Medical School.

PRACTICAL MEDICINE.

DR. PERKINS AND DR. BOX.

An elementary course of practical instruction in the means of physical diagnosis is held for about a month prior to each quarterly appointment of out-patient clinical clerks; no student can be appointed until he has attended this class, or an equivalent course elsewhere. Instruction is given in the principles and method of examination of the circulatory, respiratory, urinary, digestive, and nervous systems. Tutorial Classes are held prior to the January, April, and July Examinations of the "Conjoint Board."

SURGERY.

MR. MAKINS AND MR. BALLANCE.

A systematic course of lectures on General and Special Surgery is given three times weekly throughout the Winter Session. The subject, being too extensive for a six months' course, is completed in two Winter Sessions.

Clinical lectures on Surgery are given once weekly throughout the Academic year, by the surgeons to the Hospital in rotation. The subject chosen for each lecture is advertised beforehand in the Hospital and Medical School.

PRACTICAL SURGERY.

MR. ROBINSON AND MR. ABBOTT.

During the Summer Session Mr. Abbott holds a class once a week, providing special instruction for students about to apply for Out-patient dresserships. It comprises bandaging, the treatment of wounds the use of certain instruments and splints, and the demonstration of surgical landmarks on the living model. No student can be appointed a dresser until he has attended this class.

The Winter Course includes the diagnosis and treatment of fractures and dislocations, application of trusses and tourniquets, minor operations, treatment of hæmorrhage and surgical emergencies, and the completion of the Summer Course on instruments and applied anatomy.

The teachers of practical surgery are assisted by Demonstrators, who supervise the students after each lecture in the various manipulations on the living models provided.

Tutorial classes are held for six weeks prior to the January, April, and July examinations of the "Conjoint Board." These include general surgery, operative surgery, and surgical anatomy, by the teachers and Demonstrator of Practical Surgery; and surgical pathology, by Mr. Shattock.

OPERATIVE SURGERY.

Classes are held by Mr. Robinson previous to the January, April, and July examinations of the "Conjoint Board." The operations are performed by the students, subjects being provided at the expense of the school.

Special classes are held at convenient times by Mr. Battle and Mr. Abbott, for students preparing for the higher examinations. (Fee, see p. 37.)

PATHOLOGY, PATHOLOGICAL ANATOMY, AND BACTERIOLOGY.

DR. TURNEY, DR. PERKINS, AND MR. SHATTOCK.

A course of lectures on General Pathology, Surgical Pathology, and the diseases of special organs is given by Dr. Turney, Dr. Perkins, and Mr. Shattock throughout the Winter and Summer Sessions. A demonstration is given on Saturdays, in which the main points are illustrated by microscopical and museum preparations. Illustrative sections for microscopical examination are given to each student for preparation and mounting.

Mr. Shattock's course of lectures deals with morbid growths, with the pathological questions touched upon in the systematic course of Surgery, and with Bacteriology; in the latter subject Students receive practical instruction.

The Demonstrator of Morbid Histology holds occasional classes, in which the microscopical preparations contained in the pathological cabinet are shown and explained.

Students are selected annually to assist the Demonstrator of Morbid Histology.

Post-mortem examinations are performed daily at 2 p.m. by Dr. Perkins, Dr. Colman, or Dr. Box, and demonstrations given. Students are appointed to act as clerks, and are required to make examinations under the supervision of the demonstrators.

ELEMENTARY PRACTICAL BACTERIOLOGY.

A short course is given during May and June by Mr. Shattock. (Fee, One Guinea, including materials.)

This course deals with the following subjects:—

1. Apparatus, and Preparation of Media.
2. The inoculation of various Media in Test tubes (Aerobic and Anaerobic).
3. The microscopic study of Bacteria by means of the Hanging Drop, and Dry Method.
4. The study and separation of Micro-Organisms by means of Plate-Cultures (Koch and Petri), of Roll- and Shake-Cultures.
5. The inoculation of Tubes from Plate- and Roll-Cultures, the making of Impression Preparations.
6. The staining of Micro-Organisms in sections by Gram's method and others; the Staining of Tubercular Sputum, of the Diphtheria Bacillus, Cholera Spirillum and other important Pathogenic forms.

N.B.—For the Diploma of Public Health this course is followed by a more detailed study of such Pathogenic organisms as those of Typhoid, Cholera, and Diphtheria; the examination of infected animals; and the Bacterial examination of water, air, and soil.

FORENSIC MEDICINE AND TOXICOLOGY.

DR. COLMAN.

Demonstrator of Toxicology—Dr. Le Sueur.

A three months' course of lectures is given during the Summer Session, by Dr. Colman.

The lectures cover the synopses of the various Examining Boards, and are supplemented in the toxicological section by demonstrations by Dr. Le Sueur

MENTAL DISEASES.

DR. RAYNER.

A three months' course of lectures is given during the Summer Session, comprising Symptomatology, Causation, States and Forms of Disease.

1. Mental Defects—Idiocy, Imbecility, etc.
 2. Mental disorders—(a) States of Mental Depression, Melancholia, etc. ; (b) States of Mental Exaltation, Mania, etc. ; (c) States of Stupor ; (d) States of Chronic Disorder, and Dementia.
 3. Mental disorder in relation to diseases, causes, etc.
 - (a) General paralysis, epilepsy, and other neuroses. (b) Insanities of puberty, adolescence, pregnancy, parturition and lactation ; climacteric and senile insanities. (c) Insanities from injury, heat-stroke, fevers, etc. (d) Insanities from alcohol, lead, and other toxic agencies. (e) Insanity from gout, phthisis, and associated bodily diseases.
 4. General Pathology.
- Clinical Instruction is given by visits to Bethlem Hospital and other institutions for the Insane and Imbecile.

DISEASES OF THE EYE.

MR. LAWFORD AND MR. FISHER.

A course of about thirty lectures on the principal disorders and diseases of the Eye and its appendages is given during the Winter Session. Occasional demonstrations of cases are also given. A clinical lecture or demonstration of cases is given weekly during the Summer Session.

An elementary class for learning the use of the Ophthalmoscope is held in October, January, and May. Ophthalmoscopic cases are shown once a week during the Winter Session.

Oral classes and demonstrations are held in connection with the Surgical tutorial classes for the examinations of the "Conjoint Board."

A Special Course of operations on the dead subject is given by Mr. Fisher. (Fee, see p. 37.)

PUBLIC HEALTH.

DR. SEATON.

A course of lectures is given during the Summer Session, including :—

Water, Air, Soil, Food, the Dwelling—in relation to Health and Disease—Infectious and Epidemic Diseases, the principles of preventive measures—Quarantine, Port Sanitary Administration, Isolation—Hospitals, temporary or permanent—Provisions of the Act for Notification of Diseases—The principles of Disinfection and the mode of action of the chief disinfecting agents—Vaccination—Statistics in relation to public health—Statutes relating to public health—The powers and duties of Sanitary Authorities and their officers—Water Supply, Drainage, Sewerage, the disposal of sewage and excreta by methods adapted to either town or country districts—Trades regulated under the Factory and Public Health Acts.

The lectures are usually supplemented by Public Health demonstrations, relating to water supply, systems of sewage disposal and purification, establishment and organization of Isolation Hospitals, house drainage, schools, workhouses and other institutions, the practical working of the Contagious Diseases (Tuberculosis) Animals' Act.

Degree and Diploma in Public Health.—Dr. Seaton holds special classes for the above, and will be ready to advise gentlemen who are desirous of acquiring the special knowledge of the Sanitary organization of large Towns and Counties, as to the best way of complying with the requirements of the Local Government Acts and of the various examining bodies.

Mr. Shattock and Mr. Seligmann will give a course of Bacteriology and Microscopy, beginning in May, and Dr. Crossley will give two courses of laboratory instruction in Physics and Chemistry, beginning, respectively, in October and January.

St. Thomas's Hospital Medical School is one of the institutions recognised by the Universities of Oxford and Cambridge and the Royal Colleges of Physicians and Surgeons for the course of laboratory instruction.

DAYS AND HOURS OF LECTURES AND DEMONSTRATIONS.
WINTER SESSION.

	Mon.	Tues.	Wed.	Thurs.	Fri.	Sat.	Years of Attendance
Elementary Biology, p. 22	—	11	—	12	—	—	1st Year.
Physics, Chemistry & Practical Chemistry p. 23	—	—	12	—	12	10.30	do.
Descriptive and Surgical Anatomy, { p. 23	— 9.30	9.30 —	— 9.30	9.30 —	— 9.30	9.30 11	do. 2nd Year.
Anatomical Demonstrations, p. 23	10½-4½	10½-4½	10½-4½	10½-4½	10½-4½	10½-1	1st & 2nd.
Physiology, p. 23	10.45	—	10.45	—	10.45	—	do.
Physiological De- } Oct., Nov., Dec. monstrations, p. 24 } Oct. to Mar.	— 11.45	— —	9.30 11.45	— —	9.30 —	— —	1st Year. 2nd Year.
Practical Surgery, p. 25, Oct., Nov., Dec.	—	9	—	—	—	—	3rd Year.
Comparative Anatomy (six lectures), p. 23	—	—	11	—	—	—	do.
Medicine, p. 25 { 2nd and 4th six weeks { 1st and 3rd six weeks	— 12.30	4 —	12.30 12.30	— 4	12.30 —	— —	do.
Surgery, p. 25	9	—	—	9	—	9	do.
Bacteriology and Surgical Pathology, p. 26	—	12	—	12.30	—	—	do.
Diseases of Women, p. 24, Jan., Feb., Mar.	—	9	—	—	9	—	3rd or 4th.
Pathological Anatomy, p. 26	12	—	—	—	12	12	do.
Diseases of the Eye, { Oct., Nov., Dec. p. 27	4 4	— —	— —	— —	4.30 —	— —	do. do.
Obstetric Demonstrations (six), p. 24.....	—	—	4.30	—	—	—	do.

SUMMER SESSION.

	Mon.	Tues.	Wed.	Thurs.	Fri.	Sat.	Years
Botany, p. 22	—	10	10	—	—	—	1st Year.
Elementary Biology, p. 22	2	—	2	—	—	—	do.
Practical Pharmacy (Demonstrations), p. 24	—	3	—	2	—	—	do.
Chemistry and Practical Chemistry, p. 23	11-1	—	—	—	10-1	11-12½	do.
Physiology, p. 23 { Lecture	—	9	9	9	—	—	do.
{ Practical Class	—	10-12	10-12	10-12	—	—	do.
Anatomical Demonstrations, p. 23	11-4	11-4	11-4	11-4	11-4	11-1	2nd Year.
Practical and Manipulative Surgery, p. 25	9	—	—	—	—	—	do.
Midwifery, p. 24	—	9	9	9	9	—	3rd Year.
Comparative Anatomy (six lectures), p. 23	—	—	—	—	2	—	do.
Pathological Anatomy & Bacteriology, p. 26	12	—	12	—	—	—	do.
Do. Demonstration, p. 26	—	—	—	—	—	11	do.
Practical Bacteriology (six meetings), p. 26	—	—	—	12	—	—	do.
Pharmacology and Therapeutics, p. 24	—	—	4.30	—	4.30	12	do.
Forensic Medicine, p. 26	4	12	—	4	—	9	do.
Mental Diseases, p. 26	—	—	—	12.30	—	—	do.
Public Health and Sanitary Science, p. 27	—	—	—	—	12	—	do.
Diseases of the Eye, p. 27	—	4.30	—	—	—	—	3rd or 4th.

Clinical Lectures in Medicine and Surgery are given every Wednesday throughout the Sessions, at 2 p.m. and 9.30 a.m. respectively.

SCHOLARSHIPS, PRIZES, APPOINTMENTS, & HONORARY DISTINCTIONS.

OPEN SCHOLARSHIPS IN NATURAL SCIENCE.*

As an inducement to the study of Natural Science before the commencement of the strictly Medical Course, two Scholarships, of the value of £150 (*i.e.*, a free admission) and £60 respectively, are awarded annually, after an examination in Physics, Chemistry, and either Botany, Zoology or Physiology, at the option of Candidates. The Medical School Committee is empowered to grant an Exhibition of £20 to any *unsuccessful* competitor who obtains sufficient marks to qualify for a Scholarship.

These Scholarships are open to all Students not exceeding 24 years of age who have passed a recognised Preliminary Examination in Arts, and have not yet attended Lectures on Anatomy of the first year, without any condition as to their becoming Students of the Hospital, except in the case of successful Candidates, who must enter at once for the full curriculum. The Examination will be conducted by means of written papers and practical work, and will be held on the 24th, 25th, and 26th of September, 1901. The standard, so far as the subjects are the same, will be that of the Preliminary Scientific Examination for Honours of the University of London. Competitors are required to send in their names with choice of optional subject and Certificate of Birth and of Preliminary Examination to the Medical Secretary not later than September 17th.

UNIVERSITY SCHOLARSHIP.*

A Scholarship of the value of £50 will be offered for competition in the last week of September after an examination in **any two** of the following subjects: Anatomy, Physiology, Chemistry. It is open to Students who have completed their examinations in Anatomy, Physiology, and Materia Medica and Pharmacy for a Medical Degree in any of the Universities of the United Kingdom or the Colonies, and have not entered as Students in any London Medical School.

THE WILLIAM TITE SCHOLARSHIP.

This Scholarship, founded by the late Sir W. TITE, C.B., M.P., F.R.S., of the value of £27 10s., is awarded each year to the Student placed highest in the 1st Class List in the examinations at the end of the first Winter Session. Preference, in case of equality between Students, is to be given to the son of a medical man, and more particularly of one who has been educated at St. Thomas's Hospital or is in Practice in Bath.

THE MUSGROVE SCHOLARSHIP.

This Scholarship, founded by Sir JOHN MUSGROVE, Bart., the late President of the Hospital, of the value of £38 10s., is awarded biennially to the Student who shall take the highest place in the 1st Class List in the examinations at the end of the Second Winter Session. It is tenable for two years, provided the holder has worked during his third year to the satisfaction of the Medical School Committee.

THE PEACOCK SCHOLARSHIP.

This Scholarship, founded by the will of the late Dr. THOMAS BEVILL PEACOCK, for many years Physician, and at the time of his death Consulting Physician to St. Thomas's Hospital, is of the same value as the Musgrove Scholarship; is awarded and held upon the same terms; and is given every second year in alternation with that Scholarship.

THE BEANEY SCHOLARSHIP.

This Scholarship, founded by the will of the late Dr. BEANEY, of the value of £50, is awarded biennially, after an examination in Surgery and Surgical Pathology, to a student who shall have completed his fifth but not his seventh year. The examination is held during the Summer Session.

* The Examination Papers of last year may be had on application to the Medical Secretary.

THE SALTERS' COMPANY RESEARCH FELLOWSHIP.

This Fellowship of the annual value of £100 has been established and endowed by the Salters' Company, with a view to the promotion of research in Pharmacology. The Fellowship is awarded to a properly qualified person by the Company on the nomination of the Treasurer of St. Thomas's Hospital and a Committee of Selection. It may be held for a term of three years, the Fellow carrying on his researches at St. Thomas's Hospital and giving annual evidence of the performance of satisfactory work to the Committee of Selection. The Fellow is required to devote his whole time to research and to hold no other office or appointment except by special permission of the Salters' Company, granted on the strong recommendation of the Committee of Selection.

PRIZES.

The following Scholarships, Prizes, and Medals, will be offered for Competition during the year 1901-1902 :—

TWO OPEN SCHOLARSHIPS IN NATURAL SCIENCE of the value of £150 and £60 respectively, at the commencement of the 1st year.

THE UNIVERSITY SCHOLARSHIP of the value of £50, at the commencement of the 3rd year.

AT THE END OF FIRST YEAR.

<i>Winter.</i>	1st.	...	The William Tite Scholarship	£27 10s.
	2nd.	...	College Prize	£20.
	3rd.	...	Ditto	£10.
<i>Summer.</i>	1st.	...	College Prize	£15.
	2nd.	...	Ditto	£10.

SECOND YEAR.

<i>Winter.</i>	1st.	...	The Peacock Scholarship	£38 10s.
	2nd.	...	College Prize	£20.
	3rd.	...	Ditto	£10.

THIRD YEAR.

Second Tenure of the Musgrove Scholarship	£38 10s.
---	-----	-----	-----	----------

FIFTH YEAR.

Winter. An Examination will be held in the second half of the Fifth Winter Session, for which a Prize of £10 will be given in each subject.

Students of each year are classed according to their respective merits in the examinations, and those in the *first* class in each year receive Certificates of Honour, and a preference in the selection for Hospital Appointments.

Free Scholarships are given to distinguished Pupils of Merchant Taylors and City of London Schools, and Epsom College.

In addition there are awarded—

THE MEAD MEDAL, *Annually.*

THE WAINWRIGHT PRIZE FOR MEDICINE, *Annually.*

THE CHESELDEN MEDAL, *Annually.*

THE SOLLY MEDAL AND PRIZE, *Biennially.* (1902.)

THE BEANEY SCHOLARSHIP, *do.* (1902.)

THE BRISTOWE MEDAL, *Annually.*

THE SUTTON SAMS MEMORIAL PRIZE, *Biennially* (1902.)

THE GRAINGER TESTIMONIAL PRIZE, *Annually.*

THE TREASURER'S GOLD MEDAL, *do.*

Intending Competitors, especially those who have spent a part of their curriculum elsewhere, should apply to the Medical Secretary for detailed regulations.

The CHESELDEN MEDAL, founded by the late GEORGE VAUGHAN, Esq., is annually awarded to the Fifth Year's Student who most distinguishes himself in respect of a Special Practical Examination in Surgery and Surgical Anatomy.

The MEAD MEDAL, founded by Mr. and Mrs. NEWMAN SMITH, is awarded annually to a Fifth Year's Student, in respect of a Special Practical Examination in Medicine, Pathology and Hygiene.

The WAINRIGHT PRIZE, £10, is awarded annually to a University Student under certain conditions after an Examination in Medicine, Pathology and Hygiene.

The SOLLY MEDAL, together with a Prize in Money, will be awarded biennially. Those Students are eligible to compete who shall be of from three to six years' standing. The award is made for the best series of Reports of Surgical cases coming under the Student's personal observation in the Wards, not, however, to exceed ten in number.

The BRISTOWE MEDAL will be awarded annually in respect of a special Practical Examination in Pathology and Morbid Anatomy.

The GRAINGER TESTIMONIAL PRIZE, of the value of Fifteen Pounds, is awarded annually for work in Anatomy and Physiology. The conditions of competition for this Prize have recently been altered, and can be learnt from the Medical Secretary.

The SUTTON SAMS MEMORIAL PRIZE, awarded biennially for the best series of Reports of Cases in Obstetric Medicine, including Midwifery and the Diseases of Women.

The TREASURER'S GOLD MEDAL for General Proficiency and Good Conduct, is awarded at the end of the 5th Winter Session to the Student who has passed through his pupilage in St. Thomas's Hospital in the most meritorious manner (printed regulations are posted in the Library).

APPOINTMENTS.*

A RESIDENT ASSISTANT PHYSICIAN and a RESIDENT ASSISTANT SURGEON, at a salary of £100 per annum each, are from time to time appointed. The appointments are annual, but the tenure of office may be renewed for a term not exceeding two years.

TWO HOSPITAL REGISTRARS, at an annual Salary of £100 each, are appointed in each year. They are eligible for annual re-appointment, but may not hold office for more than two years. Preference will be given to Gentlemen who have been distinguished for merit, and have completed their studies in the School. The payment of the Registrars is subject to the presentation of a Report upon the Practice of the Hospital, and to such Report being regarded as satisfactory by the Medical Officers to whom it shall have been referred.

AN OBSTETRIC TUTOR AND REGISTRAR is appointed each year, at an annual salary of £50. He is eligible for annual re-appointment, but may not hold office for more than three years consecutively. The holder of the office takes part in the tutorial instruction of students, under the direction of the Obstetric Physician.

AN ASSISTANT TO THE SUPERINTENDENT OF THE CLINICAL LABORATORY is appointed from time to time.

House Appointments, open to Students who have obtained their diplomas. (*The duties of these offices commence on the first Tuesday in March, June, September, and December.*)

Four HOUSE PHYSICIANS, Two ASSISTANT HOUSE PHYSICIANS, Four HOUSE SURGEONS, and Four ASSISTANT HOUSE SURGEONS, are selected every three months. The Assistant House Physicians and Surgeons are non-resident, but the other Officers are provided with Rooms and Commons in the Hospital, free of expense, and hold office for six months, if recommended for re-election.

* All these Appointments are open to Students without extra payment.

A SENIOR and a JUNIOR OBSTETRIC HOUSE PHYSICIAN are selected every three months. The former is provided with Rooms and Commons in the Hospital, free of expense. The latter is provided with Commons, and must live near the Hospital.

Two OPHTHALMIC HOUSE SURGEONS, Senior and Junior, are appointed for six months; each receives a Salary at the rate of £50 per annum, and the Senior is provided with Commons. They must live near the Hospital.

CLINICAL ASSISTANTS in the Departments for Diseases of the Throat, Skin, and Ear, and in the Electrical, X Ray, and Physical Exercise Departments, are appointed every three months.

In the Special Departments preference is given to those who have worked in a satisfactory manner therein as Clinical Clerks and Dressers.

Appointments for Students before Qualification.

CLINICAL CLERKS and DRESSERS to In-patients are selected to the number of at least 100 each year, from amongst the most eligible pupils. The DRESSER on Accident Duty is provided with a Room and Commons in the Hospital. CLINICAL CLERKS and DRESSERS for the Out-patients are also appointed, to the number of at least 80 to 100 each year; applicants are required to have passed the 2nd examination of the Conjoint Board, or an equivalent examination, and to have attended a course of instruction in Elementary Clinical Medicine (p. 25). (*The Duties commence on the first Tuesday in January, April, July, and October.*)

OBSTETRIC CLERKS are appointed, in rotation, from a list of Students who have entered their names for the purpose, have attended Lectures on Midwifery and a course of Elementary Practical Obstetrics, and have passed the "Second Conjoint," or an equivalent Examination. Each Clerk holds office for three weeks, and Special Certificates are awarded to those Gentlemen who have satisfactorily attended Sixty Maternity cases. An allowance is made towards the cost of board and lodging.

ASSISTANTS TO THE TEACHERS OF PRACTICAL AND MANIPULATIVE SURGERY are appointed for the Winter and Summer Sessions.

ASSISTANTS TO THE LECTURER ON MATERIA MEDICA are appointed for the Summer Session.

Students are appointed to act as ASSISTANTS in the CLINICAL LABORATORY and to the DEMONSTRATORS of MORBID HISTOLOGY and of MORBID ANATOMY.

ASSISTANTS IN THE CHEMICAL DEPARTMENT are selected from those who have passed the PREL. SCI. UNIV. LOND. or who are similarly qualified.

ASSISTANTS IN THE PHYSIOLOGICAL LABORATORY are selected from Students who have completed their Second Winter Session.

ANATOMICAL REGISTRARS and PROSECTORS are appointed in the early part of the Winter Session, also ASSISTANTS TO THE LECTURER ON ELEMENTARY BIOLOGY.

REGULATIONS FOR THE EXAMINATION AND CLASSIFICATION OF THE STUDENTS AT THE MEDICAL SCHOOL.

1. In accordance with the Regulations of the Qualifying Bodies, Students must attend the Class Examinations in the subjects for which they have to be certified, and show by their answers to the questions that they have paid proper attention to the Lectures, otherwise the signature to their Schedules may be withheld.

2. There shall be held at least two Examinations in the 1st and 2nd Winter and one in the 1st Summer Session in each subject on which attendance is required during that Session, and the marks obtained in these Examinations shall be the basis for the Classification of Students and the Award of Prizes for each Session respectively. Provided that any extra Examination in the course of the Session, in any subject, be not allowed to interfere with the ordinary Lectures in other subjects.

3. The number of marks allotted to each subject in the following Schedule is not to be exceeded in case the number of Examinations held during the Session be more than two, but must be distributed amongst the several Examinations.

4. Students must obtain at least one-third of the total number of marks in each subject, and not less than two-thirds of the total number allotted to all the subjects collectively, to be placed in the 1st Class.

Those who have obtained one-third of the total number of marks allotted to all the subjects collectively are placed in the 2nd Class.

The names of those who do not obtain either a 1st or 2nd Class position are not published, but a General List showing the exact position of each Student at every Examination is kept by the Secretary, from whom any Student can learn his own position, but no Lecturer shall make known to Students the number of marks obtained by any Student in any subject.

5. The Prizes shall be awarded to the Students holding the 1st, 2nd, and 3rd positions in the 1st Class of each Winter Session, and to those holding the 1st and 2nd positions of the 1st Class in the first Summer Session.

6. The number of marks allotted to the Examinations for the MEAD and CHESELDEN Medals shall be 600 each.

7. In awarding the TREASURER'S Medal the number of marks obtained at the Sessional Examinations and in the MEAD and CHESELDEN Examinations shall be counted, provided that, as regards the Examination for the Medals, two-thirds of the maximum marks be obtained, but those obtained in the Entrance Scholarship Competition shall not be included.

8. The Authorities reserve the right of withholding any prize, if no competitor of sufficient merit present himself.

9. Attendance and satisfactory performance at the Fifth Year's Examination is compulsory upon all Students who desire to hold a House Appointment, or an appointment as Clinical Assistant in a Special Department.

1st YEAR'S SUBJECTS.

WINTER ...	Anatomy	500
	Practical Anatomy	300
	Physiology	300
	Elementary Biology	300
	Chemistry and Practical Chemistry	600
	Total	2000

SUMMER ... Chemistry and Practical

Chemistry	300
Practical Pharmacy... ..	200
Histology	300
Total	800

2nd YEAR'S SUBJECTS.

WINTER ...	Anatomy	500
	Practical Anatomy	300
	Physiology	400
	Practical Physiology	400
	Total	1600

5th YEAR'S SUBJECTS.

Medicine.
Surgery (including Ophthalmology).
Midwifery and Diseases of Women.
Pathology.

Pharmacology and Therapeutics.
Forensic Medicine (including Insanity).
Public Health.

Every Student must take up at least three subjects, one of which must be either Medicine or Surgery.

Distribution of Prizes for the Past Sessions.

SUMMER SESSION, 1900.

FIRST YEAR'S STUDENTS.

K. TAKAKI, *Tokio* { College Prize, £15,
and Certificate of Honour.

SECOND YEAR'S STUDENT.

H. S. BENNETT, *Felixstowe* { College Prize, £15,
and Certificate of Honour.

WINTER SESSION, 1900-1901.

ENTRANCE SCIENCE SCHOLARSHIP.

G. Y. WORRALL, *Southampton* ... } First Scholarship, £150,
and Certificate of Honour.

UNIVERSITY SCHOLARSHIP.

W. L. HARNETT, *Barnet* ... } Scholarship, £50,
and Certificate of Honour.

FIRST YEAR'S STUDENTS.

L. E. C. NORBURY, *Ealing* ... } The Wm. Tite Scholarship,
£27 10s.,
and Certificate of Honour.
D. K. COUTTS, *Streatham* ... } College Prize, £20.
and Certificate of Honour.
R. J. H. COX, *Hampstead* ... } College Prize, £10.
and Certificate of Honour.
A. W. HOOKER, *Putney* ... } Certificate of Honour.

SECOND YEAR'S STUDENTS.

H. A. KISCH, *Maida Vale* ... } The Musgrove Scholarship,
£38 10s.,
and Certificate of Honour.
E. W. PARRY, *South Kensington* ... } College Prize, £20,
and Certificate of Honour.
T. P. PUDDICOMBE, *Beaford, North Devon* ... } College Prize, £10.
and Certificate of Honour.
K. TAKAKI, *Tokio* ... } Certificate of Honour.

THIRD YEAR'S STUDENTS.

H. S. BENNETT, *Felixstowe* ... } Second tenure of Peacock
Scholarship,
F. W. W. SMITH, *Newington Causeway* ... } and Certificate of Honour.

FIFTH YEAR'S STUDENTS.

C. N. SEARS, *Lee* ... } College Prize, £10 (Medicine).
C. BURROWS, *Cambridge* ... } College Prize, £10 (Surgery).
R. E. ROBERTS, *Carnarvon* ... } College Prize, £10 (Midwifery).
W. M. G. GLANVILLE, *Bristol* ... } Hadden Prize, £10 (Pathology).
C. N. SEARS, *Lee* ... } College Prize, £10 (Pharmacology).
H. W. SINCLAIR, *Llandudno* ... } College Prize, £10 (Forensic Medicine
and Insanity).
H. W. SINCLAIR, *Llandudno* ... } College Prize, £10 (Public Health).

PRACTICAL MEDICINE.

W. M. G. GLANVILLE, *Bristol* ... } The Wainwright Prize.

PATHOLOGY AND MORBID ANATOMY.

J. E. H. SAWYER, *Warwick* ... } The Bristowe Medal.
H. S. STANNUS ... } Certificate of Honour.

FOR GENERAL PROFICIENCY AND GOOD CONDUCT.

C. N. SEARS, *Lee* ... } The Treasurer's Gold Medal.

CERTIFICATES OF HONOUR.

HOUSE PHYSICIANS.

E. W. HEDLEY	C. F. SELOUS
F. C. EVE	H. H. R. CLARKE
H. M. HARWOOD	Z. MENNELL
R. B. KINLOCH	F. B. SKERRETT

ASSISTANT HOUSE PHYSICIANS.

H. M. HARWOOD	Z. MENNELL
R. B. KINLOCH	F. B. SKERRETT
C. F. SELOUS	J. E. H. SAWYER
H. H. R. CLARKE	J. L. LOCK

HOUSE SURGEONS.

A. E. MARTIN	Y. TAKAKI	T. S. TAYLOR
C. L. HAWKINS	T. H. EDWARDS	T. BURFIELD
J. F. CUNNINGHAM	B. S. WILLS	

ASSISTANT HOUSE SURGEONS.

T. H. EDWARDS	T. BURFIELD	S. HUNT
B. S. WILLS	C. A. R. NITCH	A. S. GRIMWADE
T. S. TAYLOR	W. H. O. WOODS	

OBSTETRIC HOUSE PHYSICIANS.

<i>Senior</i> —A. BEVAN.	<i>Junior</i> —B. F. HOWLETT
B. F. HOWLETT	H. R. BEALE
H. R. BEALE	E. W. HEDLEY
E. W. HEDLEY	A. E. MARTIN

OPHTHALMIC HOUSE SURGEONS.

S. HUNT	J. F. CUNNINGHAM	H. S. HARRIS
---------	------------------	--------------

CLINICAL ASSISTANTS IN THE SPECIAL DEPARTMENTS.

Throat	Skin	Ear	Electrical
T. W. S. PATERSON	C. A. R. NITCH	L. H. C. BIRKBECK	L. S. DUDGEON
	W. C. MENCE	T. W. S. PATERSON	A. BEVAN

CERTIFICATES OF PROFICIENCY.**ANATOMICAL REGISTRARS.**

E. L. MOSS	F. W. W. SMITH
------------	----------------

PROSECTORS.

H. A. KISCH	T. P. PUDDICOMBE
E. W. PARRY	K. TAKAKI

ASSISTANTS IN THE PHYSIOLOGICAL LABORATORY.

J. H. CHAUNCEY	C. M. ROBERTS
----------------	---------------

ASSISTANTS IN THE PATHOLOGICAL LABORATORY.

S. G. SCOTT	H. S. STANNUS
F. B. SKERRETT	W. M. STRONG

ASSISTANT IN THE BIOLOGICAL LABORATORY.

L. E. C. NORBURY

ASSISTANTS IN THE CHEMICAL LABORATORY.

D. K. COUTTS	E. V. DUNKLEY
--------------	---------------

ASSISTANTS TO THE LECTURER ON MATERIA MEDICA.

A. S. GRIMWADE	Z. MENNELL
----------------	------------

ASSISTANTS TO THE TEACHERS OF PRACTICAL SURGERY.

A. S. GRIMWADE	H. S. STANNUS	W. H. O. WOODS
Z. MENNELL	J. WALKER	

The following Distinctions in the University of London have been obtained by Students of St. Thomas's Hospital during the past year:—

HONOURS EXAMINATIONS—UNIVERSITY OF LONDON.

First Class in Anatomy (Inter. M.B.), J. E. ADAMS.

First Class in Medicine (M.B.), E. A. GATES.

Third Class in Forensic Medicine (M.B.), J. W. LITTLE.

FEES FOR ATTENDANCE ON THE LECTURES AND ON THE PRACTICE OF THE HOSPITAL.

COMPOSITION FEES.

The Composition Fee to Hospital Practice and Lectures may be paid in the following ways:

- 1st. One Hundred and Fifty Pounds on entrance in one sum;
- 2nd. One Hundred and Fifty-seven Pounds Ten Shillings in instalments;
 - (a) By two payments, £85 on entrance, and £72 10s. at the beginning of the second year;
 - (b) By three payments, £75 at the beginning of the first year, £50 at the beginning of the second year, and £32 10s. at the beginning of the third year;
 - (c) By four payments, £65 at the beginning of the first year, £50 at the beginning of the second year, £30 at the beginning of the third year, and £12 10s. at the beginning of the fourth year.

Under certain circumstances, a reduction is made in the case of Students who have passed in Chemistry and Physics or Elementary Biology before entering the Hospital.

Students entering at St. Thomas's for Lectures and Hospital Practice of the second and subsequent years pay £130 on entrance, or three instalments of £52 10s., £42, and £42. Students entering for Lectures and Hospital Practice of third and subsequent years pay a composition fee of £80, or £52 10s. on entrance, and £31 10s. one year subsequently.

[N.B.—It should be understood that although the Composition Fees are intended to cover unlimited attendance on Lectures and Hospital Practice, yet if a student fail to pass the several professional examinations within periods deemed reasonable by the School authorities, he may be required to pay additional fees for attendance at practical Courses and Tutorial Classes, or his rights as a Student may be suspended or determined at any time by the School Committee, with the approval of the Treasurer.]

Legally qualified Medical Men (British, Colonial, or Foreign), are admitted to the Hospital practice, Clinical Lectures, and Museums of the following Hospitals: Charing Cross, Guy's, King's College, Middlesex, St. George's, St. Mary's, St. Thomas's, University College, and Westminster.

Cards are issued at the following rates: For 3 months, 7 guineas; for 6 months, 10 guineas; and for any longer period at the further rate of 5 guineas for each additional 6 months.

The cards do not entitle the holder to certificates of attendance either on Lectures or in Hospital Practice for the purpose of any examination.

NOTE.—Cheques may be made payable to the Medical Secretary, and crossed "London and County Bank, Lambeth."

The Fee for attendance on the *general* subjects required of Students in Dental Surgery, is for the two years, £65, or by instalments, £55 for the first year, and £15 for the second year. If certificates for *Dental* practice are also required, the special fee for that subject (see below) has to be paid.

The undermentioned Courses may be attended separately on the following terms, which entitle to Certificates for such Attendances.

For the Medical and Surgical Practice, including Clinical Lectures and the Special Departments.

Three months	£21.	Twelve months... ..	£36 15s.
Six months	£26 5s.	Unlimited	£73 10s.

The Practice of either the Medical or Surgical Wards, or any one of the Special Departments, may be attended separately.

<i>Medical or Surgical.</i>		<i>Each Special Department.</i>	
Three months	£15 15s.	£5 5s.
Six months	£21.	£10 10s.
Twelve months	£26 5s.	£15 15s.

Lectures and Demonstrations.

Anatomy, Physiology	each	£10 10s.
Practical Anatomy (twelve months), Practical Physiology, including Histology	each	£10 10s.
Medicine, Surgery, Chemistry	£7 7s.
Midwifery	£6 6s.
Pharmacology and Therapeutics, Physics, Forensic Medicine each	..	£5 5s.
Pathology, including Pathological Histology and Bacteriology...	..	£8 8s.
Diseases of Women, Public Health, Insanity, Diseases of the Eye	each	£3 3s.
Practical Medicine, Practical Obstetrics, Laryngology	£3 3s.
Practical Surgery, Practical Chemistry, Elementary Biology	£6 6s.
Demonstrations in Post-Mortem room (twelve months)	£10 10s.

NOTE.—A small charge for materials is made for all Practical Courses taken separately.

SPECIAL COURSES (not included in the Composition Fee) and EXTRA EXPENSES.

Comparative Anatomy	£2 2s.
Botany	£3 3s.
Operative Surgery	£5 5s.
Ditto of Eye	£2 2s.
Advanced Anatomy, Advanced Physiology	each £6 6s.
Public Health—Six months' Laboratory Instruction for the Diploma	£21.
Practical Toxicology	£2 2s.
Practical Bacteriology	£1 1s.
Vaccination	£1 11s. 6d.
Practical Instruction in Pharmacy	£3 3s.
Attendance at a recognised Fever Hospital	£3 3s.
Attendance at a recognised Lunatic Asylum	£3 3s.

Students who pay a Composition Fee are now supplied with chemicals and materials for **one course** of Practical Chemistry, Practical Physiology, and Elementary Biology without extra charge, but there are certain instruments and materials required during the course of study, as follows, viz. :

Those attending Elementary Biology, Practical Physiology and Physiological Demonstrations must provide themselves with Microscopes. Dissecting Instruments are required for the Elementary Biology Course.

Students Dissecting pay for the "parts" they dissect at fixed rates, which are notified in the Library.

Each Clinical Clerk must provide himself with a Stethoscope and Registering Clinical Thermometer. Each Dresser is required to have a Registering Clinical Thermometer, a Pocket Case of Instruments, and a Case of Silver or Plated Catheters.

UNIVERSITY OF LONDON.

Preliminary Scientific and Intermediate M.B. Classes.

PRELIMINARY SCIENTIFIC EXAMINATION.

Special instruction in the subjects required for this Examination is given in the form of (a) Lectures and (b) Classes, from October to July.

	Mon.	Tues.	Wed.	Thu.	Fri.	Sat.
Botany.						
A. W. BENNETT, M.A. { Lectures (Summer)	—	10.0	10.0	—	—	—
{ Classes (Winter & Summer)	—	—	11.0	—	—	—
Chemistry.						
A. W. CROSSLEY, { Lectures (Winter)	—	—	12.0	—	12.0	—
D.Sc., Ph.D. { Classes (Summer)	—	—	—	12.0	—	—
{ Practical (Winter)	—	2.0	—	—	—	10.30 fm Jan
{ „ (Summer)	11.0	2.0	—	—	11.0	11.0
	Laboratory open daily					
Physics.						
H. R. LESUEUR, D.Sc. { Lectures and } Winter	2.0	—	9.30	—	—	10.30 Oct. Nov. Dec.
{ Practical Work } Summer	fm Jan	—	9.0	9.0	—	—
				& 2.0		
Zoology.						
F.G. PARSONS, F.R.C.S. { Classes (Winter)	—	—	—	10.30	—	—
{ „ (Summer)	9.30	—	—	10.30	—	—
	Laboratory open daily					

N.B.—A Microscope and simple Dissecting Apparatus must be provided by each Member of the Class, and Two Guineas are charged for materials.

Fee, inclusive of Practical Chemistry *Sixteen Guineas.*

Fee for any single subject *Five Guineas.*

Subsequent Courses, half Fee, if recommended by the respective Teachers.

In the Practical Classes of Botany and Zoology, each Student has the opportunity of dissecting the chief types.

INTERMEDIATE EXAMINATION IN MEDICINE.

	Mon.	Tues.	Wed.	Thurs.	Fri.	Sat.
Anatomy.						
F. G. PARSONS, { Jan.to Mar.	—	9.30	—	9.30	—	—
F.R.C.S. { May to July	—	Four	times a	week.	—	—
Physiology & Histology						
J. B. LEATHES, M.B., { Oct.to Mar.	—	11.45	—	11.45	—	—
B.Ch. Oxon., F.R.C.S. { May to July	—	—	—	3.0	—	—
Organic Chemistry.*						
A. W. CROSSLEY, { Oct.to Dec.	—	12.0	—	—	—	—
D.Sc., Ph.D. { Jan.to Mar.	—	2.0	—	2.0	2.0	—
{ May to July	—	2.0	12.0	—	2.0	—
{ Practical work	—	Practical			Revision	
{ May to July	—	Practical			Class and	
{ May to July	—	work			Practical	
Materia Medica and Pharm. Chemistry.						
E. WHITE, B.Sc. { May to July	—	—	2.0	—	—	—

Fee to Students of the Hospital, inclusive of

Organic Analysis and Chemicals *Nine Guineas.*

To others ditto *Twelve Guineas.*

Subsequent Courses, half Fee, if recommended by the respective Teachers.

* Students are strongly advised to attend the lectures in this subject immediately they have passed the Preliminary Scientific Examination, and the lectures, revision classes and practical work in the next year.

St. Thomas's Hospital.

MEDICAL AND PHYSICAL SOCIETY.

President, 1901—1902.
MR. H. B. ROBINSON.

Vice-Presidents.

DR. ACLAND.
MR. BATTLE.
DR. CULLINGWORTH.

MR. LAWFORD.
DR. MACKENZIE.

MR. SHATTOCK.
DR. TURNEY.

Treasurer.—MR. G. S. SAUNDERS.

Hon. Secretaries.

MR. A. MAVROGORDATO. | A. C. BIRT.

Committee.

MR. H. S. STANNUS.	MR. A. MAVROGORDATO.	MR. A. C. HUDSON.
MR. J. J. ARMITAGE.	MR. G. A. C. SHIPMAN.	MR. W. H. HARWOOD-
MR. H. J. DE BRENT.	MR. H. UPCOTT.	YARRED.
MR. A. E. BOYCOTT		MR. T. A. CHATER.

This Society was originated in the early part of the last century by students of the Hospital, and has for its object the reading and discussion of papers on Medicine, Surgery, and subjects of General Interest, the narration of cases, and the exhibition of specimens of Physiological and Pathological interest. The Meetings are held in the Students' Club on alternate Thursdays at 8.30 p.m., and terminate not later than 10 p.m.

Further information can be obtained of the Hon. Secretaries.

ST. THOMAS'S HOSPITAL REPORTS.

VOL. XXIX., NEW SERIES,

EDITED BY

H. W. G. MACKENZIE, M.A., M.D., Cantab, and
G. H. MAKINS, F.R.C.S.

Will be Published in due Course.

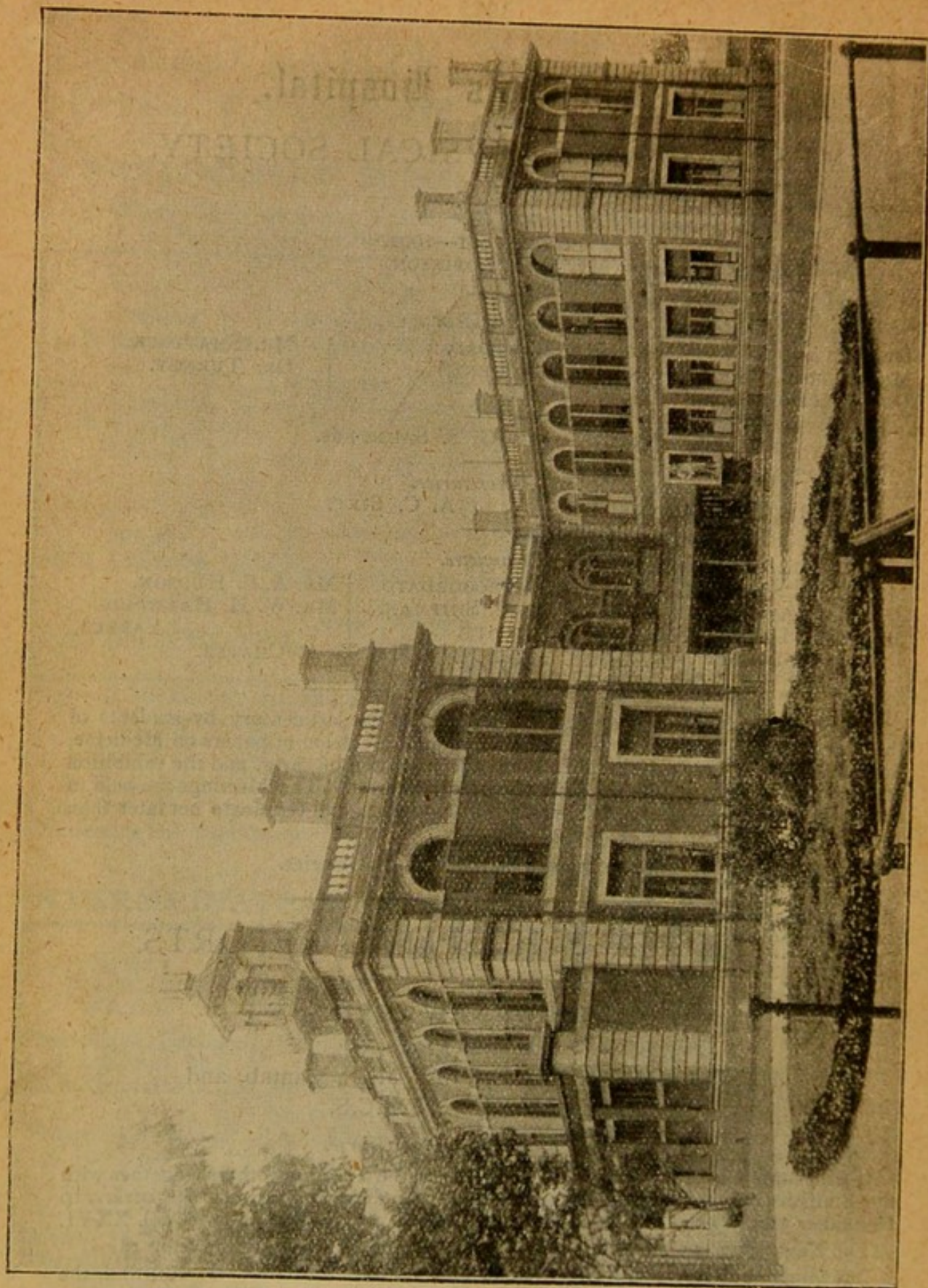
It will contain contributions from Members of the Staff and others, together with the Statistical Reports of the Hospital, by the Medical and Surgical Registrars, to December 31st, 1900. A General Index to Vols. I. to XXV. appears in Vol. XXVI.

The New Series commenced in 1870, and complete Sets may still be had.

Intending Subscribers are requested to communicate with MR. G. RENDLE, the Secretary of the Medical School, at the Hospital, to whom P.O. Orders on the Westminster Bridge Office are to be made payable.

PRICE OF THE VOLUME (including Postage or delivery) :—

To Subscribers in Great Britain and Countries within the Postal Union	...	6s. 6d.
To Non Subscribers	do. do. do.	8s. 6d.



MEDICAL SCHOOL, NORTH VIEW.