

**Case of extensive congenital division of both the hard and soft palates :
successfully treated by mechanical means / by James Snell.**

Contributors

Snell, James.
Royal College of Surgeons of England

Publication/Creation

[London] : [publisher not identified], [between 1820 and 1829?]

Persistent URL

<https://wellcomecollection.org/works/mt97v9x8>

Provider

Royal College of Surgeons

License and attribution

This material has been provided by This material has been provided by The Royal College of Surgeons of England. The original may be consulted at The Royal College of Surgeons of England. where the originals may be consulted. This work has been identified as being free of known restrictions under copyright law, including all related and neighbouring rights and is being made available under the Creative Commons, Public Domain Mark.

You can copy, modify, distribute and perform the work, even for commercial purposes, without asking permission.



Wellcome Collection
183 Euston Road
London NW1 2BE UK
T +44 (0)20 7611 8722
E library@wellcomecollection.org
<https://wellcomecollection.org>

Case of extensive Congenital Division of both the Hard and Soft Palates, successfully treated by Mechanical Means. By JAMES SNELL, Dentist, Member of the Royal College of Surgeons in London.

The extreme importance of any successful contrivance, in so distressing a defect as that of a fissured palate, will render unnecessary any apology for introducing the following case to the Profession.

An interesting young lady, now about sixteen years of age, has laboured under this distressful malformation from her birth. When an infant, it deprived her of the support of the breast,—the milk, when any could be drawn, being invariably ejected through the nose; and her articulation, from a later period to the time of my seeing her, was so defective as not to be understood but by those who were constantly about her. On her application to me about three months ago, the appearances were as follow:—The fissure, as may be seen by reference to the plate, commenced immediately behind the two anterior incisores, extending backward through the palatal portion of the maxillary bone, and through the os palati, velum pendulum palati, dividing the uvula, and giving rise to an unlimited communication between the nose and mouth.

When the case first came under my care, I was desirous of making the attempt to unite the edges of the soft palate, according to the suggestion of M. Roux;* but this mode of proceeding being altogether objected to by the parents, I was induced to try how far success might be obtained by mechanical means. With this view I obtained a correct model of the deficiency, from which a gold plate was first fitted to the roof of the mouth, as far back as could be worn by the patient, to the posterior part of which two pieces or flaps of Indian Rubber were attached, thus filling up the deficiency of the soft palate. A small moveable piece of the same material was also attached, by means of a gold hinge, to the centre of the lower piece, to imitate as near as possible the natural uvula. A piece of ivory was next fitted to the upper or back part of the gold plate, and carried upwards until it came in contact with the remaining portion of the septum narium: this was of course, firmly attached. The whole was held up in its situation by means of two gold springs soldered to the plate, which attached themselves round one of the molares on either side. It may readily be conceived that the introduction of such an apparatus must, in the first instance, cause

* Medical Intelligencer, Vol. 1. p. 98.

great inconvenience. This was, however, overcome by perseverance on the part of the patient, who was soon convinced of a most material improvement in her speech, as well as of great increase of comfort while taking her meals; and to crown the whole, the parents were most agreeably surprised to find her voice possessed of considerable musical power, a qualification which none could have presumed to hope for. As the apparatus requires to be frequently removed that it may be cleansed, she is provided with two, in figure the exact counterpart of each other.

EXPLANATION OF THE PLATE.

FIGURE 1.

The natural State of the Mouth.

a a The upper and lower Lips.
b The Teeth in outline.

c c The divided Uvula.
d d The Amygdalæ.

e The Tongue pressed down.
f The Fissure.

FIGURE 2.

The Artificial Palate.

a The Gold Plate.
b The lower Flap of Indian Rubber.

c The upper Flap.
d The Ivory Piece.

e The Artificial Uvula.
f The Gold Spring.

FIGURE 3.

The appearance of the mouth with the Apparatus affixed.

a The Gold Plate,--*b* The lower Flap of Indian Rubber,--*c* The Artificial Uvula.

fig 1

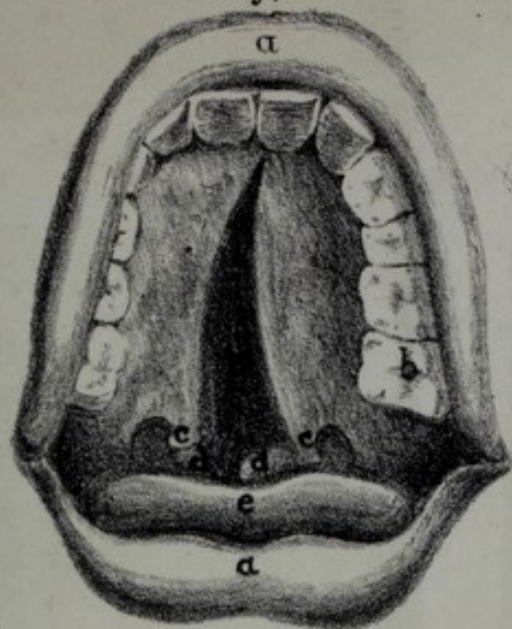


fig 2

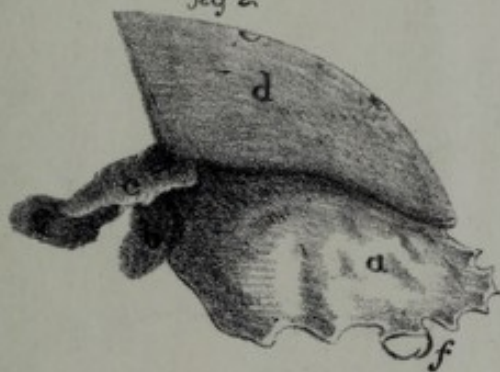
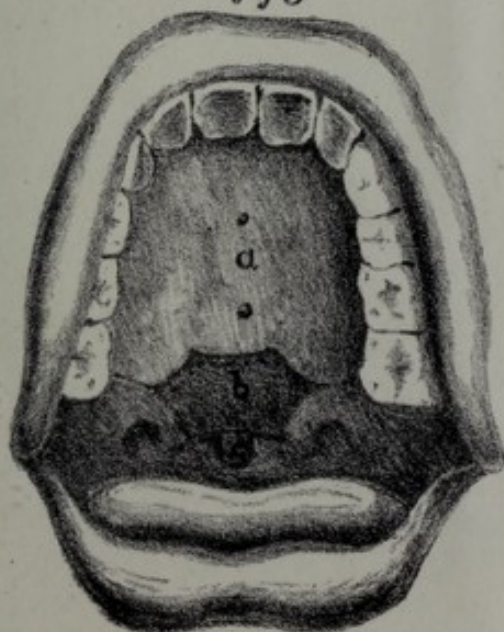


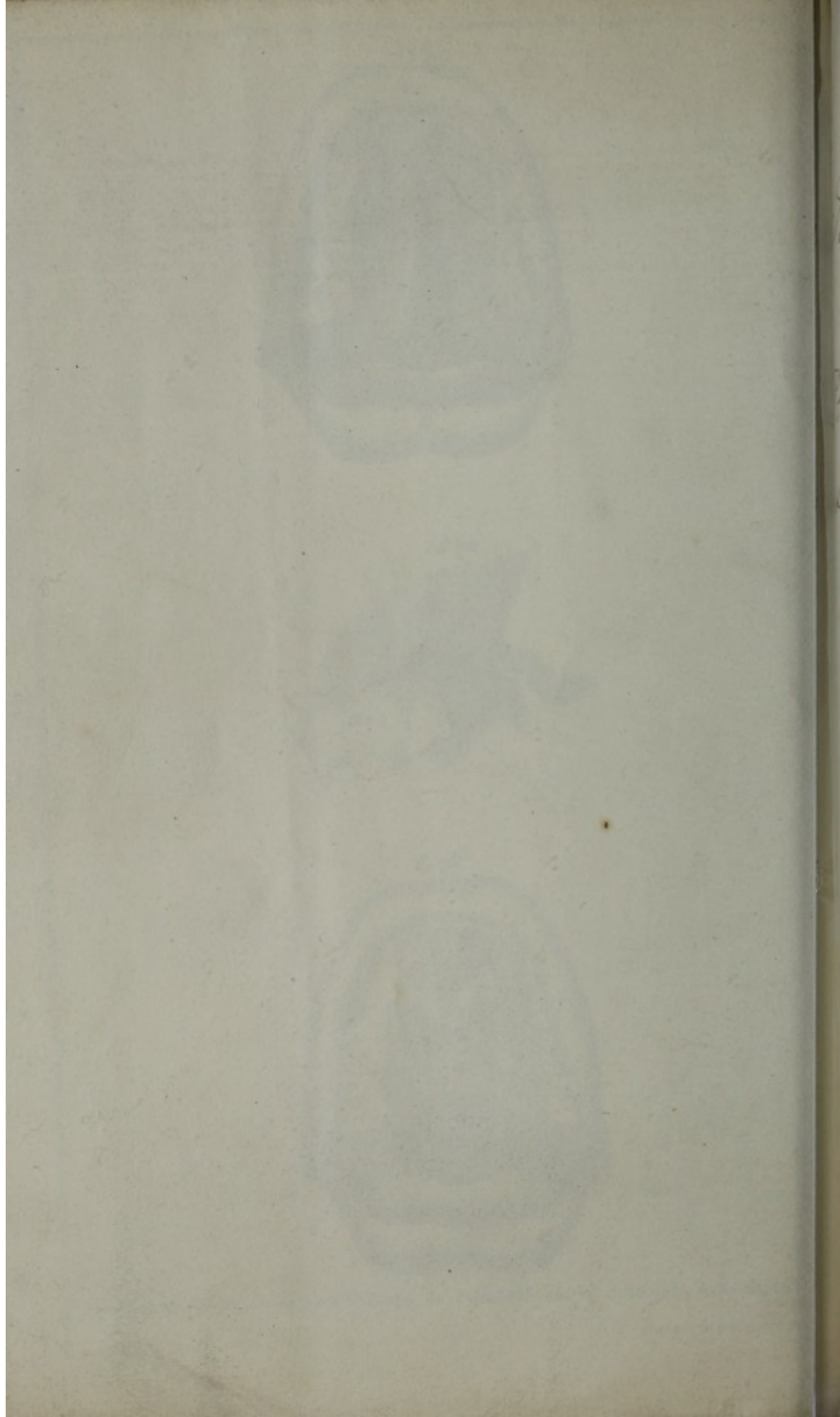
fig 3



Congenital division of the Palate, successfully treated by J. Snell, Surgeon-Dentist

Drawn on Stone by J. Snell.

C. Ingray lithog. 340, Strand.



Sir

I beg your acceptance of the enclosed
Plate with particulars, as published in the
1st Month's London Medical Repository.

I am Sir
Yours most Obedt^{ly} Serv^t

Chas^r Bell
Q

