

**Thermometric, barometric, and other tables, for the reciprocal conversion of the numbers of the scales in more frequent use / calculated by George Atkin.**

**Contributors**

Atkin, George.  
Royal College of Physicians of Edinburgh

**Publication/Creation**

Edinburgh : A. & C. Black, 1837.

**Persistent URL**

<https://wellcomecollection.org/works/h7nhj6tb>

**Provider**

Royal College of Physicians Edinburgh

**License and attribution**

This material has been provided by This material has been provided by the Royal College of Physicians of Edinburgh. The original may be consulted at the Royal College of Physicians of Edinburgh. where the originals may be consulted.

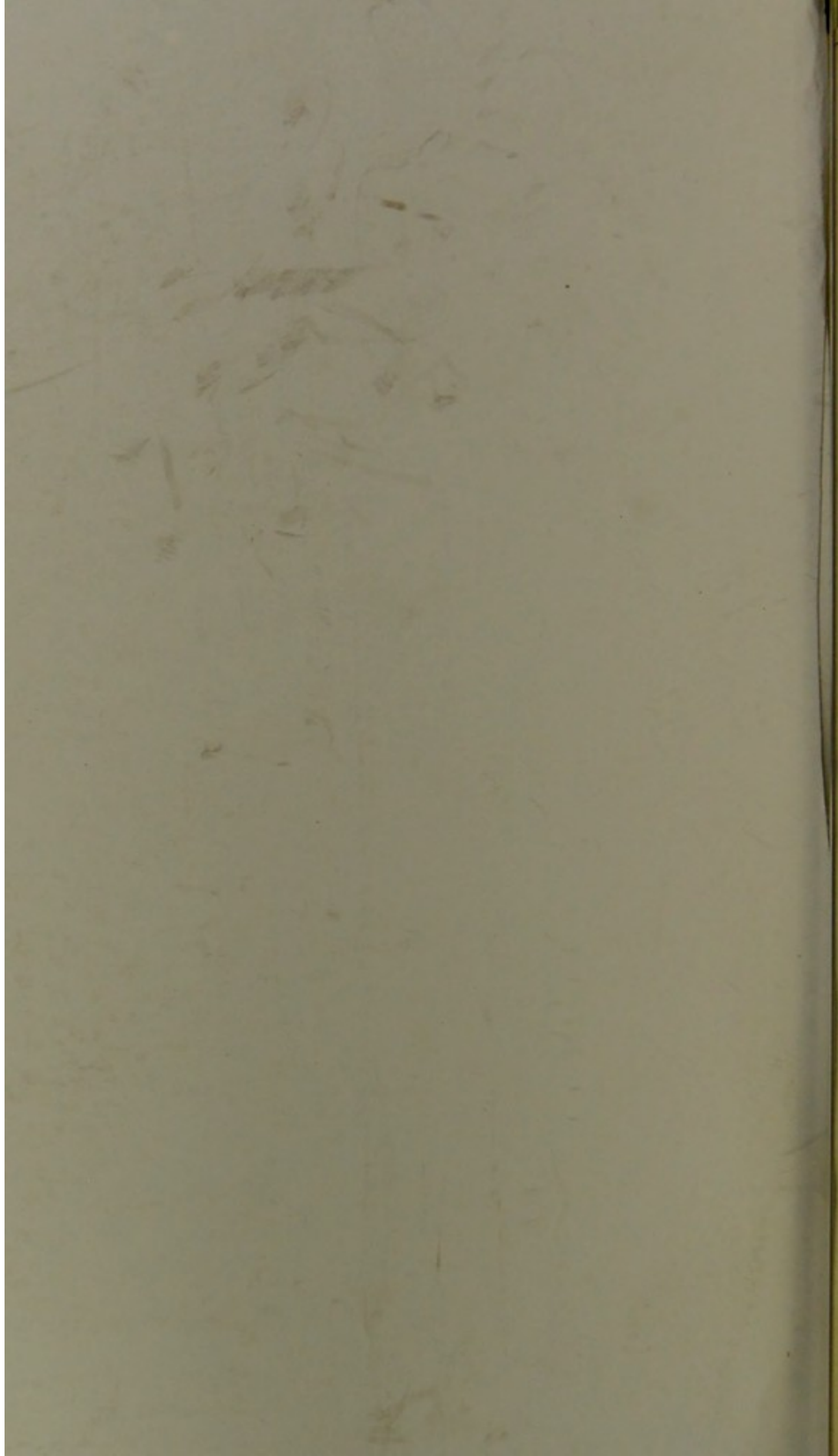
This work has been identified as being free of known restrictions under copyright law, including all related and neighbouring rights and is being made available under the Creative Commons, Public Domain Mark.

You can copy, modify, distribute and perform the work, even for commercial purposes, without asking permission.



Wellcome Collection  
183 Euston Road  
London NW1 2BE UK  
T +44 (0)20 7611 8722  
E [library@wellcomecollection.org](mailto:library@wellcomecollection.org)  
<https://wellcomecollection.org>





*with Mr. Atkin's best res,*

THERMOMETRIC,

BAROMETRIC,

AND OTHER TABLES,

FOR THE

RECIPROCAL CONVERSION OF THE NUMBERS OF  
THE SCALES IN MORE FREQUENT USE.

CALCULATED BY

GEORGE ATKIN, Esq.

---

EXTRACTED FROM THE EDINBURGH NEW PHILOSOPHICAL JOURNAL.

---

ADAM & CHARLES BLACK, EDINBURGH.

MDCCCXXXVII.

THE THERMOMETER

BAROMETER

AND OTHER TABLES

FOR THE USE OF THE MARINE

THE SCALE IN MORE FREQUENT USE

BY

GEORGE ALLEN

ALLEN & CHARLES, 10, ABINGDON

R38146



*Thermometric Tables ; Barometric Tables ; Tables of Toises, French Feet and Inches, Metres and Millimetres ; Tables of English Feet and Inches.* Calculated by GEORGE ATKIN, Esq.

### THERMOMETRIC TABLES, Nos. I. II. III.

THE following Tables are for the purpose of converting the degrees of the three thermometric scales into one another. When the quantity to be converted is a whole number, its value is ascertained by simple inspection of that table in which the proposed scale stands in the first column. Thus, to convert + 85 R. into degrees of Fahrenheit and Centigrade, by Table I. we find :

$$+ 85 \text{ R.} = 223.25 \text{ F. and } 106.25 \text{ C.}$$

Again, if —65 C. were the given number, we find in Table II.

$$-65 \text{ C.} = -85.0 \text{ F. and } -52.0 \text{ R.}$$

Lastly, to convert + 42 F. into the corresponding scales, in Table III. we find :

$$+ 42 \text{ F.} = + 4.44 \text{ R. and } + 5.55 \text{ C.}$$

If there be fractional parts annexed to the proposed number, by having recourse to the table of proportional parts, the value of the part is ascertained, and must be added to the number found in the body of the table ; observing that, when the signs are alike, the sum is taken when unlike the difference. The signs of the fractional parts are the same in all the scales.

#### *Example.*

1. Convert + 44.2 R. into degrees of Fahr. and Cent. :

By Table I.	+ 44 R.	=	+ 131.00 F.	+ 55.00 C.
	+ 0.2	=	0.45	0.25
	<hr/>		<hr/>	<hr/>
	44.2 R.	=	131.45 F.	55.25 C.

2. Convert —40.4 R. into degrees of Fahr. and Cent. :

	—40 R.	=	—58.00 F.	—50.00 C.
	— 0.4	=	— 0.9	— 0.5
	<hr/>		<hr/>	<hr/>
	—40.4 R.	=	—58.9 F.	—50.5 C.



3. Convert  $-9.6$  R. into degrees of Fahr. and Cent. :

$$-9 \text{ R.} = + 11.75 \text{ F.} \quad -11.25 \text{ C.}$$

$$-0.6 = - 1.35 \quad - 0.75$$

---


$$-9.6 \text{ R.} = + 10.40 \text{ F.} \quad -12.00 \text{ C.}$$

If the proposed quantity extends to hundredths or thousandths of a degree, it may be converted by shifting the decimal point of the proportional part either one or two places to the left. For example :

4. Convert  $+ 52.246$  C. into degrees of Fahr. and Reaum. :

$$+ 52 \text{ C.} = 125.6 \text{ F.} \quad 41.6 \text{ R.}$$

$$+ 0.2 = 0.36 \quad 0.16$$

$$+ 0.04 = 0.072 \quad 0.032$$

$$+ 0.006 = 0.0108 \quad 0.0048$$

---


$$+ 52.246 \text{ C.} = 126.0428 \text{ F.} \quad 41.7968 \text{ R.}$$

#### BAROMETRIC TABLES, NOS. IV. V. VI.

1. Required the value in French inches and lines, and English inches, of a column of mercury  $729.7$  mill. in height. By Table IV.

		Inch.	Lin.	
729 mill.	=	26	11.16	French. 28.701 English inch.
+ 0.7	=		0.315	0.0275
<hr/> 729.7	=	<hr/> 26	<hr/> 11.475	<hr/> 28.7285

Tables V. and VI. are used in the same manner, and serve for the conversion of French inches and lines and English inches into one another, and also into millimetres. By these tables a conversion may be made at a half or third of any of the numbers, by doubling or trebling the given quantity, and then a half or third of the result will be the quantity required.

#### TABLES VII. to XIV.

Are for converting the different French and English measures into one another, and are used in the same manner as the preceding.



TABLE 1.

Reau.	Fahr.	Cent.	Reau.	Fahr.	Cent.	Reau.	Fahr.	Cent.	Reau.	Fahr.	Cent.
-60	-103.00	-75.00	+1	+34.25	+1.25	+62	+171.50	+ 77.50	+123	+308.75	+153.75
59	100.75	73.75	2	36.50	2.50	63	173.75	78.75	124	311.00	155.00
58	98.50	72.50	3	38.75	3.75	64	176.00	80.00	125	313.25	156.25
57	96.25	71.25	4	41.00	5.00	65	178.25	81.25	126	315.50	157.50
56	94.00	70.00	5	43.25	6.25	66	180.50	82.50	127	317.75	158.75
55	91.75	68.75	6	45.50	7.50	67	182.75	83.75	128	320.00	160.00
54	89.50	67.50	7	47.75	8.75	68	185.00	85.00	129	322.25	161.25
53	87.25	66.25	8	50.00	10.00	69	187.25	86.25	130	324.50	162.50
52	85.00	65.00	9	52.25	11.25	70	189.50	87.50	131	326.75	163.75
51	82.75	63.75	10	54.50	12.50	71	191.75	88.75	132	329.00	165.00
50	80.50	62.50	11	56.75	13.75	72	194.00	90.00	133	331.25	166.25
49	78.25	61.25	12	59.00	15.00	73	196.25	91.25	134	333.50	167.50
48	76.00	60.00	13	61.25	16.25	74	198.50	92.50	135	335.75	168.75
47	73.75	58.75	14	63.50	17.50	75	200.75	93.75	136	338.00	170.00
46	71.50	57.50	15	65.75	18.75	76	203.00	95.00	137	340.25	171.25
45	69.25	56.25	16	68.00	20.00	77	205.25	96.25	138	342.50	172.50
44	67.00	55.00	17	70.25	21.25	78	207.50	97.50	139	344.75	173.75
43	64.75	53.75	18	72.50	22.50	79	209.75	98.75	140	347.00	175.00
42	62.50	52.50	19	74.75	23.75	80	212.00	100.00	141	349.25	176.25
41	60.25	51.25	20	77.00	25.00	81	214.25	101.25	142	351.50	177.50
40	58.00	50.00	21	79.25	26.25	82	216.50	102.50	143	353.75	178.75
39	55.75	48.75	22	81.50	27.50	83	218.75	103.75	144	356.00	180.00
38	53.50	47.50	23	83.75	28.75	84	221.00	105.00	145	358.25	181.25
37	51.25	46.25	24	86.00	30.00	85	223.25	106.25	146	360.50	182.50
36	49.00	45.00	25	88.25	31.25	86	225.50	107.50	147	362.75	183.75
35	46.75	43.75	26	90.50	32.50	87	227.75	108.75	148	365.00	185.00
34	44.50	42.50	27	92.75	33.75	88	230.00	110.00	149	367.25	186.25
33	42.25	41.25	28	95.00	35.00	89	232.25	111.25	150	369.50	187.50
32	40.00	40.00	29	97.25	36.25	90	234.50	112.50	151	371.75	188.75
31	37.75	38.75	30	99.50	37.50	91	236.75	113.75	152	374.00	190.00
30	35.50	37.50	31	101.75	38.75	92	239.00	115.00	153	376.25	191.25
29	33.25	36.25	32	104.00	40.00	93	241.25	116.25	154	378.50	192.50
28	31.00	35.00	33	106.25	41.25	94	243.50	117.50	155	380.75	193.75
27	28.75	33.75	34	108.50	42.50	95	245.75	118.75	156	383.00	195.00
26	26.50	32.50	35	110.75	43.75	96	248.00	120.00	157	385.25	196.25
25	24.25	31.25	36	113.00	45.00	97	250.25	121.25	158	387.50	197.50
24	22.00	30.00	37	115.25	46.25	98	252.50	122.50	159	389.75	198.75
23	19.75	28.75	38	117.50	47.50	99	254.75	123.75	160	392.00	200.00
22	17.50	27.50	39	119.75	48.75	100	257.00	125.00	161	394.25	201.25
21	15.25	26.25	40	122.00	50.00	101	259.25	126.25	162	396.50	202.50
20	13.00	25.00	41	124.25	51.25	102	261.50	127.50	163	398.75	203.75
19	10.75	23.75	42	126.50	52.50	103	263.75	128.75	+164	+401.00	+205.00
18	8.50	22.50	43	128.75	53.75	104	266.00	130.00			
17	6.25	21.25	44	131.00	55.00	105	268.25	131.25			
16	4.00	20.00	45	133.25	56.25	106	270.50	132.50			
15	-1.75	18.75	46	135.50	57.50	107	272.75	133.75			
14	+ 0.50	17.50	47	137.75	58.75	108	275.00	135.00			
13	2.75	16.25	48	140.00	60.00	109	277.25	136.25			
12	5.00	15.00	49	142.25	61.25	110	279.50	137.50			
11	7.25	13.75	50	144.50	62.50	111	281.75	138.75			
10	9.50	12.50	51	146.75	63.75	112	284.00	140.00			
9	11.75	11.25	52	149.00	65.00	113	286.25	141.25			
8	14.00	10.00	53	151.25	66.25	114	288.50	142.50			
7	16.25	8.75	54	153.50	67.50	115	290.75	143.75			
6	18.50	7.50	55	155.75	68.75	116	293.00	145.00			
5	20.75	6.25	56	158.00	70.00	117	295.25	146.25			
4	23.00	5.00	57	160.25	71.25	118	297.50	147.50			
3	25.25	3.75	58	162.50	72.50	119	299.75	148.75			
2	27.50	2.50	59	164.75	73.75	120	302.00	150.00			
1	29.75	-1.25	60	167.00	75.00	121	304.25	151.25			
0	+32.00	0.00	+61	+169.25	+76.25	+122	+306.50	+152.50			

PROPORTIONAL PARTS.		
Reau.	Fahr.	Cent.
0.1	0.225	0.125
0.2	0.450	0.250
0.3	0.675	0.375
0.4	0.900	0.500
0.5	1.125	0.625
0.6	1.350	0.750
0.7	1.575	0.875
0.8	1.800	1.000
0.9	2.025	1.125



TABLE II.

Cent.	Fahr.	Reaum.	Cent.	Fahr.	Reaum.	Cent.	Fahr.	Reaum.	Cent.	Fahr.	Reaum.
-75	-103.00	-60.0	-2	+23.4	-1.6	+71	+159.8	+56.8	+144	+291.2	+115.2
-74	101.2	59.2	1	30.2	0.8	72	161.6	57.6	145	293.0	116.0
-73	99.4	58.4	0	32.0	0.0	73	163.4	58.4	146	294.8	116.8
-72	97.6	57.6	+1	33.8	+0.8	74	165.2	59.2	147	296.6	117.6
-71	95.8	56.8	2	35.6	1.6	75	167.0	60.0	148	298.4	118.4
-70	94.0	56.0	3	37.4	2.4	76	168.8	60.8	149	300.2	119.2
-69	92.2	55.2	4	39.2	3.2	77	170.6	61.6	150	302.0	120.0
-68	90.4	54.4	5	41.0	4.0	78	172.4	62.4	151	303.8	120.8
-67	88.6	53.6	6	42.8	4.8	79	174.2	63.2	152	305.6	121.6
-66	86.8	52.8	7	44.6	5.6	80	176.0	64.0	153	307.4	122.4
-65	85.0	52.0	8	46.4	6.4	81	177.8	64.8	154	309.2	123.2
-64	83.2	51.2	9	48.2	7.2	82	179.6	65.6	155	311.0	124.0
-63	81.4	50.4	10	50.0	8.0	83	181.4	66.4	156	312.8	124.8
-62	79.6	49.6	11	51.8	8.8	84	183.2	67.2	157	314.6	125.6
-61	77.8	48.8	12	53.6	9.6	85	185.0	68.0	158	316.4	126.4
-60	76.0	48.0	13	55.4	10.4	86	186.8	68.8	159	318.2	127.2
-59	74.2	47.2	14	57.2	11.2	87	188.6	69.6	160	320.0	128.0
-58	72.4	46.4	15	59.0	12.0	88	190.4	70.4	161	321.8	128.8
-57	70.6	45.6	16	60.8	12.8	89	192.2	71.2	162	323.6	129.6
-56	68.8	44.8	17	62.6	13.6	90	194.0	72.0	163	325.4	130.4
-55	67.0	44.0	18	64.4	14.4	91	195.8	72.8	164	327.2	131.2
-54	65.2	43.2	19	66.2	15.2	92	197.6	73.6	165	329.0	132.0
-53	63.4	42.4	20	68.0	16.0	93	199.4	74.4	166	330.8	132.8
-52	61.6	41.6	21	69.8	16.8	94	201.2	75.2	167	332.6	133.6
-51	59.8	40.8	22	71.6	17.6	95	203.0	76.0	168	334.4	134.4
-50	58.0	40.0	23	73.4	18.4	96	204.8	76.8	169	336.2	135.2
-49	56.2	39.2	24	75.2	19.2	97	206.6	77.6	170	338.0	136.0
-48	54.4	38.4	25	77.0	20.0	98	208.4	78.4	171	339.8	136.8
-47	52.6	37.6	26	78.8	20.8	99	210.2	79.2	172	341.6	137.6
-46	50.8	36.8	27	80.6	21.6	100	212.0	80.0	173	343.4	138.4
-45	49.0	36.0	28	82.4	22.4	101	213.8	80.8	174	345.2	139.2
-44	47.2	35.2	29	84.2	23.2	102	215.6	81.6	175	347.0	140.0
-43	45.4	34.4	30	86.0	24.0	103	217.4	82.4	176	348.8	140.8
-42	43.6	33.6	31	87.8	24.8	104	219.2	83.2	177	350.6	141.6
-41	41.8	32.8	32	89.6	25.6	105	221.0	84.0	178	352.4	142.4
-40	40.0	32.0	33	91.4	26.4	106	222.8	84.8	179	354.2	143.2
-39	38.2	31.2	34	93.2	27.2	107	224.6	85.6	180	356.0	144.0
-38	36.4	30.4	35	95.0	28.0	108	226.4	86.4	181	357.8	144.8
-37	34.6	29.6	36	96.8	28.8	109	228.2	87.2	182	359.6	145.6
-36	32.8	28.8	37	98.6	29.6	110	230.0	88.0	183	361.4	146.4
-35	31.0	28.0	38	100.4	30.4	111	231.8	88.8	184	363.2	147.2
-34	29.2	27.2	39	102.2	31.2	112	233.6	89.6	185	365.0	148.0
-33	27.4	26.4	40	104.0	32.0	113	235.4	90.4	186	366.8	148.8
-32	25.6	25.6	41	105.8	32.8	114	237.2	91.2	187	368.6	149.6
-31	23.8	24.8	42	107.6	33.6	115	239.0	92.0	188	370.4	150.4
-30	22.0	24.0	43	109.4	34.4	116	240.8	92.8	189	372.2	151.2
-29	20.2	23.2	44	111.2	35.2	117	242.6	93.6	190	374.0	152.0
-28	18.4	22.4	45	113.0	36.0	118	244.4	94.4	191	375.8	152.8
-27	16.6	21.6	46	114.8	36.8	119	246.2	95.2	192	377.6	153.6
-26	14.8	20.8	47	116.6	37.6	120	248.0	96.0	193	379.4	154.4
-25	13.0	20.0	48	118.4	38.4	121	249.8	96.8	194	381.2	155.2
-24	11.2	19.2	49	120.2	39.2	122	251.6	97.6	195	383.0	156.0
-23	9.4	18.4	50	122.0	40.0	123	253.4	98.4	196	384.8	156.8
-22	7.6	17.6	51	123.8	40.8	124	255.2	99.2	197	386.6	157.6
-21	5.8	16.8	52	125.6	41.6	125	257.0	100.0	198	388.4	158.4
-20	4.0	16.0	53	127.4	42.4	126	258.8	100.8	199	390.2	159.2
-19	2.2	15.2	54	129.2	43.2	127	260.6	101.6	200	392.0	160.0
-18	0.4	14.4	55	131.0	44.0	128	262.4	102.4	201	393.8	160.8
-17	+1.4	13.6	56	132.8	44.8	129	264.2	103.2	202	395.6	161.6
-16	+3.2	12.8	57	134.6	45.6	130	266.0	104.0	203	397.4	162.4
-15	5.0	12.0	58	136.4	46.4	131	267.8	104.8	204	399.2	163.2
-14	6.8	11.2	59	138.2	47.2	132	269.6	105.6	+205	+401.0	+164.0
-13	8.6	10.4	60	140.0	48.0	133	271.4	106.4	PROPORTIONAL PARTS.		
-12	10.4	9.6	61	141.8	48.8	134	273.2	107.2	Cent.	Fahr.	Reaum.
-11	12.2	8.8	62	143.6	49.6	135	275.0	108.0	0.1	0.18	0.08
-10	14.0	8.0	63	145.4	50.4	136	276.8	108.8	0.2	0.36	0.16
-9	15.8	7.2	64	147.2	51.2	137	278.6	109.6	0.3	0.54	0.24
-8	17.6	6.4	65	149.0	52.0	138	280.4	110.4	0.4	0.72	0.32
-7	19.4	5.6	66	150.8	52.8	139	282.2	111.2	0.5	0.90	0.40
-6	21.2	4.8	67	152.6	53.6	140	284.0	112.0	0.6	1.08	0.48
-5	23.0	4.0	68	154.4	54.4	141	285.8	112.8	0.7	1.26	0.56
-4	24.8	3.2	69	156.2	55.2	142	287.6	113.6	0.8	1.44	0.64
-3	+26.6	-2.4	+70	+158.0	+56.0	+143	+289.4	+114.4	0.9	1.62	0.72



TABLE III.

Fahr.	Reaum.	Cent.	Fahr.	Reaum.	Cent.	Fahr.	Reaum.	Cent.	Fahr.	Reaum.	Cent.
-100	58.66	73.33	-35	29.77	-37.22	+30	-0.88	-1.11	+95	+28.00	+35.00
99	58.22	72.77	34	29.33	36.66	31	0.44	0.55	96	28.44	35.55
98	57.77	72.22	33	28.88	36.11	32	0.00	0.00	97	28.88	36.11
97	57.33	71.66	32	28.44	35.55	33	+0.44	+0.55	98	29.33	36.66
96	56.88	71.11	31	28.00	35.00	34	0.88	1.11	99	29.77	37.22
95	56.44	70.55	30	27.55	34.44	35	1.33	1.66	100	30.22	37.77
94	56.00	70.00	29	27.11	33.88	36	1.77	2.22	101	30.66	38.33
93	55.55	69.44	28	26.66	33.33	37	2.22	2.77	102	31.11	38.88
92	55.11	68.88	27	26.22	32.77	38	2.66	3.33	103	31.55	39.44
91	54.66	68.33	26	25.77	32.22	39	3.11	3.88	104	32.00	40.00
90	54.22	67.77	25	25.33	31.66	40	3.55	4.44	105	32.44	40.55
89	53.77	67.22	24	24.88	31.11	41	4.00	5.00	106	32.88	41.11
88	53.33	66.66	23	24.44	30.55	42	4.44	5.55	107	33.33	41.66
87	52.88	66.11	22	24.00	30.00	43	4.88	6.11	108	33.77	42.22
86	52.44	65.55	21	23.55	29.44	44	5.33	6.66	109	34.22	42.77
85	52.00	65.00	20	23.11	28.88	45	5.77	7.22	110	34.66	43.33
84	51.55	64.44	19	22.66	28.33	46	6.22	7.77	111	35.11	43.88
83	51.11	63.88	18	22.22	27.77	47	6.66	8.33	112	35.55	44.44
82	50.66	63.33	17	21.77	27.22	48	7.11	8.88	113	36.00	45.00
81	50.22	62.77	16	21.33	26.66	49	7.55	9.44	114	36.44	45.55
80	49.77	62.22	15	20.88	26.11	50	8.00	10.00	115	36.88	46.11
79	49.33	61.66	14	20.44	25.55	51	8.44	10.55	116	37.33	46.66
78	48.88	61.11	13	20.00	25.00	52	8.88	11.11	117	37.77	47.22
77	48.44	60.55	12	19.55	24.44	53	9.33	11.66	118	38.22	47.77
76	48.00	60.00	11	19.11	23.88	54	9.77	12.22	119	38.66	48.33
75	47.55	59.44	10	18.66	23.33	55	10.22	12.77	120	39.11	48.88
74	47.11	58.88	9	18.22	22.77	56	10.66	13.33	121	39.55	49.44
73	46.66	58.33	8	17.77	22.22	57	11.11	13.88	122	40.00	50.00
72	46.22	57.77	7	17.33	21.66	58	11.55	14.44	123	40.44	50.55
71	45.77	57.22	6	16.88	21.11	59	12.00	15.00	124	40.88	51.11
70	45.33	56.66	5	16.44	20.55	60	12.44	15.55	125	41.33	51.66
69	44.88	56.11	4	16.00	20.00	61	12.88	16.11	126	41.77	52.22
68	44.44	55.55	3	15.55	19.44	62	13.33	16.66	127	42.22	52.77
67	44.00	55.00	2	15.11	18.88	63	13.77	17.22	128	42.66	53.33
66	43.55	54.44	-1	14.66	18.33	64	14.22	17.77	129	43.11	53.88
65	43.11	53.88	0	14.22	17.77	65	14.66	18.33	130	43.55	54.44
64	42.66	53.33	+1	13.77	17.22	66	15.11	18.88	131	44.00	55.00
63	42.22	52.77	2	13.33	16.66	67	15.55	19.44	132	44.44	55.55
62	41.77	52.22	3	12.88	16.11	68	16.00	20.00	133	44.88	56.11
61	41.33	51.66	4	12.44	15.55	69	16.44	20.55	134	45.33	56.66
60	40.88	51.11	5	12.00	15.00	70	16.88	21.11	135	45.77	57.22
59	40.44	50.55	6	11.55	14.44	71	17.33	21.66	136	46.22	57.77
58	40.00	50.00	7	11.11	13.88	72	17.77	22.22	137	46.66	58.33
57	39.55	49.44	8	10.66	13.33	73	18.22	22.77	138	47.11	58.88
56	39.11	48.88	9	10.22	12.77	74	18.66	23.33	139	47.55	59.44
55	38.66	48.33	10	9.77	12.22	75	19.11	23.88	140	48.00	60.00
54	38.22	47.77	11	9.33	11.66	76	19.55	24.44	141	48.44	60.55
53	37.77	47.22	12	8.88	11.11	77	20.00	25.00	142	48.88	61.11
52	37.33	46.66	13	8.44	10.55	78	20.44	25.55	143	49.33	61.66
51	36.88	46.11	14	8.00	10.00	79	20.88	26.11	144	49.77	62.22
50	36.44	45.55	15	7.55	9.44	80	21.33	26.66	145	50.22	62.77
49	36.00	45.00	16	7.11	8.88	81	21.77	27.22	146	50.66	63.33
48	35.55	44.44	17	6.66	8.33	82	22.22	27.77	147	51.11	63.88
47	35.11	43.88	18	6.22	7.77	83	22.66	28.33	148	51.55	64.44
46	34.66	43.33	19	5.77	7.22	84	23.11	28.88	149	52.00	65.00
45	34.22	42.77	20	5.33	6.66	85	23.55	29.44	150	52.44	65.55
44	33.77	42.22	21	4.88	6.11	86	24.00	30.00	151	52.88	66.11
43	33.33	41.66	22	4.44	5.55	87	24.44	30.55	152	53.33	66.66
42	32.88	41.11	23	4.00	5.00	88	24.88	31.11	153	53.77	67.22
41	32.44	40.55	24	3.55	4.44	89	25.33	31.66	154	54.22	67.77
40	32.00	40.00	25	3.11	3.88	90	25.77	32.22	155	54.66	68.33
39	31.55	39.44	26	2.66	3.33	91	26.22	32.77	156	55.11	68.88
38	31.11	38.88	27	2.22	2.77	92	26.66	33.33	157	55.55	69.44
37	30.66	38.33	28	1.77	2.22	93	27.11	33.88	158	56.00	70.00
-36	-30.22	-37.77	+29	-1.33	-1.66	+94	+27.55	+34.44	+159	+56.44	+70.55



TABLE III.—continued.

Fahr.	Reaum.	Cent.	Fahr.	Reaum.	Cent.	Fahr.	Reaum.	Cent.	Fahr.	Reaum.	Cent.
+160	+56.88	+71.11	+225	+85.77	+107.22	+290	+114.66	+143.33	+355	+143.55	+179.44
161	57.33	71.66	226	86.22	107.77	291	115.11	143.88	356	144.00	180.00
162	57.77	72.22	227	86.66	108.33	292	115.55	144.44	357	144.44	180.55
163	58.22	72.77	228	87.11	108.88	293	116.00	145.00	358	144.88	181.11
164	58.66	73.33	229	87.55	109.44	294	116.44	145.55	359	145.33	181.66
165	59.11	73.88	230	88.00	110.00	295	116.88	146.11	360	145.77	182.22
166	59.55	74.44	231	88.44	110.55	296	117.33	146.66	361	146.22	182.77
167	60.00	75.00	232	88.88	111.11	297	117.77	147.22	362	146.66	183.33
168	60.44	75.55	233	89.33	111.66	298	118.22	147.77	363	147.11	183.88
169	60.88	76.11	234	89.77	112.22	299	118.66	148.33	364	147.55	184.44
170	61.33	76.66	235	90.22	112.77	300	119.11	148.88	365	148.00	185.00
171	61.77	77.22	236	90.66	113.33	301	119.55	149.44	366	148.44	185.55
172	62.22	77.77	237	91.11	113.88	302	120.00	150.00	367	148.88	186.11
173	62.66	78.33	238	91.55	114.44	303	120.44	150.55	368	149.33	186.66
174	63.11	78.88	239	92.00	115.00	304	120.88	151.11	369	149.77	187.22
175	63.55	79.44	240	92.44	115.55	305	121.33	151.66	370	150.22	187.77
176	64.00	80.00	241	92.88	116.11	306	121.77	152.22	371	150.66	188.33
177	64.44	80.55	242	93.33	116.66	307	122.22	152.77	372	151.11	188.88
178	64.88	81.11	243	93.77	117.22	308	122.66	153.33	373	151.55	189.44
179	65.33	81.66	244	94.22	117.77	309	123.11	153.88	374	152.00	190.00
180	65.77	82.22	245	94.66	118.33	310	123.55	154.44	375	152.44	190.55
181	66.22	82.77	246	95.11	118.88	311	124.00	155.00	376	152.88	191.11
182	66.66	83.33	247	95.55	119.44	312	124.44	155.55	377	153.33	191.66
183	67.11	83.88	248	96.00	120.00	313	124.88	156.11	378	153.77	192.22
184	67.55	84.44	249	96.44	120.55	314	125.33	156.66	379	154.22	192.77
185	68.00	85.00	250	96.88	121.11	315	125.77	157.22	380	154.66	193.33
186	68.44	85.55	251	97.33	121.66	316	126.22	157.77	381	155.11	193.88
187	68.88	86.11	252	97.77	122.22	317	126.66	158.33	382	155.55	194.44
188	69.33	86.66	253	98.22	122.77	318	127.11	158.88	383	156.00	195.00
189	69.77	87.22	254	98.66	123.33	319	127.55	159.44	384	156.44	195.55
190	70.22	87.77	255	99.11	123.88	320	128.00	160.00	385	156.88	196.11
191	70.66	88.33	256	99.55	124.44	321	128.44	160.55	386	157.33	196.66
192	71.11	88.88	257	100.00	125.00	322	128.88	161.11	387	157.77	197.22
193	71.55	89.44	258	100.44	125.55	323	129.33	161.66	388	158.22	197.77
194	72.00	90.00	259	100.88	126.11	324	129.77	162.22	389	158.66	198.33
195	72.44	90.55	260	101.33	126.66	325	130.22	162.77	390	159.11	198.88
196	72.88	91.11	261	101.77	127.22	326	130.66	163.33	391	159.55	199.44
197	73.33	91.66	262	102.22	127.77	327	131.11	163.88	392	160.00	200.00
198	73.77	92.22	263	102.66	128.33	328	131.55	164.44	393	160.44	200.55
199	74.22	92.77	264	103.11	128.88	329	132.00	165.00	394	160.88	201.11
200	74.66	93.33	265	103.55	129.44	330	132.44	165.55	395	161.33	201.66
201	75.11	93.88	266	104.00	130.00	331	132.88	166.11	396	161.77	202.22
202	75.55	94.44	267	104.44	130.55	332	133.33	166.66	397	162.22	202.77
203	76.00	95.00	268	104.88	131.11	333	133.77	167.22	398	162.66	203.33
204	76.44	95.55	269	105.33	131.66	334	134.22	167.77	399	163.11	203.88
205	76.88	96.11	270	105.77	132.22	335	134.66	168.33	+400	+163.55	+204.44
206	77.33	96.66	271	106.22	132.77	336	135.11	168.88	PROPORTIONAL PARTS.		
207	77.77	97.22	272	106.66	133.33	337	135.55	169.44			
208	78.22	97.77	273	107.11	133.88	338	136.00	170.00	Fahr.	Reaum.	Cent.
209	78.66	98.33	274	107.55	134.44	339	136.44	170.55	0.1	0.044	0.055
210	79.11	98.88	275	108.00	135.00	340	136.88	171.11	0.2	0.088	0.111
211	79.55	99.44	276	108.44	135.55	341	137.33	171.66	0.3	0.133	0.166
212	80.00	100.00	277	108.88	136.11	342	137.77	172.22	0.4	0.177	0.222
213	80.44	100.55	278	109.33	136.66	343	138.22	172.77	0.5	0.222	0.277
214	80.88	101.11	279	109.77	137.22	344	138.66	173.33	0.6	0.266	0.333
215	81.33	101.66	280	110.22	137.77	345	139.11	173.88	0.7	0.311	0.388
216	81.77	102.22	281	110.66	138.33	346	139.55	174.44	0.8	0.355	0.444
217	82.22	102.77	282	111.11	138.88	347	140.00	175.00	0.9	0.400	0.500
218	82.66	103.33	283	111.55	139.44	348	140.44	175.55			
219	83.11	103.88	284	112.00	140.00	349	140.88	176.11			
220	83.55	104.44	285	112.44	140.55	350	141.33	176.66			
221	84.00	105.00	286	112.88	141.11	351	141.77	177.22			
222	84.44	105.55	287	113.33	141.66	352	142.22	177.77			
223	84.88	106.11	288	113.77	142.22	353	142.66	178.33			
+224	+85.33	+106.66	+289	+114.22	+142.77	+354	+143.11	+178.88			



TABLE IV.

Millim.	French		French Lines.	English inches.	Millim.	French		French Lines.	English inches.
	In.	Lines.				In.	Lines.		
720	26	7.17	319.17	28.347	759	28	0.46	336.46	29.882
721		7.62	319.62	28.386	760		0.90	336.90	29.922
722		8.06	320.06	28.426	761		1.35	337.35	29.961
723		8.50	320.50	28.465	762		1.79	337.79	30.000
724		8.95	320.95	28.504	763		2.23	338.23	30.040
725		9.39	321.39	28.544	764		2.68	338.68	30.079
726		9.83	321.83	28.583	765		3.12	339.12	30.119
727		10.28	322.28	28.623	766		3.56	339.56	30.158
728		10.72	322.72	28.662	767		4.01	340.01	30.197
729		11.16	323.16	28.701	768		4.45	340.45	30.237
730	27	11.61	323.61	28.741	769	4.89	340.89	30.276	
731		0.05	324.05	28.780	770	5.34	341.34	30.315	
732		0.49	324.49	28.819	771	5.78	341.78	30.355	
733		0.94	324.94	28.859	772	6.22	342.22	30.394	
734		1.38	325.38	28.898	773	6.67	342.67	30.434	
735		1.82	325.82	28.937	774	7.11	343.11	30.473	
736		2.27	326.27	28.977	775	7.55	343.55	30.512	
737		2.71	326.71	29.016	776	8.00	344.00	30.552	
738		3.15	327.15	29.056	777	8.44	344.44	30.591	
739		3.60	327.60	29.095	778	8.88	344.88	30.630	
740	4.04	328.04	29.134	779	9.33	345.33	30.670		
741	4.48	328.48	29.174	780	28	9.77	345.77	30.709	
742	4.93	328.93	29.213	PROPORTIONAL PARTS.					
743	5.37	329.37	29.252						
744	5.81	329.81	29.292						
745	6.26	330.26	29.331						
746	6.70	330.70	29.371						
747	7.14	331.14	29.410						
748	7.58	331.58	29.449						
749	8.03	332.03	29.489						
750	8.47	332.47	29.528						
751	8.91	332.91	29.567						
752	9.36	333.36	29.607	Millim.	French lines.	English inches.			
753	9.80	333.80	29.646	0.1	0.045	0.0039			
754	10.24	334.24	29.686	0.2	0.090	.0078			
755	10.69	334.69	29.725	0.3	0.135	.0118			
756	11.13	335.13	29.764	0.4	0.180	.0157			
757	27	11.57	335.57	29.804	0.5	0.225	.0196		
758		0.02	336.02	29.843	0.6	0.270	.0236		
		28			0.7	0.315	.0275		
					0.8	0.360	.0314		
					0.9	0.405	.0354		
					1.0	0.450	0.0393		



TABLE VI.

English inches.	French		French Lines.	Millim.	English inches.	French		French Lines.	Millim.		
	In.	Lines.				In.	Lines.				
27.1	25	5.12	305.12	688.31	29.9	28	0.65	336.65	759.43		
27.2		6.25	306.25	690.85	30.0		1.78	337.78	761.97		
27.3		7.36	307.38	693.39	30.1		2.90	338.90	764.51		
27.4		8.50	308.50	695.93	30.2		4.03	340.03	767.05		
27.5		9.63	309.63	693.47	30.3		5.15	341.15	769.59		
27.6		10.75	310.75	701.01	30.4		6.28	342.28	772.13		
27.7		11.88	311.88	703.55	30.5		7.41	343.41	774.67		
27.8		26	1.01	313.01	706.09		30.6	8.53	344.53	777.21	
27.9			2.13	314.13	708.63		30.7	9.66	345.66	779.75	
28.0			3.26	315.26	711.17		30.8	10.78	346.78	782.29	
28.1	4.38		316.38	713.71	30.9	28	11.91	347.91	784.83		
28.2	5.51		317.51	716.25	31.0		29	1.04	349.04	787.37	
28.3	6.64		318.64	718.79	PROPORTIONAL PARTS.						
28.4	7.76		319.76	721.33							
28.5	8.89		320.89	723.87							
28.6	10.01		322.01	726.41							
28.7	26		11.14	323.14	728.95						
28.8		27	0.27	324.27	731.49						
28.9			1.39	325.39	734.03						
29.0			2.52	326.52	736.57						
29.1			3.64	327.64	739.11						
29.2			4.77	328.77	741.65						
29.3			5.90	329.90	744.19						
29.4			7.02	331.02	746.73						
29.5			8.14	332.14	749.27						
29.6			9.27	333.27	751.81						
29.7	10.40		334.40	754.35							
29.8	27	11.52	335.52	756.89							



TABLE VIII.—FRENCH FEET.

French Feet.	Toises.	Mètres.	English Feet. and Inch.		French Feet.	Toises.	Mètres.	English Feet. and Inch.	
			Feet.	Inch.				Feet.	Inch.
1	0.16667	0.32484	1	0.7892	200	33.33333	64.96788	213	1.8366
2	0.33333	0.64968	2	1.5784	300	50.00000	97.45182	319	8.7550
3	0.50000	0.97452	3	2.3675	400	66.66667	129.93575	426	3.6733
4	0.66667	1.29936	4	3.1567	500	83.33333	162.41969	532	10.5916
5	0.83333	1.62420	5	3.9459	600	100.00000	194.90363	639	5.5099
6	1.00000	1.94904	6	4.7351	700	116.66667	227.38757	746	0.4282
7	1.16667	2.27388	7	5.5243	800	133.33333	259.87151	852	7.3466
8	1.33333	2.59872	8	6.3135	900	150.00000	292.35545	959	2.2649
9	1.50000	2.92355	9	7.1026	1000	166.66667	324.83938	1065	9.1832
10	1.66667	3.24839	10	7.8918	2000	333.33333	649.67877	2131	6.3664
20	3.33333	6.49679	21	3.7837	3000	500.00000	974.51815	3197	3.5496
30	5.00000	9.74518	31	11.6755	4000	666.66667	1299.35754	4263	0.7328
40	6.66667	12.99358	42	7.5673	5000	833.33333	1624.19692	5328	9.9160
50	8.33333	16.24197	53	3.4592	6000	1000.00000	1949.03631	6394	7.0993
60	10.00000	19.49036	63	11.3510	7000	1166.66667	2273.87569	7460	4.2825
70	11.66667	22.73876	74	7.2428	8000	1333.33333	2598.71508	8526	1.4657
80	13.33333	25.98715	85	3.1347	9000	1500.00000	2923.55446	9591	10.6489
90	15.00000	29.23554	95	11.0265	10000	1666.66667	3248.39385	10657	7.8321
100	16.66667	32.48394	106	6.9183					

TABLE IX.—FRENCH INCHES.

French Inches.	Toises.	Millimeters.	English Inches.
1	0.01389	27.070	1.0658
2	0.02778	54.140	2.1315
3	0.04167	81.210	3.1973
4	0.05556	108.280	4.2631
5	0.06944	135.350	5.3288
6	0.08333	162.420	6.3946
7	0.09722	189.490	7.4604
8	0.11111	216.560	8.5261
9	0.12500	243.630	9.5919
10	0.13889	270.699	10.6577
11	0.15278	297.769	11.7234
12	0.16667	324.839	12.7899

TABLE X.—FRENCH LINES.

French Lines.	Toises.	Millimeters.	English Inches.
1	0.00116	2.256	0.0888
2	0.00231	4.512	0.1776
3	0.00347	6.767	0.2664
4	0.00463	9.023	0.3553
5	0.00579	11.279	0.4441
6	0.00694	13.535	0.5329
7	0.00810	15.791	0.6217
8	0.00926	18.046	0.7105
9	0.01042	20.302	0.7993
10	0.01157	22.558	0.8881
11	0.01273	24.814	0.9770
12	0.01389	27.070	1.0658

TABLE XI.—METRES.

Met.	Toises.	French			English		Met.	Toises.	French			English	
		Feet.	In.	Lines.	Feet.	Inch.			Feet.	In.	Lines.	Feet.	Inch.
1	0.51307	3	0	11.296	3	3.3708	200	102.61481	615	8	3.200	656	2.1580
2	1.02615	6	1	10.592	6	6.7416	300	153.92222	923	6	4.800	984	3.2370
3	1.53922	9	2	9.888	9	10.1124	400	205.22963	1231	4	6.400	1312	4.3160
4	2.05230	12	3	9.184	13	1.4832	500	256.53704	1539	2	8.000	1640	5.3950
5	2.56537	15	4	8.480	16	4.8539	600	307.84444	1847	0	9.600	1968	6.4740
6	3.07844	18	5	7.776	19	8.2247	700	359.15185	2154	10	11.200	2296	7.5530
7	3.59152	21	6	7.072	22	11.5955	800	410.45926	2462	9	0.800	2624	8.6320
8	4.10459	24	7	6.368	26	2.9663	900	461.76667	2770	7	2.400	2952	9.7110
9	4.61767	27	8	5.664	29	6.3371	1000	513.07407	3078	5	4.000	3280	10.7900
10	5.13074	30	9	4.960	32	9.7079	2000	1026.14815	6156	10	8.000	6561	9.5800
20	10.26148	61	6	9.920	65	7.4158	3000	1539.22222	9235	4	0.000	9842	8.3700
30	15.39222	92	4	2.880	98	5.1237	4000	2052.29630	12313	9	4.000	13123	7.1600
40	20.52296	123	1	7.840	131	2.8316	5000	2565.37037	15392	2	8.000	16404	5.9500
50	25.65370	153	11	0.800	164	0.5395	6000	3078.44444	18470	8	0.000	19685	4.7400
60	30.78444	184	8	5.760	196	10.2474	7000	3591.51852	21549	1	4.000	22966	3.5300
70	35.91519	215	5	10.720	229	7.9553	8000	4104.59259	24627	6	8.000	26247	2.3200
80	41.04593	246	3	3.680	262	5.6632	9000	4617.66667	27706	0	0.000	29528	1.1100
90	46.17667	277	0	8.640	295	3.3711	10000	5130.74074	30784	5	4.000	32808	11.9000
100	51.30741	307	10	1.600	328	1.0790							



TABLE XII.—MILLIMETRES.

Millim.	Toises.	French lines.	English lines.	Millim.	Toises.	French lines.	English lines.
1	0.00051	0.443	0.0394	60	0.03078	26.598	2.3622
2	0.00103	0.887	0.0787	70	0.03592	31.031	2.7560
3	0.00154	1.330	0.1181	80	0.04105	35.464	3.1497
4	0.00205	1.773	0.1575	90	0.04618	39.897	3.5434
5	0.00257	2.216	0.1969	100	0.05131	44.330	3.9371
6	0.00308	2.660	0.2362	200	0.10261	88.659	7.8742
7	0.00359	3.103	0.2756	300	0.15392	132.989	11.8112
8	0.00410	3.546	0.3150	400	0.20523	177.318	15.7483
9	0.00462	3.990	0.3543	500	0.25654	221.648	19.6854
10	0.00513	4.433	0.3937	600	0.30784	265.978	23.6225
20	0.01026	8.866	0.7874	700	0.35915	310.307	27.5596
30	0.01539	13.299	1.1811	800	0.41046	354.637	31.4966
40	0.02052	17.732	1.5748	900	0.46177	398.966	35.4337
50	0.02565	22.165	1.9685				

TABLE XIII.—ENGLISH FEET.

Eng. feet.	Toises.	Metres.	French			English feet.	Toises.	Metres.	French		
			Feet.	In.	Lines.				Feet.	In.	Lines.
1	0.15638	0.30479	0	11	3.114	200	31.27643	60.95850	187	7	10.836
2	0.31276	0.60959	1	10	6.228	300	46.91465	91.43835	281	5	10.254
3	0.46915	0.91438	2	9	9.343	400	62.55286	121.91780	375	3	9.672
4	0.62553	1.21918	3	9	0.457	500	78.19108	152.39725	469	1	9.090
5	0.78191	1.52397	4	8	3.571	600	93.82929	182.87670	562	11	8.508
6	0.93829	1.82877	5	7	6.685	700	109.46751	213.35615	656	9	7.926
7	1.09468	2.13356	6	6	9.799	800	125.10572	243.83559	750	7	7.344
8	1.25106	2.43836	7	6	0.913	900	140.74394	274.31504	844	5	6.762
9	1.40744	2.74315	8	5	4.028	1000	156.38215	304.79449	938	3	6.180
10	1.56382	3.04794	9	4	7.142	2000	312.76431	609.58899	1876	7	0.360
20	3.12764	6.09589	18	9	2.284	3000	469.14646	914.38348	2814	10	6.539
30	4.69146	9.14383	28	1	9.425	4000	625.52861	1219.17797	3753	2	0.719
40	6.25529	12.19178	37	6	4.567	5000	781.91076	1523.97246	4691	5	6.899
50	7.81911	15.23972	46	10	11.709	6000	938.29292	1828.76696	5629	9	1.079
60	9.38293	18.28767	56	3	6.851	7000	1094.67507	2133.56145	6568	0	7.259
70	10.94675	21.33561	65	8	1.993	8000	1251.05722	2438.35594	7506	4	1.438
80	12.51057	24.38536	75	0	9.134	9000	1407.43937	2743.15044	8444	7	7.618
90	14.07439	27.43150	84	5	4.276	10000	1563.82153	3047.94493	9382	11	1.798
100	15.63822	30.47945	93	9	11.418						

TABLE XIV.—ENGLISH INCHES.

Inch.	Toises.	French		Millim.	Inch.	Toises.	French		Millim.
		In.	Lines.				In.	Lines.	
1	0.01303	0	11.260	25.400	7	0.09122	6	6.817	177.797
2	0.02606	1	10.519	50.799	8	0.10426	7	6.076	203.197
3	0.03910	2	9.779	76.199	9	0.11729	8	5.336	228.596
4	0.05213	3	9.038	101.598	10	0.13032	9	4.595	253.995
5	0.06516	4	8.298	126.998	11	0.14335	10	3.855	279.395
6	0.07819	5	7.557	152.397					



# SCIENTIFIC TREATISES

RECENTLY PUBLISHED BY

ADAM & CHARLES BLACK, EDINBURGH;

LONGMAN & CO.; SIMPKIN, MARSHALL & CO.; WHITTAKER & CO.; AND  
HAMILTON, ADAMS & CO., LONDON.

## I.

In post 8vo, price Six Shillings, copiously illustrated with Wood-Cuts,

**M**INERALOGY, according to the Natural History System, forming the Article under that head in the Seventh Edition of the *Encyclopædia Britannica*. By ROBERT JAMESON, F.R. SS. L. & E., Regius Professor of Natural History, and Lecturer on Mineralogy in the University of Edinburgh, &c. &c. &c.

"To the student of Mineralogy such a treatise as this is peculiarly valuable, from its simplicity of arrangement and judicious compression, no less than from its cheapness."—*Glasgow Courier*.

"Distinguished by perspicuity of style and arrangement, and by copiousness and accuracy of detail."—*Constitutional*.

"The accuracy of the author's knowledge in this important branch of science is unrivalled."—*Scotsman*.

## II.

In post 8vo, price Six Shillings, illustrated by upwards of 100 Engravings on Wood, and a Chart of Magnetic Curves,

**A**TREATISE ON MAGNETISM, forming the Article under that head in the current Edition of the *Encyclopædia Britannica*. By SIR DAVID BREWSTER, LL.D., F.R. S., Corresponding Member of the Royal Institute of France, &c. &c.

"The splendid article by Sir David Brewster on Magnetism."—*Morning Herald*.

"The only treatise yet published in which all the recent discoveries of importance are to be found collected together, and properly arranged."—*Observer*.

"Distinguished by that depth of search, felicity and variety of illustration, and breadth of view, which characterize the other works of this eminent philosopher."—*Glasgow Argus*.

"We cordially recommend it to the public for its cheapness, accuracy, and profound science."—*Glasgow Constitutional*.

## III.

In post 8vo, price Six Shillings, embellished with Plates and Wood-Cuts,

**A**TREATISE ON GEOLOGY, forming the Article under that head in the current Edition of the *Encyclopædia Britannica*. By JOHN PHILLIPS, F.R. S., F.G. S., Professor of Geology in King's College, London, Author of "Illustrations of the Geology of Yorkshire," a "Guide to Geology," &c. &c.

"The author has selected and combined all the discoveries which have been made in Geology up to the present time."—*Morning Herald*.

"A masterly compendious exhibition of the general principles, objects, and ascertained data of the youngest, but not least robust, of modern sciences."—*Glasgow Argus*.

"One of the most generally and practically useful books ever published."—*Birmingham Herald*.

"A more interesting and valuable volume on the subject of which it treats does not exist."—*Hull Packet*.

"A clear and correct summary of the great truths of Geology."—*Scotsman*.

"An admirable digest of geological knowledge."—



With Six Plates and a Map, price 6s.

# THE EDINBURGH MEDICAL AND SURGICAL JOURNAL,

No. CXXXIII.—OCTOBER 1. 1837.

THE characteristic features of this Journal are, *1st*, The great practical value of its Original Papers, which are frequently quoted with approbation by the principal Medical Periodicals of this country, as well as republished in the leading Journals of France, Germany, and the United States. *2dly*, The copious critical analyses of New Works, a preference being given to those of the highest practical value, and due regard being paid to such Foreign Works as are not generally accessible to the profession in this country. *3dly*, The early selection of articles on important and useful Discoveries, Additions, and Improvements in the various departments of Medical Science. On the whole, the Work will be found to exhibit in every branch of Medical and Surgical Science a valuable compendious view of the progressive advancement of Knowledge; and to those who desire to keep pace with the improvements of the times, either in the theoretical departments of Medical Science, or in their practical application, the Edinburgh Medical and Surgical Journal is recommended not only as a safe and judicious guide, but as an indispensable requisite.

The present Number contains Dr Craigie's Translation of Professor Ehrenberg's Observations on the Structure hitherto unknown of the Nervous System in Man and Animals, with Notes and Additions by the Translator, *illustrated by Six Plates*.—Mr Marshall's Contribution to Statistics of the Army, with a variety of interesting Tables, and *Map of Zealand*.—Mr Robertson on establishing Convalescent Retreats on the Sea Coast.—Official Report on the Radesyge and Venereal Cases in the Swedish Hospitals.—Dr Maclachlan on Traumatic Erysipelas and diffuse Inflammation of Cellular Tissue.—Dr Henderson on Inadequacy of the Valves of the Aorta.—Dr Hargrave's Anatomical Description of the Parts in Partial Luxation of the Shoulder-Joint, *illustrated by engraved figures*.—Dr Ferguson on Acid Fruits in Dysentery.—Dr Craigie on Inflammation of the Adipose Tissue.

The department of Critical Analysis includes elaborate Reviews of Quetelet on Man—Memoires de l'Academie de Medecine, tom. iii.—Trousseau and Belloc on Phthisis Laryngea—Warren on Tumours—Browne on Insanity and Asylums for the Insane—and Montgomery on the Signs and Symptoms of Pregnancy, besides various bibliographical notices of minor works.

The Number is concluded with the most recent and important Medical Intelligence.

ADAM & CHARLES BLACK, Edinburgh; LONGMAN & Co., London.



