

Illustrations of the superficial nerves and muscles with their motor points : a knowledge of which is essential in the art of electro-diagnosis / by A. Hughes Bennett.

Contributors

Bennett, A. Hughes 1848-1901.
Royal College of Physicians of Edinburgh

Publication/Creation

London : H.K. Lewis, 1882.

Persistent URL

<https://wellcomecollection.org/works/hnya7ge4>

Provider

Royal College of Physicians Edinburgh

License and attribution

This material has been provided by This material has been provided by the Royal College of Physicians of Edinburgh. The original may be consulted at the Royal College of Physicians of Edinburgh. where the originals may be consulted.

This work has been identified as being free of known restrictions under copyright law, including all related and neighbouring rights and is being made available under the Creative Commons, Public Domain Mark.

You can copy, modify, distribute and perform the work, even for commercial purposes, without asking permission.

ARTES IN MEDICINE.

the learning and practice
be a labour and begin to
you say to yourselves that
mastered yourselves and it
the profession you have
distinguished among your
ents and possibly even by
versity in which you have
satisfaction and pride to
mory with pleasure to it, is
whom you have had inter-



ILLUSTRATIONS

OF THE

SUPERFICIAL NERVES AND MUSCLES

WITH THEIR

MOTOR POINTS

A KNOWLEDGE OF WHICH IS ESSENTIAL IN THE ART OF

ELECTRO-DIAGNOSIS

BY

A. HUGHES BENNETT, M.D.

MEMBER OF THE ROYAL COLLEGE OF PHYSICIANS OF LONDON;
PHYSICIAN TO THE HOSPITAL FOR EPILEPSY AND PARALYSIS, REGENT'S PARK;
ASSISTANT PHYSICIAN TO THE WESTMINSTER HOSPITAL.

LONDON

H. K. LEWIS, 136 GOWER STREET, W.C.

1882

PRINTED BY
H. K. LEWIS, 136 GOWER STREET,
LONDON, W.C.

NOTE.

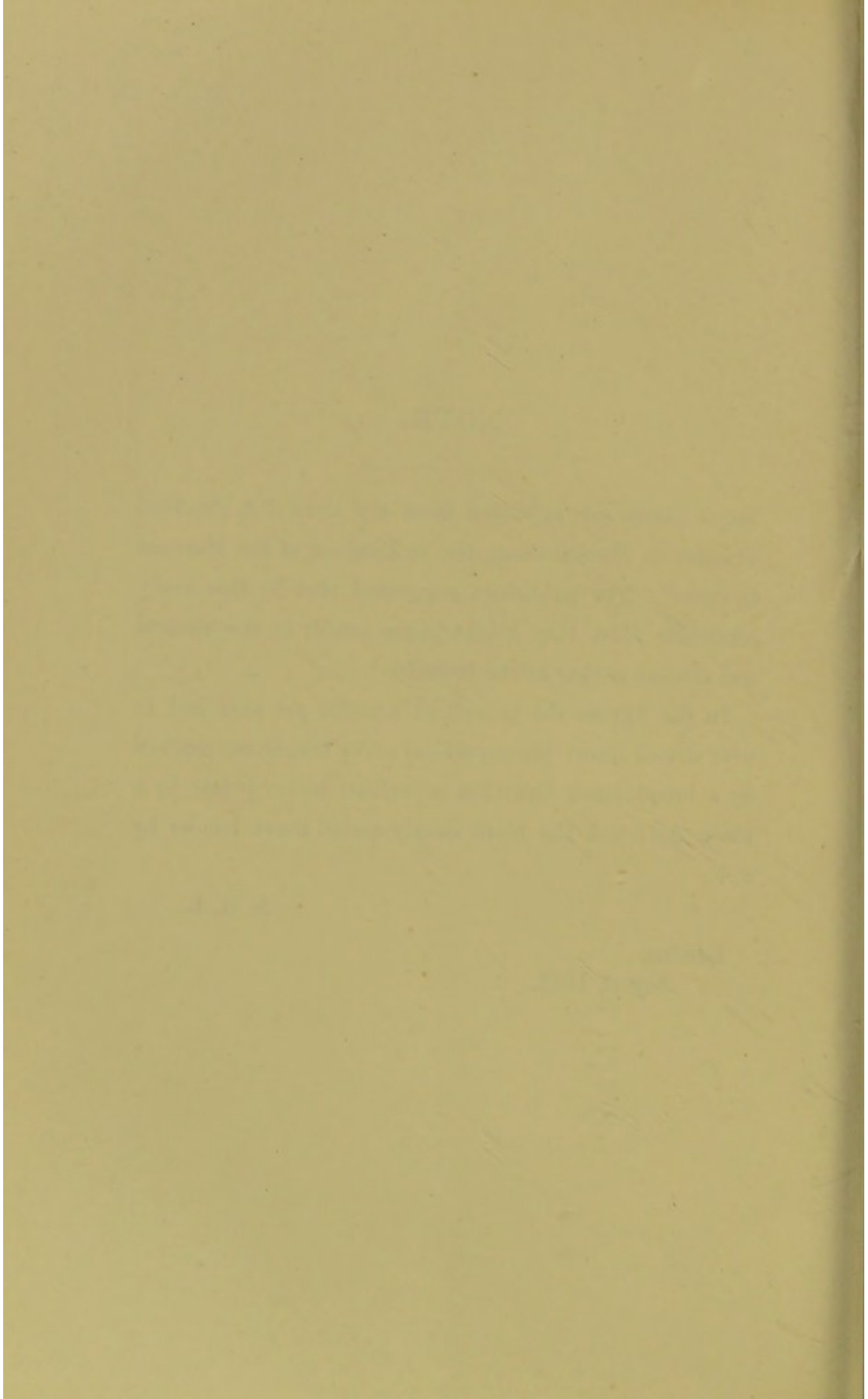
THESE plates are reprinted from my work "A Practical Treatise on Electro-Diagnosis, in Diseases of the Nervous System." The publishers suggested that in this easily accessible form they might prove useful to the student and clinical worker at the bedside.

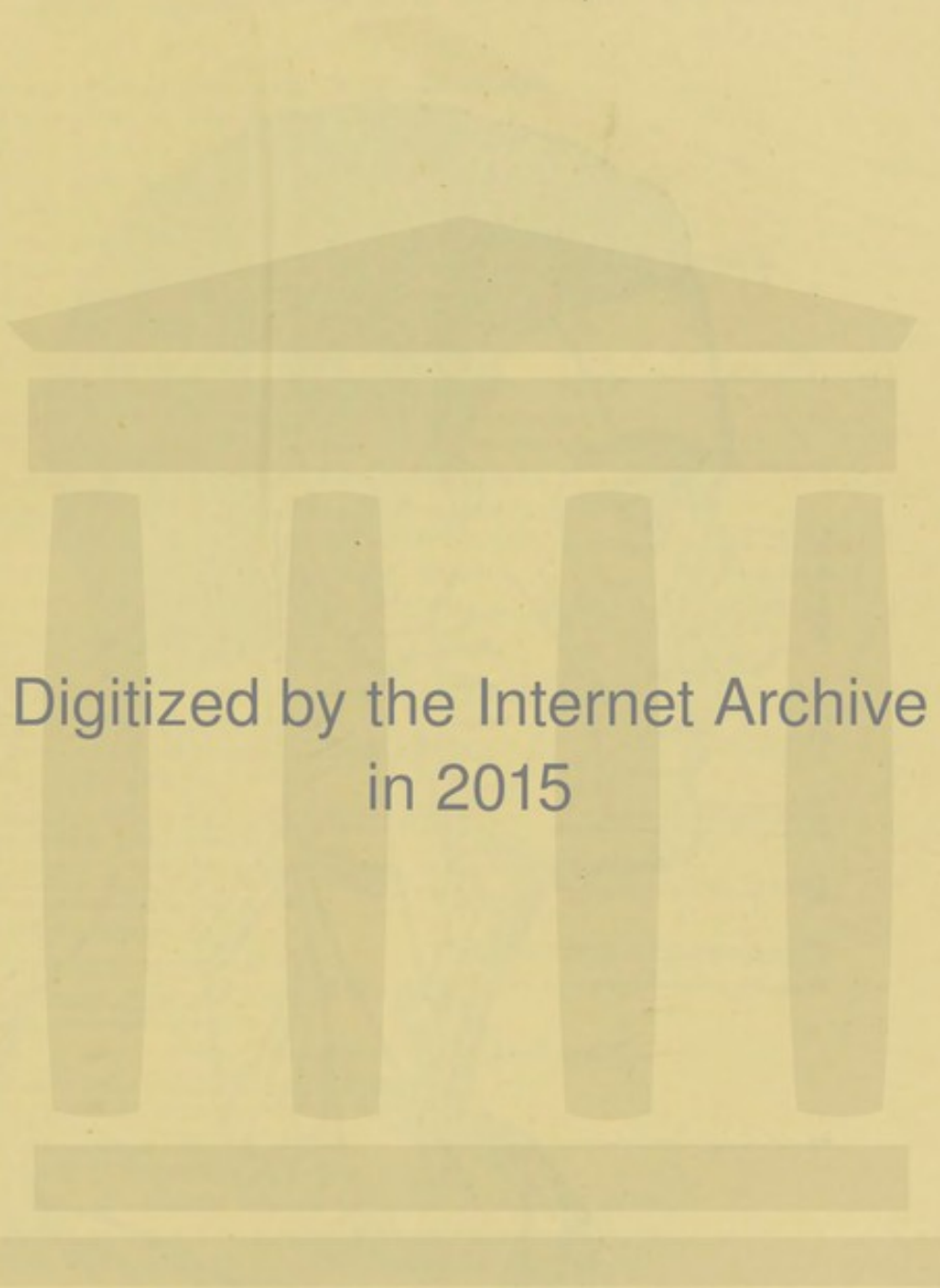
In the figures the superficial muscles are sketched in with dotted lines; the superficial nerve trunks are marked by a broad black line; the superficial motor points by a black dot; and the more deeply seated nerve trunks by a +.

A. H. B.

London.

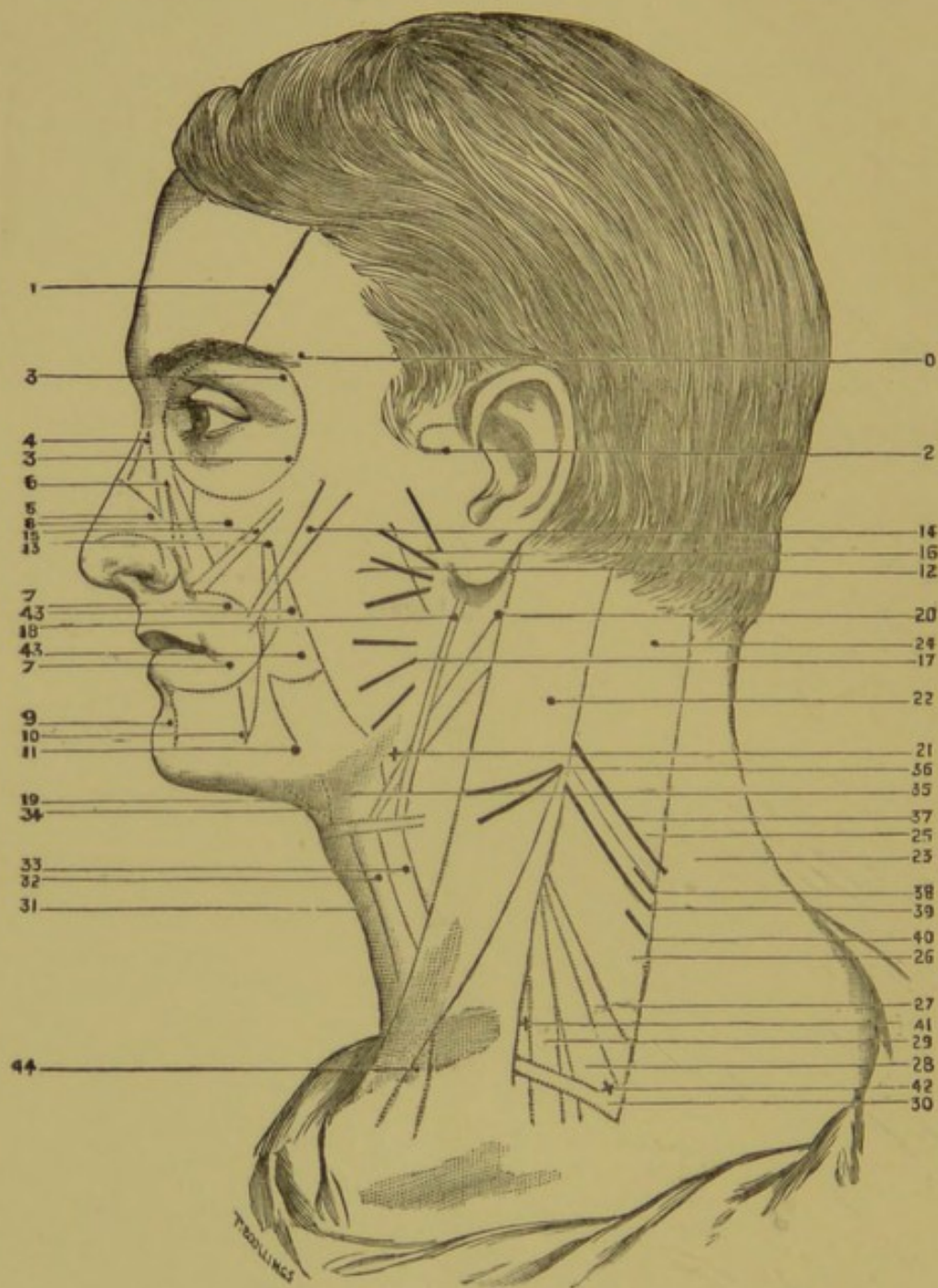
August, 1882.





Digitized by the Internet Archive
in 2015

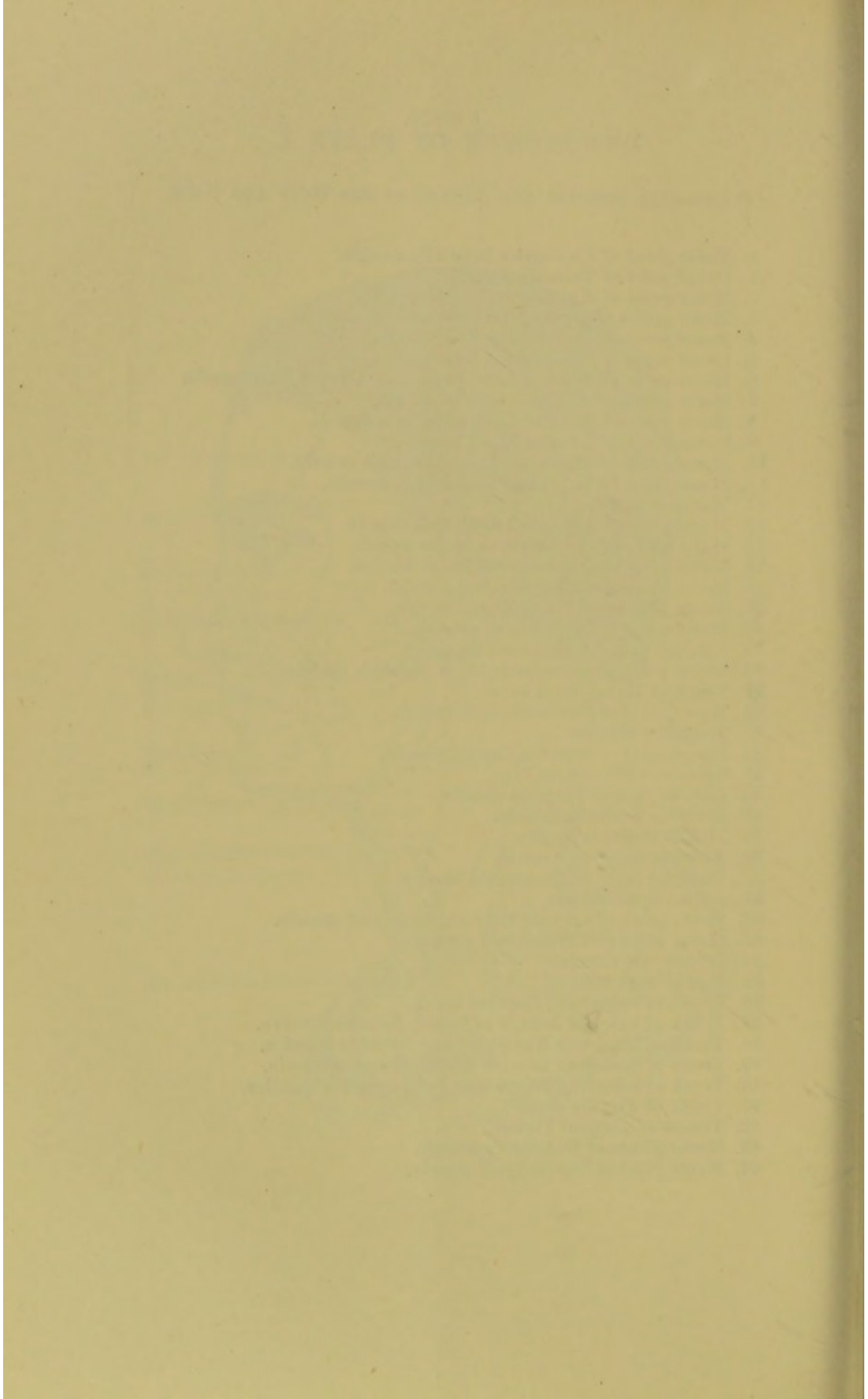
PLATE I.



DESCRIPTION OF PLATE I.

SUPERFICIAL MUSCLES AND NERVES OF THE HEAD AND NECK.

0. Motor point of Corrugator Supercilii muscle.
1. Motor point of Frontalis muscle.
2. Motor point of Anterior Auricular muscle.
3. Motor points of Orbicularis Palpebrarum muscle.
4. Motor point of Pyramidalis Nasi muscle.
5. Motor point of Triangularis Nasi muscle.
6. Motor point of Levator Labii Superioris Alæque Nasi muscle.
7. Motor points of Orbicularis Oris muscle.
8. Motor point of Levator Labii Superioris muscle.
9. Motor point of Levator Menti muscle.
10. Motor point of Depressor Labii Inferioris muscle.
11. Motor point of Depressor Anguli Oris muscle.
12. Masseter muscle.
13. Motor point of Levator Anguli Oris muscle.
14. Motor point of Zygomaticus Major muscle.
15. Motor point of Zygomaticus Minor muscle.
16. Nerve Trunks of Temporo-facial nerve.
17. Nerve Trunks of Cervico-facial nerve.
18. Motor point of Stylo-hyoid muscle.
19. Anterior belly of Digastric muscle.
20. Motor point of posterior belly of Digastric muscle.
21. Trunk of Hypoglossal nerve.
22. Motor point of Sterno-mastoid muscle.
23. Trapezius muscle.
24. Motor point of Splenius Capitis muscle.
25. Splenius Colli muscle.
26. Levator Anguli Scapulæ muscle.
27. Posterior Scalenus muscle.
28. Middle Scalenus muscle.
29. Anterior Scalenus muscle.
30. Posterior belly of Omo-hyoid muscle.
31. Sterno-hyoid muscle.
32. Motor point of anterior belly of Omo-hyoid muscle.
33. Motor point of Thyro-hyoid muscle.
34. Mylo-hyoid muscle.
35. Hyo-glossus muscle.
36. Trunk of Superficial Cervical nerve.
37. Trunk of external branch of Spinal Accessory nerve.
38. Trunk of branch to Rhomboid and Serratus muscles.
39. Trunk of branch to Levator Anguli Scapulæ muscle.
40. Trunk of branch to Supra- and Infra-spinatus muscles.
41. Trunk of Phrenic nerve.
42. Trunks of Cervical Plexus.
43. Motor points of Buccinator muscle.
44. Motor point of Sterno-hyoid muscle.



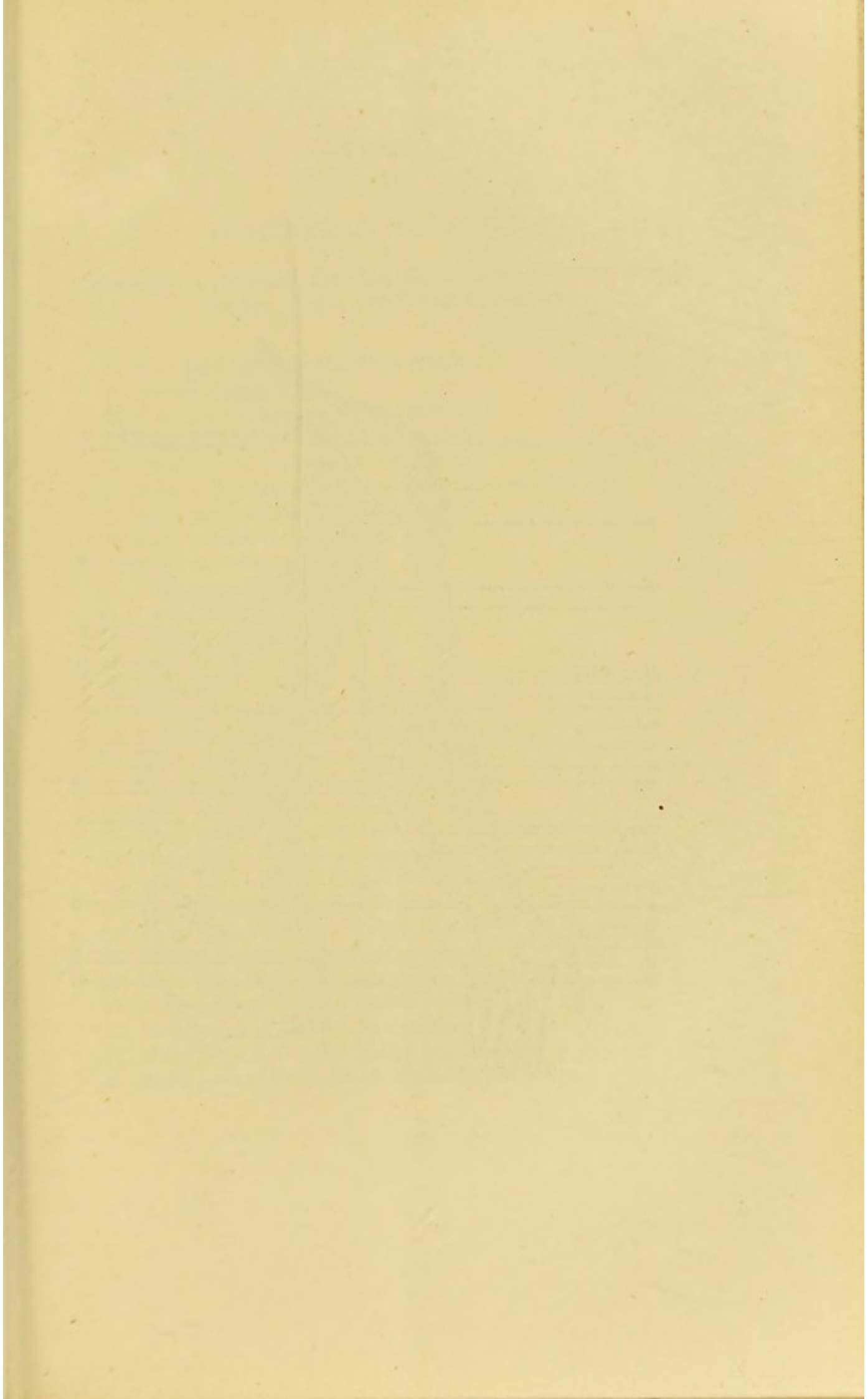
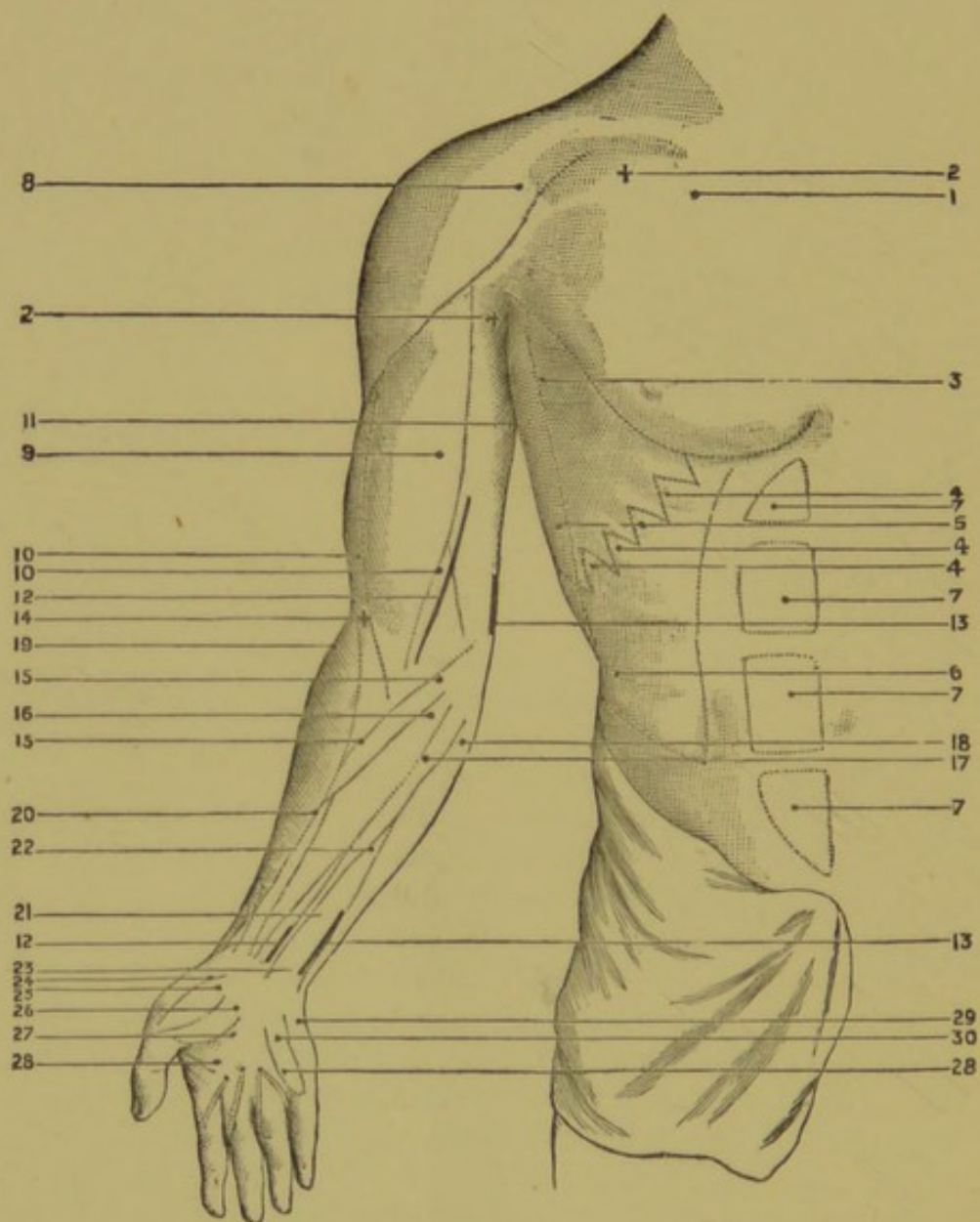


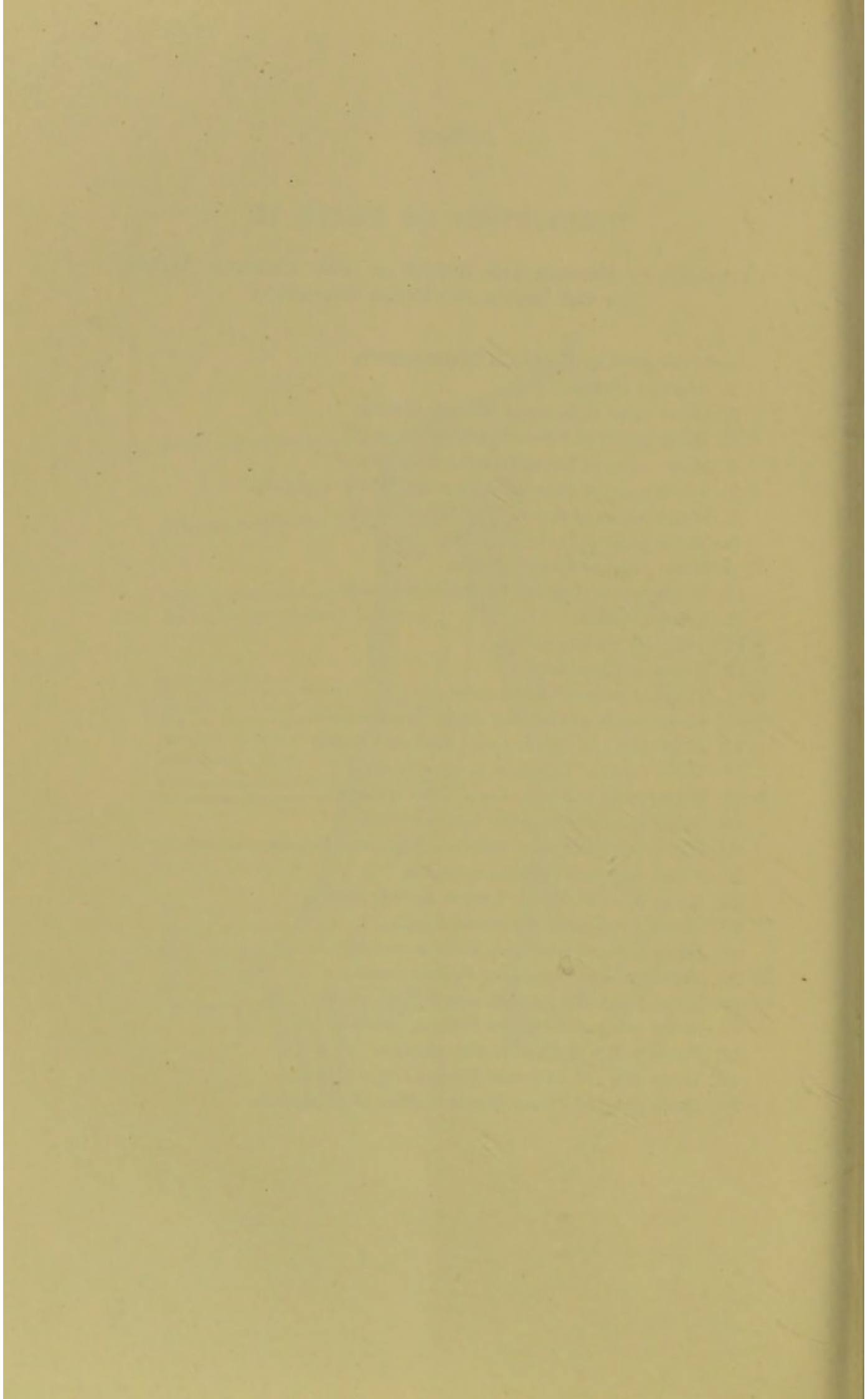
PLATE II.



DESCRIPTION OF PLATE II.

SUPERFICIAL MUSCLES AND NERVES OF THE ANTERIOR ASPECT OF THE TRUNK AND UPPER EXTREMITY.

1. Motor point of Pectoralis Major muscle.
2. Brachial Plexus.
3. Motor point of Serratus Magnus muscle.
4. Motor points of External Oblique muscle.
5. Motor point of Latissimus Dorsi muscle.
6. Motor point of Internal Abdominal Oblique muscle.
7. Motor points of Rectus Abdominis muscle.
8. Motor point of Deltoid muscle.
9. Motor point of Biceps muscle.
10. Motor points of Brachialis Anticus muscle.
11. Triceps muscle.
12. Trunk of Median nerve.
13. Trunk of Ulnar nerve.
14. Trunk of musculo-spiral nerve.
15. Motor points of Pronator Radii Teres muscle.
16. Motor point of Flexor Carpi Radialis muscle.
17. Motor point of Palmaris Longus muscle.
18. Motor point of Flexor Carpi Ulnaris muscle.
19. Motor point of Supinator Longus muscle.
20. Motor point of Flexor Sublimis Digitorum muscle.
21. Flexor Sublimis Digitorum muscle.
22. Motor point of Flexor Longus Pollicis muscle.
23. Flexor Profundus Digitorum muscle.
24. Motor point of Abductor Pollicis muscle.
25. Motor point of Opponens Pollicis muscle.
26. Motor point of Flexor Brevis Pollicis muscle.
27. Motor point of Adductor Pollicis muscle.
28. Motor points of Lumbricales muscles.
29. Motor point of Abductor Minimi Digiti muscle.
30. Motor point of Flexor Brevis Minimi Digiti muscle.



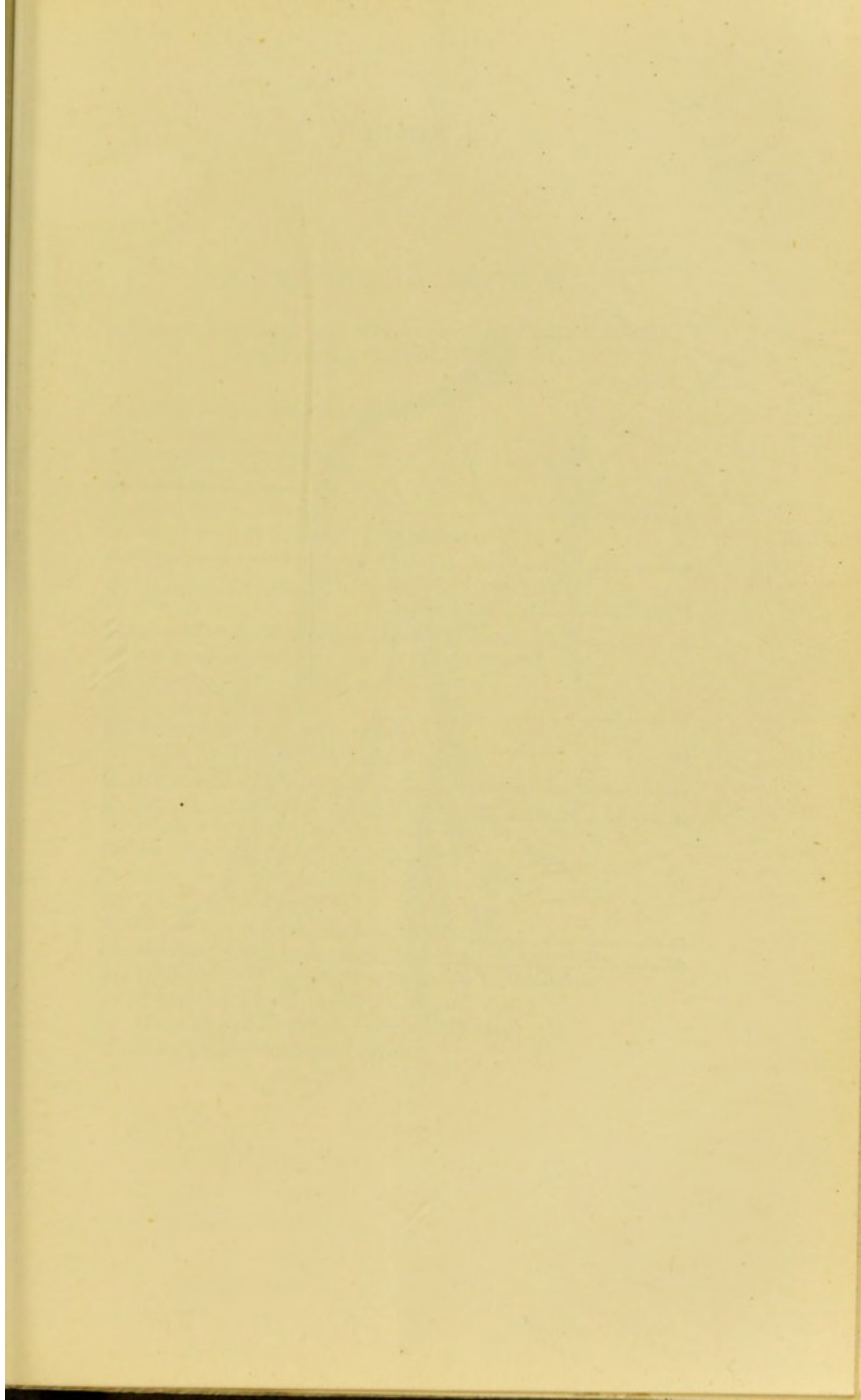
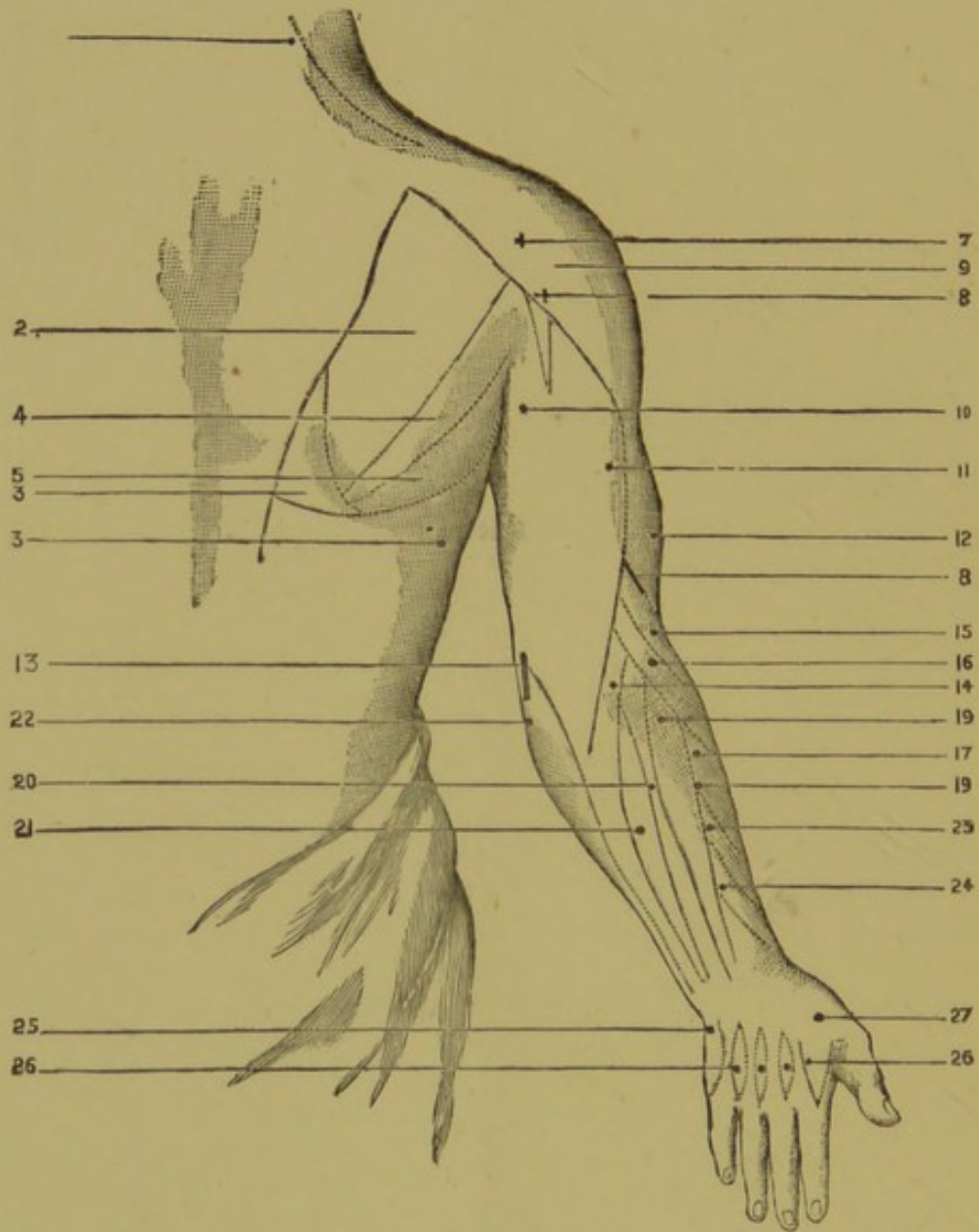


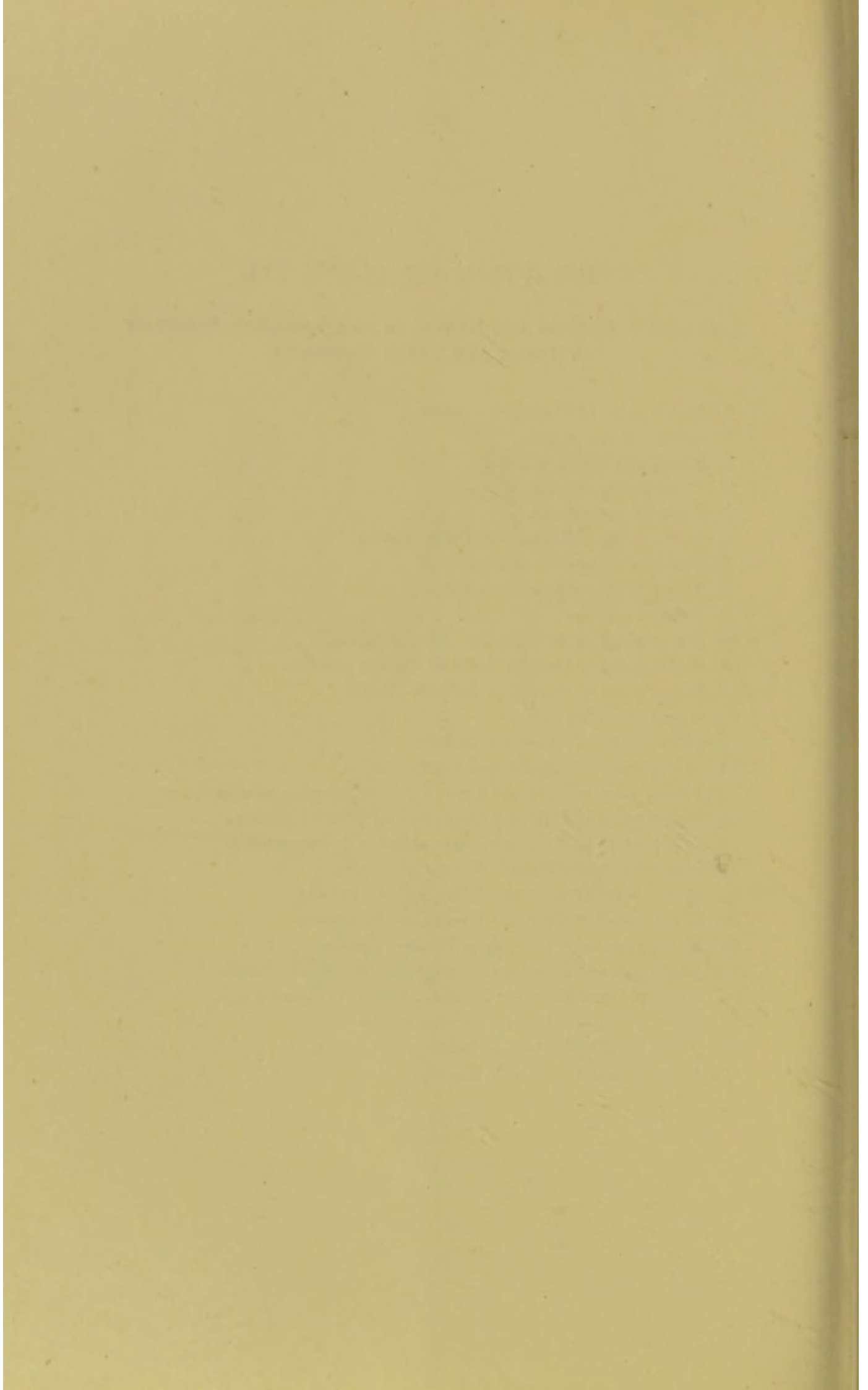
PLATE III.



DESCRIPTION OF PLATE III.

SUPERFICIAL MUSCLES AND NERVES OF THE POSTERIOR ASPECT OF THE TRUNK AND UPPER EXTREMITY.

1. Motor point of Trapezius muscle.
2. Infra-spinatus muscle.
3. Rhomboid Major muscle.
4. Teres Minor muscle.
5. Teres Major muscle.
6. Motor point of Latissimus Dorsi muscle.
7. Trunk of Circumflex nerve.
8. Trunk of Musculo-spiral nerve.
9. Deltoid muscle.
10. Motor point of long head of Triceps muscle.
11. Motor point of external head of Triceps muscle.
12. Motor point of Brachialis Anticus muscle.
13. Trunk of Ulnar nerve.
14. Motor point of Anconeus muscle.
15. Motor point of Supinator Longus muscle.
16. Motor point of Extensor Carpi Radialis Longior muscle.
17. Motor point of Extensor Carpi Radial Brevior muscle.
18. Motor point of Extensor Communis Digitorum muscle.
19. Motor point of Extensor Indicis muscle.
20. Motor point of Extensor Minimi Digiti muscle.
21. Motor point of Extensor Carpi Ulnaris muscle.
22. Motor point of Flexor Carpi Ulnaris muscle.
23. Motor point of Extensor Ossis Metacarpi Pollicis muscle.
24. Motor point of Extensor Primi Internodii Pollicis muscle.
25. Motor point of Abductor Minimi Digiti.
26. Motor points of External Interossei muscles.
27. Motor point of Adductor Pollicis.



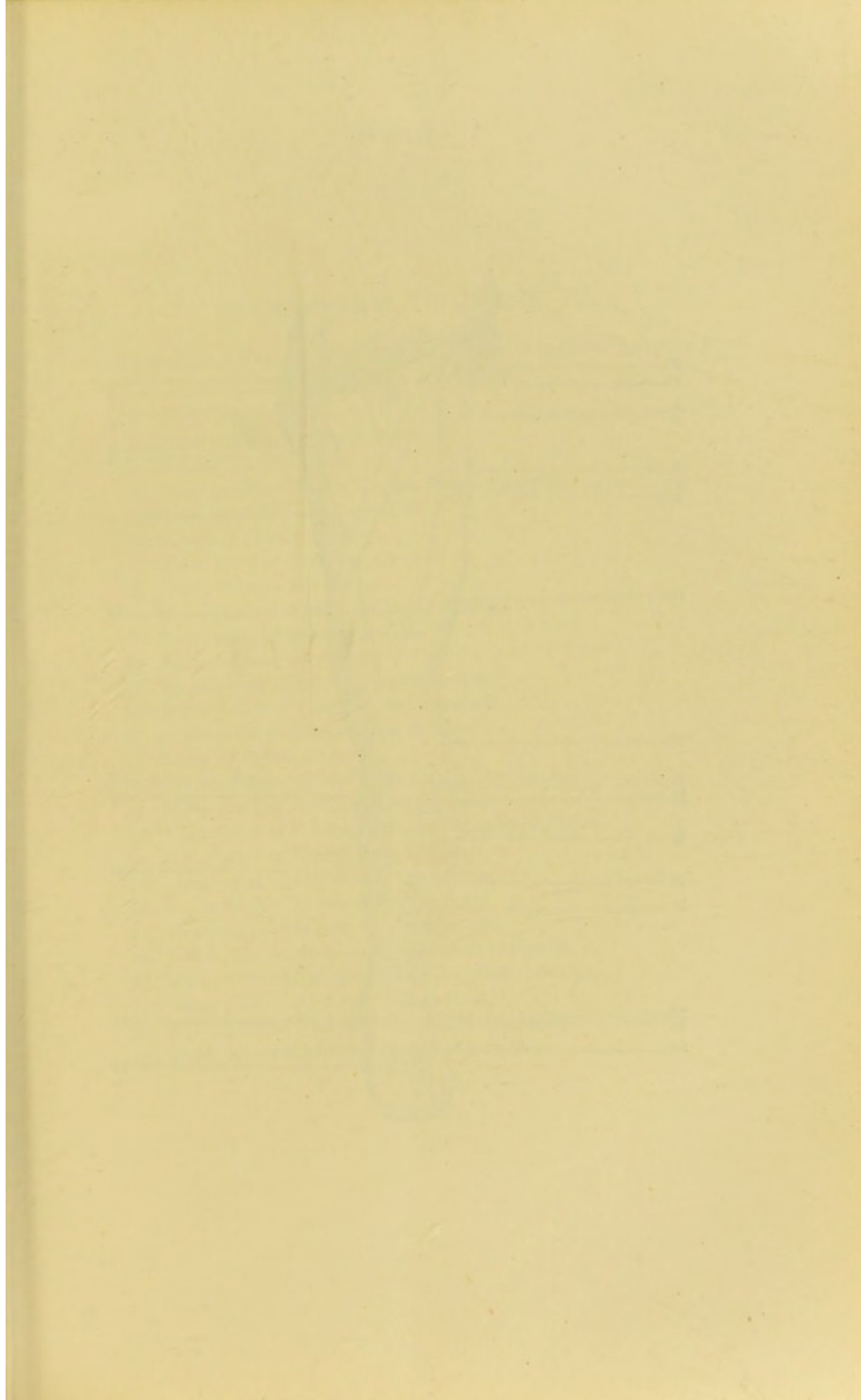
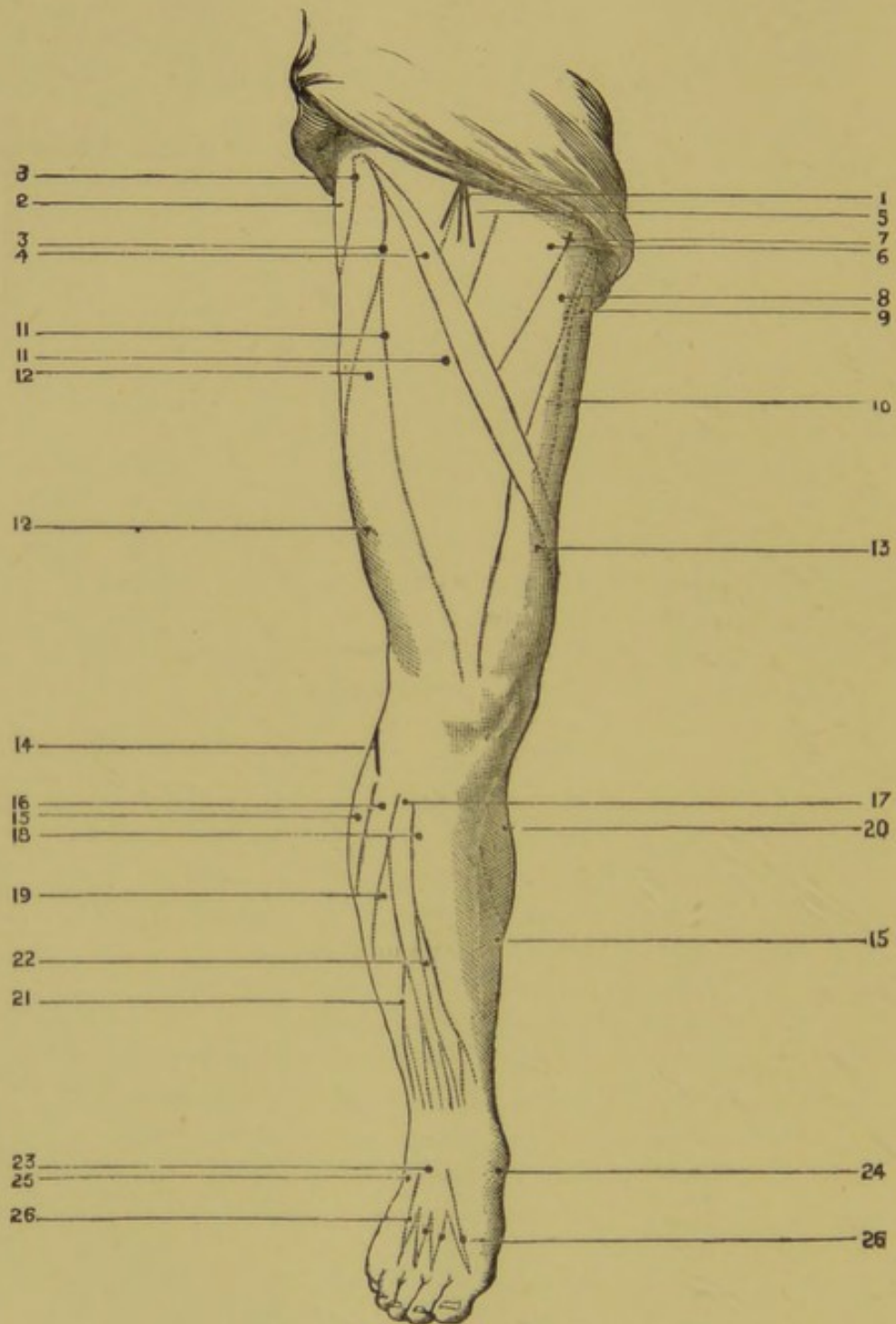


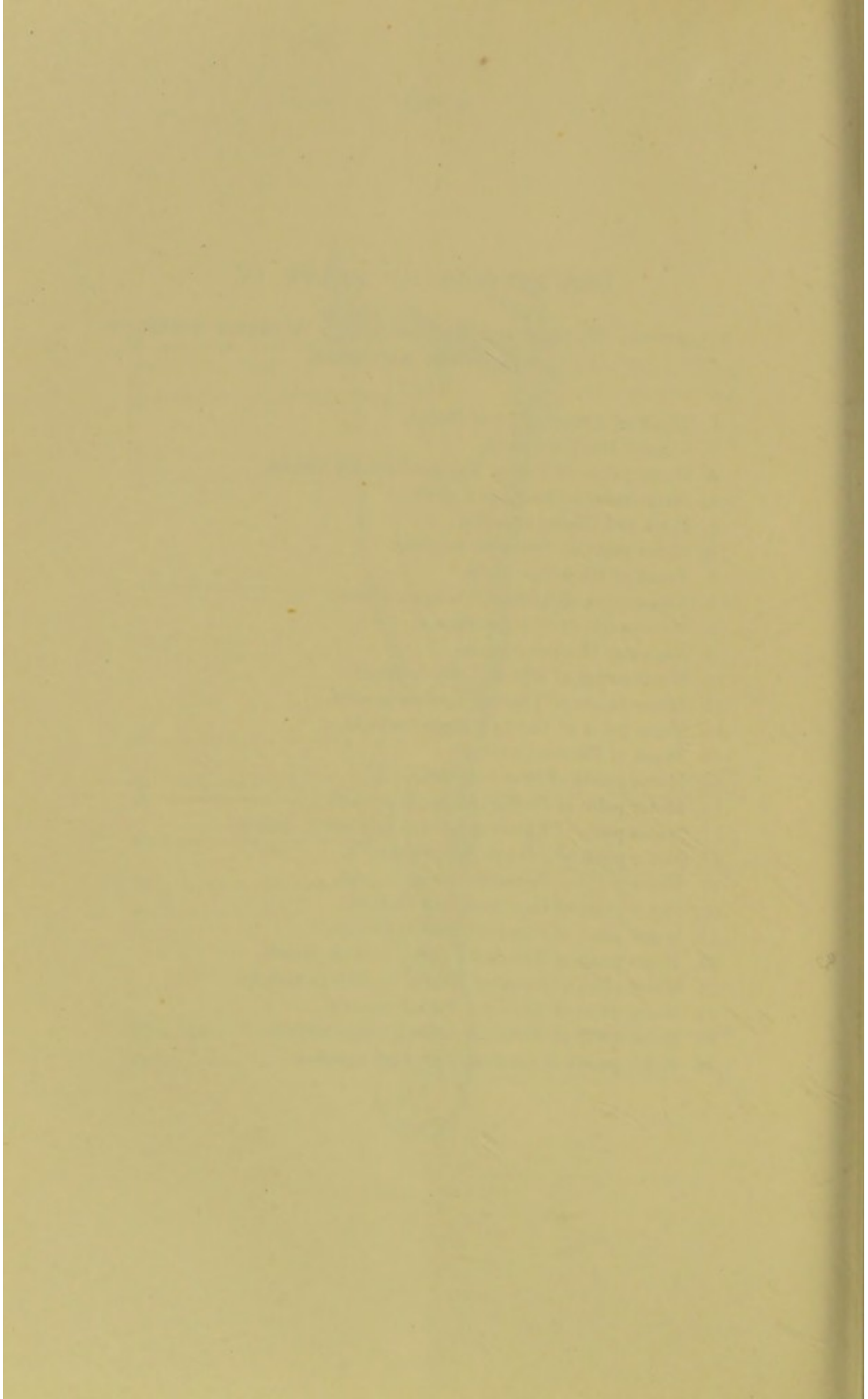
PLATE IV.

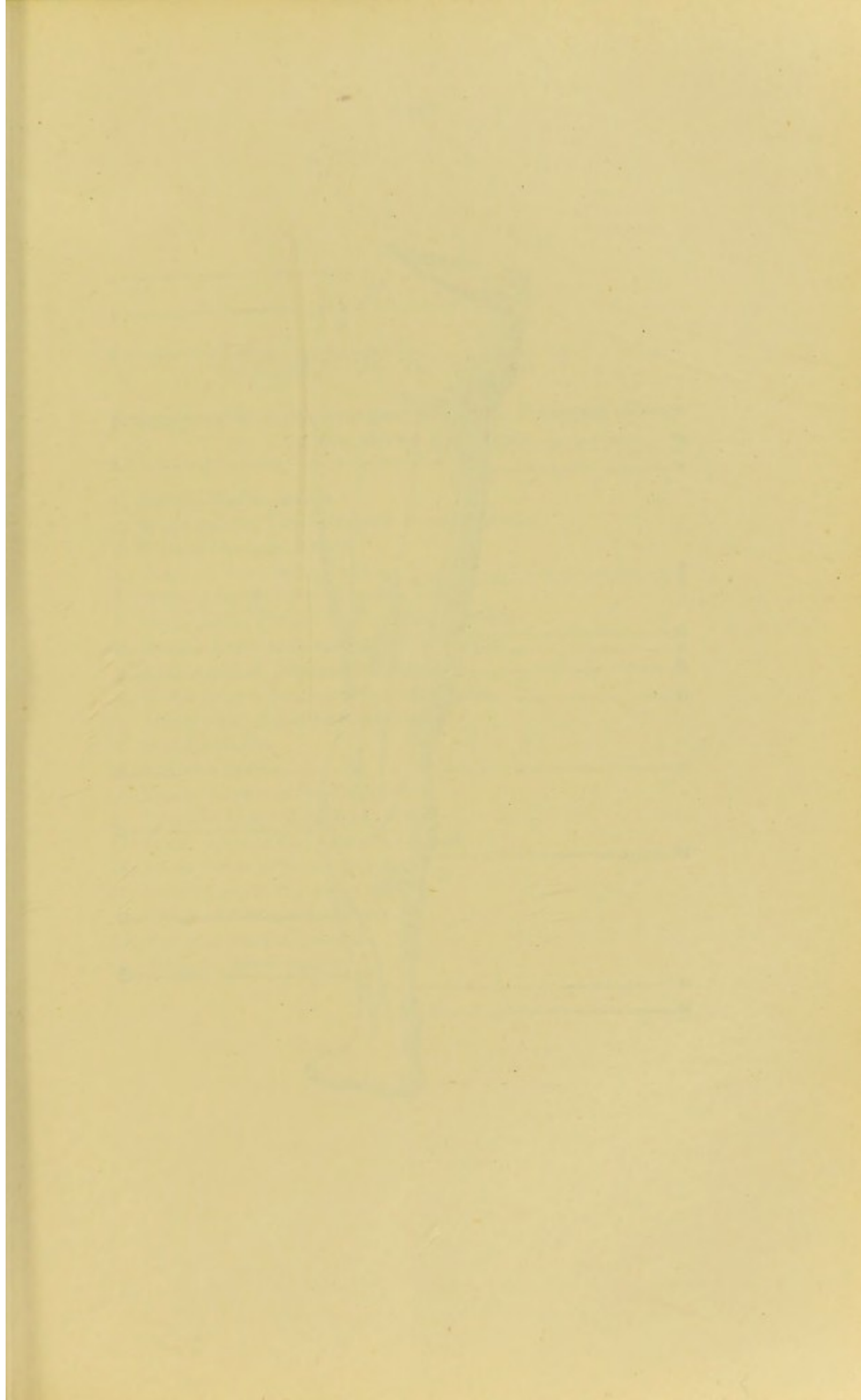


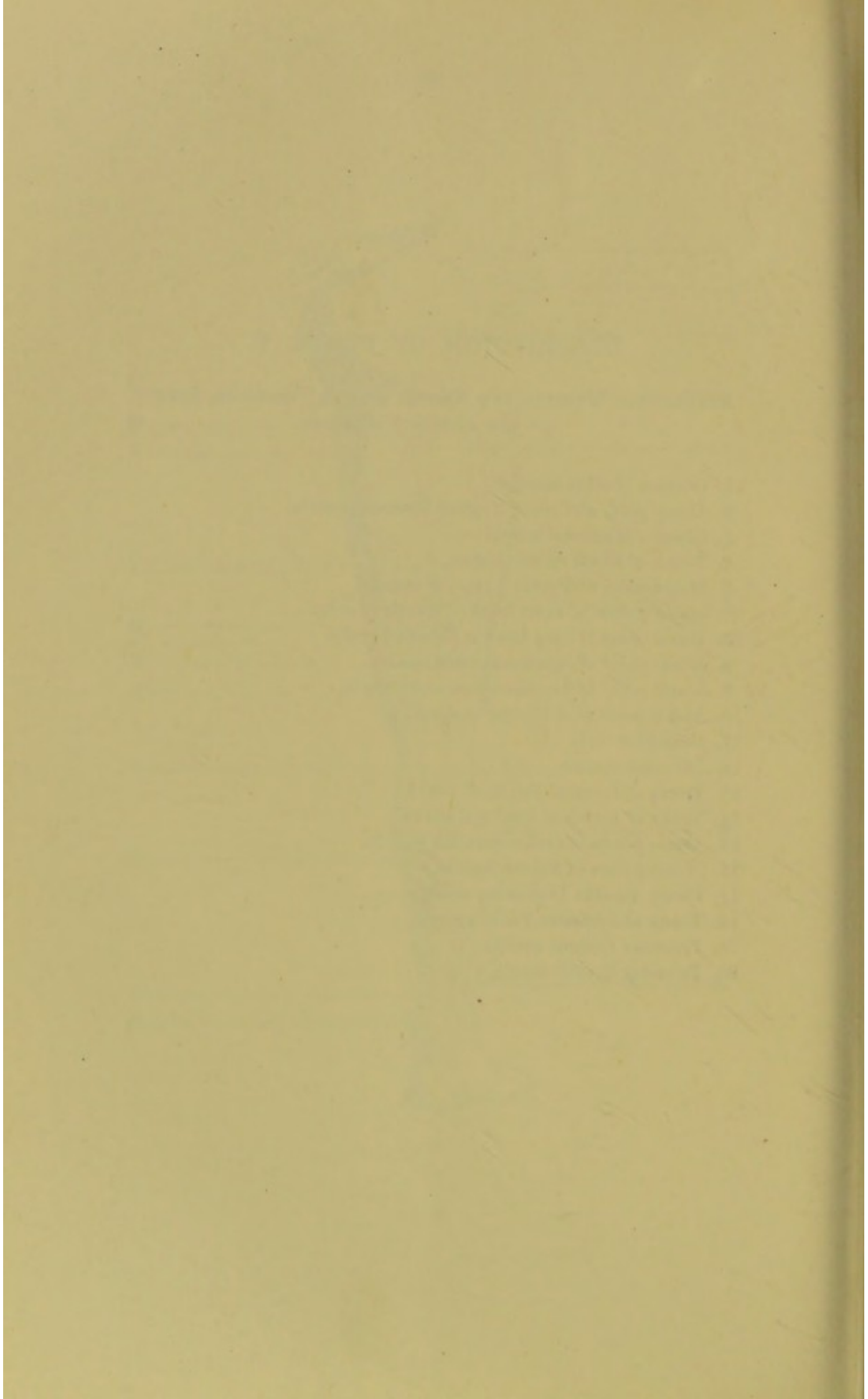
DESCRIPTION OF PLATE IV.

SUPERFICIAL MUSCLES AND NERVES OF THE ANTERIOR ASPECT OF THE LOWER EXTREMITY.

1. Trunk of Anterior Crural Nerve.
2. Gluteus Medius muscle.
3. Motor points of Tensor Vaginæ Femoris muscle.
4. Motor point of Sartorius muscle.
5. Psoas and Iliacus muscles.
6. Motor point of Pectineus muscle.
7. Trunk of Obturator nerve.
8. Motor point of Adductor Longus muscle.
9. Motor point of Gracilis muscle.
10. Adductor Magnus muscle.
11. Motor points of Rectus Femoris muscle.
12. Motor points of Vastus Externus muscle.
13. Motor point of Vastus Internus muscle.
14. Trunk of Peroneal nerve.
15. Motor points of Soleus muscle.
16. Motor point of Peroneus Longus muscle.
17. Motor point of Extensor Longus Digitorum muscles.
18. Motor point of Tibialis Anticus muscle.
19. Motor point of Peroneus Brevis muscle.
20. Motor point of Gastrocnemius muscle.
21. Motor point of Peroneus Tertius muscle.
22. Motor point of Extensor Longus Pollicis muscle.
23. Motor point of Extensor Brevis Digitorum muscle.
24. Motor point of Abductor Pollicis muscle.
25. Motor point of Abductor Minimi Digiti muscle.
26. Motor points of external Interossei muscles.







DESCRIPTION

OF AN

ELEMENT BOARD AND COMBINED HANDLE ELECTRODE.

