

**Engravings of the arteries of the human body : selected and reduced from the engravings of Haller, exhibiting the parts as they appear on dissection: designed for the use of students, with descriptions to each / by the late William Cox, surgeon.**

### **Contributors**

Cox, William.  
Haller, Albrecht von, 1708-1777.  
Basire, James, 1730-1802  
Parks, approximately 1825  
Mogbridge, approximately 1825  
St. Thomas's Hospital. Medical School. Library  
King's College London

### **Publication/Creation**

London : Printed for E. Cox and Son ; ..., Dublin : Sold also by Hodges and M'Arthur, [1825]

### **Persistent URL**

<https://wellcomecollection.org/works/zre92h8z>

### **License and attribution**

This material has been provided by This material has been provided by King's College London. The original may be consulted at King's College London. where the originals may be consulted.

This work has been identified as being free of known restrictions under copyright law, including all related and neighbouring rights and is being made available under the Creative Commons, Public Domain Mark.

You can copy, modify, distribute and perform the work, even for commercial purposes, without asking permission.



Wellcome Collection  
183 Euston Road  
London NW1 2BE UK  
T +44 (0)20 7611 8722  
[E.library@wellcomecollection.org](mailto:E.library@wellcomecollection.org)  
<https://wellcomecollection.org>

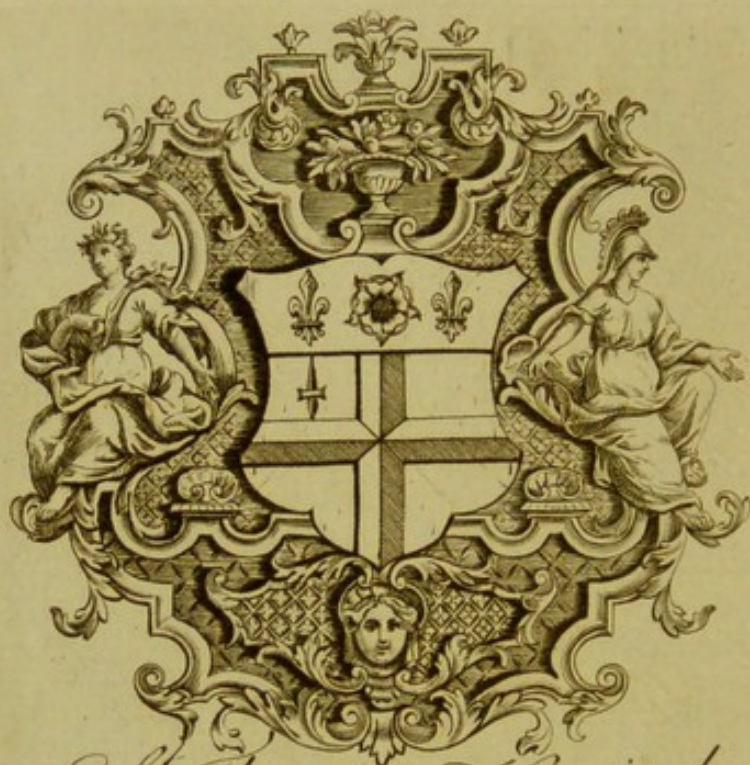
HALLER'S ENGRAVINGS  
OF THE  
ARTERIES  
OF THE HUMAN BODY,  
WITH DESCRIPTIONS.

---

*Price 8s. boards.*



24. h. 23.

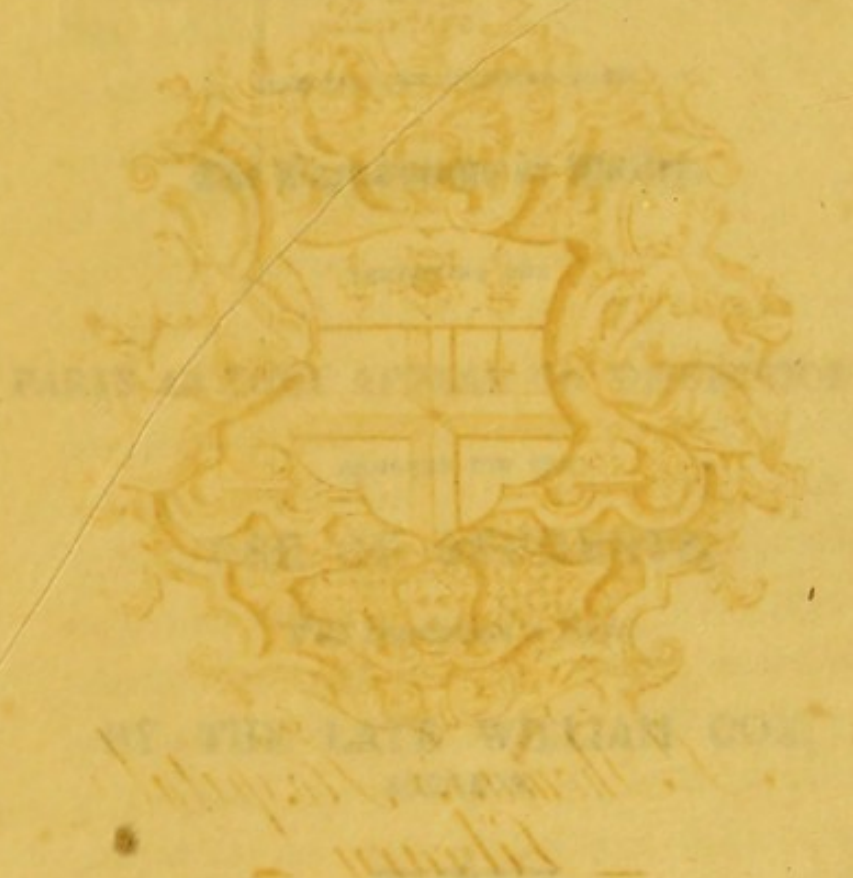


*St. Thomas's Hospital  
Library*

ORIGINAL

# THE ARTERIES

HUMAN BODY.



OF THE LATE HANCOCK COLLEGE

NEW HAVEN, CONNECTICUT

LONDON

PRINTED BY J. JOHNSON, ST. PAULS CHURCH-YARD.

1825.

Price 1s. 6d. per copy.



THE LATE WILLIAM COLE

# THE ANTIQUITIES

OF THE

OF THE

OF THE

OF THE

OF THE

OF THE LATE WILLIAM COLE

OF THE

OF THE

OF THE

OF THE

OF THE LATE WILLIAM COLE

OF THE

OF THE

27. n. 25.

ENGRAVINGS  
OF  
THE ARTERIES  
OF THE  
HUMAN BODY,

SELECTED AND REDUCED FROM

The Engravings of Haller,

EXHIBITING THE

PARTS AS THEY APPEAR ON DISSECTION :

DESIGNED FOR THE

USE OF STUDENTS,

*With Descriptions to Each ;*

BY THE LATE WILLIAM COX,  
SURGEON.

---

THIRD EDITION, CORRECTED.

---

LONDON :

PRINTED FOR E. COX AND SON, ST. THOMAS' STREET,  
SOUTHWARK ;

AND SOLD ALSO BY HODGES AND M<sup>r</sup>ARTHUR, DUBLIN.

1510804

THOMAS



ENGLAND

# THE ARTS

## HUMAN BODY

The Language of Sculpture

USE OF STUDENTS

BY THE LATE WILLIAM COX

THIRD EDITION, CORRECTED

LONDON:

PRINTED FOR E. COX AND SON, ST. THOMAS STREET

Printed by John Hill, 57, Paternoster Row.




## ADVERTISEMENT.

---

THE natural timidity and modesty of the individual whose name *now* appears in the title page of this work, prevented the insertion of it at an earlier period, when the book was published. It is however but a just tribute to *professional talent* and *departed excellence* to introduce this volume to the notice of gentlemen who are commencing their studies, as having been very carefully revised by the hand of one whose anatomical knowledge so fully qualified him for the undertaking and which rendered him so conspicuous during the progress, and at the completion, of his Medical Studies; and whose humane and skilful attention to those entrusted to his care (more especially the poorer class of the community) will embalm his memory in the hearts of many, and prove the severe loss which has been sustained, not only by such, but by the Profession at large, of which he was an *ornamental and useful Member*.

October 6, 1825.





## ADVERTISEMENT

THIS manual fidelity and modesty of the individual whose name now appears in the title page of this work, presented the insertion of it at an early period, when the book was published. It is however but a just tribute to permanent talent and diligent exertion to introduce this volume to the notice of gentlemen who are commencing their studies, as having been very carefully revised by the hand of one whose anatomical knowledge so fully qualified him for the undertaking, and which rendered him so conspicuous during the progress, and at the completion, of his Medical Studies; and whose perspicacious and skilful attention to those entitled to the care (more especially the poorer class of the community) will embalm his memory in the hearts of many, and prove the source from which has been extracted not only by such, but by the Profession at large, of which he was an ornament and useful member.

Glasgow 4. 1802.

## PREFACE.

---

THE high estimation in which the writings of Haller are held, renders it altogether unnecessary to say a word in their commendation. The work from which these plates are selected, is allowed to be one of the most useful of his productions; it exhibits in the clearest manner the relative situation of the principal arteries of the human body. If an apology be necessary, on the part of the Editor, for having presented the Public with a part only of the original work, he has merely to state, that the plates here given were first selected by one of the most eminent teachers of anatomy, as comprising those parts which he conceived to be of the greatest utility to the student.

Whilst the knowledge of every part of the body is essential to the medical practitioner, perhaps none is of greater im-

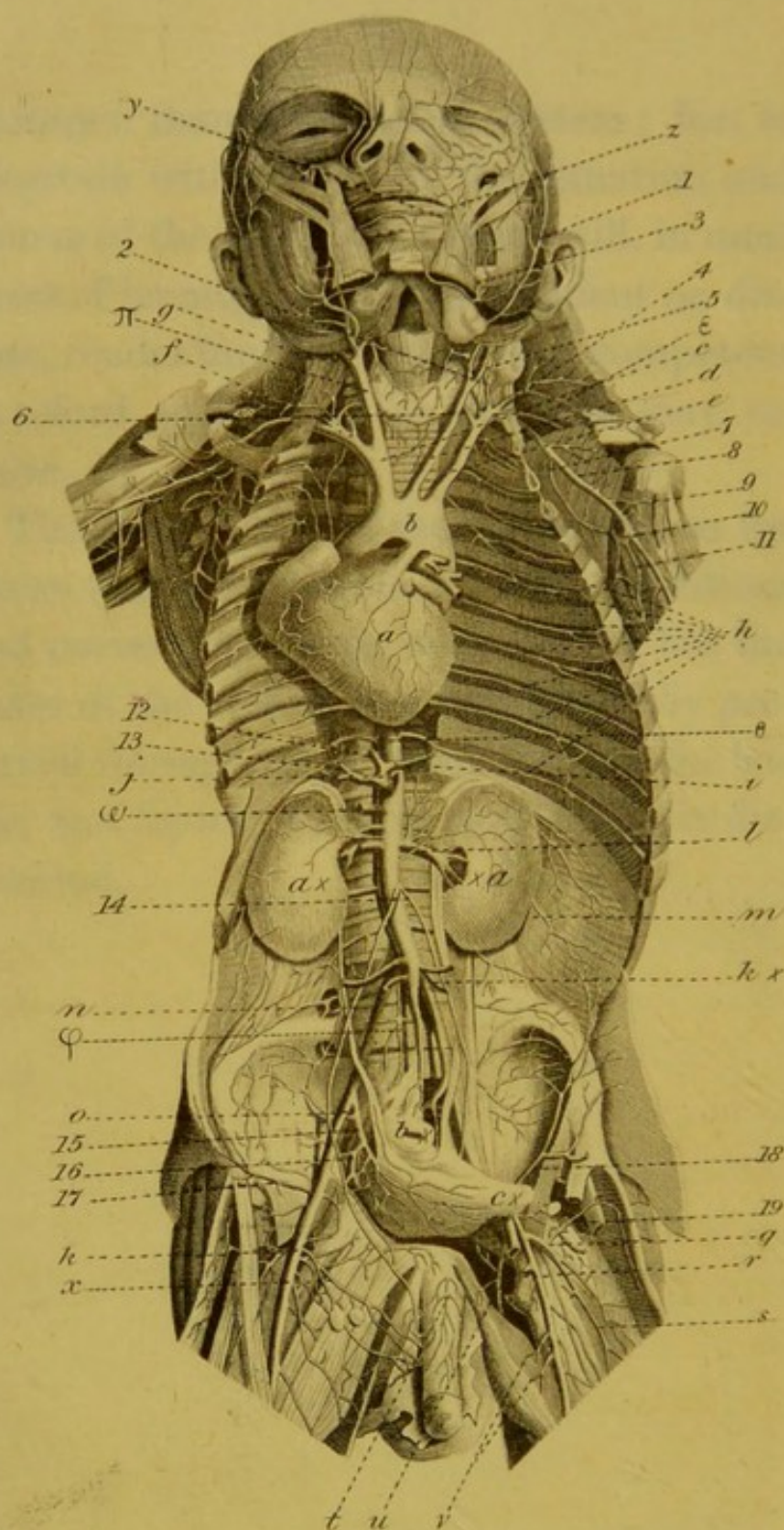


portance than the arterial system ; for, to ascertain with precision the situation and course of the principal vessels will, in most cases of hæmorrhage from accident or disease, render the Surgeon at once competent to afford such relief as the case may require.

The irregularity of the references to the plates was unavoidable, as many additions and corrections have been made ; but the order of the vessels has been carefully preserved throughout the whole, so that the letters and figures on them may be easily discovered.







## PLATE I.

### *Arteries of the Head and Trunk.*

- a. The Heart.
- b. Arch of the Aorta.
- c. Arteria Innominata.
- π. Right Common Carotid Artery.
- d. Left Common Carotid.
- e. Left Subclavian.
- f. Right Subclavian.
- g. Right external Carotid.
- 3. Facial.
- z. Superior Coronary of the Lip.
- y. Inferior Coronary of the Lip.
- 1. Temporal.
- 5. Left internal Carotid.
- 6. ——— Vertebral.
- 2. Inferior Thyroideal.
- 4. Transversa Colli.
- ε. Superior dorsal artery of the Scapula.
- 7. Inferior Scapular.
- 9. Anterior Circumflex.
- 10. Posterior Circumflex.
- 11. Profunda Humeri.
- h. Intercostal Arteries.

---

ax. ax. Kidnies.



*b*x. Bladder.

*c*x. Rectum.

---

*e*. Descending Aorta.

*j*. Coeliac Artery.

13. Hepatic.

*i*. Splenic.

12. Coronary of the Stomach.

*ω*. Superior Mesenteric.

*l*. Left emulgent.

14. Right and left Spermatic.

*k*x. Inferior Mesenteric.

*m*. Lumbar Arteries.

*φ*. Sacra Media.

*n*. Right Common Iliac Artery.

*o*. External Iliac.

15. Internal.

16. Obturator.

17. Circumflexa Ilii.

18. Epigastric Artery.

*t*. Arteria penis.

*k*. Femoral Artery.

*x*. Superior external pudic.

*r*. Profunda femoris.

*q*. External Circumflex.

19. Its superior branch.

*s*. Its inferior branch.

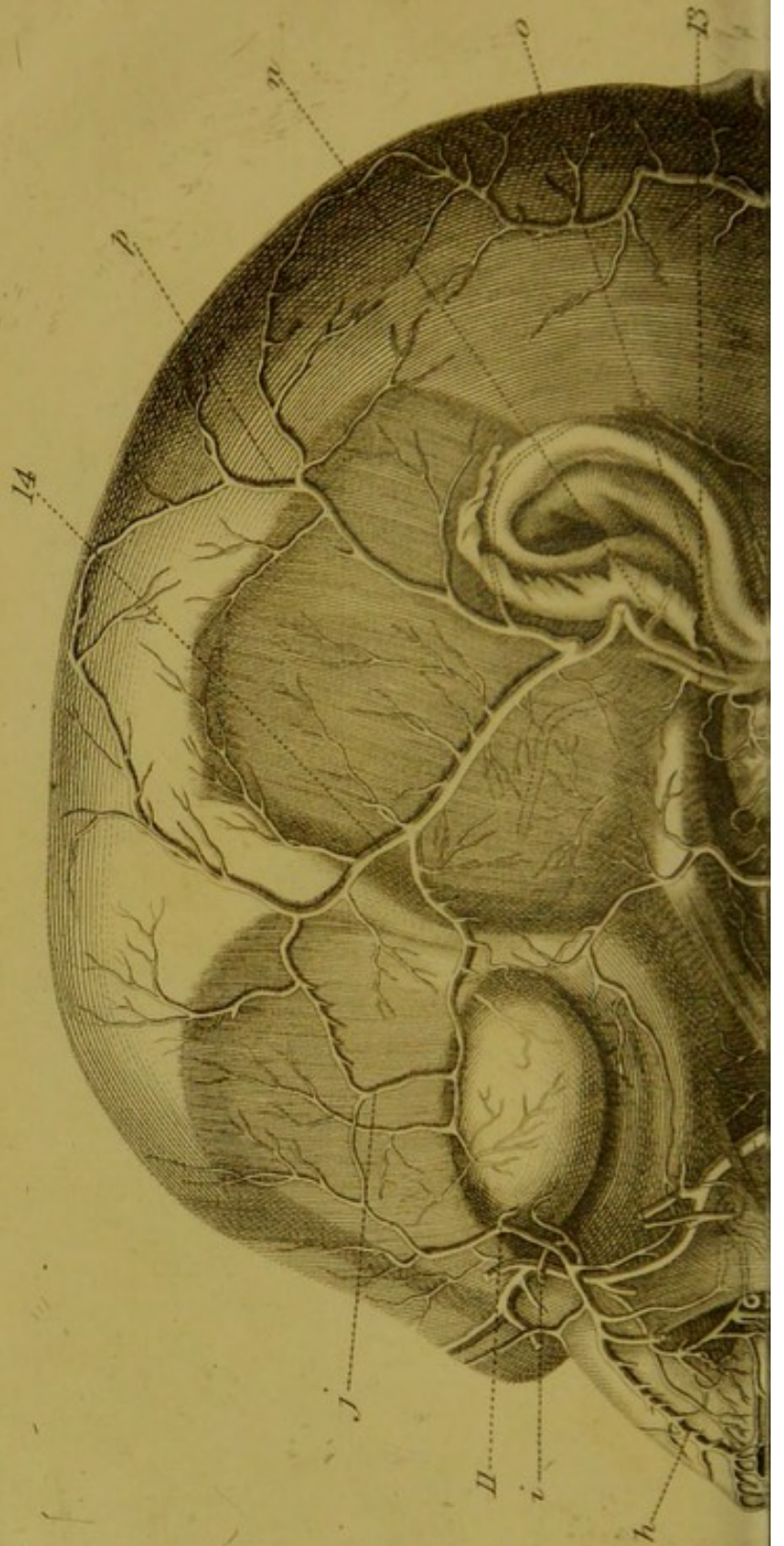
*u*. Internal Circumflex.

*v*. Arteriæ perforantes.

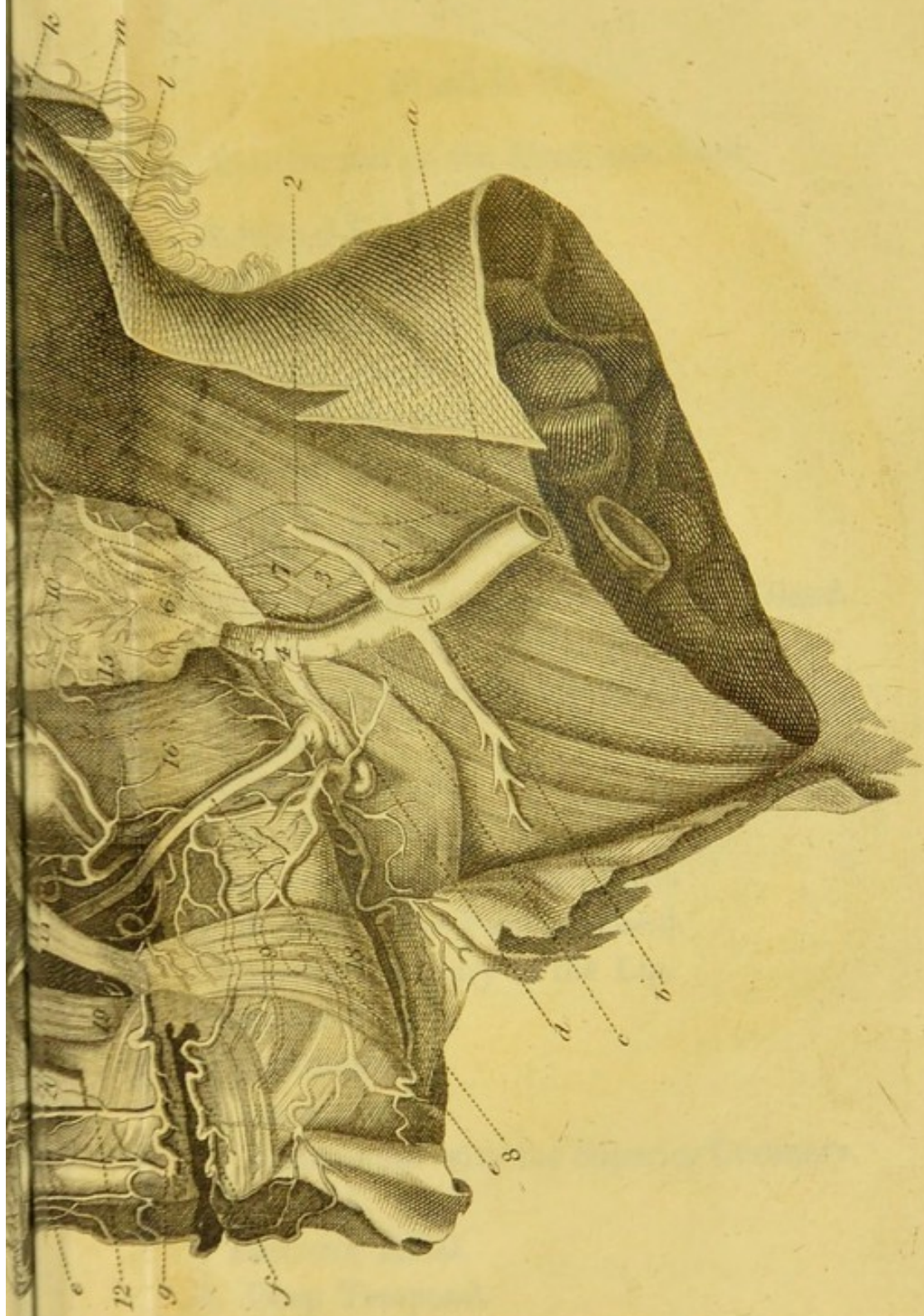




Pl. II



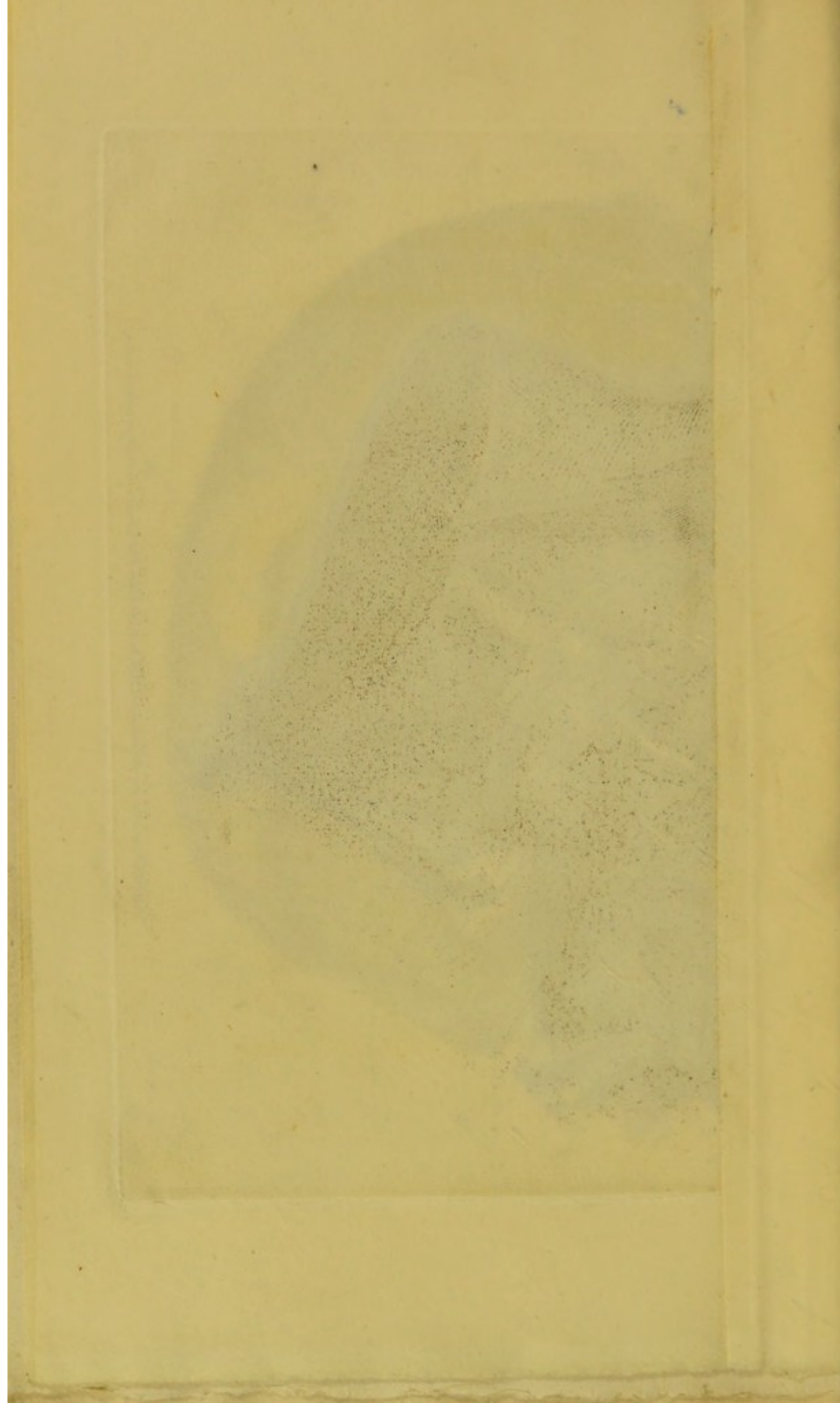




*Published at the Anatomic Theatre, St. Thomas's, Strand, by E. Cox & Son, St. Thomas's, Strand, London.*

*Robt. D. D. Sc.*





## PLATE II.

*Blood-vessels of the Head and Neck.*

- a.* External Jugular Vein.
- e. e.* Facial Vein.
- 1. Common Carotid Artery.
- 2. Internal Carotid.
- 3. External Carotid.
- b.* Superior Thyroideal.
- 4. Lingual, } covered by Veins.
- 5. Facial, }
- 6. External Carotid under the Parotid Gland.
- 7. Course of the Ascending Pharyngeal.
- d.* Superficial branch of the Facial.
- 8. Submental.
- 9. Inferior Labial.
- f.* Inferior Coronary of the Lip.
- 1. Transverse Artery of the Face.
- 10. Branch to the Parotid Gland.
- g.* Superior Coronary of the Lip.
- i.* Angular branch.
- 11. Ophthalmic.
- h.* Dorsal branch.
- 12. Anastomosis with the Superior Coronary.
- k.* Occipital.
- m.* Posterior Aural.
- 13. Deep Temporal.



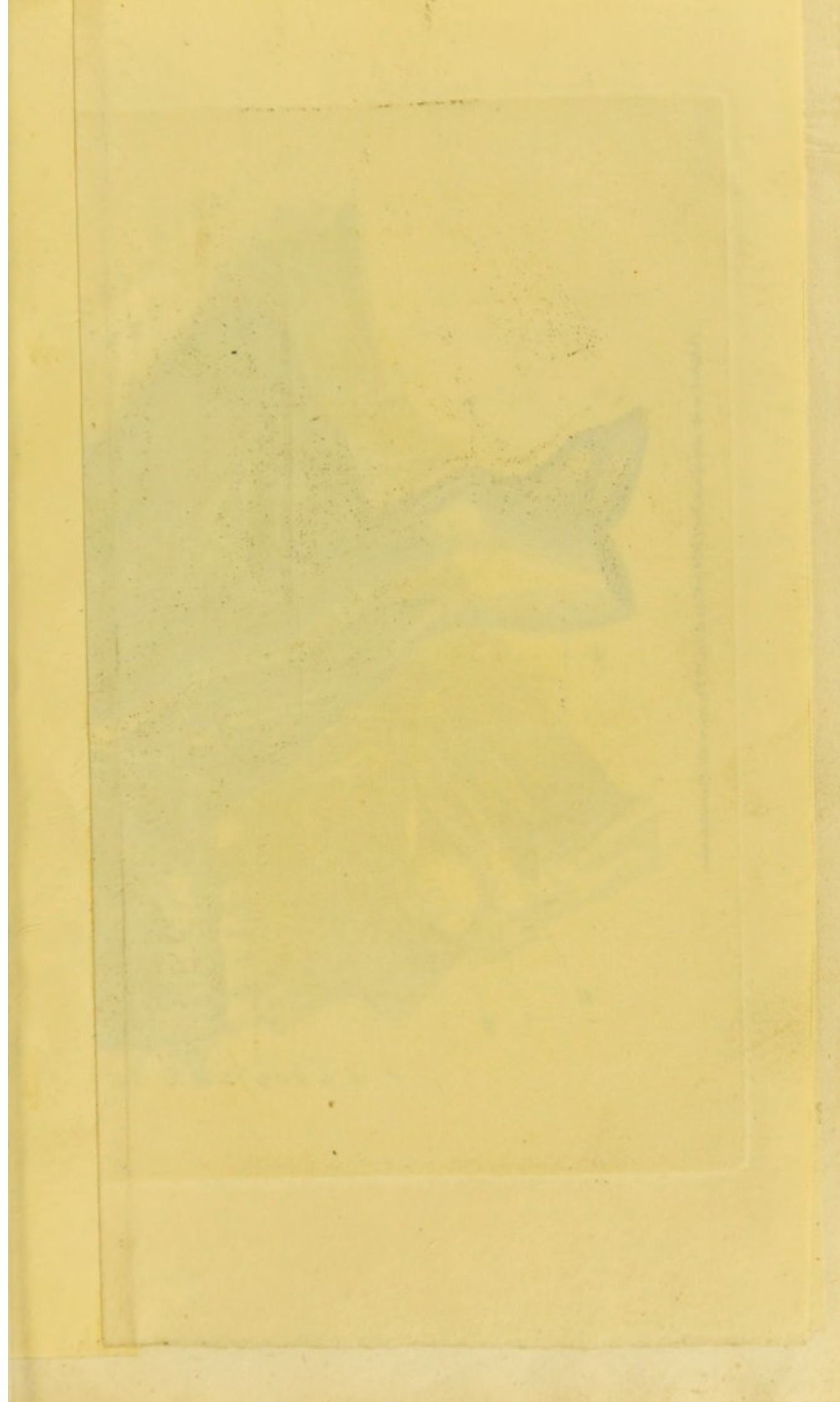
- o.* Temporal Artery.
- 14. Its Frontal branch.
- p.* Its Occipital branch.
- j.* Their Anastomosis.

---

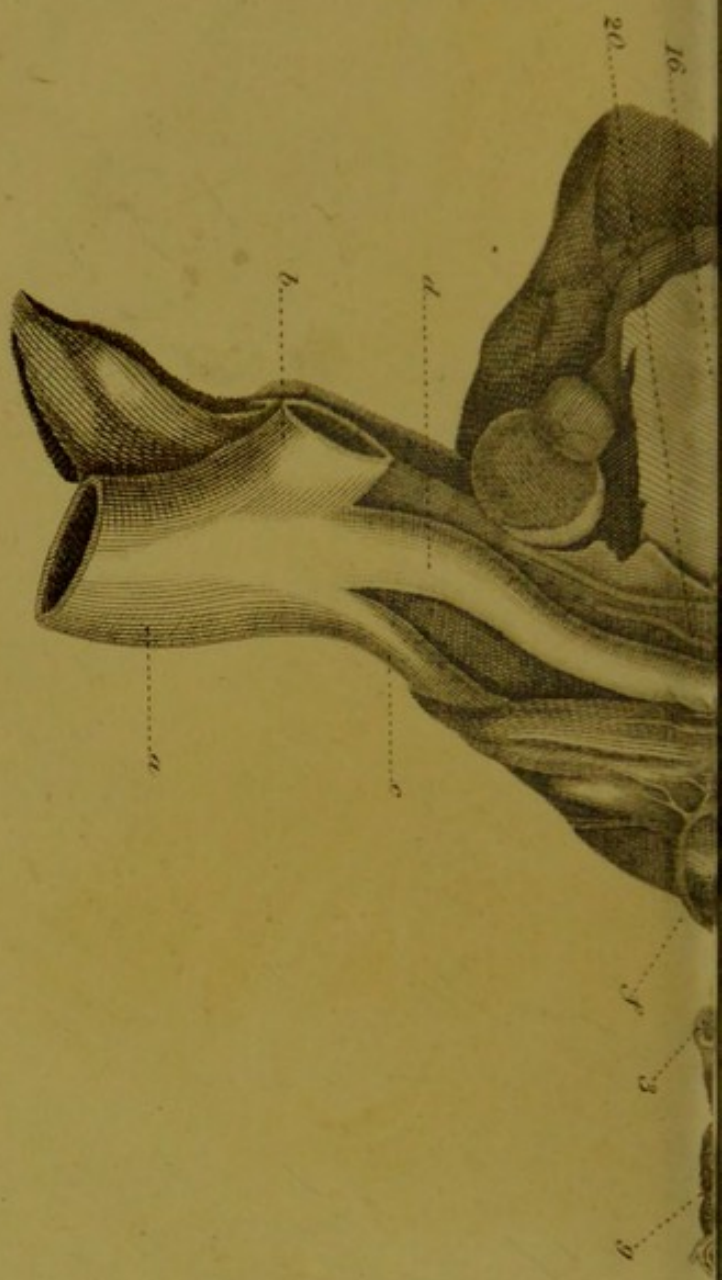
### PLATE III.

#### *Blood-vessels of the Head and Neck Continued.*

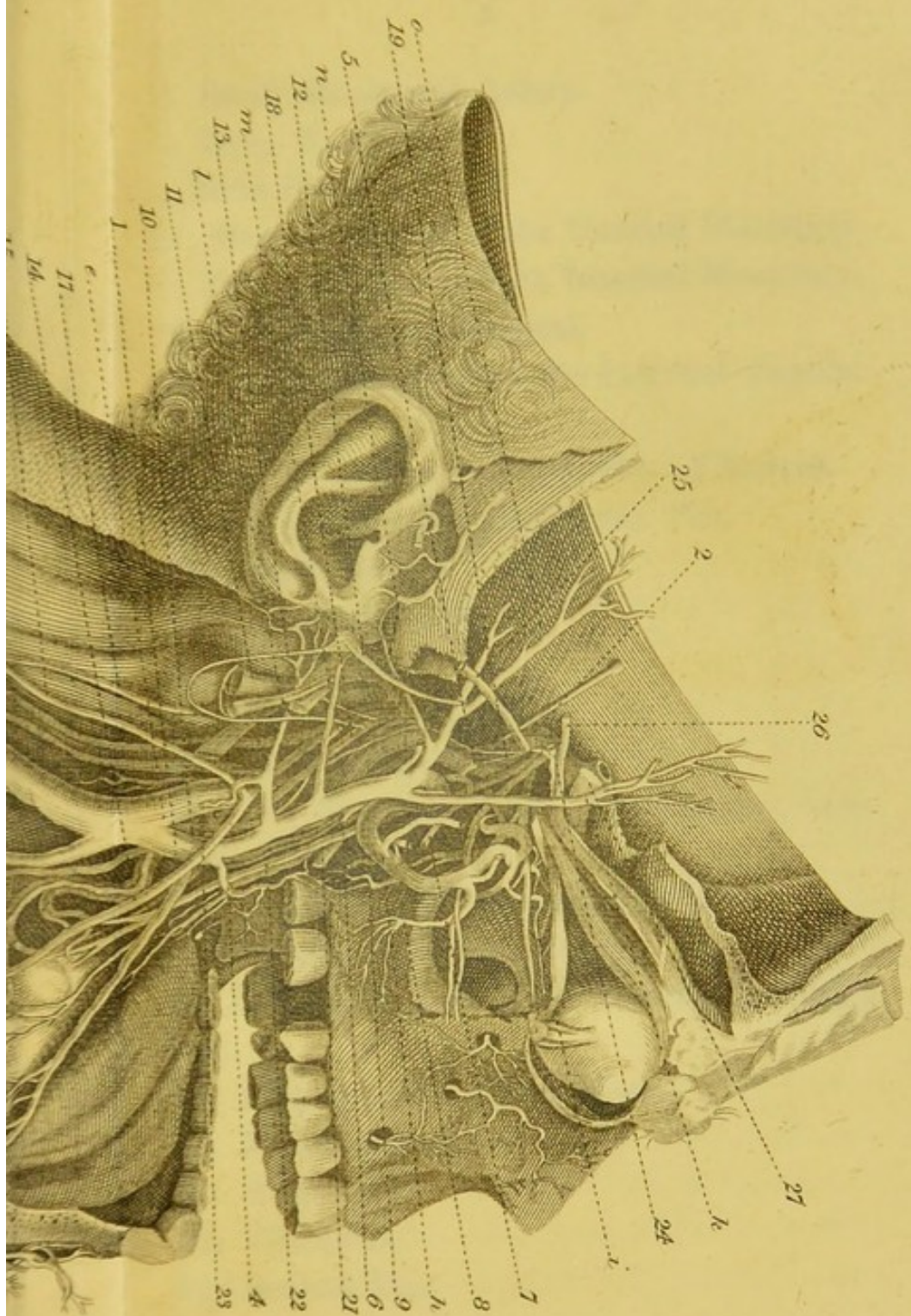
- a.* Aorta.
- b.* Arteria Innominata.
- c.* Left Common Carotid Artery.
- d.* Right Common Carotid.
- e.* Internal Common Carotid.
- 1. External Common Carotid.
- f.* Superior Thyroideal.
- 2. Curvatures of the Internal Carotid.
- 3. Lingual.
- g.* Facial.
- 4. Palatine branch of the Facial.
- o.* Temporal Artery.
- l.* Occipital.
- m.* Posterior Aural.
- n.* Anterior Aural.
- h.* Internal Maxillary.
- 5. Middle Artery of the Dura Mater.
- 6. Inferior Maxillary.



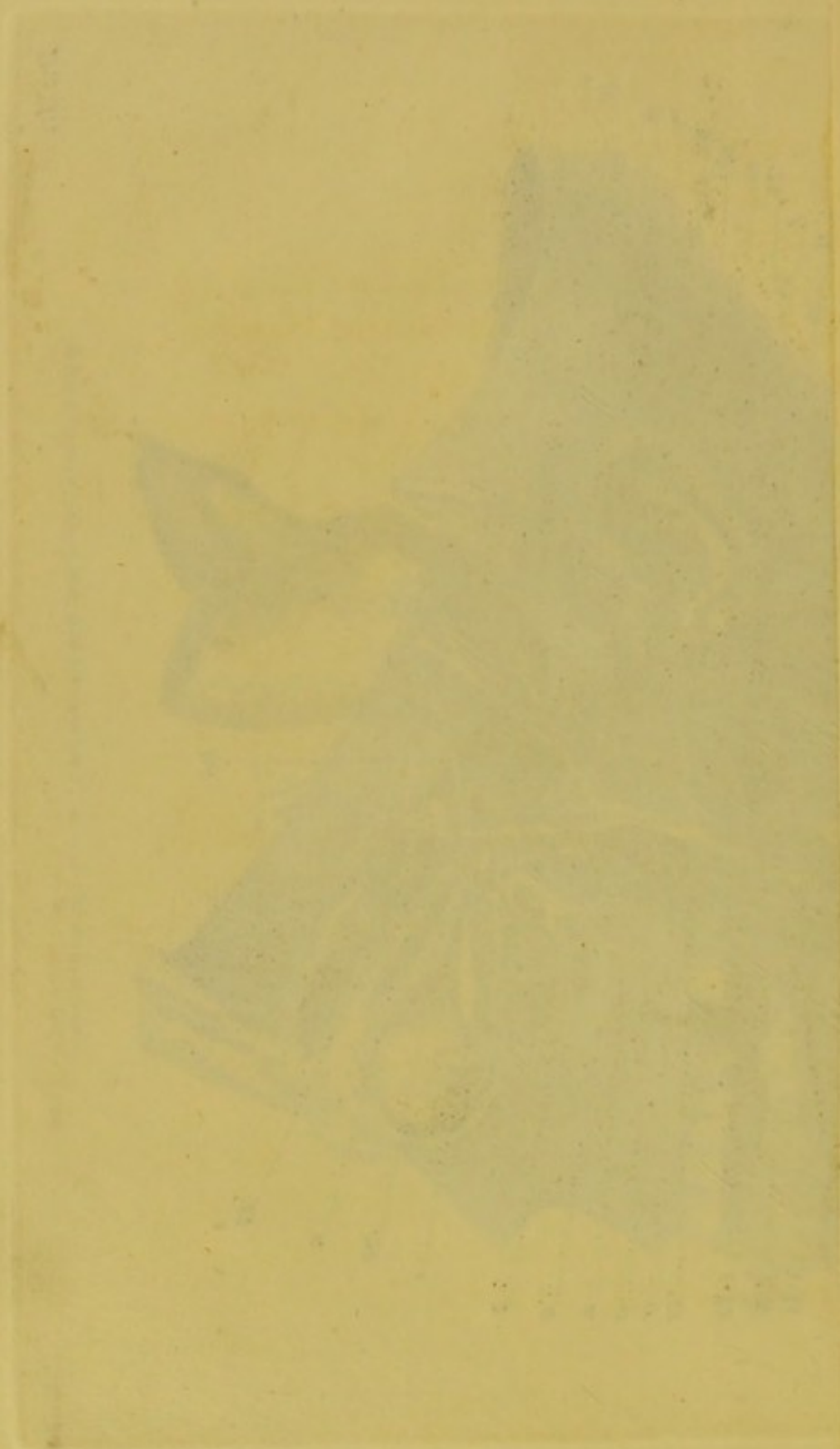




Published as directed Jan<sup>y</sup> 1 1824 by E. Cox & Son, 57 Thomas St<sup>h</sup>, Borough London.







7. Small Meningeal Artery.
  - k. Deep Temporal.
  - i. Infra Orbital.
8. Alveolar Branch of the Internal Maxillary.
9. Palatine Branch of the Internal Maxillary.
10. Ascending Pharyngeal.
11. Commencement of the Internal Jugular Vein.
12. Portio Dura of the 7th Pair of Nerves.
13. Its connexion with the 8th Pair.
14. Ninth Pair.
15. Descendens noni.
16. Eighth Pair.
17. Nervus Accessorius.
18. Nerve from the 8th Pair.
19. Two Branches of the Intercostal or Sympathetic Nerve.
20. Trunk of the Sympathetic Nerve.
21. Inferior Maxillary Nerve.
22. Lingual Branch of the Inferior Maxillary Nerve.
23. Laryngeal Maxillary Nerve.
24. Fourth pair of Nerves.
25. Sixth Pair.
26. Third Pair.
27. Second Pair.

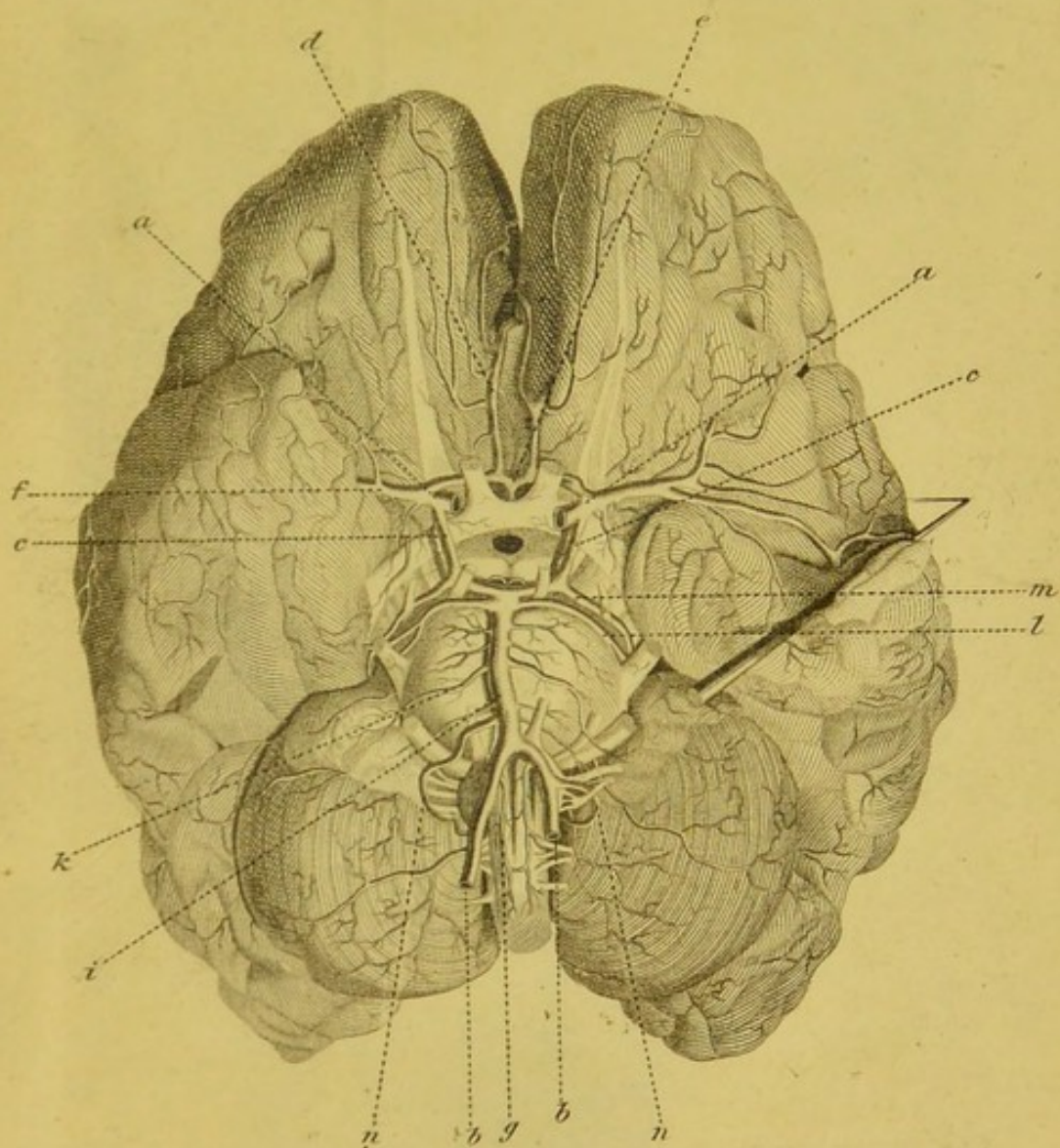


## PLATE IV.

*Arteries of the Brain.*

- a.a.* Internal Carotid Arteries.
- f.* Middle Cerebral Artery.
- d.* Anterior Cerebral.
- e.* Transverse Artery, uniting the Anterior Cerebral Arteries.
- c.c.* Communicating Arteries uniting the Internal Carotids to the Posterior Cerebral.
- b.b.* Vertebral Arteries.
- g.* Anterior Artery of the Spinal Marrow.
- i.* Basilar Artery.
- n.n.* Inferior Arteries of the Cerebellum, one arising from the Left Vertebral and the other from the Basilar Artery.
- k.* Internal Auditory Artery.
- l.* Superior Artery of the Cerebellum.
- m.* Posterior Artery of the Cerebrum.

The *Circulus Arteriosus Willisii* is formed by the union of the Anteriores Cerebri with the Arteria Anterior Transversa, before; by the Posteriores Cerebri, behind; and on the sides by the Arteriæ Communicantes, which pass between the Caroticæ Internæ, and the Posteriores Cerebri.



Barth. Del. Sc.

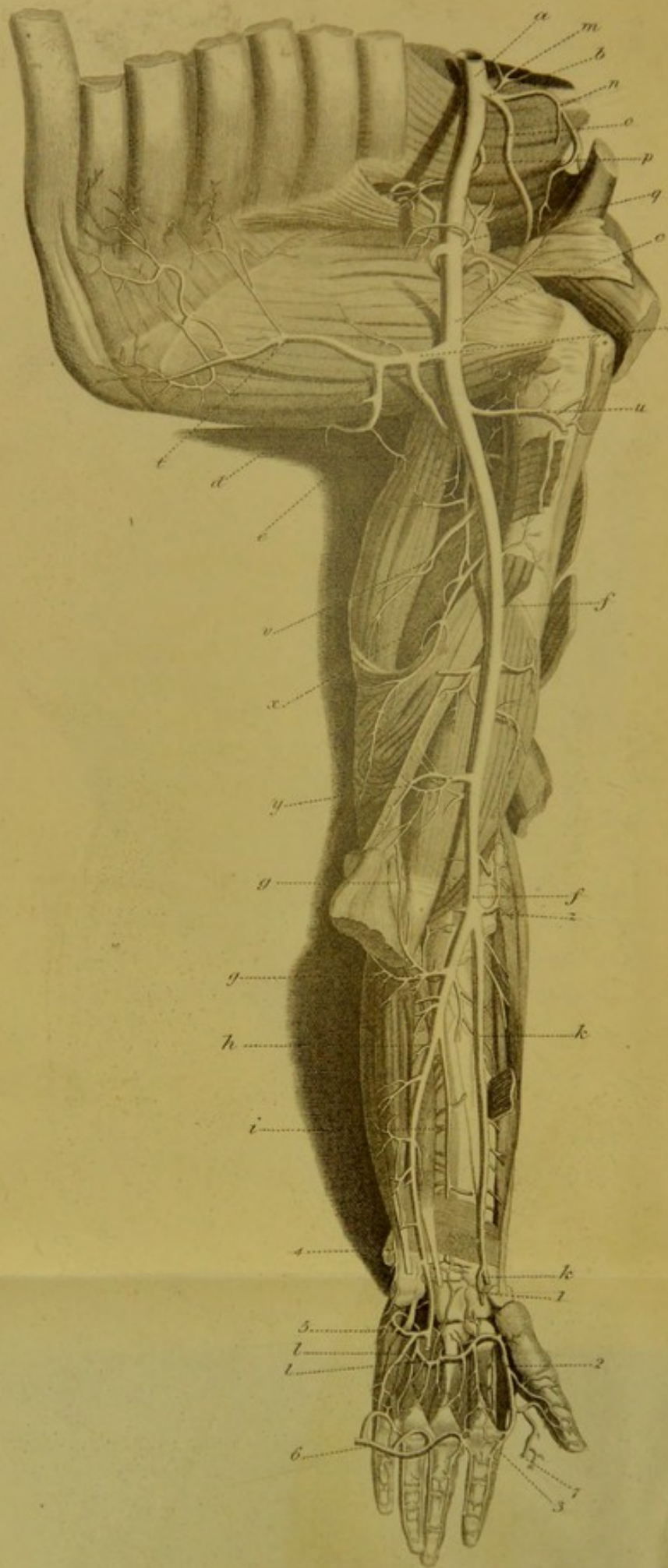
Published as the Act directs Jan<sup>y</sup> 1 1824. by E. Cox & Son, 5<sup>th</sup> Thomas's Str.<sup>t</sup> Berrough, London.











## PLATE V.

*Front view of the Arteries of the Arm.*

- a.* Subclavian Artery.
- m.* Inferior Thyroideal.
- b.* Superior Scapular, and Superficial Cervical  
arising by a common origin.
- n.* Superficial Cervical Artery.
- o.* Supra Scapular.
- p.* Superior Thoracic.
- q.* Humeral Thoracic.
- c.* Axillary Artery.
- s.* Inferior Scapular.
- d.* ——— Dorsal of the Scapula.
- t.* Internal Scapular.
- e.* Posterior Circumflex.
- u.* Anterior Circumflex.
- f.f.* Brachial Artery.
- v.* Profunda.
- x.* ——— Inferior.
- y.* Ramus Anastomoticus.
- k.k.* Radial Artery.
- z.* Recurrent branch of the Radial.
- 1. Superficial Artery of the Palm.
- 2. Great Artery of the Thumb.
- 3. Radial branch of the Index Finger.
- l.l.* Deep Palmar Arch.





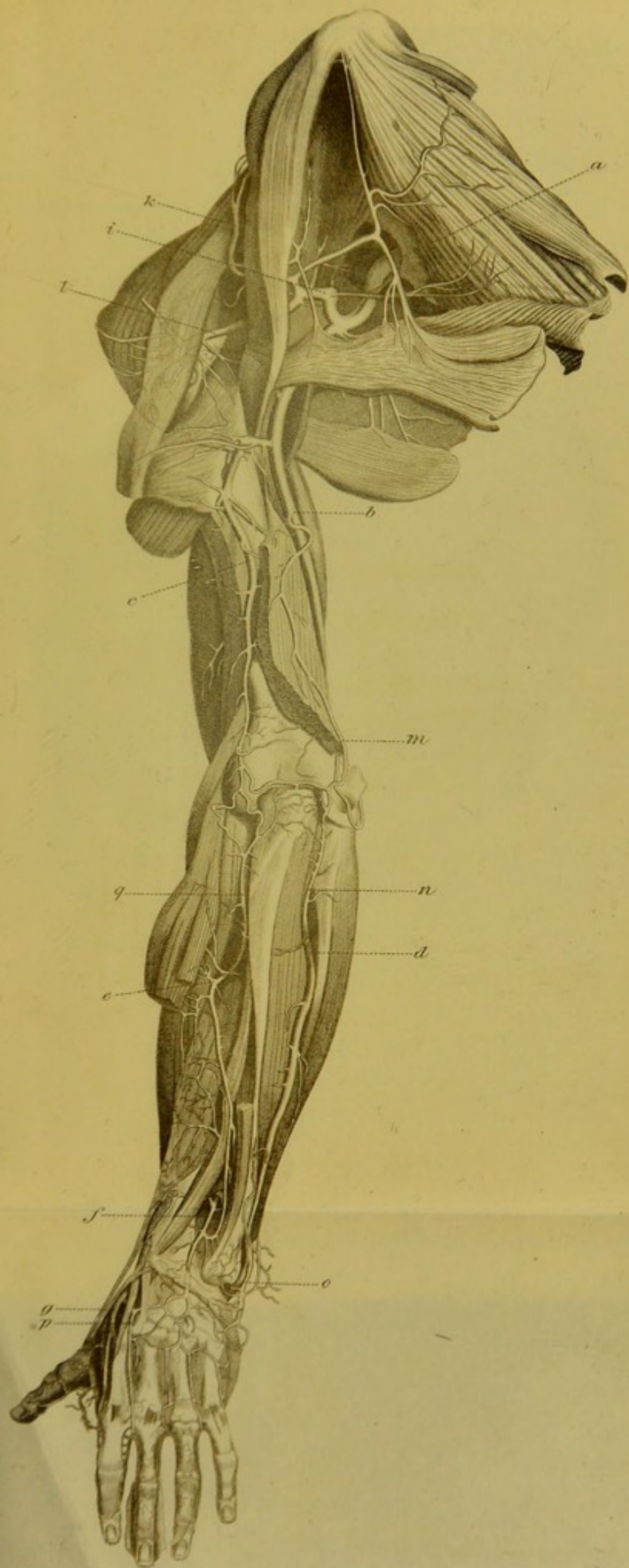
- h.* Ulnar Artery.
- g.* Recurrent Branch of the Ulnar.
- i.* Anterior Interosseal Artery.
- 4. Dorsal branch of the Ulnar Artery.
- 5. Deep Ulnar Branch.
- 6. Superficial Palmar Arch.
- 7. Branch from the Superficial Palmar Arch.

---

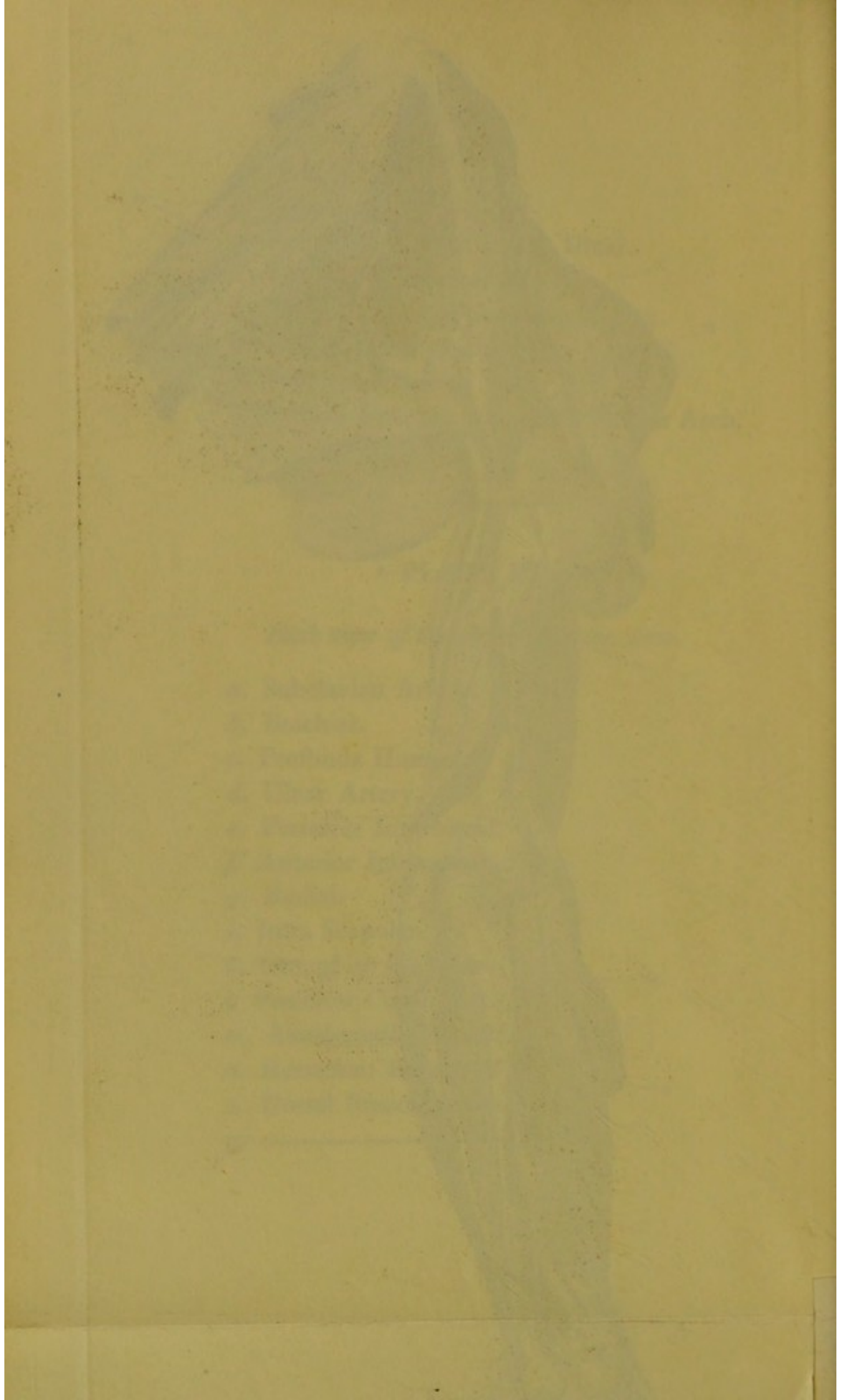
## PLATE VI.

### *Back view of the Arteries of the Arm.*

- a.* Subclavian Artery.
- b.* Brachial.
- c.* Profunda Humeri.
- d.* Ulnar Artery.
- e.* Posterior Interosseal.
- f.* Anterior Interosseal.
- g.* Radial.
- i.* Infra Scapular.
- k.* One of its Branches.
- l.* Posterior Circumflex.
- m.* Anastomotic Branch.
- n.* Recurrent Branch of the Ulnar.
- o.* Dorsal Branch of the Ulnar.
- p.* ————— Radial.

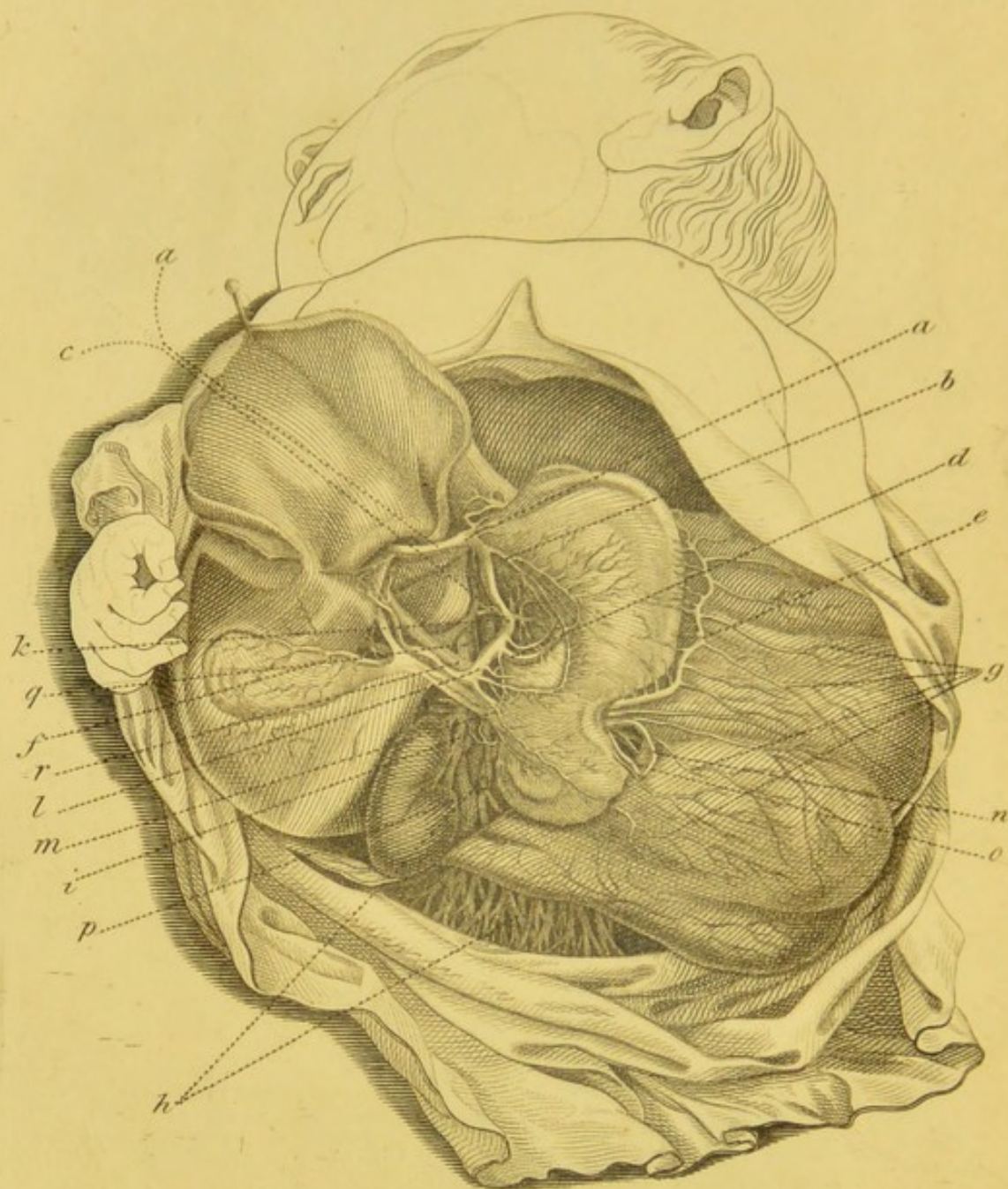












*q.* A recurrent Branch from the Posterior Interosseal Artery.

---

## PLATE VII.

### *Arteries of the Abdominal Viscera.*

- c.* Coeliac Artery.
- k.* Appendix of the Diaphragm separating the Vena Cava from the Aorta.
- b.* Superior Coronary Artery of the Stomach.
- d.* Splenic.
- e.* Right inferior Gastric.
- l.* ——— Hepatic.
- m.* Duodenal.
- f.* Cystic.
- n.* Gastro Epiploica Dextra.
- a.a.* Left Hepatic Artery.
- g.* Omental.
- h.* Mesenteric Branches.
- o.* Ileo Colic Artery.
- q.* Vena Cava.
- r.* Vena Portæ.
- i.* Right Emulgent Artery.
- p.* ——— Spermatic.



## PLATE VIII.

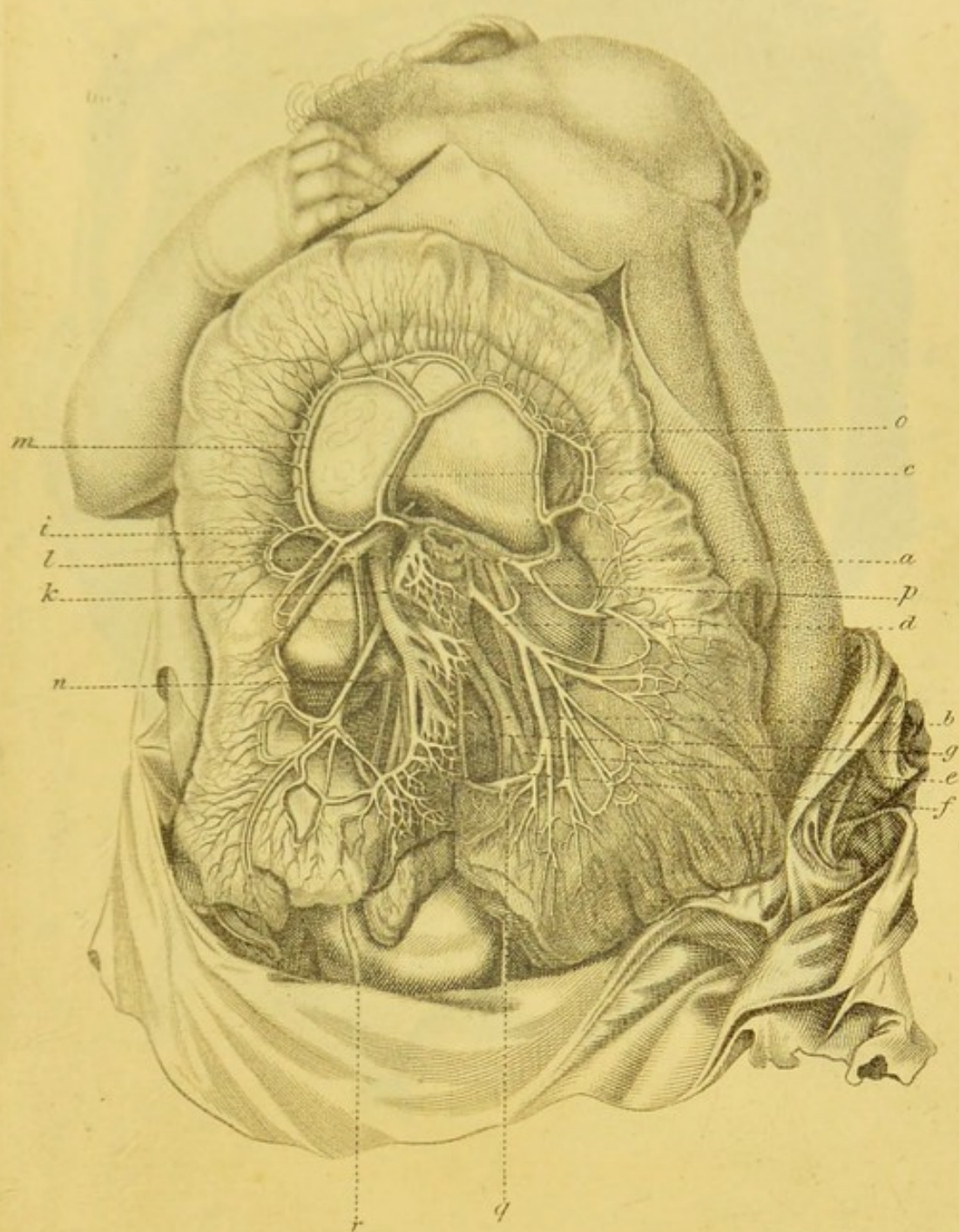
*Arteries of the Abdominal Viscera.*

- a. Aorta.
  - b. Left Common Iliac Artery.
  - c. — External Iliac.
  - f. — Internal Iliac.
  - g. Iliac Vein.
  - i. Vena Portæ.
  - k. Mesenteric Vein.
  - l. Superior Mesenteric Artery.
  - c. Middle Colic, } Arising together.
  - m. Right Colic, }
  - n. Ileo Colic.
  - d. Inferior Mesenteric.
  - o. Continuation of its Ascending Branch (p.)  
and its union with the Middle Colic Artery.
  - p. Ascending Branch of the Inferior Mesenteric Artery.
  - q. Internal Hæmorrhoidal Artery.
  - r. Epigastric.
- 

## PLATE IX.

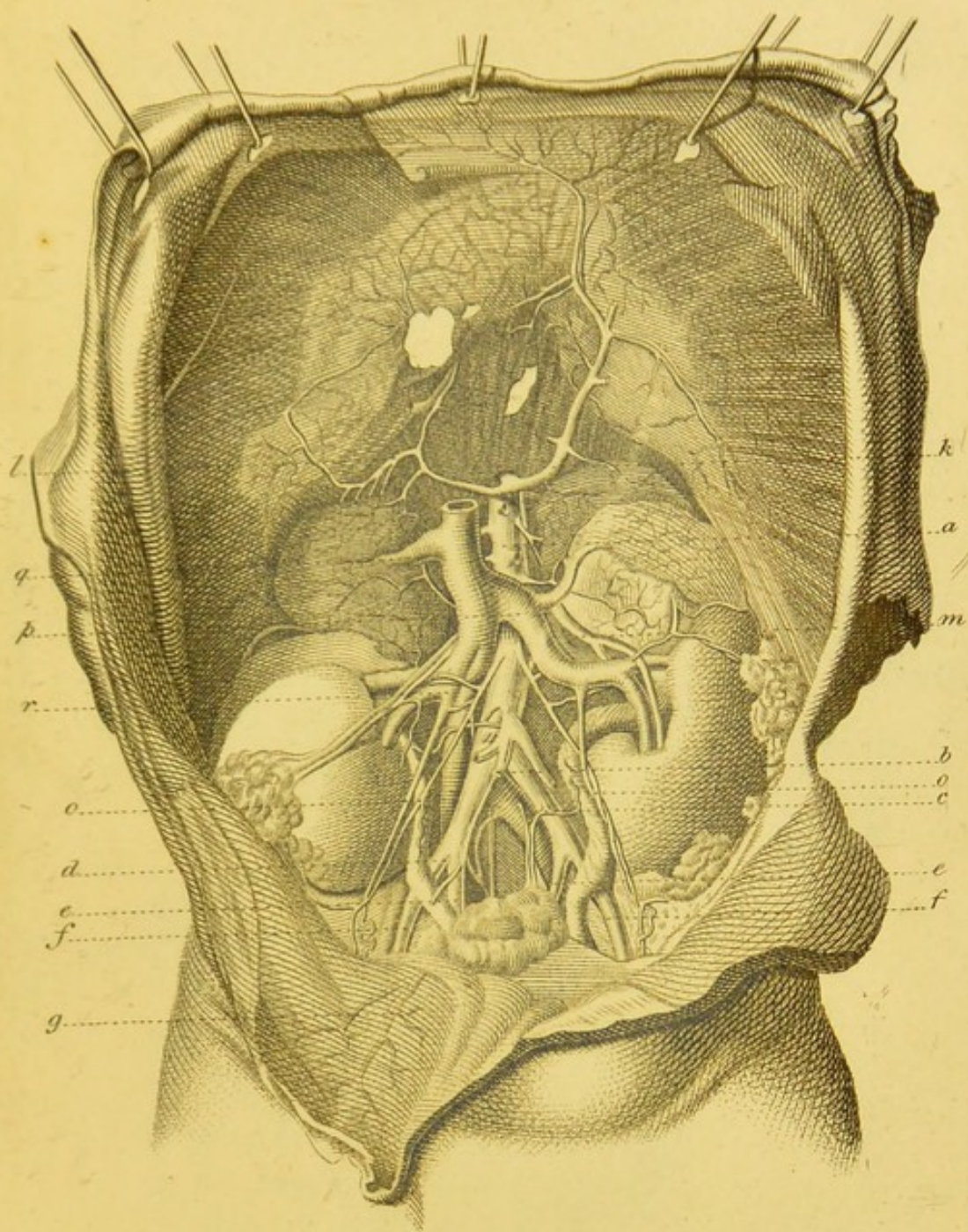
*Arteries of the Abdominal Viscera.*

- a. Aorta.
- b. Its Bifurcation.

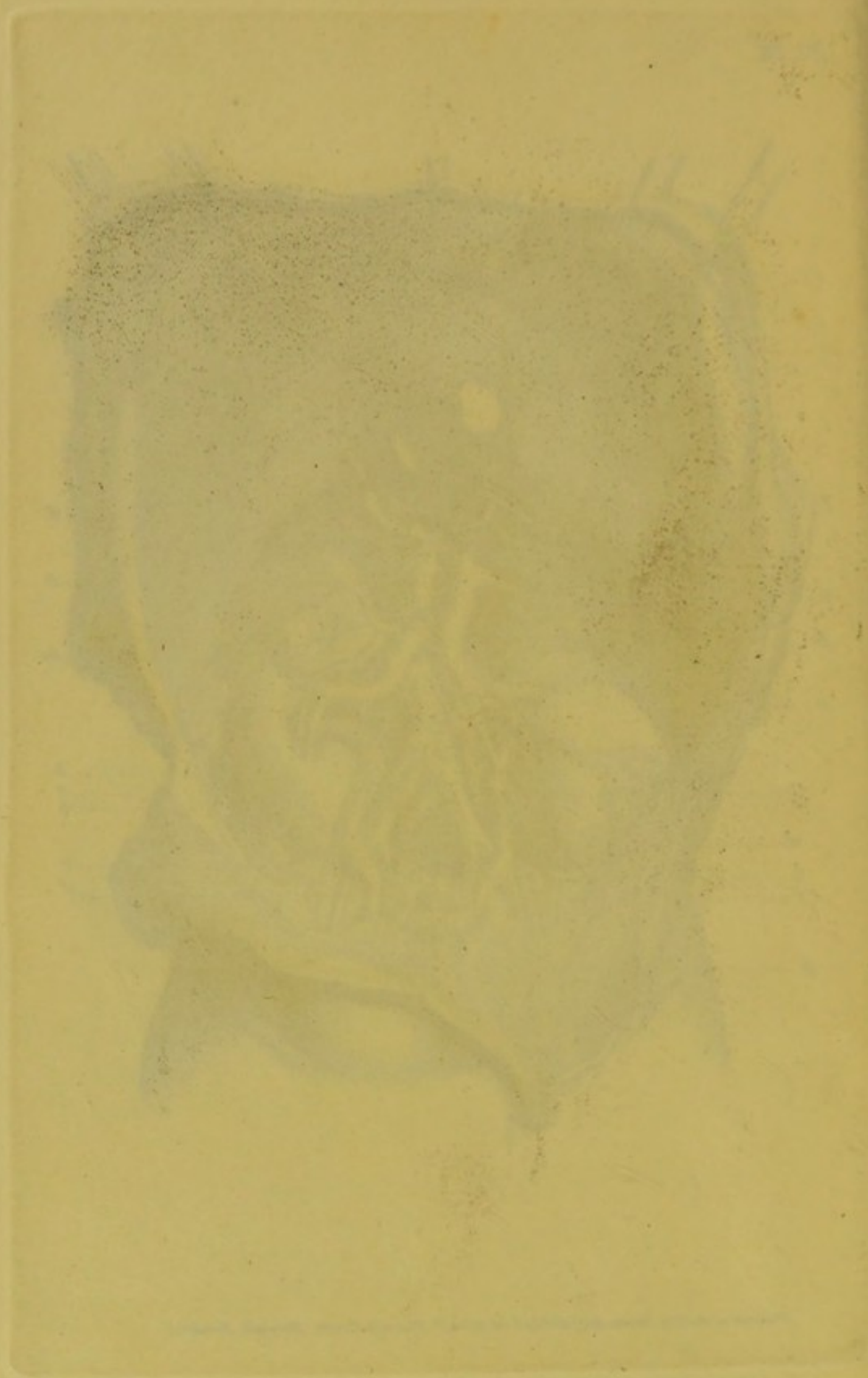












1. *Chrysomelid* *Blattaria*

2. *Dermaptera* of the *Chrysomelid* *Blattaria*

3. *Dermaptera* *Blattaria*

4. *Dermaptera* *Blattaria*

5. *Dermaptera* *Blattaria*

6. *Dermaptera* *Blattaria*

7. *Dermaptera* *Blattaria*

8. *Dermaptera* *Blattaria*

9. *Dermaptera* *Blattaria*

10. *Dermaptera* *Blattaria*

11. *Dermaptera* *Blattaria*

12. *Dermaptera* *Blattaria*

13. *Dermaptera* *Blattaria*

14. *Dermaptera* *Blattaria*

15. *Dermaptera* *Blattaria*

16. *Dermaptera* *Blattaria*

17. *Dermaptera* *Blattaria*

18. *Dermaptera* *Blattaria*

19. *Dermaptera* *Blattaria*

20. *Dermaptera* *Blattaria*

21. *Dermaptera* *Blattaria*

22. *Dermaptera* *Blattaria*

23. *Dermaptera* *Blattaria*

24. *Dermaptera* *Blattaria*

25. *Dermaptera* *Blattaria*

26. *Dermaptera* *Blattaria*

27. *Dermaptera* *Blattaria*

28. *Dermaptera* *Blattaria*

29. *Dermaptera* *Blattaria*

30. *Dermaptera* *Blattaria*

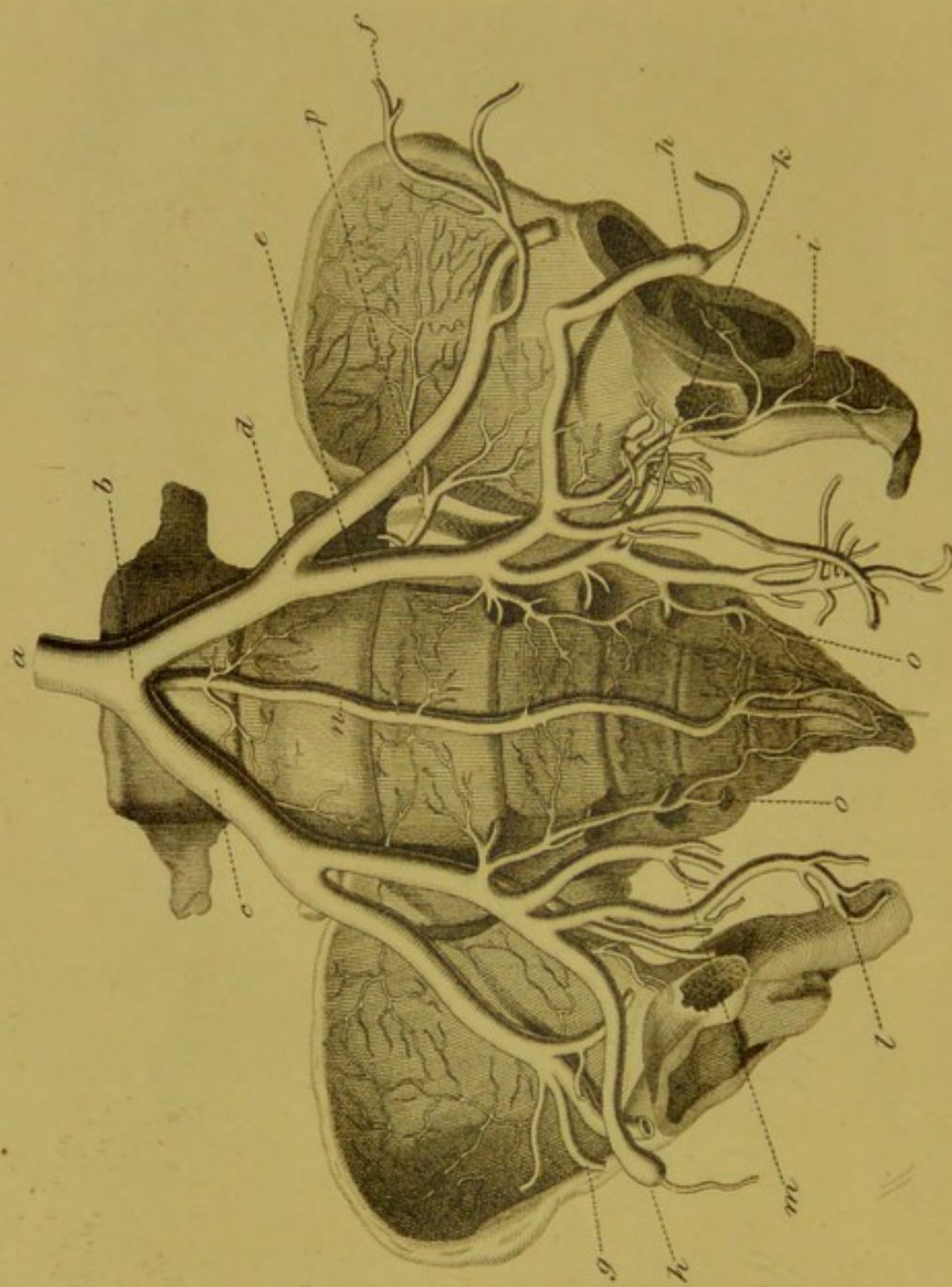
31. *Dermaptera* *Blattaria*

32. *Dermaptera* *Blattaria*

33. *Dermaptera* *Blattaria*

34. *Dermaptera* *Blattaria*





- c. Common Iliac Artery.
- d. Division of the Common Iliac.
- e.e. Internal Iliac.
- f.f. External Iliac.
- g. Epigastric.
- l. Right Phrenic.
- k. Left Phrenic.
- m. Emulgent.
- o. Spermatic.
- p. Left Emulgent Vein.
- q. Capsular Vein.
- r. Right Emulgent Vein.

---

## PLATE X.

### *Arteries of the Pelvis.*

- a. Aorta.
- b. Its Bifurcation.
- c. Common Iliac Artery.
- d. External Iliac.
- e. Internal Iliac.
- f. Epigastric.
- g. Circumflex Artery of the Ilium.
- h.h. Umbilical.
- i. Obturator.
- k. Gluteal.



- l.* Internal Pudic Artery.
  - m.* Ischiatic.
  - n.* Middle Sacral.
  - o.* Lateral Sacral.
  - p.* Ilio Lumbar.
- 

## PLATE XI.

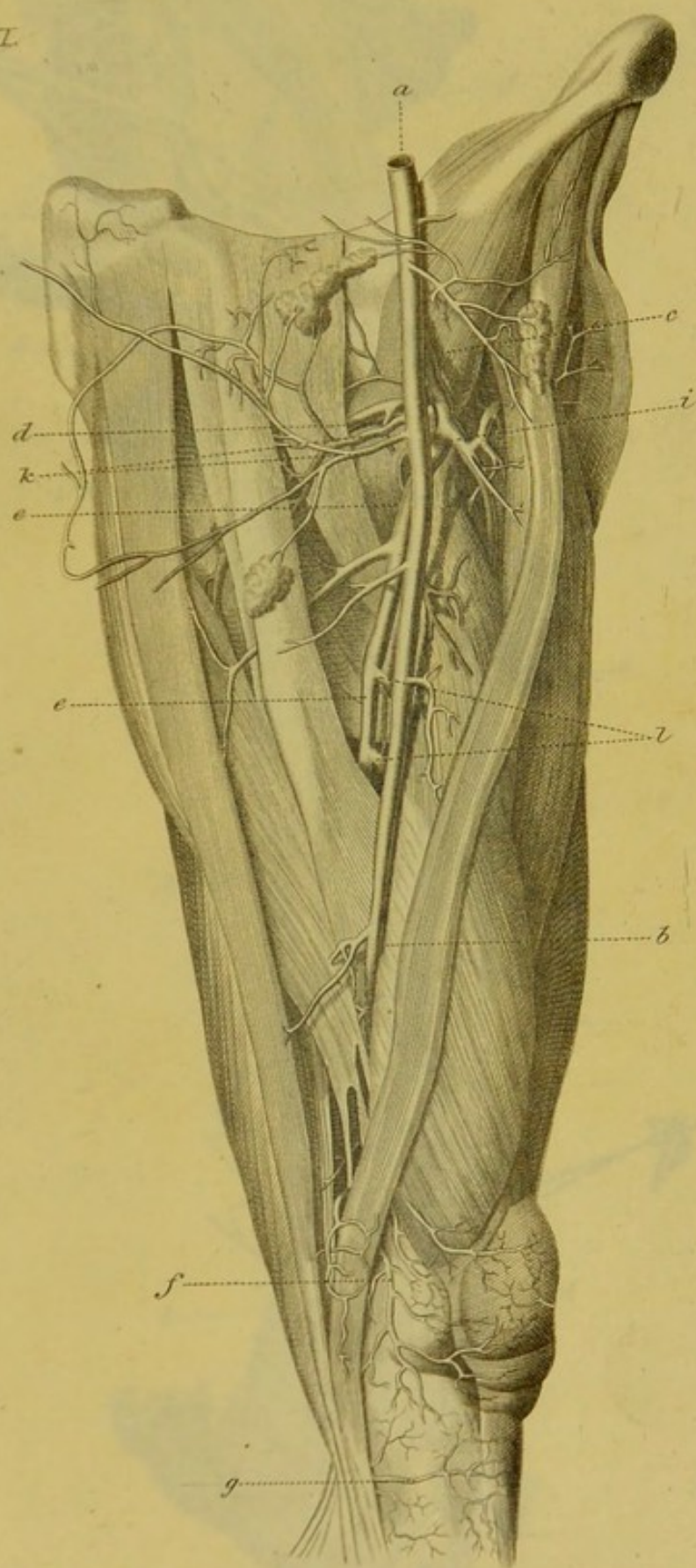
### *Arteries on the Fore Part of the Thigh.*

- a.* External Iliac Artery.
  - b.* Femoral perforating the Tendon of the Triceps Muscle.
  - c.* Origin of the Profunda.
  - e. e.* Profunda Femoris.
  - d.* Internal Circumflex Artery.
  - i.* External Circumflex.
  - k.* ——— Pudic Branches.
  - l.* Perforating Arteries.
  - f.* Superior Internal Articular Artery.
  - g.* Inferior Internal Articular Artery.
- 

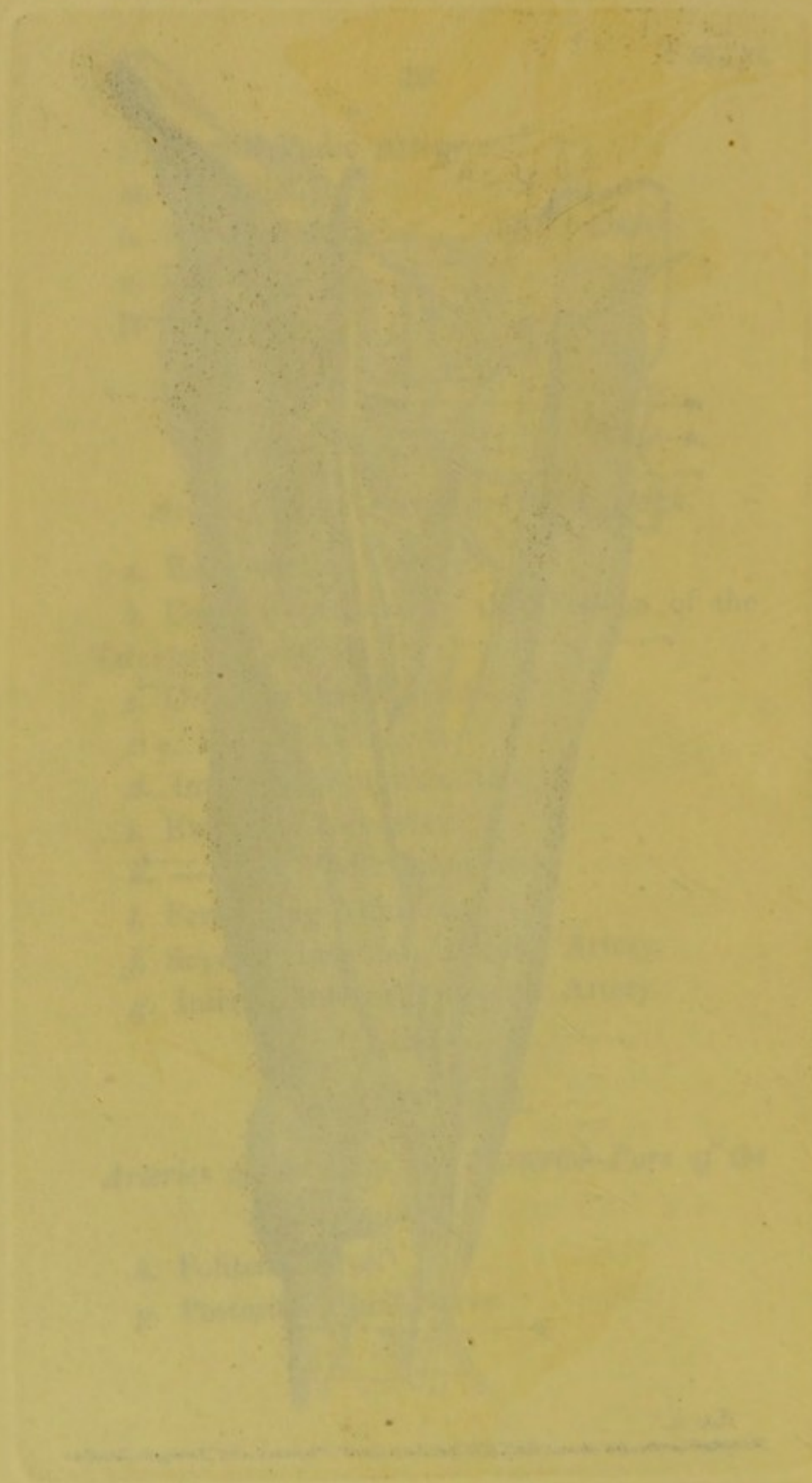
## PLATE XII.

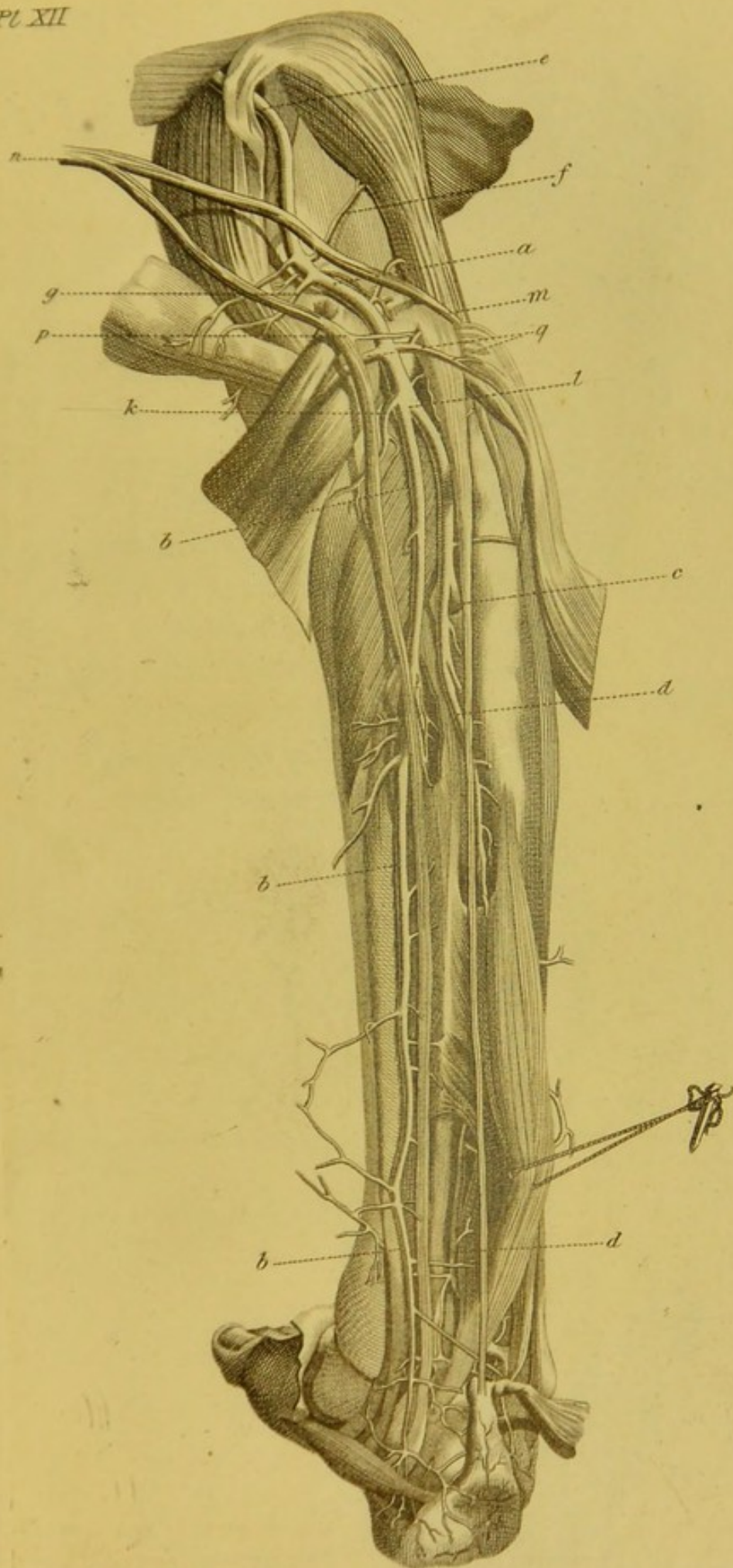
### *Arteries of the Ham and Posterior Part of the Leg.*

- h.* Politeal Nerve.
- p.* Posterior Tibial Nerve.



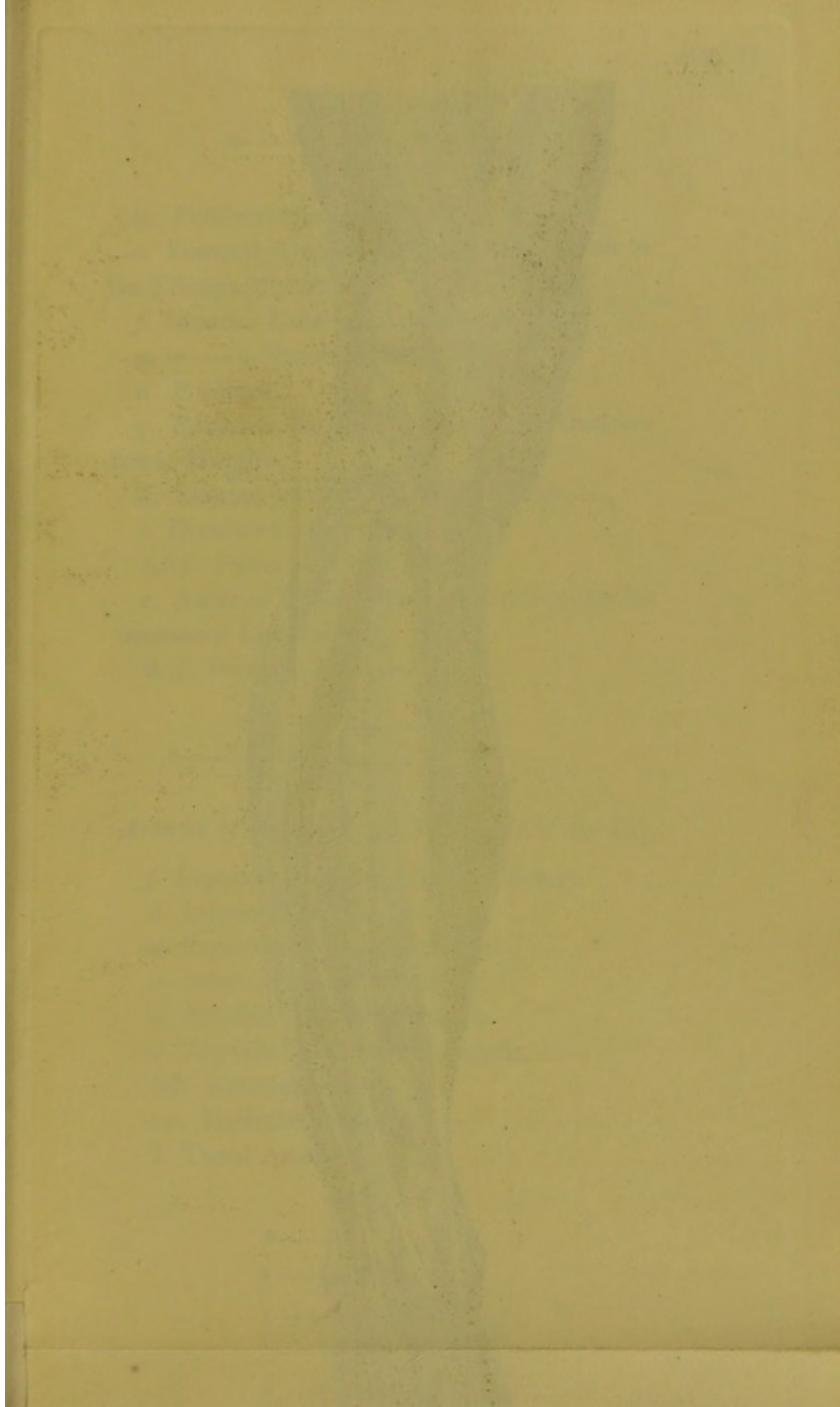
















- m.* Peroneal Nerve.
- e.* Femoral Artery perforating the Tendon of the Triceps Muscle.
- f.* Superior External Articular Artery,
- g.* ——— Internal Articular.
- a.* Popliteal.
- q.* Branches to the Heads of the Gastrocnemii Muscles.
- k.* Inferior Internal Articular Artery.
- l.* Division of the popliteal.
- b.b.b.* Posterior Tibial Artery.
- c.* Anterior Tibial Artery perforating the Interosseous Ligament.
- d. d.* Peroneal Artery.

---

### PLATE XIII.

#### *Arteries of the Knee and Fore Part of the Leg.*

- f.* Superior External Articular Artery.
- d.* Inferior External Articular.
- a.* Superior Internal Articular.
- e.* Inferior Internal Articular.
- k.* Another Articular Branch.
- g.* Superior Artery of the Patella.
- b.b.* Anterior Tibial.
- c.c.* Malleolar Arteries.
- l.* Tarsal Artery.



- m.* Descending Trunk of the Anterior Tibial.
  - h.* Dorsal Artery of the Great Toe.
  - o.* Anastomosis of *h*, with the Internal Plantar Artery.
- 

## PLATE XIV.

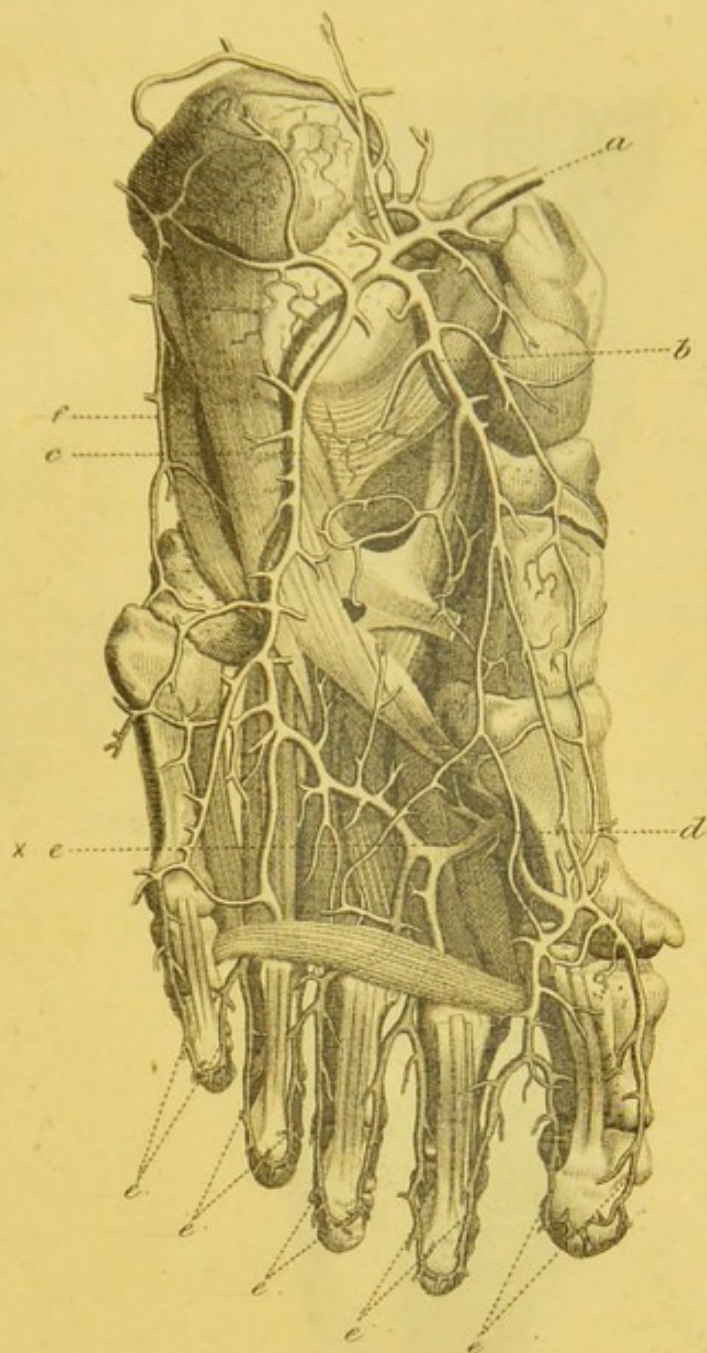
### *Arteries of the Sole of the Foot.*

- a.* Posterior Tibial Artery.
  - b.* Internal Plantar.
  - c.* External Plantar.
  - d.* Anastomosis, with the deep Branch of the Anterior Tibial.
  - ×e.* Continuation of the External Plantar Artery, uniting with the Anterior Tibial, to form the Plantar Arch.
  - f.* Peroneal Branch.
  - e.e.e.e.e.* Digital Branches.
- 

## PLATE XV.

### *Blood-vessels and Nerves at the Bend of the Elbow.*

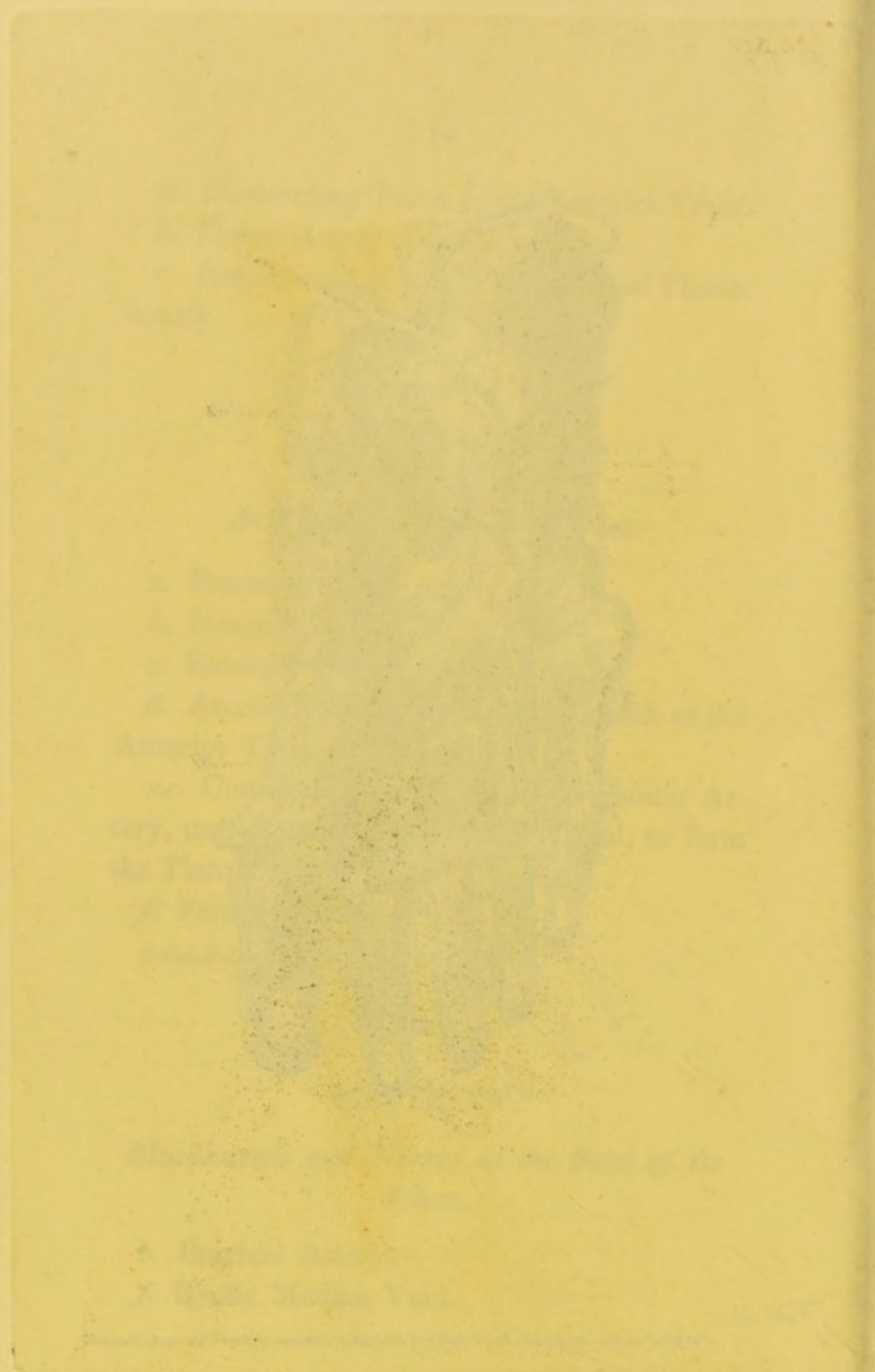
- b.* Brachial Artery.
- f.* Basilic Median Vein.

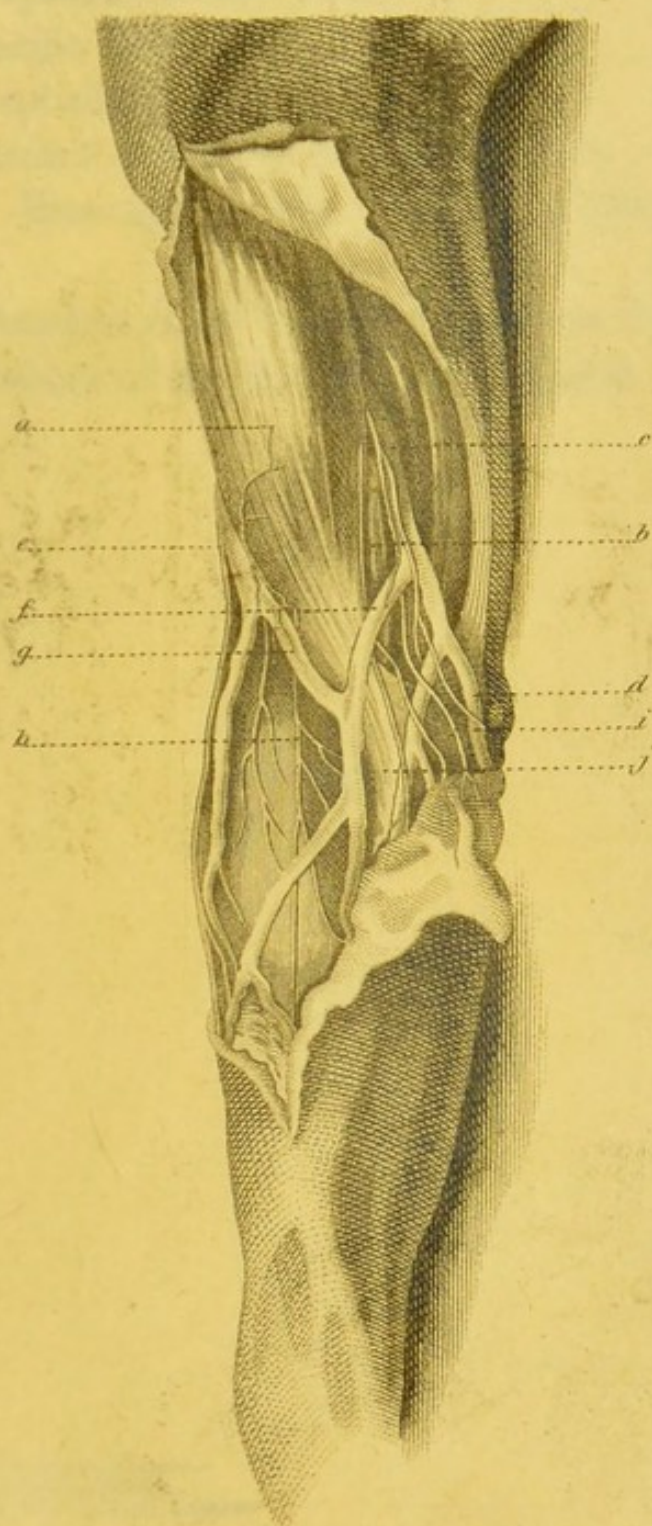


Parke, Sc.

Published as the Act directs Jan<sup>y</sup> 1. 1724. by E. Calkins & Sons, Thomas's Str<sup>et</sup> Borough, London.







Meybridge. Del.

Parks. Sc.

Published as the Act Directs Jan<sup>y</sup> 21. 1824. by E. Cox & Son. St. Thomas's St. Boro'





- g.* Cephalic Median Vein.
- c.* Basilic Vein.
- e.* Cephalic Vein.
- d.* Branch leading to the Basilic Vein.
- a.h.* Branches of the External Cutaneous Nerve.
- i.* Branches of the Internal Cutaneous Nerve.
- j.* Tendon of the Biceps, and its Fascia.

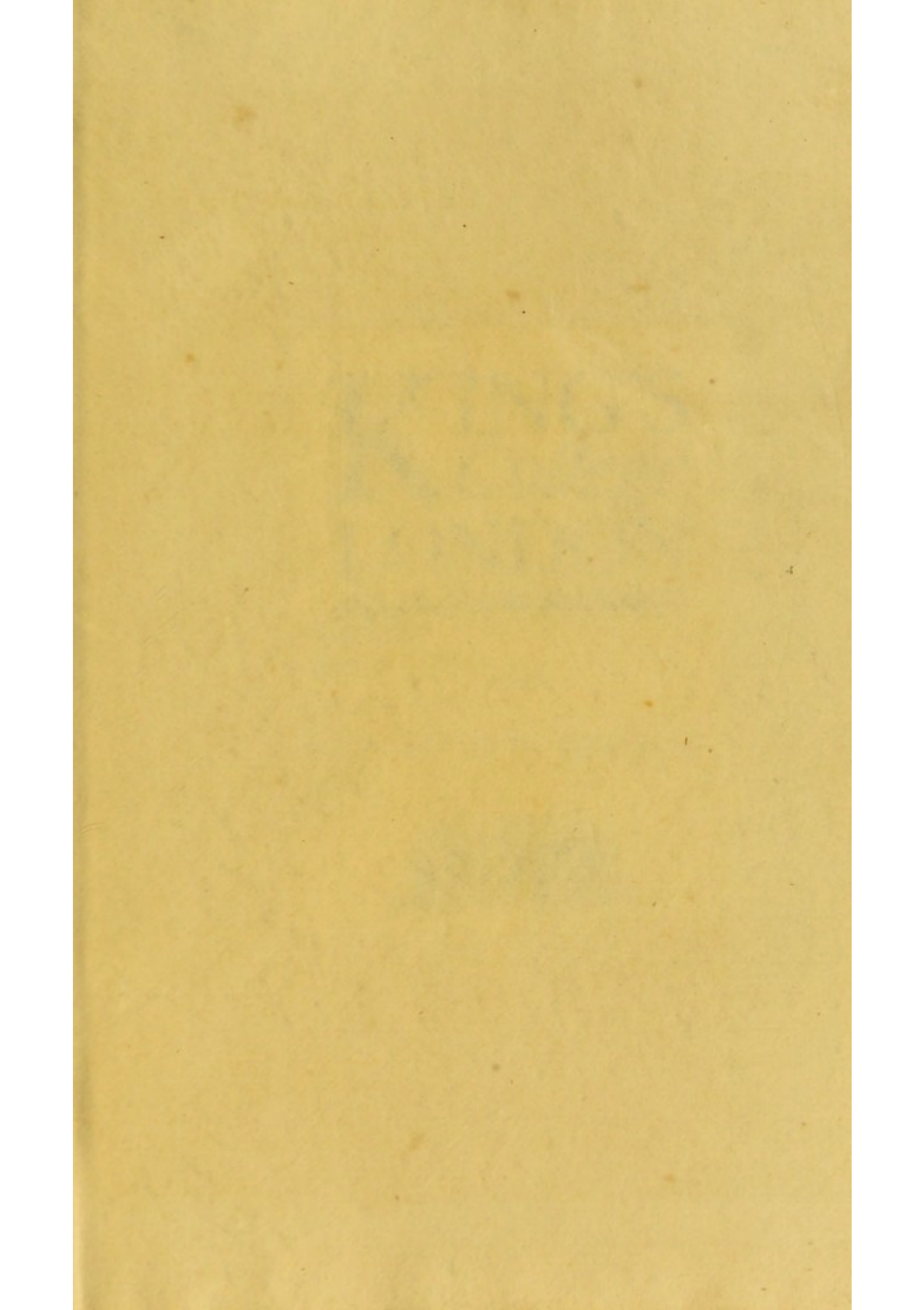
THE END.



3. Cephalic Median Vein
4. Cephalic Vein
5. Cephalic Vein
6. Branch leading to the Head Vein
7. Branches of the External Carotid
8. Branches of the Internal Carotid
9. Branches of the Subclavian Vein

THE END

Printed by J. W. Smith, New York







# KING'S *College* LONDON

---

TOMHB  
Q.M191 COX *Library*  
COX, WILLIAM

ENGRAVINGS OF THE ARTERIES OF...  
[1825]

020218339 6



KINGS COLLEGE LONDON



