

**The family companion and physician : on reformed botanical principles, treating of the symptoms and remedies of acute diseases in men, women, and children : together with a short lecture on the laws of the many nervous diseases to which we are subject : also, numerous preparations valuable to every family / by J. Wilson.**

### **Contributors**

Wilson, J., Dr.  
National Library of Medicine (U.S.)

### **Publication/Creation**

Rochester : Daily Democrat, [1866?]

### **Persistent URL**

<https://wellcomecollection.org/works/mg9g3bj>

### **License and attribution**

This material has been provided by This material has been provided by the National Library of Medicine (U.S.), through the Medical Heritage Library. The original may be consulted at the National Library of Medicine (U.S.) where the originals may be consulted.

This work has been identified as being free of known restrictions under copyright law, including all related and neighbouring rights and is being made available under the Creative Commons, Public Domain Mark.

You can copy, modify, distribute and perform the work, even for commercial purposes, without asking permission.

**wellcome  
collection**

Wellcome Collection  
183 Euston Road  
London NW1 2BE UK  
T +44 (0)20 7611 8722  
E [library@wellcomecollection.org](mailto:library@wellcomecollection.org)  
<https://wellcomecollection.org>













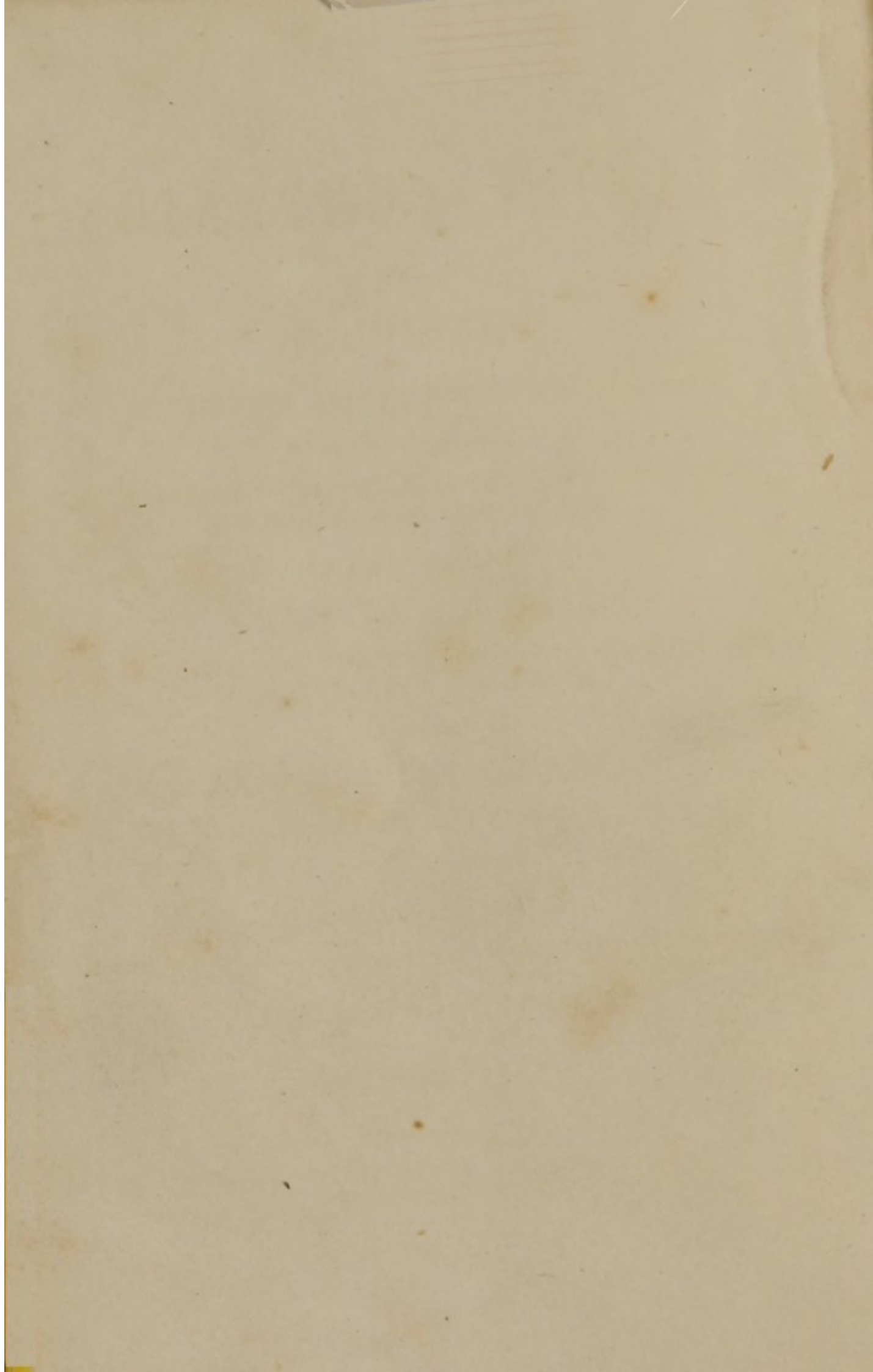










































































































































ver entirely subsides. At first, numerous red spots appear, and then gradually rise into pimples, which first appear upon the face, and at the sixth day are filled like a bladder. The fluid, and afterwards a pit, form at the centre. Between the eruptions the skin assumes a scarlet hue, the eyes red, face swollen, until the eyes are often closed. At the eleventh day the swelling abates, the pustules are quite full; on the top of each a dark spot appears and then breaks, and a portion of the matter oozes out, and forms a crust or scab over the surface, and some days after, the scab falls from the skin, leaving a darkish spot.

*Confluent form.*—In this species the foregoing symptoms are much aggravated. The pulse is increased; more fever; increased drowsiness, and frequently delirium, and sometimes vomiting, and with the young frequently epileptic fits, and often proves fatal before the eruption appears, and when they do appear, they are in clusters like the measles, and often run together, and the entire face and other parts assume a black or crus-







































































































































































































































































































































































































